



HAL
open science

Analysis of aircraft and satellite measurements from the intercontinental chemical transport experiment (INTEX-B) to quantify long-range transport of East Asian Sulfur to Canada

A. van Donkelaar, R. V. Martin, W. R. Leitch, A. M. Macdonald, T. W. Walker, D. G. Streets, Q. Zang, E. Dunlea, J. L. Jimenez, J. E. Dibb, et al.

► To cite this version:

A. van Donkelaar, R. V. Martin, W. R. Leitch, A. M. Macdonald, T. W. Walker, et al.. Analysis of aircraft and satellite measurements from the intercontinental chemical transport experiment (INTEX-B) to quantify long-range transport of East Asian Sulfur to Canada. *Atmospheric Chemistry and Physics Discussions*, 2008, 8 (1), pp.4017-4057. hal-00303994

HAL Id: hal-00303994

<https://hal.science/hal-00303994>

Submitted on 18 Jun 2008

HAL is a multi-disciplinary open access archive for the deposit and dissemination of scientific research documents, whether they are published or not. The documents may come from teaching and research institutions in France or abroad, or from public or private research centers.

L'archive ouverte pluridisciplinaire **HAL**, est destinée au dépôt et à la diffusion de documents scientifiques de niveau recherche, publiés ou non, émanant des établissements d'enseignement et de recherche français ou étrangers, des laboratoires publics ou privés.

Analysis of aircraft and satellite measurements from the intercontinental chemical transport experiment (INTEX-B) to quantify long-range transport of East Asian Sulfur to Canada

A. van Donkelaar¹, R. V. Martin^{1,2}, W. R. Leitch³, A. M. Macdonald³,
T. W. Walker^{1,4}, D. G. Streets⁵, Q. Zhang⁵, E. J. Dunlea⁶, J. L. Jimenez⁶, J. E. Dibb⁷,
G. Huey⁸, R. Weber⁸, M. O. Andreae⁹

¹Dept. of Physics and Atmospheric Science, Dalhousie University, Halifax, Nova Scotia, Canada

²Harvard-Smithsonian Center for Astrophysics, Cambridge, Massachusetts, USA

³Science and Technology Branch, Environment Canada, Toronto, Ontario, Canada

⁴Dept. of Physics, University of Toronto, Ontario, Canada

⁵Decision and Information Sciences Division, Argonne National Lab., Aragonne, Illinois, USA

⁶Department of Chemistry and Biochemistry, and Cooperative Institute for Research in the Environmental Sciences (CIRES), University of Colorado, Boulder, Colorado, USA

⁷Climate Change Research Center/EOS, University of New Hampshire, USA

⁸School of Earth and Atmospheric Sciences, Georgia Institute of Technology, Atlanta, Georgia, USA

⁹Biogeochemistry Department, Max Plank Institute for Chemistry, Mainz, Germany

Long-range transport
of East Asian sulfur
to Canada

A. van Donkelaar et al.

Title Page

Abstract

Introduction

Conclusions

References

Tables

Figures

◀

▶

◀

▶

Back

Close

Full Screen / Esc

Printer-friendly Version

Interactive Discussion



Received: 11 December 2007 – Accepted: 22 January 2008 – Published: 27 February 2008

Correspondence to: A. van Donkelaar (aaron.van.donkelaar@dal.ca)

Published by Copernicus Publications on behalf of the European Geosciences Union.

ACPD

8, 4017–4057, 2008

**Long-range transport
of East Asian sulfur
to Canada**

A. van Donkelaar et al.

Title Page

Abstract

Introduction

Conclusions

References

Tables

Figures

◀

▶

◀

▶

Back

Close

Full Screen / Esc

Printer-friendly Version

Interactive Discussion



Abstract

We interpret a suite of satellite, aircraft, and ground-based measurements over the North Pacific Ocean and western North America during April–May 2006 as part of the Intercontinental Chemical Transport Experiment Phase B (INTEX-B) campaign to understand the implications of long-range transport of East Asian emissions to North America. The Canadian component of INTEX-B included 33 vertical profiles from a Cessna 207 aircraft equipped with an aerosol mass spectrometer. Long-range transport of organic aerosols was insignificant. Measured sulfate plumes in the free troposphere over British Columbia exceeded $1 \mu\text{g}/\text{m}^3$. We update the global anthropogenic emission inventory in a chemical transport model (GEOS-Chem) and use it to interpret the observations. Trends in Aerosol Optical Depth (AOD) retrieved from two satellite instruments (MISR and MODIS) for 2000–2006 are analyzed with GEOS-Chem to estimate an annual growth in Chinese sulfur emissions of 6.2% and 9.6%, respectively. Analysis of aircraft sulfate measurements from the NASA DC-8 over the central Pacific, the NSF C-130 over the east Pacific and the Cessna over British Columbia indicates most Asian sulfate over the ocean is in the lower free troposphere (800–600 hPa), with a decrease in pressure toward land due to orographic effects. We calculate that 63% of the measured sulfate at 600 hPa over British Columbia is due to East Asian sources. Simulation of INTEX-B and May 1985 aircraft measurements off the northwest coast of the United States reveals a 2.4–3.4 fold increase in the relative contribution of East Asian sulfate to the total burden. Campaign-average simulations indicate anthropogenic East Asian sulfur emissions increase mean springtime sulfate in Western Canada at the surface by $0.14\text{--}0.19 \mu\text{g}/\text{m}^3$ ($\sim 30\%$) and account for 40% of the overall regional sulfate burden between 1 and 5 km. Mean measured daily surface sulfate concentrations taken in the Vancouver area increase by $0.27 \mu\text{g}/\text{m}^3$ per 10% increase in the simulated fraction of Asian sulfate, suggesting current East Asian emissions degrade local air quality.

ACPD

8, 4017–4057, 2008

Long-range transport of East Asian sulfur to Canada

A. van Donkelaar et al.

Title Page

Abstract

Introduction

Conclusions

References

Tables

Figures

◀

▶

◀

▶

Back

Close

Full Screen / Esc

Printer-friendly Version

Interactive Discussion



1 Introduction

The transport of Asian emissions to North America has been well documented (e.g. Parrish et al., 1992; Jaffe et al., 1999; Bertschi et al., 2004; Liang et al., 2004; Park et al., 2004). Andreae et al. (1988) measured sulfate (SO_4^-) concentrations off the northwest coast of the United States in May 1985, and attributed enhancements in the free troposphere to Asian sources. Asian emissions of sulfur oxides ($\text{SO}_x \equiv \text{SO}_2 + \text{SO}_4^-$) are dominated by SO_2 and have grown substantially over the last two decades (Streets and Waldhoff, 2000). They increasingly impact North America, affecting both regional air quality (Park et al., 2004; Heald et al., 2006) and climate (Ming et al., 2007). Additional analysis of in-situ and remote-sensed observations are needed to quantify this long-range transport and its implications.

Sirois and Barrie (1999) analyzed aerosol composition between 1980 and 1995 to infer the presence of Eurasian SO_4^- in the Canadian Arctic between those dates. During the Polar Sunrise Experiment in 1992 at Alert, Canada, concentrations of SO_x were well correlated with long-range transport of fine anthropogenic aerosol (Barrie et al., 1994). Asian pesticides have been observed in the Yukon Territory, Canada, as a result of transpacific flow (Bailey et al., 2000). The influence of long-range transport to Canada is not limited to remote regions, and is especially relevant in populated areas. Asian pesticides have also been transported to the Fraser Valley, British Columbia (Harner et al., 2005). Dust transport to western Canada has been observed from as far as the Sahara Desert (McKendry et al., 2007) and Asian fine dust provides an estimated median $1.2 \mu\text{g}/\text{m}^3$ in surface air over the western United States in spring (Fairlie et al., 2007). Chinese dust has also been observed in British Columbia's Lower Fraser Valley (McKendry et al., 2001) and can be linked to SO_4^- transport through the uptake of sulfur dioxide (SO_2) on dust (Jordan et al., 2003; Song et al., 2007).

Satellite observations offer a top-down constraint on emissions. Previous work includes absolute emissions of nitrogen oxides (Leue et al., 2001; Martin et al., 2003a; Jaeglé et al., 2005; Müller and Stavrakou, 2005), volatile organic compounds (Palmer

Long-range transport of East Asian sulfur to Canada

A. van Donkelaar et al.

Title Page

Abstract

Introduction

Conclusions

References

Tables

Figures

◀

▶

◀

▶

Back

Close

Full Screen / Esc

Printer-friendly Version

Interactive Discussion



et al., 2003; Fu et al., 2007), and carbon monoxide (Arellano et al., 2004; Heald et al., 2004; Pétron et al., 2004), as well as trends in nitrogen oxide (Richter et al., 2005; van der A et al., 2006; Zhang et al., 2007) emissions. The clearest signals in current SO₂ retrievals are of volcanic activity (Khokar et al., 2005), although anthropogenic activity has also been detected (Eisinger and Burrows, 1998; Krotkov et al., 2006; Carn et al., 2007). In some regions satellite-retrieved Aerosol Optical Depth (AOD) is closely related to SO₂ emissions through production of SO₄⁻ (Massie et al., 2004; Dubovik et al., 2007).

Although direct emission of Asian aerosol may be readily scavenged near its source due to wet deposition, SO₂ emissions can still escape to the free troposphere prior to SO₄⁻ conversion and then transported across the Pacific Ocean (Brock et al., 2004). Elevated aerosol concentrations, attributed to East Asian combustion sources, have been observed reaching North America near the Canadian border at Cheeka Peak (Jaffe et al., 1999).

Springtime weather patterns generally produce the strongest seasonal outflow from Asia (Jacob et al., 2003; Liu et al., 2005), and therefore a pronounced influence of Asian emissions upon the North American continent. During April and May 2006, the Intercontinental Chemical Transport Experiment, Phase B (INTEX-B) set out to assess this influence using a combination of aircraft and satellite measurements throughout the northeastern pacific (Singh et al.¹). This NASA-driven initiative constituted the second half of the INTEX project, and was designed to improve the understanding of gas and aerosol transformation and transport on transcontinental and intercontinental scales.

In this paper we investigate the long-range transport of East Asian SO₄⁻ to Canada. Section 2 presents the aircraft component of the Canadian contribution to INTEX-B and outlines the other instruments, platforms and the model used in this study. In

¹Singh, H. B., Brune, W. H., Crawford, J. H., et al.: An overview of the INTEX-B campaign: Transport and transformation of pollutants over the Pacific and the Gulf of Mexico, Atmos. Chem. Phys., in preparation, 2008.

Long-range transport of East Asian sulfur to Canada

A. van Donkelaar et al.

Title Page

Abstract

Introduction

Conclusions

References

Tables

Figures

◀

▶

◀

▶

Back

Close

Full Screen / Esc

Printer-friendly Version

Interactive Discussion



Sect. 3, we estimate the recent growth in East Asian SO_x emissions based upon remote sensing measurements. Section 4 combines data from a chemical transport model with in-situ measurements to characterize the Asian sulfur transport to Canada. A case study of an Asian plume is presented in Sect. 5, along with the implications for Canadian air quality. Conclusions are in Sect. 6.

2 INTEX-B platforms

Here we introduce the aircraft, surface and satellite measurements, and the model used for interpretation.

2.1 In-situ measurements

Figure 1 provides an overview of the measurement platforms and regions examined throughout this manuscript. Several aircraft participated in INTEX-B, including the NASA DC-8, the NSF C-130 and a Canadian Cessna 207 described below. Throughout this manuscript, we limit the DC-8 and C-130 measurements to within the boxed regions of Fig. 1 to focus on long-range transport of Asian aerosol to Canada. The DC-8 aircraft utilized both a mist chamber (Cofer et al., 1985) and bulk aerosol filters to characterize the SO_4^- aerosol load, during 10 flights between 17 April 2006 and 15 May 2006. The size cutoff of the onboard mist chamber system is $\sim 1 \mu\text{m}$ (based on estimated particle transmission efficiency through the inlet and sampler) while that of the bulk aerosol filters has been empirically determined to be $\sim 4.5 \mu\text{m}$ (McNaughton et al., 2007). Mist chamber sampling periods are less than two minutes and aerosol filters are not exposed longer than 10 to 20 min, depending upon altitude. Uncertainties in the reported SO_4^- mixing ratios are $\sim 20\%$ from the mist chamber and ~ 25 pptv ($\sim 110 \text{ ng/m}^3$) from the filters. A chemical ionization mass spectrometer (CIMS) instrument (Huey et al., 2004; Kim et al., 2007) was also onboard the DC-8 and used for the measurement of SO_2 with a sampling frequency of approximately

Long-range transport of East Asian sulfur to Canada

A. van Donkelaar et al.

Title Page

Abstract

Introduction

Conclusions

References

Tables

Figures

◀

▶

◀

▶

Back

Close

Full Screen / Esc

Printer-friendly Version

Interactive Discussion



**Long-range transport
of East Asian sulfur
to Canada****A. van Donkelaar et al.**

[Title Page](#)[Abstract](#)[Introduction](#)[Conclusions](#)[References](#)[Tables](#)[Figures](#)[◀](#)[▶](#)[◀](#)[▶](#)[Back](#)[Close](#)[Full Screen / Esc](#)[Printer-friendly Version](#)[Interactive Discussion](#)

3 s. The C-130 platform included a high-resolution time-of-flight aerosol mass spectrometer (HR-ToF-AMS) (DeCarlo et al., 2006; Canagaratna et al., 2007; Dunlea et al.²) with ~12 s sampling frequency and a particle-into-liquid sampler (PILS) (Weber et al., 2001; Peltier et al., 2007) of one minute sampling frequency during its 11 flights between 21 April 2006 and 15 May 2006. AMS particle transmission is approximately PM₁ in vacuum aerodynamic diameter (Jayne et al., 2000) with particle transmission efficiency rapidly decreasing for aerosols larger than 0.7 μm (e.g. Rupakheti et al., 2005; Liu et al., 2007). PILS measurements were restricted to particles less than 1 μm (at 1 atm. pressure) aerodynamic diameter via a single-stage micro-orifice impactor (Model 100, MSP Corp.). AMS and PILS sulfate measurement uncertainties are estimated at 25% and 10%, respectively.

Whistler Peak Station (50.1° N, 122.9° W, 2182 m) is operated by Environment Canada and has provided continuous measurements of meteorological data, CO and O₃ since its establishment in 2002 (Macdonald et al., 2006). Inorganic filter packs of SO₄⁻, NO₃⁻ and Ca⁺ are also routinely collected and analyzed. In addition to these regular measurements, a HR-ToF-AMS (Sun et al.³) and a Micro-Orifice Uniform Deposit Impactor (MOUDI) were operated at the site for the duration of INTEX-B. The MOUDI was operated with three stages to isolate particles into three nominal size bins of <1 μm, 1–3 μm and >3 μm.

A Cessna 207 aircraft (Leaitch et al.⁴), supplied by Environment Canada during INTEX-B, contained a suite of instruments designed to capture both gaseous and aerosol pollutants. Aerosol instrumentation included number concentrations of ultra-

²Dunlea, E., DeCarlo, P. F., Kimmel, J. R., et al.: Evolution of Asian aerosols during transpacific transport in INTEX-B, Atmos. Chem. Phys., in preparation, 2008.

³Sun, Y., Zhang, Q., Leaitch, R. W., et al.: Characterization of Submicron Aerosols at the Whistler Summit, BC Using a High-Resolution Time-of-Flight Aerosol Mass Spectrometer during INTEX-B, Atmos. Chem. Phys., in preparation, 2008.

⁴Leaitch, W. R., Macdonald, A. M., Anlauf, K. G., et al.: Vertical Profiles at Whistler, B.C. during INTEX-B, in preparation, 2008.

**Long-range transport
of East Asian sulfur
to Canada****A. van Donkelaar et al.**

[Title Page](#)[Abstract](#)[Introduction](#)[Conclusions](#)[References](#)[Tables](#)[Figures](#)[◀](#)[▶](#)[◀](#)[▶](#)[Back](#)[Close](#)[Full Screen / Esc](#)[Printer-friendly Version](#)[Interactive Discussion](#)

fine aerosol (PMS7610), aerosol size distribution (FSSP300: $<18\ \mu\text{m}$ and PCASP: $<2.5\ \mu\text{m}$) and aerosol composition by way of a quadrupole aerosol mass spectrometer (Q-AMS) (Rupakheti et al., 2005; Jimenez et al., 2003; Jayne et al., 2000). The Q-AMS detection limits are $40\ \text{ng}/\text{m}^3$ for SO_4^- and nitrate and $600\ \text{ng}/\text{m}^3$ for organic aerosol for each one-minute average measurement. Walker et al.⁵ describe and interpret O_3 and CO measurements on the Cessna.

All Cessna 207 flights, shown in Fig. 2, originated outside Pemberton, B. C., 35 km north of Whistler, with the exception of one inter-comparison flight with the C-130, conducted on 9 May 2006 along the Canada-US border and related transit. Most Cessna flight tracks consisted of an ascent and descent near Whistler Peak Station before returning to the takeoff site. Thirty-three flights occurred between 22 April 2006 and 17 May 2006, with most extending from the surface to approximately 5 km (550 hPa) altitude and those with valid Q-AMS data occurring mid-late morning to late afternoon. Q-AMS data from the 9 May inter-comparison and several other flights were lost due to radio frequency interference, resulting in a total twenty one flights with successful Q-AMS measurements.

The right panel of Fig. 2 shows the flight paths for the 3 May inter-comparison flight between the Cessna and the C-130. The inter-comparison zone is outlined in grey. The Cessna descent was not completed within the comparison region until approximately 50 min after the C-130 had left the inter-comparison zone. To minimize the effect of sampling time differences, we compare only measurements taken during the Cessna upward spiral against those from the C-130.

Figure 3 shows the speciated aerosol profiles from both aircraft during this intercomparison. All measurements are converted to concentrations at standard temperature and pressure of 1013 hPa and 0°C . Significant agreement is found between the AMS measurements, with respective Root Mean Square Differences (RMSD) and mean bias of, 0.9 and $0.3\ \mu\text{g}/\text{m}^3$ for SO_4^- , 0.3 and $0.2\ \mu\text{g}/\text{m}^3$ for organics, 0.03 and $0.003\ \mu\text{g}/\text{m}^3$ for

⁵Walker, T. W., Martin, R. V., van Donkelaar, A., et al.: Trans-Pacific transport of ozone and reactive nitrogen in spring, in preparatin, 2008.

nitrate, and 0.2 and $-0.0007 \mu\text{g}/\text{m}^3$ for ammonium. The largest disagreement is found in SO_4^- at approximately 625 hPa, likely representative of a change in air mass, as indicated by significant and abnormal disagreement ($\sim 30\%$) between the relative humidity measurements on the two aircraft. This particular pressure was sampled ~ 35 minutes apart. Removal of points between 600 and 650 hPa, decreases the RMSD and bias in SO_4^- to 0.6 and $-0.01 \mu\text{g}/\text{m}^3$ respectively, leaving other species largely unchanged. This is considered good agreement for these sampling conditions.

A collection efficiency (CE) of 0.5 is used for the AMS on the C-130 and is based on many previous intercomparisons (Canagaratna et al., 2007, and references therein), with a correction for increased CE under high acidity conditions (Quinn et al., 2006) and is discussed by Dunlea et al. (in preparation). The CE used with the Cessna AMS is discussed by Leitch et al. (in preparation).

MOUDI Measurements of the SO_4^- size distribution at Whistler Peak during INTEX-B indicate a mean ratio of total SO_4^- aerosol to SO_4^- below $1 \mu\text{m}$ in aerodynamic diameter of 1.4. We scale the Cessna SO_4^- Q-AMS measurements by this correction factor, which is further justified in section 4, to better represent total SO_4^- mass. Airborne measurements off the west coast of Washington State and Oregon in May 1985 found that up to half of the non-seasalt SO_4^- mass was above $1.5 \mu\text{m}$ (Andreae et al., 1988) suggesting either a larger scale factor or a change in the SO_4^- size distribution. MOUDI measurements of the NO_3^- size distribution indicate that total NO_3^- aerosol is eight times larger than submicron NO_3^- . However, we do not apply a correction factor to nitrate measurements due to concerns about such a larger scale factor.

Figure 4 shows average vertical profiles of Cessna Q-AMS and water (H_2O) concentration data obtained during four separate enhancement periods. SO_4^- concentrations of $1\text{--}2 \mu\text{g}/\text{m}^3$ dominate in the free troposphere and tend to increase with altitude, implying long-range transport. In contrast, organic concentrations typically decrease with altitude and dominate at the surface, implying a local source. These opposing trends suggest that the amount of organics transported with SO_4^- is small and that long-range transport of organic aerosols is not a significant contributor to the organic concentration

Long-range transport of East Asian sulfur to Canada

A. van Donkelaar et al.

Title Page

Abstract

Introduction

Conclusions

References

Tables

Figures

◀

▶

◀

▶

Back

Close

Full Screen / Esc

Printer-friendly Version

Interactive Discussion



in the region studied. Leaitch et al. (in preparation) find a high level of mass closure with Cessna Q-AMS measurements, suggesting that the relatively high Q-AMS detection limit for organics ($0.4\text{--}0.6\ \mu\text{g}/\text{m}^3$) has not impacted this conclusion. They also show that the occurrence of increased sulfate usually accompanies an increase in the number and mass concentrations of coarse particles. Dunlea et al. (2007) find that SO_4^- concentrations exceed those of organics for all Asian plume intercepts in the C-130, with older air masses being characterized by a larger $\text{SO}_4^-/\text{organics}$ ratio than younger ones having undergone more rapid transport, presumably due to additional production of SO_4^- during their extended transport time. The organic enhancement over 15 May–17 May is likely fuelled by an unusually high mixed layer depth, as indicated by the water concentration profile, and can be attributed to local sources. This period is further examined by Zhang et al. (in preparation) and McKendry et al.⁶. The contribution of nitrate to particulate mass is relatively insignificant, in part reflecting AMS size restrictions. We focus on long-range transport of SO_4^- for the remainder of the manuscript.

2.2 Model description

We use the GEOS-Chem chemical transport model v7-04-09 (Bey et al., 2001) (<http://www-as.harvard.edu/chemistry/trop/geos/index.html>) to interpret the aforementioned measurements. GEOS-Chem is driven by assimilated meteorological data from the Goddard Earth Observing System (GEOS-4) at the NASA Global Modeling Assimilation Office (GMAO), with 30 vertical levels and degraded to the model's horizontal resolution of 2° latitude by 2.5° longitude.

The aerosol simulation in GEOS-Chem includes the sulfate-nitrate-ammonium system (Park et al., 2004; Park et al., 2006), carbonaceous aerosols (Park et al., 2003; Liao et al., 2007), mineral dust (Fairlie et al., 2007) and sea-salt (Alexander et al.,

⁶McKendry, I. G., Macdonald, A. M., Leaitch, W. R., et al.: Trans-Pacific dust events observed at Whistler, British Columbia during INTEX-B, in preparation, 2008.

Long-range transport of East Asian sulfur to Canada

A. van Donkelaar et al.

Title Page

Abstract

Introduction

Conclusions

References

Tables

Figures

◀

▶

◀

▶

Back

Close

Full Screen / Esc

Printer-friendly Version

Interactive Discussion



2005). The aerosol and oxidant simulations are coupled through formation of sulfate and nitrate (Park et al., 2004), heterogeneous chemistry (Jacob, 2000) and aerosol effects on photolysis rates (Martin et al., 2003b). Wet and dry deposition are based upon Liu et al. (2001), including both washout and rainout. GEOS-Chem simulations capture
5 both the timing and distribution of Asian dust outbreaks during TRACE-P and ACE-Asia (Fairlie et al., 2007). It exhibits no significant bias in Asian SO_x ($\text{SO}_2 + \text{SO}_4^-$) outflow during spring 2001 as part of the TRACE-P campaign (Park et al., 2005), although modeled SO_4^- concentrations were 50% high during ACE-Asia, which may suggest an error in SO_2 oxidation rates (Heald et al., 2005).

10 The global emission inventory in the standard GEOS-Chem model is based on GEIA (Benkovitz et al., 1996) for the base year of 1985 with scale factors to 1998. We implement here the EDGAR 3.2FT2000 emission inventory based upon the year 2000 (Olivier et al., 2002) to provide a more current estimate of global emissions of NO_x , SO_x and CO. The global inventory is replaced by regional inventories from NEI99 (<http://www.epa.gov/ttn/chief/net/1999inventory.html>) over the United States for 1999, BRAVO
15 (Kuhns et al., 2005) over Mexico for 1999 and Streets et al. 2003; 2006) for 2000 (NO_x and SO_x) and 2001 (CO) for eastern Asia. EMEP emissions (<http://www.emep.int>) of NO_x and CO are used over Europe for up to 2000. We update the eastern Asia emissions to 2006 from Streets et al. (in preparation) and implement EMEP SO_x
20 emissions (Vestreng et al., 2007) over Europe for the year 2004. We increase ship emissions by 4.1% per year (Corbett et al., 2007).

We scale all regional and global inventories from their respective base year to 2003, the last year of available statistics, unless its base year is after 2003. Our approach follows Bey et al. (2001) and Park et al. (2004). Emissions are scaled according to estimates provided by individual countries, where available. These countries/regions
25 include the United States, Canada, Japan and Europe. NO_x emissions of remaining countries are scaled proportional to changes in total CO_2 emissions. SO_x emissions are similarly scaled to solid fuel CO_2 emissions and CO emissions to liquid fuel CO_2 emissions. CO_2 emission data are obtained from the Carbon Dioxide Information Anal-

Long-range transport of East Asian sulfur to Canada

A. van Donkelaar et al.

Title Page

Abstract

Introduction

Conclusions

References

Tables

Figures

◀

▶

◀

▶

Back

Close

Full Screen / Esc

Printer-friendly Version

Interactive Discussion



ysis Center (CDIAC).

In addition to annual scale factors, diurnal scale factors are also applied to NO_x emissions. Here, the intra-day variation of each grid cell is based upon the diurnal variation of each source type, as provided with the EDGAR inventory, and its relative contribution to total NO_x emissions within that cell.

2.3 Satellite instrumentation

Aerosol Optical Depth (AOD), a measure of light extinction, has been retrieved since 2000 from the Moderate Resolution Imaging Spectroradiometer (MODIS) and Multi-angle Imaging Spectroradiometer (MISR), onboard the NASA satellite Terra. The MODIS retrieval of AOD is based on scene brightness over dark surfaces, using empirical relationships in the spectral variation in surface reflectivity (Kaufmann et al., 1997; Remer et al., 2005). We use the MODIS collection 5 dataset (Levy et al., 2007). The MISR algorithm uses observed differences in the spatial variation of backscattered radiation with changing viewing angle to self-consistently retrieve surface reflectivity and AOD (Martonchik et al., 2002; Kahn et al., 2005). Global coverage in the absence of clouds is achieved daily from MODIS and in 6 to 9 days from MISR.

3 Estimate of sulfur emission growth from China

Significant increases in AOD retrieved from the Total Ozone Mapping Spectrometer (TOMS) over China between 1979–2000 and the Advanced Very High Resolution Radiometer (AVHRR) off the east coast of China between the periods 1988–1991 and 2002–2005 are attributed to increased aerosol sources (Massie et al., 2004; Mishchenko and Geogdzhayer, 2007). Here we investigate the recent trend using AOD from MODIS and MISR and assess its relationship with Chinese sulfur emissions growth. We first use GEOS-Chem, with East Asian emissions held at year 2000 levels, to investigate meteorologically induced changes to AOD.

Long-range transport of East Asian sulfur to Canada

A. van Donkelaar et al.

Title Page

Abstract

Introduction

Conclusions

References

Tables

Figures

◀

▶

◀

▶

Back

Close

Full Screen / Esc

Printer-friendly Version

Interactive Discussion



Long-range transport of East Asian sulfur to Canada

A. van Donkelaar et al.

Title Page

Abstract

Introduction

Conclusions

References

Tables

Figures

◀

▶

◀

▶

Back

Close

Full Screen / Esc

Printer-friendly Version

Interactive Discussion



The top row of Fig. 5 shows mean AOD for 2000–2006 over East Asia from MODIS, MISR and GEOS-Chem. Pronounced enhancements of mean AOD in excess of 0.4 are apparent in all three datasets. MODIS AOD exceeds MISR AOD by 12% over the outlined Region 1, consistent with comparisons by Abdou et al. (2005). Simulated AOD exhibits a smoother distribution than both retrievals and exceeds MISR AOD by 22%. The middle panel of Fig. 5 presents monthly average AOD within the Region 1. All three datasets contain a distinct seasonal variation with a spring maximum and a fall minimum that reflects the seasonal variation in dust as noted by Prospero et al. (2002). Simulated AOD generally captures the retrieved monthly variation and magnitude as compared to both instruments (MODIS: $r^2=0.46$, RMSD=0.09; MISR: $r^2=0.36$, RMSD=0.12), although the simulation tends to overestimate springtime AOD. Simulated AOD contributions from dust (green) and SO_4^- (magenta) indicate that dust comprises the largest fraction of springtime AOD, whereas SO_4^- dominates during other periods. We focus on the periods between July and December, as indicated by yellow bars, when non-sulfate aerosol species such as dust have smaller burdens.

The bottom left panel of Figure 5 shows the annual mean difference over July–December between simulated and retrieved AOD for Region 1, expressed as a percentage of the mean retrieved AOD from each instrument over the six-year, low-dust period. We find a significant trend for both MODIS (+4.1%/year, $r^2=0.72$) and MISR (+3.4%/year, $r^2=0.54$). We associate this trend with increased SO_x emissions, as SO_4^- dominates simulated AOD in this comparison, simulated SO_x emissions are held at 2000 levels and interannual changes in other aerosols are accounted for in the simulation.

The quantitative relationship between AOD and SO_2 emissions depends on a number of factors including SO_2 oxidation rates, dynamics and aerosol deposition (Dubovik et al., 2007). We quantify the relationship by conducting sensitivity simulations with increased SO_x emissions, and examining the change in simulated AOD. The bottom right panel of Fig. 5 shows the calculated relationship between SO_x emissions and AOD over Region 1. The calculated ratio of $\Delta\text{AOD}(\%)/\Delta\text{SO}_x$ emissions (%) is

nearly linear over this region during July to December. The annual trend in AOD for MISR and MODIS correspond to simulations with an annual growth in SO_x emissions of 6.2%/yr and 9.6%/yr, respectively. In agreement, a comparison of the two bottom-up SO_x emission inventories for 2000 (Streets et al., 2003) and 2006 (http://www.cgrer.uiowa.edu/EMISSION_DATA_new/index_16.html) over Region 1 yields an annual growth of 9.9%. Beyond actual emission growth, changes between the 2000 and 2006 inventories include the addition of local inventories not present in, and improvement and corrections made to, the original 2000 inventory. These factors may account for the slight discrepancy between the growth estimates. We adopt the 2006 bottom-up inventory for our standard simulation, as it provides additional information on the spatial distribution of these SO_x emissions.

4 Campaign average analysis of transpacific transport

The top row of Fig. 6 shows campaign average SO_4^- concentrations for the DC-8 over the domain in Fig. 1. Only filter pack and mist chamber measurements with corresponding CIMS SO_2 measurements have been included to allow subsequent SO_x comparison. Both filter pack (4.5 μm cutoff) and mist chamber (1 μm cutoff) measurements show a maximum between 700–800 hPa. Heald et al. (2006) attribute the SO_4^- maximum in the lower free troposphere to preferential scavenging during transport either in the boundary layer or during lifting to the upper troposphere. Our standard simulation of total SO_4^- captures the relative vertical profile for both the mist chamber and filter pack measurements over the domain of the DC-8, but overestimates their magnitude by a RMSD of 0.43 $\mu\text{g}/\text{m}^3$ (mean bias=49%) and 0.54 $\mu\text{g}/\text{m}^3$ (mean bias=81%), respectively. We attribute the bias versus the filter pack measurements to an underestimate in wet deposition. Comparison of the GEOS-4 rainfall rates used in GEOS-Chem with data from the Tropical Rainfall Measuring Mission (TRMM) (Bowman, 2005) reveals a 40% underestimate in modeled rainfall rates over the North Pacific (25–45° N, 120° E–130° W) during INTEX-B. An overestimate in the SO_2 oxidation rate may also

Long-range transport of East Asian sulfur to Canada

A. van Donkelaar et al.

Title Page

Abstract

Introduction

Conclusions

References

Tables

Figures

◀

▶

◀

▶

Back

Close

Full Screen / Esc

Printer-friendly Version

Interactive Discussion



play a role (Heald et al., 2005). Comparison of simulated SO_x with the sum of CIMS SO_2 measurements (converted to $\mu\text{g}/\text{m}^3$) with mist chamber and filter pack SO_4^- data between 500-900 hPa reduces the mean bias to 39% and 70% for the filter pack and mist chamber, respectively. However, the bias in SO_4^- found here for the East Pacific is lower than found by Heald et al. (2005) for the West Pacific, suggesting a decrease with air mass age as continued SO_4^- production during transport decreases the ratio of SO_2 to SO_x .

The campaign average filter pack measurements are 25% higher than the mist chamber measurements between 500–900 hPa, an altitude range inclusive of the C-130 and Cessna measurements. Over the altitude of the C-130 and Cessna measurements a higher bias is found between simulated values and the mist chamber (RMSD=0.75 $\mu\text{g}/\text{m}^3$, mean bias=98%) versus the filter pack (RMSD=0.49 $\mu\text{g}/\text{m}^3$, mean bias=45%). This comparison provides additional evidence for scaling the AMS and PILS measurements to reflect total SO_4^- mass.

The bottom panels of Fig. 6 show campaign average SO_4^- measurements on the C-130 and Cessna, sampled coincidentally in time and space with simulated concentrations. Campaign average SO_4^- concentrations for the C-130 measurements generally increase with altitude, reaching a maximum at 600 hPa. The C-130 HR-ToF-AMS measurements consistently exceed the PILS measurements. It is noteworthy that the two AMS measurements tend to agree, whereas the PILS and mist chamber measurements tend to show a separate agreement. These pairings represent current uncertainties in aerosol measurement technologies. During a blind intercomparison conducted 15 May 2006 during a period of DC-8 and C-130 formation flying, the DC-8 Mist Chamber and C-130 PILS sulfate were in close agreement (slope=1.00, $1\sigma=0.03 \mu\text{g}/\text{m}^3$, range 0.15 to 1.15 $\mu\text{g}/\text{m}^3$, $r^2=0.95$). The C-130 had considerable freedom to chase individual events. Despite this, simulated total SO_4^- between 500–900 hPa has an RMSD of 0.42 $\mu\text{g}/\text{m}^3$ (mean bias=35%) versus C-130 HR-ToF-AMS measurements and an RMSD of 0.56 $\mu\text{g}/\text{m}^3$ (mean bias=62%) versus C-130 PILS measurements. The simulation exhibits the weak enhancement at 600 hPa, although fails to represent the lower

Long-range transport of East Asian sulfur to Canada

A. van Donkelaar et al.

Title Page

Abstract

Introduction

Conclusions

References

Tables

Figures

◀

▶

◀

▶

Back

Close

Full Screen / Esc

Printer-friendly Version

Interactive Discussion



concentrations at lower altitudes.

The sampling strategy for the Cessna was to conduct frequent profiles over Whistler Peak. Such a sampling strategy facilitated comparison with simulated results, provided context for the measurements at Whistler summit, and accommodated the range and duration of the Cessna. Cessna measurements indicate a fairly uniform vertical profile, with a large standard deviation in the free troposphere that reflects an oscillation between clean conditions and plumes. The simulation agrees significantly with size-correction scaled measured SO_4^- (RMSD=0.20 $\mu\text{g}/\text{m}^3$, mean bias=20%). The largest model-Cessna bias is observed nearer to the surface, suggesting an overestimate in local emissions which dominate at this altitude. Variability of the Cessna measurements, as represented by the mean standard deviation, exceed model variability by 86%, perhaps reflective of model resolution and thereby its suitability for large-scale events over small ones. While recognizing the potential influence of both measurement uncertainty and the limitation of applying a constant size-correction factor across both altitude and aircrafts, the eastward decrease in the bias between the three aircraft may indicate an increasing $\text{SO}_4^-/\text{SO}_x$ ratio in the measurements.

Figure 6 also shows simulation without anthropogenic East Asian and all anthropogenic sources for all three aircraft flight tracks. Anthropogenic East Asian SO_4^- dominates throughout the DC-8 profiles, comprising 60% of the simulated mass between 500–900 hPa, with the largest contribution in the lower free troposphere. Other anthropogenic SO_4^- sources comprise an additional 17%. For the C-130 flight track, closer to North America, simulation results attribute 67% of SO_4^- to be of Asian origin, with a peak at 600 hPa. For the Cessna profiles over Whistler, local sources dominate below 700 hPa, while higher altitude concentrations reflect Asian anthropogenic emissions. We calculate that 63% of the measured SO_4^- at 600 hPa is from East Asia. Model analysis indicates the influence of Asian sources at higher altitudes in both C-130 and Cessna versus the DC-8 measurements. This orographic effect is induced by rising air masses on approach to North American mountain ranges.

Of interest is the evolution of Asian sulfate over the last two decades. Figure 7 shows

Long-range transport of East Asian sulfur to Canada

A. van Donkelaar et al.

Title Page

Abstract

Introduction

Conclusions

References

Tables

Figures

◀

▶

◀

▶

Back

Close

Full Screen / Esc

Printer-friendly Version

Interactive Discussion



**Long-range transport
of East Asian sulfur
to Canada****A. van Donkelaar et al.**

[Title Page](#)[Abstract](#)[Introduction](#)[Conclusions](#)[References](#)[Tables](#)[Figures](#)[⏪](#)[⏩](#)[◀](#)[▶](#)[Back](#)[Close](#)[Full Screen / Esc](#)[Printer-friendly Version](#)[Interactive Discussion](#)

the mean non-seasalt sulfate profile observed by Andreae et al. (1988) during 4 flights in May 1985, covering a similar domain to the C-130 INTEX-B flights. Concentrations of $0.3\text{--}0.8\ \mu\text{g}/\text{m}^3$ (adjusted to STP at 273 K, sum of coarse and fine fractions) were observed between 500–900 hPa. SO_4^- concentrations increased with altitude below 5 km, from $0.3\text{--}0.6\ \mu\text{g}/\text{m}^3$ in the marine boundary layer to $0.6\text{--}0.8\ \mu\text{g}/\text{m}^3$ in the cloud convection layer and free troposphere. The 1985 measurements thus showed lower concentrations, but a similar trend with increased altitude as was seen in the C-130 measurements. Mean measurements between 500–900 hPa are higher than the 1985 data by 60% from C-130 PILS and by 90% from HR-ToF-AMS. We further interpret these observations by conducting a GEOS-Chem simulation using 1985 GEIA emissions and meteorology and sampling along the 1985 flights tracks. The simulation reproduces the measurements with an RMSD of $0.25\ \mu\text{g}/\text{m}^3$ (mean bias=21%) over 500–900 hPa. A sensitivity simulation without anthropogenic East Asian emissions reveals that this source contributes $0.14\ \mu\text{g}/\text{m}^3$ (20%) to the measured values in 1985, greatly reduced compared to the 67% along the C-130 flights in 2006. Comparison of simulations along the 1985 and INTEX-B flight tracks indicate a 3.4 fold increase in the relative contribution of east Asian sulfate between 1985–2006. Simulation of complete temporal and spatial coverage within the C-130 area (April–May, 34–55 N, 123.75–141.25 W, 500–900 hPa) indicates a 2.4 fold increase between these two time periods, while a simulation over the 1985 flight region (April–May, 45–49 N, 123.75–126.25 W, 500–900 hPa) experiences an increase of 2.8 fold, suggesting a substantial increase in the influence of East Asian emissions to the free troposphere over the western coast of North America.

5 Asian plume development and influence

Figure 8 examines the development of an Asian plume from 18 April 2006 to 25 April 2006. MODIS AOD retrievals are used from both the Aqua (01:30 overpass) and Terra (10:30 overpass) satellites and plotted with simulation results from the same

period. The GEOS-Chem simulation successfully captures many of the trends associated with the influx event. Both retrieval and simulation show this plume beginning from China on 18 April and stretching across the Pacific Ocean through 21 April, and finally aligning to the north while moving eastward over the North American coast. Many simulated features, however, are spatially shifted after several days transport primarily due to differences in the simulated and real meteorology. This is typical of simulations of all individual events, complicating individual flight comparisons.

Figure 9 shows individual Cessna SO_4^- profiles taken between 22 and 25 April with GEOS-Chem profiles during the same flights. The first three Cessna profiles show enhancements of $0.2\text{--}0.8\ \mu\text{g}/\text{m}^3$ above 800 hPa relative to surface concentrations, indicative of a transported plume and in agreement with simulated enhancements of $0.6\text{--}0.8\ \mu\text{g}/\text{m}^3$. In the final profile, however, Cessna measurements show an enhancement of $1.6\ \mu\text{g}/\text{m}^3$ which the model fails to represent. Simulations can fail to produce accurate plumes (e.g. Dunlea et al., in preparation), but in this case the simulated plume has advanced beyond the Cessna's flight path, where in fact the physical plume still resides. During long range transport events, small errors in the meteorological fields used by chemical transport models can compound to create offsets in time and space, making average comparisons more robust.

Figure 10 shows simulated average conditions during April and May 2006. The top panel shows mean concentrations at 2 km, where DC-8 SO_4^- enhancements were observed. Simulated SO_4^- enhancements occur along the entire western Pacific Canadian border, extending to the northwestern United States. A pronounced enhancement covers the eastern United States and Canada, related to major regional anthropogenic sources. The middle and bottom panels show vertical cross-sections of SO_4^- and percentage of SO_4^- originating from East Asia, respectively, averaged between the blue lines of the top panel. The highest overall magnitude ($>1\ \mu\text{g}/\text{m}^3$) is again simulated in eastern North America and is predominately from regional emissions. Nonetheless, a narrow band of Asian influence in excess of 40% prevails over the continent at 4.5 km, where overall concentrations are $\sim 0.3\ \mu\text{g}/\text{m}^3$. Along coastal regions, the largest East

Long-range transport of East Asian sulfur to Canada

A. van Donkelaar et al.

Title Page

Abstract

Introduction

Conclusions

References

Tables

Figures

◀

▶

◀

▶

Back

Close

Full Screen / Esc

Printer-friendly Version

Interactive Discussion



Asian influence is found between 1 and 5 km, where 40% of the overall SO_4^- burden originated in Southeast Asia. We calculate that surface concentrations of SO_4^- along the southern Pacific Canadian coast are increased by 0.14–0.19 $\mu\text{g}/\text{m}^3$ (~30%) as a result of Asian emissions in spring. Heald et al. (2006) found a 0.16 $\mu\text{g}/\text{m}^3$ enhancement in SO_4^- over the northwest United States during periods of Asian influence.

We go on to explore the surface SO_4^- measurements from the National Air Pollution Surveillance (NAPS) Network in the Vancouver area for evidence of Asian influence. Figure 11 shows surface SO_4^- concentrations between April and May 2006 in the Vancouver area as a function of the modeled percent SO_4^- originating in Asia. The two measurement sites in the Vancouver area, Abbotsford and Vancouver, reside in the same model grid box. Black circles correspond to measurement averages, binned at intervals of 5% simulated East Asian influence. Individual measurements show substantial scatter, but linear regression of the binned measurements show a significant correlation ($r^2=0.64$). Binned measurements indicate that an additional 0.27 $\mu\text{g}/\text{m}^3$ reaches the surface with each 10% increase in modeled Asian SO_4^- , corroborating that current levels of Asian sulfur emissions are impacting surface SO_4^- concentrations in Canada.

6 Conclusions

We interpret a suite of satellite (MODIS and MISR), aircraft (DC-8, C-130 and Cessna 207) and ground-based measurements (Whistler Peak, NAPS) over the North Pacific Ocean and western North America in April-May 2006 as part of the INTEX-B campaign to understand the implications of long-range transport of Asian aerosol to Canada.

The Canadian component of INTEX-B included 33 flights from a Cessna 207 aircraft. We compare the Cessna quadrupole Aerodyne Mass Spectrometer (Q-AMS) measurements with a high resolution time of flight AMS (HR-ToF-AMS) onboard the C-130 during an intercomparison flight, yielding an overall bias of $-0.01 \mu\text{g}/\text{m}^3$ with appreciable scatter ($\text{RMSD}=0.6 \mu\text{g}/\text{m}^3$) for sulfate (SO_4^-) and similar agreement for

Long-range transport of East Asian sulfur to Canada

A. van Donkelaar et al.

Title Page

Abstract

Introduction

Conclusions

References

Tables

Figures

◀

▶

◀

▶

Back

Close

Full Screen / Esc

Printer-friendly Version

Interactive Discussion



organics (bias=0.2 $\mu\text{g}/\text{m}^3$, RMSD=0.3 $\mu\text{g}/\text{m}^3$). However, there was a small systematic difference (<20%) between the C-130 HR-ToF-AMS sulfate and a co-located PILS measurement of SO_4^- (Dunlea et al., in preparation). We use ground-based measurements (MOUDI) of the SO_4^- size distribution at Whistler Peak to estimate that a correction factor of 1.4 should be applied to Cessna Q-AMS SO_4^- mass to compensate for mass lost due to instrument size restrictions. Cessna profiles over Whistler, B. C. show SO_4^- enhancements of 1–2 $\mu\text{g}/\text{m}^3$ over 600–700 hPa, indicative of long-range transport, whereas organic enhancements are largest near the surface, suggesting a local emission source. We did not detect long-range transport of significant organic aerosol from the Cessna data.

We interpret these observations with a global chemical transport model, GEOS-Chem, to simulate the implications of anthropogenic activity. We develop updated scale factors, bringing global anthropogenic emissions from 1998 to at least the year 2003. We also implement a recent bottom-up inventory for East Asia for 2006 (http://www.cgrer.uiowa.edu/EMISSION_DATA_new/index_16.html).

Trends in retrieved Aerosol Optical Depth (AOD) from MISR and MODIS during low dust periods (July–Dec) over 2000–2006 are used to evaluate growth in SO_x emissions from the year 2000 (Streets et al., 2003) to the 2006 values. We find a trend in retrieved AOD of 3.4%/yr (MISR) and 4.1%/yr (MODIS) after accounting for interannual variability in transport and natural sources as represented by GEOS-Chem. GEOS-Chem calculations of the change in AOD for a change in SO_x emissions indicate a near-linear relationship with a ratio of 0.4 over East Asia. We estimate the average annual growth in East Asian SO_x emissions to be between 6.2% for MISR and 9.6% for MODIS, supporting the bottom-up estimate of an annual increase of 9.9% from 2000 (Streets et al., 2003) to 2006.

We use this simulation to understand the characteristics of East Asian outflow as measured by the INTEX-B aircraft. Over the Pacific Ocean, Asian outflow of SO_x is strongest in the lower troposphere, with enhanced SO_4^- concentrations of 1–1.5 $\mu\text{g}/\text{m}^3$ observed by the DC-8 between 700–800 hPa. The C-130 and Cessna aircraft SO_4^-

Long-range transport of East Asian sulfur to Canada

A. van Donkelaar et al.

Title Page

Abstract

Introduction

Conclusions

References

Tables

Figures

◀

▶

◀

▶

Back

Close

Full Screen / Esc

Printer-friendly Version

Interactive Discussion



Long-range transport of East Asian sulfur to Canada

A. van Donkelaar et al.

Title Page

Abstract

Introduction

Conclusions

References

Tables

Figures

◀

▶

◀

▶

Back

Close

Full Screen / Esc

Printer-friendly Version

Interactive Discussion



measurements of $1\text{--}1.5\ \mu\text{g}/\text{m}^3$ over $600\text{--}800\ \text{hPa}$ indicate that Asian plumes are often elevated by orographic effects along coastal North America. The simulation generally captures the campaign mean profile shape of DC-8, C-130 and Cessna measurements, but overestimate total SO_4^- concentrations with RMSD of $0.20\text{--}0.56\ \mu\text{g}/\text{m}^3$ (mean bias of $20\text{--}62\%$), likely due to biases in precipitation and SO_2 oxidation. Simulations without Asian emissions reveal that long-range transport of SO_4^- dominates campaign-mean aircraft measurements in the free troposphere.

We compare the INTEX-B measurements with aircraft measurements in May 1985 over a similar domain as the C-130. Measured free tropospheric SO_4^- concentrations increase by $60\text{--}90\%$ from 1985 to 2006. Simulations without East Asian emissions indicate that their relative contribution to SO_4^- concentrations during April and May, between $500\text{--}900\ \text{hPa}$ and over the two aircraft domains, have increased by a factor of $2.4\text{--}3.4$ since 1985 depending on the specific region.

Comparison of individual plumes with aircraft profiles and MODIS AOD reveals a general consistency, but offsets in time and space. Campaign-mean simulations show that 40% of the SO_4^- burden between 1 and 5 km over Whistler is of anthropogenic Asian origin. These emissions increase surface concentrations along the western Canadian coast by $0.14\text{--}0.19\ \mu\text{g}/\text{m}^3$ ($\sim 30\%$) in spring. This effect is corroborated with surface measurements, where we find an increase of $0.27\ \mu\text{g}/\text{m}^3$ with each 10% increase in simulated fraction of Asian SO_4^- during INTEX-B.

A better understanding of SO_2 oxidation and wet scavenging is still needed. Previous work (Heald et al., 2006) and our analysis indicate an overestimate in the simulated SO_2 oxidation rate. Development of size-resolved aerosol simulations and SO_4^- instruments that sample larger particles with high time resolution would facilitate model-measurement comparison. Improved understanding of inter-instrument SO_4^- measurements would be valuable.

Acknowledgements. We thank D. Parrish for his helpful suggestions. This work is supported by the Natural Sciences and Engineering Research Council of Canada Special Research Opportunity Program and Environment Canada. E. J. Dunlea and J. L. Jimenez were supported

by NASA grants NNG04GA67G and NNG06GB03G and NSF grants ATM-0449815 and ATM-0513116. We thank the MODIS and MISR teams for their level 3 aerosol products and Environment Canada for their NAPS data.

References

- 5 Arellano, A. F., Kasibhatla Jr., P. S., Giglio, L., van der Werf, G. R., and Randerson, J. T.: Top-down estimates of global CO sources using MOPITT measurements, *Geophys. Res. Lett.*, 31, L01104, doi:10.1029/2003GL018609, 2004.
- Abdou, W. A., Diner, D. J., Martonchik, J. V., Bruegge, C. J., Kahn, R. A., Gaitley, B. J., and Crean, K. A.: Comparison of coincident Multiangle Imaging Spectroradiometer and Moderate Resolution Imaging Spectroradiometer aerosol optical depths over land and
10 ocean scenes containing Aerosol Robotic Network sites, *J. Geophys. Res.*, 110, D10S07, doi:10.1029/2004JD004693, 2005.
- Andreae, M. O., Berresheim, H., Andreae, T. W., Kritz, M. A., Bates, T. S., and Merrill, J. T.: Vertical distribution of dimethylsulfide, sulfur dioxide, aerosol ions, and radon over the
15 northeast Pacific Ocean, *J. Atmos. Chem.*, 6, 149–173, 1988.
- Bailey, R., Barrie, L. A., Halsall, C. J., Fellin, P., and Muir, D. C. G.: Atmospheric organochlorine pesticides in the western Canadian Arctic: Evidence of transpacific transport, *J. Geophys. Res.*, 105(D9), 11 805–11 811, 2000.
- Barrie, L. A., Li, S.-M., Toom, D. L., Landsberger, S., and Sturges, W.: Lower tropospheric
20 measurements of halogens, nitrates, and sulphur oxides during Polar Sunrise Experiment 1992, *J. Geophys. Res.*, 99(D12), 25 453–25 467, 1994.
- Benkovitz, C. M., Scholtz, M. T., Pacyna, J., Tarrasón, L., Dignon, J., Voldner, E. C., Spiro, P. A., Logan, J. A., and Graedel, T. E.: Global gridded inventories of anthropogenic emissions of sulfur and nitrogen, *J. Geophys. Res.*, 101(D22), 29 239–29 253, 1996.
- 25 Bertschi, I. T., Jaffe, D. A., Jaeglé, L., Price, H. U., and Dennison, J. B.: PHOBEA/ITCT 2002 airborne observations of transpacific transport of ozone, CO, volatile organic compounds, and aerosols to the northeast Pacific: Impacts of Asian anthropogenic and Siberian boreal fire emissions, *J. Geophys. Res.*, 109, D23S12, doi:10.1029/2003JD004328, 2004.
- Bey, I., Jacob, D. J., Yantosca, R. M., Logan, J. A., Field, B. D., Fiore, A. M., Li, Q., Liu, H. Y.,
30 Mickley, L. J., and Schultz, M. G.: Global modeling of tropospheric chemistry with assimilated

Long-range transport of East Asian sulfur to Canada

A. van Donkelaar et al.

Title Page

Abstract

Introduction

Conclusions

References

Tables

Figures

◀

▶

◀

▶

Back

Close

Full Screen / Esc

Printer-friendly Version

Interactive Discussion



meteorology: Model description and evaluation, *J. Geophys. Res.*, 106(D19), 23 073–23 095, 2001.

Bowman, K. P.: Comparison of TRMM precipitation retrievals with rain gauge data from ocean buoys, *J. Climate*, 18, 178–190, 2005.

5 Brock, C. A., Hudson, P. K., Lovejoy, E. R., Sullivan, A., Nowak, J. B., Huey, L. G., Cooper, O. R., Cziczo, D. J., de Gouw, J., Fehsenfeld, F. C., Holloway, J. S., Hübler, G., Lafleur, B. G., Murphy, D. M., Neuman, J. A., Nicks Jr., D. K., Orsini, D. A., Parrish, D. D., Ryerson, T. B., Tanner, D. J., Warneke, C., Weber, R. J., and Wilson, J. C.: Particle characteristics following cloud-modified transport from Asia to North America, *J. Geophys. Res.*, 109, D23S26, doi:10.1029/2003JD004198, 2004.

10 Canagaratna, M. R., Jayne, J. T., Jimenez, J. L., Allan, J. D., Alfarra, M. R., Zhang, Q., Onasch, T. B., Drewnick, F., Coe, H., Middlebrook, A., Delia, A., Williams, L. R., Trimborn, A. M., Northway, M. J., DeCarlo, P. F., Kolb, C. E., Davidovits, P., and Worsnop, D. R.: Chemical and microphysical characterization of ambient aerosols with the Aerodyne Aerosol Mass Spectrometer, *Mass Spec. Rev.*, 26, 185–222, 2007.

15 Cofer, W. R., Collins, V. G., and Talbot, R. W.: Improved aqueous scrubber for collection of soluble atmospheric trace gases, *Environ. Sci. Tech.*, 19, 557–560, 1985

Corbett, J. J., Wang, C., Winebrake, J. J., and Green, E.: Allocation and forecasting of global ship emissions, Clean Air Task Force Report, 2007.

20 DeCarlo, P. F., Kimmel, J. R., Trimborn, A., Northway, M. J., Jayne, J. T., Aiken, A. C., Gonin, M., Fuhrer, K., Horvath, T., Docherty, K. S., Worsnop, D. R., and Jimenez, J. L.: Field-deployable, high-resolution, time-of-flight aerosol mass spectrometer, *Analytical Chemistry*, 78, 8281–8289, doi:10.1021/ac061249n, 2006.

25 Dubovik, O., Lapyonok, T., Kaufman, Y. J., Chin, M., Ginoux, P., and Sinyuk, A.: Retrieving global sources of aerosols from MODIS observations by inverting GOCART model, *Atmos. Chem. Phys. Discuss.*, 7, 3629–3718, 2007, <http://www.atmos-chem-phys-discuss.net/7/3629/2007/>.

Eisinger, M. and Burrows, J. P.: Tropospheric sulfur dioxide observed by the ERS-2 GOME instrument, *Geophys. Res. Lett.*, 25(22), 4177–4180, 1998.

30 Fairlie, T. D., Jacob, D. J., and Park, R. J.: The impact of transpacific transport of mineral dust in the United States, *Atmos. Environ.*, 41, 1251–1266, 2007.

Fu, T.-M., Jacob, D. J., Palmer, P. I., Chance, K., Wang, Y. X., Barletta, B., Blake, D. R., Stanton, J. C., and Pilling, M. J.: Space-based formaldehyde measurements as constraints on volatile

**Long-range transport
of East Asian sulfur
to Canada**

A. van Donkelaar et al.

Title Page

Abstract

Introduction

Conclusions

References

Tables

Figures

◀

▶

◀

▶

Back

Close

Full Screen / Esc

Printer-friendly Version

Interactive Discussion



**Long-range transport
of East Asian sulfur
to Canada****A. van Donkelaar et al.**

[Title Page](#)[Abstract](#)[Introduction](#)[Conclusions](#)[References](#)[Tables](#)[Figures](#)[◀](#)[▶](#)[◀](#)[▶](#)[Back](#)[Close](#)[Full Screen / Esc](#)[Printer-friendly Version](#)[Interactive Discussion](#)

organic compound emissions in east and south Asia and implications for ozone, *J. Geophys. Res.*, 112, D06312, doi:10.1029/2006JD007853, 2007.

Harner, T., Shoeib, M., Kozma, M., Gobas, F.A.P.C., and Li, S. M.: Hexachlorocyclohexanes and endosulfans in urban, rural and high altitude air samples in the Fraser Valley, British Columbia: Evidence for trans-Pacific transport, *Env. Sci. Tech.* 39, 724–731, 2005

Heald, C. L., Jacob, D. J., Jones, D. B., Palmer, P. I., Logan, J. A., Streets, D. G., Sachse, G. W., Gille, J. C., Hoffman, R. N., and Nehrkorn, T.: Comparative inverse analysis of satellite (MOPITT) and aircraft (TRACE-P) observations to estimate Asian sources of carbon monoxide. *J. Geophys. Res.*, 109, D23306, doi:10.1029/2004JD005185, 2004.

Heald, C. L., Jacob, D. J., Park, R. J., Russel, L. M., Huebert, B. J., Seinfeld, J. H., Liao, H., and Weber, R.: A large organic aerosol source in the free troposphere missing from current models, *Geophys. Res. Lett.*, 32, L18809, doi:10.1029/2005GL023831, 2005.

Heald, C. L., Jacob, D. J., Park, R. J., Alexander, B., Fairlie, T. D., Yantosca, R. M., and Chu, D. A.: Transpacific transport of Asian anthropogenic aerosols and its impact on surface air quality in the United States, *J. Geophys. Res.*, 111, D14310, doi: 10.1029/2005JD006847, 2006.

Huey, L. G., Tanner, D. J., Slusher, D. L., Dibb, J. E., Arimoto, R., Chen, G., Davis, D., Buhr, M. P., Nowak, J. B., Mauldin, R. L. III, Eisele, R. L., and Kosciuch, E.: CIMS measurements of HNO₃ and SO₂ at the South Pole during ISCAT 2000, *Atmos. Environ.*, 38, 5411–5421, 2004.

Jacob, D. J.: Heterogeneous chemistry and tropospheric ozone, *Atmos. Env.*, 34, 2131–2159, 2000.

Jacob, D. J., Crawford, J. H., Kleb, M. M., Connors, V. S., Bendura, R. J., Raper, J. L., Sachse, G. W., Gille, J. C., Emmons, L., and Heald, C. L.: Transport and Chemical Evolution over the Pacific (TRACE-P) aircraft mission: Design, execution, and first results, *J. Geophys. Res.*, 108(D20), 9000, doi:10.1029/2002JD003276, 2003.

Jaffe, D., Anderson, T., Covert, D., Kotchenruther, R., Trost, B., Danielson, J., Simpson, W., Berntsen, T., Karlsdottir, S., Blake, D., Harris, J., Carmichael, G., and Uno, I.: Transport of Asian air pollution to North America, *Geophys. Res. Lett.*, 26(6), 711–714, 1999.

Jayne, J. T., Leard, D., Zhang, X., Daivovits, P., Smith, K. A., Kolb, C. E., and Worsnop, D. R.: Development of an aerosol mass spectrometer for size and composition analysis of submicron particles, *Aero. Sci. Tech.*, 33(1), 49–70, 2000.

Jaeglé, L., Steinberger, L., Martin, R. V., and Chance, K.: Global partitioning of NO_x sources

**Long-range transport
of East Asian sulfur
to Canada**

A. van Donkelaar et al.

[Title Page](#)[Abstract](#)[Introduction](#)[Conclusions](#)[References](#)[Tables](#)[Figures](#)[◀](#)[▶](#)[◀](#)[▶](#)[Back](#)[Close](#)[Full Screen / Esc](#)[Printer-friendly Version](#)[Interactive Discussion](#)

using satellite observations: Relative roles of fossil fuel combustion, biomass burning and soil emissions, *Faraday Discussions*, 130, 407–423, doi:10.1039/b502128f, 2005.

Jimenez, J. L., Jayne, J. T., Shi, Q., Kolb, C. E., Worsnop, D. R., Yourshaw, I., Seinfeld, J. H., Flagan, R. C., Zhang, X., Smith, K. A., Morris, J. W., and Davidovits, P.: Ambient aerosol sampling using the Aerodyne Aerosol Mass Spectrometer, *J. Geophys. Res.*, 108(D7), 8425, doi:10.1029/2001JD001213, 2003.

Jordan, C. E., Dibb, J. E., Anderson, B. E., and Fuelberg, H. E.: Uptake of nitrate and sulfate on dust aerosols during TRACE-P, *J. Geophys. Res.*, 108(D21), 8817, doi:10.1029/2002JD003101, 2003.

Kahn, R. A., Gaitley, B. J., Martonchik, J. V., Diner, D. J., and Crean, K. A.: Multiangle Imaging Spectroradiometer (MISR) global aerosol optical depth validation based on 2 years of coincident Aerosol Robotic Network (AERONET) observations, *J. Geophys. Res.*, 110, D10S04, doi: 10.1029/2004JD004706, 2005.

Kaufman, Y. J., Tanré, D., Remer, L. A., Vermote, E. F., Chu, D. A., and Holben, B. N.: Operational remote sensing of tropospheric aerosol over the land from EOS moderate resolution imaging spectroradiometer, *J. Geophys. Res.*, 102, 17 051–17 061, 1997.

Khokhar, M. F., Frankenberg, C., Van Roozendaal, M., Beirle, S., Köhl, S., Richter, A., Platt, U., and Wagner, R.: Satellite observations of atmospheric SO₂ from volcanic eruptions during the time-period of 1996–2002, *Adv. Sp. Res.*, 36, 879–887, 2005.

Kim, S., Huey, L. G., Stickel, R. E., Tanner, D. J., Crawford, J. H., Olson, J. R., Chen, G., Brune, W. H., Ren, X., Leshner, R., Wooldridge, P. J., Bertram, T. H., Perring, A., Cohen, R. C., Lefer, B., Shetter, R. E., Avery, M., Diskin, G., and Sokolik, I.: Measurement of pernitric acid in the free troposphere, *J. Geophys. Res.*, 112, D12S01, doi:10.1029/2006JD007676, 2007.

Krotkov, N. A., Carn, S. A., Krueger, A. J., Bhartia, P. K., and Yang, K.: Band residual difference algorithm for retrieval of SO₂ from the aura ozone monitoring instrument (OMI), *IEEE Trans. Geosci. Remote Sens.*, 44(5), 1259–1266, 2006.

Kuhns, H., Knipping, E. M., and Vukovich, J. M.: Development of a United States-Mexico emissions inventory for the Big Bend Regional Aerosol and Visibility Observational (BRAVO) study, *J. Air and Waste Manage. Assoc.*, 55, 677–692, 2005.

Leue, C., Wenig, M., Wagner, T., Klimm, O., Platt, U., and Jahne, B.: Quantitative analysis of NO_x emissions from GOME satellite image sequences, *J. Geophys. Res.*, 106(D6), 5493–5505, 2001.

Levy, R. C., Remer, L. A., Mattoo, S., Vermote, E. F., and Kaufman, Y. J.: Second-generation

operational algorithm: Retrieval of aerosol properties over land from inversion of Moderate Resolution Imaging Spectroradiometer spectral reflectance, *J. Geophys. Res.*, 112, D13211, doi:10.1029/2006JD007811, 2007.

Liang, Q., Jaeglé, L., Jaffe, D. A., Weiss-Penzias, P., Heckman, A., and Snow, J. A.: Long-range transport of Asian pollution to the northeast Pacific: Seasonal variations and transport pathways of carbon monoxide, *J. Geophys. Res.*, 109, D23S07, doi:10.1029.2003JD004402, 2004.

Liao, H., Henze, D. K., Seinfeld, J. H., Wu, S., and Mickley, L. J.: Biogenic secondary organic aerosol over the United States: Comparison of climatological simulations with observations, *J. Geophys. Res.*, 112, D06201, doi:10.1029/2006JD007813, 2007.

Liu, H., Jacob, D. J., Bey, I., and Yantosca, R. M.: Constraints from ^{210}Pb and ^7Be on wet deposition and transport in a global three-dimensional chemical tracer model driven by assimilated meteorological fields, *J. Geophys. Res.*, 106(D11), 12 109–12 128, 2001.

Liu, J., Mauzerall, D. L., and Horowitz, L. W.: Analysis of seasonal and interannual variability in transpacific transport, *J. Geophys. Res.*, 110, D04302, doi:10.1029/2004JD005207, 2005.

Liu, P. S. K., Deng, S., Smith, K. A., Williams, L. R., Jayne, J. T., Canagaratna, M. R., Moore, K., Onasch, T. B., Worsnop, D. R., and Deshler, T.: Transmission efficiency of an aerodynamic focusing lens system: Comparison of model calculations and laboratory measurements for the Aerodyne Aerosol Mass Spectrometer, *Aero. Sci. Tech.*, 41, 721–733, 2007.

Macdonald, A.M., Anlauf, K. G., Leitch, W. R., and Liu, P. S. K.: Multi-year chemistry of particles and selected trace gases at the Whistler High Elevation Site, *EOS Trans. AGU*, 87(52), Fall Meet. Suppl., Abstract A53B-0719, 2006.

Martin, R. V., Jacob, D. J., Chance, K., Kurosu, T. P., Palmer, P. I., and Evans, M. J.: Global inventory of nitrogen oxide emissions constrained by space-based observations of NO_2 columns, *J. Geophys. Res.*, 108(D17), 4537, doi:10.1029/2003JD003453, 2003a.

Martin, R. V., Jacob, D. J., and Yantosca, R. M.: Global and regional decreases in tropospheric oxidants from photochemical effects of aerosols, *J. Geophys. Res.*, 108(D3), 4097, doi:10.1029/2002JD002622, 2003b.

Martonchik, J. V., Diner, D. J., Crean, K. A., and Bull, M. A.: Regional aerosol retrieval results from MISR, *IEEE Trans. Geosci. Remote Sens.*, 40(7), 1520–1531, 2002.

Massie, S. T., Torres, O., and Smith, S. J.: Total Ozone Mapping Spectrometer (TOMS) observations of increases in Asian aerosol in winter from 1979 to 2000, *J. Geophys. Res.*, 109, D18211, doi:10.1029/2004JD004620, 2004.

Long-range transport of East Asian sulfur to Canada

A. van Donkelaar et al.

Title Page

Abstract

Introduction

Conclusions

References

Tables

Figures

◀

▶

◀

▶

Back

Close

Full Screen / Esc

Printer-friendly Version

Interactive Discussion



- McKendry, I. G., Hacker, J. P., Stull, R., Sakiyama, S., Mignacca, D., and Reid, K.: Long-range transport of Asian dust to the Lower Fraser Valley, British Columbia, Canada, *J. Geophys. Res.*, 106(D16), 18361–18370, 2001.
- 5 McKendry, I. G., Strawbridge, K. B., O'Neill, N. T., Macdonald, A. M., Liu, P. S. K., Leaitch, W. R., Anlauf, K. G., Jaegle, L., Fairlie, T. D., and Westphal, D. L.: Trans-Pacific transport of Saharan dust to western North America: A case study, *J. Geophys. Res.*, 112, D01103, doi:10.1029/2006JD007129, 2007.
- 10 McNaughton, C. S., Thornhill, L., Clarke, A. D., Howell, S. G., Pinkerton, M., Anderson, B., Winstead, E., Hudgins, C., Maring, H., Dibb, J. E., and Scheuer, E.: Results from the DC-8 inlet characterization experiment (DICE): Airborne versus surface sampling of mineral dust and sea salt aerosols, *Aero. Sci. Tech.*, 40, 136–159, 2007.
- Ming, Y., Ramaswamy, V., Donner, L. J., Phillips, V. T. J., Klein, S. T., Ginoux, P. A., and Horowitz, L. W.: Modeling the interactions between aerosols and liquid water clouds with a self-consistent cloud scheme in a general circulation model, *J. Atmos. Sci.*, 64(4), 1189–1209, doi: 10.1175/JAS3874.1, 2007.
- 15 Mishchenko, M. L. and Geogdzhayer, I. V.: Satellite remote sensing reveals regional tropospheric aerosol trends, *Opt. Ex.*, 15(12), 7423–7438, 2007.
- Müller, J.-F. and T. Stavrakou: Inversion of CO and NO_x emissions using the adjoint of the IMAGES model, *Atmos. Chem. Phys.*, 5, 1157–1186, 2005,
20 <http://www.atmos-chem-phys.net/5/1157/2005/>.
- Olivier, J. G. J., Berdowski, J. J. M., Peters, J. A. H. W., Bakker, J., Visschedijk, A. J. H., and Bloos, J. P. J.: Applications of EDGAR. including a description of EDGAR 3.2: reference database with trend data for 1970-1995, RIVM, Bilthoven, RIVM report 773301 001/NRP report 410200 051, 2002
- 25 Palmer, P. I., Jacob, D. J., Fiore, A. M., Martin, R. V., Chance, K., and Kurosu, T. P.: Mapping isoprene emissions over North America using formaldehyde column observations from space, *J. Geophys. Res.*, 108(D6), 4180, doi:10.1029/2002JD002153, 2003.
- Park, R. J., Jacob, D. J., Chin, M., and Martin, R. V.: Sources of carbonaceous aerosols over the United States and implications for natural visibility, *J. Geophys. Res.*, 108(D12), 4355, doi:10.1029/2002JD003190, 2003.
- 30 Park, R. J., Jacob, D. J., Field, B. D., and Yantosca, R. M.: Natural and transboundary pollution influences on sulphate-nitrate-ammonium aerosols in the United States: Implications for policy, *J. Geophys. Res.*, 109, D15204, doi:10.1029/2003JD004473, 2004.

Long-range transport of East Asian sulfur to Canada

A. van Donkelaar et al.

Title Page

Abstract

Introduction

Conclusions

References

Tables

Figures

◀

▶

◀

▶

Back

Close

Full Screen / Esc

Printer-friendly Version

Interactive Discussion



**Long-range transport
of East Asian sulfur
to Canada****A. van Donkelaar et al.**

[Title Page](#)[Abstract](#)[Introduction](#)[Conclusions](#)[References](#)[Tables](#)[Figures](#)[◀](#)[▶](#)[◀](#)[▶](#)[Back](#)[Close](#)[Full Screen / Esc](#)[Printer-friendly Version](#)[Interactive Discussion](#)

Park, R. J., Jacob, D. J., Palmer, P. I., Clarke, A. D., Weber, R. J., Zondlo, M. A., Eisele, F. L., Bandy, A. R., Thornton, D. C., Sachse, G. W., and Bond, T.: Export efficiency of black carbon aerosol in continental outflow: Global implications, *J. Geophys. Res.*, 110, D11205, doi:10.1029/2004JD005432, 2005.

5 Park, R. J., Jacob, D. J., Naresh, K., and Yantosca, R. M.: Regional visibility statistics in the United States: Natural and transboundary pollution influences, and implications for the Regional Haze Rule, *Atmos. Environ.*, 40, 5405–5423, 2006.

Parrish, D. D., Hahn, C. J., Williams, E. J., Norton, R. B., Fehsenfeld, F. C., Singh, H. B., Shetter, J. D., Gandrud, B. W., and Ridley, B. A.: Indications of photochemical histories of
10 Pacific air masses from measurements of atmospheric tracer species at Pt. Arena, California, *J. Geophys. Res.*, 97, 15 883–15 901, 1992.

Pétron, G., Granier, C., Khatatov, B., Yudin, V., Lamarque, J.-F., Emmons, L., Gille, J., and Edwards, D. P.: Monthly CO surface sources inventory based on the 2000-2001 MOPITT satellite data, *Geophys. Res. Lett.*, 31, L21107, doi:10.1029/2004GL020560, 2004.

15 Peltier, R. E., Hecobian, A. H., Weber, R. J., Stohl, A., Atlas, E. L., Riemer, D. D., Apel, E., Campos, T., and Karl, T.: Contrast between the sources and atmospheric processing of fine particles from Asia and North America measured during INTEX B, *Atm. Chem. Phys.*, manuscript in review, 2007.

Prospero, J. M., Ginoux, P., Torres, O., Nicholson, S. E., and Gill, T. E.: Environmental characterization of global sources of atmospheric soil dust identified with the NIMBUS 7 Total Ozone Mapping Spectrometer (TOMS) absorbing aerosol product, *Rev. Geophys.*, 40(1), 1002, doi:10.1029/2000RG000095, 2002.

20 Remer, L. A., Kaufman, Y. J., Tanré, D., Mattoo, S., Chu, D. A., Martins, J. V., Li, R.-R., Ichoku, C., Levy, R. C., Kleidman, R. G., Eck, T. F., Vermote, E., and Holben, B. N.: The MODIS aerosol algorithm, products and validation, *J. Atmos. Sci.*, 62, 947–973, 2005.

25 Richter, A., Burrows, J. P., Nüß, H., Granier, C., and Niemeier, U.: Increase in Tropospheric nitrogen dioxide levels over China observed from space, *Nature*, 437, 129–132, 2005.

Rupakheti, M., Leaitch, R. W., Lohmann, U., Hayden, K., Brickell, P., Lu, G., Li, S.-M., Toom-Saunry, D., Bottenheim, J. W., Brook, J. R., Vet, R., Jayne, J. T., and Worsnop, D. R.: An
30 intensive study of the size and composition of submicron atmospheric aerosols at a rural site in Ontario, Canada, *Aero. Sci. Tech.*, 39, 722–736, 2005.

Sirois, A., and Barrie, L. A.: Arctic lower tropospheric aerosol trends and composition at Alert Canada: 1980–1995, *J. Geophys. Res.*, 104, 11 599–11 618, 1999.

**Long-range transport
of East Asian sulfur
to Canada****A. van Donkelaar et al.**

Title Page

Abstract

Introduction

Conclusions

References

Tables

Figures

◀

▶

◀

▶

Back

Close

Full Screen / Esc

Printer-friendly Version

Interactive Discussion



Song, C. H., Kim, C. M., Lee, Y. J., Carmichael, G. R., Lee, B. K., and Lee, D. S.: An evaluation of reaction probabilities of sulfate and nitrate precursors onto East Asian dust particles, *J. Geophys. Res.*, 112, D18206, doi:10.1029/2006JD008092, 2007.

Streets, D. G. and Waldhoff, S. T.: Present and future emissions of air pollutants in China: SO₂, NO_x and CO, *Atmos. Environ.*, 34, 363–374, 2000.

Streets, D. G., Bond, T. C., Carmichael, G. R., Fernandes, S. D., Fu, Q., He, D., Klimont, Z., Nelson, S. M., Tsai, N. Y., Wang, M. Q., Woo, J.-H., and Yarber, K. F.: An inventory of gaseous and primary aerosol emissions in Asia in the year 2000, *J. Geophys. Res.*, 108(D21), 8809, doi:10.1029/2002JD003093, 2003.

Streets, D. G., Zhang, Q., Wang, L., He, K., Hao, J., Wu, Y., Tang, Y., and Carmichael, G. R.: Revisiting China's CO emissions after the Transport and Chemical Evolution over the Pacific (TRACE-P) mission: Synthesis of inventories, atmospheric modeling, and observations, *J. Geophys. Res.*, 111, D14306, doi:10.1029/2006JD007118, 2006.

van der A, R. J., Peters, D. H. M. U., Eskes, H., Boersma, K. F., Van Roozendaal, M., De Smedt, I., and Kelder, H. M.: Detection of the trend and seasonal variation in tropospheric NO₂ over China, *J. Geophys. Res.*, 111, D12317, doi:10.1029/2005JD006594, 2006.

Vestreng, V., Myhre, G., Fagerli, H., Reis, S., and Tarrasón L.: Twenty-five years of continuous sulphur dioxide emission reduction in Europe, *Atmos. Chem. Phys.*, 7, 3663–3683, 2007, <http://www.atmos-chem-phys.net/7/3663/2007/>.

Weber, R. J., Orsini, D., Daun, Y., Lee, Y.-N., Klotz, P. J., and Brechtel, F.: A particle-into-liquid collector for rapid measurement of aerosol bulk chemical composition, *Aero. Sci. Tech.*, 35, 718–727, 2001.

Zhang, Q., Streets, D. G., He, K., Wang, Y., Richter, A., Burrows, J. P., Uno, I., Jang, C. J., Chen, D., Yao, Z., and Lei, Y.: NO_x emission trends for China, 1995-2004: The view from the ground and the view from space, *J. Geophys. Res.*, 112, D22306, doi:10.1029/2007JD008684, 2007.

Long-range transport of East Asian sulfur to Canada

A. van Donkelaar et al.

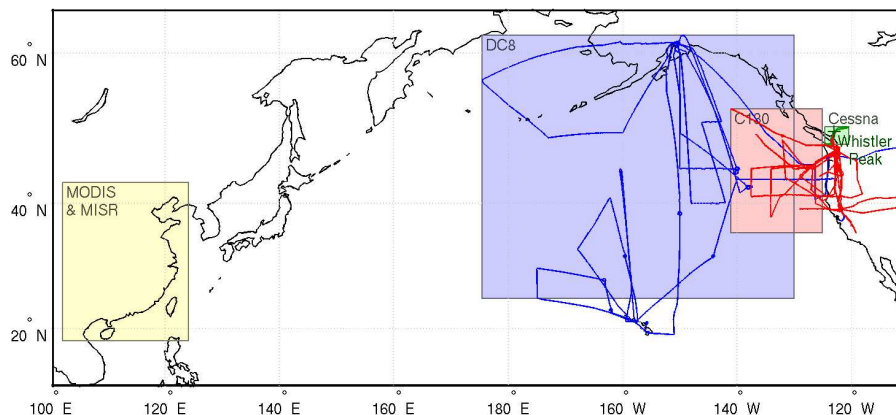


Fig. 1. Spatial domain of observations used to characterize Asian SO_2 emissions and their impact. The domains and flightpaths of the DC-8, C-130 and Cessna aircraft are shown in blue, red and green, respectively. The domain of the MODIS and MISR satellite observations used to estimate emissions is shown in yellow. Figure 2 shows a detailed plot of the Cessna flight tracks.

Title Page

Abstract

Introduction

Conclusions

References

Tables

Figures

◀

▶

◀

▶

Back

Close

Full Screen / Esc

Printer-friendly Version

Interactive Discussion



Long-range transport of East Asian sulfur to Canada

A. van Donkelaar et al.

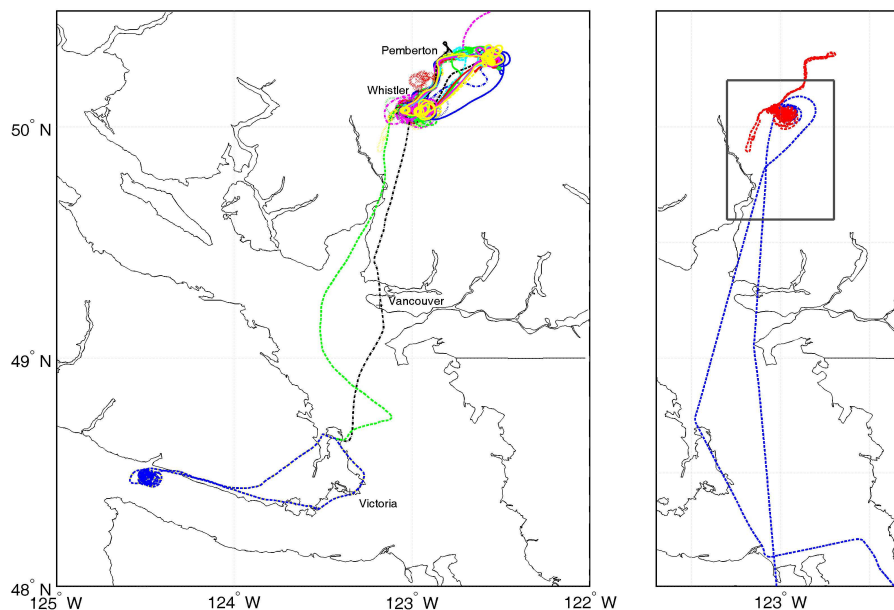


Fig. 2. Flight paths of the Cessna 207 aircraft during the INTEX-B campaign over 22 April 2006 to 17 May 2006. The left panel shows all Cessna 207 flights, with colors representing individual flights. The right panel highlights the 3 May 2006 inter-comparison flight between the Cessna and C-130 aircraft. The flight track of the Cessna is shown in red, and of the C-130 in blue. The grey box defines the inter-comparison region.

Title Page

Abstract

Introduction

Conclusions

References

Tables

Figures

◀

▶

◀

▶

Back

Close

Full Screen / Esc

Printer-friendly Version

Interactive Discussion



**Long-range transport
of East Asian sulfur
to Canada**

A. van Donkelaar et al.

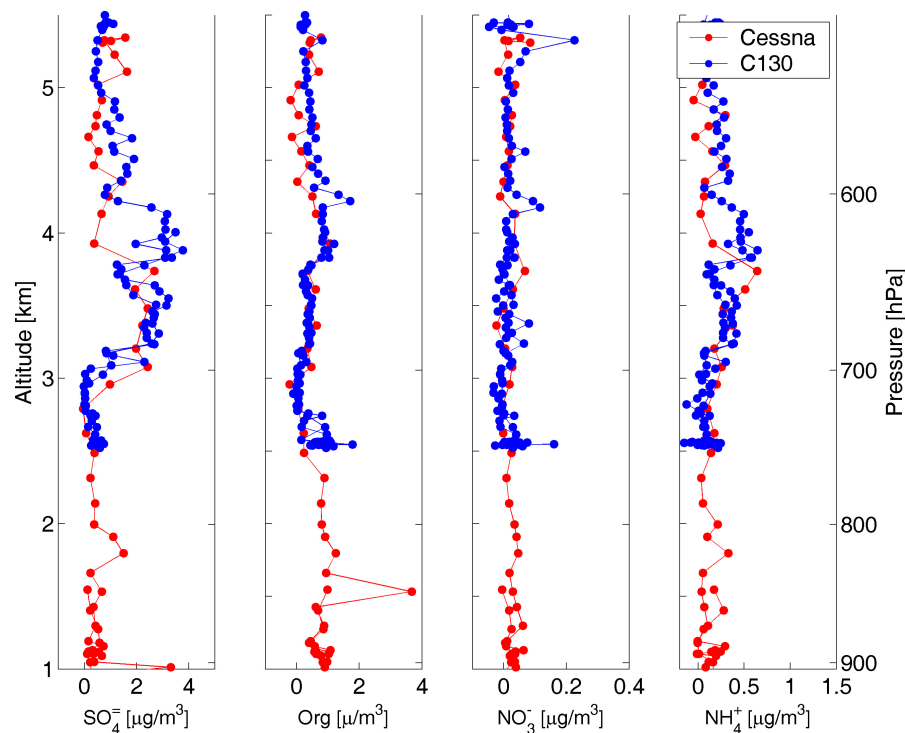


Fig. 3. Aerosol Mass Spectrometer (AMS) measurements from the 3 May 2006 inter-comparison flight over Whistler Peak Station (50.1° N, 122.9° W). Cessna data are shown in red. C-130 data are shown in blue. All data at STP. No scaling for the upper size cut of the AMS has been applied to these data.

Title Page

Abstract

Introduction

Conclusions

References

Tables

Figures

◀

▶

◀

▶

Back

Close

Full Screen / Esc

Printer-friendly Version

Interactive Discussion



Long-range transport of East Asian sulfur to Canada

A. van Donkelaar et al.

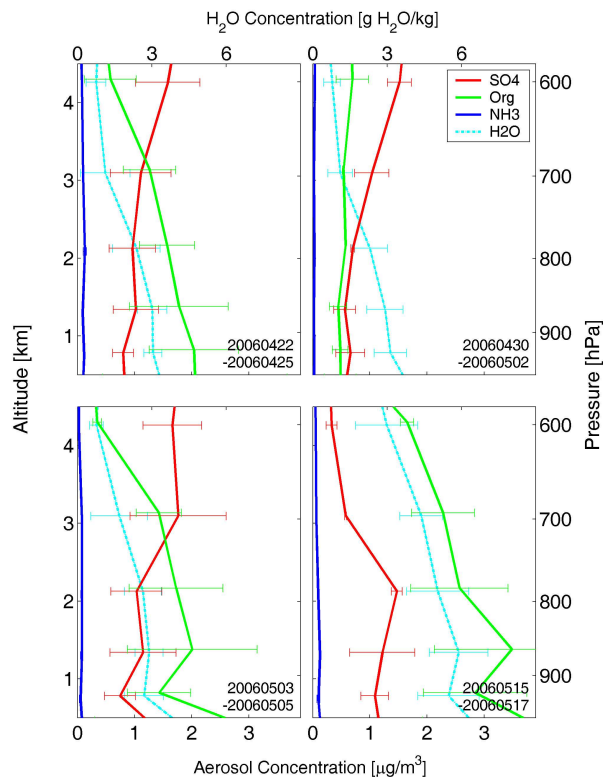


Fig. 4. Cessna Q-AMS vertical profiles of sulfate, organics and nitrate during four enhancement periods. Sulfate (SO_4^-) data have been scaled by multiplying with a factor of 1.4 to account for particle size restrictions as inferred from MOUDI measurements at Whistler summit. Aerosol data are at STP. Water (H_2O) concentration profiles are in cyan. Date ranges are indicated in the bottom right of each plot. Error bars represent one standard deviation of the data.

Title Page

Abstract

Introduction

Conclusions

References

Tables

Figures

◀

▶

◀

▶

Back

Close

Full Screen / Esc

Printer-friendly Version

Interactive Discussion



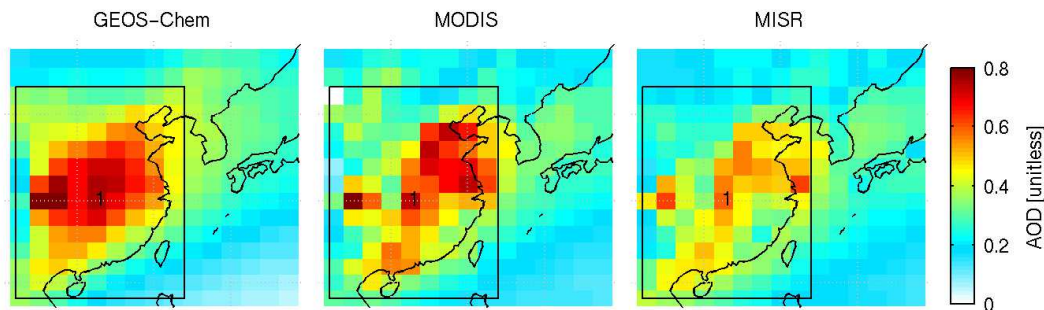


Fig. 5. Aerosol Optical Depth (AOD) from the MODIS and MISR satellite instruments and a GEOS-Chem simulation. The top row shows mean AOD over 2000–2006 and defines Region 1 as used in the lower panels. The middle panel shows monthly mean for Region 1 retrieved and simulated AOD with simulated SO_x emissions held at 2000 levels. Simulated contributions of dust and SO_4^{2-} to total AOD are also shown. Highlighted areas indicate time periods used in the lower panels. The bottom left panel shows the Region 1 difference between retrieved and simulated AOD averaged between July and December of each year expressed as a percentage of mean retrieved AOD. Dashed line indicates best linear fit, error bars represent the 20th and 80th percentile. The bottom right panel shows the simulated relationship in Region 1 between total AOD and SO_x emissions over July–December 2000–2006 as calculated with 5 simulations with SO_x emissions increased by 0%, 5%, 10%, 15% and 20%. The red and blue stars respectively indicate the observed change in difference of simulated AOD between MISR and MODIS. Error bars denote one standard deviation of the data.

Long-range transport of East Asian sulfur to Canada

A. van Donkelaar et al.

Title Page

Abstract

Introduction

Conclusions

References

Tables

Figures

◀

▶

◀

▶

Back

Close

Full Screen / Esc

Printer-friendly Version

Interactive Discussion



Long-range transport of East Asian sulfur to Canada

A. van Donkelaar et al.

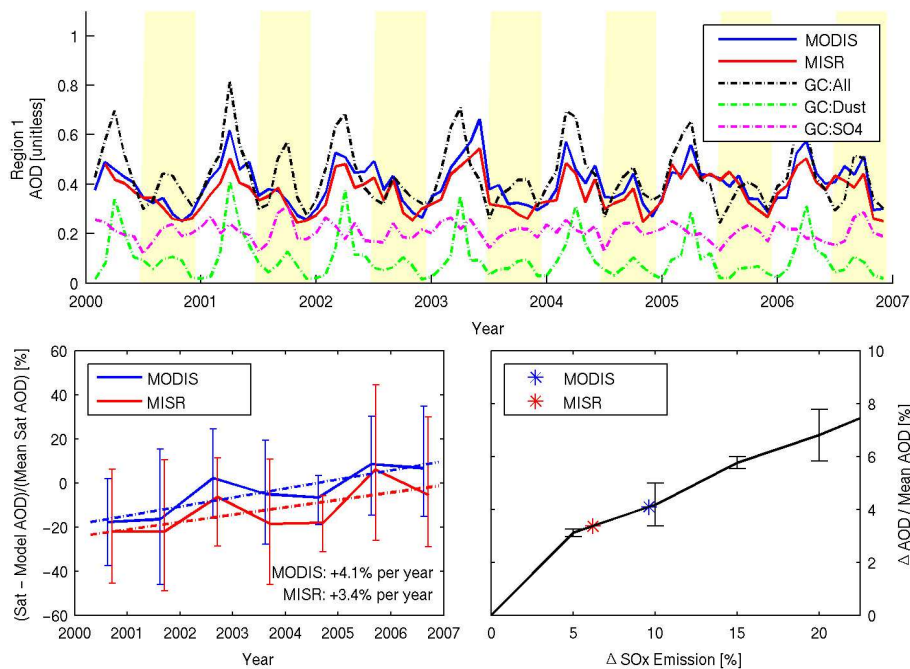


Fig. 5. Continued.

Title Page

Abstract

Introduction

Conclusions

References

Tables

Figures

◀

▶

◀

▶

Back

Close

Full Screen / Esc

Printer-friendly Version

Interactive Discussion



Long-range transport of East Asian sulfur to Canada

A. van Donkelaar et al.

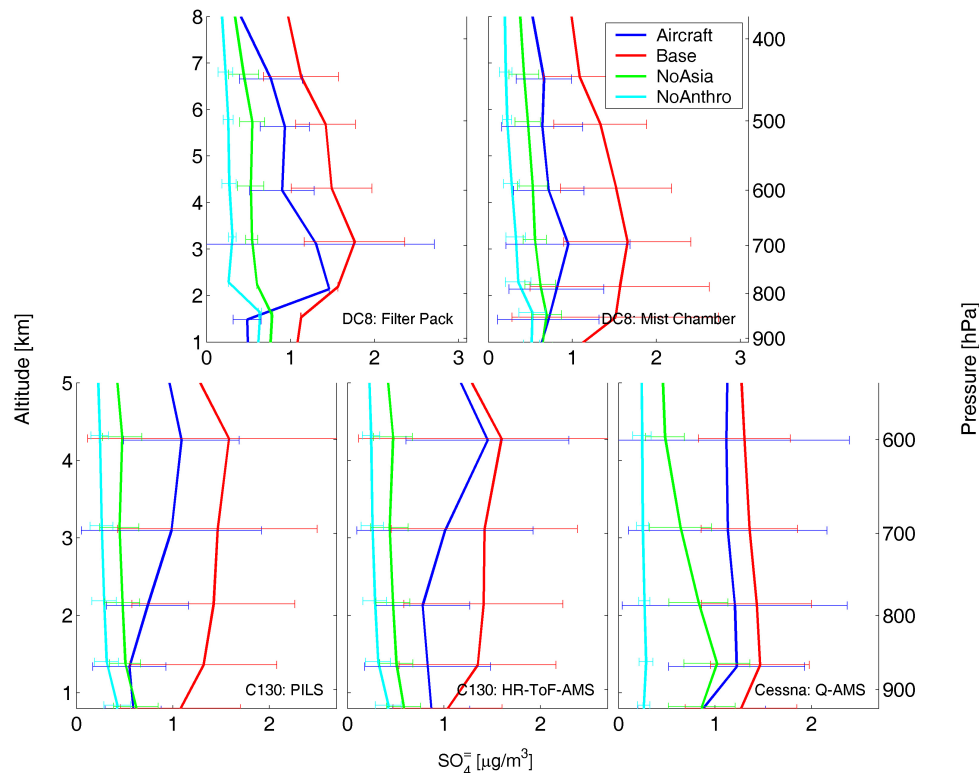


Fig. 6. Campaign average aircraft measurements of SO_4^{2-} during INTEX-B, within the boundaries shown in Fig. 1. Simulated cases of total SO_4^{2-} include our standard simulation, no East Asian emissions, and no global anthropogenic emissions. All measured and modeled data are at STP. AMS and PILS data are increased by a factor of 1.4 to account for particle size restrictions. Error bars denote one standard deviation. A small vertical offset is included between datasets for visibility.

Title Page

Abstract

Introduction

Conclusions

References

Tables

Figures

◀

▶

◀

▶

Back

Close

Full Screen / Esc

Printer-friendly Version

Interactive Discussion



**Long-range transport
of East Asian sulfur
to Canada**

A. van Donkelaar et al.

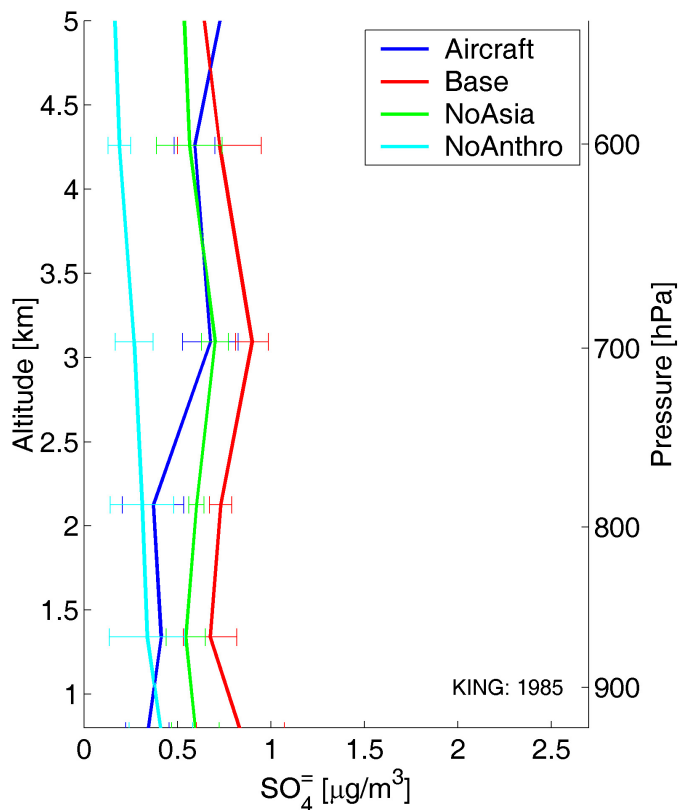


Fig. 7. Average aircraft measurements of SO_4^- during 1985 King flights, within the boundary shown in Fig. 1. Simulated cases of total SO_4^- include our standard simulation, no East Asian emissions, and no global anthropogenic emissions. All measured and modeled data are at STP. Error bars denote one standard deviation. A small vertical offset is included between datasets for visibility.

Title Page

Abstract

Introduction

Conclusions

References

Tables

Figures

◀

▶

◀

▶

Back

Close

Full Screen / Esc

Printer-friendly Version

Interactive Discussion



**Long-range transport
of East Asian sulfur
to Canada****A. van Donkelaar et al.**

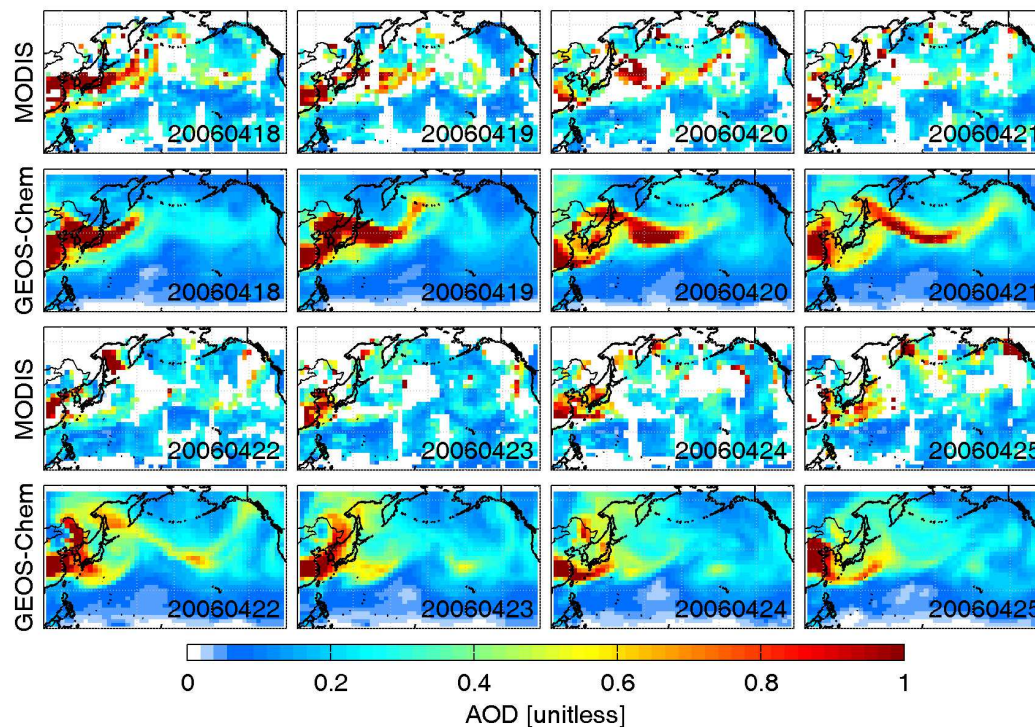


Fig. 8. The development of an Asian plume between 18–25 April 2006 as retrieved from MODIS and as simulated by GEOS-Chem. White spaces indicate regions of less than 10 cloud free scenes within a $2^\circ \times 2.5^\circ$ area.

[Title Page](#)[Abstract](#)[Introduction](#)[Conclusions](#)[References](#)[Tables](#)[Figures](#)[◀](#)[▶](#)[◀](#)[▶](#)[Back](#)[Close](#)[Full Screen / Esc](#)[Printer-friendly Version](#)[Interactive Discussion](#)

Long-range transport
of East Asian sulfur
to Canada

A. van Donkelaar et al.

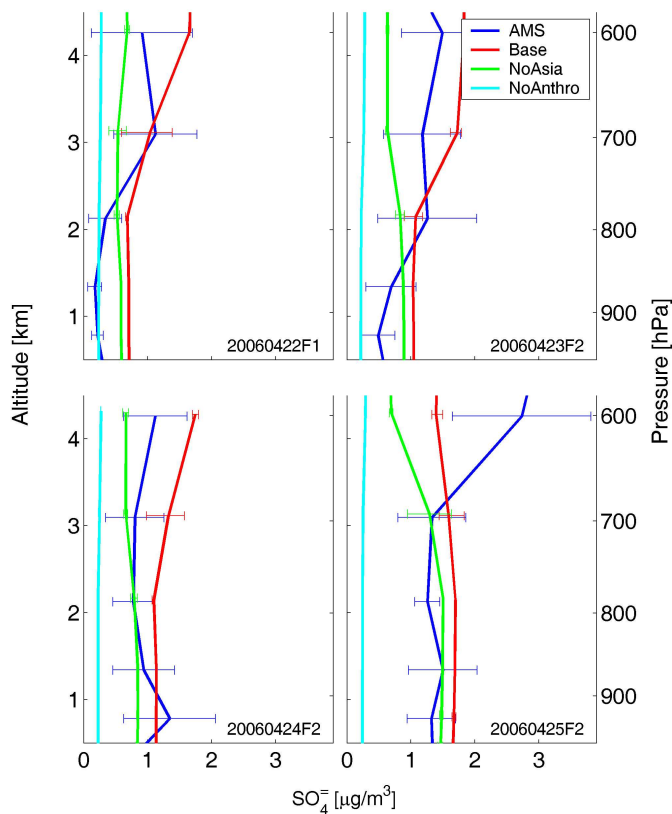


Fig. 9. Cessna Q-AMS SO_4^- profiles taken 22–25 April 2006. Error bars represent one standard deviation of the data. Q-AMS data are at STP and scaled by 40% to account for particle size restrictions.

[Title Page](#)[Abstract](#)[Introduction](#)[Conclusions](#)[References](#)[Tables](#)[Figures](#)[◀](#)[▶](#)[◀](#)[▶](#)[Back](#)[Close](#)[Full Screen / Esc](#)[Printer-friendly Version](#)[Interactive Discussion](#)

Long-range transport of East Asian sulfur to Canada

A. van Donkelaar et al.

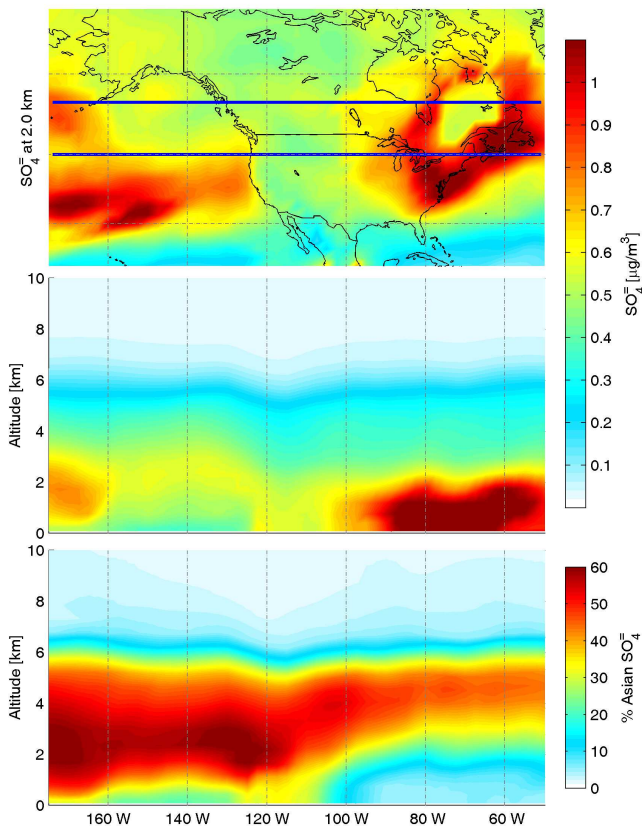


Fig. 10. Average simulated conditions for April and May 2006. The top panel shows total SO_4^- concentrations at ~ 2 km altitude. Middle and bottom panels display the mean cross-sectional total concentration and East Asian influence, respectively, between the blue lines in the top panel.

[Title Page](#)[Abstract](#)[Introduction](#)[Conclusions](#)[References](#)[Tables](#)[Figures](#)[◀](#)[▶](#)[◀](#)[▶](#)[Back](#)[Close](#)[Full Screen / Esc](#)[Printer-friendly Version](#)[Interactive Discussion](#)

**Long-range transport
of East Asian sulfur
to Canada**

A. van Donkelaar et al.

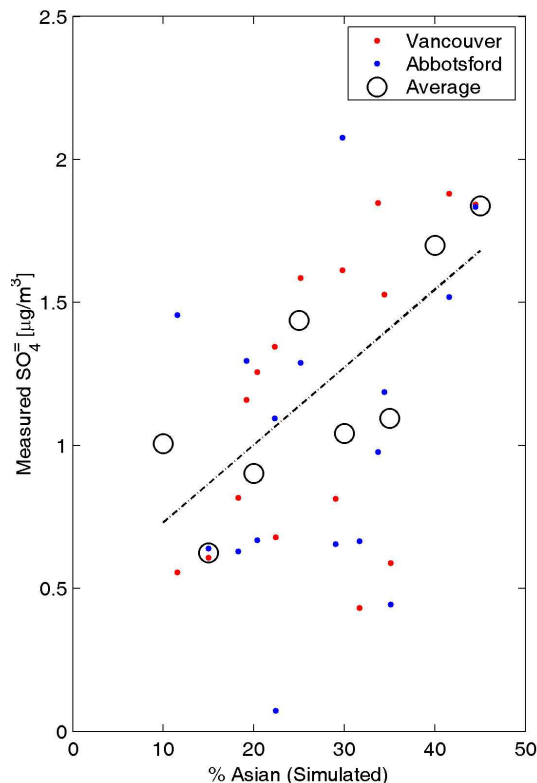


Fig. 11. The influence of Asian SO_4^{2-} on coastal western Canadian surface concentrations during April–May 2006. Black circles denote mean filter pack sulfate measurements from Canada’s National Air Pollution Network sites in Vancouver and Abbotsford as averaged at 5% intervals of percent Asian SO_4^{2-} . Dashed line shows linear best fit. Percent Asian sulfate is simulated using the GEOS-Chem model.

Title Page

Abstract

Introduction

Conclusions

References

Tables

Figures

◀

▶

◀

▶

Back

Close

Full Screen / Esc

Printer-friendly Version

Interactive Discussion

