



HAL
open science

Depletion of gaseous polycyclic aromatic hydrocarbons by a forest canopy

S.-D. Choi, H. Li, Y. Su, B. Gevao, T. Harner, R. M. Staebler, F. Wania

► **To cite this version:**

S.-D. Choi, H. Li, Y. Su, B. Gevao, T. Harner, et al.. Depletion of gaseous polycyclic aromatic hydrocarbons by a forest canopy. *Atmospheric Chemistry and Physics Discussions*, 2008, 8 (1), pp.2359-2380. hal-00303962

HAL Id: hal-00303962

<https://hal.science/hal-00303962>

Submitted on 18 Jun 2008

HAL is a multi-disciplinary open access archive for the deposit and dissemination of scientific research documents, whether they are published or not. The documents may come from teaching and research institutions in France or abroad, or from public or private research centers.

L'archive ouverte pluridisciplinaire **HAL**, est destinée au dépôt et à la diffusion de documents scientifiques de niveau recherche, publiés ou non, émanant des établissements d'enseignement et de recherche français ou étrangers, des laboratoires publics ou privés.

**PAH gradient over
forest**

S.-D. Choi et al.

Depletion of gaseous polycyclic aromatic hydrocarbons by a forest canopy

S.-D. Choi¹, H. Li^{1,*}, Y. Su^{1,**}, B. Gevao^{1,***}, T. Harner², R. M. Staebler², and F. Wania¹

¹Department of Physical and Environmental Sciences, University of Toronto Scarborough, 1265 Military Trail, Toronto, Ontario, M1C 1A4, Canada

²Science and Technology Branch, Environment Canada, 4905 Dufferin Street, Toronto, Ontario, M3H 5T4, Canada

* now at: Worsfold Water Quality Centre, Trent University, Peterborough, Ontario, K9J 7B8, Canada

** now at: Science & Technology Branch, Environment Canada, 4905 Dufferin Street, Toronto, Ontario, M3H 5T4, Canada

*** now at: Department of Environmental Science, Environment and Urban Development Division, Kuwait Institute for Scientific Research, P.O. Box 24885, Safat 13109, Kuwait

Received: 13 November 2007 – Accepted: 26 December 2007 – Published: 8 February 2008

Correspondence to: F. Wania (frank.wania@utoronto.ca)

Title Page

Abstract

Introduction

Conclusions

References

Tables

Figures

◀

▶

◀

▶

Back

Close

Full Screen / Esc

Printer-friendly Version

Interactive Discussion

EGU

Abstract

Rapid uptake of gaseous polycyclic aromatic hydrocarbons (PAHs) by a forest canopy was observed at Borden in Southern Ontario, Canada during bud break in early spring 2003. High volume air samples were taken on 12 individual days at three different heights (44.4, 29.1, and 16.7 m) on a scaffolding tower and on the forest floor below the canopy (1.5 m). Concentrations of PAHs were positively correlated to ambient temperature, resulting from relatively warm and polluted air masses passing over the Eastern United States and Toronto prior to arriving at the sampling site. An analysis of vertical profiles and gas/particle partitioning of the PAHs showed that gaseous PAHs established a concentration gradient with height, whereas levels of particulate PAHs were relatively uniform, implying that only the uptake of gaseous PAHs by the forest canopy was sufficiently rapid to be observed. Specifically, the gaseous concentrations of intermediate PAHs, such as phenanthrene, anthracene, and pyrene, during budburst and leaf emergence were reduced within and above the canopy. When a gradient was observed, the percentage of PAHs on particles increased at the elevations experiencing a decrease in gas phase concentrations. The uptake of intermediate PAHs by the canopy also led to significant differences in gaseous PAH composition with height. These results are the most direct evidence yet of the filter effect of forest canopies for gaseous PAHs in early spring. PAH deposition fluxes and dry gaseous deposition velocities to the forest canopy were estimated from the concentration gradients.

1 Introduction

Vegetation constitutes an important environmental reservoir for semi-volatile organic compounds (SOCs) because of high surface coverage (80% of the earth's terrestrial surface) and the presence of hydrophobic lipids and waxes in foliage (Simonich, 1995; Simonich and Hites, 1994a). A high surface roughness leads to fast uptake of atmospheric SOC in forest canopies, which have indeed been shown to effectively

PAH gradient over forest

S.-D. Choi et al.

Title Page

Abstract

Introduction

Conclusions

References

Tables

Figures

◀

▶

◀

▶

Back

Close

Full Screen / Esc

Printer-friendly Version

Interactive Discussion

filter many SOCs, including polycyclic aromatic hydrocarbons (PAHs). Such filtering reduces air concentrations and increases contaminant deposition to the forest floor (Howsam et al., 2001a, b; Matzner, 1984; McLachlan and Horstmann, 1998; Simonich and Hites, 1994b). Model calculations suggest that the filter effect is most efficient for airborne SOCs that have an octanol-air partition coefficient $\log K_{OA}$ between 7 and 11 and an air-water partition coefficient $\log K_{AW}$ above -6 (McLachlan and Horstmann, 1998). Calculations with a regional multimedia fate model indicated that average air concentrations of chemicals with such properties may decrease by as much as a factor of 5 during the growing season (Wania and McLachlan, 2001). Global scale modeling revealed that the filter effect of boreal deciduous forests may significantly reduce long-range transport of SOCs to the Arctic (Su and Wania, 2005). Despite these field measurements and modeling efforts devoted to quantifying the forest filter effect, the magnitude, variability, and mechanisms of this process remain to be fully characterized.

The gaseous deposition velocity to deciduous forests is clearly one of the most important factors controlling the forest filter effect. Simultaneous sampling of air concentrations and bulk deposition below a canopy and at a nearby clearing can be applied to estimate the SOC deposition to forest canopies during an entire growing season (Horstmann and McLachlan, 1998; Su et al., 2007). While these studies can yield long term average gaseous deposition velocities to forests, they only provide indirect evidence of SOC uptake in the canopy and the resulting reduction of air concentrations. They are also unsuitable for chemicals that degrade in the canopy, such as the PAHs (Su et al., 2007). The purpose of this study was to determine concentration gradients of PAHs developing above a forest as a result of their rapid uptake in the canopy. Specifically, the temporal variations of gaseous and particulate PAHs, their vertical profiles and gas/particle partitioning at different heights on a 45 m scaffolding tower were investigated in a Canadian deciduous forest.

PAH gradient over forest

S.-D. Choi et al.

Title Page

Abstract

Introduction

Conclusions

References

Tables

Figures

◀

▶

◀

▶

Back

Close

Full Screen / Esc

Printer-friendly Version

Interactive Discussion

2 Experimental section

2.1 Air sampling

The sampling site (44° 19' N, 79° 56' W), located 75 km northwest of Toronto on the Canadian Forces Base Borden (Fig. S1 in the supplementary information, <http://www.atmos-chem-phys-discuss.net/8/2359/2008/acpd-8-2359-2008-supplement.pdf>), is a mixed deciduous forest, dominated by red maple (*Acer rubrum*), trembling aspen (*Populus tremuloides*), large-tooth aspen (*Populus grandidentata*), white ash (*Fraxinus americana*), black cherry (*Prunus serotina*), and white pine (*Pinus strobes*). Average canopy height and stand age is 22 m and 90 years (http://www.smc.ec.gc.ca/arqp/borden_e.cfm), respectively. The terrain is flat and uniform surface characteristics apply to an area of several square kilometers. A 45 m scaffolding tower in the center of the forest is fully instrumented for measurements of micrometeorological parameters above and within the canopy. The site has previously been used for studies of the exchange of gases between the forest and the atmosphere (Fuentes et al., 1992; Fuentes et al., 1995; Gu et al., 1999; Makar et al., 1999).

Sampling was carried out in spring (24 April–2 June 2003) when PAH uptake in the forest canopy is expected to be largest. Three samples at different heights on the scaffolding tower (44.4, 29.1, and 16.7 m) and one sample on the forest floor below the canopy (1.5 m) were taken on 12 individual days using high volume air samplers (Fig. S2). Particulate and gaseous PAHs were collected on Whatman GF/A glass fiber filters (GFF: 203 × 254 mm) and two polyurethane foam plugs (PUF: 80 mm diameter, 75 mm long), respectively. Prior to budburst (April 24 and 25), 24-h samples were collected for two continuous days to characterize the situation without the presence of a canopy. While leaves were developing, 24-h samples were collected every three days until leaves were completely developed, which lasted about one month (5 May–2 June). In total, 48 paired PUF and GFF samples were taken. More information on sampling times is presented in the supplementary information (Table S1, <http://www.atmos-chem-phys-discuss.net/8/2359/2008/acpd-8-2359-2008-supplement.pdf>).

Title Page

Abstract

Introduction

Conclusions

References

Tables

Figures

◀

▶

◀

▶

Back

Close

Full Screen / Esc

Printer-friendly Version

Interactive Discussion

PAH gradient over forest

S.-D. Choi et al.

At the same time, eddy covariance fluxes for sensible heat, CO₂, and H₂O were measured at 33 m using a triaxial sonic anemometer in combination with fast response gas analyzers. In addition to these measurements, data for air temperatures, wind speed and direction, incoming solar radiation, photosynthetically active radiation, and relative humidity were continuously collected above the canopy. All microclimatic and gas concentration measurements were acquired using data loggers, and results were averaged every half-hour.

2.2 Chemical analysis

PUFs and GFFs were individually Soxhlet extracted for 16 h with petroleum ether (PE) and dichloromethane (DCM), respectively. Extracts were concentrated by rotary evaporation, blown down to about 1 mL with a gentle stream of nitrogen, and then solvent exchanged into iso-octane. Standard solutions of deuterated PAHs (D₈-naphthalene, D₈-acenaphthylene, D₁₀-phenanthrene, D₁₀-fluoranthene, D₁₀-pyrene, D₁₂-benzo(a)pyrene, D₁₂-benzo(ghi)perylene) were spiked into the samples prior to extraction to check recoveries during extraction and clean-up procedures. Extracts were cleaned and separated into two fractions on a column of 3 g 100-mesh silicic acid (deactivated with 3% water) overlaid by 2 g neutral alumina (deactivated with 6% water), and topped with 1 cm of anhydrous sodium sulfate. The column was pre-washed with 30 mL of DCM and 30 mL of PE. The sample was eluted with 50 mL of PE (fraction 1, containing light PAHs) and then with 30 mL of DCM (fraction 2, containing heavy PAHs). Fractions were reduced to 1 mL using a rotary evaporator and further blown down to about 0.5 mL under a gentle stream of nitrogen and solvent exchanged into iso-octane. Mirex (1,3,4-Metheno-2h-cyclobuta(cd)pentalene) was added to the sample prior to injection as internal standard.

Sixteen PAHs (naphthalene, acenaphthylene, acenaphthene and those listed in Table 1) were analyzed by gas chromatography (GC)-electron impact mass spectrometry in the selected ion monitoring mode using an Agilent 6890 GC-5973 mass spectrometric detector. The separation was performed on a DB-5MS column (60 m×0.25 mm

[Title Page](#)[Abstract](#)[Introduction](#)[Conclusions](#)[References](#)[Tables](#)[Figures](#)[I◀](#)[▶I](#)[◀](#)[▶](#)[Back](#)[Close](#)[Full Screen / Esc](#)[Printer-friendly Version](#)[Interactive Discussion](#)

i.d., 0.10 μm film thickness). 1 μL of samples were injected in splitless mode at inlet temperature of 280°C. The carrier gas was helium with a constant flow rate of 1 mL min^{-1} . Details on GC temperature program and the target ions are provided in the supplementary information (<http://www.atmos-chem-phys-discuss.net/8/2359/2008/acpd-8-2359-2008-supplement.pdf>).

2.3 Quality assurance and quality control

Field blanks were collected for every sampling event ($n=12$). PUF plugs and GFFs were extracted and analyzed for target analytes using the same method as was used for real samples. The method detection limit (MDL) and recoveries for PAHs calculated from field blanks are shown in Table S2 (supplementary information, <http://www.atmos-chem-phys-discuss.net/8/2359/2008/acpd-8-2359-2008-supplement.pdf>). The range of MDL, defined as the mean blank value plus three standard deviations, was 0.1–27.1 pg m^{-3} for gaseous PAHs and 0.1–6.5 pg m^{-3} for particulate PAHs. Concentrations below the limit of detection were eliminated and the remaining ones were corrected for average blank values, but not corrected for the recoveries of deuterated PAHs. Recovery, calculated using the seven deuterated PAHs, was 65–136% for gaseous PAHs and 74–154% for particulate PAHs (Table S2). Breakthrough was checked by separately analyzing front and back PUFs in each of the four samples taken on 6 May, 30 May and 2 June. Significant fractions of the three most volatile compounds (naphthalene, acenaphthylene, and acenaphthene) on the back PUF indicated breakthrough and they were thus not considered further. Meanwhile, lack of PAH detection on eight back-up GFFs (30 May and 2 June) indicated that an adsorption artifact was not observed.

2.4 Calculation of diffusion fluxes

Gas fluxes ($\text{pg m}^{-2} \text{s}^{-1}$) between the air and forest canopy can be calculated by the modified Bowen ratio method. This method has been widely used for the calculation of

PAH gradient over forest

S.-D. Choi et al.

Title Page

Abstract

Introduction

Conclusions

References

Tables

Figures

◀

▶

◀

▶

Back

Close

Full Screen / Esc

Printer-friendly Version

Interactive Discussion

PAH gradient over forest

S.-D. Choi et al.

air/surface exchange fluxes of mercury vapor, volatile organic compounds, and other trace gases (Doskey et al., 2004; Kurt-Karakus et al., 2006; Lindberg et al., 1998; Majewski et al., 1990; Meyers et al., 1996; Schween et al., 1997). Only recently has it found use for semivolatile pesticides, both to measure volatilization from agricultural soils (Kurt-Karakus et al., 2006) and to quantify air-water exchange fluxes in Lake Superior (Perlinger et al., 2005). To our knowledge, this study is the first application of the modified Bowen ratio method to measuring fluxes of SOCs to a terrestrial surface. The underlying equation is:

$$\text{Flux} = -K_C \frac{dC}{dz} \quad (1)$$

where K_C is the eddy diffusivity ($\text{m}^2 \text{s}^{-1}$) for chemicals, C is concentration (pg m^{-3}), and z is height (m). It is assumed that the turbulent exchange of heat and chemicals is governed by the same turbulent mechanisms (Schween et al., 1997), i.e. K_{Heat} equals K_C (Kurt-Karakus et al., 2006). K_{Heat} is determined by combining direct eddy covariance flux measurements of sensible heat with the vertical temperature gradient,

$$\overline{w'T'} = -K_{\text{Heat}} \frac{dT}{dz} \quad (2)$$

where w is the vertical wind component, T is the temperature, and $\overline{w'T'}$ represents the turbulent sensible heat flux directly measured by the sonic anemometer at 33 m, determined on a half-hourly basis. The vertical temperature gradient is determined using the temperatures at 43.4 m and 29.0 m. It is also assumed that the chemical undergoes no transformations between the two gradient levels.

Strictly speaking, the gradient method can only be used to derive fluxes for time periods when both the vertical eddy diffusivity K_C and the concentration gradient dC/dz are constant. This condition is clearly not fulfilled in our case, as sampling took place over continuous 24-h periods, and K_C and dC/dz are expected to undergo significant diurnal variability. However, 24-h sampling periods were considered necessary to achieve

Title Page

Abstract

Introduction

Conclusions

References

Tables

Figures

◀

▶

◀

▶

Back

Close

Full Screen / Esc

Printer-friendly Version

Interactive Discussion

the precision required to observe statistically significant differences in PAH air concentrations. To nevertheless derive some kinetic information from the data, we made some assumptions about the diurnal variability of PAH air concentrations to at least provide a reasonable estimate of the range within which the real flux resides. An overview of the theoretical background and uncertainties associated with the modified Bowen ratio technique are detailed elsewhere (Fuentes et al., 1996; Simpson et al., 1998).

3 Results and discussion

3.1 Temporal variations of gaseous and particulate PAHs

Table 1 lists arithmetic means and ranges of the concentrations of individual PAHs during the sampling period. Concentration data for each air sample are provided in the supplementary information (Table S3 and S4, <http://www.atmos-chem-phys-discuss.net/8/2359/2008/acpd-8-2359-2008-supplement.pdf>). The average concentration of $\sum_{13}\text{PAH}$ in this study (2.4 ng m^{-3}) is lower than the annual average (12.8 ng m^{-3}) for the same site (derived from 35 measurements from October 2001 to November 2002), presumably because the latter is strongly influenced by high winter time values (Su et al., 2006).

The temporal variation of total gaseous and particulate PAHs at different heights (A, B, C, and D) is shown in Fig. 1a and c, respectively. With the exception of the first two days, PAH concentrations at all heights rise and fall in concert with temperature. Especially the particulate PAH concentrations are significantly correlated with temperature ($p < 0.01$). Relatively high concentrations of particulate PAHs on the first two days of sampling, when temperatures were still low, may be related to local emissions associated with residential heating. Air mass origin can explain the correlation between PAH concentrations and temperature during the remainder of the sampling period. Higher concentrations observed on May 9 and 18 are associated with warmer air masses originating in the South and passing over the eastern United States and the

Title Page

Abstract

Introduction

Conclusions

References

Tables

Figures

◀

▶

◀

▶

Back

Close

Full Screen / Esc

Printer-friendly Version

Interactive Discussion

Toronto metropolitan area prior to arrival at Borden. Low temperatures and low PAH concentrations, on the other hand, are associated with air masses originating from the Canadian Arctic. Five-day back trajectories, calculated for the sampling days, and wind-rose diagrams are provided in the supplementary information (Fig. S3, <http://www.atmos-chem-phys-discuss.net/8/2359/2008/acpd-8-2359-2008-supplement.pdf>).

Whereas the concentrations of particulate PAHs are similar at all four heights (Fig. 1c), those of the gaseous PAHs vary with height (Fig. 1a). Generally, the sequence of increasing gas phase concentrations is C (16.7 m) < B (29.1 m) < A (44.4 m) = D (1.5 m). The average difference between heights A and C is 42% and 2% for gaseous and particulate \sum_{13} PAH concentrations, respectively. T-tests for concentration pairs at two different heights confirm significant difference ($p < 0.05$) between A-B, A-C, B-C, B-D, and C-D. Only gaseous PAH levels at A and D are not significantly different. None of the total and individual concentration differences between particulate PAH concentrations are significant. The average composition of gaseous PAHs also shows subtle differences with height (Fig. 1b). In particular, the contribution of phenanthrene ranges from 51% (height C) to 62% (height A and D). However, there is no difference in the particulate PAH composition with height (Fig. 1d). These results indicate that only the concentration and composition of gaseous PAHs are influenced by the canopy. Namely, this result agrees with the contention that dry gaseous deposition is the principle process of PAH uptake by vegetation (Simonich and Hites, 1994a).

Theoretically, other processes may contribute to PAH concentrations that vary with height. Whereas differences in photooxidant concentrations with height may lead to different loss rates of PAH vapors, the reaction of gas phase PAHs with hydroxyl radicals proceeds with half lives on the order of 10 h and more (Kwok et al., 1994, Brubaker and Hites, 1998) and thus is clearly too slow to explain the observed concentration differences. Reactions with other photooxidants, such as ozone, are even slower. Also, photooxidant concentrations at Borden tend to show only minor variations with height and do not have higher values within the canopy (e.g. Makar et al., 1999). During the sampling period, ozone did not show any significant concentration gradient above

PAH gradient over forest

S.-D. Choi et al.

Title Page

Abstract

Introduction

Conclusions

References

Tables

Figures

I◀

▶I

◀

▶

Back

Close

Full Screen / Esc

Printer-friendly Version

Interactive Discussion

16.7 m. Neither were strong temperature gradients recorded, which could have caused slightly different reaction rates at different elevations or influenced the gas/particle partitioning behavior of the PAHs. However, the temperature dependence of the OH radical oxidation of PAHs is very minor (Brubaker and Hites, 1998).

5 3.2 Evidence for the uptake of some gaseous PAHs by the forest canopy

In Fig. 1a, the levels of gaseous PAHs just above (B: 29.1 m) and below (C: 16.7 m) the top of the canopy are clearly lower than those well above the canopy (A: 44.4 m) and at ground level (D: 1.5 m). This vertical gradient for the total gaseous PAHs is mainly due to phenanthrene which is dominant in all samples (Fig. 1b). In order to confirm which compounds have vertical gradients, the gas-phase concentrations of intermediate PAHs and particle-phase concentrations of less volatile PAHs were plotted against sampling height (Fig. S4). Gradients with lower concentrations close to the canopy are apparent for gaseous PAHs with three and four aromatic rings, such as phenanthrene, anthracene, and pyrene (Fig. 2). They have $\log K_{OA}$ values of 7.78, 7.82, and 8.93 at 25°C (calculated from sub-cooled liquid vapor pressure) (Lei et al., 2002; Xiao and Wania, 2003), which is in the expected range for a pronounced filter effect ($7 < \log K_{OA} < 11$) (McLachlan and Horstmann, 1998). No such gradients were observed for highly volatile PAHs such as fluorene because of the low uptake capacity of the canopy for these PAHs, which may quickly establish equilibrium between air and canopy. Gradients for less volatile PAHs were not observed either because they were strongly associated with particles during the sampling period (Table S5).

Whenever a gradient was observed, the percentage of PAHs on particles increased at the elevations which experienced a decrease in gaseous concentration (Fig. 2). This was most evident in the case of pyrene. This observation suggests that it was mostly the gaseous compounds that were taken up in new foliage and is consistent with the lack of a gradient for the less volatile, particle-bound compounds. The gas/particle partitioning behavior was explored further by relating the fraction in the particle phase (Table S5) to a PAH's vapor pressure. This discussion, which sug-

PAH gradient over forest

S.-D. Choi et al.

[Title Page](#)[Abstract](#)[Introduction](#)[Conclusions](#)[References](#)[Tables](#)[Figures](#)[◀](#)[▶](#)[◀](#)[▶](#)[Back](#)[Close](#)[Full Screen / Esc](#)[Printer-friendly Version](#)[Interactive Discussion](#)

gested that the gas/particle partitioning behavior above and within the canopy is indeed statistically different, can be found in the supplementary material (<http://www.atmos-chem-phys-discuss.net/8/2359/2008/acpd-8-2359-2008-supplement.pdf>). Incidentally, the finding that gas phase concentrations change with height, whereas particle phase concentrations do not, implies either that the kinetics of gaseous deposition to the canopy are more rapid than the kinetics of desorption from the particles or that the PAHs in question are not sufficiently desorbable from the particles.

As expected, no strong gradients were observed on the first two sampling days in late April, which was prior to the emergence of the new foliage at Borden. After budburst, the gradients were maintained throughout May and early June. This suggests that it is indeed the newly emerging foliage which results in the rapid uptake and a decrease in air concentrations. In addition to the gradients above the canopy, inverse gradients were often observed below the canopy, i.e. the PAH levels measured at the forest floor (1.5 m) were typically higher than the levels within and above the canopy. Again, this phenomenon was only observed for the more volatile PAHs (phenanthrene, anthracene, and pyrene) (Fig. 2), suggesting volatilization from forest litter. In early spring, the potential for such revolatilization may be high because snowmelt has just delivered PAHs that had been deposited over the winter months to the soil surface.

Whether uptake by plants is thermodynamically or kinetically limited depends in part on a chemical's octanol-air partition coefficient ($\log K_{OA}$) (Böhme et al., 1999; McLachlan, 1999). Previous studies had identified critical $\log K_{OA}$ values of 9.9 and 9.7 for the gaseous deposition of SOCs to a German and a Canadian deciduous canopy, respectively (Horstmann and McLachlan, 1998; Su et al., 2007). Compounds with $\log K_{OA}$ below that threshold approached equilibrium between air and the forest canopy during a growing season, whereas the uptake of less volatile SOCs is kinetically controlled. In this study, however, even relatively volatile PAHs with $\log K_{OA} < 9$ (phenanthrene, anthracene, and pyrene) were likely subject to kinetically limited dry gaseous deposition. This can be explained by the sampling date in early spring, when leaves had just been emerging and had not had time to approach equilibrium with atmospheric PAH levels.

PAH gradient over forest

S.-D. Choi et al.

Title Page

Abstract

Introduction

Conclusions

References

Tables

Figures

◀

▶

◀

▶

Back

Close

Full Screen / Esc

Printer-friendly Version

Interactive Discussion

In contrast, the log K_{OA} thresholds in the previous studies were determined from data covering the entire growing season.

3.3 PAH flux to the forest canopy

As expected, an investigation of the eddy diffusivities (sensible heat, momentum, and CO_2) measured during spring 2003 revealed that they were highly variable and in particular that none of the 12 sampling days experienced a “stationary” period that would allow for steady-state flux conditions and thus a direct application of measured eddy diffusivities to individual 24-h measurements. Of the three eddy diffusivities, the heat flux was best behaved during the sampling period and K_{Heat} was used for the calculation of K_C . A median diurnal cycle of K_{Heat} for the period 20 April–10 June 2003 (Fig. S7) shows a strong diurnal pattern with a noon time maximum (17:00 GMT) and a very low value during night time.

Level C at 16.7 m is already within the canopy, and should therefore not be used in the quantification of dC/dz . It is difficult to assign a defensible eddy diffusivity that applies to a vertical span that includes points above and below the top of the trees. In addition, canopy uptake occurring between levels B and C would invalidate the application of the gradient approach. We therefore used only the concentrations at the highest two levels A and B to calculate dC/dz . The average 24-hour gradients of phenanthrene, anthracene, and pyrene for the 10 sampling days in May and June are 37, 3, and 8 $\text{pg m}^{-3} \text{m}^{-1}$, respectively. These gradients are highly variable during the sampling period (Fig. 2), and the flux estimate can only be expected to deliver an order of magnitude estimate.

We do not know whether and how the concentration gradients above the canopy dC/dz changed during the sampling periods. However, we can make different assumptions concerning the diurnal variability of dC/dz to at least provide a rough estimate of a range within which the true flux is likely located. Three diurnal gradient scenarios were used, all sharing the same average value derived from measurements (Fig. S8): Scenario I assumes that dC/dz was constant throughout the 24-h sampling period

PAH gradient over forest

S.-D. Choi et al.

Title Page

Abstract

Introduction

Conclusions

References

Tables

Figures

◀

▶

◀

▶

Back

Close

Full Screen / Esc

Printer-friendly Version

Interactive Discussion

PAH gradient over forest

S.-D. Choi et al.

($dC/dz(\text{day})=dC/dz(\text{night})$). Scenario II assumes a decrease of dC/dz by 50% during the day as a result of increased mixing ($2 \cdot dC/dz(\text{day})=dC/dz(\text{night})$). This scenario approximates a situation where PAHs are advected into the region from elsewhere (MacLeod et al., 2007). Considering the tight relationship between air mass origin and air concentration discussed above, this is likely to be the most realistic assumption. In scenario III, it is assumed that dC/dz increased twofold during the day in parallel with K_{Heat} , e.g. is proportional to temperature ($dC/dz(\text{day})=2 \cdot dC/dz(\text{night})$). This scenario represent a situation where temperature-driven revolatilization is the dominant source of PAHs to the local atmosphere (MacLeod et al., 2007).

By combining the diurnal cycle of the K_{Heat} (Fig. S7) with the PAH concentration gradients (Fig. S8), we can estimate the average diurnal fluxes for the three gradient scenarios for pyrene, phenanthrene, and anthracene (Fig. S9):

$$\text{Flux} = -\frac{1}{24} \sum_{i=1}^{24} \left(K_{\text{Heat}}(i) \frac{C_A(i) - C_B(i)}{z_A - z_B} \right) \quad (3)$$

Where i denotes the hour, $K_{\text{Heat}}(i)$ is the median eddy diffusivity for hour i , and C_A and C_B are the hourly scenario concentrations. C_A and C_B are constrained by the condition $\frac{1}{24} \sum_{i=1}^{24} C_A(i) = \overline{C(z_A)}$ where the latter is the measured 24-h average.

Note that these fluxes only include the turbulent exchange and do not account for molecular diffusion at night or intermittent transport mechanisms. Maximum uptake is observed during the day in all cases. This pattern results from the diurnal cycle of the diffusivity because the K is close to zero at night. Scenario III produces higher fluxes than the other two scenarios (III>I>II), but they are comparable. The average fluxes for the three intermediate PAHs are in the range of 60 to 120 $\text{pg m}^{-2} \text{s}^{-1}$ for phenanthrene, 5 to 10 $\text{pg m}^{-2} \text{s}^{-1}$ for anthracene, and 13 to 27 $\text{pg m}^{-2} \text{s}^{-1}$ for pyrene (Table 2). This implies the net dry gaseous deposition of micrograms of PAHs to the canopy per square meter during spring.

Title Page

Abstract

Introduction

Conclusions

References

Tables

Figures

◀

▶

◀

▶

Back

Close

Full Screen / Esc

Printer-friendly Version

Interactive Discussion

3.4 Dry gaseous deposition velocities

Dry gaseous deposition velocities to the canopy (v_G in cm s^{-1}) were calculated using:

$$v_G = \text{Flux}/C_G \quad (4)$$

where C_G is the gaseous concentration of PAHs at level B. The average velocities are on the order of 5 to 20 cm s^{-1} (Table 2) and, like the fluxes, vary by a factor of two between scenarios II and III. They also vary between chemicals, increasing two-fold from phenanthrene ($5\text{--}10 \text{ cm s}^{-1}$) to anthracene to pyrene ($10\text{--}20 \text{ cm s}^{-1}$). Such variability in the deposition velocities would be expected, if the various PAHs had approached equilibrium between canopy and atmospheric gas phase to a different extent. In general, however we suspect that these three PAHs were still far from equilibrium because sampling occurred very early in the growing season.

The deposition velocities for intermediate PAHs from this study are of the same order of magnitude as, albeit somewhat higher than, those previously reported for SOCs in Borden (2.7 cm s^{-1}) (Su et al., 2007) and a German deciduous forest (3.6 cm s^{-1}) (Horstmann and McLachlan, 1998). In particular, it is encouraging that the deposition velocities from the most realistic scenario II are in reasonable agreement with those reported previously. The latter values are average gross deposition velocities for the entire growing season, and were indirectly determined from differences in total deposition under the canopy and a nearby clearing (Horstmann and McLachlan, 1998), whereas the values reported here are net deposition velocities during the first month after budburst, so perfect agreement can not be expected, especially as gross deposition velocities may vary during the growing season. As long as the PAHs were far from reaching equilibrium between atmospheric gas phase and leaves during that month, net and gross deposition velocities would be similar, because revolatilization from the canopy would still be negligible. The high deposition velocities observed in the present study lend further support to the very rapid uptake of PAHs by deciduous forest canopies.

Title Page

Abstract

Introduction

Conclusions

References

Tables

Figures

◀

▶

◀

▶

Back

Close

Full Screen / Esc

Printer-friendly Version

Interactive Discussion

4 Conclusions

Rapid uptake of gaseous PAHs by the deciduous forest canopy was observed during bud break in early spring. This conclusion relies on the following evidence: (1) Concentrations of intermediate gaseous PAHs, such as phenanthrene, anthracene, and pyrene, within the canopy were reduced relative to above and below the canopy. (2) When this gradient was observed, the percentage of PAHs on particles increased at the elevations which experienced a decrease in gaseous concentration. (3) No strong gradients were observed prior to the emergence of the new foliage, but the gradients were maintained throughout the sampling period after budburst. (4) The gas/particle partitioning behavior above and within the canopy was statistically different. These observations suggest that the newly emerging foliage indeed resulted in the rapid uptake of intermediate gaseous PAHs and a decrease in air concentrations.

Average diurnal fluxes and dry gaseous deposition velocities were estimated from the air concentrations measured at the two highest elevations. The net dry gaseous deposition flux of individual PAHs to the canopy was in the range of micrograms per square meter during spring. Deposition velocities were of the same order of magnitude as, albeit somewhat higher than, those previously reported, lending further support to the hypothesis of rapid uptake of SOCs by deciduous forest canopies. This is the first study applying the modified Bowen ratio method to measuring fluxes of SOCs to a terrestrial surface and showing the most direct evidence yet of the filter effect of forest canopies for gaseous SOCs.

Supplementary material

Information on sampling site and events; detection limits and recoveries; back-trajectories and wind-rose diagrams; vertical profiles and particle-bound percentages for all PAHs; regression parameters, fitting curves and discussion of gas/particle partitioning; diurnal cycles of the diffusivity, gradient, and flux. This material is available free

PAH gradient over forest

S.-D. Choi et al.

Title Page

Abstract

Introduction

Conclusions

References

Tables

Figures

◀

▶

◀

▶

Back

Close

Full Screen / Esc

Printer-friendly Version

Interactive Discussion

of charge via the Internet at <http://www.atmos-chem-phys-discuss.net/8/2359/2008/acpd-8-2359-2008-supplement.pdf>.

Acknowledgements. This work was financially supported by the Canadian Foundation for Climate and Atmospheric Sciences (Project GR-007). We further thank S. Hayward and T. Dermott for help with collecting samples, M. S. McLachlan for valuable comments on the manuscript, and J. Fuentes for advice on the setup of the micrometeorological technique.

References

- Böhme, F., Welsch-Pausch, K., and McLachlan, M. S.: Uptake of airborne semivolatile organic compounds in agricultural plants: Field measurements of interspecies variability, *Environ. Sci. Technol.*, 33, 1805–1813, 1999.
- Brubaker, W. W. and Hites, R. A.: OH reaction kinetics of polycyclic aromatic hydrocarbons and polychlorinated dibenzo-p-dioxins and dibenzofurans. *J. Phys. Chem. A*, 102, 915–919, 1998.
- Doskey, P. V., Kotamarthi, V. R., Fukui, Y., Cook, D. R., Breitbeil III, F. W., and Wesely, M. L.: Air-surface exchange of peroxyacetyl nitrate at a grassland site, *J. Geophys. Res.*, 109, D10310, doi:10.1029/2004JD004533, 2004.
- Fuentes, J. D., Gillespie, T. J., Den Hartog, G., and Neumann, H. H.: Ozone deposition onto a deciduous forest during dry and wet conditions, *Agr. Forest Meteorol.*, 62, 1–18, 1992.
- Fuentes, J. D., Wang, D., Den Hartog, G., Neumann, H. H., Dann, T. F., and Puckett, K. J.: Modelled and field measurements of biogenic hydrocarbon emissions from a Canadian deciduous forest, *Atmos. Environ.*, 29, 3003–3017, 1995.
- Fuentes, J. D., Wang, D., Neumann, H. H., Gillespie, T. J., Den Hartog, G., and Dann, T. F.: Ambient biogenic hydrocarbons and isoprene emissions from a mixed deciduous forest, *J. Atmos. Chem.*, 25, 67–95, 1996.
- Gu, L., Fuentes, J. D., Shugart, H. H., Staebler, R. M., and Black, T. A.: Responses of net ecosystem exchanges of carbon dioxide to changes in cloudiness: Results from two north American deciduous forests, *J. Geophys. Res.*, 104, 31 421–31 434, 1999.
- Horstmann, M. and McLachlan, M. S.: Atmospheric deposition of semivolatile organic compounds to two forest canopies, *Atmos. Environ.*, 32, 1799–1809, 1998.

Title Page

Abstract

Introduction

Conclusions

References

Tables

Figures

◀

▶

◀

▶

Back

Close

Full Screen / Esc

Printer-friendly Version

Interactive Discussion

PAH gradient over forest

S.-D. Choi et al.

Title Page

Abstract

Introduction

Conclusions

References

Tables

Figures

◀

▶

◀

▶

Back

Close

Full Screen / Esc

Printer-friendly Version

Interactive Discussion

Howsam, M., Jones, K. C., and Ineson, P.: Dynamics of PAH deposition, cycling and storage in a mixed-deciduous (*quercus-fraxinus*) woodland ecosystem, *Environ. Pollut.*, 113, 163–176, 2001a.

Howsam, M., Jones, K. C., and Ineson, P.: PAHs associated with the leaves of three deciduous tree species. II: Uptake during a growing season, *Chemosphere*, 44, 155–164, 2001b.

Kurt-Karakus, P. B., Bidleman, T. F., Staebler, R. M., and Jones, K. C.: Measurement of DDT fluxes from a historically treated agricultural soil in Canada, *Environ. Sci. Technol.*, 40, 4578–4585, 2006.

Kwok, E. S. C., Harger, W. P., Arey, J., and Atkinson, R.: Reactions of gas-phase phenanthrene under simulated atmospheric conditions. *Environ. Sci. Technol.* 28, 521–527, 1994.

Lei, Y. D., Chankalal, R., Chan, A., and Wania, F.: Supercooled liquid vapor pressures of the polycyclic aromatic hydrocarbons, *J. Chem. Eng. Data*, 47, 801–806, 2002.

Lindberg, S. E., Hanson, P. J., Meyers, T. P., and Kim, K.-H.: Air/surface exchange of mercury vapor over forests – the need for a reassessment of continental biogenic emissions, *Atmos. Environ.*, 32, 895–908, 1998.

MacLeod, M., Scheringer, M., Podey, H., Jones, K. C., and Hungerbühler, K.: The origin and significance of short-term variability of semivolatile contaminants in air, *Environ. Sci. Technol.*, 41, 3249–3253, 2007.

Majewski, M. S., Glotfelty, D. E., Paw U, K. T., and Seiber, J. N.: A field comparison of several methods for measuring pesticide evaporation rates from soil, *Environ. Sci. Technol.*, 24, 1490–1497, 1990.

Makar, P. A., Fuentes, J. D., Wang, D., Staebler, R. M., and Wiebe, H. A.: Chemical processing of biogenic hydrocarbons within and above a temperate deciduous forest, *J. Geophys. Res.*, 104, 3581–3603, 1999.

Matzner, E.: Annual rates of deposition of polycyclic aromatic hydrocarbons in different forest ecosystems, *Water Air Soil Pollut.*, 21, 425–434, 1984.

McLachlan, M. S. and Horstmann, M.: Forests as filters of airborne organic pollutants: A model, *Environ. Sci. Technol.*, 32, 413–420, 1998.

McLachlan, M. S.: Framework for the interpretation of measurements of SOCs in plants, *Environ. Sci. Technol.*, 33, 1799–1804, 1999.

Meyers, T. P., Hall, M. E., Lindberg, S. E., and Kim, K.-H.: Use of the modified Bowen-ratio technique to measure fluxes of trace gases, *Atmos. Environ.*, 30, 3321–3329, 1996.

Perlinger, J. A., Tobias, D. E., Morrow, P. S., and Doskey, P. V.: Evaluation of novel techniques

PAH gradient over forest

S.-D. Choi et al.

[Title Page](#)[Abstract](#)[Introduction](#)[Conclusions](#)[References](#)[Tables](#)[Figures](#)[◀](#)[▶](#)[◀](#)[▶](#)[Back](#)[Close](#)[Full Screen / Esc](#)[Printer-friendly Version](#)[Interactive Discussion](#)

for measurement of air-water exchange of persistent bioaccumulative toxicants in lake superior, Environ. Sci. Technol., 39, 8411–8419, 2005.

Schween, J. H., Dlugi, R., Hewitt, C. N., and Foster, P.: Determination and accuracy of voc-fluxes above the pine/oak forest at Castelporziano, Atmos. Environ., 31, 199–215, 1997.

5 Simonich, S. L. and Hites, R. A.: Vegetation-atmosphere partitioning of polycyclic aromatic hydrocarbons, Environ. Sci. Technol., 28, 939–943, 1994a.

Simonich, S. L. and Hites, R. A.: Importance of vegetation in removing polycyclic aromatic hydrocarbons from the atmosphere, Nature, 370, 49–51, 1994b.

10 Simonich, S. L.: Organic pollutant accumulation in vegetation, Environ. Sci. Technol., 29, 2905–2914, 1995.

Simpson, I. J., Thurtell, G. W., Neumann, H. H., Den Hartog, G., and Edwards, G. C.: The validity of similarity theory in the roughness sublayer above forests, Bound-Lay. Meteorol., 87, 69–99, 1998.

15 Su, Y. and Wania, F.: Does the forest filter effect prevent semivolatile organic compounds from reaching the Arctic?, Environ. Sci. Technol., 39, 7185–7193, 2005.

Su, Y., Lei, Y. D., Wania, F., Shoeib, M., and Harner, T.: Regressing gas/particle partitioning data for polycyclic aromatic hydrocarbons, Environ. Sci. Technol., 40, 3558–3564, 2006.

20 Su, Y., Wania, F., Harner, T., and Lei, Y. D.: Deposition of polybrominated diphenyl ethers, polychlorinated biphenyls, and polycyclic aromatic hydrocarbons to a boreal deciduous forest, Environ. Sci. Technol., 41, 534–540, 2007.

Wania, F. and McLachlan, M. S.: Estimating the influence of forests on the overall fate of semivolatile organic compounds using a multimedia fate model, Environ. Sci. Technol., 35, 582–590, 2001.

25 Xiao, H. and Wania, F.: Is vapor pressure or the octanol-air partition coefficient a better descriptor of the partitioning between gas phase and organic matter?, Atmos. Environ., 37, 2867–2878, 2003.

PAH gradient over forest

S.-D. Choi et al.

Table 1. Average and range of PAH concentrations in pg m^{-3} . BDL means below method detection limit.

	Gas-phase	Particle-phase
Fluorene	450 (91–990)	1.3 (BDL–3.8)
Phenanthrene	1250 (270–2600)	5.9 (BDL–24)
Anthracene	82 (BDL–380)	1.7 (BDL–4.8)
Fluoranthene	190 (83–440)	20 (3.8–72)
Pyrene	160 (34–410)	18 (3.9–56)
Benz(a)anthracene	5.3 (0.8–20)	13 (3.4–43)
Chrysene	12 (2–34)	21 (4.9–61)
Benzo(b)fluoranthene	5.2 (BDL–27)	31 (3.4–80)
Benzo(k)fluoranthene	1.3 (BDL–8.2)	14 (BDL–33)
Benzo(a)pyrene	0.5 (BDL–7.5)	14 (2.4–39)
Indeno(123,cd)pyrene	1.4 (BDL–6.6)	27 (6.4–60)
Dibenz(ah)anthracene	0.05 (BDL–0.80)	7.1 (BDL–12)
Benzo(ghi)perylene	1.6 (BDL–6.2)	25 (7.0–54)
\sum_{13} PAH	2200 (540–4300)	200 (46–520)

Title Page

Abstract

Introduction

Conclusions

References

Tables

Figures

I◀

▶I

◀

▶

Back

Close

Full Screen / Esc

Printer-friendly Version

Interactive Discussion

PAH gradient over forest

S.-D. Choi et al.

Table 2. Average fluxes ($\text{pg m}^{-2} \text{s}^{-1}$) and dry gaseous deposition velocities (cm s^{-1}) of intermediate PAHs for different gradient scenarios. A range of fluxes was calculated based on upper and lower quartiles of K_{Heat} .

	Scenario I		Scenario II		Scenario III	
	Flux	v_G	Flux	v_G	Flux	v_G
Phenanthrene	83 (14–145)	7.9 (1.4–13.8)	57 (6–111)	5.4 (0.6–10.5)	119 (26–191)	11.3 (2.4–18.1)
Anthracene	7.1 (1.2–12.4)	11.8 (2.0–20.6)	4.8 (0.5–9.5)	8.0 (0.9–15.8)	10.2 (2.2–16.4)	16.9 (3.6–27.1)
Pyrene	18.9 (3.3–32.9)	16.6 (2.9–28.9)	12.8 (1.4–25.2)	11.2 (1.2–22.1)	27.0 (5.8–43.3)	23.7 (5.1–38.0)

Title Page

Abstract

Introduction

Conclusions

References

Tables

Figures

I◀

▶I

◀

▶

Back

Close

Full Screen / Esc

Printer-friendly Version

Interactive Discussion

EGU

PAH gradient over forest

S.-D. Choi et al.

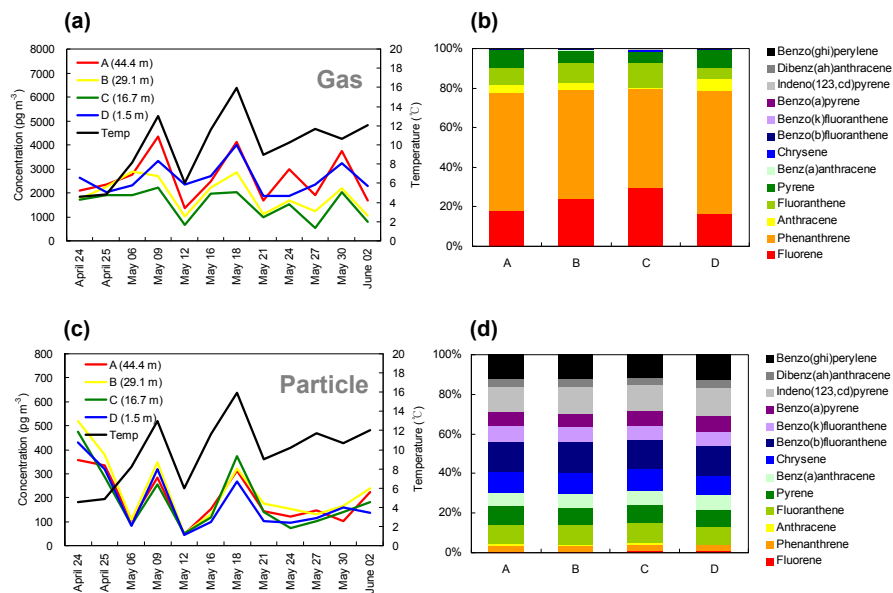


Fig. 1. Temporal variations of the total PAH concentrations (\sum_{13} PAH) and the average composition in the gaseous (a, b) and particulate phase (c, d) at different heights. Black lines in (a) and (c) denote average temperatures at height B during the sampling time.

Title Page

Abstract

Introduction

Conclusions

References

Tables

Figures

◀

▶

◀

▶

Back

Close

Full Screen / Esc

Printer-friendly Version

Interactive Discussion

EGU

PAH gradient over forest

S.-D. Choi et al.

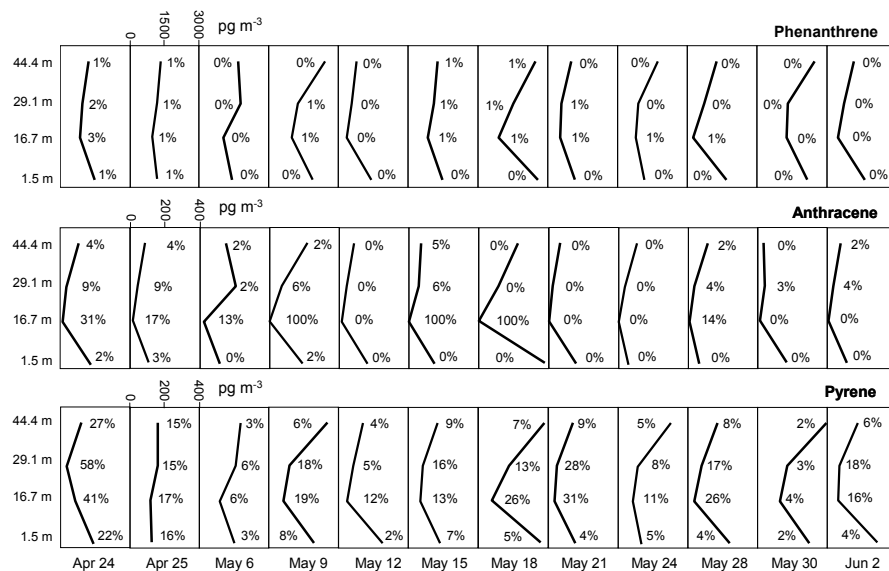


Fig. 2. Vertical profiles of gaseous phenanthrene, anthracene, and pyrene during each sampling day. Percentages of the compounds on particles at the different heights are indicated as well.

Title Page

Abstract

Introduction

Conclusions

References

Tables

Figures

◀

▶

◀

▶

Back

Close

Full Screen / Esc

Printer-friendly Version

Interactive Discussion

EGU