



HAL
open science

A study of dispersion in complex terrain under winter conditions using high-resolution mesoscale and Lagrangian particle models

J. L. Palau, G. Pérez-Landa, J. Meliá, D. Segarra, M. M. Millán

► **To cite this version:**

J. L. Palau, G. Pérez-Landa, J. Meliá, D. Segarra, M. M. Millán. A study of dispersion in complex terrain under winter conditions using high-resolution mesoscale and Lagrangian particle models. *Atmospheric Chemistry and Physics Discussions*, 2005, 5 (6), pp.11965-12030. hal-00303947

HAL Id: hal-00303947

<https://hal.science/hal-00303947>

Submitted on 18 Jun 2008

HAL is a multi-disciplinary open access archive for the deposit and dissemination of scientific research documents, whether they are published or not. The documents may come from teaching and research institutions in France or abroad, or from public or private research centers.

L'archive ouverte pluridisciplinaire **HAL**, est destinée au dépôt et à la diffusion de documents scientifiques de niveau recherche, publiés ou non, émanant des établissements d'enseignement et de recherche français ou étrangers, des laboratoires publics ou privés.

**Dispersion on
complex terrain
under winter
conditions**

J. L. Palau et al.

A study of dispersion in complex terrain under winter conditions using high-resolution mesoscale and Lagrangian particle models

J. L. Palau¹, G. Pérez-Landa¹, J. Meliá², D. Segarra², and M. M. Millán¹

¹Fundación Centro de Estudios Ambientales del Mediterráneo (CEAM), València, Spain

²Departamento de Termodinàmica, Facultat de Física, València, Spain

Received: 6 October 2005 – Accepted: 10 November 2005 – Published: 22 November 2005

Correspondence to: J. L. Palau (jlp@confluencia.biz)

© 2005 Author(s). This work is licensed under a Creative Commons License.

Title Page

Abstract

Introduction

Conclusions

References

Tables

Figures

⏪

⏩

◀

▶

Back

Close

Full Screen / Esc

Print Version

Interactive Discussion

EGU

Abstract

A mesoscale model (MM5), a dispersive Lagrangian particle model (FLEXPART), and intensive meteorological and CO₂ correlation SPECTrometer (COSPEC) measurements from a field campaign are used to examine the advection and turbulent diffusion patterns associated with interactions and forcings between topography, synoptic atmospheric flows and thermally-driven circulations. This study describes the atmospheric dispersion of emissions from a power plant with a 343-meter-tall chimney, situated on very complex terrain in the North-East of Spain, under winter conditions. During the field campaign, the plume was transported with low transversal dispersion and deformed essentially due to the effect of mechanical turbulence. The main surface impacts appeared at long distances from the emission source (more than 30 km). The results show that the coupled models (MM5 and FLEXPART) are able to predict the plume integral advection from the power plant on very complex terrain. Integral advection and turbulent dispersion are derived from the dispersive Lagrangian model output for three consecutive days so that a direct quantitative comparison has been made between the temporal evolution of the predicted three-dimensional dispersive conditions and the COSPEC measurements. Comparison between experimental and simulated transversal dispersion shows an index of agreement between 80% and 90%, within distance ranges from 6 to 33 km from the stack. Linked to the orographic features, the simulated plume impacts on the ground more than 30 km away from the stack, because of the lee waves simulated by MM5.

1. Introduction

Dispersion of pollutants emitted from tall chimneys has been widely studied since the beginning of the twentieth century. The transport of air pollutants (mainly tracers and SO₂ plumes) in stratified layers over land was documented in the US in the mid-to-late 1960s (Singer and Smith, 1966). Some of the available results were consolidated in

Dispersion on complex terrain under winter conditions

J. L. Palau et al.

Title Page

Abstract

Introduction

Conclusions

References

Tables

Figures

⏪

⏩

◀

▶

Back

Close

Full Screen / Esc

Print Version

Interactive Discussion

**Dispersion on
complex terrain
under winter
conditions**J. L. Palau et al.

[Title Page](#)[Abstract](#)[Introduction](#)[Conclusions](#)[References](#)[Tables](#)[Figures](#)[⏪](#)[⏩](#)[◀](#)[▶](#)[Back](#)[Close](#)[Full Screen / Esc](#)[Print Version](#)[Interactive Discussion](#)

the reports by Slade (1968) and ASME (1973) and reviewed by Pooler and Niemeyer (1971). For industrial stacks, the formation of stable plumes was considered a rare phenomenon resulting from the emission of hot effluents into a stable atmosphere (with shear, for a thin but wide, “fanning-type” plume, and without shear, for a thin and narrow, “ribbon-type” plume). The most significant aspects of this phenomenon were that the plumes became very thin, under essentially no vertical diffusion, and could be found at large distances from their sources after one-night’s travel (Brown et al., 1972). It was also realised that the observed behaviour of the plume reflected the properties of the atmospheric layers in which it had become embedded.

These observations became more and more frequent in the early 1970s with the tracking of plumes from tall stacks. Passive remote sensing CORrelation SPECTrometer (COSPEC) measurement campaigns documented their travel distances to hundreds of km from the source (Millán and Chung, 1977; Millán, 1978; Carras and Williams, 1981). They also documented that stratified plumes could form and/or persist during the day, whenever conditions were right (Uthe and Wilson, 1979; Portelli et al., 1982; Hoff and Gallant, 1985; Millán, 1987).

Passive remote sensing lidar measurements (measuring both mean values and turbulent components) have also been extensively used since the beginning of the 1970s to study tropospheric flows and the atmospheric dispersion of plumes emitted from point and area sources within the planetary boundary layer, PBL (Luhar and Young, 2002; Fast and Darby, 2004). Nevertheless, to the author’s knowledge, available databases using lidar remote sensing technology and including simultaneous measurements of fumigations on the ground, are associated with field campaigns lasting only few days, e.g., the Nanticoke Shoreline Diffusion Experiment (Hoff et al., 1982, 1995); the Kwinana Coastal Fumigation Study (Sawford et al., 1998) and the Vertical Transport and Mixing Program, VTMX (Doran et al., 2002).

The availability of measurements aloft enables us to verify the patterns of advection and turbulent diffusion which govern atmospheric pollutant dynamics in complex topography areas (as a previous step to the analysis of the cause-effect relation between the

**Dispersion on
complex terrain
under winter
conditions**J. L. Palau et al.

[Title Page](#)[Abstract](#)[Introduction](#)[Conclusions](#)[References](#)[Tables](#)[Figures](#)[⏪](#)[⏩](#)[◀](#)[▶](#)[Back](#)[Close](#)[Full Screen / Esc](#)[Print Version](#)[Interactive Discussion](#)

emission source and the ground-level concentration). In complex topography, availability of simultaneous measurements aloft and at ground level is a clear advantage because surface concentrations and plume pathways aloft are not necessarily correlated (essentially due to the vertical wind directional shear and to the heterogeneity of the physiographic thermodynamic properties of the ground). Moreover, ground-level pollutant concentrations typically present high spatial variabilities that are difficult to simulate because they result from non-stationary three-dimensional circulations and recirculations of pollutants driven by valleys, hills, mountains and any other topographic feature (Zaremba and Carroll, 1999).

At present, most simulated dispersion results are generally checked either against measurements of tracer-pollutant surface concentrations, with the dispersion analysis limited to the impact areas (Souto et al., 2001; Martín et al., 2001; Fast et al., 1995; Luhar, 2002); or occasionally, against instrumented airplane measurements taken during field campaigns lasting several days (Carroll and Baskett, 1979; Millán et al., 1992). In this latter case, the measurements recorded along the airplane pathway are difficult to compare with simulated concentrations due to the former's high temporal and spatial resolution¹ (Eastman et al., 1995; Carvalho, 2002).

Complementing the previously published studies performed in the Iberian Peninsula with correlation spectrometer techniques (as e.g., Albizuri, 1985; Millán et al., 1986, 1987, 1989, 1991; Alonso et al., 1987, 1993; Salvador et al., 1992; Artiñano et al., 1993; Querol et al., 1999), this paper presents what is to our knowledge the first dispersive study using measurements aloft and on the ground simultaneously, together with numerical models resolving mesoscale forcings in the study area to reproduce the three-dimensional wind and turbulent fields.

In this study, the mesoscale model MM5, the dispersive Lagrangian particle model FLEXPART, and the intensive meteorological and COSPEC measurements obtained during one of the “Els Ports-Maestrat” field campaigns are used to examine the ad-

¹Simulated concentrations are generally hourly averaged (in time and space), while measurements taken with an airplane are quasi-instantaneously recorded along the plane pathway.

**Dispersion on
complex terrain
under winter
conditions**J. L. Palau et al.

[Title Page](#)[Abstract](#)[Introduction](#)[Conclusions](#)[References](#)[Tables](#)[Figures](#)[◀](#)[▶](#)[◀](#)[▶](#)[Back](#)[Close](#)[Full Screen / Esc](#)[Print Version](#)[Interactive Discussion](#)

vection and turbulent diffusion patterns under typical winter conditions that are associated with interactions and forcings between topography, synoptic atmospheric flows and thermally-driven circulations on a mid-latitude complex terrain. A unique aspect of this study is that integral advection and turbulent dispersion are derived from the dispersive Lagrangian model output for three consecutive days so that a direct quantitative comparison can be made between the temporal evolution of the predicted three-dimensional dispersive conditions and the COSPEC measurements. Nearly all of the COSPEC measurements are employed. After the predicted dispersive conditions have been evaluated (analysing the integral advection of the plume aloft and the horizontal turbulent diffusion), we present the analysis of the ground impacts due to both meso and locally-driven flows, including the consequences of orographical effects on the simulated wind fields.

2. “Els Ports-Maestrat” field campaigns: Els Ports database

The Els Ports-Maestrat field campaign, sponsored by the Environment Department of the Valencia (Spain) regional government, has been conducted at the Southwestern border of the Ebro basin since November 1994. One of the main objectives of this field campaign is to monitor (aloft and on the ground) the SO₂ plume emitted from the 343-m tall stack of the Andorra Power Plant (APP) located at Teruel (Spain), Figs. 1 and 2. Another objective is to study the possible effects on the APP emissions on the Els Ports/Maestrat forest masses. Thus, the “Els Ports” database consists, on the one hand, of three independent (but related) meteorological and air quality databases that extend from the end of 1994 to the present (2005), and, on the other hand, of a fourth database, complementary but independent from the plume monitoring, generated from a parallel monitoring of the state of the vegetation in a network of selected plots within the study area.

The first database is constituted by a systematic tracking of the SO₂-plume emitted from the APP (Teruel, Spain). Measurements are performed at different distances from

**Dispersion on
complex terrain
under winter
conditions**J. L. Palau et al.

[Title Page](#)[Abstract](#)[Introduction](#)[Conclusions](#)[References](#)[Tables](#)[Figures](#)[⏪](#)[⏩](#)[◀](#)[▶](#)[Back](#)[Close](#)[Full Screen / Esc](#)[Print Version](#)[Interactive Discussion](#)

the chimney (along the available road network, Figs. 2 and 1B) with the double aim of (1) monitoring the plume's atmospheric dispersion (advection+turbulent diffusion) and ground impacts over complex terrain under different meteorological conditions and (2) identifying (and quantifying) the recurrence of each dispersive scenario in this mid-latitude region. The set of plume field measurements is very extensive; at present, it includes more than 3236 experimental plume-distributions registered spatially during the 1994–2004 period (equally distributed during the four annual seasons).

The second and the third databases are sets of measurements obtained from the Regional Air Quality Network (measuring continuously air pollutants and meteorological parameters), and from ENDESA (the power generation company, owner of this power plant). The available meteorological data (wind direction, wind speed, temperature and short-wave radiation) are recorded electronically every 15 min at 10 m above the ground. Sensors are located on different sites in the area (Fig. 2), and they have different temporal coverage because they were installed at different times during the last decade. Besides, ENDESA has two more meteorological towers located near the power plant; one is 60 m in height and the other (Monagrega) is 10 km away.

The fourth database consists of two types of forested plots: plots with conifers and plots where lichen transplants were made.

3. Study area

The Andorra Power Plant (APP) – ENDESA, 1050 MW – with a 343-m-tall chimney, is located near the city of Andorra (Teruel), (00°22'46" W; 40°59'54" N), 87 km from the Spanish Mediterranean coast, in the Southwestern border of the Ebro basin (605 m above sea level (m a.s.l.)). The APP, licensed for construction in 1974, would nowadays be considered a medium-size installation, with three generators of 350 MW each. Nevertheless, it uses large amounts of low-grade lignite with high sulphur content (from 12 000 to 15 000 tons/day, with 5–6% sulphur content) (ENDESA, 1994), which translates into high SO₂ emissions (11.2 g/m³N in 1987).

**Dispersion on
complex terrain
under winter
conditions**

J. L. Palau et al.

Title Page

Abstract

Introduction

Conclusions

References

Tables

Figures

◀

▶

◀

▶

Back

Close

Full Screen / Esc

Print Version

Interactive Discussion

The study area comprises three main basins (Fig. 2): the Mediterranean coast (East from the Power Plant), the Ebro valley (North from the Power Plant, running from NNW to ESE) and the Northeastern ridges of the Iberian Range (South and Southeast from the Power Plant).

The area includes the semi-arid plane of Calanda (100 km inland from the coast, with a mean altitude of 600 m a.s.l.), some mountain ranges on the Northwestern side of the Iberian Range (Mediterranean forest with a mean altitude of 1000 to 1300 m a.s.l.) and the coastal plain of Castellon (vegetation characterised by irrigated crops). This coastal plain is delimited to the North, 7 km from the coast, by a mountain range of 780 m a.s.l. (with a very steep slope towards the coastal side).

Within this area, strong and extensive micro and mesoscale circulations develop, which are enhanced and driven by topography (Millán, 2002). Previous studies (Carroll and Baskett, 1979; Millán et al., 1992; Liu and Carroll, 1996; COST-710, 1998; Kitada et al., 1998; Zaremba and Carroll, 1999) have emphasized how complex terrain drives micro-and-meso-scale secondary circulations. These, superimposed on the general flow (synoptic scale), drive the advection of momentum, energy, moisture and mass, within scales essentially different from those of turbulence (lower scale), which are the focus of “traditional” dispersion models. Secondary circulations are responsible for cumulus development (convective clouds) associated with mountain barriers (Huggins et al., 2005), leewaves perturbing general flow streamlines of the lower troposphere, etc. In this sense, some studies under Foehn conditions have already been performed on the North coast of the Iberian Peninsula (Gangoiti et al., 2002) using RAMS² model.

Dispersive patterns characteristic of the elevated plume emitted from the 343 m-tall chimney are frequently the result of the interaction between these kinds of thermal and/or mechanical circulations and flows driven by larger spatial scales (synoptic scale), Palau (2003).

In wintertime (from October to March), previous results (Palau, 2003) showed that the synoptic conditions driving Northwest advections represent up to 57% of the field

²RAMS: Regional Atmospheric Modeling System: <http://www.atmet.com>

**Dispersion on
complex terrain
under winter
conditions**J. L. Palau et al.

[Title Page](#)[Abstract](#)[Introduction](#)[Conclusions](#)[References](#)[Tables](#)[Figures](#)[I◀](#)[▶I](#)[◀](#)[▶](#)[Back](#)[Close](#)[Full Screen / Esc](#)[Print Version](#)[Interactive Discussion](#)

campaigns carried out during the 1995–2000 winter period (study performed from a total of 112 different campaign days during that period). This dispersive scenario is associated, from a synoptic point of view, with anticyclonic conditions over the Iberian Peninsula and Southeastern Europe; it is one of the two most representative dispersive conditions prevailing in the Northeast region of the Iberian Peninsula (mainly associated with neutral to stable atmospheric conditions). Under such winter meteorological conditions, with completely clear skies, temperatures around 0°C and moderate-to-strong Northwestern wind flows, the plume aloft is advected with very low transversal and vertical dispersion (ribbon-type integral advective conditions) and it is deformed (differential advection) only by mechanical turbulence leeward mountain ranges (Palau et al., 2004). Thus, the main plume impacts on the ground are located far away from the chimney (more than 30 km), and generally within spatial areas on the ground that are in good agreement with the direction of the general wind flow aloft. Nevertheless, on occasion, intense fumigations near the chimney, i.e. within 30 km, have been recorded in coincidence with either high wind-speed events (mechanical turbulence) or low wind speeds around noon under anticyclonic conditions (convective turbulence associated with insolation and dry surface conditions).

4. Methodology

4.1. Experimental setup

To monitor the plume transport and ground-level fumigation we took systematic remote-sensing measurements using a mobile unit equipped with a Correlation Spectrometer System – COSPEC – and a conventional SO₂ UV analyser, since this equipment makes it possible to record the distribution of the pollutant both aloft and on the ground (Newcomb and Millán, 1970).

The COSPEC is a passive remote sensor that uses the sunlight dispersed in the atmosphere as its radiation source. Its response is proportional to the integral of the

SO₂ concentration (throughout the optic path between infinity and the instrument telescope). The pulsed fluorescence analyser is used to measure the SO₂ concentration over the roof of the vehicle.

The plume-tracking strategy consisted of making transects, as transversal as possible to the mean plume-transport direction, at different distances from the stack. Measurements were taken throughout the day to record any changes that might occur in the plume transport direction or in the dispersive conditions (Fig. B1).

To obtain the dispersive parameters implicitly contained in the experimental data, Pseudo-Lagrangian averages were carried out (Millán, 1978). This average is made with the coordinates related to the centre of gravity of each profile; thus, meandering effects are not taken into account. This profile, averaged in time but not in space, shows the relative diffusion of the plume and keeps its morphologic features (Millán et al., 1976): bifurcation, directional shear effect, wind-speed shear effect (i.e., Kurtosis), etc. Further details in Appendix A.

Concerning the available ground-based meteorological and air quality information, data from five air quality stations and from one 60 m-tall tower were available. The geographical description for each site is as follows (Fig. 2):

The Morella station is located at the top of a 1160 m-high mountain, 50 km southeast of the Andorra power plant and 55 km inland from the Mediterranean coast. The Zorita station is located around 40 km from the power plant and at the bottom of a deep valley (the Bergantes valley). The Coratxar station is located 55 km southeast of the power plant and 42 km inland from the sea, at the top of a 1100 m-high mountain. The Vallibona station, 60 km from the chimney, is located SE from the power plant at 666 m a.s.l. The Sant Jordi station is located on a coastal plain North of the city of Castellon, about 80 km from the power plant and about 20 km from the Mediterranean coast. The 60 m-high meteorological tower, located at the power plant and near the chimney, measures wind speed and direction at 60 m above ground level (m a.g.l.) and temperature at 10 m a.g.l.

Although the geographical distribution of the air quality stations is biased towards the

**Dispersion on
complex terrain
under winter
conditions**

J. L. Palau et al.

Title Page

Abstract

Introduction

Conclusions

References

Tables

Figures

◀

▶

◀

▶

Back

Close

Full Screen / Esc

Print Version

Interactive Discussion

**Dispersion on
complex terrain
under winter
conditions**J. L. Palau et al.

Southeast of the power plant (Fig. 2), this feature is not relevant to the present study because of the steady Northwest wind advection registered throughout the campaign.

There is no meteorological information aloft within the study area; thus, the comparison between the simulated wind fields aloft and those occurring during the campaign days was performed using measurements of the plume aloft (obtained with the COSPEC) as a tracer of opportunity of the wind flow at the mean plume transport height.

Total emission data available are monthly averages of the emission flow. Moreover, from the 60 m-high tower, meteorological measurements were recorded at 10 and 60 m a.g.l. every 15 min.

4.2. Model configuration

We used a non-hydrostatic mesoscale meteorological model MM5, version 3.2 (Dudhia, 1993; Grell et al., 1995) coupled to a Lagrangian Particle Dispersion (LPD) Model FLEXPART, version 3.1 (Stohl, 1999; Stohl et al., 2005).

4.2.1. MM5 mesoscale meteorological model configuration

The MM5 model used a nested-grid configuration with 5 domains (100×100 grids spaced at 108, 36, 12, 4 and 1.3 km, respectively) centred over the power plant (Fig. 1). The inner four domains are two-way interactive and are nested into the coarser domain, that is, run in 1-way mode. Thirty-nine sigma levels were configured, fifteen of them defined within the first 1500 m above ground level (m a.g.l.).

The model predicts the three-dimensional wind components u , v and w , the temperature, the humidity, the pressure perturbation and the associated turbulence parameters, as surface fluxes of heat, humidity and momentum. Multilayer Blackadar Planetary Boundary Layer (PBL) parameterization is employed to represent turbulent fluxes of heat, moisture and momentum (Zhang and Anthes, 1982). Boundary and initial conditions of atmospheric fields are derived from NCEP reanalysis data, available

[Title Page](#)[Abstract](#)[Introduction](#)[Conclusions](#)[References](#)[Tables](#)[Figures](#)[◀](#)[▶](#)[◀](#)[▶](#)[Back](#)[Close](#)[Full Screen / Esc](#)[Print Version](#)[Interactive Discussion](#)

every 6 h at 2.5° resolution (Kalnay et al., 1996). Four-dimensional data assimilation (Stauffer and Seaman, 1994) was applied to the coarser domain, nudging towards the gridded reanalysis fields. Kain-Fritsch (1993) cumulus parameterisation was active in the three external domains.

5 Terrain data and properties like albedo, roughness and available soil moisture vary horizontally accordingly to the USGS (U.S. Geological Survey) topography and land use database, with 30'' resolution.

4.2.2. FLEXPART Lagrangian particle dispersion (LPD) model configuration

10 The FLEXPART-v3.1 model (Stohl, 1999) was fed by the MM5 meteorological outputs, using a grid configuration with one domain, which coincided with MM5 grid 5 (i.e., 100×100 grids spaced at 1.3 km and centred over the power plant).

15 The FLEXPART-LPD model takes into account wind velocity variances and Lagrangian autocorrelations. The spread of the pollutant is simulated by the Langevin equation derived by Thomson for inhomogeneous and Gaussian turbulence under non-stationary conditions (McNider et al., 1988). Lagrangian time scale is considered a function of the turbulent and stability conditions within the PBL. Turbulence statistics are obtained by using the Hanna scheme with some modifications taken from Ryall and Maryon for convective conditions (Stohl and Seibert, 2001). The Gaussian turbulence assumption is not strictly valid under convective conditions when the vertical velocity distribution is skewed. However, the differences between a Markov process that includes wind velocity covariances and one that neglects them are likely to be very small as Uliasz (1994) showed when evaluating different LPD model simplifications over mesoscale and regional areas. The FLEXPART model incorporates a density correction term for Gaussian turbulence which takes into account the density decrease with height within the PBL (Stohl and Thomson, 1999).

25 The autocorrelation coefficient is assumed to be an exponential function that depends on the Lagrangian time scale. The time step used to move particles in the Markov chain model has to be variable in inhomogeneous turbulence and depends on

**Dispersion on
complex terrain
under winter
conditions**

J. L. Palau et al.

Title Page

Abstract

Introduction

Conclusions

References

Tables

Figures

⏪

⏩

◀

▶

Back

Close

Full Screen / Esc

Print Version

Interactive Discussion

**Dispersion on
complex terrain
under winter
conditions**J. L. Palau et al.

[Title Page](#)[Abstract](#)[Introduction](#)[Conclusions](#)[References](#)[Tables](#)[Figures](#)[⏪](#)[⏩](#)[◀](#)[▶](#)[Back](#)[Close](#)[Full Screen / Esc](#)[Print Version](#)[Interactive Discussion](#)

the Lagrangian time scale (Uliasz, 1994). Well-mixed profiles can be obtained as long as the timestep is small enough to resolve the small-scale turbulence in the vicinity of the boundaries (Hurley and Physick, 1991).

Independently of the Langevin equation implemented within LPD models, to simulate dispersion from punctual anthropogenic point sources it is necessary to consider the emission heights of the Lagrangian particles.

A priori, from the available emission factors there is a large uncertainty when estimating the plume rise; thus we checked the eventual effect of plume-rise on the results obtained from the FLEXPART model by performing three independent dispersion simulations on the basis of three different plume-rise schemes:

- Releasing Lagrangian particles at variable heights, estimated each hour using Briggs' plume-rise equations for hot plumes (Briggs, 1975).
- Releasing Lagrangian particles at a constant height of 700 m a.g.l. (constant plume-rise of 357 m a.g.l.)
- Releasing Lagrangian particles at a constant height of 450 m a.g.l. (constant plume-rise of 107 m a.g.l.)

It is important to note that these last two constant values are based on visual estimations of the plume-rise behaviour during the three-day campaign; they are considered to be the maximum and minimum plume-rise values observed at different times of day during those three days. When using the Briggs' plume-rise equations, quantitative analysis of the evolution of the simulated PBL and the height of the first inversion aloft allows us to set limits to the plume rise.

In our simulations, we treated the buoyant plume of the Andorra power plant by releasing $2 \cdot 10^6$ particles at different effective stack heights. The particles were randomly released and linearly distributed within a $0.1 \times 0.1 \times 0.01$ km volume over 95-h period (from the beginning of the four-day simulation to the end).

From these dispersion simulations we obtain a time series of the three-dimensional distribution of Lagrangian particles (each one representing a specific volumetric concentration of pollutant).

4.3. Model validation

5 A wide variety of intercomparison procedures between experimental and simulated air quality results have been found to be useful (Fox, 1981; Willmott, 1981; Weil et al., 1992; Seaman, 2000). These procedures, strongly determined by the number of available experimental data (data with a significant spatial-temporal resolution), generally focus on the intercomparison of deviations in maximum values, first-order statistical
10 momentum, frequency distribution of concentration values, etc. (Carvalho et al., 2002; Fast et al., 1995; Uliasz, 1994; CityDelta web-page).

In our particular case, on one hand, the available data from the air quality network in the region have a good temporal resolution but a coarse spatial resolution. On the other hand, although with a much coarser temporal resolution, “Els Ports” database
15 has also an extensive field campaigns covering the whole study area with a very good spatial distribution.

The availability of surface information from the Air Quality Network, and both surface and systematic tracking of the power plant plume aloft, allows a detailed validation of the skills of the aforementioned models (MM5+FLEXPART) in the simulation of the
20 pollutants behaviour. Thus, the ability of the coupled models to simulate the two main physical processes driving air pollutant dispersion³ (advection and turbulent dispersion) can be evaluated.

³Following the terminology by Moran (2000). Within this paper, advection is considered the sum of integral transport and differential transport. Turbulent dispersion is considered as differential transport plus turbulent diffusion.

**Dispersion on
complex terrain
under winter
conditions**

J. L. Palau et al.

Title Page

Abstract

Introduction

Conclusions

References

Tables

Figures

◀

▶

◀

▶

Back

Close

Full Screen / Esc

Print Version

Interactive Discussion

**Dispersion on
complex terrain
under winter
conditions**

J. L. Palau et al.

4.3.1. Direct comparison between plume tracking and model results

Using the plume transport direction aloft as a tracer of opportunity of the wind field at the mean plume transport height, it is possible to make a direct comparison between the simulated dispersive conditions with the measurements of the plume aloft. Thus, two different but complementary physical processes can be analysed: (a) the integral-transport of the plume aloft, and (b) the turbulent dispersion (differential transport and turbulent diffusion) of the plume aloft. Additionally, simultaneous measurements of SO₂ concentration at surface level during the plume tracking, allows the comparison between measured and simulated plume impact areas on the ground.

4.3.2. Comparison of the simulated and measured transversal dispersion

Obtaining typical horizontal deviations of the plume distribution aloft from the available experimental records has already been described in the literature (Millán et al., 1976; Millán, 1978); nevertheless, details of the modified Pseudo-Lagrangian method used in this study can be found in Appendix A. In this study, it is important to remark that, following this procedure and from the experimental measurements of the SO₂ distribution aloft, mean values of transversal plume dispersion are obtained at different distances from the emission point and during a determinate temporal period.

The procedure for estimating simulated transversal dispersion for fixed time periods and distances, Fig. 3, consists of reducing the three-dimensional distribution of Lagrangian particles to a bi-dimensional distribution (adding all the particles vertically) contained within a plane that is normal to the direction determined by the centre of gravity of the simulated particles during the fixed temporal period (the “simulated effective plane”, Fig. A2). Moreover, the distance to the source completely determines that effective plane (that distance is fixed by the distance between the experimental effective plane and the chimney; further details in Appendix A).

[Title Page](#)[Abstract](#)[Introduction](#)[Conclusions](#)[References](#)[Tables](#)[Figures](#)[◀](#)[▶](#)[◀](#)[▶](#)[Back](#)[Close](#)[Full Screen / Esc](#)[Print Version](#)[Interactive Discussion](#)

4.3.3. Comparison of spatial biases between measured and simulated ground-level SO₂ concentrations

The spatial density of the Air Quality Network is not enough to perform a detailed evaluation of the simulated ground-impact areas. However, availability of continuous SO₂-concentration measurements at the five sites, allowed the quantification of spatial biases between the measurements within the study area and the simulated ground-concentration field during the whole period considered. Thus, it is possible to evaluate the performance of the model simulating ground-level concentrations during the different turbulent regimes implemented in the meteorological model.

5. 26–28 November case study

The campaign of 26–28 November was selected as representative of the most recurrent winter scenarios in the area (winter Northwest advection, Appendix B); Palau, 2003. The analysis of synoptic conditions using NCEP Reanalysis data (Kalnay et al., 1996) and the meteorological datasets available in the region (not shown), confirm that typical winter conditions prevailed during the experimental campaign. On these days, meteorological situation within the study area was driven synoptically by three main pressure systems: an Atlantic anticyclone extending over the Iberian Peninsula, a Low located over the North of the British Isles and another low pressure system located on the Western Mediterranean Sea. This synoptic configuration (Fig. 4) drove cross-isobaric flows, advecting the plume aloft towards the SE of the power plant (almost parallel to the Ebro valley axis towards the Mediterranean Sea) and inhibiting the development of thermally-driven local circulations. The passing of a cold front between 26 and 27 November, diminished temperatures and brought heavy cloudiness over the study area. After the cold front, skies cleared and wind speed increased substantially.

Forty transects (or, as previously indicated in the “Experimental setup” section, simultaneous recordings of the spatial SO₂ distribution aloft and on the ground) were

Dispersion on complex terrain under winter conditions

J. L. Palau et al.

Title Page

Abstract

Introduction

Conclusions

References

Tables

Figures

◀

▶

◀

▶

Back

Close

Full Screen / Esc

Print Version

Interactive Discussion

performed at different distances from the stack during the three-day campaign. Measurements were taken during the day and are considered representative of the dispersive conditions around the APP during the field campaign.

The mesometeorological simulation was initialized the 25th of November to avoid spin-up effects on the simulated results for the first day of the campaign and was run for four days. Meteorological simulated fields were used to drive the LPD model simulations during the same period.

6. Results and discussion

Time series of vertical profiles of wind field (Fig. 5A) and temperature (Fig. 5B) at the stack location during the whole simulated period, show the main meteorological features described previously. The passing of a cold front between 26 and 27 November, can be identified by the wind speed increase, a decrease in temperature (Fig. 5B) and the wind direction turning towards the South (Fig. 5A) between the days 26 and 27. The simulated time series for the wind field and potential temperature show the predicted meteorological conditions for the three different emission schemes implemented in the LPD model (constant heights of 450 and 700 m, and variable heights following the modified Briggs'plume-rise equations for hot plumes – Briggs, 1975; as indicated by colour lines, Figs. 5A and B). With respect to the dynamic emission conditions (wind speed and direction) for each of the three emission schemes no major differences are detected between them (Figs. 5A and B).

On the power plant site, the simulated PBL has a height of 700-to-800 m a.g.l. on the 25th, 26th and 29th of November (not shown). On the 27th, after the cold airmass inflow and the wind speed increase, PBL ranges between 900 and 1200 m a.g.l. Besides, during the four simulated days, the simulated PBL is characterised by a surface layer in a muffled mechanical turbulence regime during the nocturnal hours (second category of the Blackadar parameterization implemented within MM5) with a PBL in a non-local free convection regime (fourth Blackadar category) only for two-to-five hours

**Dispersion on
complex terrain
under winter
conditions**

J. L. Palau et al.

Title Page

Abstract

Introduction

Conclusions

References

Tables

Figures

◀

▶

◀

▶

Back

Close

Full Screen / Esc

Print Version

Interactive Discussion

around noon (when short radiation is higher).

6.1. Plume tracking versus model results

As representative of the results obtained from the three emission schemes implemented in the LPD-model simulations, in this section we only present figures from the simulation performing the constant 700 m-high emission scheme. Comparison between the measured plume dynamical behaviour throughout the day and the simulation is presented at different instants during the day, corresponding to the different dispersive conditions identified: (a) During the early morning and afternoon, measurements correspond to the nocturnal drainage flow where synoptic flows drive the plume dynamics and local mechanical turbulence governs the differential advection and diffusion (stirring and mixing) of the plume aloft but without major ground fumigations on the plane areas near the chimney; (b) during the rest of the day, until the afternoon, thermal mesoscale circulations (convection) affect the plume dynamics favoring plume fumigations near the chimney.

6.1.1. Day: 26 November 2001

For the first campaign day (the second simulated day), two instants are shown (Figs. 6A and B) as representative of the dispersive conditions throughout the day. The first corresponds to midday and the second to five hours later (late afternoon).

Experimental measurements show the plume aloft being advected eastward from the power plant during the whole day. This is mostly captured by the simulation, although a small deviation towards the South can be observed in the late afternoon (Figs. 6C and D). At noon, SO₂-ground level concentrations were measured South of the mean plume transport direction aloft (along a mountainous barrier, 45 km from the chimney). Thus, from the integral-transport point of view, on this first campaign day, westerly winds prevailed according to both the simulation (Figs. 6C and D) and the measurements (Figs. 6A and B) of the the plume aloft.

Dispersion on complex terrain under winter conditions

J. L. Palau et al.

Title Page

Abstract

Introduction

Conclusions

References

Tables

Figures

◀

▶

◀

▶

Back

Close

Full Screen / Esc

Print Version

Interactive Discussion

**Dispersion on
complex terrain
under winter
conditions**J. L. Palau et al.

[Title Page](#)[Abstract](#)[Introduction](#)[Conclusions](#)[References](#)[Tables](#)[Figures](#)[⏪](#)[⏩](#)[◀](#)[▶](#)[Back](#)[Close](#)[Full Screen / Esc](#)[Print Version](#)[Interactive Discussion](#)

The main simulated SO₂ ground-level concentrations are spatially well correlated with the mean plume transport direction aloft (Figs. 6A, B, C, D, E and F). The highest SO₂ ground impacts are located leeward of mountain barriers and at distances from the power plant ranging between 30 and 50 km. The lowest SO₂ ground impacts are also simulated and measured at shorter distances from the chimney, coinciding with periods with high short-wave radiation (associated with the free convection scheme performed by the MM5).

6.1.2. Day: 27 November 2001

To present the dispersive conditions for this second campaign day, we have selected three different instants during the day: in the morning, at noon, and in the late afternoon (Figs. 7A, B and 8A). On this day, simulated and observed plume aloft is advected southeastward from the power plant during the entire day. Thus, from the integral-transport point of view, after the cold front passed, both the simulation and the experimentally-measured plume transport direction aloft changed towards the Southeast. During the afternoon, as a consequence of the wind speed increase at the plume transport height, the plume became thinner. A slight decrease in the transversal dispersion was observed due to wind speed increase during the afternoon (Fig. 12, Table 1). The direction of the simulated plume seems to be slightly biased towards the South at 11:00 GMT (Figs. 7B and D) and at 12:00 GMT (Figs. 8A and B).

The measured SO₂ ground impacts were light at short distances from the chimney in the morning, they increased around noon, and they began to decrease again during the afternoon. During this second campaign day, Figs. 7 and 8, the simulations also follow the experimentally recorded plume impacts on the ground. On the one hand, the highest impacts are simulated leeward of the mountain barriers and, on the other hand, the impacts close to the chimney are mainly simulated during the periods of time associated to the strongest convective activity. Changing the convective scheme used by the MM5 model within the PBL produces a reduction in the number of impacts on the ground near the chimney during the afternoon (Figs. 8).

Under these dispersive conditions, the simulated plume “footprint” (ground-level SO₂ concentration) gives a good sense of the preferred plume advection aloft.

6.1.3. Day: 28 November 2001

As the previous day, throughout this third campaign day the plume aloft continued to advect southeastward from the power plant. Thus, from the integral-transport point of view, both the simulation and the experimentally-measured plume transport direction aloft remain towards the Southeast. Temporal evolution of the simulated integral transport aloft, (Figs. 9C, D; 10C, D and 11B), shows that the model present very good skills, capturing the observed plume horizontal meandering.

In the early morning of the third campaign day, Fig. 9A, there are no measured impacts over the areas closest to the chimney, and the simulation only shows impacts leeward of mountain barriers 40-to-50 km from the power plant (there are no available mobile unit measurements in these areas during this period).

As on the previous day, around noon (Figs. 9B, D, F and Figs. 10A, C, E), the convective activity causes strong impacts on the ground near the power plant (as the experimental measurements show, Figs. 9B and 10A) and these are well-simulated by the LPD model (Figs. 9F and 10E). Around 13:00 GMT, the impacts close to the chimney cease (experimentally documented, Fig. 10B); around the same time of day, the LPD model performed a progressive reduction of impacts near the point source (Fig. 10F).

During the afternoon (14:45 to 15:40 GMT), the mobil unit recorded a channelization of the plume along the Bergantes valley (southeast from the chimney), with SO₂ ground-level concentrations along the whole valley. In agreement with these measurements, simulated SO₂ impacts on the ground are recorded along the whole Bergantes valley (Southeast from the chimney) as a result of a topographically channelized simulated plume (Fig. 11A and C). In addition, the simulated strong SO₂ ground impacts leeward of the mountains still remain.

Dispersion on complex terrain under winter conditions

J. L. Palau et al.

Title Page

Abstract

Introduction

Conclusions

References

Tables

Figures

⏪

⏩

◀

▶

Back

Close

Full Screen / Esc

Print Version

Interactive Discussion

6.2. Horizontal turbulent diffusion

Under the aforesaid dispersive scenario (synoptic Northwest winter advection) a good correlation between experimental and simulated transversal dispersion was obtained within a spatial area ranging between 6 and 33 km (Fig. 12 and Table 1).

Results show that the LPD model systematically underestimates transversal dispersion. Independent of the emission scheme performed, fittings between experimental and simulated transversal dispersion values have slopes lower than one (Fig. 12, Tables 1 and 2). Nevertheless, better results are obtained when using the Briggs' plume-rise scheme and the constant 450 m-height scheme (both schemes have excellent statistical significance⁴ for the slope). From the 26th, these two emission schemes (Briggs and 450 m-height) present almost the same advective conditions all the time, which is not the case for the 700 m-height scheme (Fig. 5A). Larger differences between the estimated plume rise obtained from the Briggs' scheme and the 450 m-height scheme occur when very little vertical windspeed shear is simulated. On the contrary, when major vertical windspeed shear is simulated (with important differences between the 450 m and 700 m heights) Briggs' plume-rise is estimated around the 450 m-height.

Mean square errors (MSE) obtained from the linear fittings are lower than one kilometre, of the order of the available measurement spatial resolution (Table 2). The adimensional index of agreement (IoA), Willmott (1981), is higher than 90% for the simulations using the Briggs' and 450 m-height schemes, while it is 80% for the simulation using a constant 700 m-height scheme.

A dependence is detected between the emission scheme performed and the contribution of systematic and un-systematic errors to the total MSE. Whereas with the 450 m-height scheme a systematic contribution of 12% to the total MSE was obtained, with the Briggs' equations the systematic contribution was 52%.

The un-systematic contribution to the total MSE and its absolute value (of the order

⁴General criteria is: $p\text{-value} \leq 0.001$ (***, excellent significance); $p\text{-value} \leq 0.01$ (**, good significance); $p\text{-value} \leq 0.05$ (*, significant); $p\text{-value} > 0.05$ (•, no significance).

Dispersion on complex terrain under winter conditions

J. L. Palau et al.

Title Page

Abstract

Introduction

Conclusions

References

Tables

Figures

⏪

⏩

◀

▶

Back

Close

Full Screen / Esc

Print Version

Interactive Discussion

of the experimental uncertainty) are indicative of the viability of this kind of numerical approximation for performing dispersive studies over this kind of mid-latitude complex orography and under these winter dispersive conditions.

The systematic errors obtained could be directly related to uncertainties when describing land use and PBL physics. In this sense, further studies should be performed to quantify the effect of using different PBL parameterisations to describe turbulent fields (and, therefore, pollutant dispersion) over mid-latitude complex terrain.

6.3. Plume impacts on the ground

If we compare the three simulated SO₂ concentrations accumulated throughout the three-day campaign, it is clear that under the aforesaid meteorological conditions there are no qualitative differences between the plume “footprints” when using the three different emission schemes performed (Figs. 13A, B and C). This result is a direct consequence of the very similar dynamic conditions of the simulated emissions (Figs. 5A and B). Obviously, mechanical effects associated with topography are stronger in the case of the 450 m-high fixed emission scheme than in the other cases; even so, the spatial pattern of the accumulated simulated impacts does not essentially vary with respect to the other two emission schemes (Figs. 13A, B and C). In the next section, the simulated mechanical processes associated with the simulated ground impacts leeward of mountains are discussed.

To quantify the ground impacts of the plume aloft on the complex terrain around the emission source, we estimated the accumulated values of the simulated SO₂ ground-level concentrations for the different turbulent regimens implemented within the MM5. For this reason, we disaggregated the accumulated concentrations in the different turbulent regimes identified during the whole campaign. In this specific case, calculations were done separately for diurnal hours (free convection regime) and for nocturnal hours (muffled mechanical turbulence regime).

During the nocturnal hours, the accumulated ground-level concentrations show a strong bias towards areas leeward of the mountains, with no simulated impacts near

**Dispersion on
complex terrain
under winter
conditions**

J. L. Palau et al.

Title Page

Abstract

Introduction

Conclusions

References

Tables

Figures

⏪

⏩

◀

▶

Back

Close

Full Screen / Esc

Print Version

Interactive Discussion

**Dispersion on
complex terrain
under winter
conditions**

J. L. Palau et al.

Title Page

Abstract

Introduction

Conclusions

References

Tables

Figures

◀

▶

◀

▶

Back

Close

Full Screen / Esc

Print Version

Interactive Discussion

the power plant (Fig. 14C). As a result, the closest simulated impacts are located 45 km away from the chimney. These results are in agreement with the experimental data that confirm that relevant impacts are located leeward of the mountains (Fig. 14D). In contrast, during the daytime, although the strongest impacts are simulated leeward of the mountains, significant accumulated impacts are simulated in a wider area and closer to the chimney than for the nocturnal hours (Fig. 14A). This is coherent with the behaviour of the measurements in the five sites available (Fig. 14B).

Considering the spatial distribution of the SO_2 accumulated magnitudes measured and the location of the five air quality stations, we have grouped them into three different geographical areas with the objective of intercomparing the experimental accumulated concentrations with the LPD model results within the same spatial areas. Figure 2 shows the spatial coverage of the three selected areas (1, 2 and 3), where the corresponding sites recorded accumulated SO_2 ground-level concentrations lower than $1000 \mu\text{g}/\text{m}^3$, higher than $3000 \mu\text{g}/\text{m}^3$ and about $2000 \mu\text{g}/\text{m}^3$, respectively. To quantify the differences and the similarities between the simulated and measured impact patterns, diurnal/nocturnal percentual variations of the SO_2 ground-level concentrations were calculated as spatial averages within each of the aforesaid zones of the study area (Fig. 2 and Table 3).

From the comparison between the experimental results and the simulated SO_2 ground-level concentration fields obtained using the three different emission schemes, we found that zones one and three have comparable diurnal/nocturnal percentual contribution to the total SO_2 concentrations within each zone (Table 3). Both the simulated and experimentally measured results show a diurnal predominance in zone one and a higher nocturnal contribution in zone three. It is interesting to note the high variability of the percental contributions in area 3, depending of the emission scheme employed. This could suggest high spatial and temporal wind field variability at the leeward of the mountains, as small differences in the dynamical conditions of the emissions from the APP induce high variations of the simulated ground-level SO_2 concentration.

The discrepancy between the simulated results and the experimental measurements

**Dispersion on
complex terrain
under winter
conditions**J. L. Palau et al.

[Title Page](#)[Abstract](#)[Introduction](#)[Conclusions](#)[References](#)[Tables](#)[Figures](#)[◀](#)[▶](#)[◀](#)[▶](#)[Back](#)[Close](#)[Full Screen / Esc](#)[Print Version](#)[Interactive Discussion](#)

within zone two is due to the direct plume impact at Coratxar station on the night of the 26th. At this site, a very intense plume impact was recorded on the 26th during the nocturnal hours (maximum 1-h average value of $1638 \mu\text{g}/\text{m}^3$, not shown). These extremely high SO_2 concentration values, together with the low wind speed measured (not shown), indicate that this plume impact was not associated with mechanical turbulence but rather with a direct plume impact on this site. Under very stable conditions with a completely thermalised plume (55 km away from the chimney) and with no external forces except gravity, direct plume impacts can occur at mountain heights similar to the plume advective height because the plume cannot change its internal energy to rise up the edge of the mountain (i.e., no variation in the plume external parameters and/or heat transfer with the environment is possible under such thermodynamic states).

To analyse the discrepancy between the simulation and the measurements it is necessary to consider, on the one hand, that this kind of episode (given its local nature) cannot be considered representative of the whole zone two (within which the average SO_2 concentration was calculated for the four simulated days). On the other hand, under such stable dispersive conditions (plume advected as a ribbon-type plume) slight deviations between the real and the simulated plume advective direction have a strong impact when comparing simulated and measured local ground-level concentrations (and this limitation worsens even more on complex terrain). Additionally, the analysis of the simulated results indicated the PBL parameterization overestimated the mechanical turbulence, avoiding a stable regime and consequently the presence of very high SO_2 concentrations.

6.4. Orographic effects on the simulated wind fields

Mesometeorological model behaviour is analysed with respect to wind field perturbations due to complex orography, which drive plume impacts on the ground far away (>30 km) from the power plant considered in this study. As there are no available vertical measurements over the leeward areas, it is not possible to make a direct comparison between the simulated turbulent fields and those produced within the study

Dispersion on complex terrain under winter conditions

J. L. Palau et al.

Title Page

Abstract

Introduction

Conclusions

References

Tables

Figures

◀

▶

◀

▶

Back

Close

Full Screen / Esc

Print Version

Interactive Discussion

area under winter Northwest advective conditions. Nevertheless, description of the simulated wind field is necessary to complement some of the aforesaid physical processes when describing the temporal evolution of SO₂ ground-level concentrations on the mountainous and coastal sites located Southeast of the APP.

For stationary flows, the development of trapped leewaves (leeward of mountain barriers) is favoured when a vertical increase in wind speed exists, i.e., when stability decreases with height. Scorer (1997) showed how these requirements are equivalent to the vertical decrease with height of the Scorer parameter (I^2):

$$I^2 = \frac{g}{U^2} \frac{1}{\theta} \frac{\partial \theta}{\partial z} - \frac{1}{U} \frac{\partial^2 U}{\partial z^2} \quad (1)$$

where

U is the mean wind speed, perpendicular to the obstacle (or mountain).

g is the gravity acceleration.

θ is the potential temperature.

As evidenced previously, within the context of complex-terrain air quality simulations, the ground-level plume impacts simulated leeward of the mountains represent one of the most relevant features of the dispersion model results and will strongly depend on the meteorological fields resolved by the mesoscale model (Liu and Carroll, 1996; Gangoiti et al., 2002).

To visualise the vertical distribution of the Scorer parameter obtained from the simulated meteorological fields (Eq. 1), we analysed two transversal sections (at constant 0.05° E longitude and 40.43° N latitude) from the previously presented simulations. The simulated meteorological data for 28 November show a decrease in the Scorer parameter leeward of the mountains from 1000 m a.g.l. for both transections during the whole day (Figs. 15, where vectors represent the horizontal wind field). In contrast, over the Ebro valley (around 41° N) we observe an extensive area within the lower atmospheric layers with low values of I^2 (increasing with height), indicating that in these semi-flat

areas the development of this kind of secondary circulation is poorly favoured under these meteorological conditions.

The effect of these leewaves on elevated plumes was documented empirically within the Iberian Peninsula using the emissions from the Santurtzi power plant (Millán et al., 1987); the observed dynamic behaviour was described as plume “loopings” rapped by “turbulent cavities” produced leeward of a 455 m-tall hill.

In our case, the LPD model was able to “interpret” the secondary dynamics simulated by the mesometeorological model and differentially transport the plume in a ribbon-type plume that produces eventual, intermittent and very local impacts on the ground (Figs. 16, where the plume transversal sections are presented at the same time and at the same constant latitude and longitude that for the vertical Scorer parameter distribution). Despite this capability, high bias between experimental and simulated percentual contributions in area 3 has been found (Table 3), probably due to the interaction of different mesoscale forcings that could be unresolved by the model.

The high intensity of the ground impacts at these distances from the chimney are due, as aforementioned, to the low vertical and transversal dispersion of the plume aloft (ribbon-type plume) during its advection from the chimney, and, as shown in this last section, to the mechanical instabilities looping the ribbon-type plume vertically once it reaches the mountain barriers.

7. Conclusions

The availability, since 1994, of an extensive database with systematic tracking of a SO₂-plume emitted from a power plant, has allowed the identification of one of the field campaigns that best exemplifies the most recurrent winter scenario in a mid-latitude and topographically complex terrain area.

A direct quantitative comparison has been performed between the dispersive conditions simulated by the coupled numerical system MM5+FLEXPART and two combined databases consisting of (1) data from a traditional surface Air Quality Network (with

Dispersion on complex terrain under winter conditions

J. L. Palau et al.

Title Page

Abstract

Introduction

Conclusions

References

Tables

Figures

⏪

⏩

◀

▶

Back

Close

Full Screen / Esc

Print Version

Interactive Discussion

**Dispersion on
complex terrain
under winter
conditions**

J. L. Palau et al.

Title Page

Abstract

Introduction

Conclusions

References

Tables

Figures

◀

▶

◀

▶

Back

Close

Full Screen / Esc

Print Version

Interactive Discussion

high temporal resolution) and (2) data from simultaneous measurements of SO₂ spatial distributions aloft and on the ground (with a high spatial resolution).

A new methodology (based on Pseudo-Lagrangian averages) has been developed to calculate the horizontal turbulent diffusion of the measured pollutant spatial distribution aloft throughout the day.

This new methodology, together with a traditional procedure for the air-quality inter-comparison between experimental and simulated air-quality results, has been found to be useful for a detailed validation of the skills of the aforementioned coupled system MM5+FLEXPART in the simulation of the atmospheric pollutants behaviour.

Moreover, this study shows how the integration of the aforementioned experimental data with the validated numerical system can give a complementary view for the interpretation of meso-meteorological processes and for the quantification of the daily evolution of the dispersive conditions on a complex-terrain region.

Under Northwest winter advective conditions, the coupled numerical system MM5+FLEXPART has been able to reproduce the most relevant dispersive features of an elevated plume. The results show that the coupled models are able to predict the plume integral transport from the Andorra power plant on very complex terrain. Linked to the orographic features, the simulated plume impacts on the ground more than 30 km away from the stack because of the leewaves simulated.

These results have been possible thanks to the availability of simultaneous monitoring, aloft and on the ground, of both the SO₂ spatial distribution emitted from a point source and its impacts on the ground (reaching distances up to 80 km from the chimney).

Using available measurements of the SO₂ concentration aloft and on the ground, and performing different numerical simulations, we were able to identify and simulate the following processes:

1. Integral plume transport under winter advective conditions over complex terrain.
2. Ground impact patterns along the arc defined by the preferred plume transport

**Dispersion on
complex terrain
under winter
conditions**J. L. Palau et al.

[Title Page](#)[Abstract](#)[Introduction](#)[Conclusions](#)[References](#)[Tables](#)[Figures](#)[⏪](#)[⏩](#)[◀](#)[▶](#)[Back](#)[Close](#)[Full Screen / Esc](#)[Print Version](#)[Interactive Discussion](#)

directions aloft: 1) Impacts close to the chimney driven by diurnal convective and mechanical turbulence; and 2) impacts far away from the chimney (more than 80 km) driven by orographic effects (mechanical turbulence).

- 5 3. The plume differential transport resulting from secondary circulations of the synoptic advective regime on complex terrain.

These results permitted a comparison between experimental and simulated transversal dispersion with an “index of agreement” of 80–90%, within distance ranges of 6 to 33 km from the stack. Moreover, the variation in the accumulated ground-level concentrations for the different plume-rise schemes is found to be larger far away from the chimney (about 80 km) than in intermediate areas (ranging from 40 to 60 km).

10 The dispersive simulations performed had a non-systematic contribution to the total MSE ranging from 29% to 88% depending on the plume-rise scheme; moreover, the absolute errors range from 0.53 km to 0.84 km, i.e., lower than the available experimental accuracy. Both statistical results corroborate that the coupled numerical model (MM5+FLEXPART) is a suitable tool to perform dispersion research on complex terrain in mid-latitude winter conditions perturbed by local-to-meso scale secondary circulations driven by topography.

15 Systematic errors were found to be highly dependent on the plume-rise scheme implemented; nevertheless, throughout this study these systematic errors were also attributable to limitations on the PBL parameterisation and the land use description. In this sense, further research is needed to quantify the effect of using different PBL parameterisations to describe the turbulent field on complex terrain (and, therefore, pollutant dispersion). The versatility of the MM5 meso-meteorological model when using different PBL schemes is an additional motive for using this tool in the aforementioned research.

25

Pseudo-Lagrangian data processing methodology for remote sensing measurements

In the plume-measurement strategy used in the field campaign presented in this paper, mobile units (vehicles instrumented with a COSPEC) make transects around the emission source at different distances (Fig. A1). Measurements must be taken throughout the day to record any changes that might occur in the plume transport direction or in the dispersive conditions. To obtain the dispersive parameters implicitly contained in the experimental data recorded with the COSPEC, Eulerian and Pseudo-Lagrangian averages must be carried out. Each of these presents the following features (Millán, 1978):

- Eulerian average: This average, georeferenced or fixed to terrestrial coordinates, shows the meandering of the centre of gravity of the plume throughout the averaging time. It corresponds to the average plume observed at the ground stations.
- Pseudo-Lagrangian average: This average is made with the coordinates related to the centre of gravity of each profile; thus, meandering effects are not taken into account. This profile, averaged in time but not in space, shows the relative diffusion of the plume and keeps its morphologic features: bifurcation, directional shear effect, wind-speed shear effect (Kurtosis), etc.

The geometrical requirements (summarised in this appendix) have to be taken into account during the averaging process to guarantee the significance of the averaged profiles; i.e., it is necessary to establish control mechanisms to ensure correspondence between the profiles projected over the plane perpendicular to the mean plume transport direction (defined as the effective plane, Fig. A2) and those that would be obtained by measuring directly over that plane (Millán et al., 1976; Hoff and Gallant, 1985).

Dispersion on complex terrain under winter conditions

J. L. Palau et al.

Title Page

Abstract

Introduction

Conclusions

References

Tables

Figures

◀

▶

◀

▶

Back

Close

Full Screen / Esc

Print Version

Interactive Discussion

A.1. Averaging procedure

When several plume profiles were registered consecutively (along the same road span), their spatial average was calculated (Eulerian average over the road). This averaged (Eulerian) profile of the (vertically integrated) concentration distribution includes both the dispersive features of the averaged plume and the geometrical characteristics of the road used during the measurements. To eliminate this second contribution, it is necessary to estimate the instantaneous plume on the effective plane (the plane perpendicular to the mean plume transport direction). This plane is determined by calculating the line connecting the chimney and the centre of gravity of the mean profile obtained on the road, c.g._r (Fig. A3). This line is considered the average axis of the plume or the mean plume transport direction (Millán et al., 1976).

When each of the experimental profiles obtained over the same road span is projected onto the effective plane, a new Eulerian average is performed on the effective plane and a new centre of gravity is calculated, c.g._e (in general, this new centre of gravity will not coincide with the projection of the c.g._r on the effective plane). In addition, the centres of gravity of each of the projected profiles are calculated, c.g._{pi}.

A pseudo-Lagrangian average is obtained by superimposing the c.g._{pi}; in this way, the new averaged profile has no connection with the coordinates of the road projected on the effective plane (Millán et al., 1976). This last distribution contains only information on the concentration values at different (relative) distances from its centre of gravity. This distribution has no spatial information because it is the product of a temporal average (not a spatial one).

A.2. Geometrical restrictions

Based on the large number of plume profiles obtained in the 70s from a 380 m-tall chimney⁵, Millán (1976, 1978) established geometric criteria to assure 'realistic' pro-

⁵International Nickel Company (INCO) chimney, located at Sudbury (Ontario, Canada).

Dispersion on complex terrain under winter conditions

J. L. Palau et al.

Title Page

Abstract

Introduction

Conclusions

References

Tables

Figures

⏪

⏩

◀

▶

Back

Close

Full Screen / Esc

Print Version

Interactive Discussion

**Dispersion on
complex terrain
under winter
conditions**J. L. Palau et al.

[Title Page](#)[Abstract](#)[Introduction](#)[Conclusions](#)[References](#)[Tables](#)[Figures](#)[⏪](#)[⏩](#)[◀](#)[▶](#)[Back](#)[Close](#)[Full Screen / Esc](#)[Print Version](#)[Interactive Discussion](#)

jected profiles. These studies were performed for four different stability classes (from very unstable to stable) and for different road geometries. They justified the general geometric restrictions (just described herein), and they concluded that only two angles were restrictive: the maximum angle between the most divergent directions in the road span used during the measurements, γ (i.e., between road curves), and the minimum angle between the plume axis and the road span used, β ; (Fig. A4).

In this way, some road-geometry restrictions are established (transects that are not too curvy or that lack long spans between sharp curves), and the angle between the road and the plume axis is also limited (only considering the cases when this angle tends to 90°). The restrictive values for the different angles depend on the dispersive conditions (atmospheric stability); these are more conservative when the instability is higher (i.e., higher dispersion, shear effects and meandering). To avoid considering profiles affected by shear effects, different publications (Millán et al., 1976) discuss in depth the general geometrical restrictions needed. Table A1 summarizes the results obtained by Millán (1976).

Given the configuration of the roads used in the field campaigns studied herein, the above geometrical restrictions were particularized to simplify their practical implementation. Moreover, from the aforementioned criteria, the following were designed and applied:

A.2.1. Regarding the plume axis

An experimentally-tracked plume is rarely symmetrical to any axis or point (if it is an instantaneous plume or if it is the product of some kind of average). In this sense, the plume axis can be considered the central line of the distribution; nevertheless, this definition subordinates the plume-axis determination to the measurement method (or to the plume-diffusion theoretical treatment). Several different strategies have been presented in the literature: some authors have used the maximum of the concentration values as the locus of the plume axis (Slade, 1968) while others consider the center of gravity of the experimental concentration distribution (Csanady, 1973).

**Dispersion on
complex terrain
under winter
conditions**J. L. Palau et al.

Throughout this study, both axes of the averaged plume on the road were considered (one calculated from the concentration maximum and the other from the locus of the centre of gravity, c.g._r).

Only those profiles with angles (between both axes) lower than ten degrees were considered. Averaged profiles with any ambiguity in the definition of their axis (with angles higher than ten degrees) were discarded. In this way, askew distributions caused by directional shear were not considered.

In order to define the effective plane for the plumes fitting this geometrical restriction, the axis determined by the centre of gravity was considered (as recommended by Millán et al., 1976).

A.2.2. Regarding the geometry of the road used in the field campaigns

Because of the particular distribution of the road network and the dispersive scenario chosen (winter advection from the NW, with stability classes E and D), for the “Els Ports-Maestrat” field campaigns we selected four transects along the available road network. Each of these defines a quite straight line (Fig. A5). Along these roads, the effects of high γ angles can be underestimated. This is reasonable because spans between curves subtending a higher-than- 100° γ angle can be found along all four transects, and they are always shorter than one kilometer in length (characteristic, as in this case, of mountain-road networks in complex terrain with very sharp and close curves). For this reason, the spatial resolution selected for the plume measurements was five hundred meters, and road irregularities below that size are averaged.

On the other hand, for these four straight lines, the estimation of the β angle is also simplified. In this context, β is the angle subtended by the fitted line obtained from the road and the axis of the averaged plume (averaged on the road). As this study is centred in stable to neutral scenarios, the profiles considered were those with β higher than (or equal to) 20° (as indicated in Table A1).

[Title Page](#)[Abstract](#)[Introduction](#)[Conclusions](#)[References](#)[Tables](#)[Figures](#)[◀](#)[▶](#)[◀](#)[▶](#)[Back](#)[Close](#)[Full Screen / Esc](#)[Print Version](#)[Interactive Discussion](#)

Statistical description of the plume integral advection aloft

The “classic” meteorological approach to the dispersion for air pollutants on a region is based on a preliminary analysis of the surface wind-field regimes, in order to provide “recurrent” wind fields for transport calculations (e.g., Zaremba and Carroll, 1979). Besides, by using the plume transport direction aloft as a tracer of opportunity of the wind field at the plume (air pollutants) transport height, it is possible to identify the diurnal advective regimes in the mid-troposphere. Previous studies in different climatological and geographical regions have already used plume transport directions aloft to track the main dispersive characteristics and daily evolution of the windfield at the plume transport height (Millán, 1979; Guillot et al., 1979; Chung et al., 1981; Hoff et al., 1982; Portelli, 1982; Millán et al., 1987; Eastman et al., 1995; Palau et al., 2005).

This availability of measurements aloft, obtained by means of a vehicle equipped with a COSPEC remote sensor, represents a clear advantage over the information provided by the fixed ground-level monitoring stations for atmospheric pollutant control, especially on mid-latitude complex terrain (where vertical wind directional shear is the most persistent pattern). A statistical analysis of the plume transport directions between January 1995 and December 2004, was used to obtain an averaged (statistical) representation of the main windfield advective features aloft throughout the four seasons of the year.

From the 3236 different SO₂ distributions aloft (obtained with the COSPEC around the APP), we calculated the annual and seasonal average frequency distributions of the plume transport directions (Fig. B1). A seasonal intercomparison provided the following statistical evidence with regard to the advective behaviour of the plume aloft (Fig. B1 and Table B1):

Our statistics on plume transport aloft evidence a clear predominance of the South-east transport direction (45°-to-125° sector, following a clockwise criteria starting from the North) during the autumn-to-spring period. Only during the summer period are the

Dispersion on complex terrain under winter conditions

J. L. Palau et al.

Title Page

Abstract

Introduction

Conclusions

References

Tables

Figures

⏪

⏩

◀

▶

Back

Close

Full Screen / Esc

Print Version

Interactive Discussion

transport directions from SE and SW statistically equiprobable (both transport frequencies are similar).

During wintertime, from a statistical point of view, 80% of the plume transport directions measured aloft are located around the second meteorological quadrant (transport towards the SE from the chimney); Fig. B1 and Table B1. This statistical evidence arises because of the recurrence of Northwest advective conditions. This seasonal dispersive scenario is the natural consequence (from a climatological point of view) of the gradual migration (during the late summertime and autumn) of the northern lows towards mid latitudes and the corresponding retreat of the Azores high pressure system from Iberian Peninsula latitudes. Under this seasonal dispersive scenario, the plume aloft is advected by the general wind circulation driven by Atlantic lows flowing Northwest to Southeast onto the Iberian Peninsula, and/or under nocturnal drainage conditions channelled by the Ebro basin towards the Mediterranean sea. Only 20% of the experimental measurements tracked the plume aloft flowing inland (towards Northwest).

Acknowledgements. The authors would like to acknowledge the people from the CEAM Foundation who participated in the field measurements campaign. The CEAM Foundation is supported by the Generalitat Valenciana and BANCAIXA (València, Spain). This study has been partially funded by the Conselleria de Cultura (Generalitat Valenciana, SPAIN) research project "MEDICO" – GV04B-069, and by the Conselleria de Territori i Habitatge (Generalitat Valenciana, SPAIN).

References

- Albizuri, A.: Métodos de diagnóstico y predicción de episodios de contaminación atmosférica: aplicación a chimeneas altas, (Diagnostic and pronostic methods for forecasting atmospheric pollution episodes), PhD thesis, Escuela técnica superior de ingenieros industriales y de ingenieros de telecomunicación, University of Basque Country (Spain), 1985.
- Alonso, L., Millán, M., Albizuri, A., and Navazo, M.: Dispersión de contaminates en la atmósfera

Dispersion on complex terrain under winter conditions

J. L. Palau et al.

Title Page

Abstract

Introduction

Conclusions

References

Tables

Figures

⏪

⏩

◀

▶

Back

Close

Full Screen / Esc

Print Version

Interactive Discussion

**Dispersion on
complex terrain
under winter
conditions**

J. L. Palau et al.

Title Page

Abstract

Introduction

Conclusions

References

Tables

Figures

◀

▶

◀

▶

Back

Close

Full Screen / Esc

Print Version

Interactive Discussion

II. Chimeneas altas, (Atmospheric pollutant dispersion II. Tall Chimneys), Energía, mayo-junio, Madrid (Spain), 101–116, 1987.

Alonso, L., Navazo, M., García, J. A., Gutierrez-Cañas, C., Ildardia, J. L., and Gangoiti, G.: Experimental determination of σ_y , σ_z and plume rise from a tall stack in the western mediterranean coast (Castellón-Spain), Proceeding of the sixth European symposium, Physico-chemical behaviour of atmospheric pollutants, Vol. 1. Varese, Published by the European Commission, Report EUR 15609/1 EN, 1993.

Artiñano, B., Pujadas, M., Plaza, J., Terés, J., and Cabal, H.: Characterization of a pollution episode in stagnant conditions in the greater Madrid area, Proceedings of the sixth European Symposium, Physico-Chemical behaviour of atmospheric pollutants, Varese (Italy), October, Report EUR 15609/1 EN, 1993.

ASME (the American Society of Mechanical Engineers): The recommended guide for the prediction of the dispersion of airborne effluents, ASME, 345 East 47 Street, New York, 10017, 1–85, 1973.

Briggs, A.: Plume rise predictions, in: Lectures on Air Pollution and Environment Impact Analysis, AMS, Boston (USA), 1975.

Brown, R. M., Cohen, L. A., and Smith, M. E.: Diffusion measurements in the 10–100 km range, J. App. Met., 11, 3323–3334, 1972.

Carras, J. N. and Williams, D. J.: The long-range dispersion of a plume from an isolated point source, Atmos. Environ., 15, 2205–2217, 1981.

Carroll, J. J. and Baskett, R. L.: Dependence of air quality in a remote location on local and mesoscale transports: A case study, J. Appl. Met., 18, 474–486, 1979.

Carvalho, J. C., Anfossi, D., Trini Castelli, S., and Degrazia, G. A.: Application of a model system for the study of transport and diffusion in complex terrain to the TRACT experiment, Atmos. Environ., 36, 1147–1161, 2002.

CityDelta: An intercomparison of long-term model responses to urban-scale emission-reduction scenarios, <http://rea.ei.jrc.it/netshare/thunis/citydelta>, 2005.

COST 710.: Harmonisation of the pre-processing of meteorological data for atmospheric dispersion models. COST Action 710 – Final report, European Commission, Directorate-General Science, Research and Development, EUR 18195 EN, 1978.

Csanady, G. T.: Turbulent diffusion in the environment, Reidel, Dordrecht, Holland, 1973.

Chung, Y. S., Gallant, A., Fanaki, F., and Millán, M. M.: On the observation of Mount St. Helens Volcanic emissions, Atmosphere-Ocean, 19 (2), 172–178, 1981.

**Dispersion on
complex terrain
under winter
conditions**

J. L. Palau et al.

[Title Page](#)[Abstract](#)[Introduction](#)[Conclusions](#)[References](#)[Tables](#)[Figures](#)[◀](#)[▶](#)[◀](#)[▶](#)[Back](#)[Close](#)[Full Screen / Esc](#)[Print Version](#)[Interactive Discussion](#)

- Doran, J. C., Fast, J. D., and Horel, J.: The VTMX 2000 campaign. *Bulletin of American Meteorological Society*, 83, 537–551, 2002.
- Dudhia, J.: A nonhydrostatic version of the Penn State/NCAR mesoscale model: Validation tests and simulation of an Atlantic cyclone and cold front, *Mon. Wea. Rev.*, 121, 1493–1513, 1993.
- 5 Eastman, J. L., Pielke, R. A., and Lyons, W. A.: Comparison of lake-breeze model simulations with tracer data. *J. App. Met.*, 34, 1398–1418, 1995.
- ENDESA, Martínez, C.: Razón y controversia sobre la Central Térmica Teruel, en Andorra, *Gestión Ambiental de Endesa*, 167–172, 1994. Also published in *Tecno Ambiente*, 22, November, 1992.
- 10 Fast, J. D. and Darby, L. S.: An evaluation of mesoscale model predictions of down-valley and canyon flows and their consequences using doppler lidar measurements during VTMX 2000, *J. App. Met.*, 43, 420–436, 2004.
- Fast, J. D.: Mesoscale modeling in areas of highly complex terrain employing a four-dimensional data assimilation technique, *J. App. Met.*, 34, 2762–2782, 1995.
- Fast, J. D., Lance O'Steen, B., and Addis, R. P.: Advanced atmospheric modeling for emergency response, *J. App. Met.*, 34, 626–649, 1995.
- Fox, D. G.: Judging air quality model performance, *Bulletin American Meteorological Society*, 62, 599–609, 1981.
- 20 Gangoiti, G., Alonso, L., Navazo, M., Albizuri, A., Pérez-Landa, G., Matabuen, M., Valdenebro, V., Maruri, M., García, J. A., and Millán, M. M.: Regional transport of pollutants over the bay of Biscay: Analysis of an ozone episode under a blocking anticyclone in west-central Europe, *Atmos. Environ.*, 36, 1349–1361, 2002.
- Gangoiti, G., Alonso, L., Maruri, M., Navazo, M., and Pérez-Landa, G.: UHF radar detection and numerical simulation of an episode of Foehn and lee waves over the Northern coast of Iberia, *J. Appl. Met.*, 41, 230–240, 2002.
- 25 Grell, G. A., Dudhia, J., and Stauffer, D. R.: A description of the fifth-generation Penn State/NCAR mesoscale model (MM5), NCAR/TN-398+STR, National Center for Atmospheric Research, Boulder, CO (USA), 138, 1995.
- 30 Guillot, P., Bonometti, G., Hasenjaeger, H., Van der Meulen, A., Hamilton, P. M., Haulet, R., Laurent, J., Sandroni, S., Cerutti, C., Giovanelli, G., Tirabassi, T., Vittori, O., and Piccinini, P.: First European Community campaign for remote sensing of atmospheric pollution, Lacq (France), 7–11 July 1975, *Atmos. Environ.*, 13, 895–917, 1979.

**Dispersion on
complex terrain
under winter
conditions**

J. L. Palau et al.

Title Page

Abstract

Introduction

Conclusions

References

Tables

Figures

◀

▶

◀

▶

Back

Close

Full Screen / Esc

Print Version

Interactive Discussion

- Hoff, R. H. and Gallant, A. G.: The use of an available SO₂ tracer during the 1983 CAPTEX experiment, *Atmos. Environ.*, 19, 1573–1575, 1985.
- Hoff, R. M., Trivett, N. B. A., Millán, M. M., Fellin, P., Anlauf, K. G., and Wiebe, H. A.: The Nanticoke shoreline diffusion experiment, June 1978-III. Ground-based air quality measurements, *Atmos. Environ.*, 16(3), 439–454, 1982.
- Huggins, A. W., Koracin, D., Podnar, D., and Xiao, M.: A case study of mesoscale and plume dispersion modeling for a February 2004 cloud seeding event in the Walker river basin of California/Nevada, *Proceedings of the 85th AMS annual meeting: 16th Conference on planned and inadvertent weather modification*, San Diego, CA, USA, January, 2005.
- Hurley, P. and Physick, W.: A lagrangian particle model of fumigation by breakdown of the nocturnal inversion. *Atm. Environ.*, 25A(7), 1313–1325, 1991.
- Kain, J. S., Fritsch, J. M.: Convective parameterization for mesoscale models: The Kain-Fritsch scheme. *The Representation of Cumulus Convection in Numerical Models*, Meteor. Monogr., No. 46, Amer. Meteor. Soc., 165-170, 1993.
- Kalnay, E., Kanamitsu, M., Kistler, R., Collins, W., Deaven, D., Gandin, L., Iredell, M., Saha, S., White, G., Woollen, J., Zhu, Y., Chelliah, M., Ebisuzaki, W., Higgins, W., Janowiak, J., Mo, K. C., Roelewski, C., Wang, J., Leetmaa, A., Reynolds, R., Jenne, R., and Joseph, D.: The NCEP/NCAR 40-year re-analysis project. *Bulletin of American Meteorological Society*, 77, 437–471, 1996.
- Kitada, T., Okamura, K., and Tanaka, S.: Effects of topography and urbanization on local winds and thermal environment in the Nohbi Plain, coastal region of central Japan: A numerical analysis by mesoscale meteorological model with κ - ϵ turbulence model, *J. App. Met.*, 37(10, part 1), 1026–1046, 1998.
- Liu, M. and Carroll, J. J.: A high-resolution air pollution model for dispersive studies in complex terrain, *Mon. Wea. Rev.*, 124(10), 2396–2409, 1996.
- Luhar, A. K. and Young, S. A.: Dispersion moments of fumigating plumes-LIDAR estimates and pdf model simulations. *Boundary-Layer Meteorology*, 104(3), 411–444, 2002.
- Luhar, A. K.: The influence of vertical wind direction shear on dispersion in the convective boundary layer, and its incorporation in coastal fumigation models, *Boundary-Layer Meteorol.*, 102, 1–38, 2002.
- Martín, F., Palacios, M., and Crespi, S. N.: Simulations of mesoscale circulations in the center of the Iberian Peninsula for thermal low pressure conditions, Part II: Air-parcel transport patterns, *J. Appl. Met.*, 40, 905–914, 2001.

**Dispersion on
complex terrain
under winter
conditions**

J. L. Palau et al.

[Title Page](#)[Abstract](#)[Introduction](#)[Conclusions](#)[References](#)[Tables](#)[Figures](#)[◀](#)[▶](#)[◀](#)[▶](#)[Back](#)[Close](#)[Full Screen / Esc](#)[Print Version](#)[Interactive Discussion](#)

- McNider, R. T., Moran, M. D., and Pielke, R. A.: Influence of diurnal and inertial boundary-layer oscillations on long-range dispersion, *Atmos. Environ.*, 22(11), 2445–2462, 1988.
- Millán, M. M., Artiñano, B., Alonso, L., Navazo, M., and Castro, M.: The effect of meso-scale flows on regional and long-range atmospheric transport in the western Mediterranean area, *Atmos. Environ.*, 25A, 949–963, 1991.
- 5 Millán, M. M. and Chung, Y.-S.: Detection of a plume 400 Km from the source, *Atmos. Environ.*, 11, 937–944, 1977.
- Millán, M. M., Artiñano, B., Alonso, L., Castro, M., Fernandez-Patier, R., and Goberna, J.: Meso-Meteorological Cycles of Air Pollution in the Iberian Peninsula, (MECAPIP) (Air Pollution Research Report 44, EUR No. 14834), European Commission DG XII/E-1, Rue de la Loi, 200, B-140, Brussels, 1992.
- 10 Millán, M. M., Gallant, A. J., and Turner, H. E.: The application of correlation spectroscopy to the study of dispersion from tall stacks, *Atmos. Environ.*, 10, 499–511, 1976.
- Millán, M. M., Otamendi, E., Alonso, L., and Ureta, I.: Experimental characterization of atmospheric diffusion in complex terrain with land-sea interactions, *JAPCA*, 37(7), 807–811, 1987.
- 15 Millán, M. M.: Ozone dynamics in the Mediterranean basin, A collection of scientific papers resulting from the MECAPIP, RECAPMA and SECAP Projects, Air Pollution Research Report 78 – DGXII, EC, Brussels, 2002.
- 20 Millán, M. M.: Passive remote sensing of SO₂, Proceedings from the EPA seminar – Workshop on prolonged elevated pollution episodes (PEPE), March 19–23, 406–424, 1979.
- Millán, M. M.: Recent advances in correlation spectroscopy for the remote sensing of SO₂. Proceedings of the 4th Joint Conference on Sensing of Environmental Pollutants, Sponsored by the American Chemical Society, edited by: John Wiley & Sons, New York, 1978.
- 25 Millán, M. M.: Remote sensing of SO₂, a data processing methodology, Proceeding from 4th Joint Conference on Sensing of Environmental Pollutants, American Chemical Society, 1978.
- Millán, M. M.: The regional transport of tall stack plumes, in: Regional and Long-range Transport of Air Pollution, edited by: Sandroni, S., Elsevier Science Publishers, Amsterdam, The Netherlands, 249–280, 1987.
- 30 Moran, M. D.: Basic aspects of mesoscale atmospheric dispersion, Chapter 2 in: Mesoscale atmospheric dispersion, edited by: Boybeyi, Z., WIT Press, Great Britain, 424, 2000.
- Newcomb, G. S. and Millán, M. M.: Theory, applications, and results of the long-line correlation

**Dispersion on
complex terrain
under winter
conditions**

J. L. Palau et al.

Title Page

Abstract

Introduction

Conclusions

References

Tables

Figures

◀

▶

◀

▶

Back

Close

Full Screen / Esc

Print Version

Interactive Discussion

spectrometer, IEEE Transactions on Geoscience Electronics, GE-8 (3), 149–157, 1970.

Palau, J. L., Mantilla, E., and Millán, M. M.: Estimation of the dispersion of an elevated plume on complex terrain under stable-to-neutral conditions, A changing atmosphere: 8th European Symposium on the Physico-Chemical Behaviour of Atmospheric Pollutants, 17–20 September, Torino (Italy), 2001.

Palau, J. L., Pérez-Landa, G., Diéguez, J. J., Monter, C., and Millán, M. M.: The importance of meteorological scales to forecast air pollution scenarios on coastal complex terrain, Atmos. Chem. Phys., 5, 2771–2785, 2005,
SRef-ID: 1680-7324/acp/2005-5-2771.

Palau, J. L.: Dispersión atmosférica de las emisiones de una chimenea alta en terreno complejo (Atmospheric dispersion of a tall-stack plume on complex terrain), PhD thesis (in Spanish), University of Valencia (Spain), edited by: CEAM Foundation, 1–366, 2003.

Pooler Jr., F. and Niemeyer, L. E.: Dispersion from tall stacks: an evaluation, Proceedings, 2nd International Air Congress (Englund and Beery, editors), Academic Press, New York, 1971.

Portelli, R. V., Kerman, B. R., Mickle, R. E., Trivett, N. B., Hoff, R. M., Millán, M. M., Fellin, P., Anlauf, K. S., Wiebe, H. A., Misra, P. K., Bell, R., and Melo, O.: The Nanticoke shoreline diffusion experiment, June 1978, Atmos. Environ., 16, 413–466, 1982.

Querol, X., Alastuey, A., Lopez-Soler, A., Plana, F., Puigercus, J. A., Mantilla, E., and Palau, J. L.: Daily evolution of sulphate aerosols in a rural area, northeastern Spain – elucidation of an atmospheric reservoir effect, Environ. Poll., 105, 397–407, 1999.

Salvador, R.: Análisis y modelización de los procesos atmosféricos durante condiciones de brisa en la costa mediterránea occidental: zona de Castellón, (Analysis and modelization of atmospheric processes under sea-breeze conditions at the Eastern Mediterranean coast: Castellon area), PhD thesis, Universitat Politècnica de Catalunya, Barcelona (Spain), 1999.

Sawford, B. L., Luhar, A. K., Hacker, J. M., Young, S. A., Yoon, I.-H., Noonan, J. A., Carras, J. N., Williams, D. J., and Rayner, K. N.: The Kwinana Coastal Fumigation Study: I-Program overview, experimental design and selected results, Boundary Layer Meteorology, 89, 359–384, 1998.

Scorer, R. S.: Dynamics of meteorology and climate, edited by: John Wiley and sons, and Praxis publishing, UK, 1997.

Seaman, N. L.: Meteorological Modelling for Air-Quality Assessments, Atmos. Environ., 34, 2231–2259, 2000.

Singer, I. A. and Smith, M. E.: Atmospheric dispersion at Brookhaven National Laboratory, Int.

**Dispersion on
complex terrain
under winter
conditions**J. L. Palau et al.

Title Page

Abstract

Introduction

Conclusions

References

Tables

Figures

◀

▶

◀

▶

Back

Close

Full Screen / Esc

Print Version

Interactive Discussion

J. Air Water Pollut., 10, 125–135, 1966.

Slade, D. H. (Ed.): Meteorology and atomic energy 1968, Report TID-24190, NTIS, Springfield, Virginia, USA, 445, 1968.

Souto, M. J., Souto, J. A., Pérez-Muñuzuri, V., Casares, J. J., and Bermúdez, J. L.: A comparison of operational Lagrangian particle and adaptive puff models for plume dispersion forecasting, Atmos. Environ., 35, 2349–2360, 2001.

Stauffer, D. R. and Seaman, N. L.: Multiscale four-dimensional data assimilation, J. Appl. Met., 33, 416–434, 1994.

Stohl, A. and Seibert, P.: The FLEXPART particle dispersion model, User Guide, <http://www.forst.uni-muenchen.de/EXT/LST/METEO/stohl/>, 2001.

Stohl, A. and Thomson, D. J.: A density correction for lagrangian particle dispersion models, Boundary-Layer Meteorology, 90, 155–167, 1999.

Stohl, A., Forster, C., Frank, A., Seibert, P., and Wotawa, G.: Technical note: The Lagrangian particle dispersion model FLEXPART version 6.2, Atmos. Chem. Phys., 5, 2461–2474, 2005, [SRef-ID: 1680-7324/acp/2005-5-2461](https://doi.org/10.5194/acp-5-2461-2005).

Stohl, A.: The FLEXPART Particle dispersion model. Version 3.1., <http://www.forst.uni-muenchen.de/EXT/LST/METEO/stohl/>, 1999.

Uliasz, M.: Lagrangian particle modeling in mesoscale applications, Environmental Modeling II, edited by: Zannetti, P., Computational Mechanics Publications, 71–102, 1994.

Uthe, E. E. and Wilson, W. E.: Lidar observations of the density and behaviour of the Labadie power plant plume, Atmos. Environ., 13, 1395–1412, 1979.

Weil, J. C., Sykes, R. I., and Venkatram, A.: Evaluating air-quality models: Review and outlook, J. Appl. Met., 31, 1121–1145, 1992.

Willmott, C. J.: On the validation of models, Physical Geography, 2(2), 184–194, 1981.

Zaremba, L. L. and Carroll, J. J.: Summer wind flow regimes over the Sacramento valley, J. App. Met., 38, 1463–1473, 1999.

Zhang, D. and Anthes, R. A.: A high-resolution model of the planetary boundary layer – Sensitivity tests and comparisons with SESAME-79 data, J. Appl. Meteor., 21, 1594–1609, 1982.

Dispersion on complex terrain under winter conditions

J. L. Palau et al.

Title Page

Abstract

Introduction

Conclusions

References

Tables

Figures

◀

▶

◀

▶

Back

Close

Full Screen / Esc

Print Version

Interactive Discussion

Table 1. Experimental and simulated horizontal turbulent diffusion. Simulated values correspond to the three different emission schemes performed (constant heights: 450 and 700 m a.g.l., and Briggs' plume-rise scheme).

Day/ Month	Hour Begin.	Hour End.	Distance (km)	Experimental Dispersion (km)	Simulated dispersion Briggs (km)	Simulated dispersion 700 m (km)	Simulated dispersion 450 m (km)
26/11	10:45	11:58	26.68	3.03	1.70	1.33	3.18
26/11	13:21	14:12	20.57	1.14	1.64	1.40	1.29
26/11	15:12	15:35	15.79	2.49	1.59	1.05	1.75
26/11	16:01	16:16	12.33	1.02	0.55	0.90	2.01
27/07	08:35	09:45	8.04	0.94	0.40	0.25	0.34
27/07	09:45	10:25	13.02	1.69	1.22	0.50	1.03
27/07	11:03	13:15	32.78	2.45	2.19	1.63	2.14
27/07	14:23	15:04	6.87	0.58	0.76	0.84	0.73
27/07	15:06	15:40	14.99	1.05	1.74	1.85	1.90
27/07	15:41	16:09	6.40	0.86	0.50	0.69	0.81
28/11	08:17	09:54	19.84	1.00	0.83	0.56	0.74
28/11	09:55	11:00	6.18	0.85	0.00	0.00	0.50
28/11	11:01	11:56	7.41	1.54	0.84	0.50	0.73
28/11	11:57	13:09	6.33	1.13	1.01	0.93	0.84
28/11	14:16	14:44	6.31	0.93	0.50	0.49	0.87

Dispersion on complex terrain under winter conditions

J. L. Palau et al.

Table 2. Statistical skills for the horizontal dispersion values simulated with the three different emission schemes. m : fitting slope; b : ordinate [km]; SE: Standard Error; MSE: Mean Squared Error; MSEu: Unsystematic Mean Squared Error; MSEs: Systematic Mean Squared Error; MSEa: Additive Mean Squared Error; MSEp: Proportional Mean Squared Error; MSEi: Interdependence Mean Squared Error; d: Index of Agreement. ‘Rs’ indicate ‘Root’ for every statistic.

	m	b [km]	SE (m)	SE (b) [km]	p-value (m)	p-value (b)
450 m	0.81	0.13	0.20	0.30	0.001	0.667
700 m	0.31	0.43	0.18	0.28	0.108	0.141
BRIGGS	0.60	0.20	0.17	0.26	0.003	0.468
	RMSE [km]	RMSEu	RMSEs	RMSEa	RMSEp	RMSEi
450 m	0.53	0.49	0.18	0.13	0.29	−0.26
700 m	0.84	0.45	0.71	0.43	1.07	−0.91
BRIGGS	0.62	0.43	0.44	0.20	0.61	−0.46
	MSEu/MSE	MSEs/MSE	MSEa/MSE	MSEp/MSE	MSEi/MSE	d
450 m	0.88	0.12	0.06	0.30	0.25	0.94
700 m	0.29	0.71	0.27	1.62	1.17	0.80
BRIGGS	0.48	0.52	0.10	0.98	0.56	0.90

Title Page

Abstract

Introduction

Conclusions

References

Tables

Figures

◀

▶

◀

▶

Back

Close

Full Screen / Esc

Print Version

Interactive Discussion

Dispersion on complex terrain under winter conditions

J. L. Palau et al.

Table 3. “Day/night” percentual variation in the mean ground-level SO₂ concentrations throughout the field campaign at three different areas Southeast from the APP. Positive variations indicate that diurnal impacts prevail; negative variations indicate that nocturnal impacts prevail. Values are expressed in % and are calculated from $100 \cdot [\text{SO}_2]_{\text{day}} / [\text{SO}_2]_{\text{night}}$. This table is related to Fig. 19.

Day/night percentual variation of SO ₂ ground-level concentrations				
	Experimental	Emission 450 m	Emission 700 m	Briggs emission Briggs
AREA 1	57.7	100.0	100.0	100.0
AREA 2	-113.1	90.6	85.4	80.9
AREA 3	-122.6	-295.8	-92.2	-796.4

[Title Page](#)
[Abstract](#)
[Introduction](#)
[Conclusions](#)
[References](#)
[Tables](#)
[Figures](#)
[Back](#)
[Close](#)
[Full Screen / Esc](#)
[Print Version](#)
[Interactive Discussion](#)

Dispersion on complex terrain under winter conditions

J. L. Palau et al.

Table A1. Generic geometrical limits to be fulfilled for a reliable projection on the effective plane (depending on the atmospheric stability class).

Atmospheric Stability Class	Minimum angle β	Maximum angle γ
Stable	10°	120°
Neutral	20°	100°
Unstable	30°	70°
Very unstable	40°	50°

[Title Page](#)
[Abstract](#)
[Introduction](#)
[Conclusions](#)
[References](#)
[Tables](#)
[Figures](#)
[I◀](#)
[▶I](#)
[◀](#)
[▶](#)
[Back](#)
[Close](#)
[Full Screen / Esc](#)
[Print Version](#)
[Interactive Discussion](#)

Dispersion on complex terrain under winter conditions

J. L. Palau et al.

Table B1. Frequency (%) in which the plume aloft is advected in a determined direction (wind roses at the mean plume advection height). The ‘plume roses’ were obtained as annual and seasonal averages for the period 1995–2004.

	N	NE	E	SE	S	SW	W	NW
Total (1995–2004)	8.3	9.1	22.8	32.2	5.5	2.7	8.4	11.1
Summer	8.7	5.5	11.9	23.0	7.9	6.3	18.2	18.6
Winter	5.8	8.9	26.0	45.9	2.8	0.2	3.2	7.2

[Title Page](#)
[Abstract](#)
[Introduction](#)
[Conclusions](#)
[References](#)
[Tables](#)
[Figures](#)
[I◀](#)
[▶I](#)
[◀](#)
[▶](#)
[Back](#)
[Close](#)
[Full Screen / Esc](#)
[Print Version](#)
[Interactive Discussion](#)

**Dispersion on
complex terrain
under winter
conditions**J. L. Palau et al.

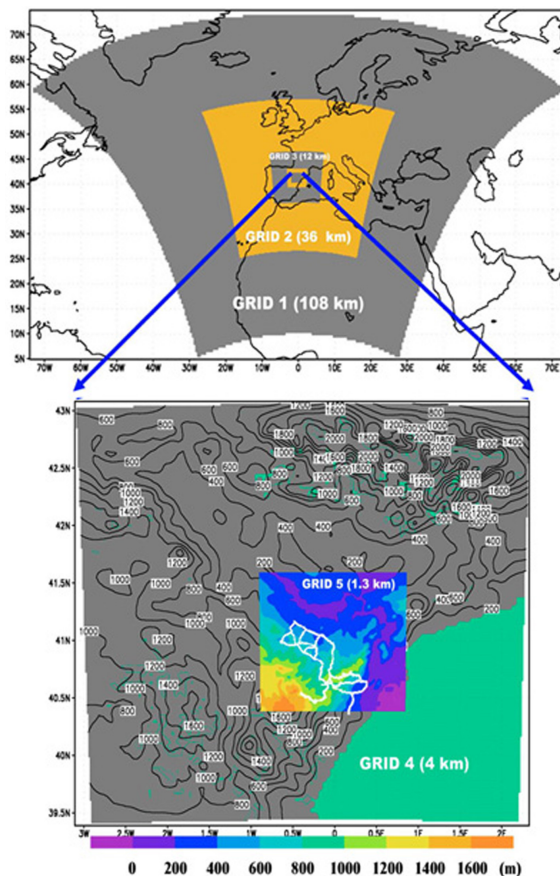


Fig. 1. Modelling configuration with the five grids of different resolution employed in the simulations centred over the Andorra power plant (G_1 108 km, G_2 36 km, G_3 12 km, G_4 4 km; G_5 1.3 km). Road network used by the mobile units (instrumented with a COSPEC) to take measurements around the power plant is also indicated in white in the fifth grid.

[Title Page](#)[Abstract](#)[Introduction](#)[Conclusions](#)[References](#)[Tables](#)[Figures](#)[◀](#)[▶](#)[◀](#)[▶](#)[Back](#)[Close](#)[Full Screen / Esc](#)[Print Version](#)[Interactive Discussion](#)

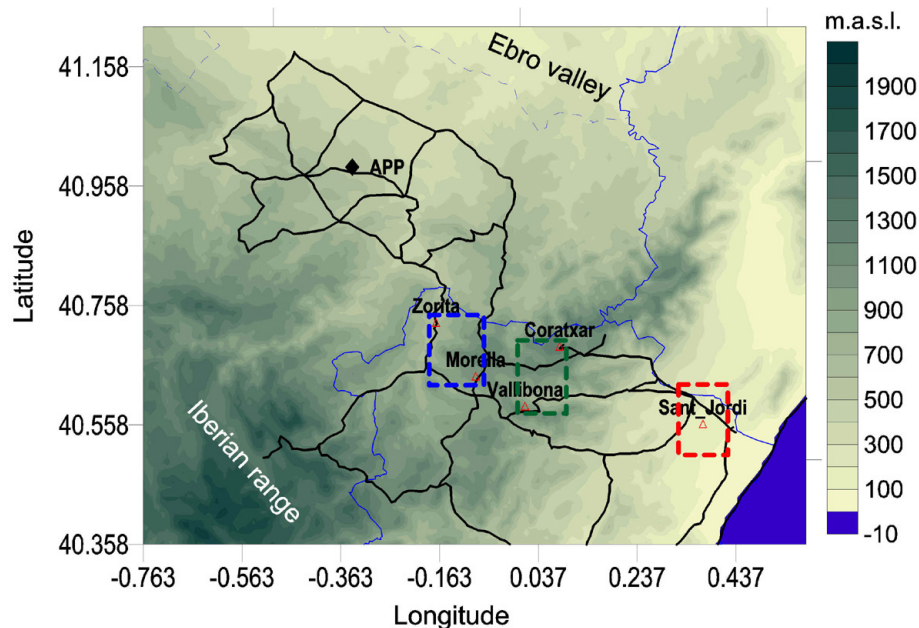


Fig. 2. Study area around the Andorra Power Plant (APP) in the North-East of the Iberian Peninsula, near the Mediterranean sea (bottom right corner). Blue lines indicate borders of three Spanish provinces. Black lines indicate the available road network around the APP. Locations of five air quality and meteorological stations are also indicated; an additional 60 m-high meteorological tower is located beside the APP. Squares indicate the three different orographic areas where plume impacts on the ground were analysed by comparing the simulated results with measurements (area 1: blue color dashed square, area 2: green square and area 3: red square).

Dispersion on complex terrain under winter conditions

J. L. Palau et al.

Title Page

Abstract

Introduction

Conclusions

References

Tables

Figures

◀

▶

◀

▶

Back

Close

Full Screen / Esc

Print Version

Interactive Discussion

Dispersion on complex terrain under winter conditions

J. L. Palau et al.

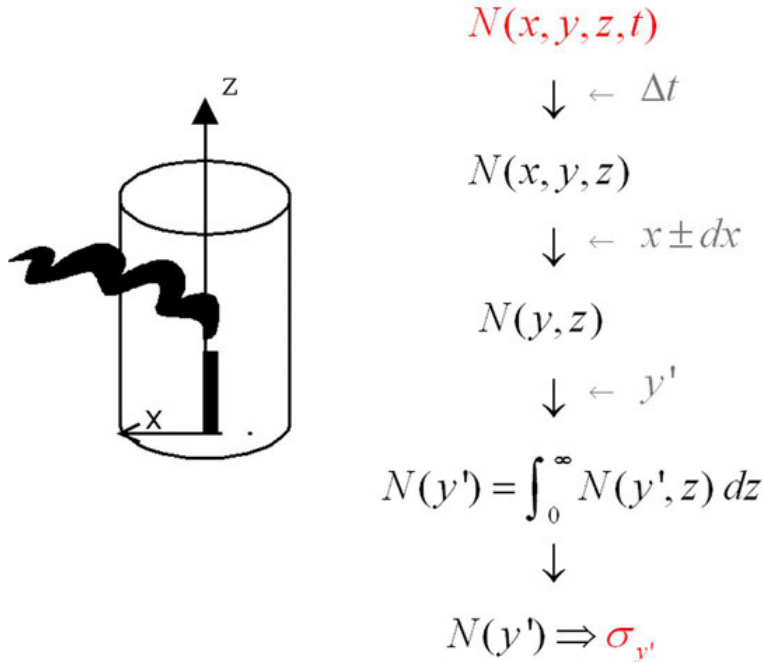


Fig. 3. Schematic representation of the procedure for estimating simulated transversal dispersion for fixed time periods and distances. It shows the process for reducing a three-dimensional distribution of Lagrangian particles, $N(x, y, z)$ during a time interval Δt , to a bi-dimensional distribution, $N(y, z)$, at a fixed distance from the point source, $x \pm dx$. Finally calculus of the standard deviation of $N(y, z)$ is calculated as the vertical integration of the bi-dimensional Lagrangian distribution.

Title Page

Abstract

Introduction

Conclusions

References

Tables

Figures

◀

▶

◀

▶

Back

Close

Full Screen / Esc

Print Version

Interactive Discussion

**Dispersion on
complex terrain
under winter
conditions**

J. L. Palau et al.

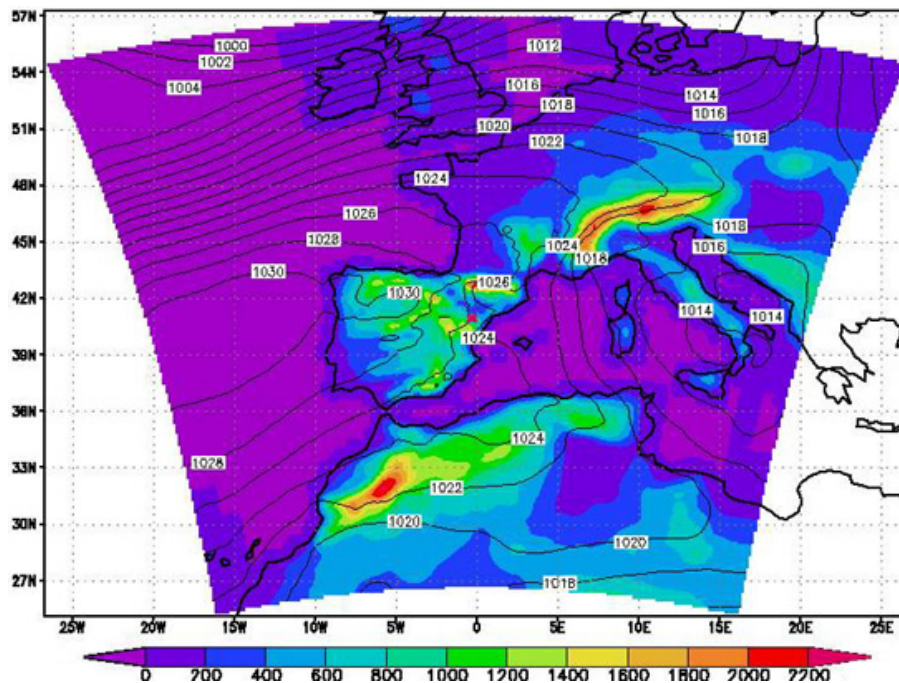


Fig. 4. Synoptic chart (grid 2) at 18:00 GMT on 28 November 2001. Typical anticyclonic conditions prevailed during the experimental campaign. Cross-isobaric flows advected the plume aloft towards the SE of the power plant (red cross at the North-East of the Iberian Peninsula).

Title Page

Abstract

Introduction

Conclusions

References

Tables

Figures

◀

▶

◀

▶

Back

Close

Full Screen / Esc

Print Version

Interactive Discussion

**Dispersion on
complex terrain
under winter
conditions**J. L. Palau et al.

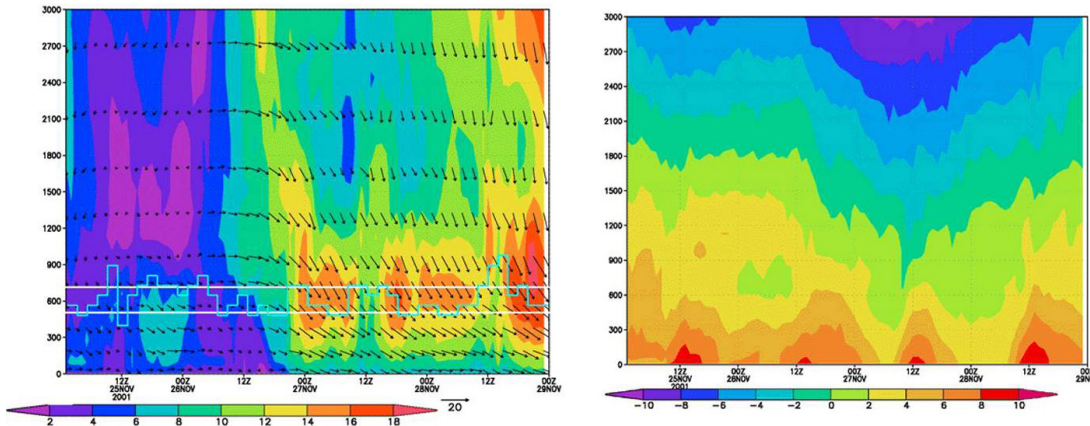


Fig. 5. Time series of the vertical profiles of wind field (left, **A**) and potential temperature (right, **B**) at APP site showing the meteorological conditions for the three different emission schemes implemented in the LPD model (constant heights of 450 and 700 m, and variable heights following Briggs' modified plume-rise equations for hot plumes; as indicated by coloured lines in Fig. 5A).

[Title Page](#)[Abstract](#)[Introduction](#)[Conclusions](#)[References](#)[Tables](#)[Figures](#)[◀](#)[▶](#)[◀](#)[▶](#)[Back](#)[Close](#)[Full Screen / Esc](#)[Print Version](#)[Interactive Discussion](#)

Dispersion on complex terrain under winter conditions

J. L. Palau et al.

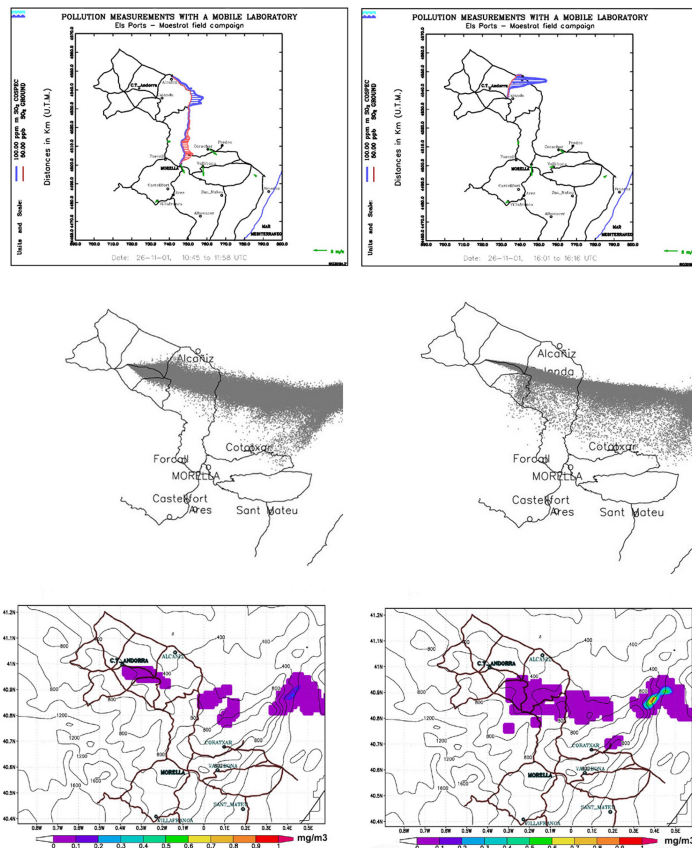


Fig. 6. First campaign day (26 November 2001). Top (A, B): COSPEC measurements of both the plume aloft (blue line) and its simultaneous impacts on the ground (red line); (A: 10:45–11:58 GMT; B: 16:01–16:16 GMT). Middle (C, D): Simulated Lagrangian distribution at 11:00 GMT (left) and 16:00 GMT (right). Bottom (E, F): Simulated SO₂ concentrations on the ground at 11:00 GMT (left) and 16:00 GMT (right).

12014

Title Page

Abstract

Introduction

Conclusions

References

Tables

Figures

◀

▶

◀

▶

Back

Close

Full Screen / Esc

Print Version

Interactive Discussion

EGU

Dispersion on complex terrain under winter conditions

J. L. Palau et al.

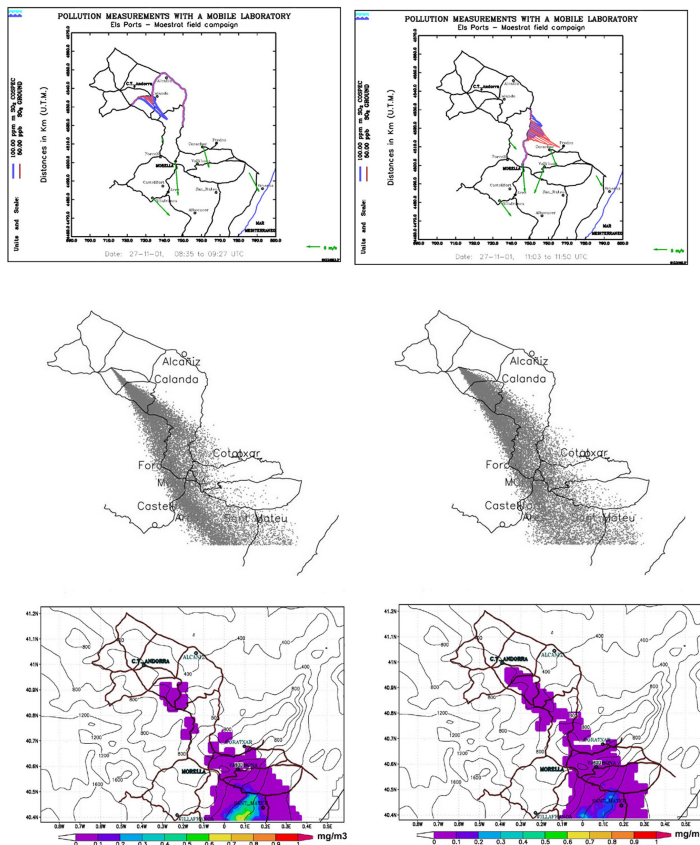


Fig. 7. Second campaign day (27 November 2001). Top (**A, B**): COSPEC measurements of both the plume aloft (blue line) and its simultaneous impacts on the ground (red line); (**A**: 08:35–09:27 GMT; **B**: 11:03–11:50 GMT). Middle (**C, D**): Simulated Lagrangian distribution at 10:00 GMT (left) and 11:00 GMT (right). Bottom (**E, F**): Simulated SO_2 concentrations on the ground at 10:00 GMT (left) and 11:00 GMT (right).

[Title Page](#)
[Abstract](#)
[Introduction](#)
[Conclusions](#)
[References](#)
[Tables](#)
[Figures](#)
[⏪](#)
[⏩](#)
[◀](#)
[▶](#)
[Back](#)
[Close](#)
[Full Screen / Esc](#)
[Print Version](#)
[Interactive Discussion](#)

Dispersion on complex terrain under winter conditions

J. L. Palau et al.

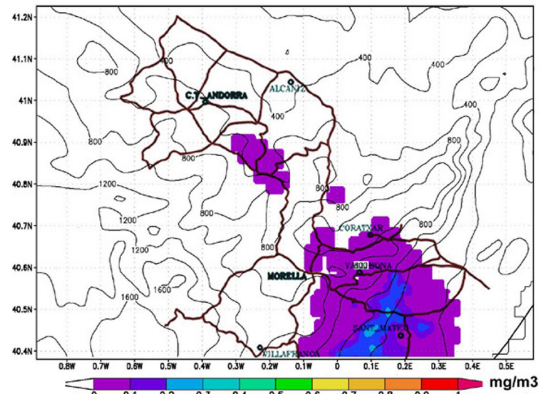
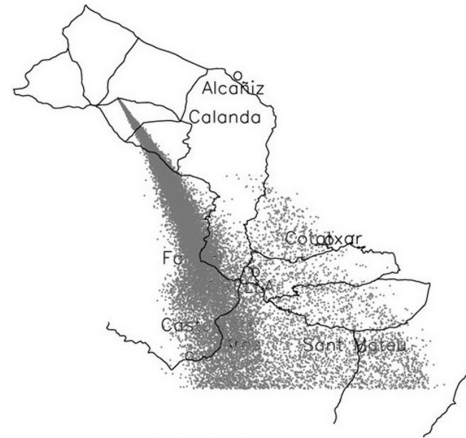
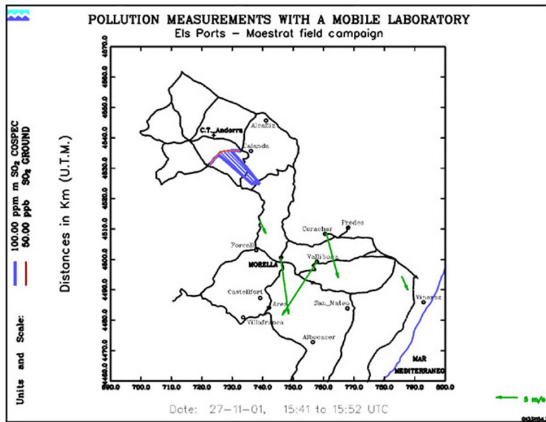


Fig. 8. Second campaign day (27 November 2001). Top-left **(A)**: COSPEC measurements (15:41–15:52 GMT) of both the plume aloft (blue line) and its simultaneous impacts on the ground (red line). Top-right and bottom **(B, C)**: Simulated Lagrangian distribution (right) and SO_2 concentrations on the ground (right) at 16:00 GMT.

Title Page

Abstract

Introduction

Conclusions

References

Tables

Figures

◀

▶

◀

▶

Back

Close

Full Screen / Esc

Print Version

Interactive Discussion

Dispersion on complex terrain under winter conditions

J. L. Palau et al.

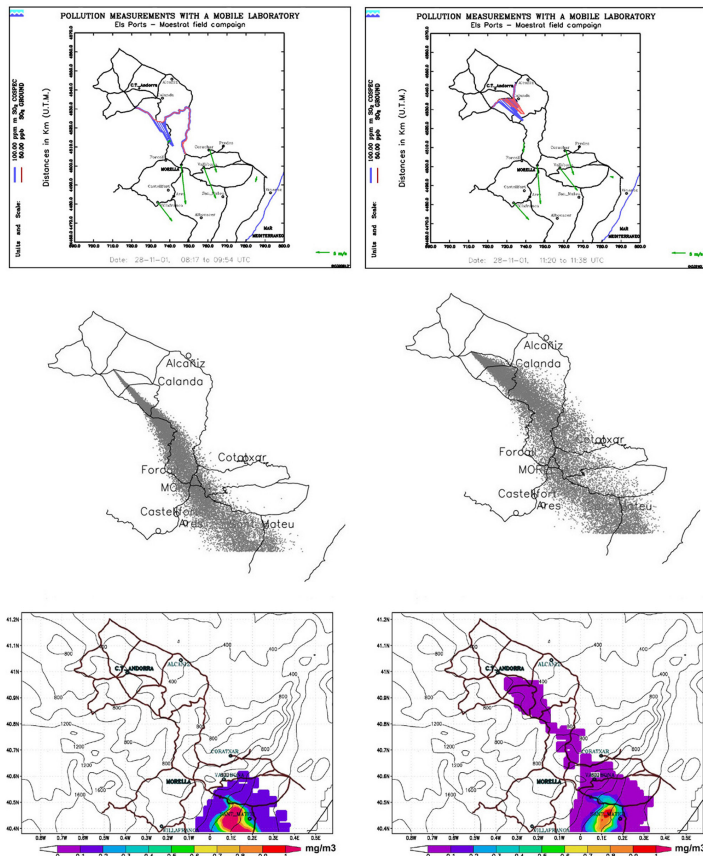


Fig. 9. Third campaign day (28 November 2001). Top (**A, B**): COSPEC measurements of both the plume aloft (blue line) and its simultaneous impacts on the ground (red line); (**A**: 08:17–09:54 GMT; **B**: 11:20–11:38 GMT). Middle (**C, D**): Simulated Lagrangian distribution at 09:00 GMT (left) and 11:00 GMT (right). Bottom (**E, F**): Simulated SO_2 concentrations on the ground at 09:00 GMT (left) and 11:00 GMT (right).

12017

Title Page

Abstract

Introduction

Conclusions

References

Tables

Figures

◀

▶

◀

▶

Back

Close

Full Screen / Esc

Print Version

Interactive Discussion

EGU

Dispersion on complex terrain under winter conditions

J. L. Palau et al.

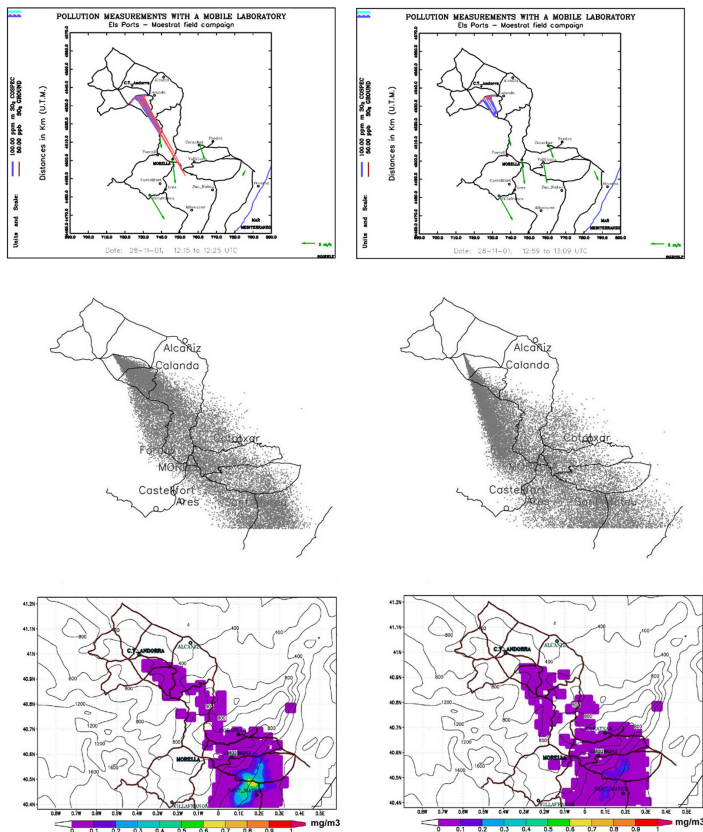


Fig. 10. Third campaign day (28 November 2001). Top (A, B): COSPEC measurements of the plume aloft (blue line) and its simultaneous impacts on the ground (red line); (A: 12:15–12:25 GMT; B: 12:59–13:09 GMT). Middle (C, D): Simulated Lagrangian distribution at 12:00 GMT (left) and 13:00 GMT (right). Bottom (E, F): Simulated SO₂ concentrations on the ground at 12:00 GMT (left) and 13:00 GMT (right).

Title Page

Abstract

Introduction

Conclusions

References

Tables

Figures

◀

▶

◀

▶

Back

Close

Full Screen / Esc

Print Version

Interactive Discussion

Dispersion on complex terrain under winter conditions

J. L. Palau et al.

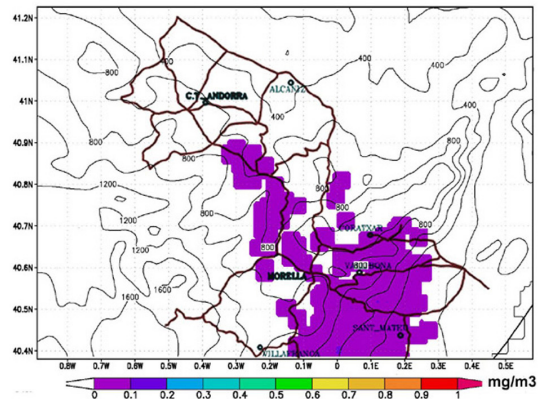
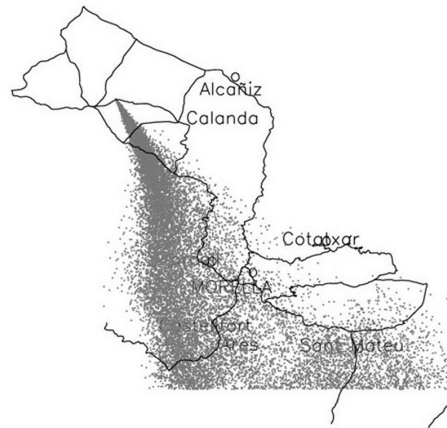
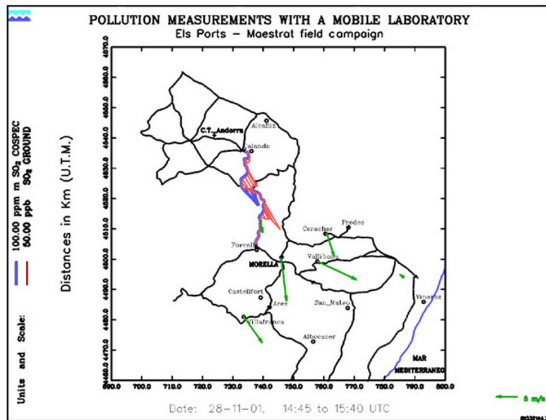


Fig. 11. Third campaign day (28 November 2001). Top-left **(A)**: COSPEC measurements (14:45–15:40 GMT) of both the plume aloft (blue line) and its simultaneous impacts on the ground (red line). Top-right and bottom **(B, C)**: Simulated Lagrangian distribution (right) and SO_2 concentrations on the ground (right) at 14:00 GMT.

Title Page

Abstract

Introduction

Conclusions

References

Tables

Figures

◀

▶

◀

▶

Back

Close

Full Screen / Esc

Print Version

Interactive Discussion

**Dispersion on
complex terrain
under winter
conditions**

J. L. Palau et al.

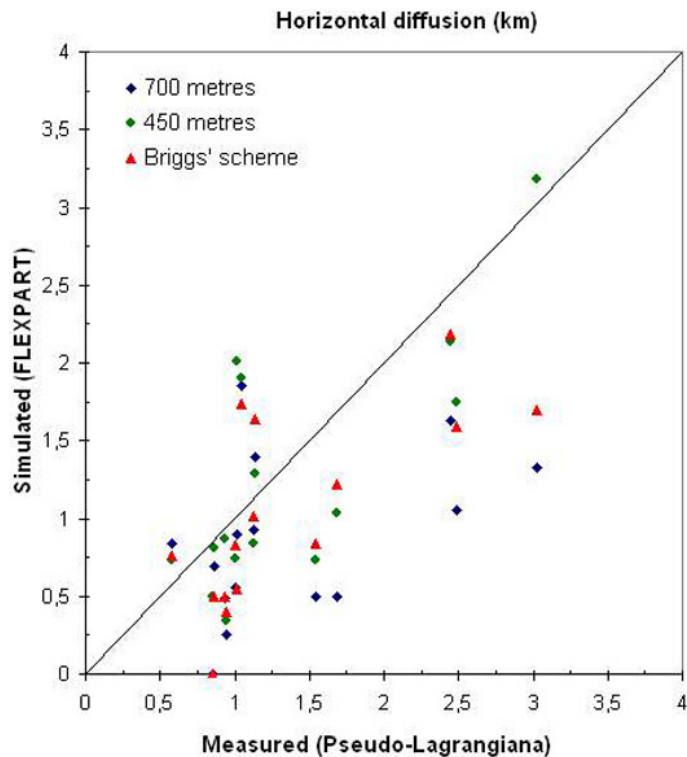


Fig. 12. Comparison between simulated and measured horizontal diffusion for the three different emission schemes performed during the dispersive simulations.

[Title Page](#)[Abstract](#)[Introduction](#)[Conclusions](#)[References](#)[Tables](#)[Figures](#)[◀](#)[▶](#)[◀](#)[▶](#)[Back](#)[Close](#)[Full Screen / Esc](#)[Print Version](#)[Interactive Discussion](#)

Dispersion on
complex terrain
under winter
conditions

J. L. Palau et al.

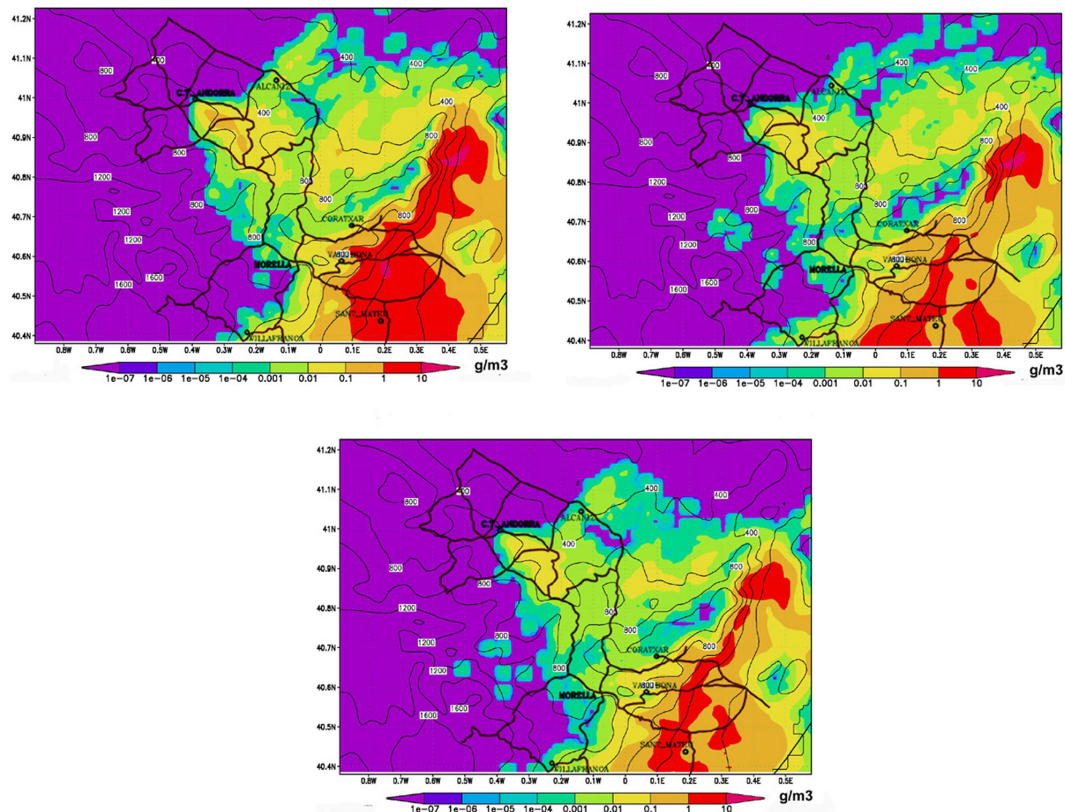


Fig. 13. Simulated plume footprint when using the three different emission schemes (top left, **(A)**, 450 m-height; top right, **(B)**, 700 m-height; and bottom, **(C)**, Briggs' plume-rise scheme). Figures represent the SO_2 ground-level concentration accumulated during the four-day simulated period (25–28 November).

Title Page

Abstract

Introduction

Conclusions

References

Tables

Figures

◀

▶

◀

▶

Back

Close

Full Screen / Esc

Print Version

Interactive Discussion

Dispersion on
complex terrain
under winter
conditions

J. L. Palau et al.

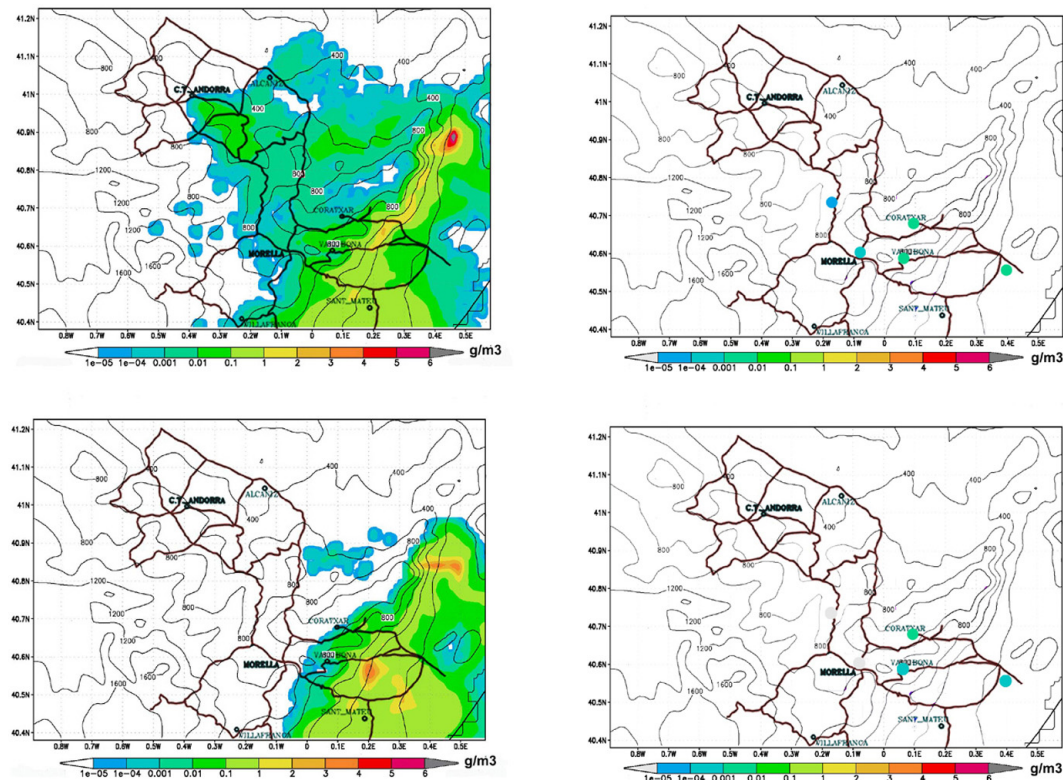


Fig. 14. Accumulated diurnal (top-left, **A**) and nocturnal (bottom-left, **C**) ground-level concentration fields obtained from the dispersive simulations performed with the 700 m constant height scheme. Experimental diurnal (top-right, **B**) and nocturnal (bottom-right, **D**) accumulated SO₂ concentration at five air quality stations, Northeast of the APP. Accumulation was calculated for the four-day simulated period (25–28 November).

Title Page

Abstract

Introduction

Conclusions

References

Tables

Figures

◀

▶

◀

▶

Back

Close

Full Screen / Esc

Print Version

Interactive Discussion

Dispersion on complex terrain under winter conditions

J. L. Palau et al.

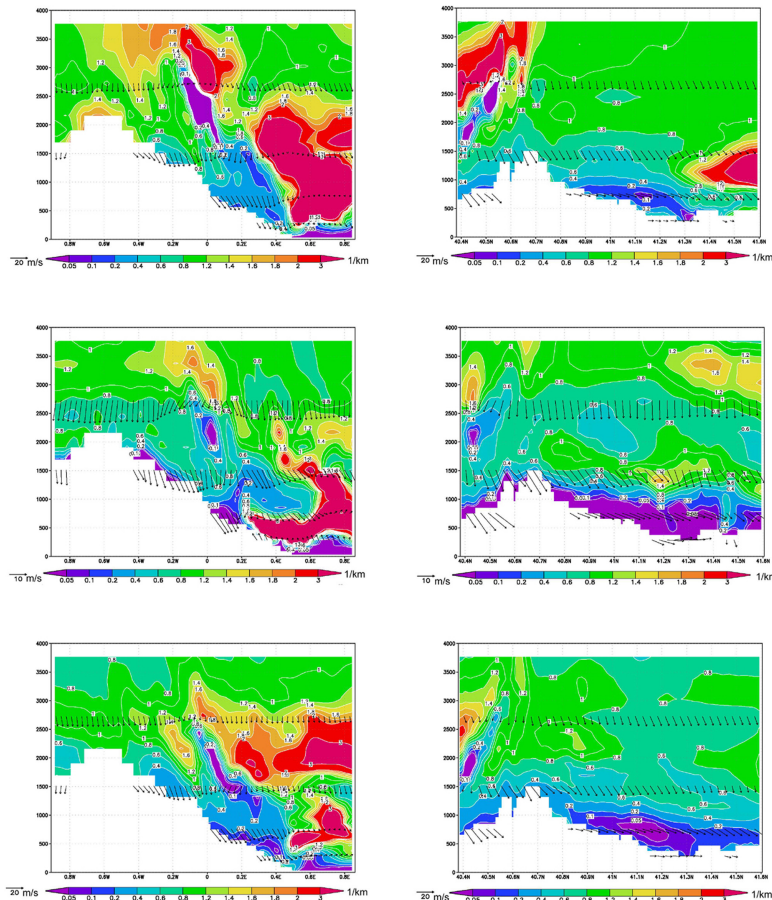


Fig. 15. Vertical distribution of the Scorer parameter (km^{-1}) from the meteorological simulations for 28 November. Vectors indicate wind field. The left column corresponds to a fixed latitude plane (40.43°N) and the right column corresponds to a fixed longitude plane (0.05°E). The first row corresponds to 06:00 GMT, the second row to 13:00 GMT, and the third row to 18:00 GMT.

[Title Page](#)[Abstract](#)[Introduction](#)[Conclusions](#)[References](#)[Tables](#)[Figures](#)[◀](#)[▶](#)[◀](#)[▶](#)[Back](#)[Close](#)[Full Screen / Esc](#)[Print Version](#)[Interactive Discussion](#)

Dispersion on
complex terrain
under winter
conditions

J. L. Palau et al.

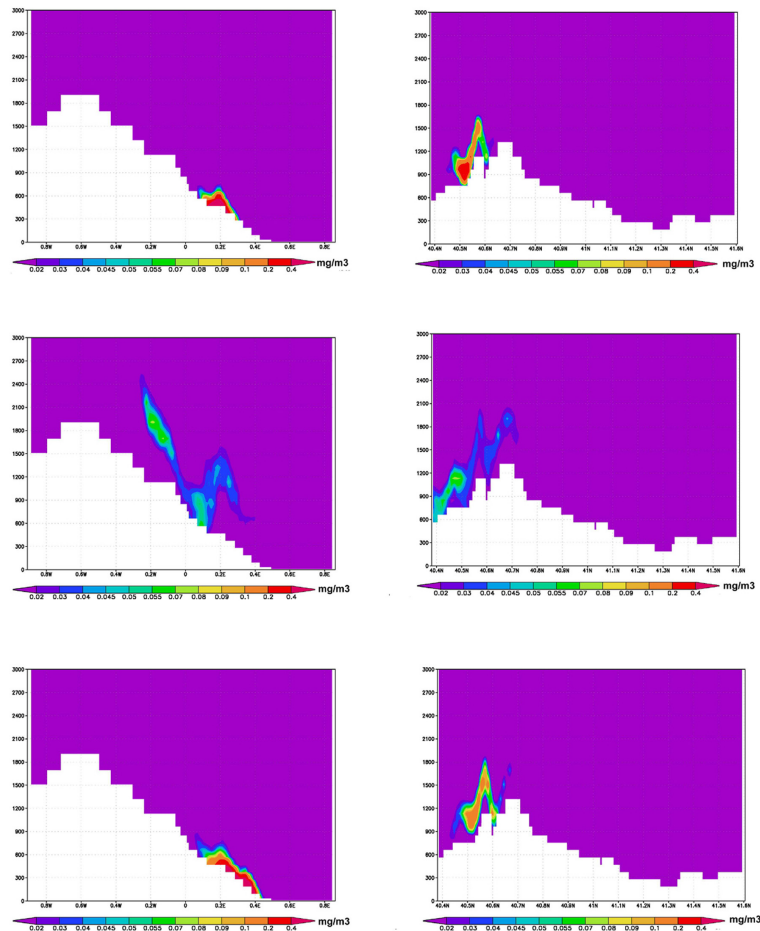


Fig. 16. Vertical distributions (left column, constant latitude 40.43° N; right column, constant longitude 0.05° E) of the simulated SO_2 plume for 28 November. The first row corresponds to 06:00 GMT, the second row corresponds to 13:00 GMT, and the third row corresponds to 18:00 GMT.

[Title Page](#)[Abstract](#)[Introduction](#)[Conclusions](#)[References](#)[Tables](#)[Figures](#)[⏪](#)[⏩](#)[◀](#)[▶](#)[Back](#)[Close](#)[Full Screen / Esc](#)[Print Version](#)[Interactive Discussion](#)

**Dispersion on
complex terrain
under winter
conditions**

J. L. Palau et al.

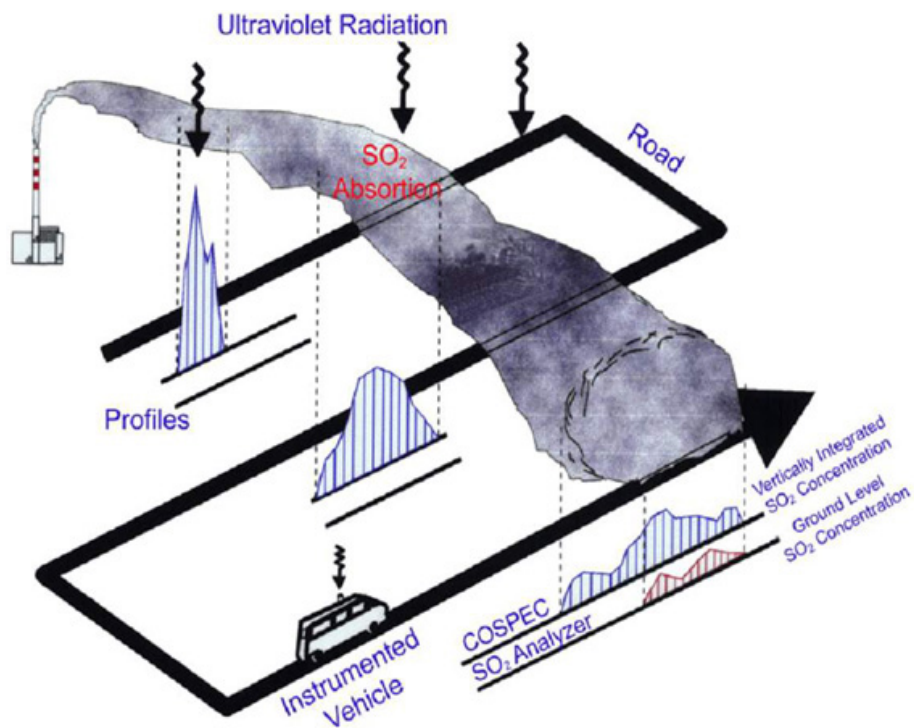


Fig. A1. Plume tracking strategy. A vehicle instrumented with a COSPEC and a ground-level analyser makes transects at different distances from the emission source for the whole day.

[Title Page](#)[Abstract](#)[Introduction](#)[Conclusions](#)[References](#)[Tables](#)[Figures](#)[◀](#)[▶](#)[◀](#)[▶](#)[Back](#)[Close](#)[Full Screen / Esc](#)[Print Version](#)[Interactive Discussion](#)

EGU

**Dispersion on
complex terrain
under winter
conditions**

J. L. Palau et al.

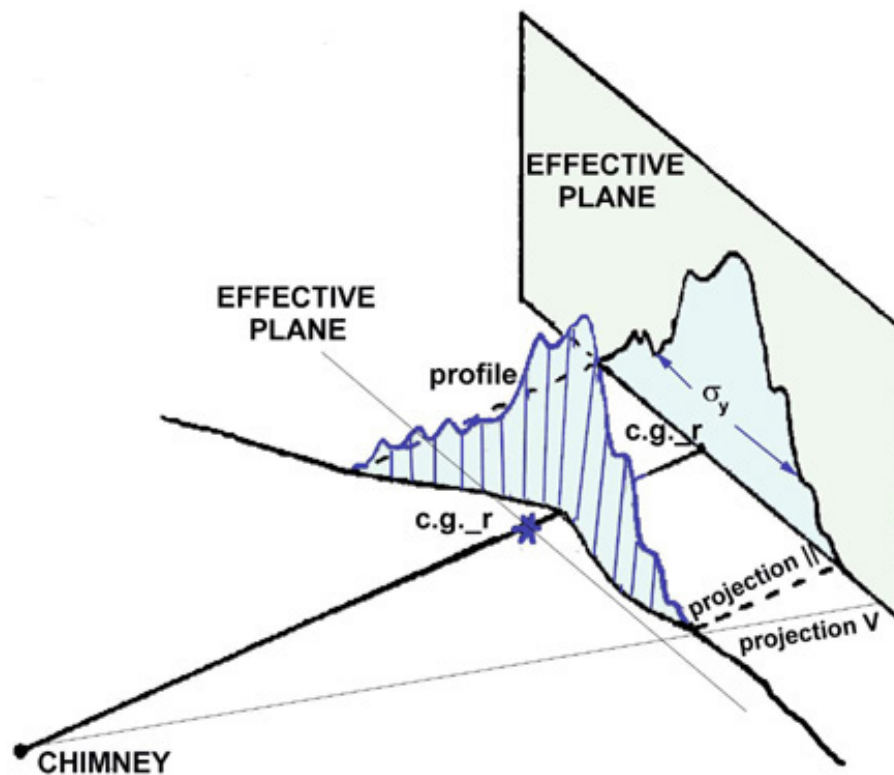


Fig. A2. Schematic representation of the definition of “effective plane”, starting from a vertically integrated distribution recorded with the COSPEC along a road span. C.g._r is the center of gravity of the distribution measured along the road.

[Title Page](#)[Abstract](#)[Introduction](#)[Conclusions](#)[References](#)[Tables](#)[Figures](#)[◀](#)[▶](#)[◀](#)[▶](#)[Back](#)[Close](#)[Full Screen / Esc](#)[Print Version](#)[Interactive Discussion](#)

**Dispersion on
complex terrain
under winter
conditions**

J. L. Palau et al.

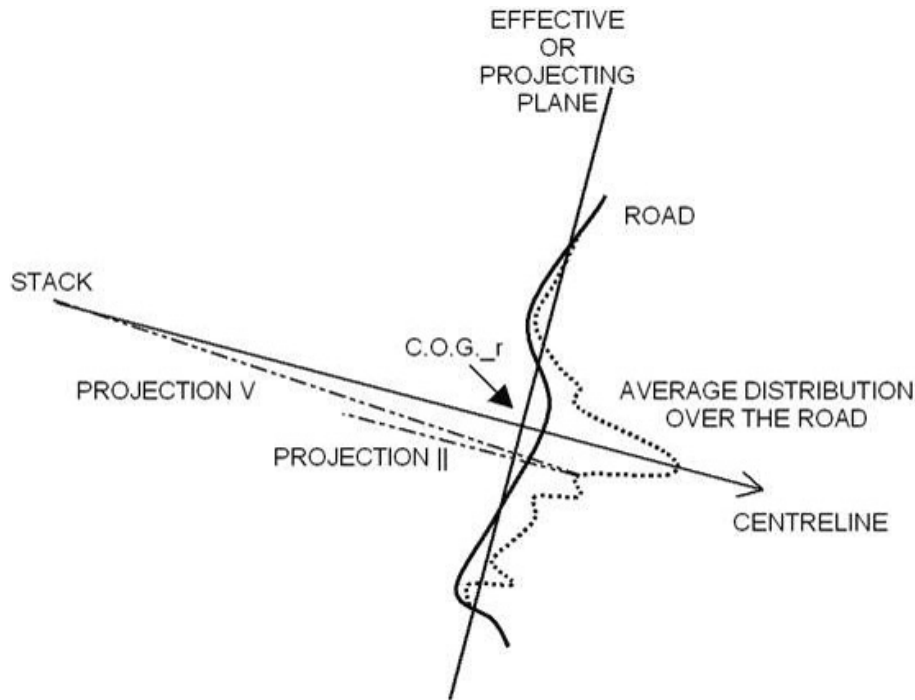


Fig. A3. Schematic representation of the definition of the “effective plane” and the “centreline”, starting from a vertically integrated distribution recorded with the COSPEC along a road span. C.g._r is the center of gravity of the distribution measured along the road.

[Title Page](#)[Abstract](#)[Introduction](#)[Conclusions](#)[References](#)[Tables](#)[Figures](#)[◀](#)[▶](#)[◀](#)[▶](#)[Back](#)[Close](#)[Full Screen / Esc](#)[Print Version](#)[Interactive Discussion](#)

**Dispersion on
complex terrain
under winter
conditions**

J. L. Palau et al.

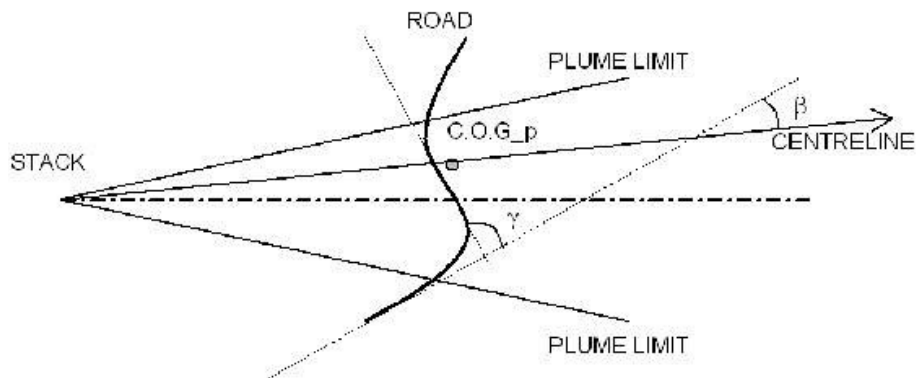


Fig. A4. Schematic representation of the definition of “angles β and γ ” definition, starting from the road span and the centreline. C.g.-p is the center of gravity of the distribution projected on the effective plane.

[Title Page](#)[Abstract](#)[Introduction](#)[Conclusions](#)[References](#)[Tables](#)[Figures](#)[⏪](#)[⏩](#)[◀](#)[▶](#)[Back](#)[Close](#)[Full Screen / Esc](#)[Print Version](#)[Interactive Discussion](#)

Dispersion on complex terrain under winter conditions

J. L. Palau et al.

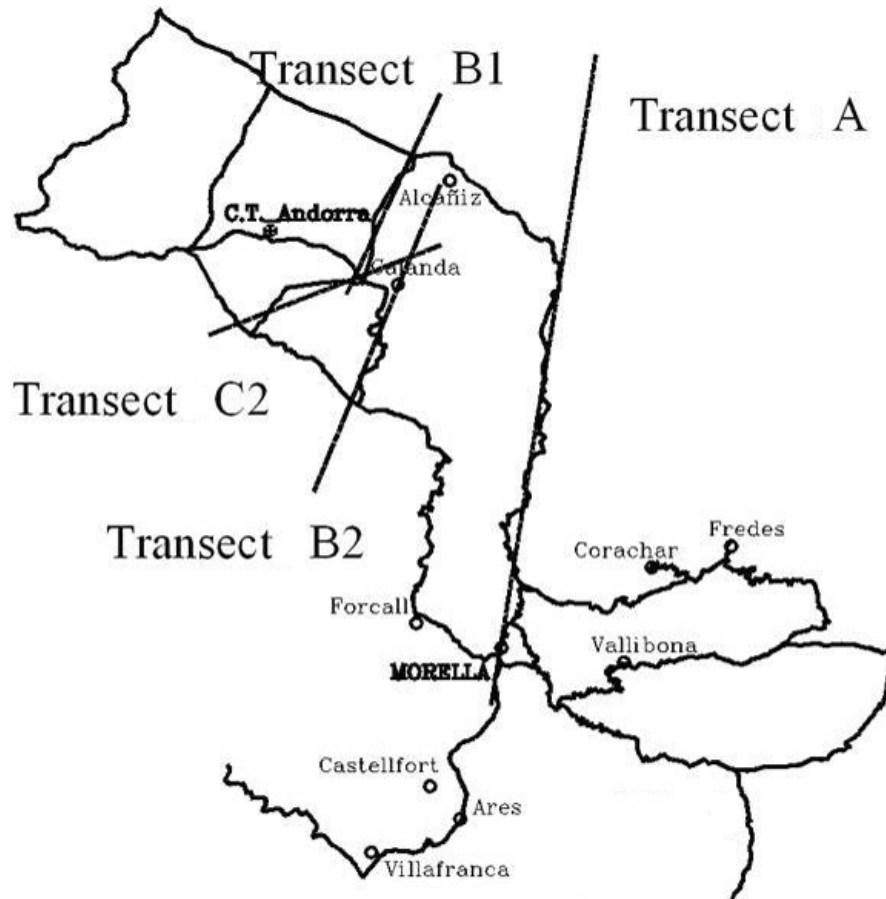


Fig. A5. Straight lines defined on four selected transects from the available road network.

Title Page

Abstract

Introduction

Conclusions

References

Tables

Figures

◀

▶

◀

▶

Back

Close

Full Screen / Esc

Print Version

Interactive Discussion

**Dispersion on
complex terrain
under winter
conditions**

J. L. Palau et al.

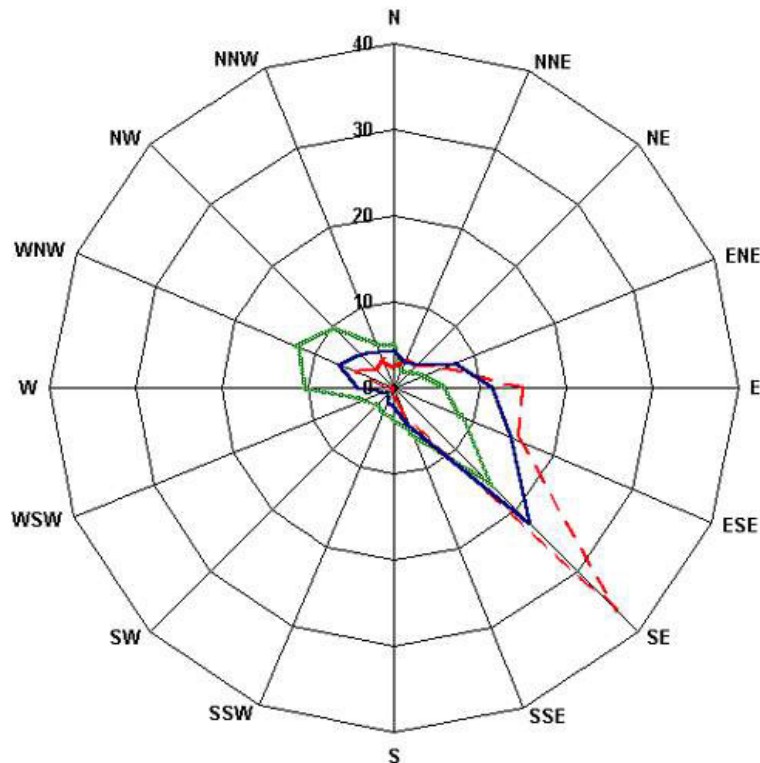


Fig. B1. Frequency (%) in which the plume aloft is advected in a particular direction (wind roses at the mean plume advection height). The ‘plume roses’ were obtained as annual and seasonal averages for the period 1995–2004. The blue line is the “annual” frequency of the plume transport direction aloft; the dotted red line is the “winter” frequency of the plume transport direction aloft; and the green line is the “summer” frequency of the plume transport aloft.

[Title Page](#)[Abstract](#)[Introduction](#)[Conclusions](#)[References](#)[Tables](#)[Figures](#)[◀](#)[▶](#)[◀](#)[▶](#)[Back](#)[Close](#)[Full Screen / Esc](#)[Print Version](#)[Interactive Discussion](#)