



**HAL**  
open science

## Mexico City basin wind circulation during the MCMA-2003 field campaign

B. de Foy, E. Caetano, V. Magaña, A. Zitácuaro, B. Cárdenas, A. Retama, R.  
Ramos, L. T. Molina, M. J. Molina

► **To cite this version:**

B. de Foy, E. Caetano, V. Magaña, A. Zitácuaro, B. Cárdenas, et al.. Mexico City basin wind circulation during the MCMA-2003 field campaign. Atmospheric Chemistry and Physics Discussions, 2005, 5 (3), pp.2503-2558. hal-00303903

**HAL Id: hal-00303903**

**<https://hal.science/hal-00303903>**

Submitted on 18 Jun 2008

**HAL** is a multi-disciplinary open access archive for the deposit and dissemination of scientific research documents, whether they are published or not. The documents may come from teaching and research institutions in France or abroad, or from public or private research centers.

L'archive ouverte pluridisciplinaire **HAL**, est destinée au dépôt et à la diffusion de documents scientifiques de niveau recherche, publiés ou non, émanant des établissements d'enseignement et de recherche français ou étrangers, des laboratoires publics ou privés.

**Mexico City wind  
circulation**

B. de Foy et al.

# Mexico City basin wind circulation during the MCMA-2003 field campaign

**B. de Foy<sup>1</sup>, E. Caetano<sup>2</sup>, V. Magaña<sup>2</sup>, A. Zitiácuaro<sup>2</sup>, B. Cárdenas<sup>3</sup>, A. Retama<sup>4</sup>, R. Ramos<sup>4</sup>, L. T. Molina<sup>1</sup>, and M. J. Molina<sup>1</sup>**

<sup>1</sup>Department of Earth, Atmospheric and Planetary Sciences, Massachusetts Institute of Technology, USA

<sup>2</sup>Centro de Ciencias de la Atmósfera, Universidad Nacional Autónoma de México, Mexico

<sup>3</sup>General Direction of the National Center for Environmental Research and Training (CENICA), National Institute of Ecology (INE), Mexico

<sup>4</sup>Secretaría del Medio Ambiente, Gobierno del Distrito Federal, Mexico

Received: 22 March 2005 – Accepted: 6 April 2005 – Published: 2 May 2005

Correspondence to: B. de Foy (foy@mit.edu)

© 2005 Author(s). This work is licensed under a Creative Commons License.

Title Page

Abstract

Introduction

Conclusions

References

Tables

Figures

◀

▶

◀

▶

Back

Close

Full Screen / Esc

Print Version

Interactive Discussion

EGU

## Abstract

MCMA-2003 was a major field campaign investigating the atmospheric chemistry of the Mexico City Metropolitan Area (MCMA) in April of 2003. This paper describes the wind circulation patterns during the campaign both within the Mexico City basin and on the regional scale. “Time roses” are introduced to concisely analyze the diurnal wind patterns. Three episode types were identified that explain the conditions encountered: “O3-South”, “Cold Surge” and “O3-North”. These can be diagnosed from a combination of synoptic and basin observations based on whether the day was predominantly cloudy, or whether the O<sub>3</sub> peak was in the north or south of the basin. O3-South days have weak synoptic forcing due to an anti-cyclone over the eastern Pacific. Strong solar heating leads to northerly flows in the basin and an evening shift due to a gap flow from the south-east. Peak ozone concentrations are in the convergence zone in the south of the city. Cold Surge days are associated with “El Norte” events, with strong surface northerlies bringing cold moist air and rain. Stable conditions lead to high concentrations of primary pollutants and peak ozone in the city center. O3-North days occur when the sub-tropical jet is closer to Mexico City. With strong westerlies aloft, the circulation pattern is the same as O3-South days except for a wind shift in the mid-afternoon leading to ozone peaks in the north of the city. This classification is proposed as a means of understanding pollutant transport in the Mexico City basin and as a basis for future meteorological and chemical analysis. Furthermore, model evaluation and design of policy recommendations will need to take into account the three episode types.

## 1. Introduction

The Mexico City Metropolitan Area (MCMA) is situated inside a basin at 2240 m altitude and 19° N latitude. The basin is surrounded by high mountains on three sides as shown in Fig. 1. To the west and south there is an elevated rim of which the highest point is the

## Mexico City wind circulation

B. de Foy et al.

Title Page

Abstract

Introduction

Conclusions

References

Tables

Figures

◀

▶

◀

▶

Back

Close

Full Screen / Esc

Print Version

Interactive Discussion

**Mexico City wind  
circulation**

B. de Foy et al.

Title Page

Abstract

Introduction

Conclusions

References

Tables

Figures

◀

▶

◀

▶

Back

Close

Full Screen / Esc

Print Version

Interactive Discussion

EGU

Volcan Ajusco at 3930 m above sea level. To the east is a north/south barrier consisting of three peaks, with the Popocatepetl reaching an elevation of 5465 m. To the north, the basin extends into the Mexican Plateau and the arid interior of the country, with the Sierra de Guadalupe creating a small 800 m barrier above the basin floor. The regional topography is just as important as that of the basin. To the south, at low altitude, are Cuernavaca and the valley of Cuautla. Immediately to the north-east is the bottom of the Sierra Madre Oriental parallel to coastal plains 50 km away and the coast of the Gulf of Mexico 200 km away. To the north-west and west is the Sierra Madre Occidental which forms a barrier to the Pacific, 300 km away. [Molina and Molina \(2002\)](#) describe in greater detail the MCMA and provide the current state of understanding of its air quality.

The Mexico City basin meteorology is usually classified into three seasons: the cold dry season from November to February, the warm dry season from March to April and the rainy season from May to October. These are due to the two basic patterns on the synoptic scale: dry, westerly flow from November to April with anticyclonic conditions, and moist easterly flows due to the weaker trade winds for the other half of the year.

Due to its complex physiography, the micro-meteorology of the MCMA cannot be simplified to one individual factor but depends rather on the interplay of the basin with the Mexican plateau and the lower coastal areas. [Jauregui \(1988\)](#) analyzed the surface wind and temperature measured in the city and their impact on SO<sub>2</sub> levels. For the dry season when anticyclonic conditions and westerly flows aloft dominate, weak northerly flows were found during the morning, strengthening in the afternoon with an increased westerly component and turning into downslope drainage flows at night. Of particular significance was the effect of the urban heat island which increases the drainage flows but reduces the upslope flow to the west during the day. The surface energy balance was measured by [Oke et al. \(1992\)](#) showing large ground heat fluxes capable of modifying the local circulation. [Jauregui and Luyando \(1999\)](#) looked at the contribution of the attenuation due to aerosols to the radiation budget. Increased radiation attenuation correlated with reduced wind speeds and temperatures but increased relative humidity

and air pollution.

The Mexico City Air Quality Research Initiative (MARI) conducted a field campaign in February 1991 involving vertical profiling with both a LIDAR and an aircraft (Streit and Guzman, 1996). Nickerson et al. (1992) show some of the profiles obtained for particulate matter, SO<sub>2</sub> and O<sub>3</sub>, focussing on a day with weak northerly winds leading to high pollutant levels and one with stronger southerly winds leading to cleaner air. Williams et al. (1995) modeled the episodes to reproduce the light northeast winds with pollution accumulation in the south-west of the basin. Lagrangian dispersion modeling found entrainment of particles convected aloft into the drainage flows of the mountains at night. Bossert (1997) analyzed three different episodes which he called the synoptic, thermal and regional flows. In the first case, southerly flow aloft leads to strong cool southerly flow in the basin and rapid pollutant washout to the north. In the second case, very weak synoptic flows lead to a situation dominated by thermal heating in the basin. Upslope flow leads to basin venting to the upper troposphere. Lastly, north-westerly synoptic flow leads to a situation favoring the arrival of cool moist air from the Gulf of Mexico into the basin. This leads to pollutant accumulation in the south of the basin followed by mountain venting as for the second case.

The next international campaign was the IMADA-AVER Boundary Layer Experiment held in February and March of 1997 (Doran et al., 1998). Fast and Zhong (1998) analyzed the meteorological factors associated with inhomogeneous ozone concentrations using mesoscale models. Thermal flows were found similar to those described by Bossert (1997), but with significant vertical wind direction shear leading to recirculation over the basin and possible re-entrainment of air pollutants in the northern part of the basin. Other days had similar thermal flows but with no vertical shear and weaker flows aloft, combined with increased atmospheric stability leading to pollutant accumulation in the south of the city. Residence times were analyzed with a Lagrangian model showing very little multi-day accumulation. Whiteman et al. (2000) found an absence of nocturnal inversions due to urban effects. Very strong daytime heating was followed by rapid cooling in the late afternoon that could only be explained by horizontal ad-

Mexico City wind circulation

B. de Foy et al.

Title Page

Abstract

Introduction

Conclusions

References

Tables

Figures

◀

▶

◀

▶

Back

Close

Full Screen / Esc

Print Version

Interactive Discussion

**Mexico City wind  
circulation**

B. de Foy et al.

Title Page

Abstract

Introduction

Conclusions

References

Tables

Figures

◀

▶

◀

▶

Back

Close

Full Screen / Esc

Print Version

Interactive Discussion

EGU

vection of cold air from the south. Furthermore, flows were described that were not typical basin flows but rather were due to the plateau-basin interactions. The coastal flows described by [Bossert \(1997\)](#) were found to be held back by the mountains and only led to an influx of cold air when the plateau-basin thermal balance reverses later in the day. [Doran and Zhong \(2000\)](#) analyzed the strong southerly gap flow from the Cuautla valley through the Chalco passage. This correlates with both the north/south surface temperature gradient in the basin and a similar gradient aloft between the basin and Acapulco on the Pacific coast to the south. [Jazcilevich et al. \(2003\)](#) further analyzed these episodes using the Multiscale Climate Chemistry Model ([Grell et al., 2000](#)). Transport of CO from the south-west to the northern part of the city resulting from the mountain-basin flow was indicative of direct, convective recirculation of air.

Analysis of monitoring data from the Ambient Air Monitoring Network (Red Automática de Monitoreo Atmosférico, RAMA) has provided valuable insights into the basin dynamics. [Raga and Le Moyne \(1996\)](#) analyzed basin-wide monitoring data and identified a pattern of transport from the north-west to the south-east using nonlinear analysis. [Raga et al. \(1999\)](#) identified evidence of the upslope flow on the southern edge of the basin by looking at measurements of primary and secondary pollutants. While the former are diluted by up to 50% as the flow moves up the slope, the concentration of the latter increases. A lag time of 2 h was found for the transport from the basin floor to the edge of the basin. At night, increasing levels of O<sub>3</sub> at basin sites is traced to downward transport due to the drainage flows. Principal component analysis of O<sub>3</sub> distributions was carried out by [Klaus et al. \(2001\)](#). Four eigenvectors were found to account for 55% of the variance in O<sub>3</sub> concentrations. These components correspond to the north/south transport of pollutants, the east/west slope flows, the center/periphery due to drainage flows and urban effects and a north-east/south-west component due to moisture and precipitation flows.

The majority of pollution studies to date have concentrated on episodes with O<sub>3</sub> peaks in the south of the city. This paper examines this episode type during the MCMA-2003 campaign, but also expands the analysis by adding two additional categories of

importance to air quality studies. Section 9 will suggest a classification of the existing circulation models in terms of the episode types proposed here.

## 2. Field campaign description

MCMA-2003 was designed to be towards the end of the dry season when solar radiation is intense but daily convective rainfall has not yet begun. In addition, it included school vacations as well as Holy Week and Easter when traffic is greatly reduced in the whole city, providing a natural experiment for the impact of emissions reductions. The four goals of the field campaign were (1) to develop improved volatile organic compounds (VOC) and nitrogen oxides (NO<sub>x</sub>) emissions inventories; (2) to develop a better understanding of formaldehyde sources and atmospheric chemistry; (3) to investigate fine particulate components and sources; and (4) to develop improved understanding of odd nitrogen (NO<sub>y</sub>) levels and partitioning. In this context, the main meteorological questions were (1) the nature of the mixed layer; (2) the impact of carry-over from day-to-day; and (3) the evaluation of mesoscale model performance.

This paper describes the basin circulation patterns occurring during the campaign and classifies the days of the campaign into three types of episodes. This lays the foundation for further work to answer the meteorological questions of the field campaign. By classifying the days, it will be possible to look at the behavior of the mixed layer in relation to the basin circulation. Developing circulation patterns will guide the analysis of carry-over by identifying both the days where accumulation is expected to occur and those where the basin is flushed clean. Finally, the paper lays out a framework for evaluating models in terms of the dominant flow features encountered in the basin for multiple episodes grouped together.

Section 4 will provide an overview of the field campaign meteorological conditions and wind patterns at CENICA and proposes a classification and circulation scheme for the Mexico City basin. The surface wind patterns are analysed at the national scale (Sect. 5) and at the basin scale (Sect. 6) showing the differences between the pro-

### Mexico City wind circulation

B. de Foy et al.

Title Page

Abstract

Introduction

Conclusions

References

Tables

Figures

◀

▶

◀

▶

Back

Close

Full Screen / Esc

Print Version

Interactive Discussion

**Mexico City wind  
circulation**

B. de Foy et al.

Title Page

Abstract

Introduction

Conclusions

References

Tables

Figures

◀

▶

◀

▶

Back

Close

Full Screen / Esc

Print Version

Interactive Discussion

EGU

posed episodes. Section 7 extends this analysis to the measurements available aloft from radiosondes. The impact of the circulation patterns on the diurnal meteorological profiles at CENICA and the pollution levels in the city will be described in Sect. 8. After the discussion in Sect. 9, a catalogue of events has been included in Sect. 10 to highlight photochemical and meteorological events that are of particular interest.

### 3. Measurement description

The MCMA-2003 field campaign was based at the National Center for Environmental Research and Training (Centro Nacional de Investigación y Capacitación Ambiental, CENICA) super-site working together with the Aerodyne mobile laboratory (Kolb et al., 2004). The analysis is based on the monitoring site at CENICA and on the monitoring networks operated by the Mexican National Weather Service (Servicio Meteorológico Nacional, SMN) and by RAMA. Detailed measurements during the campaign available from LIDAR, SODAR, tethersonde, pilot balloon, radiometers and temporary monitoring sites installed on the MCMA boundary will be presented separately.

Figure 2 shows surface and upper-air stations used in the current study on the national scale. The automatic weather stations (EHCA) are operated by SMN (see <http://smn.cna.gob.mx/productos/emas/emas.html>) and report 10-min data in three hour blocks via satellite. The observations were averaged to one hour intervals for this analysis. The SMN radiosondes are launched at 12:00 UTC outside of Mexico City. The Mexico City radiosondes are launched from the SMN headquarters (GSMN), WMO ID 76679 (also MEX) which is on the western edge of the basin floor every 6 h at 00:00, 06:00, 12:00 and 18:00 UTC.

Figure 3 shows the observation network in the basin. CENICA is in the south-east of the city. There are six SMN surface weather stations in the basin: SMN Headquarters (GSMN), Escuela Nacional de Ciencias Biológicas (ENCB), Mexico International Airport (AERO), Tezontle (TEZO), Pimentel (PIME) and Presa Madín (MADI). RAMA operates 32 monitoring sites in the MCMA. Of these, 15 are equipped with weather sta-



tions, 23 with CO monitors and 20 with O<sub>3</sub> monitors. The data is archived at one-minute time resolution and averaged to one hour for reporting and analysis. The symbol on the map shows the geographical sectors used by RAMA in classifying the stations.

The timezone in the MCMA was Central Standard Time (CST=UTC−6) before 6 April and daylight saving time (CDT=UTC−5) thereafter. The field campaign policy specified the use of local time for data storage and analysis, a convention that will be followed here with times in CDT unless marked otherwise. Solar noon during the campaign was within 5 min of 13:35.

#### 4. General overview

April is a transition month between the hot dry season and the wet season (Jauregui, 1988). There are therefore weather events occurring from both kinds of seasons in brief succession. Typically, the mean April synoptic flow is dominated by a low level anticyclonic circulation over central southern Mexico and westerly winds aloft north of 20° N. This leads to subsidence over the Mexico basin with weak surface winds favorable to the development of thermally driven circulations. This pattern was observed for two episodes during MCMA-2003: 14–17 April and 1–3 May. They will be referred to as “O3-South” as, under these conditions, ozone levels are highest in the south of the city. An important phenomenon leading to low temperatures and rains in Mexico is “el Norte” or “Cold Surge” (Schultz et al., 1998 and Mosiño Alemán and García, 1974). This occurred twice during the campaign, on 8–10 and 20–22 April, and once before the beginning of the campaign on 29–31 March. The remaining days of the campaign had unperturbed westerlies with very weak anticyclonic conditions to the south and a strong subtropical jet just to the north of the MCMA. This results in high ozone levels in the north of the city, and will be referred to as “O3-North”.

GOES-12 cloud imagery is shown in Fig. 4 for representative days of the 3 episode types (14, 8, and 24 April). Superimposed are arrows showing dominant transport direction of air masses important to the flow in the Mexico City basin. The proposed

Title Page

Abstract

Introduction

Conclusions

References

Tables

Figures

◀

▶

◀

▶

Back

Close

Full Screen / Esc

Print Version

Interactive Discussion

---

**Mexico City wind  
circulation**B. de Foy et al.

---

[Title Page](#)[Abstract](#)[Introduction](#)[Conclusions](#)[References](#)[Tables](#)[Figures](#)[◀](#)[▶](#)[◀](#)[▶](#)[Back](#)[Close](#)[Full Screen / Esc](#)[Print Version](#)[Interactive Discussion](#)

EGU

circulation patterns in the basin for each episode are shown in Fig. 5. These will be discussed in greater detail once the supporting data has been presented.

Surface and 500 hPa weather maps are shown in Figs. 6 and 7 for representative days of the 3 episode types (14, 8, and 24 April 13:00). O3-South days occur when a high pressure system is located over the eastern Pacific leading to subsidence and clear skies. Strong sea breezes develop under these conditions and are clearly signaled by the surface convection cloudiness on the Gulf coast as the warm moist air from the Gulf rises overland. For the Cold Surge, a surface high over Texas with convergence aloft leads to strong northerly flow of cold polar air down the Gulf of Mexico. It accumulates moisture and is partially held back by the Sierra Madre Oriental leading to afternoon flows over the mountains and strong flows through the isthmus of Tehuantepec. Mild cloudiness is associated with a low pressure trough off the western coast of Mexico containing warmer tropical air. For O3-North days, the situation is dominated by the westerly winds that reach down to the latitude of the MCMA, with the subtropical jet clearly marked by the band of clouds that form beneath. This situation corresponds to low pressure systems over the US but very little activity to the south.

Table 1 lists all the days of the campaign with their group, cloudiness, rain, O<sub>3</sub> and CO levels. There are 7 O3-South days, 10 Cold Surge days and 17 O3-North days making each episode type well represented during the campaign. Each of the three episode types lead to high pollution events: O3-South days have a peak around 150 ppb O<sub>3</sub>, with one day above 200 ppb, Cold Surge days have a broad distribution from 140 to 175 ppb and O3-North days have a narrower distribution around 170 ppb but with three days above 200 ppb.

Two-dimensional maps of the maximum ozone for everyday of the campaign are shown in Fig. 18. These are arranged by episode type and show clearly high ozone levels in the south of the city for O3-South days, in the north for O3-North, and lower levels with a more even geographical distribution for Cold Surge.

Figure 8 shows the wind rose for CENICA during the entire campaign. The preferred directions are from the north-east and south, but there is no clear pattern in the winds.

**Mexico City wind  
circulation**

B. de Foy et al.

[Title Page](#)[Abstract](#)[Introduction](#)[Conclusions](#)[References](#)[Tables](#)[Figures](#)[◀](#)[▶](#)[◀](#)[▶](#)[Back](#)[Close](#)[Full Screen / Esc](#)[Print Version](#)[Interactive Discussion](#)

EGU

Also shown in Fig. 8 are the diurnal profile of wind speed and wind direction as median, upper and lower quartile and data range for each episode. For wind speed, there is a clear pattern that differs little between the episodes. Winds are below 2 m/s in the early morning, increase steadily from sunrise to speeds of 4 to 6 m/s at sunset and then decrease until about midnight. The wind direction is southerly in the early morning, shifting to northerly during the day and back to southerly at night. There is a sharp difference between the episodes in the timing of the wind shift from northerly to southerly, highlighted by the arrows in the figure. O3-South days have a late shift to southerly between 18:00–21:00. The same shift exists on O3-North days but 3–6 h earlier, starting at 15:00. For Cold Surge days winds are more consistently from the north and north-west, with a gradual shift limited to the early hours of the morning. Because traditional wind roses fail to capture the differences in these patterns, Fig. 9 shows a “Time rose” for each episode. Wind speed categories have been replaced by time of day categories, showing the dominant wind direction for each time segment. These were selected to be 0–6, 6–9, 9–12, 12–15, 15–18 and 18–24: 3 h resolution during the day and 6 h at night when the variations are smaller. The distinctive feature of each episode can be clearly seen: northerly to southerly wind shift between 18:00–24:00 for O3-South, same shift but at 15:00 for O3-North and northerly winds for Cold Surge.

These sharp differences suggest that this classification accounts for the main variability in basin observations. It will therefore be used in understanding the circulation in the MCMA and the manner in which it is influenced by the synoptic flow. Once the circulation patterns associated with each episode are established, they will help in the analysis of chemical measurements in the basin and provide a basis for organizing and averaging field campaign results.

## 5. Surface observations

Figure 10 shows the surface winds over the sea measured by SeaWinds on QuikSCAT (Perry, 2001), averaged for both ascending and descending passes by episode. On the Pacific side, the Hawaiian high leads to north-westerly winds sweeping down the Pacific coast from Baja California and turning easterly into the intertropical convergence zone below Acapulco. On the Gulf of Mexico side, the Bermuda-Azores high leads to south-easterly winds moving up towards Texas. O3-North days follow this pattern very closely. O3-South days are similar except for a weakening of the flow along the Pacific coast and easterly, rather than south-easterly, winds over the Gulf of Mexico. On Cold Surge days, the strong northerly current is clearly visible over the Gulf, leading to a gap flow over the Isthmus of Tehuantepec and into the Pacific. Note that averaging blurs this feature as the strength of the flow varies strongly both during and between Cold Surge events.

Surface winds along the coasts of Mexico are determined by the interaction of the sea breezes with these stationary highs. Figure 11 shows “Time roses” for representative stations on the regional scale. On the Pacific coast, at the stations of Acapulco (ACAP) and Puerto Angel (PUER) the winds are predominantly westerly with a secondary sea breeze turning the wind towards the ocean before sunrise and towards the land in the afternoon. Río Tomatlan (TOMA) and Chinatu (CHIN) have winds determined by the local topography. On the Gulf coast, to the north, the strength of the surface easterlies prevents a flow reversal and winds are consistently inland (easterly). To the south of Tampico (TAMP), starting with Tuxpan, (TUXP) there is a reversal, however, with westerly flows in the early morning.

In the interior of Mexico, the surface winds are determined by the competing inland flows which create a convergence zone that runs down the Mexican Plateau towards the MCMA. On certain days, this is visible as cumulus clouds forming in the afternoon over the Mexican Plateau. The position of the convergence line is influenced by the strength and direction of the westerlies aloft. At Zacatecas (ZACA) and Los Colomos

Title Page

Abstract

Introduction

Conclusions

References

Tables

Figures

◀

▶

◀

▶

Back

Close

Full Screen / Esc

Print Version

Interactive Discussion

(LOSC), on the Pacific side of the Mexican Plateau, the winds are predominantly west-  
erly and the difference in episodes is limited to an increasing northerly component for  
O3-South days. To the south-east of the MCMA, surface stations are very influenced  
by local topography. For these stations, wind patterns follow diurnal mountain/valley  
5 flow patterns with little variation between the episode types.

The real difference among episodes exists in the Mexico City basin and the neigh-  
boring part of the Mexican Plateau to the north. On O3-South days, the stations west  
of the MCMA have a south-westerly flow in the morning but strong afternoon turning  
with winds from the north-west and north-east. At Pachuca, the afternoon winds are  
10 north-westerly instead of south-westerly. The north-westerly winds are due to local  
heating and terrain turning the north-easterly Gulf flow. Overall, this suggests a con-  
vergence line that passes through the Mexico City basin and moves west as the day  
progresses. On O3-North days, the stations west of the MCMA have south-westerly  
flow in the morning and north-westerly in the afternoon. On the opposite side of the  
15 basin, at Pachuca (PACH), there is north-easterly flow in the morning turning to south-  
westerly in the afternoon. This suggests that in the morning the convergence line  
passes through the MCMA and is then shifted to the north-east as the incoming flow  
from the Pacific is reinforced by the westerlies aloft. Cold Surge days have the northerly  
flow superimposed on local thermal flows with the greatest influence along the Gulf  
20 coast, decreasing with distance towards the south-west. There is, however, a clear  
line of influence that extends from Zacatecas to Presa Allende, Nevado de Toluca and  
Izúcar de Matamoros.

## 6. Basin surface observations

The winds at CENICA have a strong diurnal pattern in wind speed and sharp differ-  
25 ences in wind direction between the episodes. This suggests that the basin circulation  
is a combination of strong thermally-induced flows and the line of convergence de-  
scribed above that passes roughly through the basin. Figure 12 shows maps of “Time

---

### Mexico City wind circulation

B. de Foy et al.

---

Title Page

Abstract

Introduction

Conclusions

References

Tables

Figures

◀

▶

◀

▶

Back

Close

Full Screen / Esc

Print Version

Interactive Discussion

roses” for selected observations in and around the basin.

For O3-South days, night-time drainage flows into the basin give way to morning northerly winds. As thermally induced winds develop both in the basin and on the regional scale, winds turn to north-easterly across the whole basin. The passage of the regional scale convergence zone over the basin can be seen by the presence of north-easterly winds at both Cerro Catedral and Nevado de Toluca, to the west of the basin. It is only after sunset that there is a wind shift to southerly as a gap flow develops in the Chalco passage. This reinforces the drainage at the basin edge leading to basin venting towards the northeast.

On O3-North days, the situation is very similar with a crucial difference in timing. The drainage flows are equally present and the morning winds are northerly. The afternoon wind shift starts at 15:00 in the south-east with the gap flow through Chalco. It is sufficiently strong to reverse the up-slope flow at Chapingo (CHA) and to sweep through the whole city in the mid-afternoon. With a slight delay, there is an additional flow over the basin rim in the south-west leading to wind reversals at Tlalpan (TPN) and Pedregal (PED) that actually begin before sunset. These winds are reinforced by the winds at Cerro Catedral and Nevado de Toluca which are now entirely from the west, suggesting that the regional convergence zone is being pushed to the north-east.

Cold Surge days have predominant northerly winds which are superimposed on the thermal basin winds. Despite being weakened by cloudiness and reduced solar heating, these are still strong enough to cause morning drainage flows into the basin in the south and west of the city and afternoon westerly and south-westerly gap flows.

## 7. Radiosonde observations

Vertical profiles of humidity, wind speed and wind direction for Acapulco, Mexico City and Veracruz are shown in Figs. 13 and 14, segregated by episode type. This is a composite of all the morning (07:00) soundings available showing in greater detail the difference along a coast-to-coast transect through Mexico City. The weak winds at

### Mexico City wind circulation

B. de Foy et al.

Title Page

Abstract

Introduction

Conclusions

References

Tables

Figures

◀

▶

◀

▶

Back

Close

Full Screen / Esc

Print Version

Interactive Discussion

**Mexico City wind  
circulation**

B. de Foy et al.

[Title Page](#)[Abstract](#)[Introduction](#)[Conclusions](#)[References](#)[Tables](#)[Figures](#)[◀](#)[▶](#)[◀](#)[▶](#)[Back](#)[Close](#)[Full Screen / Esc](#)[Print Version](#)[Interactive Discussion](#)

EGU

Acapulco are a very robust feature due to the sub-tropical high, with westerly winds in the boundary layer but north-easterly above. There is a humid boundary layer below 1000 m with little variation of wind speeds. Veracruz, in comparison, has more humid conditions and a boundary layer extending up to 2000 m. Due to the Bermuda high, the winds are weak and southerly below 3000 m, except for the Cold Surge where a clear easterly jet can be seen below 1000 m. In Mexico City, the boundary layer is much drier and extends up to 3000 m. There is a slight but significant trend of increasing humidity from O3-South to O3-North and Cold Surge. Winds are below 6 m/s below 3000 m and increase steadily above this, suggesting the impact of mountain shielding on the basin. Wind directions aloft are clearly segregated by episode, with north-westerly flow for O3-South, westerly flow for O3-North and south-westerly for Cold Surge. It is only in a shallow layer that Cold Surge days have northerly and easterly winds.

Due to the intense solar radiation heating, high altitude and low humidity in the basin there is intense vertical mixing with mixing heights up to 4000 m. Maximum mixing heights for each day of the campaign were calculated by finding the height at which the gradient of potential temperature first exceeds 2.5 K/km. O3-South days have mixing heights in the range of 3000 to 4000 m. O3-North are in the range of 1000 to 3500 m and Cold Surge 900 to 3000 m. For clear days, the maximum is at the 19:00 sounding. On cloudy days, it is usually at the 13:00 sounding. Morning thermal inversions are important in determining the concentration of primary pollutants during rush hour. These existed on nearly half of the days of the campaign, with intensities reaching 2.5 K. On a further 6 days there were inversions above the surface between 500 and 1000 m. These inversions occur on all types of days as skies tend to be free of clouds in the morning for most meteorological conditions. Further aloft, sharp capping inversions occur on 75% of days with intensities up to 3.3 K. These are strongest and most persistent for the O3-South days but there is no clear pattern otherwise, with base heights ranging between 2070 and 4500 m. A table of mixing heights and temperature inversions for each day of the campaign is shown in Appendix 2.

The inversions aloft mark the transition from the weak winds sheltered by the moun-

**Mexico City wind  
circulation**

B. de Foy et al.

[Title Page](#)[Abstract](#)[Introduction](#)[Conclusions](#)[References](#)[Tables](#)[Figures](#)[◀](#)[▶](#)[◀](#)[▶](#)[Back](#)[Close](#)[Full Screen / Esc](#)[Print Version](#)[Interactive Discussion](#)

EGU

tains surrounding Mexico City and the dominant westerly winds aloft. Figure 15 shows aggregate profiles of wind speeds and directions by time of day for each episode. Wind speeds below 3000 m are in the range of 0 to 6 m/s and rarely exceed 8 m/s. Above the boundary layer, wind speeds increase steadily from around 5 m/s at 3000 m to a maximum of 20 to 35 m/s at 10 000 m depending on the episodes. O3-South days have north-westerly winds with a median maximum of around 20 to 25 m/s. Cold Surge days have west-south-westerly winds reaching up to 35 m/s and O3-North days have westerly winds around 25 to 30 m/s.

In the boundary layer a jet forms on most days, as described by Doran and Zhong (2000). Most jets have maximum speed in the middle of the height range, but for some the maximum is at the surface. At 13:00, the jet is weak and shallow, coming from the east or north-east irrespective of the episode type. By 19:00 the jets have strongly increased and are differentiated by episode type. For O3-South, the jet is the weakest of the three types and north-easterly. For Cold Surge the jet is westerly and extends to 1000 to 1500 m. For O3-North the jet is strongest. It is south-westerly and can extend above 2000 m. At 01:00, the jet is strongly reduced. It is westerly for O3-South, north-westerly for O3-North and northerly for Cold Surge. By 07:00, the jet has increased and becomes more consistently westerly across the episodes. Appendix 3 lists the jets identified during the campaign, identified by maximum wind speed, average wind direction and vertical extent.

In terms of humidity, O3-South shows substantial subsidence surface drying during the day due to vertical mixing with drier air aloft. O3-North has an influx of humidity accompanying the south-westerly flow. Cold Surge days have a more gradual and more humid profile, with drying during the day and a combination of influx and mixing in the afternoon.



## 8. Diurnal profiles and surface pollution levels

The diurnal profiles of wind speed and direction at CENICA were shown in Fig. 8 by episode type. Similar plots for temperature and water mixing ratio, shown in Fig. 16, contribute to the classification of episode types. O3-South days have a later peak in temperature and slower decrease than O3-North days. The humidity contrasts are greater on O3-South days as dry air is both transported from the Mexican Plateau to the north and mixed down due to subsidence aloft. The O3-North days have a reduced diurnal range with an increase in humidity corresponding to the jet coming from the south-west. Cold Surge days are cooler and more humid, as would be expected. The temperature and humidity trends act as tracers of air mass movements that indicate basin cooling due to an influx of southerly air similar to that described by Doran and Zhong (2000).

Diurnal profiles of ozone are shown for 3 individual stations in Fig. 17: CENICA, Azcapotzalco and Tlalpan. CENICA, while being in the south-east sector of the city is close to the geographical middle of the basin. The differences between episodes are smaller here, with higher levels for O3-South and a slightly sharper drop for Cold Surge associated with clouds and rain. Ozone levels between midnight and sunrise are noticeably higher for O3-South due to lower concentrations of CO and NO<sub>x</sub>. As there is no difference in wind direction for this time period, the cleaner air must be due to the higher wind speeds (Fig. 8) leading to greater dispersion.

In Azcapotzalco, to the north-west of the city, the diurnal profiles illustrate the main features of the basin circulation. There is a rapid rise and equally rapid fall of O<sub>3</sub> for O3-North days due to the strong afternoon jet transporting pollutants from the whole city over the area after 15:00 and then venting them out of the basin. For O3-South days, the levels rise slowly as the area receives cleaner air from the north, and then stay high as the weaker jet blows from the city through the early evening. Cold Surge days have the same O<sub>3</sub> rise as O3-South days followed by a drop starting at 13:00. This is faster than the decrease at CENICA due to the stronger winds bringing clouds

Title Page

Abstract

Introduction

Conclusions

References

Tables

Figures

◀

▶

◀

▶

Back

Close

Full Screen / Esc

Print Version

Interactive Discussion

and rain from the north.

In Tlalpan, to the south of the city, the rise in  $O_3$  is the same for all episodes as the wind blows from the north. O3-South days have a peak at 16:00 with a gradual decline into the evening. For O3-North days there is a sharp drop at 15:00 as the lower-level jet comes over the mountains from the south blowing clean air into the basin. For Cold Surge days, there is a bigger spread in the data with a later drop. In contrast to CENICA and Azcapotzalco, where the drop is due to cloud and rain, the drop here is due to a drainage flow similar to O3-North that forms just on the southern rim of the basin. This flow is weaker than for both O3-South and O3-North and the reduced winds lead to a more polluted air mass after midnight, signalled by lower ozone concentrations.

## 9. Discussion

The schematic representation of the circulation patterns in the basin is shown in Fig. 5, summarizing the conclusions from the data analysis presented. On O3-South days there is weak forcing and thermal flows with reduced influence from outside the basin. Southerly drainage flows at night give way to north-westerly influx during the day from the Mexican Plateau. This changes to north-easterly Gulf flow in the afternoon before switching back to southerly in the early evening. The gap flow is reduced in strength and does not influence the western edge of the basin as for O3-North days. On Cold Surge days, there is a weak component of slope winds in the basin with a strong influence from the synoptic conditions. North-easterly flows from the Gulf of Mexico are found during the day and give way to north-westerly Plateau/Pacific air at night. Despite cloudiness, high  $O_3$  levels take place on these days and tend to be centered on the city. These are in part due to the much higher morning concentrations of primary pollutants due to reduced vertical mixing. O3-North days are dominated by the westerlies. Early morning drainage flows from the south give way to north-westerly inflow from the Mexican plateau. In the afternoon, the winds shift with the beginning of the gap flow through the Chalco passage. This dominates the thermal flows and increases

Title Page

Abstract

Introduction

Conclusions

References

Tables

Figures

◀

▶

◀

▶

Back

Close

Full Screen / Esc

Print Version

Interactive Discussion

to the point where it is a general south-westerly flow coming over the basin rim with channeling around the Ajusco mountain through the passes towards Cuernavaca and Toluca.

This picture is consistent with radiosonde observations. On O3-South days, inflow from the north-east reinforces the up-slope flow at GSMN. This increases during the afternoon and then decreases, reversing into a westerly drainage flow at night. For Cold Surge days, the upslope flow is still present, but by late afternoon the northerly influx of cold and humid air leads to a flow reversal and to westerly flow at GSMN. At night, with less heating and cooling the flow is northerly and then also turns to a westerly drainage flow with a northerly component. O3-North days have weaker upslope flows during the day due to the stronger westerly component of the winds. In the late afternoon, the upslope flow is eliminated by the incoming south-westerly flow. From the surface observations, this was seen to originate as a gap flow at Chalco around 15:00 but then strengthens and becomes a generalized south-westerly flow over the basin rim.

The meteorological conditions of Cold Surge episodes were analyzed by Schultz et al. (1998). Despite the potential for high primary pollutant concentrations there is no published analysis of the air pollution on these episodes. Previous modeling work described in the literature review has focussed on O3-South events. The episodes described in Williams et al. (1995) and Whiteman et al. (2000) can be classified as O3-South with Fast and Zhong (1998) looking at both O3-South and O3-North. Bossert (1997) looked at three days. His synoptic flow corresponds to O3-North with a particularly strong gap flow. Both the thermal and regional flows correspond to O3-South, albeit with different intensity of forcing aloft.

The gap flow was analyzed by Doran and Zhong (2000) who found that it strengthened with increases in temperature and reductions in humidity and cloudiness. Compared to the IMADA campaign, flow patterns during MCMA-2003 show gap flows that are clearly separated between O3-South and O3-North episodes. On O3-South days there are later, weaker jets driven by thermal effects. On O3-North days, the strong,

Mexico City wind circulation

B. de Foy et al.

Title Page

Abstract

Introduction

Conclusions

References

Tables

Figures

◀

▶

◀

▶

Back

Close

Full Screen / Esc

Print Version

Interactive Discussion

**Mexico City wind  
circulation**

B. de Foy et al.

[Title Page](#)[Abstract](#)[Introduction](#)[Conclusions](#)[References](#)[Tables](#)[Figures](#)[I◀](#)[▶I](#)[◀](#)[▶](#)[Back](#)[Close](#)[Full Screen / Esc](#)[Print Version](#)[Interactive Discussion](#)

EGU

early jets are due to the influence of the westerlies and extend over the entire basin rim beyond the gap itself. Whereas the strength of the gap flow during IMADA was shown to be a function of temperature gradient, the gap flows during MCMA-2003 are due to the westerlies, with wind direction aloft being the clearest predictor of the extent of the jet.

The presence of a convergence line between surface flows from the Pacific and the Gulf of Mexico was suggested by surface as well as upper air observations. This regional feature was found to pass through the Mexico City basin, and to move either to the south-west or north-east based on variations in regional forcings. This leads to strong differences in transport of moisture in and out of the basin. The Mexico City basin has its own mountain-basin flow with an afternoon wind shift and corresponding convergence line. This feature is very sensitive to the regional flow and leads to large differences in the location and peak concentration of the ozone plume. Future work using models and more extensive vertical data sets (such as are available from the IMADA campaign) will explore the combination of the two convergence lines and the superposition of the regional flow with the local basin flow. The factors affecting the timing and strength of the afternoon wind shift will need to be analyzed given its large impact on urban pollution levels.

## 10. Catalogue of events

While the meteorological conditions during the field campaigns can be shown to belong to three broad categories, there were specific variations that are of interest for evaluating chemical episodes. The highest  $O_3$  level occurred on 3 April. With a maximum of 243 ppb, this is above the trigger level for the government's pre-contingency plan (Comisión Ambiental Metropolitana, CAM). This was a  $O_3$ -North day, with the  $O_3$  peak sharply focussed in the north-west of the city. There were very weak and variable winds in the basin, with neighboring stations often reporting winds of opposite directions. The mixing height was below 3000 m and the vertical winds were particularly weak: less

**Mexico City wind  
circulation**

B. de Foy et al.

Title Page

Abstract

Introduction

Conclusions

References

Tables

Figures

◀

▶

◀

▶

Back

Close

Full Screen / Esc

Print Version

Interactive Discussion

EGU

than 2 m/s for most of the day and below 3 m/s at 19:00. There was, however, a stronger than usual jet at 07:00 with westerly winds reaching 6 m/s between 750 and 1500 m. In addition to meteorological conditions, one of the Metro lines to that section of the city was out of operation, causing increased traffic congestion. This day followed the cleanest day in the campaign with peak O<sub>3</sub> of 117 ppb and was followed by the fourth cleanest day with 134 ppb. It therefore poses an interesting case where very high photochemistry can take place in a single day. In addition, further information on the traffic levels could be used to analyze this day as a natural experiment of increased emissions.

2 and 9 April were both Cold Surge days with O<sub>3</sub> maxima in the south-east, with levels of 117 and 122 ppb. Whereas 2 April had very little photochemistry over the city, 9 April had a relatively uniform O<sub>3</sub> levels over most of the eastern part of the basin. Winds were consistently from the north-north-west until 14:00 at which point a weakening in the south-east was followed by convergence of winds from the north-west and south-east and followed by westerly winds. 9 April shows that significant photochemistry can take place even on cloudy days with steady winds.

On 10 April, a large SO<sub>2</sub> plume covered the northern half of the city, with maximum concentrations of 277 ppb, starting around midnight and lasting until around 10 a.m. The mixing heights for the whole day were below 900 m and winds were weak and from the north in the early morning. Similar but smaller events were recorded on 1, 2, 27 and 30 April.

11 April had the highest CO levels of the campaign. This is due to one of the strongest surface inversions with an intensity of 1.7 K for a depth of 170 m. The winds in the inversion were low but had a 4 m/s jet in the surface layer and started rising rapidly above 500 m, reaching 10 m/s by 1000 m – the strongest vertical winds observed by the morning radiosondes. This was accompanied by a second weak inversion at 960 m. The strength of the surface inversions and the presence of the second one suggest that the surface layer was isolated from the flow aloft. At 13:00 the winds were very similar to 7:00, but by 19:00 they had increased to 6 m/s almost uniformly

below 2000 m.

Good Friday, had CO concentrations around 50% lower than normal and O<sub>3</sub> around 20% lower, with a peak value of 121 ppb in the north-west. In addition, it followed a day with emissions estimated to be 30% lower. Maximum total solar radiation at different sites in the basin is around 50 W/m<sup>2</sup> higher than on the previous day, in the range of 1050 to 1100 W/m<sup>2</sup>. This is similar to the difference observed on certain days between city sites and Presa Madín (MADI), suggesting that the effect of air pollution on surface radiation heating is of the order of 50 W/m<sup>2</sup>. This was a O3-North day with weak surface winds and clear skies similar in some respects to 3 and 25 April which had O<sub>3</sub> peaks of 243 and 163 ppb. The surface winds started off north-westerly with an afternoon shift to south-easterly leading to the ideal condition for a repeat of 3 April. There was one of the strongest surface inversions of the campaign at 7:00, with an intensity of 1.6 K for a depth of 210 m, but this was accompanied by an unusually strong jet above, reaching 9 m/s between 500 and 1000 m. In this respect, it differed markedly from 3 April, which had very weak winds throughout the mixed layer, and resembles more closely 25 April, which had a 7:00 jet reaching 8 m/s at 700 m. 21 April was also similar with a 7:00 jet of 8 m/s between 1000 and 1500 m. While this is above the early morning mixed layer, CO concentrations were very low on all three of those days, suggesting that the jet had an important impact on the morning concentrations. While there is no perfect match for this day, the high O<sub>3</sub> levels of the close relatives suggest that it can be used as a natural experiment for analyzing the impact of reduced emissions.

22 April was an interesting day at the campaign super-site. There was a broad ozone plume, with a relatively low peak of 148 ppb in the north-east and levels of 110 to 140 ppb at most of the monitoring sites. Winds were from the north-west before sunrise, shifting to easterly from sunrise until 13:00. They then shifted to northerly and at 15:00 formed a very sharp convergence zone over CENICA. Strong north-westerly flow in the north met with strong south-westerly flow to the south in a clear east-west line across the basin, causing strong convection and rainfall in the process. After this,

Mexico City wind circulation

B. de Foy et al.

Title Page

Abstract

Introduction

Conclusions

References

Tables

Figures

◀

▶

◀

▶

Back

Close

Full Screen / Esc

Print Version

Interactive Discussion

the winds became more westerly and variable for the rest of the day as the skies cleared.

Finally, 1 May was a O3-South day with clear skies and peak O<sub>3</sub> of 177 ppb in the south-east despite being a national holiday. 2 May had a slightly higher O<sub>3</sub> peak at 185 ppb in the south-west. Both of these days are comparable to the first 3 days of Holy week where peak O<sub>3</sub> was 164 to 180 ppb. There is no clear signal of lower emissions. Nevertheless, 1 and 2 May present an informative case on the importance of carry-over effects as the O<sub>3</sub> peak on 1 May is quite broad whereas on 2 May high O<sub>3</sub> is limited to the south-western edge of the basin. On 1 May, three quarters of stations reported higher O<sub>3</sub> than the median of 2 May.

## 11. Conclusions

Three types of episodes have been identified that account for the meteorological conditions occurring during the campaign. They have been designated “O3-South”, “Cold Surge” and “O3-North” and can be diagnosed from a combination of synoptic and basin observations. These episodes serve as an organizing axis for measurements made during the field campaign that is more meaningful than the time axis. By grouping or averaging the data according to episodes, significant trends and differences become apparent.

Diurnal patterns of winds on both the basin and regional scale were displayed using “Time roses”. These figures succinctly capture a large amount of information and enable the competing effects of regional and basin thermal flows to be analyzed. In particular, the extent of the sea breezes from the Pacific and from the Gulf can be clearly seen as a convergence line over the Mexican plateau that interacts with the convergence line in the basin due to wind shifts.

The existence of a wind jet through the pass in the south-east of the basin has been well established in previous field campaigns. Its strength was found to correlate with thermal gradients across the basin rim. In this study, the strength of the jet was found

Title Page

Abstract

Introduction

Conclusions

References

Tables

Figures

◀

▶

◀

▶

Back

Close

Full Screen / Esc

Print Version

Interactive Discussion

to be a function of episode type and more closely influenced by wind direction aloft. Further analysis will be needed to establish the forcing mechanisms responsible for this flow feature.

Previous analysis of the circulation in the Mexico City basin has covered a large range of conditions but focussed on O3-South days. Because high pollutant concentrations occur during each of the episodes, it is recommended that analysis of O3-North and Cold Surge days be included in air quality studies in the future.

The meteorological goals of the field campaign were to analyze the mixed layer, the day-to-day carry-over and the performance of mesoscale models. By identifying the basic circulation patterns in the basin, this paper provides a framework for analyzing these questions. In particular, models can now be evaluated in terms of the specific flow features found in the basin and in terms of how well they reproduce the three episode types.

Finally, scenario analysis will need to take into account the three episode types in order to evaluate policies. The air quality response of alternate strategies will be a function of the wind patterns. Identifying the optimal pollution control mechanisms requires careful consideration of the types of wind circulation occurring in the Mexico City basin.

*Acknowledgements.* The analysis contained in this paper was made possible by the collaborative efforts of many people involved in field measurements, both during the campaign and over longer periods of time. We are indebted to the staff of CENICA who hosted the campaign. We would like to thank S. Blanco, A. Sanchez, O. Fentanes, J. Zaragoza, A. P. Ocampo, C. Cruz, C. Aguirre, R. Romo, A. Pino, R. Castañeda, R. Rodríguez, P. Escamilla and the operators and analyst personnel of the “Red Automática de Monitoreo Atmosférico del Gobierno del Distrito Federal” for their contribution in administering and gathering the data used in this manuscript. We are grateful to M. Rosengaus, J. L. Razo, J. Olalde and P. García of the Mexican National Meteorological Service for providing the EHCA and Radiosonde data. We thank A. García and A. Jazcilevich of the Universidad Nacional Autónoma de México, A. Soler and F. Hernandez of the Secretaría del Medio Ambiente, Gobierno del Distrito Federal, México for helpful discussions, and F. San Martini, R. Volkamer, J. L. Jimenez, B. Lamb and D. Worsnop for valuable

Mexico City wind circulation

B. de Foy et al.

Title Page

Abstract

Introduction

Conclusions

References

Tables

Figures

◀

▶

◀

▶

Back

Close

Full Screen / Esc

Print Version

Interactive Discussion



comments on the manuscript. The financial support of the Comisión Ambiental Metropolitana de Mexico and of the US National Science Foundation (Award ATM 308748) for this work is gratefully acknowledged, as well as support from Pemex-Refinación to the Instituto Mexicano del Petróleo for additional radiosonde observations.

## 5 References

Bossert, J. E.: An investigation of flow regimes affecting the Mexico City region, *J. Appl. Meteorology*, 36, 119–140, 1997. [2506](#), [2507](#), [2520](#)

Doran, J. C. and Zhong, S.: Thermally driven gap winds into the Mexico City basin, *J. Appl. Meteorology*, 39, 1330–1340, 2000. [2507](#), [2517](#), [2518](#), [2520](#)

10 Doran, J. C., Abbott, S., Archuleta, J., Bian, X., Chow, J., Coulter, R. L., de Wekker, S. F. J., Edgerton, S., Elliott, S., Fernandez, A., Fast, J. D., Hubbe, J. M., King, C., Langley, D., Leach, J., Lee, J. T., Martin, T. J., Martinez, D., Martinez, J. L., Mercado, G., Mora, V., Mulhearn, M., Pena, J. L., Petty, R., Porch, W., Russell, C., Salas, R., Shannon, J. D., Shaw, W. J., Sosa, G., Tellier, L., Templeman, B., Watson, J. G., White, R., Whiteman, C. D., and Wolfe, D.: The IMADA-AVER boundary layer experiment in the Mexico City area, *Bulletin of the American Meteorological Society*, 79, 2497–2508, 1998. [2506](#)

15 Fast, J. D. and Zhong, S. Y.: Meteorological factors associated with inhomogeneous ozone concentrations within the Mexico City basin, *J. Geophys. Res.*, 103, 18927–18946, 1998. [2506](#), [2520](#)

20 Grell, G. A., Emeis, S., Stockwell, W. R., Schoenemeyer, T., Forkel, R., Michalakes, J., Knoche, R., and Seidl, W.: Application of a multiscale, coupled MM5/chemistry model to the complex terrain of the VOTALP valley campaign, *Atmos. Environ.*, 34, 1435–1453, 2000. [2507](#)

Jauregui, E.: Local wind and air pollution interaction in the Mexico basin, *Atmosfera*, 1, 131–140, 1988. [2505](#), [2510](#)

25 Jauregui, E. and Luayando, E.: Global radiation attenuation by air pollution and its effects on the thermal climate in Mexico City, *Int. J. Climatol.*, 19, 683–694, 1999. [2505](#)

Jazcilevich, A. D., Garcia, A. R., and Ruiz-Suarez, L. G.: A study of air flow patterns affecting pollutant concentrations in the Central Region of Mexico, *Atmos. Environ.*, 37, 183–193, 2003. [2507](#)

30 Klaus, D., Poth, A., Voss, M., and Jauregui, E.: Ozone distributions in Mexico City using principal component analysis and its relation to meteorological parameters, *Atmosfera*, 14, 171–188, 2001. [2507](#)

---

## Mexico City wind circulation

B. de Foy et al.

---

Title Page

Abstract

Introduction

Conclusions

References

Tables

Figures

◀

▶

◀

▶

Back

Close

Full Screen / Esc

Print Version

Interactive Discussion

**Mexico City wind circulation**

B. de Foy et al.

Title Page

Abstract

Introduction

Conclusions

References

Tables

Figures

◀

▶

◀

▶

Back

Close

Full Screen / Esc

Print Version

Interactive Discussion

EGU

Kolb, C. E., Herndon, S. C., McManus, B., Shorter, J. H., Zahniser, M. S., Nelson, D. D., Jayne, J. T., Canagaratna, M. R., and Worsnop, D. R.: Mobile laboratory with rapid response instruments for real-time measurements of urban and regional trace gas and particulate distributions and emission source characteristics, *Environ. Sci. Technol.*, 38, 5694–5703, 2004. [2509](#)

Molina, L. T. and Molina, M. J. (Eds.): *Air Quality in the Mexico Megacity*, Kluwer Academic Publishers, 2002. [2505](#)

Mosiño Alemán, P. A. and García, E.: The Climate of Mexico, in: *Climates of North America*, edited by: Bryson, R. A. and Hare, F. K., *World Survey of Climatology*, vol. 11, chap. 4, pp. 345–404, Elsevier Scientific Publishing Company, 1974. [2510](#)

Nickerson, E. C., Sosa, G., Hochstein, H., Mccaslin, P., Luke, W., and Schanot, A.: Project Aguila – In situ Measurements of Mexico-City Air-Pollution by a Research Aircraft, *Atmos. Environ. Part B – Urban Atmosphere*, 26, 445–451, 1992. [2506](#)

Oke, T. R., Zeuner, G., and Jauregui, E.: The Surface-Energy Balance in Mexico-City, *Atmos. Environ. Part B – Urban Atmosphere*, 26, 433–444, 1992. [2505](#)

Perry, K. L.: *SeaWinds on QuikSCAT Level 3 Daily, Gridded Ocean Wind Vectors (JPL SeaWinds Project)*, Tech. Rep. JPL D-20335, Jet Propulsion Laboratory, 2001. [2513](#)

Raga, G. B. and Le Moyne, L.: On the nature of air pollution dynamics in Mexico City. I: Non-linear analysis, *Atmos. Environ.*, 30, 3987–3993, 1996. [2507](#)

Raga, G. B., Baumgardner, D., Kok, G., and Rosas, I.: Some aspects of boundary layer evolution in Mexico City, *Atmos. Environ.*, 33, 5013–5021, 1999. [2507](#)

Schultz, D. M., Bracken, W. E., and Bosart, L. F.: Planetary- and synoptic-scale signatures associated with central American cold surges, *Mon. Weather Rev.*, 126, 5–27, 1998. [2510](#), [2520](#)

Streit, G. E. and Guzman, F.: Mexico City air quality: Progress of an international collaborative project to define air quality management options, *Atmos. Environ.*, 30, 723–733, 1996. [2506](#)

Whiteman, C. D., Zhong, S., Bian, X., Fast, J. D., and Doran, J. C.: Boundary layer evolution and regional-scale diurnal circulations over the Mexico Basin and Mexican Plateau, *J. Geophys. Res.*, 105, 10 081–10 102, 2000. [2506](#), [2520](#)

Williams, M. D., Brown, M. J., Cruz, X., Sosa, G., and Streit, G.: Development and testing of meteorology and air dispersion models for Mexico City, *Atmos. Environ.*, 29, 2929–2960, 1995. [2506](#), [2520](#)

**Table 1.** Summary of MCMA-2003 field campaign days with classification by episode type.

Date	Type of Day	Cloud Cover <sup>1</sup>		Rain <sup>2</sup> mm	Category	Episode	Max O <sub>3</sub> (RAMA)			Max NO <sub>x</sub> (RAMA)			Max CO (RAMA)		
		Morning	Afternoon				ppb	Site	Sec.	ppb	Site	Sec.	ppm	Site	Sec.
01/04/2003		Broken	Overcast		Cold Surge	Cold0	154	SUR	SW	379	EAC	NW	8.8	TAX	SE
02/04/2003		Broken	Overcast		Cold Surge		117	TAH	SE	395	EAC	NW	7.1	EAC	NW
03/04/2003		Few	Broken	0.7	O3-North	North1	243	AZC	NW	368	EAC	NW	9.5	VAL	NW
04/04/2003		Few	Broken		O3-North		134	AZC	NW	365	HAN	CR	9.4	ARA	NE
05/04/2003	Saturday	Few	Broken		O3-North		157	TLA	NW	352	MER	CR	7.5	MER	CR
06/04/2003	Sunday	Scattered	Broken		O3-North		171	AZC	NW	298	XAL	NE	10.1	TAX	SE
07/04/2003		Scattered	Overcast	0.4	O3-North		167	AZC	NW	436	HAN	CR	11.6	ARA	NE
08/04/2003		Broken	Overcast	4.9	Cold Surge	Cold1	147	TPN	SW	287	XAL	NE	7.8	MIN	CR
09/04/2003		Overcast	Overcast	0.1	Cold Surge		122	TAH	SE	238	TAX	SE	6.4	MIN	CR
10/04/2003		Broken	Overcast	0.7	Cold Surge		148	TPN	SW	337	EAC	NW	7.8	MIN	CR
11/04/2003		Overcast	Overcast	2.0	Cold Surge		150	CHA	NE	439	HAN	CR	12.5	ARA	NE
12/04/2003	Saturday	Clear	Broken	0.2	O3-North	Transition1	173	CHA	NE	374	HAN	CR	6.8	MIN	CR
13/04/2003	Sunday	Clear	Broken		O3-North		145	LAG	CR	251	TAX	SE	4.5	MIN	CR
14/04/2003	School vacation	Scattered	Broken	0.5	O3-South	South1	164	TAH	SE	387	XAL	NE	9.9	VAL	NW
15/04/2003	School vacation	Clear	Broken		O3-South		146	PED	SW	419	HAN	CR	6.9	HAN	CR
16/04/2003	School vacation	Clear	Scattered		O3-South		180	TPN	SW	352	HAN	CR	7.2	MIN	CR
17/04/2003	M. Thursday	Clear	Broken		O3-South		160	BJU	CR	328	MER	CR	6	MER	CR
18/04/2003	Good Friday	Clear	Broken	0.5	O3-North	Transition2	121	AZC	NW	269	TAX	SE	4.8	TAX	SE
19/04/2003	Holy Saturday	Clear	Overcast	0.1	Cold Surge	Cold2	153	BJU	CR	257	TAX	SE	4.7	MIN	CR
20/04/2003	Easter	Clear	Overcast	0.3	Cold Surge		145	PED	SW	173	MER	CR	4.4	MIN	CR
21/04/2003	School vacation	Few	Overcast	0.4	Cold Surge		175	AZC	NW	305	SUR	SW	6	SUR	SW
22/04/2003	School vacation	Broken	Overcast	0.5	Cold Surge		148	SAG	NE	352	TAX	SE	6.1	TAX	SE
23/04/2003	School vacation	Clear	Overcast	0.3	O3-North	North2	209	LAG	CR	426	XAL	NE	7.2	MIN	CR
24/04/2003	School vacation	Clear	Clear		O3-North		210	SAG	NE	382	AZC	NW	10.1	ARA	NE
25/04/2003	School vacation	Clear	Broken	0.2	O3-North		163	XAL	NE	342	TLA	NW	8.4	CES	SE
26/04/2003	Saturday	Clear	Broken		O3-North		184	AZC	NW	459	XAL	NE	10.3	XAL	NE
27/04/2003	Sunday	Clear	Broken		O3-North		178	AZC	NW	316	TAX	SE	5.9	TAX	SE
28/04/2003		Clear	Overcast		O3-North		179	AZC	NW	352	BJU	CR	10.2	VAL	NW
29/04/2003		Clear	Broken	0.1	O3-North		185	BJU	CR	474	MER	CR	11	ARA	NE
30/04/2003		Clear	Scattered		O3-North		175	AZC	NW	436	HAN	CR	8.4	HAN	CR
01/05/2003	Labor Day	Clear	Broken	0.1	O3-South	South2	177	TAH	SE	319	XAL	NE	6.2	TAC	NW
02/05/2003		Clear	Scattered		O3-South		185	TPN	SW	373	HAN	CR	6.8	HAN	CR
03/05/2003	Saturday	Clear	Broken		O3-South		165	BJU	CR	404	XAL	NE	7.2	XAL	NE
04/05/2003	Sunday	Few	Broken		O3-North	North3	152	TAC	NW	292	TAX	SE	5.2	TAX	SE

**Mexico City wind circulation**

B. de Foy et al.

Title Page

Abstract

Introduction

Conclusions

References

Tables

Figures

◀

▶

◀

▶

Back

Close

Full Screen / Esc

Print Version

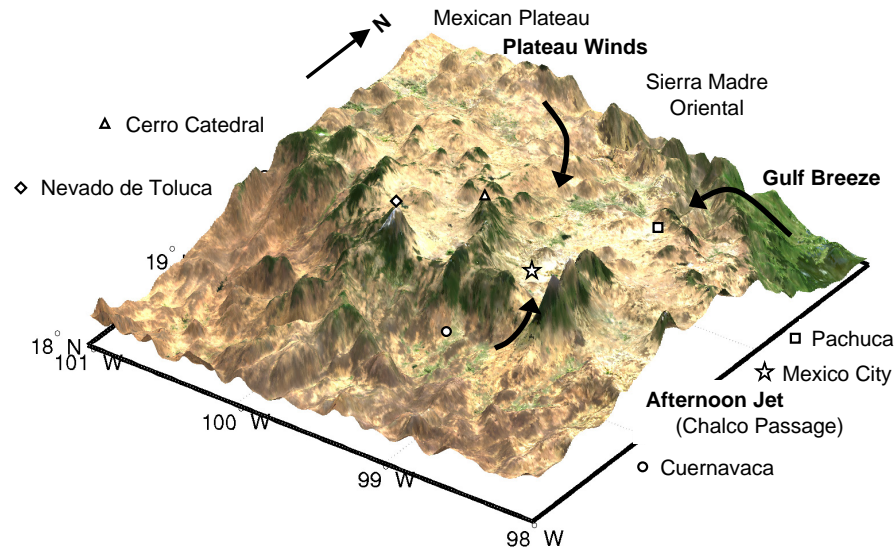
Interactive Discussion

<sup>1</sup>Average of AERO METAR reports

<sup>2</sup>Average of afternoon (12:00–00:00) accumulated rain at GSMN, ENCB, AERO, TEZO and PIME

## Mexico City wind circulation

B. de Foy et al.



**Fig. 1.** Mexico City basin and surrounding areas. The mountains surrounding the basins can be clearly seen, along with the Mexican Plateau to the north-west, the Sierra Madre Oriental and the drop to the Gulf of Mexico plain to the north-east and the low-lying Cuernavaca and Cuautla valley to the south. The location of the meteorological stations at Cerro Catedral (CATE), Nevado de Toluca (NEVA) and Pachuca (PACH) are indicated. Black arrows show 3 main wind features described in the literature: plateau winds, Gulf breezes and the afternoon jet into the basin.

Title Page

Abstract

Introduction

Conclusions

References

Tables

Figures

◀

▶

◀

▶

Back

Close

Full Screen / Esc

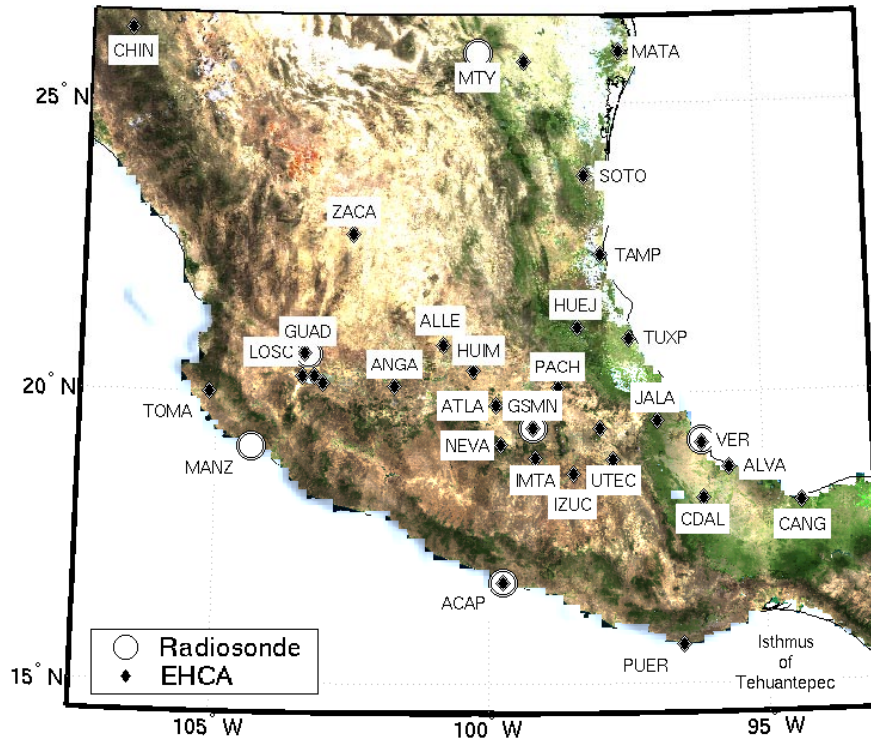
Print Version

Interactive Discussion

EGU

## Mexico City wind circulation

B. de Foy et al.

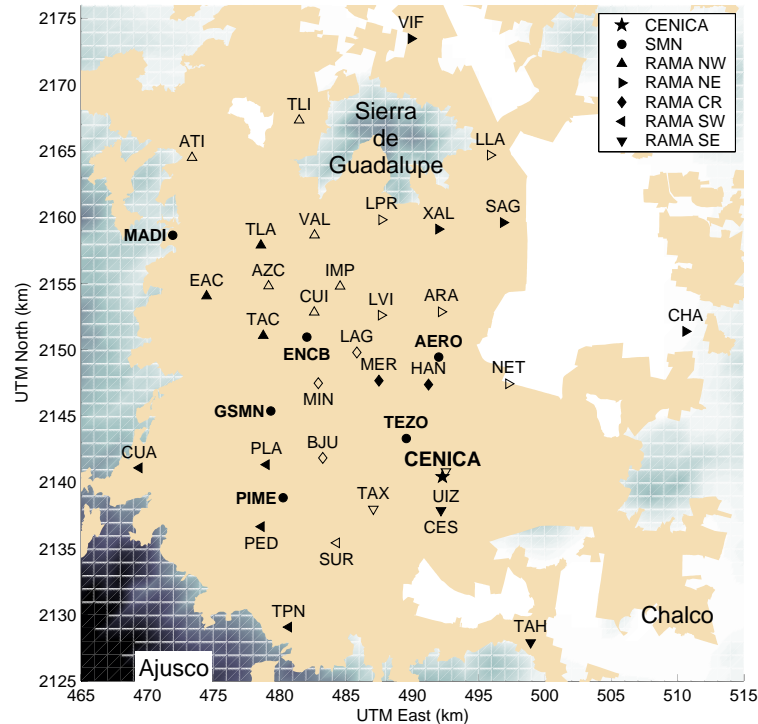


**Fig. 2.** Map of Mexico. Circles indicate radiosonde launch sites: Mexico City (GSMN), Acapulco (ACAP), Veracruz (VER), Monterrey (MTY), Guadalajara (GUAD) and Manzanillo (MANZ). Surface stations are indicated by diamonds: Chinatu (CHIN), Presa Allende (ALLE), Pachuca (PACH), Huejutla (HUEJ), Río Tomatlan (TOMA), Angamacutiro (ANGA), Instituto Mexicano de Tecnología del Agua (IMTA), Atacomulco (ATLA), Nevado de Toluca (NEVA), Puerto Angel (PUER), U. Tec. de Tecmachalco (UTE), Izúcar de Matamoros (IZUC), Huimilpan (HUIM), Tampico (TAMP), Soto la Marina (SOTO), Matamoros (MATA), Jalapa (JALA), Tuxpan (TUXP), Alvarado (ALVA), Cd. Alemán (CDAL), La Cangrejera (CANG), Zacatecas (ZACA) and Los Colomos (LOSC). Some stations are included for completeness but not labeled as they were not used.

[Title Page](#)
[Abstract](#)
[Introduction](#)
[Conclusions](#)
[References](#)
[Tables](#)
[Figures](#)
[◀](#)
[▶](#)
[◀](#)
[▶](#)
[Back](#)
[Close](#)
[Full Screen / Esc](#)
[Print Version](#)
[Interactive Discussion](#)

## Mexico City wind circulation

B. de Foy et al.



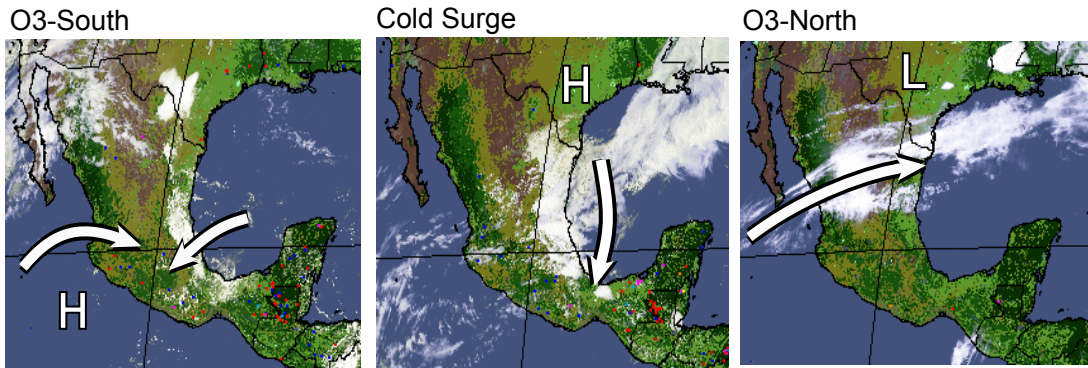
**Fig. 3.** Map of the MCMA showing the monitoring stations. The star is the CENICA supersite. Circles are National Meteorological Service surface stations: SMN Headquarters (GSMN), Escuela Nacional de Ciencias Biológicas (ENCB), Mexico International Airport (AERO), Tezontle (TEZO), Pimentel (PIME) and Presa Madín (MADI). Triangles and diamonds are RAMA stations by geographical sector. Those referred to in text are: Tlalnepantla (TLA), Azcapotzalco (AZC), Tacuba (TAC), Villa de las Flores (VIF), Xalostoc (XAL), San Agustín (SAG), Chapingo (CHA), La Merced (MER), Cuajimalpa (CUA), Pedregal (PED), Tlalpan (TPN), Tlahuac (TAH). Closed circles denote availability of meteorological observations. Urban area of 1995 shown in beige, shading corresponds to topography.

[Title Page](#)
[Abstract](#)
[Introduction](#)
[Conclusions](#)
[References](#)
[Tables](#)
[Figures](#)
[◀](#)
[▶](#)
[◀](#)
[▶](#)
[Back](#)
[Close](#)
[Full Screen / Esc](#)
[Print Version](#)
[Interactive Discussion](#)

EGU

**Mexico City wind  
circulation**

B. de Foy et al.



**Fig. 4.** GOES-12 satellite images for O3-South (14 April 11:45 CDT), Cold Surge (8 April 16:45 CDT) and O3-North (24 April 7:15 CDT). Areas of high and low pressure are marked by H and L. Arrows show significant wind transport directions: surface sea breezes for O3-South, low level jet for Cold Surge and westerlies aloft for O3-North. Images courtesy of GOES Biomass Burning Monitoring Team, UW-Madison, Cooperative Institute for Meteorological Satellite Studies (CIMSS).

[Title Page](#)[Abstract](#)[Introduction](#)[Conclusions](#)[References](#)[Tables](#)[Figures](#)[◀](#)[▶](#)[◀](#)[▶](#)[Back](#)[Close](#)[Full Screen / Esc](#)[Print Version](#)[Interactive Discussion](#)

EGU

## Mexico City wind circulation

B. de Foy et al.

Title Page

Abstract

Introduction

Conclusions

References

Tables

Figures

◀

▶

◀

▶

Back

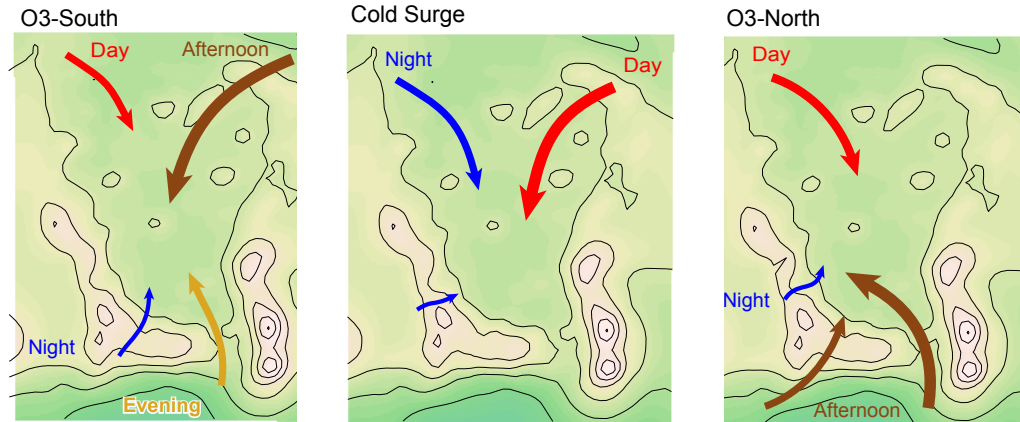
Close

Full Screen / Esc

Print Version

Interactive Discussion

EGU

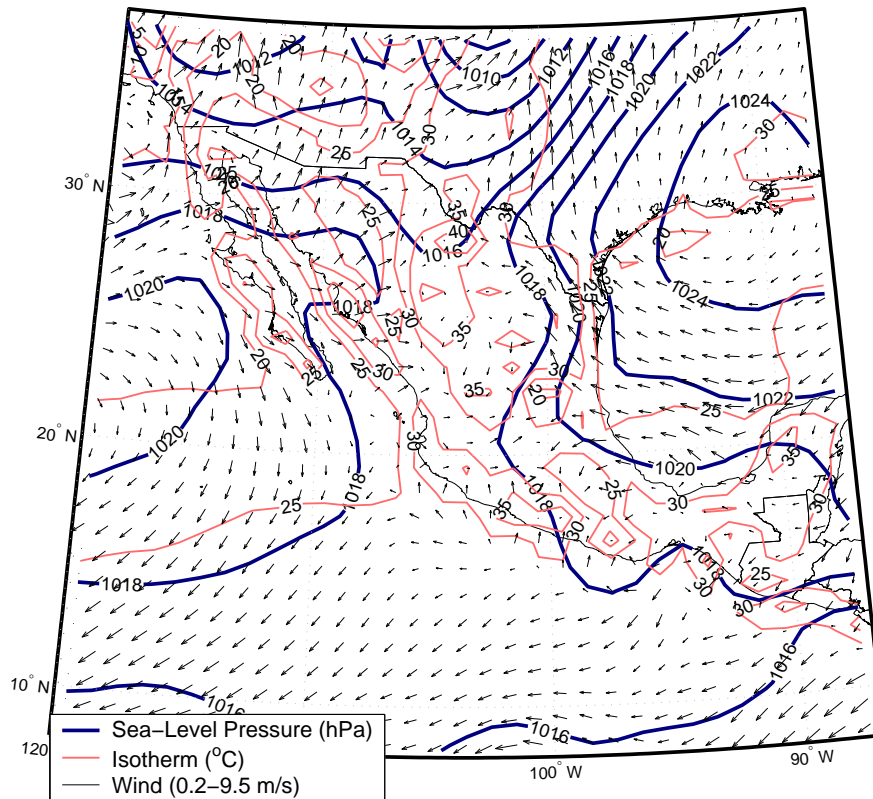


**Fig. 5.** Circulation model for the Mexico City basin for O3-South, Cold Surge and O3-North. Weak drainage flows on O3-South days give way to strong north-easterly winds. A weak southerly jet forms in the Chalco passage in the evening. Cold Surge days have predominantly northerly flow with a westerly component at night turning to easterly flow from the Gulf in the afternoon. On O3-North days, the day-time flow is from the north-west and gives way to a strong afternoon jet that starts in the pass but expands over the entire southern basin rim.



Mexico City wind  
circulation

B. de Foy et al.



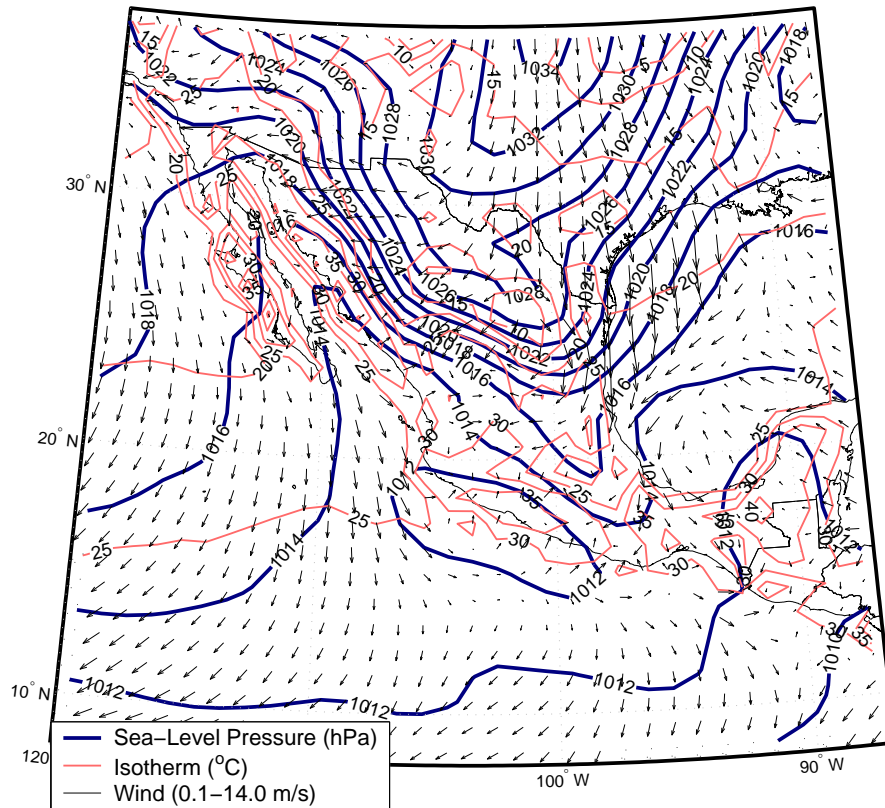
(a) 14 April (O3-South)

**Fig. 6.** Surface weather maps for (a) 14 April (O3-South), (b) 8 April (Cold Surge) and (c) 24 April (O3-North) at 13:00 CDT. Thick blue lines for sea level pressure contours, thin red lines for surface isotherms and wind vectors are shown.

[Title Page](#)[Abstract](#)[Introduction](#)[Conclusions](#)[References](#)[Tables](#)[Figures](#)[◀](#)[▶](#)[◀](#)[▶](#)[Back](#)[Close](#)[Full Screen / Esc](#)[Print Version](#)[Interactive Discussion](#)

Mexico City wind circulation

B. de Foy et al.



(b) 8 April (Cold Surge)

Fig. 6. Continued.

Title Page

Abstract

Introduction

Conclusions

References

Tables

Figures

◀

▶

◀

▶

Back

Close

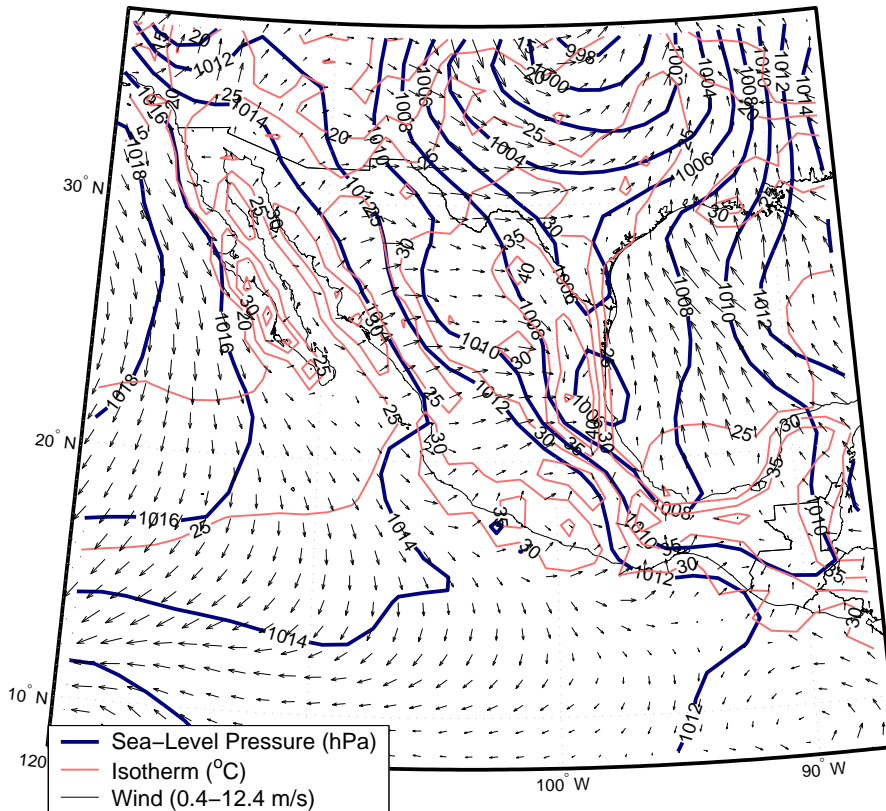
Full Screen / Esc

Print Version

Interactive Discussion

Mexico City wind circulation

B. de Foy et al.



(c) 24 April (O3-North)

Fig. 6. Continued.

Title Page

Abstract

Introduction

Conclusions

References

Tables

Figures

◀

▶

◀

▶

Back

Close

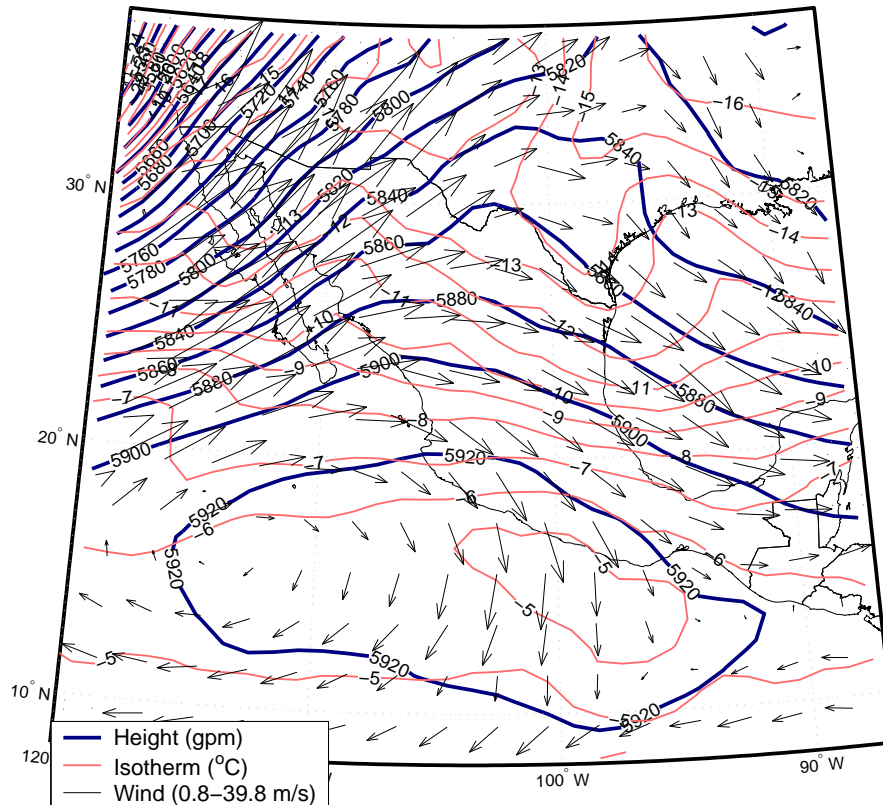
Full Screen / Esc

Print Version

Interactive Discussion

Mexico City wind  
circulation

B. de Foy et al.



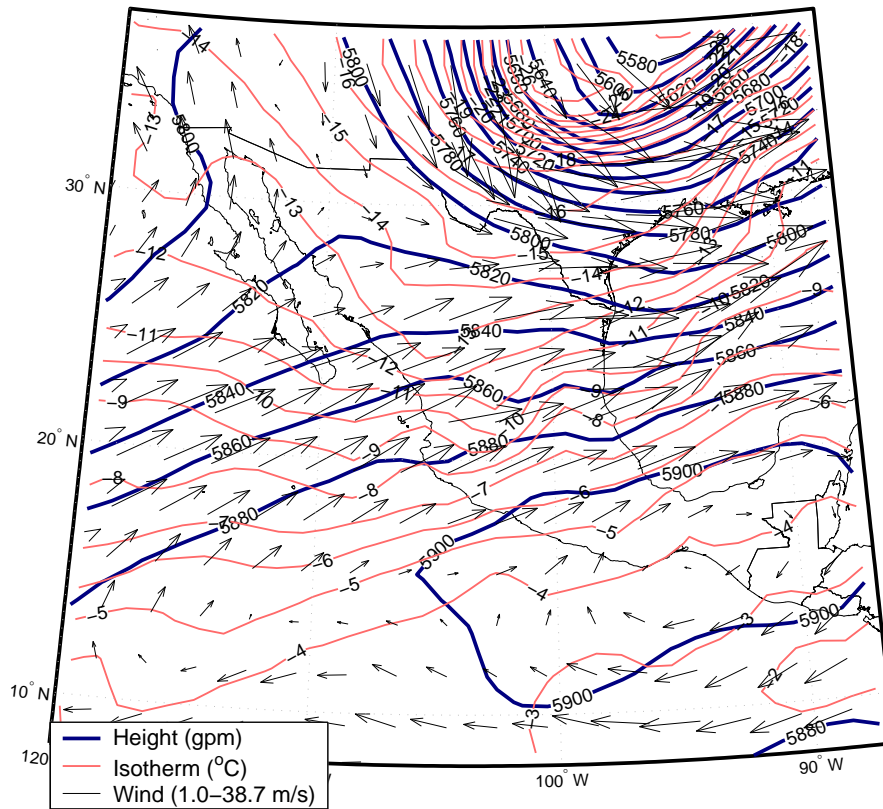
(a) 14 April (O3-South)

**Fig. 7.** Weather maps at 500 hPa for (a) 14 April (O3-South), (b) 8 April (Cold Surge) and (c) 24 April (O3-North) at 13:00 CDT. Thick blue lines for 500 hPa height, thin red lines for isotherms and wind vectors are shown.

[Title Page](#)[Abstract](#)[Introduction](#)[Conclusions](#)[References](#)[Tables](#)[Figures](#)[◀](#)[▶](#)[◀](#)[▶](#)[Back](#)[Close](#)[Full Screen / Esc](#)[Print Version](#)[Interactive Discussion](#)

Mexico City wind circulation

B. de Foy et al.



(b) 8 April (Cold Surge)

Fig. 7. Continued.

Title Page

Abstract

Introduction

Conclusions

References

Tables

Figures

◀

▶

◀

▶

Back

Close

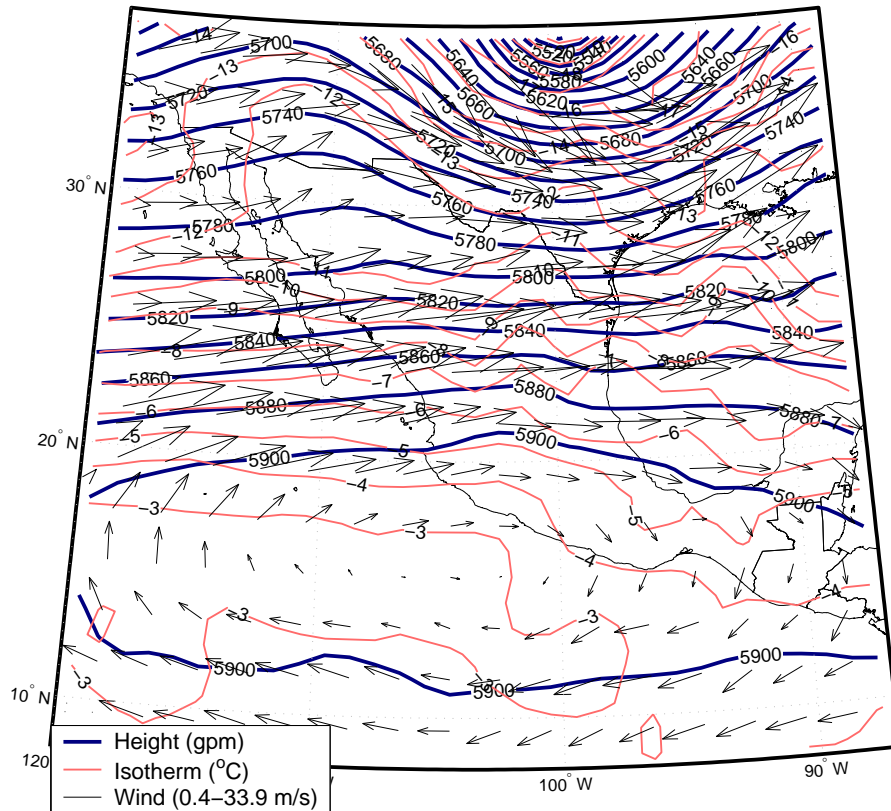
Full Screen / Esc

Print Version

Interactive Discussion

Mexico City wind circulation

B. de Foy et al.



(c) 24 April (O3-North)

Fig. 7. Continued.

Title Page

Abstract

Introduction

Conclusions

References

Tables

Figures

◀

▶

◀

▶

Back

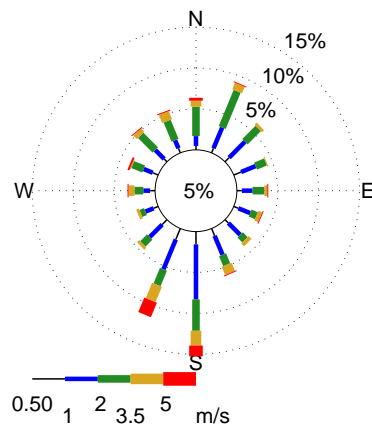
Close

Full Screen / Esc

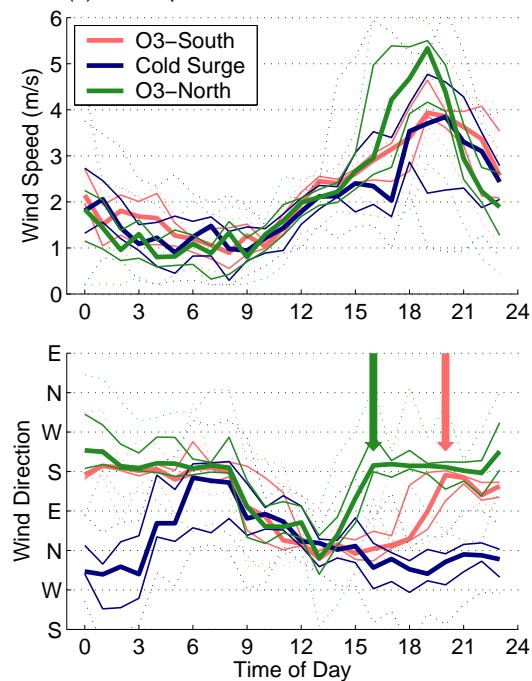
Print Version

Interactive Discussion

(a) Wind Rose



(b) Wind Speed and Direction



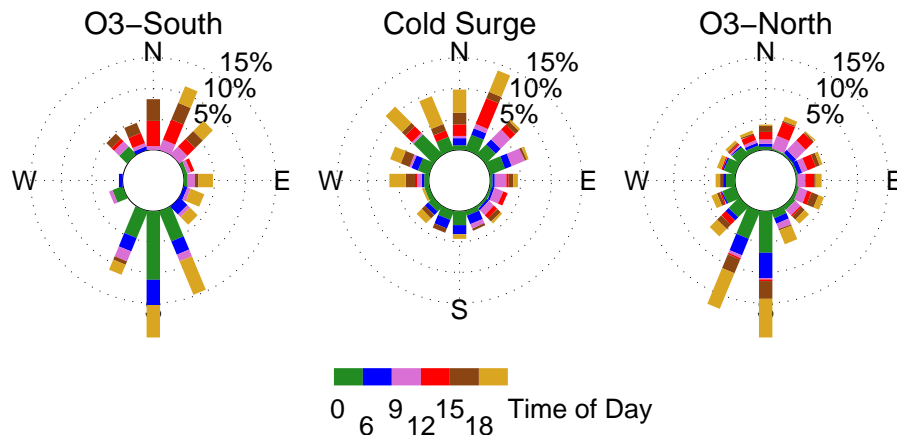
**Fig. 8.** (a) Wind rose for CENICA during MCMA-2003. Dominant wind direction is from the south with both stronger and calmer winds, secondary preferred direction from the north-northeast with medium winds. Diurnal variation of wind speed and direction (b) at CENICA segregated by episode type: red for O3-South, blue for Cold Surge and green for O3-North. Thick line indicates median value, thin lines show the 25 and 75 percentile (inter-quartile range), dotted lines show minimum and maximum values. Arrows show timing of wind shift for O3-North (15:00) and O3-South (20:00).

[Title Page](#)
[Abstract](#)
[Introduction](#)
[Conclusions](#)
[References](#)
[Tables](#)
[Figures](#)
[◀](#)
[▶](#)
[◀](#)
[▶](#)
[Back](#)
[Close](#)
[Full Screen / Esc](#)
[Print Version](#)
[Interactive Discussion](#)

EGU

**Mexico City wind circulation**

B. de Foy et al.



**Fig. 9.** “Time rose” for CENICA for O3-South, Cold Surge and O3-North. Rose segments correspond to time of day as follows: green 00:00–6:00, blue 06:00–9:00, pink 09:00–12:00, red 12:00–15:00, brown 15:00–18:00 and tan 18:00–24:00.

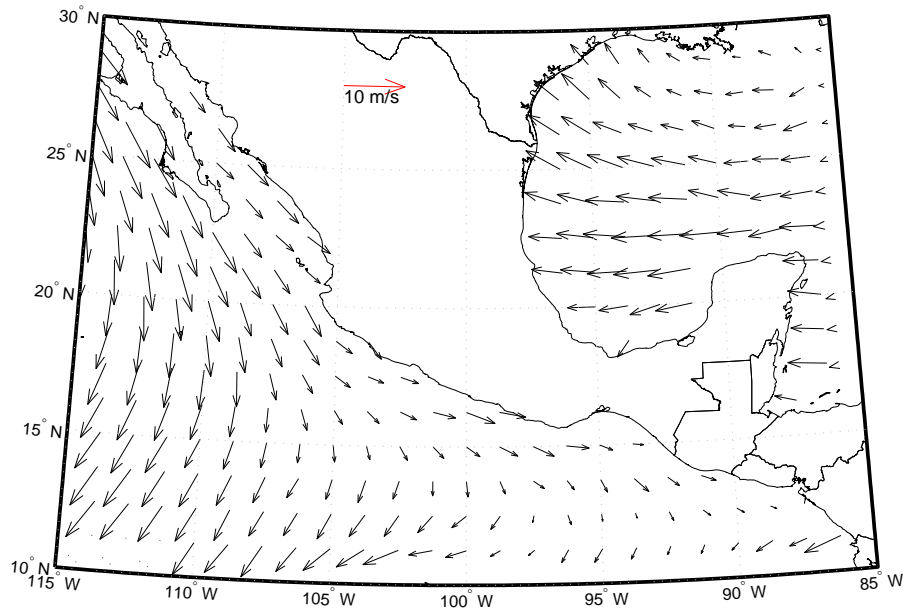
[Title Page](#)[Abstract](#)[Introduction](#)[Conclusions](#)[References](#)[Tables](#)[Figures](#)[◀](#)[▶](#)[◀](#)[▶](#)[Back](#)[Close](#)[Full Screen / Esc](#)[Print Version](#)[Interactive Discussion](#)

EGU



Mexico City wind  
circulation

B. de Foy et al.



(a) O3-South

**Fig. 10.** Average Quikscat winds for (a) O3-South, (b) Cold Surge and (c) O3-North. All available data from both ascending and descending passes is combined to make the average.

[Title Page](#)[Abstract](#)[Introduction](#)[Conclusions](#)[References](#)[Tables](#)[Figures](#)[◀](#)[▶](#)[◀](#)[▶](#)[Back](#)[Close](#)[Full Screen / Esc](#)[Print Version](#)[Interactive Discussion](#)

EGU

**Mexico City wind  
circulation**

B. de Foy et al.

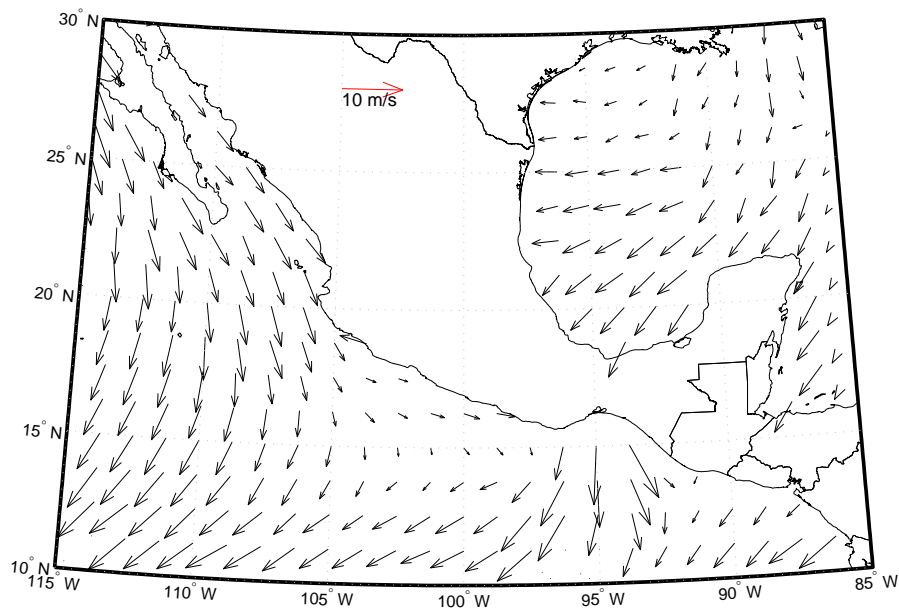
**(b) Cold Surge**

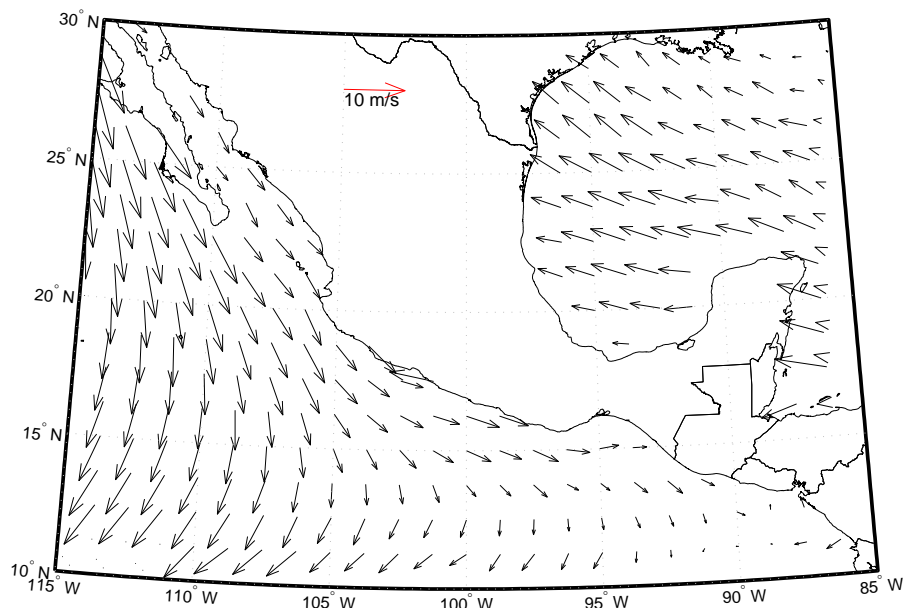
Fig. 10. Continued.

[Title Page](#)[Abstract](#)[Introduction](#)[Conclusions](#)[References](#)[Tables](#)[Figures](#)[◀](#)[▶](#)[◀](#)[▶](#)[Back](#)[Close](#)[Full Screen / Esc](#)[Print Version](#)[Interactive Discussion](#)

EGU

**Mexico City wind circulation**

B. de Foy et al.



(c) O3-North

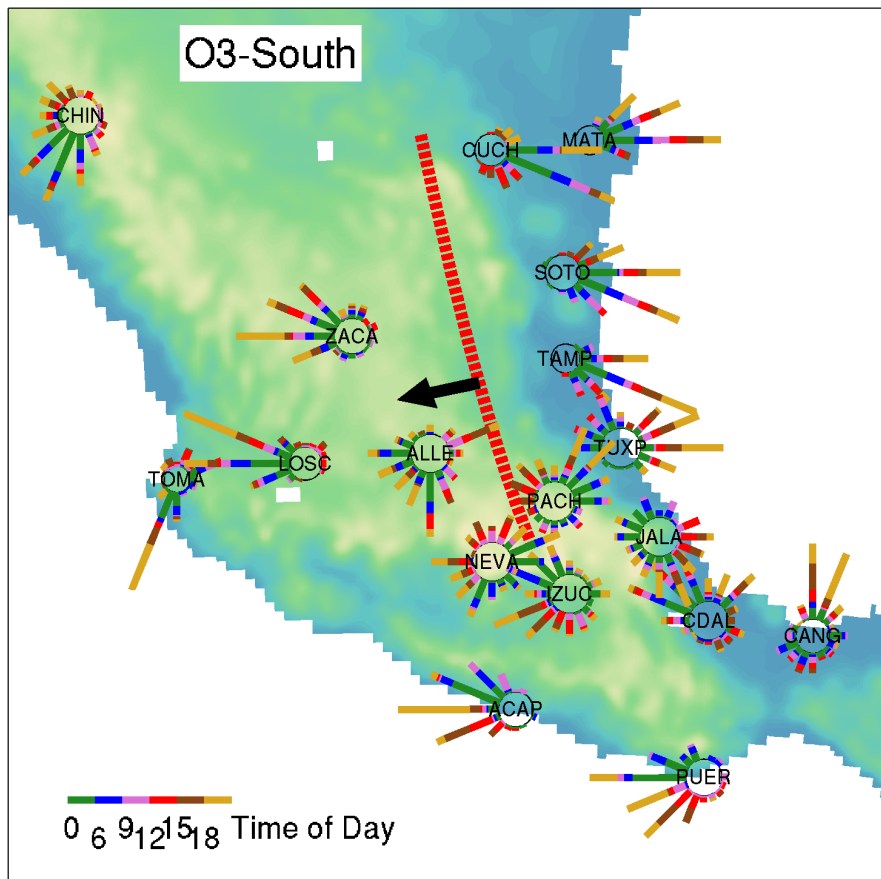
Fig. 10. Continued.

[Title Page](#)[Abstract](#)[Introduction](#)[Conclusions](#)[References](#)[Tables](#)[Figures](#)[◀](#)[▶](#)[◀](#)[▶](#)[Back](#)[Close](#)[Full Screen / Esc](#)[Print Version](#)[Interactive Discussion](#)

EGU

Mexico City wind circulation

B. de Foy et al.



**Fig. 11.** “Time roses” for selected SMN surface stations on the national scale for O3-South, Cold Surge and O3-North. Topography is shown by colored contours. Dashed red lines show estimated location of convergence zones, with black arrow showing its displacement as the day progresses.

Title Page	
Abstract	Introduction
Conclusions	References
Tables	Figures
◀	▶
◀	▶
Back	Close
Full Screen / Esc	
Print Version	
Interactive Discussion	

Mexico City wind circulation

B. de Foy et al.

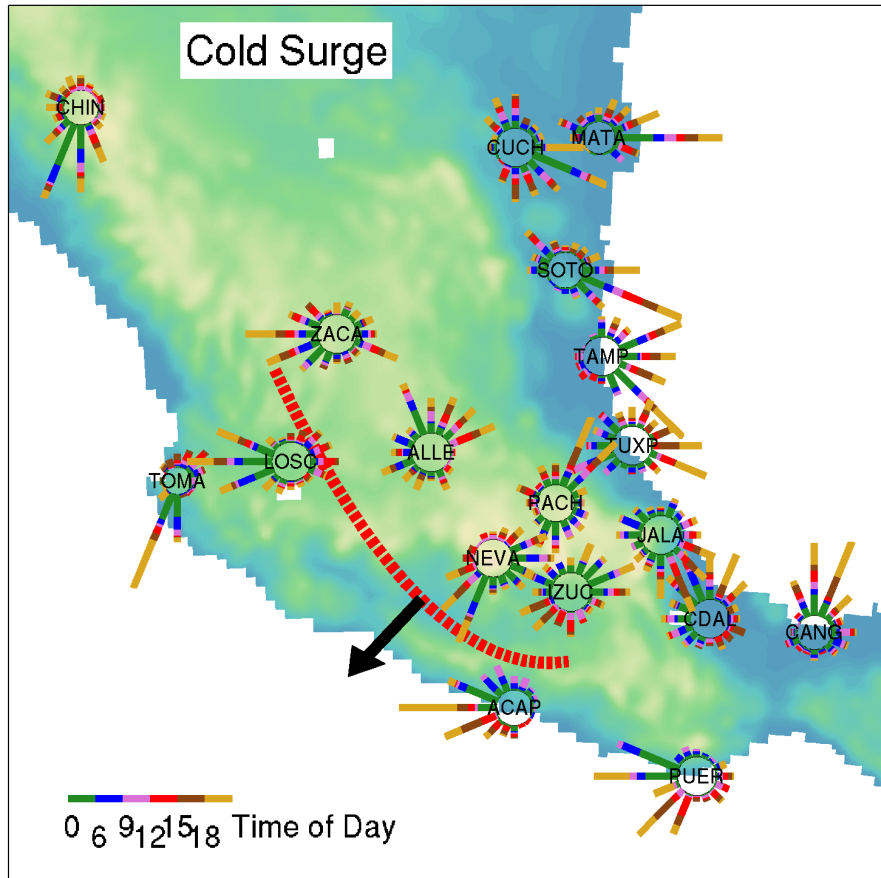


Fig. 11. Continued.

Title Page	
Abstract	Introduction
Conclusions	References
Tables	Figures
◀	▶
◀	▶
Back	Close
Full Screen / Esc	
Print Version	
Interactive Discussion	

Mexico City wind circulation

B. de Foy et al.

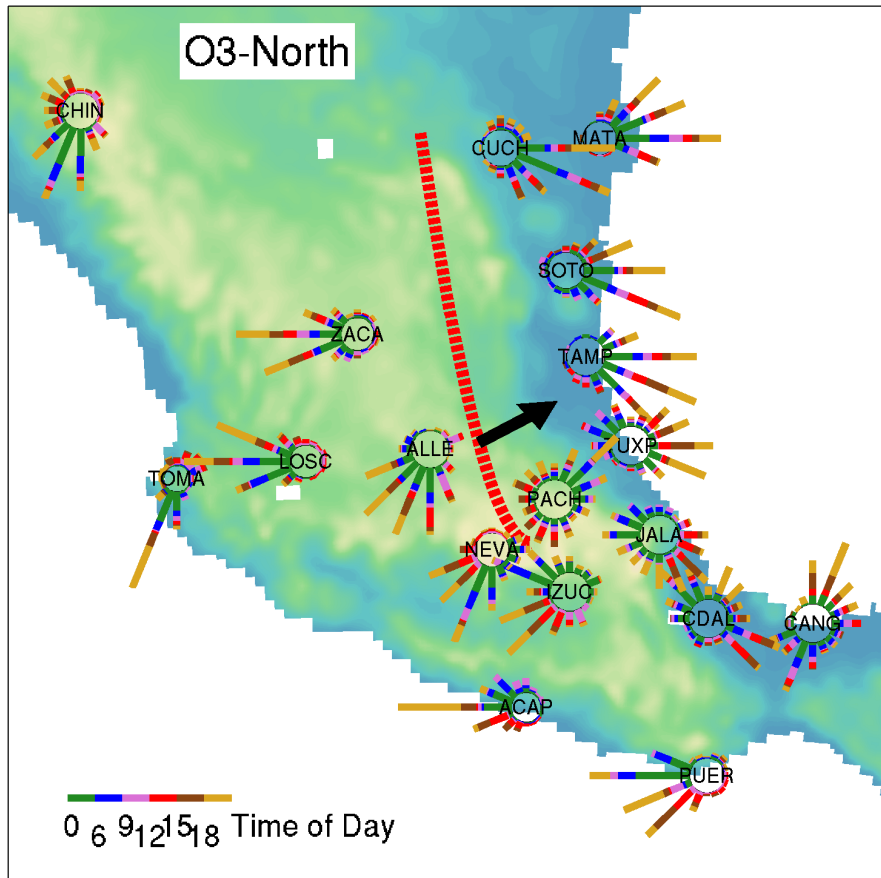


Fig. 11. Continued.

Title Page

Abstract Introduction

Conclusions References

Tables Figures

◀ ▶

◀ ▶

Back Close

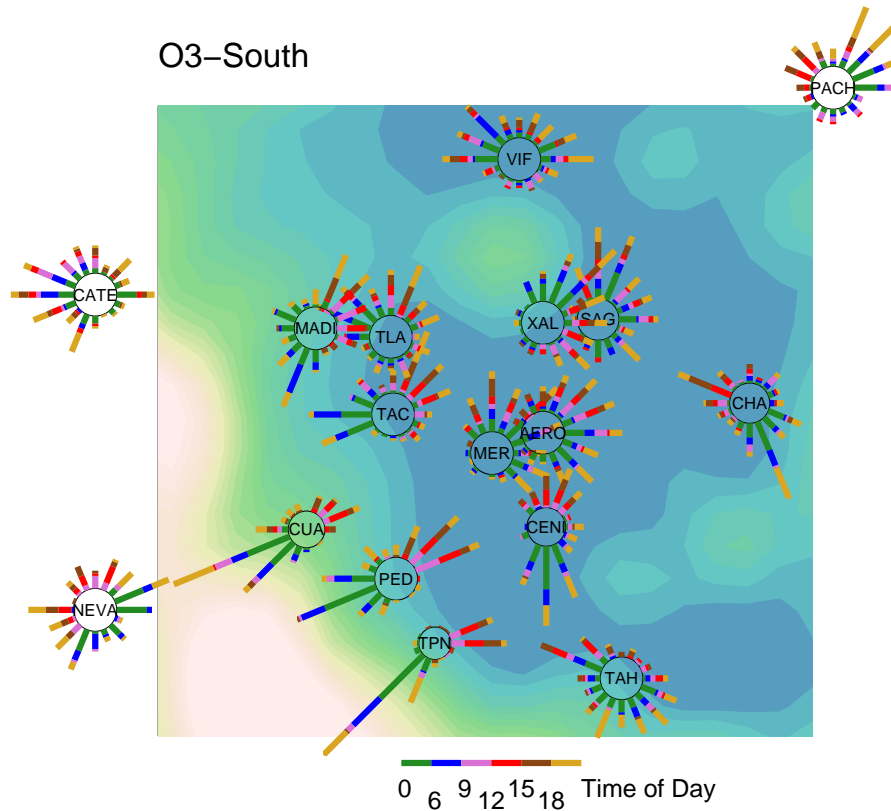
Full Screen / Esc

Print Version

Interactive Discussion

Mexico City wind circulation

B. de Foy et al.



**Fig. 12.** “Time roses” for selected stations in the Mexico City basin for O3-South, Cold Surge and O3-North. Topography is shown by colored contours.

Title Page	
Abstract	Introduction
Conclusions	References
Tables	Figures
◀	▶
◀	▶
Back	Close
Full Screen / Esc	
Print Version	
Interactive Discussion	

Mexico City wind circulation

B. de Foy et al.

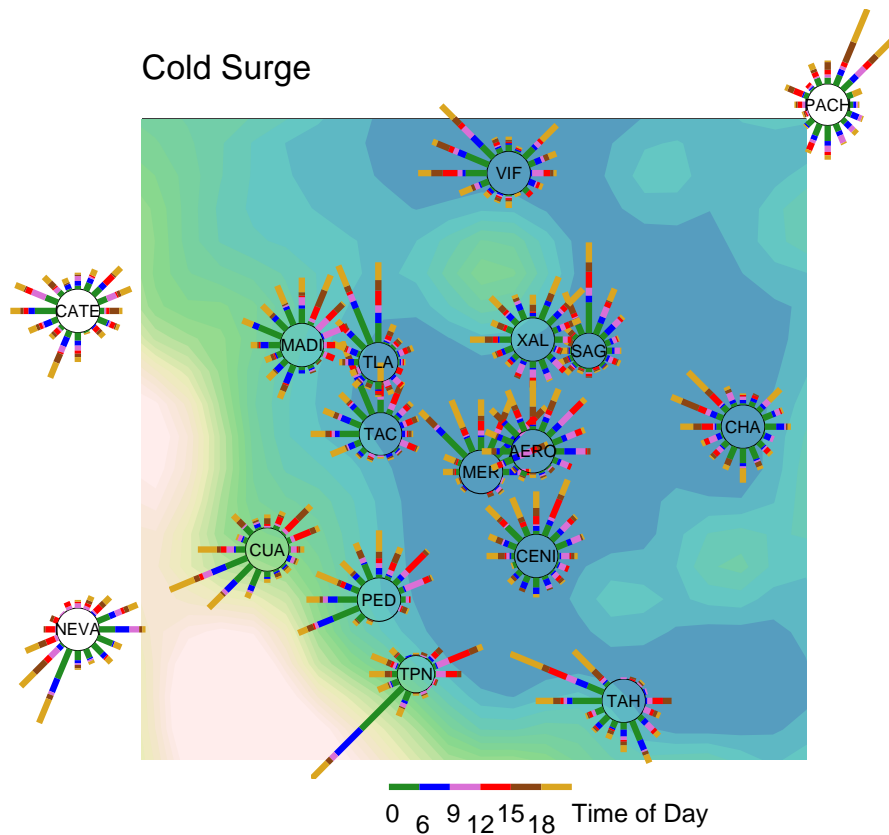


Fig. 12. Continued.

Title Page	
Abstract	Introduction
Conclusions	References
Tables	Figures
◀	▶
◀	▶
Back	Close
Full Screen / Esc	
Print Version	
Interactive Discussion	



Mexico City wind circulation

B. de Foy et al.

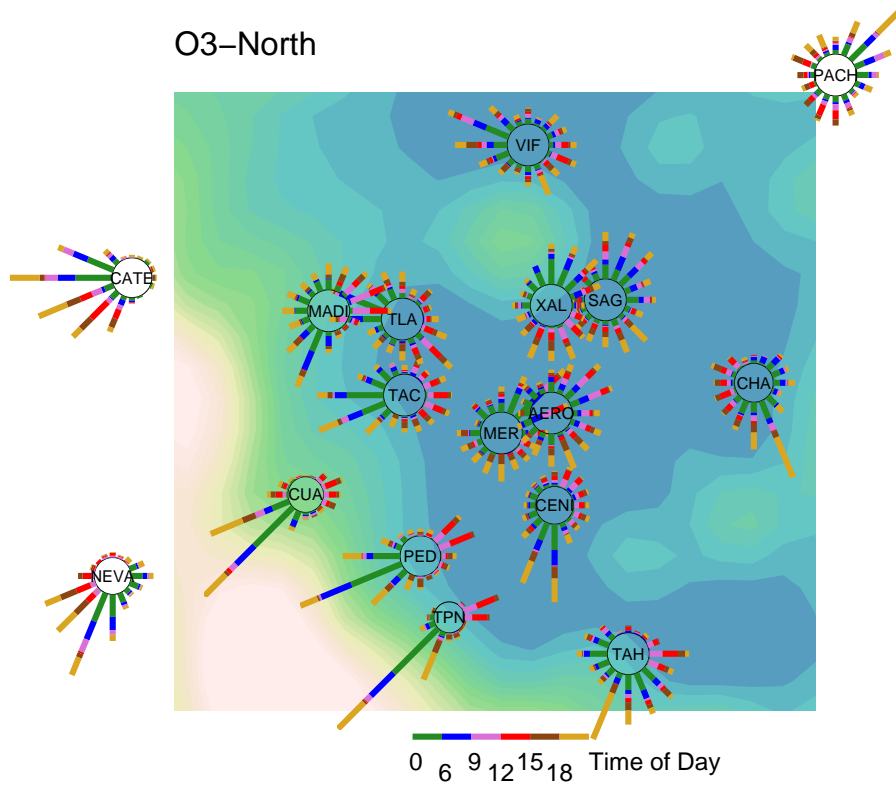
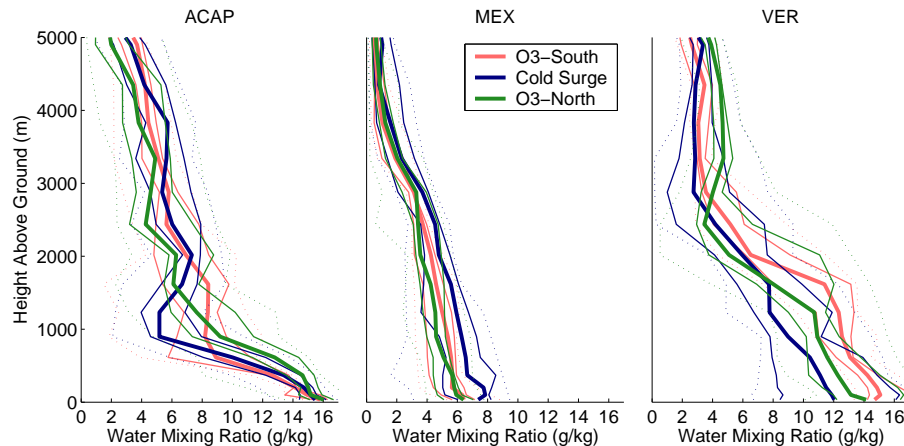


Fig. 12. Continued.

Title Page	
Abstract	Introduction
Conclusions	References
Tables	Figures
◀	▶
◀	▶
Back	Close
Full Screen / Esc	
Print Version	
Interactive Discussion	

## Mexico City wind circulation

B. de Foy et al.



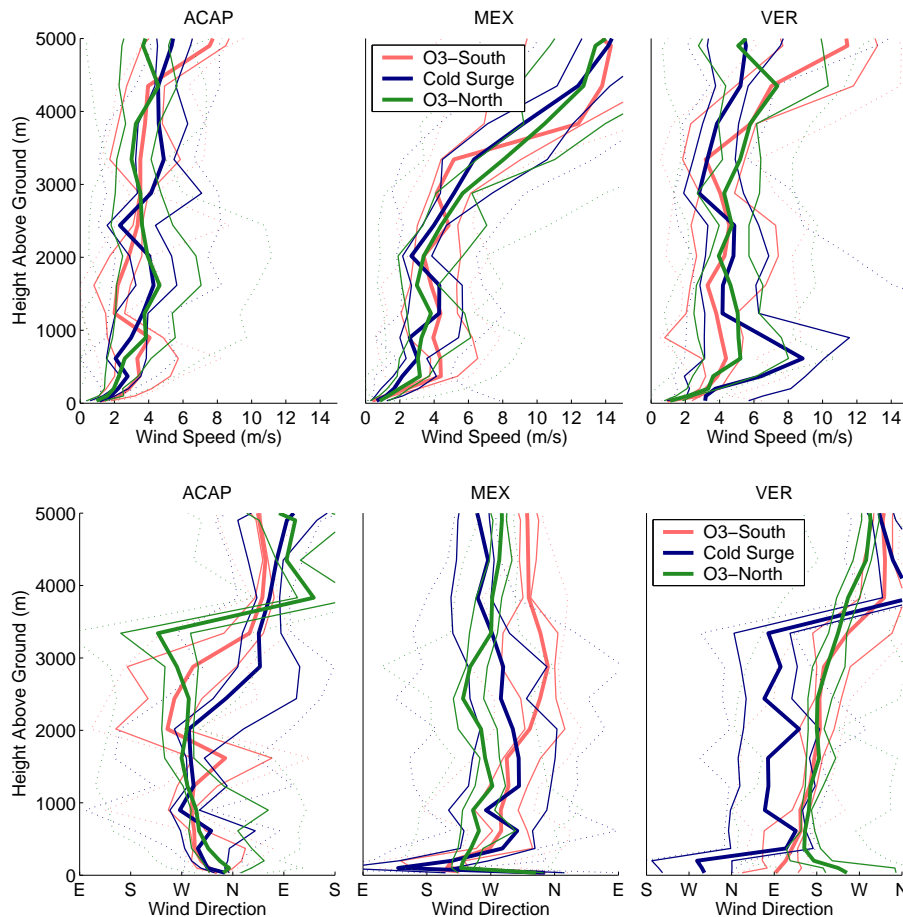
**Fig. 13.** Radiosonde profiles of water mixing ratio for Acapulco (ACAP), Mexico City (MEX) and Veracruz (VER) by episode for all available 07:00 CDT soundings. As for the diurnal plots, the bold line indicates the median, the thin line the 25 and 75 percentile (inter-quartile range) and the dotted lines the data range. Red for O3-South, blue for Cold Surge and green for O3-North.

[Title Page](#)[Abstract](#)[Introduction](#)[Conclusions](#)[References](#)[Tables](#)[Figures](#)[◀](#)[▶](#)[◀](#)[▶](#)[Back](#)[Close](#)[Full Screen / Esc](#)[Print Version](#)[Interactive Discussion](#)

EGU

Mexico City wind circulation

B. de Foy et al.



**Fig. 14.** Radiosonde profiles of wind speed and direction for Acapulco (ACAP), Mexico City (MEX) and Veracruz (VER), see Fig. 13 for explanation.

Title Page

Abstract Introduction

Conclusions References

Tables Figures

◀ ▶

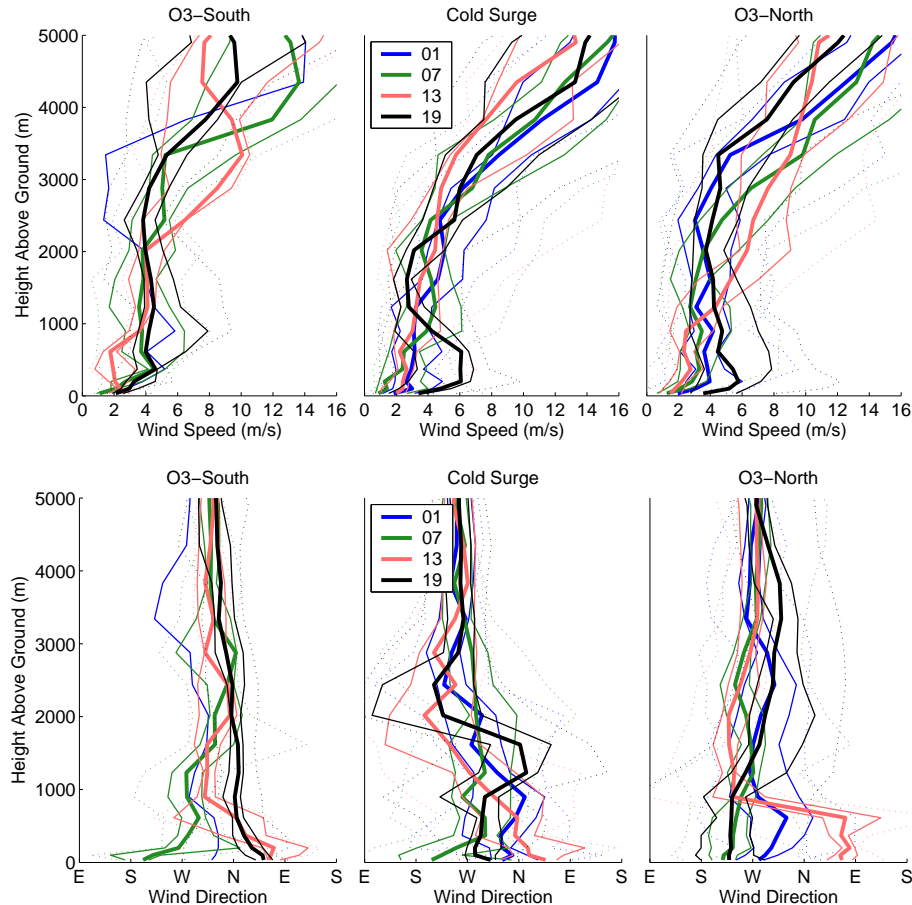
◀ ▶

Back Close

Full Screen / Esc

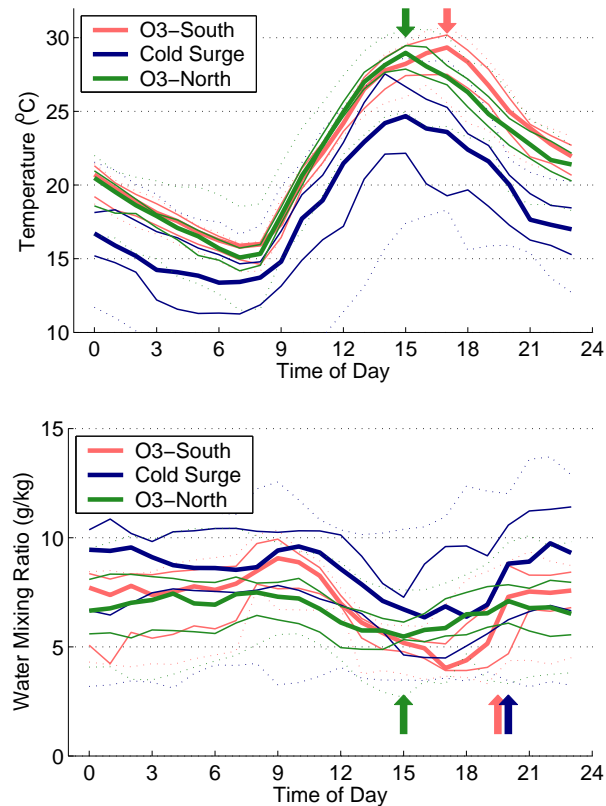
Print Version

Interactive Discussion



**Fig. 15.** Radiosonde profiles of wind speed and direction at GSMN (MEX) by time of day for each episode. As for the previous profiles, the bold line indicates the median, the thin line the 25 and 75 percentile (inter-quartile range) and the dotted lines the data range. Blue for 01:00 CDT, green for 07:00 CDT, red for 13:00 CDT and black for 19:00 CDT. All available soundings included.

[Title Page](#)
[Abstract](#)
[Introduction](#)
[Conclusions](#)
[References](#)
[Tables](#)
[Figures](#)
[◀](#)
[▶](#)
[◀](#)
[▶](#)
[Back](#)
[Close](#)
[Full Screen / Esc](#)
[Print Version](#)
[Interactive Discussion](#)



**Fig. 16.** Diurnal pattern of temperature and water mixing ratio at CENICA by episode, as for Fig. 8. For temperature, arrows show the delay in the maximum temperature for O3-South relative to O3-North. For water mixing ratio, arrows indicate the start of influx of moist air into the basin.

[Title Page](#)[Abstract](#)[Introduction](#)[Conclusions](#)[References](#)[Tables](#)[Figures](#)[◀](#)[▶](#)[◀](#)[▶](#)[Back](#)[Close](#)[Full Screen / Esc](#)[Print Version](#)[Interactive Discussion](#)

EGU

Mexico City wind circulation

B. de Foy et al.

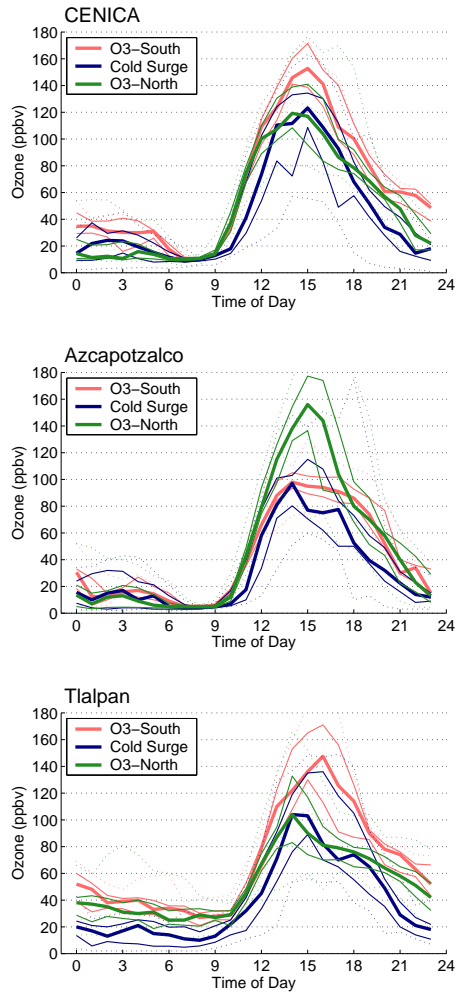


Fig. 17. Diurnal pattern of ozone at CENICA, Azcapotzalco and Tlalpan by episode, as for Fig. 8.

Title Page

Abstract

Introduction

Conclusions

References

Tables

Figures

◀

▶

◀

▶

Back

Close

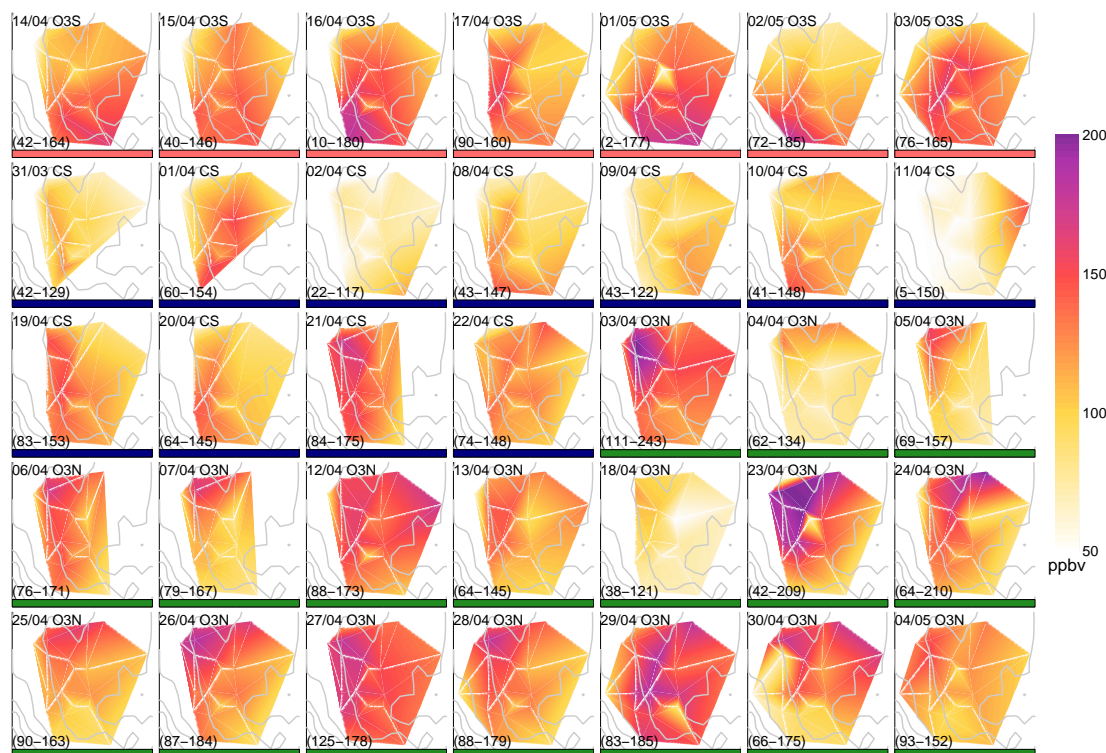
Full Screen / Esc

Print Version

Interactive Discussion

Mexico City wind  
circulation

B. de Foy et al.



**Fig. 18.** Two-dimensional maps of peak ozone measured by RAMA for each day of the campaign over MCMA, arranged by episode. Bars are colored by episode type: red for O3-South (O3S), blue for Cold Surge (CS) and green for O3-North (O3N). The range of ozone values in ppbv is printed in the lower-left corner of each plot.

Title Page

Abstract

Introduction

Conclusions

References

Tables

Figures

◀

▶

◀

▶

Back

Close

Full Screen / Esc

Print Version

Interactive Discussion

EGU

**Table 2.** Maximum mixing heights and morning (07:00 CDT) thermal inversions from radiosondes at SMN. Mixing heights are calculated from the potential temperature gradient and inversions are calculated from temperature profiles.

Date	Category	Max Mixing Height		Surface Inversion			Shallow Inversion			Upper Inversion		
		m a.g.l.	Sounding CDT	base m	depth m	intensity K	base m	depth m	intensity K	base m	depth m	intensity K
01/04/2003	Cold Surge	3090	19	0	500	2.5						
02/04/2003	Cold Surge	690	13									
03/04/2003	O3-North	2680	19							3410	80	1.4
04/04/2003	O3-North	3480	19				830	80	0.8	3050	200	1.0
05/04/2003	O3-North	3080	19	0	80	0.5						
06/04/2003	O3-North	3280	19							4500	100	0.7
07/04/2003	O3-North	3280	19							3760	110	0.6
08/04/2003	Cold Surge	1690	13				300	60	0.4	2740	90	0.7
09/04/2003	Cold Surge	890	13				920	100	0.8			
10/04/2003	Cold Surge	890	13							4480	120	1.8
11/04/2003	Cold Surge	2300	13	0	170	1.7	960	40	0.2	3150	110	0.5
12/04/2003	O3-North	N.A.										
13/04/2003	O3-North	3300	19							2840	260	2.2
14/04/2003	O3-South	2890	19							3310	300	2.5
15/04/2003	O3-South	3490	19	0	110	0.4				3090	270	1.1
16/04/2003	O3-South	3480	19	0	70	0.2	690	50	0.3	2810	200	1.1
17/04/2003	O3-South	3280	19							3040	80	0.5
18/04/2003	O3-North	3090	19	0	210	1.6				3650	120	1.7
19/04/2003	Cold Surge	1490	13							3300	190	3.3
20/04/2003	Cold Surge	2480	13	0	340	0.6				3800	120	1.8
21/04/2003	Cold Surge	2890	19				510	130	1.1	4000	110	0.9
22/04/2003	Cold Surge	890	13							3420	110	0.6
23/04/2003	O3-North	N.A.		0	270	1.4				3140	100	0.5
24/04/2003	O3-North	3500	19				1130	60	0.4	2070	90	0.6
25/04/2003	O3-North	3490	19	110	80	0.3						
26/04/2003	O3-North	N.A.		0	100	1.0				2740	120	0.2
27/04/2003	O3-North	1290	19	0	220	0.4	590	60	0.2			
28/04/2003	O3-North	2090	13									
29/04/2003	O3-North	3890	19	0	260	0.8						
30/04/2003	O3-North	1090	13				650	40	0.6	3270	250	0.7
01/05/2003	O3-South	4090	19	0	190	1.2				3490	90	0.3
02/05/2003	O3-South	3680	19	0	410	0.4						
03/05/2003	O3-South	3680	19	0	240	1.2				4450	80	1.1
04/05/2003	O3-North	3490	19							3840	110	0.8

Mexico City wind circulation

B. de Foy et al.

Title Page

Abstract Introduction

Conclusions References

Tables Figures

◀ ▶

◀ ▶

Back Close

Full Screen / Esc

Print Version

Interactive Discussion



**Table 3.** Wind jets identified from radiosonde profiles for each day of the campaign. (Surf indicates maximum wind speed at the surface.)

Date	Category	Wind Jet 13:00				Wind Jet 19:00				Wind Jet 01:00				Wind Jet 07:00			
		Ws <sub>max</sub> m/s	WD dir	Ht <sub>min</sub> m	Ht <sub>max</sub> m	Ws <sub>max</sub> m/s	WD dir	Ht <sub>min</sub> m	Ht <sub>max</sub> m	Ws <sub>max</sub> m/s	WD dir	Ht <sub>min</sub> m	Ht <sub>max</sub> m	Ws <sub>max</sub> m/s	WD dir	Ht <sub>min</sub> m	Ht <sub>max</sub> m
01/04/2003	Cold Surge	4	N	0	1500	6	N	Surf	1000	4	N	Surf	500	5	N	500	1500
02/04/2003	Cold Surge	0				7	W	Surf	1000	0				0			
03/04/2003	O3-North	2	E	0	500	3	S	Surf	500	0				0			
04/04/2003	O3-North	0				9	W	Surf	1500		No Sounding			5	SW	0	1000
05/04/2003	O3-North	2	E	0	1000	10	SW	Surf	2500		No Sounding			4	SW	0	500
06/04/2003	O3-North	4	E	0	750	7	SW	Surf	1000	6	NW	Surf	750	5	NW	500	2500
07/04/2003	O3-North	0				6	WNW	1500	3500	4	NW	Surf	500	0			
08/04/2003	Cold Surge	7	S	0	750		No Sounding			5	NE	Surf	1000	5	W	0	750
09/04/2003	Cold Surge	3	W	0	500	6	S	0	1500	3	S	Surf	1000	6	W	0	1500
10/04/2003	Cold Surge		No Sounding			8	W	Surf	1500	0				0			
11/04/2003	Cold Surge	0				0				0				5	NW	0	1500
12/04/2003	O3-North		No Sounding			5	W	Surf	1500	6	W	Surf	1000	5	S	0	1250
13/04/2003	O3-North		No Sounding			4	S	0	1250	6	W	0	2500	7	W	0	2500
14/04/2003	O3-South	0				0					No Sounding			6	W	0	1000
15/04/2003	O3-South	3	SE	Surf	500	3	N	0	2000		No Sounding			5	W	0	750
16/04/2003	O3-South	5	NW	500	2500	8	N	0	2500		No Sounding			6	N	1500	3500
17/04/2003	O3-South		No Sounding				No Sounding				No Sounding			9	S	0	1500
18/04/2003	O3-North	3	E	0	1500		No Sounding				No Sounding			6	N	500	2500
19/04/2003	Cold Surge	3	N	Surf	750	0					No Sounding			4	WSW	0	1000
20/04/2003	Cold Surge	4	E	0	1500	7	NW	0	1500	0				8	S	0	2000
21/04/2003	Cold Surge	0				0					No Sounding			7	W	Surf	1500
22/04/2003	Cold Surge	0				5	NW	0	1000	0				0			
23/04/2003	O3-North		No Sounding			8	W	0	3000	0				7	W	0	1500
24/04/2003	O3-North	0				4	SE	0	1250	8	N	0	2500	8	W	0	1500
25/04/2003	O3-North	0				0				0				4	W	0	2000
26/04/2003	O3-North		No Sounding				No Sounding			10	W	0	1250	5	SW	0	500
27/04/2003	O3-North		No Sounding			0				5	W	0	1500	3	S	500	2000
28/04/2003	O3-North	3	NE	0	750	12	E	Surf	1250		No Sounding			7	W	0	2000
29/04/2003	O3-North	3	NE	0	750	10	W	0	3000	0				0			
30/04/2003	O3-North	0				7	W	0	1500		No Sounding			0			
01/05/2003	O3-South		No Sounding			0					No Sounding			8	N	0	2000
02/05/2003	O3-South		No Sounding			0					No Sounding			7	WSW	0	1250
03/05/2003	O3-South		No Sounding			10	NE	0	2500		No Sounding			5	SE	0	1250
04/05/2003	O3-North		No Sounding			0					No Sounding						

Mexico City wind circulation

B. de Foy et al.

Title Page

Abstract Introduction

Conclusions References

Tables Figures

◀ ▶

◀ ▶

Back Close

Full Screen / Esc

Print Version

Interactive Discussion