



**HAL**  
open science

## Climatological aspects of aerosol optical properties in Northern Greece

E. Gerasopoulos, M. O. Andreae, C. S. Zerefos, T. W. Andreae, D. Balis, P. Formenti, P. Merlet, V. Amiridis, C. Papastefanou

► **To cite this version:**

E. Gerasopoulos, M. O. Andreae, C. S. Zerefos, T. W. Andreae, D. Balis, et al.. Climatological aspects of aerosol optical properties in Northern Greece. *Atmospheric Chemistry and Physics Discussions*, 2003, 3 (2), pp.2059-2099. hal-00303883

**HAL Id: hal-00303883**

**<https://hal.science/hal-00303883>**

Submitted on 18 Jun 2008

**HAL** is a multi-disciplinary open access archive for the deposit and dissemination of scientific research documents, whether they are published or not. The documents may come from teaching and research institutions in France or abroad, or from public or private research centers.

L'archive ouverte pluridisciplinaire **HAL**, est destinée au dépôt et à la diffusion de documents scientifiques de niveau recherche, publiés ou non, émanant des établissements d'enseignement et de recherche français ou étrangers, des laboratoires publics ou privés.

**Aerosol optical  
properties in  
Northern Greece**

E. Gerasopoulos et al.

# Climatological aspects of aerosol optical properties in Northern Greece

**E. Gerasopoulos<sup>1,2</sup>, M. O. Andreae<sup>2</sup>, C. S. Zerefos<sup>1</sup>, T. W. Andreae<sup>2</sup>, D. Balis<sup>1</sup>, P. Formenti<sup>3</sup>, P. Merlet<sup>2</sup>, V. Amiridis<sup>1</sup>, and C. Papastefanou<sup>4</sup>**

<sup>1</sup>Laboratory of Atmospheric Physics, Physics Department, Aristotle University of Thessaloniki, P. O. Box 149, 54124 Thessaloniki, Greece

<sup>2</sup>Max Planck Institute for Chemistry, Biogeochemistry Department, P.O. Box 3060, 55020 Mainz, Germany

<sup>3</sup>Centre of Geophysics of Évora, Universidade de Évora, Rua R. Ramalho, 59, 7000-532 Évora, Portugal

<sup>4</sup>Nuclear Physics Department, Aristotle University of Thessaloniki, 54124 Thessaloniki, Greece

Received: 27 November 2002 – Accepted: 21 March 2003 – Published: 15 April 2003

Correspondence to: E. Gerasopoulos (egera@skiathos.physics.auth.gr)

Title Page

Abstract

Introduction

Conclusions

References

Tables

Figures

◀

▶

◀

▶

Back

Close

Full Screen / Esc

Print Version

Interactive Discussion

© EGU 2003

## Abstract

Measurements of aerosol optical properties (aerosol optical depth, scattering and backscattering coefficients) have been conducted at two ground-based sites in Northern Greece, Ouranoupolis (40°23' N, 23°57' E, 170 m a.s.l.) and Thessaloniki (40°38' N, 22°57' E, 80 m a.s.l.), between 1999 and 2002. Their frequency distributions have revealed the presence of individual modes of high and low values, indicating the influence from different sources. At both sites, the mean aerosol optical depth at 500 nm was 0.23. Values increase considerably during summer when they remain persistently between 0.3 and 0.5, going up to 0.7–0.8 during specific cases. The mean value of  $65 \pm 40 \text{ Mm}^{-1}$  of the particle scattering coefficient at 550 nm reflects the impact of continental pollution in the regional boundary layer. Trajectory analysis has shown that higher values of aerosol optical depth and the scattering coefficient are found in the east sector (former Soviet Union countries, eastern Balkan countries), whereas cleaner conditions are found for the NW direction. The influence of Sahara dust events is clearly reflected in the Angström exponents. About 45–60% of the observed diurnal variation of the optical properties was attributed to the growth of aerosols with humidity, while the rest of the variability is in phase with the evolution of the sea-breeze cell. Local pollution is estimated to contribute  $35 \pm 10\%$  to the average aerosol optical depth at the Thessaloniki site during summer. Finally, the aerosol scale height was found to be related to the height of the boundary layer with values between 0.5–1 km during winter and up to 2.5–3 km during summer.

## 1. Introduction

The role of aerosols in a changing climate has been under scrutiny during the past decades (e.g. Coakley et al., 1983; Andreae, 1995; Penner et al., 2001; Haywood and Boucher, 2000). Depending on their intrinsic properties, especially the single scattering albedo, aerosols can cause either cooling or warming of the atmosphere, in contrast to

## Aerosol optical properties in Northern Greece

E. Gerasopoulos et al.

Title Page

Abstract

Introduction

Conclusions

References

Tables

Figures

◀

▶

◀

▶

Back

Close

Full Screen / Esc

Print Version

Interactive Discussion

the greenhouse gases which only cause warming. Nevertheless, the “level of scientific understanding” concerning the various climatic effects of atmospheric aerosols is still very inadequate (Houghton et al., 2001; Shine and Forster, 1999).

In the last decade, a substantial number of experimental studies on aerosols have focused on the eastern Mediterranean area (Luria et al., 1996; Pinker et al., 1997; Mihalopoulos et al., 1997; Paronis et al., 1998; Papayiannis et al., 1998; Ichoku et al., 1999; Andreae et al., 2002; Formenti et al., 2001a; 2001b; 2002a; 2002b; Lelieveld et al., 2002; Kouvarakis et al., 2002). This is because of the maximum in the net direct radiative forcing by sulfate aerosols predicted to occur in this region by various models (Charlson et al., 1991; Kiehl and Rodhe, 1995; Boucher and Anderson, 1995). Accumulation of aerosols and enhanced backscattering is favored by the meteorological conditions prevailing over the eastern Mediterranean, namely sparse cloudiness and prolonged exposure to solar radiation. Concentrations of important trace gases and aerosols are typically factors of 2 to 10 higher over the Mediterranean than in the hemispheric background troposphere (Lelieveld et al., 2002). Within the eastern Mediterranean, the Aegean sea and the coastal part of continental Greece are in a “key” geographical position where aerosols from different sources converge, namely maritime aerosols from sea spray; mineral dust from North Africa; and anthropogenic aerosols from the highly populated urban centers and industrial areas, as well as seasonal biomass burning (Formenti et al., 2002a, 2002b). In the lower troposphere over the Mediterranean, European pollution is mainly responsible for the reduction of air quality, particularly during summer, whereas in the free troposphere pollution is largely determined by intercontinental transport (Lelieveld et al., 2002).

Furthermore, the impact of aerosols on the photochemical activity and thus on the air quality of the region is very important and has been studied extensively during the Photochemical Activity and Ultraviolet Radiation (PAUR) campaigns (Zerefos et al., 2002) that took place in the Northern Aegean (1996) and on Crete (1999). These studies showed that various (in type and quantity) aerosols can modulate the solar UV radiation reaching the Earth’s surface in such a way that it can mask changes induced by

**Aerosol optical properties in Northern Greece**

E. Gerasopoulos et al.

Title Page

Abstract

Introduction

Conclusions

References

Tables

Figures

◀

▶

◀

▶

Back

Close

Full Screen / Esc

Print Version

Interactive Discussion

## Aerosol optical properties in Northern Greece

E. Gerasopoulos et al.

Title Page

Abstract

Introduction

Conclusions

References

Tables

Figures

◀

▶

◀

▶

Back

Close

Full Screen / Esc

Print Version

Interactive Discussion

© EGU 2003

total ozone itself (Kylling et al., 1997). Moreover, in the presence of high tropospheric ozone (Kourtidis et al., 2002) and high absorbing aerosols from the Sahara desert, reduction in the UV and in associated photolysis rates have been measured even if total ozone decreases (Balis et al., 2002).

In this paper, we present the results of an extended time series (1999–2002) of measurements of the optical characteristics of aerosols (optical depth, scattering and back-scattering coefficient, Angström exponent, backscatter ratio), and thereby establish a climatology of aerosols in the region. Following the description of the instrumentation and data analysis methodology (Sect. 2), the basic statistical properties of the measured and calculated quantities are presented together with their frequency distributions (Sect. 3.1). In Sect. 3.2, the source distribution of aerosols with different properties is investigated via air mass trajectory analysis. The temporal variation of aerosol optical properties for two time-scales, seasonal and diurnal, is then described (Sects. 3.3, 3.4, respectively), and finally an estimation of the contribution of local pollution sources (Sect. 4.1) and of the aerosol scale height (Sect. 4.2) is attempted. The following notation for the optical properties of aerosols will be used in the text:

AOD = aerosol optical depth,

$\mathring{a}_\tau$  = Angström exponent calculated from aerosol optical depths at different wavelengths,

$\sigma_{\text{sp}}$  = scattering coefficient,

$\sigma_{\text{bsp}}$  = back-scattering coefficient,

$\mathring{a}_\sigma$  = Angström exponent calculated from scattering coefficients at different wavelengths,

$\beta$  = backscatter ratio ( $\sigma_{\text{bsp}}/\sigma_{\text{sp}}$ ).

## 2. Instrumentation and methodology

### 2.1. Site description

Measurements of aerosol optical properties have been conducted at two ground-based sites in Northern Greece between 1999 and 2002. The first station is situated in the region of Ouranoupolis (Mount Athos Observatory, MAO, 40°23' N, 23°57' E, 170 m a.s.l.), a rural area in the Chalkidiki peninsula, 100 km east of Thessaloniki, the closest major city with a population of approximately 1 million. The second station is located in an urban setting at the Laboratory of Atmospheric Physics in Thessaloniki (LAP, 40°38' N, 22°57' E, 80 m a.s.l.). Both sites face the Aegean Sea to the south and are situated along the expected pathway through which pollution from central and eastern Europe influences aerosol loading over the Eastern Mediterranean.

### 2.2. Instrumentation

At MAO, a multi-filter rotating shadowband radiometer (MFR-7 Yankee Env. System Inc., Turner Falls, MA) has been providing 1-min average aerosol optical depths (AOD) at five wavelengths (415, 501, 615, 675 and 867 nm) since June 1999, with a gap from September 2000 until June 2001 due to instrument malfunctioning. A three wavelength (450, 550 and 700 nm) integrating nephelometer (TSI 3563, TSI Inc., St Paul, MN) has been also providing continuous measurements (2-min resolution) of the particle light scattering coefficients for both total scattering ( $\sigma_{sp}$ ) and back-scattering ( $\sigma_{bsp}$ ) for the same period, with minor gaps from September to middle November 1999 and from April to July 2001. A second multi-filter rotating shadowband radiometer of the same type has been operating at LAP since February 2001. Valid measurements from the MFR were obtainable during daytime under clear sky conditions only. Gaps in the time series are associated with either total cloudiness, enhanced during the fall-winter period, or with power failures at Ouranoupolis after severe weather phenomena (thundershowers, snowfall etc). Regular calibration checks and instrument maintenance have been

## Aerosol optical properties in Northern Greece

E. Gerasopoulos et al.

Title Page

Abstract

Introduction

Conclusions

References

Tables

Figures

◀

▶

◀

▶

Back

Close

Full Screen / Esc

Print Version

Interactive Discussion

performed during the period of operation.

### 2.3. Methods

A detailed description of the operation principles of the MFR can be found in Harrison et al. (1994a), and a considerable number of publications have suggested various algorithms for the retrieval of aerosol optical depths from measurements of the direct solar irradiance (e.g. Bruegge et al., 1992; Michalsky et al., 2001; Alexandrov et al., 2002). The procedure followed in the present study is described below:

At first, the Langley linear regression technique (Harrison et al., 1994b) was applied to morning and afternoon data with airmass,  $m$ , between 2 and 6. This provided us with the solar constant  $I_o$  estimated from the intercept of the regression line. This procedure was applied to each clear-sky day that showed a log-linear relationship between irradiance and airmass, regardless of the optical depth obtained from the slope of the regression line. The solar constants were then corrected for the Sun-Earth distance (Iqbal, 1983). The inclusion of periods with high amounts of aerosols over the station produced a bias in the estimates of  $I_o$  that showed up as a positive correlation between optical depth (slope) and solar constant (intercept). To eliminate these biased values, a threshold value of optical depth was chosen for each wavelength, below which  $I_o$ 's dependence on optical depth was statistically non-significant. The remaining cases were filtered to eliminate days with significant variability of optical depth within the day, and the same days were used for all wavelengths. Finally, trend analysis on  $I_o$  was used to determine a possible physical deterioration of the filters or photodiode detectors, and a linear regression provided the final  $I_o$  values to be used for each wavelength along the whole period.

The Beer-Lambert-Bouguer law ( $I = I_o \cdot e^{-\tau \cdot m}$ ) was next applied to derive instantaneous measurements of the total optical depth (one-minute time resolution). Finally, aerosol optical depths (AODs) for the five wavelengths were obtained by subtracting the contribution of Rayleigh scattering and ozone absorption from the total optical depth. The wavelength dependent optical depth of Rayleigh scattering was calculated from

---

## Aerosol optical properties in Northern Greece

E. Gerasopoulos et al.

---

Title Page

Abstract

Introduction

Conclusions

References

Tables

Figures

◀

▶

◀

▶

Back

Close

Full Screen / Esc

Print Version

Interactive Discussion

---

**Aerosol optical properties in Northern Greece**E. Gerasopoulos et al.

---

[Title Page](#)[Abstract](#)[Introduction](#)[Conclusions](#)[References](#)[Tables](#)[Figures](#)[◀](#)[▶](#)[◀](#)[▶](#)[Back](#)[Close](#)[Full Screen / Esc](#)[Print Version](#)[Interactive Discussion](#)

© EGU 2003

the formula of Hansen and Travis (1974) using a time series of pressure available for Thessaloniki. The ozone optical depth was extracted using the ozone absorption coefficients for each wavelength and the total column of ozone available from the operation of a double monochromator Brewer ozone spectrophotometer at Thessaloniki (Bais et al., 1996), as well as from Earth-Probe Total Ozone Mapping Spectrometer (TOMS) data (<http://toms.gsfc.nasa.gov>). For the calculation of the airmass,  $m$ , we used the formula suggested by Hansen and Travis (1974). Results from different formulas (Young, 1994; Kasten and Young, 1989; Rosenberg, 1966), also taking into account atmospheric refraction and the effects of a spherical Earth on the atmospheric path of radiance, were compared. The average percentage difference of each airmass value calculated by the different formulae from their mean increased from 0.2% to 1.7% for the airmass range of 2–6 that we used.

From the 1-min resolution measurements those parts affected by cloudiness were easily identified and removed, although the presence of thin cirrus clouds inducing slight increase in optical depth was difficult to distinguish from changes in the atmospheric conditions due to aerosol loading. For this reason, the description of cloudiness available from the Hellenic Meteorological Service at Thessaloniki helped to clarify the origins of certain diurnal disturbances. Additionally, the comparison of the columnar measurements of the MFR with the in situ measurements of the nephelometer can provide some indication for the presence of aerosol layers or thin clouds at higher altitudes. Such disturbances do not produce large changes to daily averages, but they are useful for certain case studies.

The operating principles of the TSI nephelometer as well as the methodology used to extract  $\sigma_{\text{sp}}$  and  $\sigma_{\text{bsp}}$  are extensively described by Andreae et al. (2002). Corrections for the angular truncation and the nonlambertian errors were performed using the correction equations proposed by Anderson and Ogren (1998). For  $\sigma_{\text{sp}}$ , correction was based on the Angström exponents,  $\mathring{a}_{\sigma}$ , whereas constant correction factors were used for  $\sigma_{\text{bsp}}$ . To provide comparability with literature values, we provide the resulting percentage change for our data set: For  $\mathring{a}_{\sigma} > 1.5$  the increase of  $\sigma_{\text{sp}}$  at 550 nm stays well



[Title Page](#)[Abstract](#)[Introduction](#)[Conclusions](#)[References](#)[Tables](#)[Figures](#)[◀](#)[▶](#)[◀](#)[▶](#)[Back](#)[Close](#)[Full Screen / Esc](#)[Print Version](#)[Interactive Discussion](#)

© EGU 2003

within 10% and only for  $\mathring{a}_\sigma < 0.5$  it exceeds 20% (up to 27%) – an average increase of 9%. The pattern is the same for the other two wavelengths, only with much higher dispersion of the values. On the other hand,  $\sigma_{\text{bsp}}$  are reduced by 1.8%. The change in the recalculated value of  $\mathring{a}_\sigma$  (either increase or decrease) does not exceed 10% for almost the whole range of particle size, and only for  $\mathring{a}_\sigma < 0.2$  an increase up to 30% is found for a limited number of cases. Finally, backscatter ratios ( $\beta$ ) decrease by 13% on average, with the decrease reaching 30–40% for  $\mathring{a}_\sigma < 0.5$ .

### 3. Climatological investigation of aerosol optical properties

#### 3.1. Descriptive statistics

Before proceeding to the main analysis, we present some basic statistics in order to summarize the optical properties of aerosols in our study region in the Eastern Mediterranean, and to facilitate comparison with literature values (Table 1). A collection of literature values from previous studies is available in Formenti et al. (2001b).

The wavelength dependence of optical depth at MAO and LAP is investigated for the common period (July 2001–March 2002) using the Angström's power law approximation,  $\tau(\lambda) = \beta\lambda^{-\mathring{a}}$  (Angström, 1929). Values of  $\mathring{a}$  around 1.3 are representative of continental aerosols, whereas for larger aerosols (dust, seasalt) the exponents tend to zero (Michalsky et al., 2001). As shown in Fig. 1, average  $\mathring{a}_\tau$  values for both stations, calculated from the average AOD at each wavelength, are close to continental levels with values  $1.43 \pm 0.03$  and  $1.57 \pm 0.05$  for MAO and LAP, respectively.

The frequency distribution of all aerosol optical properties was calculated next. The resulting histograms for AOD as well as for  $\mathring{a}_\tau$  are presented in Fig. 2. A rather smooth behavior was found for the LAP data, which allowed the fitting of a lognormal distribution for AOD and a normal distribution for  $\mathring{a}_\tau$ . For MAO the frequency distributions proved to be more complicated and the estimation of statistical parameters was subject to higher uncertainty. The choice of the distributions to be fitted was based on the fact

**Aerosol optical  
properties in  
Northern Greece**

E. Gerasopoulos et al.

Title Page

Abstract

Introduction

Conclusions

References

Tables

Figures

◀

▶

◀

▶

Back

Close

Full Screen / Esc

Print Version

Interactive Discussion

that AOD has the natural cut-off value of zero, resulting in positive skewness, whereas for  $\hat{a}_\tau$  no such physical threshold exists near the high frequency classes, and thus a normal distribution could be applied. More specifically, for LAP the lognormal fitting resulted into a mean AOD value of  $0.126 \pm 0.006$  (values after  $\pm$  represent the standard error of the parameter estimation) and a standard deviation of  $0.63 \pm 0.06$ . The Gaussian fitting for  $\hat{a}_\tau$  gave a mean value of  $1.67 \pm 0.01$  and a standard deviation of  $0.19 \pm 0.01$ . The distribution of  $\hat{a}_\tau$  at MAO is flatter (low kurtosis) and a slight shift to lower values appears, with a mean of  $1.57 \pm 0.05$  and a standard deviation of  $0.28 \pm 0.06$ . Finally, a more complex distribution is found for optical depths at MAO, although once more a lognormal distribution could be fitted, leading however to enhanced uncertainty to the estimation of the parameters. Instead, three distributions were fitted in order to represent three frequency modes that seem to be consistently present. A dominant normal distribution with a mean of 0.2 (standard deviation,  $\text{std}=0.11$ ) explains the majority of the observed values, whereas for lower values a lognormal distribution at 0.066 ( $\text{std}=0.34$ ) reflects the fact that the site is actually situated at a rural area and thus this mode corresponds to background conditions. Finally, a second normal distribution (mean=0.47,  $\text{std}=0.07$ ) represents the higher values that possibly reflect either the fact that pollution events are more easily distinguished at this site or that data coverage is more complete during the warm season, with some gaps during the winter-spring months.

Corresponding frequency distributions were calculated for  $\sigma_{\text{sp}}$ ,  $\sigma_{\text{bsp}}$ ,  $\hat{a}_\sigma$  and  $\beta$  and are presented in Fig. 3. For both  $\sigma_{\text{bsp}}$  and  $\sigma_{\text{bsp}}$  a lognormal (background conditions) and a normal distribution were fitted resulting in a mean of 28 ( $\text{std}=0.8$ ), 76 ( $\text{std}=25$ ) and 2.6 ( $\text{std}=0.7$ ), 7.2 ( $\text{std}=3$ ), respectively. Values of  $\hat{a}_\sigma$  were fitted by a normal distribution, giving a mean of  $1.74 \pm 0.01$  and a standard deviation of  $0.26 \pm 0.02$  and ratios were best fitted by a lognormal distribution with a mean of  $0.0961 \pm 0.0007$  and a standard deviation of  $0.2 \pm 0.01$ .

### 3.2. Origins of air masses arriving at the stations

In order to investigate the source regions of particles leading to elevated AOD over Northern Greece, back-trajectories (96 h) were calculated at three heights using HYSPLIT (Hybrid Single-Particle Lagrangian Integrated Trajectory Model). The heights chosen were: 1) at surface level (80 m above ground) to give representative origins of air masses for the in-situ nephelometer measurements. 2) at 1 km, which can serve as a representative height for the boundary layer in which the majority of aerosol particles is present, thus providing a good estimation of the air mass origins for the column integrated MFR measurements. 3) at 3 km for the presence of Sahara dust layers to be captured, if needed during specific case studies. We then selected sectors around the prevailing transport directions, to be used for the classification of the air mass origins.

As seen in Fig. 4, five main sectors were used: (S) southern sector, to represent the influence from the African continent, with most trajectories coming from the southwest; (W) western sector, for air masses coming from either south-western European countries or north-western African countries having spent considerable time over the western Mediterranean or representing longer range transport from the Atlantic; (NW) northwestern sector, including the main part of central Europe; (N) Northern sector, used mainly to capture the transition between the Northwestern and Eastern sectors; and (E) eastern sector, to cover air-masses originating mainly from the most eastern-northeastern part of Europe, since trajectories coming from southeastern directions were quite rare. An additional sector (L) was also applied to represent those stagnant cases when trajectories showed air masses staying for an extended period over the neighboring areas without a prevailing direction. When trajectories were passing over different sectors the main sector chosen was the one over which air-masses spent most of their time, giving also additional weight to the fact that as one follows trajectories backwards there is a significant increase to their uncertainty.

Before proceeding to the more detailed investigation of the source regions, we give a brief description of the frequency and seasonality of the prevailing direction for air

## Aerosol optical properties in Northern Greece

E. Gerasopoulos et al.

Title Page

Abstract

Introduction

Conclusions

References

Tables

Figures

◀

▶

◀

▶

Back

Close

Full Screen / Esc

Print Version

Interactive Discussion

**Aerosol optical properties in Northern Greece**

E. Gerasopoulos et al.

[Title Page](#)[Abstract](#)[Introduction](#)[Conclusions](#)[References](#)[Tables](#)[Figures](#)[◀](#)[▶](#)[◀](#)[▶](#)[Back](#)[Close](#)[Full Screen / Esc](#)[Print Version](#)[Interactive Discussion](#)

© EGU 2003

masses arriving at MAO, at both the surface and the 1 km height levels. For the days with available measurements, 40% of the trajectories originated from the E sector, whereas the other sectors were almost uniformly distributed with a small excess of the NW and N ones. During all seasons except winter, the E sector prevailed, and especially during summer its frequency reached 50%, while during winter the NW and N sectors retained each a frequency of 25–30%.

The main results of categorizing the aerosol optical properties according to the origins of the air masses arriving at MAO station are presented in Table 2. Significant differences, in most cases characteristic of the sources present in the various sectors, are found (Fig. 5). Values were not assigned for the eastern-southeastern sector, since there were no trajectories originating from there, as already mentioned. At the borders of the sectors average values between adjacent sectors are used. A consistent distribution pattern is evident for all three extensive quantities. The minimum values of AOD,  $\sigma_{\text{sp}}$  and  $\sigma_{\text{bsp}}$  are in the NW sector, and then values increase moving clockwise, reaching a maximum in the E sector, and then decrease again for air masses from the S and the W sectors. In contrast, minimum values of  $\hat{a}_{\tau}$  and  $\hat{a}_{\sigma}$  are found for the S sector and maxima for the N and E sectors ( $\hat{a}_{\sigma}$  shows only minor variability and only for the S sector are values significantly different). Finally,  $\beta$  ratios have their minimum values in the S sector and maximum values in the NW sector.

More detailed information on these spatial patterns is revealed by calculating the frequency distribution of aerosol optical properties for each different sector (Fig. 6). As shown in Fig. 6a, AOD values higher than 0.45 are found to originate only from the E and L sector, which both have a relatively flat distribution, whereas a rather narrow distribution is revealed for the NW sector with a pronounced frequency peak at the 0.1–0.15 class. The distribution in the N sector represents a transition between the two most different sectors (E and NW). Finally, both the S and the W distributions appear to be bi-modal, with one mode describing the lower values and the other being partly shifted as one moves from the E sector maximum to the NW minimum. From the distributions in Fig. 6b one can clearly see the influence of the Sahara dust events

**Aerosol optical  
properties in  
Northern Greece**

E. Gerasopoulos et al.

[Title Page](#)[Abstract](#)[Introduction](#)[Conclusions](#)[References](#)[Tables](#)[Figures](#)[◀](#)[▶](#)[◀](#)[▶](#)[Back](#)[Close](#)[Full Screen / Esc](#)[Print Version](#)[Interactive Discussion](#)

© EGU 2003

on the size of aerosols, as revealed by the distinct peak around 0.4–0.6 found for the S sector. This maximum is less well defined for  $\hat{a}_\sigma$ , probably because most of the dust transport occurs at higher altitudes and does not influence surface aerosol properties as much as the column-integrated values (Formenti et al., 2001b; Andreae et al., 2002). The frequency distribution for  $\hat{a}_\tau$  in the W sector is shifted to higher values serving again as a transition to the NW and N sectors, for which nearly identical and relatively broad distributions with maxima near 1.7 are found. Finally, a peak at the same position is present for the E and L sectors. The narrower frequency peak in these sectors suggests a more constant particle size distribution in the air masses arriving from these sectors. The similarity between the distributions in the E and L sectors is probably due to the fact that most of the L (local) trajectories actually arrive from easterly directions and that the two sectors include common pollution sources from eastern Balkan countries (L) and former Soviet Union countries (E). The same general pattern is evident for  $\sigma_{sp}$  and  $\sigma_{bsp}$  (Figs. 6c, e) with minimum values originating from the N and NW sectors, while the distributions of the rest of the sectors are not separable.

### 3.3. Seasonality of aerosol optical properties

The seasonal variability of aerosol optical properties is mainly related to the seasonal characteristics of the production, transport and removal processes of aerosols over a specific region. In many studies (e.g. Michalsky et al., 2001; Holben et al., 2001; Alexandrov et al., 2002) a summer peak has been found for AOD, while larger aerosols dominate during winter.

Monthly means of aerosol optical properties at MAO and LAP are presented in Fig. 7. At MAO (Fig. 7a) a distinct annual cycle is seen with clear summer maximum (August) and winter minimum (December) for AOD,  $\hat{a}_\tau$  and  $\hat{a}_\sigma$ . The second peak in October for  $\hat{a}_\tau$  can be attributed to particular days in October 1999 and 2001 with higher values for the Angström exponents and slightly higher ones for AOD. The data show that, on a climatological basis, real background conditions are encountered at MAO only

**Aerosol optical properties in Northern Greece**

E. Gerasopoulos et al.

[Title Page](#)[Abstract](#)[Introduction](#)[Conclusions](#)[References](#)[Tables](#)[Figures](#)[◀](#)[▶](#)[◀](#)[▶](#)[Back](#)[Close](#)[Full Screen / Esc](#)[Print Version](#)[Interactive Discussion](#)

© EGU 2003

during November and December, with AOD down to 0.1 and  $\text{\AA}$  below 1.2 indicating the possible influence from sea-spray aerosols. During summer, enhanced turbidity, the absence of wet removal processes, as well as the prevailing east sector under more stagnant meteorological conditions, result in the build-up of aerosols. The same conditions are also favorable to enhanced pollution near urban areas.

In contrast, no clear annual cycle is revealed at LAP (Fig. 7b). This can be attributed to the fact that sources of pollution with different seasonal characteristics (central heating, transportation, industrial activities etc.) are superimposed on the seasonality related to the change of meteorological patterns. An extreme peak in August at LAP reconfirms that part of the seasonality at MAO is due to enhanced pollution, but one has still to bear in mind that the periods of measurements at the two sites are not the same and August 2001 has been an exceptional month, influenced by biomass burning from areas at the northern coast of the Black Sea (Salisbury et al., 2003; Balis et al., 2003b).

The seasonal variability of  $\sigma_{\text{sp}}$  and  $\sigma_{\text{bsp}}$  (Fig. 7c) is quite different. Following a maximum in August, there is an even larger one in the fall (November), whereas a minimum is seen during spring. However, it should be mentioned that values for April, May and June are mainly from 2000 and that during this period the lowest values of the whole data set are found. The seasonal cycle of the planetary boundary layer (PBL) thickness (Balis et al., 2003a) could be responsible for the fall and winter maximum in  $\sigma_{\text{sp}}$ . The PBL is shallower in fall and winter and thus aerosols are confined to a thinner layer. In contrast,  $\text{\AA}_{\sigma}$  is consistent with the seasonality in  $\text{\AA}_{\tau}$  since both show the same summer maximum, with the specific annual cycle being much more distinct for  $\text{\AA}_{\sigma}$ . The same pattern is also followed by  $\beta$  (Fig. 7d).

### 3.4. Diurnal variability of aerosol optical properties

To investigate the diurnal variability of the aerosol optical properties, we used higher resolution data (1-min and 2-min averages of the quantities measured directly and indirectly by the two instruments). A distinct diurnal cycle is observed for all quantities, as

**Aerosol optical properties in Northern Greece**

E. Gerasopoulos et al.

[Title Page](#)[Abstract](#)[Introduction](#)[Conclusions](#)[References](#)[Tables](#)[Figures](#)[◀](#)[▶](#)[◀](#)[▶](#)[Back](#)[Close](#)[Full Screen / Esc](#)[Print Version](#)[Interactive Discussion](#)

© EGU 2003

seen in Fig. 8. AOD values decrease at both sites (Fig. 8a) around 06:00–08:00 UTC, reach a minimum at about 12:00–14:00 UTC and then start increasing again during afternoon (12:00 UTC corresponds to 10:28 solar time at MAO). The column ångström exponents,  $\text{\AA}_\tau$ , (Fig. 8b) also show a decrease in the morning, more intense at MAO than at LAP, and then they increase until 14:00 UTC, when they are subject to an abrupt decrease. Observing AOD for individual days, it is seen that there are no abrupt changes within the day and specific patterns are found. The most common patterns are those of AOD decreasing during the day and either reaching a plateau during afternoon or increasing again, but not reaching the same values as in the early morning.

The diurnal variation from the nephelometer data covers the full 24-hour period, but the results indicate more or less the same behavior. Both  $\sigma_{\text{sp}}$  and  $\sigma_{\text{bsp}}$  (Fig. 8c) decrease around 08:00 UTC, reach a minimum value at about 14:00 UTC and then increase until 20:00–22:00 UTC, after which they remain on a plateau during the whole night. The pattern for  $\text{\AA}_\sigma$  is similar (Fig. 8d), but shows a phase shift of about 2–3 h, with maxima and minima occurring earlier than for the other parameters. The minimum occurs at 06:00 UTC, then values rise until 12:00 UTC and then a decrease is observed during afternoon. A similar pattern is found for  $\beta$  with minimum and maximum preceding those of  $\text{\AA}_\sigma$ .

Gebhart et al. (2001) refer to five different diurnal patterns for optical properties of aerosols at various stations in the US, mainly related to the relationship between RH and scattering. Many of the patterns were linked to local sources or local meteorology whereas factors causing diurnal variability in particle concentration or composition are also important. At MAO and LAP, the diurnal variability of the optical properties of aerosols (Fig. 8) follows the heating of the surface by the sun, suggesting that this pattern is mainly driven by the effect of relative humidity (RH) on the size and the composition of aerosols. Numerous studies (Hänel, 1976; Fitzgerald et al., 1982; Charlson et al., 1984; Horvath, 1996) have focused on the change of particle size with RH for different types of atmospheric aerosols.

In order to explore the role of RH, its diurnal variability was derived using the internal

**Aerosol optical  
properties in  
Northern Greece**

E. Gerasopoulos et al.

[Title Page](#)[Abstract](#)[Introduction](#)[Conclusions](#)[References](#)[Tables](#)[Figures](#)[◀](#)[▶](#)[◀](#)[▶](#)[Back](#)[Close](#)[Full Screen / Esc](#)[Print Version](#)[Interactive Discussion](#)

© EGU 2003

RH measurements of the nephelometer. The instrument was located in a small room directly under the roof of the building, which generally was a few degrees warmer than the ambient temperature, so that internal RH was somewhat lower than that of the ambient air. As seen in Fig. 9, RH has a distinct diurnal cycle in general agreement with those of the aerosol optical properties. More specifically, regression analysis shows a strong correlation between RH with  $\sigma_{\text{sp}}$  and  $\sigma_{\text{bsp}}$  ( $r^2 = 0.98$  and  $0.92$ , respectively) with a time delay of 1–1.5 h and a strong anticorrelation with  $\beta$  ( $r^2 = -0.96$ ) at zero lag. The anticorrelation with  $\hat{a}_{\sigma}$  is weaker ( $r^2 = -0.74$ ) possibly due to the fact that  $\hat{a}_{\sigma}$  is influenced by the instrumental noise on the scattering coefficients. The additional time delay of  $\hat{a}_{\tau}$  in comparison with  $\hat{a}_{\sigma}$  can be attributed to the fact that since the heating of the atmosphere is taking place from the surface and upwards, it takes some time to affect the relative humidity of the column that the MFR sees.

But can the RH variability explain the whole of the diurnal cycle of the optical properties? To answer this question, a correction factor  $f(\text{RH})$  describing the hygroscopic growth of the aerosol particles with increasing RH is calculated, according to the equation  $f(\text{RH}) = a \cdot (1 - \text{RH}/100)^b$  (Kasten, 1969; Hänel, 1976). The choice of the constants  $a$  and  $b$  vary for different chemical composition of the aerosols (Day and Malm, 2001). Since no representative values are known for MAO, different constants (Day and Malm, 2001; Clarke et al., 2002) were applied and  $\sigma_{\text{sp}}$  was corrected according to the  $f(\text{RH})$  (Fig. 9). Depending on the choice of the constants 45–60% of the diurnal cycle is explained by RH, but a considerable part still remains unexplained.

This part could be attributed to the contribution of local circulation systems persistent under certain meteorological conditions. Since both measuring sites (LAP and MAO) are very close to the sea, under weakening of the synoptic winds local circulation systems develop, which often lead to a sea-breeze circulation cell. This circulation pattern is stronger and appears more often during the warm period. Its presence results in a shallower PBL (e.g. Melas et al., 1998) and in a diurnal variation of both wind speed and wind direction. In a typical sea breeze pattern it is expected that the wind speed reaches maximum values around 08:00–09:00 UTC and remain constant until



---

**Aerosol optical  
properties in  
Northern Greece**E. Gerasopoulos et al.

---

[Title Page](#)[Abstract](#)[Introduction](#)[Conclusions](#)[References](#)[Tables](#)[Figures](#)[◀](#)[▶](#)[◀](#)[▶](#)[Back](#)[Close](#)[Full Screen / Esc](#)[Print Version](#)[Interactive Discussion](#)

© EGU 2003

the afternoon (16:00–17:00 UTC) for places that are a few kilometers inland. When the sea-breeze flow pattern is established both at the surface and up to the mixing height, the boundary-layer air originates from the sea. This pattern can introduce different aerosol sources during most of the day compared to the sources that are associated with the synoptic flow over the area. The diurnal variability of the ångström exponent shown in Fig. 8 indicates changes in the aerosol type and is in phase with the evolution of the sea-breeze cell.

Additional results are derived by sorting the diurnal variability by seasons and trajectory origins. Thus, extracting the diurnal cycles for pairs of months (not shown here) one can see that during winter-spring (November–December, January–February and less during March–April), when the maximum diurnal range of RH is observed, the amplitude of the diurnal cycle of both  $\sigma_{sp}$  and  $\sigma_{bsp}$  takes its maximum value as well. When sorting the diurnal variability by the trajectory origins it is shown that when air masses come from the S–SW sectors then the diurnal cycle of  $\sigma_{sp}$  and  $\sigma_{bsp}$  is more intense. In combination with the fact that the decrease of the values is prolonged during the afternoon, this possibly reflects the local sea breeze system.

## 4. Further analysis

### 4.1. Comparison between rural and urban measurements – Estimation of contributions from local pollution

As already mentioned, the key difference between the two sites is the fact that Thessaloniki (LAP) is the main urban center of the region, and is therefore impacted by local pollution sources, while MAO is remote enough to be considered as a rural site. On the other hand, the sites are close enough to each other so that they are influenced simultaneously from medium- and long-range transport. This allows us to estimate the contribution of local pollution to the aerosol radiative effects at LAP, without of course disregarding the potential influence of pollution from the Thessaloniki urban region on

MAO.

For the period when both sites were operating simultaneously, AOD values at the two sites show significant covariance ( $r^2=0.76$  at 500 nm and 0.69 for  $\text{\AA}_T$ ), partly bearing out the assertion above (Fig. 10). Even though not evident in Table 1 due to the use of the entire periods for both sites instead of their common period, AOD values over LAP were on average higher than over MAO, reflecting local pollution in Thessaloniki (values at LAP are generally above the 1:1 line). Assuming a simple additive effect of the urban pollution, the mean of the AOD differences would express the contribution of the pollution, provided that clear days and days with transport from Thessaloniki to MAO are excluded. Also, one has to consider that on a climatological basis the differences in transport from remote sources at the two sites are not significant. In order to investigate the above, the differences of AOD at MAO and LAP were categorized according to the direction of the arriving air masses. In general, small differences (many of them not exceeding the uncertainty of the measurements) are found for all sectors except the Eastern one. This is a combination of the fact that some sectors (NW–N) were related to the transport of cleaner air masses (Sect. 3.2) and that in the sectors from SW to NW urban pollution at Thessaloniki affects MAO. On the contrary, for air masses from the E sector, the differences become significant and more consistent. These days are more frequent during summers, when also meteorological conditions favor the trapping of pollution, and during which there is no transport of urban pollution to MAO.

Thus, when only the days with air masses from the E sector are considered, a linear regression analysis results in a slope of  $0.9\pm 0.14$  indicating that there is indeed a constant shift to higher values for LAP that could on average give an estimation of the local pollution sources at Thessaloniki. This contribution is acquired from the intercept,  $0.19\pm 0.05$  at 500 nm, leading to a contribution of  $35\pm 10\%$  for the average AOD over LAP. For the rest of the cases the contribution, calculated from the mean of the AOD differences at the two sites, varies between 3–10%.

**Aerosol optical properties in Northern Greece**

E. Gerasopoulos et al.

Title Page

Abstract

Introduction

Conclusions

References

Tables

Figures

◀

▶

◀

▶

Back

Close

Full Screen / Esc

Print Version

Interactive Discussion

## 4.2. Estimation of aerosol scale height

The aerosol scale height, which is the equivalent depth of the optically active aerosol layer of the atmosphere at an assumed constant pressure equal to the surface pressure, can be estimated by combining the extinction coefficient,  $s_{ep}$ , and the AOD at MAO. In general, if a linear relationship between the two parameters exists (AOD= $H \cdot \sigma_{ep} + b$ ), then the slope of the regression line gives the aerosol scale height, under the assumption that aerosols are homogeneously concentrated within the lower part of the atmosphere, near the ground and up to the height,  $H$ . The variance explained by the regression gives an indication of how well the column extinction is represented by a measurement at the bottom of the boundary layer. The intercept, on the other hand, represents more or less constant contributions to extinction by free tropospheric and stratospheric background aerosols.

However, for the calculation of  $s_{ep}$  apart from  $\sigma_{sp}$  the aerosol absorption coefficient,  $\sigma_{abs}$ , is also needed. Shettle and Fenn (1979) provide the single scattering albedo,  $\omega$ , for various types of aerosols, ranging from 0.7 (urban) to 0.98 (maritime) with  $\omega$  equal to 0.94 and 0.96 for rural and tropospheric background, respectively. Moreover, estimations of  $\omega$  over the Eastern Mediterranean show mean values within the range of 0.85–0.90 (Kouvarakis et al., 2002; Lelieveld et al., 2002; Formenti et al., 2002a; 2002b). Thus, assuming the general case of moderately absorbing aerosols ( $\omega=0.9$ ),  $\sigma_{ep}$  would be 10% higher than  $\sigma_{sp}$ , which leads to a corresponding 10% reduction to the calculated aerosol scale height. Nevertheless, for the regressions below,  $\sigma_{sp}$  will be used instead of  $s_{ep}$  since an exact value for  $\omega$  is not available, and it must be kept in mind that the corrected value for  $H$  is  $H/(2 - \omega)$ . Application of the correction for ( $\omega=0.9$ ) will also be provided.

In the scatter plot between  $\sigma_{sp}$  and AOD at 550 nm for the whole period (Fig. 11) a great dispersion of values can be seen, thus not fully satisfying the assumption of linearity for the determination of  $H$  (AOD at 550 was derived by Angström's power law approximation,  $\tau(\lambda) = \beta \lambda^{-\alpha}$ , after constants  $\alpha$ ,  $\beta$ , were calculated). Nonetheless, the

Title Page

Abstract

Introduction

Conclusions

References

Tables

Figures

◀

▶

◀

▶

Back

Close

Full Screen / Esc

Print Version

Interactive Discussion

**Aerosol optical  
properties in  
Northern Greece**

E. Gerasopoulos et al.

[Title Page](#)[Abstract](#)[Introduction](#)[Conclusions](#)[References](#)[Tables](#)[Figures](#)[◀](#)[▶](#)[◀](#)[▶](#)[Back](#)[Close](#)[Full Screen / Esc](#)[Print Version](#)[Interactive Discussion](#)

© EGU 2003

regression for the whole of the available data yielded a mean aerosol scale height of  $2.1 \pm 0.2$  km ( $1.9 \pm 0.18$  km, for  $\omega=0.9$ ). When we stratified the data seasonally, the aerosol scale height was found to be  $1.1 \pm 0.13$  km ( $0.96 \pm 0.11$  km, for  $\omega=0.9$ ) during the colder period (October–March) with 54% of AOD variance explained by the variability of the near-surface aerosols, whereas, during the warmer months, (April–September)  $H$  went up to  $2.6 \pm 0.25$  km ( $2.3 \pm 0.22$  km, for  $\omega=0.9$ ). The greater scatter of the values during the warm season reflects the more variable aerosol loading and the greater fluctuation of the boundary layer thickness.

We also calculated the aerosol scale height for those individual months when data coverage was sufficient for both AOD and  $\sigma_{sp}$ . As seen in Fig. 12, a distinct seasonality with a peak of 2.7 km (2.5 km, for  $\omega=0.9$ ) in August–September (coinciding with the peak in AOD seasonal cycle) is seen, whereas during the cold months (November–February)  $H$  is between 0.5–1 km. The corrected heights remain well within the standard error of the estimations. The seasonal cycle of the aerosol scale height relates to the seasonal change in the boundary layer thickness as shown by individual estimations of the PBL by LIDAR and radiosondes at Thessaloniki. More specifically, the PBL during 2001 varied between 0.3–0.5 km during winter, whereas for summer it had values about 1.5–1.7 km, exceeding 2 km under certain circumstances (Balis et al., 2003a). This result is consistent with the assumption that most of the aerosols are present within the boundary layer, and that there is a lesser contribution to scattering from free tropospheric aerosols. This is additionally supported by the relatively small value of the regression intercept (0.049–0.057 for optical depth at 550 nm), indicating an average contribution of 24–28% of the total AOD from aerosols outside of the boundary layer, part of which can be attributed to the transport of dust from the Sahara desert.

## 5. Conclusions

Aerosol optical properties from two sites in Northern Greece, the first at Thessaloniki (LAP), the main city of the region, and the second at Ouranoupolis (MAO), 100 km to the east, have been analyzed in order to provide information about the climatological characteristics of aerosol optical properties. The data cover a time span of 3 years.

The mean value of 0.23 for AOD at 500 nm at both sites is well within the range of values observed previously in the area (Formenti et al., 2001b). During summer, AOD values increase considerably, remaining persistently between 0.3 and 0.5, while during specific cases they go up to 0.7–0.8. The higher values of AOD are mainly associated with fine aerosols as indicated by the  $\hat{a}_\tau$  exponents. At MAO, a mean value of  $65 \pm 40 \text{ Mm}^{-1}$  for  $\sigma_{\text{sp}}$  at 550 nm reflects the impact of continental pollution on the region. During the colder months values are usually well above  $100 \text{ Mm}^{-1}$ , reaching even  $250 \text{ Mm}^{-1}$  under certain circumstances. The level of  $\sigma_{\text{sp}}$  is well above the limits of  $10\text{--}30 \text{ Mm}^{-1}$  reported for unpolluted marine air (Formenti et al., 2001 and references therein). This limit is exceeded during 80% of the days for which measurements were available, and for 50% of the days values are above the mean value of  $57 \text{ Mm}^{-1}$  given by Seinfeld and Pandis (1998) for the average continental background. The frequency distributions of AOD,  $\sigma_{\text{sp}}$  and  $\sigma_{\text{bsp}}$  have revealed the existence of different modes of aerosol loading associated with background conditions, average continental aerosol concentrations, and highly polluted air masses from either local and regional sources or from longer range transport.

The investigation of source regions via air mass trajectory analysis has shown that enhanced AOD,  $\sigma_{\text{sp}}$  and  $\sigma_{\text{bsp}}$  are found for the E sector. Observations of enhanced  $\text{SO}_2$  over Southeastern Europe by GOME (Eisinger and Burrows, 1998) as well as the fact that during NE directions about 70% of the  $\text{SO}_2$  column can be attributed to lignite combustion in power plants in Bulgaria and Romania (Zerefos et al., 2000), can help to explain the maxima in aerosol loadings from the easterly sector. Biomass burning from areas at the northern coast of the Black Sea (Salisbury et al., 2003; Balis et

### Aerosol optical properties in Northern Greece

E. Gerasopoulos et al.

Title Page

Abstract

Introduction

Conclusions

References

Tables

Figures

◀

▶

◀

▶

Back

Close

Full Screen / Esc

Print Version

Interactive Discussion

**Aerosol optical properties in Northern Greece**

E. Gerasopoulos et al.

[Title Page](#)[Abstract](#)[Introduction](#)[Conclusions](#)[References](#)[Tables](#)[Figures](#)[◀](#)[▶](#)[◀](#)[▶](#)[Back](#)[Close](#)[Full Screen / Esc](#)[Print Version](#)[Interactive Discussion](#)

© EGU 2003

al., 2003b) may also contribute episodically. Cleaner conditions, associated with fine aerosol particles, are found for the NW direction, in spite of the presence of the most industrialized countries of Central Europe being in this sector. The reason for this could be the meteorological conditions during which NW air mass trajectories reach Northern Greece, namely increased wind speed and atmospheric washout, and the fact that this path is often associated with subsidence from the upper troposphere (Gerasopoulos et al., 2001). The influence of Sahara dust events is clearly shown by both  $\alpha$  exponents and backscatter ratio  $\beta$ . The values of  $\alpha_\tau$  for the S sector (Fig. 6b) are distributed around 0.4, which is typical of mineral dust (Kaufman, 1993), while the corresponding  $\alpha_\sigma$  exponents from scattering are shifted to higher values, since dust layers are present mainly at elevated altitudes. The coarse dust particles are also responsible for the enhanced scattering for the S sector.

The temporal variability of aerosol optical properties at two time scales was also investigated. A distinct summer maximum was revealed for AOD and  $\alpha_\tau$  at MAO, but the seasonality at LAP was masked by the seasonal variability of local pollution sources. Only during November and December can real background conditions be observed at MAO, with AOD down to 0.1 and  $\alpha$  exponents below 1.2 indicating the possible influence from sea-spray aerosols. The seasonality is mainly driven by the fact that during summer 50% of the trajectories (for the days that measurements were available) came from the E sector. This fact, in combination with enhanced turbidity, the absence of wet removal processes and conditions favorable to enhanced pollution, leads to the build-up of aerosols during summer. A diurnal cycle of all properties was evident. In the morning, AOD,  $\sigma_{sp}$  and  $\sigma_{bsp}$  decrease simultaneously with humidity and reach a minimum at mid-day. About 45–60% of the diurnal cycle amplitude was explained by the effect of humidity on the size of hygroscopic aerosols. The rest of the variability was attributed to the local sea breeze system that results in a shallower PBL and in a diurnal variation of both wind speed and wind direction, thus introducing different aerosol sources than those resulting from the synoptic flow over the area.

From the days with higher values at LAP than at MAO an estimation of the con-

**Aerosol optical  
properties in  
Northern Greece**

E. Gerasopoulos et al.

tribution of the local pollution sources to Thessaloniki's AOD was attempted. During summer, when the effect of urban pollution is favored by meteorological conditions, a constant shift by  $0.19 \pm 0.05$  at 500 nm was found, leading to a contribution of  $35 \pm 10\%$  for the average AOD over LAP, while in general it ranges between 3–10%. Finally, the equivalent thickness of the optically active aerosol layer (aerosol scale height) was found to be related to the height of the boundary layer, with values between 0.5–1 km during winter and up to 2.5–3 km during summer.

*Acknowledgement.* This research was financially supported by the Max Planck Society, Germany.

**References**

- Alexandrov, M. D., Lacis, A. A., Carlson, B. E., and Cairns, B.: Remote sensing of atmospheric aerosols and trace gases by means of Multifilter Rotating Shadowband Radiometer. Part I: Retrieval algorithm, *J. Atmos. Sci.*, 59, 524–543, 2002.
- Anderson, T. L., and Ogren, J. A.: Determining aerosol radiative properties using the TSI 3563 integrating nephelometer, *Aerosol Sci. Tech.*, 29, 57–69, 1998.
- Andreae, M. O.: Climatic effects of changing atmospheric aerosol levels, in *World Survey Climatology, Future Climates of the world*, Vol. 16, edited by A. Henderson-Sellers, 341–392, Elsevier, Amsterdam, 1995.
- Andreae, T. W., Andreae, M. O., Ichoku, C., Maenhaut, W., Cafmeyer, J., Karnieli, A., and Orlovsky, L.: Light scattering by dust and anthropogenic aerosol at a remote site in the Negev desert, Israel, *J. Geophys. Res.*, 107, 4008, doi:10.1029/2001JD900252, 2002.
- Angström, A.: On the transmission of sun radiation and on dust in the air, *Geogr. Ann.*, 2, 156–166, 1929.
- Bais, A., Zerefos, C. S., and McElroy, C. T.: Solar UV-B measurements with the double-and-single monochromator Brewer ozone spectrophotometers, *Geophys. Res. Lett.*, 23, 8, 833–836, 1996.
- Balis, D. S., Zerefos, C. S., Kourtidis, K., Bais, A. F., Hofzumahaus, A., Kraus, A., Schmitt, R., Blumthaler, M., and Gobbi, G. P.: Measurements and modeling of photolysis rates during the PAUR II campaign, *J. Geophys. Res.*, 10.1029/2000JD000136, 2002.

[Title Page](#)[Abstract](#)[Introduction](#)[Conclusions](#)[References](#)[Tables](#)[Figures](#)[◀](#)[▶](#)[◀](#)[▶](#)[Back](#)[Close](#)[Full Screen / Esc](#)[Print Version](#)[Interactive Discussion](#)

© EGU 2003

---

**Aerosol optical  
properties in  
Northern Greece**

---

E. Gerasopoulos et al.

---

[Title Page](#)[Abstract](#)[Introduction](#)[Conclusions](#)[References](#)[Tables](#)[Figures](#)[◀](#)[▶](#)[◀](#)[▶](#)[Back](#)[Close](#)[Full Screen / Esc](#)[Print Version](#)[Interactive Discussion](#)

© EGU 2003

- Balis, D. S., Amiridis, V., Zerefos, C., and Melas, D.: Seasonal variability of the mixed layer height using radiosonde and lidar measurements, in preparation, 2003a.
- Balis, D. S., Amiridis, V., Zerefos, C., Gerasopoulos, E., Zanis, P., and Papayannis, A.: Raman lidar and filter radiometer measurements of aerosol optical properties during a biomass burning episode over Thessaloniki, in preparation, 2003b.
- Boucher, O. and Anderson, T. L.: GCM assessment of the sensitivity of direct climate forcing by anthropogenic sulphate aerosols to aerosol size and chemistry, *J. Geophys. Res.*, 100, 26 117–26 134, 1995.
- Bruegge, C. J., Halthore, R. N., Markham, B., Spanner, M., and Wrigley, R.: Aerosol optical depth retrievals over the Konza Prairie, *J. Geophys. Res.*, 97, 18 743–18 758, 1992.
- Coakley, J. A., Cess, Jr. R. D., and Yurevich, J. B.: The effect of tropospheric aerosols on the earth's radiation budget: A parameterization of for climate models, *J. Atmos. Sci.*, 40, 116–138, 1983.
- Charlson, R. J., Covert, D. S., and Larson, T. V.: Observation of the effect of humidity on light scattering by aerosols, in *Hygroscopic Aerosols*, edited by Rukube, T. H. and Deepak, A., A. Deepak, Hampton, Va., 35–44, 1984.
- Charlson, R. J., Langner, J., Rodhe, H., Leovy, C. B., and Warren, S. G.: Perturbation of the northern hemisphere radiative balance by scattering from anthropogenic sulphate aerosols, *Tellus A*, 43, 152–163, 1991.
- Clarke, A. D., Howell, S., Quinn, P. K., Bates, T. S., Ogren, J. A., Andrews, E., Jefferson, A., Massling, A., Mayol-Bracero, O., Maring, H., Savoie, D., and Cass, G.: INDOEX aerosol: A comparison and summary of chemical, microphysical, and optical properties observed from land, ship, and aircraft, *J. Geophys. Res.*, 107, 8033, doi:10.1029/2001JD000572., 2002.
- Day, D. E. and Malm, W. C.: Aerosol light scattering measurements as a function of relative humidity: A comparison between measurements made at three different sites, *Atmos. Environ.*, 35, 5169–5176, 2001.
- Eisinger, M. and Burrows, J. P.: Tropospheric Sulfur Dioxide observed by the ERS-2 GOME Instrument, *Geophys. Res. Lett.*, 25, 4177–4180, 1998.
- Fitzgerald, J. W., Hoppel, W. A., and Vietti, M. A.: The size and scattering coefficient of urban aerosol particles at Washington D.C. as a function of relative humidity, *J. Atmos. Sci.*, 39, 1838–1852, 1982.
- Formenti, P., Andreae, M. O., Andreae, T. W., Ichoku, C., Schebeske, G., Kettle, J., Maenhaut, W., Cafmeyer, J., Ptasinsky, J., Karnieli, A., and Lelieveld, J.: Physical and chemical charac-



---

**Aerosol optical properties in Northern Greece**E. Gerasopoulos et al.

---

[Title Page](#)[Abstract](#)[Introduction](#)[Conclusions](#)[References](#)[Tables](#)[Figures](#)[◀](#)[▶](#)[◀](#)[▶](#)[Back](#)[Close](#)[Full Screen / Esc](#)[Print Version](#)[Interactive Discussion](#)

© EGU 2003

teristics of aerosols over the Negev Desert (Israel) during summer 1996, *J. Geophys. Res.*, 106, 4871–4890, 2001a.

Formenti, P., Andreae, M. O., Andreae, T. W., Galani, E., Vasaras, A., Zerefos, C., Amiridis, V., Orlovsky, L., Karnieli, A., Wendisch, M., Wex, H., Holben, B. N., Maenhaut, W., and Lelieveld, J.: Aerosol optical properties and large scale transport of air masses: Observations at a coastal and a semiarid site in the eastern Mediterranean during summer 1998, *J. Geophys. Res.*, 106, 9807–9826, 2001b.

Formenti, P., Reiner, O., Sprung, D., Andreae, M. O., Wendisch, M., Wex, H., Kindred, D., Dewey, K., Kent, J., Tzortziou, M., Vasaras, A., and Zerefos, C.: The STAAARTE-MED 1998 summer airborne measurements over the Aegean Sea: 1. Aerosol particles and trace gases, *J. Geophys. Res.*, 107, 4450, doi:10.1029/2001JD001337, 2002a.

Formenti, P., Boucher, O., Reiner, T., Sprung, D., Andreae, M. O., Wendisch, M., Wex, H., Kindred, D., Tzortziou, M., Vasaras, A., and Zerefos, C.: The STAAARTE-MED 1998 summer airborne measurements over the Aegean Sea: 2. Aerosol scattering and absorption, and radiative calculations, *J. Geophys. Res.*, 107, 4451, doi:10.1029/2001JD001536, 2002b.

Gerasopoulos E., Zanis, P., Stohl, A., Zerefos, C. S., Papastefanou, C., Ringer, W., Tobler, L., Huebener, S., Kanter, H. J., Tositti, L., and Sandrini, S.: A climatology of 7Be at four high-altitude stations at the Alps and the Northern Apennines, *Atmos. Environ.*, 35, 6347–6360, 2001.

Hänel, G.: The properties of atmospheric aerosol particles as function of the relative humidity at thermodynamic equilibrium with the surrounding moist air, *Adv. Geophys.*, 19, 73–188, 1976.

Hansen, J. E. and Travis, L. D.: Light scattering in planetary atmospheres, *Space Sci. Rev.*, 16, 257–610, 1974.

Harrison, L., Michalsky, J., and Berndt, J.: Automated multifilter rotating shadow-band radiometer: an instrument for optical depth and radiation measurements, *Appl. Optics*, 33, 5118–5125, 1994a.

Harrison, L. and Michalsky, J.: Objective algorithms for the retrieval of optical depths from ground-based measurements, *Appl. Optics*, 33, 5126–5132, 1994b.

Haywood, J. and Boucher, O.: Estimates of the direct and indirect radiative forcing due to tropospheric aerosols: A review, *Rev. Geophys.*, 38, 513–543, 2000.

Holben, B. N., Tanre, D., Smirnov, A., Eck, T. F., Slutsker, I., Abuhassan, N., Newcomb, W. W., Schafer, J. S., Chatenet, B., Lavenue, F., Kaufman, Y. J., Vande Castle, J., Setzer, A.,

**Aerosol optical properties in Northern Greece**

E. Gerasopoulos et al.

[Title Page](#)[Abstract](#)[Introduction](#)[Conclusions](#)[References](#)[Tables](#)[Figures](#)[◀](#)[▶](#)[◀](#)[▶](#)[Back](#)[Close](#)[Full Screen / Esc](#)[Print Version](#)[Interactive Discussion](#)

© EGU 2003

Markham, B., Clark, D., Frouin, R., Halthore, R., Karneli, A., O'Neill, N. T., Pietras, C., Pinker, R. T., Voss, K., and Zibordi, G.: An emerging ground-based aerosol climatology: Aerosol optical depth from AERONET, *J. Geophys. Res.*, 106, 12 067–12 097, 2001.

Horvath, H.: Spectral extinction coefficients of rural aerosol in southern Italy – A case study of cause and effect of variability of atmospheric aerosol, *J. Aerosol Sci.*, 27, 437–453, 1996.

Houghton, J. T., Ding Y., Griggs, D. J., Noguer, M., van der Linden, P. J., Dai, X., Maskell, K., and Johnson C. A. (Eds.): *Climate Change 2001: The Scientific Basis. Contribution of Working Group I to the Third Assessment Report of the Intergovernmental Panel on Climate Change*. Cambridge, UK, and New York, NY, USA: Cambridge University Press, 881, 2001.

Gebhart, K. A., Copeland, S., and Malm, W. C.: Diurnal and seasonal patterns in light scattering, extinction and relative humidity, *Atmos. Environ.*, 35, 5177–5191, 2001.

Ichoku, C., Andreae, M. O., Andreae, T. W., Meixner, F. X., Schebeske, G., Formenti, P., Maenhaut, W., Cafmeyer, J., Ptasinski, J., Karnieli, A., and Orlovsky, L.: Interrelationships between aerosol characteristics and light scattering during late-winter in an Eastern Mediterranean arid environment, *J. Geophys. Res.*, 104, 24 371–24 393, 1999.

Iqbal M.: *Introduction to Solar Radiation*, Academic Press Canada, Ontario, Canada, 1983.

Kasten, F.: Visibility in the phase of pre-condensation, *Tellus*, 21, 631–635, 1969.

Kasten, F., and Young, T.: Revised optical air mass tables and approximation formula, *Appl. Optics*, 28, 4735–4738, 1989.

Kaufman, Y. J.: Aerosol Optical Thickness and Atmospheric Path Radiance, *J. Geophys. Res.*, 98, 2677–2692, 1993.

Kiehl, J. T., and Rodhe, H.: Modeling geographical and seasonal forcing due to aerosols, in *Aerosol Forcing of Climate*, edited by Charlson, R. J. and Heintzenberg, J., J. Wiley, New York, 281–296, 1995.

Kourtidis, K., Zerefos, C., Rapsomanikis, S., Simeonov, V., Balis, D., Perros, P. E., Thompson, A. M., Witte, J., Calpini, B., Sharobiem, W.M., Papayannis, A., Mihalopoulos, N., and Drakou, R.: Regional levels of ozone in the troposphere over eastern Mediterranean, *J. of Geophys. Res.*, 107, 18, 8140, doi: 10.1029/2000JD000140, 2002.

Kouvarakis, G., Doukelis, Y., Mihalopoulos, N., Rapsomanikis, S., Sciare, J., and Blumtharel, M.: Chemical, physical and optical characterisation of aerosols during PAUR II experiment, *J. of Geophys. Res.*, 107, 18, 8141, doi:10.1029/2000JD000291, 2002.

Kylling A., Bais, A.F., Blumthaler, M., Schreder, J., Zerefos, C.S., and Kosmidis, E.: Effect of aerosol on solar UV irradiances during the Photochemical Activity and Solar Ultraviolet

---

**Aerosol optical  
properties in  
Northern Greece**E. Gerasopoulos et al.

---

[Title Page](#)[Abstract](#)[Introduction](#)[Conclusions](#)[References](#)[Tables](#)[Figures](#)[◀](#)[▶](#)[◀](#)[▶](#)[Back](#)[Close](#)[Full Screen / Esc](#)[Print Version](#)[Interactive Discussion](#)

© EGU 2003

Radiation campaign, *J. Geophys. Res.*, 103, 26 051–26 060, 1998.

Lelieveld, J., Berresheim, H., Bormann, S., Crutzen, P. J., et al.: Global air pollution crossroads over the Mediterranean, *Science*, 298, 794–799, 2002.

Luria, M., Peleg, M., Sharf, G., Tov-Alper, D. S., Spitz, N., Ben Ami, Y., Gawii, Z., Lifschitz, B., Yitzchaki, A., and Seter, I.: Atmospheric sulfur over the east Mediterranean region, *J. Geophys. Res.*, 101, 25 917–25 930, 1996.

Melas, D., Ziomas, I., Klemm, O., and Zerefos, C.: Anatomy of the Sea Breeze circulation in Athens under weak large-scale ambient winds, *Atmos. Environ.*, 32, 2223–2237, 1998.

Michalsky, J. J., Schlemmer, J. A., Berkheiser, W. E., Berndt, J. L., Harrison, L. C., Laulainen, N. S., Larson, and N. R., Barnard, J. C.: Multiyear measurements of aerosol optical depth in the Atmospheric Radiation Measurement and Quantitative Links programs, *J. Geophys. Res.*, 106, 12 099–12 107, 2001.

Mihalopoulos, N., Stephanou, E., Kanakidou, M., Pilitsidis, S., and Bousquet, P.: Tropospheric aerosol ionic composition in the eastern Mediterranean region, *Tellus B*, 49, 314–326, 1997.

Papayannis A., Balis, D., Bais, A., van der Bergh, H., Calpini, B., Durieux, E., Fiorani, L., Jaquet, L., Ziomas, I., and Zerefos, C. S.: The role of urban and suburban aerosols on solar UV radiation over Athens, Greece, *Atmos. Environ.*, 32, 2193–2201, 1998.

Paronis, D., Doulac, F., Chazette, P., Hamonou, E., and Liberti, G. L.: Aerosols optical thickness monitoring in the Mediterranean, *J. Aerosol Sci.*, 30, 631–632, 1998.

Penner, J. E., Andreae, M.O., Annegarn, H., Barrie, L., Feichter, J., Hegg, D., Jayaraman, A., Leaitch, R., Murphy, D., Nganga, J., and Pitari, G.: Aerosols, their Direct and Indirect Effects, in *Climate Change 2001: The Scientific Basis. Contribution of Working Group I to the Third Assessment Report of the Intergovernmental Panel on Climate Change*, edited by J. T. Houghton, Y. Ding, D. J. Griggs, M. Noguer, P. J. van der Linden, X. Dai, K. Maskell, C. A. Johnson, Cambridge University Press, Cambridge, UK, and New York, NY, USA, 289–348, 2001.

Pinker, R. T., Ferrare, R. A., Karnieli, A., Aro, T. O., Kaufman, Y. J., and Zangvil, A.: Aerosol optical depths in a semiarid region, *J. Geophys. Res.*, 102, 11 123–11 137, 1997.

Rosenberg, G. V.: *Twilight: A Study in Atmospheric Optics*, Plenum, New York, 359, 1966.

Salisbury, G., Williams, J., Holzinger, R., Gros, V., Mihalopoulos, N., Vrekoussis, M., Sciare, J., Berresheim, H., von Kuhlmann, R., Lawrence, M., and Lelieveld, J.: Ground-based PTR-MS measurements of reactive organic compounds during the MINOS campaign in Crete, July–August 2001, *Atmos. Chem. Phys. Discuss.*, 3, 911–948, 2003.

Shettle E. P. and Fenn, R. W.: Models for the aerosols of the lower atmosphere and effects of humidity variations on their optical properties, Air Force Geophys. Laboratory, Environmental Papers No. 676, 1979.

Shine, K. P. and Forster, P. M.: The effect of human activity on radiative forcing of climate change: A review of recent developments, *Global Planet. Change*, 20, 205–225, 1999.

Zerefos, C. S., Kanev, K., Kourtidis, K., Tzortziou, M., Vasaras, A., and Syrakov, E.: On the origin of SO<sub>2</sub> above Northern Greece, *Geophys. Res. Lett.*, 27, 365–368, 2000.

Zerefos, C. S., Kourtidis, K. A., Melas, D., Balis, D., Zanis, P., Mantis, H. T., Repapis, C., Isaksen, I., Sundet, J., Herman, J., Bhartia, P. K., and Calpini, B.; Photochemical Activity and Solar Ultraviolet Radiation Modulation Factors (PAUR): An overview of the project, *J. Geophys. Res.*, 10.1029/2000JD000134, 2002.

Young, A. T.: Air mass and refraction, *Appl. Optics*, 33, 1108–1110, 1994.

---

**Aerosol optical  
properties in  
Northern Greece**

E. Gerasopoulos et al.

---

Title Page

Abstract

Introduction

Conclusions

References

Tables

Figures

◀

▶

◀

▶

Back

Close

Full Screen / Esc

Print Version

Interactive Discussion

## Aerosol optical properties in Northern Greece

E. Gerasopoulos et al.

**Table 1.** Basic statistical quantities from daily values for: **(a)** aerosol optical depth (AOD) calculated at MAO (June 1999–August 2000 and July 2001–March 2002) and LAP (February 2001–March 2002), **(b)** scattering ( $\sigma_{\text{sp}}$ ) and backscattering ( $\sigma_{\text{bsp}}$ ) coefficients at MAO (June 1999–March 2002), **(c)** Angström exponents from optical depths ( $\hat{a}_{\tau}$ ) and scattering coefficients ( $\hat{a}_{\sigma}$ ), and backscatter ratio ( $\beta$ ). Averages are accompanied by their standard deviation. Note that no direct comparison between the stations is feasible from this table since the values do not correspond to a common period (see Sect. 4.1 for a comparison)

a)					
AOD					
MAO	414 nm	500 nm	614 nm	671 nm	867 nm
Average	0.30 ± 0.16	0.23 ± 0.13	0.17 ± 0.10	0.15 ± 0.08	0.11 ± 0.06
Maximum	0.92	0.69	0.53	0.48	0.47
Minimum	0.042	0.028	0.025	0.025	0.020
LAP					
Average	0.32 ± 0.20	0.23 ± 0.15	0.14 ± 0.10	0.11 ± 0.09	0.10 ± 0.07
Maximum	1.02	0.77	0.58	0.54	0.54
Minimum	0.073	0.050	0.012	0.010	0.026

b)						
$\sigma_{\text{sp}}$ (Mm <sup>-1</sup> )			$\sigma_{\text{bsp}}$ (Mm <sup>-1</sup> )			
MAO	450 nm	550 nm	700 nm	450 nm	550 nm	700 nm
Average	91 ± 54	65 ± 40	44 ± 27	7.7 ± 4.6	6.4 ± 3.5	5.3 ± 2.8
Maximum	337	246	161	26.0	21.1	17.4
Minimum	9.9	8.3	5.6	0.1	0.8	0.9

c)				
	$\hat{a}_{\tau}$		$\hat{a}_{\sigma}$	$\beta$
	(867 nm/414 nm)		(700 nm/450 nm)	550 nm
	MAO	LAP	MAO	MAO
Average	1.4 ± 0.4	1.6 ± 0.3	1.7 ± 0.4	0.1 ± 0.02
Maximum	2.25	2.21	2.33	0.16
Minimum	0.18	0.4	-0.10	0.05

Title Page

Abstract

Introduction

Conclusions

References

Tables

Figures

◀

▶

◀

▶

Back

Close

Full Screen / Esc

Print Version

Interactive Discussion

**Table 2.** Basic statistical quantities of aerosol optical properties at MAO (daily values) sorted by the air mass sector origins. Averages are accompanied by their standard deviation

AOD	S	W	NW	N	E	L
Average	0.21 ± 0.11	0.18 ± 0.10	0.12 ± 0.07	0.21 ± 0.09	0.30 ± 0.13	0.31 ± 0.12
Maximum	0.33	0.39	0.28	0.41	0.69	0.58
Minimum	0.05	0.05	0.03	0.05	0.05	0.08
N obs.	16	20	45	40	95	23

$\hat{a}_t$	S	W	NW	N	E	L
Average	0.82 ± 0.58	1.14 ± 0.39	1.44 ± 0.41	1.61 ± 0.27	1.57 ± 0.31	1.34 ± 0.48
Maximum	2.08	1.78	2.01	2.03	2.25	1.93
Minimum	0.3	0.18	0.53	0.62	0.61	0.39
N obs.	16	20	44	40	96	23

$\sigma_{sp}$ (Mm <sup>-1</sup> )	S	W	NW	N	E	L
Average	73 ± 40	54 ± 29	32 ± 16	46 ± 26	68 ± 42	79 ± 32
Maximum	235	145	73	122	246	166
Minimum	10	8	8	12	15	18
N obs.	47	41	59	44	148	49

$\sigma_{bsp}$ (Mm <sup>-1</sup> )	S	W	NW	N	E	L
Average	6.3 ± 3.3	5.8 ± 2.9	3.9 ± 1.9	5.1 ± 2.8	7.1 ± 4.0	7.3 ± 3.0
Maximum	18.3	12	8.3	11.5	21.1	16.2
Minimum	0.8	1.1	1.1	1.3	1.1	1.8
N obs.	47	39	58	44	148	49

$\hat{a}_\sigma$	S	W	NW	N	E	L
Average	1.1 ± 0.5	1.6 ± 0.3	1.8 ± 0.3	1.9 ± 0.2	1.8 ± 0.3	1.7 ± 0.3
Maximum	1.85	2.1	2.3	2.3	2.3	2.2
Minimum	0.04	0.7	1.2	1.3	0.7	0.6
N obs.	47	41	59	44	148	49

$\beta$	S	W	NW	N	E	L
Average	0.086 ± 0.01	0.103 ± 0.02	0.121 ± 0.02	0.111 ± 0.02	0.107 ± 0.02	0.093 ± 0.01
Maximum	0.14	0.13	0.16	0.16	0.16	0.14
Minimum	0.05	0.06	0.07	0.07	0.06	0.07
N obs.	47	39	58	44	148	49

## Aerosol optical properties in Northern Greece

E. Gerasopoulos et al.

Title Page

Abstract

Introduction

Conclusions

References

Tables

Figures

◀

▶

◀

▶

Back

Close

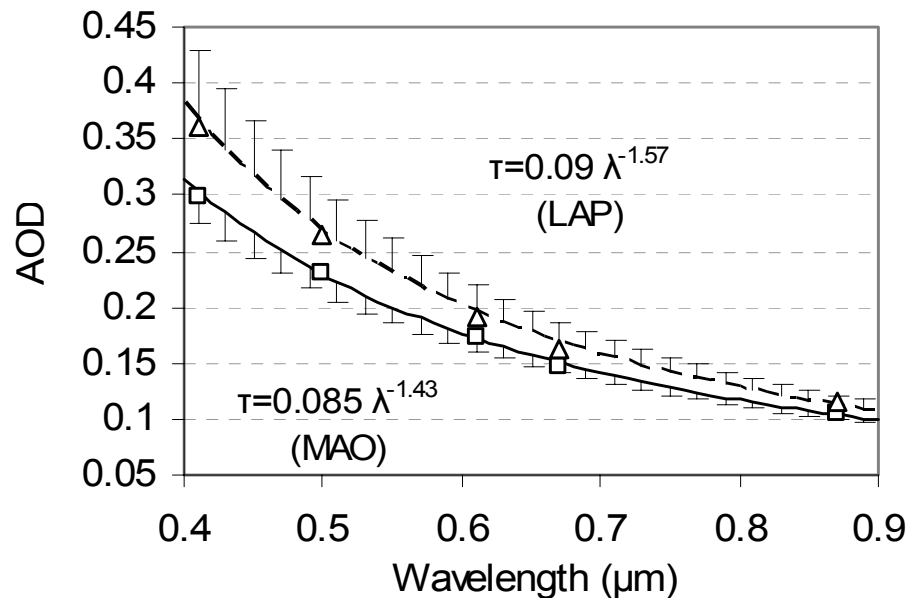
Full Screen / Esc

Print Version

Interactive Discussion

Aerosol optical properties in  
Northern Greece

E. Gerasopoulos et al.



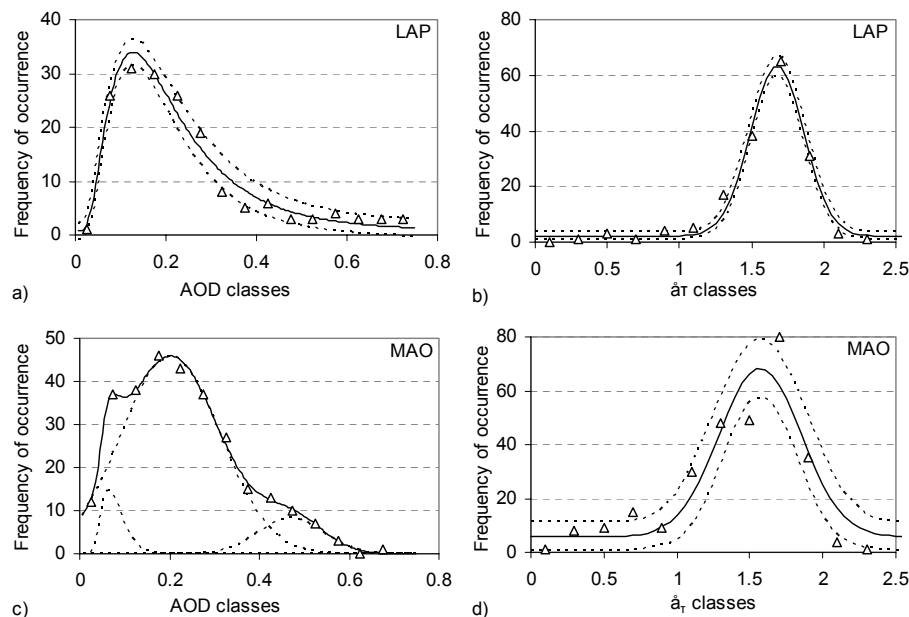
**Fig. 1.** Wavelength dependence of aerosol optical depth, AOD. Error bars correspond to the standard deviation of the applied power law (least squares fitting). Triangles and squares are averages of AOD at LAP and MAO, respectively, during the period that measurements are simultaneously available at both sites.

[Title Page](#)[Abstract](#)[Introduction](#)[Conclusions](#)[References](#)[Tables](#)[Figures](#)[◀](#)[▶](#)[◀](#)[▶](#)[Back](#)[Close](#)[Full Screen / Esc](#)[Print Version](#)[Interactive Discussion](#)

© EGU 2003

## Aerosol optical properties in Northern Greece

E. Gerasopoulos et al.

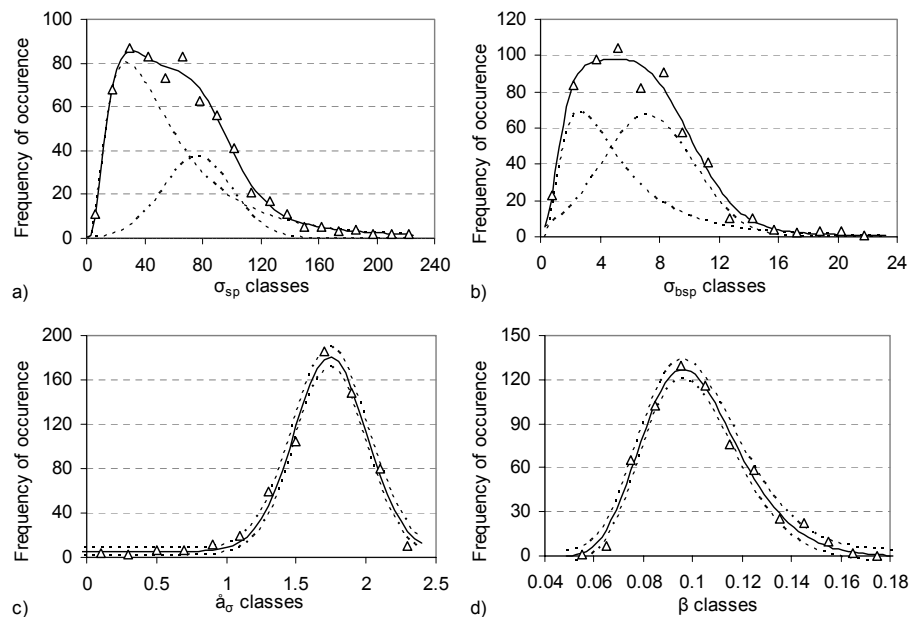


**Fig. 2.** Frequency distribution of aerosol optical depth, AOD, (500 nm) and Angström exponent,  $\hat{\alpha}_r$ , (867/414 nm) at LAP (a), (b) and MAO (c), (d). The solid lines represent the result of the fitting procedure on raw frequencies and the dashed lines show the standard error of each estimation. When the frequency distribution is multi-modal (c), the dashed lines represent the individual modes and the solid line the composite distribution.

[Title Page](#)[Abstract](#)[Introduction](#)[Conclusions](#)[References](#)[Tables](#)[Figures](#)[◀](#)[▶](#)[◀](#)[▶](#)[Back](#)[Close](#)[Full Screen / Esc](#)[Print Version](#)[Interactive Discussion](#)

© EGU 2003



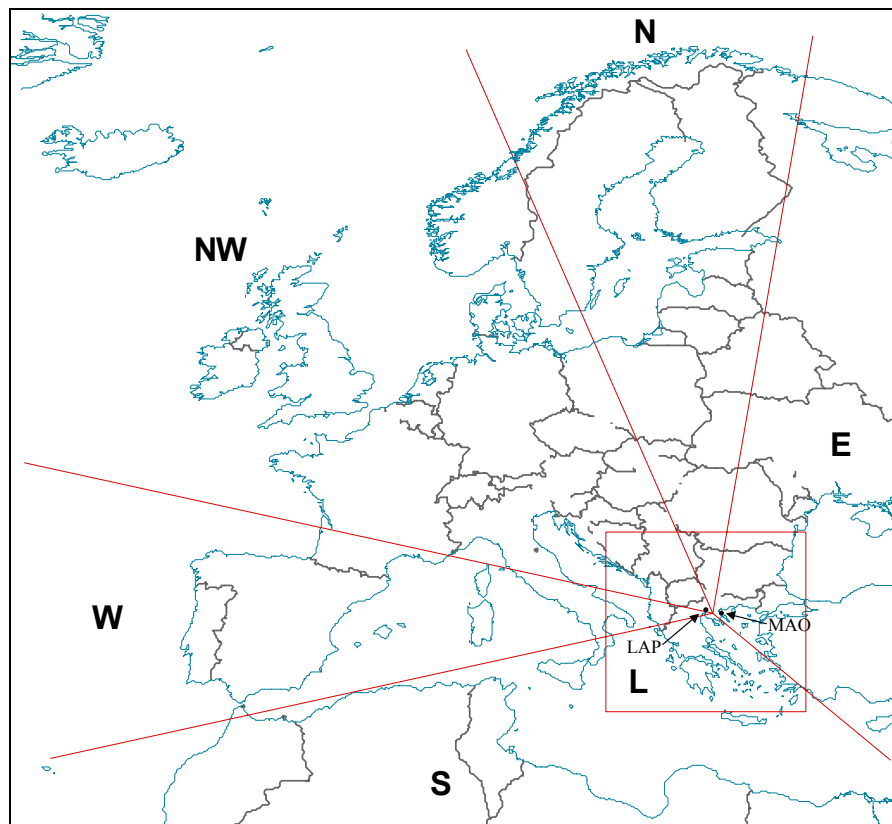


**Fig. 3.** Frequency distribution of scattering,  $\sigma_{sp}$ , and backscattering coefficients,  $\sigma_{bsp}$ , (550 nm), Angström exponent,  $\hat{a}_{\sigma}$ , (700/450 nm) and backscatter ratio,  $\beta$ , at MAO. The solid lines represent the result of the fitting procedure on raw frequencies and the dashed lines show the standard error of each estimation. When the frequency distribution is multi-modal (**a**), (**b**), the dashed lines represent the individual modes and the solid line the composite distribution.

[Title Page](#)
[Abstract](#)
[Introduction](#)
[Conclusions](#)
[References](#)
[Tables](#)
[Figures](#)
[◀](#)
[▶](#)
[◀](#)
[▶](#)
[Back](#)
[Close](#)
[Full Screen / Esc](#)
[Print Version](#)
[Interactive Discussion](#)

**Aerosol optical properties in Northern Greece**

E. Gerasopoulos et al.

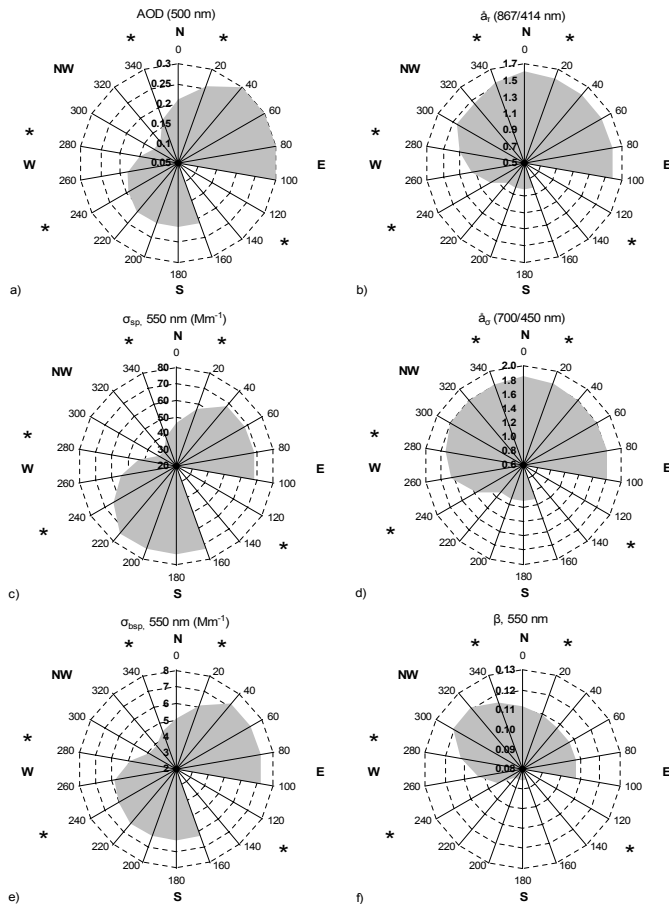


**Fig. 4.** Sectors used for the classification of the back trajectories ending at MAO.

[Title Page](#)[Abstract](#)[Introduction](#)[Conclusions](#)[References](#)[Tables](#)[Figures](#)[◀](#)[▶](#)[◀](#)[▶](#)[Back](#)[Close](#)[Full Screen / Esc](#)[Print Version](#)[Interactive Discussion](#)

## Aerosol optical properties in Northern Greece

E. Gerasopoulos et al.

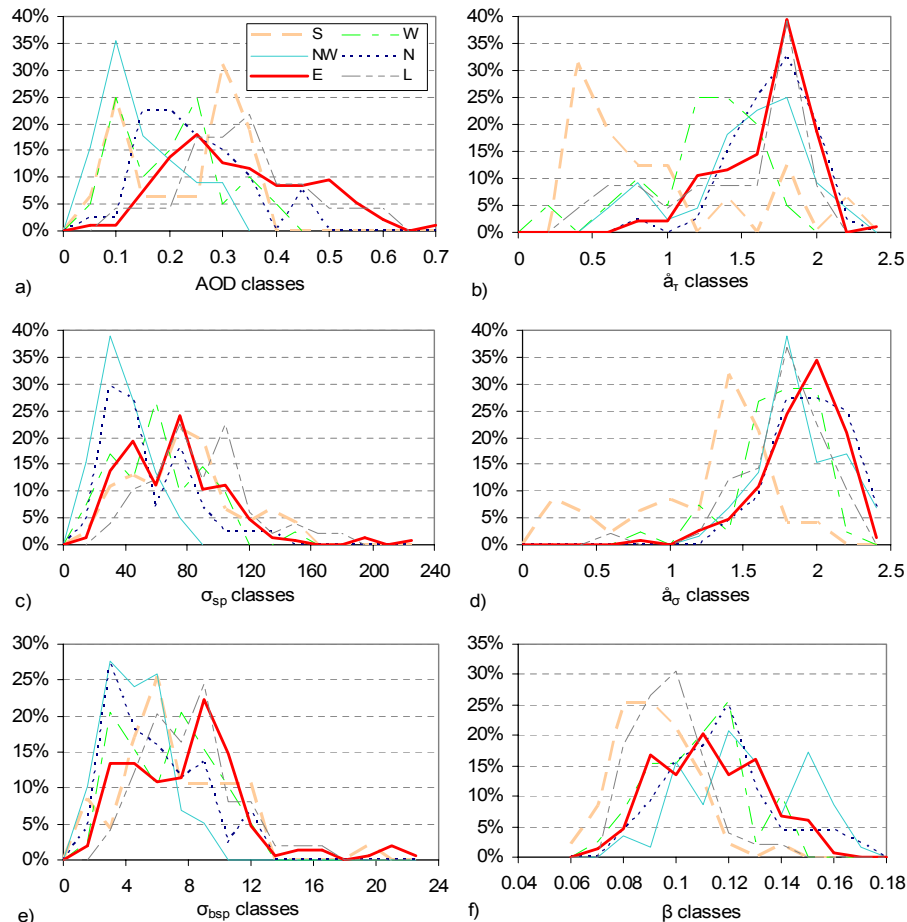


**Fig. 5.** Radar plots of the source contribution to aerosol optical properties using air mass trajectory analysis.

[Title Page](#)
[Abstract](#)
[Introduction](#)
[Conclusions](#)
[References](#)
[Tables](#)
[Figures](#)
[◀](#)
[▶](#)
[◀](#)
[▶](#)
[Back](#)
[Close](#)
[Full Screen / Esc](#)
[Print Version](#)
[Interactive Discussion](#)

## Aerosol optical properties in Northern Greece

E. Gerasopoulos et al.



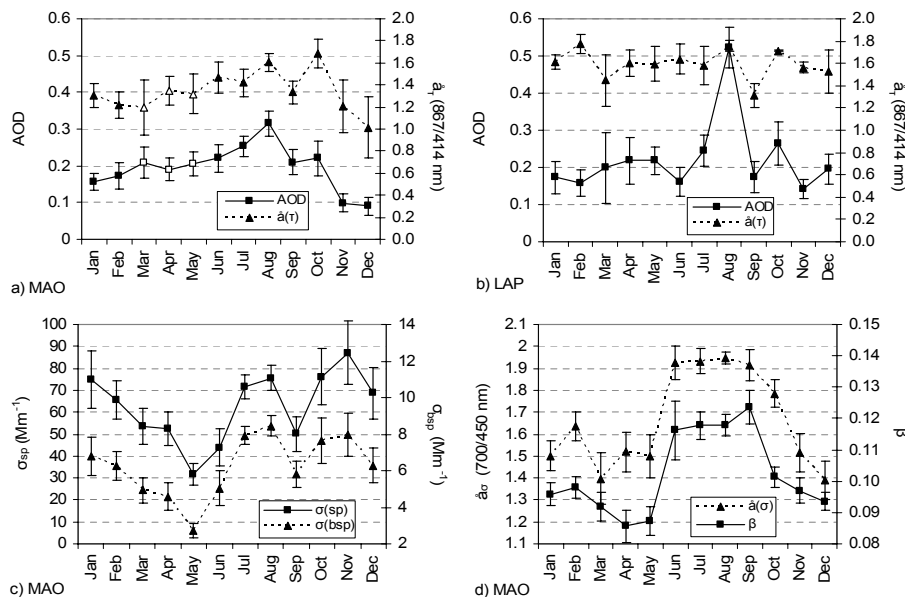
**Fig. 6.** Frequency distribution of each optical property sorted by the air mass origins. Class percentage occurrence is referred to the specific sector.

[Title Page](#)
[Abstract](#)
[Introduction](#)
[Conclusions](#)
[References](#)
[Tables](#)
[Figures](#)
[◀](#)
[▶](#)
[◀](#)
[▶](#)
[Back](#)
[Close](#)
[Full Screen / Esc](#)
[Print Version](#)
[Interactive Discussion](#)

© EGU 2003

## Aerosol optical properties in Northern Greece

E. Gerasopoulos et al.



**Fig. 7.** Seasonal variation of aerosol optical properties at both stations. Error bars correspond to the 95% confidence level. In **(a)**, empty points were calculated using the correlation of optical depth and the Angström exponent between LAP and MAO because of the lack of an adequate number of measurements at the latter site for the specific months.

Title Page

Abstract

Introduction

Conclusions

References

Tables

Figures

◀

▶

◀

▶

Back

Close

Full Screen / Esc

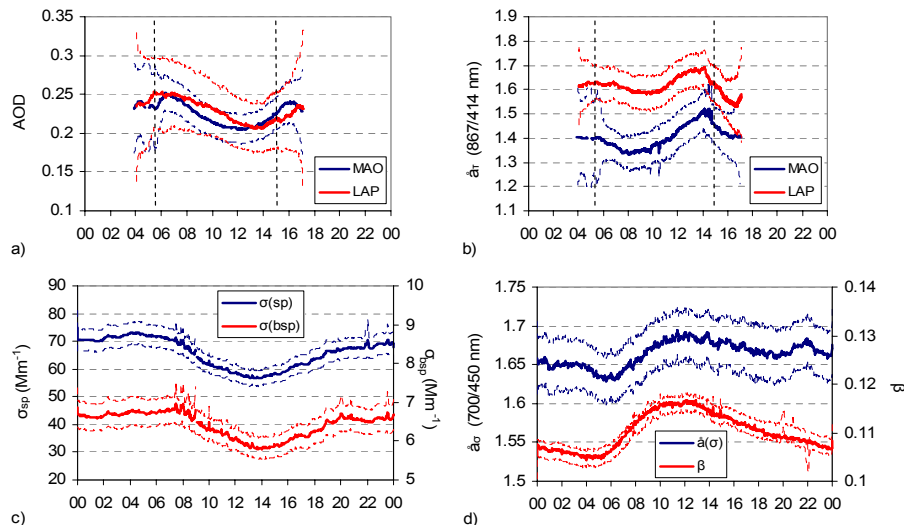
Print Version

Interactive Discussion

© EGU 2003

## Aerosol optical properties in Northern Greece

E. Gerasopoulos et al.



**Fig. 8.** Diurnal variability of aerosol optical properties at both stations. Averages (thick lines) are calculated by the one-minute and two-minute time resolution of the MFR and the nephelometer measurements, respectively. Dashed lines represent the 95% confidence level. The vertical dashed lines in **(a)** and **(b)** correspond to the time before and after which the change in the length of day with the season may have posed an effect on the pattern of the diurnal cycle. Time is in UTC.

Title Page

Abstract

Introduction

Conclusions

References

Tables

Figures

◀

▶

◀

▶

Back

Close

Full Screen / Esc

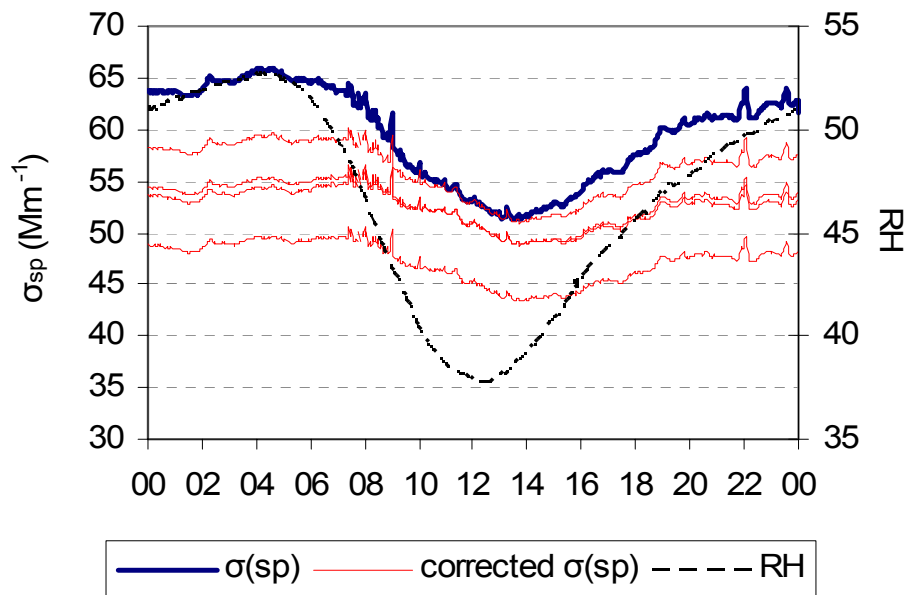
Print Version

Interactive Discussion

© EGU 2003

## Aerosol optical properties in Northern Greece

E. Gerasopoulos et al.



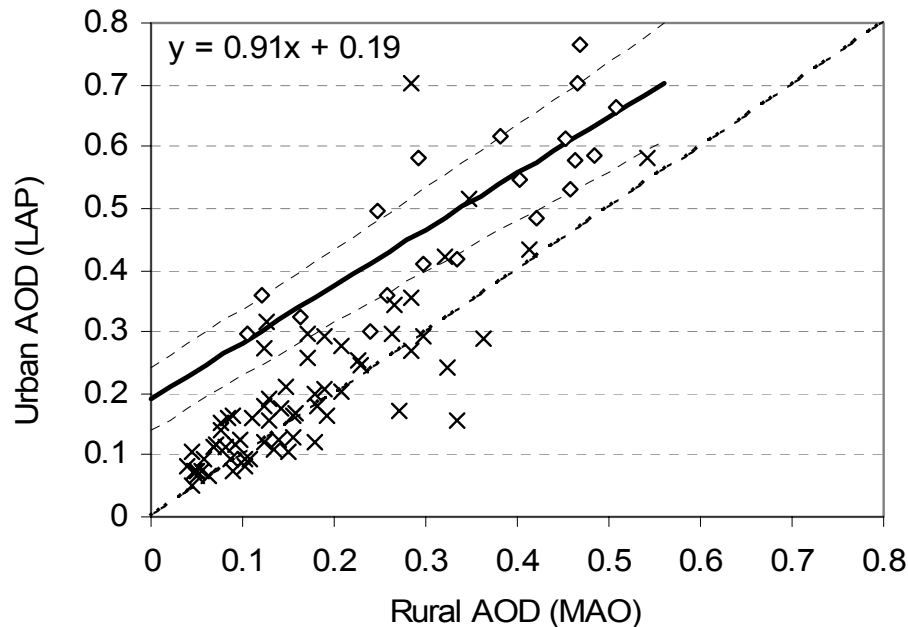
**Fig. 9.** Diurnal variability of the internal relative humidity of the nephelometer and the scattering coefficient,  $\sigma_{sp}$ . Corrected  $\sigma_{sp}$  values according to  $f(RH)$  for four different choices of  $a$  and  $b$ . As seen from the top: a)  $a = 0.841$ ,  $b = 0.368$ , b)  $a = 0.831$ ,  $b = 0.481$ , c)  $a = 0.805$ ,  $b = 0.545$ , d)  $a = 0.950$ ,  $b = 0.447$ . Constants for case a) were taken from Clarke et al. (2002) and for the rest of the cases they were extrapolated from data given in Day and Malm (2001).

[Title Page](#)[Abstract](#)[Introduction](#)[Conclusions](#)[References](#)[Tables](#)[Figures](#)[◀](#)[▶](#)[◀](#)[▶](#)[Back](#)[Close](#)[Full Screen / Esc](#)[Print Version](#)[Interactive Discussion](#)

© EGU 2003

**Aerosol optical properties in Northern Greece**

E. Gerasopoulos et al.



**Fig. 10.** Scatter plot of aerosol optical depth over LAP versus MAO for the investigation of local pollution contribution. The dashed line represents the 1:1 line. Points denoted by diamonds express days with enhanced contribution of local pollution. The solid line indicates the average excess of optical depth measured over the urban station (LAP) and dotted lines correspond to the standard error of the estimation.

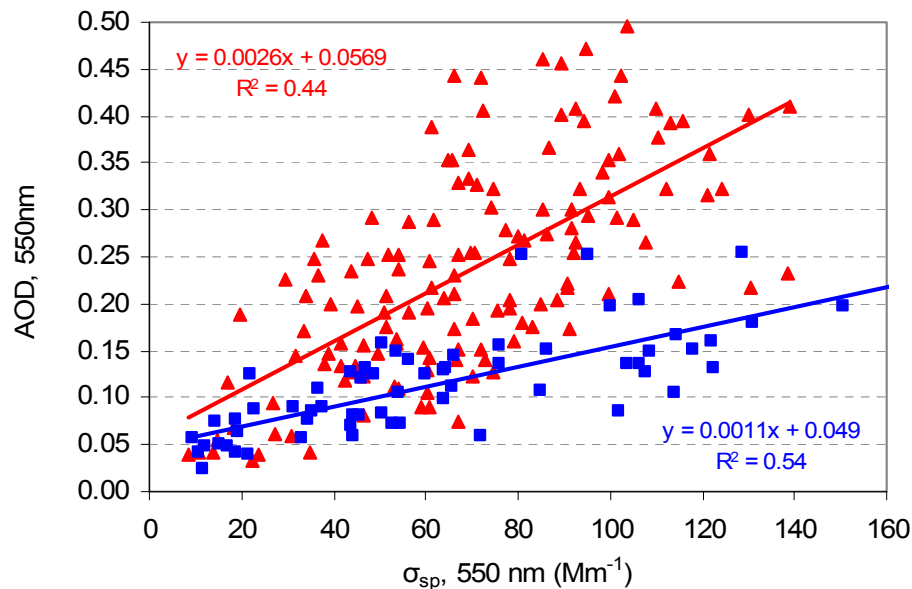
[Title Page](#)[Abstract](#)[Introduction](#)[Conclusions](#)[References](#)[Tables](#)[Figures](#)[◀](#)[▶](#)[◀](#)[▶](#)[Back](#)[Close](#)[Full Screen / Esc](#)[Print Version](#)[Interactive Discussion](#)

© EGU 2003



## Aerosol optical properties in Northern Greece

E. Gerasopoulos et al.



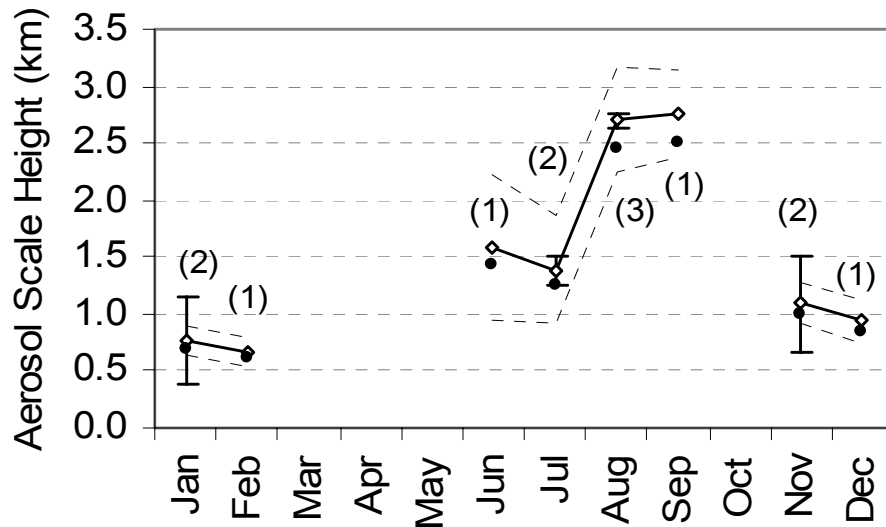
**Fig. 11.** Scatter plot of aerosol optical depth, AOD, (550 nm) versus scattering coefficient,  $\sigma_{sp}$ , (550 nm) for the estimation of aerosol scale height. Red triangles and blue squares denote summer and winter data, respectively, whereas the solid lines correspond to the regression line of each group.

[Title Page](#)[Abstract](#)[Introduction](#)[Conclusions](#)[References](#)[Tables](#)[Figures](#)[◀](#)[▶](#)[◀](#)[▶](#)[Back](#)[Close](#)[Full Screen / Esc](#)[Print Version](#)[Interactive Discussion](#)

© EGU 2003

## Aerosol optical properties in Northern Greece

E. Gerasopoulos et al.



**Fig. 12.** Seasonal variation of the estimated aerosol scale height. Dashed lines represent the standard error of the height estimation. Numbers in brackets express the number of years from which monthly estimates of  $H$  were derived. Error bars correspond to the standard deviation when months from different years are available. Black dots represent the reduction to the scale height when absorption is taken under consideration for single scattering albedo of 0.9.

[Title Page](#)[Abstract](#)[Introduction](#)[Conclusions](#)[References](#)[Tables](#)[Figures](#)[◀](#)[▶](#)[◀](#)[▶](#)[Back](#)[Close](#)[Full Screen / Esc](#)[Print Version](#)[Interactive Discussion](#)