



HAL
open science

Contribution of residential wood combustion to hourly winter aerosol in Northern Sweden determined by positive matrix factorization

P. Krecl, E. Hedberg Larsson, J. Ström, C. Johansson

► To cite this version:

P. Krecl, E. Hedberg Larsson, J. Ström, C. Johansson. Contribution of residential wood combustion to hourly winter aerosol in Northern Sweden determined by positive matrix factorization. *Atmospheric Chemistry and Physics Discussions*, 2008, 8 (2), pp.5725-5760. hal-00303417

HAL Id: hal-00303417

<https://hal.science/hal-00303417>

Submitted on 18 Jun 2008

HAL is a multi-disciplinary open access archive for the deposit and dissemination of scientific research documents, whether they are published or not. The documents may come from teaching and research institutions in France or abroad, or from public or private research centers.

L'archive ouverte pluridisciplinaire **HAL**, est destinée au dépôt et à la diffusion de documents scientifiques de niveau recherche, publiés ou non, émanant des établissements d'enseignement et de recherche français ou étrangers, des laboratoires publics ou privés.

**Wood combustion
contribution to winter
aerosol in Sweden**

P. Krecl et al.

Contribution of residential wood combustion to hourly winter aerosol in Northern Sweden determined by positive matrix factorization

P. Krecl, E. Hedberg Larsson, J. Ström, and C. Johansson

Department of Applied Environmental Science, Atmospheric Science Unit, Stockholm
University, Stockholm, Sweden

Received: 11 January 2008 – Accepted: 18 February 2008 – Published: 19 March 2008

Correspondence to: P. Krecl (patricia.krecl@itm.su.se)

Published by Copernicus Publications on behalf of the European Geosciences Union.

Title Page

Abstract

Introduction

Conclusions

References

Tables

Figures

◀

▶

◀

▶

Back

Close

Full Screen / Esc

Printer-friendly Version

Interactive Discussion



Abstract

The combined effect of residential wood combustion (RWC) emissions with stable atmospheric conditions, which is a frequent occurrence in Northern Sweden during wintertime, can deteriorate the air quality even in small towns. To estimate the contribution of RWC to the total atmospheric aerosol loading, the positive matrix factorization (PMF) method was applied to hourly mean particle number size distributions measured in a residential area in Lycksele during winter 2005/2006. The sources were identified based on the particle number size distribution profiles of the PMF factors, the diurnal contributions patterns estimated by PMF for both weekends and weekdays, and correlation of the modeled particle number concentration per factor with measured aerosol mass concentrations (PM_{10} , PM_1 , and light-absorbing carbon M_{LAC}). Through these analyses, the factors were identified as local traffic (factor 1), local RWC (factor 2), and local RWC plus long-range transport (LRT) of aerosols (factor 3). In some occasions, it was difficult to detach the contributions of local RWC from background concentrations since their particle number size distributions partially overlapped and the model was not able to separate these two sources. As a consequence, we report the contribution of RWC as a range of values, being the minimum determined by factor 2 and the possible maximum as the contributions of both factors 2 and 3. A multiple linear regression (MLR) of observed PM_{10} , PM_1 , total particle number, and M_{LAC} concentrations is carried out to determine the source contribution to these aerosol variables. The results reveal RWC is an important source of atmospheric particles in the size range 25–606 nm (44–57%), PM_{10} (36–82%), PM_1 (31–83%), and M_{LAC} (40–76%) mass concentrations in the winter season. The contribution from RWC is especially large on weekends between 18:00 LT and midnight whereas local traffic emissions show similar contributions every day.

ACPD

8, 5725–5760, 2008

Wood combustion contribution to winter aerosol in Sweden

P. Krecl et al.

Title Page

Abstract

Introduction

Conclusions

References

Tables

Figures

◀

▶

◀

▶

Back

Close

Full Screen / Esc

Printer-friendly Version

Interactive Discussion



1 Introduction

Recently, renewed attention has been paid to residential wood combustion (RWC) as a substantial source of airborne particulate matter (PM) in regions with cold climate. Studies on the impact of RWC on air quality have been conducted in several countries, like Sweden (Hedberg et al., 2006; Krecl et al., 2007a; Krecl et al., 2007b), Norway (Kocbach et al., 2005), Denmark (Glasius et al., 2006), USA (Gorin et al., 2006), New Zealand (Wang and Shooter, 2002) and Australia (Keywood et al., 2000). In Sweden, the main energy sources for residential heating in 2005 were electricity (~40%), combined firewood and electricity (21%), followed by exclusively bio-fuel combustion (11%) (Statistics Sweden, 2005). The energy output from bio-fuels increased by about 70% between 2000 and 2005 in the whole country. Approximately 61% of the residential wood boilers have low combustion efficiency and their emissions can be several times larger than modern installations (Johansson et al., 2004). The combined effect of these small scale emissions with stable atmospheric conditions during wintertime, which occur frequently in Northern Sweden, can deteriorate the air quality even in small towns (Krecl et al., 2007a; Krecl et al., 2007b).

To implement effective strategies to control PM emissions and assess health effects due to poor air quality, source apportionment of atmospheric aerosol is needed in areas with high PM concentrations. Different techniques, such as unique emission source tracers, air quality dispersion modeling or source-receptor modeling, can be employed to estimate the contribution of the sources. A number of elemental and molecular tracers (e.g., potassium and chlorine, methyl chloride (Khalil and Rasmussen, 2003), and levoglucosan (Hedberg et al., 2006)) have been used to identify and quantify wood smoke. However, the reliability of some of these tracers often suffers from high emission variability and lack of uniqueness. In contrast to these markers, radiocarbon (^{14}C) measurements provide an unambiguous source apportionment of contemporary and fossil fuel derived carbonaceous aerosol since it retains its identity throughout any atmospheric chemical change (Reddy et al., 2002). In the atmosphere, high temporal

Wood combustion contribution to winter aerosol in Sweden

P. Krecl et al.

Title Page

Abstract

Introduction

Conclusions

References

Tables

Figures

◀

▶

◀

▶

Back

Close

Full Screen / Esc

Printer-friendly Version

Interactive Discussion



5 resolution measurements of many of these tracers are not possible due to the necessity of large sampling volumes to detect the concentrations accurately. On the other hand, atmospheric dispersion modeling can provide spatial and temporally resolved source contributions but can be difficult to perform accurately since detailed quantitative information of the emissions and meteorology is required, and in some cases also aerosol chemical transformation and removal processes might be considered. Thus, dispersion model calculations need to be validated. Briefly, aerosol source-receptor modeling quantifies the impact of various relevant sources to the concentrations measured at a certain site (the receptor). Among source-receptor models, positive matrix factorization (PMF) has been extensively used for source apportionment of particle composition data, where the goal is to determine the sources that contribute to PM samples (e.g., Hedberg et al., 2005; Hedberg et al., 2006). Lately, PMF has been applied to particle size distribution data to estimate possible sources from model identified particle size distributions (Kim et al., 2004; Zhou et al., 2004). Continuous aerosol size distribution measurements can provide very large data sets with high temporal resolution, which is relevant for source apportionment calculations.

15 In order to characterize the urban aerosol during the wood burning season in Northern Sweden, a field campaign was conducted in a residential area in winter 2005/2006. In this study, hourly mean particle number size distributions are analyzed using the PMF method to obtain the factor profiles and identify the emission sources. Then a multiple linear regression (MLR) of observed PM_{10} , PM_1 , particle number, and light-absorbing carbon concentrations is carried out to determine the source contribution to these aerosol variables on an hourly basis and for the whole measurement period.

Wood combustion contribution to winter aerosol in SwedenP. Krecl et al.

[Title Page](#)[Abstract](#)[Introduction](#)[Conclusions](#)[References](#)[Tables](#)[Figures](#)[⏪](#)[⏩](#)[◀](#)[▶](#)[Back](#)[Close](#)[Full Screen / Esc](#)[Printer-friendly Version](#)[Interactive Discussion](#)

2 Methodology

2.1 Aerosol measurements

The field campaign was carried out in the town of Lycksele (64.55° N, 18.72° E, 240 m a.m.s.l., population 8600). The receptor site was placed in Forsdala where RWC is common and local traffic within the area is limited (the closest major road is located 200 m from the site, ~3000 vehicles/d). Particles were sized and counted in the diameter range 25–606 nm with a differential mobility particle sizer (DMPS) composed of a custom-built differential mobility analyzer (DMA, Vienna type) and a condensation particle counter (CPC, TSI 3760, TSI Inc., USA). Particle number concentration was calculated from particle number size distribution and is denoted N_{25-606} , where the subindices indicate the lower and upper bin limit of particle diameters. Total PM_{10} mass concentrations were provided by a Filter Dynamics Measurement System (FDMS, series 8500 Rupprecht & Patashnick Inc.) whereas total PM_1 mass concentrations were measured with a Tapered Element Oscillating Microbalance (TEOM 1400a, Rupprecht & Patashnick Inc., USA). No other correction than the TEOM inbuilt correction (1.3TEOM + 3) was applied to the PM_1 mass concentrations. A commercial Aethalometer (series 8100, Magee Scientific Inc.) operated with a PM_1 sample inlet measured the light-absorbing carbon mass concentration M_{LAC} . The reader is referred to Krecl et al. (2007a) and Krecl et al. (2007b) for more operational details on these aerosol measurements. Additionally, PM_{10} mass concentrations were measured with a TEOM 1400ab (Rupprecht & Patashnick Inc., USA) at Vindeln station. This is a background monitoring station of the Cooperative Program for Monitoring and Evaluation of the Long-Range Transmissions of Air Pollutants in Europe (EMEP), situated in a forest ~65 km southeast of Lycksele. All measurements from 31 January to 9 March 2006 were averaged on an hourly basis considering a minimum data availability of 75% per hour.

Wood combustion contribution to winter aerosol in Sweden

P. Krecl et al.

Title Page

Abstract

Introduction

Conclusions

References

Tables

Figures

◀

▶

◀

▶

Back

Close

Full Screen / Esc

Printer-friendly Version

Interactive Discussion



2.2 Positive matrix factorization

PMF is a powerful multivariate least-squares technique that constraints the solution to be non-negative and takes into account the uncertainty of the observed data (Paatero and Taaper, 1994). This method relies on the time-invariance of the source profiles and, thus, requires the emission particle size distributions to be stable in the atmosphere between the sources and the receptor site. According to Zhou et al. (2004), after some initial size distribution changes in the vicinity of the sources (due to coagulation and dry deposition), it is reasonable to expect that particle size distributions will become relatively stable when sampling at some appropriate distance from the emission sources.

The basic source-receptor model in matrix form is:

$$\mathbf{X} = \mathbf{G} \cdot \mathbf{F} + \mathbf{E}, \quad (1)$$

where \mathbf{X} is the matrix of observed particle number size distributions, \mathbf{G} and \mathbf{F} are, respectively, the source contributions and particle number size distribution profiles of the sources that are unknown and are estimated from the analysis, and \mathbf{E} is the residual matrix (observed – estimated). Equation (1) can also be expressed in the element form as:

$$x_{ij} = \sum_{k=1}^p g_{ik} \cdot f_{kj} + e_{ij}, \quad (2)$$

where x_{ij} is the particle number concentration of size interval j measured on sample i , p is the number of factors contributing to the samples, f_{kj} is the concentration of size bin j from the k th factor, g_{ik} is the relative contribution of factor k to sample i , and e_{ij} is the residual value (estimated – observed) for the size bin j measured on the sample i . For a given p , values of f_{kj} and g_{ik} are adjusted using a least-square method (with the

Wood combustion contribution to winter aerosol in Sweden

P. Krecl et al.

Title Page

Abstract

Introduction

Conclusions

References

Tables

Figures

◀

▶

◀

▶

Back

Close

Full Screen / Esc

Printer-friendly Version

Interactive Discussion



constraint that f_{kj} and g_{jk} values are non-negative), until a minimum Q value is found:

$$Q = \sum_{i=1}^n \sum_{j=1}^m \left(\frac{e_{ij}}{\sigma_{ij}} \right)^2. \quad (3)$$

σ_{ij} is the uncertainty of the particle number concentration of size bin j in sample i , n is the number of samples, and m is the number of size intervals.

Following Hedberg et al. (2006), the apportionment of N_{25-606} , M_{LAC} , PM_{10} , and PM_1 was performed by multiple linear regression (95% confidence level) of the factor contributions from PMF onto these aerosol concentrations.

Reff et al. (2007) recommended documenting all of the procedural details used in the PMF application in order to obtain source apportionment results that are of known quality. The next sections describe the data preparation, selection of model parameters, and diverse tests on the PMF runs. A summary of the methodological details chosen for this PMF analysis is shown in Table 1.

2.2.1 Data preparation

A total of 769 hourly mean particle number size distributions, each with 18 size intervals, were used in this study after discarding faulty scans. There are several sources of measurement errors for DMPS particle number size distributions. Errors due to particle counting might arise from the CPC detection efficiency, problems in the CPC optics, and large flow rate fluctuations in the CPC. Neither large CPC flow rate variations nor problems associated to the CPC optics were observed during the Lycksele campaign. According to Wiedensohler et al. (1997), the particle detection efficiency for the CPC TSI-3760 operated at 1.5 l min^{-1} is 90% at 25 nm and rapidly increases for larger particle diameters. Another error source is related to the particle sizing, being the fluctuations of flow rate in the DMA the most important effect in this experiment. The sheath flow rate variation was 1–2% during the campaign, producing a 2–3% error in particle size calculations. Particle losses in the system could also lead to mea-

Wood combustion contribution to winter aerosol in Sweden

P. Krecl et al.

Title Page

Abstract

Introduction

Conclusions

References

Tables

Figures

◀

▶

◀

▶

Back

Close

Full Screen / Esc

Printer-friendly Version

Interactive Discussion



surement errors. In this study, we discard losses produced by diffusion and impaction because of the size range covered by the DMPS. Particle residence times in the DMPS system are very short compared to coagulation time scales and hence losses due to coagulation are negligible. The inversion algorithm included a correction for doubly-charged aerosol particles and a triangular-shape transfer function was implemented. The fraction of triply-charged particles is lower than 8% at 600 nm where usually low particle concentrations are measured. As a result, if triply-charged particles at 600 nm are wrongly assigned to a smaller size bin their effect might be negligible.

2.2.2 Selection of PMF parameters

Number of factors

Different factor numbers were tested and a 3-factor model adequately fitted the data with the most meaningful results. When 4 factors were included in the analysis, no more relevant sources could be identified.

Rotations

As other factor analysis techniques, PMF suffers from rotational indeterminacy of the solution as extensively discussed by Paatero et al. (2002). F_{peak} is the model parameter that controls the rotation in PMF by adding and/or subtracting the rows and columns of \mathbf{F} and \mathbf{G} matrices from each other depending on the sign of the F_{peak} value. Diverse methods have been proposed to adjust F_{peak} to obtain the most meaningful results (Paatero et al., 2002; Paatero et al., 2005). Usually, PMF is run several times with different F_{peak} values to determine the range within which the Q value remains stable (Paatero et al., 2002). Figure 1a shows the Q values obtained when a 3-factor PMF model was run for F_{peak} values between -2 and $+2$ in steps of 0.1 . Based on Paatero et al. (2005), the coefficients of determination R^2 among the three g-factors are plotted as a function of F_{peak} in Fig. 1b. The PMF solutions

Title Page

Abstract

Introduction

Conclusions

References

Tables

Figures

◀

▶

◀

▶

Back

Close

Full Screen / Esc

Printer-friendly Version

Interactive Discussion



**Wood combustion
contribution to winter
aerosol in Sweden**

P. Krecl et al.

[Title Page](#)[Abstract](#)[Introduction](#)[Conclusions](#)[References](#)[Tables](#)[Figures](#)[⏪](#)[⏩](#)[◀](#)[▶](#)[Back](#)[Close](#)[Full Screen / Esc](#)[Printer-friendly Version](#)[Interactive Discussion](#)

for $F_{peak} \geq 0$ resulted in negative regression coefficients when the factor contributions were regressed onto PM_1 mass concentrations and, thus, these solutions are considered physically invalid. It can be observed that the statistical independence between pairs of g -factors increases for decreasing F_{peak} values (all R^2 were lower than 0.1 for $F_{peak} \leq -1.2$). Thus, the selection of F_{peak} is restricted to values smaller than -1.1 . Another approach to reduce the rotational ambiguity is to use some a priori information that helps constraining the solution. In our case, we employ PM_{10} mass concentration measured at a background site (Vindeln). Figure 2 shows the temporal series of the modeled PM_{10} contribution per factor for $F_{peak} = -0.1$ (maximum valid value) and $F_{peak} = -1.4$ (panels a, b, and c) together with observed PM_{10} mass concentrations at Vindeln (panel c). As will be discussed in Sect. 3.1, factor 1 can be interpreted mostly as the contribution from local traffic, factor 2 as local RWC, whereas factor 3 is a combination of two sources: local RWC and long-range transport (LRT). The largest difference in PM_{10} mass concentration when running PMF for $F_{peak} = -0.1$ and -1.4 is found for factors 2 and 3. When PMF is run for $F_{peak} = -1.4$, a larger contribution of factor 2 (mostly local RWC) to PM_{10} is found whereas the local RWC contribution to factor 3 is reduced and the correlation with Vindeln background measurements increases. For $F_{peak} < -1.6$, the contribution of factor 3 to PM_{10} is mostly below the observed background contribution. As a result of these tests, we selected a range of F_{peak} values between -1.6 and -1.2 . For the sake of completeness, the time series of modeled aerosol variables M_{LAC} , N_{25-606} , and PM_1 together with the observed data are presented in Appendix A (Figs. A1, A2, A3).

Error model

A dynamical error model was chosen for this study and PMF uncertainties are calculated at each iteration step of the program by using the formula shown in Table 1. In this expression, the uncertainty σ_{ij} is derived from the measurement error C_{ij} , the constant C_3 and the maximum value between the observed x_{ij} and the modeled y_{ij} .

C_3 is included to account for some source profile variation and, in this way, provides the fitting more flexibility to accommodate this variability. As previously shown, the DMPS measurement error was quite small and, hence, we decided to set C_{ij} to 0 and include all the uncertainty input in the C_3 constant. In order to obtain small scaled residuals, C_3 was set up to 0.25.

Robust mode and outliers

PMF was run in the robust mode to reduce the influence of atypical measurements in the dataset. In this mode, the uncertainties of measurements for which the scaled residuals are larger than the outlier threshold distance α are increased to diminish their influence on the PMF solution. As suggested by Paatero (2000), standard α values of 2, 4 (default value), and 8 were tested in this study. The test was carried out with a 3-factor model, $F_{peak} = -1.4$, and $C_3 = 0.25$. No difference between the solutions using $\alpha = 4$ and $\alpha = 8$ was observed since the scaled residuals for both runs lay in the range $[-2, 3.4]$. Small differences in f and g-factors were found when PMF was run with $\alpha = 2$ compared to the default α value. Emulated aerosol concentrations (N_{25-606} , M_{LAC} , PM_{10} , and PM_1) were compared when running PMF with $\alpha = 2$ and $\alpha = 4$. The largest mean difference between aerosol concentrations (25%) was observed for the contribution of factor 2 to PM_1 mass concentrations. This indicates, once more, that PM_1 is the most sensitive aerosol variable in relation to PMF initialization parameters in this study. As a result, PMF was run with $\alpha = 4$ in this work.

2.2.3 Tests on PMF runs

Global minimum

Least-squares can yield multiple solutions depending on the initial starting point

Wood combustion contribution to winter aerosol in Sweden

P. Krecl et al.

Title Page

Abstract

Introduction

Conclusions

References

Tables

Figures

⏪

⏩

◀

▶

Back

Close

Full Screen / Esc

Printer-friendly Version

Interactive Discussion



for each entry in the **F** and **G** matrices. PMF was run 5 times with different seed values to ensure that a global minimum has been reached. The setup of the initialization PMF parameters was: $F_{peak}=-1.4$, $C_3=0.25$, 3 factors and $\alpha=4$. The same output values (f and g -factors, and Q) were obtained for all the runs. Hence, we conclude that the PMF solution consistently converges and a global minimum was found for this particular setup of model parameters.

Goodness of model fit

Two methods were employed to assess the adequacy of the PMF fit to the measurements. First, the distribution of scaled residuals was examined when using a 3-factor model ($F_{peak}=-1.4$, $C_3=0.25$, and $\alpha=4$). The residual concentrations are normally distributed and no structured features were identified. Second, the modeled aerosol concentrations were compared to the measurements. Time series of observed and total modeled concentrations of PM_{10} , PM_1 , M_{LAC} , and N_{25-606} are displayed in Figs. 2d, A1d, A2d and A3d, respectively. Figure 3 shows scatter plots and least-squares linear regressions between modeled and observed PM_{10} , PM_1 , M_{LAC} and N_{25-606} concentrations. The 95% confidence intervals for the slope and intercept were also calculated and included in the linear regression equation. As expected, the highest R^2 and slope close to 1 was obtained for N_{25-606} since PMF was run on particle number size distributions. The variability of the measured M_{LAC} is very well predicted by the model ($R^2=0.85$) whereas for PM_{10} , and PM_1 the coefficients of determination are 0.75 and 0.72, respectively. The intercept seen in Fig. 3b (PM_1 linear regression) is significantly different from zero at 95% confidence interval. This might suggest the inbuilt correction for the loss of volatile material applied by the TEOM instrument is not adequate for the measurements carried out in this Lycksele campaign. Hedberg et al. (2006) reported a similar problem when performing PMF on $PM_{2.5}$ mass concentrations measured with a TEOM series 1400 in a previous winter campaign in Lycksele.

Wood combustion contribution to winter aerosol in Sweden

P. Krecl et al.

Title Page

Abstract

Introduction

Conclusions

References

Tables

Figures

◀

▶

◀

▶

Back

Close

Full Screen / Esc

Printer-friendly Version

Interactive Discussion



Model uncertainties

Following Hedberg et al. (2005), in order to estimate the model uncertainties 25% of the original samples were randomly removed and then PMF was run 300 times on these new datasets (always with 3 factors, $C_3=0.25$, $\alpha=4$, and $F_{peak}=-1.4$). Figure 4 presents the mean and standard deviation of the factor profiles. The difference between the mean factor profiles after removing 25% of the samples, and the factor profiles when all samples (using the same model initialization values) are included lies between one standard deviation values. As a result, the PMF solution is considered stable.

3 Results and discussion

3.1 Source identification

The sources were identified based on the particle number size distribution profiles of the PMF factors (Fig. 5), the diurnal contributions patterns estimated by PMF for both weekends (WE) and weekdays (WD) (Fig. 6), and correlation of the modeled N values with measured aerosol concentrations (PM_{10} , PM_1 , and M_{LAC}). Time series of particle number contributions for each factor are presented in the appendix (Fig. A3). Figure 5 displays the calculated factor profiles when the PMF model was run with F_{peak} values ranging from -1.6 to -1.2 in steps of 0.1 . The left panels show mean modeled particle number size distributions per factor whereas normalized f -factor profiles (mean \pm standard deviation) to the total number of particles per factor are presented in Fig. 5d. This right panel highlights the contribution of each size bin to the total number particle concentration per factor.

Factor 1 has a peak at particle diameter $D_p \sim 28$ nm (Fig. 5a) and shows a very well defined daily pattern during weekdays and weekends (Fig. 6a). The strong diurnal variation might suggest that these particles are produced in the immediate vicinity of

Wood combustion contribution to winter aerosol in Sweden

P. Krecl et al.

Title Page

Abstract

Introduction

Conclusions

References

Tables

Figures

◀

▶

◀

▶

Back

Close

Full Screen / Esc

Printer-friendly Version

Interactive Discussion



the receptor site. The origin of this factor is likely to be local traffic emissions. The shape of this modeled profile is similar to the shape of particle number size distributions measured at a street canyon and road tunnel sites in Stockholm (Gidhagen et al., 2004; Kristensson et al., 2004). The peak number concentration in Stockholm was observed at $D_p \sim 20$ nm for both studies, which could not be observed in our case since DMPS measurements started at 25 nm. In Sweden, only 5% of passenger cars are diesel vehicles and heavy-duty vehicles comprise 5% of the total vehicle fleet (SIKA, 2006). This could explain the weak correlation ($R=0.37$) between modeled N_{25-606} (attributed to factor 1) and M_{LAC} found in our study.

Factor 2 is strongly associated with the light absorbing carbon content of fine aerosols as shown by the high correlation ($R=0.76$) between modeled N_{25-606} (attributed to factor 2) and the observed M_{LAC} . Kim et al. (2004) also found a similar correlation between modeled particle size distributions attributed to RWC and light absorption coefficients in Seattle (USA) during wintertime. In Lycksele, particle number concentrations are significantly higher on weekends than on weekdays after 13:00 LT (unpaired t-test, 95% confidence interval), reaching mean concentrations of $\sim 1 \times 10^4 \text{ cm}^{-3}$ from 21:00 LT to midnight (Fig. 6b). Several studies (e.g., Hueglin et al., 1997; Hedberg et al., 2002; Johansson et al., 2004; Boman, 2005) have shown that particle size distributions from wood combustion under controlled laboratory conditions vary in shape, peak concentration value and mode diameter depending on a number of factors such as the combustion phase (i.e. ignition, intermediate, and smoldering), appliance type (e.g. wood stove, boiler, fireplace), type and amount of wood, and wood moisture content. Despite of this broad variation, a consistent conclusion is that RWC emits particles mainly in the size range 60–300 nm. As shown in Fig. 5b, factor 2 peaks at ~ 70 nm and its shape is similar to the shape of particle number size distributions measured in winter field campaigns (Kristensson, 2005; Hering et al., 2007) when wood burning was an important particle emission source. Local RWC emissions are suggested to be the source of this factor.

Factor 3 particle number size distribution is depicted in Fig. 5c and peaks at ~ 160 nm.

Wood combustion contribution to winter aerosol in Sweden

P. Krecl et al.

Title Page

Abstract

Introduction

Conclusions

References

Tables

Figures

◀

▶

◀

▶

Back

Close

Full Screen / Esc

Printer-friendly Version

Interactive Discussion



**Wood combustion
contribution to winter
aerosol in Sweden**

P. Krecl et al.

Title Page

Abstract

Introduction

Conclusions

References

Tables

Figures

◀

▶

◀

▶

Back

Close

Full Screen / Esc

Printer-friendly Version

Interactive Discussion



We suggest this factor could be a combination of two sources: local wood combustion and long-range transport of particles. Tunved et al. (2003) found that particle number size distributions are typically bimodal (mean mode diameters at ~56 nm and 160–190 nm) during winter in five Nordic background stations (covering latitudes 58° N–68° N). They observed a gradient in the mean daily integral number concentration from ~2000 cm⁻³ at the southernmost station to values <500 cm⁻³ at the two northernmost sites. The diurnal variation of the integrated particle number concentration was small, typically below ±10% for all sites, indicating limited local anthropogenic sources influence. In our study, modeled N_{25-606} values for factor 3 are higher on weekends than on weekdays, and this difference is statistically significant (unpaired t-test, 95 % confidence interval) in the time periods: 03:00–04:00 LT, 11:00–14:00 LT, and 18:00–19:00 LT. The mean N_{25-606} for factor 3 is 586 cm⁻³ on WD and 1043 cm⁻³ during WE and the standard deviation of the hourly mean values are ±24% and ±20%, respectively. These results suggest factor 3 might be influenced by some local human sources.

As discussed above, RWC can produce substantially different size distribution shapes and peak concentration values and cover a wide range of particle diameters. In this study, number size distributions from local RWC and LRT partially overlap. It has been shown in Sect. 2.2.2 that by fine-tuning the F_{peak} value one can force the model to detach the local aerosol contribution (attributed to RWC) from the long-range transport contribution. However, as shown in Fig. 6c, it was not possible to completely isolate the LRT contribution in factor 3. Unfortunately, no particle size distribution measurements were simultaneously carried out in a background site close enough to Lycksele to subtract them from the measurements conducted in Lycksele before performing the PMF analysis. Even though the individual contribution of these two sources to the hourly atmospheric aerosol concentrations cannot be determined we can estimate a range of possible contributions. The local RWC contribution to atmospheric aerosol then might vary between the contribution of factor 2 (i.e. factor 3 is all attributed to LRT) and the contributions of factors 2 and 3 (i.e. factor 3 is all attributed to local RWC

in this case).

3.2 Source apportionment

The mean contributions of the three factors to the total number of particles in the size range 25–606 nm are 42.6% (factor 1), 43.7% (factor 2) and 13.7% (factor 3). Assuming spherical particles and calculating the volume concentration from the modeled number concentration, the mean contributions per factor to the total volume concentration are 8.6%, 43.9%, and 47.5% for factors 1, 2, and 3, respectively.

Besides using the particle number size distributions of the PMF factors as a method to identify the sources, one can gain some knowledge on the contribution of each factor to certain particle diameter. Figure 7a displays the contribution of the factors to the total modeled particle number size distribution ($F_{peak} = -1.4$, $C_3 = 0.25$, and $\alpha = 4$) together with the mean observed size distribution in the period 31 January–9 March 2006. The difference between the total modeled and the mean observed particle size distributions is very small (<7%) for all particle diameters. The relative cumulative contribution per factor to the number and volume concentrations as a function of the diameter are shown in Fig. 7b and c, respectively. In order to correctly interpret this figure, we give an example related to the Aitken mode particles (defined, in this study, as particles with $28 < D_p < 100$ nm). It can be seen in Fig. 7b that these particles account for 77% of the mean measured particle number concentration (black line). If we want to know the contribution of each factor to the particles measured in the Aitken mode, we check the other 3 curves: blue (factor 1), green (factor 2), and red (factor 3). For example, the contribution of factor 1 for the smallest particles is quite large (77%) and decreases to 50% for $D_p = 100$ nm. Considering all particle diameters now, factor 1 has the largest contribution at the smallest sizes and then decreases maintaining a nearly constant particle emission of 44% for $D_p > 190$ nm. Factor 2 provides 20% of the particles at the smallest diameter and its contribution increases to ~45% and remains constant for larger particles. Factor 3 has a low overall contribution to particle number concentrations that slightly increases when increasing the particle diameter. The same

Wood combustion contribution to winter aerosol in Sweden

P. Krecl et al.

Title Page

Abstract

Introduction

Conclusions

References

Tables

Figures

◀

▶

◀

▶

Back

Close

Full Screen / Esc

Printer-friendly Version

Interactive Discussion



interpretation applies to Fig. 7c but now considering volume fractions instead of number fractions. Factor 2 has the largest factor contribution to volume (mass) concentration for $80 < D_p < 380$ nm whereas factor 1 dominates for $D_p < 80$ nm. The contribution of factor 3 to volume (mass) concentration as a function of increasing D_p varies from 3% to ~50%.

Figure 8 summarizes the mean contribution of the modeled factors to the aerosol concentrations (PM_{10} , PM_1 , M_{LAC} , and N_{25-606}) for weekends, weekdays, and all days together in the period 31 January–9 March 2006. The mean contribution of local traffic to the aerosol concentration is similar on weekdays and weekends (2.1 vs. $1.8 \mu\text{g m}^{-3}$ for PM_{10} , 1.4 vs. $1.1 \mu\text{g m}^{-3}$ for PM_1 , 0.3 vs. $0.32 \mu\text{g m}^{-3}$ for M_{LAC} , and 2264 vs. 1894 cm^{-3} for N_{25-606}). On the other hand, the impact of local RWC on atmospheric aerosol varies depending on the day of the week and the aerosol variable analyzed. Factor 3 has a larger impact on aerosol mass concentrations (i.e. PM_{10} , PM_1 , M_{LAC}) than on particle number concentrations. This is consistent with factor 3 providing less but bigger particles that contribute more to the total mass than the particles emitted by local traffic emissions (factor 1) which are more in number but have smaller sizes.

To facilitate the comparison between our results and other source apportionments studies, Table 2 summarizes the emission sources relative contribution to PM_{10} , PM_1 , M_{LAC} , and N_{25-606} concentrations for the whole campaign in Lycksele (31 January–9 March 2006). The mean contribution of local traffic is displayed whereas minimum and maximum mean contributions of local RWC and LRT are presented. Two previous source apportionment studies of ambient aerosol were performed in Lycksele using source-receptor modeling (Kristensson, 2005; Hedberg et al., 2006) on measurements carried out in winter 2001/2002. In our study, the largest impact of local traffic is on particle number concentrations, accounting for ~43% of particle number concentrations in the diameter range 25–606 nm. Kristensson (2005), using COPREM model on particle number size distributions, attributed 38% of particle number concentrations between 3 and 850 nm to local traffic in Lycksele in the period 14 January–9 March 2002. Another 38% was classified by Kristensson (2005) as the contribution of local

**Wood combustion
contribution to winter
aerosol in Sweden**

P. Krecl et al.

Title Page

Abstract

Introduction

Conclusions

References

Tables

Figures

◀

▶

◀

▶

Back

Close

Full Screen / Esc

Printer-friendly Version

Interactive Discussion



RWC whereas LRT accounted for the remaining 24%. This last value is larger than the possible maximum mean N_{25-606} value we estimated for the LRT contribution (13%). This difference could be related to different air quality characteristics (different sampling years), different DMPS cut-off sizes, and also to the method chosen by Kristensson (2005) to estimate the average background contribution. The same problem related to the interference between local RWC and LRT particle number size distributions was encountered by Kristensson (2005). To overcome this difficulty, the background contribution to particle number concentration was calculated as the average of measurements at two background stations (Hyytiälä and Pallas) for the winter 2002. Hedberg et al. (2006) apportioned 70% of $PM_{2.5}$ mass concentration to local RWC when performing a PMF analysis on inorganic compounds and using mainly the abundance of K and Zn to identify this combustion source. This fraction apportioned by Hedberg et al. (2006) lies within the local RWC contribution intervals we estimated for PM_{10} and PM_1 mass concentrations and might suggest the local RWC contribution is closer to the possible maximum fraction (very low background contribution to factor 3) than to the minimum possible value (factor 3 is all LRT). Finally, our apportionment of M_{LAC} can be roughly compared to the radiocarbon analysis results reported by Sheesley et al. (2008)¹ when sampling in Lycksele from 23 January to 8 March 2006. To correctly interpret and compare these results, the reader has to bear in mind that ¹⁴C analysis provides the apportionment of modern and fossil carbonaceous aerosol but does not provide information on the location of the emission sources (local or LRT). The average contribution of fossil total organic carbon (attributed to traffic emissions) was 24% which coincides with the mean fraction of M_{LAC} we attributed to local traffic emissions. The other 76% was mostly attributed to wood combustion since biogenic emissions and combustion of grass fires and incineration of household vegetable waste were not observed in the area. Another study in the Nordic region (Glasius et al., 2006) reported

¹Sheesley, R. J., Kruså, M., Krecl, P., Johansson, C., and Gustaffson, Ö.: Source apportionment of elevated wintertime PAH in a northern Swedish town by compound specific radiocarbon analysis, in preparation, 2008.

**Wood combustion
contribution to winter
aerosol in Sweden**

P. Krecl et al.

Title Page

Abstract

Introduction

Conclusions

References

Tables

Figures

◀

▶

◀

▶

Back

Close

Full Screen / Esc

Printer-friendly Version

Interactive Discussion



**Wood combustion
contribution to winter
aerosol in Sweden**

P. Krecl et al.

Title Page

Abstract

Introduction

Conclusions

References

Tables

Figures

◀

▶

◀

▶

Back

Close

Full Screen / Esc

Printer-friendly Version

Interactive Discussion

two main sources of ambient aerosol when performing COPREM model calculations on $PM_{2.5}$ mass concentrations measured in a residential area in Denmark in winter 2003/2004. The largest contribution to $PM_{2.5}$ was assigned to long-range transport (mean $10.65 \mu\text{g m}^{-3}$) with additional and episodically contributions from RWC (mean $4.60 \mu\text{g m}^{-3}$). The regional traffic was found to be of minor importance accounting only for $0.83 \mu\text{g m}^{-3}$ of $PM_{2.5}$ concentrations. As discussed by Tunved et al. (2003), there is a gradient in background aerosol concentrations in the Nordic region with highest concentrations in the South and decreasing towards the North. Thus, it is expected to have a larger absolute contribution of LRT to mass concentrations in Denmark compared to Northern Sweden. Local RWC influence on aerosol concentrations might be lower in Denmark since winters are milder than in Northern Sweden. This is associated to lower heat demand (lower emissions) and more unstable lower atmosphere (favors the vertical dispersion of pollutants).

Figure 9 displays the diurnal contribution of the modeled factors to the PM_{10} , PM_{10} , M_{LAC} , and N_{25-606} concentrations for weekdays and weekends. Krecl et al. (2007b) showed that measured mean aerosol concentrations were statistically significantly higher on WE than on WD after 12:00 LT at 95% confidence level when analyzing the same data set employed in this study. For all aerosol variables, the contribution of local traffic (factor 1) on weekdays shows a peak concentration at 9:00–10:00 LT and a second and smaller maximum at 20:00–21:00 LT. During weekdays, local traffic emissions increase the aerosol concentrations during the morning reaching a peak value \sim 11:00–12:00 LT while in the evening its effect is smaller and more diffuse. As shown before, the mean contribution of local traffic to the aerosol concentration is similar on weekdays and weekends. Then this large difference between weekends and weekdays for all aerosol variables is attributed by PMF to local RWC as shown in Fig. 9. On weekends, the contribution of local RWC to atmospheric aerosol is largest between 18:00 and midnight even when considering the minimum contribution (only factor 2). This result is in agreement with the findings by Kim et al. (2004) when applying PMF analysis on particle volume distributions measured in Seattle (USA) during the winter

season. They identified a local RWC particle emission source based on the distinct diurnal pattern of modeled volume concentrations on weekends compared to weekdays. In Seattle, daytime contributions of this factor during weekends were lower than those of weekdays and the highest concentrations were observed on weekends between
5 21:00 LT and midnight.

4 Conclusions

This work demonstrates that is possible to estimate the emission sources of atmospheric aerosols applying PMF analysis on particle size distributions in a wood smoke-impacted residential area. The high-temporal resolution of the source apportionment
10 allows studying in detail the diurnal variation of source contributions to ambient aerosol and also provides a better estimation of the time periods when the inhabitants are more exposed to harmful aerosol concentrations. Although the PMF factors were attributed to certain emission sources, they might still be influenced by other unknown sources or among themselves. This PMF source-receptor modeling should be complemented
15 with chemical speciation analysis to provide a more precise source apportionment in relation to local RWC due to the overlapping of sources profiles between RWC and LRT at this receptor site. In the Nordic region, where LRT can have a large influence on particle concentrations, DMPS measurements at rural background sites close to the receptor site of interest should be conducted in future field campaigns.

20 *Acknowledgements.* Financial support from the Swedish Energy Agency and the Swedish Environmental Protection Agency is acknowledged. We thank T. Hennig for calculating the error in particle sizing due to flow rate fluctuations in the DMA and for useful discussions on DMPS measurement errors.

Wood combustion contribution to winter aerosol in Sweden

P. Krecl et al.

Title Page

Abstract

Introduction

Conclusions

References

Tables

Figures

◀

▶

◀

▶

Back

Close

Full Screen / Esc

Printer-friendly Version

Interactive Discussion



References

- Boman, C.: Particulate and gaseous emissions from residential biomass combustion, Ph.D. Thesis, Energy Technology and Thermal Process Chemistry, Umeå University, Umeå, Sweden, available at: <http://www.diva-portal.org/umu/theses/index.xsql?lang=en>, last access: 25 November 2007, 2005.
- Gidhagen, L., Johansson, C., Langner, J., and Olivares, G.: Simulation of NO_x and ultrafine particles in a street canyon in Stockholm, Sweden, *Atmos. Environ.*, 38, 2029–2044, 2004.
- Gladius, M., Ketzel, M., Wåhlin, P., Jensen, B., Mønster, J., Berkowicz, R., and Palmgren, F.: Impact of wood combustion on particle levels in a residential area in Denmark, *Atmos. Environ.*, 40, 7115–7124, 2006.
- Gorin, C. A., Collet, J. L., and Herckes, P.: Wood smoke contribution to winter aerosol in Fresno, CA, *J. Air Waste Manage.*, 56, 1584–1590, 2006.
- Hedberg, E., Kristensson, A., Ohlsson, M., Johansson, C., Johansson, P. Å., Swietlicki, E., Vesely, E., Wideqvist, U., and Westerholm, R.: Chemical and physical characterization of emissions from birch wood combustion in a wood stove, *Atmos. Environ.*, 36, 4823–4837, 2002.
- Hedberg, E., Gidhagen, L., and Johansson, C.: Source contributions to PM₁₀ and arsenic concentrations in Central Chile using positive matrix factorization, *Atmos. Environ.*, 39, 549–561, 2005.
- Hedberg, E., Johansson, C., Johansson, L., Swietlicki, E., and Brorström-Lundén, E.: Is levoglucosan a suitable quantitative tracer for wood burning? Comparison with receptor modeling on trace elements in Lycksele, Sweden, *J. Air Waste Manage.*, 56, 1669–1678, 2006.
- Hering, S. V., Kreisberg, N. M., Stolzenburg, M. R., and Lewis, G. S.: Comparison of particle size distributions at urban and agricultural sites in California's San Joaquin Valley, *Aerosol Sci. Tech.*, 41, 86–96, 2007.
- Hueglin, Ch., Gaegauf, Ch., Künzel, S., and Burtscher, H.: Characterization of wood combustion particles: morphology, mobility, and photoelectric activity, *Environ. Sci. Technol.*, 31, 3439–3447, 1997.
- Johansson, L.S., Leckner, B., Gustavsson, L., Cooper, D., Tullin, C., and Potter, A.: Emission characteristics of modern and old-type residential boilers fired with wood logs and wood pellets, *Atmos. Environ.*, 38, 4183–4195, 2004.
- Keywood, M. D., Ayers, G. P., Gras, J. L., Gillet, R. W., and Cohen, D.: Size distribution and

Wood combustion contribution to winter aerosol in Sweden

P. Krecl et al.

Title Page

Abstract

Introduction

Conclusions

References

Tables

Figures

◀

▶

◀

▶

Back

Close

Full Screen / Esc

Printer-friendly Version

Interactive Discussion



sources of aerosol in Launceston, Australia, during winter 1997, *J. Air Waste Manage.*, 50, 418–427, 2000.

Khalil, M. A. K. and Rasmussen R. A.: Tracers of wood smoke, *Atmos. Environ.*, 37, 1211–1222, 2003.

5 Kim, E., Hopke, P. K., Larson, T. V., and Covert, D. S.: Analysis of ambient particle size distributions using Unmix and positive matrix factorization, *Environ. Sci. Technol.*, 38, 202–209, 2004.

Kocbach, A., Johansen, B. V., Schwarze, P. E., and Namork, E.: Analytical electron microscopy of combustion particles: a comparison of vehicle exhaust and residential wood smoke, *Sci. Total Environ.*, 346, 231–243, 2005.

10 Krecl, P., Ström, J., and Johansson, C.: Carbon content of atmospheric aerosols in a residential area during the wood combustion season in Sweden, *Atmos. Environ.* 41, 6974–6985, 2007a.

Krecl, P., Ström, J., and Johansson, C.: Diurnal variation of atmospheric aerosol during the wood combustion season in Northern Sweden, *Atmos. Environ.*, in press, doi:10.1016/j.atmosenv.2008.01.026, 2007b.

Kristensson, A., Johansson, C., Westerholm, R., Swietlicki, E., Gidhagen, L., Wideqvist, U., and Vesely, V.: Real-world traffic emission factors of gases and particles measured in a road tunnel in Stockholm, Sweden, *Atmos. Environ.* 38, 657–673, 2004.

20 Kristensson, A.: Aerosol particle sources affecting the Swedish air quality at urban and rural level, Ph.D. thesis, Lund Institute of Technology, Lund University, Sweden, available at: http://theses.lub.lu.se/postgrad//search.tkl?field_query1=pubid&query1=tec.936&recordformat=display, last access: 5 November 2007, 2005.

Paatero, P. and Taaper, U.: Positive matrix factorization: a non-negative factor model with optimal utilization of error estimates of data values, *Environmetrics*, 5, 111–126, 1994.

25 Paatero, P.: User's guide for positive matrix factorization programs PMF2 and PMF3, Part2: reference, 2000.

Paatero, P., Hopke, P. K., Song, X.-H., and Ramadan, Z.: Understanding and controlling rotations in factor analytic models, *Chemometr. Intell. Lab.*, 60, 253–264, 2002.

30 Paatero, P., Hopke, P. K., Begum, B. A., and Biswas, S. K.: A graphical diagnostic method for assessing the rotation in factor analytical models of atmospheric pollution, *Atmos. Environ.*, 39, 193–201, 2005.

Reddy, C. M., Pearson, A., Xu, L., McNichol, A. P., Benner, B. A., Wise, S. A., Klouda, G. A.,

**Wood combustion
contribution to winter
aerosol in Sweden**

P. Krecl et al.

Title Page

Abstract

Introduction

Conclusions

References

Tables

Figures

◀

▶

◀

▶

Back

Close

Full Screen / Esc

Printer-friendly Version

Interactive Discussion



Currie, L. A., and Eglinton, T. I.: Radiocarbon as a tool to apportion the sources of polycyclic aromatic hydrocarbons and black carbon in environmental samples, *Environ. Sci. Technol.*, 36, 1774–1782, 2002.

Reff, A., Eberly, S. I., and Bhave, P. V.: Receptor modeling of ambient particulate matter data using positive matrix factorization: review of existing methods, *J. Air Waste Manage.*, 57, 146–154, 2007.

SIKA: Vehicles in counties and municipalities at the turn of the year 2005/2006, available at: http://www.sika-institute.se/Templates/FileInfo.aspx?filepath=/Doclib/Import/101/ss_2006_4.pdf, Last access: 17 March 2008, 2006.

Statistics Sweden: Energy statistics for one- to two-dwelling buildings in 2005, *Statistiska Meddelanden EN16SM0601*, available at: http://www.scb.se/templates/Publikation____178027.asp, Last access: 8 November 2007, 2005.

Tunved, P., Hansson, H. C., Kulmala, M., Aalto, P., Viisanen, Y., Karlsson, H., Kristensson, A., Swietlicki, E., Dal Maso, M., Ström, J., and Komppula, M.: One year boundary layer aerosol size distribution data from five Nordic background stations, *Atmos. Chem. Phys.*, 3, 2183–2205, 2003, <http://www.atmos-chem-phys.net/3/2183/2003/>.

Wang, H. and Shooter, D.: Coarse-fine and day-night differences of water-soluble ions in atmospheric aerosols collected in Christchurch and Auckland, New Zealand, *Atmos. Environ.*, 36, 3519–3529, 2002.

Wiedensohler, A., Orsini, D., Covert, D. S., Coffmann, D., Cantrell, W., Havlicek, M., Brechtel, F. J., Russell, L. M., Weber, R. J., Gras, J., Hudson, J. G., and Litchy, M.: Intercomparison study of the size-dependent counting efficiency of 26 condensation particle counters, *Aerosol Sci. Tech.*, 27, 224–242, 1997.

Zhou, L., Kim, E., Hopke, P. K., Stainer, C. O., and Pandis, S.: Advanced factor analysis on Pittsburgh particle size-distribution data, *Aerosol Sci. Tech.*, 38(S1), 118–132, 2004.

Wood combustion contribution to winter aerosol in Sweden

P. Krecl et al.

Title Page

Abstract

Introduction

Conclusions

References

Tables

Figures

◀

▶

◀

▶

Back

Close

Full Screen / Esc

Printer-friendly Version

Interactive Discussion



Wood combustion contribution to winter aerosol in Sweden

P. Krecl et al.

Table 1. Summary of the PMF methodological details used in this study.

PMF parameters	Selected option
Number of factors (p)	3
PMF mode	robust
Outliers distance (α)	4
F_{peak}	$[-1.6:-1.2]$ in steps of 0.1
Error model	$\sigma_{ij}=C_{ij}+C_3 \max(x_{ij} , y_{ij})$, with $C_{ij}=0$ and $C_3=0.25$
Missing data	Samples were omitted
Model uncertainty	25% samples randomly removed, 300 runs

Title Page

Abstract

Introduction

Conclusions

References

Tables

Figures

◀

▶

◀

▶

Back

Close

Full Screen / Esc

Printer-friendly Version

Interactive Discussion



Wood combustion contribution to winter aerosol in Sweden

P. Krecl et al.

Table 2. Summary of modeled sources contributions to PM_{10} , PM_1 , M_{LAC} , and N_{25-606} concentrations. The mean contribution of local traffic is displayed whereas minimum and maximum contributions of local RWC and LRT are presented for the period 31 January–9 March 2006. PMF was run with $F_{peak}=-1.4$, $C_3=0.25$, and $\alpha=4$.

Variable	Local traffic [%]	Local RWC [%]	LRT [%]
PM_{10}	18	[36–82]	[0–46]
PM_1	17	[31–83]	[0–52]
M_{LAC}	24	[40–76]	[0–36]
N_{25-606}	43	[44–57]	[0–13]

[Title Page](#)
[Abstract](#)
[Introduction](#)
[Conclusions](#)
[References](#)
[Tables](#)
[Figures](#)
[⏪](#)
[⏩](#)
[◀](#)
[▶](#)
[Back](#)
[Close](#)
[Full Screen / Esc](#)
[Printer-friendly Version](#)
[Interactive Discussion](#)


**Wood combustion
contribution to winter
aerosol in Sweden**

P. Krecl et al.

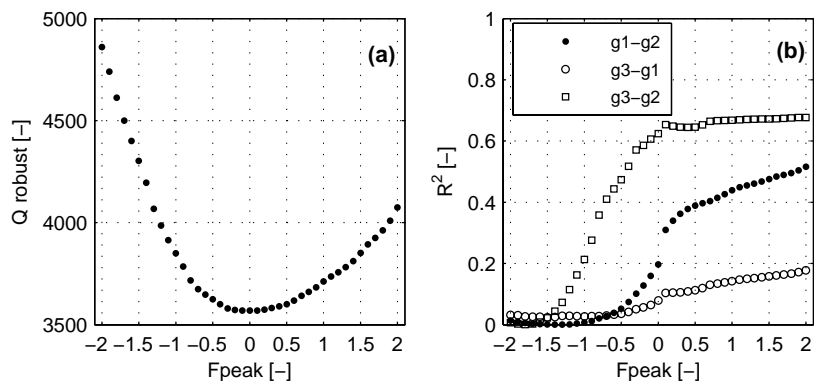


Fig. 1. (a) F_{peak} values versus Q robust values for PMF. (b) Coefficient of determination (R^2) among g -factors (g_1, g_2, g_3) versus F_{peak} values. PMF was run using three factors, $C_3=0.25$, and $\alpha=4$. [-] denotes the variable is dimensionless.

[Title Page](#)[Abstract](#)[Introduction](#)[Conclusions](#)[References](#)[Tables](#)[Figures](#)[◀](#)[▶](#)[◀](#)[▶](#)[Back](#)[Close](#)[Full Screen / Esc](#)[Printer-friendly Version](#)[Interactive Discussion](#)

Wood combustion
contribution to winter
aerosol in Sweden

P. Krecl et al.

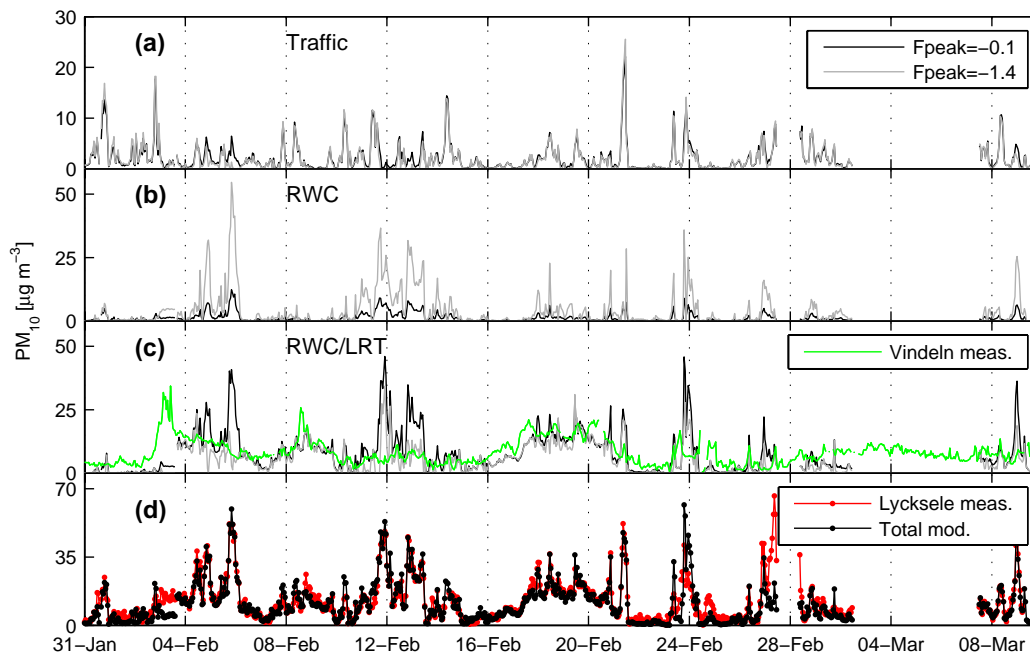


Fig. 2. Time series of modeled PM₁₀ contribution for each factor for $F_{\text{peak}}=-0.1$ and -1.4 (a–c), together with total modeled and measured PM₁₀ concentrations (d). PM₁₀ mass concentration at Vindeln (rural background site) is also shown in panel c.

[Title Page](#)[Abstract](#)[Introduction](#)[Conclusions](#)[References](#)[Tables](#)[Figures](#)[◀](#)[▶](#)[◀](#)[▶](#)[Back](#)[Close](#)[Full Screen / Esc](#)[Printer-friendly Version](#)[Interactive Discussion](#)

Wood combustion
contribution to winter
aerosol in Sweden

P. Krecl et al.

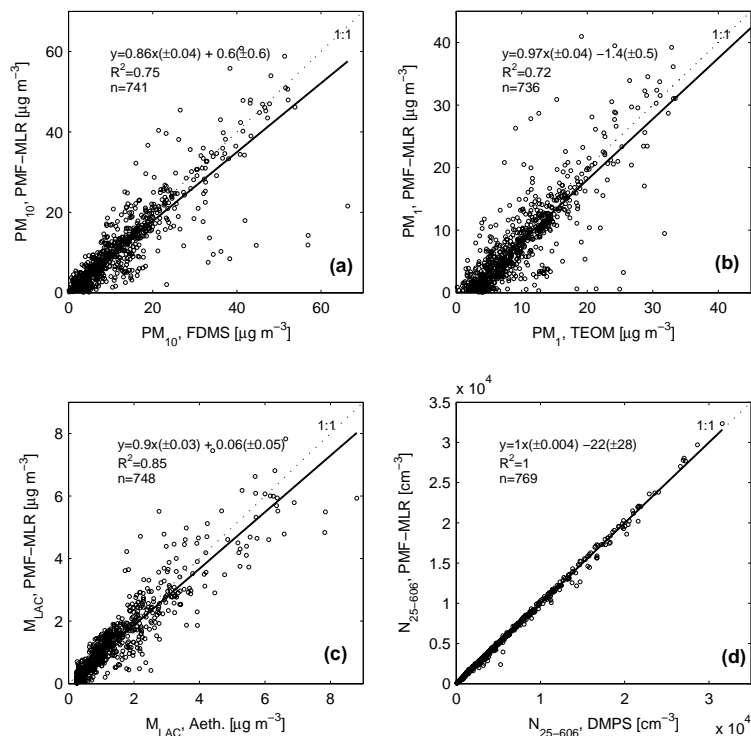


Fig. 3. Scattergram of predicted (PMF-MLR) vs. measured concentrations of: **(a)** PM_{10} , **(b)** PM_1 , **(c)** M_{LAC} , and **(d)** N_{25-606} . The 95% confidence intervals for the slope and intercept are included in the linear regression equation (in parenthesis). The solid line represents the least squares line regression and the dotted line indicates the identity line (1:1). The number of samples n and coefficient of determination R^2 are also shown.

Title Page

Abstract

Introduction

Conclusions

References

Tables

Figures

◀

▶

◀

▶

Back

Close

Full Screen / Esc

Printer-friendly Version

Interactive Discussion



**Wood combustion
contribution to winter
aerosol in Sweden**

P. Krecl et al.

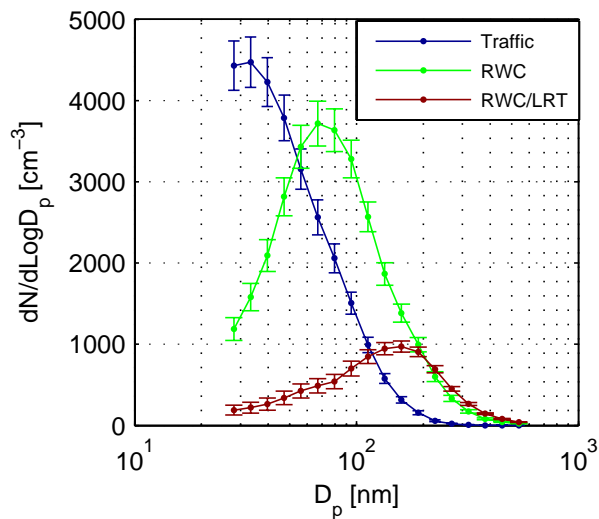


Fig. 4. Mean f-factors and 1STD error bars as a result of randomly removing 25% of the original samples. PMF was run 300 times using three factors, $C_3=0.25$, $\alpha=4$, and $F_{peak}=-1.4$.

[Title Page](#)[Abstract](#)[Introduction](#)[Conclusions](#)[References](#)[Tables](#)[Figures](#)[◀](#)[▶](#)[◀](#)[▶](#)[Back](#)[Close](#)[Full Screen / Esc](#)[Printer-friendly Version](#)[Interactive Discussion](#)

Wood combustion contribution to winter aerosol in Sweden

P. Krecl et al.

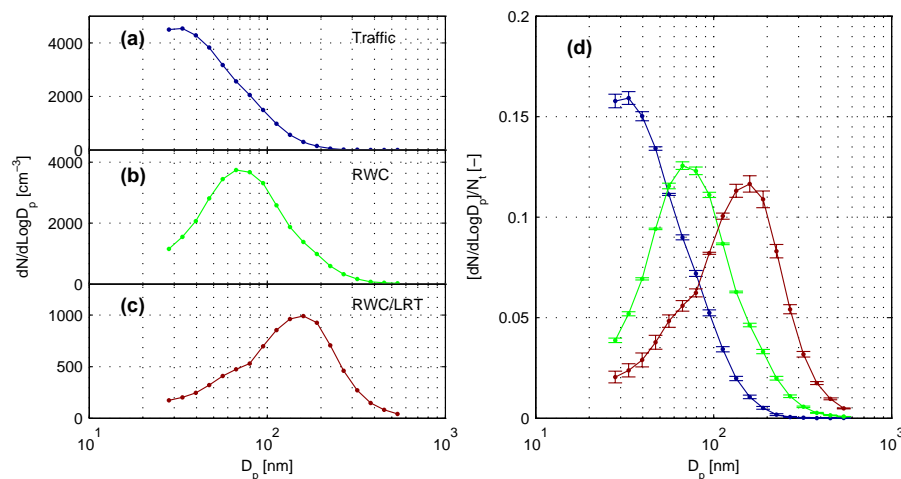


Fig. 5. Left panels: Absolute mean f-factors expressed in cm^{-3} . Right panel: Normalized f-factor profiles (mean \pm standard deviation) to the total number of particles per factor. PMF was run with F_{peak} values from -1.6 to -1.2 , $C_3=0.25$, and $\alpha=4$. [-] denotes the variable is dimensionless.

Title Page

Abstract

Introduction

Conclusions

References

Tables

Figures

◀

▶

◀

▶

Back

Close

Full Screen / Esc

Printer-friendly Version

Interactive Discussion



Wood combustion
contribution to winter
aerosol in Sweden

P. Krecl et al.

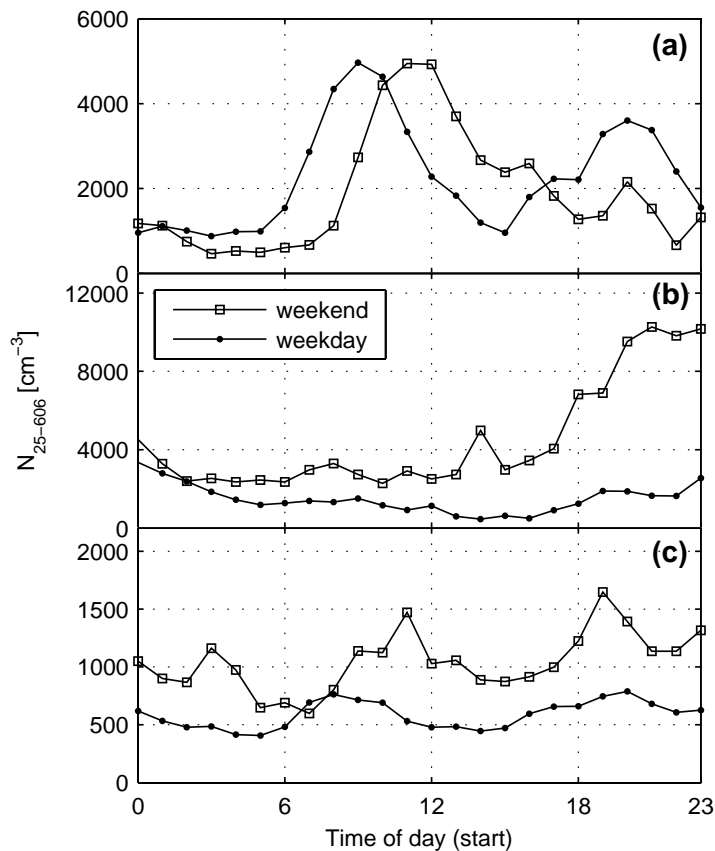


Fig. 6. Comparison of model resolved hourly contributions to N_{25-606} between weekends and weekdays. **(a)** Traffic, **(b)** RWC, **(c)** RWC/LRT. PMF 3-factor model was run with $F_{peak} = -1.4$, $C_3 = 0.25$, and $\alpha = 4$.

[Title Page](#)[Abstract](#)[Introduction](#)[Conclusions](#)[References](#)[Tables](#)[Figures](#)[◀](#)[▶](#)[◀](#)[▶](#)[Back](#)[Close](#)[Full Screen / Esc](#)[Printer-friendly Version](#)[Interactive Discussion](#)

Wood combustion
contribution to winter
aerosol in Sweden

P. Krecl et al.

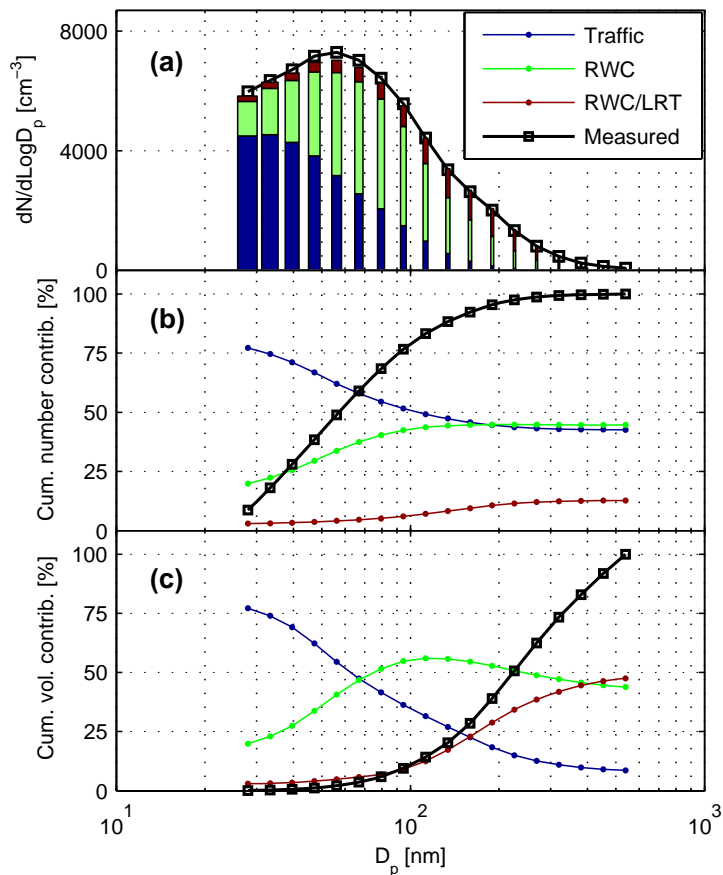


Fig. 7. Cumulative contribution per factor as a function of particle diameter and mean measured particle size distribution. **(a)** Absolute particle number concentrations. **(b)** Relative number concentration. **(c)** Relative volume concentration considering spherical particles. PMF 3-factor model was run with $F_{\text{peak}} = -1.4$, $C_3 = 0.25$, and $\alpha = 4$.

[Title Page](#)[Abstract](#)[Introduction](#)[Conclusions](#)[References](#)[Tables](#)[Figures](#)[◀](#)[▶](#)[◀](#)[▶](#)[Back](#)[Close](#)[Full Screen / Esc](#)[Printer-friendly Version](#)[Interactive Discussion](#)

Wood combustion contribution to winter aerosol in Sweden

P. Krecl et al.

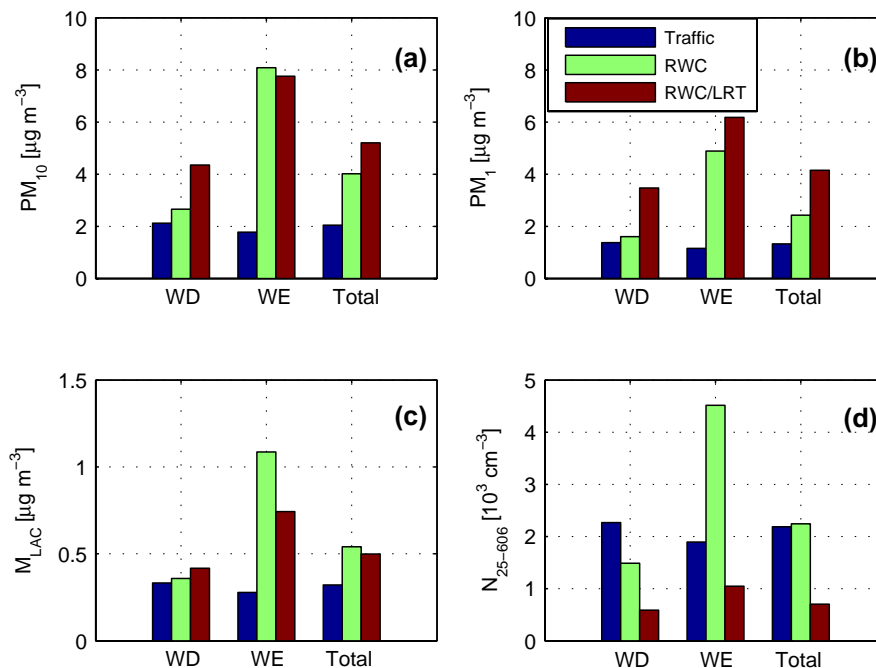


Fig. 8. Summary of the mean contribution of the three factors to PM_{10} , PM_1 , M_{LAC} , and N_{25-606} for weekdays (WD), weekends (WE) and the whole campaign (Total), in the period 31 January–9 March 2006. PMF was run with $F_{peak} = -1.4$, $C_3 = 0.25$, and $\alpha = 4$.

Title Page

Abstract

Introduction

Conclusions

References

Tables

Figures

◀

▶

◀

▶

Back

Close

Full Screen / Esc

Printer-friendly Version

Interactive Discussion



Wood combustion
contribution to winter
aerosol in Sweden

P. Krecl et al.

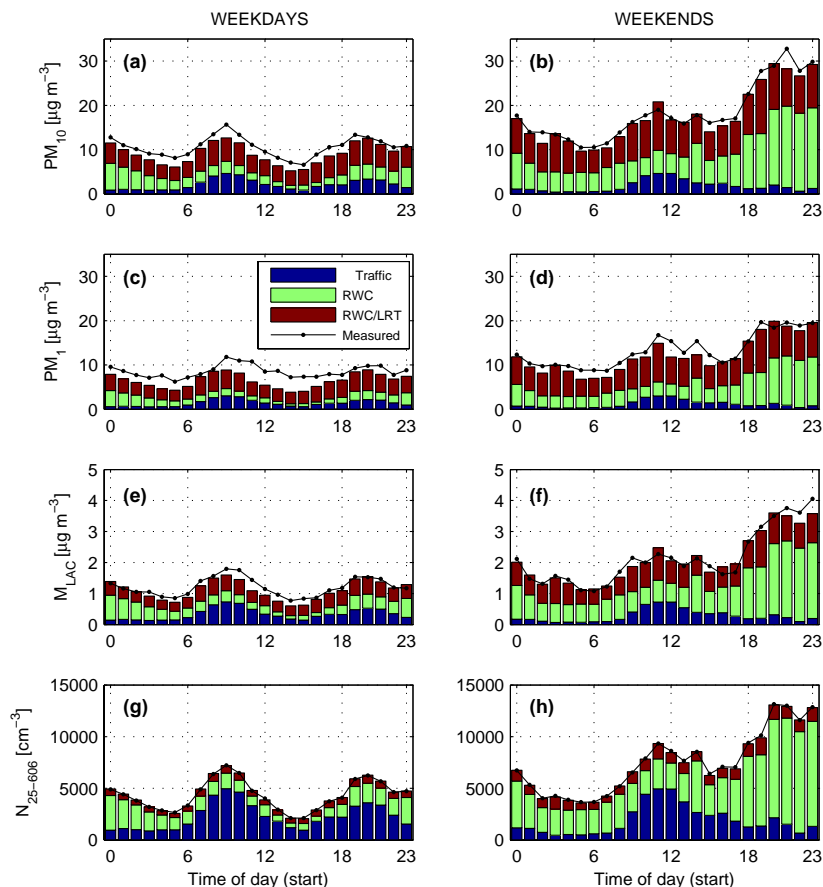


Fig. 9. Model resolved mean diurnal contributions per factor to PM_{10} , PM_1 , M_{LAC} and N_{25-606} for weekdays (left panels) and weekends (right panels). The daily mean measured concentrations are also shown with black lines. PMF 3-factor model was run with $F_{peak} = -1.4$, $C_3 = 0.25$, and $\alpha = 4$.

Title Page

Abstract

Introduction

Conclusions

References

Tables

Figures

◀

▶

◀

▶

Back

Close

Full Screen / Esc

Printer-friendly Version

Interactive Discussion



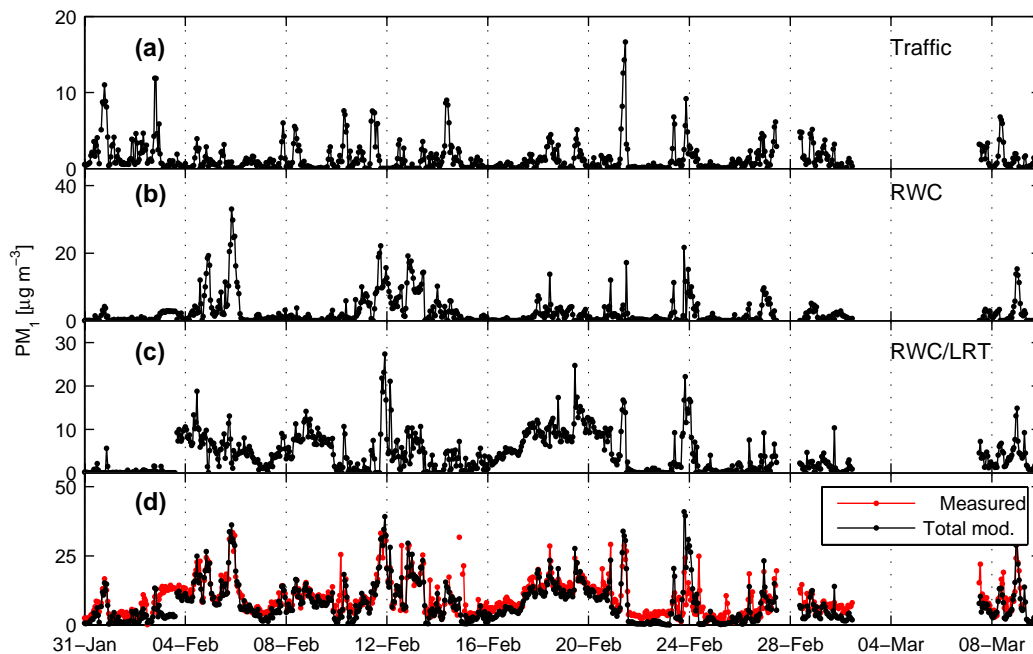


Fig. A1. Time series of modeled PM₁ contribution for each factor (a–c), together with total modeled and measured PM₁ concentrations (d). PMF was run with $F_{peak}=-1.4$, $C_3=0.25$, and $\alpha=4$.

Wood combustion contribution to winter aerosol in Sweden

P. Krecl et al.

Title Page

Abstract

Introduction

Conclusions

References

Tables

Figures

◀

▶

◀

▶

Back

Close

Full Screen / Esc

Printer-friendly Version

Interactive Discussion



Wood combustion
contribution to winter
aerosol in Sweden

P. Krecl et al.

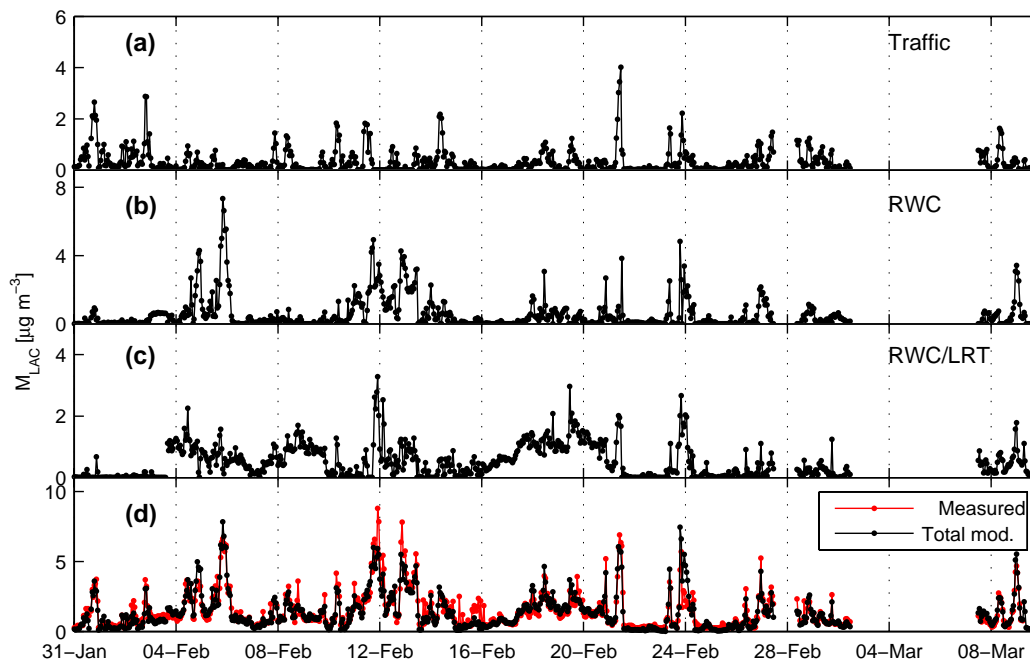


Fig. A2. Times series of modeled M_{LAC} contribution for each factor (a–c), together with total modeled and measured M_{LAC} concentrations (d). PMF was run with $F_{peak}=-1.4$, $C_3=0.25$, and $\alpha=4$.

[Title Page](#)[Abstract](#)[Introduction](#)[Conclusions](#)[References](#)[Tables](#)[Figures](#)[◀](#)[▶](#)[◀](#)[▶](#)[Back](#)[Close](#)[Full Screen / Esc](#)[Printer-friendly Version](#)[Interactive Discussion](#)

Wood combustion
contribution to winter
aerosol in Sweden

P. Krecl et al.

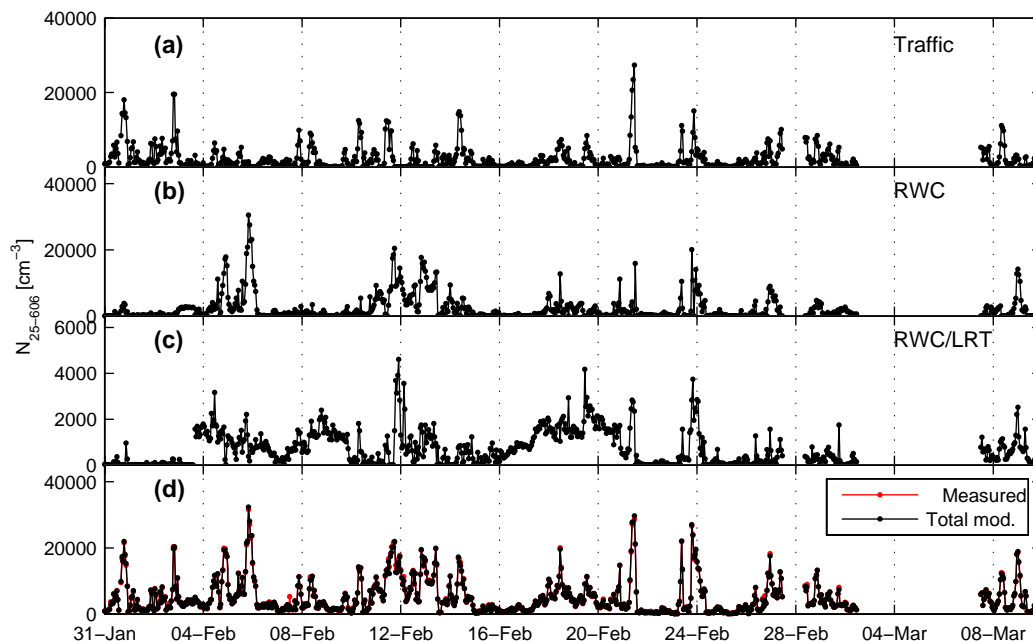


Fig. A3. Time series of modeled N_{25-606} contribution for each factor (a–c), together with total modeled and measured N_{25-606} concentrations (d). PMF was run with $F_{peak} = -1.4$, $C_3 = 0.25$, and $\alpha = 4$.

[Title Page](#)[Abstract](#)[Introduction](#)[Conclusions](#)[References](#)[Tables](#)[Figures](#)[◀](#)[▶](#)[◀](#)[▶](#)[Back](#)[Close](#)[Full Screen / Esc](#)[Printer-friendly Version](#)[Interactive Discussion](#)