



HAL
open science

Chemistry of the antarctic boundary layer and the interface with snow: an overview of the CHABLIS campaign

A. E. Jones, E. W. Wolff, R. A. Salmon, S. J.-B. Bauguitte, H. K. Roscoe, P. S. Anderson, D. Ames, K. C. Clemitshaw, Z. L. Fleming, W. J. Bloss, et al.

► To cite this version:

A. E. Jones, E. W. Wolff, R. A. Salmon, S. J.-B. Bauguitte, H. K. Roscoe, et al.. Chemistry of the antarctic boundary layer and the interface with snow: an overview of the CHABLIS campaign. Atmospheric Chemistry and Physics Discussions, 2008, 8 (2), pp.5137-5181. hal-00303401

HAL Id: hal-00303401

<https://hal.science/hal-00303401>

Submitted on 18 Jun 2008

HAL is a multi-disciplinary open access archive for the deposit and dissemination of scientific research documents, whether they are published or not. The documents may come from teaching and research institutions in France or abroad, or from public or private research centers.

L'archive ouverte pluridisciplinaire **HAL**, est destinée au dépôt et à la diffusion de documents scientifiques de niveau recherche, publiés ou non, émanant des établissements d'enseignement et de recherche français ou étrangers, des laboratoires publics ou privés.

CHABLIS overview

Chemistry of the antarctic boundary layer and the interface with snow: an overview of the CHABLIS campaign

A. E. Jones¹, E. W. Wolff¹, R. A. Salmon¹, S. J.-B. Bauguitte¹, H. K. Roscoe¹, P. S. Anderson¹, D. Ames², K. C. Clemitshaw^{2,*}, Z. L. Fleming^{2,**}, W. J. Bloss^{3,***}, D. E. Heard³, J. D. Lee^{3,****}, K. A. Read^{3,****}, P. Hamer⁴, D. E. Shallcross⁴, A. Jackson⁵, S. Walker⁵, A. C. Lewis⁶, G. P. Mills⁷, J. M. C. Plane^{7,*****}, A. Saiz-Lopez^{7,*****}, W. T. Sturges⁷, D. R. Worton^{7,*****}

¹British Antarctic Survey, Natural Environment Research Council, High Cross, Madingley Road, Cambridge, CB3 0ET, UK

²Dept. of Environmental Science and Technology, Imperial College of Science, Technology and Medicine, Ascot, UK

³School of Chemistry, University of Leeds, Woodhouse Lane, Leeds, LS2 9JT, UK

⁴School of Chemistry, University of Bristol, Cantock's Close, Clifton, Bristol, BS8 1TS, UK

⁵Institute for Atmospheric Science, School of Earth and Environment, University of Leeds, Leeds, LS2 9JT, UK

⁶Department of Chemistry, University of York, Heslington, York, YO10 5DD, UK

⁷University of East Anglia, School of Environmental Sciences, Norwich, NR47TJ, UK

Title Page

Abstract

Introduction

Conclusions

References

Tables

Figures

◀

▶

◀

▶

Back

Close

Full Screen / Esc

Printer-friendly Version

Interactive Discussion



*now at: Dept. Geology, Royal Holloway, University of London, Egham, Surrey, TW20 0EX, UK

**now at: University of Leicester, Leicester, UK

***now at: School of Geography, Earth and Environmental Sciences, University of Birmingham, Edgbaston, Birmingham, B15 2TT, UK

****now at: Department of Chemistry, University of York, Heslington, York, YO10 5DD, UK

*****now at: School of Chemistry, University of Leeds, Woodhouse Lane, Leeds, LS2 9JT, UK

*****now at: Earth And Space Science Division, Jet Propulsion Laboratory, California Institute of Technology, USA

*****now at: Department of Environmental Science, Policy and Management, Univ. of California–Berkley, Berkley, CA 94720–3110, USA

Received: 20 December 2007 – Accepted: 12 February 2008 – Published: 11 March 2008

Correspondence to: A. E. Jones (a.jones@bas.ac.uk)

Published by Copernicus Publications on behalf of the European Geosciences Union.

ACPD

8, 5137–5181, 2008

CHABLIS overview

Title Page

Abstract

Introduction

Conclusions

References

Tables

Figures

◀

▶

◀

▶

Back

Close

Full Screen / Esc

Printer-friendly Version

Interactive Discussion



Abstract

CHABLIS (Chemistry of the Antarctic Boundary Layer and the Interface with Snow) was a collaborative UK research project aimed at probing the detailed chemistry of the Antarctic boundary layer and the exchange of trace gases at the snow surface. The centre-piece to CHABLIS was the measurement campaign, conducted at the British Antarctic Survey station, Halley, in coastal Antarctica, from January 2004 through to February 2005. The campaign measurements covered an extremely wide range of species allowing investigations to be carried out within the broad context of boundary layer chemistry. Here we present an overview of the CHABLIS campaign. We provide details of the measurement location and introduce the Clean Air Sector Laboratory (CASLab) where the majority of the instruments were housed. We describe the meteorological conditions experienced during the campaign and present supporting chemical data, both of which provide a context within which to view the campaign results. Finally we provide a brief summary of highlights from the measurement campaign. Unexpectedly high halogen concentrations profoundly affect the chemistry of many species at Halley throughout the sunlit months, with a secondary role played by emissions from the snowpack. This overarching role for halogens in coastal Antarctic boundary layer chemistry was completely unanticipated, and the results have led to a step-change in our thinking and understanding.

1 Introduction

The Antarctic boundary layer is one of the regions of the world's atmosphere least affected by human activity. The continent is surrounded by the Southern Ocean with the nearest population centres being at much lower latitudes in the South American, African and Australian continents. The Antarctic boundary layer is a place of extremes; during the winter, the sun does not rise for months on end, contrasting with the summer which is light for 24 h each day. Temperatures remain below zero for the majority of

CHABLIS overview

Title Page

Abstract

Introduction

Conclusions

References

Tables

Figures



Back

Close

Full Screen / Esc

Printer-friendly Version

Interactive Discussion



CHABLIS overview[Title Page](#)[Abstract](#)[Introduction](#)[Conclusions](#)[References](#)[Tables](#)[Figures](#)[I ◀](#)[▶ I](#)[◀](#)[▶](#)[Back](#)[Close](#)[Full Screen / Esc](#)[Printer-friendly Version](#)[Interactive Discussion](#)

the year, and even in coastal Antarctica can drop to -50°C . With this background, a study of Antarctic boundary layer chemistry can provide many things – a view of a natural atmosphere to be contrasted with more polluted regions; a challenging test bed for numerical models which simulate the atmosphere and climate of the future; and in addition, it provides a chance to deconstruct the chemistry, deposition and post-depositional processes which determine the record of impurities retrieved from deep ice cores.

The chemistry of the Antarctic troposphere has been relatively little studied to date. The earlier studies focused mainly on aerosols (e.g. Wolff et al., 1998) and long-lived radiatively and stratospherically important gases (e.g. Elkins et al., 1993; CMDL 1996). Of the more reactive trace gases, only surface ozone was measured with any real vigour across the continent, with continuous sampling inland at South Pole (Oltmans and Komhyr, 1976) and on the coast, for example at Neumayer (Wyputta, 1994) and Syowa (Murayama et al., 1992). Data from the coastal stations are now recognised to also show springtime destruction of tropospheric ozone similar to that seen in the Arctic (Wessel et al., 1998). Recent years, however, have seen the first attempts to study the broader active background tropospheric chemistry and the interaction between air and snow. The SCATE (Sulfur Chemistry in the Antarctic Troposphere Experiment) campaign at Palmer Station on the Antarctic Peninsula (austral summer 1993/1994) (Berresheim and Eisele, 1998) focused on sulphur chemistry but included measurements for O_3 , CO , NO , OH . Further year-round work on sulphur chemistry has been carried out at Dumont d'Urville station (Jourdain and Legrand, 2001). SCATE was followed up at South Pole by further summer programmes with a progressive shift towards focus on oxidants: ISCAT (Investigation of Sulfur Chemistry in the Antarctic Troposphere) in 1998 and 2000 (e.g. Davis et al., 2001; Davis et al., 2004). These studies have since been complemented by ANTCl (Antarctic Tropospheric Chemistry Investigation) 2003 and 2005. Two campaigns were conducted at Neumayer, in austral summers 1997 and 1999 aimed at studying the budget and chemistry of NO_y (e.g. Jones et al., 1999; Weller et al., 1999; Jacobi et al., 2000). In addition, measurements

CHABLIS overview[Title Page](#)[Abstract](#)[Introduction](#)[Conclusions](#)[References](#)[Tables](#)[Figures](#)[I◀](#)[▶I](#)[◀](#)[▶](#)[Back](#)[Close](#)[Full Screen / Esc](#)[Printer-friendly Version](#)[Interactive Discussion](#)

of tropospheric H₂O₂ and HCHO were run at Neumayer throughout 1997 (Riedel et al., 1999; Riedel et al., 2000), and of NO and NO_y throughout 1999 (Weller et al., 2002), recognising the need for year-round measurement programmes. From the limited number of previous studies it was already clear that the Antarctic boundary layer behaved in very unexpected ways, driven by the extreme cold, long periods of darkness alternating with continuous sunlight, and a strong chemical coupling between the snowpack and the overlying atmosphere.

But in spite of these studies, the detailed chemistry of the Antarctic boundary layer remained little explored, in particular beyond the summer season. Progress was limited by the difficulty of assembling suitable facilities, instruments and researchers in the Antarctic, and in doing so for a time period long enough to unambiguously observe the underlying interactions at work. In response to this, CHABLIS (Chemistry of the Antarctic Boundary Layer and the Interface with Snow) was designed to explore the atmospheric chemistry of the Antarctic boundary layer in greater detail and for a longer period of time than had been previously achieved. It was a collaborative project between the British Antarctic Survey and research groups from 5 UK universities, and involved measurements made by an extensive range of chemical analysers as well as numerical modelling (see Table 1). The centre-piece to CHABLIS was a year-long field campaign to carry out measurements of Antarctic boundary layer chemistry and experiments to explore exchange processes between the snowpack and the overlying atmosphere.

2 CHABLIS scientific aims

The broad aims for CHABLIS outlined above, were distilled into three specific science foci: i) seasonal studies of oxidant chemistry which considered the potential role for NO₃ during polar twilight/night, halogen chemistry during spring and summer, and HO_x chemistry during polar summer; ii) year-round studies of the NO_y budget aimed at determining the dominant NO_y components, how they varied throughout the year, and

CHABLIS overview

[Title Page](#)[Abstract](#)[Introduction](#)[Conclusions](#)[References](#)[Tables](#)[Figures](#)[I ◀](#)[▶ I](#)[◀](#)[▶](#)[Back](#)[Close](#)[Full Screen / Esc](#)[Printer-friendly Version](#)[Interactive Discussion](#)

what this meant both to sources of NO_x and to ice core nitrate; iii) air/snow transfer studies, to assess the influence of the snowpack on coastal Antarctic boundary layer chemistry. Details of the measurement techniques are given in Table 1. The measurement strategy was for a co-ordinated study, beginning with a modest summer field campaign in 2003/2004 extending into the 2004 Antarctic over-winter and spring period and culminating with a major summer intensive in the 2004/2005 summer season. The overwinter campaign was run with 2 scientists on the ground who were responsible for set-up of most of the instruments. These consequently came on line progressively throughout the year, with the majority operational and capturing data from mid-winter onwards. For the summer intensive, additional instruments were deployed, including FAGE (Fluorescence Assay by Gas Expansion) for OH and HO_2 , PERCA (Peroxy Radical Chemical Amplifier) for peroxy radicals, and a GC-MS for high resolution alkyl nitrates, alkyl halides and halocarbons. See Fig. 1 for details.

3 Halley research station

The field work was carried out at the British Antarctic Survey station, Halley ($75^{\circ}35' \text{ S}$, $26^{\circ}39' \text{ W}$), in coastal Antarctica (Fig. 2). Halley sits 32 m above sea level on the floating Brunt Ice shelf. The surrounding area is flat and snow-covered with the nearest rock outcrops roughly 200 km away. The station lies roughly 15 km inland, and as the coast effectively forms a promontory at this point, Halley is close to the Weddell Sea in three directions. During the summer months, an open water lead, that can be several tens of kilometers wide, extends along the ice front. Even during the winter, open water leads form regularly when easterly winds force the sea ice offshore. In particular, Precious Bay, to the south west of Halley, is normally ice free during winter and spring such that air arriving at Halley from this direction is likely to have had contact with open water. At Halley, the sun stays permanently above the horizon from 2 November to 9 February, and permanently below the horizon from 30 April to 13 August. Prior to sun-up and after sun-down, scattered light can be observed at Halley for several hours around

solar noon.

4 The Clean Air Sector Laboratory

The CHABLIS measurements were made at the new Clean Air Sector Laboratory (CASLab) (Fig. 3) which is designed specifically for studies of background atmospheric chemistry and air/snow exchange. The laboratory is constructed from three shipping containers, and mounted on a steel, legged platform that is raised approximately every two years in order to keep the platform roughly 3 m above the snow surface. The laboratory is situated 1 km to the south east of the main station, in a sector which receives minimal air flow from the base (see Fig. 2). Routine access is on ski or by foot, so interference from vehicle emissions is kept to an absolute minimum.

For all trace gas analysers housed in the CASLab (i.e. all but FAGE which was in its own container), ambient air was sampled off the main trace gas inlet stack. The stack comprises a 100 mm internal diameter (i.d.) electropolished stainless steel tube ventilated by a fan at the far end (see Fig. 4). The air flow through this central stack was $\sim 314 \text{ m}^3/\text{h}$, i.e. sufficiently high that the residence time within the stack was less than 1 s. Additionally, the volume of air drawn through the stack was such that the samples removed less than 10% of the total air flow. Access to the air was achieved via individual ports, spaced 10 cm apart along the length of the stack, with 1/4" stainless steel tubing that penetrated to the centre of the air flow. Inlets to individual samplers were connected to these ports using Swagelock connectors. A Pitot tube monitored air flow through the stack during the CHABLIS campaign. The inlet of the central stack itself was initially ~ 8 m above the snow surface. As the campaign progressed and snow accumulated during the year, this height reduced such that by the end of the campaign the inlet was ~ 7 m above the snow surface.

Aerosol measurements were made from a separate stack specifically designed for particulate sampling. It comprises of a 200 mm i.d. stainless steel chimney with a cowl at the air intake to prevent snow ingress (see Fig. 5). Ventilation was achieved

CHABLIS overview

Title Page

Abstract

Introduction

Conclusions

References

Tables

Figures

◀

▶

◀

▶

Back

Close

Full Screen / Esc

Printer-friendly Version

Interactive Discussion



CHABLIS overview[Title Page](#)[Abstract](#)[Introduction](#)[Conclusions](#)[References](#)[Tables](#)[Figures](#)[I ◀](#)[▶ I](#)[◀](#)[▶](#)[Back](#)[Close](#)[Full Screen / Esc](#)[Printer-friendly Version](#)[Interactive Discussion](#)

using a fan with a variable flow rate that can be altered according to the volume of air being drawn from the stack for sampling in order to allow isokinetic sampling. During CHABLIS, a stack flow rate of 240 l/min was appropriate for the aerosol instrument suite: the low-volume filter sampler (flow rate 20 l/min), the aethalometer (flow rate 20 l/min) and the condensation particle counter (CPC, flow rate 1 l/min). The samplers accessed the stack via stainless steel cones that were installed at the base of the chimney (see Fig. 5a and b). Each cone was specific to a particular instrument and was designed to maintain isokinetic flow up to the point of sampling. To achieve this, the ratio of the area of the cone opening to the area of the stack tube needs to be equal to the ratio of the sampler flow rate to stack flow rate. For the low volume air sampler at 20 L/min, this led to a diameter of the sampling cone of 57.6 mm. The samplers then connected to the cones via swagelock connectors situated below the stack.

Particularly challenging for the CHABLIS set-up phase was the installation of the boundary layer differential optical absorption spectrometer (BL DOAS) system. This instrument records differential spectra between a light beam, emitted by a 400 W Xe arc lamp, and the return beam. In order to allow sufficient path length to achieve a satisfactory detection limit, the retro-reflector was located 4 km away from the CASLab. In order to keep the surfaces of the retro free from snow/ice, it was necessary to warm it. This was done by supplying 90 W of power from the CASLab to heaters at the retro-reflector along 4 mm² cables over 5 km long.

In addition to the main CASLab facility, the Clean Air Sector includes a suite of external micro-meteorological instruments for probing the physics of the boundary layer. The suite of boundary layer measurements made during CHABLIS are summarised in Table 2. The instruments were mounted on a 30 m mast 50 m south of the laboratory, and located just beyond the air-flow distortion associated with the facility itself. In addition, the acoustic sounder and co-spatial microbarograph array were situated 1 km north of the CASLab and operated for periods of the CHABLIS campaign. The combination of chemistry and physics instrumentation at the CASLab provided a powerful tool for interpreting the chemical measurements within the context of the physical

behaviour of the boundary layer.

5 Meteorological conditions during CHABLIS

The general meteorological conditions at Halley during the CHABLIS campaign are shown in Figs. 6 and 7, and are similar to those described from earlier years (König-Langlo et al., 1998). Figure 6 shows that surface temperatures ranged from around zero during the summer months to almost -50°C during the late spring. Surface winds were generally between 0 and 10 ms^{-1} , with a number of storms throughout the year. The windiest period was during the spring, but a number of storms occurred also at other times of the year, including a particularly strong and sustained storm during May 2004. These storms tend to be associated with low pressure systems in the Southern Ocean that track the Antarctic coast and bring maritime air to Halley. Of interest also in this plot, and shown clearly for the May 2004 storm, is that periods of high winds are often associated with warmer temperatures; conversely, quiescent periods with low wind speeds tend to be colder.

The wind rose shown in Fig. 7 provides information not only on wind direction, but also on the strength of the winds (shown by the width of the bars). It demonstrates very clearly that the majority of winds during the campaign came from the east, and also that these were the strongest winds. It is also clear that for a significant proportion of the time during CHABLIS, winds came from the south west. Although local wind direction is not generally a good indicator of air mass origin, air arriving at Halley from the south west is likely to have had contact with open water in the Precious Bay region within the previous few hours. An important aspect is that very few winds were from the northwesterly direction of the main station buildings.

The broader air mass origins can be derived from back trajectory calculations. 8-day back trajectories were calculated for the entire CHABLIS campaign using the web-based trajectory service of the British Atmospheric Data Centre (BADC) using input data from the European Centre for Medium-Range Weather Forecasting (ECMWF).

CHABLIS overview

Title Page

Abstract

Introduction

Conclusions

References

Tables

Figures

◀

▶

◀

▶

Back

Close

Full Screen / Esc

Printer-friendly Version

Interactive Discussion



They show that during the campaign, air arrived at Halley from both the deep interior and the open ocean, so that a range of air mass types was probed.

Although the suite of boundary layer meteorology instrumentation at Halley includes an acoustic radar, this was unfortunately faulty during the period of the CHABLIS over-winter, coming on line again only in December 2004. However, data from previous years can be used to provide information on typical boundary layer conditions at Halley. For example, a study of the 2003 acoustic radar data (Dieudonne and Anderson, personal communication) showed that the height of the boundary layer during this year varied between <40 m and 110 m above ground level, with a mean height of 70 m. For the majority of the summer season (Dec/Jan/Feb) the boundary layer was near neutrally stratified, with occasions of convection around midday possible under suitable conditions associated with positive net radiation. During the winter (March through to November) the atmosphere was stable throughout, and only under conditions of moderate to strong winds was the boundary layer well mixed. Under very strong stability (light winds and clear skies) the upper atmosphere was effectively dislocated from the surface and very little vertical mixing could occur. Under stable conditions, any emissions of trace gases from the surface (e.g. the snowpack) would be concentrated in the lowest layers of the atmosphere, and considerable vertical gradients could be expected.

6 Supporting chemical measurements

Accompanying papers in this special issue explore the details of chemical composition and processes during the CHABLIS campaign. Here we present the chemical climatology as demonstrated by various measurements made during the campaign, and explore what some of these mean for boundary layer chemistry.

CHABLIS overview

Title Page

Abstract

Introduction

Conclusions

References

Tables

Figures

◀

▶

◀

▶

Back

Close

Full Screen / Esc

Printer-friendly Version

Interactive Discussion



6.1 Surface ozone

Surface ozone was measured throughout the CHABLIS campaign using a 2B Technologies model 202 ozone monitor. This instrument was selected in part because of its extremely low power consumption (~ 4 W) which is a great advantage when operating in remote regions. The analyser was connected directly to the trace gas inlet manifold and captured data every 10 s. The hourly-averaged time series is shown in Fig. 8. Surface ozone reaches its maximum concentration during the winter months and is at its minimum during the summer. This is the classic seasonal cycle for a trace gas whose concentration is balanced by increases arising from air mass transport and destruction by the direct action of the sun or by sunlight-initiated chemistry. Such a cycle is apparent at all other coastal Antarctic sites where surface ozone is measured (e.g. Neumayer, Syowa, McMurdo and Sanae (Helmig et al., 2007)). The cycle differs from that of South Pole, where surface ozone values decrease during spring from a winter peak before escalating rapidly towards a sharp annual maximum in summer (Crawford et al., 2001; Helmig et al., 2007). This unusual behaviour is associated with high mixing ratios of NO_x which are themselves driven by emissions from the snowpack (Davis et al., 2001; Davis et al., 2004; Oncley et al., 2004); at sufficiently high NO_2 mixing ratios, in situ ozone production occurs which dominates over loss processes (Crawford et al., 2001). Early results suggested that elevated NO_x mixing ratios occurred under conditions of shallow boundary layer depths (20 m to 50 m) which were themselves associated with strong surface stability and light winds (Davis et al., 2004; Oncley et al., 2004). The picture was that trace gases produced from the snowpack were concentrated to a relatively high degree within this shallow layer. However, a recent study has found that the picture is somewhat more complicated, and that elevated NO mixing ratios can also occur under conditions of higher winds, weaker surface stability and deeper mixed layers (Neff et al., 2007). At Halley, the summertime boundary layer is normally deeper than that observed at South Pole; this factor will in part explain the lower surface O_3 mixing ratios observed during summertime at Halley as NO_x mixing

CHABLIS overview

Title Page

Abstract

Introduction

Conclusions

References

Tables

Figures

◀

▶

◀

▶

Back

Close

Full Screen / Esc

Printer-friendly Version

Interactive Discussion



CHABLIS overview[Title Page](#)[Abstract](#)[Introduction](#)[Conclusions](#)[References](#)[Tables](#)[Figures](#)[I ◀](#)[▶ I](#)[◀](#)[▶](#)[Back](#)[Close](#)[Full Screen / Esc](#)[Printer-friendly Version](#)[Interactive Discussion](#)

ratios do not achieve the elevated levels observed at South Pole. However, an additional factor influencing surface ozone at Halley (and most likely all other coastal sites) is the presence of halogens. Measurements of IO and BrO made at Halley suggested that they were present throughout the summer at mixing ratios of the order 2 pptv, with typical peaks of 5 pptv (Saiz-Lopez et al., 2007). This inevitably suggests an associated presence of I and Br atoms which would be a significant sink for surface ozone (Bloss et al., 2007).

The influence of halogens on surface ozone is also clearly apparent during spring-time. Figure 8 shows the springtime ozone depletion events (ODEs), previously seen at Halley (Jones et al., 2006) and indeed a commonly-recognised feature at coastal sites in both polar regions (e.g. Simpson et al., 2007). Interestingly, a deep and rapid ODE lasting for just under a day was measured on 19 October which is surprisingly late in the season.

6.2 Carbon monoxide

The instrument used for measuring carbon monoxide was the AeroLaser Fast CO Monitor, Model AL 5001, which employs the technique of vacuum ultra-violet (VUV) fluorescence for determination of CO. Data were captured in real time from July 2004 until February 2005. Two sampling protocols were adopted. Up until 6 August 2004, the measurement duty cycle included 5 min long, hourly calibration/zeroing sequences, the data were logged at 10 s intervals with no smoothing; this yielded a standard deviation for a one hour data sample (at low atmospheric variability) of 0.7 ppbv. After 6 August 2004, the duty cycle comprised 10 min long, 12 hourly calibration/zeroing sequences, the data were logged at 30 s intervals, with a 60 s running average; this yielded a standard deviation for a one hour data sample (at low atmospheric variability) of 0.2 ppbv. The timeseries measured during the CHABLIS campaign is shown in Fig. 9, with the anticipated mid-winter maximum and summer minimum. These data and issues of CO

calibration and standardisation are discussed by Bauguitte et al., 2008¹.

6.3 Inorganic nitrate

6.3.1 Nitric acid

Nitric acid is notoriously difficult to collect and measure because of its tendency to stick to any available surface (see e.g. Ryerson et al., 1999). Apart from the more expensive routes (such as Chemical Ionisation Mass Spectrometry), three main methods have been used to sample HNO₃ in the past: nylon filters, annular denuders, and mist chambers. For CHABLIS, annular denuders (URG corporation) were used to sample HNO₃. For the routine measurements two denuders were used in series, each denuder being 150 mm long, 30 mm outside diameter and with 3 concentric channels. The second denuder acted as a back-up from which collection efficiency could be derived.

Before use, each denuder was coated with a solution made up from 1 g Na₂CO₃ (sodium carbonate), 1 g glycerol in 50 mL Milli-Q water plus 50 mL methanol; the denuders were then dried in a clean air stream and capped at either end. For sampling, the denuder train was installed on the roof of the CASLab to allow open-face sampling and ensure minimal losses of HNO₃ to surfaces. Air was pumped through the denuder train at a flow rate of 20 l/min. Denuders were exposed for periods of 1 week throughout the campaign, and in each season for a week, daily sampling was conducted as well as one day at 6-hourly resolution. After sampling, the denuder coating was rinsed off using a known amount of MilliQ water (18MΩ) and the liquid was frozen and returned to the UK for analysis. This was carried out using an ion chromatograph (IC).

The collection efficiency was assessed throughout the campaign by comparing HNO₃ sampled on the first denuder with that sampled on the second (both initially

¹ Bauguitte, S. J.-B., Jones, A. E., Brough, N., and Wolff, E. W.: Carbon monoxide measurements in coastal Antarctica and issues regarding standardisation, Atmos. Chem. Phys. Discuss., in preparation, 2008.

CHABLIS overview

Title Page

Abstract

Introduction

Conclusions

References

Tables

Figures

◀

▶

◀

▶

Back

Close

Full Screen / Esc

Printer-friendly Version

Interactive Discussion



blank-corrected):

$$\text{collection efficiency} = 1 - (\text{denuder 2} / \text{denuder 1})$$

During CHABLIS, HNO_3 was sampled with a collection efficiency of 91%. Blanks were assessed every 3 months by connecting an additional denuder to the sampling train. The third denuder acted as the blank, the assumption being that no significant amount of ambient HNO_3 would break through into this denuder.

When working up the data, the amount of HNO_3 in the boundary layer was calculated according to:

$$\text{total sample} = (\text{denuder 1} - \text{blank}) / \text{collection efficiency}$$

The detection limit for HNO_3 sampling (derived from 2 x standard deviation of the blank) varied from 0.14 pptv for weekly sampling to 1 pptv for daily sampling. For the 6-hourly sampling, unfortunately all the data were below the detection limit of 4 pptv. The HNO_3 measurements made during CHABLIS are shown at their highest resolution in Fig. 10a and are further discussed in Jones et al. (2007).

6.3.2 Particulate nitrate

Particulate nitrate was sampled through the main aerosol inlet within the CASLab, on 1 μm pore size, 37 mm diameter Zefluor filters (Pall-Gelman Corp.), at a flow rate of ~ 20 l/min. Again, filters were exposed for periods of 1 week throughout the majority of the campaign, but with higher resolution (daily and 6-hourly) in each season. Handling blanks were run approximately every 3 months, during which the filter was installed as normal but the pump switched on only for a few seconds before changing the filter. Once exposed, all filters were stored frozen and returned to the UK for analysis. Filters were extracted into ~ 8 ml of MilliQ water (18M Ω) by agitating in an ultrasound bath. The extract was then analysed for major cations (e.g. Na^+ , Ca^+) and anions (e.g. NO_3^- , methane sulphonic acid) using an IC. Low-volume aerosol filters operated in this way are assumed to sample aerosol with 100% efficiency. Throughout this paper particulate nitrate measurements are expressed in pptv, where 1 pptv is equivalent to 2.78 $\text{ng}\cdot\text{m}^{-3}$. Detection limits were derived from 2 x standard deviation of the blanks, and varied from

CHABLIS overview

Title Page

Abstract

Introduction

Conclusions

References

Tables

Figures

◀

▶

◀

▶

Back

Close

Full Screen / Esc

Printer-friendly Version

Interactive Discussion



CHABLIS overview

[Title Page](#)[Abstract](#)[Introduction](#)[Conclusions](#)[References](#)[Tables](#)[Figures](#)[I◀](#)[▶I](#)[◀](#)[▶](#)[Back](#)[Close](#)[Full Screen / Esc](#)[Printer-friendly Version](#)[Interactive Discussion](#)

0.01 pptv for weekly sampling to 2.4 pptv for 6-hourly sampling (see Table 1). The low-volume aerosol $p\text{-NO}_3^-$ data, blank corrected, are shown at their highest resolution in Fig. 10b. These and other low-vol data are more fully analysed in other papers in this special issue (Jones et al., 2007; Wolff et al., 2008²).

5 6.3.3 Total inorganic nitrate

Here we briefly consider the monthly averaged “total inorganic nitrate” ($\text{TIN}=\text{HNO}_3+p\text{-NO}_3^-$) data for CHABLIS, which is shown in Fig. 11. The peak in summer (Nov-Dec-Jan) and shoulder suggesting a possible secondary peak in August are consistent with observations at both Neumayer (Wagenbach et al., 1998) and Dumont d’Urville, a coastal station in the Pacific sector of Antarctica. High volume aerosol filters (assumed to capture both particulate and gaseous nitrate) from Dumont d’Urville were analysed both for their nitrate concentration and isotopic signature (Savarino et al., 2007). The authors concluded that the two nitrate peaks were driven by quite separate mechanisms. The summertime peak was interpreted as arising from snowpack emissions on the polar plateau which were recycled and transported to the coastal region. Polar stratospheric cloud (PSC) sedimentation was concluded to be responsible for the late winter/early spring TIN peak. Certainly measurements of tritium, a marker of stratospheric water and hence PSCs, reported for Halley from 1983 to 1992 (Wagenbach et al., 1998) reveal a maximum in August/September.

20 6.4 Surface snow and snow pit measurements (nitrate and nitrite)

Surface snow was collected on a daily basis during CHABLIS from March 2004 until the end of the measurement campaign. An area of clean snow was selected, roughly 50 m

² Wolff, E. W., Jones, A. E. Bauguitte, S. J.-B., and Salmon, R. A.: Reassessment of the factors controlling temporal profiles of nitrate in polar ice cores using evidence from snow and atmospheric measurements, Atmos. Chem. Phys. Discuss., in preparation, 2008.

to the south west of the CASLab. This area was remote from the station, undisturbed by vehicle traffic of any sort, and therefore provided pristine snow for sampling.

Using clean procedures (i.e. wearing clean-room gloves and not breathing into the sample), snow was collected directly into clean accuvettes to a depth of roughly 1 cm.

5 The samples were stored frozen and returned to the UK at the end of the measurement campaign where they were analysed on an IC for major anions and cations. The data are discussed in various papers in this special issue, e.g. Jones et al., 2007 and Wolff et al., 2008².

10 Snow pits were dug each month during the CHABLIS campaign, in a similar location to the surface snow sampling and again using clean procedures to limit contamination. The pits were sampled at a series of depths between the surface and 80 cm, by pushing cleaned Perspex bottles directly into the wall of the pit. As the diameter of the bottles is 3 cm, the resolution of each snow pit sample was the desired depth ± 1.5 cm. Snow samples for nitrate analysis were stored frozen and returned to the UK for analysis on the BAS IC. This approach relies on the fact that nitrate is stable within snow when stored frozen and in the dark. Snow samples for nitrite, however, were analysed at Halley using the HONO analyser which, given it uses a liquid method for sample analysis, was ideal for determining nitrite in melted snow. The samples were stored frozen and in the dark and were analysed within a few days.

20 Figure 12a shows the depth profile of nitrite in the top 80 cm of the Halley snow pack for June, July (winter) and January (summer). The June and July profiles effectively overlap, displaying essentially no variation within this depth range. January, however, is markedly different, with a very clear maximum in the top 0 to 15 cms, which gradually decreases with depth until it coincides with the wintertime profiles at around 60 cm. This behaviour is characteristic of a snow impurity that has a maximum during the summer months. At Halley, with roughly a meter of snowfall each year, sampling to only 80 cm depth would not reach the previous summer's maximum assuming that it was preserved. The trend in the nitrite profile is very similar to that for nitrate, shown in Fig. 12b; concentrations of nitrate in surface snow have a maximum during the summer

CHABLIS overview

Title Page

Abstract

Introduction

Conclusions

References

Tables

Figures

◀

▶

◀

▶

Back

Close

Full Screen / Esc

Printer-friendly Version

Interactive Discussion



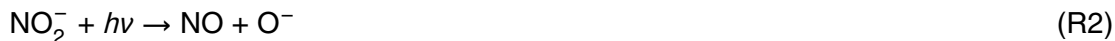
and minima in the winter (Jones et al., 2007).

Of particular interest in Fig. 12 are the comparative concentrations of nitrate and nitrite, with summertime nitrate exceeding that of nitrite by 2 orders of magnitude. Abundant data exist for concentrations of nitrate in polar snow and ice, however, there are extremely few reported measurements of nitrite. A likely reason for this are the very low concentrations of nitrite, that would take it below the detection limit of many analysis systems. One previous set of measurements were made during the spring in Barrow, Alaska (Li, 1993) where surface snow nitrate concentrations were typically around the instrument detection limit of 40 nM. Two recent papers have calculated nitrite concentrations in snow. Jacobi and Hilker (2007) used a model derived from laboratory experiments and applied to field data to calculate nitrite concentrations in summertime snow at Summit, Greenland, of less than 0.0002 nM. Chu and Anastasio (2007) calculated concentrations of snow grain nitrite based on steady state analysis of sources and sinks for four polar locations. Their estimates ranged from 0.7 nM (for Alert) to 13 nM (for Summit). For Neumayer (70° S, 8° W), a coastal site in the same sector of Antarctica as Halley, nitrite concentrations of 5 nM were calculated for noon solstice (21 December) conditions.

The interest in comparing nitrite and nitrate snow pack concentrations stems from the fact that both are potential sources of OH although their direct contribution has been shown to be considerably less than that from H₂O₂ for example (Chu and Anastasio, 2007), and also sources of NO_x. Nitrate is photolysed to directly produce NO₂ via its major channel:



and nitrite photolysis generates NO:



Nitrite itself can be formed from the minor photolysis channel of nitrate (NO₃⁻ + hν → NO₂⁻ + O(³P)) as well as from hydrolysis of NO₂ generated by Reaction (R1).

CHABLIS overview

Title Page

Abstract

Introduction

Conclusions

References

Tables

Figures

◀

▶

◀

▶

Back

Close

Full Screen / Esc

Printer-friendly Version

Interactive Discussion



CHABLIS overview

[Title Page](#)[Abstract](#)[Introduction](#)[Conclusions](#)[References](#)[Tables](#)[Figures](#)[I ◀](#)[▶ I](#)[◀](#)[▶](#)[Back](#)[Close](#)[Full Screen / Esc](#)[Printer-friendly Version](#)[Interactive Discussion](#)

The fact that nitrite is photolysed at somewhat longer wavelengths than nitrate (320–400 nm as opposed to 280–320 nm) results in significantly higher photolysis rates for nitrite than for nitrate under natural sunlit conditions. Chu and Anastasio (2007) calculated photolysis rates for Reaction (R1) and (R2) appropriate for Neumayer (for noon 21 December) and found that those for nitrite were two orders of magnitude higher than for nitrate. We use their calculated photolysis rates and our measurements of nitrite and nitrate in the top of the summertime snow pits to derive relative production rates for NO_x (see Table 3). The ratio of NO_x produced by photolysis of nitrite to that from nitrate under these conditions is 1:0.69, i.e. an equivalent order of magnitude from both sources. This approach considers only surface snow and does not take into account photolysis occurring deeper within the snow pack. However, the production with depth is expected to scale linearly for both species, so this additional factor is not likely to significantly alter the ratio. However, it must be remembered that surface snow nitrate concentrations display considerable heterogeneity; for example, at Halley the average surface snow nitrate concentration for the months of December 2004 and January 2005 is 2630 ± 982 nM, with a range from 801 nM to 6015 nM. Unfortunately, we have no additional nitrite data to explore whether equivalent heterogeneity exists for this species such that the NO_x production ratio is preserved, or whether the ratio varies. However, the results do illustrate that, at least at Halley, nitrite, albeit at low concentrations in the snow, can be a very significant source of NO_x . This conclusion, arrived at from measurements, agrees with that of Chu and Anastasio (2007) who made this suggestion based on calculations. What it means is that numerical models that aim to calculate fluxes of NO_x from snow (and indeed those probing the chemistry of snow-pack and its interstitial air) should include a comprehensive suite of reactions to account for nitrite formation and subsequent photolysis.

6.5 Albedo measurements

During CHABLIS, a spectroradiometer was used to derive photolysis frequencies for a number of trace gases, and to measure albedo. The purpose of the albedo measure-

ments was to provide parameterisations suitable for use by modellers. For this purpose, an accuracy of a few percent is quite adequate, unlike in climate and snow-character studies where an accuracy of better than 1% would be important (for some modelling studies, even an estimate of albedo within 10% might be considered sufficient).

5 The instrument used was a single monochromator with a diode array detector (meteorologieconsult gmbh; Hofzumahaus et al., 2004). It uses a 512 pixels diode array detector, mounted in a fixed-grating monolithic monochromator (Zeiss), covering the spectral range from 270 to 700 nm. The input optics were heated to prevent riming. Spectra were digitised to 16 bits (MOE C161, TEC 5 AG, Germany), and the values transmitted to the CASLab computer, 150 m away, via RS422 serial communication. 10 The instrument was calibrated at 6 month intervals using a spectral irradiance standard consisting of a 1000 Watt quartz halogen tungsten filament lamp model FEL A (Optronics Laboratories).

Normally, the actinic flux spectrometer measured the total downwelling hemispheric flux by observing vertically upward via a quartz hemisphere ground on the inside (conventionally known as a 2π dome). A black horizontal plate and ring defined the lowest angle seen. From time to time during the summer, measurements of the upwelling flux were made by pointing the spectrometer vertically downward towards the snow 2.5 m below. The process of unclamping the spectrometer from its mounting frame, rotating it and re-clamping took 2 to 4 min. Measurements of upwelling flux were made for 5 to 15 min before restoring the spectrometer to its upwards pointing position. Sometimes three or four successive upwelling measurements were made at intervals of 10 to 15 min. 15

25 Rather than derive albedo at each of the 512 wavelengths measured by the spectrometer (which would have been unwieldy for the user), we derived albedo from j -values for specific molecules calculated from the spectra. These quantities are much more useful for most atmospheric chemistry modellers. As the upwelling and downwelling measurements were not simultaneous, the near-continuous downwelling measurements were interpolated across the periods of upwelling measurements. This was

CHABLIS overview

[Title Page](#)[Abstract](#)[Introduction](#)[Conclusions](#)[References](#)[Tables](#)[Figures](#)[◀](#)[▶](#)[◀](#)[▶](#)[Back](#)[Close](#)[Full Screen / Esc](#)[Printer-friendly Version](#)[Interactive Discussion](#)

CHABLIS overview[Title Page](#)[Abstract](#)[Introduction](#)[Conclusions](#)[References](#)[Tables](#)[Figures](#)[◀](#)[▶](#)[◀](#)[▶](#)[Back](#)[Close](#)[Full Screen / Esc](#)[Printer-friendly Version](#)[Interactive Discussion](#)

achieved by multiplying the upwelling j -values by trial factors and comparing the fit by eye to the adjacent downwelling. Disagreement from the interpolation line was sometimes as large as 1%, which suggests this value as an upper limit to the error on albedo measurement. A set of successive upwelling measurements was treated as one albedo measurement.

Results are given in Fig. 13, divided into measurements during more cloud and less cloud. The dividing value for cloudiness was between 6 and 7 octas (1 octa is 1/8 cloud cover), chosen by examination. The cloudy measurements gave an albedo of about 0.98, more or less independent of solar zenith angle (SZA) as might be expected from the geometry of light paths from cloud above snow.

The less-cloudy measurements did not give a constant albedo, but had minimum albedos between 72° and 78° SZA. Chemical model runs usually demand an albedo input, and will often use a single value, so it is useful to have parameterised equations for albedo, and fits over the range of SZA in Fig. 13 allow interpolation outside the summer period. We experimented with fitting polynomials, but they were generally less representative than the pairs of straight lines shown in the figure. These were fitted by eye, as there are too few points at $\text{SZA} > 75^\circ$ for a formal least-squares fit, and the observations are within a few percent of the lines chosen. Co-ordinates of the line pairs are listed in Table 4.

As found by other authors, the albedo for j -values at shorter wavelengths (e.g. $j_{\text{O}^1\text{D}}$) was larger than for those at longer wavelengths (e.g. j_{NO_2}). Variability around the lines was several percent, which is probably due to variability in the age of the snow since it fell, as aging reduces albedo. For example, in the snow model of Flanner and Zender (2006), the albedo of fresh snow decreased by 2 to 9% over 5 to 10 d, depending on temperature and grain size. If chemical model comparisons of CHABLIS data demanded albedos accurate to better than a few percent, the time since snowfall could be used to improve the parameterisation in Table 4. In the more likely case that an accuracy of 10 to 15% is adequate, the value of 0.92 could be used for albedo in all conditions.

7 Broad conclusions from CHABLIS

As described above, CHABLIS had three specific science foci, i) seasonal studies of oxidant chemistry, ii) year-round studies of the NO_y budget, and iii) air/snow transfer studies. Advances were made in each of these three areas of study and the broad conclusions are presented here.

The year-round measurements of BrO and IO made during CHABLIS revealed the absolutely key role of halogens in determining boundary layer chemistry at Halley. A springtime maximum in both radicals was measured, the observed IO peak at 20 pptv (Saiz-Lopez et al., 2007) having only recently been exceeded (Whalley et al., 2007). The NMHC data gathered during CHABLIS allowed a kinetic analysis that revealed significant concentrations of both Cl and Br atoms during ozone depletion events (ODEs), with Cl in the range 1.7×10^3 to 3.4×10^4 atom cm^{-3} and Br in the range 1.4×10^6 to 2.9×10^7 atom cm^{-3} (Read et al., 2007). A further analysis using NMHC data revealed a persistent background Cl atom concentration in August of 2.3×10^3 atom cm^{-3} (Read et al., 2007).

Measurements of OH and HO_2 by FAGE during the austral summer produced the longest duration dataset yet achieved by that instrument (Bloss et al., 2007). Concentrations were lower than measured at South Pole (Mauldin et al., 2001), and were more in line with data captured at Palmer Station, another coastal Antarctic site (Jefferson et al., 1998). Elevated levels of NO_x released from the snowpack (Bauguitte et al., 2008³) contributed to enhancements in OH concentrations through HO_x cycling. However, control of the CH_3O_2 – HO_2 –OH cycling was achieved by the halogen oxides, BrO and IO (Bloss et al., 2007), which were still present during the summer at mixing ratios of around 2 pptv, with peaks to 5 pptv (Saiz-Lopez et al., 2007). The halogens were

³ Bauguitte, S. J-B., Bloss, W. J., Evans, M. E., Jones, A. E., Lee, J. D., Mills, G.P., Saiz-Lopez, A., Salmon, R. A., Roscoe, H. K., and Wolff, E. W.: An overview of multi-seasonal NO_x measurements during the CHABLIS campaign: Can sources and sinks estimates unravel observed diurnal cycles?, Atmos. Chem. Phys. Discuss., in preparation, 2008.

CHABLIS overview

Title Page

Abstract

Introduction

Conclusions

References

Tables

Figures

◀

▶

◀

▶

Back

Close

Full Screen / Esc

Printer-friendly Version

Interactive Discussion



CHABLIS overview

[Title Page](#)[Abstract](#)[Introduction](#)[Conclusions](#)[References](#)[Tables](#)[Figures](#)[I ◀](#)[▶ I](#)[◀](#)[▶](#)[Back](#)[Close](#)[Full Screen / Esc](#)[Printer-friendly Version](#)[Interactive Discussion](#)

also responsible for controlling the NO/NO₂ ratio at this site (Bauguitte et al., 2008³). This overarching key role for halogens in boundary layer oxidant chemistry was completely unanticipated, and the results have led to a step-change in our thinking and understanding.

5 The partitioning of boundary layer NO_y is explored in greater detail than previously reported for an Antarctic site (Jones et al., 2007). The nitrate radical remained below the 2 pptv instrumental detection limit throughout the duration of the campaign so it was impossible to explore any role for this oxidant within the boundary layer. Organic components (peroxyacetyl nitrate and methyl nitrate) overwhelmingly dominate the budget
10 during the winter months, but are in no way associated with concentrations of nitrate measured in newly fallen snow. There thus appears to be no direct link between organic NO_y and the ice core nitrate record. The measurements of nitrate in snow (and hence the nitrate record in ice) appear to be closely linked to inorganic species, with summertime peaks apparent both in surface snow nitrate and the inorganic species
15 HNO₃ and HONO. The control over these peaks, and whether the atmosphere is controlling snow or vice versa requires further study. Nitrite in snow is present in very low concentrations, but with its relatively fast photolysis rate, can also be a significant source of NO_x to the boundary layer.

The range of species measured for the NO_y budget study allowed an assessment of
20 NO_x sources to the boundary layer. Kinetic analyses were carried out for two case studies, one in summer and one in spring. In both cases, the production rate for boundary layer NO_x was dominated by emissions from the snowpack; they were more important than any other gas phase reservoir and indeed greater than the integrated gas-phase source. This finding suggests that for certain periods in the Earth's past history, it will
25 be possible to calculate concentrations of Antarctic boundary layer NO_x by using the ice core nitrate record.

Taken as a whole, the CHABLIS campaign clearly reveals that the chemistry of the coastal Antarctic boundary layer can only be understood if we consider both the active snow photochemistry that dominates the plateau region, and the halogen chemistry

that dominates the sea ice zone. To understand what is eventually preserved in snowpack and hence in ice cores, it remains essential to follow all these processes, and the resulting air-snow fluxes, throughout the year.

8 Summary

5 CHABLIS was an ambitious programme of atmospheric and snowpack sampling that built strongly on existing research. The results have provided exciting new insights into the way the polar atmosphere functions in coastal regions and provided step changes in our understanding about some of the chemical processes occurring there. Antarctica is a vast continent, and a real understanding of its boundary layer chemistry is essential
10 if we are, for example, to access the rich ice core record of past atmospheric, climatic and environmental changes. The CHABLIS campaign has demonstrated what can be achieved with a very limited number of researchers in the field. It provides a model for others to follow in order to extend atmospheric chemistry research in this inhospitable environment.

15 *Acknowledgements.* We are grateful to the Technical Services and Operations/Logistics staff of the British Antarctic Survey, and their creative approaches to solving numerous problems encountered along the way. We thank also the other overwintering staff at Halley who carried out the aerosol sampling programme and S. Colwell for providing meteorological data. We are indebted to the Natural Environment Research Council Antarctic Funding Initiative (grant number
20 NER/G/S/2001/00010) for providing us with the grant to fund this project. Additional support for fieldwork and data analysis respectively came from the BAS core-funded projects SAGES-AIR and CACHE-CEFAC. We would also like to thank the National Centre for Atmospheric Science Universities Facility for Atmospheric Measurements, NCAS-UFAM, for support of the FAGE instrument. CHABLIS contributes to the IGAC task on Air-Ice Chemical interactions (AICI).

CHABLIS overview

Title Page

Abstract

Introduction

Conclusions

References

Tables

Figures

◀

▶

◀

▶

Back

Close

Full Screen / Esc

Printer-friendly Version

Interactive Discussion



References

- Berresheim, H. and Eisele, F.L.: Sulfur Chemistry in the Antarctic Troposphere Experiment: An overview of the Project SCATE, *J. Geophys. Res.*, 103(D1), 1619–1627, 1998.
- Bloss, W. J., Lee, J. D., Heard, D. E., Salmon, R. A., Bauguitte, S. J-B., Roscoe, H. K.,
5 and Jones, A. E.: Observations of OH and HO₂ radicals in coastal Antarctica, *Atmos. Chem. Phys.*, 7, 4171–4185, available at: <http://www.atmos-chem-phys.net/7/4171/2007/acp-7-4171-2007.pdf>, 2007.
- Crawford, J. H., Davis, D. D., Chen, G., Buhr, M., Oltmans, S., Weller, R., Mauldin, L., Eisele, F., Shetter, R., Lefer, B., Arimoto, R. and Hogan, A.: Evidence for photochemical production of ozone at the South Pole surface, *Geophys. Res. Lett.*, 28(19), 3641–3644, 2001.
- CMDL (Climate Monitoring and Diagnostics Laboratory): Biennial Report 23 (1994/95), edited by: Hofmann, D. J., Peterson, J. T., and Rosson, R. M., Boulder, 1996.
- Chu, L. and Anastasio, C.: Temperature and wavelength dependence of nitrite photolysis in frozen and aqueous solutions, *Environ. Sci. Technol.*, 41, 3626–3632, 2007.
- 15 Davis, D., Nowak, J. B., Chen, G., Buhr, M., Arimoto, R., Hogan, A., Eisele, F., Mauldin, L., Tanner, D., Shetter, R., Lefer, B., and McMurry, P.: Unexpected high levels of NO observed at South Pole, *Geophys. Res. Lett.*, 28, 3625–3628, 2001.
- Davis, D., Chen, G., Buhr, M., Crawford, J., Lenschow, D., Lefer, B., Shetter, R., Eisele, F., Mauldin, L., and Hogan, A.: South Pole NO_x chemistry: an assessment of factors controlling variability and absolute levels, *Atmos Environ.*, 38, 5375–5388, 2004.
- 20 Elkins, J. W., Thompson, T. M., Swanson, T. H., Butler, J. H., Hall, B. D., Cummings, S. O., Fisher, D. A., and Raffo, A. G.: Decrease in the growth rates of atmospheric chlorofluorocarbons 11 and 12, *Nature*, 364, 780–783, 1993.
- Flanner, M. G. and Zender, C. S.: Linking snowpack microphysics and albedo evolution, *J. Geophys. Res.*, 111, D12208, doi:10.1029/2005JD006834, 2006.
- Helmig, D., Oltmans, S. J., Carlson, D., Lamarque, J.-F., Jones, A., Labuschagne, C., Anlauf, K., and Hayden, K.: A review of surface ozone in the polar regions, *Atmos. Environ.*, 41, 5138–5161, 2007.
- 30 Hofzumahaus, A., Lefer, B. L., Monks, P. S., Hall, S. R., Kylling, A., Mayer, B., Shetter, R. E., Junkermann, W., Bais, A., Calvert, J. G., Cantrell, C. A., Madronich, S., Edwards, G. D., Kraus, A., Müller, M., Bohn, B., Schmitt, R., Johnston, P., McKenzie, R., Frost, G. J., Griffioen, E., Krol, M., Martin, T., Pfister, G., Röth, E. P., Ruggaber, A., Swartz, W. H., Lloyd, S. A., and

CHABLIS overview

Title Page

Abstract

Introduction

Conclusions

References

Tables

Figures

◀

▶

◀

▶

Back

Close

Full Screen / Esc

Printer-friendly Version

Interactive Discussion



CHABLIS overview

Title Page

Abstract

Introduction

Conclusions

References

Tables

Figures

◀

▶

◀

▶

Back

Close

Full Screen / Esc

Printer-friendly Version

Interactive Discussion



VanWeele, M.: Photolysis frequency of O₃ to O(¹D): Measurements and Modeling during the International Photolysis Frequency Measurement and Model Intercomparison (IPMMI), *J. Geophys. Res.*, 109, D08S90, doi:10.1029/2003JD004333, 2004.

Jacobi, H.-W., Weller, R., Jones, A. E., Anderson, P. S., and Schrems, O.: Peroxyacetyl nitrate (PAN) concentrations in the Antarctic troposphere measured during the photochemical experiment at Neumayer (PEAN “99), *Atmos. Environ.*, 34, 5235–5247, 2000.

Jacobi, H.-W. and Hilker, B.: A mechanism for the photochemical transformation of nitrate in snow, *J. Photochem. Photobiol. A*, 185, 371–382, doi:10.1016/j.jphotochem.2006.06.039, 2007.

Jefferson, A., Tanner, D. J., Eisele, F. L., Davis, D. D., Chen, G., Crawford, J., Huey, J. W., Torres, A. L., and Berresheim, H.: OH Photochemistry and methane sulphonic acid formation in the coastal Antarctic boundary layer, *J. Geophys. Res.*, 103, 1647–1656, 1998.

Jones, A. E., Weller, R., Minikin, A., Wolff, E. W., Sturges, W. T., McIntyre, H. P., Leonard, S. R., Schrems, O., and Bauguitte, S.: Oxidised nitrogen chemistry and speciation in the Antarctic troposphere, *J. Geophys. Res.*, 104, 21 355–21 366, 1999.

Jones, A. E., Anderson, P. S., Wolff, E. W., Turner, J. T., Rankin, A. M., and Colwell, S. R.: A role for newly forming sea ice in springtime polar tropospheric ozone loss? Observational evidence from Halley station, Antarctica, *J. Geophys. Res.*, 111, D08306, doi:10.1029/2005JD006566, 2006.

Jones, A. E., Wolff, E. W., Ames, D., Bauguitte, S. J.-B., Clemitshaw, K. C., Fleming, Z., Mills, G. P., Saiz-Lopez, A., Salmon, R. A., Sturges, W. T., and Worton, D. R.: The multi-seasonal NO_y budget in coastal Antarctica and its link with surface snow and ice core nitrate: Results from the CHABLIS campaign, *Atmos. Chem. Phys. Discuss.*, 7, 4127–4163, available at: <http://www.atmos-chem-phys-discuss.net/7/4127/2007/>, 2007.

Jourdain, B. and Legrand, M.: Seasonal variations of atmospheric dimethylsulfide, dimethylsulfoxide, sulfur dioxide, methanesulfonate, and non-sea-salt sulfate aerosols at Dumont d’Urville (coastal Antarctica) (December 1998 to July 1999), *J. Geophys. Res.*, 106, 14 391–14 408, 2001.

König-Langlo, G., King, J., and Pettre, P.: Climatology of the three coastal Antarctic stations Dumont d’Urville, Neumayer and Halley, *J. Geophys. Res.*, 103, 10 935–10 946, 1998.

Li, S.-M.: Particulate and snow nitrite in the spring arctic troposphere, *Atmos. Environ.*, 27A, 2959–2967, 1993.

Mauldin III, R.L., Eisele, F. L., Tanner, D. J., Kosciuch, E., Shetter, R., Lefer, B., Hall, S. R.,

CHABLIS overview

Title Page

Abstract

Introduction

Conclusions

References

Tables

Figures

◀

▶

◀

▶

Back

Close

Full Screen / Esc

Printer-friendly Version

Interactive Discussion



- Nowak, J. B., Buhr, M., Chen, G., Wang, P., and David, D.: Measurements of OH, H₂SO₄, and MSA at the South Pole during ISCAT, *Geophys. Res. Lett.*, 28, 3629–3632, 2001.
- Murayama, S., Takakiyo, N., and Tanaka, M.: Variations of tropospheric ozone concentrations over Syowa Station, Antarctica, *Tellus*, 44B, 262–272, 1992.
- 5 Neff, W., Helmig, D., Grachev, A., and Davis, D.: A study of boundary layer behavior associated with high NO concentrations at the South Pole using a minisodar, tethered balloon and sonic anemometer, *Atmos. Environ.*, in press, 2007.
- Oltmans, S. J. and Komhyr, W. D.: Surface ozone in Antarctica, *J. Geophys. Res.*, 81, 5359–5364, 1976.
- 10 Oncley, S. P., Buhr, M., Lenschow, D. H., Davis, D. and Semmer, S. R.: Observations of summertime NO fluxes and boundary-layer height at South Pole during ISCAT 2000 using scalar similarity, *Atmos. Environ.*, 38, 5389–5398, 2004.
- Read, K. A., Lewis, A. C., Salmon, R. S., Jones A. E., and Bauguutte, S.: OH and halogen atom influence on the variability of non-methane hydrocarbons in the Antarctic boundary layer, *Tellus B*, 59, 22–38, 2007.
- 15 Riedel, K., Weller, R., and Schrems, O.: Variability of formaldehyde in the Antarctic troposphere, *Phys. Chem. Chem. Phys.*, 1, 5523–5527, 1999.
- Riedel, K., Weller, R., Schrems, O., and König-Langlo, G.: Variability of tropospheric hydroperoxides at a coastal surface site in Antarctica, *Atmos. Environ.* 34, 5225–5234, 2000.
- 20 Ryerson, T. B., Huey, L. G., Knapp, K., Neuman, J. A., Parrish, D. D., Sueper, D. T., and Fehsenfeld, F. C.: Design and initial characterization of an inlet for gas-phase NO_y measurements from aircraft, *J. Geophys. Res.*, 104(D5), 5483–5492, 1999.
- Saiz-Lopez, A., Mahajan, A. S., Salmon, R. A., Bauguutte, S. J-B., Jones, A. E., Roscoe, H. K., and Plane, J. M. C.: Boundary layer halogens in coastal Antarctica, *Science*, 317(5836), 25 348–351, 2007.
- Savarino, J., Kaiser, J., Morin, S., Sigman, D. M., and Thiemens, M. H.: Nitrogen and oxygen isotopic constraints on the origin of atmospheric nitrate in coastal Antarctica, *Atmos. Chem. Phys.*, 7, 1925–1945, 2007,
<http://www.atmos-chem-phys.net/7/1925/2007/>.
- 30 Simpson, W. R., von Glasow, R., Riedel, K., et al.: Halogens and their role in polar boundary layer ozone depletion, *Atmos. Chem. Phys. Discuss.*, 7, 4285–4403, available: <http://www.atmos-chem-phys-discuss.net/7/4285/2007/>, 2007.
- Wagenbach, D., Legrand, M., Fischer, H., Pichlmayer, F., and Wolff, E. W.: Atmospheric near-

CHABLIS overview

[Title Page](#)[Abstract](#)[Introduction](#)[Conclusions](#)[References](#)[Tables](#)[Figures](#)[I ◀](#)[▶ I](#)[◀](#)[▶](#)[Back](#)[Close](#)[Full Screen / Esc](#)[Printer-friendly Version](#)[Interactive Discussion](#)

- surface nitrate at coastal Antarctic sites, *J. Geophys. Res.*, 103(D9), 11 007–11 020, 1998.
- Weller, R., Jones, A. E., Wolff, E. W., Minikin, A., Anderson, P. S., KönigLanglo, G., and Schrems, O.: Investigating possible causes of the observed diurnal variability in Antarctic NO_y , *Geophys. Res. Lett.* 26, 2853–2856, 1999.
- 5 Weller, R., Jones, A. E., Wille, A., Jacobi, H.-W., McIntyre, H. P., Huke, M., and Wagenbach, D.: Seasonality of reactive nitrogen oxides (NO_y) at Neumayer Station, Antarctica, *J. Geophys. Res.*, 107(D23), 4673, doi:10.1029/2002JD002495, 2002.
- Wessel, S., Aoki, S., Winkler, P., Weller, R., Herber, A., Gerhardt, H., and Schrems, O.: Tropospheric ozone depletion in polar regions – A comparison of observations in the Arctic and Antarctic, *Tellus*, 50B, 34–50, 1998.
- 10 Whalley, L. K., Furneaux, K. L., Gravestock, T., Atkinson, H. M., Bale, C. S. E., Ingham, T., Bloss, W. J., and Heard, D. E.: Detection of iodine monoxide radicals in the marine boundary layer using laser induced fluorescence spectroscopy, *J. Atmos. Chem.*, 58, 19–39, 2007.
- Wolff, E. W., Legrand, M. R., and Wagenbach, D.: Coastal Antarctic aerosol and snowfall chemistry, *J. Geophys. Res.*, 103, 10 927–10 934, 1998.
- 15 Wyputta, U.: Untersuchung zum Spurenstofftransport in die Antarktis anhand von Messung an der Georg-von-Neumayer-Station, PhD Thesis, Hamburg. Berichte aus dem Zentrum fuer Meeres-und-Klimaforschung Reihe A, No 15, 1994.

Table 1. List of CHABLIS participants, with the measurements made by each institution and details of the chemical instrumentation and techniques used.

Institute and Researchers	Target molecule(s) / measurement	Technique	Detection limit	Data frequency
British Antarctic Survey A. E. Jones, E. W. Wolff, R. A. Salmon, S. J-B. Bauguitte, H. K. Roscoe, P. S. Anderson	HCHO	Fluorescence	50 pptv	5 min
	NO/NO ₂	Chemiluminescence	1.5/5.0 pptv	1 min
	HNO ₃	Denuder sampling	0.14/1.0 pptv	weekly/daily
	O ₃	UV absorption	1 ppbv	1 min
	CO	VUV fluorescence	1 ppbv	30 s
	CN	Particle counting	0.02 μm	15 s
	Photolysis rates	spectroradiometer	270–700 nm	~10 s
	Snow NO ₃ ⁻	IC analysis	<1 μg/kg	daily
	Particulate NO ₃ ⁻	Filter s+IC analysis	0.01/0.6/2.4 pptv	wk/day/6 h
	H ₂ O	Frost point hygrometer	N/A	10 s
	University of York A. Lewis, K. Read	NMHCs/CH ₄ /DMS	Gas Chromatography	1/5/100 pptv
University of East Anglia J. Plane, W. T. Sturges, G. Mills, A. Saiz-Lopez, D. Worton		Halocarbons/RONO ₂	Whole air samples	≤1 pptv
	Halocarbons/RONO ₂	GC/MS	≤1 pptv	hourly
	PAN	GC/ECD	<1 pptv	30 min
	NO ₃	BL-DOAS	2 pptv	10 min
	BrO/IO/OIO	BL-DOAS	1–2/1–2/5 pptv	10 min
University of Leeds D. E. Heard, W. Bloss, J. Lee, A. Jackson, S. Walker	OH/HO ₂	FAGE (LIF technique)	1.3 × 10 ⁵ /1.8 × 10 ⁶	~5 min
	H ₂ O ₂ /CH ₃ OOH	HPLC	molec.cm ⁻³ 30 pptv	30 min
Imperial College, London K. C. Clemitshaw, D. Ames, Z. Fleming	HONO	Colorimetry	2 pptv	15 min
	HO ₂ /RO ₂	PERCA	1 pptv	1 min
University of Bristol D. Shallcross, P. Hamer		Model experiments	–	–

IC=Ion Chromatograph;
GC-ECD=Gas Chromatography – Electron Capture Detector;
FAGE=Fluorescence Assay by Gas Expansion;
HPLC=High Performance Liquid Chromatography;

GC-MS=Gas Chromatography – Mass Spectrometer;
BL-DOAS=Boundary Layer- Differential Optical Absorption Spectrometer;
LIF=Laser Induced Fluorescence;
PERCA=Peroxy Radical Chemical Amplifier.

CHABLIS overview

Title Page

Abstract

Introduction

Conclusions

References

Tables

Figures

◀

▶

◀

▶

Back

Close

Full Screen / Esc

Printer-friendly Version

Interactive Discussion



CHABLIS overview

Table 2. Summary of external boundary layer measurements made at Halley*.

Measurement	Resolution	Notes
Snow temperature profile	10 cm vertical 0.05 K 10 min	18 white sheathed PRTs, gradually burying with accumulation: initially 7 subsurface.
Radiation	5 Wm ⁻² 10 min	global, reflected and diffuse shortwave. Incoming and outgoing longwave
Air Temperature	0.1 K 10 min	1, 2, 4, 8, 16 and 32 m nominal levels. Aspirated PRT.
RH	2%	1, 2, 4, 8, 16 and 32 m nominal levels. HMP35D
wind speed and direction	0.3 ms ⁻¹ , 2°	1, 2, 4, 8, 16 and 32 m nominal levels. Propeller vane
Turbulent u, v, w and T	0.01 ms ⁻¹ , 0.2 K 40 Hz	4, 16 and 32 m nominal levels, with three separate 4 m instruments deployed at varying distance from CASLab to provide error sensitivity.
RH turbulence	40 Hz	4 m nominal level

* PRT=platinum resistor thermometer; HMP35D=Humidity probe (Vaisala Corp.)

[Title Page](#)
[Abstract](#)
[Introduction](#)
[Conclusions](#)
[References](#)
[Tables](#)
[Figures](#)
[I ◀](#)
[▶ I](#)
[◀](#)
[▶](#)
[Back](#)
[Close](#)
[Full Screen / Esc](#)
[Printer-friendly Version](#)
[Interactive Discussion](#)


CHABLIS overview

[Title Page](#)[Abstract](#)[Introduction](#)[Conclusions](#)[References](#)[Tables](#)[Figures](#)[I◀](#)[▶I](#)[◀](#)[▶](#)[Back](#)[Close](#)[Full Screen / Esc](#)[Printer-friendly Version](#)[Interactive Discussion](#)

Table 3. Comparing photolysis rates, surface snow concentrations, and the consequent ratio in NO_x production rate from nitrite and nitrate in snow. The photolysis rates are for $j(\text{NO}_2^- \rightarrow \text{NO})$ and $j(\text{NO}_3^- \rightarrow \text{NO}_2)$ respectively for noon 21 December conditions (Chu and Anastasio, 2007).

	nitrite	nitrate
photolysis rate (s^{-1})	3.5×10^{-5}	2.8×10^{-7}
snow concentration (nM)	33.2	2843
ratio	1	0.69

CHABLIS overview[Title Page](#)[Abstract](#)[Introduction](#)[Conclusions](#)[References](#)[Tables](#)[Figures](#)[I◀](#)[▶I](#)[◀](#)[▶](#)[Back](#)[Close](#)[Full Screen / Esc](#)[Printer-friendly Version](#)[Interactive Discussion](#)

Table 4. End-point albedos for interpolation versus solar zenith angle, when cloud cover <6.5 octas.

SZA (°)	54.8	74.7	84.0
jO ¹ D	0.948	0.892	0.985
jNO ₂	0.948	0.735	0.821
jHONO	0.948	0.775	0.865
jHCHO	0.948	0.859	0.941
JNO ₃	0.948	0.867	0.952
jH ₂ O ₂	0.948	0.852	0.935

CHABLIS overview

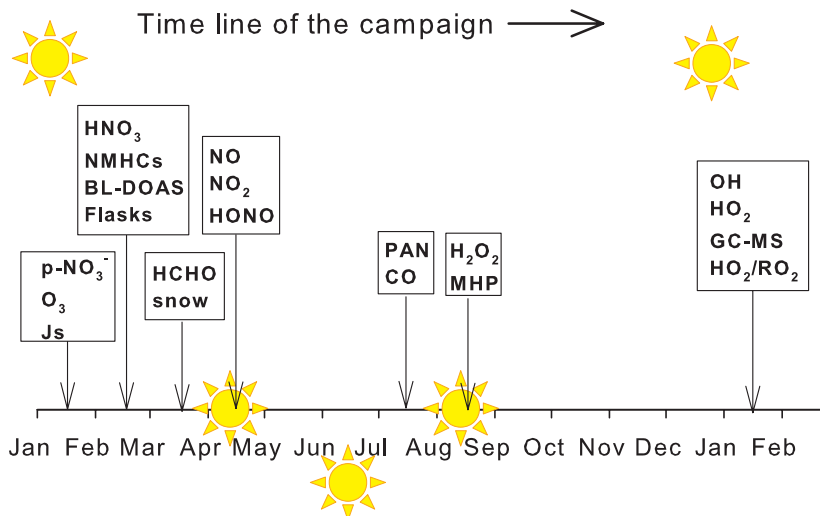


Fig. 1. Cartoon showing the point during the CHABLIS campaign at which instruments came on line. Periods of summer sunlight, as well as the onset and end of winter darkness, are denoted by the position of the sun above the nominal horizon suggested by the x-axis.

[Title Page](#)
[Abstract](#)
[Introduction](#)
[Conclusions](#)
[References](#)
[Tables](#)
[Figures](#)
[I◀](#)
[▶I](#)
[◀](#)
[▶](#)
[Back](#)
[Close](#)
[Full Screen / Esc](#)
[Printer-friendly Version](#)
[Interactive Discussion](#)


CHABLIS overview

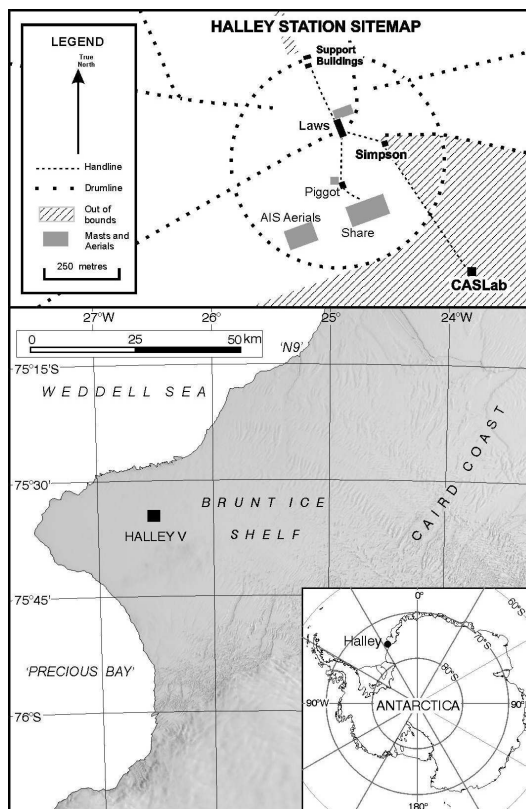


Fig. 2. Map of Halley, with details of the station lay-out and the location of the Clean Air Sector Laboratory (CASLab). The hashed area in the top panel is the clean air sector within which routine vehicular access is not allowed.

[Title Page](#)[Abstract](#)[Introduction](#)[Conclusions](#)[References](#)[Tables](#)[Figures](#)[◀](#)[▶](#)[◀](#)[▶](#)[Back](#)[Close](#)[Full Screen / Esc](#)[Printer-friendly Version](#)[Interactive Discussion](#)

CHABLIS overview



Fig. 3. The Clean Air Sector Laboratory (CASLab) at Halley. In the background is the 30 m mast for boundary layer meteorology experiments.

[Title Page](#)[Abstract](#)[Introduction](#)[Conclusions](#)[References](#)[Tables](#)[Figures](#)[I ◀](#)[▶ I](#)[◀](#)[▶](#)[Back](#)[Close](#)[Full Screen / Esc](#)[Printer-friendly Version](#)[Interactive Discussion](#)

CHABLIS overview

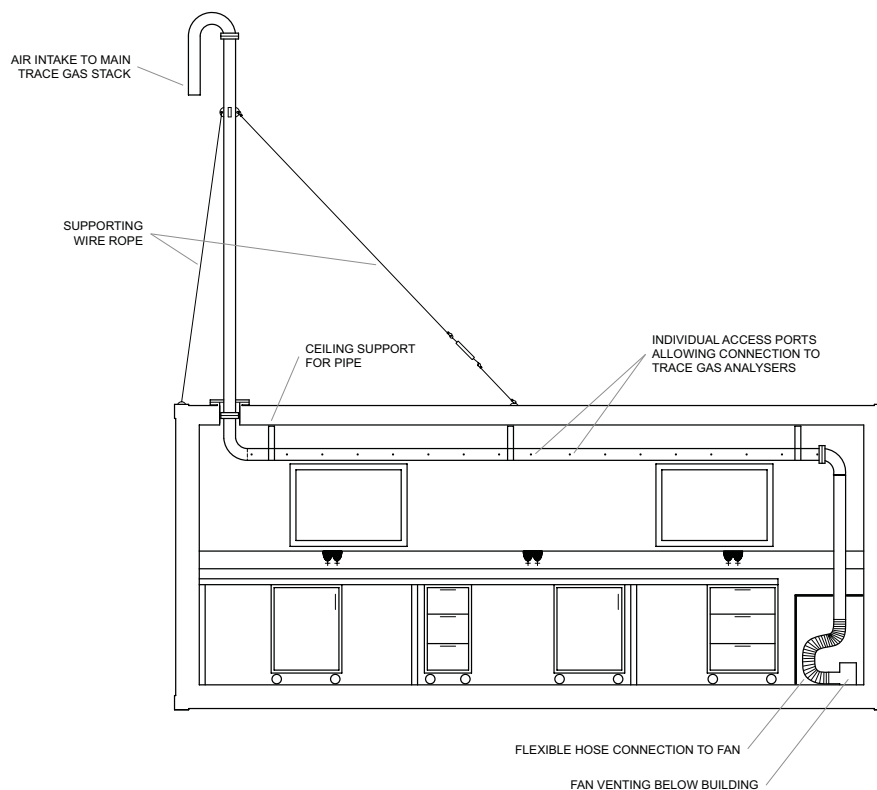


Fig. 4. A cross section through the CASLab showing the main trace gas sampling stack. Trace gas analysers accessed ambient air through individual access ports along the length of the stack. The CASLab is mounted on a platform roughly 3 m above the snow surface.

[Title Page](#)[Abstract](#)[Introduction](#)[Conclusions](#)[References](#)[Tables](#)[Figures](#)[◀](#)[▶](#)[◀](#)[▶](#)[Back](#)[Close](#)[Full Screen / Esc](#)[Printer-friendly Version](#)[Interactive Discussion](#)

CHABLIS overview

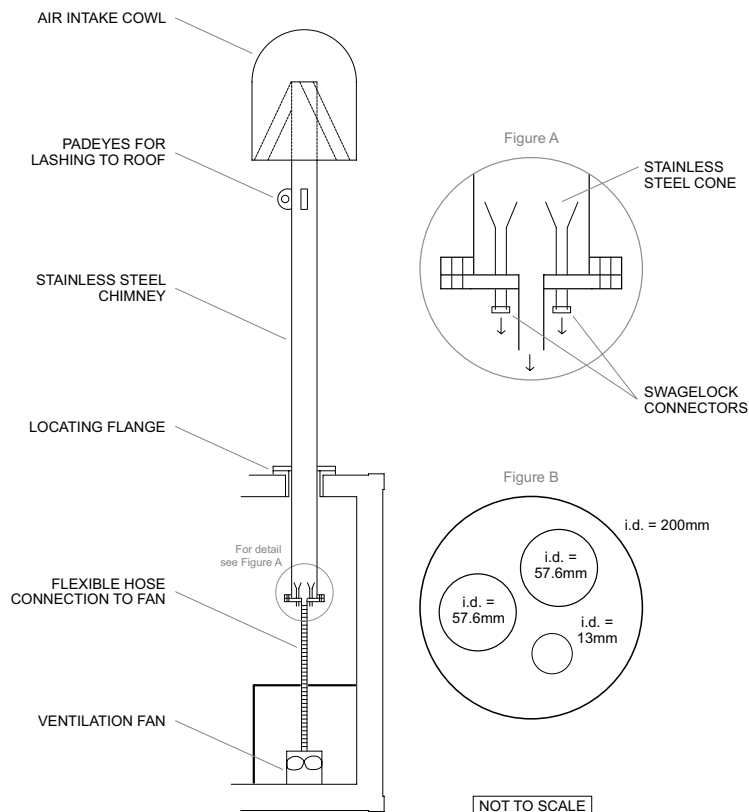


Fig. 5. Details of the air intake and sampling set up for the aerosol stack within the CASLab. Note that the drawings are not to scale.

[Title Page](#)[Abstract](#)[Introduction](#)[Conclusions](#)[References](#)[Tables](#)[Figures](#)[◀](#)[▶](#)[◀](#)[▶](#)[Back](#)[Close](#)[Full Screen / Esc](#)[Printer-friendly Version](#)[Interactive Discussion](#)

CHABLIS overview

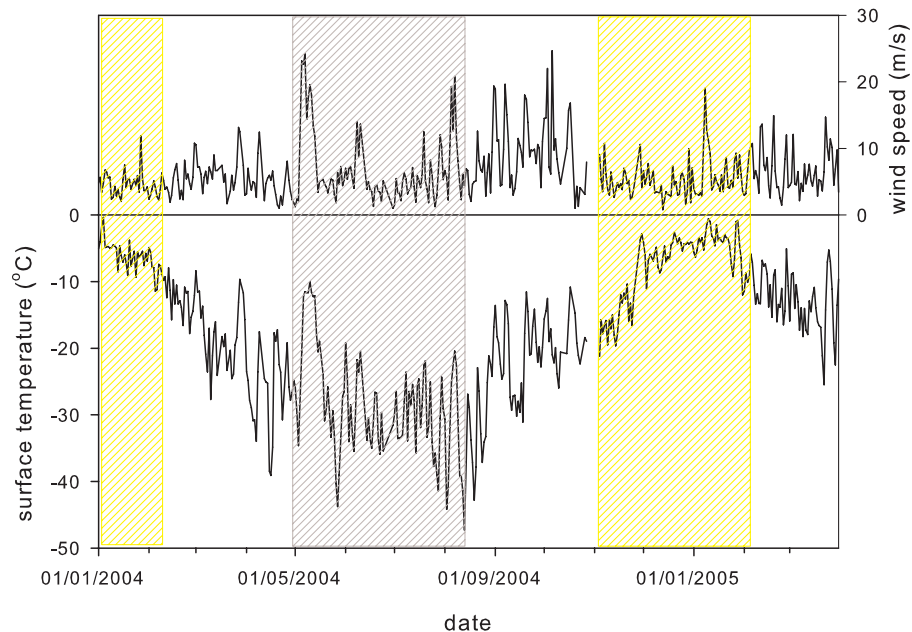


Fig. 6. Daily average wind speed (top panel) and surface temperatures (bottom panel) at Halley during the CHABLIS campaign (measurements made at 8 m above the snow surface). Periods when the sun did not set below the horizon are shaded yellow, and those when the sun did not rise above the horizon are shaded grey.

[Title Page](#)[Abstract](#)[Introduction](#)[Conclusions](#)[References](#)[Tables](#)[Figures](#)[◀](#)[▶](#)[◀](#)[▶](#)[Back](#)[Close](#)[Full Screen / Esc](#)[Printer-friendly Version](#)[Interactive Discussion](#)

CHABLIS overview

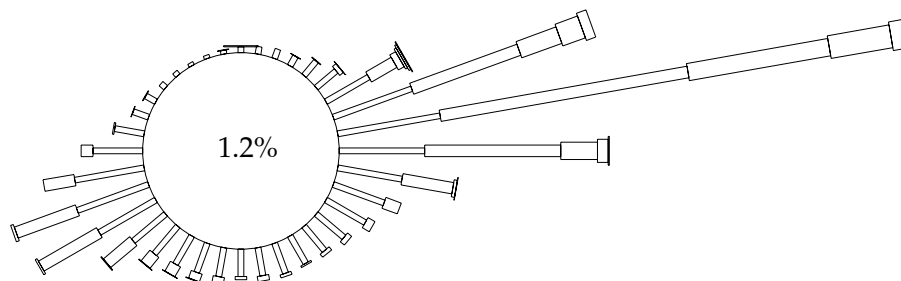


Fig. 7. Wind rose showing winds (measured at 8 m above the snow surface) experienced at Halley during the CHABLIS campaign (averaged from 1 January 2004 to 31 March 2005). The length of the bar indicates frequency of winds, and thickness indicates wind speed (i.e. 1.2% at <math><0.5\text{ m/s}</math>, then 0.5 to 5 m/s, 5.5–10 m/s, 10.5 to 15 m/s, 15.5 to 20 m/s, 20.5 to 25 m/s).

[Title Page](#)[Abstract](#)[Introduction](#)[Conclusions](#)[References](#)[Tables](#)[Figures](#)[I ◀](#)[▶ I](#)[◀](#)[▶](#)[Back](#)[Close](#)[Full Screen / Esc](#)[Printer-friendly Version](#)[Interactive Discussion](#)

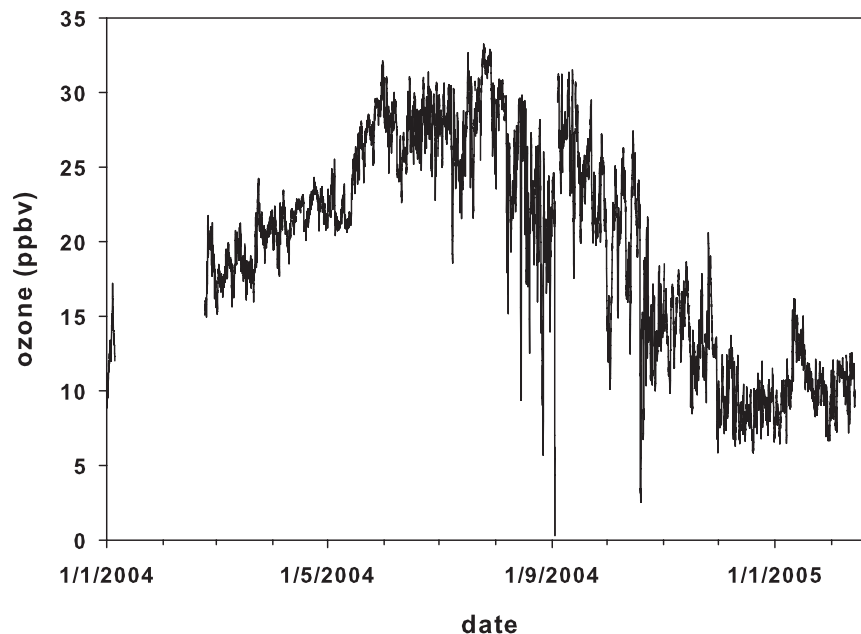
CHABLIS overview[Title Page](#)[Abstract](#)[Introduction](#)[Conclusions](#)[References](#)[Tables](#)[Figures](#)[I◀](#)[▶I](#)[◀](#)[▶](#)[Back](#)[Close](#)[Full Screen / Esc](#)[Printer-friendly Version](#)[Interactive Discussion](#)

Fig. 8. Hourly average near-surface ozone measured throughout the CHABLIS campaign. Measurements were made from 1 January 2004 to 13 February 2005 apart from 6 January to 23 February 2004.

CHABLIS overview

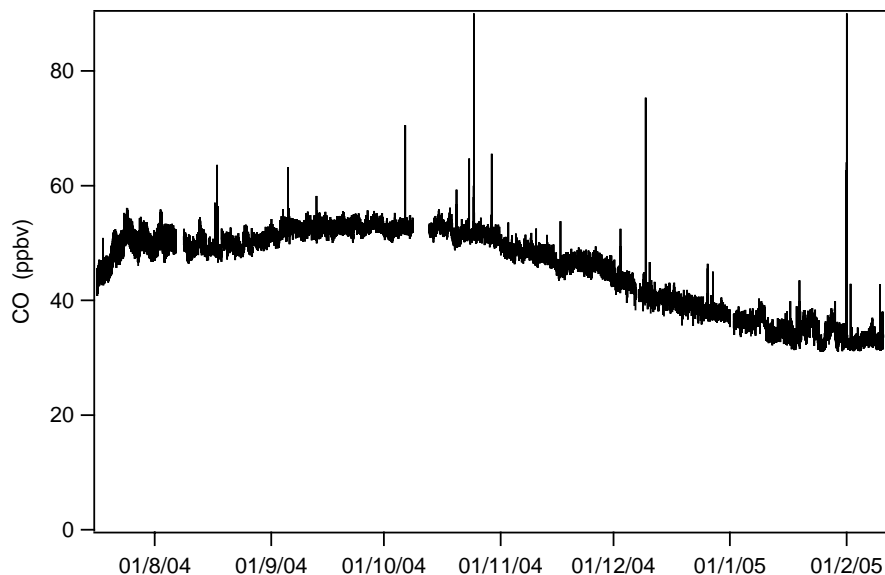


Fig. 9. Timeseries of CO measurements made during the CHABLIS campaign. Data were captured from July 2004 through to February 2005. The very short-lived spikes are associated with exhaust emissions from the main station.

[Title Page](#)[Abstract](#)[Introduction](#)[Conclusions](#)[References](#)[Tables](#)[Figures](#)[I◀](#)[▶I](#)[◀](#)[▶](#)[Back](#)[Close](#)[Full Screen / Esc](#)[Printer-friendly Version](#)[Interactive Discussion](#)

CHABLIS overview

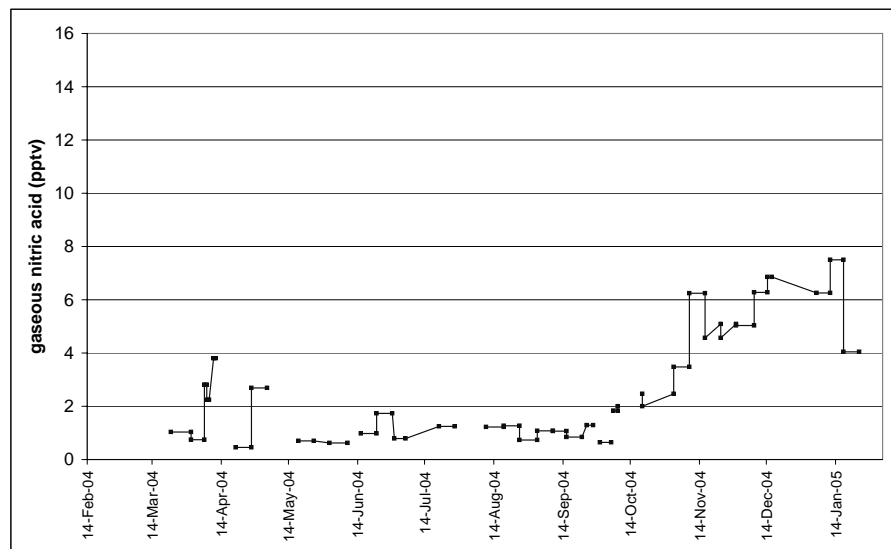


Fig. 10a. Year-round HNO_3 from denuders at weekly and daily sampling frequency, plotted on same y-axis scale as Fig. 10b to ease comparison.

[Title Page](#)[Abstract](#)[Introduction](#)[Conclusions](#)[References](#)[Tables](#)[Figures](#)[◀](#)[▶](#)[◀](#)[▶](#)[Back](#)[Close](#)[Full Screen / Esc](#)[Printer-friendly Version](#)[Interactive Discussion](#)

CHABLIS overview

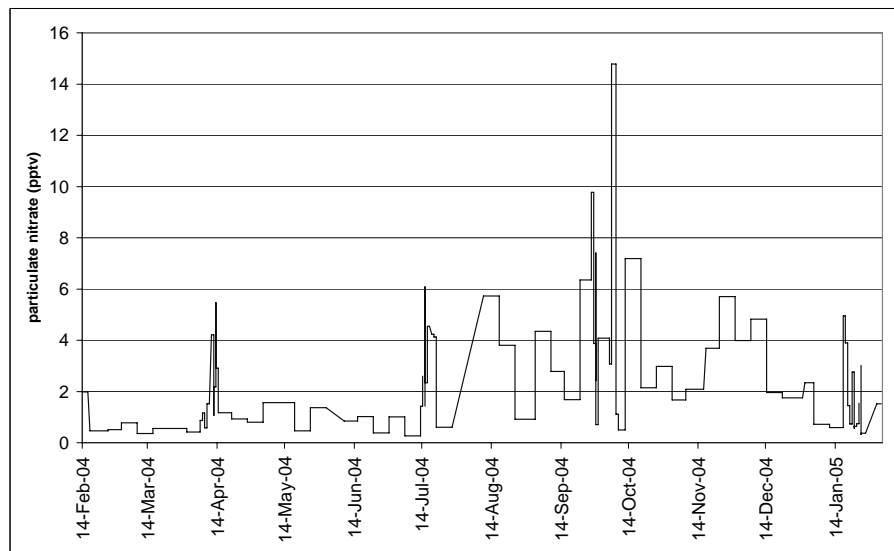


Fig. 10b. Year-round particulate nitrate from filter sampling at weekly, daily and 6-hourly sampling resolution.

[Title Page](#)[Abstract](#)[Introduction](#)[Conclusions](#)[References](#)[Tables](#)[Figures](#)[◀](#)[▶](#)[◀](#)[▶](#)[Back](#)[Close](#)[Full Screen / Esc](#)[Printer-friendly Version](#)[Interactive Discussion](#)

CHABLIS overview

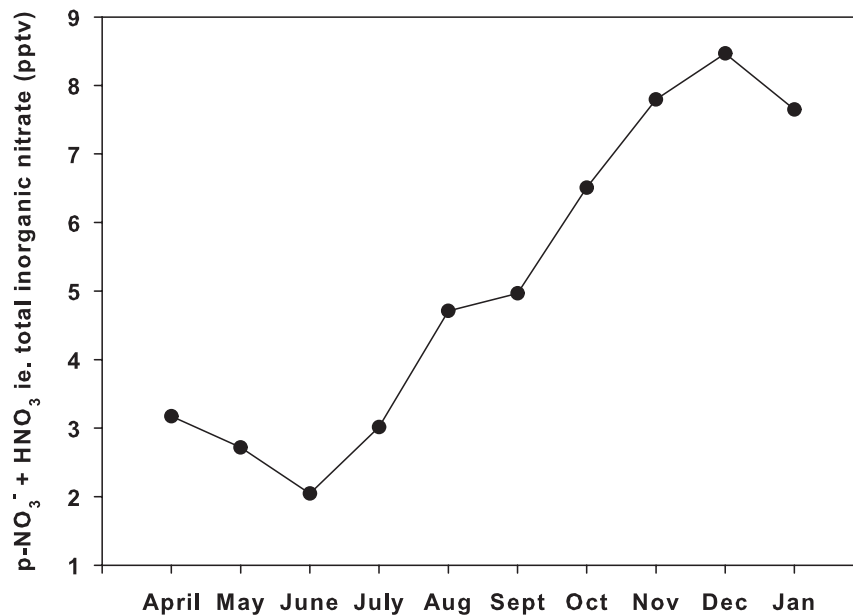


Fig. 11. The sum of nitric acid and particulate nitrate, often referred to as total inorganic nitrate, as measured on denuders and low-volume filters during CHABLIS.

[Title Page](#)[Abstract](#)[Introduction](#)[Conclusions](#)[References](#)[Tables](#)[Figures](#)[I◀](#)[▶I](#)[◀](#)[▶](#)[Back](#)[Close](#)[Full Screen / Esc](#)[Printer-friendly Version](#)[Interactive Discussion](#)

CHABLIS overview

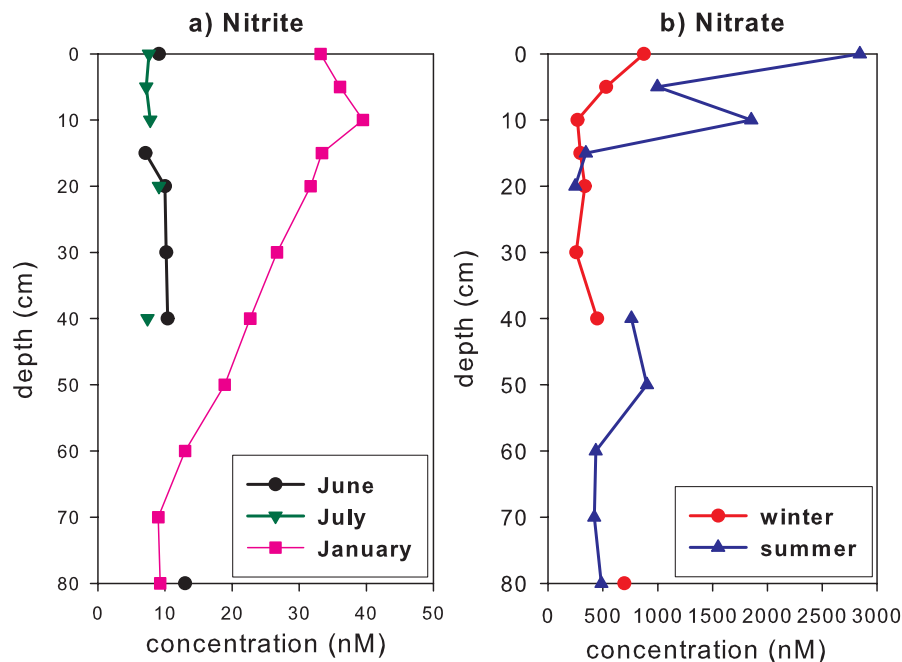


Fig. 12. Snow pit profiles of (a) nitrite (NO_2^-) and (b) nitrate (NO_3^-) during winter and summer months. The nitrite profiles show individual months whereas those for nitrate are averages of June and July (for winter) and December and January (for summer).

[Title Page](#)[Abstract](#)[Introduction](#)[Conclusions](#)[References](#)[Tables](#)[Figures](#)[I◀](#)[▶I](#)[◀](#)[▶](#)[Back](#)[Close](#)[Full Screen / Esc](#)[Printer-friendly Version](#)[Interactive Discussion](#)

CHABLIS overview

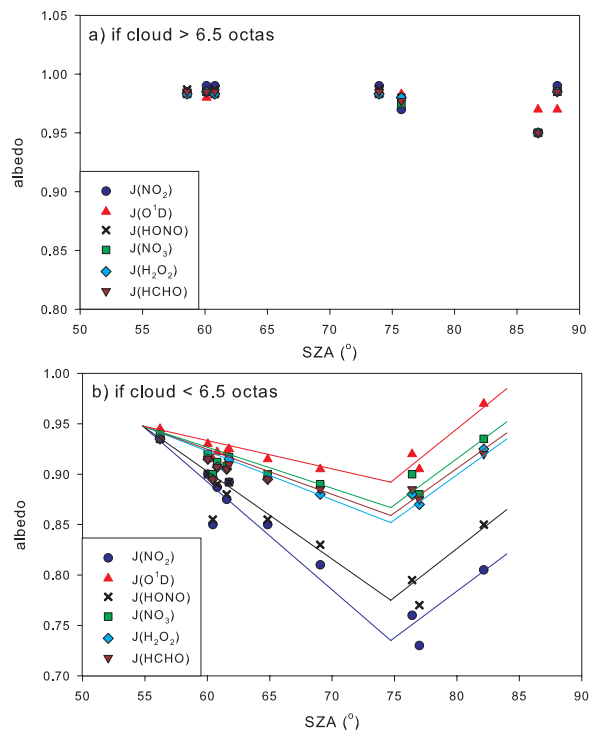


Fig. 13. Hemispheric albedo (i.e. a 2- Π average) derived from j-values for specific molecules. These were calculated from spectra measured by the actinic flux spectrometer at Halley in January and February 2005 **(a)** in cloudy conditions, and **(b)** less cloudy conditions, as a function of solar zenith angle (SZA). In the upper plot, albedo is constant with SZA and has a variability of around 0.5%. Pairs of straight lines in the lower plot are fits by hand to the points, to enable models to use albedos in less cloudy conditions within a few percent, interpolated to SZA values, on any day of the year. Albedos in cloudy conditions are about 0.98 irrespective of SZA.

[Title Page](#)[Abstract](#)[Introduction](#)[Conclusions](#)[References](#)[Tables](#)[Figures](#)[◀](#)[▶](#)[◀](#)[▶](#)[Back](#)[Close](#)[Full Screen / Esc](#)[Printer-friendly Version](#)[Interactive Discussion](#)