



HAL
open science

Weekly patterns of aerosol in the United States

D. M. Murphy, S. L. Capps, J. S. Daniel, G. J. Frost, W. H. White

► **To cite this version:**

D. M. Murphy, S. L. Capps, J. S. Daniel, G. J. Frost, W. H. White. Weekly patterns of aerosol in the United States. *Atmospheric Chemistry and Physics Discussions*, 2008, 8 (1), pp.521-548. hal-00303246

HAL Id: hal-00303246

<https://hal.science/hal-00303246>

Submitted on 18 Jun 2008

HAL is a multi-disciplinary open access archive for the deposit and dissemination of scientific research documents, whether they are published or not. The documents may come from teaching and research institutions in France or abroad, or from public or private research centers.

L'archive ouverte pluridisciplinaire **HAL**, est destinée au dépôt et à la diffusion de documents scientifiques de niveau recherche, publiés ou non, émanant des établissements d'enseignement et de recherche français ou étrangers, des laboratoires publics ou privés.

Weekly patterns of
aerosol

D. M. Murphy et al.

Weekly patterns of aerosol in the United States

D. M. Murphy¹, S. L. Capps^{1,2,*}, J. S. Daniel¹, G. J. Frost^{1,3}, and W. H. White⁴

¹Earth System Research Laboratory, National Oceanic and Atmospheric Administration, Boulder, CO 80305, USA

²Vanderbilt University, Nashville, TN 37240, USA

³Cooperative Institute for Research in Environmental Sciences, University of Colorado, Boulder, CO 80309, USA

⁴Crocker Nuclear Laboratory, University of California, Davis, Davis, CA 95616, USA

*now at: School of Chemical and Biomolecular Engineering, Georgia Institute of Technology, Atlanta, GA 30332, USA

Received: 4 December 2007 – Accepted: 4 December 2007 – Published: 10 January 2008

Correspondence to: D. M. Murphy (daniel.m.murphy@noaa.gov)

Title Page

Abstract

Introduction

Conclusions

References

Tables

Figures

◀

▶

◀

▶

Back

Close

Full Screen / Esc

Printer-friendly Version

Interactive Discussion

EGU

Abstract

Data from the Interagency Monitoring of Protected Visual Environments (IMPROVE) network of aerosol samplers and NOAA monitoring sites are examined for weekly cycles. Fine particle elemental carbon, crustal elements, and coarse particle mass had pronounced (up to 20%) weekly cycles with minima on Sunday or Monday. Fine particle organic carbon and mass had smaller amplitude cycles, also with Sunday or Monday minima. There was no statistically significant weekly cycle in fine particle sulfate despite a 10 to 15% weekly cycle in power plant SO₂ emissions. Although results for nitrate must be treated with caution, it showed a pronounced weekly cycle with an amplitude similar to elemental carbon. The only species found with a weekend maximum was Pb, probably from general aviation on weekends. Aerosol optical properties at NOAA monitoring sites were consistent with the IMPROVE chemical data, with significant weekly cycles in aerosol light absorption but not light scattering. These results support a large role of diesel emissions in elemental carbon aerosol over the entire United States and suggest that a large fraction of the airborne soil dust is anthropogenic. They also suggest that studies of weekly cycles in temperature, cloudiness, or precipitation should look for causes more in light-absorbing particles and dust rather than sulfate or total aerosol. There are also implications for personal exposure and epidemiological studies of aerosol health effects.

1 Introduction

Observations of the weekly cycle are a powerful tool for distinguishing anthropogenic from natural causes. Only anthropogenic activities are likely to influence concentrations, temperatures, or other atmospheric variables on a seven-day cycle. Weekly trends have been found for diurnal temperature range over the United States (Forster and Solomon, 2003) and China (Gong et al., 2006) as well as cloudiness and precipitation in Germany (Bäumer and Vogel, 2007). White et al. (1990, 1991) studied

ACPD

8, 521–548, 2008

Weekly patterns of aerosol

D. M. Murphy et al.

Title Page

Abstract

Introduction

Conclusions

References

Tables

Figures

◀

▶

◀

▶

Back

Close

Full Screen / Esc

Printer-friendly Version

Interactive Discussion

EGU

Weekly patterns of aerosol

D. M. Murphy et al.

[Title Page](#)[Abstract](#)[Introduction](#)[Conclusions](#)[References](#)[Tables](#)[Figures](#)[I◀](#)[▶I](#)[◀](#)[▶](#)[Back](#)[Close](#)[Full Screen / Esc](#)[Printer-friendly Version](#)[Interactive Discussion](#)

transport of urban pollutants using weekly cycles. Blanchard and Tanenbaum (2003) found significantly less NO_2 on weekends in Southern California. Bierle et al. (2003) found weekly cycles in column NO_2 measured from satellite, with different amplitudes and phases on various continents that could be related to various societies. A number of studies have examined weekly cycles of ozone concentrations and photochemistry (e.g. Elkus and Wilson, 1977; Marr and Harley, 2002).

Several studies have specifically studied weekly cycles of aerosol. Almeida et al. (2006) found that chemical elements such as Ca, Si, and Fe associated with soil were significantly higher on weekdays at a site in a suburb of Lisbon. Motallebi et al. (2003) found weekly cycles at selected urban sites in California. Lough et al. (2006) and Harley et al. (2005) found significant weekly trends in aerosol components in the Los Angeles area. In particular, both found much lower ratios of elemental carbon to organic carbon on weekends. Jin et al. (2005) used satellite data to discern a midweek maximum in aerosol optical thickness near New York City. Delene and Ogren (2002) found slightly higher single scattering albedos on Sundays and Mondays at Bondville, Illinois and Southern Great Plains, Oklahoma than on other days of the week.

With the exception of Delene and Ogren (2002), studies on weekly aerosol properties have concentrated on urban sites. In this paper we use data from the IMPROVE network and NOAA aerosol monitoring sites to examine weekly cycles in aerosol across the United States. An important feature of the IMPROVE aerosol data set is the chemical analysis, allowing much better weekly analysis than a simple mass measurement.

2 Data

2.1 IMPROVE network

IMPROVE data in this paper are from 1 September 2000 through 31 August 2006. This is an integral number of weeks and years, which helps keep annual cycles from being aliased into weekly cycles. We use data after summer 2000 because the network

shifted then from a Wednesday-Saturday sampling schedule to a once every third day schedule that rotates through the days of the week, an important feature for this work. There were also few sites in the eastern United States before 2000. Except as noted for coarse mass, all data in the paper are for fine mode aerosol smaller than 2.5 μm .

The IMPROVE monitoring program is described by Malm et al. (2004). Routine monitoring began in 1988 with the objectives of establishing current background haze levels, identifying the chemical composition and emissions sources of regional aerosols, and documenting long-term trends in aerosol concentrations. Most of the samplers are in locations representative of the 156 National Parks and Wilderness Areas where the Clean Air Act provides special protections for visibility. The network now includes about 170 rural or remote sites in the United States.

Data, standard operating procedures and site descriptions are all available in detail at <http://vista.cira.colostate.edu/improve/>. Every third day, a set of three $\text{PM}_{2.5}$ samples and one PM_{10} sample is collected by four independent filter sampling trains. The PM_{10} filter is analyzed only for mass. The $\text{PM}_{2.5}$ modules sample behind AIHL cyclones (John and Reischl, 1980) at nominal flow rates of 22.8 liter min^{-1} . One module collects $\text{PM}_{2.5}$ on a 37 mm Nylon filter behind an annular denuder coated with Na_2CO_3 and glycerol. This filter is analyzed by ion chromatography for the anions chloride, nitrate, and sulfate. A second module collects undenuded $\text{PM}_{2.5}$ on a 25 mm Teflon filter for weighing and energy-dispersive x-ray fluorescence analysis (XRF). The third module collects undenuded $\text{PM}_{2.5}$ on a 25 mm quartz-fiber filter for thermal fractionation of organic and elemental carbon with an optical correction for pyrolysis.

The methods used for elemental and carbon analysis have undergone some minor changes since August 2000. Before December 2001, the elements lighter than iron were determined by proton-induced x-ray emission, and since January 2005 the XRF analysis for elements lighter than nickel has been done under vacuum. Carbon analyses since January 2005 have been conducted with new instrumentation according to a more precise protocol (Chow et al., 2007). These one-time method transitions should have no effect on multi-year weekly cycles.

Weekly patterns of aerosolD. M. Murphy et al.

Title Page

Abstract

Introduction

Conclusions

References

Tables

Figures

◀

▶

◀

▶

Back

Close

Full Screen / Esc

Printer-friendly Version

Interactive Discussion

Weekly patterns of aerosolD. M. Murphy et al.

[Title Page](#)[Abstract](#)[Introduction](#)[Conclusions](#)[References](#)[Tables](#)[Figures](#)[◀](#)[▶](#)[◀](#)[▶](#)[Back](#)[Close](#)[Full Screen / Esc](#)[Printer-friendly Version](#)[Interactive Discussion](#)

EGU

There is a weekly pattern of sampler operations: the local operator checks the system's operation each Tuesday, and replaces the cartridge of exposed filter cassettes in each module with one of unexposed filter cassettes. This schedule imposes extra handling for Tuesday samples, which are briefly interrupted while the operator transfers the active filter cassette from the old cartridge to the new one. It also imposes sample-day-dependent delays between exposure and unloading, when losses might potentially occur within the sampler. (Any potential for contamination would presumably exist both before and after exposure, and so be independent of sample day.) Such hypothetical effects have not been detected in previous testing. With the exception of winter nitrate, they would not explain the calendar-week cycles presented here, whose extremes usually occur away from the Tuesday sampler maintenance.

The sites in the IMPROVE database were combined into 25 groups using hierarchical cluster analysis (Fig. 1). Fifteen urban sites were eliminated (ATLA1, BAL1, CHIC1, DETR1, FRES1, HOUS1, NEYO1, OLTO1, OMAH1, PHOE1, PITT1, PUSO1, RUB1, SAGU1, and WASH1), as were some sites that were closed before 2000. Then great circle distances were calculated between all site pairs and the closest pair of sites or clusters combined with each other. The process was repeated until the closest clusters were more than 390 km apart. This threshold was chosen to keep separate clusters in California. Single sites that had not ended up in a cluster were paired together (in Louisiana and the Carolinas) or combined with the nearest cluster (Everglades and Big Bend). Of sites outside of the continental United States, only Hawaii was kept because there were fewer samples in Alaska or the Virgin Islands.

Use of clusters is essential to this work. Weekly cycles at single sites are often not statistically significant when samples are taken every third day. Several sampling sites must be averaged to distinguish weekly cycles from random variability. Yet one cannot average the entire United States. It does not make sense to average together mineral dust concentrations from Arizona and Maine or sulfate concentrations in California and Ohio. The exact technique used to generate the clusters is less important than having some sort of regional averaging.

Weekly patterns of aerosol

D. M. Murphy et al.

[Title Page](#)[Abstract](#)[Introduction](#)[Conclusions](#)[References](#)[Tables](#)[Figures](#)[I◀](#)[▶I](#)[◀](#)[▶](#)[Back](#)[Close](#)[Full Screen / Esc](#)[Printer-friendly Version](#)[Interactive Discussion](#)

To start with a consistent set of data, all samples were required to have valid values for mass, elemental carbon, and sulfate. About 0.1% of the data were eliminated as high outliers. These are probably valid data influenced by local events such as fires or nearby dust generation. For example, fine mode mass was required to be less than $50\mu\text{g m}^{-3}$. The results are not sensitive to these cutoffs but they do help keep a single sample from skewing one day of the week for an entire cluster. This left 92 744 samples in the IMPROVE data during the time period after eliminating the urban sites. The actual number of samples for a given species may be slightly smaller, since not all analyses were performed on every sample. Data below detection limit were retained as zeros but species with many values below detection limit are not discussed in the paper. Notably, our mineral dust analysis does not consider aluminum because of a poor detection limit compared to silicon and iron.

Most of the subsequent results are presented in terms of the average weekly cycle in a cluster. For each day of the week, this is calculated as the average of all observations on that day of the week during the September 2000 to August 2006 period, at all sites in the cluster. For visual presentation, and for network averages, each cluster's cycle is normalized to that cluster's overall September 2000 to August 2006 mean.

Judging the statistical significance of the weekly cycles is difficult. The most important problem is the number of independent measurements. The standard errors in subsequent figures are calculated as usual by dividing the standard deviation of individual measurements by the square root of the number of measurements. The samples are not completely independent of each other, however, as this calculation implicitly assumes. Concentration variations are driven largely by meteorological variables, which are correlated in both time and space. The IMPROVE protocol of samples every third day should reduce but not completely eliminate the autocorrelation between successive samples (Anderson et al., 2003). Similarly, multiple sites within a cluster will often lie in the same synoptic airmass.

Dilution can cause statistical significance to be underestimated. Consider the simple case of two sites downwind of a consistent weekly source with rapid transport. Both

would show the same weekly cycles, but the site further downwind would have lower absolute values. If the sites with different absolute concentrations are averaged together, the standard deviations for each day would be large even though the sites were sampling the same source.

5 To assess the statistical significance, we compared the amplitude of the observed weekly cycle with the amplitude of the weekly cycle for synthetic time series generated from randomized versions of the same data. To preserve short-term correlations, data within each month were kept as a block and each month was shifted by a random number of days of the week. The resulting statistics for 500 randomized samples of
10 the data are shown in Table 1. The weekly cycle inferred from random data varies by species because of different variance and skew in the concentrations of each species.

Since we are considering the absolute value of the weekly cycle in the randomized data, the distributions are not centered on zero. This is why the 90th and 99th percentiles may appear closer than expected. Also, these percentiles of the absolute
15 values of weekly cycles represent the amplitude required for confidence that a cycle of any phase is real. They are not the same as the 90 percent confidence limits on the amplitude of the derived cycles (these are not computed here). The reason the two quantities are different is that random noise will always generate a positive weekly cycle of some phase whereas it can generate either a positive or negative error in a
20 cycle whose phase is already determined.

We also checked for cycles of 5, 8, and 10 d using the same software as the 7-day cycle (6 and 9 d cycles do not work well with samples taken every third d). For the species with cycles that are statistically significant compared to the randomized data, the 7-day cycle was much larger than the other periods. For example, by one measure
25 (maximum two consecutive days minus minimum two consecutive d) the weekly cycle for silicon was 15.3%. The 5, 8, and 10 d cycles were 2.6%, 2.7%, and 5.6% respectively. For sulfate, which was not statistically significant, the weekly cycle was 2.3% and the 8-day cycle was 2.5%. Finally, all of the weekly patterns shown here are robust with respect to changing the time period to various subsets of 2000 to 2006.

Weekly patterns of aerosol

D. M. Murphy et al.

[Title Page](#)[Abstract](#)[Introduction](#)[Conclusions](#)[References](#)[Tables](#)[Figures](#)[◀](#)[▶](#)[◀](#)[▶](#)[Back](#)[Close](#)[Full Screen / Esc](#)[Printer-friendly Version](#)[Interactive Discussion](#)

2.2 NOAA aerosol optical properties

The National Oceanic and Atmospheric Administration (NOAA) continuously measures aerosol optical properties at a number of baseline and regional monitoring stations (Delene and Ogren, 2002). Bondville, Illinois, and Southern Great Plains, Oklahoma, are relevant to this work. Their locations are shown on Fig. 1. Daily averaged data were used to construct the weekly cycles.

Aerosol light absorption was measured at 565 nm using Particle Soot/Absorption Photometers (PSAP, Radiance Research). The data were corrected for scattering using Bond et al. (1999). Aerosol light scattering was measured using TSI 3563 nephelometers. Only the 550 nm data are shown here. The sample stream was heated, if necessary, to maintain the relative humidity at about 50%. Further descriptions are available at <http://www.esrl.noaa.gov/gmd/aero/instrumentation/instrum.html>.

The PSAP filters were changed less frequently on weekends at the Southern Great Plains sit and therefore had lower average total filter transmission on Sundays and Mondays (J. Ogren, personal communication, 2007). The Bondville site was less affected. More recent work on PSAP corrections by Virkkula et al. (2005) suggests that the Bond et al. (1999) corrections have an accurate dependence on filter transmission except for highly absorbing aerosols (albedo less than about 0.7) that are not likely to be important for these sites.

2.3 Emissions inventories

Weekly cycles in SO₂ and NO_x emissions from power plants were computed for comparison with observed weekly cycles in aerosols. U.S. power plant emission data were obtained from the Environmental Protection Agency's Clean Air Markets Division, <http://camddataandmaps.epa.gov/gdm/index.cfm?fuseaction=emissions.wizard>. 1999 and 2005 hourly emissions recorded by continuous emission monitors at each power plant were aggregated over large geographic regions containing 50 to 300 individual plants. The hourly emissions for each region were averaged for each day of week

Title Page

Abstract

Introduction

Conclusions

References

Tables

Figures

◀

▶

◀

▶

Back

Close

Full Screen / Esc

Printer-friendly Version

Interactive Discussion

over the entire year, and the day-of-week averages were normalized using the average emissions in each region. Weekly cycles in 1999 were very similar to the 2005 data shown in the figure.

3 Results

3.1 Crustal elements

The largest percentage weekly cycles in aerosol concentrations were observed for the crustal elements Si, Ca, Ti, and Fe (Fig. 2). All had weekly cycles with 20% or greater range. Minima were on Sunday for most locations and maxima were usually on Thursday. Aluminum also had similar patterns but more values below the detection limit. The weekly cycles were consistent throughout the country except for a few locations where the absolute values were small. One of the largest weekly cycles was observed for the cluster in Arizona that had the largest annual averages for these elements of any cluster in the continental United States. That cluster had low values on both Saturday and Sunday, perhaps because the soil particles were generated locally so the atmospheric concentrations could respond more quickly to low emissions on the weekend. A curious feature for many locations is that the weekly maximum was on Thursday rather than Friday, as might be expected if weekday emissions built up in the atmosphere throughout the week. It is not clear to what extent this is a statistical fluctuation or a reflection of four-day work weeks.

On Fig. 2 and subsequent figures, the average for the continental United States was generated from the normalized averages of the clusters. This means that individual sites in areas with a dense network of sites contribute less to the average than sites where the network is sparse. Averaging the normalized weekly cycles means that regions with low absolute concentrations contribute as much to the continental average as regions with high concentrations. As a guide to the eye, normalized weekly cycles for individual clusters are plotted in orange or red if the maximum of two consecutive

Weekly patterns of aerosol

D. M. Murphy et al.

Title Page

Abstract

Introduction

Conclusions

References

Tables

Figures

◀

▶

◀

▶

Back

Close

Full Screen / Esc

Printer-friendly Version

Interactive Discussion

days is less or more than four standard errors from the minimum of two consecutive days.

3.2 Elemental carbon, organic carbon, and aerosol mass

Weekly cycles for elemental carbon, organic carbon, and several measures of aerosol mass are shown in Figs. 3 and 4. Elemental carbon is subtracted from fine mode mass because for climate forcing calculations it is sensible to separate absorbing and non-absorbing aerosols. This also facilitates comparison with the optical measurements discussed later. The weekly cycles for fine mass are not statistically significant for individual clusters. Although Fig. 3 shows one highly significant cluster, testing with the randomized series shows that by chance one out of 25 clusters can exceed the four standard error threshold for the color code on Fig. 3. However, the continental US average weekly cycle for fine mass is statistically significant (Table 1) at about the 95% level.

Elemental carbon has a much larger weekly cycle than organic carbon or the fine mode mass. Figure 4d compares some of the weekly cycles. In view of the large weekly cycle for crustal elements, a curve is shown for fine mass after removing the contribution from soil calculated using a slightly modified version of the IMPROVE soil equation:

$$\text{Soil} = (2.42 + 1.5) * \text{Fe} + 1.63 * \text{Ca} + 2.2 * \text{Al} + 2.49 * \text{Si} + 1.94 * \text{Ti} \quad (1)$$

The factors account for oxides, and in the case of Fe, crustal elements such as K that cannot easily be separated from other sources. The additional factor of $1.5 * \text{Fe}$ is a very rough estimate of a contribution from total carbon in the soil estimated from examining some strong dust events. We infer from this curve that the weekly cycle for fine mass is only partially due to the strong cycle in soil dust. It is also due to organic carbon and nitrate.

Figure 5 shows histograms of elemental carbon concentrations for one cluster. The lower averages on Sunday and Monday were caused by a shift of the entire distribution

Weekly patterns of aerosol

D. M. Murphy et al.

Title Page

Abstract

Introduction

Conclusions

References

Tables

Figures

◀

▶

◀

▶

Back

Close

Full Screen / Esc

Printer-friendly Version

Interactive Discussion

rather than changes in a few extreme values. This is the case for other clusters as well. The histograms also show the form of the distributions: on a log scale such as Fig. 5 the distributions are skewed left. On a linear scale they are skewed to the right, so the distributions are between log-normal and normal.

5 The IMPROVE network uses a thermo-optical method to separate organic and elemental carbon. For all thermo-optical methods, there are questions about the absolute accuracy of how organic carbon that chars during heating is separated from elemental carbon. Despite these questions, weekly cycles depend more on consistency of the carbon analysis than the absolute cut point between elemental and organic carbon. In
10 addition, the different weekly cycles for elemental and organic carbon show that the operational definition of elemental and organic carbon in the IMPROVE protocol does represent a useful separation for species with differing sources and behavior in the atmosphere.

3.3 Sulfate and nitrate

15 Sulfate has a very different pattern than elemental carbon. There is no statistically significant weekly cycle in sulfate, despite a weekly cycle in SO_2 emissions (Fig. 6). This is probably caused both by the emissions and the chemistry of SO_2 . Emissions of SO_2 from power plants decline by 5 to 15% on weekends compared to weekdays, a much smaller change than the reduction in diesel emissions on weekends. Elec-
20 tric power generation accounted for about 70% of US SO_2 emissions during the period 2000–2006 (National Emissions Inventory (NEI) Air Pollutant Emissions Trends Data, <http://www.epa.gov/ttn/chief/trends/index.html>). Unlike crustal material or elemental carbon, the SO_2 emissions must be chemically transformed to produce sulfate. This will delay and spread out any weekly pattern. Also, oxidation of SO_2 to sulfate
25 takes place by both gas phase reactions and liquid phase chemistry in clouds. These pathways proceed at different rates, further spreading out any weekly pattern. The variable presence of clouds may add to the daily scatter in sulfate and make cycles harder to discern.

Weekly patterns of aerosol

D. M. Murphy et al.

Title Page

Abstract

Introduction

Conclusions

References

Tables

Figures

◀

▶

◀

▶

Back

Close

Full Screen / Esc

Printer-friendly Version

Interactive Discussion

We compared the weekly cycles for winter and summer sulfate concentrations. Sulfate concentrations are generally higher in summer than in winter, when photochemistry is slower and liquid phase clouds are less common in the northern United States. Distinguishing seasons did not reveal any statistically significant cycles.

There are two main types of aerosol nitrate: ammonium nitrate and nitrate chemically bound to crustal cations such as calcium (Murphy et al., 2006). With few exceptions, ammonium nitrate is only stable when the sulfate has been completely neutralized. Otherwise it dissociates to gas phase ammonia and nitric acid. Because of the widespread oxidation of SO_2 to sulfuric acid, ammonium nitrate is more often limited by ammonium than the availability of gas phase nitric acid. The absolute amounts of nitrate vary greatly, with much larger concentrations in southern California and the Midwest than the mountain west. California and the Midwest are locations with substantial sources of ammonia and, especially for California, small emissions of SO_2 . The reaction of nitric acid with calcium in mineral dust is much less sensitive to sulfate.

In contrast to sulfate, nitrate shows a weekly cycle (Fig. 7). Some of the cycle in nitrate is driven by the strong weekly cycle in crustal elements, but examination of the absolute values shows that calcium nitrate and similar species cannot account for all of the observed cycle in nitrate. The weekly nitrate minimum is Sunday through Tuesday, later than other species. The presence of a weekly cycle in nitrate is a little surprising because of the possible limitations by ammonia. For example, emissions of ammonia from farm animals should be fairly constant. NO_x emissions from power plants have a similar cycle to that shown for sulfate in Fig. 6. NO_x emissions from vehicles will have a much stronger weekly cycle, similar to that for elemental carbon. The fraction of US NO_x emitted by electric power generation decreased from 24% in 2000 to 20% in 2006. During the same period, on-road mobile sources produced about 37% while the contribution of off-highway vehicles has increased from 18% to 22% (National Emissions Inventory (NEI) Air Pollutant Emissions Trends Data, <http://www.epa.gov/ttn/chief/trends/index.html>). A weekly cycle for nitrate with a Sunday-Monday minimum has also been found in some urban areas (Millstein et al., 2007).

Weekly patterns of aerosol

D. M. Murphy et al.

Title Page

Abstract

Introduction

Conclusions

References

Tables

Figures

◀

▶

◀

▶

Back

Close

Full Screen / Esc

Printer-friendly Version

Interactive Discussion

**Weekly patterns of
aerosol**D. M. Murphy et al.

[Title Page](#)[Abstract](#)[Introduction](#)[Conclusions](#)[References](#)[Tables](#)[Figures](#)[◀](#)[▶](#)[◀](#)[▶](#)[Back](#)[Close](#)[Full Screen / Esc](#)[Printer-friendly Version](#)[Interactive Discussion](#)

EGU

Although the data are noisy when separated by season, there does appear to be a shift in the timing from a Sunday minimum in summer to a Tuesday minimum in winter (Fig. 7). There are two possible explanations for this shift. First, conversion of NO_x to HNO_3 , followed by rapid equilibration with aerosol nitrate, will be much slower in winter than in summer. That could shift the phase of the weekly cycle. Second, there could be an unrecognized artifact associated with the extra handling Tuesday samples receive from the site operator. Low temperatures and low sulfate concentrations favor the stability of ammonium nitrate particles, so nitrate concentrations in most of the country peak during the winter. The Nylon filters used for IMPROVE's nitrate measurement retain any nitric acid gas released after collection by thermal dissociation of ammonium nitrate. Warming of winter-Tuesday samples during the brief handling period, when any volatilized nitric acid would not be drawn back into the filter, must for the moment be considered as a possible explanation for the nitrate minimum on winter Tuesdays.

3.4 Lead and other metals

Lead is the only species studied with a weekend maximum (Fig. 8). The largest single source of airborne Pb, accounting for about 25% of US emissions, is leaded gasoline in small piston aircraft (Murphy et al., 2007). Many of these small planes are recreational and emissions probably peak on weekends. The next largest sources of airborne Pb are coal-fired power plants and heavy steel industry. Those emissions probably go down slightly on weekends as shown earlier for SO_2 .

Zinc and Pb are highly correlated in atmospheric samples, probably because of similar electric utility and industrial sources and similar condensation in combustion exhaust (Murphy et al., 2007). Their ratio is less variable than their absolute concentrations with a very consistent Sunday maximum (Fig. 8). Most locations in the United States have $\text{Pb}/(\text{Pb}+\text{Zn})$ in a narrow range between 0.3 and 0.33. The ratio $\text{Pb}/(\text{Pb}+\text{Zn})$ is computed instead of Pb/Zn because the latter diverges when Zn concentrations are small.

By itself, Zn had a small weekly cycle with a Sunday minimum. Neither vanadium nor selenium had a statistically significant weekly cycle. The data for copper are noisy.

3.5 Optical properties of aerosols

Changes in the optical properties of aerosols at two sites in the central United States are consistent with the weekly cycles from the IMPROVE network. These NOAA sites use completely different instrumentation than the IMPROVE sites and operate continuously rather than sampling for 24 h every third day. At both NOAA sites, there was a weekly minimum in aerosol light absorption on Monday (Fig. 9). Although the national minimum for IMPROVE elemental carbon was on Sunday, the clusters of sites close to Bondville and Southern Great Plains had minima on Monday (Fig. 3). With samples every third day, there were not enough data to do the direct comparison of just the Bondville IMPROVE site with the NOAA Bondville data. There were no statistically significant weekly cycles in light scattering at either NOAA site. This is consistent with the lack of a statistically significant weekly cycle in sulfate and the small cycle in organic carbon.

4 Implications

The weekly cycles shown here are unlikely to be from local sources at the sampling sites for two reasons. First, the data show regional rather than local patterns. Second, many of the IMPROVE sites are at national parks and monuments. One would expect weekend maxima rather than minima if local traffic were generating the weekly cycles.

Large-scale weekly cycles in aerosol have implications for emissions, health effects, and climate studies. The weekly cycles in emissions must be much stronger than the up to 20% cycles observed in aerosol species. At any site and time, some sources will be very close, some one day upwind, and others further upwind. Multiple sources and variations in winds will both tend to smear out the weekly cycle in emissions.

Weekly cycles of traffic emissions have been studied in California. There, passenger vehicle travel is similar on weekdays and weekends but heavy truck emissions decrease by 70 to 80% on weekends (Marr et al., 2002; Motallebi et al., 2003; Harley et

Weekly patterns of aerosol

D. M. Murphy et al.

Title Page

Abstract

Introduction

Conclusions

References

Tables

Figures

◀

▶

◀

▶

Back

Close

Full Screen / Esc

Printer-friendly Version

Interactive Discussion

al., 2005). For passenger vehicles, there are diurnal differences between weekday and weekend. The peak emissions are at rush hours during the week but around midday on weekends. The dominant effect for elemental carbon emissions is the decrease of diesel emissions on weekends. Elemental carbon concentrations on all days should decrease as new controls on heavy truck emissions penetrate the fleet.

The weekly cycle in crustal elements implies a large anthropogenic source in the United States besides wind-blown dust. The crustal elements have an even larger weekly cycle than elemental carbon, which is affected by the 70% decrease in heavy truck emissions on weekends. That means that the anthropogenic source for crustal elements must be both large and decrease very significantly on weekends. Light vehicle traffic on dirt or dusty roads probably does not have a sufficiently large weekly cycle. We do not know what fractions of plowing and other agricultural operations are conducted on weekends, and these may vary with region and season. Construction and heavy truck traffic on dirt roads are possible sources of dust with large weekly cycles. For Pb, the IMPROVE data support a significant source from leaded aviation fuel.

Weekly cycles may have implications for epidemiological studies of the health effects of aerosols. First, personal exposure to certain species will be affected if people spend more time outdoors on Sundays when mineral dust and elemental carbon concentrations are lower. Second, there might be some effects on the statistics in time series studies. Such studies often include day-of-week in the statistical analysis (Pope and Dockery, 2006). This should take out the biggest effects but it is hard to exclude subtle interactions in the time series. On the other hand, the consistency of weekly cycles throughout the United States means that studies comparing different cities over the same time period should compensate very well for any weekly cycles. Third, health care can be better on weekdays than weekends, resulting in different mortality rates for the same conditions (Bell and Redelmeier, 2001). This could conceivably cause aerosol-health correlations to be underestimated if aerosol health effects maximize on weekdays when treatment is better. Finally, it is possible that the differing weekly cy-

Weekly patterns of aerosolD. M. Murphy et al.

[Title Page](#)[Abstract](#)[Introduction](#)[Conclusions](#)[References](#)[Tables](#)[Figures](#)[I◀](#)[▶I](#)[◀](#)[▶](#)[Back](#)[Close](#)[Full Screen / Esc](#)[Printer-friendly Version](#)[Interactive Discussion](#)

cles of elemental carbon and sulfate could be used in a statistical sense to examine the difficult question of what aerosol components are most responsible for the health effects.

These results are important for studies of weekly and other short-term climate effects of aerosols. The direct climate effects of elemental carbon and non-absorbing fine particle mass have opposite signs. It will not be possible to relate weekly cycles in temperature or precipitation to aerosols without considering elemental carbon separately from other species. The differing weekly cycles of various aerosol species could provide a powerful check on aerosol transport models. Finally, mineral dust particles can be potent ice nuclei so the strong weekly cycle in crustal elements could affect ice clouds and precipitation.

Acknowledgements. S. L. Capps was supported by the National Oceanic and Atmospheric Administration's Ernest F. Hollings Undergraduate Scholarship Program administered by the Oak Ridge Institute for Science and Education.

References

- Almeida, S. M., Pio, C. A., Freitas, M. C., Reis, M. A., and Trancoso, M. A.: Source apportionment of atmospheric urban aerosol based on weekdays/weekends variability: evaluation of road re-suspended dust contribution, *Atmos. Environ.*, 40, 2058–2067, 2006.
- Anderson, T. L., Charlson, R. J., Winker, D. M., Ogren, J. A., and Holmén, K.: Mesoscale variations of tropospheric aerosols, *J. Atmos. Sci.*, 60, 119–136, 2003.
- Bäumer, D. and Vogel, B.: An unexpected pattern of distinct weekly periodicities in climatological variables in Germany, *Geophys. Res. Lett.*, 34, L03819, doi:10.1029/2006GL028559, 2007.
- Beirle, S., Platt, U., Wenig, M., and Wagner, T.: Weekly cycle of NO₂ by GOME measurements: a signature of anthropogenic sources, *Atmos. Chem. Phys.*, 3, 2225–2232, 2003, <http://www.atmos-chem-phys.net/3/2225/2003/>.
- Bell, C. M. and Redelmeier, D. A.: Mortality among patients admitted to hospitals on weekends as compared with weekdays, *New Engl. J. Med.*, 345, 663–668, 2001.

Weekly patterns of aerosol

D. M. Murphy et al.

Title Page

Abstract

Introduction

Conclusions

References

Tables

Figures

◀

▶

◀

▶

Back

Close

Full Screen / Esc

Printer-friendly Version

Interactive Discussion

- Blanchard, C. L. and Tanenbaum, S. J.: Differences between weekday and weekend air pollutant levels in Southern California, *J. Air Waste Manage.*, 53, 816–828, 2003.
- Bond, T. C., Anderson, T. L., and Campbell, D.: Calibration and intercomparison of filter-based measurements of visible light absorption by aerosols, *Aerosol Sci. Technol.*, 30, 582–600, 1999.
- 5 Chow, J. C., Watson, J. G., Chen, L.-W. A., Chang, M. C. O., Robinson, N. F., Trimble, D., and Kohl, S.: The IMPROVE_A temperature protocol for thermal/optical carbon analysis: maintaining consistency with a long-term database, *J. Air Waste Manage.*, 57, 1014–1023, 2007.
- 10 Delene, D. J. and Ogren, J. A.: Variability of aerosol optical properties at four North American surface monitoring sites, *J. Atmos. Sci.*, 59, 1135–1150, 2002.
- Elkus, B. and Wilson, K. R.: Photochemical air pollution: Weekend-weekday differences, *Atmos. Environ.*, 11, 509–515, 1977.
- Forster, P. M. de F. and Solomon, S.: Observations of a “weekend effect” in diurnal temperature range, *P. Natl. Acad. Sci. USA*, 100, 11 225–11 230, 2003.
- 15 Gong, D.-Y., Guo, D., and Ho, C.-H.: Weekend effect in diurnal temperature range in China: Opposite sign between winter and summer, *J. Geophys. Res.*, 111, D18113, doi:10.1029/2006JD007068, 2006.
- Harley, R. A., Marr, L. C., Lehner, J. K., and Giddings, S. N.: Changes in motor vehicle emissions on diurnal to decadal time scales and effects on atmospheric composition, *Environ. Sci. Technol.*, 39, 5356–5362, 2005.
- 20 Jin, M., Shepherd, J. M., and King, M. D.: Urban aerosols and their variations with clouds and rainfall: A case study for New York and Houston, *J. Geophys. Res.*, 110, D10S20, doi:10.1029/2004JD005081, 2005.
- Lough, G. C., Schauer, J. J., and Lawson, D. R.: Day-of-week trends in carbonaceous aerosol composition in the urban atmosphere, *Atmos. Environ.*, 40, 4137–4149, 2006.
- 25 Malm, W. C., Schichtel, B. A., Pitchford, M. L., Ashbaugh, L. L., and Eldred, R. A.: Spatial and monthly trends in speciated fine particle concentration in the United States, *J. Geophys. Res.*, 109, D03306, doi:10.1029/2003JD003739, 2004.
- 30 Marr, L. C. and Harley, R. A.: Modeling the effect of weekday-weekend differences on motor vehicle emissions on photochemical air pollution in central California, *Environ. Sci. Technol.*, 36, 4099–4106, 2002.
- Marr, L. C., Black, D. R., and Harley, R. A.: Formation of photochemical air pollution in central

Weekly patterns of aerosol

D. M. Murphy et al.

Title Page

Abstract

Introduction

Conclusions

References

Tables

Figures

◀

▶

◀

▶

Back

Close

Full Screen / Esc

Printer-friendly Version

Interactive Discussion

**Weekly patterns of
aerosol**

D. M. Murphy et al.

Title Page

Abstract

Introduction

Conclusions

References

Tables

Figures

◀

▶

◀

▶

Back

Close

Full Screen / Esc

Printer-friendly Version

Interactive Discussion

- California 1. Development of a revised motor vehicle emission inventory, *J. Geophys. Res.*, 107(D6), 4047, doi:10.1029/2001JD000689, 2002.
- Millstein, D. E., Harley, R. A., and Hering, S. V.: Weekly cycles in fine particulate nitrate, *Atmos. Environ.*, in press, 2007.
- 5 Motallebi, N., Tran, H., Croes, B. E., and Larsen, L. C.: Day-of-week patterns of particulate matter and its chemical components at selected sites in California, *J. Air Waste Manage.*, 53, 876–888, 2003.
- Murphy, D. M., Cziczo, D. J., Froyd, K. D., Hudson, P. K., Matthew, B. M., Middlebrook, A. M., Peltier, R. E., Sullivan, A., Thomson, D. S., and Weber, R. J.: Single-particle mass spectrometry of tropospheric aerosol particles, *J. Geophys. Res.*, 111, D23S32, 10.1029/2006JD007340, 2006.
- 10 Murphy, D. M., Hudson, P. K., Cziczo, D. J., Gallavardin, S., Froyd, K. D., Johnston, M. V., Middlebrook, A. M., Reinard, M. S., Thomson, D. S., Thornberry, T., and Wexler, A. S.: Distribution of lead in single atmospheric particles, *Atmos. Chem. Phys.*, 7, 3195–3210, 2007, <http://www.atmos-chem-phys.net/7/3195/2007/>.
- Pope, C. A. III and Dockery, D. W.: Health effects of fine particulate air pollution: lines that connect, *J. Air Waste Manage.*, 56, 709–724, 2006.
- Venkatachari, P., Zhou, L. M., Hopke, P. K., Felton, D., Rattigan, O. V., Schwab, J. J., and Demerjian, K. L.: Spatial and temporal variability of black carbon in New York City, *J. Geophys. Res.*, 111, D10S05, 10.1029/2005JD006314, 2006.
- 20 Virkkula, A., Ahlquist, N. C., Covert, D. S., Arnott, W. P., Sheridan, P. J., Quinn, P. K., and Coffman, D. J.: Modification, calibration and a field test of an instrument for measuring light absorption by particles, *Aerosol Sci. Tech.*, 39, 68–83, 2005.
- 25 White, W. H., Macias, E. S., Miller, D. F., Schorran, D. E., Hoffer, T. E., and Rogers, D. P.: Regional transport of the urban workweek: Methylchloroform cycles in the Nevada-Arizona desert, *Geophys. Res. Lett.*, 17, 1081–1084, 1990.
- White, W. H., Macias, E. S., Miller, D. F., Schorran, D. E., Hoffer, T. E., and Rogers, D. P.: Observations of Los Angeles smog in southern Nevada, in *Tropospheric Ozone and the Environment*, edited by Berglund, R. L., Air Waste Management Association, Pittsburgh, 1991.
- 30

Weekly patterns of aerosol

D. M. Murphy et al.

Title Page

Abstract

Introduction

Conclusions

References

Tables

Figures

◀

▶

◀

▶

Back

Close

Full Screen / Esc

Printer-friendly Version

Interactive Discussion

EGU

Table 1. Statistics of weekly cycles for selected species averaged over the continental United States.

Species	Weekly range (%)	Weekly two-day range* (%)	Randomized data	
			Weekly two-day range (%)	Weekly two-day range (%)
			90th percentile	99th percentile
Silicon	22.4	15.3	9.1	11.4
Iron	26.5	18.1	10.2	14.2
Calcium	24.3	17.4	9.6	12.8
Coarse mass	23.1	18.4	9.8	12.8
Elemental carbon	14.2	11.4	6.3	8.1
Organic carbon	7.9	5.6	4.9	6.2
Fine mass – EC	7.9	6.2	5.1	6.4
Fine mass – (EC+soil)	5.5	<i>4.8</i>	5.4	7.2
Sulfate	4.5	<i>2.3</i>	5.4	7.2
Nitrate	13.4	11.0	8.0	9.7
Pb	9.1	6.7	5.0	6.6
Pb/(Pb + Zn)	8.4	7.0	3.6	5.2
Zn	8.3	6.6	4.3	5.3
V	4.5	<i>3.2</i>	6.6	8.0
Se	3.3	<i>1.8</i>	4.4	5.9

* maximum two consecutive days – minimum two consecutive days

Bold: exceeds 99th percentile of randomized data; italics: less than 90th percentile

Weekly patterns of
aerosol

D. M. Murphy et al.

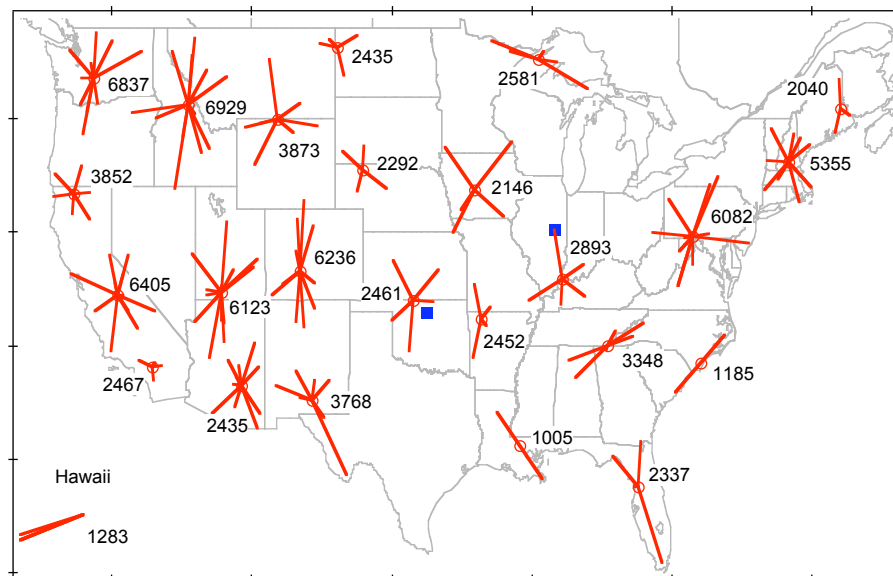


Fig. 1. Clusters generated from the IMPROVE site locations. Each cluster is shown by a circle with lines to the positions of the individual sites in that cluster. Next to each cluster is the number of elemental carbon samples for the analysis in this paper; other species have similar numbers of samples. Also shown as squares are the two NOAA monitoring sites discussed in this paper.

[Title Page](#)[Abstract](#)[Introduction](#)[Conclusions](#)[References](#)[Tables](#)[Figures](#)[◀](#)[▶](#)[◀](#)[▶](#)[Back](#)[Close](#)[Full Screen / Esc](#)[Printer-friendly Version](#)[Interactive Discussion](#)

Weekly patterns of aerosol

D. M. Murphy et al.

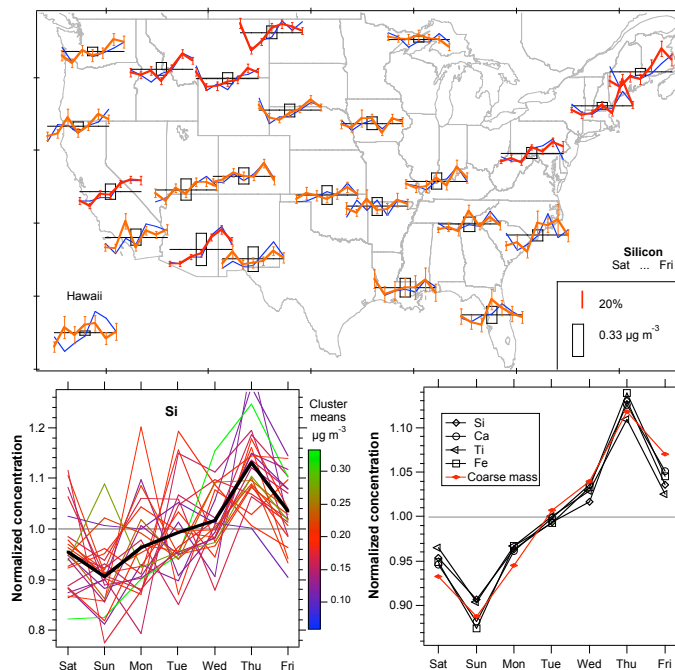


Fig. 2. Weekly cycles of crustal elements in the fine mode (below $2.5\ \mu\text{m}$). The top panel shows weekly cycles for silicon at each cluster of IMPROVE sites. For each cluster of sites, Saturday through Friday averages are shown in red or orange as departures from the weekly mean, with standard errors. Red curves indicate statistical significance is more likely than for orange. Weekly cycles in medians are shown in blue. Rectangles are proportional in size to the annual mean for each cluster. The lower left panel shows the normalized weekly cycles for silicon for each cluster in the continental United States. The heavy line is the average over all clusters. The lower right panel shows the average weekly cycle for the continental United States for various crustal elements and coarse mass, defined as the difference between fine and total (PM_{10}) mass.

[Title Page](#)
[Abstract](#)
[Introduction](#)
[Conclusions](#)
[References](#)
[Tables](#)
[Figures](#)
[◀](#)
[▶](#)
[◀](#)
[▶](#)
[Back](#)
[Close](#)
[Full Screen / Esc](#)
[Printer-friendly Version](#)
[Interactive Discussion](#)

Weekly patterns of
aerosol

D. M. Murphy et al.

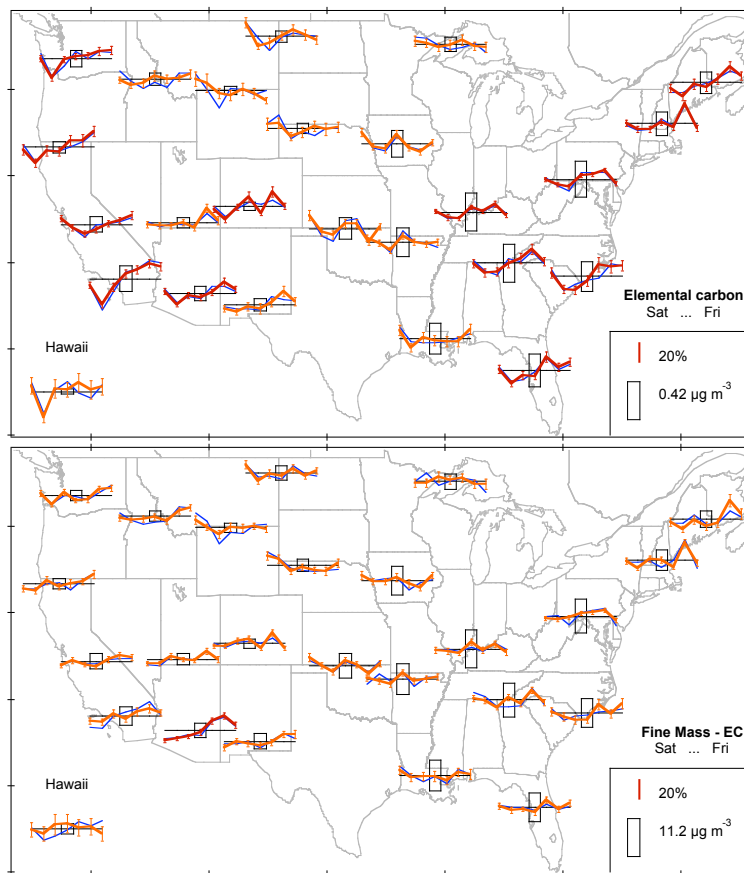


Fig. 3. Weekly cycles for fine mode elemental carbon and the balance of fine mass. As in Fig. 2, red lines are average percentage daily departures from the mean for that cluster and blue lines are departures of the medians. Rectangles are proportional to the annual mean for each cluster of sites.

[Title Page](#)[Abstract](#)[Introduction](#)[Conclusions](#)[References](#)[Tables](#)[Figures](#)[◀](#)[▶](#)[◀](#)[▶](#)[Back](#)[Close](#)[Full Screen / Esc](#)[Printer-friendly Version](#)[Interactive Discussion](#)

Weekly patterns of
aerosol

D. M. Murphy et al.

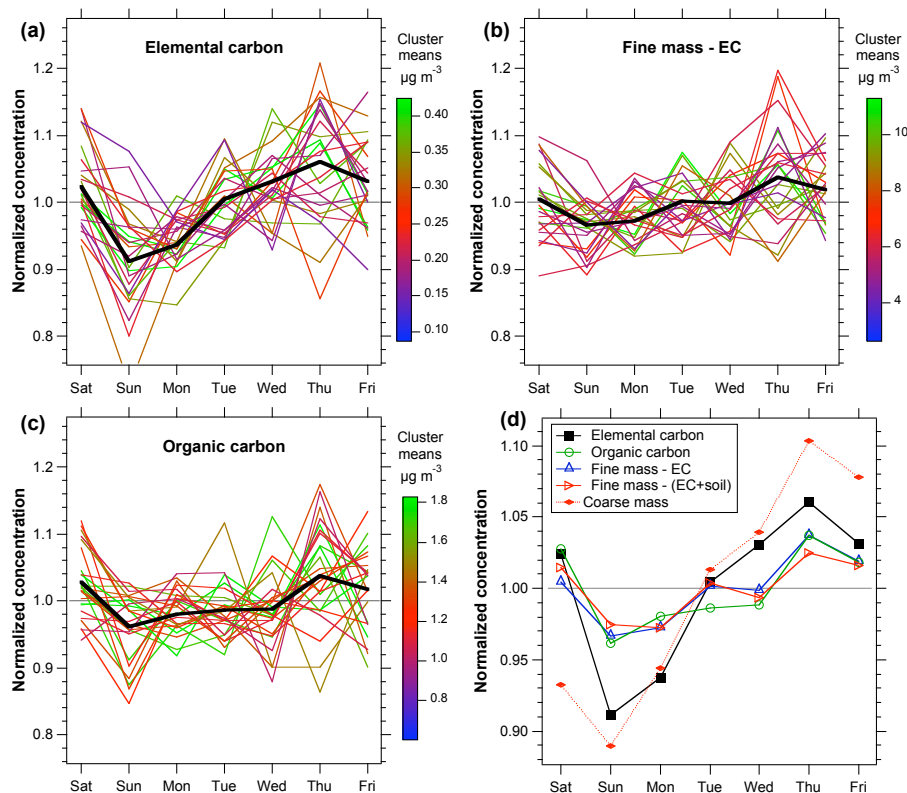


Fig. 4. A comparison of the weekly cycles of elemental and organic carbon as well as various measures of the fine and coarse mode mass. Each line is the weekly cycle for one cluster of sites, colored by the annual mean. The heavy black lines are the averages for all clusters in the continental United States.

[Title Page](#)[Abstract](#)[Introduction](#)[Conclusions](#)[References](#)[Tables](#)[Figures](#)[◀](#)[▶](#)[◀](#)[▶](#)[Back](#)[Close](#)[Full Screen / Esc](#)[Printer-friendly Version](#)[Interactive Discussion](#)

EGU

Weekly patterns of
aerosol

D. M. Murphy et al.

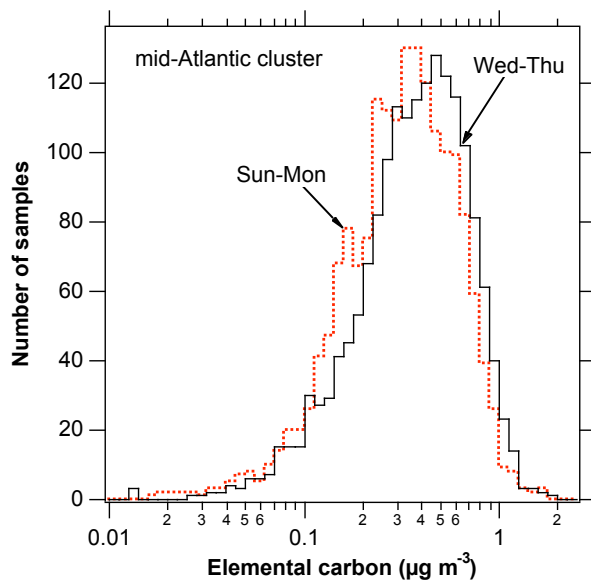


Fig. 5. Histograms of elemental carbon concentrations for one cluster of IMPROVE sites centered around Pennsylvania and West Virginia. The histograms compare Sunday and Monday with Wednesday and Thursday.

[Title Page](#)[Abstract](#)[Introduction](#)[Conclusions](#)[References](#)[Tables](#)[Figures](#)[◀](#)[▶](#)[◀](#)[▶](#)[Back](#)[Close](#)[Full Screen / Esc](#)[Printer-friendly Version](#)[Interactive Discussion](#)

EGU

Weekly patterns of
aerosol

D. M. Murphy et al.

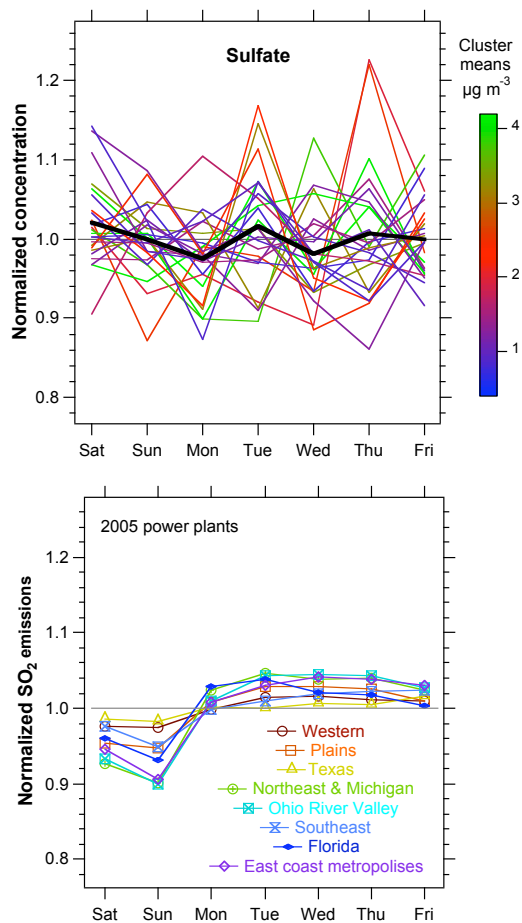


Fig. 6. Weekly cycles of sulfate in the IMPROVE network and emissions of SO_2 from power plants. Symbols and lines are the same as Fig. 2.

Title Page

Abstract

Introduction

Conclusions

References

Tables

Figures

◀

▶

◀

▶

Back

Close

Full Screen / Esc

Printer-friendly Version

Interactive Discussion

Weekly patterns of
aerosol

D. M. Murphy et al.

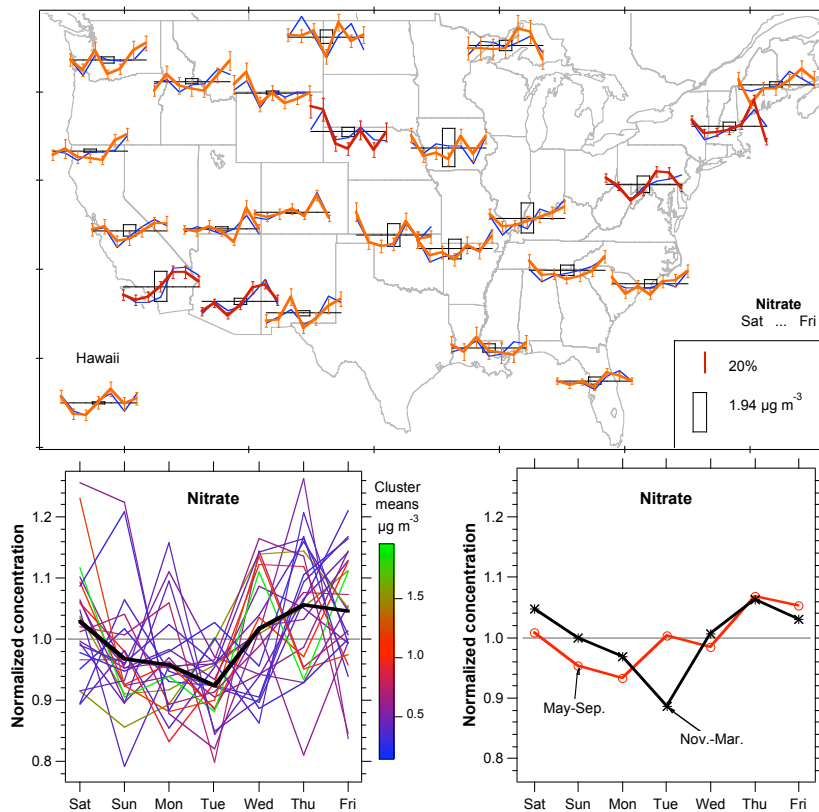


Fig. 7. Weekly cycles of nitrate in the IMPROVE network. The lower right panel shows the average for the continental US separated by season. Symbols and lines are the same as Fig. 2.

[Title Page](#)[Abstract](#)[Introduction](#)[Conclusions](#)[References](#)[Tables](#)[Figures](#)[◀](#)[▶](#)[◀](#)[▶](#)[Back](#)[Close](#)[Full Screen / Esc](#)[Printer-friendly Version](#)[Interactive Discussion](#)

Weekly patterns of aerosol

D. M. Murphy et al.

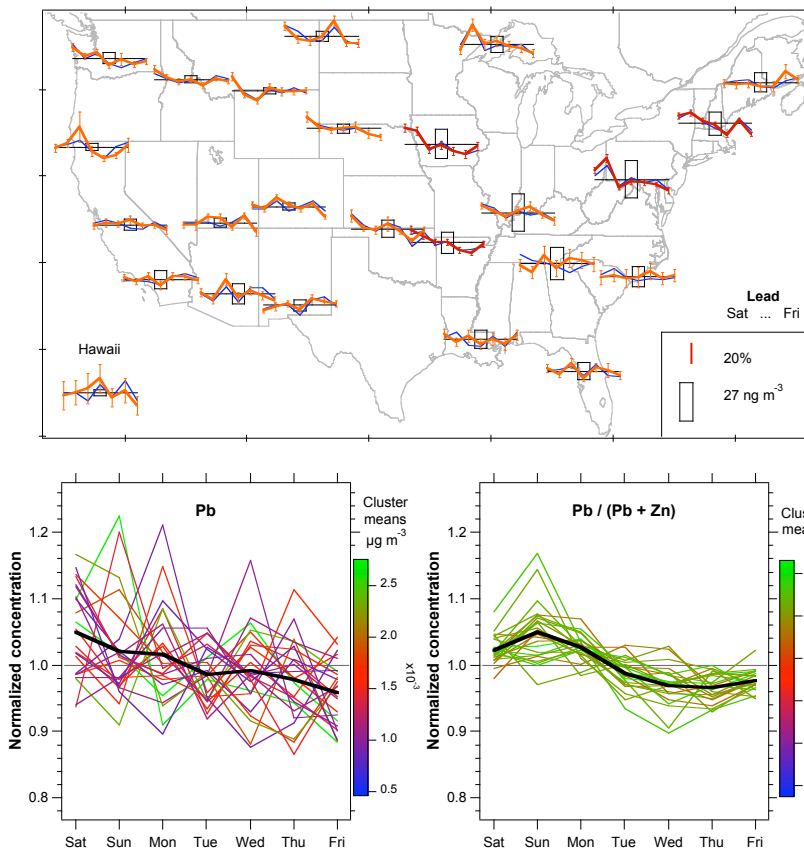


Fig. 8. Weekly cycles for Pb and the ratio of Pb to Zn. As for other figures, the red lines are the departures of the daily averages from each cluster mean, blue departures for medians, and the boxes are proportional to the annual mean for each cluster.

Title Page

Abstract

Introduction

Conclusions

References

Tables

Figures

◀

▶

◀

▶

Back

Close

Full Screen / Esc

Printer-friendly Version

Interactive Discussion

Weekly patterns of
aerosol

D. M. Murphy et al.

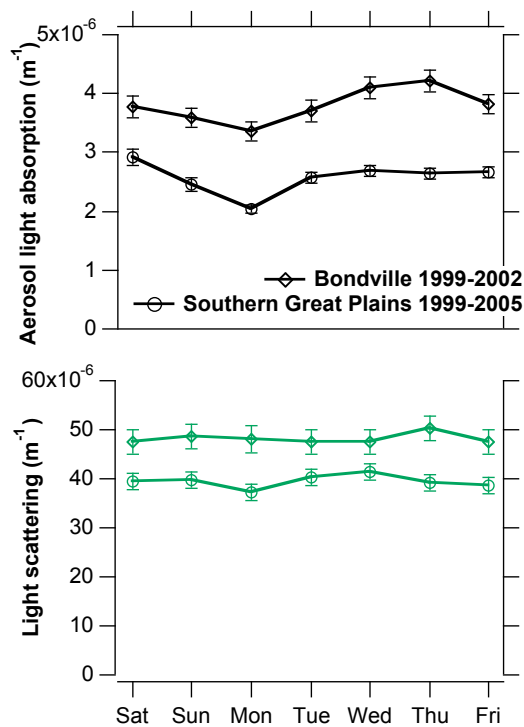


Fig. 9. Aerosol light absorption and scattering from the NOAA monitoring sites at Bondville, Illinois, and Southern Great Plains, Oklahoma.

[Title Page](#)[Abstract](#)[Introduction](#)[Conclusions](#)[References](#)[Tables](#)[Figures](#)[◀](#)[▶](#)[◀](#)[▶](#)[Back](#)[Close](#)[Full Screen / Esc](#)[Printer-friendly Version](#)[Interactive Discussion](#)

EGU