



**HAL**  
open science

## The validity of the kinetic collection equation revisited

L. Alfonso, G. B. Raga, D. Baumgardner

► **To cite this version:**

L. Alfonso, G. B. Raga, D. Baumgardner. The validity of the kinetic collection equation revisited. Atmospheric Chemistry and Physics Discussions, 2007, 7 (5), pp.13733-13771. hal-00303105

**HAL Id: hal-00303105**

**<https://hal.science/hal-00303105>**

Submitted on 18 Jun 2008

**HAL** is a multi-disciplinary open access archive for the deposit and dissemination of scientific research documents, whether they are published or not. The documents may come from teaching and research institutions in France or abroad, or from public or private research centers.

L'archive ouverte pluridisciplinaire **HAL**, est destinée au dépôt et à la diffusion de documents scientifiques de niveau recherche, publiés ou non, émanant des établissements d'enseignement et de recherche français ou étrangers, des laboratoires publics ou privés.

**The validity of the  
kinetic collection  
equation**

L. Alfonso et al.

# The validity of the kinetic collection equation revisited

L. Alfonso<sup>1</sup>, G. B. Raga<sup>2</sup>, and D. Baumgardner<sup>2</sup>

<sup>1</sup>Universidad Autónoma de la Ciudad de México, México City, 09790 México

<sup>2</sup>Centro de Ciencias de la Atmósfera, UNAM, México City, 04510 México

Received: 22 August 2007 – Accepted: 9 September 2007 – Published: 20 September 2007

Correspondence to: L. Alfonso (lesterson@yahoo.com)

Title Page

Abstract

Introduction

Conclusions

References

Tables

Figures

◀

▶

◀

▶

Back

Close

Full Screen / Esc

Printer-friendly Version

Interactive Discussion

## Abstract

The kinetic collection equation (KCE) describes the evolution of the average droplet spectrum due to successive events of collision and coalescence. Fluctuations and non-zero correlations present in the stochastic coalescence process would imply that the size distributions may not be correctly modelled by the KCE.

In this study we expand the known analytical studies of the coalescence equation with some numerical tools such as Monte Carlo simulations of the coalescence process. The validity time of the KCE was estimated by calculating the maximum of the ratio of the standard deviation for the largest droplet mass over all the realizations to the averaged value. A good correspondence between the analytical and the numerical approaches was found for all the kernels studied. The expected values from analytical solutions of the KCE, were compared with true expected values of the stochastic collection equation (SCE) estimated with Gillespie's Monte Carlo algorithm and analytical solutions of the SCE, after and before the breakdown time.

The possible implications for cloud physics are discussed, in particular the possibility of application of these results to kernels modified by turbulence and electrical processes.

## 1 Introduction

The kinetic collection equation (KCE) describes the temporal change of the mean number of particles of mass  $x_j$  in a given volume of fluid through the process of coalescence and is written as

$$\frac{\partial n(i, t)}{\partial t} = \frac{1}{2} \sum_{j=1}^{i-1} K(i-j, j)n(i-j)n(j) - n(i) \sum_{j=1}^{\infty} K(i, j)n(j) \quad (1)$$

Here  $n(i, t)$  can be obtained for  $t > 0$  from a given initial spectrum  $n(i, 0)$ . The coagulation kernel  $K(i, j)$  contains the probability of coalescence of two drops of masses  $x_i$ ,

## The validity of the kinetic collection equation

L. Alfonso et al.

Title Page

Abstract

Introduction

Conclusions

References

Tables

Figures

◀

▶

◀

▶

Back

Close

Full Screen / Esc

Printer-friendly Version

Interactive Discussion

$x_j$ .

The KCE gives the time rate of change of the average number of  $i$  droplets as the difference of two terms, the first term describes the average rate of production of droplets of mass  $x_i$  due to coalescence between pairs of drops whose masses add  $x_i$ , and the second term describes the average rate of depletion of  $x_i$  droplets due to their coalescences with other droplets. As was pointed out by Gillespie (1975), the KCE is only an approximate time-evolution equation for  $n(i, t)$  because the numbers of droplets of different masses are statistically correlated, and the KCE equation contains no definite information concerning the size of the fluctuations from the average, which would be observed in independent realizations of the coalescence stochastic process. Furthermore, for certain collection kernels, the KCE gives nonphysical solutions in which the total mass of the system is not conserved (Drake, 1972; Aldous, 1997). For example, the solution of the KCE using a kernel proportional to the product of the masses of the colliding droplets, features unrealistic behavior such as failure to conserve mass, and divergence of the second moments.

The main goal of our work is to test a numerical criteria for the validity time of the KCE (Inaba et al., 1999), with analytical results obtained for the KCE with kernels for which analytical solutions existed. Because of that, we are not using a realistic collection kernel determined from either laboratory measurements or theoretical flow modeling. The idea is to test the numerical results with simple kernels in order to extend the results to real kernels in future works.

Drake (1972) carefully analyzed the solutions of the KCE for polynomial kernels of the form  $A+B(x_i+x_j)+Cx_ix_j$ , and concluded that any polynomial containing an  $x_ix_j$  term is a poor approximation, based on the fact that the non-linear term leads to a time when the second moment of the raindrop distribution becomes infinite, and liquid water content is no longer conserved.

The reason for these behaviors has been previously explained and results from the fact that deterministic laws are valid only for infinite systems, e.g., systems with large number of particles in large volumes. However, as droplets grow by coalescence, the

**The validity of the kinetic collection equation**

L. Alfonso et al.

Title Page

Abstract

Introduction

Conclusions

References

Tables

Figures

⏪

⏩

◀

▶

Back

Close

Full Screen / Esc

Printer-friendly Version

Interactive Discussion

number of them inevitably decreases, and, as a result, the KCE becomes invalid to describe the process.

This problem is relevant to cloud physics, since the evolution of the large end of the spectrum is crucial in the description of precipitation development. The KCE assumes that the number of particles  $n(i, t)$  is a continuous variable. If the collection kernel increases steeply with the mass of the particles, then the collection rate at the high-mass end of the spectrum is significant. A single drop can acquire a mass much larger than the rest of the system and becomes separated from the smooth mass spectrum. In such a situation, the statistical fluctuations at the high-mass end of the spectrum must be taken into account.

A numerical approach to the collection process that takes into account statistical fluctuations is Monte Carlo (MC). Gillespie (1975) first developed an exact Monte Carlo framework for simulating the stochastic coalescence process. Within this framework, all assumptions included in the stochastic collection equation are avoided.

Another way to handle this problem is to study the probability  $P(n_1, n_2, \dots, n_k, \dots, t)$  that the system has a drop spectrum  $\bar{n}=(n_1, n_2, \dots, n_k, \dots)$  at time  $t$ . The evolution of the probability distribution  $P$  is described by the stochastic coalescence equation (Bayewitz et al., 1974, Lushnikov, 1978; Tanaka and Nakazawa 1993; Inaba et al., 1999; and more recently Wang et al., 2006). This equation has the form:

$$\begin{aligned} \frac{\partial P(\bar{n})}{\partial t} = & \sum_{i=1}^N \sum_{j=i+1}^N K(i, j)(n_i + 1)(n_j + 1)P(\dots, n_i + 1, \dots, n_j + 1, \dots, n_{i+j} - 1, \dots; t) \\ & + \sum_{i=1}^N \frac{1}{2} K(i, i)(n_i + 2)(n_i + 1)P(\dots, n_i + 2, \dots, n_{2i} - 1, \dots; t) \\ & - \sum_{i=1}^N \sum_{j=i+1}^N K(i, j)n_i n_j P(\bar{n}; t) - \sum_{i=1}^N \frac{1}{2} K(i, i)n_i(n_i - 1)P(\bar{n}; t) \end{aligned} \quad (2)$$

**The validity of the kinetic collection equation**

L. Alfonso et al.

Title Page

Abstract

Introduction

Conclusions

References

Tables

Figures

◀

▶

◀

▶

Back

Close

Full Screen / Esc

Printer-friendly Version

Interactive Discussion

The first two terms in the right-hand side of Eq. (2) show the probabilities of transition from other states into the state  $\vec{n}=(n_1, n_2, \dots, n_k, \dots)$ ; the last two terms represent those from the state  $\vec{n}=(n_1, n_2, \dots, n_k, \dots)$  to other states. The solution of Eq. (2) will produce the complete probabilistic picture of the process and can be used to calculate the true averages as suggested by Bayewitz et al., (1974) and Tanaka and Nakazawa (1994) as:

$$\langle n_k \rangle = \sum_{\vec{n}} n_k P(\vec{n}; t) \quad (3)$$

The KCE results from taking the first moments Eq. (3) and assuming that  $\langle n_i n_j \rangle = \langle n_i \rangle \langle n_j \rangle$ . Under these assumptions Eq. (2) reduces to the KCE. Equation (2) is very difficult to solve, even numerically since the number of states increases extremely fast with  $N_0$ . Analytical solutions were obtained for three cases: sum kernel  $B(x_j+x_j)$ , product  $C(x_j \times x_j)$  and constant kernel. Bayewitz et al. (1974) obtained an evolution equation for the true mean of the total number of particles for the constant kernel case. Tanaka and Nakazawa (1993) compared the size distributions calculated from Eq. (2) for the three cases, with analytical solutions of the KCE and examined the conditions under which the kinetic collection equation is valid. The stochastic completeness of the KCE was also studied by Valioulis and List (1984).

Going further in this direction we will use the Monte Carlo approach in order to examine the conditions under which the kinetic collection equation is valid. Special attention will be paid to the time evolution and fluctuations of droplet concentration in the large end of the size distribution, which is crucial in precipitation development. The main result of the present paper will be the test of the numerical criteria suggested by Inaba et al. (1999), to calculate the validity time for the KCE. This result is compared with analytical results previously obtained by Drake (1972) and Tanaka and Nakazawa (1994). We were lead to this conjecture on the basis of numerical simulations with the Monte Carlo algorithm presented in Sect. 2. In Sect. 3, approximating polynomials and analytical solution for the KCE and SCE are presented. Simulations and a comparison with analytical solutions are described in Sect. 4. Finally, in Sect. 5 we discuss the results

## The validity of the kinetic collection equation

L. Alfonso et al.

Title Page

Abstract

Introduction

Conclusions

References

Tables

Figures

◀

▶

◀

▶

Back

Close

Full Screen / Esc

Printer-friendly Version

Interactive Discussion

and possible applications to more general kernels of importance for cloud physics.

## 2 The Monte Carlo algorithm

In this study we use the stochastic algorithm developed by Gillespie (1976) for chemical reactions. This algorithm was reformulated to simulate the kinetic behaviour of aggregating systems by Laurenzi and Diamond (1999), by defining species as a type of aggregate with a specific size and composition. In our case, species represent droplets of different sizes.

Within this framework, there is a unique index  $\mu$  for each pair of droplets  $i, j$  that may collide. For a system with  $N$  species  $(S_1, S_2, \dots, S_N)$   $\mu \in \frac{N(N+1)}{2}$ . The set  $\{\mu\}$  defines the total collision space, and is equal to the total number of possible interactions. With this set the collision probability density function  $P(\tau, \mu)$  can be determined. This quantity is defined by:

$P(\tau, \mu) d\tau \equiv$  Probability that at time  $t$  the next collision in volume  $V$  will occur in the infinitesimal interval  $(t+\tau, t+\tau+d\tau)$  and will be a  $\mu$  collision.

Gillespie derives this probability density function for a system of  $N$  species as

$$P(\tau, \mu) d\tau = a_\mu \exp\left(-\sum_{j=1}^{\frac{N(N+1)}{2}} a_j \tau\right) \quad (4)$$

Here  $\mu \in \frac{N(N+1)}{2}$ . The functions  $a_\mu$  are calculated according to

$$a(i, j) = V^{-1} K(i, j) n_i n_j dt (\equiv Pr \{ \text{Probability that two unlike particles } i \text{ and } j \text{ with populations (number of particles) } n_i \text{ and } n_j \text{ will collide within the imminent time interval} \}) \quad (5)$$

### The validity of the kinetic collection equation

L. Alfonso et al.

Title Page

Abstract

Introduction

Conclusions

References

Tables

Figures

◀

▶

◀

▶

Back

Close

Full Screen / Esc

Printer-friendly Version

Interactive Discussion

$a(i, i) = V^{-1} K(i, i) \frac{n_i (n_i - 1)}{2} dt \equiv Pr \{ \text{Probability that two particles of the same species } i \text{ with population (number of particles) } n_i \text{ collide within the imminent time interval} \}$  (6)

5 The collision probability density function is the basis of the Monte Carlo algorithm. For calculating the evolution of the system, two random numbers  $\tau$  and  $\mu$  must be generated. Equation (4) leads directly to the answers of the aforementioned questions. First, what is the probability distribution for times. Summing  $P(\tau, \mu) d\tau$  over all  $\mu$  (all possible collisions) results in

$$10 \quad P_1(\tau) d\tau = \sum_{\mu=1}^{\frac{N(N+1)}{2}} P(\tau, \mu) = \sum_{\mu=1}^{\frac{N(N+1)}{2}} a_{\mu} \exp\left(-\sum_{\nu=1}^{\frac{N(N+1)}{2}} a_{\nu} \tau\right) = \alpha \exp(-\alpha\tau) d\tau \quad (7)$$

$$\text{with } \alpha = \sum_{\nu=1}^{\frac{N(N+1)}{2}} a_{\nu}$$

The probability function for reactions can be obtained in a similar way, by integrating the probability density function (pdf)  $P(\tau, \mu) d\tau$  over all  $\tau$  from 0 to  $\infty$  results in

$$15 \quad P_2(\mu) = \frac{a_{\mu}}{\alpha} \quad (8)$$

Equation (7) shows that the probability of a collision in time follows an exponential distribution. In order to obtain a random pair  $(\tau, \mu)$ , according to the probability density function  $P(\tau, \mu)$  we first generate a random number  $r_1$  distributed uniformly in the interval  $(0, 1)$ , then, the inversion method to obtain random numbers is applied. In the inversion method this random number is taken as the probability of a collision in the time period  $\tau$  according to  $P_1(\tau)$ . This probability is obtained by integrating  $P_1(\tau)$  from

## The validity of the kinetic collection equation

L. Alfonso et al.

Title Page

Abstract

Introduction

Conclusions

References

Tables

Figures

◀

▶

◀

▶

Back

Close

Full Screen / Esc

Printer-friendly Version

Interactive Discussion



0 to  $\tau$ :

$$r_1 = \int_0^\tau P_1(z) dx = \int_0^\tau \alpha \exp(-\alpha z) dz = 1 - \exp(-\alpha\tau) \quad (9)$$

Considering that  $1-r_1=r_1^*$  is also a uniformly distributed random number in the interval (0,1), then the time  $\tau$  can be calculated from Eq. (9) in the form:

$$\tau = \frac{1}{\alpha} \ln \left( \frac{1}{r_1^*} \right) \quad (10)$$

The collision number  $\mu$  is calculated similarly. A random number  $r_2$  uniformly distributed in the interval (0,1) is generated. Then the pdf  $P_2(\nu)$  Eq. (8) must be integrated over  $\nu$  until the sum of the  $\mu$  probability exceeds the random number  $r_2$ . The inequality to obtain the collision index  $\mu$  has the form (Gillespie, 1976)

$$\sum_{\nu=1}^{\mu-1} a_\nu < r_2 \alpha \leq \sum_{\nu=1}^{\mu} a_\nu \quad (11)$$

The former results lead to the Gillespie's direct algorithm:

1. Initialize (set initial numbers of species, set  $t=0$ , set stopping criteria).
2. Calculate the function  $a_\mu$  for all  $\mu$ .

Choose  $\tau$  according to the exponential distribution  $P_1(\tau) = \alpha \exp(-\alpha\tau) d\tau$

1. Calculate  $\mu$  according to the distribution  $P_2(\mu) = \frac{a_\mu}{\alpha}$ .
2. Change the numbers of species to reflect the execution of a collision.
3. If stopping criteria are not met, go to step 2.

**The validity of the kinetic collection equation**

L. Alfonso et al.

Title Page

Abstract

Introduction

Conclusions

References

Tables

Figures

◀

▶

◀

▶

Back

Close

Full Screen / Esc

Printer-friendly Version

Interactive Discussion

### 3 Analytical solutions of the KCE and SCE using polynomial approximations

The collection kernel for hydrodynamic interactions for the continuous case has the form:

$$K(x, y) = \pi [R(x) + r(y)]^2 E(x, y) [V(x) - V(y)], x \geq y \quad (12)$$

5 In Eq. (12),  $x$  and  $y$  are the masses of the colliding droplets,  $R(x)$  is the radius of the larger collector droplet, and  $r(y)$  is the radius of the smaller collected droplet,  $E(x, y)$  is the collection efficiency and is given by the product of the collision efficiency and coalescence efficiency. For general kernels of the form Eq. (12), the KCE has to be solved numerically.

10 Analytical solutions of the continuous KCE have been obtained by Golovin (1963), Scott (1968), Drake (1972) and Drake and Wright (1972) for approximations of the hydrodynamic kernel given by the polynomials:

$$f(x, y) = A \quad (13a)$$

$$f(x, y) = A + B(x + y) \quad (13b)$$

$$15 f(x, y) = Cxy \quad (13c)$$

$$f(x, y) = A + B(x + y) + Cxy \quad (13d)$$

Long (1974) calculated the coefficients for the polynomials Eq. (13) approximating the collection kernel Eq. (12) when the largest of the colliding drops is smaller than  $50 \mu\text{m}$ . The results are displayed in Table 1. Other studies (e.g. Scott, 1968) used coefficients up to an order of magnitude larger.

20 Analytical size distributions of the KCE for the constant, sum and product kernels, are displayed in Table 2, and Table 3 shows the results for total concentration. For the stochastic collection equation (SCE), the true stochastic averages calculated from analytical solutions (Eq. 3) for the sum and product kernel are shown in Table 4 (Tanaka and Nakazawa, 1994).

25

## The validity of the kinetic collection equation

L. Alfonso et al.

Title Page

Abstract

Introduction

Conclusions

References

Tables

Figures

◀

▶

◀

▶

Back

Close

Full Screen / Esc

Printer-friendly Version

Interactive Discussion

We have tested the numerical code against the exact size distribution of the SCE reported in Tanaka and Nakazawa (1994) for the sum kernel case ( $K(x,y)=B(x+y)$ ,  $B=8.83 \times 10^2 \text{ cm}^3 \text{ s}^{-1}$ ). The comparison was made at  $N_0=100$  and an excellent agreement was founded (See Fig. 1).

## 4 Numerical estimation of the validity time for the KCE

### 4.1 Validity of the KCE for kernels of the form $Cxy$

Long (1974) demonstrated that for small droplets ( $R \leq 50 \mu\text{m}$ ) as terms of higher degree are included in a polynomial, the kernel  $K(x, y)$  in the continuous case is approximated adequately. Nevertheless, many authors (Drake, 1972; Pruppacher and Klett, 1997) have claimed that the terms  $xy$  give a “nonphysical” behaviour of the solutions, since solution does not conserve mass and there is a divergence of the second moment. The first ( $M_1$ ) and second ( $M_2$ ) moments of the droplet distribution for the continuous case are defined by

$$M_2(t) = \int_0^{\infty} x^2 n(x, t) dx \quad (14a)$$

$$M_1(t) = \int_0^{\infty} xn(x, t) dx \quad (14b)$$

where  $n(x, t)$  is the droplet size distribution and  $x$  is the droplet mass. The evolution of  $M_2$  with time for kernels containing terms of the form  $xy$  diverge as a consequence of the fact that deterministic laws are valid only for systems with large number of particles in large volumes. This assumption is adequate for most kinetic processes, but the neglect of small population corrections in the KCE causes unrealistic behaviors as the

## The validity of the kinetic collection equation

L. Alfonso et al.

Title Page

Abstract

Introduction

Conclusions

References

Tables

Figures

◀

▶

◀

▶

Back

Close

Full Screen / Esc

Printer-friendly Version

Interactive Discussion

total population of particles become small. Laurenzi and Diamond (2003) studied the case with a  $Cxy$  kernel with a Monte Carlo method and demonstrated that  $M_2$  shows a rapid but finite increase and a rigorous conservation of mass.

Drake (1972) calculated the analytical solutions of the KCE for polynomials of the form  $f(x, y) = Cxy$ . In this case the second moment evolution is given by

$$M_2(\tau) = \frac{M_2(t_0)}{1 - CM_2(t_0)\tau} \quad (15)$$

Note that when

$$\tau = [CM_2(t_0)]^{-1} \quad (16)$$

$M_2$  is undefined. Then for  $t \rightarrow \tau$  a single macroparticle remains and  $M_2(\tau) \rightarrow \infty$ . The time point  $t = \tau$  when the deterministic KCE predicts a divergence of  $M_2$  and a decrease of  $M_1$  (first moment, liquid water content) is called the *gel point*.

We have calculated  $\tau$  for an initial monodisperse distribution of 100 droplets of  $14 \mu\text{m}$  in radius (droplet mass  $1.1494 \times 10^{-8} \text{g}$ ). The volume of the cloud was set equal to  $1 \text{cm}^3$ . Using the value of  $C$  from Table 1 ( $C = 5.49 \times 10^{10} \text{cm}^3 \text{s}^{-1}$ ), then  $\tau$  in Eq. (16) is 1378.7 s.

For the same type of kernel ( $Cxy$ ), by using analytical methods, Tanaka and Nakazawa (1994) concluded that the KCE described well the coalescence process as long as the mass of the largest droplet was smaller than  $M_T^{2/3}$ , where  $M_T$  is the total mass of the system.

When the coalescence growth is described by the KCE, the mass spectrum is continuous, as shown by the near-equality of the mass of the largest and second largest droplets. However, as the mass of the largest droplet grows, the number of droplets inevitably decreases and the KCE becomes unable to describe the coalescence process. This larger droplet acquires a mass much larger than the rest of the particles, and becomes detached from the smooth spectrum (Lee, 2000).

**The validity of the kinetic collection equation**

L. Alfonso et al.

Title Page

Abstract

Introduction

Conclusions

References

Tables

Figures

◀

▶

◀

▶

Back

Close

Full Screen / Esc

Printer-friendly Version

Interactive Discussion

We have calculated the ensemble mean of the largest and second largest droplets,  $M_{L1}$  and  $M_{L2}$ . The ensemble mean is given by the expression:

$$M_L = \frac{1}{N_r} \sum_{i=1}^{N_r} M_L^i \quad (17)$$

where  $N_r$  is the number of realizations of the Monte Carlo process, and  $M^i$  is the droplet mass in the  $i$ -realization of the stochastic algorithm. The average time evolution of the largest and second largest droplets for this particular case is shown in Fig. 2.

Inaba et al. (1999), by using a statistical model, found that the stochastic property of the system changes around the stage when the largest droplet mass is in the order of  $M_T^{2/3}$ . By using a statistical code for modeling planetary accretion, they calculated the ratio of the standard deviation for the largest particle mass over all the realizations, to the averaged value evaluated from 1000 numerical simulations  $\sigma_L = STD(M_{L1})/M_{L1}$ . The standard deviation for the largest droplet mass is calculated for each time by using the expression:

$$STD(M_{L1}) = \sqrt{\frac{1}{N_r} \left( \sum_{i=1}^{N_r} (M_{L1}^i - M_{L1})^2 \right)} \quad (18)$$

where  $M_{L1}$  is the ensemble mean of the mass of the largest droplet over all the realizations (given by Eq. 17),  $N_r$  is the number of realizations of the Monte Carlo algorithm and  $M_{L1}^i$  is the largest droplet for each realization.

Inaba et al. (1999) found that  $\sigma_L$  was maximum in the vicinity of  $M_{L1}/M_T^{2/3} = 1$ . This reinforces the possibility of using this magnitude in order to calculate the validity time of the KCE. In order to check when the largest droplet acquires a mass much larger than the rest of the droplets, and becomes detached from the continuous spectrum.

We have calculated the behavior of  $\sigma_L$  evaluated from 1000 realizations ( $N_r = 1000$ ) of the Monte Carlo algorithm. The results are displayed in Fig. 3. The maximum of

**The validity of the kinetic collection equation**

L. Alfonso et al.

Title Page

Abstract

Introduction

Conclusions

References

Tables

Figures

◀

▶

◀

▶

Back

Close

Full Screen / Esc

Printer-friendly Version

Interactive Discussion

## The validity of the kinetic collection equation

L. Alfonso et al.

Title Page

Abstract

Introduction

Conclusions

References

Tables

Figures

◀

▶

◀

▶

Back

Close

Full Screen / Esc

Printer-friendly Version

Interactive Discussion

$\sigma_L$  was obtained for  $\tau=1315$  s, very similar to the analytical estimation from Eq. (16) ( $\tau=1388$ ). The ratio  $STD(M_{L1})/M_{L1}$  seems to be a very reliable way for estimating the breakdown time of the KCE. Around this time ( $\tau=1388$ ), the growth of  $M_{L2}$  (second largest droplet) stops while  $M_{L1}$  (largest droplet) continues to grow rapidly (See Fig. 2).

5 After that,  $M_{L2}$  decreases with time because large droplets first coalesce with  $M_{L1}$  and its mass approaches the total mass gradually.

The maximum of the statistic  $\sigma_L$  was obtained when the largest droplet was about 20 times larger (in volume) than the initial  $14 \mu\text{m}$  droplet. By evaluating this mass in the condition  $M_{L1}/M_T^{2/3}$  a value of 0.86 was obtained, which is very close to 1 (Fig. 4.), in  
10 agreement with the analytical findings of Tanaka and Nakazawa (1994).

As pointed out by Inaba et al. (1999), the time of the maximum depends on the functional form of the collisional kernel. For other type of kernels the maximum will be obtained for different exponents of the total mass of the system  $M_T$  (in the vicinity of  $M_{L1}/M_T^\beta=1$ ), here the parameter  $\beta$  has to be estimated.

### 15 4.1.1 Comparison of the solutions of the KCE and SCE for $C_{xy}$ kernels – Results for total concentration

The degree of accuracy of the solution of the kinetic collection equation is measured by the square relative error, defined by

$$SE(N) = \left( \frac{\langle N \rangle - N}{N} \right)^2 \quad (19)$$

20 where  $\langle N \rangle$  are the true stochastic averages calculated from the MC and  $N$  the averages from the KCE. As can be observed in Fig. 5, the square relative error shows a sharp increase after  $M_{L1}/M_T^{2/3}=1$  ( $\tau \sim 1300$  s). That means that the expected values calculated according to the KCE will differ from the true averages calculated from the Monte Carlo algorithm. After that time, the KCE breaks down.

For earlier times ( $t < 1300$  s) and values  $M_{L1}/M_T^{2/3} \ll 1$ , the Monte Carlo technique produces averages for total concentration that are almost equal to the solution of the KCE.

#### 4.1.2 Comparison of the solutions of the KCE and SCE for $C_{xy}$ kernel – Results for the size distribution

The problem of the size distributions was studied by Bayewitz et al. (1974) for constant kernel solutions of the kinetic and stochastic collection equations. They found that in systems of small population, or in a system partitioned into small compartments, the results of the KCE and SCE may differ substantially, particularly in the long-term tail of the distribution. The same situation was observed by Wang et al. (2006) while comparing the size distributions of the KCE and size distributions from the stochastically complete equation. According to Tanaka and Nakazawa (1994), for product kernel, the solutions of the KCE ( $N_i$ ) and the SCE ( $n_i$ ) agree with each other if the condition  $x_i/M_T^{2/3} \ll 1$  is fulfilled. The corresponding condition for the sum kernel case is  $x_i/M_T \ll 1$ . Here  $M_T$  is the total mass of the system.

In order to perform a high accuracy comparison of size distributions, a statistical test like the Kolmogorov-Smirnov was found not suitable. The analytical solution of the KCE and results of MC simulations were virtually indistinguishable from each other, with Probability-values ranging from 0.8 to 1 at each time point.

The size distributions obtained from our MC calculations are presented in Figs. 6 and 7, for two different times:  $t = 1000$  s and  $t = 1600$ . This times correspond to values of  $M_{L1}/M_T^{2/3}$  equal to 0.49 and 1.39 respectively. At earlier times, when  $M_{L1}/M_T^{2/3} = 0.49$ , the KCE size distributions match quite well the SCE size distributions. In contrast, after 1600 s (Fig. 7), the size distributions differ substantially for bin numbers larger than 7.

According to Tanaka and Nakazawa (1994) for sufficiently small mass  $x_i$ , the solution  $n_i$  of the stochastic collection equation agrees with that of the KCE equation even in

### The validity of the kinetic collection equation

L. Alfonso et al.

Title Page

Abstract

Introduction

Conclusions

References

Tables

Figures

◀

▶

◀

▶

Back

Close

Full Screen / Esc

Printer-friendly Version

Interactive Discussion

the late stage.

As Fig. 8 shows, for the product kernel, the KCE and the SCE solutions start to differ for  $i \geq 5$ . When  $t > 1300$  s, there is no agreement between the analytical and the Monte Carlo solutions for bin numbers as small as 5, a fact that explained the marked differences observed in Fig. 7. The disagreement increases as we move to the large end of the distribution and time advances.

## 4.2 Validity of the KCE for polynomials of the form $B(x+y)$

For  $K(x, y) = B(x+y)$ , the analytical solution of the stochastic collection equation can be calculated easily (see Table 4), and there is no need to use the Monte Carlo integration. As seen in Fig. 10, both analytical solutions for the KCE and the SCE are in excellent agreement even for bin sizes as large as 10.

Then, the results displayed in Fig. 10 are in agreement with the less restrictive condition for the sum kernel, that the KCE ( $n_i$ ) and the SCE ( $\langle n_i \rangle$ ) solutions agree with each other if the condition  $x_i/M_T \ll 1$  is fulfilled. According to Drake (1972), when  $K(x, y) = B(x+y)$ ,  $M_2(t)$  will exponentially increase with time but still be finite at any time. For Tanaka and Nakazawa (1994), the KCE is valid until a drop with mass comparable with  $M_T$  appears, i.e., almost until the limit of complete aggregation, when a single macroparticle remains.

We have analyzed this problem by calculating the statistics  $STD(M_{L1})/M_{L1}$ . Surprisingly, there is a maximum at  $\tau = 1320$  s (Fig. 11), indicating that the liquid water content is no longer conserved after 1320 s. We have calculated the evolution of the liquid water content by using the analytical solution of the KCE for monodisperse initial conditions displayed in Table 2 according to:

$$M_1(t) = \sum_{i=1}^{\infty} m(i)N(i, t) \quad (20)$$

At the same time, we have calculated  $M_1$  by using Eq. (20) and the true averages  $\langle N(i, t) \rangle$  from the SCE (See Table 3). The results are shown in Fig. 12. After  $t \sim 1300$  s

### The validity of the kinetic collection equation

L. Alfonso et al.

Title Page

Abstract

Introduction

Conclusions

References

Tables

Figures

◀

▶

◀

▶

Back

Close

Full Screen / Esc

Printer-friendly Version

Interactive Discussion



the total mass calculated with the KCE, starts to decrease, while the total mass calculated with the true averages from the SCE is conserved all the time. This reflects the fact that the stochastic approach can predict the behavior of the coalescence process for all times.

5 The results from Fig. 11 contradict the generalized idea that the KCE with a sum kernel is valid for all times (Drake, 1972). Actually, after some time, the total mass is no longer conserved. After 2000 s we have 82% of the initial mass. The total mass for the product kernel is also plotted indicating that after 2000 s. the remaining mass is only 45% of the initial mass. The smaller reduction in total mass for the sum kernel explains  
 10 the better agreement between the size distributions (Fig. 10) for the sum kernel.

### 4.3 Other approximating polynomials containing an $xy$ term

For polynomials of the form  $A+B(x+y)+Cxy$  where  $A=B^2/C$ , the KCE is valid until the time (Drake, 1972):

$$\tau = [CM_2(t_0) + BL]^{-1} \quad (21)$$

15 where  $L$  is the initial liquid water content of the droplets ( $M_1(0)$ ). In evaluating  $\tau$  the values of  $A, B$  and  $C$  calculated by Long(1974) and displayed in Table 1. The liquid water content (first moment of the distribution) was equal to  $1.149 \times 10^{-6} \text{ g cm}^{-3}$  (we consider a cloud initially containing 100 droplets of  $14 \mu\text{m}$  in diameter in  $1 \text{ cm}^3$ ). The analytically predicted  $\tau$  for this polynomial form of the kernel was 1134 while the  
 20 numerically evaluated value was 1260 s, and the ratio  $M_{L,1} / M_T^{2/3} = 1.03$ . In Tanaka and Nakazawa (1994) the condition that the KCE is valid until  $M_{L,1} / M_T^{2/3}$  is smaller than unity was deduced for kernels of the form  $Cxy$ . Nevertheless, it seems to work quiet well in general for kernels containing an  $xy$  term.

To further study this trend,  $\tau$  was also estimated numerically for polynomials of  
 25 the form  $B(x+y)+Cxy$ . The coefficients that better approximate the kernel for small

**The validity of the kinetic collection equation**

L. Alfonso et al.

Title Page

Abstract

Introduction

Conclusions

References

Tables

Figures

◀

▶

◀

▶

Back

Close

Full Screen / Esc

Printer-friendly Version

Interactive Discussion

droplets are ( $A=0$ ,  $B=4.16 \times 10^2$ ,  $C=2.24 \times 10^{10}$ ). The analytical expression for  $\tau$  is given by (Drake (1972), Long (1974)):

$$\tau = \ln [1 + 2BL/CM_2(t_0)] / 2BL \quad (22)$$

where  $L$  is the initial liquid water content ( $M_1(0)$ ). For  $L=1.149 \times 10^{-6} \text{g cm}^{-3}$ , from expression Eq. (22) was obtained  $\tau=1508.5$  s. From the MC calculations, the maximum of  $STD(M_{L_1})/M_{L_1}$  was 0.504 reached at  $\tau=1310$  s and the ratio  $M_{L_1}/M_T^{2/3}$  was found equal to 0.96 (see Fig. 9a and 9b).

The above mentioned results support the fact that the criterium proposed by Tanaka and Nakazawa (1994) for the product kernel in general works well for polynomial kernels containing an  $xy$  term.

## 5 Discussion and conclusions

In this study we have represented the kernels for the continuous case by a series of polynomials and used a MC algorithm to obtain the solutions of the SCE. The solution of the KCE for polynomials containing an  $xy$  term predicts an infinite value of  $M_2$  for  $t=\tau$ . For kernels of the form  $B(x+y)$ , there is a no conservation of the total mass, but a less pronounce divergence that for the product kernel.

Since this problem is important in other branches of physical sciences, it is useful to look at different approaches. For condensed matter physicists, the situation that arises for kernels containing an  $xy$  term is a phase transition, typically called gelation in the context of coalescence models. Then, when gelation occurs, the mass conservation is expected to break down in finite time i.e.: there exists a  $T_g$ , called gelation time such that

$$M_1(t) \equiv M_1(0) \text{ for } t < T_g \text{ and } M_1(t) < M_1(0) \text{ for } t > T_g \quad (23)$$

The physical interpretation is that after gelation, some mass is lost under the form of a particle of infinite size, with mass  $M_1(0)-M_1(t)$ , called *gel part*. The rest of the

### The validity of the kinetic collection equation

L. Alfonso et al.

Title Page

Abstract

Introduction

Conclusions

References

Tables

Figures

◀

▶

◀

▶

Back

Close

Full Screen / Esc

Printer-friendly Version

Interactive Discussion

particles are then called the *sol part*. For astronomers, the non conservation of the first moment after  $T_g$ , is usually interpreted to mean that a runaway particle (planet) has formed.

In reality, the KCE describes the continuous mass droplet spectrum (without the gel part or the largest droplet) all the time. When a single droplet is detached from this spectrum then we have a continuous spectrum plus a massive droplet. To further study this trend, we can analyze the time evolution of the liquid water content for a polynomial of the form  $Cxy$  for monodisperse initial conditions (see Fig. 12). After  $t \sim 1300$ , the liquid water content starts to decrease. As mentioned above, the neglect of small population corrections causes unrealistic behavior as the total concentration of particles becomes small.

When the gel is formed the largest droplet is detached from the continuous spectrum, the KCE describes only the continuous droplet spectrum (sol part). For example, for  $t = 1700$  s, the largest droplet mass is in average 36.52 times larger than the initial  $14 \mu\text{m}$  droplet. Then its mass is equal to  $4.197 \times 10^{-7}$  g. At this time, the total mass calculated from the KCE is  $7.432 \times 10^{-7}$  g. On the other hand, the initial water content for our simulations was  $M_1(0) = 1.1494 \times 10^{-6} \text{ g cm}^{-3}$ .

The physical interpretation is that after  $t = \tau$ , some mass is lost under the form of a particle of big size, with mass  $M_1(0) - M_1(t)$ , the *gel part* which is not represented by the KCE. The gel mass in this example is

$$M_1(0) - M_1(1700) = 1.1494 \times 10^{-6} \text{ g} - 7.432 \times 10^{-7} \text{ g} = 4.1 \times 10^{-7} \text{ g}$$

which is almost equal to the mass of the largest droplet calculated with the MC algorithm ( $4.197 \times 10^{-7}$  g).

The former analysis confirms the fact that for  $t > \tau$  the KCE actually models the evolution of the continuous size of the spectrum. As the largest droplet continue to grow by accretion of smaller droplets, the mass of the continuous spectrum will decrease, together with the liquid water content predicted by the KCE. The values of the total water content for the continuous spectrum and the largest droplet (*gel part*) for several

## The validity of the kinetic collection equation

L. Alfonso et al.

Title Page

Abstract

Introduction

Conclusions

References

Tables

Figures

◀

▶

◀

▶

Back

Close

Full Screen / Esc

Printer-friendly Version

Interactive Discussion

times are shown and the total water content calculated as the sum of the continuous spectrum total water content and the largest droplet mass are shown in Table 5.

Note that the missing mass ( $M_1(0) - M_1(t)$ ) calculated from the KCE is equal (within a 90% accuracy) to the mass of the largest droplet detached from the continuous spectrum for  $t > \tau$ , and estimated from the Monte Carlo algorithm according to expression Eq. (17). Then, for  $t > \tau$ , the mass conservation can be formulated in the form

$$M_{\text{Total}} = M_{\text{Continuous\_Spectrum(KCE)}} + M_{\text{Largest\_Droplet}} \quad (24)$$

This expression reflects the fact that the “missing mass” actually is transferred to the largest droplet that becomes isolated for times larger than  $\tau$ . The non conservation of the initial mass when the largest droplet becomes separated from the continuous spectrum  $n(i, t)$  predicted by the KCE, explain the differences between the KCE and SCE size distributions after  $t > \tau$  (Figs. 6, 7 and 8), and the underestimation of the concentration for bin sizes larger than 5. The underestimation in this case is a consequence of non conservation of the liquid water content for the continuous spectrum, when mass is constantly transferred to the largest droplet (*gel part*).

Wang et al. (2006) also observed marked differences between size distributions predicted by the KCE and the SCE (Fig. 7 of Wang et al., 2006). In fact the mass predicted by the KCE is smaller than the mass predicted by the SCE (True Stochastic Collection Equation) for bin numbers smaller than 80.

The numerical criteria  $STD(M_{L1})/M_{L1}$  described in this work could be used for calculating  $\tau$  in the general case, when there is no analytical solutions for the KCE or SCE. One interesting question that arises is the validity of the KCE when turbulence or electrical processes influence the collection process. In these situations, the Monte Carlo algorithm and the already analyzed statistics  $STD(M_{L1})/M_{L1}$  for the largest droplet will be useful in the evaluation of the validity of calculations made with the KCE. The alternative, is to use the Monte Carlo algorithm instead of the deterministic tool Eq. (1).

Another question is the possibility of existence of such large drops, since the collisional and spontaneous breakup modes will tend to fragment them. In our particular situation the answer is positive, because the collisional and spontaneous breakup

**The validity of the kinetic collection equation**

L. Alfonso et al.

Title Page

Abstract

Introduction

Conclusions

References

Tables

Figures

◀

▶

◀

▶

Back

Close

Full Screen / Esc

Printer-friendly Version

Interactive Discussion

mechanisms will act for larger sizes. For example, at  $\tau=1315$  s (calculated for a kernel of the form  $C_{xy}$ ), the largest droplet (gel) has a radius of then  $38 \mu\text{m}$ . At  $t=2000$  s the radius of the largest droplet radius is  $52 \mu\text{m}$ .

From the theoretical point of view it will be interesting to check whether the phase transition approach adopted by condensed matter physicists and astronomers could work in a cloud physics context. Long (1974) demonstrated that  $K(x, y)$  increases as  $x^2$  for small droplets ( $R < 50 \mu\text{m}$ ) and as  $x$  for larger ones. He concluded that for typical continental and maritime clouds, the evolution of the raindrop distribution is closely described if the kernel has the piecewise approximation:

$$9.44 \times 10^9 (x^2 + y^2) \text{ or } 1.10 \times x^2 \text{ if } R \leq 50 \mu\text{m} \quad (25)$$

or by

$$5.78 \times 10^3 (x + y) \text{ or } 6.33 \times 10^2 x \text{ if } R > 50 \mu\text{m} \quad (26)$$

In Eq. (25) and Eq. (26)  $x$  and  $y$  are the masses of the colliding drops, and  $R$  is the radius of the larger droplet. By doing this, he avoided the inclusion of “non-physical”  $xy$  terms, that predict to rapid growth for the large drops in a cloud. In other words, by choosing this piecewise approximation, the breakdown of the KCE will be avoided for longer times, since the KCE solutions for kernels of the type  $B(x+y)$  are valid until the largest droplet has a mass the limit of complete aggregation (i.e., for all times).

According to Eq. (12), the time interval for droplets to grow from  $20 \mu\text{m}$  to  $100 \mu\text{m}$  in radius will be in the order of an hour (Pruppacher and Klett, 1997). Nevertheless, for smaller droplets,  $C_{xy}$  approximates quite well the collection kernel. Then, one open question is the possibility of inclusion of  $xy$  terms in approximations of  $K(x, y)$  when small scale turbulence or other processes are present, in order to predict a faster growth of smaller droplets. From this point of view, precipitation formation could be interpreted as a sol-gel transition. Several mechanisms have been proposed in the past (entrainment, presence of giant nuclei, supersaturation fluctuations and more recently,

**The validity of the kinetic collection equation**

L. Alfonso et al.

Title Page

Abstract

Introduction

Conclusions

References

Tables

Figures

◀

▶

◀

▶

Back

Close

Full Screen / Esc

Printer-friendly Version

Interactive Discussion

effects of air turbulence in concentration fluctuations and collision efficiencies), but a conclusive answer is still absent.

## References

- 5 Aldous, D. J.: Deterministic and stochastic models for coalescence (aggregation, coagulation):  
A review of the mean-field theory for probabilists, <http://www.stat.berkeley.edu/users/aldous>,  
1997.
- Bayewitz, M. H., Yerushalmi, J., Katz, S., and Shinnar, R.: The extent of correlations in a  
stochastic coalescence process, *J. Atmos. Sci.*, 31, 1604–1614, 1974.
- Drake, R. L.: The scalar transport equation of coalescence theory: Moments and kernels, *J.*  
10 *Atmos. Sci.*, 29, 537–547, 1972.
- Drake, R. L. and Wright, T. J.: The scalar transport equation of coalescence theory: New  
families of exact solutions, *J. Atmos. Sci.*, 29, 548–556, 1972.
- Gillespie, D. T.: The stochastic coalescence model for cloud droplet growth, *J. Atmos. Sci.*, 29,  
1496–1510, 1972.
- 15 Gillespie, D. T.: An exact method for numerically simulating the stochastic coalescence process  
in a cloud, *J. Atmos. Sci.*, 32, 1977–1989, 1975.
- Gillespie, D. T.: A general method for numerically simulating the stochastic time evolution of  
coupled chemical reactions, *J. Comput. Phys.*, 22, 403–434, 1976.
- Golovin, A. M.: The solution of the coagulating equation for cloud droplets is a rising air current,  
20 *B. Acad. Sci. USSR, Geophys. Ser.*, No. 5, 482–487, 1963.
- Inaba, S., Tanaka, H., Ohtsuki, K., and Nakazawa, K.: High-accuracy statistical simulation of  
planetary accretion: I. Test of the accuracy by comparison with the solution to the stochastic  
coagulation equation, *Earth Planets Space*, 51, 205–217, 1999.
- Lee, M. H.: On the validity of the coagulation equation and the nature of runaway growth,  
25 *Icarus*, 142, 74–86, 2000.
- Laurenzi, I. J. and Diamond, S. L.: Monte Carlo simulation of the heterotypic aggregation  
kinetics of platelets and neutrophils, *Biophys. J.*, 77, 1733–1746, 1999.
- Laurenzi, I. J. and Diamond, S. L.: Kinetics of random aggregation-fragmentation processes  
with multiple components, *Phys. Rev. E*, 67, 051103, doi:10.1103/PhysRevE.67.051103,  
30 2003.

---

### The validity of the kinetic collection equation

L. Alfonso et al.

---

Title Page

Abstract

Introduction

Conclusions

References

Tables

Figures

◀

▶

◀

▶

Back

Close

Full Screen / Esc

Printer-friendly Version

Interactive Discussion

- Long, A. B.: Solutions to the droplet collection equation for polynomial kernels, *J. Atmos. Sci.*, 31, 1040–1051, 1974.
- Lushnikov, A. A.: Certain new aspects of the coagulation theory, *Izvestiya, Atmos. Ocean Phys.*, 14, 738–743, 1978, 1978.
- 5 Pruppacher, H. R. and Klett, J. D.: *Microphysics of clouds and precipitation*, Kluwer Academic Publishers, 1997.
- Scott, W. T.: Analytic studies of cloud droplet coalescence, *J. Atmos. Sci.*, 25, 54–65, 1968.
- Tanaka, H. and Nakazawa, K.: Stochastic coagulation equation and the validity of the statistical coagulation equation, *J. Geomagn. Geoelectr.*, 45, 361–381, 1993.
- 10 Tanaka, H. and Nakazawa, K.: Validity of the statistical coagulation equation and runaway growth of protoplanets, *Icarus*, 107, 404–412, 1994.
- Valioulis, I. A. and List, E. J.: A numerical evaluation of the stochastic completeness of the kinetic coagulation equation, *J. Atmos. Sci.*, 41, 2516–2529, 1984.
- 15 Wang, L. P., Xue, Y., Ayala, O., and Grabowski, W. W.: Effect of stochastic coalescence and air turbulence on the size distribution of cloud droplets, *Atmos. Res.*, 82, 416–432, 2006.

---

**The validity of the  
kinetic collection  
equation**L. Alfonso et al.

---

[Title Page](#)[Abstract](#)[Introduction](#)[Conclusions](#)[References](#)[Tables](#)[Figures](#)[I◀](#)[▶I](#)[◀](#)[▶](#)[Back](#)[Close](#)[Full Screen / Esc](#)[Printer-friendly Version](#)[Interactive Discussion](#)

## The validity of the kinetic collection equation

L. Alfonso et al.

**Table 1.** Polynomials approximating the actual collection kernel  $K(x, y)$  (Long, 1974).

Approximating Polynomial $P(x, y)$	Coefficients $R \leq 50 \mu\text{m} (\text{cm}^3 \text{s}^{-1})$
$f(x, y) = A$	$A=1.20 \times 10^{-4}$
$f(x, y) = A + B(x + y)$	$A=0$ $B=8.83 \times 10^2$
$f(x, y) = Cxy$	$C=5.49 \times 10^{10}$
$f(x, y) = A + B(x + y) + Cxy$ $A = B^2/C$	$A=4.41 \times 10^{-7}$ $B=1.36 \times 10^2$ $C=4.18 \times 10^{10}$
$f(x, y) = A + B(x + y) + Cxy$	$A=0$ $B=4.16 \times 10^2$ $C=2.24 \times 10^{10}$

[Title Page](#)
[Abstract](#)
[Introduction](#)
[Conclusions](#)
[References](#)
[Tables](#)
[Figures](#)
[◀](#)
[▶](#)
[◀](#)
[▶](#)
[Back](#)
[Close](#)
[Full Screen / Esc](#)
[Printer-friendly Version](#)
[Interactive Discussion](#)



## The validity of the kinetic collection equation

L. Alfonso et al.

**Table 2.** Analytical size distributions of the kinetic collection equation calculated with monodisperse initial conditions (Laurenzi and Diamond, 1999).

$K(x_i, x_j)$	$N(i, t)$	
$B(x_i + x_j)$	$N_0(1 - \phi) \frac{(i\phi)^{i-1}}{\Gamma(i+1)} \exp(-i\phi)$	$\phi = 1 - \exp(-BN_0v_0t)$
$C(x_i \times x_j)$	$N_0 \frac{(iT)^{i-1}}{i\Gamma(i+1)} \exp(-iT)$	$T = CN_0v_0^2t$
$A$	$4N_0 \frac{(T)^{i-1}}{(T+2)^{i+1}}$	$T = AN_0t$

*Note:* Parameters  $A$ ,  $B$  and  $C$  are constants.  $N_0$  is the initial concentration and  $v_0$  is the initial volume of droplets.

Title Page

Abstract

Introduction

Conclusions

References

Tables

Figures

◀

▶

◀

▶

Back

Close

Full Screen / Esc

Printer-friendly Version

Interactive Discussion

## The validity of the kinetic collection equation

L. Alfonso et al.

**Table 3.** Analytical solutions of the kinetic collection equation for total concentration calculated with monodisperse initial conditions (Scott, 1968).

$K(x_i, x_j)$	$N(t)$	
$B(x_i + x_j)$	$N(t) = N_0(1 - \tau)$	$\tau = 1 - \exp(-BN_0v_0t)$
$C(x_i \times x_j)$	$N(t) = N_0 \left(1 - \frac{1}{2}T\right)$	$T = CN_0v_0^2t$
$A$	$N(t) = \frac{2N_0}{T+2}$	$T = AN_0t$

*Note:* Parameters  $A$ ,  $B$  and  $C$  are constants.  $N_0$  is the initial concentration and  $v_0$  is the initial volume of droplets.

Title Page

Abstract

Introduction

Conclusions

References

Tables

Figures

◀

▶

◀

▶

Back

Close

Full Screen / Esc

Printer-friendly Version

Interactive Discussion

## The validity of the kinetic collection equation

L. Alfonso et al.

**Table 4.** True stochastic averages calculated from analytical solutions of the stochastic collection equation with monodisperse initial conditions for the sum and product kernels (Tanaka and Nakazawa, 1994).

$K(x_i, x_j)$	$\langle n(i, t) \rangle$
$B(x_i + x_j)$	$C_i^{N_0} \left(\frac{i}{N_0}\right)^{i-1} \left\{1 - \frac{i}{N_0} (1 - e^T)\right\}^{N_0-i-1} \times (1 - e^{-T})^{i-1} e^{-T}$ $T = BN_0 v_0 t$
$C(x_i \times x_j)$	$C_i^{N_0} e^{-i(N_0-i)T} f_i(T)$ $T = CN_0 v_0^2 t$

*Note:* Parameters  $B$  and  $C$  are constants.  $N_0$  is the initial concentration and  $v_0$  is the initial volume of droplets.  $C_k^{N_0}$  is the binomial coefficient. Functions  $f_k(T)$  can be found by solving successively the equation:  $\frac{\partial f_k(t)}{\partial t} = \frac{1}{2} \sum_{i,j=1}^N ij \delta_{i+j,kk} C_i e^{-ijt} f_i(t) f_j(t)$  for monodisperse initial conditions.

[Title Page](#)
[Abstract](#)
[Introduction](#)
[Conclusions](#)
[References](#)
[Tables](#)
[Figures](#)
[Back](#)
[Close](#)
[Full Screen / Esc](#)
[Printer-friendly Version](#)
[Interactive Discussion](#)

## The validity of the kinetic collection equation

L. Alfonso et al.

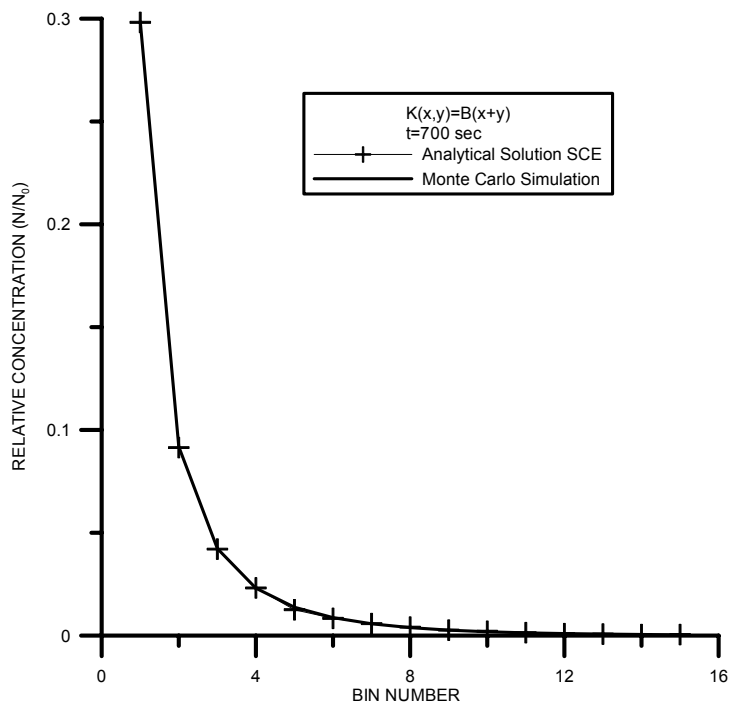
**Table 5.** Total water content calculated as the sum of the smooth spectrum total water content and largest droplet mass (*gel part*).

Time (s)	$M_1(t)$ ( $\text{g cm}^{-3}$ ) (Smooth spectrum mass, calculated according to the KCE)	$M_{\text{Largest\_Droplet}}$ Largest Droplet mass ( $\text{g cm}^{-3}$ ) from the MC ( <i>gel part</i> )	$M_1(t) + M_{\text{Largest\_Droplet}}$ ( $\text{g cm}^{-3}$ )	$M_1(0)$ (Initial liquid water content) ( $\text{g cm}^{-3}$ )
1600	$8.41 \times 10^{-7}$	$3.56 \times 10^{-7}$	$1.19 \times 10^{-7}$	$1.14 \times 10^{-7}$
1700	$7.43 \times 10^{-7}$	$4.197 \times 10^{-7}$	$1.16 \times 10^{-7}$	$1.14 \times 10^{-7}$
1800	$6.56 \times 10^{-7}$	$4.71 \times 10^{-7}$	$1.12 \times 10^{-7}$	$1.14 \times 10^{-7}$
1900	$5.82 \times 10^{-7}$	$5.32 \times 10^{-7}$	$1.11 \times 10^{-7}$	$1.14 \times 10^{-7}$

[Title Page](#)
[Abstract](#)
[Introduction](#)
[Conclusions](#)
[References](#)
[Tables](#)
[Figures](#)
[◀](#)
[▶](#)
[◀](#)
[▶](#)
[Back](#)
[Close](#)
[Full Screen / Esc](#)
[Printer-friendly Version](#)
[Interactive Discussion](#)

**The validity of the  
kinetic collection  
equation**

L. Alfonso et al.

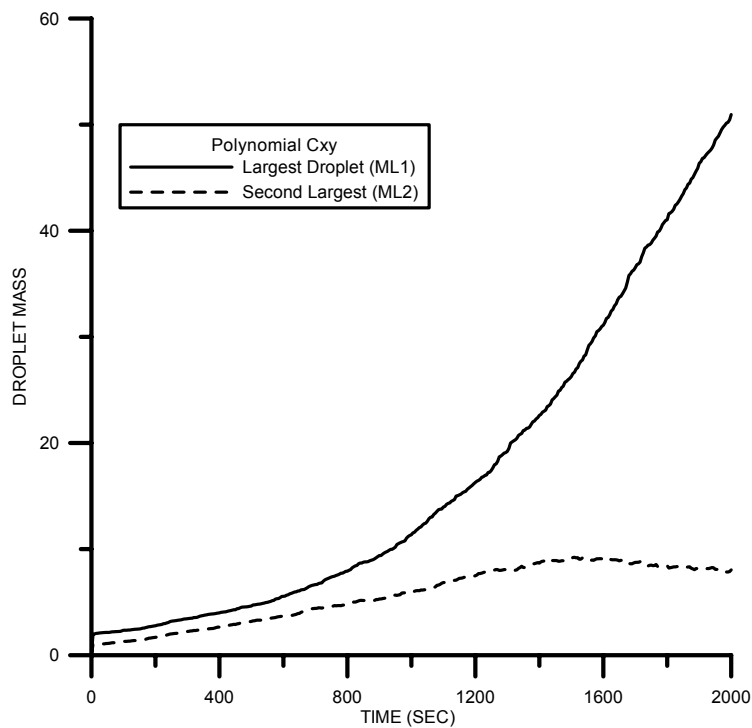


**Fig. 1.** The number of particles, averaged over 1000 simulations and normalized to initial number of particles ( $N_0=100$ ), versus the analytical solution of the stochastic collection equation (SCE) at  $t=700$  s as a function of size.

[Title Page](#)[Abstract](#)[Introduction](#)[Conclusions](#)[References](#)[Tables](#)[Figures](#)[◀](#)[▶](#)[◀](#)[▶](#)[Back](#)[Close](#)[Full Screen / Esc](#)[Printer-friendly Version](#)[Interactive Discussion](#)

**The validity of the  
kinetic collection  
equation**

L. Alfonso et al.

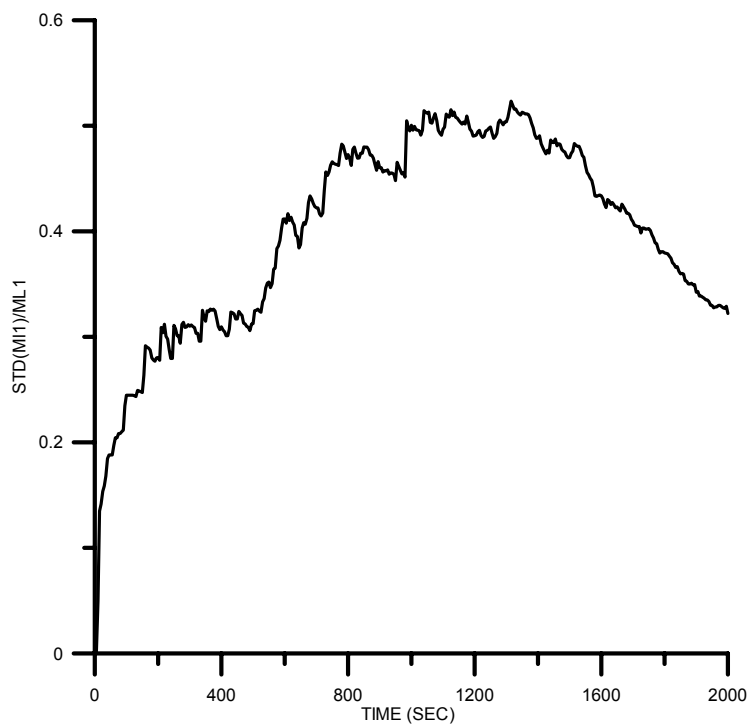


**Fig. 2.** Average time evolution for 1000 simulations versus time ( $N_0=100$ ) of the largest and second largest droplets for the kernel  $C_{xy}$  ( $C=5.49 \times 10^{10} \text{ cm}^3 \text{ s}^{-1}$ ).

[Title Page](#)[Abstract](#)[Introduction](#)[Conclusions](#)[References](#)[Tables](#)[Figures](#)[◀](#)[▶](#)[◀](#)[▶](#)[Back](#)[Close](#)[Full Screen / Esc](#)[Printer-friendly Version](#)[Interactive Discussion](#)

**The validity of the  
kinetic collection  
equation**

L. Alfonso et al.

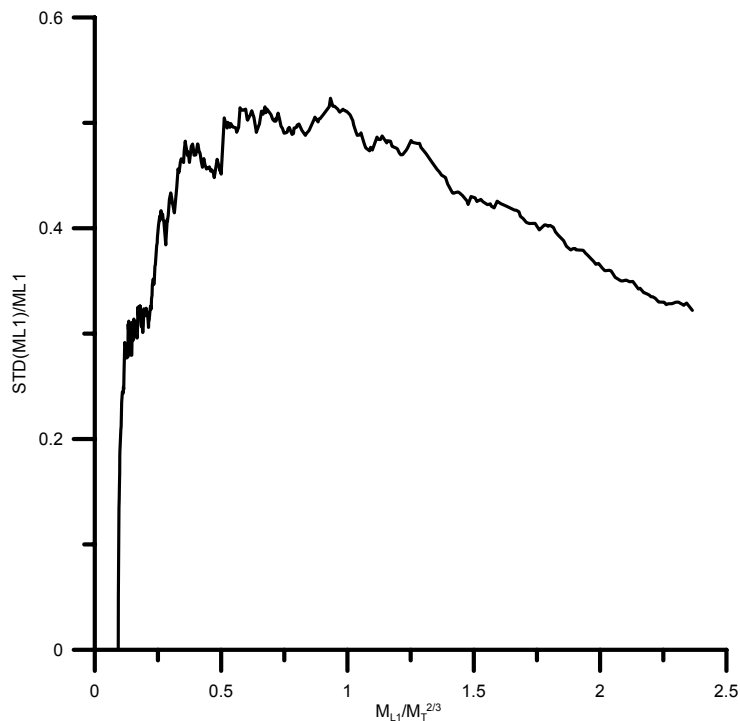


**Fig. 3.** The ratio of the standard deviation to expectation value of the largest droplet  $STD(M_{L1})/M_{L1}$  as a function of time.

[Title Page](#)[Abstract](#)[Introduction](#)[Conclusions](#)[References](#)[Tables](#)[Figures](#)[◀](#)[▶](#)[◀](#)[▶](#)[Back](#)[Close](#)[Full Screen / Esc](#)[Printer-friendly Version](#)[Interactive Discussion](#)

**The validity of the  
kinetic collection  
equation**

L. Alfonso et al.



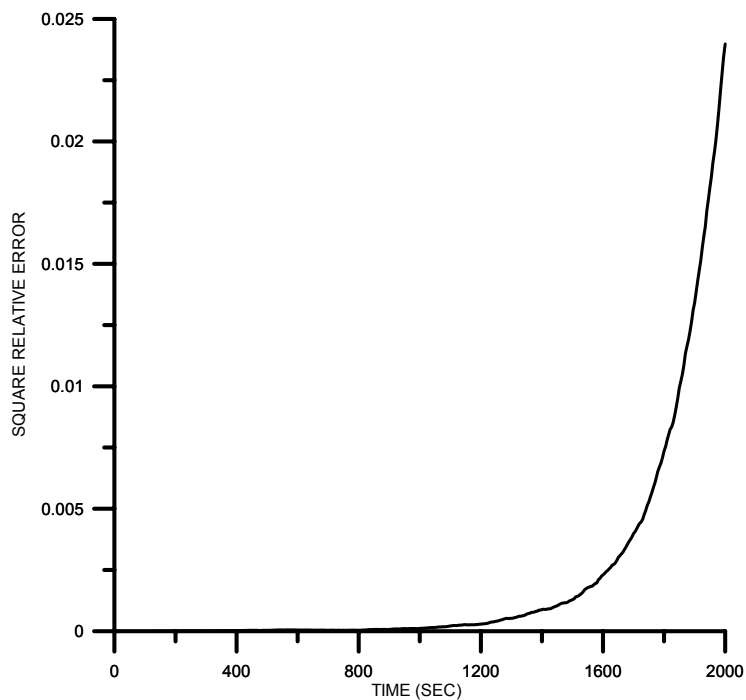
**Fig. 4.** The ratio of the standard deviation to expectation value of the largest droplet  $STD(M_{L1})/M_{L1}$  as a function of  $M_{L1}/M_T^{2/3}$ .

[Title Page](#)[Abstract](#)[Introduction](#)[Conclusions](#)[References](#)[Tables](#)[Figures](#)[◀](#)[▶](#)[◀](#)[▶](#)[Back](#)[Close](#)[Full Screen / Esc](#)[Printer-friendly Version](#)[Interactive Discussion](#)



**The validity of the  
kinetic collection  
equation**

L. Alfonso et al.

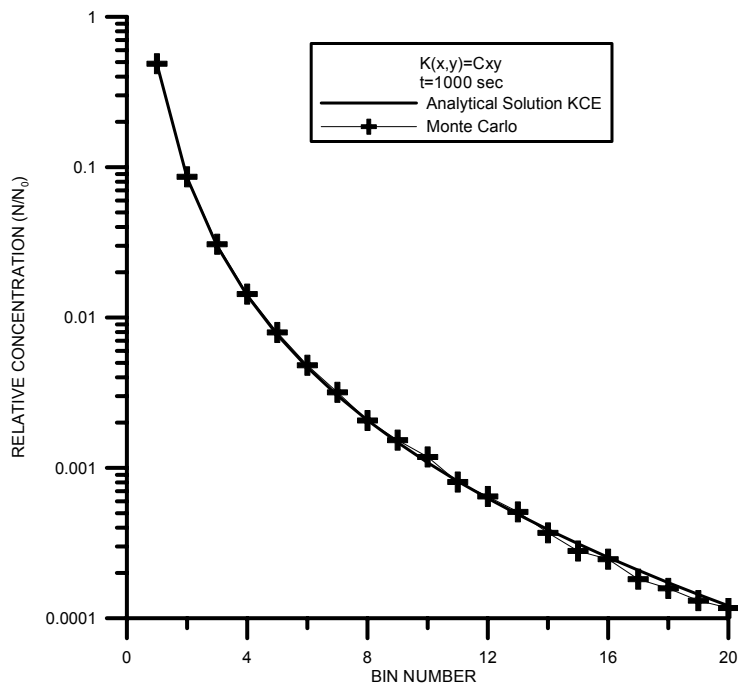


**Fig. 5.** Time evolution of the square relative error  $\left(\frac{\langle N \rangle - N}{N}\right)^2$  as a function of time for the product kernel.

[Title Page](#)[Abstract](#)[Introduction](#)[Conclusions](#)[References](#)[Tables](#)[Figures](#)[◀](#)[▶](#)[◀](#)[▶](#)[Back](#)[Close](#)[Full Screen / Esc](#)[Printer-friendly Version](#)[Interactive Discussion](#)

**The validity of the  
kinetic collection  
equation**

L. Alfonso et al.

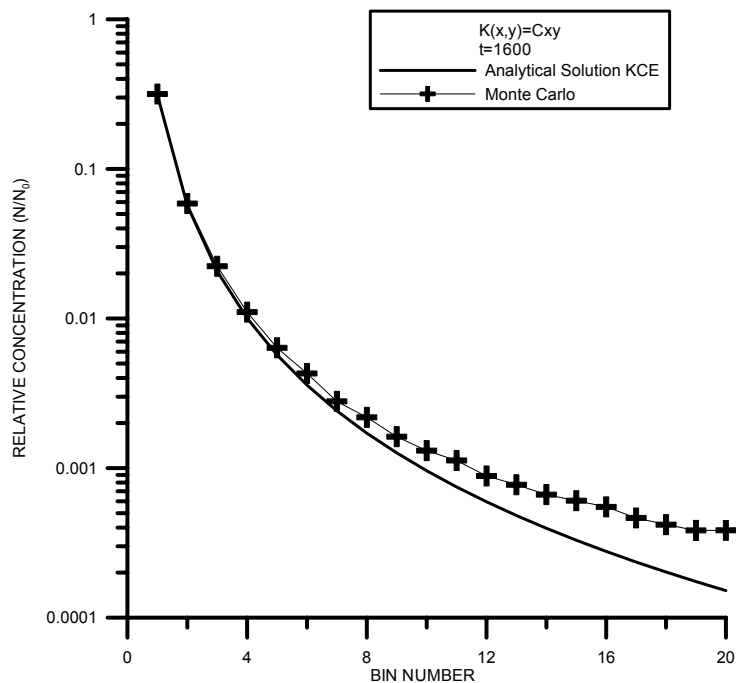


**Fig. 6.** Size distributions obtained from the KCE and the stochastic approach at  $t=1000$  s for the product kernel.

[Title Page](#)[Abstract](#)[Introduction](#)[Conclusions](#)[References](#)[Tables](#)[Figures](#)[◀](#)[▶](#)[◀](#)[▶](#)[Back](#)[Close](#)[Full Screen / Esc](#)[Printer-friendly Version](#)[Interactive Discussion](#)

**The validity of the  
kinetic collection  
equation**

L. Alfonso et al.

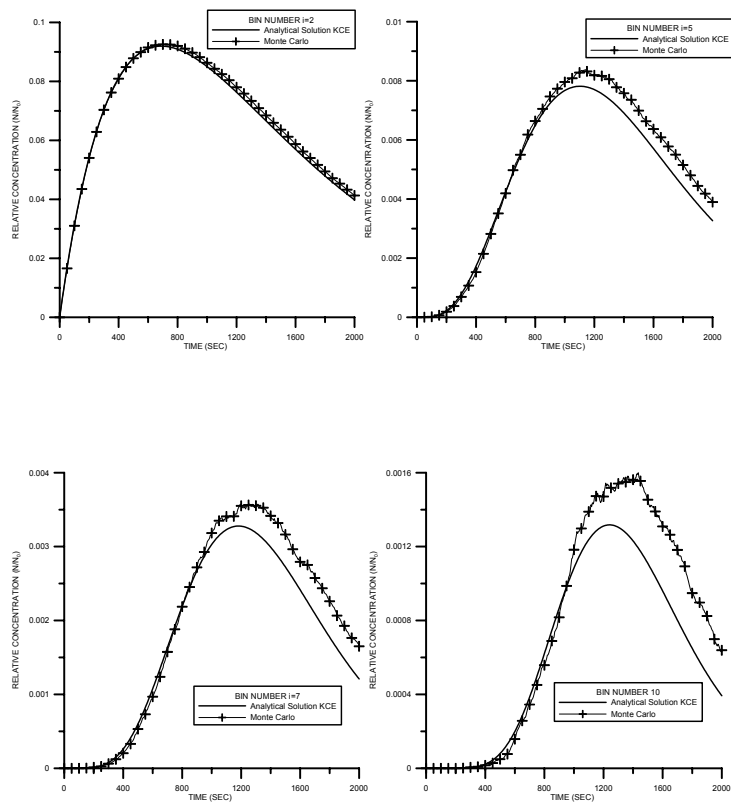


**Fig. 7.** Size distributions obtained from the KCE and the stochastic approach at  $t=1600$  s for the product kernel.

[Title Page](#)[Abstract](#)[Introduction](#)[Conclusions](#)[References](#)[Tables](#)[Figures](#)[◀](#)[▶](#)[◀](#)[▶](#)[Back](#)[Close](#)[Full Screen / Esc](#)[Printer-friendly Version](#)[Interactive Discussion](#)

## The validity of the kinetic collection equation

L. Alfonso et al.

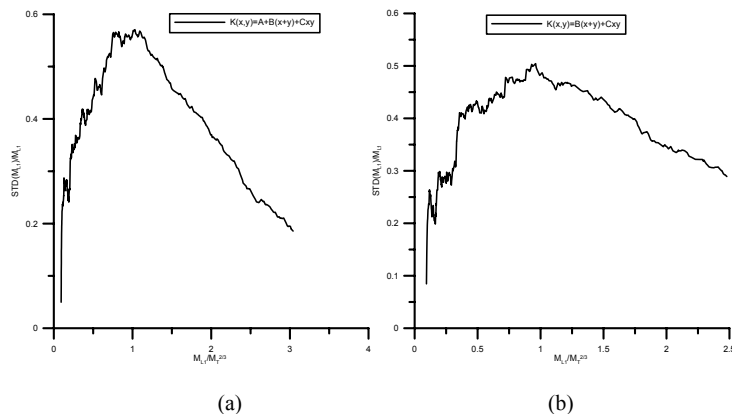


**Fig. 8.** Time evolution (bin sizes 2,5,7 and 10) for a system modeled by the product kernel, as a function of time. The solid lines are the analytical solution of the KCE.

[Title Page](#)[Abstract](#)[Introduction](#)[Conclusions](#)[References](#)[Tables](#)[Figures](#)[◀](#)[▶](#)[◀](#)[▶](#)[Back](#)[Close](#)[Full Screen / Esc](#)[Printer-friendly Version](#)[Interactive Discussion](#)

## The validity of the kinetic collection equation

L. Alfonso et al.



**Fig. 9.** The ratio of the standard deviation to expectation value of the largest droplet  $STD(M_{L1})/M_{L1}$  as a function of  $M_{L1}/M_T^{2/3}$  for approximating polynomials **(a)**  $A+B(x+y)+Cxy$  and **(b)**  $B(x+y)+Cxy$ .

Title Page

Abstract

Introduction

Conclusions

References

Tables

Figures

◀

▶

◀

▶

Back

Close

Full Screen / Esc

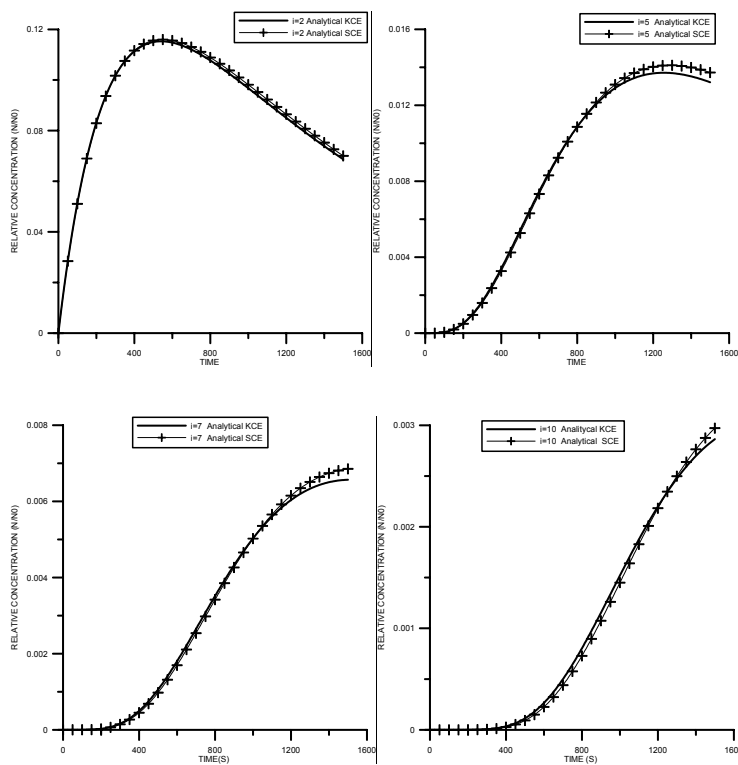
Printer-friendly Version

Interactive Discussion

---

**The validity of the  
kinetic collection  
equation**L. Alfonso et al.

---



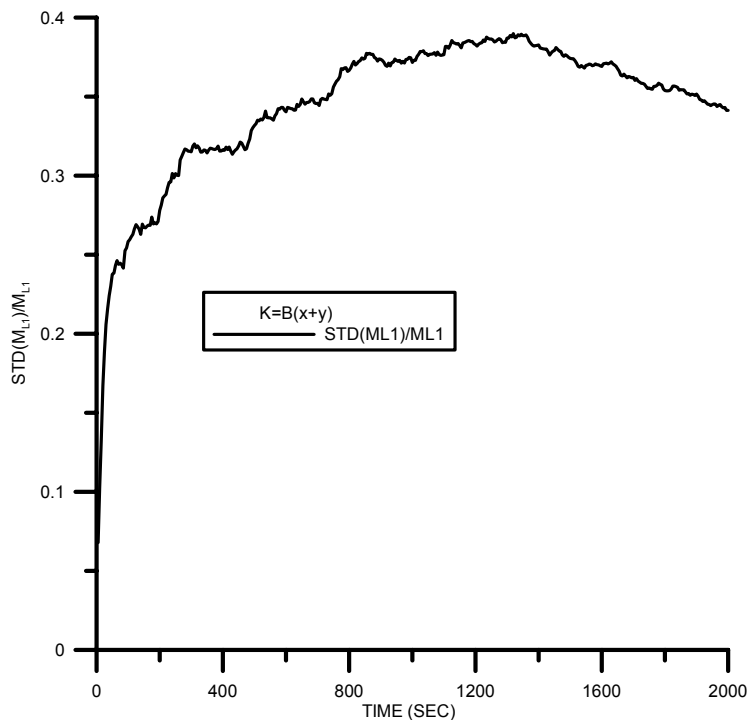
**Fig. 10.** Time evolution (bin sizes 2, 5, 7 and 10) for a system modeled by the sum kernel, as a function of time. The solid lines are the analytical solution of the KCE, the symbols are the analytical solutions of the SCE.

[Title Page](#)[Abstract](#)[Introduction](#)[Conclusions](#)[References](#)[Tables](#)[Figures](#)[◀](#)[▶](#)[◀](#)[▶](#)[Back](#)[Close](#)[Full Screen / Esc](#)[Printer-friendly Version](#)[Interactive Discussion](#)

---

**The validity of the  
kinetic collection  
equation**L. Alfonso et al.

---

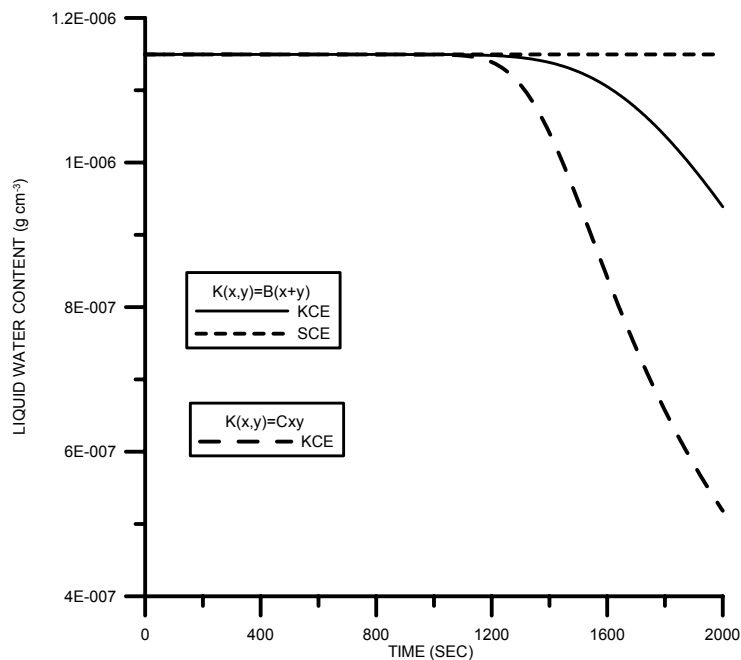


**Fig. 11.** The ratio of the standard deviation to expectation value of the largest droplet  $STD(M_{L1})/M_{L1}$  as a function of time for the approximating polynomial  $K(x,y)=B(x+y)$ , ( $B=8.82 \times 10^2 \text{ cm}^3 \text{ s}^{-1}$ ).

[Title Page](#)[Abstract](#)[Introduction](#)[Conclusions](#)[References](#)[Tables](#)[Figures](#)[◀](#)[▶](#)[◀](#)[▶](#)[Back](#)[Close](#)[Full Screen / Esc](#)[Printer-friendly Version](#)[Interactive Discussion](#)

**The validity of the  
kinetic collection  
equation**

L. Alfonso et al.



**Fig. 12.** Time evolution of the liquid water content (first moment of the distribution) for the sum kernel ( $K(x,y)=B(x+y)$ ), calculated from size distributions of the KCE and true averages from the SCE; and for product kernel ( $K(x,y)=Cxy$ ), calculated from the analytical solution of the KCE.

[Title Page](#)[Abstract](#)[Introduction](#)[Conclusions](#)[References](#)[Tables](#)[Figures](#)[◀](#)[▶](#)[◀](#)[▶](#)[Back](#)[Close](#)[Full Screen / Esc](#)[Printer-friendly Version](#)[Interactive Discussion](#)