



HAL
open science

Influence of trans-Pacific pollution transport on acyl peroxy nitrate abundances and speciation at Mount Bachelor Observatory during INTEX-B

G. M. Wolfe, J. A. Thornton, V. Faye Mcneill, D. A. Jaffe, D. Reidmiller, D. Chand, J. Smith, P. Swartzendruber, F. Flocke, W. Zheng

► **To cite this version:**

G. M. Wolfe, J. A. Thornton, V. Faye Mcneill, D. A. Jaffe, D. Reidmiller, et al.. Influence of trans-Pacific pollution transport on acyl peroxy nitrate abundances and speciation at Mount Bachelor Observatory during INTEX-B. *Atmospheric Chemistry and Physics Discussions*, 2007, 7 (3), pp.9139-9181. hal-00302913

HAL Id: hal-00302913

<https://hal.science/hal-00302913>

Submitted on 18 Jun 2008

HAL is a multi-disciplinary open access archive for the deposit and dissemination of scientific research documents, whether they are published or not. The documents may come from teaching and research institutions in France or abroad, or from public or private research centers.

L'archive ouverte pluridisciplinaire **HAL**, est destinée au dépôt et à la diffusion de documents scientifiques de niveau recherche, publiés ou non, émanant des établissements d'enseignement et de recherche français ou étrangers, des laboratoires publics ou privés.

**APNs at Mt. Bachelor
during INTEX-B**

G. M. Wolfe et al.

Influence of trans-Pacific pollution transport on acyl peroxy nitrate abundances and speciation at Mount Bachelor Observatory during INTEX-B

G. M. Wolfe¹, J. A. Thornton², V. Faye McNeill², D. A. Jaffe^{2,3}, D. Reidmiller², D. Chand³, J. Smith^{3,*}, P. Swartzendruber², F. Flocke⁴, and W. Zheng⁴

¹Chemistry Department, University of Washington, Seattle, Washington, USA

²Atmospheric Sciences Department, University of Washington, Seattle, Washington, USA

³Interdisciplinary Arts and Sciences Department, University of Washington, Bothell, Washington, USA

⁴Atmospheric Chemistry Division, National Center for Atmospheric Research, Boulder, Colorado, USA

*now at: UNAVCO, Boulder, Colorado, USA

Received: 4 June 2007 – Accepted: 15 June 2007 – Published: 28 June 2007

Correspondence to: J. A. Thornton (thornton@atmos.washington.edu)

Title Page

Abstract

Introduction

Conclusions

References

Tables

Figures

◀

▶

◀

▶

Back

Close

Full Screen / Esc

Printer-friendly Version

Interactive Discussion

EGU

Abstract

We present month-long observations of speciated acyl peroxy nitrates (APNs), including PAN, PPN, MPAN, APAN, and the sum of PiBN and PnBN, measured at the Mount Bachelor Observatory (MBO) as part of the INTEX-B collaborative field campaign during spring 2006. APN abundances, measured by thermal dissociation-chemical ionization mass spectrometry (TD-CIMS), are discussed in terms of differing contributions from the boundary layer and the free troposphere and in the context of previous APN measurements in the NE Pacific region. PAN mixing ratios range from 11 to 3955 pptv, with a mean value of 334 pptv for the full measurement period. PPN is linearly correlated with PAN ($r^2=0.96$), with an average abundance of 6.5% relative to PAN; other APNs are generally <1% of PAN. Diurnal cycles and relationships of APNs with ozone reveal a gradient in hydrocarbon chemistry between the boundary layer and the free troposphere. On average, the highest levels of APNs, ozone and PPN/PAN are found in free tropospheric air masses, suggesting that this site is strongly influenced by distant pollution sources. To estimate the impact of long-range transport of Asian pollution on atmospheric composition at MBO, we perform a detailed analysis utilizing HYSPLIT back trajectories. This analysis suggests that trans-Pacific transport of Asian pollution leads to substantial increases in APN and ozone mixing ratios at MBO, especially when transport occurs via the free troposphere. The ensemble of trajectories indicate that Asian-influenced free tropospheric air was sampled in ~16% of our data and contained a median PAN mixing ratio double that of the full dataset.

1 Introduction

Rapid economic growth in Asia over the past 30 years has led to a substantial increase in emissions of particulate and gas-phase pollutants in that region, including NO_x , SO_2 and CO (Elliot et al., 1997; van Aardenne et al., 1999; Streets et al., 2001). NO_x emissions can alter the oxidizing capacity of the troposphere through the catalytic

APNs at Mt. Bachelor during INTEX-B

G. M. Wolfe et al.

Title Page

Abstract

Introduction

Conclusions

References

Tables

Figures

◀

▶

◀

▶

Back

Close

Full Screen / Esc

Printer-friendly Version

Interactive Discussion

production of ozone, a primary daytime source of OH. Models suggest that global tropospheric ozone has increased by 30 to 60% over the last century as a result of anthropogenic activities (Wang and Jacob, 1998; Lamarque et al., 2005), becoming a significant component of anthropogenic greenhouse climate forcing (Shindell et al., 2006) and reducing agricultural yields (Chameides et al., 1999; Wang et al., 2005). NO_x may also contribute to ecosystem eutrophication and soil acidification through formation of nitric acid (HNO₃) and subsequent deposition (Goulding et al., 1998). Emissions of NO_x in East Asia doubled between 1985 and 1997 (Streets et al., 2001) and are projected to more than double again by 2020 in the absence of improved mitigation strategies (van Aardenne et al., 1999). It has also been suggested that boreal climate warming may exacerbate Siberian forest fires (Jaffe et al., 2004), further enhancing emissions of NO_x and other combustion byproducts over Eurasia.

Rising Asian industrial and biomass burning emissions have the potential to impact atmospheric composition over western North America. Long-range transport (LRT) of pollution from the Asian continental boundary layer tends to be strongest in the spring, when warm conveyor belts and occasional deep convection events associated with East Asian cyclones loft polluted air masses into the free troposphere (FT), where they are rapidly (5 to 10 days) carried to the Northwestern U.S. by westerly winds (Bey et al., 2001; Cooper et al., 2004; Liang et al., 2004). Modeling studies estimate that polluted air transported from Asia may contribute 4–7 ppbv to the ozone background over the North Pacific Ocean (Berntsen et al., 1999) and continental U.S. (Fiore et al., 2002). Jacob et al. (1999) projected that future increases in Asian anthropogenic emissions may enhance springtime surface ozone levels by 1–3 ppbv over western North America despite domestic reductions of ozone precursor emissions. These predictions are supported by a number of ground and aircraft measurements throughout the NE Pacific region, which point toward a significant and growing LRT influence on ozone concentrations both episodically (Jaffe et al., 2003a; Bertschi et al., 2004; Hudman et al., 2004; Nowak et al., 2004; Weiss-Penzias et al., 2006) and in the background (Parrish et al., 1992; Jaffe et al., 2003b; Jaffe et al., 2004). Such enhancements can lead

APNs at Mt. Bachelor during INTEX-B

G. M. Wolfe et al.

Title Page

Abstract

Introduction

Conclusions

References

Tables

Figures

◀

▶

◀

▶

Back

Close

Full Screen / Esc

Printer-friendly Version

Interactive Discussion

APNs at Mt. Bachelor during INTEX-B

G. M. Wolfe et al.

Title Page

Abstract

Introduction

Conclusions

References

Tables

Figures

◀

▶

◀

▶

Back

Close

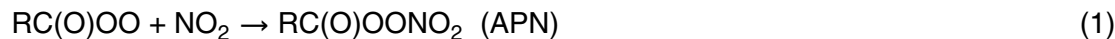
Full Screen / Esc

Printer-friendly Version

Interactive Discussion

to non-attainment of U.S. EPA ozone standards (Fiore et al., 2002; Jaffe et al., 2004). It has been argued that rising ozone levels in the NE Pacific region are due partly to changes in the springtime ozone photochemical tendency (lower destruction rate) as a result of increasing NO_x abundances (Yienger et al., 1999; Kotchenruther et al., 2001b; Parrish et al., 2004); however, we currently lack the long-term measurements of NO_x and its reservoirs in this region to adequately test models.

NO_x has a relatively short lifetime (~1 day) in the troposphere, thus its transport far from source regions is largely determined by the formation of insoluble reservoir species (Crutzen, 1979), such as peroxyacetyl nitrate (PAN) and its homologues, to which we refer collectively as acyl peroxy nitrates (APNs). APNs are formed during the photochemical oxidation of volatile organic compounds (VOCs) in the presence of NO_x:



The structure of the “R” group is dependent on the organic precursor. PAN (R = CH₃) is the most abundant APN, having both anthropogenic and biogenic precursor sources. The equilibrium in Eq. (1) is highly dependent on temperature; for example, the pseudo-first order lifetime of PAN is greater than 1 month at 258 K but less than 1 h at 298 K. In the lower troposphere, PAN is lost primarily through thermal decomposition followed by reaction of the peroxy radical with NO or other peroxy radicals; photolysis is the dominant loss mechanism above 7 km ($\tau_{\text{PAN}} \sim 3$ weeks), while oxidation by OH and ozone represents a minor loss pathway throughout the troposphere for all but unsaturated APNs (Talukdar et al., 1995). The thermal stability of APNs in the free troposphere provides a pathway for the transport NO_x from Asian source regions to remote areas, where subsidence-induced warming and subsequent thermal decomposition of APNs releases NO_x (Singh et al., 1986; Moxim et al., 1996; Yienger et al., 1999).

Connecting increasing NO_x emissions in Asia to enhanced ozone production in the NE Pacific region is currently limited by the availability of observations. APNs (predominantly PAN) can compose 60 to 80% of total reactive nitrogen (NO_y) in air parcels

influenced by Asian pollution (Roberts et al., 2004). Parrish et al. (2004) have noted that PAN levels may be increasing in the NE Pacific marine boundary layer (MBL), based on observations made during several independent field campaigns over the last two decades. The apparent rise is consistent with increasing East Asian NO_x emissions, suggesting a growing influence of Asian pollutants on photochemistry near the surface. Few studies have attempted to assess the impacts of LRT on the composition of the continental FT, even though the injection of NO_x into the remote FT—where ozone production is NO_x limited—has the potential to significantly alter ozone production chemistry (Moxim et al., 1996; Kotchenruther et al., 2001b; Hudman et al., 2004).

As part of the Intercontinental Chemical Transport Experiment (INTEX-B) in spring 2006, a suite of chemical and meteorological measurements were made at Mount Bachelor Observatory (MBO), a ground-based research site in central Oregon that allows routine sampling of FT air (Jaffe et al., 2005; Weiss-Penzias et al., 2006). This paper presents observations of a range of APNs, including PAN, peroxypropionyl nitrate (PPN, R = CH₃CH₂), peroxyethacryloyl nitrate (PEAN, R = CH₂C(CH₃)), peroxyacryloyl nitrate (APAN, R = CH₂CH), and the sum of peroxy-n-butyryl nitrate (PnBN, R = CH₃CH₂CH₂) and peroxyisobutyryl nitrate (PiBN, R = (CH₃)₂CH), made between 11 April and 14 May 2006 at MBO. First, we discuss the behavior and speciation of APNs in terms of differing contributions from surface and FT air. Next, we utilize relationships between APNs, ozone and water vapor to diagnose the effect of air mass origin and history on APN abundances. Finally, we perform an ensemble trajectory analysis to estimate the contribution of LRT of Asian pollution to APN and ozone abundances at MBO. We conclude that FT transport of Asian pollution and subsequent subsidence over western North America can significantly alter ozone photochemistry at high-altitude locations.

APNs at Mt. Bachelor during INTEX-B

G. M. Wolfe et al.

Title Page

Abstract

Introduction

Conclusions

References

Tables

Figures

◀

▶

◀

▶

Back

Close

Full Screen / Esc

Printer-friendly Version

Interactive Discussion

2 Methods

2.1 Site description and sampling

The MBO site (43.979° N, 121.687° W, 2763 m above sea level (a.s.l.)) has been described in detail previously (Weiss-Penzias et al., 2006). The mountain itself is snow-covered through summer and the upper half is above tree line, whereas the surrounding area is predominantly coniferous forest. The Mount Bachelor Ski Resort is located on the east face, and the closest populated areas are Bend (pop. 65,210) at 31 km to the east and Redmond (pop. 21,109) at 53 km to the northeast, both of which are located along the Route 97 corridor that runs north-south and approaches to within 25 km east of Mt. Bachelor. Prevailing winds were northwesterly on average during the campaign but ranged from southwesterly to northeasterly, which is a broader range than reported for previous studies at MBO (Jaffe et al., 2005; Weiss-Penzias et al., 2006); thus, there may be some potential for influence from local pollution sources during spring 2006.

A variety of measurements were made at MBO during INTEX-B and are described in detail elsewhere (Reidmiller et al., 2007¹). For analysis of the APN data, we employ 5-min and 60-min averages of ozone, water vapor, sub-micron particle light scattering, carbon monoxide and gaseous elemental mercury; these measurements are summarized in Table 1. A common sampling inlet, located 15 m above the instrument room, was used to draw ambient air at a rate of 20 slpm from the sampling tower through 15 m of 3/8" OD PFA tubing to a gas distribution manifold shared by the CO, O₃, NO_x, NO_y and APN instruments; the Hg and scattering instruments employed separate inlets. From the manifold, 2 slpm were pulled through 5 m of 1/4" OD PFA tubing to the APN instrument, resulting in an average residence time of 2 seconds for transit from the inlet tower to the APN instrument. APN loss due to thermal decomposition during transit should be minimal (<0.1%).

¹Reidmiller, D., et al.: in preparation, 2007.

Title Page

Abstract

Introduction

Conclusions

References

Tables

Figures

◀

▶

◀

▶

Back

Close

Full Screen / Esc

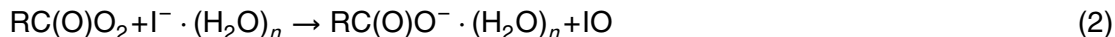
Printer-friendly Version

Interactive Discussion

2.2 Measurement of APNs

A custom-built thermal-dissociation chemical ionization mass spectrometer (TD-CIMS) was employed to detect APNs; the technique is similar to those of Villalta and Howard (1996) and Slusher et al. (2004). Sample air is pulled at 2 slpm through a heated inlet consisting of a 17 cm length of 1/2" OD PFA tubing maintained at 160–180°C. A coupled chemistry-heat transfer model indicates a final axial gas temperature of 145°C and dissociation of >99% of PAN into NO₂ and peroxy radicals under these conditions. Thermal dissociation rates of other APNs are similar to those of PAN, thus we expect near-complete dissociation of all APNs studied (Roberts and Bertman, 1992; Grosjean et al., 1994a; Grosjean et al., 1994b).

Upon exiting the inlet region, the hot sample gas passes through a flow-restricting orifice into the ion-molecule reaction region (55–60 Torr) where it immediately mixes with an iodide reagent ion flow. Iodide is generated by flowing trace amounts of methyl iodide (CH₃I) in 2 slpm N₂ through a commercial ²¹⁰Po α-particle ionizer (10 mCi, NRD). Peroxy radicals react with iodide to form their corresponding carboxylate anions (Villalta and Howard, 1996):



By retaining the “R” group, the TD-CIMS technique allows for speciation of APNs with different molecular masses; PiBN and PnBN, which have the same molecular mass, are detected as a sum and will be referred to as ΣPBNs. After a reaction time of ~70 ms, ions are focused through a second orifice into a collisional dissociation chamber (CDC) held at 0.8 Torr. A set of electrostatic lenses in the CDC establish an electric field of 55 V/cm to accelerate ions and break water-ion clusters apart through collisions with bath gas, thereby simplifying mass spectra and reducing the effect of humidity changes on instrument sensitivity. Ions are then focused through a third pinhole into the differentially pumped high-vacuum chamber. Here an octopole ion guide directs ions through a final pinhole before mass selection and detection by a quadrupole mass spectrometer (Extrel). Signal intensities at 59 (PAN), 71 (APAN), 73 (PPN), 85 (MPAN)

Title Page

Abstract

Introduction

Conclusions

References

Tables

Figures

◀

▶

◀

▶

Back

Close

Full Screen / Esc

Printer-friendly Version

Interactive Discussion

and 87 (Σ PBNs) amu were acquired at 0.1 Hz with a signal collection time of 1 s per mass. A full mass spectrum (10–200 amu) was also recorded every 3–6 h. A typical mass spectrum obtained during the measurement period is shown in Fig. 1.

2.3 Sensitivity and Background Determination

5 Calibrations were performed at 45–90 min intervals by standard addition of ~ 1 ppbv of PAN (62.5 ppbv before dilution into the sample stream) to sample air just prior to entering the heated inlet. PAN was generated by an acetone-nitric oxide photolysis source analogous to that of Roberts et al. (2004) and based on the work of Warneck and Zerbach (1992). During the first half of the measurement period, isotopically-labeled acetone (17.79 \pm 0.36 ppmv in air, Scott-Marrin) was used with NO (1.025 \pm 0.020 ppmv in O₂-free N₂, Scott-Marrin) to generate isotopically-labeled PAN (¹³C-PAN) with the
10 intention of shifting the calibration peak by 1 amu, thus allowing for continuous calibration. The appearance of non-negligible signal at 59 amu during addition of ¹³C-PAN ultimately precluded a continuous calibration procedure, although the interference was fairly constant and easily removed from the raw data. We suspect that the interference
15 resulted from a combination of ¹²C-acetone impurities in the ¹³C-acetone cylinder and insufficient signal resolution between the 59 amu and 60 amu peaks. ¹²C-acetone (18.62 \pm 0.37 ppmv in air, Scott-Marrin) was used for the remainder of the campaign. Before deployment, the photolytic PAN source was cross-checked against an NO/NO_y
20 analyzer operated by the Jaffe group at UW Bothell. These tests suggest a PAN formation efficiency of 95 \pm 1%, in good agreement with a chemical kinetics model and previous tests of analogous PAN sources (Volz-Thomas et al., 2002; Roberts et al., 2004).

25 The average sensitivity to PAN during the measurement period was 1.4 \pm 0.7 counts pptv⁻¹ s⁻¹ (mean $\pm 1\sigma$). Changes in the sensitivity of the TD-CIMS were inversely correlated with small changes (<10%) in the chemical ionization region pressure, which appear to have been related to 5–10°C diurnal variations in instrument room temperature. Data analysis was largely unaffected by these fluctuations, as calibrations were

Title Page

Abstract

Introduction

Conclusions

References

Tables

Figures

◀

▶

◀

▶

Back

Close

Full Screen / Esc

Printer-friendly Version

Interactive Discussion

performed frequently enough to capture any change in sensitivity. Average sensitivities from each calibration period were linearly interpolated to give concentration values for the 1-s data, and the sensitivity of the TD-CIMS was assumed to be the same for all APNs. The nature of chemical ionization generally allows for extrapolation of calibrations constants within a family of ion-molecule reactions, as the reaction rates are often very similar within a family. We have confirmed this assumption for PPN in our lab, and other groups have shown that Σ PBNs and APAN also have similar sensitivities to PAN, but for MPAN the TD-CIMS sensitivity appears to be 3–8 times lower (Slusher et al., 2004; Turnipseed et al., 2006). Since the calculated concentrations are inversely proportional to sensitivity, the data reported here for MPAN may be considered a lower limit to its actual atmospheric abundance; our conclusions herein are not dependent on the absolute abundance of MPAN.

Instrumental background noise was determined every 30 min by diverting sample air through a 27 cm length of 1/2" OD stainless steel tubing packed with stainless steel wool and heated to 150–180°C prior to entering the TD-CIMS. Laboratory tests using the PAN calibration source suggest a destruction efficiency of >99% for PAN. The heated PFA inlet was also occasionally cooled to room temperature during the measurement period to check for temperature-independent interferences; all APN signals dropped to background levels during these tests. Average background count rates were found to be equivalent to 7 pptv for PAN and 2 pptv for other APNs, yielding 1-s detection limits ($S/N = 2$) of 8 pptv for PAN and 5 pptv for other APNs. Averaging of the data to a 5-min or 60-min time base further reduces the detection limits, such that they are determined primarily by the deviation in adjacent background measurements (~ 4 pptv for PAN and ~ 2 pptv for other APNs). It should be noted that the less abundant APNs (MPAN, Σ PBNs and APAN) were often below the background-limited detection limit; however, these points are still used in the data analysis. Cumulative errors for the 1-s data are estimated at $\pm(15\%+6)$ pptv for PAN and $\pm(15\%+2)$ pptv for all other APNs.

APNs at Mt. Bachelor during INTEX-B

G. M. Wolfe et al.

Title Page

Abstract

Introduction

Conclusions

References

Tables

Figures

I◀

▶I

◀

▶

Back

Close

Full Screen / Esc

Printer-friendly Version

Interactive Discussion

2.4 Trajectory analysis

To assess the history of various air masses reaching MBO and identify potential pollution transport events from Asia, 10-day kinematic back trajectories (BTs) were calculated using the HYbrid Single-Particle Lagrangian Integrated Trajectory (HYSPPLIT) model (Draxler and Rolph, 2003). The model was operated with meteorological input from the Global Data Assimilation System (GDAS) archive, which has a 3-h time resolution, 1° latitude by 1° longitude horizontal resolution and 23 vertical layers from the surface to 20 hPa. Ensemble BTs were initialized for each hour of the measurement period in a grid box centered on MBO, with start locations every 0.125° in a 0.5° latitude by 0.5° longitude grid box and every 100 m of altitude from 0–2900 m above ground level (agl). This translates to 30 initialization altitudes with 25 initialization locations per altitude, yielding 750 trajectories per initialization time and a total of 588,000 BTs for the entire measurement period. This method is analogous to the calculation of “retroplumes” as introduced by Stohl et al. (2002).

We use these BTs to estimate the magnitude of pollution transport from Asia by determining how long each trajectory particle spends in an “East Asian box” defined as 20–45° N by 100–130° E by 0–3 km, similar to the method described by Weiss-Penzias et al. (2006, 2007). This box corresponds to the continental boundary layer of an area of east-central China and Korea with high levels of anthropogenic emissions as estimated by Streets et al. (2003) and measured by orbiting platforms such as MOPITT (cf. Heald et al., 2003). For each hour of the campaign and each BT initialization altitude, the number of hours in the East Asian box are counted and then averaged over the 25 trajectories for that initialization time and altitude. Thus, we compute the number of BTs passing through the East Asian box, weighted by the average amount of time each BT spends in the box. Results presented below are computed with trajectories driven by GDAS meteorology; however, we also performed this analysis with trajectories driven by the FNL (a lower-resolution archive of the GDAS output) and NCEP/NCAR Reanalysis meteorological datasets (information on these datasets may

Title Page

Abstract

Introduction

Conclusions

References

Tables

Figures

◀

▶

◀

▶

Back

Close

Full Screen / Esc

Printer-friendly Version

Interactive Discussion

be found at <http://www.arl.noaa.gov/ss/transport/archives.html>). Comparable conclusions are drawn in all cases, even though individual trajectories were often different for each meteorological dataset. Section 4.2 details the results of this analysis.

3 Results

3.1 Measurement summary

Figure 2 shows time series for 60-min averaged PAN, PPN, the ratio of PPN to PAN, and ozone for 11 April to 14 May (day of year 101 to 134). Temporal profiles of PAN, PPN and other measured APNs (not shown) are qualitatively similar throughout the campaign. Air sampled during the first 11 days was relatively clean compared to the remainder of the campaign, with PAN mixing ratios ranging from 20 to 321 pptv (mean 124 ± 55 pptv) and O_3 concentrations from 34 to 58 ppbv (mean 47 ± 4 ppbv). Ten-day back trajectories for this period indicate that air masses reaching MBO originated primarily from the Pacific MBL with minimal continental influence. Starting on day 112 significant episodic increases in PAN and PPN are evident, particularly on days 113, 124–126, 128–129, and 131–133. Some of these events – but not all – are associated with LRT from Asia. Ozone also shows greater variability after day 112, reaching the highest values of the campaign (~ 90 ppbv) on day 112 followed by a period of fairly low values (~ 35 ppbv) from days 117 to 120. Changes in PAN and ozone are often strongly correlated during individual events (cf. days 128 and 132). Linear fits to four-day medians of PAN and O_3 (not shown) indicate an average increase of 0.48 ppbv/day for O_3 and 11.6 pptv/day for PAN, consistent with seasonal changes in photochemistry and long-range transport throughout the measurement period.

Despite the apparent similarity between the temporal profiles of their absolute abundance, the ratio of PPN to PAN (Fig. 2c) varies considerably throughout the campaign. PPN/PAN ranges from 0.033 to 0.144, within the span reported by Roberts et al. (2004) for the NE Pacific region. The highest values of PPN/PAN tend to occur during times

Title Page

Abstract

Introduction

Conclusions

References

Tables

Figures

◀

▶

◀

▶

Back

Close

Full Screen / Esc

Printer-friendly Version

Interactive Discussion

APNs at Mt. Bachelor during INTEX-B

G. M. Wolfe et al.

[Title Page](#)[Abstract](#)[Introduction](#)[Conclusions](#)[References](#)[Tables](#)[Figures](#)[◀](#)[▶](#)[◀](#)[▶](#)[Back](#)[Close](#)[Full Screen / Esc](#)[Printer-friendly Version](#)[Interactive Discussion](#)

when both PAN and PPN are very low (e.g. days 126 and 128) and may be a consequence of concentrations approaching the detection limit of the TD-CIMS. This ratio (or its surrogate, the slope of a plot of PPN vs. PAN) is often used to diagnose anthropogenic influence in pollution plumes (Williams et al., 1997; Roberts et al., 2004); however, the utility of this indicator at MBO is complicated by diel boundary layer dynamics (discussed below) and by extensive photochemical aging and dilution during LRT, which tends to lower the PPN/PAN ratio (Singh and Salas, 1989).

Table 2 lists the statistical parameters for all APNs measured at MBO, as well as O₃ and CO, using data averaged onto a 5-minute time base; MPAN abundances are not reported as their quantification is uncertain. For PAN and PPN, the mean values are greater than the medians by a factor of ~1.7, reflecting the sporadic occurrence of high APN events. Maxima for PAN and PPN were reached during two short events occurring on day 132. A number of other chemical tracers also displayed large enhancements at this time, including ozone (24% above the campaign median) and sub-micron particle scattering (a factor of 1.5 above the campaign median, not shown); water vapor dropped by a factor of 3, suggesting FT air. The origins of these events are unclear. Back trajectories indicate the possibility of LRT from central East Asia and/or Eastern Europe, the latter of which experienced a broad band of agricultural and forest fires during late April and early May (Stohl et al., 2007). Additionally, several forest fires (possibly controlled burns) were also observed in the area around MBO during this period, resulting in a layer of haze clearly visible from the summit building. A more intensive analysis of such episodes is beyond the scope of the current study. Removing these two events has a minimal impact on the campaign statistics, decreasing the mean and standard deviation for PAN by 7% and 17%, respectively.

3.2 Correlations among APNs

While PAN is by far the most abundant APN, a number of other APNs are also produced in the rich hydrocarbon chemistry of the lower troposphere. PPN is generally the next most abundant, and is believed to be predominantly anthropogenic in origin (Singh

and Salas, 1989). In contrast, MPAN is derived primarily from the photo-oxidation of biogenic hydrocarbons, particularly isoprene (Tuazon and Atkinson, 1990; Bertman and Roberts, 1991). Other APNs have also been recently detected in the field, including APAN (Roberts et al., 2001; Tanimoto and Akimoto, 2001), PnBN (Grosjean et al., 1993; Glavas and Moschonas, 2001) and PiBN (Roberts et al., 2002; Roberts et al., 2003), all phytotoxic compounds associated with petrochemical precursors (Taylor, 1969; Roumelis and Glavas, 1992). Speciation of APNs can provide insight into sources of photochemical ozone precursors, especially near urban regions where recent photochemical production yields high APN concentrations (Williams et al., 1997; Roberts et al., 1998; Roberts et al., 2002).

Relationships of PAN with PPN, MPAN, Σ PBNs and APAN are plotted in Fig. 3 using 5-min data, and the results of the error-weighted linear least-squares fit to each plot are summarized in Table 2. All APNs show a clear linear correlation with PAN, with slopes relative to PAN decreasing in the order PPN, Σ PBNs, MPAN and APAN. This trend partly reflects the varying lifetimes and abundances of both the APNs and their VOC precursors; for example, the unsaturated hydrocarbon moiety in MPAN and APAN makes these compounds more susceptible to oxidation by OH and O₃. The same ordering is also apparent in the progressively weaker correlation coefficients, which may be a byproduct of atmospheric concentrations approaching the detection limit. Linear correlations are maintained even during the high PAN events observed on day 132, although the slopes of linear fits to the data during this period are generally lower than the fits to the full dataset, possibly suggesting more complete oxidation of VOCs prior to APN formation. Removing day 132 data has a negligible effect on the linear fits to the full dataset.

The slopes listed in Table 2 and the range of values observed for the various APN-PAN relationships (denoted by dashed lines in Fig. 3) suggest that most of the polluted air intercepted at MBO, regardless of its origin, is photochemically aged. PPN is clearly the most ubiquitous APN after PAN, with the ratio of PPN/PAN ranging from 4–10% and averaging 6.5% (Fig. 3a). PPN and PAN are highly correlated ($r^2=0.96$), which is

APNs at Mt. Bachelor during INTEX-B

G. M. Wolfe et al.

Title Page

Abstract

Introduction

Conclusions

References

Tables

Figures

I◀

▶I

◀

▶

Back

Close

Full Screen / Esc

Printer-friendly Version

Interactive Discussion

somewhat unexpected considering the diversity of air masses sampled at MBO. Our PPN/PAN agrees well with the range (3–14%) and average (8%) of values reported by Singh et al. (1989) for North America and is well below the 12–15% observed for urban areas (Roberts et al., 1998; Roberts et al., 2002; Roberts et al., 2003), indicating the absence of “fresh” anthropogenic pollution. In contrast to PPN, other APNs are much less abundant (<1% of PAN on average), with mixing ratios and slopes approximately an order of magnitude smaller than those measured at urban locations (Roberts et al., 2002; Roberts et al., 2003). Occasional episodic increases in these compounds are still observed; for instance, a plume sampled on day 124 contained relatively high levels of APAN, and another event on day 126 brought the highest values of the campaign for APAN and Σ PBNs (see Figs. 3b and d). These narrow plumes also contained uncharacteristically high levels of CO (up to 283 ppbv, see Fig. 4b) and sub-micron particle scattering (up to 190 Mm^{-1} , 48 times the campaign median). Such enhancements suggest a local but unidentified anthropogenic combustion or biomass burning source.

Though most of the cross-correlations of the four less abundant APNs yield little additional information, the correlation between Σ PBNs and MPAN ($r^2=0.73$) is stronger than might be expected, considering that the former is thought to be primarily anthropogenic in origin, while the latter is predominantly biogenic. Although the MPAN precursor methacrolein has been identified as a minor component of vehicle exhaust (Zervas et al., 1999), this correlation may provide evidence of the existence of an unidentified biogenic APN, namely peroxypruvyl nitrate ($\text{CH}_3\text{C}(\text{O})\text{C}(\text{O})\text{OONO}_2$, PPyN), which would be detected at the same mass as Σ PBNs ($m/z=87$). PPyN has been postulated to be a product of MPAN oxidation (Orlando et al., 2002) and would likely have a longer atmospheric lifetime than MPAN, but it has yet to be uniquely identified in the atmosphere. It is not possible to differentiate between the various possible species at this mass with the current dataset.

APNs at Mt. Bachelor during INTEX-B

G. M. Wolfe et al.

Title Page

Abstract

Introduction

Conclusions

References

Tables

Figures

◀

▶

◀

▶

Back

Close

Full Screen / Esc

Printer-friendly Version

Interactive Discussion

3.3 PAN relationships with ozone and carbon monoxide

Figure 4a displays the relationship of PAN and ozone for all 5-minute data. For the majority of the data, PAN and ozone exhibit a positive correlation, which is to be expected since both are products of coupled NO_x -VOC photochemical cycles in the troposphere. A number of previous studies have also reported strong positive correlations between PAN and O_3 (Singh et al., 1990; Parrish et al., 1992; Walega et al., 1992; Roberts et al., 2002). Stratospheric intrusions or strong photochemistry may have contributed to the high ozone episodes on days 112 and 133. CO concentrations during these times (means of 135 and 131 ppbv, respectively) yield little information, as they were close to the campaign average (Table 2). High-altitude trajectories (approaching 10 km) make stratospheric influence a likely possibility for air sampled on day 112, while higher PAN mixing ratios and a steeper PAN – O_3 slope in the day 133 event suggest that photochemistry was more active in that air mass. These episodes were likely a mixture of MBL or stratospheric air and polluted air masses.

The PAN – CO relationship, shown in Fig. 4b, is also log-linear for the bulk of observations. Elevated CO mixing ratios are sometimes (day 126) but not always (days 105 and 110) accompanied by large increases in PAN. A general positive correlation is expected for these species given that emission sources of CO and NO_x are often collocated, although the enhancement ratio for a particular episode will depend both on the photochemical and meteorological history of an air mass – as CO and PAN lifetimes could be vastly different – and on the exact nature of the emission source. For example, recent Asian emission inventories have estimated that CO/NO_x can be quite high for inefficient combustion sources (e.g. domestic fuel and biomass burning) but is small for other anthropogenic sources (e.g. coal-fired power plants) (Streets et al., 2003). Mean CO concentrations measured at MBO in spring 2006 are ~ 20 ppbv lower compared to previous years, and the variability is also lower by 5–10 ppbv (Jaffe et al., 2005; Reidmiller et al., 2007¹). While the reasons for these differences are not yet well understood, it is conceivable that the relative contribution of domestic fuel and biomass

Title Page

Abstract

Introduction

Conclusions

References

Tables

Figures

◀

▶

◀

▶

Back

Close

Full Screen / Esc

Printer-friendly Version

Interactive Discussion

burning to pollution observed at MBO was stronger in previous years.

3.4 Comparison with previous APN measurements

Table 3 presents statistics from a collection of field measurements of PAN made at various locations in the NE Pacific and the northern FT; references pertinent to the following discussion are also listed. PAN mixing ratios measured at MBO in spring 2006 are among the highest ever reported in remote western North America, although the available data is far from comprehensive. PAN abundances at Point Arena, CA – among the first to be reported for the NE Pacific – are quite low (<100 pptv), as would be expected for a site that samples predominantly clean MBL air. Later springtime studies in this region, such as PHOBEA and ITCT 2K2, have focused largely on non-continental regions, where PAN concentrations are expected to be lower due to warmer temperatures (when sampling MBL air) and lower precursor concentrations. Mean PAN concentrations for these investigations are 100–200 pptv, 30–50% of the MBO mean. In aircraft-based campaigns, 1-min maximum PAN concentrations observed at higher altitudes (in the FT) or in Asian-influenced air are well below the 60-minute maxima observed during pollution episodes at MBO. Interestingly, PAN observations recorded on the NCAR C-130 research aircraft during INTEX-B are much closer to the MBO values than previous aircraft measurements, with a mean of 275 pptv and a maximum of 2.6 ppbv. This may reflect stronger LRT from Asia during 2006 or more sampling of this pollution by the C-130 compared to the previous campaigns.

A comparison of PAN measurements between the few other high-altitude mountain locations in the northern hemisphere provides further context to our MBO data. PAN measurements at Niwot Ridge, Colorado, and Jungfrauoch, Switzerland, are quite similar to our observations at MBO, both in the mean values and standard deviations, although direct comparison with the summertime Niwot Ridge measurements is complicated by seasonal PAN variations. Zellweger et al. (2003) reported springtime PAN mixing ratios of up to ~7 ppbv at Jungfrauoch, almost twice our observed maximum. Furthermore, our values are within the range of PAN concentrations observed in nu-

APNs at Mt. Bachelor during INTEX-B

G. M. Wolfe et al.

Title Page

Abstract

Introduction

Conclusions

References

Tables

Figures

◀

▶

◀

▶

Back

Close

Full Screen / Esc

Printer-friendly Version

Interactive Discussion

merous non-urban continental air masses around the world (see Roberts, 1990, and references therein). Thus we conclude that APN values measured at MBO are representative of an inland mountaintop site that intercepts a mixture of FT, MBL and continental air.

4 Analysis and discussion

4.1 Boundary layer vs. free troposphere influences

As demonstrated by Weiss-Penzias et al. (2006), the springtime diurnal patterns of many chemical and meteorological parameters at MBO tend to be controlled by the meteorology characteristic of many high alpine sites. During the daytime, surface heating in surrounding valleys generates an upslope flow, bringing air to MBO from the mixed layer that is warm, higher in water vapor and depleted in ozone due to surface losses. At night this flow is reversed and accompanied by a drop in the mixed layer height, drawing drier, ozone-rich FT air down to MBO. To assess the average springtime diurnal behavior of APNs at MBO, we plot in Fig. 5 the mean values of ozone, water vapor, PPN/PAN, PAN and PPN, as well as median PAN, as a function of local time of day. While the standard deviation of each point is large due to the variety of air masses intercepted at MBO, the standard error of the means, defined as $\sigma/(N)^{1/2}$ and indicated by the error bars, is a more appropriate measure of the uncertainty in the average behavior and is within 8% for PAN and PPN and 3% for ozone and water vapor. The diurnal patterns for ozone and water vapor (Fig. 5a) are qualitatively the same as those for the 2004 MBO data set reported in Weiss-Penzias et al. (2006), although in the 2006 data the maximum water vapor and minimum ozone are reached ~ 1 h later; small time shifts are also observed for diurnal profiles of temperature, wind speed and relative humidity (not shown). Moreover, the 2006 diurnal cycles show higher average ozone (by ~ 9 ppbv) and lower water vapor (by ~ 1 g kg⁻¹). These differences may reflect the inclusion of early April measurements in the 2004 data set or a stronger in-

Title Page

Abstract

Introduction

Conclusions

References

Tables

Figures

◀

▶

◀

▶

Back

Close

Full Screen / Esc

Printer-friendly Version

Interactive Discussion

fluence from the FT during 2006; long-term measurements at MBO will help elucidate the nature of these discrepancies.

Figure 5b illustrates the diurnal variations of PAN and PPN; as in the longer data set (see Fig. 2), PAN, PPN and the other APNs (not shown) qualitatively exhibit the same behavior. The mean and median profiles of PAN are clearly different, primarily because the mean is subject to weighting by a few high PAN events; for instance, the first maximum occurring at ~9 am is largely due to the day 132 episode. Thus, we deem the median to be a more appropriate indicator of the average diel behavior for APNs. Diurnal cycles in both PAN and PPN have been observed previously at other ground sites (Singh and Salas, 1989; Walega et al., 1992; Zellweger et al., 2003; Doskey et al., 2004), although other high-alpine sites typically show a single maximum in the afternoon that is attributed to thermally-induced vertical transport of local pollution. The springtime trend at MBO is clearly more complicated but is consistent with contributions from photochemical activity, boundary layer dynamics and LRT. For example, the broad midday peak in the median PAN profile might be attributed to photochemical production, and a second rise before midnight – after photochemical production has ceased – may be related to stronger subsidence from the FT. Note that the range of variability in the PAN diurnal cycle is small (~60 pptv) compared to the range of the full set of PAN measurements (11–3855 pptv), illustrating that diurnal processes have only a minor effect on APN levels at MBO compared to other influences, such as LRT of non-local pollution.

Despite the similarity of the PAN and PPN diurnal profiles, Fig. 5a illustrates a clear diurnal cycle in the PPN/PAN ratio, with PPN mixing ratios ranging from 6.4% to 7.3% of those of PAN. This cycle is present for both mean and median PPN/PAN profiles. Although the cycle phase appears to be shifted back by ~1 h relative to ozone and water vapor, the trend is almost parallel to that of ozone ($r^2=0.66$) and also correlates negatively with water vapor ($r^2=0.68$). The diurnal variation in ozone correlates stronger with PPN ($r^2=0.41$) than PAN ($r^2=0.19$), suggesting that diurnal variations in PPN/PAN are more a function of changes in the PPN mixing ratio (relative to PAN).

APNs at Mt. Bachelor during INTEX-BG. M. Wolfe et al.

[Title Page](#)[Abstract](#)[Introduction](#)[Conclusions](#)[References](#)[Tables](#)[Figures](#)[I◀](#)[▶I](#)[◀](#)[▶](#)[Back](#)[Close](#)[Full Screen / Esc](#)[Printer-friendly Version](#)[Interactive Discussion](#)

APNs at Mt. Bachelor during INTEX-B

G. M. Wolfe et al.

[Title Page](#)[Abstract](#)[Introduction](#)[Conclusions](#)[References](#)[Tables](#)[Figures](#)[◀](#)[▶](#)[◀](#)[▶](#)[Back](#)[Close](#)[Full Screen / Esc](#)[Printer-friendly Version](#)[Interactive Discussion](#)

Given the similarity of the diurnal patterns for PPN/PAN and ozone, we conclude that upslope/downslope flows drive the diurnal behavior of PPN/PAN. Previous laboratory tests on an analogous instrument suggest that the TD-CIMS technique may be 10–50% more sensitive to PPN than PAN at low (<100 ppmv) H_2O concentrations in the chemical ionization region (Swanson et al., 2004). Although such an effect might dampen the observed PPN/PAN cycle, this is unlikely since 1) estimates from ambient measurements indicate that H_2O concentrations were always >125 ppmv in the chemical ionization region during the MBO campaign, and 2) detailed calculations indicate that even a 50% difference in PPN and PAN sensitivities at the lowest H_2O concentrations cannot explain the observed diurnal trend in the PPN/PAN ratio. Differing loss rates of PAN and PPN to deposition (Shepson et al., 1992; Turnipseed et al., 2006) or thermal decomposition may affect changes in the PPN/PAN ratio between BL and FT air, although the observed PPN/PAN cycle is counter to that expected from thermal decomposition rates, which are estimated to be $\sim 20\%$ faster for PAN than for PPN (Kirchner et al., 1999; Roberts et al., 2004). In the absence of other sinks or significant transport, the PPN/PAN ratio would be higher in warmer boundary layer air. We conclude that the PPN/PAN diurnal cycle is most likely due to differences in hydrocarbon chemistry between the boundary layer and the free troposphere.

To distinguish between boundary layer (BL) and FT air masses, we utilize water vapor concentrations as in previous analyses of MBO observations (Weiss-Penzias et al., 2006). Filters for the 60-min data set were generated by including only the lowest (FT) or highest (BL) 20th percentiles by water vapor, corresponding to $H_2O < 1.5 \text{ g kg}^{-1}$ and $H_2O > 2.9 \text{ g kg}^{-1}$, respectively. Medians for several chemical species and in the resulting data subsets are listed in Table 4. PAN increases by more than 200 pptv and ozone by 22 ppbv in “dry” air relative to “wet” air, suggestive of higher concentrations in the FT. No significant differences were observed in CO (not shown) between the dry, wet and full datasets, although enhancements of ~ 10 ppbv have been observed in dry air at MBO in previous years (Weiss-Penzias et al., 2006).

Ozone abundances at MBO are affected by mountain meteorology and long-range

transport but are also photochemically linked to APNs; thus, relationships of ozone with APNs and APN/PAN ratios can provide insight into variations in hydrocarbon chemistry between different air masses. Figure 6a shows mean values of PAN, PPN, Σ PBNs, MPAN and APAN, binned by ozone such that each value represents the mean of 686 points from the 5-min dataset and normalized to their maximum values for comparison. Figure 6b is an analogous plot for PPN/PAN, Σ PBNs/PAN, MPAN/PAN, APAN/PAN and water vapor. The standard error for each point is relatively small (<7%) and the use of bin medians (not shown) yields the same results as bin means. Figure 6a reveals that all APNs demonstrate similar correlations with ozone, starting at 20% to 40% of their peak values and increasing to maxima at the highest ozone concentrations. The observed trends are consistent with the photochemical relationship of APNs and O₃ but are also indicative of gradients in these species between BL and FT air, as illustrated by the simultaneously decreasing water vapor in Fig. 6b. BL air should be relatively depleted in ozone and APNs due to stronger sinks: deposition removes ozone (and to some extent APNs) near the surface, and thermal decomposition of APNs is faster in warmer, lower-altitude air.

Relationships of APN/PAN ratios with ozone provide a more direct gauge of the type of hydrocarbons participating in photochemical cycles. Figure 6b shows that PPN/PAN increases by ~15% over the range of mean ozone values while APN/PAN ratios for larger-chain APNs decrease by 50% to 70%. Taken with the large drop in water vapor concentration, these profiles imply a significant, but expected, change in the hydrocarbon chemistry on transitioning from BL to FT air. In the mixed layer, continental petrochemical sources in the region around Mount Bachelor could contribute to elevated levels of Σ PBNs and APAN, while biogenic VOCs from surrounding coniferous forests could enhance MPAN levels. In aged FT air, on the other hand, longer-chain or unsaturated APNs should be depleted relative to PAN because of less-abundant precursors and, for MPAN and APAN, faster oxidation by OH and O₃. For example, the typical lifetime against reaction with OH is ~1 year for PAN and ~10 h for MPAN. The positive correlation of PPN/PAN and ozone is analogous to the parallel diurnal cy-

APNs at Mt. Bachelor during INTEX-B

G. M. Wolfe et al.

[Title Page](#)[Abstract](#)[Introduction](#)[Conclusions](#)[References](#)[Tables](#)[Figures](#)[◀](#)[▶](#)[◀](#)[▶](#)[Back](#)[Close](#)[Full Screen / Esc](#)[Printer-friendly Version](#)[Interactive Discussion](#)

cles seen in Fig. 5(a) and implies that MBO is impacted by transport of anthropogenic pollution from distant sources via the free troposphere.

4.2 Examining Asian long-range transport with trajectories

We employ an ensemble back trajectory (BT) analysis to obtain an initial estimate of the impact of Asian LRT (ALRT) on APN levels at MBO. Figure 7a displays the average residence time in the East Asian box for BTs initialized at MBO, plotted as a function of BT initialization altitude and time. Results reveal a number of ALRT episodes, many of which display a downward-sloping “L” shape suggestive of subsidence. The percentage of Asian-influenced BTs passing near MBO at a given BT start altitude increases from <1% at 0 km to 43% at 2.9 km, consistent with the view that LRT pathways are primarily via the free troposphere in the spring (Liang et al., 2004) and that mixed layer composition is dominated by local and regional influences. The mean residence time in the East Asian box for ALRT BTs is ~6.5 h. Separate calculations indicate that BTs leaving the East Asian box take an average of 8–9 days to reach MBO, although transit times as short as 6 days are not uncommon.

Comparison of predicted ALRT events with observations at MBO requires selecting trajectory model output from the appropriate altitude. HYSPLIT calculates ground level at MBO to be 1.0–1.1 km above sea level (a.s.l.), while the altitude of the summit building is 2.76 km a.s.l.; this places MBO at ~1.7 km above ground level (a.g.l.) for the GDAS meteorological dataset. In order to adequately catch descending plumes, however, it is often necessary to examine BTs at several initialization altitudes (Weiss-Penzias et al., 2006). Visual comparison of individual altitudinal cross-sections from Fig. 7a with PAN and ozone profiles reveals the same phenomenon as observed for the 2004 MBO intensive, where some plumes observed at MBO arrive at a time different from that predicted by the BT analysis. This is particularly prevalent for strongly subsiding air masses and is symptomatic of the accumulation of errors when running the trajectory model over a 10-day period. The computation of a statistical set of trajectories – as done in the current study – reduces such errors, but we will refrain from

Title Page

Abstract

Introduction

Conclusions

References

Tables

Figures

◀

▶

◀

▶

Back

Close

Full Screen / Esc

Printer-friendly Version

Interactive Discussion

drawing detailed connections between trajectory results and observations.

To evaluate the extent of Asian influence at MBO, we employ an ALRT index, plotted in Fig. 7b and defined as the average of the five cross-sections between 1.7 and 2.1 km in Fig. 7a. This altitude range provides the best alignment between BT-predicted and observed pollution events, and the width (500 m) is on the order of the GDAS vertical resolution. Comparing the ALRT index time series with the profiles for PAN and ozone in Fig. 2 reveals that some pollution events are captured quite well by the ALRT index (days 113 and 131). In other cases, however, substantial chemical enhancements are observed without increases in the ALRT index (day 129), or the ALRT index predicts an episode but no significant enhancements are detected at that time (day 117). There is no reason to expect, a priori, a direct correlation between APN abundances and residence time in the East Asian box, as atmospheric composition at MBO is often subject to numerous influences. First, LRT is expected from regions other than Asia (e.g. Siberia, the Arctic, California, etc.). Trajectories for the broad event on day 129, for example, suggest strong subsidence from the upper Arctic troposphere, which may have contained elevated pollutant levels due to the previously mentioned Eastern European fires (Stohl et al., 2007). Measurements of levoglucosan, a product of cellulose pyrolysis, taken at MBO during this time also imply a biomass burning source (T. Primbs, personal communication). Second, not all air masses leaving the East Asian box will reach North America with elevated pollutant levels. Dilution and chemical losses may deplete plume concentrations during transport, depending on the actual trajectory. APNs may only survive LRT when temperatures are cold enough that their thermal decomposition lifetime exceeds the entire transit period; when ALRT occurs within the MBL, as was the case for the air mass observed on day 117, APN concentrations can be severely depleted. A higher ALRT index does not necessarily translate to larger enhancements; however, longer residence times should increase the *probability* that an LRT air mass will contain pollution from Asia.

The ALRT index provides a useful means for gauging the average perturbations in atmospheric composition at MBO caused by ALRT. To extract data representative of

APNs at Mt. Bachelor during INTEX-BG. M. Wolfe et al.

[Title Page](#)[Abstract](#)[Introduction](#)[Conclusions](#)[References](#)[Tables](#)[Figures](#)[◀](#)[▶](#)[◀](#)[▶](#)[Back](#)[Close](#)[Full Screen / Esc](#)[Printer-friendly Version](#)[Interactive Discussion](#)

ALRT, we divide the 60-min dataset into two categories: times when BTs indicate a history in the East Asian box (ALRT index >0) and times when they do not (ALRT index = 0). Table 4 shows that the ALRT-influenced dataset, comprising ~57% of all data points, displays elevated medians for all chemical values relative to the “no ALRT” data. PAN and PPN are enhanced by nearly a factor of two, and O₃ is ~10% higher. Our results agree well with those of Nowak et al. (2004), who estimate mean PAN and O₃ enhancements of 360 pptv and 73 ppbv, respectively, in Asian pollution plumes as identified by CO measurements and back trajectories.

Recent studies have identified the gaseous elemental mercury-carbon monoxide enhancement ratio as a tracer of pollution from Asia, with “Asian” plumes exhibiting a characteristic $\Delta(\text{Hg}^0)/\Delta(\text{CO})$ of $\sim 0.0048 \text{ ng m}^{-3} \text{ ppbv}^{-1}$ (Jaffe et al., 2005; Swartzen-druber et al., 2006; Weiss-Penzias et al., 2006; Weiss-Penzias et al., 2007). The enhancement ratio for the ALRT subset – calculated as the linear slope of a plot of Hg⁰ versus CO – yields a value of $0.0049 \text{ ng m}^{-3} \text{ ppbv}^{-1}$, in excellent agreement with the expected Asian ratio and lending support to the trajectory filter analysis. Mercury data is only available after day 113, thus the $\Delta(\text{Hg}^0)/\Delta(\text{CO})$ values are calculated with roughly half of the number of points shown in the last column of Table 4, although the Hg⁰-CO correlation is still moderately strong ($r^2=0.28$) and statistically significant ($p<<0.01$). As with the wet/dry filters, CO mixing ratios exhibit no significant difference between ALRT and non-ALRT air masses. Performing a similar analysis on spring 2005 MBO data yields a CO enhancement of ~18 ppbv in ALRT air; the differences in CO behavior between 2005 and 2006 are not yet fully understood.

Median water vapor varies little between the ALRT, no ALRT and full datasets, indicating that LRT from Asia is not necessarily restricted to dry FT air masses. Nevertheless, plumes transported from Asia in the free troposphere should contain higher average APN concentrations due to longer thermal lifetimes (Wang et al., 2006). To test this hypothesis, the dry and ALRT filters were combined to extract ALRT air masses arriving from the FT. Resulting median values (see Table 4) confirm that the largest average enhancements for all quantities are observed during periods when high-altitude

APNs at Mt. Bachelor during INTEX-B

G. M. Wolfe et al.

Title Page

Abstract

Introduction

Conclusions

References

Tables

Figures

◀

▶

◀

▶

Back

Close

Full Screen / Esc

Printer-friendly Version

Interactive Discussion

LRT brings air from the central East Asian boundary layer to MBO. Median PAN is double the campaign median at 414 pptv, and O_3 is enhanced by 12 ppbv ($\sim 20\%$) over the campaign median. These points comprise $\sim 16\%$ of all APN observations made at MBO in spring 2006. The same conclusions are reached if the ALRT index is constructed from trajectories driven by the FNL or NCEP/NCAR Reanalysis meteorological datasets.

5 Conclusions

We have presented an analysis of a suite of acyl peroxy nitrates measured at Mount Bachelor Observatory in April and May of 2006. APN abundances at MBO are highly variable and event-driven, with 5-min average PAN mixing ratios ranging from 11 to 3855 pptv and averaging 334 pptv. Relationships of PAN with PPN, MPAN, Σ PNBs and APAN are characteristic of well-aged air masses influenced by a variety of local, regional and global-scale sources. Both ozone and CO display a strong log-linear relationship with PAN. While higher than previous campaigns in the NE Pacific region, observed PAN levels at MBO are consistent with PAN measurements at other high-alpine sites. Investigation of diurnal cycles and correlations of APNs and APN/PAN ratios with ozone reveals a gradient in hydrocarbon chemistry between boundary layer and free tropospheric air. Our analysis indicates that the highest levels of ozone and APNs observed at MBO arrive from the free troposphere and are associated with anthropogenic pollution. A back trajectory analysis suggests that LRT of Asian pollution via the free troposphere effectively doubles the mean PAN mixing ratio at MBO during pollution episodes.

The consequences of trans-Pacific pollution transport from Asia for local photochemistry in western North America remains to be fully elucidated. While the ALRT index provides a useful first estimate of the impacts on atmospheric composition at MBO, thorough modeling studies are necessary to fully understand the effects of APN transport on quantities like nitrogen deposition and the ozone photochemical tendency in

Title Page

Abstract

Introduction

Conclusions

References

Tables

Figures

◀

▶

◀

▶

Back

Close

Full Screen / Esc

Printer-friendly Version

Interactive Discussion

Northwestern America. Such efforts will require simulations with coupled chemistry-transport models and detailed box-modeling of the strongest transport events observed during the campaign. We stress the need for continuous observations of APNs and other chemical species at sites such as MBO, to acquire a dataset extensive enough to allow evaluation of the long-term effects of increasing Asian emissions on air quality in western North America.

Acknowledgements. The authors thank J. Roberts for providing plans for the PAN calibration source, D. Tanner for providing plans for the octopole ion guide, T. Primbs for levoglucosan data, R. Yatavelli and A. Moon for technical support and helpful discussion, and L. Jaeglé for insightful comments on the manuscript. We also thank the staff of the Mount Bachelor Ski Resort and C. Higginbotham for their cooperation and assistance. This work was supported by NASA Office of Earth Science grant NIP/03-0000-0025 and NSF-ATM-0613064. GMW was supported by NASA Headquarters under the Earth System Science Fellowship Grant NNG-05GP64H.

References

- Berntsen, T., Karlsdottir, S., and Jaffe, D.: Influence of Asian emissions on the composition of air reaching the North Western United States, *Geophys. Res. Lett.*, 26(14), 2171–2174, 1999.
- Bertman, S. B. and Roberts, J. M.: A PAN analog from isoprene photooxidation, *Geophys. Res. Lett.*, 18(8), 1461–1464, 1991.
- Bertschi, I. T., Jaffe, D. A., Jaegle, L., Price, H. U., and Dennison, J. B.: PHOBEA/ITCT 2002 airborne observations of transpacific transport of ozone, CO, volatile organic compounds, and aerosols to the northeast Pacific: impacts of Asian anthropogenic and Siberian boreal fire emissions, *J. Geophys. Res.*, 109, D23S12, doi:10.1029/2003JD004328, 2004.
- Bey, I., Jacob, D. J., Logan, J. A., and Yantosca, R. M.: Asian chemical outflow to the Pacific in spring: Origins, pathways, and budgets, *J. Geophys. Res.*, 106(D19), 23 097–23 113, 2001.
- Chameides, W. L., Li, X., Tang, X., Zhou, X., Luo, C., Kiang, C. S., St. John, J., Saylor, R. D., Liu, S. C., Lam, K. S., Wang, T., and Giorgi, F.: Is ozone pollution affecting crop yields in China?, *Geophys. Res. Lett.*, 26(7), 867–870, 1999.

APNs at Mt. Bachelor during INTEX-B

G. M. Wolfe et al.

Title Page

Abstract

Introduction

Conclusions

References

Tables

Figures

◀

▶

◀

▶

Back

Close

Full Screen / Esc

Printer-friendly Version

Interactive Discussion

**APNs at Mt. Bachelor
during INTEX-B**

G. M. Wolfe et al.

Title Page

Abstract

Introduction

Conclusions

References

Tables

Figures

◀

▶

◀

▶

Back

Close

Full Screen / Esc

Printer-friendly Version

Interactive Discussion

Cooper, O. R., Forster, C., Parrish, D., Trainer, M., Dunlea, E., Ryerson, T., Hübler, G., Fehsenfeld, F., Nicks, D., Holloway, J., De Gouw, J., Warneke, C., Roberts, J. M., Flocke, F., and Moody, J.: A case study of transpacific warm conveyor belt transport: Influence of merging airstreams on trace gas import to North America, *J. Geophys. Res.*, 109, D23S08, doi:10.1029/2003JD004006, 2004.

Crutzen, P. J.: The role of NO and NO₂ in the chemistry of the troposphere and stratosphere, *Ann. Rev. Earth Planet. Sci.*, 7, 443–472, 1979.

Doskey, P. V., R. Kotamarthi, V., Fukui, Y., Cook, D. R., Breitbeil, F. W., III, and Wesely, M. L.: Air-surface exchange of peroxyacetyl nitrate at a grassland site, *J. Geophys. Res.*, 109, D10310, doi:10.1029/2004JD004533, 2004.

Draxler, R. R. and Rolph, G. D.: HYSPLIT (HYbrid Single-Particle Lagrangian Integrated Trajectory) Model access via NOAA ARL READY Website, NOAA Air Resour. Lab., Silver Spring, MD., available at <http://www.arl.noaa.gov/ready/hysplit4.html>.

Elliot, S., Blake, D. R., Duce, R. A., Lai, C. A., McCreary, I., McNair, L. A., Rowland, R. S., Russel, A. G., Streit, G. E., and Turco, R. P.: Motorization of China implies changes in Pacific air chemistry and primary production, *Geophys. Res. Lett.*, 24(21), 2671–2674, 1997.

Fiore, A. M., Jacob, D. J., Bey, I., Yantosca, R. M., Field, B. D., Fusco, A. C., and Wilkinson, J. G.: Background ozone over the United States in summer: Origin, trend, and contribution to pollution episodes, *J. Geophys. Res.*, 107(D15), 4275, doi:10.1029/2001JD000982, 2002.

Glavas, S. and Moschonas, N.: Determination of PAN, PPN, PnBN and selected pentyl nitrates in Athens, Greece, *Atmos. Environ.*, 35(32), 5467–5475, 2001.

Goulding, K. W. T., Bailey, N. J., Bradbury, N. J., Hargreaves, P., Howe, M., Murphy, D. V., Poulton, P. R., and Willison, T. W.: Nitrogen deposition and its contribution to nitrogen cycling and associated soil processes, *New Phytol.*, 139, 49–58, 1998.

Grosjean, D., Grosjean, E., and Williams, E. L.: Thermal decomposition of PAN, PPN and vinyl-PAN, *Air & Waste*, 44(4), 391–396, 1994a.

Grosjean, D., Grosjean, E., and Williams, E. L., II: Thermal decomposition of C3-substituted peroxyacyl nitrates, *Res. Chem. Intermed.*, 20(3–5), 447–461, 1994b.

Grosjean, D., Williams II, E. L., and Grosjean, E.: Ambient levels of peroxy-n-butyryl nitrate at a Southern California mountain forest smog receptor location, *Environ. Sci. Tech.*, 27(2), 326–331, 1993.

Heald, C. L., Jacob, D. J., Fiore, A. M., Emmons, L. K., Gille, J. C., Deeter, M. N., Warner, J., Edwards, D. P., Crawford, J. H., Hamlin, A. J., Sachse, G. W., Browell, E. V., Avery,

**APNs at Mt. Bachelor
during INTEX-B**

G. M. Wolfe et al.

Title Page

Abstract

Introduction

Conclusions

References

Tables

Figures

◀

▶

◀

▶

Back

Close

Full Screen / Esc

Printer-friendly Version

Interactive Discussion

M. A., Vay, S. A., Westberg, D. J., Blake, D. R., Singh, H. B., Sandholm, S. T., Talbot, R. W., and Fuelberg, H. E.: Asian outflow and trans-Pacific transport of carbon monoxide and ozone pollution: an integrated satellite, aircraft, and model perspective, *J. Geophys. Res.*, 108(D24), ACH 25/21–ACH 25/13, 2003.

5 Hudman, R. C., Jacob, D. J., Cooper, O. R., Evans, M. J., Heald, C. L., Park, R. J., Fehsenfeld, F., Flocke, F., Holloway, J., Hübler, G., Kita, K., Koike, M., Kondo, Y., Neuman, A., Nowak, J., Oltmans, S., Parrish, D., Roberts, J. M., and Ryerson, T.: Ozone production in transpacific Asian pollution plumes and implications for ozone air quality in California, *J. Geophys. Res.*, 109, D23S10, doi:10.1029/2004JD004974, 2004.

10 Jacob, D. J., Logan, J. A., and Murti, P. P.: Effect of rising Asian emissions on surface ozone in the United States, *Geophys. Res. Lett.*, 26(14), 2175–2178, 1999.

Jaffe, D., Anderson, T., Covert, D., Trost, B., Danielson, J., Simpson, W., Blake, D., Harris, J., and Streets, D.: Observations of ozone and related species in the northeast Pacific during the PHOBEA campaigns 1. Ground-based observations at Cheeka Peak, *J. Geophys. Res.*, 15 106(D7), 7449–7461, 2001.

Jaffe, D., Bertschi, I., Jaeglé, L., Novelli, P., Reid, J. S., Tanimoto, H., Vingarzan, R., and Westphal, D. L.: Long-range transport of Siberian biomass burning emissions and impact on surface ozone in western North America, *Geophys. Res. Lett.*, 31, L16106, doi:10.1029/2004GL020093, 2004.

20 Jaffe, D., McKendry, I., Anderson, T., and Price, H.: Six “new” episodes of trans-Pacific transport of air pollutants, *Atmos. Environ.*, 37, 391–404, 2003a.

Jaffe, D., Prestbo, E., Swartzendruber, P., Weiss-Penzias, P., Kato, S., Takami, A., Hatakeyama, S., and Kajii, Y.: Export of atmospheric mercury from Asia, *Atmos. Environ.*, 39, 3029–3038, 2005.

25 Jaffe, D., Price, H., Parrish, D., Goldstein, A., and Harris, J.: Increasing background ozone during spring on the west coast of North America, *Geophys. Res. Lett.*, 30(12), 1613, doi:10.1029/2003GL017024, 2003b.

Kirchner, F., Mayer-Figge, A., Zabel, F., and Becker, K. H.: Thermal Stability of Peroxynitrates, *Int. J. Chem. Kinet.*, 31, 127–144, 1999.

30 Kotchenruther, R., Jaffe, D. A., Beine, H. J., Anderson, T. L., Bottenheim, J. W., Harris, J. M., Blake, D. R., and Schmitt, R.: Observations of ozone and related species in the northeast Pacific during the PHOBEA campaigns 2. Airborne observations, *J. Geophys. Res.*, 106(D7), 7463–7483, 2001a.

**APNs at Mt. Bachelor
during INTEX-B**

G. M. Wolfe et al.

Title Page

Abstract

Introduction

Conclusions

References

Tables

Figures

I◀

▶I

◀

▶

Back

Close

Full Screen / Esc

Printer-friendly Version

Interactive Discussion

Kotchenruther, R. A., Jaffe, D. A., and Jaeglé, L.: Ozone photochemistry and the role of peroxyacetyl nitrate in the springtime northeastern Pacific troposphere: Results from the Photochemical Ozone Budget of the Eastern North Pacific Atmosphere (PHOBEA) campaign, *J. Geophys. Res.*, 106(D22), 28 731–28 742, 2001b.

5 Lamarque, J.-F., Hess, P., Emmons, L., Buja, L., Washington, W., and Granier, C.: Tropospheric ozone evolution between 1890 and 1990, *J. Geophys. Res.*, 110, D08304, doi:10.1029/2004JD005537, 2005.

Liang, Q., Jaeglé, L., Jaffe, D. A., Weiss-Penzias, P., Heckman, A., and Snow, J. A.: Long-range transport of Asian pollution to the northeast Pacific: Seasonal variations and transport pathways of carbon monoxide, *J. Geophys. Res.*, 109, D23S07, doi:10.1029/2003JD004402, 2004.

Moxim, W. J., Levy II, H., and Kasibhatla, P. S.: Simulated global tropospheric PAN: Its transport and impact on NO_x , *J. Geophys. Res.*, 101(D7), 12 621–12 638, 1996.

15 Nowak, J. B., Parrish, D. D., Neuman, J. A., Holloway, J. S., Cooper, O. R., Ryerson, T. B., Nicks, D. K., Jr., Flocke, F., Roberts, J. M., Atlas, E., de Gouw, J. A., Donnelly, S., Dunlea, E., Hubler, G., Huey, L. G., Schauffler, S., Tanner, D. J., Warneke, C., and Fehsenfeld, F. C.: Gas-phase chemical characteristics of Asian emission plumes observed during ITCT 2K2 over the eastern North Pacific Ocean, *J. Geophys. Res.*, 109, D23S19, doi:10.1029/2003JD004488, 2004.

20 Orlando, J. J., Tyndall, G. S., Bertman, S. B., Chen, W., and Burkholder, J. B.: Rate coefficient for the reaction of OH with $\text{CH}_2=\text{C}(\text{CH}_3)\text{C}(\text{O})\text{OONO}_2$ (MPAN), *Atmos. Environ.*, 36, 1895–1900, 2002.

Parrish, D. D., Dunlea, E. J., Atlas, E. L., Schauffler, S., Donnelly, S., Stroud, V., Goldstein, A. H., Millet, D. B., McKay, M., Jaffe, D. A., Price, H. U., Hess, P. G., Flocke, F., and Roberts, J. M.: Changes in the photochemical environment of the temperate North Pacific troposphere in response to increased Asian emissions, *J. Geophys. Res.*, 109, D23S18, doi:10.1029/2004JD004978, 2004.

25 Parrish, D. D., Hahn, C. J., Williams, E. J., Norton, R. B., and Fehsenfeld, F. C.: Indications of photochemical histories of Pacific air masses from measurements of atmospheric trace species at Point Arena, California, *J. Geophys. Res.*, 97(D14), 15 883–15 901, 1992.

30 Roberts, J. M.: The Atmospheric Chemistry of Organic Nitrates, *Atmos. Environ.*, 24A(2), 243–287, 1990.

Roberts, J. M. and Bertman, S. B.: The thermal decomposition of peroxyacetic nitric anhydride

(PAN) and peroxyacetic nitric anhydride (MPAN), *Int. J. Chem. Kinet.*, 24(3), 297–307, 1992.

Roberts, J. M., Flocke, F., Chen, G., de Gouw, J., Holloway, J. S., Hübler, G., Neuman, J. A., Nicks Jr., D. K., Nowak, J. B., Parrish, D. D., Ryerson, T. B., Sueper, D. T.,
5 Warneke, C., and Fehsenfeld, F. C.: Measurement of peroxyacetic nitric anhydrides (PANs) during the ITCT 2K2 aircraft intensive experiment, *J. Geophys. Res.*, 109, D23S21, doi:10.1029/2004JD004960, 2004.

Roberts, J. M., Flocke, F., Stroud, C. A., Hereid, D., Williams, E., Fehsenfeld, F., Brune, W.,
10 Martinez, M., and Harder, H.: Ground-based measurements of peroxyacetic nitric anhydrides (PANs) during the 1999 Southern Oxidants Study Nashville Intensive, *J. Geophys. Res.*, 107(D21), ACH1/1–ACH1/10, 2002.

Roberts, J. M., Flocke, F., Weinheimer, A., Tanimoto, H., Jobson, B. T., Riemer, D., Apel, E.,
Atlas, E., Donnelly, S., Stroud, V., Johnson, K., Weaver, R., and Fehsenfeld, F. C.: Observations of APAN during TexAQS 2000, *Geophys. Res. Lett.*, 28(22), 4195–4198, 2001.

15 Roberts, J. M., Jobson, B. T., Kuster, W., Goldan, P., Murphy, P., Williams, E., Frost, G., Riemer, D., Apel, E., Stroud, C., Wiedinmyer, C., and Fehsenfeld, F.: An examination of the chemistry of peroxyacetic nitric anhydrides and related volatile organic compounds during Texas Air Quality Study 2000 using ground-based measurements, *J. Geophys. Res.*, 108(D16), ACH4/1–ACH4/12, 2003.

20 Roberts, J. M., Williams, J., Baumann, K., Buhr, M. P., Goldan, P. D., Holloway, J., Hubler, G., Kuster, W. C., McKeen, S. A., Ryerson, T. B., Trainer, M., Williams, E. J., Fehsenfeld, F. C., Bertman, S. B., Nouaime, G., Seaver, C., Grodzinsky, G., Rodgers, M., and Young, V. L.: Measurements of PAN, PPN, and MPAN made during the 1994 and 1995 Nashville Intensives of the southern Oxidant Study. Implications for regional ozone production from biogenic hydrocarbons, *J. Geophys. Res.*, 103(D17), 22 473–22 490, 1998.

25 Roumelis, N. and Glavas, S.: Formation of peroxyacyl- and alkyl nitrates in irradiations of gasoline vapours under atmospheric conditions, *Environ. Tech.*, 13(2), 189–194, 1992.

Shepson, P. B., Bottenheim, J. W., Hastie, D. R., and Venkatram, A.: Determination of the relative ozone and PAN deposition velocities at night, *Geophys. Res. Lett.*, 19(11), 1121–
30 1124, 1992.

Shindell, D., Fauvegi, G., Lacis, A., Hansen, J., Ruedy, R., and Aguilar, E.: Role of tropospheric ozone increases in 20th-century climate change, *J. Geophys. Res.*, 111, D08302, doi:10.1029/2005JD006348, 2006.

ACPD

7, 9139–9181, 2007

APNs at Mt. Bachelor during INTEX-B

G. M. Wolfe et al.

Title Page

Abstract

Introduction

Conclusions

References

Tables

Figures

◀

▶

◀

▶

Back

Close

Full Screen / Esc

Printer-friendly Version

Interactive Discussion

EGU

**APNs at Mt. Bachelor
during INTEX-B**

G. M. Wolfe et al.

Title Page

Abstract

Introduction

Conclusions

References

Tables

Figures

◀

▶

◀

▶

Back

Close

Full Screen / Esc

Printer-friendly Version

Interactive Discussion

Singh, H. B., Condon, E., Vedder, J., O'Hara, D., Ridley, B. A., Gandrud, B. W., Shetter, J. D., Salas, L. J., Huebert, B., Hübler, G., Carroll, M. A., Albritton, D. L., Davis, D. D., Bradshaw, J. D., Sandholm, S. T., Rodgers, M. O., Beck, S. M., Gregory, G. L., and LeBel, P. J.: Peroxyacetyl Nitrate measurements during CITE 2: Atmospheric Distribution and Precursor Relationships, *J. Geophys. Res.*, 95(D7), 10 163–10 178, 1990.

Singh, H. B. and Salas, L. J.: Measurements of peroxyacetyl nitrate and peroxypropionyl nitrate (PPN) at selected urban, rural and remote sites, *Atmos. Environ.*, 23, 231–238, 1989.

Singh, H. B., Salas, L. J., and Viezee, W.: Global distribution of peroxyacetyl nitrate, *Nature*, 321, 588–591, 1986.

Slusher, D. L., Huey, L. G., Tanner, D. J., Flocke, F. M., and Roberts, J. M.: A thermal dissociation-chemical ionization mass spectrometry (TD-CIMS) technique for the simultaneous measurement of peroxyacyl nitrates and dinitrogen pentoxide, *J. Geophys. Res.*, 109, D19315, doi:10.1029/2004JD004670, 2004.

Stohl, A., Berg, T., Burkhardt, J. F., Fjaeraa, A. M., Forster, C., Herber, A., Hov, O., Lunder, C., McMillan, W. W., Oltmans, S., Shiobara, M., Simpson, D., Solberg, S., Stebel, K., Strom, J., Tørseth, K., Treffeisen, R., Virkhunen, K., and Yttri, K. E.: Arctic smoke - record high air pollution levels in the European Arctic due to agricultural fires in Eastern Europe in spring 2006, *Atmos. Chem. Phys.*, 7, 51-1-534, 2007.

Stohl, A., Eckhardt, S., Forster, C., James, P., Spichtinger, N., and Seibert, P.: A replacement for simple back trajectory calculations in the interpretation of atmospheric trace substance measurements, *Atmos. Environ.*, 36, 4635–4648, 2002.

Streets, D. G., Bond, T. C., Carmichael, G. R., Fernandes, S. D., Fu, Q., He, D., Klimont, Z., Nelson, S. M., Tsai, N. Y., Wang, M. Q., Woo, J.-H., and Yarber, K. F.: An inventory of gaseous and primary aerosol emissions in Asia in the year 2000, *J. Geophys. Res.*, 108(D21), 8809, doi:10.1029/2002JD003093, 2003.

Streets, D. G., Tsai, N. Y., Akimoto, H., and Oka, K.: Trends in Emissions of Acidifying Species in Asia, 1985–1997, *Water Air Soil Pollut.*, 130, 187–192, 2001.

Swanson, A., Flocke, F., Roberts, J., Huey, L. G., Tanner, D. J., Hanson, D., Slusher, D. L., Orlando, J. J., and Tyndall, G. S.: Characterization of a CIMS Technique for PAN Analysis (poster presentation), AGU Fall Meeting, San Francisco, CA, 2004.

Swartzendruber, P. C., Jaffe, D. A., Prestbo, E. M., Weiss-Penzias, P., Selin, N. E., Park, R., Jacob, D. J., Strode, S., and Jaeglé, L.: Observations of reactive gaseous mercury in the free troposphere at the Mount Bachelor Observatory, *J. Geophys. Res.*, 111, D24301,

doi:10.1029/2006JD007415, 2006.

Talukdar, R. K., Burkholder, J. B., Schmoltner, A. M., Roberts, J. M., Wilson, R. R., and Ravishankara, A. R.: Investigation of the loss processes for peroxyacetyl nitrate in the atmosphere: UV photolysis and reaction with OH, *J. Geophys. Res.*, 100(D7), 14 163–14 173, 1995.

5 Tanimoto, H., and Akimoto, H.: A new peroxy-carboxylic nitric anhydride identified in the atmosphere: $\text{CH}_2=\text{CHC}(\text{O})\text{OONO}_2$ (APAN), *Geophys. Res. Lett.*, 28(14), 2831–2834, 2001.

Taylor, O. C.: Importance of peroxyacetyl nitrate (PAN) as a phytotoxic air pollutant, *J. Air Pollut. Cont. Assoc.*, 19, 347–351, 1969.

Tuazon, E. C., and Atkinson, R.: A product study of the gas-phase reaction of methacrolein with the OH radical in the presence of NO_x , *Int. J. Chem. Kinet.*, 22(6), 591–602, 1990.

10 Turnipseed, A. A., Huey, L. G., Nemitz, E., Stickel, R., Higgs, J., Tanner, D. J., Slusher, D. L., Sparks, J. P., Flocke, F., and Guenther, A.: Eddy covariance fluxes of peroxyacetyl nitrates (PANs) and NO_y to a coniferous forest, *J. Geophys. Res.*, 111, D09304, doi:10.1029/2005JD006631, 2006.

15 van Aardenne, J. A., Carmichael, G. R., Levy II, H., Streets, D., and Hordijk, L.: Anthropogenic NO_x emission in Asia in the period 1990–2020, *Atmos. Environ.*, 33, 633–646, 1999.

Villalta, P. W., and Howard, C. J.: Direct Kinetics Study of the $\text{CH}_3\text{C}(\text{O})\text{O}_2 + \text{NO}$ Reaction Using Chemical Ionization Mass Spectrometry, *J. Phys. Chem.*, 100, 13 624–13 628, 1996.

20 Volz-Thomas, A., Xueref, I., and Schmitt, R.: An Automatic Gas Chromatograph and Calibration System for Ambient Measurements of PAN and PPN, *Environ. Sci. & Pollut. Res.*, 4, 72–76, 2002.

Walega, J. G., Ridley, B. A., Madronich, S., Grahek, F. E., Shetter, J. D., Sauvain, T. D., Hahn, C. J., Merrill, J. T., Bodhaine, B. A., and Robinson, E.: Observations of Peroxyacetyl Nitrate, Peroxypropionyl Nitrate, Methyl Nitrate and Ozone During the Mauna Loa Observatory Photochemistry Experiment, *J. Geophys. Res.*, 97(D10), 10 311–10 330, 1992.

25 Wang, H., Kiang, C. S., Tang, X., Zhou, X., and Chameides, W. L.: Surface ozone: A likely threat to crops in the Yangtze delta of China, *Atmos. Environ.*, 39(21), 3843–3850, 2005.

Wang, Y., Choi, Y., Zeng, T., Ridley, B., Blake, N., Blake, D., and Flocke, F.: Late-spring increase of trans-Pacific pollution transport in the upper troposphere, *Geophys. Res. Lett.*, 33, L01811, doi:10.1029/2005GL024975, 2006.

30 Wang, Y., and Jacob, D. J.: Anthropogenic forcing on tropospheric ozone and OH since preindustrial times, *J. Geophys. Res.*, 103(D23), 31 123–31 135, 1998.

Warneck, P., and Zerbach, T.: Synthesis of peroxyacetyl nitrate in air by acetone photolysis,

APNs at Mt. Bachelor during INTEX-B

G. M. Wolfe et al.

Title Page

Abstract

Introduction

Conclusions

References

Tables

Figures

◀

▶

◀

▶

Back

Close

Full Screen / Esc

Printer-friendly Version

Interactive Discussion

Environ. Sci. Tech., 26, 74–79, 1992.

Weiss-Penzias, P., Jaffe, D., Swartzendruber, P., Hafner, W., Chand, D., and Prestbo, E.: Quantifying Asian and biomass burning sources of mercury using the Hg/CO ratio in pollution plumes observed at Mount Bachelor Observatory, Atmos. Environ., doi:10.1016/j.atmosenv.2007.01.058, 2007.

Weiss-Penzias, P., Jaffe, D. A., Swartzendruber, P., Dennison, J. B., Chand, D., Hafner, W., and Prestbo, E.: Observations of Asian air pollution in the free troposphere at Mount Bachelor Observatory during the spring of 2004, J. Geophys. Res., 111, D10304, doi:10.1029/2005JD006522, 2006.

Williams, J., Roberts, J. M., Fehsenfeld, F. C., Bertman, S. B., Buhr, M. P., Goldan, P. D., Hübler, G., Kuster, W. C., Ryerson, T. B., Trainer, M., and Young, V.: Regional ozone from biogenic hydrocarbons deduced from airborne measurements of PAN, PPN, and MPAN, Geophys. Res. Lett., 24(9), 1099–1102, 1997.

Yienger, J. J., Klonecki, A. A., Levy II, H., Moxim, W. J., and Carmichael, G. R.: An evaluation of chemistry's role in the winter-spring ozone maximum found in the northern midlatitude free troposphere, J. Geophys. Res., 104(D3), 3655–3667, 1999.

Zellweger, C., Forrer, J., Hofer, P., Nyeki, S., Schwarzenbach, B., Weingartner, E., Ammann, M., and Baltensperger, U.: Partitioning of reactive nitrogen (NO_y) and dependence on meteorological conditions in the lower free troposphere, Atmos. Chem. Phys., 3(3), 779–796, 2003.

Zervas, E., Montagne, X., and Lahaye, J.: The influence of gasoline formulation on specific pollutant emission, J. Air Waste Manage. Assoc., 49(11), 1304–1314, 1999.

ACPD

7, 9139–9181, 2007

APNs at Mt. Bachelor during INTEX-B

G. M. Wolfe et al.

Title Page

Abstract

Introduction

Conclusions

References

Tables

Figures

◀

▶

◀

▶

Back

Close

Full Screen / Esc

Printer-friendly Version

Interactive Discussion

EGU

**APNs at Mt. Bachelor
during INTEX-B**

G. M. Wolfe et al.

Table 1. Observations used in APN analysis.

Measurement	Instrument	Technique	60-min Det. Limit	Uncertainty
APNs Ozone	TD-CIMS Dasibi 1008-RS	See text UV Photometric Ozone An- alyzer	2–4 pptv 0.6 ppbv	See text ±8%
H ₂ O vapor	Campbell Scientific HMP 45C	Calculated from tempera- ture and relative humidity measurements	–	±5%
Sub-Micron Particle Scattering	Radiance Research M903 Nephelometer	Total scattering, 550 nm, sub-micron particles	0.35 Mm ⁻¹	±6%
CO Hg ⁰	Thermo 48C-TLE Tekran 2537A, 1130, 1135	Non-dispersive Infrared concentration on Au car- tridges, thermal desorp- tion, CVAFS	30 ppbv 0.1 ng m ⁻³	±4% ±15%

Title Page

Abstract

Introduction

Conclusions

References

Tables

Figures

◀

▶

◀

▶

Back

Close

Full Screen / Esc

Printer-friendly Version

Interactive Discussion

APNs at Mt. Bachelor during INTEX-B

G. M. Wolfe et al.

Table 2. Statistics for 5-min measurements^a.

Species	Median	Mean	1 σ	Min.	Max.	Slope ^d	r ^{2d}
PAN	203	334	369	11	3855	–	–
PPN	14	23	26	1	228	0.0654	0.96
Σ PBNs	3	3	3	0 ^c	25	0.0079	0.63
MPAN	–	–	–	–	–	0.0045 ^b	0.59
APAN	1	1	1	0 ^c	26	0.0028	0.39
Ozone	52	53	10	28	93	–	–
CO	143	142	15	83	283	–	–

^a APN values in pptv, CO and O₃ values in ppbv.

^b Lower limit.

^c Minimum values below detection limit.

^d With respect to PAN.

[Title Page](#)
[Abstract](#)
[Introduction](#)
[Conclusions](#)
[References](#)
[Tables](#)
[Figures](#)
[I◀](#)
[▶I](#)
[◀](#)
[▶](#)
[Back](#)
[Close](#)
[Full Screen / Esc](#)
[Printer-friendly Version](#)
[Interactive Discussion](#)

APNs at Mt. Bachelor during INTEX-B

G. M. Wolfe et al.

Table 3. Comparison of PAN observations at Northern midlatitudes^a.

Study/Location	Type ^b	Dates	Alt./km	Median	Mean	1 σ	Max	Reference
Point Arena	MBL	April–May 1985	0.0	40	57	47	173	Parrish et al. (1992)
PHOBEA/CPO ^c	MBL	March–April 1997	0.5	103	140	129	395	Jaffe et al. (2001)
PHOBEA/CPO	MBL	Mar-Apr 1998	0.5	101	134	102	363	Jaffe et al. (2001)
PHOBEA/Air	MBL/FT	March–April 1999	2–4	108	183	186	622	Kotchenruther et al. (2001a)
ITCT 2K2	MBL/FT	April-May 2002	2–4 ^d	118	142	117	660	Roberts et al. (2004)
INTEX-B/C-130	MBL/FT	Apr-May 2006	2–4 ^d	233	262	189	2575	F. Flocke, personal communication
Niwot Ridge	CBL/FT	July 1984	3	–	275	300	2317	Singh and Salas 1989)
Jungfrauoch	CBL/FT	MAM 1997–98	3.6	294	346	245	7000	Zellweger et al. (2003)
INTEX-B/MBO	CBL/FT	Apr-May 2006	2.7	206	340	370	3074	This work

^a PAN values in pptv. Ground data are 60-min averages; aircraft data are 1-min averages.

^b MBL: marine boundary layer; FT: free troposphere; CBL: continental boundary layer.

^c Cheeka Peak Observatory.

^d West of 120° W.

Title Page

Abstract

Introduction

Conclusions

References

Tables

Figures

I◀

▶I

◀

▶

Back

Close

Full Screen / Esc

Printer-friendly Version

Interactive Discussion

APNs at Mt. Bachelor during INTEX-B

G. M. Wolfe et al.

Table 4. Median values for filtered 60-min data.

Data Filter	PAN ^a	PPN ^a	PPN/PAN	O ₃ ^b	H ₂ O ^c	# pts
All Data	206	13	0.068	52	2.2	784
Dry	379	27	0.074	65	1.0	170
Wet	162	9	0.056	43	3.3	163
ALRT >0	284	19	0.069	55	2.0	446
ALRT = 0	148	10	0.065	49	2.5	338
Dry + ALRT	414	29	0.074	65	1.0	126

Values in ^a pptv, ^b ppbv, ^c g kg⁻¹.

Title Page

Abstract

Introduction

Conclusions

References

Tables

Figures

◀

▶

◀

▶

Back

Close

Full Screen / Esc

Printer-friendly Version

Interactive Discussion

APNs at Mt. Bachelor during INTEX-B

G. M. Wolfe et al.

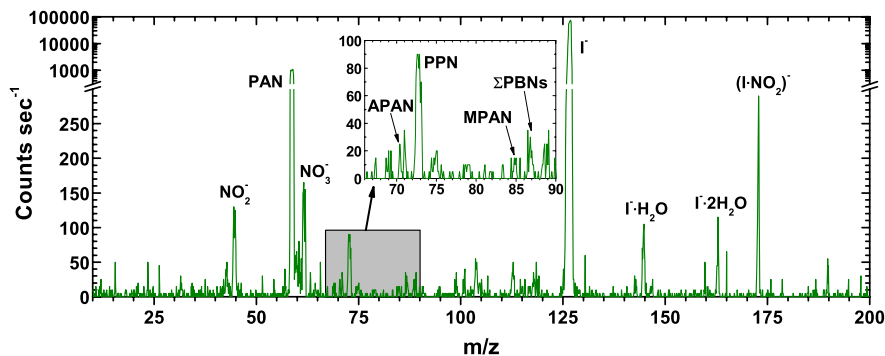


Fig. 1. Representative TD-CIMS mass spectrum obtained at MBO. Note the logarithmic scale above 300 counts s^{-1} .

[Title Page](#)[Abstract](#)[Introduction](#)[Conclusions](#)[References](#)[Tables](#)[Figures](#)[I◀](#)[▶I](#)[◀](#)[▶](#)[Back](#)[Close](#)[Full Screen / Esc](#)[Printer-friendly Version](#)[Interactive Discussion](#)

EGU

APNs at Mt. Bachelor
during INTEX-B

G. M. Wolfe et al.

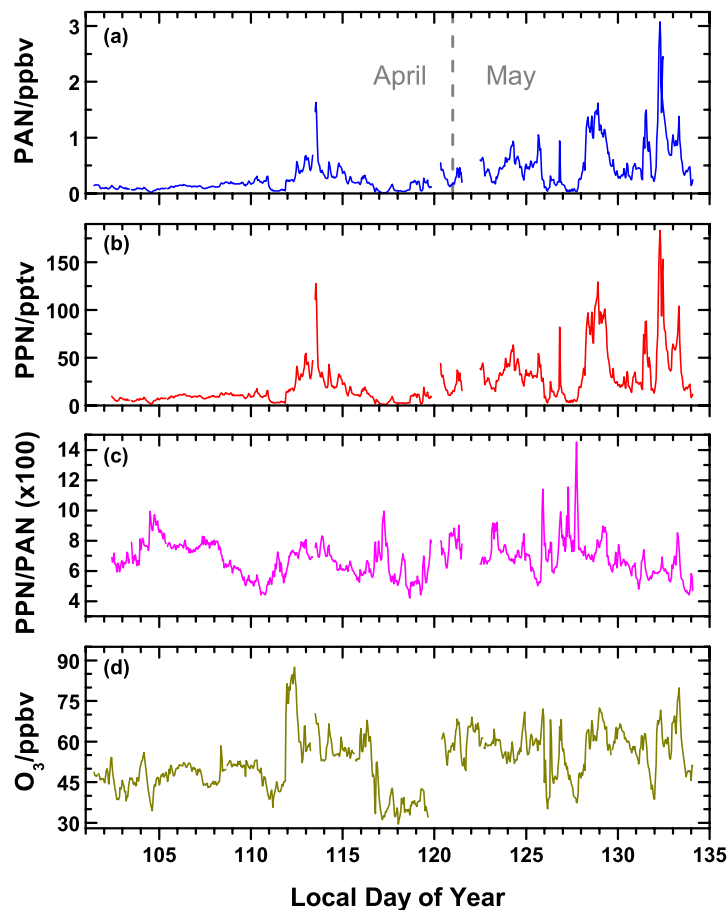


Fig. 2. Time series of (a) PAN, (b) PPN, (c) PPN/PAN and (d) ozone for the full period of APN measurements. For reference, day of year 101 corresponds to 11 April and day 121 to 1 May. Hourly-averaged data are plotted for clarity.

[Title Page](#)[Abstract](#)[Introduction](#)[Conclusions](#)[References](#)[Tables](#)[Figures](#)[◀](#)[▶](#)[◀](#)[▶](#)[Back](#)[Close](#)[Full Screen / Esc](#)[Printer-friendly Version](#)[Interactive Discussion](#)

APNs at Mt. Bachelor during INTEX-B

G. M. Wolfe et al.

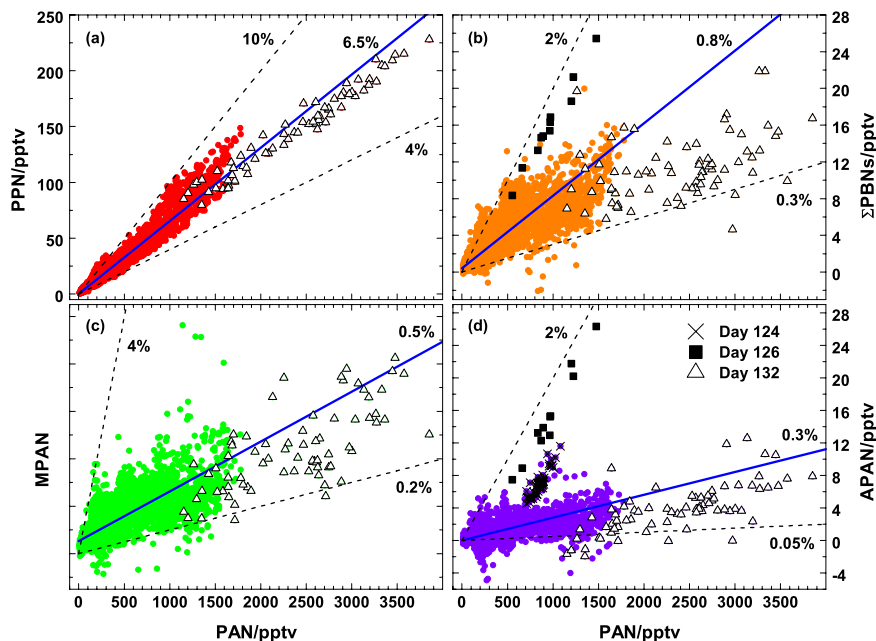


Fig. 3. Relationships of PAN with (a) PPN, (b) Σ PBNs, (c) MPAN and (d) APAN. Gray circles represent all 5-min data, while individual events are plotted as crosses (day 124), black squares (day 126), and open triangles (day 132). The solid lines are the linear least-squares fits to all data in each plot (see Table 2 for fit results). The dashed lines provide an estimate of the range of slopes.

[Title Page](#)
[Abstract](#)
[Introduction](#)
[Conclusions](#)
[References](#)
[Tables](#)
[Figures](#)
[◀](#)
[▶](#)
[◀](#)
[▶](#)
[Back](#)
[Close](#)
[Full Screen / Esc](#)
[Printer-friendly Version](#)
[Interactive Discussion](#)

EGU

APNs at Mt. Bachelor during INTEX-B

G. M. Wolfe et al.

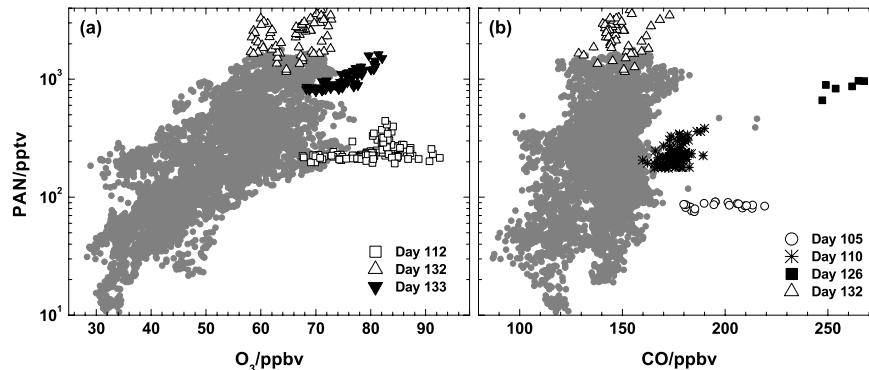


Fig. 4. Relationships of PAN with (a) O_3 and (b) CO for all 5-min data. Note that PAN is plotted on a logarithmic scale. Gray circles represent all data. High ozone events are plotted in (a) as open squares (day 112) and black triangles (day 133). High CO events are plotted in (b) as open circles (day 105), asterisks (day 110) and black squares (day 126). The high PAN event on day 132 is denoted by open triangles in both plots.

[Title Page](#)[Abstract](#)[Introduction](#)[Conclusions](#)[References](#)[Tables](#)[Figures](#)[I◀](#)[▶I](#)[◀](#)[▶](#)[Back](#)[Close](#)[Full Screen / Esc](#)[Printer-friendly Version](#)[Interactive Discussion](#)

EGU

APNs at Mt. Bachelor during INTEX-B

G. M. Wolfe et al.

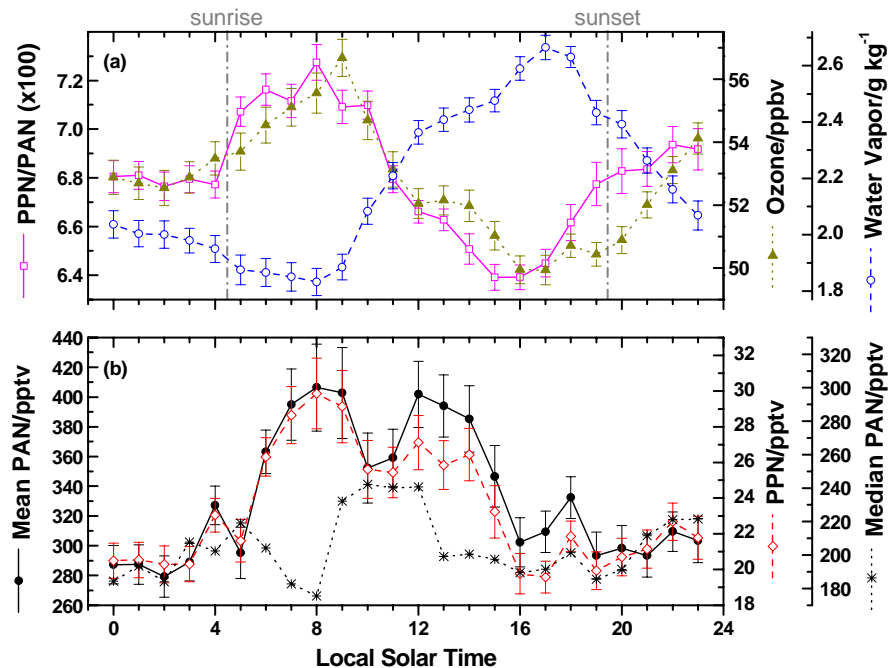


Fig. 5. Diurnal profiles of (a) PPN/PAN, ozone and water vapor, (b) PAN and PPN, calculated with 5-min data. Each hourly point represents the mean of all five-minute points within ± 30 min of that hour. Error bars denote the standard deviation of the mean for each point. Also shown in (b) is the PAN profile calculated using bin medians instead of means; note the different scales for mean and median PAN profiles. Vertical dash-dotted lines in (a) denote average sunrise/sunset times at MBO during the campaign.

[Title Page](#)[Abstract](#)[Introduction](#)[Conclusions](#)[References](#)[Tables](#)[Figures](#)[◀](#)[▶](#)[◀](#)[▶](#)[Back](#)[Close](#)[Full Screen / Esc](#)[Printer-friendly Version](#)[Interactive Discussion](#)

EGU

APNs at Mt. Bachelor during INTEX-B

G. M. Wolfe et al.

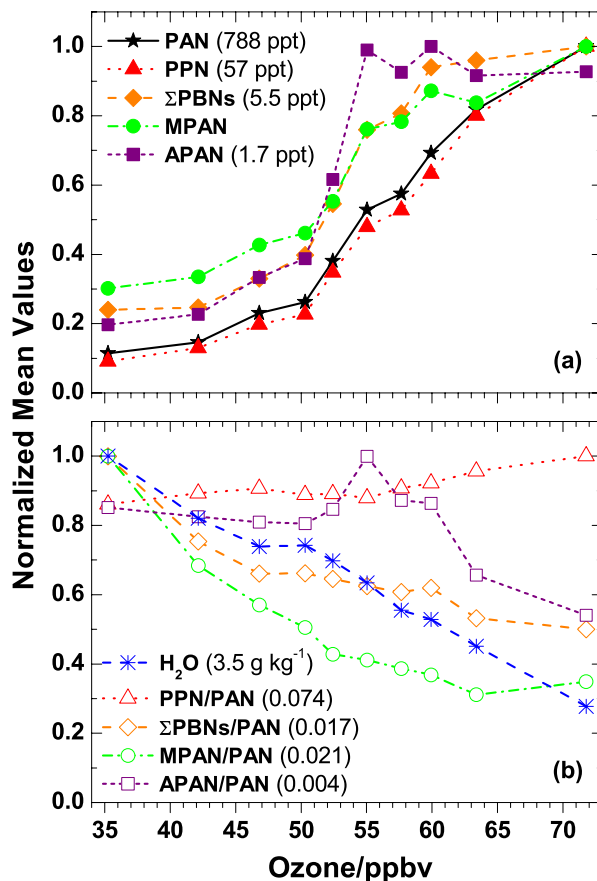


Fig. 6. Relationship of ozone with (a) APNs and (b) APN/PAN ratios and water vapor. Each point represents the mean of 686 points from the five-minute dataset, and each curve is normalized to its maximum value (indicated in plot legends).

Title Page

Abstract

Introduction

Conclusions

References

Tables

Figures

◀

▶

◀

▶

Back

Close

Full Screen / Esc

Printer-friendly Version

Interactive Discussion

APNs at Mt. Bachelor during INTEX-B

G. M. Wolfe et al.

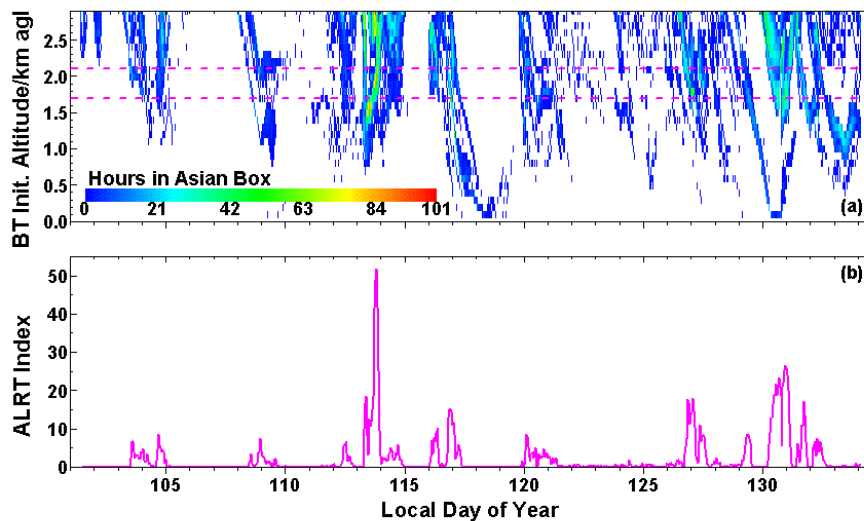


Fig. 7. (a) Average number of hours spent in the East Asian box for back trajectories originating around MBO, as a function of trajectory initialization time and altitude. Results are plotted at 100 m altitudinal increments for every hour of the campaign. White space represents time/altitude pairs where no trajectories passed through the box (hours in Asian box = 0). The horizontal lines denote the range of data used to calculate the ALRT index. (b) Time profile of the ALRT index, defined as the mean of the 1.7–2.1 km cross-sections of plot (a). Each point is the mean for ~125 trajectories.

[Title Page](#)[Abstract](#)[Introduction](#)[Conclusions](#)[References](#)[Tables](#)[Figures](#)[I◀](#)[▶I](#)[◀](#)[▶](#)[Back](#)[Close](#)[Full Screen / Esc](#)[Printer-friendly Version](#)[Interactive Discussion](#)

EGU