



HAL
open science

Quality assessment of water cycle parameters in REMO by Radar-Lidar synergy

B. Hennemuth, A. Weiss, J. Bösenberg, D. Jacob, H. Linné, G. Peters, S.
Pfeifer

► **To cite this version:**

B. Hennemuth, A. Weiss, J. Bösenberg, D. Jacob, H. Linné, et al.. Quality assessment of water cycle parameters in REMO by Radar-Lidar synergy. Atmospheric Chemistry and Physics Discussions, 2007, 7 (3), pp.8455-8524. hal-00302881

HAL Id: hal-00302881

<https://hal.science/hal-00302881>

Submitted on 18 Jun 2008

HAL is a multi-disciplinary open access archive for the deposit and dissemination of scientific research documents, whether they are published or not. The documents may come from teaching and research institutions in France or abroad, or from public or private research centers.

L'archive ouverte pluridisciplinaire **HAL**, est destinée au dépôt et à la diffusion de documents scientifiques de niveau recherche, publiés ou non, émanant des établissements d'enseignement et de recherche français ou étrangers, des laboratoires publics ou privés.

**Quality assessment
of water cycle
parameters in REMO
by Radar-Lidar
synergy**

B. Hennemuth et al.

Quality assessment of water cycle parameters in REMO by Radar-Lidar synergy

**B. Hennemuth^{1,*}, A. Weiss², J. Bösenberg¹, D. Jacob¹, H. Linné¹, G. Peters³,
and S. Pfeifer¹**

¹Max-Planck-Institute for Meteorology, Hamburg, Germany

²British Antarctic Survey, High Cross, Madingley Road, Cambridge CB3 0ET, UK

³Meteorological Institute, University of Hamburg, Hamburg, Germany

*now: Consulting Meteorologist, Hamburg, Germany

Received: 30 May 2007 – Accepted: 1 June 2007 – Published: 20 June 2007

Correspondence to: B. Hennemuth (hennemuth@dkrz.de)

Title Page

Abstract

Introduction

Conclusions

References

Tables

Figures

◀

▶

◀

▶

Back

Close

Full Screen / Esc

Printer-friendly Version

Interactive Discussion

Abstract

A comparison study of water cycle parameters derived from ground-based remote-sensing instruments and from the regional model REMO is presented. Observational data sets were collected during three measuring campaigns in summer/autumn 2003 and 2004 at Richard Aßmann Observatory, Lindenberg, Germany. The remote sensing instruments which were used are differential absorption lidar, Doppler lidar, ceilometer, cloud radar, and micro rain radar for the derivation of humidity profiles, ABL height, water vapour flux profiles, cloud parameters, and rain rate. Additionally, surface latent and sensible heat flux and soil moisture were measured. Error ranges and representativity of the data are discussed. For comparisons the regional model REMO was run for all measuring periods with a horizontal resolution of 18 km and 33 vertical levels. Parameter output was every hour. The measured data were transformed to the vertical model grid and averaged in time in order to better fit with gridbox model values. The comparisons show that the atmospheric boundary layer is not adequately simulated, on most days it is too shallow and too moist. This is found to be caused by a wrong partitioning of energy at the surface, particularly a too large latent heat flux. The reason is obviously an overestimation of soil moisture during drying periods by the one-layer scheme in the model. The profiles of water vapour transport within the ABL appear to be realistically simulated. The comparison of cloud cover reveals an underestimation of low-level and mid-level clouds by the model, whereas the comparison of high-level clouds is hampered by the inability of the cloud radar to see cirrus clouds above 10 km. Simulated ABL clouds apparently have a too low cloud base, and the vertical extent is underestimated. The ice water content of clouds agree in model and observation whereas the liquid water content is insufficiently derived from cloud radar reflectivity in the present study. Rain rates are similar, but the representativeness of both observations and grid box values is low.

Quality assessment of water cycle parameters in REMO by Radar-Lidar synergy

B. Hennemuth et al.

Title Page

Abstract

Introduction

Conclusions

References

Tables

Figures

◀

▶

◀

▶

Back

Close

Full Screen / Esc

Printer-friendly Version

Interactive Discussion

1 Introduction

Regional climate models are widely used to assess regional climatic features for present climate and increasingly also for future climate, e.g. to downscale global change scenarios for the analysis of regional climate change and its impacts. For these studies, validation of the model, e.g. comparisons of model simulations with observations are an essential prerequisite to ensure that the main processes are simulated properly. One of the key processes is the water cycle, controlling cloud formation and precipitation. Of special interest are cloud parameters because of their strong impact on radiation, and thus on energetic issues. Moreover, the formation of precipitation is a crucial point for the assessment of climate. Special interest should also be directed to boundary layer parameters because of the great turnover of water and energy in this layer adjacent to the earth's surface.

Ground-based remote sensing systems are adequate instrumentation for model comparison of water cycle parameters since a lot of quantities can be derived, and they cover a wide range of heights and operate continuously. There has been enormous progress in the development and refinement of ground-based remote sensing instruments for the determination of humidity, wind, cloud parameters and rain rate in recent years (e.g., Bösenberg and Linné, 2002; Bormotov et al., 2000; Haeffelin et al., 2005; Peters et al., 2002; Intrieri et al., 2002), and also the retrieval algorithms for characterising clouds have been much improved in recent years, not least because of international projects like BALTEX BRIDGE with its subprogrammes CLIWA-NET and 4D CLOUDS (e.g., Crewell et al., 2004; Löhnert et al., 2004), and CLOUDNET (<http://www.cloud-net.org/>). In particular the CLOUDNET project has promoted the retrievals of cloud liquid water and cloud ice water content (e.g., Tinel et al., 2005; Liu and Illingworth, 2000; Hogan et al., 2006).

Many model validation studies concentrate on single parameters such as evaporation, precipitation, boundary layer height, or cloud parameters (e.g., Chiriaco et al., 2006). Precipitation comparisons are rather frequent, because precipitation observa-

**Quality assessment
of water cycle
parameters in REMO
by Radar-Lidar
synergy**

B. Hennemuth et al.

Title Page

Abstract

Introduction

Conclusions

References

Tables

Figures

◀

▶

◀

▶

Back

Close

Full Screen / Esc

Printer-friendly Version

Interactive Discussion

tions are available with a good resolution due to a dense rain gauge network over land and radar networks e.g. over the Baltic Sea region (Jacob, 2001). Within CLOUDNET and CLIWA-NET extensive comparisons of the observed cloud structure with several operational forecast models like ECMWF model, RACMO, RCA and LM with horizontal resolution between 50 km and 7 km were performed (Willén et al., 2005).

In this study water cycle parameters measured at the Meteorological Observatory Lindenberg (MOL), Germany, during experiments in summer and autumn 2003 and 2004 are compared with simulated parameters of the regional model REMO. The comparisons include vertical distribution of humidity in the lower troposphere, surface evaporation, soil moisture, profiles of vertical water vapour flux in the boundary layer, cloud cover, vertical distribution of cloud boundaries, cloud water and ice, and precipitation. Special attention is paid to the atmospheric boundary layer (ABL), particularly to the convective boundary layer (CBL) because of its important role in controlling the water transport between the earth's surface and the free atmosphere. The data set is used for statistical analysis as well as for process studies. Special emphasis is given on the assessment of the differences between observed and modelled values with regard to measurement accuracy.

2 Instrumentation, measured parameters and accuracy

2.1 Lidar systems

Water vapour lidar

The MPI-DIAL (Differential Absorption Lidar) is a vertically pointing water vapour lidar. It combines signals at two slightly different wavelengths. One wavelength is located in the centre of a water vapour absorption line (“online”), the other is located just beside but in a region of negligible water vapour absorption (“offline”). The backscatter coefficient can be assumed to be the same for both wavelengths, so the ratio of the two

Quality assessment of water cycle parameters in REMO by Radar-Lidar synergy

B. Hennemuth et al.

Title Page

Abstract

Introduction

Conclusions

References

Tables

Figures

◀

▶

◀

▶

Back

Close

Full Screen / Esc

Printer-friendly Version

Interactive Discussion

signals depends only on water vapour absorption. For details of the methodology the reader is referred to Bösenberg (1998, 2005). Typical performance values are summarised in Table 1, but lower resolution and/or decreased accuracy may occur in the upper altitude range. The measurement error caused by noise is nearly constant with height within the boundary layer and strongly increases in the free atmosphere. Table 1 gives the error range within the boundary layer.

The backscatter measurement has a vertical resolution of 15 m.

During the first campaign a different laser type was used (Wulfmeyer and Bösenberg, 1998) than in the later campaigns (Ertel, 2004). Due to the different configuration and adjustment the height interval was 700 m to 4000 m in 2003 and 300 m to 3000 m in 2004. The operating time was daytime only.

Doppler lidar

For vertical wind speed measurements a Doppler lidar (MPI Hamburg) with heterodyne detection, operating at 1120 nm wavelength was used. The instrument is described by Linné et al. (2006). The performance depends on the presence of aerosol particles of sufficient size to produce backscatter at the operating wavelength of 1120 nm, so wind data are collected in the boundary layer mainly. Typical performance values are summarised in Table 1. The noise induced error estimated from the power spectrum is less than 0.1 m s^{-1} within the boundary layer. Both lidar systems, DIAL and Doppler lidar were only operated during daytime because unattended operation was not feasible at that time.

Ceilometer

The Laser-Ceilometer Tropopause LD40 (Impulsphysik GmbH) measures cloud base heights. Only standard products of the online signal processing software were used which include the detection of up to three cloud levels, depending on cloud optical depth and atmospheric conditions.

**Quality assessment
of water cycle
parameters in REMO
by Radar-Lidar
synergy**

B. Hennemuth et al.

Title Page

Abstract

Introduction

Conclusions

References

Tables

Figures

◀

▶

◀

▶

Back

Close

Full Screen / Esc

Printer-friendly Version

Interactive Discussion

2.2 Radar systems

Cloud radar

The cloud radar MIRA-36 (METEK GmbH) is a vertically pointing Doppler radar, measuring at a frequency of 36.5 GHz corresponding to 8 mm wavelength (Bormotov et al., 2000). It provides the radar reflectivity factor Z which is equal to the 6th moment of the drop size distribution $N(D)$ for drops with diameter $D \ll \lambda$ (Rayleigh approximation). In addition to Z , the Doppler velocity V and the linear depolarization ratio LDR are recorded since these variables are useful for target classification. Main operating parameters of the radar are given in Table 2. The cloud radar was operating continuously.

The interpretation of radar reflectivities in terms of cloud properties requires some caution since signals at the radar receiver input are not necessarily due to cloud echoes. Figure 1 shows frequency distributions of $10 \cdot \log(Z)$ (= : dBZ for shortness) with units of $Z = \text{mm}^6/\text{m}^3$ for four height intervals between 2 and 10 km for the whole analysis period described in Sect. 4.1. At all heights the distributions exhibit two or even three modes.

The modes at the low end of the Z -distributions are not related to clouds but to the noise floor P_n of the radar receiver. In the signal analysis implemented during the campaigns P_n was set equal to the receiver input power observed at 12 km range, where no echo is expected. The corresponding noise spectra are assumed to be frequency independent, and are subtracted from the spectra measured at lower heights in order to obtain noise corrected signal powers. The estimated spectral noise floor is distributed randomly around the noise expectation value with the standard deviation $\sigma_n = \langle P_n \rangle / F^{0.5}$ where $\langle P_n \rangle$ is the expectation value of P_n and $F = S_f S_t$ is the number of degrees of freedom with S_f and S_t number of spectral lines and number of spectral averages, respectively. As the noise at 12 km is not correlated with noise at other sounding heights, the random fluctuations of the noise corrected receiver power represent (in the absence of echoes) a zero-mean distribution with the standard deviation $\sigma_{nc} = 2^{0.5} \cdot \sigma_n$. Only the positive wing of this distribution is displayed on the logarithmic axis. It gives

Quality assessment of water cycle parameters in REMO by Radar-Lidar synergy

B. Hennemuth et al.

Title Page

Abstract

Introduction

Conclusions

References

Tables

Figures

◀

▶

◀

▶

Back

Close

Full Screen / Esc

Printer-friendly Version

Interactive Discussion

rise to the sharp peaks at the low end of the Z -distributions. These peak positions are shifted to higher Z with increasing height z according to the geometric signal attenuation proportional to z^2 . The corresponding Z -values were discarded by setting the detection threshold such that the false alarm rate is less than 5%.

The peaks at the high end of the Z -distributions, which appear in the lower two height intervals, are due to drizzle, while the broad maximum around -40 dBZ occurring in the lowest height interval is influenced by atmospheric particles (see Sect. 2.8) that gives rise to weak but rather persistent echoes in the atmospheric boundary layer. Only the peaks at -20 dBZ (6–8 km) and at -35 dBZ (8–10 km) are believed to stem actually from cloud droplets. These potential ambiguities underline the need of further information in order to derive sensible cloud statistics. As discussed in Sect. 2.8, simultaneous lidar echoes were used in this study to remove efficiently the boundary-layer particle signal. In the same way drizzle induced ambiguities were mitigated – however at this stage only with regard to cloud base detection, but not to liquid water estimation.

Micro Rain Radar

The micro rain radar MRR (METEK GmbH) measures the size distribution of rain droplets at 32 heights from which rain parameters, including the rainrate, can be derived (Peters et al., 2002, 2005). The measuring frequency is 24.1 GHz. The height interval was 50 m in 2003 and 100 m in 2004. The lowest useful height is the third range gate (150 m/300 m) which was used in this study. The retrieval of size distribution is based on the size-dependent terminal fall velocity of rain drops. Vertical air motion is the dominating source of error. In terms of rain rate the error is 25% per 0.1 m s^{-1} vertical wind. For 1 min averages the estimated standard deviation of the statistical rain rate error is $\pm 20\%$ under conditions typical for these data sets.

**Quality assessment
of water cycle
parameters in REMO
by Radar-Lidar
synergy**

B. Hennemuth et al.

Title Page

Abstract

Introduction

Conclusions

References

Tables

Figures

◀

▶

◀

▶

Back

Close

Full Screen / Esc

Printer-friendly Version

Interactive Discussion

2.3 Other instrumentation

In the area around MOL a network of global radiation instruments and of 14 PLUVIO rain gauges (Ott GmbH) is installed in order to characterize the variability of the forcing for the water and energy cycle. The sensitivity threshold of the PLUVIO sensor corresponds to a rain amount of 0.03 mm, smaller amounts can not be recorded. Continuous precipitation of weak intensity is therefore reported as a series of single events. Each accumulation of mass in the gauge is reported by the sensor as precipitation (e.g., heavy insects). Therefore, isolated single values at the detection limit have usually to be interpreted as questionable or corrupted data.

During the first measuring period a network of energy balance stations was installed for the determination of area-averaged surface fluxes. 13 micrometeorological and flux stations were operated over different types of soil, vegetation and land use. All stations were equipped with ultrasonic-anemometer-thermometers and fast-response optical hygrometers for the determination of the surface turbulent sensible and latent heat fluxes by eddy covariance techniques. Details on the measurement sites and instrumentation can be found in [Beyrich et al. \(2006\)](#). Processing and quality control of the data at all sites were performed with one standard software package which is described by [Mauder et al. \(2006\)](#) who specify the error for sensible heat flux as 5% and for latent heat flux as 15%.

Seven energy balance stations were equipped with instruments for the measurement of soil moisture at different depths.

2.4 Humidity field

From DIAL measurements vertical profiles of absolute humidity with a time resolution of 10 s can be derived. As Fig. 2 shows, the humidity structure in the lower troposphere is depicted, in particular the evolution of the convective boundary layer with a marked upper boundary which reaches up to 1500 m around noon. But also synoptic-scale influences like humidity advection above the CBL are shown.

Quality assessment of water cycle parameters in REMO by Radar-Lidar synergy

B. Hennemuth et al.

Title Page

Abstract

Introduction

Conclusions

References

Tables

Figures

◀

▶

◀

▶

Back

Close

Full Screen / Esc

Printer-friendly Version

Interactive Discussion

The accuracy of the derived absolute humidity values is determined by systematic errors which are small and well assessed (Bösenberg, 1998) and by random errors which depend on atmospheric conditions, height, and resolution. Actual random errors are estimated for each measurement. For the ABL altitude range and typical conditions during the measurements presented here a value of $<0.2 \text{ gm}^{-3}$ can be assumed.

2.5 Surface evaporation, soil moisture

In order to obtain area-averaged surface fluxes of latent and sensible heat from the energy balance network, flux composites were derived for each surface type by averaging data from the different stations operated over the same type of surface. Then averages for the three main land use classes (farmland, forest, water) and a weighted area-average over the whole study region were determined considering the percentage of each surface type in the area (for details, see Beyrich et al., 2006). For this study only the composite flux values for farmland were used because this is the prevailing land use class in the corresponding model gridbox (see Sect. 3). The averaging time is 30 min. The uncertainty range of composite fluxes is determined by Beyrich et al. (2006) and is approximately 10% for sensible heat flux and 15–20% for latent heat flux.

Soil moisture data are not averaged because the measurements at different locations differ strongly - although the trends are similar – and measurement depths differ, too. One location with continuous measurements is chosen as a proxy and the data are only compared qualitatively with model data.

2.6 Boundary layer height

The boundary layer height which can be clearly seen in Fig. 2 is derived from the DIAL offline backscatter signal. The method of Lammert and Bösenberg (2006) is used which is based on the analysis of average and instantaneous data by searching for the maximum in the vertical variance profile and the maximum in the gradient profile of the backscatter signal. The method has been modified by implementation of the cloud

Quality assessment of water cycle parameters in REMO by Radar-Lidar synergy

B. Hennemuth et al.

Title Page

Abstract

Introduction

Conclusions

References

Tables

Figures

◀

▶

◀

▶

Back

Close

Full Screen / Esc

Printer-friendly Version

Interactive Discussion

mask (see Sect. 2.8.1) into the backscatter data so that only in cloud-free regions the ABL height is determined. The 10 s boundary layer heights are averaged over one minute.

Figure 3 shows examples of days with and without boundary layer clouds to illustrate the performance of the method. The top of the CBL is well detected, sometimes there are difficulties in finding the growing CBL height in the morning. The top of the residual layer height is also detected by this method because its undulating structure also causes a maximum in the variance profile, but results are often not as clear as in Fig. 3, left panel. For these reasons the comparisons with REMO will be restricted to the fully developed CBL between 10:00 and 16:00 UTC.

The height resolution of CBL-height is 15 m. The accuracy strongly depends on atmospheric conditions and is estimated in a cloud-free and well-defined CBL as better than 50 m, but deviations due to ill-defined ABL may be as large as 200 m (Hennemuth and Lammert, 2006).

2.7 Vertical water vapour transport

The water vapour flux was determined by the eddy-covariance method from fluctuations of humidity and vertical wind measured by synchronised DIAL and Doppler lidar, operating side by side. The measurements, which took place during the first campaign, are described by Linné et al. (2006). Flux values are calculated at 30 m intervals with an averaging period of 90 min. Since wind data are only available in aerosol loaded layers, the flux values are mainly restricted to the boundary layer. Figure 4 illustrates the availability of vertical wind and humidity fluctuation measurements and derived water vapour flux profiles at special time intervals. Depending on the mean horizontal wind speed the recorded dominating eddies may have a time scale of up to 30 min of minutes (see Fig. 4, upper panels). This leads to a rather large sampling error.

Typical total error values for 90 min average flux values are $\pm 50 \text{ W m}^{-2}$ (Linné et al., 2006).

**Quality assessment
of water cycle
parameters in REMO
by Radar-Lidar
synergy**

B. Hennemuth et al.

Title Page

Abstract

Introduction

Conclusions

References

Tables

Figures

◀

▶

◀

▶

Back

Close

Full Screen / Esc

Printer-friendly Version

Interactive Discussion

2.8 Cloud parameters

Scattering of millimeter waves is particularly suited to characterise cloud parameters because most clouds can on one hand be detected and on the other hand are penetrated, even if there are multiple optically thick cloud layers. Cloud parameters to be determined by radar are cloud cover, cloud boundaries and thickness, number of layers, liquid water content and ice water content.

Main ambiguities in cloud parameter retrieval from radar reflectivity are due to the proportionality to the 6th moment of the cloud drop size distribution $N(D)$. Thus quantitative retrieval of liquid water content (proportional to the third moment of $N(D)$) is obviously impossible without assumptions on the shape of $N(D)$. Even the observed cloud boundaries is sometimes affected by the D^6 -dependence of the radar echo.

Particularly cloud-base detection in the boundary layer can be impaired by mainly two mechanisms:

- Clouds often release small amounts of drizzle, which evaporates at some height between the cloud base and the surface. As drizzle drops are larger than cloud drops, they tend to dominate the radar echo due to the D^6 -dependence, even if their liquid water content is negligible.
- During daytime in the warm season particulate echos from the cloud-free boundary layer can be misinterpreted as clouds. Insects or seeds are assumed to be the main source of these echos (sometimes referred to as “atmospheric plankton”).

In addition, optical relevant clouds can sometimes fall below the detection threshold of the radar when cloud particles are too small. This occurs preferably in shallow convective ABL clouds (e.g. cumulus humilis) or in high cirrus clouds.

In this study only the radar reflectivity factor Z was considered, although spectral and polarimetric data with high potential to mitigate many of the mentioned shortcomings were provided by the radar. This restriction was dictated by the lack of sufficiently

Quality assessment of water cycle parameters in REMO by Radar-Lidar synergy

B. Hennemuth et al.

Title Page

Abstract

Introduction

Conclusions

References

Tables

Figures

◀

▶

◀

▶

Back

Close

Full Screen / Esc

Printer-friendly Version

Interactive Discussion

tested algorithms to exploit this information except for case studies and by the fact that those data were not continuously available.

Optical ceilometer data, which were continuously available, provided an alternative to eliminate the cloud base ambiguities. Due to the D^2 -dependence of the optical returns for the given range of particle sizes drizzle and atmospheric plankton had nearly no effect on optical data. Therefore ceilometer data, and if available, lidar data were used to determine the lowest cloud base in the ABL. In addition the comparison of radar and lidar data provided an estimate of the fraction of high cirrus clouds below the radar detection threshold. The ratio of clouds detected only by lidar and clouds detected by radar and lidar is 2.7 for the height range of 9 km to 12 km. This underlines the necessity of using an additional optical instrument for cloud detection particularly for heights above approximately 10 km.

Cloud base determination with ceilometer relies completely on the proprietary algorithm of the system manufacturer. According to C. Muenkel (private communication) the algorithm first identifies rain sections in the lowest 2000 m of the range- and overlap-corrected signal profile by checking signal strength and height range threshold values. Clouds can be detected within and outside rain sections by either checking the slope steepness or signal strength, and cloud base height is set to 15 m below the height of the maximum signal within the cloud peak.

In about 30% of times the offline channel of the DIAL was used for cloud detection with very high sensitivity. Only signals with a signal-to-noise-ratio $SNR > 5$ are used, and cloud boundary detection is based on the analysis of the small scale variances (40 ms/15 m resolution). Since backscatter shows a sharp increase at cloud boundaries and the edges are variable in time and height, the shot-to-shot signal variance shows a pronounced maximum at the cloud boundaries. Signal strength is used additionally to select only those variance maxima associated with clouds.

Different cloud detection algorithms exist, based on the maximum in the backscatter coefficient profile (Hogan et al., 2003) or on a wavelet analysis (Haeffelin et al., 2005), used at the SIRTa site (France). A systematic algorithm comparison was beyond the

**Quality assessment
of water cycle
parameters in REMO
by Radar-Lidar
synergy**

B. Hennemuth et al.

Title Page

Abstract

Introduction

Conclusions

References

Tables

Figures

⏪

⏩

◀

▶

Back

Close

Full Screen / Esc

Printer-friendly Version

Interactive Discussion

scope of this study.

2.8.1 Cloud morphology

Vertical profiles of cloud boundaries were evaluated with a resolution of $\Delta t=1$ min, $\Delta z=30$ m. The automatic detection of clouds with radar requires the knowledge of the noise level P_n at the radar receiver input. In this study P_n was obtained from the receiver signal, measured after the transmit pulse with a delay corresponding to 12 km height. It is assumed that no echo is received from that height, and that the mean noise power does not change with delay time. With knowledge of P_n and of the number of incoherent averages a cloud mask consisting of 5 pixels in range and 5 pixels in time, as described by Clothiaux et al. (1995), was established.

Figure 5 gives an example of a time-height section of the radar reflectivity and the Doppler velocity. It can be seen that multiple cloud layers are penetrated by the radar. The echos from particles inside the ABL, which have to be masked with lidar data, are clearly visible. Rain events can be detected by the Doppler velocity as shown in Fig. 5, lower panel.

Figure 6 shows an example of the range-corrected backscatter signal – original and with cloud mask – of the offline channel of the DIAL and the lidar-derived cloud mask for one day.

The complete cloud mask is then derived from the combination of both instruments by using lidar data for lowest cloud base height, radar data for cloud top heights and cloud base heights above water cloud layers. This method was also applied by Intrieri et al. (2002).

Figure 7 shows the radar-lidar cloud mask. It can be seen that the lidar beam cannot penetrate water clouds because the signal is rapidly attenuated by strong scattering from water droplets. High cirrus clouds and some low-level small-particle clouds on the other hand are invisible for the cloud radar. Elevated cloud base heights agree well for both instruments.

The errors in the determination of the geometrical boundaries of clouds strongly

Quality assessment of water cycle parameters in REMO by Radar-Lidar synergy

B. Hennemuth et al.

Title Page

Abstract

Introduction

Conclusions

References

Tables

Figures

◀

▶

◀

▶

Back

Close

Full Screen / Esc

Printer-friendly Version

Interactive Discussion

depend on the height of the cloud bases and tops. High cirrus clouds above 10 km are only visible for the lidar (see Sect. 2.8). But lidar measurements are only available at 33% of all radar measurements and even in those periods the lidar beam is often blocked by low-level water clouds.

5 The rms-deviation of cloud base height as determined by the two lidar systems, DIAL and ceilometer, is about 100 m and characterises the uncertainty caused by the different retrieval algorithms. The error in the cloud base height determination by cloud radar is as small as the height resolution, i.e. 30 m, but the cloud base may be not well defined. The cloud cover, which was derived from these observations, is defined in
10 Sect. 4.3.

2.8.2 Water content of clouds

The key parameter describing the role of clouds in the water cycle is – besides the geometrical size – their water content which is denoted here by M . It is determined by:

$$M = \frac{\pi}{6} \rho \int_0^{\infty} N(D) D^3 dD \quad (1)$$

15 where D is the droplet size, $N(D)$ is the droplet size distribution and ρ is the water density. Unfortunately, $N(D)$ cannot be measured directly because

$$Z = \int_0^{\infty} N(D) D^6 dD \quad (2)$$

Therefore M is estimated from the Ka-Band radar measurements by using empirical Z – M relations of the form:

20 $Z = a M^b$ (3)

where a and b are empirical constants.

These Z – M relations were obtained from the independent determination of liquid water content (LWC) and radar reflectivity of known droplet size distributions. Droplet size

**Quality assessment
of water cycle
parameters in REMO
by Radar-Lidar
synergy**

B. Hennemuth et al.

Title Page

Abstract

Introduction

Conclusions

References

Tables

Figures

◀

▶

◀

▶

Back

Close

Full Screen / Esc

Printer-friendly Version

Interactive Discussion

distributions can be obtained from airborne probes, cloud physical model calculations or the combination of remote sensing instruments (see e.g., [Sauvageot and Omar, 1987](#)).

A large problem deriving cloud water content is imposed by drizzle within water clouds. New attempts to take this effect into account use different Z - M relations for clouds without drizzle, with a slight drizzle portion and with a large drizzle portion (see Fig. 8). According to a suggestion of [Krasnov and Russchenberg \(2003\)](#) these relations hold for certain dBZ-ranges which are also used in this study. For $\text{dBZ} < -30$ the relation of [Fox and Illingworth \(1997\)](#), for $-30 < \text{dBZ} < -20$ the relation of [Baedi et al. \(2000\)](#), and for $\text{dBZ} > -20$ the relation of [Krasnov and Russchenberg \(2002\)](#) is applied.

There exist a variety of algorithms to derive LWC from cloud radar data which differ mostly in the coefficients in Eq. (3). Advanced methods combine instruments like cloud radar, microwave radiometer and radiosonde or make use of multi-wavelength radar systems (see e.g., [Meywerk et al., 2005](#); [Löhnert et al., 2004](#); [Gaussiat et al., 2003](#)). [Krasnov and Russchenberg \(2006\)](#) suggested the use of lidar-derived optical extinction to determine the optimum choice of parameters a and b in Eq. 3.

The ice water content of clouds (IWC) can be similarly calculated from a Z - M relation (e.g., [Sassen, 1987](#); [Liu and Illingworth, 2000](#)) with M denoting IWC here. But since different ice crystal types which can be assigned to certain height - and thus temperature - ranges cause different reflectivity, a new Z - M relation was suggested by [Hogan et al. \(2006\)](#). This algorithm stratifies the Z - M relation with temperature and is illustrated in Fig. 9. [Hogan et al. \(2006\)](#) derive two different formulae for different aims, one formula seems to give best results for the expected value of IWC when compared with aircraft measurements (black lines), the other formula gives better agreement when comparing variances or PDFs of IWC (red lines).

Generally, the derivation of cloud water content from radar reflectivity suffers from several simplifying assumptions. Better algorithms to discriminate between water droplets and ice crystals make use of the reflectivity ratio of the radar and lidar systems ([Tinel et al., 2005](#)). In this study this method was not applied because of the low

Quality assessment of water cycle parameters in REMO by Radar-Lidar synergy

B. Hennemuth et al.

Title Page

Abstract

Introduction

Conclusions

References

Tables

Figures

◀

▶

◀

▶

Back

Close

Full Screen / Esc

Printer-friendly Version

Interactive Discussion

lidar availability particularly at high levels.

The accuracy of cloud radar-derived liquid water content and ice water content using Z - M relations is nearly entirely determined by the validity of the assumptions of the applied methods. The liquid water determination only from reflectivity may - according to the situation – enclose large errors up to ± 10 dBZ.

2.9 Precipitation

Precipitation measurements are continuously available from the PLUVIO network and from one MRR at Lindenberg. The general difficulty that point measurements are not necessarily representing the average inside a model grid box applies particularly to precipitation due to the extreme spatial heterogeneity of the precipitation field. In this study the network data are used for calculating area averages of rain rates, while the MRR data represent a single station. The results differ both in rain sum and in time structure (see below Fig. 25). The reason is that precipitation is strongly heterogeneous as e.g. shown for the measurement period in 2003 by [Beyrich and Mengelkamp \(2006\)](#). The MRR rain rates are nearly always smaller than those of the network. MRR point measurements have earlier been compared with a conventional rain gauge aside, and the 30 min averages deviate by approximately 20% ([Peters et al., 2002](#)).

3 Regional model REMO

The regional climate model REMO is a hydrostatic, three-dimensional atmospheric model, that has been developed in the context of the Baltic Sea Experiment (BAL-TEX) at the Max-Planck-Institute for Meteorology in Hamburg, Germany. It is based on the Europa Model, the former numerical weather prediction model of the German Weather Service and is described in [Jacob \(2001\)](#) and [Jacob et al. \(2001\)](#). REMO uses the physical package of the global circulation model ECHAM4 ([Roeckner et al., 1996](#); [DKRZ, 1994](#)) and can be run in forecast as well as in climate mode. Prognostic

Quality assessment of water cycle parameters in REMO by Radar-Lidar synergy

B. Hennemuth et al.

Title Page

Abstract

Introduction

Conclusions

References

Tables

Figures

◀

▶

◀

▶

Back

Close

Full Screen / Esc

Printer-friendly Version

Interactive Discussion

variables are the horizontal wind components, surface pressure, temperature, mixing ratio of water vapour and of cloud water.

The surface fluxes are determined by a bulk equation taking into account the difference of momentum, energy or water vapour at the surface and at the lowest model level. The transfer coefficient consists of a neutral part and a stability function after Louis (1979). Surface evapotranspiration is composed of evaporation from the skin reservoir, bare soil, vegetation and snow (DKRZ, 1994). Soil moisture is – in contrast to soil temperature – determined at only one layer by a budget equation which includes evaporation, rainfall, surface runoff, drainage and snow melt (Dümenil and Todini, 1992). This type of scheme is called a “bucket model”.

The vertical turbulent transport in the atmosphere is parameterised by a local diffusion equation. The diffusion coefficient is the product of the square root of the turbulent kinetic energy (TKE) and a length scale which is a prescribed length scale times a stability function. For TKE a prognostic equation is solved (“TKE-closure”). In the dry atmosphere no entrainment scheme is included. In this study the instantaneous latent heat flux in the atmosphere is recalculated from the diffusion coefficient and humidity profiles.

The height of the atmospheric boundary layer can be diagnosed from model output parameters or can be taken from the diffusion subroutine. This parameter is determined as the maximum value of two parameters,

$$h_{bl} = \max(h_{dyn}, h_{cnv}), \quad (4)$$

the dynamical height

$$h_{dyn} = 0.5 \frac{u_*}{f} \quad (5)$$

with u_* : friction velocity and f : Coriolis parameter and the convective height which is the height of the lowest level with a static stability larger than at the first level (DKRZ, 1994), a method which is often called “parcel method”. The height of the convective

**Quality assessment
of water cycle
parameters in REMO
by Radar-Lidar
synergy**

B. Hennemuth et al.

Title Page

Abstract

Introduction

Conclusions

References

Tables

Figures

◀

▶

◀

▶

Back

Close

Full Screen / Esc

Printer-friendly Version

Interactive Discussion

boundary layer h_{cnv} can also be determined as the height where the gradient of potential temperature or of absolute humidity or of TKE is largest. These methods refer to the definition of the CBL as a turbulent well-mixed layer with an inversion on top which restricts transport of matter to the CBL, see e.g. the discussion in [Hennemuth and Lammert \(2006\)](#). The CBL height values from different definitions mostly agree on undisturbed days with strong insolation while they may differ much on non-ideal days (see below, Fig. 17).

The simulation of clouds and precipitation in REMO is divided into the stratiform cloud and precipitation scheme accounting for clouds developing on scales that can be described directly by the prognostic variables of the model, and in the convective cloud and precipitation scheme for clouds on smaller scales. The stratiform cloud scheme in REMO, taken from the MPI Global Model ECHAM4, is based on the approach of [Sundqvist \(1978\)](#) and is described in detail in ([DKRZ, 1994](#)) and in [Roeckner et al. \(1996\)](#). In-cloud water q_c is diagnosed assuming that the predicted cloud water mixing ratio q_w is confined to the cloudy part of the gridbox. q_c is then split into cloud ice water content (IWC) and cloud liquid water content (LWC) as a function of temperature following [Rockel et al. \(1991\)](#) (Fig. 10): above the melting point – here 0°C – the cloud consists entirely of liquid water while near -50°C the cloud almost entirely consists of ice.

Convective clouds in REMO are parameterised using the Tiedtke mass flux scheme ([Tiedtke, 1989](#)) with some modifications following [Nordeng \(1994\)](#).

Total precipitation in REMO is the sum of precipitation formed in the stratiform cloud scheme and precipitation formed in the convective cloud scheme. Cloud cover is calculated as a nonlinear function of the grid-mean relative humidity.

Quality assessment of water cycle parameters in REMO by Radar-Lidar synergy

B. Hennemuth et al.

[Title Page](#)[Abstract](#)[Introduction](#)[Conclusions](#)[References](#)[Tables](#)[Figures](#)[◀](#)[▶](#)[◀](#)[▶](#)[Back](#)[Close](#)[Full Screen / Esc](#)[Printer-friendly Version](#)[Interactive Discussion](#)

4 Quality assessment experiment

4.1 Site and time table

The Meteorological Observatory Lindenberg of the German Weather Service (DWD) is located 60 km southeast of Berlin (Neisser et al., 2002). The terrain is flat with gently rolling hills of less than 50 m, and its heterogeneous landscape of agriculture, forests, small lakes and villages is typical for the region and also for northern Central Europe.

The measurements took place in three time periods, 20 May 2003 to 14 June 2003, 11 May 2004 to 6 June 2004, and 26 August 2004 to 30 September 2004. The first campaign was the LITFASS-2003 campaign within the EVA_GRIPS project of the German Climate Research Program (DEKLIM) (Beyrich and Mengelkamp, 2006) aiming at the determination of area-averaged surface evaporation over a heterogeneous surface. LITFASS stands for Lindenberg Inhomogeneous Terrain – Fluxes between Atmosphere and Surface: a Long-term Study)

The comprehensive instrumentation at MOL, set up in order to characterise the vertical structure of the atmosphere includes energy balance stations (enhanced number during LITFASS-2003), a network of rain gauges, a ceilometer, a microwave cloud radar, and a Micro Rain Radar. Additional instruments during the three campaigns were a Differential Absorption Lidar (DIAL) and a Doppler lidar (operated by MPI for Meteorology).

Comparisons are performed for all three measuring periods. Only in case of a restricted availability of special data the period is shortened.

4.2 Model runs

In this study REMO was run in the forecast mode in order to simulate the atmospheric conditions at Lindenberg as close to the real weather as possible. This means that the model was initialized at 00:00 UTC and the forecast times from 07:00 UTC of the same day to 06:00 UTC of the following day were used. The horizontal resolution was

Quality assessment of water cycle parameters in REMO by Radar-Lidar synergy

B. Hennemuth et al.

Title Page

Abstract

Introduction

Conclusions

References

Tables

Figures

◀

▶

◀

▶

Back

Close

Full Screen / Esc

Printer-friendly Version

Interactive Discussion

1/6°, i.e. approximately 18 km. The model runs were nested in 1/2° runs which were initialized and driven at the boundaries with ECMWF analyses. Figure 11 shows the model domain of the 1/2° runs and of the nested 1/6° runs.

The water cycle parameters which are compared with observations are absolute humidity (calculated from mixing ratio and temperature), surface latent heat flux, soil wetness, water vapour transport in the atmosphere, cloud cover, cloud liquid water content, and precipitation. Output parameters are available every 1 h. Two different models levels are distinguished, full levels which characterise the centre of gravity of the model layers as well as half-levels which are the boundaries of the model layers. The model levels are transformed to pressure levels by means of the surface pressure value, and then the individual height of these levels is calculated using the barometric height equation. The predicted values are defined on full levels, for the comparison with observations they are regarded representative for the layer between the adjacent half levels.

4.3 Transformation of observational data to model grid

All vertical profiles of water cycle parameters - absolute humidity, cloud cover, cloud liquid water content and cloud ice water content – are transformed to the vertical grid of the model REMO with $\Delta z \approx 35$ m near the surface and $\Delta z \approx 1600$ m at 10 km. For vertical averaging the time-dependent REMO level heights are averaged over all model runs. The observational data are then averaged for the layers between the half levels. The measured humidity values are averaged over ± 10 min around the model output times and are compared with instantaneous model values. The boundary layer height is averaged over ± 15 min around the model output times because the values are strongly variable. Surface fluxes are averaged over 1 h, precipitation is added up to 1 h. The observed cloud cover is the percentage of cloud signals detected in height/time boxes with vertical extension equal to the respective REMO layer thickness and with 1 h duration corresponding to the REMO output time interval Only data with more than 2% cloud cover are regarded as clouds. Cloud LWC and IWC are averaged over height

**Quality assessment
of water cycle
parameters in REMO
by Radar-Lidar
synergy**

B. Hennemuth et al.

Title Page

Abstract

Introduction

Conclusions

References

Tables

Figures

◀

▶

◀

▶

Back

Close

Full Screen / Esc

Printer-friendly Version

Interactive Discussion

and time of REMO grid boxes.

4.4 Representativeness and comparability of data sets

The two data sets of water cycle parameters – derived from observations and the model – differ in spatial and temporal representativity. Therefore, the comparability and its limitations should briefly be discussed.

Model parameters are partly instantaneous values (humidity, cloud water content, soil wetness, and parameters derived from instantaneous parameters like cloud cover, soil wetness and atmospheric fluxes) and partly means or sums over 1 h (surface evaporation, precipitation). If possible, instantaneous values are compared to observations of short averaging time (humidity, ABL height, see Sect. 4.3).

Simulated values are representative for the grid box or surface area defined by the horizontal model resolution. Additionally, the numeric calculation scheme introduces an uncertainty of one mesh size in each direction. The uncertainty can be estimated by the difference of neighbouring values to the selected gridbox and can be regarded as negligible in a rather uniform area like the Lindenberg area. Thus a height uncertainty of one vertical mesh size remains.

The accuracy of measurement-derived water cycle parameters is given in Sect. 2, but additional uncertainties arise from the transformation to the model grid. Height averaging over increasing intervals with increasing height and time averaging over 1 h or shorter intervals smoothes small-scale features and thus improves the comparability with model values which are representative for a 300 km² gridbox. But averaging may in the case of cloud cover lead to a larger portion of small cloud cover values. Generally, time averages of point measurements are compared with area-representative model values. Under the assumption of Taylor's hypothesis in a divergence-free flow, time averaging approaches spatial averaging. For surface values the use of area-averaged observations – e.g. from networks – is highly recommended because surface heterogeneities are mostly large (Mengelkamp et al., 2006). Atmospheric heterogeneities are assumed to be smaller because of atmospheric mixing (Parlange et al., 1995).

Quality assessment of water cycle parameters in REMO by Radar-Lidar synergy

B. Hennemuth et al.

Title Page

Abstract

Introduction

Conclusions

References

Tables

Figures

◀

▶

◀

▶

Back

Close

Full Screen / Esc

Printer-friendly Version

Interactive Discussion

There exists a general problem in comparing observed and modelled clouds because the parameters are derived differently. Cloud boundaries and cloud cover are derived directly from measured radar and lidar reflectivity, but cloud liquid water and ice water content are diagnosed making certain assumptions. The opposite is the case for models, here total water content – in enhanced models liquid water content and ice water content – is predicted, but cloud cover is diagnosed from the predicted relative humidity. So in the comparison of cloud cover and liquid/ice water content one of the respective parameters is diagnosed using assumptions which may not be valid for all situations. This has to be kept in mind in the discussion of comparisons.

5 Results of comparison

5.1 Humidity field, evaporation, soil moisture

The direct comparison of simulated and observed humidity fields in the lower troposphere shows that the evolution of the CBL is well reproduced in the model, although height of the boundary layer and humidity values do not always agree with observations.

For a statistical analysis the observed humidity field transformed to the REMO grid is used. The number of data pairs per gridbox – i.e. the number of observations – is shown in Fig. 12. The boundary layer is best represented below 1500 m and between 07:00 and 18:00 UTC, in the region above the boundary layer less observations are available because of cloud occurrences and limited range of the DIAL used in 2004.

Statistical analysis is performed for 1 h-intervals with observations. Simulated and observed humidity values are well correlated within the convective boundary layer below 1000 m and in the lower part of the free atmosphere (around 2000 m) as Fig. 13, upper panel shows. In the lower height levels the correlation coefficient is larger than 0.75, whereas in the layer between 1000 m and 2000 m the correlation coefficient is 0.4–0.7. In this region observed values often lie within the CBL while simulated values

Quality assessment of water cycle parameters in REMO by Radar-Lidar synergy

B. Hennemuth et al.

Title Page

Abstract

Introduction

Conclusions

References

Tables

Figures

◀

▶

◀

▶

Back

Close

Full Screen / Esc

Printer-friendly Version

Interactive Discussion

lie above the CBL, as this is often too low in the model (see Sect. 5.2). A marked distinction between the layer below 1000 m and the layer between 1000 m and 2000 m is also reflected in the bias and the rms-error (Fig. 13, middle and lower panel). While the humidity below 1000 m is strongly biased (“model – observation”: 1.5 to 3 g m⁻³) but exhibits a low rms-error, the humidity above the CBL agrees well on average, but shows a large rms-error.

This difference is also manifest in statistics of humidity values from all grid boxes in the range of 500 m to 1000 m and 1000 m to 2000 m. Data between 10:00 to 16:00 UTC are taken into account. Figure 14 shows the related scatter plots.

The statistical results are presented in Table 3. The data in the lower range, i.e. in the CBL, are well correlated but are strongly biased. Whereas the data in the layer where the model often predicts free atmosphere show a large scatter, which results in a poor correlation and enhanced rms-error. The errors lie far beyond the measurement uncertainty.

The analyses suggest that in most cases the simulated boundary layer is too low and too moist. One crucial parameter determining the humidity field in the boundary layer is evaporation. During LITFASS-2003 there was the opportunity to compare REMO evaporation with an areal average of evaporation from a network of micrometeorological stations. Figure 15 shows time series of simulated and observed surface fluxes for a 12 day period.

The simulated latent heat flux is much larger than the observed one, the sensible heat flux is lower. There are only a few days on which the modelled latent heat flux is equal to or even smaller than the observed flux on 27 May, 31 May, 6 June, and 9 June. These are days with or after rain events with the consequence of a decreasing Bowen ratio. The deviations between modelled and measured fluxes is – at least for the latent heat flux – much larger than the measurement uncertainty of maximum 20% stated in Sect. 2.5, the agreement on wet days is within this range.

Since boundary layer processes are influenced by soil parameters we compare modelled and observed soil moisture. A direct comparison of simulated and observed soil

Quality assessment of water cycle parameters in REMO by Radar-Lidar synergy

B. Hennemuth et al.

[Title Page](#)[Abstract](#)[Introduction](#)[Conclusions](#)[References](#)[Tables](#)[Figures](#)[◀](#)[▶](#)[◀](#)[▶](#)[Back](#)[Close](#)[Full Screen / Esc](#)[Printer-friendly Version](#)[Interactive Discussion](#)

moisture is difficult because REMO has a one layer scheme and the measurements comprise several soil layers. The measured soil moisture is given in volume percentage and the simulated soil moisture is soil water content in m. So the time series are only being compared qualitatively here. Figure 16 shows the evolution of observed and simulated soil moisture during LITFASS-2003. It is obvious that during dry periods the soil moisture decreases steadily in all depths, and after rain events the upper layers are moistened. The simple “bucket”-model of REMO shows decreasing soil wetness and only little reaction to rain events. The large increase in soil moisture in the upper 10 cm which dominates evapotranspiration cannot be simulated by the one layer scheme. The deviation between observation and simulation relates to the missing vertical structure of soil moisture. Error ranges cannot be supplied.

5.2 Boundary layer height

The structure of humidity profiles in the lower troposphere is closely related to the ABL depth. In high-pressure situations it is controlled by the sensible heat flux at the surface, the stratification of the free atmosphere, and synoptic-scale subsidence (see e.g., Batchvarova and Gryning, 1994). From REMO simulations four ABL height values can be derived according to different definitions (see Sect. 3). They are compared with ABL heights derived from DIAL measurements. Figure 17 shows two examples of the time development of the ABL height. On 10 June 2003 the coincidence between all modelled and the observed ABL height is good although the observed maximum height of the CBL is approximately 500 m larger than the simulated height. The underestimation of the CBL height by REMO is more obvious on 7 June 2004. The latter example is from a day with boundary layer clouds and shows that the variability of the ABL height is large. The representation of boundary layer clouds in REMO will be discussed later in Sect. 5.4.

Leaving out all days with a complex development like frontal passage, strong advective influences or breakdown of ABL height and regarding only the values between 10 and 16:00 UTC the scatterplots between the observed ABL height with the differ-

Quality assessment of water cycle parameters in REMO by Radar-Lidar synergy

B. Hennemuth et al.

Title Page

Abstract

Introduction

Conclusions

References

Tables

Figures

◀

▶

◀

▶

Back

Close

Full Screen / Esc

Printer-friendly Version

Interactive Discussion

ent REMO ABL heights show large deviations (Fig. 18 shows the ABL height derived from the parcel method). The correlation coefficient between observed and different model-derived ABL heights is in the range of 0.28 (for the potential temperature gradient method) to 0.50 (for the parcel method). The observed ABL height covers a larger range of height values compared to the model ABL height. Even if an error of observed ABL height of 200 m and additionally the REMO height uncertainty of 160 m at 1000 m height is assumed it is obvious that most deviations are larger.

The lower panel of Fig. 18 shows the same relation, but only for undisturbed days after rain events. The agreement is much better, the correlation coefficient varies between 0.43 (for the TKE gradient method) and 0.81 (for the humidity gradient method and the parcel method). This confirms the ability of the model to well simulate situations with wet soils.

5.3 Vertical water vapour transport

Within the convective boundary layer water vapour is transported vertically by turbulent and convective eddies. The surface is generally a source of water vapour and evaporation increases the water vapour amount in the boundary layer. Entrainment of air from the free atmosphere into the boundary layer occurs during the growth of the CBL (Stull, 1988). This is in most cases a downward flux of dry air. In situations with moist air advected over the ABL or with the CBL growing in the humid residual layer the entrainment flux may also be near zero. The top-down and bottom-up processes control the humidity profiles in structure and amount (Mahrt, 1976).

The measured and simulated flux profiles are only compared qualitatively, because the surface values differ a lot (see Sect. 5.1). The simulations mostly show a large positive entrainment flux in the morning connected with the CBL growth and after reaching a nearly constant CBL height either a slightly increasing or a slightly decreasing flux profile with height. The flux magnitude is determined by the surface flux. Details of the profiles should be looked at with caution bearing in mind that the model flux is recalculated with instantaneous output values while the observed flux is a time average

**Quality assessment
of water cycle
parameters in REMO
by Radar-Lidar
synergy**

B. Hennemuth et al.

Title Page

Abstract

Introduction

Conclusions

References

Tables

Figures

◀

▶

◀

▶

Back

Close

Full Screen / Esc

Printer-friendly Version

Interactive Discussion

over turbulent fluctuations.

Figure 19 shows latent heat flux profiles for two days with different characteristics. On 30 May 2003 a large entrainment flux is observed during the period of growing CBL. On 9 June 2003 the flux is nearly constant with height in the CBL and decreases at its top. This general structure remains even when accounting for the accuracy of the observations which is about $\pm 50 \text{ W m}^{-2}$. The simulated flux profiles also show these features: increasing flux with height on 30 May and slightly decreasing flux with height on 9 June. But since the environmental conditions differ there are also differences in water vapour transport. On 30 June the CBL is steadily growing with large entrainment of dry air. The model CBL remains shallow and the entrainment stops after reaching the final height extent. On 9 June no entrainment flux is observed in the morning because the residual layer is humid, but the simulations show a large entrainment of dry air in the morning.

Generally, the observed profiles of latent heat flux often exhibit a decrease with height in the lower part of the CBL and – in case of entrainment of dry air – an increase towards the top of the CBL. This tendency cannot be found in simulated flux profiles which steadily increase or decrease with height throughout the CBL.

5.4 Cloud amount

Simulated and observed clouds are compared in a two-fold way, the occurrence of a cloud in the gridbox is considered as well as the cloud cover. Figure 20 shows cloud cover on three days with clouds in several layers. The first impression is that the model predicts too few clouds at all levels except above 10 km height, and that the predicted cloud cover is mostly less than the observed one.

For a statistical analysis the number of cloud occurrences is counted for each height level and the cloud cover is added up. The results are shown in Fig. 21. Both observations and simulations show two maxima of cloud occurrence and cloud cover, one maximum around 2000 m and a second maximum between 9000 m and 11 000 m. The mid-level region around 5000 m exhibits a distinct minimum of clouds. This structure

**Quality assessment
of water cycle
parameters in REMO
by Radar-Lidar
synergy**

B. Hennemuth et al.

Title Page

Abstract

Introduction

Conclusions

References

Tables

Figures

◀

▶

◀

▶

Back

Close

Full Screen / Esc

Printer-friendly Version

Interactive Discussion

of cloud occurrence is typical for mid-European climate and reported by e.g. Hogan et al. (2001), Brooks et al. (2004), Willén et al. (2005). It is obvious that in most height levels nearly twice as many clouds are observed than simulated. The same is true for the cloud cover sum. The opposite tendency can be seen for high-level clouds. Above 11 km the same number of clouds is observed and modelled, but the corresponding cloud cover is smaller in observations than in the model. Similar results are found in other studies, e.g. for Europe by Hogan et al. (2001) and by Sengupta et al. (2004) for the ARM site in the southern Great Plains (USA).

The cloud observations, mainly based on cloud radar data, may still contain some non-cloud echoes (compare Sect. 2.8). Most of these remaining echoes are blinded when transforming the cloud mask to the grid where only averages larger than 2% are retained (see Sect. 4.3). Excluding all cloud observations with cloud cover smaller than 0.2 yields a better agreement with the number of simulated clouds at low and mid levels. But the tendency of the model to underestimate the number of low-level and mid-level clouds remains. As discussed in Sect. 4.4 the quantity cloud cover is determined in different ways from modelled and observed values – with cloud cover being directly derived from observations – and obviously the results differ strongly. For high-level clouds above 10 km the observational data are not of sufficient reliability to assess the quality of model cloud data (compare Sect. 2.8). The observed cloud amount is biased and a quantitative comparison is not possible.

An analysis of observed and simulated clouds for different times of the day and heights is shown in Table 4. Here we regard all cloud observations. Cloud occurrence and cloud cover are counted for cloud levels 0 m to 3000 m (low), 3000 m to 6000 m (mid), and >6000 m (high) and for time periods 04:00 UTC to 09:00 UTC (morning), 10:00 UTC to 15:00 UTC (noon), 16:00 UTC to 21:00 UTC (evening), and 22:00 UTC to 03:00 UTC (night).

The Table shows that REMO predicts too few clouds at all times and heights with one exception of night-time high-level clouds. Generally, the agreement is best at night and for high-level clouds. The largest differences between observed and simulated cloud

Quality assessment of water cycle parameters in REMO by Radar-Lidar synergy

B. Hennemuth et al.

[Title Page](#)[Abstract](#)[Introduction](#)[Conclusions](#)[References](#)[Tables](#)[Figures](#)[◀](#)[▶](#)[◀](#)[▶](#)[Back](#)[Close](#)[Full Screen / Esc](#)[Printer-friendly Version](#)[Interactive Discussion](#)

occurrence are found for low-level clouds in the morning and around noon. This kind of cloud is typically fair-weather convective boundary layer cloud. The sum over cloud cover confirms these results.

The observations show that boundary layer clouds extend over several grid levels whereas model ABL clouds are often restricted to one, two or three layers. Moreover, simulated boundary layer cloud bases are lower than observed ones. This is illustrated by Fig. 22 for 7 June 2004. For this day a comparison of ABL height is shown in Fig. 17. It is clear from this figure that there is a broad entrainment layer of several 100 m with scattered clouds. This is also evident from Fig. 17. The model does not show such a broad cloud layer. The height of the average maximum of cloud occurrence is 1760 m for observed clouds and 1380 m for simulated clouds. The peak width at half-height to the upper minimum is 1500 m for observed, and 900 m for simulated clouds.

While cloud amount and cloud cover differ between observations and simulations the number of cloud levels is quite similar (Table 5). There is a tendency for REMO to produce slightly more cloud levels than observed. This is particularly the case when compact clouds are observed which extend over nearly the whole troposphere and the model separates the cloud into several layers (see Fig. 20, lower panels).

5.5 Water content of clouds

The total cloud water content of clouds consists of liquid water and ice water. Over a wide temperature range the clouds contain both droplets and ice crystals which is expressed in the model by the function determining the portions of LWC and IWC by temperature (see Fig. 10). But the determination of LWC and IWC in mixed clouds from radar reflectivity demands the partitioning of the reflectivity which is a difficult task requiring the solution of not well established empirical non-linear equations. So for this study only those clouds are compared for which the assumption of mainly water clouds or mainly ice clouds holds. This is determined by use of the REMO temperature values. Water clouds are supposed to occur below 3000 m where on most days temperature is above 2°C. Only cloud radar data which are masked by ceilometer data are used. But

Quality assessment of water cycle parameters in REMO by Radar-Lidar synergy

B. Hennemuth et al.

Title Page

Abstract

Introduction

Conclusions

References

Tables

Figures

◀

▶

◀

▶

Back

Close

Full Screen / Esc

Printer-friendly Version

Interactive Discussion

5 additionally, the lower region up to 1800 m is excluded because of the problems with remaining non-cloud echos in radar reflectivity. The number of observed clouds in this layer is 2760, the number of simulated clouds only 790 because many of the model ABL clouds appear below 2000 m. Ice clouds are assumed to be in the region above 7000 m where temperature values below -30°C prevail. According to the temperature – IWC relation (Fig. 10) only less than 7% of the cloud water is liquid water. The number of model ice clouds for the comparison is 545 while the number of observed ice clouds is 683. For both regions the observation-derived LWC and IWC, respectively, are compared with REMO total cloud water.

10 Liquid water content

Figure 23 shows the frequency distributions of simulated and observation-derived LWC in supposedly water clouds. The distribution of simulated LWC has a peak between 10^{-1} and 10^{-2} g m^{-3} and there are no values larger than approximately 0.25 g m^{-3} . Values smaller than 10^{-3} g m^{-3} occur rarely.

15 The frequency distribution of LWC from cloud radar data covers the range between 10^{-3} and 1 g m^{-3} with a nearly constant frequency between 10^{-3} and 10^{-1} g m^{-3} with a maximum near 1 g m^{-3} . This peak is probably an artefact of the cloud radar data due to the inadequate treatment of drizzle droplets in the clouds. We also find a cut-off of values smaller than 10^{-3} g m^{-3} which may be due to the noise characteristics of the cloud radar (see Fig. 1).

20 The superimposition of an artificial peak and the cut-off at small LWC values falsifies the LWC distribution and makes the accurate quality assessment of model LWC impossible. As mentioned in Sect. 2.8.2 the LWC derived from cloud radar data is afflicted with problems and obviously the results are not plausible. Another reason for the the poor quality of the radar retrieval of LWC may be related to the systematic difference (although depending on the cloud type) between radar observations of reflectivity factor Z and the aircraft/balloon predictions of the same quantity, which was reported by Russchenberg et al. (2004).

Quality assessment of water cycle parameters in REMO by Radar-Lidar synergy

B. Hennemuth et al.

Title Page

Abstract

Introduction

Conclusions

References

Tables

Figures

◀

▶

◀

▶

Back

Close

Full Screen / Esc

Printer-friendly Version

Interactive Discussion

Ice water content

The agreement of frequency distributions of IWC derived from the model and the cloud radar is better (Fig. 24). The radar-derived IWC is calculated according to the two algorithms given by Hogan et al. (2006) (see Fig. 9) and marked in Fig. 24 by “radar e” for best obtaining the expected value and “radar v” for best obtaining the variance. The distributions cover the IWC range between 10^{-7} and 10^{-2} g m^{-3} with a maximum around 10^{-4} g m^{-3} and negative skewness. The REMO IWC distribution exhibits a narrower shape, it agrees with the radar IWC at large IWC values, the maximum is situated between 10^{-4} and 10^{-3} g m^{-3} , but small IWC ($<10^{-6}$ g m^{-3}) values are missing. This is also evident in similar comparisons – with the mesoscale version of the Met Office Unified model – in the moderate temperature range of -15°C to -30°C shown by Hogan et al. (2006). A reason for the missing small model IWC values may be the threshold of 80% relative humidity in the gridbox for the formation of clouds. A lower threshold value would probably favor a larger amount of small IWC.

In this particular comparison the model IWC distribution fits better with the IWC distribution of “radar e” than of “radar v” for large IWC values.

5.6 Precipitation

Precipitation is the parameter with the largest spatial and temporal heterogeneity and therefore difficult to compare for one gridbox and time periods of weeks. One of the three measuring periods – LITFASS-2003 period – was exceptionally dry and is therefore excluded in this comparison. Fig. 25 shows time series of rainrates for the two campaigns of 2004 determined from the Micro Rain Radar, a network of conventional rain gauges and from REMO. The precipitation predicted by the model captures most of the observed rain events in the Lindenberg gridbox, but some events are either not simulated or not observed. The total rain sums over the two periods in 2004 which are listed in Table 6 shows a rather good agreement of simulated and observed rain. The sum lies within the measurement uncertainty of 20% and within a certainly larger error

Title Page

Abstract

Introduction

Conclusions

References

Tables

Figures

◀

▶

◀

▶

Back

Close

Full Screen / Esc

Printer-friendly Version

Interactive Discussion

range due to limited representativity. The network rain sum is larger than the point measurement and better matches the REMO values.

6 Discussion and conclusions

Several water cycle parameters in the atmospheric column over Lindenberg, at the surface and in the soil as observed with a suite of ground-based remote sensing systems and in-situ instruments were compared with corresponding parameters simulated by the regional model REMO. The comparison covers months from May to September.

A parameter-related interpretation of the results does not seem to be reasonable, so we try to summarise the results in the frame of related processes. The main conclusions from the comparison between observed and simulated water cycle parameters refer to two areas, boundary layer processes, and cloud and precipitation processes.

The simulated humidity field only agrees with observations in the lowest 1000 m, i.e. in the atmospheric boundary layer (see Fig. 13 and Fig. 14). The daytime observations show that often the convective boundary layer reaches up to 2000 m which cannot be found in the model and causes the poor correlation in the layer between 1000 m and 2000 m. The model boundary layer is too low, and the large positive bias in the ABL shows that it is too moist. One reason for this is a too large evaporation and a mostly too low sensible heat flux (Fig. 15). We calculate an average Bowen ratio, which is the ratio of sensible to latent heat flux, from observed fluxes which is 2.1 times the average Bowen ratio of model fluxes. A low sensible heat flux leads to a shallow boundary layer (see e.g., Batchvarova and Gryning, 1994), and a large latent heat flux increases the moisture content.. The wrong partitioning of the available energy at the surface is probably caused by the unrealistic representation of soil moisture in the model (Fig. 16). On days after rain events the modelled and observed evaporation, humidity profiles and boundary layer height agree well (see Fig. 18, lower panel), but the model performance is not right in dry conditions. The simple bucket model for soil moisture cannot simulate the drying of the upper layers of the soil, and consequently,

Quality assessment of water cycle parameters in REMO by Radar-Lidar synergy

B. Hennemuth et al.

Title Page

Abstract

Introduction

Conclusions

References

Tables

Figures

◀

▶

◀

▶

Back

Close

Full Screen / Esc

Printer-friendly Version

Interactive Discussion

the decrease in evaporation and the right simulation of the boundary layer cannot be reproduced. The importance of soil parameters for the right prediction of atmospheric fluxes is widely acknowledged (e.g., Mölders, 2005). The process study clearly shows that the interaction of all relevant processes has to be analysed when assessing the deviations between model and observations..

The development of the boundary layer also has consequences for the formation of low-level clouds. Consistently, it is found that the modelled ABL clouds are lower than observed ABL clouds (Fig. 21). The comparison of the water vapour flux profiles shows that the vertical transport of water vapour in the CBL is simulated in the right way (Fig. 19). So boundary layer clouds arise near the top of the CBL which is too shallow in the model. The lower base of simulated ABL clouds compared to observations is also reported for other models (ECMWF, RACMO, RCA and LM) by Willén et al. (2005). The comparisons also show that the vertical extent of simulated ABL clouds is smaller than for observed clouds (Fig. 22). This may be a result of the parameterisation scheme, which may not be capable of extending the ABL clouds to more than a few levels. In reality, we observe a large variability of the top of boundary layer clouds.

Generally, REMO predicts too few clouds, both in cloud occurrence and in cloud cover (Fig. 21). In the region above 10 km the assessment of cloud representation becomes difficult because of shortcomings in the cloud radar data. Low-level cloud cover is underestimated by the model. Part of the differences between radar- and model-derived distributions can be explained by the discrepancy in deriving cloud parameters as discussed in Sect. 4.4. Concerning IWC, the lack of IWC values smaller than 10^{-6} g m^{-3} (Fig. 24) is probably due to the large threshold value of 80% relative humidity in the grid box for a cloud to form. This value depends on the horizontal grid size, and an adaptation based on observations may give smaller values. The comparison of LWC probably suffers from the insufficient algorithm for deriving LWC in water clouds (see Fig. 23). Drizzle in clouds can cause problems because it produces a large reflectivity which can be misinterpreted as a large cloud water content. This problem does not seem to be solved in a satisfactory manner.

Quality assessment of water cycle parameters in REMO by Radar-Lidar synergy

B. Hennemuth et al.

[Title Page](#)[Abstract](#)[Introduction](#)[Conclusions](#)[References](#)[Tables](#)[Figures](#)[◀](#)[▶](#)[◀](#)[▶](#)[Back](#)[Close](#)[Full Screen / Esc](#)[Printer-friendly Version](#)[Interactive Discussion](#)

**Quality assessment
of water cycle
parameters in REMO
by Radar-Lidar
synergy**B. Hennemuth et al.

[Title Page](#)[Abstract](#)[Introduction](#)[Conclusions](#)[References](#)[Tables](#)[Figures](#)[I◀](#)[▶I](#)[◀](#)[▶](#)[Back](#)[Close](#)[Full Screen / Esc](#)[Printer-friendly Version](#)[Interactive Discussion](#)

The right representation of clouds in models appears to be essential for the right prediction of precipitation amount. In the present study we find in the REMO simulations too few clouds but a realistic rain amount (Sect. 5.6) within the range of uncertainty. The coupling of cloud cover to grid-box relative humidity is of course a possibility to tune the model to a more realistic cloud representation. But the present study in which both cloud amount and precipitation amount were validated by observations strongly recommends that the processes should be treated together in order to keep the parameterisation physically relevant.

The comparisons show that the atmospheric boundary layer is not adequately simulated, on most days it is too shallow and too moist. This is found to be caused by a wrong partitioning of energy at the surface. The reason is obviously an overestimation of soil moisture during drying periods by the one-layer scheme in the model. The vertical water vapour transport within the CBL appears to be realistically simulated. Cloud cover of low-level and mid-level clouds is underestimated by the model. The observation of high-level clouds above 10 km is insufficient. Simulated ABL clouds apparently have too low a cloud base, and the vertical extent is underestimated, probably because a parameterisation scheme cannot reflect the natural cloud variability. The frequency distributions of observed and simulated ice water content of clouds agree well. However, the derivation of liquid water content from cloud radar reflectivity is insufficient in the present study. Rain rates are similar, but the representativeness of both observations and grid-box values is low.

The determination of several parameters – observed or modelled – which were compared in this study is presently improved or will be improved in the near future. Lidar humidity data are now available continuously (from August 2005 on) and with this also night time parameters can be derived and ceilometer data can be replaced by data of the more sensitive backscatter lidar. With continuous lidar data there is a large potential for the use of more accurate algorithms, which combine radar and lidar for the discrimination of water clouds and ice clouds (e.g., Tinel et al., 2005). In the future the Doppler spectra measured by the cloud radar will be used for the discrimination of

drizzle/rain and cloud droplets.

Some of the shortcomings found in parameterisation schemes in REMO are currently cleared up. REMO will be upgraded with a new scheme for cloud water calculation in which both cloud liquid water and cloud ice water content are treated prognostically with separate budget equations (Lohmann, 1995). The REMO soil moisture scheme which was found to be insufficient for dry periods is now extended to the five soil layers (S. Hagemann, personal communication).

There are also considerations to improve the parameterisation scheme of turbulent and convective vertical transport in the ABL. The transport is – as in most present-day regional models – parameterised by a diffusion equation where the flux is proportional to the local gradient of the transported quantity. It is known from measurements as well as from Large Eddy Simulations that in the CBL the gradient is equal or near to zero and the transport depends on bulk characteristics rather than on local gradients (Stull, 1988). Therefore a non-local parameterisation scheme like the one proposed by Holtzlag and Boville (1993) may be more adequate and will be tested in REMO.

Acknowledgements. The Meteorological Observatory Lindenberg (German Meteorological Service) is acknowledged for providing the data of the ceilometer, the cloud radar MIRA-36, the micro rain radar and of the PLUVIO rain gauges. The authors would like to thank B. Brüggemann, F. Jansen, K. Ertel, and A. Lammert for operating the lidar systems during the measuring campaigns. Thanks are also due to the participants of LITFASS-2003 for providing data (composite surface flux, soil moisture data). R. Podzun helped to run the model.

The German Federal Ministry for Education and Research (BMBF) partly funded the work of B. Hennemuth under contract No. 01LD0103. Financial support for part of the lidar work by the German Meteorological Service is gratefully acknowledged.

References

Baedi, R. J. P., de Wit, J. J. M., Russchenberg, H. W. J., Erkelens, J. S., and Baptista, J. P. V. P.: Estimating effective radius and liquid water content from radar and lidar based on CLARE'98 data-set, Phys. Chem. Earth (B), 25, 1057–1062, 2000. 8469

Quality assessment of water cycle parameters in REMO by Radar-Lidar synergy

B. Hennemuth et al.

Title Page

Abstract

Introduction

Conclusions

References

Tables

Figures

◀

▶

◀

▶

Back

Close

Full Screen / Esc

Printer-friendly Version

Interactive Discussion

- Batchvarova, E. and Gryning, S.: An applied model for the height of the daytime mixed layer and the entrainment zone, *Boundary-Layer Meteorol.*, 71, 311–323, 1994. [8478](#), [8485](#)
- Beyrich, F. and Mengelkamp, T.: Evaporation over a heterogeneous land surface: EVA_GRIPS and the LITFASS-2003 experiment – an overview, *Boundary-Layer Meteorol.*, 5–32, doi:10.1007/s10546-006-9079-z, 2006. [8470](#), [8473](#)
- Beyrich, F., Leps, J.-P., Bange, J., Bernhofer, C., Foken, T., Huneke, S., Kohsiek, W., Lohse, H., Lüdi, A., Mauder, M., Meijninger, W., Mengelkamp, H.-T., Queck, R., Weisensee, U., and Zittel, P.: Area-averaged surface fluxes over the LITFASS region based on eddy-covariance measurements, *Boundary-Layer Meteorol.*, 33–65, doi:10.1007/s10546–006–9052–x, 2006. [8462](#), [8463](#)
- Bormotov, V., Peters, G., Schünemann, K., Vavriv, D., Vinogradov, V., and Volkov, V.: A 36 GHz Doppler radar for remote sensing of the atmosphere, in: *Proceedings of Millennium Conference on Antenna and Propagation*, Davos Switzerland, 9–14 April 2000, 2000. [8457](#), [8460](#)
- Bösenberg, J.: Ground-based differential absorption lidar for Water-vapor and temperature profiling: methodology, *Appl. Optics*, 37, 3845–3860, 1998. [8459](#), [8463](#)
- Bösenberg, J.: *Differential Absorption Lidar for Water Vapor and Temperature Profiling, in: Lidar-Range-Resolved Optical Remote Sensing of the Atmosphere*, edited by: Weitkamp, C., 213–240, Springer, New York, 2005. [8459](#)
- Bösenberg, J. and Linné, H.: Laser remote sensing of the planetary boundary layer, *Meteorol. Z.*, 11, 233–240, 2002. [8457](#)
- Brooks, M., Hogan, R., and Illingworth, I.: A long term comparison of cloud properties observed by vertically pointing radar and lidar with their representation in operational NWP models., in: *Proc. 14th Int. Conf. on Clouds and Precipitation*, Bologna, Italy, 2004. [8481](#)
- Chiriaco, M., Vautard, R., Chepfer, H., Haefelin, M., Didhia, J., Wanherdrick, Y., Morille, Y., and Protat, A.: The ability of MM5 to simulate ice clouds: Systematic comparison between simulated and measured fluxes and lidar/radar profiles at the SIRTA Atmospheric Observatory, *Monthly Weath. Rev.*, 134, 897–918, 2006. [8457](#)
- Clothiaux, E. E., Miller, M. A., Albrecht, B. A., Ackermann, T. P., Verlinde, J., Babb, D. M., Peters, R. M., and Syrett, W. J.: An evaluation of a 94-GHz radar for remote sensing of cloud properties, *J. Atmos. and Ocea. Techn.*, 12, 201–229, 1995. [8467](#)
- Crewell, S., Bloemink, H., Feijt, A., García, S., Jolivet, D., Krasnov, O., van Lammeren, A., Löhnert, U., van Meijgaard, E., Meywerk, J., Quante, M., Pfeilsticker, K., Schmidt, S., Scholl,

**Quality assessment
of water cycle
parameters in REMO
by Radar-Lidar
synergy**B. Hennemuth et al.

Title Page

Abstract

Introduction

Conclusions

References

Tables

Figures

◀

▶

◀

▶

Back

Close

Full Screen / Esc

Printer-friendly Version

Interactive Discussion

**Quality assessment
of water cycle
parameters in REMO
by Radar-Lidar
synergy**

B. Hennemuth et al.

Title Page

Abstract

Introduction

Conclusions

References

Tables

Figures

◀

▶

◀

▶

Back

Close

Full Screen / Esc

Printer-friendly Version

Interactive Discussion

T., Simmer, C., Schröder, M., Trautmann, T., Venema, V., Wendisch, M., and Willén, U.: The BALTEX BRIDGE campaign - An integrated approach for a better understanding of clouds, Bull. Am. Meteorol. Soc., 85, 1565–1584, 2004. [8457](#)

DKRZ: The ECHAM3 atmospheric general circulation model, Techn. Report 6, Deutsches Klimarechenzentrum, Hamburg, Germany, 1994. [8470](#), [8471](#), [8472](#)

Dümenil, L. and Todini, E.: A rainfall-runoff scheme for use in the Hamburg climate model, in: Advances in Theoretical Hydrology, A Tribute to James Dooge, edited by O’Cane, J., Europ. Geophys. Soc. Ser. Hydrolog. Sciences (1), pp. 129–157, Elsevier Press, Amsterdam, The Netherlands, 1992. [8471](#)

Ertel, K.: Application and Development of Water Vapor DIAL Systems, Dissertation Univ. Hamburg, <http://www.sub.uni-hamburg.de/opus/volltexte/2004/2027/>, 128 pp., 2004. [8459](#)

Fox, N. and Illingworth, A.: The retrieval of stratocumulus cloud properties by ground-based cloud radar, J. Appl. Met., 36, 485–492, 1997. [8469](#)

Gaussiat, N., Sauvageot, H., and Illingworth, A.: Cloud liquid water and ice content retrieval by multiwavelength radar, J. Atmosph. Ocean. Techn., 20, 1264–1275, 2003. [8469](#)

Haefelin, M., Barthés, L., Bock, O., Boitel, C., Bouniol, D., Chepfer, H., Chiriaco, M., Cuesta, J., Delanoë, J., Dobrinski, P., Dufresne, J.-L., Flamant, C., Grall, M., Hodzic, A., Hourdin, F., Lapouge, F., Lemaître, Y., Mathieu, A., Morille, Y., Naud, C., Noël, V., O’Hirok, W., Pelon, J., Pietras, C., Protat, A., Romand, B., Scialom, G., and Vautard, R.: SIRTa, a ground-based atmospheric observatory for cloud and aerosol research, Ann. Geophys., 23, 253–275, 2005, <http://www.ann-geophys.net/23/253/2005/>. [8457](#), [8466](#)

Hennemuth, B. and Lammert, A.: Determination of the atmospheric boundary layer height from radiosonde and lidar backscatter, Boundary-Layer Meteorol., 181–200, doi:10.1007/s10546-005-9035-3, 2006. [8464](#), [8472](#)

Hogan, R., Jakob, C., and Illingworth, A.: Comparison of ECMWF winter-season cloud fraction with radar-derived values, J. Appl. Meteorol., 40, 513–525, 2001. [8481](#)

Hogan, R., Illingworth, A., O’Connor, E., and Baptista, J. P.: Characteristics of mixed-phase clouds Part II: A climatology from ground-based lidar, Q. J. R. Meteorol. Soc., 129, 1–18, 2003. [8466](#)

Hogan, R., Mittermaier, M., and Illingworth, A.: The retrieval of ice water content from radar reflectivity factor and temperature and its use in evaluating a mesoscale model, J. Appl. Meteorol., 45, 301–317, 2006. [8457](#), [8469](#), [8484](#), [8508](#), [8523](#)

Holtzlag, A. A. and Boville, B. A.: Local versus non-local boundary-layer diffusion in a global

- climate model, *J. Clim.*, 10, 1825–1842, 1993. [8488](#)
- Intrieri, J., Shupe, M., Uttal, T., and McCarty, B.: An annual cycle of Arctic cloud characteristics observed by radar and lidar at SHEBA, *J. Geophys. Res.-Oceans*, 107, SHE 5–1–SHE 5–15, 2002. [8457](#), [8467](#)
- 5 Jacob, D.: A note to the simulation of the annual and inter-annual variability of the water budget over the Baltic Sea drainage basin, *Meteorol. Atmos. Phys.*, 77, 61–73, 2001. [8458](#), [8470](#)
- Jacob, D., den Hurk, B. V., Andr e, U., Elgered, G., Fortelius, C., Graham, L., Jackson, S., Karstens, U., K pken, C., Lindau, R., Podzun, R., Rockel, B., Rubel, F., Sass, B., Smith, R., and Yang, X.: A comprehensive model inter-comparison study investigating the water budget during the BALTEX-PIDCAP period, *Meteorol. Atmos. Phys.*, 77, 19–43, 2001. [8470](#)
- 10 Krasnov, O. and Russchenberg, H.: An enhanced algorithm for the retrieval of liquid water cloud properties from simultaneous radar and lidar measurements. Part 1: The basic analysis of in situ measured drop size spectra, in: European conference on Radar Meteorology ERAD 2002, 18 -22 November 2002, ERAD Publication Series, 1, Delft, The Netherlands, 2002. [8469](#)
- 15 Krasnov, O. and Russchenberg, H.: Retrieval of the LWC in water clouds with radar and lidar, in: Proc. Sixth Int. Symposium on Tropospheric Profiling, Needs and Technologies, Sep. 14–20, 2003, Leipzig, Germany, 2003. [8469](#), [8522](#)
- Krasnov, O. and Russchenberg, H.: A synergetic radar lidar technique for the LWC retrieval in water clouds, in: COST 720 Final Symposium, Toulouse, Toulouse, France, 15–18 May 2006, 2006. [8469](#)
- 20 Lammert, A. and B senberg, J.: Determination of the convective boundary layer height with laser remote sensing, *Bound.-Layer Meteor.*, 119, 159–170, 2006. [8463](#)
- Linn , H., Hennemuth, B., B senberg, J., and Ertel, K.: Water vapour flux profiles in the convective boundary layer, *Theoretical and Applied Climatology*, 201–211, doi:10.1007/s00704-005-0191-7, 2006. [8459](#), [8464](#)
- 25 Liu, C.-L. and Illingworth, A.: Toward more accurate retrievals of ice water content from radar measurements of clouds, *J. Appl. Meteorol.*, 39, 1130–1146, 2000. [8457](#), [8469](#)
- Lohmann, U., E. R.: Introduction of a prognostic cloud ice scheme in the ECHAM general circulation model: Impact on climate and climate sensitivity, Report 179, Max-Planck-Inst. f. Meteorologie, Hamburg, Germany, 1995. [8488](#)
- 30 Louis, J. F.: A parametric model of vertical eddy fluxes in the atmosphere, *Boundary-Layer Meteor.*, 17, 187–202, 1979. [8471](#)

Quality assessment of water cycle parameters in REMO by Radar-Lidar synergy

B. Hennemuth et al.

Title Page

Abstract

Introduction

Conclusions

References

Tables

Figures

◀

▶

◀

▶

Back

Close

Full Screen / Esc

Printer-friendly Version

Interactive Discussion

**Quality assessment
of water cycle
parameters in REMO
by Radar-Lidar
synergy**B. Hennemuth et al.

Title Page

Abstract

Introduction

Conclusions

References

Tables

Figures

◀

▶

◀

▶

Back

Close

Full Screen / Esc

Printer-friendly Version

Interactive Discussion

Löhnert, U., Crewell, S., and Simmer, C.: An integrated approach toward retrieving physically consistent profiles of temperature, humidity and cloud liquid water, *J. Appl. Meteorol.*, 43, 1295–1307, 2004. [8457](#), [8469](#)

Mahrt, L.: Mixed layer moisture structure, *Mon. Weather Rev.*, 104, 1403–1407, 1976. [8479](#)

5 Mauder, M., Liebenthal, C., Göckede, M., Leps, J., Beyrich, F., and Foken, T.: Processing and quality control of flux data during LITFASS-2003, *Boundary-Layer Meteorol.*, 67–88, doi:10.1007/s10546-006-9094-0, 2006. [8462](#)

Mengelkamp, H.-T., Beyrich, F., Heinemann, G., Ament, F., Bange, J., Berger, F., Bösenberg, J., Foken, T., Hennemuth, B., Heret, C., Huneke, S., Johnsen, K.-P., Kerschgens, M., Kohsiek, W., Leps, J.-P., Liebenthal, C., Lohse, H., Mauder, M., Meijninger, W., Raasch, S., Simmer, C., Spieß, T., Tittebrand, A., Uhlenbrock, J., and Zittel, P.: Evaporation over a heterogeneous
10 land surface, *Bull. Americ. Meteorol. Soc.*, 775–786, doi:10.1175/BAMS-87-775, 2006. [8475](#)

Meywerk, J., Quante, M., and Sievers, O.: Radar based remote sensing of cloud liquid water - application of various techniques – a case study, *Atmos. Res.*, 75, 167–181, 2005. [8469](#)

15 Mölders, N.: Plant- and soil-parameter-caused uncertainty of predicted surface fluxes, *Mon. Wea. Rev.*, 133, 3498–3516, 2005. [8486](#)

Neisser, J., Adam, W., Beyrich, F., Leiterer, U., and Steinhagen, H.: Atmospheric boundary layer monitoring at the Meteorological Observatory Lindenberg as a part of the 'Lindenberg Column': Facilities and selected results, *Meteorol. Z.*, 11, 241–253, 2002. [8473](#)

20 Nordeng, T.: Extended versions of the convective parametrization scheme at ECMWF and their impact on the mean and transient activity of the model in the tropics, Technical Memorandum 206, ECMWF Research Department, Reading, UK, 1994. [8472](#)

Parlange, M., Eichinger, W., and Albertson, J.: Regional scale evaporation and the atmospheric boundary layer, *Rev. Geophys.*, 33, 99–124, 1995. [8475](#)

25 Peters, G., Fischer, B., and Andersson, T.: Rain observations with avertically looking Micro Rain Radar (MRR), *Boreal Environ.*, 7, 353–362, 2002. [8457](#), [8461](#), [8470](#)

Peters, G., Fischer, B., Münster, H., Clemens, M., and Wagner, A.: Profiles of raindrop size distributions as retrieved by microrain radars, *J. Appl. Meteorol.*, 41, 1930–1949, 2005. [8461](#)

30 Rockel, B., Raschke, E., and Weyres, B.: A parameterization of broad band radiative transfer properties of water, ice and mixed clouds, *Contr. Atmos. Phys.*, 64, 1–12, 1991. [8472](#)

Roeckner, E., Arpe, K., Bengtsson, L., Christoph, M., Claussen, M., Dümenil, L., M. Esch, Giorgetta, M., Schlese, U., and Schulzweida, U.: The atmospheric general circulation model ECHAM-4: Model description and simulation of present day climate, Report 218, Max-

- Planck-Inst. f. Meteorologie, Hamburg, Germany, 1996. [8470](#), [8472](#)
- Russchenberg, H., Crewell, S., Loehnert, U., Quante, M., Meywerk, J., Baltink, H. K., and Krasnov, O.: Radar observations of stratocumulus compared with in situ aircraft data and simulations, in: Proc. ERAD 2004 Visby, pp. 296–300, Visby, Sweden, 2004. [8483](#)
- 5 Sassen, K.: Ice cloud content from radar reflectivity, *J. Clim. Appl. Met.*, 25, 1050–1053, 1987. [8469](#)
- Sauvageot, H. and Omar, J.: Radar reflectivity of cumulus clouds, *J. Atmos. Oceanic Technol.*, 4, 264–272, 1987. [8469](#)
- Sengupta, M., Clothiaux, E., and Ackerman, T.: Climatology of warm boundary layer clouds at the ARM SGP site and their comparison to models, *J. Climate*, 17, 4760–4782, 2004. [8481](#)
- 10 Stull, R.: An introduction to boundary layer meteorology, Kluwer Academic Publisher, Dordrecht, 1988. [8479](#), [8488](#)
- Sundqvist, H.: A parameterization scheme for non-convective condensation including prediction of cloud water content, *Q. J. R. Meteorol. Soc.*, 104, 677–690, 1978. [8472](#)
- 15 Tiedtke, M.: A comprehensive mass flux scheme for cumulus parameterization in large-scale models, *Mon. Wea. Rev.*, 117, 1779–1800, 1989. [8472](#)
- Tinel, C., Testud, J., Pelon, J., Hogan, R., Protat, A., Delanoë, J., and Bouniol, D.: The retrieval of ice-cloud properties from cloud radar and lidar synergy, *J. Appl. Meteorol.*, 44, 860–874, 2005. [8457](#), [8469](#), [8487](#)
- 20 Willén, U., Crewell, S., Baltink, H., and Sievers, O.: Assessing model predicted vertical cloud structure and cloud overlap with radar and lidar ceilometer observations for the Baltex Bridge Campaign of CLIWA-NET, *Atmosph. Res.*, 75, 227–255, 2005. [8458](#), [8481](#), [8486](#)
- Wulfmeyer, V. and Bösenberg, J.: Ground-based differential absorption lidar for water-vapor and temperature profiling: assessment of accuracy, resolution, and meteorological applications, *Appl. Opt.*, 37, 3825–3844, 1998. [8459](#)
- 25

**Quality assessment
of water cycle
parameters in REMO
by Radar-Lidar
synergy**B. Hennemuth et al.

[Title Page](#)[Abstract](#)[Introduction](#)[Conclusions](#)[References](#)[Tables](#)[Figures](#)[⏪](#)[⏩](#)[◀](#)[▶](#)[Back](#)[Close](#)[Full Screen / Esc](#)[Printer-friendly Version](#)[Interactive Discussion](#)

**Quality assessment
of water cycle
parameters in REMO
by Radar-Lidar
synergy**

B. Hennemuth et al.

Table 1. Characteristics of lidar systems for the measurement of water vapour fluxes in the boundary layer.

	DIAL	Doppler lidar
Method	Differential Absorpt.	Doppler frequency shift
Meas. value	absolute humidity	vertical wind speed
Meas. time	daytime	daytime
Time resol.	10 s	10 s
Height range	ca. 400 m–3000 m	200 m – Top of ABL
Height resol.	90 m	90 m
Horiz. resol.	time average (10 s≈50–100 m)	
Instrum. error	$<0.2 \text{ gm}^{-3}$	$<0.1 \text{ m s}^{-1}$

Title Page

Abstract

Introduction

Conclusions

References

Tables

Figures

◀

▶

◀

▶

Back

Close

Full Screen / Esc

Printer-friendly Version

Interactive Discussion

**Quality assessment
of water cycle
parameters in REMO
by Radar-Lidar
synergy**

B. Hennemuth et al.

Table 2. Operation parameters of cloud radar MIRA36.

Parameter	Value	
Frequency	36.5	GHz
Peak Power	30	kW
Beam width	0.6	°
Range resolution	30	m
Minimum height	150	m
Maximum height	13.5	km
Time resolution	1	min
Minimum detectable reflectivity factor at 5 km height (including processing gain)	−50	dBZ

Title Page

Abstract

Introduction

Conclusions

References

Tables

Figures

◀

▶

◀

▶

Back

Close

Full Screen / Esc

Printer-friendly Version

Interactive Discussion

**Quality assessment
of water cycle
parameters in REMO
by Radar-Lidar
synergy**

B. Hennemuth et al.

Table 3. Statistical results of comparison of humidity observations and simulation in different height ranges.

Sample	Correlation coefficient	Bias m^{-3}	rms-error g m^{-3}
all heights	0.739	0.998	0.0100
500 m–1000 m	0.812	1.898	0.0158
1000 m–2000 m	0.675	0.800	0.0223

[Title Page](#)[Abstract](#)[Introduction](#)[Conclusions](#)[References](#)[Tables](#)[Figures](#)[I◀](#)[▶I](#)[◀](#)[▶](#)[Back](#)[Close](#)[Full Screen / Esc](#)[Printer-friendly Version](#)[Interactive Discussion](#)

Table 4. Sum of cloud amount and cloud cover from observations and simulations for different height layers and time periods. For the definition of the classification scheme see text.

Observation:	morning	noon	evening	night
no of cloud occurrence				
low	1493	1512	728	856
middle	356	387	408	257
high	313	372	322	237
sum of cloud cover				
low	605	545	251	384
middle	145	197	243	124
high	102	168	144	106
REMO:	morning	noon	evening	night
no of cloud occurrence				
low	592	403	402	551
middle	158	163	181	187
high	235	252	240	234
sum of cloud cover				
low	235	116	105	235
middle	67	79	77	77
high	104	117	124	109

Quality assessment of water cycle parameters in REMO by Radar-Lidar synergy

B. Hennemuth et al.

Title Page

Abstract

Introduction

Conclusions

References

Tables

Figures

◀

▶

◀

▶

Back

Close

Full Screen / Esc

Printer-friendly Version

Interactive Discussion

**Quality assessment
of water cycle
parameters in REMO
by Radar-Lidar
synergy**B. Hennemuth et al.

Table 5. Relative frequency of cloud levels from observations and REMO.

system	number of levels					
	1	2	3	4	5	6
radar-lidar	0.645	0.286	0.058	0.009	0.001	0.000
REMO	0.591	0.289	0.083	0.031	0.004	0.001

[Title Page](#)[Abstract](#)[Introduction](#)[Conclusions](#)[References](#)[Tables](#)[Figures](#)[I◀](#)[▶I](#)[◀](#)[▶](#)[Back](#)[Close](#)[Full Screen / Esc](#)[Printer-friendly Version](#)[Interactive Discussion](#)

**Quality assessment
of water cycle
parameters in REMO
by Radar-Lidar
synergy**B. Hennemuth et al.

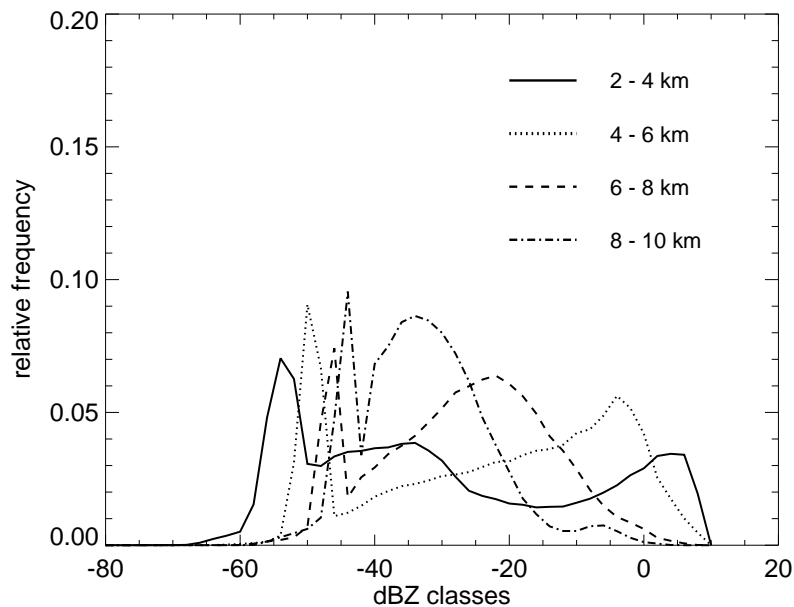
Table 6. Rain sum in mm from observations and REMO.

	11 May–17 Jun 2004	1 Sep–30 Sep 2004
REMO	42.7	49.5
MRR	37.3	20.8
PLUVIO	48.5	30.7

[Title Page](#)[Abstract](#)[Introduction](#)[Conclusions](#)[References](#)[Tables](#)[Figures](#)[I◀](#)[▶I](#)[◀](#)[▶](#)[Back](#)[Close](#)[Full Screen / Esc](#)[Printer-friendly Version](#)[Interactive Discussion](#)

**Quality assessment
of water cycle
parameters in REMO
by Radar-Lidar
synergy**

B. Hennemuth et al.

**Fig. 1.** Frequency distribution of radar reflectivity at different heights.[Title Page](#)[Abstract](#)[Introduction](#)[Conclusions](#)[References](#)[Tables](#)[Figures](#)[◀](#)[▶](#)[◀](#)[▶](#)[Back](#)[Close](#)[Full Screen / Esc](#)[Printer-friendly Version](#)[Interactive Discussion](#)

Quality assessment of water cycle parameters in REMO by Radar-Lidar synergy

B. Hennemuth et al.

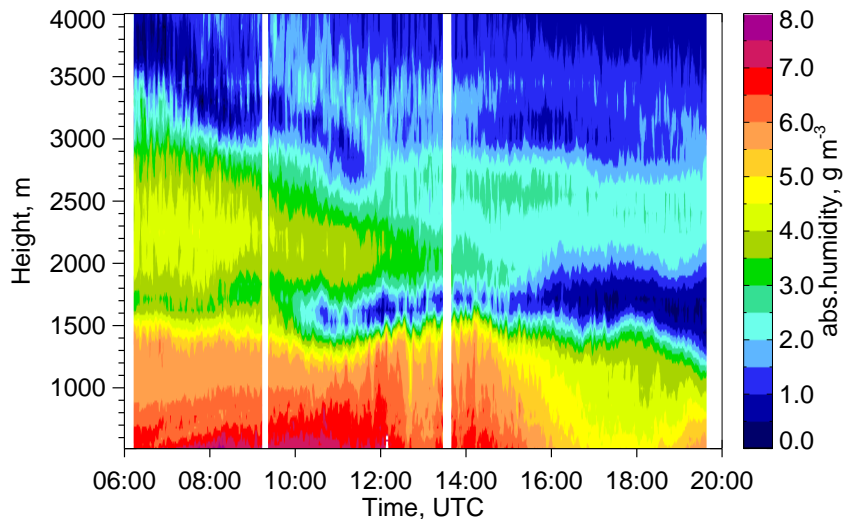


Fig. 2. Time-height cross-section of absolute humidity on 29 May 2003. The values are averages over 3 min.

Title Page

Abstract

Introduction

Conclusions

References

Tables

Figures

◀

▶

◀

▶

Back

Close

Full Screen / Esc

Printer-friendly Version

Interactive Discussion

Quality assessment of water cycle parameters in REMO by Radar-Lidar synergy

B. Hennemuth et al.

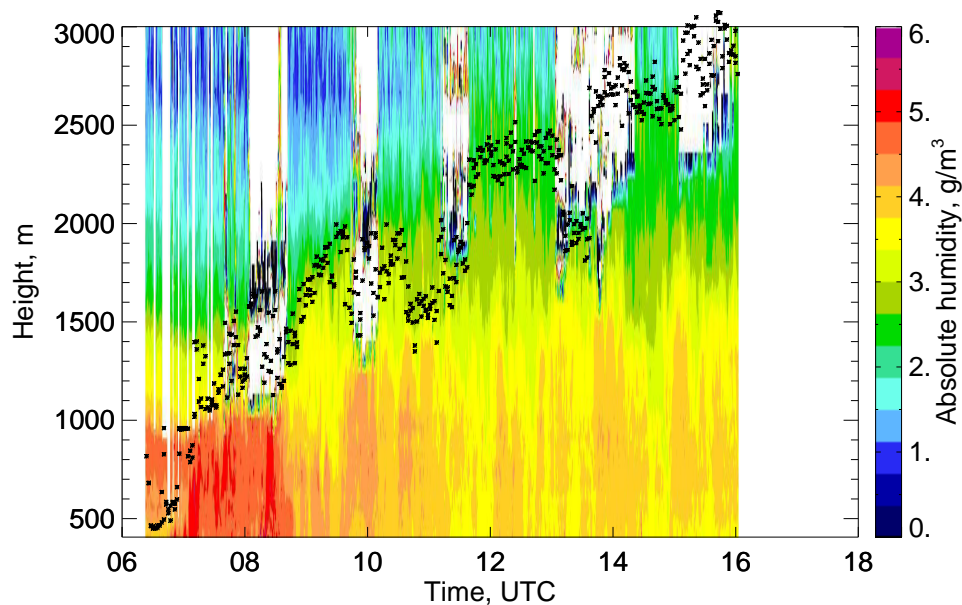


Fig. 3. Boundary layer height plotted over time-height cross-section of absolute humidity 28 May 2004 (right). The clouds are masked.

Title Page

Abstract

Introduction

Conclusions

References

Tables

Figures

◀

▶

◀

▶

Back

Close

Full Screen / Esc

Printer-friendly Version

Interactive Discussion

Quality assessment of water cycle parameters in REMO by Radar-Lidar synergy

B. Hennemuth et al.

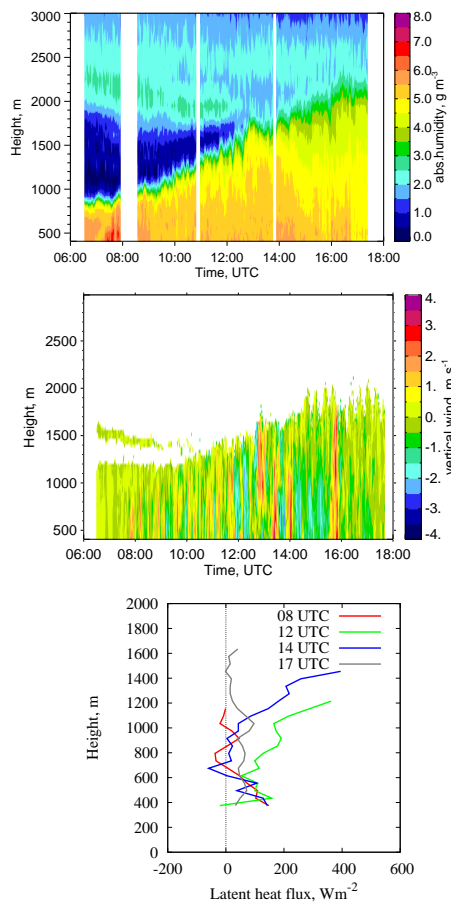


Fig. 4. Time-height cross-sections of absolute humidity (top) and vertical wind (middle) and derived latent heat flux profiles (bottom) on 30 May 2003.

[Title Page](#)[Abstract](#)[Introduction](#)[Conclusions](#)[References](#)[Tables](#)[Figures](#)[◀](#)[▶](#)[◀](#)[▶](#)[Back](#)[Close](#)[Full Screen / Esc](#)[Printer-friendly Version](#)[Interactive Discussion](#)

**Quality assessment
of water cycle
parameters in REMO
by Radar-Lidar
synergy**B. Hennemuth et al.

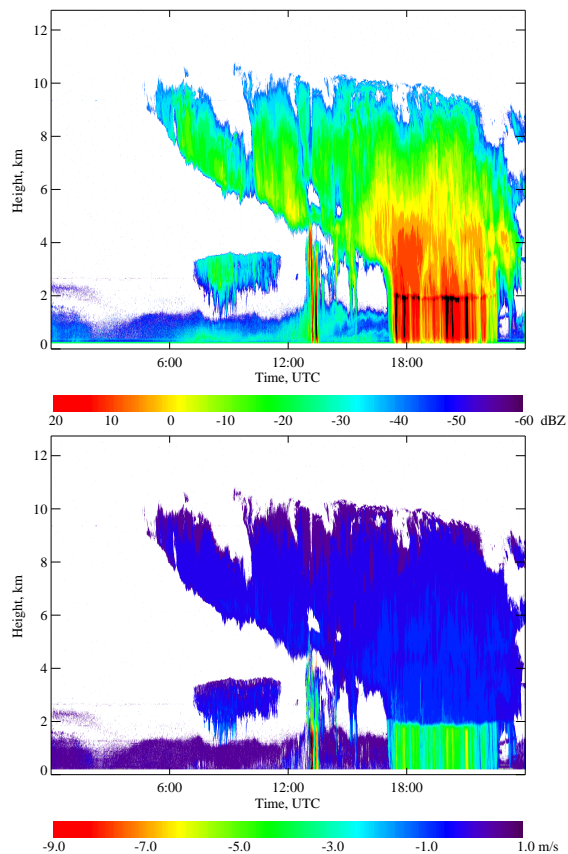


Fig. 5. Time-height cross-sections of the effective radar reflectivity factor (upper panel) and the Doppler velocity (lower panel) on 4 June 2004.

[Title Page](#)[Abstract](#)[Introduction](#)[Conclusions](#)[References](#)[Tables](#)[Figures](#)[◀](#)[▶](#)[◀](#)[▶](#)[Back](#)[Close](#)[Full Screen / Esc](#)[Printer-friendly Version](#)[Interactive Discussion](#)

Quality assessment of water cycle parameters in REMO by Radar-Lidar synergy

B. Hennemuth et al.

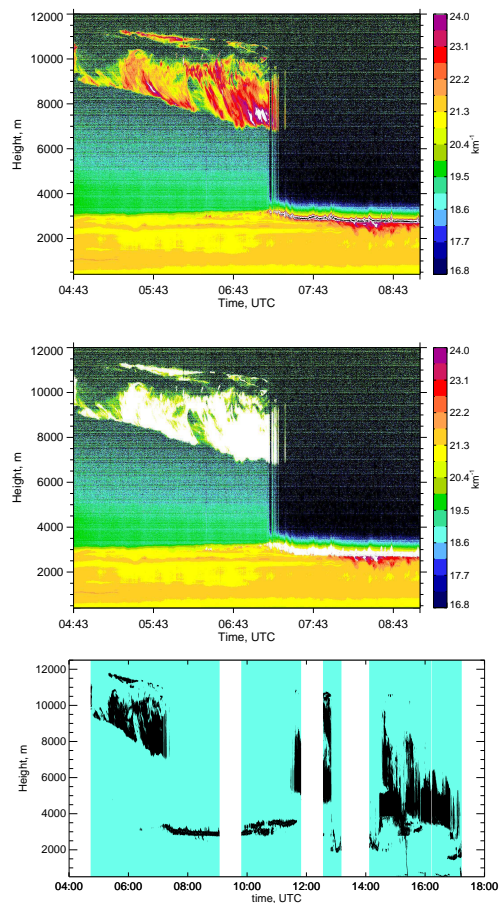


Fig. 6. Time-height cross-section of range-corrected backscatter signal (top), same but with cloud mask (middle) for a single file and derived cloud mask (bottom) for 14 h of 4 June 2004.

[Title Page](#)[Abstract](#)[Introduction](#)[Conclusions](#)[References](#)[Tables](#)[Figures](#)[◀](#)[▶](#)[◀](#)[▶](#)[Back](#)[Close](#)[Full Screen / Esc](#)[Printer-friendly Version](#)[Interactive Discussion](#)

Quality assessment of water cycle parameters in REMO by Radar-Lidar synergy

B. Hennemuth et al.

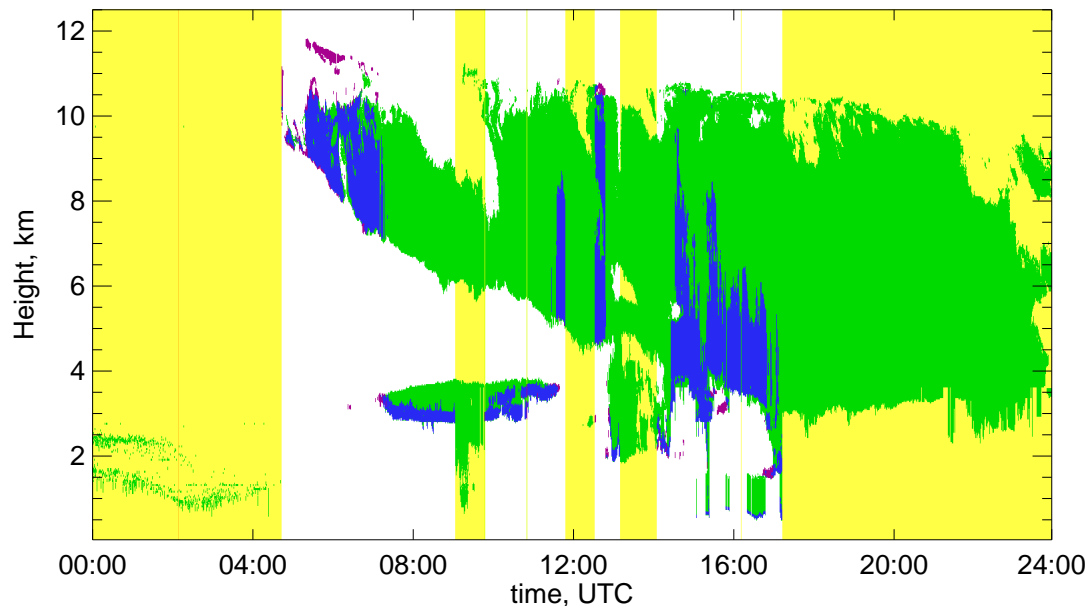


Fig. 7. Cloud mask derived from radar and lidar on 4 June 2004. Meaning of colors: yellow: no lidar observation, green: radar cloud, blue: radar and lidar cloud, purple: lidar cloud.

[Title Page](#)[Abstract](#)[Introduction](#)[Conclusions](#)[References](#)[Tables](#)[Figures](#)[◀](#)[▶](#)[◀](#)[▶](#)[Back](#)[Close](#)[Full Screen / Esc](#)[Printer-friendly Version](#)[Interactive Discussion](#)

Quality assessment of water cycle parameters in REMO by Radar-Lidar synergy

B. Hennemuth et al.

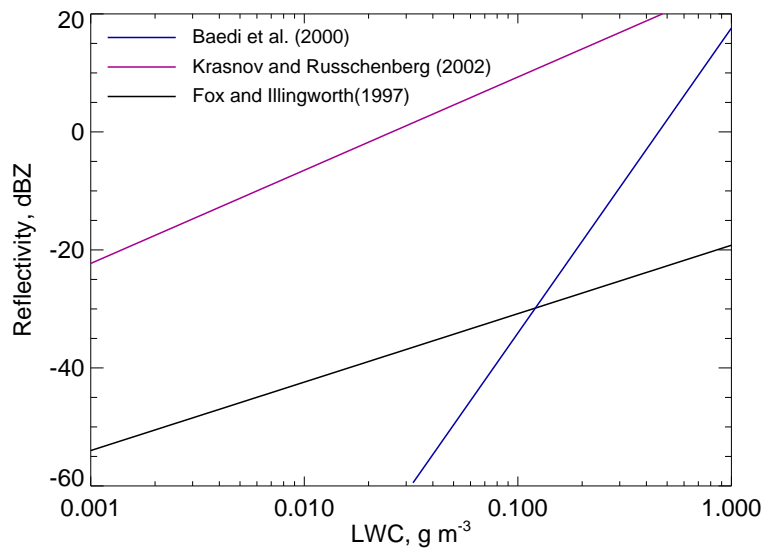


Fig. 8. Derivation of liquid cloud water content from cloud radar reflectivity by relations of LWC and dBZ from different authors, applied at different ranges of dBZ.

Title Page

Abstract

Introduction

Conclusions

References

Tables

Figures

◀

▶

◀

▶

Back

Close

Full Screen / Esc

Printer-friendly Version

Interactive Discussion

Quality assessment of water cycle parameters in REMO by Radar-Lidar synergy

B. Hennemuth et al.

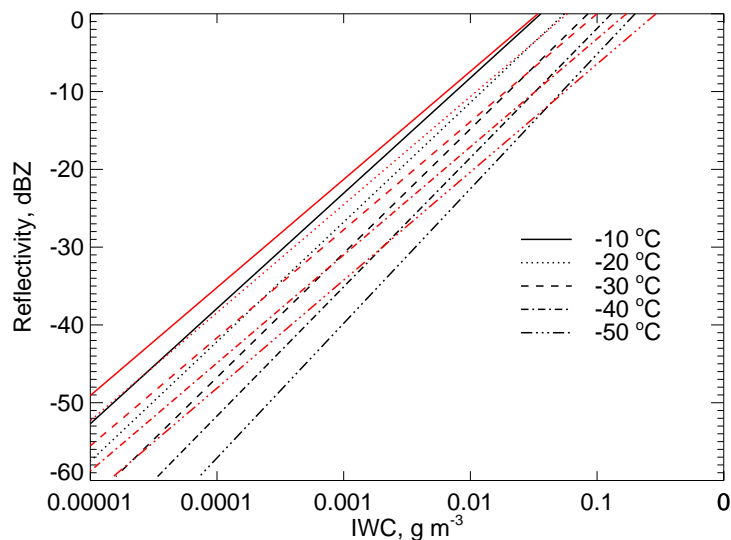


Fig. 9. Derivation of ice water content from cloud radar reflectivity by relations of IWC and dBZ according to Hogan et al. (2006), stratified by temperature, black lines: “best expected value”, red lines: “best variance”.

[Title Page](#)[Abstract](#)[Introduction](#)[Conclusions](#)[References](#)[Tables](#)[Figures](#)[◀](#)[▶](#)[◀](#)[▶](#)[Back](#)[Close](#)[Full Screen / Esc](#)[Printer-friendly Version](#)[Interactive Discussion](#)

**Quality assessment
of water cycle
parameters in REMO
by Radar-Lidar
synergy**

B. Hennemuth et al.

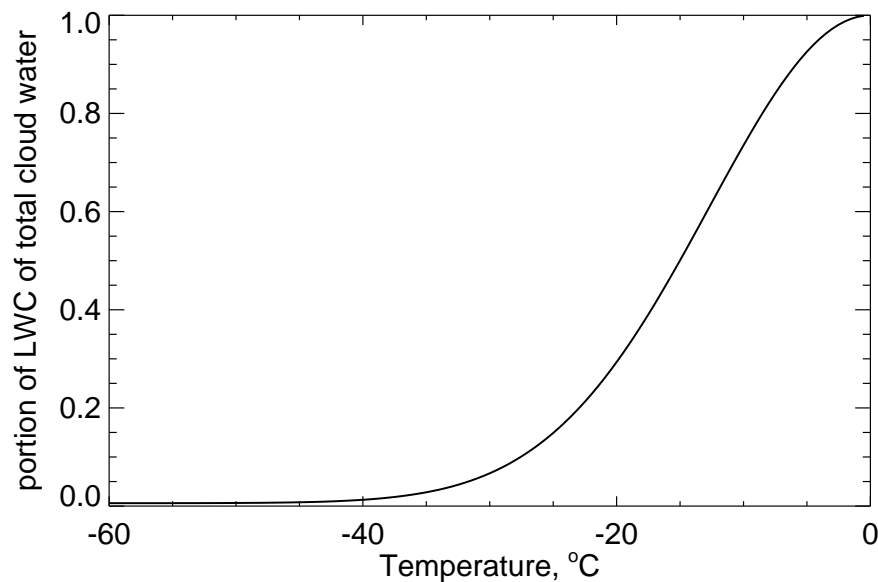


Fig. 10. Partitioning of predicted total cloud water into liquid cloud water and ice cloud water in REMO5.5.

[Title Page](#)[Abstract](#)[Introduction](#)[Conclusions](#)[References](#)[Tables](#)[Figures](#)[◀](#)[▶](#)[◀](#)[▶](#)[Back](#)[Close](#)[Full Screen / Esc](#)[Printer-friendly Version](#)[Interactive Discussion](#)

Quality assessment of water cycle parameters in REMO by Radar-Lidar synergy

B. Hennemuth et al.

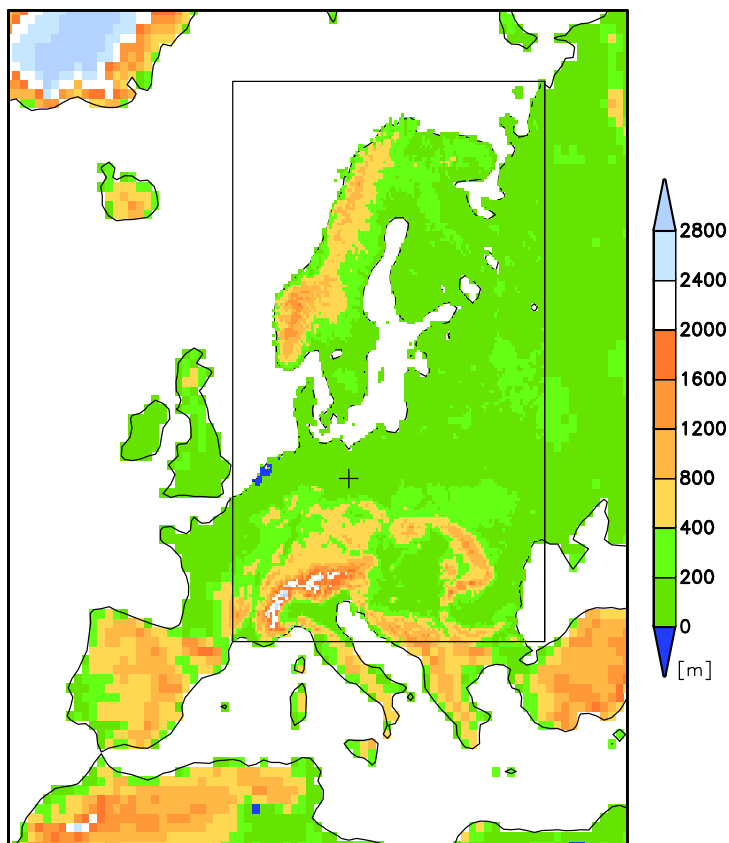


Fig. 11. Model domain of the $1/2^\circ$ and of the nested $1/6^\circ$ runs. The cross marks the position of Lindenberg.

Title Page

Abstract

Introduction

Conclusions

References

Tables

Figures

◀

▶

◀

▶

Back

Close

Full Screen / Esc

Printer-friendly Version

Interactive Discussion

**Quality assessment
of water cycle
parameters in REMO
by Radar-Lidar
synergy**

B. Hennemuth et al.

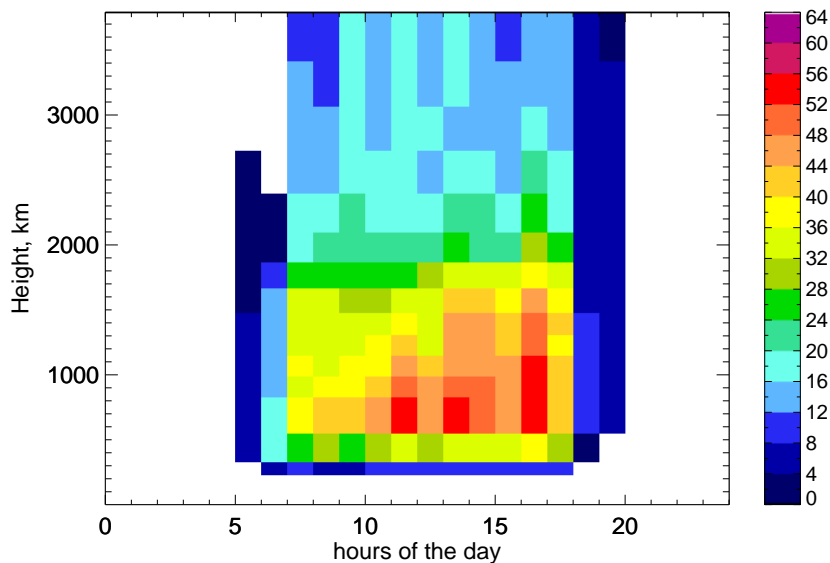


Fig. 12. Number of 1 h humidity observations in the Lindenberg gridbox.

[Title Page](#)[Abstract](#)[Introduction](#)[Conclusions](#)[References](#)[Tables](#)[Figures](#)[◀](#)[▶](#)[◀](#)[▶](#)[Back](#)[Close](#)[Full Screen / Esc](#)[Printer-friendly Version](#)[Interactive Discussion](#)

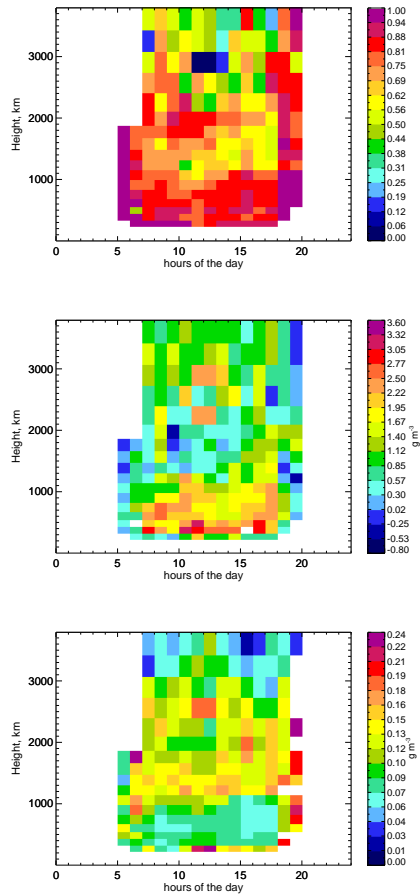


Fig. 13. Correlation coefficient, bias and rms-error of REMO humidity versus observation humidity.

**Quality assessment
of water cycle
parameters in REMO
by Radar-Lidar
synergy**

B. Hennemuth et al.

Title Page

Abstract

Introduction

Conclusions

References

Tables

Figures

◀

▶

◀

▶

Back

Close

Full Screen / Esc

Printer-friendly Version

Interactive Discussion

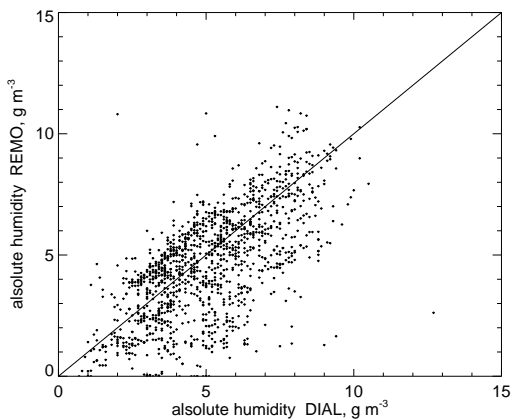
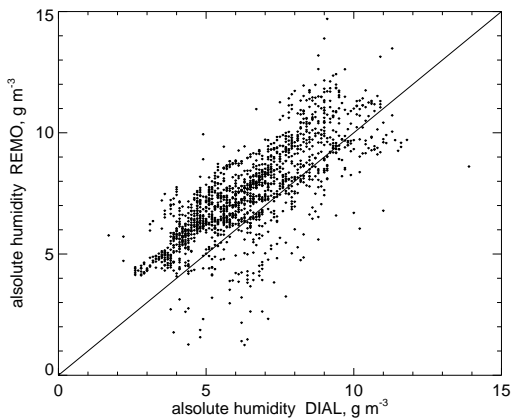


Fig. 14. Scatter plot of humidity values from REMO and observations, within the boundary layer (top), and above the boundary layer (bottom).

**Quality assessment
of water cycle
parameters in REMO
by Radar-Lidar
synergy**

B. Hennemuth et al.

Title Page

Abstract

Introduction

Conclusions

References

Tables

Figures

◀

▶

◀

▶

Back

Close

Full Screen / Esc

Printer-friendly Version

Interactive Discussion

Quality assessment of water cycle parameters in REMO by Radar-Lidar synergy

B. Hennemuth et al.

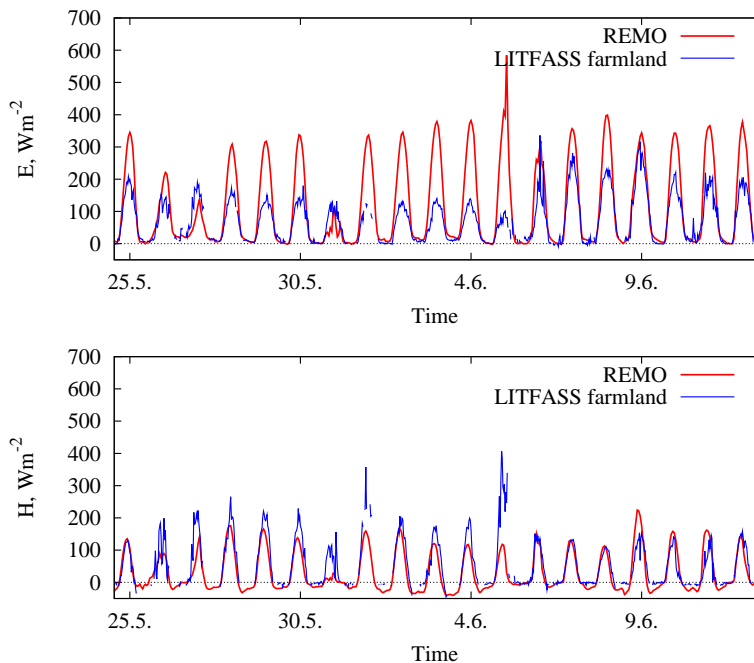


Fig. 15. Time series of surface latent heat flux (top) and sensible heat flux (bottom) from 1 to 12 June 2003.

[Title Page](#)[Abstract](#)[Introduction](#)[Conclusions](#)[References](#)[Tables](#)[Figures](#)[◀](#)[▶](#)[◀](#)[▶](#)[Back](#)[Close](#)[Full Screen / Esc](#)[Printer-friendly Version](#)[Interactive Discussion](#)

Quality assessment of water cycle parameters in REMO by Radar-Lidar synergy

B. Hennemuth et al.

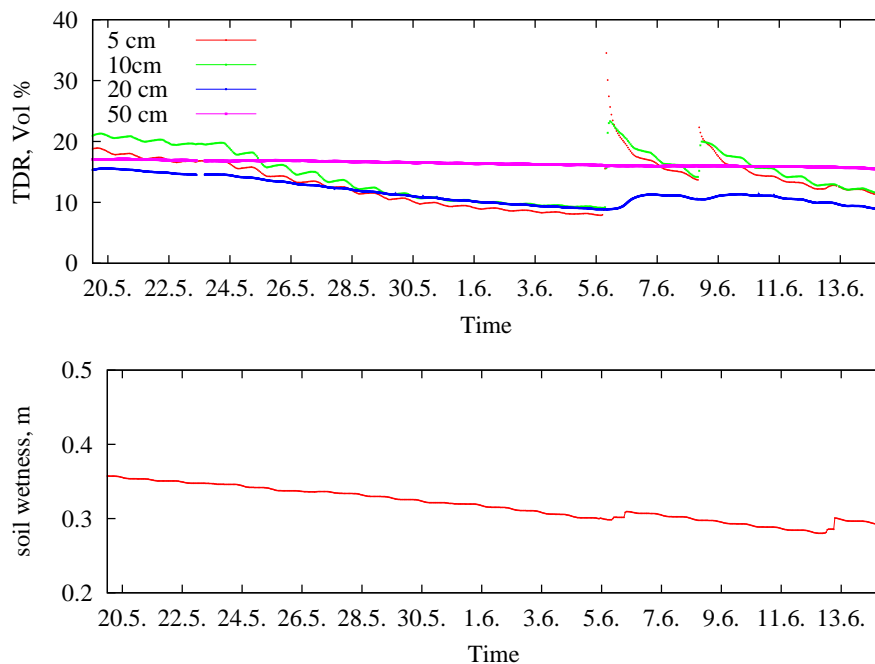


Fig. 16. Time series of observed (top) and simulated (bottom) soil moisture during LITFASS-2003. Note the different units of soil moisture, for explanation see text.

[Title Page](#)[Abstract](#)[Introduction](#)[Conclusions](#)[References](#)[Tables](#)[Figures](#)[◀](#)[▶](#)[◀](#)[▶](#)[Back](#)[Close](#)[Full Screen / Esc](#)[Printer-friendly Version](#)[Interactive Discussion](#)

Quality assessment of water cycle parameters in REMO by Radar-Lidar synergy

B. Hennemuth et al.

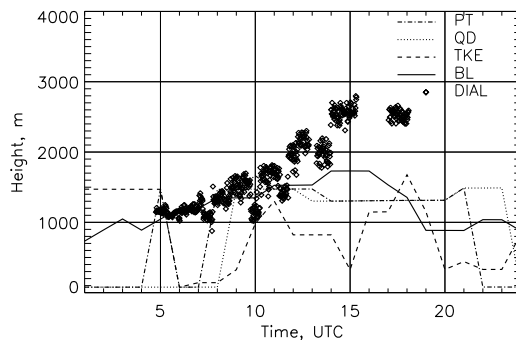
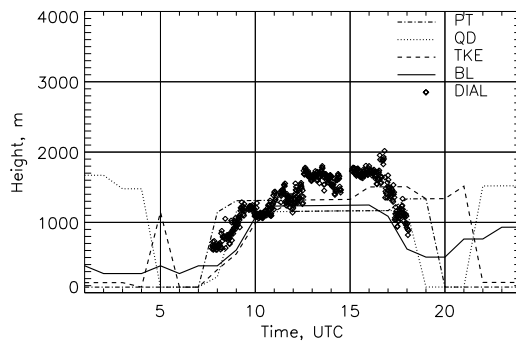


Fig. 17. ABL height derived from REMO and from DIAL on 10 June 2003 (top) and 7 June 2004 (bottom). The model ABL height is derived from the gradient of potential temperature (PT), of specific humidity (QD), of turbulent kinetic energy (TKE) and from static stability (BL, see chapter 2).

Title Page

Abstract

Introduction

Conclusions

References

Tables

Figures

◀

▶

◀

▶

Back

Close

Full Screen / Esc

Printer-friendly Version

Interactive Discussion

Quality assessment of water cycle parameters in REMO by Radar-Lidar synergy

B. Hennemuth et al.

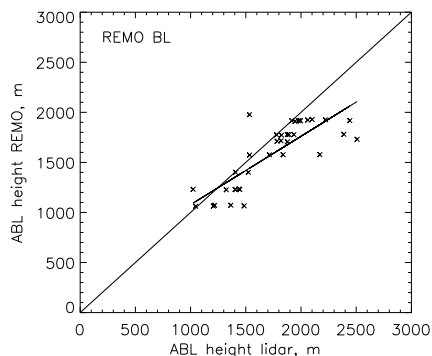
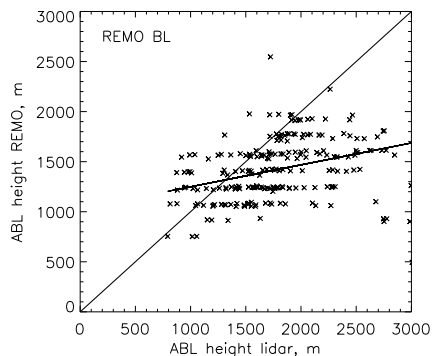


Fig. 18. ABL height derived from REMO (according to Eq. 4) and from DIAL and regression line. Top: for all undisturbed days, bottom: for undisturbed days after rain events.

Title Page

Abstract

Introduction

Conclusions

References

Tables

Figures

◀

▶

◀

▶

Back

Close

Full Screen / Esc

Printer-friendly Version

Interactive Discussion

Quality assessment of water cycle parameters in REMO by Radar-Lidar synergy

B. Hennemuth et al.

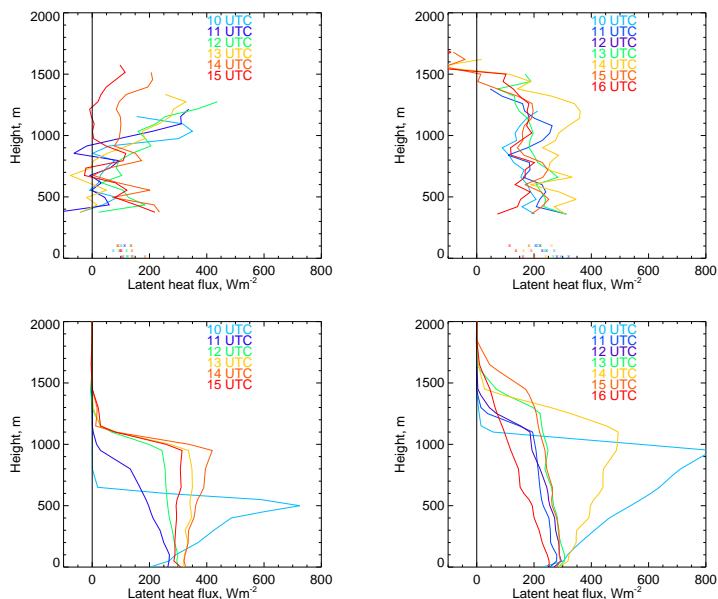


Fig. 19. Vertical profiles of latent heat flux on 30 May 2003 (left), and 9 June 2003 (right). Top: lidar measurements, bottom: REMO simulations.

Title Page

Abstract

Introduction

Conclusions

References

Tables

Figures

◀

▶

◀

▶

Back

Close

Full Screen / Esc

Printer-friendly Version

Interactive Discussion

Quality assessment of water cycle parameters in REMO by Radar-Lidar synergy

B. Hennemuth et al.

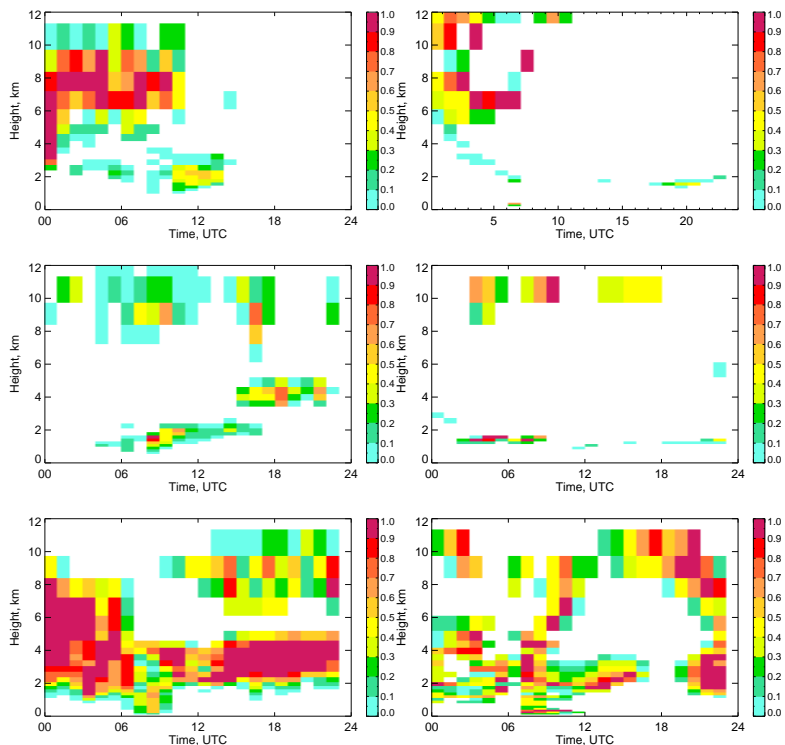


Fig. 20. Cloud cover on 11 June 2003 (top), on 8 June 2004 (middle), and on 2 June 2004 (bottom). Left: observation, right: REMO.

[Title Page](#)[Abstract](#)[Introduction](#)[Conclusions](#)[References](#)[Tables](#)[Figures](#)[◀](#)[▶](#)[◀](#)[▶](#)[Back](#)[Close](#)[Full Screen / Esc](#)[Printer-friendly Version](#)[Interactive Discussion](#)

Quality assessment of water cycle parameters in REMO by Radar-Lidar synergy

B. Hennemuth et al.

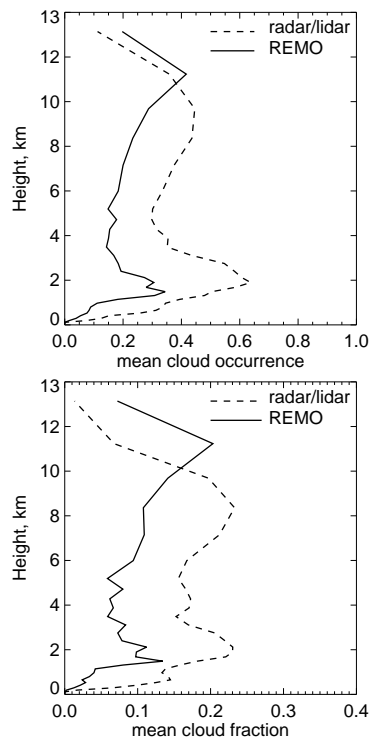


Fig. 21. Number of clouds (upper) and sum of cloud cover (lower).

[Title Page](#)[Abstract](#)[Introduction](#)[Conclusions](#)[References](#)[Tables](#)[Figures](#)[◀](#)[▶](#)[◀](#)[▶](#)[Back](#)[Close](#)[Full Screen / Esc](#)[Printer-friendly Version](#)[Interactive Discussion](#)

**Quality assessment
of water cycle
parameters in REMO
by Radar-Lidar
synergy**B. Hennemuth et al.

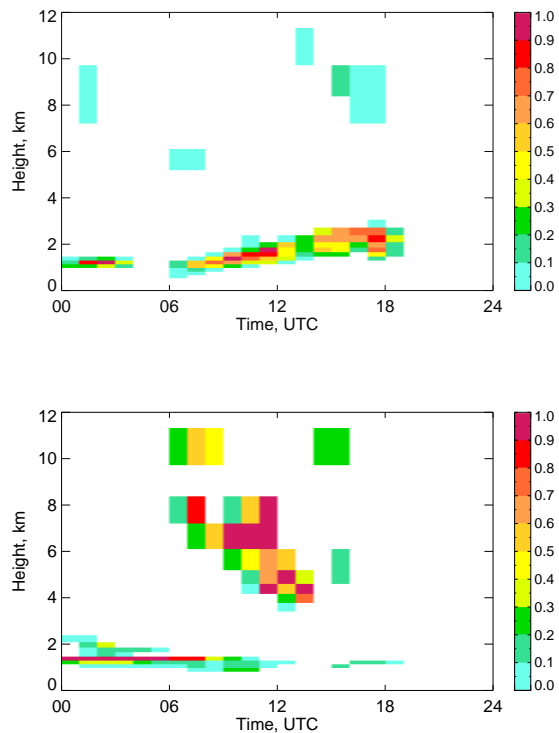


Fig. 22. Cloud cover on 7 June 2004. Top: observation, bottom: REMO.

[Title Page](#)[Abstract](#)[Introduction](#)[Conclusions](#)[References](#)[Tables](#)[Figures](#)[◀](#)[▶](#)[◀](#)[▶](#)[Back](#)[Close](#)[Full Screen / Esc](#)[Printer-friendly Version](#)[Interactive Discussion](#)

Quality assessment of water cycle parameters in REMO by Radar-Lidar synergy

B. Hennemuth et al.

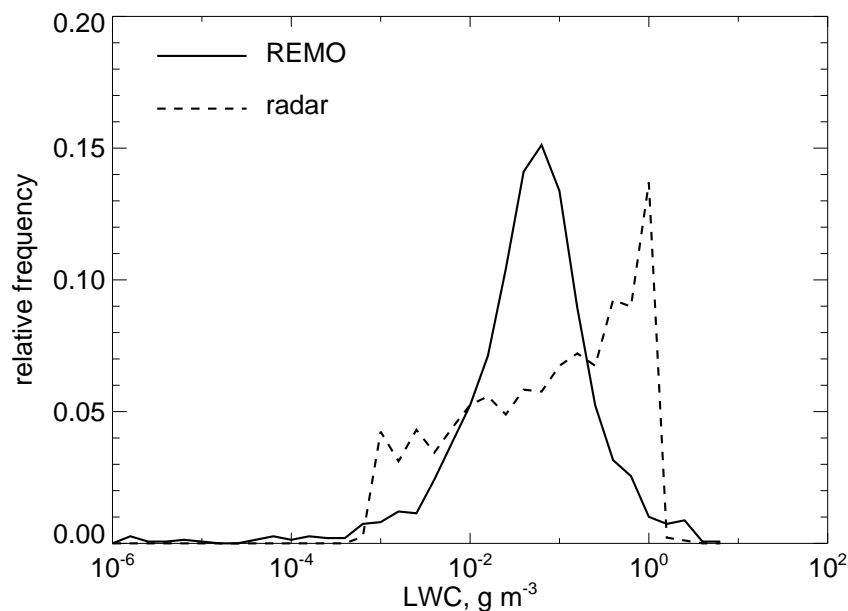


Fig. 23. Frequency distributions of LWC derived from REMO and from cloud radar (using the algorithm of Krasnov and Russchenberg, 2003) in the height range of 1800 m to 3000 m.

Title Page

Abstract

Introduction

Conclusions

References

Tables

Figures

◀

▶

◀

▶

Back

Close

Full Screen / Esc

Printer-friendly Version

Interactive Discussion

Quality assessment of water cycle parameters in REMO by Radar-Lidar synergy

B. Hennemuth et al.

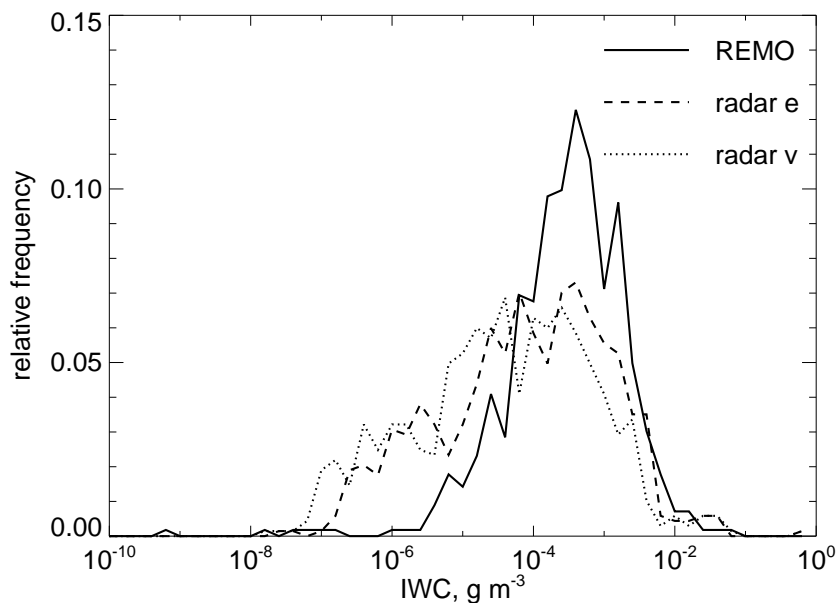


Fig. 24. Probability density functions of IWC derived from REMO and from cloud radar (using the algorithm of Hogan et al., 2006) in the range of 6000 m to 10 000 m. The abbreviations “e” and “v” stand for the Z -IWC – algorithms optimizing the expected value and the variance of IWC, respectively.

Title Page

Abstract

Introduction

Conclusions

References

Tables

Figures

◀

▶

◀

▶

Back

Close

Full Screen / Esc

Printer-friendly Version

Interactive Discussion

Quality assessment of water cycle parameters in REMO by Radar-Lidar synergy

B. Hennemuth et al.

Title Page

Abstract

Introduction

Conclusions

References

Tables

Figures

◀

▶

◀

▶

Back

Close

Full Screen / Esc

Printer-friendly Version

Interactive Discussion

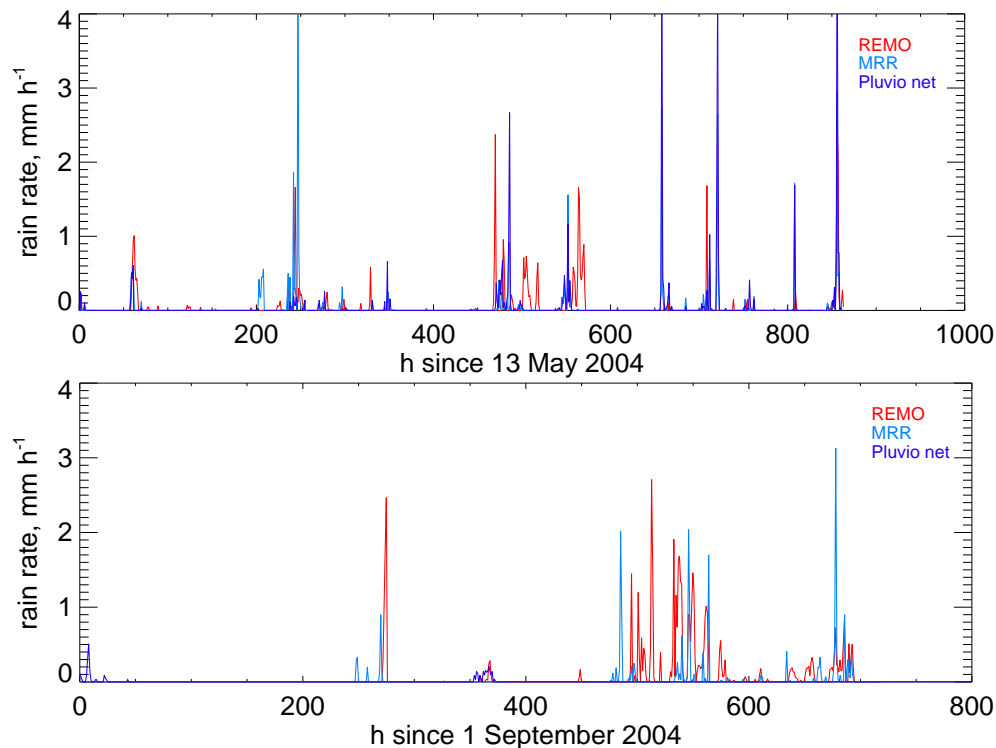


Fig. 25. Time series of rain rates for two measuring campaigns from REMO (red), MRR (light blue), and rain gauge network (blue).