



HAL
open science

Connections between atmospheric sulphuric acid and new particle formation during QUEST III?IV campaigns in Heidelberg and Hyytiälä

I. Riipinen, S.-L. Sihto, M. Kulmala, F. Arnold, M. Dal Maso, W. Birmili, K. Saarnio, K. Teinilä, V.-M. Kerminen, A. Laaksonen, et al.

► To cite this version:

I. Riipinen, S.-L. Sihto, M. Kulmala, F. Arnold, M. Dal Maso, et al.. Connections between atmospheric sulphuric acid and new particle formation during QUEST III?IV campaigns in Heidelberg and Hyytiälä. *Atmospheric Chemistry and Physics Discussions*, 2006, 6 (5), pp.10837-10882. hal-00302236

HAL Id: hal-00302236

<https://hal.science/hal-00302236>

Submitted on 18 Jun 2008

HAL is a multi-disciplinary open access archive for the deposit and dissemination of scientific research documents, whether they are published or not. The documents may come from teaching and research institutions in France or abroad, or from public or private research centers.

L'archive ouverte pluridisciplinaire **HAL**, est destinée au dépôt et à la diffusion de documents scientifiques de niveau recherche, publiés ou non, émanant des établissements d'enseignement et de recherche français ou étrangers, des laboratoires publics ou privés.

Connections between atmospheric sulphuric acid and new particle formation during QUEST III–IV campaigns in Heidelberg and Hyytiälä

I. Riipinen¹, S.-L. Sihto¹, M. Kulmala¹, F. Arnold², M. Dal Maso¹, W. Birmili³,
K. Saarnio⁴, K. Teinilä⁴, V.-M. Kerminen⁴, A. Laaksonen⁵, and K. E. J. Lehtinen⁶

¹University of Helsinki, Department of Physical Sciences, P.O. Box 64, 00014 University of Helsinki, Finland

²Max-Planck Institute for Nuclear Physics (MPIK), Atmospheric Physics Division, P.O. Box 103980, 69029 Heidelberg, Germany

³Leibniz Institute for Tropospheric Research, Permoserstrasse 15, 04318 Leipzig, Germany

⁴Finnish Meteorological Institute, Erik Palménin Aukio 1, P.O. Box 503, 00101 Helsinki, Finland

⁵University of Kuopio, Department of Applied Physics, P.O. Box 1627, 70211 Kuopio, Finland

⁶Finnish Meteorological Institute and University of Kuopio, Department of Applied Physics, P.O. Box 1627, 70211 Kuopio, Finland

Received: 9 October 2006 – Accepted: 15 October 2006 – Published: 25 October 2006

Correspondence to: I. Riipinen (ilona.riipinen@helsinki.fi)

**Sulphuric acid and
particle formation
during QUEST III–IV**

I. Riipinen et al.

Title Page

Abstract

Introduction

Conclusions

References

Tables

Figures

◀

▶

◀

▶

Back

Close

Full Screen / Esc

Printer-friendly Version

Interactive Discussion

Abstract

This study investigates the connections between atmospheric sulphuric acid and new particle formation during QUEST III and BACCI/QUEST IV campaigns. The campaigns have been conducted in Heidelberg (2004) and Hyytiälä (2005), the first representing a polluted site surrounded by deciduous forest, and the second a rural site in a boreal forest environment. We have studied the role of sulphuric acid in particle formation and growth by determining 1) the power-law dependencies between sulphuric acid ($[\text{H}_2\text{SO}_4]$), and particle concentrations (N_{3-6}) or formation rates at 1 nm and 3 nm (J_1 and J_3); 2) the time delays between $[\text{H}_2\text{SO}_4]$ and N_{3-6} or J_3 , and the growth rates for 1–3 nm particles; 3) the empirical nucleation coefficients A and K in relations $J_1 = A[\text{H}_2\text{SO}_4]$ and $J_1 = K[\text{H}_2\text{SO}_4]^2$, respectively; 4) theoretical predictions for J_1 and J_3 for the days when no significant particle formation is observed, based on the observed sulphuric acid concentrations and condensation sinks. In both environments, N_{3-6} or J_3 and $[\text{H}_2\text{SO}_4]$ were linked via a power-law relation with exponents typically ranging from 1 to 2. The result suggests that the cluster activation theory and kinetic nucleation have the potential to explain the observed particle formation. However, some differences between the sites existed: The 1–3 nm growth rates were slightly higher and the nucleation coefficients about an order of magnitude greater in Heidelberg than in Hyytiälä conditions. The time lags between J_3 and $[\text{H}_2\text{SO}_4]$ were consistently lower than the corresponding delays between N_{3-6} and $[\text{H}_2\text{SO}_4]$. The exponents in the $J_3 \propto [\text{H}_2\text{SO}_4]^{n_{J_3}}$ -connection were consistently higher than or equal to the exponents in the relation $N_{3-6} \propto [\text{H}_2\text{SO}_4]^{n_{N36}}$. In the J_1 values, no significant differences were found between the observed rates on particle formation event days and the predictions on non-event days. The J_3 values predicted by the cluster activation or kinetic nucleation hypotheses, on the other hand, were considerably lower on non-event days than the rates observed on particle formation event days. This study provides clear evidence implying that the main process limiting the observable particle formation is the competition between the growth of the freshly formed particles and their loss by scavenging,

Sulphuric acid and particle formation during QUEST III–IV

I. Riipinen et al.

Title Page

Abstract

Introduction

Conclusions

References

Tables

Figures

◀

▶

◀

▶

Back

Close

Full Screen / Esc

Printer-friendly Version

Interactive Discussion

rather than the initial particle production by nucleation of sulphuric acid. In general, it can be concluded that the simple models based on sulphuric acid concentrations and particle formation by cluster activation or kinetic nucleation can predict the occurrence of atmospheric particle formation and growth well, if the particle scavenging is accurately accounted for.

1 Introduction

The formation of new secondary atmospheric aerosol particles and their subsequent growth has been observed at various locations around the world (Kulmala et al., 2001a, 2004a). These particles can affect the climate in two distinct ways: first, by directly scattering the solar radiation and second, indirectly by acting as cloud condensation nuclei and therefore influencing the optical properties of clouds (Ramanathan et al., 2001; Lohmann and Feichter, 2005). On more local scales, the aerosol particles can affect the human health (e.g. Donaldson, 1998; Stieb et al., 2003) and deteriorate visibility (Cabada et al., 2004), particularly in polluted environments. To accurately quantify and model the regional and global effects of the formed particles, the mechanisms leading to their formation and growth need to be known.

Sulphuric acid has been identified as a key component in aerosol formation and growth (see e.g. Berndt et al., 2005; Korhonen et al., 1999; Kulmala, 2003; Kulmala et al., 2004b; Laakso et al., 2004a). The exact role of sulphuric acid, as well as the processes limiting the observed new particle formation, however, are still under discussion. Several studies such as Weber et al. (1995a, 1997), Fiedler et al. (2005) and Sihto et al. (2006) report a close connection between measured atmospheric sulphuric acid and new particle formation at different locations.

Recently Kulmala et al. (2006) have proposed the activation of stable clusters (Kulmala et al., 2000) to be one of the possible mechanisms governing the observed atmospheric particle formation. The theory predicts a nearly constant reservoir or stable clusters which are activated for growth at favourable conditions. In relation to this, Kul-

Sulphuric acid and particle formation during QUEST III–IV

I. Riipinen et al.

Title Page

Abstract

Introduction

Conclusions

References

Tables

Figures

◀

▶

◀

▶

Back

Close

Full Screen / Esc

Printer-friendly Version

Interactive Discussion

mala (2003) speculates that the limiting factor for the detected new particle formation and growth might not be the production of the initial particles but rather the competition between scavenging to the background particles and the particle growth to detectable sizes. The proposed activation processes involve sulphuric acid either as the activating vapour or as a constituent of the activated clusters. This theory is supported by the recent study by Sihto et al. (2006), which reports the cluster activation as a potential formation mechanism, along with kinetic nucleation (McMurry and Friedlander 1979; Lushnikov and Kulmala, 1998). Spracklen et al. (2006) have implemented the cluster activation scheme as the particle formation mechanism in a global aerosol microphysics model. The model reproduces the observed secondary aerosol concentrations and the occurrence of new particle formation with good accuracy.

In this paper we expand the work by Sihto et al. (2006), which studied the connections of new particle formation and sulphuric acid during the QUEST II campaign (March–April 2003) in Hyytiälä, Southern Finland. Sihto et al. observed that the nucleation mode particle concentration typically depends on the sulphuric acid concentration via a power-law relation, the exponent being 1 or 2. The proposed theory of atmospheric nucleation by cluster activation or kinetic nucleation could be used to explain the observed behaviour. Related to this, Sihto et al. investigated the strength of the coupling between the atmospheric nucleation rate and sulphuric acid concentrations by determining empirical nucleation coefficients based on the QUEST II data. In this work we do a similar analysis for the data collected during QUEST III and BACCI/QUEST IV campaigns in Heidelberg (2004) and Hyytiälä (2005), in order to find out how broadly the results reported by Sihto et al. are valid. On one hand, we compare the conditions in the two different sites, Heidelberg representing a polluted environment surrounded by deciduous forest, and Hyytiälä a remote boreal forest site. On the other hand, the QUEST II and IV data allows for a comparison between two different springs in Hyytiälä: spring 2003 has the most particle formation event days so far, whereas the particle formation events in spring 2005 are much fewer in number. We study the dependence of the particle concentrations and formation rates on

Sulphuric acid and particle formation during QUEST III–IVI. Riipinen et al.

[Title Page](#)[Abstract](#)[Introduction](#)[Conclusions](#)[References](#)[Tables](#)[Figures](#)[◀](#)[▶](#)[◀](#)[▶](#)[Back](#)[Close](#)[Full Screen / Esc](#)[Printer-friendly Version](#)[Interactive Discussion](#)

sulphuric acid with a computer-based fitting routine. We investigate the magnitude of the empirical nucleation coefficients in both locations and compare them to the results obtained by Sihto et al. We also study the days without new particle formation and investigate the relative importance of sulphuric acid concentrations and the condensation/coagulation sinks in the initial steps of particle formation and growth to detectable sizes, in order to find out the limiting factors for the observed new particle formation.

2 Materials and methods

2.1 The utilised data sets

In this work we used the data sets collected during the QUEST III and BACCI/QUEST IV campaigns. The QUEST III campaign has been carried out 28 February–3 April 2004 at the Max Plack Institute for Nuclear Physics in Heidelberg (49°23' N, 08°41' E, 350 m a.s.l.), Germany, and the BACCI/QUEST IV campaign 5 April–16 May 2005 at the SMEAR II station in Hyytiälä (61°51' N, 24°17' E, 181 m a.s.l.), Finland. The Heidelberg station is situated at a polluted site surrounded by deciduous forest (beech, maple, chestnut, birch, oak), whereas the SMEAR II station represents a typical rural site with extensive areas of Scots pine dominated forests surrounding it. For detailed descriptions of the measurement sites and the measurement equipment, see e.g. Fiedler et al. (2005), Hari and Kulmala (2005), Sihto et al. (2006), and <http://www.atm.helsinki.fi/SMEAR/>. The used data included particle size distributions measured with Twin-DMPS systems, sulphuric acid concentration measured with chemical ionization mass spectrometers (CIMS, see e.g. Hanke et al., 2002) and meteorological data, such as temperature and relative humidity. The time resolution was 10–15 min for the DMPS measurements and less than 1 s for the sulphuric acid data. In the analysis, however, the sulphuric acid data was averaged over 10–30 min time intervals to make it comparable with the particle concentration data. For comparison, we also utilised the data collected during the QUEST II campaign at the SMEAR II

Sulphuric acid and particle formation during QUEST III–IV

I. Riipinen et al.

Title Page

Abstract

Introduction

Conclusions

References

Tables

Figures

◀

▶

◀

▶

Back

Close

Full Screen / Esc

Printer-friendly Version

Interactive Discussion

station in Hyytiälä (March–April 2003, see Sihto et al., 2006, for details).

In the case of BACCI/QUEST IV campaign in Hyytiälä, we also studied data on ammonia concentrations measured with a refluxing mist chamber. The device strips ammonia from the atmosphere and concentrates ammonium ions in the aqueous phase (Talbot et al., 1990). The sample flow in the system was 5 l/min. Due to the low mass concentration of ammonia in the air, the sampling duration varied from 2 to 10 h. The analysis of ammonium ions was conducted with a Dionex-500 ion chromatograph (Dionex, Sunnyvale, USA; columns CG12A + CS12A, electrochemical suppression CSRS, 20 mM methanesulphonic acid eluent).

The data set collected at the Heidelberg station consisted of 38 days in total. According to the criteria presented by Dal Maso et al. (2005), clear new particle formation and growth was seen on 11 days (later often referred to as event days), whereas on 5 days, no indications of new particle formation were observed (non-event days). The rest of the days (22) were classified as “undefined” days. The Hyytiälä data set contained 22 days with new particle formation, 11 days with clearly no new particle formation, and 9 undefined days.

2.2 Data analysis

2.2.1 Connections between sulphuric acid, particle concentrations and formation rates

In order to investigate the connection between sulphuric acid concentrations and new particle formation and growth, we studied the correlations

$$\begin{aligned} N_{3-6}(t + \Delta t_{N36}) &\propto [\text{H}_2\text{SO}_4]^{n_{N36}}, \\ J_3(t + \Delta t_{J3}) &\propto [\text{H}_2\text{SO}_4]^{n_{J3}}, \\ J_1(t) &\propto [\text{H}_2\text{SO}_4]^{n_{J1}}, \end{aligned} \quad (1)$$

where N_{3-6} refers to the 3–6 nm particle concentration (corresponding to the four lowest channels of the DMPS) and J_3 to the formation rate of the 3 nm particles. The

Sulphuric acid and particle formation during QUEST III–IV

I. Riipinen et al.

Title Page

Abstract

Introduction

Conclusions

References

Tables

Figures

◀

▶

◀

▶

Back

Close

Full Screen / Esc

Printer-friendly Version

Interactive Discussion

Sulphuric acid and particle formation during QUEST III–IV

I. Riipinen et al.

Title Page

Abstract

Introduction

Conclusions

References

Tables

Figures

◀

▶

◀

▶

Back

Close

Full Screen / Esc

Printer-friendly Version

Interactive Discussion

time delays $\Delta t_{N_{36}}$ and Δt_{J_3} are the intervals after which the effect of a change in the sulphuric acid concentration is shown in 3–6 nm particle concentration or formation rate. J_1 is the particle formation rate at 1 nm, corresponding to the size region at which the atmospheric nucleation is assumed to take place. In particular, the values $n_{J_1}=1$ or $n_{J_1}=2$ in the correlation between J_1 and $[\text{H}_2\text{SO}_4]^{n_{J_1}}$ could imply the activation of pre-existing clusters ($n_{J_1}=1$) or kinetic nucleation of sulphuric acid ($n_{J_1}=2$) to be the dominating mechanisms for atmospheric new particle formation. In these cases the new particle formation rate (i.e. the atmospheric nucleation rate) can be simply written as

$$J_1 = A [\text{H}_2\text{SO}_4] \quad (2)$$

or

$$J_1 = K [\text{H}_2\text{SO}_4]^2, \quad (3)$$

where A and K are coefficients containing the details of the nucleation processes. According to our previous study (Sihto et al., 2006) these nucleation mechanisms seem to be the best candidates for the atmospheric nucleation observed in Hyytiälä. Exponents larger than 2, on the other hand, may indicate that the atmospheric nucleation is thermodynamically limited (Kulmala et al., 2006). In our previous study we concentrated only on exponents and time delays related to sulphuric acid and N_{3-6} . In this work we expanded the analysis to the exponents and time delays related to sulphuric acid and particle formation rates, to be able to draw more sound conclusions on the nucleation mechanism and the processes governing the evolution of N_{3-6} and J_3 .

We studied the exponents and time delays relating the sulphuric acid and particle concentrations and formation rates, as well as the magnitude of the coefficients A and K at both measurement sites. We fitted the values for the exponents, time delays and nucleation coefficients for each new particle formation event day by maximizing the correlation coefficients for the relations presented in Eq. (1).

Assuming Δt_{N36} as the time that particles spend growing from 1 to 3 nm, the growth rate from 1 to 3 nm can be expressed as

$$GR_{1-3} = \frac{2 \text{ nm}}{\Delta t_{N36}}. \quad (4)$$

We could thus estimate the 1–3 nm particle growth rates from the time delays obtained from the fits. Similar methods have been used by e.g. Weber et al. (1997); Fiedler et al. (2005) and Sihto et al. (2006).

We obtained the N_{3-6} values directly from the measurement data, whereas J_3 and J_1 were calculated from the data as described below. The non-event and undefined days were also analysed in order to check the possible connection between N_{3-6} and $[H_2SO_4]$, and to make a comparison between the days with and without clear new particle formation and growth.

2.2.2 Particle formation rates at 3 nm (J_3) and 1 nm (J_1)

The time evolution of N_{3-6} is described with a balance equation

$$\frac{dN_{3-6}}{dt} = GR_3 \cdot n_3 - GR_6 \cdot n_6 - \text{CoagS}_{3-6} \cdot N_{3-6}, \quad (5)$$

including terms for the growth into the 3–6 nm range over the 3 nm limit (the first term), out of the range over the 6 nm limit (the second term) and the loss by coagulation scavenging (the third term). The growth by intermodal coagulation is assumed to be negligible compared to condensation. Here, GR_6 denotes the particle growth rate at 6 nm, and n_d is a particle size distribution function, defined as $n_d = dN_d / dd_p$, with d_p = particle diameter. CoagS_{3-6} denotes the average coagulation sink for the 3–6 nm range (Kulmala et al., 2001b). By rearranging the terms, and denoting the first term on the right hand side of Eq. (5) by J_3 , the following equation for the particle formation rate at 3 nm is obtained:

$$J_3 = \frac{dN_{3-6}}{dt} + \text{CoagS}_4 \cdot N_{3-6} + \frac{1}{3 \text{ nm}} GR_6 \cdot N_{3-6}. \quad (6)$$

Sulphuric acid and particle formation during QUEST III–IV

I. Riipinen et al.

Title Page

Abstract

Introduction

Conclusions

References

Tables

Figures

◀

▶

◀

▶

Back

Close

Full Screen / Esc

Printer-friendly Version

Interactive Discussion

Sulphuric acid and particle formation during QUEST III–IV

I. Riipinen et al.

Title Page

Abstract

Introduction

Conclusions

References

Tables

Figures

◀

▶

◀

▶

Back

Close

Full Screen / Esc

Printer-friendly Version

Interactive Discussion

Here the coagulation loss for the interval 3–6 nm has been approximated by a term representing the loss of 4 nm sized particles, with hygroscopicity effects estimated as in Laakso et al. (2004b). The third term representing the condensation loss out of the size range 3–6 nm is obtained by approximating n_6 by $N_{3-6}/(6\text{ nm}-3\text{ nm})$. The GR_6 value used in the calculations was obtained from lognormal fits to DMPS data in the size range 3–7 nm. If the fits were not available, the growth rate determined from Δt_{N36} (Eq. 4) was used.

When calculating the time derivative of N_{3-6} from the measurement data by a simple approximation $\Delta N_{3-6}/\Delta t$, where the time interval $\Delta t=10$ min, the effect of noise results in big fluctuations in J_3 data. To filter out this noise, we applied a parabolic differentiation algorithm with a window size of 5 data points (50 min), which implies only a slight smoothing to ensure that we do not lose data significantly in the differentiation process. The differentiation algorithm significantly improved the quality of J_3 -data, enabling us to distinguish peaks and other characteristics from the background level more reliably.

The atmospheric nucleation rate J_1 at time $t=t'-\Delta t$ was estimated from the J_3 data using the method presented by Kerminen and Kulmala (2002):

$$J_1(t) = J_3(t') \exp \left[\gamma \frac{CS'}{GR_{1-3}} \left(\frac{1}{1\text{ nm}} - \frac{1}{3\text{ nm}} \right) \right]. \quad (7)$$

Here CS' is the reduced condensation sink (in units m^{-2}), GR_{1-3} is the 1–3 nm growth rate (in nm/h) and γ is a coefficient with a value of approximately $0.23\text{ m}^2\text{ nm}^2\text{ h}^{-1}$. The times t and t' are related as $t=t'-\Delta t$, where $\Delta t=2\text{ nm}/GR_{1-3}$. This equation was applied in a running window $[t, t+\Delta t]$ throughout each analysed day. For GR_{1-3} and t' we utilized the fitted time delay between N_{3-6} and the sulphuric acid data, and for the CS' the median value from the interval $[t, t+\Delta t]$. The formula can be applied also in other direction to calculate J_3 from J_1 .

2.2.3 Fittings of the exponents and time delays

In our previous study (Sihto et al., 2006) the exponents and time delays relating sulphuric acid concentration and nucleation mode particle concentrations were determined visually from the data. In this work we used a slightly more sophisticated method: we determined the values for the exponents n_{N36} and n_{J3} , as well as the time delays Δt_{N36} and Δt_{J3} for each analysed day with a two-parameter fitting procedure, where the combination $(n, \Delta t)$ maximizing the correlation coefficient between $[\text{H}_2\text{SO}_4]$ and N_{3-6} or J_3 was chosen. In the fittings, the exponent was varied in the steps of 0.01 and the time delay in 10 min. intervals, corresponding to the time resolution of the particle measurements. In the case of J_1 , no time delay with respect to $[\text{H}_2\text{SO}_4]$ was assumed and only the exponent n_{J1} was fitted, assuming it to have a discrete value 1, 2 or 3, consistently with the nucleation theories. An important advantage of this method compared to e.g. least-squares fitting is that it gives more statistical weight to the temporal evolution of the data, rather than the magnitude of the correlated points. However, we made a comparison with a least squares fit and in most of the studied cases, the results agreed well. We also re-analysed the data from the QUEST II campaign presented in our previous paper, to check the consistency of the two approaches, and the results obtained with the visual inspection are essentially the same as obtained with our fittings.

2.2.4 Determining the nucleation coefficients A and K

In order to investigate the applicability of the proposed atmospheric nucleation schemes – particularly cluster activation and kinetic nucleation – we calculated the formation rate of 1 nm particles (J_1) from the particle measurements (Eqs. 6 and 7). The obtained J_1 was compared with the J_1 calculated from the sulphuric acid data according to Eqs. (2) and (3). The nucleation coefficients A and K were kept as free parameters which were determined with least squares fits to the J_1 estimated from the particle measurements. To double-check the values of A and K we performed the fit-

Title Page

Abstract

Introduction

Conclusions

References

Tables

Figures

◀

▶

◀

▶

Back

Close

Full Screen / Esc

Printer-friendly Version

Interactive Discussion

ting also to J_3 -data: J_1 calculated from sulphuric acid was scaled to the formation rate of 3 nm particles using Eq. (7) in the opposite direction, and the obtained estimate for J_3 was compared with the J_3 calculated from the particle measurements.

2.2.5 Analytical approach connecting the exponents n_{N36} and n_{J3}

5 The actual connections between N_{3-6} , J_3 and J_1 are complicated, and the relations between the exponents connecting them to the sulphuric acid are affected by, for instance, changes in the particle growth rates as well as the condensation and coagulation sinks (see Eqs. 6 and 7). To have a simple theoretical reference with which to compare the results obtained from the experimental data, we derived an analytical expression for J_3 that links the exponents n_{N36} and n_{J3} . The detailed derivation of the expression is presented in Appendix A. Using the relation between N_{3-6} and $[H_2SO_4]^{n_{N36}}$ and assuming a simple sinusoidal production term for $[H_2SO_4]$ we obtained an expression for J_3 as a function of $[H_2SO_4]$ and n_{N36} :

$$J_3 = B \cdot [H_2SO_4]^{n_{N36}-1} + D \cdot [H_2SO_4]^{n_{N36}} + E \cdot [H_2SO_4]^{n_{N36}+1}, \quad (8)$$

15 where the coefficients B , D and E depend on e.g. $CoagS_{3-6}$, CS (condensation sink), GR_{1-3} and n_{N36} (see Appendix A for details). By comparing the magnitude of the terms in Eq. (8), we get a theoretical estimate for the dominating power of $[H_2SO_4]$ in the J_3 expression. We chose to use the n_{N36} as the reference (instead of n_{J3}), since it can be directly and reliably determined from the available data. Even though desirable, linking the exponents n_{J3} and n_{J1} is considerably more difficult because of the exponential relation between J_1 and J_3 , containing the GR_{1-3} (which is presumably a function of $[H_2SO_4]$) in the exponential term (Eq. 7).

Sulphuric acid and particle formation during QUEST III–IV

I. Riipinen et al.

Title Page

Abstract

Introduction

Conclusions

References

Tables

Figures

◀

▶

◀

▶

Back

Close

Full Screen / Esc

Printer-friendly Version

Interactive Discussion

3 Results and discussion

3.1 Correlations of sulphuric acid and freshly nucleated particles

3.1.1 Correlation of sulphuric acid and N_{3-6} during new particle formation

The exponents $n_{N_{36}}$ and the time delays $\Delta t_{N_{36}}$ were determined for all new particle formation days for which sulphuric acid data was available. In Heidelberg (QUEST III) this corresponded to 10 days, and in Hyytiälä (BACCI/QUEST IV) 18 days in total. Figure 1a shows the sulphuric acid and 3–6 nm particle concentrations for the QUEST III campaign, and Fig. 1b shows the corresponding plot for the BACCI/QUEST IV. In Fig. 1c we present the ammonia data available for the Hyytiälä campaign. From these figures the clear correlation between N_{3-6} and $[\text{H}_2\text{SO}_4]$ can be observed on particle formation event days (white background), whereas on the non-event days (dark gray) this correlation seems to be absent. The latter applies also for most of the undefined days (light gray), particularly in Hyytiälä. In Heidelberg the undefined days resemble the event days with a clearer correlation between the particle concentrations and sulphuric acid. It can also be noted that the correlation patterns in general are not as clear for the more polluted Heidelberg data as for Hyytiälä. No significant relation between the particle concentrations and ammonia is observed in Hyytiälä. This might be due to the relatively high concentrations of ammonia: even if ammonia participated in the nucleation processes, the new particle formation would not be here limited by the ammonia concentrations.

Figures 2a and 3a show typical new particle formation events observed in Heidelberg (22 March 2004) and Hyytiälä (27 April 2005), respectively. In both cases a clear new nucleation mode is formed around noon, and a continuous growth of the mode is seen during the day. As can be seen from the Figs. 1, 2 and 3, the background particle concentration and thus the condensation sink (see Kulmala et al., 2001b) at Heidelberg is typically significantly higher (mean $CS=1.4\times 10^{-2}\text{ s}^{-1}$) than in Hyytiälä (mean $CS=4.2\times 10^{-3}\text{ s}^{-1}$).

Title Page

Abstract

Introduction

Conclusions

References

Tables

Figures

◀

▶

◀

▶

Back

Close

Full Screen / Esc

Printer-friendly Version

Interactive Discussion

Sulphuric acid and particle formation during QUEST III–IV

I. Riipinen et al.

Title Page

Abstract

Introduction

Conclusions

References

Tables

Figures

◀

▶

◀

▶

Back

Close

Full Screen / Esc

Printer-friendly Version

Interactive Discussion

Figures 2b and 3b show exemplary plots of the diurnal variation of N_{3-6} and sulphuric acid concentration (upper panel in both figures), and figures illustrating the ($n_{N_{36}}$, $\Delta t_{N_{36}}$)-fitting procedures (lower panel) for Heidelberg and Hyytiälä. On the exemplary day, the optimal fitting parameters for Heidelberg data were $n_{N_{36}}=0.7$ and $\Delta t_{N_{36}}=1.7$ h, the maximum correlation coefficient being 0.67 (see Fig. 2b). For Hyytiälä data (see Fig. 3b), the corresponding values were $n_{N_{36}}=2.4$, $\Delta t_{N_{36}}=1.3$ h and $R_{\max}=0.96$.

Clear positive correlation between N_{3-6} and sulphuric acid was observed during all new particle formation events at both locations. The mean value of the correlation coefficient between N_{3-6} and sulphuric acid raised to the power $n_{N_{36}}$ is 0.75 (R in the range 0.57–0.90) for Heidelberg, and 0.82 (R in the range 0.54–0.97) for Hyytiälä. Compared to the Hyytiälä conditions, the high and fluctuating background particle concentrations in Heidelberg made accurate correlation analysis often challenging. Also, in Heidelberg, the sulphuric acid data was available only from 08:00 a.m. to 06:00 p.m. for each day, which naturally affected the analysis as well.

In the fittings, the exponents $n_{N_{36}}$, were allowed to vary in the range 0.7–5. Based on the fittings, the investigated days could be separated to four categories: days with $n_{N_{36}}\sim 1$, $n_{N_{36}}\sim 1.5$, $n_{N_{36}}\sim 2.0$ and days with $n_{N_{36}}\sim 2.5$ –3. A more detailed division would not be appropriate, because in a much denser scale the differences in the correlation coefficients (i.e. in the quality of the fits) would be negligible. The distribution of the exponents for both measurement sites is summarized in Table 1. The exponents are similar to those found by Sihto et al. (2006) for the QUEST II campaign in Hyytiälä and Weber et al. (1995b, 1997) at Mauna Loa and Idaho Hill.

A summary of the fitted time delays $\Delta t_{N_{36}}$ and the corresponding 1–3 nm growth rates is presented in Table 2 for Heidelberg and Hyytiälä, and the results from QUEST II are shown for comparison. In Heidelberg, the growth rates are in the range 0.9–2.7 nm/h, the mean and median values being 1.5 nm/h and 1.3 nm/h. In Hyytiälä the growth rates are 0.4–2.4 nm/h, having their mean at 1.1 nm/h and median at 0.8 nm/h. The observations from Hyytiälä are consistent, first with the growth rates reported in our previous paper (mean 1.2 nm/h, median 1.2 nm/h, Sihto et al., 2006), and second

**Sulphuric acid and
particle formation
during QUEST III–IV**

I. Riipinen et al.

Title Page

Abstract

Introduction

Conclusions

References

Tables

Figures

◀

▶

◀

▶

Back

Close

Full Screen / Esc

Printer-friendly Version

Interactive Discussion

with the GR_{1-3} values determined from ion measurements by Hirsikko et al. (2005). The mean growth rate for 3–7 nm particles in Hyytiälä during QUEST IV campaign was 3.6 nm/h, suggesting that additional vapours participate in the growth processes after its initial steps (see also Kulmala et al., 2004b). The GR_{1-3} values obtained for the Heidelberg data set are significantly lower than those reported by Fiedler et al. (2005) (mean GR_{1-3} 7.7 nm/h, median 6.3 nm/h). One reason for the large differences in the growth rates is the different analysis methods: Fiedler et al. determine $\Delta t_{N_{36}}$ by comparing N_{3-6} and $[H_2SO_4]$ directly, whereas we take into account the possible power-law dependence of the two curves and fit the time delay numerically.

In the present study one value for $n_{N_{36}}$ as well as for $\Delta t_{N_{36}}$ was assumed to be valid throughout the day. This, however, might not be the case if the aerosol dynamic conditions, for instance the nucleation processes or the amount of condensable vapours, vary during the day.

3.1.2 Correlation of sulphuric acid and J_3 during new particle formation

On all the studied new particle formation days, the formation rate of 3 nm particles (J_3) was observed to correlate with the sulphuric acid concentration. We performed a similar fitting procedure for the J_3 data as we did for the N_{3-6} , and searched the combination of the exponent n_{J_3} and time delay Δt_{J_3} that gave the maximum correlation coefficient for the relation $J_3 \propto [H_2SO_4(t - \Delta t_{J_3})]^{n_{J_3}}$. Figure 4 shows the fit to the J_3 -data on 12 April 2005 in Hyytiälä, when the best agreement between the curves was obtained with an exponent $n_{J_3} = 2.0$ and time delay $\Delta t_{J_3} = 0.5$ h. On this day there is a high peak in J_3 that clearly corresponds to a peak in $[H_2SO_4]^2$. The general agreement of the curves is also satisfying. It can be observed from Fig. 4 that in the afternoon the time delay between $[H_2SO_4]$ and J_3 increases slightly compared to the fitted value. Similar changes in time lags and exponents were observed during several other days. As stated above, however, at this stage we chose to fit one exponent and time delay per day, mostly to ensure the statistical reliability of the fits.

The exponents n_{J_3} typically varied between 1–3 in both locations. In Heidelberg, on

Sulphuric acid and particle formation during QUEST III–IV

I. Riipinen et al.

[Title Page](#)[Abstract](#)[Introduction](#)[Conclusions](#)[References](#)[Tables](#)[Figures](#)[◀](#)[▶](#)[◀](#)[▶](#)[Back](#)[Close](#)[Full Screen / Esc](#)[Printer-friendly Version](#)[Interactive Discussion](#)

2 days (20% of all analysed days) the exponent was approximately 1, on 5 (50%) days the exponent was 1.5, and on 2 (20%) days n_{J_3} had the value of 2. On one day the exponent corresponding to the best correlation was approximately 3. In Hyytiälä, the results were similar, on 3 days (16%) n_{J_3} was approximately 1, on 2 (11%) days n_{J_3} had the value 1.5, and on 7 (37%) days the exponent was 2. On 3 (16%) days n_{J_3} was 2.5, and on 3 (16%) days it had the value of 3. The time delay Δt_{J_3} had a mean value of 0.8 h and a median 0.7 h in Heidelberg. In Hyytiälä, the corresponding values were 1.7 h and 1.2 h.

The formation rate J_3 is plotted versus the sulphuric acid concentration in Figs. 5a and b for Heidelberg and Hyytiälä, respectively. The plots include all data points between 06:00 a.m. and 06:00 p.m. for all event days during the campaigns. Lines with slopes 1 and 2 (corresponding to the values 1 and 2 for the exponent n_{J_3}) are also indicated in the figures to guide the eye. The scatterplots illustrate what also has been observed for each studied day separately: the exponent n_{J_3} is typically between 1 and 2. Similar result has been reported by Weber (1995b) for measurements at a marine and a continental site, where the exponent n_{J_3} was also between 1 and 2.

When calculating the J_3 with Eq. (6), the numerical differentiation of the N_{3-6} data results in relatively large fluctuations in J_3 , despite the applied smoothing algorithm. The J_3 data therefore includes negative values, which must be left out from the analysis. The reasoning for this is that if we assume particles to be lost only due to coagulation, and not due to evaporation (i.e. GR_3 in Eq. (6) is assumed to be positive), J_3 should be positive. Due to the resulting gaps in J_3 data, the correlation coefficients between J_3 and $[\text{H}_2\text{SO}_4]^{n_{J_3}}$ are not as high as in case of N_{3-6} . However, the correlation between J_3 and $[\text{H}_2\text{SO}_4]^{n_{J_3}}$ is clear, the correlation coefficients being 0.37–0.85 in Heidelberg, and 0.53–0.97 in Hyytiälä. In J_3 there were often distinct peaks that corresponded clearly to peaks in $[\text{H}_2\text{SO}_4]$ data (see Fig. 4). It should be noted that these peaks do not necessarily coincide with peaks in N_{3-6} , because the J_3 is derived from N_{3-6} using Eq. (6). This observation gives us further confidence that there is a fundamental connection between the new particle formation rates and sulphuric acid, which can be

formulated e.g. according to Eqs. (2) and (3).

3.1.3 Comparison of the exponents and time delays for N_{3-6} and J_3

The time delays Δt and exponents for both N_{3-6} and J_3 -fittings are listed in Tables 3a (Heidelberg) and 3b (Hyytiälä). It can be observed that the time delays between J_3 and sulphuric acid are consistently smaller than the time delays for N_{3-6} . The mean time delays for J_3 in Hyytiälä and Heidelberg are 1.7 h and 0.8 h, respectively, while the values for N_{3-6} are 2.4 h and 1.5 h, respectively. The difference in time delays $\Delta t_{N_{36}}$ and Δt_{J_3} is on average 0.7 h. The result is reasonable, since the formation rate J_3 is essentially the differential of N_{3-6} . This implies that a rise in the N_{3-6} is always preceded by a rise in J_3 .

In this study we have used the time delay $\Delta t_{N_{36}}$ instead of Δt_{J_3} for estimating the mean growth rates for 1–3 nm particles during new particle formation (see Tables 3a and b). There are several reasonings for this choice. First, $\Delta t_{N_{36}}$ can be determined directly and reliably from the data, whereas J_3 needs to be calculated using the measured data. Second, using $\Delta t_{N_{36}}$ makes our results comparable with the available literature, where similar methods have been used (Weber et al., 1997; Fiedler et al., 2005; Sihto et al., 2006). Additionally, preliminary calculations with an aerosol dynamics model (UHMA, see Korhonen et al., 2004) imply that the growth rate determined from the time delay of N_{3-6} is closer to the real particle growth rates (which are not constant, either in time or for all 1–3 nm particles) as compared with the one calculated from the time delay of J_3 . It should be borne in mind, however, that if the growth rate of 1–3 nm particles would be constant, it would be directly obtained from the time difference between J_1 and J_3 , or if $J_1 \propto [\text{H}_2\text{SO}_4]$, between $[\text{H}_2\text{SO}_4]$ and J_3 . Also the 1–3 nm growth rates determined from ion measurements are close to the growth rates obtained from $\Delta t_{N_{36}}$.

The exponent in J_3 correlation was observed to be greater or equal to the exponent in N_{3-6} correlation ($n_{J_3} \geq n_{N_{36}}$, see Tables 3a and b). In Hyytiälä BACCI/QUEST IV data set, on 5 days of the total of 18 new particle formation days the exponent n_{J_3} is

Title Page

Abstract

Introduction

Conclusions

References

Tables

Figures

◀

▶

◀

▶

Back

Close

Full Screen / Esc

Printer-friendly Version

Interactive Discussion

higher by approximately 0.5 compared with n_{N36} and by 1.0 on 7 days. Similar trend is observed in Heidelberg, where the exponent increases by 0.5 on 4 days and by 1.0 on 3 days, staying the same on 3 days. The change in the exponent when calculating back from N_{3-6} to J_3 is again related to the fact that N_{3-6} is an integral quantity of J_3 :

N_{3-6} increases less steeply with time compared to J_3 , resulting in smaller exponent for N_{3-6} when fitted with sulphuric acid data.

To further investigate the relationship of exponents in N_{3-6} and J_3 correlations, we have derived an analytical formula to estimate the exponent of J_3 correlation if the exponent for N_{3-6} is known (see Appendix A). Assuming a relationship $N_{3-6} = C [\text{H}_2\text{SO}_4]^{n_{N36}}$ and using a sinusoidal profile for $[\text{H}_2\text{SO}_4]$ production, we find that the expression for J_3 includes $[\text{H}_2\text{SO}_4]$ -dependent terms with the exponents $n_{N36}-1$, n_{N36} , and $n_{N36}+1$. We can now carry on an exemplary calculation for one day, substituting typical ambient values in Hyytiälä conditions for the condensation and coagulation sinks, for instance, $CS = 1.0 \times 10^{-3} \text{ s}^{-1}$ and $CoagS = 0.6 \times 10^{-4} \text{ s}^{-1}$. The coefficient for the sulphuric acid formation rate can be set to e.g. $Q_0 = 1.0 \times 10^7 \text{ cm}^{-3} \text{ h}^{-1}$ (corresponding to a maximum sulphuric acid concentration of approximately $5.5 \times 10^6 \text{ cm}^{-3}$). The concentration obtained with this production rate (Eq. A8 in Appendix A) is presented in Fig. 6a. First, we used the maximum growth rate from BACCI/QUEST IV, $GR_{1-3} = 2.4 \text{ nm/h}$. According to Kulmala et al. (2001b) and Lehtinen and Kulmala (2003) the factor α now has the value of approximately $1.8 \times 10^{-7} \text{ nm/h} \cdot \text{cm}^3$. Thus the sulphuric acid would explain at maximum a growth rate of about 1.0 nm/h , therefore leading to $\beta = 1.4 \text{ nm/h}$. The terms $B [\text{H}_2\text{SO}_4]^{n_{N36}-1}$, $D [\text{H}_2\text{SO}_4]^{n_{N36}}$ and $E [\text{H}_2\text{SO}_4]^{n_{N36}+1}$ normalized with the factor C (Eq. A2) and the total normalized formation rate expressed with Eq. (8) are plotted in Fig. 6b. Second, the total growth rate was assumed to be 0.4 nm/h , corresponding to the minimum growth rate observed during the BACCI/QUEST IV. In this case, the maximum sulphuric acid concentration could explain the growth rate totally, and therefore $\beta = 0$. The terms $B [\text{H}_2\text{SO}_4]^{n_{N36}-1}$, $D [\text{H}_2\text{SO}_4]^{n_{N36}}$ and $E [\text{H}_2\text{SO}_4]^{n_{N36}+1}$ and the total J_3 for this case are presented in Fig. 6c. In these calculations we assumed $n_{N36} = 2$; the case with $n_{N36} = 1$ gives qualitatively similar results.

Sulphuric acid and particle formation during QUEST III–IV

I. Riipinen et al.

Title Page

Abstract

Introduction

Conclusions

References

Tables

Figures

◀

▶

◀

▶

Back

Close

Full Screen / Esc

Printer-friendly Version

Interactive Discussion

**Sulphuric acid and
particle formation
during QUEST III–IV**

I. Riipinen et al.

The calculations indicate that the term with the exponent n_{N36} is dominating in our first exemplary case, where only about half of the growth rate can be explained by sulphuric acid. However, the $n_{N36}+1$ –dependent term is important as well, giving significant contribution to the total formation rate. In the second case, on the other hand, when all of the growth can be explained by the sulphuric acid concentration, the $n_{N36}+1$ – dependent term dominates. In both cases the $n_{N36}-1$ –dependent term is of minor importance. Thus the simple analytical derivation suggests that $n_{N36}-1 \leq n_{J3} \leq n_{N36}+1$. The same relation was observed from the data: the n_{J3} was always larger than or equal to n_{N36} , with a maximum difference of unity. The derived result indicates that the difference between the exponents n_{N36} and n_{J3} is clearly larger, the larger the contribution of sulphuric acid to the 1–3 nm particle growth (see Fig. 6).

3.2 Nucleation coefficients A and K during new particle formation

The two atmospheric nucleation mechanisms – the activation of stable clusters and kinetic nucleation by sulphuric acid – were tested by comparing the formation rates J_1 and J_3 calculated from the sulphuric acid concentration according to Eqs. (2) and (3) with those estimated from the particle measurements. The actual values for the nucleation coefficients A and K were determined with least squares fits. In the relationship $J_1 \propto [\text{H}_2\text{SO}_4]^{n_{J1}}$ the exponent is expected to be discrete, with $n_{J1}=1$ in the case of particle formation by cluster activation, and $n_{J1}=2$ in the case of kinetic nucleation. We also calculated the nucleation rate with the exponent $n_{J1}=3$ for each day as a representative of thermodynamically limited nucleation scheme.

The nucleation coefficients A and K were determined for all event days during QUEST III and IV campaigns. We determined both coefficients for every day, since there were days when the exponents, time lags or kinetic coefficients seemed to vary during the day. There are several possible reasons for this, such as changes in the amount of condensable vapours and particle growth rates, or different nucleation mechanisms taking place simultaneously. The results are summed in Table 4, where also values for the QUEST II campaign are listed for comparison. In Hyytiälä,

[Title Page](#)[Abstract](#)[Introduction](#)[Conclusions](#)[References](#)[Tables](#)[Figures](#)[◀](#)[▶](#)[◀](#)[▶](#)[Back](#)[Close](#)[Full Screen / Esc](#)[Printer-friendly Version](#)[Interactive Discussion](#)

**Sulphuric acid and
particle formation
during QUEST III–IV**

I. Riipinen et al.

Title Page

Abstract

Introduction

Conclusions

References

Tables

Figures

◀

▶

◀

▶

Back

Close

Full Screen / Esc

Printer-friendly Version

Interactive Discussion

during the QUEST IV campaign the activation coefficients varied from $7.6 \times 10^{-8} \text{ s}^{-1}$ to $1.6 \times 10^{-5} \text{ s}^{-1}$ with a median value of $4.9 \times 10^{-7} \text{ s}^{-1}$. Kinetic coefficients were in the range 2.0×10^{-14} – $1.5 \times 10^{-12} \text{ cm}^3 \text{ s}^{-1}$ with a median of $6.6 \times 10^{-14} \text{ cm}^3 \text{ s}^{-1}$. These values are about the same order of magnitude as during the QUEST II campaign, with somewhat larger range from the minimum to the maximum and smaller median during the QUEST IV. In Heidelberg the coefficients were significantly higher: the activation coefficients varied from $2.6 \times 10^{-6} \text{ s}^{-1}$ to $3.5 \times 10^{-4} \text{ s}^{-1}$ with a median of $1.1 \times 10^{-5} \text{ s}^{-1}$, and kinetic coefficients from $3.7 \times 10^{-13} \text{ cm}^3 \text{ s}^{-1}$ to $1.3 \times 10^{-10} \text{ cm}^3 \text{ s}^{-1}$ with a median of $2.3 \times 10^{-11} \text{ cm}^3 \text{ s}^{-1}$. These values are slightly more than an order of magnitude greater than the coefficients in Hyytiälä.

Exponents n_{J_1} , which can be termed also as the exponents of the nucleation were determined simply by choosing the curve ($n_{J_1}=1, 2$ or 3) that gives the best correspondence to the J_1 estimated from the particle measurements. The values are listed in Table 3. Kulmala et al. (2006) have shown that theoretically always applies $n_{J_1} \leq n_{J_3}$. This condition was always satisfied in this study as well (see Table 3). This result, along with the fact that n_{J_3} never exceeded 3, strongly suggest that the activation of stable clusters and/or kinetic nucleation are possible nucleation mechanisms present in atmospheric particle formation. On some days in Heidelberg, when a clear rise in J_3 was missing or the data was heavily scattered, we were not able to specify the exponent n_{J_1} .

3.3 Non-events and undefined days

During the BACCI/QUEST IV campaign in Hyytiälä there were 17 days with no significant new particle formation when also sulphuric acid measurements were performed; of these 9 were classified as “non-event days” and 8 as “undefined”. This data allows us to test the framework of activation and kinetic nucleation during days with no new particle formation using the determined nucleation coefficients. We calculated the nucleation rate J_1 from the sulphuric acid concentration according to activation hypothesis

(Eq. 2) using the median value during BACCI/QUEST IV for A , thus $A=4.9\times 10^{-7}\text{ s}^{-1}$. The J_1 was scaled to the formation rate J_3 by Eq. (7) using the median value for GR_{1-3} (see Table 3). The condensation sink was calculated for each day in the same manner as for the event days from the background aerosol distribution in a running window of $[t-\Delta t, t]$. The calculations were repeated using the kinetic coefficient K , yielding similar results.

The median values of J_1 on days with no new particle formation, calculated according to the activation hypothesis, were about half of the values on the event days. The medians of the J_1 :s were $0.46\text{ cm}^{-3}\text{ s}^{-1}$ and $0.32\text{ cm}^{-3}\text{ s}^{-1}$ on non-event and undefined days, while on the event days the median J_1 was $0.7\text{ cm}^{-3}\text{ s}^{-1}$. However, this difference in the median values is not significant enough to alone explain the lack of new particle formation. The maximum nucleation rates during the day showed a clearer difference with $1.88\text{ cm}^{-3}\text{ s}^{-1}$ and $2.04\text{ cm}^{-3}\text{ s}^{-1}$ on non-event and undefined days compared to $15.86\text{ cm}^{-3}\text{ s}^{-1}$ on event days. Thus on the days with no new particle formation the peak value in sulphuric acid (i.e. in the nucleation rate) was significantly smaller than on the event days.

When considering the formation rates J_3 , the event days differed clearly from the non-event days (see Fig. 7a for the Hyytiälä data). On 6 non-event days out of 9, the median of the calculated J_3 was at least an order of magnitude lower compared to the median J_3 on event days. The median of J_3 on the event days was about $1.6\times 10^{-2}\text{ cm}^{-3}\text{ s}^{-1}$ but on non-event days only $5.2\times 10^{-4}\text{ cm}^{-3}\text{ s}^{-1}$. Also the maximum J_3 values had a difference of the same magnitude, being $0.4\text{ cm}^{-3}\text{ s}^{-1}$ on event days and $4.6\times 10^{-3}\text{ cm}^{-3}\text{ s}^{-1}$ on the non-event days. Since the differences were not as pronounced in the J_1 values, the main reason for the small predicted J_3 :s on the nonevent days was most probably the condensation sink, which was taken into account when scaling from J_1 to J_3 by the exponential formula (Eq. 7). Also a slow growth rate could be a reason for a small J_3 , but its effect cannot be studied in detail because the growth rate naturally cannot be determined for the non-event days. In any case, the effect of the CS is expected to be more pronounced compared to GR_{1-3} , because the variation

Sulphuric acid and particle formation during QUEST III–IV

I. Riipinen et al.

Title Page

Abstract

Introduction

Conclusions

References

Tables

Figures

◀

▶

◀

▶

Back

Close

Full Screen / Esc

Printer-friendly Version

Interactive Discussion

in CS is much larger than in the growth rate.

In contrast to the non-event days, the J_3 :s on the undefined days in Hyytiälä lie mostly in the same range as on the event days, as seen in Fig. 7a. The median of J_3 on undefined days was $1.2 \times 10^{-2} \text{ cm}^{-3} \text{ s}^{-1}$ whereas on the event days it was $1.6 \times 10^{-2} \text{ cm}^{-3} \text{ s}^{-1}$. In the maximum values of J_3 we see some difference, with $0.07 \text{ cm}^{-3} \text{ s}^{-1}$ on the undefined and $0.4 \text{ cm}^{-3} \text{ s}^{-1}$ on the event days. This might indicate that the characteristics of the undefined days typically resemble more those of event days than non-event days. There may be new particle formation happening also on the undefined days, but due to e.g. the meteorological situation, lack of continuous growth or rapidly changing air masses they are classified as undefined.

Similar analysis as described above for Hyytiälä was conducted for the Heidelberg data as well. Due to the high background concentrations and the gaps in sulphuric acid data, there were only two analysable non-event days. The atmospheric nucleation rates J_1 on these days were $4.7 \text{ cm}^{-3} \text{ s}^{-1}$ and $5.7 \text{ cm}^{-3} \text{ s}^{-1}$. On the undefined days, the median J_1 was $5.5 \text{ cm}^{-3} \text{ s}^{-1}$, and the corresponding value for the event days was $25.2 \text{ cm}^{-3} \text{ s}^{-1}$, resulting in a difference of approximately factor 5. For the J_3 values the differences between event and non-event or undefined days were again more pronounced (see Fig. 7b for the exact numbers), being typically about two orders of magnitude. In Heidelberg, also the undefined days differ clearly from the days with new particle formation.

As a summary, on most non-event days the formation rates predicted according to activation or kinetic nucleation hypotheses are so low that they would not lead to a new particle formation event. Thus in most cases the data from non-event days is consistent with the framework of activation or kinetic nucleation using the nucleation coefficients determined for the particle formation event days. There are some undefined days when the lack of new particle formation is probably due to the low sulphuric acid concentration. However, most often the sulphuric acid is not the limiting factor, but the condensation sink and a slow growth rate prevent particles from growing to sizes above 3–6 nm.

**Sulphuric acid and
particle formation
during QUEST III–IV**

I. Riipinen et al.

Title Page

Abstract

Introduction

Conclusions

References

Tables

Figures

◀

▶

◀

▶

Back

Close

Full Screen / Esc

Printer-friendly Version

Interactive Discussion

4 Conclusions

We have studied the role on sulphuric acid in new particle formation and the initial particle growth during QUEST III and IV campaigns in Heidelberg and Hyytiälä, the preceding representing a polluted environment in Central Europe and the latter a rural boreal site in Finland.

We have quantitatively studied the dependencies of newly formed atmospheric particle concentrations and formation rates on sulphuric acid concentrations, using a computer-based fitting method. We have observed that both 3–6 nm particle concentrations and their formation rates have a power-law dependence on sulphuric acid concentrations (delayed with time lag Δt_{N36} or Δt_{J3}), the typical powers being between 1 and 2. This observation holds for both locations and is consistent with the results reported by Sihto et al. for QUEST II campaign in Hyytiälä. The exponents 1–2, particularly in the relation between sulphuric acid and the 1 and 3 nm formation rates, strongly suggest that the activation of stable clusters and/or kinetic nucleation are probable mechanisms behind the observed atmospheric particle formation. The time lags between sulphuric acid concentration and 3–6 nm particle concentrations and formation rates are rather similar at both locations and during all campaigns. However, the time lags in Heidelberg are approximately 0.5–1 h lower than in Hyytiälä, which indicates slightly higher 1–3 nm particle growth rates in Heidelberg (mean 1.5 nm/h) in comparison with Hyytiälä (mean 1.2 nm/h for QUEST II and 1.1 nm/h for QUEST IV). This may be related to the higher background particle concentrations in Heidelberg: due to the higher coagulation sink, the particles have to grow faster to survive to detectable sizes.

In both places we have observed similar relations between the time lags and exponents in the sulphuric acid dependencies of the particle concentrations and formation rates: the time delay between sulphuric acid and particle formation rate tends to be shorter and the exponents higher than the corresponding variables for particle concentrations. The difference in the time delays can be explained by the differential relation between the formation rates and the concentrations. For the difference in the expo-

Sulphuric acid and particle formation during QUEST III–IV

I. Riipinen et al.

Title Page

Abstract

Introduction

Conclusions

References

Tables

Figures

⏪

⏩

◀

▶

Back

Close

Full Screen / Esc

Printer-friendly Version

Interactive Discussion

nents n_{N36} and n_{J3} we have derived a simple analytical formula, which, if applied in typical ambient conditions produces similar relation as observed from the data. The main reason for the difference in the exponents is the significant participation of sulphuric acid in the initial particle growth.

5 The empirical nucleation coefficients A (cluster activation) and K (kinetic nucleation) have been determined for QUEST III and BACCI/QUEST IV data. The results have been compared with the values reported by Sihto et al. (2006) for Hyytiälä (QUEST II). Both coefficients are the same order of magnitude for the Hyytiälä campaigns (QUEST II and BACCI/QUEST IV), the latter campaign having slightly lower values than the preceding one. This difference, however, might be explained by the limited data sets. The values for A and K in Heidelberg, on the other hand, are approximately an order of magnitude higher than in Hyytiälä. The result is probably due to the different conditions in the measurement sites, such as the background particle concentrations, variety of condensable vapours or meteorological conditions. It is noteworthy that the kinetic coefficients in both locations are typically 2–4 orders of magnitude lower than the collision rate of $[\text{H}_2\text{SO}_4]$ molecules in atmospheric conditions ($3 \times 10^{-10} \text{ cm}^3 \text{ s}^{-1}$). The result indicates that probability of a stable cluster formation upon the collision of two sulphuric acid molecules is significantly smaller than unity.

15 Theoretical predictions for atmospheric nucleation rates J_1 and particle formation rates at 3 nm J_3 have been calculated for the days when no significant new particle formation and growth is observed. No significant difference between the J_1 values on particle formation event days and non-event or undefined days is observed, which implies that the observed new particle formation and growth typically cannot be predicted from sulphuric acid concentrations alone. However, when the predicted J_3 values on non-event days are compared to the rates observed on particle formation event days, a much clearer difference (usually about two orders of magnitude) is observed. Interestingly in Heidelberg, the same applies also for the undefined days, whereas in Hyytiälä the formation rates on undefined days are close to those of the event days. The results suggest that the main process limiting the particle formation and growth to detectable

Sulphuric acid and particle formation during QUEST III–IV

I. Riipinen et al.

[Title Page](#)[Abstract](#)[Introduction](#)[Conclusions](#)[References](#)[Tables](#)[Figures](#)[◀](#)[▶](#)[◀](#)[▶](#)[Back](#)[Close](#)[Full Screen / Esc](#)[Printer-friendly Version](#)[Interactive Discussion](#)

sizes is not the initial particle production by atmospheric nucleation of sulphuric acid, but rather the competition between the initial growth of the particles and the loss by scavenging to larger particles, as also speculated by e.g. Kulmala (2003). Our observations support the ideas of Kulmala et al. (2000, 2004b), where the atmospheric particle formation is proposed to be a two-step process consisting of 1) the nucleation forming thermodynamically stable clusters present all the time, and 2) the activation and growth of these clusters via vapour condensation.

In general, it can be concluded that the introduced simple models based on the cluster activation and kinetic nucleation mechanisms are able to predict the occurrence of new particle formation and their subsequent growth reasonably well, if the particle scavenging and growth are accounted for.

Appendix A

Derivation of the analytical expression connecting J_3 and n_{N36}

According to Eq. (6) the formation rate of 3 nm particles can be written

$$J_3 = \frac{dN_{3-6}}{dt} + \text{CoagS} \cdot N_{3-6} + \frac{GR_{1-3}}{3 \text{ nm}} \cdot N_{3-6}. \quad (\text{A1})$$

According to observations, the particle concentration can be expressed as

$$N_{3-6} = C [\text{H}_2\text{SO}_4]^{n_{N36}}. \quad (\text{A2})$$

If we now assume that the particle growth is partly by sulphuric acid, partly by some other condensing vapour (e.g. organics), the growth rate can be written as

$$GR_{1-3} = \alpha [\text{H}_2\text{SO}_4] + \beta. \quad (\text{A3})$$

Substituting Eqs. (A2) and (A3) to Eq. (A1), we get

$$J_3 = C \left[n_{N36} [\text{H}_2\text{SO}_4]^{n_{N36}-1} \cdot \frac{d[\text{H}_2\text{SO}_4]}{dt} + \text{CoagS} \cdot [\text{H}_2\text{SO}_4]^{n_{N36}} + \right.$$

10860

Sulphuric acid and particle formation during QUEST III–IV

I. Riipinen et al.

Title Page

Abstract

Introduction

Conclusions

References

Tables

Figures

◀

▶

◀

▶

Back

Close

Full Screen / Esc

Printer-friendly Version

Interactive Discussion

Title Page

Abstract

Introduction

Conclusions

References

Tables

Figures

◀

▶

◀

▶

Back

Close

Full Screen / Esc

Printer-friendly Version

Interactive Discussion

$$\frac{\beta}{3 \text{ nm}} \cdot [\text{H}_2\text{SO}_4]^{n_{N36}} + \frac{\alpha}{3 \text{ nm}} \cdot [\text{H}_2\text{SO}_4]^{n_{N36}+1} \quad (\text{A4})$$

On the other hand, we can write a balance equation for the $[\text{H}_2\text{SO}_4]$:

$$\frac{d[\text{H}_2\text{SO}_4]}{dt} = Q - CS \cdot [\text{H}_2\text{SO}_4], \quad (\text{A5})$$

where Q is the production rate of sulphuric acid. Let us now simply assume a sinusoidal production

$$Q = Q_0[\sin(\omega t + k) + 1], \quad (\text{A6})$$

so that the production has a maximum at noon and a minimum at midnight. Thus we can set $\omega = \pi/12$ and $k = -\pi/12$ (as t is in hours). Equation (A6) can be substituted to Eq. (A5) to get a differential equation

$$\frac{d[\text{H}_2\text{SO}_4]}{dt} = Q_0[\sin(\omega t + k) + 1] - CS \cdot [\text{H}_2\text{SO}_4], \quad (\text{A7})$$

which can be solved for $[\text{H}_2\text{SO}_4]$, yielding:

$$[\text{H}_2\text{SO}_4] = Q_0 \left\{ \frac{CS}{\omega^2 + CS^2} \sin(\omega t + k) - \frac{\omega}{\omega^2 + CS^2} \cos(\omega t + k) - \left[\frac{1}{CS} - \frac{CS}{\omega^2 + CS^2} \right] e^{-CS \cdot t} + \frac{1}{CS} \right\}. \quad (\text{A8})$$

Combining Eqs. (A4), (A7) and (A8) and we can write J_3 as a function of $[\text{H}_2\text{SO}_4]$:

$$J_3 = B \cdot [\text{H}_2\text{SO}_4]^{n_{N36}-1} + D \cdot [\text{H}_2\text{SO}_4]^{n_{N36}} + E \cdot [\text{H}_2\text{SO}_4]^{n_{N36}+1}, \quad (\text{A9})$$

where now

$$\begin{aligned} B &= C \cdot n_{N36} Q_0 \left[\frac{\omega}{CS} \cos(\omega t + k) + \frac{\omega^2}{CS^2} \left(e^{-CS \cdot t} - 1 \right) \right] \\ D &= C \cdot \left[n_{N36} \cdot \frac{\omega^2 + CS^2}{CS} - n_{N36} CS + \text{CoagS} + \beta \cdot \frac{1}{3 \text{ nm}} \right] \\ E &= C \cdot \alpha \cdot \frac{1}{3 \text{ nm}}. \end{aligned} \quad (\text{A10})$$

Acknowledgements. The authors kindly acknowledge the Academy of Finland, BACCI and the QUEST project.

References

- Berndt, T., Böge, O., Stratmann, F., Heintzenberg, J., and Kulmala, M.: Rapid formation of new sulfuric acid particles at near-atmospheric conditions, *Science*, 307(5710), 698–700, 2005.
- Cabada, J. C., Khlystov, A., Wittig, A. E., Pilinis, C., and Pandis, S. N.: Light scattering by fine particles during the Pittsburgh Air Quality Study: Measurements and modelling, *J. Geophys. Res.*, 109, D16S03, doi:10.1029/2003JD004155, 2004.
- Dal Maso, M., Kulmala, M., Riipinen, I., Wagner, R., Hussein, T., Aalto, P. P., and Lehtinen, K. E. J.: Formation and growth of fresh atmospheric aerosols: Eight years of aerosol size distribution data from SMEAR II, Hyytiälä, Finland, *Boreal Environ. Res.*, 10, 323–336, 2005.
- Donaldson, K., Xy Li, and MacNee, W.: Ultra-fine (nanometer) particle-mediated lung injury, *J. Aerosol. Sci.*, 29, 553–560, 1998.
- Fiedler, V., Dal Maso, M., Boy, M., Aufmhoff, H., Hoffmann, J., Schuch, T., Birmili, W., Hanke, M., Uecker, J., Arnold, F., and Kulmala, M.: The contribution of sulphuric acid to atmospheric particle formation and growth: a comparison between boundary layers in Northern and Central Europe, *Atmos. Chem. Phys.*, 5, 1773–1785, 2005.
- Hanke, M., Uecker, J., Reiner, T., and Arnold, F.: Atmospheric peroxy radicals: ROXMAS, a new mass-spectrometric methodology for speciated measurements of HO₂ and Sigma RO₂ and first results, *Int. J. Mass Spectr.*, 213(2–3), 91–99, 2002.
- Hari, P. and Kulmala, M.: Station for measuring ecosystem-atmosphere relations (SMEAR II), *Boreal Environ. Res.*, 10, 315–322, 2005.
- Hirsikko, A., Laakso, L., Hörrak, U., Aalto, P.P., Kerminen, V.-M., and Kulmala, M.: Annual and size dependent variation of growth rates and ion concentrations in boreal forest, *Boreal Environ. Res.*, 10, 357–369, 2005.
- Kerminen, V.-M. and Kulmala, M.: Analytical formulae connecting the “real” and the “apparent” nucleation rate and the nuclei number concentration for atmospheric nucleation events, *J. Aerosol Sci.*, 33, 609–622, 2002.
- Korhonen, H., Lehtinen, K. E. J., and Kulmala, M.: Multicomponent aerosol dynamics model UHMA: model development and validation, *Atmos. Chem. Phys.*, 4, 757–771, 2004.
- Korhonen, P., Kulmala, M., Laaksonen, A., Viisanen, Y., McGraw, R., and Seinfeld, J. H.: Ternary nucleation of H₂SO₄, NH₃ and H₂O in the atmosphere, *J. Geophys. Res.*, 104, 26 349–26 353, 1999.
- Kulmala, M., Pirjola, L., and Mäkelä, J.: Stable sulphate clusters as a source of new atmo-

ACPD

6, 10837–10882, 2006

Sulphuric acid and particle formation during QUEST III–IV

I. Riipinen et al.

Title Page

Abstract

Introduction

Conclusions

References

Tables

Figures

◀

▶

◀

▶

Back

Close

Full Screen / Esc

Printer-friendly Version

Interactive Discussion

EGU

**Sulphuric acid and
particle formation
during QUEST III–IV**

I. Riipinen et al.

[Title Page](#)[Abstract](#)[Introduction](#)[Conclusions](#)[References](#)[Tables](#)[Figures](#)[◀](#)[▶](#)[◀](#)[▶](#)[Back](#)[Close](#)[Full Screen / Esc](#)[Printer-friendly Version](#)[Interactive Discussion](#)

spheric particles, *Nature*, 404, 66–69, 2000.

Kulmala, M., Hämeri, K., Aalto, P. P., Mäkelä, J. M., Pirjola, L., Nilsson, E. D., Buzorius, G., Rannik, Ü, Dal Maso, M., Seidl, W., Hoffmann, T., Janson, R., Hansson, H.-C., Viisanen, Y., Laaksonen, A., and O'Dowd, C. D.: Overview of the international project on Biogenic aerosol formation in the boreal forest (BIOFOR), *Tellus*, 53B, 324–343, 2001a.

Kulmala, M., Dal Maso, M., Mäkelä, J. M., Pirjola, L., Väkevä, M., Aalto, P., Miiikkulainen, P., Hämeri, K., and O'Dowd, C. D.: On the formation, growth and composition of nucleation mode particles, *Tellus*, 53B, 479–490, 2001b.

Kulmala, M.: How Particles Nucleate and Grow, *Science*, 302, 1000–1001, 2003.

Kulmala, M., Vehkamäki, H., Petäjä, T., Dal Maso, M., Lauri, A., Kerminen, V.-M., Birmili, W., McMurry, P. H.: Formation and growth rates of ultrafine atmospheric particles: A review of observations, *J. Aerosol Sci.*, 35, 143–176, 2004a.

Kulmala, M., Laakso, L., Lehtinen, K. E. J., Riipinen, I., Dal Maso, M., Anttila, T., Kerminen, V.-M., Horrak, U., Vana, M., and Tammet, H.: Initial steps of aerosol growth, *Atmos. Chem. Phys.*, 4, 2553–2560, 2004b.

Kulmala, M., Lehtinen, K. E. J., and Laaksonen, A.: Cluster activation theory as an explanation of the linear dependence of the formation rate of 3 nm particles and sulphuric acid concentrations, *Atmos. Chem. Phys.*, 6, 787–793, 2006.

Laakso, L., Anttila, T., Lehtinen, K. E. J., Aalto, P. P., Kulmala, M., Hörrak, U., Paatero, J., Hanke, M., and Arnold, F.: Kinetic nucleation and ions in boreal particle formation events, *Atmos. Chem. Phys.*, 4, 2353–2366, 2004a.

Laakso, L., Petäjä, T., Lehtinen, K. E. J., Kulmala, M., Paatero, J., Hörrak, U., Tammet, H., and Joutsensaari, J.: Ion production rate in a boreal forest based on ion, particle and radiation measurements, *Atmos. Chem. Phys.*, 4, 1933–1943, 2004b.

Lehtinen, K. E. J. and Kulmala, M.: A model for particle formation and growth in the atmosphere with molecular resolution in size, *Atmos. Chem. Phys.*, 3, 251–257, 2003.

Lohmann, U. and Feichter, J.: Global indirect aerosol effects: a review, *Atmos. Chem. Phys.*, 5, 715–737, 2005.

Lushnikov, A. A. and Kulmala, M.: Dimers in nucleating vapors, *Phys. Rev. E*, 58, 3157–3167, 1998.

McMurry, P. H. and Friedlander, S. K.: New particle formation in the presence of an aerosol, *Atmos. Environ.*, 13, 1635–1651, 1979.

Ramanathan, V., Crutzen, P. J., Kiehl, J. T., and Rosenfeld, D.: Aerosol, climate, and the

- hydrological cycle, *Science*, 294, 2119–2124, 2001.
- Sihto, S.-L., Kulmala, M., Kerminen, V.-M., Dal Maso, M., Petäjä, T., Riipinen, I., Korhonen, H., Arnold, F., Janson, R., Boy, M., Laaksonen, A., and Lehtinen, K. E. J.: Atmospheric sulphuric acid and aerosol formation: Implications from atmospheric measurements for nucleation and early growth mechanisms, *Atmos. Chem. Phys.*, 6, 4079–4091, 2006.
- 5 Spracklen, D. V., Carslaw, K. S., Kulmala, M., Kerminen, V.-M., Mann, G. W., and Sihto, S.-L.: The contribution of boundary layer nucleation events to total particle concentrations on regional and global scales, *Atmos. Chem. Phys. Discuss.*, 6, 7323–7368, 2006.
- Stieb, D. M., Judek, S., and Burnett, R. T.: Meta-analysis of time-series studies of air pollution and mortality: Effects of gases and particles and their influence of cause of death, age and season, *J. Air Manage. Assoc.*, 52, 470–484, 2002.
- 10 Talbot, R. W., Vijgen, A. S., and Harriss, R. C.: Measuring tropospheric HNO₃: Problems and prospects for nylon filter and mist chamber techniques, *J. Geophys. Res.*, 95, 7553–7561, 1990.
- 15 Weber, R. J., McMurry, P. H., Eisele, F. L., and Tanner, D. J.: Measurement of expected nucleation precursor species and 3–500 nm diameter particles at Mauna Loa observatory, Hawaii, *J. Atmos. Sci.*, 52, 2242–2257, 1995a.
- Weber, R. J.: Studies of new particle formation in the remote troposphere, PhD thesis, University of Minnesota, USA, 1995b.
- 20 Weber, R. J., Marti, J. J., McMurry, P. H., Eisele, F. L., Tanner, D. J., and Jefferson, A.: Measurements of new particle formation and ultrafine particle growth rates at a clean continental site, *J. Geophys. Res.*, 102, 4375–4385, 1997.

Sulphuric acid and particle formation during QUEST III–IVI. Riipinen et al.

[Title Page](#)[Abstract](#)[Introduction](#)[Conclusions](#)[References](#)[Tables](#)[Figures](#)[I◀](#)[▶I](#)[◀](#)[▶](#)[Back](#)[Close](#)[Full Screen / Esc](#)[Printer-friendly Version](#)[Interactive Discussion](#)

Sulphuric acid and particle formation during QUEST III–IV

I. Riipinen et al.

Table 1. A classification of the particle formation event days during QUEST II–IV campaigns according to the exponent in the correlation $N_{3-6} \propto [\text{H}_2\text{SO}_4]^{n_{36}}$. R refers to the correlation coefficient.

	Hyytiälä QUEST II	Heidelberg QUEST III	Hyytiälä BACCI/QUEST IV	Total
$n \approx 1$	6 (38%)	6 (60%)	9 (45%)	21 (46%)
$n \approx 1.5$	4 (25%)	3 (30%)	2 (10%)	9 (20%)
$n \approx 2$	5 (31%)	1 (10%)	6 (30%)	12 (26%)
$n \approx 2.5-3$	1 (6%)	–	3 (15%)	4 (9%)
mean R	0.85	0.75	0.82	

[Title Page](#)
[Abstract](#)
[Introduction](#)
[Conclusions](#)
[References](#)
[Tables](#)
[Figures](#)
[I◀](#)
[▶I](#)
[◀](#)
[▶](#)
[Back](#)
[Close](#)
[Full Screen / Esc](#)
[Printer-friendly Version](#)
[Interactive Discussion](#)

Sulphuric acid and particle formation during QUEST III–IV

I. Riipinen et al.

Table 2. The time delays and corresponding growth rates from 1 to 3 nm (GR_{1-3}) for the three QUEST campaigns.

	Hyytiälä QUEST II		Heidelberg QUEST III		Hyytiälä BACCI/QUEST IV	
	Δt_{N36} [h]	GR_{1-3} [nm/h]	Δt_{N36} [h]	GR_{1-3} [nm/h]	Δt_{N36} [h]	GR_{1-3} [nm/h]
Mean	2	1.2	1.5	1.5	2.4	1.1
Median	1.7	1.2	1.5	1.3	2.5	0.8
Min	1.0	0.5	0.7	0.9	0.8	0.4
Max	4.1	2.1	2.3	2.7	4.5	2.4

[Title Page](#)
[Abstract](#)
[Introduction](#)
[Conclusions](#)
[References](#)
[Tables](#)
[Figures](#)
[⏪](#)
[⏩](#)
[◀](#)
[▶](#)
[Back](#)
[Close](#)
[Full Screen / Esc](#)
[Printer-friendly Version](#)
[Interactive Discussion](#)

Table 3. (a) The fitted time delays and categorised exponents for N_{3-6} and J_3 correlations with sulphuric acid for each new particle formation event day during QUEST III (Heidelberg). The exponents fitted to J_3 are consistently larger than the exponents fitted to N_{3-6} . Correspondingly the time delays of J_3 are smaller than in the case of N_{3-6} . During some days (*) the J_1 data contained peaks corresponding to exponent 2 even though the general behaviour during the day would correspond to $n_{J_1}=1$.

Date	DOY	$\Delta t_{N_{36}}$ [h]	GR_{1-3} [nm/h]	Δt_{J_3} [h]	$n_{N_{36}}$	n_{J_3}	n_{J_1}
14.3.	74	1.5	1.3	1.0	1.0	2.0	2.0
15.3.	75	0.7	2.9	0.3	1.0	1.0	–
16.3.	76	1.3	1.5	0.8	1.5	2.0	–
18.3.	78	1.5	1.3	1.0	2.0	3.0	–
19.3.	79	1.0	2.0	0.3	1.0	2.0	2.0
21.3.	81	1.7	1.2	0.7	1.0	1.0	1.0
22.3.	82	1.7	1.2	0.7	1.0	1.5	1.0*
27.3.	87	1.2	1.7	0.5	1.0	1.5	1.0*
30.3.	90	2.2	1.3	1.3	1.5	2.0	2.0
2.4.	93	2.3	0.9	1.8	1.5	1.5	–
Mean		1.5	1.5	0.8			
Median		1.5	1.3	0.7			
Max		2.3	2.7	1.8			
Min		0.7	0.9	0.3			

* Peaks with exponent 2

Sulphuric acid and particle formation during QUEST III–IV

I. Riipinen et al.

Title Page

Abstract

Introduction

Conclusions

References

Tables

Figures

◀

▶

◀

▶

Back

Close

Full Screen / Esc

Printer-friendly Version

Interactive Discussion

Table 3. (b) The fitted time delays and the categorised exponents for N_{3-6} and J_3 correlations with sulphuric acid for new particle formation days during BACCI/QUEST IV campaign (Hyytiälä). Consistently with Heidelberg data, the exponents n_{J_3} are larger than the exponents $n_{N_{36}}$. Also the time delays of J_3 are smaller than in the case of N_{3-6} . For the explanations of (*), see Table 3a.

Date	DOY	$\Delta t_{N_{36}}$ [h]	GR_{1-3} [nm/h]	Δt_{J_3} [h]	$n_{N_{36}}$	n_{J_3}	n_{J_1}
12.4.	102	1.2	1.7	0.5	1.0	2.0	1.0*
13.4.	103	2.0	1.0	0.7	1.0	2.0	1.0*
16.4.	106	2.2	0.9	2.3	1.0	1.0	1.0*
17.4.	107	1.5	1.3	1.0	2.0	2.0	2.0
18.4.	108	3.3	0.6	2.3	2.0	3.0	2.0
24.4.	114	4.5	0.4	4.2	1.5	2.0	2.0
25.4.	115	3.0	0.7	1.7	1.0	2.0	2.0
26.4.	116	3.0	0.7	2.5	2.0	3.0	2.0
27.4.	117	1.3	1.5	0.8	2.0	2.0	2.0
30.4.	120	3.0	0.7	1.2	1.5	2.5	2.0
2.5.	122	3.3	0.6	3.0	1.0	1.5	2.0
3.5.	123	0.8	2.4	0.5	2.5	3.0	2.0
8.5.	128	1.3	1.5	0.8	1.0	1.0	1.0*
11.5.	131	3.0	0.7	2.5	1.0	2.0	2.0
12.5.	132	4.0	0.5	2.8	1.0	2.0	1.0*
13.5.	133	2.7	0.8	1.0	1.0	1.0	1.0*
14.5.	134	1.2	1.7	0.7	2.0	2.5	2.0
16.5.	136	1.7	1.2	1.2	2.5	2.5	2.0
Mean		2.4	1.1	1.7			
Median		2.5	0.8	1.2			
Max		4.5	2.4	4.2			
Min		0.8	0.4	0.5			

* Peaks with exponent 2

Sulphuric acid and particle formation during QUEST III–IV

I. Riipinen et al.

Title Page

Abstract

Introduction

Conclusions

References

Tables

Figures

◀

▶

◀

▶

Back

Close

Full Screen / Esc

Printer-friendly Version

Interactive Discussion

Sulphuric acid and particle formation during QUEST III–IV

I. Riipinen et al.

Table 4. The average values for the activation and kinetic coefficients A and K during new particle formation in the QUEST II–IV campaigns. The coefficients in the two Hyytiälä campaigns are in the same order of magnitude, whereas the corresponding coefficients in Heidelberg are approximately an order of magnitude higher.

	Hyytiälä QUEST II		Heidelberg		Hyytiälä BACCI/QUEST IV	
	A [1/s]	K [cm ³ /s]	A [1/s]	K [cm ³ /s]	A [1/s]	K [cm ³ /s]
Mean	1.7E-06	5.7E-13	7.7E-05	2.3E-11	2.0E-06	2.4E-13
Median	1.0E-06	4.5E-13	1.1E-05	3.9E-12	4.9E-07	6.6E-14
25%-quartile	8.0E-07	3.0E-13	6.1E-06	1.5E-12	1.5E-07	3.2E-14
75%-quartile	2.8E-06	7.8E-13	6.7E-05	1.2E-11	1.1E-06	1.7E-13
Min	4.0E-07	2.0E-13	2.6E-06	3.7E-13	7.6E-08	2.0E-14
Max	6.0E-06	1.4E-12	3.5E-04	1.3E-10	1.6E-05	1.5E-12

Title Page

Abstract

Introduction

Conclusions

References

Tables

Figures

◀

▶

◀

▶

Back

Close

Full Screen / Esc

Printer-friendly Version

Interactive Discussion

**Sulphuric acid and
particle formation
during QUEST III–IV**

I. Riipinen et al.

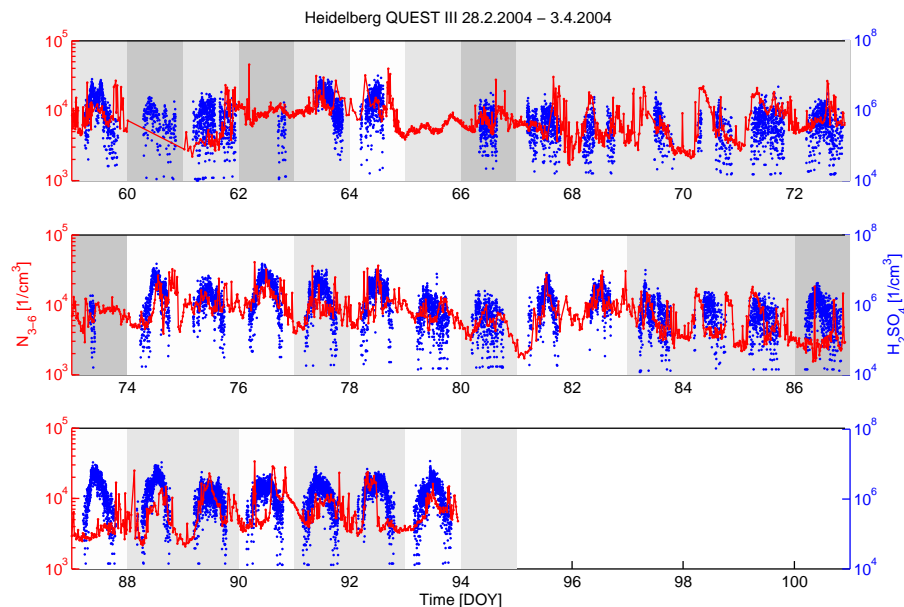


Fig. 1. (a) The particle number concentrations in the 3–6 nm size range (red) and sulphuric acid concentration (blue) measured during the QUEST III campaign in Heidelberg. The data is presented in two-week -periods. The particle formation event days are presented on white background. Non-event days are shaded with dark and undefined days with light gray.

[Title Page](#)[Abstract](#)[Introduction](#)[Conclusions](#)[References](#)[Tables](#)[Figures](#)[◀](#)[▶](#)[◀](#)[▶](#)[Back](#)[Close](#)[Full Screen / Esc](#)[Printer-friendly Version](#)[Interactive Discussion](#)

**Sulphuric acid and
particle formation
during QUEST III–IV**

I. Riipinen et al.

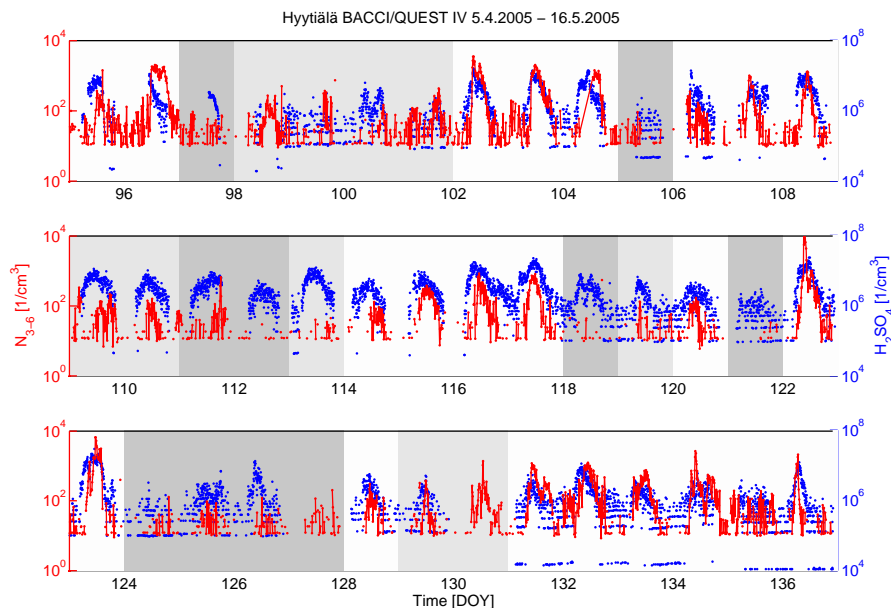


Fig. 1. (b) The particle number concentrations in the 3–6 nm size range (red) and sulphuric acid concentration (blue) measured during the BACCI/QUEST IV campaign in Hyytiälä. The data is presented in two-week -periods. The particle formation event days are presented on white background. Non-event days are shaded with dark and undefined days with light gray.

[Title Page](#)[Abstract](#)[Introduction](#)[Conclusions](#)[References](#)[Tables](#)[Figures](#)[◀](#)[▶](#)[◀](#)[▶](#)[Back](#)[Close](#)[Full Screen / Esc](#)[Printer-friendly Version](#)[Interactive Discussion](#)

**Sulphuric acid and
particle formation
during QUEST III–IV**

I. Riipinen et al.

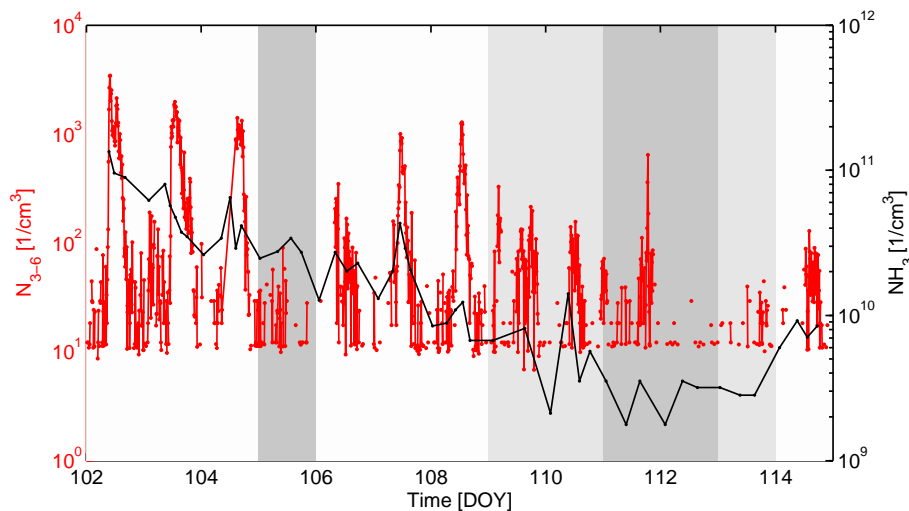


Fig. 1. (c) The particle number concentrations in the 3–6 nm size range (red) and the ammonia concentration (black) during the BACCI/QUEST IV campaign in Hyttiälä. The particle formation event days are presented on white background. Non-event days are shaded with dark and undefined days with light gray.

[Title Page](#)[Abstract](#)[Introduction](#)[Conclusions](#)[References](#)[Tables](#)[Figures](#)[◀](#)[▶](#)[◀](#)[▶](#)[Back](#)[Close](#)[Full Screen / Esc](#)[Printer-friendly Version](#)[Interactive Discussion](#)

**Sulphuric acid and
particle formation
during QUEST III–IV**

I. Riipinen et al.

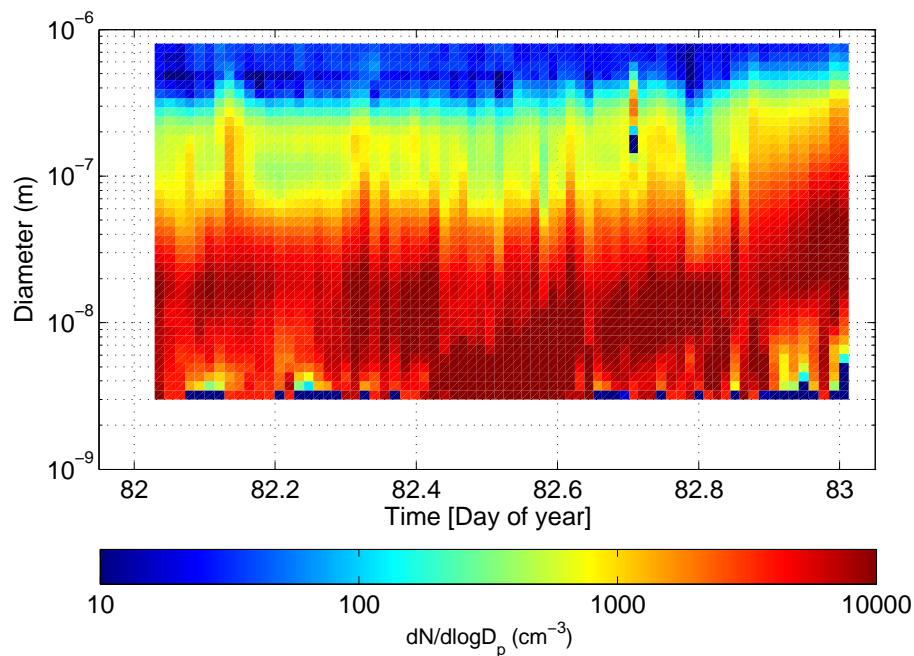


Fig. 2. (a) A surface plot of the particle size distribution data measured by a DMPS system 22 March 2003 (day 82) in Heidelberg. New particle formation and growth of the nucleation mode is observed during the day.

[Title Page](#)[Abstract](#)[Introduction](#)[Conclusions](#)[References](#)[Tables](#)[Figures](#)[◀](#)[▶](#)[◀](#)[▶](#)[Back](#)[Close](#)[Full Screen / Esc](#)[Printer-friendly Version](#)[Interactive Discussion](#)

Sulphuric acid and
particle formation
during QUEST III–IV

I. Riipinen et al.

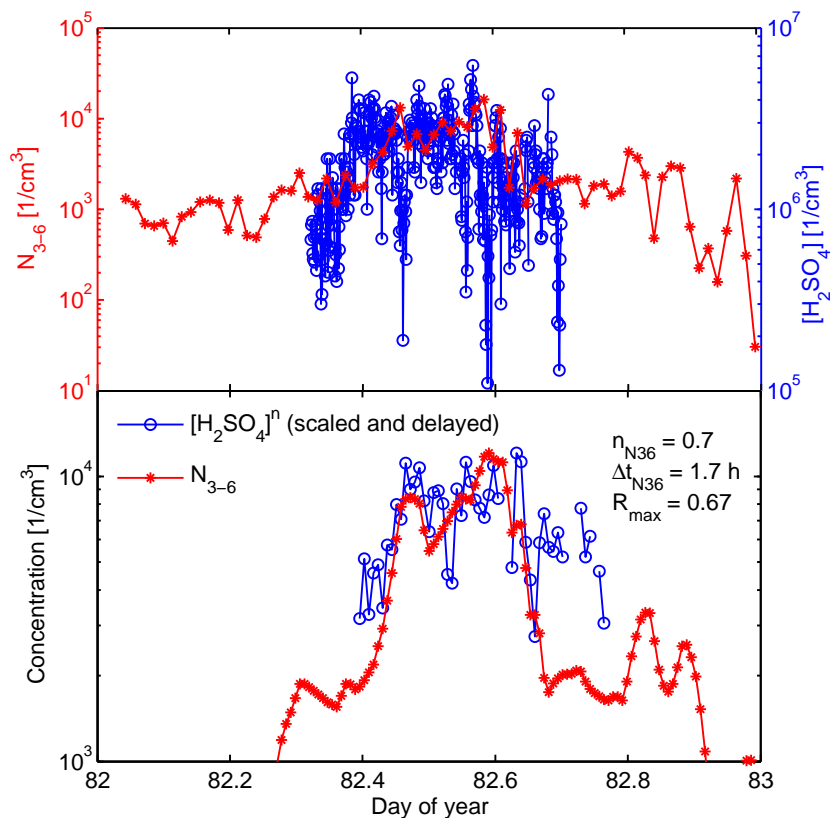


Fig. 2. (b) Upper panel: The number concentration of 3–6 nm particles (red curve) and the sulphuric acid concentration (blue curve) on 22 March 2004 in Heidelberg. Lower panel: The number concentration of 3–6 nm particles and the sulphuric acid concentration delayed with the fitted time lag ($\Delta t_{N36}=1.7 \text{ h}$) and raised to the fitted power ($n_{N36}=0.7$), corresponding to the maximum correlation ($R=0.67$).

Title Page

Abstract

Introduction

Conclusions

References

Tables

Figures

◀

▶

◀

▶

Back

Close

Full Screen / Esc

Printer-friendly Version

Interactive Discussion

**Sulphuric acid and
particle formation
during QUEST III–IV**

I. Riipinen et al.

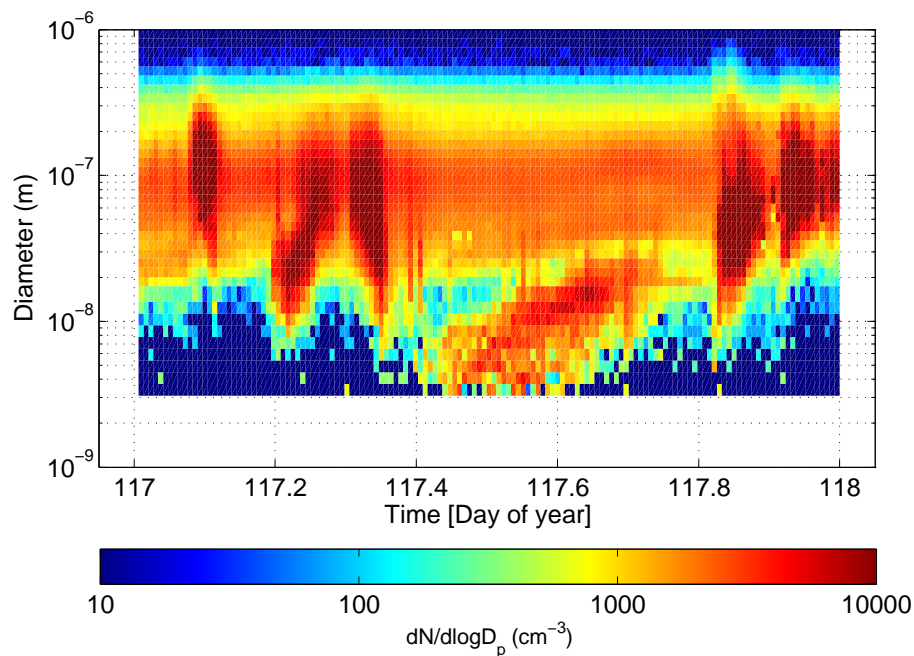


Fig. 3. (a) A surface plot of the particle size distribution data measured by a DMPS system 27 April 2005 (day 117) in Hyytiälä. New particle formation and growth of the nucleation mode is observed during the day.

[Title Page](#)[Abstract](#)[Introduction](#)[Conclusions](#)[References](#)[Tables](#)[Figures](#)[◀](#)[▶](#)[◀](#)[▶](#)[Back](#)[Close](#)[Full Screen / Esc](#)[Printer-friendly Version](#)[Interactive Discussion](#)

Sulphuric acid and
particle formation
during QUEST III–IV

I. Riipinen et al.

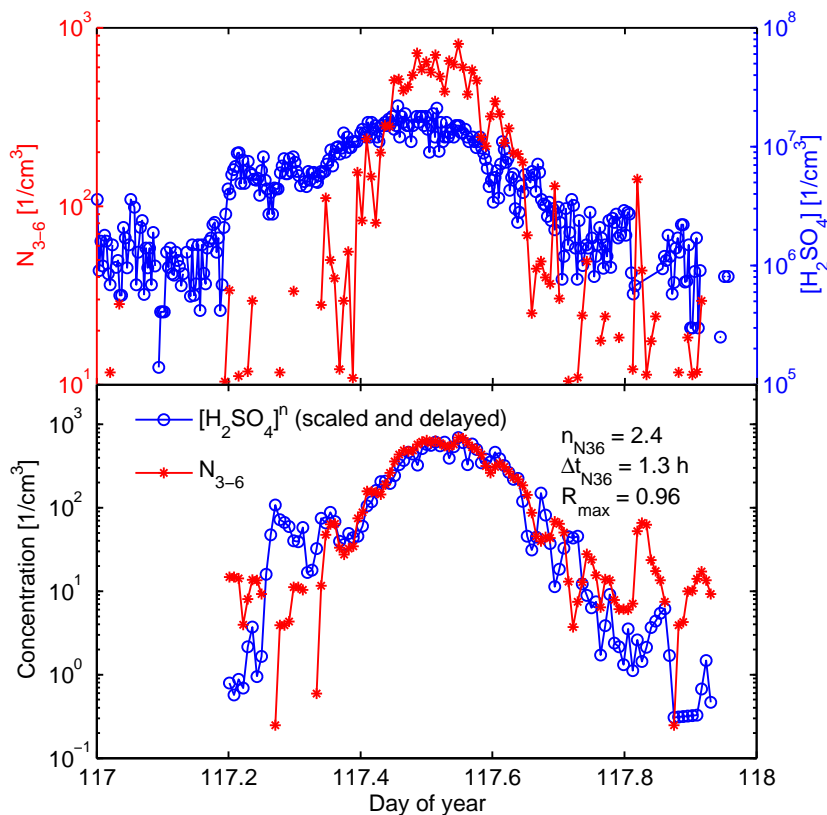


Fig. 3. (b) Upper panel: The number concentration of 3–6 nm particles (red curve) and the sulphuric acid concentration (blue curve) on 27 April 2005 in Hyytiälä. Lower panel: The number concentration of 3–6 nm particles (red curve) and the sulphuric acid concentration (blue curve) n delayed with the fitted time lag ($\Delta t_{N36} = 1.3 \text{ h}$) and raised to the fitted power ($n_{N36} = 2.4$), corresponding to the maximum correlation ($R = 0.96$).

Title Page

Abstract

Introduction

Conclusions

References

Tables

Figures

◀

▶

◀

▶

Back

Close

Full Screen / Esc

Printer-friendly Version

Interactive Discussion

Sulphuric acid and
particle formation
during QUEST III–IV

I. Riipinen et al.

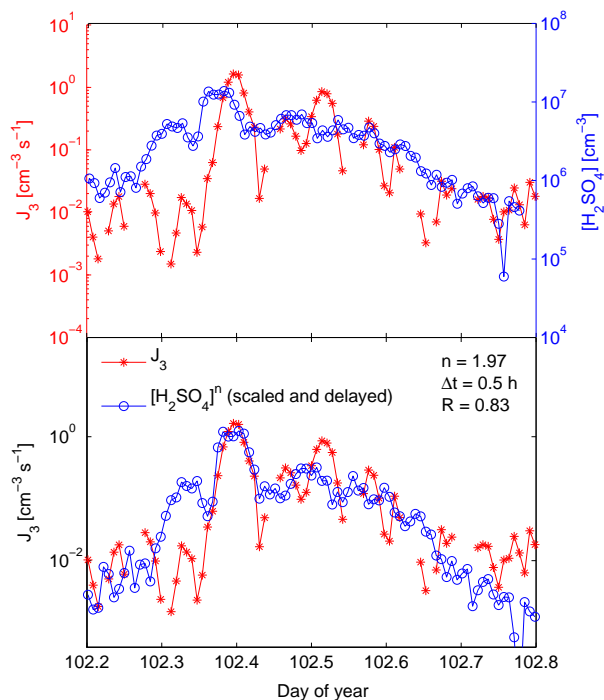


Fig. 4. A plot illustrating the fitting procedure for J_3 and $[\text{H}_2\text{SO}_4]$. Upper panel: The sulphuric acid concentration (blue curve) and the 3 nm particle formation rate (red curve) on 12 April 2005 in Hyytiälä. Lower panel: Fitting of sulphuric acid data to J_3 data, with sulphuric acid raised to the power $n_{J_3}=1.97$ and delayed by $\Delta t_{J_3}=0.5$ h. The correlation coefficient between the curves is $R=0.83$.

[Title Page](#)[Abstract](#)[Introduction](#)[Conclusions](#)[References](#)[Tables](#)[Figures](#)[◀](#)[▶](#)[◀](#)[▶](#)[Back](#)[Close](#)[Full Screen / Esc](#)[Printer-friendly Version](#)[Interactive Discussion](#)

Sulphuric acid and
particle formation
during QUEST III–IV

I. Riipinen et al.

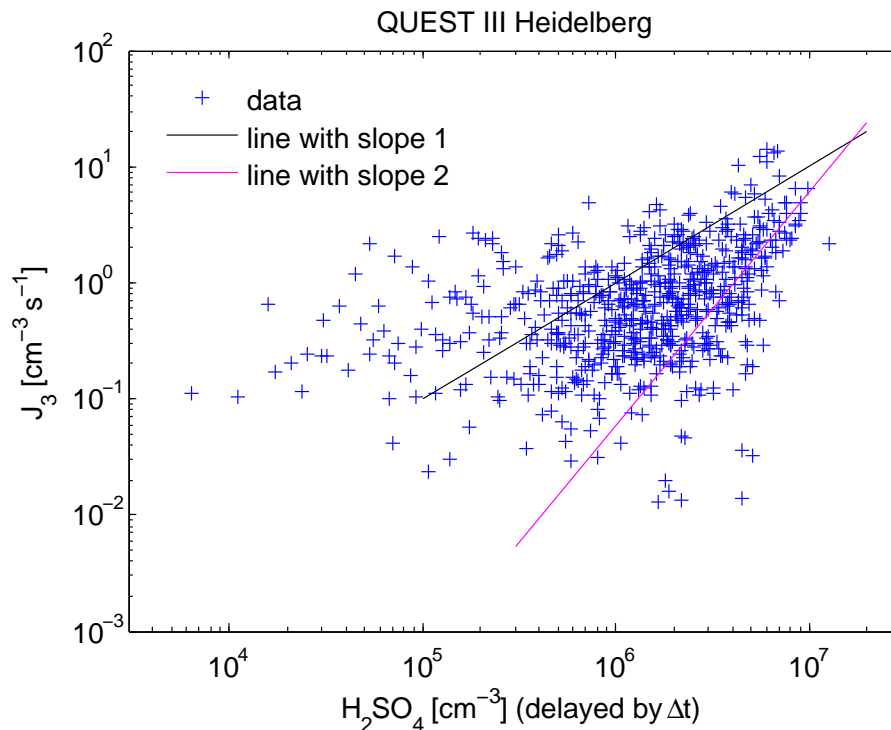


Fig. 5. (a) The formation rate J_3 estimated from particle measurements versus the sulphuric acid concentration during the QUEST III campaign in Heidelberg. Sulphuric acid concentrations have been delayed by the fitted time lags. Lines with slopes 1 and 2 (corresponding to values 1 and 2 in the exponent n_{J_3}) are indicated to guide the eye.

[Title Page](#)[Abstract](#)[Introduction](#)[Conclusions](#)[References](#)[Tables](#)[Figures](#)[◀](#)[▶](#)[◀](#)[▶](#)[Back](#)[Close](#)[Full Screen / Esc](#)[Printer-friendly Version](#)[Interactive Discussion](#)

Sulphuric acid and
particle formation
during QUEST III–IV

I. Riipinen et al.

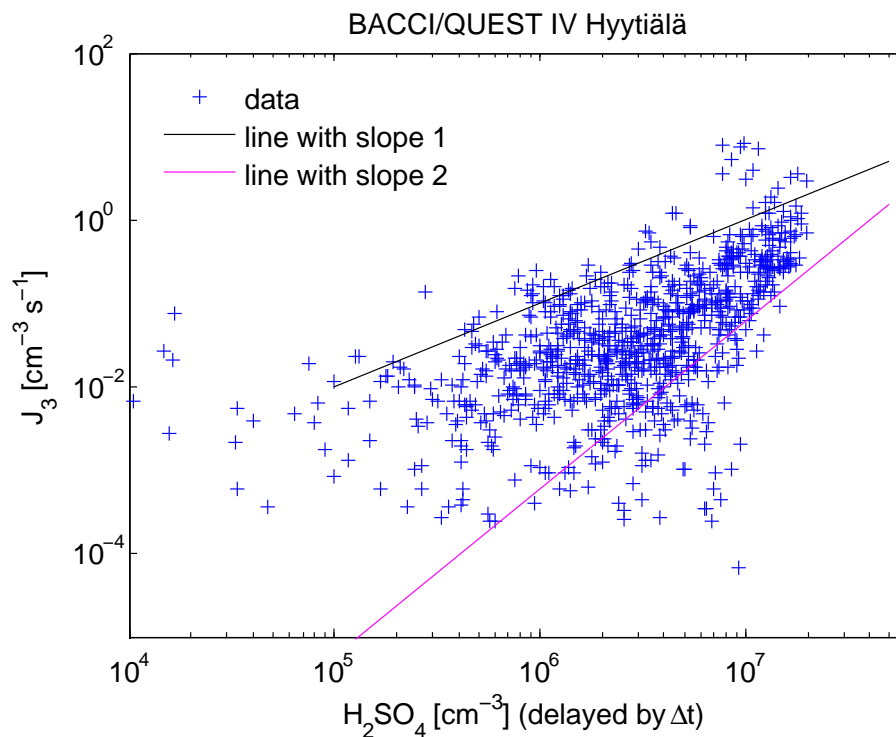


Fig. 5. (b) The formation rate J_3 estimated from particle measurements versus the sulphuric acid concentration during the BACCI/QUEST IV campaign in Hyytiälä. Sulphuric acid concentrations have been delayed by the fitted time lags. Lines with slopes 1 and 2 (corresponding to values 1 and 2 in the exponent n_{J3}) are indicated to guide the eye.

[Title Page](#)[Abstract](#)[Introduction](#)[Conclusions](#)[References](#)[Tables](#)[Figures](#)[◀](#)[▶](#)[◀](#)[▶](#)[Back](#)[Close](#)[Full Screen / Esc](#)[Printer-friendly Version](#)[Interactive Discussion](#)

Sulphuric acid and
particle formation
during QUEST III–IV

I. Riipinen et al.

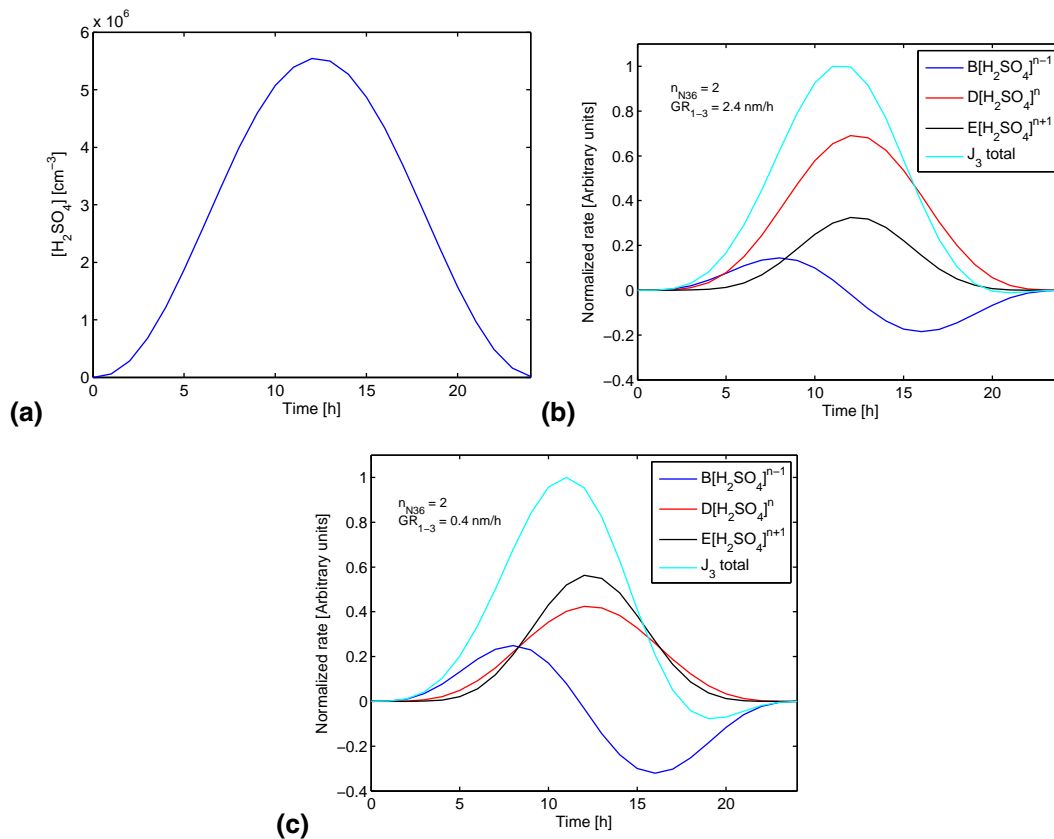


Fig. 6. The analytical estimations for the formation rate. **(a)** The sulphuric acid concentration calculated from the sinusoidal production rate; **(b)** The different terms in Eq. (8) and the total calculated J_3 , using the growth rate of 2.4 nm/h; **(c)** The same as (b) but with the growth rate of 0.4 nm/h.

Title Page

Abstract

Introduction

Conclusions

References

Tables

Figures

◀

▶

◀

▶

Back

Close

Full Screen / Esc

Printer-friendly Version

Interactive Discussion

**Sulphuric acid and
particle formation
during QUEST III–IV**

I. Riipinen et al.

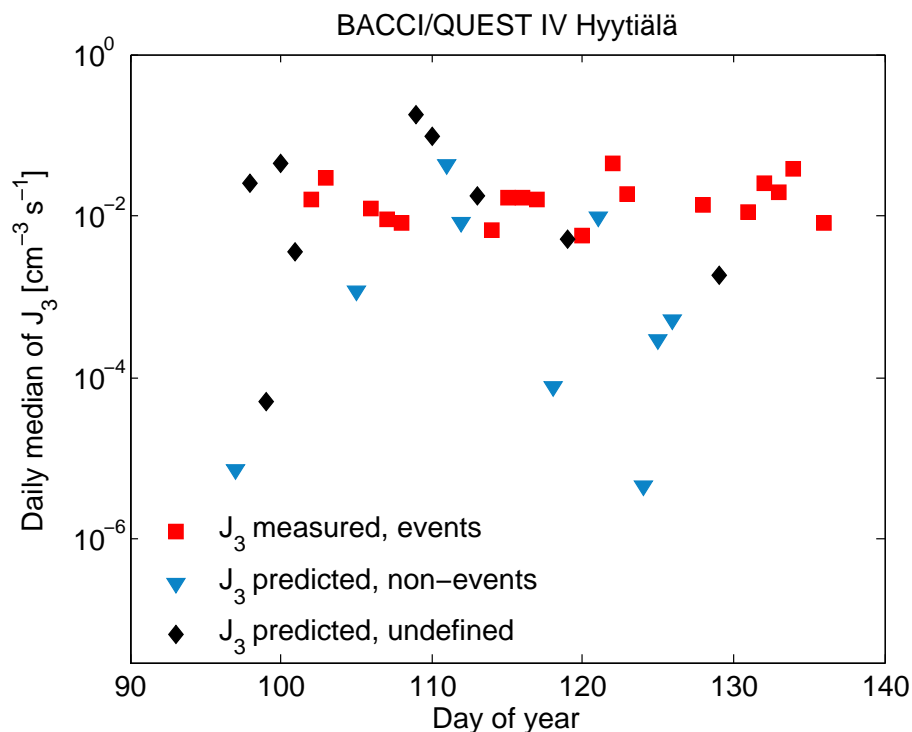


Fig. 7. (a) The median particle formation rates at 3 nm for BACCI/QUEST IV, Hyttiälä. The red squares refer to the J_3 values calculated from the DMPS data for the particle formation events. The blue triangles and the black diamonds show the values predicted for non-event and undefined days from the sulphuric acid data according to cluster activation hypothesis.

[Title Page](#)[Abstract](#)[Introduction](#)[Conclusions](#)[References](#)[Tables](#)[Figures](#)[◀](#)[▶](#)[◀](#)[▶](#)[Back](#)[Close](#)[Full Screen / Esc](#)[Printer-friendly Version](#)[Interactive Discussion](#)

Sulphuric acid and
particle formation
during QUEST III–IV

I. Riipinen et al.

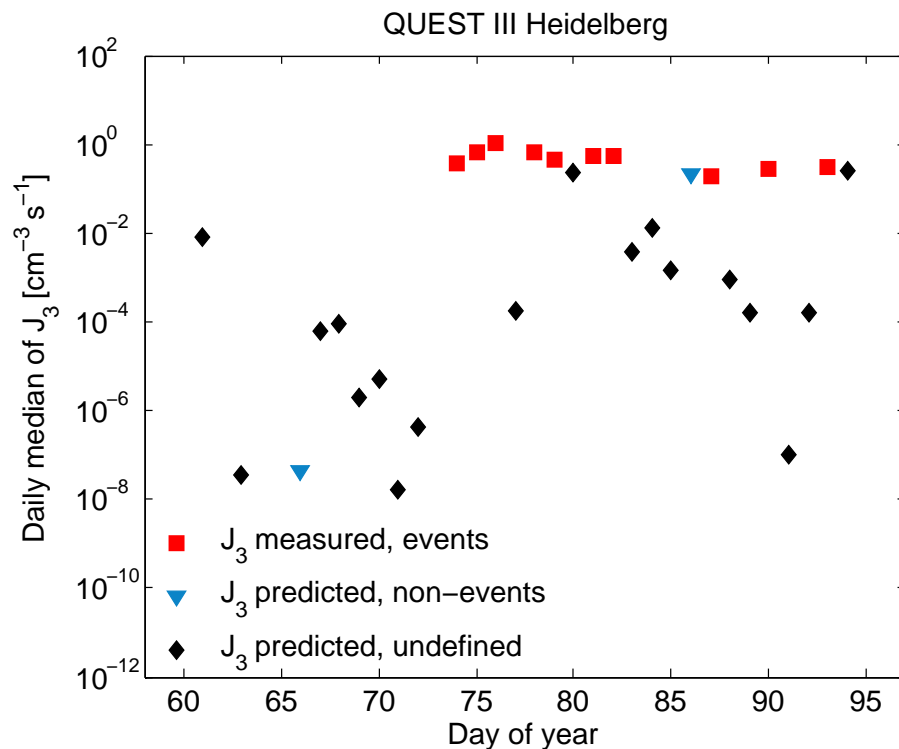


Fig. 7. (b) The median particle formation rates at 3 nm for QUEST III, Heidelberg. The red squares refer to the J_3 values calculated from the DMPS data for the particle formation events. The blue triangles and the black diamonds show the values predicted for non-event and undefined days from the sulphuric acid data according to cluster activation hypothesis.

[Title Page](#)[Abstract](#)[Introduction](#)[Conclusions](#)[References](#)[Tables](#)[Figures](#)[◀](#)[▶](#)[◀](#)[▶](#)[Back](#)[Close](#)[Full Screen / Esc](#)[Printer-friendly Version](#)[Interactive Discussion](#)