



**HAL**  
open science

## Overview of SCIAMACHY validation: 2002?2004

A. J. M. Piters, K. Bramstedt, J.-C. Lambert, B. Kirchhoff

► **To cite this version:**

A. J. M. Piters, K. Bramstedt, J.-C. Lambert, B. Kirchhoff. Overview of SCIAMACHY validation: 2002?2004. Atmospheric Chemistry and Physics Discussions, 2005, 5 (4), pp.7769-7828. hal-00301736

**HAL Id: hal-00301736**

**<https://hal.science/hal-00301736>**

Submitted on 18 Jun 2008

**HAL** is a multi-disciplinary open access archive for the deposit and dissemination of scientific research documents, whether they are published or not. The documents may come from teaching and research institutions in France or abroad, or from public or private research centers.

L'archive ouverte pluridisciplinaire **HAL**, est destinée au dépôt et à la diffusion de documents scientifiques de niveau recherche, publiés ou non, émanant des établissements d'enseignement et de recherche français ou étrangers, des laboratoires publics ou privés.

**Overview of  
SCIAMACHY  
validation: 2002–2004**

A. J. M. Piters et al.

# Overview of SCIAMACHY validation: 2002–2004

**A. J. M. Piters<sup>1</sup>, K. Bramstedt<sup>2</sup>, J.-C. Lambert<sup>3</sup>, and B. Kirchhoff<sup>4,5</sup>**

<sup>1</sup>Royal Netherlands Meteorological Institute, Department of Climate Research and Seismology, De Bilt, The Netherlands

<sup>2</sup>Institute for Environmental Physics, University of Bremen, Germany

<sup>3</sup>Belgian Institute for Space Aeronomy, Brussels, Belgium

<sup>4</sup>Institute for Environmental Physics, University of Heidelberg, Germany

<sup>5</sup>Max Planck Institute for Chemistry, Department for Atmospheric Chemistry, Mainz, Germany

Received: 11 April 2005 – Accepted: 18 July 2005 – Published: 30 August 2005

Correspondence to: A. J. M. Piters (piters@knmi.nl)

© 2005 Author(s). This work is licensed under a Creative Commons License.

Title Page

Abstract

Introduction

Conclusions

References

Tables

Figures

◀

▶

◀

▶

Back

Close

Full Screen / Esc

Print Version

Interactive Discussion

EGU

## Abstract

SCIAMACHY, on board Envisat, is now in operation for almost three years. This UV/visible/NIR spectrometer measures the solar irradiance, the earthshine radiance scattered at nadir and from the limb, and the attenuation of solar radiation by the atmosphere during sunrise and sunset, from 240 to 2380 nm and at moderate spectral resolution. Vertical columns and profiles of a variety of atmospheric constituents are inferred from the SCIAMACHY radiometric measurements by dedicated retrieval algorithms. With the support of ESA and several international partners, a methodical SCIAMACHY validation programme has been developed jointly by Germany, the Netherlands and Belgium (the three instrument providing countries) to face complex requirements in terms of measured species, altitude range, spatial and temporal scales, geophysical states and intended scientific applications. This summary paper describes the approach adopted to address those requirements.

The actual validation of the operational SCIAMACHY processors established at DLR on behalf of ESA has been hampered by data distribution and processor problems. Since first data releases in summer 2002, operational processors were upgraded regularly and some data products – level-1b spectra, level-2 O<sub>3</sub>, NO<sub>2</sub>, BrO and clouds data – have improved significantly. Validation results summarised in this paper conclude that for limited periods and geographical domains they can already be used for atmospheric research. Nevertheless, remaining processor problems cause major errors preventing from scientific usability in other periods and domains. Untied to the constraints of operational processing, seven scientific institutes (BIRA-IASB, IFE, IUP-Heidelberg, KNMI, MPI, SAO and SRON) have developed their own retrieval algorithms and generated SCIAMACHY data products, together addressing nearly all targeted constituents. Most of the UV-visible data products (both columns and profiles) already have acceptable, if not excellent, quality. Several near-infrared column products are still in development but they have already demonstrated their potential for a variety of applications. In any case, scientific users are advised to read carefully validation reports before using the

---

**Overview of  
SCIAMACHY  
validation: 2002–2004**

A. J. M. Piters et al.

---

Title Page

Abstract

Introduction

Conclusions

References

Tables

Figures

◀

▶

◀

▶

Back

Close

Full Screen / Esc

Print Version

Interactive Discussion

data. It is required and anticipated that SCIAMACHY validation will continue throughout instrument lifetime and beyond. The actual amount of work will obviously depend on funding considerations.

## 1. Introduction

SCIAMACHY (SCanning Imaging Absorption spectroMeter for Atmospheric Cartography) is a spectrometer on-board ESA's Environmental Satellite Envisat launched on 1 March 2002. SCIAMACHY measures sunlight reflected or transmitted by the Earth's atmosphere in the ultraviolet, visible, and near-infrared wavelength region (240–2380 nm) at moderate spectral resolution. SCIAMACHY observes earthshine radiance in limb and nadir viewing geometry and solar and lunar light transmitted through the atmosphere in occultation viewing geometry.

The primary objective of the SCIAMACHY mission is to improve our knowledge of the chemistry and physics of the Earth's atmosphere (troposphere, stratosphere, and mesosphere), including anthropogenic changes or the variability of natural phenomena. SCIAMACHY's contribution are vertical and horizontal distributions of atmospheric constituents and parameters such as trace gases, aerosols, cloud information, temperature and pressure. Specific topics for SCIAMACHY's scientific mission are:

- stratospheric ozone chemistry, including the verification of expected effects of the Montreal Protocol and amendments on future developments of the ozone layer;
- climate research by observation of radiatively active species and transport tracers important for understanding global warming, like greenhouse gases, aerosols, and clouds;
- tropospheric pollution associated with industrial activity, urban concentration and biomass burning;
- troposphere-stratosphere exchange processes;

---

**Overview of  
SCIAMACHY  
validation: 2002–2004**

A. J. M. Piters et al.

---

Title Page

Abstract

Introduction

Conclusions

References

Tables

Figures

◀

▶

◀

▶

Back

Close

Full Screen / Esc

Print Version

Interactive Discussion

- monitoring and understanding of special events and hazards such as volcanic eruptions, solar proton events, and related regional and global consequences.

A complete description of SCIAMACHY and its mission can be found in Bovensmann et al. (1999) and references therein.

SCIAMACHY has been in operation for more than three years now, and is a very stable instrument with only few short periods of ‘off-time’ as was shown by Chlebek et al. (2004), see Fig. 1. The detectors are regularly heated up (decontamination) to evaporate a small ice layer on the NIR detectors.

A number of instrumental and calibration issues are known to affect the quality of the retrieved trace gases. The issues which are currently (April 2005) believed to affect the retrievals most are (Lichtenberg et al., 2005): 1) a radiance offset and a different irradiance offset, 2) insufficient polarisation correction, 3) errors in calibration of NIR detectors (channel 7 light leak, changing ‘slit function’, thermal contribution to dark current).

The currently retrieved SCIAMACHY level 2 data products are listed in Table 1. The main objective of the validation is to accompany each of these products by a complete description of the systematic and random deviations from other well-established measurement systems, formulated in such a way that it is of direct use for algorithm improvement, instrument characterisation and atmospheric research. To achieve this, we need: (1) a large amount of suitable validation measurements and (2) detailed analyses of the SCIAMACHY data with respect to the validation data set. This is more than a straightforward calculation of the average bias and scatter, as is outlined in Sect. 2, where the validation methods are described.

In Sect. 3 an overview is presented of the overall organisation of the international validation of SCIAMACHY. Section 4 describes the validation measurements performed in dedicated campaigns and by regular measurement systems, often organised in global networks. The contents, availability and expected upgrades of the SCIAMACHY products are described in Sect. 5. Preliminary validation results are summarised in Sect. 6, and the necessary future validation efforts will be discussed in Sect. 7.

**Overview of  
SCIAMACHY  
validation: 2002–2004**

A. J. M. Piters et al.

Title Page

Abstract

Introduction

Conclusions

References

Tables

Figures

◀

▶

◀

▶

Back

Close

Full Screen / Esc

Print Version

Interactive Discussion

---

**Overview of  
SCIAMACHY  
validation: 2002–2004**

---

A. J. M. Piters et al.

---

[Title Page](#)[Abstract](#)[Introduction](#)[Conclusions](#)[References](#)[Tables](#)[Figures](#)[◀](#)[▶](#)[◀](#)[▶](#)[Back](#)[Close](#)[Full Screen / Esc](#)[Print Version](#)[Interactive Discussion](#)

EGU

The validation results presented in this overview are based on presentations given at the Second Workshop on Atmospheric Chemistry Validation of Envisat, May 2004, Frascati, at the Envisat/ERS symposium, September 2004, Salzburg, and at the SCIAMACHY validation workshop, December 2004, Bremen. The results already published in the literature are also included in the summary. Specific product overview papers are expected to appear in this special issue in May/June 2005. In these category of papers the most up-to-date status of the product quality is expected to be described.

## 2. Validation methods

The rationale of satellite validation is to ensure that geophysical quantities inferred from in-orbit radiometric measurements meet quality requirements for the intended scientific studies and applications. Starting from this perspective of scientific usability, considering the major scientific objectives of the mission, and based on the GOME validation experience, SCIAVALIG elaborated a list of validation requirements (SCIAVALIG, 1998) and a detailed validation plan (SCIAVALIG, 2002).

These documents underline the importance of: (a) performing correlative studies with well-characterised data obtained by complementary measurement systems and modelling tools, and (b) validation as diagnostic tool in the improvement of retrieval algorithms. The validation methods developed and used for SCIAMACHY validation, and reviewed hereafter, arise naturally from the arguments and considerations in these documents.

### 2.1. Concept of validation

Satellite validation is often understood as a simple comparison exercise concluding to a once-and-for-all assessment of the difference between the satellite data being validated and a reference data set of “validated” quality. Although such comparisons are indeed the basis for investigating the quality of the satellite data, they are by no means

---

**Overview of  
SCIAMACHY  
validation: 2002–2004**A. J. M. Piters et al.

---

Title Page

Abstract

Introduction

Conclusions

References

Tables

Figures

◀

▶

◀

▶

Back

Close

Full Screen / Esc

Print Version

Interactive Discussion

EGU

sufficient for assessing the usefulness of the data for its intended scientific applications. The simplified approach above is sufficient to determine whether satellite and correlative data agree within their respective error bars, and whether the accuracy and precision estimates of the satellite data drawn from a comprehensive error budget of the retrieved value may be realistic. However, obtaining an agreement within estimated errors bars offers no guarantee that the retrieved values contain new information coming from the measurement itself, e.g. a good agreement might simply reflect the use of excellent first guess data. Therefore, beyond the calculation of differences between SCIAMACHY and correlative data sets, SCIAVALIG recommends to use several other validation methods, each with its own potential contribution to the overall assessment of the usefulness of the data.

## 2.2. Consistency with current knowledge

It is important to investigate, both qualitatively and quantitatively, how well SCIAMACHY data represents known geophysical signals that are either observed by other measurement systems or deduced from our understanding of the atmosphere. Depending on the species and the type of product (total or tropospheric column, vertical profile), these signals may include meridional and zonal structures, vertical structures, temporal cycles on seasonal, day-to-day and diurnal scales, special events of tropospheric pollution, etc. Unpredictable events like the Antarctic vortex split of September 2002 and a few volcanic eruptions in 2003 and 2004 have been instrumental in testing the real capabilities of SCIAMACHY (Lambert et al., 2004a).

## 2.3. Sensitivity to retrieval algorithm parameters

Geophysical (level 2) quantities are retrieved from SCIAMACHY level 1 data using auxiliary data, such as output from radiative transfer models, or climatologies. Simplifications or misinterpretations therein can result in systematic errors in the retrieved quantities that may depend on geophysical, instrumental or algorithm parameters. It is

---

**Overview of  
SCIAMACHY  
validation: 2002–2004**A. J. M. Piters et al.

---

[Title Page](#)[Abstract](#)[Introduction](#)[Conclusions](#)[References](#)[Tables](#)[Figures](#)[⏪](#)[⏩](#)[◀](#)[▶](#)[Back](#)[Close](#)[Full Screen / Esc](#)[Print Version](#)[Interactive Discussion](#)

EGU

important to investigate the influence of these parameter-dependent systematic errors on the intended scientific use. E.g., ozone loss assessments relying on successive SCIAMACHY measurements along isentropic trajectories might be affected by any dependence of ozone-related products on the solar zenith angle (SZA) and the latitude, or by altitude registration biases associated with pointing errors of the instrument. Global and regional chemical family budgets might be altered by fictitious spatial structures and temporal signals generated by the retrieval algorithms and superimposed on the actual geophysical signals. Therefore, those retrieval-parameter dependent systematic errors should be tracked down systematically, and characterized in detail.

#### 2.4. Internal consistency investigation

In a first stage, prior to performing full geophysical validation of a mature data product, validation has often played and still plays a diagnostic role in the improvement of retrieval algorithms. Careful investigation of comparison time-series and the use of assimilation tools have been powerful in revealing internal inconsistencies in SCIAMACHY data, like gaps, shifts, systematic biases between data acquired at two different viewing angles, drifts, cycles, etc. Intercomparison of SCIAMACHY data retrieved with independent algorithms, either directly or indirectly using correlative measurements as standard transfer, has also given new insights for potential improvement.

#### 2.5. Representativeness in comparison studies

The comparison of remotely sensed geophysical quantities with correlative data is not straightforward. A major difficulty results from the convolution of atmospheric variability with the smoothing/scanning properties inherent to the remote sensing approach. Different observation techniques and retrieval methods yield different sampling of the atmosphere in time and in space, different averaging of its 3-dimensional structure, and different sensitivity to ancillary atmospheric and instrumental parameters. As a direct consequence of those differences in the perception of the atmospheric field,



---

**Overview of  
SCIAMACHY  
validation: 2002–2004**A. J. M. Piters et al.

---

[Title Page](#)[Abstract](#)[Introduction](#)[Conclusions](#)[References](#)[Tables](#)[Figures](#)[◀](#)[▶](#)[◀](#)[▶](#)[Back](#)[Close](#)[Full Screen / Esc](#)[Print Version](#)[Interactive Discussion](#)

EGU

atmospheric structures and variability can critically corrupt the reliability of the comparison by introducing systematic biases and additional scatter. Similar considerations apply to the comparison of remote-sensing measurements with modelling results. The most common methodology is the direct comparison of columns and profiles within an arbitrary time/space coincidence window spanning typically from 200 to 1000 km and from 1 hour to 2 days. The presumed advantage of such a selection window is that the variability caused by differences in air mass is reduced. As expected, it works satisfactorily for long-lived species with negligible variability in space and in time, and for which the retrieval has a moderate sensitivity to the vertical structure. When atmospheric variability increases, differences in smoothing and sensitivity increase the comparison noise. For the comparison of SCIAMACHY and correlative ozone column data, the same time/distance selection window can increase the  $1\sigma$  comparison scatter from a few percent at middle latitudes to several ten percent near the polar vortex edge. Stronger effects, including systematic biases, have been observed for short-lived species, like  $\text{NO}_2$  and  $\text{BrO}$ . Therefore, more sophisticated methods have been developed to deal with representativeness errors in the comparisons:

- the use of radiative transfer tools to better determine the vertical and line-of-sight smoothing of both SCIAMACHY and correlative data (modelling of slant column, weighting functions, averaging kernels);
- the use of modelling and assimilation tools to deal with transport and photochemical effects (including diurnal cycles);
- the use of meteorological analyses to discriminate the effects of dynamic variability (e.g., use of backward trajectories, transformation to equivalent latitude and isentropic coordinates);
- the synergistic use of complementary correlative data sources offering different smoothing/sampling properties, sensitivity and errors budgets.

## 2.6. Synergism

The latter point is of great importance for SCIAMACHY validation. The SCIAMACHY data products potentially support an assortment of scientific applications, spanning from regional to global scales, from the ground up to the mesosphere, from short-term to decadal timeframes.

The synergistic use of complementary validation sources deals with this variety of products and of scales. Local studies carried out at single stations constitute the preferred approach to detailed investigation. They benefit from local research and excellent understanding of local geophysical particulars; they assure full control and accurate error budgets of the instrumentation, and the availability of adequate ancillary data. Complementary studies exploiting pseudo-global sources yield access to patterns, sensitivity and space/time structures on the global scale. The differences in spatial coverage between different satellite instruments may introduce artefacts, but the massive amount of possible collocations, at least for nadir viewing instruments, potentially improves the significance of statistical quantities.

## 3. Validation organisation

SCIAMACHY is an Announcement of Opportunity (AO) instrument provided by the AO instrument Providers (AOIPs) Germany and the Netherlands with a contribution from Belgium. The Flight Operation and Data Plan (FODP) defined the share of responsibility between ESA and the SCIAMACHY AOIPs, the German, Dutch and Belgium space agencies. In principle, the AOIPs have the responsibility for the validation of SCIAMACHY, but since ESA has the responsibility for the operational SCIAMACHY data processor, ESA includes the validation of SCIAMACHY into their Envisat validation programme as well.

---

**Overview of  
SCIAMACHY  
validation: 2002–2004**

A. J. M. Piters et al.

---

Title Page

Abstract

Introduction

Conclusions

References

Tables

Figures

◀

▶

◀

▶

Back

Close

Full Screen / Esc

Print Version

Interactive Discussion

### 3.1. ESA's organisation

In 1997 ESA raised an Announcement of Opportunity (AO) for the use of Envisat data. The Principal Investigators of the approved AO projects dealing with the validation of SCIAMACHY, GOMOS and MIPAS were gathered in the Atmospheric Chemistry Validation Team (ACVT). The ACVT is divided in the following subgroups:

**GBMCD:** Ground-based Measurements and Campaign Database subgroup,

**ESABC:** Envisat Stratospheric Aircraft and Balloon Campaign,

**MASI:** Models and data Assimilation, Satellite Inter-comparisons, and

A subgroup of the overall Envisat Calibration and Validation team is also the:

**SCCVT:** SCIAMACHY Calibration and Verification Team.

The ESABC subgroup is more than a working group. ESA, DLR, and CNES together financed dedicated campaigns for the validation of SCIAMACHY, MIPAS and GOMOS (Sect. 4.3). These campaigns are referred to as ESABC campaigns, and are prepared and coordinated in the ESABC group. Preparation and results of other campaigns are only presented and discussed within in the ESABC group.

In addition, ESA supports a dedicated validation data centre, the NILU Atmospheric Data Base for Interactive Retrieval (NADIR). The NILU database is operated by the Norwegian Institute for Air Research (NILU). The NILU centre hosts all correlative results coming from the various validation campaigns (ground-based and ship-borne, balloon-borne, from aircrafts and satellites) generated for all Envisat instruments by the various calibration/validation teams and allow all groups involved to access data generated by the other teams.

### 3.2. SCIAVALIG's organisation

The organisation of the validation of SCIAMACHY from the AOIP's side is delegated to the SCIAMACHY VALidation and Interpretation Group (SCIAVALIG), a subgroup of the

Title Page

Abstract

Introduction

Conclusions

References

Tables

Figures

◀

▶

◀

▶

Back

Close

Full Screen / Esc

Print Version

Interactive Discussion

SCIAMACHY Science Advisory Group (SSAG). SCIAVALIG consists of an international scientific consortium of representatives of 12 institutes participating in the validation. It is chaired by the Royal Netherlands Meteorological Institute (KNMI). SCIAVALIG has established a list of validation requirements (SCIAVALIG, 1998), defined an essential 'core' validation programme (SCIAVALIG, 2002), and has set up an organisational structure for the continuous monitoring of validation results throughout the lifetime of SCIAMACHY. The core validation programme is mainly funded by the AOIPs, and is embedded in the ESA AO programme via several AO projects. The "national coordinators" of SCIAVALIG (who are the authors of this paper) are responsible for the practical coordination of this programme.

The two complementary organisation structures from ESA and SCIAVALIG are illustrated in Fig. 2.

### 3.3. Product coordinators

The SCIAMACHY validation and interpretation group established a product coordination system. For each SCIAMACHY data product a product coordinator maintains an overview of the validation results. Their task is not to coordinate the individual validation activities as such, but to monitor the scientific process, collect the different validation results, and create a consistent view on the product quality. The product coordinators report their findings to SCIAVALIG, ACVT and scientists. The product coordinators collect their information mainly via the SCIAMACHY validation discussion pages on Internet, via validation meetings and via e-mail. In addition they have interaction with algorithm developing teams and processor experts for an efficient translation from validation results towards algorithm changes.

**Overview of  
SCIAMACHY  
validation: 2002–2004**

A. J. M. Piters et al.

Title Page

Abstract

Introduction

Conclusions

References

Tables

Figures

◀

▶

◀

▶

Back

Close

Full Screen / Esc

Print Version

Interactive Discussion

## 4. Correlative measurements

The core validation programme was complemented by a selection of AO projects from international partners. The major component of the SCIAMACHY validation programme consists of comparison studies with correlative measurements acquired by independent instrumentations from various platforms, namely, ground-based stations and ships, aircrafts, stratospheric balloons, and satellites.

### 4.1. Ground-based and ship-based instruments

Ground-based instruments provide the appropriate correlative data to fulfil four main tasks of the SCIAMACHY validation programme:

- quick validation before public release of a new product or just after the release of a near-real time product;
- detailed geophysical validation from pole to pole and for a variety of geophysical states, including dependences on measurement and atmospheric parameters like, e.g., SZA and temperature;
- after major improvement of a retrieval algorithm, verification of correctness of changes and preliminary quality assessment of the resulting data product;
- long-term validation, including detection of trends and other time-varying features.

The list of stations providing correlative measurements for SCIAMACHY validation is given in Table 2. The nationally funded core validation programme, constituting the backbone of the validation, includes complementary types of instrumentation (see list in the next paragraph), yielding all together nearly all targeted species, and operating at about forty stations distributed from the Arctic to the Antarctic and from South America to the Indian Ocean, as indicated in Table 2. Thanks to long-lasting collaborations established mainly in the framework of WMO's Global Atmospheric Watch programme (GAW), and particularly within its affiliated ozonometric networks (see Fioletov

Title Page

Abstract

Introduction

Conclusions

References

Tables

Figures

◀

▶

◀

▶

Back

Close

Full Screen / Esc

Print Version

Interactive Discussion

et al., 1999, and references therein) and the Network for the Detection of Stratospheric Change (NDSC, Lambert et al., 1999, and references therein), international partners contribute through AO projects with a long list of instruments which add significantly to the geographical coverage of the ground-based instrumentation included in the core validation programme.

The ozone column amount is monitored at a variety of ground-based stations by Dobson and Brewer ultraviolet spectrophotometers and by Russian/NIS ultraviolet filter radiometers of the M-124 design. A network of about 30 DOAS instruments, all certified for the NDSC, monitor the column amount of species absorbing in the UV-visible part of the spectrum like O<sub>3</sub>, NO<sub>2</sub>, BrO, OCIO, HCHO, SO<sub>2</sub>, H<sub>2</sub>O and IO. Some of them have multi-axis observation capabilities yielding separation of the tropospheric and stratospheric columns. Seven Fourier Transform IR spectrometers (FTIR), also carrying NDSC certification, report the vertical column amount and sometimes the vertical distribution of a bunch of species including O<sub>3</sub>, NO<sub>2</sub>, CO, CH<sub>4</sub>, N<sub>2</sub>O, CO<sub>2</sub>, HCHO, and H<sub>2</sub>O. Six microwave (MW) radiometers measure the thermally induced rotational emission of selected species, like O<sub>3</sub>, H<sub>2</sub>O and ClO. Ground-based ozone differential absorption lidars (DIAL) and/or electro-chemical ozonesondes yield the vertical distribution of tropospheric and stratospheric ozone, at high and moderate vertical resolution. Aerosol and cloud properties are recorded by lidar and aerosol instruments.

In addition to the instruments operating continuously at ground-based sites, two instruments operated on board the German research vessel Polarstern (Fig. 3) to facilitate the validation of SCIAMACHY measurements in remote marine regions (Fig. 4): a MAX-DOAS (Multi-Axis Differential Optical Absorption Spectroscopy) and an FTIR (Fourier Transform InfraRed) instrument. The Polarstern made three cruises within this time period: the first between November 2001 and May 2002, the second between October 2002 and February 2003, the third between October 2003 and July 2004. The moveable MAX-DOAS experiment measured constantly during all three cruises and the investigation of large scale latitudinal cross sections of atmospheric trace gases were done. The FTIR instrument was operating during the second and third campaign

---

**Overview of  
SCIAMACHY  
validation: 2002–2004**

A. J. M. Piters et al.

---

Title Page

Abstract

Introduction

Conclusions

References

Tables

Figures

◀

▶

◀

▶

Back

Close

Full Screen / Esc

Print Version

Interactive Discussion

from Bremerhaven to Africa.

## 4.2. Airborne campaigns

The German aircraft validation activities were concentrated on missions with the meteorological research aircraft Falcon 20 (D-CMET) operated by the German Aerospace Center (DLR). Many features make the Falcon an excellent aircraft for the validation experiment. Three large optical windows, two in the bottom and one in the roof enable operation of large lidar experiments both for tropospheric and stratospheric research. Specially manufactured polyethylene windows allow remote sensing in the microwave spectral region. The aircraft carries a data acquisition system and an extensive instrument package capable of measuring position, altitude, static pressure and temperature.

Within the SCIA-VALUE (SCIAMACHY VALidation and Utilization Experiment) project two major campaigns with 28 flights were flown in September 2002 and February/March 2003, see Fig. 5. Both campaigns consisted of large-scale latitudinal cross sections from the polar regions to the tropics as well as longitudinal cross sections at polar latitudes. To validate SCIAMACHY, three different types of remote sensing instruments were installed on board the Falcon 20 (Fig. 6). The AMAXDOAS (Airborne Multi-Axis Differential Optical Absorption Spectrometer), which is an experiment developed jointly by the Universities of Heidelberg and Bremen, is able to measure tropospheric and stratospheric columns of key gases like O<sub>3</sub>, NO<sub>2</sub>, BrO and OCIO absorbing in the UV/visible wavelength range. ASUR (Airborne SUBmillimeter Radiometer) operated by the University of Bremen is a passive microwave sensor. A broad range of molecular lines can be detected containing the molecules that play an important role in the catalytic destruction of ozone. The frequency band includes emission lines of O<sub>3</sub>, ClO, HCl, HNO<sub>3</sub>, N<sub>2</sub>O, H<sub>2</sub>O, HO<sub>2</sub>, CH<sub>3</sub>Cl, NO, HCN, and BrO. The Ozone Lidar Experiment (OLEX) developed and operated by DLR complete the scientific payload of the Falcon. In the zenith looking mode this instrument provides high resolution two-dimensional cross sections of ozone number densities, aerosol extinction, and cirrus cloud cover information from about 2 km above aircraft flight level up to a height of 30 km (Fix et al.,

---

**Overview of  
SCIAMACHY  
validation: 2002–2004**

A. J. M. Piters et al.

---

Title Page

Abstract

Introduction

Conclusions

References

Tables

Figures

◀

▶

◀

▶

Back

Close

Full Screen / Esc

Print Version

Interactive Discussion

2004).

The stratospheric research aircraft M55-Geophysica is also involved in Envisat validation. It performed two midlatitude campaigns in July and October 2002 from a basis in Forli, Italy and a high latitude campaign in January and March 2003 in Kiruna. For the Envisat validation flights, the M55 was equipped with two sets of instruments. The so-called chemical flights are performed with six in-situ and one remote-sensing instrument, able to measure, among others, concentrations of H<sub>2</sub>O, O<sub>3</sub>, NO, NO<sub>y</sub>, N<sub>2</sub>O, CH<sub>4</sub>, BrO, and columns of O<sub>3</sub>, and NO<sub>2</sub> (Kostadinov et al., 2003; Heland et al., 2003). For the the so-called cloud/aerosol flights, the remote-sensing instrument was replaced by six instruments for the characterisation of aerosol and cloud properties. Although the in-situ instruments remain on-board these flights optimised for the cloud and aerosol properties.

Within the MOZAIC program (Marengo et al., 1998) started in 1994, five long-range Airbus A340 aircrafts are equipped with in situ-instruments measuring O<sub>3</sub>, H<sub>2</sub>O, CO and NO<sub>y</sub>. They provide data from all over the world along the flight tracks at the upper troposphere, lower stratosphere altitude level from 9–12 km and down to the ground around 60 airports. These measurements are a unique dataset at the tropopause region and will be usefull especially for development and validation of products distinguishing between troposphere and stratosphere.

#### 4.3. Balloon campaigns

Balloon-borne measurements provide snapshot type vertical profile measurements of very high precision. The dedicated balloon campaigns for the atmospheric chemistry instruments MIPAS, GOMOS and SCIAMACHY are financed by ESA, DLR and the French space agency CNES (Centre National d' Etudes Spatiales), the costs and responsibilities are shared according to an agreement between the three agencies. Part of this agreement is to use all balloon flights as much as possible for all three satellite instruments.

CNES provides the facilities and staff for launching scientific payloads with large

**Overview of  
SCIAMACHY  
validation: 2002–2004**

A. J. M. Piters et al.

Title Page

Abstract

Introduction

Conclusions

References

Tables

Figures

◀

▶

◀

▶

Back

Close

Full Screen / Esc

Print Version

Interactive Discussion



---

**Overview of  
SCIAMACHY  
validation: 2002–2004**

---

A. J. M. Piters et al.

---

[Title Page](#)[Abstract](#)[Introduction](#)[Conclusions](#)[References](#)[Tables](#)[Figures](#)[◀](#)[▶](#)[◀](#)[▶](#)[Back](#)[Close](#)[Full Screen / Esc](#)[Print Version](#)[Interactive Discussion](#)

EGU

stratospheric balloons from dedicated stations. The availability of the CNES equipment is an important constraint for the implementation of campaigns. Within the ACVT subgroup ESABC, the involved scientists from the balloon teams and representatives of the agencies frequently met to organize the Envisat validation balloon campaigns. The launch sites and campaign times are selected to cover mid-latitudes, northern latitudes and the tropics during several seasons as much as possible within the available resources.

Until May 2005, SCIAMACHY validation measurements were performed during 16 balloon campaigns from launch sites in Kiruna, Sweden (August 2002, December 2002 / January 2003, March 2003, July 2003, March 2004, June 2004), Aire sur l'Adour, France (September/October 2002, October 2003), Bauru, Brazil (February/March 2003, January/April 2004, June 2004), Vanscoy, Canada (September 2002, August 2004), and Fort Sumner, New Mexico, USA (October 2002, September 2003, September 2004). Table 3 lists the payloads and the measured species relevant for SCIAMACHY.

Further ESABC supported campaigns are already planned in Brazil (June/July 2005), and Kiruna (January/February 2006). With these campaigns, high latitudes in summer with usual conditions and in spring with the possibility of ozone depletion are covered as well as mid-latitudes and tropical regions.

Explicitly funded for the validation of SCIAMACHY are the LPMA/DOAS (combining a Limb Profile Monitoring of the Atmosphere FTIR and a Differential Optical Absorption Spectrometry instrument), the TRIPLE (combining a resonance fluorescence ClO/BrO instrument, an in-situ Fluorescence Induced Stratospheric Hygrometer FISH, a cryogenic total air sampler (BONBON) and a tunable diode laser measuring H<sub>2</sub>O and CH<sub>4</sub>) and the MIPAS-B (Michelson Interferometer for Passive Atmospheric Sounding – balloon version) balloon gondolas. These constitute the German contribution to the balloon-borne validation of Envisat.

These three balloon payloads together measured atmospheric profiles of O<sub>3</sub>, NO<sub>2</sub>, OClO, BrO, CH<sub>4</sub>, N<sub>2</sub>O, H<sub>2</sub>O, CO, CO<sub>2</sub>, temperature and pressure which will allow to

validate corresponding parameters measured by SCIAMACHY during collocated overpasses of the satellite. By radiometric calibration of the DOAS instruments on board the LPMA/DOAS gondola, solar irradiances and limb radiances are determined for level 1 validation.

#### 5 4.4. Satellite intercomparisons

Measurements of relevant parameters by independent instruments on board other satellite platforms facilitate the required pole-to-pole validation for many of the SCIAMACHY products for all seasons. Several satellite instruments are available for comparison with results from the Envisat atmospheric chemistry experiments. In most cases satellite measurements provide near global coverage and, therefore, are well suited for global validation in space and time.

Table 4 lists the satellite instruments used for the validation of SCIAMACHY products. SCIAMACHY's precursor GOME on board ERS-2 follows Envisat with a thirty minutes delay. Since the GOME channels are almost identical to the UV/vis channels of SCIAMACHY, GOME is the first choice for validating UV/vis nadir products. Unfortunately, since June 2003 GOME measurements are restricted to the North Atlantic sector and the north polar region due to a platform failure. TOMS and SBUV II as nadir looking instruments provide total columns. HALOE, SAGE II/III, and POAM III are solar occultation instruments, providing trace gas profiles at sunset and sunrise. SABER observes infrared emissions in limb, retrieving ozone and water vapour profiles. OSIRIS also operates in limb mode, providing ozone profiles. SUSIM and SOLSTICE results are used for comparison with solar irradiance measurements, needed to check the radiometric calibration of SCIAMACHY.

In addition intercomparisons are performed between the three atmospheric chemistry instruments on board Envisat: MIPAS, GOMOS and SCIAMACHY.

---

**Overview of  
SCIAMACHY  
validation: 2002–2004**

A. J. M. Piters et al.

---

Title Page

Abstract

Introduction

Conclusions

References

Tables

Figures

◀

▶

◀

▶

Back

Close

Full Screen / Esc

Print Version

Interactive Discussion

## 5. SCIAMACHY data

### 5.1. Operational products

The raw data of the SCIAMACHY instrument are sent from Envisat to the receiving stations, reformatted there and stored as 'level 0' products. Rearranged and combined with the appropriate calibration information, they are converted by the SCIAMACHY data processor to the so-called 'level 1b' products. These contain the measured spectra as raw data and the calibration information needed to derive spectra in physical units.

The level 1b products are the basis to derive atmospheric parameters from the SCIAMACHY measurements. Two operational processors are implemented to derive these parameters: the Near-Real Time (NRT) and the Offline (OL) level 1b-2 processor. The NRT processor is intended to derive trace gas columns, cloud and aerosol information from SCIAMACHY nadir measurements within a few hours after acquisition. The OL processor will additionally contain trace gas vertical profiles derived from the limb measurement, available a few weeks after the measurements.

Several software updates to the operational processors have been performed since the launch of Envisat. An overview of the software version numbers and the periods to which they apply is given in Table 5.

The first (re-)processing of the entire mission started in March 2004 with software version 5.01. A later software version was introduced in August 2004. The reprocessing continued with this version, and parts of the already reprocessed data with version 5.01 have been reprocessed with version 5.04, but not yet all data.

In Figs. 7 and 8 an overview is given from the data currently available to the validation teams as a percentage of the total number of orbits in each month since July 2002. For each orbit only the latest software version is counted in this plot, so that when the reprocessing is finished the entire plot should consist of only one colour (corresponding to the latest software version).

The auxiliary files and the initialisation files used in the processors are different for

Title Page

Abstract

Introduction

Conclusions

References

Tables

Figures

◀

▶

◀

▶

Back

Close

Full Screen / Esc

Print Version

Interactive Discussion

different software versions. Periods with erroneous initialisation or auxiliary files are in principle listed in ESA's data disclaimer. The data disclaimers can be found on ESA's web site <http://envisat.esa.int/dataproducts/availability/disclaimers>.

SCIAVALIG, with input from the validation community, has defined a validation reference set: a small subset of SCIAMACHY measurements coinciding with selected validation measurements between July 2002 and April 2003. With this reference set it should be possible to derive a first statement of the product quality from comparison with the validation measurements after every processor upgrade, provided that the validation reference set is processed first. The SCIAMACHY validation reference set covers about 3000 states from the first year of operation, where a state is a measurement block with consecutive measurements, with a total duration of approximately 1 min, in nadir corresponding to approximately  $960 \times 400 \text{ km}^2$ .

For the second workshop of Atmospheric Chemistry Validation of Envisat in May 2004 (ACVE-2), the 2002 part of the reference set was processed to level 1b and level 2 NRT and OL products with the most recent processors (NRT: 5.01 and OL: 2.1, see Table 5). The OL products contained only ozone and  $\text{NO}_2$  profiles. The NRT products contained entries for all planned nadir products, but only  $\text{O}_3$ ,  $\text{NO}_2$ , BrO, and cloud cover fraction could be used for comparison studies; the retrieval of the other species were suffering from calibration issues or from errors in the processors.

## 5.2. Scientific products

Many institutes interested in the SCIAMACHY project developed their own retrieval algorithms to derive atmospheric products from SCIAMACHY measurements as an alternative for the operational products. These non-operational products, hereafter called "scientific products", are more advanced than the operational ones. For many atmospheric parameters, scientific products are the only ones available at the time of writing of this paper. The availability of the scientific products varies. For some products, almost complete datasets exist. This is the case for  $\text{O}_3$ ,  $\text{NO}_2$ , BrO, OCIO,  $\text{SO}_2$ , and  $\text{H}_2\text{O}$  columns, and for  $\text{O}_3$ ,  $\text{NO}_2$  and BrO profiles.

---

**Overview of  
SCIAMACHY  
validation: 2002–2004**

A. J. M. Piters et al.

---

Title Page

Abstract

Introduction

Conclusions

References

Tables

Figures

◀

▶

◀

▶

Back

Close

Full Screen / Esc

Print Version

Interactive Discussion

---

**Overview of  
SCIAMACHY  
validation: 2002–2004**A. J. M. Piters et al.

---

[Title Page](#)[Abstract](#)[Introduction](#)[Conclusions](#)[References](#)[Tables](#)[Figures](#)[⏪](#)[⏩](#)[◀](#)[▶](#)[Back](#)[Close](#)[Full Screen / Esc](#)[Print Version](#)[Interactive Discussion](#)

EGU

The improvement of scientific products usually goes faster than that of the operational products, because changes can be faster implemented without the restricting needs of an operational processor regarding design, stability and documentation. The disadvantage of scientific products is the lack of standardized formats and data access.

5 Nevertheless, the knowledge gained by validation and further development of scientific products can help considerably in the improvement of the operational products.

Table 1 gives an overview of the current availability of operational and scientific products. Section 6 will give a short summary of first validation results, including information about the institutes developing the scientific products.

## 10 6. Validation results

This Section contains a summary of validations reported in May 2004 to the Second Workshop on the Atmospheric Chemistry Validation of Envisat (ACVE-2) in Frascati and in December 2004 to the SCIAMACHY Validation Workshop in Bremen. It must be noted that for all products the data sets suitable for evaluation were too limited to cover  
15 all geophysical states of interest. Qualitative and quantitative statements hereafter are valid only for the data sets and algorithm versions available at the time of the investigation.

### 6.1. Level 1 products

The solar spectral irradiance measured by SCIAMACHY has been compared with the high-resolution Kurucz solar spectrum (Skupin et al., 2005). These comparisons have revealed deficiencies in the absolute radiometric calibration of the solar irradiance, with offsets ranging between 6% and 13%. Comparisons of the spectral reflectance, i.e., the ratio of the earth radiance at nadir and the solar irradiance with GOME, MERIS and modelled reflectance spectra, show wavelength dependent offsets varying between 5%  
20 and 25% (Acarreta and Stammes, 2005; van Soest et al., 2005). Such offsets cannot

---

**Overview of  
SCIAMACHY  
validation: 2002–2004**

---

A. J. M. Piters et al.

---

[Title Page](#)[Abstract](#)[Introduction](#)[Conclusions](#)[References](#)[Tables](#)[Figures](#)[◀](#)[▶](#)[◀](#)[▶](#)[Back](#)[Close](#)[Full Screen / Esc](#)[Print Version](#)[Interactive Discussion](#)

EGU

be explained by absolute calibration errors of the solar irradiance alone, suggesting also uncertainties with the absolute calibration of the earth radiance different from solar irradiance calibration errors. Reflectance comparisons have also revealed the presence of residual polarisation sensitivity structures in the spectra even after application of the polarisation correction (Tilstra and Stammes, 2005).

According to recent studies, the calibration improves greatly by recalculating calibration parameters from on-ground measurements and extended analysis of in-flight measurements. With these improvements, the mean solar irradiance for SCIAMACHY channels 3–6 is expected to agree with the Kurucz data to within  $\pm 2$ –3%, and for channels 1 and 2 within  $\pm 5$ –10% (Skupin et al., 2005). The reflectance is expected to agree within  $\pm 2$ –7% for channels 1–6. However, these changes are not yet implemented in the operational chain at this time.

The near-infrared channels 7 and 8 are hampered by various effects, the most important being: varying ice layer on the cooled detectors causing transmission loss and further effects; light-leak in channel 7; non-linearity of the detector electronics; variable dark current (Lichtenberg et al., 2005). The current calibration of these channels is insufficient to start the validation of reflectance data in this wavelength region.

## 6.2. Level 2 products from nadir UV-visible

Apparent slant column amounts of  $O_3$ ,  $NO_2$ , BrO, OCIO,  $SO_2$ , HCHO and  $H_2O$  are retrieved from SCIAMACHY UV-visible spectra measured at nadir. When the vertical distribution of the constituents controlling the optical path through the atmosphere is known a priori, slant columns can be converted into vertical columns using an air mass factor (AMF) calculated with a radiative transfer model. Also retrieved from nadir UV-visible data are the fractional cloud cover, cloud top pressure, absorbing aerosol index (AAI), and aerosol optical thickness (AOT).

### 6.2.1. O<sub>3</sub> column

Preliminary validations based on sporadic sets of SCIAMACHY O<sub>3</sub> columns processed with versions 5.01 and 5.04 of the NRT processor were overviewed by Lambert et al. (2004a) in May 2004 and December 2004, respectively. They concluded that the NRT O<sub>3</sub> column products offer in most cases the level of quality that could be expected from this processor based on version 2 of the GOME Data Processor (GDP). For several seasons and latitudes, the agreement to ground-based networks and satellite measurements is indeed within the 2–10% range, with a global tendency to underestimate correlative data by a few percent. Ground-based comparisons of the SCIAMACHY NRT O<sub>3</sub> columns confirm the expected presence of errors inherited from GDP 2, like dependences on the solar zenith angle, season and viewing angle. The apparent absence of meridional structures between SCIAMACHY NRT 5.01/5.04 and ground-based total O<sub>3</sub> is surprising at first glance but it can be the result of compensating errors which vary with time and latitude, e.g. errors associated with rotational Raman scattering (RRS) and with the temperature dependence of the O<sub>3</sub> absorption cross-section. Between October and December, unexpectedly, much larger errors appear than those reported for GOME. Those errors correlate with the cloud fraction, ghost vertical column and air mass factor, and they show up at several latitudes. This explains apparent differences between individual comparison results and vindicates the maintenance of a network-based effort instead of only a few “representative” stations. It is expected that the OL SCIAMACHY processor will be upgraded in 2005 to a GDP 4-like version, including a better treatment of RRS, of the cross-sections temperature dependence and of the air mass factor, and therefore significant improvements are anticipated.

SCIAMACHY O<sub>3</sub> column data sets have also been produced by scientific processors developed at BIRA-IASB, IUP/Bremen and KNMI. Those processors are based on recent GOME O<sub>3</sub> column retrieval algorithms (GDOAS, Spurr et al., 2004; TO-GOMI, Valks and van Oss, 2003; WFDOAS, Coldewey-Egbers et al., 2004) which have demonstrated to bring the SZA/season/ latitude dependencies of the GOME O<sub>3</sub>

---

**Overview of  
SCIAMACHY  
validation: 2002–2004**

A. J. M. Piters et al.

---

Title Page

Abstract

Introduction

Conclusions

References

Tables

Figures

◀

▶

◀

▶

Back

Close

Full Screen / Esc

Print Version

Interactive Discussion

---

**Overview of  
SCIAMACHY  
validation: 2002–2004**

---

A. J. M. Piters et al.

---

[Title Page](#)[Abstract](#)[Introduction](#)[Conclusions](#)[References](#)[Tables](#)[Figures](#)[◀](#)[▶](#)[◀](#)[▶](#)[Back](#)[Close](#)[Full Screen / Esc](#)[Print Version](#)[Interactive Discussion](#)

EGU

column product down to the “1% level”, that is, to the level of accuracy that can be reached with well-maintained and calibrated ground-based sensors. Those algorithms have also proven to be stable and relatively insensitive to instrumental degradation over the entire GOME lifetime, enabling accurate O<sub>3</sub> trend monitoring. First validation of preliminary SCIAMACHY O<sub>3</sub> columns generated by the scientific algorithms developed at BIRA-IASB and KNMI shows a good agreement of 1–1.5% (usually a slight underestimation) and a RMS of about 5% with most of ground-based data sets (Eskes et al., 2005).

### 6.2.2. NO<sub>2</sub> column

Validations of the SCIAMACHY NO<sub>2</sub> column data were reviewed by Lambert et al. (2004b) in May 2004 for NRT version 5.01 and for scientific products generated at BIRA-IASB, IFE, IUP-Heidelberg, KNMI, and SAO. This review was updated with NRT version 5.04 in December 2004. Both NRT versions and the scientific products have demonstrated to capture major geophysical signals appropriately. For NRT 5.01 and 5.04, the two validation reviews conclude to a good agreement (of a few times 10<sup>14</sup> molec/cm<sup>2</sup>) with correlative data over clean areas in the Southern winter-spring and Northern summer. Much larger deviations (systematic overestimations up to 1.5·10<sup>15</sup> molec/cm<sup>2</sup> over clean areas and more in polluted conditions) are observed in other cases, e.g. from October till the end of the year for several latitudes but not all, and with a clear correlation with cloud fraction, ghost vertical column and air mass factor values. It is anticipated that, in spring 2005, a GDP 4-like algorithm will be implemented in the OL SCIAMACHY processor and that the NRT NO<sub>2</sub> column product will improve significantly. It is important to note that, while GOME GDP 2.7 NO<sub>2</sub> columns were strongly affected by instrumental degradation after 2001, the new level-1 calibration implemented in 2002 solved the problem for the subsequent GDP versions, yielding stable data sets over the entire GOME lifetime.

Coordinated validations carried out on the SCIAMACHY NO<sub>2</sub> scientific products have shown that stratospheric NO<sub>2</sub> columns already have a good quality. Differences be-



tween the different products exist because of differences in retrieval settings and assumptions. The retrieval algorithm differences that have most impact concern the profile database used for air mass factor calculations, the way cross-sections temperatures are determined, and the way clouds are handled. More detailed validation is ongoing, with special attention to tropospheric NO<sub>2</sub> products.

### 6.2.3. BrO column

SCIAMACHY BrO slant columns are retrieved by the NRT processor and by scientific algorithms developed at BIRA-IASB, IFE, IUP-Heidelberg and SAO. Due to the low signal/noise ratio and to remaining polarisation features of SCIAMACHY in the classical GOME BrO window (345–359 nm), the SCIAMACHY BrO window in NRT version 5.01 has been shifted to shorter wavelengths (335–347 nm). Thanks to this shift, at moderate and large slant column values, an acceptable agreement better than 20% is found between NRT 5.01 and all scientific SCIAMACHY data sets, and also with GOME despite the spectral window difference. This level of agreement is also observed with ground-based UV-visible measurements after due conversion to vertical columns and appropriate treatment of the diurnal cycle. Detailed investigation further confirms that SCIAMACHY and other BrO sensors capture polar spring emissions and short-term variability in a consistent way. However, in summer, for slant column values smaller than  $1.5 \cdot 10^{14}$  molec/cm<sup>2</sup>, version 5.01 of the NRT product reports systematically higher values than other systems by 20% to 100% (Van Roozendael et al., 2004).

### 6.2.4. SO<sub>2</sub> column

SCIAMACHY SO<sub>2</sub> column data are routinely retrieved by the scientific processors developed and operated at BIRA-IASB and IFE. SCIAMACHY SO<sub>2</sub> data give a clear picture of volcanic emissions, sulphur plant fires and other pollution events. They show good agreement with SO<sub>2</sub> columns derived from GOME, despite the significant differences in spatial resolution and sampling. Quantitative validation is nevertheless

Title Page

Abstract

Introduction

Conclusions

References

Tables

Figures

◀

▶

◀

▶

Back

Close

Full Screen / Esc

Print Version

Interactive Discussion

hampered by the lack of independent measurements. Further details are given by [Bramstedt et al. \(2004\)](#).

#### 6.2.5. OCIO slant columns

5 SCIAMACHY OCIO slant columns produced by the scientific processors at IFE and IUP-Heidelberg have been compared with OCIO slant columns from GOME and with other observations from AMAXDOAS and ground-based UV-visible spectrometers. Using a polarisation sensitivity spectrum and an empirical correction spectrum in the spectral fit, and considering diurnal cycle and atmospheric variability effects, SCIAMACHY OCIO data are consistent with those from other sensors and show the expected relation  
10 to atmospheric conditions ([Wagner et al., 2004](#); [Wang et al., 2003](#)).

#### 6.2.6. H<sub>2</sub>O columns

An overview of the validation status of the scientific SCIAMACHY H<sub>2</sub>O columns (IFE, MPI) in May 2004 was given by [Timmermans et al. \(2004\)](#). With the MPI algorithm (based on the GOME algorithm by [Lang et al., 2003](#)), a negative bias of 20 to 25%  
15 was reported. The IFE product ([Noël et al., 2004](#)) showed about 10% too low water vapour values when compared to ozone sondes. A more recent validation effort of an improved version of the IFE product shows a systematic bias of  $-0.05 \text{ g/cm}^2$ , and a scatter of  $0.5 \text{ g/cm}^2$  with respect to SSM/I measurements [Noël et al. \(2005\)](#).

#### 6.2.7. Clouds

20 An overview of the validation status of the SCIAMACHY cloud products in May 2004 was given by [Fournier et al. \(2004\)](#). They concluded that the operational SCIAMACHY cloud fraction correlated well with the cloud fraction retrieved with FRESCO (KNMI), and is not sensitive to errors in the radiance calibration, as FRESCO is. A viewing angle dependent error was pointed out in the operational product. Independent validation

Title Page

Abstract

Introduction

Conclusions

References

Tables

Figures

◀

▶

◀

▶

Back

Close

Full Screen / Esc

Print Version

Interactive Discussion

still has to be performed. The FRESCO cloud-top pressure shows a RMS difference of about 100 hPa when compared to MODIS (Fournier et al., 2005).

### 6.2.8. Aerosol parameters

An overview of the validation status of the SCIAMACHY aerosol products can be found in von Hoyningen-Hüne et al. (2004) and de Graaf et al. (2004). The aerosol algorithms are very sensitive to errors in the reflectance. However, after using an empirical correction factor for the reflectance, it was shown that the SCIAMACHY Absorbing Aerosol Index (KNAI) compared well to TOMS and the SCIAMACHY Aerosol Optical Thickness (IFE) compared reasonably well to MERIS.

### 6.3. Level 2 products from nadir near infrared

Columns of CO, CH<sub>4</sub>, N<sub>2</sub>O, and/or CO<sub>2</sub> have been retrieved from SCIAMACHY near-infrared (NIR) measurements by the IMAP-DOAS (Frankenberg et al., 2005a,b), IMLM (Gloude-mans et al., 2005) and WFM-DOAS (Buchwitz et al., 2005b) scientific algorithms. First order corrections for the thermal variation of the dark current signal along the orbit, dead/bad pixels, light leak in channel 7, and the build-up of ice on the detectors of channels 7 and 8 affecting signal transmission and line shape functions, have been implemented. Such corrections significantly improve the level 2 data products, however, the retrieval residuals are still larger than the expected instrument noise. Refinements of the algorithms are still progressing, e.g. using more CO lines in the retrieval is envisaged. Accurate validation methods are also under refinement, e.g., to deal properly with issues posed by clouds and by small-scale variations of the surface properties and altitude.

Correlative studies have been conducted using ground-based data from a pole-to-pole network of 12 FTIR instruments and from the FTIR operated during two cruises of the Polarstern ship from Bremerhaven to Africa; CO column data from the EOS-Terra MOPITT satellite; CO and CH<sub>4</sub> data from the TM3 (KNMI) and TM5 (MAU) models;

Title Page

Abstract

Introduction

Conclusions

References

Tables

Figures

◀

▶

◀

▶

Back

Close

Full Screen / Esc

Print Version

Interactive Discussion

---

**Overview of  
SCIAMACHY  
validation: 2002–2004**

---

A. J. M. Piters et al.

---

[Title Page](#)[Abstract](#)[Introduction](#)[Conclusions](#)[References](#)[Tables](#)[Figures](#)[◀](#)[▶](#)[◀](#)[▶](#)[Back](#)[Close](#)[Full Screen / Esc](#)[Print Version](#)[Interactive Discussion](#)

EGU

and ancillary data like fire maps produced by ERS-2 ATSR and EOS-Aqua MODIS. The general potential of SCIAMACHY NIR products is demonstrated (Buchwitz et al., 2005a; de Mazière et al., 2004; Gloudemans et al., 2005; Warneke et al., 2004; Dils et al., 2005), in particular its capabilities to detect source/sink areas of CO, CH<sub>4</sub> and CO<sub>2</sub> and to track their transport. Provisional precision estimates for SCIAMACHY CO (30%) and CH<sub>4</sub> (5%) vertical columns are not far away from the nominal requirements and can already be used in a variety of applications. Even so, inverse modelling analyses seem to indicate that nominal precision requirements are a firm precondition to the potential improvement of existing emission catalogues. The current estimated precision for N<sub>2</sub>O is 20%. It is expected that this will be improved in the near future. For CO<sub>2</sub>, current validation is too limited to give firm conclusions.

#### 6.4. Level 2 products retrieved from limb UV-visible

##### 6.4.1. O<sub>3</sub> profile

Up to now, the availability of O<sub>3</sub> profile data generated from SCIAMACHY limb spectra by the OL processor has been limited to a few verification orbits not designed for geophysical validation, and to a limited data set produced with version 2.1 of the OL processor. Both versions are based on the Optimal Estimation retrieval method. They rely on limb spectra not corrected for pointing errors of the satellite platform and therefore resulting O<sub>3</sub> profiles are expected to exhibit a shift in altitude registration. In May 2004, a review of preliminary validations of SCIAMACHY OL O<sub>3</sub> profiles (Brinksmas et al., 2004) concluded that version 2.1 O<sub>3</sub> profiles agree to within 10% to ground-based data (ozonesonde, lidar, microwave, FTIR), and to within 30% to satellite data (HALOE, SAGE-II, SAGE-III, SBUV/2). More recently, a preliminary validation of version 2.5 O<sub>3</sub> profiles with ground-based instruments and satellites showed that 20% of the profiles have unrealistic values. The other 80% show no systematic deviations above 24 km, but are significantly underestimated below 24 km, by 15% (Brinksmas et al., 2005). It is anticipated that a new OL limb O<sub>3</sub> profile data product based on an

---

**Overview of  
SCIAMACHY  
validation: 2002–2004**

---

A. J. M. Piters et al.

---

[Title Page](#)[Abstract](#)[Introduction](#)[Conclusions](#)[References](#)[Tables](#)[Figures](#)[⏪](#)[⏩](#)[◀](#)[▶](#)[Back](#)[Close](#)[Full Screen / Esc](#)[Print Version](#)[Interactive Discussion](#)

EGU

alternative retrieval approach and including a correction for pointing errors should be made available to validation teams in 2005.

Synergistic use of complementary ground-based network data by [de Clercq et al. \(2004\)](#) allowed characterisation of an altitude shift in the ozone profiles. This shift was found to drift monotonically from 1.5 km to 3 km between two successive updates of the on-board orbit-model, performed each time Envisat flies over the Caribbean and over Australia. This drift causes fictitious meridional and zonal structures in the O<sub>3</sub> profile product. The implementation of a new version of the orbit propagator model on 9 December 2003 improve the altitude registration of the SCIAMACHY O<sub>3</sub> profile (C. von Savigny, personal communication, 2005)

SCIAMACHY limb O<sub>3</sub> profiles have also been generated by IFE, with a recent software version 1.61. These profiles were validated for five months spread over 2004 with ground-based and satellite data. The systematic bias of the IFE profiles, after a downward shift of 1.5 km was applied to account for Envisat pointing problems, is –3% with respect to lidars, averaged between 16 and 40 km, and –6% with respect to SAGE II over the same latitude range. The difference profile has a characteristic zig-zag shape with a wavelength of approximately 8 km, the systematic bias being a few percent larger around 32 and 24 km, and a few percent smaller around 20 and 28 km.

#### 6.4.2. NO<sub>2</sub> profiles

An overview of the validation status of the SCIAMACHY NO<sub>2</sub> profiles (OL vs. 2.1) in May 2004 was given by ([von Savigny et al., 2004](#)). They concluded that the OL product was about 50% larger than HALOE (25–40 km). About 10% of the OL profiles appear to be entirely unphysical. The IFE profiles were within 15% of the HALOE profiles (22–33 km). Both IFE and SAO NO<sub>2</sub> profiles compared reasonably to SAOZ balloon profiles.

A more recent comparison of OL vs. 2.4 and 2.5 NO<sub>2</sub> profiles with collocated and photochemically corrected SAGE II (vs. 6.2) measurements yielded improved OL NO<sub>2</sub> profiles (Bracher, personal communication, Feb. 2005). However, the quality of the re-

---

**Overview of  
SCIAMACHY  
validation: 2002–2004**

---

A. J. M. Piters et al.

---

trievals strongly depended on latitude and/or solar zenith angle (SZA). For high southern latitudes (60° S–70° S) the OL NO<sub>2</sub> profile retrievals agreed with photochemically corrected SAGE II profiles within –20% to +5% for the 19–36 km altitude range. At low northern latitudes (25° N–30° N) the OL concentrations were systematically higher by 10–60% in the 25–36 km altitude range. At northern mid-latitudes (40° N–53° N) the agreement was again better: –35% to +25% between 19 and 36 km altitude.

Furthermore, retrievals with the DLR prototype processor that will replace the current OL processor in the future are in good agreement with the IFE NO<sub>2</sub> profile retrievals (Doicu et al., 2005<sup>1</sup>).

#### 6.4.3. BrO profiles

Profiles of BrO have been retrieved from SCIAMACHY limb spectra by IFE, SAO, and IUP-Heidelberg. Preliminary validation relies on comparisons with balloon-based data acquired either by UV-visible solar occultation during ascent/descent and sunset/sunrise (three LPMA/DOAS and seven SAOZ-balloon flights) or by resonance fluorescence (three Triple flights), and with simulations provided by the SLIMCAT chemical-transport model of the stratosphere. The direct comparison of photochemically uncorrected BrO profiles from balloons and from SCIAMACHY limb spectra shows promising results in the middle stratosphere but reveals possible problems below 20 km (Pfeilsticker et al., 2004; Rozanov et al., 2005). Further validation is needed, that will include photochemical corrections for balloon observations along calculated air mass trajectories.

---

<sup>1</sup>Doicu, A., Hilgers, S., Rozanov, A., Eichmann, K.-U., von Savigny, Ch., and Burrows, J. P.: Information operator approach for atmospheric remote sensing, *J. Quant. Spectrosc. Radiat. Transfer*, in preparation, 2005.

[Title Page](#)[Abstract](#)[Introduction](#)[Conclusions](#)[References](#)[Tables](#)[Figures](#)[◀](#)[▶](#)[◀](#)[▶](#)[Back](#)[Close](#)[Full Screen / Esc](#)[Print Version](#)[Interactive Discussion](#)

EGU

## 7. Validation plans

Our long-term goal is to generate a complete description of the quality of all SCIAMACHY products that fulfil specific criteria on availability, product and algorithm description, and software version control. These criteria are listed in Sect. 7.1. We discuss the contents of such a complete description (i.e. what is meant by ‘complete’) in Sect. 7.2, what is still missing in Sect. 7.3, and how to achieve our long-term goal in Sect. 7.4.

### 7.1. Criteria for SCIAMACHY products

Scientific publications in which SCIAMACHY products are used need to address the quality (like accuracy, precision, features) of these products focused on the effect the quality has on the results presented in the publication. It is our goal to give a general description of the quality for those SCIAMACHY products that are well-documented and generally available. SCIAMACHY products generated for a specific scientific study only do not fall within this scope. The specific criteria are:

1. The product is generated from SCIAMACHY measurements, and is of level 2 or lower, i.e. directly associated with the satellite observation at a specific location and time. Gridded products (level 3, e.g. maps) or value-added products (level 4, e.g. assimilated products) are not within our scope.
2. A data set is generated with one software version for a consecutive period of at least 1 year, and for at least 50% of the orbits in that period.
3. The data set is available for scientific research at reproduction costs or free of charge.
4. The retrieval algorithm for the product is well described, i.e. mathematical methods, assumptions, input data and auxiliary data are all listed and properly referenced. This algorithm description is available to the users.

Title Page

Abstract

Introduction

Conclusions

References

Tables

Figures

⏪

⏩

◀

▶

Back

Close

Full Screen / Esc

Print Version

Interactive Discussion

---

**Overview of  
SCIAMACHY  
validation: 2002–2004**

---

A. J. M. Piters et al.

---

Title Page

Abstract

Introduction

Conclusions

References

Tables

Figures

◀

▶

◀

▶

Back

Close

Full Screen / Esc

Print Version

Interactive Discussion

EGU

5. The output format of the product is well described and the description is available to the users.
6. Software version documentation is available to the users, listing changes to previous versions.

At the time of writing, April 2005, the reprocessed NRT level 2 product (version 5.04) fulfils all these criteria. For the period December 2002 to November 2003 about 60% of the orbits are processed with software version 5.04 and available to the users. Several scientific institutes are currently generating SCIAMACHY products and making them available. An overview is given in Table 1, information about the institutes developing the products is included in Sect. 6. None of these products/data sets are already fulfilling all criteria, the main reason being that most of them are still in their development phase. Some scientific products are close to fulfilling all criteria, and only lacking some documentation (criteria 4 and 6). Many of the papers in this special issue of ACP, “Geophysical Validation of SCIAMACHY: 2002–2004” are already dealing with the comparison of scientific products with correlative data, and so were many of the papers in the Proceedings of the Second Workshop on the Atmospheric Validation of Envisat (ACVE-2; 3–7 May 2004, Frascati, ESA SP-562, 2004). It is our expectation that between 5 and 15 of these scientific products will fulfil all criteria within the near future. The products will be listed on the SCIAMACHY validation web site; <http://www.sciamachy-validation.org>.

## 7.2. Complete description of product quality

A complete description of the quality of a SCIAMACHY product should be formulated in such a way that it is of direct use for scientific research. In particular the behaviour of deviations (between SCIAMACHY data and correlative data) with respect to relevant algorithm, instrument, and atmospheric parameters should be specified. Examples of such parameters are: surface albedo, scan mirror angle, solar zenith angle. Some product specific features (or obvious errors) can be observed from the analysis of the



product itself, without comparison to correlative data. Also, the descriptions of these features, and where they occur (what algorithm, instrumental or geophysical parameters), should be part of the complete description.

Ideally, all SCIAMACHY products should be compared to several, i.e. more than one, independent sources of well-established correlative data. The results of these comparisons should be combined to get a consistent description of the behaviour of the product.

### 7.3. Constraints and requirements

To achieve our long-term goal it is necessary that: 1) processors are bug free and known improvements to the algorithms are implemented (Sect. 7.3.1), 2) a consecutive period of at least one year of data is processed with the latest software version, and enough collocations with correlative data are included within this data set (Sect. 7.3.2), and 3) the manpower for data analysis is available (Sect. 7.3.3).

#### 7.3.1. Operational product improvement and processor upgrades

The current operational nadir UV-visible products (NRT 5.04 and OL 2.5), i.e., vertical columns of  $O_3$  and  $NO_2$ , and slant columns of BrO, OCIO and HCHO, are based on the algorithms used in the GOME Data Processor (GDP) version 2.4. An upgrade of these algorithms to the algorithms currently used in GOME (GDP version 4.0) is planned for the autumn of 2005. Validation of the current product has confirmed similar features of  $O_3$  and  $NO_2$  as in GOME version 2.4 (see Sects. 6.2.1 and 6.2.2), and further validation is waiting for the processor upgrade.

The current operational nadir NIR products are still unrealistic, see Sect. 6.3. Upgrades of the level 0-1 and the level 1-2 processors should improve these products; the validation can hopefully start after these upgrades have been performed. For NIR products this will not be done before 2006.

In the  $O_3$  and  $NO_2$  profiles, generated with the operational OL processor version

Title Page

Abstract

Introduction

Conclusions

References

Tables

Figures

⏪

⏩

◀

▶

Back

Close

Full Screen / Esc

Print Version

Interactive Discussion

2.5, several unrealistic features have been found (Brinkma et al., 2005). Validation of these products should also continue after the next processor upgrade, planned for fall 2005.

### 7.3.2. Data availability and collocations

5 For studying the dependence of deviations on several atmospheric parameters, like season and latitude, a sufficient amount of SCIAMACHY data collocated in time and place with correlative measurements is needed. For example, more than 100 collocations are needed to show that a bias of 2% is significantly differing from 0, on a confidence level of 95%, for a comparison with a standard deviation of 10%. To show a significant dependence of the bias on, e.g., latitude one needs even more points. Selection of measurements with specific atmospheric conditions, e.g. cloud-free pixels, requires again more collocations. The number of collocation points needed is dependent on the random errors of the satellite measurements and the correlative measurements, the representative errors and on the magnitude of the effect under investigation. 10 In general, with about 1000 collocations, spread evenly over several parameters (especially over time and latitude), it should be possible to thoroughly study the consistency of the satellite product with the correlative data.

For many of the products of SCIAMACHY enough correlative measurements are available. However, the SCIAMACHY measurements themselves are not all processed with the current operational processors (NRT 5.04/OL 2.5) and/or distributed to the validation teams, making it difficult to continue or complete the validation of the operational products. 20

For long-term monitoring of the instrument, it is even necessary to analyse data over the lifetime of SCIAMACHY to identify instrumental drifts and degradations. This includes not only the availability of SCIAMACHY data over the whole period, but also requires a minimum amount of correlative data during lifetime. 25

---

**Overview of  
SCIAMACHY  
validation: 2002–2004**

A. J. M. Piters et al.

---

Title Page

Abstract

Introduction

Conclusions

References

Tables

Figures

◀

▶

◀

▶

Back

Close

Full Screen / Esc

Print Version

Interactive Discussion

### 7.3.3. Manpower for data analysis

A budget of about 16 million euro, mainly from the national space agencies of Germany, The Netherlands, and Belgium, was spent for performing dedicated validation measurements and for the analysis of the data. Most of the funding was applied in the first two years of operation, since the necessary validation effort was expected to be largest in that period. The dedicated validation measurements have indeed been performed successfully, but the analysis of the SCIAMACHY data still has to be performed for all SCIAMACHY products after bugs have been fixed, algorithms have been improved, and the data have been reprocessed and distributed.

In addition, all non-operational products fulfilling the criteria of Sect. 7.1 have to be thoroughly compared to the existing correlative measurements as well.

Only very limited funding is currently available to perform these tasks, also it will be a huge effort: At least 27 atmospheric parameters are anticipated for the operational chain in its final stage. Additionally, an increasing number of scientific products will fulfill the criteria from Sect. 7.1 and therefore should be analysed.

### 7.4. What can be done

SCIAVALIG and individual institutes involved in validation are at the moment looking for ways to secure funding for the necessary analysis of SCIAMACHY data. With even a limited amount of funding it is possible to at least monitor the comparisons performed by individual teams and list them, and to identify validation possibilities within existing projects. However, when we find more funding for the validation of SCIAMACHY products we strive for regular updates of the complete descriptions of the product quality on the web site, in documents, and in peer-reviewed journals.

Title Page

Abstract

Introduction

Conclusions

References

Tables

Figures

◀

▶

◀

▶

Back

Close

Full Screen / Esc

Print Version

Interactive Discussion

## 8. Conclusions

With the support of ESA and of a list of international partners, an extensive SCIAMACHY validation programme has been developed jointly by Germany, the Netherlands and Belgium to face complex requirements in terms of measured species, altitude range, spatial and temporal scales, geophysical states and intended applications. Preparation of the validation has been successful:

- An organisational structure has been set up to coordinate this large-scale validation campaign, to monitor continuously the validation results (Sect. 3) and to foster exchanges between the different validation actors;
- Numerous independent validation measurements of all planned SCIAMACHY products have been performed (Sect. 4), with a special concentration in the first two years of operation;
- The required manpower to analyse the data was available in the first two years of operation, for a large part funded by the national space agencies in the three instrument-providing countries.

The validation itself has been however hampered, firstly by delays in the production and delivery of operational data by the Envisat ground segment, secondly by delays in the development of the data processors.

Since the first release of early SCIAMACHY data in summer 2002, the operational processors established at DLR on behalf of ESA were upgraded regularly (see Table 5) and some data products (level 1b spectra, O<sub>3</sub>, NO<sub>2</sub>, BrO and clouds data) have improved considerably. Validation has shown that for limited periods and geographical domains they can already be used for scientific studies. Nevertheless, near-real-time level-1b-to-2 processors are still affected by a series of bugs, which result in major errors preventing from scientific usability in other periods and domains, e.g., the O<sub>3</sub> and NO<sub>2</sub> columns in the last months of the year or the BrO columns at small BrO abun-

Title Page

Abstract

Introduction

Conclusions

References

Tables

Figures

◀

▶

◀

▶

Back

Close

Full Screen / Esc

Print Version

Interactive Discussion

dances. Scientific users are advised to read carefully validation reports and quality statements before using the data.

Untied to the constraints of operational processing, independent research algorithms developed at scientific institutes usually are more flexible and they allow dedicated investigation of specific retrieval issues. Seven scientific institutes (BIRA-IASB, IFE, IUP-Heidelberg, KNMI, MPI, SAO and SRON) have developed their own retrieval algorithms and generated SCIAMACHY data products, addressing all together nearly all targeted constituents. Their UV-visible data products (columns as well as profiles) are already of acceptable, if not of excellent, quality and are available publicly, sometimes in near-real-time (see Table 1 and Sect. 6. Several near-infrared column products are still under development but they have already demonstrated their potential for a variety of applications. Most of them can be obtained on request. All scientific products will be judged first on their availability and description and after that on their usefulness for scientific research by the monitoring of the validation results.

SCIAMACHY is a remarkable stable instrument starting the fourth year of almost continuous measurements (see Fig. 1). It is required and anticipated that SCIAMACHY validation will continue throughout the instrument lifetime (and beyond, anticipating algorithm updates and reprocessing of data for many years to come). The actual amount of work will obviously depend on funding and manpower considerations.

*Acknowledgements.* SCIAMACHY is a national contribution to the Envisat Mission of the European Space Agency (ESA). It is funded by the German Aerospace Center (DLR) and the Netherlands Agency for Aerospace Programs (NIVR) with a contribution of the Belgian Institute for Space Aeronomy (BIRA-IASB). We thank the agencies for providing the platform and the instrument. SCIAMACHY's Principal Investigator is J. Burrows (University of Bremen) and Co-Principal Investigators are A. Goede (KNMI) and C. Muller (BIRA-IASB). Operational data processing is performed at the German Remote Sensing Data Center (DLR-DFD) on behalf of ESA as part of the Envisat ground segment.

Validation activities are initiated by the Principal Investigators of the ESA-AO, by alphabetical order: I. Aben, C. Blom, T. Blumenstock, J. Burrows, C. Camy-Peyret, K. Chance, W. Chu, P. Ciotti, F. Congeduti, V. Cuomo, O. F. d'Andon, M. De Maziere, D. De Muer, C. Deniel,

**Overview of  
SCIAMACHY  
validation: 2002–2004**

A. J. M. Piters et al.

Title Page

Abstract

Introduction

Conclusions

References

Tables

Figures

◀

▶

◀

▶

Back

Close

Full Screen / Esc

Print Version

Interactive Discussion

---

**Overview of  
SCIAMACHY  
validation: 2002–2004**

---

A. J. M. Piters et al.

---

Title Page

Abstract

Introduction

Conclusions

References

Tables

Figures

◀

▶

◀

▶

Back

Close

Full Screen / Esc

Print Version

Interactive Discussion

EGU

M. Dobber, H. Fischer, D. Fonteyn, K.-H. Fricke, F. Goutail, J. Haase, G. Hansen, E. Hilsenrath, A. Hollingsworth, P. Keckhut, H. Kelder, E. Kyrölä, K. Labitzke, W. Lahoz, J.-C. Lambert, A. Matthews, C. Matzler, D. Murtagh, S. Pal, P. Peeters, K. Pfeilsticker, M. Pirre, J.-P. Pommereau, R. Rood, P. Stammes, L. Stefanutti, D. Swart, J. Tamminen, Y. Timofeyev, and M. Weber. We thank them and their co-workers warmly for providing correlative data and for carrying out validation studies. Part of the correlative data was obtained in the framework of WMO's Global Atmospheric Watch Programme (GAW) and is publicly available via the NDSC and WOUDC archives (see <http://www.ndsc.ws> and <http://www.woudc.org>).

The good interaction and cooperation with ESA on validation issues has been greatly appreciated. We thank especially J. Frerick, R. Koopman, P. Snoeij, C. Zehner, P. Wursteisen, T. Wehr, A. Dehn, and E. Attema.

This paper is for a major part based on the discussions and cooperation within the SCIAVALIG team. We thank the other members: H. Kelder, U. Platt, P. Simon, R. Timmermans, I. Aben, J. Burrows, C. Camy-Peyret, E. Hilsenrath, B. Kerridge, K. Künzi, D. Perner, M. Riese, H. Smit, J. Staehelin, and D. Swart.

The SCIAMACHY validation product coordinators are acknowledged for their support in summarising the validation results: G. Lichtenberg, G. Tilstra, A. Richter, M. van Roozendaal, T. Wagner, M. de Mazière, C. Camy-Peyret, J. Notholt, W. von Hoyningen-Hüne, F. Wittrock, R. Timmermans, M. van Weele, and B. Barret.

SCIAMACHY Validation has been funded partly by the European Space Agency, ProDEX, the Science Policy Office of the Belgian Prime Minister's Services, the Bundesministerium für Bildung und Forschung (BMBF via DLR-Bonn, Germany, Projects 55 EE 9908/09 and 50 EE 0005-0025), the Netherlands Agency for Aerospace Programmes (NIVR), and the French Programme National de Chimie de l'Atmosphère (PNCA).

## References

Acarreta, J. R. and Stammes, P.: Calibration comparison between SCIAMACHY and MERIS on board ENVISAT, IEEE Geoscience and Remote Sensing Letters, 2, 1, 31–35, 2005. [7788](#)  
Bovensmann, H., Burrows, J. P., Buchwitz, M., Frerick, J., Noël, S., Rozanov, V. V., Chance,

---

**Overview of  
SCIAMACHY  
validation: 2002–2004**

---

A. J. M. Piters et al.

---

Title Page

Abstract

Introduction

Conclusions

References

Tables

Figures

◀

▶

◀

▶

Back

Close

Full Screen / Esc

Print Version

Interactive Discussion

EGU

K. V., and Goede, A. P. H.: SCIAMACHY: Mission objectives and measurement modes, *J. Atmos. Sci.*, 56, 2, 127–150, 1999. [7772](#)

Bramstedt, K., Richter, A., Van Roozendaal, M., and De Smedt, I.: Comparisons of SCIAMACHY sulfur dioxide observations, *Proceedings of the Second Workshop on the Atmospheric Validation of Envisat (ACVE-2)*, 3–7 May 2004, Frascati, ESA SP-562, 2004. [7793](#)

Brinksma, E. J., Piters, A. J. M., Boyd, I. S., Parrish, A., Bracher, A., von Savigny, C., Bramstedt, K., Schmoltner, A.-M., Taha, G., Hilsenrath, E., Blumenstock, T., Kopp, G., Mikuteit, S., Fix, A., Meijer, Y. J., Swart, D. P. J., Bodeker, G. E., McDermid, I. S., and Leblanc, T.: SCIAMACHY ozone profile validation, *Proceedings of the Second Workshop on the Atmospheric Validation of Envisat (ACVE-2)*, 3–7 May 2004, Frascati, ESA SP-562, 2004. [7795](#)

Brinksma, E. J., Bracher, A., Lolkema, D. E., et al.: Geophysical validation of SCIAMACHY limb ozone profiles, *Atmos. Chem. Phys. Discuss.*, 5, 4893–4928, 2005, [SRef-ID: 1680-7375/acpd/2005-5-4893](#). [7795](#), [7801](#)

Buchwitz, M., de Beek, R., Burrows, J. P., Bovensmann, H., Warneke, T., Notholt, J., Meirink, J. F., Goede, A. P. H., Bergamaschi, P., Körner, S., Heimann, M., and Schulz, A.: Atmospheric methane and carbon dioxide from SCIAMACHY satellite data: initial comparison with chemistry and transport models, *Atmos. Chem. Phys.*, 5, 941–962, 2005, [SRef-ID: 1680-7324/acp/2005-5-941](#). [7795](#)

Buchwitz, M., de Beek, R., Noël, S., Burrows, J. P., Bovensmann, H., Bremer, H., Bergamaschi, P., Körner, S., and Heimann, M.: Carbon monoxide, methane and carbon dioxide columns retrieved from SCIAMACHY by WFM-DOAS: Year 2003 initial data set, *Atmos. Chem. Phys. Discuss.*, 5, 1943–1971, 2005, [SRef-ID: 1680-7375/acpd/2005-5-1943](#). [7794](#)

Chlebek, Ch., Noël, S., Skupin, J., Gottwald, M., and Krieg, E.: SCIAMACHY instrument status, *Proceedings of the Second Workshop on the Atmospheric Validation of Envisat (ACVE-2)*, 3–7 May 2004, Frascati, ESA SP-562, 2004. [7772](#)

Coldewey-Egbers, M., Weber, M., Lamsal, L. N., de Beek, R., Buchwitz, M., and Burrows, J. P.: Total ozone retrieval from GOME UV spectral data using the weighting function DOAS approach, *Atmos. Chem. Phys. Discuss.*, 4, 4915–4944, 2004, [SRef-ID: 1680-7375/acpd/2004-4-4915](#). [7790](#)

de Clercq, C., Lambert, J.-C., Calisesi, Y., Claude, H., Stubi, R., von Savigny, C., and the ACVT-GBMCD Ozone Profile Team: Integrated characterization of Envisat ozone profile data using ground-based network data, *Proceedings of the Envisat and ERS Symposium*, Salzburg,

---

**Overview of  
SCIAMACHY  
validation: 2002–2004**

---

A. J. M. Piters et al.

---

[Title Page](#)[Abstract](#)[Introduction](#)[Conclusions](#)[References](#)[Tables](#)[Figures](#)[◀](#)[▶](#)[◀](#)[▶](#)[Back](#)[Close](#)[Full Screen / Esc](#)[Print Version](#)[Interactive Discussion](#)

EGU

Austria, 6–10 September 2004, ESA SP-572, 2004. [7796](#)

de Graaf, M., Tilstra, L. G., and Stammes, P.: SCIAMACHY Absorbing Aerosol Index: The scientific product compared to the operational product and TOMS data, Proceedings of the Second Workshop on the Atmospheric Validation of Envisat (ACVE-2), 3–7 May 2004, Frascati, ESA SP-562, 2004. [7794](#)

de Mazière, M., Barret, B., Blumenstock, T., Buchwitz, M., de Beek, R., Demoulin, P., Fast, H., Gloudemans, A., Griesfeller, A., Griffith, D., Ionov, D., Janssens, K., Jones, N., Mahieu, E., Mellqvist, J., Mittermeier, R. L., Notholt, J., Rinsland, C., Schrijver, H., Schultz, A., Smale, D., Strandberg, A., Strong, K., Sussmann, R., Warneke, T., and Wood, S.: Comparisons between SCIAMACHY scientific products and ground-based FTIR data for total columns of CO, CH<sub>4</sub> and N<sub>2</sub>O, Proceedings of the Second Workshop on the Atmospheric Validation of Envisat (ACVE-2), 3–7 May 2004, Frascati, ESA SP-562, 2004. [7795](#)

Eskes, H. J., van der A. R. J., Brinksma, E. J., Veefkinf, J. P., de Haan, J. F., and Valks, P. J. M.: Retrieval and validation of ozone columns derived from measurements of SCIAMACHY on Envisat, Atmos. Chem. Phys. Discuss., 5, 4429–4475, 2005, [SRef-ID: 1680-7375/acpd/2005-5-4429](#). [7791](#)

Dils, B., De Mazière, M., Blumenstock, T., Buchwitz, M., de Beek, R., Demoulin, P., Duchatelet, P., Fast, H., Frankenberg, C., Gloudemans, A., Griffith, D., Jones, N., Kerzenmacher, T., Kramer, I., Mahieu, E., Mellqvist, J., Mittermeier, R. L., Notholt, J., Rinsland, C. P., Schrijver, H., Smale, D., Strandberg, A., Straume, A. G., Stremme, W., Strong, K., Sussmann, R., Taylor, J., van den Broek, M., Wagner, T., Warneke, T., Wiacek, A., and Wood, S.: Comparisons between SCIAMACHY and ground-based FTIR data for total columns of CO, CH<sub>4</sub>, CO<sub>2</sub> and N<sub>2</sub>O, Atmos. Chem. Phys. Discuss., 5, 2677–2717, 2005, [SRef-ID: 1680-7375/acpd/2005-5-2677](#). [7795](#)

Fioletov, E., Kerr, J. B., Hare, E. W., Labow, G. J., and McPeters, R. D.: An assessment of the world ground-based total ozone network performance from the comparison with satellite data, J. Geophys. Res., 104(1), 1737–1747, 1999. [7780](#)

Fix, A., Ehret, G., Flentje, H., Poberaj, G., Gottwald, M., Finkenzeller, H., Bremer, H., Bruns, M., Burrows, J. P., Kleinböhl, A., Küllmann, H., Kuttippurath, J., Richter, A., Wang, P., Heue, K.-P., Platt, U., and Wagner, T.: SCIAMACHY validation by aircraft remote measurements: design, execution, and first results of the SCIA-VALUE mission, Atmos. Chem. Phys. Discuss., 4, 8381–8423, 2004, [SRef-ID: 1680-7375/acpd/2004-4-8381](#). [7782](#), [7825](#)



---

**Overview of  
SCIAMACHY  
validation: 2002–2004**

---

A. J. M. Piters et al.

---

[Title Page](#)[Abstract](#)[Introduction](#)[Conclusions](#)[References](#)[Tables](#)[Figures](#)[◀](#)[▶](#)[◀](#)[▶](#)[Back](#)[Close](#)[Full Screen / Esc](#)[Print Version](#)[Interactive Discussion](#)

EGU

Fournier, N., Stammes, P., Acarreta, J. R., Eskes, H., Piters, A., Hess, M., Von Bargaen, A., Kokhanovsky, A., and Grzegorski, M.: SCIAMACHY cloud product validation, Proceedings of the Second Workshop on the Atmospheric Validation of Envisat (ACVE-2), 3–7 May 2004, Frascati, ESA SP-562, 2004. [7793](#)

5 Fournier, N., Stammes, P., Acarreta, J., de Graaf, M., van der A. R., and Kokhanovsky, A.: Retrieving accurate cloud information over deserts using FRESCO from the SCIAMACHY Instrument, Atmos. Chem. Phys. Discuss., in press, 2005. [7794](#)

Frankenberg, C., Platt, U., and Wagner, T.: Retrieval of CO from SCIAMACHY onboard ENVISAT: Detection of strongly polluted areas and seasonal patterns in global CO abundances, Atmos. Chem. Phys., 5, 1639–1644, 2005a, [SRef-ID: 1680-7324/acp/2005-5-1639](#). [7794](#)

10 Frankenberg, C., Platt, U., and Wagner, T.: Iterative maximum a posteriori (IMAP-)DOAS for retrieval of strongly absorbing trace gases: Model studies for CH<sub>4</sub> and CO<sub>2</sub> retrieval from near-infrared spectra of SCIAMACHY onboard ENVISAT, Atmos. Chem. Phys., 5, 9–22, 2005b, [SRef-ID: 1680-7324/acp/2005-5-9](#). [7794](#)

15 Gloudemans, A. M. S., Schrijver, H., Kleipool, Q., van den Broek, M. M. P., Straume, A. G., Lichtenberg, G., van Hees, R. M., Aben, I., and Meirink, J. F.: The impact of SCIAMACHY near-infrared instrument calibration on CH<sub>4</sub> and CO total columns, Atmos. Chem. Phys. Discuss., 5, 1733–1770, 2005, [SRef-ID: 1680-7375/acpd/2005-5-1733](#). [7794](#), [7795](#)

Lichtenberg, G., Kleipool, Q., Krijger, J. M., et al.: SCIAMACHY Level1 data: Calibration concept and in-flight calibration, Atmos. Chem. Phys. Discuss., in press, 2005. [7772](#), [7789](#)

20 Heland, J., Schlager, H., Schiller, C., Sitnikov, N., Ulanovsky, A., Ravegnani, F., Volk, C. M., Werner, A., Petritoli, A., Kostadinov, I., Giovanelli, G., Bortoli, D., Stroh, F., von Hobe, M., and the Geophysica Team: Validation of MIPAS on Envisat by in situ instruments on the M55-Geophysica, Proceedings of the Envisat Validation Workshop, Frascati, Italy, 9–13 December 2002, ESA SP-531, 2003. [7783](#)

von Hoyningen-Hüne, W.: Validation of aerosol products derived from SCIAMACHY, Proceedings of the Second Workshop on the Atmospheric Validation of Envisat (ACVE-2), 3–7 May 2004, Frascati, ESA SP-562, 2004. [7794](#)

30 Kelder, H., Piters, A., Timmermans, R., Bramstedt, K., and Lambert, J.-C.: SCIAMACHY validation summary, Proceedings of the Second Workshop on the Atmospheric Validation of Envisat (ACVE-2), 3–7 May 2004, Frascati, ESA SP-562, 2004.

---

**Overview of  
SCIAMACHY  
validation: 2002–2004**A. J. M. Piters et al.

---

[Title Page](#)[Abstract](#)[Introduction](#)[Conclusions](#)[References](#)[Tables](#)[Figures](#)[◀](#)[▶](#)[◀](#)[▶](#)[Back](#)[Close](#)[Full Screen / Esc](#)[Print Version](#)[Interactive Discussion](#)

EGU

Kostadinov, I., Giovanelli, G., Petritoli, A., Bortoli, D., Ravegnani, F., Radaelli, G., Ulanovsky, A., and Yuzhkov, V.: Combined in situ and quasi in situ measurements aboard M55 Geophysica stratospheric aircraft dedicated for Envisat satellite data validation, Proceedings of the Envisat Validation Workshop, Frascati, Italy, 9–13 December 2002, ESA SP-531, 2003.

[7783](#)

Lambert, J.-C., Van Roozendaal, M., De Mazière, M., Simon, P. C., Pommereau, J.-P., Goutail, F., Sarkissian, A., and Gleason, J. F.: Investigation of pole-to-pole performances of spaceborne atmospheric chemistry sensors with the NDSC, *J. Atmos. Sci.*, 56, 176–193, 1999.

[7781](#)

Lambert, J.-C., Allaart, M., Andersen, S. B., Blumenstock, T., Bodeker, G., Brinksma, E., Cambridge, C., De Mazière, M., Demoulin, P., Gerard, P., Gil, M., Goutail, F., Granville, J., Ionov, D. V., Kyrö, E., Navarro-Comas, M., Piters, A., Pommereau, J.-P., Richter, A., Roscoe, H. K., Schets, H., Shanklin, J. D., Suortti, T., Sussmann, R., Van Roozendaal, M., Varotsos, C., Wagner, T., Wood, S., and Yela, M.: First ground-based validation of SCIAMACHY V5.01 ozone column, Proceedings of the Second Workshop on the Atmospheric Validation of Envisat (ACVE-2), 3–7 May 2004, Frascati, Italy, ESA SP-562, 2004a. [7774](#), [7790](#)

Lambert, J.-C., Blumenstock, T., Boersma, F., Bracher, A., De Mazière, M., Demoulin, P., De Smedt, I., Eskes, H., Gil, M., Goutail, F., Granville, J., Hendrick, F., Ionov, D. V., Johnston, P. V., Kostadinov, I., Kreher, K., Kyrö, E., Martin, R., Meier, A., Navarro-Comas, M., Petritoli, A., Pommereau, J.-P., Richter, A., Roscoe, H. K., Sioris, C., Sussmann, R., Van Roozendaal, M., Wagner, T., Wood, S., and Yela, M.: Geophysical validation of SCIAMACHY NO<sub>2</sub> vertical columns: Overview of early 2004 results, Proceedings of the Second Workshop on the Atmospheric Validation of Envisat (ACVE-2), 3–7 May 2004, Frascati, Italy, ESA SP-562, 2004b. [7791](#)

Lang, R., Williams, J. E., Maurellis, A. N., and van der Zande, W. J.: Application of the Spectral Structure Parameterization Technique: Retrieval of Total Water Vapor Columns from GOME, *Atmos. Chem. Phys.*, 3, 145–160, 2003,

[SRef-ID: 1680-7324/acp/2003-3-145](#). [7793](#)

Marengo, A., Thouret, V., Nédélec, P., Smit, H., Helten, M., Kley, D., Karcher, F., Simon, P., Law, K., Pyle, J., Poschmann, G., von Wrede, R., Hume, C., and Cook, T.: Measurement of ozone and water vapor by Airbus in-service aircraft: The MOZAIC airborne program, An overview, *J. Geophys. Res.*, 103, 25 631–25 642, 1998. [7783](#)

Noël, S., Buchwitz, M., and Burrows, J. P.: First retrieval of global water vapour column amounts

from SCIAMACHY measurements, *Atmos. Chem. Phys.*, 4, 111–125, 2004,

[SRef-ID: 1680-7324/acp/2004-4-111](#). 7793

Noël, S., Buchwitz, M., Bovensmann, H., and Burrows, J. P.: Validation of SCIAMACHY AMC-DOAS water vapour columns, *Atmos. Chem. Phys.*, 5, 1835–1841, 2005,

[SRef-ID: 1680-7324/acp/2005-5-1835](#). 7793

Pfeilsticker, K., Bösch, H., Burrows, J., Butz, A., Camy-Peyret, C., Dorf, M., Goutail, F., Grunow, K., Hrechanyy, S., Naujokat, B., Pommereau, J. P., Sioris, C., Stroh, F., Rozanov, A., and Weidner, F.: Validation of SCIAMACHY BrO Profiles, Proceedings of the Second Workshop on the Atmospheric Validation of Envisat (ACVE-2), 3–7 May 2004, Frascati, ESA SP-562, 2004. 7797

Rozanov, A., Bovensmann, H., Bracher, A., Hrechanyy, S., Rozanov, V., Sinnhuber, M., Stroh, F., and Burrows, J. P.: NO<sub>2</sub> and BrO vertical profile retrieval from SCIAMACHY limb measurements: sensitivity studies, *Adv. Space Res.*, in press, 2005. 7797

SCIAVALIG: SCIAMACHY Validation Requirements, SVDS-01, published by KNMI and NIVR, January 1998. 7773, 7779

SCIAVALIG: SCIAMACHY Detailed Validation Plan, SVDS-04, published by KNMI and NIVR, October 2002. 7773, 7779

Skupin, J., Noël, S., Wuttke, M. W., Gottwald, M., Bovensmann, H., Weber, M., and Burrows, J. P.: SCIAMACHY Solar Irradiance Observation in the Spectral Range from 240 to 2380 nm, *Adv. Space Res.*, 35, 3, 370–375, 2005. 7788, 7789

van Soest, G., Tilstra, L. G., and Stammes, P.: Large-scale validation of SCIAMACHY reflectance in the ultraviolet, *Atmos. Chem. Phys. Discuss.*, 5, 1771–1796, 2005,

[SRef-ID: 1680-7375/acpd/2005-5-1771](#). 7788

Spurr, R. J. D., van Roozendaal, M., and Loyola, D. G.: Algorithm Theoretical Basis Document for GOME Total Column Densities of Ozone and Nitrogen Dioxide UPAS/GDOAS: GDP 4.0, DLR Technical note ERSE-DTEX-EOPG-TN-04-0007, issue 1A, DLR, Oberpfaffenhofen, Germany, December 2004. 7790

Tilstra, L. G., van Soest, G., de Graaf, M., Acarreta, J. R., and Stammes, P.: Reflectance comparison between SCIAMACHY and a radiative transfer code in the UV, Proceedings of the Second Workshop on the Atmospheric Validation of Envisat (ACVE-2), 3–7 May 2004, Frascati, ESA SP-562, 2004.

Tilstra, L. G. and Stammes, P.: Alternative polarisation retrieval for SCIAMACHY in the ultraviolet, *Atmos. Chem. Phys. Discuss.*, 5, 1973–1993, 2005,

**Overview of  
SCIAMACHY  
validation: 2002–2004**

A. J. M. PETERS et al.

Title Page

Abstract

Introduction

Conclusions

References

Tables

Figures

◀

▶

◀

▶

Back

Close

Full Screen / Esc

Print Version

Interactive Discussion

SRef-ID: 1680-7375/acpd/2005-5-1973. 7789

Timmermans, R. M. A., Lang, R., Noël, S., Kojs, B., and Kyrö, E.: SCIAMACHY H<sub>2</sub>O column validation by the atmospheric chemistry validation team, Proceedings of the Second Workshop on the Atmospheric Validation of Envisat (ACVE-2), 3–7 May 2004, Frascati, ESA SP-562, 2004. 7793

von Savigny, C., Bracher, A., Bramstedt, K., Rozanov, A., Sinnhuber, M., Sioris, C., Butz, A., Dorf, M., Pfeilsticker, K., Grunow, K., Goutail, F., Pommereau, J. P., and Huret, N.: SCIAMACHY limb NO<sub>2</sub> profile validation, Proceedings of the Second Workshop on the Atmospheric Validation of Envisat (ACVE-2), 3–7 May 2004, Frascati, ESA SP-562, 2004. 7796

Valks, P. and van Oss, R.: TOGOMI Algorithm Theoretical Basis Document, Issue 1.2, TOGOMI/KNMI/ATBD/001, KNMI/ESA, November 2003. 7790

Van Roozendael, M., De Smedt, I., Fayt, C., Wittrock, F., Richter, A., and Afe, O.: First validation of SCIAMACHY BrO columns, Proceedings of the Second Workshop on the Atmospheric Validation of Envisat (ACVE-2), 3–7 May 2004, Frascati, ESA SP-562, 2004. 7792

Wagner, T., Köhl, S., Richter, A., Bruns, M., Burrows, J. P., Heue, K.-P., Kirchoff, B., Wilms-Grabe, W., Wang, P., and Platt, U.: Preliminary validation of SCIAMACHY nadir OCIO SCDS, Proceedings of the Second Workshop on the Atmospheric Validation of Envisat (ACVE-2), 3–7 May 2004, Frascati, ESA SP-562, 2004. 7793

Wang, P., Richter, A., Bruns, M., Burrows, J. P., Heue, K.-P., Wagner, T., Pundt, I., and Platt, U.: AMAXDOAS OCIO measurements in EUPLEX campaign, Proceedings of the 16th ESA Symposium on on rocket and balloon program and related research, 2–5 June 2003, St. Gallen, ESA SP-530, 2003. 7793

Warneke, T., de Beek, R., Buchwitz, M., Notholt, J., Schulz, A., Velazco, V., and Schrems, O.: Shipborne solar absorption measurements of CO<sub>2</sub>, CH<sub>4</sub>, N<sub>2</sub>O and CO and comparison with SCIAMACHY WFM-DOAS retrievals, Atmos. Chem. Phys., 5, 2029–2034, 2005, SRef-ID: 1680-7324/acp/2005-5-2029. 7795

**Overview of  
SCIAMACHY  
validation: 2002–2004**

A. J. M. Piters et al.

Title Page

Abstract

Introduction

Conclusions

References

Tables

Figures

◀

▶

◀

▶

Back

Close

Full Screen / Esc

Print Version

Interactive Discussion

---

**Overview of  
SCIAMACHY  
validation: 2002–2004**

---

A. J. M. Piters et al.

---

Title Page

Abstract

Introduction

Conclusions

References

Tables

Figures

◀

▶

◀

▶

Back

Close

Full Screen / Esc

Print Version

Interactive Discussion

EGU

**Table 1.** Availability of the anticipated level 2 products from SCIAMACHY. Note that some of the ‘recommended’ products are in fact included in the operational data files, but they have no geophysical meaning yet. ‘NRT’: near-real time; ‘OL’: offline (see Sect. 5); ‘av’: available; ‘glob’: larger or global dataset; ‘rec’: recommended, not available; ‘cs’: few case study periods; ‘dev’: under development; ‘-’: not planned or development not started.

Product	spectral region	operational		scientific
		NRT	OL	
O <sub>3</sub> column	UV/vis	av	av	glob
NO <sub>2</sub> column	UV/vis	av	av	glob
BrO column	UV/vis	av	av	glob
SO <sub>2</sub> column	UV/vis	rec	rec	glob
OCIO column	UV/vis	rec	rec	glob
HCHO column	UV/vis	rec	rec	dev
H <sub>2</sub> O column	UV/vis,NIR	rec	rec	cs
N <sub>2</sub> O column	UV/vis	rec	rec	cs
CO column	UV/vis	rec	rec	cs
CO <sub>2</sub> column	UV/vis	rec	rec	cs
CH <sub>4</sub> column	UV/vis	rec	rec	cs
cloud cover	UV/vis	av	av	glob
cloud top height	UV/vis	rec	rec	glob
AAI	UV/vis,NIR	rec	rec	cs
AOT	UV/vis,NIR	rec	rec	cs
O <sub>3</sub> profile	UV/vis	-	av	glob
NO <sub>2</sub> profile	UV/vis	-	av	glob
BrO profile	UV/vis	-	rec	glob
OCIO profile	UV/vis	-	rec	cs
H <sub>2</sub> O profile	UV/vis,NIR	-	rec	dev
CO <sub>2</sub> profile	NIR	-	rec	-
CH <sub>4</sub> profile	NIR	-	rec	-
N <sub>2</sub> O profile	NIR	-	rec	-
CO profile	NIR	-	rec	-
pressure profile	UV/vis,NIR	-	rec	-
temperature profile	UV/vis,NIR	-	rec	-
aerosol profile	UV/vis,NIR	-	rec	-

**Table 2.** Ground-based stations contributing to the SCIAMACHY validation effort, and associated SCIAMACHY data products. In the column ‘core’ is indicated when a station is used within the nationally funded core validation programme. The column ‘netw’ identifies stations belonging to the NDSC (‘N’) and/or Russian/NIS M-124 (‘R’) networks. ‘c’: column; ‘p’: profile; ‘ccf’: cloud cover fraction; ‘ctp’: cloud top pressure; ‘AAI’: absorbing aerosol index.

station	core	netw	lat (° N)	long (° E)	O <sub>3</sub> (c/p)	NO <sub>2</sub> (c/p)	BrO (c)	OCIO (c)	SO <sub>2</sub> (c)	HCHO (c)	H <sub>2</sub> O (c,p)	CO (c)	CH <sub>4</sub> (c)	N <sub>2</sub> O (c/p)	CO <sub>2</sub> (c)	T/p (p)	UV	ccf	ctp	AAI
Ny-Ålesund	*	N	78.9	11.9	c,p	c	c	c		c	c,p	c	c	c	c	p				x
Barentsburg		R	78.1	13.2	c															
Thule	*	N	76.5	-68.8	c,p	c					p					p				
Summit	*	N	72.3	-38.3	c,p	c	c	c						p						
Tiksi		R	71.6	128.9	c															
Scoresbysund	*	N	76.5	-68.8	c,p	c					p					p				
Andoya/Alomar	*	N	69.3	16.0	c,p	c	c	c								p		x	x	
Murmansk		R	69.0	33.0	c															
Kiruna	*	N	67.8	20.4	c,p	c	c	c		c	p		c	c,p		p				x
Igarka		R	67.5	86.6	c															
Sodankyla	*	N	67.4	26.7	c,p	c					p					p				
Sondrestromfjord	*	N	67.0	-50.7	c															
Zhigansk	*	N	67.2	123.4	c	c														
Salekhard	*	N	66.7	66.7	c	c														
Pechora		R	65.1	57.1	c															
Markovo		R	64.7	170.4	c															
Arhangelsk		N,R	64.6	40.5	c															
Vindeln			64.2	19.8	c															
Reykjavik			64.0	-22.6	c															
Orlandet			63.0	9.0	p						p					p				
Yakutsk	*	N,R	62.1	129.8	c,p				c		p					p				
Jokioinen	*		60.8	23.5	c,p						p					p				
Harestua	*	N	60.2	10.8	c	c,p	c	c			c	c	c	c						
Gardermoen			60.1	11.0	p						p					p				
Lerwick		N	60.1	1.1	c,p						p					p				
Saint Petersburg		R	60.0	30.3	c	c						c	c							
Oslo		N	59.9	10.8	c															
Magadan		R	59.6	150.8	c															
Vitim		R	59.4	112.6	c															
Norrkoping			58.6	16.1	c															
Ekaterinburg		R	56.8	60.6	c															
Krasnoyarsk		R	56.0	92.9	c															
Moscow		R	55.7	37.6	c,p						p					p				

## Overview of SCIAMACHY validation: 2002–2004

A. J. M. Piters et al.

Title Page

Abstract

Introduction

Conclusions

References

Tables

Figures

◀

▶

◀

▶

Back

Close

Full Screen / Esc

Print Version

Interactive Discussion

EGU

**Overview of  
SCIAMACHY  
validation: 2002–2004**

A. J. M. Piters et al.

**Table 2.** Continued.

station	core	netw	lat (° N)	long (° E)	O <sub>3</sub> (c/p)	NO <sub>2</sub> (c/p)	BrO (c)	OCIO (c)	SO <sub>2</sub> (c)	HCHO (c)	H <sub>2</sub> O (c,p)	CO (c)	CH <sub>4</sub> (c)	N <sub>2</sub> O (c/p)	CO <sub>2</sub> (c)	T/p (p)	UV	ccf	ctp	AAI
Zvenigorod		N	55.7	36.8		c					c	c	c							
Obninsk		R	55.2	36.2	c						c	c	c							
Omsk		R	54.9	73.4	c															
Samara		R	53.2	50.4	c															
Bremen	*	N	53.1	8.9	c	c	c	c		c	c,p	c	c	c	c	p				
Nikolaevsk		R	53.1	140.7	c															
Petropavlovsk		R	53.0	158.8	c															
Aberystwyth	*	N	52.7	-4.1	c	c			c										x	
Irkutsk		R	52.3	104.4	c															
Legionowo			52.2	20.6	p						p					p				
Lindenberg			52.2	14.1	c,p						p					p				
De Bilt	*	N	52.1	5.2	c,p				c		p					p	x			
Bilthoven			52.1	5.1	p															x
Voronezh		R	51.7	39.2	c															
Cahirciveen Valentia			51.6	-10.1	c,p						p					p				
Uccle	*	N	50.8	4.3	c,p				c		p					p				
Hradec Králové		N	50.2	15.8	c															
Camborne		N	50.1	-5.2	c															
Praha			50.0	14.5	p						p					p				
Karaganda		R	49.8	73.1	c															
Hohenpeissenberg	*	N	47.8	11.0	c,p				c		p					p				
Zugspitze	*	N	47.4	11.0	c,p	c	c			c			c	c	c					
Bern		N	47.0	7.4	p						p					p				x
Yuzhno Sahalinsk		R	46.9	142.7	c															
Arosa	*	N	46.8	9.7	c				c											
Jungfrauoch	*	N	46.5	8.0	c,p	c				c	c	c	c	c	c					x
Payerne	*	N	46.8	7.0	c,p						p					p				
Bordeaux	*	N	44.8	-0.5	c,p						p					p				
Bucharest			44.3	26.1	c															
Egbert			44.2	-79.8	c							c	c	c	c					
Monte Cimone			44.2	10.7		c														
Haute Provence	*	N	43.9	5.7	c,p	c	c			c	p					p				
Toronto		N	43.7	-79.4	p															

Title Page

Abstract

Introduction

Conclusions

References

Tables

Figures

◀

▶

◀

▶

Back

Close

Full Screen / Esc

Print Version

Interactive Discussion

EGU

Table 2. Continued.

station	core	netw	lat (° N)	long (° E)	O <sub>3</sub> (c/p)	NO <sub>2</sub> (c/p)	BrO (c)	OCIO (c)	SO <sub>2</sub> (c)	HCHO (c)	H <sub>2</sub> O (c,p)	CO (c)	CH <sub>4</sub> (c)	N <sub>2</sub> O (c/p)	CO <sub>2</sub> (c)	T/p (p)	UV	ccf	ctp	AAI
Kislovodsk		N	43.7	42.7	c	c														
Perugia			43.1	12.2							c									
Vladivostok		R	43.1	131.9	c															
Issyk Kul		N,R	42.6	77.0	c	c					c									
L'Aquila			42.2	13.2	p						c,p					p			x	x
Stara Zagora			42.0	25.0		c														
Roma			41.0	12.0	p						c,p									x
Thessaloniki			40.4	22.6	c															
Greenbelt		N	38.9	-76.7	c															
Wallops Island		N	37.9	-75.5	c															
Athens			37.6	23.4	c,p						p					p				
Table Mountain		N	34.4	-117.7	p															
Kitt Peak	*		31.9	-111.6	c							c	c	c						
Izaña	*	N	28.3	-16.5	c,p	c	c				c									
Mauna Loa	*	N	19.5	-155.5	c,p	c	c					c	c	c						
Mérida	*	N	8.0	-71.0	c,p	c	c									p				
Paramaribo	*	N	5.8	-55.2	c,p	c	c	c	c		p					p	x			
Nairobi	*	N	-1.2	36.8	c	c	c													
Reunion	*	N	-21.8	55.5	c,p	c	c					c	c	c						
Bauru	*	N	-22.3	-49.0	c	c														
Wollongong	*	N	-34.4	150.9	c	c							c	c	c					
Broadmeadows			-37.4	144.5	p						p									
Lauder	*	N	-45.0	169.7	c,p	c	c				p	c	c	c,p		p	x			x
Kerguelen	*	N	-49.3	70.3	c	c	c													
Macquarie	*	N	-54.5	159.0	c	c	c													
Maramba		N	-61.0	-35.6	c,p	c	c	c			p					p				
Vernadsky	*	N	-65.2	-64.3	c															
Dumont d'Urville	*	N	-66.6	140.0	c,p	c					p									
Rothera	*	N	-67.5	-68.1	c	c														
Neumayer	*	N	-70.6	8.4	c	c	c	c												
Halley	*	N	-75.5	-26.8	c															
Arrival Heights	*	N	-77.8	166.7	c,p	c	c	c			p	c	c	c,p		p				
Belgrano			-77.8	-34.6	c,p	c	c	c			p									
South Pole		N	-90.0	0.0	c,p															

Overview of  
**SCIAMACHY**  
 validation: 2002–2004

A. J. M. Piters et al.

Title Page

Abstract

Introduction

Conclusions

References

Tables

Figures

◀

▶

◀

▶

Back

Close

Full Screen / Esc

Print Version

Interactive Discussion

EGU



**Table 3.** Balloon launches used for SCIAMACHY validation.

Payload	Launch dates	Launch site	Target species
MIPAS-B <i>Pl: Fischer</i>	24 Sept. 2002 07 Dec. 2002 20 Mar. 2003 03 July 2003	Aire sur l'Adour, France Kiruna, Sweden Kiruna, Sweden Kiruna, Sweden	O <sub>3</sub> , NO <sub>2</sub> , N <sub>2</sub> O, H <sub>2</sub> O, CO, CO <sub>2</sub> , temperature, pressure
TRIPLE <i>Pl: Fischer</i>	24 Sept. 2002 06 Mar. 2004 09 June 2004	Aire sur l'Adour, France Kiruna, Sweden Kiruna, Sweden	CO <sub>2</sub> , CH <sub>4</sub> , N <sub>2</sub> O, NO <sub>2</sub> , H <sub>2</sub> O, BrO
LPMA-DOAS <i>Pl: Camy-Peyret</i>	18 Aug. 2002 09 Mar. 2003 23 Mar. 2003 09 Oct. 2003 24 Mar. 2004	Kiruna, Sweden Kiruna, Sweden Kiruna, Sweden Aire sur l'Adour, France Kiruna, Sweden	O <sub>3</sub> , NO <sub>2</sub> , OClO, BrO, CH <sub>4</sub> , N <sub>2</sub> O, H <sub>2</sub> O, CO, temperature, pressure, irradiance
SAOZ-MIR <i>Pl: Pommereau</i>	23 Feb.–04 Mar. 2003 26 Feb.–06 April 2004	Bauru, Brazil Bauru, Brazil	O <sub>3</sub> , NO <sub>2</sub> , 2004: H <sub>2</sub> O
SAOZ <i>Pl: Goutail</i>	04 Oct. 2002 18 Oct. 2002 09 June 2004	Aire sur l'Adour, France Aire sur l'Adour, France Bauru, Brazil	O <sub>3</sub> , NO <sub>2</sub> , temperature, pressure
SAOZ + SAOZ-BrO <i>Pl: Goutail/Pirre</i>	01 Oct. 2002 23 Feb. 2003 16 Mar. 2003 30 Mar. 2003 31 Jan. 2004 05 Feb. 2004	Aire sur l'Adour, France Bauru, Brazil Kiruna, Sweden Kiruna, Sweden Bauru, Brazil Bauru, Brazil	O <sub>3</sub> , NO <sub>2</sub> , temperature, pressure, BrO
FIRS-2 <i>Pl: Chance</i>	20 Oct. 2002 20 Sept. 2003 23 Sept. 2004	Ft. Sumner, NM, USA Ft. Sumner, NM, USA Ft. Sumner, NM, USA	O <sub>3</sub> , H <sub>2</sub> O, N <sub>2</sub> O, NO <sub>2</sub> , 2003/2004: CO, CH <sub>4</sub> , CO <sub>2</sub> , temperature
MANTRA <i>Pl: Strong</i>	03 Sept. 2002 25 Aug. 2004	Vanscoy, Canada Vanscoy, Canada	O <sub>3</sub> , NO <sub>2</sub> , H <sub>2</sub> O, N <sub>2</sub> O, CH <sub>4</sub> , aerosol, pressure, temperature
SALOMON <i>Pl: Renard</i>	19 Sept. 2002 04 Mar. 2002	Aire sur l'Adour, France Kiruna, Sweden	O <sub>3</sub> , NO <sub>2</sub> , OClO, aerosol
SPIRALE <i>Pl: Pirre</i>	02 Oct. 2002 21 Jan. 2003	Aire sur l'Adour, France Kiruna, Sweden	O <sub>3</sub> , NO <sub>2</sub> , CO, CH <sub>4</sub>
SDLA-LAMA <i>Pl: Pirre</i>	08 Aug. 2002	Kiruna, Sweden	H <sub>2</sub> O, CH <sub>4</sub>
ELHYSA <i>Pl: Ovarlez</i>	11 Mar. 2004	Kiruna, Sweden	H <sub>2</sub> O, CH <sub>4</sub>
AMON <i>Pl: Renard</i>	01 Mar. 2003	Kiruna, Sweden	O <sub>3</sub> , NO <sub>2</sub> , OClO
μRADIBAL <i>Pl: Brogniez</i>	08 Mar. 2004	Kiruna, Sweden	aerosol
LPMA-IASI <i>Pl: Renard</i>	06 Aug. 2002	Kiruna, Sweden	H <sub>2</sub> O(c), CO <sub>2</sub> (c) CO(c), O <sub>3</sub> (c), N <sub>2</sub> O(c), CH <sub>4</sub> (c)

## Overview of SCIAMACHY validation: 2002–2004

A. J. M. Piters et al.

Title Page

Abstract

Introduction

Conclusions

References

Tables

Figures

◀

▶

◀

▶

Back

Close

Full Screen / Esc

Print Version

Interactive Discussion

EGU

**Table 4.** Satellite instruments used in the core validation for intercomparison with SCIAMACHY.

Intrument	Name	Platform / Operator	Target Species
GOME	Global Ozone Monitoring Experiment	ERS-2 / ESA	O <sub>3</sub> (c/p), NO <sub>2</sub> , BrO(c), HCHO
SUSIM	Solar Ultraviolet Irradiance Monitor	UARS / NASA	solar ultra-violet energy
HALOE	Halogen Occultation Experiment	UARS / NASA	O <sub>3</sub> , NO <sub>2</sub> , NO, CH <sub>4</sub> , N <sub>2</sub> O, CO <sub>2</sub> , H <sub>2</sub> O(p)
SBUV/2	Solar Backscatter Ultraviolet Ozone Experiment II	NOAA-14+16 / NOAA	O <sub>3</sub> (p)
TOMS	Total Ozone Monitoring Spectrometer	Earth Probe / NASA	O <sub>3</sub> , SO <sub>2</sub> (c), AAI
OSIRIS	Optical Spectrograph and Infrared Imaging System	ODIN / SNSB	O <sub>3</sub> ,NO <sub>2</sub> (p)
SAGE II + III	Stratospheric Aerosol and Gas Experiment II + III	ERBS + METEOR-3M / NASA	O <sub>3</sub> , NO <sub>2</sub> , H <sub>2</sub> O, aerosols(p)
SABER	Sounding of the Atmosphere Using Broadband Emission Radiomet	TIMED / NASA	O <sub>3</sub> , H <sub>2</sub> O(p)
POAM III	Polar Ozone and Aerosol Measurement III	SPOT-4 / CNES	O <sub>3</sub> , H <sub>2</sub> O, NO <sub>2</sub> , aerosols(p)
SOLSTICE	Solar Stellar Irradiance Comparison Experiment	UARS / NASA	solar UV spectral irradiance
AATSR	Advanced Along Track Scanning Radiometer	Envisat / ESA	spectral reflectance (555, 659, 865 nm), cloud cover, cloud top height
MERIS	Medium Resolution Imaging Spectrometer	Envisat / ESA	spectral reflectance (390–1040 nm), cloud cover, aerosol
MOPITT	Measurements Of Pollution In The Troposphere	EOS-TERRA / NASA	CO(c/p)
MODIS	Moderate Resolution Imaging Spectoradiometer	EOS-TERRA / NASA	cloud cover, cloud top pressure, aerosol

**Overview of  
SCIAMACHY  
validation: 2002–2004**

A. J. M. Piters et al.

Title Page

Abstract

Introduction

Conclusions

References

Tables

Figures

◀

▶

◀

▶

Back

Close

Full Screen / Esc

Print Version

Interactive Discussion

EGU

**Overview of  
SCIAMACHY  
validation: 2002–2004**

A. J. M. Piters et al.

**Table 5.** Overview of the software versions ('sv') of the NRT and OL operational processors, the months in which they became operational ('oper'), and the time range of the data processed with this processor version ('range'). Note that not all data within the listed time ranges are processed, as can be seen in Figs. 7 and 8.

NRT 0-1b			NRT 1b-2			OL 1b-2		
sv	oper	range	sv	oper	range	sv	oper	range
3.51	July 2002	2002-07/2002-08	3.53	Aug. 2002	2002-08/2002-12	2.1	Mar. 2004	2002-07/2002-11
4.00	Dec. 2002	2002-12/2003-04	4.00	Dec. 2002	2002-12/2003-04	2.4	Sept. 2004	2004-09/2004-11
4.01	Apr. 2003	2003-04/2003-09	4.01	Apr. 2003	2003-04/2003-09	2.5	Dec. 2004	2004-12/2005-03
4.02b	Dec. 2003	2002-07/2002-08	4.03	Aug. 2003	2003-08/2004-03			
4.03	Aug. 2003	2003-09/2004-03	5.01	Mar. 2004	2002-07/2003-08			
5.00	Jan. 2004	2002-07/2002-10			2004-02/2004-08			
5.01	Mar. 2004	2002-08/2002-12	5.04	Aug. 2004	2002-07/2005-03			
		2003-02/2003-04						
		2004-03/2004-08						
5.04	Aug. 2004	2002-07/2003-05						
		2003-07/2004-05						
		2004-07/2005-03						

Title Page

Abstract

Introduction

Conclusions

References

Tables

Figures

⏪

⏩

◀

▶

Back

Close

Full Screen / Esc

Print Version

Interactive Discussion

EGU

**Overview of  
SCIAMACHY  
validation: 2002–2004**

A. J. M. Piters et al.

**Table 6.** Summary of the validation status per product, details can be found in Sect. 6, applicable subsections are listed in the second column ('sect'). 'B' means average systematic deviation between SCIAMACHY and correlative measurements. If a range is give here, the systematic deviation depends on the geophysical state and/or measurement parameters. If the sign of the bias is negative, SCIAMACHY is on average lower than the correlative measurement. 'S' means average scatter of the deviations.

product	sect	average agreement	special features / remarks
solar irradiance spectrum (NRT 5.04, SciaL1c 2.2.9)	6.1	B: +6/+13%	
nadir earth radiance spectrum (NRT 5.04, SciaL1c 2.2.9)	–	n/a	no validation sources
limb earth radiance spectrum (NRT 5.04, SciaL1c 2.2.9)	–	n/a	no validation sources
spectral reflectance (NRT 5.04, SciaL1C 2.2.9)	6.1	B: –5/–25%	residual polarisation structures
earth fractional polarisation	–	unknown	
O <sub>3</sub> column (NRT 5.04)	6.2.1	B: –2/–10%	dependence on SZA, cloud cover; known errors in retrieval for Oct.–Dec.
O <sub>3</sub> column (OL 2.5)	–	unknown	
O <sub>3</sub> column (scientific)	6.2.1	B: –1/–1.5%, S: 5%	
NO <sub>2</sub> column (NRT 5.04)	6.2.2	B&S: ~10 <sup>14</sup> molec/cm <sup>2</sup> B: > + 1.5 · 10 <sup>15</sup> molec/cm <sup>2</sup>	over clean areas July–Sept. otherwise; known errors in retrieval for Oct.–Dec.
NO <sub>2</sub> column (OL 2.5)	–	unknown	
NO <sub>2</sub> column (scientific)	6.2.2	B: –7 · 10 <sup>14</sup> / +10 <sup>14</sup> molec/cm <sup>2</sup>	bias depends on retrieval method and settings
BrO slant column (NRT 5.04)	6.2.3	not specified	Large positive bias for small SCDs
BrO slant column (OL 2.5)	–	unknown	
BrO slant column (scientific)	6.2.3	not specified	Consistent with GB (2 stations) and GOME
SO <sub>2</sub> column (scientific)	6.2.4	unknown	Qualitatively ok; special events needed for validation
OCIO slant column (scientific)	6.2.5	not specified	consistent with GOME
HCHO column (scientific)	–	unknown	

Title Page

Abstract

Introduction

Conclusions

References

Tables

Figures

◀

▶

◀

▶

Back

Close

Full Screen / Esc

Print Version

Interactive Discussion

Table 6. Continued.

product	sect	average agreement	special features / remarks
H <sub>2</sub> O column (scientific)	6.2.6	B: $-0.05 \text{ g/cm}^2$ S: $0.5 \text{ g/cm}^2$	
N <sub>2</sub> O column (scientific)	6.3	S: 20%	
CO column (scientific)	6.3	S: 30%	
CO <sub>2</sub> column (scientific)	6.3	unknown	validation too limited
CH <sub>4</sub> column (scientific)	6.3	S: 5%	
cloud cover (NRT 5.04)	6.2.7	unknown	good, compared to scientific products
cloud cover (OL2.5)	–	unknown	
cloud cover (scientific)	6.2.7	unknown	good, compared to NRT 5.04
cloud top pressure (scientific)	6.2.7	B: 100 hPa	with respect to MODIS
Absorbing Aerosol Index (scientific)	6.2.8	not specified	compares well with TOMS; sens. to lv1 errors
Aerosol Optical Thickness (scientific)	6.2.8	not specified	compares well with MERIS; sens. to lv1 errors
O <sub>3</sub> profile (OL 2.5, limb)	6.4.1	B: 0 B: $-15\%$ S: 13–18%	> 24 km 20–24 km 25–40 km; 20% of profiles show unrealistic features
O <sub>3</sub> profile (scientific, limb)	6.4.1	B: $-3/-6\%$  S: 10%	16–40 km; zig-zag shaped difference profiles 20–35 km
O <sub>3</sub> profile (scientific, nadir)	–	unknown	depends on future improvement of level 1 data
NO <sub>2</sub> profile (OL 2.5, limb)	6.4.2	B: $-20/+5\%$ B: $+10/+60\%$ B: $-35/+25\%$	60S–70S, 19–36 km 25N–30N, 25–36 km
NO <sub>2</sub> profile (scientific, limb)	6.4.2	B: < 15%	40N–53N, 19–36 km; 22–33 km; compares reasonable to balloon profiles
BrO profile (scientific, limb)	6.4.3	unknown	possible problems below 20 km
OCIO profile (scientific, limb)	–	unknown	look geophysically consistent
H <sub>2</sub> O profile (scientific, limb)	–	unknown	

## Overview of SCIAMACHY validation: 2002–2004

A. J. M. Piters et al.

Title Page

Abstract

Introduction

Conclusions

References

Tables

Figures

◀

▶

◀

▶

Back

Close

Full Screen / Esc

Print Version

Interactive Discussion

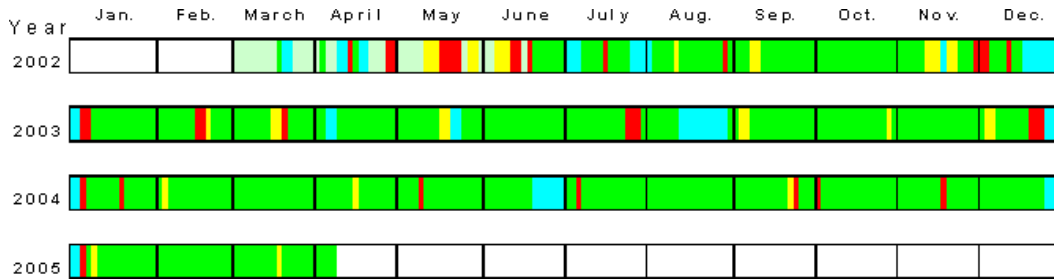
EGU

---

**Overview of  
SCIAMACHY  
validation: 2002–2004**

A. J. M. Piters et al.

---



**Fig. 1.** Overview of SCIAMACHY operations between March 2002 and April 2005. Green denotes periods with nominal measurements, blue are the periods where the instrument was heated to evaporate the ice layer on the detectors (the near infra-red channels cannot be used during this period for retrieval of CO, CH<sub>4</sub>, N<sub>2</sub>O, CO<sub>2</sub>), yellow are periods where Envisat was off, red are the periods where SCIAMACHY was off. Courtesy: C. Chlebek, DLR.

Title Page

Abstract

Introduction

Conclusions

References

Tables

Figures

◀

▶

◀

▶

Back

Close

Full Screen / Esc

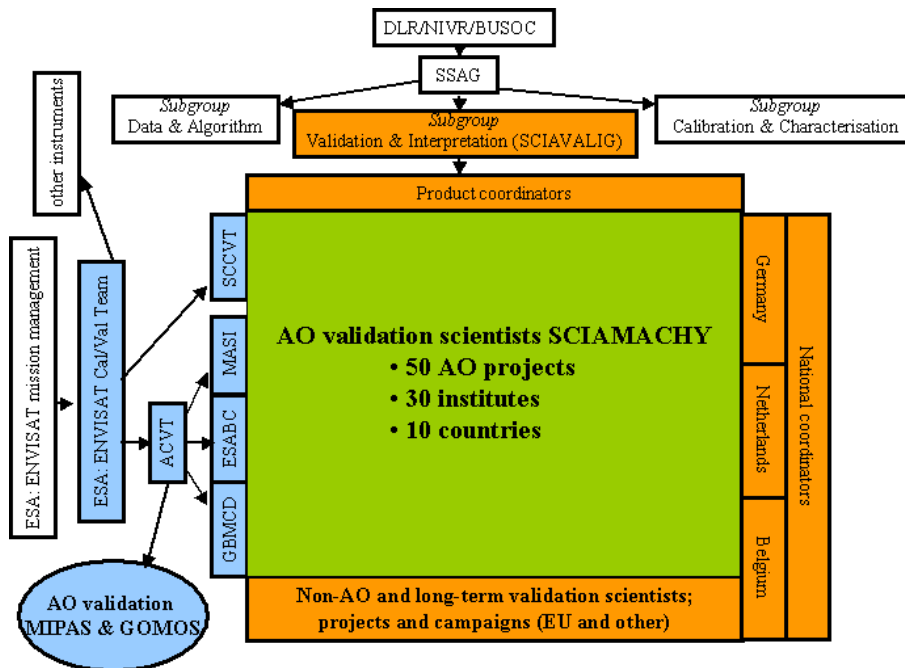
Print Version

Interactive Discussion

EGU

## Overview of SCIAMACHY validation: 2002–2004

A. J. M. Piters et al.



**Fig. 2.** A scheme of the SCIAMACHY validation organisational structures set-up by SCIAVALIG (light orange) and by ESA (pale blue). The validation scientist actually doing the work are supported by both organisations, if they have an approved AO proposal for SCIAMACHY validation (lime).

Title Page

Abstract

Introduction

Conclusions

References

Tables

Figures

◀

▶

◀

▶

Back

Close

Full Screen / Esc

Print Version

Interactive Discussion

EGU

---

**Overview of  
SCIAMACHY  
validation: 2002–2004**

A. J. M. Piters et al.

---



**Fig. 3.** The German Research vessel Polarstern.

Title Page

Abstract

Introduction

Conclusions

References

Tables

Figures

◀

▶

◀

▶

Back

Close

Full Screen / Esc

Print Version

Interactive Discussion

EGU



---

**Overview of  
SCIAMACHY  
validation: 2002–2004**

A. J. M. Piters et al.

---



**Fig. 4.** Route of the first Polarstern cruise (ANT XIX) between November 2001 and June 2002.

Title Page

Abstract

Introduction

Conclusions

References

Tables

Figures

◀

▶

◀

▶

Back

Close

Full Screen / Esc

Print Version

Interactive Discussion

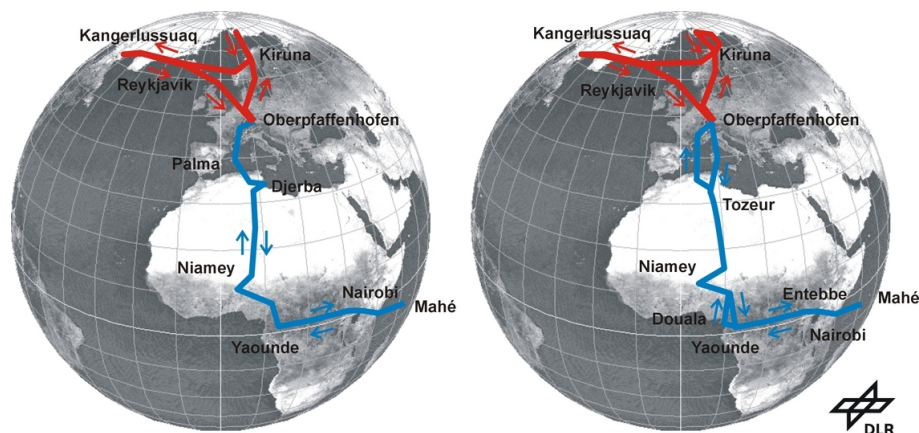
EGU

---

**Overview of  
SCIAMACHY  
validation: 2002–2004**

---

A. J. M. Piters et al.



**Fig. 5.** Flight tracks of the research aircraft Falcon at the SCIA-VALUE campaigns. Left panel, northern track (red): 3–8 September 2002 and southern track (blue) 15–28 September 2002. Right panel, northern track (red) 19 February–3 March, 2003 and southern track (blue) 10–19 March 2003 (image from [Fix et al., 2004](#)).

[Title Page](#)[Abstract](#)[Introduction](#)[Conclusions](#)[References](#)[Tables](#)[Figures](#)[◀](#)[▶](#)[◀](#)[▶](#)[Back](#)[Close](#)[Full Screen / Esc](#)[Print Version](#)[Interactive Discussion](#)

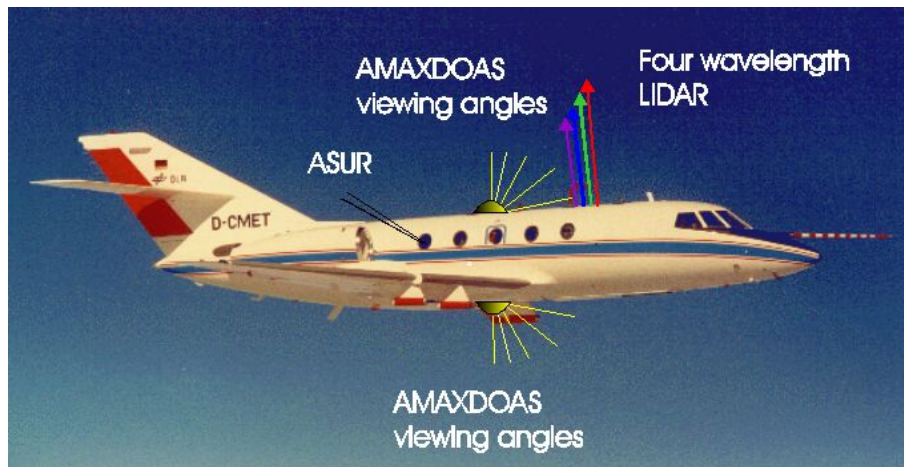
EGU

---

**Overview of  
SCIAMACHY  
validation: 2002–2004**

A. J. M. Piters et al.

---



**Fig. 6.** The Falcon aircraft with the viewing directions of the validation instruments.

Title Page

Abstract

Introduction

Conclusions

References

Tables

Figures

◀

▶

◀

▶

Back

Close

Full Screen / Esc

Print Version

Interactive Discussion

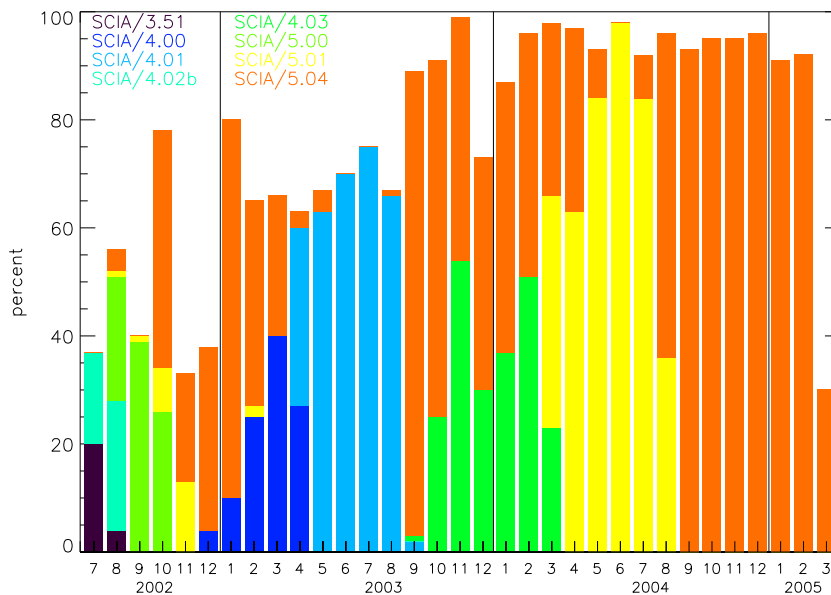
EGU

---

**Overview of  
SCIAMACHY  
validation: 2002–2004**

A. J. M. Piters et al.

---



**Fig. 7.** The fraction of level 1b orbits available in March 2005 for several software versions. Orbits, processed with more than one software version, have only been counted for the latest software version. This plot does not account for Envisat or SCIAMACHY off-time, so part of the ‘missing’ data will actually never become available (see Fig. 1). Software versions 5.01 and 5.04 have been used for reprocessing the entire mission.

Title Page

Abstract

Introduction

Conclusions

References

Tables

Figures

◀

▶

◀

▶

Back

Close

Full Screen / Esc

Print Version

Interactive Discussion

EGU

Overview of  
**SCIAMACHY**  
 validation: 2002–2004

A. J. M. Piters et al.

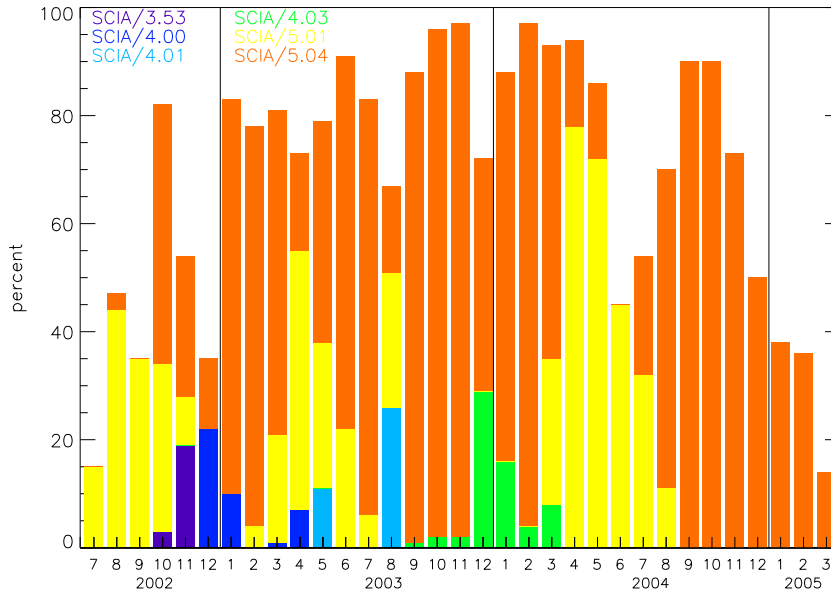


Fig. 8. The same as Fig. 7, but now for level 2 orbits.

Title Page

Abstract Introduction

Conclusions References

Tables Figures

◀ ▶

◀ ▶

Back Close

Full Screen / Esc

Print Version

Interactive Discussion