



HAL
open science

Transport Modelling of a pyro-convection event in Alaska

R. Damoah, N. Spichtinger, R. Servranckx, M. Fromm, E. W. Eloranta, I. A.
Razenkov, P. James, M. Shulski, C. Forster, A. Stohl

► **To cite this version:**

R. Damoah, N. Spichtinger, R. Servranckx, M. Fromm, E. W. Eloranta, et al.. Transport Modelling of a pyro-convection event in Alaska. *Atmospheric Chemistry and Physics Discussions*, 2005, 5 (4), pp.6185-6214. hal-00301705

HAL Id: hal-00301705

<https://hal.science/hal-00301705>

Submitted on 18 Jun 2008

HAL is a multi-disciplinary open access archive for the deposit and dissemination of scientific research documents, whether they are published or not. The documents may come from teaching and research institutions in France or abroad, or from public or private research centers.

L'archive ouverte pluridisciplinaire **HAL**, est destinée au dépôt et à la diffusion de documents scientifiques de niveau recherche, publiés ou non, émanant des établissements d'enseignement et de recherche français ou étrangers, des laboratoires publics ou privés.

Pyro-convection

R. Damoah et al.

Transport Modelling of a pyro-convection event in Alaska

**R. Damoah¹, N. Spichtinger¹, R. Servranckx², M. Fromm³, E. W. Eloranta⁴,
I. A. Rازenkov⁴, P. James⁵, M. Shulski⁶, C. Forster⁷, and A. Stohl⁷**

¹Department of Ecology, Technical University of Munich, Freising, Germany

²Canadian Meteorological Centre, Montreal, Canada

³Naval Research Laboratory, Washington, D.C., USA

⁴University of Wisconsin-Madison, Madison, WI, USA

⁵Hadley Centre for Climate Prediction and Research, Exeter, UK

⁶Alaska Climate Research Center, Fairbanks, AK, USA

⁷Norwegian Institute for Air Research, Kjeller, Norway

Received: 8 July 2005 – Accepted: 21 July 2005 – Published: 18 August 2005

Correspondence to: R. Damoah (damoah@forst.tu-muenchen.de)

© 2005 Author(s). This work is licensed under a Creative Commons License.

Title Page

Abstract

Introduction

Conclusions

References

Tables

Figures

◀

▶

◀

▶

Back

Close

Full Screen / Esc

Print Version

Interactive Discussion

EGU

Abstract

5 Summer 2004 saw severe forest fires in Alaska and the Yukon Territory that were mostly triggered by lightning strikes. The area burned ($>2.7 \times 10^6$ ha) in the year 2004 was the highest on record to date in Alaska. Pollutant emissions from the fires lead to violation of federal standards for air quality in Fairbanks.

This paper studies deep convection events that occurred in the burning regions at the end of June 2004. The convection was likely enhanced by the strong forest fire activity (so-called pyro-convection) and penetrated into the lower stratosphere, up to about 3 km above the tropopause. Emissions from the fires did not only perturb the UT/LS locally, but also regionally. POAM data at the approximate location of Edmonton (53.5° N, 113.5° W) show that the UT/LS aerosol extinction was enhanced by a factor of 4 relative to unperturbed conditions. Simulations with the particle dispersion model FLEXPART with the deep convective transport scheme turned on showed transport of forest fire emissions into the stratosphere, in qualitatively good agreement with the enhancements seen in the POAM data. A corresponding simulation with the deep convection scheme turned off did not result in such deep vertical transport. Lidar measurements at Wisconsin on 30 June also show the presence of substantial aerosol loading in the UT/LS, up to about 13 km. In fact, the FLEXPART results suggest that this aerosol plume originated from the Yukon Territory on 25 June.

20 1. Introduction

Emissions of aerosols and trace gases like carbon monoxide, nitrogen oxides and non-methane hydrocarbons from forest fires play an important role for atmospheric chemistry (Crutzen, 1973) and radiation transmission in the atmosphere (Robock, 1991). Due to long-range transport of forest fire emissions, they affect not only local surroundings but also influence the atmosphere on regional (Tanimoto et al., 2000; Kato et al., 2002) and even continental (Wotawa and Trainer, 2000) and hemispheric scales

Title Page

Abstract

Introduction

Conclusions

References

Tables

Figures

◀

▶

◀

▶

Back

Close

Full Screen / Esc

Print Version

Interactive Discussion

(Forster et al., 2001; Wotawa et al., 2001; Damoah et al., 2004; Spichtinger et al., 2004; Yurganov et al., 2004; Novelli et al., 2005).

It is well known that volcanic eruptions can produce the explosive force to inject material from the surface deep into the stratosphere (Graf et al., 1999). Only recently, however, it was realized that deep convection triggered or enhanced by forest fires (so-called pyro-convection) can also penetrate deeply into the stratosphere, leading to the deposition of gaseous and particulate products of the burning in the upper troposphere and lower stratosphere (UT/LS) (Fromm et al., 2003, 2004). The mechanisms causing this deep convection are not yet entirely clear, but it appears that normal deep convection that occurs regularly in the boreal region in summer-time under favourable meteorological conditions can be greatly enhanced by the heat released by the fire as well as by microphysical and radiative processes due to the large amounts of aerosols emitted. These aerosols reduce cloud droplet numbers, suppress precipitation formation, and enhance the significance of the ice phase (thence, also enhance the amount of latent heating available at high altitudes) (Andreae et al., 2004). Similar processes have also been observed to be effective in tropical biomass burning plumes (Andreae et al., 2004). Furthermore, the radiation absorption by black carbon particles emitted by the fires and the associated heating of the atmosphere above the cloud tops could lead to further lifting after the initial convective injection into the UT/LS region. While the relative importance of these different mechanisms is not clear, several recent papers have presented cases where pyro-convection transported forest fire emissions relatively deep into the stratosphere, using satellite (Fromm et al., 2003; Livesey et al., 2004), lidar (Immler et al., 2005; Fromm et al., 2004) and aircraft (Jost et al., 2004) observations. Some of the observations (e.g., Jost et al., 2004) even show that the emission products can be transported to levels in the stratosphere with potential temperatures above 380 K, a region that is commonly referred to as the stratospheric overworld.

In June 2004, dry conditions, above normal temperatures and strong lightning activity caused severe forest fires in Alaska and the Canadian Yukon Territory. Air quality

Pyro-convection

R. Damoah et al.

Title Page

Abstract

Introduction

Conclusions

References

Tables

Figures

◀

▶

◀

▶

Back

Close

Full Screen / Esc

Print Version

Interactive Discussion

Pyro-convection

R. Damoah et al.

[Title Page](#)[Abstract](#)[Introduction](#)[Conclusions](#)[References](#)[Tables](#)[Figures](#)[I◀](#)[▶I](#)[◀](#)[▶](#)[Back](#)[Close](#)[Full Screen / Esc](#)[Print Version](#)[Interactive Discussion](#)

EGU

was significantly degraded in large regions by these fires. For instance, particulate matter smaller than $2.5\ \mu\text{m}$ (PM-2.5) of about $1000\ \mu\text{g}/\text{m}^3$ were measured in Fairbanks, exceeding E.P.A.'s threshold ($300\ \mu\text{g}/\text{m}^3$) by a factor of more than three (Rozell, 2004). Also in Fairbanks measured CO of 9.2 ppm nearly violated the Clean Air Act (9.5 ppm), whereas typical mid-summer CO background mixing ratios are only about 80 ppb. Emissions from the burning were also transported over long distances. High enhancements of aerosol scattering were observed at Cheeka Peak ($48.3^\circ\ \text{N}$, $124.6^\circ\ \text{W}$, $480\ \text{m a.s.l.}$) (Jaffe, D., personal communication) and several research aircraft were guided repeatedly into the fire plumes over eastern North America, the Atlantic and over Europe during the ICARTT (International Consortium for Atmospheric Research on Transport and Transformation) campaign and measured large enhancements of fire tracers in the lower and middle troposphere. In fact, Cammas et al. (2005)¹ linked an enhanced CO measurements taking during a commercial airliner cruising at about 11 km over the North Atlantic to biomass burning. Using convective mass fluxes from a mesoscale model, they show that deep convection was responsible for the high CO concentrations in the stratosphere.

In this paper we focus on a particular episode of burning in June 2004 when pyro-convection transported fire emissions into the UT/LS. Section 2 describes model calculations used to study the transport of the plume, and Sect. 3 gives the meteorological conditions in the observed area during the event. Model results, satellite and lidar measurements during the event are reported in Sect. 4 and, finally, summary and conclusions are presented in Sect. 5.

¹Cammas, J.-P., Brioude, J., Chaboureaud, J.-P., Duron, J., Mari, C., Mascart, P., Nedelec, P., Smit, H., Volz-Thomas, A., Stohl, A., and Fromm, M.: Stratospheric injection of biomass fire smoke followed by long-range transport: a MOZAIC case study, in preparation, 2005.

2. Model description

For studying the transport phenomena associated with the pollution plumes, we used the Lagrangian particle dispersion model FLEXPART (Stohl et al., 1998; Stohl and Thomson, 1999) to simulate the transport of a CO tracer. CO tracer was used because CO has a relatively long life time that ranges from 1 month (in the tropics) to 4 months (in the mid-latitudes) (Seinfeld and Pandis, 1998) and because we want to focus here on the transport only, and do not consider chemical processes.

FLEXPART simulates long-range transport, diffusion, dry and wet deposition and radioactive decay of air pollutants released from point, line or volume sources. It treats advection and turbulent diffusion by calculating the trajectories of a multitude of particles. Stochastic fluctuations, obtained by solving Langevin equations (Stohl and Thomson, 1999), are superimposed on the grid-scale winds from global meteorological datasets to represent transport by turbulent eddies, which are not resolved. Global data sets also do not resolve individual convective cells, although they reproduce some of the large-scale effects of convection. Therefore, FLEXPART has recently been equipped with a convection scheme (Emanuel and Zivkovic-Rothman, 1999) to account for sub grid-scale convective transport. FLEXPART can be driven by meteorological analysis data either from the European Centre for Medium-Range Weather Forecasts (ECMWF, 1995) or from the Global Forecast System (GFS) of the National Center for Environmental Prediction (NCEP). Due to the significantly higher vertical resolution of the ECMWF data and the higher intrinsic horizontal resolution of the operational ECMWF forecast model, compared to the GFS model, we use ECMWF data in this study.

The ECMWF model version used here has 60 hybrid model levels in the vertical and data were retrieved on a global $1^{\circ} \times 1^{\circ}$ latitude-longitude grid. Six hourly analyses were supplemented by 3-h forecast step data to provide a 3-hourly temporal resolution. An output grid with a $1^{\circ} \times 2^{\circ}$ latitude/longitude resolution, a vertical spacing of 1000 m and an output interval of 3 h was employed.

Title Page

Abstract

Introduction

Conclusions

References

Tables

Figures

◀

▶

◀

▶

Back

Close

Full Screen / Esc

Print Version

Interactive Discussion

Pyro-convectionR. Damoah et al.

[Title Page](#)[Abstract](#)[Introduction](#)[Conclusions](#)[References](#)[Tables](#)[Figures](#)[◀](#)[▶](#)[◀](#)[▶](#)[Back](#)[Close](#)[Full Screen / Esc](#)[Print Version](#)[Interactive Discussion](#)

EGU

In the tracer simulations, 5×10^6 particles were released to calculate the transport of CO emissions from fires in Alaska. For our simulation we considered the 2-week period from 17 to 30 June 2004, during which the strongest deep convection and transport event occurred. In order to describe the regional and daily variations of the fires, the MODIS hot spot data were counted daily on a $1^\circ \times 1^\circ$ grid. For every 3-day period the maximum daily number of hot spots in a grid cell was taken in order to minimize the effect of missing hot spot data in the presence of clouds. The daily area burned in North America on a per-province (in Canada) and per-fire-state (in the United States) basis, taken from a web page at the Center for International Disaster Information (<http://www.cidi.org/wildfire>), was distributed to those cells in the respective province containing the hot spots. Then, a constant CO emission factor of 4500 kg per hectare of forest burned, which is similar to recent estimates based on emissions from the Canadian Northwest Territories (Cofer et al., 1998), was applied to release CO on a $1^\circ \times 1^\circ$ grid. The altitude at which fire emissions are effectively released into the atmosphere varies from day to day and is actually not known. Lacking this information, we released the CO tracer into the lowest 3 km of the model atmosphere which is consistent with other fire simulations (Damoah, 2004; Spichtinger, 2004). Transport to high altitudes must be produced by the model itself, either as a result of resolved vertical transport or by the convection scheme. It must be noted that all the processes related to the fire itself are not treated in the ECMWF model. It is, thus, likely that convective transport over the fires is underestimated by FLEXPART. However, to some extent the effects of the fires (e.g., a destabilization of the atmosphere) are introduced into the analyses through the assimilation of observations (e.g., temperature data from satellites and radiosondes in the vicinity of the fires).

3. Meteorological conditions in the burning area

It is known that, climatologically, maximum daily temperatures are related to the number of lightning strikes, and the number of lightning strikes is in turn related to the num-

Pyro-convection

R. Damoah et al.

Title Page

Abstract

Introduction

Conclusions

References

Tables

Figures

◀

▶

◀

▶

Back

Close

Full Screen / Esc

Print Version

Interactive Discussion

EGU

ber of started fires. During the year 2004, most of Alaska experienced the warmest summer on record. In June, temperatures were warmer than normal across the State (Alaska Climate Research Center; see <http://climate.gi.alaska.edu>). Anomalies of the monthly mean temperature ranged from 2.5°C to 4°C. In Anchorage, southern Alaska, the monthly average temperature in June was about 14°C, 2.5°C above normal. The highest temperature of the month (28°C) occurred on 26 June (Fig. 1a). More than 65% of the daily maximum temperatures were above normal. The conditions in Juneau were extreme; a string of 7 days (18–24 June) had record highs (red asterisks, Fig. 1b). The highest measured temperature was above 29°C. Nome also registered three record high temperatures (Fig. 1c). The monthly mean temperature in Fairbanks was almost 19.5°C, 4°C above normal.

The high temperatures also caused a large number of lightning strikes. Between 14 and 15 June, about 17 000 cloud-ground flashes were reported to have hit Alaska within 24 h, the highest number in 25 years (AICC, 2004). Of the 707 fires reported in 2004, almost 300 were triggered by lightning strikes (see, <http://fire.ak.blm.gov>). Being the third driest summer on record (Rozell, 2004), the fires, also fanned by surface winds of about 32 km/h (Rozell, 2004) on average in June, consumed large areas in Alaska and its surroundings. Figure 2 shows the annual area burned in Alaska from 1997 to 2004. In 2004, 707 fires burned a new record of about 2.7×10^6 ha. The old record of 2×10^6 ha was registered in 1957.

During the second half of June 2004, anti-cyclonic conditions prevailed over Alaska and north-western Canada (Fig. 3a). However, on 21 June a mid-tropospheric low-pressure system developed west of the Canadian west coast weakening the anticyclone over Alaska and north-western Canada over the next two days (Figs. 3b, c, d). Then the anticyclone strengthened again (Figs. 3e, f) and remained until the end of June. The low pressure system caused only a slight decrease in surface pressure and did not bring a major change in surface temperatures (see colored buttons in Fig. 4a and temperature time series in Fig. 1), but colder temperatures associated with the mid-tropospheric cut-off low triggered strong convection, as shown in an infrared satel-

lite image on 23 June at 05:00 UTC (Fig. 4b). Several centers of convective activity can be seen, with the coldest cloud top brightness temperatures ($< -52^{\circ}\text{C}$) located over the Yukon Territory and British Columbia. On the following days even lower brightness temperatures ($< -60^{\circ}\text{C}$) were observed (Fig. 4c). As we shall show below, the convective activity was strongest during the afternoon and evening hours and weakened over night. This daily cycle was repeated several days after 20 June. The northern cluster of convection seen in Figs. 4b and c was responsible for the upward transport of forest fire emissions into the UT/LS.

4. Transport of fire emissions into the upper troposphere and lower stratosphere

Figures 5a and b show the distribution of active fires and smoke on 23 and 22 June, respectively, from NASA's Moderate Resolution Imaging Spectroradiometer (MODIS) aboard the Terra and Aqua satellites (Kaufman et al., 2003, 1998; Justice et al., 1996). It indicates intense burning in Pingo and Winter Trail along the Yukon River (upper left of Fig. 5b). The Billy Creek and Porcupine fires south-east of the Tanana River sent piles of smoke (blue-grey) into the atmosphere. Another cluster of hot spots can be seen in Yukon Territory through to Juneau and in the north-west of British Columbia (Fig. 5a). These fires had been burning for weeks and also continued to burn into July.

By comparing Figs. 4b, 4c and 5, it can be seen that the northern clusters of deep convection were located almost exactly over the region with the strongest burning activity. While it is impossible to say to what extent the fires enhanced the convection, the strong correlation between fire locations and the coldest cloud tops is striking, such that a causal relationship is suggested. In support of this view, Fig. 6 shows a picture taken out of the window of a commercial aircraft on 27 June within the region. The picture shows a pyro-cumulonimbus cloud with cloud tops above 10 km. Three things about this image are striking: Firstly, the cloud's brownish color, which is reminiscent of pictures of volcanic eruptions and is caused by the huge mass of aerosols transported

[Title Page](#)[Abstract](#)[Introduction](#)[Conclusions](#)[References](#)[Tables](#)[Figures](#)[◀](#)[▶](#)[◀](#)[▶](#)[Back](#)[Close](#)[Full Screen / Esc](#)[Print Version](#)[Interactive Discussion](#)

EGU

Pyro-convectionR. Damoah et al.

upward by the cloud from the forest fires seen to be burning underneath. Secondly, the exact co-location of the convective cloud and the forest fire and its considerable depth. The cloud top is obviously much higher than the tops of the convective clouds seen in the background. Thirdly, despite the maturity and depth of the convection, the cloud doesn't seem to precipitate. This supports our suggestion that, in addition to the heat and water vapor (i.e., latent heat) released by the fire, microphysical mechanisms similar to those reported by Andreae et al. (2004) suppressed precipitation and, thus, allowed the latent heat of freezing to be released at high altitude.

Based on radiosonde temperature measurements from Fairbanks (Fig. 7), taken approximately within the white circle indicated in Fig. 4b, the coldest cloud tops were located at around 11 to 12 km. According to the soundings, the thermal tropopause height was at approximately 11 km on 23 June at 00:00 UTC and at 12 km on 24 June at 12:00 UTC. The dynamical tropopause (orange lines in Fig. 7) taken from the ECMWF analysis was located somewhat lower at about 10.5 km on 23 June (the dynamical tropopause is the altitude where the potential vorticity exceeds the value of 2 potential vorticity units). The radiosonde temperature profiles show a strong gradient and no significant structure in the free troposphere but a very sharp tropopause. These features are characteristic of an environment shaped by deep convection. Note that the sounding from 24 June was taken during night hours and shows a very shallow surface inversion. The cloud top height is consistent with the simulated transport of the CO emissions from the fires. The fires were located east of Fairbanks, and a vertical section of the FLEXPART CO tracer at 64° N with convection turned on (Fig. 8a) and off (Fig. 8b) on 24th at 12:00 UTC confirms the injection of fire emissions into the Alaskan lower stratosphere due to convection at around 138° W. In the simulation with convection turned on, forest fire tracer can be found up to about 12 km altitude. The top of the tracer cloud at about 12 km is in good agreement with the coldest cloud top temperatures (Fig. 7). No injection into the stratosphere takes place in the simulation without convection showing that the use of the convection scheme in FLEXPART brings a better agreement between measurements and model results.

[Title Page](#)[Abstract](#)[Introduction](#)[Conclusions](#)[References](#)[Tables](#)[Figures](#)[◀](#)[▶](#)[◀](#)[▶](#)[Back](#)[Close](#)[Full Screen / Esc](#)[Print Version](#)[Interactive Discussion](#)

EGU

[Title Page](#)[Abstract](#)[Introduction](#)[Conclusions](#)[References](#)[Tables](#)[Figures](#)[◀](#)[▶](#)[◀](#)[▶](#)[Back](#)[Close](#)[Full Screen / Esc](#)[Print Version](#)[Interactive Discussion](#)

EGU

Figure 9 shows FLEXPART vertical cross sections along 64° N cutting through the region with the strongest burning activity at around 140° W. It demonstrates how the convection weakens during the night and morning hours, and how the forest fire emission injected into the free troposphere and lower stratosphere during the day are transported eastwards (Figs. 9a, b). In the afternoon hours of the following day the convection gets active again (Fig. 9c) and transports forest fire emissions to regions above the tropopause within a couple of hours (Figs. 9d, e). This cycle is repeated every day in the period from 20 June until the end of June, and forest fire emissions were repeatedly injected into the stratosphere during this period. Figures 9f–j show the same as in Figs. 9a–e, but for a FLEXPART simulation with the convective parameterization turned off. No transport into the stratosphere takes place reflecting again the importance of the representation of convection in transport models.

4.1. UT/LS observations of forest fire smoke

The aerosol index derived from data provided by the Total Ozone Mapping Spectrometer (TOMS) instrument on board the Earth Probe satellite (see <http://toms.gsfc.nasa.gov> for details) gives information on the spatial distribution of UV-absorbing tropospheric aerosols (Hsu et al., 1996). On 23 and 24 June, the TOMS aerosol index (Figs. 10a and b, respectively) shows filaments of enhanced values that stretch from Fairbanks and the Yukon Territory through Edmonton to Wisconsin. Distinct maxima of more than 4.5 are observed over Fairbanks and the Yukon Territory on both days. These locations correspond remarkably well with the locations of the very cold cloud tops in Figs. 4b and c. The sensitivity of the TOMS aerosol index to the presence of absorbing aerosols increases strongly with altitude. Thus, the maximum values of the TOMS aerosol index are likely due to aerosols located at high altitudes, which have passed through the deep convective clouds.

The features of enhanced TOMS aerosol index on 23 and 24 June are in remarkable agreement with the FLEXPART CO tracer located between 9 and 15 km (Figs. 10c and d) in the simulation with the convection parameterization turned on. On 23 June at

Pyro-convection

R. Damoah et al.

[Title Page](#)[Abstract](#)[Introduction](#)[Conclusions](#)[References](#)[Tables](#)[Figures](#)[◀](#)[▶](#)[◀](#)[▶](#)[Back](#)[Close](#)[Full Screen / Esc](#)[Print Version](#)[Interactive Discussion](#)

EGU

03:00 UTC (Fig. 10c), the simulated CO tracer shows a similar filament over the Yukon Territory and British Columbia while on 24 June at 03:00 UTC (Fig. 10d) the maxima are at eastern Fairbanks, Yukon Territory and Edmonton. Figures 10e and f show the corresponding results, but with the convection parameterization turned off. The very low CO tracer in this simulation shows again that the upward transport in the simulation with convection turned on was indeed due to the sub-grid-scale convection parameterization. In fact, the average of the tracer between 9 and 15 km with convection relative to without convection shows a nearly nine-fold enhancement on both days. The feature in the TOMS image which is close to the Beaufort Sea on 23 and over the sea on 24 (red rectangle) is not visible in the FLEXPART 9–15 km column (Figs. 10c and d). However, inspection of the 0–15 km column (not shown) indeed shows CO tracer over the Beaufort Sea. Thus we contend that the feature is located at lower (<9 km) altitude.

Other instruments that testify to the perturbation of the UT/LS by the Alaskan fires are the Polar Ozone and Aerosol Measurement (POAM III) aboard the SPOT-4 satellite (Lucke et al., 1999) and the Stratospheric Aerosol and Gas Experiment (SAGE II) aboard the Earth Radiation Budget satellite (Mauldin et al., 1985). Figure 11a shows enhanced aerosol extinction at 1 μm wavelength in the UT/LS from SAGE II (green) and POAM III (orange) over Edmonton (green and orange rectangles in Fig. 10f) on early hours of 24 June. The SAGE profile shows a strong enhancement between 10 and 12 km, the ECMWF dynamical tropopause (Fig. 11b) over the location is at about 10–11 km. The POAM profile over Edmonton shows an even stronger enhancement above 12 km but no values below. This termination of POAM data at such a high altitude is what is referred to as “High Zmin” (Fromm et al., 1999). This normally indicates that optically sufficiently thick clouds obscure the sun from the POAM sun tracker and, thus, measurements are available only above the cloud. An investigation of GEOS infrared imagery, however, revealed that there were no high clouds in the region. Visible imagery showed some greyish features, whose color suggests these were not normal water or ice clouds. In fact, backward trajectories (not shown) from the enhanced POAM profile travel back to the fire source in Alaska. Thus, it seems that the aerosol

Pyro-convection

R. Damoah et al.

[Title Page](#)[Abstract](#)[Introduction](#)[Conclusions](#)[References](#)[Tables](#)[Figures](#)[◀](#)[▶](#)[◀](#)[▶](#)[Back](#)[Close](#)[Full Screen / Esc](#)[Print Version](#)[Interactive Discussion](#)

EGU

layer was optically sufficiently thick to terminate the POAM sun tracker measurements. Another POAM profile over Quebec at 54° N, 66° W (black line in Fig. 11a) outside the region of the Alaskan fire emission plume shows an unperturbed profile for reference. The two POAM profiles above 12 km show an approximately four-fold enhancement of the aerosol extinction of the perturbed relative to the unperturbed profile. Although the FLEXPART CO tracer across 54° N on 24 June at 06:00 UTC (Fig. 11b) shows the main part of the forest fire plume west of Edmonton, there is clear evidence of forest fire CO plume well above (1–2 km) the local tropopause at Edmonton. This underlines that the enhanced POAM and SAGE extinction in the UT/LS were likely due to a pyro-convective blow up.

4.2. Lidar observations at Madison

During the last four days of June 2004, the High Spectral Resolution Lidar (HSRL) (Elo-ranta, 2005) at the University of Wisconsin (red rectangle in Fig. 10d), used for long-term cloud studies (43.1° N, 89.4° W), registered unusually high values of the aerosol backscatter cross section in the upper troposphere (Fig. 12). The strong signal was presumably smoke that was transported from Alaska and the Yukon Territory. Figures 12a–c show observed aerosol backscatter on 26, 28 and 30 June, respectively, (note that the first two panels show the last 12 h of the day while the last panel shows the first 12 h of the day). It is obvious that there is a consistent aerosol layer build up high above the atmospheric boundary layer at altitudes up to 13 km.

The observed patterns of the aerosol backscatter throughout this period agree well with the simulated FLEXPART CO tracer patterns from the fires both with convection on (Figs. 12d–f) and off (Figs. 12g–i). Although FLEXPART tends to underestimate the plume height by about 2–3 km, the overall features are well produced. It is evident from the simulations that convection did not alter the CO tracer distribution over Madison significantly during 26 and 28 June. However, during the last 2 h of 26 of June traces of the CO lifted into the UT/LS by pyro-convection is evident above 9 km. The strongest aerosol backscatter was observed on 30 June, with the pyro-convective CO plume

seen at 6 to 13 km. In fact, according to a FLEXPART movie showing maps of the total tracer column (not shown), this thick plume over Madison was advected north-eastwards from the Yukon Territory on 25 June. 24 h later, it has taken a south-eastern direction from south of Victoria Island (69° – 73° N, 100° – 115° W) where it was stagnant for some hours before it headed to Wisconsin, where it engulfed most of the upper troposphere over Madison and reached levels above 12 km.

5. Summary and conclusions

In this paper, we have used satellite and lidar data and the Lagrangian transport model FLEXPART to study a pyro-convection event that occurred in Alaska and the Yukon Territory in June, 2004. After a mostly dry period of anticyclonic conditions over Alaska with unusually high temperatures, a cyclone developed west of the Canadian coast on 21 June. It weakened the anticyclone over Western Canada and Alaska and triggered strong convection. Several deep convective centers with very low cloud top brightness temperatures were observed. The cluster of the coldest cloud top temperatures (below -60°C) was located almost exactly over the region with the strongest fire activity in the boreal forest, suggesting that the fires may have enhanced the convection. A picture taken from a commercial airliner a few days later over another fire also shows the pyro-convection over the fire to be much higher than the convective clouds in the environment. The picture clearly shows how smoky the pyro-convection was, suggestive of microphysical processes being active to influence the release of latent heat in the atmosphere, in addition to the heat generated by the fire itself.

POAM and SAGE extinction profiles that were available on 24 June, one day after one of the pyro-convection events, showed that there was enhanced aerosol extinction up to about 13 km, whereas the local tropopause was at about 11 km. Lidar measurements at Madison, Wisconsin, showed strongly enhanced aerosol backscatter at up to about 12 km altitude on 30 June, about 1 week after the strongest pyro-convection.

The Lagrangian particle dispersion model FLEXPART was used to establish rela-

[Title Page](#)[Abstract](#)[Introduction](#)[Conclusions](#)[References](#)[Tables](#)[Figures](#)[I◀](#)[▶I](#)[◀](#)[▶](#)[Back](#)[Close](#)[Full Screen / Esc](#)[Print Version](#)[Interactive Discussion](#)

EGU

Pyro-convection

R. Damoah et al.

[Title Page](#)[Abstract](#)[Introduction](#)[Conclusions](#)[References](#)[Tables](#)[Figures](#)[◀](#)[▶](#)[◀](#)[▶](#)[Back](#)[Close](#)[Full Screen / Esc](#)[Print Version](#)[Interactive Discussion](#)

EGU

tionships between the different observations of the fire plume. These simulations could indeed trace back the POAM and SAGE observations as well as the lidar observations to the pyro-convection events in the second half of June 2004. However, the simulations were only successful when the deep convection parameterization of FLEXPART was switched on. Without the convection parameterization the deep transport of the fire emissions into the stratosphere could not be simulated at all. Even with the convection parameterization turned on, the maximum altitude of the simulated pollution plume over the lidar location was somewhat lower than observed. This is likely because the convection parameterization does not account for processes related directly to the fire. However, the ECMWF data used to drive FLEXPART likely benefited from the assimilation of close-by (only about 557 km from the coldest cloud top temperatures) radiosonde data that clearly showed the signatures of the deep convection taking place. In other cases, where there are no such close-by radiosonde data available, tracer simulations of pyro-convection may be much less successful. This demonstrates the need to include information about fire activity in numerical weather forecast models and observation assimilation schemes.

Finally, measurements of CO on board a commercial airliner showed strongly enhanced CO concentrations of almost 300 ppb at cruising altitude (about 11 km) in the stratosphere over the North Atlantic. This CO plume could be traced back to the same pyro-convection events as described here (Cammass et al., 2005¹). Using convective mass fluxes taken from a simulation with a mesoscale model, Cammass et al. also show that deep convection was responsible for the strong stratospheric CO enhancements.

Acknowledgements. We acknowledge ECMWF and the German Weather Service for permitting access to the ECMWF archives. We appreciate the provision of data via the internet by the science teams at the Alaska climate research centre including those of MODIS, TOMS, POAM, SAGE and lidar group in Madison. We are thankful to N. Todo of Japan Airlines International Co. Ltd. for his image of a pyro-cb. This study was funded by the European Commission in the European Research Framework 5 program as part of the PARTS (no. EVK2CT200100112) project and the German Federal Ministry for Education and Research in the Framework of the Atmospheric Research 2000 program as part of NOXTRAM (07 ATF05).

References

- Alaska Interagency Coordination Center (AICC) Report: Review of the 2004 fire season (see, <http://fire.ak.blm.gov>), 2004.
- Andreae, M. O., Rosenfeld, D., Artaxo, P., Costa, A. A., Frank, G. P., Longo, K. M., and Silva-Dias, M. A. F.: Smoking rain clouds over the Amazon, *Science*, 303, 1337–1342, 2004.
- Cofer, W. R., Winstead, E. L., Stocks, B. J., Goldammer, J. G., and Cahoon, D. R.: Crown fire emissions of CO₂, CO, H₂, CH₄, and TNMHC from dense jack pine boreal forest fire, *Geophys. Res. Lett.*, 25, 3919–3922, 1998.
- Crutzen, P. J.: A discussion of the chemistry of some minor constituents in the stratosphere and troposphere, *Pure Appl. Geophys.*, 106–108, 1385–1399, 1973.
- Damoah, R., Spichtinger, N., Forster, C., James, P., Mattis, I., Wandinger, U., Beirle, S., Wagner, T., and Stohl, A.: Around the world in 17 days – hemispheric-scale transport of forest fire smoke from Russia in May 2003, *Atmos. Chem. Phys.*, 4, 1311–1321, 2004, [SRef-ID: 1680-7324/acp/2004-4-1311](https://doi.org/10.5194/acp-2004-4-1311).
- ECMWF: User Guide to ECMWF Products 2.1, Meteorol. Bull. M3.2, ECMWF, Reading, UK, 1995.
- Eloranta, E. W.: High spectral resolution lidar: Range-Resolved Optical Remote Sensing of the Atmosphere, edited by: Weitkamp, K., Springer-Verlag, New York, pp. 143–163, 2005.
- Emanuel, K. A. and Zivkovic-Rothman, M.: Development and evaluation of a convection scheme for use in climate models, *J. Atmos. Sci.*, 56, 1766–1782, 1999.
- Forster, C., Wandinger, U., Wotawa, G., James, P., Mattis, I., Althausen, D., Simmonds, P., O'Doherty, S., Jennings, S., Kleefeld, C., Schnieder, J., Trickl, T., Kreipl, S., Jäger, H., and Stohl, A.: Transport of boreal forest fire emissions from Canada to Europe, *J. Geophys. Res.*, 106, 22 887–22 906, 2001.
- Fromm, M., Bevilacqua, R., Hornstein, J., Shettle, E., Hoppel, K., and Lumpe, J. D.: An analysis of Polar Ozone and Aerosol Measurement (POAM) II Arctic polar stratospheric cloud Observations, 1993–1996, *J. Geophys. Res.*, 104, 24 341–24 357, 1999.
- Fromm, M. D. and Servranckx, R.: Transport of forest fire smoke above the tropopause by supercell convection, *Geophys. Res. Lett.*, 30, 1542, doi:10.1029/2002GL016820, 2003.
- Fromm, M., Bevilacqua, R., Servranckx, R., Rosen, J., Thayer, P. J., Herman, J., and Larko, D.: Pyro-cumulonimbus injection of smoke to the stratosphere: observations and impact of a super blowup in northwestern Canada on 3–4 August 1998, *J. Geophys. Res.*, 110,

Pyro-convection

R. Damoah et al.

Title Page

Abstract

Introduction

Conclusions

References

Tables

Figures

◀

▶

◀

▶

Back

Close

Full Screen / Esc

Print Version

Interactive Discussion

doi:10.1029/2004JD005350, 2005.

Graf, H., Herzog, M., Oberhuber, J. M., and Textor, C.: The effect of environmental conditions on volcanic plume rise, *J. Geophys. Res.*, 104, 24 309–24 320, 1999.

Hsu, N. C., Herman, J., Gleason, J., Torres, O., and Seftor, C.: Satellite detection of smoke aerosols over a snow/ice surface by TOMS, *Geophys. Res. Lett.*, 26, 1165–1168, 1999.

Immler, F., Engelbart, D., and Schrems, O.: Fluorescence from atmospheric aerosol detected by a lidar indicates biogenic particles in the stratosphere, *Atmos. Chem. Phys.*, 5, 345–355, 2005,

[SRef-ID: 1680-7324/acp/2005-5-345.](#)

Jost, H. J., Drdla, K., Stohl, A., Pfister, L., Loewenstein, M., Lopez, J. P., Hudson, P. K., Murphy, D. M., Cziczo, D. J., Fromm, M., Bui, T. P., Dean-Day, J., Gerbig, C., Mahoney, M. J., Richard, E. C., Spichtinger, N., Pittman, J. V., Weinstock, E. M., Wilson, J. C., and Xueref, I.: In-situ observations of mid-latitude forest fire plumes deep in the stratosphere, *Geophys. Res. Lett.* 31, 11101, doi:10.1029/2003GL019253, 2004.

Justice, C. O., Kendall, J. D., Dowty, P. R., and Scholes, R.: Satellite remote sensing of fires during the SAFARI campaign using NOAA advanced very high radiometer data, *J. Geophys. Res.*, 101, 23 851–23 863, 1996.

Kato, S., Pochanart, P., Hirokawa, J., Kajii, Y., Akimoto, H., Ozaki, Y., Obi, K., Katsuno, T., Streets, D. G., and Minko, N. P.: The influence of Siberian forest fires on carbon monoxide concentrations at Happo, Japan, *Atmos. Environ.*, 36, 385–390, 2002.

Kaufman, Y. J., Justice, C. O., Flynn, L. P., Kendall, J. D., Prins, E. M., Giglio, L., Ward, D. E., Menzel, W. P., and Setzer, A. W.: Potential global fire monitoring from EOS-MODIS, *J. Geophys. Res.*, 103, 32 215–32 238, 1998.

Kaufman, Y. J., Ichoku, C., Giglio, L., Korontzi, S., Chu, D. A., Hao, W. M., Li, R.-R., and Justice, C. O.: Fire and smoke observed from Earth Observing System MODIS instrument – products, validation, and operational use, *Int. J. Remote Sensing*, 24, 1765–1781, 2003.

Livesey, N. J., Fromm, M. D., Waters, J. W., Manney, G. L., Santee, M. L., and Read, W. G.: Enhancement in lower stratospheric CH₃CH observed by the Upper Atmosphere Research Satellite Microwave Limb Sounder following boreal forest fires, *J. Geophys. Res.*, 109, D06308, doi:10.1029/2003JD004055, 2004.

Lucke, R., Korwan, D., Bevilacqua, R., Hornstein, J., Shettle, E., Chen, D., Daehler, M., Lumpe, J., Fromm, M., Debrestian D., Neff, B., Squire, M., König-Langglo, and Davis J.: The Polar Ozone and Aerosol Measurement (POAM) III instrument and early validation results , *J.*

Pyro-convection

R. Damoah et al.

Title Page

Abstract

Introduction

Conclusions

References

Tables

Figures

◀

▶

◀

▶

Back

Close

Full Screen / Esc

Print Version

Interactive Discussion

Pyro-convection

R. Damoah et al.

[Title Page](#)[Abstract](#)[Introduction](#)[Conclusions](#)[References](#)[Tables](#)[Figures](#)[◀](#)[▶](#)[◀](#)[▶](#)[Back](#)[Close](#)[Full Screen / Esc](#)[Print Version](#)[Interactive Discussion](#)

EGU

Geophys. Res., 104, 18 785–18 799, 1999.

Mauldin, L., Zuan, N., McCormic, M., Guy, J., and Vaughn, W.: Stratospheric Aerosol and Gas Experiment II instrument: A functional description, *Opt. Eng.*, 24, 307–312, 1985.

Novelli, P. C., Masarie, K. A., Land, P. M., Hall, B. D., Myers, R. C., and Elkins, J. W.: Reanalysis of tropospheric CO trends: Effects on the 1997–1998 wildfires, *J. Geophys. Res.*, 108, 4464, 2003.

Robock, A.: Surface cooling due to forest fire smoke, *J. Geophys. Res.*, 96, 20 869–20 878, 1991.

Rozell, N.: Smoked pike on menu for Yukon Flats scientists, *Alaska Science Forum*, 1710, 2004.

Seinfeld, J. H. and Pandis, S. N.: *Atmospheric Chemistry and Physics*, 1326 pp., John Wiley, Inc., New York, 1998.

Spichtinger, N., Damoah, R., Eckhard, S., Forster, C., James, P., Beirle, T., Wagner, T., Novelli, P. C., and Stohl, A.: Boreal forest fires in 1997 and 1998: A seasonal comparison using transport model simulations and measurement data, *Atmos. Chem. Phys.*, 4, 1857–1868, 2004,

[SRef-ID: 1680-7324/acp/2004-4-1857](#).

Stohl, A., Hittenberger, M., and Wotawa, G.: Validation of the Lagrangian particle dispersion model FLEXPART against large scale tracer experiment data, *Atmos. Environ.*, 32, 4245–4264, 1998.

Stohl, A. and Thomson, D. J.: A density correction for Lagrangian particle dispersion models, *Boundary-Layer Meteorol.*, 90, 155–167, 1999.

Tanimoto, H., Kajii, Y., Hirokawa, J., Akimoto, H., and Minko, N. P.: The atmospheric impact of boreal forest fires in far eastern Siberia on the seasonal variation of carbon monoxide : observations at Rishiri, a northern remote island in Japan, *Geophys. Res. Lett.*, 27, 4073–4076, 2000.

Wotawa, G. and Trainer, M.: The influence of Canadian forest fires on pollutant concentrations in the United States, *Science*, 288, 324–328, 2000.

Wotawa, G., Novelli, P. C., Trainer, M., and Granier, C.: Inter-annual variability of summertime CO concentrations in the Northern Hemisphere explained by boreal forest fires in North America and Russia, *Geophys. Res. Lett.*, 28, 4575–4578, 2001.

Yurganov, N. L., Blumenstock, T., Grechko, I. E., Hase, F., Hyer, J. E., Kasischke, E. S., Koike, M., Kondo, Y., Kramer, I., Leung, F.-Y., Mahieu, E., Mellqvist, J., Notholt, J., Novelli, C.

P., Rinsland, P. C., Scheel, E. H., Schulz, A., Strandberg, A., Sussmann, R., Tanimoto, H., Velazco, V., Zander, R., and Zhao, Y.: A quantitative assessment of the 1998 carbon monoxide emissions anomaly in the Northern Hemisphere based on total column and surface concentration measurements, *J. Geophys. Res.*, 109, doi:10.1029/2004JD004559, 2004.

ACPD

5, 6185–6214, 2005

Pyro-convection

R. Damoah et al.

Title Page

Abstract

Introduction

Conclusions

References

Tables

Figures

◀

▶

◀

▶

Back

Close

Full Screen / Esc

Print Version

Interactive Discussion

EGU

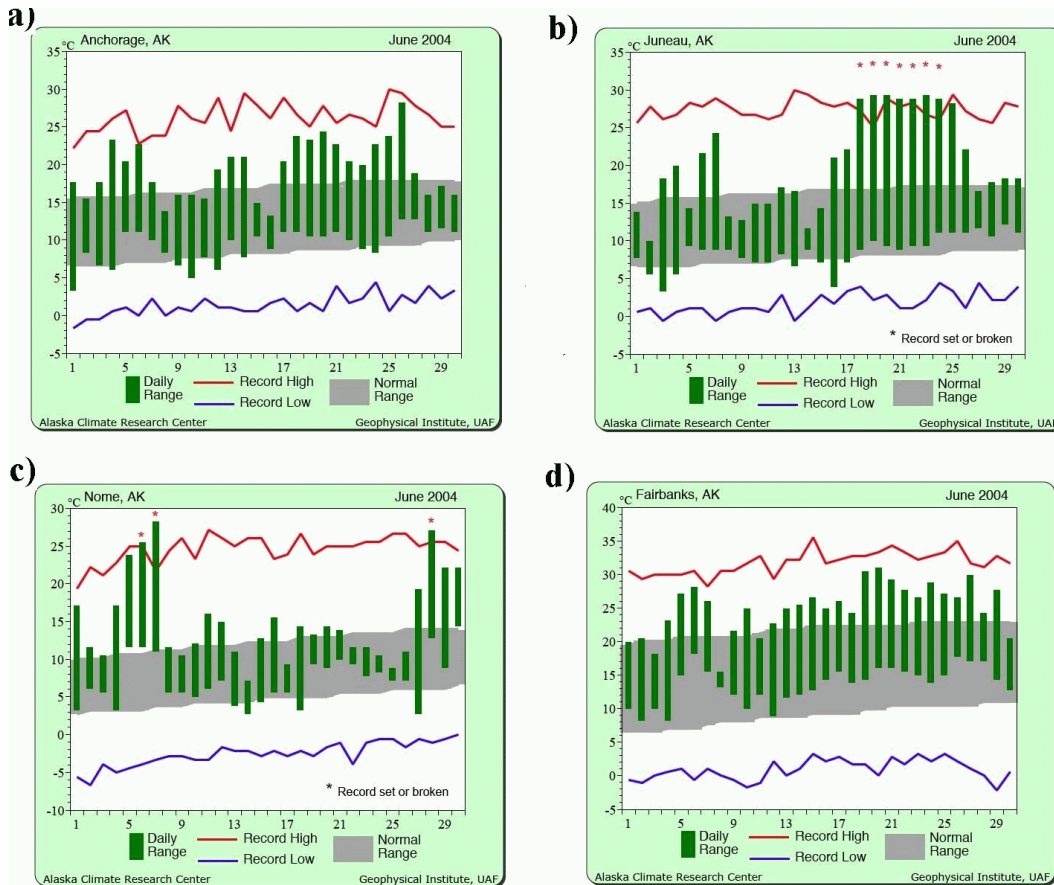


Fig. 1. June daily temperatures (green) for (a) Anchorage, (b) Juneau, (c) Nome and (d) Fairbanks, respectively. The horizontal red and blue lines indicate record high and low temperatures, respectively (see from <http://climate.gi.alaska.edu>).

Title Page

Abstract

Introduction

Conclusions

References

Tables

Figures

◀

▶

◀

▶

Back

Close

Full Screen / Esc

Print Version

Interactive Discussion

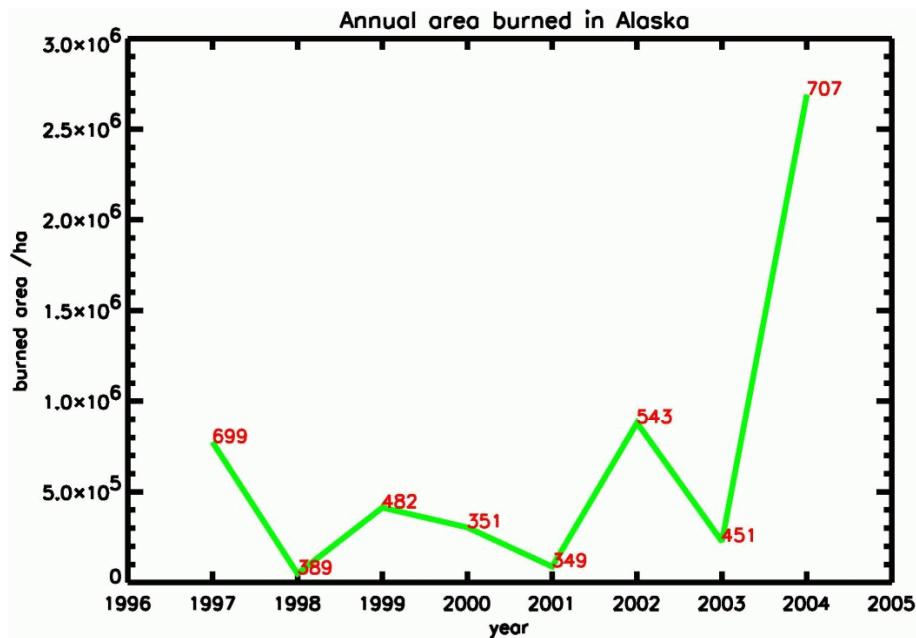


Fig. 2. The annual area burned in Alaska during the fire seasons between the years 1997 and 2004 (see <http://climate.gi.alaska.edu>).

[Title Page](#)[Abstract](#)[Introduction](#)[Conclusions](#)[References](#)[Tables](#)[Figures](#)[◀](#)[▶](#)[◀](#)[▶](#)[Back](#)[Close](#)[Full Screen / Esc](#)[Print Version](#)[Interactive Discussion](#)

EGU

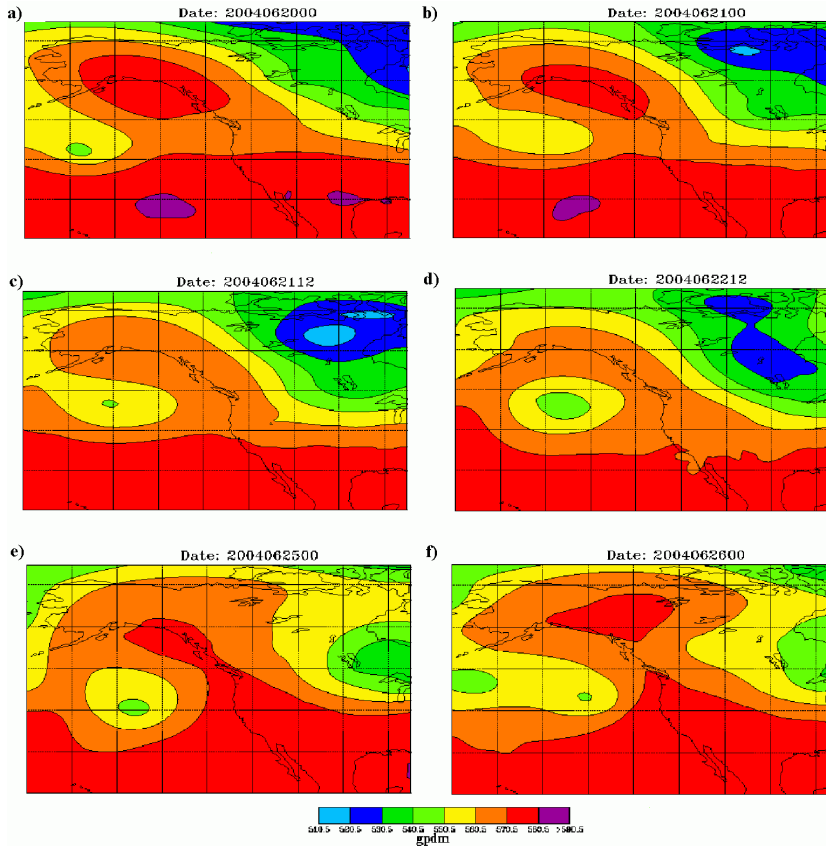


Fig. 3. ECMWF (European Centre for Medium-Range Weather Forecasts) Geopotential Height in gpm (geopotential decametres) at 500 hPa on (a) 20 June 2004 at 00:00 UTC, (b) 21 June 2004 at 00:00 UTC, (c) 21 June 2004 at 12:00 UTC, (d) 22 June 2004 at 12:00 UTC, (e) 25 June 2004 at 00:00 UTC and (f) 26 June 2004 at 00:00 UTC.

[Title Page](#)[Abstract](#)[Introduction](#)[Conclusions](#)[References](#)[Tables](#)[Figures](#)[◀](#)[▶](#)[◀](#)[▶](#)[Back](#)[Close](#)[Full Screen / Esc](#)[Print Version](#)[Interactive Discussion](#)

EGU

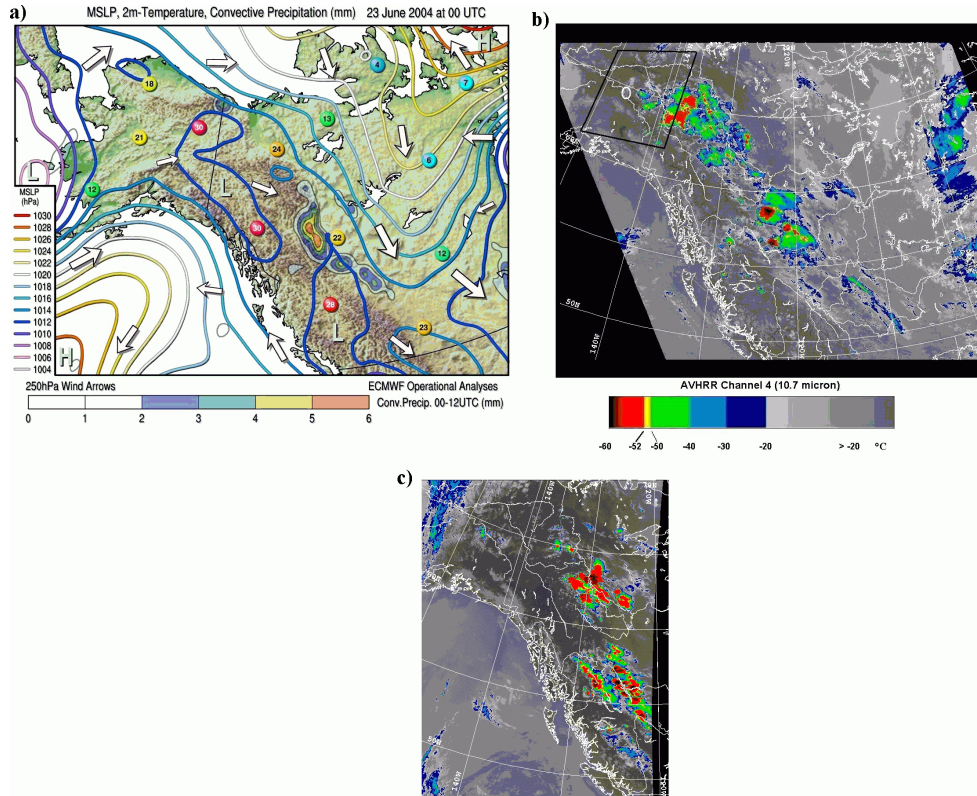


Fig. 4. (a) ECMWF analyses of mean sea level pressure (colored contour lines), 2-meter temperatures at selected locations (colored buttons) and 250 hPa winds (arrows) for 23 June at 00:00 UTC, plotted over a topography map of Alaska and western Canada. Shaded areas show the convective precipitation from a 12-h forecast from the 00:00 UTC analysis. (b) Brightness temperatures from the NOAA-12 satellite at channel 4 ($10.7 \mu\text{m}$) on 23 June at 05:00 UTC and (c) on 24 June at 01:00 UTC. The black rectangle and white circle in (b) indicate approximately the area shown in Fig. 5b and location of the radiosonde (Fig. 7), respectively.

[Title Page](#)
[Abstract](#)
[Introduction](#)
[Conclusions](#)
[References](#)
[Tables](#)
[Figures](#)
[◀](#)
[▶](#)
[◀](#)
[▶](#)
[Back](#)
[Close](#)
[Full Screen / Esc](#)
[Print Version](#)
[Interactive Discussion](#)

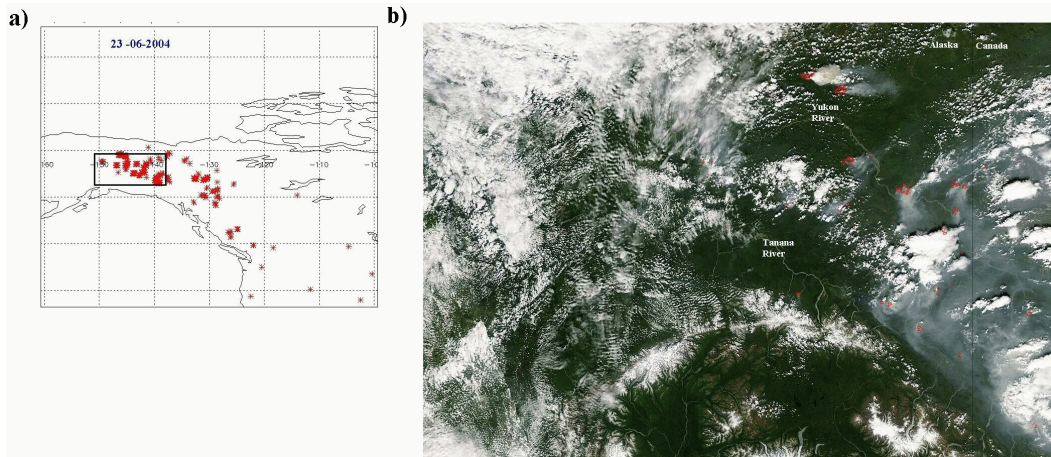


Fig. 5. (a) MODIS fire hot spots for 23 June, 2004. The black rectangle is approximately the area shown in panel b). (b) MODIS Aqua satellite image over Alaska and the Yukon Territory on 22 June at about 22:00 UTC. Red spots show active fires, whereas blue-grey colors indicate smoke, and the whitish colors show snow, ice and clouds.

[Title Page](#)[Abstract](#)[Introduction](#)[Conclusions](#)[References](#)[Tables](#)[Figures](#)[I◀](#)[▶I](#)[◀](#)[▶](#)[Back](#)[Close](#)[Full Screen / Esc](#)[Print Version](#)[Interactive Discussion](#)

EGU

Pyro-convection

R. Damoah et al.



Fig. 6. Picture of a pyro-cumulonimbus located at 58° N, 126° W on 27 June at 21:00 UTC. The picture was taken out of the cockpit of a commercial airliner cruising at about 10 km (Picture courtesy of Noriyuki Todo of Japan Airlines).

[Title Page](#)[Abstract](#)[Introduction](#)[Conclusions](#)[References](#)[Tables](#)[Figures](#)[I◀](#)[▶I](#)[◀](#)[▶](#)[Back](#)[Close](#)[Full Screen / Esc](#)[Print Version](#)[Interactive Discussion](#)

EGU

Pyro-convection

R. Damoah et al.

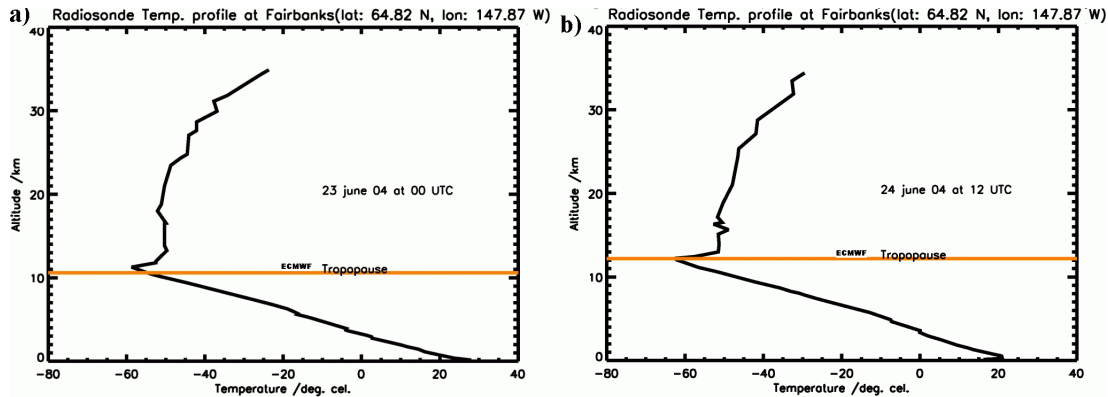


Fig. 7. Radiosonde temperature profile at Fairbanks, Alaska **(a)** on 23 June at 00:00 UTC and **(b)** on 24 June at 12:00 UTC. The horizontal orange line indicates the dynamical tropopause height calculated from ECMWF data.

[Title Page](#)[Abstract](#)[Introduction](#)[Conclusions](#)[References](#)[Tables](#)[Figures](#)[◀](#)[▶](#)[◀](#)[▶](#)[Back](#)[Close](#)[Full Screen / Esc](#)[Print Version](#)[Interactive Discussion](#)

EGU

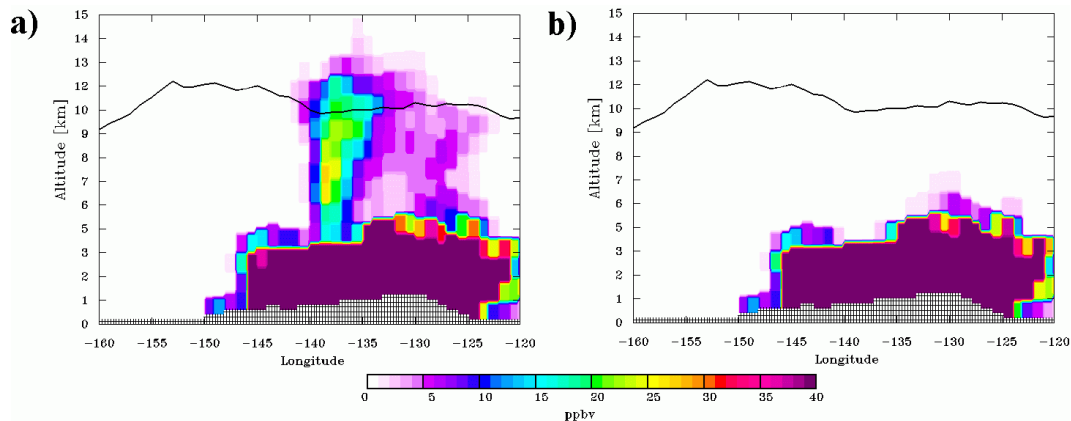


Fig. 8. Vertical sections through the FLEXPART CO tracer at 64° latitude on 24 June at 12:00 UTC with convection turned on (a) and off (b), respectively. The black solid line is the dynamical tropopause height (height of the 2PVU surface) determined from ECMWF operational data.

[Title Page](#)[Abstract](#)[Introduction](#)[Conclusions](#)[References](#)[Tables](#)[Figures](#)[◀](#)[▶](#)[◀](#)[▶](#)[Back](#)[Close](#)[Full Screen / Esc](#)[Print Version](#)[Interactive Discussion](#)

EGU

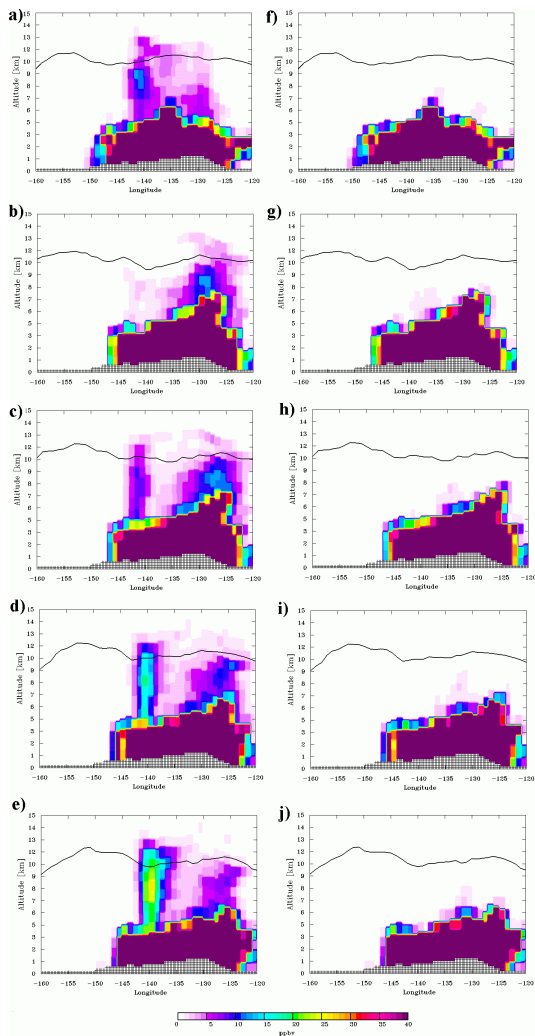


Fig. 9. Vertical sections through the FLEXPART CO tracer at 64° latitude on (a, f) 23 June at 09:00 UTC and (b, g) 21:00 UTC, (c, h) on 24 June at 00:00 UTC, (d, i) 03:00 UTC and (e, j) 06:00 UTC. Panels a–e show simulations with convection turned on, panels (f–j) show simulations with convection turned off. The black solid line is the dynamical tropopause height (height of the 2PVU surface) determined from ECMWF operational data.

[Title Page](#)
[Abstract](#)
[Introduction](#)
[Conclusions](#)
[References](#)
[Tables](#)
[Figures](#)
[◀](#)
[▶](#)
[◀](#)
[▶](#)
[Back](#)
[Close](#)
[Full Screen / Esc](#)
[Print Version](#)
[Interactive Discussion](#)

EGU

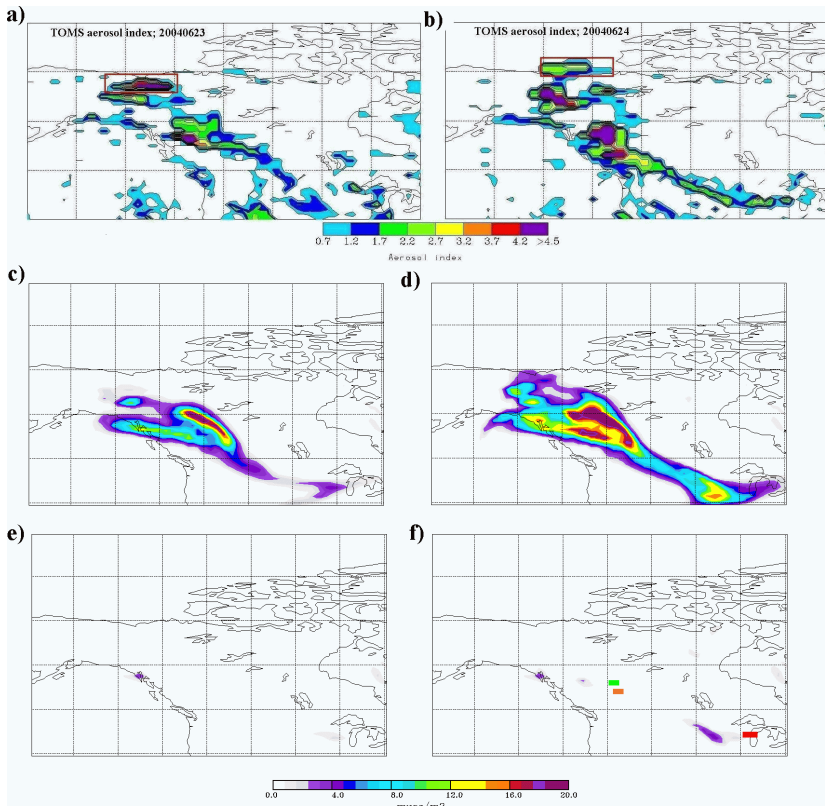


Fig. 10. TOMS aerosol index over North America on **(a)** 23 and **(b)** 24 June, 2004. FLEXPART 9–15 km CO tracer columns over North America with convection turned on, at **(c)** 23 June 03:00 UTC, **(d)** 24 June 03:00 UTC. **(e)** and **(f)** Same as (c) and (d), respectively, but with convection turned off. The orange and green rectangles shown in panel (f) indicate the locations of the POAM and SAGE measurements, respectively, shown in Fig. 11a. The red rectangle shows the location of the lidar measurements shown in Fig. 12.

[Title Page](#)
[Abstract](#)
[Introduction](#)
[Conclusions](#)
[References](#)
[Tables](#)
[Figures](#)
[◀](#)
[▶](#)
[◀](#)
[▶](#)
[Back](#)
[Close](#)
[Full Screen / Esc](#)
[Print Version](#)
[Interactive Discussion](#)

Pyro-convection

R. Damoah et al.

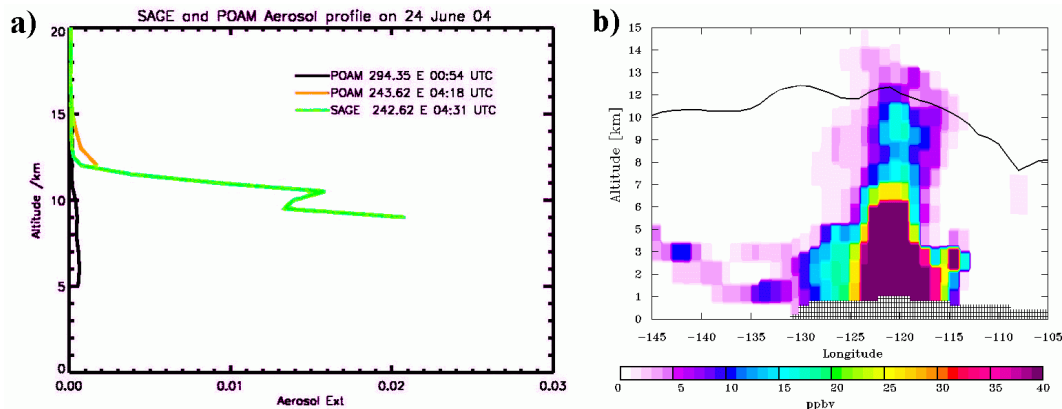


Fig. 11. (a) POAM III (orange) and SAGE II (green) aerosol extinction profiles at $1 \mu\text{m}$ approximately over Edmonton on 24 June at 04:00 UTC. The location of the profiles is shown in Fig. 10f. The unperturbed black profile is the POAM aerosol extinction over Quebec at 00:00 UTC. **(b)** Vertical section through the FLEXPART CO tracer at 54° latitude on 24 June at 03:00 UTC with convection turned on. The black solid line is the dynamical tropopause height (height of the 2PVU surface) determined from ECMWF operational data.

[Title Page](#)[Abstract](#)[Introduction](#)[Conclusions](#)[References](#)[Tables](#)[Figures](#)[◀](#)[▶](#)[◀](#)[▶](#)[Back](#)[Close](#)[Full Screen / Esc](#)[Print Version](#)[Interactive Discussion](#)

EGU

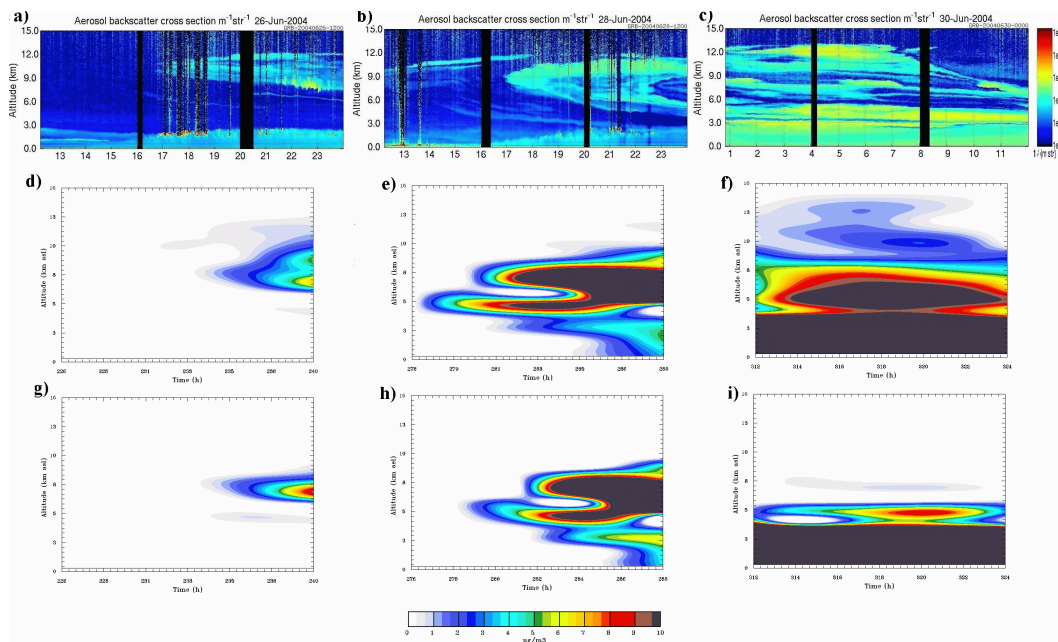


Fig. 12. Lidar time-height plot of aerosol backscatter cross section over Madison (red rectangle in Fig. 10f) on **(a)** 26 June from 12:00 UTC to 24:00 UTC, **(b)** 28 June from 12:00 UTC to 24:00 UTC and **(c)** 30 June 2004 from 01:00 UTC to 12:00 UTC. The vertical resolution is 7.5 m. FLEXPART time-height plots of the CO tracer from the simulation with convection turned on at the lidar location on **(d)** 26, **(e)** 28 **(f)** 30 June for the same time periods as the corresponding lidar data plots (a–c). **(g)**, **(h)** and **(i)** Same as d), e) and f), respectively, but with convection switched off.

[Title Page](#)
[Abstract](#)
[Introduction](#)
[Conclusions](#)
[References](#)
[Tables](#)
[Figures](#)
[◀](#)
[▶](#)
[◀](#)
[▶](#)
[Back](#)
[Close](#)
[Full Screen / Esc](#)
[Print Version](#)
[Interactive Discussion](#)

EGU