



**HAL**  
open science

# A curved multi-component aerosol hygroscopicity model framework: 1? Inorganics

D. O. Topping, G. B. Mcfiggans, H. Coe

## ► To cite this version:

D. O. Topping, G. B. Mcfiggans, H. Coe. A curved multi-component aerosol hygroscopicity model framework: 1? Inorganics. Atmospheric Chemistry and Physics Discussions, 2004, 4 (6), pp.8627-8676. hal-00301641

**HAL Id: hal-00301641**

**<https://hal.science/hal-00301641>**

Submitted on 18 Jun 2008

**HAL** is a multi-disciplinary open access archive for the deposit and dissemination of scientific research documents, whether they are published or not. The documents may come from teaching and research institutions in France or abroad, or from public or private research centers.

L'archive ouverte pluridisciplinaire **HAL**, est destinée au dépôt et à la diffusion de documents scientifiques de niveau recherche, publiés ou non, émanant des établissements d'enseignement et de recherche français ou étrangers, des laboratoires publics ou privés.

**Curved  
multi-component  
aerosol  
hygroscopicity model  
framework 1**

D. O. Topping et al.

# **A curved multi-component aerosol hygroscopicity model framework: 1 – Inorganics**

**D. O. Topping, G. B. McFiggans, and H. Coe**

School of Earth, Atmospheric and Environmental Sciences, The University of Manchester,  
The Sackville street building, Sackville street, Manchester M60 1QD, UK

Received: 17 November 2004 – Accepted: 6 December 2004 – Published: 23 December 2004

Correspondence to: D. O. Topping (david.topping@postgrad.manchester.ac.uk)

© 2004 Author(s). This work is licensed under a Creative Commons License.

[Title Page](#)

[Abstract](#)

[Introduction](#)

[Conclusions](#)

[References](#)

[Tables](#)

[Figures](#)

[◀](#)

[▶](#)

[◀](#)

[▶](#)

[Back](#)

[Close](#)

[Full Screen / Esc](#)

[Print Version](#)

[Interactive Discussion](#)

## Abstract

A thermodynamic modelling framework to predict the equilibrium behaviour of mixed inorganic salt aerosols is developed, and then coupled with a technique for finding a solution to the Köhler equation in order to create a diameter dependent hygroscopic aerosol model (Aerosol Diameter Dependent Equilibrium Model – ADDEM). The model described here provides a robust and accurate inorganic basis using a mole fraction based activity coefficient model and adjusted energies of formation for treating solid precipitation. The model framework can accommodate organic components, though this added complexity is considered in a companion paper, whereas this paper describes the development of the modelling architecture to be used and predictions of an inorganic model alone. The modelling framework has been developed to flexibly use a combination of mixing rules and other potentially more accurate techniques where available to calculate the water content. Comparisons with other state-of-the-art general equilibrium models and experimental data are presented and show excellent agreement. The Kelvin effect can be considered in this scheme using a variety of surface tension models. Comparison of predicted diameter dependent phenomena, such as the increased relative humidity for onset of deliquescence with decreasing diameter, with another diameter dependent model is very good despite the different approach used. The model is subject to various sensitivities. For the inorganic systems studied here, the model is sensitive to choice of surface tension scheme used, which decreases for larger aerosol. Large sensitivities are found for the value of dry density used. It is thus likely that the history of the aerosol studied in a hygroscopic tandem differential mobility analyser (HTDMA), specifically the nature of the drying process that will influence the final crystalline form, will create systematic uncertainties upon comparisons with theoretical predictions. However, the magnitudes of all of the above sensitivities are potentially less than those introduced when using a semi ideal growth factor analogue for certain conditions.

---

**Curved  
multi-component  
aerosol  
hygroscopicity model  
framework 1**

D. O. Topping et al.

---

Title Page

Abstract

Introduction

Conclusions

References

Tables

Figures

◀

▶

◀

▶

Back

Close

Full Screen / Esc

Print Version

Interactive Discussion

## 1. Introduction

The interaction between aerosols and water vapour plays a large role in determining their effect on the environment. The chemical and physical characteristics of aerosols are diverse and attempting to encompass such variability within a hygroscopic model is complex. An aerosol may exist in a solid or liquid state or a combination of the two over a wide range of ambient conditions both in the sub and super saturated humid environment, (Corrigan and Novakov, 1999; Pitchford and McMurry, 1994; Shulman et al., 1996; Swietlicki et al., 1999). Thus, where possible, the ability to couple the chemical and physical characteristics to the equilibrium phase of the aerosol is the ultimate aim of any hygroscopic modelling approach.

Chemical components include sulphates, nitrates, ammonium, sea salt, hydrogen ions, crustal components and organic material (Seinfeld and Pandis, 1998). In the past, only the inorganic fraction has been assumed to play a role in the interaction between aerosols and water vapour. As such, this fraction has been studied and modelled extensively and our understanding of its behaviour is relatively robust, despite various shortcomings of the previous modelling approaches, which are addressed in this paper.

The accuracy with which one treats the hygroscopic properties of aerosols can be determined by the framework of the modelling approach, which in turn is often developed with varying levels of flexibility in mind. One can categorise such frameworks using the assumptions associated with each. Ultimately these range from empirical parameterisations to semi empirical thermodynamic models. Whilst easier to implement, the former are potentially less accurate and are not as applicable to as wide a range of atmospheric situations. Ideally an explicit treatment of the underlying thermodynamics is required.

Numerous inorganic thermodynamic models have been developed. These include EQUIL (Bassett and Seinfeld, 1983), KEQUIL (Bassett and Seinfeld, 1984), MARS (Saxena et al., 1986), SEQUILIB (Pilinis and Seinfeld, 1987), SCAPE and SCAPE 2 (Kim and Seinfeld, 1995; Kim et al., 1993a, b; Meng et al., 1995), MARS-A (Binkowski

---

**Curved  
multi-component  
aerosol  
hygroscopicity model  
framework 1**

D. O. Topping et al.

---

Title Page

Abstract

Introduction

Conclusions

References

Tables

Figures

◀

▶

◀

▶

Back

Close

Full Screen / Esc

Print Version

Interactive Discussion

and Shankar, 1995), EQUISOLV and EQUISOLV II (Jacobson, 1999b; Jacobson et al., 1996), AIM and AIM 2 (Clegg et al., 1998a, b; Wexler and Seinfeld, 1990, 1991), IS-SORROPIA (Nenes et al., 1998, 1999) and GFEMN (Ansari and Pandis, 1999). Comparative reviews are given in the literature (Saxena et al., 1986; Zhang et al., 2000).

5 These models treat the inorganic fraction with varying levels of complexity, often dictated by the numerical technique chosen and the activity coefficient model employed. One can classify the different techniques used to determine the equilibrium composition and phase state of the aerosols into two main categories. The first utilises equilibrium constants housed within varying levels of iteration. Whilst relatively easy to  
10 implement, the use of such schemes often results in the sole use of mixing rules to calculate the water content. Although proven to be relatively successful for inorganic systems, it would be beneficial to devise a framework in which potentially more accurate techniques for calculating the water content can be employed given that errors associated with organics are likely to be significant,. In addition, as noted by Ansari and Pandis (1999), conditions suggesting multistage behaviour and quantifying the degree of deliquescence depression are not known a priori. As such, modifying an equation-based algorithm to predict multistage behaviour and deliquescence depression is difficult (Ansari and Pandis, 1999). A more fundamental approach centres on a search for the global Gibbs free energy minimum using either predetermined reaction  
20 paths or allowing the components to be freely variable within set charge and mass constraints. Whilst much harder to implement, this approach allows the use of both mixing rules and potentially more accurate techniques for calculating the water content. A further benefit is that these techniques allow a treatment of multistage behaviour of volatile compounds. The model described in this paper relies on such a technique.

25 Another shortcoming of the majority of inorganic models available is the lack of a coupled consideration of aerosol particle curvature and composition, the Kelvin effect. Curvature influences the partitioning of volatile compounds between the aerosol and gas phase. Whilst negligible for aerosols larger than 100 nm dry diameter, not treating the Kelvin effect restricts the range of applicability of the model both with respect to am-

---

**Curved  
multi-component  
aerosol  
hygroscopicity model  
framework 1**

D. O. Topping et al.

---

Title Page

Abstract

Introduction

Conclusions

References

Tables

Figures

◀

▶

◀

▶

Back

Close

Full Screen / Esc

Print Version

Interactive Discussion

---

**Curved  
multi-component  
aerosol  
hygroscopicity model  
framework 1**D. O. Topping et al.

---

[Title Page](#)[Abstract](#)[Introduction](#)[Conclusions](#)[References](#)[Tables](#)[Figures](#)[◀](#)[▶](#)[◀](#)[▶](#)[Back](#)[Close](#)[Full Screen / Esc](#)[Print Version](#)[Interactive Discussion](#)

bient conditions and the aerosol population being studied. However, introduction of the Kelvin effect is difficult; of the above models, only KEQUIL attempts to treat it by utilising the Gibbs-Thomson relation for each appropriate component. Whilst this is an entirely feasible approach, there are complicating issues, not least the requirement for complex derivatives when using thermodynamic models for the surface tension (in KEQUIL the surface tension is assumed to be that of pure water which introduces inconsistencies). Ming and Russell (2002) introduce the Kelvin effect into their thermodynamic model by deriving an expression for the change in Gibbs free energy from an initially dry to a wet aerosol. Here the surface tension is calculated using the formulation of Suarez et al. (1989) and the authors assume that the surface concentrations are proportional to the bulk by using a proportionality constant derived from measurements of binary systems. The model presented here combines the framework developed around a direct minimisation of the Gibbs free energy and the equilibration of water governed by the simple Köhler equation in order to find a solution pertaining to the new definition of equilibrium. In this manner, one can utilise a wide variety of surface tension models, the most complicated of which may treat the surface/bulk concentration relations explicitly.

In this paper, a general equilibrium model is described before a method for treating the Kelvin effect is introduced. In this way a diameter dependent equilibrium model is developed (ADDEM – Aerosol Diameter Dependent Equilibrium Model). Comparisons with other techniques that are available are made during these developments, finishing with a variety of sensitivity studies. This paper deals with the essential components for calculating the equilibrium state and composition of a solely inorganic aerosol. In this manner, a robust basis on which to include organics is described in detail. An approach to extending this model to include mixed inorganic/organic aerosols is discussed in the companion paper (Topping et al., 2004).

Title Page

Abstract

Introduction

Conclusions

References

Tables

Figures

◀

▶

◀

▶

Back

Close

Full Screen / Esc

Print Version

Interactive Discussion

## 2. General inorganic equilibrium model

In this section, the theoretical and numerical requirements for a general equilibrium model are described. Figure 1 shows a basic model schematic for the current model. The following section describes the portion outlined by the dashed box labelled ‘a’.

### 5 2.1. Thermodynamics

One needs to determine the chemical equilibrium of an aerosol for a given composition and ambient conditions. The condition for chemical equilibrium at constant temperature ( $T$ ) and pressure ( $P$ ) is that the total Gibbs free energy of the system is at the global minimum (Denbigh, 1981). The Gibbs free energy ( $G$ ) is a function of temperature, pressure and the number of moles of each component being considered:

$$10 \quad G = \sum_i n_i \mu_i, \quad (1)$$

where  $\mu_i$  is the chemical potential of component  $i$ , and  $n_i$  the corresponding number of moles. An aerosol may consist of an aqueous phase at high relative humidity ( $RH$ ), one or more solid phases at low  $RH$  and both aqueous and solid phases at intermediate  $RH$  (Wexler and Seinfeld, 1991). Thus the system treated here includes water in both the liquid and gas phase and inorganic components in the gas, liquid and solid phase. The definitions of chemical potentials for ionic components, gases, water and solids are respectively:

$$15 \quad \begin{aligned} \mu_i &= \mu_i^o(T) + RT \ln(\gamma_i m_i) \\ \mu_i &= \mu_i^o(T) + RT \ln(p_i) \\ \mu_i &= \mu_i^o(T) + RT \ln(a_w) \\ \mu_i &= \mu_i^o(T), \end{aligned} \quad (2)$$

20 where  $\mu_i^o(T)$  is the standard state chemical potential ( $\text{kJ mol}^{-1}$ ),  $R$  is the universal gas constant ( $0.0083145 \text{ kJ mol}^{-1}$ ),  $T$  is the temperature (K),  $\gamma_i$  the activity coefficient,

---

**Curved  
multi-component  
aerosol  
hygroscopicity model  
framework 1**

---

D. O. Topping et al.

---

Title Page

Abstract

Introduction

Conclusions

References

Tables

Figures

◀

▶

◀

▶

Back

Close

Full Screen / Esc

Print Version

Interactive Discussion

$m_i$  the molality ( $\text{mol kg}^{-1}$  water) and  $p_i$  the partial pressure (atm) of component  $i$ . For gases at atmospheric pressure, ideality is assumed. The temperature dependence of the standard state chemical potential is calculated from:

$$\mu_i^o(T) = T \left[ \frac{\Delta G_f^o}{T_o} + \Delta H \left( \frac{1}{T} - \frac{1}{T_o} \right) + c_p \left( \ln \frac{T_o}{T} - \frac{T_o}{T} + 1 \right) \right], \quad (3)$$

where  $\Delta G_f^o$  is the free energy of formation ( $\text{kJ mol}^{-1}$ ),  $\Delta H$  is the standard heat of formation ( $\text{kJ mol}^{-1}$ ), and  $c_p$  the heat capacity ( $\text{kJ mol}^{-1}$ ), all at  $T_o$ , a reference temperature (298.15 K). Such data is compiled in Table 1. Currently the model treats the following components in the gas, solid and aqueous phase:

Gas:  $\text{HNO}_3$ ,  $\text{HCl}$ ,  $\text{NH}_3$ ,  $\text{H}_2\text{O}$

Solid:  $\text{NaCl}$ ,  $\text{Na}_2\text{SO}_4$ ,  $\text{NaHSO}_4$ ,  $\text{NaNO}_3$ ,  $\underline{(\text{NH}_4)_2\text{SO}_4}$ ,  $\underline{\text{NH}_4\text{HSO}_4}$ ,  $\underline{\text{NH}_4\text{NO}_3}$ ,  $\underline{\text{NH}_4\text{Cl}}$ ,  $\text{Na}_2\text{SO}_4 \cdot 10\text{H}_2\text{O}$ ,  $\text{NaHSO}_4 \cdot \text{H}_2\text{O}$ ,  $\text{NaNO}_3 \cdot \text{Na}_2\text{SO}_4 \cdot \text{H}_2\text{O}$ ,  $\underline{(\text{Na})_2\text{SO}_4 \cdot (\text{NH}_4)_2\text{SO}_4 \cdot \text{H}_2\text{O}}$ ,  $\underline{\text{NH}_4\text{NO}_3 \cdot \text{NH}_4\text{HSO}_4}$ ,  $\underline{2\text{NH}_4\text{NO}_3 \cdot (\text{NH}_4)_2\text{SO}_4}$  and  $\underline{3\text{NH}_4\text{NO}_3 \cdot (\text{NH}_4)_2\text{SO}_4}$

Aqueous:  $\underline{\text{H}^+}$ ,  $\text{Na}^{2+}$ ,  $\underline{\text{NH}_4^+}$ ,  $\underline{\text{SO}_4^{2-}}$ ,  $\underline{\text{HSO}_4^-}$ ,  $\underline{\text{NO}_3^-}$ ,  $\text{Cl}^-$

The underlined components are those that can be modelled at temperatures other than 298.15 K in accordance with the activity coefficient model described in the following text.

Given the form of  $\mu_i$  in the Gibbs energy summation, this means that one needs to solve a non-linear problem. However, the system is also subject to charge and mass constraints. For example, in calculating the partitioning of sulphate between the aqueous and solid phase, the total sulphate concentration should be conserved whilst also maintaining a charge balance in solution. This is applicable to all components.

Thus, determining the global minimum of Eq. (1) requires that one solve a constrained non-linear problem. This requires the use of complex numerical algorithms that either rely on an exhaustive search (GFEMN) or use gradient information to con-



---

**Curved  
multi-component  
aerosol  
hygroscopicity model  
framework 1**D. O. Topping et al.

---

[Title Page](#)[Abstract](#)[Introduction](#)[Conclusions](#)[References](#)[Tables](#)[Figures](#)[◀](#)[▶](#)[◀](#)[▶](#)[Back](#)[Close](#)[Full Screen / Esc](#)[Print Version](#)[Interactive Discussion](#)

verge on the solution much faster (AIM). Unconstrained optimisation algorithms are widely available (e.g. Press et al., 1992). However, constrained algorithms are more complex and less readily available. The model presented here currently uses the algorithm FFSQP (Fast Fortran Sequential Quadratic Programming) (Zhou et al., 1997) where the gradient of the Gibbs energy surface is calculated using the Gibbs-Duhem relationship:

$$\frac{\partial G}{\partial n_i} = \mu_i \quad (4)$$

In the presence of the  $\text{H}^+$  and  $\text{SO}_4^{2-}$  ions, it is necessary to consider the bisulphate dissociation explicitly:



In treating the sulphuric acid-water system for example, the reaction  $\text{H}_2\text{SO}_4(\text{g}) \leftrightarrow \text{H}_2\text{SO}_4(\text{aq})$  is not considered as  $\text{H}_2\text{SO}_4(\text{g})$  can be assumed to completely dissociate to  $\text{HSO}_4^-$  in the atmosphere for all practical purposes (Seinfeld and Pandis, 1998). Rather than iterating around an equilibrium constant, the model presented here treats the dissociation given by Eq. (5) within the Gibbs energy minimisation. This tends to simplify matters somewhat as one simply adds another component and changes the mass/charge constraints accordingly.

### 2.1.1. Solute activity coefficients

Perhaps the most important and most complex variable to deal with is the activity of the aqueous components ( $\gamma_i$ ) given in Eq. (2). It is this aspect of the thermodynamic module that determines the range of applicability of the equilibrium model. There are various options available (see Pilinis 1999), however the most accurate are semi-empirical thermodynamic models. In solution mixtures of strong electrolytes where association of ions is assumed not to occur, an ion-interaction rather than ion-pairing model is the appropriate choice (Clegg and Brimblecombe, 1988). Pitzer's molality based model

---

**Curved  
multi-component  
aerosol  
hygroscopicity model  
framework 1**

D. O. Topping et al.

---

Title Page

Abstract

Introduction

Conclusions

References

Tables

Figures

◀

▶

◀

▶

Back

Close

Full Screen / Esc

Print Version

Interactive Discussion

(Pitzer, 1973, 1975; Pitzer and Mayorga, 1973; Pitzer and Silvester, 1976) had been the most powerful and widely used, yet the severe concentration limitations associated with it prevent its use for predictions in low  $RH$  regions where aerosols may exist in states of very high aqueous concentrations. Many of these concentration limitations are overcome by using the Pitzer, Simonson and Clegg mole fraction based approach (PSC, Clegg and Pitzer, 1992; Clegg et al., 1992). On a mole fraction scale, the activity of component  $i$  ( $a_i$ ) is calculated by:

$$a_i = f_i x_i, \quad (6)$$

where  $x_i$  is the mole fraction and  $f_i$  the mole fraction activity coefficient of component  $i$ . The expressions for  $f_i$  are complex and can be found in the literature (Clegg and Pitzer, 1992; Clegg et al., 1992). Such expressions rely upon the use of component mole fractions, binary and ternary interaction parameters. Currently interaction parameters are available for two systems. The first treats the components  $H^+ + NH_4^+ + Na^{2+} + SO_4^{2-} + NO_3^- + Cl^- + H_2O$  at 298.15 K. Similarly the authors successfully applied the model to system  $H^+ + NH_4^+ + SO_4^{2-} + NO_3^- + H_2O$  over a range of tropospheric temperatures.

The mole fraction of component  $i$  is given by

$$x_i = \frac{n_i}{\sum_j n_j}, \quad (7)$$

where the summation is over all aqueous components. For use in this model, the activity must be calculated on a molality scale. Activity coefficients on a mole fraction scale are related to the molality-based coefficients by:

$$f_i = \gamma_i \left( 1 + (M_1/1000) \sum_j m_j \right), \quad (8)$$

where  $M_1$  is the molar mass of the solvent ( $M_{water}=18\text{ gmol}^{-1}$ ) and the summation is over the molality of all aqueous components. For systems in which water is the only solvent this reduces to:

$$f_i X_{water} = \gamma_i \quad (9)$$

### 5 2.1.2. Water activity

A method is required which relates the water activity of the solution to both ambient conditions and the chemical composition of the aerosol. At equilibrium, it can be shown that, over a flat surface, the water activity equals the ambient relative humidity in the sub-saturated humid environment (see Seinfeld and Pandis, 1998).

$$10 a_w = RH \quad (10)$$

When treating a curved surface this relationship is no longer valid. This is discussed in Sect. 3.

Hence, for each  $RH$  the water activity of any liquid aerosol solution is fixed. There are numerous techniques for calculating the water content associated with an aerosol that are discussed and reviewed in the literature to varying extents (Chan et al., 1992; Cohen et al., 1987a, b; Pilinis, 1999). Perhaps the most widely used mixing rule is that defined by (Stokes and Robinson, 1966), namely the ZSR (Zdanovski-Stokes-Robinson) mixing rule. It has been shown that the ZSR relationship has been able to predict the water content of supersaturated aqueous aerosols quite well (Chan et al., 2000; Ha et al., 2000) and has been incorporated into existing aerosol models (EQUISOLV II – Jacobson, 1999b; ISORROPRIA – Nenes et al., 1998; AIM – Wexler and Seinfeld, 1991; SCAPE II – Meng et al., 1995; GFEMN – Ansari and Pandis, 1999). The generalised form presented in most publications (e.g. Jacobson, 1999a) is given by Eq. (11).

$$25 W = \sum \frac{M_i}{m_{io}(a_w)} \quad (11)$$

---

**Curved  
multi-component  
aerosol  
hygroscopicity model  
framework 1**

D. O. Topping et al.

---

Title Page

Abstract

Introduction

Conclusions

References

Tables

Figures

◀

▶

◀

▶

Back

Close

Full Screen / Esc

Print Version

Interactive Discussion

---

**Curved  
multi-component  
aerosol  
hygroscopicity model  
framework 1**D. O. Topping et al.

---

[Title Page](#)[Abstract](#)[Introduction](#)[Conclusions](#)[References](#)[Tables](#)[Figures](#)[◀](#)[▶](#)[◀](#)[▶](#)[Back](#)[Close](#)[Full Screen / Esc](#)[Print Version](#)[Interactive Discussion](#)

$W$  is the total water content,  $M_i$  is the mass of the solute present and  $m_{iO}(a_w)$  the molality at a given  $RH(a_w)$ . Only data for single solute solutions are required to predict the water content of a mixture. Such data is available in the literature (Cohen et al., 1987a, b; Jacobson, 1999a; Tang, 1997; Tang and Munkelwitz, 1994). However, it must be remembered that the ZSR is based on semi-ideality. Attempts have been made to improve the traditional ZSR relationship and account in some manner for deviations from semi-ideality (e.g. Clegg et al., 2003; Tang, 1997). However, despite the success of the extended relationship to model various systems, it is difficult to assess its success in more complex mixtures. In addition, one is severely limited by the data available that includes lack of treatment of the  $\text{NH}_4^+ \text{-NO}_3^- \text{-SO}_4^{2-}$  system. Furthermore, using such a mixing rule with the current activity coefficient model may introduce some inconsistencies (Ansari and Pandis, 1999). Within the minimisation scheme, one cannot rely solely upon the Gibbs-Duhem relationship for calculating the gradient of the Gibbs energy surface since varying solute concentrations influences the water content directly using relationship (11). To circumvent these problems and provide a more accurate estimation of the inorganic aerosol water content, the solvent activity model of Clegg et al. (1998a, b) is used here. In this way the interactions between the respective solutes, and not just the solute/solvent interactions, are treated explicitly. The activity of water is calculated on a mole fraction scale:

$$a_w = f_w \quad (12)$$

## 2.2. Solids

Following GFEMN, the current model uses adjusted energies of formation for solid components ( $\Delta G_f^0$ ). It was found that in order to match deliquescence behaviour to that reported experimentally, the energies of formation for each solid had to be adjusted slightly. The results are shown in Table 1, and discussed in Sect. 6.1, with regard to model sensitivity. Such energies are also used to model multi-component deliquescence behaviour as in GFEMN. Table 2 shows the reported DRH points for

four mixtures and comparisons with experimental data and four other available models, including AIM online (Clegg et al., 1998a, b). The ability of the model to reproduce measured behaviour is shown in Figs. 2a and b, along with comparisons of other models.

### 5 2.3. Complex salts

The majority of models available do not take double or hydrated salts into account. There is contrasting evidence in the literature for their importance. Experimental evidence has shown that aerosols may exist in dry states that are composed of complex or hydrated salts. Stelson and Seinfeld (1982) showed that the double salt  $2\text{NH}_4\text{NO}_3 \cdot (\text{NH}_4)_2\text{SO}_4$  is present over a small *RH* range (0.63–0.66) for the mixed  $\text{NH}_4\text{NO}_3/(\text{NH}_4)_2\text{SO}_4$  particle. Similarly, Harrison and Sturges (1984) provide evidence of the same salt. In light of this, the equilibrium model treats various double salts. The information regarding the temperature dependent energies of formation was taken as polynomial fits from AIM online by matching given results for set mixed systems.

15 Hydrated salts are those salts to which water is chemically bound. Pilinis et al. (1989) note that  $\text{Na}_2\text{SO}_4$  is the only inorganic salt present in atmospheric aerosols that has bound water associated with it. Tang (1997) also discusses the behaviour of sodium decahydrate ( $\text{Na}_2\text{SO}_4 \cdot 10\text{H}_2\text{O}$  – its stable form). It is noted that under ambient conditions, a supersaturated solution droplet at room temperature rarely crystallises to form the decahydrate. Instead, it crystallises into an anhydrous particle (no water) and obtains a lower deliquescence relative humidity as a result. Also mixed salt particles containing  $\text{Na}_2\text{SO}_4$  are not observed to form hydrates (Tang, 1997). However, upon inclusion into the equilibrium model, it is clear that the thermodynamics show it may be the most stable form under certain conditions. The equilibrium constants for these salts  
25 are a function of relative humidity (water vapour pressure), and there is a dissociation pressure associated with each salt (Crocker et al., 1997). Applied to the equilibrium model, this translates to a relative humidity dependent Gibbs free energy of formation. Thus, there is a point at which the dehydrated salt is more stable than its anhydrous

---

**Curved  
multi-component  
aerosol  
hygroscopicity model  
framework 1**

D. O. Topping et al.

---

Title Page

Abstract

Introduction

Conclusions

References

Tables

Figures

◀

▶

◀

▶

Back

Close

Full Screen / Esc

Print Version

Interactive Discussion

---

**Curved  
multi-component  
aerosol  
hygroscopicity model  
framework 1**

---

D. O. Topping et al.

---

Title Page

Abstract

Introduction

Conclusions

References

Tables

Figures

◀

▶

◀

▶

Back

Close

Full Screen / Esc

Print Version

Interactive Discussion

form and vice versa. Such dependent fits were taken from AIM online, again by matching up energies required to produce the same results for certain mixed systems. An example is shown in figure 3. The complex salts treated here include  $\text{Na}_2\text{SO}_4 \cdot 10\text{H}_2\text{O}$ ,  $\text{NaHSO}_4 \cdot \text{H}_2\text{O}$ ,  $\text{NaNO}_3 \cdot \text{Na}_2\text{SO}_4 \cdot \text{H}_2\text{O}$ ,  $(\text{Na})_2\text{SO}_4 \cdot (\text{NH}_4)_2\text{SO}_4 \cdot \text{H}_2\text{O}$ ,  $\text{NH}_4\text{NO}_3 \cdot \text{NH}_4\text{HSO}_4$ ,  $2\text{NH}_4\text{NO}_3 \cdot (\text{NH}_4)_2\text{SO}_4$  and  $3\text{NH}_4\text{NO}_3 \cdot (\text{NH}_4)_2\text{SO}_4$ .

Using the features discussed in Sect. 2, and highlighted in portion ‘a’ of Fig. 1, it is now possible to construct an equilibrium model that neglects the Kelvin effect. However, a significant fraction of aerosols may populate the sub 100 nm region. Thus to adequately model the aerosol population, the curvature effect must be taken into account. The following section provides a way of treating the Kelvin effect in combination with the thermodynamic model described previously.

### 3. Curvature (the Kelvin effect)

For a curved surface there are two competing effects defining equilibrium. The Raoult, or solute effect already treated in the equilibrium model described earlier acts to decrease the equilibrium pressure required. However, for a curved surface, the equilibrium pressure of component  $A$  is greater than that required for a flat surface as described by the Kelvin equation:

$$p_A = p_A^o \exp\left(\frac{2\sigma M_A}{RT\rho r}\right), \quad (13)$$

where  $p_A$  and  $p_A^o$  are the equilibrium pressures over a curved and flat drop, respectively,  $\sigma$  is the surface tension,  $M_A$  the molecular weight,  $R$  the universal gas constant,  $T$  the temperature,  $\rho$  the solution density and  $r$  the droplet radius. Combining these two competing effects leads to the well-known Köhler equation that provides the equilibrium condition for water vapour over a solution droplet in both the sub and supersaturated humid environment. There are many ways of deriving this relationship and the reader

is referred to various sources in the literature (Chylek and Wong, 1998; Pruppacher and Klett, 1997; Seinfeld and Pandis, 1998):

$$RH = a_w \exp \left( \frac{2M_w \sigma_{ws}}{RT \rho_{sol} r_{drop}} \right) \quad (14)$$

Thus at equilibrium over a curved surface the activity of water does not simply equal the ambient  $RH$ .

### 3.1. Model treatment of the Kelvin effect

Whilst the available equilibrium models have been built to treat the ionic interaction of the inorganic fraction with varying levels of accuracy, few treat the effect of curvature on the aerosol composition. The Kelvin effect may be neglected on particles larger than 100 nm, though not treating it in general restricts the range of applicability of the aerosol model. Errors associated with this neglect also propagate through to any additional mass transport calculations made. As stated in the introduction, the models that do treat the Kelvin effect do so using different approaches. These include utilising the Gibbs-Thomson equation for each appropriate component in KEQUIL and assumptions of proportionality between the bulk and surface phase utilising the method of Suarez et al. (1989) in the model of Ming and Russell (2002). Another formal treatment would include the surface term in the Gibbs energy summation. However, as stated by Chylek and Wong (1998), this approach provides more opportunities to obtain inaccurate results when various terms appearing in the equations are not treated in a consistent manner. Indeed, using the results of Wilemski (1984) and Reiss and Koper (1995), the authors point out that a fully consistent thermodynamic treatment leads to the derivation of the original Köhler equation that provides the correct equilibrium condition for a solution droplet. Sole use of the Köhler equation to calculate the complete phase equilibrium composition for multiple solutes in the sub-saturated regime cannot be justified due to the invalid assumption of infinite solubility used in its derivation. Indeed,

---

**Curved  
multi-component  
aerosol  
hygroscopicity model  
framework 1**

D. O. Topping et al.

---

Title Page

Abstract

Introduction

Conclusions

References

Tables

Figures

◀

▶

◀

▶

Back

Close

Full Screen / Esc

Print Version

Interactive Discussion

---

**Curved  
multi-component  
aerosol  
hygroscopicity model  
framework 1**

D. O. Topping et al.

---

Title Page

Abstract

Introduction

Conclusions

References

Tables

Figures

◀

▶

◀

▶

Back

Close

Full Screen / Esc

Print Version

Interactive Discussion

modifications are continually being made in order to make this simple formulation more applicable to hygroscopic growth regions (e.g. Bilde and Svenningsson, 2004; Laaksonen et al., 1998; Shulman et al., 1996). However, one can combine the thermodynamic model and the equilibration of water governed by the simple Köhler equation in order to find a solution pertaining to this new definition of equilibrium.

This way one can also utilise a wide variety of surface tension models, the more complicated of which often treat the surface/bulk concentration relations explicitly by using various definitions of the surface phase and appropriate activity models.

As already stated, for a flat solution the activity of water equals the  $RH$  at equilibrium. However, the simple Köhler equation shows that for a curved surface the activity of water is equal to the  $RH$  divided by the Kelvin term. The model thus needs to find a solution pertaining to this new definition of equilibrium.

For each water content there is an associated composition (liquid and solid) and water activity at equilibrium. Similarly, the physical characteristics of the composition (a radius derived from assumed particle sphericity) define a new Kelvin factor through the use of appropriate surface tension models and density mixing rules. Since one is dealing with a one-dimensional problem (water equilibration) with a unique solution one can thus employ a bisection approach to find the required root of Eq. (14). Hence, a method with guaranteed convergence is used when the root has been bracketed accordingly. The variable involved in this bisection approach controls the water content, thus the water activity. In this manner, the aerosol is forced toward a dry state, using a step length defined by the user, and a solution to relation (14) found if indeed there is one. For conditions where solid precipitation may occur (e.g. gradual deliquescence behaviour) or any complex formation (bisulphate ion) then the minimum energy associated with each new iteration must be found. Therefore, the energy minimisation scheme is housed within the bisection method here. This is shown in section ‘b’) of Fig. 1. Since water is a free variable in this minimisation, one requires a technique of controlling the bounds of aerosol water content. This is achieved by changing the energetics of the system through the energy of formation for liquid water (the condition  $\mu_{liquid} = \mu_{gas}$  defines how



much water is associated with the aerosol). For solutions with no solid precipitation or bisulphate formation one can simply vary the water content directly (an initial guess given by the ZSR relationship), bypassing the energy minimisation scheme, until the new solution is found.

### 5 3.2. Altering composition with curvature

One can therefore predict the effect of curvature on solid precipitation as shown in Fig. 4. First, the minimisation scheme is used to check if a solid aerosol is the most stable state for a 'flat' system at a given composition and ambient conditions. If a dry aerosol is returned then the diameter dependent model need not be applied since the effect of curvature only acts to increase the equilibrium pressure of water, thus driving the aerosol toward a solid state. Otherwise, the diameter dependent scheme is used. There may be some additional steps required around the deliquescence point of the aerosol. The initial step in the bisection approach may be too great, predicting a completely solid aerosol that causes numerical instability in the bisection approach.

15 This may also not be the most stable state of the aerosol for a given size. In order to refine the search, smaller step lengths are used and the solution space defined by the initial step length is searched to see if the difference converges to zero. If it does then the normal bisection approach may be used. If not then a solid aerosol is predicted.

Clearly the effect of curvature will also influence the aqueous composition. Whilst such an effect can be encompassed into a growth factor model that relies upon experimental data of molality versus  $a_w$ , again the influence of other solutes is not treated in such schemes. Similarly, such effects propagate through to the prediction of equilibrium pressures above the aerosol for mass transfer predictions.

Hence, one can now build a framework for calculating the diameter dependent equilibrium composition of an aerosol of known composition, size and given ambient conditions. It is now necessary to define how one can calculate the mixture properties for use in the Kelvin equation, before comparisons with other diameter dependent models and more simple parameterisations.

---

**Curved  
multi-component  
aerosol  
hygroscopicity model  
framework 1**

D. O. Topping et al.

---

Title Page

Abstract

Introduction

Conclusions

References

Tables

Figures

◀

▶

◀

▶

Back

Close

Full Screen / Esc

Print Version

Interactive Discussion

## 4. Mixture parameters

In order to calculate mixtures properties, various models for the chemical and physical characteristics had to be chosen.

### 4.1. Surface tension

5 All surface tension predictions made here use bulk relationships. Several authors have noted the inadequacy of bulk surface tension for finite molecule systems (Girshick and Chiu, 1990; Russell and Ming, 2002; Wilemski, 1995). However the work of Fisher and Israelachvili (1979) suggests that bulk relationships may be appropriate. The variation of surface tension with aerosol size for will not be reviewed or analysed here.

10 For single salt systems empirical fits are commonly used, though there can be inconsistencies between different fits that inevitably introduce sensitivities to growth factor calculations (see Hameri et al., 2000). For multi-component systems, three groups of calculation have been presented in the literature Hu and Lee (2004). These include simple additive methods and conventional thermodynamic methods based on  
15 the Gibbs adsorption equation. It is useful to provide brief examples of such techniques here before the scheme used in this model is described. The simple additive methods, such as that of Chen (1994), are based on the assumptions that the difference between the surface tension of electrolyte solutions and that of water at the same temperature is proportional to the respective number of ions (Hu and Lee, 2004). The  
20 mixing rule of Chen (1994), used in various atmospheric applications (e.g. Brechtel and Kreidenweis, 2000a, b), is given as:

$$\sigma_{ws} = \sigma_w + \frac{M_w \sum_i m_i (\sigma'_i - \sigma_w)}{1 + M_w m_s}, \quad (15)$$

where  $\sigma_{ws}$  is the solution surface tension,  $\sigma_w$  the surface tension of pure water,  $\sigma'_i$  the apparent surface tension of solute  $i$  and  $m_s$  the overall solution molality. A more

---

**Curved  
multi-component  
aerosol  
hygroscopicity model  
framework 1**

D. O. Topping et al.

---

Title Page

Abstract

Introduction

Conclusions

References

Tables

Figures

◀

▶

◀

▶

Back

Close

Full Screen / Esc

Print Version

Interactive Discussion

rigorous derivation has been provided by Hu and Lee (2004) which leads to a simple mixing rule for the surface tension of electrolyte solutions at constant ionic strength:

$$\sigma_{ws} = \sum_i y_i \sigma_i^o, \quad (16)$$

where  $y_i$  is the ionic strength fraction of solute  $i$  and  $\sigma_i^o$  the surface tension of a binary solution of solute  $i$  at the ionic strength of the mixture. The authors report improved predictive capability for 26 concentrated multi-component electrolyte solutions at different temperatures, even compared with a thermodynamic model (Li et al., 1999). However, binary data may not extend into the concentration ranges required for moderate to highly concentrated mixed solutions. In this instance, an approximate value has to be used. There are thermodynamic techniques available that have strict derivations and use the activity of solutes present in the aerosol. A common approach consists of combining thermodynamic relations together with an adsorption model. In the model presented by Li and Lu (2001), the authors combined the Gibbs dividing surface, the Langmuir adsorption equation and an appropriate model for calculating activity coefficients in mixed solutions:

$$\sigma_{ws} = \sigma_w + RT \sum_{i=1}^k \Gamma_i^{wo} \ln\left(1 - \frac{k_i a_i}{1 + \sum_j k_j a_j}\right), \quad (17)$$

where  $\Gamma_i^{wo}$  is the saturated surface excess of solute  $i$  (tabulated),  $k_i$  the adsorption equilibrium constant for solute  $i$  (tabulated) and  $a_i$  the activity of component  $i$ .

The authors claim the model is able to represent surface tensions up to concentrations of 36 M where an average absolute percentage deviation from experimental data for 45 single solutes of 0.47 was reported. In addition, it was used to predict surface tensions of 11 binary and five ternary mixtures with an average absolute percentage deviation from experimental data of 1.69. The two models presented in this work for mixed electrolyte solutions have slightly different derivations. The first is based on the

---

**Curved  
multi-component  
aerosol  
hygroscopicity model  
framework 1**

D. O. Topping et al.

---

Title Page

Abstract

Introduction

Conclusions

References

Tables

Figures

◀

▶

◀

▶

Back

Close

Full Screen / Esc

Print Version

Interactive Discussion

---

**Curved  
multi-component  
aerosol  
hygroscopicity model  
framework 1**D. O. Topping et al.

---

[Title Page](#)[Abstract](#)[Introduction](#)[Conclusions](#)[References](#)[Tables](#)[Figures](#)[◀](#)[▶](#)[◀](#)[▶](#)[Back](#)[Close](#)[Full Screen / Esc](#)[Print Version](#)[Interactive Discussion](#)

assumption that there is no interaction or competing adsorption between electrolytes at the interface. The second model shown here assumes that it may be preferable to consider competing adsorption between the electrolytes at the interface at higher concentrations.

5 Despite no significant difference between each model, any aerosol model should be applicable to a wide range of tropospheric conditions. Since this includes varying temperature and relative humidity, the thermodynamic model of Li and Lu (2001) has been used in this equilibrium model and uses the same activity model as the bulk phase to maintain some consistency. The sensitivity to the choice of surface tension  
10 model is discussed in more detail in Sect. 7.

#### 4.2. Density

In order to calculate the molar volume and radius in Eq. (8), the density of the mixed inorganic solution must be calculated. There are a few techniques available. The simple combination rules have been reviewed briefly in the literature (e.g. Tang, 1997),  
15 where a basic volume additivity rule was found to be adequate for most of the systems studied. A mixed solution density can be calculated using only the binary solution data using the following rule:

$$\frac{1}{\rho_{sol}} = \sum_i \frac{X_i}{\rho_{oi}}, \quad (18)$$

where  $X_i$  is the dry solute mass fraction for compound  $i$  and  $\rho_{oi}$  the binary solution density for compound  $i$  at the solute concentration of the mixture. The binary data is  
20 available in the literature (Tang, 1997).

It is now interesting to analyse diameter dependent phenomena and compare with other available techniques.

## 5. Growth factor

The hygroscopicity of an aerosol is often related to the directly measurable parameter known as the growth factor. This simply relates the change in diameter from one reference  $RH$  to that at another:

$$GF = d(RH)/d(dry), \quad (19)$$

where the dry state,  $d(dry)$ , is often used as the reference diameter.

In order to calculate the wet diameter, volume additivity is assumed whereby the solution and dry solute are added together.

$$V_{aerosol} = V_{solid} + V_{solution} \quad (20)$$

For the dry solute density, the mass fraction weighted mixing rule of Tang (1997) is used.

### 5.1. Growth factor parameterisations

Rather than define the water uptake through strict thermodynamics, it is possible to derive much simpler relationships that can also utilise the Köhler equation, thus providing diameter dependent growth factor parameterisations. Using bulk empirical data, the growth factor of an aqueous aerosol can be defined quite easily using assumptions of particle sphericity and volume additivity. For completely soluble particles the growth factor can be expressed as (Swietlicki et al., 1999):

$$GF = \left( \frac{\rho_s}{\rho_{sol}} \left[ 1 + (mM_s)^{-1} \right] \right)^{1/3}, \quad (21)$$

where  $\rho_s$  is the dry density,  $\rho_{sol}$  the solution density,  $m$  the solution molality and  $M_s$  the molecular weight.

Similarly for mixed solutes, a method following Malm and Kreidenweis (1997) can be used by evoking the principles of the ZSR relationship. In this way, the growth factor of the mixed solute is calculated using only data from the binary systems. Cruz

Title Page

Abstract

Introduction

Conclusions

References

Tables

Figures

◀

▶

◀

▶

Back

Close

Full Screen / Esc

Print Version

Interactive Discussion

and Pandis (2000) use a similar relationship to analyse data from mixed binary inorganic/organic systems. As with the ZSR relationship, such multi-component schemes are based on semi-ideality. Whilst uncoupled inorganic/organic thermodynamic models deal with the interactions taking place within the two separate fractions, this method only treats the numerous solvent/solute interactions.

If relying solely on density information for calculating growth factors, for a diameter dependent model one can utilise the same approach as that used with the thermodynamic scheme. In this instance, the solute mass fraction is varied and the process becomes iterative until the Kelvin term converges toward a solution within a set tolerance level.

Thus, it is now possible to compare two diameter dependent growth factor models that approach the same problem differently. This is shown in Fig. 4 for an equimolar  $(\text{NH}_4)_2\text{SO}_4$ :  $\text{NH}_4\text{NO}_3$  system. For comparative purposes the ZSR model used the same growth factor for the binary systems as the thermodynamic model, and in both cases the mass fraction density scheme of Tang (1997) was used for calculating multi-component solution densities. Whilst the difference between the two schemes in Fig. 4 is small, the advantage of using a thermodynamic approach is clear. Indeed, it is possible to predict stepped deliquescence behaviour as the solubility of one salt is influenced by the presence of other solutes. For comparisons with laboratory and field data, the inclusion of solid formation extends the range of model applicability. Table 3 shows percentage deviations (here defined as  $(\text{GF}_{\text{ZSR}}/\text{GF}_{\text{thermodynamic}} - 1) \times 100\%$ ) between the two approaches for some binary and ternary mixed systems. Interestingly, for the binary mixtures the deviations are not particularly large, ranging from 0.02 to 2.25%. In addition, the general trend is that as the solution becomes more concentrated the deviations tend to increase, which is down to the neglect of solute-solute interactions within the ZSR relationship as the solution becomes more concentrated. For all given systems at higher relative humidity, the corresponding absolute growth factor difference is likely to be within the experimental uncertainty of the HTDMA. For the ternary systems, the deviations are larger. Again, this is down to the neglect of

---

**Curved  
multi-component  
aerosol  
hygroscopicity model  
framework 1**

D. O. Topping et al.

---

Title Page

Abstract

Introduction

Conclusions

References

Tables

Figures

◀

▶

◀

▶

Back

Close

Full Screen / Esc

Print Version

Interactive Discussion

---

**Curved  
multi-component  
aerosol  
hygroscopicity model  
framework 1**D. O. Topping et al.

---

[Title Page](#)[Abstract](#)[Introduction](#)[Conclusions](#)[References](#)[Tables](#)[Figures](#)[◀](#)[▶](#)[◀](#)[▶](#)[Back](#)[Close](#)[Full Screen / Esc](#)[Print Version](#)[Interactive Discussion](#)

the solute-solute interactions. In this instance, the thermodynamic model can explicitly deal with the partitioning of the bisulphate ion, whilst the ZSR cannot. As shown in the table, for a relative humidity down to 40%, this introduces growth factor deviations of around 7%, with a corresponding absolute value of around 0.1. Such deviations are likely to be outside the experimental uncertainty of the HTDMA. Thus for such ambient conditions in which solute concentrations increase, and for larger multi-component systems, the choice of growth factor model scheme is likely to be important. Whilst ZSR has been used to analyse mixed inorganic/organic systems with relative success (Cruz and Pandis, 2000), it is unclear as to the improvement one gains when treating the system using an uncoupled thermodynamic approach. Indeed, for mixed aqueous systems where solid precipitation cannot be treated thermodynamically, this should be the focus of future work. It must also be pointed out that an explicit treatment of the system thermodynamics allows one to extend predictions into the super-saturated humid regime, thus enabling one to analyse the aerosol cloud nucleating capabilities. Indeed, the parameterisations given above were designed specifically to model sub-saturated hygroscopic growth.

## 6. Deliquescence of small particles

Descriptions of the deliquescence processes for standard salts given in the text above neglects surface tension effects as the particles are sufficiently large. However, since the size of the aerosol particles can range from just a few molecules to particles with radii larger than  $100\ \mu\text{m}$ , it is important to understand the role the surface effects have on the deliquescence process by which small drops are formed (Mirabel et al., 2000). There have been few attempts to predict the influence of curvature on the hygroscopic properties, specifically in relation to the change in deliquescence patterns. There are various complicating features surrounding the point of deliquescence. It is the norm to consider the transition from an uncoated dry aerosol to a dissolved salt droplet. Whilst several studies have shown that it may be more suitable to consider the transition

---

**Curved  
multi-component  
aerosol  
hygroscopicity model  
framework 1**D. O. Topping et al.

---

[Title Page](#)[Abstract](#)[Introduction](#)[Conclusions](#)[References](#)[Tables](#)[Figures](#)[◀](#)[▶](#)[◀](#)[▶](#)[Back](#)[Close](#)[Full Screen / Esc](#)[Print Version](#)[Interactive Discussion](#)

from a wetted particle to a dissolved droplet (Finlayson-Pitts and Hemminger, 2000; Ghosal and Hemminger, 1999; Weis and Ewing, 1999) such features will not be further analysed here, the adjusted energies of formation used to match experimental data inevitably subsuming a lot of these characteristics.

5 Mirabel et al. (2000) developed a model to predict the prompt deliquescence, and its dependence on particle size, for a generic crystal with an ideal solution. More recently, Russell and Ming (2002) developed a similar model for treating wetted particles and non-ideal effects. Similarly, the same authors incorporated the curvature effect into a larger thermodynamic equilibrium model used to treat mixed inorganic/organic systems  
10 (Ming and Russell, 2002). Both techniques can be compared with the model described here. There is also some experimental data provided in the literature that can be used as a preliminary comparison (Hameri et al., 2000).

Using results from Russell and Ming (2002), the model described by these authors and that described here agree for a 15 nm  $(\text{NH}_4)_2\text{SO}_4$  particle, predicting the same shift  
15 in the deliquescent point to 88%. This shows a predicted increase in the deliquescence point by 8% compared to the bulk data. Comparison between the two models for a 15 nm NaCl particle also shows very good agreement for the altered DRH (Russell and Ming: 83%, Model 81.6%).

Figure 5 shows a comparison between the model described here, that of Ming and  
20 Russell (2002), bulk data, and 100 nm data for both NaCl and  $(\text{NH}_4)_2\text{SO}_4$  aerosols. The model predictions, neglecting the Kelvin effect, compare very well with the bulk data as one might expect. Again the two separate curved models agree very well for both aerosol types, each predicting an increase in the DRH for 100 nm of the same magnitude (Ming and Russell, 2002  $(\text{NH}_4)_2\text{SO}_4$  – 82%, NaCl – 76.7%; this model  
25  $(\text{NH}_4)_2\text{SO}_4$  – 81.5%, NaCl – 76.4%). The measurements of Cruz and Pandis (2000) differ from those of Hameri et al. (2002) for 100 nm aerosol, between relative humidities of 85% and 99%, by between 20% and 30% as pointed out by Ming and Russell (2002), both model predictions lying between the two.

For surface tension predictions, the binary data of Pruppacher and Klett (1997) was



---

**Curved  
multi-component  
aerosol  
hygroscopicity model  
framework 1**D. O. Topping et al.

---

[Title Page](#)[Abstract](#)[Introduction](#)[Conclusions](#)[References](#)[Tables](#)[Figures](#)[◀](#)[▶](#)[◀](#)[▶](#)[Back](#)[Close](#)[Full Screen / Esc](#)[Print Version](#)[Interactive Discussion](#)

used for  $(\text{NH}_4)_2\text{SO}_4$  and the model of Chen (1994) for NaCl. The lack of any change in DRH for the sub 100 nm  $(\text{NH}_4)_2\text{SO}_4$  aerosol studied by Hameri et al. (2000) is an interesting result. Nonetheless, both models predict an increase should occur, and as stated by Russell and Ming (2002), additional experiments might be able to not only confirm the increase in deliquescence relative humidity with decreasing particle size, but also to allow size-dependent surface tension measurements to be made. The agreement between the model presented here (Köhler equation) and the model of Russell and Ming (2002) (Explicit energy derivative formulation) is encouraging considering the different level of complexity from both approaches.

## 7. Sensitivity studies

The equilibrium model already described is subject to various sensitivities created by the introduction of empirical parameters and choice of calculation techniques for multiple physical/chemical characteristics of the aerosol. For the general equilibrium model, these include important thermodynamic parameters. For a curved model, these also include surface tension and density calculations when treating the Kelvin effect. All are analysed here.

### 7.1. Thermodynamic parameters

#### 7.1.1. Energies of formation

As with GFEMN, it was found that the equilibrium model was particularly sensitive to the energies of formation used for the different salts. Indeed, if the values tabulated in the literature were used, the model could not accurately reproduce known deliquescence behaviour. In light of this, and given that the experimental uncertainty in  $\Delta G_f^o$  is more than 0.5% (Ansari and Pandis, 1999), the values of  $\Delta G_f^o$  were adjusted and the required magnitude of these adjustments are shown in Table 1 along with those

---

**Curved  
multi-component  
aerosol  
hygroscopicity model  
framework 1**D. O. Topping et al.

---

[Title Page](#)[Abstract](#)[Introduction](#)[Conclusions](#)[References](#)[Tables](#)[Figures](#)[◀](#)[▶](#)[◀](#)[▶](#)[Back](#)[Close](#)[Full Screen / Esc](#)[Print Version](#)[Interactive Discussion](#)

reported by Ansari and Pandis (1999). Figure 6 highlights the sensitivity of the model to the value used. For a deviation of only 0.5% either side of the reported value, the deliquescence relative humidity for a  $(\text{NH}_4)_2\text{SO}_4$  particle ranges from 54 to 88%. Thus, similar adjustments were made for all aerosol salts using the measured DRH data of Pilinis et al. (1995). Since aerosols may exist as multi-component particles, it is important to analyse the sensitivity of the model to using single adjusted energies of formation for multistage growth patterns. One can do this by using experimentally observed multistage growth patterns such as those provided by Tang (1997). The adjustment in  $\Delta G_f^0$  for each solid component results in no need to adjust the values of  $\Delta G_f^0$  for the ions or

However, unlike GFEMN, water is a free variable in this system thus requiring its own activity coefficient. This has been described in the text. Ultimately the water content is determined by the difference in chemical potentials between water in the gas and liquid phase. Thus, there is an inevitable sensitivity to the value of  $\Delta G_f^0$  chosen for liquid water. Using the value tabulated by Ansari and Pandis (1999), it was found that the activity of water did not equal the relative humidity at equilibrium. It is important to stress how sensitive this is to the calculated water content. Since water uptake is an exponential function of water activity, at high relative humidity any deviation from the equilibrium condition could have drastic consequences. This is best illustrated in Fig. 7. Here the difference between the relative humidity and water activity is shown for various deviations from the tabulated value of  $\Delta G_f^0$ . The figure also highlights how this relationship changes for different relative humidity. Clearly there is a large sensitivity, for a deviation of just 0.12% in  $\Delta G_f^0$ , a difference of 0.11 is found at 90%RH. This translates to an aerosol with an equilibrium water activity of 0.79, thus representing the water content at 79%RH, roughly 50% the amount found at 90%RH. The figure also shows that the sensitivity decreases at lower RH, which one would expect. Hence a value was derived for which the difference between RH and  $a_w$  was negligible. A deviation of -0.0153% was required, clearly within the uncertainty of 0.5% given for other parameters, the resulting value shown in Table 1. Importantly, this was found to

be independent of composition and relative humidity.

## 7.2. Surface tension

Clearly, the calculation of the Kelvin term is sensitive to the value of surface tension used. As the solution becomes more concentrated, it becomes less appropriate to use the bulk value for water. There are various options for dealing with both single and mixed solute systems. Hameri et al. (2000) analysed the sensitivity of different models for ammonium sulphate solutions, highlighting the inconsistency between them. They also found that as the dry diameter decreased, the sensitivity to the model chosen increased. A similar study for different binary fits will not be carried out here. Instead, the sensitivity to the choice of model used for dealing with mixed solutions is analysed for two separate mixed systems. Here, the dry diameters of 10, 15, 20, 30, 50, 100 and 400 nm are used. The three surface tension models chosen have already been described in Sect. 4.1. Figure 8a shows the standard deviation in the calculated growth factor for an equimolar  $\text{NaCl}/(\text{NH}_4)_2\text{SO}_4$  aerosol at 298.15 K using the three different models. Clearly, as the dry diameter decreases, the sensitivity to the model used increases. This can be explained as follows. Since water uptake is an exponential function of the water activity at equilibrium, and the Kelvin factor is larger for smaller particles, the calculated water content becomes more sensitive to the choice of model used at smaller dry diameters and higher  $RH$ . At 90%  $RH$  a 10 nm aerosol of this composition has a molality of around 2.8, the three different surface tension models covering a range of values from around 0.075 to 0.08. At 61%  $RH$  the molality is around 6.7, again resulting in a difference of around 0.005. Figure 8b provides the same analysis for an equimolar  $\text{H}_2\text{SO}_4:(\text{NH}_4)_2\text{SO}_4$  aerosol at 298.15 K. At 61%  $RH$  a 10 nm aerosol with this composition has a molality of around 8.3. At 90%  $RH$  the molality decreases to around 2.9. For these concentrations, the models differ by around 0.01 and 0.00275, respectively. Although the standard deviation is relatively small, and growth factor deviation likely to be within the experimental uncertainty of the HTDMA, the increase at higher relative is likely to have implications for any cloud activation studies. Indeed,

---

**Curved  
multi-component  
aerosol  
hygroscopicity model  
framework 1**

D. O. Topping et al.

---

Title Page

Abstract

Introduction

Conclusions

References

Tables

Figures

◀

▶

◀

▶

Back

Close

Full Screen / Esc

Print Version

Interactive Discussion

---

**Curved  
multi-component  
aerosol  
hygroscopicity model  
framework 1**D. O. Topping et al.

---

[Title Page](#)[Abstract](#)[Introduction](#)[Conclusions](#)[References](#)[Tables](#)[Figures](#)[◀](#)[▶](#)[◀](#)[▶](#)[Back](#)[Close](#)[Full Screen / Esc](#)[Print Version](#)[Interactive Discussion](#)

whilst the surface tension of mixed electrolyte solutions does not differ greatly from that of pure water, the presence of organics can have significant effects thus making the ability to use various surface tension models important for any future applications. Various studies have highlighted the significant effect organics can have by lowering the surface tension (e.g. Mircea et al., 2002; Nenes et al., 2002). The sensitivity of hygroscopic growth, to choice of organic surface tension model, in sub-saturated humid regimes will be analysed in the accompanying paper to this report.

### 7.3. Density

#### 7.3.1. Aqueous density (mixing rules)

The sensitivity of the growth factor calculation to the choice of density model, for the same binary systems, is shown in Fig. 8c, d. As with the choice of surface tension model, the relative sensitivity between different dry sizes increases with decreasing dry diameter at larger  $RH$ . However, the deviation increases as the  $RH$  decreases. As the solution becomes more concentrated, then the deviation between the two density mixing rules increases enough to overcompensate for the fact that the water content is less sensitive to the solution water activity. Thus, since the two mixing rules converge at low solution strengths, the deviation tends toward zero at higher relative humidity whilst maintaining a higher value for smaller dry diameters as discussed earlier. Again, the growth factor difference associated with the two separate mixing rules is likely to be within any experimental uncertainty associated with the HTDMA.

#### 7.3.2. Aqueous density (composition determination)

In systems where there is one common cation, or anion, it is easy to define the solution composition with respect to the difference solutes associated with such ions. However, for mixtures with 2 or more different anion/cation pairs the system is ambiguously defined. Thus, one must choose an appropriate method for pairing the respective ions.

---

**Curved  
multi-component  
aerosol  
hygroscopicity model  
framework 1**

D. O. Topping et al.

---

Title Page

Abstract

Introduction

Conclusions

References

Tables

Figures

◀

▶

◀

▶

Back

Close

Full Screen / Esc

Print Version

Interactive Discussion

This problem is faced in other predictive schemes such as the ZSR mixing rule, which will not be analysed here. There are a few options available that include elimination and equivalent concentration methods. The sensitivity of hygroscopicity predictions to such techniques are briefly analysed here. One method relies on the knowledge of the solute forms present (i.e. the user assumes the mixture to be composed of two solutes NX and MY with no variations). The second is a simple use of all possible permutations from the respective ions. Alternatively, one may use the mixing scheme of Reilly and Wood (1969) in which equivalent concentrations are defined using the relationship given below.

$$N_{MX} = 2N_m N_X \frac{(Z_m Z_X / (V_{M(X)} V_{X(M)}))^{1/2}}{(\sum_c N_c Z_c + \sum_a N_a Z_a)}, \quad (22)$$

where  $N_M$  is the number of moles of components  $M$ ,  $Z_M$  the charge on component  $M$ ,  $V_{M(X)}$  the stoichiometric coefficient of component  $M$  in the salt  $N_{MX}$ .

All were used with the mass fraction mixing rule of Tang (1997) to analyse the uncertainty. The systems studied were  $(\text{NH}_4)_2\text{SO}_4\cdot\text{NaCl}$ ,  $(\text{NH}_4)_2\text{SO}_4\cdot\text{Na}_2\text{SO}_4$  and  $(\text{NH}_4)_2\text{SO}_4\cdot\text{NaNO}_3$ .

Table 4 shows the standard deviation on GF for the 3 different combination rules at 3 different diameters and varying relative humidity. Clearly as the  $RH$  decreases deviations increase. Similarly at higher  $RH$  there is a greater distinction between sizes. Again, the range of deviations are not particularly large, though greater than those found for choice of density mixing rule. Indeed, deviations are more than an order of magnitude greater at 60%  $RH$ . For comparative purposes, such deviations are again likely to be within the experimental uncertainty of any measurements taken.

### 7.3.3. Dry density

There are also sensitivities to the value of the dry density used. Hameri et al. (2000) alluded to erroneous bulk density values used for small aerosols, in which structural com-

---

**Curved  
multi-component  
aerosol  
hygroscopicity model  
framework 1**D. O. Topping et al.

---

[Title Page](#)[Abstract](#)[Introduction](#)[Conclusions](#)[References](#)[Tables](#)[Figures](#)[◀](#)[▶](#)[◀](#)[▶](#)[Back](#)[Close](#)[Full Screen / Esc](#)[Print Version](#)[Interactive Discussion](#)

plexities may cause significant deviations from the true value. They used a change in  $(\text{NH}_4)_2\text{SO}_4$  density of 3.9% from 1.769 to  $1.7 \text{ kg m}^{-3}$  in order to match up growth factor calculations for 8nm dry diameter aerosols. Reported density values differ for different crystalline forms. For example, the density value for  $\text{NH}_4\text{NO}_3$  given in Perry's Chemical handbook is reported for both rhombic and tetragonal forms ( $1.725$  and  $1.66 \text{ kg m}^{-3}$ , respectively). Figure 9a and b highlights the sensitivity of the subsequent growth factor calculations to the value of dry density for both  $(\text{NH}_4)_2\text{SO}_4$  and  $\text{NH}_4\text{NO}_3$ . For a 10 nm  $\text{NH}_4\text{NO}_3$  particle at 90%RH the change in GF is 0.0216. For a 400 nm particle the change is 0.0235. Using the bulk dry density for  $(\text{NH}_4)_2\text{SO}_4$  and that reported by Hameri et al. (2000), the change in GF for a 10 nm diameter  $(\text{NH}_4)_2\text{SO}_4$  particle at 90%RH is 0.0216. Similarly for a 400 nm particle the difference is 0.023. Interestingly, these changes in GF are larger than the deviations found for aqueous solution density. It is thus likely that the history of the aerosol studied in a HTDMA, specifically the nature of the drying process that will influence the final crystalline form, will create discrepancies upon comparisons with theoretical predictions.

## 8. Conclusions

A thermodynamic equilibrium model, built specifically to treat mixed inorganic/organic aerosols, which will be the focus of the accompanying paper to this report, has been presented which can also treat the Kelvin effect. The framework which one develops to treat the hygroscopic properties of aerosols can determine both the accuracy and the range of applicability of the model. Indeed, given that errors associated with the organic fraction are likely to be substantial, it is imperative to create a robust inorganic framework on which to include organics. A direct minimisation of the Gibbs free energy has been used here where all of the components are freely variable within set charge and mass constraints. In this way, the model does not rely solely upon the use of mixing rules for calculating the water content but can employ potentially more accurate semi empirical thermodynamic models. Here the state of the art activity model of

---

**Curved  
multi-component  
aerosol  
hygroscopicity model  
framework 1**

D. O. Topping et al.

---

[Title Page](#)

[Abstract](#)

[Introduction](#)

[Conclusions](#)

[References](#)

[Tables](#)

[Figures](#)

[◀](#)

[▶](#)

[◀](#)

[▶](#)

[Back](#)

[Close](#)

[Full Screen / Esc](#)

[Print Version](#)

[Interactive Discussion](#)

Clegg and Pitzer (1992), Clegg et al. (1992) is used following GFEMN (Ansari and Pandis, 1999) and AIM (Clegg et al., 1998a, b), allowing the model to deal with higher concentrations, often supersaturated, than would be possible using Pitzer's molality based model. Similar to GFEMN, adjusted energies of formation are used to predict multistage behaviour. This may introduce some inconsistencies with the activity model employed. However, as found by Ansari and Pandis (1999) the use of such parameters allows the model to accurately predict the deliquescence behaviour of multi-component aerosols.

Unlike the majority of equilibrium models available, the model presented here can treat the influence of curvature on aerosol composition. Circumventing the complexities of treating the curvature term explicitly in the energy summation, the model relies upon the use of the Köhler equation to describe the equilibration of water between the liquid and gaseous phase. In this way, the model is housed within an iterative loop, using a guaranteed convergence scheme to attain the solution pertaining to the new definition of equilibrium. Unlike other diameter dependent thermodynamic models, this enables one to use any model for the surface tension and density of solution without requiring complex derivatives. Such features will be useful when treating mixed inorganic/organic systems. Comparisons with another diameter dependent thermodynamic model (Ming and Russell, 2001) showed that this model can reproduce diameter dependent phenomena including the onset of deliquescence. Comparisons with a diameter dependent growth factor parameterisation shows that as the number of the components increases and the solution becomes more concentrated, then the advantages of an explicit thermodynamic treatment become apparent. Indeed, the deviations are likely to be outside experimental uncertainty for such conditions. In addition, where available, the treatment of solid precipitation is a great advantage for field/laboratory comparisons.

The model is subject to various sensitivities. For the inorganic systems studied here, the sensitivity to choice of surface tension model used decreases for larger aerosol. A similar trend for the choice of density mixing rule is found, although the difference

---

**Curved  
multi-component  
aerosol  
hygroscopicity model  
framework 1**D. O. Topping et al.

---

between the density models at lower  $RH$  is large enough to offset the decreased sensitivity of water content to calculated water activity in these regions. Interestingly, larger sensitivities are found for the value of dry density used. It is thus likely that the history of the aerosol studied in a HTDMA, specifically the nature of the drying process that will influence the final crystalline form, will create systematic uncertainties upon comparisons with theoretical predictions. However, the magnitudes of all of the above sensitivities are potentially less than those introduced when using a semi ideal ZSR growth factor analogue for certain conditions.

*Acknowledgements.* This work was supported by the UK Natural Environment Research Council (NERC) studentship NER/S/A/2001/06423.

## References

- Ansari, A. S. and Pandis, S. N.: Prediction of multicomponent inorganic atmospheric aerosol behavior, *Atmos. Environ.*, 33 (5), 745–757, 1999.
- Bassett, M. and Seinfeld, J. H.: Atmospheric Equilibrium-Model of Sulfate and Nitrate Aerosols, *Atmos. Environ.*, 17 (11), 2237–2252, 1983.
- Bassett, M. E. and Seinfeld, J. H.: Atmospheric Equilibrium-Model of Sulfate and Nitrate Aerosols, 2. Particle-Size Analysis, *Atmos. Environ.*, 18 (6), 1163–1170, 1984.
- Bilde, M. and Svenningsson, B.: CCN activation of slightly soluble organics: the importance of small amounts of inorganic salt and particle phase, *Tellus B*, 56 (2), 128–134, 2004.
- Binkowski, F. S. and Shankar, U.: The Regional Particulate Matter Model, 1. Model description and preliminary results, *J. Geophys. Res. A*, 100 (D12), 26 191–26 209, 1995.
- Brechtel, F. J. and Kreidenweis, S. M.: Predicting particle critical supersaturation from hygroscopic growth measurements in the humidified TDMA, part I: Theory and sensitivity studies, *J. Atmos. Sci.*, 57 (12), 1854–1871, 2000a.
- Brechtel, F. J. and Kreidenweis, S. M.: Predicting particle critical supersaturation from hygroscopic growth measurements in the humidified TDMA, Part II: Laboratory and ambient studies, *J. Atmos. Sci.*, 57 (12), 1872–1887, 2000b.
- Chan, C. K., Flagan, R. C., and Seinfeld, J. H.: Water Activities of  $NH_4NO_3/(NH_4)_2SO_4$  Solutions, *Atmos. Environ.*, 26 (9), 1661–1673, 1992.

[Title Page](#)[Abstract](#)[Introduction](#)[Conclusions](#)[References](#)[Tables](#)[Figures](#)[◀](#)[▶](#)[◀](#)[▶](#)[Back](#)[Close](#)[Full Screen / Esc](#)[Print Version](#)[Interactive Discussion](#)



---

**Curved  
multi-component  
aerosol  
hygroscopicity model  
framework 1**D. O. Topping et al.

---

[Title Page](#)[Abstract](#)[Introduction](#)[Conclusions](#)[References](#)[Tables](#)[Figures](#)[◀](#)[▶](#)[◀](#)[▶](#)[Back](#)[Close](#)[Full Screen / Esc](#)[Print Version](#)[Interactive Discussion](#)

- Chan, C. K., Ha, Z. Y., and Choi M. Y.: Study of water activities of aerosols of mixtures of sodium and magnesium salts, *Atmos. Envir.*, 34 (28), 4795–4803, 2000.
- Chen, J. P.: Theory of Deliquescence and Modified Kohler Curves, *J. Atmos. Sci.*, 51 (23), 3505–3516, 1994.
- 5 Chylek, P. and Wong, J. G. D.: Erroneous use of the modified Kohler equation in cloud and aerosol physics applications, *J. Atmos. Sci.*, 55 (8), 1473–1477, 1998.
- Clegg, S. L. and Brimblecombe, P.: Equilibrium Partial Pressures of Strong Acids over Concentrated Saline Solutions, 2. HCl, *Atmos. Envir.*, 22 (1), 117–129, 1988.
- Clegg, S. L. and Pitzer, K. S.: Thermodynamics of Multicomponent, Miscible, Ionic-Solutions –  
10 Generalized Equations for Symmetrical Electrolytes, *J. Phys. Chem. Us*, 96 (8), 3513–3520, 1992.
- Clegg, S. L., Pitzer, K. S., and Brimblecombe, P.: Thermodynamics of Multicomponent, Miscible, Ionic-Solutions, 2. Mixtures Including Unsymmetrical Electrolytes, *J. Phys. Chem. Us*, 96 (23), 9470–9479, 1992.
- 15 Clegg, S. L., Brimblecombe, P., and Wexler, A. S.: Thermodynamic model of the system  $H^+-NH_4^+-Na^+-SO_4^{2-}-NB_3-Cl-H_2O$  at 298.15 K, *J. Phys. Chem. A*, 102 (12), 2155–2171, 1998a.
- Clegg, S. L., Brimblecombe, P., and Wexler, A. S.: Thermodynamic model of the system  $H^+-NH_4^+-SO_4^{2-}-NO_3^- -H_2O$  at tropospheric temperatures, *J. Phys. Chem. A*, 102 (12), 2137–  
20 2154, 1998b.
- Clegg, S. L., Seinfeld, J. H., and Edney, E. O.: Thermodynamic modelling of aqueous aerosols containing electrolytes and dissolved organic compounds, II. An extended Zdanovskii-Stokes-Robinson approach, *J. Aerosol Sci.*, 34 (6), 667–690, 2003.
- Cohen, M. D., Flagan, R. C., and Seinfeld, J. H.: Studies of Concentrated Electrolyte-Solutions Using the Electrodynamic Balance, 1. Water Activities for Single-Electrolyte Solutions, *J. Phys. Chem. Us*, 91 (17), 4563–4574, 1987a.
- 25 Cohen, M. D., Flagan, R. C., and Seinfeld, J. H.: Studies of Concentrated Electrolyte-Solutions Using the Electrodynamic Balance, 2. Water Activities for Mixed-Electrolyte Solutions, *J. Phys. Chem. Us*, 91 (17), 4575–4582, 1987b.
- 30 Corrigan, C. E. and Novakov, T.: Cloud condensation nucleus activity of organic compounds: a laboratory study, *Atmos. Envir.*, 33 (17), 2661–2668, 1999.
- Crocker, L. S., Varsolona, R. J., and McCauley, J. A.: Two methods for the measurement of the dissociation pressure of a crystalline hydrate, *J. Pharmaceut. Biomed.*, 15 (11), 1661–1665,

1997.

Cruz, C. N. and Pandis, S. N.: Deliquescence and hygroscopic growth of mixed inorganic-organic atmospheric aerosol, *Environ. Sci. Technol.*, 34 (20), 4313–4319, 2000.

Denbigh, K. G.: *The Principles of Chemical Equilibrium: With Applications in Chemistry and Chemical Engineering*, Cambridge University Press, 1981.

Finlayson-Pitts, B. J. and Hemminger, J. C.: Physical chemistry of airborne sea salt particles and their components, *J. Phys. Chem. A*, 104 (49), 11 463–11 477, 2000.

Fisher, L. R. and Israelachvili, J. N.: Direct Experimental-Verification of the Kelvin Equation for Capillary Condensation, *Nature*, 277 (5697), 548–549, 1979.

Ghosal, S. and Hemminger, J. C.: Effect of water on the HNO<sub>3</sub> pressure dependence of the reaction between gas-phase HNO<sub>3</sub> and NaCl surfaces, *J. Phys. Chem. A*, 103 (25), 4777–4781, 1999.

Girshick, S. L. and Chiu, C. P.: Kinetic Nucleation Theory – a New Expression for the Rate of Homogeneous Nucleation from an Ideal Supersaturated Vapor, *J. Chem. Phys.*, 93 (2), 1273–1277, 1990.

Ha, Z. Y., Choy, L., and Chan, C. K.: Study of water activities of supersaturated aerosols of sodium and ammonium salts, *J. Geophys. Res. A*, 105 (D9), 11 699–11 709, 2000.

Hameri, K., Vakeva, M., Hansson, H. C., and Laaksonen, A.: Hygroscopic growth of ultrafine ammonium sulphate aerosol measured using an ultrafine tandem differential mobility analyzer, *J. Geophys. Res. A*, 105 (D17), 22 231–22 242, 2000.

Harrison, R. M. and Sturges, W. T.: Physicochemical Speciation and Transformation Reactions of Particulate Atmospheric Nitrogen and Sulfur-Compounds, *Atmos. Envir.*, 18 (9), 1829–1833, 1984.

Hu, Y. F. and Lee, H.: Prediction of the surface tension of mixed electrolyte solutions based on the equation of Patwardhan and Kumar and the fundamental Butler equations, *J. Colloid Interf. Sci.*, 269 (2), 442–448, 2004.

Jacobson, M. Z.: *Fundamentals of Atmospheric Modelling*, Cambridge University Press, 1999a.

Jacobson, M. Z.: Studying the effects of calcium and magnesium on size-distributed nitrate and ammonium with EQUISOLV II, *Atmos. Envir.*, 33 (22), 3635–3649, 1999b.

Jacobson, M. Z., Tabazadeh, A., and Turco, R. P.: Simulating equilibrium within aerosols and nonequilibrium between gases and aerosols, *J. Geophys. Res. A*, 101 (D4), 9079–9091, 1996.

---

**Curved  
multi-component  
aerosol  
hygroscopicity model  
framework 1**

D. O. Topping et al.

---

Title Page

Abstract

Introduction

Conclusions

References

Tables

Figures

◀

▶

◀

▶

Back

Close

Full Screen / Esc

Print Version

Interactive Discussion

---

**Curved  
multi-component  
aerosol  
hygroscopicity model  
framework 1**

---

D. O. Topping et al.

---

Title Page

Abstract

Introduction

Conclusions

References

Tables

Figures

◀

▶

◀

▶

Back

Close

Full Screen / Esc

Print Version

Interactive Discussion

- Kim, Y. P. and Seinfeld, J. H.: Atmospheric Gas-Aerosol Equilibrium, 3. Thermodynamics of Crustal Elements Ca<sup>2+</sup>, K<sup>+</sup>, and Mg<sup>2+</sup>, *Aerosol Sci. Tech.*, 22 (1), 93–110, 1995.
- Kim, Y. P., Seinfeld, J. H., and Saxena, P.: Atmospheric Gas Aerosol Equilibrium, 1. Thermodynamic Model, *Aerosol Sci. Tech.*, 19 (2), 157–181, 1993a.
- 5 Kim, Y. P., Seinfeld, J. H., and Saxena, P.: Atmospheric Gas-Aerosol Equilibrium, 2. Analysis of Common Approximations and Activity-Coefficient Calculation Methods, *Aerosol Sci. Tech.*, 19 (2), 182–198, 1993b.
- Laaksonen, A., Korhonen, P., Kulmala, M., and Charlson, R. J.: Modification of the Kohler equation to include soluble trace gases and slightly soluble substances, *J. Atmos. Sci.*, 55 (5), 853–862, 1998.
- 10 Li, Z. B. and Lu, B. C. Y.: Surface tension of aqueous electrolyte solutions at high concentrations – representation and prediction, *Chem. Eng. Sci.*, 56 (8), 2879–2888, 2001.
- Li, Z. B., Li, Y. G., and Lu, J. F.: Surface tension model for concentrated electrolyte aqueous solutions by the Pitzer equation, *Ind. Eng. Chem. Res.*, 38 (3), 1133–1139, 1999.
- 15 Malm, W. C. and Kreidenweis, S. M.: The effects of models of aerosol hygroscopicity on the apportionment of extinction, *Atmos. Environ.*, 31 (13), 1965–1976, 1997.
- Meng, Z. Y., Seinfeld, J. H., Saxena, P., and Kim, Y. P.: Atmospheric Gas-Aerosol Equilibrium, 4. Thermodynamics of Carbonates, *Aerosol. Sci. Tech.*, 23 (2), 131–154, 1995.
- Ming, Y. and Russell, L. M.: Predicted hygroscopic growth of sea salt aerosol, *J. Geophys. Res.* A, 106 (D22), 28 259–28 274, 2001.
- 20 Ming, Y. and Russell, L. M.: Thermodynamic equilibrium of organic-electrolyte mixtures in aerosol particles, *Aiche J.*, 48 (6), 1331–1348, 2002.
- Mirabel, P., Reiss, H., and Bowles, R. K.: A theory for the deliquescence of small particles, *J. Chem. Phys.*, 113 (18), 8200–8205, 2000.
- 25 Mircea, M., Facchini, M. C., Decesari, S., Fuzzi, S., and Charlson, R. J.: The influence of the organic aerosol component on CCN supersaturation spectra for different aerosol types, *Tellus B*, 54 (1), 74–81, 2002.
- Nenes, A., Pandis, S. N., and Pilinis, C.: ISORROPIA: A new thermodynamic equilibrium model for multiphase multicomponent inorganic aerosols, *Aquat. Geochem.*, 4 (1), 123–152, 1998.
- 30 Nenes, A., Pandis, S. N., and Pilinis, C.: Continued development and testing of a new thermodynamic aerosol module for urban and regional air quality models, *Atmos. Environ.*, 33 (10), 1553–1560, 1999.
- Nenes, A., Charlson, R. J., Facchini, M. C., Kulmala, M., Laaksonen, A., and Seinfeld, J. H.:

---

**Curved  
multi-component  
aerosol  
hygroscopicity model  
framework 1**D. O. Topping et al.

---

[Title Page](#)[Abstract](#)[Introduction](#)[Conclusions](#)[References](#)[Tables](#)[Figures](#)[◀](#)[▶](#)[◀](#)[▶](#)[Back](#)[Close](#)[Full Screen / Esc](#)[Print Version](#)[Interactive Discussion](#)

Can chemical effects on cloud droplet number rival the first indirect effect?, *Geophys. Res. Lett.*, 29 (17), 1848, 2002.

Pilinis, C.: Modelling atmospheric aerosols using thermodynamics arguments – a review, *Global Nest: The international journal*, 1 (1), 5–13, 1999.

5 Pilinis, C. and Seinfeld, J. H.: Continued Development of a General Equilibrium-Model for Inorganic Multicomponent Atmospheric Aerosols, *Atmos. Environ.*, 21 (11), 2453–2466, 1987.

Pilinis, C., Seinfeld, J. H., and Grosjean, D.: Water-Content of Atmospheric Aerosols, *Atmos. Environ.*, 23 (7), 1601–1606, 1989.

10 Pilinis, C., Pandis, S. N., and Seinfeld, J. H.: Sensitivity of Direct Climate Forcing by Atmospheric Aerosols to Aerosol-Size and Composition, *J. Geophys. Res. A*, 100 (D9), 18 739–18 754, 1995.

Pitchford, M. L. and McMurry, P. H.: Relationship between Measured Water-Vapor Growth and Chemistry of Atmospheric Aerosol for Grand-Canyon, Arizona, in Winter 1990, *Atmos. Environ.*, 28 (5), 827–839, 1994.

15 Pitzer, K. S.: Thermodynamics of Electrolytes, 1. Theoretical Basis and General Equations, *J. Phys. Chem. Us*, 77 (2), 268–277, 1973.

Pitzer, K. S.: Thermodynamics of Electrolytes, 5. Effects of Higher-Order Electrostatic Terms, *J. Solution Chem.*, 4 (3), 249–265, 1975.

20 Pitzer, K. S. and Mayorga, G.: Thermodynamics of Electrolytes, 2. Activity and Osmotic Coefficients for Strong Electrolytes with One or Both Ions Univalent, *J. Phys. Chem. Us*, 77 (19), 2300–2308, 1973.

Pitzer, K. S. and Silvester, L. F.: Thermodynamics of Electrolytes, 6. Weak Electrolytes Including  $\text{H}_3\text{PO}_4$ , *J. Solution Chem.*, 5 (4), 269–278, 1976.

25 Press, W. H., Teukolsky, S. A., Vetterling, W. T., and Flannery, B. P.: Numerical recipes in Fortran 77, *The Art of Scientific Computing*, Cambridge University Press, 1992.

Pruppacher, H. R. and Klett, J. D.: *Microphysics of clouds and precipitation*, Kluwer, Dordrecht.

Reilly, P. J. and Wood, R. H.: Prediction of Properties of Mixed Electrolytes from Measurements on Common Ion Mixtures, *J. Phys. Chem. Us*, 73 (12), 4292–4297, 1969.

30 Reiss, H. and Koper, G. J. M.: The Kelvin Relation – Stability, Fluctuation, and Factors Involved in Measurement, *J. Phys. Chem. Us*, 99 (19), 7837–7844, 1995.

Russell, L. M. and Ming, Y.: Deliquescence of small particles, *J. Chem. Phys.*, 116 (1), 311–321, 2002.

Saxena, P., Hudischewskyj, A. B., Seigneur, C., and Seinfeld, J. H.: A Comparative-Study of

---

**Curved  
multi-component  
aerosol  
hygroscopicity model  
framework 1**D. O. Topping et al.

---

[Title Page](#)[Abstract](#)[Introduction](#)[Conclusions](#)[References](#)[Tables](#)[Figures](#)[◀](#)[▶](#)[◀](#)[▶](#)[Back](#)[Close](#)[Full Screen / Esc](#)[Print Version](#)[Interactive Discussion](#)

Equilibrium Approaches to the Chemical Characterization of Secondary Aerosols, *Atmos. Environ.*, 20 (7), 1471–1483, 1986.

Seinfeld, J. H. and Pandis, S. N.: *Atmospheric Chemistry and Physics*, Wiley-Interscience publication, 1998.

5 Shulman, M. L., Jacobson, M. C., Charlson, R. J., Synovec, R. E., and Young, T. E.: Dissolution behavior and surface tension effects of organic compounds in nucleating cloud droplets (23, 277, 1996), *Geophys. Res. Lett.*, 23 (5), 603–603, 1996.

Stelson, A. W. and Seinfeld, J. H.: Relative-Humidity and Temperature-Dependence of the Ammonium-Nitrate Dissociation-Constant, *Atmos. Environ.*, 16 (5), 983–992, 1982.

10 Stokes, R. H. and Robinson, R. A.: Interactions in Aqueous Nonelectrolyte Solutions, I. Solute-Solvent Equilibria, *J. Phys. Chem. Us*, 70 (7), 2126–2130, 1966.

Suarez, J. T., Torres-Marchal, C., and Rasmussenn, P.: Prediction of surface tension of non-electrolyte solutions, *Chem. Eng. Sci.*, 44 (3), 782–786, 1989.

15 Swietlicki, E., Zhou, J. C., Berg, O. H., Martinsson, B. G., Frank, G., Cederfelt, S. I., Dusek, U., Berner, A., Birmili, W., Wiedensohler, A., Yuskiewicz, B., and Bower, K. N.: A closure study of sub-micrometer aerosol particle hygroscopic behaviour, *Atmos. Res.*, 50 (3–4), 205–240, 1999.

Tang, I. N.: Thermodynamic and optical properties of mixed-salt aerosols of atmospheric importance, *J. Geophys. Res. A*, 102 (D2), 1883–1893, 1997.

20 Tang, I. N. and Munkelwitz, H. R.: Water Activities, Densities, and Refractive-Indexes of Aqueous Sulfates and Sodium-Nitrate Droplets of Atmospheric Importance, *J. Geophys. Res. A*, 99 (D9), 18 801–18 808, 1994.

Topping, D., Mc Figgans, G., and Coe, H.: A curved multi-component aerosol hygroscopicity model framework: 2 – Including organics, *Atmos. Chem. Phys. Discuss.*, accepted, 2004.

25 Weis, D. D. and Ewing, G. E.: Water content and morphology of sodium chloride aerosol particles, *J. Geophys. Res. A*, 104 (D17), 21 275–21 285, 1999.

Wexler, A. S. and Seinfeld, J. H.: The Distribution of Ammonium-Salts among a Size and Composition Dispersed Aerosol, *Atmos. Environ.*, 24 (5), 1231–1246, 1990.

30 Wexler, A. S. and Seinfeld, J. H.: 2nd-Generation Inorganic Aerosol Model, *Atmos. Environ.*, 25 (12), 2731–2748, 1991.

Wilemski, G.: Composition of the Critical Nucleus in Multicomponent Vapor Nucleation, *J. Chem. Phys.*, 80 (3), 1370–1372, 1984.

Wilemski, G.: The Kelvin Equation and Self-Consistent Nucleation Theory, *J. Chem. Phys.*, 103

(3), 1119–1126, 1995.

Zhang, Y., Seigneur, C., Seinfeld, J. H., Jacobson, M., Clegg, S. L., and Binkowski, F. S.: A comparative review of inorganic aerosol thermodynamic equilibrium modules: similarities, differences, and their likely causes, *Atmos. Envir.*, 34 (1), 117–137, 2000.

- 5 Zhou, J. L., Tits, A. L., and Lawrence, C. T.: Users Guide for FFSQP Version 3.7:A FORTRAN code for solving optimisation problems, possibly minimax, with general inequality constraints and linear equality constraints, generating feasible iterates, University of Maryland, technical Report SRC-TR-92-107r5, College Park, MD 20742, 1997.

**ACPD**

4, 8627–8676, 2004

---

**Curved  
multi-component  
aerosol  
hygroscopicity model  
framework 1**

D. O. Topping et al.

---

Title Page

Abstract

Introduction

Conclusions

References

Tables

Figures

◀

▶

◀

▶

Back

Close

Full Screen / Esc

Print Version

Interactive Discussion

**Curved  
multi-component  
aerosol  
hygroscopicity model  
framework 1**

D. O. Topping et al.

Title Page

Abstract

Introduction

Conclusions

References

Tables

Figures

◀

▶

◀

▶

Back

Close

Full Screen / Esc

Print Version

Interactive Discussion

**Table 1.** Thermodynamic parameters used in the model. % Deviation values indicate the deviation between the adjusted energies of formation and those tabulated in the first column.

Species	$\Delta G_f^\circ$	$\Delta H_f^\circ$	$C_p^\circ$	Adj. $\Delta G_f^\circ$ <sup>a</sup>	% Deviation		DRH
	(kJ mol <sup>-1</sup> )	(kJ mol <sup>-1</sup> )	(J mol <sup>-1</sup> )		(this study)	(Ansari and Pandis 1999)	
NH <sub>4</sub> NO <sub>3</sub> (s)	-183.87	-365.56	139.3	-184.4116215	0.295	<b>0.37</b>	0.62
(NH <sub>4</sub> ) <sub>2</sub> SO <sub>4</sub> (s)	-901.67	-1180.85	187.49	-902.9684592	0.144	<b>0.16</b>	0.8
NH <sub>4</sub> HSO <sub>4</sub> (s)	-823	-1026.96	127.5	-822.7440844	0.031	<b>0.02</b>	0.4
(NH <sub>4</sub> ) <sub>2</sub> H(SO <sub>4</sub> ) <sub>2</sub> (s)	-1730	-2207	315	-1731.801894	0.104	<b>0.18</b>	0.69
Na <sub>2</sub> SO <sub>4</sub> (s)	-1270.16	-1387.08	128.2	-1268.1116	0.161	<b>0.05</b>	0.84
NaHSO <sub>4</sub> (s)	-992.8	-1125.5	85	-1005.081095	1.237	<b>1.26</b>	0.52
NaCl(s)	-384.14	-411.15	50.5	-384.0132158	0.033	<b>0.09</b>	0.75
NaNO <sub>3</sub> (s)	-367	-461.75	92.88	-367.0149944	0.004	<b>0.03</b>	0.74
NH <sub>4</sub> Cl(s)	-202.87	-314.43	84.1	-205.1639246	1.131	<b>0.95</b>	0.8
NH <sub>3</sub> (g)	-16.45	-46.11	35.06				
HNO <sub>3</sub> (g)	-74.72	-135.06	53.35				
HCl(g)	-95.3	-92.31	29.13				
H <sub>2</sub> O(g)	-228.57	-241.82	33.58				
H <sub>2</sub> O(l)	-237.13	-285.83	75.29	-237.16619243942 <sup>b</sup>	0.015		
NH <sub>4</sub> <sup>+</sup> (aq)	-79.31	-132.51	79.9				
Na <sup>+</sup> (aq)	-261.91	-240.12	46.4				
NO <sub>3</sub> <sup>-</sup> (aq)	-111.25	-207.36	-86.6				
SO <sub>4</sub> <sup>2-</sup> (aq)	-744.53	-909.27	-293				
Cl <sup>-</sup> (aq)	-131.23	-167.16	-136.4				
HSO <sub>4</sub> <sup>-</sup> (aq)	-755.91	-887.34	-84				

All values are reproduced from Ansari and Pandis (1999) unless otherwise noted.

<sup>a</sup> All values were derived by using the chemical potentials of the ionic components at saturation.

<sup>b</sup> Value derived for the minimal difference of water activity from the known RH.

**Curved  
multi-component  
aerosol  
hygroscopicity model  
framework 1**

D. O. Topping et al.

**Table 2.** Deliquescence relative humidity (DRH) of mixed particles at 25°C.

Components	Measured DRH (25°C)	Predicted DRH			AIM online		ADDEM	
		GFEMN	Sequilib	SCAPE2				
NaCl-NaNO <sub>3</sub>	68.0 +/- 0.4	67.6	62.1	67.3 <sup>a</sup>	67.27		67.1	
NaCl-Na <sub>2</sub> SO <sub>4</sub>	74.2 +/- 0.3	72.8	62.1	72.0 <sup>a</sup>	74.34		73.5	
Na <sub>2</sub> SO <sub>4</sub> -(NH <sub>4</sub> ) <sub>2</sub> SO <sub>4</sub>	71.3 +/- 0.4	70.2	80.1	67.5 <sup>b</sup>	71.92	82.9 <sup>c</sup>	69.9	82.9 <sup>c</sup>
Na <sub>2</sub> SO <sub>4</sub> -NaNO <sub>3</sub>	72.2 +/- 0.2	72.2	62.1	72.8 <sup>b</sup>	72.93	80.61 <sup>d</sup>	72.3	80.7 <sup>d</sup>

All values are reproduced from Ansari and Pandis (1999) apart from AIM results

AIM and ADDEM results found using RH intervals of 0.1%

AIM and ADDEM predictions also give results upon inclusion of hydrated salts for the last two systems

<sup>a</sup> Bromley method for activity coefficients

<sup>b</sup> Pitzer method for activity coefficients

<sup>c</sup> DRH found when including (NH<sub>4</sub>)<sub>2</sub>SO<sub>4</sub>.Na<sub>2</sub>SO<sub>4</sub>.4H<sub>2</sub>O

<sup>d</sup> DRH found when including NaNO<sub>3</sub>.Na<sub>2</sub>SO<sub>4</sub>.H<sub>2</sub>O

Title Page

Abstract

Introduction

Conclusions

References

Tables

Figures

◀

▶

◀

▶

Back

Close

Full Screen / Esc

Print Version

Interactive Discussion



**Curved  
multi-component  
aerosol  
hygroscopicity model  
framework 1**

D. O. Topping et al.

**Table 3.** Growth factor percentage deviations for various equimolar compositions at 25°C. Percentage deviations are calculated as the absolute value of  $(GF_{ZSR}/G_{Thermodynamic} - 1) * 100\%$ .

Components	RH		40%		50%		60%		70%		80%		90%	
(NH <sub>4</sub> ) <sub>2</sub> SO <sub>4</sub> – NH <sub>4</sub> NO <sub>3</sub>	0.4950	<b>0.0096</b>	0.9933	<b>0.0024</b>	1.2144	<b>0.0020</b>	1.4024	<b>0.0066</b>	1.4037	<b>0.0098</b>	1.0748	<b>0.0105</b>		
(NH <sub>4</sub> ) <sub>2</sub> SO <sub>4</sub> – NaCl	1.0209	<b>0.0031</b>	0.7611	<b>0.0087</b>	1.2480	<b>0.0034</b>	1.4250	<b>0.0020</b>	1.7180	<b>0.0017</b>	2.2598	<b>0.0127</b>		
Na <sub>2</sub> SO <sub>4</sub> – NaNO <sub>3</sub>	0.9579	<b>0.0175</b>	0.7651	<b>0.0149</b>	0.5208	<b>0.0118</b>	0.2706	<b>0.0078</b>	0.0273	<b>0.0014</b>	0.7292	<b>0.0176</b>		
(NH <sub>4</sub> ) <sub>2</sub> SO <sub>4</sub> – NaCl – H <sub>2</sub> SO <sub>4</sub>	6.9588	<b>0.0919</b>	6.4581	<b>0.0910</b>	5.5080	<b>0.0847</b>	4.2310	<b>0.0732</b>	2.7205	<b>0.0579</b>	1.0984	<b>0.0395</b>		
(NH <sub>4</sub> ) <sub>2</sub> SO <sub>4</sub> – NaNO <sub>3</sub> – H <sub>2</sub> SO <sub>4</sub>	7.2961	<b>0.0858</b>	7.7996	<b>0.0899</b>	7.0852	<b>0.0870</b>	5.7131	<b>0.0762</b>	3.8747	<b>0.0592</b>	1.9707	<b>0.0426</b>		

All calculations made at 298.15K

Values in bold represent growth factor differences

Title Page

Abstract

Introduction

Conclusions

References

Tables

Figures

◀

▶

◀

▶

Back

Close

Full Screen / Esc

Print Version

Interactive Discussion

**Table 4.** Growth factor standard deviations for 3 different systems using 3 density combination rules. AI calculations were made at 25°C.

RH	Dry diameter (nm)	System		
		1	2	3
60%	8	0.01057	0.01080	0.00470
	20	0.01061	0.01082	0.00469
	400	0.01068	0.01087	0.00472
70%	8	0.00956	0.00981	0.00430
	20	0.00960	0.00983	0.00429
	400	0.00969	0.00991	0.00431
80%	8	0.00817	0.00847	0.00375
	20	0.00817	0.00848	0.00371
	400	0.00826	0.00859	0.00372
90%	8	0.00618	0.00658	0.00296
	20	0.00596	0.00663	0.00279
	400	0.0060	0.0064	0.0028

System1 (NH<sub>4</sub>)<sub>2</sub>SO<sub>4</sub> - NaCl

System2 (NH<sub>4</sub>)<sub>2</sub>SO<sub>4</sub> - Na<sub>2</sub>SO<sub>4</sub>

System3 (NH<sub>4</sub>)<sub>2</sub>SO<sub>4</sub> - NaNO<sub>3</sub>

**Curved  
multi-component  
aerosol  
hygroscopicity model  
framework 1**

D. O. Topping et al.

Title Page

Abstract

Introduction

Conclusions

References

Tables

Figures

◀

▶

◀

▶

Back

Close

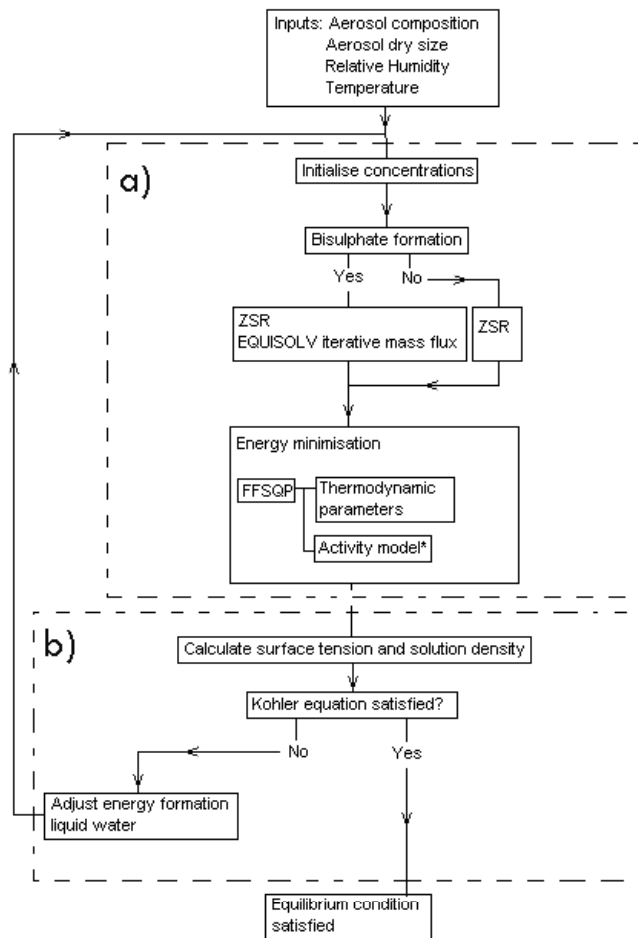
Full Screen / Esc

Print Version

Interactive Discussion

## Curved multi-component aerosol hygroscopicity model framework 1

D. O. Topping et al.

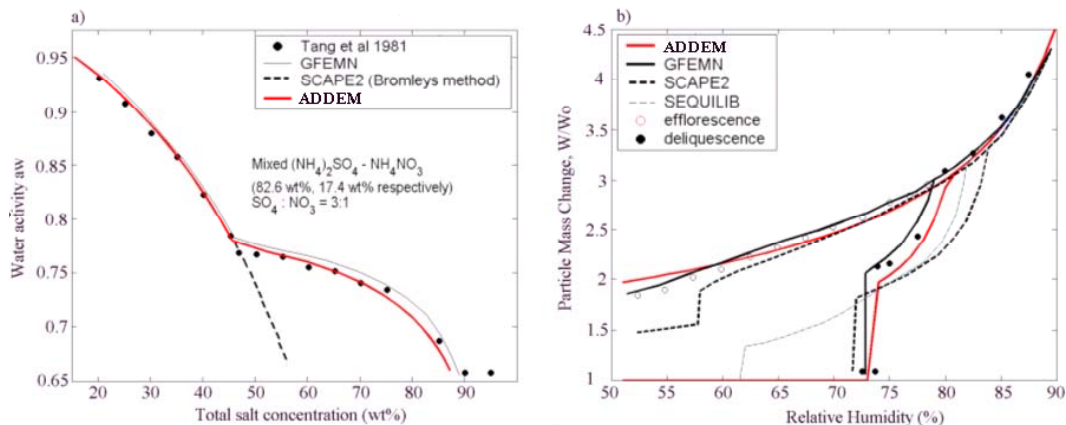


**Fig. 1.** Diameter dependent inorganic equilibrium model schematic. **(a)** The general equilibrium model framework without Kelvin effect, **(b)** the additional iterative scheme for treating the Kelvin effect.

[Title Page](#)
[Abstract](#)
[Introduction](#)
[Conclusions](#)
[References](#)
[Tables](#)
[Figures](#)
[◀](#)
[▶](#)
[◀](#)
[▶](#)
[Back](#)
[Close](#)
[Full Screen / Esc](#)
[Print Version](#)
[Interactive Discussion](#)

## Curved multi-component aerosol hygroscopicity model framework 1

D. O. Topping et al.



**Fig. 2.** (a) Water activity as a function of total solute concentration at 25°C for a mixed (NH<sub>4</sub>)<sub>2</sub>SO<sub>4</sub>-NH<sub>4</sub>NO<sub>3</sub> particle (SO<sub>4</sub>:NO<sub>3</sub> 3:1). GFEMN and SCAPE2 results taken from Ansari and Pandis (1999). Experimental data taken from Tang et al. (1981). (b) Particle mass change at 25°C for a mixed Na<sub>2</sub>SO<sub>4</sub>-NaCl (equimolar) particle. GFEMN, SCAPE2 and SEQUILIB results taken from Ansari and Pandis (1999).

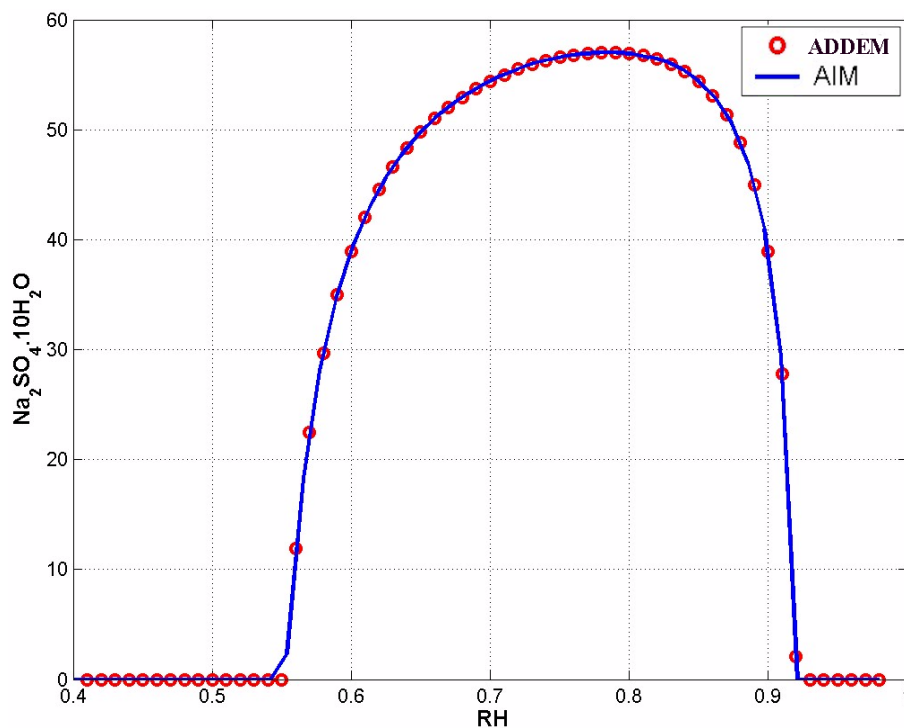
[Title Page](#)
[Abstract](#)
[Introduction](#)
[Conclusions](#)
[References](#)
[Tables](#)
[Figures](#)
[◀](#)
[▶](#)
[◀](#)
[▶](#)
[Back](#)
[Close](#)
[Full Screen / Esc](#)
[Print Version](#)
[Interactive Discussion](#)

---

Curved  
multi-component  
aerosol  
hygroscopicity model  
framework 1

D. O. Topping et al.

---



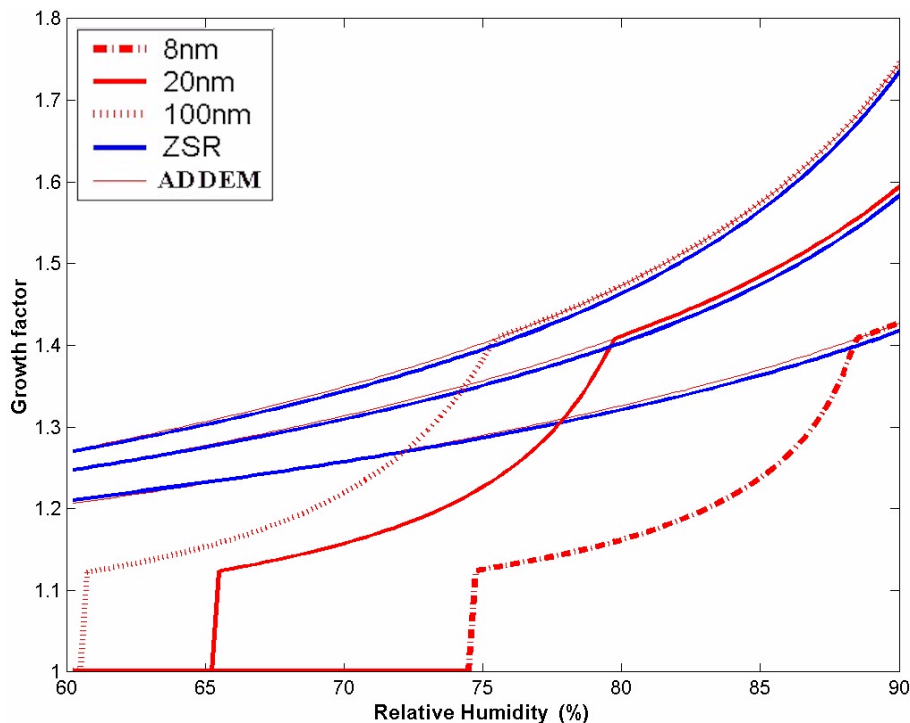
**Fig. 3.** Predictions for gradual solid precipitation for  $\text{Na}_2\text{SO}_4 \cdot 10\text{H}_2\text{O}$ , as a function of relative humidity, for a mixed  $\text{Na}_2\text{SO}_4$ -HCl system and comparison with AIM online (Clegg et al., 1998a, b). Relative composition  $\text{Na}_2\text{SO}_4$ :HCl of 8:1. No other solids are allowed to precipitate during calculations.

[Title Page](#)[Abstract](#)[Introduction](#)[Conclusions](#)[References](#)[Tables](#)[Figures](#)[◀](#)[▶](#)[◀](#)[▶](#)[Back](#)[Close](#)[Full Screen / Esc](#)[Print Version](#)[Interactive Discussion](#)

---

**Curved  
multi-component  
aerosol  
hygroscopicity model  
framework 1**

D. O. Topping et al.



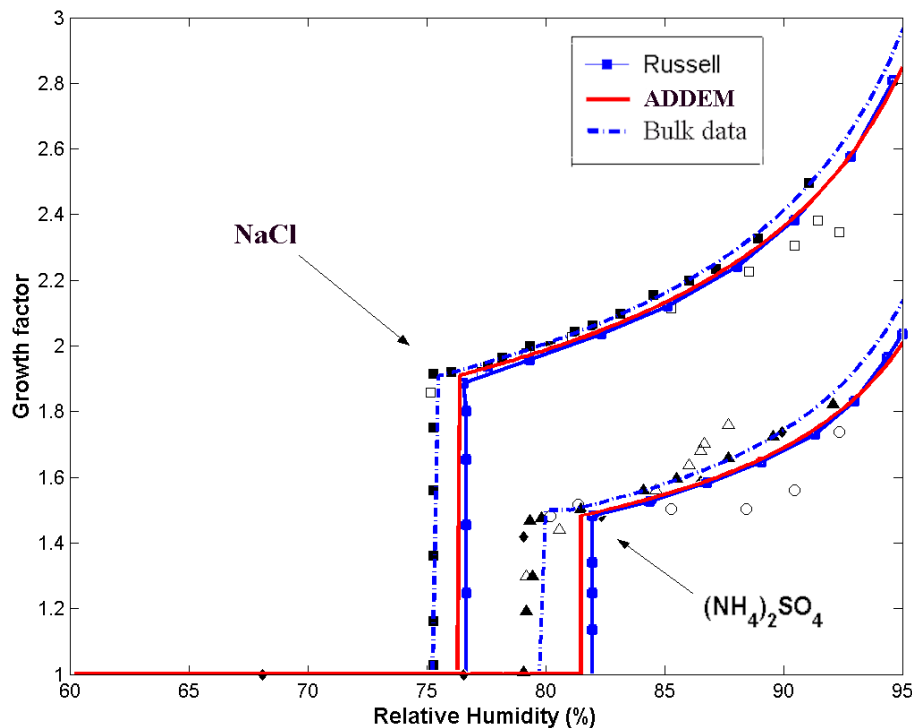
**Fig. 4.** Influence of curvature on aerosol composition for a mixed equimolar  $(\text{NH}_4)_2\text{SO}_4$ - $\text{NH}_4\text{NO}_3$  aerosol at  $25^\circ\text{C}$ . The model output (ADDEM) is from the scheme described in this paper including diameter dependence. The three dry diameters chosen are 8, 20 and 100 nm. Also shown are the growth factor predictions for a ZSR analogue growth factor model. Both utilise the mass fraction mixing rule of Tang (1997) for calculating the solution and dry densities.

[Title Page](#)[Abstract](#)[Introduction](#)[Conclusions](#)[References](#)[Tables](#)[Figures](#)[◀](#)[▶](#)[◀](#)[▶](#)[Back](#)[Close](#)[Full Screen / Esc](#)[Print Version](#)[Interactive Discussion](#)

---

**Curved  
multi-component  
aerosol  
hygroscopicity model  
framework 1**D. O. Topping et al.

---



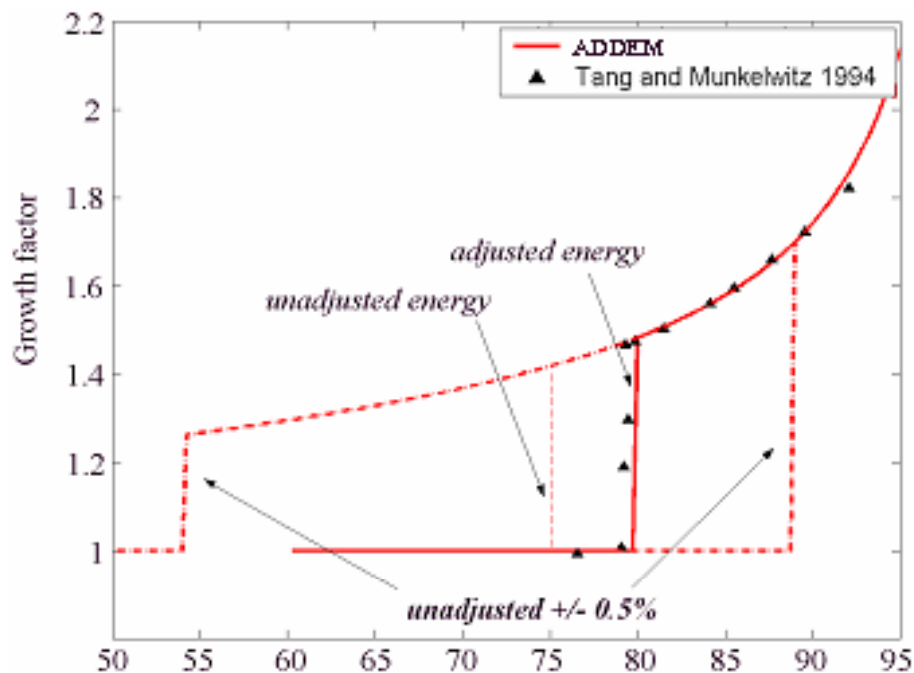
**Fig. 5.** Hygroscopic growth predictions for 100 nm NaCl and  $(\text{NH}_4)_2\text{SO}_4$ , comparisons with experimental data and other theoretical results. Theoretical results taken from Ming and Russell (2001) labelled ‘Russell’. Bulk data: Dashed lines are model predictions, NaCl (solid square) Tang et al. (1986);  $(\text{NH}_4)_2\text{SO}_4$  (solid triangle) Tang and Munkelwitz (1994). 100 nm data: NaCl (open square) Cruz and Pandis (2000);  $(\text{NH}_4)_2\text{SO}_4$  (open circle) Cruz and Pandis (2000); (open triangle) Hameri et al. (2002); 50 nm data:  $(\text{NH}_4)_2\text{SO}_4$ ; (solid diamond) Hameri et al. (2000).

[Title Page](#)[Abstract](#)[Introduction](#)[Conclusions](#)[References](#)[Tables](#)[Figures](#)[◀](#)[▶](#)[◀](#)[▶](#)[Back](#)[Close](#)[Full Screen / Esc](#)[Print Version](#)[Interactive Discussion](#)

---

**Curved  
multi-component  
aerosol  
hygroscopicity model  
framework 1**D. O. Topping et al.

---



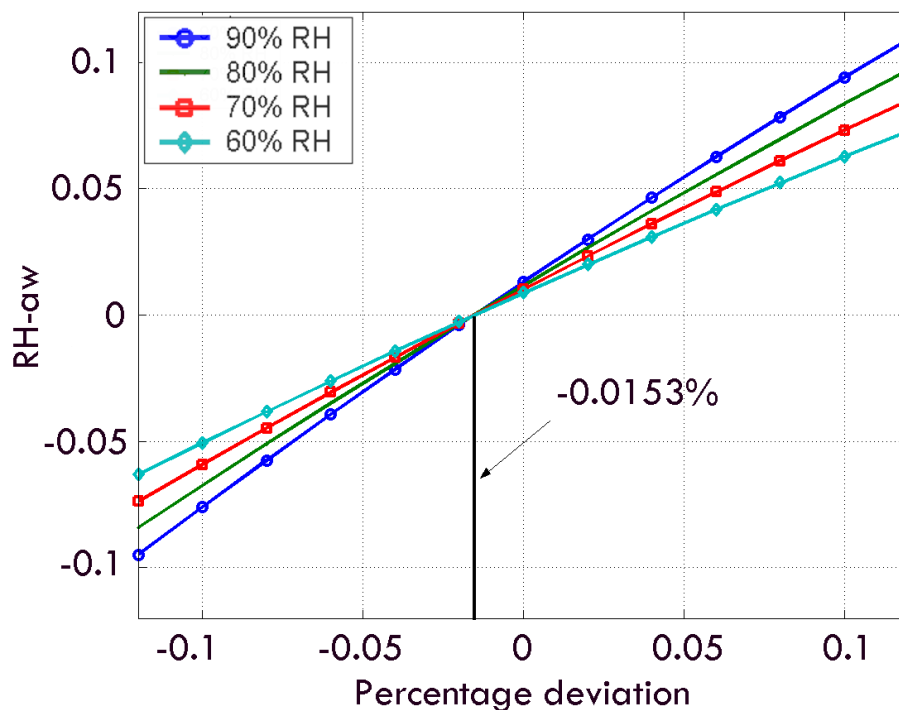
**Fig. 6.** Deliquescence growth curve for  $(\text{NH}_4)_2\text{SO}_4$  – Sensitivity to Gibbs energy of formation for the salt.

[Title Page](#)[Abstract](#)[Introduction](#)[Conclusions](#)[References](#)[Tables](#)[Figures](#)[◀](#)[▶](#)[◀](#)[▶](#)[Back](#)[Close](#)[Full Screen / Esc](#)[Print Version](#)[Interactive Discussion](#)



**Curved  
multi-component  
aerosol  
hygroscopicity model  
framework 1**

D. O. Topping et al.

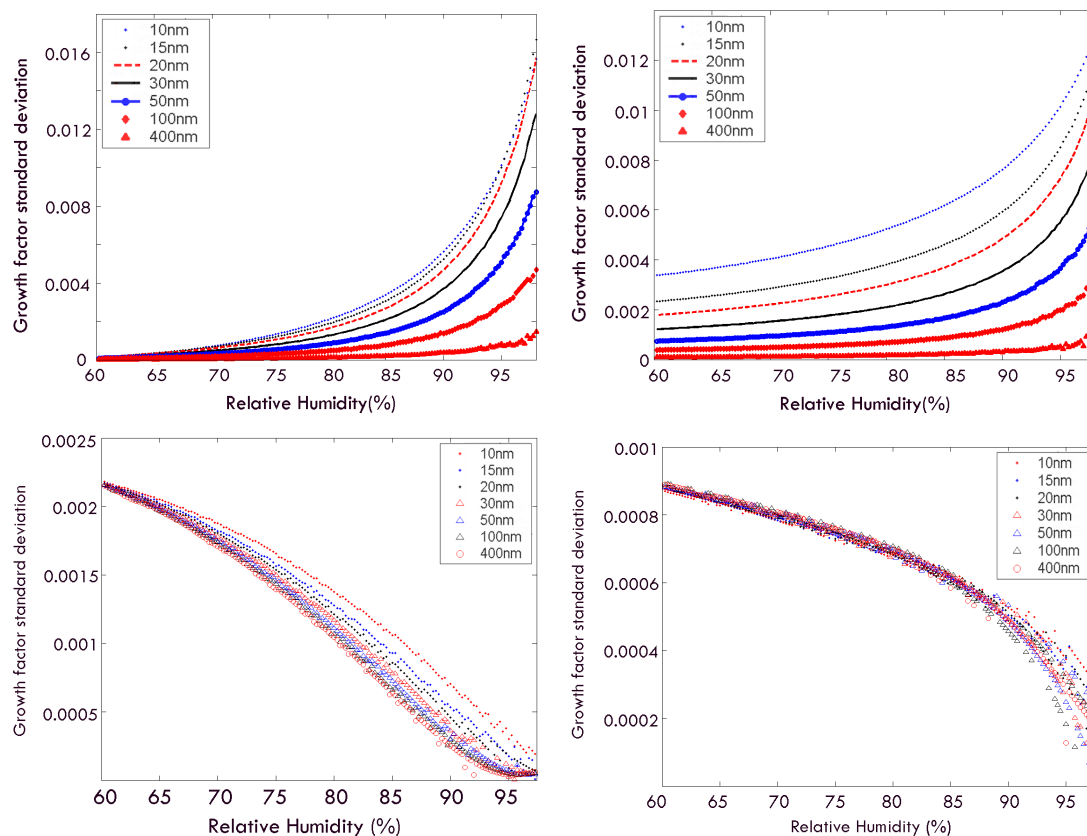


**Fig. 7.** Difference between equilibrium solution water activity and  $RH$  (0–1) for various values of  $\Delta G_f^o \text{H}_2\text{O}(l)$ . Percentage deviation is taken from the tabulated value of Wagman et al. (1982).

[Title Page](#)[Abstract](#)[Introduction](#)[Conclusions](#)[References](#)[Tables](#)[Figures](#)[◀](#)[▶](#)[◀](#)[▶](#)[Back](#)[Close](#)[Full Screen / Esc](#)[Print Version](#)[Interactive Discussion](#)

## Curved multi-component aerosol hygroscopicity model framework 1

D. O. Topping et al.



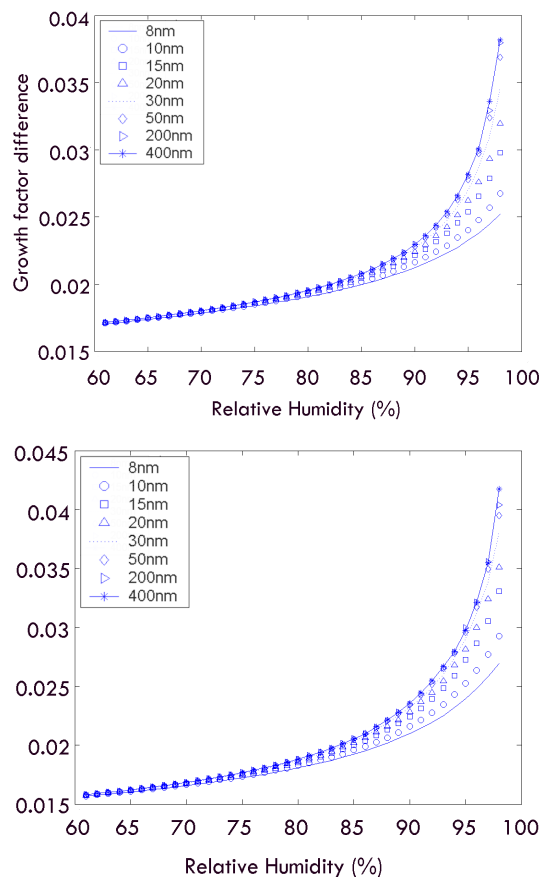
**Fig. 8.** (a) GF standard deviation for different dry diameters using 3 surface tension models for equimolar  $\text{NaCl}-(\text{NH}_4)_2\text{SO}_4$  at  $25^\circ\text{C}$ . (b) GF standard deviation for different dry diameters using 3 surface tension models for  $\text{H}_2\text{SO}_4-(\text{NH}_4)_2\text{SO}_4$  particles at  $25^\circ\text{C}$ . (c) GF standard deviation for different dry diameters using 3 solution density models for equimolar  $\text{NaCl}-(\text{NH}_4)_2\text{SO}_4$  particles at  $25^\circ\text{C}$ . (d) GF standard deviation for different dry diameters using 3 solution density models for equimolar  $\text{H}_2\text{SO}_4-(\text{NH}_4)_2\text{SO}_4$  particles at  $25^\circ\text{C}$ .

[Title Page](#)
[Abstract](#)
[Introduction](#)
[Conclusions](#)
[References](#)
[Tables](#)
[Figures](#)
[◀](#)
[▶](#)
[◀](#)
[▶](#)
[Back](#)
[Close](#)
[Full Screen / Esc](#)
[Print Version](#)
[Interactive Discussion](#)

---

**Curved  
multi-component  
aerosol  
hygroscopicity model  
framework 1**D. O. Topping et al.

---



**Fig. 9.** (a) Growth factor difference for a  $(\text{NH}_4)_2\text{SO}_4$  particle at 25°C and various dry diameters using two different density values. Values used were  $1.769 \text{ kg/m}^3$  (Perry's Chemical handbook) and  $1.7 \text{ kg/m}^3$  (Hameri et al., 2000). (b) Growth factor difference for a  $\text{NH}_4\text{NO}_3$  particle at 25°C and various dry diameters using two different density values of  $1.725 \text{ kg/m}^3$  (rhombohedral crystal) and  $1.66 \text{ kg/m}^3$  (tetragonal crystal). Both values taken from Perry's Chemical handbook.

8676

[Title Page](#)[Abstract](#)[Introduction](#)[Conclusions](#)[References](#)[Tables](#)[Figures](#)[◀](#)[▶](#)[◀](#)[▶](#)[Back](#)[Close](#)[Full Screen / Esc](#)[Print Version](#)[Interactive Discussion](#)