



HAL
open science

Chemical ozone loss in the Arctic winter 2002/2003 determined with Match

M. Streibel, M. Rex, P. von Der Gathen, R. Lehmann, N. R. P. Harris, G. O. Braathen, E. Reimer, H. Deckelmann, M. Chipperfield, G. Millard, et al.

► **To cite this version:**

M. Streibel, M. Rex, P. von Der Gathen, R. Lehmann, N. R. P. Harris, et al.. Chemical ozone loss in the Arctic winter 2002/2003 determined with Match. *Atmospheric Chemistry and Physics Discussions*, 2005, 5 (4), pp.4311-4333. hal-00301599

HAL Id: hal-00301599

<https://hal.science/hal-00301599>

Submitted on 18 Jun 2008

HAL is a multi-disciplinary open access archive for the deposit and dissemination of scientific research documents, whether they are published or not. The documents may come from teaching and research institutions in France or abroad, or from public or private research centers.

L'archive ouverte pluridisciplinaire **HAL**, est destinée au dépôt et à la diffusion de documents scientifiques de niveau recherche, publiés ou non, émanant des établissements d'enseignement et de recherche français ou étrangers, des laboratoires publics ou privés.

Chemical ozone loss in the Arctic winter 2002/2003 determined with Match

M. Streibel^{1,2}, M. Rex¹, P. von der Gathen¹, R. Lehmann¹, N. R. P. Harris²,
G. O. Braathen³, E. Reimer⁴, H. Deckelmann¹, M. Chipperfield⁵, G. Millard⁶,
M. Allaart⁷, S. B. Andersen⁸, H. Claude⁹, J. Davies¹⁰, H. De Backer¹¹, H. Dier¹²,
V. Dorokov¹³, H. Fast¹⁰, M. Gerding¹⁴, E. Kyrö¹⁵, Z. Litynska¹⁶, D. Moore¹⁷,
E. Moran¹⁸, T. Nagai¹⁹, H. Nakane²⁰, C. Parrondo²¹, P. Skrivankova²², R. Stübi²³,
G. Vaughan²⁴, P. Viatte²⁵, and V. Yushkov¹³

¹Alfred Wegener Institute for Polar and Marine Research, P.O. Box 600149, 14401 Potsdam, Germany

²European Ozone Research Coordinating Unit, University of Cambridge, 14 Union Road, Cambridge, UK

³NILU, P.O. Box 100, Kjeller, Norway

⁴Met. Institute, FU Berlin, C.-H.-Becker Weg 6-10, D-12165 Berlin, Germany

⁵University of Leeds, Leeds, LS2 9JT, UK

⁶Centre for Atmospheric Science, University of Cambridge, Lensfield Road, Cambridge, UK

⁷KNMI, P.O. Box 201, 3730 AE De Bilt, The Netherlands

⁸Danish Meteorological Institute, Lyngbyvej 100, DK-2100 Copenhagen, Denmark

⁹DWD, Observatory Hohenpeißenberg, Albin-Schwaiger-Weg 10, 82383 Hohenpeißenberg, Germany

© 2005 Author(s). This work is licensed under a Creative Commons License.

Title Page

Abstract

Introduction

Conclusions

References

Tables

Figures

◀

▶

◀

▶

Back

Close

Full Screen / Esc

Print Version

Interactive Discussion

**Match in Arctic winter
2002/2003**M. Streibel et al.

[Title Page](#)[Abstract](#)[Introduction](#)[Conclusions](#)[References](#)[Tables](#)[Figures](#)[◀](#)[▶](#)[◀](#)[▶](#)[Back](#)[Close](#)[Full Screen / Esc](#)[Print Version](#)[Interactive Discussion](#)

EGU

¹⁰ Meteorological Service of Canada, 4905 Dufferin Street, Downsview, ON, M3H 5T4, Canada

¹¹ RMI, Ringlaan 3, Brussels, Belgium

¹² MOL, 15864 Lindenberg, Germany

¹³ CAO, Pervomajskaya Street 3, Dolgoprudny, Moscow Region, 141700, Russia

¹⁴ IAP, Schlosstrasse 6, 18225 Kühlungsborn, Germany

¹⁵ SMO, Tähteläntie 71, Sodankylä, Finland

¹⁶ MWM, Centre of Aerology, Zegrzynska Str.38, 05-119 Legionowo, Poland

¹⁷ Met. Office, Fitzroy Road, Exeter, Berknell, Devon, EX1 3PB, UK

¹⁸ IMS, Valentia Observatory, Cahirciveen, Co. Kerry, Ireland

¹⁹ Meteorological Research Institute, 1-1, Nagamine, Tsukuba, Ibaraki 305-0052, Japan

²⁰ National Institute for Environmental Studies, 16-2 Onogawa, Tsukuba, Ibaraki 305-8506,

Japan

²¹ INTA, Torrejon de Argoz, Madrid, Spain

²² Czech Hydrometrical Institute, Na Sabatce 17, 14306 Prague, Czech Republik

²³ Swiss Meteorological Aerological Station CH-1530 Payerne, Switzerland

²⁴ University of Wales, Department of Physics, Aberystwyth, SY23 3BZ, Wales, UK

²⁵ SMI, Les Innuardes, 1530 Payerne, Switzerland

Received: 27 April 2005 – Accepted: 3 May 2005 – Published: 1 July 2005

Correspondence to: M. Streibel (martin.streibel@ozone-sec.ch.cam.ac.uk)

Abstract

The Match technique was used to determine chemically induced ozone loss inside the stratospheric vortex during the Arctic winter 2002/2003. From end of November 2002, which is the earliest start of a Match campaign ever, until end of March 2003 approximately 800 ozonesondes were launched from 30 stations in the Arctic and mid latitudes. Ozone loss rates were quantified from the beginning of December until mid of March in the vertical region of 400–550 K potential temperature. In December ozone destruction rates varied between 10–15 ppbv/day depending on height. Maximum loss rates around 35 ppbv/day were reached during late January. Afterwards ozone loss rates decreased until mid-March when the final warming of the vortex began and measurements for the campaign were no longer possible. In the period of 2 December 2002 to 16 March 2003 the accumulated ozone loss reduced the partial ozone column of 400–500 K potential temperature by 56 ± 4 DU. The sensitivity of the results on recent improvements of the approach has been tested.

1. Introduction

Over the past two decades substantial progress has been made in the qualitative understanding of chemical and dynamical processes in the northern winter stratosphere that lead to ozone loss (WMO, 2003). Nevertheless a full quantitative understanding of the ozone loss processes is essential for a reliable prediction of the future evolution of the polar ozone layer. Several comparisons of observed ozone losses measured by a variety of approaches with model calculations indicate that observed ozone loss rates are often faster than can be explained, particularly during cold Arctic Januaries (e.g. Rex et al., 2003). To provide a broader observational basis for detailed studies addressing this issue, an ozonesonde campaign using the Match technique (von der Gathen et al., 1995; Rex et al., 1997, 1999) was performed within the EC project “Quantitative Understanding of Ozone losses by Bipolar Investigations” (QUOBI). This project

Match in Arctic winter 2002/2003

M. Streibel et al.

Title Page

Abstract

Introduction

Conclusions

References

Tables

Figures

◀

▶

◀

▶

Back

Close

Full Screen / Esc

Print Version

Interactive Discussion

**Match in Arctic winter
2002/2003**M. Streibel et al.

[Title Page](#)[Abstract](#)[Introduction](#)[Conclusions](#)[References](#)[Tables](#)[Figures](#)[◀](#)[▶](#)[◀](#)[▶](#)[Back](#)[Close](#)[Full Screen / Esc](#)[Print Version](#)[Interactive Discussion](#)

EGU

is part of the European experiment "Validation of INTERnational satellites and Study of Ozone Loss" (VINTERSOL). It was carried out together with the second NASA SAGE III Ozone Loss and Validation Experiment (SOLVE II) as a collaborative field campaign in the winter 2002/2003. In this paper we report results from the Match campaign 2002/2003 and summarize improvements which have been implemented in the Match analysis since it was last described in Rex et al. (2002).

During winter 2002/2003 more than 800 ozonesondes were launched from approximately 30 stations in the Arctic and northern mid latitudes (Fig. 1). More than 450 of these were launched in response to Match alerts, which directed them into air masses that had been probed by an ozonesonde launched at another station between two and ten days earlier. This was achieved by using trajectory calculations based on analysis and forecast data from the European Centre for Medium-Range Weather Forecasts (ECMWF). For two measurements which can be connected by a calculated trajectory the dynamical impact on the ozone mixing ratio is largely eliminated. After the active coordination phase the trajectories are recalculated based on analysis data. By comparing the ozone concentration of two air parcels which are connected by a trajectory the chemical ozone destruction can be calculated. One particular focus of the Match campaign 2002/2003 was the study of ozone loss in December, which had not been investigated by Match. Hence, the campaign was started in late November, about six weeks earlier than previous Match campaigns. To cover also the full extent of the ozone loss period, the campaign was run until mid-March, when the increased dynamical activity made the continuation of the campaign impossible. The ozone loss rates had dropped to near zero values by then and temperatures stayed well above the threshold for chlorine activation afterwards. So it can be assumed that the results presented here cover the overall ozone loss during winter 2002/2003.

The campaign and the following data analysis were carried out along the lines described in Rex et al. (2002). However, the following modifications were made to further improve the approach:

- The resolution of the ECMWF wind fields used for the trajectory calculations in

Match in Arctic winter 2002/2003

M. Streibel et al.

Title Page

Abstract

Introduction

Conclusions

References

Tables

Figures

◀

▶

◀

▶

Back

Close

Full Screen / Esc

Print Version

Interactive Discussion

the final analysis step was increased to 1.25° × 1.25° (2.5° × 2.5° before).

- The sensitivity of ozone loss rates to an additional match radius has been tested. For that reason backward trajectories have been calculated starting at the location of the second ozonesonde measurement. This additional match radius is calculated as the distance between the respective point of the backward trajectory to the location of the first measurement. In the following this match radius is called “backward match radius”. This addresses the effect of a modification of the original Match approach that has first been used by Terao et al. (2002). So far only the difference between the location of the forward trajectory to the second ozonesonde measurement was calculated and checked. This match radius will be called “forward match radius”.
- The approach to estimate statistical uncertainties of the results has been updated to fully account for the effect that not all individual match events are strictly independent. A detailed description of the statistical method applied is given in the paper Lehmann et al. (2004).

The impact of these changes on the results are discussed in Sect. 4.

2. Meteorology of the winter 2002/2003

The stratospheric temperature in the beginning of the winter 2002/2003 was sufficiently low for the widespread formation of PSCs. In November/December the area covered by temperatures low enough for PSCs to exist (A_{PSC}) even exceeded those of the cold winter 1999/2000. At 475–550 K potential temperature they reached the largest values present in the ERA-15 dataset, which goes back to 1979. A_{PSC} is calculated using temperatures from the ECMWF, assuming nitric acid trihydrate (NAT) in thermodynamic equilibrium (Hansen and Mauersberger, 1988). In the middle and lower stratosphere the conditions remained cold until mid January, when a major warming occurred. During the rest of the winter the vortex was less stable and warmer than during some of

the cold winters during the 1990s. In February a minor warming took place leading to a split of the vortex for several days. Another minor warming took place in March. During February and March the temperatures dropped only occasionally below temperatures low enough for the formation of polar stratospheric clouds. The final warming began at the end of March (Naujokat and Grunow, 2003).

3. Results

In this section we report the seasonal evolution and vertical distribution of ozone loss rates in winter 2002/2003. The ozone loss rates are presented as averages over all match events inside the polar vortex and are expressed in terms of ozone loss per sunlit hour as well as loss per day. Figure 2 shows the spatial and temporal coverage of the vortex by match events throughout the winter. Each red dot gives the relative location of a match event inside the vortex. 100% relative location is defined as the vortex edge, 0% as the vortex core. Figure 2 shows that the vortex was relatively homogeneously sampled by Match. Hence, the loss rates reported here represent vortex average conditions. In previous Match analyses the vortex edge was defined by a constant value of normalized PV (see Rex et al., 1999, for definition of normalized PV), which was chosen such that it corresponds to the strongest meridional gradient in PV. This approach was justified, since during the individual periods studied in those analyses, the PV values at the maximum PV gradient have not changed much. In contrast to recent years, in 2002/2003 the vortex was probed already during its formation phase, when the PV value closest to the maximum PV gradient was still increasing. Hence, the definition of the vortex edge was adapted to the strengthening of the vortex during December and the value of normalized PV chosen to define the vortex edge was increased from 28 s^{-1} in early December to 36 s^{-1} on 9 January. From that day on the value was hold on a constant level of 36 s^{-1} (Table 1).

The lower part of the panels of Fig. 3 shows the seasonal evolution of ozone loss rates on four potential temperature levels ($\Theta=425, 450, 475, \text{ and } 500 \text{ K}$). The individual

Title Page

Abstract

Introduction

Conclusions

References

Tables

Figures

◀

▶

◀

▶

Back

Close

Full Screen / Esc

Print Version

Interactive Discussion

**Match in Arctic winter
2002/2003**M. Streibel et al.

data points shown in Figure 3 represent results of linear regressions based on match events from a ± 10 K vertical bin and a ± 7 day time bin, starting with a point corresponding to data centred around 5 December. In the upper part of each panel A_{PSC} is shown. In December ozone loss rates increased towards the end of the month and ranged between 0 and about 4 ppbv per sunlit hour, which corresponds to 0–20 ppbv per day. At $\Theta=450$ –500 K ozone loss rates reached maximum values of up to 6.0 ppbv per sunlit hour (35 ppbv per day) during January and generally decreased during February, reaching insignificant values by the end of the month. At 425 K ozone loss rates were generally smaller and reached a maximum value of 3.1 ± 0.9 ppbv per sunlit hour (27 ± 7.4 ppbv per day) during mid-February.

The numbers given in the lower part of the panels (a), (c), (e), (g) in Fig. 3 indicate the numbers of individual match events that were used for the various data points. For days 44 to 51 these numbers are considerably smaller than for most of the other data points. The reason is the strong minor warming that occurred during this period of the winter. Due to the unstable meteorological conditions the quality criteria for Match events (i.e. little divergence of the individual trajectory clusters, PV conservation along the trajectories, absence of laminae structures in the ozone profiles) were often not met.

Figure 4 shows the overall accumulated ozone loss that occurred during the Arctic winter 2002/2003. Following the approach described in Rex et al. (2002) ozone loss rates were accumulated in five subsiding levels inside the polar vortex, corresponding to the spring equivalent potential temperatures 400, 425, 450, 475, and 500 K at 31 March. Spring equivalent potential temperature denotes the potential temperature a given air mass reaches on day 90 (Rex et al., 2002). Figure 4a shows the evolution and vertical distribution of the accumulated ozone loss during December to March. By the end of the winter (day 75) accumulated ozone loss reached 1.6 ± 0.2 ppmv at $\Theta=407$ K and slightly smaller values above, up to 475 K spring equivalent potential temperature (Fig. 4b).

The vertically integrated column loss in the partial column covered by the Match

[Title Page](#)[Abstract](#)[Introduction](#)[Conclusions](#)[References](#)[Tables](#)[Figures](#)[I◀](#)[▶I](#)[◀](#)[▶](#)[Back](#)[Close](#)[Full Screen / Esc](#)[Print Version](#)[Interactive Discussion](#)

EGU

**Match in Arctic winter
2002/2003**

M. Streibel et al.

[Title Page](#)
[Abstract](#)
[Introduction](#)
[Conclusions](#)
[References](#)
[Tables](#)
[Figures](#)
[◀](#)
[▶](#)
[◀](#)
[▶](#)
[Back](#)
[Close](#)
[Full Screen / Esc](#)
[Print Version](#)
[Interactive Discussion](#)

EGU

analysis is shown in Fig. 4c. For December the accumulated ozone loss is 5 ± 1 DU in the vertical column of $\Theta=454\text{--}550$ K. By day 75 the column loss between $\Theta=407$ and 501 K (corresponding to $\Theta=400\text{--}500$ K at the end of March, about 16–21 km) reached 56 ± 4 DU. This quantity is the difference between the actually observed ozone abundance and the total ozone column that would have been present in the absence of chemical loss for identical dynamics (i.e. the quantity column $[\text{O}_3^* - \text{O}_3]$ as defined in Rex et al., 2002). This loss estimate can be directly compared to ozone loss estimates based on the difference between passive ozone from a transport model and ozone values that are actually observed or that are the results from a 3D chemical transport model. Note that the column $[\text{O}_3^* - \text{O}_3]$ is different from the overall number of molecules destroyed in a vertical column of air during the winter (i.e. the quantity column $[-d\text{O}_3/dt_{chem}]$ as defined by Rex et al., 2002), because air masses may leave or enter the vertical column due to average poleward or equatorward motion, even if no mixing across the edge of the polar vortex occurs. The loss in the partial column covered here is a lower limit for the ozone loss in the total column. The loss in the region above the covered vertical range is probably very small, because accumulated losses at the upper edge of the covered region are already small (cf. Fig. 4a). We may have missed ozone loss in the region below 400 K, which could contribute to the total column loss. Christensen et al. (2005) suggest that around 15 DU additional loss may have occurred between $\Theta=350\text{--}400$ K.

To check whether the major warming during January cancelled the quality criteria which sort out air parcels that had been exposed to mixing processes, a bivariate regression was calculated for the time period of 5 January 2004–31 January 2004, allowing for ozone change during sunlit and dark periods along the trajectories (Rex et al., 1999):

$$\Delta\text{O}_3 = L_S \times t_S + L_D \times t_D$$

where L_S and L_D are the loss rate during sunlit time and darkness and t_S and t_D the time the trajectories spent in sunlight and darkness, respectively. In January at $\Theta=475 \pm 10$ K, i.e. the period of the highest ozone loss rates we find

$L_S = -5.8 \pm 2.2$ ppbv/sunlit hour and $L_D = 0.6 \pm 0.6$ ppbv/dark hour. Hence, during dark periods ozone was conserved along the trajectories, suggesting that our approach was not significantly influenced by dynamical effects during that time.

4. Uncertainty

5 The uncertainties stated above are 1σ uncertainties not including potential systematic effects. A discussion of systematic uncertainties of the Match approach is given in Rex et al. (1998).

4.1. Impact of the grid resolution of the meteorological input data

10 Until this winter the grid resolution of the meteorological input data used for the trajectory calculation of the Match analysis was $2.5^\circ \times 2.5^\circ$. This files have become available in the higher grid resolution of $1.25^\circ \times 1.25^\circ$. In order to make sure that a change in the grid resolution does not affect the continuity of the Match time series a comparison between two analyses using the files with lower and higher grid resolution was performed. In Fig. 5 the result is shown which indicates that higher grid resolution does not change
15 the derived ozone loss rates significantly.

4.2. Sensitivity on diabatic cooling rates

The sensitivity on systematic errors in the diabatic cooling rates, which have been calculated by the SLIMCAT radiation scheme MIDRAD, depends on the average vertical gradient in the ozone mixing ratio profile, which varies from year to year and during
20 the season. The sensitivity was generally small for most of the winters during the past decade but contributed significantly to the overall uncertainty for the winter 1991/1992 (Rex et al., 1998). The strong dynamic activity in winter 2002/2003 caused a greater variability in the cooling rates compared to previous winters. The sensitivity of derived ozone losses on the diabatic cooling rates for the winter 2002/2003 are shown in Fig. 6.

Title Page

Abstract

Introduction

Conclusions

References

Tables

Figures

◀

▶

◀

▶

Back

Close

Full Screen / Esc

Print Version

Interactive Discussion

**Match in Arctic winter
2002/2003**M. Streibel et al.

[Title Page](#)[Abstract](#)[Introduction](#)[Conclusions](#)[References](#)[Tables](#)[Figures](#)[◀](#)[▶](#)[◀](#)[▶](#)[Back](#)[Close](#)[Full Screen / Esc](#)[Print Version](#)[Interactive Discussion](#)

EGU

While for most of the period the sensitivity of calculated ozone losses on the cooling rates is small, the cooling rate variation has a large impact on derived ozone losses in December. During this month the loss rates calculated with cooling rates reduced to 50% are smaller but stay within the 1σ uncertainty of the original rates. When the cooling rates are increased by the factor 1.5, the derived ozone loss rates are also lying within 1σ statistical uncertainty.

4.3. Trajectory quality criteria symmetric in time

Terao et al. (2002) modified the original Match approach to use it with data from the Improved Limb Atmospheric Spectrometer (ILAS) for the Arctic winter 1996/97. They introduced an additional match radius, the backward match radius as explained in Sect. 1. In our sensitivity study all quality criteria which belong to the forward trajectory are applied additionally to a corresponding cluster of backward trajectories, such that the Match approach becomes symmetric in time.

The central trajectory of each cluster started at the coordinates of the second sonde measurement of the respective match event. The cluster was set up in the same way as the standard forward trajectory cluster. However, the backward trajectories were triggered on a vertical grid with 5 K vertical resolution. Hence, the potential temperature of the start point of the backward trajectory may differ by up to 2.5 K potential temperature from the level of the ozonesonde measurement. With this procedure two different match radii are calculated for one match: (a) the forward match radius (see Sect. 1), and (b) the backward match radius. We have used the information from (a) and (b) in two different ways. First, a threshold value is introduced for the backward match radius, similar to the standard threshold of 500 km for the forward match radius. Figure 7a shows the results for different choices of this new threshold value: 600 km (green crosses, 251 matches), 500 km (blue stars, 230 matches) and 400 km (blue diamonds, 191 matches). The original loss rates from the standard analysis are shown by red squares (405 matches). Second, the radii (a) and (b) were added up to give a combined match radius, for which a new threshold value is defined, which replaces

the individual threshold for both match radii. Results for various choices of the threshold for the combined match radius are shown in Fig. 7b: 1000 km (green crosses, 273 matches), 800 km (light blue stars, 227 matches), 700 km (dark blue diamonds, 188 matches). Again the reference data is given as red squares.

5 Although the use of the backward trajectories has a large impact on the number of used match events, both, the loss rates and their uncertainties are quite robust and do not change significantly.

4.4. Correction for matches which are not statistically independent

10 The Match analysis is based on linear regression analyses of ozone change versus sunlit time from a number of individual match events. The slope of the linear regression gives the ozone loss rate, while the calculated statistical uncertainty of the slope is stated as statistical uncertainty of the loss rate. The standard regression analysis and uncertainty estimations assume that the errors of the individual match events are statistically independent and normally distributed and that their variances are equal.

15 However, the assumption of statistical independence is not fulfilled because an individual ozonesonde measurement can contribute to more than one match event within a linear regression analysis. Lehmann et al. (2004) developed an approach to estimate the uncertainty of the ozone loss rates derived from a sample of matches with statistically dependent errors. Whether the estimated uncertainty increases or decreases compared to the former approach (which ignores the dependencies), depends on the precise distribution of sondes in the sample of match events. But in most cases the derived uncertainty increases. All error bars stated in this paper are based on that new approach. For loss rates at the $\Theta=475$ K level we found an average increase of about 14% of the calculated uncertainty compared to the former approach which is shown in Table 2. This is in good agreement with the numbers presented in Lehmann et al. (2004) for the average of four match Campaigns.

25

Title Page

Abstract

Introduction

Conclusions

References

Tables

Figures

◀

▶

◀

▶

Back

Close

Full Screen / Esc

Print Version

Interactive Discussion

5. Summary and discussion

Significant ozone loss took place in the stratospheric vortex over the Arctic in winter 2002/2003. This winter is characterised by a cold beginning which led to ozone loss of ~ 5 DU in December and 56 DU at the end of the campaign in mid-March for the partial column of $\Theta=453\text{--}550$ K and $400\text{--}500$ K, respectively. Accumulated loss of 1.2–1.6 ppmv was found in the layers of air descending to $\Theta=400\text{--}475$ K spring equivalent temperatures. This loss is moderate compared to 1.0–2.8 ppmv loss found in winter 1999/2000 with the Match approach for the upper mentioned levels. The sensitivity study of different grid resolution of the used meteorological data for the trajectory calculation showed that the change to a higher horizontal grid resolution does not affect the results significantly. Therefore the continuity of the Match time series, which includes 12 winters, is conserved. Moreover it was shown that the implementation of a backward trajectory check into the ozonesonde Match approach as an additional quality criterion result in similar loss rates and error bars.

Goutail et al. (2005) derived ozone loss from the comparison of measurements of the SAOZ Network, a network of UV-visible spectrometers, to calculations of passive ozone by the chemical transport model (CTM) REPROBUS. A column loss of 6–8% was found until end of December, which corresponds to approximately 28–38 DU. This value is high compared to the value derived from Match. One reason for the difference is the slightly different definition of the vortex edge. Moreover, UV-visible spectrometers depend on light. Hence, mainly the vortex edge was probed during December in the Goutail et al. (2005) study. It is reasonable to assume that ozone loss during December was more pronounced in the more sunlit vortex edge region, but it is unlikely that this effect can fully explain the differences for the December period. For January to March the accumulated ozone loss is $\sim 12\text{--}14\%$ or 56–66 DU which is in agreement with our partial column result of about 51 DU for the same period.

Singleton et al. (2005) used the passive ozone of the SLIMCAT CTM and measurements of the satellite based instrument POAM III to derive chemical ozone loss. By mid-

Match in Arctic winter 2002/2003

M. Streibel et al.

Title Page

Abstract

Introduction

Conclusions

References

Tables

Figures

◀

▶

◀

▶

Back

Close

Full Screen / Esc

Print Version

Interactive Discussion

March the maximum accumulated ozone loss obtained by this method is 1.2 ppmv for the air masses descending to $\Theta=425$ K. Match found an ozone loss of 1.5 ± 0.2 ppmv at that level. At most levels between $\Theta=400$ – 500 K the results from Singleton et al. (2005) suggest slightly smaller ozone losses than Match. However, the results agree within their respective uncertainties.

Acknowledgements. We are grateful to the staff at the ozonesonde stations who participated in the Arctic Match campaign 2002/03 for numerous timely started ozonesondes. We thank the European Centre for Medium-Range Weather Forecast (ECMWF) and the German Weather Office (DWD) for providing the meteorological data and the EC for funding the project “Quantitative Understanding of Ozone losses by Bipolar Investigations” (QUOBI) (EVK2-CT-2001-00129).

References

- Christensen, T., Knudsen, B., Streibel, M., et al.: Vortex-averaged Arctic ozone depletion in the winter 2002/2003, *Atmos. Chem. Phys.*, 5, 131–138, 2005, [SRef-ID: 1680-7324/acp/2005-5-131](#).
- Goutail, F., Pommereau, J.-P., Lefèvre, F., et al.: Early unusual ozone loss during the Arctic winter 2002/2003 compared to other winters, *Atmos. Chem. Phys.*, 5, 665–677, 2005, [SRef-ID: 1680-7324/acp/2005-5-665](#).
- Hansen, D. R. and Mauersberger, K.: Laboratory studies of nitric acid trihydrate: Implications for the south polar stratosphere, *Geophys. Res. Lett.*, 15, 855–858, 1988.
- Lehmann, R., von der Gathen, P., Rex, M., and Streibel, M.: Statistical analysis of the precision of the Match method, *Atmos. Chem. Phys. Discuss.*, 5, 3225–3268, 2005, [SRef-ID: 1680-7375/acpd/2005-5-3225](#).
- Naujokat, B. and Grunow, K.: The stratospheric Arctic winter 2002/03: Balloon flight planning by trajectory calculations, *Proceedings of the 16th ESA Symposium on European Rocket and Balloon Programmes and Related Research*, St. Gallen 2003 (ESA SP-530), 421–425, 2003.
- Rex, M., Harris, N. R. P., von der Gathen, P., et al.: Prolonged stratospheric ozone loss in the 1995/96 Arctic winter, *Nature*, 389, 835–838, 1997.

**Match in Arctic winter
2002/2003**

M. Streibel et al.

Title Page

Abstract

Introduction

Conclusions

References

Tables

Figures

◀

▶

◀

▶

Back

Close

Full Screen / Esc

Print Version

Interactive Discussion

**Match in Arctic winter
2002/2003**M. Streibel et al.

[Title Page](#)[Abstract](#)[Introduction](#)[Conclusions](#)[References](#)[Tables](#)[Figures](#)[◀](#)[▶](#)[◀](#)[▶](#)[Back](#)[Close](#)[Full Screen / Esc](#)[Print Version](#)[Interactive Discussion](#)

EGU

Rex, M., von der Gathen, P., Harris, N. R. P., et al.: In-situ measurements of stratospheric ozone depletion rates in the Arctic winter 1991/1992: A Lagrangian approach, *J. Geophys. Res.*, 103(D5), 5843–5853, 1998.

Rex, M., von der Gathen, P., Braathen G. O., et al.: Chemical ozone loss in the Arctic winter 1994/95 as determined by the Match technique, *J. Atmos. Chem.*, 32(1), 35–59, 1999.

Rex, M., Salawitch, R. J., Harris, N. R. P., et al.: Chemical loss of Arctic ozone in winter 1999/2000, *J. Geophys. Res.*, 107(D20), 8276, doi:10.1029/2001JD000533, 2002.

Rex, M., Salawitch, R. J., Santee, M. L., et al.: On the unexplained stratospheric ozone losses during cold Arctic Januaries, *Geophys. Res. Lett.*, 30(1), 1008, doi:10.1029/2002GL016008, 2003.

Singleton, C. S., Randall, C. E., Chipperfield, M. P., et al.: 2002–2003 Arctic ozone loss deduced from POAM III satellite observations and the SLIMCAT chemical transport model, *Atmos. Chem. Phys.*, 5, 597–609, 2005,

[SRef-ID: 1680-7324/acp/2005-5-597](#).

Terao, Y., Sasano, Y., Nakajima, H., et al.: Stratospheric ozone loss in the 1996/1997 Arctic winter: Evaluation based on multiple trajectory analysis for double-sounded air parcels by ILAS, *J. Geophys. Res.*, 107(D24), 8210, doi:10.1029/2001JD000615, 2002.

von der Gathen, P., Rex, M., Harris, N. R. P., et al.: Observational evidence for chemical ozone depletion over the Arctic in winter 1991–92, *Nature*, 375, 131–134, 1995.

WMO: Scientific Assessment of Ozone Depletion: 2002, ISBN 92-807-2261-1, 2003.

**Match in Arctic winter
2002/2003**

M. Streibel et al.

Table 1. Values used to define the vortex edge during December and early January. Between the given days the PV values are linearly interpolated.

Date [day of the year 2003]	normalized PV [s^{-1}]
-33	28
-26	30
-19	31
-12	32
-5	33
2	34
9	36
75	36

[Title Page](#)[Abstract](#)[Introduction](#)[Conclusions](#)[References](#)[Tables](#)[Figures](#)[I◀](#)[▶I](#)[◀](#)[▶](#)[Back](#)[Close](#)[Full Screen / Esc](#)[Print Version](#)[Interactive Discussion](#)

EGU

Match in Arctic winter 2002/2003

M. Streibel et al.

Table 2. Change of the statistical uncertainty of the loss rates by taking the dependence of match events into account at $\Theta=475$ K. Column 1: day of the year 2003. Column 2: ozone loss rate. Column 3: estimation of the statistical uncertainty of the ozone loss rate neglecting dependencies between match events. Column 4: estimation of the statistical uncertainty of the ozone loss rate taking dependencies between match events into account. Column 5: ratio of column 4/column 3.

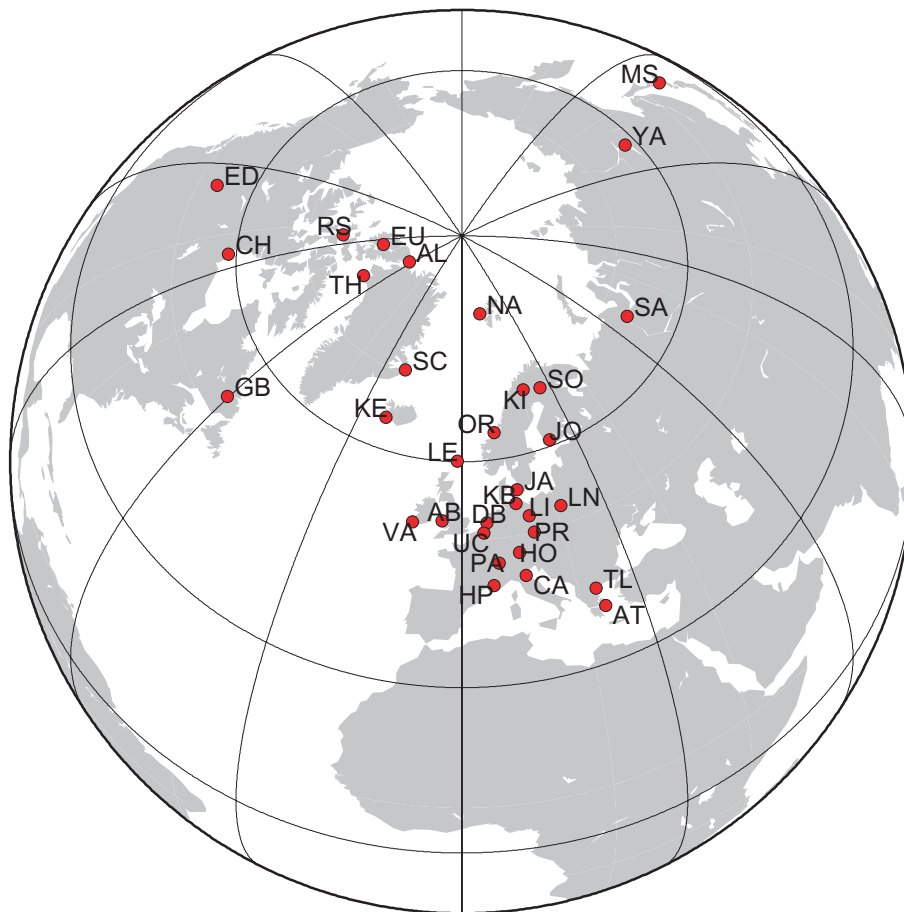
date [day of the year 2003]	loss rate [ppbv/sunlit hour]	statistical uncertainty (old) [ppbv/sunlit hour]	statistical uncertainty (new) [ppbv/sunlit hour]	column 4/ column 3
-26	-0.49	0.88	0.88	1.00
-19	-1.32	0.89	0.95	1.07
-12	-2.6	1.11	1.22	1.10
-5	-3.89	1.30	1.31	1.01
2	-4.39	0.95	1.01	1.06
9	-3.36	0.83	0.92	1.11
16	-3.70	0.88	1.06	1.20
23	-4.15	1.07	1.35	1.26
30	-2.65	0.63	0.75	1.19
37	-2.82	0.54	0.67	1.24
44	-2.24	0.91	1.04	1.14
51	0.53	1.08	1.21	1.12
58	-1.18	0.54	0.57	1.06
65	-0.51	0.46	0.53	1.15
72	1.12	0.49	0.66	1.35

[Title Page](#)
[Abstract](#)
[Introduction](#)
[Conclusions](#)
[References](#)
[Tables](#)
[Figures](#)
[I◀](#)
[▶I](#)
[◀](#)
[▶](#)
[Back](#)
[Close](#)
[Full Screen / Esc](#)
[Print Version](#)
[Interactive Discussion](#)

EGU

**Match in Arctic winter
2002/2003**

M. Streibel et al.

**Fig. 1.** Map of the 34 stations that participated in the Arctic Match campaign 2002/03.[Title Page](#)[Abstract](#)[Introduction](#)[Conclusions](#)[References](#)[Tables](#)[Figures](#)[◀](#)[▶](#)[◀](#)[▶](#)[Back](#)[Close](#)[Full Screen / Esc](#)[Print Version](#)[Interactive Discussion](#)

EGU

**Match in Arctic winter
2002/2003**

M. Streibel et al.

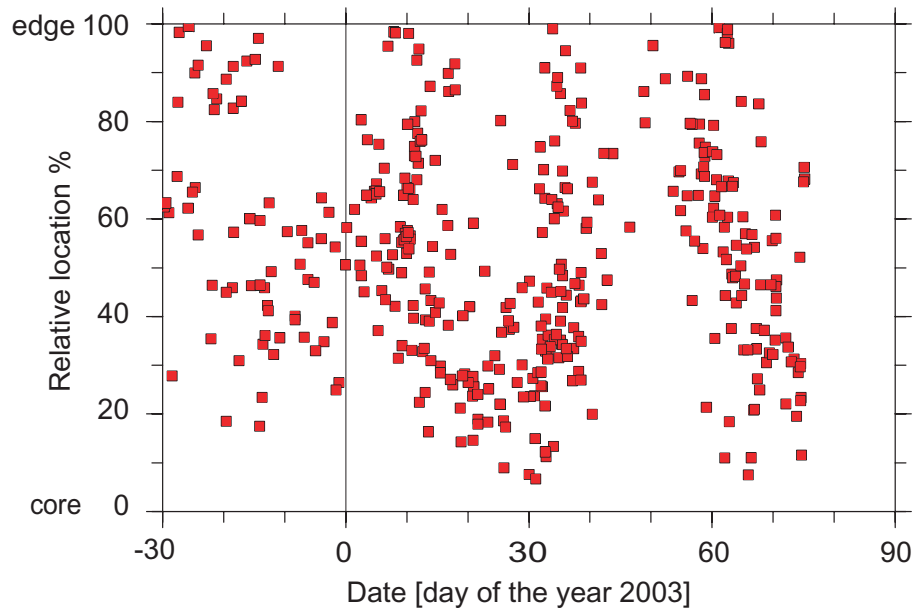


Fig. 2. Distribution of match events within the polar vortex ($\Theta=475\pm 10$ K). Relative location is normalized PV scaled such that equal intervals of this quantity correspond to equal areas of the vortex. Hence, the homogeneity of the sampling of the PV-space can be assessed. Relative location of 100% is the vortex edge, 0% is the vortex core.

[Title Page](#)[Abstract](#)[Introduction](#)[Conclusions](#)[References](#)[Tables](#)[Figures](#)[◀](#)[▶](#)[◀](#)[▶](#)[Back](#)[Close](#)[Full Screen / Esc](#)[Print Version](#)[Interactive Discussion](#)

EGU

Match in Arctic winter
2002/2003

M. Streibel et al.

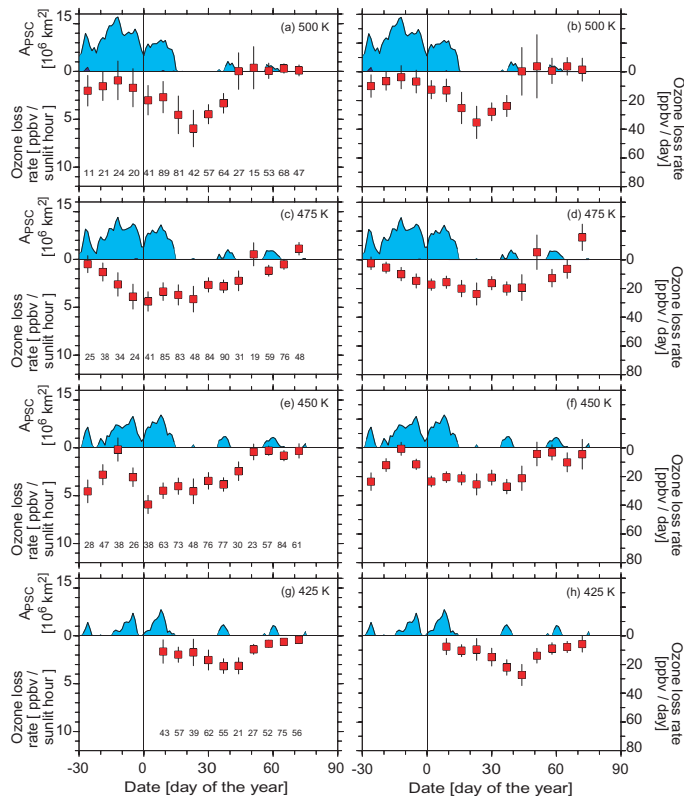


Fig. 3. Ozone loss rates at the indicated levels in ppbv per sunlit time (left hand panels), and ppbv per day (right hand panels). The loss rates represent the results of linear regressions through sets of individual match events in ± 7 day and ± 10 K potential temperature bins. Error bars are 1σ statistical uncertainties of the regression coefficients. The numbers in the lower part of the left-hand panels give the number of individual match events that were used in the respective linear regression. The area of possible PSC existence (A_{PSC}) is also indicated for each potential temperature surface (the shaded area in the upper part of the respective panels).

Title Page

Abstract

Introduction

Conclusions

References

Tables

Figures

◀

▶

◀

▶

Back

Close

Full Screen / Esc

Print Version

Interactive Discussion

EGU

**Match in Arctic winter
2002/2003**

M. Streibel et al.

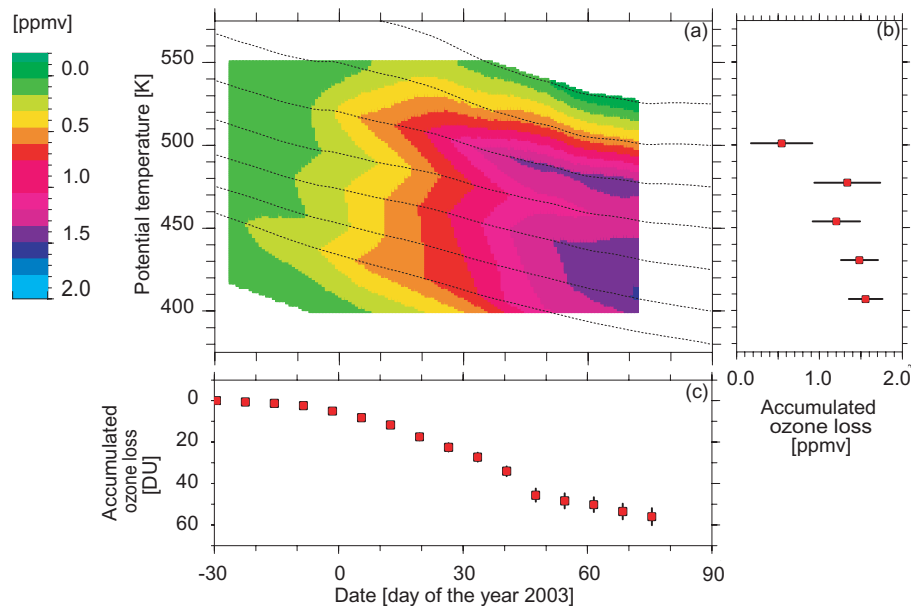


Fig. 4. Panel (a): temporal evolution of the accumulated ozone loss in subsiding air masses derived from Match, panel (b): profile of the accumulated ozone loss on 16 March (day 75), panel (c): ozone loss in DU obtained by vertical integration of the accumulated ozone loss shown in panel (a) for each given day for the subsiding air masses with spring equivalent potential temperature of 400–500 K at the end of March.

[Title Page](#)[Abstract](#)[Introduction](#)[Conclusions](#)[References](#)[Tables](#)[Figures](#)[◀](#)[▶](#)[◀](#)[▶](#)[Back](#)[Close](#)[Full Screen / Esc](#)[Print Version](#)[Interactive Discussion](#)

EGU

**Match in Arctic winter
2002/2003**

M. Streibel et al.

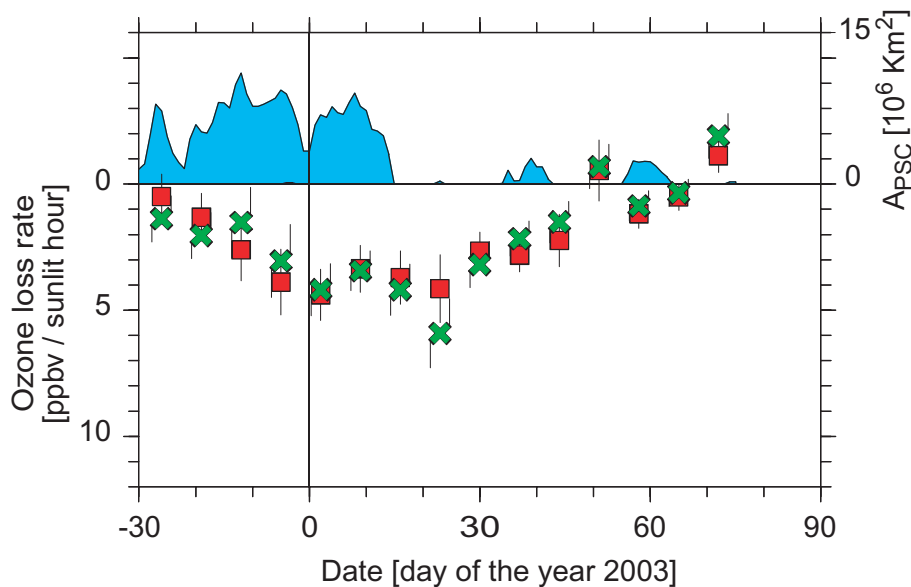


Fig. 5. Comparison of ozone loss rates at $\Theta=475\pm 10\text{K}$ based on different resolutions of the meteorological data used for the trajectory calculations. Red squares show the results for $1.25^\circ \times 1.25^\circ$ horizontal resolution, green crosses for $2.5^\circ \times 2.5^\circ$ resolution.

[Title Page](#)[Abstract](#)[Introduction](#)[Conclusions](#)[References](#)[Tables](#)[Figures](#)[◀](#)[▶](#)[◀](#)[▶](#)[Back](#)[Close](#)[Full Screen / Esc](#)[Print Version](#)[Interactive Discussion](#)

EGU

**Match in Arctic winter
2002/2003**

M. Streibel et al.

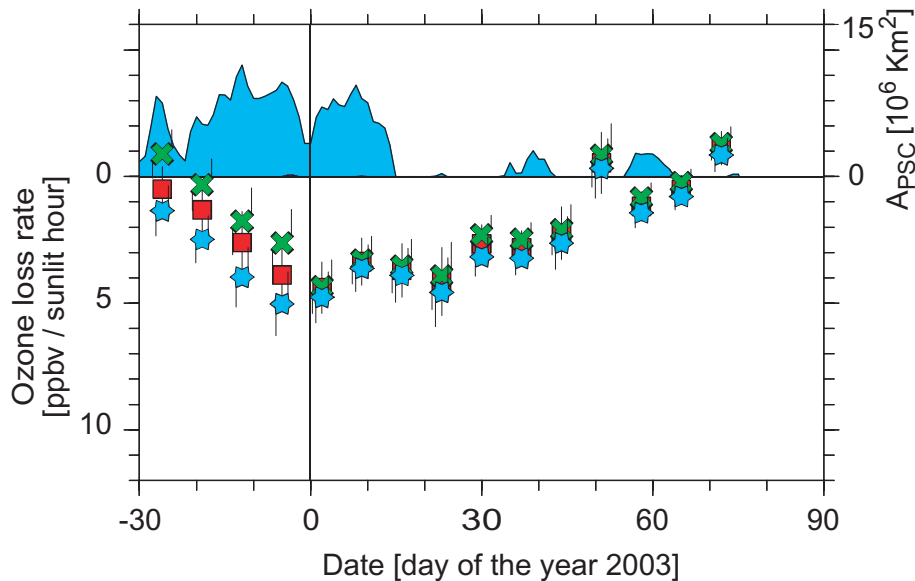


Fig. 6. Sensitivity of the Match results to diabatic cooling rates used in the Match analysis. Loss rates per sunlit hour at $\Theta=475\pm 10$ K are shown. Red squares: reference (same data as shown in Fig. 3c), green crosses: cooling rates are multiplied by a constant factor of 0.5, light blue stars: cooling rates are multiplied by a constant factor of 1.5.

[Title Page](#)[Abstract](#)[Introduction](#)[Conclusions](#)[References](#)[Tables](#)[Figures](#)[◀](#)[▶](#)[◀](#)[▶](#)[Back](#)[Close](#)[Full Screen / Esc](#)[Print Version](#)[Interactive Discussion](#)

EGU

**Match in Arctic winter
2002/2003**

M. Streibel et al.

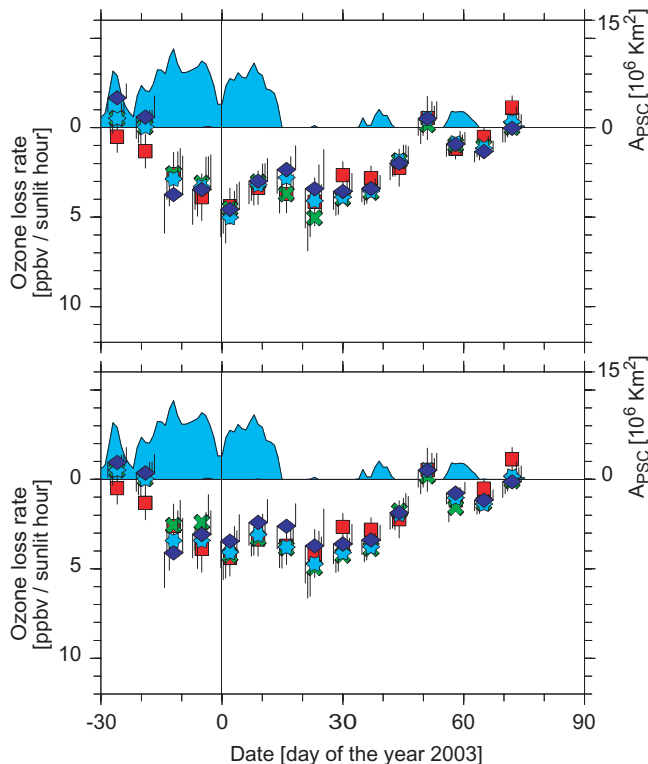


Fig. 7. Effect of the introduction of a backward match radius in addition to the forward match radius at $\Theta=475\pm 10$ K. Panel **(a)**: analyses using two thresholds for the two match radii. The forward match radius is kept constant at 500 km whereas the backward match radius is changed. Red squares: reference (same data as shown in Fig. 3c), green crosses: maximum allowed backward match radius = 600 km, light blue stars: 500 km, dark blue diamonds: 400 km. Panel **(b)**: analyses using a threshold for the sum of forward and backward match radius. Red squares reference (same data as shown in Fig. 3c), green crosses: combined match radius = 1000 km, light blue stars: 800 km, dark blue diamonds: 700 km.

[Title Page](#)
[Abstract](#)
[Introduction](#)
[Conclusions](#)
[References](#)
[Tables](#)
[Figures](#)
[◀](#)
[▶](#)
[◀](#)
[▶](#)
[Back](#)
[Close](#)
[Full Screen / Esc](#)
[Print Version](#)
[Interactive Discussion](#)