



HAL
open science

Simulations of preindustrial, present-day, and 2100 conditions in the NASA GISS composition and climate model G-PUCCINI

D. T. Shindell, G. Faluvegi, N. Unger, E. Aguilar, G. A. Schmidt, D. M. Koch, S. E. Bauer, R. L. Miller

► **To cite this version:**

D. T. Shindell, G. Faluvegi, N. Unger, E. Aguilar, G. A. Schmidt, et al.. Simulations of preindustrial, present-day, and 2100 conditions in the NASA GISS composition and climate model G-PUCCINI. Atmospheric Chemistry and Physics Discussions, 2006, 6 (3), pp.4795-4878. hal-00301540

HAL Id: hal-00301540

<https://hal.science/hal-00301540>

Submitted on 18 Jun 2008

HAL is a multi-disciplinary open access archive for the deposit and dissemination of scientific research documents, whether they are published or not. The documents may come from teaching and research institutions in France or abroad, or from public or private research centers.

L'archive ouverte pluridisciplinaire **HAL**, est destinée au dépôt et à la diffusion de documents scientifiques de niveau recherche, publiés ou non, émanant des établissements d'enseignement et de recherche français ou étrangers, des laboratoires publics ou privés.

Simulations of preindustrial, present-day, and 2100 conditions in the NASA GISS composition and climate model G-PUCCINI

D. T. Shindell^{1,2}, G. Faluvegi^{1,2}, N. Unger^{1,2}, E. Aguilar^{1,2}, G. A. Schmidt^{1,2},
D. M. Koch^{1,3}, S. E. Bauer^{1,2}, and R. L. Miller^{1,4}

¹NASA Goddard Institute for Space Studies, New York, NY, USA

²Center for Climate Systems Research, Columbia University, NY, USA

³Dept. of Geophysics, Yale University, New Haven, USA

⁴Dept. of Applied Physics and Applied Math, Columbia University, NY, USA

Received: 3 February 2006 – Accepted: 13 March 2006 – Published: 15 June 2006

Correspondence to: D. T. Shindell (dshindell@giss.nasa.gov)

Title Page

Abstract

Introduction

Conclusions

References

Tables

Figures

◀

▶

◀

▶

Back

Close

Full Screen / Esc

Printer-friendly Version

Interactive Discussion

Abstract

A model of atmospheric composition and climate has been developed at the NASA Goddard Institute for Space Studies (GISS) that includes composition seamlessly from the surface to the lower mesosphere. The model is able to capture many features of the observed magnitude, distribution, and seasonal cycle of trace species. The simulation is especially realistic in the troposphere. In the stratosphere, high latitude regions show substantial biases during period when transport governs the distribution as meridional mixing is too rapid in this model version. In other regions, including the extrapolar tropopause region that dominates radiative forcing (RF) by ozone, stratospheric gases are generally well-simulated. The model's stratosphere-troposphere exchange (STE) agrees well with values inferred from observations for both the global mean flux and the ratio of Northern to Southern Hemisphere downward fluxes.

Simulations of preindustrial (PI) to present-day (PD) changes show tropospheric ozone burden increases of 11% while the stratospheric burden decreases by 18%. The resulting tropopause RF values are -0.06 W/m^2 from stratospheric ozone and 0.40 W/m^2 from tropospheric ozone. Global mean mass-weighted OH decreases by 16% from the PI to the PD. STE of ozone also decreased substantially during this time, by 14%. Comparison of the PD with a simulation using 1979 pre-ozone hole conditions for the stratosphere shows a much larger downward flux of ozone into the troposphere in 1979, resulting in a substantially greater tropospheric ozone burden than that seen in the PD run. This implies that reduced STE due to Antarctic ozone depletion may have offset as much as 2/3 of the tropospheric ozone burden increase from PI to PD. However, the model overestimates the downward flux of ozone at high Southern latitudes, so this estimate is likely an upper limit.

In the future, the tropospheric ozone burden increases sharply in 2100 for the A1B and A2 scenarios, by 41% and 101%, respectively. The primary reason is enhanced STE, which increases by 71% and 124% in the two scenarios. Chemistry and dry deposition both change so as to reduce ozone, partially in compensation for the enhanced

ACPD

6, 4795–4878, 2006

Composition and climate modeling with G-PUCCINI

D. T. Shindell et al.

Title Page

Abstract

Introduction

Conclusions

References

Tables

Figures

◀

▶

◀

▶

Back

Close

Full Screen / Esc

Printer-friendly Version

Interactive Discussion

EGU

STE. Thus even in the high-pollution A2 scenario, and certainly in A1B, the increased ozone influx dominates the burden changes. However, STE has the greatest influence on middle and high latitudes and towards the upper troposphere, so RF and surface air quality are dominated by emissions. Net RF values due to projected ozone changes depend strongly on the scenario, with 0.1 W/m^2 for A1B and 0.8 W/m^2 for A2. Changes in oxidation capacity are also scenario dependent, with values of plus and minus seven percent in the A2 and A1B scenarios, respectively.

1 Introduction

There are many ways in which changes in atmospheric composition and climate are coupled. The interactions are especially pronounced in the case of chemically reactive gases and aerosols. For example, atmospheric humidity increases as climate warms, altering reactions involving water vapor and aqueous phase chemistry in general, which in turn affects the abundance of radiative active species such as ozone and sulfate. Additional couplings exist via climate-sensitive natural emissions, such as methane from wetlands and isoprene from forests, aerosol-chemistry-cloud interactions in a changing climate, and large-scale circulation shifts in response to climate change, such as stratosphere-troposphere exchange (STE). This paper presents the latest version of the NASA Goddard Institute for Space Studies (GISS) composition and climate model as part of our continuing efforts to more realistically simulate the range of physical interactions important to past, present and future climates.

The trace gas photochemistry has been expanded from the earlier troposphere-only scheme described in Shindell et al. (2003) to include gases and reactions important in the stratosphere. At the same time, the sulfate aerosol and trace gas chemistry have been fully coupled (Bell et al., 2005) and interactions between chemistry and mineral dust have been added to the model. Climate-sensitive emissions have been included for methane from wetlands, NO_x from lightning, dust from soils, and DMS from the ocean. Water isotopes and a passive linearly increasing tracer have been included,

Title Page

Abstract

Introduction

Conclusions

References

Tables

Figures

◀

▶

◀

▶

Back

Close

Full Screen / Esc

Printer-friendly Version

Interactive Discussion

allowing better transport diagnostics. All components have been developed within the new GISS ModelE climate model (Schmidt et al., 2006). Since the climate model developed under the ModelE project has been named GISS model III, and the chemistry is also the third major version of its development following Shindell et al. (2001, 2003), it is appropriate to call this model the GISS composition and climate model III. We prefer, however, a more descriptive name: the GISS model for Physical Understanding of Composition-Climate INTERactions and Impacts (G-PUCCINI).

We present a detailed description of the model in Sect. 2, followed by an evaluation against available observations in Sect. 3. Section 4 presents the response to preindustrial and 2100 composition and climate changes as an initial application of this model. We conclude with a discussion of the model's successes and limitations with an eye towards determination of the suitability of the current model for various potential future studies.

2 Model description

2.1 Trace gas and aerosol chemistry

The trace gas photochemistry has been expanded from the tropospheric scheme developed previously (Shindell et al., 2003) to include species and reactions important in the stratosphere. Table 1 lists the molecules included in the gas photochemistry. Table 2 presents the additional 78 new reactions incorporated within the chemistry scheme. Together with the reactions included previously, the photochemistry now includes 155 reactions. Rate coefficients are taken from the NASA JPL 2000 handbook (Sander et al., 2000). Photolysis rates are calculated using the Fast-J2 scheme (Bian and Prather, 2002), except for the photolysis of water and nitric oxide (NO) in the Schumann-Runge bands, which are parameterized according to Nicolet (1984), Nicolet and Cieslik (1980).

Heterogeneous chemistry in the stratosphere follows the reactions listed in Table 2.

Title Page

Abstract

Introduction

Conclusions

References

Tables

Figures

◀

▶

◀

▶

Back

Close

Full Screen / Esc

Printer-friendly Version

Interactive Discussion

**Composition and
climate modeling
with G-PUCCINI**

D. T. Shindell et al.

Title Page

Abstract

Introduction

Conclusions

References

Tables

Figures

◀

▶

◀

▶

Back

Close

Full Screen / Esc

Printer-friendly Version

Interactive Discussion

Aerosol surface areas are set to match those used in the GCM's calculation of radiative transfer based upon an updated version of the volcanic plus background aerosol timeseries of Sato et al. (1993). For all the simulations described here, we use the stratospheric aerosol distribution for 1984, a mid-range year in terms of volcanic loading. Surface areas for polar stratospheric clouds (PSCs) are set using simple temperature thresholds for type I and II particles, with a parameterization of sedimentation also included. A more sophisticated model of particle growth based on Hanson and Mauersberger (1988) is being incorporated into the chemistry code, but is not yet functional. Thus the simulations do not include all potential pathways for interactions between polar ozone chemistry and climate or emissions changes as PSC formation is not sensitive to water or nitric acid abundance variations. Given that the model's transport biases limit the realism of its polar ozone simulations in any case, it was deemed a better use of resources to address this in future higher resolution runs than to repeat these simulations with a more advanced PSC scheme.

Chemistry can be included in the full model domain, or it can be restricted to levels below the meteorological tropopause. In the latter case, climatological ozone is used in the stratosphere and NO_x is prescribed as a fixed fraction of the ozone abundance as in our previous models. While we focus on the full chemistry model, both configurations are evaluated here so that future studies can select the most appropriate version. For the tropospheric chemistry-only version, the ozone climatology is set to 1990s levels.

To better understand the model's simulation of stratospheric transport, we have incorporated a passive, linearly increasing tracer as a standard feature along with the chemical tracers. This tracer is initialized in the lowest model layer with a value that increases by one unit each year, with a linear interpolation used to set monthly values. The difference between the tracer value at a given point and the surface level value then gives the mean time in years since the air left the surface. By comparing values throughout the stratosphere with those at the tropical tropopause, we can evaluate the age of air in the stratosphere and compare with observations of CO_2 and SF_6 .

The updated modelE version of the sulfate and sea salt model is described and eval-

uated in Koch et al. (2006). It includes prognostic simulations of DMS, MSA, SO₂ and sulfate mass distributions. The mineral dust aerosol model transports four different sizes classes of dust particles with radii between 0.1–1, 1–2, 2–4, and 4–8 microns. Particle sources are identified using the topographic prescription of (Ginoux, 2001). Direct dust emission increases with the third power of the wind speed above a threshold that increases with soil moisture. Emission is calculated by integrating over a probability distribution of surface wind speed that depends upon the speed explicitly calculated by the GCM at each grid box, along with the magnitude of fluctuations resulting from subgrid circulations created by boundary layer turbulence, along with dry and moist convection. As a result, emission can occur even if the GCM grid box wind speed is below the threshold, so long as there are subgrid fluctuations. Dust particles are removed from the atmosphere by a combination of gravitational settling, turbulent mixing, and wet scavenging. Dust also affects the radiation field, and can thus influence photolysis rates. A more detailed description of the dust model, along with a comparison to regional observations, is given by Miller et al. (2006) and Cakmur et al. (2006).

The model includes heterogeneous chemistry for the uptake of nitric acid on mineral dust aerosol surfaces. This is described by a pseudo first-order rate coefficient which gives the net irreversible removal rate of gas-phase species to an aerosol surface. We use the uptake coefficient of 0.1 recommended from laboratory measurements (Hanisch and Crowley, 2001), though this value is fairly uncertain.

The model also includes the stable water isotopes HDO and H₂¹⁸O, which are fully coupled to the GCM's hydrologic cycle. Comparison between the modeled and observed values of these isotopes, and especially of their vertical profiles, can be a useful way to evaluate (and improve) the stratosphere-troposphere exchange in the model and the parameterization of cloud physics (Schmidt et al., 2005).

For the simulations described here, the tropospheric chemistry-only simulations were run including interactive aerosols, which are coupled to the chemistry (Bell et al., 2005). Heterogeneous chemistry on dust was included in a separate sensitivity study to isolate its influence. In the full chemistry simulations, we revert to using offline prescribed

**Composition and
climate modeling
with G-PUCCINI**

D. T. Shindell et al.

Title Page

Abstract

Introduction

Conclusions

References

Tables

Figures

◀

▶

◀

▶

Back

Close

Full Screen / Esc

Printer-friendly Version

Interactive Discussion

aerosol fields for computational efficiency as the chemistry-aerosol coupling has a substantial effect on the aerosol simulation, but only a minor effect on the trace gases, which are our primary concern here.

The model has the capability to have changes in composition affect radiative transfer for radiatively active species including ozone, methane, aerosols and dust. The full chemistry simulations were performed including such interactions. However, the simulations we report on here for model evaluation used prescribed present-day sea surface temperatures (SSTs) and sea ice conditions, so that changes in the radiatively active gases could not affect climate substantially, though they could influence atmospheric temperatures. In the climate simulations described in Sect. 4, however, this interaction becomes important.

2.2 Sources and sinks

Emissions of trace gases and aerosols are largely the same as those used in previous versions (Shindell et al., 2003). They include the standard suite of emissions from fossil fuel and biomass burning, soils, industry, livestock, forests, wetlands, etc. These are based largely on GEIA inventories (Benkovitz et al., 1996). Sulfur emissions are from the EDGAR inventory as described in Bell et al. (2005). For the new long-lived species included here, N_2O and CFCs (and CO_2), we prescribe values at observed amounts (Table 3) in the lowest model layer. This technique is also available for methane, though in the present-day simulations described here we use the full set of methane emissions. CFCs are modeled using the characteristics of CFC-11 but with a magnitude designed to capture the total chlorine source from all CFC species (i.e. each CFC yields one chlorine atom when broken down, so the amount of CFCs is set to match total anthropogenic chlorine). We also assume there is a background chlorine value of 0.5 ppbv from natural sources.

Composition and climate modeling with G-PUCCINI

D. T. Shindell et al.

Title Page

Abstract

Introduction

Conclusions

References

Tables

Figures

◀

▶

◀

▶

Back

Close

Full Screen / Esc

Printer-friendly Version

Interactive Discussion

2.3 Climate model

During the past several years, primary GISS modeling efforts have been directed into an entirely rewritten and upgraded climate model under the modelE project (Schmidt et al., 2006). This resulting GISS model, called either modelE or model III, incorporates previously developed physical processes within a single standardized structure quite different from the older model. This structure is much more complicated to create, but makes the interaction between GISS model components easier and more physically realistic. The standardization across components has also allowed many improvements to be included relatively easily. An example is that the previous schemes all calculated momentum in somewhat different ways. With modelE's uniform treatment of momentum, it was quickly apparent that momentum was not conserved in the interaction between the gravity-wave drag scheme and the rest of the circulation, which has now been corrected.

ModelE also includes several advances compared to previous versions, including more realistic physics and improved convection and boundary layer schemes. The horizontal resolution can be easily altered, unlike previous versions. Standard diagnostics include statistical comparisons with satellite data products such as ISCCP cloud cover, cloud height, and radiation products, MSU temperatures, TRMM precipitation, and ERBE radiation products. Over a full suite of evaluation comparisons, including the satellite data and standard reference climatologies for parameters such as circulation, precipitation, snow cover, and water vapor, modelE now substantially outperforms all other GISS model versions (of course not on every individual quantity), producing rms errors approximately 11% less than those for Model II'. The new modelE GCM was used for the GISS simulations performed for the forthcoming Intergovernmental Panel on Climate Change (IPCC) Fourth Assessment Report (AR4). Hence this model has been scrutinized in great detail, so that the behavior of physical processes have been compared with a wide range of observations and the model's response to a large number of forcings has been well-characterized.

ACPD

6, 4795–4878, 2006

Composition and climate modeling with G-PUCCINI

D. T. Shindell et al.

Title Page

Abstract

Introduction

Conclusions

References

Tables

Figures

◀

▶

◀

▶

Back

Close

Full Screen / Esc

Printer-friendly Version

Interactive Discussion

EGU

An important new feature of modelE for the trace gas and aerosol species is a carefully constructed cloud tracer budget. Most, if not all, chemical and aerosol models (including all pre-modelE GISS models) do not save dissolved species in a cloud budget but instead return the dissolved (unscavenged) species to the model grid box at the end of each model time-step. In our model, we have created a cloud liquid budget and this has important implications for tracer distributions. Inclusion of the cloud tracer budget decreases sulfate production in the clouds (since most of the sulfate is ultimately rained out instead of released back to the grid box) (Koch et al., 2006) and reduces the abundance of soluble O₃ precursors, such as nitric acid (HNO₃), which were systematically overestimated in previous models. We have also developed a new dry deposition module within modelE that is physically consistent with the other surface fluxes (e.g. water, heat) in the planetary boundary layer scheme of the GCM, which was not the case in earlier models (or indeed in most chemistry-climate models).

Yet another important feature of modelE is the capability to run the GCM with linear relaxation, or “nudging”, to reanalysis data for winds. This allows the model’s meteorology to be forced to match fairly closely that which existed during particular times, making for a much cleaner comparison with observational datasets.

GISS model development has benefited particularly from the close interaction of the composition modelers with the basic climate model developers at all stages, which has enabled development of many consistent physical linkages such as the surface fluxes and liquid tracer budgets. Here we use a version with 23 vertical layers (model top in the mesosphere at 0.01 hPa) and 4×5 degree horizontal resolution. Present-day simulations use seasonally varying climatological sea surface temperatures and sea ice coverage representative of the 1990s (Table 3).

**Composition and
climate modeling
with G-PUCCINI**

D. T. Shindell et al.

Title Page

Abstract

Introduction

Conclusions

References

Tables

Figures

◀

▶

◀

▶

Back

Close

Full Screen / Esc

Printer-friendly Version

Interactive Discussion

3 Evaluation of present-day simulation

3.1 Long-lived gases in the stratosphere

Several long-lived species have been included as transported gases. These include nitrous oxide (N_2O), a source of NO_x radicals in the stratosphere, methane (CH_4) and water vapor (H_2O), sources of stratospheric HO_x , and chlorofluorocarbons (CFCs), a source of halogens. A linearly increasing tracer to diagnose transport was also included. This is presented in Fig. 1, which shows the age of air in the stratosphere calculated using the linearly increasing tracer in comparison with values derived from SF_6 and CO_2 observations (Andrews et al., 1999; Boering et al., 1996; Elkins et al., 1996; Harnisch et al., 1996) and values from other models (Hall et al., 1999). Clearly the model's air in the high latitude lower stratosphere is too young, a feature seen in most GCMs and even in CTMs driven by assimilated meteorological data (Scheele et al., 2005; Schoeberl et al., 2003). The annual mean residual vertical velocity in the model underestimates the maximum values seen in the UKMO analyses (Swinbank and O'Neill, 1994), and the region of upwelling extends too far poleward in the Southern Hemisphere, and to a much lesser extent in the Northern Hemisphere (Fig. 2). The model's mean upwelling velocity is 35% slower than in the observations. However, the seasonal cycle shows the maximum upwelling occurring in the summer subtropics in both hemispheres, in accord with Rosenlof (1995) and Plumb and Eluszkiewicz (1999). This simulation of the seasonality of tropical upwelling is a marked improvement over that seen in the older GISS model II, which failed to reproduce the austral summer maximum entirely (Butchart et al., 2006¹). The model also simulates a local minimum in upwelling near the equator, a feature seen in most GCMs but not in previous GISS models (Butchart et al., 2006¹). The underestimate of upwelling velocities indicates that air reaches the high latitude lower stratosphere too easily via merid-

¹Butchart, N., Scaife, A. A., Bourqui, M., et al.: A multi-model study of climate change in the Brewer-Dobson circulation, *Clim. Dyn.*, submitted, 2006.

Title Page

Abstract

Introduction

Conclusions

References

Tables

Figures

◀

▶

◀

▶

Back

Close

Full Screen / Esc

Printer-friendly Version

Interactive Discussion

ional transport across the semi-permeable barriers in the stratosphere rather than via a Brewer-Dobson circulation that is too rapid.

Consistent with these circulation biases, the model's N_2O and CH_4 distributions are too broad compared with satellite climatologies from the Halogen Occultation Experiment (HALOE) and the Cryogenic Limb Array Etalon Spectrometer (CLAES) (Randel et al., 1998) (Fig. 3). Also, the high mixing ratio values entering the stratosphere in the tropics do not penetrate to high enough altitudes before being chemically transformed. The distribution of CFCs in the model exhibits a similar shape. The weak meridional gradients in the distributions of these long-lived gases implies that transport across the subtropical and polar barriers is too rapid. Additionally, there may not be enough downward transport within the polar vortex, as seen near the North Pole in Fig. 3. This appears to result from the underestimate of polar isolation which keeps the polar region from cooling as much as it should, rather than biases in the overturning circulation given that the age of air is too short in the polar regions. In the interest of space, we concentrate on results for April, a month showing a "typical" ozone distribution neither too close to the solstices nor drastically affected by polar heterogeneous chemistry. The distributions are similarly too broad in other months.

The model's water vapor distribution in the stratosphere closely resembles the opposite of the methane distribution up through ~ 1 hPa. However, the water vapor near the tropical tropopause entry point is too low, leading to a negative bias throughout the stratosphere. Given the extremely high sensitivity of water vapor to temperature and convective mixing in this region, the bias in water reflects only a small underestimate of temperature or overestimate of convective drying. As in observations, values increase by roughly 3 ppmv from the tropical tropopause to the upper stratosphere at 2 hPa. However, the model's meridional gradients in stratospheric water are again too weak and the stratopause region water values are too low, both features being consistent with the circulation-induced biases in the methane distribution. Water vapor mixing ratios decrease below 5.5 ppmv at about 0.2–0.3 hPa, as in observations, however this mesospheric loss takes place at all latitudes in the model but only near the springtime

**Composition and
climate modeling
with G-PUCCINI**

D. T. Shindell et al.

Title Page

Abstract

Introduction

Conclusions

References

Tables

Figures

◀

▶

◀

▶

Back

Close

Full Screen / Esc

Printer-friendly Version

Interactive Discussion

pole in observations. This may indicate that chemistry above the model top influences those layers, or that the current parameterization of mesospheric photolysis needs to be improved. Future work will explore this region further. The seasonality of water vapors entry into the stratosphere is simulated reasonably well, with a clear “tropical tape recorder” signal seen in the water vapor distribution (Schmidt et al., 2005).

3.2 Ozone

The model’s annual cycle of column ozone and the difference with respect to observations is shown in Fig. 4. The simulated distribution shows a broad minimum and little seasonality in the tropics, with greater ozone values and a larger seasonal cycle at high latitudes, in good agreement with observations. However, the model underestimates the magnitude of the seasonal cycle at high northern latitudes, with too little ozone during the winter and too much ozone during the summer, and has a general positive bias over the Antarctic. The model’s column ozone is within 10% of the observed value throughout the tropics and subtropics and over most mid-latitude areas. High latitude differences are larger, in excess of 20% in some locations during some seasons.

There are two primary reasons for the high latitude biases apparent in Fig. 4. During the summer, high latitude temperatures in the ModelE GCM without chemistry exhibit a cold bias of $\sim 10^{\circ}\text{C}$ in the lowermost stratosphere (Schmidt et al., 2006). By slowing down the rates of ozone destroying reactions, this contributes to an increasing positive ozone biases during summer and fall seen in both hemispheres. The second reason is that the model’s transport of gases into high latitudes is in general too rapid in the lower stratosphere, with the subtropical and polar barriers being too permeable, as discussed in Sect. 3.1. This transport bias contributes to the underaccumulation of ozone in the Arctic during winter, and to the failure of the model to simulate lower ozone values over the Antarctic than at Southern Hemisphere mid-latitudes during fall and winter, in both cases as air is not confined closely enough within the polar region. The model does produce a fairly reasonable Antarctic ozone hole. The timing is consistent with observations, as is the depletion relative to the wintertime values, though the min-

Composition and climate modeling with G-PUCCINI

D. T. Shindell et al.

Title Page

Abstract

Introduction

Conclusions

References

Tables

Figures

◀

▶

◀

▶

Back

Close

Full Screen / Esc

Printer-friendly Version

Interactive Discussion

imum values are too large as those winter starting values are too large (as discussed previously).

Figure 5 presents the April zonal mean ozone distribution in the model and from the Microwave Limb Sounder (MLS) and HALOE instruments. Clearly the Arctic distribution is too closely centered around 10 hPa, similar to middle latitudes, consistent with an underestimate of downward transport within the polar vortex and too much mixing across the vortex boundary. The Southern Hemisphere polar vortex similarly shows too much ozone from about 10–5 hPa and contours of large ozone mixing ratios that extend too far poleward from the mid-latitude maximum. Ozone in the tropics is well-simulated, though the maximum ozone mixing ratio in the model is slightly less than in observations. In fact, the simulation is generally of high quality in regions where ozone's photochemical lifetime is short, suggesting that the model's chemistry scheme works well and that biases are indeed largely related to transport.

In addition to examining the present-day stratospheric ozone climatology, sufficient data exists to allow evaluation of the sensitivity of stratospheric ozone to perturbations. Observations from the Stratospheric Aerosol and Gas Experiment (SAGE) series of satellites have been used to calculate ozone trends over the period 1979 to 2004 (updated from Randel and Wu, 1999). We have performed a simulation using 1979 climate and long-lived trace gas conditions (Table 3), and can then compare the modeled change from 1979 to the present with these observations, as shown in Fig. 6. Note that our simulation did not include changes in emissions of short-lived tropospheric ozone precursors, as it was designed to isolate the impact of stratospheric ozone changes on the atmosphere. Qualitatively, the model captures the pattern of local maxima in ozone loss in both polar regions in the lowermost stratosphere and in the upper stratosphere and also simulates the local minimum in the tropical stratosphere around 25–30 km altitude. Quantitatively, the model's ozone trends are typically a few percent larger than those seen in the satellite record. This is especially true in the Arctic lower stratosphere, though the uncertainty in the observed trends is very large as variability is high in this region. In the Antarctic lower stratosphere, the model's trend is in fairly good

**Composition and
climate modeling
with G-PUCCINI**

D. T. Shindell et al.

Title Page

Abstract

Introduction

Conclusions

References

Tables

Figures

◀

▶

◀

▶

Back

Close

Full Screen / Esc

Printer-friendly Version

Interactive Discussion

agreement with the magnitude calculated from observations, though the largest depletion extends over a larger area, especially down into the troposphere. However, the values in the troposphere and near the tropopause in general are all more negative in the model since these simulations did not include increases in tropospheric ozone precursors. As seen in the runs that did include such increases, the troposphere became more and more polluted during the twentieth century, which would account for the positive trends seen in the lowermost portion of the SAGE data at mid-latitudes and in the tropics and also the smaller negative values seen at high latitudes.

To evaluate the lowermost stratosphere and troposphere, where satellite climatologies do not yet exist, we have extensively compared modeled annual cycles of ozone with a long-term balloon sonde climatology from remote sites (Logan, 1999). Annual cycles at several pressure levels are shown for selected sites in Fig. 7, while statistical comparisons with all sites are presented in Table 4. Results are included for simulations incorporating chemistry throughout the model domain and for simulations with tropospheric chemistry only. Values from the previous model II' version are also shown in the table for comparison.

The ozone values and annual cycles over a wide range of latitudes are reasonably well simulated (Fig. 7). The high latitude biases evident in the previous analysis of the total column are immediately apparent at the uppermost sonde levels, however. The full chemistry version underpredicts wintertime ozone at 125 hPa at both Resolute and Hohenpeissenberg, and overpredicts at Lauder and especially at Syowa. Interestingly, the depth of the springtime ozone hole over Syowa is reproduced fairly reasonably. The biases have only a minor effect on lower altitudes at most locations, with the exception of Syowa where they persist clearly through at least 500 hPa. The shape of the seasonal cycle is generally well reproduced in the model, with maximum and minimum values typically falling at the correct time of year. There is clearly an underestimate of ozone in the tropical upper troposphere at Natal, but this is not the case at other locations.

A broader comparison of all 16 ozonesonde sites, as shown in Table 4, demonstrates

Composition and climate modeling with G-PUCCINI

D. T. Shindell et al.

Title Page

Abstract	Introduction
Conclusions	References
Tables	Figures

◀ ▶

◀ ▶

Back Close

Full Screen / Esc

Printer-friendly Version

Interactive Discussion

that the new composition and climate model gives a substantially improved simulation in comparison with the older model II' tropospheric chemistry model. Running the new model in tropospheric chemistry-only mode leads to a better match with observations at all levels, though especially those away from the surface. Using the full chemistry calculation, inherently a more difficult endeavor compared with prescribing stratospheric ozone to exactly match observations, coincidentally leads to differences with respect to observations that are quite similar to those seen in the tropospheric chemistry-only model II'. However, this implies that at a level such as 125 hPa, in the stratosphere for many of the sites, the full chemistry model does a much better job for the low latitude sites for which this level is in the troposphere (consistent with the modelE tropospheric chemistry-only performance). Transport from the stratosphere to the troposphere is substantially improved in the new modelE, as evidenced by the improvement in the tropospheric chemistry modelE versus II'. Thus the large positive bias in the full chemistry model at 300 hPa does not result solely from excessive downward transport, a major problem in previous GISS GCMs. It is at least partially attributable to the overestimate of high latitude lower stratospheric ozone, especially in the Southern Hemisphere. A similar statistical comparison of the full chemistry run with sonde data leaving out the two high latitude sites Resolute and Syowa shows average differences in ppbv reduced from 34.7 to 23.7 at 300 hPa, from 45.7 to 37.0 at 200 hPa, and from 83.2 to 75.8 ppbv at 125 hPa, while at lower levels, there is little effect. This demonstrates that, as expected, a fair amount of the discrepancy with observations arises from the model's high latitude biases. However, some excessive downward transport may still be occurring, which is partially masked in the tropospheric chemistry-only run by the negative bias at 200 hPa. The large 300 hPa positive bias is thus not present in the modelE tropospheric chemistry-only run. Aside from this large positive bias (31%), biases at other levels are generally quite small, with values of 12% or less (and often 3% or less) at all other levels for both the full chemistry and tropospheric chemistry-only simulations. The GISS tropospheric-only chemistry model participated in the ACCENT/IPCC AR4 assessment of chemistry models, which included an evaluation of present-day simula-

**Composition and
climate modeling
with G-PUCCINI**

D. T. Shindell et al.

Title Page

Abstract

Introduction

Conclusions

References

Tables

Figures

◀

▶

◀

▶

Back

Close

Full Screen / Esc

Printer-friendly Version

Interactive Discussion

tions against this same ozonesonde climatology. In comparison with the other models, the GISS model performed quite well, with a root-mean-square (rms) error value of 6.3 ppbv compared with a range of rms error values of 4.6 to 17.8 ppbv (Stevenson et al., 2006).

5 An additional simulation identical to the tropospheric chemistry-only run except including heterogeneous reactions on dust surfaces was also performed. The same statistical comparison of ozone fields with sonde data for that run shows reductions in the mean ozone concentration at those sites of 1.3% at 300 hPa, of 9.8% at 500 hPa, and of 1.0% at 950 hPa. Changes are 0.5% or less at 125 and 200 hPa. The reduction
10 occurs primarily via removal of nitric acid on dust surfaces (see Sect. 3.3), which reduces the reactive nitrogen available for ozone production. The overall effect on ozone is mixed, with minor improvements in the model-data comparison at some levels and minor reductions in quality at others. The effect of the model's liquid tracer budget has also been assessed. The inclusion of liquid tracers leads to an overall reduction in
15 ozone due to enhanced removal of soluble species such as HNO_3 (see Sect. 3.2). The tropospheric ozone burden is reduced by 10 Tg (3%). The changes are not uniform, however, with ozone generally decreasing in the upper troposphere but sometimes increasing at lower levels. For example, in the same statistical comparison with sondes discussed above, the ozone concentration at those sites is reduced by 0.6 ppbv at
20 300 hPa, but increased by 1.6 ppbv at 500 hPa. This results from enhanced downward transport of aqueous-phase HNO_3 via advection and precipitation followed by evaporation. Overall the comparison with sondes generally changes by only about 1%, though at the 900 hPa level the difference between sondes and the model is reduced by ~3% with the inclusion of the liquid tracer.

25 Surface ozone data is more widely available, and we compare modeled values with measurements from 40 sites using the climatology of Logan (1999), based on data from many sources (Cros et al., 1988; Kirchhoff and Rasmussen, 1990; Oltmans and Levy, 1994; Sanhueza et al., 1985; Sunwoo and Carmichael, 1994). The model does a reasonably good job of matching the observed annual cycle at most sites, a sample

**Composition and
climate modeling
with G-PUCCINI**

D. T. Shindell et al.

Title Page

Abstract

Introduction

Conclusions

References

Tables

Figures

◀

▶

◀

▶

Back

Close

Full Screen / Esc

Printer-friendly Version

Interactive Discussion

**Composition and
climate modeling
with G-PUCCINI**

D. T. Shindell et al.

Title Page

Abstract

Introduction

Conclusions

References

Tables

Figures

◀

▶

◀

▶

Back

Close

Full Screen / Esc

Printer-friendly Version

Interactive Discussion

of which is shown in Fig. 8. The results for the tropospheric chemistry-only simulation are fairly similar to those of our previous model (Shindell et al., 2003), consistent with the 900 hPa results shown in Table 4. There is some improvement at Reykjavik owing to the improved downward transport at high latitudes. At Northern middle latitudes, the simulation at Rockport is substantially improved, while that in the Northeastern US is marginally better though the Hohenpeissenberg results are marginally worse. The surface ozone values in the full chemistry simulation are very similar to those in the tropospheric chemistry-only version, unsurprisingly. Interestingly, South Pole shows a substantial difference, with more wintertime ozone in the full chemistry run. While this improves the agreement with observations, it results from the overestimate of ozone in the Antarctic lower stratosphere. This does indicate that the model correctly transports stratospheric ozone anomalies all the way to the surface at South Pole. Comparing all 40 sites with the model's values shows that the mean bias has decreased from +3.8 ppbv in model II' to -1.4 ppbv in the tropospheric chemistry-only run and 0.6 ppbv in the full chemistry run. A correlation plot of the annual average surface ozone (Fig. 9), however, shows that there is still substantial scatter despite the small mean bias. It is important to remember that the observations are primarily from remote sites, and that the model's 4 by 5 degree grid boxes tend to include a mix of remote and urban locations over most continental regions, making the comparison somewhat imperfect.

It thus appears that the model generally does a reasonable job of reproducing observations throughout much of the atmosphere. The primary exception is the polar stratosphere, as discussed above, where values show biases up to about 25%. This is an important limitation, affecting the model's usefulness in performing studies of polar ozone depletion, though the Antarctic ozone hole is fairly well represented. However, the model reproduced observations in the extrapolar regions quite well, and shows especially good agreement near the surface and in the vicinity of the tropopause (Table 4). The latter is a key region for radiative forcing, and thus the results indicate that the model is useful for studies of how composition-climate interactions may affect climate and air quality.

**Composition and
climate modeling
with G-PUCCINI**

D. T. Shindell et al.

Title Page

Abstract

Introduction

Conclusions

References

Tables

Figures

◀

▶

◀

▶

Back

Close

Full Screen / Esc

Printer-friendly Version

Interactive Discussion

One area that has proved difficult to study in the past has been the response of STE to climate change. Without the inclusion of stratospheric chemistry, our previous studies, and those of many other groups using tropospheric chemistry-only setups, were strongly influenced by the definition of the upper boundary for chemistry. For example, if chemistry was calculated below a fixed level, part of the upper troposphere and lowermost stratosphere, a region where data is sparse, had to be prescribed, and odd gradients could be created across this arbitrary chemical boundary. If instead chemistry followed the tropopause, changes in the location of the tropopause could dramatically affect the results as ozone amounts changed from climatology to calculated values. This latter effect could create sources and sinks as a box was categorized alternately in one region then the other. The new full chemistry model avoids these problems, and so we explore the issue of STE in some depth in Sect. 4.4. In preparation for this, we give the tropospheric ozone budget for the models discussed here initially calculating the terms for the atmosphere below 150 hPa and using fluxes across this level (Table 5).

The tropospheric ozone burden of 379 Tg in the tropospheric chemistry-only model is quite similar to the 349 Tg burden in the previous model II' tropospheric chemistry-only version. These burdens are very close despite a large change in dry deposition between the two models that resulted from the switch between the earlier surface flux calculation to one consistent with other climate variables in the new modelE. This reinforces the point we've made previously that only the STE value is reasonably well constrained from observations. These give a best estimate of 450 Tg/yr with a range of 200 to 870 Tg/yr for the cross-tropopause flux based on O_3 - NO_y correlations (Murphy and Fahey, 1994), a range of 450–590 Tg/yr at 100 hPa from satellite observations (Gettelman et al., 1997), and a constraint from potential vorticity and ozone fluxes for the downward extrapolar flux (~80–100% of total downward flux) of 470 Tg/yr for the year 2000 (Olsen et al., 2003). Some analyses also provide estimates of the ratio of NH to SH downward flux, with the NH contributing 55% of the total in Olsen et al. (2003) and 57% in (Gettelman et al., 1997). The present-day model results are in good agree-

ment with this value, with 57% of the downward flux in the NH (Table 6). The total STE values in the tropospheric chemistry-only model are consistent with the observational constraints. The full chemistry simulation has a larger value that is on the high side of the range from observations, owing to the excessive downward ozone fluxes at high

5 Southern latitudes where ozone amounts are overestimated (the full chemistry STE value at 115 hPa, our closest level to 100 hPa, is 578 Tg/yr). The other budget terms simply respond to balance the tropospheric abundance as chemistry is typically very rapid, making the system highly buffered and the other budget terms of limited value for model evaluation.

10 3.3 Nitrogen species

The model's distribution of HNO₃ matches the location of maxima in the satellite observations in both extratropical regions fairly well (Fig. 5). The area within the 9 ppbv contour is too large in the SH, however. Nitric acid can be formed by heterogeneous chemistry, and is therefore dependent upon aerosol and PSC surface areas and a parameterization of particle growth and sedimentation. Since these are quite simple in this model, it is not surprising that the abundance of HNO₃ does not match perfectly with observations. In the tropics, the level with maximum HNO₃ occurs too low, consistent with the tropical upward transport being too slow and mixing across the subtropics being too rapid.

20 In the troposphere, the nitric acid simulation is in good qualitative agreement with the limited available data, and is quantitatively much improved over previous results despite still being too large. Figure 10 shows nitric acid profiles from tropospheric chemistry-only simulations performed with and without the inclusion of heterogeneous chemistry on dust, and for a run without the use of the liquid tracer budget. These are compared with a variety of aircraft measurements (Emmons et al., 2000). In the new simulations with or without heterogeneous chemistry on dust, the overestimate of HNO₃ typically seen in our earlier model II' results has been reduced substantially in the new modelE, primarily as a result of the inclusion of a liquid tracer budget. The

Title Page

Abstract

Introduction

Conclusions

References

Tables

Figures

◀

▶

◀

▶

Back

Close

Full Screen / Esc

Printer-friendly Version

Interactive Discussion

**Composition and
climate modeling
with G-PUCCINI**

D. T. Shindell et al.

Title Page

Abstract

Introduction

Conclusions

References

Tables

Figures

◀

▶

◀

▶

Back

Close

Full Screen / Esc

Printer-friendly Version

Interactive Discussion

presence of a liquid tracer, allowing dissolved species to remain in the condensed phase for multiple timesteps, leads to global reductions in the abundance of soluble gases, with an overall reduction in the global HNO_3 burden of 5% and a reduction in the tropospheric ozone burden of 3%, as noted previously. The effect of the liquid budget is much larger for sulfur-containing species, some of whose burdens decreased by 25–30% (Koch et al., 2006). In some locations where liquid water is abundant and long-lasting, quite large reductions occur (e.g. Japan in Fig. 10). Additionally, it is clear from the figure that heterogeneous chemistry on dust further improves the results in many locations (though not all). The overall model improvement is especially striking for Japan, where the liquid tracer and the removal of nitric acid on dust particles blowing out from the Asian interior brings the modeled values down to observed levels. In contrast, profiles from model II' or modelE without the liquid tracers or dust chemistry were roughly a factor of 5 too large in this area, while those from the modelE run without dust chemistry are a factor of 2 to 3 too large.

Similar comparisons of the vertical profiles of NO_x and PANs in the troposphere show good agreement between the model and observations in most locations (not shown), similar to that seen in our previous model (Shindell et al., 2003). Analysis of the modeled NO_x simulation in the stratosphere is complicated by the fact that the available climatologies from HALOE record sunrise and sunset NO and NO_2 , but these species change rapidly during these times. The model's monthly mean April NO_x shows a peak of ~12–13 ppbv in the tropics at ~5 hPa, in reasonable agreement with the sum of NO and NO_2 in the HALOE sunrise measurements but somewhat lower than the sunset sum which is peaks at ~18 ppbv. Given that the model values are a diurnal average, it seems reasonable that they should lie below some of the sunlit observations. Since nitrogen oxide abundances change so rapidly during sunrise and sunset, even a more detailed comparison with the model results is likely to be inconclusive owing to the model's half hour chemistry timestep.

The global annual average source of NO_x from lightning is 5.2 Tg N/yr in both the tropospheric chemistry-only and the full chemistry models. This source is calculated

internally based on the GCM's convection using parameterizations for total and cloud-to-ground lightning modified from (Price et al., 1997). The spatial distribution of lightning agrees fairly well with observations (Boccippio et al., 1998), especially over land areas (Fig. 11). The model tends to overestimate lightning over SE Asia and Indonesia, however. This leads to overestimates of the total flash rate of 5% during boreal summer (JJA), and 17% during boreal winter (DJF) when lightning over South America is also overestimated.

The deposition of nitrogen in the model has been extensively compared with observations as part of a wider model intercomparison (Lamarque et al., 2005). In that study the GISS model was run with several different sets of sea surface temperature and sea ice boundary conditions. Comparisons were made with deposition measurements from acid rain monitoring networks in the NH. We summarize the results of those studies briefly here. In comparison against the North American network of deposition measurements (Holland et al., 2005), the GISS models showed correlations of 0.82 to 0.85 (regression over all points in the network against the equivalent model grid box), comparable to the average of the 0.83 for the 6 different models in the intercomparison. The mean value was also in fairly good agreement at 0.20–0.25 gN/m²/year compared with an observed value of 0.19. For Asia, the GISS models' correlations with the single year of available observations (see <http://www.eanet.cc/>) were 0.54–0.62, again consistent with the model average of 0.58. As in the other models, the GISS model underestimated the mean flux by ~50% however, perhaps reflecting the difficulties inherent in comparison between large model grid boxes and point measurements in a densely populated area. It is also possible that the bias reflects and underestimate of nitrogen emissions from Asia. Inverse modeling using satellite observations suggests that Asian emissions are indeed underreported (Arellano et al., 2004; Pétron et al., 2004). Over Europe, the correlation coefficients in all the models, including GISS, dropped to much lower values (~0.3), which may reflect the reduced sampling frequency or other biases in that network as discussed in Lamarque et al. (2005), but the mean values matched well with observations (0.27–0.38 GISS, 0.32 observed). Thus

**Composition and
climate modeling
with G-PUCCINI**

D. T. Shindell et al.

Title Page

Abstract

Introduction

Conclusions

References

Tables

Figures

◀

▶

◀

▶

Back

Close

Full Screen / Esc

Printer-friendly Version

Interactive Discussion

overall it seems that the GISS model does a good job in reproducing observed rates and distributions of nitrogen deposition fluxes in the NH regions where observations are considered reliable.

3.4 Halogens

5 The ClO maximum in the upper stratosphere is located at approximately the correct altitude and has the right magnitude at high latitudes in comparison with the MLS satellite climatology (Waters et al., 1996) (Fig. 5). The model underpredicts ClO in the tropical upper stratosphere, however, while HCl (not shown) is overpredicted in this region. These features appears to result from the underprediction of water vapor in this region, 10 which leads to a commensurate underprediction of OH and hence a positive bias in the HCl/ClO ratio. ClO is reasonably well simulated in the polar regions, except for the underestimate of downwelling within the polar vorticies noted previously. During polar winter and spring, heterogeneous activation of reservoir chlorine to reactive species (ClO in the spring) is well captured.

15 The model's chlorine nitrate distribution shows peaks at middle to high latitudes around 15–30 hPa. In the winter hemisphere, the peak values just exceed 1 ppbv and are located at around 60–80 degrees, while in the summer hemisphere the peak values are below 1 ppbv and are located at mid-latitudes, in accord with CLAES observations. Distributions of most bromine species are similar to their chlorine analogues, with BrO_x 20 most prevalent at higher altitudes and BrONO₂ showing peaks in the lower stratosphere towards the poles with a substantial seasonal cycle. In contrast to HCl, however, HBr makes up only a small fraction of reactive bromine throughout the stratosphere.

3.5 Reduced carbon species in the troposphere

25 Tropospheric hydrocarbons and carbon monoxide play similar roles in tropospheric chemistry. The model's simulation of these species is generally similar to that of the previous version. It compares relative well with the limited available observations. For

Title Page

Abstract

Introduction

Conclusions

References

Tables

Figures

◀

▶

◀

▶

Back

Close

Full Screen / Esc

Printer-friendly Version

Interactive Discussion

methane, comparisons with the surface measurements of the NOAA GMD (formerly CMDL) cooperative air sampling network (Dlugokencky et al., 1994) (updated to 2000–2004) show that the model overestimates the interhemispheric gradient slightly, and tends to put its maximum values more poleward in the NH than observed (Fig. 12).

5 The very large uncertainties in methane's sources, however, easily encompass the model/measurement differences. Comparison of the model's surface CO with the GMD surface observations shows good agreement in both magnitude and seasonality, as shown in Shindell et al. (2005), suggesting that the model's OH fields are reasonably realistic. For CO, several years of near-global satellite data have also recently become
10 available, allowing for a much more thorough evaluation of tropospheric chemistry simulations. We have evaluated our model against the MOPITT CO observations in detail, comparing global and regional simulations throughout the year at various altitudes within the troposphere (Shindell et al., 2005). The evaluation showed that the model was able to capture the geographic, vertical and seasonal variations of CO quite well.
15 Monthly mean correlations against observations were typically in the range of 0.8–0.9, with highest values (up to 0.95) during the boreal winter and spring and lowest values (0.7–0.8, depending strongly on the emissions inventory used) during the boreal autumn biomass burning season (Shindell et al., 2005).

The simulation of methyl hydroperoxide is similar to that obtained in the previous
20 model, which was in good agreement with observations (Shindell et al., 2003). The model captures the observed distribution and seasonality of this important radical intermediate over both remote and polluted locations. Though the available dataset is quite sparse, the good agreement between the model and the observations gives us confidence in the model's hydrocarbon oxidation scheme.

25 Methane's lifetime is primarily determined by the rate of its chemical oxidation by OH, with smaller contributions from loss to soils and the stratosphere. For comparison with other tropospheric models, we compute the methane lifetime in the GISS tropospheric chemistry model using a prescribed loss to soils of 30 Tg/yr and a loss to the stratosphere of 40 Tg/yr. The result is a lifetime of 8.48 years, in excellent agreement with

**Composition and
climate modeling
with G-PUCCINI**

D. T. Shindell et al.

Title Page

Abstract

Introduction

Conclusions

References

Tables

Figures

◀

▶

◀

▶

Back

Close

Full Screen / Esc

Printer-friendly Version

Interactive Discussion

the value of 8.4 ± 1.3 years recommended by the IPCC TAR based on observations and modeling studies (Prather et al., 2001). Participating models in the IPCC AR4 chemistry simulations produced methane lifetimes ranging from 6.3 to 12.5 years (Stevenson et al., 2006), so it is by no means a given that a model will match observations. Thus we believe the model's simulation of OH is likely to be quite realistic, especially in the tropics where the bulk of methane oxidation takes place. Further supporting this conclusion, comparison of the model's simulation of hydrogen peroxide, produced by the chemical combination of two HO₂ molecules, is in good agreement with observations as in our previous simulations (Shindell et al., 2003).

3.6 Aerosols

The simulation of sulfate aerosols has largely been discussed elsewhere (Koch et al., 2006), though in those simulations the aerosols were not coupled with chemistry. The influence of interactive chemistry and aerosols in this model has been investigated extensively, however (Bell et al., 2005). The effects of coupling chemistry and aerosols, as opposed to running with off-line fields of oxidants prescribed for the aerosol simulation, were fairly small. The overall correlation between the model's sulfate simulations and surface observations decreasing slightly, from an r^2 of 0.56 to 0.54 (Fig. 13), though correlations over some regions, including the US, improved. Note that the network of surface stations has very inhomogeneous coverage, with 174 locations in the NH but only 17 in the SH, and a paucity of data over Asia and over ocean regions. The new composition and climate model also includes the effects of chemistry on the surface of mineral dust aerosols, as discussed in Sect. 3.3. The effects of mineral dust on sulfate has been described elsewhere (Bauer and Koch, 2005). The model includes simulations of carbonaceous, sea-salt and nitrate aerosols as well, though these do not directly influence the simulations of other trace species in the model and are described in detail elsewhere (Koch and Hansen, 2005; Koch et al., 2006).

Title Page

Abstract

Introduction

Conclusions

References

Tables

Figures

◀

▶

◀

▶

Back

Close

Full Screen / Esc

Printer-friendly Version

Interactive Discussion

4 Climate change simulations

4.1 Experimental setup

As noted previously, one issue that we were not able to adequately address in our earlier studies of the interactions between composition and climate change was the response of stratosphere-troposphere exchange to altered climate states. The new full chemistry version of the model can now be used to explore this issue, as well as changes within the stratosphere, NO_x from lightning that's transported into the stratosphere, etc. We have therefore run additional simulations using conditions appropriate for both the preindustrial era and estimates of possible future conditions (Table 3).

For the preindustrial, we have removed all anthropogenic emissions into the troposphere, and set long-lived greenhouse gases to 1850 conditions. For the future, simulations were performed setting long-lived gases to their IPCC SRES scenario A1B 2080 concentrations. Emissions of short-lived species were unchanged from the present-day for these runs. The year 2080 was chosen to give an idea of the potential 2100 response, as our simulations are for equilibrium while the transient case typically lags the forcing by ~20 years. Additional simulations used the IPCC SRES A2 scenario for 2100. These included changes to emissions of short-lived gases, primarily ozone precursors. They used 2100 values rather than 2080 for consistency with the short-lived emissions estimates and to allow for comparisons with other 2100 model studies. We refer to both simulations as 2100 runs for convenience hereafter. Companion future simulations were performed to separate the effects of climate and chemistry in the future. For an A2 climate-only run, the future concentration of CO₂ was prescribed, thus altering temperatures throughout the atmosphere, and future SSTs from an earlier run were specified. Compositions and emissions for reactive gases were unchanged from the PD. For the A1B case, the future composition used in the full A1B run was provided to the chemistry, but not to the radiation. We refer to this as the A1B composition run, and to the A1B run with climate change as the A1B composition and climate run (as distinct from an emissions and climate run such as for A2, since emissions of

Title Page

Abstract

Introduction

Conclusions

References

Tables

Figures

◀

▶

◀

▶

Back

Close

Full Screen / Esc

Printer-friendly Version

Interactive Discussion

short-lived gases were not changed).

All these simulations for past and future time periods were run using a mixed-layer (Q-flux) ocean to allow the climate to adjust to the imposed greenhouse gas forcing (except the A1B composition and A2 climate-only runs). In this setup, ocean circulation is prescribed for computational efficiency and therefore does not respond to climate changes (i.e. heat convergence is prescribed while allowing SST to adjust). In order to have an appropriate comparison, a present-day simulation with a mixed-layer ocean was also performed. Initial conditions for the ocean were taken from earlier runs for the appropriate time periods, and then all simulations were run for several years to establish climate (and the faster chemical) equilibrium, at least three and up to 10 depending on how close the initial conditions were to the balanced state. Simulations were run from 20–40 years, providing at least 15 and often 30–35 years of post-spinup results for analysis. All simulations use solar minimum conditions (1986) to allow for comparison with companion solar maximum experiments to be performed later. As the influence of the solar cycle is small, about 1–2% in column ozone with a maximum impact of ~3–4% in the upper stratosphere (McCormack and Hood, 1996), this introduces only a very minor bias into the model's climatology.

4.2 Response to climate and emissions changes: preindustrial conditions

We first examine the changes between the preindustrial and present day simulations including both climate and emissions changes. The annual average zonal mean temperature changes in the troposphere display a modest increase during this period, consistent with surface observations, while in the middle and upper stratosphere temperatures decrease substantially (Fig. 14). Ozone changes are clearly dominated by the increase in emissions. As in the tropospheric chemistry-only models, the bulk of the troposphere shows increased ozone amounts with maximum values in the NH subtropics. Unlike the tropospheric chemistry-only models, however, the SH poleward of about 45 degrees shows a reduction in ozone in the full chemistry simulations, reflective of the reduced influx from the stratosphere owing to Antarctic ozone depletion (Table 6).

Composition and climate modeling with G-PUCCINI

D. T. Shindell et al.

Title Page

Abstract

Introduction

Conclusions

References

Tables

Figures

◀

▶

◀

▶

Back

Close

Full Screen / Esc

Printer-friendly Version

Interactive Discussion

**Composition and
climate modeling
with G-PUCCINI**

D. T. Shindell et al.

Title Page

Abstract

Introduction

Conclusions

References

Tables

Figures

◀

▶

◀

▶

Back

Close

Full Screen / Esc

Printer-friendly Version

Interactive Discussion

Though the model's downward transport at high Southern latitudes is clearly too large based on the comparison with sonde data shown previously, the influence of stratospheric ozone depletion extending down to the surface is seen in both the model and in observations (Oltmans et al., 1997). This leads to small (<5 ppbv) decreases in surface ozone in the SH poleward of about 45 degrees, which contrast markedly with the large increases seen in the NH, especially over mid-latitude continental areas where they exceed 20 ppbv in some areas (Fig. 15). Tropical and NH extratropical fluxes of ozone across the tropopause show relatively small changes between the preindustrial and the present-day (Table 6), indicating that the change in SH extratropical STE is indeed driven by composition changes rather than climate-induced circulation changes.

Changes in stratospheric ozone have a similar pattern to those calculated for 1979–2000, but enhanced in magnitude. The spatial pattern of the stratospheric ozone losses corresponds closely to that of increased chlorine monoxide from the PI to the PD (Fig. 16). This is not surprising as it is well-known that increased chlorine has been the main driver of past stratospheric ozone losses (World Meteorological Organization, 1999). Stratospheric ozone has also been influenced by changes in the abundance of other radicals, with losses from increased NO_x and HO_x in some regions. In general there is more NO_x in the stratosphere, consistent with the increase in its primary source gas N_2O , however there is less NO_x in the uppermost tropical troposphere and in the lower to middle stratosphere over Southern mid-latitudes. Both regions also show an enhancement of OH concentrations over this period, consistent with an overall increase in water vapor driven by increased surface temperatures and methane. The increased OH speeds the removal of NO_x into nitrogen reservoir species, accounting for the reduced NO_x in these areas. The changes in both OH and NO_x are quite small, however, and little clear direct effect is seen on ozone. The cooler stratospheric temperatures (Fig. 14) partially compensated for some of the enhanced catalytic losses by slowing down many temperature-sensitive chemical reactions.

The RF from ozone (tropospheric and stratospheric) is 0.34 W/m^2 from the PI to the PD. In the tropospheric chemistry-only model it is 0.37 W/m^2 (Shindell et al., 2005) (all

RFs are instantaneous tropopause values). This implies a very small contribution to RF from stratospheric ozone change. This conclusion is consistent with results from the 1979 simulations as well. To show the effects of stratospheric ozone depletion on both the stratosphere and troposphere in the absence of other changes, we performed the 1979 run including PD emissions of short-lived gases that primarily affect the troposphere, as noted previously. Thus it is not intended to show the actual time evolution of the atmosphere. It shows decreases in most of the troposphere as well as the stratosphere (Fig. 6). These are created by reductions in the flux of stratospheric ozone into the troposphere (Table 5), and thus maximize at middle to high latitudes. The simulation yields a decrease in the tropospheric ozone burden between 1979 and the present that is roughly 80 Tg. This is considerably larger than the total PI to PD increase in the tropospheric ozone burden of 40 Tg, suggesting that stratospheric ozone losses have indirectly offset roughly 2/3 of the increase in the tropospheric ozone burden. Such a result implies a substantial future increase in tropospheric ozone as the stratospheric ozone layer recovers, though, as noted previously, the downward flux of ozone at high latitudes is too large in this model. Since the tropospheric ozone decreases that result from transport of stratospheric air are primarily at high latitudes they contribute comparatively little to the RF, however. In comparison with the total PI to PD changes, those from 1979 to the PD contain 61% of the stratospheric ozone decline (Table 5). The total RF due to the effects of stratospheric ozone changes from 1979 to 2000 on both the troposphere and stratosphere is quite small, only -0.04 W/m^2 . This small value is consistent with other recent results with our model (Hansen et al., 2005), which found a value of -0.06 W/m^2 using the observed trends which are slightly larger than those calculated by the model in the crucial region near the tropical tropopause (Fig. 6). Over the full PI to PD period, the stratospheric ozone depletion was about 1.5 times as large as during 1979–2000, a result in good agreement with earlier analyses based on historical data (Shindell and Faluvegi, 2002). Ozone losses prior to 1979 result from increases in methane and nitrous oxide as well as the initial input of CFCs. This then implies an overall negative forcing from stratospheric ozone depletion of about -0.06 W/m^2 from

**Composition and
climate modeling
with G-PUCCINI**

D. T. Shindell et al.

Title Page

Abstract

Introduction

Conclusions

References

Tables

Figures

◀

▶

◀

▶

Back

Close

Full Screen / Esc

Printer-friendly Version

Interactive Discussion

the PI to the PD in our model. Given a total forcing of 0.34 W/m^2 , the contribution from tropospheric ozone increases is about 0.40 W/m^2 , slightly larger than that seen in the tropospheric chemistry-only model. The difference may represent the effects of tropospheric ozone increases on the stratosphere, as in the full-chemistry model the increased pollution of the troposphere can be transported into the stratosphere.

4.3 Response to climate and emissions changes: 2100 conditions

4.3.1 A2 emissions and climate

We begin by examining the composition response to the most extreme future changes, the 2100 A2 emissions and climate simulation. Zonal mean temperatures show large increases in the troposphere reflective of the large surface warming in this run, while the stratosphere shows even greater decreases in temperature (Fig. 17). Stratospheric ozone shows large increases in areas where chlorine abundances decline (Fig. 18), namely the upper stratosphere around 1 hPa and the lower stratosphere in the polar regions. The increases are roughly double the stratospheric ozone depletion to date. In the tropics, however, ozone decreases in both the uppermost and lower stratosphere. Ozone in the uppermost stratosphere is dominated by catalytic cycles involving hydrogen oxides, which increase substantially in the A2 simulations. This is clear in the OH distribution, which is greatly enhanced in the upper stratosphere with a peak increase at $\sim 0.3 \text{ hPa}$ (Fig. 18), exactly where the ozone decrease is greatest (Fig. 17). The hydrogen oxides increase owing to the greater abundance of stratospheric water (Fig. 18). The ozone decreases in the tropical lower stratosphere result from an increase in transport of relatively ozone-poor troposphere air upward across the tropical tropopause (Table 6). The stratospheric ozone distribution is also influenced by the increased NO_x in much of the stratosphere, which tends to deplete ozone, and by the cooler temperatures, which tend to slow ozone loss.

Tropospheric ozone shows increases nearly everywhere. Especially large increases are seen at high latitudes, owing to increases in the downward flux of ozone from the

Title Page

Abstract

Introduction

Conclusions

References

Tables

Figures

◀

▶

◀

▶

Back

Close

Full Screen / Esc

Printer-friendly Version

Interactive Discussion

stratosphere of 445 and 402 Tg/yr in the SH and NH extratropics, respectively (Table 6). At lower latitudes, the increased emission of pollutants such as methane (prescribed) and NO_x leads to roughly a doubling of ozone chemical production. This is offset by increased destruction in the highly buffered tropospheric chemical system, so that the net change of ozone by chemistry is nearly the same as in the PD (Table 5). The tropospheric burden of ozone is more than doubled relative to the PD, with a concomitant increase in dry deposition as ozone increases substantially at the surface (Fig. 15). The surface ozone reflects the projected increases in emissions in the developing world, especially in Asia, and the increased flux into the SH due to stratospheric ozone recovery. Much of the tropical and subtropical land area suffers increases in surface ozone of more than 20 ppbv, with parts of India and Southern Africa showing increases in excess of 40 ppbv. The tropospheric ozone changes dominate the RF, though stratospheric ozone recovery also contributes a positive forcing, leading to a net RF of 0.76 W/m^2 in the A2 case.

4.3.2 A2 climate-only

The relative importance of emissions and climate changes in the A2 scenario can be determined by comparing the results above with those from the companion A2 climate-only run (Fig. 19). In that simulation, the same SSTs as in the A2 climate and emissions run were used, and CO_2 in the atmosphere was set to future conditions (Table 3). The annual average zonal mean temperature changes in the troposphere are quite similar to those seen in the A2 emissions and climate run. In the stratosphere the cooling is less due to the smaller GHG increases (CO_2 only), but the pattern is quite similar. Ozone shows only small changes in most of the stratosphere, with small increases associated with cooler temperatures. Thus it is clear that the increases seen in the upper stratosphere around 1 hPa in the A2 emissions and climate simulation (Fig. 17) are driven primarily by emissions changes. The ozone reduction seen in the uppermost tropical stratosphere in the A2 emissions and climate run (Fig. 17) is present in the climate-only run as well, indicating that a substantial portion of this decrease results

**Composition and
climate modeling
with G-PUCCINI**

D. T. Shindell et al.

Title Page

Abstract

Introduction

Conclusions

References

Tables

Figures

◀

▶

◀

▶

Back

Close

Full Screen / Esc

Printer-friendly Version

Interactive Discussion

from HO_x enhancements due to the increased influx of water across the tropopause. Direct examination of OH changes in the A2 climate-only run (not shown) reveal that the increase in the uppermost stratosphere is about one-third that in the A2 emissions and climate run (Fig. 18). In the high-latitude lower stratosphere, the changes in the climate-only run are of opposite sign in the Arctic and the Antarctic. Both regions show cooling, which should lead to enhanced ozone destruction given PD composition, as seen in the SH. In the Arctic, however, changes in circulation induced by climate change dominate over the changes in local temperature for the annual average. In the A2 climate-only simulation, the downward extratropical flux across 150 hPa increases by only 4 Tg/yr in the SH, but by 151 Tg/yr in the NH (Table 6), so that the NH circulation is indeed more sensitive to climate change in our model. This presumably results from the greater importance of wave forcing in the NH in coupling the troposphere and stratosphere, which makes the stratospheric circulation more sensitive to changes in surface climate that affect atmospheric flow and thereby wave generation.

In the troposphere, the high latitudes reflect the changes in the stratosphere. Lower latitudes show a complex pattern, with ozone decreases near the surface, increases in a band around 300 hPa, and decreases again at higher levels extending into the tropical lower stratosphere. This pattern results from the combination of changes in both circulation and chemistry. The general circulation shows a weakening of the tropical Hadley Cell, which leads to ozone decreases near the equator and increases in the subtropics (Fig. 20, top left) as less low level comparatively polluted air is entrained into the bottom of the equatorial ascending branch while more polluted extratropical air mixes into the descending branch. Ozone increases from the enhanced downward flux from the stratosphere at mid-latitudes (Table 6) are also visible in the change by dynamics. The general circulation moving upward across the tropical tropopause increases by 22% at 50 hPa in the future A2 climate (Table 7), but the upward flux of ozone across this level actually decreases in the A2 climate-only runs (Table 6) as there is less ozone in the upper troposphere. The effects of changes in convective transport and chemistry are difficult to separate from one another as they show similar

**Composition and
climate modeling
with G-PUCCINI**

D. T. Shindell et al.

Title Page

Abstract

Introduction

Conclusions

References

Tables

Figures

◀

▶

◀

▶

Back

Close

Full Screen / Esc

Printer-friendly Version

Interactive Discussion

but opposite spatial patterns (Fig. 20, top center and top right). Chemistry is enhanced in the upper troposphere, with a maximum at around 300 hPa as in the net change. This is at least partially related to increased NO_x generated by lightning, which goes from a PD value of 5.2 Tg/yr to 7.2 Tg/yr in the A2 simulations. In the middle troposphere the net ozone change by chemistry is less positive in the A2 climate-only simulation than in the PD. The difference relative to the PD is dominated by the change in ozone loss rather than in production (Table 5), as the destruction is enhanced by the increases in the reaction of excited singlet-D oxygen atoms with water vapor in the more humid atmosphere resulting from a warmer climate. The chemical changes at low levels in the tropics are simply compensating for the reduction in ozone there due to dynamical and convective changes. Convection increases in the future simulations, contributing to ozone decreases at low levels by increasing the ventilation of the boundary layer, and increasing the transport of ozone-poor air into the tropopause region. Vertical transport by convective activity also acts to counter the altered ozone field resulting from the chemical changes, leading to a pattern than in many areas is the mirror image to the chemical changes. The net changes in ozone seem to be dominated by dynamical and convective effects at low levels, by chemical changes in the middle troposphere from about 800–200 hPa (of opposite sign in the lower and upper portions of that region), and by convective changes in the uppermost tropical troposphere. At the surface, ozone changes show decreases nearly everywhere, with the largest changes generally over oceans where increased evaporation leads to enhanced reaction of $\text{O}(^1\text{D})$ atoms with water molecules. Decreases are also large over the Southern Ocean and Antarctica, owing to increased wind speeds and hence dry deposition, which more than offset a reduction in deposition due to the retreat of sea ice around Antarctica.

The pattern of ozone changes by transport and chemistry for the A2 emissions and climate run is similar, but with larger positive values in all the terms (Fig. 20, bottom). This reflects the increased emissions of pollutants and the greater influx of stratospheric ozone in that simulation. In both simulations, more subtle effects also take place within the troposphere owing to the thermal and hydrologic changes in future

**Composition and
climate modeling
with G-PUCCINI**

D. T. Shindell et al.

Title Page

Abstract

Introduction

Conclusions

References

Tables

Figures

◀

▶

◀

▶

Back

Close

Full Screen / Esc

Printer-friendly Version

Interactive Discussion

climates. While a complete description of these changes is beyond the scope of this paper, several examples stand out. The tropospheric burden of PANs decreases by 21% in the A2 climate run as the warmer temperatures cause this thermally unstable molecule to more readily dissociate. Nitric acid abundances increase in the tropical upper troposphere due to the availability of nitrogen oxides from lightning. At the same time, however, the removal of nitric acid by wet processes follows changes in the hydrologic cycle, with increased precipitation enhancing removal near the equator and decreased precipitation reducing removal in the subtropics. Similar behavior is seen in the removal of other soluble gases such as hydrogen peroxide. The net effect on nitric acid is an increase in overall wet removal (primarily by moist convection) that is outweighed by the increase in production, leading to a greater burden and longer lifetime (Table 8). Clearly the emissions perturbations in the A2 emissions and climate case overwhelm the climate signal for nitric acid, as they did for tropospheric ozone.

4.3.3 A1B composition and climate

We next investigate the changes relative to the PD simulated for 2100 conditions in the A1B composition and climate run. The temperature change shows the typical warming of the troposphere and cooling of the stratosphere as seen in the PI to PD comparison but with a greater magnitude (Fig. 21). The zonal mean annual average ozone change shows increases in the upper stratosphere peaking at ~60–70% at 1 hPa. This is slightly more than a full “recovery”, as the changes between the PI and the present were losses of ~50–60% (also relative to present day) in this region. Compared with the losses since 1979, a commonly used reference point for recovery, the changes are roughly a factor of three greater. This emphasizes that due to changes in climate and in greenhouse gases, even when CFCs have been fully removed from the stratosphere the ozone layer there will not return to either its earlier 1979 or preindustrial states even for a less extreme projection such as A1B. In the lower stratosphere, ozone increases at middle to high latitudes in the A1B future, with especially large enhancements over Antarctica. In the tropics, however, ozone shows small decreases in the lower strato-

**Composition and
climate modeling
with G-PUCCINI**

D. T. Shindell et al.

Title Page

Abstract

Introduction

Conclusions

References

Tables

Figures

◀

▶

◀

▶

Back

Close

Full Screen / Esc

Printer-friendly Version

Interactive Discussion

sphere. In the troposphere, there are ozone increases at high latitudes, especially in the SH. These result from an increased influx from the stratosphere of 220 and 203 Tg/yr in the SH and NH extratropics, respectively (Table 6). Changes are near zero in the tropics near the surface, but a band where ozone increases by more than 20% is present from about 500–250 hPa in the tropics and subtropics.

As in the A2 case, much of the stratospheric ozone response follows from the reduced chlorine loading in the future, as shown by the close match between the spatial structure of the ozone and ClO changes (Fig. 22). Stratospheric ozone also increases generally due to colder temperatures and to reduced NO_x (Fig. 22). The latter occurs despite increases in N₂O, the primary source gas for reactive nitrogen in the stratosphere, and seems to result largely from the increased stability of the N₂O₅ reservoir as temperature decreases. The balance between the increased source of reactive nitrogen and increased reservoir stability appears to be a close one, as the opposite result (increased NO_x) was seen in the A2 emissions and climate case (Fig. 18). The small region of positive NO_x changes in the Antarctic lower stratosphere results from reduced heterogeneous conversion of NO_x into nitric acid on PSCs under conditions with less available chlorine (reactions 60–62 and 64 in Table 2). Finally, the HO_x radicals, shown here by OH, increase in the upper stratosphere due to increased water vapor, their primary source gas, owing to increased flux from the troposphere and increased production from methane oxidation. Increases in HO_x lead to ozone reductions in regions where the HO_x cycle is dominant, above about 50 km altitude, but can lead to increases elsewhere by sequestering other radicals. Clearly even at high altitudes the effect of HO_x changes has been outweighed by changes in ClO_x, NO_x and temperature. The overall increase in the stratospheric ozone burden is 24% in the A1B composition and climate run, quite close to the 28% increase seen in the A2 emissions plus climate case.

In the troposphere, the ozone changes follow the same general pattern seen in the A2 simulations, but the changes are of a reduced magnitude. Since there were no changes in the short-lived ozone precursor emissions in this simulation, the increase in

**Composition and
climate modeling
with G-PUCCINI**

D. T. Shindell et al.

Title Page

Abstract

Introduction

Conclusions

References

Tables

Figures

◀

▶

◀

▶

Back

Close

Full Screen / Esc

Printer-friendly Version

Interactive Discussion

the tropospheric ozone burden of 41% primarily reflects the influence of the increased inflow of stratospheric ozone (Table 6). Production of nitrogen oxides, generated by the model's internal convection scheme, did increase in response to climate change, going from 5.2 to 6.2 Tg/yr in the A1B future run.

5 4.3.4 A1B composition-only

Comparison of the temperature and ozone changes in the companion A1B simulation including composition changes only (fixed PD climate and short-lived gas emissions) shows that most of the stratospheric ozone changes and high latitude tropospheric ozone changes result from emissions projections rather than climate (Fig. 23). The main feature is the recovery of stratospheric depletion by halogens as CFC abundances are reduced. In the tropical and subtropical troposphere, extending even into the lower stratosphere, the changes in the composition-only run are quite different from those in the composition and climate run, indicating the strong influence of climate in that region.

The set of simulations described above allow us to examine the relative impacts of emissions and climate change on the oxidation capacity of the troposphere. In general, a warmer climate leads to increased OH via enhancement of OH production by the chemical reaction of oxygen atoms and water vapor (Table 5). In contrast, increased emissions of pollutants typically leads to reduced OH, as the effect of the greater abundance of hydrocarbons and CO outweighs increased production of oxygen atoms from increased ozone. From the PI to the PD, the increased emissions of pollutants have a larger effect than the modest climate warming, so that OH decreases. In the future, the combined effects of pollutant emissions and climate depend upon the specific emission scenario. In fact, the changes relative to the PD in the A2 and A1B emissions/composition and climate runs are of equal magnitude, but opposite sign. The effects of changing stratospheric ozone can be clearly seen in the comparison of the OH values in the PD and 1979 simulations, which had identical emissions of short-lived tropospheric gases. The depletion of ozone in the present relative to 1979 allows

Title Page

Abstract

Introduction

Conclusions

References

Tables

Figures

◀

▶

◀

▶

Back

Close

Full Screen / Esc

Printer-friendly Version

Interactive Discussion

more short wavelength photons to penetrate the troposphere, where they can produce excited oxygen atoms that can form OH. Hence the global mean mass-weighted OH value increases by 0.3×10^5 molecules/cm³ (~4%). Thus stratospheric ozone recovery in the future will lead to reduced OH. Changes in OH affect the oxidation rates of most reduced species. Changes to the lifetime of methane, which are roughly proportional to the percentage change of OH, are especially important due to the large RF from methane.

4.4 Stratosphere-troposphere exchange

As discussed previously, we calculated STE of ozone across the 150 hPa surface for comparison with observations. Continuing with this definition, we find an increase in STE from the present day to 2100 of 434 Tg/yr (71%) including both A1B climate and composition changes in the mixed-layer ocean simulations (Table 5). The change in STE for the more extreme 2100 A2 case, again using emissions plus climate, is 752 Tg/yr (+124%). In the companion simulations, A1B composition alone induced an increase of 295 Tg/yr, while A2 climate changes alone contributed 202 Tg/yr (+33%). The difference between A2 emissions and climate and A2 climate-only indicates that the A2 emissions contribute 550 Tg/yr of the increase. With the long simulations we performed, the standard deviation in global STE is only ~16 Tg/yr.

Other GCMs have typically looked at A2 or similar scenarios. Our change in STE of 202 Tg/yr for the A2 climate alone, with a warming of 4.8°C, is smaller than the increase of 390 Tg/yr (across 200 hPa) found in a study using a similar magnitude warming (5°C) in the Hadley Center Unified Model (UM) (Collins et al., 2003). Their base flux was also much larger, however, at 1068 Tg/yr. In percentage terms, the UM change due to climate alone was 37%, while ours is a quite similar 33%. We note that their model has no stratospheric chemistry, and hence does not include changes in extratropical downward fluxes due to changing stratospheric composition. Since these were negative in the SH and positive in the NH in our model in response to climate change alone (Fig. 19), these may have contributed little to the overall change,

Composition and climate modeling with G-PUCCINI

D. T. Shindell et al.

Title Page

Abstract

Introduction

Conclusions

References

Tables

Figures

◀

▶

◀

▶

Back

Close

Full Screen / Esc

Printer-friendly Version

Interactive Discussion

however.

Also using the UM model, but including a different tropospheric chemistry scheme than Collins et al. (2003) and also including simplified lower stratospheric chemistry, Zeng and Pyle (2003) find STE increased by 373 Tg/yr due to A2 emissions plus climate change, an increase of 80% over their base present-day value. STE was calculated across the surface where ozone values exceeded 150 ppbv, the so-called 'chemical tropopause', making comparisons with other models somewhat difficult. Their increase is somewhat less than the 124% enhancement seen in our results. Their simulations did not include the effects of decreases in future CFC emissions on stratospheric chemistry, however, so that there was no ozone recovery from halogen-induced depletion. Climate change played the dominant role in the STE changes seen in their model. This is quite clear in that the increase in STE between their present-day simulation and a run with 2100 A2 emissions but present-day climate was only 5 Tg/yr. In contrast, emissions had a larger effect than climate in our simulations which did include recovery of stratospheric ozone (Table 5). Similar experiments run within the CCSR/NIES GCM show decreases in STE of 20% with 2100 A2 emissions when compared with present day simulations, and increases of 83% including both emissions and climate change (Sudo et al., 2003). In this case, STE values were computed across a surface at 100 hPa from 35° S to 35° N, and at 250 hPa poleward of that region. The total change in the CCSR/NIES model in response to A2 emissions and climate is similar to, though again somewhat smaller than, that seen in our study. These simulations included the effects of future HFCs on radiation, but not on chemistry, so that again they did not include the recovery of stratospheric ozone. Thus as with the Zeng and Pyle, 2003 runs, they find that future climate dominated STE changes and even that the impact of emissions may be to reduce STE while our simulations indicate a larger role for emissions than for climate.

Comparison of the relative roles of climate and emissions can be further complicated by differences in the experimental setup. The role of climate alone in these two models is obtained by taking the difference between a simulation for 2100 conditions using the

**Composition and
climate modeling
with G-PUCCINI**

D. T. Shindell et al.

Title Page

Abstract

Introduction

Conclusions

References

Tables

Figures

◀

▶

◀

▶

Back

Close

Full Screen / Esc

Printer-friendly Version

Interactive Discussion

A2 emissions and projected climate change and one using only emissions changes. Thus the STE is reflective of transport of ozone whose distribution is governed by future composition, a rather different situation than ours or Collins et al. (2003) where the effect of climate alone is assessed using PD composition. When we compare the STE change per degree of warming derived from our A1B simulations using a similar experimental setup to that of Zeng and Pyle (2003) or Sudo et al. (2003) (our A1B composition and climate – A1B composition) versus that derived from our A2 climate only simulations we find 1.8 times the impact on STE per degree of warming in the A1B setup that calculates climate's role based on the future atmospheric composition. This likely contributes to difference between the relative roles of climate and emissions on STE calculated in our model and the other two, though the difference between PD and 2100 stratospheric composition is of course much larger in our simulations that include ozone recovery. Uncertainties in model simulations of future atmospheric circulation, perhaps especially in the polar regions during winter and spring (Austin et al., 2003) also likely play a role. The lack of stratospheric ozone recovery in the other models is probably the dominant factor, however.

Examining our STE changes in more detail, we find that both the downward extratropical ozone fluxes across the 150 hPa surface and the upward tropical ozone fluxes across 50 hPa tend to increase as climate warms (Table 6). Standard deviations of these regional STE values are ~ 16 Tg/yr in the extratropics, and only 2 Tg/yr in the tropics. We choose these levels to roughly follow the tropopause, with a primary concern that the tropical level is high enough so that the calculation is not influenced by changes in the Hadley Cell circulation. The flux changes are consistent with an overall strengthening of the Brewer-Dobson circulation, which is clearly visible in the tropical residual vertical velocity (Table 7). The results are presented at several levels, showing that the response is consistent above about 100 hPa, but that the response is quite different at 150 hPa, reflecting the strong influence of the Hadley Cell at lower levels. This may account for a small portion of the differences between our results and those of Collins et al. (2003).

**Composition and
climate modeling
with G-PUCCINI**

D. T. Shindell et al.

Title Page

Abstract

Introduction

Conclusions

References

Tables

Figures

◀

▶

◀

▶

Back

Close

Full Screen / Esc

Printer-friendly Version

Interactive Discussion

**Composition and
climate modeling
with G-PUCCINI**

D. T. Shindell et al.

Title Page

Abstract

Introduction

Conclusions

References

Tables

Figures

◀

▶

◀

▶

Back

Close

Full Screen / Esc

Printer-friendly Version

Interactive Discussion

Note that the definition of the tropical tropopause does not have a great effect on the PD global STE value, as seen by comparing the STE values across 150 hPa (Table 5) with the sum of fluxes following the surface of 150 hPa in the extratropics and 50 hPa in the tropics (Table 6, last column). The differences are mostly in the range of 15–50 Tg/yr, with the exception of the A1B composition-only run which shows a difference of ~80 Tg/yr. That the differences are typically small is not surprising given the relatively small contribution of tropical upwelling to the total. The differences can be important in the tropics, however, and the variable pressure surface consistently yields lower values. The results imply that in some simulations, such as the PD, there is substantial chemical production of ozone in the tropical tropopause layer as the STE is reduced by 51 Tg/yr changing from the 150 hPa surface in the tropics to the 50 hPa surface plus horizontal fluxes from 150–50 hPa (i.e. there is greater upward transport of ozone at 50 than at 150 hPa).

In the NH extratropics, there is also some evidence for chemical processing of ozone between 115 and 150 hPa with little chemical change from 150 to 250 hPa (Table 9). In the SH extratropics, changes are most apparent between 150 and 190 hPa. The comparison of STE values at different pressure levels indicates that the global value is relatively robust in the vicinity of the tropopause. Extratropical fluxes can show variations of 10–20% between constant pressure surfaces, however, and the results appear to be sensitive to the atmospheric composition. Additionally, the sensitivity of STE to climate and composition change is strongly affected by the choice of tropopause boundary. The change in global STE relative to the PD (values in parentheses in Table 9) is 20% larger at 115 hPa than at 250 hPa for the A1B 2100 case, and is nearly a factor of three larger for the PI. For the A2 2100 case, the increase in extratropical STE becomes generally larger at higher pressures in both hemispheres, while in the PI case it becomes weaker with increasing pressure. Sensitivity differences are apparent in the SH extratropics despite the similarity between PD values at the various pressure levels. Thus it seems likely that the differences in tropopause definitions used in the various models contribute to sensitivity differences.

A general increase in tropical upwelling as climate warms is seen in many GCMs (Butchart et al., 2006¹). However, it is surprising that the increase in tropical upwelling is less going from the present to the A1B future than from the preindustrial to the present, despite the much larger climate change in the former. We hypothesize that this results from the influence of ozone changes on the tropical temperature structure. The ozone changes from the preindustrial to the present, with increases below the tropopause and decreases above, tend to reduce the positive vertical gradient of temperature in the tropical lower stratosphere (Fig. 14), while the projected future recovery of stratospheric ozone, and the slight ozone decreases in the tropical uppermost troposphere, tend to increase this gradient (Fig. 21), slowing vertical transport. The projected increases in future tropical upwelling seem to vary fairly linearly with the surface warming, however, so that at 50 hPa both the A2 and A1B futures show an increase of ~5% per degree of warming. This is not surprising given that both future simulations also show similar changes to the vertical structure of ozone.

Changes in ozone transport reflect changes in atmospheric composition as well as transport. From the preindustrial to the present-day, the downward extratropical fluxes decreased substantially in the SH and increased marginally in the NH when both climate and composition changes were included (Table 6). Given that warming induces an acceleration of the Brewer-Dobson circulation, the stratospheric ozone depletion induced by the composition changes leads to a reduction in ozone transport which outweighs the effects of climate in the SH where ozone losses are greatest. In the case of present-day to future changes, the climate warming is much larger. Additionally, the projected ozone changes are also large, with a greater stratospheric ozone burden in both the A1B and especially in the A2 2100 scenarios than in the PI (Table 5). The distribution of changes is rather similar to those between the PI and PD, however, except in the vicinity of the tropical tropopause (Figs. 14, 17, and 21). The result is that in the extratropical SH, the combined effects of ozone recovery and an enhanced stratospheric overturning lead to nearly a doubling of the stratosphere-to-troposphere ozone flux in the A1B scenario, and an increase of ~170% in the A2 scenario. In the NH ex-

**Composition and
climate modeling
with G-PUCCINI**

D. T. Shindell et al.

Title Page

Abstract

Introduction

Conclusions

References

Tables

Figures

◀

▶

◀

▶

Back

Close

Full Screen / Esc

Printer-friendly Version

Interactive Discussion

trotropics, the increase is similar in absolute terms to the SH, but smaller in percentage though still quite substantial at 58% in the A1B run and 114% in the A2 run (Table 6). Interestingly, the increased downward flux in the SH results almost entirely from composition changes, while in the NH both climate and emissions play a comparable role.

5 Thus a comparison across models would be much more meaningful if the response of STE to climate in each region could be compared. The other models discussed here do not report separate values for each hemisphere however, but we strongly encourage future studies to do so.

5 Discussion and conclusions

10 The new GISS composition-climate model is able to represent interactions between atmospheric composition and the rest of the GCM in response to changes in trace species emissions, volcanic aerosol, solar radiation and greenhouse gas abundances. These interactions are incorporated using atmospheric species whose surface fluxes and transport via the general circulation and the hydrologic cycle are physically consistent with the treatment of other physical quantities such as heat and moisture in the climate model. Thus this model will be useful for a wide variety of composition-climate
15 interaction studies. Biases in the transport of stratospheric constituents are a primary weakness of the current setup, leading to distributions of long-lived gases with gradients that are too weak in the meridional direction and to an underestimate of the age of air at high latitudes. These circulation deficiencies also cause substantial biases
20 in high latitude ozone. However, the simulation of ozone is quite realistic in the troposphere and in the remainder of the stratosphere. Thus the observed total ozone columns are well reproduced throughout the tropics and mid-latitudes. Ozone also is well simulated in the vicinity of the tropopause (outside high latitudes), where it has
25 the greatest effect on climate. Thus the radiative forcing produced by the composition-climate model is likely realistic. We have also shown that the sensitivity of stratospheric ozone to perturbations over the past two decades is reasonably well modeled.

Title Page

Abstract

Introduction

Conclusions

References

Tables

Figures

◀

▶

◀

▶

Back

Close

Full Screen / Esc

Printer-friendly Version

Interactive Discussion

The model has been used to investigate changes in STE without the difficulties associated with arbitrary boundaries between chemically active and non-chemically active regions found in tropospheric chemistry-only or stratospheric chemistry-only models. We find substantial changes in STE in the SH extratropics going from the PI to the PD, which are due to Antarctic ozone depletion. In the future, large changes in STE are simulated for both hemispheres. The SH is primarily sensitive to the projected recovery of lower stratospheric ozone, while the NH is most strongly influenced by the projected circulation response to climate change. The strong asymmetry in the circulation response to climate change is consistent with wave-mean flow interactions linking surface climate to the stratosphere more closely in the NH (Shindell et al., 2001). Planetary waves produced by flow over land-ocean contrasts and orography, and by storm systems, are more important in the NH, and wave generation increases as climate warms and the flow increases. They drive the stratospheric overturning, so a greater wave response in the NH would be expected to lead to a greater change in the Brewer-Dobson circulation there. Other models do not report hemispheric values for STE, precluding evaluation of the robustness of this asymmetric circulation response to climate change. Our results indicate that substantial chemical processing of ozone can take place in the vicinity of the tropopause under some conditions, making regional STE calculations sensitive to the tropopause definition (though the global value is fairly robust). Additionally, we show that both the global and regional STE response to climate is sensitive to the definition of the surface across which STE is calculated. We suggest that multiple surfaces, perhaps 50, 100 and 150 hPa from 28° S to 28° N and 100, 150 and 250 hPa poleward of 28 degrees, be used for models and most importantly that extratropical values be reported in addition to global fluxes.

Composition changes in the stratosphere were also projected. These show an increase of ozone in the future that substantially exceeds “recovery” to 1979 levels. In the A2 scenario, the stratospheric ozone burden increase between the PD and 2100 is roughly twice the loss between 1979 and the PD. In both the A2 and A1B scenarios, the 2100 stratospheric burden exceeds even the levels simulated for the PI. The scenario

**Composition and
climate modeling
with G-PUCCINI**

D. T. Shindell et al.

Title Page

Abstract

Introduction

Conclusions

References

Tables

Figures

◀

▶

◀

▶

Back

Close

Full Screen / Esc

Printer-friendly Version

Interactive Discussion

used for the future has a strong influence on the projected changes in NO_x , which are sensitive to the precise balance between increased production from nitrous oxide and increased reservoir stability as the stratosphere cools. Other gases show changes in the future that are fairly robust to the scenario chosen. Similarly, the projected increase in the stratospheric ozone burden relative to the PD is quite similar in the A1B and A2 scenarios, at 24 and 28%, respectively. The projection of future stratospheric values in excess of the 1979 or PI values results from the influence of greenhouse gases other than CFCs on the temperature and composition of the stratosphere. These gases also had an influence in the past, so that $\sim 38\%$ of the total depletion between the PI and the PD took place prior to 1979 (though a small portion of this resulted from the small quantity of CFCs released prior to 1979). A substantial role for non-CFC greenhouse gases in affecting past and future stratospheric ozone is consistent with studies of historical observations (Shindell and Faluvegi, 2002) and other modeling results (Randeniya et al., 2002).

Projections of future composition in the polar regions are less reliable in this model. Examination of springtime temperatures shows that the lower stratosphere is projected to cool in response to climate change, as in our earlier studies (Shindell et al., 1998). This occurs despite an increase in ozone transported to the lower stratosphere in future climates, which is especially large in the NH (Fig. 19), and suggests a dynamic feedback that strengthens the Arctic vortex along with the radiative cooling induced by greenhouse gas increases. As halogen loading has dropped dramatically by 2100, heterogeneous ozone chemistry no longer takes place at levels sufficient to cause substantial ozone depletion in the 2100 emissions and climate simulations, however. Future model versions with higher vertical resolution and an enhanced parameterization of polar heterogeneous chemistry will be used to address the issue of transient ozone changes as climate warms while halogens decline.

The effect of future climate on the tropospheric ozone burden appears to be relatively robust across models. Applying projected future A2 2100 climate, the tropospheric ozone burden in our model decreases from 420 to 413 Tg. The experiments of

**Composition and
climate modeling
with G-PUCCINI**

D. T. Shindell et al.

Title Page

Abstract

Introduction

Conclusions

References

Tables

Figures

◀

▶

◀

▶

Back

Close

Full Screen / Esc

Printer-friendly Version

Interactive Discussion

Collins et al. (2003) show a similarly small decrease from 284 to 271 Tg. Again using the different setup of taking the difference between A2 emissions plus climate and A2 emissions alone, the burden increases from 489 to 505 Tg in the model of Zeng and Pyle (2003). Thus it appears that the overall influence of climate change on the tropospheric burden is consistently small, as several competing factors offset one another, while the absolute sign of the change depends on the relative importance of individual processes (e.g. increases in humidity, lightning, rainout of soluble gases, etc.) in the particular models. The response to changes in emissions appears to be more sensitive to intermodel variations, though this is difficult to gauge due to the varying assumptions used in future simulations. In the runs of Zeng and Pyle (2003) that did not include future ozone recovery, the tropospheric burden increased from 317 to 505 Tg with 2100 A2 emissions and climate. In our model, which did include future stratospheric ozone recovery, the burden increased from 420 to 845 Tg.

Comparison of simulations with 1979 and PD stratospheric conditions but identical tropospheric emissions indicates that a reduction in the influx of ozone from the stratosphere to the troposphere coincident with stratospheric ozone depletion may have played a large role in compensating for tropospheric ozone burden increase driven by enhanced pollutant emissions. The model results suggest that as much as 2/3 of the burden increase may have been offset, with the changes nearly all arising from the SH. Projected future ozone recovery leads to an enhanced influx of ozone from the stratosphere, again with potentially large impacts on the tropospheric ozone burden. As the influx is confined to middle to high latitudes, however, the impact on RF is not large, nor do the STE changes dramatically affect surface pollution. These will continue to be governed primarily by emissions, which dominate over the effects of climate change on tropospheric pollution at low levels globally and are important at all levels in the tropics.

Acknowledgements. The authors thank NASA's Atmospheric Chemistry Modeling and Analysis Program for support, and the SPARC data center for satellite trace-gas climatologies.

**Composition and
climate modeling
with G-PUCCINI**

D. T. Shindell et al.

Title Page

Abstract

Introduction

Conclusions

References

Tables

Figures

◀

▶

◀

▶

Back

Close

Full Screen / Esc

Printer-friendly Version

Interactive Discussion

References

- Andrews, A. E., Boering, K. A., Daube, B. C., Wofsy, S. C., Hints, E. J., Weinstock, E. M., and Bui, T. P.: Empirical age spectra for the lower tropical stratosphere from in situ observations of CO₂: Implications for stratospheric transport, *J. Geophys. Res.*, 104, 26 581–26 596, 1999.
- 5 Arellano, A. F. J., Kasibhatla, P. S., Giglio, L., van der Werf, G. R., and Randerson, J. T.: Top-down estimates of global CO sources using MOPITT measurements, *Geophys. Res. Lett.*, 31, L01104, doi:10.1029/2003GL018609, 2004.
- Austin, J., Shindell, D., Beagley, S. R., et al.: Uncertainties and assessments of chemistry-climate models of the stratosphere, *Atmos. Chem. Phys.*, 3, 1–27, 2003.
- 10 Bauer, S. E. and Koch, D.: Impact of heterogeneous sulfate formation at mineral dust surfaces on aerosol loads and radiative forcing in the Goddard Institute for Space Studies general circulation model, *J. Geophys. Res.*, 110, D17202, doi:10.1029/2005JD005870, 2005.
- Bell, N., Koch, D., and Shindell, D.: Impacts of chemistry-aerosol coupling on tropospheric ozone and sulfate simulations in a general circulation model, *J. Geophys. Res.*, 110, D14305, doi:10.1029/2004JD005538, 2005.
- 15 Benkovitz, C. M., Scholtz, M. T., Pacyna, J., Tarrason, L., Dignon, J., Voldner, E. C., Spiro, P. A., Logan, J. A., and Graedel, T. E.: Global gridded inventories of anthropogenic emissions of sulfur and nitrogen, *J. Geophys. Res.*, 101, 29 239–29 253, 1996.
- Bian, H. and Prather, M.: Fast-J2: Accurate simulations of photolysis in global climate models, *J. Atmos. Chem.*, 41, 281–296, 2002.
- 20 Boccippio, D. J., Driscoll, K., Koshak, W., Blakeslee, R., Boeck, W., Mach, D., Christian, H. J., and Goodman, S. J.: Cross-sensor validation of the Optical Transient Detector (OTD), *J. Atmos. Sol. Terr. Phys.*, 60, 701–712, 1998.
- Boering, K. A., Wofsy, S. C., Daube, B. C., Schneider, H. R., Loewenstein, M., Podolske, J. R., and Conway, T. J.: Stratospheric Mean Ages and Transport Rates from Observations of Carbon Dioxide and Nitrous Oxide, *Science*, 274, 1340–1343, 1996.
- 25 Cakmur, R. V., Miller, R. L., Perlwitz, J., Koch, D., Geogdzhayev, I. V., Ginoux, P., Tegen, I., and Zender, C. S.: Constraining the global dust emission and load by minimizing the difference between the model and observations, *J. Geophys. Res.*, 111, D06207, doi:10.1029/2005JD005791, 2006.
- 30 Collins, W. J., Derwent, R. G., Garnier, B., Johnson, C. E., Sanderson, M. G., and Stevenson, D. S.: Effect of stratosphere-troposphere exchange on the future tropospheric ozone trend,

Title Page

Abstract

Introduction

Conclusions

References

Tables

Figures

◀

▶

◀

▶

Back

Close

Full Screen / Esc

Printer-friendly Version

Interactive Discussion

- J. Geophys. Res., 108, doi:10.1029/2002JD002617, 2003.
- Cros, B., Delmas, R., Nganga, D., Clairac, B., and Fontan, J.: Seasonal trends of ozone in equatorial Africa: experimental evidence of photochemical formation, J. Geophys. Res., 93, 8355–8366, 1988.
- 5 Dlugokencky, E. J., Steele, L. P., Lang, P. M., and Masarie, K. A.: The growth rate and distribution of atmospheric methane, J. Geophys. Res., 99, 17 021–17 043, 1994.
- Elkins, J. W., Fahey, D. W., Gilligan, J. M., et al.: Airborne gas chromatograph for in situ measurements of long-lived species in the upper troposphere and lower stratosphere, Geophys. Res. Lett., 23, 347–350, 1996.
- 10 Emmons, L. K., Hauglustaine, D. A., Muller, J. F., Carroll, M. A., Brasseur, G. P., Brunner, D., Staehelin, J., Thouret, V., and Marenco, A.: Data composites of airborne observations of tropospheric ozone and its precursors, J. Geophys. Res., 105, 20 497–20 538, 2000.
- Gettelman, A., Holton, J. R., and Rosenlof, K. H.: Mass fluxes of O₃, CH₄, N₂O, and CF₂Cl₂ in the lower stratosphere calculated from observational data, J. Geophys. Res., 102, 19 149–19 159, 1997.
- 15 Ginoux, P., Chin, M., Tegen, I., Prospero, J., Holben, B., Dubovik, O., and Lin, S. J.: Sources and distributions of aerosols simulated with the {GOCART} model, J. Geophys. Res., 106, 20 255–20 273, 2001.
- Hall, T. M., Waugh, D. W., Boering, K. A., and Plumb, R. A.: Evaluation of transport in stratospheric models, J. Geophys. Res., 104, 18 815–18 839, 1999.
- 20 Hanisch, F. and Crowley, J. N.: The heterogeneous reactivity of gaseous nitric acid on authentic mineral dust samples, and on individual mineral and clay mineral components, Phys. Chem. Chem. Phys., 3, 2474–2482, 2001.
- Hansen, J., Sato, M., Ruedy, R., et al.: Efficacy of Climate Forcings, J. Geophys. Res., 110, D18104, doi:10.1029/2005JD005776, 2005.
- 25 Hanson, D. and Mauersberger, K.: Laboratory studies of the nitric acid tridydrate: Implications for the south polar stratosphere, Geophys. Res. Lett., 15, 855–858, 1988.
- Harnisch, J., Borchers, R., Fabian, P., and Maiss, M.: Tropospheric trends for CF₄ and C₂F₆ since 1982 derived from SF₆ dated stratospheric air, Geophys. Res. Lett., 23, 1099–1102, 1996.
- 30 Holland, E. A., Braswell, B. H., Sulzman, J., and Lamarque, J.-F.: Nitrogen deposition onto the United States and Western Europe: Synthesis of observations and models, Ecological Applications, 15, 38–57, 2005.

**Composition and
climate modeling
with G-PUCCINI**

D. T. Shindell et al.

Title Page

Abstract

Introduction

Conclusions

References

Tables

Figures

◀

▶

◀

▶

Back

Close

Full Screen / Esc

Printer-friendly Version

Interactive Discussion

**Composition and
climate modeling
with G-PUCCINI**

D. T. Shindell et al.

Title Page

Abstract

Introduction

Conclusions

References

Tables

Figures

◀

▶

◀

▶

Back

Close

Full Screen / Esc

Printer-friendly Version

Interactive Discussion

- Kirchhoff, V. W. J. H. and Rasmussen, R. A.: Time variations of CO and ozone concentrations in a region subject to biomass burning, *J. Geophys. Res.*, 95, 7521–7532, 1990.
- Koch, D. and Hansen, J.: Distant origins of Arctic Black Carbon: A GISS ModelE experiment, *J. Geophys. Res.*, 110, D04204, doi:10.1029/2004JD005296, 2005.
- 5 Koch, D., Schmidt, G., and Field, C.: Sulfur, sea salt and radionuclide aerosols in GISS ModelE, *J. Geophys. Res.*, 111, D06206, doi:10.1029/2004JD005550, 2006.
- Lamarque, J.-F., Kiehl, J. T., Brasseur, G. P., et al.: Assessing future nitrogen deposition and carbon cycle feedback using a multi-model approach. Part 1: Analysis of nitrogen deposition, *J. Geophys. Res.*, 110, D19303, doi:10.1029/2005JD005825, 2005.
- 10 Logan, J. A.: An analysis of ozonesonde data for the troposphere: Recommendations for testing 3-D models and development of a gridded climatology for tropospheric ozone, *J. Geophys. Res.*, 104, 16 115–16 149, 1999.
- McCormack, J. P. and Hood, L. L.: Apparent solar cycle variations of upper stratospheric ozone and temperature: Latitude and seasonal dependences, *J. Geophys. Res.*, 101, 20 933–20 944, 1996.
- 15 Miller, R. L., Cakmur, R. V., Perlwitz, J., et al.: Mineral Dust Aerosols in the NASA Goddard Institute for Space Studies ModelE AGCM, *J. Geophys. Res.*, 111, D06208, doi:10.1029/2005JD005796, 2006.
- Murphy, D. M. and Fahey, D. W.: An estimate of the flux of stratospheric reactive nitrogen and ozone into the troposphere, *J. Geophys. Res.*, 99, 5325–5332, 1994.
- Nicolet, M.: On the photodissociation of water vapour in the mesosphere, *Planet. Space Sci.*, 32, 871–880, 1984.
- Nicolet, M. and Cieslik, S.: The photodissociation of nitric oxide in the mesosphere and stratosphere, *Planet. Space Sci.*, 28, 105–115, 1980.
- 25 Olsen, M. A., Douglass, A. R., and Schoeberl, M. R.: A comparison of Northern and Southern Hemisphere cross-tropopause ozone flux, *Geophys. Res. Lett.*, 30(7), 1412, doi:10.1029/2002GL016538, 2003.
- Oltmans, S. J. and Levy, H.: Surface ozone measurements from a global network, *Atmos. Env.*, 28, 9–24, 1994.
- 30 Oltmans, S. J., Lefohn, A. S., Scheel, H. E., et al.: Trends of ozone in the troposphere, *Geophys. Res. Lett.*, 25, 139–142, 1997.
- Pétron, G., Granier, C., Khatatov, B., Yudin, V., Lamarque, J.-F., Emmons, L., Gille, J., and Edwards, D. P.: Monthly CO surface sources inventory based on the 2000–2001 MOPITT

- satellite data, *Geophys. Res. Lett.*, 31, L21107, doi:10.1029/2004GL020560, 2004.
- Plumb, R. A. and Eluszkiewicz, J.: The Brewer-Dobson circulation: dynamics of the tropical upwelling, *J. Atmos. Sci.*, 56, 868–890, 1999.
- Prather, M. J., Ehhalt, D., Dentener, F., et al.: Atmospheric Chemistry and Greenhouse Gases, in: *Climate Change 2001*, edited by: Houghton, J. T., Cambridge Univ. Press, Cambridge, 239–287, 2001.
- Price, C., Penner, J., and Prather, M.: NO_x from lightning, 1, Global distribution based on lightning physics, *J. Geophys. Res.*, 102, 5929–5941, 1997.
- Randel, W. J. and Wu, F.: A stratospheric ozone trends data set for global modeling studies, *Geophys. Res. Lett.*, 26, 3089–3092, 1999.
- Randel, W. J., Wu, F., Russell, J., Roche, A., and Waters, J.: Seasonal cycles and QBO variations in stratospheric CH₄ and H₂O observed in UARS HALOE data, *J. Atmos. Sci.*, 55, 163–185, 1998.
- Randeniya, L. K., Vohralik, P. F., and Plumb, I. C.: Stratospheric ozone depletion at northern mid latitudes in the 21st century: The importance of future concentrations of greenhouse gases nitrous oxide and methane, *Geophys. Res. Lett.*, 29(4), doi:10.1029/2001GL014295, 2002.
- Rosenlof, K. H.: Seasonal cycle of the residual mean meridional circulation in the stratosphere, *J. Geophys. Res.*, 100, 5173–5191, 1995.
- Sander, S. P., Friedl, R. R., Golden, D. M., et al.: Chemical kinetics and photochemical data for use in stratospheric modeling, *Eval.* 13, JPL Publ. 00-003, 2000.
- Sanhueza, E., Octavio, K. H., and Arrocha, A.: Surface ozone measurements in the Venezuelan tropical savannah, *J. Atmos. Chem.*, 2, 377–385, 1985.
- Sato, M., Hansen, J. E., McCormick, M. P., and Pollack, J. B.: Stratospheric aerosol optical depths, 1850–1990, *J. Geophys. Res.*, 98, 22 987–22 994, 1993.
- Scheele, M. P., Siegmund, P. C., and van Velthoven, P. F. J.: Stratospheric age of air computed with trajectories based on various 3D-Var and 4D-Var data sets, *Atmos. Chem. Phys.*, 5, 1–7, 2005.
- Schmidt, G. A., Hoffmann, G., Shindell, D. T., and Hu, Y.: Modeling atmospheric stable water isotopes and the potential for constraining cloud processes and stratosphere-troposphere water exchange, *J. Geophys. Res.*, 110, D21314, doi:10.1029/2005JD005790, 2005.
- Schmidt, G. A., Ruedy, R., Hansen, J. E., et al.: Present day atmospheric simulations using GISS ModelE: Comparison to in-situ, satellite and reanalysis data, *J. Clim.*, 19, 153–192,

**Composition and
climate modeling
with G-PUCCINI**

D. T. Shindell et al.

Title Page

Abstract

Introduction

Conclusions

References

Tables

Figures

◀

▶

◀

▶

Back

Close

Full Screen / Esc

Printer-friendly Version

Interactive Discussion

2006.

Schoeberl, M. R., Douglass, A. R., Zhu, Z., and Pawson, S.: A comparison of lower stratospheric age spectra derived from a general circulation model and two data assimilation systems, *J. Geophys. Res.*, 108, 4113, doi:10.1029/2002JD002652, 2003.

5 Shindell, D. T. and Faluvegi, G.: An exploration of ozone changes and their radiative forcing prior to the chlorofluorocarbon era, *Atmos. Chem. Phys.*, 2, 363–374, 2002.

Shindell, D. T., Faluvegi, G., and Bell, N.: Preindustrial-to-present-day radiative forcing by tropospheric ozone from improved simulations with the GISS chemistry-climate GCM, *Atmos. Chem. Phys.*, 3, 1675–1702, 2003.

10 Shindell, D. T., Faluvegi, G., Bell, N., and Schmidt, G. A.: An emissions-based view of climate forcing by methane and tropospheric ozone, *Geophys. Res. Lett.*, 32, L04803, doi:10.1029/2004GL021900, 2005.

Shindell, D. T., Faluvegi, G., and Emmons, L.: Inferring carbon monoxide pollution changes from space-based observations, *J. Geophys. Res.*, 110, D23303, doi:10.1029/2005JD006132, 2005.

15 Shindell, D. T., Grenfell, J. L., Rind, D., Price, C., and Grewe, V.: Chemistry-climate interactions in the Goddard Institute for Space Studies general circulation model 1. Tropospheric chemistry model description and evaluation, *J. Geophys. Res.*, 106, 8047–8076, 2001.

Shindell, D. T., Rind, D., and Lonergan, P.: Increased polar stratospheric ozone losses and delayed eventual recovery due to increasing greenhouse gas concentrations, *Nature*, 392, 589–592, 1998.

20 Shindell, D. T., Schmidt, G. A., Miller, R. L., and Rind, D.: Northern Hemisphere winter climate response to greenhouse gas, volcanic, ozone and solar forcing, *J. Geophys. Res.*, 106, 7193–7210, 2001.

25 Stevenson, D. S., Dentener, F. J., Schulz, M. G., et al.: Multi-model ensemble simulations of present-day and near-future tropospheric ozone, *J. Geophys. Res.*, 111, D08301, doi:10.1029/2005JD006338, 2006.

Sudo, K., Takahashi, M., and Akimoto, H.: Future changes in stratosphere-troposphere exchange and their impacts on future tropospheric ozone simulations, *Geophys. Res. Lett.*, 30(24), 2256, doi:10.1029/2003GL018526, 2003.

30 Sunwoo, Y. and Carmichael, G.: Characteristics of background surface ozone in Japan, *Atmos. Env.*, 28, 25–38, 1994.

Swinbank, R. and O'Neill, A.: A stratosphere-troposphere data assimilation system, *Mon.*

Composition and climate modeling with G-PUCCINI

D. T. Shindell et al.

Title Page

Abstract

Introduction

Conclusions

References

Tables

Figures

◀

▶

◀

▶

Back

Close

Full Screen / Esc

Printer-friendly Version

Interactive Discussion

Weather Rev., 122, 686–702, 1994.

Waters, J. W., Read, W. G., Froidevaux, L., et al.: Validation of UARS MLS ClO measurements, J. Geophys. Res., 101, 10 091–10 127, 1996.

World Meteorological Organization: Scientific Assessment of Ozone Depletion, 1998, Rep. 44, Geneva, 1999.

5

Zeng, G. and Pyle, J. A.: Changes in tropospheric ozone between 2000 and 2100 modeled in a chemistry-climate model, Geophys. Res. Lett., 30(7), 1392, doi:10.1029/2002GL016708, 2003.

ACPD

6, 4795–4878, 2006

**Composition and
climate modeling
with G-PUCCINI**

D. T. Shindell et al.

Title Page

Abstract

Introduction

Conclusions

References

Tables

Figures

⏪

⏩

◀

▶

Back

Close

Full Screen / Esc

Printer-friendly Version

Interactive Discussion

EGU

Table 1. Gases included in the model.

Transported		Not Transported	
(1)	O _x	(28)	NO
(2)	NO _x	(29)	NO ₂
(3)	HNO ₃	(30)	NO ₃
(4)	N ₂ O ₅	(31)	HONO
(5)	HO ₂ NO ₂	(32)	OH
(6)	H ₂ O ₂	(33)	HO ₂
(7)	CO	(34)	O
(8)	HCHO	(35)	O(¹ D)
(9)	CH ₃ OOH	(36)	O ₃
(10)	H ₂ O	(37)	CH ₃ O ₂
(11)	CH ₄	(38)	C ₂ O ₃
(12)	PANs	(39)	Aldehydes ^a
(13)	Isoprene	(40)	XO ₂ ^d
(14)	Alkyl Nitrates ^a	(41)	XO ₂ N ^e
(15)	Alkenes ^a	(42)	RXPAR ^f
(16)	Paraffins ^a	(43)	ROR ^g
(17)	ClO _x	(44)	Cl
(18)	BrO _x	(45)	ClO
(19)	HCl	(46)	OCIO
(20)	HOCl	(47)	Cl ₂ O ₂
(21)	ClONO ₂	(48)	Cl ₂
(22)	HBr	(49)	ClNO ₂
(23)	HOBr	(50)	Br
(24)	BrONO ₂	(51)	BrO
(25)	N ₂ O	(52)	BrCl
(26)	CFCs ^b	(53)	N
(27)	Linearly increasing tracer ^c	(54)	H

**Composition and
climate modeling
with G-PUCCINI**

D. T. Shindell et al.

Title Page

Abstract

Introduction

Conclusions

References

Tables

Figures

◀

▶

◀

▶

Back

Close

Full Screen / Esc

Printer-friendly Version

Interactive Discussion

^a Alkyl nitrates, alkenes, paraffins, and aldehydes are lumped families. Alkenes include propene, >C3 alkenes, and >C2 alkynes, paraffins include ethane, propane, butane, pentane, >C5 alkanes and ketones, while aldehydes include acetaldehyde and higher aldehydes (not formaldehyde).

5 ^b CFCs are defined here as the sum of all CFCs, using the characteristics of CFC-11.

^c Linear tracer is a tracer with a linearly increasing surface abundance that can be scaled to SF₆ or CO₂ to evaluate the models age of air against observations.

^d XO₂ is a surrogate species to represent primarily hydrocarbon oxidation byproducts that subsequently convert NO to NO₂, and also leads to a small amount of organic peroxide formation.

10 ^e XO₂N is a surrogate species to represent hydrocarbon oxidation byproducts that subsequently convert NO to alkyl nitrates, and also leads to a small amount of organic peroxide formation.

^f RXPAR is a paraffin budget corrector to correct a bias in the oxidation of alkenes related to an overly short chain length for the lumped alkenes.

^g ROR are radical byproducts of paraffin oxidation.

Composition and climate modeling with G-PUCCINI

D. T. Shindell et al.

Title Page

Abstract

Introduction

Conclusions

References

Tables

Figures

◀

▶

◀

▶

Back

Close

Full Screen / Esc

Printer-friendly Version

Interactive Discussion

Table 2. Additional reactions included in the model.

Bimolecular Reactions	
(1)	$\text{Cl} + \text{O}_3 \rightarrow \text{ClO} + \text{O}_2$
(2)	$\text{ClO} + \text{O} \rightarrow \text{Cl} + \text{O}_2$
(3)	$\text{Cl} + \text{OCIO} \rightarrow \text{ClO} + \text{ClO}$
(4)	$\text{ClO} + \text{O}_3 \rightarrow \text{ClOO} + \text{O}_2$
(5)	$\text{ClO} + \text{O}_3 \rightarrow \text{OCIO} + \text{O}_2$
(6)	$\text{O} + \text{OCIO} \rightarrow \text{ClO} + \text{O}_2$
(7)	$\text{OH} + \text{Cl}_2 \rightarrow \text{HOCl} + \text{Cl}$
(8)	$\text{OH} + \text{HCl} \rightarrow \text{H}_2\text{O} + \text{Cl}$
(9)	$\text{OH} + \text{HOCl} \rightarrow \text{H}_2\text{O} + \text{ClO}$
(10)	$\text{O} + \text{HCl} \rightarrow \text{OH} + \text{Cl}$
(11)	$\text{O} + \text{HOCl} \rightarrow \text{OH} + \text{ClO}$
(12)	$\text{OCIO} + \text{OH} \rightarrow \text{HOCl} + \text{O}_2$
(13)	$\text{Cl} + \text{HOCl} \rightarrow \text{Cl}_2 + \text{OH}$
(14)	$\text{Cl} + \text{H}_2\text{O}_2 \rightarrow \text{HCl} + \text{HO}_2$
(15)	$\text{Cl} + \text{HO}_2 \rightarrow \text{HCl} + \text{O}_2$
(16)	$\text{Cl} + \text{HO}_2 \rightarrow \text{OH} + \text{ClO}$
(17)	$\text{ClO} + \text{OH} \rightarrow \text{HO}_2 + \text{Cl}$
(18)	$\text{ClO} + \text{OH} \rightarrow \text{HCl} + \text{O}_2$
(19)	$\text{ClO} + \text{HO}_2 \rightarrow \text{HOCl} + \text{O}_2$
(20)	$\text{ClO} + \text{NO} \rightarrow \text{NO}_2 + \text{Cl}$
(21)	$\text{ClONO}_2 + \text{O} \rightarrow \text{ClO} + \text{NO}_3$
(22)	$\text{HCl} + \text{O}({}^1\text{D}) \rightarrow \text{Cl} + \text{OH}$
(23)	$\text{NO} + \text{OCIO} \rightarrow \text{NO}_2 + \text{ClO}$
(24)	$\text{HBr} + \text{OH} \rightarrow \text{H}_2\text{O} + \text{Br}$
(25)	$\text{BrO} + \text{O} \rightarrow \text{Br} + \text{O}_2$
(26)	$\text{Br} + \text{O}_3 \rightarrow \text{BrO} + \text{O}_2$
(27)	$\text{BrO} + \text{NO} \rightarrow \text{Br} + \text{NO}_2$
(28)	$\text{Br} + \text{HO}_2 \rightarrow \text{HBr} + \text{O}_2$
(29)	$\text{BrO} + \text{HO}_2 \rightarrow \text{HOBr} + \text{O}_2$
(30)	$\text{Br} + \text{OCIO} \rightarrow \text{BrO} + \text{ClO}$
(31)	$\text{BrO} + \text{ClO} \rightarrow \text{OCIO} + \text{Br}$
(32)	$\text{BrO} + \text{ClO} \rightarrow \text{Br} + \text{ClOO}$
(33)	$\text{BrO} + \text{ClO} \rightarrow \text{BrCl} + \text{O}_2$
(34)	$\text{BrO} + \text{BrO} \rightarrow \text{Br} + \text{Br}$
(35)	$\text{Br} + \text{H}_2\text{O}_2 \rightarrow \text{HBr} + \text{HO}_2$
(36)	$\text{BrO} + \text{OH} \rightarrow \text{Br} + \text{HO}_2$
(37)	$\text{BrO} + \text{OH} \rightarrow \text{HBr} + \text{O}_2$
(38)	$\text{Cl} + \text{CH}_4 \rightarrow \text{HCl} + \text{CH}_3\text{O}_2$
(39)	$\text{Cl} + \text{H}_2 \rightarrow \text{HCl} + \text{H}$
(40)	$\text{O} + \text{HBr} \rightarrow \text{OH} + \text{Br}$
(41)	$\text{ClO} + \text{CH}_3\text{O}_2 \rightarrow \text{ClOO} + \text{HCHO} + \text{HO}_2$
(42)	$\text{N}_2\text{O} + \text{O}({}^1\text{D}) \rightarrow \text{N}_2 + \text{O}_2$
(43)	$\text{N}_2\text{O} + \text{O}({}^1\text{D}) \rightarrow \text{NO} + \text{NO}$
(44)	$\text{O} + \text{O}_3 \rightarrow \text{O}_2 + \text{O}_2$
(45)	$\text{O} + \text{OH} \rightarrow \text{O}_2 + \text{H}$
(46)	$\text{O} + \text{HO}_2 \rightarrow \text{OH} + \text{O}_2$
(47)	$\text{N} + \text{O}_2 \rightarrow \text{NO} + \text{O}$
(48)	$\text{N} + \text{O}_2 \rightarrow \text{N}_2\text{O} + \text{O}$
(49)	$\text{N} + \text{O}_2 \rightarrow \text{N}_2 + \text{O}$
(50)	$\text{H} + \text{O}_3 \rightarrow \text{OH} + \text{O}_2$
(51)	$\text{H} + \text{O}_2 + \text{M} \rightarrow \text{HO}_2 + \text{M}$
(52)	$\text{ClO} + \text{ClO} \rightarrow \text{Cl}_2 + \text{O}_2$
(53)	$\text{ClO} + \text{ClO} \rightarrow \text{ClOO} + \text{Cl}$
(54)	$\text{ClO} + \text{ClO} \rightarrow \text{OCIO} + \text{Cl}$
(55)	$\text{O} + \text{H}_2\text{O}_2 \rightarrow$
Monomolecular Reactions	
(56)	$\text{Cl}_2\text{O}_2 + \text{M} \rightarrow \text{ClO} + \text{ClO}$
Termolecular Reactions	
(57)	$\text{ClO} + \text{ClO} + \text{M} \rightarrow \text{Cl}_2\text{O}_2 + \text{M}$
(58)	$\text{ClO} + \text{NO}_2 + \text{M} \rightarrow \text{ClONO}_2 + \text{M}$
(59)	$\text{BrO} + \text{NO}_2 + \text{M} \rightarrow \text{BrONO}_2 + \text{M}$
Heterogeneous Reactions	
(60)	$\text{N}_2\text{O}_5 + \text{H}_2\text{O} \rightarrow \text{HNO}_3 + \text{HNO}_3$
(61)	$\text{ClONO}_2 + \text{H}_2\text{O} \rightarrow \text{HOCl} + \text{HNO}_3$
(62)	$\text{ClONO}_2 + \text{HCl} \rightarrow \text{Cl}_2 + \text{HNO}_3$
(63)	$\text{HOCl} + \text{HCl} \rightarrow \text{Cl}_2 + \text{H}_2\text{O}$
(64)	$\text{N}_2\text{O}_5 + \text{HCl} \rightarrow \text{ClONO}_2 + \text{HNO}_3$
Photolysis Reactions	
(65)	$\text{ClO} + h\nu \rightarrow \text{Cl} + \text{O}$
(66)	$\text{Cl}_2 + h\nu \rightarrow \text{Cl} + \text{Cl}$
(67)	$\text{OCIO} + h\nu \rightarrow \text{O} + \text{ClO}$
(68)	$\text{Cl}_2\text{O}_2 + h\nu \rightarrow \text{Cl} + \text{Cl} + \text{O}_2$
(69)	$\text{HOCl} + h\nu \rightarrow \text{OH} + \text{Cl}$
(70)	$\text{ClONO}_2 + h\nu \rightarrow \text{Cl} + \text{NO}_3$
(71)	$\text{BrONO}_2 + h\nu \rightarrow \text{BrO} + \text{NO}_2$
(72)	$\text{HOBr} + h\nu \rightarrow \text{Br} + \text{OH}$
(73)	$\text{BrO} + h\nu \rightarrow \text{Br} + \text{O}$
(74)	$\text{CFC} + h\nu \rightarrow \text{Cl}$
(75)	$\text{O}_2 + h\nu \rightarrow \text{O} + \text{O}$
(76)	$\text{N}_2\text{O} + h\nu \rightarrow \text{N}_2 + \text{O}({}^1\text{D})$
(77)	$\text{NO} + h\nu \rightarrow \text{N} + \text{O}$
(78)	$\text{H}_2\text{O} + h\nu \rightarrow \text{OH} + \text{H}$

M is any body that can serve to carry away excess energy. ClOO is assumed to decay immediately to Cl + O₂.

Title Page

Abstract

Introduction

Conclusions

References

Tables

Figures

◀

▶

◀

▶

Back

Close

Full Screen / Esc

Printer-friendly Version

Interactive Discussion

Composition and climate modeling with G-PUCCINI

D. T. Shindell et al.

Table 3. Simulations with the full chemistry model.

	Year	Long-lived gases			CFC ppbv	Short-lived species emissions	Ocean conditions
		CO ₂ ppmv	N ₂ O ppbv	CH ₄ ppmv			
Preindustrial (PI)	1850	285.2	275.4	0.79	0.0	~1850	responsive
1979 stratosphere	1979	337.1	300.9	1.53	1.9	1990s	responsive
Present-day (PD)	1995	360.7	315.7	~1.85 N ~1.72 S	3.2	1990s	responsive & 1990s (2 runs)
A1B composition and climate	2080	649.0	365.1	2.127 N 2.255 S	1.5	1990s	responsive
A2 emissions and climate	2100	856.0	447.0	3.731	1.2	2100	responsive
A2 climate-only	1995	856.0	315.7	~1.85 N ~1.72 S	3.2	1990s	2100
A1B composition	2080	360.7	365.1*	2.13 N* 2.26 S*	1.5*	1990s	1990s

* These values were seen by the chemistry but not the radiation/climate in the GCM.

[Title Page](#)
[Abstract](#)
[Introduction](#)
[Conclusions](#)
[References](#)
[Tables](#)
[Figures](#)
[Back](#)
[Close](#)
[Full Screen / Esc](#)
[Printer-friendly Version](#)
[Interactive Discussion](#)

Composition and climate modeling with G-PUCCINI

D. T. Shindell et al.

Table 4. Ozone differences and biases (ppbv) between models and sondes.

Pressure level (hPa)	Avg. difference, model II'	Avg. difference, modelE, tropospheric chemistry	Avg. difference, modelE, full chemistry	Avg. bias, modelE, tropospheric chemistry	Avg. bias, modelE, full chemistry	Avg. bias, modelE, full chemistry, w/o Syowa	Standard deviation of observations
125	83.7 (22%)	50.2 (13%)	88.9 (23%)	3.5 (1%)	−16.1 (4%)	−33.9 (9%)	137
200	44.9 (22%)	34.3 (17%)	47.2 (23%)	−23.8 (12%)	0.2 (0%)	−12.8 (6%)	74.2
300	28.9 (39%)	17.9 (24%)	34.8 (46%)	5.9 (8%)	22.8 (30%)	16.1(21%)	32.2
500	10.6 (23%)	6.4 (14%)	10.3 (22%)	1.5 (3%)	−0.3 (1%)	−1.9 (4%)	11.4
900	6.6 (22%)	5.7 (19%)	8.3 (28%)	−2.6 (9%)	−1.7 (6%)	−2.6 (9%)	9.9

Comparisons are between the models and the 16 recommended sites of Logan (1999), having excluded the two sites with four months or less data. Average differences are from the month-by-month absolute value differences between the model and the sondes. Values in parentheses are percent difference with respect to observed values at these levels. The sites are: Resolute, Edmonton, Hohenpeissenberg, Sapporo, Boulder, Wallops Island, Tateno, Kagoshima, Naha, Hilo, Natal, Samoa, Pretoria, Aspendale, Lauder, and Syowa. All models are 23 layer versions.

Title Page

Abstract

Introduction

Conclusions

References

Tables

Figures

◀

▶

◀

▶

Back

Close

Full Screen / Esc

Printer-friendly Version

Interactive Discussion

Table 5. Tropospheric ozone budget (Tg/yr), burden (Tg) and radiative forcing (RF, W/m²).

Simulation → Quantity ↓	Preindustrial (PI) emiss + climate	1979 strat comp	Present-day (PD)	A1B 2080 comp + climate	A2 2100 emiss + climate	A2 2100 climate	A1B 2080 comp	Tropospheric chemistry-only (PD)
Change by dynamics (STE)	708 (100)	777 (169)	608	1042 (434)	1360 (752)	810 (202)	903 (295)	502
Change by dry deposition	-669	-1031	-976	-1098	-1800	-873	-1145	-956
Net change by chemistry	-39	254	368	56	349	64	242	454
Chemical production	4278	4705	4957	4916	9545	4901	4861	4932
Chemical loss	-4317	-4451	-4588	-4860	-9194	-4837	-4619	-4464
Tropospheric burden	379	503	420	591	845	413	585	379
Stratospheric burden	3365	3134	2769	3440	3531	2777	3265	NA
Mean OH	10.3	8.4	8.7	8.1	9.3	11.8	7.4	9.6
Shortwave RF	-0.39	-0.21	NA	-0.36	-0.25	-0.05	0.01	NA
Longwave RF	0.05	0.25	NA	0.48	1.01	-0.13	0.45	NA
Net RF	-0.34	0.04	NA	0.12	0.76	-0.18	0.46	NA

Budget values (STE, dry deposition and chemistry) are for the troposphere only. All radiative forcings are relative to present day. Values in parentheses for O_x change by dynamics give the change relative to present-day. Troposphere-only chemistry model net forcing from PI to PD is 0.37 W/m² (Shindell et al., 2005). emiss=emissions, and denotes time appropriate settings for both concentrations of long-lived gases and emissions of short-lived gases in the troposphere, comp=composition, and denotes time appropriate settings for concentrations of long-lived gases only, strat=stratosphere.

[Title Page](#)
[Abstract](#)
[Introduction](#)
[Conclusions](#)
[References](#)
[Tables](#)
[Figures](#)
[Back](#)
[Close](#)
[Full Screen / Esc](#)
[Printer-friendly Version](#)
[Interactive Discussion](#)

Composition and climate modeling with G-PUCCINI

D. T. Shindell et al.

Table 6. Ozone fluxes (Tg/yr).

	Southern extratropical flux, downwards across 150 hPa	Tropical flux, upwards across 50 hPa	Northern extratropical flux, downwards across 150 hPa	Net horizontal and vertical flux into troposphere
A2 emissions + climate	710 (+445)	145 (+37)	755 (+402)	1333 (+776)
A1B composition+ climate	485 (+220)	120 (+12)	556 (+203)	1060 (+503)
Present-day (PD)	265	108	353	557
Preindustrial (PI)	369 (+104)	101 (−7)	345 (−8)	693 (+136)
A1B emissions	487 (+222)	165 (+57)	462 (+109)	821 (+264)
A2 climate	269 (+4)	100 (−8)	504 (+151)	742 (+185)

Values in parentheses are changes relative to the present day. Tropical upward fluxes at 50 hPa are calculated over the region where the net flux is upwards, which is typically 24° S to 20° N. Extratropical fluxes are summed from 28 degrees to the pole. The final column gives fluxes across a continuous surface following 150 hPa from 28 to 90 in each hemisphere and 50 hPa from 28 to 28, and including the horizontal fluxes across 28 degrees latitude from 150 to 50 hPa.

Title Page

Abstract

Introduction

Conclusions

References

Tables

Figures

◀

▶

◀

▶

Back

Close

Full Screen / Esc

Printer-friendly Version

Interactive Discussion

**Composition and
climate modeling
with G-PUCCINI**

D. T. Shindell et al.

Table 7. Tropical residual vertical velocity changes.

	150 hPa	86 hPa	50 hPa
PD to A2 future	15%	18%	22%
PD to A1B future	2%	9%	9%
PI to PD	6%	13%	14%

All changes are relative to the present-day velocities, and are calculated using area-weighted averages over the region with positive (upward) values. Future simulations included changes in both emissions and climate.

[Title Page](#)[Abstract](#)[Introduction](#)[Conclusions](#)[References](#)[Tables](#)[Figures](#)[⏪](#)[⏩](#)[◀](#)[▶](#)[Back](#)[Close](#)[Full Screen / Esc](#)[Printer-friendly Version](#)[Interactive Discussion](#)

**Composition and
climate modeling
with G-PUCCINI**

D. T. Shindell et al.

Table 8. Tropospheric nitric acid.

Simulation	Removal by moist convection (Tg/yr)	Burden (Tg)	Wet removal lifetime (days)
PD	−31.3	3.4	40
A2 emissions and climate	−98.1	6.9	26
A2 climate-only	−35.3	4.0	41

Title Page

Abstract

Introduction

Conclusions

References

Tables

Figures

I◀

▶I

◀

▶

Back

Close

Full Screen / Esc

Printer-friendly Version

Interactive Discussion

Title Page

Abstract

Introduction

Conclusions

References

Tables

Figures

◀

▶

◀

▶

Back

Close

Full Screen / Esc

Printer-friendly Version

Interactive Discussion

Table 9. STE across various surfaces (Tg/yr).

Simulation → STE ↓	Preindustrial (PI)	Present-day (PD)	A1B comp + climate	A2 emiss + climate
Global 115 hPa	735 (157)	578	1063 (485)	1324 (746)
Global 150 hPa	708 (100)	608	1042 (434)	1360 (752)
Global 190 hPa	676 (89)	587	1033 (446)	1342 (755)
Global 250 hPa	647 (57)	590	996 (406)	1325 (735)
NH ext 115 hPa	337 (22)	315	546 (231)	690 (375)
NH ext 150 hPa	345 (−8)	353	556 (203)	755 (402)
NH ext 190 hPa	353 (1)	352	571 (219)	744 (392)
NH ext 250 hPa	353 (−18)	371	575 (204)	771 (400)
SH ext 115 hPa	380 (133)	247	493 (246)	608 (361)
SH ext 150 hPa	369 (104)	265	485 (220)	710 (445)
SH ext 190 hPa	319 (89)	230	475 (245)	641 (411)
SH ext 250 hPa	319 (73)	246	472 (226)	663 (417)

Values in parentheses are changes relative to the present day. NH and SH ext indicates extratropics (28–90 degrees). Positive values indicate flux into the troposphere.

Composition and climate modeling with G-PUCCINI

D. T. Shindell et al.

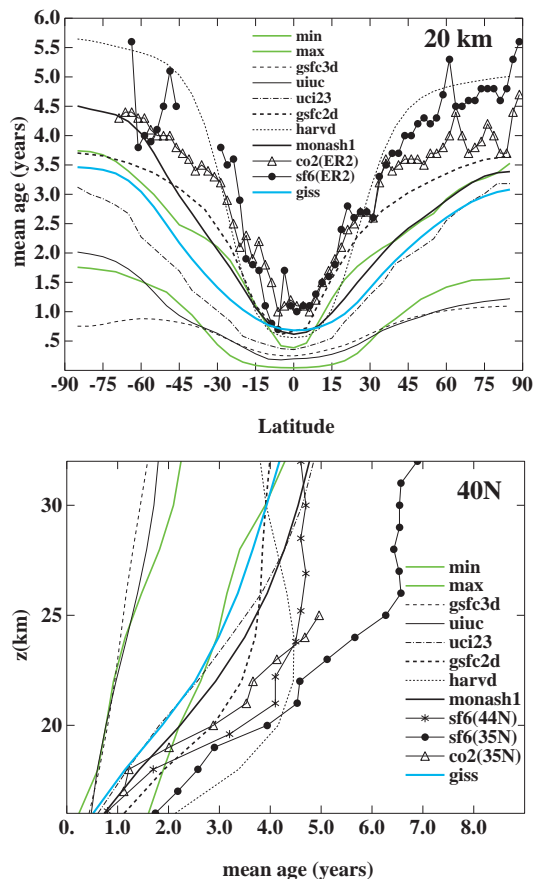


Fig. 1. Comparison of the modeled age of air with other models and data from Hall et al. (1999). The data (symbols) are based on CO_2 and SF_6 observations as per the references in the text. The “min” and “max” lines show the range of mean ages of models other than those explicitly plotted here. The current model is in blue.

[Title Page](#)
[Abstract](#)
[Introduction](#)
[Conclusions](#)
[References](#)
[Tables](#)
[Figures](#)
[◀](#)
[▶](#)
[◀](#)
[▶](#)
[Back](#)
[Close](#)
[Full Screen / Esc](#)
[Printer-friendly Version](#)
[Interactive Discussion](#)

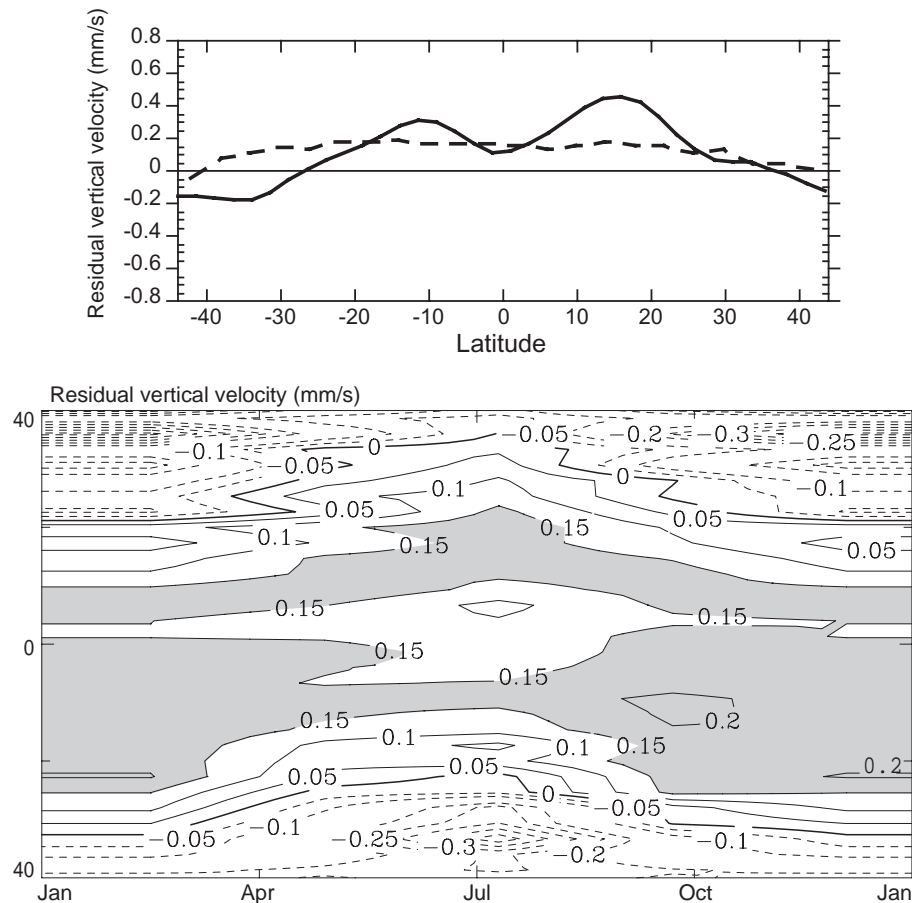


Fig. 2. Annual mean (top) and seasonal cycle (bottom) of residual vertical velocity at 68 hPa. For the annual mean, the solid line is from UKMO analyses averaged over 1992–2001, while the dashed line is from the GCM present-day control run. Areas with upwelling velocity >0.15 mm/s are shaded.

[Title Page](#)[Abstract](#)[Introduction](#)[Conclusions](#)[References](#)[Tables](#)[Figures](#)[◀](#)[▶](#)[◀](#)[▶](#)[Back](#)[Close](#)[Full Screen / Esc](#)[Printer-friendly Version](#)[Interactive Discussion](#)

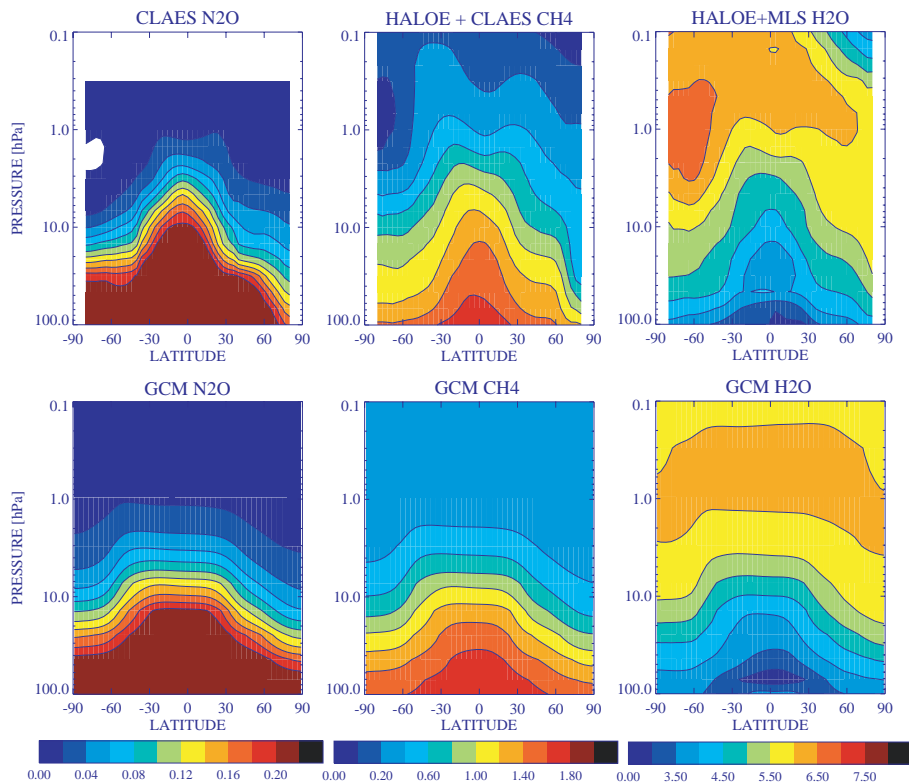


Fig. 3. Zonal mean April N_2O , CH_4 and H_2O from satellite observations and in the model. All values are in ppmv. N_2O data is from the CLAES instrument, methane data from HALOE+CLAES, and water data from HALOE+MLS instruments. Modeled water values have been offset by 0.7 ppmv to remove a negative bias in water entering the stratosphere and allow for easier comparison with the observed distribution within the stratosphere.

[Title Page](#)[Abstract](#)[Introduction](#)[Conclusions](#)[References](#)[Tables](#)[Figures](#)[◀](#)[▶](#)[◀](#)[▶](#)[Back](#)[Close](#)[Full Screen / Esc](#)[Printer-friendly Version](#)[Interactive Discussion](#)

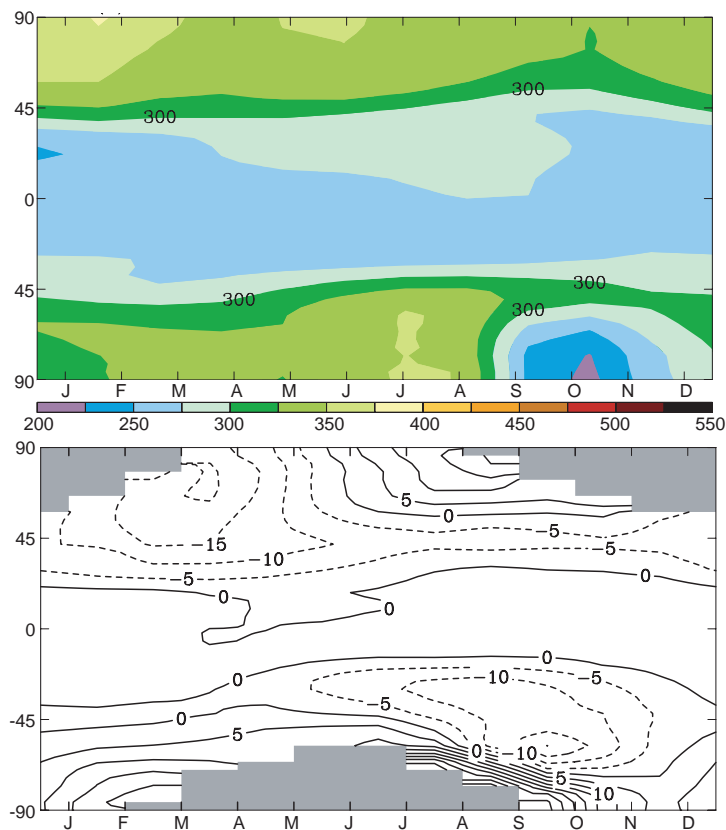


Fig. 4. Total ozone column (DU) in the model shown as latitude versus month (top) and percentage difference between modeled total column ozone and observations from the Earth Probe TOMS instrument averaged over 1996–2003 (bottom). Grey areas indicate no observations. Annual average global mean total ozone column is 287 DU, while the annual average global mean anomaly with respect to observations is -1.6 DU.

[Title Page](#)[Abstract](#)[Introduction](#)[Conclusions](#)[References](#)[Tables](#)[Figures](#)[◀](#)[▶](#)[◀](#)[▶](#)[Back](#)[Close](#)[Full Screen / Esc](#)[Printer-friendly Version](#)[Interactive Discussion](#)

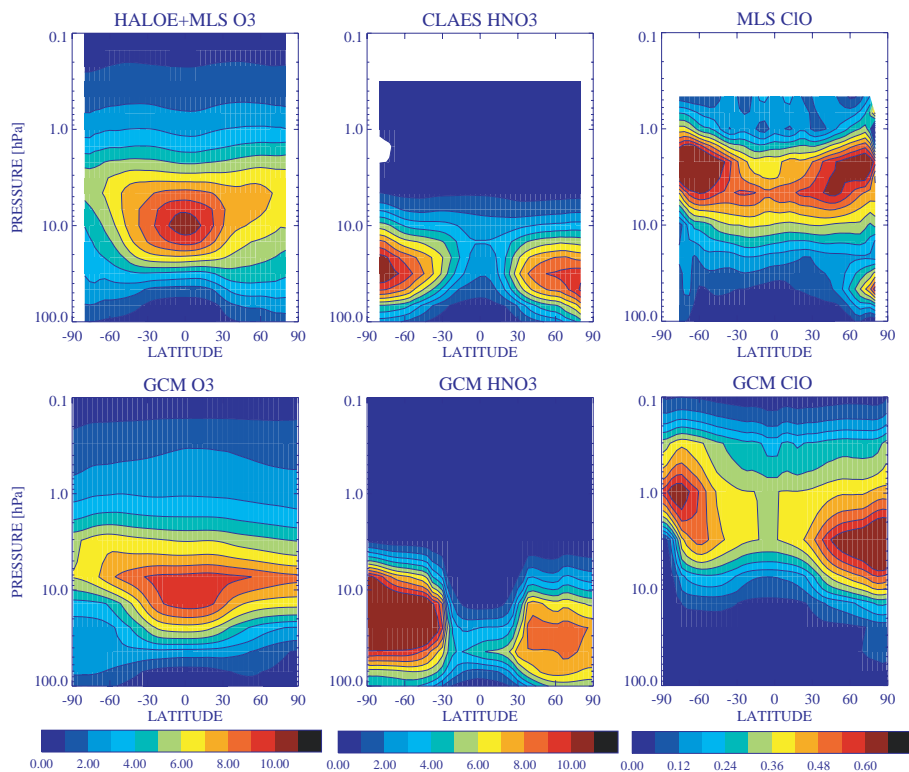


Fig. 5. Zonal mean April O₃ (ppmv), HNO₃ (ppbv) and ClO (ppbv) from satellite observations and in the model. Ozone observations are from the HALOE and MLS instruments, HNO₃ data is from the CLAES instrument, and ClO measurements are from the MLS instrument.

[Title Page](#)[Abstract](#)[Introduction](#)[Conclusions](#)[References](#)[Tables](#)[Figures](#)[◀](#)[▶](#)[◀](#)[▶](#)[Back](#)[Close](#)[Full Screen / Esc](#)[Printer-friendly Version](#)[Interactive Discussion](#)

Composition and
climate modeling
with G-PUCCINI

D. T. Shindell et al.

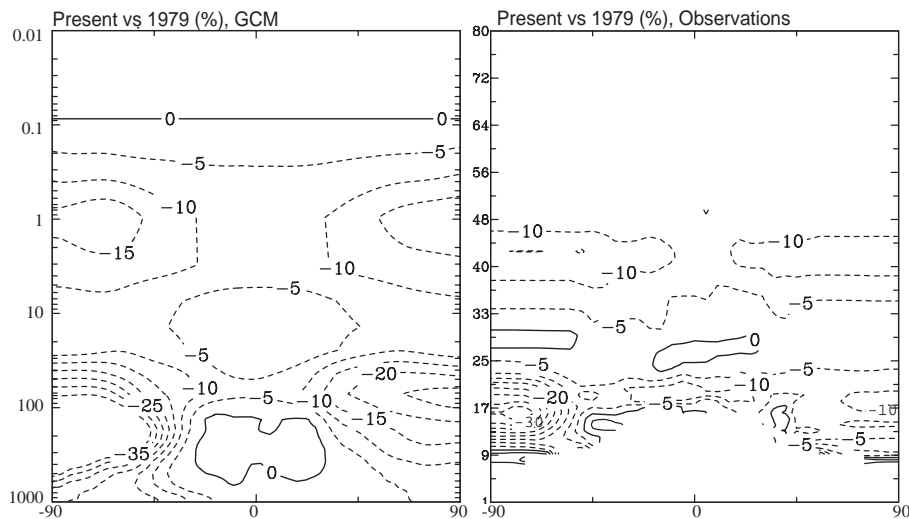


Fig. 6. Ozone changes with time (percent relative to 1979). Model PD (2000)–1979 (left), SAGE 1979–2004 observations (right).

[Title Page](#)[Abstract](#)[Introduction](#)[Conclusions](#)[References](#)[Tables](#)[Figures](#)[◀](#)[▶](#)[◀](#)[▶](#)[Back](#)[Close](#)[Full Screen / Esc](#)[Printer-friendly Version](#)[Interactive Discussion](#)

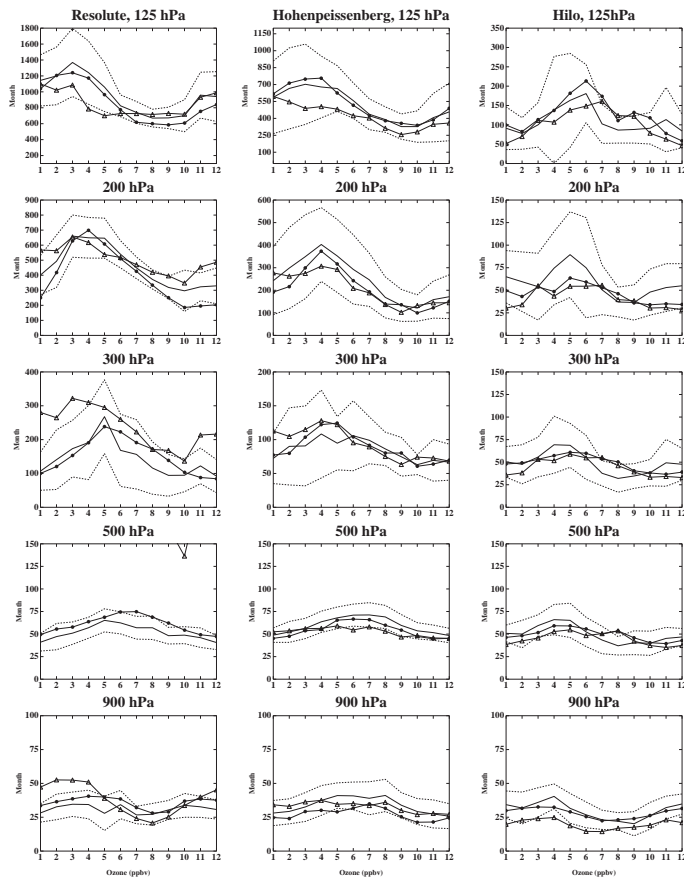


Fig. 7. Comparison of ozone's annual cycle in the model with an ozonesonde climatology (Logan, 1999) at the given locations and pressure levels. Solid lines give observed mean values, while filled circles and open triangles show results from the tropospheric chemistry-only and full chemistry simulations, respectively. Model values have been interpolated onto the given pressure levels.

[Title Page](#)[Abstract](#)[Introduction](#)[Conclusions](#)[References](#)[Tables](#)[Figures](#)[◀](#)[▶](#)[◀](#)[▶](#)[Back](#)[Close](#)[Full Screen / Esc](#)[Printer-friendly Version](#)[Interactive Discussion](#)

Composition and climate modeling with G-PUCCINI

D. T. Shindell et al.

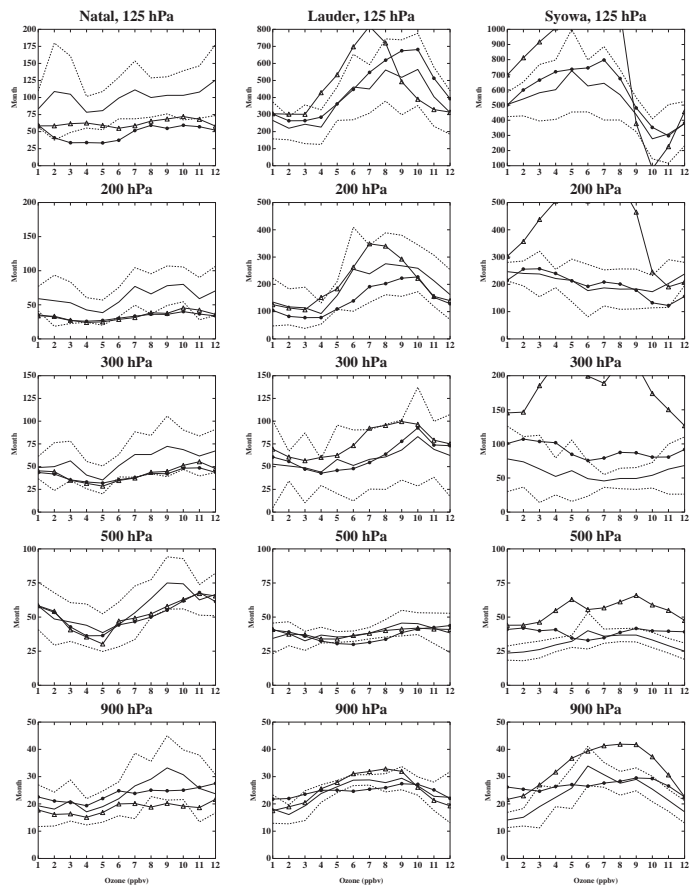


Fig. 7. Continued.

Title Page

Abstract

Introduction

Conclusions

References

Tables

Figures

◀

▶

◀

▶

Back

Close

Full Screen / Esc

Printer-friendly Version

Interactive Discussion

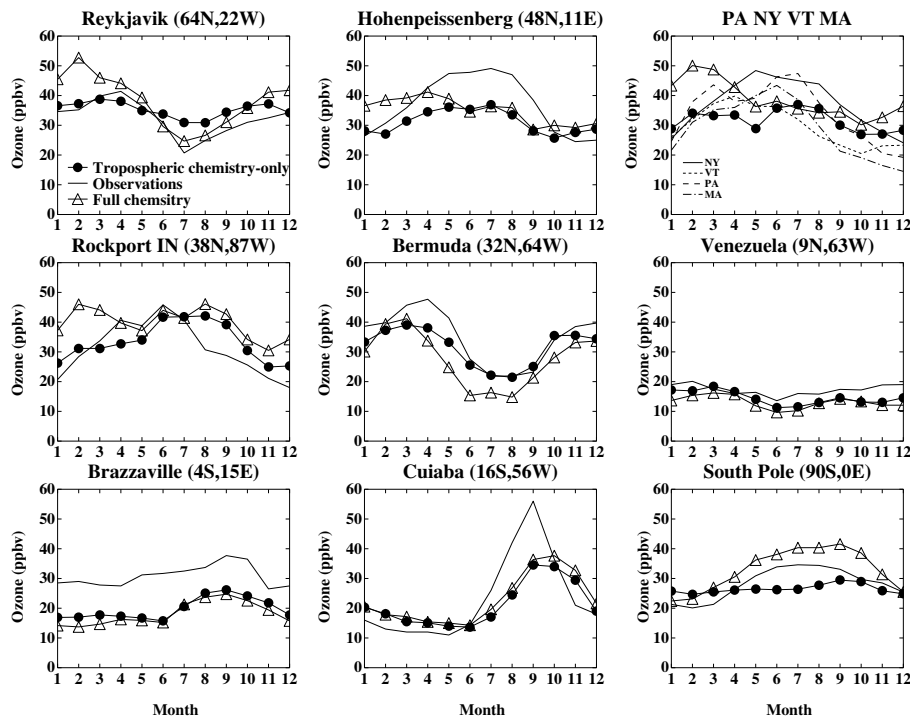


Fig. 8. Annual cycles of surface ozone in the model and in observations. Solid lines give observed mean values, while filled circles and open triangles show results from the tropospheric chemistry-only and full chemistry simulations, respectively. Note that observations at Brazzaville and Venezuela are averages of daily maximum values, so represent an upper bound.

[Title Page](#)
[Abstract](#)
[Introduction](#)
[Conclusions](#)
[References](#)
[Tables](#)
[Figures](#)
[◀](#)
[▶](#)
[◀](#)
[▶](#)
[Back](#)
[Close](#)
[Full Screen / Esc](#)
[Printer-friendly Version](#)
[Interactive Discussion](#)

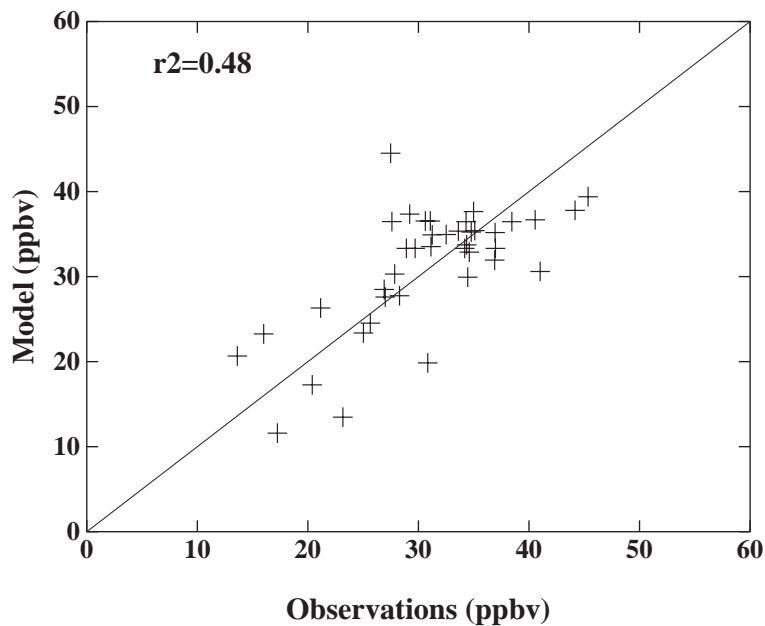


Fig. 9. Correlation diagram of observed and modeled annual average surface ozone at 40 locations using the data of Logan (1999).

[Title Page](#)[Abstract](#)[Introduction](#)[Conclusions](#)[References](#)[Tables](#)[Figures](#)[◀](#)[▶](#)[◀](#)[▶](#)[Back](#)[Close](#)[Full Screen / Esc](#)[Printer-friendly Version](#)[Interactive Discussion](#)

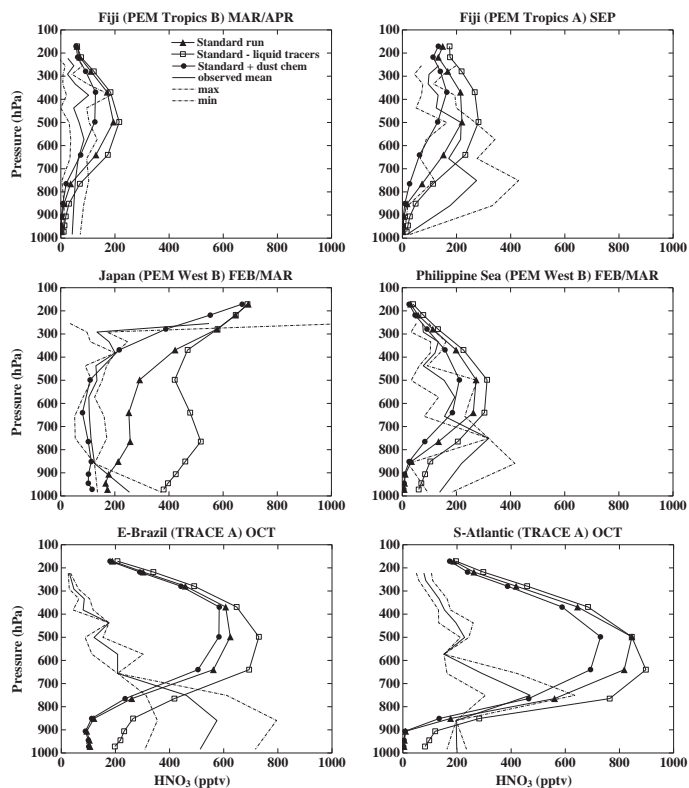


Fig. 10. Nitric acid profiles in observations and model simulations for the indicated locations and seasons. Solid and dotted lines indicate measured mean values and standard deviations, respectively. Values from the model are shown as lines with symbols, with solid triangles showing the standard simulation, open squares showing the simulation with the liquid tracer budget removed, and filled circles showing the standard simulation but with heterogeneous chemistry on mineral dust included. Observations are from Emmons et al. (2000).

[Title Page](#)
[Abstract](#)
[Introduction](#)
[Conclusions](#)
[References](#)
[Tables](#)
[Figures](#)
[Back](#)
[Close](#)
[Full Screen / Esc](#)
[Printer-friendly Version](#)
[Interactive Discussion](#)

**Composition and
climate modeling
with G-PUCCINI**

D. T. Shindell et al.

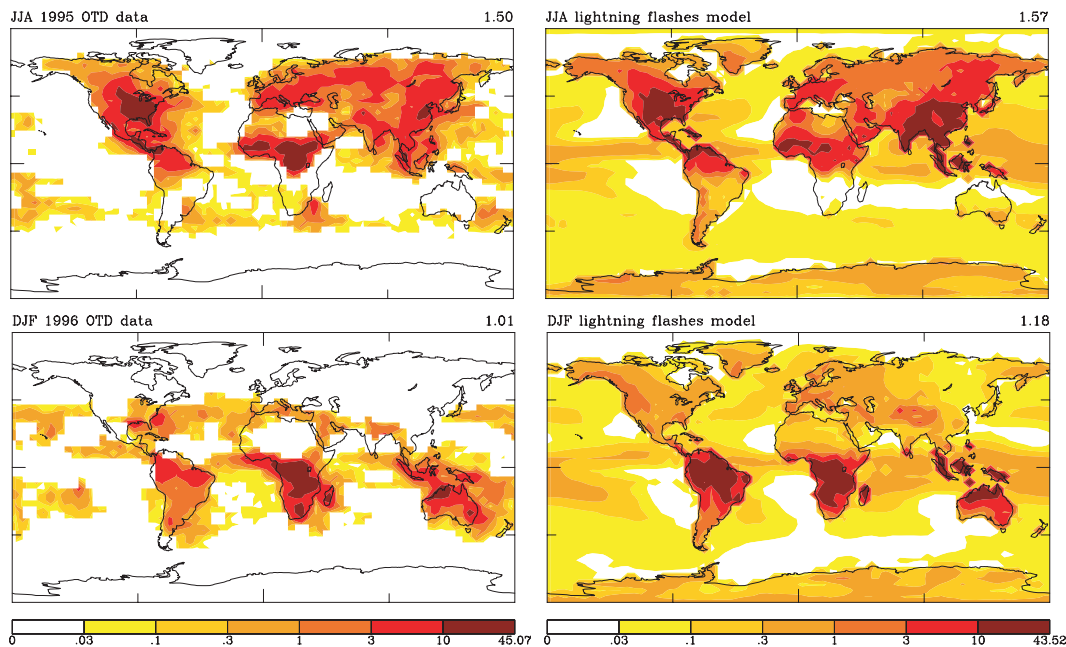


Fig. 11. Observed and modeled seasonal lightning flash rates (flashes/km²/season). The left column shows observations from the Optical Transient Detector during 1995–1996 (other years are similar), while the right shows model results. The top row are June–August averages, while the bottom row are December–February averages. Note that there are no measurements at high latitudes, and the scale used here is non-linear.

[Title Page](#)[Abstract](#)[Introduction](#)[Conclusions](#)[References](#)[Tables](#)[Figures](#)[◀](#)[▶](#)[◀](#)[▶](#)[Back](#)[Close](#)[Full Screen / Esc](#)[Printer-friendly Version](#)[Interactive Discussion](#)

**Composition and
climate modeling
with G-PUCCINI**

D. T. Shindell et al.

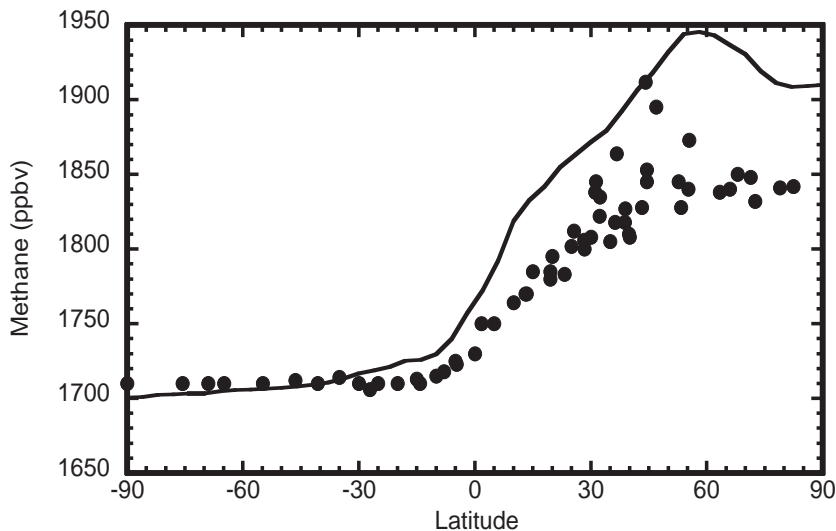


Fig. 12. Zonal mean surface methane in the NOAA GMD network (solid circles) for 2000–2004 and in the model (solid line). Note that the model is a true zonal average while the observations are averages over locations with observations.

[Title Page](#)[Abstract](#)[Introduction](#)[Conclusions](#)[References](#)[Tables](#)[Figures](#)[◀](#)[▶](#)[◀](#)[▶](#)[Back](#)[Close](#)[Full Screen / Esc](#)[Printer-friendly Version](#)[Interactive Discussion](#)

**Composition and
climate modeling
with G-PUCCINI**

D. T. Shindell et al.

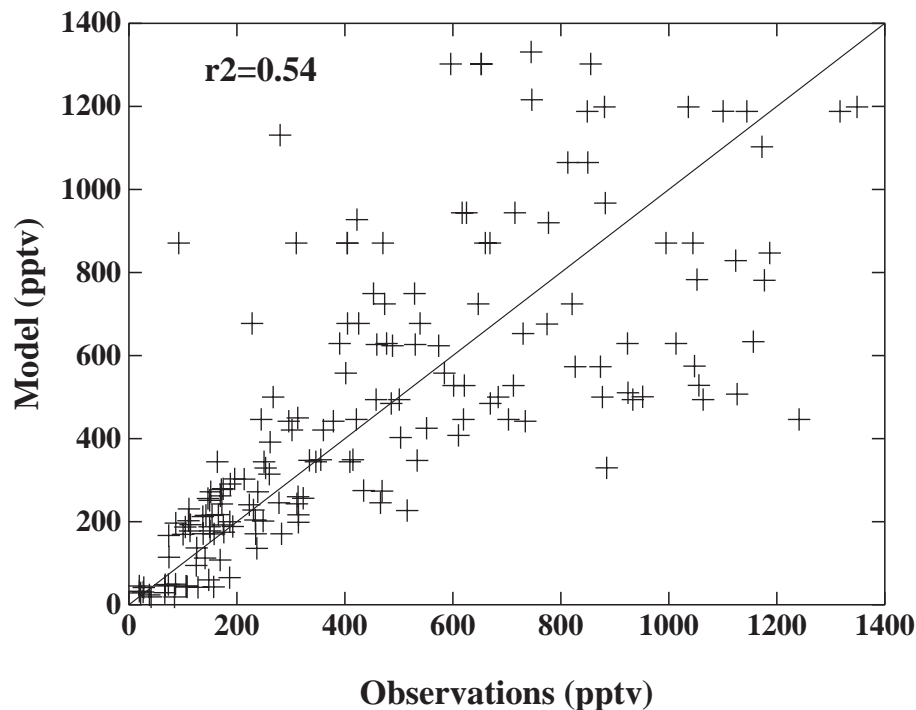


Fig. 13. Surface sulfate in observations and in the GCM simulations with coupled chemistry and aerosols. Observations are taken from the IMPROVE network (<http://vista.cira.colostate.edu/improve>), the EMEP network (<http://www.emep.int>), and J. M. Prospero and D. L. Savoie (unpublished data, 1999).

Title Page

Abstract

Introduction

Conclusions

References

Tables

Figures

◀

▶

◀

▶

Back

Close

Full Screen / Esc

Printer-friendly Version

Interactive Discussion

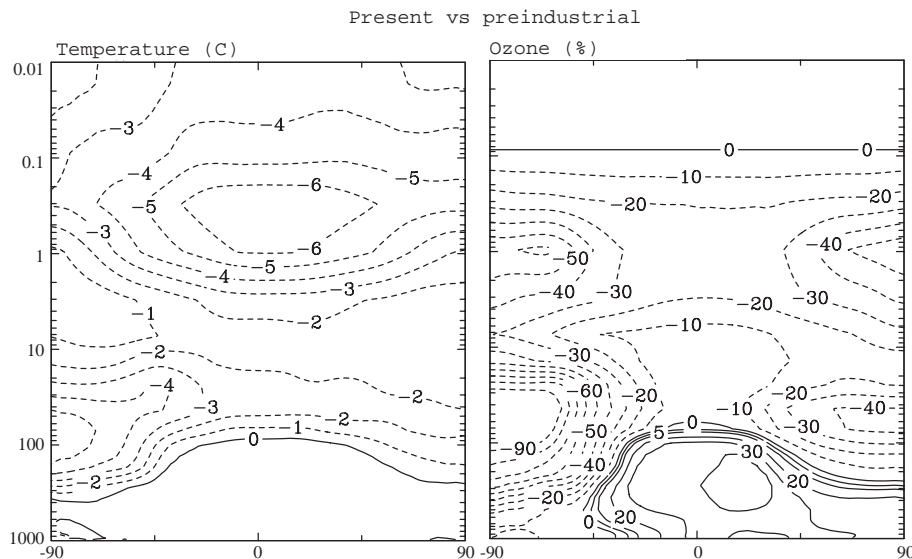


Fig. 14. Modeled differences between the present day and the preindustrial due to both emissions and climate changes in annual average zonal mean temperature (left, C) and ozone (right, % relative to PD). Note that plotting ozone changes relative to PD makes them comparable to the results from the future simulations it can lead to very large values in regions where PD amounts are small.

Composition and climate modeling with G-PUCCINI

D. T. Shindell et al.

Title Page

Abstract

Introduction

Conclusions

References

Tables

Figures

◀

▶

◀

▶

Back

Close

Full Screen / Esc

Printer-friendly Version

Interactive Discussion

Composition and
climate modeling
with G-PUCCINI

D. T. Shindell et al.

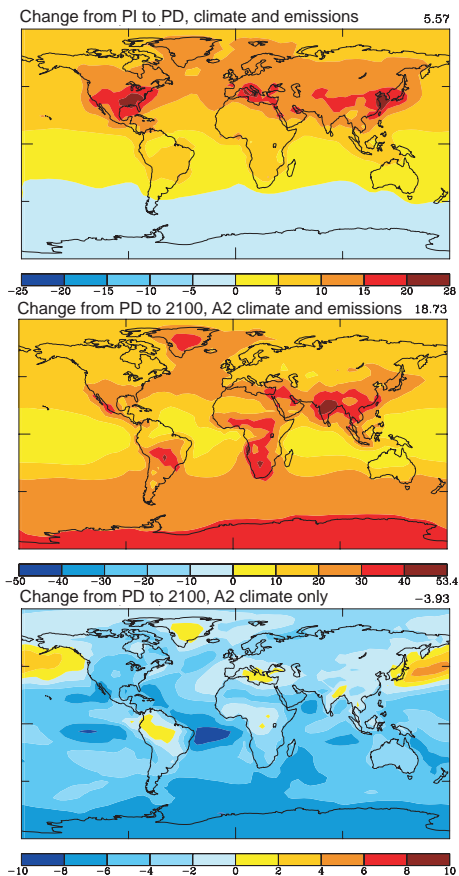


Fig. 15. Changes in annual average surface ozone (ppbv) for the indicated climate or climate and emissions perturbations. Values in the upper right corner show the global mean change. Note change in scale between panels.

[Title Page](#)[Abstract](#)[Introduction](#)[Conclusions](#)[References](#)[Tables](#)[Figures](#)[◀](#)[▶](#)[◀](#)[▶](#)[Back](#)[Close](#)[Full Screen / Esc](#)[Printer-friendly Version](#)[Interactive Discussion](#)

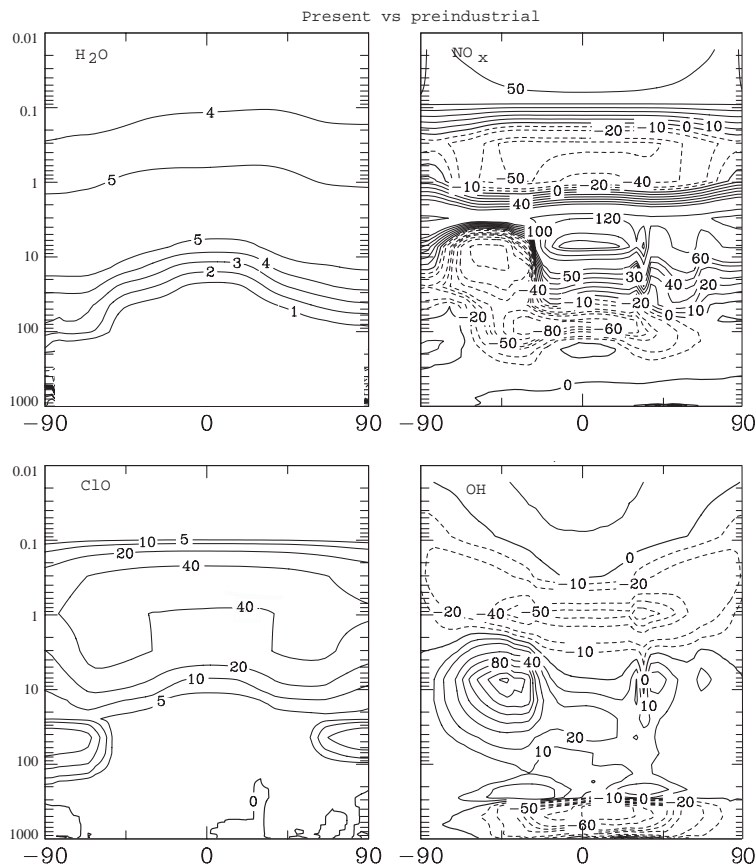


Fig. 16. Changes in water (tenths ppmv, top left), NO_x (tens pptv, top right), ClO (tens pptv, bottom left) and OH (10^4 molecules/cm³ bottom right) between the present and the preindustrial in simulations forced by emissions and climate changes. Tropospheric changes in water have been blanked out for clarity.

Title Page

Abstract

Introduction

Conclusions

References

Tables

Figures

◀

▶

◀

▶

Back

Close

Full Screen / Esc

Printer-friendly Version

Interactive Discussion

Composition and
climate modeling
with G-PUCCINI

D. T. Shindell et al.

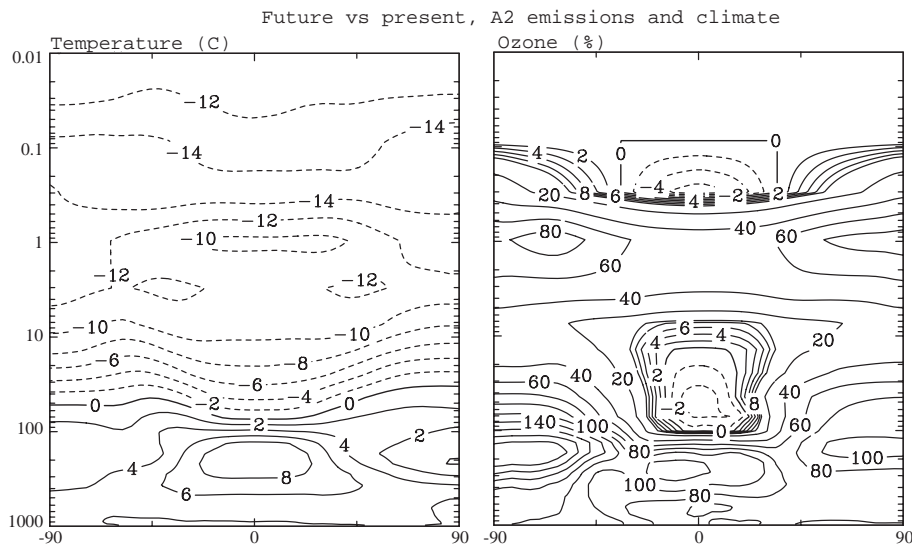


Fig. 17. Simulated changes between the 2100 A2 emissions and climate run and the present-day for annual average zonal mean temperature (left, C) and ozone (right, %).

[Title Page](#)[Abstract](#)[Introduction](#)[Conclusions](#)[References](#)[Tables](#)[Figures](#)[◀](#)[▶](#)[◀](#)[▶](#)[Back](#)[Close](#)[Full Screen / Esc](#)[Printer-friendly Version](#)[Interactive Discussion](#)

Composition and
climate modeling
with G-PUCCINI

D. T. Shindell et al.

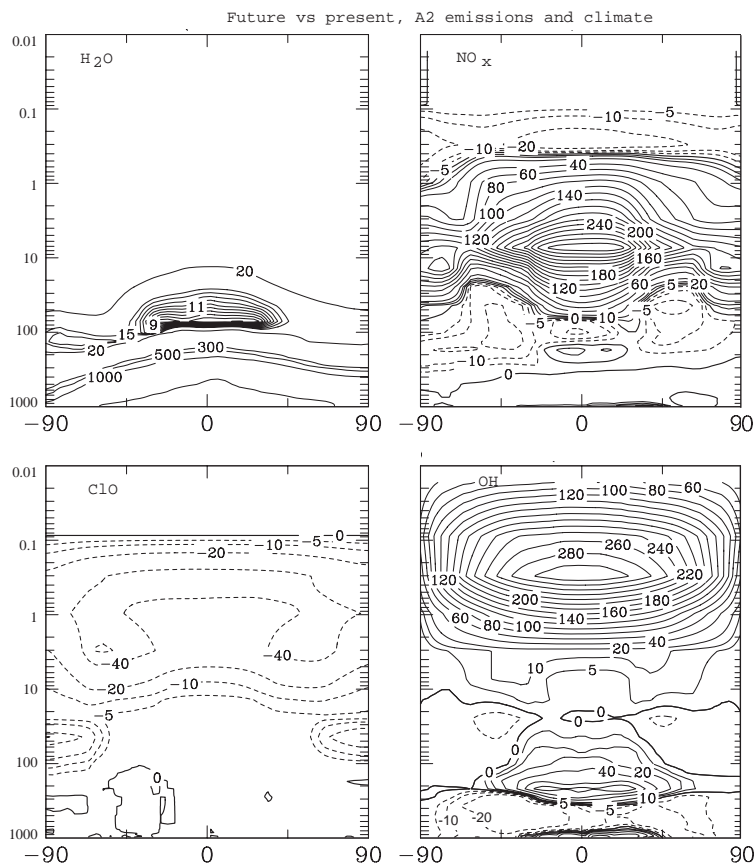


Fig. 18. Changes in water (tenths ppmv, top left), NO_x (tens pptv, top right), ClO (tens pptv, bottom left) and OH (10⁴ molecules/cm³ bottom right) between the 2100 A2 emissions plus climate run and the present-day simulation.

Title Page

Abstract

Introduction

Conclusions

References

Tables

Figures

◀

▶

◀

▶

Back

Close

Full Screen / Esc

Printer-friendly Version

Interactive Discussion

Composition and
climate modeling
with G-PUCCINI

D. T. Shindell et al.

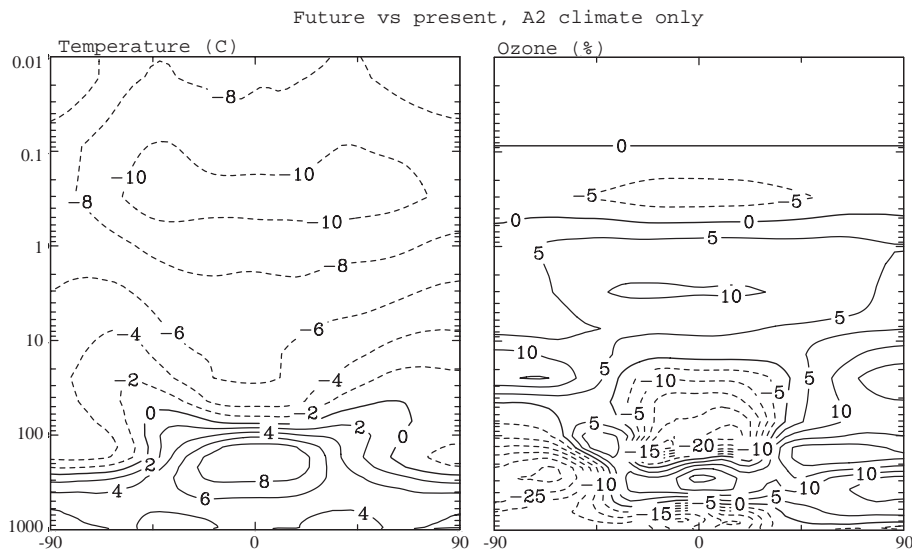


Fig. 19. Simulated changes between the 2100 A2 climate-only run and the present-day for annual average zonal mean temperature (left, C) and ozone (right, %).

[Title Page](#)[Abstract](#)[Introduction](#)[Conclusions](#)[References](#)[Tables](#)[Figures](#)[◀](#)[▶](#)[◀](#)[▶](#)[Back](#)[Close](#)[Full Screen / Esc](#)[Printer-friendly Version](#)[Interactive Discussion](#)

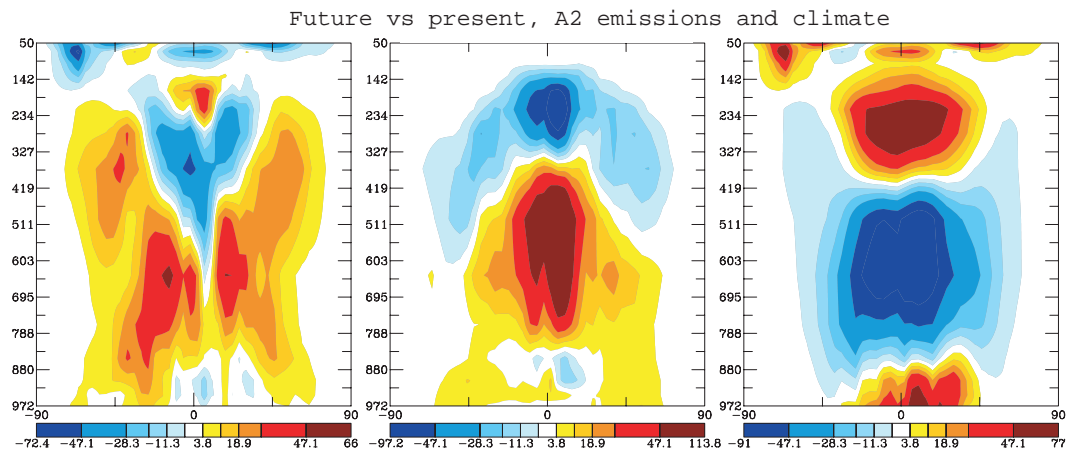
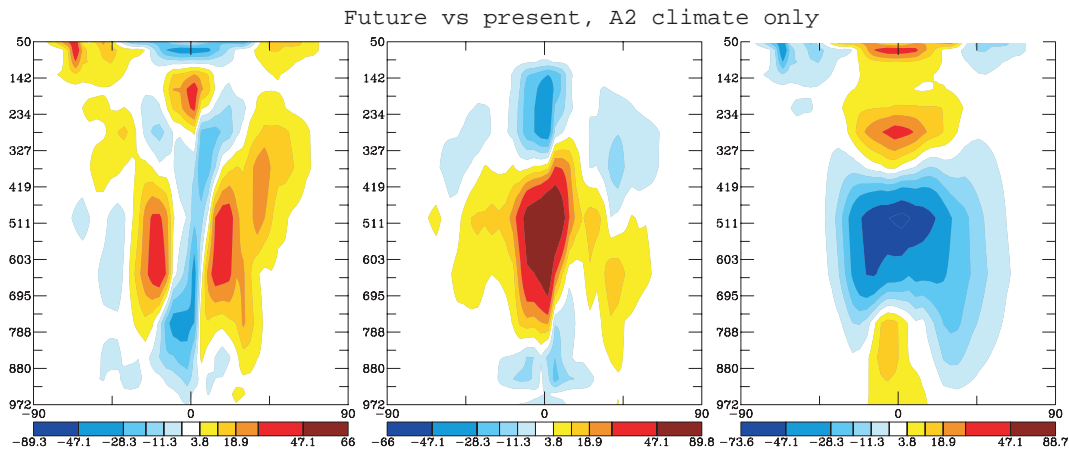


Fig. 20. Differences in zonal mean ozone change (10kg/s) due to dynamics (left column), moist convection (center column) and chemistry (right column) between the PD and the A2 climate-only (top row) and A2 climate and emissions (bottom row) simulations.

[Title Page](#)
[Abstract](#)
[Introduction](#)
[Conclusions](#)
[References](#)
[Tables](#)
[Figures](#)
[◀](#)
[▶](#)
[◀](#)
[▶](#)
[Back](#)
[Close](#)
[Full Screen / Esc](#)
[Printer-friendly Version](#)
[Interactive Discussion](#)

**Composition and
climate modeling
with G-PUCCINI**

D. T. Shindell et al.

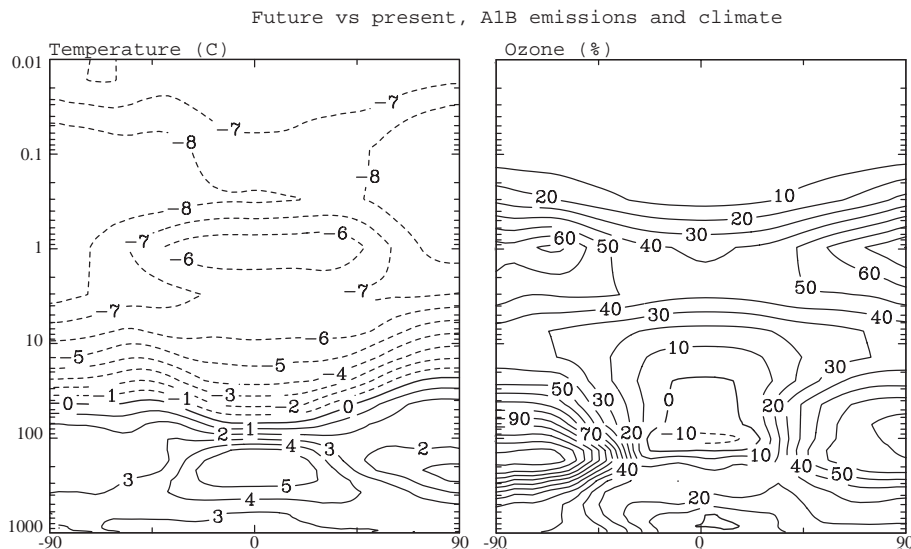


Fig. 21. Modeled future A1B 2100 emissions and climate change relative to the present-day in zonal mean annual average temperature (left, C) and ozone (right, %).

[Title Page](#)[Abstract](#)[Introduction](#)[Conclusions](#)[References](#)[Tables](#)[Figures](#)[◀](#)[▶](#)[◀](#)[▶](#)[Back](#)[Close](#)[Full Screen / Esc](#)[Printer-friendly Version](#)[Interactive Discussion](#)

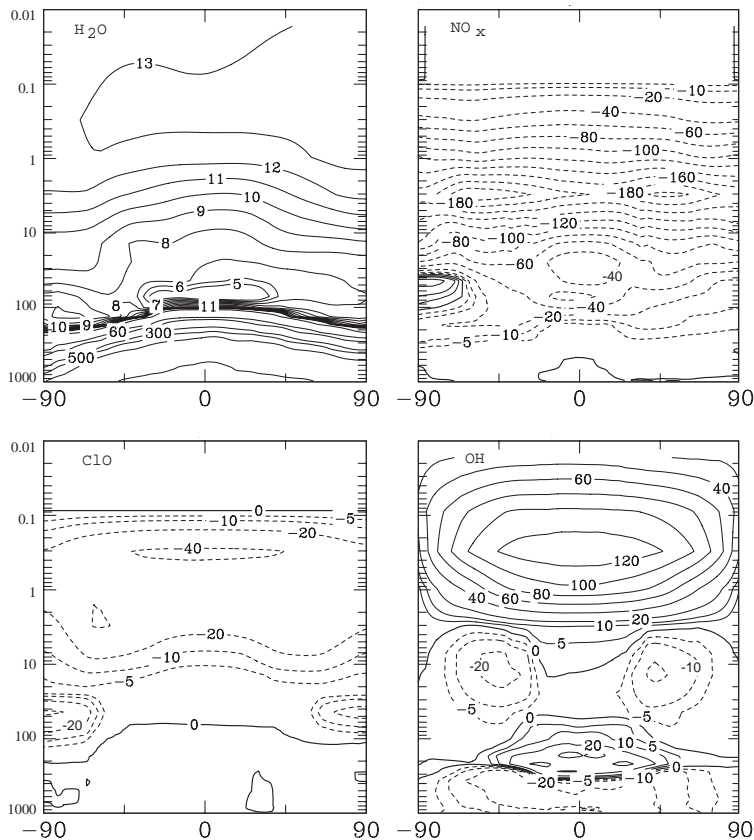


Fig. 22. Changes in water (tenths ppmv, top left), NO_x (tens pptv, top right), ClO (tens pptv, bottom left) and OH (10^4 molecules/ cm^3 bottom right) between the 2100 A1B composition plus climate run and the present-day simulation.

Composition and climate modeling with G-PUCCINI

D. T. Shindell et al.

Title Page

Abstract

Introduction

Conclusions

References

Tables

Figures

◀

▶

◀

▶

Back

Close

Full Screen / Esc

Printer-friendly Version

Interactive Discussion

**Composition and
climate modeling
with G-PUCCINI**

D. T. Shindell et al.

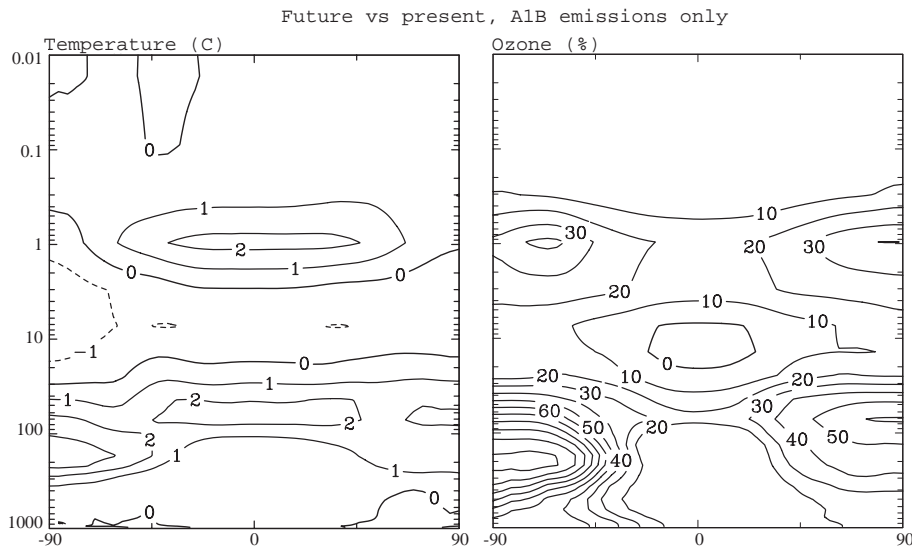


Fig. 23. Impact of A1B composition change (Future vs PD) on annual average zonal mean temperature (left, C) and ozone (right, %).

[Title Page](#)[Abstract](#)[Introduction](#)[Conclusions](#)[References](#)[Tables](#)[Figures](#)[◀](#)[▶](#)[◀](#)[▶](#)[Back](#)[Close](#)[Full Screen / Esc](#)[Printer-friendly Version](#)[Interactive Discussion](#)