



**HAL**  
open science

# Ice nucleation by surrogates for atmospheric mineral dust and mineral dust/sulfate particles at cirrus temperatures

C. M. Archuleta, P. J. Demott, S. M. Kreidenweis

► **To cite this version:**

C. M. Archuleta, P. J. Demott, S. M. Kreidenweis. Ice nucleation by surrogates for atmospheric mineral dust and mineral dust/sulfate particles at cirrus temperatures. *Atmospheric Chemistry and Physics Discussions*, 2005, 5 (3), pp.3391-3436. hal-00301467

**HAL Id: hal-00301467**

**<https://hal.science/hal-00301467>**

Submitted on 18 Jun 2008

**HAL** is a multi-disciplinary open access archive for the deposit and dissemination of scientific research documents, whether they are published or not. The documents may come from teaching and research institutions in France or abroad, or from public or private research centers.

L'archive ouverte pluridisciplinaire **HAL**, est destinée au dépôt et à la diffusion de documents scientifiques de niveau recherche, publiés ou non, émanant des établissements d'enseignement et de recherche français ou étrangers, des laboratoires publics ou privés.

**Ice nucleation by  
mineral dust particles**

C. M. Archuleta et al.

# Ice nucleation by surrogates for atmospheric mineral dust and mineral dust/sulfate particles at cirrus temperatures

**C. M. Archuleta, P. J. DeMott, and S. M. Kreidenweis**

Department of Atmospheric Science, Colorado State University, Fort Collins, 80523-1371  
Colorado, USA

Received: 14 April 2005 – Accepted: 2 May 2005 – Published: 30 May 2005

Correspondence to: P. J. DeMott (pdemott@lamar.colostate.edu)

© 2005 Author(s). This work is licensed under a Creative Commons License.

Title Page

Abstract

Introduction

Conclusions

References

Tables

Figures

◀

▶

◀

▶

Back

Close

Full Screen / Esc

Print Version

Interactive Discussion

EGU

## Abstract

This study examines the potential role of some types of mineral dust and mineral dust with sulfuric acid coatings as heterogeneous ice nuclei at cirrus temperatures. Commercially-available nanoscale powder samples of aluminum oxide, alumina-silicate and iron oxide were used as surrogates for atmospheric mineral dust particles, with and without multilayer coverage of sulfuric acid. A sample of Asian dust aerosol particles was also studied. Measurements of ice nucleation were made using a continuous-flow ice-thermal diffusion chamber (CFDC) operated to expose size-selected aerosol particles to temperatures between  $-45$  and  $-60^{\circ}\text{C}$  and a range of relative humidity above ice-saturated conditions. Pure metal oxide particles supported heterogeneous ice nucleation at lower relative humidities than those required to homogeneously freeze sulfuric acid solution particles at sizes larger than about 50 nm. The ice nucleation behavior of the same metal oxides coated with sulfuric acid indicate heterogeneous freezing at lower relative humidities than those calculated for homogeneous freezing of the diluted particle coatings. The effect of soluble coatings on the ice activation relative humidity varied with the respective uncoated core particle types, but for all types the heterogeneous freezing rates increased with particle size for the same thermodynamic conditions. For a selected size of 200 nm, the natural mineral dust particles were the most effective ice nuclei tested, supporting heterogeneous ice formation at an ice relative humidity of approximately 135%, irrespective of temperature. Modified homogeneous freezing parameterizations and theoretical formulations are shown to have application to the description of heterogeneous freezing of mineral dust-like particles with soluble coatings.

## 1. Introduction

In order to unravel the intricacies of climate change, it is important to include the role of cirrus clouds. The net impact of cirrus clouds on the Earth's climate system is de-

## Ice nucleation by mineral dust particles

C. M. Archuleta et al.

Title Page

Abstract

Introduction

Conclusions

References

Tables

Figures

◀

▶

◀

▶

Back

Close

Full Screen / Esc

Print Version

Interactive Discussion

---

**Ice nucleation by  
mineral dust particles**C. M. Archuleta et al.

---

[Title Page](#)[Abstract](#)[Introduction](#)[Conclusions](#)[References](#)[Tables](#)[Figures](#)[◀](#)[▶](#)[◀](#)[▶](#)[Back](#)[Close](#)[Full Screen / Esc](#)[Print Version](#)[Interactive Discussion](#)

EGU

5 terminated by the balance between the reflectance of incoming solar radiation back to space and the trapping of outgoing infrared fluxes emitted from the Earth's surface. These net radiative impacts are determined by the microphysical composition, altitude and frequency of formation of cirrus clouds (e.g. Stephens et al., 1990). Upper tro-  
10 spheric aerosols indirectly affect these physical properties through their role in the ice formation process. The salient ice nucleation processes are homogeneous freezing and heterogeneous nucleation and their relative roles in cirrus ice formation are presently unclear. Because heterogeneous nucleation is effective at warmer tempera-  
15 tures and possibly at lower relative humidities than homogeneous freezing nucleation, even relatively modest populations of ice nuclei (IN) can have substantial impacts on the conditions under which cirrus clouds form (DeMott et al., 1994). The impacts of heterogeneous nucleation on the formation of cirrus clouds could have implications for the extent and duration of cirrus cloud cover, which ultimately impacts climate.

15 Mineral dusts from the arid regions of the Asiatic continent were implicated as possible heterogeneous ice nuclei over 40 years ago (Isono et al., 1959). More recently, evidence has emerged indicating that mineral particles reach upper tropospheric altitudes where they may serve as ice nuclei in cirrus clouds. In an aircraft campaign conducted over the Alps, Heintzenberg et al. (1996) found that minerals were common constituents in cirrus crystal residues. Upper tropospheric IN activated in a diffusion  
20 chamber and subsequently collected by impaction (Chen et al., 1998) also had enhanced number fractions of crustal particles when compared with the ambient aerosol population. A lidar study by Sassen (2002) suggests that cirrus-like ice clouds form at the top of layers of transported Asian aerosols, at temperatures considerably warmer than the climatological mean temperature for midlatitude cirrus formation. DeMott et al. (2003a) detected concentrations of heterogeneous ice nuclei exceeding  $1 \text{ cm}^{-3}$ , up  
25 to 100 times higher than typical background values, in and above the marine boundary layer in Florida during Saharan dust episodes. These nuclei were within atmospheric layers feeding thunderstorm development and subsequent cirrus anvil formation. Measurements of high mineral dust fractions in residual particles from anvil cirrus during

---

**Ice nucleation by  
mineral dust particles**C. M. Archuleta et al.

---

[Title Page](#)[Abstract](#)[Introduction](#)[Conclusions](#)[References](#)[Tables](#)[Figures](#)[◀](#)[▶](#)[◀](#)[▶](#)[Back](#)[Close](#)[Full Screen / Esc](#)[Print Version](#)[Interactive Discussion](#)

EGU

that study (Cziczo et al., 2004) and cloud model simulations of these cases (Van den Heever et al., 2005) support the hypothesis that the dust ice nuclei modified cloud microphysics and dynamics. Sassen et al. (2003) documented glaciation of altocumuli forming at the top of the dust layer at  $-8^{\circ}\text{C}$  during one of the same episodes. Finally, DeMott et al. (2003b) found mineral dusts as the major component of free tropospheric ice nuclei processed for cirrus conditions even during a period without strong influence from dust transports.

Dust particles are sometimes found in the upper troposphere without significant sulfate or other condensed components (DeMott et al., 2003b), but these particles can also become coated with aqueous solutions of sulfates, nitrates and other electrolytes when passing through marine or polluted continental regions (Zhang and Carmichael, 1999). Grassian (2002) describes the role of many types of mineral dusts in the irreversible uptake and surface reaction with nitric acid. Dentener et al. (1996) calculate that 50–70% of particulate sulfate in the vicinity of dust source regions is associated with mineral aerosol. Recent laboratory studies also indicate the possible role of clays or mineral dust components internally mixed with sulfate in particles as effective heterogeneous ice nuclei (Zuberi et al., 2002; Hung et al., 2003).

The current study focuses on the role of mineral aerosols as likely insoluble components of heterogeneous IN. Experiments were performed to expose nearly monodisperse samples of the submicrometer aerosols (50–200 nm in diameter) to cirrus-relevant temperatures between  $-45$  and  $-60^{\circ}\text{C}$  and a range of relative humidity above ice-saturated conditions ( $\text{RH}_i$ ) to map out regions of  $\text{RH}_i$  and temperature space where significant ice nucleation rates occur. The heterogeneous ice nucleation rates of submicrometer iron oxide, aluminum oxide and alumina-silicate particles were quantified, in their pure states and as multi-component particles with soluble  $\text{H}_2\text{SO}_4$  coatings. The ice nucleation rates of a sample of reference Asian dust were also measured.

## 2. Methods

The experimental methods used to generate test aerosols, characterize them for size and soluble content and then measure their ice nucleation activity are summarized in Fig. 1. Powder samples were continuously atomized from aqueous suspensions using a constant output atomizer, dried, size selected using a differential mobility analyzer (DMA), and for some studies, coated with sulfuric acid as described in the following section. Particles were then sent to a condensation nuclei counter (CNC) to measure total number concentrations and simultaneously either to a cloud condensation nuclei (CCN) counter or through a temperature and humidity pre-conditioner to the continuous flow diffusion chamber (CFDC). The latter instrument detects ice nucleation.

### 2.1. Aerosol generation

Aluminum oxide ( $\text{Al}_2\text{O}_3$ ), alumina-silicate ( $3\text{Al}_2\text{O}_3 \cdot 2\text{SiO}_2$ ) and iron oxide ( $\text{Fe}_2\text{O}_3$ ) nanoscale particles were obtained commercially (NanoProducts Corporation, Longmont, CO, USA). The particles were prepared via spray pyrolysis of aqueous metal salt solutions. Crystallite sizes as determined by x-ray diffraction are quoted by the manufacturer as 13 to 19 nm for aluminum oxide and 37 to 39 nm for iron oxide. The alumina-silicate particles are amorphous. The degree of residual contamination by the precursor salts, if any, was not reported. A sample of Asian mineral dust was collected and prepared for analysis by the National Institute for Environmental Studies in Japan. The dust sample was obtained originally as a soil sample from the Tengger desert of China. Sample preparation involved sieving the dust with a wind tunnel system, and using a cyclone impactor to remove particles larger than  $10 \mu\text{m}$ . The composition of the remaining fine dust is typical of what is found aloft following desert dust storms over Asia (Mori et al., 2002).

Reservoir solutions for the atomizer (TSI Model 3076) consisted of 1.0 weight percent mixtures of the dust particles suspended (by stirring) in high purity water. The particle stream was dried via passage through a heater ( $60^\circ\text{C}$ ) and diffusion dryer. Fil-

## Ice nucleation by mineral dust particles

C. M. Archuleta et al.

Title Page

Abstract

Introduction

Conclusions

References

Tables

Figures

◀

▶

◀

▶

Back

Close

Full Screen / Esc

Print Version

Interactive Discussion

---

**Ice nucleation by  
mineral dust particles**C. M. Archuleta et al.

---

[Title Page](#)[Abstract](#)[Introduction](#)[Conclusions](#)[References](#)[Tables](#)[Figures](#)[◀](#)[▶](#)[◀](#)[▶](#)[Back](#)[Close](#)[Full Screen / Esc](#)[Print Version](#)[Interactive Discussion](#)

EGU

tered compressed air was then introduced to promote additional drying and to lower particle number density. From this 30 liter per minute polydisperse particle stream a DMA (TSI Model 3071A) pulled off  $1000 \text{ cm}^3 \text{ min}^{-1}$ . The DMA, using a 10:1 sheath to sample ratio, produced nearly monodisperse fractions of particles centered at sizes of 50, 100 and 200 nm for experiments.

Sulfuric acid was condensed onto dust particles using the method described by Han and Martin (2001). Sulfuric acid droplets, produced by heating and re-condensation in  $\text{N}_2$  carrier gas, were mixed with monodisperse mineral dust particles from the DMA. The combined particle stream entered an insulated Pyrex tube wrapped with a resistive heating element in steadily decreasing pitch to initially re-volatilize the sulfuric acid at  $200^\circ\text{C}$  and re-condense it onto the mineral dust cores as the stream steadily cooled, with nearly a linear gradient, to room temperature. The result was a stream of monodisperse dust cores coated with sulfuric acid.

## 2.2. Characterization of soluble matter and soluble coatings

The cloud condensation nuclei (CCN) activity of the dust aerosols treated with  $\text{H}_2\text{SO}_4$  was used to determine the amount of  $\text{H}_2\text{SO}_4$  that deposited onto the insoluble particles, a critical factor in estimating their  $\text{H}_2\text{SO}_4$ - $\text{H}_2\text{O}$  compositions in freezing experiments. Simultaneous measurements with a CCN counter (CCNC), a static thermal gradient diffusion chamber, described by DeMott (1995), and a condensation nuclei counter (CNC, TSI Model 3025A) were used to determine the critical water vapor supersaturation ( $S_{\text{crit}}$ ) at which half of the particles activated as CCN (at  $25^\circ\text{C}$ ). The CCNC sample volume and supersaturation calibration were checked prior to these studies using known sizes and concentrations of ammonium sulfate particles. Köhler theory for spherical particles of soluble material having insoluble, spherical cores (e.g. Pruppacher and Klett, 1997) was used to relate  $S_{\text{crit}}$  of the mean size particles to the soluble weight percent of  $\text{H}_2\text{SO}_4$ , assuming that the acid/water coating formed a perfect shell. Property data for  $\text{H}_2\text{SO}_4$ - $\text{H}_2\text{O}$  solutions were determined following DeMott et al. (1997) and water activity was based on Clegg et al. (1998).

**Ice nucleation by  
mineral dust particles**

C. M. Archuleta et al.

Title Page

Abstract

Introduction

Conclusions

References

Tables

Figures

◀

▶

◀

▶

Back

Close

Full Screen / Esc

Print Version

Interactive Discussion

EGU

Figure 2 shows an example of the effect of soluble coating on CCN activation by alumina-silicate particles. The spherical primary particle and agglomerate morphology shown in the image inset was typical of all of the particles in this study. The particles were significantly more active as CCN after passing through the H<sub>2</sub>SO<sub>4</sub> coating system.

The expected activation condition for a pure, 200-nm H<sub>2</sub>SO<sub>4</sub> particle is also shown.

The estimated weight fractions of sulfuric acid deposited on the treated mineral particles are summarized in Table 1. The bulk densities of insoluble cores used in this calculation were 5.24, 4.0 and 3.16 g cm<sup>-3</sup> for Fe<sub>2</sub>O<sub>3</sub>, Al<sub>2</sub>O<sub>3</sub> and alumina-silicate particles, respectively. Weight percent acid coverage ranged from 1.6 to 7%. The approximate corresponding number of monolayers of acid is indicated, calculated by assuming spherical particles with uniform coverage and using the estimate that a simple, close-packed sphere model for H<sub>2</sub>SO<sub>4</sub> gives about 4.5 × 10<sup>14</sup> molecules/cm<sup>2</sup> (Wyslouzil et al., 1994). A range of acid coatings from 2.9 to 7.1 monolayers with an average of 4.7 was thus inferred. The number concentrations of 50 nm particles generated by atomization of the colloidal suspensions were not sufficient for accurate determination of their CCN activation conditions. For example, two particles in the CCNC sample volume reflects concentrations of 35 cm<sup>-3</sup>, sufficient number concentrations for ice nucleation experiments but inadequate numbers for determining the 50% CCN activation. Results did not suggest that soluble content continued the modest trend toward higher sulfuric acid weight fraction versus smaller size that is apparent in Table 1. Therefore, an intermediate weight fraction of 0.035 was assumed for all treated 50 nm core particles for use in inferring the water activity and composition in ice nucleation studies.

Modest CCN activity was noted for untreated particles, greater than expected for an insoluble, but completely wettable nucleus (~1% water vapor supersaturation for an insoluble 200 nm particle); this may be a consequence of contamination introduced in the manufacturing process and/or the atomization procedure. Assuming sulfuric acid as the solute for reference, S<sub>crit</sub> values of 0.58, 0.63, and 0.66% for 200 nm aluminum oxide, alumina-silicate and iron oxide particles, gave a range from 0.2 to 0.5% soluble content present in the untreated particles. The nature of this soluble matter was not de-



---

**Ice nucleation by  
mineral dust particles**C. M. Archuleta et al.

---

[Title Page](#)[Abstract](#)[Introduction](#)[Conclusions](#)[References](#)[Tables](#)[Figures](#)[◀](#)[▶](#)[◀](#)[▶](#)[Back](#)[Close](#)[Full Screen / Esc](#)[Print Version](#)[Interactive Discussion](#)

EGU

terminated. Water uptake measurements at 30°C and below water saturation were made with a humidified tandem differential mobility analyzer (HTDMA) (Brechtel and Kreidenweis 2000), Virtually no water uptake was measured below 93% RH<sub>w</sub> for any of the untreated aerosol particles using the HTDMA device, which is consistent with the inability of the HTDMA to resolve, within uncertainties, the expected small amounts of water uptake that could be associated with the soluble material responsible for CCN activity. Nevertheless, the consequence for these studies is that the water uptake properties of the untreated particles at below water saturation are not completely characterized. We do not know if there was continuous water uptake from some lower relative humidity or if, instead, the soluble component possessed a deliquescence relative humidity well above 90%. It is therefore not possible to infer the exact nature of the ice formation mechanism for untreated particles, whether it is deposition nucleation or condensation freezing.

### 2.3. Continuous flow diffusion chamber

The laboratory continuous-flow diffusion chamber (CFDC) used in these experiments enables real-time measurements of IN concentrations at controlled temperatures and humidities from a continuous stream of aerosol. The laboratory CFDC is the same instrument used previously to characterize homogeneous freezing by sulfuric acid/water (Chen et al., 2000) and pure dicarboxylic acid (Prenni et al., 2001) aerosols and is a modified version of the design described in detail by Rogers (1988) and Rogers et al. (2001). The primary component of the CFDC is the vertically-oriented flow chamber, which consists of two concentric ice-coated cylinders, 1.5 m long, that are held at different temperatures to process particles at a calculated supersaturation with respect to ice within the annular region. For these experiments, the chamber was operated between −45° and −60°C and from ice saturation into the water supersaturation regime. A pre-conditioner (Chen et al., 2000) was used to cool sample air to as low as −30°C in order to reduce temperature contrasts before air enters the CFDC inlet manifold, which directs the sample flow (~1.2 liters per minute) into the center of the annulus where

---

**Ice nucleation by  
mineral dust particles**C. M. Archuleta et al.

---

[Title Page](#)[Abstract](#)[Introduction](#)[Conclusions](#)[References](#)[Tables](#)[Figures](#)[I◀](#)[▶I](#)[◀](#)[▶](#)[Back](#)[Close](#)[Full Screen / Esc](#)[Print Version](#)[Interactive Discussion](#)

EGU

it merges with and is surrounded by two equal sheath flow lamina of particle-free air (~12 liters per minute in total). At the chamber exit all flow passes through an optical particle counter (OPC, Climet Model 7350A). Ice crystals that are nucleated in the CFDC are detected by their growth to relatively large sizes ( $>2\ \mu\text{m}$ ) compared to wet aerosol particles in equilibrium with the relative humidity conditions.

In the results that follow, ice formation in experiments is referenced primarily to the temperature and  $\text{RH}_i$  conditions at which 1% of the particles activate as ice nuclei during the instrument residence time, which was 10 to 13 s for this study. Ice fraction activated is determined by comparing the ice crystal count to a total sample particle count as indicated by simultaneous measurements with the CNC and correction for particle losses through the instrument. Ice relative humidity is determined from the calculated water relative humidity and temperature at the aerosol lamina location in the CFDC, as described in Rogers (1988). Vapor pressure equations used for CFDC calculations are selected from Buck (1981), and are given in Table 2. We note that alternate expressions for the vapor pressure of water over ice and over supercooled liquid exist; these will yield different calculated values of ice supersaturation. The values of  $\text{RH}_{\text{ice}}$  presented in this paper can be adjusted for alternate expressions using the information in Table 2.

### 3. Ice Nucleation Results

The size-resolved ice nucleation results for 50, 100 and 200 nm aluminum oxide, alumina-silicate and iron oxide particles are indicated respectively in Figs. 3a to c (without  $\text{H}_2\text{SO}_4$  coatings) and Figs. 3d to f (with  $\text{H}_2\text{SO}_4$  coatings). Data points represent the 1% ice activation conditions for averages of 1 to 3 experiments and error bars represent the 95% confidence intervals of these averages based on a pooled standard deviation of 2.83%  $\text{RH}_i$  and using a t-statistic with 45 degrees of freedom (size of the experimental data set). Pooled standard deviation was used as a means to mitigate the need otherwise for a very large ( $>20$ ) number of experiments for each aerosol system

at each set of processing conditions. Ice formation results for untreated and coated commercial dust samples are also summarized in Table 4.

### 3.1. Untreated mineral particles

The appearance of ice formation below water saturation conditions (Figs. 3a to c) suggests that all of the untreated insoluble particle types possess apparent heterogeneous ice nucleation ability at upper tropospheric temperatures. Also included for comparison in Figs. 3a to c are curves representing homogeneous freezing conditions for pure sulfuric acid particles of the same sizes as the mineral dust particles, based upon data from Chen et al. (2000). This comparison emphasizes the conditions where heterogeneous nucleation by the relatively pure mineral particles could effectively compete with homogeneous ice formation in sulfate-water particles in the atmosphere. A few general conclusions are apparent. First, all three particle types were as effective or were more effective at initiating ice formation under upper tropospheric conditions, as compared with homogeneous freezing of pure sulfate particles of similar sizes. These differences are statistically significant at greater than the 95% confidence level in nearly 70% of the untreated mineral particle experiments, without consideration of particle size and temperature. Secondly, the apparent heterogeneous ice nucleating ability of the mineral particles, as indicated by the lowering of ice supersaturation for ice formation compared to the value at water saturation, becomes more effective at lower temperatures and larger particle sizes. The nature of ice nucleation varied among the different particle types, as indicated by different trends of conditions of  $RH_i$  versus temperature ( $\Delta RH_i/\Delta T$ ) required for 1% ice formation. The  $\Delta RH_i/\Delta T$  values were zero or positive for alumina-silicate particles of all sizes larger than 50 nm and these particles were the most effective of the untreated particles at initiating ice formation at lower temperatures. Results for untreated aluminum oxide particles displayed a similar positively valued trend in  $\Delta RH_i/\Delta T$  as particle size increased. In contrast, iron oxide particles maintained a negative  $\Delta RH_i/\Delta T$  at all particle sizes examined, but were the most effective of the manufactured particles as ice nuclei at  $-45^\circ\text{C}$ . The differences among the

## Ice nucleation by mineral dust particles

C. M. Archuleta et al.

Title Page

Abstract

Introduction

Conclusions

References

Tables

Figures

◀

▶

◀

▶

Back

Close

Full Screen / Esc

Print Version

Interactive Discussion

**Ice nucleation by  
mineral dust particles**

C. M. Archuleta et al.

Title Page

Abstract

Introduction

Conclusions

References

Tables

Figures

◀

▶

◀

▶

Back

Close

Full Screen / Esc

Print Version

Interactive Discussion

EGU

three particle types may relate to their fundamental properties for catalyzing ice formation, but may also be affected by the small amounts of soluble matter contamination in the particles as suggested by the CCN measurements for untreated particles. As already discussed, the presence of some apparent soluble matter (~0.5% by mass) in the untreated particles complicates discerning the ice nucleation mechanism as deposition or condensation freezing for these particles.

### 3.2. H<sub>2</sub>SO<sub>4</sub>-treated mineral particles

The size-resolved results for H<sub>2</sub>SO<sub>4</sub>-treated 50, 100 and 200 nm aluminum oxide, alumina-silicate and iron oxide particles are indicated respectively in Figs. 3d, e and f. The treatment was intended to promote condensation prior to ice nucleation, under the assumption that sulfuric acid coatings exceeding more than a few monolayers were sufficient to assure that the heterogeneous ice formation mechanism would be condensation freezing. We then classified each result for treated particles, compared with the analogous result for the untreated case, as enhancing, hindering, or leaving unaltered the ice-nucleating activity of each particle type and size, using a 95% confidence level for ascribing statistical significance. Aluminum oxide particles of all sizes showed no statistical difference in ice formation conditions whether treated or untreated, except at -60°C where the treated particles required higher RH<sub>i</sub> for ice formation. Alumina silicate particles of all sizes were more effective in the untreated state, at all temperatures below -50°C (statistically significant in all but one case). In contrast, iron oxide particles appeared modestly more effective when coated with sulfuric acid and this result was statistically significant for half of the combinations of tested size and temperature.

Included for comparison in Figs. 3d–f are curves representing homogeneous freezing of the sulfuric acid-water component of the different sized particles based on the measured weight percent of acid, calculation of equilibrium composition versus RH using Köhler theory and the freezing rates as a function of H<sub>2</sub>SO<sub>4</sub>-H<sub>2</sub>O composition from Chen et al. (2000). All of the 200 nm treated particles nucleated ice at lower RH<sub>i</sub> than the conditions for which homogeneous freezing of the liquid component of the

---

**Ice nucleation by  
mineral dust particles**C. M. Archuleta et al.

---

[Title Page](#)[Abstract](#)[Introduction](#)[Conclusions](#)[References](#)[Tables](#)[Figures](#)[|◀](#)[▶|](#)[◀](#)[▶](#)[Back](#)[Close](#)[Full Screen / Esc](#)[Print Version](#)[Interactive Discussion](#)

EGU

particles was predicted, significant at a 99.5% confidence level. For 100- and 50-nm particles, the  $RH_i$  points of apparent heterogeneous freezing nucleation for aluminum oxide and alumina-silicate particles are typically lower but indistinguishable, within experimental uncertainty, from the condition that would lead to homogeneous freezing of the acid-water solution in the particles. Only the treated iron oxide particles nucleated ice at a statistically-lower  $RH_i$  than that at which the liquid shell was predicted to freeze homogeneously.

### 3.3. Reference Asian mineral dust particles

Measurements of the ice nucleating activity of selected sizes of the resuspended reference Asian dust sample are shown in Fig. 4 and Table 5. Water uptake measurements using the HTDMA gave hygroscopic growth factors ( $D_{wet}/D_{dry}$ ) at 85%  $RH_w$  of 1.155, 1.125 and 1.05 for 50, 100 and 200 nm particles, respectively. These results indicated that the particles contained some soluble matter and that the smaller 50 and 100 nm particles contained relatively more soluble matter than the larger 200 nm particles. This variation in soluble matter content was associated with a pronounced size separation in ice nucleation conditions, especially in the size step between 100 and 200 nm. The 100 nm Asian dust particles did not nucleate ice at conditions substantially different from those required to homogeneously freeze 100 nm sulfuric acid particles, but the 200 nm natural mineral dust particles were very effective ice nuclei, initiating ice formation at ice relative humidities more than 5% below those of any of the manufactured mineral particles studied here. Interestingly, to first order, heterogeneous ice nucleation on these particles below water saturation seems to depend only on particle size and ice relative humidity. This result is similar in form to results reported for clay minerals in earlier studies using static diffusion chambers to process 0.5 to 3  $\mu\text{m}$  diameter particles collected on filters (e.g., Roberts and Hallett, 1968).

### 3.4. Summary of Ice Nucleation Results

Figure 5 summarizes results for 200 nm particles of all particle types studied in this work. Figure 5a is a summary of the ice nucleation conditions for untreated particles. Also included are curves denoting the homogeneous freezing conditions for 200 nm H<sub>2</sub>SO<sub>4</sub> particles (Chen et al., 2000) and the RH<sub>i</sub> inferred for the onset of continental cirrus cloud formation based on observations by Heymsfield and Milosevich (1995). The conditions inferred for cirrus formation by Heymsfield and Milosevich (1995) bound the minimum RH<sub>i</sub> conditions required for upper tropospheric cloud formation in observational studies of cirrus over the continental United States during the FIRE II (First IS-CCP (International Cloud Climatology Project) Regional Experiment) program in spring 1991. Since that study was conducted during springtime, the peak season for Asian dust transport to the United States (VanCuren and Cahill, 2002), these observations are most likely to have captured potential effects of heterogeneous nucleation by dust particles on cirrus clouds. Studies of cirrus in the INCA (INterhemispheric differences in Cirrus properties from Anthropogenic emissions) program found that, although homogeneous freezing likely dominates in most cirrus situations, evidence from observational data (Ström et al., 2003) and process modeling studies (Haag et al., 2003) suggests that a modest population of IN (concentrations somewhat less than 0.01 cm<sup>-3</sup>) activating near 130% RH influences the onset of freezing in cirrus in parts of the polluted Northern Hemisphere. Freezing-onset RH conditions were higher in less-polluted Southern Hemisphere sampling locales.

The 200 nm aluminum oxide and alumina-silicate particle activation conditions trend in the same direction as the conditions reported by Heymsfield and Milosevich. The slope of 200 nm iron oxide particle activation conditions is similar to that for homogeneous freezing of sulfuric acid solutions.

Figure 5b summarizes the freezing conditions for the treated 200 nm aluminum oxide, alumina-silicate and iron oxide minerals. The heterogeneous freezing conditions of these metal oxide particles come much closer to the onset conditions for cirrus

## Ice nucleation by mineral dust particles

C. M. Archuleta et al.

Title Page

Abstract

Introduction

Conclusions

References

Tables

Figures

◀

▶

◀

▶

Back

Close

Full Screen / Esc

Print Version

Interactive Discussion

**Ice nucleation by  
mineral dust particles**

C. M. Archuleta et al.

Title Page

Abstract

Introduction

Conclusions

References

Tables

Figures

◀

▶

◀

▶

Back

Close

Full Screen / Esc

Print Version

Interactive Discussion

EGU

formation suggested by Heymsfield and Milosevich than do previous results for homogeneous freezing of sulfate particles measured with the CFDC instrument. The ice nucleation conditions for the 200 nm Asian dust particles are also included in Fig. 5b, under the assumption that the measured water uptake properties inferred from the HTDMA would favor a condensation freezing mechanism. Figure 5b emphasizes that these natural dust particles nucleate ice at  $RH_i$  conditions that are 5–9% lower than the treated surrogate mineral particles. To first order, all of the 200-nm treated particles and the 200-nm Asian dust samples nucleated ice at nearly constant ice relative humidity conditions. The onset relative humidity for ice nucleation of the 200 nm Asian dust particles is approximately the same as the ice relative humidity (130%  $RH_i$ ) found in the INCA measurements to characterize apparent ambient heterogeneous ice nuclei. This agreement may be fortuitous since the observed strong size dependence of ice nucleation would suggest even lower  $RH_i$  activation for larger suspended particles, a fraction of which will be subject to long-range transport.

It is interesting that sulfuric acid coatings largely inhibited the innate ice nucleating capability of the alumina-silicate particles. These particles are specified by the manufacturer as having amorphous surfaces, in contrast to the oxides which are crystalline. Bassett et al. (1970) suggested a heterogeneous freezing mechanism for such surfaces that involves adsorption of water at discrete locations on a hydrophobic surface, where the advantage of a hydrophobic surface is that it promotes cluster formations that more easily stabilize and form ice than a liquid-like layer of water. This suggests that a partially hydrophilic substrate, which is an effective ice-nucleating agent in water vapor, is less effective when the surface of the substrate is covered by a liquid layer.

Overall, the range of cirrus formation conditions by the treated and untreated mineral oxide particles span the full range of cirrus formation conditions suggested in some other atmospheric studies (e.g., Jensen et al., 2001).

#### 4. Quantifying Heterogeneous Freezing by Mineral Dust/Sulfate Particles

Absent a first principle understanding of heterogeneous ice nucleation for atmospheric aerosols, a number of parametric approaches have been used to represent these processes in numerical modeling studies. Two approaches used for quantifying homogeneous freezing nucleation are examined here for relevance to parameterization of heterogeneous freezing nucleation (treated particle results). In addition, nucleation rates are derived, as these are useful for parameterization development and for evaluating the suitability of classical nucleation theory for interpreting experimental results. Parameterization of the results for untreated particle types will not be considered in this paper since the ice formation mechanism is not clearly defined.

##### 4.1. Freezing point depression and water activity parameterizations

Solutes have the effect of lowering the equilibrium melting point of a solution. Sassen and Dodd (1988) formulated a parameterization of homogeneous freezing of solution droplets at cirrus condition, based on earlier observations that the median homogeneous freezing temperatures of emulsified drops were depressed by solutes to an even greater extent than the lowering of the melting point, so that

$$\Delta T_{hf} = \lambda \Delta T_m \quad (1)$$

where  $\Delta T_{hf}$  is the homogeneous freezing point depression and  $\Delta T_m$  is the melting point depression for a specific salt concentration. Sassen and Dodd (1988) also proposed that the proportionality constant  $\lambda$  was valid at temperatures other than the temperatures at which drops freeze instantaneously, such that,

$$T^* = T + \lambda \Delta T_m \quad (2)$$

where  $T^*$  is an effective homogeneous freezing temperature and  $T$  is the actual temperature of the solution drops. Using  $T^*$  instead of  $T$  in a temperature dependent theoretical or parametric expression for the volumetric nucleation rate of pure water

### Ice nucleation by mineral dust particles

C. M. Archuleta et al.

Title Page

Abstract

Introduction

Conclusions

References

Tables

Figures

◀

▶

◀

▶

Back

Close

Full Screen / Esc

Print Version

Interactive Discussion



---

**Ice nucleation by  
mineral dust particles**


---

C. M. Archuleta et al.

Title Page	
Abstract	Introduction
Conclusions	References
Tables	Figures
◀	▶
◀	▶
Back	Close
Full Screen / Esc	
Print Version	
Interactive Discussion	

EGU

then permits estimation of the volumetric nucleation rate of solution drops ( $J_{\text{hf}}$ ) as a function of both temperature and composition (DeMott, 2002).  $T^*$  is thus understood as the temperature at which a solution droplet achieves the same nucleation rate as a pure water droplet of the same size. For homogeneous nucleation of haze particles,  $\lambda$  ranges from 1.4 to 2.2 for different solutions (DeMott, 2000). Sassen and Dodd proposed a  $\lambda$  equal to 1.7 to characterize a wide range of solutes and Chen et al. (2000) confirmed values ranging from about 1.5 to 2 for sulfate aerosols.

DeMott (2002) also suggested that a similar parameterization might be possible for describing heterogeneous freezing, such that the heterogeneous freezing rate is given by  $J_{\text{hetf}}(T_{\text{hetf}0})$  where  $J_{\text{hetf}}$  is the heterogeneous freezing rate and  $T_{\text{hetf}0}$  is an effective heterogeneous freezing temperature akin to  $T^*$ . Zuberi et al. (2002) found that  $\lambda_{\text{het}}$  equal to 1.7 fit their median freezing temperature data for the heterogeneous nucleation of ice in 10 to 55  $\mu\text{m}$  aqueous  $(\text{NH}_4)_2\text{SO}_4\text{-H}_2\text{O}$  particles containing kaolinite and montmorillonite powders. This suggests that perhaps  $\lambda$  is insensitive to the fundamental nucleation process in solutions (e.g.,  $\lambda_{\text{het}}=\lambda$ ) and that  $T_{\text{hetf}0}$  primarily describes the role of the insoluble substrate, capturing the effect of size and insoluble particle composition. Thus,  $T_{\text{hetf}0}$  is a variable parameter that depends on particle size, nucleation rate and the core particle type.

Koop et al. (2000) proposed that homogeneous freezing depends on solution droplet water activity ( $a_w$ ), such that the difference between  $a_w$  and  $a_w^i$ , the water activity of the solution in equilibrium with ice, is constant for a given particle size:

$$\Delta a_w = a_w - a_w^i \quad (3)$$

Zuberi et al. (2002) obtained a reasonable fit when they tested whether this method could be applied to heterogeneous freezing of the mineral dust immersions in super-micron drops. We will term the differential water activity for heterogeneous nucleation, analogous to that for homogeneous freezing in Eq. (3), as  $\Delta a_{w\text{het}}$ .

The two parametric approaches are compared for data in this study in Fig. 6. This figure shows the heterogeneous freezing temperatures determined using the CFDC for

---

**Ice nucleation by  
mineral dust particles**

 C. M. Archuleta et al.
 

---

[Title Page](#)
[Abstract](#)
[Introduction](#)
[Conclusions](#)
[References](#)
[Tables](#)
[Figures](#)
[◀](#)
[▶](#)
[◀](#)
[▶](#)
[Back](#)
[Close](#)
[Full Screen / Esc](#)
[Print Version](#)
[Interactive Discussion](#)

EGU

200-nm  $\text{H}_2\text{SO}_4$ -coated aluminum oxide particles, plotted against water activity. Water activity was determined using Köhler theory and using the measured RH conditions, dry particle size and soluble content as inputs. The assumption of drop-vapor equilibrium used in this calculation is probably most reasonable when ice formation occurs below 95%  $\text{RH}_w$ . This discussion is therefore focused on results for treated 100 and 200 nm particles.

The thin solid curve in Fig. 6 indicates the best fit of the data to Eq. (2). The line is extrapolated to  $a_w=1$  to estimate an intercept temperature  $T_{hetf0}$  as the temperature at which pure water particles with mineral dust immersions would freeze in the proportion measured (e.g., 1 in 100 particles freezing) in the CFDC residence time. The resulting best-fit equations for treated aluminum oxide, alumina-silicate and iron oxide are listed in Table 6. Included under each equation is the square of the correlation coefficient relating the equation to the corresponding experimental data. Overall, forms of Eq. (2) could be fit to describe the nucleation behavior of the treated 200 nm particles fairly well, with an average  $r^2$  of 0.89. The 100 nm particles could not be fit quite as well with the equations, with an average  $r^2$  of 0.53. For these investigations, the coefficient  $\lambda_{het}$  ranges from 1.1 to 1.9 for solutions of  $\text{H}_2\text{SO}_4$  on 100 and 200 nm aluminum oxide, alumina-silicate and iron oxide particles. The lowest correlation in these studies was for the 100 nm alumina-silicate particles ( $r^2=0.37$ ) where  $\lambda_{het}=1.1$ . Disregarding this point, the values for the coefficient  $\lambda_{het}$  range from 1.4 to 1.9. This range agrees with the range that has been reported from homogeneous freezing investigations ( $\lambda=1.4$ –2.2).

Results for  $\Delta a_{whet}$  for treated aluminum oxide particles are plotted in Fig. 6 as the dashed curve, Included in the plots is the line for  $a_w^i$  (Table 2). The corresponding  $\Delta a_{whet}$  equations for treated aluminum oxide and the equations that were best fits to the treated alumina silicate and iron oxide data are listed in Table 6. Correlations between these curves and the experimental data are also listed. Equation (3) could be fit to describe the nucleation behavior of the treated 100 nm and 200 nm particles at least as well as Eq. (2). The 200 nm water activity fit had an average  $r^2$  to the

**Ice nucleation by  
mineral dust particles**

C. M. Archuleta et al.

Title Page

Abstract

Introduction

Conclusions

References

Tables

Figures

◀

▶

◀

▶

Back

Close

Full Screen / Esc

Print Version

Interactive Discussion

EGU

experimental data of 0.89 and the 100 nm particles had an average  $r^2$  of 0.51.

Figure 7 shows the constant  $\Delta a_{whet}$  line fits for size-resolved data for various compositions of treated particles in this study. For comparison, we also show a constant  $\Delta a_{whet}$  line fit by Zuberi et al. (2002) to their data for heterogeneous nucleation of ice in aqueous  $(\text{NH}_4)_2\text{SO}_4\text{-H}_2\text{O}$  particles containing kaolinite and montmorillonite. The data from this study approach the data from the Zuberi et al. (2002) study as the particles become larger. The mineral dust surface areas in the Zuberi et al. (2002) work are not well quantified, but were certainly representative of much larger particles than in the current study. However, the freezing condition used by Zuberi et al. (2002) was the median freezing temperature, in contrast to the 1% freezing level used in the current study. Higher freezing rates would tend to require higher water activity. Although a direct comparison between the two studies is not possible, the new data in this paper supports the application of the relation between heterogeneous freezing and water activity for soluble-species-coated mineral oxide and clay particles.

A general result apparent in Table 6 and Fig. 7, at least for particles as small as 200 nm, is that  $\Delta a_{whet}$  or alternately,  $T_{hetf0}$ , are size dependent. It remains to be explored if the trend with particle size continues toward larger sizes, as this would be an important factor to consider in applying such results to atmospheric size distributions of mineral dust aerosols. A water-activity-based parameterization to utilize data of the type presented here has been described by Kärcher and Lohmann (2003). Fully quantifying the behaviors of mineral dust particles as ice nuclei for use in numerical modeling will entail determining the dependence of the inherent nucleation rates on particle size and composition over the entire range of supercooled temperatures.

#### 4.2. Nucleation rates

Heterogeneous nucleation is thought to critically depend on the number of ice nucleation active sites, with the probability of a particle containing active sites increasing with particle surface area. Using the assumption that heterogeneous nucleation depends

## Ice nucleation by mineral dust particles

C. M. Archuleta et al.

Title Page

Abstract

Introduction

Conclusions

References

Tables

Figures

◀

▶

◀

▶

Back

Close

Full Screen / Esc

Print Version

Interactive Discussion

EGU

on the surface areas of the aerosol particles, the fraction of particles of class  $i$  freezing is,

$$F_i = 1 - \exp(J_{hetf} A_i \Delta t) \quad (4)$$

where  $J_{hetf}$  ( $\text{cm}^{-2}\text{s}^{-1}$ ) is the heterogeneous freezing rate of the particles and  $A_i$  ( $\text{cm}^2$ ) is the surface area of the core particle.

Hung et al. (2003) reported values of  $J_{hetf}$  computed for polydisperse distributions of hematite (iron oxide) and corundum (aluminum oxide) core particles treated with  $(\text{NH}_4)_2\text{SO}_4$ . The core particles were generated using spray pyrolysis of aqueous metal salt solutions, the same basic process used to create the manufactured powders used in this study. Particles were coated with sulfuric acid in a similar manner as done in this work, and the coatings were then neutralized with excess  $\text{NH}_3(\text{g})$ . Particle compositions and freezing onset were detected in an aerosol flow tube using infrared spectroscopy. Nucleation rates were determined by Hung et al. (2003) using an iterative procedure that involved guessing  $J_{hetf}$  values in Eq. (4) and modeling ice formation and growth in the experimental section of the flow tube until the ice mass inferred from calculation matched that inferred from the spectroscopic measurements. The particle composition associated with the frozen particles was inferred from a combination of spectroscopic measurement and numerical modeling of particle-size dependent composition.

Nucleation rate calculations were relatively straightforward for the data collected in the present study. The residence time of particles after initial adjustment to the conditions in the CFDC was approximately 10 s.  $A_i$  in Eq. (4) is computed assuming spherical particles where  $A_i = \pi D_i^2$  and  $D_i$  is the diameter of the mineral dust core. With  $F_i$ ,  $A_i$  and  $\Delta t$  known,  $J_{hetf}$  can be calculated in Eq. (4). Thus, for example, 1% activation conditions represent nominal heterogeneous nucleation rates of  $1 \times 10^{-3}$  per particle per second or  $1.3 \times 10^7$ ,  $3.2 \times 10^6$ , and  $8.0 \times 10^5 \text{ cm}^{-2}\text{s}^{-1}$  for 50-, 100- and 200-nm particles, respectively, assuming uniform nonporous surface area and spherical shape. Köhler theory was used to associate a composition and thus a water activity with each nucle-

ation rate. Data for conditions where  $\sim 0.1\%$  of the particles activated were also used in this analysis to achieve a broader sense of the trends in nucleation rates.

Figure 8 shows nucleation rates for aluminum oxide core particles treated with  $\text{H}_2\text{SO}_4$  compared to the nucleation rates reported by Hung et al. (2003) for aluminum oxide core particles treated with  $(\text{NH}_4)_2\text{SO}_4$ , and Fig. 9 shows a similar comparison for the treated iron oxide particles. The results are compared for constant water activities, given that this appears to normalize for differences in the composition of the sulfate coating (see last section). The Hung et al. (2003) nucleation rates were reported as functions of the  $(\text{NH}_4)_2\text{SO}_4(\text{aq})$  mole fraction which we converted to water activity using the Aerosol Inorganics Model (AIM) of Clegg et al. (1998). Curve fits as in Figs. 6 and 7 for water-activity based parameterizations were used to associate data from the current study with these same water activities and thus create the data points in Figs. 8 and 9.

Figures 8 and 9 show that the nucleation rates in this study are higher than the nucleation rates in Hung et al. (2003) This is expected because this study assessed fractions of particles activating as ice nuclei in the range of 0.1% to 1% over about 10 s, while Hung et al. (2003) reported activated fractions between 0.000003 and 0.003% over 60 s. The slopes of the nucleation rates in this study are shallower: for both metal oxides, the constant  $a_w$  lines for this study are spread across a larger temperature range than those reported by Hung et al. (2003). It seems possible that the Hung et al. (2003) data may not reflect as large a variation in particle size nucleating ice as assumed from the mode size of the input particle distributions. For example, the small fractions nucleated from the overall populations may represent primarily particles from the larger particle tails in the polydisperse distributions. Experiments performed with polydisperse aerosols having less overlap in particle size might alter the slope and range of nucleation rates determined from experiments performed using the Hung et al. (2003) approach. Nevertheless, it is also possible that the particles used in the respective studies were not entirely of similar morphology and nucleating characteristics. The results in the current study extend the nucleation rate observations over a wider

---

**Ice nucleation by  
mineral dust particles**C. M. Archuleta et al.

---

[Title Page](#)[Abstract](#)[Introduction](#)[Conclusions](#)[References](#)[Tables](#)[Figures](#)[◀](#)[▶](#)[◀](#)[▶](#)[Back](#)[Close](#)[Full Screen / Esc](#)[Print Version](#)[Interactive Discussion](#)

## Ice nucleation by mineral dust particles

C. M. Archuleta et al.

Title Page

Abstract

Introduction

Conclusions

References

Tables

Figures

◀

▶

◀

▶

Back

Close

Full Screen / Esc

Print Version

Interactive Discussion

EGU

range of  $J_{hetf}$  for potential use in numerical parameterizations of ice formation by mineral dusts. For the temperature range assessed thus far, the rates can be reasonably fit by exponentials, as shown in Figs. 8 and 9.

The nucleation rate results in the present study are extrapolated for water activities equal to 1 by using the intercepts from analyses as presented in Fig. 7. The nucleation rates computed for  $a_w=1$  are shown in Figs. 8 and 9. These calculations predict appreciable heterogeneous freezing nucleation by these mineral particles within dilute activated cloud droplets at relatively warm temperatures, for which confirmatory data can be sought in future studies. Gorbunov and Safatov (1994) report active fractions of around 1% of 200 nm diameter  $Al_2O_3$  particles nucleating ice by unspecified mechanisms in a laboratory water cloud at  $-20^\circ C$ , which is broadly consistent with our predictions.

For completeness, we here consider the application of classical nucleation theory to the results, assuming the applicability of the capillarity approximation inherent in the spherical cap model and assuming a uniform distribution of active sites. Nucleation rate is then given by,

$$J_{hetf} = K \exp \left( \frac{-\Delta F_{act} - \Delta F_{ghet}}{kT} \right). \quad (5)$$

where  $\Delta F_{act}$  is the activation energy (ergs) for movement of water molecules from the solution to the ice phase,  $\Delta F_{ghet}$  (ergs) is the energy of formation of the critical embryo on the surface,  $k$  is Boltzmann's constant,  $T$  is temperature and  $K$  is the impingement rate of monomers to the critical embryo, taken as constant (see, e.g., DeMott, 2002). The free energy of formation for heterogeneous freezing nucleation may be written

$$\Delta F_{ghet} = \frac{4}{3} \pi r_g^2 f(m, x) \sigma_{i/s}, \quad (6)$$

where  $f(m, x)$  is a geometric factor (Pruppacher and Klett, 1997) that depends, in the case of a spherical cap embryo, on the cosine of the contact angle between the ice

embryo and substrate nucleus ( $m = \cos \theta$ ) and the ratio of the nucleus to ice embryo radius ( $x = r/r_g$ ). The ice embryo radius (cm) is,

$$r_g = \frac{2 \sigma_{i/s}}{\rho_i L_{ef} (\ln(T_0/T) a_w^G)}, \quad (7)$$

where  $L_{ef}$  (ergs  $g^{-1}$ ) is the temperature-dependent “effective” latent heat of formation (Khvorostyanov and Sassen, 1998), ice density  $\rho_i$  ( $g\text{ cm}^{-3}$ ) is taken from Pruppacher and Klett (1997),  $\sigma_{i/s}$  is the interfacial energy (ergs) of the ice-solution interface,  $T_0$  is the triple point of water,  $a_w$  is water activity, and  $G = RT/(L_{ef} M_w)$ ,  $M_w$  being the molecular weight of water and  $R$  the universal gas constant.

For these calculations we use  $\Delta F_{act}$  from Tabazadeh et al. (2000), who equate it to the measurable energy for viscous flow. Water activity is determined as a function of temperature and composition based on Clegg et al. (1998). Composition- and temperature-dependent values of  $\sigma_{i/s}$  for sulfuric acid/water solutions are estimated indirectly through the application of Antonoff’s rule (e.g.,  $\sigma_{i/s}$  is equal to the absolute difference of the individual surface tensions of ice and solution against air) following Tabazadeh et al. (2000). For the preexponential constant  $K$ , we follow Hung et al. (2003) and Fletcher (1969), using a value of  $10^{20}\text{ cm}^{-2}\text{ s}^{-1}$  and note, as they have, the relative insensitivity of the calculation to this parameter.

Using the measured freezing temperatures and relative humidities to constrain solution composition for  $F_j = 0.01$  and  $\Delta t = 10\text{ s}$  in Eq. (4) and under the various assumptions described above, the contact parameter remains as the adjustable free parameter for achieving the required nucleation rate for theory to agree with experiment for different particle sizes. Best-fit values of  $m$  for heterogeneous freezing by different sizes of the experimentally tested metal oxides are given in Table 6. The result of computations versus experimental results for heterogeneous freezing of 100 and 200 nm  $\text{Fe}_2\text{O}_3$  particles coated with  $\text{H}_2\text{SO}_4$  (weight % as given in Table 1) is shown in Fig. 10. This analysis shows that while the form of the 1% freezing results is approximately reproduced by theory in temperature-humidity space, the particle size dependencies cannot

---

**Ice nucleation by  
mineral dust particles**C. M. Archuleta et al.

---

[Title Page](#)[Abstract](#)[Introduction](#)[Conclusions](#)[References](#)[Tables](#)[Figures](#)[◀](#)[▶](#)[◀](#)[▶](#)[Back](#)[Close](#)[Full Screen / Esc](#)[Print Version](#)[Interactive Discussion](#)

---

**Ice nucleation by  
mineral dust particles**C. M. Archuleta et al.

---

[Title Page](#)[Abstract](#)[Introduction](#)[Conclusions](#)[References](#)[Tables](#)[Figures](#)[I◀](#)[▶I](#)[◀](#)[▶](#)[Back](#)[Close](#)[Full Screen / Esc](#)[Print Version](#)[Interactive Discussion](#)

EGU

be reproduced without parameterizing  $m$  as a function of particle size. This suggests that it would be necessary to invoke active-site parameter formulations of classical theory (Fletcher, 1969; Han et al., 2002) to more closely represent ice formation by metal oxide particles based on observation. Nevertheless, we note that the contact parameters found in best agreement for standard nucleation theory are very similar to those found by Hung et al. (2003) for the metal oxide species examined in common with this study.

We do not attempt here to relate in detail the results from experiments with relatively pure aerosols that may reflect deposition nucleation (Figs. 3a, c, e) to classical theory calculations of this ice formation process. It is clear from representative calculations of this type that the slopes of constant nucleation rate versus temperature surfaces are highly sensitive to the choice of contact parameter of ice against mineral surface and the forms of the free energy of formation and surface tension. For example, with appropriate choices for other terms, the negative  $dS_{\text{ice}}/dT$  slope can be achieved by an increasing contact parameter as temperature decreases. The same effect is achieved by increasing either the surface tension or free energy terms at lower temperatures.

## 5. Conclusions

A continuous-flow diffusion chamber was used to characterize the size-resolved ice nucleating ability of several types of submicron mineral particles of potential atmospheric importance at cirrus temperatures. Included in this study were aluminum oxide, alumina-silicate, and iron oxide particles both as single component aerosols and treated with a coating of sulfuric acid. Ice nucleating characteristics were also determined for a desert soil dust sample that is intended as a reference sample for airborne Asian dust. These experiments support a number of conclusions.

1. The examined particle types, if assumed to be appropriate surrogates for the components of natural mineral dust particles, are strong potential contributors to



Ice nucleation by mineral dust particles

C. M. Archuleta et al.

Title Page

Abstract

Introduction

Conclusions

References

Tables

Figures

◀

▶

◀

▶

Back

Close

Full Screen / Esc

Print Version

Interactive Discussion

atmospheric heterogeneous IN populations. This is true whether in the pure state or after being coated with soluble species, such as occurs during processing in pollutant-rich air.

2. The widest range of activation conditions among the aerosol types examined occurred for particles in their pure (unprocessed) state. The ice formation mechanisms could not be discerned in these cases and may have been affected by the preparation or generation methods. The CCN activity demonstrated the presence of some soluble matter, due to contamination, presumably from the dry powders, but possibly redistributed to particles in the water suspensions. Since the deliquescence relative humidity and water uptake properties of the dry particles under the conditions at which ice nucleation occurred were not discernable by the HTDMA method, it was not possible to define ice nucleation as deposition or condensation freezing. If the nucleation mechanism in all untreated cases is presumed to be deposition, particles with diameters of 200 nm size display constant deposition nucleation rates (equal to  $1 \times 10^{-3}$  per particle per second in Figs. 4 and 5) occurring at approximately constant to progressively lower ice supersaturations with decreasing temperature. Future work should consider dry dispersion generation methods.
3. Soluble coatings affected different mineral particles in different ways. Coatings on aluminum oxide particles had little impact on altering ice formation as compared to untreated particles, suggesting a condensation freezing mechanism for ice nucleation in both cases. Coatings on iron oxide particles reduced the required RH<sub>i</sub> for ice initiation by a statistically significant amount in about half of the cases. Coatings on alumina-silicate particles were in most cases detrimental to their innate ice forming ability. The ice nucleation behaviors of the three particle types were similar when coated with significant amounts of sulfuric acid. For the larger particles (200 nm), coating with sulfuric acid led to heterogeneous freezing under significantly less stringent conditions than those at which the diluted sulfuric acid

Ice nucleation by mineral dust particles

C. M. Archuleta et al.

Title Page

Abstract

Introduction

Conclusions

References

Tables

Figures

◀

▶

◀

▶

Back

Close

Full Screen / Esc

Print Version

Interactive Discussion

coatings were predicted to freeze homogeneously.

4. Clear size effects on heterogeneous ice formation were noted for all examined aerosols, independent of nucleation mechanism. In all cases, larger particles consistently nucleated ice at lower humidity than smaller particles at the same temperatures. Particles as small as 50 nm diameter were active as heterogeneous ice nuclei, with activation conditions that were generally comparable to the homogeneous freezing conditions of small sulfate particles in cirrus conditions. Particles larger than 100 nm were much more effective heterogeneous ice nuclei. This size dependence is reflected in classical theory of heterogeneous nucleation including active sites and is consistent with observations that suggest that IN typically have sizes larger than 0.1 μm (Pruppacher and Klett, 1997; Chen et al., 1998). It is inferred that natural dust particles larger than those studied here (i.e., having diameters larger than 200 nm) could be even more effective in initiating ice formation in clouds.

5. Two parametric ice formation models that have been previously applied to model homogeneous freezing nucleation were found to also be conceptually appropriate for describing heterogeneous freezing of coated mineral dust-like particles at cirrus conditions. Both the effective freezing temperature parameterization, for which nucleation rate depends on freezing point depression, and a parameterization that quantifies nucleation rate as a function of water activity could be applied with essentially the same confidence to describe heterogeneous freezing conditions. The range of values of freezing point depression coefficients for heterogeneous freezing ( $\lambda_{het}$ ) determined in this work was consistent with the range that has been reported for homogeneous freezing parameterizations for pure sulfates. Application of these parameterizations requires knowledge of or assumptions of insoluble core size and the amount of soluble material associated with the dust cores. Classical theory may be applied to describe ice formation by coated mineral aerosols, but it is clear that contact parameter must be specified as a function

---

**Ice nucleation by  
mineral dust particles**C. M. Archuleta et al.

---

[Title Page](#)[Abstract](#)[Introduction](#)[Conclusions](#)[References](#)[Tables](#)[Figures](#)[◀](#)[▶](#)[◀](#)[▶](#)[Back](#)[Close](#)[Full Screen / Esc](#)[Print Version](#)[Interactive Discussion](#)

EGU

of particle size, or alternately that application of active site theory is necessary.

- 5 6. Nucleation rate calculations provide an alternate method for parameterizing ice nucleation by dust particles. These calculations for metal oxide particles suggest that mineral dust particles in supercooled liquid water clouds would initiate ice formation at relatively warm temperatures relevant to mixed-phase clouds.
7. Resuspended, nearly-monodisperse natural desert dust particles activated ice formation at nearly constant ice relative humidities over a wide temperature range (–45 to –60°C). The  $RH_i$  values for nucleating 1% (in 12 s) of the 200 nm particles from the natural dust sample were the lowest values observed for aerosols tested in the present study, averaging  $RH_i \sim 135\%$ . The trend of the results predicts lower ice relative humidities for equivalent nucleation rates in larger particles. Since natural mineral dust particle plumes undergoing long-range atmospheric transport include larger submicron and supermicron sizes, the present study suggests airborne mineral dusts as a potential explanation for the presence at cirrus levels of heterogeneous ice nuclei active at or below  $130\%RH_i$ , as inferred by Haag et al. (2003).

10 In general, the findings in this study support observations that mineral dust particles can act as efficient ice nuclei (DeMott et al., 2003a, b). These laboratory observations appear to come closer to a viable explanation of the existing observations of the full range of cirrus onset conditions than homogeneous nucleation alone. This information provides more insight into the radiative forcing of clouds, as these particles in competition with homogeneous freezing processes freeze more readily and can lead to a reduction in ice crystal density in slow updraft cloud parcels (DeMott et al., 1997). The net effects on cirrus coverage, properties and net cloud albedo depend also on cloud dynamics (Haag and Kärcher, 2004). Nevertheless, the parameterizations developed here, combined with a prognostic treatment of dust aerosol transport, should be useful in the modeling of ice formation in cirrus conditions, and for interpreting observations of ice formation in clouds. Future studies are needed to extend investigations to other

types of natural and surrogate mineral dusts, to extend studies to warmer temperatures ( $T > -45^{\circ}\text{C}$ ) of relevance to mixed-phase clouds, and to examine the additional effects on ice nucleation rates due to particle processing by gas-phase reactions and clouds.

*Acknowledgements.* This work was supported by National Science Foundation Grants ATM0071321 and ATM-0436196. Any conclusions are those of the authors. C. A. Archuleta received partial support for these studies from an American Meteorological Society scholarship. The authors gratefully acknowledge M. Nishikawa of the Japanese National Institute for Environmental Studies for providing the desert soil sample. We also acknowledge the helpful technical and/or manuscript evaluation assistance of D. Rogers, B. Jesse, A. Prenni, K. Koehler, S. Brooks and M. Petters.

## References

- Bassett, D. R., Boucher, E. A. and Zettlemoyer, A.C.: Adsorption studies on ice-nucleation substrates. Hydrophobed silicas and silver iodide, *Journal of Colloid and Interface Science*, 31, 436–446, 1970.
- Buck, A. L.: New equations for computing vapor pressure and enhancement factor, *J. Appl. Meteor.*, 20, 1527–1532, 1981.
- Chen, Y., DeMott, P. J., Kreidenweis, S. M., Rogers, D. C., and Sherman, D. E.: Ice formation by sulfate and sulfuric acid aerosol particles under upper tropospheric conditions, *J. Atmos. Sci.*, 57, 3752–3766, 2000.
- Chen, Y., Kreidenweis, S. M., McInnes, L. M., Rogers, D. C., and DeMott, P. J.: Single particle analysis of ice nucleation aerosols in the upper troposphere and lower stratosphere, *Geophys. Res. Lett.*, 25, 1391–1394, 1998.
- Clegg, S. L., Brimblecombe, P., and Wexler, A. S.: A Thermodynamic Model of the System  $\text{H}^+ - \text{NH}_4^+ - \text{SO}_4^{2-} - \text{NO}_3^- - \text{H}_2\text{O}$  at Tropospheric Temperatures, *J. Phys. Chem.*, 102A, 2137–2154, 1998.
- Cziczo, D. J., Murphy, D. M., Hudson, P. K., and Thomson, D. S.: Single particle measurements of the composition of cirrus ice residue during CRYSTAL-FACE, *J. Geophys. Res.*, 109, D04201, doi:10.1029/2004JD004032, 2004.

## Ice nucleation by mineral dust particles

C. M. Archuleta et al.

Title Page

Abstract

Introduction

Conclusions

References

Tables

Figures

◀

▶

◀

▶

Back

Close

Full Screen / Esc

Print Version

Interactive Discussion

---

**Ice nucleation by  
mineral dust particles**C. M. Archuleta et al.

---

Title Page

Abstract

Introduction

Conclusions

References

Tables

Figures

◀

▶

◀

▶

Back

Close

Full Screen / Esc

Print Version

Interactive Discussion

- DeMott, P. J.: Laboratory studies of cirrus cloud processes, in: Cirrus, edited by: Lynch, D. K., Sassen, K., Starr, D. O. C., and Stephens, G., Oxford Univ. Press, 102–135, 2002.
- DeMott, P. J.: Quantitative descriptions of ice formation mechanisms of silver iodide-type aerosols, *Atmospheric Research*, 38, 63–99, 1995.
- 5 DeMott, P. J., Sassen, K., Poellot, M., Baumgardner, D., Rogers, D. C., Brooks, S. D., Prenni, A. J., and Kreidenweis, S. M.: African dust aerosols as atmospheric ice nuclei, *Geophys. Res. Lett.*, 30, No. 14, 1732, doi:10.1029/2003GL017410, 2003a.
- DeMott, P. J., Cziczko, D. J., Prenni, A. J., Murphy, D. M., Kreidenweis, S. M., Thomson, D. S., Borys, R., and Rogers, D. C.: Measurements of the concentration and composition of  
10 nuclei for cirrus formation, *Proceedings of the National Academy of Sciences*, 100, No. 25, 14 655–14 660, 2003b.
- DeMott, P. J., Rogers, D. C., and Kreidenweis, S. M.: The susceptibility of ice formation in upper tropospheric clouds to insoluble aerosol components, *J. Geophys. Res.*, 102, 19 575–19 584, 1997.
- 15 DeMott, P. J., Meyers, M. P., and W. R. Cotton: Parameterization and impact of ice initiation processes relevant to numerical model simulations of cirrus clouds, *J. Atmos. Sci.*, 51, 77–90, 1994.
- Dentener, F. J., Carmichael, G. R., Zhang, Y., Lelieveld, J., and Crutzen, P. J.: Role of mineral aerosol as a reactive surface in the global troposphere, *J. Geophys. Res.*, 101, 22 869–22 889, 1996.
- 20 Fletcher, N. H.: Active sites and ice crystal nucleation, *J. Atmos. Sci.*, 26, 1266–1271, 1969.
- Gorbunov, B. and Safatov, A.: In situ measurements of the ice-forming activity of metal oxide aerosols with controlled amounts of surface active groups, *J. Aerosol. Sci.*, 673–682, 1994.
- Haag, W. and Kärcher, B.: The impact of aerosols and gravity waves on cirrus clouds at mid-latitudes, *J. Geophys. Res.*, 109, D12202, doi:10.1029/2004JD004579, 2004.
- 25 Haag, W., Kärcher, B., Ström, J., Minikin, A., Lohmann, U., Ovarlez, J., and Stohl, A.: Freezing thresholds and cirrus cloud formation mechanisms inferred from in situ measurements of relative humidity, *Atmos. Chem. Phys.*, 3, 1791–1806, 2003,  
[SRef-ID: 1680-7324/acp/2003-3-1791](#).
- 30 Han, J.-H. and Martin, S. T.: An aerosol chemical reactor for coating metal oxide particles with  $(\text{NH}_4)_2\text{SO}_4\text{-H}_2\text{SO}_4\text{-H}_2\text{O}$ , 1. New particle formation, *Aerosol Science and Technology*, 34, 363–372, 2001.
- Han, J.-H., Hung, H.-M., and Martin, S. T.: Size effect of hematite and corundum inclusions

**Ice nucleation by  
mineral dust particles**

C. M. Archuleta et al.

Title Page

Abstract

Introduction

Conclusions

References

Tables

Figures

◀

▶

◀

▶

Back

Close

Full Screen / Esc

Print Version

Interactive Discussion

EGU

on the efflorescence relative humidities of aqueous ammonium nitrate particles, *J. Geophys. Res.*, 107, D10, doi:10.1029/2001JD001054, 2002.

Heintzenberg, J., Okada, K., and Ström, J.: On the composition of non-volatile material in upper tropospheric aerosols and cirrus crystals, *Atmospheric Research*, 41, 81–88, 1996.

5 Heymsfield, A.J. and Miloshevich, L. M.: Relative humidity and temperature influences on cirrus formation and evolution: Observations from wave clouds and FIRE II, *J. Atmos. Sci.*, 52, 4302–4326, 1995.

Hung H.-M., Malinowski, A., and Martin, S. T.: Kinetics of Heterogeneous Ice Nucleation on the Surfaces of Mineral Dust Cores Inserted into Aqueous Ammonium Sulfate Particles, *J. Phys. Chem. A.*, 107, 1296–1306, 2003.

10 Isono, K., Komabayasi, M., and Ono, A.: The nature and origin of ice nuclei in the atmosphere. *J. Meteor. Soc. Japan*. 37, 211–233, 1959.

Jensen, E. J., Toon, O. B., Vay, S. A., Ovarlez, J., May, R., Bui, T. P., Twohy, C. H., Gandrud, B. W., Pueschel, R. F., and Shumann, U.: Prevalence of ice-supersaturated regions in the upper troposphere: Implications for optically thin ice cloud formation, *J. Geophys. Res.*, 106, 17 253–17 266, 2001.

Kärcher, B. and Lohmann, U.: A parameterization of cirrus cloud formation: Heterogeneous freezing, *J. Geophys. Res.*, 108, 4402, doi:10.1029/2002JD003220, 2003.

Khvorostyanov, V. and Sassen, K.: Toward the theory of homogeneous nucleation and its parameterization for cloud models, *Geophys. Res. Lett.*, 25, 3155–3158, 1998.

20 Koop, T., Luo, B. P., Tsias, A., and Peter, T.: Water activity as the determinant for homogeneous ice nucleation in aqueous solutions, *Nature*, 406, 611–614, 2000.

Mori, I., Nishikawa, M., Quan, H., and Morita, M.: Estimation of the concentration and chemical composition of Kosa aerosols at their origin, *Atmos. Environ.*, 36, 4569–4575, 2002.

25 Prenni, A. J., DeMott, P. J., Kreidenweis, S. M., and Sherman, D. E.: The effects of low molecular weight dicarboxylic acids on cloud formation, *J Phys. Chem.*, 105, 11 240–11 248, 2001.

Pruppacher, H. R. and Klett, J. D.: *The Microphysics of Clouds and Precipitation*, Second edition, Kluwer Academic Publishers, Dordrecht, Boston, 954, 1997.

Roberts, P. and Hallett, J.: A laboratory study of the ice nucleating properties of some mineral particulates, *Quart. J. Royal Met. Soc.*, 94, 25–34, 1968.

30 Rogers, D. C.: Development of a continuous flow thermal gradient diffusion chamber for ice nucleation studies, *Atmospheric Research*, 22, 149–181, 1988.

Rogers, D. C., DeMott, P. J., Kreidenweis, S. M., and Chen, Y.: A continuous flow diffusion

chamber for airborne measurements of ice nuclei, *J. Atmos. Oceanic Technol.*, 18, 725–741, 2001.

Sassen, K., DeMott, P. J., Prospero, J., and Poellot, M. R.: Saharan Dust Storms and Indirect Aerosol Effects on Clouds: CRYSTAL-FACE Results, *Geophys. Res. Lett.*, 30, No. 12, 1633, doi:10.1029/2003GL017371, 2003.

Sassen, K.: Indirect climate forcing over the western US from Asian dust storms, *Geophys. Res. Lett.*, 29(10), doi: 10.1029/2001GL014051, 2002.

Sassen, K. and Dodd, G. C.: Homogeneous nucleation rate for highly supercooled cirrus cloud droplets, *J. Atmos. Sci.*, 45, 1357–1369, 1988.

Stephens, G. L., Tsay, S. C., Stackhouse Jr., P. W., and Flatau, P. J.: The relevance of the microphysical and radiative properties of cirrus clouds to climate and climatic feedback, *J. Atmos. Sci.*, 47, 1742–1753, 1990.

Ström, J., Seifert, M., Kärcher, B., Ovarlez, J., Minikin, A., Gayet, J.-F., Krejci, R., Petzold, A., Auriol, F., Haag, W., Busen, R., Schumann, U., and Hansson, H.-C.: Cirrus cloud occurrence as a function of ambient relative humidity: A comparison of observations obtained during the INCA experiment, *Atmos. Chem. Phys.*, 3, 1807–1816, 2003, [SRef-ID: 1680-7324/acp/2003-3-1807](https://doi.org/10.5194/acp-3-1807-2003).

Tabazadeh, A., Martin, S. T., and Lin, J.-S.: The effect of particle size and nitric acid uptake on the homogeneous freezing of aqueous sulfuric acid particles, *Geophys. Res. Lett.*, 27, No. 8, 1111–1114, 2000.

VanCuren, R. A. and Cahill, T. A.: Asian aerosols in North America: Frequency and concentration of fine dust, *J. Geophys. Res.*, 107, doi:10.1029/2002JD002204, 2002.

Van den Heever, S. C., Carrio, G., Cotton, W. R., DeMott, P. J., and Prenni, A. J.: Impacts of nucleating aerosol on Florida convection, Part I: Mesoscale simulations, *J. Atmos. Sci.*, accepted, 2005.

Wyslouzil, B. E., Carleton, K. L., Sonnenfroh, D. M., and Rawlins, W. T.: Observation of hydration of single, modified carbon aerosols, *Geophys. Res. Lett.*, 19, 2107–2110, 1994.

Zhang, Y. and Carmichael, G. R.: The role of mineral aerosol in tropospheric chemistry in East Asia - a model study, *J. App. Chem.*, 38, 353–366, 1999.

Zuberi, B., Bertram, A. K., Cassa, C. A., Molina, L. T., and Molina, M. J.: Heterogeneous nucleation of ice in (NH<sub>4</sub>)<sub>2</sub>SO<sub>4</sub>-H<sub>2</sub>O particles with mineral dust immersions, *Geophys. Res. Lett.*, 29(10), doi: 10.1029/2001GL014289, 2002.

---

**Ice nucleation by  
mineral dust particles**

C. M. Archuleta et al.

---

Title Page

Abstract

Introduction

Conclusions

References

Tables

Figures

◀

▶

◀

▶

Back

Close

Full Screen / Esc

Print Version

Interactive Discussion

## Ice nucleation by mineral dust particles

C. M. Archuleta et al.

**Table 1.** The weight % of sulfuric acid deposited on the mineral particles determined using measured  $S_{\text{crit}}$  and Köhler theory for solute-coated spheres. The corresponding number of monolayers of acid is included in parenthesis where spherical particles are assumed with uniform coverage.

Particle Diameter (nm)	$S_{\text{crit}}$ (%), Weight fraction $\text{H}_2\text{SO}_4$ (monolayers $\text{H}_2\text{SO}_4$ )		
	$\text{Al}_2\text{O}_3$	$3\text{Al}_2\text{O}_3 : 2\text{SiO}_2$	$\text{Fe}_2\text{O}_3$
100	0.43, 0.051(4.6)	0.41, 0.070 (5.0)	0.41, 0.045 (5.3)
200	0.28, 0.016 (2.9)	0.26, 0.023 (3.3)	0.18, 0.030 (7.1)

[Title Page](#)
[Abstract](#)
[Introduction](#)
[Conclusions](#)
[References](#)
[Tables](#)
[Figures](#)
[Back](#)
[Close](#)
[Full Screen / Esc](#)
[Print Version](#)
[Interactive Discussion](#)

EGU



**Ice nucleation by  
mineral dust particles**

C. M. Archuleta et al.

Title Page

Abstract

Introduction

Conclusions

References

Tables

Figures

I◀

▶I

◀

▶

Back

Close

Full Screen / Esc

Print Version

Interactive Discussion

EGU

**Table 2.** Vapor pressure relations used for supersaturation calculations.

Water:	$e_{sv} \text{ [mb]} = 22.542(T[\text{°C}]/(T[\text{°C}]+273.48))$
Ice:	$e_{si} \text{ [mb]} = 17.966(T[\text{°C}]/(T[\text{°C}]+247.15))$

## Ice nucleation by mineral dust particles

C. M. Archuleta et al.

**Table 3.**

Ice nucleation results (%RH<sub>i</sub>) for 1% freezing of pure (untreated) dust particles summarized as a function of particle type, size and temperature.

Temp	Al <sub>2</sub> O <sub>3</sub>			3Al <sub>2</sub> O <sub>3</sub> ·2SiO <sub>2</sub>			Fe <sub>2</sub> O <sub>3</sub>		
	50 nm	100 nm	200 nm	50 nm	100 nm	200 nm	50 nm	100 nm	200 nm
−45°C	158.0 ±4.8	153.9 ±4.8	149.5 ±4.8	147.5 ±4.8	150.6 ±4.8	147.5 ±4.8	152.5 ±4.8	146.6 ±4.8	140.9 ±4.8
−50°C	159.5 ±4.8	153.3 ±4.8	147.7 ±4.8	142.9 ±4.8	147.1 ±4.8	142.9 ±4.8	160.9 ±4.8	152.5 ±4.8	143.9 ±4.8
−55°C	162.2 ±4.8	154.7 ±4.8	144.3 ±4.8	139.4 ±3.4	148.4 ±3.4	139.4 ±3.4	168.5 ±4.8	156.6 ±4.8	148.7 ±4.8
−60°C	166.2 ±4.8	156.2 ±4.8	139.3 ±4.8	133.6 ±3.4	144.2 ±3.4	133.6 ±3.4	174.2 ±4.8	163.9 ±3.4	150.6 ±3.4

Title Page

Abstract

Introduction

Conclusions

References

Tables

Figures

◀

▶

◀

▶

Back

Close

Full Screen / Esc

Print Version

Interactive Discussion

EGU

## Ice nucleation by mineral dust particles

C. M. Archuleta et al.

**Table 4.** Ice nucleation results (%RH<sub>i</sub>) for 1% freezing of coated dust particles summarized as a function of particle type, size and temperature.

Temp	Al <sub>2</sub> O <sub>3</sub> (+H <sub>2</sub> SO <sub>4</sub> )			3Al <sub>2</sub> O <sub>3</sub> :2SiO <sub>2</sub> (+H <sub>2</sub> SO <sub>4</sub> )			Fe <sub>2</sub> O <sub>3</sub> (+H <sub>2</sub> SO <sub>4</sub> )		
	50 nm	100 nm	200 nm	50 nm	100 nm	200 nm	50 nm	100 nm	200 nm
−45°C	159.8 ±3.4	152.9 ±3.4	146.8 ±3.4	158.1 ±3.4	147.5 ±3.4	140.2 ±3.4	152.4 ±3.4	145.3 ±3.4	140.6 ±3.4
−50°C	163.0 ±3.4	154.7 ±3.4	142.6 ±3.4	170.1 ±4.8	161.5 ±4.8	148.4 ±4.8	154.7 ±3.4	146.5 ±3.4	140.3 ±3.4
−55°C	165.4 ±3.4	158.8 ±3.4	143.9 ±3.4	174.4 ±3.4	162.5 ±3.4	149.8 ±3.4	161.4 ±2.7	150.0 ±2.7	142.6 ±2.7
−60°C	179.2 ±4.8	169.1 ±4.8	148.4 ±3.4	173.2 ±4.8	165.7 ±4.8	151.4 ±4.8	170.1 ±2.7	160.6 ±2.7	144.1 ±2.7

[Title Page](#)
[Abstract](#)
[Introduction](#)
[Conclusions](#)
[References](#)
[Tables](#)
[Figures](#)
[I◀](#)
[▶I](#)
[◀](#)
[▶](#)
[Back](#)
[Close](#)
[Full Screen / Esc](#)
[Print Version](#)
[Interactive Discussion](#)

EGU

**Ice nucleation by  
mineral dust particles**

C. M. Archuleta et al.

**Table 5.** Ice nucleation results (%RH<sub>i</sub>) for 1% freezing of reference Asian dust particles summarized as a function of particle size and temperature.

Temp	Reference Asian Dust		
	50 nm	100 nm	200 nm
−45°C	172.4±4.8	154.6±4.8	135.9±4.8
−50°C	170.3±4.8	154.7±4.8	133.7±4.8
−55°C	163.2±3.4	157.5±3.4	134.3±3.4
−60°C	161.0±4.8	156.2±4.8	136.1±4.8

[Title Page](#)[Abstract](#)[Introduction](#)[Conclusions](#)[References](#)[Tables](#)[Figures](#)[I◀](#)[▶I](#)[◀](#)[▶](#)[Back](#)[Close](#)[Full Screen / Esc](#)[Print Version](#)[Interactive Discussion](#)

EGU

Ice nucleation by  
mineral dust particles

C. M. Archuleta et al.

**Table 6.** Comparison of the best fit equations for two methods,  $T_{hetf0}=T+\lambda\Delta T_m$  and  $\Delta a_{whet}=a_{whet}-a_w^i$ , used to describe heterogeneous freezing data (1% activation conditions) for treated 100 and 200 nm aluminum oxide, alumina silicate particles and treated 50, 100 and 200 nm iron oxide particles. The correlation  $r^2$  for each equation as compared to the experimental data set is in parentheses. The  $\Delta a_{whom}$  values for homogeneous freezing are shown for reference. The contact parameter ( $m$ ) derived for a classical theory calculation of heterogeneous freezing (see text) is also listed.

	D (nm)	$T_{hetf}(r^2)$	$\Delta a_{whet}(r^2)$	$\Delta a_{whom}(r^2)$	$m$
Aluminium Oxide	100	$234-1.5 \Delta T_m$ (0.74)	0.32 (0.73)	0.331	-0.90
	200	$244-1.6 \Delta T_m$ (0.92)	0.25 (0.93)	0.328	-0.15
Alumina Silicate	100	$230-1.1 \Delta T_m$ (0.37)	0.32 (0.33)	0.331	
	200	$247-1.9 \Delta T_m$ (0.85)	0.26 (0.83)	0.328	-0.30
Iron Oxide	50	$233-1.4 \Delta T_m$ (0.55)	0.31 (0.54)	0.334	
	100	$238-1.4 \Delta T_m$ (0.47)	0.28 (0.48)	0.331	-0.30
	200	$244-1.4 \Delta T_m$ (0.91)	0.23 (0.10)	0.328	-0.10

Title Page

Abstract

Introduction

Conclusions

References

Tables

Figures

I◀

▶I

◀

▶

Back

Close

Full Screen / Esc

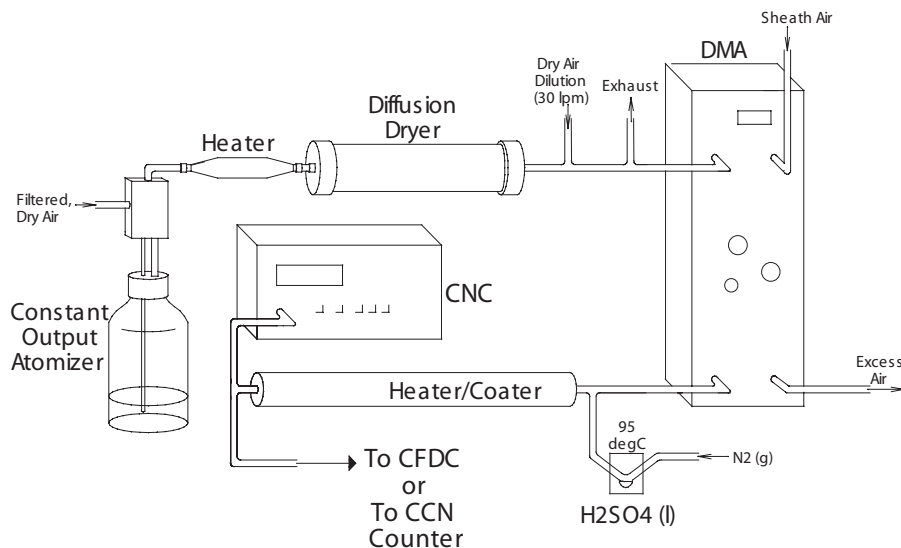
Print Version

Interactive Discussion

EGU

Ice nucleation by  
mineral dust particles

C. M. Archuleta et al.



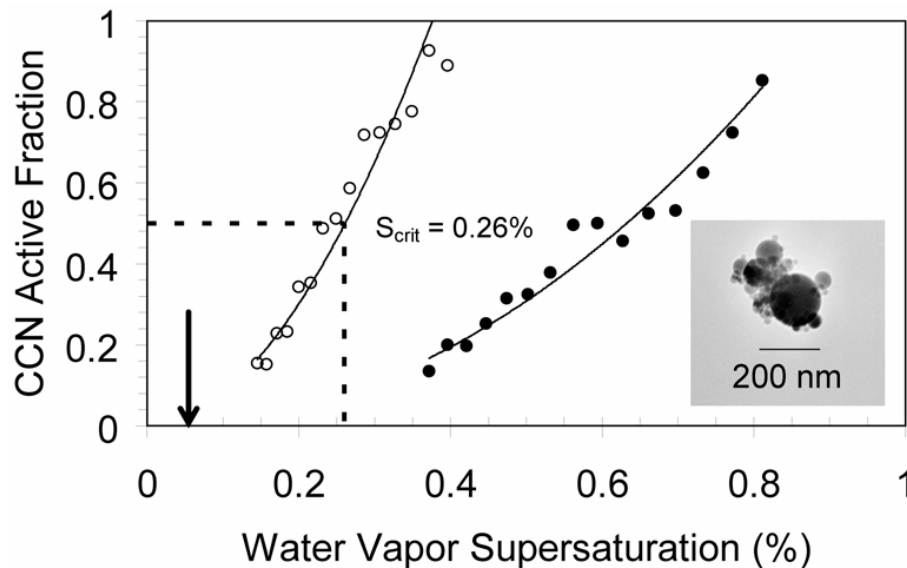
**Fig. 1.** Schematic of the aerosol particle generation and classification system. Particle suspensions are atomized in the constant output atomizer and dried using a heater, diffusion dryer and a dry air dilution. Particles are then size selected using the DMA and combined with sulfuric acid droplets which evaporated and condense on the particles in the heater/coater. Particle count is then measured with a CNC while either cloud condensation activity (CCN counter) or ice nucleation activity (CFDC) is measured.

[Title Page](#)[Abstract](#)[Introduction](#)[Conclusions](#)[References](#)[Tables](#)[Figures](#)[◀](#)[▶](#)[◀](#)[▶](#)[Back](#)[Close](#)[Full Screen / Esc](#)[Print Version](#)[Interactive Discussion](#)

EGU

Ice nucleation by  
mineral dust particles

C. M. Archuleta et al.



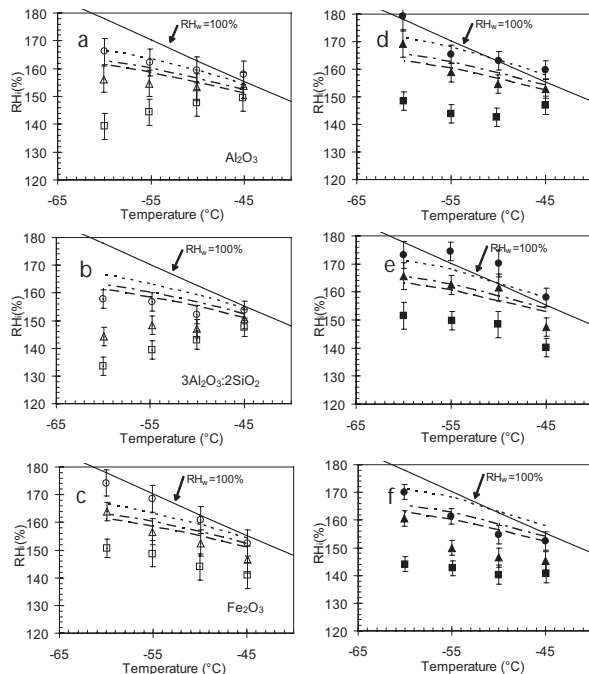
**Fig. 2.** Measured CCN activity for 200 nm alumina-silicate particles. Symbols indicate cases of untreated particles (closed circles) and particles treated with  $H_2SO_4$  (open circles). The lines indicate exponential fits to the data, and  $S_{crit}$  is the point on the line where 50% of the particles have activated as CCN. The critical supersaturation of a 200 nm pure sulfuric acid solution particle is indicated by the arrow. The insert shows a TEM image of a treated 200 nm core-sized alumina-silicate particle.

[Title Page](#)[Abstract](#)[Introduction](#)[Conclusions](#)[References](#)[Tables](#)[Figures](#)[◀](#)[▶](#)[◀](#)[▶](#)[Back](#)[Close](#)[Full Screen / Esc](#)[Print Version](#)[Interactive Discussion](#)

EGU

Ice nucleation by  
mineral dust particles

C. M. Archuleta et al.



**Fig. 3.** The CFDC conditions for formation of ice on 1% of aluminum oxide (**a, d**), alumina-silicate (**b, e**) and iron oxide particles (**c, f**). Data for untreated particles are in the left panels and  $\text{H}_2\text{SO}_4$ -coated particles in the right panels. Data are presented for 50 nm (circles), 100 nm (triangles), and 200 nm (squares) aerosol particles. For comparison predicted homogeneous freezing conditions for pure  $\text{H}_2\text{SO}_4$  particles (Chen et al., 2000) are denoted by curves in the left panels for 50 nm (dotted), 100 nm (dash-dot) and 200 nm (dashed). The same curves in the right panels denote the predicted conditions for homogeneously freezing the  $\text{H}_2\text{SO}_4$ - $\text{H}_2\text{O}$  coatings, using data from Table 1 and an inferred initial  $\text{H}_2\text{SO}_4$  content of 3.5 weight % on 50 nm treated iron oxide particles, assumed the same for all particle types. A line for  $\text{RH}_w=100\%$  (water saturation) included.

Title Page

Abstract

Introduction

Conclusions

References

Tables

Figures

◀

▶

◀

▶

Back

Close

Full Screen / Esc

Print Version

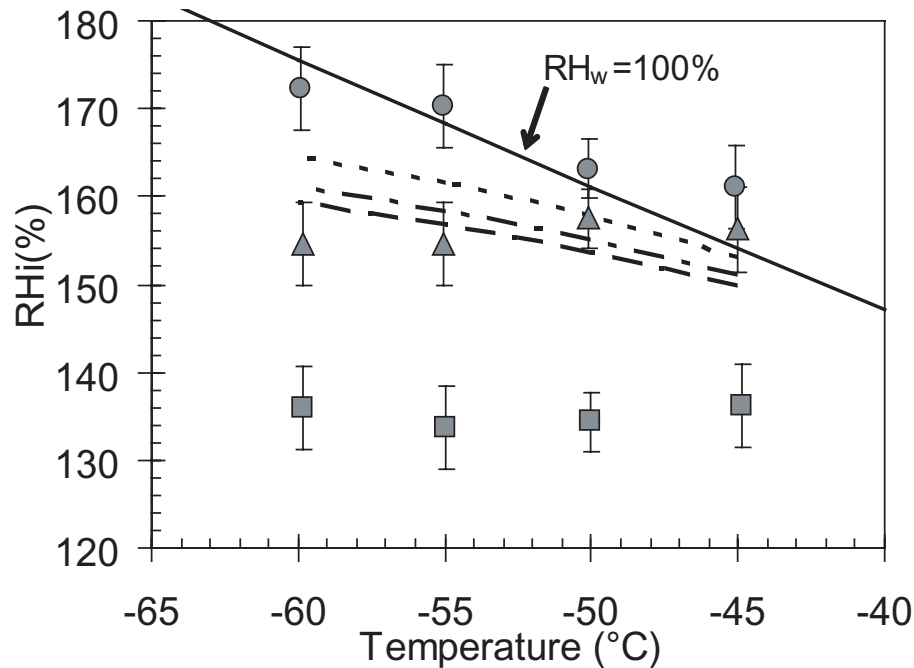
Interactive Discussion

EGU



Ice nucleation by  
mineral dust particles

C. M. Archuleta et al.



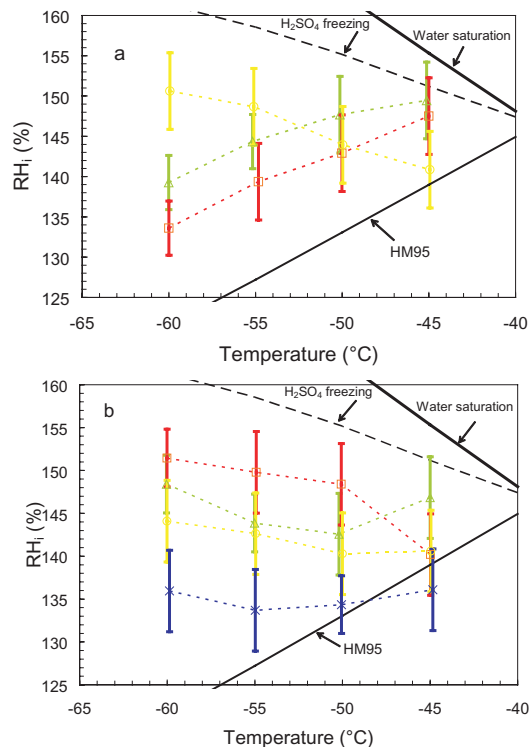
**Fig. 4.** As in Fig. 3, but showing CFDC conditions for the formation of ice on 1% of particles from the sample of resuspended Asian dust. The homogeneous freezing curves are for pure sulfuric acid particles.

[Title Page](#)[Abstract](#)[Introduction](#)[Conclusions](#)[References](#)[Tables](#)[Figures](#)[◀](#)[▶](#)[◀](#)[▶](#)[Back](#)[Close](#)[Full Screen / Esc](#)[Print Version](#)[Interactive Discussion](#)

EGU

Ice nucleation by  
mineral dust particles

C. M. Archuleta et al.



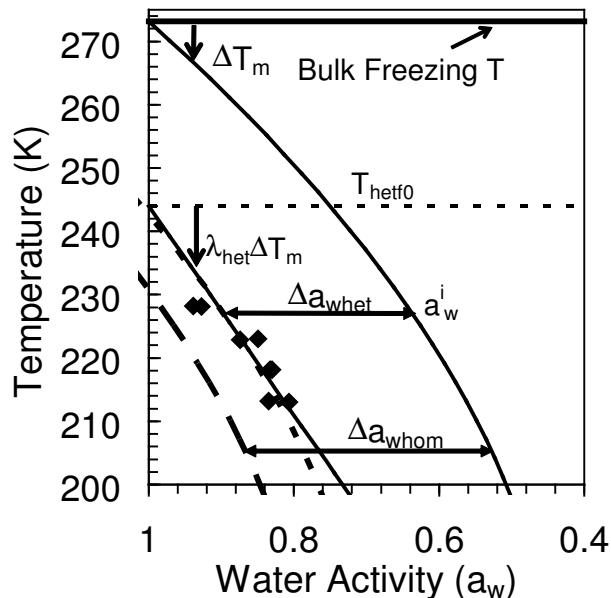
**Fig. 5.** The CFDC conditions for formation of ice on 1% of 200 nm untreated particles **(a)** and the treated aerosols along with the Asian dust aerosols **(b)**. Respective core particle types are aluminum oxide (green), alumina-silicate (red), iron oxide (yellow) and Asian dust (blue). A line summarizing the relative humidity required for cirrus formation (HM95) derived in a field study (FIRE-II) by Heymsfield and Miloshevich (1995) is also shown. Other lines indicate conditions for homogeneous freezing of 200 nm pure sulfate particles based on CFDC measurements by Chen et al. (2000) and saturation with respect to water.

[Title Page](#)[Abstract](#)[Introduction](#)[Conclusions](#)[References](#)[Tables](#)[Figures](#)[◀](#)[▶](#)[◀](#)[▶](#)[Back](#)[Close](#)[Full Screen / Esc](#)[Print Version](#)[Interactive Discussion](#)

EGU

Ice nucleation by  
mineral dust particles

C. M. Archuleta et al.



**Fig. 6.** An example of data for heterogeneous freezing temperature versus water activity, in this case for  $\text{Al}_2\text{O}_3$  particles. The diamonds represent the conditions for freezing 1% of 200 nm core particles (coated with sulfuric acid) in the CFDC residence time. The curve  $a_w^i$  denotes the activity of water in a bulk solution in equilibrium with ice, based on Buck (1981), and the intersecting solid horizontal line is the bulk freezing temperature for pure water (273.15 K). Arrows represent the melting point depression for pure water ( $\Delta T_m$ ) and the nucleation point depression for diluted sulfuric acid with a mineral immersion ( $\lambda_{\text{het}} \Delta T_m$ ). The thin solid curve represents the equation  $T_{\text{hetf}} = 244 - 1.6 \Delta T_m$  and horizontal dashed line represents the temperature at which pure water with a mineral immersion is expected to freeze with the same nucleation rate as solution drops ( $T_{\text{hetf}0}$ ). The short-dashed curve represents  $a_w^i$  shifted by  $\Delta a_{w\text{het}} = 0.25$ . The long dashed curve represents predicted homogeneous freezing conditions of the solution component.

Title Page

Abstract

Introduction

Conclusions

References

Tables

Figures

◀

▶

◀

▶

Back

Close

Full Screen / Esc

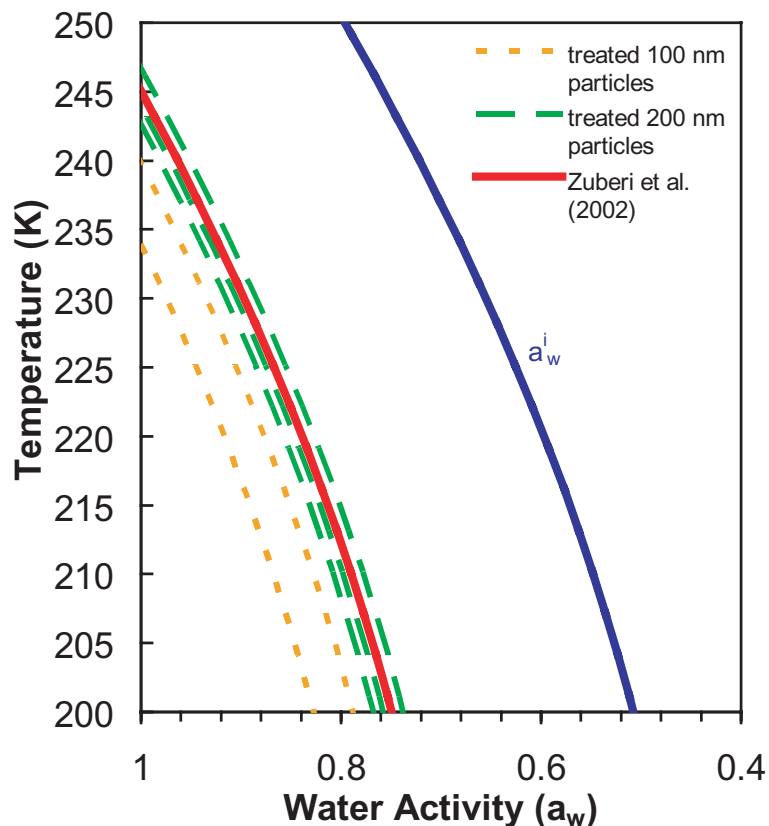
Print Version

Interactive Discussion

EGU

Ice nucleation by  
mineral dust particles

C. M. Archuleta et al.

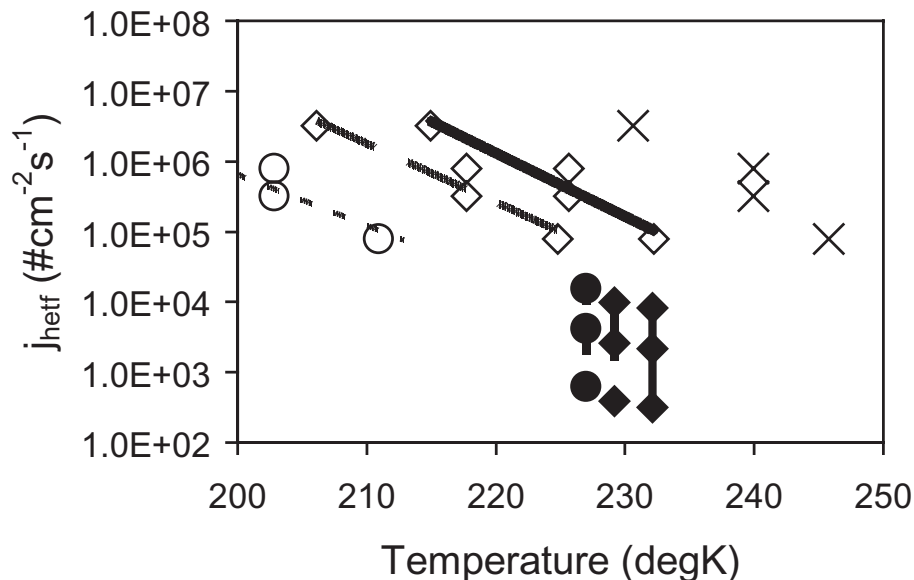


**Fig. 7.** Comparison of freezing data using line fits to constant  $\Delta a_{whet}$ . The thick solid line represents median freezing temperature results from Zuberi et al. (2002) for large koalinite and montmorillite inclusions in aqueous  $(\text{NH}_4)_2\text{SO}_4$ . The dotted (dashed) lines represent 1% freezing results from this study for 100 nm (200 nm) aluminum oxide, alumina-silicate and iron oxide particles with  $\text{H}_2\text{SO}_4$  coatings. The different particle types are not distinguished so as to focus on general size effects.

[Title Page](#)[Abstract](#)[Introduction](#)[Conclusions](#)[References](#)[Tables](#)[Figures](#)[◀](#)[▶](#)[◀](#)[▶](#)[Back](#)[Close](#)[Full Screen / Esc](#)[Print Version](#)[Interactive Discussion](#)

Ice nucleation by  
mineral dust particles

C. M. Archuleta et al.



**Fig. 8.** Derived nucleation rates. Lines with open symbols represent lines of constant  $a_w$  for 1.0 and 0.1% activation of 100 and 200 nm aluminum oxide particles treated with  $\text{H}_2\text{SO}_4$ . Lines with filled diamonds represent data from Hung et al. (2003) for active fractions between 0.003 and 0.000003% of aluminum oxide particles treated with  $(\text{NH}_4)_2\text{SO}_4$  and having mode diameters of 120, 150 and 200 nm. The different lines (exponential fits for current data) represent  $a_w=0.91$  (solid)  $a_w=0.87$  (dashed) and  $a_w=0.79$  (dotted). Results for  $a_w=1$ , based on extrapolated intercepts from CFDC studies (as in Fig. 7) are given as crosses.

Title Page

Abstract

Introduction

Conclusions

References

Tables

Figures

◀

▶

◀

▶

Back

Close

Full Screen / Esc

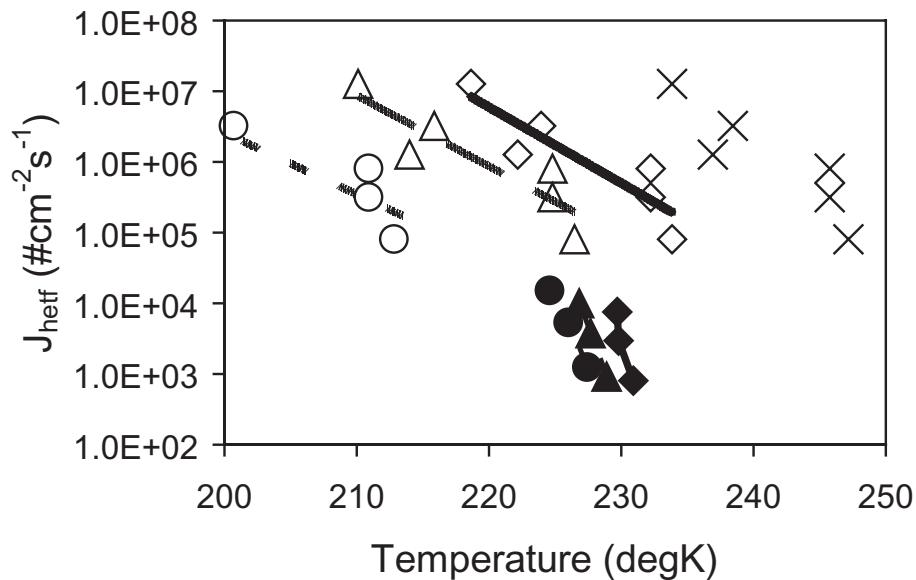
Print Version

Interactive Discussion

EGU

Ice nucleation by  
mineral dust particles

C. M. Archuleta et al.



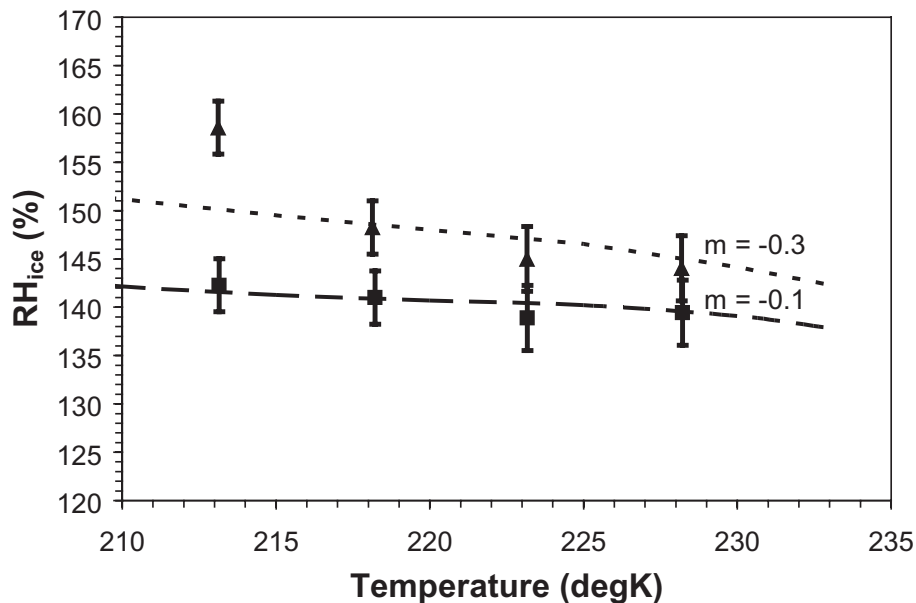
**Fig. 9.** As in Fig. 8, but for iron oxide particles treated with  $\text{H}_2\text{SO}_4$ . Mode diameters of coated iron oxide particles from Hung et al. (2003) are 80, 150 and 250 nm.

[Title Page](#)[Abstract](#)[Introduction](#)[Conclusions](#)[References](#)[Tables](#)[Figures](#)[◀](#)[▶](#)[◀](#)[▶](#)[Back](#)[Close](#)[Full Screen / Esc](#)[Print Version](#)[Interactive Discussion](#)

EGU

Ice nucleation by  
mineral dust particles

C. M. Archuleta et al.



**Fig. 10.** Comparison of classical theory calculations of heterogeneous immersion freezing nucleation with observations for treated iron oxide particles. The data are the points for activation of 1% of particles in the CFDC (95% confidence intervals as error bars). The theoretical calculations are for equivalent 1% activation, as described in the text.

[Title Page](#)[Abstract](#)[Introduction](#)[Conclusions](#)[References](#)[Tables](#)[Figures](#)[◀](#)[▶](#)[◀](#)[▶](#)[Back](#)[Close](#)[Full Screen / Esc](#)[Print Version](#)[Interactive Discussion](#)

EGU