



HAL
open science

Sulphuric acid closure and contribution to nucleation mode particle growth

M. Boy, M. Kulmala, T. M. Ruuskanen, M. Pihlatie, A. Reissell, P. P. Aalto,
P. Keronen, M. Dal Maso, H. Hellen, H. Hakola, et al.

► **To cite this version:**

M. Boy, M. Kulmala, T. M. Ruuskanen, M. Pihlatie, A. Reissell, et al.. Sulphuric acid closure and contribution to nucleation mode particle growth. *Atmospheric Chemistry and Physics Discussions*, 2004, 4 (5), pp.6341-6377. hal-00301456

HAL Id: hal-00301456

<https://hal.science/hal-00301456>

Submitted on 18 Jun 2008

HAL is a multi-disciplinary open access archive for the deposit and dissemination of scientific research documents, whether they are published or not. The documents may come from teaching and research institutions in France or abroad, or from public or private research centers.

L'archive ouverte pluridisciplinaire **HAL**, est destinée au dépôt et à la diffusion de documents scientifiques de niveau recherche, publiés ou non, émanant des établissements d'enseignement et de recherche français ou étrangers, des laboratoires publics ou privés.

Sulphuric acid closure and contribution to nucleation mode particle growth

M. Boy¹, M. Kulmala¹, T. M. Ruuskanen¹, M. Pihlatie¹, A. Reissell¹, P. P. Aalto¹, P. Keronen¹, M. Dal Maso¹, H. Hellen², H. Hakola², R. Jansson³, M. Hanke⁴, and F. Arnold⁴

¹University of Helsinki, Dept. Physical Sciences, P.O. Box 64, FIN-00014 Univ. of Helsinki, Finland

²Finnish Meteorological Institute, Air Quality Research, Sahaajankatu 20 E, FIN-00880 Helsinki, Finland

³Stockholm University (ITML), Air Pollution Laboratory, Institute for Applied Environmental Research, Stockholm University, S-10691 Stockholm, Sweden

⁴Atmospheric Physics Division, Max-Planck Institute for Nuclear Physics, (MPIK), P.O. Box 103980, D-69029 Heidelberg, Germany

Received: 23 June 2004 – Accepted: 11 August 2004 – Published: 7 October 2004

Correspondence to: M. Boy (michael.boy@helsinki.fi)

**Sulphuric acid
closure and
contribution to
nucleation mode
particle growth**

M. Boy et al.

Title Page

Abstract

Introduction

Conclusions

References

Tables

Figures

◀

▶

◀

▶

Back

Close

Full Screen / Esc

Print Version

Interactive Discussion

Abstract

Sulphuric acid concentrations were measured and calculated based on pseudo steady state model with corresponding measurements of CO, NO_x, O₃, SO₂, methane and non-methane hydrocarbon (NMHC) concentrations as well as solar spectral irradiance and particle number concentrations with size distributions. The measurements were performed as a part of the EU project QUEST (Quantification of Aerosol Nucleation in the European Boundary layer) during an intensive field campaign, which was conducted in Hyytiälä, Finland in March–April 2003. In this paper, the closure between measured and calculated H₂SO₄ concentrations is investigated. Besides that, also the contribution of sulphuric acid to nucleation mode particle growth rates is studied. Hydroxyl and hydroperoxy radical concentrations were determined using a pseudo steady state box model including photo stationary states. The maximum midday OH concentrations ranged between 4.1×10^5 to 1.8×10^6 molecules cm⁻³ and the corresponding values for HO₂ were 1.0×10^7 to 1.5×10^8 molecules cm⁻³. The dominant source term for hydroxyl radicals is the reaction of NO with HO₂ (56%) and the reaction of CO with OH covers around 41% of the sinks. The sulphuric acid source term is the reaction SO₂ with OH and the sink term is condensation of sulphuric acid. The closure between measured and calculated sulphuric acid concentrations is achieved with a high agreement to the measured values. In sensitivity studies, we used different values for the non-methane hydrocarbons, the peroxy radicals and nitrogen dioxide. The best fits between calculated and measured values were found by decreasing the NO₂ concentration when it exceeded values of 1.5 ppb and doubling the non-methane hydrocarbon concentrations. The ratio, standard deviation and correlation coefficient between measured and calculated sulphuric acid concentrations are 0.99, 0.412 and 0.645, respectively. The maximum midday sulphuric acid concentrations varied between 3×10^5 to 1.9×10^7 molecules cm⁻³ for the measurements and 3×10^5 to 1.4×10^7 molecules cm⁻³ for the calculations, respectively. An average participation of sulphuric acid to the nucleation mode particle growth rates is 8.8%. Classifying the days into two groups – “pol-

Sulphuric acid closure and contribution to nucleation mode particle growth

M. Boy et al.

Title Page

Abstract

Introduction

Conclusions

References

Tables

Figures

◀

▶

◀

▶

Back

Close

Full Screen / Esc

Print Version

Interactive Discussion

luted” days with air masses originated over Central Europe or UK, and “cleaner” days with air masses originated over the Northern Atlantic or the Polar regions – reflects an equal sulphuric acid contribution to the aerosol growth in both air mass classes.

1. Introduction

5 Aerosol particles are ubiquitous in the Earth’s atmosphere and influence our quality of life in many different ways. In urban environments, aerosol particles can affect human health through their inhalation (Wichmann and Peters, 2000; Stieb et al., 2002). In a global troposphere, and particularly downwind from major pollution sources, aerosol particles are thought to contribute to climate change patterns (Ramanathan et al., 10 2001; Menon et al., 2002). Understanding these effects requires detailed information on how aerosol particles enter the atmosphere and how they are transformed before being removed by dry or wet deposition. Key processes in this respect are the formation of new atmospheric particles and their subsequent growth to larger sizes.

15 In recent years the formation and growth of nanometer-size atmospheric aerosol particles have been observed at many different sites. These measurements have been performed on ships, aircraft and fixed sampling sites during both intensive campaigns and continuous ground-based measurements. From measured size distributions one can infer the particle growth rate, whereas from measured number concentrations an apparent source rates of 3 nm (or 10 nm or 15 nm) particles is obtained. Globally, the 20 formation of new particles and their subsequent growth seem to occur almost everywhere (Kulmala et al., 2004a).

25 Sulphuric acid is the best candidate as regards the ability of individual molecules to produce new particles in the atmosphere (Kulmala, 2003; Kulmala et al., 2004a). It will participate in binary, ternary and ion induced nucleation. A technique for the measurement of gas phase sulphuric acid at concentrations as low as 10^4 cm^{-3} is available (Eisele and Tanner, 1993). However, it is still very rare that sulphuric acid is measured in relation to atmospheric aerosol formation (Kulmala et al., 2004a).

Sulphuric acid closure and contribution to nucleation mode particle growth

M. Boy et al.

Title Page

Abstract

Introduction

Conclusions

References

Tables

Figures

⏪

⏩

◀

▶

Back

Close

Full Screen / Esc

Print Version

Interactive Discussion

Sulphuric acid closure and contribution to nucleation mode particle growth

M. Boy et al.

[Title Page](#)[Abstract](#)[Introduction](#)[Conclusions](#)[References](#)[Tables](#)[Figures](#)[◀](#)[▶](#)[◀](#)[▶](#)[Back](#)[Close](#)[Full Screen / Esc](#)[Print Version](#)[Interactive Discussion](#)

Within the framework of the EU project QUEST (Quantification of Aerosol Nucleation in the European Boundary layer), continuous measurements of aerosol size distributions and three intensive field campaigns in Finland (Hyytiälä), Italy (San Pietro Capofiume) and Ireland (Mace Head) were carried out. During the campaign in Hyytiälä (17

5 March to the 13 April 2003), besides many other parameters, sulphuric acid concentrations were measured continuously on 21 days. Sulphuric acid is one participant of ternary nucleation by H_2O , NH_3 and H_2SO_4 (Korhonen et al., 1999), one of the most common proposed mechanisms for atmospheric nucleation in the planetary boundary layer (Kulmala, 2003).

10 Although the precursors for sulphuric acid (at least some of them), as well as the condensation sink, have been measured in several places, the closure between measured and calculated sulphuric acid concentrations has not been investigated. In this paper we calculated sulphuric acid concentrations using a pseudo steady state box model including photo stationary states (see Seinfeld and Pandis, 1998). Here we focus

15 on a comparison between field measurements and model calculations of sulphuric acid concentrations using the data obtained in the field campaign in Hyytiälä. We also investigate the contribution of sulphuric acid to the growth rate of nucleation mode particles. Therefore, hydroxyl and hydroperoxy radical concentrations were calculated with the input values of different gases measured during the campaign. We focused hereby

20 only on daytime chemistry, because no nighttime measurements of NO_3 are available and second because the formation of new particles and high growth rates appear only during daylight (Boy et al., 2003).

2. Experiment

2.1. SMEAR II

25 Data were collected at the Station for Measuring Forest Ecosystem-Atmosphere Relations (SMEAR II) in Hyytiälä, Finland. The station is located in Southern Finland

(61°51' N, 24°17' E, 181 m asl), with extended areas of Scots Pine (*Pinus sylvestris*) dominated forests. The conditions at the site are typical for a background location. However, the station buildings (0.5 km away) and the city of Tampere (60 km away – both located in a west-south-west direction from the instruments, 215–265°) occasionally polluted measurements.

In the framework of this work measurements of spectral solar irradiance, different gas concentrations (O_3 , H_2O , NO , NO_x , CO and SO_2), temperature, humidity, wind-direction, particle number concentration and size distribution were taken into account. For a more detailed description of SMEAR II and instrumentation, we refer to Kulmala et al. (2001) and www.honeybee.helsinki.fi/smeaar/.

2.2. Gaseous sulphuric acid measurements

Sulphuric acid was measured by a chemical ionization mass spectrometer apparatus (CIMS) built by MPI-K Heidelberg. The instrument is essentially the same as the one used for measurements of atmospheric OH, HO_2 and RO_2 radicals except for the chemical conversion parts (Hanke et al, 2002). In brief, the CIMS used in QUEST 2 consists of four major elements including an ion trap mass spectrometer, a flow reactor, an ion source, and an H_2SO_4 -source used for calibration. Atmospheric air is passed through the flow reactor (at ambient atmospheric pressure). Reagent ions of the type $NO_3-(HNO_3)_n$ (with n being mostly 1) are produced in the ion source and subsequently introduced into the flow reactor. There these ions undergo ion-molecule reactions of the type $NO_3-(HNO_3)_n + H_2SO_4 \rightarrow HSO_4-(HNO_3)_n + HNO_3$ whose rate coefficients are close to the ion-molecule collision rate coefficients. Using the mass spectrometer the abundance ratio of product and reagent ions is measured. Building on this ion abundance ratio the H_2SO_4 -concentration in the flow reactor is determined. The latter is typically only about 50% of the ambient atmospheric sulphuric acid concentration due to H_2SO_4 -losses to the walls of the sampling line and the flow reactor. In order to quantify these H_2SO_4 -losses an H_2SO_4 -source is used for careful calibrations. Also carefully determined is the H_2SO_4 -background signal of the CIMS-instrument, which

**Sulphuric acid
closure and
contribution to
nucleation mode
particle growth**

M. Boy et al.

Title Page

Abstract

Introduction

Conclusions

References

Tables

Figures

◀

▶

◀

▶

Back

Close

Full Screen / Esc

Print Version

Interactive Discussion

dictates the H₂SO₄-detection limit.

During QUEST 2 the H₂SO₄-detection limit was as low as about 1×10^5 molecules cm⁻³ corresponding to an atmospheric mole fraction of 4×10^{-15} . The time-resolution of the sulphuric acid measurements was better than one second but usually sulphuric acid concentrations were integrated over 100 seconds to reduce the statistical error. The absolute uncertainty of the measured H₂SO₄-concentration is plus or minus 31%. A paper addressing in detail the CIMS used and the H₂SO₄-measurements made during the QUEST 2 campaign is in preparation (Scholz et al., 2004¹).

2.3. Methane

Methane concentration was measured with a tunable diode laser trace gas analyser (TDL TGA100, Campbell Scientific Inc., USA) during the QUEST 2 campaign. The measurement system consisted of a TDL TGA100 and an ultrasonic 3-D anemometer (Solent 1012, Gill Ltd., Lymington, Hampshire, England). The sample air was drawn to the TDL at 50–60 mbar pressure through a PD1000 drier (Perma pure Inc.) and a 10 m long sample tubing at a flow rate of 3 l min⁻¹. The measurements were conducted at 10 Hz frequency. The TDL was calibrated once during the campaign with calibration gases containing 0.004 ppm and 1.831 ppm of CH₄. Methane measurements were conducted from 28 March to 23 April.

The average CH₄ concentration during the measurement period was 1.941 ppm CH₄. Variation in CH₄ concentration was very small throughout the measurement period (CH₄ in ppm: average=1.941, max=1.988, min=1.873).

¹Scholz, S., Hanke, M., Ücker, J., and Arnold, F.: Gaseous Sulphuric Acid Measurements made in the boreal Atmosphere during the QUEST 2 campaign, paper in preparation, 2004.

**Sulphuric acid
closure and
contribution to
nucleation mode
particle growth**

M. Boy et al.

Title Page

Abstract

Introduction

Conclusions

References

Tables

Figures

◀

▶

◀

▶

Back

Close

Full Screen / Esc

Print Version

Interactive Discussion

2.4. Non-methane hydrocarbons and formaldehyde

Ambient monoterpenes were sampled continuously throughout the sampling period on Tenax TA (200 mg in 1/4" stainless steel tubes, 50 Nml min⁻¹, 120 min per sample). All sampling was done through a 1/2" ozone scrubber (4 plies MnO₂ coated copper screens) and a 5 cm, 0.5 mm ID Teflon tube (to limit diffusion artefacts), placed immediately in front of each sample tube. A diffusion control tube, through which no sample flow was taken, was placed alongside the sample tubes. Twenty-four hour sampling was achieved by a system of timers, solenoid valves, and mass flow control and the sample tubes changed once a day. After sampling, the tubes were stored in a cool and dry environment. Analysis was performed by ATD-GC-MS (Automatic thermal desorption, gas chromatography and mass spectrometric detection and quantification). The main monoterpenes observed were α -pinene and Δ 3-carene, accompanied by camphene, β -pinene, myrcene and limonene.

Formaldehyde samples were collected by drawing air through C18-cartridges (Sep-Pak, Waters) coated with DNPH (2,4-dinitrophenyl hydrazine) and analyzed using a liquid chromatograph with a mass spectrometer (LC-MS). Sampling time was 24 h and flow rate 980 ml min⁻¹. The measurements are described in more detail by Hellén et al. (2004).

2.5. Condensational sink

The aerosol condensational sink (CS) determines how rapidly molecules will condense onto pre-existing aerosols (CS, Kulmala et al., 2001b) and can be calculated from

$$CS = 4\pi D \int_0^{\infty} r \beta_M(r) n(r) dr = 4\pi D \int_i \beta_M r_i N_i . \quad (1)$$

D is the diffusion coefficient of sulphuric acid and the transitional correction factor β_M is typically calculated using the expression by Fuchs and Sutugin (1971). N is the num-

**Sulphuric acid
closure and
contribution to
nucleation mode
particle growth**

M. Boy et al.

Title Page

Abstract

Introduction

Conclusions

References

Tables

Figures

◀

▶

◀

▶

Back

Close

Full Screen / Esc

Print Version

Interactive Discussion

**Sulphuric acid
closure and
contribution to
nucleation mode
particle growth**

M. Boy et al.

[Title Page](#)[Abstract](#)[Introduction](#)[Conclusions](#)[References](#)[Tables](#)[Figures](#)[◀](#)[▶](#)[◀](#)[▶](#)[Back](#)[Close](#)[Full Screen / Esc](#)[Print Version](#)[Interactive Discussion](#)

ber concentration and r is the radius of the particles in the i 'th size class measured with a DMPS (Differential mobility particle sizer) system at dry relative humidity (CS-1 in Fig. 1). The hygroscopic growth rate correction for particles measured in Hyytiälä at RH=90% was included according to Hämeri et al. (2001) and further we used the growth parameterisation from Swietlicki et al. (2000) to count for the real relative humidity (CS-2 in Fig. 1). Finally, we also included particles larger than 500 nm, measured with an APS (Aerodynamic Particle Sizer) system and handled them in the same way as the DMPS data explained above (CS-3 in Fig. 1).

3. Observed Data

In this and the following sections, we concentrate our analysis on the days of the campaigns when sulphuric acid was measured (18 March until the 8 April). Figure 1 shows the different condensational sink values discussed in the previous section, as well as the wind direction. Figure 2 presents the concentrations of NO, NO₂ and SO₂ and Fig. 3 gives the solar irradiance (UV-B: 280 to 320 nm) and temperature profiles. Further, Table 1 gives the daytime averages (between 9 a.m. and 3 p.m.) of all these parameters including H₂SO₄, O₃, CO, HCHO (formaldehyde, 24-h averages), NMHC (non-methane hydrocarbon) and relative humidity for all days.

Over the whole period the average condensational sink calculated with the hygroscopicity and humidity parameterisations, explained in Sect. 2.5, were higher than those calculated from dry particle diameters by a factor of 1.35 (mean(CS-2)/mean(CS-1)). In addition, including the coarse mode particles, measured above 500 nm, raised the condensation sink by a factor of 1.17 (mean(CS-3)/mean(CS-2)). Including all corrections for the CS values led to an overall increase of the condensational sink values calculated from the measured dry particle number concentrations and size distributions (DMPS-data: CS-1 in Fig. 1) to the estimated diameter of CS-3 by a factor of 1.58.

The concentrations of NO and NO₂ (Fig. 2 and Table 1) are in the range of BDL

**Sulphuric acid
closure and
contribution to
nucleation mode
particle growth**M. Boy et al.

[Title Page](#)[Abstract](#)[Introduction](#)[Conclusions](#)[References](#)[Tables](#)[Figures](#)[◀](#)[▶](#)[◀](#)[▶](#)[Back](#)[Close](#)[Full Screen / Esc](#)[Print Version](#)[Interactive Discussion](#)

(below detection limit) to 1.1 ppb ($\text{BDL} - 2.9 \times 10^{10} \text{ molecules cm}^{-3}$) and 0.45 to 8.3 ppb ($1.2 \times 10^{10} - 2.2 \times 10^{11} \text{ molecules cm}^{-3}$), respectively. The concentration of SO_2 was on the order of BDL to 4.6 ppb ($\text{BDL} - 1.2 \times 10^{11} \text{ molecules cm}^{-3}$). Low concentrations of all three gases (NO and $\text{SO}_2 = \text{BDL}$ and $\text{NO}_2 < 1 \text{ ppb}$) were typical during times, when less polluted air masses originated over the Northern Atlantic or the Polar region arrived at Hyytiälä. High CS-values are, in the majority of the days, accompanied by high concentrations of nitrogen oxide, nitrogen dioxide and sulphur dioxide. This rough classification agrees to a certain extent with the wind direction profile, which gives less polluted air masses during periods, when the wind direction was north-east to north-west.

The temperature profiles and the solar UV-B irradiance are plotted in Fig. 3. On the third day (20 March) the T_{dav} (daytime average temperature, see Table 1) dropped to 266.4 K, the lowest value during the campaign. The wind direction during this day was close to North and signs indicate that Polar or Arctic air masses passed over the station. After this day, the T_{dav} increased to 279.6 K and the wind direction changed to southeast. This resulted in an increase of NO , NO_2 , SO_2 and CS. Continuing in the same manner and including 72 h backward trajectories calculated by the HYSPLIT model (NOAA – National Oceanic and Atmospheric Administration, Rolph, 2003) we can clearly divide 16 days of the selected period into two categories:

- Less polluted air masses originated over the Atlantic or Polar region: 19, 20, 24, 25, 31 March, 5, 6 and 7 April.
- Higher polluted air masses passed over Central Europe or England: 21, 22, 26, 27, 29, 30 March, 2 and 3 April

We will apply this air mass classification in Sect. 5.4 to investigate the influence of different measured parameters on the radical balance and sulphuric acid concentration.

4. Pseudo steady state model

In order to calculate the concentrations of sulphuric acid we used a simple zero-dimensional box model (Fig. 4). The intention was not to run a full-scale model with the complete organic and inorganic chemistry, but rather to check the consistency of our model with measured sulphuric acid concentration values. With the limited number of compounds measured in the present study, a full model including biogenic VOC chemistry would result in substantial uncertainties with respect to the calculated concentrations. Photo stationary state conditions were assumed for each of the radical species, i.e. both OH and HO₂ were assumed sufficiently short-lived that they remain in steady state with the ambient conditions. The model can be called as pseudo steady state model (Seinfeld and Pandis, 1998). This gives us the balance equations for the radicals:

$$\frac{d[C]}{dt} \approx 0 = P_C - L_C. \quad (2)$$

Here P_C represents the total production rate for C, and L_C is the corresponding loss rate. The balance equations for both radicals can now be solved by using the measured concentrations of the other species as input parameters. We used a typically northern hemisphere value of 500 ppb for H₂ and for methane an average value of 1.941 ppm (see Sect. 2.3). The $[\text{HO}_2]/([\text{HO}_2] + \sum [\text{RO}_2])$ ratio is typically 0.5–0.8 (Cantrell et al., 1996, 1997). Recent studies by Carslaw et al. (2002) during the Eastern Atlantic Spring Experiment 1997 (EASE97) at Mace Head, Ireland measured lower values of 0.18–0.4. In our analysis, we decided to use a mean value from the published data, which is 0.5 and gives $[\text{HO}_2] = [\text{RO}_2]$. However, in sensitivity studies in Sect. 5.2 we will change this parameter to investigate its influence on the radical budgets. All reactions and rate coefficients included in the radical balance calculations and the calculation for sulphuric acid concentration are listed in Table 2.

Sulphuric acid closure and contribution to nucleation mode particle growth

M. Boy et al.

Title Page

Abstract

Introduction

Conclusions

References

Tables

Figures

◀

▶

◀

▶

Back

Close

Full Screen / Esc

Print Version

Interactive Discussion

The used balance equation for calculating the OH radical concentrations with the k-values from Table 2 is

$$[\text{OH}] = \frac{2 * [\text{O}_3] * j_{\text{O}_3} * [\text{H}_2\text{O}] * k_1 + [\text{HO}_2] * [\text{NO}] * k_2 + [\text{HO}_2] * [\text{O}_3] * k_3}{[\text{NO}_2] * k_4 + [\text{CH}_4] * k_5 + [\text{CO}] * k_6 + [\text{HCHO}] * k_7 + [\text{H}_2] * k_8 + [\text{O}_3] * k_9 + [\text{NMHC}] * k_{10} + [\text{SO}_2] * k_{14}} \quad (3)$$

In the same way, the HO₂ radical concentrations were determined. In order to solve the two coupled equations we used for each time step 10 iterations. With the achieved hydroxyl concentrations and the CS-values we further estimated the concentrations of sulphuric acid.

The photolysis rates (j_{O_3}) for ozone were calculated by using spectral irradiance data measured by a radio-spectrometer. A detailed description of the theory and the instrument is given in Boy and Kulmala (2002a). In the same way, we calculated the photolysis rate for formaldehyde by using the absorption cross sections and quantum yields from DeMore et al. (1994). Concerning the uncertainties of the photolysis rates, it is worth to mention that the radio-spectrometer is placed about 0.5 km away from the measuring station SMEAR II. During periods with high fraction of cumulus clouds, this could result in significant temporal differences in measured and photochemical active radiation at the station.

5. Results and Discussion

The results were divided into four parts. In the first section, we will discuss the calculation of the hydroxyl and hydroperoxy radicals and the fraction of the sinks and sources of these species. The next sub-section will give a comparison between the measured and calculated sulphuric acid concentrations and show the closure. Also sensitivity studies of the influence of some key parameters were performed. In the following sub-section we determine the contribution of the sulphuric acid molecules to the particle growth rates. In the end of this section, we use the air mass classification given in Sect. 3 and point out the differences of some variables.

Sulphuric acid closure and contribution to nucleation mode particle growth

M. Boy et al.

Title Page

Abstract

Introduction

Conclusions

References

Tables

Figures

◀

▶

◀

▶

Back

Close

Full Screen / Esc

Print Version

Interactive Discussion

5.1. OH and HO₂ concentrations

Figure 5 gives the calculated hydroxyl and hydroperoxy radical concentrations for the selected period. The daily maxima for the OH and the HO₂ species are in the range of 4.1×10^5 to 1.8×10^6 molecules cm⁻³ and 1.0×10^7 to 1.5×10^8 molecules cm⁻³, respectively. The calculated values are in agreement with earlier model calculations for the same site (SMEAR II) by Hakola et al. (2003). Figures 6 and 7 show the diurnal contributions of the different sink and source terms for both radicals, averaged for the selected days and Table 3 gives some statistical parameters concerning these calculations. The nomenclature of sink and source terms in this context is somehow controversial, although often used in the literature. However, during this work we will retain the terms and point out that different opinions concerning the use of sink and source terms in this context exist.

Concerning the daytime averages of the whole period more than 55% of the OH production results from the reaction of hydroperoxy radicals with nitrogen oxide and around one third is produced by the photolysis of ozone and the following reaction of the exited oxygen molecules with water vapour. The reaction of ozone with HO₂ contributes only 10% to the OH concentration. However, during single days like for example the 23 March with high values of solar irradiance (see Fig. 3) and low concentrations of NO (see Fig. 2) the photolysis of ozone contributes close to half of the hydroxyl radical concentration. During the 21 days, the reactions 1 to 3 of Table 2 participate in the OH-formation with 20–49%, 33–73% and 1–20%, respectively.

For the various sink terms of the OH radicals (reactions 4–10 and 14 of Table 2) the dominating ones with over 83% concerning the daytime averages are the three reaction of OH radicals with CO ($\approx 41\%$), NO₂ ($\approx 30\%$) and CH₄ ($\approx 13\%$). All the other reactions contribute together less than 17% to the decrease of the hydroxyl concentration. Worth mentioning is that the reaction of the non-methane hydrocarbons with the OH radicals can reach up to 9.1% on single days. However, comparing this result with earlier publications (Carslaw et al., 2002 and Handisides et al., 2003) the fraction of the NMHC in

**Sulphuric acid
closure and
contribution to
nucleation mode
particle growth**

M. Boy et al.

Title Page

Abstract

Introduction

Conclusions

References

Tables

Figures

◀

▶

◀

▶

Back

Close

Full Screen / Esc

Print Version

Interactive Discussion

the OH-balance in our calculations is low. The reason for underestimating the influence of the NMHC comes from the fact, that the monoterpenes were the only non-methane hydrocarbons measured during the QUEST campaign. We will consider this in the next sub-section and use different values for the NMHCs in sensitivity studies.

5 In the same way as above we calculated the contributions of the single reactions to the production (reactions 6–11 Table 2) and loss (reactions 2, 3, 12 and 13 of Table 2) of the hydroperoxy radicals. The HO₂ production comes in average with more than 53% through the reaction of OH with CO. All other reactions play a minor role here, contributing between 4 to 17%. The loss terms for this radical are even more strongly
10 dominated by one term, which is the reaction of NO with HO₂ (average=75%). During single days, this term contributes up to 98% to the decrease of the hydroperoxy concentrations.

5.2. H₂SO₄ concentrations

In this section, we calculate sulphuric acid concentrations using the condensational
15 sink values (see Sect. 2) and perform sensitivity studies for several parameters to investigate the influence of certain variables. Table 4 gives the selected values for three different variables (NMHC, RO₂ and NO₂) and the means and standard deviations of the ratios (9 a.m. to 3 p.m.) between measured and calculated sulphuric acid concentrations. We also investigate the closure between measured and calculated values.
20 The overall goal of these sensitivity studies are not to modify data to reach the best fit with the measured sulphuric acid concentration, but to investigate the possible uncertainties and the resulting effects of different relevant parameters.

The concentrations of the non-methane hydrocarbons consist in this work only of measurements from monoterpenes. Isoprene and other NMHC's were not measured
25 during the campaign. However, from exploratory measurements made at Hyytiälä in April, 1999 (Janson, unpublished data) as well as from EMEP VOC data (e.g. EMEP/CCC Report 7/2001), we would expect reactive alkene concentrations, such as ethene, propene, and butene, to be on the order of tens to hundreds of ppts, and

**Sulphuric acid
closure and
contribution to
nucleation mode
particle growth**

M. Boy et al.

Title Page

Abstract

Introduction

Conclusions

References

Tables

Figures

◀

▶

◀

▶

Back

Close

Full Screen / Esc

Print Version

Interactive Discussion

**Sulphuric acid
closure and
contribution to
nucleation mode
particle growth**M. Boy et al.

[Title Page](#)[Abstract](#)[Introduction](#)[Conclusions](#)[References](#)[Tables](#)[Figures](#)[◀](#)[▶](#)[◀](#)[▶](#)[Back](#)[Close](#)[Full Screen / Esc](#)[Print Version](#)[Interactive Discussion](#)

less reactive aromatics, like benzene and toluene, to be a few hundred ppts and tens to a hundred ppts, respectively, depending greatly on the air mass trajectory. The natural sources for isoprene, in the Nordic countries, are Norway spruce and Sphagnum moss in wetlands. However, the emission of isoprene from these sources, especially from wetlands, should be very low at this time of year (Janson and De Serves, 1998). Therefore, we would expect our NMHC concentrations to be on the order of a factor 2 to low. We used twice and four times higher values from the monoterpenes to investigate the behaviour of different NMHC-values on the OH-budget and so on the sulphuric acid concentration. The results presented in Table 4 under scenario 1 (SC-1) indicate that the mean measured sulphuric acid concentrations are 13.8% higher than the calculated ones. Increasing the concentrations of the non-methane hydrocarbons by factors of 2 and 4 (SC-2 and SC-3, Table 4) increased the gap between measured and calculated H_2SO_4 concentrations from 13.8 to 14.5 and 16%, respectively (=decrease of our calculated H_2SO_4 concentrations compared to measured ones by 0.7 and 2.2%). The reason is simple to understand. A larger NMHC load increases the competition for the OH radical and thereby decreases the rate of reaction for SO_2 .

Peroxy radicals are the sum of HO_2 and RO_2 . The concentrations of the first one were calculated using our model (see Sect. 3). The relation of RO_2 to HO_2 was discussed in section 4 and now we used different values for this ratio. A decline of 4.2 and 7.5% between the calculated sulphuric acid concentrations compared to the measurements was achieved by doubling and quadrupling the fraction of RO_2 compared to HO_2 (SC 4 and 5, Table 4). The peroxy radical contributes on single days up to 20% to the sink terms of the hydroperoxy radicals and decreases thereby significantly the sources for OH. However, the RO_2 concentrations are maybe overestimated since the reaction of this radical with NO is neglected and its reaction rates can be much higher than the HO_2 - RO_2 rates under certain conditions, which leads to an important decrease of the RO_2 concentrations. For this reason we will use the ratio of $[\text{HO}_2]=[\text{RO}_2]$ during the rest of this manuscript.

The last variable we investigated was the concentration of NO_2 . The chemilumi-

**Sulphuric acid
closure and
contribution to
nucleation mode
particle growth**

M. Boy et al.

nescence analyzer used for detecting NO and NO_x was not NO₂ specific, however. Its catalytic converter used to measure NO₂ after reduction to NO reduces also other oxidized nitrogen species. Therefore the NO₂ concentration readings (obtained as the calculated difference between the measured NO and NO_x concentrations) may have interference of HONO, HNO₃, PAN and other organic nitrates. Especially during the time when the wind transported higher polluted air masses from the South to Hyytiälä the NO₂ mixing ratios increased up to 5 ppb and higher. However, no measurements concerning the real nitrogen dioxide fraction exist, and for this reason, we selected during times with high NO₂ concentrations two different scenarios (NO₂-SC I and II, Table 4). The result of these sensitivity studies (SC 6 and 7, Table 4) demonstrates the high effect from the nitrogen dioxide concentration. A decrease of 20% for NO₂>1.5 ppb and 40% for NO₂>2 ppb increases our calculated sulphuric acid concentrations compared to the measured ones by more than 15.8%. We selected a high limit decrease of nitrogen dioxide because of an increased emission of PANs during periods the air masses originated from industrialised areas. The atmospheric lifetime of the PAN-molecules in the temperature range 273–298 K lies between 0.5 and 8 h (Seinfeld and Pandis, 1998).

In SC 8 we combined the results by including modified values from two discussed parameters (NMHC were multiplied by a factor of 2 and NO₂ were modified by scenario NO₂-SC II, see Table 4). The ratio between measurements and calculations reached now a value close to unity and the standard deviation decreased to 0.412. The results indicate that the selected assumptions produce the best agreement compared with the measured H₂SO₄ concentrations. Figure 8 shows the measured and calculated (SC 8, Table 4) sulphuric acid concentrations from the 18 March until the 8 April. The mean daytime (6 a.m. to 6 p.m.) correlation coefficient between the two curves (measured and calculated – by SC 8 – H₂SO₄) is 0.645 with a standard deviation of 0.23. The maximum midday sulphuric acid concentrations varied between 3×10^5 to 1.9×10^7 molecules cm⁻³ for the measurements and 3×10^5 to 1.4×10^7 molecules cm⁻³ for the calculations, respectively. Some peaks of H₂SO₄ in the evening (e.g. 24, 27,

Title Page

Abstract

Introduction

Conclusions

References

Tables

Figures

◀

▶

◀

▶

Back

Close

Full Screen / Esc

Print Version

Interactive Discussion

**Sulphuric acid
closure and
contribution to
nucleation mode
particle growth**

M. Boy et al.

[Title Page](#)
[Abstract](#)[Introduction](#)[Conclusions](#)[References](#)[Tables](#)[Figures](#)[◀](#)[▶](#)[◀](#)[▶](#)[Back](#)[Close](#)[Full Screen / Esc](#)[Print Version](#)[Interactive Discussion](#)

28 March and 2 April) were not produced in our calculations. However, as mentioned already in Sect. 1 we exclude night time chemistry in this work and so our photo stationary model cannot calculate any OH concentrations after sunset. In the next two sub-sections we will use calculated sulphuric acid concentrations achieved by using the settings of scenario 8 (see Table 4).

5.3. Particle growth rates

With the sulphuric acid concentrations ($C_{\text{H}_2\text{SO}_4}$), we can now calculate the particle diameter growth rates in the nucleation mode between 3 and 25 nm (Kulmala et al., 2001b) by

$$\frac{dr}{dt} = \frac{m_{\text{H}_2\text{SO}_4} \cdot \beta_m \cdot D_{\text{H}_2\text{SO}_4} \cdot C_{\text{H}_2\text{SO}_4}}{r \cdot \rho_{\text{H}_2\text{SO}_4}} \quad (4)$$

Here $m_{\text{H}_2\text{SO}_4}$ is the molecular mass, $\rho_{\text{H}_2\text{SO}_4}$ is the liquid density and $D_{\text{H}_2\text{SO}_4}$ is the diffusion coefficient of sulphuric acid. β_m is the transitional correction factor for the mass fluxes (Fuchs and Sutugin, 1971) and r is the particle radius. Eq. 3 can be integrated from r_o to r to obtain:

$$C_{\text{H}_2\text{SO}_4} = \rho_{\text{H}_2\text{SO}_4} \left(\frac{r^2 - r_o^2}{2} + \left[\frac{4}{3\alpha} - 0.623 \right] \cdot \lambda \cdot (r - r_o) + 0.623 \cdot \lambda^2 \cdot \ln \frac{\lambda + r}{\lambda + r_o} \right) / \Delta_{\text{H}_2\text{SO}_4} \cdot m_{\text{H}_2\text{SO}_4} \quad (5)$$

Here, α is accommodation coefficient (i.e. sticking probability), λ is the mean free path of the sulphuric acid molecules and Δt is the time step.

Table 5 gives the growth rates based on particle number size distributions from DMPS-measurements and the growth rates determined with Eq. 4 from measured and calculated sulphuric acid concentrations for all days, when high amounts of small particles above 3 nm were visible on the DMPS-plots (particle formation periods). The growth rates from the DMPS data plots were estimated visually. Due to the somewhat inaccurate nature of this method, an uncertainty by a factor of two has to be taken into account.

**Sulphuric acid
closure and
contribution to
nucleation mode
particle growth**M. Boy et al.

Boy et al. (2003) estimated a growth rate fraction for sulphuric acid of 4–31% by analysing two years of data from the field station in Hyytiälä, Finland. Both growth rate fractions determined with the measured and calculated sulphuric acid concentrations are in the lower range of this earlier estimations ($dD_p/dt_{\text{average}}=8.8\%$). The result indicate, that the concentration of sulphuric acid seems always to be high enough during particle formation periods to participate in the growth process of the aerosols and can reach on certain days fractions up to 17% and most probably higher.

5.4. Air mass influences

In the last sub-section we will use the air mass classification discussed in Sect. 3 and investigate the trend of certain parameters under different aerosol loads. Hereby we will only use these days from the classification from Sect. 3 where particle formation occurred (see Table 5). Table 6 present the event-time (particle formation periods) averages for several gases, the condensational sink and the growth rates as mean values during the “clean” and “polluted” air mass periods. The high anthropogenic influence during the more polluted days was reflected in two to six times higher concentrations of SO₂, NO₂ and NO. Traffic, industry and households mostly emitted these species. Ozone, carbon monoxide and the non-methane hydrocarbons are approximately in the same range in both air mass classes. Mainly the combination of six times lower NO concentrations – main source term of the OH radicals – and three times lower NO₂ concentrations – beside CO, the second important sink term of the OH radicals – led to a nearly equal concentration of hydroxyl radicals in “clean” and “polluted” air masses. Carslaw et al. (2002) presented measured OH and HO₂ concentrations at Mace Head, Ireland for air masses originated from France, UK and Polar regions. Their results agree with ours in that the hydroxyl radical concentrations in all air masses are about equal and that the hydroperoxy radical concentrations are approximately double during the periods the air originated from the Northern regions.

Concerning the “clean” and “polluted” air masses, 2.6 times lower CS values during the times when the air originated over the Atlantic or the Polar region was detected,

[Title Page](#)[Abstract](#)[Introduction](#)[Conclusions](#)[References](#)[Tables](#)[Figures](#)[◀](#)[▶](#)[◀](#)[▶](#)[Back](#)[Close](#)[Full Screen / Esc](#)[Print Version](#)[Interactive Discussion](#)

**Sulphuric acid
closure and
contribution to
nucleation mode
particle growth**

M. Boy et al.

[Title Page](#)[Abstract](#)[Introduction](#)[Conclusions](#)[References](#)[Tables](#)[Figures](#)[⏪](#)[⏩](#)[◀](#)[▶](#)[Back](#)[Close](#)[Full Screen / Esc](#)[Print Version](#)[Interactive Discussion](#)

which reflects the higher load of aerosols during days when the air masses are originated from more industrialised regions. The difference of this parameter combined with three times higher concentrations of sulphur dioxide during more polluted periods resulted in about equal sulphuric acid concentrations in our calculations; the measured H_2SO_4 concentrations led to a slightly higher ratio (“polluted”- H_2SO_4 /"clean"- $\text{H}_2\text{SO}_4=1.46$). The difference of 46% in the H_2SO_4 concentrations between the calculations and measurements could result from different compositions of the aerosols and consequently different hygroscopic growth factors. Especially during the “polluted” periods, high amounts of soot particles with growth factors close to unity are accompanied. The effect of such low hygroscopicity aerosols results in lower CS-values, and consequently, in higher sulphuric acid concentrations.

Concerning the growth rates of particles, a 1.5 times higher value was determined with measured aerosol number size distributions during days when the air originated from Central Europe or UK. The fact that clear particle formation events occur more often during days with less aerosol load was pointed out in many publications like e.g. Boy and Kulmala (2002b) or Clement et al. (2001). However, the nearly identical contribution of sulphuric acid to the particle growth during the “polluted” periods compared to the “clean” days is unexpected. These results indicate that sulphuric acid always participates in the aerosol formation processes with a percentage fraction between 3 to 17%.

6. Summary and conclusions

In this work, we used measurements from the QUEST field campaign conducted in Hyytiälä during March and April 2003. Among many other parameters, sulphuric acid was measured continuously on 21 days. We concentrated our analyses on daytimes (9 a.m. – 3 p.m.) during this period. The measured concentrations were compared with calculated ones, achieved by a simple pseudo steady state box model including photo stationary states. Further, we estimated the particle growth rates for the nucleation

**Sulphuric acid
closure and
contribution to
nucleation mode
particle growth**M. Boy et al.

[Title Page](#)[Abstract](#)[Introduction](#)[Conclusions](#)[References](#)[Tables](#)[Figures](#)[◀](#)[▶](#)[◀](#)[▶](#)[Back](#)[Close](#)[Full Screen / Esc](#)[Print Version](#)[Interactive Discussion](#)

mode aerosols determined by measured particle number concentrations with size distributions and from the concentrations of sulphuric acid. In the end, we classified the days with air masses originated from Europe or UK and from the Atlantic or Polar region to investigate the influence of several variables on the OH and H₂SO₄ concentrations and on the particle growth rates.

As a first result we presented the importance of the various sink and source terms in the OH and HO₂ radical balance as mean values for the selected time. Nitrogen oxide was the dominant source term (mean contribution=55.9%) and carbon monoxide the key sink term (mean contribution=41%) in the hydroxyl radical balance. The same two components play also the major role in the hydroperoxy radical balance with opposite signs (mean source contribution by CO=53.8% and sink by NO=75.7%). The daily maxima for the OH and the HO₂ species are in agreement with earlier model calculations by Hakola et al. (2003) for the same site, with values of 4.1×10^5 to 1.8×10^6 molecules cm⁻³, and 1×10^7 to 1.5×10^8 molecules cm⁻³, respectively.

In sensitivity studies we investigated the influence of non-methane hydrocarbons, peroxy radicals and nitrogen dioxide on the concentration of sulphuric acid. By comparing our calculated values of sulphuric acid with the measured ones, we gained the best agreement by decreasing the nitrogen dioxide concentrations during periods when high-polluted air arrived at the SMEAR II station from south to south-east, and by doubling the NMHCs. Using these assumptions, the mean ratio for the whole period between measured and calculated H₂SO₄ concentrations reached a value close to unity with a standard deviation of 0.412. The investigated sulphuric acid closure thus achieved a high agreement between the calculated and measured sulphuric acid concentrations.

With the measured and calculated sulphuric acid concentrations, we calculated particle diameter growth rates. In addition we estimated the particle growth rates through the DMPS data and defined the contribution of sulfuric acid to the particle growth rates. The average value of 8.8% were in the lower range of earlier estimations by Boy et al. (2003) for the same site (4–31%). This indicates that the concentration of sulphuric

acid seems always to be high enough during particle formation periods to participate in the growth process of the aerosols and can reach on certain days fractions up to 17% and most probably higher.

We classified days in two categories by using measurements and 72 h back trajectories from HYSPLIT:

- Polluted air masses originated over Central Europe or UK with high concentrations of SO₂, NO₂ and NO (average: 1.74×10^{10} , 4.16×10^{10} and 4.68×10^9 molecules cm⁻³, respectively) and also high CS values (average 0.0029 s⁻¹).
- “Clean” air masses originated over the North Atlantic or Polar region with 2 to 6 times smaller SO₂, NO₂ and NO concentrations (average: 6.07×10^9 , 1.72×10^{10} and 7.91×10^8 molecules cm⁻³, respectively) and about 2 to 3 times smaller CS values (average 0.0011 s⁻¹).

The results of this analysis showed, that the growth rates determined by DMPS-measurements during “polluted” air periods are by a factor of 1.45 higher compared to the “cleaner” days. The contribution of sulphuric acid to the growth rates is approximately equal. Obviously sulfuric acid is always involved (fraction between 3 to 17%) in new particle production and growth of aerosols over boreal forest regions in Northern Europe, although it might be not the key parameter in the nucleation process itself.

According to Zhang et al. (2004) stable complex formation with sulphuric acid and carboxylic or dicarboxylic functional groups (i.e. oxidation products of monoterpenes) represents a general feature for particle formation by forming stable organic acid–sulphuric acid complexes. In this way sulphuric acid would contribute to the particle formation by heteromolecular nucleation and by helping condensation growth of the nucleated critical embryo by overcoming the Kelvin effect (Kulmala et al., 2004b), explaining the new particle formation observed in rural areas like Hyytiälä.

Acknowledgements. The QUEST team acknowledge the financial support from the European Commission under the contract number EVK2-CT2001-00127 and the Academy of Finland.

Sulphuric acid closure and contribution to nucleation mode particle growth

M. Boy et al.

Title Page

Abstract

Introduction

Conclusions

References

Tables

Figures

◀

▶

◀

▶

Back

Close

Full Screen / Esc

Print Version

Interactive Discussion

Further, the authors gratefully acknowledge the NOAA Air Resources Laboratory (ARL) for the provision of the HYSPLIT transport and dispersion model and/or READY website (<http://www.arl.noaa.gov/ready.html>) used in this publication.

References

- 5 Boy, M. and Kulmala, M.: The part of the solar spectrum with the highest influence of the formation of SOA in the continental boundary layer, *Atmos. Chem. Phys.*, 2, 375–386, 2002a.
- Boy, M. and Kulmala, M.: Nucleation events in the continental boundary layer: Influence of physical and meteorological parameters, *Atmos. Chem. Phys.*, 2, 1-16, 2002b.
- 10 Boy, M., Rannik, Ü., Lehtinen, K. E. J., Tarvainen, V., Hakola, H. and Kulmala, M.: Nucleation events in the continental PBL – long term statistical analyses of aerosol relevant characteristics, *J. Geophys. Res.*, 108 (D21), 4667, 2003.
- Cantrell, C. A., Shetter, R. E., Gilpin, T. M., and Calvert, J. G.: Peroxy radicals measured during Mauna Loa Observatory Photochemistry Experiment 2 – The data and first analysis, *J. Geophys. Res.*, 101, 14 643–14 652, 1996.
- 15 Cantrell, C. A., Shetter, R. E., Calvert, J. G., Eisele, F. L., Williams, E., Baumann, K., Brune, W. H., Stevens, P. S., and Mather, J. H.: Peroxy radicals from photostationary state deviations and steady state calculations during the Tropospheric OH Photochemistry Experiment at Idaho Hill, Colorado, *J. Geophys. Res.*, 102, 6369–6378, 1997.
- 20 Carslaw, N., Creasey, D. J., Heard, D. E., Jacobs, P. J., Lee, J. D., Lewis, A. C., McQuaid, J. B., Pilling, M. J., Bauguitte, S., Penkett, A., Monks, P. S., and Salibury, G.: Eastern Atlantic Spring Experiment 1997 (EASE97), 2. Comparisons of model concentrations of OH, HO₂, and RO₂ and measurements, *J. Geophys. Res.* 107, NO. D14, 4190, 2002.
- DeMore, W. G., Sander, S. P., Golden, D. M., Hampson, R. F., Kurylo, M. J., Howard, C. J., Ravishankara, A. R., Kolb, C. E., and Molina, M. J.: Chemical Kinetics and Photochemical Data for use in Stratospheric Modelling. Evaluation No. 11, JPL Publication 94-26, Jet Propulsion Laboratory, Pasadena, CA, 1994.
- 25 Eisele F. L. and Tanner D. J.: Measurement of the gas phase concentration of H₂SO₄ and methane sulfonic acid and estimates of H₂SO₄ production and loss in the atmosphere, *J. Geophys. Res.*, D 98, 9001–9010, 1993.

Sulphuric acid closure and contribution to nucleation mode particle growth

M. Boy et al.

Title Page

Abstract

Introduction

Conclusions

References

Tables

Figures

◀

▶

◀

▶

Back

Close

Full Screen / Esc

Print Version

Interactive Discussion

**Sulphuric acid
closure and
contribution to
nucleation mode
particle growth**M. Boy et al.

[Title Page](#)[Abstract](#)[Introduction](#)[Conclusions](#)[References](#)[Tables](#)[Figures](#)[◀](#)[▶](#)[◀](#)[▶](#)[Back](#)[Close](#)[Full Screen / Esc](#)[Print Version](#)[Interactive Discussion](#)

- Fuchs, N. A. and Sutugin, A. G.: Highly dispersed aerosol, in: Topics in current aerosol research, edited by Hidy, G. M. and Brock, J. R., Pergamon, New York, 1971.
- Hämeri, K., Väkevää, M., Aalto, P., Kulmala, M., Swietlicki, E., Zhou, J., Seidl, W., Becker, E., and O'Dowd, C. D.: Hygroscopic and CCN properties of aerosol particles in boreal forest, *Tellus* 53 B, 345–359, 2001.
- 5 Hakola, H., Tarvainen, V., Laurila, T., Hiltunen, V., Hellén, H., and Keronen, P.: Seasonal variation of VOC concentrations above a boreal coniferous forest, *Atmos. Environ.*, Vol. 37, Issue 12, 1623–1634, 2003.
- Handisides, G. M., Plass-Dülmer, C., Gilge, S., Bingemer, H., and Berresheim, H.: Hohenpeissenberg Photochemical Experiment (HOPE 2000): Measurements and photostationary state calculations of OH and peroxy radicals, *Atmos. Chem. Phys.*, 3, 1565–1588, 2003.
- 10 Hanke, M., Uecker, J., Reiner, T., and Arnold, F.: Atmospheric peroxy radicals: ROXMAS, a new mass-spectrometric methodology for speciated measurements of HO₂ and Sigma RO₂ and first results, *International Journal of Mass Spectrometry*, 213(2-3), 91–99, 2002.
- 15 Hellén, H., Hakola H., Reissell A., and Ruuskanen T. M.: Carbonyl compounds in boreal coniferous forest air in Hyytiälä, Southern Finland. Submitted to *Atmos. Chem. Phys.*, 4, 1771–1780, 2004.
- Janson, R. and De Serves, C.: Isoprene emissions from boreal wetlands in Scandinavia. *J. Geophys. Res.* 103, D19, 25, 513–25, 517, 1998.
- 20 Korhonen, P., Kulmala, M., Laaksonen, A., Viisanen, Y., McGraw, R. and Seinfeld, J. H.: Ternary nucleation of H₂SO₄, NH₃ and H₂O in the atmosphere, *J. Geophys. Res.*, 104, 26 349–26 353, 1999.
- Kulmala, M., Hämeri, K. K., Aalto, P., Mäkelä, J., Pirjola, L., Nilsson, E. D., Buzorius, G., Rannik, Ü., Dal Maso, M., Seidl, W., Hoffmann, T., Jansson, R., Hansson, H.-C., O'Dowd, C., and Viisanen, Y.: Overview of the international project on biogenic aerosol formation in the boreal forest (BIOFOR), *Tellus* B, 53, 324–343, 2001a.
- 25 Kulmala, M., Dal Maso, M., Mäkelä, J. M., Pirjola, L., Väkevää, M., Aalto, P., Miikkulainen, P., Hämeri, K., and O'Dowd, C.: On the formation, growth and composition of nucleation mode particles, *Tellus* B, 53, 479–490, 2001b.
- 30 Kulmala, M.: How particles nucleate and grow, *Science*, 307 (5647), 1000–1001, 2003.
- Kulmala, M., Vehkamäki, H., Petäjä, T., Dal Maso, M., Lauri, A., Kerminen, V.-M., Birmili, W., and McMurry, P. H.: Formation and growth rates of ultrafine atmospheric particles: A review of observations, *J. Aerosol Sci.*, Vol. 35, Issue 2, 143–176, 2004a.

**Sulphuric acid
closure and
contribution to
nucleation mode
particle growth**M. Boy et al.

[Title Page](#)[Abstract](#)[Introduction](#)[Conclusions](#)[References](#)[Tables](#)[Figures](#)[◀](#)[▶](#)[◀](#)[▶](#)[Back](#)[Close](#)[Full Screen / Esc](#)[Print Version](#)[Interactive Discussion](#)

- Kulmala, M., Kerminen, V.-M., Anttila, T., Laaksonen, A., and O'Dowd, C.: Organic aerosol formation via sulphate cluster activation, *J. Geophys. Res.*, Vol. 109, D04205, 2004b.
- Menon, S., Del Genio, A. D., Koch, D., and Tselioudis, G.: GCM simulations of the aerosol indirect effect: Sensitivity to cloud parameterization and aerosol burden, *J. Atmos. Sciences* 59, 692–713, 2002.
- 5 Ramanathan, V., Crutzen, P. J., Kiehl, J. T., and Rosenfeld, D.: Aerosol, climate, and the hydrological cycle. *Science* 294, 2119–2124, 2001.
- Rolph, G. D.: Real-time Environmental Applications and Display sYstem (READY) Website (<http://www.arl.noaa.gov/ready/hysplit4.html>). NOAA Air Resources Laboratory, Silver Spring, MD, 2003.
- 10 Seinfeld, J. H. and Pandis, S. N.: Atmospheric chemistry and physics, John Wiley & Sons, New York, 1998.
- Solberg, S., Dye, C., and Roemer, M., and Schmidbauer, N.: VOC measurements 1999, EMEP/CCC Report 7, 2001.
- 15 Stieb, D. M., Judek, S., and Burnett, R. T.: Meta-analysis of time-series studies of air pollution and mortality: Effects of gases and particles and their influence of cause of death, age and season. *J. Air & Manage. Assoc.* 52, 470–484, 2002.
- Swietlicki, E., Zhou, J., Covert, D. S., Hämeri, K., Busch, B., Väkeva, M., Dusek, U., Berg, O. H., Wiedensohler, A., Aalto, P., Mäkelä, J., Martinsson, B. G., Papaspiropoulos, G., Mentes, B., Frank, G. and Stratmann, F.: Hygroscopic properties of aerosols in the north-eastern Atlantic during ACE-2, *Tellus* 52 B, 201–227, 2000.
- 20 Wichmann, H.-H. and Peters, A.: Epidemiological evidence of the effects of ultrafine particle exposure, *Phil. Trans. R. Soc. Lond., A*. 358, 2751–2769, 2000.
- Zhang, R., Suh, I., Zhao, J., Zhang, D., Fortner, E. C., Tie, X., Molina, L. and Molina, M.: Atmospheric new particle formation enhanced by organic acids, *Science*, Vol. 304, 1487–1490, 2004.
- 25

Table 1. Daytime mean values of different parameters averaged between 9 a.m. and 3 p.m. (NMHC=non-methane hydrocarbons, UV-B=solar irradiance between 280–320 nm, RH=relative humidity and CS=condensational sink values, 24-h average for HCHO).

Date	H ₂ SO ₄	NO ₂	SO ₂	O ₃	NO	CO	HCHO	NMHC	Temp.	UV-B	RH	CS
	[10 ⁵ molecules cm ⁻³]	[10 ¹⁰ molecules cm ⁻³]							[K]	[W m ⁻²]	[%]	[s ⁻¹]
18.3.2003		3,583	0,465	104,9	0,145	379,2	0,001	0,002	277,6	0,522	70,7	0,0017
19.3.2003	0,803	1,832	0,285	112,1	0,060	391,5	0,479	1,219	276,6	0,584	52,0	0,0009
20.3.2003	2,317	1,474	0,508	110,1	0,056	419,8	1,097	1,534	266,4	0,673	51,6	0,0009
21.3.2003	4,169	5,350	1,207	108,8	0,757	416,6	0,001	0,002	269,5	0,817	42,9	0,0017
22.3.2003	0,234	6,688	0,889	88,4	0,366	424,4	1,025	1,109	273,9	0,451	84,3	0,0071
23.3.2003	2,340	2,910	0,484	108,6	0,063	373,8	0,738	1,118	279,6	0,766	65,4	0,0019
24.3.2003		1,840	0,320	113,9	0,053	354,0	0,592	1,012	278,9	0,637	58,2	0,0008
25.3.2003	2,648	1,964	0,386	108,7	0,081	360,3	1,017	0,123	278,1	0,668	50,3	0,0009
26.3.2003	4,941	10,999	2,238	100,6	1,529	384,4	1,304	1,546	279,2	0,686	54,7	0,0032
27.3.2003		7,107	1,562	127,2	0,286	470,4	0,792	1,398	279,7	0,740	63,9	0,0091
28.3.2003	1,904	1,859	0,448	114,8	0,084	355,6	0,931	1,167	278,2	0,660	51,7	0,0009
29.3.2003	2,655	5,022	0,584	108,9	0,351	372,9	0,001	0,002	278,3	0,498	50,0	0,0019
30.3.2003	0,148	6,425	0,622	116,3	0,048	562,1	0,445	1,003	276,2	0,215	90,6	0,0182
31.3.2003	2,147	1,674	0,851	102,0	0,069	418,6	0,441	1,298	268,1	0,504	62,7	0,0017
1.4.2003	3,311	3,651	0,643	96,2	0,514	417,3	0,951	1,500	269,7	0,678	45,2	0,0017
2.4.2003	3,928	3,371	2,850	100,0	0,251	431,5	1,416	1,629	270,7	0,457	43,6	0,0031
3.4.2003	8,553	5,782	4,943	102,5	0,606	442,9	1,237	1,374	272,8	0,655	43,0	0,0039
4.4.2003	2,638	4,040	0,764	96,6	0,307	402,9	0,961	0,983	273,4	0,471	61,2	0,0011
5.4.2003	0,423	2,018	0,434	99,1	0,078	409,3	0,497	1,534	271,7	0,284	92,9	0,0021
6.4.2003	2,035	1,712	0,382	71,7	0,144	402,7	0,479	1,490	270,6	0,673	53,6	0,0012
7.4.2003	6,107	1,699	1,365	97,7	0,125	379,8	0,694	1,465	271,5	0,734	44,8	0,0014
8.4.2003	4,591	2,419	1,199	75,4	0,266	414,7	0,961	1,683	271,5	0,708	62,6	0,0019
Mean	2,942	3,792	1,065	102,921	0,283	408,373	0,730	1,100	274,195	0,595	58,902	0,0031

Sulphuric acid closure and contribution to nucleation mode particle growth

M. Boy et al.

Title Page

Abstract

Introduction

Conclusions

References

Tables

Figures

◀

▶

◀

▶

Back

Close

Full Screen / Esc

Print Version

Interactive Discussion

Table 2. Reactions and rate coefficients used in the photo stationary calculations of the radical concentrations. All rate coefficients have been calculated for a relevant average temperature of 273 K using the temperature dependent rate equations from Atkinson et al. (2001) and Seinfeld and Pandis (1998).

Nr.	Reactions	j and k at 273 K and 1 bar	
		k in [cm ³ molecule ⁻¹ s ⁻¹]	j in [s ⁻¹]
1.	OH production terms		
	$O_3 + hv \longrightarrow O(^1D) + O_2$ $O(^1D) + H_2O \longrightarrow 2 OH$	j_{O_3} k_1	Max. = $1.22 \cdot 10^{-5}$ $2,2 \cdot 10^{-10}$
2.	OH production and HO₂ loss terms		
3.	$HO_2 + NO \longrightarrow OH + NO_2$ $HO_2 + O_3 \longrightarrow OH + 2 O_2$	k_2 k_3	$9,24 \cdot 10^{-12}$ $1,76 \cdot 10^{-15}$
4.	OH loss terms		
5.	$OH + NO_2 \xrightarrow{M} HNO_3$ $OH + CH_4 \longrightarrow CH_3 + H_2O$	k_4 k_5	$1,41 \cdot 10^{-11}$ $3,55 \cdot 10^{-15}$
6.	OH loss and HO₂ production terms		
7.	$OH + CO \xrightarrow{O_2} HO_2 + CO_2$ $OH + HCHO \longrightarrow HO_2 + CO + H_2O$	k_6 k_7	$1,50 \cdot 10^{-13}$ $9,37 \cdot 10^{-12}$
8.	$OH + H_2 \xrightarrow{O_2} HO_2 + H_2O$	k_8	$3,53 \cdot 10^{-15}$
9.	$OH + O_3 \longrightarrow HO_2 + O_2$	k_9	$5,12 \cdot 10^{-14}$
10.	$OH + NMHC \xrightarrow{O_2} RO_2 + H_2O$	k_{10}	various
11.	HO₂ production terms		
12.	$HCHO + hv \longrightarrow 2 HO_2 + CO$	j_{HCHO}	Max. = $1.23 \cdot 10^{-5}$
13.	HO₂ loss terms		
14.	$HO_2 + HO_2 \longrightarrow H_2O_2 + O_2$ $HO_2 + RO_2 \longrightarrow ROOH + O_2$	k_{12} k_{13}	$5,33 \cdot 10^{-12}$ $1,6 \cdot 10^{-11}$
14.	H₂SO₄ production terms and OH loss term		
	$OH + SO_2 \longrightarrow H_2SO_4$	k_{14}	$9,82 \cdot 10^{-13}$

Sulphuric acid closure and contribution to nucleation mode particle growth

M. Boy et al.

Title Page

Abstract

Introduction

Conclusions

References

Tables

Figures

◀

▶

◀

▶

Back

Close

Full Screen / Esc

Print Version

Interactive Discussion

Table 3. Average sink and source terms of the OH and HO₂ radical balance for the 18 March until the 8 April 2003 (Mean I=average for all days between 8 a.m. and 4 p.m.; Mean II= average daily maxims with H and L are the highest and lowest values; Mean III= average contributions of the single reactions to the corresponding source and loss terms of one radical with H and L are the highest and lowest values).

	Mean I [10 ⁶ molec. cm ⁻³ s ⁻¹]	Mean II [10 ⁶ molec. cm ⁻³ s ⁻¹]	H Mean II [10 ⁶ molec. cm ⁻³ s ⁻¹]	L Mean II [10 ⁶ molec. cm ⁻³ s ⁻¹]	Mean III [%]	H Mean III [%]	L Mean III [%]
OH-Sources							
NO + HO ₂	0,443	1,010	1,618	0,437	55,9	73,4	33,4
O(¹ D) + H ₂ O	0,279	0,496	1,151	0,211	33,4	48,7	20,0
O ₃ + HO ₂	0,085	0,166	0,320	0,023	10,6	20,1	1,0
OH-Sinks							
CO + OH	-0,322	-0,653	-0,384	-1,074	41,0	52,4	23,1
NO ₂ + OH	-0,241	-0,444	-0,209	-1,145	29,7	52,8	18,3
CH ₄ + OH	-0,104	-0,215	-0,089	-0,408	12,9	16,5	8,8
NMHC + OH	-0,034	-0,078	-0,004	-0,201	3,9	9,1	0,3
HCHO + OH	-0,041	-0,083	-0,019	-0,158	5,1	8,5	1,9
O ₃ + OH	-0,030	-0,062	-0,029	-0,118	3,7	5,0	2,4
H ₂ + OH	-0,026	-0,054	-0,023	-0,106	3,2	4,2	2,3
SO ₂ + OH	-0,004	-0,013	-0,004	-0,033	0,6	1,6	0,2
HO₂-Sources							
CO + OH	0,322	0,653	1,074	0,384	53,8	63,7	41,9
CH ₄ + OH	0,104	0,215	0,408	0,089	16,9	21,2	13,7
HCHO + hv	0,048	0,074	0,123	0,020	8,4	16,1	2,5
NMHC + OH	0,034	0,078	0,201	0,004	5,1	10,8	0,5
HCHO + OH	0,041	0,083	0,158	0,019	6,7	10,3	3,2
O ₃ + OH	0,030	0,062	0,118	0,029	4,8	6,1	3,4
H ₂ + OH	0,026	0,054	0,106	0,023	4,3	5,4	3,4
HO₂-Sinks							
NO + HO ₂	-0,443	-1,009	-0,437	-1,625	75,7	98,0	49,9
O ₃ + HO ₂	-0,085	-0,166	-0,023	-0,320	13,9	29,8	1,9
RO ₂ + HO ₂	-0,053	-0,144	-0,002	-0,390	8,0	19,7	0,1
HO ₂ + HO ₂	-0,017	-0,045	-0,001	-0,126	2,5	6,2	0,0

Sulphuric acid closure and contribution to nucleation mode particle growth

M. Boy et al.

Title Page

Abstract

Introduction

Conclusions

References

Tables

Figures

◀

▶

◀

▶

Back

Close

Full Screen / Esc

Print Version

Interactive Discussion

Table 4. Sensitivity study of the calculated sulphuric acid concentrations in comparison with the measured ones (M-Ratio= Mean value of the daily (9 a.m.–3 p.m.) averaged ratios between measurements and calculations, S-Ratio = standard deviation of these values and GAP= the difference in percent between measured and calculated concentrations). Highlighted fields are the parameters changed for investigation.

Scenario	NMHC	RO ₂	NO ₂	M-Ratio	S-Ratio	GAP
SC-1	M	= [HO ₂]	M	1,16	0,636	13,8
SC-2	2 * M	= [HO ₂]	M	1,17	0,635	14,5
SC-3	4 * M	= [HO ₂]	M	1,19	0,635	16,0
SC-4	M	= 2 * [HO ₂]	M	1,22	0,623	18,0
SC-5	M	= 4 * [HO ₂]	M	1,27	0,631	21,3
SC-6	M	= [HO ₂]	NO ₂ -SC I	1,07	0,522	6,5
SC-7	M	= [HO ₂]	NO ₂ -SC II	0,98	0,412	-2,0
SC-8	2 * M	= [HO ₂]	NO ₂ -SC II	0,99	0,412	-1,0

M = Measured values

NO₂-SC I: NO₂ > 1,5 ppb → NO₂ = NO₂ * 0,9

NO₂ > 2 ppb → NO₂ = NO₂ * 0,8

NO₂-SC II: NO₂ > 1,5 ppb → NO₂ = NO₂ * 0,8

NO₂ > 2 ppb → NO₂ = NO₂ * 0,6

Sulphuric acid closure and contribution to nucleation mode particle growth

M. Boy et al.

Title Page

Abstract

Introduction

Conclusions

References

Tables

Figures

◀

▶

◀

▶

Back

Close

Full Screen / Esc

Print Version

Interactive Discussion

Table 5. Particle growth rates for several days during the campaign achieved by: DMPS= based on measured particle number concentration with size distribution; $[\text{H}_2\text{SO}_4\text{-M}]$ = based on measured sulphuric acid concentrations and $[\text{H}_2\text{SO}_4\text{-C}]$ = based on calculated sulphuric acid concentration. The later ones are calculated through Eq. (3). Air mass classification: P= “polluted days” and C = “clean days” (see Sect. 3).

Date	Air mass classification	GR DMPS [nm h ⁻¹]	Measurements		Calculations		GR(H ₂ SO ₄ -M) / GR(DMPS) [%]	GR(H ₂ SO ₄ -C) / GR(DMPS) [%]
			[H ₂ SO ₄] [mol. cm ⁻³]	GR(H ₂ SO ₄ -M) [nm h ⁻¹]	[H ₂ SO ₄] [mol. cm ⁻³]	GR(H ₂ SO ₄ -C) [nm h ⁻¹]		
19.3.2003	C	1,0	7,18E+05	0,06	1,23E+06	0,10	6,1	10,5
20.3.2003	C	1,5	1,82E+06	0,15	2,26E+06	0,19	10,2	12,6
21.3.2003	P	2,6	2,81E+06	0,24	2,62E+06	0,22	9,1	8,5
25.3.2003	C	2,5	1,78E+06	0,15	2,29E+06	0,20	6,1	7,8
26.3.2003	P	3,6	3,62E+06	0,31	3,20E+06	0,28	8,6	7,6
29.3.2003	P	3,6	2,03E+06	0,17	1,34E+06	0,12	4,8	3,2
31.3.2003	C	3,5	2,77E+06	0,23	2,70E+06	0,23	6,7	6,5
2.4.2003	P	2,4	4,79E+06	0,40	3,05E+06	0,26	16,9	10,7
3.4.2003	P	3,8	3,28E+06	0,28	1,88E+06	0,16	7,3	4,2
6.4.2003	C	1,8	1,86E+06	0,16	1,72E+06	0,15	8,7	8,1
7.4.2003	C	2,9	4,62E+06	0,39	5,15E+06	0,44	13,5	15,0
Average		2,7	2,74E+06	0,2	2,50E+06	0,2	8,9	8,6

Sulphuric acid closure and contribution to nucleation mode particle growth

M. Boy et al.

Title Page

Abstract

Introduction

Conclusions

References

Tables

Figures

◀

▶

◀

▶

Back

Close

Full Screen / Esc

Print Version

Interactive Discussion

Table 6. Certain measured and calculated parameters divided by air mass classification discussed in Sect. 3 (NO₂-SC II and CS-SC II see Table 4; GR classes see Table 5).

Parameters	Unit	Clean air masses	Polluted air masses
<u>Gas concentrations</u>			
CO	molec. cm ⁻³	3,93E+12	4,09E+12
O ₃	molec. cm ⁻³	1,00E+12	1,09E+12
NO ₂ -SC-II	molec. cm ⁻³	1,72E+10	4,16E+10
SO ₂	molec. cm ⁻³	6,07E+09	1,74E+10
NMHC	molec. cm ⁻³	6,37E+08	2,91E+09
NO	molec. cm ⁻³	7,91E+08	4,68E+09
<u>Radical concentrations</u>			
OH	molec. cm ⁻³	5,13E+05	4,64E+05
HO ₂	molec. cm ⁻³	5,79E+07	1,89E+07
<u>Condensational sink</u>			
CS-SC II	s ⁻¹	1,10E-03	2,90E-03
<u>Sulfuric acid concentration</u>			
Calculated	molec. cm ⁻³	2,56E+06	2,42E+06
Measured	molec. cm ⁻³	2,26E+06	3,31E+06
<u>Growth rates</u>			
GR [H ₂ SO ₄ -M]	nm h ⁻¹	0,19	0,28
GR [H ₂ SO ₄ -C]	nm h ⁻¹	0,22	0,21
GR [DMPS]	nm h ⁻¹	2,20	3,20
GR [H ₂ SO ₄ -M] / GR [DMPS]	%	8,68	8,78
GR [H ₂ SO ₄ -C] / GR [DMPS]	%	9,84	6,43

Sulphuric acid closure and contribution to nucleation mode particle growth

M. Boy et al.

Title Page

Abstract

Introduction

Conclusions

References

Tables

Figures

◀

▶

◀

▶

Back

Close

Full Screen / Esc

Print Version

Interactive Discussion

**Sulphuric acid
closure and
contribution to
nucleation mode
particle growth**

M. Boy et al.

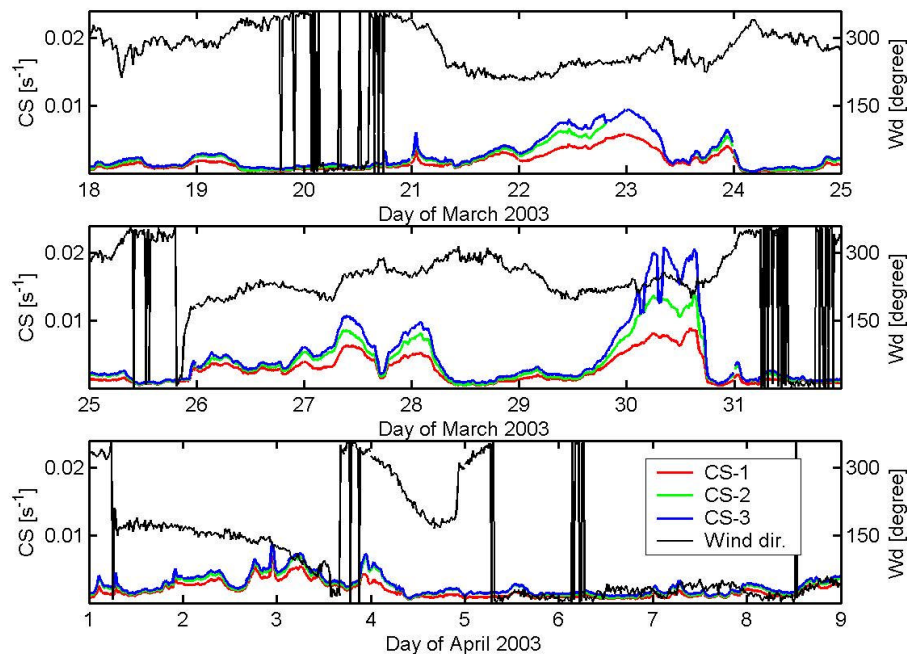


Fig. 1. Different calculated condensational sink values (explanation in Sect. 2.4) and wind-direction for Hyytiälä, Finland.

[Title Page](#)[Abstract](#)[Introduction](#)[Conclusions](#)[References](#)[Tables](#)[Figures](#)[◀](#)[▶](#)[◀](#)[▶](#)[Back](#)[Close](#)[Full Screen / Esc](#)[Print Version](#)[Interactive Discussion](#)

**Sulphuric acid
closure and
contribution to
nucleation mode
particle growth**

M. Boy et al.

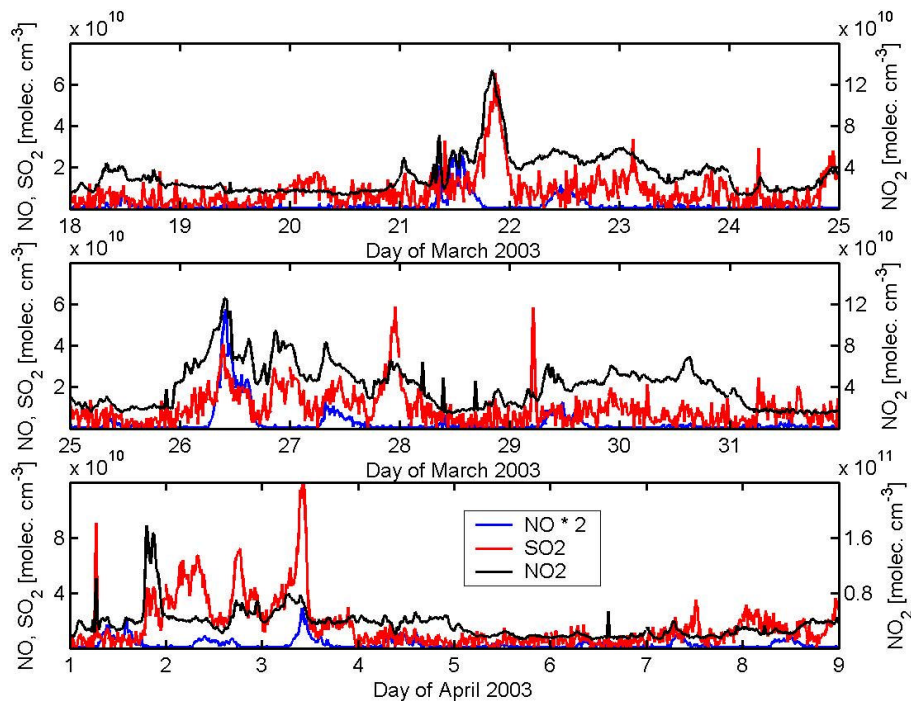
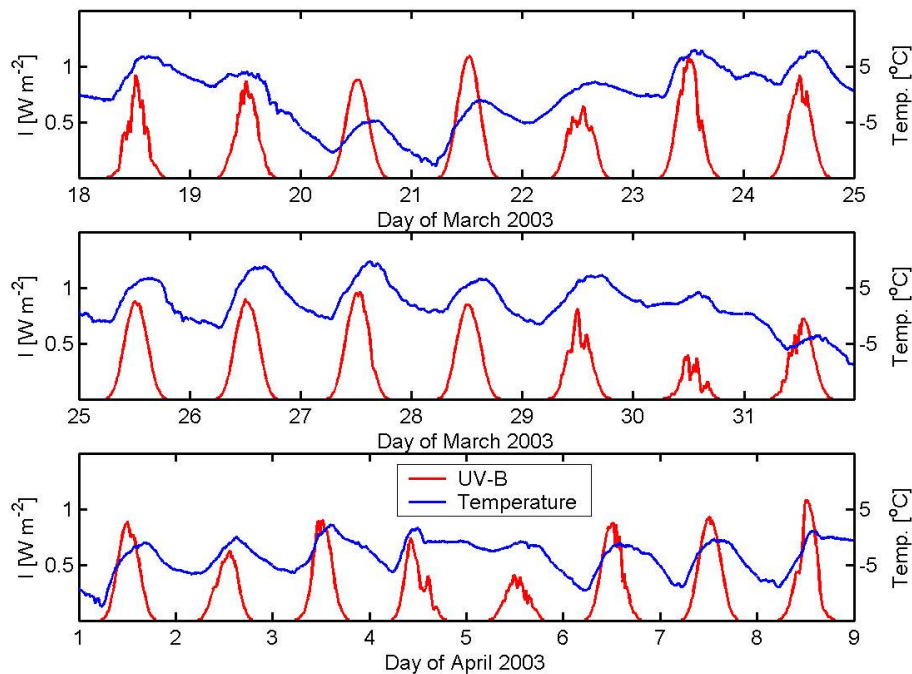


Fig. 2. Nitrogen oxide, nitrogen dioxide and sulphur dioxide concentrations for Hyytiälä, Finland.

[Title Page](#)[Abstract](#)[Introduction](#)[Conclusions](#)[References](#)[Tables](#)[Figures](#)[◀](#)[▶](#)[◀](#)[▶](#)[Back](#)[Close](#)[Full Screen / Esc](#)[Print Version](#)[Interactive Discussion](#)

**Sulphuric acid
closure and
contribution to
nucleation mode
particle growth**

M. Boy et al.

**Fig. 3.** Solar ultraviolet irradiance (280–320 nm) and temperature for Hyytiälä, Finland.[Title Page](#)[Abstract](#)[Introduction](#)[Conclusions](#)[References](#)[Tables](#)[Figures](#)[◀](#)[▶](#)[◀](#)[▶](#)[Back](#)[Close](#)[Full Screen / Esc](#)[Print Version](#)[Interactive Discussion](#)

Sulphuric acid closure and contribution to nucleation mode particle growth

M. Boy et al.

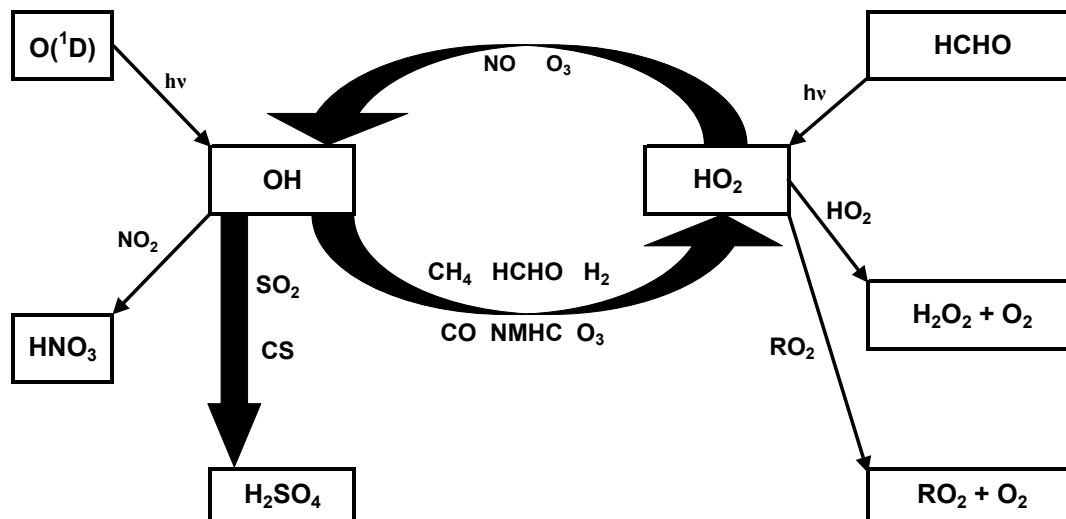


Fig. 4. Block diagram of the chemistry in the photo stationary state calculations.

Title Page

Abstract

Introduction

Conclusions

References

Tables

Figures

◀

▶

◀

▶

Back

Close

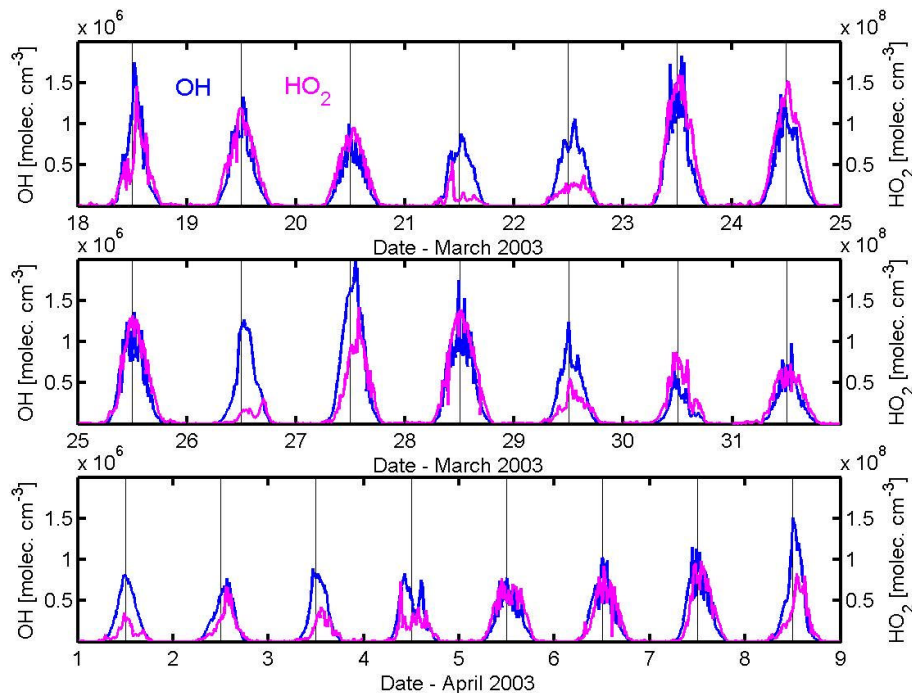
Full Screen / Esc

Print Version

Interactive Discussion

**Sulphuric acid
closure and
contribution to
nucleation mode
particle growth**

M. Boy et al.

**Fig. 5.** Calculated hydroxyl and hydroperoxy radical concentrations for Hyytiälä, Finland.[Title Page](#)[Abstract](#)[Introduction](#)[Conclusions](#)[References](#)[Tables](#)[Figures](#)[◀](#)[▶](#)[◀](#)[▶](#)[Back](#)[Close](#)[Full Screen / Esc](#)[Print Version](#)[Interactive Discussion](#)

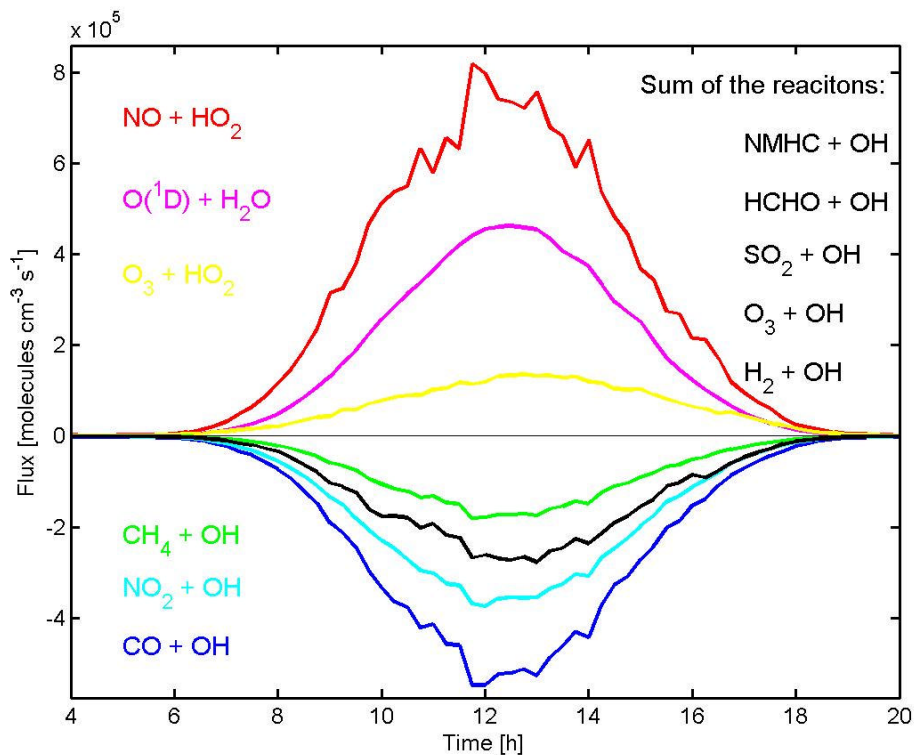


Fig. 6. Plot of calculated contributions of various sink and source terms for the hydroxyl radical concentration averaged for 15-min time intervals between the 18 March and the 8 April 2003.

Sulphuric acid closure and contribution to nucleation mode particle growth

M. Boy et al.

Title Page

Abstract

Introduction

Conclusions

References

Tables

Figures

◀

▶

◀

▶

Back

Close

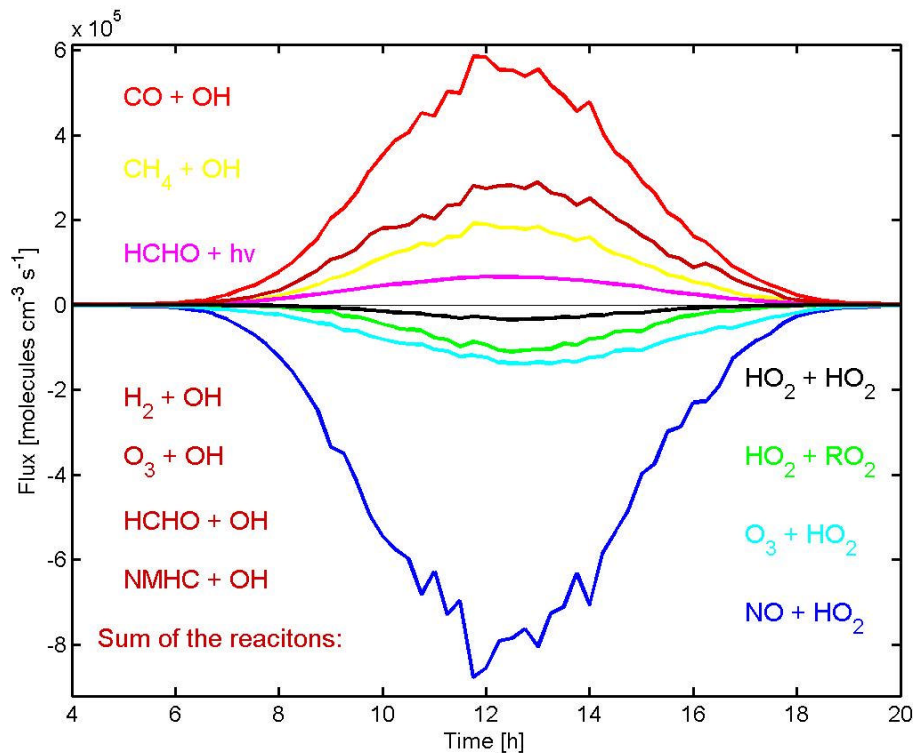
Full Screen / Esc

Print Version

Interactive Discussion

**Sulphuric acid
closure and
contribution to
nucleation mode
particle growth**

M. Boy et al.

**Fig. 7.** Same as Fig. 6 for the hydroperoxy radical.

Title Page

Abstract

Introduction

Conclusions

References

Tables

Figures

◀

▶

◀

▶

Back

Close

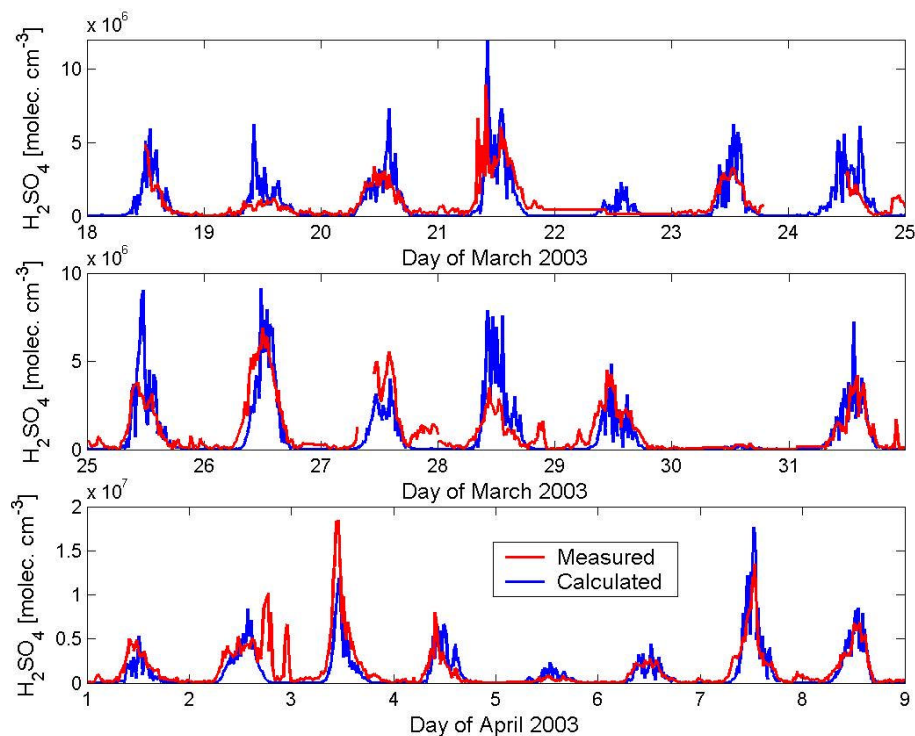
Full Screen / Esc

Print Version

Interactive Discussion

**Sulphuric acid
closure and
contribution to
nucleation mode
particle growth**

M. Boy et al.

**Fig. 8.** Measured and calculated sulphuric acid concentrations for Hyytiälä, Finland.[Title Page](#)[Abstract](#)[Introduction](#)[Conclusions](#)[References](#)[Tables](#)[Figures](#)[◀](#)[▶](#)[◀](#)[▶](#)[Back](#)[Close](#)[Full Screen / Esc](#)[Print Version](#)[Interactive Discussion](#)