



HAL
open science

MAX-DOAS measurements of atmospheric trace gases in Ny-Ålesund

F. Wittrock, H. Oetjen, A. Richter, S. Fietkau, T. Medeke, A. Rozanov, J. P.
Burrows

► **To cite this version:**

F. Wittrock, H. Oetjen, A. Richter, S. Fietkau, T. Medeke, et al.. MAX-DOAS measurements of atmospheric trace gases in Ny-Ålesund. *Atmospheric Chemistry and Physics Discussions*, 2003, 3 (6), pp.6109-6145. hal-00301395

HAL Id: hal-00301395

<https://hal.science/hal-00301395>

Submitted on 18 Jun 2008

HAL is a multi-disciplinary open access archive for the deposit and dissemination of scientific research documents, whether they are published or not. The documents may come from teaching and research institutions in France or abroad, or from public or private research centers.

L'archive ouverte pluridisciplinaire **HAL**, est destinée au dépôt et à la diffusion de documents scientifiques de niveau recherche, publiés ou non, émanant des établissements d'enseignement et de recherche français ou étrangers, des laboratoires publics ou privés.

**MAX-DOAS
measurements in
Ny-Ålesund**

F. Wittrock et al.

MAX-DOAS measurements of atmospheric trace gases in Ny-Ålesund

**F. Wittrock, H. Oetjen, A. Richter, S. Fietkau, T. Medeke, A. Rozanov, and
J. P. Burrows**

Institute of Environmental Physics, University of Bremen, Bremen, Germany

Received: 20 October 2003 – Accepted: 27 November 2003 – Published: 5 December 2003

Correspondence to: F. Wittrock (folkard@iup.physik.uni-bremen.de)

Title Page

Abstract

Introduction

Conclusions

References

Tables

Figures

◀

▶

◀

▶

Back

Close

Full Screen / Esc

Print Version

Interactive Discussion

© EGU 2003

Abstract

A new approach to derive tropospheric concentrations of some atmospheric trace gases from ground-based UV/vis measurements is described. The instrument, referred to as the MAX-DOAS, is based on the well-known UV/vis instruments, which use the sunlight scattered in the zenith sky as the light source and the method of Differential Optical Absorption Spectroscopy (DOAS) to derive column amounts of absorbers like ozone and nitrogen dioxide. Substantial enhancements have been applied to this standard setup to use different lines of sight near to the horizon as additional light sources (MAX – multi axis). Results from measurements at Ny-Ålesund (79° N, 12° E) are presented and interpreted with the full-spherical radiation transport model SCIATRAN. In particular, measurements of the oxygen dimer O₄ which has a known column and vertical distribution in the atmosphere are used to evaluate the sensitivity of the retrieval to parameters such as multiple scattering, solar azimuth, surface albedo and refraction in the atmosphere and also to validate the radiative transport model. As a first application, measurements of NO₂ emissions from a ship lying in Ny-Ålesund harbour are presented. The results of this study demonstrate the feasibility of long term UV/vis multi axis measurement that can be used to derive not only column amounts of different trace gases but also some information on the vertical location of these absorbers.

1. Introduction

In recent years, ground-based UV/visible measurements of light scattered in the zenith sky have been used to derive atmospheric columns for a number of important atmospheric trace species such as O₃, NO₂, BrO, OCIO, and also O₄ (e.g. Noxon, 1975; Noxon et al., 1978; Solomon et al., 1987; Johnston and McKenzie, 1989; van Roozen-dael et al., 1994; Richter et al., 1999; Wittrock et al., 2000; Frieß et al., 2001; Tørnkvist et al., 2002). Most of these measurements were focused on stratospheric ozone chemistry in middle and high latitudes, and the DOAS technique in the conventional setup

MAX-DOAS measurements in Ny-Ålesund

F. Wittrock et al.

Title Page

Abstract

Introduction

Conclusions

References

Tables

Figures

◀

▶

◀

▶

Back

Close

Full Screen / Esc

Print Version

Interactive Discussion

**MAX-DOAS
measurements in
Ny-Ålesund**F. Wittrock et al.

[Title Page](#)[Abstract](#)[Introduction](#)[Conclusions](#)[References](#)[Tables](#)[Figures](#)[◀](#)[▶](#)[◀](#)[▶](#)[Back](#)[Close](#)[Full Screen / Esc](#)[Print Version](#)[Interactive Discussion](#)

© EGU 2003

is most sensitive to this altitude region, in particular at low sun. However, technical improvements described in this paper, now also allow monitoring of trace gases mainly located in the troposphere and the distinction of tropospheric and stratospheric column amounts. The main idea is that measurements taken with a telescope pointed towards different elevation angles close to the horizon provide information on the lowest atmospheric layers and in combination with the zenith sky measurement can be used to derive a coarse vertical profile of some absorbers. Observations of the bright horizon (“off-axis”) were originally proposed and performed to improve the signal to noise ratio of stratospheric measurements under very low daylight conditions, e.g. twilight observations in polar regions (Sanders et al., 1993; Miller et al., 1997). In contrast to these studies and also related ones using a fixed viewing angle, the system used in this work has the capability to switch between a couple of directions within a short time period to provide quasi simultaneous measurements in different lines of sight. Similar but not identical set-ups have also been developed by other groups and used for campaign measurements or with only one horizon viewing direction (Hönninger and Platt, 2002; Bobrowski et al., 2003; Leser et al., 2003; van Roozendaal et al., 2003). Here we report on long-term measurements from our instrument installed in Ny-Ålesund, which has been upgraded with a permanent horizon viewing mode in spring 1999.

The ability to properly interpret UV/visible absorption measurements of atmospheric constituents using scattered light depends crucially on how well the optical path of light collected by the system is understood. This knowledge is essential to convert the differential slant columns (DSCs), which can be derived from the absorption measurements, into a vertical column (VC) with the help of a so-called airmass factor (AMF). This factor expresses the enhancement of the optical path through the atmosphere compared to the vertical optical path. In the case of light scattered in the zenith sky, calculations of twilight airmass factors have been made using simple single scattering radiation transport models (Solomon et al., 1987). Later, several studies have shown that at least for tropospheric absorbers and/or large solar zenith angles (SZAs) multiple scattering has to be taken into account (Perliski and Solomon, 1993). In addition, the full treatment

**MAX-DOAS
measurements in
Ny-Ålesund**F. Wittrock et al.

[Title Page](#)[Abstract](#)[Introduction](#)[Conclusions](#)[References](#)[Tables](#)[Figures](#)[◀](#)[▶](#)[◀](#)[▶](#)[Back](#)[Close](#)[Full Screen / Esc](#)[Print Version](#)[Interactive Discussion](#)

© EGU 2003

of atmospheric sphericity in the radiation transport including refraction turned out to be necessary at low sun. As will be shown in this paper, for measurements with the telescope pointed towards the horizon the relative azimuth between observation direction and the sun also plays a role as well as surface albedo and the aerosol loading of the lower atmosphere. While simple geometrical considerations as have been used in previous publications (e.g. [Hönninger and Platt, 2002](#)) can give a rough estimate of the absorber's concentration, more detailed radiation transfer calculations are needed for quantitative results, in particular for small elevation angles. When analysing horizon measurements of tropospheric species, validation of the results is usually difficult as independent measurements are scarce. Therefore, absorption by the oxygen dimer O_4 is used as a test case for sensitivity studies and validation of the measurement technique. The O_4 concentration mainly depends on the square of the O_2 concentration and thereby pressure and the equilibrium constant which is well known and has only a small dependence on temperature ([Perner and Platt, 1980](#); [Greenblatt et al., 1990](#); [Wagner et al., 2002](#)). Thus, from the knowledge of the atmospheric pressure profile the vertical O_4 column can be determined and used for validating the radiative transfer model, in particular in the lower troposphere where most of the O_4 is situated. On the other hand, once the model has been validated, O_4 can also be used to determine the correct settings for aerosols and surface albedo by varying these values until agreement with the measurements is found. As the O_4 absorption cross-section has a number of bands in the UV and visible spectral region, appropriate O_4 bands can be found close to most fitting windows used in the DOAS analysis of atmospheric trace species. This is important as for scattered light measurements the effective light path depends on wavelength, and results obtained at long wavelengths (for example from the O_2 bands) can not simply be transferred to the UV spectral region. Similar approaches to determining aerosol properties have also been suggested for zenith-sky measurements (e.g. [Wagner et al., 2002](#)), but as a result of the long tropospheric light path, the sensitivity is much larger when observing the horizon.

2. Experiment and data analysis

The MAX-DOAS instrument described in this paper is part of the primary NDSC-station in Ny-Ålesund (78°55' N, 11°56' O), Svalbard. Since 1995 ground-based zenith-sky measurements are continuously in operation at this location. After a successful test in April 1998 the first automated MAX-DOAS was setup in 1999. The instrument described below was installed in March 2002 and is typical for the instruments used in the BREDOM network operated by the University of Bremen (BREDOM: Bremian DOAS network for atmospheric measurements).

At Ny-Ålesund ozone sondes are launched at least once a week and weather sondes daily. These provide profiles of temperature, pressure and ozone that can be used as input for the radiative transfer model (see Sect. 3) and for the calculation of the vertical column of O₄ (see Sect. 5.1).

2.1. Experimental setup

The basic principle of the instrument is that scattered solar light is collected by a telescope from different directions and then transmitted to a spectrograph using a quartz fibre bundle. The spectra are recorded by a detector and saved on a PC that also controls the whole setup. A schematic of the telescope is shown in Fig. 1. The telescope housing is based on a commercial watertight box, where two quartz windows A and B are fitted in for zenith sky measurements and for off-axis observations, respectively. The photo in Fig. 1 illustrates the situation for the off-axis mode: light from all directions penetrates through window B. The mirror D only reflects light from a specific angle into the direction of the opening F in the dividing wall. In order to examine light from different angles the mirror is mounted on a revolving table C driven by a computer controlled motor. For zenith sky measurements the mirror is moved to the left hand side into an upright position to block the light passing through window B while opening the view to the zenith sky port. This is shown in the sketch in Fig. 1. The lens G focuses the light onto the mounting H for the quartz fibre bundle. The lower part of the telescope hous-

Title Page

Abstract

Introduction

Conclusions

References

Tables

Figures

◀

▶

◀

▶

Back

Close

Full Screen / Esc

Print Version

Interactive Discussion

**MAX-DOAS
measurements in
Ny-Ålesund**F. Wittrock et al.

[Title Page](#)[Abstract](#)[Introduction](#)[Conclusions](#)[References](#)[Tables](#)[Figures](#)[⏪](#)[⏩](#)[◀](#)[▶](#)[Back](#)[Close](#)[Full Screen / Esc](#)[Print Version](#)[Interactive Discussion](#)

© EGU 2003

ing is designed to enable calibration measurements with a mercury-cadmium lamp K and a tungsten lamp J, for wavelength calibration and to detect and compensate possible etalon effects, respectively. For that the calibration unit can be separated from the telescope by closing shutter E. The quartz fibre bundle consists of 38 cylindrical single fibres, each of which has a diameter of 150 μm (plus 15 μm cladding). In the telescope, the fibres are positioned in a circle while at the end of the bundle where it is attached to the spectrometer the fibres are arranged in a row to form the slit. In addition to simplifying the set-up of the telescope apart from the spectrometer system, the quartz fibre bundle also has the important function of depolarising the light fed into the spectrometer, thereby minimizing possible artefacts from a polarisation dependency of the instrument. This is of particular importance as the mirror used in the telescope introduces an additional polarisation. As a spectrometer, an Oriel MS 257 (Oriel, 2001) is used. This spectrometer is of the imaging asymmetric Czerny-Turner type and has an exit focal length of 257.36 nm. The entrance slit is enlarged by a factor of 1.6 in the vertical and 1.1 in the horizontal. The spectrometer is equipped with an automatic grating turret having in our setup two gratings, one with 1200 lines/mm and another with 600 lines/mm. In order to obtain good spectral stability of the system, the spectrometer is insulated and thermally stabilized to within 0.1 K. The detector used is a CCD (Charge-Coupled Device) of the DV 440-BU type provided by Andor Technology (Oriel, 2001). The chip has a resolution of 2048 times 512 pixels and is cooled to -40 K to reduce dark current and the impact of hot pixels. Each pixel has a size of $13.5 \times 13.5\ \mu\text{m}^2$. In order to have a better sensitivity in the ultraviolet spectrum the chip is thinned and back-illuminated. With this set-up, a spectral resolution of 0.5 nm and an oversampling of 11 is obtained for the grating with 1200 l/mm. This is derived from the FWHM of a representative line in the spectrum of the Mercury-Cadmium lamp. Continuous measurements with this setup are performed since 1 March 2002 in the wavelength region from 325 nm to 413 nm. A PC sets the configuration of the system and controls the automatic measurements. One zenith sky and horizon measurements in four directions are usually executed in a row. In the years 1998 to 2001 a slightly modified setup was

used where a cooled Reticon photodiode array served as the detector. Furthermore there was only one off-axis direction possible which was chosen to be 4° above the horizon.

2.2. Data analysis

5 The spectra measured with the above described setup are analysed using the well known DOAS method (Platt, 1994). In this technique, only the narrowband, i.e. the differential structures of the absorption cross-sections are used to identify absorbers and quantify their integrated amount along the light path. Broadband absorption and extinction by Mie and Rayleigh scattering and broadband instrumental features are removed by a polynomial of low order. This polynomial as well as the differential absorption cross-sections of all relevant absorbers together with a reference spectrum usually taken at high sun is fitted to the logarithm of the measured spectra. To account for the effects of Raman scattering in the atmosphere, a pseudo cross-section was created with the SCIATRAN model (Vountas et al., 2001) which is treated as an additional absorber (Ring) in the analysis. The DOAS fit algorithm yields the so-called differential slant column (DSC) which represents the excess absorption – with respect to the absorption in the reference spectrum – along the light path. For the O_2-O_2 dimer a spectral fitting window from 354 to 387 nm was chosen which includes two of the three strong absorption lines in the wavelength region covered by the instrument. In this window ozone is a weak absorber. Only NO_2 , BrO and a synthetic Ring cross-section as well as the noon spectrum of the respective day together with a polynomial of third order were fitted to the measured spectrum. An example of an O_4 fit is shown in Fig. 2.

2.3. MAX-DOAS and geometry

25 Among other things the slant column of an absorber depends on the position of the sun. Two angles describe the movement of the sun relative to the telescope during

Title Page

Abstract

Introduction

Conclusions

References

Tables

Figures

◀

▶

◀

▶

Back

Close

Full Screen / Esc

Print Version

Interactive Discussion

**MAX-DOAS
measurements in
Ny-Ålesund**F. Wittrock et al.

[Title Page](#)[Abstract](#)[Introduction](#)[Conclusions](#)[References](#)[Tables](#)[Figures](#)[◀](#)[▶](#)[◀](#)[▶](#)[Back](#)[Close](#)[Full Screen / Esc](#)[Print Version](#)[Interactive Discussion](#)

© EGU 2003

the day: the solar zenith angle (SZA) and the relative azimuth which is the azimuth angle between the direction of the telescope and the direction of the sun. For zenith sky measurements the relative azimuth is irrelevant. However, for off-axis directions the relative azimuth has to be taken into consideration which will be shown below.

5 The elevation angle indicates the pointing of the telescope and is defined by the angle between the tangential plane of the earth's surface and the direction of the telescope. Thus an elevation angle of 90° denotes zenith sky.

By means of the slant column's diurnal cycle it can be determined if a gas mainly absorbs in the troposphere or in the stratosphere. For zenith sky measurements a simple model that only takes single scattering of the light into account is able to illustrate the basic mechanisms: The photons cover a long and slant distance from the sun to the upper atmosphere before getting scattered in the zenith into the telescope. The most likely scattering height depends on the solar zenith angle and displaces rapidly upward with the sinking sun. For a stratospheric absorber the slant column increases with increasing SZA as long as the scattering height lies initially below and then within the absorbing layer. If at very low sun the most likely scattering height is situated above the absorbing layer the slant column decreases in turn. A tropospheric trace gas absorbs below the most likely scattering height along a relatively short light path which changes only slightly with the solar zenith angle. This model is a good approximation for stratospheric absorbers. In the troposphere multiple scattering gains in importance. Additional information on the vertical profile can be obtained by horizon viewing directions. The light path for this geometry is enhanced in the lower atmosphere compared to zenith sky measurements (see Fig. 3). In the measurements described here, the four off-axis directions are chosen to lay particular emphasis on absorption in the troposphere. They comprise the elevation angles 3° , 6° , 10° and 18° . In this case the photon path is dominated by multiple scattering effects which necessitate comparison of the measured slant columns with model calculations in order to gain vertical columns and profile information of the absorbers. An illustration of the sensitivity the different viewing modes have for absorbers located in different altitudes is given in Fig. 4. While

the zenith sky direction has a low sensitivity to the lower atmosphere, the 18° direction is already more sensitive to the troposphere in general and the lower viewing directions have increasing sensitivity to the boundary layer.

3. Radiative transfer modelling

5 The output of the DOAS analysis are slant columns that give the amount of absorber integrated along the effective light path. To convert these into vertical columns (VC) which are independent of the viewing geometry, airmass factors (AMFs) have to be calculated with a radiative transfer model. The AMF describes the weighting of the absorption as a function of solar zenith angle and relative azimuth as well as the wave-
10 length of the radiation and is defined by the ratio of the slant column to the vertical column:

$$\text{AMF} = \text{SC} / \text{VC} \quad (1)$$

Thus the diurnal cycle of the AMF follows that of the slant column unless the total amount or vertical profile of the absorber changes in the course of the day.

15 3.1. The model SCIATRAN

Within this work the radiative transfer model SCIATRAN ([Rozanov et al., 2000](#)) (CDIPI-version: combined differential-integral approach involving the Picard iterative approximation) was used to calculate the airmass factors. In this model the full spherical radiative transfer equation is converted into an integral form by using the characteristic
20 method. This integral form is solved in an iteration scheme for the intensity. As initial estimate for the diffuse radiation field the output of a pseudo-spherical approach to the radiative transfer equation is used. The interested reader can find a detailed description of the model SCIATRAN together with all relevant equation elsewhere ([Rozanov et al., 2000, 2001](#)). In order to calculate airmass factors SCIATRAN is conducting two

Title Page

Abstract

Introduction

Conclusions

References

Tables

Figures

◀

▶

◀

▶

Back

Close

Full Screen / Esc

Print Version

Interactive Discussion

[Title Page](#)
[Abstract](#)[Introduction](#)[Conclusions](#)[References](#)[Tables](#)[Figures](#)[◀](#)[▶](#)[◀](#)[▶](#)[Back](#)[Close](#)[Full Screen / Esc](#)[Print Version](#)[Interactive Discussion](#)

© EGU 2003

runs for the radiance I : One with the selected absorber (I_{+j}) and one without (I_{-j}). Then the AMF is obtained by:

$$\text{AMF}_j(\lambda) = \frac{\ln(I_{+j}(\lambda)/I_{-j}(\lambda))}{\text{VOD}_j(\lambda)} \quad (2)$$

where VOD_j is the vertical optical depth of the whole atmosphere for the absorber j and λ is the wavelength. This approach assumes an optically thin atmosphere, a condition that usually is fulfilled in the measurements presented here.

4. Sensitivity studies for O_4

When modelling the radiative transfer in the atmosphere, a number of parameters has to be set to realistic values. The most important ones are the viewing geometry, the position of the sun, wavelength, and the vertical profiles of absorbers, pressure and temperature. However, surface albedo and the atmospheric aerosol loading also have an impact on the results. For simplicity, all calculations in this work were made without consideration of clouds.

In Ny-Ålesund at least weekly profiles for the absorber ozone and daily temperature and pressure profiles of the atmosphere are available through ozone soundings and radiosondes, respectively. Above the burst height of the balloon the profiles are completed with values from a model climatology provided by the MPI (Brühl and Crutzen, 1992). In the following sections, the influence of multiple scattering, the relative azimuth, surface albedo, aerosols and the refraction on the O_4 AMF and consequently the vertical column are investigated with model data. Such sensitivity studies are necessary to determine which parameters need to be known to which accuracy to derive realistic vertical columns from the measurements. All of the following results are presented in the form of a ratio between a reference airmass factor AMF^{Ref} of a standard scenario with the airmass factor AMF' obtained with one of the above mentioned parameters changed. This ratio indicates the error in the vertical column that is introduced

**MAX-DOAS
measurements in
Ny-Ålesund**F. Wittrock et al.

[Title Page](#)[Abstract](#)[Introduction](#)[Conclusions](#)[References](#)[Tables](#)[Figures](#)[◀](#)[▶](#)[◀](#)[▶](#)[Back](#)[Close](#)[Full Screen / Esc](#)[Print Version](#)[Interactive Discussion](#)

© EGU 2003

when setting the respective parameter to an inappropriate value. For the reference AMF, the atmospheric profile from 3 April 2002 was used and a Fraunhofer reference spectrum taken at 60° SZA in the zenith direction was assumed. All calculations shown have been done for 370 nm (the center of the O₄ fitting window), an albedo of 0.5, a background arctic aerosol (Herber, 2000, see Fig. 11) and full multiple scattering and refraction.

It is important to note, that the sensitivity studies are presented in the form in which the AMF will be applied to the actual measurement. Therefore, not the absolute AMF but rather the difference in AMF between a horizon measurement and the background zenith measurement at 60° SZA is used for the comparison with the reference scenario. This relative quantity sometimes has a larger sensitivity to changes in model parameters than the absolute AMFs, but as it reproduces the real measurement situation, it seems the appropriate choice.

4.1. Multiple scattering

For a qualitative interpretation of MAX-DOAS measurements, simple geometric considerations have sometimes been used to estimate the airmass factors (see Sect. 2.3). However, in the troposphere multiple scattering can not be ignored, and using a single scattering approximation introduces large errors. This is illustrated in Fig. 5, where for an elevation angle of 6° the underestimation of the vertical column increases from a few percent at high sun to more than 50% at low sun depending on the relative azimuth. As is to be expected, the influence of multiple scattering increases with decreasing elevation angle (not shown). The reason for the large impact of multiple scattering is twofold: on one hand, the airmass factor for the zenith sky measurement increases with multiple scattering, thereby decreasing the difference between horizon and zenith measurement. On the other hand, the airmass factor for the horizon viewing mode is slightly increased by multiple scattering for high sun, but clearly decreased at low sun. The combination of both effects results in the behaviour shown in Fig. 5.

4.2. Relative azimuth

When analysing the O_4 columns measured under different elevation angles on a clear day, it is apparent that the values do not only depend on solar zenith angle as in the case of zenith sky measurements, but also vary with the relative azimuth angle. This is shown in Fig. 6 for measurements from 26 April 2003. As the instrument is pointed towards the NNW, the relative azimuth varies over the day, and morning and afternoon measurements taken at the same SZA differ significantly. In order to evaluate the impact of the relative azimuth between measurement direction and the sun, air mass factors have been calculated for different elevation angles (3° , 10° and 18°) and then sorted according to the relative azimuth. The main effect is, that the AMF is significantly smaller when looking towards the sun, in particular for higher elevation angles (see Fig. 7). This is a result of the strong forward peak in Mie scattering, that reduces the effective light path in this geometry. The effect on the difference between the horizon AMF and the zenith AMF can be quite large as shown in Fig. 8. Here, the error of the vertical columns is shown that is introduced when using a deviating azimuth instead of the correct relative azimuth of 90° in the AMF calculations. The azimuth effect is relevant for all elevation angles, and is largest for higher elevations and a small relative azimuth. For all azimuth angles pointing away the sun the error is smaller than 10% for SZAs less than 93° .

From the results of this test we conclude, that it is preferable to point a horizon viewing instrument away from the sun (This is not practicable at high latitudes!), and that the correct azimuth has to be taken into account in the AMF calculation.

4.3. Albedo

Surface albedo changes have a significant impact on the intensity of the diffuse radiation field close to the surface. In Ny-Ålesund, very different albedo values can be found depending on season and viewing direction, for example when comparing snow covered ground and open water. To study the impact of albedo on the AMF, calculations

Title Page

Abstract

Introduction

Conclusions

References

Tables

Figures

◀

▶

◀

▶

Back

Close

Full Screen / Esc

Print Version

Interactive Discussion

**MAX-DOAS
measurements in
Ny-Ålesund**F. Wittrock et al.

[Title Page](#)[Abstract](#)[Introduction](#)[Conclusions](#)[References](#)[Tables](#)[Figures](#)[◀](#)[▶](#)[◀](#)[▶](#)[Back](#)[Close](#)[Full Screen / Esc](#)[Print Version](#)[Interactive Discussion](#)

© EGU 2003

with the albedo of freshly fallen snow (0.9) and a very small albedo (0.01) are compared to a medium albedo of 0.5. For the lowest elevation angle (3°) the vertical column will be relatively constant underestimated when a too small albedo is assumed and overestimated when the albedo is too high (Fig. 9). At an elevation of 18° the same trend can be observed for the directions pointing away from the sun. However, for the direction towards the sun, i.e. 0° azimuth, using a wrong albedo has a big impact on the vertical column (see the Sect. 4.2). For relative azimuths larger than 45° , the error introduced by using an inappropriate albedo is generally less than 20%. Figure 10 shows the relative AMF, i.e. the difference between the actual AMF and the AMF of midday at 60° SZA. As can be seen, the difference is decreasing with increasing albedo. This results in a higher relative sensitivity of the off-axis measurements for a small albedo which at first glance is surprising. The reason for this unexpected behaviour is not so much the effect of high albedo on the low elevation measurements but an increased sensitivity of the zenith-sky viewing direction. For high albedo the number of photons scattered close to the ground is larger, making the zenith-sky measurements more sensitive to absorption in the troposphere. This reduces the difference in AMF between horizon and zenith-sky viewing directions.

In summary, the impact of albedo changes on the AMF is significant, in particular when looking towards the sun. Good albedo estimates are needed for the analysis (or have to be derived from the measurements themselves) and again it is simplifying the analysis if the telescope is pointed away from the sun.

4.4. Aerosols

The optical properties of aerosols are determined by their composition, their shape and relative humidity. For the impact on the AMFs, the vertical distribution of the aerosols also plays an important role. In general, increasing the aerosol extinction reduces the light path for the lower viewing directions but has little impact on the zenith directions, thereby reducing the difference in tropospheric absorption path for the different viewing directions. For the sensitivity studies, a simplified vertical extinction profile – based on

**MAX-DOAS
measurements in
Ny-Ålesund**F. Wittrock et al.

[Title Page](#)[Abstract](#)[Introduction](#)[Conclusions](#)[References](#)[Tables](#)[Figures](#)[◀](#)[▶](#)[◀](#)[▶](#)[Back](#)[Close](#)[Full Screen / Esc](#)[Print Version](#)[Interactive Discussion](#)

measurements in Svalbard during the ASTAR-Campaign 2000 (Herber, 2000) – was used. In the troposphere, a marine aerosol type was chosen, aged volcanic aerosol for the stratosphere and above that meteor dust. The standard extinction coefficient is shown in Fig. 11. The relative humidity was set to 50% in the lowermost 5 km of the atmosphere. In this study, only the total extinction was changed: The background scenario is compared with very strong extinction as would be observed in an arctic haze event (Herber, 2000) and with no aerosols at all, i.e. zero extinction coefficient throughout the whole atmosphere. The results are shown in Fig. 12 for three elevation angles. For the lowest elevation, the light path increases with decreasing extinction, and using a high aerosol scenario instead of the standard scenario will lead to a 10% overestimation of O_4 . Similarly, using a Rayleigh atmosphere in the airmass factor calculations will lead to a 10–20% underestimation of the real column. For higher elevations, the sensitivity to aerosols decreases, but azimuth effects are more important. In particular, the 0° azimuth direction (pointed towards the sun) is very sensitive to changes in the aerosol extinction, mainly because the airmass factor for this direction is very close to the one of the zenith sky background measurement (see Fig. 7).

4.5. Refraction

As a result of refraction in the atmosphere, the solar disc can be seen during dusk and dawn for some time even when it is geometrically below the horizon. In the SCIATRAN model, including refraction in the horizon viewing geometry is computationally expensive, and therefore the effect of neglecting refraction on the AMF was evaluated. As can be seen in Fig. 13, the error in the vertical would be well below 1% at SZAs smaller than 80° and depending on viewing geometry (elevation and azimuth) and increases for larger SZA. Thus, in most cases refraction is of minor importance.

4.6. Summary of the model studies

The results of the model studies for O_4 show, that multiple scattering can not be ignored, whereas refraction has only a minor impact on the results. The relative azimuth between sun and viewing direction has a significant effect and has always to be taken into account, in particular when the instrument is not pointed away from the sun and/or at high latitudes. The effect is much more pronounced when the realistic case of a zenith sky background spectrum with non negligible O_4 content is considered. Both, aerosol extinction and surface albedo can have a large effect on the airmass factors, and determining these parameters is crucial for a quantitative retrieval. The albedo can be adequately determined through weather observation or Web Cam pictures whereas the aerosol scenario persists to be an element of uncertainty. However, the measurements from different lines of sight can be used to get aerosol information as is shown in (Heckel et. al., 2003). In all sensitivity studies, only one parameter was changed at a time to simplify interpretation. However, some of the parameters are clearly not independent from each other, and for example the effect of surface albedo might vary with aerosol extinction. Also, absorbers with a different vertical profile will not behave exactly as O_4 does, in particular if they are confined to the boundary layer. However, the qualitative behaviour will be the same, and O_4 has the advantage of providing the opportunity to validate the model results.

5. Measurement results

An important test of the quality of the radiative transfer model used is comparison of modeled and measured O_4 vertical columns. In this section, vertical columns of O_4 on two selected days in 2002 and 2003 are shown, when weather conditions were stable and little clouds occurred. Actual meteorological profiles and albedo settings have been used for the radiation transport calculation. Starting with realistic aerosol scenarios (see Sect. 4.4) the extinction profile and the composition of the different aerosol layers

Title Page

Abstract

Introduction

Conclusions

References

Tables

Figures

◀

▶

◀

▶

Back

Close

Full Screen / Esc

Print Version

Interactive Discussion

have been changed until closure of vertical columns of O_4 for all lines of sight has been reached.

5.1. O_4

In Fig. 14, O_4 vertical columns are shown for 26 April 2003 and 13 July 2002. The first day was selected as it was exceptionally clear at least before 20:00 UT, the second as the NO_2 columns measured on that day show an interesting feature discussed in the next section.

When judging the quality of the O_4 vertical columns, three criteria have to be examined: a) how well the different viewing directions agree in the vertical column, b) how constant the derived vertical column is over the day, and c) how well the measured vertical column agrees with the value derived from the independent sonde measurement.

Overall the agreement between the vertical columns obtained from the different viewing directions is excellent on both days. The small scatter in the data from 13 July 2002 is related to very thin clouds that were sometimes observed on that day. The good agreement indicates, that the SCIATRAN model is capable of simulating the different light paths through the atmosphere with high accuracy.

When looking at the variation of the retrieved O_4 vertical column over the day, a systematic pattern is apparent in the April measurements. This pattern with an amplitude of roughly $100 \times 10^{40} \text{ molec}^2 \text{ cm}^{-5}$ is observed on some but not all days. It is related to the relative azimuth and probably indicates a mismatch between the aerosol phase function used in the model and the real value. However, the absolute variation is small (7% peak to peak) and does not have a big impact on the accuracy of the analysis.

The derived O_4 columns were also compared to the columns derived from sonde measurements. The latter yield $1495 \times 10^{40} \text{ molec}^2 \text{ cm}^{-5}$ on 23 April 2003, $1437 \times 10^{40} \text{ molec}^2 \text{ cm}^{-5}$ on 30 April 2003 and $1382 \times 10^{40} \text{ molec}^2 \text{ cm}^{-5}$ on 13 July 2002. As the temporal match is not perfect for April 2003, no direct comparison is possible. However, the derived value of $1441 \times 10^{40} \text{ molec}^2 \text{ cm}^{-5}$ is close to the numbers measured before and after by the sonde. The same is true for the second measure-

Title Page

Abstract

Introduction

Conclusions

References

Tables

Figures

◀

▶

◀

▶

Back

Close

Full Screen / Esc

Print Version

Interactive Discussion

ment, that agrees with the sonde within 4%.

In summary, the results of the comparison between the retrieved O_4 vertical columns and the independent measurements is very favourable, and lends confidence to the model performance and the retrieval approach.

5.2. NO_2 case study

To demonstrate the application of multi axis measurements to tropospheric pollution studies, measurements from 13 July were analysed for NO_2 . Usually, Ny-Ålesund is a clean air site with little NO_2 in the boundary layer, and only emissions by the local power generator can lead to occasional NO_2 peaks if the exhaust plume moves into the field of view of the instrument. However, in summer cruising ships frequently visit the harbour of Ny-Ålesund, and their emissions can be observed in the measurements as the instrument is pointed towards the fiord. This is of interest as model studies predict a significant impact of NO_x emissions from ships on the global tropospheric NO_x budget (Lawrence and Crutzen, 1999), but up to now there has been no experimental verification. In principle, automated MAX-DOAS observation could provide this type of missing evidence.

On 13 July (a reasonably clear day as can be seen from the O_4 measurements shown in Fig. 14) a cruising ship entered the fiord in the afternoon and stayed in the harbour of Ny-Ålesund for a few hours from 18:00 LT on. The NO_2 columns measured on that day are presented in Fig. 15 for two different scenarios: a clean air scenario with 30 ppt NO_2 in the boundary layer and a polluted scenario with 3 ppb NO_2 . The clean air scenario leads to consistent results in the morning hours, but later in the day the different viewing directions yield different vertical columns, indicating that the assumed vertical profile is not appropriate. The polluted scenario on the other hand fails to bring the morning measurements together but leads to good agreement during the pollution peak in the late afternoon, indicating that at that time roughly 3 ppb of NO_2 were present in the boundary layer. The lowest viewing direction (3°) does not line up as nicely as the other directions. This might be due to some clouds very close

**MAX-DOAS
measurements in
Ny-Ålesund**

F. Wittrock et al.

Title Page

Abstract

Introduction

Conclusions

References

Tables

Figures

◀

▶

◀

▶

Back

Close

Full Screen / Esc

Print Version

Interactive Discussion

**MAX-DOAS
measurements in
Ny-Ålesund**F. Wittrock et al.

to the horizon (see O_4 from 3° elevation angle between 18:00 and 20:00 UT in Fig. 14). Another reasonable explanation is a horizontal inhomogeneity in the NO_2 field. In the model calculations, the absorber concentrations can only vary with height, and any horizontal gradient will introduce differences between model and measurements. As the horizontal path through the boundary layer is of the order of 20 km for the lowest viewing direction, a change in NO_2 concentration along this light path is not unrealistic, in particular as the source is very localised.

6. Conclusions

A novel multi-axis UV/visible instrument (MAX-DOAS) has been described, that measures not only in the zenith direction, but also at several lines of sight close to the horizon. The instrument is operating in Ny-Ålesund in a 2 direction viewing mode since 1999 and with 5 viewing directions since March 2002.

Combination of the different viewing directions provides information on both tropospheric and stratospheric absorbers, and under clear sky conditions, some vertical profile information can be derived in the troposphere. To study the sensitivity of the measurements towards a number of parameters (multiple scattering, refraction, relative azimuth, surface albedo, and aerosols) model studies have been performed simulating the air mass factor for the oxygen dimer O_4 with the radiative transfer model SCIA-TRAN. The main results are that multiple scattering has an important impact on the results whereas refraction is only of minor importance. The relative azimuth between viewing direction and solar position is a relevant parameter and has to be considered in any air mass factor calculation. In particular when the instrument is pointing towards the sun, the sensitivity of the measurements is decreased and large relative changes in AMF are observed. Therefore, instruments should be pointed away from the sun where possible. Surface albedo and aerosols both play an important role. Increasing albedo reduces the sensitivity for absorption in the lowest layers as does increasing aerosol extinction. For quantitative studies, both parameters need to be well known

[Title Page](#)[Abstract](#)[Introduction](#)[Conclusions](#)[References](#)[Tables](#)[Figures](#)[◀](#)[▶](#)[◀](#)[▶](#)[Back](#)[Close](#)[Full Screen / Esc](#)[Print Version](#)[Interactive Discussion](#)

© EGU 2003

**MAX-DOAS
measurements in
Ny-Ålesund**F. Wittrock et al.

[Title Page](#)[Abstract](#)[Introduction](#)[Conclusions](#)[References](#)[Tables](#)[Figures](#)[◀](#)[▶](#)[◀](#)[▶](#)[Back](#)[Close](#)[Full Screen / Esc](#)[Print Version](#)[Interactive Discussion](#)

© EGU 2003

from external information or by retrieving them from O_4 measurements.

The modeled AMF have been applied to measurements of O_4 , and good agreement could be achieved between the results from different viewing directions. This is a crucial test of the ability to model the radiative transfer for this viewing geometry, and a prerequisite for application to other trace species.

As a sample application, one day of measurements in July 2002 have been analysed for NO_2 . In the morning of that day, clean background conditions prevailed and the analysis assuming 30 ppt of NO_2 in the boundary layer yields consistent results for all viewing directions. In the afternoon, NO_2 columns observed with the lower viewing directions increased very much, and mixing ratios of up to 3 ppb in the boundary layer were retrieved from the data. The high NO_2 episode coincides with the visit of a cruise ship in the harbour of Ny-Ålesund, and NO_x emissions from this ship are the most probable source of the observed plume.

In summary, Multi-Axis DOAS measurements are a promising tool for automated continuous measurements of several tropospheric species such as NO_2 , BrO, SO_2 , HCHO, and O_3 . Quantitative analysis of the measurements depends on a number of parameters in the radiative transfer, and models such as SCIATRAN are now in a position to include all these factors with the necessary accuracy.

Acknowledgements. We wish to thank the Alfred-Wegener-Institute for Polar Research in particular the NDSC station engineers, without whom this study would not have been possible. We kindly acknowledge A. Herber from the Alfred-Wegener-Institute for providing aerosol data and P. von der Gathen for the sonde data. Parts of this work have been funded by the University of Bremen, the European Union under contract EVK2-CT2000-00059 (QUILT) and the German ministry for Science and Education (BMBF).

References

Bobrowski, N., Hönninger, G., Galle, B., and Platt, U.: Detection of bromine monoxide in a volcanic plume, *Nature*, 423, 273–276, 2003. [6111](#)

**MAX-DOAS
measurements in
Ny-Ålesund**F. Wittrock et al.

[Title Page](#)[Abstract](#)[Introduction](#)[Conclusions](#)[References](#)[Tables](#)[Figures](#)[◀](#)[▶](#)[◀](#)[▶](#)[Back](#)[Close](#)[Full Screen / Esc](#)[Print Version](#)[Interactive Discussion](#)

© EGU 2003

- Brühl, C. and Crutzen, P.: Chemo-dynamical model of the stratosphere: profile data base, personal communication, 1993. [6118](#)
- Frieß, U., Wagner, T., Pundt, I., Pfeilsticker, K., and Platt, U.: Spectroscopic measurements of tropospheric Iodine oxide at Neumayer station, Antarctica, Geophys. Res. Lett., 28, 1941–1944, 2001. [6110](#)
- 5 Greenblatt, G. D., Orlando, J. J., Burkholder, J. B., and Ravishankara, A. R.: Absorption measurements of oxygen between 330 and 1140 nm, J. Geophys. Res., D95, 18577–1858, 1990. [6112](#)
- Heckel, A., Richter, A., Tarsu, T., Wittrock, F., Hak, C., Junkermann, W., and Burrows, J. P.: DOAS off-axis measurements of Formaldehyde, paper in preparation for ACP, 2003. [6123](#)
- 10 Herber, A., personal communication, 2000. [6119](#), [6122](#)
- Hönninger G. and Platt U.: The Role of BrO and its Vertical Distribution during Surface Ozone Depletion at Alert, Atmos. Environ., 36, 2481–2489, 2002. [6111](#), [6112](#)
- Johnston, P. V., and McKenzie, R. L.: NO₂ observations at 45°S during the decreasing phase of solar cycle 21, from 1980 to 1987, J. Geophys. Res., D94, 3473–348, 1989. [6110](#)
- 15 Lawrence, M. and Crutzen, P.: Influence of NO_x emissions from ships on tropospheric photochemistry, Nature, 402, 167–170, 1999. [6125](#)
- Leser, H., Hönninger, G., and Platt, U.: MAX-DOAS measurements of BrO and NO₂ in the marine boundary layer, Geophys. Res. Lett., 30, 10, doi:10.1029/2002GL015811, 2003. [6111](#)
- 20 Miller, H. L., Weaver, A., Sanders, R. W., Arpag, K., and Solomon, S.: Measurements of Arctic sunrise surface ozone depletion events at Kangerlussuaq, Greenland (67° N, 51° W), Tellus, 49B, 496–509, 1997. [6111](#)
- Noxon, J. F., Nitrogen dioxide in the stratosphere and troposphere measured by ground-based absorption spectroscopy, Science, 189, 547–549, 1975. [6110](#)
- 25 Noxon, J. F., Norton, R. B., and Henderson, W. R.: Observation of atmospheric NO₃, Geophys. Res. Lett., 5, 675–678, 1978. [6110](#)
- Oriel: The Book of Photon Tools, distributed by Oriel Corporation, available through the World Wide Web at <http://www.oriel.com>, 2001. [6114](#)
- Perliski, L. M. and Solomon, S.: On the evaluation of air mass factors for atmospheric near-ultraviolet and visible absorption spectroscopy, J. Geophys. Res., 98, D6, 10363–10374, 1993. [6111](#)
- 30 Perner, D., and Platt, U.: Absorption of light in the atmosphere by collision pairs of oxygen (O₂)₂, Geophys. Res. Lett., 7, 1053–105, 1980. [6112](#)

**MAX-DOAS
measurements in
Ny-Ålesund**

F. Wittrock et al.

[Title Page](#)[Abstract](#)[Introduction](#)[Conclusions](#)[References](#)[Tables](#)[Figures](#)[◀](#)[▶](#)[◀](#)[▶](#)[Back](#)[Close](#)[Full Screen / Esc](#)[Print Version](#)[Interactive Discussion](#)

© EGU 2003

Platt, U.: Differential optical absorption spectroscopy (DOAS), in *Air Monitoring by Spectroscopic Techniques*, Chem. Anal. Ser., edited by Sigrist, M. W., 127, 27–84, John Wiley, New York, 1994. [6115](#)

Richter, A., Eisinger, M., Ladstätter-Weißenmayer, A., and Burrows, J. P.: DOAS zenith sky observations. 2. Seasonal variation of BrO over Bremen (53° N) 1994–1995, *J. Atm. Chem.*, 32, 83–99, 1999. [6110](#)

Rozanov, A., Rozanov, V. V., and Burrows, J. P.: Combined differential-integral approach for the radiation field computation in a spherical shell atmosphere: Nonlimb geometry, *J. Geophys. Res.*, 105, D18, 22,937, 2000. [6117](#)

Rozanov, A., Rozanov, V. V., and Burrows, J. P.: A numerical radiative transfer model for a spherical planetary atmosphere: combined differential-integral approach involving the Picard iterative approximation, *Journal of Quantitative Spectroscopy and Radiative Transfer*, 69, 491, 2001. [6117](#)

Sanders, R. W., Solomon, S., Carroll, M. A., Smith, J. P., Perliski, L., Miller, H. L., Mount, G. H., Keys, J. G., and Schmeltekopf, A. L.: Visible and near-ultraviolet spectroscopy at McMurdo Station, Antarctica, 9: Observation of OCIO from April to October 1991, *J. Geophys. Res.*, 98, D1, 7219–7228, 1993. [6111](#)

Solomon, S., Schmeltekopf, A. L., and Sanders, R. W.: On the interpretation of zenith sky measurements, *J. Geophys. Res.*, 92, D7, 8311–8319, 1987. [6110](#), [6111](#)

Tørnkvist, K. K., Arlander, D. W., and Sinnhuber, B.-M.: Ground-Based UV Measurements of BrO and OCIO over Ny-Ålesund during Winter 1996 and 1997 and Andøya during Winter 1998/1999, *J. Atm. Chem.*, 43, 75–106, 2002. [6110](#)

Van Roozendael, M., Hermans, C., DeMaziere, M., and Simon, P. C.: Stratospheric NO₂ observations at the Jungfrauoch Station between June 1990 and May 1992, *Geophys. Res. Lett.*, 21, 1383–1386, 1994. [6110](#)

Van Roozendael, M., Fayt, C., Post, P., Hermans, C., Lambert, J.-C.: Retrieval of BrO and NO₂ from UV-Visible Observations, in: *Sounding the troposphere from space: a new era for atmospheric chemistry*, Springer-Verlag, ISBN 3-540-40873-8, edited by Borell, P. et al., 2003. [6111](#)

Vountas, M., Rozanov, V. V., and Burrows, J. P.: Impact of Raman Scattering on Radiative Transfer in Earth's atmosphere, *J. Quant. Spectrosc. Radiat. Transfer*, 60, 6, 943–961, 1998. [6115](#)

Wagner, T., von Friedeburg, C., Wenig, M., Otten, C., and Platt, U.: UV/vis observations of

atmospheric O₄ absorptions using direct moon light and zenith scattered sunlight under clear and cloudy sky conditions, J. Geophys. Res., 107, D20, 4424, 2002. [6112](#)
Wittrock, F., Müller, R., Richter, A., Bovensmann, H., and Burrows, J. P.: Observations of Iodine monoxide above Spitsbergen, Geoph. Res. Let., 27, 10, 1471–1474, 2000. [6110](#)

ACPD

3, 6109–6145, 2003

**MAX-DOAS
measurements in
Ny-Ålesund**

F. Wittrock et al.

Title Page

Abstract

Introduction

Conclusions

References

Tables

Figures

◀

▶

◀

▶

Back

Close

Full Screen / Esc

Print Version

Interactive Discussion

© EGU 2003

MAX-DOAS measurements in Ny-Ålesund

F. Wittrock et al.

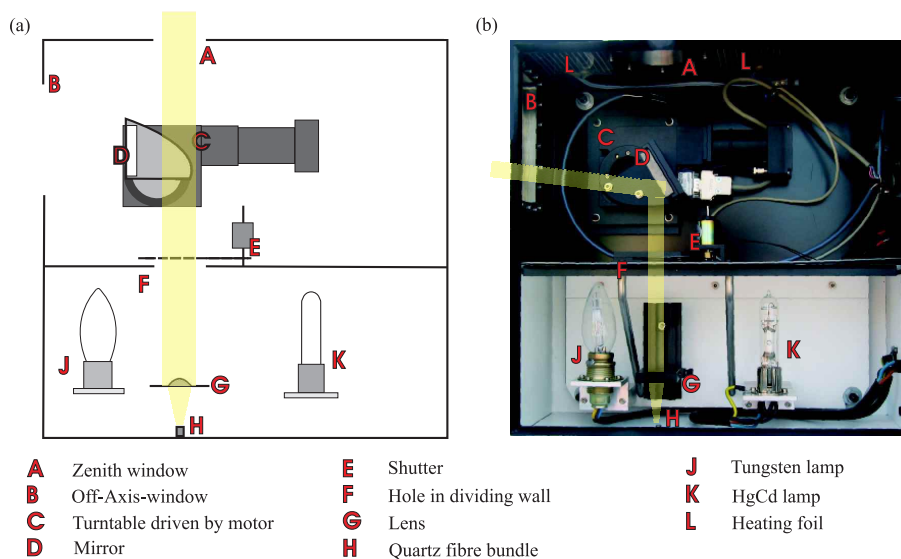


Fig. 1. Illustration of the MAX-DOAS entrance optic. The scheme on the left shows the position of the mirror for zenith sky observations, whereas the photo on the right was taken in the horizon viewing mode.

Title Page

Abstract

Introduction

Conclusions

References

Tables

Figures

◀

▶

◀

▶

Back

Close

Full Screen / Esc

Print Version

Interactive Discussion

© EGU 2003

**MAX-DOAS
measurements in
Ny-Ålesund**

F. Wittrock et al.

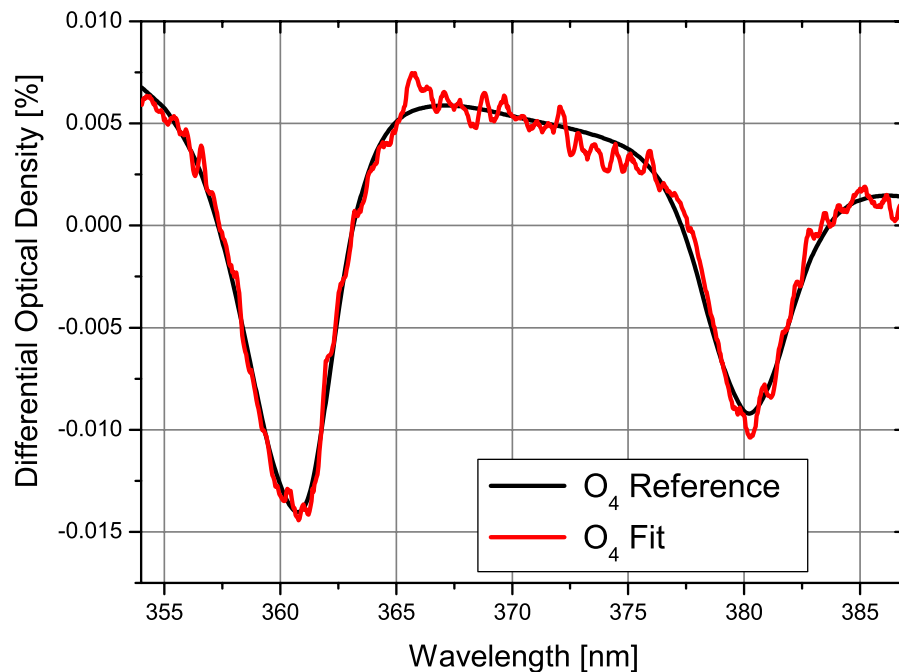


Fig. 2. Example of an O_4 fit for an elevation angle of 3° on 26 April 2003. The black solid line is the scaled laboratory reference, the red line the fit result. This fit yields an O_4 DSC of $5.16 \times 10^{43} \text{ molec}^2 \text{ cm}^{-5}$ having a linear fit error of 0.5%. As background for this fit a zenith sky noon spectrum was used. A polynomial of degree 3, NO_2 , BrO and a modeled Ring spectrum have been included.

[Title Page](#)[Abstract](#)[Introduction](#)[Conclusions](#)[References](#)[Tables](#)[Figures](#)[◀](#)[▶](#)[◀](#)[▶](#)[Back](#)[Close](#)[Full Screen / Esc](#)[Print Version](#)[Interactive Discussion](#)

© EGU 2003

**MAX-DOAS
measurements in
Ny-Ålesund**

F. Wittrock et al.

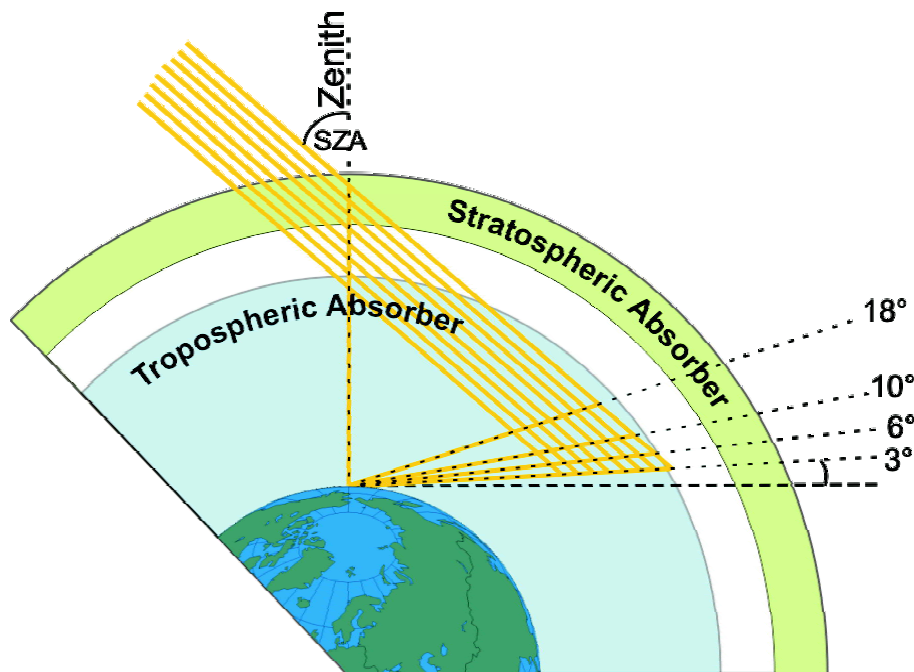


Fig. 3. Illustration of the MAX-DOAS geometry. Horizon viewing observations have a similar path through the stratosphere, whereas the light path in the troposphere is extended and increases with decreasing elevation angle.

[Title Page](#)[Abstract](#)[Introduction](#)[Conclusions](#)[References](#)[Tables](#)[Figures](#)[◀](#)[▶](#)[◀](#)[▶](#)[Back](#)[Close](#)[Full Screen / Esc](#)[Print Version](#)[Interactive Discussion](#)

© EGU 2003

**MAX-DOAS
measurements in
Ny-Ålesund**

F. Wittrock et al.

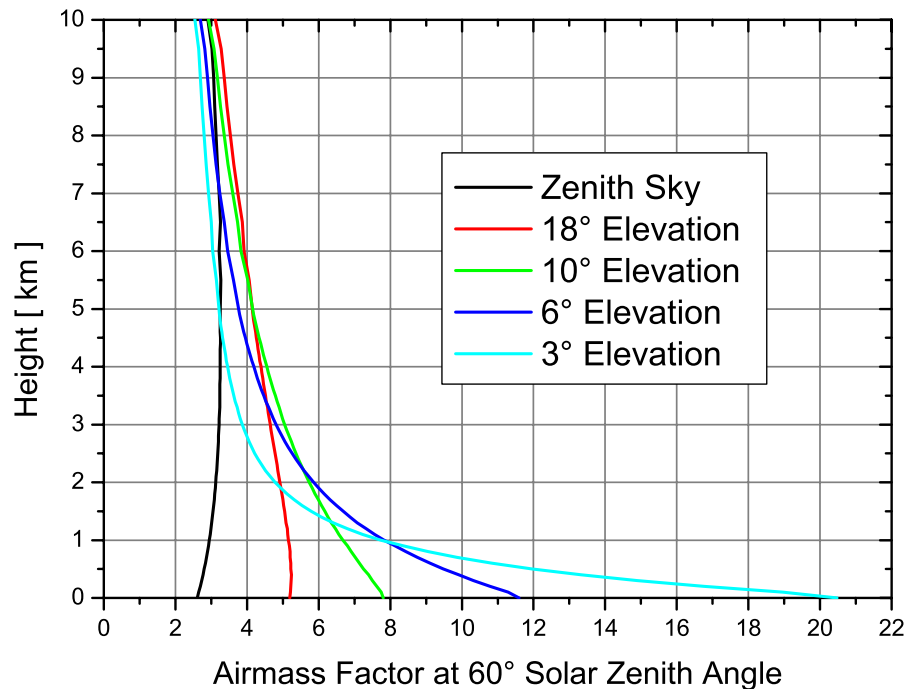


Fig. 4. Height dependence of the sensitivity for the different viewing directions at 60° SZA. The value on the x-axis is the airmass factor for a thin layer positioned in the height given on the y-axis. The large AMF for the 3° elevation viewing direction in the lowest layers indicates a large sensitivity to absorbers located close to the ground.

[Title Page](#)[Abstract](#)[Introduction](#)[Conclusions](#)[References](#)[Tables](#)[Figures](#)[◀](#)[▶](#)[◀](#)[▶](#)[Back](#)[Close](#)[Full Screen / Esc](#)[Print Version](#)[Interactive Discussion](#)

© EGU 2003

MAX-DOAS
measurements in
Ny-Ålesund

F. Wittrock et al.

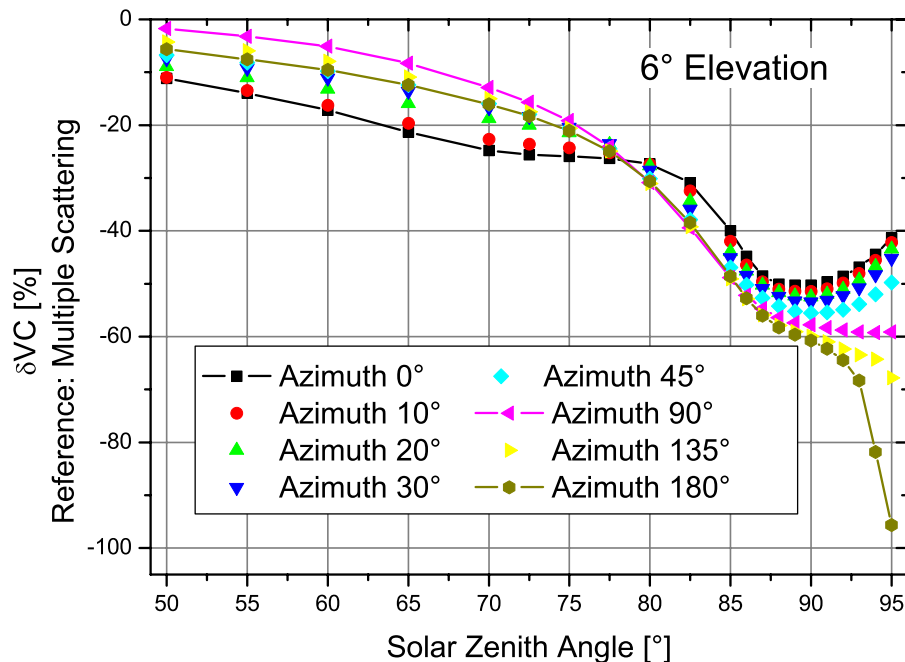


Fig. 5. Effect of neglecting multiple scattering on the calculated vertical column of O₄. For an elevation angle of 6° the vertical column will be underestimated, if only single scattering is taken into account for the airmass factor.

[Title Page](#)[Abstract](#)[Introduction](#)[Conclusions](#)[References](#)[Tables](#)[Figures](#)[◀](#)[▶](#)[◀](#)[▶](#)[Back](#)[Close](#)[Full Screen / Esc](#)[Print Version](#)[Interactive Discussion](#)

© EGU 2003

MAX-DOAS
measurements in
Ny-Ålesund

F. Wittrock et al.

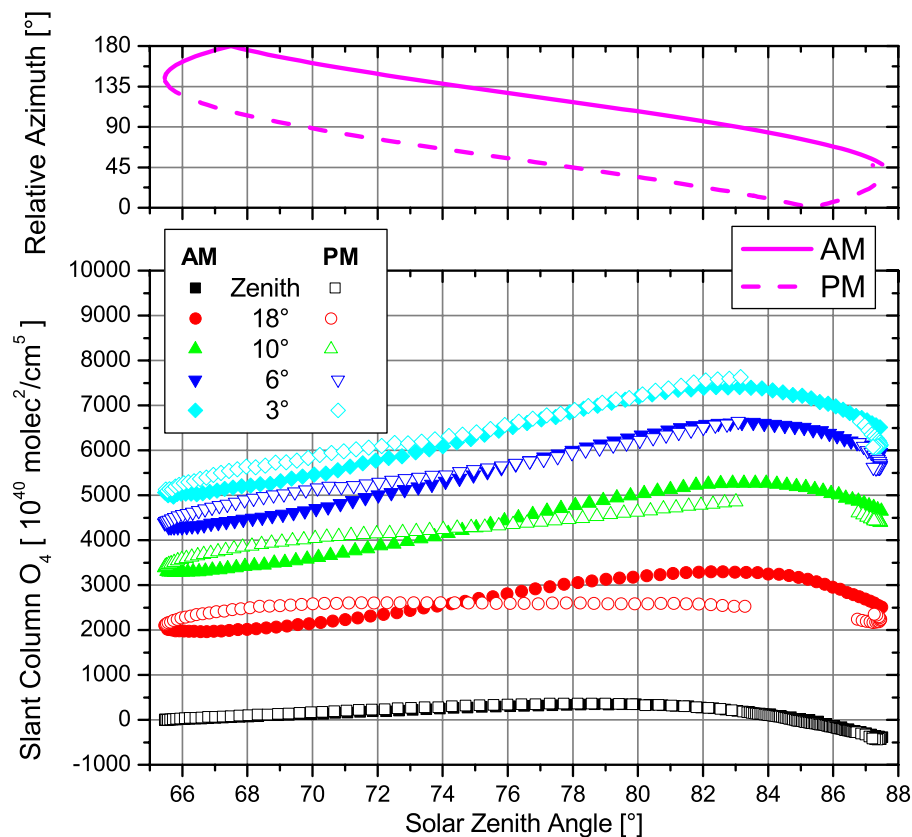


Fig. 6. Diurnal variation of the measured O_4 DSCs on 26 April 2003. As background the zenith noon spectrum from the same day was used. On this very clear day (only thin clouds in the late evening) the azimuthal dependency of the measured O_4 is clear.

[Title Page](#)[Abstract](#)[Introduction](#)[Conclusions](#)[References](#)[Tables](#)[Figures](#)[◀](#)[▶](#)[◀](#)[▶](#)[Back](#)[Close](#)[Full Screen / Esc](#)[Print Version](#)[Interactive Discussion](#)

© EGU 2003

**MAX-DOAS
measurements in
Ny-Ålesund**

F. Wittrock et al.

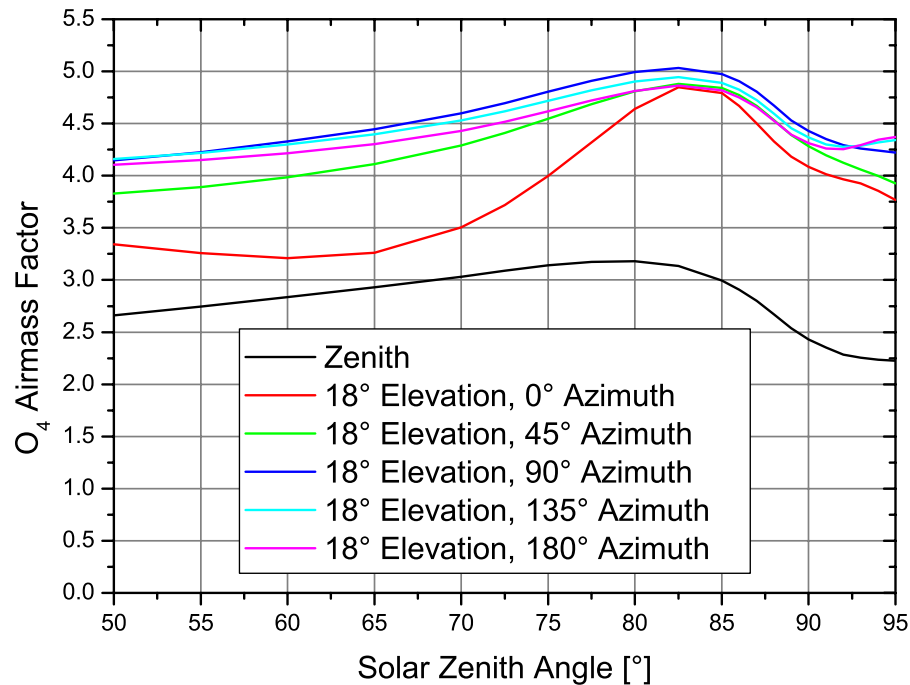


Fig. 7. Absolute airmass factors for O₄. Pointing the instrument towards the sun (0° relative azimuth) leads to decreasing differences between horizon and zenith sky AMF.

[Title Page](#)[Abstract](#)[Introduction](#)[Conclusions](#)[References](#)[Tables](#)[Figures](#)[◀](#)[▶](#)[◀](#)[▶](#)[Back](#)[Close](#)[Full Screen / Esc](#)[Print Version](#)[Interactive Discussion](#)

© EGU 2003

MAX-DOAS
measurements in
Ny-Ålesund

F. Wittrock et al.

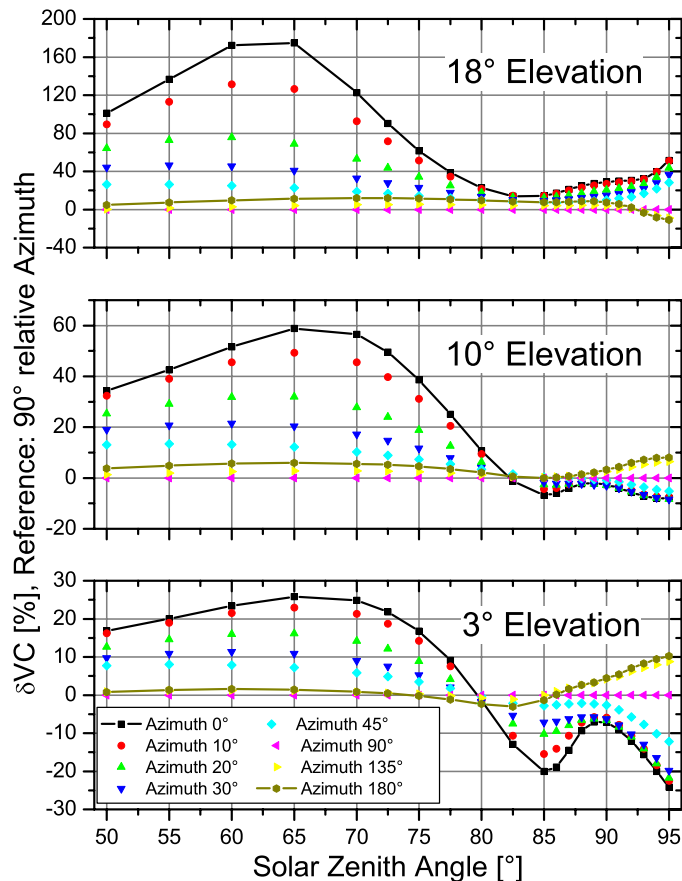


Fig. 8. Effect of the relative azimuth angle on the calculated VC. Shown is the error introduced in the vertical column of O_4 if an azimuth angle different from the 90° of the reference case is used in the airmass factor calculation.

[Title Page](#)[Abstract](#)[Introduction](#)[Conclusions](#)[References](#)[Tables](#)[Figures](#)[◀](#)[▶](#)[◀](#)[▶](#)[Back](#)[Close](#)[Full Screen / Esc](#)[Print Version](#)[Interactive Discussion](#)

© EGU 2003

MAX-DOAS
measurements in
Ny-Ålesund

F. Wittrock et al.

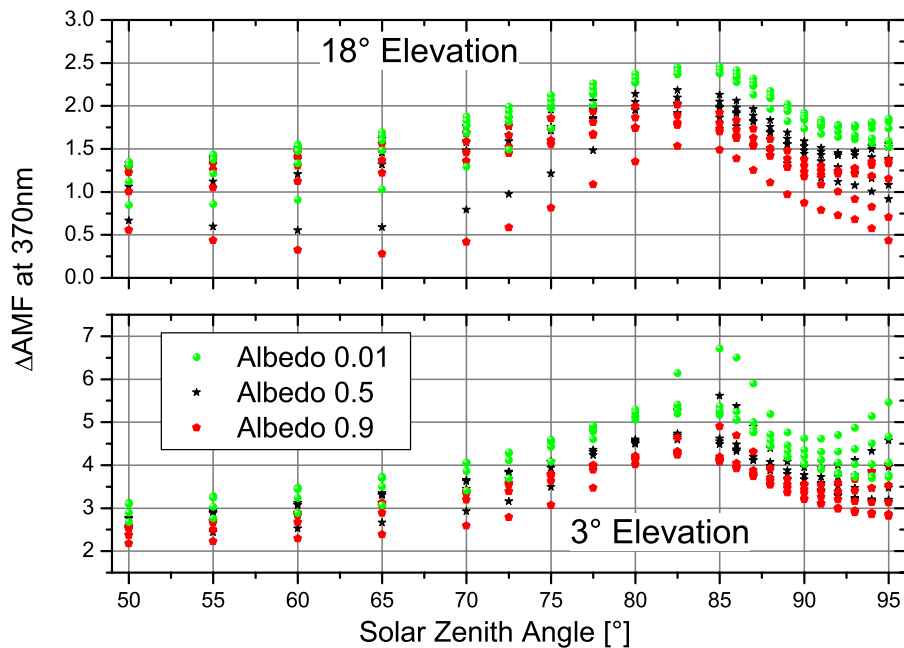


Fig. 9. Effect of the albedo on the calculated VC. Shown is the deviation introduced in the vertical column of O_4 if an albedo different from 0.5 of the reference is used in the airmass factor calculation.

[Title Page](#)[Abstract](#)[Introduction](#)[Conclusions](#)[References](#)[Tables](#)[Figures](#)[◀](#)[▶](#)[◀](#)[▶](#)[Back](#)[Close](#)[Full Screen / Esc](#)[Print Version](#)[Interactive Discussion](#)

© EGU 2003

**MAX-DOAS
measurements in
Ny-Ålesund**

F. Wittrock et al.

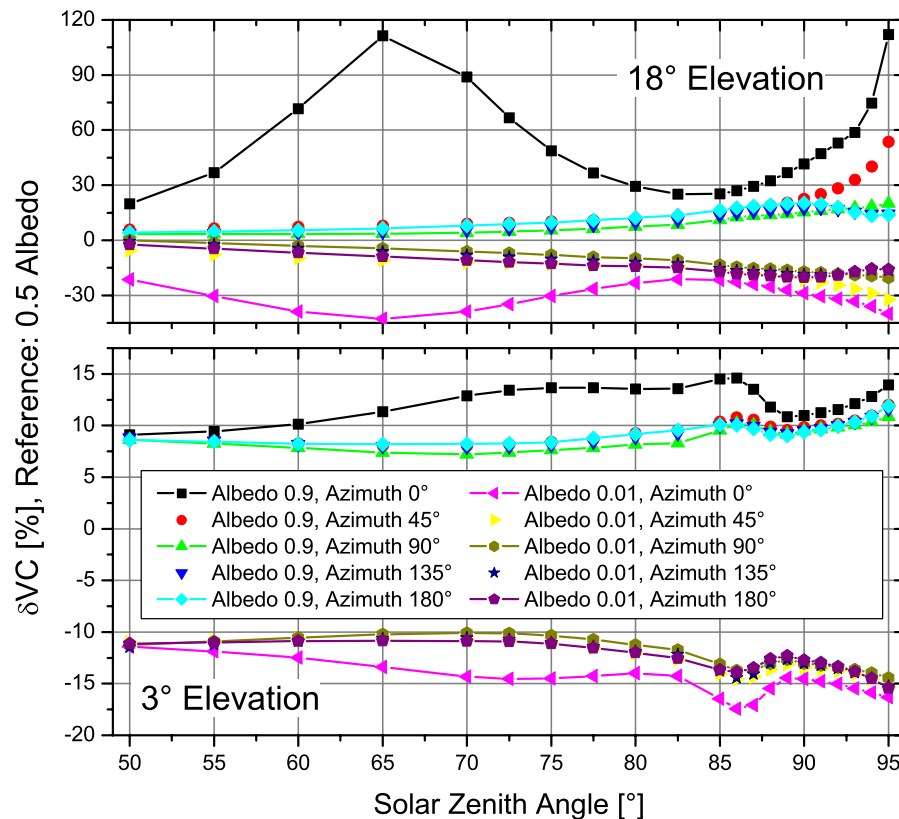


Fig. 10. Differences of AMF for O₄ calculated with different albedos. All relative azimuth angles from previous figures are plotted but for clearness not with extra symbols indicated. All AMF are related to the zenith sky AMF calculated at 60° solar zenith angle. Although absolute AMF are getting larger for increasing albedo, the inverse behaviour is true for AMF differences between off-axis and zenith sky.

[Title Page](#)
[Abstract](#)
[Introduction](#)
[Conclusions](#)
[References](#)
[Tables](#)
[Figures](#)
[◀](#)
[▶](#)
[◀](#)
[▶](#)
[Back](#)
[Close](#)
[Full Screen / Esc](#)
[Print Version](#)
[Interactive Discussion](#)

© EGU 2003

**MAX-DOAS
measurements in
Ny-Ålesund**

F. Wittrock et al.

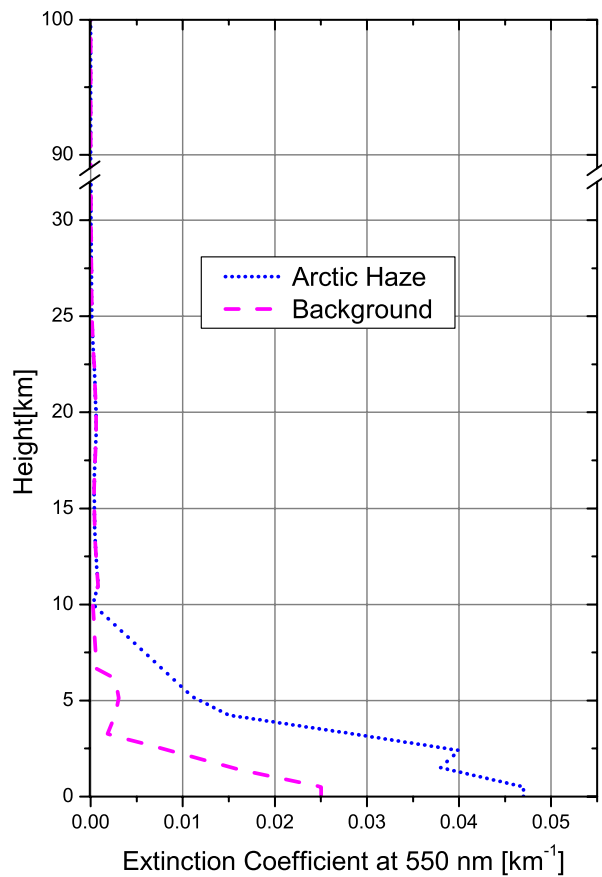


Fig. 11. Profiles of the aerosol extinction coefficient at 550 nm used for AMF calculations shown in Fig. 12.

[Title Page](#)[Abstract](#)[Introduction](#)[Conclusions](#)[References](#)[Tables](#)[Figures](#)[◀](#)[▶](#)[◀](#)[▶](#)[Back](#)[Close](#)[Full Screen / Esc](#)[Print Version](#)[Interactive Discussion](#)

© EGU 2003

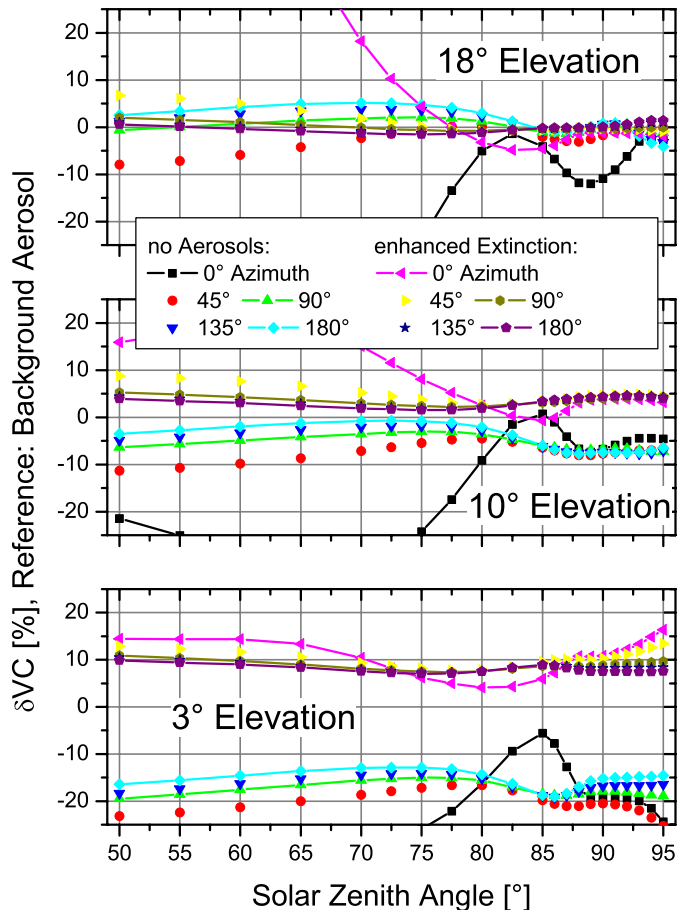


Fig. 12. Effect of the aerosol extinction profile on the calculated VC. Shown is the error introduced in the vertical column of O_4 if aerosol scenarios different from the background aerosol of the reference are used in the airmass factor calculation.

[Title Page](#)
[Abstract](#)
[Introduction](#)
[Conclusions](#)
[References](#)
[Tables](#)
[Figures](#)
[◀](#)
[▶](#)
[◀](#)
[▶](#)
[Back](#)
[Close](#)
[Full Screen / Esc](#)
[Print Version](#)
[Interactive Discussion](#)

MAX-DOAS
measurements in
Ny-Ålesund

F. Wittrock et al.

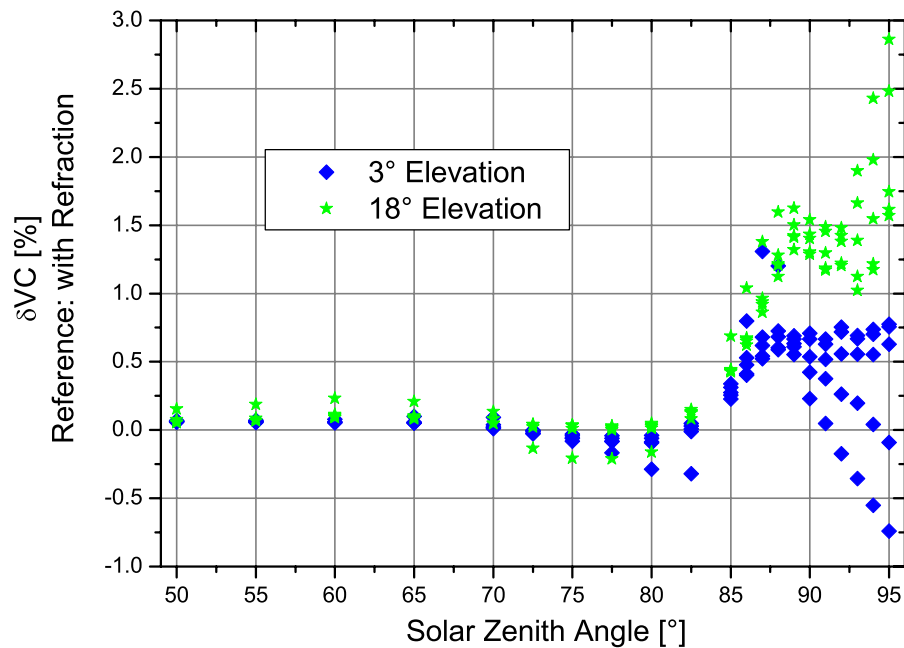


Fig. 13. Effect of neglecting refraction on the calculated VC. Only for solar zenith angles larger than 85° the introduced errors are larger than 0.5%.

[Title Page](#)[Abstract](#)[Introduction](#)[Conclusions](#)[References](#)[Tables](#)[Figures](#)[◀](#)[▶](#)[◀](#)[▶](#)[Back](#)[Close](#)[Full Screen / Esc](#)[Print Version](#)[Interactive Discussion](#)

© EGU 2003

**MAX-DOAS
measurements in
Ny-Ålesund**F. Wittrock et al.

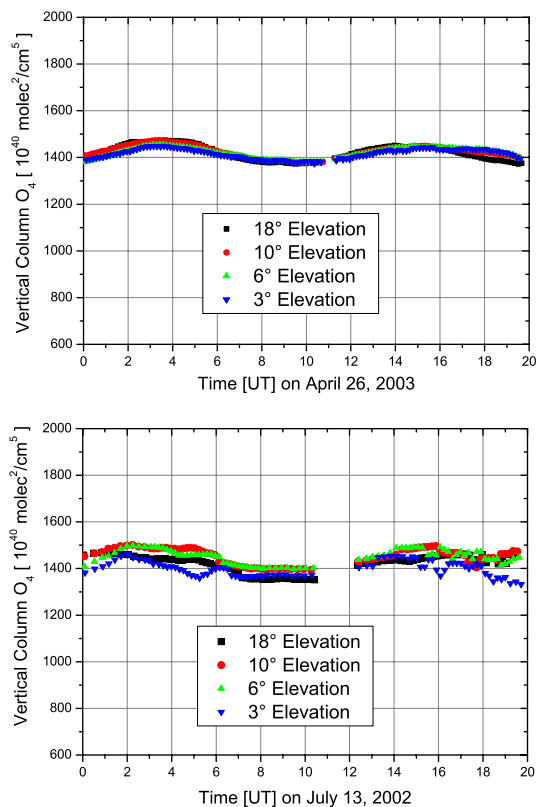


Fig. 14. Vertical columns of O₄ calculated for all off-axis directions on two selected days. See text for a detailed description.

[Title Page](#)[Abstract](#)[Introduction](#)[Conclusions](#)[References](#)[Tables](#)[Figures](#)[◀](#)[▶](#)[◀](#)[▶](#)[Back](#)[Close](#)[Full Screen / Esc](#)[Print Version](#)[Interactive Discussion](#)

© EGU 2003

MAX-DOAS measurements in Ny-Ålesund

F. Wittrock et al.

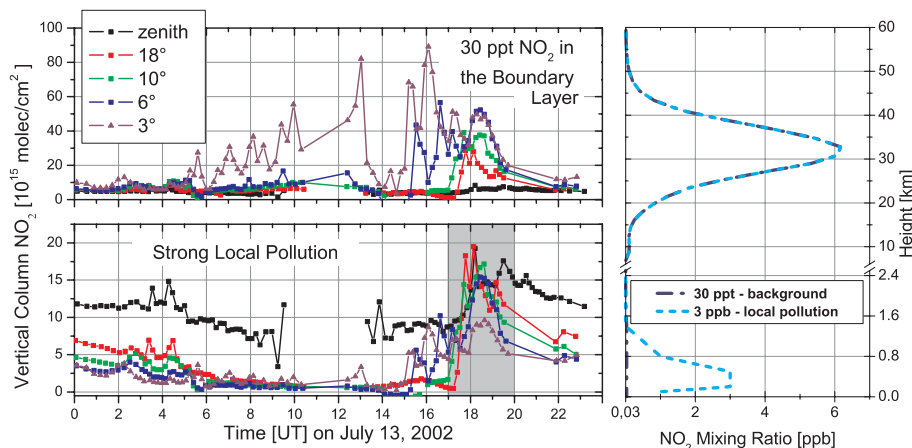


Fig. 15. NO_2 vertical columns on 13 July 2003 calculated for all off-axis directions with two different scenarios. Between 17:00 and 20:00 UT strong local pollution with 3 ppb in a layer close to the surface can be detected. Before 05:00 UT only 30 ppt in the boundary layer have been detected. This value is a typical background concentration of NO_2 around Ny-Ålesund.

[Title Page](#)
[Abstract](#)
[Introduction](#)
[Conclusions](#)
[References](#)
[Tables](#)
[Figures](#)
[◀](#)
[▶](#)
[◀](#)
[▶](#)
[Back](#)
[Close](#)
[Full Screen / Esc](#)
[Print Version](#)
[Interactive Discussion](#)

© EGU 2003