



HAL
open science

An investigation of processes controlling the evolution of the boundary layer aerosol size distribution properties at the Swedish background station Aspvreten

P. Tunved, J. Ström, H.-C. Hansson

► To cite this version:

P. Tunved, J. Ström, H.-C. Hansson. An investigation of processes controlling the evolution of the boundary layer aerosol size distribution properties at the Swedish background station Aspvreten. Atmospheric Chemistry and Physics Discussions, 2004, 4 (4), pp.4507-4543. hal-00301380

HAL Id: hal-00301380

<https://hal.science/hal-00301380v1>

Submitted on 18 Jun 2008

HAL is a multi-disciplinary open access archive for the deposit and dissemination of scientific research documents, whether they are published or not. The documents may come from teaching and research institutions in France or abroad, or from public or private research centers.

L'archive ouverte pluridisciplinaire **HAL**, est destinée au dépôt et à la diffusion de documents scientifiques de niveau recherche, publiés ou non, émanant des établissements d'enseignement et de recherche français ou étrangers, des laboratoires publics ou privés.

An investigation of processes controlling the evolution of the boundary layer aerosol size distribution properties at the Swedish background station Aspövreten

P. Tunved, J. Ström, and H.-C. Hansson

Institute for Applied Environmental Research, Stockholm University, SE-106 91, Stockholm, Sweden

Received: 11 June 2004 – Accepted: 1 July 2004 – Published: 20 August 2004

Correspondence to: P. Tunved (peter.tunved@itm.su.se)

**Evolution of the
boundary layer
aerosol size
distribution
properties**

P. Tunved et al.

Title Page

Abstract

Introduction

Conclusions

References

Tables

Figures

◀

▶

◀

▶

Back

Close

Full Screen / Esc

Print Version

Interactive Discussion

Abstract

Aerosol size distributions have been measured at the Swedish background station Aspvreten (58.8° N, 17.4° E). Different states of the aerosol were determined using a novel application of cluster analysis. The analysis resulted in eight different clusters capturing the different stages of the aerosol lifecycle. The aerosol was interpreted as belonging to fresh, intermediate and aged type of size distribution and different magnitudes thereof. With aid of back trajectory analysis we present statistics concerning the relation of source area and different meteorological parameters using a non-lagrangian approach. Source area is argued to be important although not sufficient to describe the observed aerosol properties. Especially processing by clouds and precipitation is shown to be crucial for the evolution of the aerosol size distribution. As much as 60% of the observed size distributions present features likely related to cloud processes or wet deposition. The lifetime properties of different sized aerosols are discussed by means of measured variability. Processing by non-precipitating clouds most obviously affect aerosols in the size range 100 nm and larger. This indicates an approximate limit for activation in clouds to 100 nm in this type of environment. The aerosol lifecycle is discussed. Size distributions bearing signs of recent new particle formation (~30% of the observed size distributions) represent the first stage in the lifecycle. Aging may proceed in two directions: either growth by condensation and coagulation or processing by non-precipitating clouds. In both cases mass is accumulated. Wet removal is the main process capable of removing aerosol mass. Wet deposition is argued to be an important mechanism in reaching a state where nucleation may occur (i.e. sufficiently low aerosol surface area) in environments similar to the one studied.

1. Introduction

The aerosols are poorly characterized in global climate models (National Research Council Panel on Aerosol Radiative Forcing and Climate Change, 1996). The lack

Evolution of the boundary layer aerosol size distribution properties

P. Tunved et al.

Title Page

Abstract

Introduction

Conclusions

References

Tables

Figures

◀

▶

◀

▶

Back

Close

Full Screen / Esc

Print Version

Interactive Discussion

**Evolution of the
boundary layer
aerosol size
distribution
properties**P. Tunved et al.

[Title Page](#)[Abstract](#)[Introduction](#)[Conclusions](#)[References](#)[Tables](#)[Figures](#)[◀](#)[▶](#)[◀](#)[▶](#)[Back](#)[Close](#)[Full Screen / Esc](#)[Print Version](#)[Interactive Discussion](#)

of a proper representation concerning chemical properties and size distribution of the aerosol in global and regional models is the major reason why direct and the indirect climate effects (Twomey, 1974) of the atmospheric aerosols constitute the largest uncertainty in our present understanding of the anthropogenic climate forcing (IPCC, 2001).

5 The climate effects are crucially dependent on the aerosol properties: size distribution, chemical composition and degree of internal and external mixing. The estimates of climate impact are further complicated by a high spatial and temporal variability of the aerosol properties (Pilinis et al., 1995; Anderson et al., 2003).

10 In order to improve the aerosols representation in models we need to understand what processes that determine the evolution of the aerosol in time. As shown by Tunved et al. (2003) the aerosol cannot be defined by a typical size distribution representative over large geographical scales (in this case the Nordic countries). Neither can parameterizations in terms of air-mass related aerosol properties help us initializing numerical models.

15 The evolution of the aerosol in an air mass is a process that can be described as a function of sources, time spent over the sources as well as meteorological parameters controlling the evolution of the aerosol. Processes leading to an increase in the aerosol number concentration include nucleation and primary emission of particulates, either anthropogenic emissions or natural emissions such as re-suspension of dust and breaking waves (Monahan, 1983). Processes reducing the number concentration of aerosol are coagulation and wet and dry deposition. Condensation leaves the total number unaffected, but instead contributes to growth of the particles resulting in an increase in total mass of the aerosol.

25 We exemplify this by considering a nucleation burst as many times reported from background stations in Finland (e.g. Kulmala et al., 2001a; Kulmala et al., 1998; Väkevä et al., 2000). At the time when the burst is observed the size distribution often contains several tens of thousands of particles smaller than 10 nm. These particles are exposed to processes reducing the number concentration in the sub-10 nm size range. Of most importance are coagulation, deposition and condensation. For small particles at high

**Evolution of the
boundary layer
aerosol size
distribution
properties**P. Tunved et al.

number concentrations, coagulation is a very fast process and as a consequence the time particles remain in the sub 10 nm range is short. Condensation further grows these small particles into larger sizes. That is, the nucleation is observed as a rapid, transient phenomenon due to the short lifetime of the freshly formed particles. Often, the presence of high particle number concentration (<10 nm) is limited to a couple of hours. With increasing size (20–100 nm) the rate of coagulation decreases. Also the rate of deposition decreases with size in this so called Aitken size range. As the particles grow and enter the size range 0.1–1 μm the influence from dry deposition become small (Slinn et al., 1978; Zhang et al., 2001) and changes in the aerosol number size distribution caused by condensation and coagulation are very small. Particles in this size range are found to be rather persistent in the atmosphere and often referred to as accumulation mode particles. The most dominant removal process for accumulation mode particles is wet deposition (Raes et al., 2000).

Lifetimes for Aitken and accumulation mode particles are in the order of days up to one week (depending on precipitation rate and cloud frequency) for Aitken and accumulation mode particles respectively in the lower troposphere (Raes et al., 2000; Nilsson and Rannik, 2001; Williams et al., 2002). With the lifetime perspective in mind one can assume that some types of size distributions will be more frequently observed than others, e.g. size distributions with a high number concentration of nucleation mode particles are less frequently observed in the continental boundary layer over Scandinavia due to the short lifetime of these particles. Other types of size distributions may be more frequently observed due to slow dynamical processes acting on the distribution

In this study we make use of a clustering technique in order to separate out typical distributions encountered at a continental background site, Aspövreten (58.8° N, 17.4° E). These size distribution clusters will further be associated with the meteorological history of the air, source area and receptor site meteorology. The discussion will focus on the evolution of the aerosol size distribution in terms of dynamical behaviour, meteorology and time scales for different processes in order to determine the most important controlling factors concerning the evolution of the size distribution.

[Title Page](#)[Abstract](#)[Introduction](#)[Conclusions](#)[References](#)[Tables](#)[Figures](#)[◀](#)[▶](#)[◀](#)[▶](#)[Back](#)[Close](#)[Full Screen / Esc](#)[Print Version](#)[Interactive Discussion](#)

2. Methods

2.1. Station and instrumentation

Aspvreten (58.8° N, 17.4° E) is located in the county of Sörmland, some 80 km south of Stockholm and 2 km inland from the Baltic Sea. No local anthropogenic activities influence the station (Tunved et al., 2003). The surroundings are dominated by deciduous and coniferous forest and grasslands.

A differential mobility particle sizer (DMPS-system) consisting of a TSI 3010 CPC for counting the particles and a medium-size (11 cm) Hauke differential mobility analyser (DMA) separating the aerosol according to different mobility. This setup is capable of observing aerosol particles with a diameter ranging from 10–450 nm. The DMPS-system observes a size distribution every 7.5 min. Along with the size distribution several meteorological parameters (wind direction, wind speed, relative humidity, temperature and global radiation) are also continuously being measured at the station.

2.2. Data usage and analysis methods

2.2.1. Aerosol size distribution data

Data spanning over one year (1 June 2000 to 31 May 2001) of measurements at Aspvreten (58.8° N, 17.4° E), Sweden, were used. Six hour median size distributions were calculated resulting in four distributions per day. To be included in the subsequent analysis, each median value must consist of at least two hours of data. After data reduction 1064 median size distributions remained. A clustering method was applied to the data in order to characterize different types of size distributions based on similarities within each group. Clustering is an efficient technique for finding different subgroups in a large data set. The clustering routine used, KMEANS.m, is available in MATLAB[®] version 6.5 and in later versions. The KMEANS clustering routine is most easily described as a partitioning method where the data is separated in a predefined number of clusters.

Evolution of the boundary layer aerosol size distribution properties

P. Tunved et al.

Title Page

Abstract

Introduction

Conclusions

References

Tables

Figures

◀

▶

◀

▶

Back

Close

Full Screen / Esc

Print Version

Interactive Discussion

**Evolution of the
boundary layer
aerosol size
distribution
properties**

P. Tunved et al.

The observations (i.e. size distributions) are partitioned in a cluster whose members are as close to each other as possible, and as far from observations in other clusters as possible. KMEANS iteratively minimizes the sum of distances from each object to its cluster centroid.

5 In this study we limited the analysis to include 8 clusters. Different number of clusters were tested, but as we present in the following, eight clusters provide two clusters for each of the three stages of the aerosol life-cycle, i.e. fresh, intermediate and aged aerosols, as well two clusters to capture situations that might be somewhere in between. Increasing the number of clusters above eight did not provide more information,
10 i.e. same types of clusters were simply repeated.

2.2.2. Meteorology and trajectory analysis

Trajectory data was calculated from the re-analysed meteorological data library using the HYSPLIT4 model (Draxler and Hess, 1997). The meteorological data originate
15 from NCEP's (The National Weather Service's National Centres for Environmental Prediction) GDAS (Global Data Assimilation System; Kanamitsu, 1989). Back trajectories were calculated four times a day. The trajectories were calculated arriving 10 m above ground. Since the size distribution data is based on 6-h medians, each trajectory is associated with a size distribution. As an option from the HYSPLIT4 model, meteorological output from the trajectory calculations was added to the 72 end-points building
20 the trajectory. The trajectory model supplies several meteorological parameters. In this study we made use of relative humidity, absolute temperature, height of the mixing layer, as well as precipitation rate.

Size distribution measurements, meteorological measurements at the receptor site as well as time dependent meteorological cross-sections and source area of the air-
25 parcel constitute a solid basis for determining important meteorological mechanisms related to different types of aerosols.

[Title Page](#)[Abstract](#)[Introduction](#)[Conclusions](#)[References](#)[Tables](#)[Figures](#)[◀](#)[▶](#)[◀](#)[▶](#)[Back](#)[Close](#)[Full Screen / Esc](#)[Print Version](#)[Interactive Discussion](#)

3. Results

3.1. Number size distribution clusters

The size distribution data were divided into eight distinctly separate clusters. These are displayed in Fig. 1 A–H. It can be seen from the narrow quartile ranges that the clustering is robust. That is, within each cluster the variability is low, with exception of the Aitken mode of cluster A. We will return to this later. The small spread within each cluster has important implications since it allows us to actually conclude that different “typical” aerosol size distributions are represented by each cluster. The term “typical” used here do not necessary refer to frequency of occurrence. The number of size distributions contributing to each cluster is given in the upper right of each frame (the total number of size distributions were 1064). There are some size distributions observed often, others only a minute fraction of the measurement period.

Cluster A represents aerosol size distributions with a distinct Aitken mode around 30 nm with an integrated median number concentration of 5200 cm^{-3} . Despite the rather high number concentration the integrated particle (10–450 nm) aerosol mass, assuming a density of 1.5 g cm^{-3} , is only $1.5 \mu\text{g m}^{-3}$ (c.f. Table 1). Size distributions belonging to cluster A represent only 1.5% of the total number of size distributions.

Cluster B represents distributions where the integrated number concentration (4200 cm^{-3}) is almost as high as for cluster A, but the main mode is shifted to 50–60 nm. The larger particles result in an integrated aerosol mass concentration of $3.3 \mu\text{g m}^{-3}$. Cluster B makes up about 3.3% of the total number of size distributions. As for cluster A the number concentration in the accumulation mode size range is low.

Cluster C and D bear similarities with B and A, but show smaller amplitudes in the Aitken mode. A somewhat larger accumulation mode compared to cluster A and B yields an integrated aerosol mass concentration of ca $3 \mu\text{g m}^{-3}$ for both cluster C and D. A total of 11.8 and 7.8% of the size distribution belong to cluster C and D, respectively.

Cluster E represents distributions that present a low integral number concentration (2100 cm^{-3}) as well as a low integral surface area and low integral mass concentration

Evolution of the boundary layer aerosol size distribution properties

P. Tunved et al.

Title Page

Abstract

Introduction

Conclusions

References

Tables

Figures

◀

▶

◀

▶

Back

Close

Full Screen / Esc

Print Version

Interactive Discussion

($2.3 \mu\text{g}/\text{m}^3$).

Cluster F represents size distributions completely dominated by the accumulation mode size range. The number concentration as median is high ($\sim 3400 \text{ cm}^{-3}$) and the mass is the highest of all the clusters ($12.2 \mu\text{g}/\text{m}^3$). Cluster F occurred 8.6% of the total of observations.

Cluster G represents distributions that share many features of cluster F, but the amplitude of the modes is smaller. The integral number concentration ($\sim 2200 \text{ cm}^{-3}$) is on the lower end of the clusters but the mass concentration ($\sim 7 \mu\text{g}/\text{cm}^3$) is comparably high. This type of size distributions occurred 25.9% of the time.

Cluster H represents the most frequently observed cluster type, which occurred roughly 30% of the time. The amplitude of the Aitken mode and Accumulation mode are similar, but well separated. The number concentration is the lowest of all clusters (1100 cm^{-3}). The associated aerosol mass is $5.2 \mu\text{g}/\text{m}^3$.

The seasonal contribution to each cluster was investigated. Different seasons exhibit differences in cloud cover, precipitation, temperature and global radiation as well as other meteorological parameters. More global radiation during the summer months naturally increases the speed of photochemical reactions. Likewise, more frequent precipitation during fall and winter is likely to increase the rate of wet deposition. This implies different source and sink strengths over the year and this is likely to be reflected by the aerosol properties. In Fig. 2 the seasonal component of each cluster is shown. Size distributions belonging to Cluster A, B, C and F are mostly observed during late spring and late summer months. Otherwise there is no obvious relation to the seasonal distribution of the data contributing to the different clusters. Cluster G and H have their contribution rather evenly spread over the year.

3.2. Source areas

The source area is very important in characterizing the aerosol properties. Air of continental origin for instance is often associated with higher number concentration of large

Evolution of the boundary layer aerosol size distribution properties

P. Tunved et al.

Title Page

Abstract

Introduction

Conclusions

References

Tables

Figures

◀

▶

◀

▶

Back

Close

Full Screen / Esc

Print Version

Interactive Discussion

**Evolution of the
boundary layer
aerosol size
distribution
properties**P. Tunved et al.

particles. This relation between source areas and aerosol properties has been demonstrated in several publications during recent years, e.g. Tunved et al. (2003) covering a network of five stations in Finland and Sweden; Birmili et al. (2001) at a continental site near Melpitz, Germany; Kulmala et al. (2000) with measurements from Värriö and Hyytiälä in Northern and central Finland, respectively and Nyeki et al. (1998) contributing with similar observations from Jungfraujoch, Swiss Alps.

For the analysis of the source areas associated with the different clusters, the history of the air is tracked by using the calculated trajectories described in Sect. 2.2.2. Focus is put on the relative contribution between continental and maritime sources. Trajectories are separated as either describing transport in the clean marine environment defining a sector from Scotland to North coast of Russia or as describing transport from the European sub-continent. If the trajectory reside more than 80% of the time in this marine sector it is considered as “clean marine”. This segregation between marine and continental trajectories is presented in Table 2.

A majority of the trajectories for cluster A (85%), and clusters B, D and E (70%) belong to the type “clean marine”. In Fig. 3 this typical North-West transport pattern is represented by trajectories belonging to cluster B. Cluster F describes a size distribution associated with trajectories classified as moving over predominantly continental sources (85%). The trajectories presented in Fig. 4 show some tendency of forming groups when transport come from the North Atlantic and western parts of Europe as well as transport from NE crossing the vicinity of the Kola Peninsula and over north-eastern Russia. Cluster G and H represent some intermediate situation, where 30% and 38% of the trajectories can be referred to as clean marine, respectively. This transport pattern is exemplified in Fig. 5 by trajectories belonging to cluster C. It is clear that some clusters are dominated by marine contributions (e.g. A) and some clusters are dominated by continental sources (e.g. F). Although this preference in source areas does exist, exceptions are included in each cluster. However, there are no clusters that are exclusively a marine cluster or entirely a continental cluster.

[Title Page](#)[Abstract](#)[Introduction](#)[Conclusions](#)[References](#)[Tables](#)[Figures](#)[◀](#)[▶](#)[◀](#)[▶](#)[Back](#)[Close](#)[Full Screen / Esc](#)[Print Version](#)[Interactive Discussion](#)

3.3. Meteorology

3.3.1. Precipitation

The accumulation mode particle lifetime is essentially controlled by the frequency and magnitude of precipitation (e.g. Seinfeldt and Pandis, 1998; Raes et al., 2000). Precipitation is thus an important parameter to be studied in order to evaluate controlling processes shaping the size distribution. Ideally we would like to have observations of precipitation events along the trajectory experienced by the air in which the aerosol size distributions are observed. This information is unfortunately not available to us. We instead rely on precipitation rates derived from the HYSPLIT4 model. Because the analysis of the precipitation is not based on observations we limit the interpretation of precipitation rate to be of qualitative nature. We thus focus on the pattern of precipitation indicated by the model rather than on absolute values.

In Fig. 6 median precipitation rate is shown for each of the clusters. Cluster A shows a history of very frequent precipitation events. During a time period ranging from ~15 h to 45 h before arrival each trajectory is on average associated with precipitation in 50% of the cases. However, during the last 15 h before arriving Aspvreten there is a clear drop in the precipitation frequency. Cluster B also shows a history of rather frequent precipitation. The distribution of the precipitation frequency along the trajectories is similar to trajectories associated with A in that the precipitation frequency is less close to the receptor site. We note that the period of “less precipitation” appears earlier in cluster B as compared to cluster A. The precipitation associated with cluster C is rather uniform, although slightly higher in the beginning of the trajectories. Cluster D again show a precipitation pattern similar to A and B. That is, the frequency of precipitation is greatest back in time and decreases as the air comes closer to the receptor site. This also applies to cluster E. Cluster F show the overall lowest frequency of precipitation (15–20%). A slight increase in the frequency of precipitation is noticed just before the arrival of the trajectory to the receptor site. Finally, cluster G and H exhibit a pattern of high and uniform frequency of precipitation throughout the history of the trajectories.

Evolution of the boundary layer aerosol size distribution properties

P. Tunved et al.

Title Page

Abstract

Introduction

Conclusions

References

Tables

Figures

◀

▶

◀

▶

Back

Close

Full Screen / Esc

Print Version

Interactive Discussion

**Evolution of the
boundary layer
aerosol size
distribution
properties**P. Tunved et al.

3.3.2. Clouds

Non-precipitating clouds affect aerosol mass concentration and particle water solubility. The aqueous phase oxidation of SO_2 , by mainly ozone and hydrogen peroxide, in cloud droplets may serve as an effective path of moving smaller particles into the accumulation mode (Hoppel et al., 1994; Bower et al., 1999). The average radius increase associated with cloud droplet activation also increases the coagulation rate of interstitial aerosol as they rather quickly are scavenged by the activated cloud droplets (e.g. Seinfeld and Pandis, 1998). This means that non-precipitating clouds will affect the aerosol size distribution by growing larger Aitken particles or accumulation mode particles by in-cloud chemistry described above and by reducing the number concentration of the interstitial aerosol.

In order to address the issue of the cloud processing we made use of the relative humidity supplied as a model output from the HYSPLIT4 model, which was used as a proxy for clouds. Occasions with RH above 94% is considered to correspond to an in-cloud situation. Based on this assumption, Fig. 7 presents the percentage of in-cloud occasions (or more specific frequency of occasions with $\text{RH} > 94\%$) over the last 72 h. Beginning with cluster A, the frequency of in-cloud occasions are rather unevenly

[Title Page](#)[Abstract](#)[Introduction](#)[Conclusions](#)[References](#)[Tables](#)[Figures](#)[◀](#)[▶](#)[◀](#)[▶](#)[Back](#)[Close](#)[Full Screen / Esc](#)[Print Version](#)[Interactive Discussion](#)

**Evolution of the
boundary layer
aerosol size
distribution
properties**P. Tunved et al.

distributed over the travel time of the trajectory. There are especially two occasions worth noticing. First, there is a peak in the frequency of in-cloud occasions around 30 h (15% in-cloud occasions) before arrival of the trajectory and secondly a peak just before the arrival of the trajectory. Cluster B shows an overall low frequency of in-cloud occasions. This is also true for cluster C, D, E and F. Typically, the cloud fraction associated with these clusters is below 5%. Cluster G and H do however exhibit a cloud frequency pattern obviously different from the other clusters. Trajectories belonging to cluster G are associated with in-cloud occasions between 5 and 10% of the time. Cluster H show an in-cloud frequency larger than 10% throughout the 72 h.

We are here clearly able to differ between two different aging processes; one including clouds and precipitation and one with little clouds involved in the transformation of the aerosol. This is supported both by the size distribution data (i.e. aerosol number size distribution) and trajectory model output. It is thus safe to establish a qualitative relation between cluster shape and history of the air-parcel in terms of relative humidity and precipitation. Cluster G and H associated air likely to be exposed to a large number of cloud cycles are relatively similar in shape; low number concentration and rather large accumulation mode as well as separation between the Aitken and the accumulation mode. Cluster F is associated with the lowest frequency of precipitation and the lowest number of possible cloud cycles. This size distribution is dominated by the accumulation mode.

3.3.3. Other meteorological parameters

In complement to this first analysis of the precipitation and cloudiness we also investigate the time series of average temperature, relative humidity, mixing height and the vertical component of the trajectories for each cluster. The HYSPLIT output results for these parameters are displayed in Fig. 8. Meteorological output is evaluated back in time starting from 00:00 UTC regardless of arrival time for individual trajectories. That is, if a trajectory is calculated to arrive 05:00 UTC, 5 h are subtracted from the data. Likewise, for trajectories arriving 11:00 UTC, 11 h are subtracted. This means that me-

[Title Page](#)[Abstract](#)[Introduction](#)[Conclusions](#)[References](#)[Tables](#)[Figures](#)[◀](#)[▶](#)[◀](#)[▶](#)[Back](#)[Close](#)[Full Screen / Esc](#)[Print Version](#)[Interactive Discussion](#)

eteorological output will be in phase for all trajectories. In this way we capture diurnal variations in meteorological parameters.

All median trajectories suggest subsidence during transport. Clusters A and B are slightly different than the others in that they present a “hump” shortly before arriving the station. Based on the mixing height, presented in the second panel of Fig. 8, the trajectories typically stayed within the boundary layer during the entire 72-h transport.

The mixing depths from the model follow a diurnal pattern for all the clusters. There are however some differences present concerning average depth of the mixing layer and the magnitude of the diurnal variation. The diurnal variability of the mixing layer height is low for cluster A. It is also clear that the mixing layer is on average deeper for cluster A as compared with the other clusters. Cluster B have similar mixing depth features, i.e. rather a deep mixing layer with rather low diurnal variability. Cluster C, D, E, F and G are associated with a typical diurnal variation in the mixing depth. The mixing layer is shallow during night-time and grows during the day after the onset of vertical mixing. It is obvious that the largest variation is associated with cluster F. Cluster H in turn is associated with the shallowest mixing layer and the smallest diurnal variability.

The temperature variation associated with each trajectory is displayed in the third frame. There is a wide range of temperatures associated with each cluster. Cluster F is associated with trajectories with the highest average temperatures given by the fact that the cluster is composed of mainly summer data. The other extreme are the trajectories associated with cluster E. This cluster has its contribution from air arriving during mainly the winter period. Recalling Fig. 1, cluster E had large relative contributions from nuclei and Aitken mode particles. This is quite interesting since there are only a few “real” nucleation events recorded at Aspövreten during winter time (Tunved et al., 2003). The number concentration associated with this cluster never becomes very large. The absolute contribution of the small particles remains low. It is however clear, considering the relatively large contribution to this type of size distribution (11.6% of total) that some typical mechanism is responsible for this type of size distribution. Nu-

Evolution of the boundary layer aerosol size distribution properties

P. Tunved et al.

[Title Page](#)[Abstract](#)[Introduction](#)[Conclusions](#)[References](#)[Tables](#)[Figures](#)[◀](#)[▶](#)[◀](#)[▶](#)[Back](#)[Close](#)[Full Screen / Esc](#)[Print Version](#)[Interactive Discussion](#)

**Evolution of the
boundary layer
aerosol size
distribution
properties**P. Tunved et al.

[Title Page](#)[Abstract](#)[Introduction](#)[Conclusions](#)[References](#)[Tables](#)[Figures](#)[◀](#)[▶](#)[◀](#)[▶](#)[Back](#)[Close](#)[Full Screen / Esc](#)[Print Version](#)[Interactive Discussion](#)

5 cleation is a temperature dependent phenomenon, with increasing nucleation rates at low temperatures (Easter and Peters, 1994; Nilsson and Kulmala, 1998). Thus, low temperatures during the winter period may favour nucleation, although the nucleation rate will not reach the same magnitude as observed during e.g. spring due to some other limitations.

10 Relative humidity in the boundary layer is often a very strong function of the temperature. This is also seen the fourth panel of Fig. 8. Cluster F shows the largest diurnal temperature variation with low values during day time and high values during night time, whereas cluster G shows the least variability. Large diurnal variation in ambient temperature and relative humidity are generally associated with clear sky conditions. Overcast situations shade the surface from incoming solar radiation and re-emits thermal radiation back to Earth, which suppress the daily variations in temperature. Thus there is a link between low cloudiness and large temperature variations as for cluster F, and high cloudiness and small temperature variations as for cluster H.

15 4. Discussion

20 From the analysis of the clusters and associated meteorology it was shown different types of size distributions are observed with different frequency. It was also shown analysing the dataset that each one of the clusters had different history in terms of seasonal preference, source areas and meteorological history. Influence from source area and seasonal dependence on observed aerosol properties has been demonstrated in earlier investigations (e.g. Tunved et al., 2003). What is more importantly derivable from this study is to what degree different parameters in terms of source area and meteorology influence the size distribution measured at Aspvreten. It is clear that neither one of these parameters investigated alone are sufficient to explain the size distribution properties observed at Aspvreten.

25 It is clear that different processes act on the aerosol size distribution on different timescales. These time scales in turn are dependent on meteorology, availability of

condensable gases, temperature, humidity, cloudiness etc. These time scales are reflected by the different frequency of observation for different types of aerosol size distributions. This discussion may be extended by investigating also the bulk of data included in this analysis.

5 One approach to qualitatively approximate lifetimes is to utilize the measurement variability (Junge, 1974). This assumption is based on the idea that the variability is proportional to the lifetime; a high variability corresponds to a short lifetime and vice versa. The variability may be determined by the standard deviation of the natural logarithm of the measurement values (i.e. $\sigma \ln(X)$) as utilized by Jobson et al. (1998) and Williams et al. (2002). This variability criterion was applied to the whole size distribution dataset including tens of thousands of size distributions. The result is given in Fig. 9 as $\sigma (\ln (dN/d\log D_p))$ against D_p . This plot illustrates the size dependent variability per bin in the size distribution, a total of 36 size increments ranging from 10 to 450 nm.

15 It is shown that the variability monotonically increases with reducing size (and hence the lifetime decreases) for particles less than 50 nm. This is an expected behaviour. Smaller particles are quickly removed by coagulation and by condensation growth into larger sizes. The rate of coagulation is largest for the smallest particles, and decreases with increasing size. However, from 70 nm the variability tends to increase again, reaching a local maximum around 100 nm. This behaviour can only be consistent with the processing by non-precipitating clouds; neither coagulation nor dry deposition or condensation growth is sufficiently rapid to explain an increase of variability in this size range. Clouds are capable of moving ~ 100 nm aerosols serving as CCN into the accumulation mode due to rapid oxidation of SO_2 by especially ozone and hydrogen peroxide within activated cloud droplets (Mason, 1971; Hoppel et al., 1994). Since the relative growth of the activated CCN by this process is largest for the smaller particles, this effect is likely to be most obvious for the smallest CCN particles contributing to the active cloud droplets. A variability increase in the 100 nm size range is therefore consistent with processing by clouds.

25 The variability decreases from 100 nm to approximately 200 nm. As previously dis-

Evolution of the boundary layer aerosol size distribution properties

P. Tunved et al.

[Title Page](#)[Abstract](#)[Introduction](#)[Conclusions](#)[References](#)[Tables](#)[Figures](#)[◀](#)[▶](#)[◀](#)[▶](#)[Back](#)[Close](#)[Full Screen / Esc](#)[Print Version](#)[Interactive Discussion](#)

**Evolution of the
boundary layer
aerosol size
distribution
properties**P. Tunved et al.

cussed, coagulation, condensation and dry deposition are very slow processes in the size range 0.1–1 μm . After this minimum, variability increase again. Precipitation or primary aerosol sources might give rise to the increase in the variability seen for particles larger than 200 nm. Assuming an internally mixed aerosol, larger particles are most likely to form cloud droplets and they also form larger cloud droplets. Larger cloud droplets are in turn more susceptible to rainout due to growth by coalescence (e.g. Seinfeld and Pandis, 1998; Rogers and Yau, 1989). We cannot however rule out the possibility that the observed increase in variability in fact is a result of increased deposition velocity in the upper size range of the accumulation mode.

This simple approach clearly highlights the statements produced in the discussions part. Some size ranges are more susceptible to removal processes than others, and importantly, different processes are argued responsible for the variability in different size ranges.

From the simplified three stages aerosol life-cycle envisioned when defining the number of clusters in Sect. 2.2.1, we may assume each cluster as representing a different stage in the aging process. The size distribution in each stage is the result of processing by different mechanisms over different time scales. The different clusters are not true Lagrangian in that one follows the other in time, but the type of processes that act on the different distributions might help us understand how the clusters are related to each other in a Lagrangian perspective. We illustrate that in Fig. 10. Cluster A represents the youngest and the freshest aerosol, which will rapidly transform into cluster B. Based on the meteorology (cloud frequency and precipitations), cluster B lag cluster A with approximately half a day. Precipitation followed by clearing skies shortly prior reaching Aspvreten sets the stage for new particle formation.

Through coagulation and condensation the aerosol rather quickly move into cluster types C and D, but once there the processes are much slower and the cluster types thus more frequently observed. From this point the evolution may proceed in two directions. Through continuous growth by condensation and coagulation, but more importantly through in-cloud process the distribution evolves to become cluster type F. If the cloud

[Title Page](#)[Abstract](#)[Introduction](#)[Conclusions](#)[References](#)[Tables](#)[Figures](#)[◀](#)[▶](#)[◀](#)[▶](#)[Back](#)[Close](#)[Full Screen / Esc](#)[Print Version](#)[Interactive Discussion](#)

**Evolution of the
boundary layer
aerosol size
distribution
properties**P. Tunved et al.

precipitates then to become a size distribution as defined by H.

Of course, in due time F is likely to be cloud process and deposited in a way as described by the transformation of C to H. Thus significant changes need to include in-cloud processing and wet deposition considering the time scale for coagulation and condensation for similar size distributions. Through these mechanisms size distribution H is formed. This stage represents the terminal step of the cycle. In order to close the cycle it is necessary to add a new source of small particles, i.e. start a new nucleation.

On the issue of the initiation of the nucleation one may consult one of many studies on the issue, especially from measurements performed at Hyytiälä, a boreal forest site in Finland (e.g. Kulmala et al., 2001a; Mäkelä et al., 2000a, b; Nilsson et al., 2001a, b). Nucleation preferentially occurs daytime, during clear sky conditions. That is, nucleation as observed at continental background stations are to be regarded a daylight-phenomenon, also illustrated by the dependence on high rate of incoming solar radiation indicating the importance of photochemistry.

Growth can often be followed during several hours. The nucleation occurs in air arriving from north, bringing clean air to the receptor site. It is further agreed that the sink of newly formed particles, e.g. pre-existing aerosol, is a strong determinant for the extent of the nucleation observed (Kerminen et al., 2001; Kulmala et al., 2001b; Laaksonen et al., 2001). A large concentration of pre-existing aerosol may also serve as an efficient sink of the nucleating gases, thereby diminishing the amount of particles formed. This sink is closely related to the surface area of the pre-existing aerosol.

It is however not obvious how this nucleating stage of schematic aerosol lifecycle is reached. Schröder et al. (2002) argue the importance of clouds and precipitation in order to achieve a threshold in pre-existing aerosol required in order to make nucleation possible, i.e. reaching low enough pre-existing aerosol surface area. Wet deposition as controlling mechanism for reaching a state where nucleation can occur is also suggested by Capaldo et al. (1999) in studies of the marine boundary layer aerosol.

One interesting feature in our data set is that the accumulation mode size range number concentration is lower in all clusters showing a high concentration in nuclei

[Title Page](#)[Abstract](#)[Introduction](#)[Conclusions](#)[References](#)[Tables](#)[Figures](#)[◀](#)[▶](#)[◀](#)[▶](#)[Back](#)[Close](#)[Full Screen / Esc](#)[Print Version](#)[Interactive Discussion](#)

and lower Aitken size range as compared with cluster G and H. This is consistent with the idea of a threshold in pre-existing aerosol concentration. Nucleation requires a low surface area to happen, i.e. low condensation sink.

It is also implicated from the meteorological analysis that this threshold is reached by wet-deposition of the pre-existing aerosol. If one compare the cluster A and B with the frequency of precipitation it is clear that these two clusters exhibit a history of rather high frequency of precipitation. It is also clear that the meteorological model does not indicate precipitation during the time of around where we believe nucleation to start. This fact supplies us with a possible relation where the wet-deposition govern a removal mechanism sufficiently efficient to reduce the aerosol number concentration (and surface) to a level in which nucleation is possible to occur.

It is however not possible to rule out the role of entrainment of air from free troposphere, contributing to mixing situations favouring nucleation rate and extent (e.g. Nilsson et al., 2001a; Capaldo et al., 1999). Entrainment of air with low concentration from the free troposphere could also by dilution reduce the pre-existing aerosol surface in the boundary layer leading to conditions favouring nucleation.

This connection in time between different types, or clusters, of aerosol size distributions is only tentative. The study lacks a Lagrangian component and this assumption may only be based on knowledge of different processes contributing to the evolution of the aerosol size distribution.

5. Summary and conclusions

Different states of the background boundary layer aerosol size distribution have been determined using novel application of cluster analysis. The clustering was shown to be successful in terms of identifying different types of aerosols. The main characteristics of the different clusters are presented in Table 3. From the data set it is obvious that mainly three important phases of the size distribution is present: fresh, intermediate and aged. Cluster A and B is referred to as fresh aerosol, cluster C, D and E is re-

Evolution of the boundary layer aerosol size distribution properties

P. Tunved et al.

Title Page

Abstract

Introduction

Conclusions

References

Tables

Figures

◀

▶

◀

▶

Back

Close

Full Screen / Esc

Print Version

Interactive Discussion

**Evolution of the
boundary layer
aerosol size
distribution
properties**P. Tunved et al.

garded as intermediate and cluster F, G and H are considered as aged aerosol size distributions. We further present statistics indicating a direct relation between source areas and different meteorological parameters and evolution of the size distribution using a non-Lagrangian approach. The results presented are consistent with the general view concerning influence on the aerosol size distribution from different dynamical processes such as coagulation, condensation and cloud processes and precipitation and influence from different type of source areas. It is clear that although source area is important for defining the aerosol measured at Aspvreten, it is far from sufficient. This become clear since different source areas may result in very similar size distributions observed at Aspvreten. In these cases meteorology (especially precipitation and cloud processing) define the aerosol properties.

We discussed the lifetime properties of different sized aerosol by means of measurement variability (Junge, 1974). We conclude that different size ranges are affected by different processes acting on different timescales. This idea is already established in earlier investigations (e.g. Raes et al., 2000; Williams et al., 2002) and confirmed through this study. In terms of a life-cycle the nucleation cluster A serves as the initial input aerosol. This aerosol is aged due to condensation and coagulation reaching some intermediate size distribution as exemplified by cluster C and B. Further aging may follow two different branches: uninterrupted coagulation, condensation and deposition resulting in a size distribution comparable to cluster F in Fig. 1, either aging by clouds and wet deposition resulting in a size distribution comparable to G or H. It is further argued that wet deposition depletion of the aerosol is a necessity in order to reach a nucleating stage.

The most important results from the investigation are summarized as below:

- The clustering picked out three different stages of the aerosol life cycle: fresh stage, intermediate stage and aged stage. For each of the intermediate and aged type stages different clusters presented different degree of cloud processes.
- Different clusters present characteristic differences in timing and frequency of pre-

[Title Page](#)[Abstract](#)[Introduction](#)[Conclusions](#)[References](#)[Tables](#)[Figures](#)[◀](#)[▶](#)[◀](#)[▶](#)[Back](#)[Close](#)[Full Screen / Esc](#)[Print Version](#)[Interactive Discussion](#)

Evolution of the boundary layer aerosol size distribution properties

P. Tunved et al.

Title Page

Abstract

Introduction

Conclusions

References

Tables

Figures

◀

▶

◀

▶

Back

Close

Full Screen / Esc

Print Version

Interactive Discussion

precipitation during the 72 h preceding the size distribution observations

- The processing by non-precipitating clouds are likely affect the number size distribution most obvious in the 100 nm size range as indicated by the variability analysis. This further indicates that the lowest limit of activation of aerosols in clouds is confined to the proximate diameter of 100 nm in this type of environment. This is also supported that by the location of the Hoppel minimum in the clusters showing a history of many cloud cycles
- As much as 60% of the size distribution measurements show obvious signs of in-cloud processes and wet-deposition, both regarding overall appearance of the size distribution as well as meteorological history. This point to the importance in developing parameterisations that simulate the effect of this process when modelling areas such as the Nordic countries.
- Meteorological history seems even more important than the effect of source area during situation where the air parcels are associated with high frequency of precipitation and in-cloud situations
- More frequent nucleation events than observed at single stations are required to sustain the aerosol number concentration observed. Roughly 30% of the size distributions share size distribution properties likely to be directly connectable to previous nucleation events back in time.
- Data indicate that wet deposition might be an important factor in reaching a state with sufficiently low condensation and coagulation sink to allow for nucleation.
- Evidence of recent nucleation is nearly always associated with a low-mass aerosol and corresponding low surface area

Acknowledgements. This work was funded by the ASTA programme (International and National Abatement Strategies for Transboundary Air Pollution) of the MISTRA research foundation (Swedish Foundation for Strategic Environmental Research), Nordic Council of Min-

References

- Anderson, T. L., Charlson, R. J., Winker, D. M., Ogren, J. A., and Holmen, K.: Mesoscale variations of tropospheric aerosols, *J. Atmos. Sci.*, 60, 119–136, 2003.
- 5 Birmili, W., Wiedensohler, A., Heintzenberg, J., and Lehmann, K.: Atmospheric particle number size distribution in central Europe: Statistical relations to air masses and meteorology, *J. Geophys. Res.*, 106, 32 005–32 018, 2001.
- Bower, K. N., Jones, A., and Choulaton, T. W.: A modelling study of aerosol processing by stratocumulus clouds and its impact on general circulation model parameterisations of cloud and aerosol, *Atmos. Res.*, 50, 317–344, 1999.
- 10 Capaldo, K. P., Kasibhatla, P., and Pandis, S. N.: Is aerosol production within the remote marine boundary layer sufficient to maintain observed concentration?, *J. Geophys. Res.*, 104, 3483–3500, 1999.
- Draxler, R. R. and Hess, G. D.: Description of the Hysplit_4 modelling system, NOAA Tech Memo, ERL, ARL-224, 1997.
- Easter, R. C. and Peters, L. K.: Binary homogeneous nucleation: Temperature and relative humidity fluctuations, nonlinearity, and aspects of new particle production in the atmosphere, *J. Appl. Meteorol.*, 33, 775–784, 1994.
- 20 Hoppel, W. A., Frick, G. M., Fitzgerald, J., and Larson, R. E.: Marine boundary-layer measurements of new particle formation and the effects non-precipitating clouds have on aerosol size distribution, *J. Geophys. Res.*, 99, 14 443–14 459, 1994.
- IPCC, 2001: IPCC, edited by Houghton, J. H., Ding, Y., Griggs, D. J., Noguer, M., van der Linden, P. J., Dai, X., Maskell, K., and Johnson, C. A.: *Climate Change 2000 – The Science of Climate Change*, Cambridge University Press, Cambridge, 2001.
- 25 Jobson, B. T., Parrish, D. D., Goldan, P., Kuster, W., Fehsenfeld, F. C., Blake, D. R., Blake, N. J., and Niki, H.: spatial and temporal variability of nonmethane hydrocarbon mixing ratios and their relation to photochemical lifetime, *J. Geophys. Res. Atmos.*, 103, 13 557–13 567, 1998.

Evolution of the boundary layer aerosol size distribution properties

P. Tunved et al.

Title Page

Abstract

Introduction

Conclusions

References

Tables

Figures

◀

▶

◀

▶

Back

Close

Full Screen / Esc

Print Version

Interactive Discussion

- Junge, C. E.: Residence time and variability of tropospheric trace gases, *Tellus*, 16, 477–488, 1974.
- Kanamitsu, M.: Description of the NMC global data assimilation and forecast system, *Wea. and Forecast.*, 4, 335–342, 1989.
- 5 Kerminen, V. M., Pirjola, L., and Kulmala, M.: How significantly does coagulation scavenging limit atmospheric particle production?, *J. Geophys. Res.*, 106, 24 119–24 125, 2001.
- Kulmala, M., Toivonen, A., Mäkeleä, J. M., and Laaksonen, A.: Analysis of the growth of nucleation mode particles observed in Boreal forest, *Tellus B*, 50, 449–462, 1998.
- 10 Kulmala, M., Rannik, Ü., Pirjola, L., Dal Maso, M., Karimäki, J., Asmi, A., Jäppinen, A., Karhu, V., Korhonen, H., Malvikko, S.-P., Puustinen, A., Raittila, J., Romakkaniemi, S., Suni, T., Yli-Kovisto, S., Pateero, J., Hari, P., and Vesala, T.: Characterization of atmospheric trace gases and aerosol composition at forest sites in southern and northern Finland using back trajectories, *Bor. Env. Res.*, 5, 315–336, 2000.
- 15 Kulmala, M., Hämeri, K., Aalto, P. P., Mäkelä, J. M., Pirjola, L., Nilsson, E. D., Buzorius, G., Rannik, U., Dal Maso, M., Seidl, W., Hoffman, T., Janson, R., Hansson, H. C., Viisanen, Y., Laaksonen, A., and O'Dowd, C. D.: Overview of the international project on biogenic aerosol formation in the boreal forest (BIOFOR), *Tellus B*, 53, 324–343, 2001a.
- Kulmala, M., Dal Maso, M., Mäkelä, J. M., Pirjola, L., Väkevä, M., Aalto, P., Miikkulainen, P., Hämeri, K., and O'Dowd, C. D.: On the formation, growth and composition of nucleation mode particles, *Tellus*, 53, 479–490, 2001b.
- 20 Mäkelä, J. M., Koponen, I. K., Aalto, P., and Kulmala, M.: One-year data of submicron size modes of tropospheric background aerosol in Southern Finland, *J. Aerosol Sci.*, 31, 595–611, 2000a.
- Mäkelä, J. M., Dal Maso, M., Pirjola, L., Keronen, P., Laakso, L., Kulmala, M., and Laaksonen, A.: Characteristics of the aerosol particle formation events observed at a boreal forest site in southern Finland, *Boreal Env. Res.*, 4, 299–313, 2000b.
- 25 Mason, B. J.: *The physics of clouds*, Clarendon Press, Oxford, 1971.
- Monahan, E. C., Fairall, C. W., Davidson, K. L., and Boyle, P. J.: Observed inter-relations between 10 m winds, ocean whitecaps and marine aerosols, *Q. J. Roy. Met. Soc.*, 109, 379–392, 1983.
- 30 National Research Council, Panel on Aerosol Radiative Forcing and Climate Change A Plan for a Research Program on Aerosol Radiative Forcing and Climate Change, Washington, D.C.: National Academy Press, 1996.

Evolution of the boundary layer aerosol size distribution properties

P. Tunved et al.

[Title Page](#)[Abstract](#)[Introduction](#)[Conclusions](#)[References](#)[Tables](#)[Figures](#)[◀](#)[▶](#)[◀](#)[▶](#)[Back](#)[Close](#)[Full Screen / Esc](#)[Print Version](#)[Interactive Discussion](#)

**Evolution of the
boundary layer
aerosol size
distribution
properties**

P. Tunved et al.

[Title Page](#)[Abstract](#)[Introduction](#)[Conclusions](#)[References](#)[Tables](#)[Figures](#)[◀](#)[▶](#)[◀](#)[▶](#)[Back](#)[Close](#)[Full Screen / Esc](#)[Print Version](#)[Interactive Discussion](#)

- Nilsson, E. D. and Kulmala, M.: The potential for atmospheric mixing processes to enhance the binary nucleation rate, *J. Geophys. Res.*, 103 (D1), 1381–1389, 1998.
- Nilsson, E. D. and Rannik, U.: Turbulent aerosol fluxes over the Arctic Ocean, 1. Dry deposition over sea and pack ice, *J. Geophys. Res.*, 106, 32 125–32 137, 2001.
- 5 Nilsson, E. D., Pirjola, L., and Kulmala, M.: The effect of atmospheric waves on aerosol nucleation and size distribution, *J. Geophys. Res.*, 105, 19917–19926, 2000.
- Nilsson, E. D., Rannik, U., Kulmala, M., Buzorius, G., and O'Dowd, C. D.: Effects of continental boundary layer evolution, convection, turbulence and entrainment, on aerosol formation, *Tellus B*, 53, 441–461, 2001a.
- 10 Nilsson, E. D., Paatero, J., and Boy, M.: Effects of air masses and synoptic weather on aerosol formation in the continental boundary layer, *Tellus B*, 53, 462–478, 2001b.
- Nyeki, S., Baltensperger, U., Colbeck, I., Jost, D. T., Weingartner, E., and Gaggeler, H. W.: The Jungfraujoch high-Alpine research station (3454 m) as a background clean continental site for the measurement of aerosol parameters, *J. Geophys. Res.*, 103, 6097–6107, 1998.
- 15 Pilinis, C., Pandis, S. N., and Seinfeldt, J. H.: Sensitivity of direct climate forcing by atmospheric aerosol-size and composition, *J. Geophys. Res.*, 100, 18 739–18 754, 1995.
- Raes, F., Van Dingenen, R., Vignati, E., Wilson, J., Putaud, J. P., Seinfeld, J. H., and Adams, P.: Formation and cycling of aerosols in the global troposphere, *Atmos. Environ.*, 34, 4215–4240, 2000.
- 20 Rogers, R. R. and Yau, M. K.: *A Short Course in Cloud Physics*, Third edition, Pergamon Press, 293, 1989.
- Schröder, F., Kärcher, B., Fiebig, M., and Petzold, A.: Aerosol states in the free troposphere at northern latitudes, *J. Geophys. Res.*, 107, 8126, doi:10.1029/2000JD000194, 2002.
- Seinfeld, J. H. and Pandis, S. N.: *Atmospheric Chemistry and Physics: From Air Pollution to Climate Change*, J. Wiley, New York, 1998.
- 25 Slinn, W. G. N.: Parameterizations for Resuspension and for Wet and Dry Deposition of Particles and Gases for Use in Radiation Dose Calculations, *Nuclear Safety*, 19, 205–219, 1978.
- Tunved, P., Hansson, H.-C., Kulmala, M., Aalto, P., Viisanen, Y., Karlsson, H., Kristensson, A., Swietlicki, E., Dal Maso, M., Ström, J., and Komppula, M.: One year boundary layer aerosol size distribution data from five nordic background stations, *Atmos. Chem. Phys.*, 3, 2183–2205, 2003.
- 30 Twomey, S. A.: Pollution and the planetary albedo, *Atmos. Environ.*, 8, 1251–1256, 1974.
- Väkevä, M., Hämeri, K., Puhakka, T., Nilsson, E. D., Hohti, H., and Mäkelä, J. M.: Effects of

meteorological processes on aerosol particle size distribution in an urban background area, J. Geophys. Res., 105, 9807–9821, 2000.

Williams, J., de Reus, M., Krejci, R., Fischer, H., and Ström, J.: Application of the variability-size relationship to atmospheric aerosol studies: estimating aerosol lifetimes and ages, Atmos. Chem. Phys., 2, 133–145, 2002.

5

Zhang, L., Gong, S., Padro, J., and Barrie, L.: A size-segregated particle dry deposition scheme for an atmospheric module, Atmos. Environ., 35, 549–560, 2001.

**Evolution of the
boundary layer
aerosol size
distribution
properties**

P. Tunved et al.

Title Page

Abstract

Introduction

Conclusions

References

Tables

Figures

◀

▶

◀

▶

Back

Close

Full Screen / Esc

Print Version

Interactive Discussion

**Evolution of the
boundary layer
aerosol size
distribution
properties**

P. Tunved et al.

Table 1. Number, surface and mass associated with each cluster.

Cluster	Median N (cm^{-3})	Median S (cm^2/cm^3)	Equivalent mass ($\rho=1.5$)($\mu\text{g}/\text{m}^3$)	Frequency of occurrence (%)
A	5254	0.0435	1.59	1.7
B	4278	0.0854	3.23	3.4
C	3082	0.0888	3.80	11.8
D	3004	0.0589	2.63	7.8
E	2124	0.0469	2.33	11.6
F	3372	0.2153	12.15	8.6
G	2073	0.1233	7.30	25.9
H	1106	0.0803	5.15	29.2

[Title Page](#)
[Abstract](#)
[Introduction](#)
[Conclusions](#)
[References](#)
[Tables](#)
[Figures](#)
[Back](#)
[Close](#)
[Full Screen / Esc](#)
[Print Version](#)
[Interactive Discussion](#)

Evolution of the boundary layer aerosol size distribution properties

P. Tunved et al.

Table 2. Fraction of trajectories originating from the “clean marine” sector and average number of in-cloud occasions according to definition $RH > 94\%$.

Cluster	A	B	C	D	E	F	G	H
Fraction “clean marine”	0.85	0.71	0.71	0.7	0.50	0.14	0.30	0.38
In-cloud occasions during last 72 h	2.7	1.3	2.5	2.5	2.2	1.5	5	10

[Title Page](#)
[Abstract](#)
[Introduction](#)
[Conclusions](#)
[References](#)
[Tables](#)
[Figures](#)
[Back](#)
[Close](#)
[Full Screen / Esc](#)
[Print Version](#)
[Interactive Discussion](#)

Evolution of the boundary layer aerosol size distribution properties

P. Tunved et al.

Table 3. Summary of size distribution properties and important factors associated with them.

Cluster	Frequency of occurrence and mass	Characteristics Number concentration	Age of size distribution	In-cloud processing important	Wet deposition important	Preferred source area Marine component within brackets (%)
A	1.7	High number, low mass	fresh		✓	Marine (85)
B	3.4	High number, low mass	fresh		✓	Marine (71)
C	11.8	Average number, low mass	intermediate		✓	Marine (71)
D	7.8	Average number, low mass	intermediate		✓	Marine (70)
E	11.6	Low number, low mass	fresh		✓	marine/continental (50)
F	8.6	High number, high mass	aged			Continental (14)
G	25.9	Low number, low mass	aged	✓		Continental (30)
H	29.2	Low number, low mass	aged	✓		Continental (38)

Title Page

Abstract

Introduction

Conclusions

References

Tables

Figures

◀

▶

◀

▶

Back

Close

Full Screen / Esc

Print Version

Interactive Discussion

Evolution of the boundary layer aerosol size distribution properties

P. Tunved et al.

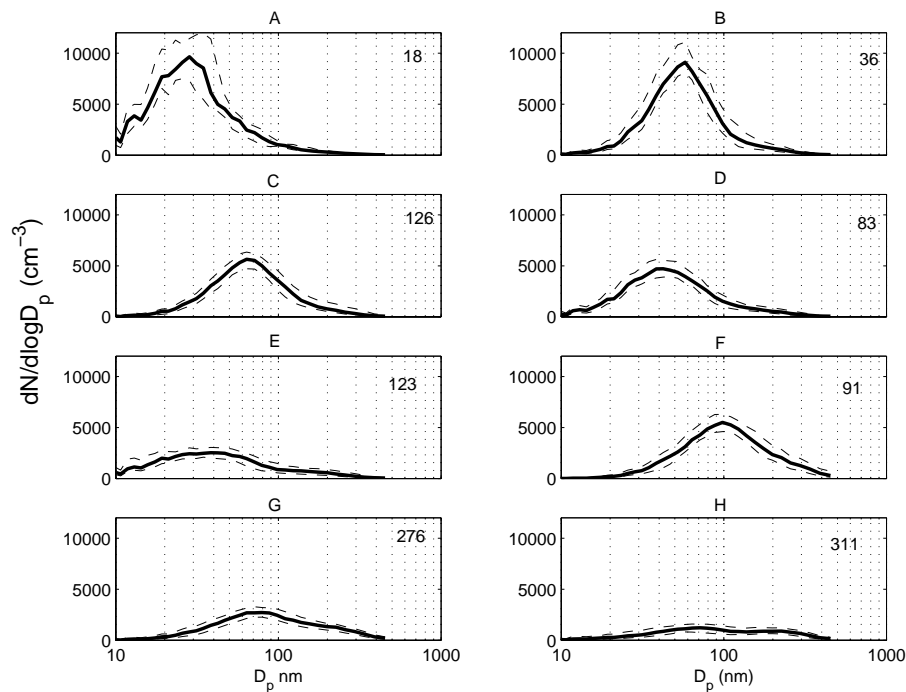


Fig. 1. Number size distribution clusters. Number of size distributions contributing to each cluster is given in the figure.

Title Page

Abstract

Introduction

Conclusions

References

Tables

Figures

◀

▶

◀

▶

Back

Close

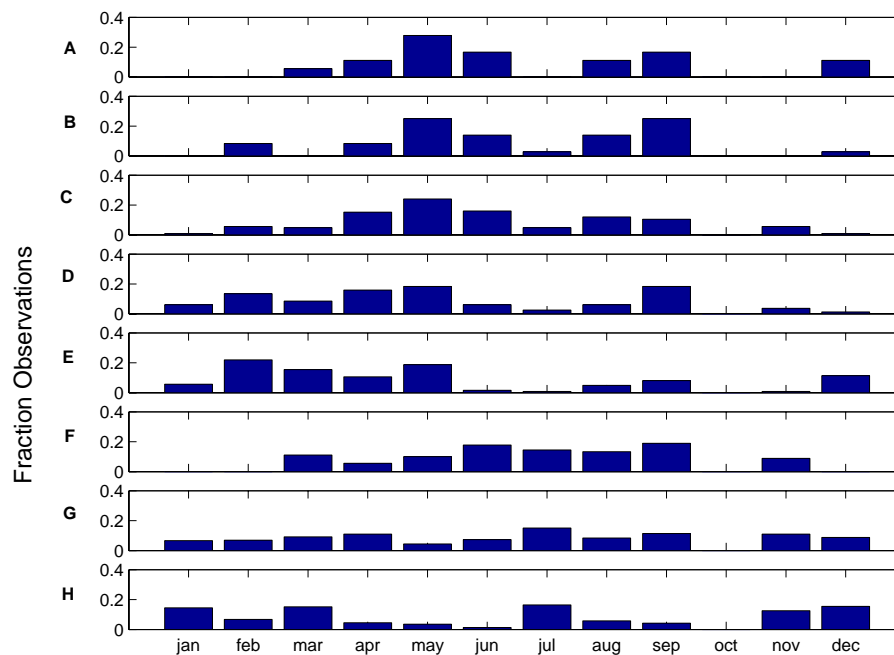
Full Screen / Esc

Print Version

Interactive Discussion

**Evolution of the
boundary layer
aerosol size
distribution
properties**

P. Tunved et al.

**Fig. 2.** Seasonal distribution of the data contributing to each cluster.[Title Page](#)[Abstract](#)[Introduction](#)[Conclusions](#)[References](#)[Tables](#)[Figures](#)[◀](#)[▶](#)[◀](#)[▶](#)[Back](#)[Close](#)[Full Screen / Esc](#)[Print Version](#)[Interactive Discussion](#)

**Evolution of the
boundary layer
aerosol size
distribution
properties**

P. Tunved et al.

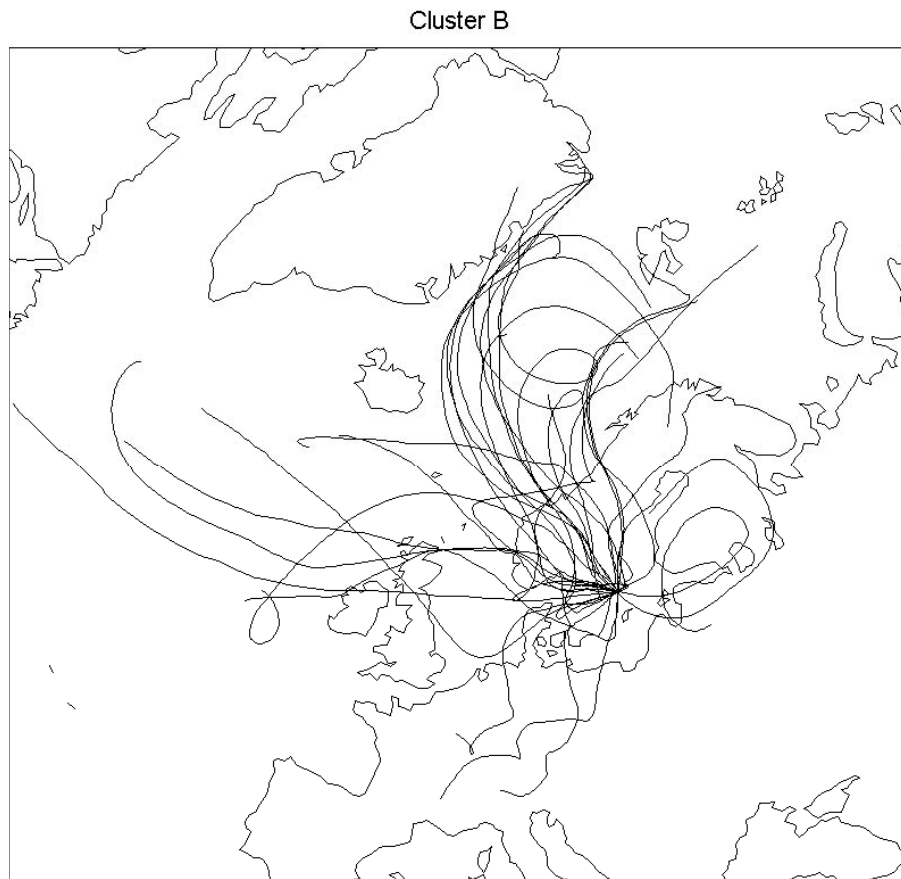


Fig. 3. Advection situations associated with cluster B.

[Title Page](#)[Abstract](#)[Introduction](#)[Conclusions](#)[References](#)[Tables](#)[Figures](#)[◀](#)[▶](#)[◀](#)[▶](#)[Back](#)[Close](#)[Full Screen / Esc](#)[Print Version](#)[Interactive Discussion](#)

Cluster F

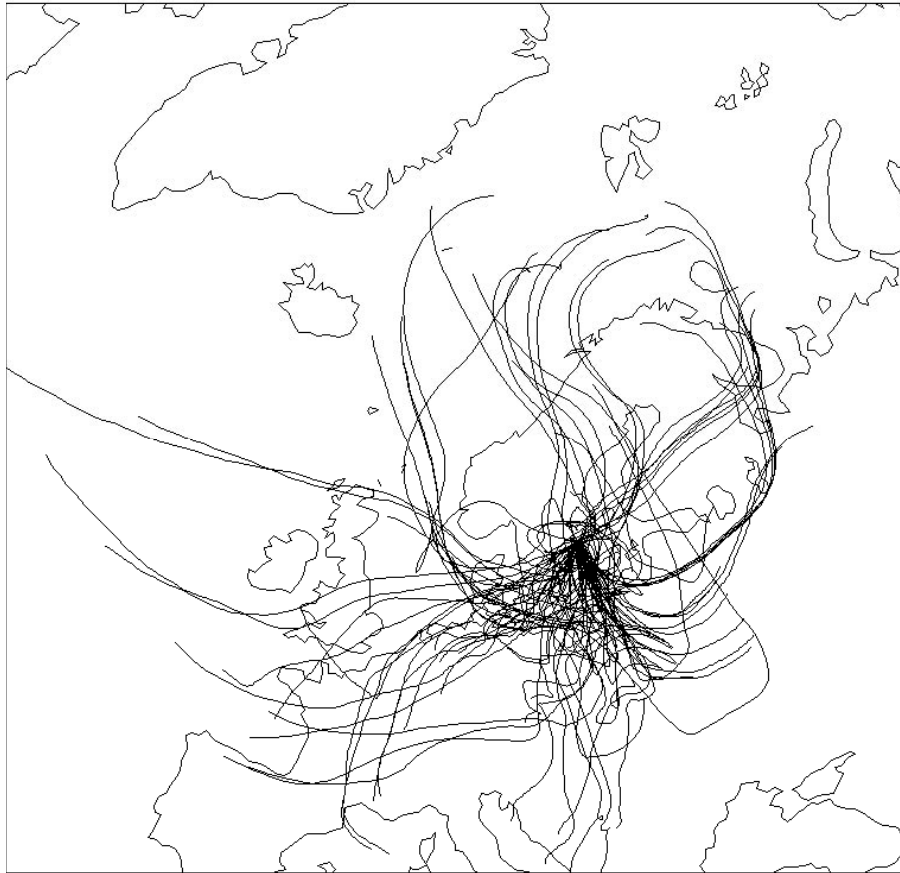


Fig. 4. Advection situations associated with cluster F.

Evolution of the
boundary layer
aerosol size
distribution
properties

P. Tunved et al.

Title Page

Abstract

Introduction

Conclusions

References

Tables

Figures

◀

▶

◀

▶

Back

Close

Full Screen / Esc

Print Version

Interactive Discussion

Cluster H

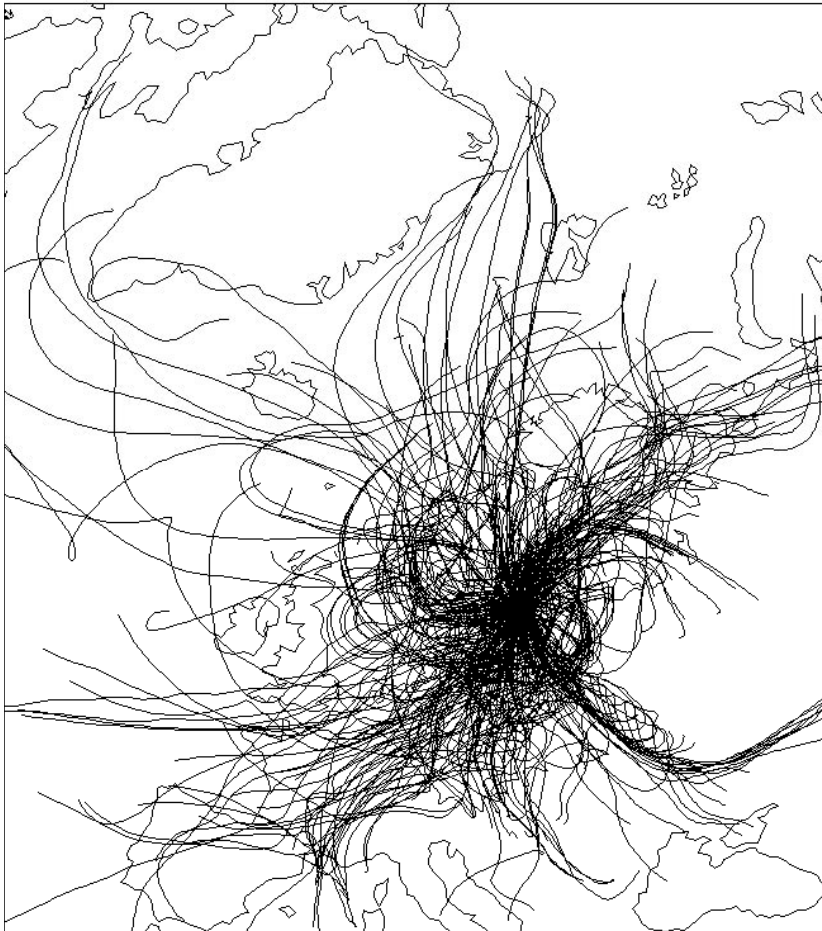


Fig. 5. Advection situations associated with cluster H.

Evolution of the
boundary layer
aerosol size
distribution
properties

P. Tunved et al.

Title Page

Abstract

Introduction

Conclusions

References

Tables

Figures

◀

▶

◀

▶

Back

Close

Full Screen / Esc

Print Version

Interactive Discussion

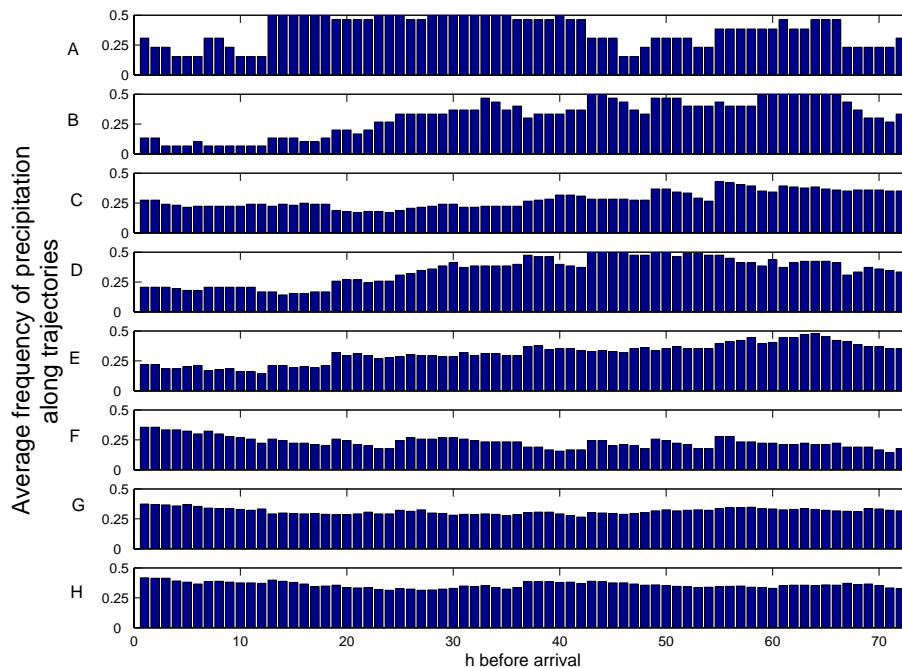


Fig. 6. Median precipitation fraction associated with each cluster, per endpoint, during the last 72 h. Blue bars denote the total precipitation fraction, green bars fraction of time with precipitation rate >0.3 mm/h. Corresponding from cluster A to H, from above.

Evolution of the boundary layer aerosol size distribution properties

P. Tunved et al.

Title Page

Abstract

Introduction

Conclusions

References

Tables

Figures

◀

▶

◀

▶

Back

Close

Full Screen / Esc

Print Version

Interactive Discussion

**Evolution of the
boundary layer
aerosol size
distribution
properties**

P. Tunved et al.

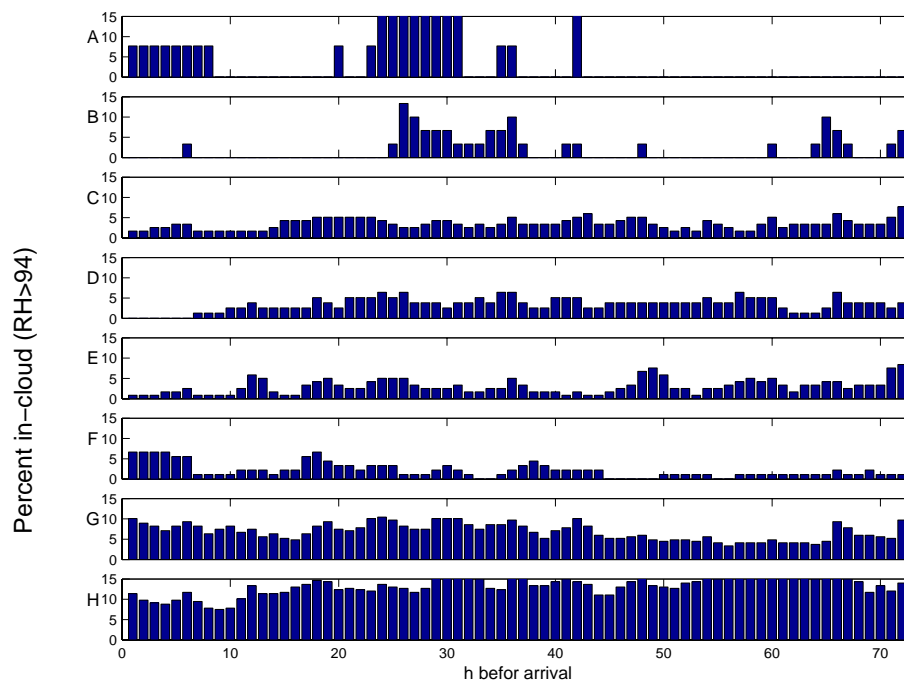


Fig. 7. Frequency of in-cloud occasions as derived from the RH profiles from the HYSPLIT4 model. Corresponding from cluster A to H, from above.

[Title Page](#)[Abstract](#)[Introduction](#)[Conclusions](#)[References](#)[Tables](#)[Figures](#)[◀](#)[▶](#)[◀](#)[▶](#)[Back](#)[Close](#)[Full Screen / Esc](#)[Print Version](#)[Interactive Discussion](#)

Evolution of the boundary layer aerosol size distribution properties

P. Tunved et al.

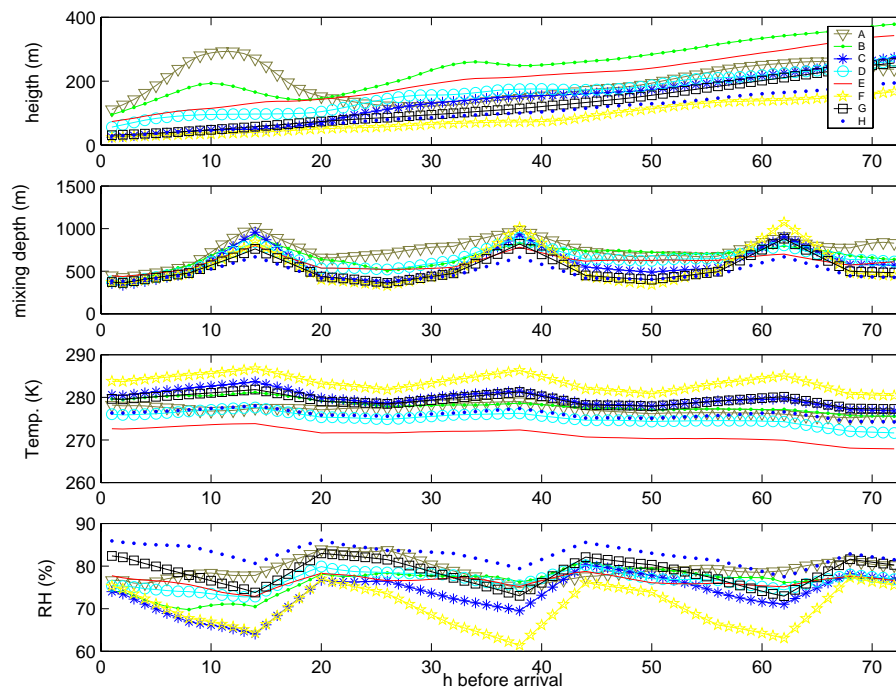


Fig. 8. Diurnal averaged time profiles of height (1), mixing layer height (2), temperature (3) and relative humidity (4) for each cluster.

[Title Page](#)[Abstract](#)[Introduction](#)[Conclusions](#)[References](#)[Tables](#)[Figures](#)[◀](#)[▶](#)[◀](#)[▶](#)[Back](#)[Close](#)[Full Screen / Esc](#)[Print Version](#)[Interactive Discussion](#)

**Evolution of the
boundary layer
aerosol size
distribution
properties**

P. Tunved et al.

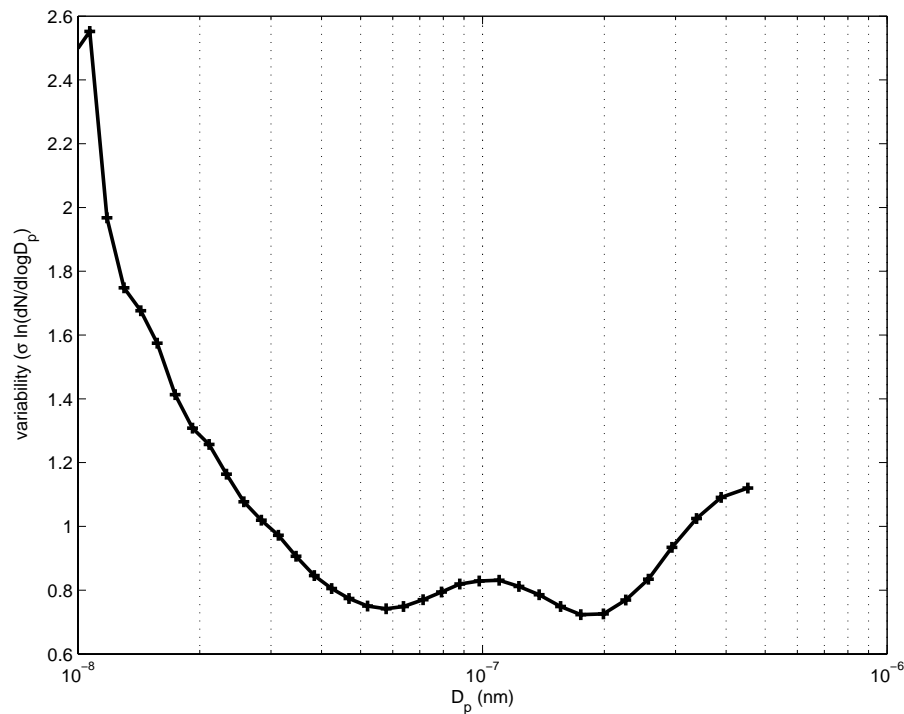


Fig. 9. Variability expressed as $\sigma \ln(dN/d\log D_p)$ for the whole data set.

[Title Page](#)[Abstract](#)[Introduction](#)[Conclusions](#)[References](#)[Tables](#)[Figures](#)[◀](#)[▶](#)[◀](#)[▶](#)[Back](#)[Close](#)[Full Screen / Esc](#)[Print Version](#)[Interactive Discussion](#)

Evolution of the boundary layer aerosol size distribution properties

P. Tunved et al.

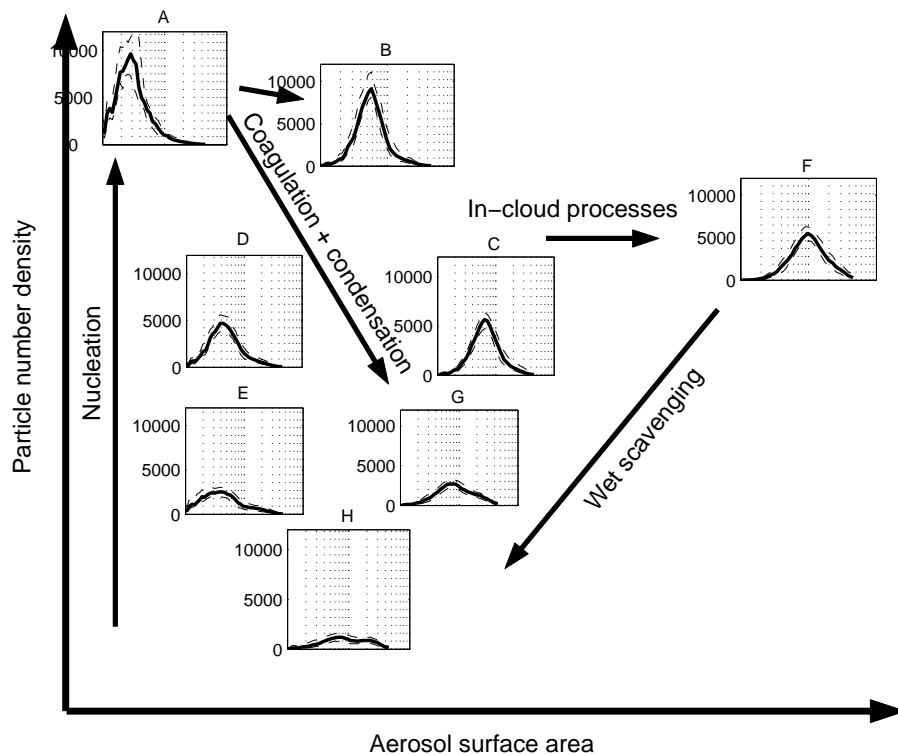


Fig. 10. Suggested lifecycle of the boundary layer aerosol.

Title Page	
Abstract	Introduction
Conclusions	References
Tables	Figures
◀	▶
◀	▶
Back	Close
Full Screen / Esc	
Print Version	
Interactive Discussion	