



## **MALTE? Model to predict new aerosol formation in the lower troposphere**

M. Boy, O. Hellmuth, H. Korhonen, E. D. Nilsson, D. Revelle, A. Turnipseed, F. Arnold, M. Kulmala

### **► To cite this version:**

M. Boy, O. Hellmuth, H. Korhonen, E. D. Nilsson, D. Revelle, et al.. MALTE? Model to predict new aerosol formation in the lower troposphere. *Atmospheric Chemistry and Physics Discussions*, 2006, 6 (3), pp.3465-3512. hal-00301238

**HAL Id: hal-00301238**

**<https://hal.science/hal-00301238>**

Submitted on 18 Jun 2008

**HAL** is a multi-disciplinary open access archive for the deposit and dissemination of scientific research documents, whether they are published or not. The documents may come from teaching and research institutions in France or abroad, or from public or private research centers.

L'archive ouverte pluridisciplinaire **HAL**, est destinée au dépôt et à la diffusion de documents scientifiques de niveau recherche, publiés ou non, émanant des établissements d'enseignement et de recherche français ou étrangers, des laboratoires publics ou privés.

# MALTE – Model to predict new aerosol formation in the lower troposphere

**M. Boy**<sup>1,2</sup>, **O. Hellmuth**<sup>3</sup>, **H. Korhonen**<sup>4</sup>, **E. D. Nilsson**<sup>5</sup>, **D. ReVelle**<sup>6</sup>,  
**A. Turnipseed**<sup>7</sup>, **F. Arnold**<sup>8</sup>, and **M. Kulmala**<sup>1</sup>

<sup>1</sup>Department of Physical Sciences, Division of Atmospheric Sciences, P.O. Box 64, 00014 University of Helsinki, Finland

<sup>2</sup>ASP/ACD, NCAR, P.O. Box 3000, 80305 Boulder, Colorado, USA

<sup>3</sup>Leibniz Institute for Tropospheric Research, Permoserstrasse 15, 04318 Leipzig, Germany

<sup>4</sup>Finnish Meteorological Institute, Air Quality Research, Sahaajankatu 20 E, FIN-00880 Helsinki, Finland

<sup>5</sup>Department of Meteorology, Stockholm University, S-106 91 Stockholm, Sweden

<sup>6</sup>Earth and Environmental Sciences, Los Alamos National Laboratory, P.O. Box 1663, MS D401, Los Alamos, NM, 87545, USA

<sup>7</sup>ACD, NCAR, P.O. Box 3000, 80305 Boulder, Colorado, USA

<sup>8</sup>Atmospheric Physics Division, Max-Planck Institute for Nuclear Physics, (MPIK), P.O. Box 103980, 69029 Heidelberg, Germany

Received: 13 February 2006 – Accepted: 17 February 2006 – Published: 4 May 2006

Correspondence to: M. Boy (michael.boy@helsinki.fi)

**MALTE – Model to  
predict new aerosol  
formation in the LT**

M. Boy et al.

Title Page

Abstract

Introduction

Conclusions

References

Tables

Figures

◀

▶

◀

▶

Back

Close

Full Screen / Esc

Printer-friendly Version

Interactive Discussion

## Abstract

The manuscript presents a detailed description of the meteorological and chemical code of Malte – a model to predict new aerosol formation in the lower troposphere. The aerosol dynamics are achieved by the new developed UHMA (University of Helsinki Multicomponent Aerosol Model) code with kinetic limited nucleation as responsible mechanism to form new clusters. First results indicate that the model is able to predict the on- and offset of new particle formation as well as the total aerosol number concentrations that were in good agreement with the observations. Further, comparison of predicted and measured  $\text{H}_2\text{SO}_4$  concentrations showed a satisfactory agreement. The simulation results indicated that at a certain transitional particle diameter (2–9 nm), organic molecules can begin to contribute significantly to the growth rate compared to sulphuric acid. At even larger particle sizes, organic molecules can dominate the growth rate on days with significant monoterpene concentrations. The intraday vertical evolution of newly formed clusters and particles in two different size ranges resulted in two maxima at the ground and the top of the mixed layer with higher concentrations for the detectable particles above 3 nm below in contrast to the predicted cluster concentrations.

## 1 Introduction

New secondary particle formation has been observed at almost all places where both particle number concentrations and size distributions have been measured; a comprehensive summary of these studies is given in Kulmala et al. (2004a). However, many questions currently remain regarding the extent to which these secondary aerosols can influence climate, radiative properties and human health. There is growing evidence that the Earth's radiation budget is affected by radiative forcing caused by changes in the number concentration and composition of aerosols (Lohmann and Feichter, 2005; Ramanathan et al., 2001). In addition higher number concentrations of ultrafine parti-

ACPD

6, 3465–3512, 2006

### MALTE – Model to predict new aerosol formation in the LT

M. Boy et al.

Title Page

Abstract

Introduction

Conclusions

References

Tables

Figures

◀

▶

◀

▶

Back

Close

Full Screen / Esc

Printer-friendly Version

Interactive Discussion

EGU

cles could have a strong impact on the size distribution of cloud condensation nuclei, which will further affect cloud properties (Kerminen et al., 2005).

Even though many field campaigns, laboratory experiments and new modelling approaches have improved our understanding to some extent, detailed mechanisms responsible for the formation of new particles in the planetary boundary layer are still not completely elucidated to date. Here we merged individually developed codes into a one-dimensional model including aerosol dynamics, boundary layer meteorology and chemistry in order to investigate the formation and growth processes responsible for the secondary organic aerosols under realistic atmospheric conditions. Up to our knowledge this is the first approach to combine aerosol dynamics, chemistry and meteorology in a one-dimensional model to investigate the different mechanisms included in the formation of secondary organic aerosols in the planetary boundary layer.

## 2 Model description

### 2.1 Model overview

MALTE is a one-dimensional model which includes several modules for the simulation of boundary layer dynamics and both chemical and aerosol dynamical processes. Owing to the modular structure, a number of sub-models can be alternatively switched on/off depending on the question of interest. This modular nature also facilitates use and testing and offers the possibility to quantify possible impacts and interactions. For example, MALTE can be used as a simple box-model to simulate chamber experiments. Figure 1 shows the basic schematic of the model. Some of these parts are currently under construction and will not be described here (highlighted with gray in Fig. 1). MALTE divides the planetary boundary layer (PBL) into several layers. The number and thickness of the model layers are variable, typically dependent on the availability of sounding measurements which are used to initialize the model. For the time-dependent integration of the chemical and aerosol processes, a Runge-Kutta scheme

## MALTE – Model to predict new aerosol formation in the LT

M. Boy et al.

Title Page

Abstract

Introduction

Conclusions

References

Tables

Figures

◀

▶

◀

▶

Back

Close

Full Screen / Esc

Printer-friendly Version

Interactive Discussion

is used (Press, 1992). In the following, the model description of the meteorological, chemical, and aerosol-dynamical processes will be presented.

## 2.2 Planetary Boundary Layer model

### 2.2.1 Gouverning equations

- 5 For the description of Planetary Boundary Layer (PBL) processes, a first-order closure technique is applied. The PBL model includes predictive equations for four first statistical moments (means), i.e., the x- and y-component of the wind  $\bar{u}$  and  $\bar{v}$ , the potential temperature  $\bar{\theta}$  and the specific humidity  $\bar{q}$ . The model is mainly based on the previous works of Blackkader (1979) and ReVelle (1993). It considers geostrophic wind forcing, radiative forcing, and large-scale subsidence. Assuming horizontal homogeneity, the governing equations in an Eulerian reference system are:

$$\frac{\partial \bar{u}}{\partial t} + \bar{w}_s \frac{\partial \bar{u}}{\partial z} = -\frac{\partial \overline{w'u'}}{\partial z} + f_c (\bar{v} - \bar{v}_g) \quad (1)$$

$$\frac{\partial \bar{v}}{\partial t} + \bar{w}_s \frac{\partial \bar{v}}{\partial z} = -\frac{\partial \overline{w'v'}}{\partial z} - f_c (\bar{u} - \bar{u}_g) \quad (2)$$

$$\frac{\partial \bar{\theta}}{\partial t} + \bar{w}_s \frac{\partial \bar{\theta}}{\partial z} = -\frac{\partial \overline{w'\theta'}}{\partial z} + \left( \frac{\partial \bar{\theta}}{\partial t} \right)_{\text{rad}} \quad (3)$$

$$15 \quad \frac{\partial \bar{q}}{\partial t} + \bar{w}_s \frac{\partial \bar{q}}{\partial z} = -\frac{\partial \overline{w'q'}}{\partial z} \quad (4)$$

Here,  $f_c = 2\omega \sin \Phi$  denotes the Coriolis parameter with  $\omega = 7.27 \times 10^{-5} \text{ s}^{-1}$  being the angular velocity of the Earth's rotation, and  $\Phi$  being the geographical latitude. The variables  $u_g$  and  $v_g$  are the x- and respective y-component of the geostrophic wind,

and  $w_s$  is the large-scale subsidence velocity. The turbulent fluxes of momentum (longitudinal and lateral to the mean wind), sensible heat, and humidity are  $\overline{w'u'}$ ,  $\overline{w'v'}$ ,  $\overline{w'\theta'}$  and  $\overline{w'q'}$ , respectively.

According to the annotation of Stull (1997, Sect. 6.4, p. 203–204), a first order/local closure is applied, i.e., the second moments are parameterised according to the down-gradient approximation or “K-theory”:

$$\overline{w'u'} = -K_m \frac{\partial \bar{u}}{\partial z}, \quad \overline{w'v'} = -K_m \frac{\partial \bar{v}}{\partial z}, \quad \overline{w'\theta'} = -K_h \frac{\partial \bar{\theta}}{\partial z}, \quad \overline{w'q'} = -K_h \frac{\partial \bar{q}}{\partial z} \quad (5)$$

Here  $K_m$  and  $K_h$  denote the eddy diffusivities for momentum and scalars, respectively.

## 2.2.2 Prandtl layer parameterization

The Prandtl layer model is based on Blackadar (1979) and ReVelle (1993). A comprehensive motivation and explanation of the present realisation of that model, called “Blackadar system” can be found in ReVelle (1993). A key assumption is the fact, that “the near-surface air temperature change is controlled by a combination of radiative and turbulent forcing as a function of the flow regime of the near-surface PBL.” The Prandtl layer is subdivided into two layers. The first layer extends from the ground level up to the height  $z_1=1$  m. In this near-surface layer the flow is quasi-laminar and atmospheric radiation effects become important for the thermal flow structure. Hence, this layer is named “radiation-surface layer”. The second layer reaches from the level  $z_1$  up to the level  $z_2=10$  m, with  $z_2$  denoting the top of the Prandtl layer being identical to the first regular model level. In this layer the flow is turbulent and only turbulent heating and cooling controls the vertical structure of the wind and temperature fields, but not radiation. Thus, this layer is named “turbulence-surface layer”. The Blackadar system includes governing equations for the Prandtl layer air potential temperature  $\bar{\theta}_1$  at  $z_1=1$  m, and the components of the wind velocity  $\bar{u}_2$  and  $\bar{v}_2$ , respectively, within the Prandtl layer. Additionally, further equations for the determination of the ground surface interface potential temperature  $\bar{\theta}_g$  and the “deep” ground potential temperature,

$\bar{\theta}_m$ , representing the temperature at the depth of penetration and the diurnal heating-cooling cycle, are considered. The final set of equations, except for the soil properties, read:

$$\frac{\partial \bar{\theta}_1}{\partial t} = a (\bar{\theta}_g - \bar{\theta}_1) - b \frac{H_0}{\rho c_p z_1} \quad (6)$$

$$\frac{\partial \bar{u}_2}{\partial t} = - \left. \frac{\partial \overline{w'u'}}{\partial z} \right|_2 + f_c (\bar{v}_2 - v_g) \quad (7)$$

$$\frac{\partial \bar{v}_2}{\partial t} = - \left. \frac{\partial \overline{w'v'}}{\partial z} \right|_2 - f_c (\bar{u}_2 - u_g) \quad (8)$$

The model parameters are the turbulent flux of sensible heat  $H_0 = -\kappa \rho c_p u_* \theta_*$  in  $[\text{W m}^{-2}]$ , an inverse adjustment time scale  $a = 0.32 \varepsilon \sigma \bar{\theta}_a^3 / (\rho c_p z_1)$  in  $[\text{s}^{-1}]$ , a dimensionless empirical constant  $b = 0.2$ , the surface emissivity  $\varepsilon$ , the Stefan-Boltzmann constant  $\sigma = 5.67 \times 10^{-8} \text{ W m}^{-2} \text{ K}^{-4}$ , the von-Karman constant  $\kappa = 0.4$ , the air density  $\rho$  in  $[\text{kg m}^{-3}]$ , the specific heat capacity of moist air  $c_p$  in  $[\text{J kg}^{-1} \text{ K}^{-1}]$ , the friction velocity  $u_* = \left( \overline{w'u'} \right) \Big|_s + \left( \overline{w'v'} \right) \Big|_s^{\frac{1}{4}}$ , the kinematic temperature scale  $\theta_* = \overline{w'\theta'} \Big|_s / u_*$ .

The divergences of the turbulent momentum fluxes in the Prandtl layer can be approximated as follows:

$$\begin{aligned} \left. \frac{\partial \overline{w'u'}}{\partial z} \right|_2 &\approx \frac{\overline{w'u'} \Big|_2 - \overline{w'u'} \Big|_1}{\Delta z} \\ \left. \frac{\partial \overline{w'v'}}{\partial z} \right|_2 &\approx \frac{\overline{w'v'} \Big|_2 - \overline{w'v'} \Big|_1}{\Delta z} \end{aligned} \quad (9)$$

with  $\Delta z = z_2 - z_1$  being the height difference between the top of the Prandtl layer (level 2) and the top of the radiation-surface layer (level 1). Using the following approximations (Stull, 1997, p. 262)

$$\begin{aligned}
 \overline{w'u'} \Big|_1 &\approx -C_d(\xi) V_H u_2 \\
 \overline{w'v'} \Big|_1 &\approx -C_d(\xi) V_H v_2 \\
 \overline{w'u'} \Big|_2 &\approx -K_m \frac{\Delta u_2}{\Delta z} \\
 \overline{w'v'} \Big|_2 &\approx -K_m \frac{\Delta v_2}{\Delta z}
 \end{aligned} \tag{10}$$

with  $V_H = (u_2^2 + v_2^2)^{\frac{1}{2}}$  being the horizontal wind velocity at  $z_2$ ,  $C_d(\xi)$  the drag coefficient as a function of the dimensionless stability parameter  $\xi = z/L$ , and  $L$  the Monin-Obukhov length (Stull, 1997, p. 265–269). Substitution into Eqs. (7) and (8), one obtains

$$\frac{\partial \bar{u}_2}{\partial t} = K_m \frac{\Delta \bar{u}_2}{\Delta z^2} - \frac{C_d(\xi) V_H u_2}{\Delta z} + f_c (\bar{v}_2 - v_g) \tag{11}$$

$$\frac{\partial \bar{v}_2}{\partial t} = K_m \frac{\Delta \bar{v}_2}{\Delta z^2} - \frac{C_d(\xi) V_H v_2}{\Delta z} - f_c (\bar{u}_2 - u_g) \tag{12}$$

### 2.2.3 Adjustment of the parameterisation to flow stability

With the assumption of Monin-Obukhov similarity in the Prandtl layer, the potential temperature difference  $(\bar{\theta}_2 - \bar{\theta}_1)$ , the specific humidity difference  $(\bar{q}_2 - \bar{q}_1)$ , and the wind velocity  $V_H$  at  $z_2$  can be determined from the kinematic temperature scale,  $\theta_*$ , the kinematic humidity scale,  $q_*$ , and the friction velocity,  $u_*$ . (Remember  $z_1$  denotes the top of radiation-surface layer, and  $z_2$  the top of the Prandtl layer and first regular main



level.) A direct solution of the inverse problem, i.e., the determination of  $\theta_*$ ,  $q_*$ , and  $u_*$  from the grid-scale temperature and specific humidity at  $z_1$  and  $z_2$  and the wind at  $z_2$  is possible, but for practical reasons not feasible. Alternatively, the scaling properties must be determined by numerical iteration. Owing to the availability of good initial estimates of  $u_*$ ,  $\theta_*$  and  $q_*$  from the previous time step, a double-iteration routine is sufficient to produce accurate updated values (Blackadar, 1979, p. 70–71). Again, following Blackadar (1979), we adjust the kinematic Prandtl layer scaling properties  $u_*$ ,  $\theta_*$  and  $q_*$  to the flow stability, allowing us to evaluate the turbulent-to-laminar flow transition. At first, the bulk Richardson number  $Ri_B$  of the Prandtl layer is evaluated between  $z_1$  and  $z_2$  using the most recently available values of  $\bar{\theta}_1$ ,  $\bar{\theta}_2$ ,  $V_H(z_2)$  and  $\theta_*$  i.e.,

$$Ri_B = \left( \frac{g}{\bar{\theta}_{\text{avg}}} \right) \left( \frac{z_2}{V_H^2} \right) \left[ \bar{\theta}_2 - \bar{\theta}_1 + \theta_* \ln \left( \frac{z_1}{z_0} \right) \right] \quad (13)$$

with

$$\bar{\theta}_{\text{avg}} = (\bar{\theta}_1 + \bar{\theta}_2)/2$$

and  $g=9.80665 \text{ m}^2 \text{ s}^{-1}$  being the constant of gravity, and  $z_0$  the aerodynamic roughness length (Blackadar, 1979, Eq. 5.10). According to the values of  $Ri_B$  three different regimes can be distinguished:

(a)  $Ri_B > 0.2$ :

In this case the lowest layer becomes non-turbulent, and even though the wind velocity at the level  $z_2$  is not zero, the momentum fluxes at the surface are set to zero. Then, the kinematic temperature scale  $\theta_*$  as well as the stability functions for momentum and heat transfer  $\Psi_m$  and  $\Psi_h$  are set to zero, hence  $H_0=0$ . For the friction velocity a minimum value of  $u_*=0.05 \text{ ms}^{-1}$  is assumed. The turbulent humidity “mass” flux  $Q_0$  in  $[\text{kg m}^{-2} \text{ s}^{-1}]$  is reduced to the molecular flux according to

$$Q_0 \approx Q_{0,\text{mol}}$$

Title Page

Abstract

Introduction

Conclusions

References

Tables

Figures

◀

▶

◀

▶

Back

Close

Full Screen / Esc

Printer-friendly Version

Interactive Discussion

$$Q_{0,\text{mol}} = -m_a \rho K_{h,\text{mol}} \left( \frac{q_2 - q_1}{h - z_0} \right) \quad (14)$$

With  $Q_{0,\text{mol}}$  being the molecular humidity mass flux,  $m_a$  being the moisture availability at the surface, i.e., the efficiency of evaporation (0–1),  $K_{h,\text{mol}} = 2.4 \times 10^{-5} \text{ m}^2 \text{ s}^{-1}$  the molecular eddy diffusivity for scalars, and  $h$  being a characteristic Prandtl layer length scale (Lettau's length scale)

$$h = (z_1 z_2)^{\frac{1}{2}} \ln \left( \frac{z_2}{z_1} \right)^{\frac{1}{2}} \quad (15)$$

The kinematic humidity scale reads

$$q_* = -\frac{Q_0}{\rho u_*} \quad (16)$$

(b)  $0 \leq Ri_B \leq 0.2$ :

In the case of stable but turbulent flow the Monin-Obukhov length is determined from the following equation (Blackadar, 1979, Eq. 5.11):

$$\frac{1}{L} = \frac{1}{h} \ln \left( \frac{h}{z_0} \right) \left( \frac{Ri_B}{1 - 5Ri_B} \right) \quad (17)$$

Then, the kinematic scaling properties are (Blackadar, 1979, Eqs. 5.12–5.13):

$$u_* = \frac{\kappa V_H|_{z_2}}{\ln \left( \frac{h}{z_0} \right) - \psi_m}$$

$$\theta_* = \frac{\bar{\theta}_2 - \bar{\theta}_1}{\ln \left( \frac{h}{z_0} \right) - \psi_h}$$

$$q_* = \frac{\bar{q}_2 - \bar{q}_1}{\ln \left( \frac{h}{z_0} \right) - \psi_h}$$

Title Page

Abstract

Introduction

Conclusions

References

Tables

Figures

◀

▶

◀

▶

Back

Close

Full Screen / Esc

Printer-friendly Version

Interactive Discussion

$$q_1 = q_g + \left( \frac{q_2 - q_g}{z_2} \right) z_1$$

$$\psi_m = -\frac{5h}{L}$$

$$\psi_h = \psi_m$$

$$H_0 = -\kappa c_p \rho u_* \theta_*$$

$$5 \quad Q_0 = Q_{0,\text{mol}} - m_a \rho \kappa u_* q_* \quad (18)$$

with  $q_g$  being the specific humidity at the surface, i.e.,

$$q_g = m_a q_{g,\text{sat}} + (1 - m_a) q_2 \quad (19)$$

and  $q_{g,\text{sat}}$  the saturation specific humidity at  $z=0$ . The latter is a function of the saturation vapour pressure of water at  $z=0$  and the surface air pressure.

10 (c)  $Re_B < 0$ :

In the unstable case the last estimate of the Monin-Obukhov length is used to evaluate the scaling properties (Blackadar, 1979, Eqs. 5.15–5.20, see references therein):

$$u_* = \frac{\kappa V_H|_{z_2}}{\ln\left(\frac{h}{z_0}\right) - \psi_m}$$

$$\theta_* = \frac{\bar{\theta}_2 - \bar{\theta}_1}{\ln\left(\frac{h}{z_0}\right) - \psi_h}$$

$$15 \quad q_* = \frac{\bar{q}_2 - \bar{q}_1}{\ln\left(\frac{h}{z_0}\right) - \psi_h}$$

$$q_1 = q_g + \left( \frac{q_2 - q_g}{z_2} \right) z_1$$

$$\psi_m = \frac{\psi_h + \pi}{2} + 2 \ln\left(\frac{1+x}{2}\right) - 2 \tan^{-1} x$$

Title Page

Abstract

Introduction

Conclusions

References

Tables

Figures

◀

▶

◀

▶

Back

Close

Full Screen / Esc

Printer-friendly Version

Interactive Discussion

$$\psi_h = 2 \ln \left( \frac{1 + x^2}{2} \right)$$

$$x = \left( 1 - 16 \frac{h}{L} \right)^{\frac{1}{4}}$$

$$\frac{1}{L} = \left( \frac{Ri_B}{h} \right) \left( \frac{[\ln(h/z_0) - \psi_m]^2}{\ln(h/z_0) - \psi_h} \right)$$

$$H_0 = -\kappa c_p \rho u_* \theta_*$$

$$5 \quad Q_0 = Q_{0,\text{mol}} - m_a \rho \kappa u_* q_* \quad (20)$$

#### 2.2.4 Soil-slab model

For the determination of the ground temperature  $\bar{\theta}_g$ , the soil-slab model proposed by Blackadar (1979, Appendix) is used (see ReVelle, 1993, as well). It is very similar to the “force-restore method”, such as described, e.g., in Stull (1997, p. 285–287). The governing equations for  $\bar{\theta}_g$  are

$$c_g \frac{\partial \theta_g}{\partial t} = E - G$$

$$E = K^\downarrow - K^\uparrow + L^\downarrow - L^\uparrow - H_0 - L_v Q_0$$

$$G = \kappa m c_g (\bar{\theta}_g - \bar{\theta}_m) \quad (21)$$

with  $E$  being the energy flux input into the soil slab of uniform properties [ $\text{Wm}^{-2}$ ],  $K^\downarrow$  the downward directed shortwave radiation flux [ $\text{Wm}^{-2}$ ],  $K^\uparrow = \alpha K^\downarrow$  the upward directed shortwave radiation flux,  $\alpha_g$  the surface albedo,  $L^\downarrow = 5.31 \times 10^{13} \bar{\theta}_a^{-6}$  [ $\text{Wm}^{-2}$ ], the downward long-wave radiation flux (back-radiation flux from the atmosphere) (Swinbank,

Title Page

Abstract

Introduction

Conclusions

References

Tables

Figures

◀

▶

◀

▶

Back

Close

Full Screen / Esc

Printer-friendly Version

Interactive Discussion

1963),  $L^\uparrow = \varepsilon \sigma \bar{\theta}_g^4$  the outgoing long-wave radiation flux [ $\text{W m}^{-2}$ ] according to the Stefan-Boltzmann law,  $L_v$  the specific latent heat of phase change [ $\text{J kg}^{-1}$ ],  $G$  the soil heat flux,  $\bar{\theta}_m$  the potential temperature of the “deep” ground, i.e., representing the mean temperature of the slab and thus of the surface air during the most recent past,  $\kappa_m$  an inverse adjustment time scale [ $\text{s}^{-1}$ ], and  $c_g = c_s d_p$  the heat capacity per unit volume  $c_s$  integrated over the thickness of the soil slab  $d_p$  (penetration depth) [ $\text{J K}^{-1} \text{ m}^{-2}$ ] (heat capacity per unit area of the slab). Blackadar (1979, Appendix, A.15) derived semi-empirical expressions for the  $c_g$  and  $\kappa_m$ , both in terms of the angular velocity of the Earth’s rotation  $\omega$  [ $\text{s}^{-1}$ ], the thermal conductivity of the soil layer  $\lambda$  [ $\text{W m}^{-1} \text{ K}^{-1}$ ], and the heat capacity per unit volume of soil  $c_s$  [ $\text{J K}^{-1} \text{ m}^{-3}$ ],

$$\kappa_m = 1.18\omega \quad (22)$$

$$c_g = 0.95 \left( \frac{\lambda c_s}{2\omega} \right)^{\frac{1}{2}}$$

## 2.2.5 Eddy diffusivity parameterization

In the basic version, the eddy diffusivity coefficients for momentum  $K_m$  and scalars  $K_h$  are diagnostically parameterised according to an approach proposed by Blackadar (1979, Eqs. 4.18–4.19), see references therein). This closure scheme is essentially based on a level-2-approximation of the governing equations of a turbulent PBL flow according to the annotation of Mellor and Yamada (1974). The basic assumptions are horizontal homogeneity, stationarity, and that the advective and diffusive terms are negligible. The Mellor/Yamada-level-2 approximation is known for not achieving Monin-Obukhov similarity. To overcome this problem Blackadar (1979) revised this scheme to improve its usefulness, especially to restore the Monin-Obukhov similarity. The authors rewrote the set of approximative level-2 equations with substitutions for the original length scales and introduction of new empirically derived parameters,

Title Page

Abstract

Introduction

Conclusions

References

Tables

Figures

◀

▶

◀

▶

Back

Close

Full Screen / Esc

Printer-friendly Version

Interactive Discussion

which originate from the effect of vortex stretching and buoyancy adjustment on the pressure-correlation terms. Mellor and Yamada, e.g., did not include the effects of buoyancy adjustment. From an algebraic solution of eight revised diagnostic equations, Blackadar (1979) obtained flux-gradient relations to parameterise the turbulent heat and momentum flux as well as the Richardson number for stable, neutral, and unstable conditions.

Apart from the basic turbulence scheme, there are a number of additional options in MALTE for the eddy diffusivity parameterisation, based on semi-empirical and ad-hoc profile methods, such as those proposed by Holtslag et al. (1995), Lüpkes and Schlünzen (1996), and Degrazia et al. (1997a, b, 1998, 2001). In all of them, the mixing height  $z_i$  serves as a characteristic length scale in the convective boundary layer (CBL). Here, the determination of  $z_i$  is based on the bulk Richardson number according to the approach proposed by Holtslag et al. (1995, Eqs. 9–11 and Appendix).

### 2.2.6 Radiative forcing

The radiative forcing throughout the PBL due to the divergence of shortwave and long-wave radiative fluxes is parameterised according to Kondo and Matsushima (1993). The parameterisation uses the surface temperature and the temperature at 1 m along with the vertical profiles of water vapour and carbon dioxide to estimate the heating/cooling rate due to longwave radiation in the boundary layer.

### 2.3 Chemical mechanism

The chemistry module is solved for every height level and consists of 70 species, with 123 chemical and 16 photochemical reactions. Chemical loss, production and deposition are taken into account. All chemical species are listed in Table 1 along with their deposition velocities and initialisation values. With the exception of sulphuric acid

**MALTE – Model to predict new aerosol formation in the LT**

M. Boy et al.

Title Page

Abstract

Introduction

Conclusions

References

Tables

Figures

◀

▶

◀

▶

Back

Close

Full Screen / Esc

Printer-friendly Version

Interactive Discussion

(which is treated separately), the mass balance equation of each species is:

$$\frac{\partial \bar{C}_i}{\partial t} + w_s \frac{\partial \bar{C}_i}{\partial z} = -\frac{\partial \overline{w'C'_i}}{\partial z} + \bar{P}_i - \bar{L}_i \bar{C}_i + \left( \frac{\partial \bar{C}_i}{\partial t} \right)_{\text{dep}} \quad (23)$$

$$\left( \frac{\partial \bar{C}_i}{\partial t} \right) \bigg|_{\text{dep}, z=z_2} = -\frac{\left( \overline{w'C'_i} \right)_{\text{dep}}}{z_2 - z_1} = -\frac{v_{\text{dep}} \bar{C}_i}{z_2 - z_1}$$

where  $C_i$  is the concentration of species  $i$ ,  $P_i$  is the chemical product rate,  $L_i C_i$  is the chemical loss rate,  $v_{\text{dep}}$  is the deposition velocity and  $z_2 - z_1$  is the thickness of the first layer.

The mass balance equation for sulphuric acid is similar:

$$\frac{\partial \bar{C}_{\text{H}_2\text{SO}_4}}{\partial t} + w_s \frac{\partial \bar{C}_{\text{H}_2\text{SO}_4}}{\partial z} = -\frac{\partial \overline{w'C'_{\text{H}_2\text{SO}_4}}}{\partial z} + \bar{P}_{\text{H}_2\text{SO}_4} - \bar{L}_{\text{H}_2\text{SO}_4} + \left( \frac{\partial \bar{C}_{\text{H}_2\text{SO}_4}}{\partial t} \right)_{\text{dep}} \quad (24)$$

$$\left( \overline{w'C'}_{\text{H}_2\text{SO}_4} \right)_0 = -v_{\text{dep}, \text{H}_2\text{SO}_4} \bar{C}_{\text{H}_2\text{SO}_4}$$

Here, the loss term  $L_{\text{H}_2\text{SO}_4}$  represents the amount of  $\text{H}_2\text{SO}_4$  condensing onto particles and participating in nucleation mechanisms. The turbulent fluxes of the chemical species were parameterised using K-theory, whereas the eddy diffusivity for the scalars (e.g., heat) was applied.

Second-order reaction rate coefficients are calculated from Arrhenius-type expressions:

$$k(T) = A \times \exp(-E/RT) \quad (25)$$

Title Page

Abstract

Introduction

Conclusions

References

Tables

Figures

◀

▶

◀

▶

Back

Close

Full Screen / Esc

Printer-friendly Version

Interactive Discussion

where the corresponding values for  $A$  and  $E/T$  are listed in Appendix A. Third-order reactions rate coefficients are calculated using a Troe formulation:

$$k(T) = \frac{k_o[M]}{\left(1 + \frac{k_o[M]}{k_\infty}\right)} \times F_C \left(1 / \left[1 + \left[\log\left(\frac{k_o[M]}{k_\infty}\right)\right]^2\right]\right)$$

$$k_o(T) = k_o^{300} \times (T/300)^{-n} \exp(-E/RT)$$

$$k_\infty(T) = k_o^{300} \times (T/300)^{-m} \exp(-E/RT) \quad (26)$$

These are listed in Appendix B. Photo-dissociation rate coefficients are based largely on the work of Finlayson-Pitts and Pitts 1986 and are calculated according to equation

$$k_A = \sum_{\lambda=280}^{700} \bar{\sigma}_s(\lambda, T) \times \bar{\phi}(\lambda) \times \bar{I}(\lambda) \times \Delta\lambda \quad (27)$$

where the absorption cross-sections,  $\sigma_s$ , and quantum yields,  $\phi$ , are modified such that  $\Delta\lambda=5$  nm (Appendix C) (Atkinson and Lloyd, 1984; Atkinson et al., 1989; Baulch et al., 1982). The solar actinic flux,  $I$ , is calculated using latitude, longitude and day of the year to predict top of the atmosphere short wavelength downward irradiance for every time-step. The values are further validated by short wavelength radiation measurements from Hyytiälä at noon to reflect the real daily irradiance input of the selected day. The differential equations were solved using the NAG-library FORTRAN routine D02EJF.

## 2.4 Aerosol dynamics

The aerosol dynamics are solved by the size-segregated aerosol model, UHMA (University of Helsinki Multicomponent Aerosol model). A detailed description of the model has been recently published by Korhonen et al. (2004). The model includes the major aerosol microphysical processes for a clear-sky atmosphere. It focuses on new



particle formation and growth; thus, it incorporates both particle coagulation and multicomponent condensation. It considers a revised treatment of condensation flux onto free molecular regime particles, including activation of nano-sized clusters by organic vapours (Nano-Koehler theory), and recent parameterisations for binary  $\text{H}_2\text{SO}_4\text{-H}_2\text{O}$ , ternary  $\text{H}_2\text{SO}_4\text{-NH}_3\text{-H}_2\text{O}$  and kinetic nucleation  $\text{H}_2\text{SO}_4\text{-H}_2\text{SO}_4$ . Particle dry deposition is also calculated according to Rannik et al. (2003). In order to account for deposition of newly formed particles, we have extrapolated the Rannik et al. results to particle sizes less than 10 nm.

The representation of particle size distribution applied in this version of UHMA can be chosen from two methods: the fixed sectional and the moving centre approach. Sensitivity studies and a detailed discussion of the advantages and disadvantages of both methods can be found in Korhonen et al. (2004). In the present study we have used the fixed sectional approach with 40 size bins.

The simulated aerosol phase chemical components consist of sulphuric acid, water-soluble organic compounds, and an arbitrary number of insoluble constituents representing, e.g., mineral dust, water-insoluble organics, and black carbon. Out of these, sulphuric acid and the organic compounds are treated as condensable species. The condensation flux of these vapours onto the particles depends on the properties of the vapour, the particle composition, and the shape of the particle distribution. The onset of low or semi-volatile organic vapour condensation onto the nano-sized inorganic clusters is determined by Nano-Koehler theory, which describes the thermodynamic equilibrium between an inorganic cluster, water, and a water soluble organic compound. For further details of the thermodynamic model, we refer the reader to Kulmala et al. (2004b). The particle water and ammonia content, on the other hand, is determined at every time step by equilibration of gaseous water and ammonia with the particulate sulphate and water-soluble organic fraction.

The model incorporates three schemes of homogeneous new particle formation: (a) binary  $\text{H}_2\text{SO}_4\text{-H}_2\text{O}$  (Kulmala et al., 1998), (b) ternary  $\text{H}_2\text{SO}_4\text{-H}_2\text{O-NH}_3$  (Napari et al., 2002), and (c) kinetic limited nucleation. If kinetic nucleation is switched off the

## MALTE – Model to predict new aerosol formation in the LT

M. Boy et al.

Title Page

Abstract

Introduction

Conclusions

References

Tables

Figures

I◀

▶I

◀

▶

Back

Close

Full Screen / Esc

Printer-friendly Version

Interactive Discussion

critical value of ammonia is set to 0.1 pptv due to the lower validity limit of the ternary parameterisation. When ammonia concentrations are below this critical level, ternary nucleation rates are very small, such that this assumption does not introduce significant errors in the model simulations. During this work we tested all three nucleation codes and used kinetically limited nucleation as the most accurate mechanism.

The coagulation kernel used in the model accounts only for Brownian diffusion. For submicron particles, coagulation tends to dominate over other mechanisms. The turbulent fluxes of the particle number concentration was calculated using the eddy diffusion coefficient for heat. These values are further used by the Runge-Kutta time scheme to predict new number concentrations and volumes in all size bins at each level.

### 3 Model initialisation

The initialisation of the meteorological data depends on the availability of vertical measurements. For Hyytiälä, soundings were used from Jokioinen, a monitoring station of the Finnish Meteorological Institute located about 100 km south-west of Hyytiälä. Temperatures at 1 m, 0 m and at 1 m depth within the soil were from measurements at the SMEAR II station in Hyytiälä. A detailed description of the station and instrumentation can be found in Kulmala et al., 2001 and under <http://www.honeybee.helsinki.fi/smea/>.

The initial gas concentrations of most species – especially the organic reaction products – were set to zero during the night at the start of the model run (see Table 1). For several other gases like CO, NO, NO<sub>x</sub> or Ozone, measurements from the SMEAR II station were used. However, because of the lag of vertical profiles during night time, we assumed a constant distribution throughout the residual layer for all gases except the monoterpenes, NH<sub>3</sub> and SO<sub>2</sub>. The monoterpene concentrations were measured diurnally with an assumed vertical gradient of

$$\frac{dQ(z)}{dz} = Q(z) \left( 1 - \frac{z}{8000} \right) \quad (28)$$

Title Page

Abstract

Introduction

Conclusions

References

Tables

Figures

◀

▶

◀

▶

Back

Close

Full Screen / Esc

Printer-friendly Version

Interactive Discussion

in agreement with earlier measured profiles (Boy et al., 2004).

5 Sulphur dioxide and ammonia are two important species for the ternary nucleation mechanism. Sulphur dioxide is produced by fossil-fuel combustion, industry and volcanoes and reaches the Hyytiälä site via horizontal advection. SO<sub>2</sub> concentrations were initialised using the daily measured profiles at ground level with the same vertical distribution as the monoterpenes for all model runs to contribute for emissions from some towns nearby. In the case of NH<sub>3</sub>, both deposition and emission fluxes are possible, depending on the compensation point for the surface vegetation (Langford and Fehsenfeld, 1992). However, currently there is no emission/deposition module for ammonia  
10 in MALTE. Therefore, we have used the measured diurnal surface concentrations and assumed a similar vertical gradient as for the monoterpenes.

The initial aerosol concentrations and size distributions at the surface were based on DMPS (Differential Mobility Particle Sizer) and APS (Aerodynamic Particle Sizer) measurements from the SMEAR II station. We assume the same vertical gradient as  
15 for the monoterpenes to initialise the vertical aerosol distribution, however, we also account for aerosol deposition processes.

Currently there is a considerable lack of knowledge concerning the atmospheric oxidation of complex organic molecules such as monoterpenes. The identities of the end-products, their reaction yields and their physical and chemical properties are not well-characterised. Therefore, in MALTE we have assumed a yield from monoterpene  
20 oxidation (Appendix A, Reactions 69–80) of 0.05 for all reaction products (Organic vapour I) capable of condensing on nano-sized inorganic clusters (as determined using Nano-Koehler theory) and a yield of 0.5 for all products (Organic vapour II) capable of being involved in the general condensation mechanism. These two yield values were  
25 found to give the best agreement for particle growth and size distribution with the measured values for the selected days. Boy et al. (2003) previously used a yield of 0.03 for the reaction products of the monoterpenes to calculate the contribution from the organics to the growth of the nucleation mode particles based on simulation of the MCM 2.0 (Master Chemical Mechanism, Jenkin et al., 2000). However, this lower value resulted

---

**MALTE – Model to predict new aerosol formation in the LT**M. Boy et al.

---

Title Page

Abstract

Introduction

Conclusions

References

Tables

Figures

◀

▶

◀

▶

Back

Close

Full Screen / Esc

Printer-friendly Version

Interactive Discussion

in overestimating the number concentrations of small particles and underestimating the concentrations of organics needed to grow the newly-formed clusters compared to the measured distributions. The physical properties for sulphuric acid and the “pseudo” organic vapours I and II used in the condensation schemes are listed in Table 2. The simplified assumptions to calculate the amount of condensable vapours with measured monoterpenes concentrations reflects only the quantitative role of organic vapours in the particle formation processes. Further improvements in the chemical module and knowledge about emissions of higher terpenes like the sesquiterpenes will in the future give more qualitative information about the real organic species.

The formation of new clusters was calculated inside the UHMA code by binary, ternary and kinetic nucleation with an average ammonia concentration of 24 pptv based on the measured values. Model simulations using this amount of ammonia resulted for the ternary code in cluster formation rates that were by a factor of 10 higher compared to measured particle size distributions, whereas binary nucleation always strongly underestimated the amount of newly formed particles. Kinetic nucleation was calculated by

$$J = K \times [\text{H}_2\text{SO}_4]^2 \quad (29)$$

with  $K$  as the kinetic coefficient, containing the details of the nucleation process, specially the probability that a collision of two molecules results in the formation of a stable critical cluster. Varying this factor in conjunction with the production yield of the condensable organics indicated that a value of  $K = 5 \times 10^{-12} \text{ cm}^3 \text{ s}^{-1}$  best reproduced the observed values.

This approach is similar to that of Weber et al. (1996), who empirically derived a nucleation rate based on field measurements. Assuming a steady-state cluster distribution, the upper limit for the new particle formation rate is the rate at which  $\text{H}_2\text{SO}_4$  collides with itself,  $\beta[\text{H}_2\text{SO}_4]^2$ , where the collision frequency function  $\beta$  was reported to be about  $3 \times 10^{-10} \text{ cm}^3 \text{ s}^{-1}$ . With consideration of the effect of stabilising species such as  $\text{NH}_3$  on clusters containing one or more  $\text{H}_2\text{SO}_4$  molecules and  $\text{H}_2\text{O}$ , the steady state

## MALTE – Model to predict new aerosol formation in the LT

M. Boy et al.

Title Page

Abstract

Introduction

Conclusions

References

Tables

Figures

◀

▶

◀

▶

Back

Close

Full Screen / Esc

Printer-friendly Version

Interactive Discussion

rate of particle formation in the absence of cluster scavenging by pre-existing particles can be parameterised as follows:

$$J_{\text{Weber}} = \beta\gamma [\text{H}_2\text{SO}_4]^2 \quad (30)$$

with  $\beta = 3 \times 10^{-10} \text{ cm}^3 \text{ s}^{-1}$  and  $\gamma = 0.001\text{--}0.003$ . Considering the usual uncertainties of commonly used nucleation parameterisations, the pre-factor  $\beta\gamma = (3\text{--}9) \times 10^{-13} \text{ cm}^3 \text{ s}^{-1}$  in the approach of Weber et al. (1996) is only marginal smaller than that used in the present approach.

Currently, the processes governing the formation of clusters and the species involved is an unresolved question and will require further study to elucidate the exact mechanisms. However, our results suggest that kinetic nucleation could be the possible nucleation mechanism for the formation of clusters as suggested recently by Kulmala et al. (2005). The constant kinetic coefficient used here may be a function of different parameters, e.g., temperature or humidity, and could to some extent also depend on the availability of certain organic reaction products.

The days we have chosen to test MALTE took place during an intensive field campaign of the EU QUEST (Quantification of Aerosol Nucleation in the European Boundary layer) project, which was conducted in Hyytiälä, Finland in March–April 2003. We have selected three days with different aerosol loadings in which new particle formation was observed (20, 25 and 26 March), and one non-event day (4 of April). For all days the simulation time was 24 h starting at 00:00 EET (winter time).

## 4 Results

Figure 2a–d gives the measured (Boy et al., 2005; Fiedler et al., 2005) and calculated sulphuric acid concentrations for all selected days at the surface. During the night, the simulated sulphuric acid concentrations drop down to values around 1000 molecules per  $\text{cm}^3$ , well below the observed values. This is due to the absence of any chemical OH production mechanisms (OH is the precursor for  $\text{H}_2\text{SO}_4$ , Reaction 6, Appendix B)

### MALTE – Model to predict new aerosol formation in the LT

M. Boy et al.

Title Page

Abstract

Introduction

Conclusions

References

Tables

Figures

◀

▶

◀

▶

Back

Close

Full Screen / Esc

Printer-friendly Version

Interactive Discussion

within the current model. The model tends to overestimate  $\text{H}_2\text{SO}_4$  concentrations in the first hour after sunrise. This effect could result from the fact that the measurements were performed in a clearing within the forest which decreased the actinic flux at sunrise under stable atmospheric conditions. The large  $\text{H}_2\text{SO}_4$  fluctuations during simulation day 1, 2 and 4 (Fig. 2a, b and d) reflect the sensitivity of the model against the fluctuations in the measured sulphur dioxide profile. On these days,  $\text{SO}_2$  concentrations were always below 0.5 ppb which is near the detection limit of the instrument. However, the general patterns of the modelled  $\text{H}_2\text{SO}_4$  concentrations agree to a large extent with the measured data on the event days. On 4 April the model over-predicts the concentration by approximately a factor of 2–3. Surprisingly the daily pattern on this day shows the highest correlation with the measurements. One explanation for this high concentration could be the existence of fog droplets with diameters above  $20\text{ }\mu\text{m}$ , the upper detection limit of the APS system. The relative humidity on this cloudy day showed a converse pattern compared to the other days with values between 90 and 100%, which then decreased around 17:00, the time when the measured and simulated sulphuric acid concentrations start to agree. In general the model seems to predict sulphuric acid concentrations quite well and future refinements of the chemical reaction mechanism (e.g. inclusion of nocturnal chemistry that can produce OH radicals) will likely further increase the accuracy for this specie.

The kinetic nucleation used  $\text{H}_2\text{SO}_4$  concentrations to produce a number of newly-formed clusters. Whether these newly-formed clusters will survive to grow (by condensation of vapours) into a larger particle or coagulate onto an existing aerosol is strongly dependent on the amount of existing aerosols or the condensation sink. During this work, the input aerosol background was the measured aerosol distribution during the night which gave the best correlation to the aerosol loading for the corresponding day. However, although new particle formation has often been observed over distances ranging from approximately 50 km to the synoptic scale ( $>1000\text{ km}$ ) (Stratmann et al., 2003; Komppula et al., 2003), the particle distribution and number concentration will be influenced to some extent by horizontal advection during the day. This effect will

## MALTE – Model to predict new aerosol formation in the LT

M. Boy et al.

Title Page

Abstract

Introduction

Conclusions

References

Tables

Figures

◀

▶

◀

▶

Back

Close

Full Screen / Esc

Printer-friendly Version

Interactive Discussion

not be reproduced by a one dimensional model and some uncertainties concerning the formation and growth of particles will always result from the diurnal pattern of the background aerosols.

20 March (Fig. 3) shows a typical example of the diurnal aerosol pattern explained above. Although the wind direction was continuously from the North throughout the day, the aerosol background concentration shows a minimum around 04:00 and a second decrease around noon. For this day we picked the aerosol loading for the model run at around 08:00, just prior to the onset of new particle formation. MALTE starts to produce new particles at exactly the same time as the observations and with nearly the same total particle number concentration (Fig. 4a). In the early afternoon the newly formed particles have grown to between 5 to 10 nm in size and by around 21:00 the new particles in the smallest detectable size range have decreased to near zero. The model maintains the higher background aerosol loading from the morning through the afternoon. For this reason, the condensable vapour available for the growth of the new formed particles is less than the amount available in the real atmosphere. During this day, monoterpene concentrations increased from below detection limit up to 156 ppt between 21:00 and 23:00. This is likely to result in a high amount of condensable vapours leading to a strong growth rate at the end of this day. The model shows a similar behaviour during the evening hours with smaller growth rates, but lacks sufficient night-time chemistry to reproduce the existence of these high amounts of condensable vapours at this time of the day.

25 March features the same basic structure with a smaller particle decrease around noon and a higher background aerosol concentration (Figs. 5 and 4b). MALTE predicts the onset of the new particle formation very well on this day as well and stops around the same time as the measured particle burst ends. The decrease in the measured Aitken mode concentration after 12:00 occurred concurrently with the continuous growth of newly formed particles with a nearly constant growth rate which persisted throughout the afternoon. However, this “dilution” is most likely a horizontal advection effect and, similar to the first day, provides a higher amount of condensable organic

---

**MALTE – Model to predict new aerosol formation in the LT**M. Boy et al.

---

Title Page

Abstract

Introduction

Conclusions

References

Tables

Figures

◀

▶

◀

▶

Back

Close

Full Screen / Esc

Printer-friendly Version

Interactive Discussion

species relative to the model which maintains the higher background aerosol concentration.

A more constant pattern of aerosol size distribution for the existing particles was observed during our last selected event day, 26 March (Figs. 6 and 4c). On this day, aerosol number concentration decreased after the evolution of the mixed layer around 09:00 and showed a small fluctuation in the late afternoon. Modelled and measured aerosol size distributions, including the particle formation burst, and the total aerosol number concentrations showed a high degree of correlation. An interesting aspect on this day is that both measured and modelled aerosol distributions show a similar two mode structure during the afternoon. In contrast to the earlier days where measurements showed a decreasing background aerosol concentrations and a merging unique Aitken mode distribution in the late afternoon, the nucleation mode and the Aitken mode aerosols are both visible in the measurements on this day in agreement with the model.

To test our model for days with clean air masses from north but with no observed particle formation, we have selected 5 April (Figs. 7 and 4c). This day showed similar background aerosol concentrations as 20 March, but cloudy conditions during the entire day decreased the solar irradiance to less than half of that observed on event days. This tends to explain the low sulphuric acid concentrations observed on this day (Fig. 2) as photochemical production was suppressed. The model predicts only a very small amount of new particles between 13:00 and 17:00, which results from the overestimation of sulphuric acid concentration. The observed high aerosol concentrations around sunset were likely due to advection of polluted air over the site and not local particle formation as evidenced by the lack of very small particles during this time. Therefore, it appears that our model can satisfactorily predict both the onset and the amount of newly-formed particles on these days within a reasonable degree of uncertainty caused by fluctuations in the background aerosol concentration.

In our model simulations, new particles grow by condensation of both sulphuric acid and organic vapours (primarily organic acids, such as di-carboxylic acids). Boy et

---

**MALTE – Model to predict new aerosol formation in the LT**M. Boy et al.

---

Title Page

Abstract

Introduction

Conclusions

References

Tables

Figures

◀

▶

◀

▶

Back

Close

Full Screen / Esc

Printer-friendly Version

Interactive Discussion



al. (2003) previously estimated the contribution of sulphuric acid molecules to the particle growth in the nucleation mode to be between 8–50%. In Fig. 8 we have plotted the ratio of the particle growth rate via  $\text{H}_2\text{SO}_4$  ( $\text{GR}[\text{H}_2\text{SO}_4]$ ) to the growth rate due to organic vapours ( $\text{GR}[\text{Organics}]$ ) versus either particle diameter (Fig. 8a) or time of day (Fig. 8b) for the four selected days. Under the conditions studied here, the growth rate for particles with diameters below about 2–9 nm is primarily controlled by sulphuric acid. Similar results were published by Wehner et al. (2005) recently. They calculated that new particles needed to reach a size range between about 7–20 nm before it becomes apparent that organic (semi-volatile) vapours can contribute significantly to the growth rate ( $\text{GR}[\text{H}_2\text{SO}_4]/\text{GR}[\text{Organics}] \leq 2$ ). However, their observations were from a more urban site in Germany with up to twice as much  $\text{H}_2\text{SO}_4$ . In the present study at the more rural South-Central Finland site, this size range seems to be shifted to smaller diameters. After the particles reached this transitional size, the contribution of sulphuric acid to the particle growth rate typically dropped to around 10–30%. 20 March diverged from this trend, indicating that sulphuric acid dominated the growth process over the entire size spectrum. This day was 5–10°C cooler ( $T_{\text{max}} = -5^\circ\text{C}$ ) than the other case days and observed monoterpene concentrations were below the detection limit until after 21:00. Therefore, contribution to the particle growth rate by organic vapours was severely suppressed.

The initial distributions of the aerosol background concentrations at the model start were based on DMPS and APS ground measurements with a vertical gradient (details see Sect. 3). Figure 9a and b shows the vertical daily evolution of particle number concentration in 2 different size ranges (1 to 3 and 3 to 6 nm) for 26 March. The simulations of the newly formed clusters with diameters <3 nm indicate two maxima in the morning, one at ground level and one around the entrainment zone at 1250 m. Later, around noon these clusters have grown to the detectable size range of 3 to 6 nm and the influence of organic condensable vapours causes the lower maximum of clusters to dominate. The results showed in Fig. 9b agree partly with measured vertical profiles between 11:21 and 11:31 for the same day reported by O'Dowd et al. (2005), in

## MALTE – Model to predict new aerosol formation in the LT

M. Boy et al.

Title Page

Abstract

Introduction

Conclusions

References

Tables

Figures

◀

▶

◀

▶

Back

Close

Full Screen / Esc

Printer-friendly Version

Interactive Discussion

which the authors reported high number concentrations of particles between 3 to 6 nm from about 100 m (lowest flight height) up to 500 m and a decrease above. However, the second maximum at the top of the predicted mixed layer was detected only to a small extent. To clarify the overestimation of the model at the top of the mixed layer more measured vertical profiles of different parameters like the organic vapours would be necessary.

## 5 Summary and conclusions

During this study we used an one-dimensional model (MALTE) with a chemical and aerosol module to calculate the amount of newly-formed particles in the mixed layer. In the current model, kinetic nucleation of  $\text{H}_2\text{SO}_4$  was considered to be the primary mechanism for the formation of new particles. It was found that the predicted particle size distributions were in agreement with the measurements by using a value of  $5 \times 10^{-12} \text{ cm}^3 \text{ s}^{-1}$  for the kinetic coefficient. This parameter includes the probability that a collision of two molecules results in the formation of a stable critical cluster, as well as all other important details concerning the nucleation process like, e.g., temperature, humidity, or organic vapours influences. Future work has to clear up the exact equation for the kinetic coefficient.

The concentrations of the condensing organic species were calculated from the reaction products of the monoterpenes with OH,  $\text{O}_3$  and  $\text{NO}_3$  assuming an aerosol yield of 0.05 for the condensation upon the nano-sized inorganic clusters by Nano-Koehler theory and a yield of 0.5 for the main condensation scheme, respectively. Both of these estimates are based on optimising the model runs to reproduce observed values. Due to uncertainties in the atmospheric degradation of monoterpenes and the identities and properties of the condensing organics, this is the only possible strategy at present.

For four selected days (3 days with new particle formation and one day without) our model predicted the on- and offset of new particle formation as well as the total aerosol number concentrations that were in good agreement with the observations. We further

### MALTE – Model to predict new aerosol formation in the LT

M. Boy et al.

Title Page

Abstract

Introduction

Conclusions

References

Tables

Figures

◀

▶

◀

▶

Back

Close

Full Screen / Esc

Printer-friendly Version

Interactive Discussion

compared the predicted and measured  $\text{H}_2\text{SO}_4$  concentrations for all days and found satisfactory agreement on all event days. On the non-event day, the modelled sulphuric acid concentrations were a factor of 2–3 higher than the measured  $\text{H}_2\text{SO}_4$ . One possible explanation could be a high uptake of  $\text{H}_2\text{SO}_4$  by existing fog droplets. The simulation results further indicated that at a certain transitional particle diameter (2–9 nm), organic molecules can begin to contribute significantly to the growth rate compared to sulphuric acid. At even larger particle sizes, organic molecules can dominate the growth rate on days with significant monoterpene concentrations.

Even with the large uncertainty in nucleation mechanisms and the chemistry/properties of condensable organics, MALTE is capable of adequately reproducing aerosol observations at this early stage in its development. Under real atmospheric situations the model can produce realistic amount of clusters that are necessary to explain observed nucleation events. However, at this point we cannot exclude the possibility of other nucleation mechanism like “ion-induced” or “organic-sulfuric acid” nucleation which are not included in the model. As progress is made in both the field of aerosol nucleation theory and the photochemical degradation of organic terpenoid compound, we hope to incorporate these into future versions of MALTE. Further improvements include the addition of a module for estimating the net emission of gases and aerosols from terrestrial ecosystems to the atmosphere (MEGAN, paper submitted to ACP - already implemented). This should help refine the estimated emission of terpenoid compounds which are likely to oxidise and produce condensable products. We also plan to extend our chemical module to move from using “pseudo” organics to real condensable species. In parallel to these improvements, we plan to include a new parameterisation for ion-induced nucleation (Lovejoy et al., 2004) to investigate the contribution of this nucleation mechanism under different atmospheric situations.

*Acknowledgements.* The QUEST team acknowledges the financial support from the European Commission under the contract number EVK2-CT2001-00127 and the Academy of Finland.

**MALTE – Model to predict new aerosol formation in the LT**

M. Boy et al.

Title Page

Abstract

Introduction

Conclusions

References

Tables

Figures

◀

▶

◀

▶

Back

Close

Full Screen / Esc

Printer-friendly Version

Interactive Discussion

## References

- Atkinson, R., Aschmann, S. M., Winer, A. M., and Pitts Jr., J. N.: Kinetics of the gas-phase reactions of NO<sub>3</sub> radicals with a series of dialkenes, cycloalkenes, and monoterpenes at 295°K, *Environ. Sci. Technol.*, 18, 370–375, 1984.
- 5 Atkinson, R. and Lloyd, A.: Evaluation of kinetic and mechanistic data for modeling of photochemical smog, *J. Phys. Chem. Ref. Data*, 132, 322, 1984.
- Atkinson, R., Aschmann, S. M., and Pitts Jr., J. N.: Rate constants for the gas-phase reactions of the OH radical with a series of monoterpenes at 294°K, *Int. J. Chem. Kin.*, 18, 287–299, 1986.
- 10 Atkinson, R., Baulch, D. L., Cox, R. F., Kerr, J. A., and Troe, J.: Evaluated kinetic and photochemical data for atmospheric chemistry: supplement III IUPAC subcommittee on gas kinetic data evaluation for atmospheric chemistry, *J. Phys. Chem. Ref. Data*, 18, 881–1097, 1989.
- Atkinson, R., Aschmann, S. M., and Arey, J.: Rate constants for the gas-phase reactions of OH and NO<sub>3</sub> radicals and O with sabinene and camphene at 296°K, *Atmos. Environ.*, 24A, 2647–2654, 1990.
- 15 Atkinson, R., Baulch, D. L., Cox, R. F., Kerr, J. A., and Troe, J.: Kinetic and photochemical data for 3 atmospheric chemistry, *J. Phys. Chem. Ref. Data*, 21, 1125–1567, Suppl. IV, 1992.
- Baulch, D. L., Cox, R. A., Crutzen, P. J., Hampson Jr., R. F., Kerr, J. A., Troe, J., and Watson, R. T.: Evaluated kinetic and photochemical data for atmospheric chemistry, *J. Phys. Chem. Ref. Data*, 11, 327–496, Suppl. I, 1982.
- 20 Blackadar, A.: *Advances in Environmental Science and Engineering*, vol. 1, chap. High-resolution models of the planetary boundary layer, pp. 50–85, Gordon and Breech Science Publishers, Inc., New York, 1979.
- Boy, M., Rannik, U., Lehtinen, K. E. J., Tarvainen, V., Hakola, H., and Kulmala, M.: Nucleation events in the continental PBL – long term statistical analyses of aerosol relevant characteristics, *J. Geophys. Res.*, 108(D21), 4667, doi:10.1029/2003JD003838, 2003.
- 25 Boy, M., Petäjä, T., Dal Maso, M., Rannik, Ü., Rinne, J., Aalto, P., Laaksonen, A., Vaattovaara, P., Joutsensaari, J., Hoffmann, T., Warnke, J., Apostolaki, M., Stephanou, E. G., Tsapakis, M., Kouvarakis, A., Pio, C., Carvalho, A., Römpp, A., Moortgat, G., Spirig, C., Guenther, A., Greenberg, J., Ciccioli, P., and Kulmala, M.: Overview of the field measurement campaign in Hyytiälä, August 2001 in the framework of the EU project OSOA, *Atmos. Chem. Phys.*, 4, 657–678, 2004.
- 30

ACPD

6, 3465–3512, 2006

### MALTE – Model to predict new aerosol formation in the LT

M. Boy et al.

Title Page

Abstract

Introduction

Conclusions

References

Tables

Figures

◀

▶

◀

▶

Back

Close

Full Screen / Esc

Printer-friendly Version

Interactive Discussion

EGU

- Boy, M., Kulmala, M., Ruuskanen, T. M., Pihlatie, M., Reissell, A., Aalto, P. P., Keronen, P., Dal Maso, M., Hellen, H., Hakola, H., Jansson, R., Hanke, M., and Arnold, F.: Sulphuric acid closure and contribution to nucleation mode particle growth, *Atmos. Chem. Phys.*, 5, 863–878, 2005.
- 5 Degrazia, G., Rizza, U., Mangia, C., and Tirabassi, T.: Validation of a new turbulent parameterization for dispersion models in convective conditions, *Boundary-Layer Meteor.*, 85, 243–254, 1997a.
- Degrazia, G., Velho, H. C., and Carvalho, J.: Nonlocal exchange coefficients for the convective boundary derived from spectral properties, *Contr. Atmos. Phys.*, 70, 57–64, 1997b.
- 10 Degrazia, G., Mangia, C., and Rizza, U.: A comparison between different methods to estimate the lateral dispersion parameter under convective conditions, *J. Appl. Meteor.*, 37, 227–231, 1998.
- Degrazia, G., Moreira, D., and Vilhena, M.: Derivation of an eddy diffusivity depending on source distance for vertically inhomogeneous turbulence in a convective boundary layer, *J. Appl. Meteor.*, 40, 1233–1240, 2001.
- 15 Fielder, V., Dal Maso, M., Boy, M., Aufmhoff, H., Hoffmann, J., Schuck, T., Birmili, W., Hanke, M., Uecker, J., Arnold, F., and Kulmala, M.: The contribution of sulphuric acid to atmospheric particle formation and growth: a comparison between boundary layers in Northern and Central Europe, *Atmos. Chem. Phys.*, 5, 1773–1785, 2005.
- 20 Finkelstein, P. L., Ellestad, T. G., Clarke, J. F., Meyers, T. P., Schwede, D. B., Hebert, E. O., and Neal, J. A.: Ozone and sulfur dioxide dry deposition to forests: Observations and model evaluation, *J. Geophys. Res.*, 105(D12), 15 365, doi:10.1029/2000JD900185, 2000.
- Finlayson-Pitts, B. J. and Pitts Jr., J. N.: *Atmospheric Chemistry: Fundamentals and Experimental Techniques*, Wiley, Chichester, 1986.
- 25 Holtslag, A., van Meijgaard, E., and Rooy, W. D.: A comparison of boundary layer diffusion schemes in unstable conditions over land, *Boundary-Layer Meteor.*, 76, 69–95, 1995.
- Horii, C. V., Munger, J. W., Wofsy, S. C., Zahniser, M., Nelson, D., and McManus, J. B.: Fluxes of nitrogen oxides over a temperate deciduous forest, *J. Geophys. Res.*, 109, D08305, doi:10.1029/2003JD004326, 2004.
- 30 Janson, R.: Monoterpenes from the boreal coniferous forest, their role in atmospheric chemistry, PhD thesis, 1992.
- Jenkin, M. E., Shallcross, D. E., and Harvey, J. N.: Development and application of a possible mechanism for the generation of cis-pinic acid from the ozonolysis of  $\alpha$ - and  $\beta$ -pinene, *Atmos.*

## MALTE – Model to predict new aerosol formation in the LT

M. Boy et al.

Title Page

Abstract

Introduction

Conclusions

References

Tables

Figures

◀

▶

◀

▶

Back

Close

Full Screen / Esc

Printer-friendly Version

Interactive Discussion

Environ., 34, 2837–2850, 2000.

Karl, T., Harley, P., Guenther, A., Rasmussen, R., Baker, B., Jardine, K., and Nemitz, E.: The bi-directional exchange of oxygenated VOCs between a loblolly pine (*Pinus taeda*) plantation and the atmosphere, *Atmos. Chem. Phys.*, 5, 3015–3031, 2005.

5 Kerminen, V. M., Lihavainen, H., Komppula, M., Viisanen, Y., and Kulmala, M.: Direct observational evidence linking atmospheric aerosol formation and cloud droplet activation, *J. Geophys. Res.*, 32, L14803, doi:10.1029/2005GL0231130, 2005.

Komppula, M., Dal Maso, M., Lihavainen, H., Kulmala, M., and Viisanen, Y.: Comparison of new particle formation events at two locations in Northern Finland, *J. Aerosol Sci.*, EAC Abstracts, S743–S744, 11 417, 2003.

10 Kondo, J. and Matsushima, D.: A simple parameterization of longwave radiative cooling with application to the atmospheric boundary layer for clear sky conditions, *Boundary-Layer Meteorol.*, 64, 209–229, 1993.

Korhonen, H., Lehtinen, K. E. J., and Kulmala, M.: Multicomponent aerosol dynamics model UHMA: model development and validation, *Atmos. Chem. Phys.*, 4, 471–506, 2004.

15 Kulmala, M., Laaksonen, A., and Pirjola, L.: Parametrizations for sulfuric acid/water nucleation rates, *J. Geophys. Res.*, 103, 8301–8308, 1998.

Kulmala, M., Haameri, K. K., Aalto, P., Maekelae, J., Pirjola, L., Nilsson, E. D., Buzorius, G., Rannik, U., Dal Maso, M., Seidl, W., Hoffmann, T., Jansson, R., Hansson, H.-C., O'Dowd, C., and Viisanen, Y.: Overview of the international project on biogenic aerosol formation in the boreal forest (BIOFOR), *Tellus B*, 53, 324–343, 2001.

20 Kulmala, M., Vehkamaeki, H., Petaja, T., Dal Maso, M., Lauri, A., Kerminen, V.-M., Birmili, W., and McMurry, P. H.: Formation and growth rates of ultrafine atmospheric particles: A observations, *J. Aerosol Sci.*, 35, 143–176, 2004a.

25 Kulmala, M., Kerminen, V.-M., Anttila, T., Laaksonen, A., and O'Dowd, C. D.: Organic aerosol formation via sulphate cluster activation, *J. Geophys. Res.*, 109(D4), 4205, doi:10.1029/2003JD003961, 2004b.

Kulmala, M., Lehtinen, K. E. J., and Laaksonen, A.: Why formation rate of 3 nm particles depends linearly on sulphuric acid concentration?, *Atmos. Chem. Phys. Discuss.*, 5, 11 277–11 293, 2005.

30 Langford, A. O. and Fehsenfeld, F. C.: Natural vegetation as a source or sink for atmospheric ammonia: a case study, *Science*, 255, 581–583, 1992.

Lohmann, U. and Feichter, J.: Global indirect aerosol effects: a review, *Atmos. Chem. Phys.*, 5,

ACPD

6, 3465–3512, 2006

---

## MALTE – Model to predict new aerosol formation in the LT

M. Boy et al.

---

Title Page

Abstract

Introduction

Conclusions

References

Tables

Figures

◀

▶

◀

▶

Back

Close

Full Screen / Esc

Printer-friendly Version

Interactive Discussion

EGU

715–737, 2005.

Lovejoy, E. R., Curtius, J., and Froyd, K. D.: Atmospheric ion-induced nucleation of sulfuric acid and water, *J. Geophys. Res.*, 109, D08204, doi:10.2929/2003JD004460, 2004.

Lüpkes, C. and Schlünzen, K.: Modelling the arctic convective boundary-layer with different turbulence parameterizations, *Boundary-Layer Meteorol.*, 79, 107–130, 1996.

Mellor, G. and Yamada, T.: A hierarchy of turbulence closure models for planetary boundary layers, *J. Atmos. Sci.*, 31, 1791–1806, 1974.

Mikkelsen, T. N., Ro-Paulsen, H., Hovmand, M. F., Jensen, N. O., Pilegaard, K., and Egleov, A. H.: Five-year measurements of ozone fluxes to a Danish Norway spruce canopy, *Atmos. Environ.*, 38, 2361–2371, 2004.

Napari, I., Noppel, M., Vehkamaeki, H., and Kulmala, M.: An improved model for ternary nucleation of sulfuric-acid-ammonia water, *J. Chem. Phys.*, 116, 4221–4227, 2002.

O'Dowd, C. D., Yoon, Y. J., Junkermann, W., Aalto, P. P., and Lihavainen, H.: Airborne measurements of nucleation mode particles II: Boreal Forest Events, Report Series in Aerosol Science, Nr. 76, ISBN 952-5027-63-5, p. 162–173, 2005.

Press, W. H., Flannery, B. P., Teukolsky, S. A., and Vetterling, W. T.: “Runge-Kutta Method” and “Adaptive Step Size Control for Runge-Kutta”, Cambridge University Press, \$16.1 and 16.2, 704–716, 1992.

Ramanathan, V., Crutzen, P. J., Kiehl, J. T., and Rosenfeld, D.: Aerosols, climate, and the hydrological cycle, *Science*, 294, 2119–2124, 2001.

Rannik, U., Aalto, P., Keronen, P., Vesala, T., and Kulmala, M.: Interpretation of aerosol particle fluxes over a pine forest: Dry deposition and random errors, *J. Geophys. Res.*, 108(D17), 4544, doi:10.1029/2003JD003542, 2003.

ReVelle, D.: Chaos and “bursting” in the planetary boundary layer, *J. Appl. Meteorol.*, 32, 1169–1180, 1993.

Saltelli, A. and Hjorth, J.: Uncertainty and sensitivity analyses of OH-initiated dimethyl sulphide DMS oxidation kinetics, *J. Atmos. Chem.*, 21, 187–221, 1995.

Simpson, D.: Long-period modelling of photochemical oxidants in Europe: model calculation for July 1985, *Atmos. Environ.*, 26A, 1609–1634, 1992.

Stratmann, F., Siebert, H., Spindler, G., Wehner, B., Althausen, D., Heintzenberg, J., Hellmuth, O., Rinke, R., Schmieder, U., Seidel, C., Tuch, T., Uhrner, U., Wiedensohler, A., Wandering, U., Wendisch, M., Schell, D., and Stohl, A.: New-particle formation events in a continental boundary layer: First results from the SATURN experiment, *Atmos. Chem. Phys.*, 3, 1445–

ACPD

6, 3465–3512, 2006

## MALTE – Model to predict new aerosol formation in the LT

M. Boy et al.

Title Page

Abstract

Introduction

Conclusions

References

Tables

Figures

◀

▶

◀

▶

Back

Close

Full Screen / Esc

Printer-friendly Version

Interactive Discussion

EGU

1459, 2003.

Stull, R.: An Introduction to Boundary Layer Meteorology, Kluwer Academic Publishers, Dordrecht/Boston/London, 1997.

Swinbank, W.: Long-wave radiation from clear skies, Quart. J. Roy. Meteor. Soc., 89, 339–348, 1963.

Weber, R. J., Marti, J. J., McMurry, P. H., Eisele, F. L., Tanner, D. J., and Jefferson, A.: Measured atmospheric new particle formation rates: implications for nucleation mechanisms, Chem. Eng. Comm., 151, 53–64, 1996.

Wehner, B., Petaja, T., Boy, M., Engler, C., Birmili, W., Tuch, T., Wiedensohler, A., and Kulmala, M.: The contribution of sulphuric acid and non-volatile compounds on the growth of freshly formed atmospheric aerosols, Geophys. Res. Lett., 32, L17810, doi:10.1029/2005GL023827, 2005.

Wesely, M. L.: Parameterization of surface resistances to gaseous dry deposition in regional-scale numerical models, Atmos. Environ., 23(6), 1293–1304, 1989.

ACPD

6, 3465–3512, 2006

## MALTE – Model to predict new aerosol formation in the LT

M. Boy et al.

Title Page

Abstract

Introduction

Conclusions

References

Tables

Figures

◀

▶

◀

▶

Back

Close

Full Screen / Esc

Printer-friendly Version

Interactive Discussion

EGU



**Table 1.** List of gases, their initialization concentration and the deposition velocity.

Nr.	Gas specie		Initialization [# cm <sup>-3</sup> ]	Deposition		Reference
	Formula	Common name		Day [m s <sup>-1</sup> ]	Night [m s <sup>-1</sup> ]	
1	O <sub>3</sub>	ozone	measurements	0.008	0.0015	Mikkelsen et al., 2004
2	O( <sup>1</sup> D)	atomic oxygen (excited state)	0	too reactive		reacts with N <sub>2</sub> , O <sub>3</sub> , H <sub>2</sub> O
3	O( <sup>3</sup> P)	atomic oxygen (ground state)	0	too reactive		reacts with O <sub>3</sub>
4	O <sub>2</sub>	molecular oxygen	measurements	is emitted, but not important		estimation
5	NO	nitrogen monoxide	measurements	< 0.0005	< 0.0005	estimation
6	NO <sub>2</sub>	nitrogen dioxide	measurements	0.005	0.001	Horii et al., ???
7	NO <sub>3</sub>	nitrogen trioxide	1.E+07	too reactive		estimation
8	N <sub>2</sub> O <sub>5</sub>	dinitrogen pentoxide	1.E+07	0.02	0.008	aerodynamic limit
9	OH	hydroxyl radical	0	too reactive		estimation
10	HO <sub>2</sub>	hydroperoxyl radical	0	0.02	0.008	aerodynamic limit
11	H <sub>2</sub> SO <sub>4</sub>	sulfuric acid	0	0.02	0.008	aerodynamic limit
12	H <sub>2</sub> O <sub>2</sub>	hydrogen peroxide	0	0.02	0.008	aerodynamic limit
13	HNO <sub>3</sub>	nitric acid	0	0.02	0.008	aerodynamic limit
14	SO <sub>2</sub>	sulfur dioxide	measurements	0.012	0.02	Finkelstein et al., 2000
15	CO	carbon monoxide	measurements	< 0.0002	< 0.0002	estimation
16	CO <sub>2</sub>	carbon dioxide	measurements	-0.0004	0.001	estimation
17	CH <sub>4</sub>	methane	measurements	<0.00001	<0.00001	estimation
18	CH <sub>3</sub>	methyl radical	0	too reactive		reacts with O <sub>3</sub>
19	CH <sub>3</sub> O <sub>2</sub>	methylperoxy radical	0	0.02	0.008	aerodynamic limit
20	HCHO	formaldehyde	1.E+10	0.007	0.001	Wesely 1989
21	C <sub>2</sub> H <sub>6</sub>	ethane	1.E+10	< 0.0002	< 0.0002	estimation
22	C <sub>2</sub> H <sub>5</sub> O <sub>2</sub>	ethylperoxy radical	0	0.02	0.008	analogy to HO <sub>2</sub>
23	C <sub>2</sub> H <sub>5</sub> O	ethyl radical	0	too reactive		reacts with O <sub>3</sub>
24	CH <sub>3</sub> CHO	acetaldehyde	0	0.0015	0.0015	Karl et al., 2004
25	CH <sub>3</sub> COO <sub>2</sub>	acetyl peroxy radical	0	0.02	0.008	aerodynamic limit
26	CH <sub>3</sub> CO <sub>2</sub> NO <sub>2</sub>	peroxyacetyl nitrate (PAN)	0	0.01	0.005	Turnipseed et al., 2005
27	nC <sub>4</sub> H <sub>10</sub>	n-butane	0	<0.00001	<0.00001	estimation
28	C <sub>4</sub> H <sub>9</sub> O <sub>2</sub>	tert-butylperoxy radical	0	0.02	0.008	analogy to HO <sub>2</sub>
29	C <sub>4</sub> H <sub>9</sub> O	tert-butyl radical	0	too reactive		estimation
30	CH <sub>3</sub> COCCH <sub>3</sub>	methyl ethyl ketone	0	0.0014	0.0014	Karl et al., 2004
31	CH <sub>3</sub> COCOCH <sub>3</sub>	peroxy radical	0	0.0014	0.0014	Karl et al., 2004
32	CH <sub>3</sub> COCOCH <sub>3</sub>	vinyl acetate	0	0.0014	0.0014	Karl et al., 2004
33	CH <sub>3</sub> O <sub>2</sub> CH <sub>2</sub> OH	2-hydroxy-1-ethyl peroxy	0	0.0027	0.0027	Karl et al., 2004
34	C <sub>2</sub> H <sub>4</sub>	ethylene	0	<0.00001	<0.00001	estimation
35	C <sub>3</sub> H <sub>6</sub>	propylene	0	<0.00001	<0.00001	estimation
36	CH <sub>3</sub> CHO <sub>2</sub> CH <sub>2</sub> OH	1-hydroxy-2-propyl peroxy	0	0.0027	0.0027	Karl et al., 2004
37	C <sub>8</sub> H <sub>16</sub>	o-xylene	0	0.02	0.008	aerodynamic limit
38	CH <sub>3</sub> CHOH-CH <sub>2</sub> COCH <sub>3</sub>	peroxy radical	0	0.0014	0.0014	Karl et al., 2004
39	CH <sub>3</sub> COCHOH-CH <sub>2</sub> CHO	peroxy radical	0	0.0014	0.0014	Karl et al., 2004
40	CH <sub>3</sub> COCHO	methylglyoxal	0	0.0014	0.0014	Karl et al., 2004
41	CHOCHO	glyoxal	0	too reactive		estimation
42	C <sub>5</sub> H <sub>8</sub>	isoprene	5.E+09	<0.00001	<0.00001	estimation
43	OHCH <sub>2</sub> CH <sub>2</sub> CH <sub>2</sub> OH	isoprene peroxy radical	0	too reactive		estimation
44	CH <sub>3</sub> COCH=CH <sub>2</sub>	methacrolein	0	<0.00001	<0.00001	estimation
45	OHCH <sub>2</sub> COCHCH <sub>2</sub> CH <sub>2</sub>	methacrolein peroxy radical	0	0.0014	0.0014	Karl et al., 2004
46	CH <sub>3</sub> OOH	methyl hydroperoxide	0	0.0015	0.0015	Karl et al., 2004
47	CH <sub>3</sub> OOH	methyl hydroperoxide	0	0.0015	0.0015	Karl et al., 2004
48	CH <sub>3</sub> O	methoxy radical	0	too reactive		reacts with O <sub>3</sub>
49	SO <sub>3</sub>	sulfur trioxide	0	0.02	0.008	aerodynamic limit
50	HSO <sub>3</sub>	bisulfite	0	0.02	0.008	aerodynamic limit
51	C <sub>10</sub> H <sub>16</sub>	alpha pinene	measurements	netto emission		
52	C <sub>10</sub> H <sub>16</sub>	beta pinene	measurements	netto emission		
53	C <sub>10</sub> H <sub>16</sub>	3-carene	measurements	netto emission		
54	C <sub>10</sub> H <sub>16</sub>	α-limonene	measurements	netto emission		
55	DMS	dimethylsulphat	0	0.02	0.008	aerodynamic limit
56	CH <sub>3</sub> S	mercaptomethyl radical	0	0.02	0.008	aerodynamic limit
57	CH <sub>3</sub> S(O)CH <sub>3</sub>	OH-DMS-adduct	0	too reactive		reacts with O <sub>3</sub>
58	CH <sub>3</sub> SO		0	0.02	0.008	aerodynamic limit
59	CH <sub>3</sub> SOO		0	0.02	0.008	aerodynamic limit
60	CH <sub>3</sub> SO <sub>2</sub>		0	0.02	0.008	aerodynamic limit
61	CH <sub>3</sub> S(O) <sub>2</sub>		0	0.02	0.008	aerodynamic limit
62	CH <sub>3</sub> SO <sub>3</sub>		0	0.02	0.008	aerodynamic limit
63	CH <sub>3</sub> S(O) <sub>2</sub> O <sub>2</sub>		0	0.02	0.008	aerodynamic limit
64	CH <sub>3</sub> S(O) <sub>2</sub> NO <sub>2</sub>		0	0.01	0.005	like PAN
65	CH <sub>3</sub> S(O) <sub>2</sub> O <sub>2</sub> NO <sub>2</sub>		0	0.01	0.005	like PAN
66	CH <sub>3</sub> SOONO <sub>2</sub>		0	0.01	0.005	like PAN
67	CH <sub>3</sub> O <sub>3</sub> S	methanesulfonic acid (MSA)	0	0.02	0.008	aerodynamic limit
68	reaction products from mono-terpene reactions		0	0.02	0.008	aerodynamic limit
69	reaction products from mono-terpene reactions		0	0.02	0.008	aerodynamic limit
70	NH <sub>3</sub>	ammonia	measurements	0.02	0.008	aerodynamic limit

(Turnipseed et al., 2005, submitted to JGR)

# MALTE – Model to predict new aerosol formation in the LT

M. Boy et al.

Title Page

Abstract

Introduction

Conclusions

References

Tables

Figures

◀

▶

◀

▶

Back

Close

Full Screen / Esc

Printer-friendly Version

Interactive Discussion

**MALTE – Model to predict new aerosol formation in the LT**

M. Boy et al.

**Table 2.** Physical properties of sulphuric acid and organic vapour I and II (see Sect. 3).

Paramter	Unit	H <sub>2</sub> SO <sub>4</sub>	Org. Vapour I	Org. Vapour II
Density	[kg m <sup>-3</sup> ]	1183	1107	110
Molar mass	[g mol <sup>-1</sup> ]	98.08	150	200
Saturation concentration above flat surface	[# m <sup>-3</sup> ]	0.0E+00	1.0E+12	1.0E+12
Surface tension	[N m <sup>-1</sup> ]	5.5E-02	4.0E-02	4.0E-02
Diffusion volume		51.96	51.96	51.96
Mass accomodation coefficient		1	1	1

Title Page

Abstract

Introduction

Conclusions

References

Tables

Figures

◀

▶

◀

▶

Back

Close

Full Screen / Esc

Printer-friendly Version

Interactive Discussion

**Appendix A:** Reactions rate and rate coefficients for second order reactions (1 = Atkinson et al., 1992; 2 = De More et al., 1997; 3 = Simpson, 1992; 4 = Atkinson et al., 1989; 5 = Atkinson et al., 1984; 6 = Janson, 1992; 7 = Atkinson et al., 1986; 8 = Atkinson et al., 1990; 9 = Saltelli and Hjorth, 1995).

Nr.	Reactant	Reaction products	Reaction rate		Ref.
			A-factor	E/R	
1	O( <sup>1</sup> D) + M	→ O( <sup>3</sup> P) + (M)	3.20E-11	67	1
2	O( <sup>1</sup> D) + H <sub>2</sub> O	→ 2OH	2.20E-10	0	1
3	NO + O <sub>3</sub>	→ NO <sub>2</sub> + O <sub>2</sub>	1.50E-11	-170	2
4	NO <sub>2</sub> + O <sub>3</sub>	→ NO <sub>3</sub> + O <sub>2</sub>	1.20E-13	-2450	1
5	O <sub>3</sub> + OH	→ HO <sub>2</sub> + O <sub>2</sub>	1.70E-12	-940	2
6	HO <sub>2</sub> + O <sub>3</sub>	→ OH + 2O <sub>2</sub>	1.00E-14	-490	2
7	NO <sub>3</sub> + NO	→ 2NO <sub>2</sub>	1.50E-11	170	2
8	NO + HO <sub>2</sub>	→ NO <sub>2</sub> + OH	3.70E-12	250	2
9	NO <sub>3</sub> + NO <sub>2</sub>	→ NO + NO <sub>2</sub> + O <sub>2</sub>	2.30E-12	-1000	3
10	NO <sub>3</sub> + H <sub>2</sub> O <sub>2</sub>	→ HNO <sub>3</sub> + HO <sub>2</sub>	4.10E-16	0	3
11	NO <sub>3</sub> + NO <sub>3</sub>	→ 2NO <sub>2</sub> + O <sub>2</sub>	8.50E-13	-2450	3
12	N <sub>2</sub> O <sub>5</sub> + H <sub>2</sub> O	→ 2HNO <sub>3</sub>	1.30E-21	0	3
13	OH + HO <sub>2</sub>	→ H <sub>2</sub> O + O <sub>2</sub>	4.80E-11	250	1
14	OH + H <sub>2</sub> O <sub>2</sub>	→ HO <sub>2</sub> + H <sub>2</sub> O	2.90E-12	-160	1
15	OH + H <sub>2</sub>	→ H + H <sub>2</sub> O	5.50E-12	-2000	2
16	OH + HNO <sub>3</sub>	→ NO <sub>3</sub> + H <sub>2</sub> O	9.40E-15	778	4
17	HO <sub>2</sub> + HO <sub>2</sub>	→ H <sub>2</sub> O <sub>2</sub> + O <sub>2</sub>	2.30E-13	600	2
18	NO <sub>3</sub> + HO <sub>2</sub>	→ O <sub>2</sub> + HNO <sub>3</sub>	3.50E-12	0	2
19	NO <sub>3</sub> + HO <sub>2</sub>	→ OH + NO <sub>2</sub> + O <sub>2</sub>	3.50E-12	0	2
20	HSO <sub>3</sub> + O <sub>2</sub>	→ HO <sub>2</sub> + SO <sub>3</sub>	4.00E-13	0	4
21	CH <sub>3</sub> O <sub>2</sub> + SO <sub>2</sub>	→ SO <sub>3</sub> + CH <sub>3</sub> O	4.00E-17	0	3
22	SO <sub>3</sub> + H <sub>2</sub> O	→ H <sub>2</sub> SO <sub>4</sub>	5.00E-15	0	4
<i>Alkane chemistry</i>					
23	CH <sub>4</sub> + OH	→ CH <sub>3</sub> + H <sub>2</sub> O	2.40E-12	0	2
24	CH <sub>3</sub> O <sub>2</sub> + NO	→ CH <sub>3</sub> O + NO <sub>2</sub>	2.80E-12	2	2
25	CH <sub>3</sub> O + O <sub>2</sub>	→ HCHO + HO <sub>2</sub>	3.90E-14	-900	2
26	CH <sub>3</sub> O <sub>2</sub> + CH <sub>3</sub> O <sub>2</sub>	→ 2CH <sub>3</sub> O + O <sub>2</sub>	9.50E-14	390	2
27	CH <sub>3</sub> O <sub>2</sub> + CH <sub>3</sub> O <sub>2</sub>	→ CH <sub>3</sub> OH + HCHO + O <sub>2</sub>	1.10E-13	365	1
28	CH <sub>3</sub> O <sub>2</sub> + HO <sub>2</sub>	→ CH <sub>3</sub> OOH + O <sub>2</sub>	3.80E-13	780	1
29	HCHO + OH	→ HCO + H <sub>2</sub> O	8.80E-12	25	1
30	NO <sub>3</sub> + HCHO	→ HNO <sub>3</sub> + HCO	5.80E-16	0	1

**MALTE – Model to predict new aerosol formation in the LT**

M. Boy et al.

Title Page

Abstract

Introduction

Conclusions

References

Tables

Figures

◀

▶

◀

▶

Back

Close

Full Screen / Esc

Printer-friendly Version

Interactive Discussion

31	$\text{HCO} + \text{O}_2$	$\rightarrow$	$\text{HO}_2 + \text{CO}$	1.50E-13	0	2
	$\text{CO} + \text{OH}$	$\rightarrow$	$\text{CO}_2 + \text{H}$			
32	$\text{C}_2\text{H}_6 + \text{OH}$	$\rightarrow$	$\text{C}_2\text{H}_5 + \text{H}_2\text{O}$	7.80E-12	-1020	1
33	$\text{C}_2\text{H}_5 + \text{O}_2$	$\rightarrow$	$\text{C}_2\text{H}_5\text{O}_2$	2.60E-12	365	2
	$\text{C}_2\text{H}_5\text{O}_2 + \text{NO}$	$\rightarrow$	$\text{C}_2\text{H}_5\text{O} + \text{NO}_2$			
34	$\text{C}_2\text{H}_5\text{O}$	$\rightarrow$	$\text{HCHO} + \text{CH}_3$	3.30E+01	0	3
35	$\text{C}_2\text{H}_5\text{O} + \text{O}_2$	$\rightarrow$	$\text{HO}_2 + \text{CH}_3\text{CHO}$	9.50E-15	0	1
36	$\text{C}_2\text{H}_5\text{O}_2 + \text{CH}_3\text{O}_2$	$\rightarrow$	$\text{C}_2\text{H}_5\text{O} + \text{CH}_3\text{O} + \text{O}_2$	2.50E-14	0	3
37	$\text{OH} + \text{CH}_3\text{CHO}$	$\rightarrow$	$\text{H}_2\text{O} + \text{CH}_3\text{CO}$	5.60E-12	310	1
38	$\text{CH}_3\text{CO} + \text{O}_2$	$\rightarrow$	$\text{CH}_3\text{COO}_2$	2.00E-11	0	1
	$\text{CH}_3\text{COO}_2 + \text{NO}$	$\rightarrow$	$\text{CH}_3 + \text{CO}_2 + \text{NO}_2$			
39	$\text{CH}_3\text{COO}_2 + \text{CH}_3\text{O}_2$	$\rightarrow$	$\text{CH}_3\text{O} + \text{CH}_3 + \text{CO}_2 + \text{O}_2$	5.50E-12	0	1
40	$\text{C}_2\text{H}_5\text{O}_2 + \text{C}_2\text{H}_5\text{O}_2$	$\rightarrow$	$2\text{C}_2\text{H}_5\text{O} + \text{O}_2$	9.80E-14	-110	1
41	$2\text{CH}_3\text{COO}_2$	$\rightarrow$	$2\text{CH}_3 + \text{O}_2 + 2\text{CO}_2$	2.80E-12	530	1
42	$\text{nC}_4\text{H}_{10} + \text{OH}$	$\rightarrow$	$\text{secC}_4\text{H}_9 + \text{H}_2\text{O}$	1.40E-11	-559	3
43	$\text{secC}_4\text{H}_9 + \text{O}_2$	$\rightarrow$	$\text{secC}_4\text{H}_9\text{O}_2$	3.00E-12	0	3
	$\text{secC}_4\text{H}_9\text{O}_2 + \text{NO}$	$\rightarrow$	$\text{secC}_4\text{H}_9\text{O} + \text{NO}_2$			
44	$\text{secC}_4\text{H}_9\text{O} + \text{O}_2$	$\rightarrow$	$\text{HO}_2 + \text{CH}_3\text{COC}_2\text{H}_5$	2.10E-16	0	3
45	$\text{secC}_4\text{H}_9\text{O}$	$\rightarrow$	$\text{CH}_3\text{CHO} + \text{C}_2\text{H}_5$	1.20E+03	0	3
46	$\text{secC}_4\text{H}_9\text{O}_2 + \text{CH}_3\text{O}_2$	$\rightarrow$	$\text{secC}_4\text{H}_9\text{O} + \text{HCHO} + \text{HO}_2$	2.50E-14	0	3
47	$\text{CH}_3\text{COC}_2\text{H}_5 + \text{OH}$	$\rightarrow$	$\text{CH}_3\text{COCHCH}_3 + \text{H}_2\text{O}$	8.80E-13	0	3
48	$\text{CH}_3\text{COCHCH}_3 + \text{O}_2$	$\rightarrow$	$\text{CH}_3\text{COCHO}_2\text{CH}_3$	3.10E-13	0	3
	$\text{CH}_3\text{COCHO}_2\text{CH}_3 + \text{NO}$	$\rightarrow$	$\text{CH}_3\text{COCHOCH}_3 + \text{NO}_2$			
49	$\text{CH}_3\text{COCHOCH}_3 + \text{O}_2$	$\rightarrow$	$\text{CH}_3\text{COCOCH}_3 + \text{HO}_2$	2.50E-14	0	1
	$\text{CH}_3\text{COCOCH}_2\text{CH}_3 + \text{CH}_3\text{O}_2$	$\rightarrow$	$\text{HCHO} + 2\text{HO}_2 + \text{CH}_3\text{COCOCH}_3$			
<i>Alkene chemistry</i>						
50	$\text{CH}_2\text{O}_2\text{CH}_2\text{OH} + \text{NO}$	$\rightarrow$	$\text{CH}_2\text{OCH}_2\text{OH} + \text{NO}_2$	3.10E-13	0	3
	$\text{CH}_2\text{OCH}_2\text{OH} + \text{O}_2$	$\rightarrow$	$2\text{HCHO} + \text{HO}_2$			
51	$\text{CH}_2\text{O}_2\text{CH}_2\text{OH} + \text{CH}_3\text{O}_2$	$\rightarrow$	$\text{CH}_2\text{OCH}_2\text{OH} + \text{CH}_3\text{O} + \text{O}_2$	2.50E-14	0	3
52	$\text{C}_2\text{H}_4 + \text{O}_3$	$\rightarrow$	$\text{HCHO} + \text{CH}_2\text{O}_2$	1.20E-14	-2630	1
	$\text{CH}_2\text{O}_2 + \text{O}_2$	$\rightarrow$	$0.42\text{CO} + 0.12\text{HO}_2 + 0.12\text{H}_2$			
53	$\text{C}_3\text{H}_6 + \text{O}_3$	$\rightarrow$	$\text{CH}_3\text{CHO} + 0.42\text{CO} + 0.12\text{HO}_2 + 0.12\text{H}_2$	6.50E-15	-1880	1
54	$\text{C}_3\text{H}_6 + \text{O}_3$	$\rightarrow$	$\text{HCHO} + 0.12\text{CH}_4 + 0.24\text{CO} + 0.29\text{HO}_2 + 0.19\text{OH} + 0.05\text{CH}_3\text{O} + 0.43\text{CH}_3\text{O}_2$	6.50E-15	-1880	1
55	$\text{CH}_3\text{CHO}_2\text{CH}_2\text{OH} + \text{NO}$	$\rightarrow$	$\text{CH}_2\text{CHOCH}_2\text{OH} + \text{NO}_2$	3.10E-13	0	3
	$\text{CH}_2\text{CHOCH}_2\text{OH} + \text{O}_2$	$\rightarrow$	$\text{HCHO} + \text{CH}_3\text{CHO} + \text{HO}_2$			
56	$\text{CH}_3\text{CHO}_2\text{CH}_2\text{OH} + \text{CH}_3\text{O}_2$	$\rightarrow$	$\text{CH}_3\text{CHOCH}_2\text{OH} + \text{CH}_3\text{O} + \text{O}_2$	2.50E-14	0	3
	$\text{CH}_3\text{CHOCH}_2\text{OH} + \text{O}_2$	$\rightarrow$	$\text{CH}_3\text{CHO} + \text{HCHO} + \text{HO}_2$			
<i>Aromatic chemistry</i>						
57	$\text{o-xylene} + \text{OH}$	$\rightarrow$	product1	1.10E-11	0	3
58	$\text{product1} + \text{NO}$	$\rightarrow$	product2 + $\text{NO}_2$	3.10E-13	0	3

# MALTE – Model to predict new aerosol formation in the LT

M. Boy et al.

Title Page

Abstract

Introduction

Conclusions

References

Tables

Figures

◀

▶

◀

▶

Back

Close

Full Screen / Esc

Printer-friendly Version

Interactive Discussion

59	product2 + O <sub>2</sub>	→	HO <sub>2</sub> + CH <sub>3</sub> COCHO + CH <sub>3</sub> COCH=CHCHO			3
	CH <sub>3</sub> COCH=CHCHO + OH	→	CH <sub>3</sub> COCHOH-CHO <sub>2</sub> CHO	2.00E-11	0	
60	CH <sub>3</sub> COCHOH-CHO <sub>2</sub> CHO + NO	→	NO <sub>2</sub> + HO <sub>2</sub> + CH <sub>3</sub> COCHO + (HCO) <sub>2</sub>	3.10E-13	0	3
61	(HCO) <sub>2</sub> + OH	→	HO <sub>2</sub> + 2CO + H <sub>2</sub> O	1.10E-11	0	4
62	CH <sub>3</sub> COCHO + OH	→	CH <sub>3</sub> COO <sub>2</sub> + CO + H <sub>2</sub> O	1.70E-11	0	3
<i>Natural hydrocarbons</i>						
63	C <sub>5</sub> H <sub>8</sub> + OH	→	HOC <sub>5</sub> H <sub>8</sub>	2.54E-11	410	3
	HOC <sub>5</sub> H <sub>8</sub> + O <sub>2</sub>	→	HOC <sub>5</sub> H <sub>8</sub> O <sub>2</sub>			
64	HOC <sub>5</sub> H <sub>8</sub> O <sub>2</sub> + NO	→	HOCH <sub>2</sub> CH <sub>3</sub> COCH=CH <sub>2</sub> + NO <sub>2</sub>	3.00E-13	0	3
	HOCH <sub>2</sub> CH <sub>3</sub> COCH=CH <sub>2</sub> + O <sub>2</sub>	→	CH <sub>3</sub> COCH=CH <sub>2</sub> + HCHO + HO <sub>2</sub>			
65	CH <sub>3</sub> COCH=CH <sub>2</sub> + OH	→	OHCH <sub>3</sub> COCHCH <sub>2</sub> O <sub>2</sub>	2.00E-11	0	3
66	OHCH <sub>3</sub> COCHCH <sub>2</sub> O <sub>2</sub> + NO	→	CH <sub>3</sub> COCHO + NO <sub>2</sub> + HCHO + HO <sub>2</sub>	3.00E-13	0	3
67	C <sub>5</sub> H <sub>8</sub> + O <sub>3</sub>	→	products	1.20E-17	0	5
68	C <sub>5</sub> H <sub>8</sub> + NO <sub>3</sub>	→	products	3.20E-13	0	5
69	alfa-pinene + OH	→	PICHO + HO <sub>2</sub> + NO <sub>2</sub> + NO	9.80E-12	500	6
70	alfa-pinene + NO <sub>3</sub>	→	products	5.80E-12	0	6
71	alfa-pinene + O <sub>3</sub>	→	Bir	4.60E-15	-1170	6
72	beta-pinene + OH	→	aldehyde + HO <sub>2</sub> + NO <sub>2</sub> -NO	7.95E-11	0	7
73	beta-pinene + NO <sub>3</sub>	→	products	2.36E-12	0	8
74	beta-pinene + O <sub>3</sub>	→	products	2.10E-17	0	5
75	3-carene + OH	→	PICHO + HO <sub>2</sub> + NO <sub>2</sub> -NO	1.60E-11	500	6
76	3-carene + NO <sub>3</sub>	→	products	1.01E-11	0	6
77	3-carene + O <sub>3</sub>	→	products	6.50E-15	-1170	6
78	D-limonene + OH	→	aldehyde + HO <sub>2</sub> + NO <sub>2</sub> -NO	1.69E-10	0	7
79	D-limonene + NO <sub>3</sub>	→	products	1.40E-11	0	7
80	D-limonene + O <sub>3</sub>	→	products	6.40E-16	0	5
<i>Dimethylsulphide chemistry</i>						
81	CH <sub>3</sub> SCH <sub>3</sub> + OH	→	CH <sub>3</sub> S + CH <sub>3</sub> OH	1.10E-11	-240	9
82	CH <sub>3</sub> SCH <sub>3</sub> + OH	→	CH <sub>3</sub> S(OH)CH <sub>3</sub>	1.20E-12	0	9
83	CH <sub>3</sub> S(OH)SH <sub>3</sub>	→	CH <sub>3</sub> SO + CH <sub>4</sub>	5.00E-01	0	9
84	CH <sub>3</sub> S + NO <sub>2</sub>	→	CH <sub>3</sub> SO + NO	5.60E-11	0	9
85	CH <sub>3</sub> S + O <sub>3</sub>	→	H <sub>3</sub> SO + O <sub>2</sub>	5.40E-12	0	9
86	CH <sub>3</sub> S + O <sub>2</sub>	→	CH <sub>3</sub> SOO	6.10E-19	0	9
87	CH <sub>3</sub> SOO	→	CH <sub>3</sub> S + O <sub>2</sub>	1.00E+00	0	9
88	CH <sub>3</sub> S(O)O <sub>2</sub> + NO <sub>2</sub>	→	CH <sub>3</sub> S(O)O <sub>2</sub> NO <sub>2</sub>	5.89E-12	0	9
89	CH <sub>3</sub> S(O)O <sub>2</sub> NO <sub>2</sub>	→	H <sub>3</sub> S(O)O <sub>2</sub> + NO <sub>2</sub>	1.12E-02	0	9
90	CH <sub>3</sub> SOO	→	CH <sub>3</sub> SO <sub>2</sub>	5.00E+00	0	9
91	CH <sub>3</sub> SOO + NO	→	CH <sub>3</sub> SO + NO <sub>2</sub>	1.11E-11	0	9
92	CH <sub>3</sub> SO + O <sub>3</sub>	→	CH <sub>3</sub> SO <sub>2</sub>	3.00E-13	0	9
93	CH <sub>3</sub> SO + NO <sub>2</sub>	→	CH <sub>3</sub> SO <sub>2</sub> + NO	1.20E-11	0	9
94	CH <sub>3</sub> SO + NO <sub>2</sub>	→	CH <sub>3</sub> + SO <sub>2</sub> + NO	8.50E-12	0	9

# MALTE – Model to predict new aerosol formation in the LT

M. Boy et al.

Title Page

Abstract

Introduction

Conclusions

References

Tables

Figures

◀

▶

◀

▶

Back

Close

Full Screen / Esc

Printer-friendly Version

Interactive Discussion

**MALTE – Model to predict new aerosol formation in the LT**

M. Boy et al.

95	$\text{CH}_3\text{SO} + \text{O}_2$	$\rightarrow$	$\text{CH}_3\text{S(O)}\text{O}_2$	7.70E-18	0	9
96	$\text{CH}_3\text{S(O)}\text{O}_2$	$\rightarrow$	$\text{CH}_3\text{SO} + \text{O}_2$	1.70E+02	0	9
97	$\text{CH}_3\text{S(O)}\text{O}_2 + \text{NO}$	$\rightarrow$	$\text{CH}_3\text{SO}_2 + \text{NO}_2$	2.40E-11	0	9
98	$\text{CH}_3\text{SO}_2 + \text{NO}_2$	$\rightarrow$	$\text{CH}_3\text{SO}_3 + \text{NO}$	1.20E-11	0	9
99	$\text{CH}_3\text{SO}_2 + \text{O}_3$	$\rightarrow$	$\text{CH}_3\text{SO}_3 + \text{O}_2$	6.03E-13	0	9
100	$\text{CH}_3\text{SO}_2 + \text{O}_2$	$\rightarrow$	$\text{CH}_3\text{S(O)}_2\text{O}_2$	2.60E-18	0	9
101	$\text{CH}_3\text{S(O)}_2\text{O}_2$	$\rightarrow$	$\text{CH}_3\text{SO}_2 + \text{O}_2$	3.30E+00	0	9
102	$\text{CH}_3\text{S(O)}_2\text{O}_2 + \text{NO}_2$	$\rightarrow$	$\text{CH}_3\text{S(O)}_2\text{NO}_2 + \text{O}_2$	5.89E-12	0	9
103	$\text{CH}_3\text{S(O)}_2\text{NO}_2 + \text{O}_2$	$\rightarrow$	$\text{CH}_3\text{S(O)}\text{O}_2 + \text{NO}_2$	1.12E-02	0	9
104	$\text{CH}_3\text{S(O)}_2$	$\rightarrow$	$\text{CH}_3 + \text{SO}_2$	5.00E+00	0	9
105	$\text{CH}_3\text{SO}_3$	$\rightarrow$	$\text{CH}_3 + \text{SO}_3$	5.00E+00	0	9
106	$\text{CH}_3\text{SO}_3$	$\rightarrow$	$\text{CH}_3\text{SO}_3\text{H}$	5.01E+00	0	9
107	$\text{CH}_3\text{S(O)}_2\text{O}_2 + \text{NO}$	$\rightarrow$	$\text{CH}_3\text{SO}_3 + \text{NO}_2$	2.40E-11	0	9
108	$\text{CH}_3\text{SOO} + \text{O}_3$	$\rightarrow$	$\text{CH}_3\text{SO} + 2\text{O}_2$	7.94E-13	0	9
109	$\text{CH}_3\text{SOO} + \text{NO}_2$	$\rightarrow$	$\text{CH}_3\text{SOONO}_2$	5.01E-12	0	9
110	$\text{CH}_3\text{SOONO}_2$	$\rightarrow$	$\text{CH}_3\text{SOO} + \text{NO}_2$	1.80E+00	0	9
11	$\text{CH}_3\text{S} + \text{O}_2$	$\rightarrow$	$\text{CH}_3 + \text{SO}_2$	3.00E-18	0	9
112	$\text{CH}_3\text{SOO} + \text{O}_2$	$\rightarrow$	$\text{CH}_3 + \text{SO}_2 + \text{O}_2$	3.00E-18	0	9

Title Page

Abstract

Introduction

Conclusions

References

Tables

Figures

◀

▶

◀

▶

Back

Close

Full Screen / Esc

Printer-friendly Version

Interactive Discussion

**Appendix B:** Reactions rate and rate coefficients for third order reactions (1 = Atkinson et al., 1992; 2 = Sander et al., 2000; 3 = Troe, 2001; 4 = JPL Publication 02-25, National Aeronautics and Space Administration, 2003; 5 = Atkinson et al., 1989).

Nr.	Reactant	→	Reaction products	Reaction rate				Ref.
				$k_o^{300}$ $k_{\infty}^{300}$	n m	E/R E/R	$F_c$	
1	$O(^3P) + O_2 + [M]$	→	$O_3 + [M]$	5.6E-34 2.8E-12	2.8 0	0 0	$\exp(-T/696)$	1
2	$O(^3P) + NO + [M]$	→	$NO_2 + [M]$	9.0E-32 3.0E-11	1.5 0	0 0	0.6	2
3	$NO_3 + NO_2 + [M]$	→	$N_2O_5 + [M]$	2.0E-30 1.4E-12	4.4 0.7	0 0	0.6	2
4	$NO_2 + OH + [M]$	→	$HNO_3 + [M]$	3.0E-30 3.6E-11	3 0	0 0	0.4	3
5	$N_2O_5 + [M]$	→	$NO_2 + NO_3 + [M]$	6.67E-04 4.67E+14	4.4 0.7	10991 10991	0.6	2
6	$SO_2 + OH + [M]$	→	$HSO_3 + [M]$	3.0E-31 1.5E-12	3.3 0	0 0	0.6	4
7	$CH_3 + O_2 + [M]$	→	$CH_3O_2 + [M]$	4.5E-31 1.8E-12	3 1.7	0 0	0.6	5
8	$CH_3COO_2 + NO_2 + [M]$	→	$CH_3COO_2NO_2 + [M]$	2.7E-28 1.2E-11	7.1 0.9	0 0	0.3	1
9	$CH_3COO_2NO_2 + [M]$	→	$CH_3COO_2 + NO_2 + [M]$	4.9E-03 4.0E+16	0 0	12100 13600	0.3	1
10	$C_3H_6 + OH + [M]$	→	$CH_3CHCH_2OH + [M]$	8.0E-27	3.5	0	$\exp(-T/433)$	5
	$\{CH_3CHCH_2OH + O_2\}$	→	$CH_3CHO_2CH_2OH\}$	3.0E-11	0	0		
11	$C_2H_4 + OH + [M]$	→	$CH_2CH_2OH + [M]$	9.5E-29	3.1	0	$\exp(-T/840)$	5
	$\{CH_2CH_2OH + O_2\}$	→	$CH_2O_2CH_2OH\}$	9.0E-12	0	0		

**MALTE – Model to predict new aerosol formation in the LT**

M. Boy et al.

Title Page

Abstract

Introduction

Conclusions

References

Tables

Figures

◀

▶

◀

▶

Back

Close

Full Screen / Esc

Printer-friendly Version

Interactive Discussion

## Appendix C: Photochemical reactions.

Nr.	Reactant	→	Reaction products
1	$\text{O}_3 + h\nu (\lambda < 320 \text{ nm})$	→	$\text{O}_2 + \text{O}(^1\text{D})$
2	$\text{O}_3 + h\nu (\lambda > 320 \text{ nm})$	→	$\text{O}_2 + \text{O}(^3\text{P})$
3	$\text{NO}_2 + h\nu (\lambda < 410 \text{ nm})$	→	$\text{NO} + \text{O}(^3\text{P})$
4	$\text{NO}_3 + h\nu (470 \text{ nm} < \lambda < 630 \text{ nm})$	→	$\text{NO}_2 + \text{O}(^3\text{P})$
5	$\text{NO}_3 + h\nu (\lambda > 580 \text{ nm})$	→	$\text{NO} + \text{O}_2$
6	$\text{N}_2\text{O}_5 + h\nu (\lambda < 350 \text{ nm})$	→	$\text{NO}_2 + \text{NO}_3$
7	$\text{H}_2\text{O}_2 + h\nu (\lambda < 350 \text{ nm})$	→	$2\text{OH}$
8	$\text{HNO}_3 + h\nu (\lambda < 320 \text{ nm})$	→	$\text{NO}_2 + \text{OH}$
9	$\text{HCHO} + h\nu (\lambda < 370 \text{ nm})$	→	$\text{HCO} + \text{H}$
10	$\text{HCHO} + h\nu (\lambda < 370 \text{ nm})$	→	$\text{CO} + \text{H}_2$
11	$\text{CH}_3\text{CHO} + h\nu (\lambda < 325 \text{ nm})$	→	$\text{CH}_3\text{O}_2 + \text{HO}_2 + \text{CO}$
12	$\text{CH}_3\text{COC}_2\text{H}_5 + h\nu$	→	$\text{CH}_3\text{COO}_2 + \text{C}_2\text{H}_5\text{O}_2$
13	$\text{CH}_3\text{COCOCH}_3 + h\nu$	→	$2\text{CH}_3\text{COO}_2$
14	$\text{HCOCHO} + h\nu (\lambda < 470 \text{ nm})$	→	$\text{CO} + \text{HCHO}$
15	$\text{CH}_3\text{OOH} + h\nu (\lambda < 350 \text{ nm})$	→	$\text{CH}_3\text{O} + \text{OH}$
16	$\text{CH}_3\text{COCHO} + h\nu (\lambda < 470 \text{ nm})$	→	$\text{CH}_3\text{CO} + \text{CO} + \text{HO}_2$

### MALTE – Model to predict new aerosol formation in the LT

M. Boy et al.

Title Page

Abstract

Introduction

Conclusions

References

Tables

Figures

◀

▶

◀

▶

Back

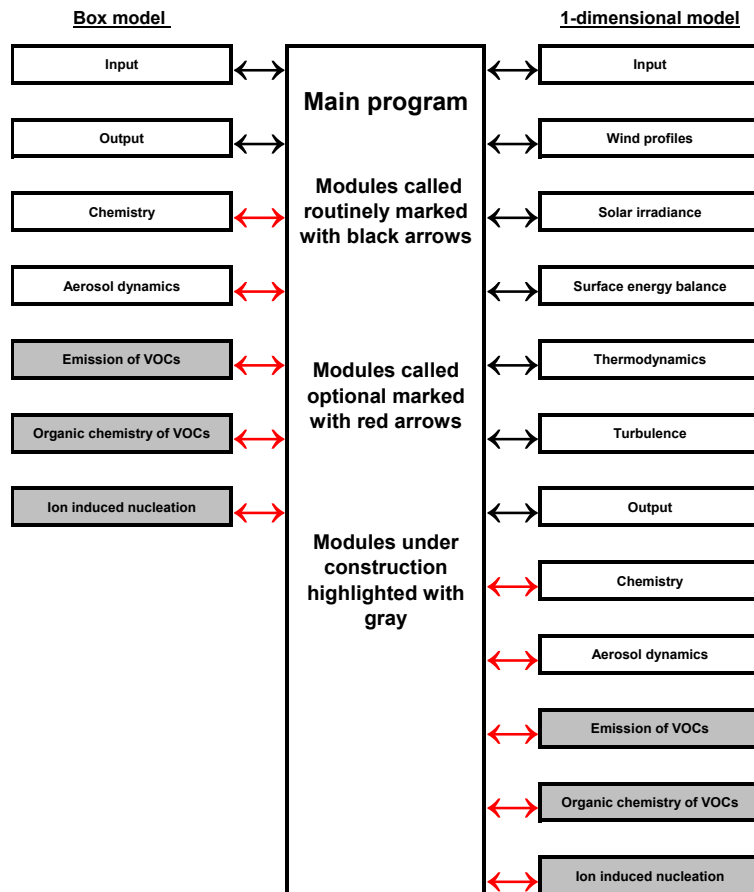
Close

Full Screen / Esc

Printer-friendly Version

Interactive Discussion

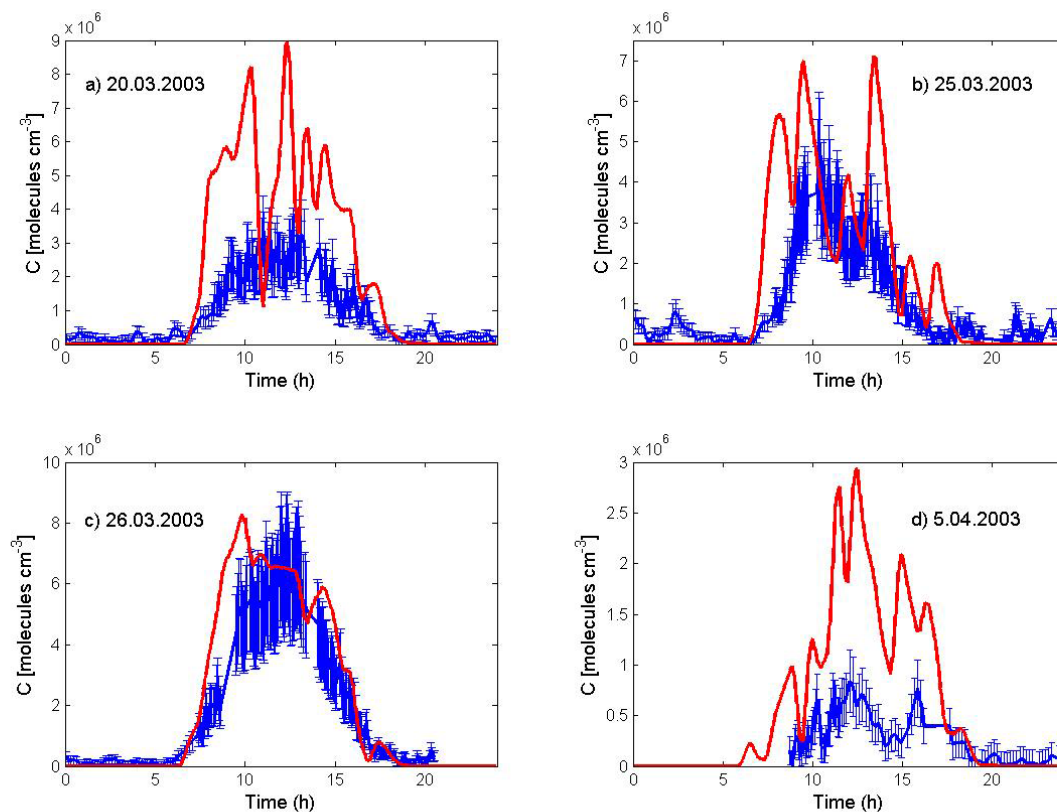




**Fig. 1.** Schematic diagram of the model MALTE.

**MALTE – Model to predict new aerosol formation in the LT**

M. Boy et al.

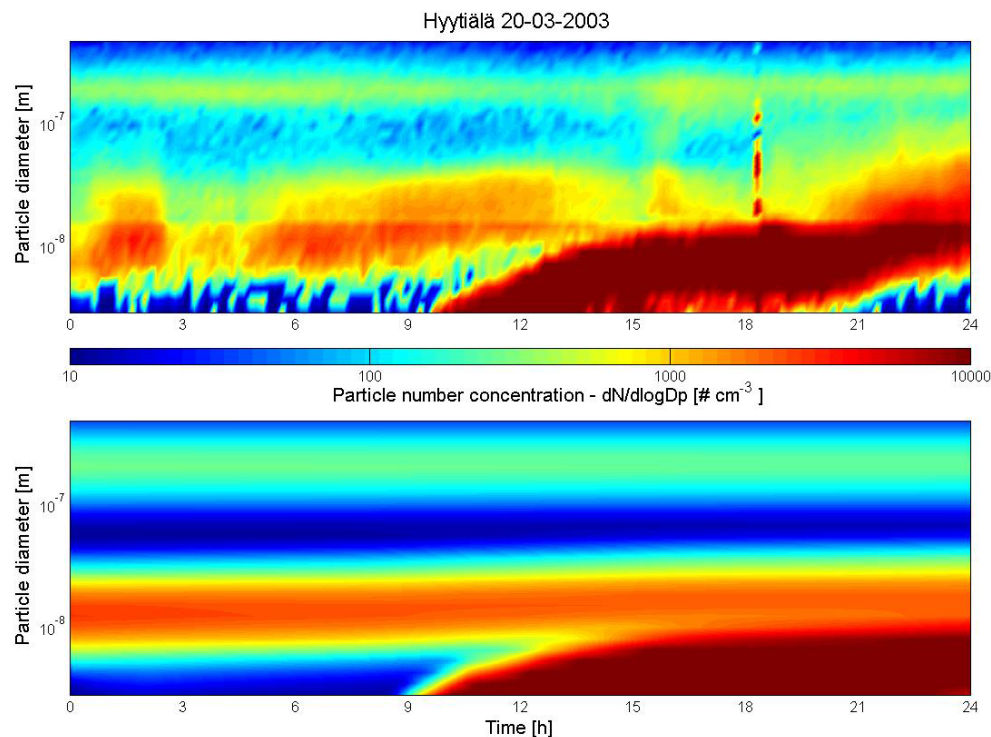


**Fig. 2.** Measured and modelled sulphuric acid concentrations for all selected days. Red lines denote modelled values; blue lines represent measurements with uncertainties.

[Title Page](#)[Abstract](#)[Introduction](#)[Conclusions](#)[References](#)[Tables](#)[Figures](#)[◀](#)[▶](#)[◀](#)[▶](#)[Back](#)[Close](#)[Full Screen / Esc](#)[Printer-friendly Version](#)[Interactive Discussion](#)

**MALTE – Model to  
predict new aerosol  
formation in the LT**

M. Boy et al.

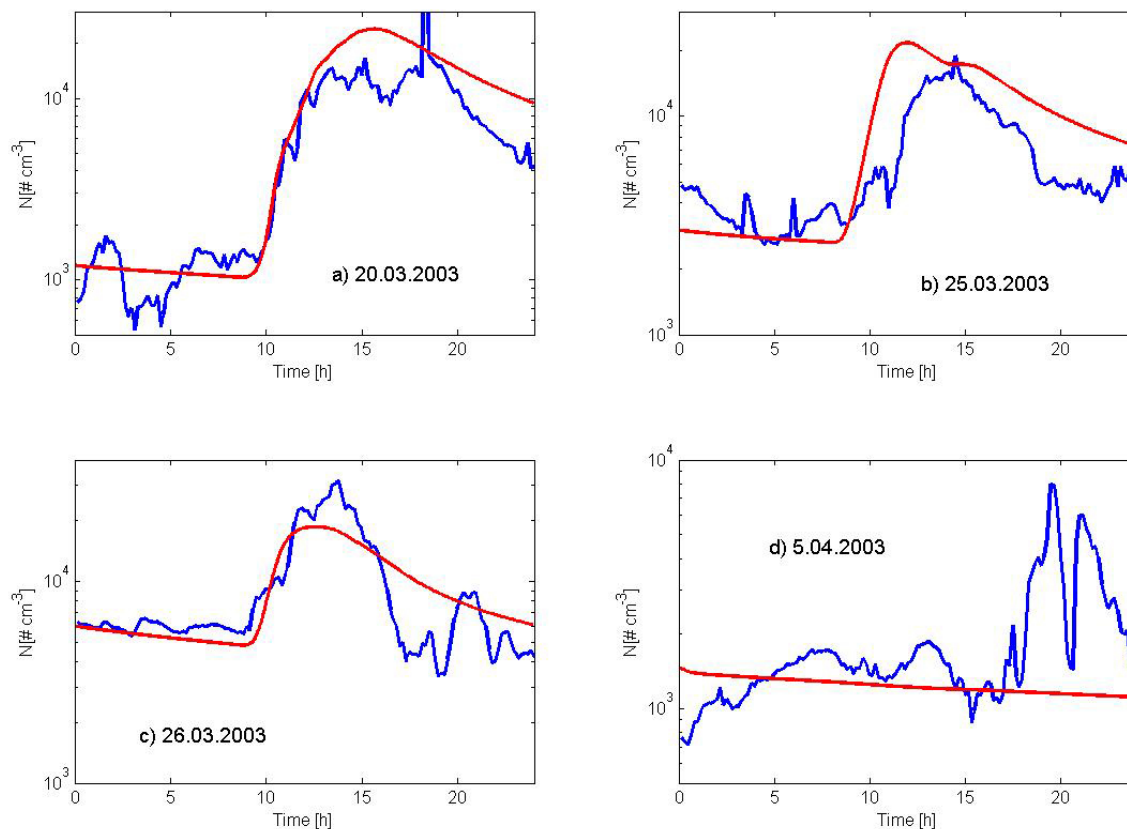


**Fig. 3.** Measured (upper plot) and modelled (lower plot) particle size distributions for 20 March 2003.

[Title Page](#)[Abstract](#)[Introduction](#)[Conclusions](#)[References](#)[Tables](#)[Figures](#)[◀](#)[▶](#)[◀](#)[▶](#)[Back](#)[Close](#)[Full Screen / Esc](#)[Printer-friendly Version](#)[Interactive Discussion](#)

**MALTE – Model to predict new aerosol formation in the LT**

M. Boy et al.

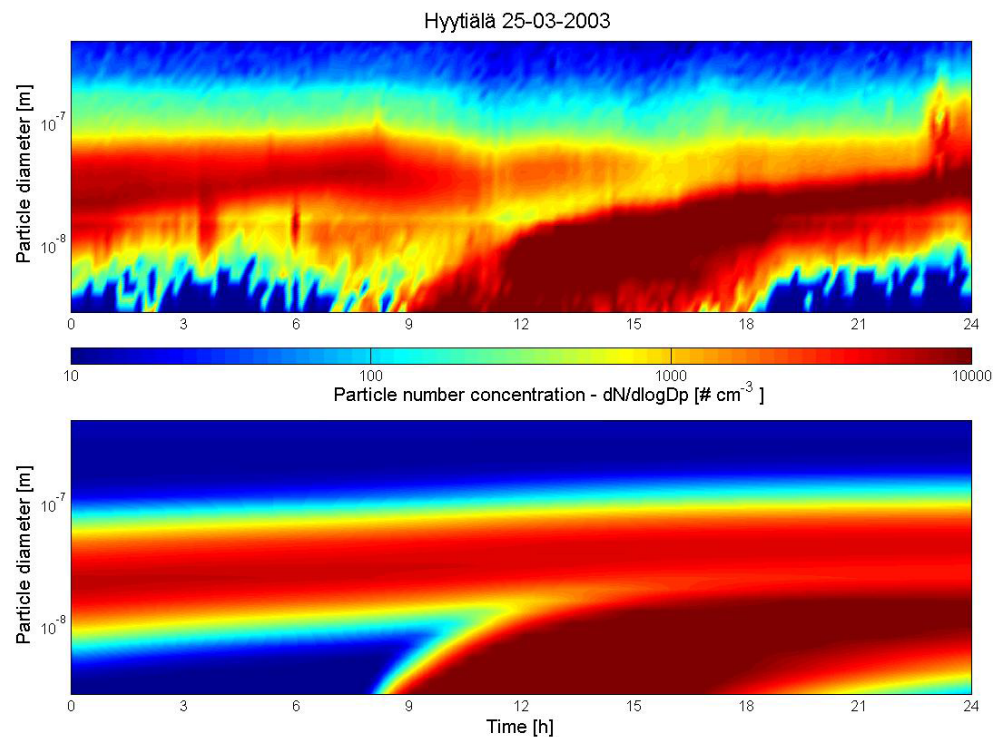


**Fig. 4.** Measured and modelled total particle number concentration for all selected days. Red lines denote modelled values; blue lines represent measurements.

[Title Page](#)[Abstract](#)[Introduction](#)[Conclusions](#)[References](#)[Tables](#)[Figures](#)[◀](#)[▶](#)[◀](#)[▶](#)[Back](#)[Close](#)[Full Screen / Esc](#)[Printer-friendly Version](#)[Interactive Discussion](#)

**MALTE – Model to  
predict new aerosol  
formation in the LT**

M. Boy et al.



**Fig. 5.** Measured (upper plot) and modelled (lower plot) particle size distributions for 25 March 2003.

Title Page

Abstract

Introduction

Conclusions

References

Tables

Figures

◀

▶

◀

▶

Back

Close

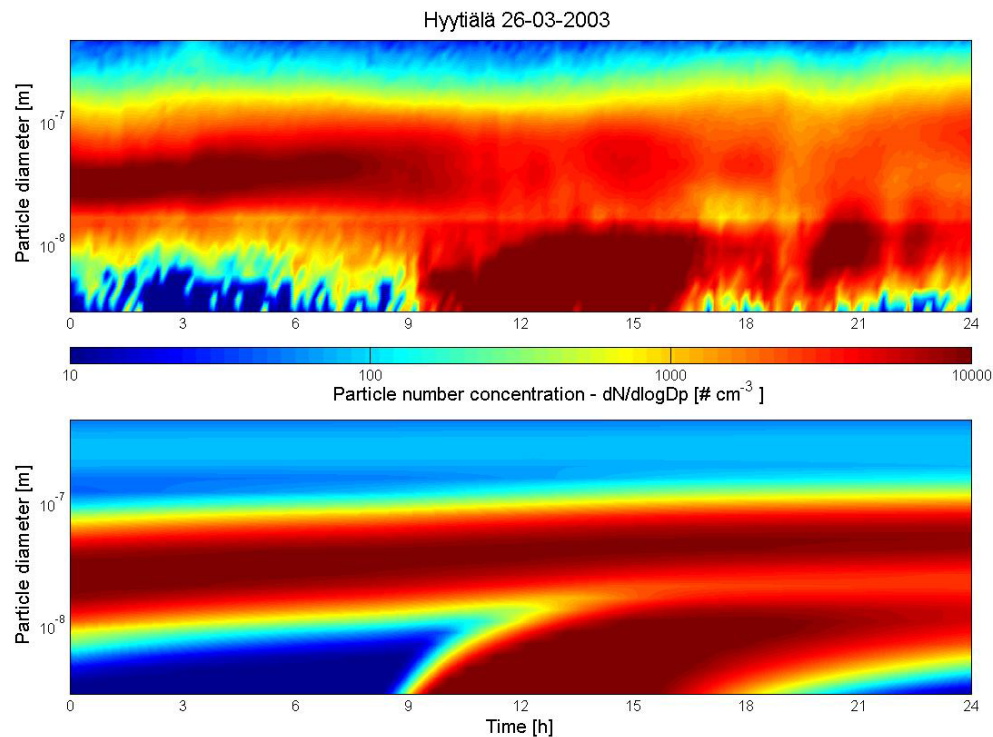
Full Screen / Esc

Printer-friendly Version

Interactive Discussion

**MALTE – Model to  
predict new aerosol  
formation in the LT**

M. Boy et al.

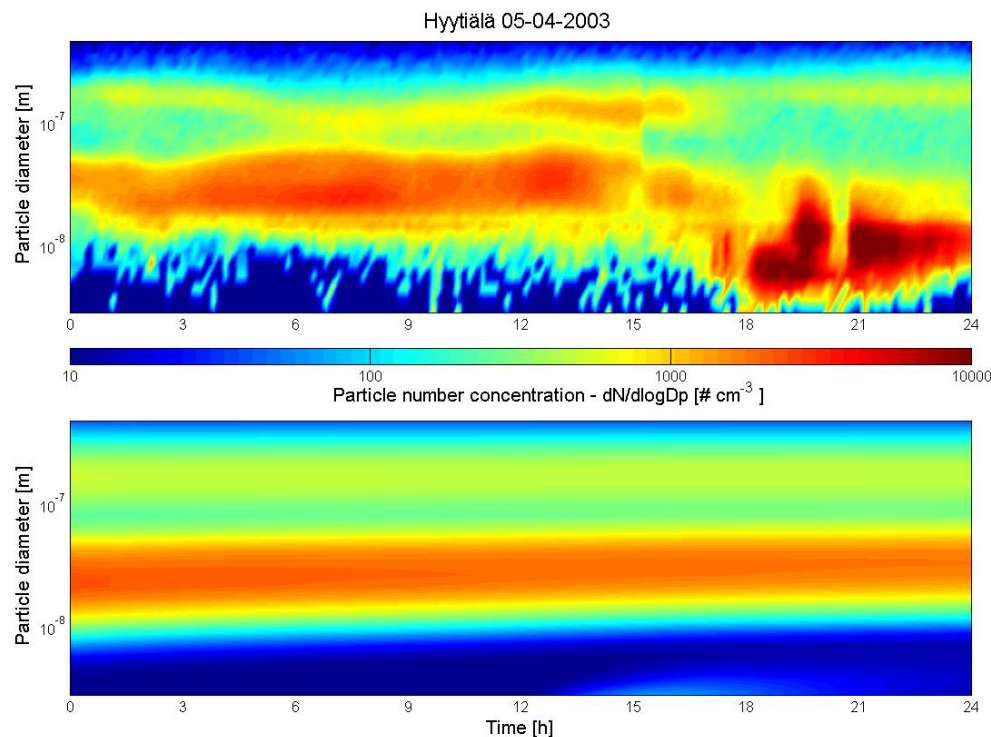


**Fig. 6.** Measured (upper plot) and modelled (lower plot) particle size distributions for 26 March 2003.

[Title Page](#)[Abstract](#)[Introduction](#)[Conclusions](#)[References](#)[Tables](#)[Figures](#)[◀](#)[▶](#)[◀](#)[▶](#)[Back](#)[Close](#)[Full Screen / Esc](#)[Printer-friendly Version](#)[Interactive Discussion](#)

**MALTE – Model to  
predict new aerosol  
formation in the LT**

M. Boy et al.

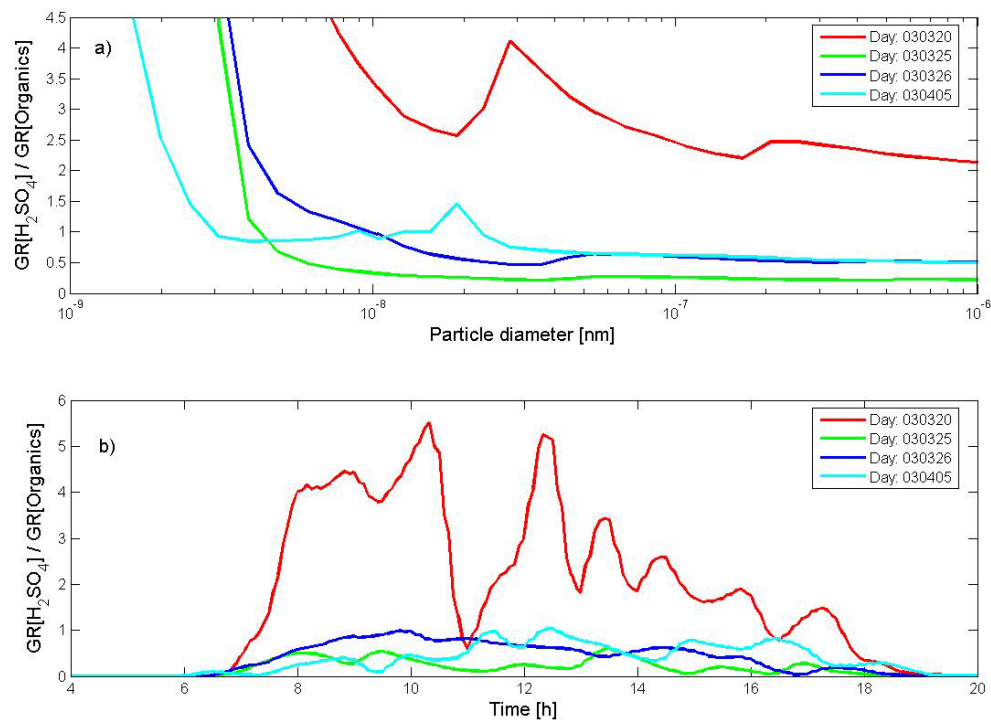


**Fig. 7.** Measured (upper plot) and modelled (lower plot) particle size distributions for 4 April 2003.

[Title Page](#)[Abstract](#)[Introduction](#)[Conclusions](#)[References](#)[Tables](#)[Figures](#)[◀](#)[▶](#)[◀](#)[▶](#)[Back](#)[Close](#)[Full Screen / Esc](#)[Printer-friendly Version](#)[Interactive Discussion](#)

**MALTE – Model to predict new aerosol formation in the LT**

M. Boy et al.



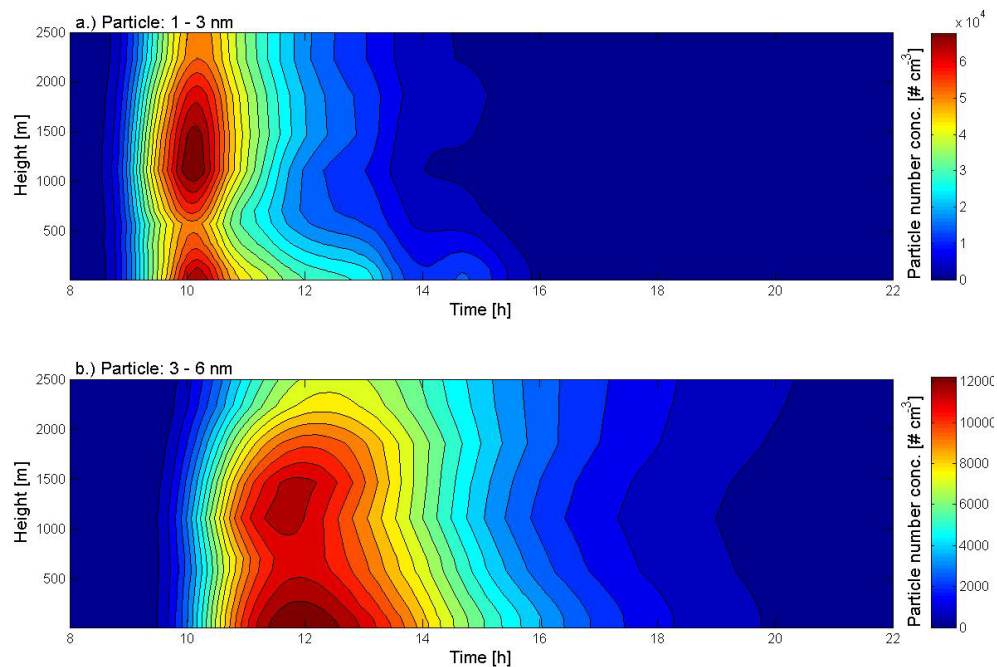
**Fig. 8.** Ratio of the growth rate by sulphuric acid to that by organic vapours against the particle diameter **(a)** and time of the day **(b)**.

[Title Page](#)[Abstract](#)[Introduction](#)[Conclusions](#)[References](#)[Tables](#)[Figures](#)[◀](#)[▶](#)[◀](#)[▶](#)[Back](#)[Close](#)[Full Screen / Esc](#)[Printer-friendly Version](#)[Interactive Discussion](#)



**MALTE – Model to  
predict new aerosol  
formation in the LT**

M. Boy et al.



**Fig. 9.** Vertical daily evolution of particle number concentrations in two different size ranges for 26 March 2003.

Title Page

Abstract

Introduction

Conclusions

References

Tables

Figures

◀

▶

◀

▶

Back

Close

Full Screen / Esc

Printer-friendly Version

Interactive Discussion