



HAL
open science

Validation of ENVISAT/SCIAMACHY columnar methane by solar FTIR spectrometry at the Ground-Truthing Station Zugspitze

R. Sussmann, W. Stremme, M. Buchwitz, R. de Beek

► **To cite this version:**

R. Sussmann, W. Stremme, M. Buchwitz, R. de Beek. Validation of ENVISAT/SCIAMACHY columnar methane by solar FTIR spectrometry at the Ground-Truthing Station Zugspitze. *Atmospheric Chemistry and Physics Discussions*, 2005, 5 (2), pp.2269-2295. hal-00301194

HAL Id: hal-00301194

<https://hal.science/hal-00301194>

Submitted on 18 Jun 2008

HAL is a multi-disciplinary open access archive for the deposit and dissemination of scientific research documents, whether they are published or not. The documents may come from teaching and research institutions in France or abroad, or from public or private research centers.

L'archive ouverte pluridisciplinaire **HAL**, est destinée au dépôt et à la diffusion de documents scientifiques de niveau recherche, publiés ou non, émanant des établissements d'enseignement et de recherche français ou étrangers, des laboratoires publics ou privés.

**Validation of
SCIAMACHY
columnar methane by
Zugspitze FTIR**

R. Sussmann et al.

**Validation of ENVISAT/SCIAMACHY
columnar methane by solar FTIR
spectrometry at the Ground-Truthing
Station Zugspitze**

R. Sussmann¹, W. Stremme¹, M. Buchwitz², and R. de Beek²

¹IMK-IFU, Forschungszentrum Karlsruhe, Garmisch-Partenkirchen, Germany

²Institute of Environmental Physics (iup), University of Bremen FB1, Bremen, Germany

Received: 27 January 2005 – Accepted: 23 March 2005 – Published: 13 April 2005

Correspondence to: R. Sussmann (ralf.sussmann@imk.fzk.de)

© 2005 Author(s). This work is licensed under a Creative Commons License.

Title Page

Abstract

Introduction

Conclusions

References

Tables

Figures

⏪

⏩

◀

▶

Back

Close

Full Screen / Esc

Print Version

Interactive Discussion

EGU

Abstract

Methane total-vertical column retrievals from ground-based solar FTIR measurements at the Permanent Ground-Truthing Station Zugspitze (47.42° N, 10.98° E, 2964 m a.s.l.), Germany are used to validate column averaged methane retrieved from ENVISAT/SCIAMACHY spectra by WFM-DOAS (WFMD) version 0.4 and 0.41 for 153 days in 2003. Smoothing errors are estimated to be below 0.10% for FTIR and 0.14% for SCIAMACHY-WFMD retrievals and can be neglected for the assessment of observed bias and day-to-day-scatter. In order to minimize the altitude-difference effect, dry-air column averaged mixing ratios (XCH_4) have been utilized. From the FTIR-time series of XCH_4 an atmospheric day-to-day variability of 1% was found, and a sinusoidal annual cycle with a $\approx 1.6\%$ amplitude. To obtain the WFMD bias, a polynomial fitted to the FTIR series was used as a reference. The result is $WFMD\ v0.4/FTIR = 1.008 \pm 0.019$ and $WFMD\ v0.41/FTIR = 1.058 \pm 0.008$. WFMD v0.41 was significantly improved by a time-dependent bias correction. It can still not capture the natural day-to-day variability, i.e., the standard deviation calculated from the daily-mean values is 2.4% using averages within a 2000-km radius, and 2.7% for a 1000-km radius. These numbers are dominated by a residual time-dependent bias in the order of 3%/month. The latter can be reduced, e.g., from 2.4% to 1.6% as shown by an empirical time-dependent bias correction. Standard deviations of the daily means, calculated from the individual measurements of each day, are excluding time-dependent biases, thus showing the potential precision of WFMD daily means, i.e., 0.3% for a 2000-km selection radius, and 0.6% for a 1000-km selection radius. Therefore, the natural variability could be captured under the prerequisite of further advanced time-dependent bias corrections, or the use of other channels, where the icing issue is less prominent.

Validation of SCIAMACHY columnar methane by Zugspitze FTIR

R. Sussmann et al.

Title Page

Abstract

Introduction

Conclusions

References

Tables

Figures

⏪

⏩

◀

▶

Back

Close

Full Screen / Esc

Print Version

Interactive Discussion

1. Introduction

The atmospheric trace species methane (CH_4) contributes by 15% to the anthropogenic greenhouse forcing, and has recently been included into the list of the so called “Kyoto gases”. It has thus become mandatory to better understand and monitor its spatiotemporal distribution on a global and centennial scale. In particular, the locations and strengths of the CH_4 sources are not sufficiently quantified yet (IPCC, 2001). An obstacle for the quantification of surface sources is that measurements of small variations on top of a large background of this well-mixed gas are required. Therefore, measurements with both high precision and global coverage are needed.

High-precision measurements of in-situ mixing ratios are realized by surface-sampling sites of the GAW (Global Atmosphere Watch) and NOAA/CMDL (National Oceanic and Atmospheric Administration Climate Monitoring and Diagnostics Laboratory) networks. By the inverse modeling of these in-situ measurements the global atmospheric CH_4 cycle has been characterized and the average uncertainties of CH_4 source magnitudes could be reduced by more than one third (Hein et al., 1997).

Ground-based solar FTIR (Fourier Transform Infrared) spectrometry sites operated within the NDSC (Network for the Detection of Stratospheric Change) are yielding vertical total columns of CH_4 . The Zugspitze FTIR is a so called Primary-Status instrument within the NDSC, which certifies both operationality and data quality on a highest level. These ground-based total-column measurements are crucial for the validation of the upcoming satellite missions dedicated to the measurement of greenhouse gases, and are likely to become important constraints on the geographic and temporal distribution of CH_4 sources and sinks in the future.

Satellite-borne remote sounders are also providing total columns and have the potential to add the required information on the global distribution of CH_4 to the highly precise ground-based networks, but strongly rely upon careful ground-truthing. The first global maps of CH_4 columns have been retrieved from IMG/ADEOS thermal infrared (TIR) nadir spectra (Kobayashi et al., 1999). The results show qualitatively the

**Validation of
SCIAMACHY
columnar methane by
Zugspitze FTIR**

R. Sussmann et al.

Title Page

Abstract

Introduction

Conclusions

References

Tables

Figures

⏪

⏩

◀

▶

Back

Close

Full Screen / Esc

Print Version

Interactive Discussion

expected variability, for example the North-South hemispheric gradient (Clerbaux et al., 2003). The CH₄ amounts retrieved from TIR nadir observations are relatively insensitive to changes within the lower troposphere, however.

Meanwhile, another satellite instrument has achieved the potential to retrieve global information on CH₄, i.e., the Scanning Imaging Absorption Spectrometer for Atmospheric CHartographY (SCIAMACHY), which is a UV/visible/near-infrared spectrometer onboard ENVISAT launched in 2002 (Bovensmann et al., 1999). Due to the near-infrared (NIR) spectral domain the SCIAMACHY nadir measurements of CH₄ are highly sensitive to concentration changes at all altitude levels, including the boundary layer (see Sect. 3).

In this paper we focus on the validation of the SCIAMACHY scientific total-column product retrieved at the University of Bremen by the Weighting Function Modified DOAS (WFMD) algorithm (Buchwitz and Burrows, 2004; Buchwitz et al., 2005a, b), which utilizes an iterative spectral fitting by scaling of an US-standard a priori profile. CH₄ has been retrieved from the 2265–2280 nm spectral region. Simultaneously, oxygen (O₂) columns have been retrieved from the oxygen A band (around 760 nm). This enables the dry-air column averaged mixing ratio, denoted as XCH₄, to be determined: $XCH_4 := CH_4\text{-column} / O_2\text{-column} \times 0.2095$, where 0.2095 is the O₂ mixing ratio of dry air. This normalization is a means of significantly improving the attainable measurement precision, because many systematic errors are common to the CH₄ and O₂ spectrometric retrievals, respectively, and thus cancel out (e.g., errors in pressure or zenith angle are propagating in a similar way to the retrieved columns of CH₄ and O₂). Our validation study refers to version 0.4 of the WFMD product 2003 data set, that has been released via the internet on 6 September 2004, including all consolidated SCIAMACHY level-1B products available for 2003, i.e., 153 days from the time period January 2003–October 2003. Additionally, we validate the version 0.41 XCH₄ data update, released on 30 September 2004, which includes an a-posteriori time-dependent bias correction, based on a channel-8 throughput analysis. Our study is the first validation of this (WFMD version 0.41) promising attempt to compensate for the time-dependent

**Validation of
SCIAMACHY
columnar methane by
Zugspitze FTIR**

R. Sussmann et al.

Title Page

Abstract

Introduction

Conclusions

References

Tables

Figures

◀

▶

◀

▶

Back

Close

Full Screen / Esc

Print Version

Interactive Discussion

**Validation of
SCIAMACHY
columnar methane by
Zugspitze FTIR**

R. Sussmann et al.

[Title Page](#)[Abstract](#)[Introduction](#)[Conclusions](#)[References](#)[Tables](#)[Figures](#)[◀](#)[▶](#)[◀](#)[▶](#)[Back](#)[Close](#)[Full Screen / Esc](#)[Print Version](#)[Interactive Discussion](#)

EGU

slit function changes due to the SCIAMACHY-channel 8 ice-build up. (XCH₄ version 0.41 also utilizes a normalization by CO₂ rather than O₂, which has the advantage of being retrieved in a spectral domain that is spectrally more closely neighbored to the target species). The SCIAMACHY CH₄ scientific product plays a key role for the users community, since there has been no operational product for CH₄ released by ESA yet.

An initial comparison of WFMD CH₄ retrievals to global models showed that the measured column amounts agree with the model columns within a few percent. For individual measurements the standard deviations of the difference with respect to the models were found to be in the range of 100–200 ppbv (5–10%) for XCH₄ (Buchwitz et al., 2005a). Early characterization studies of SCIAMACHY scientific products have also been presented at the Second Workshop on the Atmospheric Chemistry Validation of ENVISAT (ESA, 2004).

In this paper we want to promote the validation and maturation of SCIAMACHY XCH₄ by comparing the WFMD v.04 and v0.41 retrievals to the ground-based correlative solar FTIR data of the clean air site Zugspitze. The goal of this paper is i) to thereby assess the overall bias of WFMD v0.4 and 0.41, ii) characterize the time-dependent bias (ice issue) in detail, in particular the intended effect from the version 0.4 to 0.41 update, and ii) to address the question, to which degree the precision of the WFMD retrievals allows to reflect the true atmospheric variability of CH₄ in a realistic manner – both for the version 0.41 at hand, and under the assumption that the problem of time-dependent bias could be further reduced in future WFMD-data updates.

2. The correlative ground-data set from Zugspitze solar FTIR

Validation is performed using the ground-based data that are being recorded by the NDSC-Primary Status solar FTIR instrument at the Zugspitze (47.42° N, 10.98° E, 2964 m a.s.l.) continuously. The Zugspitze-FTIR instrument and retrieval-set up has been described in detail elsewhere (Sussmann et al., 1997; Sussmann, 1999). Briefly, a high-resolution Bruker IFS 120 HR Fourier Transform Spectrometer is operated with

an actively controlled solar tracker, and liquid-nitrogen cooled MCT (HgCdTe) and InSb detectors.

The Zugspitze CH₄ total columns are retrieved by using non-linear least squares spectral fitting software (SFIT) initially developed at NASA Langley Research Center (Rinsland et al., 1984). For the CH₄ total-column retrievals we applied a strong smoothness constraint based upon a VMR a priori profile obtained from balloon-borne FTIR measurements (provided by G.C. Toon, JPL/NASA). We have chosen this conservative approach for the validation purpose of this paper, i.e., we are not performing a full profile retrieval (e.g., via optimal estimation). This is because there are still unresolved spectroscopic problems for CH₄, like line mixing, that can propagate into erroneous profiles retrievals via the forward model, leading to subsequent errors in the retrieved columns. This effect is minimized by applying a strong smoothness constraint to the retrievals. The HITRAN-2000 molecular line parameters compilation was used (Rothmann et al., 2003), and daily p-T-profiles from the Munich radio sonde station (located 80 km to the north of the Zugspitze) have been utilized.

For the CH₄ column retrievals two different spectral domains from routine-measurement operations were utilized, i.e., a MCT-detector domain micro-window at 1201.80–1202.65 cm⁻¹, (859 spectra recorded on 133 measurement days in 2003; each spectrum resulted from integrating 8 interferometric scans with a 250-cm optical path difference within 20 min) and an InSb-detector domain micro-window at 2835.55–2835.85 cm⁻¹ (781 spectra recorded on 133 measurement days in 2003; each spectrum resulted from 5 scans with a maximum optical path difference of 175 cm integrated within 10 min). I.e., on average 6.5 MCT-spectra and 5.8 InSb spectra were recorded per day, yielding 6.5+5.8=12.3 retrieved columns per day. The accuracies and precisions for CH₄ vertical-column retrievals from single ground-based FTIR measurements are well characterized and understood and have been estimated from sensitivity studies to be below 6.5% and 2.5%, respectively, see, e.g., Zander et al. (1989). The actual numbers depend somewhat on changing geophysical parameters like the actual solar zenith angle. Daily mean columns were calculated using the arithmetic mean of the in-

**Validation of
SCIAMACHY
columnar methane by
Zugspitze FTIR**

R. Sussmann et al.

Title Page

Abstract

Introduction

Conclusions

References

Tables

Figures

⏪

⏩

◀

▶

Back

Close

Full Screen / Esc

Print Version

Interactive Discussion

**Validation of
SCIAMACHY
columnar methane by
Zugspitze FTIR**

R. Sussmann et al.

[Title Page](#)[Abstract](#)[Introduction](#)[Conclusions](#)[References](#)[Tables](#)[Figures](#)[⏪](#)[⏩](#)[◀](#)[▶](#)[Back](#)[Close](#)[Full Screen / Esc](#)[Print Version](#)[Interactive Discussion](#)

dividual columns. From the above error numbers the precision of a daily-mean column from our FTIR retrievals is estimated to be below $2.5\%/\sqrt{12.3}=0.7\%$. We will show in Sect. 4.2.1 below, that we find an even smaller number of 0.4% for the precision of a daily mean XCH_4 columns derived directly from our real FTIR measurements.

5 We calculated Zugspitze XCH_4 , i.e., air-column averaged mixing ratios for the validation purpose of this paper by dividing the FTIR CH_4 columns by the air columns calculated from the daily radio soundings. Note that alternatively, other authors have used for the ground-based retrievals a normalization to O_2 columns measured by FTIR at the same time (Washenfelder et al., 2003), i.e., an analogous approach as described
10 for the satellite retrievals above. On the one side this helps to significantly improve the precision. On the other hand, this increases the uncertainties in the absolute XCH_4 values due to additional errors from the O_2 spectroscopic parameters propagating into the result.

3. Validation approach

15 First we focus on investigating the bias of absolute XCH_4 values. The retrieval of WFMD version 0.4 XCH_4 includes an empirical column scaling factor, i.e., an O_2 column scaling factor or 0.85 (no scaling factor for CH_4), which will be validated. Version 0.41 XCH_4 data include a time-dependent bias correction in order to account for the icing issue of SCIAMACHY channel 8, and a normalization to CO_2 instead of O_2 , which
20 both will be validated.

Subsequently, validation focus will be put in our study on precision and dynamic response of the SCIAMACHY retrievals. I.e., we will investigate, whether the atmospheric day-to-day variabilities above the Zugspitze, which are dominated by dynamically induced tropopause movements, can be retrieved from the SCIAMACHY data.
25 Furthermore, we find from the Zugspitze FTIR measurements, that the amplitude of the sinusoidal XCH_4 annual cycle (dominated by the tropopause annual cycle) is only slightly larger than the standard deviation of the day-to-day scatter (see Sect. 4). There-

fore, it is challenging to investigate the potential of the SCIAMACHY retrievals to reflect the dynamic response to this weak annual cycle in spite of limited precision and time dependent biases due to the detector-icing issue.

Our approach to this is as follows. Individual WFMD retrievals in the near-infrared spectral domain are showing a significant scatter. The reasons are discussed in detail by Buchwitz and Burrows (2004) and Buchwitz et al. (2005a). Therefore, our validation approach is investigating to what extent the quality of SCIAMACHY data allows to approach the true variability of CH₄ columns as a function of the amount of the averaging of individual measurements performed in time and space. For this purpose, we are using daily-mean pixel averages within a stepwise increased selection radius around the Zugspitze ground site. The goal is to thereby stepwise reduce the scatter of the daily means by statistically averaging over increasing ensembles of pixels.

One might argue that also source and sink regions may be more and more included into the ensemble while increasing the selection radius, and this could potentially be compensating the statistical effect of reducing the scatter of the daily means. However, this effect is obviously weaker than the reduction of scatter by the statistical effect of increasing the averaging ensemble, as our test of the statistical parameters in Sect. 4 (Table 1) below is proving.

Another issue of the validation approach is how to reduce the impact of varying ground altitudes of the different satellite pixels that are averaged on one hand, and the (higher) altitude of the Zugspitze mountain site on the other hand. We solve this problem by focusing our validation study on XCH₄ data, i.e., the column averaged mixing ratios. This quantity does not depend on the average pixel ground-level altitude, assuming a constant mixing ratio with altitude. This approximation does not introduce significant additional errors, as measured CH₄ profiles are typically showing nearly constant volume mixing ratios as a function of altitude up to the tropopause. Deviations from this behavior are in the few per cent range, with a tendency to approach perfectly constant mixing ratios as a function of altitude after averaging of only a few profiles.

Related to this issue, one might argue whether a high-altitude mountain site or a

**Validation of
SCIAMACHY
columnar methane by
Zugspitze FTIR**

R. Sussmann et al.

Title Page

Abstract

Introduction

Conclusions

References

Tables

Figures

⏪

⏩

◀

▶

Back

Close

Full Screen / Esc

Print Version

Interactive Discussion

**Validation of
SCIAMACHY
columnar methane by
Zugspitze FTIR**

R. Sussmann et al.

[Title Page](#)[Abstract](#)[Introduction](#)[Conclusions](#)[References](#)[Tables](#)[Figures](#)[⏪](#)[⏩](#)[◀](#)[▶](#)[Back](#)[Close](#)[Full Screen / Esc](#)[Print Version](#)[Interactive Discussion](#)

low-altitude ground site, located in the boundary layer, is to be preferred for satellite validation of tropospheric species like CH₄. On the one hand, as discussed above, for a high-altitude site the altitude difference relative to the satellite-pixel ground altitude has to be properly considered, which may introduce errors on the per-cent level. On the other hand, a high-altitude site like the Zugspitze located above the boundary layer has the advantage to be representative for a much wider horizontal area, and that is exactly what the satellite data are - we will show below that not only the pixel size of the satellite data (60×30 km footprint), but even larger horizontal averages, e.g., selection radii in the order of 1000 km, have to be considered for the validation purposes.

Finally, an important issue in intercomparing two different remote-sounding systems (satellite versus ground) is to properly take their altitude-dependent sensitivities, i.e., their averaging kernels (Rodgers, 1990) into account. In case of strongly differing kernels, neglecting the effect of different smoothing errors can result in intercomparison errors in the order of the natural variability of the trace-gas columns (Rodgers and Connor, 2003). However, in our case we encounter the nearly ideal situation, that the ground-based (FTIR) and satellite (SCIAMACHY) instruments are both sampling the CH₄ columns with nearly the same total-column averaging kernels as shown in Fig. 1, i.e., both being close to the ideal uniform sampling. The FTIR kernel shown is a weighted mean of the two (slightly differing) FTIR kernels we obtain from utilizing the two different spectral micro-windows from alternating MCT and InSb measurements as described in Sect. 2. This mean was weighted by the number ratio of all spectra of the two different spectral domains used in our study (i.e., 859/781, see Sect. 2). The resulting effective FTIR kernel shows only minor differences relative to the SCIAMACHY-WFMD kernel, e.g., at the 700 hPa level, there is a slight underestimation of the natural variability of ≈13% by FTIR, and a slight overestimation of ≈14% by SCIAMACHY (Fig. 1). In the stratosphere the situation is reversed, with the underestimations/overestimations increasing with altitude. However, due to the decreasing air-number density the latter does not quantitatively impact the total columns retrieved. To prove this quantitatively, we calculated the smoothing errors $\sqrt{(a_{FTIR} -$

**Validation of
SCIAMACHY
columnar methane by
Zugspitze FTIR**

R. Sussmann et al.

Title Page

Abstract

Introduction

Conclusions

References

Tables

Figures

⏪

⏩

◀

▶

Back

Close

Full Screen / Esc

Print Version

Interactive Discussion

$\mathbf{a}_{ideal}^T \mathbf{S}_a (\mathbf{a}_{FTIR} - \mathbf{a}_{ideal})$ for the total columns using the kernels (vectors \mathbf{a}_{FTIR} and \mathbf{a}_{WFMD}) shown in Fig. 1, and the total-column kernel \mathbf{a}_{ideal} of an ideal remote-sounding system with $\mathbf{a}_{ideal}^T = (111\dots 1)$. For \mathbf{S}_a we adapted a best-estimate variance-covariance matrix of the atmospheric CH_4 variabilities. The relative vertical change of the diagonal elements (variances) were adopted from results of the Karlsruhe Simulation Model of the Middle Atmosphere (KASIMA). The absolute values of the variances were then scaled in order to reflect the total-column day-to-day variability found by our FTIR measurements (this procedure will be detailed with numbers in Sect. 4 below). For the off-diagonals (covariances) a Gaussian-shaped inter-layer correlation with length of 2.5 km was used. Thereby we end up with smoothing errors of 0.10% for FTIR and 0.14% for SCIAMACHY WFMD, respectively. These errors are small relative to the bias found between FTIR and SCIAMACHY WFMD, and relative to the differences in day-to-day scatter encountered for FTIR and WFMD, respectively during our intercomparisons of Sect. 4. For consistency reasons, we briefly state that we do not distinguish between smoothing errors of CH_4 columns and XCH_4 , respectively, i.e., we are neglecting the smoothing error contribution from the CO_2 retrieval (being part of the WFMD XCH_4 retrieval) throughout this paper. This simplification is valid because the natural variability of column averaged CO_2 is known to be significantly (\approx factor 4) smaller than for CH_4 (Buchwitz et al., 2005a). All in all, our validation results are not impacted significantly by smoothing errors. In Sects. 4.1.2 and 4.2.2 we will add absolute numbers as to this (small) smoothing-error effect on the bias and relative day-to-day scatter we obtained during our intercomparison study.

It is noteworthy, that the SCIAMACHY retrievals (and also the ground-based measurements) are perfectly sensitive down to the lower troposphere. This is indicated by the kernels in Fig. 1 showing numbers significantly above zero. This is due to the near-infrared spectral domain utilized for the SCIAMACHY retrievals, and is advantageous over thermal-IR satellite retrievals which are showing a reduced sensitivity in the boundary layer.

4. Validation results

4.1. Overall bias

4.1.1. Correlative study FTIR versus WFMD: bias

Figure 2a shows all SCIAMACHY WFMD XCH₄ data currently available (i.e., versions 0.4 and 0.41). Each SCIAMACHY data point is the average of all pixels from one day within a 2000-km radius around the Zugspitze. Cloud flagged pixels have been removed, and we restricted the WFMD data to a maximum threshold of 10% in the individual retrieval errors reported. Additionally, a flag for erroneous retrievals had been added with the version 0.41 release, and, subsequently, we excluded all error-flagged data for both versions (i.e., 0.4 and 0.41) for this study. Zugspitze FTIR daily-mean XCH₄ data are shown in the same plot. A 3rd order polynomial fit to the FTIR data nicely shows the XCH₄ annual cycle with a $\approx 1.6\%$ amplitude.

In order to obtain the bias of the SCIAMACHY WFMD data relative to the FTIR data we normalized the SCIAMACHY data by the 3rd order polynomial fit to the FTIR data. The result is shown in Fig. 2b. Note, that we do not investigate pairwise “co-incidences”, as performed in many validation studies. Rather, we herewith propose the approach of fitting a polynomial to the reference series (FTIR) that is subsequently used as a reference. This approach allows to compare time series even in case of alternating time-gaps, which would not allow for the use of “coincidences”. This is partially the case for our time series of SCIAMACHY (measurement gaps due to decontamination phases) and FTIR (measurement gaps due to the clear-sky requirement). From Fig. 2b we retrieve an overall XCH₄ bias for WFMD v0.4/FTIR=1.008±0.019 and WFMD v0.41/FTIR=1.058±0.008. The statistical errors of the biases given are 3× standard deviation/sqrt(*n*), where *n*=126 is the number of the WFMD data points.

Validation of SCIAMACHY columnar methane by Zugspitze FTIR

R. Sussmann et al.

Title Page

Abstract

Introduction

Conclusions

References

Tables

Figures

⏪

⏩

◀

▶

Back

Close

Full Screen / Esc

Print Version

Interactive Discussion

**Validation of
SCIAMACHY
columnar methane by
Zugspitze FTIR**

R. Sussmann et al.

4.1.2. Estimate of intercomparison error: impact on bias

We briefly want to estimate, whether the bias of 5.8% found for WFMD v0.41 can be partially affected by the slightly differing averaging kernels, and the different a priori profiles used for FTIR and WFMD, respectively. Therefore, we calculated the term $\mathbf{a}_{FTIR}^T(\mathbf{x}_{aFTIR}-\mathbf{x}_{aWFMD})/\text{total column}=0.74\%$ and the analogous term, i.e., $\mathbf{a}_{WFMD}^T(\mathbf{x}_{aWFMD}-\mathbf{x}_{aFTIR})/\text{total column}=0.93\%$, where \mathbf{a} are the total-column averaging kernel vectors and \mathbf{x}_a are the vectors of the a priori profiles. The numbers obtained indicate that the effect from slightly differing a priori profiles and averaging kernels is only a minor contribution to the observed bias of WFMD v0.41.

4.2. Time-dependent bias, precision, and variability

4.2.1. Precision and variability of the FTIR column data set

Figure 3 shows the FTIR data set (together with WFMD v0.4, WFMD v0.41), but now plotted as anomaly, i.e., the daily mean data are normalized with respect to their overall average. First, is obvious that the FTIR data are monitoring a sinusoidal annual cycle with a $\approx 1.6\%$ amplitude. The dominant cause for this is the corresponding annual cycle of the tropopause altitude. Second, it is obvious that the FTIR daily-mean data are showing some scatter of $\approx 1\%$ around this sinusoidal cycle. We will show below that this variability is not caused by limited precision of the FTIR measurements but is dominated by the true atmospheric day-to-day variability caused by the dynamic effect of planetary-wave activity.

In the following we want to investigate statistical parameters describing the scatter of the FTIR data in detail. Table 1 gives in the first 3 columns the statistical numbers describing the “individual” (FTIR) measurements within one measurement day. On average over the ensemble of $i=133$ FTIR measurement days, 12.3 FTIR column measurements have been performed per day. As a measure for the precision of individual FTIR measurements, the overall average of the standard deviations σ_i of the individual

[Title Page](#)[Abstract](#)[Introduction](#)[Conclusions](#)[References](#)[Tables](#)[Figures](#)[⏪](#)[⏩](#)[◀](#)[▶](#)[Back](#)[Close](#)[Full Screen / Esc](#)[Print Version](#)[Interactive Discussion](#)

**Validation of
SCIAMACHY
columnar methane by
Zugspitze FTIR**

R. Sussmann et al.

Title Page

Abstract

Introduction

Conclusions

References

Tables

Figures

⏪

⏩

◀

▶

Back

Close

Full Screen / Esc

Print Version

Interactive Discussion

measurements of each day is given in Table 1, i.e., $AV_i(\sigma_i)=1.3\%$ for FTIR. Furthermore, as a measure for the statistical error for one FTIR daily-mean value, the overall average for the daily “standard deviations of the mean value”, i.e., $AV_i(\sigma_i/\sqrt{n_i})$ calculated from the individual measurements is given in Table 1. $AV_i(\sigma_i/\sqrt{n_i})$ equals 0.4% for FTIR.

Now we discuss the standard deviations calculated from the FTIR “daily-mean” data. Of course, prior to this calculation from the daily means, the FTIR time series has to be normalized with respect to its obvious annual cycle. See, e.g., Fig. 4 for the result of this normalization. Table 1 shows in column 4 that the resulting standard deviation for FTIR is 1%.

Finally, we want to discuss the obvious discrepancy between the standard deviations we calculated from the daily mean data (1% for FTIR, see Table 1), and the average statistical error of the daily means calculated from the individual measurements, which is $AV_i(\sigma_i/\sqrt{n_i})=0.4\%$ for FTIR. Clearly the numbers indicate, that the standard deviation of 1% obtained from the FTIR daily means is dominated by true atmospheric day-to-day-variability due to tropopause movements, and not by the statistical error (due to limited single-measurement precision) which is only $AV_i(\sigma_i/\sqrt{n_i})=0.4\%$.

4.3. Estimate of intercomparison error: impact on variability

Here we like to address the question, to which degree possible differences in the day-to-day variability observed by the FTIR and WFMD, respectively might be attributed to smoothing errors. In the following we present a simple but quantitative estimate for FTIR and WFMD retrievals.

We write the variance of daily-mean total columns COL_{FTIR} observed by FTIR as $\sigma^2(COL_{FTIR})=\mathbf{a}_{FTIR}^T \mathbf{S}_a \mathbf{a}_{FTIR} + \sigma^2(\varepsilon_{FTIR})$, where vector \mathbf{a}_{FTIR} is the total-column averaging kernel, and \mathbf{S}_a is the a priori variance-covariance matrix described in Sect. 3 above. The term $\mathbf{a}_{FTIR}^T \mathbf{S}_a \mathbf{a}_{FTIR}$ describes the variance due to the true variability of the atmosphere, smoothed by the measurement. By the second term

**Validation of
SCIAMACHY
columnar methane by
Zugspitze FTIR**

R. Sussmann et al.

Title Page

Abstract

Introduction

Conclusions

References

Tables

Figures

⏪

⏩

◀

▶

Back

Close

Full Screen / Esc

Print Version

Interactive Discussion

$\sigma^2(\varepsilon_{FTIR})$, we denote all further contributions which do not originate from the true variability of the atmosphere, i.e., contributions due to any kind of random-type measurement errors. Using $\sigma(CO_{FTIR})=1\%$ from Table 1, and using for the error term $\sigma(\varepsilon_{FTIR})=AV_i(\sigma_i/\sqrt{n_i})=0.4\%$ (see Table 1), we find that it should hold

5 $\sqrt{a_{FTIR}^T \mathbf{S}_a a_{FTIR}}/\text{total column}=0.92\%$. We now use a_{FTIR} of Fig. 1 and scale \mathbf{S}_a to fulfil this relation. (See Sect. 3 for the adopted principle shape of \mathbf{S}_a .) Using the resulting best-estimate \mathbf{S}_a we calculate for WFMD analogously $\sqrt{a_{WFMD}^T \mathbf{S}_a a_{WFMD}}/\text{total column}=0.93\%$. For an ideal observing system with $a_{ideal}^T=(111\dots 1)$ we would obtain

10 $\sqrt{a_{ideal}^T \mathbf{S}_a a_{ideal}}/\text{total column}=0.94\%$. These numbers tell us that FTIR is underestimating the true variability by a factor of $0.92/0.94=0.98$ and WFMD by a factor of $0.93/0.94=0.99$ due to the smoothing effect. These underestimations are both similar to each other, and small in absolute terms. This means that possible differences in the day-to-day variability observed by the FTIR and WFMD, respectively (as discussed in the next Section) do not contain significant contributions from smoothing errors.

15 4.3.1. Correlative study FTIR versus WFMD: Time-dependent bias, precision, and variability

Figure 2b shows that the time-dependent bias correction introduced with version 0.41 for XCH_4 WFMD, in order to account for the icing issue, did result in a significant reduction in the time dependence of the bias relative to version 0.4. This holds for both

20 the time dependencies on the monthly scale, i.e., in between the various decontamination phases (marked by red vertical lines in Fig. 2b), as well as for the overall time dependence of the bias on the annual scale, as indicated by the linear fits in Fig. 2b.

Figure 3 again shows the three data sets (FTIR, WFMD v0.4, WFMD v0.41) but now plotted as anomalies, i.e., each data set is normalized with respect to its overall average. This shows even more obvious than Fig. 2a, that the changes associated with the version 0.41 update succeeded in significantly reducing the time-dependent bias compared to version 0.4. However, Fig. 3 also shows, that there is still a residual time

dependence also in the version 0.41 data, which is clearly related to the decontamination cycles.

Figure 4 shows the WFMD v0.41 daily data both averaged for a selection radius of 1000 km around Zugspitze, as well as for a 2000-km radius. Note, that in Fig. 4 all three data sets have additionally been normalized to the annual cycle, i.e., the 3rd order polynomial fit to the FTIR data shown in Fig. 3. Figure 4 shows that the scatter of the daily WFMD data clearly exceeds the scatter of the FTIR daily means. It can also be seen that the WFMD data for a 1000-km selection radius are showing a higher scatter compared to the WFMD data for a 2000-km selection radius, as expected.

The question arises whether the scatter of the WFMD data in Fig. 4 is limited by systematic issues like a residual time-dependent bias due to the icing issue, or by the limited precision of the individual column retrievals, i.e., the limited signal-to-noise ratio of the SCIAMACHY spectra. This is further investigated in Fig. 5a. We restrict here to SCIAMACHY data out of one uninterrupted measurement period between two decontamination phases, i.e., the period 25 May–12 August 2003. We have chosen this time period, because here a systematic time dependence of WFMD-selection-radius-2000-km data can be most clearly identified, see Fig. 5a. Figure 5a shows a polynomial (2nd order) fit to this time dependence of the WFMD-selection-radius-2000-km data, which reflects a residual time-dependent bias of $\approx 3\%$ /month. In Fig. 5b the WFMD data (both for 1000-km and 2000-km selection radii) are empirically normalized to this time dependence.

Having eliminated all residual systematic time dependence on an empirical best-effort basis (Fig. 5b), the next step is to investigate the statistical parameters describing the scatter of the WFMD version 0.41 data in comparison to the scatter of FTIR data in full detail. First, Table 1 gives the statistical numbers describing the “individual” measurements for FTIR and WFMD v0.41. While the number of days for which FTIR data exist (133) is comparable to the number of data for which WFMD data exist, Table 1 shows that average $AV_i(n_i)$ of the number n_i of daily measurements are quite different, i.e., 12.3 FTIR measurements per day on average versus 249 and 85 indi-

**Validation of
SCIAMACHY
columnar methane by
Zugspitze FTIR**

R. Sussmann et al.

Title Page

Abstract

Introduction

Conclusions

References

Tables

Figures

⏪

⏩

◀

▶

Back

Close

Full Screen / Esc

Print Version

Interactive Discussion

**Validation of
SCIAMACHY
columnar methane by
Zugspitze FTIR**

R. Sussmann et al.

[Title Page](#)[Abstract](#)[Introduction](#)[Conclusions](#)[References](#)[Tables](#)[Figures](#)[⏪](#)[⏩](#)[◀](#)[▶](#)[Back](#)[Close](#)[Full Screen / Esc](#)[Print Version](#)[Interactive Discussion](#)

vidual WFMD measurements per day for a 2000-km and a 1000-km selection radius, respectively. As a measure for the precision of the individual measurements $AV_i(\sigma_i)$, i.e., the overall average of the standard deviations of the individual measurements of each day is given in Table 1. The precisions are quite different, i.e., $AV_i(\sigma_i)=1.3\%$ for FTIR, and a factor of 4 lower precisions are encountered for WFMD, i.e., $AV_i(\sigma_i)$ equals 5.2% and 5.4% for calculation of $AV_i(\sigma_i)$ from the 2000-km and 1000-km selection ensembles, respectively. Note, that the WFMD single-measurement standard deviations are nearly identical (5.2 versus 5.4%), i.e., nearly independent on the size of the selected ensemble (1000-km versus 2000-km selection radius), as expected for an ideal random ensemble. Furthermore, as a measure for the statistical error for one daily mean value, the overall average for the daily “standard deviations of the mean value”, i.e., $AV_i(\sigma_i/\sqrt{n_i})$ calculated from the individual measurements is given in Table 1. $AV_i(\sigma_i/\sqrt{n_i})$ equals 0.4% for FTIR, and for WFMD 0.6% and 0.3% for the 1000-km and the 2000-km selection radii, respectively. Note again, that this factor-of-two reduction of $AV_i(\sigma_i/\sqrt{n_i})$ on doubling the selection radius nicely reflects what we would expect for an ideal statistical ensemble. This confirms our assumption of Sect. 3, that the possible effect that also source and sink regions may be more and more included into the ensemble while increasing the selection radius might potentially compensate for the intended reduction of the standard deviation of the daily mean value (by increasing the selection radius), is quantitatively negligible. All in all we have found with a selection radius somewhere between 1000–2000 km the threshold, where the statistical errors of WFMD-daily-mean data become comparable to the ones of the FTIR, i.e. in the order of 0.5%. Note, that we had obtained a related result validating the species CO in our recent work (Sussmann and Buchwitz, 2005b).

Now we discuss the standard deviations calculated from the daily mean data. Table 1 shows in column 5 and 6 the results with and without our empirical correction for a residual systematic time dependence (see Figs. 5a and b). As an important result, it can be seen from Table 1, that in fact the scatter of the WFMD-selection-radius-2000-km-data had been limited by a residual systematic time dependence. This results from

the finding that the standard deviation of daily means could be reduced from 2.4% to 1.6% by our simple and merely illustrative empirical time-dependent bias correction of Fig. 5b.

Finally, we want to discuss the obvious discrepancy between the standard deviations we calculated from the daily-mean data (1% for FTIR and 1.6% for 2000-km-WFMD after correcting for annual cycle and time-dependent bias, see Table 1), and the average statistical errors of the daily means calculated from the individual measurements, which is $AV_i(\sigma_i/\sqrt{n_i})=0.4\%$ for FTIR, and $AV_i(\sigma_i/\sqrt{n_i})=0.3\%$ for 2000-km-WFMD, and $AV_i(\sigma_i/\sqrt{n_i})=0.6\%$ for 1000-km-WFMD, see Table 1. Interpretation is easy for FTIR, where no time-dependent drift is expected. Here clearly the numbers indicate that the standard deviation of 1% obtained from the FTIR daily means is dominated by true atmospheric day-to-day-variability due to tropopause movements, and not by the statistical error (due to limited single-measurement precision) which is only $AV_i(\sigma_i/\sqrt{n_i})=0.4\%$. Interpretation for the satellite data is not so straightforward. Here, we have to stress that the statistical error for a daily mean value, i.e., $AV_i(\sigma_i/\sqrt{n_i})$ is calculated from the individual measurement data obtained during the individual measurement days, i.e., it can in principle not describe time-dependent drifts on the weekly or monthly scale. Therefore the conclusion from our statistical numbers given above can only be, that WFMD data have the potential – as to their precision – to retrieve natural variabilities down to the 0.3% level for a 2000 km-selection radius and down to the 0.6% level for a 1000-km selection radius “if” all systematic type time-dependent drifts would/could be eliminated.

5. Conclusions

Solar FTIR measurements at the Permanent Ground-Truthing Station Zugspitze (47.42° N, 10.98° E, 2964 m a.s.l.), Germany were used to validate the ENVISAT/SCIAMACHY Scientific Data Product for XCH_4 retrieved at the University of Bremen, i.e., the near infrared WFM-DOAS version 0.4 and 0.41 products.

**Validation of
SCIAMACHY
columnar methane by
Zugspitze FTIR**

R. Sussmann et al.

Title Page

Abstract

Introduction

Conclusions

References

Tables

Figures

◀

▶

◀

▶

Back

Close

Full Screen / Esc

Print Version

Interactive Discussion

**Validation of
SCIAMACHY
columnar methane by
Zugspitze FTIR**

R. Sussmann et al.

[Title Page](#)[Abstract](#)[Introduction](#)[Conclusions](#)[References](#)[Tables](#)[Figures](#)[⏪](#)[⏩](#)[◀](#)[▶](#)[Back](#)[Close](#)[Full Screen / Esc](#)[Print Version](#)[Interactive Discussion](#)

The averaging kernels of the ground-based FTIR technique turned out to be similar shaped as the SCIAMACHY WFMD kernels, which both maintain a nearly uniform sampling down to the lower troposphere. Therefore, both a direct comparison of absolute column levels (bias) and the intercomparison of the day-to-day scatter is possible without introducing significant intercomparison errors from smoothing errors, which have been estimated to be below 0.10% for FTIR and 0.14% for SCIAMACHY WFMD retrievals, respectively.

In order to account for the altitude difference between the ground altitudes of the satellite pixels and the Zugspitze, XCH_4 columns have been used for both the satellite and ground-based data sets for the intercomparison. This approach eliminates the effect of the altitude difference for the case of a constant volume mixing ratio throughout the altitude range to be accounted for. This assumption should hold for the case of the lower tropospheric CH_4 profile within the per cent level.

Analysing the 2003-time series of the Zugspitze FTIR, we characterized the natural variability of XCH_4 . It displays a 1% day-to-day variability and a sinusoidal annual cycle with a $\approx 1.6\%$ amplitude which is both dominated by related tropopause movements.

In order to obtain the bias of the SCIAMACHY WFMD data relative to the FTIR data we used a new approach, i.e., we did not investigate pairwise “coincidences” (satellite versus ground), which are limited in number in case of data series with time-gaps (e.g., decontamination phases, clear sky restrictions). Therefore, we fitted a polynomial to the reference series (FTIR) that is subsequently used as a reference. We obtained an overall XCH_4 bias for WFMD v0.4/FTIR = 1.008 ± 0.019 and WFMD v0.41/FTIR = 1.058 ± 0.008 .

Finally, we investigated whether WFMD is capable of reflecting the natural atmospheric variability of XCH_4 as characterized by FTIR. WFMD version 0.41 shows up with a break through in data quality relative to version 0.4 due to an a-posteriori time-dependent bias correction, that is based on a channel-8 throughput analysis. However, version 0.41 is still not yet able to capture the natural day-to-day variability on the 1% level because the standard deviation calculated from the daily-mean values is 2.4%

using averages within a 2000-km radius, and 2.7% for a 1000-km radius. We have shown by a merely illustrative (additional) empirical time-dependent bias correction, that it is not the precision of the daily means, but the residual time-dependent bias of WFMD v0.41 ($\approx 3\%$ /month) what currently limits data quality – and that this can still be improved (e.g., from 2.4% to 1.6% by our illustrative empirical time-dependent bias correction). From analysis of the statistics of the individual measurements, we have shown that WFMD data have the potential – as to their pure precision, i.e., neglecting any time-dependent biases – to retrieve natural variabilities down to the 0.3% level for averaging data within a 2000-km selection radius and down to the 0.6% level for a 1000-km selection radius “if” all systematic type time-dependent drifts would/could be eliminated. This means that the XCH_4 atmospheric day-to-day variability and the annual cycle can be captured under the prerequisite of further successful advanced time-dependent bias corrections, or possibly the use of other channels, where the icing issue might be less prominent.

Acknowledgements. The authors like to thank A. Rockmann (IMK-IFU) for maintaining the Zugspitze FTIR measurements. Funding by BMBF/DLR as part of the German SCIAMACHY validation program (GCVOS) via contract DLR 50 EE 0007 and by the EC within the project UFTIR (contract EVK2-CT-2002-00159) is gratefully acknowledged. This work contributes to the ESA-ENVISAT-Validation-Project TASTE and is part of the EC-Network of Excellence ACCENT-TROPOSAT-2.

References

- Bovensmann, H., Burrows, J. P., Buchwitz, M., Frerick, J., Noël, S., Rozanov, V. V., Chance, K. V., and Goede, A.: SCIAMACHY – Mission Objectives and Measurement Modes, *J. Atmos. Sci.*, 56, 127–150, 1999.
- Buchwitz, M. and Burrows, J. P.: Retrieval of CH_4 , CO , and CO_2 total column amounts from SCIAMACHY near-infrared nadir spectra: Retrieval algorithm and first results, in *Proc. SPIE 5235, Remote Sensing of Clouds and the Atmosphere VIII*, edited by: Schäfer, K. P., Comeron, A., Carleer, M. R., and Picard, R. H., 375–388, 2004.

**Validation of
SCIAMACHY
columnar methane by
Zugspitze FTIR**

R. Sussmann et al.

Title Page

Abstract

Introduction

Conclusions

References

Tables

Figures

◀

▶

◀

▶

Back

Close

Full Screen / Esc

Print Version

Interactive Discussion

**Validation of
SCIAMACHY
columnar methane by
Zugspitze FTIR**

R. Sussmann et al.

Title Page

Abstract

Introduction

Conclusions

References

Tables

Figures

◀

▶

◀

▶

Back

Close

Full Screen / Esc

Print Version

Interactive Discussion

Buchwitz, M., de Beek, R., Burrows, J. P., Bovensmann, H., Warneke, T., Notholt, J., Meirink, J. F., Goede, A. P. H., Bergamaschi, P., Körner, S., Heimann, M., Müller, J.-F., and Schulz, A.: Atmospheric methane and carbon dioxide from SCIAMACHY satellite data: initial comparison with chemistry and transport models, *Atmos. Chem. Phys.*, 5, 941–962, 2005a,

[SRef-ID: 1680-7324/acp/2005-5-941](#).

Buchwitz, M., de Beek, R., Noël, S., Burrows, J. P., Bovensmann, H., Bremer, H., Bergamaschi, P., Körner, S., and Heimann, M.: Carbon monoxide, methane and carbon dioxide columns retrieved from SCIAMACHY by WFM-DOAS: Year 2003 initial data set, *Atmos. Chem. Phys. Discuss.*, 5, 1943–1971, 2005b,

[SRef-ID: 1680-7375/acpd/2005-5-1943](#).

Clerbaux, C., Hadji-Lazaro, J., Turquety, S., Megie, G., and Coheur, P.-F.: Trace gas measurements from infrared satellite for chemistry and climate applications, *Atmos. Chem. Phys.*, 3, 1495–1508, 2003,

[SRef-ID: 1680-7324/acp/2003-3-1495](#).

ESA: Proceedings of the Second Workshop on the Atmospheric Chemistry Validation of ENVISAT (ACVE-2), 3–7 May 2004, ESA-ESRIN, Frascati, Italy, SP-562, ISBN 92-9092-873-5, ESA Publications Division, ESTEC, The Netherlands, 2004.

IPCC, IPCC Third Assessment: Climate Change 2001, The Scientific Basis, Intergovernmental Panel of Climate Change, 2001 (<http://www.ipcc.ch/>).

Kobayashi, H., Shimota, A., Kondo, K., Okumura, E., Kameda, Y., Shimoda, H., and Ogawa, T.: Development and evaluation of the Interferometric Monitor for Greenhouse Gases: a high throughput Fourier transform infrared radiometer for nadir Earth observations, *Appl. Opt.*, 38, 6801–6807, 1999.

Rinsland, C. P., Boughner, R. E., Larsen, J. C., Stokes, G. M., and Brault, J. W.: Diurnal variations of atmospheric nitric oxide: ground-based infrared spectroscopic measurements and their interpretation with time dependent photochemical model calculations, *J. Geophys. Res.*, 89, 9613–9622, 1984.

Rodgers, C. and Connor, B. J.: Intercomparison of remote sounding instruments, *J. Geophys. Res.*, 108, doi:10.1029/2002JD002299, 2003.

Rothmann, L. S., Barbe, A., Benner, D. C., Brown, L. R., Camy-Peyret, C., Carleer, M. R., Chance, K., Clerbaux, C., Dana, V., Devi, V. M., Fayt, A., Flaud, J. M., Gamache, R. R., Goldman, A., Jacquemart, D., Jucks, K. W., Lafferty, W. J., Mandin, J. Y., Massie, S. T., Nemtchinov, V., Newnham, D. A., Perrin, A., Rinsland, C. P., Schroeder, J., Smith, K. M.,

**Validation of
SCIAMACHY
columnar methane by
Zugspitze FTIR**R. Sussmann et al.

Smith, M. A. H., Tang, K., Toth, R. A., Vander Auwera, J., Varanasi, P., and Yoshino, K.: The HITRAN molecular spectroscopic database: edition of 2000 including updates through 2001, *J. Quant. Spectrosc. Radiat. Transfer*, 82, 5–44, 2003.

5 Sussmann, R. and Schäfer, K.: Infrared spectroscopy of tropospheric trace gases: combined analysis of horizontal and vertical column abundances, *Appl. Opt.*, 36, 735–741, 1997.

Sussmann, R.: Ground-based Fourier transform spectrometry at the NDSC site Zugspitze: Geophysical products for satellite validation, in: *Proceedings of the European Symposium on Atmospheric Measurements from Space*, ESTEC, Noordwijk, The Netherlands, 18–22 Jan 1999, WPP-161, Vol. 2, 661–664, 1999.

10 Sussmann, R. and Buchwitz, M.: Validation of ENVISAT/SCIAMACHY columnar CO by FTIR profile retrievals at the Ground-Truthing Station Zugspitze, *Atmos. Chem. Phys. Discuss.*, 5, 1–16, 2005,

[SRef-ID: 1680-7375/acpd/2005-5-1](#).

15 Washenfelder, R. A., Wennberg, P. O., and Toon, G. C.: Tropospheric methane retrieved from ground-based near-IR solar absorption spectra, *Geophys. Res. Lett.*, 30(23), 2226, doi:10.1029/2003GL017969, 2003.

Zander, R., Demoulin, Ph., Ehhalt, D. H., and Schmidt, U.: Secular Increase of the Vertical Column Abundance of Methane Derived from IR Solar Spectra Recorded at the Jungfraujoch Station, *J. Geophys. Res.*, 94, 11 029–11 039, 1989.

20

[Title Page](#)[Abstract](#)[Introduction](#)[Conclusions](#)[References](#)[Tables](#)[Figures](#)[◀](#)[▶](#)[◀](#)[▶](#)[Back](#)[Close](#)[Full Screen / Esc](#)[Print Version](#)[Interactive Discussion](#)

Validation of SCIAMACHY columnar methane by Zugspitze FTIR

R. Sussmann et al.

Table 1. Statistics of XCH₄ data scatter for FTIR and WFMD v0.41 measurements and time periods as indicated in Fig. 5. The index for the number of measurement days is i . First column: $AV_i(n_i)$, i.e., average of the numbers n_i of individual measurements during each measurement day. Second column: $AV_i(\sigma_i)$, i.e., average of the “single-value standard deviations” calculated from the individual measurements for the different days. 3rd column: $AV_i(\sigma_i/\text{sqrt}(n_i))$, i.e., average of the “standard deviations of the daily mean values” calculated from the individual measurements for the different days. 4th column: Standard deviations of daily means calculated from the daily-means data sets as shown in Fig. 5a, i.e., normalized to the annual cycle (polynomial fit to FTIR). 5th column: Standard deviations of daily means calculated from the daily-means data sets as shown in Fig. 5b, i.e., after applying an empirical time-dependent bias-correction (polynomial fit to WFMD v0.41). SCIAMACHY data were taken within a 2000-km pixel-selection radius around the Zugspitze for each day (“SCIA 2000”), and a 1000-km selection radius (“SCIA 1000”), respectively.

	$AV_i(n_i)$	$AV_i(\sigma_i)$	$AV_i(\sigma_i/\text{sqrt}(n_i))$	σ of daily means corrected for ann. cycle (Fig. 5a)	σ of daily means incl. empirical time-dependent bias correction (Fig. 5b)
Zugspitze FTIR	12.3	1.3%	0.4%	1.0%	–
SCIA 2000	249	5.2%	0.3%	2.4%	1.6%
SCIA 1000	85	5.4%	0.6%	2.7%	2.4%

[Title Page](#)
[Abstract](#)
[Introduction](#)
[Conclusions](#)
[References](#)
[Tables](#)
[Figures](#)
[⏪](#)
[⏩](#)
[◀](#)
[▶](#)
[Back](#)
[Close](#)
[Full Screen / Esc](#)
[Print Version](#)
[Interactive Discussion](#)

**Validation of
SCIAMACHY
columnar methane by
Zugspitze FTIR**

R. Sussmann et al.

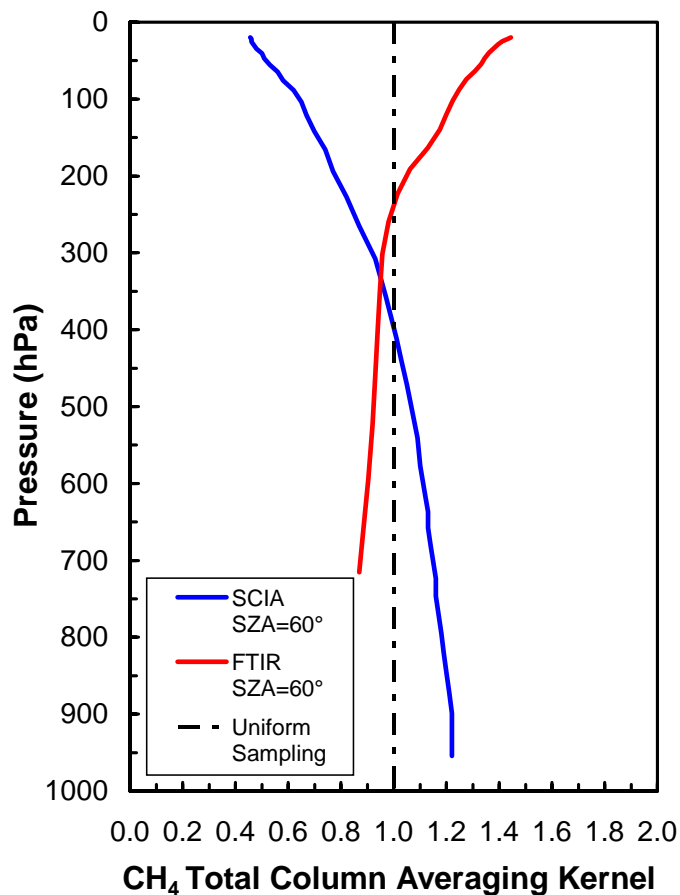


Fig. 1. Total-column averaging kernels for Zugspitze FTIR (red line) and SCIAMACHY-WFMD CH₄ retrievals (blue line) calculated for a solar zenith angle (SZA) of 60°.

[Title Page](#)[Abstract](#)[Introduction](#)[Conclusions](#)[References](#)[Tables](#)[Figures](#)[◀](#)[▶](#)[◀](#)[▶](#)[Back](#)[Close](#)[Full Screen / Esc](#)[Print Version](#)[Interactive Discussion](#)

**Validation of
SCIAMACHY
columnar methane by
Zugspitze FTIR**R. Sussmann et al.

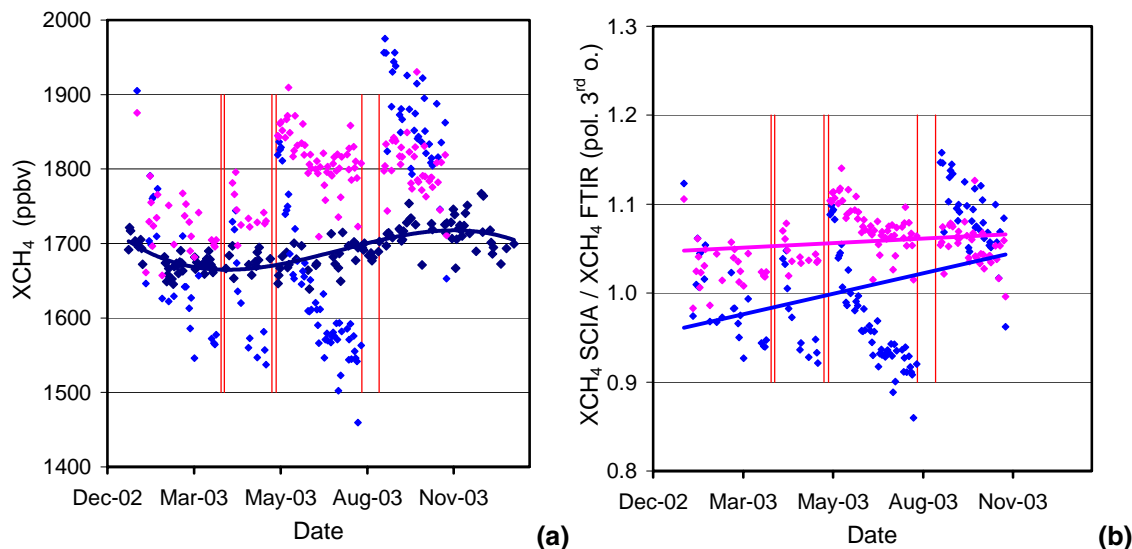


Fig. 2. (a) XCH₄ daily-mean values plotted for FTIR (dark blue, incl. 3rd order polynomial fit) and averages of all SCIAMACHY WFMD data for a 2000-km selection radius around Zugspitze for each day; v0.4 (azur) and v0.41 (pink). (b) SCIAMACHY XCH₄ data (azur: v0.4, pink: v0.41) divided by the 3rd order polynomial fitted to the FTIR data taken from (a). SCIAMACHY decontamination phases are indicated by red vertical lines.

[Title Page](#)[Abstract](#)[Introduction](#)[Conclusions](#)[References](#)[Tables](#)[Figures](#)[◀](#)[▶](#)[◀](#)[▶](#)[Back](#)[Close](#)[Full Screen / Esc](#)[Print Version](#)[Interactive Discussion](#)

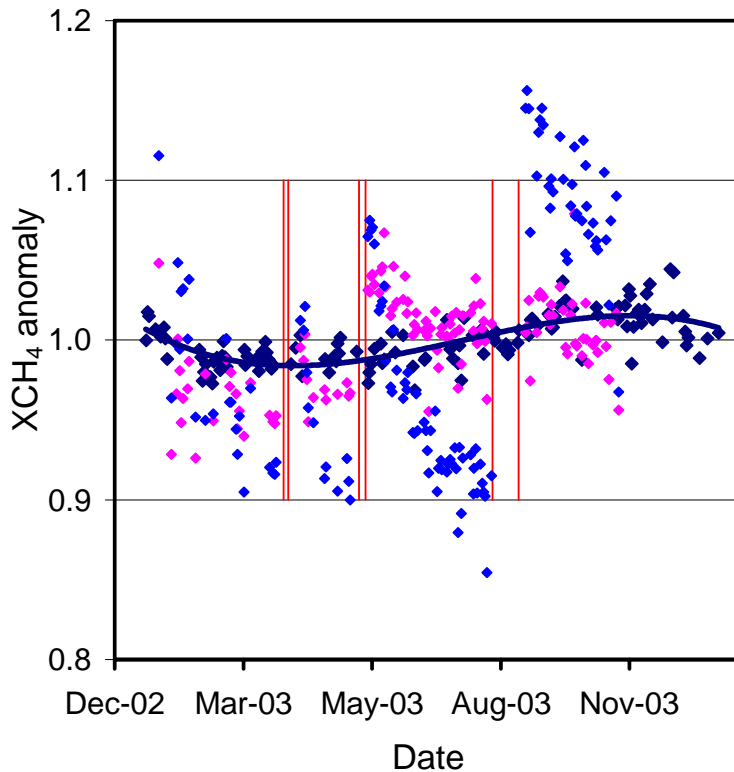


Fig. 3. Dark blue points: Anomaly of Zugspitze FTIR XCH₄ daily means. Dark blue line: 3rd order polynomial fit to FTIR data. Azur points: Anomaly of SCIAMACHY WFMD v0.4 XCH₄; average of all data within a 2000-km radius around Zugspitze for each day. Pink points: Same as azur points but for SCIAMACHY WFMD v0.41. SCIAMACHY decontamination phases are indicated by red vertical lines.

Validation of
SCIAMACHY
columnar methane by
Zugspitze FTIR

R. Sussmann et al.

Title Page

Abstract

Introduction

Conclusions

References

Tables

Figures

◀

▶

◀

▶

Back

Close

Full Screen / Esc

Print Version

Interactive Discussion

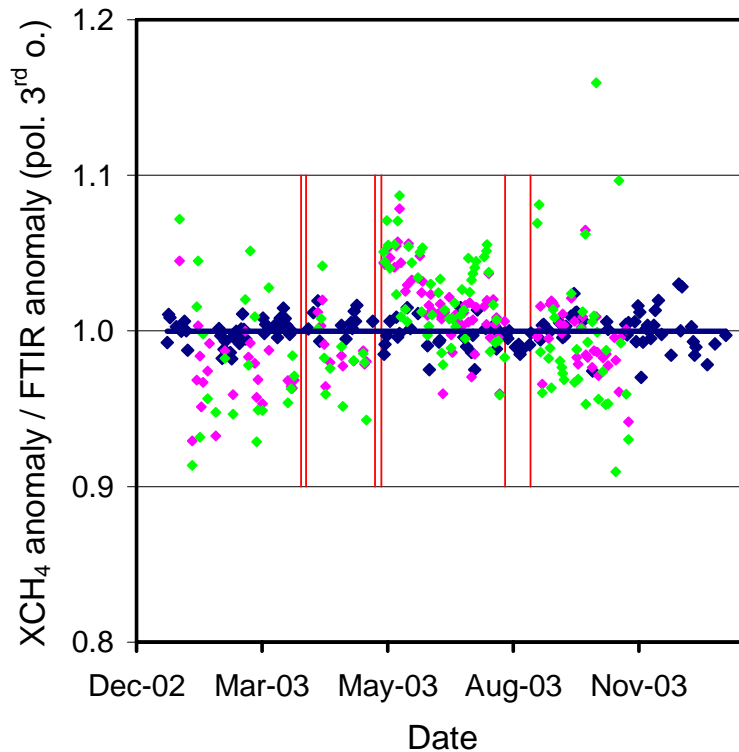


Fig. 4. Dark blue points: Zugspitze FTIR XCH₄ anomaly daily means normalized to the annual cycle (i.e., the 3rd order polynomial of Fig. 3). Pink points: SCIAMACHY WFMD v0.41 XCH₄ anomaly; average of all pixels within a 2000-km radius around Zugspitze for each day normalized to the annual cycle (i.e., the 3rd order polynomial of Fig. 3). Green points: Same as pink points but for a 1000-km selection radius around Zugspitze. SCIAMACHY decontamination phases are indicated by red vertical lines.

Validation of
 SCIAMACHY
 columnar methane by
 Zugspitze FTIR

R. Sussmann et al.

Title Page

Abstract

Introduction

Conclusions

References

Tables

Figures

◀

▶

◀

▶

Back

Close

Full Screen / Esc

Print Version

Interactive Discussion

**Validation of
SCIAMACHY
columnar methane by
Zugspitze FTIR**R. Sussmann et al.

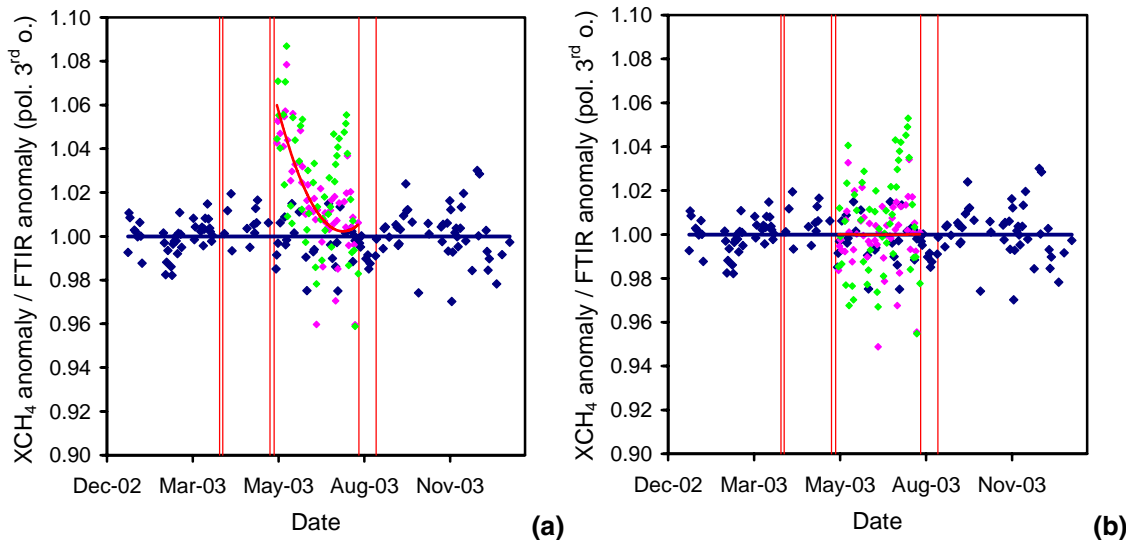


Fig. 5. (a) Same as Fig. 4 but SCIAMACHY data restricted to 25 May–12 August 2003 and a polynomial fit performed to the SCIAMACHY data with selection radius 2000 km. (b) Same as (a) but data normalized to the polynomial of (a). SCIAMACHY decontamination phases are indicated by red vertical lines.

[Title Page](#)[Abstract](#)[Introduction](#)[Conclusions](#)[References](#)[Tables](#)[Figures](#)[◀](#)[▶](#)[◀](#)[▶](#)[Back](#)[Close](#)[Full Screen / Esc](#)[Print Version](#)[Interactive Discussion](#)