



**HAL**  
open science

**Refinements in the use of equivalent latitude for assimilating sporadic inhomogeneous stratospheric tracer observations, 2: Precise altitude-resolved information about transport of Pinatubo aerosol to very high latitude**

P. Good, J. Pyle

► **To cite this version:**

P. Good, J. Pyle. Refinements in the use of equivalent latitude for assimilating sporadic inhomogeneous stratospheric tracer observations, 2: Precise altitude-resolved information about transport of Pinatubo aerosol to very high latitude. *Atmospheric Chemistry and Physics Discussions*, 2004, 4 (1), pp.667-693. hal-00301082

**HAL Id: hal-00301082**

**<https://hal.science/hal-00301082>**

Submitted on 18 Jun 2008

**HAL** is a multi-disciplinary open access archive for the deposit and dissemination of scientific research documents, whether they are published or not. The documents may come from teaching and research institutions in France or abroad, or from public or private research centers.

L'archive ouverte pluridisciplinaire **HAL**, est destinée au dépôt et à la diffusion de documents scientifiques de niveau recherche, publiés ou non, émanant des établissements d'enseignement et de recherche français ou étrangers, des laboratoires publics ou privés.

# Refinements in the use of equivalent latitude for assimilating sporadic inhomogeneous stratospheric tracer observations, 2: Precise altitude-resolved information about transport of Pinatubo aerosol to very high latitude

P. Good<sup>1</sup> and J. Pyle<sup>2</sup>

<sup>1</sup>National Observatory of Athens, Greece

<sup>2</sup>Centre for Atmospheric Science, Cambridge, UK

Received: 2 December 2003 – Accepted: 23 January 2004 – Published: 29 January 2004

Correspondence to: P. Good (pgood@meteo.noa.gr)

## Poleward transport of Pinatubo aerosol

P. Good and J. Pyle

Title Page

Abstract

Introduction

Conclusions

References

Tables

Figures

◀

▶

◀

▶

Back

Close

Full Screen / Esc

Print Version

Interactive Discussion

© EGU 2004

## Abstract

From high latitude lidar observations, quite precise information is extracted about the temporal evolution and vertical distribution of volcanic aerosol in the high latitude lower stratosphere following the eruption of Mount Pinatubo. Irreversible mixing of lower stratospheric aerosol, to the arctic pole during early 1992, is demonstrated, as a function of potential temperature and time. This work complements previous studies, which either identify vortex intrusions - without demonstrating irreversible transport, or use lower resolution satellite observations. The observed transport is associated tentatively with the vortex disturbance during late January 1992. A very large number of high resolution lidar observations of Mount Pinatubo aerosol are analysed, without any data averaging. Averaging in measurement or analysis can cause tracer mixing to be overestimated. Averaging in the analysis can also require assumptions about which quantity has the dominant error (in this case, the equivalent latitude coordinate or the measurement), and which part of the data contains real structure. The method below attempts to avoid such assumptions.

## 1. Introduction

The environmental effects of anthropogenic emissions into the atmosphere are strongly dependent on the transport of photochemical constituents. For example, a crucial factor controlling the depletion of stratospheric ozone is the strength of the winter polar vortex (e.g. [Chipperfield and Jones, 1999](#); [Millard et al., 2002](#)). Constituents act as dye-like tracers of transport. Tracer transport timescales vary greatly, eg. with rapid transport parallel to the vortex but very slow transport across it. The strength of the vortex as a transport barrier varies with altitude ([McIntyre, 1995](#)), although details of this variation are difficult to ascertain. The vortex distorts continuously, exhibiting very fine scale features (e.g. [Plumb et al., 1994](#)) and so its position and size cannot be precisely known. Also, at lower altitudes the vortex is weaker and more difficult to identify.

## Poleward transport of Pinatubo aerosol

P. Good and J. Pyle

Title Page

Abstract

Introduction

Conclusions

References

Tables

Figures

◀

▶

◀

▶

Back

Close

Full Screen / Esc

Print Version

Interactive Discussion

---

**Poleward transport of  
Pinatubo aerosol**P. Good and J. Pyle

---

[Title Page](#)[Abstract](#)[Introduction](#)[Conclusions](#)[References](#)[Tables](#)[Figures](#)[◀](#)[▶](#)[◀](#)[▶](#)[Back](#)[Close](#)[Full Screen / Esc](#)[Print Version](#)[Interactive Discussion](#)

© EGU 2004

Ground-based or in-situ tracer observations tend to be sporadic and inhomogeneous, while satellite data averages over much larger atmospheric volumes. Measuring significant tracer transport, by comparing sets of measurements with themselves and with model results, then, is not straightforward. Convincing identifications have been made of vortex intrusions occurring in the real atmosphere (particularly [Plumb et al. \(1994\)](#) and [Manney et al. \(1998\)](#) who find agreement between high resolution model and observational data), although these studies cannot show the intrusions actually mixing down irreversibly into the vortex centre. [Plumb et al. \(2000\)](#) presented tracer-tracer correlation plots from satellite data, which indicate gradual mixing of air into the 1992/1993 Arctic vortex. [Lee et al. \(2001\)](#) use satellite observations, at 480 K, of a dehydrated 1992 Antarctic vortex, maintained even after temperatures rose above the frost point. Their data appears to show some mixing into the vortex by November, prior to the vortex breakup. The results below complement these satellite data studies, by analysing, without averaging, a large number of high resolution aerosol lidar observations of the early 1992 mid- and high northern latitude stratosphere. Averaging in measurement or analysis can cause tracer mixing to be overestimated. Averaging in the analysis can also require assumptions about which quantity has the dominant error, and which part of the data contains real structure.

The June 1991 eruption of Mount Pinatubo provided a useful opportunity to study the arctic polar vortex transport barrier. [Russell et al. \(1996\)](#) summarize the observations of the resulting stratospheric aerosol. A tropical cloud of liquid binary  $\text{H}_2\text{SO}_4/\text{H}_2\text{O}$  was formed ([McCormick and Veiga, 1992](#); [Deshler et al., 1992](#)) over a timescale of about one month ([Bluth et al., 1992](#); [Read et al., 1993](#)), which then spread to midlatitudes ([McCormick and Veiga, 1992](#); [Trepte et al., 1993](#)). In northern midlatitudes, the aerosol loading peaked around December 1991 and then decayed slowly – with a timescale of about 300 days ([Grant et al., 1996](#); [Langford et al., 1995](#)). Thus, by early 1992, the northern midlatitude stratosphere contained a relatively stable reservoir of aerosol. The timing of the eruption meant that northern high latitudes remained relatively free of volcanic aerosol throughout the winter 1991–1992 ([Neuber et al., 1994](#)). The vortex

**Poleward transport of  
Pinatubo aerosol**

P. Good and J. Pyle

Title Page

Abstract

Introduction

Conclusions

References

Tables

Figures

◀

▶

◀

▶

Back

Close

Full Screen / Esc

Print Version

Interactive Discussion

© EGU 2004

was, however, rather disturbed during January 1992 (Plumb et al., 1994). Plumb et al. (1994) identified, in both observed data and model results, a filamentary vortex intrusion that may have caused transport of midlatitude air into the vortex. The aim of the analysis below is to try and identify irreversible aerosol transport into the 1991–1992 northern vortex, by re-examining the available lidar data.

The analysis uses a diagnosed equivalent latitude coordinate. Meridional coordinates based on the area enclosed by contours of potential vorticity (PV) or other tracers have been used (e.g. Butchart and Remsberg, 1986; Nakamura, 1996), since the area enclosed by a tracer contour evolves much more slowly than reversible deformations in its shape. Butchart and Remsberg (1986) defined the “equivalent latitude” for PV, but it is expressed more generally as  $\phi_e = \sin^{-1}(1 - 2A(\chi))$ , where  $A(\chi)$  is the area enclosed by a tracer contour of value  $\chi$ , on a normalised sphere. Nakamura (1996) showed that two dimensional transport can be written in a contour area coordinate as a diffusion. Long lived tracers tend to show relatively tight correlations, due to the rapid local mixing processes (Plumb and Ko, 1992), so it is reasonable to use equivalent latitude calculated from a single long lived tracer as an approximate meridional coordinate. In the text below, the “error” in diagnosed equivalent latitude ( $\phi_e$ ) is referred to. By “error”, we mean the degree to which the contours of  $\phi_e$  misalign with the contours of the observed tracer (or more precisely, the tracer that would be observed in the absence of any measurement error). The quality of this equivalent latitude coordinate is assessed, against vortex edge observations, in Good and Pyle (2004).

From the aerosol lidar data described below, an approximately conserved tracer mixing ratio ( $\nu_R$ ) may be inferred. The target of this study is to estimate the quasi-vertical profile of the quantity  $\nu_R^{(h)}$ .  $\nu_R^{(h)}$  is defined as a function of potential temperature ( $\theta$ ), and is the true value of  $\nu_R$  at the highest equivalent latitudes. By “true”, we mean in the absence of any errors. The “highest equivalent latitudes” are deep within the vortex (where it is present), and will tend to occur at high geographic latitude although not in general directly over the pole. The “highest equivalent latitudes” might be defined as the air on an isentropic surface which is most strongly isolated fluid dynamically from

## Poleward transport of Pinatubo aerosol

P. Good and J. Pyle

Title Page

Abstract

Introduction

Conclusions

References

Tables

Figures

◀

▶

◀

▶

Back

Close

Full Screen / Esc

Print Version

Interactive Discussion

© EGU 2004

the mid-latitudes. This profile is not physically vertical, since the location of the highest equivalent latitude varies with potential temperature, especially in the northern hemisphere where the polar vortex is strongly disturbed. An increase over time in  $v_R^{(h)}$  on a given  $\theta$  surface must indicate irreversible transport of aerosol into the vortex on that  $\theta$  surface, or descent from above. In estimating  $v_R^{(h)}$ , only weak assumptions are made about the errors in  $\phi_e$ . This is enabled by the large number of observations taken at high latitude.

## 2. Measurements and model

### 2.1. Observed data

This analysis uses ground-based 532 nm aerosol lidar observations taken at six sites at mid- and high northern latitudes during the EASOE campaign of winter 1991–1992. The measurements are available on the EASOE CD-ROM. See Table 1 for locations and references describing the measurement data. The vertical resolution is mostly of 200 m or less, or about 4 K in the lower stratosphere. This is equivalent (Haynes and Anglade, 1997) to about 50 km in the horizontal.

From the aerosol backscatter ratio (R), the best estimate of a conserved tracer mixing ratio ( $v_R$ , or “lidar tracer”) is (see Bohren and Huffman (1981) and the references in Table 1):

$$v_R = R - 1 = \frac{B_{(aer)}}{\sigma_{(mol)} n_{(mol)}} = \frac{1}{\sigma_{(mol)}} \frac{B_{(aer)}}{n_{(mol)}} \quad (1)$$

where R is the backscatter ratio,  $B_{(aer)}$  is the aerosol backscatter,  $\sigma_{(mol)}$  the molecular scattering cross-section and  $n_{(mol)}$  the air number density. Brock et al. (1993) and Jager et al. (1995) used observed aerosol size distributions to show that for the case of 532 nm, lidar backscatter ratio is a good predictor (to within 5%) of aerosol mass mixing ratio during late 1991 through early 1992.

---

**Poleward transport of  
Pinatubo aerosol**P. Good and J. Pyle

---

Title Page

Abstract

Introduction

Conclusions

References

Tables

Figures

◀

▶

◀

▶

Back

Close

Full Screen / Esc

Print Version

Interactive Discussion

© EGU 2004

The only sulphate aerosol microphysical processes significantly modifying mass mixing ratio during early 1992 (Russell et al., 1993) were water vapour uptake, PSC formation and gravitational sedimentation. The effects of water vapour uptake on the lidar observations was estimated using standard thermodynamic data (Hanson et al. (1994) parameterise the data of Steele and Hamill (1981)) and Mie backscatter calculations (see Bohren and Huffman, 1981). This effect is negligible for these specific observations, since the regions of cold temperatures either had very low volcanic aerosol content or were not sampled by the observations. The northern winter 1991–1992 saw only a short period of low stratospheric temperatures between late December 1991 and mid January 1992; this was too warm for PSC II (eg. Farman et al., 1994). The observation of PSCs of any type during early 1992 was relatively infrequent, and PSC Ia are identified by high depolarisation and return relatively low backscatter signals (Browell et al., 1990). Plots of backscatter ratio versus analysed temperature for the early 1992 lidar data show PSC Ib only over Andoya on 9 January. This PSC was also observed by the ISAMS satellite instrument (Massie et al., 1997). These observations were removed before analysis. Sedimentation rates may be estimated (G. Brasseur and Tyndall, 1999) using observed size distributions (e.g. Deshler et al., 1993; Deshler, 1994). Sedimentation is discussed later, in the context of the specific results.

The random error in the lidar data was estimated empirically at about 10–20% in R. This estimate used the scatter of values measured within the midlatitude surf-zone, with the mean vertical gradient removed. Horizontal tracer gradients are small within the surf-zone, so measurement error dominates over equivalent latitude error. This is consistent with reported theoretical error estimates (references in Table 1).

## 2.2. Equivalent latitude

Equivalent latitude fields are estimated from passive tracers, initialised with Ertel PV and then transported by the SLIMCAT isentropic model [described by Chipperfield (1999)] forced by United Kingdom Meteorological Office analyses (described by Swinbank and O'Neill, 1994). SLIMCAT uses the Prather advection scheme (Prather, 1986).

---

**Poleward transport of  
Pinatubo aerosol**P. Good and J. Pyle

---

[Title Page](#)[Abstract](#)[Introduction](#)[Conclusions](#)[References](#)[Tables](#)[Figures](#)[◀](#)[▶](#)[◀](#)[▶](#)[Back](#)[Close](#)[Full Screen / Esc](#)[Print Version](#)[Interactive Discussion](#)

© EGU 2004

Diabatic heating was set to zero, and horizontal transport calculated on each of 10 isentropic levels in the lower stratosphere, from 380 K to 520 K, spaced by about 2 km. The horizontal resolution was 5.6° in longitude and 2.5° in latitude. For each measurement location and time, equivalent latitude was calculated from a PV tracer which had been initialised with PV 4–5 days earlier and then transported by SLIMCAT until the time of the observation. The quality of this equivalent latitude coordinate is assessed, against vortex edge observations, in [Good and Pyle \(2004\)](#).

### 2.3. Scatter plots

Figures 1 and 2 show scatter plots of  $v_R$ , for the first 80 days of 1992. The frequency of observations outside this period was too low for the purposes of this analysis. Averaging or other manipulation is avoided, in order to avoid making unwarranted assumptions about the errors involved.

#### 2.3.1. $v_R$ versus $\phi_\theta$

Figure 1 plots  $v_R$  against  $\phi_\theta$ , for a stack of non-overlapping potential temperature bins. Two time bins are used: days 0–40 and 41–80 of 1992 (1 January–10 February and 11 February–20 March). The greatest attention is on the region below about 440 K, where high latitude structure is significant and complex. Six 10 K  $\theta$  bins span the interval between 350 K and 440 K. Note that for 96% of the observations, the vertical resolution of the measurements is better than 4 K at these values of  $\theta$ . One 475–520 K bin represents the region above 475 K. Two bins fill the gap between 440 K and 475 K. Note the variable density of observations at different values of  $\phi_\theta$ . This is particularly significant for days 0–40. However, the sampling at large equivalent latitudes is extremely good.

At the higher potential temperatures, these plots largely show the high-intermediate-low values expected for an equivalent latitude section cutting through the vortex edge (since the volcanic eruption occurred at low latitudes). The midlatitude profile is roughly the same for the two time bins. The vortex above 475 K is largely clean of volcanic



---

**Poleward transport of  
Pinatubo aerosol**

---

P. Good and J. Pyle

---

Title Page

Abstract

Introduction

Conclusions

References

Tables

Figures

◀

▶

◀

▶

Back

Close

Full Screen / Esc

Print Version

Interactive Discussion

© EGU 2004

aerosol. Note that the vortex edge step (around  $\phi_e \approx 75^\circ$ ), for days 41–80 above 475 K, is broad: about  $10^\circ$  wide, in  $\phi_e$ . This subset of the data was taken after the late January vortex disturbance. This disturbance could have caused mixing within the vortex edge region, broadening the vortex edge step signature in  $v_R$ , even if significant transport into the vortex centre is not observed. Detailed time-resolved transport between 475–520 K is presented in [Good and Pyle \(2004\)](#).

$\phi_e$  shows some success in separating mid- and high latitude observations. In some plots, especially at low  $\theta$ , the  $\phi_e$  coordinate is also able to resolve a meridional gradient within the midlatitudes. This is the case where  $\theta \lesssim 420$  K for days 0–40, and  $\theta \lesssim 400$  K for days 41–80. This positive gradient of  $v_R$  with  $\phi_e$  can be explained by the fact that wintertime diabatic descent is faster at high latitude, bringing larger tracer concentrations down from above.

As  $\theta$  decreases below 520 K, the distinction between mid- and high latitudes becomes less apparent, in part due to the strong vertical gradient in the midlatitudes. A second factor, strongest in the day 41–80 bin and below about 440 K, is the presence of elevated  $v_R$  values at high  $\phi_e$ . The 380–390 K bin even shows a reversal of the  $\phi_e$  gradient, with higher values of  $v_R$  towards the polar regions. These last two observations suggest that the day 41–80 plots are influenced by poleward transport of volcanic aerosol below about 440 K: faster diabatic descent at high latitudes then generates the reversed  $v_R$  gradient in the 390–390 K bin.

Figures 1 and 2 show a large degree of scatter, due to the combined errors in  $v_R$  and  $\phi_e$  and  $\theta$ . If all three quantities were known exactly, the plots would show compact curves.  $\theta$  error is not expected to be large. Particular care is required when interpreting observations of elevated  $v_R$  at high equivalent latitude, as they may represent midlatitude or vortex edge air, misplaced by equivalent latitude error.

### 2.3.2. $v_R$ versus time

The  $v_R$  versus time plots of Fig. 2 show only data for  $70 < \phi_e \leq 90$ . Figure 1 shows that  $\phi_e \approx 70$  largely bounds the extent of characteristic high latitude observations (low

## Poleward transport of Pinatubo aerosol

P. Good and J. Pyle

Title Page

Abstract

Introduction

Conclusions

References

Tables

Figures

◀

▶

◀

▶

Back

Close

Full Screen / Esc

Print Version

Interactive Discussion

© EGU 2004

$v_R$ ). The potential temperature bins are the same as those in Fig. 2.

Above about 410 K, the time evolution at high latitude is rather masked by the scatter. In particular, the minimum  $v_R$  values above 475 K remain at or below zero throughout. However, in all the plots up to at least 430 K, and starting from about day 40, an increase in minimum  $v_R$  values is evident. There is a hint that this increase is roughly linear over days 40 through 80, but the sampling is sparse after day 63.

This change in high latitude  $v_R$  after day 40 provided the reason for binning the data into days 0–40 and 41–80 for Fig. 1. Note that there are few observations between days 41–47 and between days 64–80.

### 3. Method for estimating $v_R^{(h)}$

This section aims to specify an appropriate method for estimating  $v_R^{(h)}$ : the true value of  $v_R$  at the highest equivalent latitudes. This involves error minimisation, and so requires knowledge of the errors involved. For  $\phi_e > 70$ , the scatter of  $v_R$  measurements is particularly large near 430 K. The contributing errors in this region are investigated, confirming that  $\phi_e$  error dominates, prior to specifying a method to estimate  $v_R^{(h)}$ .

#### 3.1. Explaining the scatter at high $\phi_e$ near 430 K

At high  $\phi_e$  near 430K, the scatter in  $v_R$  is much larger than the expected measurement error. Figure 3 is used to demonstrate the importance of equivalent latitude error in causing the large scatter in  $v_R$  for  $\phi_e > 70$  near 430 K. In this section we study the properties of the complete lidar vertical soundings. That is, we use the fact that all observations in a single sounding form a vertical profile which is taken almost simultaneously. To start with, each vertical profile of  $v_R$  was characterised by four quantities:  $v_R$  at 430 K;  $v_R$  at 355 K; the  $v_R$  profile maximum; and the potential temperature at which the  $v_R$  profile maximum occurs. The three plots in Fig. 3 use these values as axes. The solid lines in Figs. 3b and 3e trace the mean, maximum and minimum pro-

## Poleward transport of Pinatubo aerosol

P. Good and J. Pyle

Title Page

Abstract

Introduction

Conclusions

References

Tables

Figures

◀

▶

◀

▶

Back

Close

Full Screen / Esc

Print Version

Interactive Discussion

© EGU 2004

files of  $v_R$  at midlatitude. The broad form of  $v_R$  versus  $\phi_e$ , and the temporal evolution after day 40 should be recalled from Figs. 1 and 2. To classify the profiles into groups, empirical parameters  $\theta^{(i)}$  and  $v_R^{(i)}$  were chosen for each time bin. These thresholds are marked in Fig. 3 by dashed guide lines, and are explained below.

From the correlation plots, and remembering that the plots show data only for those soundings for which  $\phi_e > 70$  at 430 K, the following summary can be made:

For soundings with  $v_R$  at 430 K greater than  $v_R^{(i)}$ :  $v_R$  at 355 K is not large (Figs. 3c and 3f); the  $v_R$  peaks are above  $\theta^{(i)}$  (Figs. 3a and 3d); and the  $v_R$  peak values are almost all consistent with midlatitude observations (Figs. 3b and 3e).

For soundings with  $v_R$  at 430 K less than  $v_R^{(i)}$ :  $v_R$  at 355 K may be large (Figs. 3c and 3f); the  $v_R$  peaks are mostly below  $\theta^{(i)}$  (Figs. 3a and 3d); and a significant proportion of these peak values are inconsistent with midlatitude observations (Figs. 3b and 3e).

In other words, those lidar soundings for which  $\phi_e > 70$  at 430 K may be divided into two groups, according to the value of  $v_R$  at 430 K. Those soundings with large  $v_R$  at 430 K show air of midlatitude character at higher  $\theta$ . They also tend to show relatively low values of  $v_R$  at 355 K. It was shown earlier that near 355 K  $v_R$  is lower at lower equivalent latitudes. On the other hand, those soundings with smaller  $v_R$  at 430 K tend to not sample midlatitude-type air at higher  $\theta$ , and show relatively large values of  $v_R$  at 355 K. Therefore, in our set of lidar soundings for which  $\phi_e > 70$  at 430 K, those profiles with large  $v_R$  at 430 K appear to sample air of more midlatitude character at both higher and lower altitudes – and therefore are probably sampling air of more midlatitude character at 430 K also. That is, high values of  $v_R$  at 430 K appear to be just signatures of air of midlatitude or at least intermediate (between mid- and high latitude) character. Therefore, our equivalent latitude tracer is unsuccessful at separating midlatitude or intermediate air from high latitude air at 430 K. So, the large scatter in  $v_R$  for  $\phi_e > 70$  near 430 K is down to error in  $\phi_e$ .

### 3.2. Estimating $v_R^{(h)}$

It has been shown in the previous section that at high equivalent latitudes,  $\phi_e$  is unable to separate pure high latitude air from intermediate or mid-latitude air. An average of  $v_R$  at large  $\phi_e$ , then, will include intermediate or midlatitude air as well as true high latitude air, and therefore be biased. It is clear from Fig. 1 that at 430 K, the lowest  $v_R$  values represent samples of the highest true equivalent latitudes. Therefore, near 430 K, the  $v_R$  minimum may be used as a basis to estimate  $v_R^{(h)}$ . Since random measurement error is a factor,  $v_R^{(h)}$  may be estimated by the  $v_R$  minimum plus a suitable correction. At lower potential temperatures, the largest  $v_R$  values represent samples of the highest true equivalent latitudes (eg. see Fig. 1, below 380 K for days 41–80). There, the  $v_R$  maximum may be used, with a similar correction, to estimate  $v_R^{(h)}$ . The horizontal bars in Fig. 2 show where the minimum or maximum  $v_R$  is most appropriate for estimating  $v_R^{(h)}$ .

A reasonable approximate correction would be twice the measurement error standard deviation. For Gaussian error statistics, points outside two standard deviations are very obvious outliers. There exist much more rigorous and complex extreme-value theories for modelling minima or maxima of datasets; however in this case the measurement error standard deviation is known only approximately, so a two-standard deviation correction is sufficient for our purposes. Measurement error is 10–20% in R (R being  $v_R + 1$ ), so the correction ( $\iota_v$ ) would be 20–40% in R.  $\iota_v$  can also be estimated directly from the ratio of maximum and minimum  $v_R$  at midlatitude. The values obtained are indeed between 20–40% in R, once any resolved midlatitude gradient of  $v_R$  with  $\phi_e$  is removed. The variability could be attributed to unresolved midlatitude gradients, which would cause overestimates. The value of 40% in R then is used as an upper bound for the correction  $\iota_v$ .

At higher potential temperatures, the value of  $v_R^{(h)}$  may be estimated fairly straightforwardly, because the observations sampling the highest true equivalent latitudes form

## Poleward transport of Pinatubo aerosol

P. Good and J. Pyle

Title Page

Abstract

Introduction

Conclusions

References

Tables

Figures

◀

▶

◀

▶

Back

Close

Full Screen / Esc

Print Version

Interactive Discussion

## Poleward transport of Pinatubo aerosol

P. Good and J. Pyle

Title Page

Abstract

Introduction

Conclusions

References

Tables

Figures

◀

▶

◀

▶

Back

Close

Full Screen / Esc

Print Version

Interactive Discussion

© EGU 2004

an obvious dense cluster around  $v_R \approx 0$  (see Fig. 1). Figure 4 plots frequency distributions of  $v_R$ , showing that this is true as low as about 400 K for day 0–40, and about 480 K for days 41–80. Thus, above this potential temperature levels,  $v_R^{(h)}$  may be conservatively estimated at between 0–0.1. This also offers another opportunity to estimate  $\iota_v$ , as both  $v_R^{(h)}$  and the observed minimum  $v_R$  are known in these regions. This gives  $\iota_v \approx 15\%$  in R as corresponding to lower  $\phi_e$  error.

Thus to estimate  $v_R^{(h)}$ , the profiles can be divided into three potential temperature intervals, each requiring a slightly different method for the estimation of  $v_R^{(h)}$ . The higher potential temperatures were dealt with above. At intermediate altitudes the  $v_R$  minimum is used, and at lower  $\theta$  the  $v_R$  maximum is used – with a correction to the latter two.

#### 4. Results: best estimates of $v_R^{(h)}$

Figures 5 and 6 show estimates for  $v_R^{(h)}$ , as curves drawn over scatter plots of the high- $\phi_e$  data. The three methods of estimating  $v_R^{(h)}$ , their parameters, and the potential temperature regions in which they were applied, were described in the previous section. The three lines correspond to zero, low and high  $\phi_e$  error ( $\iota_v = 0, 15\%, 40\%$ ). Note that the peak in  $v_R^{(h)}$  is at a somewhat lower potential temperature than might be guessed from a quick look at the data. Even with a large  $\phi_e$  error, the scatter plots for  $\phi_e > 80$  would be expected to include a larger proportion of true high latitude observations than those for  $\phi_e > 70$ , and indeed the panels for  $\phi_e > 80$  show relatively more observations falling within the estimated  $v_R^{(h)}$  bounds. This gives more confidence that the  $v_R^{(h)}$  estimates are representative of true high latitude air.

The  $v_R^{(h)}$  results are quoted for two substantial time bins, but the sporadic nature of the measurement dataset means that we need to be careful about which time period the results are appropriate for. Figure 2 reveals some information about time evolution

---

**Poleward transport of  
Pinatubo aerosol**P. Good and J. Pyle

---

[Title Page](#)[Abstract](#)[Introduction](#)[Conclusions](#)[References](#)[Tables](#)[Figures](#)[◀](#)[▶](#)[◀](#)[▶](#)[Back](#)[Close](#)[Full Screen / Esc](#)[Print Version](#)[Interactive Discussion](#)

© EGU 2004

in  $v_R^{(h)}$ , and measurement frequency, within these rather broad time bins. Note the horizontal bars above and below the data, which indicate whether the  $v_R$  maximum or minimum is appropriate for estimating  $v_R^{(h)}$ . There is little evolution for days 0–40.

After day 40, between about 400–475 K, there is a hint that the evolution in  $v_R^{(h)}$  is approximately linear. After day 40, most measurements occurred during days 48–62; there were also a few after day 70. The  $v_R^{(h)}$  results presented here, therefore, apply to days 0–40 and to days 48–62 (1 January–10 February and 18 February–2 March).

Figure 7 puts the profile and evolution of  $v_R^{(h)}$  in perspective, alongside the mean midlatitude vertical profile ( $v_R^{(m)}$ ). Above 475 K, through days 0–80,  $v_R^{(h)}$  is less than 0.1.

Near 475 K, for days 0–62,  $v_R^{(h)}/v_R^{(m)}$  is less than 1/40. These indicate a very well isolated vortex centre at this level and above. Between about 475 K and 410 K, extreme high latitude air is clean of aerosol for the first 40 days, but then sees significant transport of aerosol tracer from lower latitude. This transport increases strongly with decreasing  $\theta$ . Lower down, there appears to be little barrier between mid- and high latitudes throughout the time studied. This presumably corresponds to the sub-vortex (McIntyre, 1995).

## 5. Conclusions

The results show evidence for irreversible transport of aerosol to the highest equivalent latitudes, resolved in potential temperature and time. Note that the results apply just to the highest equivalent latitudes, but they are a new part of the high latitude picture for this period. The  $v_R^{(h)}$  profiles do not have high precision in  $v_R$ , but better accuracy than if the data had been averaged. Quite precise information has been extracted about the temporal evolution and the vertical structure. The EASOE lidar data provided an excellent dataset for this purpose, with a very large number of high resolution observations.

$v_R^{(h)}$  only increases where aerosol has mixed down to the highest equivalent lati-

---

**Poleward transport of  
Pinatubo aerosol**P. Good and J. Pyle

---

[Title Page](#)[Abstract](#)[Introduction](#)[Conclusions](#)[References](#)[Tables](#)[Figures](#)[◀](#)[▶](#)[◀](#)[▶](#)[Back](#)[Close](#)[Full Screen / Esc](#)[Print Version](#)[Interactive Discussion](#)

© EGU 2004

tudes. Where the vortex is present, this means that aerosol must mix down throughout the vortex centre. Plumb et al. (1994) demonstrated a vortex intrusion event (in measurements and a model), which started on about 19 January (day 18). They also found intrusions in mid-December and mid- to late February. The February event started on day 45, which seems too late to cause an increase in  $v_R^{(h)}$  by day 48. The increase in  $v_R^{(h)}$  started between days 40–48: 22–30 days after the January intrusion started. If wintertime surf-zone mixdown times (Thuburn and Tan (1997) have 9 days for an order of magnitude reduction in scale) are used, the time taken to mix down from scales the size of the vortex centre (about 6000 km) to the lidar resolution (150–200 m in the vertical: corresponding to about 37.5–50 km horizontally, using the horizontal/vertical scale ratio of 250 (Haynes and Anglade, 1997)) is about 20 days. Thus, it seems reasonable to make a tentative link between the January intrusion reported by Plumb et al. (1994) and the subsequent increase in  $v_R^{(h)}$  diagnosed here.

Aerosol sedimentation must be borne in mind with regard to these results. Over the estimated vortex mid-down period of less than one month, below about 450 K the Pinatubo aerosol would fall only of the order of 10 K (the lidar resolution is about 4 K). This is not important in terms of the vertical precision of the quoted  $v_R^{(h)}$  results. Sedimentation through vertically sloping transport barriers, could enhance the dispersal of aerosol in equivalent latitude. Pinatubo sedimentation rates in this region are estimated at about 17 m per day, which is similar to or less than the scale mixed by turbulent dispersion per day. Thus, sedimentation could affect the efficiency of the chaotic mixdown-turbulent dispersion mechanism. Thus, these  $v_R^{(h)}$  results presumably overestimate the transport that would have occurred for a gaseous tracer.

## References

Beyerle, G. and Neuber, R.: The stratospheric aerosol content above Spitsbergen during winter 1991/1992, Geophys. Res. Lett., 21, 1291–1294, 1994. 685

---

**Poleward transport of  
Pinatubo aerosol**P. Good and J. Pyle

---

Title Page

Abstract

Introduction

Conclusions

References

Tables

Figures

◀

▶

◀

▶

Back

Close

Full Screen / Esc

Print Version

Interactive Discussion

© EGU 2004

Bluth, G. J. S., Doiron, S. D., Schnetzler, C. C., Krueger, A. J., and Walter, L. S.: Global tracking of the SO<sub>2</sub> clouds from the June, 1991 Mount Pinatubo eruptions, *Geophys. Res. Lett.*, 19, 151–154, 1992. [669](#)

Bohren, C. and Huffman, D.: *Scattering and Absorption of Light by Small Particles*, Wiley, New York, 1981. [671](#), [672](#)

Brock, C. A., Jonsson, H. H., Wilson, J. C., Dye, J. E., Baumgardner, D., Borrmann, S., Pitts, M. C., Osborn, M. T., Decoursey, R. J., and Woods, D. C.: Relationships between optical extinction, backscatter and aerosol surface and volume in the stratosphere following the eruption of Mt-Pinatubo, *Geophys. Res. Lett.*, 20, 2555–2558, 1993. [671](#)

Browell, E. V., Butler, C. F., Ismail, S., Robinette, P. A., Carter, A. F., Higdon, N. S., Toon, O. B., Schoeberl, M. R., and Tuck, A. F.: Airborne lidar observations in the wintertime Arctic stratosphere - polar stratospheric clouds, *Geophys. Res. Lett.*, 17, 385–388, 1990. [672](#)

Butchart, N. and Remsberg, E. E.: The area of the stratospheric polar vortex as a diagnostic for tracer transport on an isentropic surface, *J. Atmos. Sci.*, 43, 1319–1339, 1986. [670](#)

Chazette, P., David, C., Lefrere, J., Godin, S., Pelon, J., and Megie, G.: Comparative lidar study of the optical, geometrical, and dynamical properties of stratospheric post-volcanic aerosols, following the eruptions of El-Chichon and Mount-Pinatubo, *J. Geophys. Res.-Atmos.*, 100, 23 195–23 207, 1995. [685](#)

Chipperfield, M. P.: Multiannual simulations with a three-dimensional chemical transport model, *J. Geophys. Res.*, 104, 1781–1805, 1999. [672](#)

Chipperfield, M. P. and Jones, R. L.: Relative influences of atmospheric chemistry and transport on Arctic ozone trends, *Nature*, 400, 551–554, 1999. [668](#)

Deshler, T.: In-situ measurements of Pinatubo aerosol over Kiruna on 4 days between 18 January and 13 February 1992, *Geophys. Res. Lett.*, 21, 1323–1326, 1994. [672](#)

Deshler, T., Hofmann, D. J., Johnson, B. J., and Rozier, W. R.: Balloon-borne measurements of the Pinatubo aerosol size distribution and volatility at Laramie, Wyoming during the summer of 1991, *Geophys. Res. Lett.*, 19, 199–202, 1992. [669](#)

Deshler, T., Johnson, B. J., and Rozier, W. R.: Balloonborne measurements of Pinatubo aerosol during 1991 and 1992 at 41° N – vertical profiles, size distribution, and volatility, *Geophys. Res. Lett.*, 20, 1435–1438, 1993. [672](#)

Digirolamo, P., Cacciani, M., Disarra, A., Fiocco, G., and Fua, D.: Lidar observations of the Pinatubo aerosol layer at Thule, Greenland, *Geophys. Res. Lett.*, 21, 1295–1298, 1994. [685](#)



---

**Poleward transport of  
Pinatubo aerosol**P. Good and J. Pyle

---

[Title Page](#)[Abstract](#)[Introduction](#)[Conclusions](#)[References](#)[Tables](#)[Figures](#)[◀](#)[▶](#)[◀](#)[▶](#)[Back](#)[Close](#)[Full Screen / Esc](#)[Print Version](#)[Interactive Discussion](#)

© EGU 2004

- Farman, J. C., Oneill, A., and Swinbank, R.: The dynamics of the arctic polar vortex during the EASOE campaign, *Geophys. Res. Lett.*, 21, 1195–1198, 1994. [672](#)
- G. Brasseur, J. O. and Tyndall, G.: *Atmospheric Chemistry and Global Change*, Oxford University Press, New York, 1999. [672](#)
- 5 Good, P. and Pyle, J.: Refinements in the use of equivalent latitude for assimilating sporadic inhomogeneous stratospheric tracer observations, 1: Detecting transport of Pinatubo aerosol across a strong vortex edge, *Atmos. Chem. Phys. Discuss.*, 4, 635–666, 2004. [670](#), [673](#), [674](#)
- Grant, W. B., Browell, E. V., Long, C. S., Stowe, L. L., Grainger, R. G., and Lambert, A.: Use  
10 of volcanic aerosols to study the tropical stratospheric reservoir, *J. Geophys. Res.-Atmos.*, 101, 3973–3988, 1996. [669](#)
- Hanson, D. R., Ravishankara, A. R., and Solomon, S.: Heterogeneous reactions in sulfuric-acid aerosols – a framework for model-calculations, *J. Geophys. Res.-Atmos.*, 99, 3615–3629, 1994. [672](#)
- 15 Haynes, P. and Anglade, J.: The vertical-scale cascade in atmospheric tracers due to largescale differential advection, *J. Atmos. Sci.*, 54, 1121–1136, 1997. [671](#), [680](#)
- Jager, H., Deshler, T., and Hofmann, D. J.: Midlatitude lidar backscatter conversions based on balloonborne aerosol measurements, *Geophys. Res. Lett.*, 22, 1729–1732, 1995. [671](#)
- Langford, A. O., O'leary, T. J., Proffitt, M. H., and Hitchman, M. H.: Transport of the Pinatubo  
20 volcanic aerosol to a northern midlatitude site, *J. Geophys. Res.-Atmos.*, 100, 9007–9016, 1995. [669](#)
- Lee, A. M., Roscoe, H. K., Jones, A. E., Haynes, P. H., Shuckburgh, E. F., Morrey, M. W., and Pumphrey, H. C.: The impact of the mixing properties within the Antarctic stratospheric vortex on ozone loss in spring, *J. Geophys. Res.-Atmos.*, 106, 3203–3211, 2001. [669](#)
- 25 Manney, G. L., Bird, J. C., Donovan, D. P., Duck, T. J., Whiteway, J. A., Pal, S. R., and Carswell, A. I.: Modeling ozone laminae in ground-based Arctic wintertime observations using trajectory calculations and satellite data, *J. Geophys. Res.-Atmos.*, 103, 5797–5814, 1998. [669](#)
- Massie, S. T., Dye, J. E., Baumgardner, D., Randel, W. J., Wu, F., Tie, X. X., Pan, L. W., Figarol, F., Brasseur, G. P., Santee, M. L., Read, W. G., Grainger, R. G., Lambert, A., Mergenthaler, J. L., and Tabazadeh, A.: Simultaneous observations of Polar Stratospheric Clouds and HNO<sub>3</sub> over Scandinavia in January 1992, *Geophys. Res. Lett.*, 24, 595–598, 1997. [672](#)
- 30 McCormick, M. P. and Veiga, R. E.: SAGE-II measurements of early Pinatubo aerosols, *Geo-*

---

**Poleward transport of  
Pinatubo aerosol**P. Good and J. Pyle

---

[Title Page](#)[Abstract](#)[Introduction](#)[Conclusions](#)[References](#)[Tables](#)[Figures](#)[◀](#)[▶](#)[◀](#)[▶](#)[Back](#)[Close](#)[Full Screen / Esc](#)[Print Version](#)[Interactive Discussion](#)

© EGU 2004

phys. Res. Lett., 19, 155–158, 1992. [669](#)

McIntyre, M. E.: The stratospheric polar vortex and sub-vortex – fluid-dynamics and midlatitude ozone loss, Philos. Trans. R. Soc. Lond. Ser. A-Math. Phys. Eng. Sci., 352, 227–240, 1995. [668](#), [679](#)

5 Millard, G. A., Lee, A. M., and Pyle, J. A.: A model study of the connection between polar and midlatitude ozone loss in the Northern Hemisphere lower stratosphere, J. Geophys. Res.-Atmos., 108, art. no. 8323, 2002. [668](#)

Nakamura, N.: Two-dimensional mixing, edge formation, and permeability diagnosed in an area coordinate, J. Atmos. Sci., 53, 1524–1537, 1996. [670](#)

10 Neuber, R., Beyerle, G., Fiocco, G., Disarra, A., Fricke, K. H., David, C., Godin, S., Knudsen, B. M., Stefanutti, L., Vaughan, G., and Wolf, J. P.: Latitudinal distribution of stratospheric aerosols during the EASOE winter 1991/1992, Geophys. Res. Lett., 21, 1283–1286, 1994. [669](#)

Plumb, R. A. and Ko, M. K. W.: Interrelationships between mixing ratios of long lived stratospheric constituents, J. Geophys. Res.-Atmos., 97, 10 145–10 156, 1992. [670](#)

15 Plumb, R. A., Waugh, D. W., Atkinson, R. J., Newman, P. A., Lait, L. R., Schoeberl, M. R., Browell, E. V., Simmons, A. J., and Loewenstein, M.: Intrusions into the lower stratospheric arctic vortex during the winter of 1991–1992, J. Geophys. Res.-Atmos., 99, 1089–1105, 1994. [668](#), [669](#), [670](#), [680](#)

20 Plumb, R. A., Waugh, D. W., and Chipperfield, M. P.: The effects of mixing on traces relationships in the polar vortices, J. Geophys. Res.-Atmos., 105, 10 047–10 062, 2000. [669](#)

Prather, M. J.: Numerical advection by conservation of 2nd-order moments, J. Geophys. Res., 91, 6671–6681, 1986. [672](#)

25 Read, W. G., Froidevaux, L., and Waters, J. W.: Microwave Limb Sounder measurement of stratospheric SO<sub>2</sub> from the Mt-Pinatubo volcano, Geophys. Res. Lett., 20, 1299–1302, 1993. [669](#)

Russell, J. M., Gordley, L. L., Park, J. H., Drayson, S. R., Hesketh, W. D., Cicerone, R. J., Tuck, A. F., Frederick, J. E., Harries, J. E., and Crutzen, P. J.: The halogen occultation experiment, J. Geophys. Res., 98, 10 777–10 797, 1993. [672](#)

30 Russell, P. B., Livingston, J. M., Pueschel, R. F., Bauman, J. J., Pollack, J. B., Brooks, S. L., Hamill, P., Thomason, L. W., Stowe, L. L., Deshler, T., Dutton, E. G., and Bergstrom, R. W.: Global to microscale evolution of the Pinatubo volcanic aerosol derived from diverse measurements and analyses, J. Geophys. Res.-Atmos., 101, 18 745–18 763, 1996. [669](#)

- Schafer, H. J., Scheuch, P., Langer, M., Fricke, K. H., Vonzahn, U., and Knudsen, B. M.: Lidar observations of polar stratospheric clouds at Andoya, Norway, in January 1992, *Geophys. Res. Lett.*, 21, 1307–1310, 1994. [685](#)
- 5 Steele, H. M. and Hamill, P.: Effects of temperature and humidity on the growth and optical-properties of sulfuric acid-water droplets in the stratosphere, *J. Aerosol. Sci.*, 12, 517–528, 1981. [672](#)
- Stein, B., Delguasta, M., Kolenda, J., Morandi, M., Rairoux, P., Stefanutti, L., Wolf, J. P., and Woste, L.: Stratospheric aerosol-size distributions from multispectral lidar measurements at Sodankyla during EASOE, *Geophys. Res. Lett.*, 21, 1311–1314, 1994. [685](#)
- 10 Swinbank, R. and O'Neill, A.: A stratosphere troposphere data assimilation system, *Monthly Weather Review*, 122, 686–702, 1994. [672](#)
- Thuburn, J. and Tan, D. G. H.: A parameterization of mixdown time for atmospheric chemicals, *J. Geophys. Res.-Atmos.*, 102, 13 037–13 049, 1997. [680](#)
- Trepte, C. R., Veiga, R. E., and McCormick, M. P.: The poleward dispersal of Mount-Pinatubo volcanic aerosol, *J. Geophys. Res.-Atmos.*, 98, 18 563–18 573, 1993. [669](#)
- 15 Vaughan, G., Wareing, D. P., Jones, S. B., Thomas, L., and Larsen, N.: Lidar measurements of Mt-Pinatubo aerosols at Aberystwyth from August 1991 through March 1992, *Geophys. Res. Lett.*, 21, 1315–1318, 1994. [685](#)

---

**Poleward transport of  
Pinatubo aerosol**P. Good and J. Pyle

---

[Title Page](#)[Abstract](#)[Introduction](#)[Conclusions](#)[References](#)[Tables](#)[Figures](#)[I◀](#)[▶I](#)[◀](#)[▶](#)[Back](#)[Close](#)[Full Screen / Esc](#)[Print Version](#)[Interactive Discussion](#)

## Poleward transport of Pinatubo aerosol

P. Good and J. Pyle

**Table 1.** References for the EASOE lidar data.

Site	Position	Citation	Author of CD-ROM data
Haute-Provence	44.5°N, 5.5°E	<a href="#">Chazette et al. (1995)</a>	S. Godin
Aberystwyth	52.4°N, 355.9°E	<a href="#">Vaughan et al. (1994)</a>	G. Vaughan
Sodankyla	67.4°N, 26.6°E	<a href="#">Stein et al. (1994)</a>	L. Stefanutti
Andoya	69.3°N, 16.0°E	<a href="#">Schafer et al. (1994)</a>	K. H. Fricke
Thule	76.5°N, 291.2°E	<a href="#">Digirolamo et al. (1994)</a>	G. Fiocco
Ny-Ålesund	78.9°N, 11.9°E	<a href="#">Beyerle and Neuber (1994)</a>	R. Neuber

Title Page

Abstract

Introduction

Conclusions

References

Tables

Figures

◀

▶

◀

▶

Back

Close

Full Screen / Esc

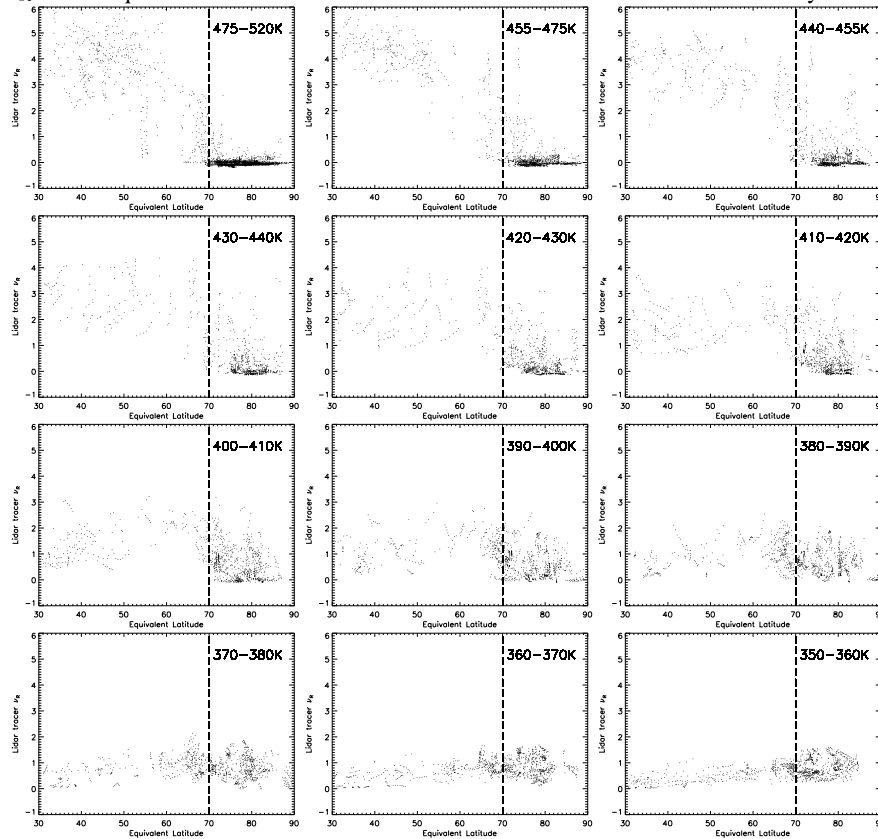
Print Version

Interactive Discussion

© EGU 2004

$\nu_R$  versus equivalent latitude

Days 0 to 40



**Fig. 1.**  $\nu_R$  versus equivalent latitude. Upper half: days 0–40; lower: days 41–80. Each plot represents a different potential temperature ( $\theta$ ) window. At high  $\theta$ , a clear separation is seen between dense aerosol at midlatitude and the clean vortex air.

Poleward transport of Pinatubo aerosol

P. Good and J. Pyle

Title Page

Abstract

Introduction

Conclusions

References

Tables

Figures

◀

▶

◀

▶

Back

Close

Full Screen / Esc

Print Version

Interactive Discussion

**Poleward transport of  
Pinatubo aerosol**

P. Good and J. Pyle

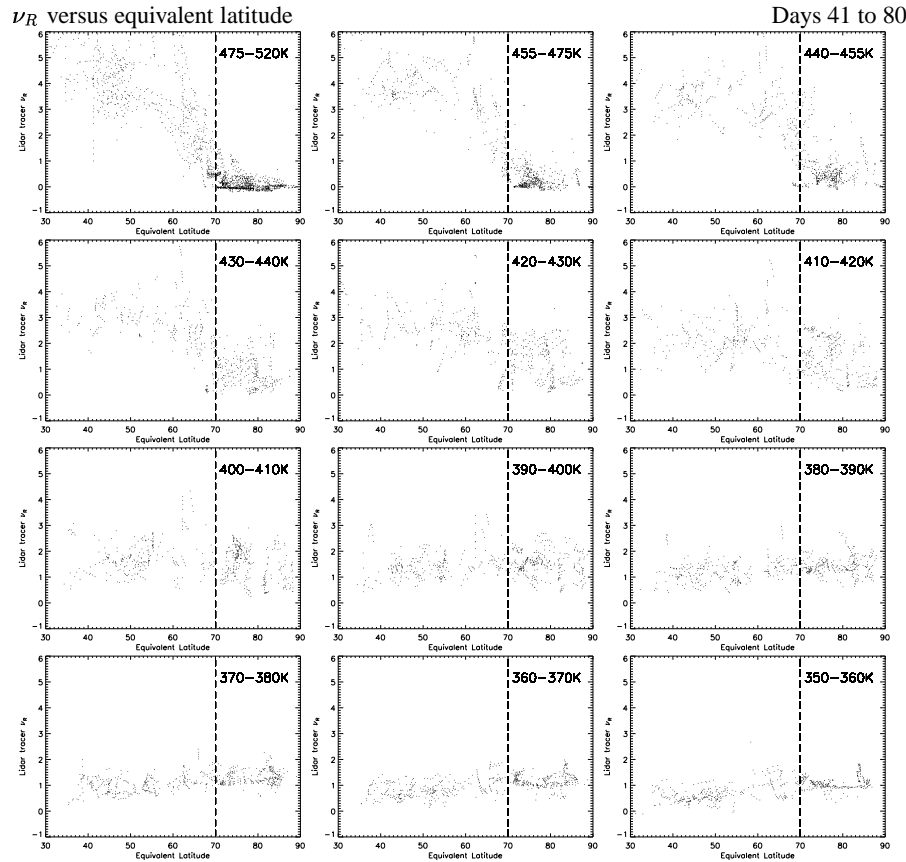


Fig. 1. Continued.

Title Page

Abstract Introduction

Conclusions References

Tables Figures

◀ ▶

◀ ▶

Back Close

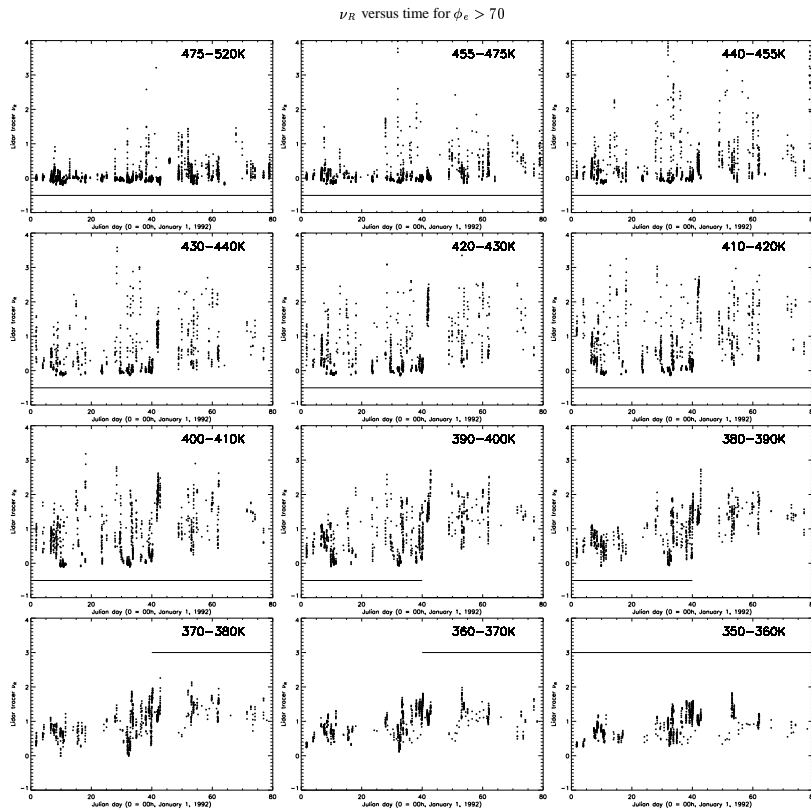
Full Screen / Esc

Print Version

Interactive Discussion

Poleward transport of  
Pinatubo aerosol

P. Good and J. Pyle



**Fig. 2.**  $\nu_R$  versus time, for observations where  $\phi_e > 70$ . Each plot is for a different potential temperature window (as in Fig. 1). These plots should be compared with Fig. 1. For  $\theta > 380\text{K}$ , the attention is on the time evolution of the minimum values of  $\nu_R$ , which show an increase after day 40. For  $\theta < 380\text{K}$ , the attention is on the time evolution of the maximum values of  $\nu_R$ , which show some signs of increase after about day 30. The significance of the minimum and maximum values, and the horizontal lines are explained in detail later in the text

Title Page

Abstract

Introduction

Conclusions

References

Tables

Figures

◀

▶

◀

▶

Back

Close

Full Screen / Esc

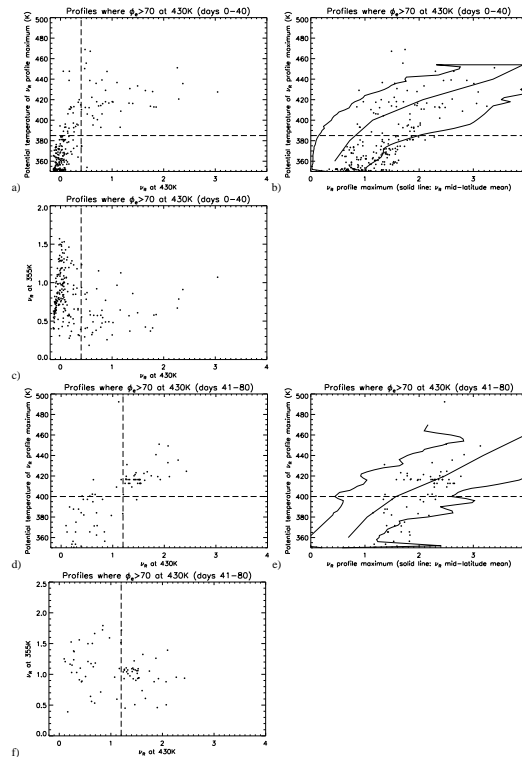
Print Version

Interactive Discussion

© EGU 2004

Poleward transport of  
Pinatubo aerosol

P. Good and J. Pyle



**Fig. 3.** Classifying the days profiles that have  $\phi_{\theta} > 70$  at 430 K. **(a)–(c):** days 0–40; **(d)–(f):** days 41–80. Profiles are characterised by:  $v_R$  at 430 K; the  $v_R$  profile maximum; the potential temperature at which the  $v_R$  profile maximum occurs; and  $v_R$  at 355 K. The three plots use these values as axes. (a) and (d): potential temperature of the  $v_R$  profile maximum versus  $v_R$  at 430 K. (b) and (e): potential temperature of the  $v_R$  profile maximum versus  $v_R$  profile maximum value. (c) and (f):  $v_R$  at 355 K versus  $v_R$  at 430 K. In (b) and (e), the profiles of the midlatitude mean, minima and maxima are plotted as solid lines. See text for details, including explanation of the dashed guide lines.

Title Page

Abstract

Introduction

Conclusions

References

Tables

Figures

◀

▶

◀

▶

Back

Close

Full Screen / Esc

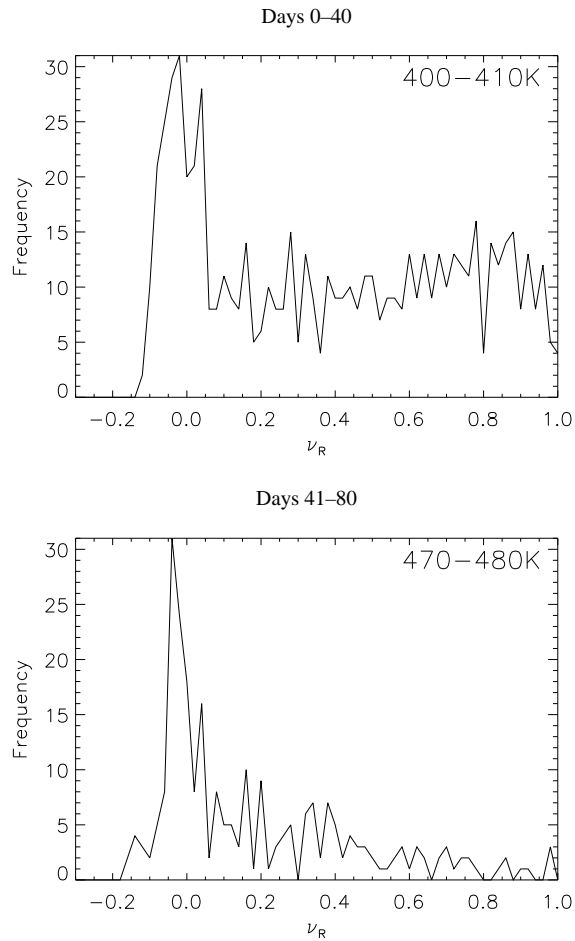
Print Version

Interactive Discussion



**Poleward transport of  
Pinatubo aerosol**

P. Good and J. Pyle



**Fig. 4.** Frequency distribution of  $\nu_R$ , for data selected where  $\phi_e > 70$ . Bin size is uniform at 0.04 in  $\nu_R$ .

Title Page

Abstract

Introduction

Conclusions

References

Tables

Figures

◀

▶

◀

▶

Back

Close

Full Screen / Esc

Print Version

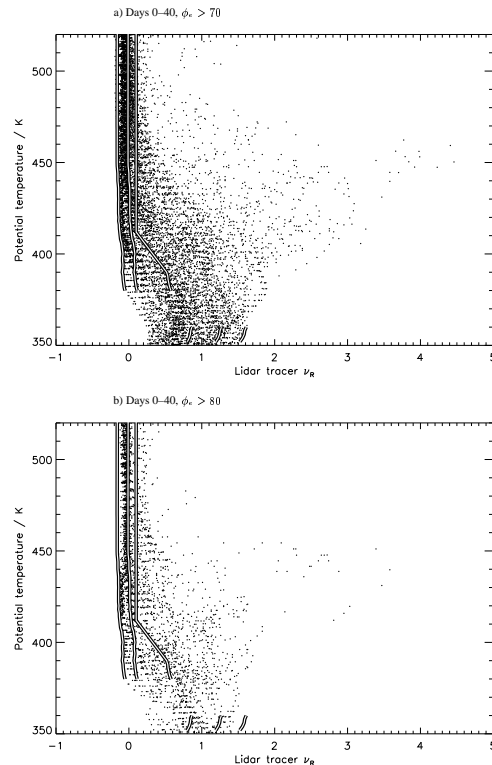
Interactive Discussion

---

**Poleward transport of  
Pinatubo aerosol**

 P. Good and J. Pyle
 

---

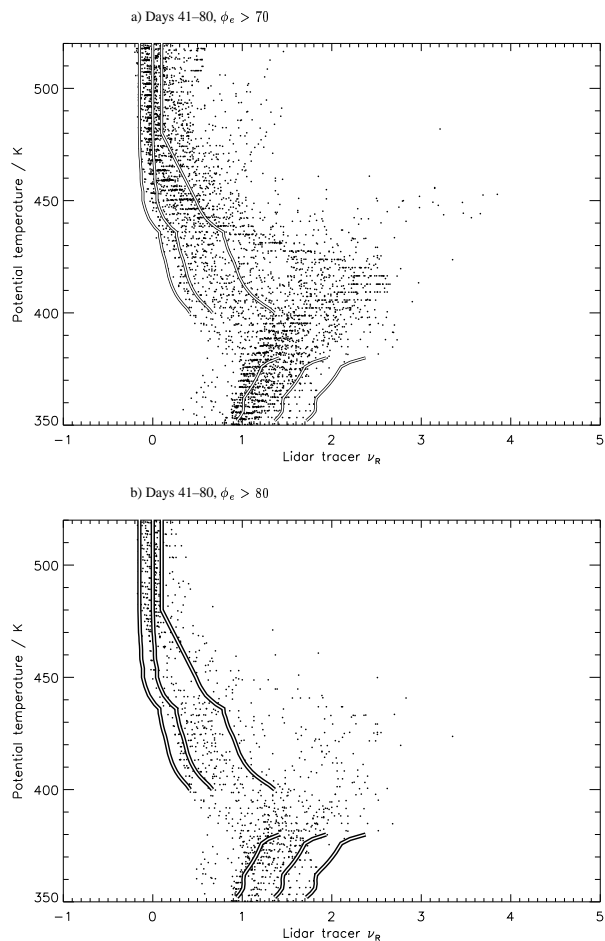


**Fig. 5.** Potential temperature versus  $\nu_R$ , for days 0–40. The scatter plot is the raw data, from **(a)**  $\phi_e > 70$  and **(b)**  $\phi_e > 80$ . Over-plotted are estimates for  $\nu_R^{(h)}$  for zero, medium-low and high  $\phi_e$  error.  $\nu_R^{(h)}$  is the value of  $\nu_R$  at the highest true equivalent latitudes – the air most isolated from midlatitude (i.e. deep inside the vortex, where it is present). Note the three lines below 360 K at  $\nu_R \sim 0.8, 1.3, 1.6$ . For  $\phi_e > 80$ , a larger proportion of the data falls within the error bounds of  $\nu_R^{(h)}$ , giving some confidence in the assumptions used in estimating  $\nu_R^{(h)}$ .

[Title Page](#)
[Abstract](#)
[Introduction](#)
[Conclusions](#)
[References](#)
[Tables](#)
[Figures](#)
[◀](#)
[▶](#)
[◀](#)
[▶](#)
[Back](#)
[Close](#)
[Full Screen / Esc](#)
[Print Version](#)
[Interactive Discussion](#)

**Poleward transport of  
Pinatubo aerosol**

P. Good and J. Pyle

**Fig. 6.** As Fig. 5, but for days 41–80.[Title Page](#)[Abstract](#)[Introduction](#)[Conclusions](#)[References](#)[Tables](#)[Figures](#)[◀](#)[▶](#)[◀](#)[▶](#)[Back](#)[Close](#)[Full Screen / Esc](#)[Print Version](#)[Interactive Discussion](#)

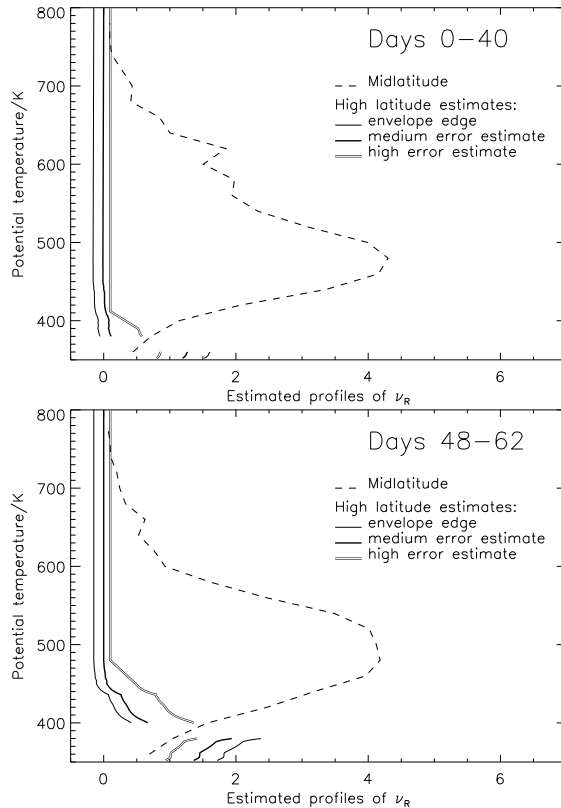
© EGU 2004

---

**Poleward transport of  
Pinatubo aerosol**

 P. Good and J. Pyle
 

---



**Fig. 7.** Estimated mid- and high equivalent latitude vertical profiles of  $v_R$ . (Note the short lines between 350–360 K). A very strongly isolated vortex is demonstrated for potential temperatures above about 475 K, but rapidly increasing poleward transport is found below this  $\theta$  level. At very low  $\theta$  the high latitude  $v_R$  is larger than the mid-latitude profile, due to stronger diabatic descent over the pole. Above about 500 K the apparent evolution in the midlatitude profile is partly due to an inability to completely separate midlatitude from tropical observations.

[Title Page](#)
[Abstract](#)
[Introduction](#)
[Conclusions](#)
[References](#)
[Tables](#)
[Figures](#)
[◀](#)
[▶](#)
[◀](#)
[▶](#)
[Back](#)
[Close](#)
[Full Screen / Esc](#)
[Print Version](#)
[Interactive Discussion](#)

© EGU 2004