



**HAL**  
open science

# Black carbon ageing in the Canadian Centre for Climate modelling and analysis atmospheric general circulation model

B. Croft, U. Lohmann, K. von Salzen

► **To cite this version:**

B. Croft, U. Lohmann, K. von Salzen. Black carbon ageing in the Canadian Centre for Climate modelling and analysis atmospheric general circulation model. *Atmospheric Chemistry and Physics Discussions*, 2005, 5 (2), pp.1383-1419. hal-00301043

**HAL Id: hal-00301043**

**<https://hal.science/hal-00301043>**

Submitted on 18 Jun 2008

**HAL** is a multi-disciplinary open access archive for the deposit and dissemination of scientific research documents, whether they are published or not. The documents may come from teaching and research institutions in France or abroad, or from public or private research centers.

L'archive ouverte pluridisciplinaire **HAL**, est destinée au dépôt et à la diffusion de documents scientifiques de niveau recherche, publiés ou non, émanant des établissements d'enseignement et de recherche français ou étrangers, des laboratoires publics ou privés.

**BC ageing in the  
CCCma AGCM**

B. Croft et al.

# Black carbon ageing in the Canadian Centre for Climate modelling and analysis atmospheric general circulation model

**B. Croft<sup>1</sup>, U. Lohmann<sup>2</sup>, and K. von Salzen<sup>3</sup>**

<sup>1</sup>Department of Physics and Atmospheric Science, Dalhousie University, Halifax, Canada

<sup>2</sup>Institute of Atmospheric and Climate Science, ETH Zurich, Zurich, Switzerland

<sup>3</sup>Canadian Centre for Climate modelling and analysis, Meteorological Service of Canada, Victoria, Canada

Received: 1 March 2005 – Accepted: 6 March 2005 – Published: 10 March 2005

Correspondence to: B. Croft (croft@mathstat.dal.ca)

© 2005 Author(s). This work is licensed under a Creative Commons License.

Title Page

Abstract

Introduction

Conclusions

References

Tables

Figures

◀

▶

◀

▶

Back

Close

Full Screen / Esc

Print Version

Interactive Discussion

EGU

## Abstract

Black carbon (BC) particles in the atmosphere have important impacts on climate. The amount of BC in the atmosphere must be carefully quantified to allow evaluation of the climate effects of this type of aerosol. In this study, we present the treatment of BC aerosol in the developmental version of the 4th generation Canadian Centre for Climate modelling and analysis (CCCma) atmospheric general circulation model (AGCM). The focus of this work is on the conversion of insoluble BC to soluble/mixed BC. Four separate parameterizations of this ageing process are compared to a control simulation that assumes no ageing occurs. These simulations use 1) an exponential decay with a fixed 24 h half-life, 2) a condensation and coagulation scheme, 3) an oxidative scheme, and 4) a linear combination of the latter two ageing treatments. Global BC burdens are 2.15, 0.15, 0.11, 0.21, and 0.11 Tg C for the control run, and four ageing schemes, respectively. The BC lifetimes are 98.1, 6.6, 5.0, 9.5, and 4.9 days, respectively. A computationally efficient parameterization that represents the processes of condensation, coagulation and oxidation is shown to simulate BC ageing well in the CCCma AGCM. As opposed to the globally fixed ageing time scale, this treatment of BC ageing is responsive to varying atmospheric composition.

## 1. Introduction

Aerosol particles in the atmosphere, such as black carbon (BC), have a significant influence on global climate. These particles both scatter and absorb radiation, thus impacting radiative transfer through the atmosphere (direct and semi-direct effects). Additionally, aerosols act as cloud condensation and ice nuclei, which influence cloud properties (indirect effects). The first indirect effect is based on the premise that for a given amount of cloud liquid water content, increased aerosol number implies more and smaller cloud droplets, and hence a more strongly reflective cloud. The second indirect effect suggests that a cloud with more but smaller cloud droplets will be less

Title Page

Abstract

Introduction

Conclusions

References

Tables

Figures

◀

▶

◀

▶

Back

Close

Full Screen / Esc

Print Version

Interactive Discussion

**BC ageing in the  
CCCma AGCM**

B. Croft et al.

Title Page

Abstract

Introduction

Conclusions

References

Tables

Figures

◀

▶

◀

▶

Back

Close

Full Screen / Esc

Print Version

Interactive Discussion

EGU

likely to precipitate (i.e. enhanced lifetime) due to a slower growth of the individual droplets. Black carbon aerosols have a role to play in all of these climate effects. For this reason, the concentration of BC aerosols must be accurately determined by atmospheric general circulation models (AGCMs).

Black carbon particles may exist in the atmosphere as either insoluble particles, or in mixtures that are considered soluble. BC in a soluble mixture will be more efficiently removed by dry and wet deposition processes, and have a shorter atmospheric residence time (Chylek et al., 1999; Hitznerberger et al., 2001; Zuberi et al., 2005). AGCMs must quantify the amount of BC that exists in the insoluble versus soluble state. For simplicity, many AGCMs assume that surface based sources are comprised of BC that is 80% insoluble, and 20% soluble (Cooke et al., 1999; Lohmann et al., 1999; Koch, 2001; Chung and Seinfeld, 2002). Following emission, BC is subject to atmospheric processes, which include oxidation, condensation and coagulation. These processes, termed the ageing processes, act to change the solubility of the BC aerosol. Parameterization of the BC ageing processes in AGCMs is key to the determination of the atmospheric abundance of this aerosol.

To date, many AGCMs have assumed that the conversion from insoluble to soluble BC follows an exponential decay process with a half-time of 24 h (Cooke et al., 1999; Lohmann et al., 1999; Koch, 2001; Chung and Seinfeld, 2002). This approach has an obvious limitation since decay rate should vary depending on the physical process that dominates the ageing. Coagulation should be enhanced in regions of greater total aerosol number concentration. Additionally, regions with large fossil fuel burning emissions will have higher concentrations of sulphuric and nitric acid vapours available for condensation, as compared to regions dominated by open burning emissions. The relative importance of oxidative processes is not well quantified in a global sense. However, laboratory studies have shown oxidation to play a role in the BC ageing process (Zuberi et al., 2005; Decesari et al., 2002; Pöschl et al., 2001).

The focus of this study is to examine the relative impact of several parameterizations of the BC ageing process on the BC burdens, concentrations and lifetimes. To this

**BC ageing in the  
CCCma AGCM**

B. Croft et al.

Title Page

Abstract

Introduction

Conclusions

References

Tables

Figures

◀

▶

◀

▶

Back

Close

Full Screen / Esc

Print Version

Interactive Discussion

EGU

end, four separate parameterizations are employed in the development version of the Canadian Centre for Climate modelling and analysis (CCCma) AGCM. These will be discussed in greater depth in the model description section. One parameterization is based on condensation and coagulation processes (Riemer et al., 2004a). This parameterization was originally designed for use in regions dominated by fossil fuel burning. A second parameterization is based exclusively on oxidation, following Pöschl et al. (2001) and Tsigaridis and Kanakidou (2003). A third and novel parameterization assumes that the processes of oxidation, condensation, and coagulation may be treated in an additive manner. These three parameterizations are compared to the parameterization used by many AGCMs, which assumes a fixed e-folding time, and additionally to a control simulation that assumes no ageing occurs.

An overview of the developmental version of the 4th generation CCCma AGCM, and the details of the various treatments for BC ageing are in Sect. 2. In Sect. 3, the modelled BC burdens, concentrations and lifetimes are presented. A comparison is made between the separate parameterizations, which shows the relative importance of the physical processes involved in BC ageing. Section 4 shows comparisons with observed surface layer concentrations for several sites in both continentally influenced, and remote locations. Section 5 includes comparisons with previous modelling studies, and with another emission inventory. The sensitivity of the modelled BC burdens to the factor of two uncertainty in the emission inventories (Bond et al., 2004) is examined.

## 2. Model description

A developmental version of the fourth generation CCCma AGCM has been used for this study (von Salzen et al., 2005)<sup>1</sup>. The spectral transform method is used with triangular truncation at wave number 47 (T47) to represent the horizontal spatial structure of

<sup>1</sup>von Salzen, K., McFarlane, N. A., and Lazare, M.: The role of shallow convection in the water and energy cycles of the atmosphere, *Climate Dynamics*, subm., 2005.

temperature, specific humidity, surface pressure, vorticity, divergence, and the mass mixing ratios of cloud liquid and ice water and chemical tracers. The model equations are solved on 35 vertical levels using a hybrid pressure-sigma grid. Physical terms and nonlinear processes are evaluated on a horizontal grid at a resolution of  $3.75 \times 3.75^\circ$ .

5 The time step used is 20 min.

An interactive sulphur cycle is included in the model (Lohmann et al., 1999; von Salzen et al., 2000). Sulphate aerosol concentrations affect clear-sky radiative transfer directly and indirectly via the first and second indirect effect in stratiform clouds (Haywood and Boucher, 2000; Lohmann and Feichter, 1997). In the model, the tracer  
10 quantity that is transported is the transformed variable,

$$s = \begin{cases} \frac{q_0}{[1 + p \ln(q_0/q)]^{1/p}}, & \text{if } q < q_0, \\ q, & \text{if } q \geq q_0, \end{cases}$$

where  $q$  is the physical variable (i.e. specific humidity, chemical tracer mixing ratios, and cloud liquid and ice water), and  $q_0$  and  $p$  are constants. This is a generaliza-  
15 tion of the hybrid variable transformation proposed by Boer (1995). The use of this transformed variable alleviates to a considerable extent the undesirable overshoots and undershoots that can occur when spectrally transporting rapidly varying functions (Merryfield and Holloway, 2003). In particular, unphysical negative values and the un-  
desirable effects that accompany them are largely suppressed. Although the transport algorithm is conservative with respect to  $s$ , the physical variable  $q$  no longer is precisely  
20 conserved under transport. However, by judiciously choosing  $q_0$  and  $p$ , the degree of global non-conservation can be effectively controlled. Therefore,  $q_0$  and  $p$  are assigned separately for each tracer according to a criterion that non-conservation errors do not  
exceed a certain threshold. The model also includes a method that locally corrects for any residual changes in global tracer masses which may be caused by transport of the  
25 hybrid variable. The AGCM also includes an updated version of the dust source flux parameterization described in Reader et al. (1999), with a single global source strength

[Title Page](#)
[Abstract](#)
[Introduction](#)
[Conclusions](#)
[References](#)
[Tables](#)
[Figures](#)
[◀](#)
[▶](#)
[◀](#)
[▶](#)
[Back](#)
[Close](#)
[Full Screen / Esc](#)
[Print Version](#)
[Interactive Discussion](#)

parameter, dependence on wind friction speed rather than wind speed, and improved soil-moisture dependence.

## 2.1. Carbon aerosol simulation

The two prognostic variables for black carbon (BC) in the AGCM are the insoluble BC and the soluble/mixed BC mass mixing ratios. Black carbon emissions are from [Bond et al. \(2004\)](#) for the fossil fuel and bio-fuel burning emissions, and from [van der Werf et al. \(2003\)](#) for open burning, including large agricultural fires. These emission inventories are for the year 1996 and 2000, respectively. The annual BC emissions are 3.04, 1.63, and 3.32 Tg C/yr for fossil fuel, biofuel, and open burning, respectively. Figure 1 shows the global distribution of column BC emissions. The open burning emissions are emitted into layers up to 6 km above the surface, whereas fossil fuel and biofuel are into layers up to 100 m. The distribution of these emissions into vertical layers is shown in the four panels of Fig. 2.

The emissions are assumed to be 80% insoluble and 20% soluble/mixed. Compounds may become attached to the black carbon and undergo chemical processes. This alters the solubility of the aerosol. These processes are termed ageing. Many models assume ageing to be an exponential decay process with a fixed half life close to 24 h ([Cooke et al., 1999](#); [Lohmann et al., 1999](#); [Chung and Seinfeld, 2002](#)). The aerosols are removed from the atmosphere by the processes of wet and dry deposition. The dry deposition flux is proportional to the BC concentration in the lowest model layer and a dry deposition velocity. This is 0.025 cm/s over dry surfaces and 0.2 cm/s over wetted surfaces for the soluble/mixed BC, and 0.025 cm/s over all surfaces for the insoluble BC. The wet deposition is proportional to the precipitation rate ([Feichter et al., 1996](#); [Lohmann et al., 1999](#)).

In this study, several physically based treatments for BC ageing are examined using the CCCma AGCM. Three physical processes that contribute to BC ageing include, coagulation with soluble aerosols, condensation of sulphuric and nitric acid gases onto the aerosol, and oxidation of compounds that have become attached to the BC aerosol.

Title Page

Abstract

Introduction

Conclusions

References

Tables

Figures

◀

▶

◀

▶

Back

Close

Full Screen / Esc

Print Version

Interactive Discussion

BC ageing in the  
CCCma AGCM

B. Croft et al.

Title Page

Abstract

Introduction

Conclusions

References

Tables

Figures

◀

▶

◀

▶

Back

Close

Full Screen / Esc

Print Version

Interactive Discussion

EGU

The condensation of volatile organic gases onto the BC aerosol is an additional process that is neglected in this study, but may well be of importance.

Using a mesoscale model, [Riemer et al. \(2004a\)](#) represented the processes of condensation and coagulation over a region roughly the size of one AGCM grid box, but in more explicit detail than a AGCM permits. These authors find that in a region dominated by significant fossil fuel burning emissions, the process of condensation is dominant during the day, and coagulation is dominant at night. The process of condensation is found to be very rapid. The e-folding time for the ageing process was found to be 8 h below 250 m, and above this and up to 2–3 km the e-folding time was 2 h. During the night time, [Riemer et al. \(2004a\)](#) found that the e-folding time,  $\tau$ , in hours, may be parameterized as a function of the internally mixed aerosol number concentration ( $N_a$ ),

$$\tau = \exp(-aN_a + b), \quad (1)$$

where  $N_a$  is less than  $4100 \text{ cm}^{-3}$  and

$$\tau = -c + dN_a, \quad (2)$$

where  $N_a$  is more than  $4100 \text{ cm}^{-3}$ . The constants,  $a$ ,  $b$ ,  $c$ , and  $d$ , are  $2.3012 \times 10^{-4} \text{ cm}^3$ , 4.4428, 3.8585 h, and  $1.48 \times 10^5 \text{ h cm}^{-3}$ , respectively. Another form of this relation has been suggested

$$\tau = \frac{a}{N_a} + \frac{b}{N_a^2} \quad (3)$$

([Riemer et al., 2004b](#)), but was not used in this study. The constants,  $a$  and  $b$ , are  $6 \times 10^4 \text{ h cm}^{-3}$  and  $3 \times 10^8 \text{ h cm}^{-6}$ , respectively. The zonal mean internally mixed aerosol number concentration is shown in Fig. 3, for the FIX-LIFE simulation. Coagulation is enhanced in regions of greater aerosol number following the [Riemer et al. \(2004a\)](#) parameterization. The internally mixed aerosol is assumed to include all of the mass of sulphate, soluble/mixed BC and OC, and accumulation mode dust and



Title Page

Abstract

Introduction

Conclusions

References

Tables

Figures

◀

▶

◀

▶

Back

Close

Full Screen / Esc

Print Version

Interactive Discussion

sea salt. The conversion from mass mixing ratio to number concentration is made assuming a log-normal size distribution with a mode radius of  $0.069 \mu\text{m}$ , and standard deviation of 1.538 following Lesins and Lohmann (2005)<sup>2</sup>. The Riemer et al. (2004a) parameterization is applied globally in the CCCma AGCM, and the results of these experiments are called COND-COAG.

Compounds may coat the BC aerosol, and then become oxidized (Pöschl et al., 2001). A pseudo-first order decay rate coefficient for the rate of oxidation of the BC coating has been determined from laboratory studies by Pöschl et al. (2001). These authors find that the decay rate coefficient ( $k$ ) is dependent on the number of available sites on the BC aerosol, and the sticking coefficients, residence times, and concentration of both ozone and water vapour molecules;

$$k = \frac{K_{\infty} k_{\text{O}_3} [\text{O}_3]}{1 + k_{\text{O}_3} [\text{O}_3] + k_{\text{H}_2\text{O}} [\text{H}_2\text{O}]}, \quad (4)$$

where  $K_{\infty}$  is the pseudo-first-order decay rate coefficient in the limit of high  $\text{O}_3$  ( $0.015 \text{ s}^{-1}$ ) and  $k_{\text{O}_3}$  and  $k_{\text{H}_2\text{O}}$  are the adsorption rate coefficients of ozone and water vapour, respectively. These are given by,

$$k_i = \frac{S_{o,i} \omega_i}{4[\text{SS}]_s} \tau_i, \quad (5)$$

where  $S_{o,i}$  is the sticking coefficient of  $\text{O}_3$  and  $\text{H}_2\text{O}$  ( $3.3 \times 10^{-3}$  and  $0.4 \times 10^{-3}$ , respectively),  $\omega_i$  is the mean thermal velocity,  $[\text{SS}]_s$  is the surface concentration of adsorption sites ( $5.7 \times 10^{14} \text{ cm}^{-2}$ ), and  $\tau_i$  is the mean residence time of  $\text{O}_3$  and  $\text{H}_2\text{O}$  on the surface sites (5 s and  $3 \times 10^{-3}$  s, respectively). Water vapour acts to impede the oxidation by ozone since these gases compete to occupy the available sites on the aerosol. The lifetime of the BC coating with respect to oxidation was found by these authors to be

<sup>2</sup>Lesins, G. and Lohmann, U.: Using MODIS and AERONET to determine GCM aerosol size, J. Atmos. Sci., subm., 2005.

in the order of 5 to 15 min for dry versus humid conditions. In poorly oxidizing environments, this lifetime will be longer. This parameterization is tested in the simulation called OXID.

Additionally, it is important to note that the rate of oxidation of a surface coating is not synonymous with the rate of production of a soluble aerosol particle. In particular, the material to be oxidized is not likely to be distributed homogeneously over the BC aerosol. In reality, there are physical shielding effects that slow the rate of the ageing. BC aerosols are not uniform spheres but have been observed to exhibit a chain structure that collapses to a clump like structure (Abel et al., 2003). Species that are deposited on the BC aerosol could be physically shielded from the oxidants by the layering of both themselves and the BC as suggested by Pöschl et al. (2001). There is little guidance to date on how to model the effects of physical shielding. As an initial approach, the reaction rate constant is scaled by a factor in the simulation OXID. The factor was introduced since simulations that did not include this factor, or where the factor was larger than 0.1, gave BC burdens that were clearly too low in comparison to surface observations (results not shown). The sensitivity to this scaling factor is considered in Sect. 3, and comparisons with surface observations are shown in Sect. 4.

To date, no AGCM studies have attempted to combine the processes of coagulation, condensation and oxidation. This will be the first study to do so with the simulation COND-COAG-OXID. As a first step, it is assumed that these processes can be combined in a linearly additive manner. This may under-estimate the ageing time scale since this assumes that the processes occur entirely independently, and do not compete with each other. Unfortunately, there is no laboratory evidence available to suggest how these processes interact.

### 3. Burdens, concentration and lifetimes

In total five primary simulations were conducted with the CCCma AGCM. All results shown are time averages from 3 year model runs following a 5 month spin up period

Title Page

Abstract

Introduction

Conclusions

References

Tables

Figures

◀

▶

◀

▶

Back

Close

Full Screen / Esc

Print Version

Interactive Discussion

**BC ageing in the  
CCCma AGCM**

B. Croft et al.

Title Page

Abstract

Introduction

Conclusions

References

Tables

Figures

◀

▶

◀

▶

Back

Close

Full Screen / Esc

Print Version

Interactive Discussion

EGU

using monthly mean climatological sea surface temperatures that are representative for the second half of the 20th century. The first simulation (NO-AGE) assumes no ageing i.e. there is no conversion from insoluble to soluble/mixed BC. This simulation serves to motivate the work, and demonstrates that it is important to represent the ageing process in a AGCM, but is a very unlikely scenario. The second simulation (FIX-LIFE) assumes an exponential decay of the insoluble BC to the soluble/mixed state with a fixed half life of 24 h. The remaining simulations are COND-COAG, OXID and COND-COAG-OXID, as discussed in the previous section.

The global and annual mean BC burdens, lifetimes and deposition rates for the five simulations are shown in Table 1. Geographical distributions of the burdens are shown in Fig. 4. The NO-AGE simulation gives a global and annual mean burden that is more than an order of magnitude higher than any of the other simulations. This suggests that the ageing parameterization is clearly important in an AGCM. This high burden is predicted because a higher percentage of the total BC resides in the insoluble state. Insoluble BC is less efficiently removed by the process of wet deposition, the primary removal process. Note that wet and dry deposition account for roughly 75 and 25 percent of the total deposition, respectively, in all of the simulations except NO-AGE. Aside from NO-AGE, the simulations give burdens that are all within a factor of two of each other. The lifetime of BC is found to be on the order of one week. The exception is the NO-AGE simulation that has a lifetime close to three months. The BC ageing is fastest in the COND-COAG and COND-COAG-OXID simulations, which assume that one very fast day-time ageing time-scale due to condensation of sulphuric and nitric acid applies globally. The impact of this assumption is investigated in the following subsection. The results of the COND-COAG and COND-COAG-OXID simulations are very similar, due to the small contribution of oxidation to the ageing process.

Figure 5 shows the zonal mean BC concentrations. The trends seen here are similar to those seen in the previous figure. The peak concentrations occur near the surface in the midlatitudes of the Northern Hemisphere due to fossil fuel burning. A secondary peak near the equator is associated with open and biofuel burning. In the OXID sim-

**BC ageing in the  
CCCma AGCM**

B. Croft et al.

Title Page

Abstract

Introduction

Conclusions

References

Tables

Figures

◀

▶

◀

▶

Back

Close

Full Screen / Esc

Print Version

Interactive Discussion

EGU

ulation, the BC concentrations decay slower with height than in the other simulations, except for NO-AGE. This reflects the slower ageing due to oxidation. Concentrations decay faster with height in the COND-COAG-OXID simulation compared to the FIX-LIFE simulation. This difference will have a potentially significant impact on estimates indirect effect due to ice nucleation in the upper troposphere since in the FIX-LIFE simulation has considerably more BC mass to act as ice nuclei (Lohmann, 2002) in the upper troposphere.

Figure 6 shows the fraction of the total BC that resides in the soluble/mixed state for four of the simulations as determined by taking the ratio of column burdens. We can see that in the NO-AGE simulation less than 10% of the BC aerosol exists in a soluble state. The 20% of BC emissions assumed to be soluble/mixed has been efficiently removed by the wet deposition processes. In all other simulations, over the oceans the percent in the soluble state is mostly over 90%. Over the continents, the transfer of BC to the soluble mixed state is much faster in the COND-COAG-OXID simulation as compared to the FIX-LIFE simulation. In the FIX-LIFE simulation, extensive continental zones exist where only about 60% of the BC is in the soluble mixed state. Whereas in the COND-COAG-OXID simulation continental BC is generally in excess of 80% in the soluble mixed state. This will have implications on estimates of the semi-direct and indirect effect of the BC aerosols, since only the portion of BC in the soluble mixed state can act as cloud condensation nuclei.

### 3.1. Sensitivity to condensation and coagulation parameterization

This subsection examines the sensitivity of the BC burdens to the condensation and coagulation parameterizations. The Riemer et al. (2004a) parameterization, used in the COND-COAG simulation, was originally developed for regions dominated fossil fuel burning. The question arises, how appropriate is the fast day-time e-folding time in 1) remote regions away from BC emission sources, and 2) regions dominated by open and biofuel burning? The COND-COAG simulation may under-estimate burdens in these regions since there is less sulphuric acid available for condensation there.

**BC ageing in the  
CCCma AGCM**

B. Croft et al.

Title Page

Abstract

Introduction

Conclusions

References

Tables

Figures

◀

▶

◀

▶

Back

Close

Full Screen / Esc

Print Version

Interactive Discussion

EGU

To give an upper bound on the BC burdens due to these concerns, two sensitivity simulations are conducted, MODR-COND-COAG and MODB-COND-COAG.

The MODR-COND-COAG simulation assumes no ageing due to condensation in remote regions, i.e. where the internally mixed aerosol number concentration is less than  $300 \text{ cm}^{-3}$  (Peng et al., 2002). Instead, the coagulation parameterization is applied during the day-time, as well as during the night-time in these relatively cleaner and remote regions. In the non-remote regions, the day-time condensation parameterization remains unmodified. Note that the modelled number concentrations are high in comparison to observations (Peng et al., 2002), since the choice of mode radius for the log-normal distribution is relatively low (see Hess et al., 1998). As a result, the BC burden in the MODR-COND-COAG simulation may err towards being too low, since less regions fall into the remote category than if the modelled number concentrations were lower.

The MODB-COND-COAG is a similar sensitivity test applied to regions dominated by open and biofuel burning. In these regions, BC concentrations are high, but  $\text{SO}_2$  concentrations are relatively much lower (Hobbs et al., 2003; Abel et al., 2003). Thus, relatively less sulphuric acid vapour should be available to contribute to the ageing. This simulation assumes no ageing due to condensation in regions exceeding a BC/ $\text{SO}_2$  ratio of 0.25. Instead, the coagulation parameterization is again applied during the day-time, as well as during the night-time. Outside these regions, the day-time condensation parameterization remains unmodified. Figure 7 shows that this threshold effectively separates the regions where biofuel and open burning dominate over fossil fuel burning. This simulation is likely to over-estimate the ageing time-scale since the process of condensation of volatile organic gases, as well as sulphuric acid condensation, is neglected. The BC burdens and deposition rates from these sensitivity tests are shown in Table 2.

The global and annual mean BC burdens from the MODR-COND-COAG and MODB-COND-COAG give the upper bounds on the BC burden estimates as compared to the COND-COAG simulation. Recent work (Abel et al., 2003) suggests that BC does age

**BC ageing in the  
CCCma AGCM**

B. Croft et al.

Title Page

Abstract

Introduction

Conclusions

References

Tables

Figures

◀

▶

◀

▶

Back

Close

Full Screen / Esc

Print Version

Interactive Discussion

EGU

rapidly in the open burning zones, and so there is reason to believe that the COND-COAG simulation may, in fact, be closer to reality for these regions. Additionally, one may argue that in the remote regions, there is less sulphuric acid, but there is also less BC, and so the ageing time-scale developed for the more polluted regimes may still be appropriate. This further supports the idea that the COND-COAG simulation maybe closer to reality than either of these two sensitivity tests. An additional sensitivity test was conducted to show the relative importance of the processes of coagulation on a global scale. This simulation (COAG) assumed that coagulation was the only process contributing to BC ageing over the entire diurnal cycle. The BC burdens and deposition rates from this sensitivity test are also shown in Table 2. Both condensation and coagulation are shown to contribute significantly to BC ageing.

### 3.2. Sensitivity to oxidation parameterization

The OXID simulation gave the slowest ageing but this is dependent on the scaling factor (0.01) chosen in the parameterization to account for the physical shielding effects. To investigate the impact of this factor, two other values are chosen, 0.1 and 0.001. Since this is the first study to use this factor, a wide range of values were selected. The resulting burdens are shown in Table 3. There is a high sensitivity to this factor. Simulations where the factor is set higher than 0.1 clearly under-estimated surface layer observations (not shown). This confirmed the hypothesis that the rate of oxidation can not be parameterized as being the same as the rate of ageing. Unfortunately, this necessitated the use of a corrective factor in the model. Further laboratory studies are needed to investigate how the rate of soot oxidation relates to the rate of production of a soluble aerosol (i.e. an aerosol that could act as a cloud condensation or ice nuclei). This will help to improve the uncertainty related to this scaling factor.

#### 4. Comparison with surface layer observations

There is a limited availability of observations of monthly mean BC surface layer concentrations for the complete annual cycle. Figure 8 shows the modelled surface layer BC concentrations for the simulations NO-AGE, FIX-LIFE1, OXID, COND-COAG-OXID.

5 These four simulations use the Bond et al. (2004) and van der Werf et al. (2003) BC emission inventories. Figure 9 shows a comparison of observations with modelled results for four continentally influenced sites. Figure 10 is similar but for four remote sites. The IMPROVE data was domain averaged over all sites participating in the IMPROVE project, and reporting BC concentrations between June 1998 and June 2002, to obtain  
10 the monthly means. AGCM results are also domain averaged over the corresponding model grid boxes. Details regarding the other datasets can be found in the respective papers quoted with each figure. Note that there is a factor of two uncertainty in the emissions inventory used (Bond et al., 2004). The sensitivity to this uncertainty is further investigated in Sect. 5. However, also shown on Figs. 9 and 10 are the results of  
15 the simulation FIX-LIFE2, which uses the combined Penner et al. (1993) and Lioussé et al. (1996) BC emission inventories, but includes the same BC conversion processes as the FIX-LIFE1 simulation. The simulations are for the most part within a factor of two of the observations, except for the NO-AGE simulation.

For the continentally influenced sites, there is a tendency for the model to underestimate the observations. This is particularly evident for Uji, Japan and Vienna, Austria. Even the NO-AGE simulation is less than these observations. In part, this may  
20 occur since these observations are taken closer to an urban plume, and are not representative of the mean of the GCM grid box. Otherwise, the NO-AGE simulation over-estimates the surface concentrations. This points to the importance of the ageing parameterization in AGCMs. For the remote sites, the over-estimation is greater,  
25 one or two orders of magnitude. This is expected given the longer distance from the emission sources, and the greater time frame that ageing processes occurred.

The model results compare best with the observations for the IMPROVE domain,

Title Page

Abstract

Introduction

Conclusions

References

Tables

Figures

◀

▶

◀

▶

Back

Close

Full Screen / Esc

Print Version

Interactive Discussion

**BC ageing in the  
CCCma AGCM**

B. Croft et al.

[Title Page](#)[Abstract](#)[Introduction](#)[Conclusions](#)[References](#)[Tables](#)[Figures](#)[◀](#)[▶](#)[◀](#)[▶](#)[Back](#)[Close](#)[Full Screen / Esc](#)[Print Version](#)[Interactive Discussion](#)

EGU

and the Alert site. Both datasets are means over a 3–4 year period and appropriate to the year of the emissions inventory. This improves the comparison. Additionally, the IMPROVE comparison has the benefit of a wider spatial coverage of observations, which will be more representative of the GCM grid box means. Also, there is likely less inter-annual variability in the North American fossil fuel dominated emissions compared to the Southern Hemisphere emissions, which are dominated by open burning. For the Mace Head site, the observations are for the mid-1990s as opposed to the year of the emission inventory.

In many cases, the COND-COAG-OXID simulation gives BC concentrations slightly lower than the FIX-LIFE simulation, i.e. the ageing half life is predicted to be less than 24 h. The opposite is seen at the Antarctica site. Slower ageing is expected there since this region of the southern hemisphere has lower aerosol number concentrations, which slows the ageing process. The COND-COAG-OXID has the advantage over the FIX-LIFE simulation in that it captures these regionally varying effects.

In summary, one must exercise caution in drawing conclusions related to comparisons of AGCM surface layer concentrations with observations. Factors to consider include, 1) how representative are the observations, taken at one site, of the grid box mean, 2) is there significant variability in the concentrations on an inter-annual basis that sensitizes the comparison to the year of the emissions scenario used by the model and 3) may the uncertainty in the emission scenario used vary considerably on a regional basis. The best match of comparison conditions are likely for the IMPROVE domain and at Alert. Results here demonstrate that the ageing parameterizations work well as opposed to the assumption of no ageing.

## 5. Sensitivity to emissions

The BC emission inventory used in this study has roughly a factor of two uncertainty (Bond et al., 2004). Table 4 shows the global and annual mean results from simulations where the emissions were both increased and decreased by a factor of two. There is



**BC ageing in the  
CCCma AGCM**

B. Croft et al.

Title Page

Abstract

Introduction

Conclusions

References

Tables

Figures

◀

▶

◀

▶

Back

Close

Full Screen / Esc

Print Version

Interactive Discussion

EGU

a high sensitivity to this factor of two uncertainty in the emissions. This highlights the importance of ongoing work to prepare accurate emission inventories. One of the few studies published to date using this same emission inventory in a AGCM was the study was by [Stier et al. \(2004\)](#). This study used an explicit representation of the processes of condensation and coagulation that was more computationally demanding than the parameterizations presented here. These authors found a annual and global mean BC burden of 0.11 Tg C. This is the same as the result of the COND-COAG simulation of this study.

Another frequently used emission inventory combines the open burning emissions from [Lioussé et al. \(1996\)](#) and the fossil fuel burning emissions from [Penner et al. \(1993\)](#). This inventory is representative of the mid 1980's, whereas the inventory used elsewhere in this study is representative of the latter 1990's. The FIX-LIFE simulation has been repeated with this inventory and is shown as FIX-LIFE2. The burdens, lifetimes and deposition rates are shown in [Table 5](#). One must be cautious not to conclude that global BC emissions have decreased as significantly as shown in the [Table 5](#). Observations from the IMPROVE dataset do show a downward trend in BC surface concentrations, but the significant difference between these emission inventories may largely reflect uncertainties in the inventories themselves. A comparison of the geographic distribution of the BC burdens is shown in [Fig. 11](#). Over much of Europe and Asia, BC burdens are higher by a factor of between 2 and 3 in the FIX-LIFE2 simulation. The FIX-LIFE1 simulation does have higher BC burdens in the southern portion of Africa. The inventory used in FIX-LIFE1 had higher open burning emissions in this region. Also shown in [Table 5](#) is a comparison with other studies. These results show that the global BC burden has a high sensitivity to the inventory used. Indeed, the burdens are roughly proportional to the emissions in the global and annual mean. Thus, a factor of two uncertainty in the emissions is expected to translate into a factor of two uncertainty in the predicted BC burdens.

## 6. Conclusions

Four separate parameterizations of the BC ageing process, suitable for use in a AGCM, have been examined in this study. The assumption of no ageing was shown to be clearly unphysical, and significantly over-estimated the observed BC surface layer concentrations. This occurred since a high percentage of the total BC mass remained in the insoluble fraction. Thus, there was less efficient removal by wet deposition, which was shown to account for roughly 75% of the total deposition. A parameterization developed by Riemer et al. (2004a) to represent BC ageing by condensation and coagulation processes was tested for the first time in an AGCM. This parameterization represented the BC ageing process reasonably on a global basis, despite being designed in a domain dominated by fossil fuel burning. Results from this simulation suggested that the global and annual mean half-life for the conversion of insoluble BC to soluble BC is less than the 24 h. For the first time, a parameterization that included processes of condensation, coagulation and oxidation was developed and used in AGCM. The contribution of oxidation to the BC ageing process was shown to be small. However, there remains a high level of uncertainty associated with the oxidative parameterization. On a global scale, condensation and coagulation were shown to contribute significantly to BC ageing. The assumption of an exponential decay of insoluble BC to the soluble/mixed state with a fixed 24 h half life was shown to represent BC burdens reasonably. However, this approach has the disadvantage in that it is not responsive to varying regional conditions. BC burdens were 2.15, 0.15, 0.11, 0.21, and 0.11 Tg C, for the simulations, assuming 1) no ageing, 2) a fixed half life of 24 h, 3) ageing by condensation and coagulation, 4) ageing by oxidation and 5) ageing by all three physical processes combined, respectively. For the same simulations respectively, BC lifetimes were 98.1, 6.6, 5.0, 9.5, and 4.9 days. The sensitivity of modelled BC burdens and concentrations to the factor of two uncertainty in emissions inventories was shown to be greater than sensitivity to the parameterization used to represent BC ageing, except for the oxidation based parameterization.

Title Page

Abstract

Introduction

Conclusions

References

Tables

Figures

◀

▶

◀

▶

Back

Close

Full Screen / Esc

Print Version

Interactive Discussion

**BC ageing in the  
CCCma AGCM**

B. Croft et al.

The BC ageing time scale is likely to change with future changes in atmospheric composition. A physically based BC ageing treatment will allow the AGCM to better respond to changes in oxidants and pollutants, as opposed to use of a fixed e-folding time. Future work is needed to study the impact of changes in the atmospheric composition on the ageing time scale and the effect that this will have on global BC burdens. As well, efforts must continue to better quantify global BC emissions. Aerosols are a relatively short-lived atmospheric constituent, and thus emissions strongly influence atmospheric burdens. Finally, further laboratory experiments are needed to better understand the mechanisms by which the processes of oxidation, coagulation, and condensation (not only of inorganic acids but also of volatile organic gases) interact and convert insoluble BC particles into particles can act as cloud condensation or ice nuclei. Ultimately, this will help to resolve one of the major uncertainties in climate research, the role of cloud-aerosol interactions.

*Acknowledgements.* The authors thank N. Riemer for helpful discussions. This work was supported by the National Science and Engineering Research Council of Canada, and the Canadian Foundation for Climate and Atmospheric Science collaborative research grants.

**References**

- Abel, S. J., Haywood, J. M., Highwood, E. J., Li, J., and Buseck, P. R.: Evolution of biomass burning aerosol properties from an agricultural fire in southern Africa, *Geophys. Res. Lett.*, 30, doi:10.1029/2003GL017342, 2003. [1391](#), [1394](#)
- Bodhaine, B. A.: Aerosol absorption measurements at Barrow, Mauna Loa and the South-Pole, *J. Geophys. Res.*, 100, 8967–8975, 1995. [1418](#)
- Boer, G. J.: Analyzed and forecast large-scale tropical divergent flow, *Mon. Wea. Rev.*, 123, 3539–3553, 1995. [1387](#)
- Bond, T. C., Streets, D. G., Yarber, K. F., Nelson, S. M., Woo, J.-H., and Klimont, Z.: A technology-based global inventory of black and organic carbon emissions from combustion, *J. Geophys. Res.*, 109, D14 203, doi:10.1029/2003JDO03697, 2004. [1386](#), [1388](#), [1396](#), [1397](#), [1408](#), [1409](#), [1410](#), [1419](#)

Title Page

Abstract

Introduction

Conclusions

References

Tables

Figures

◀

▶

◀

▶

Back

Close

Full Screen / Esc

Print Version

Interactive Discussion

EGU

**BC ageing in the  
CCCma AGCM**

B. Croft et al.

Title Page

Abstract

Introduction

Conclusions

References

Tables

Figures

◀

▶

◀

▶

Back

Close

Full Screen / Esc

Print Version

Interactive Discussion

- Chung, S. H. and Seinfeld, J. H.: Global distribution and climate forcing of carbonaceous aerosols, *J. Geophys. Res.*, 107, D194 407, doi:10.1029/2001JD001397, 2002. [1385](#), [1388](#)
- Chylek, P., Kou, L., Johnson, B., Boudala, F., and G. Lesins: Black carbon concentrations in precipitation and near surface air in and near Halifax, Nova Scotia, *Atmos. Environ.*, 33, 2269–2277, 1999. [1385](#)
- Cooke, W. F., Jennings, S. G., and Spain, T. G.: Black carbon measurements at Mace Head, 1989-1996, *J. Geophys. Res.*, 102, 25 339–25 346, 1997. [1417](#)
- Cooke, W. F., Liousse, C., Cachier, H., and Feichter, J.: Construction of a 1×1 fossil fuel emission data set for carbonaceous aerosol and implementation and radiative impact in the ECHAM4 model, *J. Geophys. Res.*, 104, 22 137–22 162, 1999. [1385](#), [1388](#)
- Decesari, S., Facchini, M. C., Matta, E., Mircea, M., Fuzzi, S., Chughtai, A. R., and Smith, D. M.: Water soluble organic compounds formed by oxidation of soot, *Atmos. Environ.*, 36, 1827–1832, 2002. [1385](#)
- Feichter, J., Kjellström, E., Rodhe, H., Dentener, F., Lelieveld, J., and Roelofs, G.-J.: Simulation of the tropospheric sulfur cycle in a global climate model, *Atmos. Environ.*, 30, 1693–1707, 1996. [1388](#)
- Haywood, J. and Boucher, O.: Estimates of the direct and indirect radiative forcing due to tropospheric aerosols: A review, *J. Geophys. Res.*, 38, doi:10.1029/1999RG000078, 2000. [1387](#)
- Hess, M., Koepke, P., and Schult, I.: Optical properties of aerosols and clouds: The software package OPAC, *Bull. Am. Meteorol. Soc.*, 79, 831–844, 1998. [1394](#)
- Hitzenberger, R., Berner, A., Giebl, H., Drobesch, K., Kasper-Giebl, A., Loefflund, M., Urban, H., and Puxbaum, H.: Black carbon (BC) in alpine aerosols and cloud water – concentrations and scavenging efficiencies, *Atmos. Environ.*, 35, 5135–5141, 2001. [1385](#)
- Hobbs, P. V., Sinha, P., Yokelson, R. J., Christian, T. J., Blake, D. R., Gao, S., Kirchstetter, T. W., Novakov, T., and Pilewskie, P.: Evolution of gases and particles from a savanna fire in South Africa, *J. Geophys. Res.*, 108, doi:10.1029/2003GL017342, 2003. [1394](#)
- Höller, R., Tohno, S., Kasahara, M., and Hitzenberger, R.: Long-term characterization of carbonaceous aerosol in Uji, Japan, *Atmos. Environ.*, 36, 1267–1275, 2002. [1417](#)
- Koch, D.: Transport and direct radiative forcing of carbonaceous and sulfate aerosols in the GISS GCM, *J. Geophys. Res.*, 106, 20 311–20 332, 2001. [1385](#)
- Liousse, C., Penner, J. E., Chung, C., Walton, J. J., Eddleman, H., and Cachier, H.: a global three-dimensional model study of carbonaceous aerosols, *J. Geophys. Res.*, 101, 19 411–

**BC ageing in the  
CCCma AGCM**

B. Croft et al.

Title Page

Abstract

Introduction

Conclusions

References

Tables

Figures

◀

▶

◀

▶

Back

Close

Full Screen / Esc

Print Version

Interactive Discussion

19 432, 1996. [1396](#), [1398](#), [1408](#), [1419](#)

Lohmann, U.: A glaciation indirect effect caused by soot aerosols, *Geophys. Res. Lett.*, 29, doi:10.1029/2001GL014357, 2002. [1393](#)

5 Lohmann, U. and Feichter, J.: Impact of sulfate aerosols on albedo and lifetime of clouds: A sensitivity study with the ECHAM4 GCM, *J. Geophys. Res.*, 102, 13 685–13 700, 1997. [1387](#)

Lohmann, U., Feichter, J., Chuang, C. C., and Penner, J. E.: Prediction of the number of cloud droplets in the ECHAM GCM, *J. Geophys. Res.*, 104, 9169–9198, 1999. [1385](#), [1387](#), [1388](#)

Merryfield, W. J. and Holloway, G.: Application of an accurate advection algorithm to sea-ice modelling, *Ocean Modelling*, 5, 1–15, 2003. [1387](#)

10 Peng, Y., Lohmann, U., Leaitch, R., Banic, C., and Couture, M.: The cloud albedo-cloud droplet effective radius relationship for clean and polluted clouds from RACE and FIRE.ACE, *J. Geophys. Res.*, 107, doi:10.1029/2000JD000281, 2002. [1394](#)

Penner, J. E., Eddleman, H., and Novakov, T.: Towards the development of a global inventory for black carbon emissions, *Atmos. Environ.*, 27A, 1277–1295, 1993. [1396](#), [1398](#), [1408](#), [1419](#)

Pöschl, U., Letzel, T., Schauer, C., and Niessner, R.: Interaction of ozone and water vapor with spark discharge soot aerosol particles coated with benzo[a]pyrene: O<sub>3</sub> and H<sub>2</sub>O Adsorption, Benzo[a]pyrene degradation, and Atmospheric implications, *J. Phys. Chem.*, 105, 4029–4041, 2001. [1385](#), [1386](#), [1390](#), [1391](#)

20 Puxbaum, H., Gomiscek, B., Kalina, M., Salam, A., Stopper, S., Preining, O., and Hauck, H.: A dual study PM<sub>2.5</sub> and PM<sub>10</sub> aerosol chemistry in the larger region of Vienna, Austria, *Atmos. Environ.*, 38, 3949–3958, 2004. [1417](#)

Reader, M. C., Fung, I., and McFarlane, N.: The mineral dust aerosol cycle during the Last Glacial Maximum, *J. Geophys. Res.*, 104,, D8, 9381–9398, 1999. [1387](#)

25 Riemer, N., Vogel, H., and B.Vogel: A parameterization of the soot aging for global climate models, *Atmos. Chem. Phys. Discuss.*, 4, 2089–2115, 2004a, [SRef-ID: 1680-7375/acpd/2004-4-2089](#). [1386](#), [1389](#), [1390](#), [1393](#), [1399](#)

Riemer, N., Vogel, H., and Vogel, B.: Soot aging time scales in polluted regions during day and night, *Atmos. Chem. Phys.*, 4, 1885–1893, 2004b, [SRef-ID: 1680-7324/acp/2004-4-1885](#). [1389](#)

30 Sharma, S., Lavoue, D., Cachier, H., Barrie, L., and Gong, S. L.: Long-term trends of the black carbon concentrations in the Canadian arctic, *J. Geophys. Res.*, 109, D15 203, doi:10.1029/2003JD004331, 2004. [1418](#)

Stier, P., Feichter, J., Kloster, S., Vignati, E., Wilson, J., Ganzeveld, L., Tegen, I., Werner, M., Balkanski, Y., Schult, M., and Boucher, O.: The aerosol-climate model ECHAM5-HAM, Atmos. Chem. Phys. Discuss., 4, 5551–5623, 2004,

[SRef-ID: 1680-7375/acpd/2004-4-5551](#). [1398](#)

Tsigaridis, K. and Kanakidou, M.: Global modelling of secondary organic aerosol in the troposphere: A sensitivity analysis, Atmos. Chem. Phys. Discuss., 3, 2879–2929, 2003,

[SRef-ID: 1680-7375/acpd/2003-3-2879](#). [1386](#)

van der Werf, G. R., Randerson, J. T., Collatz, G. J., and Giglio, L.: Carbon emissions from fires in tropical and subtropical ecosystems, Global Change Biology, 9, 547–562, 2003. [1388](#),

[1396](#), [1408](#), [1409](#), [1410](#), [1419](#)

von Salzen, K., Leighton, H. G., Ariya, P. A., Barrie, L. A., Gong, S. L., Blanchet, J.-P., Spacek, L., Lohmann, U., and Kleinman, L. I.: Sensitivity of sulfate aerosol size distributions and CCN concentrations over North America to SO<sub>x</sub> emissions and H<sub>2</sub>O<sub>2</sub> concentrations, J. Geophys. Res., 105, 9741–9765, 2000. [1387](#)

Wolff, E. W. and Cachier, H.: Concentrations and seasonal cycle of black carbon in aerosol at a coastal Antarctic station, J. Geophys. Res., 103, 11 033–11 041, 1998. [1418](#)

Zuberi, B., Johnson, K. S., Aleks, G. K., Molina, L. T., and Molina, M. J.: Hydrophylic properties of aged soot, Geophys. Res. Lett., 32, L01 807, doi:10.1029/2004GL021496, 2005. [1385](#)

**BC ageing in the  
CCCma AGCM**

B. Croft et al.

Title Page

Abstract

Introduction

Conclusions

References

Tables

Figures

◀

▶

◀

▶

Back

Close

Full Screen / Esc

Print Version

Interactive Discussion

## BC ageing in the CCCma AGCM

B. Croft et al.

**Table 1.** Global and annual mean black carbon burdens, lifetimes, and deposition rates.

	NO-AGE	FIX-LIFE	COND- COAG	OXID	COND- COAG- OXID
Emission (Tg C/yr)	8.01	8.01	8.01	8.01	8.01
Burden (Tg C)	2.153	0.145	0.109	0.209	0.108
Lifetime (days)	98.1	6.6	5.0	9.5	4.9
Wet dep (Tg C/yr)	5.07	6.09	5.99	6.00	5.98
Dry dep (Tg C/yr)	2.64	1.92	2.02	2.01	2.03

Title Page

Abstract

Introduction

Conclusions

References

Tables

Figures

◀

▶

◀

▶

Back

Close

Full Screen / Esc

Print Version

Interactive Discussion

EGU

BC ageing in the  
CCCma AGCM

B. Croft et al.

**Table 2.** Global and annual mean BC burdens, lifetimes and deposition rates from the sensitivity studies related to the condensation and coagulation parameterization.

	COND- COAG	MODR- COND- COAG	MODB- COND- COAG	COAG
Emission (Tg C/yr)	8.01	8.01	8.01	8.01
Burden (Tg C)	0.109	0.113	0.140	0.171
Lifetime (days)	5.0	5.1	6.4	7.8
Wet dep (Tg C/yr)	5.99	5.96	5.96	5.99
Dry dep (Tg C/yr)	2.02	2.05	2.05	2.02

Title Page

Abstract

Introduction

Conclusions

References

Tables

Figures

I◀

▶I

◀

▶

Back

Close

Full Screen / Esc

Print Version

Interactive Discussion

EGU



**BC ageing in the  
CCCma AGCM**

B. Croft et al.

Title Page

Abstract

Introduction

Conclusions

References

Tables

Figures

I◀

▶I

◀

▶

Back

Close

Full Screen / Esc

Print Version

Interactive Discussion

EGU

**Table 3.** Global and annual mean BC burdens, lifetimes and deposition rates from the sensitivity studies related to the oxidation parameterization.

	OXID(0.001)	OXID(0.01)	OXID(0.1)
Emission (Tg C/yr)	8.01	8.01	8.01
Burden (Tg C)	0.483	0.209	0.106
Lifetime (days)	22.0	9.5	4.8
Wet dep (Tg C/yr)	5.75	6.00	6.00
Dry dep (Tg C/yr)	2.24	2.01	2.01

---

**BC ageing in the  
CCCma AGCM**

B. Croft et al.

**Table 4.** Global and annual mean BC burdens, lifetimes and deposition rates from the sensitivity studies related to emissions. Emissions are scaled by factors shown in table. All results shown are for the FIX-LIFE simulation.

	0.5 x EMISS	1.0 x EMISS	2.0 x EMISS
Emission (Tg C/yr)	4.00	8.01	16.02
Burden (Tg C)	0.071	0.145	0.317
Lifetime ( days)	6.5	6.6	7.2
Wet dep (Tg C/yr)	2.98	6.09	12.29
Dry dep (Tg C/yr)	1.02	1.92	3.73

---

[Title Page](#)
[Abstract](#)[Introduction](#)[Conclusions](#)[References](#)[Tables](#)[Figures](#)[◀](#)[▶](#)[◀](#)[▶](#)[Back](#)[Close](#)[Full Screen / Esc](#)[Print Version](#)[Interactive Discussion](#)

EGU

## BC ageing in the CCCma AGCM

B. Croft et al.

**Table 5.** Simulations with different emissions inventories and comparison with previous studies. FIX-LIFE1 and FIX-LIFE2 simulations are both with the CCCma AGCM but use the combined Bond et al. (2004)–van der Werf et al. (2003) and Liousse et al. (1996)–Penner et al. (1993) inventories, respectively.

	FIX-LIFE1	FIX-LIFE2	Lohmann et al. (1999)	Koch (2001)	Chung and Seinfeld (2002)	Stier et al. (2004)
Emissions (Tg C/yr)	8.01	13.1	11.7	12.4	12.0	7.7
Burdens (Tg C)	0.15	0.23	0.26	0.15	0.22	0.11
Lifetimes (days)	6.6	6.5	8.1	4.4	6.4	5.4

Title Page

Abstract

Introduction

Conclusions

References

Tables

Figures

◀

▶

◀

▶

Back

Close

Full Screen / Esc

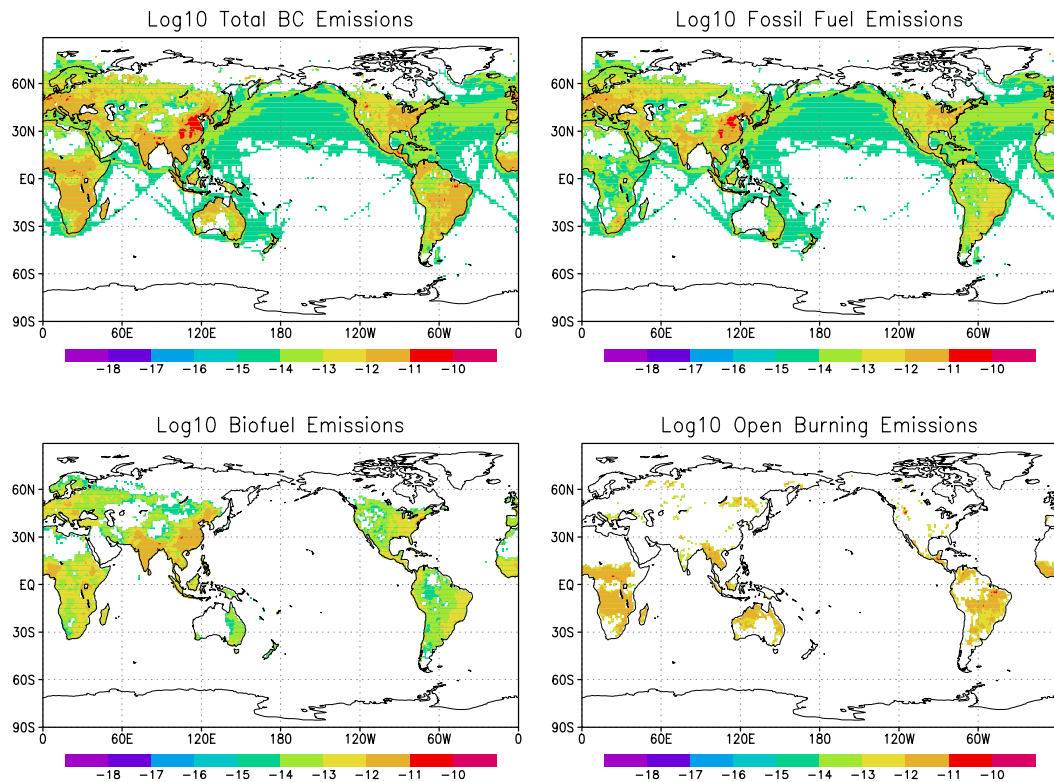
Print Version

Interactive Discussion

EGU

BC ageing in the  
CCCma AGCM

B. Croft et al.



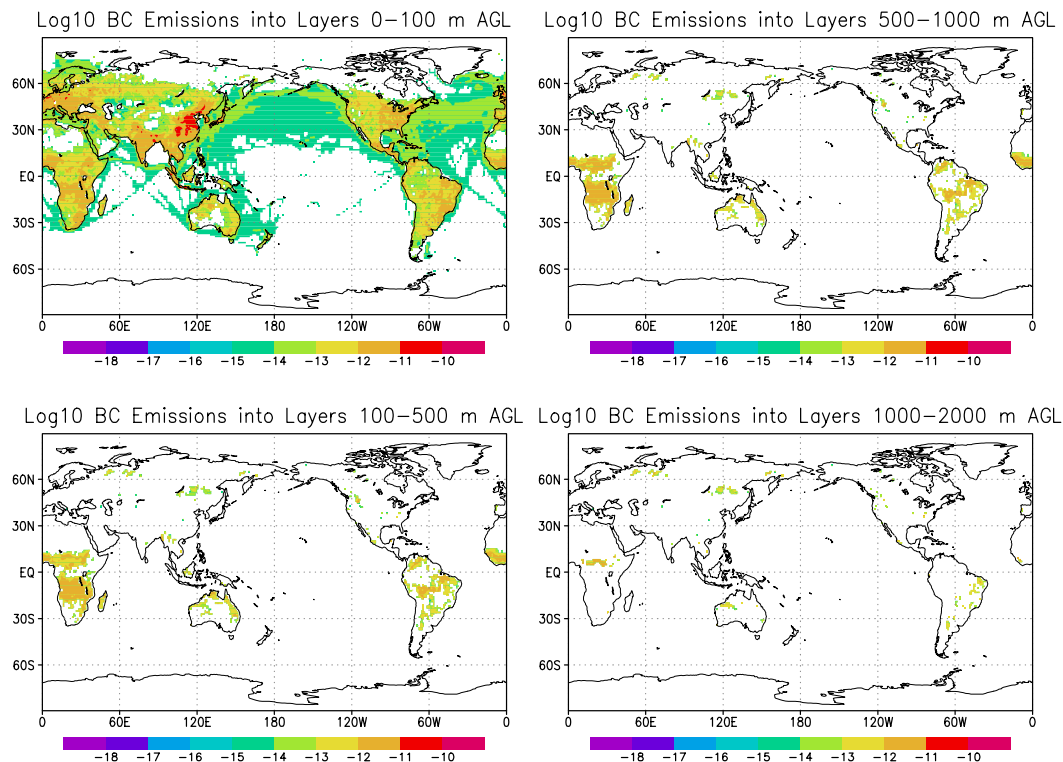
**Fig. 1.** Log<sub>10</sub> of annual mean column black carbon emissions (kg C/m<sup>2</sup>/s) from Bond et al. (2004) for fossil fuel and bio-fuel burning, and from van der Werf et al. (2003) for open burning.

[Title Page](#)[Abstract](#)[Introduction](#)[Conclusions](#)[References](#)[Tables](#)[Figures](#)[◀](#)[▶](#)[◀](#)[▶](#)[Back](#)[Close](#)[Full Screen / Esc](#)[Print Version](#)[Interactive Discussion](#)

EGU

BC ageing in the  
CCCma AGCM

B. Croft et al.



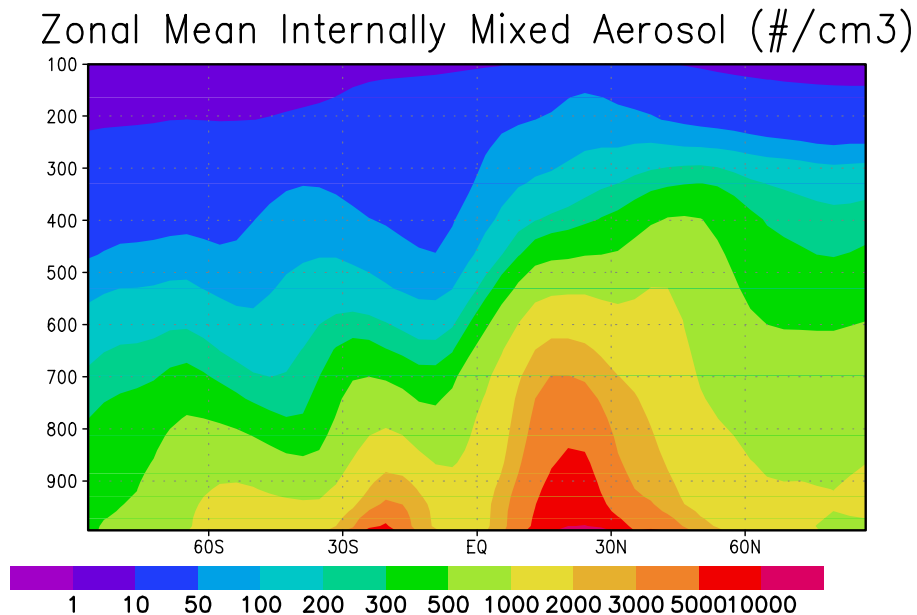
**Fig. 2.** Log<sub>10</sub> of annual mean black carbon emissions ( $\text{kg C/m}^2/\text{s}$ ) into layers from surface to 100 m, 100–500 m, 500–1000 m, and 1000–2000 m from [Bond et al. \(2004\)](#) for fossil fuel and bio-fuel burning, and from [van der Werf et al. \(2003\)](#) for open burning.

[Title Page](#)[Abstract](#)[Introduction](#)[Conclusions](#)[References](#)[Tables](#)[Figures](#)[◀](#)[▶](#)[◀](#)[▶](#)[Back](#)[Close](#)[Full Screen / Esc](#)[Print Version](#)[Interactive Discussion](#)

EGU

BC ageing in the  
CCCma AGCM

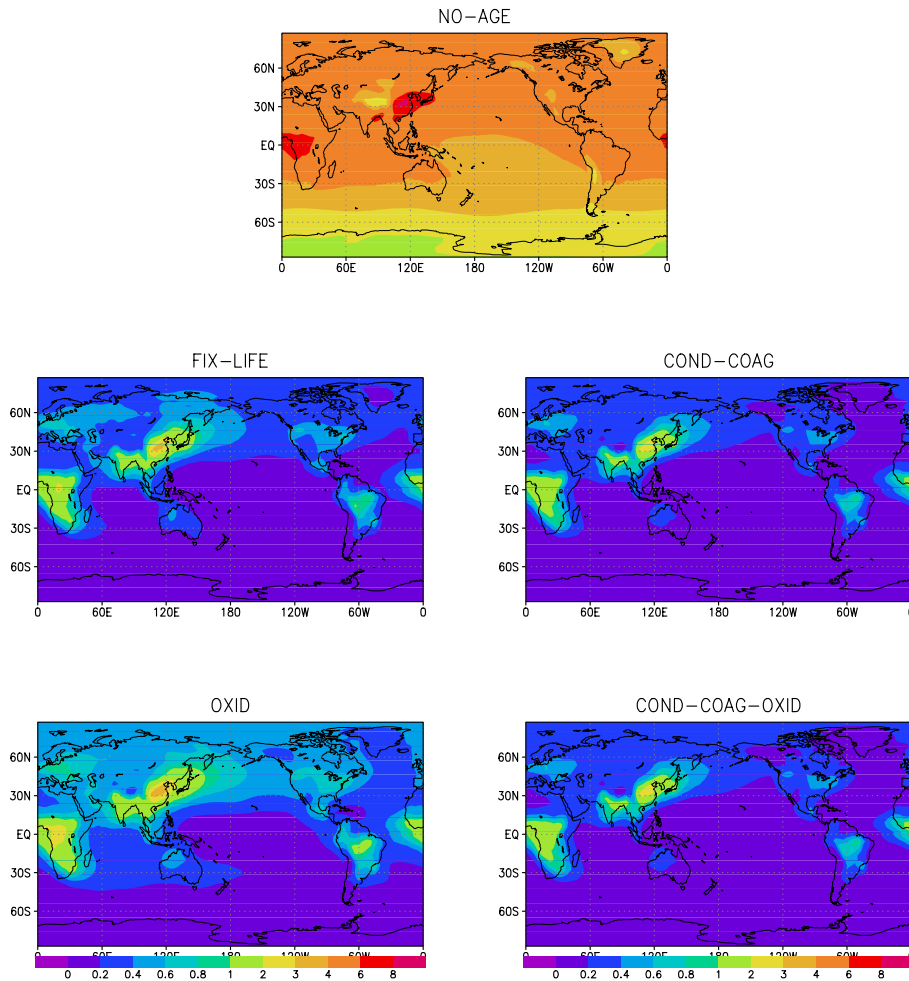
B. Croft et al.



**Fig. 3.** Zonal and annual mean internally mixed aerosol number concentration (number  $cm^{-3}$ ). Vertical axis is model hybrid sigma level scaled by 1000, but roughly corresponds to hPa.

[Title Page](#)[Abstract](#)[Introduction](#)[Conclusions](#)[References](#)[Tables](#)[Figures](#)[◀](#)[▶](#)[◀](#)[▶](#)[Back](#)[Close](#)[Full Screen / Esc](#)[Print Version](#)[Interactive Discussion](#)

EGU



**Fig. 4.** Annual mean black carbon burdens ( $\text{mg C/m}^2$ ) from the five primary simulations. Same colorbar applies to all plots.

Title Page

Abstract

Introduction

Conclusions

References

Tables

Figures

◀

▶

◀

▶

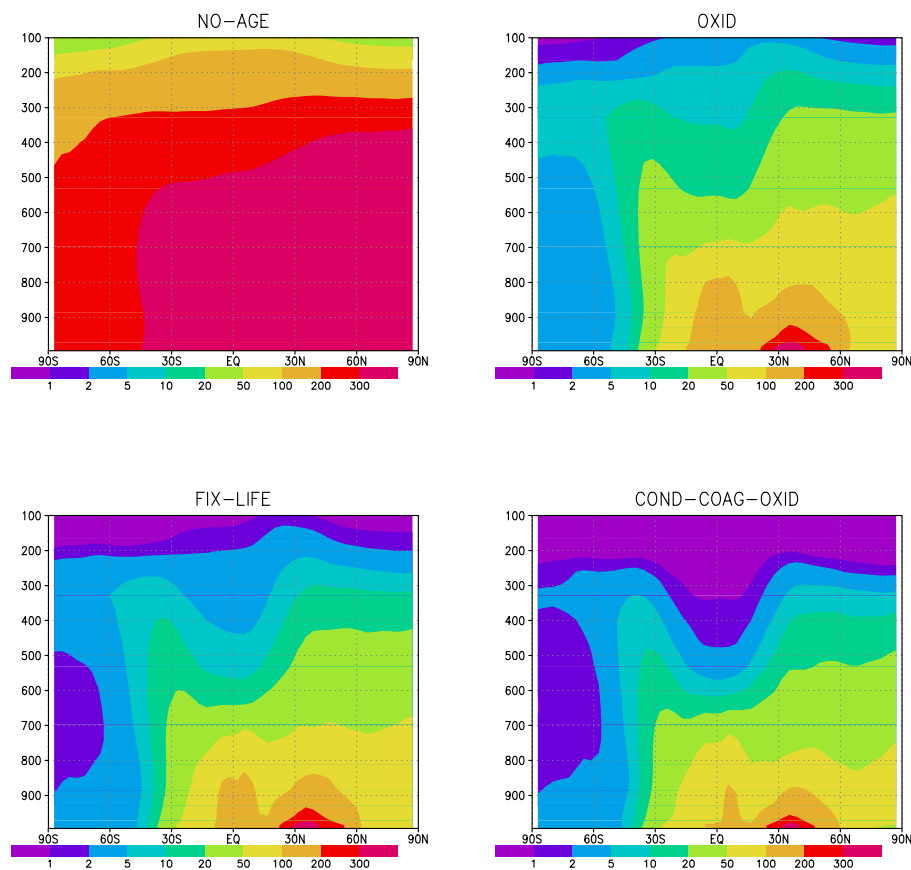
Back

Close

Full Screen / Esc

Print Version

Interactive Discussion



**Fig. 5.** Zonal and annual mean BC concentrations (ng/m<sup>3</sup>) from four of the simulations. Vertical axis is model hybrid sigma level scaled by 1000, but roughly corresponds to hPa.

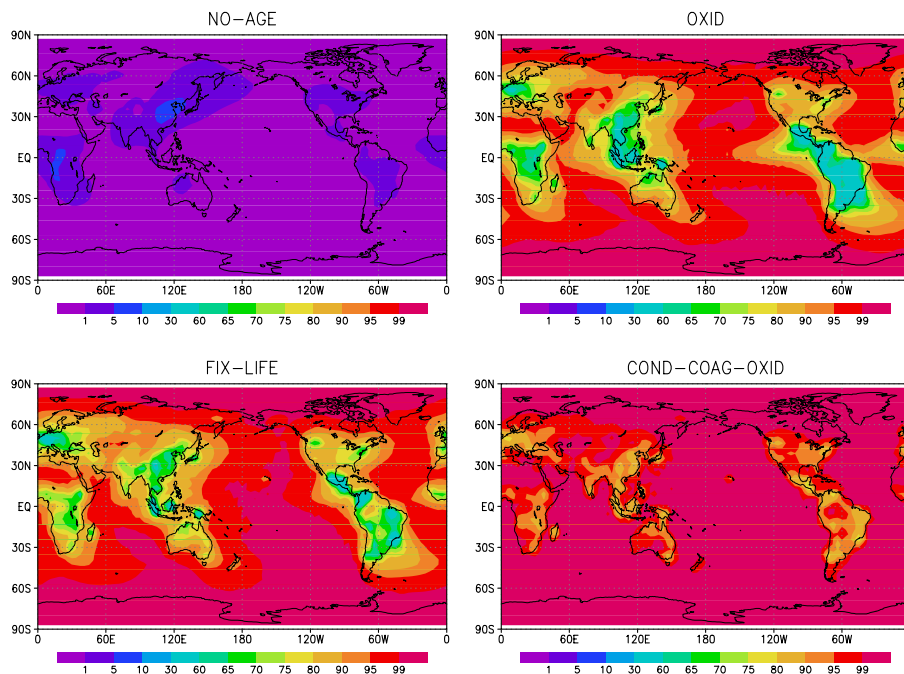
[Title Page](#)[Abstract](#)[Introduction](#)[Conclusions](#)[References](#)[Tables](#)[Figures](#)[◀](#)[▶](#)[◀](#)[▶](#)[Back](#)[Close](#)[Full Screen / Esc](#)[Print Version](#)[Interactive Discussion](#)

EGU



BC ageing in the  
CCCma AGCM

B. Croft et al.



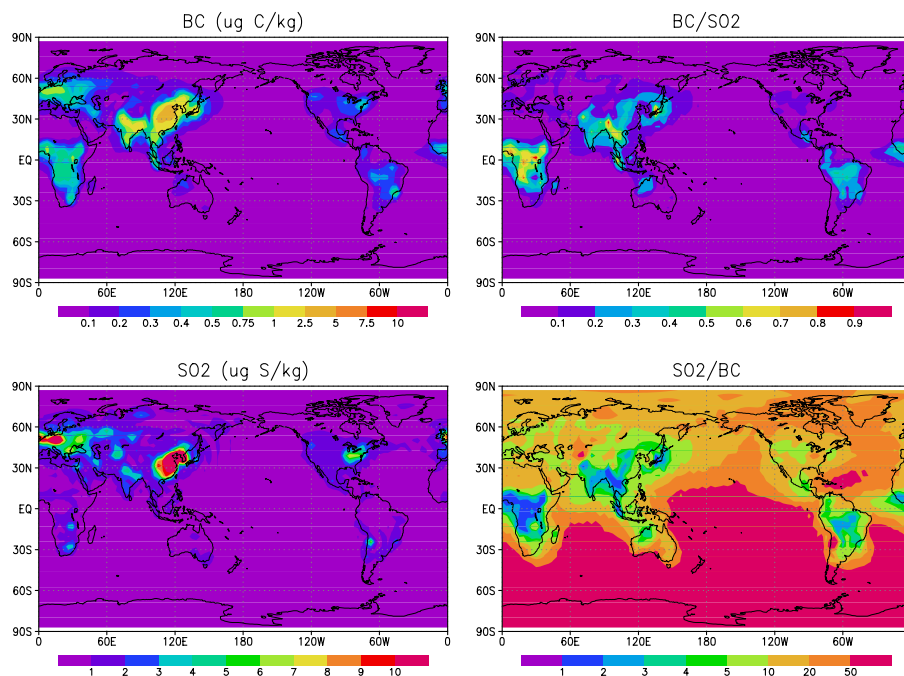
**Fig. 6.** Annual mean percent of BC existing in the soluble/mixed state as determined by the ratio of column burdens from four of the BC ageing simulations.

[Title Page](#)[Abstract](#)[Introduction](#)[Conclusions](#)[References](#)[Tables](#)[Figures](#)[◀](#)[▶](#)[◀](#)[▶](#)[Back](#)[Close](#)[Full Screen / Esc](#)[Print Version](#)[Interactive Discussion](#)

EGU

BC ageing in the  
CCCma AGCM

B. Croft et al.



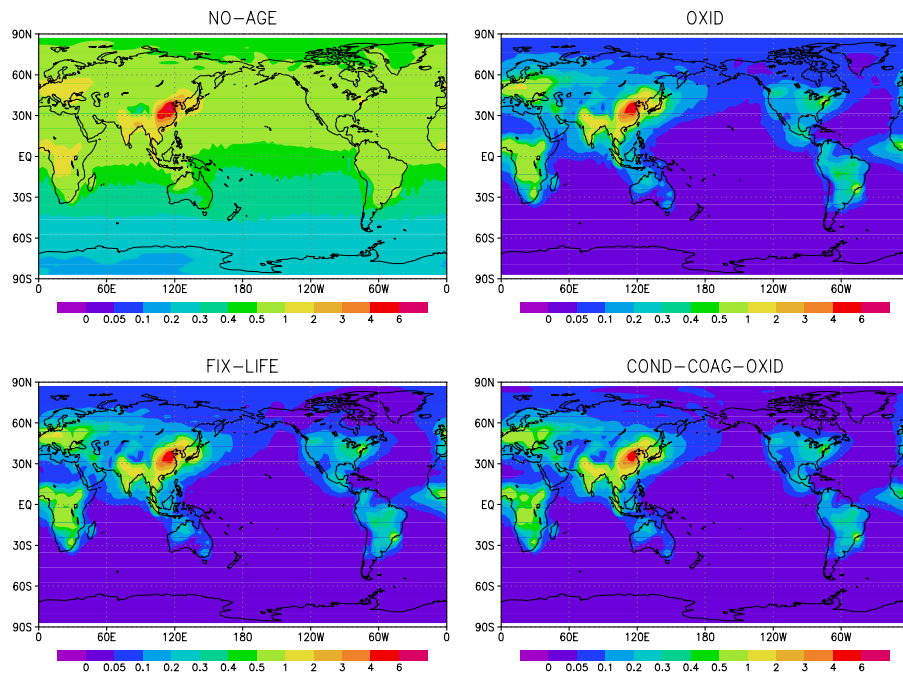
**Fig. 7.** Annual mean surface layer BC and SO<sub>2</sub> mass mixing ratios from the FIX-LIFE simulation shown on left. Surface layer black carbon to SO<sub>2</sub> ratio (kg C/kg S), and inverse shown on right.

[Title Page](#)[Abstract](#)[Introduction](#)[Conclusions](#)[References](#)[Tables](#)[Figures](#)[◀](#)[▶](#)[◀](#)[▶](#)[Back](#)[Close](#)[Full Screen / Esc](#)[Print Version](#)[Interactive Discussion](#)

EGU

BC ageing in the  
CCCma AGCM

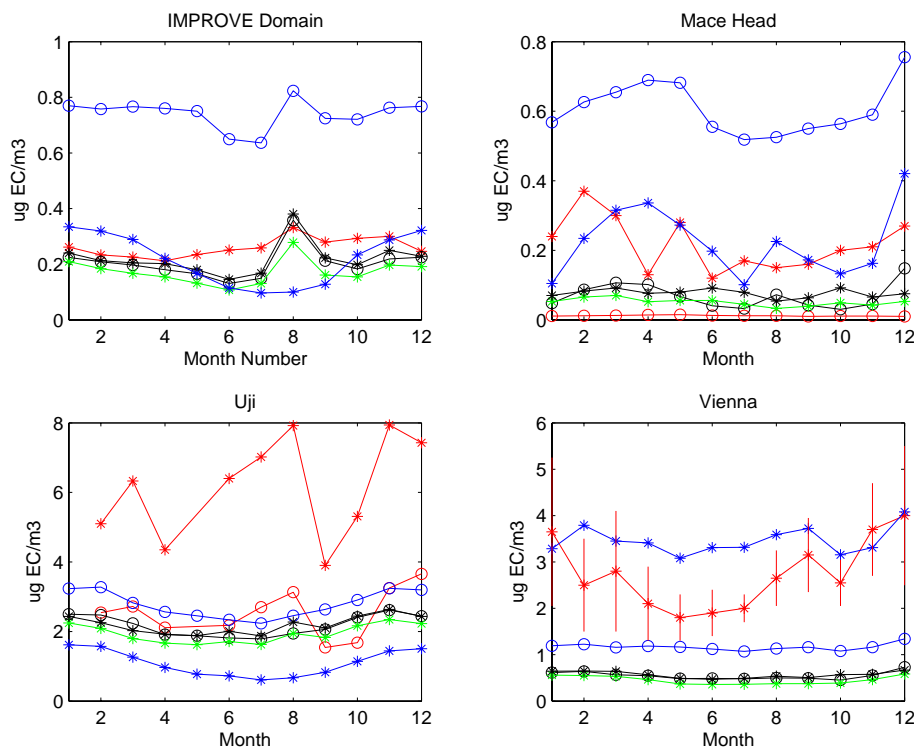
B. Croft et al.



**Fig. 8.** Annual mean surface layer BC concentrations ( $\mu\text{g}/\text{m}^3$ ) from four of the simulations.

[Title Page](#)[Abstract](#)[Introduction](#)[Conclusions](#)[References](#)[Tables](#)[Figures](#)[◀](#)[▶](#)[◀](#)[▶](#)[Back](#)[Close](#)[Full Screen / Esc](#)[Print Version](#)[Interactive Discussion](#)

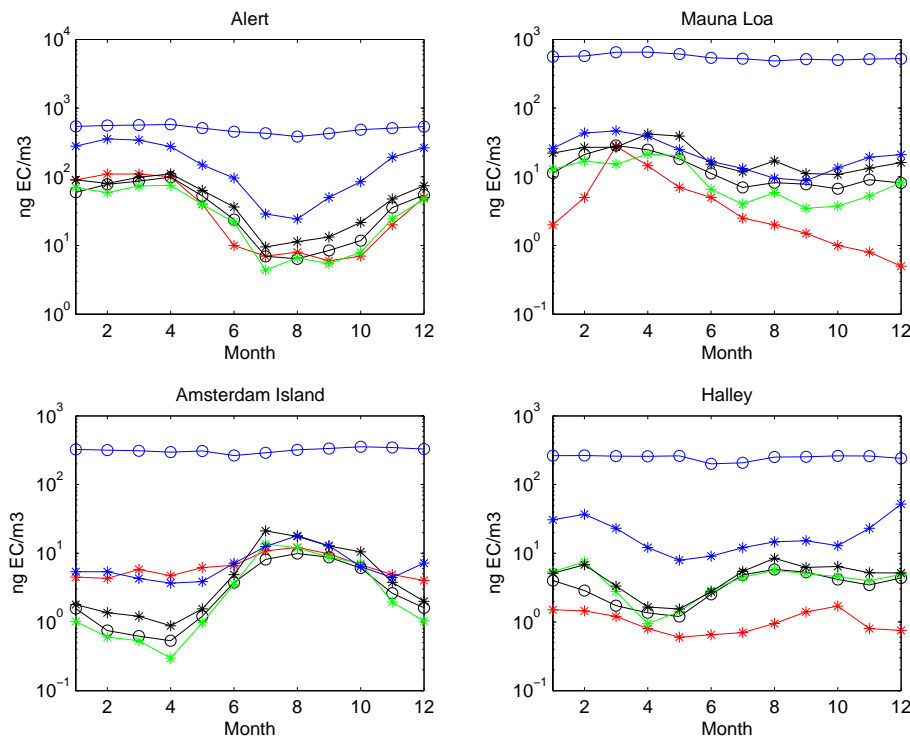
EGU



**Fig. 9.** Continentally influenced monthly mean surface layer BC concentrations from U.S.A. IMPROVE domain average from 1998–2002, Mace Head, Ireland (Cooke et al., 1997), Uji, Japan (Höller et al., 2002), and Vienna-Streithofen, Austria (Puxbaum et al., 2004). Observations are in red. For Uji, open circles are data prior to correction for small particle mass. For Mace Head, the asterisks and circles are for continental and clean air masses, respectively. Simulation NO-AGE is shown in blue circles, FIX-LIFE in black circles, OXID in black with asterisks and COND-COAG-OXID in green asterisks. FIX-LIFE2 is in blue asterisks.

[Title Page](#)[Abstract](#)[Introduction](#)[Conclusions](#)[References](#)[Tables](#)[Figures](#)[◀](#)[▶](#)[◀](#)[▶](#)[Back](#)[Close](#)[Full Screen / Esc](#)[Print Version](#)[Interactive Discussion](#)

EGU



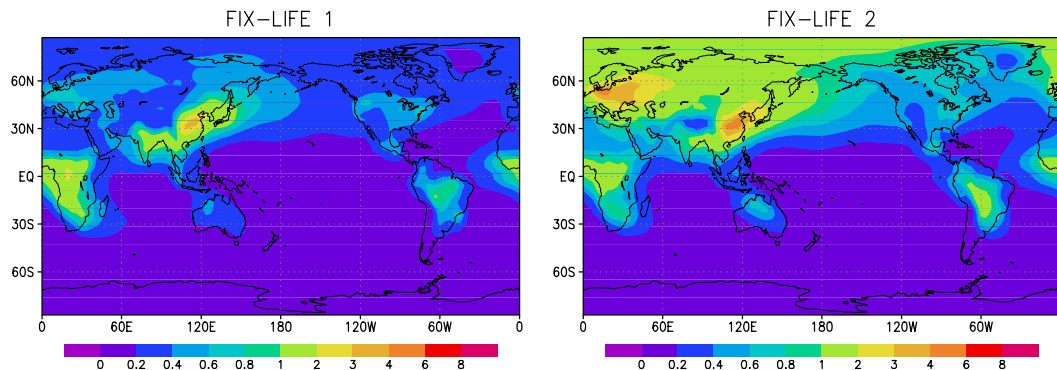
**Fig. 10.** Remote site monthly mean surface layer BC concentrations at Alert averaged over period 1999–2001 (Sharma et al., 2004), Mauna Loa (Bodhaine, 1995), Amsterdam Island (Wolff and Cachier, 1998), and Halley (Wolff and Cachier, 1998). Observations are in red. Simulation NO-AGE is shown in blue circles, FIX-LIFE in black circles, OXID in black with asterisks and COND-COAG-OXID in green asterisks. FIX-LIFE2 is in blue asterisks.

[Title Page](#)
[Abstract](#)
[Introduction](#)
[Conclusions](#)
[References](#)
[Tables](#)
[Figures](#)
[◀](#)
[▶](#)
[◀](#)
[▶](#)
[Back](#)
[Close](#)
[Full Screen / Esc](#)
[Print Version](#)
[Interactive Discussion](#)

EGU

BC ageing in the  
CCCma AGCM

B. Croft et al.



**Fig. 11.** Annual mean black carbon burdens ( $\text{mg C/m}^2$ ) from simulations with a fixed 24 h ageing half life, and using different inventories. Simulation FIX-LIFE1 uses the [Bond et al. \(2004\)](#) and [van der Werf et al. \(2003\)](#) inventories and FIX-LIFE2 uses the [Penner et al. \(1993\)](#) and [Liousse et al. \(1996\)](#) inventories.

Title Page

Abstract

Introduction

Conclusions

References

Tables

Figures

◀

▶

◀

▶

Back

Close

Full Screen / Esc

Print Version

Interactive Discussion

EGU