



HAL
open science

Partitioning between the inorganic chlorine reservoirs HCl and ClONO₂ during the Arctic winter 2005 from the ACE-FTS

G. Dufour, R. Nassar, C. D. Boone, R. Skelton, K. A. Walker, P. F. Bernath,
C. P. Rinsland, K. Semeniuk, J. J. Jin, J. C. McConnell, et al.

► **To cite this version:**

G. Dufour, R. Nassar, C. D. Boone, R. Skelton, K. A. Walker, et al.. Partitioning between the inorganic chlorine reservoirs HCl and ClONO₂ during the Arctic winter 2005 from the ACE-FTS. Atmospheric Chemistry and Physics Discussions, 2006, 6 (1), pp.1249-1273. hal-00300989

HAL Id: hal-00300989

<https://hal.science/hal-00300989>

Submitted on 18 Jun 2008

HAL is a multi-disciplinary open access archive for the deposit and dissemination of scientific research documents, whether they are published or not. The documents may come from teaching and research institutions in France or abroad, or from public or private research centers.

L'archive ouverte pluridisciplinaire **HAL**, est destinée au dépôt et à la diffusion de documents scientifiques de niveau recherche, publiés ou non, émanant des établissements d'enseignement et de recherche français ou étrangers, des laboratoires publics ou privés.

Partitioning between the inorganic chlorine reservoirs HCl and ClONO₂ during the Arctic winter 2005 from the ACE-FTS

G. Dufour^{1,*}, R. Nassar¹, C. D. Boone¹, R. Skelton¹, K. A. Walker¹, P. F. Bernath¹, C. P. Rinsland², K. Semeniuk³, J. J. Jin³, J. C. McConnell³, and G. L. Manney^{4,5}

¹Department of Chemistry, University of Waterloo, Ontario, Canada

²NASA Langley Research Center, Hampton, Virginia, USA

³Department of Space Science and Engineering, York University, Ontario, Canada

⁴NASA Jet Propulsion Laboratory/California Institute of Technology, Pasadena, California, USA

⁵New Mexico Institute of Mining and Technology, Socorro, New Mexico, USA

*now at: Laboratoire de Météorologie Dynamique/Institut Pierre Simon Laplace, Palaiseau, France

Received: 4 November 2005 – Accepted: 20 December 2005 – Published: 15 February 2006

Correspondence to: G. Dufour (gaelle.dufour@lmd.polytechnique.fr)

© 2006 Author(s). This work is licensed under a Creative Commons License.

Cl-partitioning
measured by ACE
during the Arctic
winter 2005

G. Dufour et al.

Title Page

Abstract

Introduction

Conclusions

References

Tables

Figures

⏪

⏩

◀

▶

Back

Close

Full Screen / Esc

Print Version

Interactive Discussion

Abstract

From January to March 2005, the Atmospheric Chemistry Experiment high resolution Fourier transform spectrometer (ACE-FTS) on SCISAT-1 measured many of the changes occurring in the Arctic (50–80° N) lower stratosphere under very cold winter conditions. Here we focus on the partitioning between the inorganic chlorine reservoirs HCl and ClONO₂ and their activation into ClO. The simultaneous measurement of these species by the ACE-FTS provides the data needed to follow chlorine activation during the Arctic winter and the recovery of the Cl-reservoir species ClONO₂ and HCl. The time evolution of HCl, ClONO₂ and ClO as well as the partitioning between the two reservoir molecules agrees well with previous observations and with our current understanding of chlorine activation during Arctic winter. The results of a chemical box model are also compared with the ACE-FTS measurements and are generally consistent with the measurements.

1. Introduction

The key role of chlorine species in the depletion of ozone occurring during cold Arctic winters and under high chlorine loading is now well demonstrated (WMO, 2002). A schematic description of the winter conversion of chlorine reservoir molecules to photochemically active species and of the subsequent reformation of the reservoir species in the spring is given by Michelsen et al. (1999, Plate 8). When the temperatures are sufficiently low to allow the formation of polar stratospheric clouds (PSCs), the chlorine reservoir species HCl and ClONO₂ are transformed by heterogeneous reactions into active chlorine molecules (ClO_x=ClO+2Cl₂O₂+2Cl₂) that drive catalytic ozone destruction. In the Arctic, the peak of the ClO volume mixing ratio profile is about 20–21 km and the chlorine activation typically extends up to ~25 km (Santee et al., 2003). In the presence of gaseous nitric acid (which allows the formation of NO_x from the photolysis of HNO₃ and also from the reaction with OH) and modest levels of ozone (which allows

Cl-partitioning measured by ACE during the Arctic winter 2005

G. Dufour et al.

Title Page

Abstract

Introduction

Conclusions

References

Tables

Figures

⏪

⏩

◀

▶

Back

Close

Full Screen / Esc

Print Version

Interactive Discussion

**Cl-partitioning
measured by ACE
during the Arctic
winter 2005**G. Dufour et al.

[Title Page](#)[Abstract](#)[Introduction](#)[Conclusions](#)[References](#)[Tables](#)[Figures](#)[⏪](#)[⏩](#)[◀](#)[▶](#)[Back](#)[Close](#)[Full Screen / Esc](#)[Print Version](#)[Interactive Discussion](#)

the formation of ClO via Cl+O₃), typical of the Arctic, ClO_x deactivation proceeds by the formation of ClONO₂ by the three body reaction of ClO and NO₂. The reformation of HCl via the reaction of Cl and CH₄ is slower than the formation of ClONO₂. The strong denitrification, or at least the lack of gaseous HNO₃, and the lack of O₃ in the Antarctic prevents the rapid recovery of ClONO₂. The buildup of HCl thus occurs later in the Arctic spring by the slow conversion of ClONO₂ into HCl (Douglass et al., 1995; Müller et al., 1994; Santee et al., 1996; Chipperfield et al., 1996).

The time evolution of inorganic chlorine species during the polar winter and the early spring and their partitioning have been studied in both hemispheres from ground-based (Solomon et al., 2000; Mellqvist et al., 2002), airborne (Webster et al., 1993), balloon-borne (Payan et al., 1998; Stachnik et al., 1999), shuttle-borne (Rinsland et al., 1995; Michelsen et al., 1996), and space-borne (Dessler et al., 1995, Douglass et al., 1995; Santee et al., 1996; Höpfner et al., 2004) instruments. However, very few of these instruments (Payan et al., 1998; Stimpfle et al., 1999; Bonne et al., 2000) are able to measure HCl and ClONO₂ simultaneously and none have been able to follow their evolution through the winter and spring. As far as we know, the ACE-FTS instrument is the first space-borne instrument capable of measuring HCl, ClONO₂, and ClO simultaneously. We report on the time series of the two reservoir molecules during the Arctic winter 2004/2005 and their partitioning as well as the evolution of chlorine monoxide. We compare the results to previous observations and to the calculations from a chemical box model.

2. ACE-FTS measurements

The Atmospheric Chemistry Experiment (ACE), also known as SCISAT-1, was launched on 12 August 2003, into a circular, 74° inclination low-earth orbit at 650 km. It has a global coverage from approximately 85° N to 85° S with a majority of measurements over the Arctic and the Antarctic (Bernath et al., 2005). ACE makes solar occultation measurements and can observe up to 15 sunsets and 15 sunrises per day. The

**Cl-partitioning
measured by ACE
during the Arctic
winter 2005**G. Dufour et al.

[Title Page](#)[Abstract](#)[Introduction](#)[Conclusions](#)[References](#)[Tables](#)[Figures](#)[⏪](#)[⏩](#)[◀](#)[▶](#)[Back](#)[Close](#)[Full Screen / Esc](#)[Print Version](#)[Interactive Discussion](#)

primary ACE instrument is a high resolution (0.02 cm^{-1}) Fourier transform spectrometer (ACE-FTS) operating between 750 and 4400 cm^{-1} . Vertical profiles of temperature, pressure and various atmospheric constituents are retrieved, with a vertical resolution of $3\text{--}4\text{ km}$, from the ACE-FTS spectra recorded at a series of tangent heights, using a global fit approach coupled with a Levenberg-Marquardt non-linear least squares method (Boone et al., 2005). The results presented herein correspond to version 2.2 of the retrieval algorithm using the HITRAN2004 linelist (Rothman et al., 2005). Molecular absorption lines are fitted in selected microwindows to determine temperature and volume mixing ratio profiles. A set of microwindows is determined for each target species and is optimized to reduce the impact of interferers and to retrieve the vertical profile over the broadest possible altitude range. HCl is retrieved between 8 and 57 km from a set of 22 microwindows with a maximum width of 0.5 cm^{-1} in the $2700\text{--}3000\text{ cm}^{-1}$ spectral range. The main interferers are CH_4 and O_3 and they are retrieved simultaneously with the target species. McHugh et al. (2005) showed in an initial comparison using version 1.0 (using only 13 microwindows for HCl and a reduced altitude range) that ACE HCl abundances are 10 to 20% larger than those of HALOE. More recently, Froidevaux et al. (2005) have found that the MLS HCl values are within $\sim 5\%$ of the ACE values (version 2.1, near-real-time version of version 2.2) in the stratosphere. For ClONO_2 , two microwindows are used ($779.85\text{--}780.45\text{ cm}^{-1}$ and $1291.8\text{--}1293.4\text{ cm}^{-1}$) to retrieve the profile between 12 and 35 km . The main interferers, O_3 , HNO_3 , N_2O , and CH_4 are also fitted simultaneously, including 3 additional microwindows ($1104.78\text{--}1105.08\text{ cm}^{-1}$, $1202.61\text{--}1203.11\text{ cm}^{-1}$, and $1728.03\text{--}1728.53\text{ cm}^{-1}$) to constrain better the interferers. Only a very preliminary validation of ACE-FTS version 1.0 ClONO_2 has been made using ground-based FTS instruments (Mahieu et al., 2005). For the few cases of close co-incidence, the agreement between ACE-FTS and ground-based ClONO_2 columns is within a few percent. Finally, ClO retrieval is carried out between 11 and 30 km using the spectral window: 821 to 846 cm^{-1} . This window is similar to the one used by Glatthor et al. (2004) to retrieve ClO from MIPAS spectra.

3. Synoptic view of the winter 2005 during the observation period

To describe the temperature conditions in the Arctic polar stratosphere we have used the National Centers for Environmental Protection/National Center for Atmospheric Research Reanalysis data (hereinafter "NCEP data") (Kistler et al., 2001). The region of interest for processing Cl_y is largely from 70 hPa and 30 hPa. However, the lowest temperatures are found at 50 hPa (not shown) so we have described the evolution at this pressure level.

In mid-January, on the 50 hPa surface there is a cold pool with temperatures less than 191 K over northern Canada, poleward of 75° N which shifts eastward over Scandinavia and intensifies towards the end of the month. On 25 January the temperature minimum is less than 186 K at 77° N and 8° E. By early February the lowest temperatures, less than 189 K, are over Greenland and located at about 75° N. By 20 February the cold pool is found over the north Atlantic with the temperature minimum under 187 K. A strong warming occurs by the end of February and lasts into March so that temperatures conducive to polar stratospheric cloud formation are no longer present.

For most of January and February a significant region of the Arctic stratosphere has temperatures below 192 K and it is likely that nitric acid trihydrate (NAT) and super-cooled ternary solution (STS) PSCs developed (e.g. Kleinböhl et al., 2005; Jin et al, personal communication, 2005, have also seen denitrification using the ACE data). Given the observed water vapor mixing ratios, it is likely that ice and STS PSCs form during late January and late February when temperatures fall below 187 K.

Any bias in the NCEP assimilated temperature data is likely to be towards higher values (Manney et al., 2003) so it is probable that temperatures even less than 186 K were present in early 2005. The spatial extent of the regions with temperatures low enough for PSC formation is sufficient for a significant portion of the vortex confined air mass to experience heterogeneous chemical processing during its slow descent through the 50 hPa surface (e.g. Kleinböhl et al., 2005). It is likely that heterogeneous processing occurred in a larger volume of vortex air than indicated by the NCEP data.

Cl-partitioning measured by ACE during the Arctic winter 2005

G. Dufour et al.

Title Page

Abstract

Introduction

Conclusions

References

Tables

Figures

⏪

⏩

◀

▶

Back

Close

Full Screen / Esc

Print Version

Interactive Discussion

4. Results and discussion

For this study we focus on measurements obtained over the Arctic (from 50° N to 80° N) between 1 January 2005 and 26 March 2005. The upper panels of Fig. 1 show the latitudes sounded during the observation time period and the corresponding equivalent latitudes (the latitude that would enclose the same area between it and the pole as a given potential vorticity (PV) contour) at 20.5 km. Each occultation was classified as inside, on the edge or outside the vortex, depending on the position of its reference latitude and longitude relative to the vortex edge. The classification method used here is a slightly modified version of the method described by Nassar et al. (2005). The occultations were classified based on the 15–25 km altitude range that includes the altitude of the maximum of the chlorine activation and of the recovery near 20 km. The edge classification includes both occultations that truly cross the edge of the vortex, as well as those with a mixture of vortex and extravortex characteristics between 15 and 25 km due to the highly variable vortex of the 2005 Arctic winter. The results obtained were also verified by visual inspection of PV maps at 490 K (~18–19 km) from GEOS-4 (Goddard Earth Observing System, Version 4.03) analyses (Bloom et al., 2005).

The three lowest panels of Fig. 1 show the time series of the volume mixing ratios (vmrs) of HCl and ClONO₂ and their ratio at 20.5 km from 1 January 2005 to 26 March 2005 for the occultations inside, on the edge and outside the vortex. For occultations defined as extravortex, the HCl vmr values at 20.5 km are about 1.5 ppbv while the ClONO₂ vmr values are about 0.75 ppbv, with a ClONO₂/HCl ratio of about 0.5 (lowest panel). This ratio value is characteristic of unprocessed air masses and consistent with previous observations (Rinsland et al., 1995) although somewhat lower than that given by the box model (see below). In the case of occultations on the vortex edge, the trends of HCl, ClONO₂ and their ratio during the polar winter are more difficult to establish due to the smaller number of measurements near the vortex edge and the greater uncertainty in classification of measurements there. However, their behavior is generally quite similar to the behavior of occultations inside the vortex and the recovery

Cl-partitioning measured by ACE during the Arctic winter 2005

G. Dufour et al.

Title Page

Abstract

Introduction

Conclusions

References

Tables

Figures

⏪

⏩

◀

▶

Back

Close

Full Screen / Esc

Print Version

Interactive Discussion

**Cl-partitioning
measured by ACE
during the Arctic
winter 2005**G. Dufour et al.

[Title Page](#)[Abstract](#)[Introduction](#)[Conclusions](#)[References](#)[Tables](#)[Figures](#)[⏪](#)[⏩](#)[◀](#)[▶](#)[Back](#)[Close](#)[Full Screen / Esc](#)[Print Version](#)[Interactive Discussion](#)

EGU

of ClONO₂ seems to occur first on the edge as described by Chipperfield et al. (1997). In the case of vortex occultations, the large number of measurements permits us to follow all stages from chlorine activation to reservoir molecule recovery. However, it is worth noting that the sampling of air masses within the vortex is poor at the beginning of the observation period (Fig. 1, second panel) but increases during the winter and becomes rather good during the late winter and the early spring (reservoir recovery period). We also note that the occultations measured during most of February correspond to an observation period with very high beta angles (>55° between 7 February and 21 February 2005). The beta angle is the angle between the orbital plane and the earth-sun vector. At high beta angles, the latitudes and longitudes sounded during an occultation vary significantly between the highest and the lowest tangent heights, and the number of measured spectra per occultation increases substantially, which leads to unstable retrievals. Relatively few profiles are available as shown in Fig. 1.

4.1. Evolution of HCl inside the vortex

For HCl, the start of the decrease is observed at the beginning of January and becomes more pronounced after 20 January 2005 (Fig. 1). The minimum value of the HCl vmr (~0.2 ppbv) is reached around 25 January and low values persist until 25 February. After this period of very low levels of HCl, a slow recovery occurs from the end of February until the end of our measurement period, when HCl reaches values close to those characteristic of unprocessed air masses.

The correlation plot of HCl versus CH₄ between 350 K and 700 K in Fig. 2 shows another view of the evolution of HCl inside the vortex which also allows for descent. Gray circles, corresponding to measurements outside the vortex, are used as a reference for unprocessed air masses. Similar conclusions to those discussed for the level at 20.5 km can be drawn: from the variation it can be seen that HCl is processed progressively and sporadically throughout January. It is also clear from this figure that the HCl is quite variable throughout the vortex. The maximum of HCl processing occurs between 25 January and mid-February and this is followed by a slow recovery of HCl

during March. We note that HCl is not completely recovered at the end of our measurement period inside air masses remaining from vortex air (the vortex is breaking down during March).

4.2. Evolution of ClONO₂ inside the vortex

5 In early January, the ClONO₂ vmr in the vortex at 20.5 km is quite variable and the higher values suggest that some processing has already taken place (Fig. 1). From 20 to 30 January the ClONO₂ varies from less than 0.1 ppbv to over 1.5 ppbv suggesting that the ACE-FTS is sampling air that has recently undergone processing so there has not been sufficient time to convert the ClO to ClONO₂ while the higher values
10 suggest that either the ClO resulting from earlier processing has been converted to ClONO₂ (This is also suggested by the ClO plot in Fig. 4 which shows that the ClO has decreased during this period.) or the air masses sampled were not processed (due to the variability in the vortex position with respect to ACE observations).

The ClONO₂ variability within the vortex is also clearly shown by the correlation of
15 ClONO₂ and CH₄ in Fig. 3 for the period 1–25 January (red circles). From 18 February to the beginning of March ClONO₂ is also quite variable. The lowest values are not as low as those in January and indicate less extensive processing or mixing of non-vortex air. We note that the N₂O-CH₄ correlations inside and outside the vortex indicate that there has not been much mixing of non-vortex air during this period (Jin et al,
20 *ibid*). However, it is worth pointing out that Manney et al. (2006) show evidence of mixing into and within the vortex throughout the winter, and getting stronger in late February. The higher values of ClONO₂ (up to 2.2 ppbv), much larger than those typical of unprocessed air masses (gray circles in Fig. 3) suggest that the air parcels have been
25 highly processed and the ClO converted back to ClONO₂.

At the 20.5 km level the maximum of ClONO₂ vmr occurs between 2 and 10 March, with values between 2 and 2.5 ppbv, consistent with observations made by Payan et al. (1998) during March 1995. After 10 March, ClONO₂ decreases as it is slowly converted into HCl. However, as evidenced from the correlation plot (Fig. 3) ClONO₂ vmrs

**Cl-partitioning
measured by ACE
during the Arctic
winter 2005**

G. Dufour et al.

Title Page

Abstract

Introduction

Conclusions

References

Tables

Figures

⏪

⏩

◀

▶

Back

Close

Full Screen / Esc

Print Version

Interactive Discussion

remain high until 24 March at other levels.

4.3. Evolution of the inorganic chlorine partitioning

Concerning the partitioning between HCl and ClONO₂, their ratio (ClONO₂/HCl) is about 0.5 on average (Fig. 1) during the first stage of chlorine activation (i.e., when both HCl and ClONO₂ decrease). When HCl and ClONO₂ are both at their lowest levels (25 January–3 February), the ratio increases and varies between 0 and 4 with a significant number of values higher than 1. During this time period, ClONO₂ is, in general, higher than HCl because of its re-formation from ClO and NO₂ from photolysis of HNO₃ as noted above. The recovery begins after 4 February and the ClONO₂/HCl ratio reaches values as high as 8 between 18 and 28 February. As HCl begins to recover at the end of February, the ratio decreases progressively until 26 March. The ratio value is between 2.5 and 3 for the first 10 days of March as observed by Payan et al. (1998) during March 1995.

4.4. Evolution of ClO inside the vortex

ClO profiles are also retrieved from ACE-FTS spectra. Due to ice contamination on the detector during the measurement period, individual profiles of ClO are not completely reliable and require averaging. We have done this in the following fashion. The occultations were divided into 2 groups in order to average profiles corresponding to similar air masses. Measurements within vortex or on the edge were chosen based on HCl vmrs at 19.5 km and 20.5 km. If these values are lower than 1 ppbv, then the occultations can be averaged together. The reliability of this criterion was checked by averaging ClO profiles corresponding to HCl values higher than 1 ppbv at 19.5 and 20.5 km for periods of 5 days between 1 January and 26 March. The time series obtained is presented in the lower panel of Fig. 4. ClO vmrs are less than 0.4 ppbv and negligible for all altitudes, within one standard deviation.

We average ClO profiles with the following criteria: occultations have to be within 5

Cl-partitioning measured by ACE during the Arctic winter 2005

G. Dufour et al.

Title Page

Abstract

Introduction

Conclusions

References

Tables

Figures

⏪

⏩

◀

▶

Back

Close

Full Screen / Esc

Print Version

Interactive Discussion

**Cl-partitioning
measured by ACE
during the Arctic
winter 2005**G. Dufour et al.

[Title Page](#)[Abstract](#)[Introduction](#)[Conclusions](#)[References](#)[Tables](#)[Figures](#)[⏪](#)[⏩](#)[◀](#)[▶](#)[Back](#)[Close](#)[Full Screen / Esc](#)[Print Version](#)[Interactive Discussion](#)

days and the difference in latitude should not exceed 2° . Profiles that have unphysical oscillations for the entire altitude range (11–30 km) are also rejected. This is particularly the case for occultations with beta angles higher than 56° (8–19 February). For this special case, only occultations after 15 February have realistic ClO profiles. The criterion based on latitude (2°) is relaxed and the ClO profiles between 15 and 19 February are averaged together. The upper panel of Fig. 4 shows the time series obtained. Sampling is an issue for the reliability of the averages. The average profiles between 20 January and 10 March are based on more than 10 individual profiles and are thus reliable. Outside this time period, the profiles just give the general trend of the time evolution of ClO. Although MLS data show that Cl-activation is significant by the end of December and quite substantial in the first 10 days of January (Santee et al., 2005¹), the activation is apparent in the ACE data only from 10 January to the beginning of March. Note that polar stratospheric clouds (PSCs) are also observed in some ACE-FTS spectra during this time period (Eremenko et al., 2005²). The beginning of chlorine activation corresponds well to the decrease in HCl and ClONO₂ levels and the end of activation to the maximum recovery of ClONO₂ (2–10 March). Occultations before mid-February correspond to sunrise measurements and occultations after mid-February to sunset measurements. The amounts of ClO are then larger during sunsets than for sunrises when the dimer Cl₂O₂ is still present in significant amounts. The maximum vmr value for ClO (about 1.07 ppbv), is reached near 20 km during the period of 15–19 February. This maximum value is smaller than the climatological values derived by Santee et al. (2003, Fig. 2) from MLS/UARS data recorded between 1991 and 1998. These values are between 1.20 and 1.35 ppbv for an equivalent latitude of 74° N (that corresponds to the mean equivalent latitude of ACE-FTS measurements inside the

¹Santee, M. L., MacKenzie, I. A., Manney, G. L., et al.: A study of stratospheric chlorine partitioning in the winter polar vortices based on new satellite measurements and modeling, in preparation, 2006.

²Eremenko, M. N., Galkina, I., Zsetsky, A. Y., and Sloan, J. J.: Case Study of Polar Stratospheric Clouds by ACE-FTS Observations over Scandinavia, in preparation, 2006.

**Cl-partitioning
measured by ACE
during the Arctic
winter 2005**G. Dufour et al.

vortex for the time period 15–19 February). It worth noting that only data with a solar zenith angle, $\text{SZA} < 88^\circ$ (daylight) have been considered by Santee et al. (2003), while ACE-FTS data are given at 90° due to the measurement geometry. The ACE-FTS ClO vmrs are consequently smaller. The maximum ClO value derived from ACE-FTS measurements is also much smaller than values regularly observed in Antarctic (>2 ppbv) (Glatthor et al., 2004; Santee et al., 2003). The mean value of ClO during the activation period is about 0.6–0.7 ppbv corresponding to moderate activation.

5. Comparison with a chemical box model

Three-dimensional trajectories were produced using NCEP wind and temperature data. Multiple trajectories were initialized from the January and February ACE occultation locations at different altitudes and evolved for 60 days. Thus although this is not a domain-filling method it should, however, allow a reasonable representation of the type of processing that the ACE measurement locations should have encountered. It should also give a reasonable idea of the variation of species within the vortex, again as viewed by the ACE-FTS instrument. Of course, it is not expected that parcel identity can persist this long in reality, but these trajectories give an indication of the chemical environment present inside the vortex. Some fraction of vortex air will experience multiple heterogeneous chemical processing events while some fraction will not be affected by processing. Mixing will smear out the sharp differences between the air parcels found in the trajectory modelling.

The photochemical calculations have been done with a box model (Chartrand and McConnell, 1998) with updated rate data including heterogeneous chemistry on ice and STS polar stratospheric clouds. The initial chemical concentrations were taken from the ACE-FTS measurement suite; those species which were not observed were taken from the CMAM model (e.g., de Grandpré et al., 2000).

Figure 5 shows one particular trajectory in this suite launched from an ACE measurement location on 9 January, 2005. For this trajectory the HCl is not completely

[Title Page](#)[Abstract](#)[Introduction](#)[Conclusions](#)[References](#)[Tables](#)[Figures](#)[⏪](#)[⏩](#)[◀](#)[▶](#)[Back](#)[Close](#)[Full Screen / Esc](#)[Print Version](#)[Interactive Discussion](#)

**Cl-partitioning
measured by ACE
during the Arctic
winter 2005**G. Dufour et al.

[Title Page](#)[Abstract](#)[Introduction](#)[Conclusions](#)[References](#)[Tables](#)[Figures](#)[⏪](#)[⏩](#)[◀](#)[▶](#)[Back](#)[Close](#)[Full Screen / Esc](#)[Print Version](#)[Interactive Discussion](#)

processed while the ClONO_2 virtually disappears. Of the total amount of Cl_y , 2.1 ppbv, (and 60% HCl) about 1.9 ppbv is converted to ClO_x (ClO and Cl_2O_2). The ClO_x disappears with a time constant of about 2 weeks and the main reservoir species formed is ClONO_2 : HCl is much slower to reform. By the end of February, the trajectory $\text{ClONO}_2/\text{HCl}$ ratio is about 4.3, somewhat higher than that for the measurements at that period. However this ratio is trajectory (and also temperature) dependent. Other trajectories indicate the gradual processing of vortex air through the cold pool.

Figure 6 presents a composite of ClONO_2 , HCl and their ratio from the set of vortex trapped trajectories initialized from 22.5, 23.5 and 24.5 km at the time of ACE occultations. For presentation, the values at each time have been averaged and at selected times the variance of the values have been plotted. The detailed trajectories indicate that not all encountered temperatures low enough for significant heterogeneous processing while others encountered extensive processing. This is also evident from the plot in Fig. 6 taking into account the variability in the HCl which shows that HCl varies from very small values indicating rather complete processing to larger values which indicate little processing. This variability is similar to that shown by the measurements in Fig. 1. Where processing does occur the depletion of ClONO_2 is generally greater than that for HCl. The processing is clustered around late January and late February when the Arctic cold pool reaches its lowest temperatures as described above. The behavior of ClONO_2 and the $\text{ClONO}_2/\text{HCl}$ ratio in Fig. 6 has some resemblance to Fig. 1 in regards to the timing of the depletion and the reformation and increase in chlorine nitrate. An important difference between Figs. 1 and 6 is that while Fig. 1 is for a fixed altitude, Fig. 6 shows concentrations from a range of altitudes between 16 km and 24.5 km, with values at later stages tending to be at lower altitudes. Air sampled on the 50 hPa surface will capture parcels affected by heterogeneous chemistry during the peak processing period but at later stages will see unprocessed parcels from higher altitudes.

The lowest panel in Fig. 6 shows the ClO that results from the processing. Bearing in mind the variability shown the values are comparable with those of the measurements

shown in Fig. 5. However, we have not reproduced the ClO feature that is measured at about day 15. The box model lacks representation of polar stratospheric cloud types that are not either ice or STS and temperatures below 191 K cover a large region in the first half of January 2005. The significant ClO values observed indicate that NAT processing was present.

6. Summary and conclusions

We have presented the first time series from space of the processing and recovery of the primary chlorine reservoirs HCl and ClONO₂ in the Arctic polar vortex for the period January to March 2005 using the high resolution ACE-FTS. We also present average measurements for ClO during this period. The time evolution of HCl, ClONO₂ and ClO as well as the partitioning between the two reservoir molecules agrees well with previous observations and confirms our current understanding of chlorine activation during Arctic winter (Michelsen et al., 1999). Figure 7 presents a summary of the evolution of HCl, ClONO₂ and of their ratio inside the Arctic vortex 2005. In early January the measurements (ClO in particular) indicate processing of the vortex air. The decrease in HCl and ClONO₂ begins after 10 January. HCl vmrs stay very low until the end of February and HCl recovers slowly until 26 March. The first recovery of ClONO₂ occurs between 9 February and the end of February and reaches a maximum between 2 and 10 March. Moreover, since the ACE-FTS samples a range of vortex latitudes during this period it also samples to what extent the vortex air has been processed. Using a box model and measurements, the picture that emerges is consistent with our understanding of PSC processing. As vortex air is processed through the cold pool and circulates in the vortex, the chlorine reservoirs HCl and ClONO₂ are gradually converted to ClO_x. The ACE-FTS thus samples air that is freshly processed with low HCl and ClONO₂ values and high ClO vmrs as well as air that has been partially processed and air which is beginning to recover pre-processing reservoir vmrs. Further analysis and comparison with measured ozone loss is in progress and should yield further insights to the 2005

Cl-partitioning measured by ACE during the Arctic winter 2005

G. Dufour et al.

Title Page

Abstract

Introduction

Conclusions

References

Tables

Figures

⏪

⏩

◀

▶

Back

Close

Full Screen / Esc

Print Version

Interactive Discussion

Acknowledgements. Funding for ACE is provided by the Canadian Space Agency and the Natural Sciences and Engineering Research (NSERC) of Canada. Support was also provided by the NSERC-Bomem-CSA-MS-C Industrial Research Chair in Fourier Transform Spectroscopy. Work at the Jet Propulsion Laboratory, California Institute of Technology was done under contract with the National Aeronautics and Space Administration. We thank S. McLeod and K. Gilbert for assistance.

References

- Bernath, P. F., McElroy, C. T., Abrams, M. C., Boone, C. D., Butler, M., Camy-Peyret, C., Carleer, M., Clerbaux, C., Coheur, P.-F., Colin, R., DeCola, P., DeMazière, M., Drummond, J. R., Dufour, D., Evans, W. F. J., Fast, H., Fussen, D., Gilbert, K., Jennings, D. E., Llewellyn, E. J., Lowe, R. P., Mahieu, E., McConnell, J. C., McHugh, M., McLeod, S. D., Michaud, R., Midwinter, C., Nassar, R., Nichitiu, F., Nowlan, C., Rinsland, C. P., Rochon, Y. J., Rowlands, N., Semeniuk, K., Simon, P., Skelton, R., Sloan, J. J., Soucy, M.-A., Strong, K., Tremblay, P., Turnbull, D., Walker, K. A., Walkty, I., Wardle, D. A., Wehrle, V., Zander, R., and Zou, J.: Atmospheric Chemistry Experiment (ACE): mission overview, *Geophys. Res. Lett.*, 32, L15S01, doi:10.1029/2005GL022386, 2005.
- Bonne, G. P., Stimpfle, R. M., Cohen, R. C., Voss, P. B., Perkins, K. K., Anderson, J. G., Salawitch, R. J., Elkins, J. W., Dutton, G. S., Jucks, K. W., and Toon, G. C.: An examination of the inorganic chlorine budget in the lower stratosphere, *J. Geophys. Res.*, 105(D2), 1957–1971, 2000.
- Boone, C. D., Nassar, R., Walker, W. A., Rochon, Y., McLeod, S. D., Rinsland, C. P., and Bernath, P. F.: Retrievals for the Atmospheric Chemistry Experiment Fourier Transform Spectrometer, *Appl. Opt.*, 44, 7218–7231, 2005.
- Bloom, S. C., da Silva, A., Dee, D., et al.: The Goddard Earth Observing Data Assimilation System, GEOS DAS Version4.0.3: Documentation and Validation, NASA, 104606 V26, 2005.
- Chartrand, D. J. and McConnell, J. C.: Evidence for HBr production due to minor channel branching at mid-latitudes, *Geophys. Res. Lett.*, 25, 55–58, 1998.
- Chipperfield, M. P., Santee, M. L., Froidevaux, L., Manney, G. L., Read, W. G., Waters, J. W., Roche, A. E., and Russell, J. M.: Analysis of UARS data in the southern polar vortex in

Cl-partitioning measured by ACE during the Arctic winter 2005

G. Dufour et al.

Title Page

Abstract

Introduction

Conclusions

References

Tables

Figures

◀

▶

◀

▶

Back

Close

Full Screen / Esc

Print Version

Interactive Discussion

**Cl-partitioning
measured by ACE
during the Arctic
winter 2005**G. Dufour et al.

[Title Page](#)[Abstract](#)[Introduction](#)[Conclusions](#)[References](#)[Tables](#)[Figures](#)[⏪](#)[⏩](#)[◀](#)[▶](#)[Back](#)[Close](#)[Full Screen / Esc](#)[Print Version](#)[Interactive Discussion](#)

September 1992 using a chemical transport model, *J. Geophys. Res.*, 101(D13), 18861–18881, 1996.

Chipperfield, M. P., Lutman, E. R., Kettleborough, J. A., Pyle, J. A., and Roche, A. E.: Model studies of chlorine deactivation and formation of ClONO₂ collar in the Arctic polar vortex, *J. Geophys. Res.*, 102(D1), 1467–1478, 1997.

De Grandpré, J., Beagley, S. R., Fomichev, V. I., Griffioen, E., McConnell, J. C., Medvedev, A. S., and Shepherd, T. G.: Ozone climatology using interactive chemistry: Results from the Canadian Middle Atmosphere Model, *J. Geophys. Res.*, 105, 26 475–26 492, 2000.

Dessler, A. E., Considine, D. B., Morris, G. A., Schoeberl, M. R., Russell III, J. M., Roche, A. E., Kumer, J. B., Mergenthaler, J. L., Waters, J. W., Gille, J. C., and Yue, G. K.: Correlated observations of HCl and ClONO₂ from UARS and implications for stratospheric chlorine partitioning, *Geophys. Res. Lett.*, 22, 1721–1724, 1995.

Douglass, A. R., Schoeberl, M. R., Stolarski, R. S., Waters, J. W., Russell III, J. M., Roche, A. E., and Massie, S. T.: Interhemispheric differences in springtime production of HCl and ClONO₂ in the polar vortices, *J. Geophys. Res.*, 100(D7), 13 967–13 978, 1995.

Froidevaux, L., Livesey, N. J., Read, W. G., et al.: Early validation analyses of atmospheric profiles from EOS MLS on the Aura satellite, *IEEE Trans. Geosci. Remote Sensing*, in press, 2005.

Glatthor, N., von Clarmann, T., Fischer, H., Grabowski, U., Höpfner, M., Kellmann, S., Kiefer, M., Linden, A., Milz, M., Steck, T., Stiller, G. P., Mengistu Tsidu, G., Wang, D.-Y., and Funke, B.: Spaceborne ClO observations by the Michelson Interferometer for Passive Atmospheric Sounding (MIPAS) before and during the Antarctic major warming in September/October 2002, *J. Geophys. Res.*, 109, D11307, doi:10.1029/2003JD004440, 2004.

Höpfner, M., von Clarmann, T., Fischer, H., Glatthor, N., Grabowski, U., Kellmann, S., Kiefer, M., Linden, A., Mengistu Tsidu, G., Milz, M., Steck, T., Stiller, G. P., and Wang, D. Y.: First spaceborne observations of Antarctic stratospheric ClONO₂ recovery: Austral spring 2002, *J. Geophys. Res.*, 109, D11308, doi:10.1029/2004JD004609, 2004.

Kleinböhl, A., Bremer, H., Küllmann, H., Kuttippurath, J., Browell, E. V., Canty, T., Salawitch, R., Toon, G. C., and Notholt, J.: Denitrification in the Arctic mid-winter 2004/2005 observed by airborne submillimeter radiometry, *Geophys. Res. Lett.*, 32, L19811, doi:1029/2005GL023408, 2005.

Kistler, R., Collins, W., Saha, S., White, G., Woollen, J., Kalnay, E., Chelliah, M., Ebisuzaki, W., Kanamitsu, M., Kousky, V., van den Dool, H., Jenne, R., and Fiorino, M.: The NCEP-NCAR

50-year Reanalysis: Monthly Means CD-ROM and Documentation, Bull. Am. Meteorol. Soc., 82, 247–267, 2001.

Mahieu, E., Zander, R., Duchatelet, P., Hannigan, J. W., Coffey, M. T., Mikuteit, S., Hase, F., Blumenstock, T., Wiacek, A., Strong, K., Taylor, J. R., Mittermeier, R., Fast, H., Boone, C. D., McLeod, S. D., Walker, K. A., Bernath, P. F., and Rinsland, C. P.: Comparisons between ACE-FTS and ground-based measurements of stratospheric HCl and ClONO₂ loadings at northern latitudes, Geophys. Res. Lett., 32, L15S08, doi:10.1029/2005GL022396, 2005.

Manney, G. L., Sabutis, J. L., Pawson, S., Santee, M. L., Naujokat, B., Swinbank, R., Gelman, M. E., and Ebisuzaki, W.: Lower stratospheric temperature differences between meteorological analyses in two cold Arctic winters and their impact on polar processing studies, J. Geophys. Res., 108(D5), 8328, doi:10.1029/2001JD001149, 2003.

Manney, G. L., Santee, M. L., Froidevaux, L., Hoppel, K., Livesey, N. J., and Waters, J. W.: EOS MLS observations of ozone loss in the 2004–2005 Arctic winter, Geophys. Res. Lett., in press, 2006.

McHugh, M., Magill, B., Walker, K. A., Boone, C. D., Bernath, P. F., and Russell III, J. M.: Comparison of atmospheric retrievals from ACE and HALOE, Geophys. Res. Lett., 32, L15S10, doi:10.1029/2005GL022403, 2005.

Mellqvist, J., Galle, B., Blumenstock, T., Hase, F., Yashcov, D., Notholt, J., Sen, B., Blavier, J.-F., Toon, G. C., and Chipperfield, M. P.: Ground-based FTIR observations of chlorine activation and ozone depletion inside the Arctic vortex during the winter of 1999/2000, J. Geophys. Res., 107(D20), 8263, doi:10.1029/2001JD001080, 2002.

Michelsen, H. A., Salawitch, R. J., Gunson, M. R., Aellig, C., Kämpfer, N., Abbas, M. M., Abrams, M. C., Brown, T. L., Chang, A. Y., Goldman, A., Irion, F. W., Newchurch, M. J., Rinsland, C. P., Stiller, G. P., and Zander, R.: Stratospheric chlorine partitioning: Constraints from shuttle-borne measurements of [HCl], [ClONO₂], and [ClO], Geophys. Res. Lett., 23, 2361–2364, 1996.

Michelsen, H. A., Webster, C. R., Manney, G. L., Scott, D. C., Margitan, J. J., May, R. D., Irion, F. W., Gunson, M. R., Russell III, J. M., and Spivakovsky, C. M.: Maintenance of high HCl/Cl₂ and NO_x/NO_y in the Antarctic vortex: A chemical signature of confinement during spring, J. Geophys. Res., 104, 26 419–26 436, 1999.

Müller, R., Peter, Th., Cruzten, P. J., Oelhaf, H., Adrian, G. P., von Clarmann, T., Wegner, A., Schmidt, U., and Lary, D.: Chlorine chemistry and the potential for ozone depletion in the Arctic stratosphere in the winter of 1991/1992, Geophys. Res. Lett., 21, 1427–1430, 1994.

**Cl-partitioning
measured by ACE
during the Arctic
winter 2005**

G. Dufour et al.

Title Page

Abstract

Introduction

Conclusions

References

Tables

Figures

◀

▶

◀

▶

Back

Close

Full Screen / Esc

Print Version

Interactive Discussion

**Cl-partitioning
measured by ACE
during the Arctic
winter 2005**

G. Dufour et al.

[Title Page](#)[Abstract](#)[Introduction](#)[Conclusions](#)[References](#)[Tables](#)[Figures](#)[◀](#)[▶](#)[◀](#)[▶](#)[Back](#)[Close](#)[Full Screen / Esc](#)[Print Version](#)[Interactive Discussion](#)

Nassar, R., Bernath, P. F., Boone, C. D., Manney, G. L., McLeod, S. D., Rinsland, C. P., Skelton, R., and Walker, K. A.: ACE-FTS measurements across the edge of the winter 2004 Arctic vortex, *Geophys. Res. Lett.*, 32, L15S05, doi:10.1029/2005GL022671, 2005.

Payan, S., Camy-Peyret, C., Jeseck, P., Hawat, T., Durry, G., and Lefèvre, F.: First direct simultaneous HCl and ClONO₂ profile measurements in the Arctic vortex, *Geophys. Res. Lett.*, 25, 2663–2666, 1998.

Rinsland, C. P., Gunson, M. R., Abrams, M. C., Lowes, L. L., Zander, R., Mahieu, E., Goldman, A., and Irion, F. W.: April 1993 Arctic profiles of stratospheric HCl, ClONO₂ and CCl₂F₂ from atmospheric trace molecule spectroscopy/ATLAS 2 infrared solar occultation spectra, *J. Geophys. Res.*, 100(D7), 14 019–14 027, 1995.

Rothman, L. S., Jacquemart, D., Barbe, A., Benner, D. C., Birk, M., Brown, L. R., Carleer, M. R., Chackerian Jr., C., Chance, K., Coudert, L. H., Dana, D., Devi, V. M., Flaud, J.-M., Gamache, R. R., Goldman, A., Hartmann, J.-M., Jucks, K. W., Maki, A. G., Mandin, J.-M., Massie, S. T., Orphal, J., Perrin, A., Rinsland, C. P., Smith, M. A. H., Tennyson, J., Tolchenov, R. N., Toth, R. A., Vander Auwera, J., Varanasi, P., and Wagner, G.: The HITRAN 2004 molecular spectroscopic database, *J. Quant. Spectrosc. Radiat. Transfer*, 96, 139–204, 2005.

Santee, M. L., Froidevaux, L., Manney, G. L., Read, W. G., Waters, J. W., Chipperfield, M. P., Roche, A. E., Kumer, J. B., Mergenthaler, J. L., and Russell III, J. M.: Chlorine deactivation in the lower stratospheric polar regions during late winter: Results from UARS, *J. Geophys. Res.*, 101(D13), 18 835–18 859, 1996.

Santee, M. L., Manney, G. L., Waters, J. W., and Livesey, N. J.: Variations and climatology of ClO in the polar lower stratosphere from UARS Microwave Limb Sounder measurements, *J. Geophys. Res.*, 108(D15), 4454, doi:10.1029/2002JD003335, 2003.

Solomon, P., Barrett, J., Connor, B., Zoonematkermani, S., Parrish, A., Lee, A., Pyle, J., and Chipperfield, M.: Seasonal observations of chlorine monoxide in the stratosphere over Antarctica during the 1996–1998 ozone holes and comparison with the SLIMCAT three-dimensional model, *J. Geophys. Res.*, 105(D23), 28 979–29 001, 2000.

Stachnik, R. A., Salawitch, R., Engel, A., and Schmidt, U.: Measurements of chlorine partitioning in the winter Arctic stratosphere, *Geophys. Res. Lett.*, 26, 3093–3096, 1999.

Stimpfle, R. M., Cohen, R. C., Bonne, G. P., Voss, P. B., Perkins, K. K., Koch, L. C., Anderson, J. G., Salawitch, R. J., Lloyd, S. A., Gao, R. S., Del Negro, L. A., Keim, E. R., and Bui, T. P.: The coupling of ClONO₂, ClO, and NO₂ in the lower stratosphere in-situ observations using the NASA-ER2 aircraft, *J. Geophys. Res.*, 104(D21), 26 705–26 714, 1999.

Webster, C. R., May, R. D., Toohey, D. W., Avallone, L. M., Anderson, J. G., Newman, P., Lait, L., Schoeberl, M. R., Elkins, J. W., and Chan, K. R.: Chlorine chemistry on polar stratospheric cloud particles in the Arctic winter, *Science*, 261, 1130–1133, 1993.

WMO (World Meteorological Organization): Scientific Assessment of Ozone Depletion: 2002, Global Research and Monitoring Project – Report No. 47, Geneva, 2003.

**Cl-partitioning
measured by ACE
during the Arctic
winter 2005**

G. Dufour et al.

Title Page

Abstract

Introduction

Conclusions

References

Tables

Figures

⏪

⏩

◀

▶

Back

Close

Full Screen / Esc

Print Version

Interactive Discussion

Cl-partitioning
measured by ACE
during the Arctic
winter 2005

G. Dufour et al.

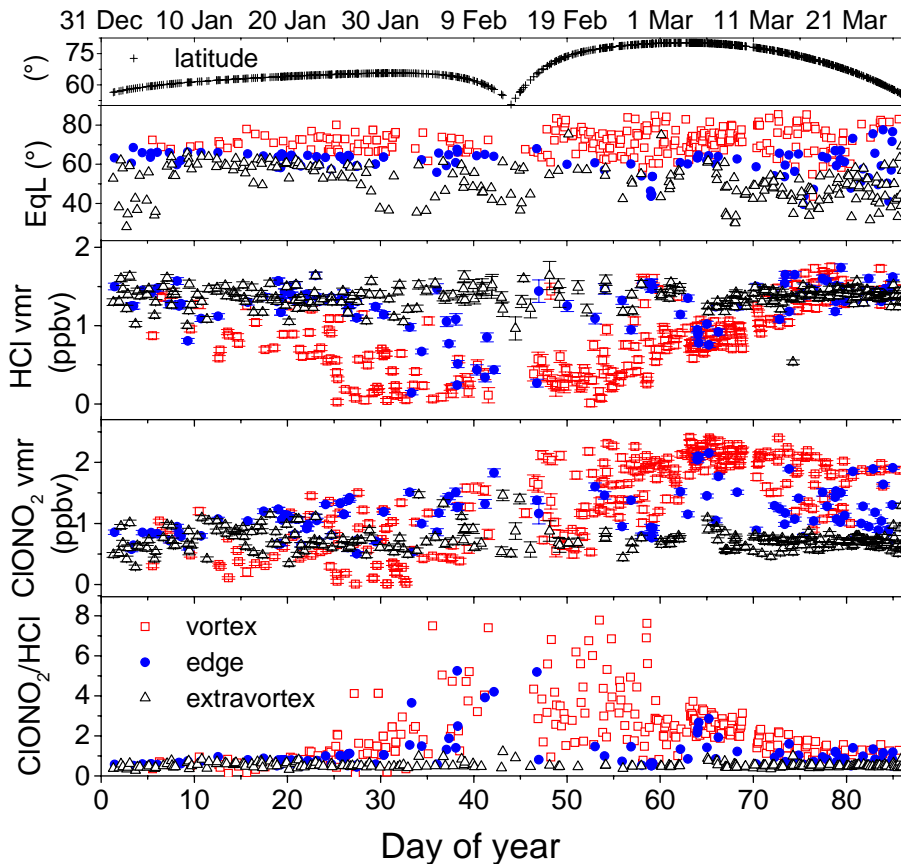


Fig. 1. Polar latitudes sounded by ACE-FTS and the corresponding equivalent latitudes (upper panels) and time series of HCl, ClONO₂ and their ratio at 20.5 km (lower panels) during the Arctic winter 2005.

[Title Page](#)[Abstract](#)[Introduction](#)[Conclusions](#)[References](#)[Tables](#)[Figures](#)[◀](#)[▶](#)[◀](#)[▶](#)[Back](#)[Close](#)[Full Screen / Esc](#)[Print Version](#)[Interactive Discussion](#)

**Cl-partitioning
measured by ACE
during the Arctic
winter 2005**

G. Dufour et al.

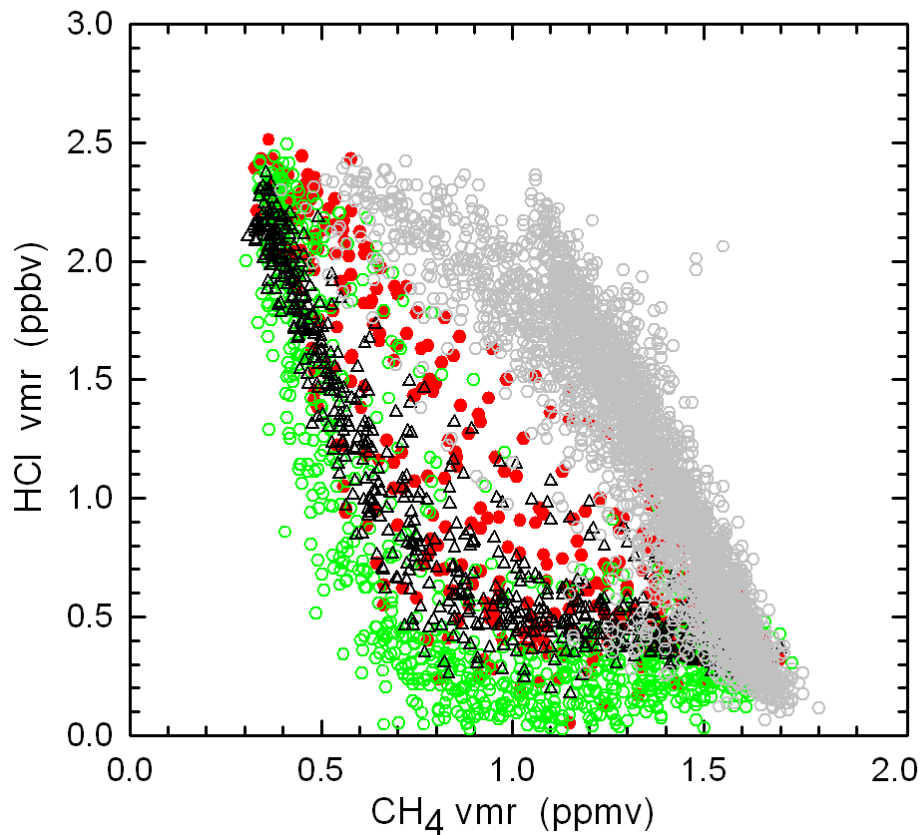


Fig. 2. Correlation plot of HCl versus CH_4 between 350 K and 700 K. Gray circles are observations outside the vortex at 3 January–26 March 2005; red dots are observations in the vortex at 1–25 January 2005; green circles are observations in the vortex at 26 January–25 February 2005; black triangles are observations in the vortex at 26 February–24 March 2005.

[Title Page](#)[Abstract](#)[Introduction](#)[Conclusions](#)[References](#)[Tables](#)[Figures](#)[◀](#)[▶](#)[◀](#)[▶](#)[Back](#)[Close](#)[Full Screen / Esc](#)[Print Version](#)[Interactive Discussion](#)

**Cl-partitioning
measured by ACE
during the Arctic
winter 2005**

G. Dufour et al.

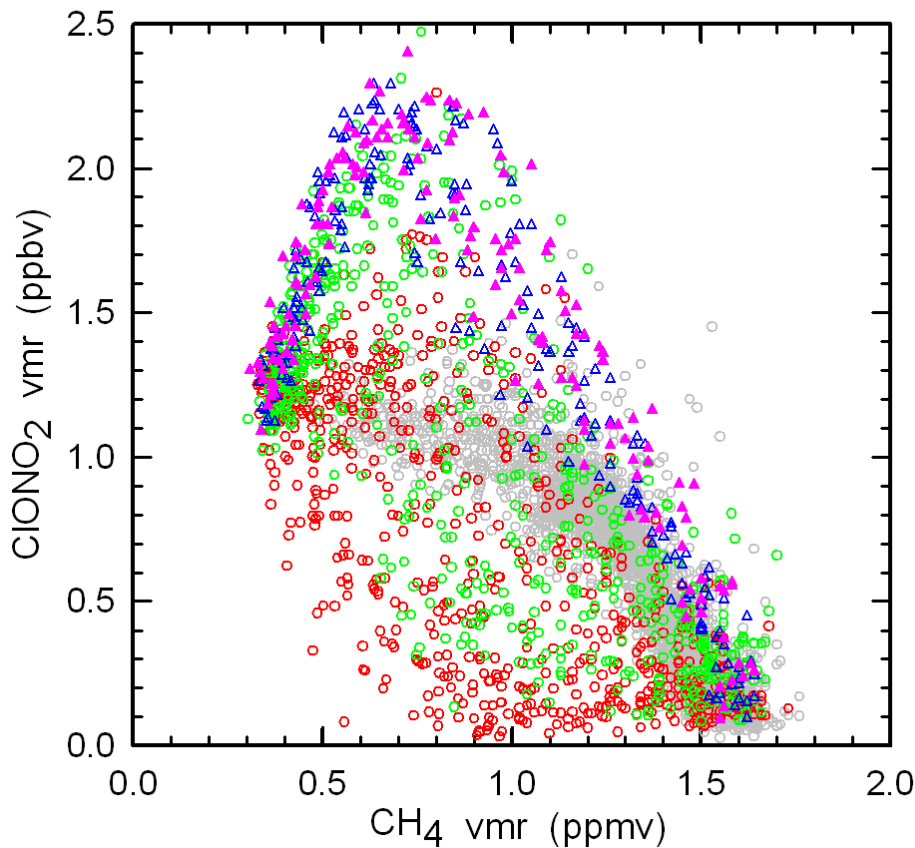


Fig. 3. Correlation plot of ClONO_2 versus CH_4 between 350 K and 700 K. Gray circles are observations outside the vortex at 1 January–26 March 2005; color symbols are observation in the vortex: red circles, 3 January–15 February 2005; green circles, 16–28 February 2005; blue triangles, 2–9 March 2005; purple triangles, 11–24 March 2005.

[Title Page](#)[Abstract](#)[Introduction](#)[Conclusions](#)[References](#)[Tables](#)[Figures](#)[◀](#)[▶](#)[◀](#)[▶](#)[Back](#)[Close](#)[Full Screen / Esc](#)[Print Version](#)[Interactive Discussion](#)

**Cl-partitioning
measured by ACE
during the Arctic
winter 2005**

G. Dufour et al.

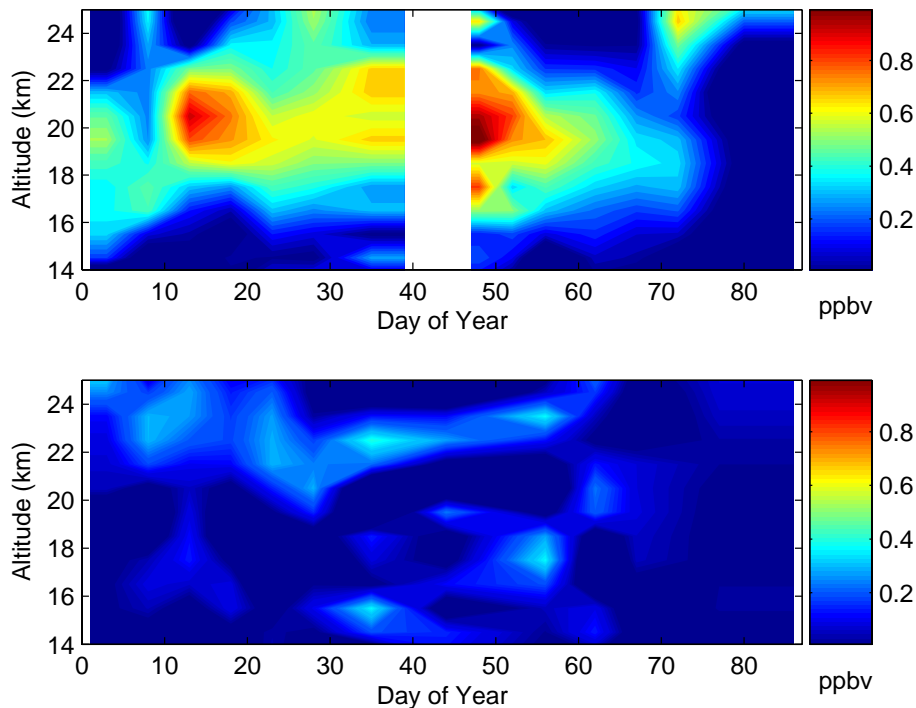


Fig. 4. Time series of average ClO profiles between 14 and 25 km during the Arctic winter 2005. Upper panel: measurements corresponding to processed air masses. Lower panel: measurements corresponding to unprocessed air masses (see text for details).

[Title Page](#)[Abstract](#)[Introduction](#)[Conclusions](#)[References](#)[Tables](#)[Figures](#)[◀](#)[▶](#)[◀](#)[▶](#)[Back](#)[Close](#)[Full Screen / Esc](#)[Print Version](#)[Interactive Discussion](#)

**Cl-partitioning
measured by ACE
during the Arctic
winter 2005**

G. Dufour et al.

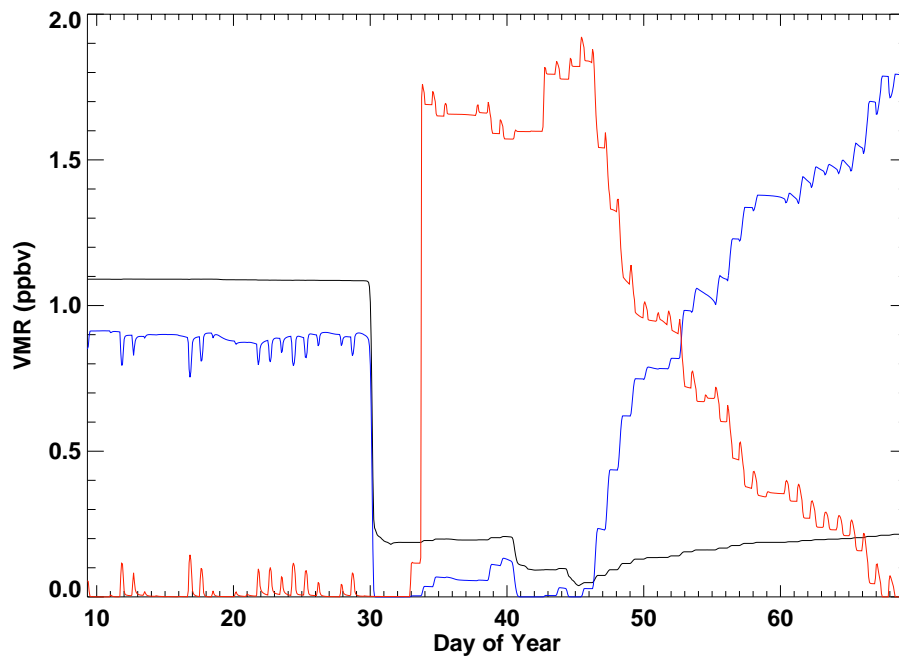


Fig. 5. HCl (black), ClONO₂ (blue) and ClOx (loosely defined as ClO+2Cl₂O₂) (red) vmrs for a 3-D trajectory launched from an ACE observation location (61.1° N, 49.8° E) at 06:00 GMT on 9 January 2005 and followed out for 60 days, using NCEP data. For initial conditions see text.

[Title Page](#)[Abstract](#)[Introduction](#)[Conclusions](#)[References](#)[Tables](#)[Figures](#)[◀](#)[▶](#)[◀](#)[▶](#)[Back](#)[Close](#)[Full Screen / Esc](#)[Print Version](#)[Interactive Discussion](#)

**Cl-partitioning
measured by ACE
during the Arctic
winter 2005**

G. Dufour et al.

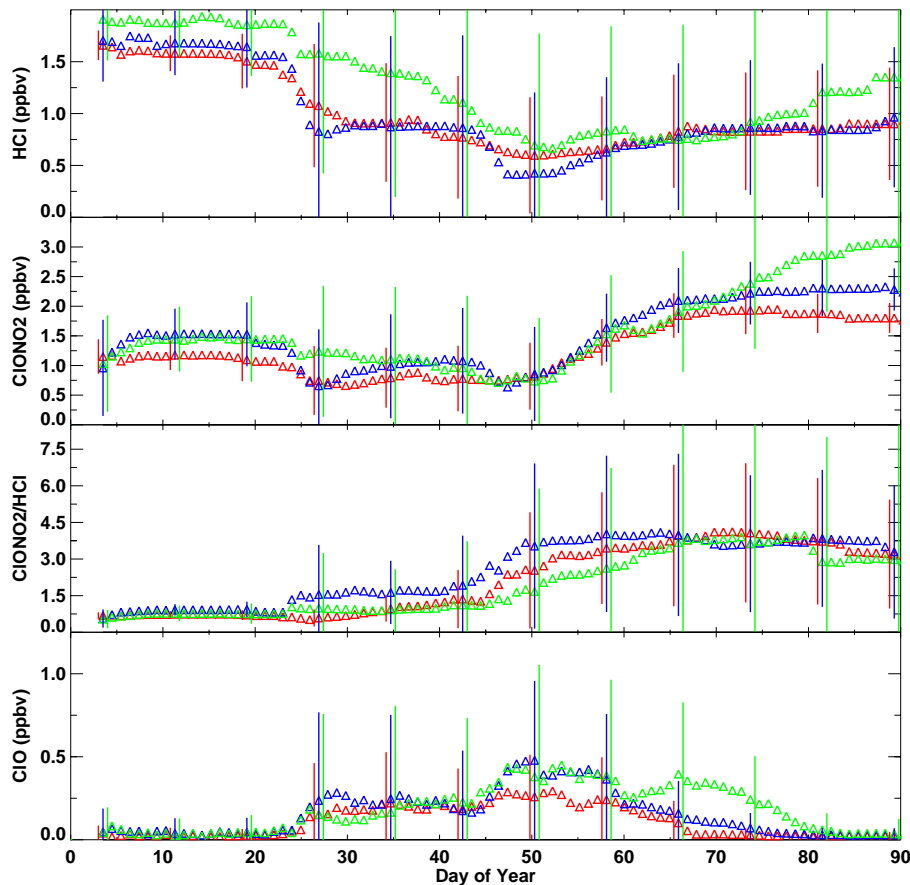


Fig. 6. Mean concentrations versus day of year for HCl (first panel), ClONO₂ (second panel), HCl/ClONO₂ ratio (third panel) and ClO (fourth panel) from vortex trapped trajectories. Colours represent different altitudes from which trajectories were initialized: 22.5 km (red), 23.5 km (blue) and 24.5 km (green). Error bars based on variance are shown at select times.

[Title Page](#)[Abstract](#)[Introduction](#)[Conclusions](#)[References](#)[Tables](#)[Figures](#)[◀](#)[▶](#)[◀](#)[▶](#)[Back](#)[Close](#)[Full Screen / Esc](#)[Print Version](#)[Interactive Discussion](#)

**Cl-partitioning
measured by ACE
during the Arctic
winter 2005**G. Dufour et al.

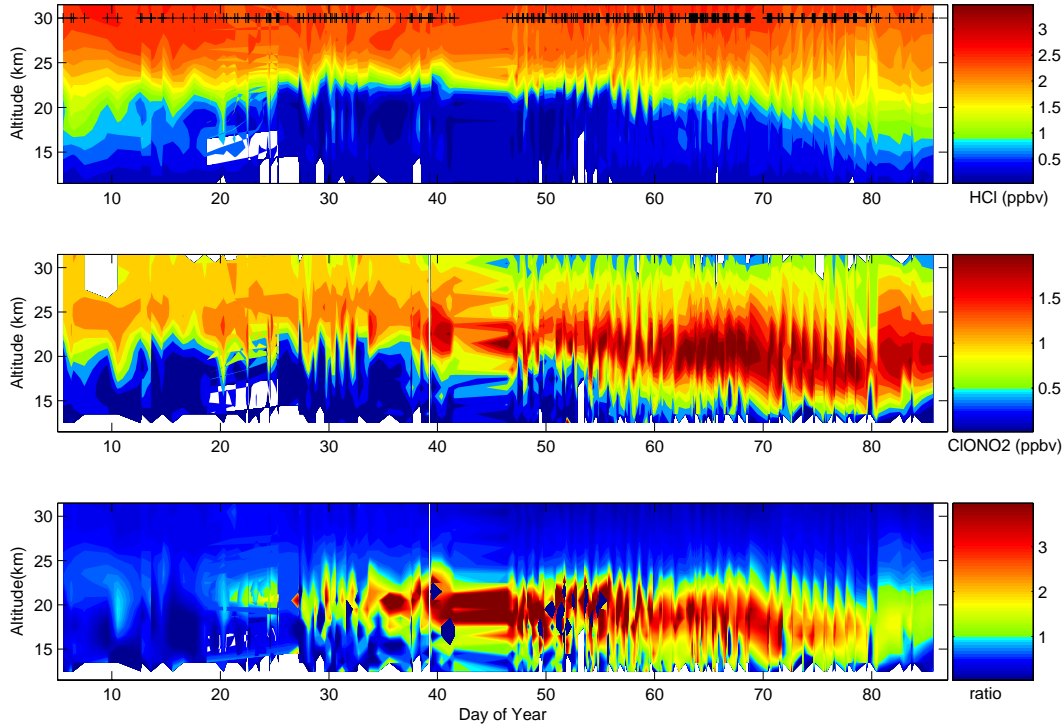


Fig. 7. Time series of the HCl (top), ClONO₂ (middle) and ClONO₂/HCl (bottom) profiles between 10 and 31 km observed from 1 January 2005 to 26 March 2005 for measurements inside the vortex. Crosses on the top panel represent the actual measurement time. White areas correspond to missing data.

[Title Page](#)[Abstract](#)[Introduction](#)[Conclusions](#)[References](#)[Tables](#)[Figures](#)[⏪](#)[⏩](#)[◀](#)[▶](#)[Back](#)[Close](#)[Full Screen / Esc](#)[Print Version](#)[Interactive Discussion](#)