



HAL
open science

Deep convective injection of boundary layer air into the lowermost stratosphere at midlatitudes

H. Fischer, M. de Reus, M. Traub, J. Williams, J. Lelieveld, J. de Gouw, C. Warneke, H. Schlager, A. Minikin, R. Scheele, et al.

► **To cite this version:**

H. Fischer, M. de Reus, M. Traub, J. Williams, J. Lelieveld, et al.. Deep convective injection of boundary layer air into the lowermost stratosphere at midlatitudes. Atmospheric Chemistry and Physics Discussions, 2002, 2 (6), pp.2003-2019. hal-00300975

HAL Id: hal-00300975

<https://hal.science/hal-00300975>

Submitted on 18 Jun 2008

HAL is a multi-disciplinary open access archive for the deposit and dissemination of scientific research documents, whether they are published or not. The documents may come from teaching and research institutions in France or abroad, or from public or private research centers.

L'archive ouverte pluridisciplinaire **HAL**, est destinée au dépôt et à la diffusion de documents scientifiques de niveau recherche, publiés ou non, émanant des établissements d'enseignement et de recherche français ou étrangers, des laboratoires publics ou privés.

Deep convective
injection

H. Fischer et al.

Deep convective injection of boundary layer air into the lowermost stratosphere at midlatitudes

H. Fischer¹, M. de Reus¹, M. Traub¹, J. Williams¹, J. Lelieveld¹, J. de Gouw²,
C. Warneke², H. Schlager³, A. Minikin³, R. Scheele⁴, and P. Siegmund⁴

¹Max Planck Institute for Chemistry, Mainz, Germany

²CIRES and NOAA Aeronomy Laboratory, Boulder, Colorado, USA

³Institute for Atmospheric Physics, DLR, Oberpfaffenhofen, Germany

⁴KNMI, de Bilt, The Netherlands

Received: 30 August 2002 – Accepted: 25 October 2002 – Published: 11 November 2002

Correspondence to: H. Fischer (hofi@mpch-mainz.mpg.de)

Title Page

Abstract

Introduction

Conclusions

References

Tables

Figures

◀

▶

◀

▶

Back

Close

Full Screen / Esc

Print Version

Interactive Discussion

© EGU 2002

Abstract

On 22 August 2001 a measurement flight was performed with the German research aircraft FALCON from Sardinia to Crete as part of the Mediterranean Oxidant Study (MINOS). Cruising at 8.2 km, the aircraft was forced to climb to 11.2 km over the southern tip of Italy to stay clear of the anvil of a large cumulonimbus tower. During ascent into the lowermost stratosphere in-situ measurements onboard the FALCON indicated several sharp increases in the concentrations of tropospheric trace gases, e.g. CO, acetone, methanol, benzene and acetonitrile, above the anvil. During one particular event deep in the stratosphere, at O₃ concentrations exceeding 200 ppv, CO increased from about 60 to 90 ppv, while the concentration of acetone and methanol increased by more than a factor of 2 (0.7 to 1.8 ppv for acetone; 0.4 to 1.4 ppv for methanol). Enhancements for the short lived species benzene are even higher, increasing from 20 pptv in the stratosphere to approx. 130 pptv. The concentrations during the event were higher than background concentrations in the upper troposphere, indicating that polluted boundary layer air was directly mixed deep into the lowermost stratosphere.

1. Introduction

Tropospheric ozone plays a key role for the oxidizing power of the atmosphere, owing to its role as OH precursor. Sources of tropospheric O₃ are: downward transport from the stratosphere (e.g. Holton et al., 1995, and references therein); and in-situ photochemical production involving volatile organic compounds, carbon monoxide and nitrogen oxide (e.g. Crutzen, 1995). The majority of ozone precursors are emitted close to the earth's surface. Large scale mixing of pollution throughout the troposphere is accomplished by frontal activity (e.g. Bethan et al., 1998; Fischer et al., 2002) and deep convection, a particularly efficient process for fast transport of boundary layer air into the upper troposphere (Dickerson et al., 1987; Pickering et al., 1988; Hauf et al., 1995; Ström et al., 1999). In the tropics deep convection can penetrate the tropopause,

Deep convective injection

H. Fischer et al.

Title Page

Abstract

Introduction

Conclusions

References

Tables

Figures

◀

▶

◀

▶

Back

Close

Full Screen / Esc

Print Version

Interactive Discussion

Deep convective injection

H. Fischer et al.

Title Page

Abstract

Introduction

Conclusions

References

Tables

Figures

I◀

▶I

◀

▶

Back

Close

Full Screen / Esc

Print Version

Interactive Discussion

© EGU 2002

carrying tropospheric air directly into the stratosphere (Danielsen, 1982, 1993). First indications that deep convection associated with midlatitudinal thunderstorms can also contribute to troposphere-to-stratosphere transport were obtained from airborne infrared radiometric interference measurements in the early 1970s (Kuhn et al., 1971; Kuhn and Stearns, 1973), which demonstrated that convective systems can introduce significant amounts of water vapour into the lower stratosphere (Reiter, 1975). Further evidence for troposphere-to-stratosphere transport in midlatitude convective complexes was obtained from airborne in-situ measurements of O₃, NO_y, CO and H₂O by Poulida et al. (1996). Although Hauf et al. (1995) and Ström et al. (1999) demonstrated that deep convection can pump boundary layer air without significant dilution to the tropopause region, experimental verification that this air directly influences the lower stratosphere is still lacking. Here we report airborne in-situ observations made during the Mediterranean INTensive Oxidant Study (MINOS) in August 2001 of cross-tropopause transport of boundary layer air deep into the lowermost stratosphere at midlatitudes, well above the local tropopause.

2. Meteorological situation

On 22 August 2001 an upper level trough developed over southern Italy associated with a surface low centred east of Rome, causing a low tropopause over the Tyrrhenian sea and the southern tip of Italy (Fig. 1). Cloud cover images in the infra-red spectral range taken by Meteosat satellites at 13:30 GMT and 14:00 GMT on 22 August 2001 are shown in Figs. 2a and 2b, respectively. Both figures indicate the development of strong convection in this area during noon. The approximate flight track of the German research aircraft Falcon on its way from Sardinia to Crete is superimposed on the pictures. Take-off from Alghero airport (Sardinia, 40.5° N, 8.5° E) took place on 12:46 GMT, landing at Heraklion airport (Crete, 35.3° N, 25.1° E) on 15:23 GMT. The aircraft passed the area of strong convection above the Thyrrenian and Ionian seas between 13:15 GMT and 13:55 GMT.

3. Measurements

Figure 3 shows the time series of trace gas concentrations from a merged data set with a resolution of 15 s obtained during the first hour of the flight from Sardinia to Crete between 12:53 GMT and 14:00 GMT extending from Alghero to the east coast of the Italian peninsula at 40.5° N, 17.2° E, while Fig. 4 shows altitude profiles of these tracers and potential temperature. CH₄ and CO were measured by infrared absorption using the Max Planck Institute for Chemistry tuneable diode laser spectrometer TRISTAR (Wienhold et al., 1999). The DLR provided O₃ measurement based on fast response UV absorption, NO measurements by chemoluminescence, and gas phase NO_y measurements via conversion of its single components to NO within a heated gold tube in the presence of CO as reducing agent (Ziereis et al., 2000). Methanol, acetonitrile, benzene, and acetone were measured with proton-transfer-reaction mass spectrometry (PTR-MS) (Lindinger et al., 1998) using two instruments, operated by the University of Utrecht and the Max Planck Institute for Chemistry. The instruments showed good agreement (de Gouw et al., 2002). In the following only data from the Utrecht PTR-MS are used because of the higher temporal resolution and the higher data coverage of this instrument. The particle number concentration was measured by two condensation particle counters with 50% counting efficiency at particle diameters of 5 nm (CN-5) and 14 nm (CN-14), respectively, operated by the DLR. The difference between CN-5 and CN-14 represents the nucleation mode or ultrafine particle number (UCN) concentration, with a diameter between 5 and 14 nm.

Previous studies have used a large variety of chemical and physical tracers from in-situ measurements to infer the effect of convection on the chemical composition. Most techniques rely on detection of trace gas enhancements of species with higher concentrations in the boundary layer than in the free troposphere, e.g. CO, NO_y, or NMHC (e.g. Dickerson et al., 1987; Poulida et al., 1996). Since outflow of larger convective clouds has recently been suggested as a source for new particles, UCN measurements have been widely used to detect convective outflow (de Reus et al.,

Deep convective injection

H. Fischer et al.

Title Page

Abstract

Introduction

Conclusions

References

Tables

Figures

◀

▶

◀

▶

Back

Close

Full Screen / Esc

Print Version

Interactive Discussion

Deep convective injection

H. Fischer et al.

Title Page

Abstract

Introduction

Conclusions

References

Tables

Figures

◀

▶

◀

▶

Back

Close

Full Screen / Esc

Print Version

Interactive Discussion

© EGU 2002

2001; Clarke et al., 1999; Wang et al., 2000). Three events during which the trace gas signatures indicate transport of boundary layer air into or above the tropopause region are marked in grey in Figs. 3 and 4. The first event, labelled C1, was observed between 13:15 and 13:21 GMT around 39.7° N, 12.5° E (north of Sicily, approximately halfway between Sardinia and Italy) at 8.2 km altitude (Fig. 2a). The event is characterized by simultaneous enhancements in CH₄, CO, NO, NO_y and UCN. Ozone levels in excess of 100 ppbv and PV values of the order of 2 PVU (Fig. 1b) indicate the close proximity of the tropopause. As a consequence of the constant level flight this event can not be unambiguously identified in the profiles shown in Fig. 4. Shortly before this event (after 13:10 GMT) strong spikes in both NO and NO_y, that were not associated with simultaneous enhancements in CO, were observed. These enhancements are therefore not ascribed to deep convective pollution transport from the boundary layer. They are more likely associated with NO production by lightning, as they are too wide to be aircraft exhaust plumes. The same argument applies to a second NO/NO_y peak around 13:36 GMT. Backward trajectories for event C1 indicate that the airmass origin 5 days prior to the measurements is in the upper troposphere off the east coast of the North American continent (note that trajectories before and after C1 show a similar behaviour with respect to the airmass origin). Figure 5a shows the trajectories during their final approach over Europe, indicating that the trajectories passed over the strong convection over the Italian mainland shortly before encountering the aircraft (compare to Fig. 2a).

Approaching the Italian west coast the aircraft was forced to climb to a higher flight level to stay clear of a large cumulonimbus cloud. Between 13:44 and 13:46 GMT the on-board operators reported close proximity to clouds and strong turbulence during passage over the southern tip of Italy (39° N, 16.1° E) at an altitude of 10.3 km. During this event, labelled C2 in Figs. 2b, 3, 4 and 5b, CO, methanol, acetonitrile, benzene, and acetone show strong and sharp increases exceeding the stratospheric background by up to a factor of two. The strongest enhancement is found for benzene, whose mixing ratio increased by approx. a factor of 5 relative to the stratospheric background, which

Deep convective injection

H. Fischer et al.

Title Page

Abstract

Introduction

Conclusions

References

Tables

Figures

◀

▶

◀

▶

Back

Close

Full Screen / Esc

Print Version

Interactive Discussion

© EGU 2002

is close to the detection limit of the instrument (20–50 pptv). Unfortunately the NO and NO_y instrumentation provided no data during this period due to an on-board calibration. For the same reason, no O₃ data are available between 13:45 and 13:46 GMT, right at the time of maximum enhancements in the tropospheric tracers.

5 The concentrations of acetone, methanol, benzene, and acetonitrile are in fact substantially higher than free tropospheric values during this particular flight (Fig. 4). They are, however, comparable to data obtained on 19 August 2001 during a flight west of Italy in the boundary layer over the Ionian sea at 36° N, 18° E, 116 m above sea level. This flight was designed to characterize west European outflow. Streamlines and backward trajectory calculations indicate that these airmasses were advected to the Ionian sea from southern Italy. The convective event C2, and the subsequent event C3 (~13:50 GMT, 38.8° N, 16.8° E, 11 km altitude), were observed deep into the stratosphere, as indicated by O₃ concentrations in excess of 200 ppv and PV values of the order of 7 PVU (Fig. 1b). Five day backward trajectories for C2 and C3 indicate that the airmasses were advected from the North Atlantic region in the lower stratosphere, passing over the convective region over Italy shortly before encountering the aircraft (Fig. 5b). Note that contrary to C1, neither C2 nor C3 are associated with significant new particle formation, i.e. an enhancement in ultrafine particles.

10 Inspection of Figs. 2a and b reveals that all three events were observed downwind (C1) or directly above (C2 and C3) areas with large convective cloud cover. The close proximity to clouds and the strong enhancements of boundary layer tracers indicate that convective injection of tropospheric air through the tropopause region has caused the events C1 to C3.

4. Amount of tropospheric air injected into the stratosphere

25 The amount of tropospheric air mixed into the lowermost stratosphere during the convective events C1 to C3 can be estimated from the budget of the insoluble trace gases CO, methanol, acetone, benzene, and acetonitrile. Table 1 lists average mixing ra-

Deep convective injection

H. Fischer et al.

Title Page

Abstract

Introduction

Conclusions

References

Tables

Figures

◀

▶

◀

▶

Back

Close

Full Screen / Esc

Print Version

Interactive Discussion

© EGU 2002

tios and 1σ -standard deviations of the mixing ratios of these species in the boundary layer (BL), the upper troposphere (UT), the lowermost stratosphere (LMS) and during the events C1 to C3. Concentrations in the boundary layer are deduced from measurements on 19 August 2001 in airmasses advected from southern Italy to the Ionian sea. The upper tropospheric background concentrations were determined from in-situ measurements on 22 August between 13:00 and 13:08 GMT (Fig. 3). Trace gas levels in the lowermost stratosphere, unperturbed by convective injection of tropospheric air, were determined by averaging data obtained 150 s before and after the events C1 to C3, respectively. The concentrations in the convective events C2 and C3 are calculated from data points exceeding the stratospheric background concentrations by 3σ . This criterion was not applied for C1, since the enhancement in CO and other tracers is generally smaller. Therefore, we based the identification of convectively influenced air for this event on the measurement of UCN particles (3σ -enhancement over upper tropospheric background).

The trace gas mixing ratios during the events C1 to C3 can be calculated according to

$$X^{Ci} = (1 - a)X^{LMS} + a \left(bX^{BL} + (1 - b)X^{UT} \right), \quad i = 1 \dots 3, \quad (1)$$

where X is the mixing ratio of the species under investigation and superscripts denote the reservoir. The parameter a gives the amount of tropospheric air mixed into the lowermost stratosphere, which itself can be composed of boundary layer air and/or upper tropospheric air. The mixture between these reservoirs is described by the parameter b . Since we cannot determine b independently, we further consider only the extreme cases were either purely boundary layer air ($b = 1$) and purely upper tropospheric air ($b = 0$) are mixed into the lowermost stratosphere. For these cases the amount of tropospheric air (TR) mixed into the lowermost stratosphere was calculated from:

$$TR = (X^{Ci} - X^{LMS}) / (X^{BL, UT} - X^{LMS}). \quad (2)$$

As already noted during the discussion of Fig. 3 concentrations of CO, acetone, acetonitrile, benzene, and methanol observed in C1 and C2 exceeded upper tropospheric

Deep convective injectionH. Fischer et al.

[Title Page](#)[Abstract](#)[Introduction](#)[Conclusions](#)[References](#)[Tables](#)[Figures](#)[◀](#)[▶](#)[◀](#)[▶](#)[Back](#)[Close](#)[Full Screen / Esc](#)[Print Version](#)[Interactive Discussion](#)

© EGU 2002

5 mixing ratios, so that local transport of upper tropospheric air into the lowermost strato-
sphere can be excluded for these events. Budget calculations according to Eq. (2) for
CO, methanol, acetonitrile, and acetone indicate that between 9 and 20% boundary
layer air has been mixed into the tropopause region during C1. For C2, CO, methanol
10 and acetone indicate that between 28 and 51% boundary layer air has been mixed into
the lowermost stratosphere. Higher percentages are calculated for acetonitrile and
benzene. Note that the average concentration of acetonitrile during C2 is even higher
than in the boundary layer, indicating that the data obtained on 19 August might not be
representative for the inflow region on 22 August, at least for acetonitrile. One expla-
15 nation could be an underestimation of the acetonitrile concentration owing to up-take
by the ocean in the airmasses during their ~24 h transport from Italy over the Ionian
sea (Williams et al., 2001). During C3 no PTR-MS data are available, therefore, budget
calculations are restricted to CO only, indicating that either 15% boundary layer or 59%
upper tropospheric air are injected into the stratosphere during this event.

20 It should be noted that these estimates suffer from a number of shortcomings, since
direct measurements in the inflow area on this particular day were not performed.
Therefore, it is hard to say how representative the measurements on 19 August, ob-
tained in the marine boundary layer ~24 h downwind of the Italian mainland, are for the
convective inflow region on August 22. This uncertainty might at least partly explain
the strongly diverging budget calculations e.g. for acetonitrile and CO.

5. Conclusions

Measurements during a strong convective event over southern Italy in August 2001
indicate that boundary layer air can be directly injected into the lowermost stratosphere.
Ozone levels exceeding 200 ppv suggest that convection significantly overshoots the
25 local tropopause. Budget calculations suggest that lower stratospheric air can contain
up to 50% boundary layer air in such convective events. Close to the tropopause the
convective injection of boundary layer air is associated with new particle formation due

Deep convective injectionH. Fischer et al.

[Title Page](#)[Abstract](#)[Introduction](#)[Conclusions](#)[References](#)[Tables](#)[Figures](#)[◀](#)[▶](#)[◀](#)[▶](#)[Back](#)[Close](#)[Full Screen / Esc](#)[Print Version](#)[Interactive Discussion](#)

© EGU 2002

to gas-to-particle conversion. Well above the tropopause convectively driven particle formation was not observed, which could indicate either inhibited particle formation or growth due to washout or freeze-out of gaseous precursors or that the particles are still too small to be detected by the instrument, which has a cut-off diameter of 4–5 nm.

5 To our best knowledge, this is the first in-situ observation of troposphere-stratosphere exchange associated with deep convection at midlatitudes that reaches deep into the lower stratosphere. The fact that deep exchange associated with convection has not been observed before might indicate that these events are rather rare and contribute only little to troposphere- stratosphere-exchange in the extra-tropics. Additional mea-
10 surements are needed to quantify the role of penetrating convection as compared to isentropic exchange associated with synoptic disturbances at the jet streams.

Acknowledgements. We gratefully acknowledge the excellent collaboration with the pilots and technicians of the DLR Falcon. Additionally, we like to thank M. Lawrence, Ph. Stier and M. Schulz for in-field chemical weather forecasts, which proved to be very helpful in day to day
15 flight planning.

References

- Bethan, S., Vaughan, G., Gerbig, C., Volz-Thomas, A., Richer, H., and Tiddeman, D. A.: Chemical airmass differences near fronts, *J. Geophys. Res.*, 103, 13,413–13,434, 1998.
- Clarke, A. D., Eisele, F., Kapustin, V. N., Moore, K., Tanner, D., Mauldin, L., Litchy, M., Lienert, B., Carroll, M. A., and Albercook, G.: Nucleation in the equatorial free troposphere: Favorable environments during PEM-Tropics, *J. Geophys. Res.*, 104, 5735–5744, 1999.
- Crutzen, P. J.: Ozone in the troposphere, in *Composition, Chemistry, and Climate of the Atmosphere*, edited by H. B. Singh, Van Norstrand Reinhold, New York, 349–393, 1995.
- Danielsen, E. F.: A dehydration mechanism for the stratosphere, *Geophys. Res. Lett.*, 9, 605–608, 1982.
- 25 Danielsen, E. F.: In situ evidence of rapid, vertical, irreversible transport of lower tropospheric air into the lower tropical stratosphere by convective cloud turrets and by large-scale upwelling in tropical cyclones, *J. Geophys. Res.*, 98, 8665–8681, 1993.

Deep convective injectionH. Fischer et al.

[Title Page](#)[Abstract](#)[Introduction](#)[Conclusions](#)[References](#)[Tables](#)[Figures](#)[◀](#)[▶](#)[◀](#)[▶](#)[Back](#)[Close](#)[Full Screen / Esc](#)[Print Version](#)[Interactive Discussion](#)

© EGU 2002

de Gouw, J. A., Warneke, C., Holzinger, R., Klüpfel, T., and Williams, J.: Inter-comparison between airborne measurements of methanol, acetonitrile and acetone using two differently configured PTR-MS instruments, manuscript in preparation, 2002.

de Reus, M., Krejci, R., Williams, J., Fischer, H., Scheele, R., and Ström, J.: Vertical and horizontal distribution of the aerosol number concentration and size distribution over the northern Indian Ocean, *J. Geophys. Res.*, 106, 28,629–28,641, 2001.

Dickerson, R. R., Huffman, G. J., Luke, W. T., Nunnermacker, L. J., Pickering, K. E., Leslie, A. C. D., Lindsey, C. G., Slinn, W. G. N., Kelly, T. J., Daum, P. H., Delany, A. C., Greenberg, J. P., Zimmerman, P. R., Boatman, J. F., Ray, J. D., and Stedman, D. H.: Thunderstorms: An important mechanism in the transport of air pollutions, *Science*, 235, 460–465, 1987.

Fischer, H., Brunner, D., Harris, G. W., Hoor, P., Lelieveld, J., McKenna, D. S., Rudolph, J., Scheeren, H. A., Siegmund, P., Wernli, H., Williams, J., and Wong, S.: Synoptic tracer gradients in the upper troposphere over central Canada during the STREAM 1998 summer campaign, *J. Geophys. Res.*, 107, D8, 10.1029/2000JD000312, 2002.

Hauf, T., Schulte, P., Alheit, R., and Schlager, H.: Rapid vertical transport by an isolated mid-latitude thunderstorm, *J. Geophys. Res.*, 100, 22,957–22,970, 1995.

Holton, J. R., Haynes, P. H., McIntyre, M. E., Douglass, A. R., Rood, R. B., and Pfister, L.: Stratosphere-troposphere exchange, *Rev. of Geophys.*, 33, 403–439, 1995.

Kuhn, P. M., Lojko, M. S., and Petersen, E. V.: Water vapor: Stratospheric injection by thunderstorms, *Science*, 174, 1319–1321, 1971.

Kuhn, P. M., and Stearns, L. P.: Radiometric observations of atmospheric water vapor injection by thunderstorms, *J. Atmos. Sci.*, 30, 507–509, 1973.

Lindinger, W., Hansel, A., and Jordan, A.: On-line monitoring of volatile organic compounds at pptv levels by means of Proton-Transfer-Reaction Mass Spectrometry (PTR-MS): Medical applications, food control and environmental research, *Int. J. Mass Spectrom. Ion Processes*, 173, 191–241, 1998.

Pickering, K. E., Dickerson, R. R., Huffman, G. J., Boatman, J. F., and Schandt, A.: Trace gas transport in the vicinity of frontal convective clouds, *J. Geophys. Res.*, 93, 759–773, 1988.

Poulida, O., Dickerson, R. R., and Heymsfield, A.: Stratosphere-troposphere exchange in a mid-latitude mesoscale convective complex: 1. Observation, *J. Geophys. Res.*, 101, 6823–6836, 1996.

Reiter, E. R.: Stratosphere-troposphere exchange processes, *Rev. Geophys. and Space Phys.*, 13, 459–474, 1975.

**Deep convective
injection**H. Fischer et al.

[Title Page](#)[Abstract](#)[Introduction](#)[Conclusions](#)[References](#)[Tables](#)[Figures](#)[I◀](#)[▶I](#)[◀](#)[▶](#)[Back](#)[Close](#)[Full Screen / Esc](#)[Print Version](#)[Interactive Discussion](#)

© EGU 2002

Ström, J., Fischer, H., Lelieveld, J., and Schröder, F.: In-situ measurements of aerosol micro-physical properties and trace gases in two cumulonimbus anvils over western Europe, *J. Geophys. Res.*, 104, 12221–12226, 1999.

5 Wang, Y., Liu, S. C., Anderson, B. E., Kondo, Y., Gregory, G. L., Sachse, G. W., Vay, S. A., Blake, D. R., Singh, H. B., and Thompson, A. M.: Evidence of convection as a major source of condensation nuclei in the northern midlatitude upper troposphere, *Geophys. Res. Lett.*, 27, 369–372, 2000.

Williams, J., Fischer, H., Harris, G. W., Crutzen, P., Hoor, P., Hansel, A., Holzinger, R., Warneke, C., Lindinger, W., Scheeren, B., and Lelieveld, J.: High resolution measurements of organic trace gases over the tropical forest and the use of the variability and lifetime relationship as a novel method to calculate HO concentrations, *J. Geophys. Res.*, 105, 20473–20486, 2000.

10 Wienhold, F. G., Fischer, H., Hoor, P., Wagner, V., Königstedt, R., Harris, G. W., Anders, J., Grisar, R., Knothe, M., Riedel, W. J., Lübken, F.-J., and Schilling, T.: TRISTAR – a tracer in-situ TDLAS for atmospheric research, *Appl. Phys. B*, 67, 411–417, 1998.

15 Ziereis, H., Schlager, H., Schulte, P., van Velthoven, P. F. J., and Slemr, F.: Distributions of NO, NO_x and NO_y in the upper troposphere and lower stratosphere between 28° and 61° N during POLINAT 2, *J. Geophys. Res.*, 105, 3653–3664, 2000.

Deep convective injection

H. Fischer et al.

Table 1. Mean concentrations of boundary layer (BL), upper tropospheric (UT), lowermost stratospheric (LMS) and convectively mixed (C1–C3) airmasses (1σ -standard deviations are given in brackets). The percentages indicate the amount of boundary layer air or upper tropospheric air mixed into the lowermost stratosphere

	CO/ppbv	Methanol/pptv	Acetonitrile/pptv	Benzene/pptv	Acetone/pptv
BL	176 (2)	3157 (199)	189 (13)	150 (30)	2845 (91)
UT	83 (7)	911 (261)	122 (14)	40 (40)	1304 (141)
LMS	95 (2)	1261 (270)	134 (10)	20 (20)	1642 (133)
C1	102 (6)	1503 (212)	145 (19)	50 (20)	1776 (146)
% BL air	9	12	20	23	11
BL	176 (2)	3157 (199)	189 (13)	150 (30)	2845 (91)
UT	83 (7)	911 (261)	122 (14)	40 (40)	1304 (141)
LMS	58 (7)	384 (159)	135 (21)	20 (20)	708 (140)
C2	91 (15)	1406 (490)	194 (35)	130 (50)	1803 (603)
% BL air	28	37	>100	85	51
BL	176 (2)	3157 (199)	189 (13)	150 (30)	2845 (91)
UT	83 (7)	911 (261)	122 (14)	40 (40)	1304 (141)
LMS	51 (3)	NA	NA	NA	NA
C3	83 (7)	NA	NA	NA	NA
% BL air	15	NA	NA	NA	NA
% UT air	59	NA	NA	NA	NA

Title Page

Abstract

Introduction

Conclusions

References

Tables

Figures

◀

▶

◀

▶

Back

Close

Full Screen / Esc

Print Version

Interactive Discussion

Deep convective injection

H. Fischer et al.

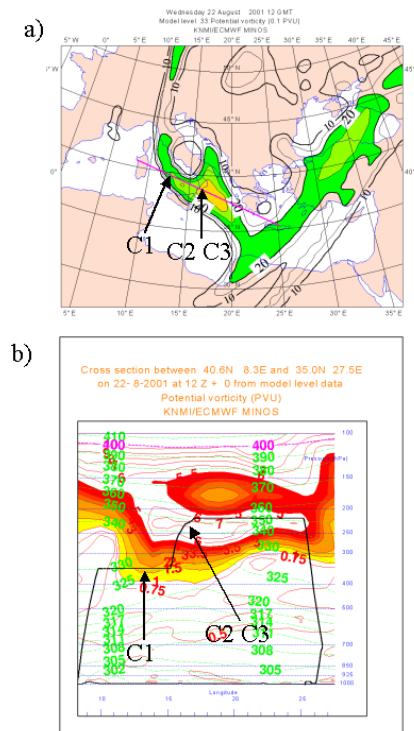


Fig. 1. (a) Potential vorticity in units of 0.1 PVU (1 PVU is $10^{-6} \text{ K m}^2 \text{ s}^{-1} \text{ kg}^{-1}$) at the 300 hPa level on 22 August 2001, 12:00 GMT. Stratospheric air is characterized by PV levels in excess of 20 (2 PVU). Superimposed on the figure is the approximate aircraft trajectory (black line). (b) Potential vorticity cross section along the pink line in (a). The tropopause region (1–3 PVU) is demarked by colouring. The flight trajectory is shown in black. C1 to C3 mark the positions of observed convective injection of tropospheric air into the lower stratosphere.

Title Page

Abstract

Introduction

Conclusions

References

Tables

Figures

◀

▶

◀

▶

Back

Close

Full Screen / Esc

Print Version

Interactive Discussion

© EGU 2002

Deep convective injection

H. Fischer et al.

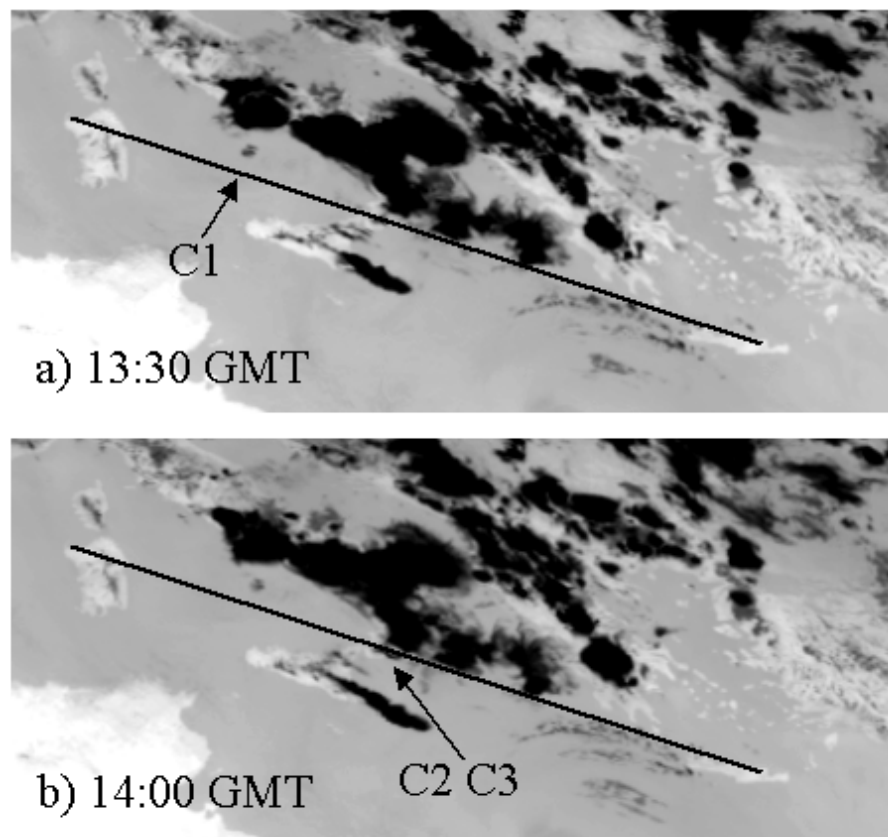


Fig. 2. Meteosat IR images obtained at 13:30 and 14:00 GMT. The lines indicate the approximate flight trajectory. Trace gas enhancements at the tropopause due to convection were observed between 13:15 and 13:21 GMT in the outflow of the clouds west of Italy (C1) and between 13:45 and 13:50 over the southern tip of Italy (C2 and C3).

[Title Page](#)[Abstract](#)[Introduction](#)[Conclusions](#)[References](#)[Tables](#)[Figures](#)[◀](#)[▶](#)[◀](#)[▶](#)[Back](#)[Close](#)[Full Screen / Esc](#)[Print Version](#)[Interactive Discussion](#)

© EGU 2002

Deep convective injection

H. Fischer et al.

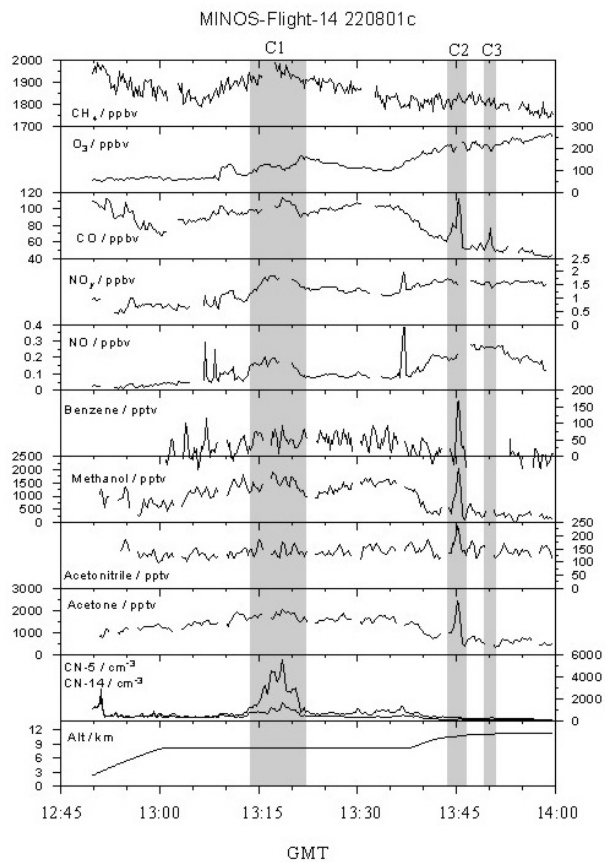


Fig. 3. Time series of trace gases measured during the first half of the MINOS measurement flight on 22 August 2001. Flight segments influenced by convection are highlighted in grey.

[Title Page](#)[Abstract](#)[Introduction](#)[Conclusions](#)[References](#)[Tables](#)[Figures](#)[◀](#)[▶](#)[◀](#)[▶](#)[Back](#)[Close](#)[Full Screen / Esc](#)[Print Version](#)[Interactive Discussion](#)

© EGU 2002

Deep convective injection

H. Fischer et al.

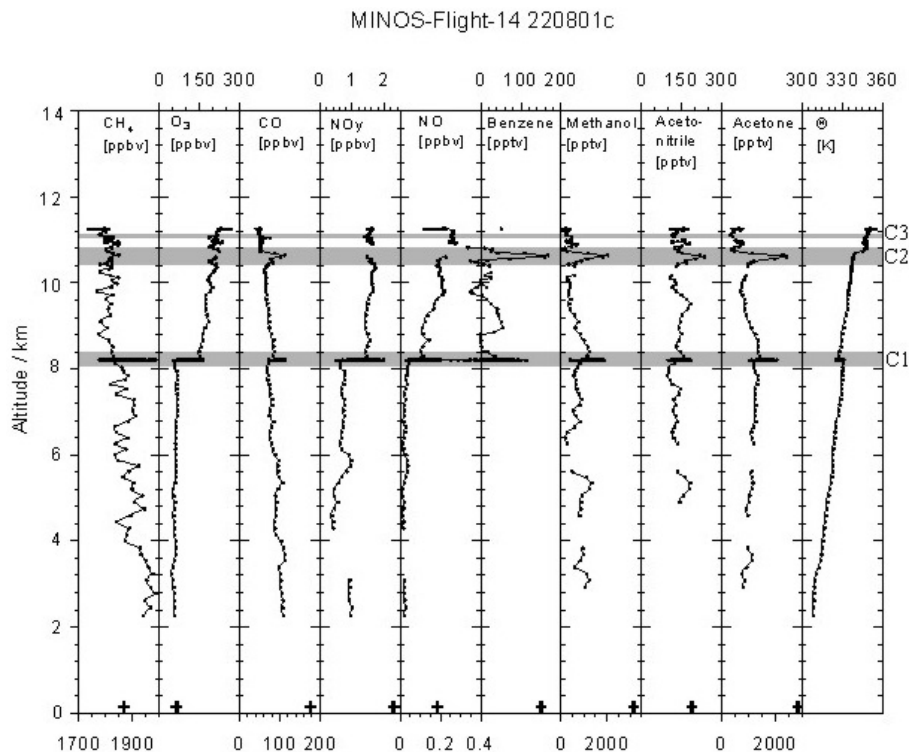


Fig. 4. Vertical profiles of measured trace gases and potential temperature during the first half of the MINOS flight on 22 August 2001. The crosses at altitudes <500 m denote boundary layer measurements performed over the Iovian sea, east of Italy on 19 July 2001.

Title Page

Abstract

Introduction

Conclusions

References

Tables

Figures

◀

▶

◀

▶

Back

Close

Full Screen / Esc

Print Version

Interactive Discussion

© EGU 2002

Deep convective injection

H. Fischer et al.

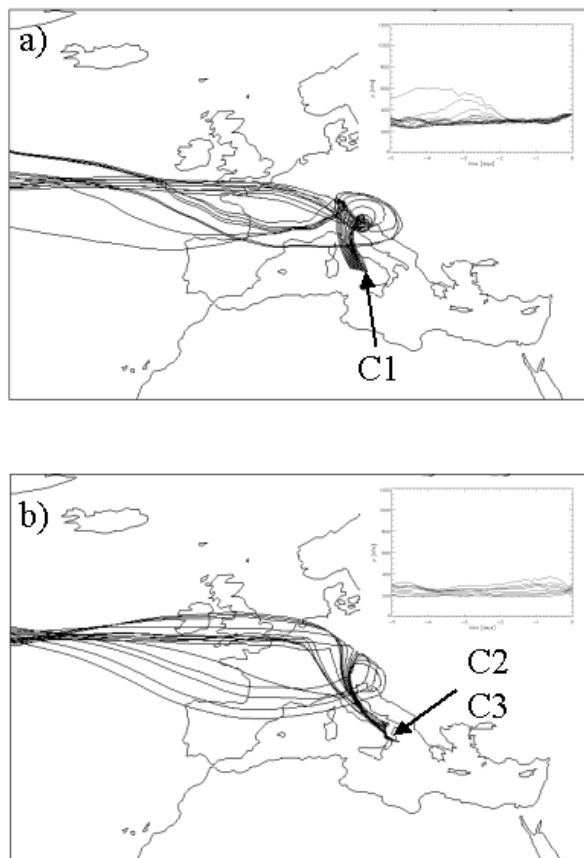


Fig. 5. Backward trajectories and their respective altitude variation for the period of event C1 (a) and C2 and C3 (b), respectively. Trajectories for C1 were calculated along the flight path at an interval of 1min between 13:10 and 13:25 GMT on 22 August 2001, while trajectories for C2 and C3 were calculated between 13:40 and 13:55 GMT.

[Title Page](#)[Abstract](#)[Introduction](#)[Conclusions](#)[References](#)[Tables](#)[Figures](#)[◀](#)[▶](#)[◀](#)[▶](#)[Back](#)[Close](#)[Full Screen / Esc](#)[Print Version](#)[Interactive Discussion](#)

© EGU 2002