



HAL
open science

CalMagNet ? an array of search coil magnetometers monitoring ultra low frequency activity in California

J. Cutler, J. Bortnik, C. Dunson, J. Doering, T. Bleier

► **To cite this version:**

J. Cutler, J. Bortnik, C. Dunson, J. Doering, T. Bleier. CalMagNet ? an array of search coil magnetometers monitoring ultra low frequency activity in California. *Natural Hazards and Earth System Sciences*, 2008, 8 (2), pp.359-368. hal-00299513

HAL Id: hal-00299513

<https://hal.science/hal-00299513>

Submitted on 18 Jun 2008

HAL is a multi-disciplinary open access archive for the deposit and dissemination of scientific research documents, whether they are published or not. The documents may come from teaching and research institutions in France or abroad, or from public or private research centers.

L'archive ouverte pluridisciplinaire **HAL**, est destinée au dépôt et à la diffusion de documents scientifiques de niveau recherche, publiés ou non, émanant des établissements d'enseignement et de recherche français ou étrangers, des laboratoires publics ou privés.

CalMagNet – an array of search coil magnetometers monitoring ultra low frequency activity in California

J. Cutler^{1,2}, J. Bortnik^{3,2}, C. Dunson², J. Doering², and T. Bleier²

¹Space and Systems Development Laboratory, Department of Aeronautics and Astronautics, 496 Lomita Mall, Stanford University, Stanford, California, USA

³Department of Atmospheric and Oceanic Sciences, Room 7115, Math Sciences Building, UC Los Angeles, California, 90095–1565, USA

²Quakefinder, LLC, 250 Cambridge Avenue, Palo Alto, California, 94306, USA

Received: 19 September 2007 – Revised: 6 December 2007 – Accepted: 6 December 2007 – Published: 15 April 2008

Abstract. The California Magnetometer Network (CalMagNet) consists of sixty-eight triaxial search-coil magnetometer systems measuring Ultra Low Frequency (ULF), 0.001–16 Hz, magnetic field fluctuations in California. CalMagNet provides data for comprehensive multi-point measurements of specific events in the Pc 1–Pc 5 range at mid-latitudes as well as a systematic, long-term study of ULF signals in active fault regions in California. Typical events include geomagnetic micropulsations and spectral resonant structures associated with the ionospheric Alfvén resonator. This paper provides a technical overview of the CalMagNet sensors and data processing systems. The network is composed of ten reference stations and fifty-eight local monitoring stations. The primary instruments at each site are three orthogonal induction coil magnetometers. A geophone monitors local site vibration. The systems are designed for future sensor expansion and include resources for monitoring four additional channels. Data is currently sampled at 32 samples per second with a 24-bit converter and time tagged with a GPS-based timing system. Several examples of representative magnetic fluctuations and signals as measured by the array are given.

1 Introduction

A number of magnetometer networks are deployed throughout the world to measure magnetic field variations to provide insight into the two-dimensional geographic distribution and dynamic variation of current flow and particle precipitation in the magnetospheric-ionospheric system.

Correspondence to: J. W. Cutler
(jwc@stanford.edu)

For example, the CANOPUS array deployed in northern Canada contains thirteen fluxgate magnetometers (along with additional riometers, photometers, and imaging systems) to monitor high-latitude ionospheric currents and auroral activity (Rostoker et al., 1995). The CANOPUS array is currently being expanded to include an additional 15 triaxial fluxgate magnetometers and eight two-axis induction coil magnetometers (Mann et al., 2004).

Another example, the Finnish pulsation magnetometer chain (Hebden et al., 2005), monitors geomagnetic pulsations with seven induction coil systems in Finland and one in Crete.

Magnetometer arrays are also used to probe conductivity structures of the Earth. Geomagnetic depth sounding (GDS) techniques use triaxial magnetic measurements to obtain orientations to nearby conductivity anomalies (Gregori and Lanzerotti, 1980; Schmucker, 1985). Typical GDS measurement examples include the survey of northern Italy by Armadillo et al. (2001) and a survey of North America by Neal et al. (2000).

Complementing the GDS technique which relies solely on magnetic field measurements, are magnetotelluric methods which use three axis magnetic and two axis electric measurements to determine the depth-profile of conductivity structures (Simpson and Bahr, 2005).

For example, a magnetotelluric network has been deployed as part of the Parkfield earthquake prediction experiment (Bakun and Lindh, 1985; Roeloffs and Langbein, 1994) to monitor sections of the San Andreas fault in California. UC-Berkeley has deployed two sites (Morrison et al., 1996), and an additional three sites are under development by Stanford University for deployment in the San Francisco Bay Area (Bijoor et al., 2005).

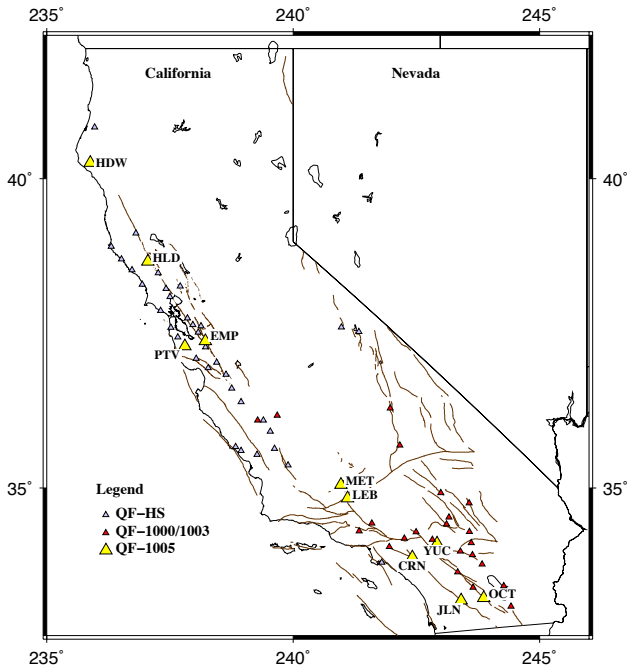


Fig. 1. A map of sensor locations in CalMagNet. The QF-1005 reference stations are shown as yellow triangles and labeled with station codes. Light blue and red triangles represent QF-HS and QF-1000/1003 stations respectively. Station locations coarsely reflect the San Andreas and adjacent fault systems, and are placed in high probability earthquake regions.

To provide additional low-latitude magnetic field measurements, we have developed and deployed the California Magnetometer Network (CalMagNet), an array of sixty-eight induction coil magnetometer systems.

L-shell values, which approximately represent the number of Earth radii that the local magnetic field line extends into space (Campbell, 2003), of the CalMagNet sensor systems range from 1.6–1.9.

Example signals include geomagnetic micropulsations (Jacobs, 1970; Bortnik et al., 2007) and spectral resonant structures (SRS) associated with the ionospheric Alfvén resonator (Belyaev et al., 1990).

CalMagNet is also monitoring ULF activity in active fault regions of California. Reports have appeared in the literature indicating anomalous electromagnetic activity preceding large quakes (e.g. see reviews by Hayakawa (1999), Park et al. (1993), Johnston (1997) and the references therein).

In direct relevance to this paper, we note two observations made during large recent California earthquakes.

Fraser-Smith et al. (1990) and Bernardi et al. (1991) describe an anomalous signal preceding the the 18 October 1989 M7.1 earthquake that occurred in Loma Prieta, California. However, Park et al. (2007) detected no anomalous

activity with electric dipoles preceding the M6.0 earthquake at Parkfield, California, on 28 September 2004.

Therefore, CalMagNet is being used for a systematic survey of ULF activity in diverse fault regions to assess any potential correlations between various earthquake events and ULF signals.

In this paper, we describe the CalMagNet sensor systems.

In Sect. 2, we describe our network topology and strategy for sensor placement.

In Sect. 3, details of the sensor systems are given, including a system block diagram, analog to digital conversion parameters, and sensor transfer function and noise floors.

In Sect. 4, we give examples of measured ULF signals and events.

We conclude in Sect. 5 with a summary of system capabilities and data distribution methods.

2 Network topology

Site selection for CalMagNet sensors is primarily directed by our long-term strategic goal to provide sensitive measurements of magnetic field fluctuations in the ULF range, located as close as possible to all land-based earthquakes greater than magnitude 5 in California. With a desired maximum distance of 10 km from an epicenter, this would require over 100 sensor systems along the over 2000 km of active fault zones in California. Due to cost constraints, this is not currently feasible.

Therefore, we guide our network topology and sensor placement with statistical methods indicating potentially higher probability locations for large earthquakes. Areas of increased seismic potential are identified from the output of a technique for describing driven, nonlinear threshold systems, the Phase Dynamics Probability Change (PDPC) method (Tiamo et al., 2002). We place our sensors in these “hotspots” to potentially improve the likelihood of proximal measurements of a large earthquake.

We have deployed four classes of sensor systems, the QF-1005, QF-1003, QF-1000, and QF-HS, to extend the range of measurement opportunities. Design details are given in the next section. Ten, high-performance systems, the QF-1005 s, perform detailed measurements of ULF magnetic activity. Positions of these ten systems are given in Table 1. The remaining fifty-eight sensor systems are lower cost systems that extend the geographic coverage of the network to increase our likelihood of measurements near a large earthquake, but with reduced measurement sensitivity at lower frequencies. Figure 1 shows the location of CalMagNet sensor systems.

Complementing the installed sites, we have a transportable QF-1005 for specialized field campaigns of short-term measurements (weeks to months). Similar in operational principle to the system described by Karakelian et al. (2000), this transportable unit will be installed near the epicenter of

Table 1. Location summary of the ten QF-1005 sensor systems in geodetic coordinates with calculated L-shell values.

ID	Name	Lat. (° N)	Lon. (° W)	Elev. (m)	L-Value
HDW	Honeydew	40.244	124.116	123	1.982
HLD	Healdsburg	38.694	122.947	85	1.895
EMP	East Milpitas	37.415	121.780	637	1.832
PTV	Portola Valley	37.336	122.196	457	1.822
MET	Mettler	35.055	119.031	136	1.731
BEC	LeBec	34.827	118.897	1324	1.721
YUC	Yucaipa	34.072	117.081	981	1.701
CRN	Corona	33.834	117.585	379	1.684
OCT	Ocotillo Wells	33.142	116.136	60	1.665
JLN	Julian	33.101	116.597	1280	1.658

Table 2. Summary of CalMagNet sensor system characteristics.

Characteristic	System Type			
	HS	1000	1003	1005
Number of stations	24	11	23	10
Geophone	no	no	yes	yes
Extra Channels	0	0	4	4
Samples per second	20	20	20	32
Bits per sample	12	12	16	24
GPS Timing	no	no	yes	yes
Coil Specs.				
Gain @ 1 Hz (V/pT)	2×10^{-3}	2×10^{-3}	2×10^{-3}	10^{-3}
Noise @ 1 Hz (pT)	3	3	3	0.1
Pass Band (Hz)	0.5–4	0.5–4	0.5–4	0.001–12

future earthquakes to search for any post-earthquake ULF anomalies. It will also be used for specialized remote referencing measurements when local signals under study are dominated by larger, wide-area signals (Egbert, 1997; Larsen, 1989).

3 Sensor systems

CalMagNet is composed of four classes of sensor systems. Their characteristics are summarized in Table 2, including the number and types of systems, induction coil parameters, extra channels, sampling rate and resolution, and GPS time-tagging. In the rest of this section, we provide a detailed summary of the ten high-performance stations, the QF-1005 s, and include brief summaries of the additional three classes.

3.1 QF-1005 System

Figure 2 is a block diagram of the major components of the QF-1005. The primary instruments for the QF-1005 are three orthogonal induction coil magnetometers, the ANT/4, designed and manufactured by Zonge Engineering (Zonge, 2006). The transfer function and noise floor and gain of a typical ANT/4 coil are plotted in Fig. 3, panels a and b, respectively and summarized in Table 3.

A high pass analog filter rolls off the gain below 0.25 Hz to suppress the monotonic increase in signal strength at lower frequencies. An anti-aliasing, analog filter rolls off the gain above 12 Hz to suppress 60 Hz noise while still allowing detection of the first Schumann resonance. During calibration, coil characteristics are optimized to achieve high coherence between separate coils, greater than 99%. After field measurements during system testing, an additional filter was installed to further reduce 60 Hz noise contamination. An analog, 5-pole Butterworth filter with a 11.5 Hz cutoff frequency was installed to provide a total of 100 dB attenuation at 60 Hz.

Three coils are installed at each site. The first coil is aligned in the geodetic north/south direction ($15^\circ \pm 2^\circ$ west of geomagnetic north) with positive signal levels indicating a magnetic field vector pointing to the north.

The second coil is aligned in the geodetic east/west direction ($15^\circ \pm 2^\circ$ south of geomagnetic east) with positive signal levels indicating a magnetic field vector pointing to the east. The third coil is installed vertically using a plumb line. A positive signal indicates a magnetic field vector pointing in the down direction.

A calibration signal is applied twice a day to each coil. At approximately local noon and midnight (within 5 min of the hour mark), an 8 nT peak-to-peak signal at 1 Hz is applied to each coil through a calibration coil built into the magnetometers. The calibration signal lasts five minutes. The sensor response is monitored for any degradation in signal quality.

Analog data channels are digitized by a commercial 8-channel, 24-bit analog-to-digital converter system, the PAR 8 CH by Symmetric Research. Samples are taken at a frequency of 32 samples per second. The sample rate is adjustable and was set to provide reasonable data file sizes for our frequency band of interest, less than 10 Hz. It was also set such that any 60 Hz signal contamination would fold over onto 4 Hz during Fourier-based spectral analysis (versus 0 Hz when sampled at 30 Hz). The PAR 8 CH uses eight independent analog-to-digital converter chips, the ADS 1210 from Burr Brown, to reduce cross-talk noise contamination.

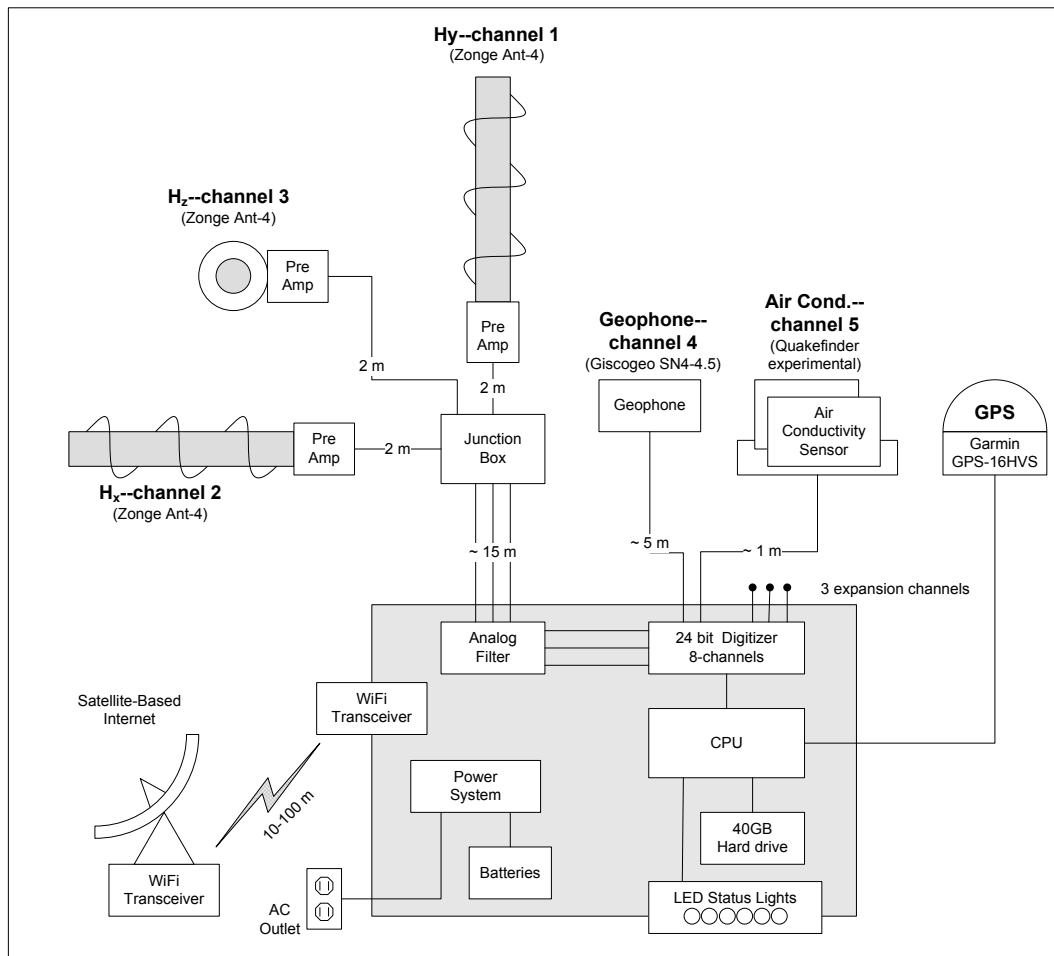


Fig. 2. Block diagram of QF-1005 system. Hx, Hy, and Hz represent the 3 search-coil magnetometers, oriented in the North, East and nadir directions respectively. A single axis geophone measures local motion. An experimental air conductivity sensor is attached, and there are three spare channels for future sensor expansions. The large gray central box houses analog filters, sampling systems, a computer, power systems, and communication equipment. Data transfers to the data center typically occur over satellite phone or Internet connections.

The primary CalMagNet instruments, namely the induction coil magnetometers, are susceptible to motion-induced noise. Oscillating microradian tilts of the induction coils in the ambient earth magnetic field result in signals that are similar to naturally occurring signals. Ideally, coils should be placed near broadband seismometer stations to provide detailed monitoring of ground motion (Karakelian et al., 2000). Due to cost constraints, CalMagNet systems are not all located near broadband seismometer stations. To augment the existing wide-area seismic monitoring stations, we have installed secondary sensors on the systems, a Giscogeo geophone SN4–4.5, that are five times more sensitive than the induction coils to motion at frequencies greater than 4 Hz.

Four of the eight channels of the data acquisition are available for experimental and future sensor expansion. Currently, at several sites, experimental air conductivity sensors are installed. A number of experimental dipole electric antennas

from Quasar Federal Systems (Delory et al., 2005) will be deployed in the near future to test their operation.

Each system is controlled by an embedded PC-104 processor system that manages data acquisition and transfer. Raw sample data from the sensors is stored in five minute blocks, and archived locally on a standard 2.5 inch hard drive with a capacity greater than 40 GB. This provides over 600 days of storage of 8 channels sampled at 32 Hz and 24 bits for local archiving during the presence of communication failures.

Raw data collected over a 24 h period is transferred nightly to a data center over commercial, satellite-based Internet links. The data center archives sensor data, monitors health of sensor systems, and produces a variety of products such as daily dynamic spectrograms (Cutler, 2005). Future upgrades will stream the data in near real-time to the data center for more timely processing.

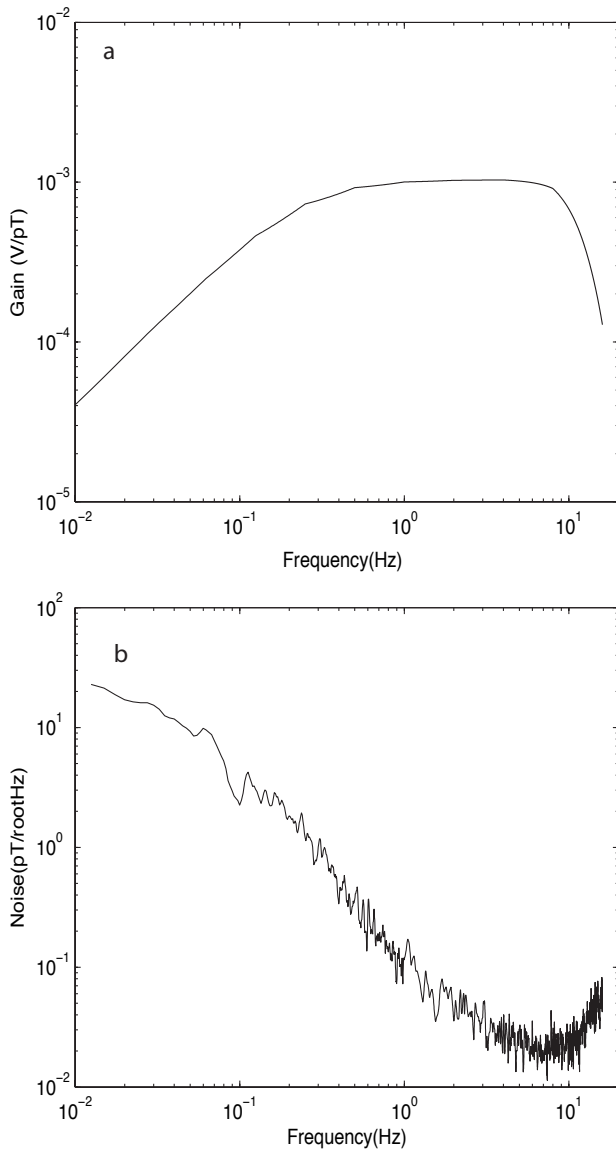


Fig. 3. Characteristics of a single ANT/4 magnetometer. **(a)** Plot of gain versus frequency for the ANT/4, pre-amplifier, and filter. **(b)** Noise floor of the ANT/4 magnetometer. These are measured values from coils deployed in CalMagNet. They were obtained by taking two coils to a remote, low-noise location, and differencing the signals to remove common mode signal while leaving only the internal noise of the system. Values differ slightly from Table 3 due to local environmental noise conditions during this particular test.

GPS-based time tagging of data samples is provided by a Garmin GPS-16HVS receiver. The pulse per second output of the receiver (accurate to ±1 microsecond) is combined with a 800 nanosecond counter on the PAR 8 CH to provide an overall timing error less than 3.3 microseconds.

Table 3. Summary of typical Zonge ANT/4 magnetometer gain and noise characteristics. Values are average measurements made from multiple ANT/4 tests in quiet locations.

Frequency (Hz)	Gain (V/pT)	Noise (pT/Hz ^{1/2})
0.001	3 × 10 ⁻⁶	250
0.01	3 × 10 ⁻⁵	15
0.1	3 × 10 ⁻⁴	1.5
1	10 ⁻³	0.1
10	10 ⁻³	0.02

3.2 Additional sensor systems

In 1998, the initial CalMagNet sites, QF-HS systems, were deployed through an educational program where high school students built low-cost, “Heathkit-like” systems. The educational program taught students about scientific instrumentation and geomagnetic studies.

In 2001, we began upgrading to commercial versions, increasing both reliability and sensitivity. These are the QF-1000 systems. In 2003, NASA provided funding to build and deploy twenty new sensors in the Mojave Desert of southern California. Through this NASA contract, our upgraded sensor system, the QF-1003, now includes GPS time synchronization, a Globalstar communication system, an air conductivity sensor, and a geophone. The third generation system, the QF-1005, has been described above.

4 Example signals and analysis

Survey and classification of ULF signal sources received by the CalMagNet is underway in our data center (Cutler, 2005). Typical signals include geomagnetic pulsations resulting from ionospheric and magnetospheric processes (Jacobs, 1970), cultural noise such as public transportation systems (Liu, 1999), and movement of the coil in the earth’s magnetic field (Karakelian et al., 2000). In this section, we provide an overview of typical signals received by CalMagNet and example analysis efforts.

4.1 Geomagnetic pulsations

Pc 1 geomagnetic pulsations are typical signals received by the network (Jacobs, 1970).

These waves are thought to originate in the equatorial region of the outer magnetosphere (Cornwall, 1965), propagate along field lines into the high latitude ionosphere, and propagate down to low latitudes within the F 2-region ionospheric duct (Fraser, 1968; Manchester, 1968), where they are observed by our instruments.

Figure 4 shows Pc 1 geomagnetic micropulsations received by the network. Data from 17–18 April 2006 is plotted from two sites, East Milpitas near San Francisco and

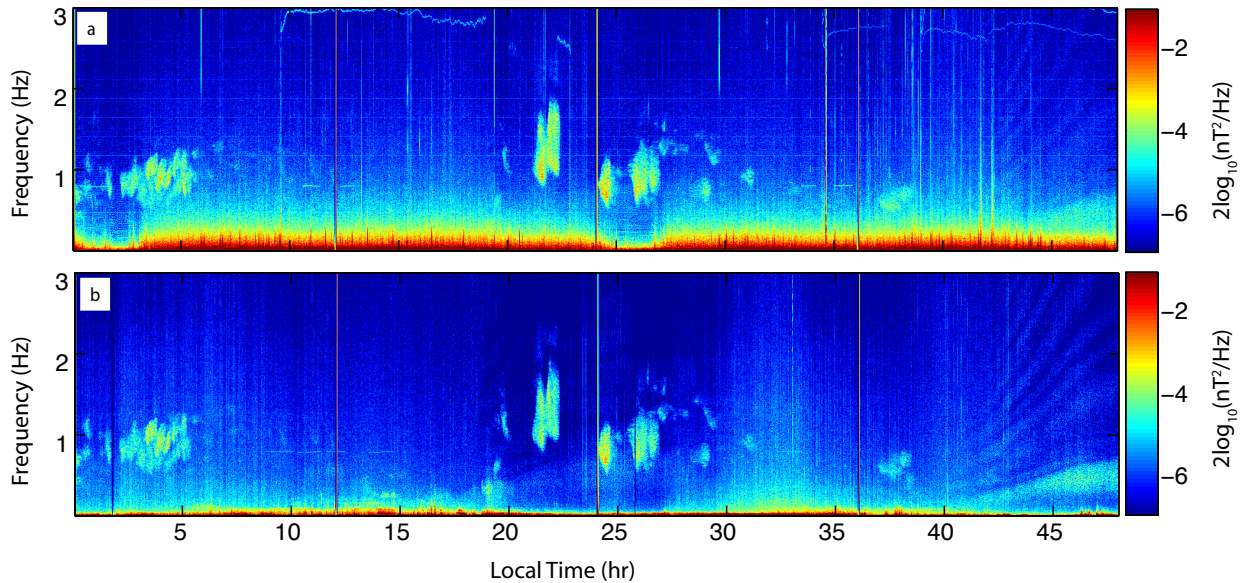


Fig. 4. Dynamic spectrograms on 17–18 April 2006 at two CalMagNet Sites: **(a)** East Milpitas (EMP), near San Francisco, and **(b)** Julian (JLN), near San Diego. Strong Pc1 pulsations occur at both sites between 0.5 and 2 Hz periode.

Julian near San Diego. Multiple Pc1 pulsations are seen during the early morning and night at both sites due to a strong magnetic storm that occurred 14 April 2006.

4.2 Ionospheric Alfvén Resonator

Another common ULF signal is the spectral resonant structure (SRS) of the the ionospheric Alfvén resonator (IAR) (Bosinger et al., 2002). According to current models, the primary excitation source is electromagnetic emissions from global thunderstorm activity (Belyaev et al., 1990). Characteristics of the IAR such as the fundamental frequency are governed by local ionospheric conditions. Distributed measurements by CalMagNet of SRS properties allow measurement of ionospheric properties over California.

Wave parameters of typical SRS activity as measured by CalMagNet are shown in Fig. 5. These parameters are calculated following the methodology of Means (1972) and Fowler et al. (1967) using the wave detection and characterization approach outlined by Bortnik et al. (2007).

Plot a shows the zenith angle of three days of data from site JLN starting from noon local time on 03 May 2006. Plots b–f plot additional wave parameters from a focused time period, 21 h of data starting at 1400 local time on 05 May 2006 to 0700 on 06 May 2006. Plot g is the power spectral density of combined three channel data from three CalMagNet sites.

Several interesting characteristics of SRS are highlighted in this example.

First, the recently described fine structure of the IAR (Bosinger et al., 2004) is clearly seen in plots b–e.

Second, plot g shows the simultaneous wide-area occurrence and local characteristics of SRS. SRS is measured simultaneously at sites HLD, MET, and JUL, which are separated by over 840 km. The variations in center frequency and signal strength at each of the sites shows the differences in local ionospheric conditions.

The spatial dimensions of the ionosphere that are characterized by a single site’s measurement of SRS are yet to be determined.

4.3 Response to ground motion

The responsive of the system to ground motion is shown in Fig. 6. On 25 March 2006 at 17:56 PST, a M_w 4.6 offshore earthquake occurred 25 km to the northwest of station Honeydew. Figure 6 plots the geophone and vertical induction coil data from the site. The arrival of the P and S waves are clearly seen in both channels. As shown, the geophone is an indicator for noise contamination of the induction coils by motion.

4.4 Cultural noise

Cultural noise sources, such as the commuter trains in the San Francisco Bay Area, have the potential to contaminate CalMagNet systems (Liu, 1999). The effects of narrow band noise sources such as power lines can be reduced through analog and digital filtering techniques. Broadband, non deterministic noise (such as nearby automotive traffic, wind-induced motion through tree root systems, farming machinery, and moving ferromagnetic materials such as chain link fences) must be characterized in the long term and specific

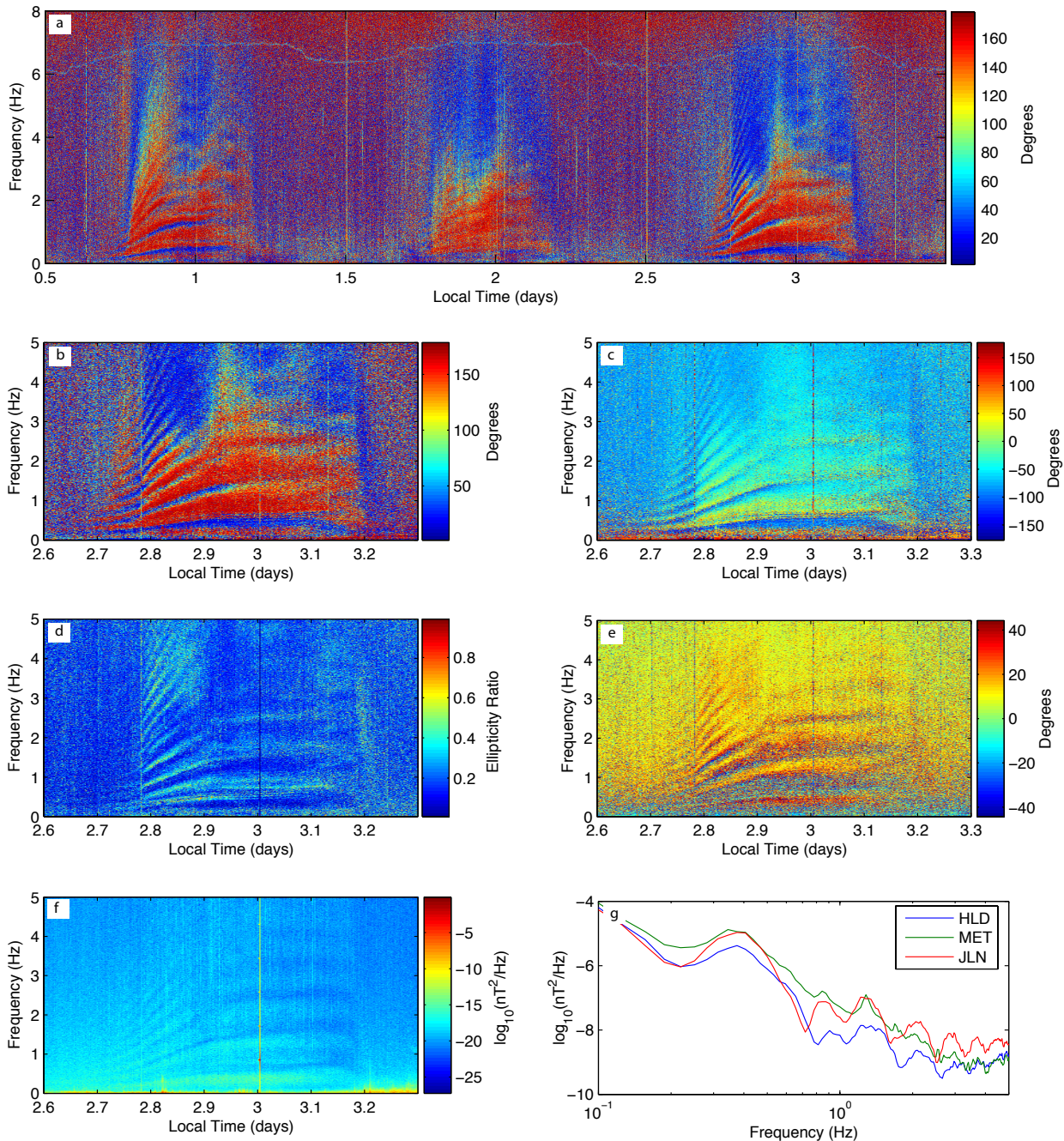


Fig. 5. Typical SRS as measured by CalMagNet. (a) Zenith angle of k-vector with respect to the z-axis. Three days of data are shown, starting at noon local time on 03 May 2006 from site JLN-605. (b) Zenith angle, zoomed in view of the third SRS event. (c) Azimuth angle of k-vector with respect to the x-axis. (d) Ellipticity. (e) Angle of major ellipse axis with respect to the x-axis. (f) Power of combined three-axis signal. (g) Power spectral density at three CalMagNet sites averaged over 1–3 am local time on 06 May 2006. The vertical bars at time 1, 1.5, 2, 2.5, 3, and 3.5 are the calibration signals.

noise characteristics cataloged. These sources are site dependent and libraries of local noise examples are under development. In extreme cases of noise contamination, sites can be moved to quieter locations.

Low frequency noise from the rapid transit system in the San Francisco area, BART, is seen in Fig. 4. In the top plot, broadband noise below 0.5 Hz is seen and corresponds to BART train activity. There is a noticeable two hour decrease after midnight which corresponds to the typical reduction in

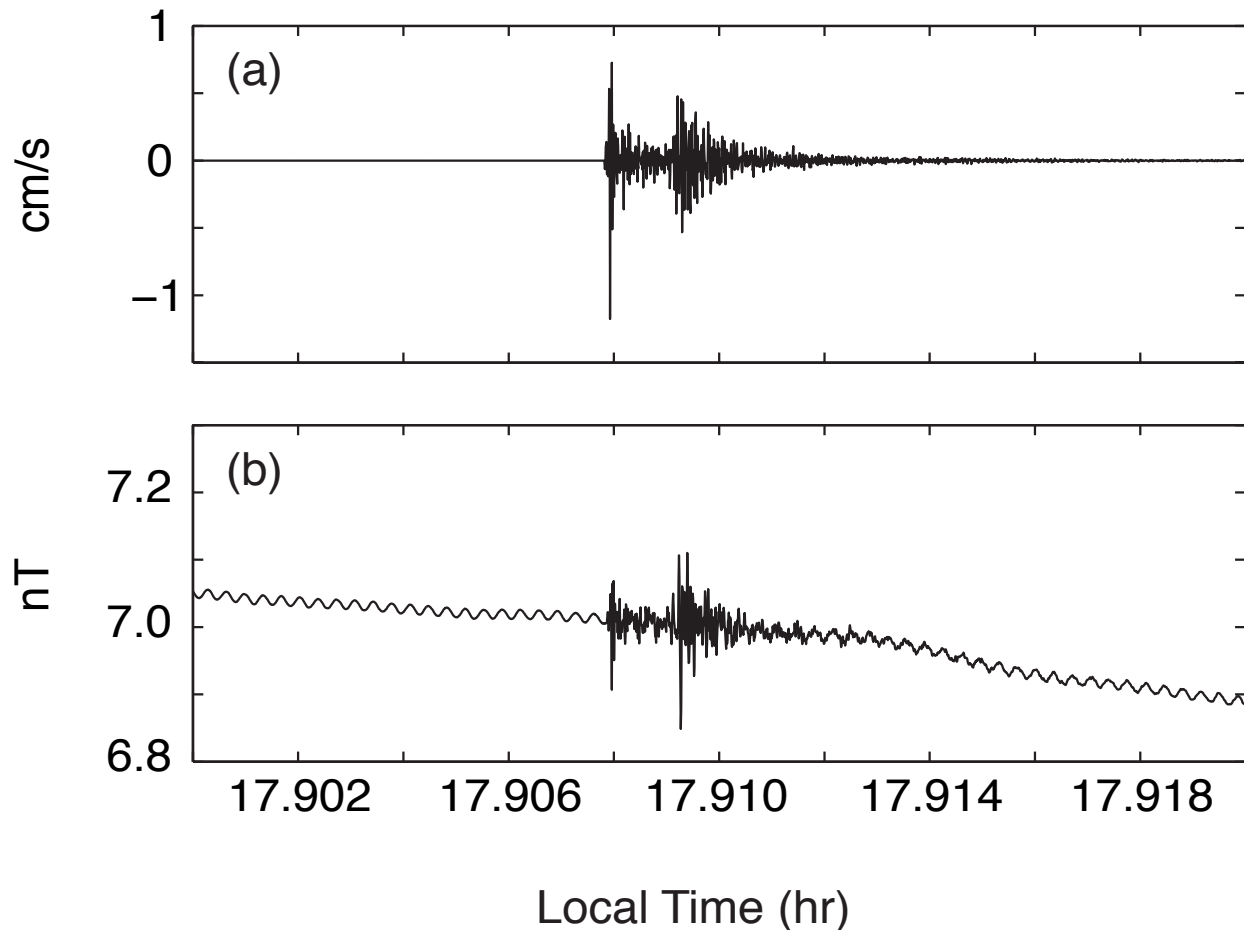


Fig. 6. Data during a nearby earthquake is plotted from station HDW, Honeydew. **(a)** normalized geophone data. **(b)** normalized data from the vertical induction coil. The low-amplitude periodic signal in **(b)** is a nearby cultural noise source that appears during the day. Time is given in local time as the number of hours since midnight, 25 March 2006. System response to the P and S waves are clearly seen in both plots. See Karakelian et al. (2002) for additional coseismic signals.

BART traffic. Spurious harmonic tones between 1–2 Hz and a wandering tone near 3 Hz are also visible.

5 Conclusions

We have deployed an array of sixty-eight ULF monitoring stations in California called the CalMagNet. Frequencies from 1 mHz to 12 Hz are measured at ten high-performance stations. Frequencies from 0.5 Hz to 4 Hz are measured with fifty-eight lower-cost stations. The purpose of the network is to provide detailed, multi-point measurements of ULF magnetic fluctuations such as geomagnetic micropulsations and to monitor ULF activity in active fault zones for any potential earthquake related signals.

A data center is currently under development to support CalMagNet sensors (Cutler, 2005). Data is archived on Quakefinder servers, and external access to raw data is pro-

vided to partnered researchers. A variety of daily data products are produced including dynamic spectrograms, transfer function compensated time series, and magnetic activity indices that summarize power levels in distinct frequency bands. Several examples of our data have been presented in the present paper, and work is currently underway to make such information available for public viewing online.

Acknowledgements. The authors wish to thank our generous supporters, especially Celeste Ford and Stellar Solutions. This work was conducted in part by NASA cooperative agreement NNG04GD16A. Many thanks to B. Camins and B. Hunter for all the sweat and blisters it took to install the CalMagNet sites. We thank S. Klemperer and T. Fraser-Smith for their feedback and comments. We also thank our reviewers and editors.

Edited by: M. Contadakis

Reviewed by: S. Klemperer and another anonymous referee

References

- Armadillo, E., Bozzo, E., Cerv, V., Santis, A. D., Mauro, D. D., Gambetta, M., Meloni, A., Pek, J., Speranza, F., and Schultz, A.: Geomagnetic depth sounding in the northern apennines (Italy), *Earth, Planets and Space*, 53, 385–396, 2001.
- Bakun, W. H. and Lindh, A. G.: The Parkfield, California, earthquake prediction experiment, *Science*, 229, 619–624, 1985.
- Belyaev, P., Polyakov, S., Rapoport, V., and Trakhtengerts, V. Y.: The ionospheric Alfvén resonator, *J. Atmos. Sol.-Terr. Phys.*, 52:9, 781–788, 1990.
- Bernardi, A., Fraser-Smith, A. C., McGill, P. R., and Villard, O. G. J.: ULF magnetic field measurements near the epicenter of the Ms 7.1 Loma Prieta earthquake, *Phys. Earth Planet. In.*, 68, 45–63, 1991.
- Bijoor, S., Glen, J., McPhee, D. K., and Klemperer, S. L.: Ultra-low frequency electromagnetic monitoring of earthquakes in the San Francisco Bay Area: Initial results of an Earthscope PBO project, *EOS Transactions AGU, Fall Meeting*, T51B-1343, 2005.
- Bortnik, J., Cutler, J. W., Dunson, C., and Bleier, T. E.: An automatic wave detection algorithm applied to Pc 1 pulsations, *J. Geophys. Res.*, 112, A04204, doi:10.1029/2006JA011900, 2007.
- Bosinger, T., Haldoupis, C., Belyaev, P. P., Yakunin, M. N., Semanova, N. V., Demekhov, A. G., and Angelopoulos, V.: Spectral properties of the ionospheric Alfvén resonator observed at a low-latitude station ($L=1.3$), *J. Geophys. Res.*, 107(A10), 1281, doi:10.1029/2001JA005076, 2002.
- Bosinger, T., Demekhov, A., and Trakhtengerts, V.: Fine structure in ionospheric Alfvén resonator spectra observed at low latitude ($L=1.3$), *Geophys. Res. Lett.*, 31, L18802, doi:10.1029/2004GL020777, 2004.
- Campbell, W. H.: *Introduction to Geomagnetic Fields*, 2nd Edition, Cambridge University Press, United Kingdom, 2003.
- Cornwall, J. M.: Cyclotron instabilities and electromagnetic emission in the ultra low frequency and very low frequency ranges, *J. Geophys. Res.*, 70(1), 61–69, 1965.
- Cutler, J.: A data fusion center for seismo-electromagnetic community, *The 3rd Annual Meeting of GEON*, San Diego, CA, 2005.
- Delory, G. T., Grimm, R. E., Nielsen, T., and Farrell, W. M.: Detection of subsurface liquid water using magnetotellurics on Mars, *EOS Transactions AGU, Fall Meeting*, 86(52), P31C-0217, 2005.
- Egbert, G. D.: Robust multiple-station magnetotelluric data processing, *Geophys. J Internat.*, 130 pp., 475–496, 1997.
- Fowler, R., Kotick, B., and Elliott, R.: Polarization analysis of natural and artificially induced geomagnetic pulsations, *J. Geophys. Res.*, 72, 2871–2883, 1967.
- Fraser, B. J.: Temporal variations in Pc 1 geomagnetic micropulsations, *Planet. Space Sci.*, 16, 111, 1968.
- Fraser-Smith, A. C., Bernardi, A., McGill, P. R., Ladd, M. E., Helliwell, R. A., and O. G. Villard, J.: Low-frequency magnetic field measurements near the epicenter of the Ms 7.1 Loma Prieta earthquake, *Geophys. Res. Lett.*, 17, 1465–1468, 1990.
- Gregori, G. P. and Lanzerotti, L. J.: Geomagnetic depth sounding by induction arrow representation: A review, *Rev. Geophys. Space Phys.*, 18, 203–209, 1980.
- Hayakawa, M.: *Atmospheric and Ionospheric Electromagnetic Phenomena Associated with Earthquakes*, Terrapub, Tokyo, 996, 1999.
- Hebden, S. R., Robinson, T. R., Wright, D. M., Yeoman, T., Raita, T., and Bosinger, T.: A quantitative analysis of the diurnal evolution of ionospheric Alfvén resonator magnetic resonance features and calculation of changing IAR parameters, *Ann. Geophys.*, 23, 1711–1721, 2005, <http://www.ann-geophys.net/23/1711/2005/>.
- Jacobs, J. A.: *Geomagnetic Micropulsations*, Springer-Verlag, 1970.
- Johnston, M. J. S.: Review of electric and magnetic fields accompanying seismic and volcanic activity, *Surv. Geophys.*, 18, 441–476, 1997.
- Karakelian, D., Klemperer, S. L., Fraser-Smith, A. C., and Beroza, G. C.: A transportable system for monitoring ultra low frequency electromagnetic signals associated with earthquakes, *Seismol. Res. Lett.*, 71, 423–436, 2000.
- Karakelian, D., Beroza, G. C., Klemperer, S. L., and Fraser-Smith, A. C.: Analysis of ultra-low frequency electromagnetic field measurements associated with the 1999 M 7.1 Hector Mine earthquake sequence, *Bot. Bull. Acad. Sinica*, 92, 1513–1524, 2002.
- Larsen, J. C.: Transfer functions: smooth robust estimates by least-squares and remote reference methods, *Geophys. J. Internat.*, 99, 645–663, 1989.
- Liu, T. T.: Ultra-low frequency magnetic fields in the San Francisco Bay Area: Measurements, models, and signal processing, Ph. D. thesis, Stanford University, June 1999.
- Manchester, R. N.: Correlation of Pc 1 Micropulsations at Spaced Stations, *J. Geophys. Res.*, 73(11), 3549–3556, 1968.
- Mann, I. R., Milling, D. K., Kale, A., Rae, I. J., Dent, Z. C., Loto'Aniu, T., and Wallis, D. D.: The expanded and upgraded CANOPUS magnetometer array: An extensive ground-based magnetometer array in the THEMIS and ILWS era, *American Geophys. Union, Spring Meeting*, SM31A–02, May 2004.
- Means, J.: Use of the three-dimensional covariance matrix in analyzing the polarization properties of plane waves, *J. Geophys. Res.*, 77, 5551–5559, 1972.
- Boyd, O. S., Morrison, H. F., Fraser-Smith, A., and Park, S.: An array for monitoring ULF fields and changes in resistivity, *The 13th Workshop on Electromagnetic Induction in the Earth*, The International Association of Geomagnetism and Aeronomy, Onuma, Japan, 12–18 July 1996.
- Neal, S. L., Mackie, R. L., Larsen, J. C., and Schultz, A.: Variations in the electrical conductivity of the upper mantle beneath North America and the Pacific Ocean, *J. Geophys. Res.*, 106(B4), 8229–8242, 2000.
- Park, S. K., Johnston, M. J. S., Madden, T. R., Morgan, F. D., and Morrison, H. F.: Electromagnetic precursors to earthquakes in the ULF band: a review of observations and mechanisms, *Rev. Geophys.*, 31, 117–132, 1993.
- Park, S. K., Dalrymple, W., and Larsen, J. C.: The 2004 Parkfield earthquake: Test of the electromagnetic precursor hypothesis, *J. Geophys. Res.*, 112, B05302, doi:10.1029/2005JB004196, 2007.
- Roeloffs, E. and Langbein, J.: The earthquake prediction experiment at Parkfield, *Rev. Geophys.*, 32, 315–336, 1994.
- Rostoker, G., Samson, J. C., Creutzberg, R., Hughes, T. J., McDiarmid, D. R., McNamar, A. G., Jones, A. V., Wallis, D. D., and Cogger, L. L.: CANOPUS – a ground-based instrument array for remote sensing the high latitude ionosphere during the ISTEP/GGS program, *Space Sci. Rev.*, 71, 743–760, 1995.
- Schmucker, U.: *Geophysics of the Solid Earth, the Moon and the*

- Planets, 2, Springer, 1985.
- Simpson, F. and Bahr, K.: Practical Magnetotellurics, Cambridge, 2005.
- Tiampo, K. F., Rundle, J. B., McGinnis, S., Gross, S. J., and Klein, W.: Mean field threshold systems and phase dynamics: An application to earthquake fault systems, *Europhys. Lett.*, 60, 481–487, 2002.
- Zonge: Zonge engineering and research organization. <http://www.zonge.com/>, last access: 15 January 2008, 2006.