



HAL
open science

GIS-based two-dimensional numerical simulation of rainfall-induced debris flow

C. Wang, S. Li, T. Esaki

► **To cite this version:**

C. Wang, S. Li, T. Esaki. GIS-based two-dimensional numerical simulation of rainfall-induced debris flow. *Natural Hazards and Earth System Sciences*, 2008, 8 (1), pp.47-58. hal-00299485

HAL Id: hal-00299485

<https://hal.science/hal-00299485>

Submitted on 18 Jun 2008

HAL is a multi-disciplinary open access archive for the deposit and dissemination of scientific research documents, whether they are published or not. The documents may come from teaching and research institutions in France or abroad, or from public or private research centers.

L'archive ouverte pluridisciplinaire **HAL**, est destinée au dépôt et à la diffusion de documents scientifiques de niveau recherche, publiés ou non, émanant des établissements d'enseignement et de recherche français ou étrangers, des laboratoires publics ou privés.

GIS-based two-dimensional numerical simulation of rainfall-induced debris flow

C. Wang^{1,2}, S. Li¹, and T. Esaki²

¹Geotechnical and Structure Engineering Center, Shandong University, China

²Institute of Environment Systems, Kyushu University, Japan

Received: 16 March 2006 – Revised: 20 December 2007 – Accepted: 21 December 2007 – Published: 4 February 2008

Abstract. This paper aims to present a useful numerical method to simulate the propagation and deposition of debris flow across the three dimensional complex terrain. A depth-averaged two-dimensional numerical model is developed, in which the debris and water mixture is assumed to be continuous, incompressible, unsteady flow. The model is based on the continuity equations and Navier-Stokes equations. Raster grid networks of digital elevation model in GIS provide a uniform grid system to describe complex topography. As the raster grid can be used as the finite difference mesh, the continuity and momentum equations are solved numerically using the finite difference method. The numerical model is applied to simulate the rainfall-induced debris flow occurred in 20 July 2003, in Minamata City of southern Kyushu, Japan. The simulation reproduces the propagation and deposition and the results are in good agreement with the field investigation. The synthesis of numerical method and GIS makes possible the solution of debris flow over a realistic terrain, and can be used to estimate the flow range, and to define potentially hazardous areas for homes and road section.

1 Introduction

Debris flows are rapidly flowing mixtures of water, clay, and granular materials and often triggered by torrential rains in mountainous areas. There are three main possible initiations of debris flows: mobilization from rainfall-induced landslide (Mainali and Rajaratnam, 1994; Anderson, 1995; Bathurst et al., 1997; Lan et al., 2004; Fiorillo and Wilson, 2004; Fleming et al., 1989; Wen and Aydin, 2005; Dai et al., 1999); erosion of steep debris beds in gullies due to intense rainfall

(Takahashi et al., 1991, 1992); and the collapse of a natural dam (Han and Wang, 1996; Valiani and Caleffi, 2003). All the debris flows have at least four characters: rainfall or dam-break is the triggering factor; a debris flow is a gravity-driven flow with free upper surface that move across three-dimensional terrain; the nature of the flow itself, which is rapid, transient, and includes a steep front mainly constituted of boulders (Laigle and Coussot, 1997); and debris flows have very strong destructive power and bring about extensive property damage and loss of life to the communities in their path (Takahashi, 1991; Hunt, 1994; Huang and Garcia, 1997; Lien and Tsai, 2003).

As debris-flows are mixtures of flowing sediment and water showing complicated flow behavior intermediate between clear-water flows and mass movements of solid material, a number of mathematical rheological models were developed to simulate the flow behavior. Many researchers have developed rheological models for mudflows and debris flows. These models can be classified as: Newtonian models (Johnson, 1970; Trunk et al., 1986; Hunt, 1994; Hung, 1995; Rickenmann, 1999), Bingham model (Johnson, 1970; O'Brien and Julien, 1988; Liu and Mei, 1989; Jan, 1997; Whipple, 1997; Fraccarollo and Papa, 2000; Pastor et al., 2004), Herschel-Bulkley model (Huang and García, 1997, 1998; Imran et al., 2001; Remaître et al., 2005; Rickenmann et al., 2006), generalized viscoplastic model (Chen, 1988), dilatant fluid models (Bagnold, 1954; Takahashi, 1978, 1991; Mainali and Rajaratnam, 1994), dispersive or turbulent stress models (Arai and Takahashi, 1986; O'Brien and Julien, 1988; Hunt, 1994), biviscous modified Bingham model (Dent and Lang, 1983), and frictional models (Iverson, 1997; Chen and Lee, 1999; Arattano and Franzi, 2003; Pastor et al., 2004; Rickenmann et al., 2006; Naef et al., 2006). Takahashi and Tsujimoto (1984) presented a two-dimensional finite difference model for debris flows based on a dilatant-fluid model coupled with coulomb flow resistance, and modified the model to include turbulence (Taka-



Correspondence to: C. Wang
(chunxiangwang@hotmail.com)

hashi et al., 1991, 1992). O'Brien et al. (1993) developed a two-dimensional flooding routing model that is a valuable tool for delineating flood hazards and simulating flood-wave attenuation, mudflows, debris flows (FLO-2D). Iverson and Denlinger (2001) developed a generalization of the depth-averaged, two-dimensional grain-fluid mixture model that describes finite masses of variably fluidized grain-fluid mixtures that move unsteady across three-dimensional terrain. Egashira et al. (2003) presented a method of numerical simulation for 2-D debris flow on an erodible bed using the constitutive equations for sediment-water mixture when the equation of erosion rate is incorporated in the continuity equation. McDougall and Hungr (2003) developed a depth-averaged model for the simulation of rapid landslide motion across complex 3-D terrain. Pudasaini and Hutter (2003) presented a two-dimensional depth-integrated theory for the gravity-driven free-surface flow of a granular avalanche over an arbitrarily but gently curved and twisted topography which is an important extension of the original Savage and Hutter (1989) theory. Bouchut and Westdickenberg (2004) developed a multidimensional shallow water model for arbitrary topography. Pastor et al. (2004) presented a depth-integrated Bingham model which is discretized using a Taylor-Galerkin finite element algorithm. Pudasaini and Hutter (2006) provided a survey and discussion about the motion of avalanche-like flows from initiation to run out. Rickenmann et al. (2006) compared three two-dimensional debris-flow simulation models with field events, and these models are based on a Voellmy fluid rheology reflecting turbulent-like and basal frictional stresses, a quadratic rheologic formulation including Bingham, collisional and turbulent stresses, and a Herschel-Bulkley rheology representing a viscoplastic fluid.

In recent years, Geographic information systems (GIS) with their excellent data format and spatial data processing ability have attracted great attention in natural disaster assessment. This is because the collection, manipulation, visualization and analysis of the environmental data on landslide and debris flow hazard can be accomplished much more efficiently and cost effectively (Carrara and Guzzetti, 1999; Guzzetti et al., 1999). Key requirements in the assessment of debris flow risk consist of the prediction of the flow trajectory over the 3-D complex topography, the potential runout distance and the extent of the hazard area in order to define a safety zone. Numerical simulation models by incorporating GIS are important prediction and analysis tools.

The objective of this paper is to develop a two-dimensional depth-averaged numerical model to simulate the rainfall-induced debris flow and to integrate GIS with the numerical model to analyze the hazard of debris flow. As raster grid networks of digital elevation model in GIS can be used as the finite difference mesh, the continuity and momentum equations are solved numerically using the finite difference method.

2 Governing equations

Modeling debris flows require rheological models (or constitutive equations) for solid-liquid mixtures. Identification of an appropriate rheology has long been regarded as the key to interpretation, modeling, and prediction of debris-flow behavior, and debates about the most suitable rheological formula have persisted for several decades. The rheological property of a debris flow depends on a variety of factors, such as the water concentration, the solid concentration, cohesive properties of the fine material, particle size distribution, particle shape and grain friction (Imran et al., 2001). It is well-known that water is the main contributor to rainfall-induced debris flow initiation and the role played by the water in such flows will affect the rheological property. At the same time, field observations and video recordings of debris flows have provided clear evidence that no unique rheology is likely to describe the range of mechanical behaviors exhibited by poorly sorted, water-saturated debris. Instead, apparent rheologies appear to vary with time, position, and feedbacks that depend on evolving debris-flow dynamics (Iverson, 2003). Therefore, in this paper, the debris and water mixture is assumed to be uniform continuous, incompressible, unsteady flow. The flow is governed by the following forms of the continuity and Navier-stokes equations.

The continuity equation is

$$\frac{\partial u}{\partial x} + \frac{\partial v}{\partial y} + \frac{\partial w}{\partial z} = 0 \quad (1)$$

and the Navier-stokes equations are as follows:

$$\rho_d \left(\frac{\partial u}{\partial t} + u \frac{\partial u}{\partial x} + v \frac{\partial u}{\partial y} + w \frac{\partial u}{\partial z} \right) = -\frac{\partial p}{\partial x} + \mu \left(\frac{\partial^2 u}{\partial x^2} + \frac{\partial^2 u}{\partial y^2} + \frac{\partial^2 u}{\partial z^2} \right) \quad (2)$$

$$\rho_d \left(\frac{\partial v}{\partial t} + u \frac{\partial v}{\partial x} + v \frac{\partial v}{\partial y} + w \frac{\partial v}{\partial z} \right) = -\frac{\partial p}{\partial y} + \mu \left(\frac{\partial^2 v}{\partial x^2} + \frac{\partial^2 v}{\partial y^2} + \frac{\partial^2 v}{\partial z^2} \right) \quad (3)$$

$$\rho_d \left(\frac{\partial w}{\partial t} + u \frac{\partial w}{\partial x} + v \frac{\partial w}{\partial y} + w \frac{\partial w}{\partial z} \right) = \rho_d g - \frac{\partial p}{\partial z} + \mu \left(\frac{\partial^2 w}{\partial x^2} + \frac{\partial^2 w}{\partial y^2} + \frac{\partial^2 w}{\partial z^2} \right) \quad (4)$$

in which u, v, w =velocity components in the x -, y -, and z -directions; ρ_d =equivalent density of the debris and water mixture, and $\rho_d = \rho_s v_s + \rho_w v_w$, ρ_s and ρ_w are the densities of solid grains and water, v_s and v_w are the volumetric concentrations of solids particles and water in the mixture; p =pressure; μ =dynamic viscosity; g =gravitational acceleration; and t =time.

A key step in simplifying Eqs. (2)–(4) involves scaling that is similar but not identical to the well-known shallow water or Saint-Venant scaling (cf. Vreugdenhil, 1994). As described by Savage and Hutter (1989), Iverson (1997), and Gray et al. (1999), two length scales exist. \bar{l} is the typical span or spread of the flow and \bar{h} the typical depth of the flow. The parameter $\varepsilon = \frac{\bar{h}}{\bar{l}}$ describes the ratio of these length scales

and is deemed generally much smaller than 1. The time-scale for order-unity changes is $\left(\frac{l}{g}\right)^{\frac{1}{2}}$, because the potential for free fall drives debris flow motion (Iverson, 1997). These time and length scales in turn lead to differing velocity scales for the flow direction, $(gl)^{\frac{1}{2}}$, and z direction, $\varepsilon (gl)^{\frac{1}{2}}$, which imply that $u, v \gg w$. In Eq. (4), all terms are small relative to the gravitational acceleration, only the pressure gradient remains to balance it. Therefore Eq. (4) can be rewritten as follows:

$$\rho dg - \frac{\partial p}{\partial z} = 0 \quad (5)$$

Using the notation and coordinate systems given in Fig. 1, Integration of (5) with respect to z from the elevation of the base $z=\eta_b$ to the upper surface of the flow at $z=\eta$ yields,

$$p = \rho dg (\eta - \eta_b) \quad (6)$$

The final step in further simplifying the continuity and momentum equations of motion is to adapt depth averaging to eliminate explicit dependence on the coordinate normal to the bed, z . Depth averaging requires decomposing the Eqs. (1), (2) and (3) into component equations in locally defined x - y - z -orthogonal directions, then integrating each component equation from the base of the flow at $z=\eta_b$ to the free surface of the flow at $z=\eta$, using the Leibnitz rule to interchange the order of integration and differentiation. Herein, we define the depth-averaged velocities are as follows:

$$\bar{u} = \frac{1}{h} \int_{\eta_b}^{\eta} u dz, \quad \bar{v} = \frac{1}{h} \int_{\eta_b}^{\eta} v dz \quad (7)$$

in (7), and equations hereinafter, overbars denote depth-averaged quantities defined by integrals similar to that (7).

The continuity Eq. (1) is integrated through the flow depth,

$$\int_{\eta_b}^{\eta} \left(\frac{\partial u}{\partial x} + \frac{\partial v}{\partial y} + \frac{\partial w}{\partial z} \right) dz = \frac{\partial}{\partial x} \int_{\eta_b}^{\eta} u dz + \frac{\partial}{\partial y} \int_{\eta_b}^{\eta} v dz - \left(u \frac{\partial \eta}{\partial x} + v \frac{\partial \eta}{\partial y} - w \right) \Big|_{z=\eta} + \left(u \frac{\partial \eta}{\partial x} + v \frac{\partial \eta}{\partial y} - w \right) \Big|_{z=\eta_b} \quad (8)$$

using the kinematic boundary conditions at the base and at the free surface, we obtain,

$$u \frac{\partial z}{\partial x} + v \frac{\partial z}{\partial y} - w = 0 \quad \text{at the base } z=\eta_b \quad (9)$$

$$\frac{\partial z}{\partial t} + u \frac{\partial z}{\partial x} + v \frac{\partial z}{\partial y} - w = 0 \quad \text{at the free surface } z=\eta \quad (10)$$

as $h=h(x, y, t)=\eta-\eta_b$ is the flow depth, we get,

$$\frac{\partial h}{\partial t} = \frac{\partial(\eta - \eta_b)}{\partial t} \quad (11)$$

Inserting (7), (9), (10), (11) into (8), we get the continuity equation of debris flow,

$$\frac{\partial h}{\partial t} + \frac{\partial M}{\partial x} + \frac{\partial N}{\partial y} = 0 \quad (12)$$

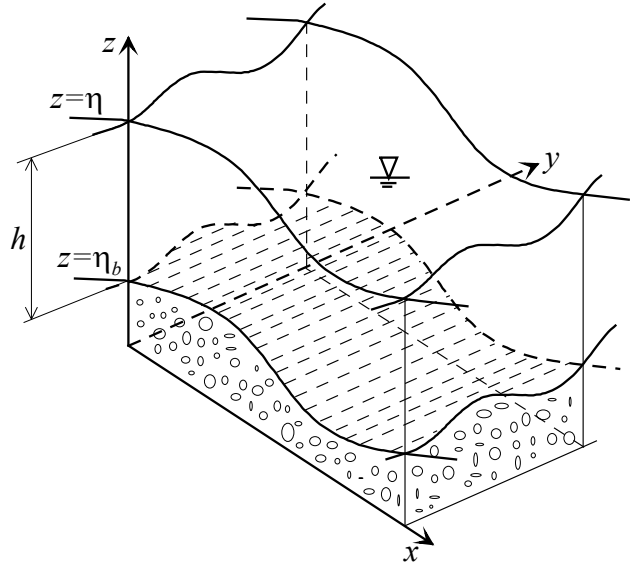


Fig. 1. Definition of coordinate system for two dimensional governing equations.

in which $M=\bar{u}h$ and $N=\bar{v}h$ are the x - and y -components of the flow flux respectively;

Integrating the left-hand side of the Eq. (2),

$$\begin{aligned} & \int_{\eta_b}^{\eta} \left(\frac{\partial u}{\partial t} + u \frac{\partial u}{\partial x} + v \frac{\partial u}{\partial y} + w \frac{\partial u}{\partial z} \right) dz \\ &= \int_{\eta_b}^{\eta} \left(\frac{\partial u}{\partial t} + \frac{\partial}{\partial x} (uu) + \frac{\partial}{\partial y} (uv) + \frac{\partial}{\partial z} (uw) \right) dz \\ &= \frac{\partial}{\partial t} \int_{\eta_b}^{\eta} u dz + \frac{\partial}{\partial x} \int_{\eta_b}^{\eta} u^2 dz + \frac{\partial}{\partial y} \int_{\eta_b}^{\eta} uv dz \\ & \quad - u \left(\frac{\partial \eta}{\partial t} + u \frac{\partial \eta}{\partial x} + v \frac{\partial \eta}{\partial y} - w \right) \Big|_{z=\eta} \end{aligned} \quad (13)$$

With

$$\begin{aligned} \int_{\eta_b}^{\eta} u^2 dz &= \alpha_1 h \bar{u}^2 = \alpha_1 \bar{u} M, \\ \int_{\eta_b}^{\eta} uv dz &= \alpha_2 h \bar{u} \bar{v} = \alpha_2 \bar{v} M \end{aligned} \quad (14)$$

Two ad-hoc coefficients α_1 and α_2 have been introduced. As was noted by Savage and Hutter (1989), values of α_1 and α_2 in (14) that deviate from unity provide information about the deviation of the vertical velocity profile from uniformity. If a debris flow velocity profile is reasonably blunt, $\alpha_1=\alpha_2=1$. For parabolic velocity profile and debris flows with no basal sliding, $\alpha_1=\alpha_2=6/5$, and for a stone-type debris flow on a rough inclined plane, $\alpha_1 = \alpha_2=1.25$ (Takahashi et al., 1992).

We may write for (13) using $\alpha=\alpha_1=\alpha_2$,

$$\int_{\eta_b}^{\eta} \left(\frac{\partial u}{\partial t} + u \frac{\partial u}{\partial x} + v \frac{\partial u}{\partial y} + w \frac{\partial u}{\partial z} \right) dz$$

$$= \frac{\partial M}{\partial t} + \alpha \frac{\partial (\bar{u}M)}{\partial x} + \alpha \frac{\partial (\bar{v}M)}{\partial y} \quad (15)$$

Furthermore, we integrate the right-hand side of the Eq. (2), Using the Eq. (6), we get

$$\int_{\eta_b}^{\eta} \frac{\partial p}{\partial x} dz = \frac{\partial}{\partial x} \int_{\eta_b}^{\eta} \rho_d g (\eta - \eta_b) dz = \rho_d h g \frac{\partial H}{\partial x} \quad (16)$$

Where $H = z = \eta_b + h$ is the height of the free surface.

Similarly, we can integrate term by term the velocity derivatives on the right-hand side of Eq. (2) to establish the relationship between viscous stress gradients and their depth averages.

$$\begin{aligned} \frac{\mu}{\rho_d} \int_{\eta_b}^{\eta} \frac{\partial^2 u}{\partial x^2} dz &= \frac{\mu \beta_1}{\rho_d} \frac{\partial^2 h \bar{u}}{\partial x^2}, \\ \frac{\mu}{\rho_d} \int_{\eta_b}^{\eta} \frac{\partial^2 u}{\partial y^2} dz &= \frac{\mu \beta_2}{\rho_d} \frac{\partial^2 h \bar{u}}{\partial y^2} \end{aligned} \quad (17)$$

Where the coefficients β_1 and β_2 represent the ration of the vertical normal stress to the horizontal one, for a rainfall-induced debris flow in which the material behaves more like a fluid, $\beta_1 = \beta_2 = \beta = 1$.

$$\frac{\mu}{\rho_d} \int_{\eta_b}^{\eta} \frac{\partial^2 u}{\partial z^2} dz = \frac{\mu}{\rho_d} \frac{\partial u}{\partial z} \Big|_{z=\eta} - \frac{\mu}{\rho_d} \frac{\partial u}{\partial z} \Big|_{z=\eta_b} \quad (18)$$

Using the shear stress boundary conditions, at the free surface, $\frac{\mu}{\rho_d} \frac{\partial u}{\partial z} \Big|_{z=\eta} = \frac{\tau_{xx}}{\rho_d} = 0$, at the base, $\frac{\mu}{\rho_d} \frac{\partial u}{\partial z} \Big|_{z=\eta_b} = \frac{\tau_{bx}}{\rho_d}$, τ_{bx} is the flow resistance. Naef et al. (2006) gave the comparison of flow resistance relations for debris flows using a one-dimensional finite element simulation model. For the two dimensional numerical simulation in this study, a combination of a viscous and Coulomb friction flow resistance is used:

$$\tau_{bx} = \mu \rho_d \sqrt{gh} \cos \theta_x \tan \varphi \quad (19)$$

where θ_x is the angle of inclination at the bed along the x-direction; and φ is the dynamic friction angle, and $\tan \varphi$ is the dynamic friction coefficient.

An analogous derivation must be performed for the right-hand side of the second Navier-stokes Eq. (3).

The final form of the depth-averaged momentum equations are

$$\begin{aligned} \frac{\partial M}{\partial t} + \alpha \frac{\partial (M\bar{u})}{\partial x} + \alpha \frac{\partial (M\bar{v})}{\partial y} \\ = -\frac{\partial H}{\partial x} gh + \frac{\mu \beta}{\rho_d} \left(\frac{\partial^2 M}{\partial x^2} + \frac{\partial^2 M}{\partial y^2} \right) - \mu \sqrt{gh} \cos \theta_x \tan \varphi \end{aligned} \quad (20)$$

$$\begin{aligned} \frac{\partial N}{\partial t} + \alpha \frac{\partial (N\bar{u})}{\partial x} + \alpha \frac{\partial (N\bar{v})}{\partial y} \\ = -\frac{\partial H}{\partial y} gh + \frac{\mu \beta}{\rho_d} \left(\frac{\partial^2 N}{\partial x^2} + \frac{\partial^2 N}{\partial y^2} \right) - \mu \sqrt{gh} \cos \theta_y \tan \varphi \end{aligned} \quad (21)$$

3 Incorporation of numerical simulation with GIS

3.1 Digital elevation model in GIS

Recently, Geographic Information Systems (GIS), with their excellent data structures and spatial data processing capacity, have attracted great attention in landslides and debris flows disasters assessment. GIS is a computer-assisted system for the acquisition, storage, analysis and display of geographic data. And GIS provides strong functions in spatially distributed data processing and analysis. Digital Elevation Models (DEM) within GIS automatically extract topographic variables, such as basin geometry, stream networks, slope, aspect, flow direction, etc. from raster elevation data. A DEM is a numerical representation of landscape topography. Three schemes for structuring elevation data for DEMs are: triangulated irregular networks (TIN), grid networks, and vector or contour-based networks (Moore and Grayson, 1991). The most widely used data structures are square grid networks with rows and columns where each cell contains a value representing information, such as elevation. The grid-based discretization of the studied area is immensely useful for numerical solution of the partial differential equations governing the propagation of debris flows. Finite-difference method on rectangular grids are widely used in numerical models of environmental flows when using this method, the studied region is discretized into rectangular grids. Therefore, in this paper, we used grid networks in GIS as the rectangular grids of finite difference methods.

3.2 Numerical scheme

Numerical models are organized on a grid cell basis. In a raster-based DEM analysis, each cell has eight possible flow directions (left, right, up, down, plus the four diagonals), as show in Fig. 2. The flow direction of a cell is expressed in degrees: left=0°, up=90°, right=180°, down=270°; and the diagonals: 45°, 135°, 225°, 315°. Within a cell overland flow is routed along one flow direction. The flow direction is the maximum downslope direction which is determined from the raster-based DEM (Fig. 3). The numerical solution is achieved using a finite difference formulation based on the DEM grid. The governing equations are approximated using leapfrog time-differencing. A staggered grid approach is followed to evaluate the spatial gradients of Eqs. (12), (20), and (21). A forward difference scheme is applied to discretize the linear terms, and a central difference scheme is applied to discretize the nonlinear terms. The thickness of the debris mass in each cell is computed at the midpoint of the cell and denoted in Fig. 3. The method of adjusting the time step and mesh size is used to prevent the appearance of numerical instability due to the use of too large a time interval and mesh size.

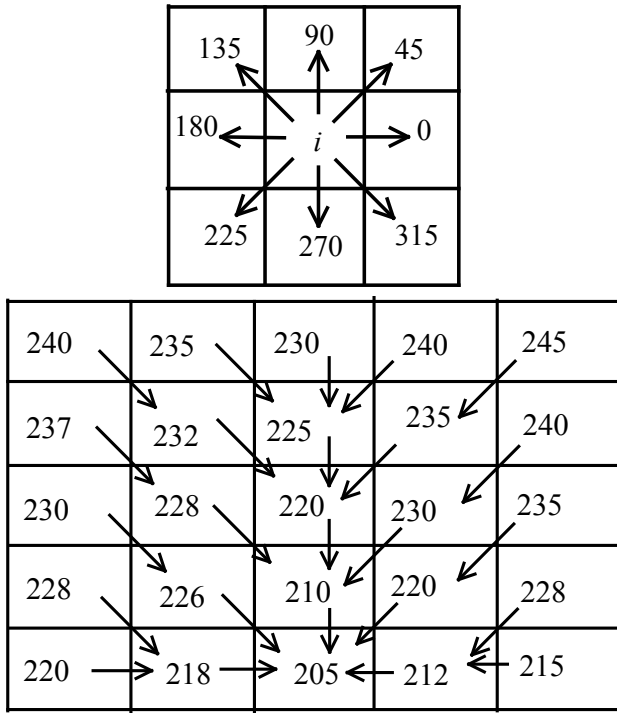


Fig. 2. Flow direction (a) possible flow direction in a cell; (b) flow direction in a DEM).

The finite difference form of the continuity equation is:

$$\begin{aligned} & \frac{h_{i+1/2,j+1/2}^{n+3} - h_{i+1/2,j+1/2}^{n+1}}{2\Delta t} \\ & + \frac{M_{i+1,j+1/2}^{n+2} - M_{i,j+1/2}^{n+2}}{\Delta x} \\ & + \frac{N_{i+1/2,j+1}^{n+2} - N_{i+1/2,j}^{n+2}}{\Delta y} = 0 \end{aligned} \quad (22)$$

And the momentum equation of x-component

$$\begin{aligned} & \frac{M_{i,j+1/2}^{n+2} - M_{i,j+1/2}^n}{2\Delta t} \\ & + \frac{\alpha}{\Delta x} \left[\frac{(M_{i+1,j+1/2}^n + M_{i,j+1/2}^n)^2}{4h_{i+1/2,j+1/2}^{n+1}} - \frac{(M_{i,j+1/2}^n + M_{i-1,j+1/2}^n)^2}{4h_{i-1/2,j+1/2}^{n+1}} \right] \\ & + \frac{\alpha}{\Delta y} \left[\frac{(M_{i,j+1/2}^n + M_{i,j+3/2}^n)(N_{i+1/2,j+1}^n + N_{i-1/2,j+1}^n)}{h_{i-1/2,j+1/2}^{n+1} + h_{i+1/2,j+1/2}^{n+1} + h_{i+1/2,j+3/2}^{n+1} + h_{i-1/2,j+3/2}^{n+1}} \right. \\ & \quad \left. - \frac{(M_{i,j+1/2}^n + M_{i,j-1/2}^n)(N_{i+1/2,j}^n + N_{i-1/2,j}^n)}{h_{i-1/2,j-1/2}^{n+1} + h_{i+1/2,j-1/2}^{n+1} + h_{i+1/2,j+1/2}^{n+1} + h_{i-1/2,j+1/2}^{n+1}} \right] \\ & = -g \frac{(h_{i+1/2,j+1/2}^{n+1} + h_{i-1/2,j+1/2}^{n+1})(H_{i-1/2,j+1/2}^{n+1} - H_{i-1/2,j+1/2}^n)}{2\Delta x} \\ & + v\beta \left[\frac{M_{i-1/2,j+1/2}^n - 2M_{i+1/2,j+1/2}^n + M_{i+3/2,j+1/2}^n}{(\Delta x)^2} \right] \end{aligned}$$

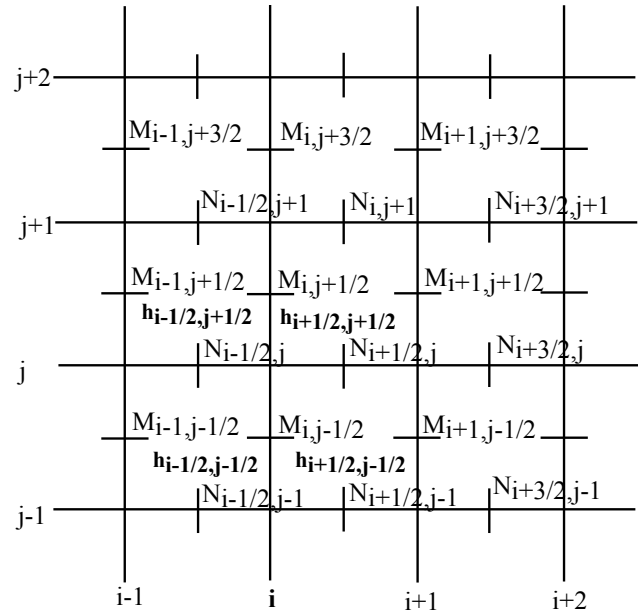


Fig. 3. Grids for 2-dimensional debris flow computation.

$$\begin{aligned} & \left[\frac{M_{i,j-1/2}^n - 2M_{i,j+1/2}^n + M_{i,j+3/2}^n}{(\Delta y)^2} \right] \\ & - \cos \theta_x \tan \varphi \sqrt{g \frac{h_{i+1/2,j+1/2}^{n+1} + h_{i-1/2,j+1/2}^{n+1}}{2}} \end{aligned} \quad (23)$$

A finite difference expression analogous to Eq. (23) represents the momentum equation of the y-component in Eq. (21).

The model outlined above has been coded into a numerical model of general utility in ArcGIS(a GIS software developed by ESRI). The code is written in Visual Basic language and ArcObjects as a tool of ArcGIS application. ArcObjects is the development environment of the desktop ArcGIS applications (ArcMap, ArcCatalog and ArcScene). It is used to customize and extend ArcGIS using Visual Basic. All the input and output data are processed in ArcGIS. The tool is embedded in a GIS to simplify the specification of input and to help the interpretation of numerical simulation results.

4 Simulation of real debris flow event

To verify the model and illustrate its validation, the model is applied to a real debris flow occurred in Japan. On 19–20 July 2003, a short duration of high intensity rainfall event impacted on Minamata City in the Kumamoto prefecture, Japan. This rainstorm triggered many landslides and debris flows (Nakazawa et al., 2003; Iwao, 2003; Taniguchi, 2003; Mizuno et al., 2003; Hashimoto et al., 2003). The landslide and resultant debris flow at Hogawachi was the largest and most damaging of the 20 July disasters in Minamata area (Fig. 4). The debris flow occurred 4.3 h after the beginning



Fig. 4. Aerial photograph of destroyed village and the path of the debris flow.

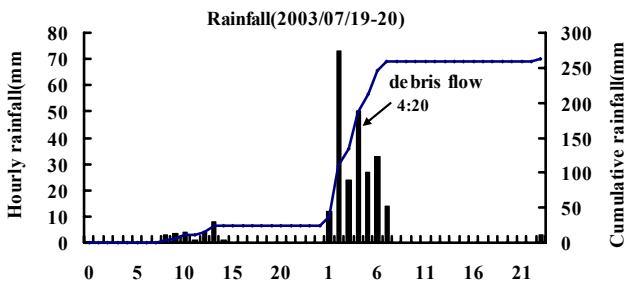


Fig. 5. Precipitation at Minamata City (19 July, 00:00~20 July, 22:00, 2003).

of the rainstorm, at 4:20 a.m. on 20 July 2003, during the period of highest intensity (Fig. 5). The landslide that triggered the debris flow initiated in highly weathered andesite (An-7: mainly lava with subordinate tuff breccia) underlain by an almost impermeable layer (An-5: tuff breccia, brecciated lava, and lava) (Fig. 6). The maximum depth of the landslide is about 15 m. The debris flow began after the landslide entered the stream valley and traveled about 1.5 km along the channel. The gradient of the slope that failed was 19° near the top and 36° in the lower section. The gradient of the channel is about $17^\circ \sim 9^\circ$, and the mean gradient of the fan is 5° (Hashimoto et al., 2003). The volume of sediment discharge

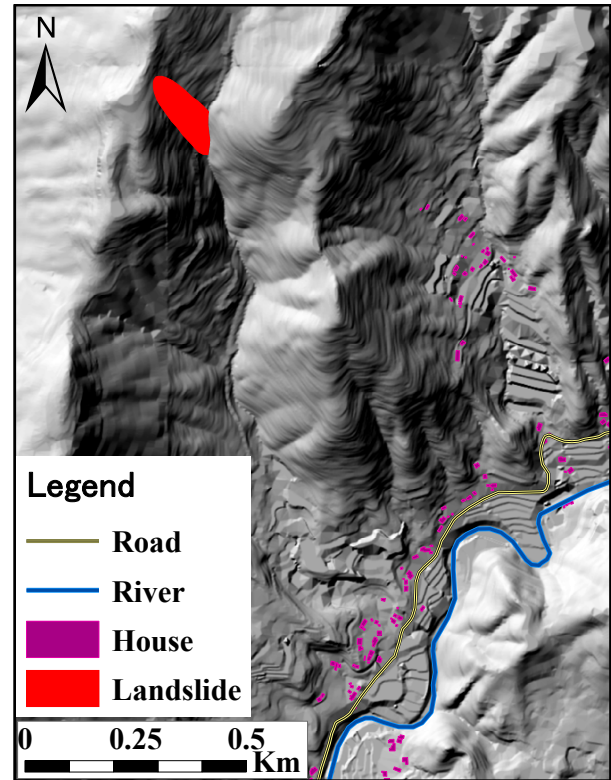


Fig. 6. (a) Schematics of the landslide. (b) Longitudinal profile of AA-section.

plunging into the village of Hougawachi-Atsumari district, Minamata City, was estimated to be about $68\,000\text{ m}^3$, and the velocity of debris flow was estimated from about 2.9 m/s to 23.5 m/s (Mizuno et al., 2003; Taniguchi, 2003). This disaster killed 15 people and more than 14 houses were either damaged or destroyed.

Based on a topographic map 1/2500 in scale, a vector contour line file is generated, with vertical spacing of 2 m. This file is converted to TIN (Triangulated Irregular Network), and subsequently DEM (Digital Elevation Model) within ArcGIS. The road and river are drawn as polylines, and the homes as polygons (Fig. 7). The DEM resolution is $2\text{ m} \times 2\text{ m}$. The elevation of terrace and river are expressed in this DEM.

How to determine the input parameters is important because these parameters will affect the simulation results. The range of parameters for simulation was constrained using field observations because no direct measurements of the parameters are available (Rickenmann et al., 2006). In this simulation, the square grid mesh in GIS is $\Delta x = \Delta y = 2\text{ m}$ and the depth-averaged velocities are considered as blunt, therefore, we have set $\alpha = 1$, $\beta = 1$. As a rough approximation by field investigation, the sediment volume is about $68\,000\text{ m}^3$, and the water volume is about $17\,000\text{ m}^3$ (Mizuno et al., 2003). The effective viscosity and the dynamic friction coefficient are

Table 1. Material properties and rheological parameters for simulation.

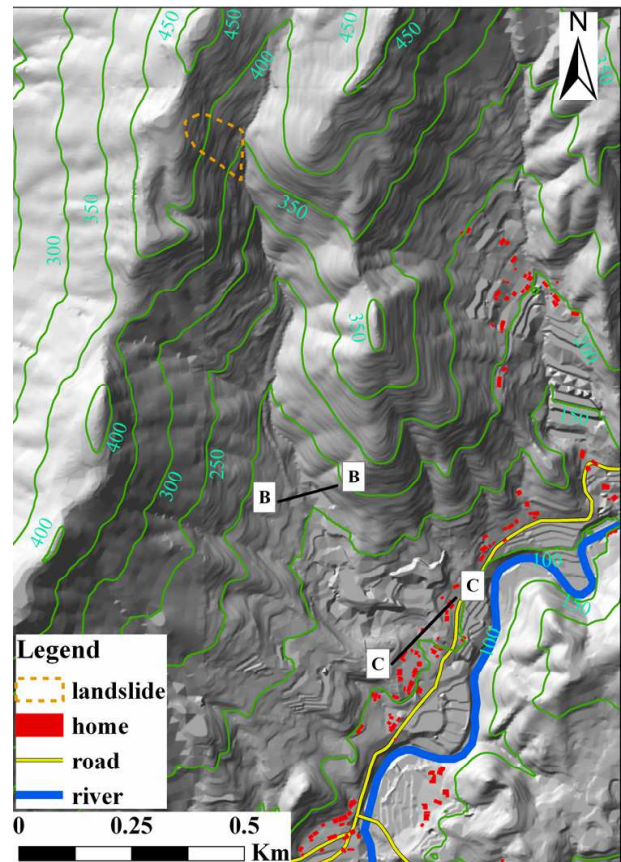
ρ (kg/m ³)	α	β	μ (Pa·s)	g (m/s ²)	$\tan \varphi$	Event volume (m ³)
2200	1.25	1.0	0.11	9.8	0.6	85 000

key parameters that affect the flow behavior. Lien and Tsai (2003) gives the range of the dynamic friction coefficient from 0.32 to 0.75. Based on field investigation, the inundated area is 0.15 km² and the average thickness of deposits is assumed to be 3.5 m. Using these data and through iterative calculations, the best-fit pair of $\tan \varphi=0.4$ and $\mu=0.11$ are selected (Table 1).

A time-lapse simulation of the dynamic progression and deposition of the debris flow over the 3-dimensional terrain is illustrated in Fig. 8. The simulation results show that it took about 200 seconds to travel 1500 m along the channel, and an average flow velocity is about 7.5 m/s. The affected region can be dynamically displayed again at different time. In order to know the flow depth and the deposition thickness in the simulation, a cross section BB and CC was given (Fig. 7). At the 60 s after the beginning of the event, the debris-flow arrived BB-cross section. Figure 9 shows the dynamic flow depth of BB-cross section at 60 s, 90 s, 120 s, 150 s, and 180 s. The deposition thickness and the dangerous homes in CC cross section are shown in Fig. 10. Figure 11a shows the simulation result of the area affected by debris flow. Comparing with the affected area tracked by aerial photograph and by field survey (Fig. 11b), the simulation result is in close agreement with filed observation. The homes affected by the simulation result are 15, which is the same with field observation also. This means that the numerical approach can be properly used to simulate the real debris-flow triggered by landslide and rainstorm in the study area.

5 Discussion

Debris flows are complex phenomena, due to spatial and temporal variability in material properties, and state of trace during their evolution. Their sudden occurrence and transient character make difficult to directly measure their rheological parameters and friction force. When using numerical simulation models for hazard assessment of debris flows, the selection of appropriate friction or flow resistance parameters is of great importance (Hung, 1995; Ayotte and Hung, 2000; Brufau et al., 2001; Arattano and Franzi, 2003; Revellino et al., 2004; Naef et al., 2006; Rickenmann et al., 2006). For the detailed reviews of different equations describing the flow resistance relations, represented by S_f , see Hung (1995), Chen (1988), Brufau et al. (2001) and Naef et al. (2006). The flow resistance term depends on the rheology of the material

**Fig. 7.** 3-D view of the study area with houses and roads.

and is a function of several different known parameters of the flow (Hung, 1995). On the other hand, a comprehensive understanding is still lacking, and a classification of debris flow into specific categories is often difficult, this is due to both to the wide range of water-sediment flows referred to as debris flows and to the flow behavior variability encountered (Sosio et al., 2007). In this study, the flow resistance is considered as the function of the flow depth, the effective viscosity, the gravity, the path slope angle, and the dynamic friction coefficient. The effective viscosity and the dynamic friction coefficient are the key parameters that affect the flow behavior.

The elevation values of Digital Elevation Model (DEM) are used in algorithms to calculate surface derivatives such as slope, aspect, flow direction and will affected the flow depth

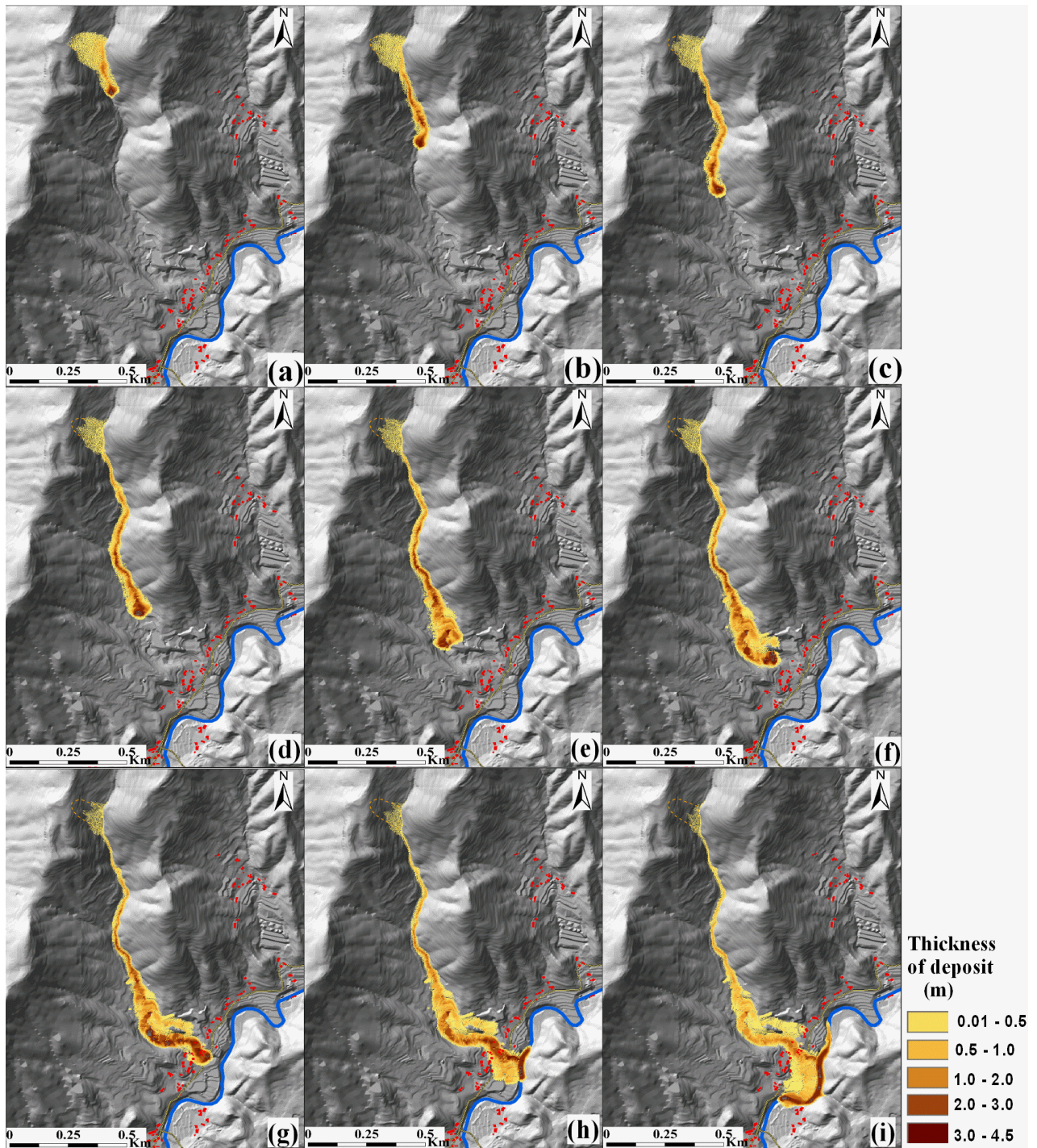


Fig. 8. Debris flow developing and affected regions at different times. (a) 30 s; (b) 50 s; (c) 90 s; (d) 110 s; (e) 150 s; (f) 170 s; (g) 190 s; (h) 210 s; (i) 230 s.

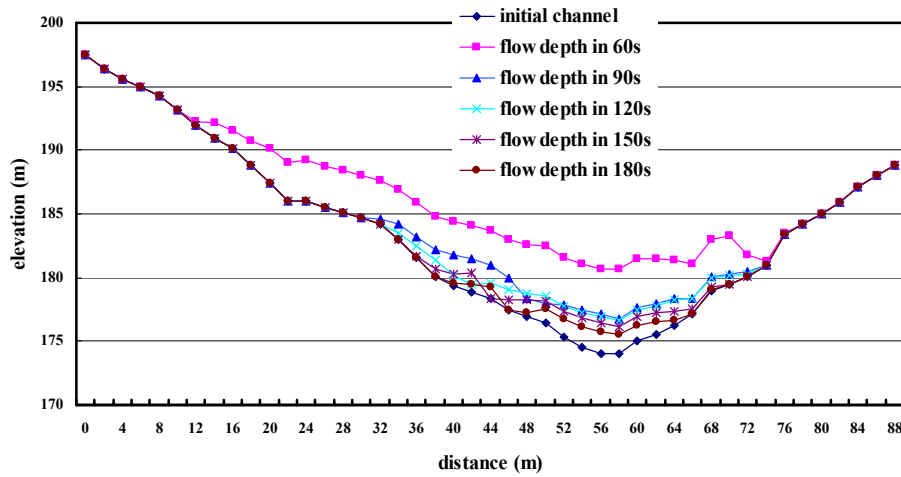


Fig. 9. Flow depth in BB-cross section.

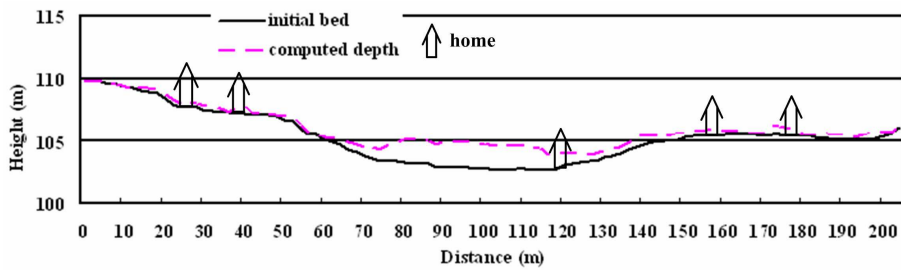


Fig. 10. The deposition thickness and the dangerous homes in CC section.

in this model. The grid cell size of DEM within GIS will also affect the simulation results. Accurate representation of the channel and fan topography in the grid is especially important to achieve a good replication of the observed deposition pattern (Rickenmann, 2006). To explore how different DEM resolutions influence the deposition thickness in the simulation, three other DEMs with the grid sizes $5\text{ m} \times 5\text{ m}$, $8\text{ m} \times 8\text{ m}$ and $10\text{ m} \times 10\text{ m}$ were generated in ArcGIS. Figure 12 shows the depositions and inundated areas of the four different DEM resolutions (grid sizes of $2\text{ m} \times 2\text{ m}$, $5\text{ m} \times 5\text{ m}$, $8\text{ m} \times 8\text{ m}$, $10\text{ m} \times 10\text{ m}$). Using the same rheologic parameters, the ratio of the mean deposition thickness of grid sizes in $10\text{ m} \times 10\text{ m}$ to $2\text{ m} \times 2\text{ m}$ is 0.71, the ratio of the mean deposition thickness of grid sizes in $8\text{ m} \times 8\text{ m}$ to $2\text{ m} \times 2\text{ m}$ is 0.78, and the ratio of the mean deposition thickness of grid sizes in $5\text{ m} \times 5\text{ m}$ to $2\text{ m} \times 2\text{ m}$ is 0.92; the computation times of grid sizes $2\text{ m} \times 2\text{ m}$, $5\text{ m} \times 5\text{ m}$, $8\text{ m} \times 8\text{ m}$, $10\text{ m} \times 10\text{ m}$ are 6.5 h, 5.2 h, 4.3 h, and 4.1 h, respectively. Comparing with the deposition and the inundated area of the field investigation, the results of the grid sizes of $2\text{ m} \times 2\text{ m}$ is better than the others. A coarse resolution DEM appears to be of poor quality results, but it can be used for rough estimation of the flow range and the deposition.

6 Conclusions

In the present study, we presented a two-dimensional depth-averaged numerical model to simulation the propagation and the inundated area of debris flow, and numerical simulation methods in combination with GIS-technology were applied. A GIS environment provides a good platform for coupling a numerical model of a debris flow. As raster grid networks of digital elevation model in GIS can be used as the finite difference mesh, the continuity and momentum equations are solved numerically using finite difference method. All the input and output data are processed in GIS. As a case study, we applied the model to a rainfall-induced real debris flow occurred in 20 July 2003, in Minamata City of southern Kyushu, Japan. The model achieved reasonable results in comparison with a field investigation. This simulation re-displays the propagation and deposition of the debris flow across the complex topography.

How to prevent or mitigate disaster caused by landslides and debris flows is an urgent problem. Therefore, prediction of the characters of the landslide and debris flow, such as the possible inundated extent of the moving debris mass, the propagation progress across the real three-dimensional terrain, the area of deposition, and finding the dangerous homes

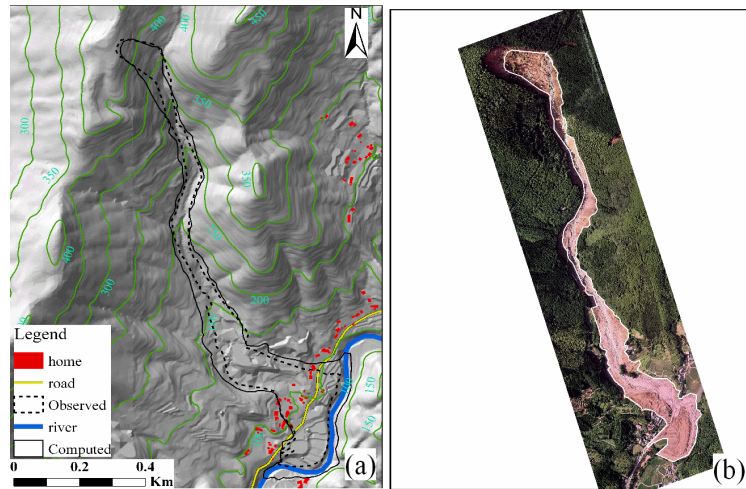


Fig. 11. Inundant extent of the debris flow in Minamata city. (a) by the Simulation and field investigation; (b) by aerial photograph.

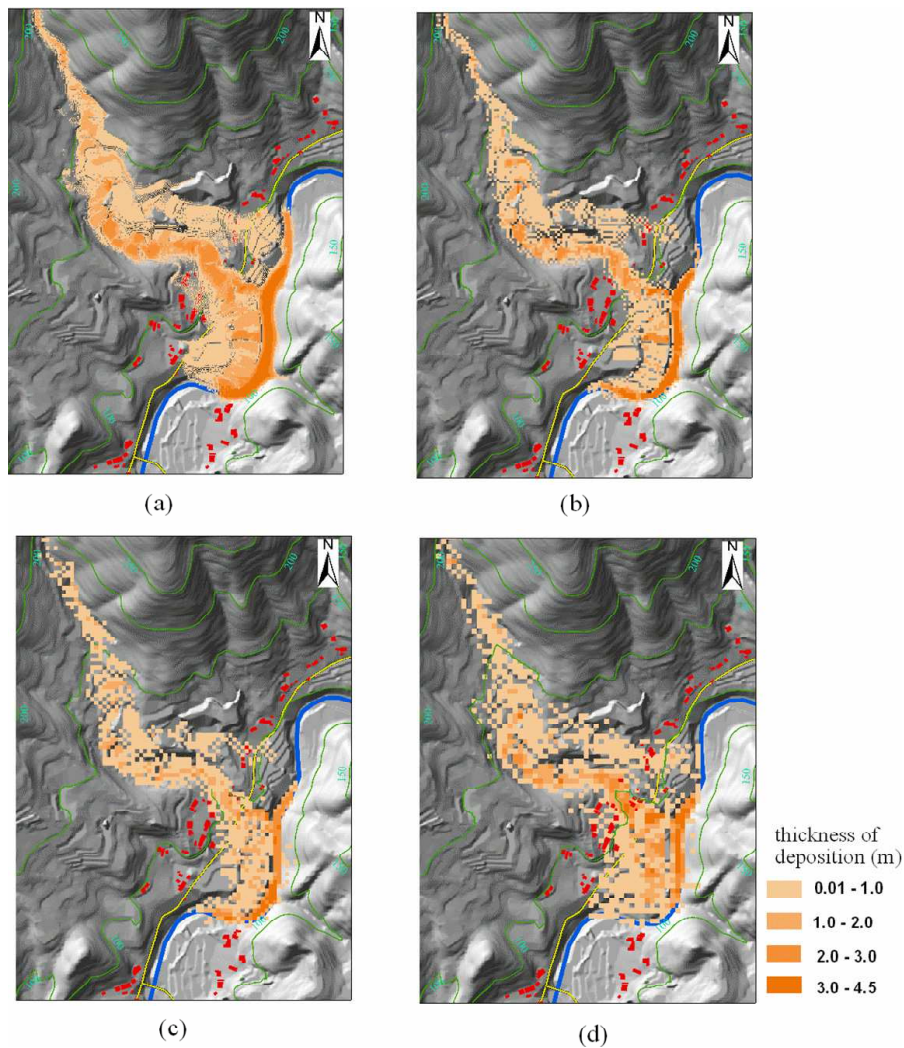


Fig. 12. Deposition of four different DEM resolutions (a) $2\text{ m} \times 2\text{ m}$; (b) $5\text{ m} \times 5\text{ m}$; (c) $8\text{ m} \times 8\text{ m}$; (d) $10\text{ m} \times 10\text{ m}$.

and other infrastructure is of great importance in hazard and risk assessment. The advantages of numerical method combining with GIS-technology are that the preprocessing routine in which the computation data are prepared, the post-computation visualization, the results analysis, and providing an effective tool for risk analysis and hazard mapping.

Acknowledgements. The authors are grateful to the National Natural Science Foundation of China for financial support (No. 50539080) and the Ministry of Education, Culture, Sports, Science and Technology, Government of Japan for providing Monbukagakusho Scholarship to this research. The authors also express their sincere appreciations to the two referees for their useful comments and suggestions that have substantially improved this paper.

Edited by: T. Glade

Reviewed by: two anonymous referees

References

- Arai, M. and Takahashi, T.: The Karman constant of the flow laden with high sediment, Proc. 3rd Int. Symp. on River Sedimentation, Univ. of Mississippi, 824–833, 1986.
- Anderson, S. A.: Analysis of Rainfall-induced debris flows, *J. Hydraul. Eng.*, ASCE, 121(7), 544–552, 1995.
- Arattano, M. and Franzini, L.: On the evaluation of debris flows dynamics by means of mathematical models, *Nat. Hazards Earth Syst. Sci.*, 3, 539–544, 2003, <http://www.nat-hazards-earth-syst-sci.net/3/539/2003/>.
- Ayotte, D. and Hungr, O.: Calibration of a runout prediction model for debris flows and avalanches, in: *Debris-Flow Hazards Mitigation: Mechanics, Prediction, and Assessment*, edited by: Wieczorek, G. F. and Naeser, N. D., Proceedings 2nd International Conference, Taipei, Taiwan, Balkema, Rotterdam, 505–514, 2000.
- Bagnold, R. A.: Experiments in a gravity-free dispersion of large solid spheres in a Newtonian fluid under shear, *Proc. Royal Soc. London Ser. A*, 225, 49–63, 1954.
- Bathurst, J. C., Burton, A., and Ward, T. J.: Debris flow run-out and landslide sediment delivery model tests, *J. Hydraul. Eng.*, ASCE, 123(5), 410–419, 1997.
- Brufau, P., Gracia-navarro, P., Ghilardi, P., Natale, L., and Savi, F.: 1D Mathematical modelling of debris flow, *J. Hydraul. Res.*, 38(6), 435–446, 2001.
- Bouchut, F. and Westdickenberg, M.: Gravity driven shallow water models for arbitrary topography, *Comm. Math. Sci.*, 2(3), 359–389, 2004.
- Carrara, A. and Guzzetti, F.: Use of GIS technology in the prediction and monitoring of landslide hazard, *Nat. Hazards*, 20, 117–135, 1999.
- Chen, C.: Generalized viscoplastic modeling of debris flow, *J. Hydraul. Eng.*, ASCE, 114(3), 237–258, 1988.
- Chen, H. and Lee, C.F.: Numerical simulation of debris flows, *Can. Geotech. J.*, 37, 146–160, 1999.
- Dai, F., Lee, C. F., and Wang, S.: Analysis of rainstorm-induced slide-debris flows on natural terrain of Lantau Island, Hong Kong, *Eng. Geol.*, 51, 279–290, 1999.
- Dent, J. D. and Lang, T. E.: A biviscous modified bingham model of snow avalanche motion, *Annals Glaciology*, 4, 42–46, 1983.
- Egashira, S., Itoh, T., and Miyamoto, K.: Debris flow simulations for San Julian torrents in Venezuela, Proc. 3rd IAHR Symposium on River, Coastal and Estuarine Morphodynamics, Barcelona, Spain, 1–5 September 2003, 976–986, 2003.
- Fiorillo, F. and Wilson, R. C.: Rainfall induced debris flows in pyroclastic deposits, Campania (southern Italy), *Eng. Geol.*, 75, 263–289, 2004.
- Fleming, R. W., Ellen, S. D., and Albus, M. A.: Transformation of dilative and contractive landslide debris into debris flow – An example from Marin County, California, *Eng. Geol.*, 27, 201–223, 1989.
- Fraccarollo, L. and Papa, M.: Numerical simulation of real debris-flow events, *Phys. Chem. Earth (B)*, 25(9), 757–763, 2000.
- Guzzetti, F., Carrara, A., Cardinali, M., and Reichenbach, P.: Landslide evaluation: a review of current techniques and their application in a multi-scale study, Central Italy, *Geomorphology*, 31, 181–216, 1999.
- Gray, J. M. N. T., Wieland, M., and Hutter, K.: Gravity-driven free surface flow of granular avalanches over complex basal topography, *Proc. R. Soc. Lond.*, 455, 1841–1874, 1999.
- Han, G. and Wang, D.: Numerical modeling of anhui debris flow, *J. Hydraul. Eng.*, ASCE, 122(5), 262–265, 1996.
- Hashimoto, H., Kitazono, Y., and Morita, O.: Flood and sediment disasters in Kyushu area on July 19 to 20, 2003 (prompt report), *Journal of Japan Society for Natural Disaster Science*, 22(2), 159–165, 2003 (in Japanese).
- Huang, X. and Garcia, M. H.: A perturbation solution for Bingham-plastic mudflows, *J. Hydraul. Eng.*, ASCE, 123(11), 986–994, 1997.
- Huang, X. and Garcia, M. H.: A Herschel-Bulkley model for mud flow down a slope, *J. Fluid Mech.*, 374, 305–333, 1998.
- Hungr, O.: A model for the runout analysis of rapid flow slides, debris flows and avalanches, *Can. Geotech. J.*, 32(4), 610–623, 1995.
- Hunt, B.: Newtonian fluid Mechanics treatment of debris flows and avalanches, *J. Hydraul. Eng.*, ASCE, 120, 1350–1363, 1994.
- Imran, J., Harff, P., and Parker G.: A number model of submarine debris-flow with a graphical user interface, *Computer Geosciences*, 27, 717–729, 2001.
- Iwao, Y.: Slope hazard induced by heavy rain in 2003, Minamata City, Kumamoto, *J. Jpn. Landslide Soc.*, 40(3), 239–240, 2003 (in Japanese).
- Iverson, R. M.: The physics of debris flows, *Rev. Geophys.*, 35, 245–296, 1997.
- Iverson, R. M., and Denlinger R. P.: Flow of variably fluidized granular masses across three-dimensional terrain, 1. Coulomb mixture theory, *J. Geophys. Res.*, 106, 537–552, 2001.
- Iverson R. M.: The debris-flow rheology myth, in: *Debris-flow hazards mitigation: Mechanics, prediction and assessment*, edited by: Rickenmann, D. and Chen, C. L., Millpress, Rotterdam, Netherlands, 303–314, 2003.
- Jan, C. D.: A study on the numerical modelling of debris flow, *Debris Flow Hazards Mitigation, Mech., Pred. and Assessment*, ASCE, 1997.
- Johnson, A. M.: *Physical processes in geology*, Freeman, San Francisco, 1970.
- Laigle, D. and Coussot P.: Numerical modeling of Mudflows, *J.*

- Hydraul. Eng., ASCE, 123, 617–623, 1997.
- Lan, H. X., Zhou, C. H., Wang, L. J., Zhang H. Y., and Li, R. H.: Landslide hazard spatial analysis and prediction using GIS in the Xiaojiang watershed, Yunnan, China, *Eng. Geol.*, 76, 109–128, 2004.
- Lien, H. P. and Tsai, F. W.: Sediment concentration distribution of debris flow, *J. Hydraul. Eng.*, ASCE, 129(12), 995–1000, 2003.
- Liu, K. F. and Mei, C. C.: Slow spreading of a sheet of Bingham fluid on an inclined plane, *J. Fluid Mech.*, 207, 505–529, 1989.
- Mainali, A. and Rajaratnam, N.: Experimental study of debris flows, *J. Hydraul. Eng.*, ASCE, 120(1), 104–123, 1994.
- McDougall, S. and Hungr, O.: Dynamic modelling of entrainment in rapid landslides, *Can. Geotech. J.*, 42(5), 1437–1448, 2005.
- Mizuno, H., Sugiura, N., Terada, H., Uchida, T., Haramaki, T., Sokabe, M., Sakurai, W., Nishimoto, H., Osanai, N., Takezawa, N., and Doi, Y.: The debris flow disasters caused by localized rainfall of seasonal rain front in Kyushu region in July, 2003 (prompt report), *J. Jpn. Erosion Control Eng.*, 56(3), 36–43, 2003 (in Japanese).
- Moore, I. D. and Grayson, R. B.: Terrain-based catchment partitioning and runoff prediction using vector elevation data, *Water Resour. Res.*, 27(6), 1177–1191, 1991.
- Naef, D., Rickenmann, D., Rutschmann, P., and McArdell, B. W.: Comparison of flow resistance relations for debris flows using a one-dimensional finite element simulation model, *Nat. Hazards Earth Syst. Sci.*, 6, 155–165, 2006
- Nakazawa, T., Saito, M., and Taguchi, Y.: Geologic and hydrologic background of slope failure and debris-flow disaster in Atsumari River Basin, Minamata City, Kumamoto Prefecture on July 20, 2003, *Bull. Geol. Surv. Japan*, 55(5/6), 113–127, 2003 (in Japanese).
- O'Brien, J. S. and Julien, P. Y.: Laboratory analysis of mudflow properties, *J. Hydr. Engrg.*, ASCE, 114(8), 877–887, 1988.
- O'Brien, J. S., Julien, P. Y., and Fullerton, W. T.: Two-dimensional water flood and mudflow simulation, *J. Hydraul. Eng.*, ASCE, 119(2), 244–261, 1993.
- Pastor, M., Quecedo, M., González, E., Herreros, M. I., Fernández Merodo, J. A., and Mira, P.: Simple approximation to bottom friction for bingham fluid depth integrated models, *J. Hydraul. Eng.*, ASCE, 130(2), 149–155, 2004.
- Pudasaini, S. P. and Hutter, K.: Rapid shear flows of dry granular masses down curved and twisted channels, *J. Fluid Mech.*, 495, 193–208, 2003.
- Pudasaini, S. P. and Hutter, K.: *Avalanche Dynamics: Dynamics of rapid flows of dense granular avalanches*, New York, Springer, 2006.
- Remaître, A., Malet, J., Maquaire, O., Ancey, C., and Locat, J.: Flow behaviour and runout modelling of Complex debris flow in a clay-shale basin, *Earth Surf. Process. Landforms*, 30, 479–488, 2005.
- Revellino, P., Hungr, O., Guadagno, F. M., and Evans, S. G.: Velocity and runout simulation of destructive debris flows and debris avalanches in pyroclastic deposits, Campania region, Italy, *Environ. Geol.*, 45(3), 295–311, 2004.
- Rickenmann, D.: Empirical relationships for debris flows, *Nat. Hazards*, 19(1), 47–77, 1999.
- Rickenmann, D., Laigle, D., McArdell, B. W., and Hübl, J.: Comparison of 2D debris-flow simulation models with field events, *Computational Geosciences*, 10, 241–264, 2006.
- Takahashi, T.: Mechanical characteristics of debris flow, *J. Hydr. Div.*, ASCE, 104(8), 1153–1169, 1978.
- Takahashi, T. and Tsujimoto, H.: Numerical simulation of flooding and deposition of a debris flow, *Disas. Prev. Res. Inst., Kyoto Univ.*, 27(B-2), 467–485, 1984.
- Takahashi, T., Nakagawa, H., Harada, T., and Yamashiki, Y.: Routing debris flows with particle segregation, *J. Hydraul. Eng.*, ASCE, 118(11), 1490–1507, 1992.
- Takahashi, T.: *Debris Flow*, A. A. Balkema, Brookfield, Vt., 1991.
- Taniguchi, Y.: Debris disaster caused by local heavy rain in Kyushu area on July 20th, 2003 (prompt report), Minamata debris disaster, *J. Jpn Erosion Control Eng.*, 56(3), 31–35, 2003 (in Japanese).
- Trunk, F. J., Dent, J. D., and Lang, T. E.: Computer modeling of large rock slides, *J. Geotech. Engrg.*, ASCE, 112(3), 348–360, 1986.
- Savage, S. B. and Hutter, K.: The motion of a finite mass of granular material down a rough incline, *J. Fluid Mech.*, 199, 177–215, 1989.
- Sosio, R., Crosta, G. B., and Frattini, P.: Field observations, rheological testing and numerical modelling of a debris-flow event, *Earth Surf. Proc. Land.*, 32, 290–306, 2007.
- Valiani, A. and Caleffi, V.: Numerical simulation of dam-break flow on granular bed: intense sediment transport vs. debris flow modeling, *Proceedings Third International Conference on Debris-Flow Hazards Mitigation, Davos, Svizzera*, 539–550, 2003.
- Vreugdenhil, C. B.: *Numerical Methods for Shallow-Water Flow*, Kluwer Acad., Norwell, Mass, 1994.
- Wen, B. P. and Aydin, A.: Mechanism of a rainfall-induced slide-debris flow: Constraints from microstructure of its slip zone, *Eng. Geol.*, 78, 69–88, 2005.
- Whipple, K. X.: Open-channel flow of Bingham fluids: applications in debris-flow research, *J. Geol.*, 105, 243–262, 1997.