



HAL
open science

Estimation of the regional stock of residential buildings as a basis for a comparative risk assessment in Germany

L. Kleist, A. H. Thieken, P. Köhler, M. Müller, I. Seifert, D. Borst, U. Werner

► To cite this version:

L. Kleist, A. H. Thieken, P. Köhler, M. Müller, I. Seifert, et al.. Estimation of the regional stock of residential buildings as a basis for a comparative risk assessment in Germany. *Natural Hazards and Earth System Sciences*, 2006, 6 (4), pp.541-552. hal-00299328

HAL Id: hal-00299328

<https://hal.science/hal-00299328>

Submitted on 18 Jun 2008

HAL is a multi-disciplinary open access archive for the deposit and dissemination of scientific research documents, whether they are published or not. The documents may come from teaching and research institutions in France or abroad, or from public or private research centers.

L'archive ouverte pluridisciplinaire **HAL**, est destinée au dépôt et à la diffusion de documents scientifiques de niveau recherche, publiés ou non, émanant des établissements d'enseignement et de recherche français ou étrangers, des laboratoires publics ou privés.

Estimation of the regional stock of residential buildings as a basis for a comparative risk assessment in Germany

L. Kleist^{1,4}, A. H. Thieken², P. Köhler², M. Müller^{2,4}, I. Seifert^{2,3}, D. Borst^{3,4}, and U. Werner³

¹University of Karlsruhe (TH), Institute for Economic Policy Research, 76128 Karlsruhe, Germany

²GeoForschungsZentrum Potsdam (GFZ), Section Engineering Hydrology and Data Center, Telegrafenberg, 14473 Potsdam, Germany

³University of Karlsruhe (TH), Institute for Finance Banking and Insurance, 76128 Karlsruhe, Germany

⁴Center for Disaster Management and Risk Reduction Technology (CEDIM), 76128 Karlsruhe, Germany

Received: 12 January 2006 – Revised: 20 April 2006 – Accepted: 21 April 2006 – Published: 15 June 2006

Abstract. One important prerequisite for a comparable quantitative risk assessment for different types of hazards (e.g., earthquakes, windstorms and floods) is the use of a common database about and financial appraisal of the assets at risk. For damage assessments it is necessary to represent the values at risk on a regional disaggregated scale and to intersect them with hazard scenarios. This paper presents a methodology and results of a financial appraisal of residential buildings for all communities in Germany. The calculated values are defined as replacement values for the reference year 2000. The resulting average replacement costs for residential buildings per inhabitant amount to EUR 46 600, with considerable differences between communities. The inventory can be used for the calculations of direct losses from various natural disasters within the project “Risk Map Germany”.

1 Introduction

One aim of the project “Risk Map Germany”, which was launched by the Center for Disaster Management and Risk Reduction Technology (CEDIM), is to compare risks due to different types of natural disasters such as windstorms, earthquakes and floods. For this task a consistent framework is needed. Such a framework includes common definitions of essential terms in risk analyses, such as hazard, vulnerability, exposure and risk, and a consensus about the indicators that are used to quantify the risk. Since it is a further aim of the CEDIM-project “Risk Map Germany” to perform quantitative risk assessments in terms of a financial appraisal, estimates of direct, tangible losses were chosen as risk indicator. Although it is acknowledged that social and ecological factors play an important role in risk assessments, it was ob-

served that most of the engineering and technical risk assessments are restricted to the quantification of direct, tangible losses as a measure for technical vulnerability (for flood risk assessments cf. Merz and Thieken, 2004).

Since it is known from other investigations (e.g. Grünthal et al., 2006) that a uniform database and financial assessment of assets at risk is essential for a consistent quantitative comparison of different risks, a working group was established with the objective to provide a spatially-distributed inventory and financial appraisal of asset values for different economic sectors in Germany. As one result of the working group, this paper describes a new method how to estimate the asset values of residential buildings at the municipal level (communities) in Germany.

The paper is organized as follows: First, an introduction of the framework for risk analysis in CEDIM and a short literature review of the estimation of building values are given. Then, the data used and the method developed for the estimation of asset values of residential buildings are described. Furthermore it is shown how the method can be applied to the whole of Germany so that an inventory and financial appraisal of assets of residential buildings in Germany can be provided. Finally, possible applications of the data set are discussed.

1.1 Framework of the risk analysis and definitions

In engineering or technical risk assessments, the term risk is often used to describe the probability that a given loss will occur (e.g. Kaplan and Garrick, 1981; Crichton, 1999; CEDIM, 2005; Grünthal et al., 2006). This definition is also used in the CEDIM project “Risk Map Germany” with direct, tangible losses as risk indicator. Therefore, risk encompasses three aspects: hazard, vulnerability (in terms of susceptibility of the affected element) and the asset of exposed elements at risk.

Correspondence to: L. Kleist
(kleist@iww.uni-karlsruhe.de)

Whereas hazard assessments are performed separately for each type of hazard, it is essential for a comparison of different risks for all loss estimates to be based on the same cost concept (e.g. replacement costs or current values, see below). To ensure this, it was decided to develop a uniform inventory of assets together with a financial appraisal that have to be used as input to all damage estimations.

This concept implies that the specific damage models calculate damage ratios indicating the cost of the damage or repair works as a percentage of the total monetary value of the affected element at risk. The total monetary loss is achieved by multiplying the calculated damage ratio by the asset value of the affected elements in the hazard scenario under study. See Blong (2003a) for other concepts that have been used in damage modelling.

A further agreement has to be made concerning the elements at risk that are chosen for the analysis. Therefore, a list of asset categories and features was developed taking into account the following aspects: Elements at risk can be classified by their assignment to an economic sector, such as private households, manufacturing, services sector, transport, agriculture etc. as done e.g. in general classification of economic activities within the European Community (NACE). In each sector different objects can be identified, e.g. buildings, contents/fixtures, vehicles, networks or land area. The objects, e.g. buildings, can be further characterised by their age, type, quality etc. For the estimation of assets in a countrywide approach scaling and correction factors, e.g. depending on the size of the cities or the number of inhabitants per community, are needed. On the basis of these considerations the asset estimation for residential buildings was performed first. The assessment approach developed as well as its main results are the subject of this paper and outlined in Sects. 2 and 3.

A central question in the assessment process is the underlying cost concept, i.e. whether replacement/reconstruction costs, current values or market values (as sale prices) of the residential buildings should be calculated. While one can rightfully argue, that the economic loss connected with the destruction of property is expressed by the current values of the damaged elements, it was decided that the values of the assets are quantified as replacement or reconstruction costs. The reason is the assumption that in the case of a natural disaster, all destroyed property will be reconstructed. As outlined by van der Veen and Logmeijer (2005) replacement costs should be used for financial appraisals, e.g. for investigating the sum of claims that an insurance company has to deal with in case of a disaster. Since this kind of financial appraisal is intended in this paper, the reconstruction costs are an adequate indicator for assessing the value of the residential building stock. It provides useful information about the disaster relief funds needed to finance the reconstruction process. Therefore, the monetary values of residential buildings were estimated as replacement costs for the reference year 2000.

1.2 Literature review: approaches to estimate building values

Only a few risk assessment studies were found in which an approach to estimate building values is explicitly explained. This might be due to the fact that in many risk analyses no quantitative risk indicators are used and/or that damage modelling is done with damage scales that directly estimate monetary losses (e.g. Parker et al., 1987; Blong, 2003a; Penning-Rowsell et al., 2006). In the latter cases an estimation of building values is not necessary.

There are a few risk assessment studies that give some examples for the estimation of building values. In many risk assessment studies in Germany, particularly in meso-scale flood damage estimations, data on the gross stock of fixed assets in combination with land use data were used to calculate unit values for different economic sectors (e.g. MURL, 2000; IKSR, 2001; Grünthal et al., 2006). The values of residential buildings, however, were estimated by another approach (see MURL, 2000; Grünthal et al., 2006): The total value of residential buildings was estimated by multiplying the number of buildings by the mean insurance value for the buildings, which in general also represent the replacement costs of the buildings. This estimate was then transformed into a unit value per m² by relating it to the total settlement area in the area under study. This approach is rather rough and has the major drawback that differences in building types are not considered.

In a few other studies more detailed concepts were introduced. Dutta et al. (2003) used unit economic values of the elements analysed. The elements at risk are classified into residential and non-residential buildings, farmhouses, agricultural products, farm infrastructure and several types of public infrastructure. To estimate the monetary value of residential buildings the replacement costs per unit floor area are multiplied by the floor areas throughout the investigation area on a grid cell basis. The floor area per grid cell is determined considering land cover type, building ratios (that is the percentage of area covered by buildings in a given area) and floor area fractions (that is the total area of all storeys of a building divided by the ground surface area of the building; thus for a one-storey building the floor area fraction amounts to 1). The latter two parameters were derived from aerial photographs; building types are classified into wooden and concrete buildings for which different unit replacement values are assumed (Dutta et al., 2003). This approach is feasible for small and medium areas, but not for a countrywide approach, since the analysis of aerial photographs for a huge area is too time-consuming.

In a risk analysis for Australia, Blong (2003b) also used construction costs (replacement costs) per square meter that are published by Australian authorities. The basic idea of the approach of Blong (2003b) is not to estimate the total value of all structures by using different unit values for each building type, but to relate all different building types to a

Table 1. Main data sources.

Data description	Regional level	Data source	Data year
Number and quality of residential buildings differentiated for 7 building types	Community	INFAS census data	2000
Standard construction costs (Normalherstellungskosten NHK) per m ² gross floor space for 38 building and 4 quality types including incidental construction costs and region-specific correction factors	Germany, federal states	NHK2000	2000
Total living area for three classes of residential buildings	District	Federal Statistical Office of Germany	2002
Redistribution of 7 INFAS-building-types into 38 different NHK-types at constant proportions, across all regions (including share of buildings with cellars)	Saxony, Saxony-Anhalt, Bavaria	Telephone survey of the GFZ Potsdam (own extrapolations of missing data)	2003
Ratios between gross floor space and living area for 38 building types	Germany	NHK95	1995
Total population per community	Community	INFAS	2000

medium-sized family house. To do this, he introduces cost and replacement ratios. The cost ratios are derived by relating the standardized construction costs of all other buildings to the construction costs of a medium-sized family house. Further, a replacement ratio RR considers differences in the building size (floor area) and is defined as $RR = [(Cost\ Ratio \times Floor\ area)/Flood\ area\ of\ a\ medium-sized\ family\ house]$. The replacement ratios are then used in the damage model of Blong (2003b), which calculates damage as house equivalents. Monetary loss can be achieved by multiplying the house equivalents by the value of a medium-sized family house. The advantage is that the method can be easily updated and that the damage model can be used for different hazard types. However, the transferability of the approach to other countries and the applicability with other damage models have not been shown yet.

The challenge in the CEDIM-Project “Risk Map Germany” was to develop a methodology for the estimation of building values that is more detailed than the approach currently used in Germany. Like in the approaches of Dutta et al. (2003) or Blong (2003b), differences in building types should be considered. On the other hand, the approach should be based on countrywide available data sets that allow an application to all 13 415 German communities.

2 Data and methods

2.1 Outline of the methodology

As outlined above, the challenge was to develop a methodology for the asset estimation of residential buildings that is detailed enough to reflect both the differences of the specific construction costs per building type and the regional differences of the building stock while simultaneously being easily applicable to all of Germany.

To bridge this gap, it was decided to use available information on standardized construction costs for residential buildings in Germany that could then be linked with census data about the building stock and the living area per community. In so doing, the total as well as the per-capita replacement costs for residential buildings, differentiated by types, could be calculated for all German communities. The results of the calculation also include information on the communal living area per inhabitant and the specific construction costs per m² living area.

2.2 Input data

To better understand the methodology, the key data sources (Table 1) are presented first.

2.2.1 Census data for residential buildings (INFAS GEO-Daten)

Several data sets of INFAS GEOdaten (2001) are used. The data are provided in two spatial resolutions: the administrative boundaries of communities and postcodes, respectively. Both topologies are incompatible with each other. This inconsistency raises a problem when transferring the results from one level to the other. Since data on the community level is easier to connect with official data from the statistical offices in Germany, the community level was determined as the level of regionalisation for the asset assessment.

The INFAS data comprise the number of buildings for seven residential building types per community. Furthermore, the communal building stock is classified into four age and quality classes respectively. The residential building types include, amongst others, 1- and 2 family-homes, multifamily houses, blocks of flats or multi-storey houses.

Table 2. Assignment of NHK building types to the INFAS building type 1- and 2-family homes on the basis of a survey among 1697 private households in Saxony, Saxony-Anhalt and Bavaria.

NHK-type number	Description of NHK building type	Share of NHK-type in INFAS-type (in %)
101	cellar (CE), ground floor (GF), fully developed attic storey (FDA)	15.3
102	CE, GF, regular attic storey (RA)	7.4
103	CE, GF, flat roof	2.8
111	CE, GF, first floor (FF), FDA	21.7
112	CE, GF, FF, RA	22.8
113	CE, GF, FF, flat roof	5.5
121	GF, FDA	3.4
122	GF, RA	2.1
123	GF, flat roof	0.7
131	GF, FF, FDA	7.4
132	GF, FF, RA	8.8
133	GF, FF, flat roof	2.0

2.2.2 Data on reconstruction costs

Since the objective was to perform the assessment for the residential buildings of all communities in Germany, a collection of individual cost data per building was not feasible. Instead, it was decided to use mean construction costs per building type. The so-called “Normalherstellungskosten” are standardized construction costs, will be further referred to as “NHK2000” and were published by the German Federal Ministry of Transport, Building and Urban Development (BMVBW, 2001). Cost data of NHK2000 are given in Euro per square meter gross floor space. They are differentiated for a fairly high number of building types, considering the number of storeys, the existence of a cellar and the type of the attic storey. In addition, information on incidental construction costs, influences of the age and the quality standard of a building as well as conversion factors between living area and gross floor space are provided per building type. Further distinctions can be introduced by considering regional correction factors for the different German federal states and for the size of a community.

Owing to the objective to provide a sound financial appraisal of the stock of residential buildings by assessing the reconstruction costs, the replacement cost approach (Sachwertverfahren) stipulated in the German evaluation guidelines was applied (BMVBW, 2002).

2.2.3 Data on total regional living area

The calculation of costs using NHK2000 does not lead to any results without data on the gross floor area per both building type and region. Since such data is not publicly available on the community level, data on the living area per district – which is the regional administrative entity above the communities – are used. The data are provided by the Federal Statistical Office of Germany (Statistisches Bundesamt, 2004)

and the Federal Office of for Building and Regional Planning (BBR, 2003).

2.3 Data mapping and data coherence

The following main challenges were connected with the use of heterogeneous data in the estimation approach:

First, the above-mentioned data sources provide different classifications for residential buildings that have to be mapped. While the INFAS data on the number of residential buildings at the municipal level differentiates between seven building types, the data of the Federal Statistical Office of Germany on the total living area on the superordinated level of districts only distinguishes between three types of buildings, according to the number of flats per building. On the other hand, the classification of building types used to determine the specific construction costs per unit of gross floor area presented in BMVBW (2001) is much more detailed: There, 38 different building types are identified, thereof 12 different types of one-family houses.

In order to achieve a mapping of these different classifications, it was necessary to estimate the percentage of each NHK2000 building type within the more aggregated INFAS building types. Since official data about the number of NHK-building types per region is not available, the linkage was done with the help of results from computer-aided telephone interviews among 1697 private households that had experienced damages during the August 2002 flood in Germany (Thieken et al., 2005; Kreibich et al., 2005). The survey contains detailed information about the affected buildings (number of storeys, type of attic storey, cellar etc.), which was used to assign a NHK-building type to each interview. A frequency analysis revealed the share of buildings among these types (Table 2). The survey contains data from Saxony, Saxony-Anhalt and Bavaria. It was assumed that the percentages are representative for all of Germany.

Table 3. Assumptions on the relative size of multi-flat-buildings in the communities.

INFAS-abbreviations	INFAS-description	Assumption on average number of flats per building
GT_FAM	1- and 2-family homes	1–2
GT_REIH	row/duplex houses	1
GT_MEHRF	multifamily homes	6
GT_BLOCK	blocks of flats	16
GT_HOCH	apartment buildings/ multi-storey houses	40
GT_TERR	terraced houses	16
GT_BAUER	farmhouses	1–2

The data on the total living area per district was available for three building types (buildings with one flat, buildings with two flats and buildings with three or more flats). To map this data with the INFAS classification of the buildings in the communities the share of the buildings with more than two flats (e.g. multi-storey buildings, apartment buildings) with respect to their living area had to be estimated. This task is necessary for the calculation of the total construction costs of these buildings. This was done with help of some assumptions (see Table 3). It has to be noted that the total living area for each of the three building types on the district level was fixed by the official data of the Federal Statistical Office; only the relative size of the multi-flat buildings within a district depends on this assumption. Thus, the average size of a multi-flat building of a certain INFAS type is constant in each district but differs between the districts in Germany. Nonetheless, systematic variations of the average size of a multi-flat building between the communities of a district, as well as variations in the average size of the family houses, may lead to discrepancies between the real and the estimated living area in some communities. As stated above, this problem does not occur on the level of districts, since the total living area is known from the statistical data.

Another mapping process was necessary with regard to building qualities. The construction costs per square meter provided by BMVBW (2001) depend not only on the building type, but also on the quality of the respective building. Since BMVBW (2001) differentiates between four quality types while the INFAS data on the number of buildings per community discriminates six quality types, it was necessary to aggregate the latter into four types. Unfortunately, the differentiation into quality types in the INFAS data was not available for each of the seven types of residential buildings, but only for all buildings of a community together. Thus, the percentage of buildings with a certain quality is constant for all buildings types in a community. However, it varies between the communities.

2.4 The calculation process

The process for the estimation of the reconstruction costs of residential buildings in the communities of Germany is subdivided in two main stages, each consisting of a number of sub-steps. The data processing is depicted in Fig. 1 and consists of the following steps:

In the first stage, the statistical data about the living area per district is linked with information on the number of residential buildings and their qualities in the communities. As an intermediate result, the living area per community, INFAS building type and quality class is obtained.

In the second stage the results of the first stage are linked with data on specific reconstruction costs provided by BMVBW (2001) with the help of the information on the share of NHK-subtypes for each INFAS building type shown in Table 2. In doing so, the total reconstruction costs for residential buildings for each community as well as for the different INFAS building types are calculated. By dividing these values with the total population per community the specific reconstruction costs per inhabitant and community are determined.

Stage 1: Calculation of the living area per community and INFAS building type

First, the number of buildings per community is aggregated to the district level for each building type. This information is transformed into the number of flats per building type and district with the help of supplementary data (Table 3). These intermediate results are then used to subdivide the total living area per district, which is available for three classes of buildings, into the total living area per district and INFAS building type. By division with the number of buildings per type and district the average living area per residential building per type and district is calculated. The intermediate result of the living area per community, differentiated for INFAS building type and quality class, follows from the multiplication of these values with the number of buildings per INFAS-type and community, with provision for the share of the quality classes in the communities.

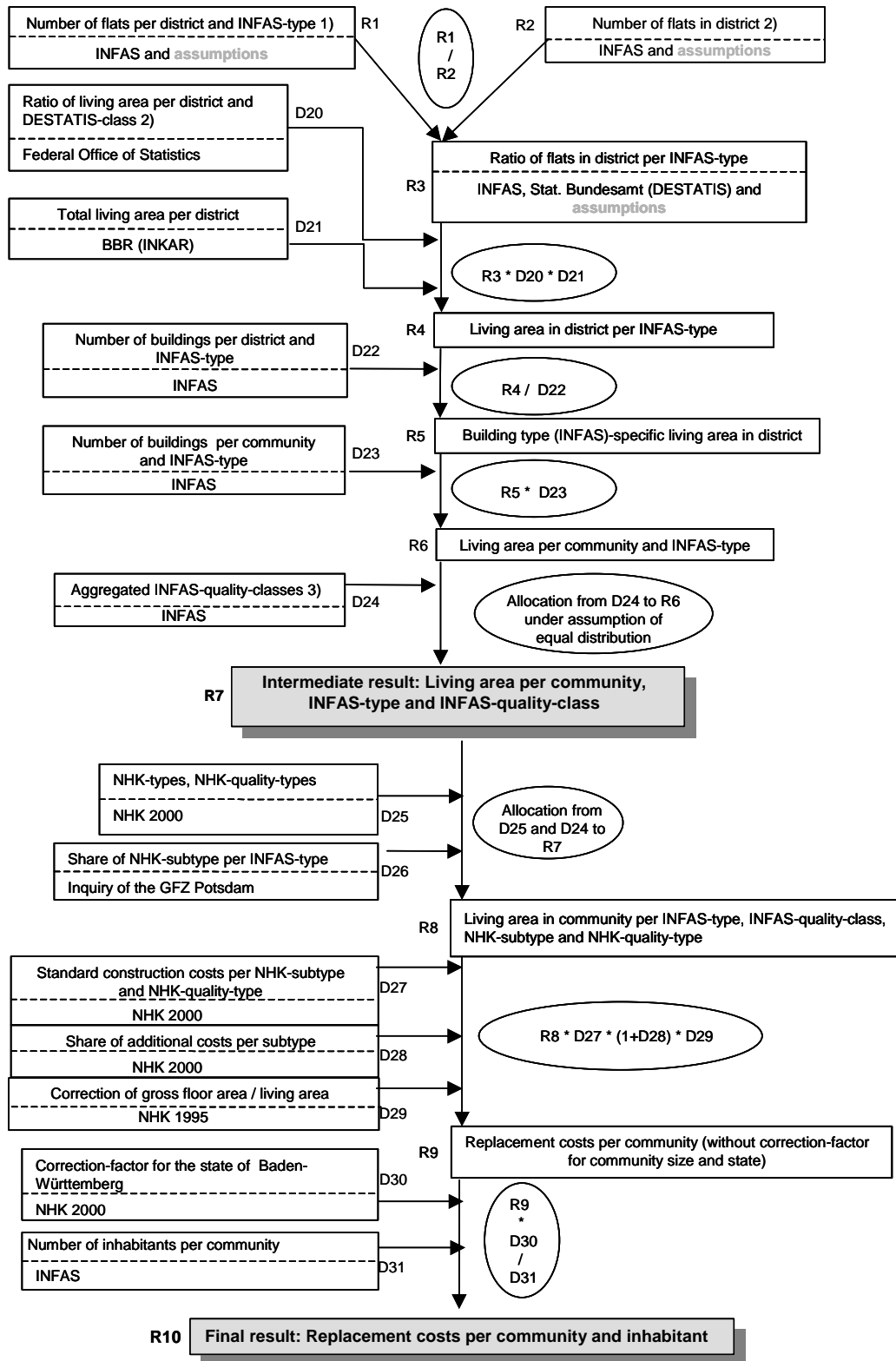


Fig. 1. Calculation scheme for regional reconstruction costs of residential buildings.

Table 4. Results for replacement costs and living area per inhabitant for Germany and some major cities and rural communities.

Region/city	Inhabitants according to (INFAS)	Average replacement costs per inhabitant [EUR]	Average replacement costs per living area [EUR/m ²]	Average living area per inhabitant [m ²]	Average number of inhabitants per residential building
Germany	82 440 307	46 601	1180	39.5	4.2
Berlin	3 388 434	66 665	1745	38.2	9.8
Munich	1 227 958	60 433	1550	39.0	8.9
Hamburg	1 726 363	57 574	1622	35.5	6.8
Stuttgart	587 152	49 000	1339	36.6	7.4
Cologne	967 940	49 176	1318	37.3	6.8
Dresden	478 631	54 039	1415	38.2	9.0
Rural communities					
Aldenhoven	13 911	33 683	1053	32.0	3.9
Templin	13 843	35 309	1169	30.2	5.2
Timmendorfer Strand	8956	56 646	1037	54.6	2.8
Lichtenstein	9460	46 390	1180	39.3	3.6
Offenau	2734	48 755	1172	41.6	3.7

Stage 2: Calculation of the specific reconstruction costs per community and per inhabitant

The living areas per INFAS building type, quality and community are now subdivided into living areas per NHK-type with the help of the sample data mentioned above. By using specific correction factors for the conversion of living area into gross floor area stemming from BMBRS (1997) and by taking into consideration incidental construction costs as well as correction factors for the federal states and for the community size as presented in BMVBW (2001), the standardized (re-)construction costs per NHK-type and community are calculated. These values are then re-aggregated to INFAS-building types. By summing up the reconstruction costs for all residential buildings of a community we obtain the total reconstruction costs per community. The formula for the total reconstruction costs per community is as follows:

$$RC_c = \sum_{i,j} LA_{c,i,j} \times GFS_i \times NHK_{i,j} \times (1 + Anc_i) \quad (1)$$

with

RC: Reconstruction costs

c: Community Index $c \in \{1, \dots, 13415\}$

i: Index of NHK building types $i \in \{1, \dots, 38\}$

j: Index of NHK quality class $j \in \{1, \dots, 4\}$

LA: Living area in m²stemming from stage 1 of the estimation process

GFS: Type-specific conversion factor between living area and gross floor space

NHK: Type-specific construction costs per m² gross floor space

Anc: Incidental construction costs

Specific reconstruction costs per region are obtained by dividing the total costs by the number of inhabitants and the total living area per community, respectively.

3 Results and discussion

The results of the asset estimation of residential buildings in Germany yield an average value of EUR 46 600 per inhabitant (Table 4), which seems to be a realistic value according to expert judgements. Total replacement costs for all residential buildings in Germany are estimated to be some EUR 3842 billion. For validation purposes, this figure can be compared with the official data on the “gross asset value of residential properties at replacement costs” published by the Federal Statistical Agency of Germany, which is derived from the gross asset investments by an accumulation method. For the reference year 2000, the official value amounts to EUR 4485 billion. Thus, the estimated replacement costs add up to 86% of the value from official statistics for Germany. Considering the differences in the calculation process and the data involved, this seems to be a reasonably good achievement, especially since the value from official statistics also includes the cumulated costs associated with the conveyance of real estate and is therefore a little too high.

The average living area per inhabitant is 39.5 m². In contrary to the estimation of the reconstruction costs, this value can be deducted directly from the official statistics on population and living areas. The number of inhabitants per residential building, stemming from the INFAS data, averages 4.2 for Germany as a whole. This value is significantly higher in the bigger cities and generally lower in rural areas. In line with these data, the average living area per inhabitant in the bigger cities is lower than the average values while

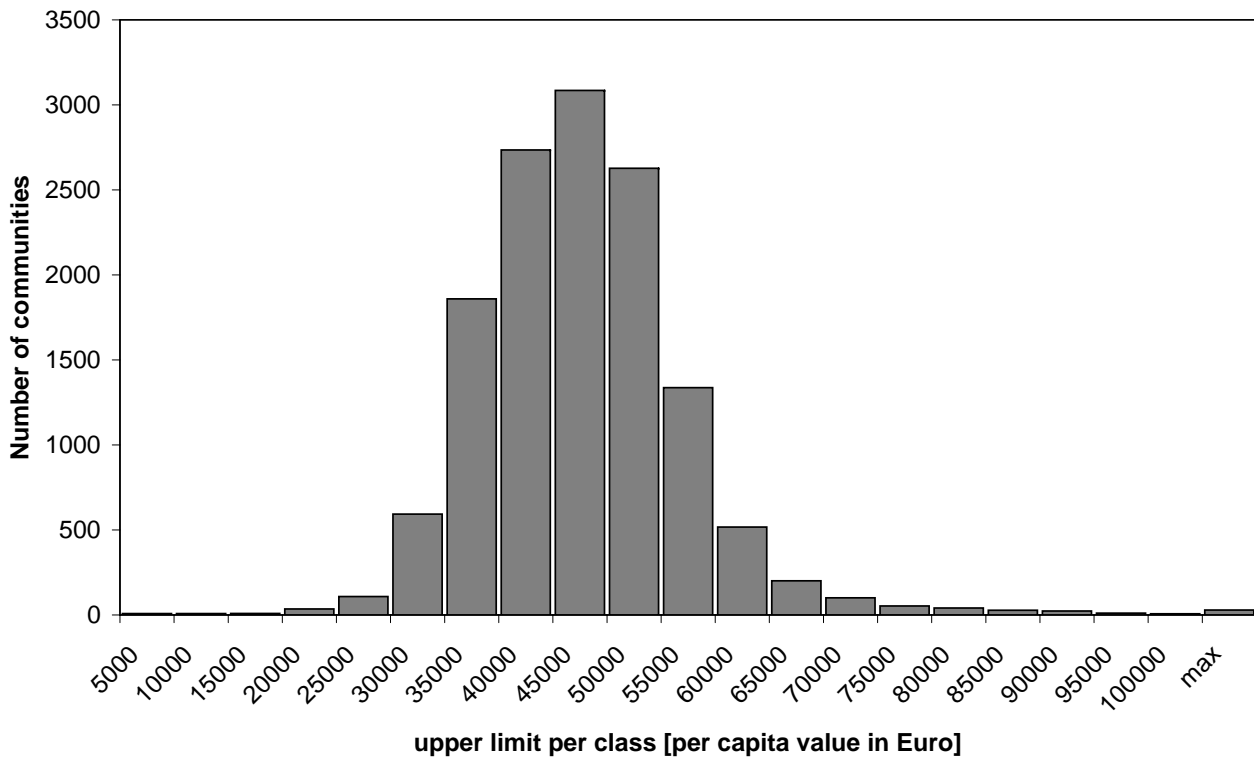


Fig. 2. Frequency distribution of the reconstruction costs of residential buildings per community and inhabitant for Germany.

their replacement costs per capita are above average. This is mainly due to higher construction costs in the cities and a higher share of the more expensive building types. On the other hand, for relatively wealthy villages or small communities that dispose a significant tourism industry like e.g. Timmendorfer Strand (Table 4), the calculation yields per-capita costs that are also well above the average, which is a plausible result.

In Fig. 2 the frequency distribution of the replacement costs per capita is given. The values follow roughly a normal distribution, but feature a slightly positive skewness. This can partly be traced back to the existence of few big cities, which count as one single community with accordingly high replacement costs compared to a relatively high number of small cities and villages with generally lower building values per capita (see also Table 4).

However, this asymmetry between the number of small and the number of big communities alone cannot explain all extreme values that occur at community level. Rather, they have to be traced back at least partly to errors in the data sources. In fact, a closer examination of the databases shows that a couple of small communities with low population contain, according to the input data, a very low number of residential buildings. Since it can be expected that the information on municipal population is more reliable than the data on the number of buildings, it must be concluded that there are some errors in the INFAS database. Because of

the method of calculation, the total living area as well as the per-capita living area per building is fixed for each district. Consequently, extremely low numbers of buildings for some communities lead to an overestimation of the living areas in other communities of the same district. To a certain degree, this linkage explains the existence of some small communities with very high replacement costs per inhabitant. In a few other cases, data inconsistencies lead to a relative high number of buildings in communities with a very low number of inhabitants.

Another reason for the relative high amplitude of divergence in the specific costs are some inconsistencies of the INFAS data with the official statistics with regard to the number of buildings for the various building types. In order to achieve high data quality, official statistical data were used where possible throughout the estimation process. This data is supplemented by the commercial census data of INFAS, sample data (Thieken et al., 2005, Kreibich et al., 2005) and own assumptions. Although every data source contributes information that does not conflict with the information provided by the other sources, one important coherence issue could be identified. While the approach chosen uses data from the Federal Statistical Office of Germany only with respect to the total living area per district, the same source also provides data on the number of buildings per district in a differentiation of three building types. Since the INFAS data on the number of buildings is much more detailed and available

on the disaggregated municipal level, this data from the Federal Statistical Office was not used in the calculation. However, a comparison of the number of residential buildings for each of the data sources reveals significant differences, when applied to the whole of Germany. While the total number of residential buildings according to INFAS census data exceeds the respective number according to the official statistics by some 13.5%, the number of residential buildings with more than two flats in this data set is approximately 14% below the values presented by the official statistics. Thus, the assessment approach applied assigns a smaller amount of the total living area to multi-flat buildings compared to a hypothetical alternative approach using only the official statistics. Unfortunately, such approach would lose the information included in the more detailed and disaggregated INFAS data set. Thus, this inconsistency is a potential source for errors that cannot be easily overcome. As a consequence, the total living area assigned to a community with a significant higher share of multi-flat buildings than the other communities of the same district may be too low. The data incoherence is well known by the data provider of the census data but up to now its source could not be identified. Thus, there is no way of coping with it than by losing other information.

Finally, it should be mentioned that another source for overestimating the variability of specific replacement costs lies in the fact that average flat sizes per building type as well as the average number of flats per multi-family/apartment buildings may, contrary to the assumptions made in the estimation process, vary between the communities of a given district.

A possible future strategy to reduce the effects of obvious errors in the data sources could include the identification of upper and lower limits for the allowed living area per capita that is then used to recalculate the distribution of living area between the building types and the communities of each district accordingly.

In Fig. 3, the individual share of each building type of the total living area is presented for Germany. It shows that 1- and 2-family homes account with more than 45% for the highest share of the overall living area. Multi-apartment buildings as family dwellings, multi-storey buildings and apartment buildings account for approximately 42% of the total volume. This result is in line with the findings of other studies stating that small buildings usually comprise more than half of the capital value of all buildings and are occupied by more people than large buildings for most of the time (Walker, 1987, in Blong, 2003a).

While the geographical distribution of the total building values per community (see Fig. 4) reproduces to a great extent the distribution of population in Germany, the information provided on per-capita replacement costs (Fig. 5) in the communities reveals significant differences across the regions. Most notably, high per-capita values are located in the bigger cities. Furthermore, there are striking differences between the southern and northern parts as well as between

share of residential building types of total living area in Germany

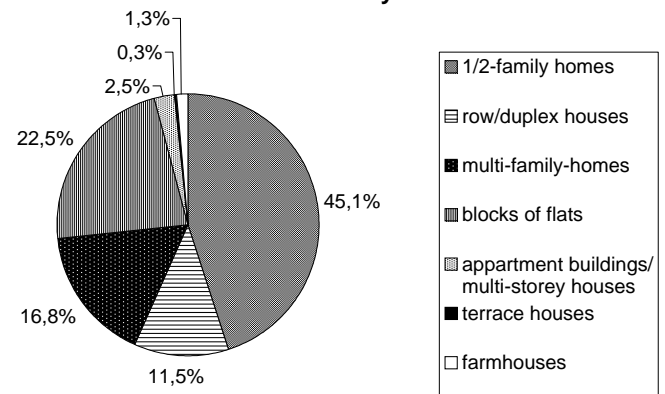


Fig. 3. Share of residential building types of total living area in Germany.

the western and eastern regions of Germany. The replacement costs per inhabitant are higher in the southwestern and southern parts of Germany and significantly lower in northern Germany and in the new federal states, except for Berlin and, to a lower degree, Hamburg. This observation is in line with the higher economic potential of the southern and southwestern regions of Germany.

4 Conclusions and outlook

The work performed provides a uniform database on the reconstruction costs of potentially risk-exposed residential buildings in Germany on the community level. This is essential for consistent comparisons of different risks on a regional scale. For loss estimations the presented assets have to be intersected with hazard maps and loss modelling has to be applied. For this task, often a more detailed spatial distribution of the assets is necessary. As shown by Thieken et al. (2006) this is done on the basis of the CORINE land cover data set and a dasymmetric mapping approach.

Since official data sets, which will be adjusted on a regular basis, were used in this study, keeping the estimations of building values up to date is easily possible. The estimates for the reference year 2000 can be transferred to other years by means of construction price indices.

The results of the calculation process shed light on the quantitative differences of the per-capita-value of residential buildings between rural and metropolitan areas, wealthy and poor communities as well as on systematic differences between the larger regions of Germany. The results also include community-specific information on the reconstruction costs per square meter living area and on the living area per inhabitant. The approach chosen ensures that the total living area per district matches the values from the official statistics.

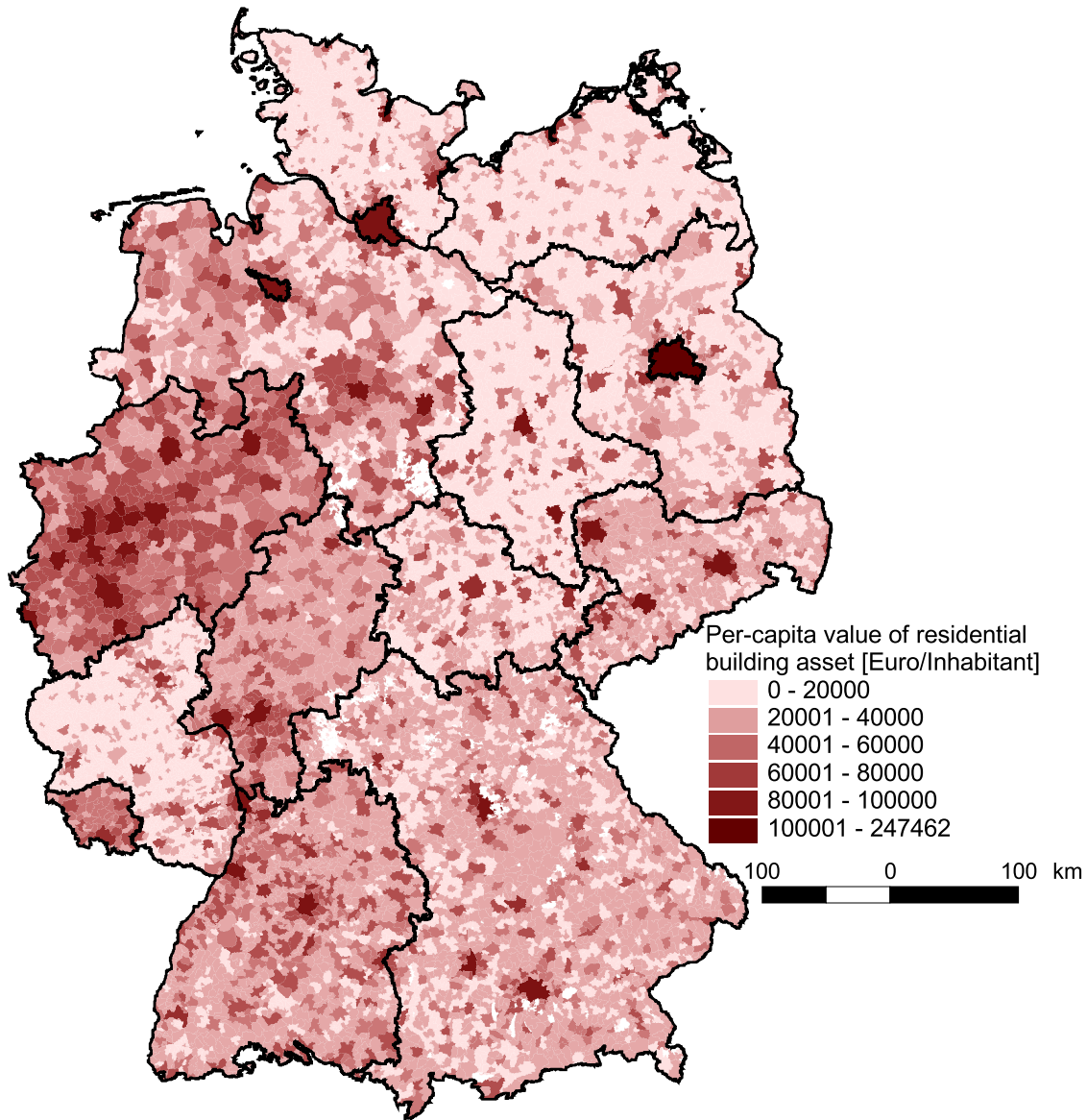


Fig. 4. Total values (reconstruction costs) of residential buildings for the communities in Germany.

In order to validate the found results, the total reconstruction costs calculated for Germany were compared with official data on the gross asset value of residential properties provided by the Federal Statistical Office of Germany in the framework of national accounting. The calculated costs for the reference year 2000 average EUR 3842 billion, which is 86% of the official amount published, which seems to be a satisfying achievement considering that the official number is, because of the applied method of calculation, probably a little too high. Nonetheless, there are still some sources of errors. Most notably, these include the lacking information about the size of the multi-storey buildings in the census data and a certain data incoherency between the census data and the official data set that could not be overcome completely.

However, a possible future strategy for the reduction of the negative effects resulting from these error sources has been drafted above.

With regard to risk management the presented results can be used for several purposes:

The inventory can be linked to risk management via information technology such as the “CEDIM Risk Explorer” (cf. Müller et al., 2006¹) or deNIS, the German emergency preparedness information system

¹Müller, M., Vorogushyn, S., Maier, P., Thielen, A. H., Petrow, Th., Kron, A., Büchele, B., and Wächter, J.: “CEDIM Risk Explorer” – A Map Server Solution in the Project „Risk Map Germany”, *Nat. Hazards Earth Syst. Sci.*, submitted, 2006.

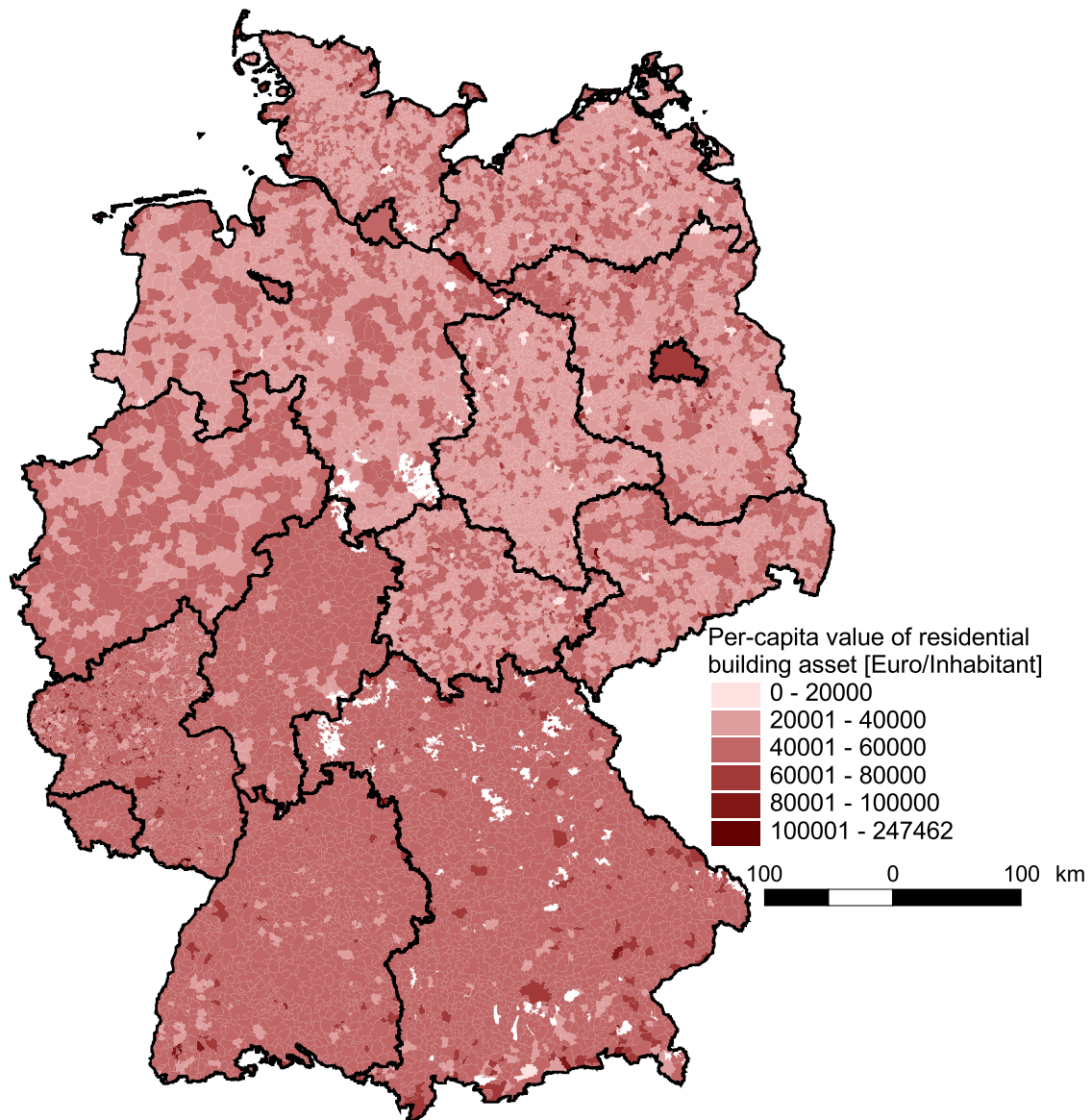


Fig. 5. Per-capita values (reconstruction costs) of residential buildings for the communities in Germany.

(deutsches Notfallvorsorge-Informationssystem, cf. <http://www.denis.bund.de/>). The estimation of building values as part of total loss potential is an important input for mitigation planning, whether for individual households or for authorities: It fills the existing information gaps on the community level by indicating the cost of reconstruction after disastrous events. This information can be aggregated for a specific regional focus of analysis, or for statewide or federal planning necessities. It facilitates financial risk management, including insurance considerations. At the same time, it might foster a dialogue between different stakeholders from the public and private sectors in order to develop new strategies for reducing losses from future

disasters. Moreover, estimating building values is a first step in the assessment of further economic and social effects of catastrophes.

It is conceivable that professional risk managers in (re)insurance companies can take advantage of building value estimations like the one presented here. Data on insured values is sometimes incomplete, especially on the community level, and even more on the individual address level. Our estimations might be used for the assessment of accumulations of exposure regarding damages to residential buildings.

Acknowledgements. This work is part of the project “Risk Map Germany” of the Center for Disaster Management and Risk

Reduction Technology (<http://www.cedim.de>), a joint venture between the GeoForschungszentrum Potsdam (GFZ) and the Technical University of Karlsruhe (TH). We thank the GFZ Potsdam and the TH Karlsruhe for financial support. We are indebted to T. Lützkendorf, D. Lorenz (Chair of Sustainable Management of Housing & Real Estate) and C. Ferrara (Institute for Industrial Building Production) for providing us with first-hand knowledge on the advantages and disadvantages of various ways to assess building values. The paper has benefited from the comments of three referees.

Edited by: H. Kreibich

Reviewed by: three referees

References

- BBR (Bundesamt für Bauwesen und Raumordnung): INKAR 2003 – Indikatoren und Karten zur Raumentwicklung 2003, CD-ROM, Bonn, 2003.
- Blong, R.: A review of damage intensity scales, *Nat. Hazards*, 29, 57–76, 2003a.
- Blong, R.: A new damage index, *Nat. Hazards*, 30(1), 1–23, 2003b.
- BMBRS (Bundesministerium für Bauwesen, Raumordnung und Städtebau): Normalherstellungskosten 1995 (NHK 1995), Bonn, 1997.
- BMVBW (Bundesministerium für Verkehr, Bau und Wohnungswesen): Normalherstellungskosten 2000 (NHK 2000), Berlin, 2001.
- BMVBW (Bundesministerium für Verkehr, Bau und Wohnungswesen): Wertermittlungsrichtlinien 2002 (WertR 2002), Berlin, 2002.
- CEDIM: Terms and definitions in risk science, available at: http://www.rz.uni-karlsruhe.de/~gd202/www.cedim/english/seite_16.php, 2005.
- Crichton, D.: The Risk Triangle, in: *Natural Disaster Management*, edited by: Ingleton, J., Tudor Rose, London, 102–103, 1999.
- Dutta, D., Herath, S., and Musiaka, K.: A mathematical model for flood loss estimation, *J. Hydrol.*, 277, 24–49, 2003.
- Grünthal, G., Thieken, A. H., Schwarz, J., Radtke, K., Smolka, A., and Merz, B.: Comparative risk assessment for the city of Cologne, Germany – storms, floods, earthquakes, *Nat. Hazards*, 38(1–2), 21–44, 2006.
- ICPR (International Commission for the Protection of the Rhine): Rhine Atlas 2001, Koblenz, 2001.
- INFAS GEOdaten GmbH: Das DataWherehouse, Bonn, December 2001.
- Kaplan, S. and Garrick, B. J.: On the quantitative definition of risk, *Risk Analysis*, 1(1), 11–27, 1981.
- Kreibich, H., Thieken, A. H., Petrow, Th., Müller, M., and Merz, B.: Flood loss reduction of private households due to building retrofitting – Lessons learned from the Elbe floods in August 2002, *Nat. Hazards Earth Syst. Sci.*, 5, 117–126, 2005.
- Merz, B. and Thieken, A. H.: Flood risk analysis: Concepts and challenges, *Österreichische Wasser- und Abfallwirtschaft*, 56(3–4), 27–34, 2004.
- MURL (Ministerium für Umwelt, Raumordnung und Landwirtschaft des Landes Nordrhein-Westfalen): Potentielle Hochwasserschäden am Rhein in Nordrhein-Westfalen, Final Report, 2000.
- Parker, D. J., Thompson, P. M., and Green, C.: Urban flood protection benefits: A project appraisal guide, 1987.
- Penning-Rowsell, E., Johnson, C., Tunstall, S., Tapsell, S., Morris, J., Chatterton, J., and Green, C.: *The Benefits of Flood and Coastal Risk Management: A Handbook of Assessment Techniques*, Middlesex University Press, 2006.
- Federal Statistical Agency: GENESIS online, 3. Wohnen, Umwelt, <https://www-genesis.destatis.de>, Wiesbaden, 2005.
- Thieken, A. H., Müller, M., Kreibich, H., and Merz, B.: Flood damage and influencing factors: New insights from the August 2002 flood in Germany, *Water Resour. Res.*, 41(12), W12430, doi:10.1029/2005WR004177, 2005.
- Thieken, A. H., Müller, M., Kleist, L., Seifert, I., Borst, D., and Werner, U.: Regionalisation of asset values for risk analyses, *Nat. Hazards Earth Syst. Sci.*, 6, 167–178, 2006.
- Van der Veen, A. and Logtmeijer, Ch.: Economis hotspots: Visualizing Vulnerability to Flooding, *Nat. Hazards*, 36, 65–80, 2005.