



**HAL**  
open science

## **Preliminary assessment of rockslide and rockfall hazards using a DEM (Oppstadhornet, Norway)**

M.-H. Derron, M. Jaboyedoff, L. H. Blikra

► **To cite this version:**

M.-H. Derron, M. Jaboyedoff, L. H. Blikra. Preliminary assessment of rockslide and rockfall hazards using a DEM (Oppstadhornet, Norway). *Natural Hazards and Earth System Sciences*, 2005, 5 (2), pp.285-292. <hal-00299171>

**HAL Id: hal-00299171**

**<https://hal.science/hal-00299171v1>**

Submitted on 18 Jun 2008

**HAL** is a multi-disciplinary open access archive for the deposit and dissemination of scientific research documents, whether they are published or not. The documents may come from teaching and research institutions in France or abroad, or from public or private research centers.

L'archive ouverte pluridisciplinaire **HAL**, est destinée au dépôt et à la diffusion de documents scientifiques de niveau recherche, publiés ou non, émanant des établissements d'enseignement et de recherche français ou étrangers, des laboratoires publics ou privés.



HAL Authorization

# Preliminary assessment of rockslide and rockfall hazards using a DEM (Oppstadhornet, Norway)

M.-H. Derron<sup>1</sup>, M. Jaboyedoff<sup>2</sup>, and L. H. Blikra<sup>1</sup>

<sup>1</sup>International Center for Geohazards, Geological Survey of Norway, Leiv Eirikssons vei 39, 7491 Trondheim, Norway

<sup>2</sup>Quanterra, Tour-Grise 28, 1007 Lausanne, and Institut de Géomatique et d'Analyse des Risques, University of Lausanne, Switzerland

Received: 17 November 2004 – Revised: 10 March 2005 – Accepted: 11 March 2005 – Published: 18 March 2005

Part of Special Issue “Landslides and debris flows: analysis, monitoring, modeling and hazard”

**Abstract.** The increasing availability and precision of digital elevation model (DEM) helps in the assessment of landslide prone areas where only few data are available. This approach is performed in 6 main steps which include: DEM creation; identification of geomorphologic features; determination of the main sets of discontinuities; mapping of the most likely dangerous structures; preliminary rock-fall assessment; estimation of the large instabilities volumes.

The method is applied to two the cases studies in the Oppstadhornet mountain (730 m alt): (1) a 10 millions m<sup>3</sup> slow-moving rockslide and (2) a potential high-energy rock falling prone area. The orientations of the foliation and of the major discontinuities have been determined directly from the DEM. These results are in very good agreement with field measurements. Spatial arrangements of discontinuities and foliation with the topography revealed hazardous structures. Maps of potential occurrence of these hazardous structures show highly probable sliding areas at the foot of the main landslide and potential rock falls in the eastern part of the mountain.

Part of the information “recorded” by a topographical surface is directly related to the stability of the slope and a morphological analysis of a DEM can reveal landsliding areas (McKean and Roering, 2004). We present here a procedure to extract as much as possible of this slope stability-related information by using only a minimal set of initial data (i.e. stereo airphotos and a topographical map).

Ideally this preliminary assessment should propose provisional answers to the following questions:

Where? – Location and geometry of the sliding mass.

Which mechanism? – Sliding on a plane, wedge failures, toppling. . .

How big? – Volume, energy, propagation. . .

Structural and stability analysis with a DEM is made possible by the recent development of geologically oriented GIS tools (Günther, 2003; Jaboyedoff, 2002, 2003).

The Oppstadhornet landslide area has been used as a “blind test” site for this preliminary assessment. The results of this assessment have been compared to the results of field investigations (Blikra et al., 2001, 2002; Robinson et al., 1997).

## 1 Introduction

Very few data are often available at the beginning of the investigation of a potential landsliding area. Nevertheless a preliminary assessment can be achieved using only a digital elevation model (DEM) (Soeters and van Westen, 1996; Guzzetti et al., 1999; Van Westen, 2004). DEMs can usually be quite easily obtained from national topographic surveys, built with remote sensing methods (such as stereo airphotos or lidar) or by digitizing the contour lines of a topographic map (Van Westen, 2004).

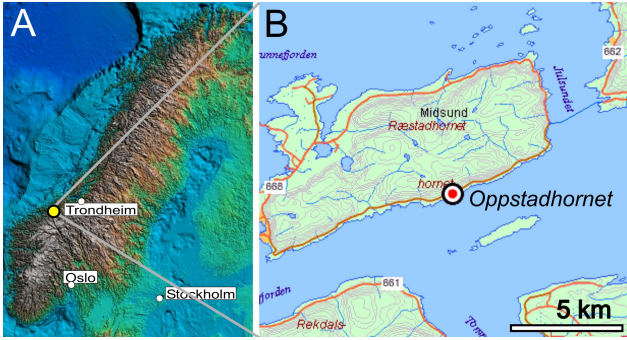
The relief modeled by a DEM is the result of the interactions between numerous processes: erosion, deposition, tectonics, weathering, human activities, climate and vegetation.

Correspondence to: M.-H. Derron  
(marc.derron@ngu.no)

## 2 Oppstadhornet landslide settings

The Oppstadhornet landslide is an unstable mountainside along the southern slope of the Oterøya island (Fig. 1), on the western coast of Norway (Blikra et al., 2001, 2002; Robinson et al., 1997). The entire slope of Oppstadhornet shows multiple imbricated instabilities, from small rock falls to a large rockslide of several millions m<sup>3</sup> (a translational landslide according to Cruden and Varnes, 1996). The area includes granitoid gneiss that hosts two zones of schist, and subordinate meta-gabbros. All rocks are well foliated, typically with a steep to moderate southward dip, i.e. towards the fjord.

Open crevasses and clefts reflecting block sliding are found within a kilometer wide and 700 m high area (Fig. 2). The slope of the soil-covered mountainside varies from 20–



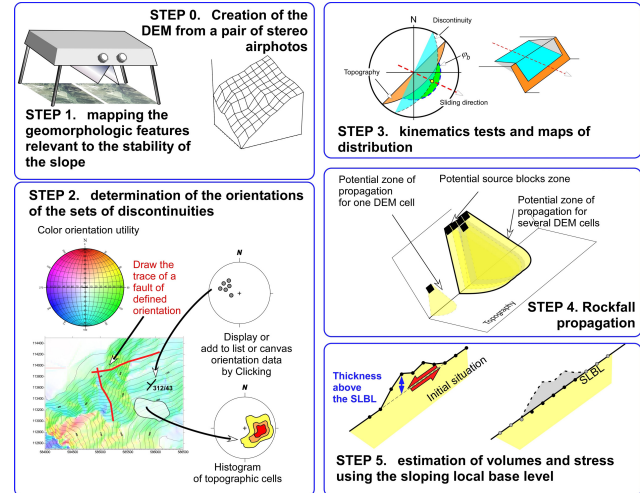
**Fig. 1.** (a) Relief map of Norway; (b) location of the Oppstadhornet site on the Oterøya island.



**Fig. 2.** Top fault scarp of the Oppstadhornet landslide. The scarp is about 600 m long, 50 m wide and 20 m high (location in Fig. 4).

30° in the lower part to bare and steep cliff-faces in the upper and especially eastern part. Talus and block fields lay at the toe of the steeper portion. Further down, the area is vegetated with a dense forest.

A 2-D mechanical modeling indicates that part of the Oppstadhornet slope can be involved in a large landslide due to the degradation of the material filling the joints or to a seismic dynamic loading (Bhasin and Kaynia, 2004).



**Fig. 3.** Illustration of the steps of the proposed approach.

### 3 Methods

For this preliminary assessment, we have used a procedure in 6 steps (Fig. 3). If a DEM is already available the step 0 can be avoided.

0. Building a DEM from a pair of stereo airphotos,
1. mapping the geomorphologic features relevant to slope stability,
2. determination of the orientations of discontinuities,
3. kinematic feasibility tests and maps of distribution of hazardous structural arrangements,
4. blocks propagation, shear/normal stress ratio on sliding planes,
5. estimation of volumes and of a shear stress-index using the sloping local base level.

#### 3.1 Step 0: DEM extraction

A pair of black and white stereo airphotos and a regular photogrammetric processing have been used to build a 5 m resolution DEM. The nominal scale of the airphotos was 1:15 000 and the ground control points were collected using the local 1:50 000 topographical maps. The DEM and the orthophotos (Fig. 4) were processed with PCI-Orthoengine. This photogrammetric step could have been avoided if another DEM was available.

#### 3.2 Step 1: DEM and orthophotos interpretation

The stereo airphotos and a 3-D model (the orthophotos draped on the DEM) from the step 0 were interpreted to extract the geomorphologic features relevant to slope stability. This is a classical step to start the investigation of a landslide area by using either an analogical stereoscope or some digital stereoscopy softwares.

### 3.3 Step 2: Structural analysis of the DEM

The structural analysis was carried out using Coltop-3-D (Jaboyedoff et al., 2004a). This software displays the orientation of a pixel of a DEM using a Hue-Intensity-Saturation coding in a stereographic projection (Fig. 3). Thus, both the dip of the slope and its direction are coded in only one color. A GIS usually requires a map for the dip of the slope and another for the dip direction (named also “slope angle” and “slope aspect”, respectively). We used two methods to measure the orientations of planar discontinuities on the DEM: a) the direct estimation of the slope of fault scarps (dip and dip direction), b) the calculation of the orientation of a plane defined by at least three points on a fault trace.

### 3.4 Step 3: Kinematic feasibility tests

This step provides the zones where sliding of rock masses can occur along discontinuities. The kinematic conditions that have to be satisfied to allow a planar sliding or a wedge failure are described in Hoek and Bray (1984), Norrish and Wyllie (1996) and Gokceoglu et al. (2000).

For a planar sliding, the three kinematics conditions are: 1) the strike of the potential sliding plane is close to the strike of the topographical slope ( $\pm 20^\circ$ ); 2) the dip of the sliding plane is less than the dip of the topographical slope; 3) the dip of the sliding plane is more than the angle of internal friction. At this stage of the investigation, no data about the angle of internal friction is available. So we used a simplified kinematic test for a planar sliding by using only the two first conditions. This test was performed with Matterrocking 2.0 (Jaboyedoff, 2002). This software identifies the cells of the DEM where the discontinuity makes an angle smaller than  $90^\circ$  with the perpendicular to the topographic facet.

A similar approach has been used for the wedge failure hazard, considering that two discontinuities define a wedge. Again three geometric conditions should be satisfied to allow a wedge failure: 1) the trend of the wedge axis is close to the dip direction of the topographical slope, 2) the plunge of the wedge axis is less than the dip of the topographical slope, 3) the plunge of the wedge axis is more than the angle of internal friction. Matterrocking 2.0 has been used to complete this test (Jaboyedoff, 2002). Assuming a continuous network of infinite discontinuities, the two sets of discontinuities make a network of wedges. The density of wedges in each cell of the DEM depends on: the average spacing of each set of discontinuities, the angle between the two sets, and the angle between the wedge axis and the topography (Jaboyedoff et al., 1996). The two angles are known, but not the average spacings. So we used arbitrary values (10 m) for the spacings. We get then a pseudo-number of wedge axis cutting each cell of the DEM. This number is interpreted as an indicator, presented here in quartiles, of the probability to satisfy the conditions for a wedge failure.



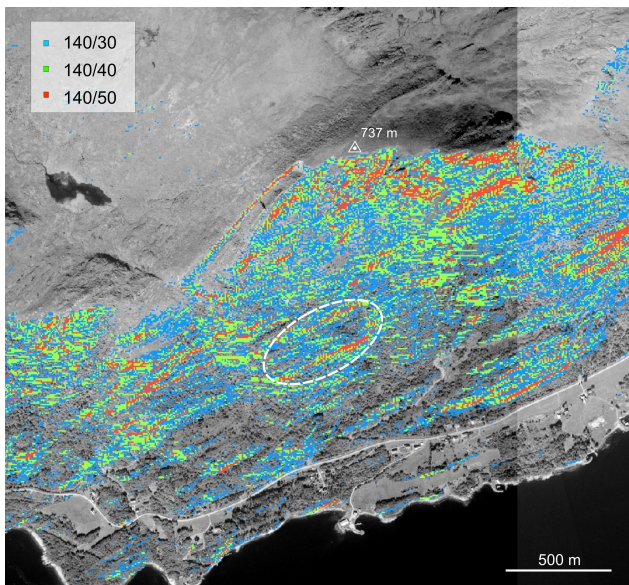
**Fig. 4.** Orthophoto of the Oppsatdhornet area (summit at 737 m), with the scarp and the fault traces limiting the main landslide (rectangle: area represented in Fig. 2).

### 3.5 Step 4: Rock fall assessment and rock mass stability

Having identified and mapped two hazardous instability processes in the previous step, two indicators can be now calculated without any new data:

1. The maximal velocities of falling blocks using a cone method model (ConeFall, Jaboyedoff, 2003). By assuming the analogy of block fall with sliding, the cone method provides an estimate of the maximal translational velocities of the blocks. The total kinetic energy is divided into a rotational component (10%) and a translational component (90%). The critical angle ( $32^\circ$ ) was estimated using the average slope of the screens. The presence of forested areas has not been taken into account and the model tends to overestimate the velocities (Jaboyedoff, 2003). Nevertheless, even if the final velocities are overestimated, they provide an important piece of information at this early stage of an investigation.
2. Following Günther (2003), the ratio of the normal stress to the shear stress on a plane of discontinuity provides an indicator of stability. This approach is based on the estimation of the ratio shear/normal stress produced by the weight of rock at the vertical of a point on a potential sliding plane. To estimate this ratio it is not necessary to know the depth of the sliding plane. Using the reduced stress tensor theory (Angelier, 1994), only the orientation of the potential sliding plane and a DEM are required to calculate this stress ratio (Günther, 2003). But





**Fig. 7.** Map of the areas where the kinematic conditions for sliding on discontinuity J1 are satisfied (3 different dips of J1). The area in white indicates the potential toe of the main landslide.

a) Erosion features: the fault scarp at the top of the Oppstadhornet is about 25 m high, 600 m long and 50 m wide (Fig. 4). Some small cliffs can be observed on the eastern part of the crest and will be used to delimit the source areas of potential block falls (Step 4).

b) Accumulation features: screes in the upper part and blocks in the lower part of the mountainside are indicators of rockfall activity (Step 4). Two ridges in the western lower part may help to locate basal sliding surfaces (Step 3).

c) Structural features: fault traces (Fig. 4) and bedding will be used in steps 2 and 3 to characterize the control of the geological structures on slope stability.

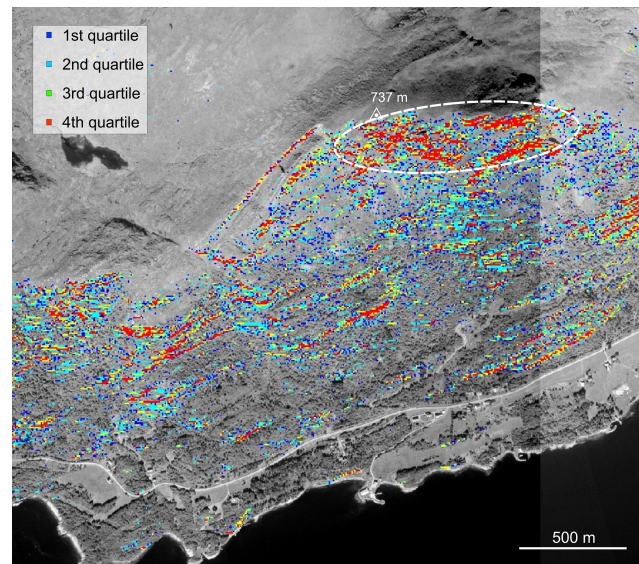
d) Hydrological features: in this case, the locations of rivers and ponds do not indicate that they have an obvious effect on the slope stability. Occurrence of springs in the lower part would have been a critical piece of information but it was not possible to get it from the initial data.

e) Man-made features: roads and buildings provide preliminary information about risk in the mass wasting area.

#### 4.3 Step 2

Two main families of discontinuities have been characterized using the DEM coincidentally with the faults traces and scarps identified in step 1. Their orientations (dip and dip direction) have been determined on the DEM using two types of measurements: a) direct measurement of the orientation of the fault scarp along the crest and b) two regional faults determined with the “3 points” method (Fig. 5).

The average slopes of the two families of discontinuities, J1 and J2, have been compared with the field measurements (Fig. 6). A good match is obtained between both sets of measurements. The dip values from the DEM are slightly lower



**Fig. 8.** Map of the areas where the kinematic conditions for a wedge failure J1/J2 are satisfied (all the points in color). The color is an indicator of the probability to have such a wedge (red = high probability). A relatively high density of hazardous wedges J1/J2 is likely along the eastern crest of the Oppstadhornet.

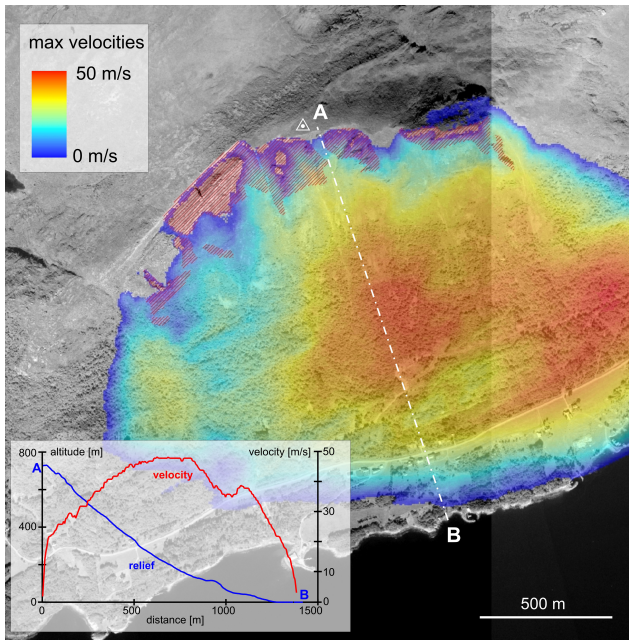
than those the field. This is consistent with the trend to underestimate the dip of a slope when measuring it on a grid (Hodgson et al., 1995; Zhang et al., 1999). On the DEM, the average slope angle of the relief in the sliding area is  $160^{\circ}/32^{\circ}$ .

#### 4.4 Step 3

Comparing the orientations of the discontinuities obtained from step 2 with the topography, two different potentially hazardous structural arrangements have been identified: a) a planar sliding on J1, b) a failure on the wedges formed by J1 and J2.

Figure 7 is the map of the areas where the kinematic conditions for a sliding plane on J1 are satisfied. Due to the lack of information about the angle of internal friction and the fact that the dip of J1 has been measured mostly on the upper part of the DEM, but may vary lower in the mountainside, three different dips of J1 have been used:  $30^{\circ}$ ,  $40^{\circ}$  and  $50^{\circ}$ . The kinematic test is much less sensitive to the strike of J1 than to its dip. The average dip direction of  $140^{\circ}$  has been used for all the tests. In the lower part, there are two elongated zones where the conditions are satisfied even for a steep dip of  $50^{\circ}$ . It is in such areas that an outcropping sliding plane can be the most likely observed. This assumption has been confirmed by field investigations. Evidences of movements and basal detachment surfaces have been found in these areas (Blikra et al., 2001).

Figure 8 is the map of the areas where the conditions for a wedge failure J1/J2 are most likely satisfied. It shows a large zone on the crest of the mountain with a relatively high



**Fig. 9.** Simulation of the maximal velocities of falling blocks (made with CONEFALL). Critical angle =  $32^\circ$ , velocity factor = 0.9, the dashed area is the source zone. In the inset, the relief and velocity profile along AB.

potential of hazardous wedges. Such an area can be an important source of falling blocks.

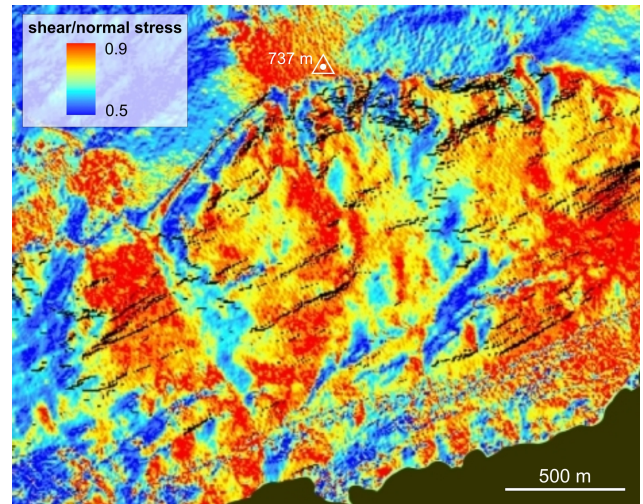
#### 4.5 Step 4

In Fig. 9, the potential source zones of falling blocks have been manually identified on the airphotos taking into consideration the potential density of wedges J1/J2 (step 3). Rock-falls may be problematic mainly in the eastern part of the Oppstadhornet mountainside (Fig. 9). The eastern part of the top ridge is steep (over  $40^\circ$ ) and the blocks can descend for more than 500 m (without considering the trees in the model). On the western flank, the average slope is inferior (about  $30^\circ$ ) and the blocks cannot reach high velocities.

The stress ratio calculation has been made for the sliding plane J1= $140^\circ/40^\circ$  using Slopemap (Günther, 2003). All the slow sliding area on the western part of Oppstadhornet has a relatively high shear to normal stress ratio (Fig. 10).

#### 4.6 Step 5

The SLBL method has been used to estimate the volume of the slow sliding mass on the western part of Oppstadhornet. The boundaries of the slide are deduced from the previous steps of this investigation: the top scarp and the faults forming the sides of the landslide from step 1, the foot from step 3 (the kinematics test for a planar sliding on J1). A very slightly concave sliding surface (=SLBL) has been chosen because of the morphology of the slope and the hard rock basement. Figure 11 shows the geometry of the sliding mass, limits and sliding plane, and the SLBL surface. The differ-



**Fig. 10.** Shear/normal stress ratio, using SLOPEMAP (Günther, 2003), on J1 produced by the weight of the rock at the vertical of the point ( $\neq$  stress). Black dots = areas where the kinematics conditions for a sliding on J1= $140^\circ/50^\circ$  are satisfied.

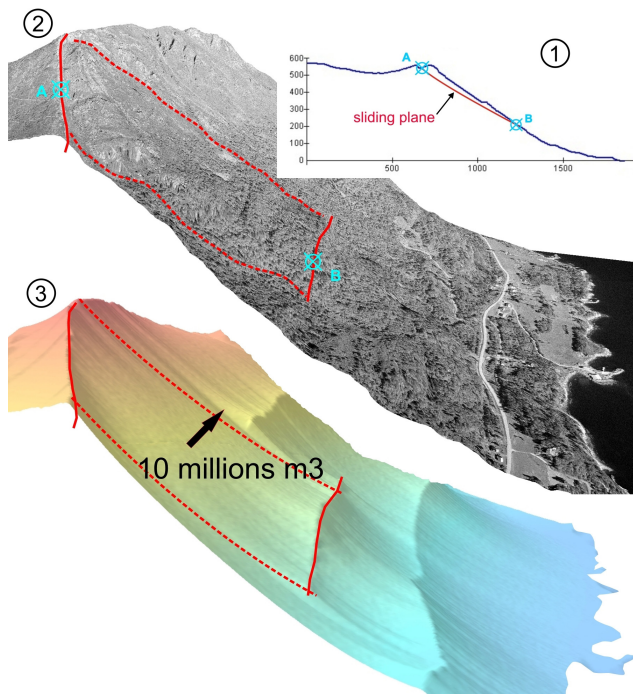
ence between the DEM and the SLBL surface provides the volume of the landslide: 10 million  $\text{m}^3$ . This volume is in agreement with the estimations made by the field geologists (Blikra et al., 2001): 10–20 million  $\text{m}^3$ .

On Fig. 12, the increasing shear stress-index towards the bottom of the landslide is in agreement with more advanced numerical models of stress analysis (Bhasin and Kaynia, 2004), even if the geometry has been strongly simplified. This slow landslide considered here as one slab is actually formed of at least four blocks (Blikra et al., 2001).

## 5 Discussion

This test of a preliminary assessment approach answers to most of the initial questions (geometry, mechanism and size of the phenomena). The agreement of these results with the field data collected are better than expected even if very simplified physical models have been used (i.e. no rheology or ballistic). These models require very few initial data. That is why they are useful at the beginning of an investigation.

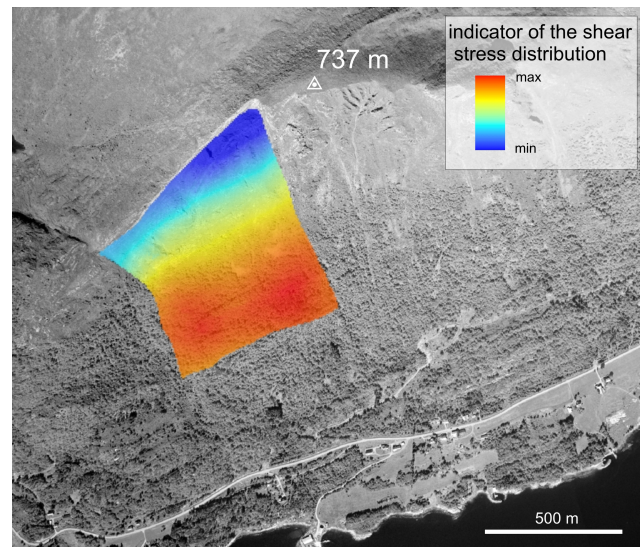
Of course each step of this procedure has some limitations and drawbacks. During step 0, it is important that the resolution of the DEM fits the size and the slope angle of the targets (Hodgson et al., 1995; Zhang et al., 1999). The medium resolution adopted in this case was suitable for the main fault scarp but can lead to an underestimation of the slope of smaller and steep objects. The airphotos resolution limits the size of the objects that can be identified during step 1. With a resolution of about 0.5 m/pixel, only plurimetric blocks can be pointed. In step 2, even if both datasets are in very good agreement, the dips of the fault scarps determined from the DEM are systematically less steep than those measured in the field (Fig. 6). This underestimation has a consequence on the results of the kinematic tests of step 3: some



**Fig. 11.** Volume estimation with a SLBL: 1) cross section along the main landslide, 2) 3-D model with the contour of the landslide, 3) surface of the sloping local base level used to estimate the volume of the landslide.

pixels on known fault scarps have been missed by the tests. But the main key areas of the landslide, top scarps and foot, have been detected. Because of the simplistic physical models used in step 4, the propagation and stress ratio maps have to be interpreted qualitatively. They provide an overview of the areas where rockfalls or planar sliding could be most problematic. The volume estimated in step 5 (about 10 million  $\text{m}^3$ ) is in agreement with the estimation made by Blikra et al. (2001; 10–20 millions  $\text{m}^3$ ), but is larger than the unstable volume estimated by mechanical modeling (Bhashin and Kaynia, 2004; 5–7 millions  $\text{m}^3$ ). These discrepancies are principally caused by the fact that the sliding planes were placed at different depth in these studies. Nevertheless the volume estimated with the SLBL concept provides an order of magnitude coherent with the other estimations. The location of the maximal shear displacements from the 2-D mechanical simulation of Bhashin and Kaynia (2004) is also in agreement with the higher value of the shear stress index for the sliding surface defined by the SLBL.

The procedure described here is only a first attempt and not a definitive mode of operation. We have tried to answer to our initial questions for our specific case. Similar procedures have been tested recently for other case studies, but each time they had to be adapted to the specificities of the site or of available data. Such a preliminary assessment does not intend to replace neither advanced numerical modeling, nor fieldwork. Ideally it should be done before fieldwork in order to optimize it.



**Fig. 12.** Distribution of the shear stress due to the overlaying rocks on the SLBL surface.

## 6 Conclusions

Geographically referenced data will be increasingly available to the scientific and public communities. This trend is particularly fast for the DEM because of the development of new technologies. For instance the lidar techniques, airborne or ground based, are able to provide DEMs with a sub-metric resolution. Such products are of course highly valuable for the stability analysis of a slope. Nevertheless, relatively few GIS tools have been developed to take advantage of these new data (Crosta and Agliardi, 2003; Dietrich and Montgomery, 1998; Günther, 2003; Jaboyedoff et al., 2004a; Pack et al., 1998). This case study was described to show the potential usefulness of such tools and the importance of developing new GIS tools that match the practical needs.

Edited by: G. B. Crosta

Reviewed by: G. B. Crosta

## References

- Agliardi, F., Crosta, G., and Zanchi, A.: Structural constraints on deep-seated slope deformation kinematics, *Engineering Geology*, 59, 83–102, 2001.
- Angelier, J.: Fault slip analysis and palaeostress reconstruction, in: *Continental deformation*, L. Hancock Paul, 53–100, 1994.
- Bashin, R. and Kaynia, A. M.: Static and dynamic simulation of a 700 m high rock slope in western Norway, *Engineering Geology*, 71, 213–226, 2004.
- Blikra, L. H., Braathen, A., Anda, E., Stalsberg, K., and Longva, O.: Rock avalanches, gravitational bedrock fractures and neotectonics faults onshore northern West Norway: examples, regional distribution and triggering mechanisms, Report 2002.016 Geological Survey of Norway (Trondheim), 48, 2002.

- Blikra, L. H., Braathen, A., and Skurtveit, E.: Hazard evaluation of rock avalanches; the Baraldsnes – Oterøya area, Report 2001.108 Geological Survey of Norway (Trondheim), 33, 2001.
- Buchroithner, M.: Creating the virtual Eiger North Face, *ISPRS J PH*, 57, 114–125, 2002.
- Crosta, G. B. and Agliardi, F.: A methodology for physically based rockfall hazard assessment, in: *Landslide risk assessment and mapping*, edited by: Reichenbach, P. and Guzzetti, F., *Nat. Haz. Earth Sys. Sci.*, 3, 407–422, 2003, **SRef-ID: 1684-9981/nhess/2003-3-407**.
- Cruden, D. M. and Varnes, D. J.: Landslide types and processes. In *Landslides: investigation and mitigation*, In: *Transportation Research Board*, edited by: Turner, A. K. and Schuster, R. L., *Special Report No. 247*, 36–75, 1996.
- Dietrich, W. E. and Montgomery, D. R.: SHALSTAB: a digital terrain model for mapping shallow landslide potential (National Council of the Paper Industry for Air and Stream Improvement), 29, 1998.
- Gokceoglu, C., Sonmez, H., and Ercanoglu, M.: Discontinuity controlled probabilistic slope failure risk maps of the Altindag (settlement) region in Turkey, *Engineering Geology*, 55, 277–296, 2000.
- Günther, A.: SLOPEMAP: programs for automated mapping of geometrical and kinematical properties of hard rock hill slopes, *Computer and Geosciences* 29, 865–875, 2003.
- Günther, A., Carstensen, A., and Pohl, W.: Automated sliding susceptibility mapping of rock slopes, *Nat. Haz. Earth Sys. Sci.*, 4, 95–102, 2004, **SRef-ID: 1684-9981/nhess/2004-4-95**.
- Guzzetti, F., Carrara, A., Cardinali, M., and Reichenbach, P.: Landslides hazard evaluation: a review of current techniques and their application in a multi-scale study, Central Italy, *Geomorphology*, 31, 181–216, 1999.
- Hodgson M.: What cell size does the computed slope/aspect angle represent?, *PE&RS*, 61, 5, 513–517, 1995.
- Hoek, E. and Bray, J.: *Rock slope engineering*, revised third edition, E & FN Spon, London, 358, 1981.
- Jaboyedoff, M.: Matterrocking v 2.0. A program for detecting rockslide instabilities, <http://www.crealp.ch>, 2002.
- Jaboyedoff, M.: Conefall v 1.0. A program to estimate propagation zones of rockfall, based on cone methode (Quanterra), <http://www.quanterra.ch>, 2003.
- Jaboyedoff, M., Philipposian, F., Mamin, M., Marro, C., and Rouiller, J.-D.: *Distribution spatiale des discontinuités dans une falaise*, Rapport de travail PNR31, VDF Publisher, Zürich, 90, 1996.
- Jaboyedoff, M., Baillifard, F., Philipposian, F., and Rouiller, J.-D.: Assessing the fracture occurrence using the “Weighted fracturing density”: a step towards estimating rock instability hazard, *Nat. Haz. Earth Sys. Sci.*, 4, 83–93, 2003, **SRef-ID: 1684-9981/nhess/2004-4-83**.
- Jaboyedoff, M., Baillifard, F., Couture, R., Locat, J., and Locat, P.: New insight of geomorphology and landslide prone area detection using DEM, in: *Landslides Evaluation and stabilization*, edited by: Lacerda, W. A., Ehrlich, M., Fontoura, A. B., and Sayo, A., Balkema, 199–205, 2004a.
- Jaboyedoff, M., Baillifard, F., Couture, R., Locat, J., and Locat, P.: Toward preliminary hazard assessment using DEM topographic analysis and simple mechanic modeling, in: *Landslides Evaluation and stabilization*, edited by: Lacerda, W. A., Ehrlich, M., Fontoura, A. B., and Sayo, A., Balkema, 191–197, 2004b.
- McKean, J. and Roering, J.: Objective landslide detection and surface morphology mapping using high-resolution airborne laser altimetry, *Geomorphology*, 57, 331–351, 2004.
- Mikhail, E. M., Bethel, J. S., and McGlone, J. C.: *Modern Photogrammetry*. Wiley, 497, 2001.
- Norrish, N. I. and Wyllie, D.: Rock slope stability analysis, in: *Landslides – Investigation and mitigation*, edited by: Turner, A. K. and Schuster, R. L., *Transportation Research Board Special Report*, 1996.
- Pack, R. T., Tarboton, D. G., and Goodwin, C. N.: The SINMAP approach to terrain stability mapping, in: *Proceedings; Eighth international congress; International Association for Engineering Geology and Environment; Theme 2, Engineering geology and natural hazards*, edited by: Moore, D. P. and Hungr, O., 1157–1165, 1998.
- Robinson, P., Tveten, E., and Blikra, L. H.: A post-glacial bedrock failure at Oppstadhornet, Oterøya, More og Romsdal; a potential major rock avalanche, *Bulletin – Norges Geologiske Undersøkelse*, 433, 46–47, 1997.
- Soeters, R. and van Westen, C. J.: Slope instability recognition analysis and zonation, In: *Landslides: Investigation and Mitigation*, edited by: Turner, A. K. and Schuster, R. L., *Transportation Research Board National Research Council, Special Report 247*, Washington D.C., 129–177, 1996.
- van Westen, C. J.: Geo-information tools for landslide risk assessment: an overview of recent developments, in: *Landslides Evaluation and stabilization*, edited by: Lacerda, W. A., Ehrlich, M., Fontoura, A. B., and Sayo, A., Balkema, 39–56, 2004.
- Zhang, X., Drake, N., Wainwright, J., and Mulligan, M.: Comparison of slope estimates from low resolution DEMs: scaling issues and a fractal method for their solution, *Earth Surf. Process. Landforms*, 24, 763–779, 1999.