



HAL
open science

Response of "Glacier-Runoff" system in a typical monsoonal temperate glacier region, Hailuogou Basin in Mt. Gongga of China, to global warming

Zongxing Li, Yuanqing He, Xiaomei Yang, Xianzhong He, Hongxi Pang, Wenxiong Jia, Caixia Zhang, Linlin Yuan, Haoyu He, Xinxin Zuo

► **To cite this version:**

Zongxing Li, Yuanqing He, Xiaomei Yang, Xianzhong He, Hongxi Pang, et al.. Response of "Glacier-Runoff" system in a typical monsoonal temperate glacier region, Hailuogou Basin in Mt. Gongga of China, to global warming. *Hydrology and Earth System Sciences Discussions*, 2007, 4 (5), pp.3395-3412. hal-00298894

HAL Id: hal-00298894

<https://hal.science/hal-00298894>

Submitted on 18 Jun 2008

HAL is a multi-disciplinary open access archive for the deposit and dissemination of scientific research documents, whether they are published or not. The documents may come from teaching and research institutions in France or abroad, or from public or private research centers.

L'archive ouverte pluridisciplinaire **HAL**, est destinée au dépôt et à la diffusion de documents scientifiques de niveau recherche, publiés ou non, émanant des établissements d'enseignement et de recherche français ou étrangers, des laboratoires publics ou privés.

Papers published in *Hydrology and Earth System Sciences Discussions* are under open-access review for the journal *Hydrology and Earth System Sciences*

Response of “Glacier-Runoff” system in a typical monsoonal temperate glacier region, Hailuogou Basin in Mt. Gongga of China, to global warming

Zongxing Li¹, Yuanqing He¹, Xiaomei Yang², Xianzhong He¹, Hongxi Pang¹, Wenxiong Jia¹, Caixia Zhang¹, Linlin Yuan¹, Haoyu He¹, and Xinxin Zuo¹

¹The State Key Laboratory of Cryosphere Science, Cold and Arid Region Environment and Engineering Research Institute, Chinese Academy of Sciences, Lanzhou 730000, China

²College of Geography and Environment Science, Northwest Normal University, Lanzhou 730070, China

Received: 27 August 2007 – Accepted: 10 September 2007 – Published: 11 September 2007

Correspondence to: Zongxing Li (yxmlzx1982822@163.com)

HESSD

4, 3395–3412, 2007

Response of
“Glacier-Runoff”
system

Zongxing Li et al.

Title Page

Abstract

Introduction

Conclusions

References

Tables

Figures

◀

▶

◀

▶

Back

Close

Full Screen / Esc

Printer-friendly Version

Interactive Discussion

Abstract

The method of correlation analysis and trend analysis were used in this research in order to confirm the response of “glacier-runoff” system to global warming. Hailuogou glacier had retreated by 1871.8 m over the past 76 years, Hailuogou No. 2 glacier had also retreated by 1100 m. Glaciers retreats are contrary to the climatic warming trend in China and the Northern Hemisphere. Glaciers in Hailuogou basin were in the loss with a fluctuating manner since 1950s, and accumulative value of mass balance is $-10\,825.5$ mm water equivalent with an annual mean value of -240.6 mm. The inverse correlation is highly significant between mass balance variation and climatic fluctuation of China and the Northern Hemisphere after 1950s. Glacier ablation is intensive with a ratio of 7.86 m yr^{-1} . A steady rise tendency toward glaciers runoff has been observed since 1980s, and the runoff rise is mainly responsible for melt water in Hailuogou basin. It is noticeable that climatic warming not only strengthened ablation extent and enlarged ablation area, but also prolonged ablation period. Global warming is the main cause of glacier retreat, mass loss and runoff rise in Hailuogou basin.

1 Introduction

Global warming has already become the focus of attention for both governments and scientists all over the world. The report of IPCC (2007) indicated that global warming has a accelerative tendency since 1910s, and the global annual mean temperature increased by 0.74°C from 1906 to 2005, and global annual mean temperature will increase by $1.1\text{--}6.4^\circ\text{C}$ in 2100. The temperature has increased by $0.4\text{--}0.5^\circ\text{C}$ from 1860 to 2005 in China, and temperature rise in winter was obvious after 1951 and it has experienced 19 green winters since 1986/1987 (Climate and Environment in China, 2006). Global warming has caused shrinking of most glaciers and ice caps in the world over the last century, especially in recent decades (Johannesson et al., 1989; Shen Yongping, 2004; He Yuanqing et al., 2003; Oerlemans and Fortuin, 1992; Oerlemans, 1994; Shi

HESSD

4, 3395–3412, 2007

Response of “Glacier-Runoff” system

Zongxing Li et al.

Title Page

Abstract

Introduction

Conclusions

References

Tables

Figures

◀

▶

◀

▶

Back

Close

Full Screen / Esc

Printer-friendly Version

Interactive Discussion

EGU

Yafeng and Liu Shiyang, 2000; Shi Yafeng, 2001; Yao Tandong et al., 2004; Dyurgerov, 2003). The retreat extent of glaciers all over the world during 1884–1978 is equivalent to that of global warming (temperature increased by $0.66 \pm 0.1^\circ\text{C}$) in the same period, and the total area of mountainous glaciers in the world will decrease by 1/3–2/3 in the 21st century (Oerlemans, 1994). Runoff will increase by 10–40% in 2050 in these rivers dominated by melt water in high latitude and alpine region of eastern equatorial Africa, southern America, Northern America and Eurasia (Blain and Milly, 1991; Milly, 1994, 1999; Chiew and McMahon, 1994). Glacier mass balance is directly linked to glacier fluctuations and climate change and also directly reflects changes of glacier volume, melting and runoff. Monsoonal temperate glaciers in China are distributed in the region of the southeastern plateau of Tibetan plateau, including Mt. Hengduan and Mt. Daxue, the eastern part of the Himalayas, and the eastern segments of the Nyainqentanglha range (Fig. 1). This region is characterized by high precipitation (1000–3000 mm) in the glacier-covered area, a low snowline (4200–5200 m), which is 800–1200 m lower than that of the polar glaciers in the western Tibetan plateau, and relatively high temperature (equilibrium line mean annual value -6°C , summer value from -1 to -5°C). According to Chinese glacier inventory, there are 8607 monsoonal temperate glaciers in China covering an area of 13200 km^2 , which is 18.6% of the total glacier number and 22.2% of total glacier area, which are the main component elements of alpine cold environment in the western China. Monsoonal temperate glaciers is the most sensitive and clear indicator of climatic change, which have a shorter lag time in response to climatic change than polar glacier, whose lag phase is 10–20 years or so (He Yuanqing et al., 2003). This paper, taking the Hailuogou basin in Mt. Gongga as an example, is intended to explore the response of the “glaciers-runoff” system in Hailuogou basin, to global warming, and provide proofs on global warming from cryosphere of the monsoonal temperate glacial region in China.

Response of “Glacier-Runoff” system

Zongxing Li et al.

Title Page

Abstract

Introduction

Conclusions

References

Tables

Figures

◀

▶

◀

▶

Back

Close

Full Screen / Esc

Printer-friendly Version

Interactive Discussion

2 Study area, data and methodology

As the part of Qinghai-Tibet plateau, MT. Gongga is 7556 m high which is situated in the middle segment of MT. Daxue (29°20′~30°20′ N, 101°30′~102°15′ E). Hailuogou basin is located at the eastern slope of MT. Gongga with an area of 80.5 km². The regional climate is dominated by the southwest and southeast monsoons in wet season, whereas westerly and Qinghai-Tibet monsoon in dry season. Hailuogou basin is one of main glaciers areas in the eastern slope of MT. Gongga (Fig. 1), where are 7 glaciers covering an area of 36.44 km² (Pujiancheng, 1994), Hailuogou glacier, Hailuogou No. 1 glacier, Hailuogou No. 2 glacier and other 4 smaller glaciers. The annual precipitation at glacier's tongue (3000 m a.s.l.) is about 1960 mm with a maximum from June to September, and the annual mean air temperature is 4°C. The annual mean air temperature at the ELA (4900 m a.s.l.) is about -4.4°C with an annual precipitation of 3000 mm (Su Zheng and Liu Shiyong, 2001).

Glacier variation data are based on field survey in 1936, 1966, 1982, 1989, 1994 and 2006. In addition, the previous research (Heim, 1936; Li Jijun and Su Zhemng, 1996; He Yuanqing et al., 2003; Li Zongxing et al., 2007¹), and aerial photographs of December 1966 and November 1982, 1:200 000 topographic map of 1966 are also employed to rebuild the change process of Hailuogou glacier and Hailuogou No. 2 glacier which were connected to each other during the historical stage. Mass balance data are available from 1959 to 2003, which have been reconstructed by the meteorological and hydrological data using the method of glacial mass balance (Shi Yafeng et al., 2000). The meteorological data during 1988–2004 have been collected at the Alpine Meteorological Station located at 3000 m a.s.l. The hydrological data during 1999–2004 have been collected at the Glacier Hydrological Station located at 2920 m a.s.l., about 1 km downstream of the glacier terminus. Glacier ablation data during 1990–1994 in the

¹Li Zongxing, He yuanqing, and Theakstone, W. H.: Changes of Glacier Hailuogou under the Background of Global Warming in Recent 100 Years, Mt. Gongga, China, J. Glaciol., in review, 2007.

Title Page

Abstract

Introduction

Conclusions

References

Tables

Figures

◀

▶

◀

▶

Back

Close

Full Screen / Esc

Printer-friendly Version

Interactive Discussion

study area were provided by Ecological System and Environment Research Station, Chengdu Institute of Mountain Hazards and Environment, CAS. The climatic data of Kangding station was obtained at Kanding Meteorological Bureau. The climatic data of China and The Northern Hemisphere was from the previous study (Wang Shaowu and Ye Jingling, 1998). We carried out trend analysis by the linear regression for the long-term climate and glacier data, and used correlation analysis for meteorological, hydrological and mass balance data to quantify the response of “glacier-runoff” system to global warming, in Hailuogou basin, China.

3 Discussions and results

3.1 Sensitivity of glaciers retreat to global warming

Since the early of the 20th century, a steady tendency toward glaciers retreat has been observed, which can be manifested by glacier retreat and rise of glaciers fronts elevation (Table 1). Meanwhile, temperature has increased with a fluctuating manner in China and the Northern Hemisphere during the 20th century (Fig. 2). At least four main phases (two cold phases and two warm phases) are distinguishable. The first cold phase is from the end of 19th century to 1920s, glaciers were in steady or advance. In the second cold phase from beginning of 1970s to mid of 1980s, Glaciers were in relative stationery or speed-down recession. Hailuogou glacier retreated 177.8 m in length and raised 20 m in elevation, and the annual mean value is 11.8 m yr^{-1} , which is 19.3 m and 12.2 m lower than that of the second stage and the fourth stage, whereas Hailuogou No. 2 glacier was in steady. Hailuogou glacier retreated more than 1150 m in length and 30–50 m in elevation, and Hailuogou No. 2 glacier retreated 800 m and glacier front have been separated from Hailuogou glacier in the first warm phase during from 1930s to the end of 1960s. Glaciers have been in intensive recession in response to rapid climatic warming in the second warm phase during the period from the mid of 1980s to present. Hailuogou glacier has retreated 522 m from 1983 to 2006 with

Title Page

Abstract

Introduction

Conclusions

References

Tables

Figures

◀

▶

◀

▶

Back

Close

Full Screen / Esc

Printer-friendly Version

Interactive Discussion

an annual mean value of 24 m, and elevation has risen by 60 m from 1989 to 2006, whereas elevation of Hailuogou No. 2 glacier raised by 280 m from 1994 to 2006.

By the contrast between glaciers variation and temperature fluctuation in China and the Northern Hemisphere over the past 100 years, it is clear that they have significant relationship taken into account a lag phase when glaciers retreat respond to climatic fluctuation. Glaciers retreat stages were in the warm phase, and vice versa. This meant strong ablation is mainly responsible for the glacier retreat in the warm phase. It is distinct that the lag phase of glacier retreat responded to climatic fluctuation is shorter in the second warm phase (the lag phase is 10 years or so) than that of other two glacier retreat stages (the lag phase is 20 years or so). There are three reasons can explain it. Firstly, the glacier scale, area and volume gradually become smaller owing to the continuant glacier mass loss. The smaller glacier scale is, the more sensitive to climate fluctuation is. Secondly, The rapid temperature rise since 1980s which has been the most distinct temperature rise since the Little Ice Age, it not only accelerated glacier ablation but also enlarged ablation area and prolonged ablation period. Thirdly, Hailuogou basin is mainly dominated by monsoonal climate, so high temperature period, high ablation period and high precipitation period are the same period from May to October per year, which farther accelerated the velocity of glacier ablation and the extent of glacier retreat under the background of global warming.

3.2 Sensitivity of mass balance to global warming

It can be seen clearly from Fig. 3 that glaciers in Hailuogou basin were in a constant snow-ice masses loss over the past 45 years when the climate warming is reinforced in both China and the Northern Hemisphere. The accumulative mass balances value is -10825.5 mm water equivalent, with an annual mean value of -240.6 mm from 1959/60 to 2003/04. There are two inflexion point of mass balance variation between 1970/71 and 1984/85 (Fig. 3), the annual mean mass balance value varied from -178.8 mm yr⁻¹ from 1959/60–1970/71 to 109.4 mm yr⁻¹ during the period 1971/72–1984/85 to -537.5 mm yr⁻¹ during 1985/86–2003/04. Three main phases are distin-

Response of “Glacier-Runoff” system

Zongxing Li et al.

Title Page

Abstract

Introduction

Conclusions

References

Tables

Figures

◀

▶

◀

▶

Back

Close

Full Screen / Esc

Printer-friendly Version

Interactive Discussion

guishable: (1) negative phase between 1959/60–1970/71; (2) positive phase between 1971/72–1984/85; (3) intensively negative phase between 1985/86–2003/04, with the accumulative mass balance values in these three phases of –2145.6 mm, 1532.2 mm and –10 212 mm water equivalent, respectively.

5 Temperature of China and the Northern Hemisphere over the last 45 years and the mass balance shows a significant inverse correlation with temperature (Table 2). This indicated that strong melting is mainly responsible for the significantly negative mass balance. These facts confirmed that glacier mass loss is the result of global warming, because glacier ablation is intensive in the negative balance phase and the ablation
10 period is long due to obvious temperature rise. In addition, ablation area also enlarged owing to the rise of the ELA under the influence of temperature rise. Glaciers were in the stationery or speed-down retreat in the positive balance phase because of a low temperature. The correlation coefficient between mass balance and temperature of the Northern Hemisphere is even higher than that of China, two reasons can account
15 for it, on the one hand, the variation of mass balance has more active response to large scope climatic change than that of small scope; on the other hand, the extent of climatic warming in the Northern Hemisphere is more remarkable than that of China according to the previous research (Wang Shaowu and Ye Jingling, 1998).

3.3 Sensitivity of runoff to global change

20 Temperature in China, Northern Hemisphere and Hailuogou basin since 1988 has apparently increased (Figs. 4c, d, e). The annual mean value in Hailuogou basin during 1997–2004 is 0.4°C higher than that of during 1988–1996, and temperature at Kangding, 80 km northwest of Hailuogou basin, also increase by 0.44°C in the same period. In addition, instrumental climatic data, ice core signals and tree ring indices
25 indicate that the temperature in China's monsoonal temperate glacier region has increased in a variable manner during the 20th century, and the rate of change has accelerated since the 1980s (He Yuanqing et al., 2003). Temperature rise, on the one hand, has resulted in an obvious increase of glacial runoff in Hailuogou basin. Annual

**Response of
“Glacier-Runoff”
system**

Zongxing Li et al.

Title Page

Abstract

Introduction

Conclusions

References

Tables

Figures

◀

▶

◀

▶

Back

Close

Full Screen / Esc

Printer-friendly Version

Interactive Discussion

mean runoff during 1999–2004 is $5.65 \text{ m}^3/\text{s}$ higher than that of 1994–1998 (Fig. 4b); on the other hand, glacier ablation becomes stronger with the annual mean ablation ratio of 7.86 m yr^{-1} , equal to 7199.76 mm water equivalent and to 3.7 year total precipitation of the study area (Fig. 4a). Because glacier ablation is intensive in the negative balance phase and the ablation period gets longer under the background of temperature rise. This meant the strong warming has led to enhanced glacier ablation. Climatic warming has intensified during 1980s in China's monsoonal temperate glacier region has also caused reduction of cold energy in the glacier-covering area. It means a small temperature increase will lead to a nonlinear rise of glacier ablation.

Feedings of Hailuogou basin are precipitation, groundwater and melt water. Groundwater is often considered as a stationery part with the weak fluctuation in long-term according to hydrology theory (Li jijun and Su zheng, 1996). Which is the main contribution of runoff rise in recent years, precipitation or melt water? Some fact can explain it, (1) the winter mean runoff in the period 1999–2004 is $2.74 \text{ m}^3 \text{ s}^{-1}$ (264.6 mm water equivalent) higher than that of the period 1994–1998, whereas the winter mean precipitation is only 87.7 mm which accounts for 4% of annual mean precipitation, so the runoff rise in winter is only the result of melt water supply, because the winter temperature increased by 0.69°C from 1994–1998 to 1999–2004 in Hailuogou basin; (2) the statistical relationship ($r=0.90$, $p<0.0001$) between runoff and summer temperature of the local is more significant than that of ($r=0.80$, $p<0.0001$) between runoff and summer precipitation; (3) the annual mean precipitation only increased by 53 mm from the period 1994–1998 to the period 1999–2004, while the runoff depth increased by 2234 mm. obviously that the melt water rise preceded the precipitation rise, so it is indicated that melt water has made a great contribution on the increase of runoff making allowance for the precipitation rise; (4) the annual mean ablation value (7199.76 mm water equivalent) is 3.67 times higher than the annual mean precipitation (1960 mm); (5) the statistical relationship is inverse correlation ($r=-0.82$, $p<0.0001$) between runoff and the mass balance during 1994–2004 (Figs. 4b, f), which also indicated that the main factor of runoff rise is melt water rise.

**Response of
“Glacier-Runoff”
system**

Zongxing Li et al.

Title Page

Abstract

Introduction

Conclusions

References

Tables

Figures

◀

▶

◀

▶

Back

Close

Full Screen / Esc

Printer-friendly Version

Interactive Discussion

Figure 5 shows the peak value of runoff depth in August, two month latter than that of precipitation in June. The runoff depth value in October is 162 mm higher than that in April, but precipitation between October and April is equal. It is noticeable that runoff depth is higher than corresponding precipitation all the year round. Hailuogou basin is smaller and is rocky mountainous region, and hydrological station is located at the front of the glacier, so the cause of the hysteresis between runoff and precipitation is ice-snow melt water, being compared with precipitation, ice and snow can feed runoff after a long ablation time. It is indicated that the variation of ice-snow melt water arouse the seasonal variation of runoff in Hailuogou basin, and also manifested ice-snow melt water is the main feeding in Hailuogou basin.

4 Conclusions

1. Since the early of the 20th century, a steady tendency toward glaciers retreat has been observed, this is manifested in glacier retreat and rise of glaciers fronts elevation. Under the background of global warming, Hailuogou glacier had retreated by 1871.8 m in 76 years during the last century, with a mean annual retreat rate of 24.7 m. Hailuogou No. 2 glacier had also retreated by 1100 m. Glaciers retreat stages were in the warm phase, and vice versa. Glaciers retreats are contrary to the climatic warming trend in China and the Northern Hemisphere in Hailuogou basin over the last 100 years.
2. Glaciers are in the loss with a fluctuating manner over the last 45 years in Hailuogou basin, which is in opposition to the temperature fluctuation in China and the Northern Hemisphere. The accumulative mass balances value is $-10\,825.5$ mm water equivalent and the annual average value is -240.6 mm yr⁻¹ water equivalent during from 1959/60 to 2003/04. The statistical relationship is inverse correlation between mass balance variation and climatic fluctuation.
3. The annual mean temperature of Hailuogou basin increased by 0.4°C during from

Title Page

Abstract

Introduction

Conclusions

References

Tables

Figures

◀

▶

◀

▶

Back

Close

Full Screen / Esc

Printer-friendly Version

Interactive Discussion

**Response of
“Glacier-Runoff”
system**

Zongxing Li et al.

Title Page

Abstract

Introduction

Conclusions

References

Tables

Figures

◀

▶

◀

▶

Back

Close

Full Screen / Esc

Printer-friendly Version

Interactive Discussion

the period 1997–2004 to the period 1988–1996, and runoff also increased by $5.65 \text{ m}^3 \text{ s}^{-1}$, whereas precipitation only increased by 53 mm. Glacier ablation is very strong with a ratio of 7.86 m yr^{-1} . Ice-snow melt water is mainly responsible for runoff rise in Hailuogou basin, and it is also the main cause of runoff interannual and seasonal variation.

Acknowledgements. This study was jointly supported by an Important Directionality Program of Chinese Academy of Sciences (KZCXZ-YW-317), a key Project of National Natural Science Foundation of China (90511007), an Innovative Research International Partnership Project, Chinese Academy Sciences (CXTD-Z2005-2), a Project for Outstanding Young Scientists of Chinese Natural Science Foundation (40121101), and a Natural Science Foundation, No. 40501014. Thanks also to the editorial staff.

References

- Blain, C. A. and Milly, P. C. D.: Development and application of a hillslope hydrologic model, *Adv. Water Resour.*, 14(4), 168–174, 1991.
- Chiew, F. H. S. and McMahon, T. A.: Application of daily rainfall-runoff model hydrology to 28 Australian catchments, *J. Hydrol.*, 153, 386–416, 1994.
- CWB: Climate and Environment in China, Science Press, Beijing, 2006.
- He Yuanqing, Zhang Zhonglin, Theakstone, W. H., Tuo Chen, Tandong Yao, and Hongxi Pang: Changing features of climate and glaciers in China’s monsoonal temperate glacier region, *J. Geophys. Res.*, 108(D17), 4530–4536, 2003.
- Heim, A.: The glaciation and solifluction of MinyaGongkaR, *Geographical Journal*, 87, 444–454, 1936.
- Johannesson, T., Raymond, C. F., and Waddington, E. D.: Time-scale for adjustment of glaciers to changes in mass balance, *J. Glaciol.*, 35(121), 355–369, 1989.
- Li Jijun and Su Zheng: *Glaciers of MT.Hengduan*, Science press, Beijing (in Chinese), 1996.
- Mark Dyurgerov: Mountain and subpolar glaciers show an increase in sensitivity to climate warming and intensification of the water cycle, *J. Hydrol.*, 282(1–4), 164–176, 2003.
- Oerlemans, J. and Fortuin, J. P. E.: Sensitivity of glaciers and small ice caps to greenhouse warming, *Science*, 258, 115–118, 1992.

- Oerlemans, J.: Quantifying global warming from the retreat of glaciers, *Science*, 264, 243–245, 1994.
- Milly, P. C. D.: Climate, interpersonal storage of soil water, and the annual water balance, *Adv. Water Resour.*, 17(1–2), 19–24, 1994.
- 5 Milly, P. C. D.: Comment on “Antiphasing between Rainfall in Africa’s Rift Valley and North America’s Great Basin”, *Quat. Res.*, 51(1), 104–107, 1999.
- Pu Jiancheng: Glacier Inventory of China (the changjiang river drainage basin), Gansu culture press, Lanzhou, 117–129 (in Chinese), 1994.
- Shen Yongping: An Overview of Glaciers, Glacier Retreating and Its Impact in the Tibetan Plateau, A Consultative Report for Climate Impact and Adaptation Project in the Tibetan Plateau submitted to the World Wide Fund for Nature – China Programme Office (WWF-China), 2004.
- 10 Shi Yafeng: Estimation of the water resources affected by climatic warming and glacier shrinkage before 2050 in west China, *J. Glaciol. Geocryology* (in Chinese), 23(4), 333–341, 2001.
- 15 Shi Yafeng, Huang Maohuan, Yao Tandong, and Deng Yangxin: Glaciers and their Environments in China – the present, past and future, Science Press, Beijing (in Chinese), 2000.
- Shi Yafeng and Liu Shiyong: Estimation on the response of glaciers in China to the global warming in the 21st century, *Chinese Science Bulletin*, 45(4), 668–672, 2000.
- 20 Su Zheng and Liu Shiyong: Glacier changes on the Hengduan Mountain and their response to climatic response, in: *Environment and Ecosystem in the Eastern Edge of Qinghai-Xizang Plateau*, Sichuan University Press, 102–109, Chengdu (in Chinese), 2001.
- The report of IPCC: Climate change 2007: the Physical Science Basis. Report of Working Group I of the Intergovernmental Panel on Climate Change, Cambridge University Press, Cambridge, 2007.
- 25 Wang Shaowu and Ye Jingling: Foundation of temperature change of China in the last 100 years, *Q. J. Appl. Meteorol.* (in Chinese), 9(4), 392–400, 1998.
- Yao Tandong, Liu Shiyin, Pu Jianchen, Shen Yongping, and Lu Anxin: Recent glaciers retreating in High Asia and their impact on the water resources of Northwest China, *Science in China (Series D)*, 34(6), 535–543, 2004.

Response of “Glacier-Runoff” system

Zongxing Li et al.

Title Page

Abstract

Introduction

Conclusions

References

Tables

Figures

◀

▶

◀

▶

Back

Close

Full Screen / Esc

Printer-friendly Version

Interactive Discussion

Table 1. Advances and retreats of main glaciers in Hailuogou basin since the early of the 20th century.

Glacier	Time period	Advance/retreat, m	Altitude of front, m	Annual mean change, m	References
Hailuogou Glacier	Early 20th century to 1930s 1930–December 1966	Steady or advance –1150	2850 in 1930 2880–2900 in 1966	Steady or advance –31.1	Heim (1936) Local studies in 1966; satellite imagery of December 1966 and topographic map of 1966
	December 1966–January 1983	–200	2920 in 1982	–11.8	Local studies in 1982; spatial images of January 1982 and local studies in 1981
	January 1983–December 1989 April 1990–March 2004	–147.8 –274	2940 (in 1989) 2980 in 1994	–21.1 –18.2	Local studies in 1983 Local studies in 1990, 1994, 2004
	March 2004–June 2006	–100 or so	3000 in 2006	–50 or so	Local studies in 2006
Hailuogou No.2 glacier	Early 20th century–1930 1930–January 1966	Front in contact with glacier Hailuogou –800		Steady or advance –21.6	Heim (1936) Local studies in 1966; satellite imagery of December 1966 and topographic map of 1966
	December 1966–January 1981	Steady		Steady	Local studies in 1982; spatial images of November 1982 and local studies in 1981
	January 1981–December 1990 January 1991–June 1998	–250 to 300 Rapid retreat	3600 (in 1994) 3880 (in 2006)	–25 to 30 Rapid retreat	Local studies in 1990 Local studies in 1994, 2006

Title Page

Abstract

Introduction

Conclusions

References

Tables

Figures

◀

▶

◀

▶

Back

Close

Full Screen / Esc

Printer-friendly Version

Interactive Discussion

Table 2. Statistical relationship between mass balance and temperature.

Correlation sample	R(Correlation coefficient)		N (Sample number)	P (Confidence level)	
	The Northern Heimsphere	China		The Northern Heimsphere	China
Between cumulative balance value and cumulative temperature value during 1960–2004	–0.96	–0.94	45	<0.0001	<0.0001
Between cumulative balance value and cumulative temperature value during 1972–1985	–0.69	–0.6	14	0.006	0.0025
Between cumulative balance value and cumulative temperature value during 1986–2004	–0.96	–0.97	19	<0.0001	<0.0001

Title Page

Abstract

Introduction

Conclusions

References

Tables

Figures

◀

▶

◀

▶

Back

Close

Full Screen / Esc

Printer-friendly Version

Interactive Discussion

Response of
“Glacier-Runoff”
system

Zongxing Li et al.

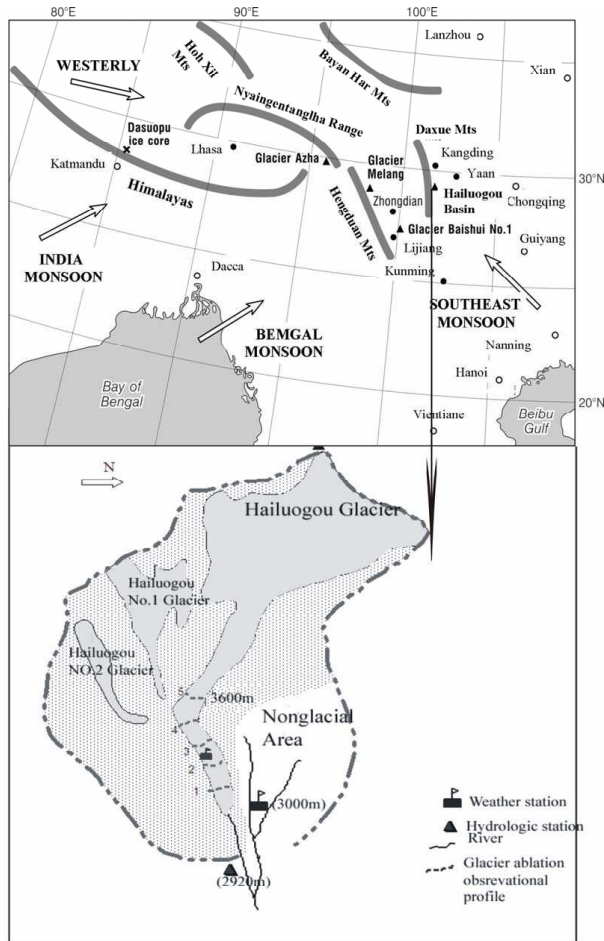


Fig. 1. Monsoonal temperate glaciers region in China and Hailuogou basin.

Title Page	
Abstract	Introduction
Conclusions	References
Tables	Figures
◀	▶
◀	▶
Back	Close
Full Screen / Esc	
Printer-friendly Version	
Interactive Discussion	

Response of
“Glacier-Runoff”
system

Zongxing Li et al.

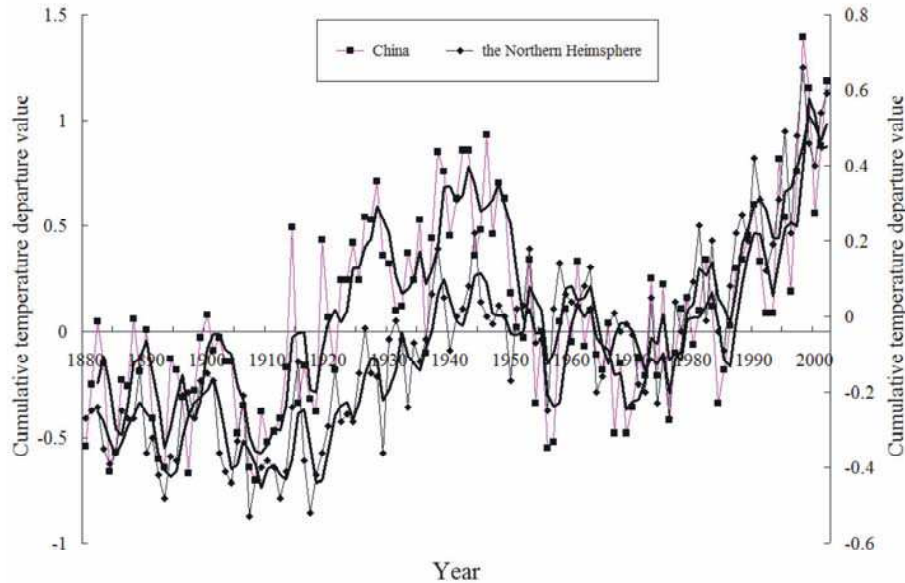


Fig. 2. Variations of annual mean temperature in Northern Hemisphere and China over the past 100 years.

Title Page

Abstract

Introduction

Conclusions

References

Tables

Figures

◀

▶

◀

▶

Back

Close

Full Screen / Esc

Printer-friendly Version

Interactive Discussion

Response of
“Glacier-Runoff”
system

Zongxing Li et al.

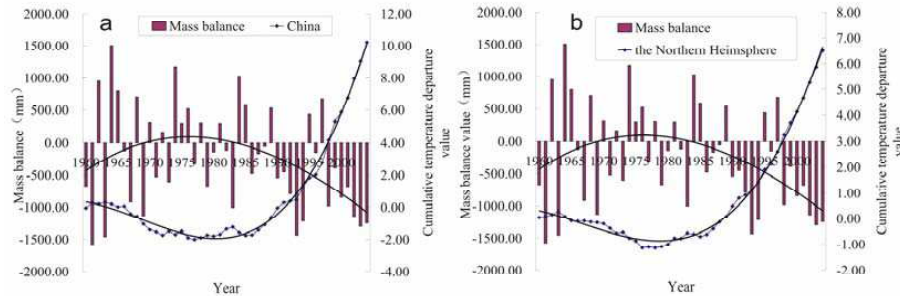


Fig. 3. The relationship between mass balance variation in Hailuogou basin and the annual mean temperature variation (**a** stands for China, **b** stands for the Northern Hemisphere).

Title Page

Abstract

Introduction

Conclusions

References

Tables

Figures

◀

▶

◀

▶

Back

Close

Full Screen / Esc

Printer-friendly Version

Interactive Discussion

Response of
“Glacier-Runoff”
system

Zongxing Li et al.

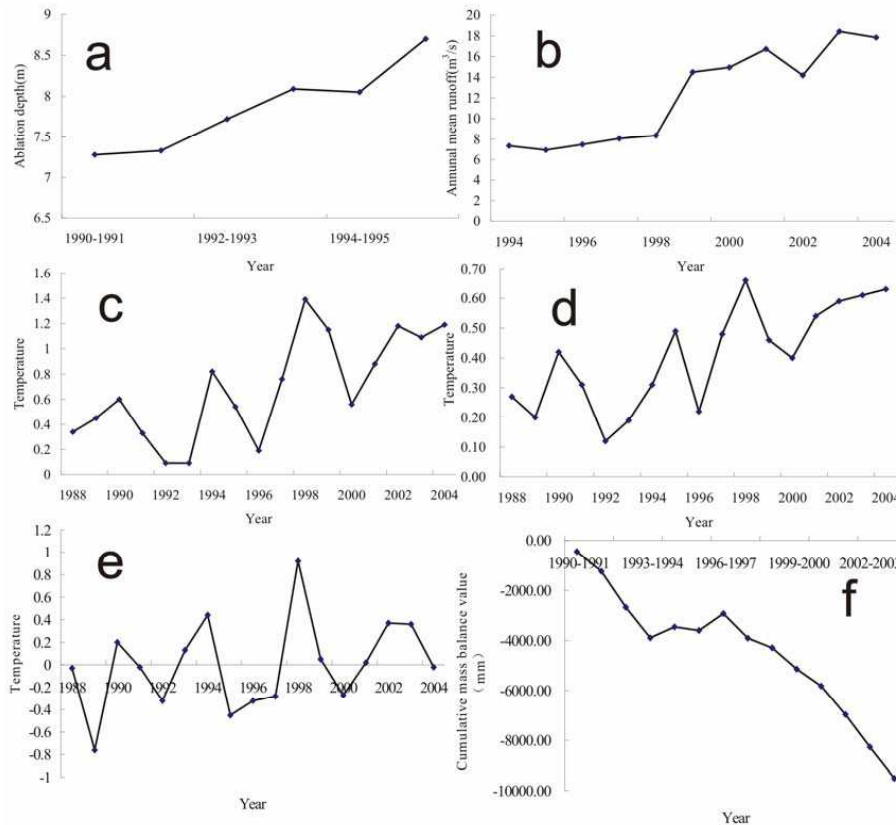


Fig. 4. Variation of ablation amount in Hailuoguo glacier tongue (a); variation of mean annual runoff in Hailuoguo basin (b); variation of annual mean temperature in China since 1988 (c); variation of annual mean temperature in the Northern Hemisphere since 1988 (d); variation of annual mean temperature in the 3000 m Meteorological Station since 1988 (e); Mass balance Variation of Hailuoguo basin (f).

Title Page

Abstract Introduction

Conclusions References

Tables Figures

◀ ▶

◀ ▶

Back Close

Full Screen / Esc

Printer-friendly Version

Interactive Discussion

Response of
“Glacier-Runoff”
system

Zongxing Li et al.

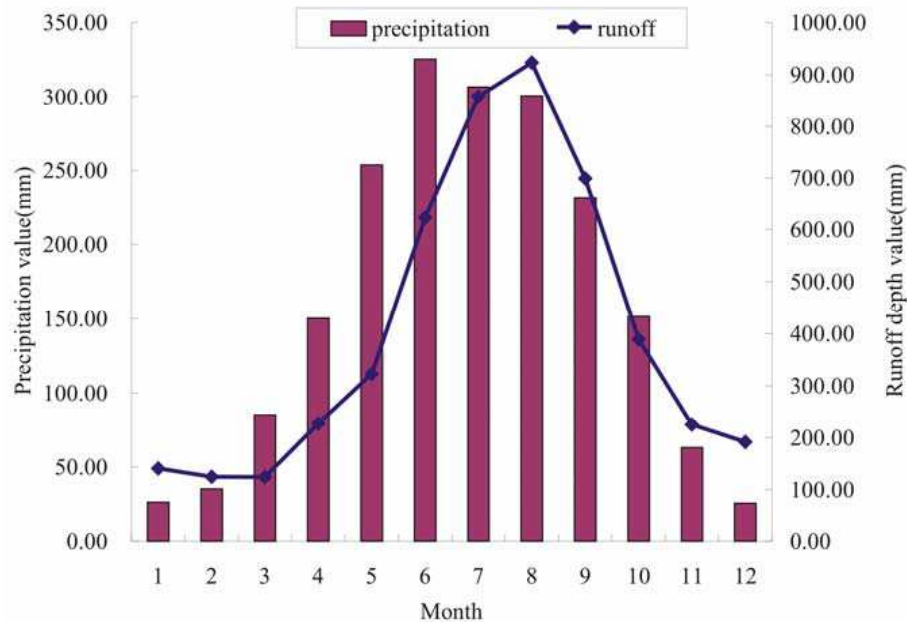


Fig. 5. Seasonal variation between precipitation and runoff in Hailuoguo basin.

Title Page

Abstract Introduction

Conclusions References

Tables Figures

◀ ▶

◀ ▶

Back Close

Full Screen / Esc

Printer-friendly Version

Interactive Discussion