



Multi-method geophysical measurements for soil science investigations in the vadose zone

B. Weihnacht, F. Börner

► To cite this version:

B. Weihnacht, F. Börner. Multi-method geophysical measurements for soil science investigations in the vadose zone. Hydrology and Earth System Sciences Discussions, 2007, 4 (4), pp.2659-2681. hal-00298872

HAL Id: hal-00298872

<https://hal.science/hal-00298872>

Submitted on 18 Jun 2008

HAL is a multi-disciplinary open access archive for the deposit and dissemination of scientific research documents, whether they are published or not. The documents may come from teaching and research institutions in France or abroad, or from public or private research centers.

L'archive ouverte pluridisciplinaire **HAL**, est destinée au dépôt et à la diffusion de documents scientifiques de niveau recherche, publiés ou non, émanant des établissements d'enseignement et de recherche français ou étrangers, des laboratoires publics ou privés.

Papers published in *Hydrology and Earth System Sciences Discussions* are under open-access review for the journal *Hydrology and Earth System Sciences*

Multi-method geophysical measurements for soil science investigations in the vadose zone

B. Weihnacht and F. Börner

Dresden Groundwater Research Centre, Meraner Str. 10, 01217 Dresden, Germany

Received: 10 August 2007 – Accepted: 21 August 2007 – Published: 23 August 2007

Correspondence to: B. Weihnacht (bweihnacht@dgfz.de)

HESSD

4, 2659–2681, 2007

Geophysical proxies for soil science investigations

B. Weihnacht and
F. Börner

Title Page

Abstract

Introduction

Conclusions

References

Tables

Figures

◀

▶

◀

▶

Back

Close

Full Screen / Esc

Printer-friendly Version

Interactive Discussion

Abstract

We studied the changes of geophysical parameters on a soil wall of the testfield Grenzhof (University of Heidelberg). The unsaturated materials investigated range from coarse-grain gravel to sandy loam. Ground-penetrating radar, ultrasound transmission and complex conductivity measurements were applied as geophysical methods. The measured parameters were used to calculate soil parameters such as porosity, water content, density and grain surface area necessary to obtain geohydraulic parameters such as hydraulic conductivity, field capacity and retention parameters. Soil samples were taken and analysed regarding porosity, apparent density, true density and internal surface. The comparison between petrophysical data from the laboratory and from geophysical measurements showed good correlations for the majority of the data.

1 Introduction

Knowledge of the water content and the water flow in the vadose zone is essential for ground water protection, agriculture, waste management and river basin management. However, investigations are complicated by high resolution desired in depth and non-invasive implementation.

Geophysical measurements can be conducted non-invasively from the surface or by using boreholes. They give in-situ values of comparatively large sample volumes. They are investigated under field condition and therefore undisturbed and left in their natural formation. Hence, important parameters such as compactness of the packing, temperature and water content are preserved. This is a major advantage compared to samples transported and afterwards analysed in the laboratory or TDR measurements, where probes have to be installed in the ground. Moreover, geophysical measurements can be applied quickly and on large scale.

Despite the numerous advantages one should note that parameters such as hydraulic conductivity, field capacity and retention parameters are not measured directly

Geophysical proxies
for soil science
investigations

B. Weihnacht and
F. Börner

Title Page

Abstract

Introduction

Conclusions

References

Tables

Figures



Back

Close

Full Screen / Esc

Printer-friendly Version

Interactive Discussion

for this approach. Consequently, the challenge lies in the development of geophysical and hydraulic models that allow for determination directly from the measured data, preferably without further calibration of soil samples (Fig. 1). Therefore, the general goal is a quantitative interpretation of the geophysical data regarding hydraulic properties and the formulation of petrophysical models for each geophysical method applicable to a wide variety of soils under various conditions.

Petrophysical parameters obtained from geophysical measurements on a field scale are becoming more and more popular for environmental applications. Monitoring solute transport using electrical resistivity tomography has found broad application (e. g. French et al., 2002, Kemna et al., 2002). Radar measurements are state-of-the-art for the determination of the water content and have been applied to a broad variety of tasks. Wollschläger et al. (2005) monitored the temporal changes of the volumetric soil water content on a testfield. A large tank filled with sandy soil was investigated by Lambot et al. (2004). Measurements on a lysimeter were conducted by Stoffregen et al. (2002) and Schmalholz et al. (2004). Saarenko (1998) measured the dielectric properties in lab scale on clayey and silty soils. He related the imaginary part of the dielectric value to the cation exchange capacity and showed a strong correlation. Nevertheless, radar measurements have strong limitations when applied for clayey soils in the field scale due to the high attenuation.

The combination of electric resistivity and radar is often applied in sandy soils (e.g. Börner, 2000; Binley et al., 2002a; Binley et al., 2002b; Turesson, 2006). Additionally, the phase information obtained from complex conductivity measurements is related to the hydraulic conductivity and the water saturation (e.g. Börner et al., 1996; Ulrich and Slater, 2004; Titov et al., 2004). As a further parameter, ultrasound investigations can provide information about the acoustic properties and the structure parameters like porosity (Nolen-Hoeksema, 2000). They are also an useful tool for the detection of the transition zone located between fully and partially saturated soils (Schön, 1996). Moreover, Prasad (2003) and Hyndman et al. (2000) tried to establish a relation between seismic velocities and hydraulic conductivity.

**Geophysical proxies
for soil science
investigations**

B. Weihnacht and
F. Börner

Title Page

Abstract

Introduction

Conclusions

References

Tables

Figures

◀

▶

◀

▶

Back

Close

Full Screen / Esc

Printer-friendly Version

Interactive Discussion

Due to the complexity of the ongoing research, one method alone cannot provide the desired geohydraulic parameters with the desired certainty in most cases. For that reason, a combination of geophysical methods like state-of-the-art in borehole investigations becomes more and more common practice also in near surface investigations.

This paper is based on a field test conducted to collect data sets on unsaturated and undisturbed soil samples. It is important to demonstrate that the geophysical methods can be applied on this scale and can provide a data set with correct information about hydraulic parameters. Hence, the results were compared to laboratory data. To our knowledge, a similar field data set on unconsolidated rocks in the vadose zone does not exist, so far. The innovation lies in the simultaneous application of three geophysical methods on a vertical profile of in-situ samples with high spatial resolution. This is a first step towards a more complex interpretation algorithm.

2 Material and methods

2.1 Test site

The measurements were carried out at the Grenzhof soil physical test site belonging to the University of Heidelberg, Institute for Environmental Physics (Wollschläger and Roth, 2005). The test site is situated at the river Neckar near Heidelberg in the area of alluvial fans (Fig. 2). Various experiments were carried out to investigate the solute transport at this location.

The vertical soil profile at the test site is shown in Fig. 3. The sandy loam generally found in this area shows an increasing clay content with depth. The uppermost layer (0–30 cm) is influenced by agricultural use. A dense layer of sandy loam from 90 cm to 120 cm separates the above layers from the gravel layers underneath. They are embedded in a clayey matrix which becomes sandier towards deeper areas.

Two parallel outcrops were used to dig off material from both sides to create a wall-like measuring object with a thickness of 40 cm. The attenuation of the ultrasonic

Geophysical proxies for soil science investigations

B. Weihnacht and
F. Börner

Title Page

Abstract

Introduction

Conclusions

References

Tables

Figures

◀

▶

◀

▶

Back

Close

Full Screen / Esc

Printer-friendly Version

Interactive Discussion

waves was very high, making the registration of transmitted waves through 40 cm soil impossible with our equipment. Therefore, the thickness had to be reduced to 17 cm, especially for the ultrasonic measurements.

Soil samples of approximately 1 dm³ were taken every 15 cm between 7.5 cm and 157.5 cm of depth for the petrophysical measurements (sample A–K).

2.2 Petrophysical measurements

The petrophysical analysis was conducted on the soil samples A–K taken according to Fig. 3. To determine the porosity Φ the soil material was built in a defined volume (30 cm³) by pouring the material in the container, applying a defined weight on top and shaking it on the vibrating table for 5 min. The porosity obtained is slightly higher than the porosity in the field. The water content was calculated from difference weighting of the wet and the dry sample (dried for 24 h at 70°C).

The true density d_t was measured on the dry samples with the automated equipment AccuPyc 1330 from Micromeritics. Furthermore, the internal surface S was determined nondestructively on a defined sample mass m with the Flowsorb II 2300 from Micromeritics which uses the BET-one-point-method (DIN 66131, DIN 66132).

These data were used to calculate the surface-area-to-porosity ratio S_{por} , which refers to the inverse hydraulic radius of porous media (Pape et al., 1987):

$$S_{\text{por}} = \frac{d_t S_m (1 - \Phi)}{\Phi} \text{ with } S_m = \frac{S}{m} \quad (1)$$

The Cation Exchange Capacity (*CEC*) was measured with the Mehlich/Bascomb method (DIN ISO 13536). The pore volume related cation exchange capacity CEC_{por} was obtained from laboratory data of *CEC*, Φ and d_t (Waxman and Smits, 1968)

$$CEC_{\text{por}} = \frac{d_t CEC (1 - \Phi)}{\Phi} \quad (2)$$

Wollschläger and Roth (2005) characterized soil samples taken from a vertical profile 5 m away from our outcrop. Layering can be regarded as nearly parallel in this area.

Geophysical proxies for soil science investigations

B. Weihnacht and
F. Börner

Title Page

Abstract

Introduction

Conclusions

References

Tables

Figures

◀

▶

◀

▶

Back

Close

Full Screen / Esc

Printer-friendly Version

Interactive Discussion

Please note that some soil samples were taken at slightly different depths than our samples. For that reason, data of soil characterization was listed only for certain depth intervals in Table 1.

2.3 Geophysical measurements

5 The measurements were carried out on a wall-like soil outcrop of unconsolidated rocks. Three geophysical methods were selected for this study: radar, ultrasound and complex conductivity. They provide four independent geophysical proxies: the dielectric constant $\varepsilon_{\text{meas}}$, the compressional wave velocity $v_{\rho,\text{meas}}$, the specific resistivity ρ_{meas} and the electrical phase shift ϕ_{meas} as an indicator to the electrical polarizability of the
10 soil. A summary of the methods, devices, spatial increments and errors is listed in Table 2. The errors for radar and ultrasound were estimated from independent repeated measurements on the entire vertical profile, whereas the electrical errors result from four repeated measurements without moving the electrodes.

The radar measurements were carried out by two antennas of the surface radar
15 system Ramac/GPR (Malå Geoscience Sweden) with 1 GHz as central frequency. The transmitting antenna was located at one side of the measuring object and the receiving antenna at the other side (Fig. 4).

The ground-penetrating radar system was calibrated with air measurements at the beginning and the end of every experiment to check the drift of the first arrival signal. It
20 was corrected during processing if necessary. After applying a dewow filter to remove the low frequency components of the signal, the first arrival signals for each trace were picked. Knowing the distance s_R between the antennas from the geometry of the investigated soil segment, it is possible to calculate $\varepsilon_{\text{meas}}$ in the case of non-magnetic materials (Gerthsen and Vogel,1993):

$$25 \quad \varepsilon_{\text{meas}} = \left(\frac{c \, t_R}{s_R} \right)^2, \quad (3)$$

with c : speed of light 0.3 m/ns; t_R : first arrival time of the electromagnetic wave.

Geophysical proxies for soil science investigations

B. Weihnacht and
F. Börner

Title Page

Abstract

Introduction

Conclusions

References

Tables

Figures

◀

▶

◀

▶

Back

Close

Full Screen / Esc

Printer-friendly Version

Interactive Discussion

The ultrasound system from Geotron Electronics uses piezoelectric probes with a main frequency of 30 kHz as transmitter and receiver. Analogous to the radar measurements, the transmitter and the receiver were located on both sides of the investigated object. The signal of the ultrasound wave was registered by a Fluke 99B scopemeter, and the first arrival time t_{US} was picked for each trace. Ultrasound transmission data were only corrected regarding the offset caused by the measurement device. Knowing the distance between the ultrasound transmitter and the receiver s_{US} , $v_{p,meas}$ can be calculated by:

$$v_{p,meas} = \frac{s_{US}}{t_{US}} \quad (4)$$

The electrical measurements were conducted using the device SIP FUCHS II (Radic Research) combined with non-polarizable electrodes for the potential measurement and alternating current injection. The device records the time-series of the electrical voltage U and the electric current I . The specific resistivity ρ_{meas} was calculated for a Wenner array with $a=5$ cm (distance between two adjacent electrodes; Telford et al., 1990):

$$\rho_{meas} = 2 \pi a \frac{U}{I} \quad (5)$$

As a second measuring parameter the phase shift ϕ_{meas} between U and I was determined by signal analysis. The measurements were conducted at a fixed frequency of 0.18 Hz.

2.4 Fitting procedure

Petrophysically founded relationships were established to obtain the hydraulic parameters directly from our geophysical proxies by fitting them to the laboratory data manually.

The estimation of the surface-area-to-porosity ratio S_{por} which is helpful for evaluating unsaturated flow properties is based on complex electrical measurements. We

Geophysical proxies for soil science investigations

B. Weihnacht and
F. Börner

Title Page

Abstract

Introduction

Conclusions

References

Tables

Figures

◀

▶

◀

▶

Back

Close

Full Screen / Esc

Printer-friendly Version

Interactive Discussion

used the relation

$$S_{\text{por}} = a \frac{\tan(-\varphi_{\text{meas}})}{\rho_{\text{meas}}} = a\sigma'' \quad (6)$$

(Börner et al., 2006) to calculate S_{por} from the phase φ_{meas} and the specific resistivity ρ_{meas} where σ'' is the imaginary part of the conductivity and a a fitting parameter. The water saturation θ_w was obtained from the radar measurements. The fitting curve is described by a modified mixing law (Börner, 2000)

$$\theta_w = \left[\frac{\varepsilon_{\text{meas}} - \varepsilon_0}{b} \right]^n \quad (7)$$

ε_0 : dielectric constant of the dry soil, b, n parameters depending on salinity and pore space structure.

The total porosity Φ was estimated on the basis of the ultrasound data, using the fitting equation suitable for unconsolidated materials (Schön, 1996)

$$\Phi = \frac{1 - \frac{v_{p,\text{meas}}}{v_0}}{c} \quad (8)$$

with v_0 as the compressional wave velocity of the solid phase and c a fitting parameter. Φ is simply related to the apparent density d_a and d_t by

$$\Phi = 1 - \frac{d_a}{d_t} \quad (9)$$

Equating Eq. (8) and (9) gives an expression to calculate d_t from $v_{p,\text{meas}}$

$$d_a = \frac{d_t(c-1)}{c} - \frac{d_t}{v_0 c} v_{p,\text{meas}} \quad (10)$$

A medium true density of 2.65 g/cm^3 was estimated for all data.

CEC_{por} was determined from S_{por} with

$$CEC_{por} = x S_{por} \quad (11)$$

where x refers to the equivalent surface charge density obtained from the laboratory measurements of the internal surface area and the cation exchange capacity.

5 2.5 Results

The summarized geophysical results along the 170 cm long soil profile of the Grenzhof test site are shown in Fig. 5. The four curves represent the measured proxies for ρ_{meas} , ϕ_{meas} , ϵ_{meas} and $v_{p,meas}$. The values for selected depths are given in Table 3.

10 The geophysical proxies indicate a clear structure of the uppermost 170 cm of the underground. Four well-defined layers are identified by characteristic combinations of the proxies. The geophysical measurements detect two layers with rather constant values of all parameters: the plough horizon and the dense loamy sand. Other layers (sandy loam, gravel) are characterized by changing proxies caused by vertically changing state parameters.

15 The zone between 40 cm and 60 cm has a low water saturation which causes higher resistivities of about 450 Ohm m and low dielectric constants between 8 and 9. Generally, increasing phases as well as steady compressional wave velocities are visible in this area. At the lower boundary (80 cm–90 cm) the continuously rising clay content influences all parameters: ρ_{meas} has a falling trend whereas ϕ_{meas} , ϵ_{meas} , and $v_{p,meas}$ increase.

20 The gravel layer is characterized by the decreasing clay content in the matrix. This is also reflected by the ρ_{meas} -curve with increasing resistivities and by decreasing ϕ_{meas} , ϵ_{meas} , and $v_{p,meas}$ in this area.

25 As a next step we obtained the soil parameters surface-area-to-porosity ratio S_{por} , water content θ_w , porosity Φ , apparent density d_a and the porosity-related cation exchange capacity CEC_{por} directly from the measured geophysical proxies using separate but substantiate petrophysical models.

Geophysical proxies for soil science investigations

B. Weihnacht and
F. Börner

Title Page

Abstract

Introduction

Conclusions

References

Tables

Figures

◀

▶

◀

▶

Back

Close

Full Screen / Esc

Printer-friendly Version

Interactive Discussion

We used Eq. (6) to calculate S_{por} from the electric proxies. The fitting Parameter a equals $3.77 \times 10^5 \text{ m S}^{-1} \mu\text{m}^{-1}$ for our data set. The radar measurements served to estimate θ_w with $\varepsilon_0=4$ for the investigated material and $b=35$ and $n=1.2$ as fitting parameters according to Eq. (7). As a third parameter, Φ was obtained from Eq. (8) with $v_0=5450 \text{ m/s}$ as the compressional wave velocity of the solid phase and $c=2.35$ as fitting parameters and d_a from Eq. (10). A medium true density of 2.65 g/cm^3 was estimated for all data. CEC_{por} was calculated from Eq. (11) where x equals 0.018 mmol+/m^2 .

The petrographical characterization of the soil samples (Table 1) obtained from lab measurements are shown in Fig. 6.

The dense loam layer shows a clear indication in all parameters with S_{por} up to $200 \mu\text{m}^{-1}$, θ_w up to 0.35, lower Φ below 0.35, d_a of about 1.75 g/cm^3 and high CEC_{por} of up to 3800 mol+/m^3 . Otherwise S_{por} is low ($20 \mu\text{m}^{-1}$), θ_w varies between 0.21 and 0.25, Φ shows a constant decrease with depth (except for the gravel), d_a lies between 1.60 g/cm^3 and 1.65 g/cm^3 and CEC_{por} between 100 mol+/m^3 and 400 mol+/m^3 .

Significant deviations between laboratory and field data of CEC_{por} are probably caused by the laboratory method destructive to the material.

3 Discussion and conclusion

Multi-method geophysical measurements were successfully applied to soil investigations in the field scale. The presented results and experiences are related to a selected test site with specific soil structure and hydraulic state. Based on multi-method measurements, characteristic data sets of geophysical proxies were detected and related to soil properties.

High resistivities and low dielectric constants indicate low water contents (40 cm–60 cm). The layer of the dense sandy loam (90 cm–120 cm) is characterized by low resistivities and high dielectric constants caused by high water contents and high com-

pressional wave velocities due to lower porosities. Within the profile, the highest electrical phase shifts and, hence, high capacitive effects are also found in this layer. They refer to high surface-area-to-porosity ratios or the cation exchange capacity, respectively.

We demonstrated that the parameters surface-area-to-porosity ratio, water saturation, apparent density, porosity and the porosity related cation exchange capacity can be calculated directly from geophysical data which gives not only qualitative results but quantitative values of the parameters. Comparing them to laboratory data showed a good agreement for most data. High discrepancies are found only in the layer of the dense sandy loam in the CEC_{por} curve. This might either be caused by the laboratory method destructive to the material, by heterogeneity and therefore non-representative laboratory probes or by the used model itself. It could be useful to introduce an exponent which would correct the area of misfit. In future work, such a step should be considered and tested if the laboratory method can be excluded as cause for the discrepancies.

The general advantage of the reported method lies in the establishment of simple and petrophysically founded relationships that can be applied for sandy/clayey soils of the same type. Especially for the acoustic properties the fitting results with such a simple relationship are not self-evident and have to be examined carefully with other data.

Water content and surface-area-to-porosity ratio are also well fitted with the established relationships. As a next step they should be compared to other models.

A disadvantage of applying the Eq. (6)–(8), (10) and (11) is the necessity to use fitting parameters which are not constant for all kinds of soil. For that reason it is planned to extend these investigations to a wider variety of soil types, to larger areas and to a broader variety of measurement parameters (e.g. attenuation of the radar and ultrasonic wave). We would also like to use geophysical data gained from the surface to minimize the effort. Additionally, the link between the various geophysical methods with its interpretation will be extended to enhance accuracy and to reduce ambiguity or

**Geophysical proxies
for soil science
investigations**

B. Weihnacht and
F. Börner

Title Page

Abstract

Introduction

Conclusions

References

Tables

Figures

◀

▶

◀

▶

Back

Close

Full Screen / Esc

Printer-friendly Version

Interactive Discussion

the number of methods.

Acknowledgements. We are grateful to U. Wollschläger and K. Roth for giving us the opportunity for measurements at the Grenzhof test site, the digging arrangements and the provision of soil data. We thank the staff of the Dresden Groundwater Centre for their technical assistance in the petrophysical analysis of soil samples. We also thank an anonymous reviewer for his constructive comments.

This project was funded by the Deutsche Forschungsgemeinschaft (BO 1082/8-3).

References

Binley, A., Cassiani, G., Middleton, R., and Winship, P.: Vadose zone flow model parameterisation using cross-borehole radar and resistivity imaging, *J. Hydrol.*, 267, 147–159, 2002a.

Binley, A., Winship, P., West, L. J., Pokar, M., and Middleton, R.: Seasonal variation of moisture content in unsaturated sandstone inferred from borehole radar and resistivity profiles, *J. Hydrol.*, 267, 160–172, 2002b.

Börner, F. D., Schopper, J. R., and Weller, A.: Evaluation of transport and storage properties in the soil and groundwater zone from induced polarization measurements, *Geophys. Prosp.*, 44, 583–601, 1996.

Börner, F. D.: Simultaneous determination of water saturation and salinity by combining electric with dielectric measurements during multiphase displacement in sandstones. *Proc. 2000 Int. Symp. SCA*, Oct. 18–22 2000, Abu Dhabi, VAE, SCA-2000-41, 2000.

Börner, F. D.: Complex conductivity measurements, in: *Groundwater Geophysics*, edited by: Kirsch, R., Springer Berlin, ISBN: 3-540-29383-3, 119–153, 2006.

DIN ISO 13536 (in German): Soil condition; Determination of the potential cation exchange capacity and the exchangeable cations using a pH=8,1 buffered barium chloride solution, 1997.

DIN 66131 (in German): Determination of the specific surface of solids by gas adsorption according to Brunauer, Emmett, Teller (BET), 1993.

DIN 66132 (in German): Determination of the specific surface of solids by nitric adsorption according to Haul, Dümbgen, 1975.

French, H. K., Hardbattle, C., Binley, A., Winship, P., and Jakobsen, L.: Monitoring snowmelt

Geophysical proxies for soil science investigations

B. Weihnacht and
F. Börner

Title Page

Abstract

Introduction

Conclusions

References

Tables

Figures

◀

▶

◀

▶

Back

Close

Full Screen / Esc

Printer-friendly Version

Interactive Discussion

- induced unsaturated flow and transport using electrical resistivity tomography, *J. Hydrol.*, 267, 273–284, 2002.
- Gerthsen C. and Vogel, H.: *Physik*. 17th edition, Springer Berlin, Heidelberg, New York, London, Paris Tokyo, Hong Kong, Barcelona, Budapest, 1993.
- 5 Hyndman, D., Harris, J., and Gorelick, S.: Inferring the relation between seismic slowness and hydraulic conductivity in heterogeneous aquifers, *Water Resour. Res.*, 36, 2121–2132, 2000.
- Kemna, A., Vanderborght, J., Kulesa, B., and Vereecken, H.: Imaging and characterisation of subsurface solute transport using electrical resistivity tomography (ERT) and equivalent
- 10 transport models, *J. Hydrol.*, 267, 125–146, 2002.
- Lambot, S., Rhebergen, J., van den Bosch, I., Slob, E. C., and Vanclooster, M.: Measuring the soil water content profile of a sandy soil with an off-ground monostatic ground penetrating radar, *Vadose Zone J.*, 3, 1063–1071, 2004.
- Nolen-Hoeksema, R.: Modulus – porosity relations, Gassmann's equations, and the low-
- 15 frequency elastic-wave response to fluids, *Geophysics, Soc. Expl. Geophys.*, 65, 1355–1363, 2000.
- Pape, H., Riepe, L., and Schopper, J. R.: Theory of self-similar network structures in sedimentary and igneous rocks and their investigation with microscopical and physical methods, *J. Microscopy*, 148, 121–147, 1987.
- 20 Prasad, M.: Velocity-permeability relations within hydraulic units, *Geophysics*, 68, 108–117, 2003.
- Saarenko, T.: Electrical properties of water in clay and silty soils, *J. Appl. Geophys.*, 40, 73–88, 1998.
- Schmalholz, J., Stoffregen, H., Kemna, A., and Yaramanci, U.: Imaging of water content distributions inside a lysimeter using GPR tomography, *Vadose Zone Journal*, 3, 1106–1115,
- 25 2004.
- Schön, J. H.: Physical Properties of Rocks, in: *Fundamental and principals of petrophysics, Handbook of Geophysical Exploration, Seismic Exploration*, Pergamon Press, Oxford, 1996.
- Stoffregen, H., Yaramanci, U., Zenker, T., and Wessolek, G.: Accuracy of soil water content measurements using ground penetrating radar: Comparison of ground penetrating radar
- 30 and lysimeter data, *J. Hydrol.*, 267, 201–206, 2002.
- Telford, W. M., Geldart, L. P., and Sheriff, R. E.: *Applied geophysics*, Second edition, Cambridge University Press, Cambridge, 1990.

Geophysical proxies for soil science investigations

B. Weihnacht and
F. Börner

Title Page

Abstract

Introduction

Conclusions

References

Tables

Figures

◀

▶

◀

▶

Back

Close

Full Screen / Esc

Printer-friendly Version

Interactive Discussion

- Titov, K., Kemna, A., Tarasov, A., and Vereecken, H.: Induced polarization of unsaturated sands determined through time domain measurement, *Vadose Zone J.*, 3, 1160–1168, 2004.
- Turesson, A.: Water content and porosity estimated from ground-penetrating radar and resistivity, *J. Appl. Geophys.*, 58, 99–111, 2006.
- 5 Ulrich, C. and Slater, L. D.: Induced polarization measurements on unsaturated, unconsolidated sands, *Geophysics*, 69, 762–771, 2004.
- Waxman, M. H. and Smits, L. J. M.: Electrical conductivities in oil-bearing shaly sands, *Society of Petroleum Engineers Journal*, 243, 107–122, 1968.
- 10 Wollschläger, U. and Roth, K.: Estimation of temporal changes of volumetric soil water content from ground-penetrating radar reflections, subsurface sensing technologies and applications, 6(2), 207–218, doi:10.1007/s11220-005-0007-y, 2005.

HESSD

4, 2659–2681, 2007

Geophysical proxies for soil science investigations

B. Weihnacht and
F. Börner

Title Page

Abstract

Introduction

Conclusions

References

Tables

Figures

◀

▶

◀

▶

Back

Close

Full Screen / Esc

Printer-friendly Version

Interactive Discussion

**Geophysical proxies
for soil science
investigations**

B. Weihnacht and
F. Börner

Table 1. Petrophysical soil characterization from the test site.

Depth interval in cm	Soil samples A-K					Soil samples (Wollschläger and Roth, 2005)	
	S_m in m^2/g	θ_w	CEC in $\text{cmol}+/\text{kg}$	Φ	ρ_t in g/cm^3	Φ	Medium grain diameter in mm
0–15	3.83	0.15	9.8	0.44	2.61	0.39	
16–32	3.78	0.18	9.8	0.40	2.62	0.365	0.12
33–46	2.86	0.15	4.3	0.37	2.65		0.13
47–57	2.33	0.15	3.6	0.38	2.64		
58–70	2.07	0.17	3.8	0.42	2.7	0.407	0.20
71–85	10.30	0.23	9.6	0.34	2.67	0.384	
86–103	22.10	0.27	10.6	0.34	2.65	0.352	0.17
104–122	33.60	0.32	13.2	0.35	2.64	0.362	0.21
123–135	9.09	0.11	5.2	0.36	2.68	0.347	0.15
136–149	5.27	0.10	10.9	0.34	2.67	0.338	2.48*
150–165	4.21	0.10	3.7	0.26	2.68		2.42*

*approximation (largest sieve >2 mm)

Title Page

Abstract

Introduction

Conclusions

References

Tables

Figures

◀

▶

◀

▶

Back

Close

Full Screen / Esc

Printer-friendly Version

Interactive Discussion

**Geophysical proxies
for soil science
investigations**

B. Weihnacht and
F. Börner

Table 2. Summary of the applied geophysical methods.

Method	Measurement parameter	Petrophysical parameter	Device	Spatial increment	Error estimation
Radar	t_R	$\varepsilon_{\text{meas}}$	Surface radar RAMAC/GPR, 1 GHz	5 cm	$\varepsilon_{\text{meas}}$ 9.3%
Ultrasound	t_{us}	$v_{\rho,\text{meas}}$	USG 21, 30 kHz-probes (Geotron Electronics), Fluke 99B	10 cm	$v_{\rho,\text{meas}}$ 11.0%
Complex conductivity	$U(t), I(t)$	$\rho_{\text{meas}}, \phi_{\text{meas}}$	SIP FUCHS II (Radic Research), non-polarizable electrodes, Wenner-array	15 cm	ρ_{meas} 0.1% ϕ_{meas} 9.6%

Title Page

Abstract

Introduction

Conclusions

References

Tables

Figures

◀

▶

◀

▶

Back

Close

Full Screen / Esc

Printer-friendly Version

Interactive Discussion

**Geophysical proxies
for soil science
investigations**

B. Weihnacht and
F. Börner

Table 3. The values for ρ_{meas} , ϕ_{meas} , $\varepsilon_{\text{meas}}$ and $v_{\rho,\text{meas}}$ for selective depths, missing data due to different spatial increments was interpolated.

Depth in cm	Layer	ρ_{meas} in Ohm*m	ϕ_{meas} in rad	$\varepsilon_{\text{meas}}$	$v_{\rho,\text{meas}}$ in m/s
7.5	Plough horizon	323	0.0126	11.5	436
22.5		211	0.0056	12.4	429
37.5	Sandy loam	333	0.0104	10.1	539
52.5		445	0.0120	8.8	528
67.5		331	0.0144	12.0	558
82.5		115	0.0186	15.4	893
97.5	Sandy loam, dense	65	0.0196	16.6	1076
112.5		32	0.0177	18.2	1040
127.5	Gravel	152	0.0128	11.7	1065
142.5		180	0.0112	10.6	1049
157.5		239	0.0088	11.6	356

Title Page

Abstract

Introduction

Conclusions

References

Tables

Figures

◀

▶

◀

▶

Back

Close

Full Screen / Esc

Printer-friendly Version

Interactive Discussion

Geophysical proxies for soil science investigations

B. Weihnacht and
F. Börner

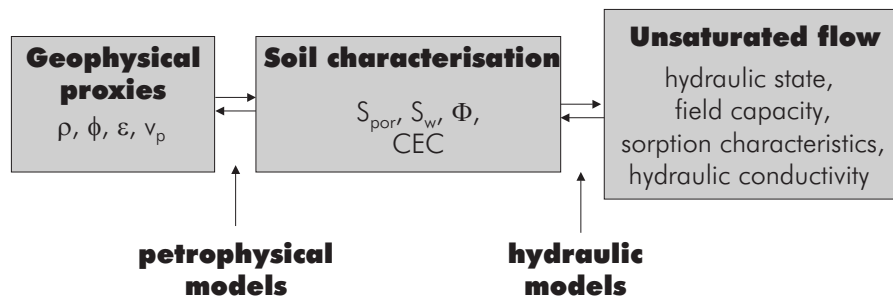


Fig. 1. Interpretation schema for geophysical data.

Title Page

Abstract

Introduction

Conclusions

References

Tables

Figures

◀

▶

◀

▶

Back

Close

Full Screen / Esc

Printer-friendly Version

Interactive Discussion

Geophysical proxies for soil science investigations

B. Weihnacht and
F. Börner

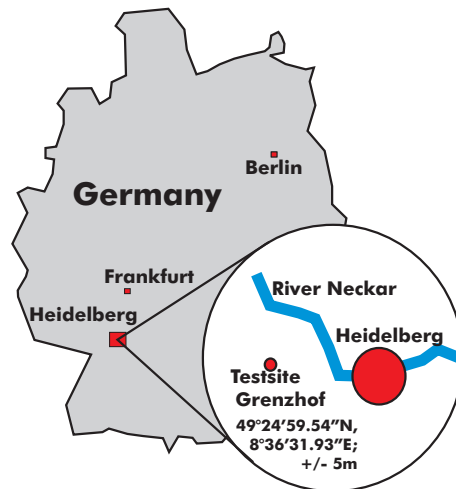


Fig. 2. Testsite Grenzhof at the river Neckar.

Title Page

Abstract

Introduction

Conclusions

References

Tables

Figures

◀

▶

◀

▶

Back

Close

Full Screen / Esc

Printer-friendly Version

Interactive Discussion

**Geophysical proxies
for soil science
investigations**

B. Weihnacht and
F. Börner

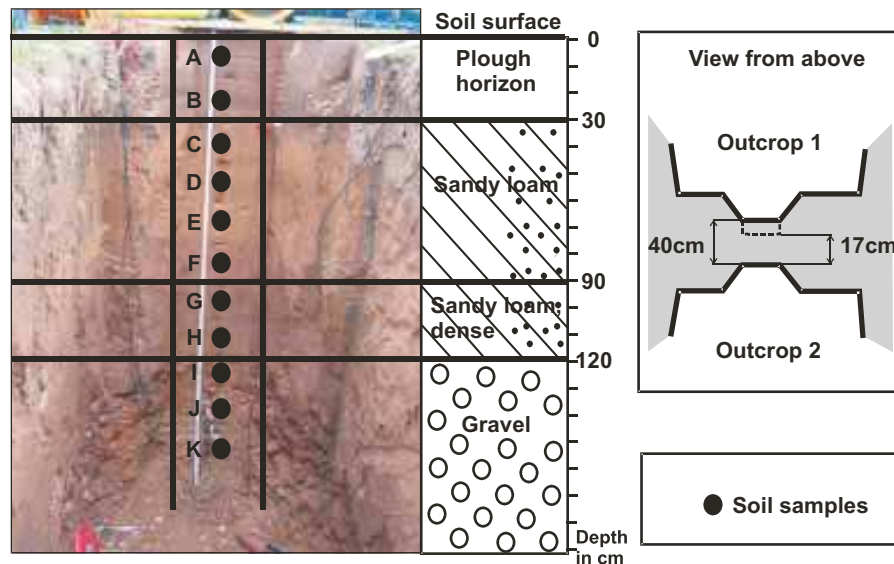


Fig. 3. Test site with geological profile and points of soil sampling.

Title Page

Abstract

Introduction

Conclusions

References

Tables

Figures

◀

▶

◀

▶

Back

Close

Full Screen / Esc

Printer-friendly Version

Interactive Discussion

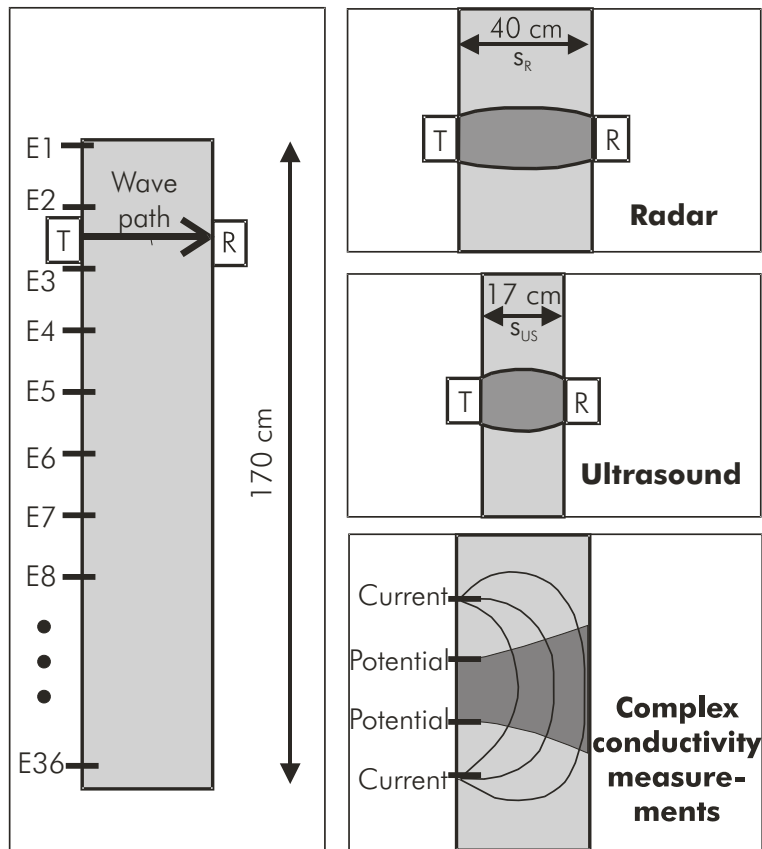


Fig. 4. Setup with electrodes E1 to E36 for the complex conductivity measurements, transmitter (T) and receiver (R) for radar and ultrasound measurements; areas of high sensitivity are marked in dark grey.

Geophysical proxies for soil science investigations

B. Weihnacht and
F. Börner

Title Page

Abstract

Introduction

Conclusions

References

Tables

Figures

◀

▶

◀

▶

Back

Close

Full Screen / Esc

Printer-friendly Version

Interactive Discussion

Geophysical proxies for soil science investigations

B. Weihnacht and
F. Börner

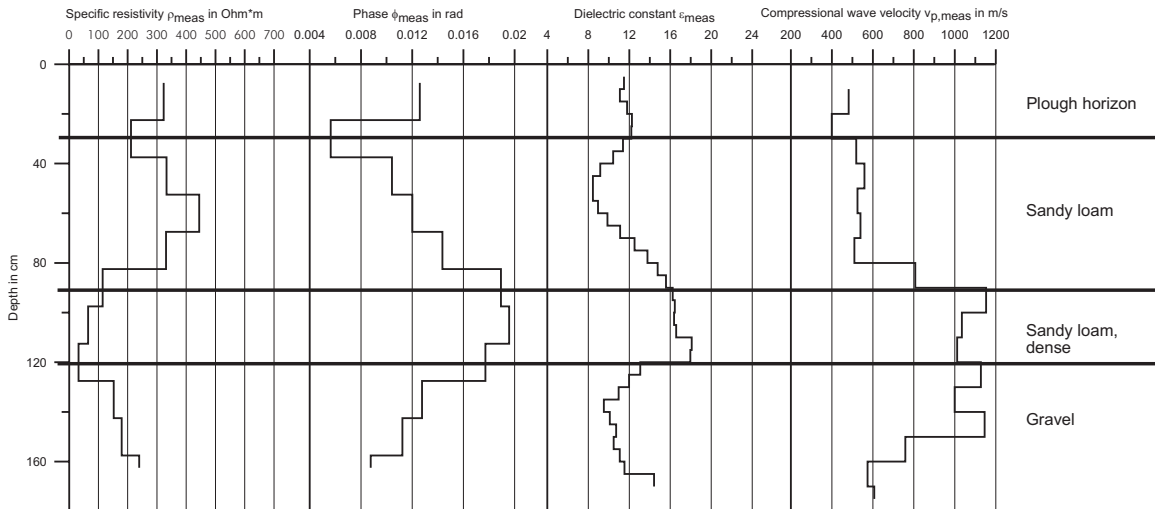


Fig. 5. Geophysical results from field measurements.

Title Page

Abstract

Introduction

Conclusions

References

Tables

Figures

◀

▶

◀

▶

Back

Close

Full Screen / Esc

Printer-friendly Version

Interactive Discussion

**Geophysical proxies
for soil science
investigations**

B. Weihnacht and
F. Börner

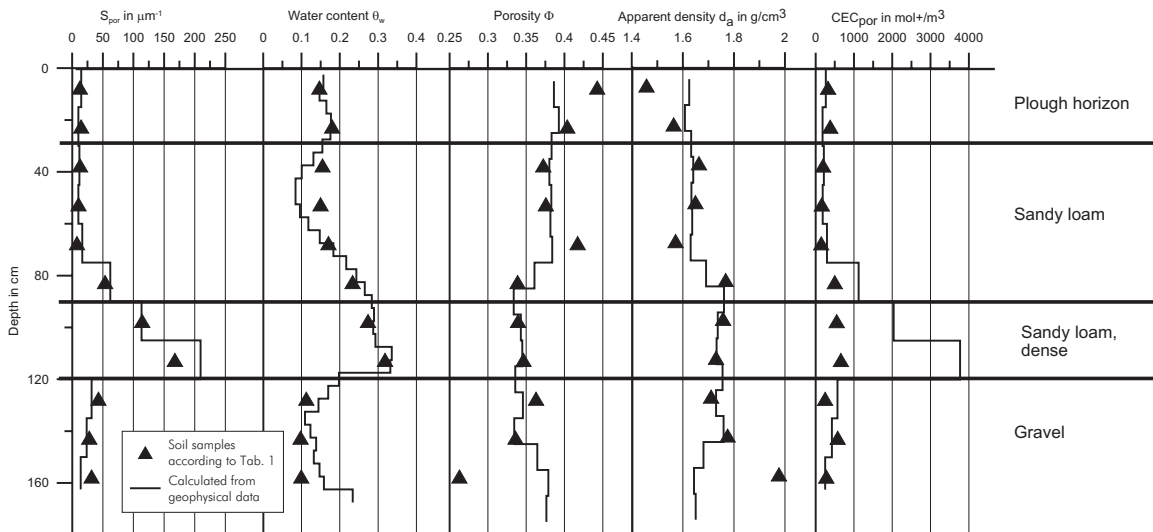


Fig. 6. Results from laboratory measurements (triangle) compared to data calculated from geophysical data (continuous line).

Title Page

Abstract

Introduction

Conclusions

References

Tables

Figures

◀

▶

◀

▶

Back

Close

Full Screen / Esc

Printer-friendly Version

Interactive Discussion