



**HAL**  
open science

# Dynamic analysis of groundwater discharge and partial-area contribution to Pukemanga Stream, New Zealand

V. J. Bidwell, R. Stenger, G. F. Barkle

► **To cite this version:**

V. J. Bidwell, R. Stenger, G. F. Barkle. Dynamic analysis of groundwater discharge and partial-area contribution to Pukemanga Stream, New Zealand. *Hydrology and Earth System Sciences Discussions*, 2007, 4 (4), pp.2461-2496. hal-00298866

**HAL Id: hal-00298866**

**<https://hal.science/hal-00298866>**

Submitted on 18 Jun 2008

**HAL** is a multi-disciplinary open access archive for the deposit and dissemination of scientific research documents, whether they are published or not. The documents may come from teaching and research institutions in France or abroad, or from public or private research centers.

L'archive ouverte pluridisciplinaire **HAL**, est destinée au dépôt et à la diffusion de documents scientifiques de niveau recherche, publiés ou non, émanant des établissements d'enseignement et de recherche français ou étrangers, des laboratoires publics ou privés.

Papers published in *Hydrology and Earth System Sciences Discussions* are under open-access review for the journal *Hydrology and Earth System Sciences*

# Dynamic analysis of groundwater discharge and partial-area contribution to Pukemanga Stream, New Zealand

V. J. Bidwell<sup>1</sup>, R. Stenger<sup>2</sup>, and G. F. Barkle<sup>3</sup>

<sup>1</sup>Lincoln Environmental Research, Lincoln Ventures Ltd, Christchurch, New Zealand

<sup>2</sup>Lincoln Environmental Research, Lincoln Ventures Ltd, Hamilton, New Zealand

<sup>3</sup>Aqualinc Research Ltd, Hamilton, New Zealand

Received: 13 July 2007 – Accepted: 23 July 2007 – Published: 30 July 2007

Correspondence to: V. J. Bidwell (bidwellv@lvl.co.nz)

HESSD

4, 2461–2496, 2007

## Dynamic analysis of groundwater discharge at Pukemanga

V. J. Bidwell et al.

Title Page

Abstract

Introduction

Conclusions

References

Tables

Figures

⏪

⏩

◀

▶

Back

Close

Full Screen / Esc

Printer-friendly Version

Interactive Discussion

## Abstract

The proportion and origin of groundwater contribution to streamflow from agricultural catchments is relevant to estimation of the effects of nitrate leached from the soil on the quality of surface waters. This study addresses the partitioning of streamflow contributions from near-surface runoff and from groundwater, each with different contributing land area, on a steep pastoral hillslope in a humid climate. The 3 ha headwater catchment of the perennial Pukemanga Stream, in the North Island of New Zealand, was instrumented for continuous observation of climatic data, streamflow and groundwater level. The dynamics of groundwater levels and groundwater contribution to streamflow were analysed by means of a one-parameter, eigenvalue-eigenfunction description of a 1-D aquifer model. Model results for seven years of daily data predict that 36–44% of the topographical catchment contributes groundwater to the stream. The remaining groundwater generated within the catchment contributes to streamflow outside the catchment. After correction for contributing areas, groundwater was calculated to be 58–83% of observed annual catchment streamflow or 78–93% of flow generation on a unit area basis. Concurrent hourly data for streamflow and groundwater levels at two sites indicate the dynamic behaviour of a local groundwater system. Groundwater flow dynamics that support the perennial nature of this headwater stream are consistent with the size of the groundwater body, porosity of the subsurface material, and hydraulic conductivity derived from partitioning of streamflow contributions.

## 1 Introduction

Agricultural land use has long been recognised as a diffuse source of nitrogen, mostly in the form of nitrate, which can cause excessive nutrient levels in surface waters. In New Zealand, pastoral grazing of sheep and beef cattle is considered to be a contributor to issues of undesirable levels of aquatic plant growth in streams and eutrophication of the large freshwater lakes, leading to algal blooms and loss of water clarity (e.g.

HESSD

4, 2461–2496, 2007

## Dynamic analysis of groundwater discharge at Pukemanga

V. J. Bidwell et al.

Title Page

Abstract

Introduction

Conclusions

References

Tables

Figures

⏪

⏩

◀

▶

Back

Close

Full Screen / Esc

Printer-friendly Version

Interactive Discussion

Smith et al., 1993). Much of the pastoral land use is on hill country, including extensive grazing on steep land. Studies of stream reaches in native forest, exotic pine, and pasture in the steep hills of the Hakarimata Ranges of Waikato Region (Quinn et al., 1997) showed a five-fold difference in nitrate concentrations between pastoral and forest catchments of up to 2 km<sup>2</sup>. Further studies on catchments up to 3 km<sup>2</sup> of the mass export of nutrients during a two-year period (Quinn and Stroud, 2002) again demonstrated the significantly higher nitrate loads from these pastoral catchments, which can be up to 10 times the recommended threshold (~0.1 g/L) for aquatic water quality. In contrast to this result, the export of dissolved reactive phosphorus was not significantly different between pasture and native forest.

Nitrate from a catchment, as a diffuse effect of agricultural land use, is generated primarily within the soil profile. It is exported from a catchment by water that has passed through the microbially active soil profile. The possible transport routes are through the remainder of the vadose zone to groundwater and hence to the stream, or from the vadose zone to re-emerge at the ground surface as a contribution to overland flow. The latter flow process usually depends on temporary saturation within subsurface layers of contrasting hydraulic conductivity. It is our hypothesis that, excluding denitrification processes, the groundwater route is the dominant pathway for nitrate transport, even for small, steep, hill-country catchments. Validation of this hypothesis is relevant for estimation of nitrate transport times within a catchment, because proposed land use changes for amelioration of nitrate effects on surface waters should take account of the likely response dynamics.

One of the complicating factors in conducting hydrometric analyses of a catchment is that the catchment area for groundwater commonly does not coincide with the topographical catchment and groundwater divides may vary with time (Winter et al., 2003). Verry (2003) reports an analysis of 32 small research watersheds, which shows that the groundwater discharge determined from topographical boundaries and not recorded at the streamflow gauge is, on average, about 45% of the recorded streamflow. The subject of the present study is the 3 ha headwater catchment of Pukemanga Stream for

## Dynamic analysis of groundwater discharge at Pukemanga

V. J. Bidwell et al.

Title Page

Abstract

Introduction

Conclusions

References

Tables

Figures

⏪

⏩

◀

▶

Back

Close

Full Screen / Esc

Printer-friendly Version

Interactive Discussion

which a water balance calculated by Stewart et al. (2007) indicates that only 50% of the drainage from the topographical catchment area actually contributes to streamflow at the flow gauge site and that the remainder is groundwater flow that bypasses the flow gauge site. These authors describe groundwater contribution to Pukemanga Stream primarily on the evidence of natural isotope tracers and geochemistry.

The conceptual approach to hydrometric analysis described in the present paper is based on two principles. Firstly, the contribution of groundwater to streamflow can be differentiated from near-surface contribution (includes surface runoff and lateral sub-surface flow) by the nature of the respective dynamic responses to soil-plant-water processes at the land surface. Secondly, the catchment area of groundwater contribution is treated as an unknown to be determined, whereas the near-surface contribution is assumed to originate from the topographical catchment.

The first principle is similar to the long-studied problem of baseflow separation, for which there are many proposed approaches, including those that preserve mass balance within the catchment and employ analytical solutions of simplified groundwater concepts (e.g. Furey and Gupta, 2001; Huyck et al., 2005). These groundwater models are typically two dimensional vertical, but can include a parameter for divergence or convergence of groundwater flow (Huyck et al., 2005). For the purposes of our research we used the analytical solution of the linearised Boussinesq equation for an aquifer discharging to a fully penetrating stream, similar to an application by Sloan (2000). The additional assumption of time-invariant transmissivity enables this model to be represented in terms of one parameter, which is itself the ratio of lumped aquifer properties and scale. This ratio can then be explored for ranges of feasible values of contributing physical properties.

## Dynamic analysis of groundwater discharge at Pukemanga

V. J. Bidwell et al.

Title Page

Abstract

Introduction

Conclusions

References

Tables

Figures

⏪

⏩

◀

▶

Back

Close

Full Screen / Esc

Printer-friendly Version

Interactive Discussion

## 2 Methods

### 2.1 Catchment description

The Pukemanga Stream discharges from a small (60 m<sup>2</sup>) spring-fed wetland on the NW face of a spur (Fig. 1) in the hill country near the west coast of the North Island of New Zealand (37.787° S, 175.068° E) and discharges into the Kiripaka Stream. The land use of this area is pastoral grazing for sheep and beef cattle. The spur lies along a bearing of 30° between two streams that meet at a confluence about 1 km from the wetland. On a cross-section through the spur at the wetland, the distance between the bounding streams is about 430 m, and the ground elevation ranges from about 70 m a.m.s.l. at the streams to about 150 m a.m.s.l. on the top of the spur. These dimensions are relevant to consideration of the likely groundwater systems in this locality. The topographical catchment area above the wetland is 3.0 ha, with slopes up to 60°. Figure 1 shows ground elevations along a transect of the main channel and the locations of monitoring devices. A 1050 m<sup>2</sup> sub-area of the catchment was the subject of experimental studies of runoff processes under a large rainfall simulator (Adams et al., 2005; Adams and Elliott, 2006; Müller et al., 2006).

The geological description of this area (Kear and Schofield, 1978) indicates that the spur lies along the strike of the boundary between the tilted Marokopa Formation and the older Hakarimata Formation (Hokonui System) on the western side of the Hakarimata Anticline. The Pukemanga Catchment appears to lie within the Marokopa Formation. The lithology of these formations near this boundary is described as interbedded fine sandstone and siltstone, with some fossilised shellbeds. The sandstone and siltstone are indurated, those of the Hakarimata are described as well jointed, and these rocks are deeply weathered.

Yellow Ultic Soils and Orthic Granular Soils dominate the catchment. While differing in their parent materials, both groups have clay-enriched B horizons in common that typically result in imperfect drainage (Bruce, 1978; Hewitt, 1998). Mottled Yellow Ultic Soils with silt loam texture in the A-horizon and loamy clay or silty clay below were

## Dynamic analysis of groundwater discharge at Pukemanga

V. J. Bidwell et al.

Title Page

Abstract

Introduction

Conclusions

References

Tables

Figures

⏪

⏩

◀

▶

Back

Close

Full Screen / Esc

Printer-friendly Version

Interactive Discussion

described at four soil pit sites within the rainfall simulator area (Müller et al., 2006). The geometric means of the saturated vertical hydraulic conductivity decreased from 36–105 mm/h at 10 cm depth to 6–29 mm/h at 80 cm. Values of 2–12 mm/h were reported for the two sites where samples were additionally taken at 120 cm depth. The plant-available water fraction (field capacity – permanent wilting point) varies from 25–28% at 10 cm to 12–14% at 25 cm (Müller et al., 2006). On the basis of these data we estimated the available water capacity (AWC) to be 80 mm for pasture with root depth of 50 cm.

## 2.2 Instrumentation

The “deep well” with a casing diameter of 50 mm and 30 m depth was installed in March 2004 by commercial well drillers (Brown Bros. (NZ) Ltd., Hamilton). The bore log describes clay down to 9 m depth, and clay and weathered rock, which became hard at 27 m below ground surface. The screen extends from 27–30 m below ground surface. The water level in this well was recorded in 15 min resolution using a pressure sensor with integrated data logger (DIVER by Van Essen Instruments).

Shallow well WW4 with a casing diameter of 28 mm and 5.1 m depth was installed near the wetland in June 2003 using a direct push-probe system (Geonor, Norway). The installation procedure involved driving a 25 mm probe down to the required depth using a percussion hammer, followed by widening of the borehole using an auger. This well is screened from 3.7 to 5.1 m below ground surface. The water level was recorded in 15 min resolution using a capacitance probe with integrated data logger (WT-HR Water Height Data Logger by TruTrack, Christchurch, NZ).

## 2.3 Data

Rainfall, streamflow, and ground elevation data were provided by the National Institute of Water and Atmospheric Research (NIWA). Values of potential evapotranspiration (PET) were calculated from climatic data following FAO-56 (Allen et al., 1988). The

## Dynamic analysis of groundwater discharge at Pukemanga

V. J. Bidwell et al.

Title Page

Abstract

Introduction

Conclusions

References

Tables

Figures

⏪

⏩

◀

▶

Back

Close

Full Screen / Esc

Printer-friendly Version

Interactive Discussion

datasets used for the following analyses were:

- Daily rainfall, PET, and Pukemanga streamflow for 9 August 1995–18 January 2003. The calendar years 1996–2002 were used for model calibration. Only the years 1996, 1999, 2000, and 2002 had complete streamflow records and these were also used for checking annual water balance.
- Hourly rainfall, PET, and Pukemanga streamflow for 1 April 1998–31 March 1999 and 1 January 2004–29 November 2005. Several gaps in the streamflow record for 2005–2005, each of no more than four hours duration, were filled by linear interpolation within the record.
- Hourly groundwater level in the deep well, for 15 May 2004–27 October 2005. There are some missing data caused by groundwater levels exceeding the measurement range of the instrument. The period 16 July 2004–27 October 2005 was used for calibration.
- Hourly groundwater level for shallow well WW4. There are missing data caused by instrument failure. The period 1 May 2004–27 October 2005 was used for calibration.

## 2.4 Hydrometric dynamic model

The hydrometric model (Fig. 2) comprises the following components:

A soil-water balance model that generates drainage  $D(k)$  in the  $k$ th time period when the soil-water capacity  $W$  is exceeded by the net effect of precipitation inflow  $R(k)$  and evaporation outflow  $E(k)$ . Evaporation  $E(k)$  is calculated from Penman values of potential evaporation  $P(k)$ , a constant crop factor  $C$  and a reduction function  $F(a, w)$  (Minhas et al., 1974) sensitive to soil water content  $S(k)$  expressed as a fraction  $w$  of  $W$ .

$$E(k) = C \times F(a, w) \times P(k)$$

## Dynamic analysis of groundwater discharge at Pukemanga

V. J. Bidwell et al.

Title Page

Abstract

Introduction

Conclusions

References

Tables

Figures

◀

▶

◀

▶

Back

Close

Full Screen / Esc

Printer-friendly Version

Interactive Discussion



$$F(a, w) = \frac{1 - \exp(-aw)}{1 - 2 \exp(-a) + \exp(-aw)}$$

$$S(k) = \min [R(k) + S(k-1) - E(k), W]$$

$$D(k) = \max [R(k) + S(k-1) - E(k) - W, 0] \quad (1)$$

The value of parameter  $a=10$  was used for all analyses. This results, approximately, in values of  $F(a, w)$  of 1.0 for  $w=0.4$  to 1.0, with a smooth transition to a linear variation between  $F(a,0)=0$  and  $F(a,0.2)=0.8$ .

Drainage  $D(k)$  is partitioned into drainage entering groundwater  $D_{gw}(k)$  and near-surface drainage  $D_{ns}(k)$ , by means of a drainage threshold value  $D_T$  for the respective time period, so that:

$$D_{gw}(k) = \min [D(k), D_T]$$

$$D_{ns}(k) = \max [D(k) - D_T, 0] \quad (2)$$

The catchment area  $A_{ns}$  contributing to near surface drainage was set equal to the topographical catchment area of 3.0 ha, whereas the area  $A_{gw}$  contributing to groundwater discharge was allowed to vary as a model parameter to be calibrated.

The dynamics of vertical water transport through the vadose zone to the groundwater surface is represented by a single, first-order storage (e.g. Bidwell, 2005) with a mean storage time  $T_v$ .

The groundwater component is represented as a 2-D vertical slice of a homogeneous aquifer receiving spatially-uniform recharge on the top surface. One end of the aquifer is considered to be at the groundwater divide, with a no-flow boundary condition, and groundwater discharges from the other end (Fig. 2). The responses of groundwater discharge and groundwater level to recharge are expressed in terms of the eigenvalue solution to aquifer dynamics (Sahuquillo, 1983). For the simple case in Fig. 2, the analytical solution (Sloan, 2000; Pulido-Velazquez et al., 2005) is a function of only one parameter  $\alpha$ , which is determined by aquifer length  $L$ , storativity  $S$  and transmissivity  $T$ . The full mathematical description of this groundwater component is given in

## Dynamic analysis of groundwater discharge at Pukemanga

V. J. Bidwell et al.

Title Page

Abstract

Introduction

Conclusions

References

Tables

Figures

◀

▶

◀

▶

Back

Close

Full Screen / Esc

Printer-friendly Version

Interactive Discussion

Appendix A. In this paper we resolve transmissivity  $T$  into aquifer thickness  $B$  and hydraulic conductivity  $K$ , for the purpose of considering feasible aquifer dimensions and properties.

$$\alpha = \frac{KB}{SL^2} \quad (3)$$

Appendix A describes how the dynamics of the vadose zone and aquifer system can be mathematically represented by the set of difference equations:

$$y_i(k) = (a_i + a_v)y_i(k-1) - a_i a_v y_i(k-2) + b_i b_v D_{gw}(k)$$

$$y(k) = \sum_{i=0}^n y_i(k) \quad (4)$$

which relate groundwater discharge or piezometric head, as  $y(k)$ , to the drainage component  $D_{gw}(k)$ . The coefficients of Eq. (4) are functions (Appendix A) of the vadose zone hydrometric storage time  $T_v$  and the aquifer property parameter  $\alpha$ . The first ten ( $n=10$ ) eigenvalues of the aquifer model solution were used for this application.

The hydrometric model was implemented in Excel spreadsheet and the “Solver” tool used for model calibration. The primary objective function for calibration of the hydrometric model was minimisation of the sum of squared errors (SSE streamflow) for streamflow predictions up to 1.0 L/s. This range of flows includes 93% of all daily average streamflow and was selected to avoid the influence on model calibration of shorter-duration daily average flow events in the range of 1.0 to 12 L/s. Unpublished SiO<sub>2</sub> data (G. F. Barkle, personal communication) also indicates that the “old water” contribution to Pukemanga streamflow occurs at this low flow range. A secondary objective function was the sum of squared annual water balance errors (SSE water balance) for the four years of complete daily data.

The eigenvalue approach represents the aquifer as a parallel set of linear water storages, which is in series with the vadose zone storage. Therefore the system state

## Dynamic analysis of groundwater discharge at Pukemanga

V. J. Bidwell et al.

Title Page

Abstract

Introduction

Conclusions

References

Tables

Figures

⏪

⏩

◀

▶

Back

Close

Full Screen / Esc

Printer-friendly Version

Interactive Discussion

in terms of water content is easily calculated, which enables water balance calculations over any time period to take account of changes in the water storage status of the vadose zone and the aquifer.

## 2.5 Groundwater level response of the hydrometric model

5 The response of groundwater level  $h(x, t)$  in the aquifer component of the hydrometric model to recharge (piezometric response) involves coefficients that depend on the aquifer storativity  $S$  and the ratio  $x/L$ , where  $x$  is the distance from the no-flow boundary or groundwater divide (Fig. 2). The full mathematical description is given in Appendix A, Eq. (A6). The piezometric level  $h(x, t)$  is relative to a datum  $d$  that corresponds to zero groundwater discharge from the aquifer. Usually,  $d$  is not known and is therefore a model parameter.

## 2.6 Analytical procedure

1. The hydrometric model was fitted to the 1996–2002 daily streamflow data by calibrating the values of groundwater catchment area  $A_{gw}$ , drainage threshold  $D_T$ , dynamic parameter  $\alpha$ , and vadose zone residence time  $T_v$ , to minimise SSE (streamflow).
2. The values of  $A_{gw}$  and  $D_T$  were then recalibrated to minimise the SSE (water balance) for the four years 1996, 1999, 2000, 2002. The previous values of  $\alpha$  and  $T_v$  were sufficient for calculation of the changes in stored water for each year.
- 20 3. With  $A_{gw}$  and  $D_T$  held at the values from 2., the parameters  $\alpha$  and  $T_v$  were recalibrated to minimise the SSE (streamflow) for the seven years 1996–2002.
4. As a test of robustness, the four model parameters were fitted to each of the seven years, minimising SSE (streamflow), using initial values from 3.

---

### Dynamic analysis of groundwater discharge at Pukemanga

V. J. Bidwell et al.

---

Title Page

Abstract

Introduction

Conclusions

References

Tables

Figures

⏪

⏩

◀

▶

Back

Close

Full Screen / Esc

Printer-friendly Version

Interactive Discussion

## Dynamic analysis of groundwater discharge at Pukemanga

V. J. Bidwell et al.

5. Since the value of  $D_T$  remained stable in 4.  $A_{gw}$  was calibrated with the other parameters held at the values determined in 3.
6. Water balance errors for each of the years 1996, 1999, 2000, 2002 were calculated for three cases of assumptions about groundwater catchment area  $A_{gw}$ : (1)  $A_{gw}=3.0$  ha; (2)  $A_{gw}$  has the same value for all years; (3)  $A_{gw}$  varies from year to year.
7. The contribution of predicted groundwater discharge as a percentage of predicted total drainage was calculated from the seven years of daily data for two cases: on a unit area basis (mm/y) and on a weighted area basis that accounts for the different catchment areas for near-surface runoff and groundwater discharge.
8. The hydrometric model was fitted to hourly data for 1 April 1998–31 March 1999 by scaling  $\alpha$  from a daily rate to an hourly rate, assigning  $A_{gw}$  to the 1998 value from the daily model, and then calibrating the parameters  $D_T$  and  $T_v$ .
9. The hydrometric model was then calibrated to the hourly data for 1 January 2004–30 September 2005 by fitting only the groundwater catchment area  $A_{gw}$ .
10. The groundwater level data for the deep well were calibrated to the piezometric response of the hydrometric model by fitting the values of storativity  $S$ , location ratio  $x/L$ , and datum  $d$ , with all other parameters retained at the previously calibrated values.
11. The groundwater level data for the shallow well WW4 were calibrated to the piezometric response model by retaining the value of storativity  $S$  from the deep well and fitting only the values of location ratio  $x/L$  and datum  $d$ .
12. A table of values of hydraulic conductivity was calculated from Eq. (3) for consideration of feasible aquifer dimensions corresponding to the derived value of the dynamic parameter  $\alpha$ .

Title Page

Abstract

Introduction

Conclusions

References

Tables

Figures

⏪

⏩

◀

▶

Back

Close

Full Screen / Esc

Printer-friendly Version

Interactive Discussion

### 3 Results

#### 3.1 Hydrometric model with daily data

Table 1 shows the values of the four parameters of the hydrometric model, calibrated with daily data, for each of the three cases: same values for all years; different values for each year; and only contributing groundwater catchment area allowed to vary with each year.

Figure 3 shows the seven years of predicted daily groundwater flow, compared with the record of observed daily streamflow.

#### 3.2 Annual water balance for daily data

Table 2 shows the annual water balance predictions and errors for the four years with complete daily streamflow records. The results are for three assumptions about the contributing groundwater catchment area  $A_{gw}$ : equal to the 3.0 ha topographical catchment area; fixed calibrated value for all seven years; and calibrated value can vary in each of the seven years.

Table 3 shows the predicted groundwater contribution for each of the seven years of daily data, as a percentage of the total predicted streamflow. Two measures are used: contribution to Pukemanga Stream, weighted for near-surface and groundwater catchment areas; and in terms of unit area processes. Two assumptions are considered about groundwater catchment area: fixed for all years at the calibrated value; calibrated area can vary from year to year.

#### 3.3 Hydrometric model with hourly data

Table 4 shows how calibration of the hourly models of streamflow and piezometric response of wells proceeded within constraints set by prior results obtained in earlier stages. Thus the dynamic parameter  $\alpha$  is carried through from the daily models, and

Title Page

Abstract

Introduction

Conclusions

References

Tables

Figures

⏪

⏩

◀

▶

Back

Close

Full Screen / Esc

Printer-friendly Version

Interactive Discussion

annually varying groundwater catchment area  $A_{gw}$  has a common value for the one year (1998) of daily and hourly data.

Figures 4 and 5 show the hourly predictions of groundwater flow, and Figs. 6 and 7 show the predicted hourly piezometric response at the deep and shallow monitoring wells.

### 3.4 Feasible aquifer dimensions

Table 5 has been calculated from Eq. (3) to enable consideration of feasible aquifer dimensions that are consistent with the calibrated dynamic behaviour, likely hydraulic conductivity, and drainable porosity of the vadose zone.

## 4 Discussion

### 4.1 Groundwater catchment area and water balance

The dynamic behaviour of low flow in the catchment, especially during periods of negligible soil drainage, is defined by the calibrated value of the parameter  $\alpha=0.0085 \text{ d}^{-1}$  that is used in the groundwater component of the hydrometric model (Fig. 2). The dynamic contribution of transport through the vadose zone is very small, as quantified by the mean hydraulic residence time of  $T_v=1.0 \text{ d}$  (Table 1, #3). Only two other parameters of the hydrometric model are involved in matching estimated soil-water drainage to observations of low streamflow that is hypothesised to be groundwater discharge. These are: catchment area contributing to groundwater,  $A_{gw}$ ; and the threshold vertical drainage rate,  $D_T$ , which partitions total soil drainage into groundwater recharge and near-surface drainage. There is potential for interdependence between these two parameters because their product defines the amount of groundwater recharge from the time series of estimated total soil-water drainage. Table 1 (#4) shows the effect of calibrating the four model parameters to each year of annual data. The aquifer dynamic

## Dynamic analysis of groundwater discharge at Pukemanga

V. J. Bidwell et al.

Title Page

Abstract

Introduction

Conclusions

References

Tables

Figures

⏪

⏩

◀

▶

Back

Close

Full Screen / Esc

Printer-friendly Version

Interactive Discussion

**Dynamic analysis of groundwater discharge at Pukemanga**

V. J. Bidwell et al.

Title Page

Abstract

Introduction

Conclusions

References

Tables

Figures

⏪

⏩

◀

▶

Back

Close

Full Screen / Esc

Printer-friendly Version

Interactive Discussion

parameter  $\alpha$  does vary considerably, and this may indicate that the simple aquifer component of the hydrometric model does not capture the full range of low flow behaviour. The vadose zone dynamic parameter  $T_v$  is quite robust, as might be expected, but the lack of variation in the drainage threshold of  $D_T=21.0$  mm/d is more surprising. Given this fixed value of  $D_T$ , it is expected that groundwater catchment area  $A_{gw}$  would vary so that water balance errors are minimised.

Allowing all model parameters to vary annually reduced the objective function, SSE (streamflow), to 88% of its value for parameters that are the same for all years. However, since there is not a sound physical reason for allowing the dynamic parameter  $\alpha$  to vary, this variation was recognised as a statistical feature of the model concept, and the calibrated value for the seven years data was retained. There is a hypothesis (e.g. Winter et al., 2003) for time variation of the contributing groundwater catchment area  $A_{gw}$ , and so these annual values were recalibrated with the other three model parameters held constant (Table 1, #5). The resulting SSE (streamflow) was 94% of the constant area case. The values of  $A_{gw}=1.09$ – $1.32$  ha are significantly smaller (36% to 44%) than the topographical catchment area of 3.0 ha.

Table 2 shows the annual water balance errors for the four calendar years of complete daily climatic and streamflow record, under two assumptions about time variation of  $A_{gw}$ , in comparison with use of the topographical catchment area as a value for  $A_{gw}$ . The use of the topographical catchment area of 3.0 ha for water balance calculations leads to gross errors of 84 to 189% overestimation of streamflow, whereas either of the results from assumptions about a smaller area of contributing groundwater reduces this error to a range of  $-26$  to  $+33\%$ , with an average of 8%. The case for time-varying groundwater catchment area does not improve the average water balance error for the four years.

4.2 Contribution of groundwater discharge to streamflow

The proportion of groundwater contribution to streamflow is relevant to estimation of nitrate loads from catchments because of the assumption that most nitrate leached

from the soil profile is transported by soil-water drainage that becomes recharge to the underlying groundwater. A small amount of nitrate may also be transported by soil-water drainage that is involved in near-surface contribution to streamflow but this can usually be neglected in calculations if the proportion of near-surface flow processes is also small. The concept of different contributing areas for groundwater and near-surface flow raises the question of whether the groundwater contribution should be calculated on a hydrological process basis (unit area) or on a specific streamflow basis for which the different contributing areas are used to weight the contribution (weighted). The respective modelled groundwater contributions for these two bases (“unit area” and “weighted”) for each of the seven years of daily data are shown in Table 3. For the two modelling assumptions about groundwater catchment area (Table 3), the time-averaged groundwater contribution is 78–93% on a unit area basis and 58–83% on an annual streamflow basis specifically for Pukemanga. The low proportion of near-surface runoff (~10%) from these steep hillslopes may seem surprising in a temperate climate with annual rainfall of 1500–2000 mm.

### 4.3 Dynamic linkages

The groundwater derived from the non-contributing area within the topographical catchment, and hence not measured at the streamflow gauge, is usually termed “deep seepage” as a water balance item. However, we are concerned about the origin and fate of this unaccounted groundwater flow because of its role in transport of nitrate from land use origin to its contribution to surface water quality. This requires an approach that takes into account the regional groundwater system at a larger scale, within which the contribution to Pukemanga Stream is a local groundwater system (e.g. Winter et al., 2003). The dynamic behaviour of this local system is quantified by the parameter  $\alpha$  in Eq. (3) of the hydrometric model. The value of  $\alpha=0.0085 \text{ d}^{-1}$  from the daily model was pro-rated to  $\alpha=0.00035 \text{ h}^{-1}$  for use in an hourly version of the model. Calibration of this hourly model during the 1998–1999 period concurrent with the daily model (Fig. 4) provided hourly-based values of  $T_v=12 \text{ h}$  and  $D_T=3.4 \text{ mm h}^{-1}$  (Table 4). This same model

## Dynamic analysis of groundwater discharge at Pukemanga

V. J. Bidwell et al.

Title Page

Abstract

Introduction

Conclusions

References

Tables

Figures

◀

▶

◀

▶

Back

Close

Full Screen / Esc

Printer-friendly Version

Interactive Discussion



was then calibrated to the 2004–2005 hourly data by fitting only the groundwater catchment area  $A_{gw}$  (Fig. 5). Thus we have an evidential chain of groundwater discharge dynamic behaviour from the daily model of 1996–2002 through to the hourly model of 2004–2005. This latter model was then compared with the concurrent dynamic response of the piezometric levels at the deep well (Fig. 6) and shallow well (Fig. 7) to the same hourly series of groundwater recharge and with the same value of dynamic parameter  $\alpha$  (Table 4).

The predicted hourly groundwater discharge shown in Fig. 4 and Fig. 5 still does not account satisfactorily for periods of higher flows with dynamics extending over periods of many days. These flows may also be part of the groundwater discharge regime but have not been captured by the dynamics of the simple groundwater model used for our analysis. The groundwater catchment area  $A_{gw}=1.42$  ha (Table 4) calibrated for the 2004–2005 hourly data is greater than the value for 1998–1999 (1.16 ha) or even the maximum value (1.32 ha) for the daily data (Table 2).

Figure 6 shows reasonable prediction of the dynamics of piezometric levels in the deep well for the three highest events of the record, although the actual peaks are missing due to instrument failure. The two smaller events of November 2004 and January 2005 are poorly predicted, as is the timing of the initial rise in June 2004. We are not able to offer a convincing explanation for this observation other than the possibility that presence of very low-conductivity layers may have retarded vertical movement of groundwater.

The datum for the deep well model is  $d=97.0$  m (a.m.s.l.) (Table 4), which represents the water level corresponding to long-term zero recharge. This level is significantly higher than the corresponding datum of 76.15 m (a.m.s.l.) at the shallow well and the  $\sim 73$  m elevation of the wetland. The reason for this non-horizontal basis for the small groundwater catchment of the Pukemanga wetland is that this groundwater body is a local system within the regional groundwater body that is determined by the boundary conditions of the 430 m wide spur on which lies the Pukemanga Catchment (Fig. 1). At a time that the Pukemanga Stream might cease to flow because of continuing zero

## Dynamic analysis of groundwater discharge at Pukemanga

V. J. Bidwell et al.

Title Page

Abstract

Introduction

Conclusions

References

Tables

Figures

⏪

⏩

◀

▶

Back

Close

Full Screen / Esc

Printer-friendly Version

Interactive Discussion

**Dynamic analysis of groundwater discharge at Pukemanga**

V. J. Bidwell et al.

Title Page

Abstract

Introduction

Conclusions

References

Tables

Figures

⏪

⏩

◀

▶

Back

Close

Full Screen / Esc

Printer-friendly Version

Interactive Discussion

recharge, this local groundwater body would disappear and the regional groundwater would continue to drain to the streams that bound the spur. The resulting piezometric surface would then be expected to include the datum elevations of the deep well and shallow well. At this state of the groundwater body, drainage to the wetland is no longer available and the dynamics would be determined by the increased drainage paths to the bounding streams. The corresponding dynamic parameter  $\alpha$  of the larger system is unlikely to have been detected in the analysis of the present data, and this underlying state has been parameterised in terms of spatially-varying  $d$ -values.

Figure 7 shows that the piezometric response of the shallow well WW4 is reasonably predicted by the model, on the basis that the dynamic behaviour is part of the same groundwater body as involved in the piezometric level at the deep well and the groundwater discharge component of Pukemanga Stream.

#### 4.4 Aquifer hydraulic properties

Table 4 shows the calibrated value of storativity  $S$  is 0.049. This value can be compared with the soil physical properties reported by Müller et al. (2006; Table 1). For depths to 120 cm, the difference between field capacity and total pore volume is 0.01–0.08, so it is not unexpected that in the weathered clay near the groundwater table the calibrated value of 0.049 is feasible. Table 5 shows values of hydraulic conductivity  $K$ , aquifer length  $L$ , and aquifer thickness  $B$  that satisfy Eq. (3) for the calibrated values of  $S=0.049$  and  $\alpha=0.0085$  m/d.

An estimate of aquifer length  $L$  may be obtained from the horizontal distance between the Pukemanga weir and the deep well, and the scale ratio of  $x/L=0.85$  (Table 4). The resulting estimate is  $L \sim 140$  m. A feasible value of hydraulic conductivity  $K$  may be compared with the value of vertical conductivity required to support the partitioning threshold  $D_T=3.4$  mm/h (Table 4), which is 82 mm/d. Consideration of the results in Table 5 suggests that the for aquifer thickness of, for example 20 m to 40 m, the required horizontal hydraulic conductivity would need to be about 200–400 mm/d. In conducting this analysis we realise that this local aquifer system does not strictly

satisfy the assumptions of the 2-D vertical, homogeneous model that is the basis of Eq. (3). However, the results do indicate that relatively low conductivity material in a steep hillslope can support small groundwater bodies that have sufficient storage to maintain perennial headwater streams in this climate.

#### 5 4.5 Implications for nitrate discharge to surface waters

Our original hypothesis was that groundwater is the dominant pathway for nitrate discharge from a catchment because the contributing water has all passed through the soil profile. Other pathways were considered to be minor. Table 3 shows that, on a unit area basis, 86% of streamflow from this land surface is groundwater discharge.

10 For the Pukemanga Stream this proportion is about 70% because the groundwater catchment is less than half the topographical area. For assessing the effect of hill-country pastoral land use on nitrate discharge to streams, Pukemanga Catchment is not a representative sample of the larger spur of land on which it lies because of the disproportion of areas contributing to groundwater and near-surface flow paths. It is possible that groundwater may have been responsible for the formation of the small Pukemanga Catchment on the side of the much larger spur. The occurrence of the wetland suggests that groundwater sapping has been a significant geo-morphological process.

## 5 Conclusions

20 The partial-area contribution of groundwater discharge to streamflow from the Pukemanga Catchment supports previous research (e.g. Verrey, 2003) on the mismatch between groundwater catchments and the contributing topographical catchment of the associated stream. The results also support some degree of time-varying area of groundwater catchments (Winter et al., 2003). The differing catchment areas of groundwater discharge and near-surface runoff contribution to a stream mean that care is required

## Dynamic analysis of groundwater discharge at Pukemanga

V. J. Bidwell et al.

Title Page

Abstract

Introduction

Conclusions

References

Tables

Figures

◀

▶

◀

▶

Back

Close

Full Screen / Esc

Printer-friendly Version

Interactive Discussion

## Dynamic analysis of groundwater discharge at Pukemanga

V. J. Bidwell et al.

Title Page

Abstract

Introduction

Conclusions

References

Tables

Figures

◀

▶

◀

▶

Back

Close

Full Screen / Esc

Printer-friendly Version

Interactive Discussion

in the hydrological analysis of the relative proportions of these contributions when conducting catchment-scale experiments. For the purpose of estimating nitrate contamination of streams from agricultural land use, robust estimates of groundwater discharge contribution are important because this is the primary transport route for nitrate leached from the soil profile. The quantification of nitrate transported in groundwater discharge is not the only issue. The land use practices that generate nitrate discharge may not all be in the topographical catchment of the stream of interest. Our study demonstrated this issue at a small headwater catchment scale but the lesson can also be applied at larger scales (Verrey, 2003).

The groundwater contribution from the steep hillslopes of the Pukemanga catchment was a very high (~90%) proportion of the streamflow generation processes under a relatively wet rainfall climate. This particular proportion was supported by a requirement for vertical hydraulic conductivities within the vadose zone of no more than  $4 \text{ mm h}^{-1}$ . It should be a consideration for other steep hill country catchments that the proportion of groundwater discharge in streamflow may be similarly high. The dynamics of groundwater discharge from this steep hillslope, which maintains a perennial stream, demonstrates that aquifer storage in headwater catchments can be an important component of water storage at the large catchment scale.

## Appendix A

### Mathematical basis of the groundwater model

The partial differential equation:

$$\frac{\partial}{\partial x} \left[ T_x(x, y) \frac{\partial h(x, y, t)}{\partial x} \right] + \frac{\partial}{\partial y} \left[ T_y(x, y) \frac{\partial h(x, y, t)}{\partial y} \right] + P(x, y) R(t) = S(x, y) \frac{\partial h(x, y, t)}{\partial t} \quad (\text{A1})$$

describes the piezometric response  $h(x, y, t)$  of 2-D-horizontal, transient groundwater flow in a heterogeneous, anisotropic aquifer, to recharge of fixed spatial pattern  $P(x, y)$

**Dynamic analysis of groundwater discharge at Pukemanga**

V. J. Bidwell et al.

Title Page	
Abstract	Introduction
Conclusions	References
Tables	Figures
⏪	⏩
◀	▶
Back	Close
Full Screen / Esc	
Printer-friendly Version	
Interactive Discussion	

with time-varying magnitude  $R(t)$ . The aquifer properties of transmissivity components  $T_x, T_y$  and storativity  $S$  are assumed to be time-invariant. It is shown (Sahuquillo, 1983; Sloan, 2000; Pulido-Velazquez et al., 2005) that the solution to Eq. (A1) can be expressed in terms of the eigenvalues and eigenfunctions of this distributed linear system.

5 Pulido-Velazquez et al. (2006) also show that time-varying transmissivity in unconfined aquifers can be incorporated by means of a modification to the recharge stress term.

The eigenvalue solution can be considered as a parallel set of conceptual first-order, linear water storages. The contribution of the  $i$ th storage to the output value  $y(t)$  of piezometric head or groundwater discharge at specific locations is:

$$y_i(t) = \exp(-\alpha_i t) y_i(0) + \beta_i [1 - \exp(-\alpha_i t)] R$$

$$10 \quad y(t) = \sum_{i=0}^{\infty} y_i(t) \tag{A2}$$

in response to a recharge stress  $R(t)=R$  for the time interval  $(0,t)$ . The parameters  $\alpha_j$  are the eigenvalues of the system and remain the same for all recharge patterns and output variables. The parameters  $\beta_j$  depend on whether  $y(t)$  represents piezometric head or groundwater discharge, the spatial pattern  $R(x, y)$  of recharge, and the spatial location of the output of interest.

15 Theoretically, there are an infinite number of eigenvalues in the solution but in practice many of these make an insignificant contribution. Pulido-Velazquez et al. (2005) provide measures of error for levels of truncation of terms in particular applications. When the number of eigenvalues is truncated to  $n$  terms, then:

$$20 \quad \beta_n = \sum_{i=1}^{\infty} \beta_i - \sum_{i=1}^{n-1} \beta_i \tag{A3}$$

In the case of numerical groundwater models, the parameters  $\alpha_j, \beta_j$  ( $i=1, n$ ) can be computed from the computational matrix for the  $n$  nodes or cells. For particular applications, the number of eigenvalues can be truncated to a smaller set that enables more

rapid model execution for use in complex water resource systems analysis (Andreu and Sahuquillo, 1987).

Analytical expressions for eigenvalues and eigenfunction coefficients can be derived for some simple aquifer models and these provide useful dynamic models of groundwater discharge, piezometric response (Sloan, 2000), and stream-aquifer interaction (Pulido-Velazquez et al., 2005). The eigenvalues for the aquifer component shown in Fig. 3, with discharge to a fully-penetrating stream are:

$$\alpha_i = \left[ \frac{(2i-1)\pi}{2} \right]^2 \alpha \quad (\text{A4})$$

$$\alpha = \frac{KB}{SL^2}$$

The eigenfunction coefficients for groundwater discharge to the stream are:

$$\beta_i = \frac{8}{[(2i-1)\pi]^2} \quad (\text{A5})$$

and for the piezometric head  $h(x, t)$  the coefficients are:

$$\beta_i = \frac{c_i F_i(x)}{\alpha_i}$$

$$c_i = \frac{4(-1)^{i+1}}{(2i-1)\pi}$$

$$F_i(x) = \frac{1}{S} \cos \left[ \frac{(2i-1)\pi x}{2L} \right] \quad (\text{A6})$$

Pulido-Velazquez et al. (2005) show that when the stream is partially connected the eigenvalues are modified to reflect the streambed resistance and the first eigenfunction coefficient increases towards unity. In the present paper we use the fully-connected form described by Eqs. (A4–A6).

## Dynamic analysis of groundwater discharge at Pukemanga

V. J. Bidwell et al.

Title Page

Abstract

Introduction

Conclusions

References

Tables

Figures

◀

▶

◀

▶

Back

Close

Full Screen / Esc

Printer-friendly Version

Interactive Discussion

For implementation of the model at time intervals of  $\Delta t$ , Eqs. (A2) become a set of difference equations:

$$\begin{aligned}
 y_i(k) &= a_i y_i(k-1) + b_i R(k) \\
 a_i &= \exp(-\alpha_i \Delta t) \\
 b_i &= \beta_i [1 - \exp(-\alpha_i \Delta t)] \\
 y(k) &= \sum_{i=0}^n y_i(k)
 \end{aligned}
 \tag{A7}$$

The input recharge  $R(k)$  is assumed to have a constant value during the time interval  $\Delta t$ . However, in the model structure shown in Fig. 3 recharge to the aquifer component is the output from the first-order model of transport through the vadose zone. If the vadose zone has a mean hydrometric residence time of  $T_v$  then the recharge  $R(k)$  to the groundwater surface from soil-water drainage  $D_{gw}(k)$  at time intervals of  $\Delta t$  is:

$$\begin{aligned}
 R(k) &= a_v R(k-1) + b_v D_{gw}(k) \\
 a_v &= \exp\left(-\frac{1}{T_v}\right) \\
 b_v &= \left[1 - \exp\left(-\frac{1}{T_v}\right)\right]
 \end{aligned}
 \tag{A8}$$

The vadose zone component is in series with the parallel set of Eq. (A7). The resulting difference equations can be developed by means of z-transforms (e.g. Bidwell, 2005), so that:

$$\begin{aligned}
 y_i(k) &= (a_i + a_v) y_i(k-1) - a_i a_v y_i(k-2) + b_i b_v D_{gw}(k) \\
 y(k) &= \sum_{i=0}^n y_i(k)
 \end{aligned}
 \tag{A9}$$

**Acknowledgements.** The technical assistance of C. Burgess, M. Haas, O. Andler, and A. Wall at the field site is gratefully acknowledged. We also thank S. Elliott and co-workers from NIWA Hamilton for providing rainfall, streamflow, and terrain data.

## Dynamic analysis of groundwater discharge at Pukemanga

V. J. Bidwell et al.

Title Page

Abstract

Introduction

Conclusions

References

Tables

Figures

◀

▶

◀

▶

Back

Close

Full Screen / Esc

Printer-friendly Version

Interactive Discussion

## References

- Adams, R., Parkin, G., Rutherford, J. C., Ibbitt, R. P., and Elliott, A. H.: Using a rainfall simulator and a physically based hydrological model to investigate runoff processes in a hillslope, *Hydrol. Process.*, 19, 2209–2223, 2005.
- 5 Adams, R. and Elliott, S.: Physically based modelling of sediment generation and transport under a large rainfall simulator, *Hydrol. Process.*, 20, 2253–2270, 2006.
- Allen, R. G., Pereira, L. S., Raes, D., and Smith, M.: Crop evapotranspiration (guidelines for computing crop water requirements), FAO Irrigation and Drainage Paper No. 56, 1988.
- Andreu, J. and Sahuquillo, A.: Efficient aquifer simulation in complex systems, *J. Water Res. Pl.-ASCE*, 113, 110–129, 1987.
- 10 Bidwell, V. J.: Realistic forecasting of groundwater level, based on the eigenstructure of aquifer dynamics, *Math. Comput. Simulat.*, 69, 12–20, 2005.
- Bruce, J. G.: Soils of part Raglan County, South Auckland, New Zealand, *New Zealand Soil Bureau Bulletin* 41, 1978.
- 15 Furey, P. R. and Gupta, V. K.: A physically based filter for separating base flow from streamflow time series, *Water Resour. Res.*, 37, 2709–2722, 2001.
- Hewitt, A. E.: *New Zealand Soil Classification*, Landcare Research Science Series No. 1, 1998.
- Huyck, A. A. O., Pauwels, V. R. N., and Verhoest, N. E. C.: A base flow separation algorithm based on the linearized Boussinesq equation for complex hillslopes, *Water Resour. Res.*, 41, WO8415, doi:10.1029/2004WR003789, 2005.
- 20 Kear, D. and Schofield, J. C.: *Geology of the Ngaruawahia Subdivision*, New Zealand Geological Survey Bulletin 88, 1978.
- Minhas, B. S., Parikh, K. S., and Srinivasan, T. N.: Toward the production function for wheat yields with dated inputs of irrigation water, *Water Resour. Res.*, 10, 383–393, 1974.
- 25 Müller, K., Stenger, R., and Rahman, A.: Herbicide loss in surface runoff from a pastoral hillslope in the Pukemanga catchment (New Zealand): Role of pre-event soil water content, *Agr. Ecosyst. Environ.*, 112, 381–390, 2006.
- Pulido-Velazquez, M. A., Sahuquillo-Herraiz, A., Ochoa-Rivera, J. C., and Pulido-Velazquez, D.: Modeling of stream-aquifer interaction: the embedded multireservoir model, *J. Hydrol.*, 313, 166–181, 2005.
- 30 Pulido-Velazquez, D., Sahuquillo, A., and Andreu, J.: A two-step explicit solution of the Boussinesq equation for efficient simulation of unconfined aquifers in conjunctive-use models, *Wa-*

**HESSD**

4, 2461–2496, 2007

---

### Dynamic analysis of groundwater discharge at Pukemanga

V. J. Bidwell et al.

---

Title Page

Abstract

Introduction

Conclusions

References

Tables

Figures

◀

▶

◀

▶

Back

Close

Full Screen / Esc

Printer-friendly Version

Interactive Discussion



- ter Resour. Res., 42, WO5423, doi:10.1029/2005WR004473, 2006.
- Quinn, J. M., Cooper, A. B., Davies-Colley, R. J., Rutherford, J. C., and Williamson, R. B.: Land use effects on habitat, water quality, periphyton, and benthic invertebrates in Waikato, New Zealand, hill-country streams, New Zeal. J. Mar. Fresh., 31, 579–597, 1997.
- 5 Quinn, J. M. and Stroud, M. J.: Water quality and sediment and nutrient export from New Zealand hill-land catchments of contrasting land use, New Zeal. J. Mar. Fresh., 36, 409–429, 2002.
- Sahuquillo, A.: An eigenvalue numerical technique for solving unsteady linear groundwater models continuously in time, Water Resour. Res., 19, 87–93, 1983.
- 10 Sloan, W. T.: A physics-based function for modeling transient groundwater discharge at the watershed scale, Water Resour. Res., 36, 225–241, 2000.
- Smith, C. M., Wilcock, R. J., Vant, W. N., Smith, D. G., and Cooper, A. B.: Towards sustainable agriculture: freshwater quality in New Zealand and the influence of agriculture, MAF Policy Technical Paper, 93/10, 208p., ISSN, 171–4662, 1993.
- 15 Stewart, M. K., Mehlhorn, J., and Elliott, S.: Hydrometric and natural tracer (oxygen-18, silica, tritium and sulphur hexafluoride) evidence for a dominant groundwater contribution to Pukemanga Stream, New Zealand, Hydrol. Process., doi:10.1002/hyp2557, in press, 2007.
- Verry, E. S.: Estimating ground water yields in small research basins, Ground Water, 41-Watershed Issue, 1001–1004, 2003.
- 20 Winter, T. C., Rosenberry, D. O., and LaBaugh, J. W.: Where does the ground water in small watersheds come from?, Ground Water, 41-Watershed Issue, 989–1000, 2003.

## Dynamic analysis of groundwater discharge at Pukemanga

V. J. Bidwell et al.

Title Page

Abstract

Introduction

Conclusions

References

Tables

Figures

◀

▶

◀

▶

Back

Close

Full Screen / Esc

Printer-friendly Version

Interactive Discussion

## Dynamic analysis of groundwater discharge at Pukemanga

V. J. Bidwell et al.

**Table 1.** Hydrometric model parameters for daily data from Pukemanga 1996–2002.

#	Parameter	Year							Mean	SSE %
		1996	1997	1998	1999	2000	2001	2002		
1.	$\alpha$ ( $\text{d}^{-1}$ )	0.0085								
to	$T_v$ (d)	1.00								
3.	$A_{gw}$ (ha)	1.13								100
	$D_T$ (mm/d)	21.0								
	$\alpha$ ( $\text{d}^{-1}$ ) $\times 10^{-3}$	11.7	8.1	8.1	7.0	5.9	6.1	12.3	8.5	
	$T_v$ (d)	1.00	1.00	1.00	1.00	1.00	1.00	1.00	1.00	
4.	$A_{gw}$ (ha)	1.32	1.14	1.16	1.09	1.15	1.32	1.14	1.19	88
	$D_T$ (mm/d)	21.0	21.0	21.0	21.0	21.0	21.0	21.0	21.0	
5.	$A_{gw}$ (ha)	1.32	1.13	1.16	1.06	1.10	1.29	1.14	1.17	94

# Refers to a step in the “Analytical procedure” section.

Title Page

Abstract

Introduction

Conclusions

References

Tables

Figures

⏪

⏩

◀

▶

Back

Close

Full Screen / Esc

Printer-friendly Version

Interactive Discussion

**Dynamic analysis of groundwater discharge at Pukemanga**

V. J. Bidwell et al.

**Table 2.** Annual water balance errors for daily data from Pukemanga.

Year	1996	1999	2000	2002	Mean
Rainfall R (mm)	1967	1532	1565	1678	1685
Potential evaporation P (mm)	832	807	775	783	799
Predicted evaporation E (mm)	642	595	596	625	615
Predicted groundwater recharge (mm)	1128	829	794	950	1002
Predicted near-surface runoff (mm)	181	117	122	125	136
Observed mean streamflow (L/s)	0.660	0.308	0.332	0.474	0.444
Predicted mean streamflow (L/s) for:					
$A_{gw}=3.0$ ha	1.217	0.890	0.809	1.092	0.986
Error (%)	84	189	144	130	137
$A_{gw}=1.13$ ha for all years <sup>(1)</sup>	0.556	0.410	0.345	0.498	0.452
Error (%)	-16	33	4	5	7
$A_{gw}$ varies from year to year <sup>(2)</sup>	0.623	0.393	0.338	0.502	0.464
Error (%)	-6	28	2	6	8

<sup>(1)</sup> #3 in Table 1 <sup>(2)</sup> #5 in Table 1

Title Page

Abstract Introduction

Conclusions References

Tables Figures

⏪ ⏩

◀ ▶

Back Close

Full Screen / Esc

Printer-friendly Version

Interactive Discussion

**Dynamic analysis of groundwater discharge at Pukemanga**

V. J. Bidwell et al.

**Table 3.** Predicted groundwater discharge as a percent of predicted total drainage.

	$A_{gw}=1.13; D_T=21.0^{(1)}$		$A_{gw}$ variable; $D_T=21.0^{(2)}$	
	Unit area	Weighted	Unit area	Weighted
1996	86	70	86	73
1997	93	83	93	83
1998	78	58	78	58
1999	88	73	88	72
2000	87	71	87	71
2001	81	61	81	64
2002	88	74	88	74
Mean	86	70	86	71

<sup>(1)</sup> #3 in Table 1 <sup>(2)</sup> #5 in Table 1

Title Page

Abstract Introduction

Conclusions References

Tables Figures

⏪ ⏩

◀ ▶

Back Close

Full Screen / Esc

Printer-friendly Version

Interactive Discussion

## Dynamic analysis of groundwater discharge at Pukemanga

V. J. Bidwell et al.

**Table 4.** Hydrometric and piezometric model parameters for hourly data.

Parameter	Hydrometric model		Piezometric model	
	1 April 1998– 31 March 1999	1 Jan 2004– 29 Nov 2005	Deep well	Shallow well
$\alpha$ ( $\text{h}^{-1}$ )	0.00035 <sup>(1)</sup>	0.00035 <sup>(1)</sup>	0.00035 <sup>(1)</sup>	0.00035 <sup>(1)</sup>
$T_v$ (h)	12	12 <sup>(3)</sup>	12 <sup>(3)</sup>	12 <sup>(3)</sup>
$A_{gw}$ (ha)	1.16 <sup>(2)</sup>	1.42		
$D_T$ (mm/h)	3.4	3.4 <sup>(3)</sup>	3.4 <sup>(3)</sup>	3.4 <sup>(3)</sup>
$S$			0.049	0.049 <sup>(4)</sup>
$x/L$			0.0	0.87
$d$ (m) a.m.s.l. <sup>(5)</sup>			97.0	76.15

<sup>1</sup> Pro-rated from the daily value in Table 1.

<sup>2</sup> The 1998 value from Table 1 (#5).

<sup>3</sup> Copied from the 1998–99 calibration.

<sup>4</sup> Same value as for deep well.

<sup>5</sup> a.m.s.l. – above mean sea level.

Title Page

Abstract

Introduction

Conclusions

References

Tables

Figures

⏪

⏩

◀

▶

Back

Close

Full Screen / Esc

Printer-friendly Version

Interactive Discussion

**Dynamic analysis of groundwater discharge at Pukemanga**

V. J. Bidwell et al.

**Table 5.** Hydraulic conductivity ( $\text{mm d}^{-1}$ ) of the aquifer calculated from Eq. (3), for a range of aquifer dimensions, with dynamic parameter  $\alpha=0.0085 \text{ d}^{-1}$  and storativity  $S=0.049$ .

<i>B</i> (m)	Aquifer length <i>L</i> (m)					
	100	120	140	160	180	200
5	833	1200	1633	2132	2699	3332
10	417	600	816	1066	1349	1666
20	208	300	408	533	675	833
40	104	150	204	267	337	417
60	69	100	136	178	225	278
80	52	75	102	133	169	208

Title Page

Abstract Introduction

Conclusions References

Tables Figures

⏪ ⏩

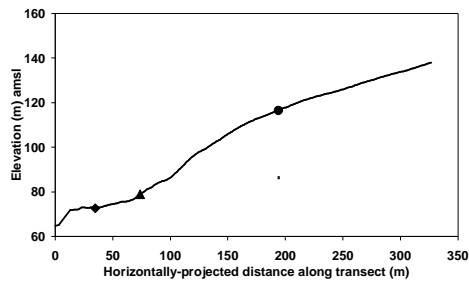
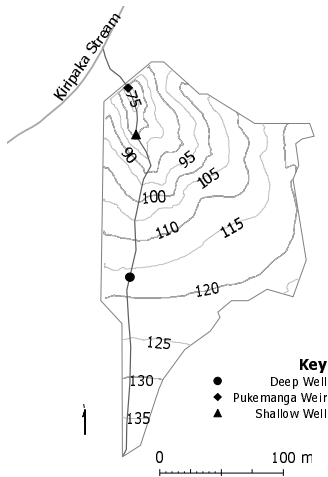
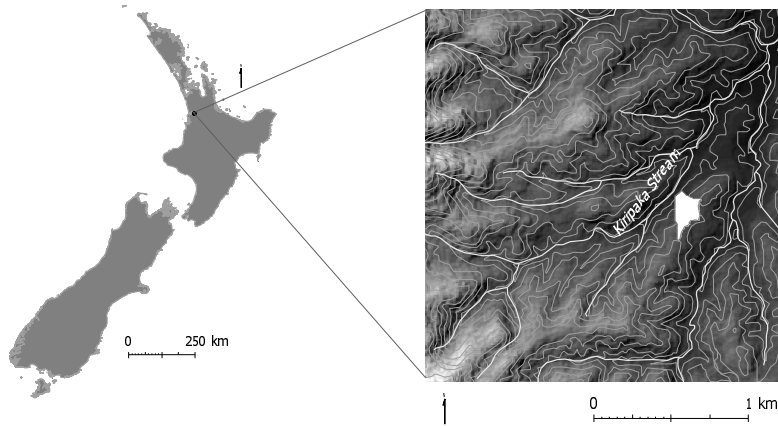
◀ ▶

Back Close

Full Screen / Esc

Printer-friendly Version

Interactive Discussion



**Fig. 1.** Pukemanga Catchment, New Zealand, showing location of monitoring sites and transect of ground surface elevation.

**Dynamic analysis of groundwater discharge at Pukemanga**

V. J. Bidwell et al.

[Title Page](#)

[Abstract](#)   [Introduction](#)

[Conclusions](#)   [References](#)

[Tables](#)   [Figures](#)

[◀](#)   [▶](#)

[◀](#)   [▶](#)

[Back](#)   [Close](#)

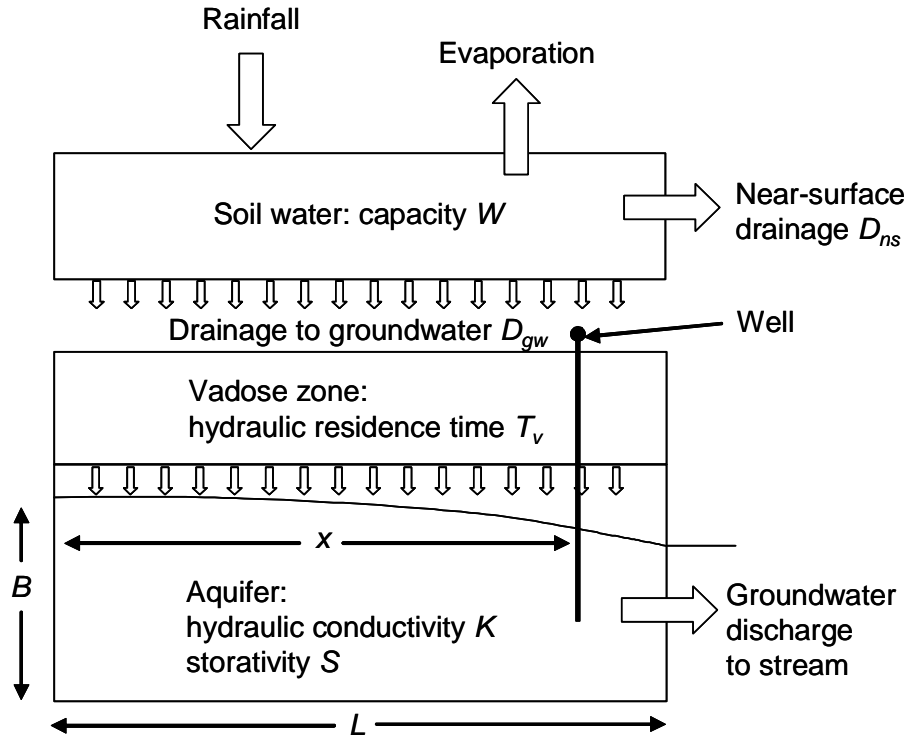
[Full Screen / Esc](#)

[Printer-friendly Version](#)

[Interactive Discussion](#)

Dynamic analysis of groundwater discharge at Pukemanga

V. J. Bidwell et al.



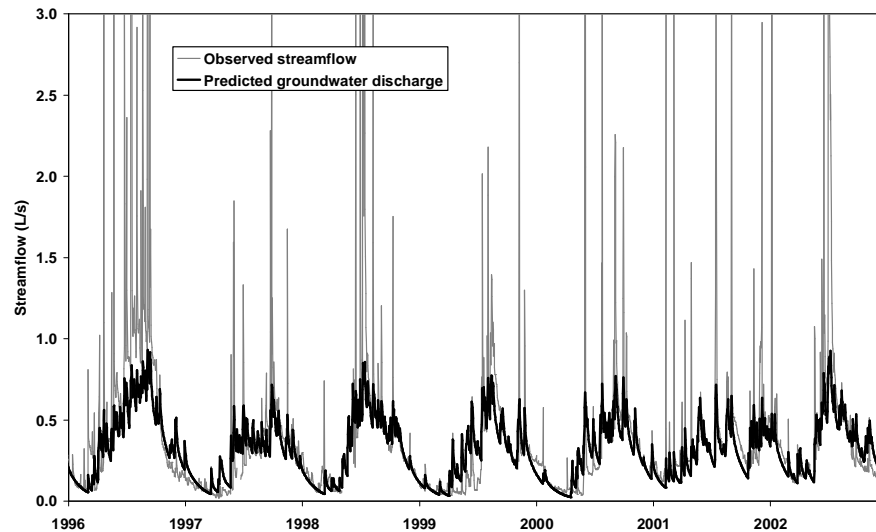
**Fig. 2.** Hydrometric model used for prediction of groundwater discharge and water balance analysis.

Title Page	
Abstract	Introduction
Conclusions	References
Tables	Figures
◀	▶
◀	▶
Back	Close
Full Screen / Esc	
Printer-friendly Version	
Interactive Discussion	



## Dynamic analysis of groundwater discharge at Pukemanga

V. J. Bidwell et al.



**Fig. 3.** Predicted daily groundwater discharge to Pukemanga Stream, for parameter set #1 in Table 1.

Title Page

Abstract

Introduction

Conclusions

References

Tables

Figures



Back

Close

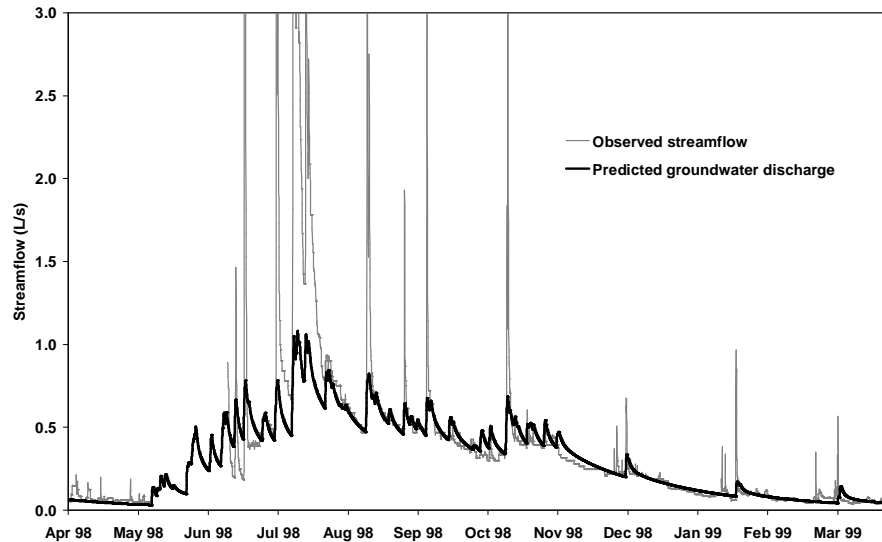
Full Screen / Esc

Printer-friendly Version

Interactive Discussion

## Dynamic analysis of groundwater discharge at Pukemanga

V. J. Bidwell et al.



**Fig. 4.** Predicted hourly groundwater discharge for Pukemanga Stream, 1 April 1998–31 March 1999.

Title Page

Abstract

Introduction

Conclusions

References

Tables

Figures

⏪

⏩

◀

▶

Back

Close

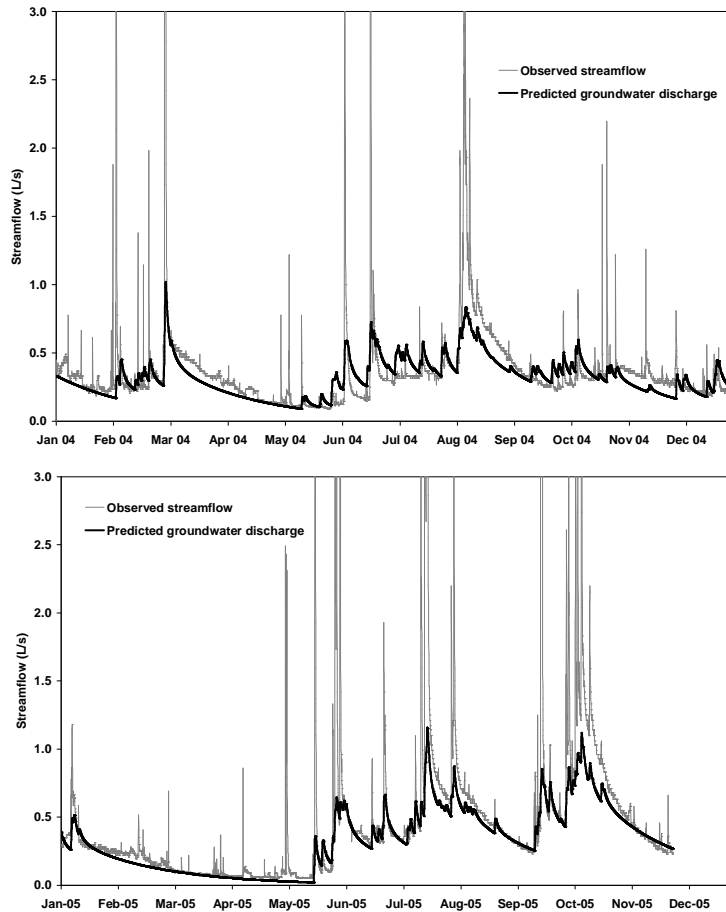
Full Screen / Esc

Printer-friendly Version

Interactive Discussion

## Dynamic analysis of groundwater discharge at Pukemanga

V. J. Bidwell et al.



**Fig. 5.** Predicted hourly groundwater discharge for Pukemanga Stream, 2004–2005.

Title Page

Abstract

Introduction

Conclusions

References

Tables

Figures

⏪

⏩

◀

▶

Back

Close

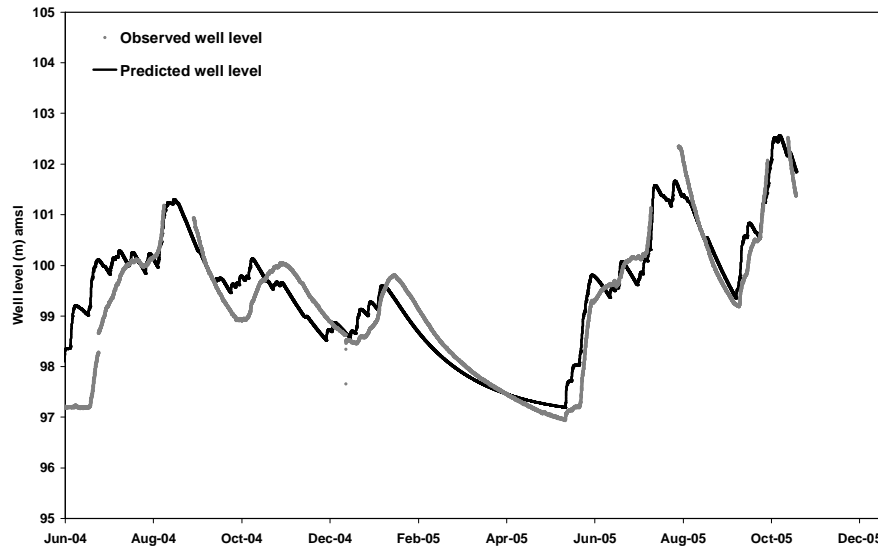
Full Screen / Esc

Printer-friendly Version

Interactive Discussion

## Dynamic analysis of groundwater discharge at Pukemanga

V. J. Bidwell et al.



**Fig. 6.** Predicted hourly groundwater level for the deep well at Pukemanga.

Title Page

Abstract

Introduction

Conclusions

References

Tables

Figures

◀

▶

◀

▶

Back

Close

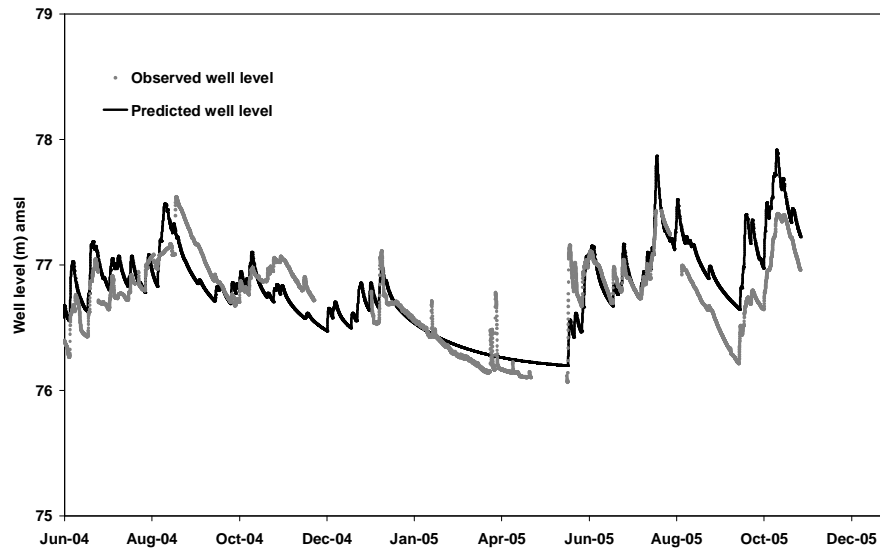
Full Screen / Esc

Printer-friendly Version

Interactive Discussion

## Dynamic analysis of groundwater discharge at Pukemanga

V. J. Bidwell et al.



**Fig. 7.** Predicted hourly groundwater level for the shallow well WW4 at Pukemanga.

Title Page

Abstract

Introduction

Conclusions

References

Tables

Figures

⏪

⏩

◀

▶

Back

Close

Full Screen / Esc

Printer-friendly Version

Interactive Discussion