



## HYDROGEIOS: A semi-distributed GIS-based hydrological model for disturbed river basins

A. Efstratiadis, I. Nalbantis, A. Koukouvinos, E. Rozos, D. Koutsoyiannis

### ► To cite this version:

A. Efstratiadis, I. Nalbantis, A. Koukouvinos, E. Rozos, D. Koutsoyiannis. HYDROGEIOS: A semi-distributed GIS-based hydrological model for disturbed river basins. *Hydrology and Earth System Sciences Discussions*, 2007, 4 (3), pp.1947-1998. hal-00298853

**HAL Id: hal-00298853**

**<https://hal.science/hal-00298853>**

Submitted on 18 Jun 2008

**HAL** is a multi-disciplinary open access archive for the deposit and dissemination of scientific research documents, whether they are published or not. The documents may come from teaching and research institutions in France or abroad, or from public or private research centers.

L'archive ouverte pluridisciplinaire **HAL**, est destinée au dépôt et à la diffusion de documents scientifiques de niveau recherche, publiés ou non, émanant des établissements d'enseignement et de recherche français ou étrangers, des laboratoires publics ou privés.

Papers published in *Hydrology and Earth System Sciences Discussions* are under open-access review for the journal *Hydrology and Earth System Sciences*

# HYDROGEIOS: A semi-distributed GIS-based hydrological model for disturbed river basins

A. Efstratiadis<sup>1</sup>, I. Nalbantis<sup>2</sup>, A. Koukouvinos<sup>1</sup>, E. Rozos<sup>1</sup>, and D. Koutsoyiannis<sup>1</sup>

<sup>1</sup>Department of Water Resources and Environment, School of Civil Engineering, National Technical University of Athens, Greece

<sup>2</sup>Laboratory of Reclamation Works and Water Resources Management, School of Rural and Surveying Engineering, National Technical University of Athens, Greece

Received: 15 June 2007 – Accepted: 15 June 2007 – Published: 28 June 2007

Correspondence to: A. Efstratiadis (andreas@itia.ntua.gr)

HESSD

4, 1947–1998, 2007

**HYDROGEIOS: A  
semi-distributed  
model for disturbed  
basins**

A. Efstratiadis et al.

Title Page

Abstract

Introduction

Conclusions

References

Tables

Figures

◀

▶

◀

▶

Back

Close

Full Screen / Esc

Printer-friendly Version

Interactive Discussion

# Abstract

The HYDROGEIOS modelling framework represents the main processes of the hydrological cycle in heavily disturbed catchments, with decision-dependend abstractions and interactions between surface and groundwater flows. A semi-distributed approach and a monthly simulation time step are adopted, which are sufficient for water resources management studies. The modelling philosophy aims to ensure consistency with the physical characteristics of the system, while keeping the number of parameters as low as possible. Therefore, multiple levels of schematisation and parameterisation are adopted, by combining multiple levels of geographical data. To optimally allocate human abstractions from the hydrosystem during a planning horizon or even to mimic the allocation occurred in a past period (e.g. the calibration period), in the absence of measured data, a linear programming problem is formulated and solved within each time step. With this technique the fluxes across the hydrosystem are estimated, and the satisfaction of physical and operational constraints is ensured. The model framework includes a parameter estimation module that involves various goodness-of-fit measures and state-of-the-art evolutionary algorithms for global and multiobjective optimisation. By means of a challenging case study, the paper discusses appropriate modelling strategies which take advantage of the above framework, with the purpose to ensure a robust calibration and reproduce natural and human induced processes in the catchment as faithfully as possible.

## 1 Introduction

A central goal of the recent Water Framework Directive (2000/60/EU) is the establishment of river basin management plans. The plans will account, in detail, how the objectives set for each basin (regarding its ecological, quantitative and chemical status) are to be reached within the time horizon required, reviewing, among others, the impacts of human activities on the status of waters. Hence, the Directive emphasises on disturbed

HESSD

4, 1947–1998, 2007

### HYDROGEIOS: A semi-distributed model for disturbed basins

A. Efstratiadis et al.

Title Page

Abstract

Introduction

Conclusions

References

Tables

Figures

◀

▶

◀

▶

Back

Close

Full Screen / Esc

Printer-friendly Version

Interactive Discussion

watersheds, which are significantly affected by man-made interventions, structural or non-structural. In such basins, inherent natural complexity of hydrological processes is amplified due to interactions between natural and artificial water bodies, on one hand, and structures operated by man, on the other hand. Another source of complexity is the interaction between surface and ground waters, particularly when both are disturbed by withdrawals and disposal of previously used water. It becomes evident that a modelling attempt must account for the aforementioned interactions, through a simultaneous representation of the key physical processes (hydrological, hydrogeological, hydrodynamic, hydrochemical) and the water management practices.

Despite the wide expansion of hydrological simulation tools, the vast majority of them are applicable to undisturbed basins. Hence, in disturbed watersheds, the usual practice consists of dividing the system under study into parts or sub-basins that can be modelled as undisturbed ones. At a second stage, the outputs (i.e. river flows) are brought together, by adding man-made structures and their related processes. However, this two-stage procedure is not always feasible without drastic and, to a certain extent, unrealistic assumptions. For example, in case of conjunctive use of surface and ground water, the impacts of abstractions (e.g. baseflow reduction due to pumping) affect the entire downstream system, especially in leaky basins, with complex interactions between soil and aquifer dynamics. Besides, detailed historical data regarding abstractions is usually missing, especially when these are implemented through small private works (e.g. wells). Therefore, additional modelling is required to estimate abstractions, on the basis of theoretical water needs.

In the last years, several approaches have appeared on coupling hydrological models for surface and sub-surface flows (e.g., Singh and Bhallamudi, 1998; Panday and Huyacorn, 2004). Typically, however, approaches followed do not represent all aspects of an operational water management problem at the river basin scale. Moreover, they preclude using stochastic simulation and forecasting, which are efficient methods to support water management. On the other hand, in most decision support systems (DSSs) for water resources management water flows are represented through network-

**HYDROGEIOS: A  
semi-distributed  
model for disturbed  
basins**

A. Efstratiadis et al.

Title Page

Abstract

Introduction

Conclusions

References

Tables

Figures

◀

▶

◀

▶

Back

Close

Full Screen / Esc

Printer-friendly Version

Interactive Discussion

type hydrosystems, thus ignoring the distributed regime of hydrological processes. In some cases, the problem is tackled by means of special elements in the hydrosystem, based on some form of elementary lumped models, such as the “groundwater reservoir node” in the RIBASIM software (Waterloopkundig Laboratorium, 1991). However, these elements, apart from being too simplified, they contain parameters that normally need some calibration effort (Nalbantis et al., 2002). Attempts to bridge this gap are very few, such as the MODSIM package (Fredericks et al., 1998; Dai and Labadie, 2001).

HYDROGEIOS is a new, GIS-based software system that provides a holistic framework, aiming at combining hydrological and hydrogeological simulation in disturbed basins. The model represents the governing interactions between surface flows, groundwater flows and man-made interventions, on the basis of a semi-distributed configuration. It integrates ideas from previous approaches (Nalbantis et al., 2002; Rozos et al., 2004; Rozos and Koutsoyiannis, 2006), whereas some components (e.g. the GIS module) are entirely new. HYDROGEIOS uses historical hydrological data for calibration and validation, as well as synthetic data for stochastic forecasting; in the last case, it co-operates with a DSS named HYDRONOMEAS, which implements the optimisation of the hydrosystem operation policy (Koutsoyiannis et al., 2002, 2003; Efstratiadis et al., 2004). Regarding the conceptualisation, model parameters retain some physical consistency, since they are assigned on the basis of distributed data. For their estimation, the software encompasses a specific module, containing multiple fitting measures, statistical and empirical, and evolutionary algorithms for single-objective and multiobjective optimisation.

The characteristics of the software system are described in the next five sections. Section 2 reviews the well-known problem of uncertainty in parameter estimation, and discusses the framework of handling it through appropriate schematisation, parameterisation and calibration. Section 3 describes the model structure and the simulation procedure, whereas Sect. 4 deals with the calibration of parameters. Section 5 discusses a test application to the Boeotikos Kephisos basin, involving a karstic aquifer

**HYDROGEIOS: A  
semi-distributed  
model for disturbed  
basins**

A. Efstratiadis et al.

Title Page

Abstract

Introduction

Conclusions

References

Tables

Figures

◀

▶

◀

▶

Back

Close

Full Screen / Esc

Printer-friendly Version

Interactive Discussion

and conjunctive water uses. Finally, Sect. 6 summarises the conclusions and provides proposals for further research.

## 2 Parameter uncertainty and calibration

Uncertainty is an inherent characteristic of all hydrological processes, further amplified by the weaknesses of deterministic conceptual watershed models, whose parameters are estimated through calibration. Uncertainty is due to multiple error sources, which are interacting in an unknown manner, thus making the traditional automatic calibration approach behave like a black-box mathematical game. Apart from evident errors in raw measurements and data-processing, typical sources of uncertainty are the inadequate representation of processes or, in the opposite, the formulation of too complex representations, unable to be supported by the existing knowledge about the physical system (Refsgaard, 1997; Wagener et al., 2001; Butts et al., 2004), the poor representation of the temporal and spatial variability of model forces (Paturel et al., 1995; Chaubey et al., 1999; Beven, 2000; Andréassian et al., 2001), the non-representativeness of calibration data and the use of statistically inconsistent fitting criteria (Sorooshian and Dracup, 1980; Kuczera, 1982; Sorooshian et al., 1983; Yapo et al., 1996; Gan et al., 1997), the poor identification of initial and boundary conditions (Kitanidis and Bras, 1980), the weaknesses of most optimisation methods to handle response surfaces of irregular topography (Duan et al., 1992), as well as the temporal changes of natural and anthropogenic processes (Nandakumar and Mein, 1997; Brath et al., 2006; Ewen et al., 2006). The above problems have been thoroughly examined for more than three decades, concluding that uncertainty is inherent, thus unavoidable, and increases with model complexity. Uncertainty is also strongly related to the “equifinality” concept (Beven and Binley, 1992), practically identified as the existence of multiple acceptable parameter sets, on the basis of different model configurations, calibration data and fitting criteria. As a consequence of equifinality, it is impossible to detect a “global” optimal model structure neither a “global” optimal parameter set, which definitely better

### HYDROGEIOS: A semi-distributed model for disturbed basins

A. Efstratiadis et al.

Title Page

Abstract

Introduction

Conclusions

References

Tables

Figures

◀

▶

◀

▶

Back

Close

Full Screen / Esc

Printer-friendly Version

Interactive Discussion

reproduce the entire hydrological regime of a river basin.

Last years, a variety of mathematical techniques were developed to quantify the uncertainty of conceptual model predictions. Most of them are embedded in the calibration procedure and seek for “promising” trajectories of model outputs that correspond to multiple, “behavioural” parameter sets (Beven and Binley, 1992; Freer et al., 1996; Kuczera and Parent, 1998; Thiemann et al., 2001; Vrugt et al., 2002). Yet, their application indicates that, usually, the model predictive uncertainty proves comparable to the statistical uncertainty of the measured outputs. Moreover, many questions arise regarding the practical aspects of uncertainty analysis methods, such as the computational effort for multidimensional applications, the acceptance by policy makers and the public, and the inability to provide a final decision regarding a unique “best-compromise” parameter set (Pappenberger and Beven, 2006).

On the other hand, the applicability of physically-based models, which, in theory, would enable their free variables to be derived from field measurements, is significantly restrained by the heterogeneity of processes and the unknown scale-dependencies of parameters (Beven, 1989; Wagener et al., 2001). This is the reason why many researchers tend to employ optimisation, for a small portion of the parameters (Refsgaard, 1997; Beven, 2001; Eckhardt and Arnold, 2001; Madsen, 2003; Vrugt et al., 2004; Muleta and Nicklow, 2005). In any case, integrating physically-based schemes within river basin management models has severe practical drawbacks, regarding the amount of spatial data required and the prohibitive computational effort.

Recent research revealed the advantages of conceptual semi-distributed models for streamflow estimation, in comparison to lumped ones (Boyle et al., 2001; Ajami et al., 2004). Such schemes allow a satisfactory representation of watershed heterogeneities, provide the required level of detail for an engineering application (due to the network-type configuration), while being computationally efficient. However, if interior calibration data are missing (e.g., hydrographs across the river basin), any movement from a lumped to a semi-distributed approach increases model complexity which, in turn, creates more uncertainty in the results.

**HYDROGEIOS: A  
semi-distributed  
model for disturbed  
basins**

A. Efstratiadis et al.

Title Page

Abstract

Introduction

Conclusions

References

Tables

Figures

◀

▶

◀

▶

Back

Close

Full Screen / Esc

Printer-friendly Version

Interactive Discussion

HYDROGEIOS employs a semi-distributed scheme for the spatial representation of physical processes in disturbed hydrosystems. Instead of allocating parameters per sub-basin, the parameterisation of surface hydrological processes is implemented on the basis of hydrological response units (HRUs). The term was introduced by Flügel (1995), to characterize homogeneous areas, with similar geomorphologic and hydrodynamic properties. The concept is widely used in distributed models, such as SWAT (Srinivasan et al., 2000), where the river basin is assumed to be an assembly of discrete entities with different characteristics that contribute differently to its responses. While an HRU is defined to serve a particular model conceptualisation, habitually it denotes a spatial element of pre-determined geometry, identical to the schematisation of the watershed. The main drawback of this approach is the huge number of unknown properties involved, which may be two or three orders of magnitude larger than the number of parameters of a lumped model, as indicated by Refsgaard (1997). To handle this problem in HYDROGEIOS, the HRU concept is used differently; it represents soil and land types, defining partitions of the basin, rather than “units” of contiguous geographical areas. In particular, the HRUs are defined as the product of separate partitions by different properties such as soil permeability, land cover, terrain slope, etc. This product is formally known as common refinement of the partitions, while in the GIS terminology the related procedure is often called “union of layers”. Through an appropriate classification of the above properties, one can adjust the number of HRUs and, consequently, the number of the parameters describing the soil hydrological mechanisms. Hence, parameters retain some physical consistency, which also allows a better identification of their prior uncertainty (i.e., the lower and upper bounds, used in calibration). Similar to surface water processes, the groundwater processes are represented through discretising the aquifer, by means of non-rectangular cells. There are no specific restrictions in the formulation of cells, contrary to the majority of groundwater models, which implement a detailed, grid-based schematisation.

The flexibility regarding the definition of the HRUs and the multi-cell representation of the aquifer allows the formulation of modelling schemes of any complexity, depend-

## HYDROGEIOS: A semi-distributed model for disturbed basins

A. Efstratiadis et al.

Title Page

Abstract

Introduction

Conclusions

References

Tables

Figures

◀

▶

◀

▶

Back

Close

Full Screen / Esc

Printer-friendly Version

Interactive Discussion



ing on the available geographical and input data and the desirable parameterisation. In contrast, the schematisation of the hydrosystem, regarding the configuration of the physical and artificial network, is only restricted by the specified study requirements (i.e. the location of control points for the water balance calculations), and has no practical influence on the number of parameters. This is consistent with the principle of parsimony, which stands as a key point to handle uncertainties in model predictions. The simplest schematisation and parameterisation is ensured by using as many degrees of freedom as can be explained by the available “knowledge” on the system, regarding the hydrological and geographical data as well as the modeller’s experience.

Results from previous research suggest that only five or six parameters can be identified, on the basis of a single hydrograph (Jakeman and Hornberger, 1993); otherwise, parameter uncertainty due to poor identifiability may limit significantly the predictive capacity of models (Wagener et al., 2001). Thus, apart from a parsimonious configuration, it is critical to increase the amount of information in calibration, using multiple output variables and multiple performance measures, since a single measure would fail to reproduce all essential characteristics of the physical system that are reflected in the observations (Gupta et al., 1998).

Recently, there has been a great interest on employing multiobjective optimisation to better control the distributed model responses or specific aspects of them (Yapo et al., 1998; Madsen, 2000, 2003; Seibert, 2000; Beldring, 2002; Muleta and Nicklow, 2005; Shoups et al., 2005; Tang et al., 2006). However, given the large number of parameters involved, a faithful implementation of such approaches requires extended hydrological measurements. Given also the scarcity of such information in most basins, an alternative is to use “soft” information, namely qualitative criteria indicating the acceptability of parameter values (Seibert and McDonnell, 2002). According to this, HYDROGEIOS implements multiobjective calibration, on the basis of typical statistical measures for the measured outputs (i.e. runoff and groundwater levels), criteria suitable for sparse measurements, and empirical criteria to control the internal model variables. Finally, for detection of a best-compromise parameter set, a hybrid strategy is proposed, based on

## HYDROGEIOS: A semi-distributed model for disturbed basins

A. Efstratiadis et al.

Title Page

Abstract

Introduction

Conclusions

References

Tables

Figures

◀

▶

◀

▶

Back

Close

Full Screen / Esc

Printer-friendly Version

Interactive Discussion

a combination of automatic and manual techniques, which have proved very effective for complex hydrological models (Boyle et al., 2000; Rozos et al., 2004).

### 3 Model overview

#### 3.1 Model formulation and input data

5 Since HYDROGEIOS is focused on the water resources management problem, the entire modelling approach is based on a network-type schematisation of the physical and the artificial components of the hydrosystem. The two networks are linked together through water diversions, abstractions and disposals. The aquifer is also modelled as a network of conceptual storage (tanks) and transportation elements (conduits),  
10 connecting adjacent tanks. Most components have georeference and are handled through a GIS module. This module is also used for processing distributed data, used in the formulation of the HRUs, and the generation of the derivative layers (unions, intersections).

##### 3.1.1 Hydrographic network

15 The schematisation of the hydrographic network is implemented through a two-step procedure. First, an initial network is formulated on the basis of a digital terrain model, by adjusting the flow accumulation parameter. Next, additional control points are added across the network, which correspond to flow monitoring stations, abstraction points, inflow nodes, etc. The sub-basins upstream of each node are then created in a way  
20 that each river segment crosses a unique sub-basin.

Hydrological inputs are precipitation and potential evapotranspiration time series, assigned to each sub-basin. For each sub-basin, the model calculates the transformation of precipitation to actual evapotranspiration, deep percolation and surface runoff; the latter is transferred as point inflow to the corresponding downstream node. The related processes are conceptualized via the soil moisture accounting model, described

**HYDROGEIOS: A  
semi-distributed  
model for disturbed  
basins**

A. Efstratiadis et al.

Title Page

AbstractIntroduction

ConclusionsReferences

TablesFigures

⏮⏭

⏪⏩

BackClose

Full Screen / Esc

Printer-friendly Version

Interactive Discussion

in Sect. 3.2.1. All calculations are implemented on a derivative layer, generated as the product of the sub-basin and HRU layers, since meteorological forcing (precipitation and potential evapotranspiration) varies for each sub-basin.

3.1.2 Water management network

5 The applicability of HYDROGEIOS to disturbed basins is ensured through a coarse depiction of the major hydraulic works (pipes, channels, wells, etc.), the corresponding water uses and constraints and their interactions with the physical system. All are represented as network components, namely nodes and aqueducts; the latter may conduct water to the hydrographic network or abstract it to satisfy demands. We notify  
10 that wells lying on neighbouring locations and serving the same use are conceptualized as clusters, named borehole groups.

The network properties are discharge and pumping capacities, target priorities, demand time series and unit transportation costs. The priorities and costs are assigned to express preferences regarding the allocation of abstractions, in case of multiple water sources and conveyance paths. When a demand can be fulfilled through different abstractions, the user can impose unit costs (actual or hypothetical ones), to the corresponding aqueducts. For instance a zero and a positive unit cost for surface and groundwater abstractions, respectively, will force the model to abstract water from the river rather than from groundwater. The preservation of target priorities and the minimi-  
20 sation of costs are both ensured via the flow allocation model, explained in Sect. 3.2.3.

3.1.3 Groundwater network

The aquifer is represented as a multicell network, on the basis of a non-rectangular discretisation of the aquifer. According to Rozos and Koutsoyiannis (2005), the mathematical concept derives from the finite volume method, provided that the cell edges  
25 are parallel or normal to the equipotential contours and the line joining the centroids of adjacent cells is perpendicular to their common edge. This approach enables the

**HYDROGEIOS: A  
semi-distributed  
model for disturbed  
basins**

A. Efstratiadis et al.

Title Page

AbstractIntroduction

ConclusionsReferences

TablesFigures

⏮⏭

⏪⏩

BackClose

Full Screen / Esc

Printer-friendly Version

Interactive Discussion

exploitation of the available piezometric data for the study area. Moreover, the flexible number and shape of cells allows the description of aquifers of complex geometries on the basis of the physical characteristics of the system (e.g., geology), through parsimonious structures. Hence, the parameterisation has a physical concept and the computational effort is significantly reduced, if compared to typical finite difference or finite element schemes.

Input properties are the top and bottom level of each tank and the water table at the beginning of simulation, which stands as the initial condition of the model. Regarding other boundary conditions, the user can prohibit the exchange of water between neighbouring cells, assuming impervious common edge. The geometrical properties are automatically computed via the GIS module. These include cell areas, centroid coordinates, distances and common edge lengths between adjacent cells, plus all unions and intersections with the surface geographical layers. Note that some cells may lie out of the watershed bounds, to direct the groundwater sinks to the sea or neighbouring basins. Other components are springs, which represent point outflows that are transferred to the downstream node of the corresponding sub-basin. Their properties are the altitude and the interconnected cell.

### 3.2 Mathematical framework

The mathematical representation of the hydrological, hydrogeological and anthropogenic processes is based on the combination of three related models running within a loop, as explained in Sect. 3.2.4. The time scale of simulation is monthly, which is sufficient for water management studies.

#### 3.2.1 Surface hydrology model

The hydrological processes above and across the unsaturated zone are modelled through a conceptual water balance scheme, illustrated in Fig. 1. Model inputs are the areal precipitation  $P_t$  and potential evapotranspiration  $E_{p_t}$ , while outputs are the

## HYDROGEIOS: A semi-distributed model for disturbed basins

A. Efstratiadis et al.

Title Page

Abstract

Introduction

Conclusions

References

Tables

Figures

◀

▶

◀

▶

Back

Close

Full Screen / Esc

Printer-friendly Version

Interactive Discussion

soil moisture  $S_t$ , the surface runoff  $Q_t$ , the real evapotranspiration  $E_t$ , and the percolation  $G_t$ . At each time step  $t$ , the water balance equation is written in the form:

$$S_{t+1} = S_t + P_t - Q_t - E_t - G_t \quad (1)$$

For a given value of soil storage at the beginning of simulation, the above formula is solved on the basis of some assumptions regarding the unknown variables  $Q_t$ ,  $E_t$  and  $G_t$ .

The ground operates as a filter transforming precipitation to direct evapotranspiration  $E_{Dt}$ , direct runoff  $Q_{Dt}$ , and infiltration  $I_t$ . Direct evapotranspiration represents the amount of precipitation evaporated quickly, before infiltrating, and cannot exceed a retention capacity  $R$ , and the theoretical demand  $E_{Pt}$ . Direct runoff represents the excess of precipitation conducted through the impervious areas of the basin to its outlet within the time interval, and calculated as  $Q_{Dt}=c(P_t-E_{Dt})$ , where  $c$  is a constant ratio, depending on the physical properties of the ground (soil permeability, vegetation, slope) and the existence of flood-prevention works.

The rest of precipitation is infiltrated to the unsaturated zone, represented as a soil moisture accounting tank of capacity  $S_{\max}$ . The tank is divided into two zones (upper and lower), using a dimensionless parameter  $\kappa$ . The evapotranspiration deficit, i.e. the amount  $E_{Pt}-E_{Dt}$ , is fulfilled through the actual moisture, using different mechanisms for the two zones. Precisely, the whole amount of moisture in the upper zone is assumed available for evapotranspiration, whereas the lower zone moisture is partially available. In the last case, the rate of soil evapotranspiration is supposed proportional to the ratio  $S_{Lt}/(\kappa S_{\max})$ , where  $S_{Lt}$  is the moisture depth stored in the lower zone and  $\kappa S_{\max}$  is the corresponding capacity. The process is mathematically expressed by a negative exponential equation, similar to the well-known Thornthwaite model (Thornthwaite, 1948).

Moreover, the soil moisture tank provides options for horizontal and vertical outflow, implemented via two orifices, the one lying at level  $\kappa S_{\max}$  and the other on the bottom. These represent a time-lagged runoff component (interflow)  $Q_{It}$  and the percolation to

## HYDROGEIOS: A semi-distributed model for disturbed basins

A. Efstratiadis et al.

Title Page

Abstract

Introduction

Conclusions

References

Tables

Figures

◀

▶

◀

▶

Back

Close

Full Screen / Esc

Printer-friendly Version

Interactive Discussion

deeper zones  $G_t$ , respectively. The corresponding outflow rates are controlled through the retention coefficients  $\lambda$  and  $\mu$ .

At the end of simulation step, the soil moisture excess (if it exists) contributes to the streamflow as quick runoff due to saturation,  $Q_{St}$ . Within the time interval the storage is allowed to exceed  $S_{\max}$ .

Model parameters are the retention capacity  $R$ , the direct runoff coefficient  $c$ , the soil capacity  $S_{\max}$ , the ratio of the lower zone capacity to the total one  $\kappa$ , and the retention coefficients  $\lambda$ ,  $\mu$  for interflow and percolation, respectively. These differ for each HRU, as explained in Sect. 3.1.1. All variables are integrated to the sub-basin scale, except for the percolation that is integrated to the groundwater cell scale. The model then adds to the surface flow, the direct, quick and time-lagged runoff components, and the baseflow arriving from the springs lying on the sub-basin. A percentage of the total runoff, equal to an infiltration coefficient  $\delta$ , assigned to each river segment crossing the sub-basin, recharges the groundwater system, whereas the rest is conducted to the outlet node, as point inflow to the hydrographic network; the coefficient  $\delta$  is either pre-specified or estimated through calibration

### 3.2.2 Groundwater model

Each groundwater cell is represented by a conceptual tank, whose parameters are the specific yield (dimensionless) and the conductivity, expressed in velocity units. The stress components of groundwater tanks are: (a) areal inflows due to percolation through each sub-basin and HRU combination; (b) inflows due to infiltration underneath each river segment; and (c) point outflows due to pumping from each well.

We remind that percolation rates are output of the surface hydrological model, whereas infiltration and pumping rates are output of the water management model. Regarding percolation, the model integrates the equivalent depths from each sub-basin and HRU combination on the corresponding cell area. Regarding infiltration, the model

**HYDROGEIOS: A  
semi-distributed  
model for disturbed  
basins**

A. Efstratiadis et al.

Title Page

Abstract

Introduction

Conclusions

References

Tables

Figures

◀

▶

◀

▶

Back

Close

Full Screen / Esc

Printer-friendly Version

Interactive Discussion

estimates the river segment losses supplying each tank, assuming that:

$$I_{ij} = I_j L_{ij} / L_j \quad (2)$$

where  $I_j$  is the sum of infiltration losses through the river segment  $j$ ,  $L_j$  is the segment length and  $L_{ij}$  is its partial length over cell  $i$ .

For given stresses, the flow field problem is solved according to a simplified version of the scheme introduced by Rozos and Koutsoyiannis (2005), which proved suitable for simulating aquifers of high parameter uncertainty (e.g., karstic). Hydraulic heads, which stand as the model state variables, are computed via the following formula:

$$h_i = \begin{cases} w_i^{\min} + w_i & w_i \leq b_i \\ w_i^{\max} + (w_i - b_i)\theta & w_i > b_i \end{cases} \quad (3)$$

where  $w_i$  is the water level in tank  $i$ ,  $w_i^{\min}$  and  $w_i^{\max}$  are the bottom and top absolute levels, respectively ( $w_i^{\max} = w_i^{\min} + b_i$ ),  $\theta$  is the ratio of specific yield to confined storage coefficient and  $b_i$  is the layer thickness. The upper equation in Eq. (3) corresponds to phreatic conditions, while the lower corresponds to confined conditions, so that  $b_i$  represents also the threshold between confined and unconfined conditions. The water volume contained in the tank equals the base area of the corresponding cell multiplied by the level and the specific yield; a low value of the latter indicates that a large level fluctuation is required to store a particular amount of groundwater, and vice versa.

A constant head condition is represented by assigning tanks with very large base, which forces the corresponding water level to remain practically constant and close to the prescribed boundary condition value. Likewise, springs are modelled assuming such dummy tanks, for which the slight changes of the water level are directly transformed into outflow hydrographs. A similar representation is implemented for simulating groundwater losses, conducted to neighbouring basins or the sea.

Groundwater flows are implemented through conceptual conduits  $(i, j)$ , where the indices denote the interconnected tanks. Their properties are the cross section area

$A_{ij}$  (equal to the common edge between cells  $i$  and  $j$ ), the length  $l_{ij}$  (centroid distance) and the conductivity  $K_{ij}$ , computed as the arithmetic or geometrical mean of the corresponding tank conductivities. The discharge  $Q_{ij}$  is calculated using a Darcian formula:

$$Q_{ij} = K_{ij} A_{ij} \frac{h_i - h_j}{l_{ij}} \quad (4)$$

where  $h_i$  and  $h_j$  are the head values of the adjacent tanks  $i$  and  $j$ .

Equations (3) and (4) formulate a system of linear equations that can be solved via explicit or implicit numerical schemes. HYDROGEIOS implements both ones, for which a proper time discretisation (i.e. number of time intervals within a simulation step) should be defined, to ensure numerical stability.

### 3.2.3 Water management model

Outputs of the surface and groundwater hydrological models are the sub-basin and spring runoff, both assumed as point inflows to the river network. The water allocation is implemented on the unified network, to define the unknown fluxes through the entire hydrosystem. These include the discharge rates and losses (due to leakage) across the river and the aquifer and, subsequently, the abstractions from surface and groundwater resources.

The modelling concept is based on a linear programming (LP) approach. Similar ones have been used in some water resource planning and management applications, where linear optimisation is embedded within simulation to find the least cost flow allocation through hydrosystems of network format (Graham et al., 1986; Kuczera, 1989; Fredericks et al., 1998; Dai and Labadie, 2001). The optimisation is based on real economic criteria or artificial costs, assigned to preserve water rights and water use priorities.

HYDROGEIOS implements a simplified version of the scheme described by Efstratiadis et al. (2004). The general idea is to distinguish the hydrosystem variables and

## HYDROGEIOS: A semi-distributed model for disturbed basins

A. Efstratiadis et al.

Title Page

Abstract

Introduction

Conclusions

References

Tables

Figures

◀

▶

◀

▶

Back

Close

Full Screen / Esc

Printer-friendly Version

Interactive Discussion



optimally allocate them through the hydrosystem, which is represented in a digraph format. Apart from real world components, the digraph is comprised of dummy nodes and arcs where virtual attributes are imposed, namely the conveyance capacity and the unit transportation cost. The latter may be either positive or negative. Particularly,

- Leaky river segments are represented by two arcs, the one carrying the discharge arriving at the downstream node, and the other carrying the infiltration, which is transferred to an accounting node, a fictitious component inserted for mathematical convenience (to ensure that the sum of inflows equals the sum of outflows).
- River segments or aqueducts where minimum flow preservation target are imposed are represented by two parallel arcs, the one having discharge capacity equal to the actual target value and negative cost, whereas the other has the rest of capacity (infinite in the case of a river segment) and unit cost equal to the real transportation one (zero in case of river segment). Maximum flow targets are handled in the same way; positive cost is used here to prohibit the violation of the discharge bound.
- Borehole groups are represented through a virtual groundwater node, the inflow of which is equal to the total pumping capacity of the wells. Two arcs are connected to this node, the one carrying the groundwater abstraction to the corresponding downstream node with unit cost equal to the total pumping charge, and the other transferring the rest of inflow to the accounting node, without cost.
- Demand nodes are connected with the accounting node via a virtual arc, the capacity of which is set equal to the actual demand rate, while a negative unit cost is imposed to enforce the model to satisfy the corresponding target.

## HESSD

4, 1947–1998, 2007

### HYDROGEIOS: A semi-distributed model for disturbed basins

A. Efstratiadis et al.

Title Page

Abstract

Introduction

Conclusions

References

Tables

Figures

◀

▶

◀

▶

Back

Close

Full Screen / Esc

Printer-friendly Version

Interactive Discussion

The transformation of hydrosystem components to digraph components and the assignment of capacity and unit cost values are automatically executed by the program. Most formulations are done once, at the beginning of each simulation. Especially, the assignment of costs is a key part of the model, since this ensures the preservation of both feasibility and economy. Feasibility refers to the strict satisfaction of all physical constraints (nodal water balance equations and arc capacity bounds) and the hierarchical satisfaction of water uses, keeping the user-defined priorities, whereas economy refers to the minimisation of total transportation and pumping costs.

The problem is expressed as:

$$\begin{aligned}
 &\text{minimize} && f(\mathbf{x}) = \mathbf{c}^T \mathbf{x} \\
 &\text{s.t.} && \mathbf{A}\mathbf{x} = \mathbf{y} \\
 &&& \mathbf{\Delta}\mathbf{x} = \mathbf{0} \\
 &&& 0 \leq \mathbf{x} \leq \mathbf{u}
 \end{aligned} \tag{5}$$

where  $\mathbf{x}$  is the vector of control variables, corresponding to the hydrosystem fluxes;  $\mathbf{c}$  is the vector of unit costs;  $\mathbf{A}$  is the incidence matrix, describing the continuity equations, with elements taking values  $\{-1, 1, 0\}$ ;  $\mathbf{\Delta}$  is a matrix describing constraints for leaky segments, with elements taking values  $\{-1, \delta_i/1-\delta_i, 0\}$ ;  $\mathbf{y}$  is the vector of inflows; and  $\mathbf{u}$  is the vector of arc capacities. Due to the particular structure of Eq. (5), primarily the sparse format of matrix  $\mathbf{A}$ , its solution is very fast through appropriate versions of the simplex method, thus ensuring computational efficiency.

### 3.3 Model integration within simulation

Due to the interactions between surface and groundwater resources, as well as the physical and man-made processes, the application of the aforementioned models within simulation requires a looped architecture, as illustrated in Fig. 2. At the beginning of each time step, dynamic input data includes precipitation and potential evapotranspiration depths, assigned at each sub-basin, and water demand values, assigned at specific nodes of the hydrosystem. The rest of hydrological variables are unknown,

## HYDROGEIOS: A semi-distributed model for disturbed basins

A. Efstratiadis et al.

Title Page

Abstract

Introduction

Conclusions

References

Tables

Figures

◀

▶

◀

▶

Back

Close

Full Screen / Esc

Printer-friendly Version

Interactive Discussion

and for some of them initial guesses are necessary. The simulation procedure is implemented as follows:

First, and outside the loop, the surface hydrological model runs to estimate real evapotranspiration, percolation, surface runoff and soil moisture accounting for each combination of sub-basins and HRUs. Runoff is transferred to the outlet node of each sub-basin, after adding baseflow and, then, excluding losses due to infiltration. Baseflow is computed by adding discharge values of springs lying on each sub-basin. Initially, these are assumed equal to the values of the previous time step, but as the loop proceeds, the real ones are assigned, as estimated from the groundwater model.

Next, the water management scheme runs to estimate all hydrosystem fluxes, i.e. discharge and infiltration values across the hydrographic network, and abstractions from surface and groundwater resources. Inflows to the digraph model are point runoff values, assigned downstream of each sub-basin, already known from the surface hydrological model, as well as external inflows, given as known time series.

The implementation of the above models allows the assignment of groundwater stresses at each cell. These are estimated by adding percolation from each sub-basin and HRU combination and infiltration from each river segment, and excluding pumping from each well. Next, the groundwater flow model is solved, to estimate the tank levels, the spring flows and the underground losses.

Based on the actual evaluation of spring discharge, HYDROGEIOS recalculates baseflow and corrects all point runoff estimations. This requires new run of the water management and groundwater models, until the stabilisation of baseflow. Practically, this scheme converges after one or two cycles only, thus ensuring both accuracy and efficiency.

**HYDROGEIOS: A  
semi-distributed  
model for disturbed  
basins**

A. Efstratiadis et al.

Title Page

Abstract

Introduction

Conclusions

References

Tables

Figures

◀

▶

◀

▶

Back

Close

Full Screen / Esc

Printer-friendly Version

Interactive Discussion

## 4 Calibration framework

### 4.1 Fitting measures

The mathematical framework described herein comprises a variety of parameters, illustrated in Table 1. Specifically, it uses one parameter per river segment, six parameters per HRU, and two parameters per each groundwater tank. Thus, even for a relatively small hydrosystem, some dozens of control variables would be involved. Generalising the empirical rule mentioned in Sect. 2, initially used in lumped rainfall-runoff models, multiple criteria should be introduced, to ensure consistency with the principle of parsimony. In accordance to this, HYDROGEIOS provides a set of statistical and empirical fitting measures for the calibration of parameters, to control the observed outputs as well as the internal state variables of the groundwater model (i.e. tank levels). The criteria are aggregated to one or more weighted objective functions, to determine a single or multiple (i.e. non-dominated) optimal parameter sets.

The statistical measures used are the coefficient of efficiency, and the bias in the mean, the standard deviation and the coefficient of variation of measured responses; the latter refer to both discharge and level time series.

Furthermore, the model uses an empirical penalty term, to better control the intermitencies, since a “zero discharge” state is very frequent, and its reproduction is important for a water management study. Given the observed and simulated time series,  $y_t$  and  $y'_t$ , respectively, the penalty is calculated as:

$$e_0 = \sqrt{\frac{1}{T_0} \sum_{t=1}^T z_t^2} \quad (6)$$

where  $z_t$  is an auxiliary variable, computed as:

$$z_t = \begin{cases} y_t & \text{if } y'_t = 0 \\ y'_t & \text{if } y_t = 0 \\ 0 & \text{else} \end{cases} \quad (7)$$

HESSD

4, 1947–1998, 2007

## HYDROGEIOS: A semi-distributed model for disturbed basins

A. Efstratiadis et al.

Title Page

Abstract

Introduction

Conclusions

References

Tables

Figures

◀

▶

◀

▶

Back

Close

Full Screen / Esc

Printer-friendly Version

Interactive Discussion

EGU

and  $T_0$  the number of time steps for which the model fails to reproduce an observed flow interruption or, in the opposite, erroneously yields zero discharge.

A final measure is used to control the behaviour of the internal model variables, specifically the generation of unreasonable trends regarding groundwater levels, based on the Mann-Kendall rank correlation test (Kottegoda, 1980, p. 32–34). When attempting to calibrate the groundwater parameters (i.e., conductivities) merely on spring hydrographs, without using observed level data, a conjunctive model could easily preserve the water balance of surface flows by leaving some upstream tanks empty and, simultaneously, accumulating the excess of water downstream. This situation is not consistent with the physical behaviour of an aquifer, whose level follows the typical seasonal and overyear fluctuation of precipitation. However, in heavily disturbed basins with intensive exploitation of groundwater, a systematic decline of the water table could be acceptable. Thus, even if level data is totally missing, an appropriate use of the trend penalty should significantly improve the identifiability of the groundwater parameters, thus leading to more reliable schemes.

The Mann-Kendall test is implemented as follows: Given a sample  $(x_1, x_2, \dots, x_N)$ , the statistic  $T = r / \sqrt{\sigma_r^2}$  is a standard normal variable, where:

$$r = 4P/[N(N - 1)], \sigma_r^2 = 2(2N + 5)/[9N(N - 1)] \quad (8)$$

and  $P$  is the number of all pairs  $\{x_i, x_j, j > i\}$  with  $x_i < x_j$ . For a two-tailed test and for a level of significance  $\alpha$ , we reject the null hypothesis of no trend presence if  $|T| < z_{\alpha/2}$ . In that case, a penalty value is assigned that equals the difference  $|T| - z_{\alpha/2}$ .

## 4.2 Optimisation algorithms

### 4.2.1 The evolutionary annealing-simplex algorithm

The evolutionary annealing-simplex algorithm is a probabilistic heuristic global optimisation technique, combining the robustness of simulated annealing in rough response

## HYDROGEIOS: A semi-distributed model for disturbed basins

A. Efstratiadis et al.

Title Page

Abstract

Introduction

Conclusions

References

Tables

Figures

◀

▶

◀

▶

Back

Close

Full Screen / Esc

Printer-friendly Version

Interactive Discussion

surfaces, with the efficiency of hill-climbing methods in convex areas. The version used in HYDROGEIOS slightly differs from the ones presented by Efstratiadis and Koutsoyiannis (2002) and Rozos et al. (2004), which proved effective and efficient for a variety of hydrological applications, including calibration problems.

5 An innovation is the assumption of two parameter ranges; the interior one is used for the generation of the initial population but can be violated through the evolution, whereas the exterior one is rigid, and represents the feasible space. The corresponding interior bounds represent initial guesses for parameters, based on their physical interpretation, while the exterior ones express their physical bounds.

10 During one generation, the population evolves as follows: First, a simplex-based pattern is formulated, using random sampling. Next, a candidate individual is selected to die, according to a modified objective function of the form:

$$g(\mathbf{x}) = f(\mathbf{x}) + uT \tag{9}$$

where  $f$  is the original objective function,  $T$  is the current “temperature” and  $u$  is a random number from the uniform distribution. The temperature is gradually reduced, according to an appropriate annealing cooling schedule, automatically adapted during the evolution. Consequently, the probability of replacing individuals with poor performance increases, since the procedure gradually moves from a random walk to a local search.

20 The recombination operator is based on the well-known downhill simplex transitions (Nelder and Mead, 1965). According to the relative values of the objective function at the vertices, the simplex is reflected, expanded, contracted or shrinks, where quasi-stochastic scale factors are employed instead of constant ones. To ensure more flexibility, additional transformations are introduced, namely multiple expansion towards the direction of reflection, when a downhill path (i.e. the gradient of the function) is located, and similar expansions but on the opposite (uphill) direction, in order to escape from the nearest local minimum. If any of the above transitions improves the function value, the new individual is generated through mutation. The related operator employs a ran-

**HYDROGEIOS: A  
semi-distributed  
model for disturbed  
basins**

A. Efstratiadis et al.

Title Page

Abstract

Introduction

Conclusions

References

Tables

Figures

◀

▶

◀

▶

Back

Close

Full Screen / Esc

Printer-friendly Version

Interactive Discussion

dom perturbation scheme outside of the usual range of the population, as determined on the basis of the average and standard deviation values of its coordinates.

4.2.2 Multiobjective version

Recently, Efstratiadis (2007)<sup>1</sup> developed a multiobjective version of the above scheme, suitable for challenging calibration problems, where multiple responses are to fit on multiple criteria (Efstratiadis and Koutsoyiannis, 2007). The multiobjective evolutionary annealing-simplex is also embedded in the software, although its full description is out of the scope of this study.

The algorithm embodies two phases; in the evaluation phase a fitness measure is assigned to all population members, whereas in the evolution phase new individuals are generated on the basis of their fitness values. The fitness measure aggregates various terms, to guide the search towards non-dominated solutions, to provide well-distributed populations and to penalize non-dominated parameter sets with extreme performance (i.e. too good against some criteria, but too bad against some other). Thus, the most promising part of the Pareto front is approximated, in an attempt to surround a best-compromise solution.

Regarding the evolving phase, some aspects are similar to the transitions used in the single-optimisation approach, whereas some alterations are necessary to prohibit population convergence (e.g. the simplex is not allowed to shrink). Moreover, the mutation operator employs two schemes, with equal probability; one allows small perturbations around the candidate individual to die, while the other ensures the generation of a random solution outside of the average range of the population.

<sup>1</sup>Efstratiadis, A.: Non-linear methods in multiobjective water resource optimization problems, with emphasis on the calibration of hydrological models, PhD dissertation, National Technical University of Athens, submitted, 2007.

HYDROGEIOS: A semi-distributed model for disturbed basins

A. Efstratiadis et al.

Title Page

Abstract

Introduction

Conclusions

References

Tables

Figures

◀

▶

◀

▶

Back

Close

Full Screen / Esc

Printer-friendly Version

Interactive Discussion

# 5 Case study

## 5.1 The study area

The Boeotikos Kephisos river basin lies on the Eastern Sterea Hellas, north of Athens, and drains a closed area (i.e., without an outlet to the sea) of 1956 km<sup>2</sup> (Fig. 3). The catchment geology comprises heavily karstified limestone, mostly developed on the mountains, and alluvial deposits, lying to the plain areas. Due to its karstic subsurface, the watershed has a considerable groundwater yield. The main discharge points are large springs in the upper and middle part of the basin that account for more than half of the annual catchment runoff. Moreover, an unknown amount of groundwater is conducted to the sea.

The basin is significantly disturbed, since it serves multiple and contradictory water uses. Specifically, through an extended drainage network, the entire surface resources are diverted to the neighbouring Lake Hylike (one of the major water storage projects of Athens), through an artificial canal and a tunnel. Besides, important supply bore-holes are located at the middle course, just upstream of the Mavroneri springs; these are activated in case of emergency, and affect significantly the flow regime of the hydrosystem. In addition to drinking water, significant surface and groundwater resources of the basin are used for irrigation. During the summer period, all surface water is used for irrigation, thus drying the canal at the basin outlet; besides, part of the demand is fulfilled via pumping from Hylike.

The estimation of the water balance of the basin on the basis of runoff data is impossible, because of the groundwater losses, the large amounts of water infiltrating across the upper course of the river (a 25% reduction of discharge is detected, according to a series of flow measurements), and the existence of combined abstractions. Previous attempts, thought a simplified version of the model, with lumped description of the main processes (Rozos et al., 2004), indicated that, due to the unknown distribution between evapotranspiration and sea outflows, the problem is ill-posed, and an infinite number of solutions exist, providing similar performance. In the present approach, we

HESSD

4, 1947–1998, 2007

## HYDROGEIOS: A semi-distributed model for disturbed basins

A. Efstratiadis et al.

Title Page

Abstract

Introduction

Conclusions

References

Tables

Figures

◀

▶

◀

▶

Back

Close

Full Screen / Esc

Printer-friendly Version

Interactive Discussion

EGU



tried to establish a much more “physical” scheme, to enhance the information content in calibration.

## 5.2 Model formulation and data

As illustrated in Fig. 3, the river network comprises a main branch, divided in four segments, and five sub-basins upstream of or in between the corresponding nodes. HRUs are produced as the product of two geographical layers; the first represents three categories of permeability (low, medium, high), whereas the second represents two categories of terrain slope, with threshold 10% (Fig. 4). The groundwater flow field is divided to 35 non-rectangular cells; six of them implement surface outflows through the major karstic springs, while two are located outside of the basin to simulate the draining of underground leakages to the sea (Fig. 5).

The water management network, sketched in Fig. 6, includes conceptual nodes representing extended agricultural areas, borehole groups and aqueducts conducting abstractions from the river and the aquifer to the related nodes. Since some demands are fulfilled via multiple sources, virtual costs are assigned to the corresponding aqueducts thus representing the real management policy (i.e. priority in using surface resources, instead of the groundwater ones). Additional targets are water supply through the middle course boreholes that were drilled during the early 90’s. Historical abstractions from Hylike are imported to the network as external inflows, with known values.

For the above schematisation, the total number of parameters is more than 100. Hence, it is essential to use multiple criteria within calibration, to avoid over-parameterisation and to properly represent all important characteristics of the physical system that are reflected in the observations. The latter refer to systematic (daily) discharge measurements at the basin outlet (Karditsa tunnel) and sparse (two per month) measurements downstream of the six springs. These samples were used to construct monthly hydrographs at seven discharge points, for a 10-year period (October 1984–September 1994), which was the control horizon of the study. Plotted data in Figs. 7–13 illustrate the irregular behaviour of most hydrographs, which reflects the intense

1970

**HYDROGEIOS: A  
semi-distributed  
model for disturbed  
basins**

A. Efstratiadis et al.

Title Page	
Abstract	Introduction
Conclusions	References
Tables	Figures
◀	▶
◀	▶
Back	Close
Full Screen / Esc	
Printer-friendly Version	
Interactive Discussion	

complexity of the hydrosystem. With respect to groundwater level, several gauges were available for the aforementioned period, mostly located in the vicinity of Boeotikos Kephisos. However, due to the difference of scale between point observations and averages over the cell areas, superimposed to high heterogeneity and uncertainty of the karstic aquifer, we preferred not to include this information in calibration.

The rest of hydrological inputs were monthly precipitation and potential evapotranspiration time series, integrated on the surface of the five sub-basins. The former were constructed using point data from 12 rainfall stations, well-distributed through the basin, whereas the latter was estimated via the Penman-Monteith method. Irrigation demands were approximated by assuming an average annual value of 6500 m<sup>3</sup>/ha of irrigated land.

### 5.3 Calibration strategy

Model parameters were fitted on multiple criteria, weighted in a single performance measure. Specifically, we used the efficiency index and the average bias, to calibrate the hydrographs at the basin outlet (Karditsa tunnel) and downstream of the six karstic springs, the zero-flow penalty to further control the discharge at the outlet (systematically going to zero during each irrigation period) and downstream of the Mavroneri springs (eliminated, in case of intensive pumping) and the trend penalty to calibrate groundwater cell levels, except for those lying in the neighbourhood of springs, the behaviour of which was better controlled through the hydrographs. The 10-year control period has split in a six-year calibration period (October 1984–September 1990) and a four-year validation period (October 1990–September 1994).

Given the large number of control variables (~100) and criteria involved (~40) the derived optimisation problem was infeasible to be solved within a single run. Apart from the vast number of local optima and the irregularities of the response surface, an additional complexity factor was the different order of magnitude between the groundwater conductivities, taking values in the range 10<sup>-8</sup> to 10<sup>-1</sup>, and the rest of parameters, most of them being dimensionless. This was partly remedied using logarithms of

**HYDROGEIOS: A  
semi-distributed  
model for disturbed  
basins**

A. Efstratiadis et al.

Title Page

Abstract

Introduction

Conclusions

References

Tables

Figures

◀

▶

◀

▶

Back

Close

Full Screen / Esc

Printer-friendly Version

Interactive Discussion

conductivities.

To treat with the multiple puzzles of the calibration problem while ensuring a satisfactory predictive capacity of the model, a hybrid calibration strategy was employed, through progressive improvements of relatively small groups of parameters. At a preliminary phase, we used extended bounds for the search space and tried various combinations of weighting coefficients, to obtain a general overview of the problem, regarding the multiple criteria interactions and their feasible range.

At the second phase, we attempted to optimize the HRU parameters, as well as the most important parameters of the groundwater model, specifically the conductivities of the springs and their adjacent cells. Moreover, the interior bounds of parameters were restricted to be consistent with their physical interpretation. The main objective was to guarantee a good fitting of the hydrograph at the outlet, especially its parts related to floods, and a satisfactory fitting of the spring flows. At the end of this phase, we removed most trend penalties, since we ensured a “regular” behaviour of the groundwater model, by appropriately adjusting the corresponding parameters.

In the last phase, starting from a relatively good solution, we focused on improving specific aspects of the model responses. This proved not an easy task, since even slight ameliorations of one criterion had asymmetrically negative impacts on others, due to the high sensitivity of some parameters. Often, it was necessary to accept non-optimal transitions, regarding the overall value of the objective function, to ensure the improvement of particular aspects of the hydrographs. In that phase, we focused on the predictive capacity of the model, accounted on the basis of efficiency values in validation, and the consistency of parameters. The latter was evaluated according to our experience, recognising the fact that the model is unavoidably vulnerable against the existing multiple sources of uncertainty, which is further amplified by the high complexity of the system under study.

**HYDROGEIOS: A  
semi-distributed  
model for disturbed  
basins**

A. Efstratiadis et al.

Title Page

Abstract

Introduction

Conclusions

References

Tables

Figures

◀

▶

◀

▶

Back

Close

Full Screen / Esc

Printer-friendly Version

Interactive Discussion

## 5.4 Results and discussion

The optimized statistical measures against the simulated runoffs are summarized in Table 2, whereas Figs. 7–13 compare the observed and the computed hydrographs at the seven control sites. Regarding the runoff at the outlet (Fig. 7), a very good fitting is ensured for both the calibration and validation periods, with efficiency values 87.0% and 76.1%, respectively. The model preserves the important aspects of the hydrograph, namely the peaks and the artificial interruption of discharge during the summer due to upstream abstractions. Moreover, it reproduces the sequence of high and low flow periods, which is more prominent during the validation period. Analysis with extended historical data further validated the model capacity relating to the prediction of the basin runoff (Koutsoyiannis et al., 2007).

For the Lilaia-Kefalovryssos springs, located in the upper course of the basin, the model provides a very satisfactory performance (efficiency 80.9% in calibration, 60.5% in validation), apart from a deviation during the winter of 1992, which was characterized by large amounts of snow in contrast to poor liquid precipitation depths.

For the Marvoneri springs, located on the middle course and very close to the water supply drills, the fitting was also very satisfactory (efficiency 70.7% in calibration, 60.1% in validation). Indeed, the model represents the two characteristic periods of flow intermittency, where the first (May–December 1990) is merely due to the persistent drought of the late 1980's, whereas the second one, lasted more than a year (end of 1992 to start of 1994), resulted as combination of unfavourable hydrological conditions and intensive use of the newly constructed boreholes. Between these extremely dry periods, an impressive increase of discharge was observed, well-represented by the model. In general, the overall fitting on this particularly important hydrograph was a major guarantee of the model performance, especially when taking into account the high uncertainty of such a karstic system.

Regarding the other springs, the model fitting was less satisfactory, although acceptable. The efficiency values achieved vary from 72.4% for the Agia Paraskevi

Title Page

Abstract

Introduction

Conclusions

References

Tables

Figures

◀

▶

◀

▶

Back

Close

Full Screen / Esc

Printer-friendly Version

Interactive Discussion

springs (the less important of the whole system) to 26.5% for the Melas springs. The latter contribute significantly to the total basin runoff and their mechanisms are extremely complex. Previous attempts to represent the corresponding groundwater system failed, even when detailed models were used. For example, a simulation based on the MODFLOW achieved an efficiency value of 10% (Nalbantis et al., 2002), whereas the lumped approach of Rozos et al. (2004) attained a value of 19.4%, regarding the combined representation of Melas and Polygyra springs (the corresponding value for the validation period was slightly negative). Hence, the actual approach worked better, although additional improvement is necessary to ensure a satisfactory predictive capacity.

The physical interpretation of parameters is generally difficult, especially for those of the groundwater model, because of the complexity of the karstic system. Table 3 shows the optimal values of the six parameters of the soil moisture model, assigned to the corresponding HRUs. It is not surprising that the direct runoff coefficients,  $c$ , and the retention rates for percolation,  $\mu$ , are mainly affected by the soil permeability, whereas the soil capacities,  $S_{\max}$ , are more related to the terrain slope. Thus, the plain areas of the basin have almost double capacity if compared to the mountainous ones, for the same category of permeability. On the other hand, the percolation rates through the high-permeable soils are significant, which explains the limited contribution of surface flows to the total water potential of the basin. Regarding the river infiltration coefficients, their optimal values are 26.4, 8.5 and 3.1%, along the upper, middle and lower course of Boeotikos Kephisos. The significant percentage of water losses in the upstream segment is consistent with the flow measurements, as mentioned in Sect. 5.1.

The semi-distributed formulation of the model provides a much clearer view of the water balance of the basin and the spatial distribution of its water resources. The water balance components, for the 10-year control period, are summarized in Table 4. Significant part of precipitation is lost due to evapotranspiration (62.3%) and underground runoff, conducted to the sea (10.4%). The results are very close to those reported by Rozos et al. (2004). Percolation reaches 29.6% of precipitation, whereas flood runoff

## HYDROGEIOS: A semi-distributed model for disturbed basins

A. Efstratiadis et al.

[Title Page](#)

[Abstract](#)

[Introduction](#)

[Conclusions](#)

[References](#)

[Tables](#)

[Figures](#)

[◀](#)

[▶](#)

[◀](#)

[▶](#)

[Back](#)

[Close](#)

[Full Screen / Esc](#)

[Printer-friendly Version](#)

[Interactive Discussion](#)

is only 6.9%, due to the dominance of high-permeable areas. Due to increased demands, less than half of the available resources reach the basin outlet, thus indicating a significantly disturbed hydrosystem.

## 6 Summary and conclusions

5 HYDROGEIOS integrates a conjunctive surface-groundwater simulator within a water management scheme, to describe the hydrological processes and the impacts of human interventions. It is suitable for simulating the water balance across disturbed hydrosystems with conjunctive water uses even with limited data. It aims to treat the issues mentioned in the introduction, such as the faithful representation of the decision-related interactions, through establishing computationally efficient modelling schemes. Other significant issues are the use of GIS for generating various levels of spatial information, the physical consistency a propos to the modelling components, and the parsimonious use of parameters. The software provides also tools for the calibration of parameters, on the basis of multiple fitting criteria and advanced algorithms for single- and multi-objective optimisation.

15 The key points of our approach were revealed through a case study, involving a real management problem in a hydrosystem of many peculiarities. These refer to both the physics of the basin (karstic subsurface, high contribution of baseflow to total runoff, extended outflows to the sea) and the water management regime (combined supply from surface and groundwater resources, multiple water uses, negative impacts of pumping to the downstream water availability, lack of real abstraction data). The calibration was based on a combined strategy, where the hydrological experience had the key role and optimisation, carried out through the evolutionary annealing-simplex method, was used as an auxiliary tool, which provided fast solutions. Having a hundred of parameters to optimize and seven hydrographs to fit, the equifinality problem emerged. However, we attempted to increase the information contained in calibration data, by assigning additional criteria to control specific aspects of the measured outputs (e.g. the reproduction

### HYDROGEIOS: A semi-distributed model for disturbed basins

A. Efstratiadis et al.

Title Page

Abstract

Introduction

Conclusions

References

Tables

Figures

◀

▶

◀

▶

Back

Close

Full Screen / Esc

Printer-friendly Version

Interactive Discussion

of flow interruptions) and criteria to prohibit the generation of unrealistic trends, regarding the internal variables of the groundwater module, which is another innovation in our approach. Moreover, by emphasising the model performance in validation and the physical interpretation of parameters, we managed to guide the search towards a best-compromise set, which is essential for an engineering application.

Further analysis is now implemented regarding the practical use of Pareto-based approaches, in combination with classical global optimisation, to detect the most promising areas of search spaces in problems involving very many parameters and criteria. Investigation is also under way for the model implementation on finer time scales, by means of incorporating routing procedures within simulation. The task is not straightforward, given the co-operation of three modules interchanging inputs and outputs (surface hydrological model, groundwater model and water management model); an iterative procedure is required within each time step which is, however, inconsistent with the condition of successive time periods assumed in all known routing numerical schemes. The results of these investigations will be reported in due course.

*Acknowledgements.* HYDROGEIOS was developed within the research project “ODYSSEUS”, funded by the European Development Fund, the European Social Fund, the General Secretariat of Research and Technology of Greece and private organisations (<http://www.odysseusproject.gr/en>). The research regarding the calibration framework was performed within the framework of the scholarship project “Heracleitos”. The project is co-funded by the European Social Fund (75%) and National Resources (25%). The authors are grateful to R. Moussa and H. Bormann for their invitation to prepare this paper.

References

Ajami, N. K., Gupta, H., Wagener, T., and Sorooshian, S.: Calibration of a semi-distributed hydrologic model for streamflow estimation along a river system, *J. Hydrol.*, 298, 112–135, 2004.

Andréassian, V., Perrin, C., Michel, C., Usart-Sanchez, I., and Lavabre, J.: Impact of imperfect

HYDROGEIOS: A semi-distributed model for disturbed basins

A. Efstratiadis et al.

Title Page

Abstract

Introduction

Conclusions

References

Tables

Figures

◀

▶

◀

▶

Back

Close

Full Screen / Esc

Printer-friendly Version

Interactive Discussion

- rainfall knowledge on the efficiency and the parameters of watershed models, *J. Hydrol.*, 250, 206–223, 2001.
- Beldring, S.: Multi-criteria validation of a precipitation-runoff model, *J. Hydrol.*, 257, 189–211, 2002.
- 5 Beven, K. J. and Binley, A. M.: The future of distributed models: model calibration and uncertainty prediction, *Hydrol. Processes*, 6, 279–298, 1992.
- Beven, K. J.: How far can we go in distributed hydrological modelling?, *Hydrol. Earth Syst. Sci.*, 5, 1–12, 2001,  
<http://www.hydrol-earth-syst-sci.net/5/1/2001/>.
- 10 Beven, K. J.: Uniqueness of place and process representations in hydrological modelling, *Hydrol. Earth Syst. Sci.*, 4, 203–213, 2000,  
<http://www.hydrol-earth-syst-sci.net/4/203/2000/>.
- Boyle, D. P., Gupta, H. V., and Sorooshian, S.: Toward improved calibration of hydrologic models: combining the strengths of manual and automatic methods, *Water Resour. Res.*, 36(12), 3663–3674, 2000.
- 15 Boyle, D. P., Gupta, H. V., Sorooshian, S., Koren, V., Zhang, Z., and Smith, M.: Toward improved streamflow forecasts: value of semidistributed modeling, *Water Resour. Res.*, 37(11), 2749–2760, 2001.
- Brath, A., Montanari, A., and Moretti, G.: Assessing the effect on flood frequency of land use change via hydrological simulation (with uncertainty), *J. Hydrol.*, 324(1–4), 141–153, 2006.
- 20 Butts, M. B., Payne, J. T., Kristensen, M., and Madsen, H.: An evaluation of the impact of model structure on hydrological uncertainty for streamflow simulation, *J. Hydrol.*, 298, 242–266, 2004.
- Chaubey, I., Haan, C. T., Grunwald, S., and Salisbury, J. M.: Uncertainty in the model parameters due to spatial variability of rainfall, *J. Hydrol.*, 220, 48–61, 1999.
- Dai, T. and Labadie, J. W.: River basin network model for integrated water quantity/quality management, *J. Water Res. Pl.-ASCE*, 127(5), 295–305, 2001.
- Duan, Q., Sorooshian, S., and Gupta, V.: Effective and efficient global optimization for conceptual rainfall-runoff models, *Water Resour. Res.*, 28(4), 1015–1031, 1992.
- 30 E.U.: Directive 2000/60/EC establishing a framework for Community action in the field of water policy, Official Journal of the European Communities, L 327, 2000.
- Eckhardt, K. and Arnold, J. G.: Automatic calibration of a distributed catchment model, *J. Hydrol.*, 251, 103–109, 2001.

## HYDROGEIOS: A semi-distributed model for disturbed basins

A. Efstratiadis et al.

Title Page

Abstract

Introduction

Conclusions

References

Tables

Figures

◀

▶

◀

▶

Back

Close

Full Screen / Esc

Printer-friendly Version

Interactive Discussion



- Efstratiadis, A. and Koutsoyiannis, D.: An evolutionary annealing-simplex algorithm for global optimisation of water resource systems, Proc. Fifth Intern. Conf. on Hydroinformatics, Cardiff, UK, 1423–1428, IWA, 2002.
- 5 Efstratiadis, A. and Koutsoyiannis, D.: Fitting hydrological models on multiple responses using the multiobjective evolutionary annealing-simplex approach, in: Hydroinformatics in practice: computational intelligence and technological developments in water applications, edited by: Abrahart, R. J., See, L. M., and Solomatine, D. P., Springer DE, Water Science and Technology Library, in press, 2007.
- 10 Efstratiadis, A., Koutsoyiannis, D., and Xenos, D.: Minimising water cost in the water resource management of Athens, Urban Water J., 1(1), 3–15, 2004.
- Ewen, J., O'Donnell, G., Burton, A., and O'Connell, E.: Errors and uncertainty in physically-based rainfall-runoff modelling of catchment change effects, J. Hydrol., 330(3–4), 641–650, 2006.
- 15 Flügel, W.-A.: Delineating Hydrological Response Units (HRU's) by GIS analysis for regional hydrological modelling using PRMS/MMS in the drainage basin of the River Bröl, Germany, Hydrol. Processes, 9, 423–436, 1995.
- Fredericks, J., Labadie, J., and Altenhofen, J.: Decision support system for conjunctive stream-aquifer management, J. Water Res. Pl.-ASCE, 124(2), 69–78, 1998.
- 20 Freer, J., Beven, K. J., and Ambrose, B.: Bayesian estimation of uncertainty in runoff prediction and the value of data: an application of the GLUE approach, Water Resour. Res., 32(7), 2161–2173, 1996.
- Gan, T. Y., Dlamini, E. M., and Biftu, G. F.: Effects of model complexity and structure, data quality, and objective functions on hydrologic modelling, J. Hydrol., 192, 81–103, 1997.
- 25 Graham, L. P., Labadie, J. W., Hutchison, I. P. G., and Ferguson, K. A.: Allocation of augmented water supply under a priority water rights system, Water Resour. Res., 22(7), 1083–1094, 1986.
- Gupta, H. V., Sorooshian, S., and Yapo, P. O.: Toward improved calibration of hydrologic models: multiple and non-commensurable measures of information, Water Resour. Res., 34(4), 751–763, 1998.
- 30 Jakeman, A. J. and Hornberger, G. M.: How much complexity is warranted in a rainfall-runoff model?, Water Resour. Res., 29, 2637–2649, 1993.
- Kitanidis, P. K. and Bras, R. L.: Real-time forecasting with a conceptual hydrologic model: analysis of uncertainty, Water Resour. Res., 16(6), 1025–1033, 1980.

## HYDROGEIOS: A semi-distributed model for disturbed basins

A. Efstratiadis et al.

Title Page

Abstract

Introduction

Conclusions

References

Tables

Figures

◀

▶

◀

▶

Back

Close

Full Screen / Esc

Printer-friendly Version

Interactive Discussion

- Kottegoda, N. T.: Stochastic water resources technology, McMillan Press, Honk Kong, 1980.
- Koutsoyiannis, D., Efstratiadis, A., and Georgakakos, K.: Uncertainty assessment of future hydroclimatic predictions: A comparison of probabilistic and scenario-based approaches, *J. Hydrometeorol.*, 8(3), 261–281, 2007.
- 5 Koutsoyiannis, D., Efstratiadis, A., and Karavokiros, G.: A decision support tool for the management of multi-reservoir systems, *J. Am. Water Resour. As.*, 38(4), 945–958, 2002.
  - Koutsoyiannis, D., Karavokiros, G., Efstratiadis, A., Mamassis, N., Koukouvinos, A., and Christofides, A.: A decision support system for the management of the water resource system of Athens, *Phys. Chem. Earth*, 28(14–15), 599–609, 2003.
  - 10 Kuczera, G. and Parent, E.: Monte Carlo assessment of parameter uncertainty in conceptual catchment models: the Metropolis algorithm, *J. Hydrol.*, 211, 69–85, 1998.
  - Kuczera, G.: Fast multireservoir multiperiod linear programming models, *Water Resour. Res.*, 25(2), 169–176, 1989.
  - Kuczera, G.: On the relationship of the reliability of parameter estimates and hydrologic time series data used in calibration, *Water Resour. Res.*, 18, 146–154, 1982.
  - 15 Madsen, H.: Parameter estimation in distributed hydrological catchment modelling using automatic calibration with multiple objectives, *Adv. Water Resour.*, 26, 205–216, 2003.
  - Muleta, M. K. and Nicklow, J. W.: Sensitivity and uncertainty analysis coupled with automatic calibration for a distributed watershed model, *J. Hydrol.*, 306, 127–145, 2005.
  - 20 Nalbantis, I., Rozos, E., Tentes, G., Efstratiadis, A., and Koutsoyiannis, D.: Integrating ground-water models within a decision support system, in: *Proc. 5th Intern. Conf. of European Water Resources Association: “Water Resources Management in the Era of Transition”*, edited by: Tsakiris, G., Athens, 4–8 September 2002, 279–286, EWRA, IAHR, 2002.
  - Nandakumar, N. and Mein, R. G.: Uncertainty in rainfall-runoff model simulations and the implications for predicting the hydrologic effects of land-use change, *J. Hydrol.*, 192(1–4), 211–232, 1997.
  - 25 Nelder, J. A. and Mead, R.: A simplex method for function minimization, *Comput. J.*, 7(4), 308–313, 1965.
  - Panday, S. and Huyakorn, P. S.: A fully coupled physically-based spatially distributed model for evaluating surface/subsurface flow, *Adv. Water. Resour.*, 27, 361–382, 2004.
  - Pappenberger, F. and Beven, K. J.: Ignorance is bliss: or seven reasons not to use uncertainty analysis, *Water Resour. Res.*, 42, W05302, doi:10.1029/2005WR004820, 2006.
  - Paturel, J. E., Servat, E., and Vassiliadis, A.: Sensitivity of conceptual rainfall-runoff algorithms

## HYDROGEIOS: A semi-distributed model for disturbed basins

A. Efstratiadis et al.

Title Page

Abstract

Introduction

Conclusions

References

Tables

Figures

◀

▶

◀

▶

Back

Close

Full Screen / Esc

Printer-friendly Version

Interactive Discussion

- to errors in input data – case of the GR2M model, J. Hydrol., 168, 111–125, 1995.
- Refsgaard, J. C.: Parameterisation, calibration and validation of distributed hydrological models, J. Hydrol., 198, 69–97, 1997.
- Rozos, E. and Koutsoyiannis, D.: A multicell karstic aquifer model with alternative flow equations, J. Hydrol., 325(1–4), 340–355, 2006.
- Rozos, E. and Koutsoyiannis, D.: Application of the Integrated Finite Difference Method in groundwater flow, EGU General Assembly 2005, Geophys. Res. Abstr., 7, 00579, 2005.
- Rozos, E., Efstratiadis, A., Nalbantis, I., and Koutsoyiannis, D.: Calibration of a semi-distributed model for conjunctive simulation of surface and groundwater flows, Hydrolog. Sci. J., 49(5), 819–842, 2004.
- Schoups, G., Addams, C. L., and Gorelick, S. M.: Multi-objective calibration of a surface water-groundwater flow model in an irrigated agricultural region: Yaqui Valley, Sonora, Mexico, Hydrol. Earth Syst. Sci., 9, 549–568, 2005, <http://www.hydrol-earth-syst-sci.net/9/549/2005/>.
- Seibert, J. and McDonnell, J. J.: On the dialog between experimentalist and modeler in catchment hydrology: use of soft data for multicriteria model calibration, Water Resour. Res., 38(11), 1241, doi:10.1029/2001WR000978, 2002.
- Seibert, J.: Multi-criteria calibration of a conceptual runoff model using a genetic algorithm, Hydrol. Earth Syst. Sci., 4, 215–224, 2000, <http://www.hydrol-earth-syst-sci.net/4/215/2000/>.
- Singh, V. and Bhallamudi, S. M.: Conjunctive surface-subsurface modeling of overland flow, Adv. Water Resour., 21, 567–579, 1998.
- Sorooshian, S. and Dracup, J. A.: Stochastic parameter estimation procedures for conceptual rainfall-runoff models: correlated and heteroscedastic error case, Water Resour. Res., 16(2), 430–442, 1980.
- Sorooshian, S., Gupta, V. K., and Fulton, J. L.: Evaluation of maximum likelihood parameter estimation techniques for conceptual rainfall-runoff models: influence of calibration data variability and length on model credibility, Water Resour. Res., 19(1), 251–259, 1983.
- Srinivasan, R., Muttiah, R. S., Dyke, P. T., Walker, C., and Arnold, J.: Hydrologic unit model for the United States (HUMUS), Texas Agricultural Experiment Station, Blackland Research Center, Temple, TX, 2000.
- Tang, Y., Reed, P., and Wagener, T.: How effective and efficient are multiobjective evolutionary algorithms at hydrologic model calibration?, Hydrol. Earth Syst. Sci., 10, 289–307, 2006,

## HYDROGEIOS: A semi-distributed model for disturbed basins

A. Efstratiadis et al.

Title Page

Abstract

Introduction

Conclusions

References

Tables

Figures

◀

▶

◀

▶

Back

Close

Full Screen / Esc

Printer-friendly Version

Interactive Discussion

<http://www.hydrol-earth-syst-sci.net/10/289/2006/>.

Thiemann, M., Trosser, M., Gupta, H., and Sorooshian, S.: Bayesian recursive parameter estimation for hydrologic models, *Water Resour. Res.*, 37(10), 2521–2536, 2001.

Thornthwaite, C. W.: An approach toward a rational classification of climate, *Geogr. Rev.*, 38(I), 55–94, 1948.

Vrugt, J. A., Bouten, W., Gupta, H. V., and Sorooshian, S.: Toward improved identifiability of hydrologic model parameters: the information content of experimental data, *Water Resour. Res.*, 38(12), 1312, doi:10.1029/2001WR001118, 2002.

Vrugt, J. A., Schoups, G., Hopmans, J. W., Young, C., Wallender, W. W., Harter, T., and Bouten, W.: Inverse modeling of large-scale spatially distributed vadose zone properties using global optimization, *Water Resour. Res.*, 40, W06503, doi:10.1029/2003WR002706, 2004.

Wagener, T., Boyle, D. P., Lees, M. J., Wheater, H. S., Gupta, H. V., and Sorooshian, S.: A framework for development and application of hydrological models, *Hydrol. Earth Syst. Sci.*, 5, 13–26, 2001,

<http://www.hydrol-earth-syst-sci.net/5/13/2001/>.

Waterloopkundig Laboratorium: RIBASIM User's Guide, 1991.

Yapo, P. O., Gupta, H. V., and Sorooshian, S.: Multi-objective global optimization for hydrologic models, *J. Hydrol.*, 204, 83–97, 1998.

Yapo, P. O., Gupta, H. V., and Sorooshian, S.: Automatic calibration of conceptual rainfall-runoff models: sensitivity to calibration data, *J. Hydrol.*, 181, 23–48, 1996.

**HESSD**

4, 1947–1998, 2007

---

**HYDROGEIOS: A  
semi-distributed  
model for disturbed  
basins**

A. Efstratiadis et al.

---

Title Page

Abstract

Introduction

Conclusions

References

Tables

Figures

◀

▶

◀

▶

Back

Close

Full Screen / Esc

Printer-friendly Version

Interactive Discussion

## HYDROGEIOS: A semi-distributed model for disturbed basins

A. Efstratiadis et al.

**Table 1.** List of model parameters.

Description	Symbol	Units	Model component
Infiltration coefficient	$\delta$	Dimensionless	River segment
Direct runoff coefficient	$c$	Dimensionless	HRU
Retention capacity	$R$	mm	HRU
Soil moisture tank capacity	$S_{\max}$	mm	HRU
Ratio of the lower zone capacity	$\kappa$	Dimensionless	HRU
Retention coefficient for interflow	$\lambda$	$[T^{-1}]$	HRU
Retention coefficient for percolation	$\mu$	$[T^{-1}]$	HRU
Specific yield	$S_y$	Dimensionless	Groundwater cell
Hydraulic conductivity	$K$	m/s	Groundwater cell

Title Page

Abstract

Introduction

Conclusions

References

Tables

Figures

◀

▶

◀

▶

Back

Close

Full Screen / Esc

Printer-friendly Version

Interactive Discussion

## HYDROGEIOS: A semi-distributed model for disturbed basins

A. Efstratiadis et al.

**Table 2.** Optimal values of efficiency and bias for the calibration and validation periods.

Monthly runoff	Calibration period		Validation period	
	Efficiency	Average bias	Efficiency	Average bias
Basin outlet	0.870	0.058	0.761	−0.116
Lilea-Kefalovryso springs	0.809	0.069	0.605	0.180
Agia Paraskevi springs	0.707	0.106	–	–
Mavroneri springs	0.724	0.038	0.601	0.480
Herkyna springs	0.446	−0.040	0.403	−0.049
Melas springs	0.265	0.036	0.028	0.231
Polygyra springs	0.372	0.024	–	–

Title Page

Abstract

Introduction

Conclusions

References

Tables

Figures

◀

▶

◀

▶

Back

Close

Full Screen / Esc

Printer-friendly Version

Interactive Discussion

## HYDROGEIOS: A semi-distributed model for disturbed basins

A. Efstratiadis et al.

**Table 3.** Calibrated HRU parameters.

Slope	Permeability	Total area (km <sup>2</sup> )	$c$	$R$ (mm)	$S_{\max}$ (mm)	$\kappa$	$\lambda$	$\mu$
Low	Low	132.2	0.054	79.1	523.2	0.351	0.108	0.138
Low	High	154.1	0.006	79.1	588.8	0.564	0.093	0.704
Low	Medium	679.0	0.056	79.1	443.2	0.359	0.096	0.057
High	Low	288.0	0.066	85.6	227.4	0.479	0.019	0.210
High	High	539.8	0.006	85.6	242.0	0.147	0.000	0.421
High	Medium	158.2	0.026	85.6	263.6	0.180	0.212	0.175

Title Page

Abstract

Introduction

Conclusions

References

Tables

Figures

◀

▶

◀

▶

Back

Close

Full Screen / Esc

Printer-friendly Version

Interactive Discussion

**Table 4.** Simulated water balance for the period 1984–1994.

	Mean annual depth (mm)	Mean annual volume (hm <sup>3</sup> )	Percentage of inflows (%)
Surface water balance			
Precipitation	810.0	1584.1	1.000
Actual evapotranspiration	514.2	1005.6	0.635
Surface (flood) runoff	55.9	109.4	0.069
Percolation	239.8	469.0	0.296
Soil moisture storage difference	0.1	0.2	0.000
Groundwater balance			
Inflows from percolation	239.8	469.0	
Inflows from infiltration	13.8	26.9	
Pumping from boreholes	67.8	132.6	
<i>Sum of inflows</i>	<i>185.8</i>	<i>363.3</i>	<i>0.955</i>
Groundwater losses	85.5	167.1	0.460
Spring outflow	101.1	197.7	0.544
Groundwater storage difference	−9.1	−17.8	−0.049
Water management balance			
Inflows from surface runoff	55.9	109.4	
Inflows from springs	101.1	197.7	
Inflows from Hylke	14.8	28.9	
Inflows from boreholes	67.8	132.6	
<i>Sum of inflows</i>	<i>239.6</i>	<i>468.5</i>	
Infiltration losses	13.8	26.9	0.057
Abstractions for irrigation and water supply	119.2	233.0	0.497
Outlet runoff	106.7	208.7	0.445
Total basin runoff			
Inflow from precipitation	810.0	1584.1	
Inflows from Hylke	14.8	28.9	
<i>Sum of inflows</i>	<i>824.8</i>	<i>1613.0</i>	
Real evapotranspiration	514.2	1005.6	0.623
Abstractions for irrigation and water supply	119.2	233.0	0.144
Groundwater losses	85.5	167.1	0.104
Soil moisture storage difference	0.1	0.2	0.000
Groundwater storage difference	−9.1	−17.8	−0.011
Outlet runoff	106.7	208.7	0.129

**HESSD**

4, 1947–1998, 2007

**HYDROGEIOS: A  
semi-distributed  
model for disturbed  
basins**

A. Efstratiadis et al.

Title Page

Abstract

Introduction

Conclusions

References

Tables

Figures

◀

▶

◀

▶

Back

Close

Full Screen / Esc

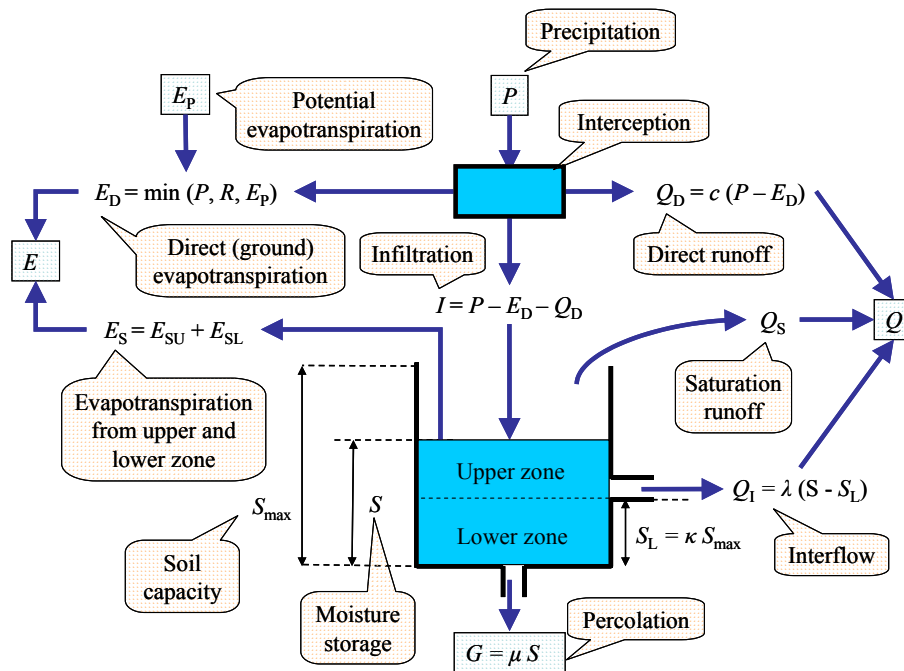
Printer-friendly Version

Interactive Discussion



## HYDROGEIOS: A semi-distributed model for disturbed basins

A. Efstratiadis et al.



**Fig. 1.** Schematic layout of the surface water balance model.

Title Page

Abstract

Introduction

Conclusions

References

Tables

Figures

◀

▶

◀

▶

Back

Close

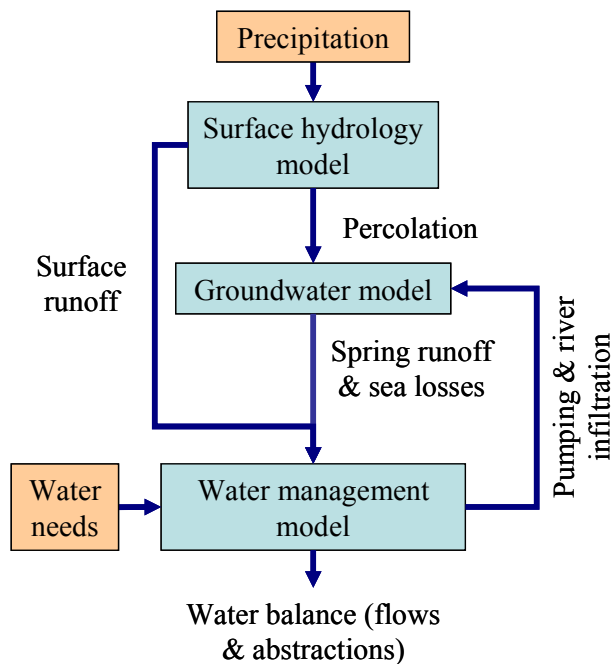
Full Screen / Esc

Printer-friendly Version

Interactive Discussion

## HYDROGEIOS: A semi-distributed model for disturbed basins

A. Efstratiadis et al.



**Fig. 2.** Simulation flowchart, explaining the co-operation of the three models.

Title Page

Abstract

Introduction

Conclusions

References

Tables

Figures

◀

▶

◀

▶

Back

Close

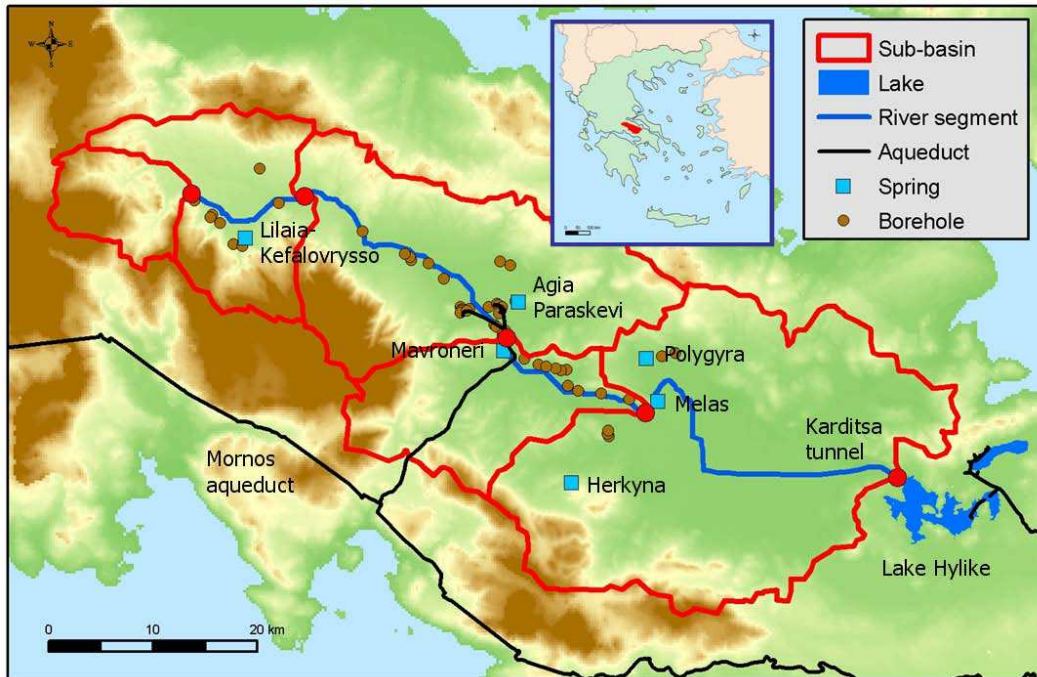
Full Screen / Esc

Printer-friendly Version

Interactive Discussion

## HYDROGEIOS: A semi-distributed model for disturbed basins

A. Efstratiadis et al.



**Fig. 3.** The Boeotikos Kephisos river basin and the main hydrosystem components.

Title Page

Abstract

Introduction

Conclusions

References

Tables

Figures

◀

▶

◀

▶

Back

Close

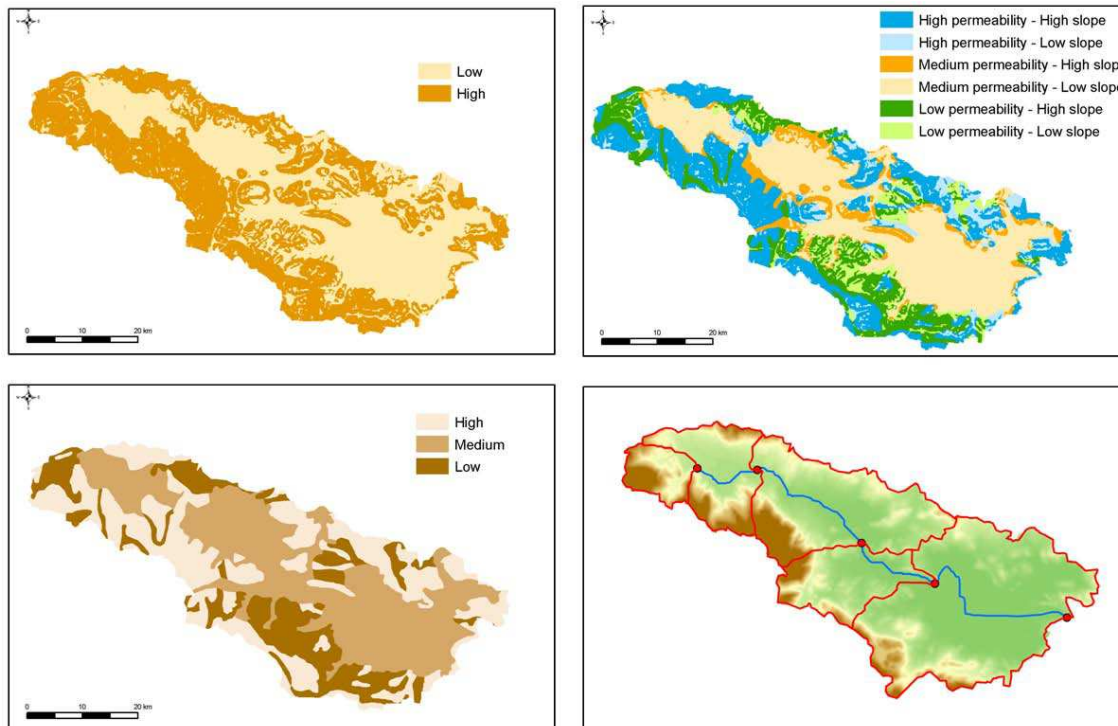
Full Screen / Esc

Printer-friendly Version

Interactive Discussion

## HYDROGEIOS: A semi-distributed model for disturbed basins

A. Efstratiadis et al.



**Fig. 4.** Characteristic layers of geographical data for the schematisation of the surface system: **(a)** top left, terrain slope; **(b)** bottom left, permeability; **(c)** top right HRUs, derived as the product of slope and permeability; **(d)** bottom right, product of HRUs and sub-basins.

Title Page

Abstract

Introduction

Conclusions

References

Tables

Figures

◀

▶

◀

▶

Back

Close

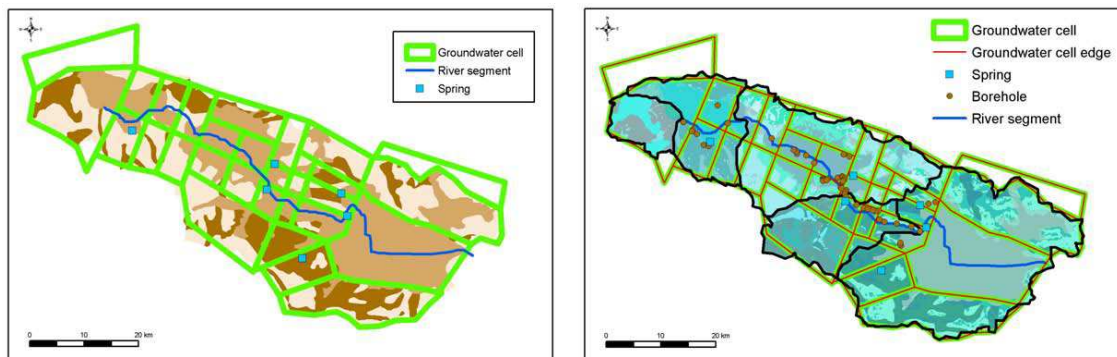
Full Screen / Esc

Printer-friendly Version

Interactive Discussion

## HYDROGEIOS: A semi-distributed model for disturbed basins

A. Efstratiadis et al.



**Fig. 5.** Characteristic layers of geographical data for the schematisation of the groundwater system: **(a)** left, formulation of cells, based on permeability; **(b)** right, product of cells, sub-basins, HRUs, springs and boreholes.

Title Page

Abstract

Introduction

Conclusions

References

Tables

Figures

◀

▶

◀

▶

Back

Close

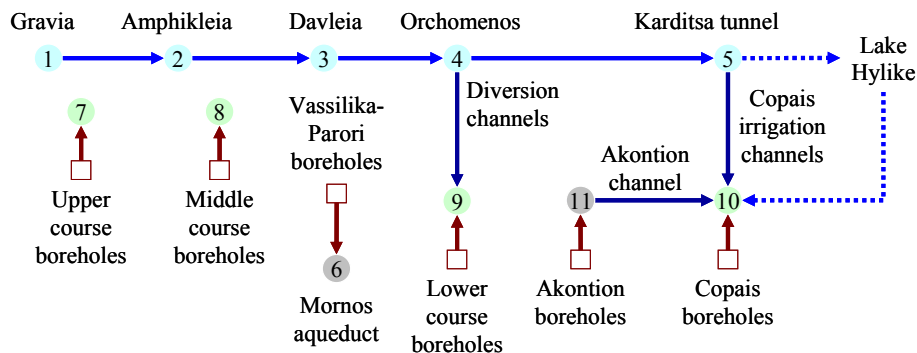
Full Screen / Esc

Printer-friendly Version

Interactive Discussion

## HYDROGEIOS: A semi-distributed model for disturbed basins

A. Efstratiadis et al.



**Fig. 6.** Simplified sketch of the water management network, representing abstractions from the surface and groundwater resources. Nodes 1–5 are river points, whereas nodes 7–10 denote agricultural areas across the basin.

Title Page

Abstract

Introduction

Conclusions

References

Tables

Figures

◀

▶

◀

▶

Back

Close

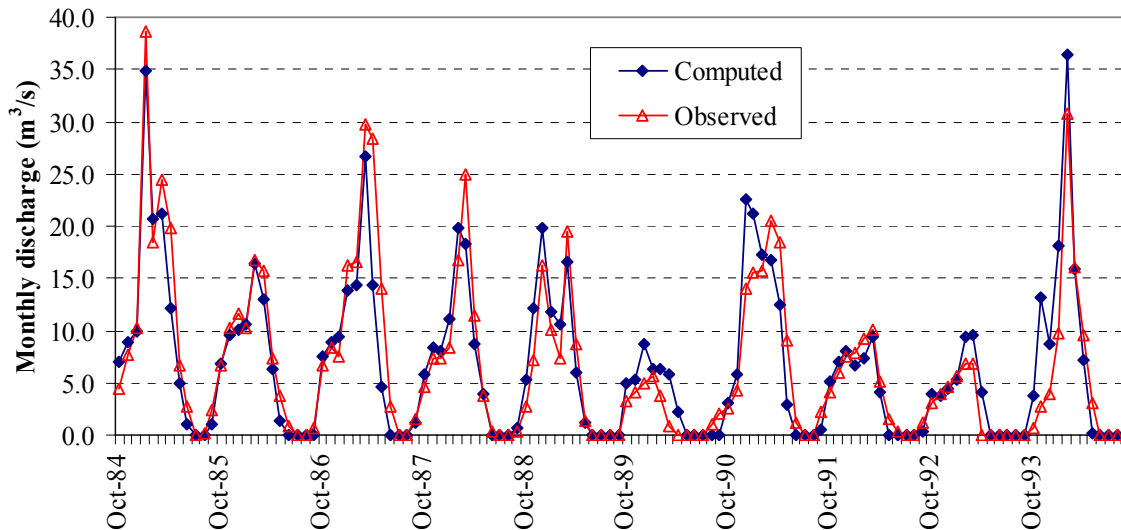
Full Screen / Esc

Printer-friendly Version

Interactive Discussion

## HYDROGEIOS: A semi-distributed model for disturbed basins

A. Efstratiadis et al.



**Fig. 7.** Computed and observed discharge series at the basin outlet.

Title Page

Abstract

Introduction

Conclusions

References

Tables

Figures

◀

▶

◀

▶

Back

Close

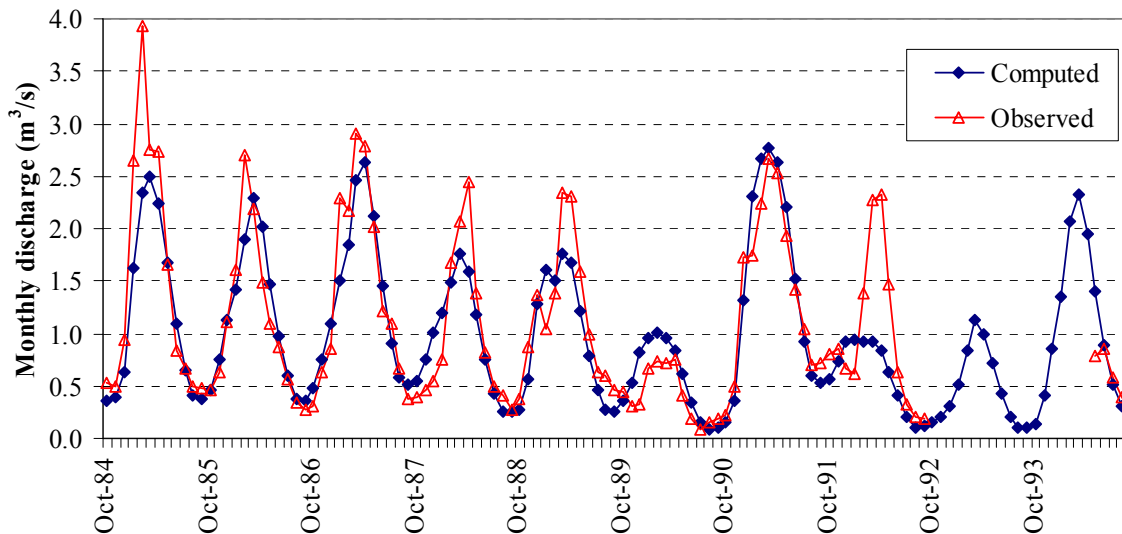
Full Screen / Esc

Printer-friendly Version

Interactive Discussion

## HYDROGEIOS: A semi-distributed model for disturbed basins

A. Efstratiadis et al.



**Fig. 8.** Computed and observed discharge series at Lilaia-Kefalovryssos springs.

Title Page

Abstract

Introduction

Conclusions

References

Tables

Figures

◀

▶

◀

▶

Back

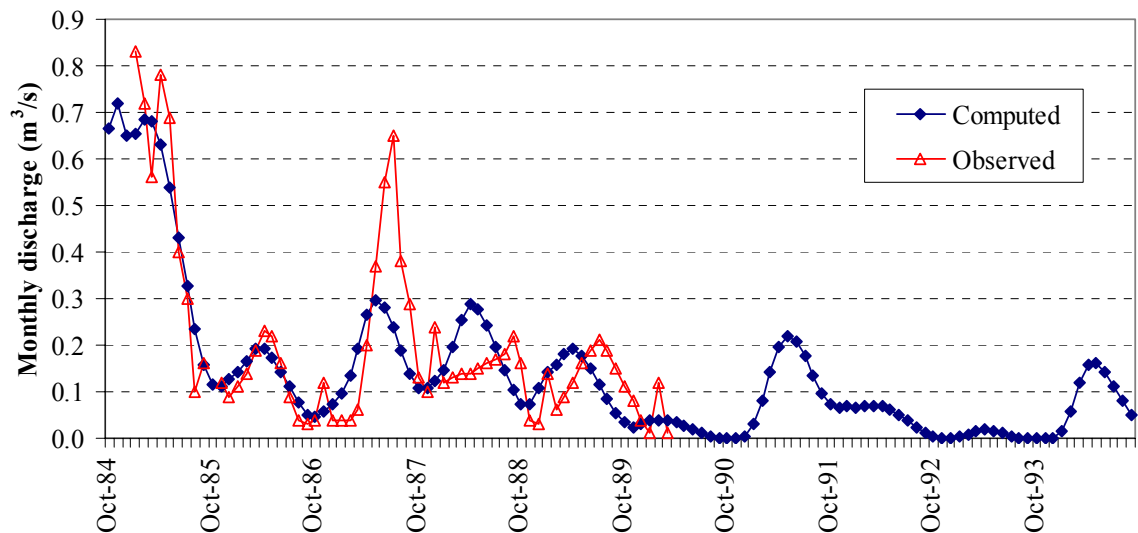
Close

Full Screen / Esc

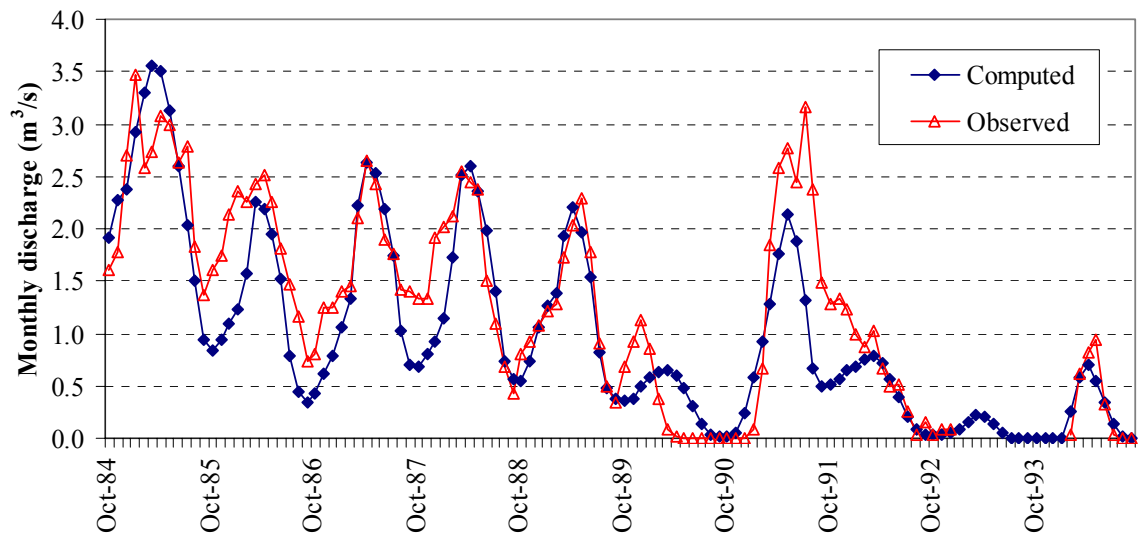
Printer-friendly Version

Interactive Discussion





**Fig. 9.** Computed and observed discharge series at Agia Paraskevi springs.



**Fig. 10.** Computed and observed discharge series at Mavroneri springs.

Title Page

Abstract

Introduction

Conclusions

References

Tables

Figures

◀

▶

◀

▶

Back

Close

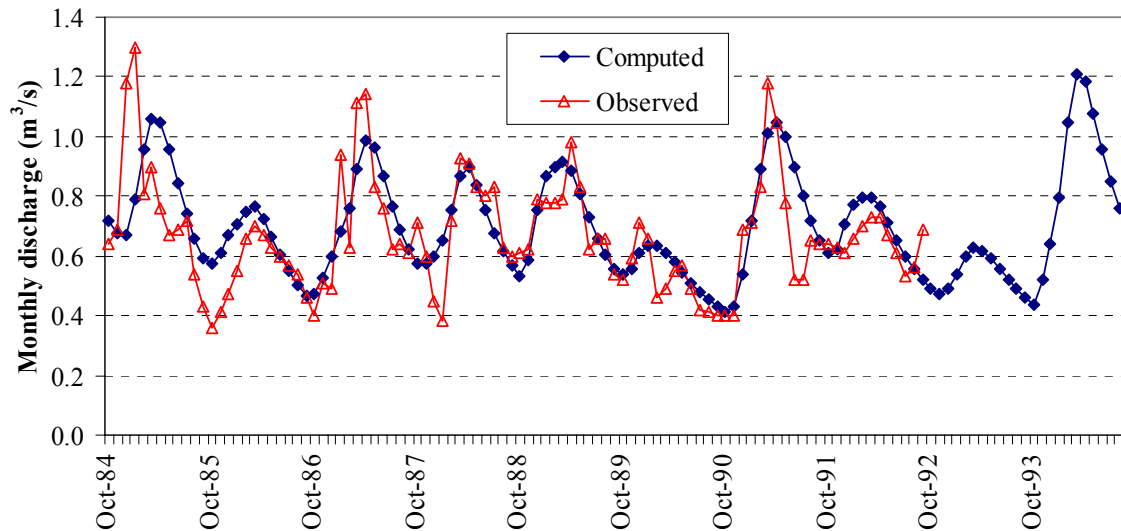
Full Screen / Esc

Printer-friendly Version

Interactive Discussion

## HYDROGEIOS: A semi-distributed model for disturbed basins

A. Efstratiadis et al.



**Fig. 11.** Computed and observed discharge series at Herkyna springs.

[Title Page](#)

[Abstract](#)

[Introduction](#)

[Conclusions](#)

[References](#)

[Tables](#)

[Figures](#)

[◀](#)

[▶](#)

[◀](#)

[▶](#)

[Back](#)

[Close](#)

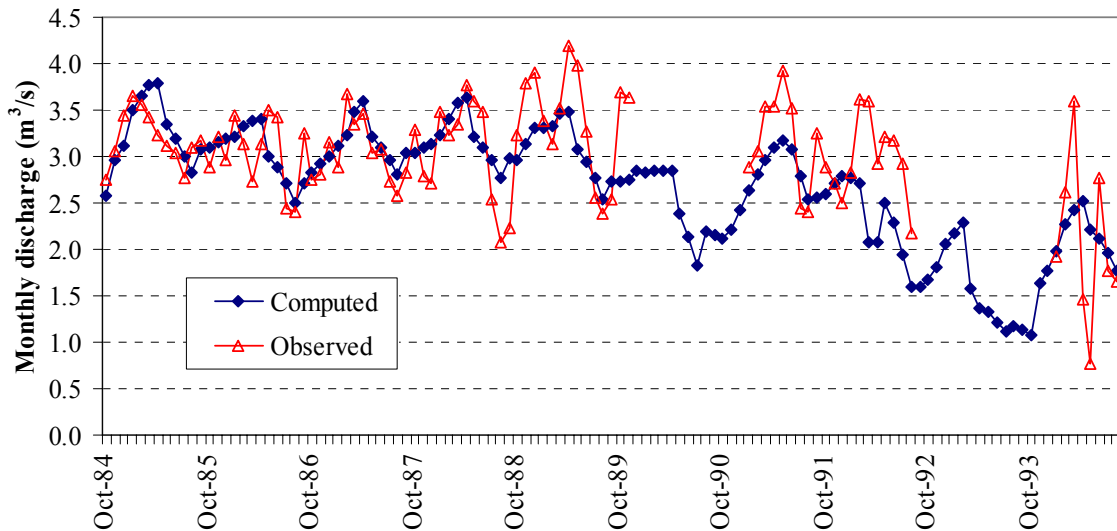
[Full Screen / Esc](#)

[Printer-friendly Version](#)

[Interactive Discussion](#)

## HYDROGEIOS: A semi-distributed model for disturbed basins

A. Efstratiadis et al.



**Fig. 12.** Computed and observed discharge series at Melas springs.

Title Page

Abstract

Introduction

Conclusions

References

Tables

Figures

◀

▶

◀

▶

Back

Close

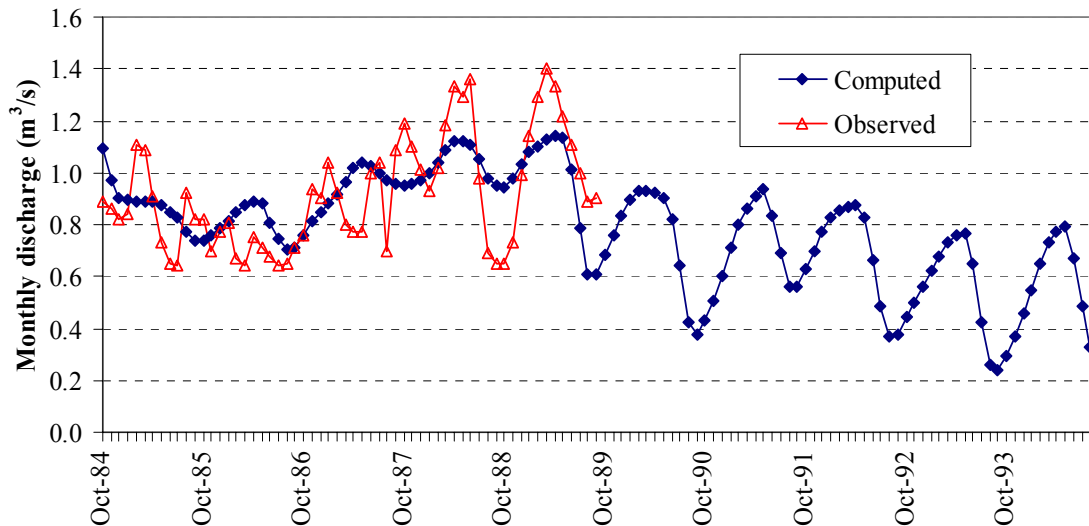
Full Screen / Esc

Printer-friendly Version

Interactive Discussion

## HYDROGEIOS: A semi-distributed model for disturbed basins

A. Efstratiadis et al.



**Fig. 13.** Computed and observed discharge series at Polygyra springs.

Title Page

Abstract

Introduction

Conclusions

References

Tables

Figures

◀

▶

◀

▶

Back

Close

Full Screen / Esc

Printer-friendly Version

Interactive Discussion