



HAL
open science

Towards a hydrological classification of European soils: preliminary test of its predictive power for the base flow index using river discharge data

M. K. Schneider, F. Brunner, J. M. Hollis, C. Stamm

► **To cite this version:**

M. K. Schneider, F. Brunner, J. M. Hollis, C. Stamm. Towards a hydrological classification of European soils: preliminary test of its predictive power for the base flow index using river discharge data. Hydrology and Earth System Sciences Discussions, 2007, 4 (2), pp.831-861. hal-00298826

HAL Id: hal-00298826

<https://hal.science/hal-00298826>

Submitted on 18 Jun 2008

HAL is a multi-disciplinary open access archive for the deposit and dissemination of scientific research documents, whether they are published or not. The documents may come from teaching and research institutions in France or abroad, or from public or private research centers.

L'archive ouverte pluridisciplinaire **HAL**, est destinée au dépôt et à la diffusion de documents scientifiques de niveau recherche, publiés ou non, émanant des établissements d'enseignement et de recherche français ou étrangers, des laboratoires publics ou privés.

Papers published in *Hydrology and Earth System Sciences Discussions* are under open-access review for the journal *Hydrology and Earth System Sciences*

Towards a hydrological classification of European soils: preliminary test of its predictive power for the base flow index using river discharge data

M. K. Schneider¹, F. Brunner¹, J. M. Hollis², and C. Stamm¹

¹Swiss Federal Institute of Aquatic Science and Technology, Eawag, Dübendorf, Switzerland

²Independent consultant, 58 St. Annes Rd., London Colney, St. Albans, AL2 1LJ, UK

Received: 29 March 2007 – Accepted: 3 April 2007 – Published: 16 April 2007

Correspondence to: M. K. Schneider (manuel.schneider@eawag.ch)

HESSD

4, 831–861, 2007

Testing a hydrological classification of European soils

M. Schneider et al.

Title Page

Abstract

Introduction

Conclusions

References

Tables

Figures

⏪

⏩

◀

▶

Back

Close

Full Screen / Esc

Printer-friendly Version

Interactive Discussion

Abstract

Predicting discharge in ungauged catchments requires knowledge on the distribution and spatial heterogeneity of hydrological soil properties.

Because hydrological soil information is not available on a European scale, we reclassified the Soil Geographical Database of Europe (SGDBE) in a hydrological manner by adopting the Hydrology Of Soil Types (HOST) system developed in the UK. The HOST classification describes dominant pathways of water movement through soil and was related to the base flow index (BFI) of a catchment (the long-term proportion of base flow on total stream flow). In the original UK study, a linear regression of the coverage of HOST classes in a catchment explained 79% of BFI variability.

We found that a hydrological soil classification can be built based on the information present in the SGDBE. The reclassified SGDBE and the regression coefficients from the original UK study were used to predict BFIs for 103 catchments spread throughout Europe. The predicted BFI explained around 65% of the variability in measured BFI in catchments in Northern Europe, but the explained variance decreased from North to South. We therefore estimated new regression coefficients from the European discharge data and found that these were qualitatively similar to the original estimates from the UK. This suggests little variation across Europe in the hydrological effect of particular HOST classes, but decreasing influence of soil on BFI towards Southern Europe.

Our preliminary study showed that pedological information is useful for characterising soil hydrology within Europe and the long-term discharge regime of catchments in Northern Europe. Based on the results, we draft a roadmap for a refined hydrological classification of European soils.

HESSD

4, 831–861, 2007

Testing a hydrological classification of European soils

M. Schneider et al.

Title Page

Abstract

Introduction

Conclusions

References

Tables

Figures

◀

▶

◀

▶

Back

Close

Full Screen / Esc

Printer-friendly Version

Interactive Discussion

1 Introduction

Water movement through soil is a primary determinant of discharge dynamics in a catchment Boorman et al., 1995; Beven, 2001; McDonnell, 2003). Accordingly, soil hydrology is an essential prerequisite for understanding the hydrology of a basin. Such knowledge is crucial for the prediction of discharge response in ungauged catchments (Sivapalan, 2003; McDonnell and Woods, 2004) and the evaluation of effects of changing environmental conditions such as land use and climate (Kirchner, 2006).

The relevance of soil hydrology goes well beyond the prediction of the behaviour of ungauged basins. An example for this comes from monitoring herbicide losses in watersheds, which was found to depend strongly on hydrological soil properties (Blanchard and Lerch, 2000). Field experiments on herbicide losses in small agricultural catchments have shown that site properties crucially affect the proportion of applied substances ending up in the receiving brook (Leu et al., 2004). These findings are in line with the variable source area concept, that storm runoff originates from a small part of a catchment only (Hewlett and Hibbert, 1967). Assessing the environmental impact of agricultural production thus requires knowledge on the hydrological response of soil units, their distribution and spatial heterogeneity. Such information is most often patchy, i.e. only available for small, incoherent areas, e.g. experimental catchments. This limited data availability is often in conflict with the tendency towards multi-national and global standards in assessing environmental risks of chemical substances used in agriculture (Schneider et al., in press, 2007), which require a comparable database on soil hydrology.

Although pedologists started to compile and harmonize European soil data as early as 1974, information on the hydrological behaviour of soils at the European scale is still widely lacking. The most recent and most comprehensive source of soil information on European scale is the Soil Geographical Database of Europe (SGDBE, King et al., 1994) at 1:1 Mio scale. It contains primary pedological attributes and additional characteristics derived from pedo-transfer rules developed from expert knowl-

HESSD

4, 831–861, 2007

Testing a hydrological classification of European soils

M. Schneider et al.

Title Page

Abstract

Introduction

Conclusions

References

Tables

Figures

⏪

⏩

◀

▶

Back

Close

Full Screen / Esc

Printer-friendly Version

Interactive Discussion

edge. Databases of soil profile descriptions and analyses have been connected to many of the soil units in the map (Hollis et al., 2006), as well as a database of hydraulic properties called HYPRES (Wösten et al., 1999). Unfortunately, the raw hydraulic property data in HYPRES are unavailable for many applications because no agreement regarding the distribution has been reached with the participating institutions. The only readily available data from HYPRES are a set of derived pedo-transfer functions for predicting Mualem-van Genuchten parameters from basic data on soil particle size fractions, organic carbon content and bulk density (Wösten et al., 1999). Thus, there is need to predict soil hydrological characteristics from existing pedological information at a European level.

Soil properties and catchment response could be related, for example, through a hydrological model using the hydraulic parameters estimated by HYPRES (Wösten et al., 1999). However, the HYPRES pedo-transfer functions may give unsatisfactory predictions of soil hydrological characteristics because additional pedological information (e.g. on impermeable layers) and boundary conditions (e.g. parent material) are not taken into account (Lin et al., 2006). A completely different concept is the Curve Number Model (Soil Conservation Service, 1972), which estimates direct runoff from rainfall using information on the hydrological soil group, land cover and antecedent moisture conditions. In the United States, the soil hydrologic groups were determined directly during soil survey, but they are not available in the SGDBE. On top, with only four soil hydrologic groups, each of which can encompass different mechanisms of generating runoff, this concept is limited.

A more holistic approach for the description of soil hydrology was developed in the United Kingdom by Boorman et al. (1995). Their system of Hydrology Of Soil Types (HOST) classifies soils according to conceptual models representing the dominant features controlling water movement through soil and hence the mean residence time of water in soils. This approach to classify soil hydrologic properties was quantitatively linked to hydrology by deriving Base Flow Indices (BFI) for 575 catchments in the UK. The Base Flow Index (BFI) corresponds to the long-term average proportion of flow

Testing a hydrological classification of European soils

M. Schneider et al.

Title Page

Abstract

Introduction

Conclusions

References

Tables

Figures

⏪

⏩

◀

▶

Back

Close

Full Screen / Esc

Printer-friendly Version

Interactive Discussion

that occurs as base flow (Institute of Hydrology, 1980). It provides a measure of the overall discharge responsiveness of a catchment, although it is commonly derived, as in this study, from the hydrograph only with little physical underpinning. The BFI may not be result of soil hydrological conditions alone, but also of topography and/or climate.

5 However, its simplicity makes it an attractive concept for evaluating a hydrological soil classification at a European scale.

Boorman et al. (1995) used multiple linear regression to estimate a regression coefficient for each of the 29 HOST classes. These coefficients describe the effect of a particular HOST class on the BFI and can be used for BFI prediction by simple weighting with the fraction of the class in the catchment. Boorman et al. (1995) found that their regression, i.e. the coverage of HOST classes in a catchment, explained 79% of the variability in the measured BFI. Including topography, land cover or climate did not increase the explained variance and it was concluded that, in the UK at least, these environmental characteristics were already largely reflected in the HOST classes. HOST has been successfully used to predict catchment response at the small to mesoscale (Dunn and Lilly, 2001; Maréchal and Holman, 2005; Soulsby et al., 2006b). A process-based soil classification such as HOST may thus integrate regional climatic and topographic variation and have the potential to be extendable to a European scale.

Outside the UK, Haberlandt et al. (2001) used slope, topographic index, hydraulic conductivity and precipitation to predict BFI patterns in the Elbe River Basin and Lacey et al. (1998) related the BFI of catchments in Victoria (Australia) to altitude, forest coverage and precipitation amongst other parameters. The two studies found negative (Haberlandt et al., 2001) and positive (Lacey and Grayson, 1998) correlations between precipitation and the BFI, suggesting that effects of climatic parameters on BFI vary regionally. It might thus be important to consider climate and topography in an extrapolation of HOST beyond the UK.

In this study, we evaluated whether the SGDBE, as the most comprehensive harmonised source of pedological information at a European scale, could be reclassified into HOST classes. We then investigated how the soil properties conceptualised by

Testing a hydrological classification of European soils

M. Schneider et al.

Title Page

Abstract

Introduction

Conclusions

References

Tables

Figures

⏪

⏩

◀

▶

Back

Close

Full Screen / Esc

Printer-friendly Version

Interactive Discussion

HOST affected the BFI of a selection of small European catchments. This was done in a two-step approach:

1. We predicted BFI values for the evaluated catchments using the regression coefficients from the original HOST study in the UK by Boorman et al. (1995).
2. We estimated new regression coefficients from the discharge data of the European catchments and compared them to the estimates of Boorman et al. (1995).

By doing so, we explored regional differences in the driving factors of catchment response at the European scale and the feasibility of a hydrological classification of European soils. In this sense, we consider our work as an important first step towards an improved hydrological interpretation of European soil information.

2 Data preparation and analysis

2.1 Reclassification of SGDBE into HOST classes

The Soil Geographical Database of Europe (SGDBE; King et al., 1994; <http://eussoils.jrc.it/>) is built upon Soil Mapping Units (SMU), which are geo-referenced and composed of one or more Soil Type Unit (STU). Each STU is described by attributes specifying the nature and properties of the soils, for example parent material, dominant surface texture class, water regime etc. The percentage in a SMU that is covered by each STU is given, but not their location. Hence, an SMU is the smallest available spatial object, but the availability of multiple STUs improves the quantification of pedological information.

The reclassification was performed using a logical decision tree, which is available for download as supplementary data (<http://www.hydrol-earth-syst-sci-discuss.net/4/831/2007/hessd-4-831-2007-supplement.zip>). We used the SGDBE 3.2.8.0, on which further information can be found at <http://eussoils.jrc.it/>. The HOST report (Boorman et

Testing a hydrological classification of European soils

M. Schneider et al.

Title Page

Abstract

Introduction

Conclusions

References

Tables

Figures

⏪

⏩

◀

▶

Back

Close

Full Screen / Esc

Printer-friendly Version

Interactive Discussion

al. 1995) is downloadable from <http://www.ceh.ac.uk/products/publications/hydrology.html>.

In the first step of reclassification, substrate hydrogeology and the presence of groundwater or aquifers were used to define twelve physical subsettings (Table 1, i.1 to iii.4). Substrate hydrogeology was derived from the parent material of each STU in the SGDBE, guided by Boorman et al. (1995: Tables 3.1 to 3.3) and expert judgement. The presence of aquifers or groundwater near the surface was more difficult to represent because no direct information was available in the SGDBE. Hence, SGDBE attributes “Water Regime” (WR) and “Hydrological Class” (HG) were used. WR describes whether a soil is wet within a certain depth and for how many months per year. HG is derived by a pedotransfer rule from information of soil type, altitude and permeability. Soils in WR 4 (wet within 40 cm depth for over 11 months) were attributed to physical setting ii), other WR classes (0, 1, 2 and 3) were attributed to physical setting i). HG class 2 stands for “lowland soil affected by groundwater, seasonally or permanently wet, or artificially drained” and was found to be representative for physical setting ii) by comparison with the original HOST map by Boorman et al. (1995).

In the second step, STUs were further classified according to permeability and the presence of peat. Again, not all attributes used for HOST were present in the SGDBE and it was necessary to use other SGDBE attributes as proxies. As an indicator of impermeability or gleying, attributes “Presence of an impermeable layer within a certain depth” (IL) and “Depth to a gleyed horizon” (DGH) were used (Table 1). The original HOST classification used the integrated air capacity to further separate soils on impermeable or slowly permeable substrate into groups with large or small soil water storage capacities. Integrated air capacity is a measure of the soil macroporosity defined as the volume of pores in the soil which are greater than 60 μm and was derived from soil profile data (Hollis and Woods, 1989). Since integrated air capacity was not available in SGDBE, a separation was based upon dominant or secondary surface textural class (Table 1, classes 18 to 21).

Peat soils were determined by considering the dominant texture class, which con-

HESSD

4, 831–861, 2007

Testing a hydrological classification of European soils

M. Schneider et al.

Title Page

Abstract

Introduction

Conclusions

References

Tables

Figures

⏪

⏩

◀

▶

Back

Close

Full Screen / Esc

Printer-friendly Version

Interactive Discussion

tains a separate peat class, and, where dominant texture information was missing, the secondary texture class. If the parent material was reported as “organic materials”, soils were directly assigned to class 29 (Table 1). Peat soils with shallow aquifer or groundwater were divided according to whether a peat soil is drained or not (Table 1, classes 11 and 12). Since there was no such information in SGDBE, all peat soils with agricultural use were assumed to be drained.

This procedure permitted to almost fully reproduce the HOST concept on the basis of SGDBE attributes. There remained 3 differences: (i) Eroded peat and raw peat (classes 28 and 29 in Boorman et al. (1995)) were not distinguishable and, thus, connected to one group called Peat (Table 1, class 29). (ii) In the original HOST classification, soils with a gleyed layer within 40 cm and a shallow aquifer were subdivided on the basis of different lateral saturated hydraulic conductivity (classes 9 and 10 in Boorman et al. (1995)). In the European soil map, no attribute to establish such a differentiation was available and the two classes were aggregated to class 10 (Table 1). (iii) Due to wider range of soils in Europe, classes 17, 25 and 27 were extended to cover physical subsettings iii.2) and iii.3), whereas in the UK, these combinations are not present and no HOST classes were defined (Boorman et al., 1995).

The original HOST class and the reclassified SGDBE were qualitatively compared in England and Wales based on the original and the reclassified map (Figs. 1 a,b). A quantitative comparison was performed using an ad-hoc measure on the basis of the SMU, which are the smallest spatial units of the SGDBE with unique soil information (King et al., 1994). For each SMU, the fractions of all HOST classes were extracted either directly from the original HOST map or, in the case of the reclassified SGDBE, using the percentage of STUs in the SMU. The extracted fractions were then multiplied by the area of the SMU. These values represented observations of the coverage of each HOST class in the two maps and would lay on a 1:1 line in case of a perfect reclassification. Normalized residuals from the 1:1 line ($NR_{1:1}$) were calculated for

Testing a hydrological classification of European soils

M. Schneider et al.

Title Page

Abstract

Introduction

Conclusions

References

Tables

Figures

⏪

⏩

◀

▶

Back

Close

Full Screen / Esc

Printer-friendly Version

Interactive Discussion

each HOST class as:

$$NR_{1:1} = \frac{\sum_i |F_i^o - F_i^r| \cdot A_i}{\sum_i (F_i^o + F_i^r) \cdot A_i} \quad (1)$$

where F_i^o and F_i^r are the fraction of a particular HOST class in the i -th SMU in the original map and the reclassified SGDBE, respectively, A_i is the area covered by the i -th SMU. $NR_{1:1}$ are 0 in case of a perfect match between the two maps and 1 in case of complete disagreement.

2.2 Preparation of discharge data

Data on mean daily discharge in European catchments was obtained from the Global Runoff Data Centre (GRDC). Primary selection criteria for the catchments used in this study were a catchment size smaller than 5000 km², a spread over Europe as uniform as possible and the coverage of a large range of soil types. In a more detailed evaluation during the study, also catchments with lakes or artificial flow corrections and a high proportion of urban area were excluded. No restriction on the number of available record years was set at this stage.

Long-term BFIs were calculated as the ratio of summed base flow to summed total discharge in a catchment. The base-flow was obtained using the smoothed minima method as described by the Institute of Hydrology (1980). The hydrograph was separated into blocks of five days and the minimum discharge was determined for each block. If the minimum discharge of a block was smaller than 90% of the minima in the preceding and subsequent block, it was considered a turning point. The daily base flow was determined as the smaller value of the linear interpolation between turning points and the actual discharge. Missing values were treated slightly different to the Institute of Hydrology (1980). To avoid bias from incomplete annual data, runoff data of years with more than three consecutive weeks of missing data were removed from

Testing a hydrological classification of European soils

M. Schneider et al.

Title Page

Abstract

Introduction

Conclusions

References

Tables

Figures

⏪

⏩

◀

▶

Back

Close

Full Screen / Esc

Printer-friendly Version

Interactive Discussion

the analysis. Additionally, gaps smaller than three weeks were linearly interpolated for the determination of turning points, but excluded for the final summation of base flow.

2.3 Delineation and characterisation of catchments

To relate the BFI to catchment properties, the catchment boundaries had to be determined. We used the coordinates of the gauging station given in the GRDC database and a digital elevation model (DEM) with 90 m resolution, obtained from the Shuttle Radar Topography Mission (Void-filled seamless SRTM data V2, 2005, International Centre for Tropical Agriculture, available from <http://srtm.csi.cgiar.org/>). After filling sinks in the DEM, flow direction was calculated using the single flow direction algorithm and accumulated thereafter using ArcGIS 9.2 (ESRI, Redlands, USA). No stream burning was performed, because data was not available at the required quality on a European scale. Since the calculated river network and especially the coordinates of gauging stations in the GRDC database were not always precise enough, the flow accumulation layer and the gauging station did often not coincide. For each catchment, up to three potential gauging positions within a distance of 1.5 km to the original position were evaluated by calculating the area of all cells lying upstream. The position was selected, at which the upstream area was closest to the area reported by GRDC. If the two areas deviated by more than 5% for all three positions, the catchment was excluded from further analysis. This criterion reduced the number of catchments from 229 to 103 and was the most important restriction on the use of the GRDC data.

In order to analyze the influence of topography on the BFI, average slope, altitude, topographic index were calculated for each of the catchments based on the SRTM DEM. The effect of climate was assessed using global data on mean annual precipitation sum and the precipitation amount per wet day (New et al., 2002).

Testing a hydrological classification of European soils

M. Schneider et al.

Title Page

Abstract

Introduction

Conclusions

References

Tables

Figures

⏪

⏩

◀

▶

Back

Close

Full Screen / Esc

Printer-friendly Version

Interactive Discussion

2.4 Prediction of BFI based on original UK regression coefficients

In the first step of our evaluation, we predicted BFI for the evaluated catchments based on the reclassified SGDBE and the regression coefficients estimated to each HOST class based on 575 catchments in the UK (Boorman et al., 1995, Table 3.8). A *BFI* value for each catchments was calculated as

$$BFI = \sum_{i=1}^n a_i F_i \quad (2)$$

where a_i is the regression coefficient of HOST class i in the catchment, F_i is the fraction for class i and n is the number of HOST classes. For HOST classes 29 and 10, which were aggregated from the original classes 28, 29 and 9, 10, respectively, a weighted average coefficient was calculated based on the UK coverage of the original classes. This led to a regression coefficient a of 0.259 for class 29 and of 0.654 for class 10.

2.5 Estimation of regression coefficients based on discharge data of European catchments

In the second step of the evaluation, we estimated new regression coefficients for each HOST class from the measured BFIs derived from the discharge data of the studied catchments. This was done by applying Eq. (2) in a multiple linear regression with measured BFI as target variable and HOST class fractions F as explanatory variables.

In order to avoid estimations of regression coefficients outside the permissible range for the base flow index of 0 and 1, Fisher's z transformation was used (Haberlandt et al., 2001). First, a value z was calculated from the measured BFI as

$$z = \frac{1}{2} \ln \left(\frac{BFI}{1 - BFI} \right) \quad (3)$$

The multiple linear regression was performed with z as dependant variable and the

Testing a hydrological classification of European soils

M. Schneider et al.

Title Page

Abstract

Introduction

Conclusions

References

Tables

Figures

⏪

⏩

◀

▶

Back

Close

Full Screen / Esc

Printer-friendly Version

Interactive Discussion

resulting regression coefficients a_z were then back-transformed into regression coefficients a between 0 and 1 by

$$a = \frac{1}{2} \left(\frac{\exp(2a_z) - 1}{\exp(2a_z) + 1} \right) + 0.5 \quad (4)$$

Not all classes had equal coverage in the analysed catchments and the estimated coefficients had different support. Therefore, classes with very small coverage were excluded. Akaike's information criterion (AIC) was used to select only those classes which importantly improved the goodness of fit of the classification to the data. AIC penalises the goodness of fit with the complexity of the classification (i.e. the number of classes) and was used to optimize the regression model using the function step in R 2.4.0 (R Development Core Team, 2006). Classes which did not improve AIC when in the model were step-wise excluded. The remaining classes were summed up and set to 100% to calculate the BFI. As a consequence, catchments that lost more than 40% of soil information were excluded from further calculations.

3 Results

3.1 Performance of the reclassified SGDBE for England and Wales

For England and Wales, the reclassified SGDBE (Fig. 1a) agreed qualitatively well with the original HOST classification (Fig. 1b). Especially, the classes with a high coverage (e.g. classes 17, 18 and 24) and those based on distinct geological features (e.g. classes 1 and 2) were generally well reproduced. The coarser resolution of the SGDBE led to small-scale variability being lost. For example, HOST classes 7, 8 and 10, which are situated predominantly in riverbeds, and some other scattered, mainly secondary classes were underestimated and large-area classes such as classes 17 and 24 were overestimated by the reclassification (Table 2).

The $NA_{1:1}$ as a quantitative measure showed that also the spatial agreement between original and reclassified map was generally good for classes with high coverage

Testing a hydrological classification of European soils

M. Schneider et al.

Title Page

Abstract

Introduction

Conclusions

References

Tables

Figures

⏪

⏩

◀

▶

Back

Close

Full Screen / Esc

Printer-friendly Version

Interactive Discussion

(Table 2). This confirms the impression of a good agreement from Fig. 1. However, there are exceptions such as classes 4 and 6, which are often encountered as a secondary class in the original map and therefore difficult to represent using the SGDBE.

Despite the insufficient information to distinguish different peat substrates in the SGDBE, there was a relatively good match for the aggregated class 29, both with respect to coverage as well as spatial association. This was not the case for the other peat soil classes (11, 12, 15, 26, 27), which showed considerable disagreement due to the missing peat information in the SGDBE. Class 15 was also strongly underestimated because rocks and schists were classified as slowly permeable into physical setting iii) and peat soils on these substrates were thus attributed to class 27.

3.2 HOST map extrapolated to Europe

Based on the good performance of the reclassification for England and Wales, the HOST system was extrapolated to the rest of Europe (Fig. 2). When comparing the maps for England and Wales and the rest of Europe, a general trend towards a higher coverage of permeable classes was observed, visually (Fig. 2) as well as quantitatively (Table 2). Classes with no impermeable or gleyed layers within 100 cm soil depth had higher coverages in Europe than in England and Wales, especially classes 2, 6 and 16 (Table 2). Also class 8 (soils with groundwater or aquifer present within 2 m depth but without impermeable or gleyed layers with 40 cm) was more abundant in Europe than in England and Wales. This trend can also be seen by just comparing the most abundant classes (Table 2). In England and Wales, more than 30% of the soils were classified into classes 24 and 25, whereas more than 30% of the soils in Europe fell into classes 16 and 17.

Two main problems were encountered during the extrapolation to Europe. First, the hydrological interpretation of parent materials in the SGDBE was not always clear. For example, a whole range of crystalline rocks and migmatites may be hard and impermeable (Table 1, physical subsetting iii.2) or slightly porous and permeable (physical subsetting i.4) if they are weathered. Information on the state of weathering is com-

Testing a hydrological classification of European soils

M. Schneider et al.

Title Page

Abstract

Introduction

Conclusions

References

Tables

Figures

⏪

⏩

◀

▶

Back

Close

Full Screen / Esc

Printer-friendly Version

Interactive Discussion

pletely missing in the SGDBE. Second, the resolution of the SGDBE is not homogeneous throughout Europe. Some countries, e.g. Sweden or Spain are separated in only few large polygons and large areas are attributed to the same HOST class. This is especially striking in the coverage of class 16 throughout Northern Sweden (Fig. 2).

5 3.3 Predicted BFIs using original UK regression coefficients

For 103 catchments in Europe BFI values were predicted based on regression coefficients from the original UK estimation (Boorman et al., 1995) and compared to BFI derived from river discharge measurements (Fig. 3). The dataset was separated into four groups (A-D).

- 10 A A total of 13 catchments were identified where the runoff regimes were governed by major artificial influences or large lake fractions (Figs. 3 and 4, triangles). These catchments were excluded from further analysis together with two more catchments with insufficient flow data. The R^2 for the 88 remaining catchments was 0.256.
- 15 B BFIs were over-predicted in a considerable number of the remaining catchments. It was found that absolute residuals of the BFI prediction correlated strongly with the coefficient of variation (CV) of the yearly BFI ($r=0.53$). In 11 catchments (Figs. 3 and 4, squares) the CV of the annual BFI was higher than the maximum CV of yearly BFI in the available UK catchments (Group C) of 0.18. All these catchments were located in Southern Europe (Fig. 4).
- 20 C In the 21 catchments in the UK (Figs. 3 and 4, rhomboids) the reclassified SGDBE explained 68% of the variability in measured BFI. This is in agreement with the 79% explained by the original HOST classification (Boorman et al., 1995).
- 25 D Even without the catchments with a high CV of annual BFI, the predictability of BFI for the remaining 48 catchments outside the UK (Figs. 3 and 4, circles) was still relatively low ($R^2=0.16$).

Testing a hydrological classification of European soils

M. Schneider et al.

Title Page

Abstract

Introduction

Conclusions

References

Tables

Figures

⏪

⏩

◀

▶

Back

Close

Full Screen / Esc

Printer-friendly Version

Interactive Discussion

Testing a hydrological classification of European soils

M. Schneider et al.

Title Page

Abstract

Introduction

Conclusions

References

Tables

Figures

⏪

⏩

◀

▶

Back

Close

Full Screen / Esc

Printer-friendly Version

Interactive Discussion

The geographic distribution of residuals revealed a decreasing predictability of BFI from North to South (Fig. 4). Most catchments in Southern Europe had large residuals and a high variation in annual BFI. Of all the catchment properties included in the analysis, the topographic index explained the highest share of the remaining variation in BFI in the 48 catchments of group D ($r=0.32$). Low topographic indices generally corresponded to over-predicted BFIs, while the residuals of the prediction decreased with larger topographic indices (data not shown).

3.4 Estimated regression coefficients based on European catchments

There was a good qualitative agreement between the regression coefficients estimated by the original UK study (Fig. 5: Original UK) and estimates from discharge of the catchments in groups C and D (Fig. 5: Europe reduced). We mean by a good qualitative agreement that most regression coefficients estimated from the European data were consistent to their response models. For example, HOST classes on permeable substrate had higher regression coefficients than classes on impermeable substrate or with impermeable or gleyed layers. Class 16 on slowly permeable substrate had a higher regression coefficient than class 17 on impermeable substrate (Fig. 5). There was a notable exception: classes 19 and 21 should both have a lower regression coefficient than class 18 (Table 1), because 19 is on less permeable substrate and 21 on finer material than 18.

As in the original UK study by Boorman et al. (1995), constraining the regression coefficients to values between 0 and 1 (the allowable range for the BFI) had only minor effects on the overall results. For easier readability of Fig. 5, only the constrained regression coefficients are shown.

Based on the good predictability of BFI in the UK from the original regression coefficients, we expected that including the UK catchments (Group C) into the estimation may draw coefficients towards the original values by Boorman et al. (1995). To test for this potential bias, a linear regression was fitted to the catchments outside the UK only (Group D). Using step-wise AIC produced coefficient estimates for 11 HOST

classes (Fig. 5, Europe outside UK). With the exception of HOST class 14, the estimated regression coefficients were almost identical to the estimates including the UK catchments. This suggests that 10 out of 11 classes, which were estimable from non-UK catchments, were dominantly influenced by non-UK catchments, but the estimated regression coefficients were still close to those of Boorman et al. (1995).

In addition, there exists a general trend in the European regression coefficients: Except for the relatively small classes 14 and 19 (covering together less than 3% in the catchments, Table 2), all HOST classes dominantly influenced by catchments outside the UK were estimated either lower or almost identical to the original regression coefficients.

4 Discussion

The analysis of discharge data from selected European catchments has shown that (i) the information in the SGDBE is sufficient for a hydrological classification, (ii) the variability of BFI explained by soil classes tends to decrease from Northern to Southern Europe, probably because factors such as climate and topography, which are not reflected in the parameters originally used to differentiate HOST classes, have a greater influence on catchment response in Southern Europe, but (iii) there are no indications at this scale that the hydrological effect of a particular hydrological soil class would differ regionally.

4.1 The Soil Geographical Database of Europe can be used as a basis for a hydrological classification

The process-based HOST classification was derived from soil maps available in the UK at a scale of 1:250'000 (Boorman et al., 1995). Our study showed that the classification can be widely reproduced from the SGDBE at 1:1 Mio scale. Only a few attributes are missing in the SGDBE, mainly affecting the classification of peat soils, obviously

Testing a hydrological classification of European soils

M. Schneider et al.

Title Page

Abstract

Introduction

Conclusions

References

Tables

Figures

⏪

⏩

◀

▶

Back

Close

Full Screen / Esc

Printer-friendly Version

Interactive Discussion

because these are less important on a European scale. Also the integrated air capacity used to subdivide certain classes was difficult to represent. Comparing the reclassified SGDBE with the original HOST map shows that texture was a satisfactory proxy for soil water storage capacities in order to separate soils in HOST classes 18 to 23 (Table 2).

5 Subdivisions are important for the goodness of fit of the estimated linear regression. The results by Boorman et al. (1995) show that there exist large differences between the estimated regression coefficients for a number of subdivided classes (e.g. 0.524 for class 20 and 0.218 for class 23). This suggests that a European classification may be greatly improved by subdividing large classes according to adequate criteria.

10 More critical in a Europe-wide classification are uncertainties in the hydrological interpretation of parent materials and the complete absence of certain situations in the HOST system. It was noticed that information on the state of weathering of parent material is important but not available. The line of the last European glaciation might be used to separate zones where substrates are likely to be weathered but testing this assumption would go beyond the scope of this preliminary study. Another uncertainty is the hydrological characteristics of parent materials which are not found in the UK and are thus not considered in the original HOST system. It might be useful to evaluate the inclusion of additional HOST classes for e.g. volcanic soils in a refined European classification.

20 A further limitation of a European hydrological classification is the variable quality of the underlying pedological information, which is not homogenous for the whole SGDBE since the quality of available soil surveys strongly differs between countries (European Commission, 2005, 37). The UK is entirely covered by a pedological map at 1:250000 but soil information is poorer in several other countries (e.g. in Switzerland) and this is reflected in the SGDBE. In the UK, most SMU contain several soil type units, but
25 in Switzerland, for example, only one soil type unit is given per SMU. This may be one reason why the BFI predicted from the reclassified SGDBE explains only around 22% of the variance in measured BFI in 55 Swiss catchments (Rosi Siber, personal communication). In contrast, a fine-scale mapping of dominant runoff processes

Testing a hydrological classification of European soils

M. Schneider et al.

Title Page

Abstract

Introduction

Conclusions

References

Tables

Figures

⏪

⏩

◀

▶

Back

Close

Full Screen / Esc

Printer-friendly Version

Interactive Discussion

in a small Swiss catchment allowed good prediction of rainfall-runoff transformations (Schmocker-Fackel et al., 2007).

A final consideration with respect to HOST characterisation of the SGDBE is the uncertainty associated with interpretation of its hydrological attributes. For example, there can be inconsistencies between the identified soil water regime information, interpreted depth to gleyed horizon information and the hydrological interpretation of information conveyed by pedological soil type. Such inconsistencies mean that there is significantly more uncertainty in using the SGDBE to derive HOST classes than using the original UK soil map data to derive HOST classes.

4.2 The importance of soil for the discharge dynamics is decreasing from Northern to Southern Europe but it does not change

Residuals of the prediction based on the regression coefficients from the original UK study (Boorman et al. 1995) were found to be smallest in catchments located in Northern Europe, especially on the British Isles and in North-Central Europe (Fig. 4). The residuals are larger in hillier regions further South and in the Mediterranean. This result may be attributable to the relatively good soil data in the UK and countries such as the Czech Republic, Slovakia, Austria and Hungary (European Commission, 2005, 37). However, soil information in Italy, Slovenia and Serbia is also of relatively good quality but there exist major deviations from the predicted BFI, probably because of influences of topography and altitude. Hence, similar climatic and topographic conditions rather than data quality determines the predictability of BFI.

In catchments in Central and Southern Europe, additional parameters may become important, especially topography and climate. The topindex was found to explain the highest proportion of variation in the residuals (data not shown), indicating some effects of topography on the discharge dynamics not captured by the HOST classes. Generally, low topographic indices corresponded to overpredicted BFIs, while the predictions were more accurate with larger topographic indices. A low index is found in hilly catchments with pronounced topography where rain events cause more surface runoff than

Testing a hydrological classification of European soils

M. Schneider et al.

Title Page

Abstract

Introduction

Conclusions

References

Tables

Figures

⏪

⏩

◀

▶

Back

Close

Full Screen / Esc

Printer-friendly Version

Interactive Discussion

in flat regions with the same soil characteristics (Page et al., 2005). Topography was found to be the main determinant of water residence in the Western US (McGuire et al., 2005).

In alpine and pre-alpine situations, the long-term average precipitation sum may be an important factor for the discharge dynamics. It was identified as the most important predictor of discharge dynamics in country-wide analyses in Austria (Merz et al., 2006) and in Switzerland (Rosi Siber, personnel communication) and explained 62% of the BFI variation in 25 catchments in the Elbe River basin (Haberlandt et al., 2001). However, mean annual precipitation was not found to be a crucial factor for BFI prediction on a European scale. There was also no correlation between BFI and precipitation intensity but this may also be due to the quality and resolution of the precipitation data currently available at a European scale.

On the other hand, we found constant hydrological effects of HOST classes throughout Europe. This can be seen from the fact that (i) the regression coefficients estimated from European discharge data were qualitatively similar to those from Boorman et al. (1995), and that (ii) excluding UK catchments did not affect the regression coefficients for 10 out of 11 HOST classes, for which such comparison was possible (Fig. 5). Thus, there was no change in the hydrological effect of HOST classes itself but only in the influence on overall catchment response as summarized by the BFI. This points to the fact that, for our preliminary exercise, we validated a soil hydrological classification with catchment response, two measures that are not necessarily connected.

4.3 The concept of a long-term BFI is breaking down in Mediterranean catchments

Highest residuals of BFI prediction were found in Mediterranean catchments (Fig. 4) and may be explained by two factors: An important factor in Mediterranean catchment is water abstraction and deviation for irrigation agriculture and human consumption (Gasith and Resh, 1999). The discharge data was not corrected for water abstraction and may thus have been affected, but the phenomenon seems to be too systematic to be explained by this factor alone.

Testing a hydrological classification of European soils

M. Schneider et al.

Title Page

Abstract

Introduction

Conclusions

References

Tables

Figures

⏪

⏩

◀

▶

Back

Close

Full Screen / Esc

Printer-friendly Version

Interactive Discussion

Testing a hydrological classification of European soils

M. Schneider et al.

Title Page

Abstract

Introduction

Conclusions

References

Tables

Figures

⏪

⏩

◀

▶

Back

Close

Full Screen / Esc

Printer-friendly Version

Interactive Discussion

The second factor is the high variability of climate in the Mediterranean zone. In order to use soil characteristics and hence the HOST classification as a meaningful measure for the discharge dynamics in a catchment, it is necessary that the soil compartment towards rainfall events remains more or less equal from year to year. In most of the catchments located in Southern Europe, variability in yearly BFI was very high. This suggests that variable factors such as precipitation were the main driving force of the variability. Obviously, not only amount, but also intensity, length, spatial and temporal variability of rainfall events may have a great impact on the runoff regime. The interaction with temperature may also be crucial: High temperatures and long dry spells, for example, may render soils hydrophobic. Hence, high rainfall intensities may cause vast amounts of direct runoff also on soils with a high infiltration capacity. On the other hand, excessive precipitation periods lead to soil saturation and therefore surface runoff even if the soil is generally regarded as being well drained. Since Southern Europe usually shows a higher interannual climatic variability (Zveryaev, 2004), summarising discharge dynamics into a single long-term measure is likely to fail. Instead, statistics of individual discharge events should be analysed taking into account climatic conditions of the event, antecedent soil moisture as well as soil properties. For such purposes, a parameter taking into account precipitation and flow may be a better method for characterizing catchment response to rainfall. Such a measure is the Standard Percentage Runoff (SPR), the percentage of rainfall that causes the short-term increase of flow at the catchment outlet (Boorman et al., 1995).

4.4 Further steps needed towards a hydrological classification of European soils

This investigation is clearly of preliminary character and aimed at evaluating the feasibility of a European hydrological classification. It showed that the attributes available in the SGDBE are generally sufficient, but depend on the underlying soil information per country. To overcome this limitation, additional pedological maps could, where available, be used to improve the hydrological interpretation. Also a number of classes could be added to the existing HOST classification relatively easily, if necessary.

Testing a hydrological classification of European soils

M. Schneider et al.

Title Page

Abstract

Introduction

Conclusions

References

Tables

Figures

⏪

⏩

◀

▶

Back

Close

Full Screen / Esc

Printer-friendly Version

Interactive Discussion

Our evaluation has also shown that the number of catchments used was rather small compared to the number of coefficients in the classification. The original HOST system (Boorman et al., 1995) used BFI values from nearly 600 catchments in the UK and Merz et al. (2006) analysed 337 catchments in Austria. Relating the discharge data to soil information required the delineation of catchments and this proved to be far more difficult than expected. For less than 50% of the gauging stations for which discharge data was available, it was possible to delineate the catchment with sufficient accuracy and confidence. This calls for a joint multi-national action in collecting a database of gauging stations with high quality discharge and precipitation data and precise coordinates in order that the catchment can be delineated. Such a database would allow the necessary evaluation of potential uncertainties in the classification and of potential improvements through subdivisions and additional HOST classes.

Ultimately, a hydrological classification of European soils may assist decisions at a multi-national or European level and may be useful in predicting discharge behaviour in ungauged catchments (Soulsby et al., 2006a). Because the processes of water flow through soil are incorporated in the classification, it may be the basis for models with few parameters (e.g. Maréchal and Holman, 2005), which can be usefully applied to model changes in climatic conditions or land-use (Kirchner, 2006).

An understanding of the hydrological mechanisms and transport pathways of rainfall to surface waters at the catchment level is of critical importance in managing the quality and quantity of European water resources and is fundamental to implementing the European Water Framework Directive. Development of a robust hydrological classification of European soils would provide such an understanding and it should be in the interests of legislators, managers and research scientists to work together to achieve this goal.

Acknowledgements. We thank K. Abbaspour, M. Amini, M. Frey, C. Leu and R. Siber for helpful comments on the manuscript. The Global Runoff Data Centre, the European Soil Bureau and the National Soil Resources Institute are acknowledged for making their data available for this study, which was funded by the EU Sixth Framework program through the project ERAPharm,

References

- Beven, K. J.: Rainfall-runoff modelling, John Wiley & Sons, Chichester, 2001.
- Blanchard, P. E. and Lerch, R. N.: Watershed vulnerability to losses of agricultural chemicals: Interactions of chemistry, hydrology, and land-use, *Environ. Sci. Technol.*, 34, 3315–3322, 2000.
- Boorman, D. B., Hollis, J. M., and Lilly A.: Hydrology of soil types: a hydrologically-based classification of the soils of the United Kingdom, Institute of Hydrology, Wallingford, 1995.
- Dunn, S. M. and Lilly, A.: Investigating the relationship between a soils classification and the spatial parameters of a conceptual catchment-scale hydrological model, *J. Hydrol.*, 252, 157–173, 2001.
- European Commission: Soil Atlas of Europe, Office for Official Publications of the European Communities, Luxembourg, 2005.
- Gasith, A. and Resh, V. H.: Streams in Mediterranean climate regions: Abiotic influences and biotic responses to predictable seasonal events, *Annu. Rev. Ecol. Systematics*, 30, 51–81, 1999.
- Haberlandt, U., Klocking, B., Krysanova, V., and Becker, A.: Regionalisation of the base flow index from dynamically simulated flow components – a case study in the Elbe River Basin, *J. Hydrol.*, 248, 35–53, 2001.
- Hewlett J. D. and Hibbert, A. R.: Factors affecting the response of small watersheds to precipitation in humid areas, edited by: Sopper, W. E., Lull, H. W., *Forest Hydrology*, Pergamon Press, New York, 275–290, 1967.
- Hollis, J. M., Jones, R. J. A., Marshall, C. J., Holden, A., Van de Veen, J. R., and Montanarella, L.: SPADE-2: The soil profile analytical database for Europe, version 1.0. European Soil Bureau Research Report No.19, EUR 22127 EN, Office for Official Publications of the European Communities, Luxembourg, 2006.
- Hollis, J. M. and Woods, S. M.: The measurement and estimation of saturated soil hydraulic conductivity, SSLRC report to MAFF, Soil Survey and Land Research Centre, Silsoe, 1989. Institute of Hydrology: Low Flow Studies, Institute of Hydrology, Wallingford, 1980.

Testing a hydrological classification of European soils

M. Schneider et al.

Title Page

Abstract

Introduction

Conclusions

References

Tables

Figures

⏪

⏩

◀

▶

Back

Close

Full Screen / Esc

Printer-friendly Version

Interactive Discussion

Testing a hydrological classification of European soils

M. Schneider et al.

Title Page

Abstract

Introduction

Conclusions

References

Tables

Figures

⏪

⏩

◀

▶

Back

Close

Full Screen / Esc

Printer-friendly Version

Interactive Discussion

- King, D., Daroussin, J., and Tavernier, R.: Development of a soil geographical database from the soil map of the European Communities, *Catena*, 21, 37–56, 1994.
- Kirchner, J. W.: Getting the right answers for the right reasons: Linking measurements, analyses, and models to advance the science of hydrology, *Water Resour. Res.*, 42, 2006.
- 5 Lacey, G. C. and Grayson, R. B.: Relating baseflow to catchments properties in south-eastern Australia, *J. Hydrol.*, 204, 231–250, 1998.
- Leu, C., Singer, H., Stamm, C., Müller, S. R., and Schwarzenbach, R. P.: Variability of herbicide losses from 13 fields to surface water within a small catchment after a controlled herbicide application, *Environ. Sci. Technol.*, 38, 3835–3841, 2004.
- 10 Lin, H., Bouma, J., Pachepsky, Y., Western, A., Thompson, J., Van Genuchten, R., Vogel, H. J., and Lilly, A.: Hydropedology: Synergistic integration of pedology and hydrology, *Water Resour. Res.*, 42, 2006.
- Maréchal, D. and Holman, I. P.: Development and application of a soil classification-based conceptual catchment-scale hydrological model, *J. Hydrol.*, 312, 277–293, 2005.
- 15 McDonnell, J. J.: Where does water go when it rains? Moving beyond the variable source area concept of rainfall-runoff response, *Hydrol. Process.*, 17, 1869–1875, 2003.
- McDonnell, J. J. and Woods, R.: On the need for catchment classification, *J. Hydrol.*, 299, 2–3, 2004.
- McGuire, K. J., McDonnell, J. J., Weiler, M., Kendall, C., McGlynn, B. L., Welker, J. M., and Seibert, J.: The role of topography on catchment-scale water residence time, *Water Resour. Res.*, 41, 2005.
- 20 Merz, R., Blöschl, G., and Parajka, J.: Spatio-temporal variability of event runoff coefficients, *J. Hydrol.*, 331, 591–604, 2006.
- New, M., Lister, D., Hulme, M., and Makin, I.: A high-resolution data set of surface climate over global land areas, *Clim. Res.*, 21, 1–25, 2002.
- 25 Page, T., Haygarth, P. M., Beven, K. J., Joynes, A., Butler, T., Keeler, C., Freer, J., Owens, P. N., and Wood, G. A.: Spatial variability of soil phosphorus in relation to the topographic index and critical source areas: Sampling for assessing risk to water quality, *J. Environ. Qual.*, 34, 2263–2277, 2005.
- 30 R Development Core Team R: A language and environment for statistical computing, R Foundation for Statistical Computing, Vienna, Austria, 2006.
- Schmocker-Fackel, P., Naef, F., and Scherrer, S.: Identifying runoff processes on the plot and catchment scale, *Hydrol. Earth Syst. Sci.*, 11, 891–906, 2007,

<http://www.hydrol-earth-syst-sci.net/11/891/2007/>.

Schneider, M. K., Stamm, C., and Fenner, K.: Selecting scenarios to assess exposure of surface waters to veterinary medicines in Europe, *Environ. Sci. Technol.*, in press, 2007.

Sivapalan, M.: Prediction in ungauged basins: a grand challenge for theoretical hydrology, *Hydrol. Process.*, 17, 3163–3170, 2003.

Soil Conservation Service: SCS National Engineering Handbook, Sect. 4, Hydrology, U.S Department of Agriculture, Washington D.C., 1972.

Soulsby, C., Tetzlaff, D., Dunn, S. M., and Waldron, S.: Scaling up and out in runoff process understanding: insights from nested experimental catchment studies, *Hydrol. Process.*, 20, 2461–2465, 2006a.

Soulsby, C., Tetzlaff, D., Rodgers, P., Dunn, S., and Waldron, S.: Runoff processes, stream water residence times and controlling landscape characteristics in a mesoscale catchment: An initial evaluation, *J. Hydrol.*, 325, 197–221, 2006b.

Wösten, J. H. M., Lilly, A., Nemes, A., and Le Bas, C.: Development and use of a database of hydraulic properties of European soils, *Geoderma*, 90, 169–185, 1999.

Zveryaev, I. I.: Seasonality in precipitation variability over Europe, *J. Geophys. Res., Atmos.*, 109, Art. No. D05103, 2004.

HESSD

4, 831–861, 2007

Testing a hydrological classification of European soils

M. Schneider et al.

Title Page

Abstract

Introduction

Conclusions

References

Tables

Figures

◀

▶

◀

▶

Back

Close

Full Screen / Esc

Printer-friendly Version

Interactive Discussion

Table 1. Scheme to reclassify of the Soil Geographical Database of Europe (SGDBE) into HOST classes

PHYSICAL SUBSETTINGS		MINERAL SOILS			PEAT SOILS		
Substrate hydrogeology	Ground-water or aquifer	No impermeable or gleyed layer within 100cm <i>IL=0,1 DGH=V</i>	Impermeable or gleyed layer at 40 - 100cm <i>IL=2,3,4 DGH=M</i>	Gleyed layer within 40cm <i>DGH=S</i>	<i>TEXT1=9 (TEXT1=0 & TEXT2=9)</i>		
i.1	Weakly consolidated, microporous, by-pass flow uncommon (Chalk)	Normally present and at >2m depth <i>WR=0,1,2,3</i>	1	13	14	15	
i.2	Weakly consolidated, microporous, by-pass flow uncommon (Limestone)		2				
i.3	Weakly consolidated, macroporous, by-pass flow uncommon		3				
i.4	Strongly consolidated, non or slightly porous, by-pass flow common		4				
i.5	Unconsolidated, macroporous, by-pass flow very uncommon		5				
i.6	Unconsolidated, microporous, by-pass flow common		6				
ii.1	Unconsolidated, macroporous, by-pass flow very uncommon	Normally present and at <2m depth <i>WR=4 HG=2</i>	7		10	drained: ₂₎ undrained: ₂₎	
ii.2	Unconsolidated, microporous, by-pass flow common		8			11	12
iii.1	Slowly permeable	No significant groundwater or aquifer	16	coarse ¹⁾ 18	24	26	
				fine ¹⁾ 21			
iii.2	Impermeable (hard)		17	19	22	25	27
iii.3	Impermeable (soft)			20			
iii.4	Peat					29	

SGDBE attributes used for reclassification: **WR:** Water Regime, **HG:** Hydrological Class, **IL:** Impermeable Layer, **DGH:** Depth to Gleyed Layer, **TEXT1:** Dominant surface textural class, **TEXT2:** Secondary surface textural class.

¹ Texture as proxy for soil water storage capacity. Fine: TEXT1 >= 4 | TEXT2 >= 4. Coarse: NOT fine

² Agricultural use as proxy for drained/undrained. Drained: USE1=1, 3, 6, 7, 12 to 17. Undrained: NOT drained. USE1 is an attribute describing dominant

5 land use within an STU. **Logical operators:** &: and; |: or.

Testing a hydrological classification of European soils

M. Schneider et al.

Title Page

Abstract Introduction

Conclusions References

Tables Figures

⏪ ⏩

◀ ▶

Back Close

Full Screen / Esc

Printer-friendly Version

Interactive Discussion

Table 2. Percentage coverage of HOST classes in England and Wales in the reclassified Soil Geographical Database of Europe (SGDBE) as compared to the original HOST map.

HOST class	Coverage in England and Wales		Normalised residuals from the 1:1 line (NR _{1:1})	Coverage in Europe reclassified SGDBE	Coverage in 88 catchments reclassified SGDBE
	reclassified SGDBE	original HOST			
1	4.38	6.97	0.26	0.81	1.06
2	2.37	3.49	0.30	8.55	9.87
3	3.98	2.60	0.65	4.83	4.45
4	5.34	5.19	0.67	2.07	2.96
5	4.90	5.80	0.59	4.13	4.49
6	3.28	2.81	0.70	7.19	4.39
7	0.60	1.34	0.75	0.81	0.39
8	1.17	2.49	0.53	8.17	4.73
10	7.01	9.38	0.41	3.85	1.37
11	0.64	0.92	0.84	0.11	0.06
12	0.00	0.24	1.00	0.00	0.00
13	1.75	0.58	0.94	3.59	5.10
14	0.71	0.04	0.99	1.95	1.75
15	0.01	2.72	0.99	0.36	0.05
16	0.67	0.40	0.91	14.66	6.20
17	11.55	7.23	0.40	17.55	24.84
18	6.11	6.90	0.48	6.26	3.65
19	0.75	0.37	0.79	1.77	1.69
20	0.84	1.10	0.45	0.08	0.22
21	5.42	6.35	0.39	1.44	3.99
22	0.00	1.06	1.00	0.26	0.22
23	2.31	2.10	0.30	0.26	0.47
24	23.32	17.44	0.30	3.31	9.03
25	8.40	5.98	0.39	0.94	3.77
26	0.15	3.52	0.92	0.43	0.20
27	1.01	0.29	0.67	0.71	1.84
29	2.81	2.67	0.34	4.79	3.21

Testing a hydrological classification of European soils

M. Schneider et al.

Title Page

Abstract

Introduction

Conclusions

References

Tables

Figures

⏪

⏩

◀

▶

Back

Close

Full Screen / Esc

Printer-friendly Version

Interactive Discussion

Testing a hydrological classification of European soils

M. Schneider et al.

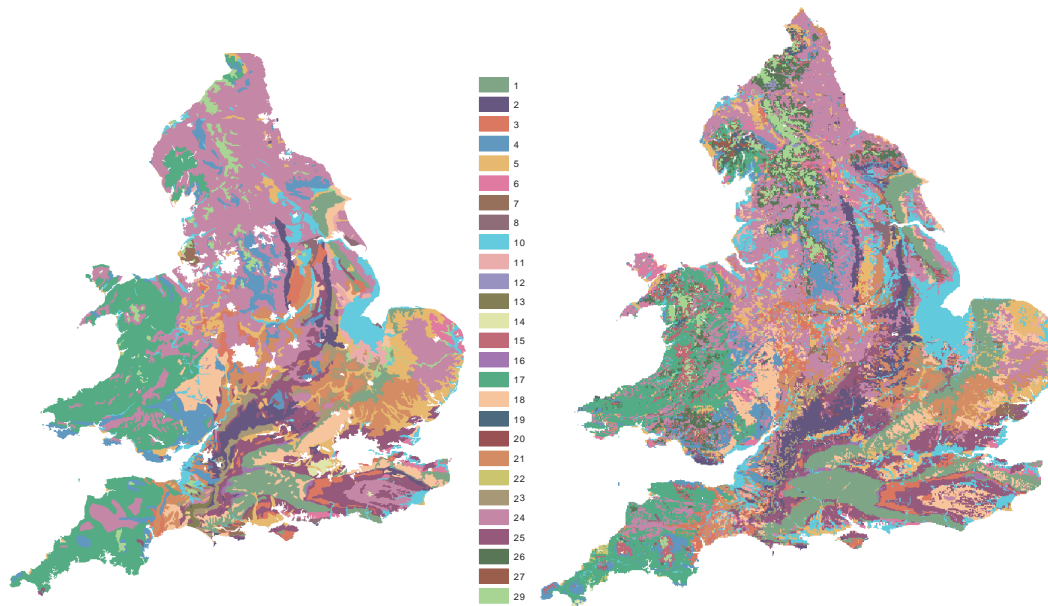


Fig. 1. Coverage of dominant HOST classes in England and Wales **(a)** as reclassified from the Soil Geographical Database of Europe and **(b)** in comparison to the original HOST map. Colours for each HOST class are given in the legend. Copyrights: SGDBE polygons are copyright of the Commission of the European Community, the HOST map is copyright of National Soil Resources Institute, Cranfield University, UK and the Centre for Ecology & Hydrology, Swindon, UK.

Title Page

Abstract

Introduction

Conclusions

References

Tables

Figures

⏪

⏩

◀

▶

Back

Close

Full Screen / Esc

Printer-friendly Version

Interactive Discussion

Testing a hydrological classification of European soils

M. Schneider et al.

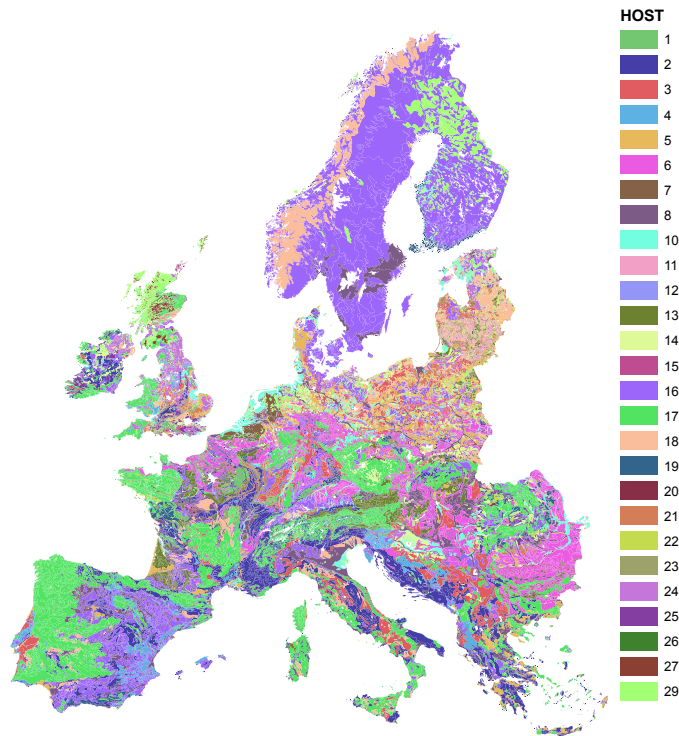


Fig. 2. Soil Geographical Database of Europe reclassified in HOST classes. Colours for each Host class are identical to Fig. 1. SGDBE polygons are copyright of the Commission of the European Community.

Title Page

Abstract

Introduction

Conclusions

References

Tables

Figures

◀

▶

◀

▶

Back

Close

Full Screen / Esc

Printer-friendly Version

Interactive Discussion

Testing a hydrological classification of European soils

M. Schneider et al.

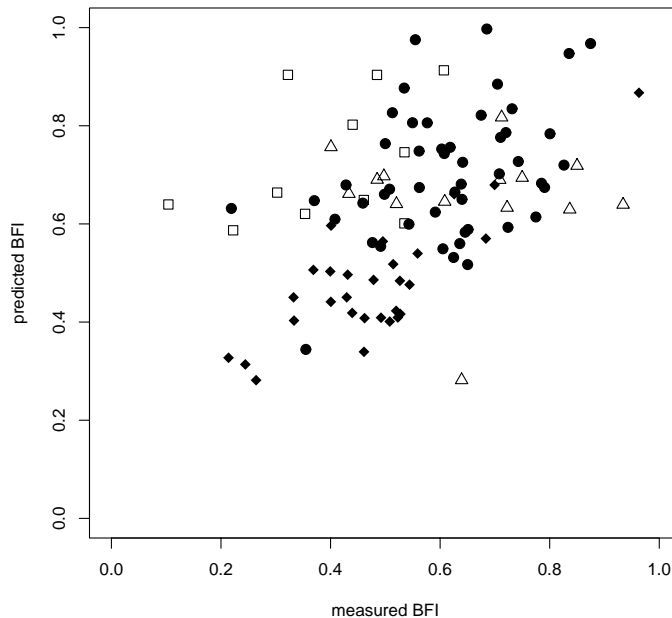


Fig. 3. Prediction of the BFI of 103 European catchments clustered into four groups: A. Catchments governed by major artificial influences, large lake fractions, subsurface water sources or extreme climatic conditions (triangles); B. Catchments whose coefficient of variation of the annual BFI was larger than 0.18 (squares); C. Catchments in England and Wales (rhomboids); D. Remaining catchments outside England and Wales (circles).

Title Page

Abstract

Introduction

Conclusions

References

Tables

Figures



Back

Close

Full Screen / Esc

Printer-friendly Version

Interactive Discussion

Testing a hydrological classification of European soils

M. Schneider et al.

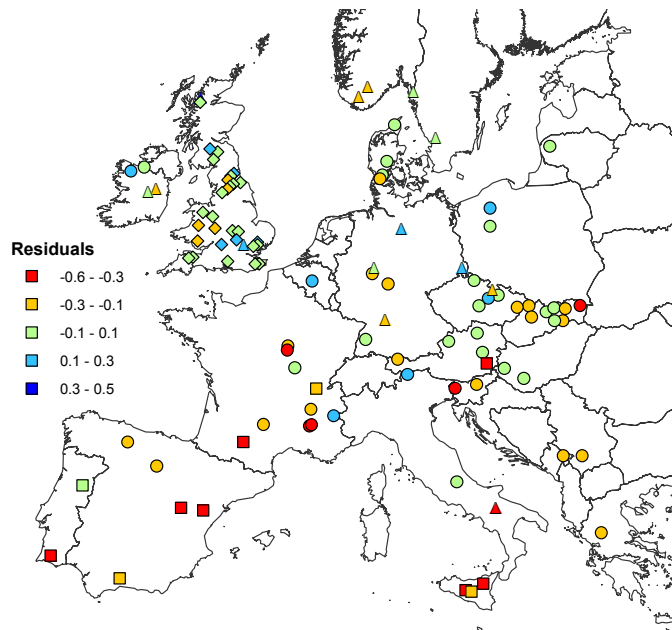


Fig. 4. Residuals of the BFI prediction for 103 catchments using the reclassified SGDBE and regression coefficients as estimated by Boorman et al. (1995). Symbols are similar to Fig. 3: Triangles: catchments governed by major artificial influences (Group A); Squares: catchments CV of annual BFI > 0.18 (Group B); Rhomboids: remaining catchments in England and Wales (Group C); Circles: remaining catchments outside England and Wales (Group D).

Title Page

Abstract

Introduction

Conclusions

References

Tables

Figures

⏪

⏩

◀

▶

Back

Close

Full Screen / Esc

Printer-friendly Version

Interactive Discussion

Testing a hydrological classification of European soils

M. Schneider et al.

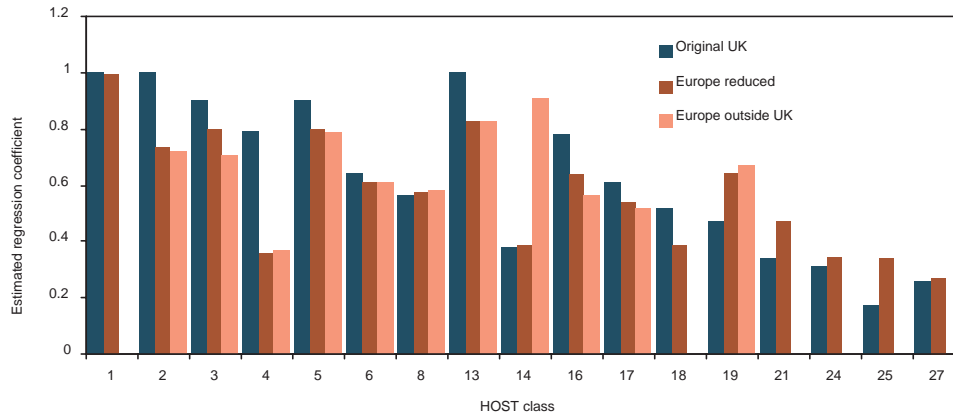


Fig. 5. Comparison of estimated regression coefficients per HOST class from the original UK study and from European catchments inside and outside the UK based on the reclassified SGDBE. Original UK designates the coefficients obtained by Boorman et al. (1995: Table 3.8). Europe reduced are the estimates for the reduced set of catchments from the UK and Europe (Groups C + D; rhomboids and circles in Figs. 3 and 4), constraint to lay between 0 and 1 and optimised using step-wise Akaike. Europe outside UK designates the values estimated from catchments outside the UK only (Group D; circles in Figs. 3 and 4), using constraints 0 and 1 and step-wise optimisation. Only those classes are shown for which coefficients from the Europe reduced dataset could be obtained.

Title Page

Abstract Introduction

Conclusions References

Tables Figures

◀ ▶

◀ ▶

Back Close

Full Screen / Esc

Printer-friendly Version

Interactive Discussion