



HAL
open science

Uncertainty in geological and hydrogeological data

B. Nilsson, A. L. Højberg, J. C. Refsgaard, L. Trolborg

► **To cite this version:**

B. Nilsson, A. L. Højberg, J. C. Refsgaard, L. Trolborg. Uncertainty in geological and hydrogeological data. Hydrology and Earth System Sciences Discussions, 2006, 3 (4), pp.2675-2706. hal-00298763

HAL Id: hal-00298763

<https://hal.science/hal-00298763>

Submitted on 18 Jun 2008

HAL is a multi-disciplinary open access archive for the deposit and dissemination of scientific research documents, whether they are published or not. The documents may come from teaching and research institutions in France or abroad, or from public or private research centers.

L'archive ouverte pluridisciplinaire **HAL**, est destinée au dépôt et à la diffusion de documents scientifiques de niveau recherche, publiés ou non, émanant des établissements d'enseignement et de recherche français ou étrangers, des laboratoires publics ou privés.

Papers published in *Hydrology and Earth System Sciences Discussions* are under open-access review for the journal *Hydrology and Earth System Sciences*

Uncertainty in geological and hydrogeological data

B. Nilsson, A. L. Højberg, J. C. Refsgaard, and L. Trolborg

Geological Survey of Denmark and Greenland, Copenhagen, Denmark

Received: 26 April 2006 – Accepted: 17 August 2006 – Published: 31 August 2006

Correspondence to: B. Nilsson (bn@geus.dk)

HESSD

3, 2675–2706, 2006

Uncertainty in geological and hydrogeological data

B. Nilsson et al.

Title Page

Abstract

Introduction

Conclusions

References

Tables

Figures

◀

▶

◀

▶

Back

Close

Full Screen / Esc

Printer-friendly Version

Interactive Discussion

EGU

Abstract

Uncertainty in conceptual model structure and in environmental data is of essential interest when dealing with uncertainty in water resources management. To make quantification of uncertainty possible it is necessary to identify and characterise the uncertainty in geological and hydrogeological data. This paper discusses a range of available techniques to describe the uncertainty related to geological model structure and scale of support. Literature examples on uncertainty in hydrogeological variables such as saturated hydraulic conductivity, specific yield, specific storage, effective porosity and dispersivity are given. Field data usually have a spatial and temporal scale of support that is different from the one on which numerical models for water resources management operate. Uncertainty in hydrogeological data variables is characterised and assessed within the methodological framework of the HarmoniRiB classification.

1 Introduction

Uncertainty of geological and hydrogeological features is of great interest when dealing with uncertainty in relation to the Water Framework Directive (WFD). One of the key sources of uncertainty of importance for evaluating the effect and cost of a measure in relation to preparing a WFD-compliant river basin management plan is to assess uncertainty on model structure, input data and parameter variables in relation to hydrological models. Uncertainty in hydrogeological variables is typically done by the use of numerical models.

Neuman and Wierenga (2003) summarise where uncertainties in model results originate from in addition to parameter uncertainty. Uncertainties arise firstly from incomplete definitions of the final conceptual framework that determines model structure; secondly from spatial and temporal variations in hydrological variables that are either not fully captured by the available data or not fully resolved by the model; and finally from the scaling behaviour of the hydrogeological variables. Whereas much has been

HESSD

3, 2675–2706, 2006

Uncertainty in geological and hydrogeological data

B. Nilsson et al.

Title Page

Abstract

Introduction

Conclusions

References

Tables

Figures

◀

▶

◀

▶

Back

Close

Full Screen / Esc

Printer-friendly Version

Interactive Discussion

EGU

written about the mathematical component of hydrogeological models, relatively little attention has been devoted to the conceptual component. In most mathematical models of subsurface flow and transport, the conceptual framework is assumed to be given, accurate and unique (Dagan et al., 2003).

It has been recognised for long that the structural uncertainty often can be the dominating factor (Carrera and Neuman, 1986; Harrar et al., 2003; Troldborg, 2004; Højberg and Refsgaard, 2005; Poeter and Anderson, 2005; Eaton, 2006). This is especially important in groundwater modelling, where the geological structure is dominant for the groundwater flow but where specific knowledge of the geology at the same time is very limited. Simulating flow through heterogeneous geological media requires that the numerical models capture the important aspects of the flow domain structures. Only a very sparse selection of operational methods has been developed to quantify structural uncertainties in geological models.

In the international literature significant attention has been given to estimation of parameter uncertainties on the variability in parameter values which can vary many decades and therefore cannot be directly measured but are often derived from model calibration (e.g. Samper et al, 1990; Poeter and Hill, 1997; Cooley, 2004). Scaling behaviour of hydrogeological variables is another challenge within the hydrological science. This paper deals with assessing the uncertainty in geological and hydrogeological data.

The overall aim of this paper is to illustrate how currently available techniques and results can be used to describe the uncertainty related to geological and hydrogeological data at the river basin scale. Specific objectives are firstly to characterize uncertainty within the methodological framework given by Brown et al. (2005) and van Loon et al. (2006)¹. Secondly, to give examples on variability from literature on input data, parameter values and geological model structure interpretations. This paper will have main focus on physical data uncertainty in the saturated zone unlike van der Keur et

¹van Loon, E., Brown, J., and Heuvelink, G.: A framework to describe hydrological uncertainties, Hydrol. Earth Syst. Sci. Discuss., in preparation, 2006.

Uncertainty in geological and hydrogeological data

B. Nilsson et al.

Title Page

Abstract

Introduction

Conclusions

References

Tables

Figures

◀

▶

◀

▶

Back

Close

Full Screen / Esc

Printer-friendly Version

Interactive Discussion

al. (2006), that primarily covers the physical and chemical data in the unsaturated zone.

The present work in this paper is part of an ongoing research project, HarmoniRiB, that is supported under EU 5th Framework Programme. The overall goal of HarmoniRiB is to develop methodologies for quantifying uncertainty and its propagation from raw data to concise management information. Refsgaard et al. (2005) present further details about the HarmoniRiB project.

2 Uncertainty in geological model structure

2.1 What is a hydrogeological conceptual model?

Many scientists and practitioners have difficulties finding consensus on defining terminology and guiding principles on hydrogeological conceptual modelling. Neuman and Wierenga (2003) describe a hydrogeological model as a framework that serves to analyse, qualitatively and quantitatively, subsurface flow and transport at a site in a way that is useful for review and performance evaluation.

Anderson and Woessner (1992) point out that a conceptual model is a simplification of the problem, where the associated field data are organised in such a way, that the system can be analysed more readily. When numerical modelling is considered the conceptual model should define the hydrogeological structures relevant to be included in the numerical model given the modelling objectives and requirements, and help to keep the modeller tied into reality and exert a positive influence on his subjective modelling decisions. The nature of the conceptual model determines the dimensions of the model and the design of the grid.

An important part of the conceptual model for groundwater modelling is related to the geological structure and how this is represented in the numerical model. Among hydrogeologists it is very common to use the hydrofacies modelling approach to construct conceptual models for specific types of sedimentary environments. *Hydrofacies* or *hydrogeological facies* are used for homogeneous but not necessarily isotropic hydro-

Title Page

Abstract

Introduction

Conclusions

References

Tables

Figures

◀

▶

◀

▶

Back

Close

Full Screen / Esc

Printer-friendly Version

Interactive Discussion

geological units that are formed under conditions, which lead to similar characteristic hydraulic properties (Anderson, 1989). Numerous papers address the hydrogeological conceptualisation using hydrofacies: E.g. in glacial melt water-stream sediment and till (Anderson, 1989), buried valley aquifers (Ritzi et al., 2000); and alluvial fan depositional systems (Weissmann and Fogg, 1999). Comprehensive reviews and compilations of this issue can be found in e.g. Koltermann and Gorelick (1996) and Fraser and Davis (1998).

2.2 Where do uncertainties arise from in conceptual models ?

Descriptive methods are used to create images of subsurface geological depositional architecture by combining site-specific and regional data with conceptual depositional models and geological insight. For a given field site, descriptive methods produce one deterministic image of the aquifer architecture, acknowledging heterogeneity but not describe it in a deterministic way at scales ranging from stratigraphical features (m scale) to basin fill (river basin scale). Large scale heterogeneity may be recognised but most often smaller scale heterogeneity is not captured. Often, sedimentary strata are divided into multiple layers designated as aquifers or aquitards. The assumption is made that geological facies define the spatial arrangement of hydraulic properties dominating groundwater flow and transport behaviour (Anderson, 1989; Fogg, 1986; Klingbeil et al., 1999; Bersezio et al., 1999; Willis and White, 2000). This assumption can be checked using hydraulic property measurements to define facies.

2.3 Strategies on assessing uncertainty in the geological model structure

Errors in the conceptual model structure may be analysed by considering different conceptualisations or scenarios. In the scenario approach a number of alternative plausible conceptual models are formulated and applied in a model to provide model predictions. The differences between the model predictions based on the alternative conceptualisations are then taken as a measure of the model structure uncertainty.

Uncertainty in geological and hydrogeological data

B. Nilsson et al.

Title Page

Abstract

Introduction

Conclusions

References

Tables

Figures

◀

▶

◀

▶

Back

Close

Full Screen / Esc

Printer-friendly Version

Interactive Discussion

Uncertainty in geological and hydrogeological data

B. Nilsson et al.

Title Page

Abstract

Introduction

Conclusions

References

Tables

Figures

◀

▶

◀

▶

Back

Close

Full Screen / Esc

Printer-friendly Version

Interactive Discussion

The influence of different model conceptualisations may be evaluated by having alternative conceptual models based on different geological interpretations (Selroos et al., 2001; National Research Council, 2001). Harrar et al. (2003) and Højberg and Refsgaard (2005) present two different examples, both using three different conceptual models, based on three alternative geological interpretations for multi-aquifer system representative of eastern part of Denmark with glacial till plains (Højberg and Refsgaard, 2005) and in sandy outwash plains in the western part of Denmark (Harrar et al., 2003). Each of the models was calibrated against piezometrical head data using inverse optimisation. In both studies, the three models performed equally well in reproducing the groundwater head used for calibration. Using the models in predictive mode they resulted in very similar well field capture zones. However, when the models were used to extrapolate beyond the calibration data for predictions of solute transport and travel times the three models differed dramatically. When assessing the uncertainty contributed by the model parameter values using Monte Carlo simulations, the overlap of uncertainty ranges between the three models by Højberg and Refsgaard (2005) significantly decreased when moving from groundwater heads to capture zones and travel times. The larger the degree of extrapolation, the more the underlying conceptual model dominates over the parameter uncertainty and the effect of calibration. However, the parameter uncertainty can not compensate for the variability (uncertainty) in the geological model structure.

The importance of geological interpretations on groundwater flow and age (particle tracking) predictions have been studied by Trolborg (2000, 2004). Using a zonation approach three different conceptual models were constructed based on an extensive borehole database (Fig. 1). The three models differed in complexity. Calibrations of the models were performed using inverse calibration against hydraulic head and discharge measurements. Numerical simulation of groundwater age was carried out using a particle tracking model. Although the three models provided very similar calibration fits to groundwater heads, a model extrapolation to predictions of groundwater ages revealed very significant differences between the three models, which were explained

by the differences in underlying hydrogeological interpretations.

Conditional geostatistical simulations is frequently used to address issues related to spatial distribution of conductivity (de Marsily et al., 1998; Kupfersberger and Deutsch, 1999). Most frequently, though, it is used after conceptualization of aquifer structures to generate conditional realizations of conductivity within hydrological units (facies) e.g. input for Monte Carlo analysis. A good example of this is found in Zimmerman et al. (1998), where they compared seven different geostatistical approaches in combination with inverse modelling to simulate travel times and travel paths of conservative tracer through four synthetic aquifer data sets.

Geostatistical methods that can simulate hydrofacies distributions at different scale are divided into structural and process imitating methods (Koltermann and Gorelick, 1996). De Marsily et al. (1998) point out that process imitating methods cannot be conditioned to local available information. Carle and Fogg (1996, 1997) present a transition probability geostatistical framework that can be conditioned to hard as well as soft data in simulating hydrofacies distributions. There are several examples on application which include simulation of alluvial fan systems (Fogg et al., 1998; Weissmann et al., 1999; Weissmann and Fogg, 1999), river valley aquifer systems (Ritzi et al., 1994, 2000), Quaternary aquifer complex (Trolborg et al., 2006²) and sandlenses distribution within glacial till in (Sminchak et al., 1996; Petersen et al., 2004).

Neuman and Wieranga (2002) present a generic strategy that embodies a systematically and comprehensive multiple conceptual model approach, including hydrogeological conceptualisation, model development and predictive uncertainty analysis. The strategy encourages an iterative approach to modelling, whereby an initial conceptual-mathematical model is gradually altered and/or refined until one or more like alternatives have been identified and analysed.

Professionals within the discipline have not yet agreed upon a procedure for rank-

²Trolborg, L., Refsgaard, J. C., Jensen, K. H., Engesgaard, P., and Carle, S. F.: Application of transition probability geostatistics in hydrological modeling of a Quaternary aquifer complex, in preparation, 2006.

Uncertainty in geological and hydrogeological data

B. Nilsson et al.

Title Page

Abstract

Introduction

Conclusions

References

Tables

Figures

◀

▶

◀

▶

Back

Close

Full Screen / Esc

Printer-friendly Version

Interactive Discussion

ing or weighting conceptual models. Poeter and Anderson (2005) introduce a multimodel ranking and interference, which is a simple and effective approach for the selection of a best model: one that balances under fitting with over fitting. Neuman and Wierenga (2003) propose and apply the Maximum Likelihood Bayesian Averaging (MLBA) approach for assessment of the joint predictive uncertainties in the conceptual-mathematical model structure and its parameters. Finally, Refsgaard et al. (2006) propose a strategy that combines multiple conceptual models and the pedigree approach (Funtowicz and Ravetz, 1990) for assessing the overall tenability of models in one formalised protocol. The level of subjectivity can to some degree be reduced using expert elicitation, which is a structured process to elicit subjective judgements from experts.

3 Scaling issues

One of the great and very general challenges within the hydrological science is to understand the impact of changing scales on various process descriptions and parameter values. The average volume of hydrogeological measurements (also named support volume) is ranging many orders of magnitude depending on the size of volume representing the individual measurements. Spatial heterogeneity as a function of scale is well documented in the literature for saturated hydraulic conductivity (Clauser, 1992; Sánchez-Vila et al., 1996; Nilsson et al., 2001). Values of the saturated hydraulic conductivity depend on the volume of substrate sampled by the applied hydraulic testing method. A literature example in coarse-grained fluvial sediments (Bradbury and Muldoon, 1990) is shown in Fig. 2. It is evident that the mean hydraulic conductivity increases as the support volume of the tests increases.

3.1 Classification of scales of heterogeneity

Aquifers contain many scales of hydrofacies or hydrogeological facies, which controls the hydraulic conductivity structure. The descriptive nature of many classifications

Title Page

Abstract

Introduction

Conclusions

References

Tables

Figures

◀

▶

◀

▶

Back

Close

Full Screen / Esc

Printer-friendly Version

Interactive Discussion

makes them somewhat subjective; however, they provide a useful basis for comparison between multiple scales of geological heterogeneity (Koltermann and Gorelick, 1996) (Table 1). Scales of geological and hydraulic conductivity structure are based on (a) size of the geological features, (b) genetic origin, (c) support length (porous media measurement volumes).

3.2 Support volume of hydrogeological measurements

Subsurface investigations like pumping tests or tracer tests are only able to provide effective parameters at a scale much larger than the typical length of structures in a heterogeneous aquifer (Klingbeil et al., 1999). Results from many different hydrogeological field studies, for example Borden (Sudicky, 1985) and Cape Cod (Hess, 1990; Hess et al., 1991) show that the resolution of data acquisition necessary for predicting transport parameters cannot be achieved by standard subsurface investigation techniques such as pumping tests, tracer tests, flowmeter measurements and core analysis. Although flowmeter measurements and core analysis data give enough details to characterise heterogeneous hydraulic conductivity and porosity distributions in the vertical direction, the boreholes often have spacings that are too large for inferring heterogeneous parameters in the horizontal direction. Thus the lateral continuity of subsurface structures is often not known. Based on this experience more detailed information is needed, particularly on the small-scale horizontal structure and consequently the distribution of parameters in aquifers (Anderson, 1989). Generally, real aquifers are not accessible for investigation to directly measure hydrogeological parameters. An outcrop composed of a similar stratigraphy and of similar lithologies as the aquifer may be viewed as an analogue of the aquifer (“aquifer/ outcrop analogue”) representing an accessible formation for the examination of spatial geometries and for in-situ measurements of hydrogeological parameters at the smaller scale.

Uncertainty in geological and hydrogeological data

B. Nilsson et al.

Title Page

Abstract

Introduction

Conclusions

References

Tables

Figures

◀

▶

◀

▶

Back

Close

Full Screen / Esc

Printer-friendly Version

Interactive Discussion

3.3 Examples dealing with scaling

Frykman and Deutsch (2002) demonstrate a practical application of the volume-variance relations in oil reservoir characterisation in the Danish North Sea for upscaling and downscaling methods to integrate data of different scales. The volume-variance scaling laws were used on traditional core and well logs representing fine-scale geological heterogeneities to seismic or well test data capturing much larger scales. A good understanding of the support volume for the different scales is necessary and the up- and downscaling effects must be considered.

An example of upscaling of uncertainty on groundwater heads from a point scale to a 1 km² grid scale is given in Henriksen et al. (2003). Groundwater head data are measured in observation wells, i.e. with a measurement support scale of a few cm². When used to compare with simulated heads simulated by a groundwater model with a spatial resolution of 1 km² the relevant uncertainty of the measured head should also include its uncertainty in representing average groundwater head over the 1 km². In addition the point scale value representing a small time scale (e.g. 10 s) should be upscaled to show its representativeness of an average annual value, taking the seasonal variations into account. The sources of uncertainty and their respective contributions in this respect are shown in Table 2. Assuming mutual independence between these individual errors the aggregated uncertainty of the observed head data relative to model simulations at a 1 km scale can be estimated as the square root of the sum of the squared errors, summing up to 3.1 m.

4 Uncertainty in hydrogeological data

4.1 Variability on hydraulic properties

Data on spatial variability investigated by means of geostatistical methods have obtained significant attention in the scientific literature (Isaaks and Srivastava, 1989). For

Uncertainty in geological and hydrogeological data

B. Nilsson et al.

Title Page

Abstract

Introduction

Conclusions

References

Tables

Figures

◀

▶

◀

▶

Back

Close

Full Screen / Esc

Printer-friendly Version

Interactive Discussion

all practical purposes at the time scales relevant for this paper the variables are considered invariant. Several studies have focused on the determination of spatial correlation length scales for different hydraulic properties (e.g. Dagan, 1986; Gelhar, 1993). Variability becomes uncertain because it cannot be captured by direct field or laboratory measurements. Instead, the parameter variability is recognised by the geostatistical measure like mean, variance and correlation length.

4.1.1 Hydraulic conductivity (K)

Gelhar (1993) summarise the standard deviation and correlation lengths (λ) of hydraulic conductivity from several field studies in Table 3, which covers a wide range of field scales and seems to indicate that the length scale of field data for which correlation length and standard deviation have been assessed increases with increasing field scale.

Different measurement techniques used to determine saturated hydraulic conductivity representing 13 orders of magnitude in a coarse-grained fluvial material are shown in Fig. 2. The hydraulic conductivity of various geological materials is ranging multiple orders of magnitude with unfractured bedrocks and matrix permeability in glacial tills in the lower end and unconsolidated sediments in the middle to upper end.

4.1.2 Storage coefficients, effective porosity and dispersivity

Correlation lengths of specific yield (S_y), specific storage (S_s) and effective porosity (n) are not found in the literature. The range of values related to different soil types are available (Table 4). The longitudinal dispersivity (α) has been compiled in Fig. 3 from many field sites with very different geological setting around the world (Gelhar, 1986). These data indicates that a longitudinal dispersivity in the range of 1 to 10 m would be reasonable for a site of dimensions on the order of 1 km, whereas the range of 10 to 1000 m would cover the river basin length scale on the order of few km to more than 100 km. The dispersivity value typically varies by 2 to 3 orders of magnitude depending

Title Page

Abstract

Introduction

Conclusions

References

Tables

Figures

◀

▶

◀

▶

Back

Close

Full Screen / Esc

Printer-friendly Version

Interactive Discussion

on which length that are of interest.

4.2 Classification of data uncertainty in accordance to HarmoniRiB terminology and classes

As part of the data processing the HarmoniRiB project partners have characterised and assessed the data uncertainty using the new methodology described by Brown et al. (2005) and using the DUE (Data Uncertainty Engine) software tool (Brown and Heuvelink, 2006). This new methodology has been further elaborated in van Loon et al. (2006)¹. Tables 5–8 show the key characteristics used to characterise data uncertainty. The terms in these tables are used in characterising the key characteristics of data uncertainty in the hydrogeological variables.

4.2.1 Attribute, empirical and longevity uncertainty

The specific yield, effective porosity and dispersivity are all assessed to typically have a measurement space support of about 100 cm^3 . Hydraulic conductivity and specific storage have a measurement space support scale ranging from 10^{-5} to 10^9 m^3 depending on sample size of the applied method to determine the variable. The uncertainty category is for all variables classified as C1 (cf. Table 5), which means all variables are assumed to vary in space but not in time. The type of empirical uncertainty is classified as M1 (Table 6) for all five parameters implying that uncertainty can be characterised statistically by use of probability density functions. The relative age (denoted by the term “longevity”) of uncertainty description is classified as L2 (Table 7) for all variables, which means the uncertainty does not change significantly so no updating is required.

4.2.2 Methodological quality uncertainty

Saturated hydraulic conductivity (K): The K values can be determined by all test methods represented in Table 9 from point scale (laboratory measurements) to model cal-

Title Page

Abstract

Introduction

Conclusions

References

Tables

Figures

◀

▶

◀

▶

Back

Close

Full Screen / Esc

Printer-friendly Version

Interactive Discussion

Uncertainty in geological and hydrogeological data

B. Nilsson et al.

Title Page

Abstract

Introduction

Conclusions

References

Tables

Figures

◀

▶

◀

▶

Back

Close

Full Screen / Esc

Printer-friendly Version

Interactive Discussion

ibration scale (typical grid size of 1 km²). However tracer tests are rarely used for determination of K values, why the methodological quality have been found irrelevant for evaluation. The instrument quality is classified as I3 (instruments well suited for the field situation and calibrated) except the model calibration scale, where the evaluation of instrument quality is not relevant. The sampling strategy is showing increasing indices (i.e. increasing quality) with increasing support volume, i.e. the small scale measurements like grain sieving analysis and other laboratory measurements (e.g. leaching columns experiments or intact columns) are typically ranging between S1 to S2 indices. Slug test measurements vary even more from S1 to S3 depending on the site specific geological heterogeneity. Pump tests are giving the best coverage. Regarding the overall method indices are laboratory methods ranging significantly due to scale effects. On the other hand both specific laboratory measurements and pump test are reliable methods and there are even approved standards for measuring saturated hydraulic conductivity on laboratory and field scale. Model calibrations using inverse techniques (auto-calibration) is also a reliable and commonly used method.

Specific yield (S_y): Retention curve determinations on laboratory scale has instrument quality range from not well to well match of the field conditions. Keur et al. (2006) describe more thoroughly the application of retention curves to determination of physical parameters on various scales. Pump tests have the highest instrument quality, best coverage of sampling strategy and is an overall reliable method. Model calibration is commonly used and seen as an acceptable method for S_y estimation but there are limited consensus on the reliability of the results.

Specific storage (S_s) has been characterised with the same indices ranking as S_y but on laboratory scale are retentions curves exchanged with geotechnical triaxial tests to determine specific storage.

Effective porosity (n): This variable has the instrument quality well suited at both small and large scale. All test methods are ranking between educated guesses to indirect measurements. Results derived from tracer tests can among others be used for effective porosity estimation. All test methods are grouped as acceptable methods even

with some specific methods appearing as approved standards for porosity measuring.

Dispersivity (α): The alpha value is limited to be determined from the larger scale methods: tracer test and model calibration.

In general, the HarmoniRiB framework indices for the methodological quality increase with increasing support volume, which the different test methods represent. Individual indices show higher variability at small scale test methods compared to larger scale methods due to effects of spatial scale.

5 Discussion and conclusions

Uncertainty assessment is an important aspect of water resources management. First of all, water management decisions should be made with full information on the underlying uncertainties. Secondly, credibility of model predictions among stakeholders is important for achieving consensus and robust decisions. Overselling of model capabilities is 'poison' for establishing such credibility. Instead, explicit information on the involved uncertainties may help creating a more balanced view on the capability of models and in this way pave the road for improving the credibility of models.

Assessments of uncertainty in hydrogeological data and conceptual models are prerequisites for assessment of uncertainty in model predictions, and as such they are crucial. Uncertainty assessments are common in the scientific community, but not yet in the professional world of water management. We therefore have a major task in promoting the use of our uncertainty concepts and tools in practise.

In this paper examples are given from the most current scientific literature that deals with uncertainty on model structure and uncertainty on parameter variables. Quantification of the uncertainty due to model structure is an area of novel interest, where only few operational methods have been developed. Some of the present techniques to describe the uncertainty related to geological model structure are presented and some strategies on interpretation of geological model structure are identified. In addition, uncertainty and scale of support in the hydrogeological data variables: saturated hydraulic

Title Page

Abstract

Introduction

Conclusions

References

Tables

Figures

◀

▶

◀

▶

Back

Close

Full Screen / Esc

Printer-friendly Version

Interactive Discussion

conductivity, specific yield, specific storage, effective porosity and dispersivity are evaluated. The variables are related to the following test methods: grain size analysis, other laboratory measurements, slug tests, pump tests, tracer tests and model calibrations. Uncertainty in the hydrogeological data variables is in this study characterised and assessed within the methodological framework of the HarmoniRiB classification, where the rating of the quality of methods can be given in a more structured overview. In general, the HarmoniRiB framework indices for the methodological quality increase with increasing support volume, which the different test methods represent. Individual indices shows higher variability at small scale test methods compared to larger scale methods due to effects of spatial scale. The use of the HarmoniRiB classification makes it possible to carry out systematic comparison of uncertainties arising in different data types required for evaluating the effect and cost of a measure in relation to preparing a water management plan in relation to the Water Framework Directive.

Scientifically there are two major tasks ahead of us to be solved. While the statistical tools for characterising uncertainty are well developed, it should be realised that many aspects of uncertainty cannot be quantified but have to be described qualitatively or subjectively. This applies particularly to geological uncertainty where knowledge on geological history and formation processes basically is qualitative. If we do not allow qualitative descriptions of uncertainty we exclude much of the geological knowledge. The second major challenge lies in handling of model structure uncertainty, which in case of groundwater models corresponds to uncertainty in hydrogeological conceptual models. In cases where models are used for making extrapolatory predictions, i.e. predictions beyond conditions and data for which a model was calibrated and tested, model structure uncertainty is known often to be the dominant source of uncertainty. And such extrapolations are situations where models are most needed, because relevant explicit data on the decisions variables of interest do not exist. While methods for handling uncertainty in geological data are well known we have a major challenge in developing and testing concepts for handling model structure uncertainty, and to make best possible use of qualitative geological knowledge in this context.

Uncertainty in geological and hydrogeological data

B. Nilsson et al.

Title Page

Abstract

Introduction

Conclusions

References

Tables

Figures

◀

▶

◀

▶

Back

Close

Full Screen / Esc

Printer-friendly Version

Interactive Discussion

Acknowledgements. The present work was carried out within the Project “Harmonised Techniques and Representative River Basin Data for Assessment and Use of Uncertainty Information in Integrated Water Management (HarmoniRiB)”, which is partly funded by the EC Energy, Environment and Sustainable Development programme (Contract EVK1-CT2002-00109).

5 References

- Anderson, M. P.: Hydrogeologic facies models to delineate large-scale spatial trends in glacial and glaciofluvial sediments, *Geological Society America Bulletin*, 101, 501–511, 1989.
- Anderson, M. P. and Woessner, W. W.: Applied groundwater modelling, simulation of flow and advective transport, Academic Press, San Diego, California, 1992.
- 10 Bersezio, R., Bini, A., and Giudici, M.: Effects of sedimentary heterogeneity on groundwater flow in a Quaternary pro-glacial delta environment: joining facies analysis and numerical modelling, *Sedimentary Geology*, 129, 327–344, 1999.
- Bradbury, K. R. and Muldoon, M. A.: Hydraulic conductivity determination in lithified glacial and fluvial materials, in: *Ground Water and Vadose Zone Monitoring*, ASTM STP 1053, edited by: Nielsen, D. M. and Johnsen, A. I., American Society for testing Materials, Philadelphia, 138–151, 1990.
- 15 Brown, J. D., Heuvelink, G. B. M., and Refsgaard, J. C.: An integrated framework for assessing and recording uncertainties about environmental data, *Water Sci. Technol.*, 52(6), 153–160, 2005.
- 20 Brown, J. D. and Heuvelink, G. B. M.: Data Uncertainty Engine (DUE) User’s Manual, University of Amsterdam, <http://www.harmonirib.com>, 2006.
- Carrera, J. and Neuman, S. P.: Estimation of aquifers parameters under transient and steady state conditions: 1. Maximum likelihood method incorporating prior information, *Water Resour. Res.*, 22, 199–210, 1986.
- 25 Carle, S. F. and Fogg, G. E.: Transition probability based on indicator geostatistics, *Mathematical Geology*, 28, 453–477, 1996.
- Carle, S. F. and Fogg, G. E.: Modelling spatial variability with one and multidimensional continuous-lag Markov chains, *Mathematical Geology*, 29, 891–917, 1997.
- Clauser, C.: Permeability of crystalline rocks, *Eos*, 73, 233–238, 1992.

Uncertainty in geological and hydrogeological data

B. Nilsson et al.

Title Page

Abstract

Introduction

Conclusions

References

Tables

Figures

◀

▶

◀

▶

Back

Close

Full Screen / Esc

Printer-friendly Version

Interactive Discussion

- Cooley, R. L.: A theory for modelling ground-water flow in heterogeneous media, U.S.G.S. Professional Paper, vol. P 1679, U.S. Geological Survey, Denver, CO, 220 pp., 2004.
- Dagan, G.: Statistical theory of groundwater flow and transport: Pore to laboratory, laboratory to formation and formation to regional scale, *Water Resour. Res.*, 22(9), 120S–134S, 1986.
- 5 Dagan, G., Fiori, A., and Janković, I.: Flow and transport in highly heterogeneous formations: 1. Conceptual framework and validity of first-order approximations, *Water Resour. Res.*, 39, 1268, doi:10.1029/2002WR001717, 2003.
- de Marsily, G., Delay, F., Teles, V., and Schafmeister, M. T.: Some current methods to represent the heterogeneity of natural media in hydrogeology, *Hydrogeology Journal*, 6(1), 115–130, 10 1998.
- Eaton, T.: On the importance of geological heterogeneity for flow simulation, *Sedimentary Geology*, 184, 187–201, 2006.
- Fogg, G. E.: Groundwater flow and sand body interconnectedness in a thick multiple aquifer system, *Water Resour. Res.*, 22, 679–694, 1986.
- 15 Fogg, G. E., Noyes, C. D., and Carle, S. F.: Geologically based model of heterogeneous hydraulic conductivity in an alluvial setting, *Hydrogeology Journal*, 6(1), 131–143, 1998.
- Fraser, G. S. and Davis, J. M. (Eds.): *Hydrogeologic models of sedimentary aquifers, SEPM Concepts in Hydrology and Environmental geology*, vol. 1. Society for Sedimentary Geology, Tulsa, OK, 180 pp., 1998.
- 20 Freeze, R. A. and Cherry, J. A.: *Groundwater*, Prentice Hall, Englewood Cliffs, NJ 07632, USA, 1979.
- Frykman, P. and Deutsch, C. V.: Practical application of geostatistical scaling laws for data integration, *Petrophysics*, 43(3), 153–177, 2002.
- Funtowicz, S. O. and Ravetz, J. R.: *Uncertainty and Quality in Science for Policy*, Kluwer, Dordrecht, 229 p., 1990.
- 25 Gelhar, L. W.: *Stochastic subsurface hydrology from theory to application*, *Water Resour. Res.*, 22(9), 135S–145S, 1986.
- Gelhar, L. W.: *Stochastic subsurface hydrology*, Englewood Cliffs, NJ, Prentice Hall, 1993.
- Harrar, W. G., Sonnenborg, T. O., and Henriksen, H. J.: Capture zone, travel time and solute transport predictions using inverse modelling and different geological models, *Hydrogeology Journal*, 11, 536–548, 2003.
- 30 Henriksen, H. J., Trolborg, L., Nyegaard, P., Sonnenborg, T. O., Refsgaard, J. C., and Madsen, B.: Methodology for construction, calibration and validation of a national hydrological model

**Uncertainty in
geological and
hydrogeological data**B. Nilsson et al.

[Title Page](#)[Abstract](#)[Introduction](#)[Conclusions](#)[References](#)[Tables](#)[Figures](#)[◀](#)[▶](#)[◀](#)[▶](#)[Back](#)[Close](#)[Full Screen / Esc](#)[Printer-friendly Version](#)[Interactive Discussion](#)

- for Denmark, *J. Hydrol.*, 280, 52–71, 2003.
- Hess, K. M.: Spatial structure in glacial outwash, sand and gravel aquifer, Cape Cod, Massachusetts, *Eos*, 71(17), 509, 1990.
- Hess, K. M., Wolff, S. H., and Celia, M. A.: Estimation of hydraulic conductivity in a sand and gravel aquifer, Cape Cod, Massachusetts, USGS Water Resources Investigation Report 91-4034, 15–22, 1991.
- Højberg, A. L. and Refsgaard, J. C.: Model Uncertainty – Parameter uncertainty versus conceptual models, *Water Sci. Technol.*, 52(6), 177–186, 2005.
- Isaaks, E. D. and Srivastava, R. M.: *An Introduction to Applied Geostatistics*, Oxford University Press, New York, USA, 1989.
- Klingbeil, R., Kleineidam, S., Asprien, U., Aigner, T., and Teutsch, G.: Relating lithofacies to hydrofacies: Out-crop hydrogeological characterization of Quaternary gravel deposits, *Sedimentary Geology*, 129, 299–310, 1999.
- Koltermann, C. E. and Gorelick, S. M.: Heterogeneity in sedimentary deposits: A review of structure-imitating, process-imitating and descriptive approaches, *Water Resour. Res.*, 32, 2617–2658, 1996.
- Kupfersberger, H. and Deutsch, C. V.: Ranking stochastic realizations for improved aquifer response uncertainty assessment, *J. Hydrol.*, 223(1–2), 54–65, 1999.
- National Research Council: *Conceptual models of flow and transport in vadose zone*, National Academy Press, Washington, D.C., 2001.
- Neuman, S. P. and Weirenga, P. J.: A comprehensive strategy of hydrogeologic modelling and uncertainty analysis for nuclear facilities and sites, NUREG/CR-6805, 2003.
- Nilsson, B., Sidle, R. C., Klint, K. E., Bøggild, C. E., and Broholm, K.: Mass transport and scale-dependent hydraulic tests in a heterogeneous glacial till-sandy aquifer system, *J. Hydrol.*, 243, 162–179, 2001.
- Petersen, D. L., Jensen, K. H., and Nilsson, B.: Effect of embedded sand lenses on transport in till, *Eos, Transactions, American Geophysical Union*, 85(47), Fall Meeting, 2004.
- Poeter, E. M. and Anderson, D.: Multimodel ranking and inference in ground water modelling, *Groundwater*, 43(4), 597–605, 2005.
- Poeter, E. M. and Hill, M. C.: Inverse methods: A necessary next step in ground water modelling, *Groundwater*, 35(2), 250–260, 1997.
- Refsgaard, J. C., Nilsson, B., Brown, J., Klauer, B., Moore, R., Bech, T., Vurro, M., Blind, M., Castilla, G., Tsanis, I., and Biza, P.: *Harmonised Techniques and Representative River Basin*

Uncertainty in geological and hydrogeological data

B. Nilsson et al.

Title Page

Abstract

Introduction

Conclusions

References

Tables

Figures

◀

▶

◀

▶

Back

Close

Full Screen / Esc

Printer-friendly Version

Interactive Discussion

Data for Assessment and Use of Uncertainty Information in Integrated Water Management (HarmoniRiB), Environmental Science and Policy, 8, 267–277, 2005.

Refsgaard, J. C., van der Sluijs, J. P., Brown, J., and van der Keur, P.: A framework for dealing with uncertainty due to model structure error, *Adv. Water Resour.*, in press, 2006.

5 Ritzl Jr., R. W., Dominic, D. F., Slesers, A. J., Greer, C. B., Reboulet, E. C., Telford, J. A., Masters, R. W., Klohe, C. A., Bogle, J. L., and Means, B. P.: Comparing statistical models of physical heterogeneity in buried-valley aquifers, *Water Resour. Res.*, 36(11), 3179–3192, 2000.

10 Ritzl, R. W., Jayne, D. F., Zahradink, A. J., Field, A. A., and Fogg, G. E.: Geostatistical modeling of heterogeneity in glaciofluvial, buried-valley aquifers, *Ground Water*, 32(4), 666–674, 1994.

Samper, J., Carrera, J., Galarza, G., and Medina, A.: Application of an automatic calibration technique to modelling an alluvial aquifer, IAHS AISH Publication, 195, 87–95, 1990.

15 Sánchez-Vila, X., Girardi, J., and Carrera, J.: Scale effects in transmissivity, *J. Hydrol.*, 183, 1–22, 1996.

Selroos, J. O., Walker, D. D., Strom, A., Gylling, B., and Follin, S.: Comparison of alternative modelling approaches for groundwater flow in fractured rock, *J. Hydrol.*, 257, 174–188, 2001.

20 Sminchak, J. R., Dominic, D. F., and Ritzl, R. W.: Indicator geostatistical analysis of sand interconnections within a till, *Ground Water*, 34(6), 1125–1131, 1996.

Smith, L. and Weathcroft, S. W.: Groundwater flow, in: *Handbook of Hydrology*, edited by: Maidment, D. R., Mc Graw-Hill Inc., 1992.

Sonnenborg, T. O.: Calibration of flow models, in: *Handbook of groundwater modeling*, edited by: Sonnenborg, T. O. and Henriksen, H. J., GEUS report No 80 (Text in Danish), 2005.

25 Sudicky, E. A.: Spatial variability of hydraulic conductivity at the Borden tracer test site, paper presented at Proceedings of the Symposium on the Stochastic Approach to Subsurface Flow, Int. Assoc. Hydraul. Res. Montvillargenne, France, June, 1985.

Trolborg, L.: Effects of geological complexity on groundwater age prediction, *Eos, Transactions, American Geophysical Union*, 81(48), F435, 2000.

30 Trolborg, L.: The influence of conceptual geological models on the simulation of flow and transport in Quaternary aquifer systems, PhD thesis, Geological Survey of Denmark and Greenland, Report 2004/107, 2004.

HESSD

3, 2675–2706, 2006

Uncertainty in geological and hydrogeological data

B. Nilsson et al.

Title Page

Abstract

Introduction

Conclusions

References

Tables

Figures

◀

▶

◀

▶

Back

Close

Full Screen / Esc

Printer-friendly Version

Interactive Discussion

van der Keur, P. and Iversen, B. V.: Uncertainty in soil physical data at river basin scale, *Hydrol. Earth Syst. Sci.*, 3, 1281–1313, 2006.

Weissmann, G. S., Carle, S. F., and Fogg, G. E.: Three dimensional hydrofacies modeling based on soil surveys and transition probability geostatistics, *Water Resour. Res.*, 35(6), 1761–1770, 1999.

Weissmann, G. S. and Fogg, G. E.: Multi-scale alluvial fan heterogeneity modelled with transition probability geostatistics in a sequence stratigraphic framework, *J. Hydrol.*, 226(1–2), 48–65, 1999.

Willis, B. J. and White, C. D.: Quantitative outcrop data for flow simulation, *Journal of Sedimentary Research*, 70(4), 788–802, 2000.

Zimmerman, D. A., de Marsily, G., Gotway, C. A., Marietta, M. G., Axness, C. L., Beauheim, R. L., Bras, R. L., Carrera, J., Dagan, G., Davies, P. B., Gallegos, D. P., Galli, A., Gomez-Hernandez, J., Grindrod, P., Gutjahr, A. L., Kitanidis, P. K., Lavenue, A. M., McLaughlin, D., Neuman, S. P., RamaRao, B. S., Ravenne, C., and Rubin, Y.: A comparison of seven geostatistically based inverse approaches to estimate transmissivities for modeling advective transport by groundwater flow, *Water Resour. Res.*, 34(6), 1373–1413, 1998.

HESSD

3, 2675–2706, 2006

Uncertainty in geological and hydrogeological data

B. Nilsson et al.

Title Page

Abstract

Introduction

Conclusions

References

Tables

Figures

◀

▶

◀

▶

Back

Close

Full Screen / Esc

Printer-friendly Version

Interactive Discussion

EGU

Uncertainty in geological and hydrogeological data

B. Nilsson et al.

Table 1. Classification of scales of sedimentary heterogeneity (from Koltermann and Gorelick, 1996).

Scale name:	Basin	Depositional environments	Channels	Stratigraphical features	Flow regime features	Pores
Approximate length scale	3 km–>100 km	80 m–3 km	5 m–80 m	0.1 m–5 m	2 mm–0.1 m	<2 mm
Geologic features	Basin geometry, strata geometries, structural features, lithofacies, regional facies trends	Multiple facies, facies relations, morphologic features	Channel geometry, bedding type and extent, lithology, fossil content	Abundance of sedimentary structures, stratification type, upward fining/ or coarsening	Primary sedimentary structures: ripples, cross-bedding, parting lineation, lamination, soft sediment deformation	Grain size, shape, sorting, packing, orientation, composition, cements, interstitial clays
Heterogeneity affected by	Faults (sealing folding, External controls (tectonic, sea level, climatic history), thickness trends, unconformities	Fractures (open or tight), intrabasinal controls (on fluid dynamics and depositional mechanism)	Frequency of shale beds, sand and shale body geometries, sediment load composition	Bed boundaries, minor channels, bars, dunes	Uneven diagenetic processes, sediment transport mechanisms, bioturbation	Provenance, diagenesis, sediment transport mechanisms
Observations/ measurement techniques	Maps, seismic profiles, cross-sections	Maps, cross-sections, lithologic and geophysical logs, seismic profiles	Outcrop, cross-well tomography, lithologic and geophysical logs	Outcrop, lithologic and geophysical logs	Core plug, hand sample, outcrop	Thin section, hand lens, individual clast, aggregate analysis
Support volume of hydraulic measurements	Shallow crustal properties	Regional (long term pumping or tracer tests)	Local (short term pumping or tracer tests)	Near-well (non-pumping tests-height of screened interval)	Core plug analysis (permeameter)	Several pores (mini-permeameter)

Title Page

Abstract Introduction

Conclusions References

Tables Figures

◀ ▶

◀ ▶

Back Close

Full Screen / Esc

Printer-friendly Version

Interactive Discussion

Uncertainty in geological and hydrogeological data

B. Nilsson et al.

Table 2. The sources of uncertainty on groundwater head values and the assessed error values in this respect. Modified from Sonnenborg (2005).

Source of uncertainty	Type of uncertainty	Assessed error value
Field instruments Level of well	Measurement error Errors in assessing the level of the well, relative to which the observation is made.	Assessed to be: 0.1 m Assessed on the basis of topographic maps: 1.5 m
Location of well	Scaling errors as the well may be located randomly within the 1 km ² model grid.	Estimated as a typical hydraulic gradient multiplied by half the grid size: 1.5 m
Geological heterogeneity	Scaling error due to geological heterogeneity within a model grid.	According to Gelhar (1986) to be assessed as the autocorrelation length scale for log K multiplied to the standard deviation of log K and the average hydraulic gradient: 2.1 m
Non-stationarity	Error due to non-stationarity. The observed data originate from different seasons.	The error may be assessed as half the typical annual fluctuation: 0.5 m
Other effects	E.g. due to vertical scaling error and variations in topography.	Assessed to be: 0.5 m

Title Page

Abstract

Introduction

Conclusions

References

Tables

Figures

◀

▶

◀

▶

Back

Close

Full Screen / Esc

Printer-friendly Version

Interactive Discussion

Table 3. Data on variance and correlation scales of the natural logarithm of hydraulic conductivity or transmissivity (from Gelhar, 1993).

Medium	Standard deviation (m)	Correlation length (m)		Correlation scale (m)	
		horizontal	vertical	horizontal	vertical
<i>Transmissivity data (depth-averaged observations based on pump tests)</i>					
alluvial aquifer	0.6	150		5000	
alluvial aquifer	0.8	820		5000	
alluvial-basin aquifer	1.0	800		20 000	
alluvial aquifer	0.4	1800		25 000	
alluvial-basin aquifer	1.22	4000		30 000	
limestone aquifer	2.3	6300		30 000	
limestone aquifer	2.3	3500		40 000	
sandstone aquifer	1.4	17500		50 000	
chalk aquifer	1.7	7500		80 000	
sandstone aquifer	0.6	4.5×10 ⁴		5×10 ⁵	
<i>Soils (based on observed vertical infiltration rates at ground surface)</i>					
alluvial silty-clay loam soil	0.6	0.1		6	
weathered shale subsoil	0.8	<2		14	
prairie soil	0.6	8		100	
Homra red Mediterranean soil	0.4-1.1	14-39		100	
alluvial soil	0.9	15		100	
fluvial soil	1.0	7.6		760	
gravely loamy sand soil	0.7	500		1600	
<i>Three-dimensional aquifer data</i>					
fluvial sand	0.9	>3	0.1	14	5
glacial-lacustrine sand aquifer	0.6	3	0.12	20	2
glacial outwash sand	0.5	5	0.26	20	5
outwash sand and gravel outcrop	0.8	5	0.4	30	30
eolian sandstone	0.4	8	3	30	60
fluvial sand and gravel aquifer	2.1	13	1.5	90	7
sand and gravel aquifer	1.9	20	0.5	100	20
sandstone aquifer	1.5–2.2		0.3–1.0		100

Uncertainty in geological and hydrogeological data

B. Nilsson et al.

Title Page

Abstract

Introduction

Conclusions

References

Tables

Figures

◀

▶

◀

▶

Back

Close

Full Screen / Esc

Printer-friendly Version

Interactive Discussion

Uncertainty in geological and hydrogeological data

B. Nilsson et al.

Table 4. Value ranges of effective porosity (n), specific yield (S_y) and specific storage (S_s). Data sources: a) Freeze and Cherry (1979), b) Anderson (1989), and c) Smith and Weathcroft (1992).

Material	n^a	S_y^{b+c}	S_s^{b+c}
Gravel	25–40	0.2–0.4	10^{-4} – 10^{-6}
Sand	25–50	0.1–0.3	10^{-3} – 10^{-5}
Clay	40–70	0.01–0.1	10^{-3} – 10^{-4}
Sand and gravel	20–35	0.15–0.25	10^{-3} – 10^{-4}
Sandstone	5–30	0.05–0.15	10^{-3} – 10^{-5}
Limestone	0–20	0.005–0.05	10^{-3} – 10^{-5}
Shale	0–10	0.005–0.05	10^{-3} – 10^{-5}

Title Page

Abstract

Introduction

Conclusions

References

Tables

Figures

◀

▶

◀

▶

Back

Close

Full Screen / Esc

Printer-friendly Version

Interactive Discussion

Uncertainty in geological and hydrogeological data

B. Nilsson et al.

Table 5. The subdivision and coding of attribute uncertainty-categories, along the “axes” of space-time variability and measurement scale (van Loon et al., 2006¹).

Space-time variability	Measurement scale		
	Continuous numerical	Discrete numerical	Categorical
Constant in space and time	A1	A2	A3
Varies in time, not in space	B1	B2	B3
Varies in space, not in time	C1	C2	C3
Varies in time and space	D1	D2	D3

Title Page

Abstract

Introduction

Conclusions

References

Tables

Figures

◀

▶

◀

▶

Back

Close

Full Screen / Esc

Printer-friendly Version

Interactive Discussion

Uncertainty in geological and hydrogeological data

B. Nilsson et al.

Table 6. Types of empirical uncertainty (van Loon et al., 2006¹).

Code	Explanation
M1	Probability distribution or upper & lower bounds
M2	Qualitative indication of uncertainty
M3	Some examples of different values a variable may take

Title Page

Abstract

Introduction

Conclusions

References

Tables

Figures

◀

▶

◀

▶

Back

Close

Full Screen / Esc

Printer-friendly Version

Interactive Discussion

Uncertainty in geological and hydrogeological data

B. Nilsson et al.

Table 7. Codes for “longevity” of uncertainty information (van Loon et al., 2006¹).

Code	Explanation
L0	Temporal variability of the uncertainty information is unknown.
L1	The uncertainty information is known to change significantly over time (specify how fast it changes if you know it).
L2	Uncertainty does not change significantly, in principle no updating required.

Title Page

Abstract

Introduction

Conclusions

References

Tables

Figures

◀

▶

◀

▶

Back

Close

Full Screen / Esc

Printer-friendly Version

Interactive Discussion

Uncertainty in geological and hydrogeological data

B. Nilsson et al.

Table 8. Indices for “methodological quality” of a variable. (*) One may specify the sampling strategy in the different spatial dimensions (Ss = in space, Sh = horizontal, Sv = Vertical), and also in time (St). (**) Under “overall method” we group the combined and described procedures to collect/transport/process/calculate the variable of interest (from van Loon et al., 2006¹).

Instrument quality	Sampling strategy (*)	Overall method (**)
I4 Instrument quality is irrelevant.	S4 Full coverage, no sampling involved.	O4 Approved standard in well-established discipline.
I3 Instruments well suited for the field situation and calibrated.	S3 Large sample of direct measurements, good sample design, controlled experiments and cross-validation.	O3 Reliable method, common within discipline.
I2 Instruments are not well matched for the field situation, no calibration performed.	S2 Indirect measurements, historical field data, uncontrolled experiments, or small sample of direct measurements.	O2 Acceptable method, but limited consensus on reliability.
I1 Instruments of questionable reliability and applicability.	S1 Educated guesses, very indirect approximations, handbook or “rule of thumb” estimates.	O1 Unproven methods, questionable reliability.
I0 Instruments of unknown quality or applicability.	S0 Pure guesses.	O0 Highly subjective method.

Title Page

Abstract

Introduction

Conclusions

References

Tables

Figures

◀

▶

◀

▶

Back

Close

Full Screen / Esc

Printer-friendly Version

Interactive Discussion

Table 9. Methodological quality: Instrument quality (I); Sampling strategy (S) and Overall method (O). -: test method not common/relevant for determination of specific hydraulic parameter values.

Test method	Saturated hydraulic conductivity	Specific yield	Specific storage	Effective porosity	Dispersivity
	(K)	(S_y)	(S_s)	(n)	(α)
Grain size + formula	I3	–	–	I3	–
	S1–S2	–	–	S1–S2	–
	O2	–	–	O2	–
Laboratory measurements	I3	I2–I3	I2–I3	I3	–
	S2	S2	S2	S2	–
	O2–O4	O2–O4	O2–O4	O2–O4	–
Slug test	I2–I3	–	–	–	–
	S1–S3	–	–	–	–
	O2–O3	–	–	–	–
Pump test	I3	I3	I3	–	–
	S3–S4	S3–S4	S3–S4	–	–
	O3–O4	O3–O4	O3–O4	–	–
Tracer test	–	–	–	I3	I3
	–	–	–	S2	S2
	–	–	–	O3	O3
Model calibration	I4	I4	I4	I4	I4
	S2	S2	S2	S2	S2
	O3	O2	O2	O2–O3	O2–O3

Uncertainty in geological and hydrogeological data

B. Nilsson et al.

Title Page

Abstract

Introduction

Conclusions

References

Tables

Figures

◀

▶

◀

▶

Back

Close

Full Screen / Esc

Printer-friendly Version

Interactive Discussion

Uncertainty in geological and hydrogeological data

B. Nilsson et al.

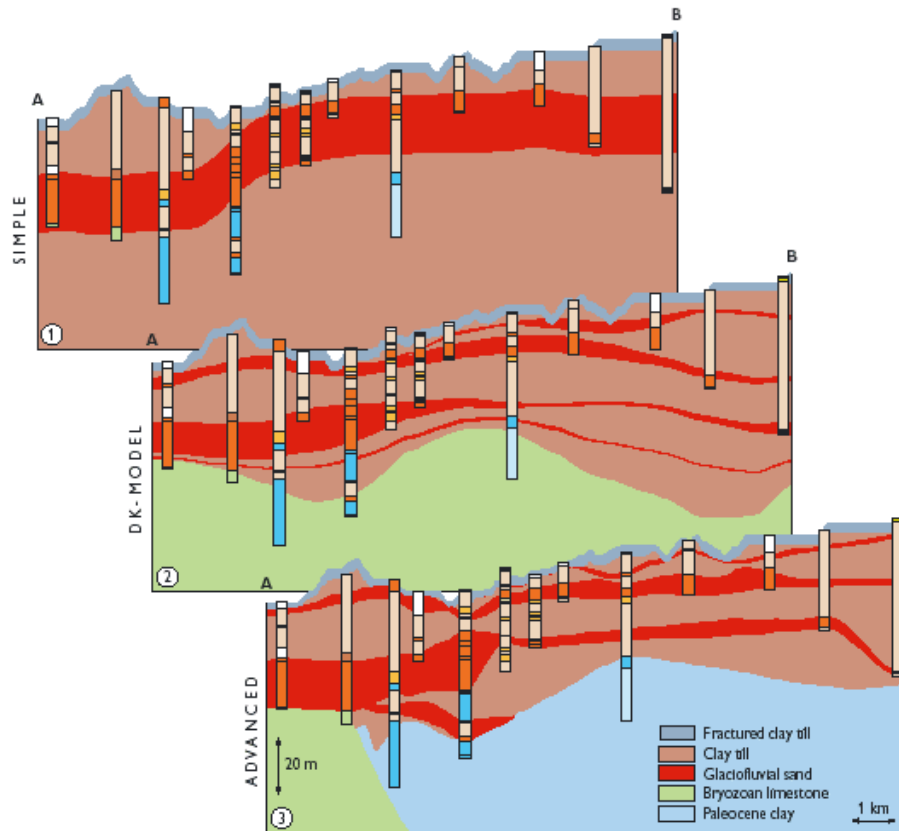


Fig. 1. Geological complexity and simulated age distribution. In a simple (upper), in an intermediary (middle), and in a complex hydrogeological conceptual model (lower). From Trolborg (2000).

Title Page

Abstract

Introduction

Conclusions

References

Tables

Figures

◀

▶

◀

▶

Back

Close

Full Screen / Esc

Printer-friendly Version

Interactive Discussion

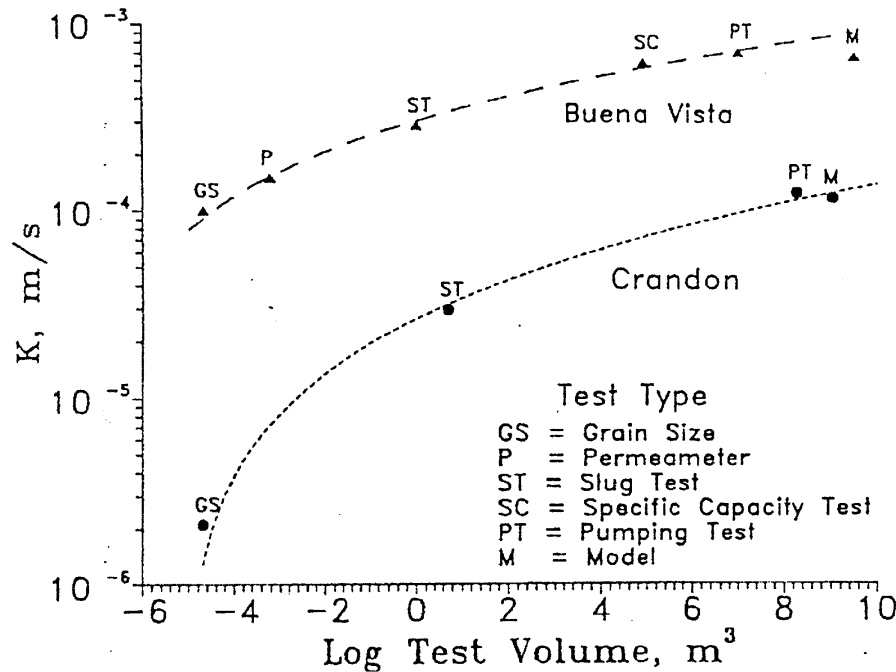


Fig. 2. Relationship between the geometric mean measured hydraulic conductivity and the support volume (sample size) for different field measurement methods in coarse-grained fluvial sediments in Wisconsin. From Bradbury and Muldoon (1990).

Title Page

Abstract

Introduction

Conclusions

References

Tables

Figures

◀

▶

◀

▶

Back

Close

Full Screen / Esc

Printer-friendly Version

Interactive Discussion

Uncertainty in geological and hydrogeological data

B. Nilsson et al.

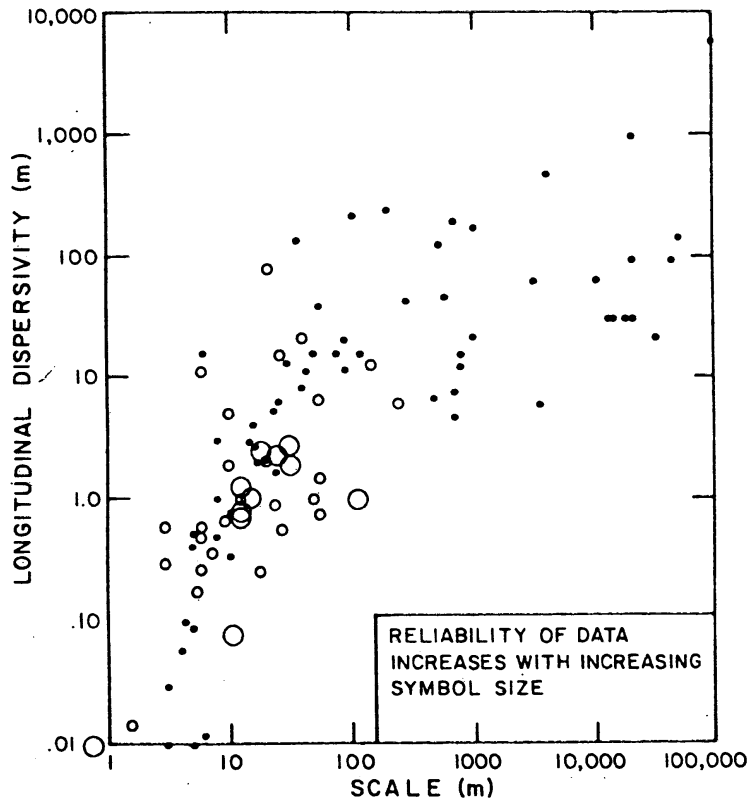


Fig. 3. Longitudinal dispersivity data plotted versus scale of experiment; the largest symbols indicate the most reliable data (Gelhar, 1986).

Title Page

Abstract

Introduction

Conclusions

References

Tables

Figures

◀

▶

◀

▶

Back

Close

Full Screen / Esc

Printer-friendly Version

Interactive Discussion