



**HAL**  
open science

## Validation of MODIS snow cover images over Austria

J. Parajka, G. Blöschl

► **To cite this version:**

J. Parajka, G. Blöschl. Validation of MODIS snow cover images over Austria. Hydrology and Earth System Sciences Discussions, 2006, 3 (4), pp.1569-1601. hal-00298733

**HAL Id: hal-00298733**

**<https://hal.science/hal-00298733>**

Submitted on 18 Jun 2008

**HAL** is a multi-disciplinary open access archive for the deposit and dissemination of scientific research documents, whether they are published or not. The documents may come from teaching and research institutions in France or abroad, or from public or private research centers.

L'archive ouverte pluridisciplinaire **HAL**, est destinée au dépôt et à la diffusion de documents scientifiques de niveau recherche, publiés ou non, émanant des établissements d'enseignement et de recherche français ou étrangers, des laboratoires publics ou privés.

Papers published in *Hydrology and Earth System Sciences Discussions* are under open-access review for the journal *Hydrology and Earth System Sciences*

# Validation of MODIS snow cover images over Austria

J. Parajka<sup>1,\*</sup> and G. Blöschl<sup>1</sup>

<sup>1</sup>Institute for Hydraulic and Water Resources Engineering, Vienna University of Technology, Austria

\* on leave from: Institute of Hydrology, Slovak Academy of Sciences, Bratislava, Slovakia

Received: 6 June 2006 – Accepted: 26 June 2006 – Published: 13 July 2006

Correspondence to: J. Parajka (parajka@hydro.tuwien.ac.at)

**HESSD**

3, 1569–1601, 2006

## Validation of MODIS snow cover images over Austria

J. Parajka and G. Blöschl

Title Page

Abstract

Introduction

Conclusions

References

Tables

Figures

◀

▶

◀

▶

Back

Close

Full Screen / Esc

Printer-friendly Version

Interactive Discussion

EGU

## Abstract

This study evaluates the Moderate Resolution Imaging Spectroradiometer (MODIS) snow cover product over the territory of Austria. The aims are (a) to analyse the spatial and temporal variability of the MODIS snow product classes, (b) to examine the accuracy of the MODIS snow product against in situ snow depth data, and (c) to identify the main factors that may influence the MODIS classification accuracy. We use daily MODIS grid maps (version 4) and daily snow depth measurements at 754 climate stations in the period from February 2000 to December 2005. The results indicate that, on average, clouds obscured 63% of Austria, which may significantly restrict the applicability of the MODIS snow cover images to hydrological modelling. On cloud-free days, however, the classification accuracy is very good with an average of 95%. There is no consistent relationship between the classification errors and dominant land cover type and local topographical variability but there are clear seasonal patterns to the errors. In December and January the errors are around 15% while in summer they are less than 1%. This seasonal pattern is related to the overall percentage of snow cover in Austria, although in spring, when there is a well developed snow pack, errors tend to be smaller than they are in early winter for the same overall percent snow cover. Overestimation and underestimation errors balance during most of the year which indicates little bias. In November and December, however, there appears to exist a tendency for overestimation. Part of the errors may be related to the temporal shift between the in situ snow depth measurements (7 a.m.) and the MODIS acquisition time (early afternoon).

## 1 Introduction

Hydrological modelling in alpine regions is very difficult due to sparse observational networks and the enormous spatial variability of runoff formation factors such as snow processes. The value of snow cover data in hydrologic modelling has been demonstrated by many authors in the past (e.g. Blöschl et al., 1991, among others). Grayson

HESSD

3, 1569–1601, 2006

### Validation of MODIS snow cover images over Austria

J. Parajka and G. Blöschl

Title Page

Abstract

Introduction

Conclusions

References

Tables

Figures

◀

▶

◀

▶

Back

Close

Full Screen / Esc

Printer-friendly Version

Interactive Discussion

EGU

and Blöschl (2000) and Grayson et al. (2002) summarise numerous examples of using snow cover data in addition to runoff and suggest that these response data are particularly useful if available as spatial patterns.

Currently, a suite of satellite snow cover products is available through the National Snow and Ice Data Center (NSIDC) Distributed Active Archive Center. These include global daily and 8-day composite products at a spatial resolution of 500 m derived from the Moderate Resolution Imaging Spectroradiometer (MODIS) instrument imagery. The MODIS snow-mapping algorithms are automated, which means that a consistent data set may be generated for long term climate studies that require snow-cover information (Hall et al., 2002). Both for climate and hydrological studies the accuracy to which these products represent the actual snow cover is critically important as it is the main determinant of their usefulness. Several studies have been conducted to evaluate the accuracy of MODIS snow products, either based on comparisons with other satellite-derived products or based on comparisons with point ground based (in situ) snow depth measurements. Bitner et al. (2002) quantified the differences between the snow products of the National Operational Hydrologic Remote Sensing Center (NOHRSC), the National Environmental Satellite Data and Information Service (NESDIS) and MODIS for a few days in 2001. They concluded that, in mid-winter, when there tends to be a continuous snow pack, the agreement between the NOHRSC, NESDIS and MODIS snow cover products was good. However, when large areas of discontinuous snow cover occurred in the forested areas of the mountains the MODIS product tended to map more discontinuous snow cover under the forest canopy than the NOHRSC product.

Klein and Barnett (2003) compared the MODIS product with operational NOHRSC snow cover maps and against in situ Snowpack Telemetry (SNOTEL) measurements for the 2000–2001 snow season. They demonstrated that, over the snow season, the agreement between the MODIS and NOHRSC snow maps was high with an overall accuracy of 86%. However, the MODIS snow maps typically indicated a higher proportion of the basin as being snow-covered than did the NOHRSC snow maps. A comparison

## Validation of MODIS snow cover images over Austria

J. Parajka and G. Blöschl

Title Page

Abstract

Introduction

Conclusions

References

Tables

Figures

◀

▶

◀

▶

Back

Close

Full Screen / Esc

Printer-friendly Version

Interactive Discussion



of MODIS maps and in situ SNOTEL measurements indicated good overall agreement over the snow season with an overall accuracy of 94%. Maurer et al. (2003) compared the MODIS maps with the NOHRSC snow cover maps for 46 selected days over the Columbia River basin and 32 days over the Missouri River basin during the 2000–2001 snow season. For inferring the presence or absence of snow, they used ground observations of snow depth at 1330 stations in the Missouri River basin and 762 stations in the Columbia River basin and concluded that, on average, the MODIS images classified fewer pixels as cloud and misclassified less pixels than did the NOHRSC product. The performance of MODIS, GOES + SSM/I and SPOT-4 VEGETATION daily snow cover products over Canada in a period of one year was evaluated by Simic et al. (2004). They compared the snow cover products with daily surface snow depth observations at almost 2000 meteorological stations across Canada and found that the MODIS and NOAA products have similar levels of agreement with ground data, ranging from accuracies of 80% to almost 100% on a monthly basis. The lowest accuracies were found for the snowmelt periods in forested areas. Recently, the study of Zhou et al. (2005) statistically evaluated two MODIS snow products, the daily and 8-day composite images, for a period from February 2000 to June 2004, using streamflow and SNOTEL measurements as constraints. The intercomparison of these two products over the Upper Rio Grande River Basin indicated that the MODIS 8-day product has higher classification accuracies for both snow and land, but slightly higher errors of misclassifying land as snow than the MODIS daily product. They concluded that, for clear days, the MODIS daily algorithm works as well or better than the MODIS 8-day algorithm.

As indicated in this review, most of the validation studies used short periods of MODIS data and were carried out in North America. In this paper we focus on the validation of MODIS snow cover images over Central Europe, specifically over the territory of Austria. The main goals of this paper are (a) to analyse the spatial and temporal variability of the MODIS snow product classes, (b) to examine the accuracy of the MODIS snow product against in situ snow depth data at climate stations, and (c) to identify

## Validation of MODIS snow cover images over Austria

J. Parajka and G. Blöschl

Title Page

Abstract

Introduction

Conclusions

References

Tables

Figures

◀

▶

◀

▶

Back

Close

Full Screen / Esc

Printer-friendly Version

Interactive Discussion

the main factors that may influence the MODIS classification accuracy. The analysis of the variability of the snow product classes provides an assessment of the role of snow and clouds in the study area; the accuracy analysis is an important background information for the use of MODIS data in hydrological modelling and data assimilation; and an understanding of possible error sources may help improve the MODIS snow classification in the future. We use the dataset of MODIS daily grid maps together with daily snow depth measurements at 754 climate stations in the period from February 2000 to December 2005 which will likely allow us to draw more generic inferences than has been possible in previous studies.

## 2 Moderate Resolution Imaging Spectroradiometer (MODIS)

The snow cover images used in this study have been acquired by the MODIS instrument mounted on the Terra and Aqua satellites of the NASA Earth Observation System. MODIS is an imaging spectroradiometer that employs a cross-track scan mirror, collecting optics, and a set of individual detector elements to provide imagery of the Earth's surface and clouds in 36 discrete, narrow spectral bands from approximately 0.4 to 14.4  $\mu\text{m}$  (Barnes et al., 1998). From a variety of geophysical products derived from MODIS observation, the global daily snow cover product is available through the Distributed Active Archive Center located at the National Snow and Ice Data Center (NSIDC, <http://www.nsidc.org>).

The detailed description of the MODIS snow algorithm is presented in the Algorithm Theoretical Basis Document (Hall et al., 2001). The techniques used in the snow mapping procedure include indices based on normalised differences between bands, threshold-based criteria tests, and decision rules. The basic principle of the MODIS snow detection algorithm uses the difference between the infrared reflectance of snow in visible and short-wave wavelengths. The main distinctive feature of snow properties is a strong reflectance in the visible and strong absorption capacity in the short-wave part of the spectrum. The measure of snow reflectance difference in the MODIS snow

## Validation of MODIS snow cover images over Austria

J. Parajka and G. Blöschl

Title Page

Abstract

Introduction

Conclusions

References

Tables

Figures

◀

▶

◀

▶

Back

Close

Full Screen / Esc

Printer-friendly Version

Interactive Discussion

## Validation of MODIS snow cover images over Austria

J. Parajka and G. Blöschl

Title Page

Abstract

Introduction

Conclusions

References

Tables

Figures

◀

▶

◀

▶

Back

Close

Full Screen / Esc

Printer-friendly Version

Interactive Discussion

mapping procedure is the Normalised Difference Snow Index (NDSI). The NDSI allows to distinguish snow from many other surface features and is adaptable for a number of illumination conditions. The discrimination between snow and clouds is based on differences between cloud and snow/ice reflectance and emittance properties. Clouds, typically, have high reflectance in visible and near-infrared wavelengths, while the reflectance of snow decreases towards the short-wave infrared wavelengths (Hall et al., 1998). The MODIS snow cover determination is based on a liberal cloud mask. This means that, when in doubt, the image is not masked. Riggs et al. (2003) suggested that a liberal cloud mask allows snow analysis on more pixels than a more conservative mask and often results in an increased accuracy of snow mapping in regions where there is snow and a mix of snow and clouds. On the other hand, a liberal cloud mask tends to erroneously identify some types of ice clouds as snow.

The mapping of snow cover is limited in areas where snow cover is obscured by dense forest canopies (Hall et al., 2001). In the MODIS product, mapping snow in forested locations is based upon a combination of the normalised difference vegetation index (NDVI) and the NDSI (Hall et al., 1998). Application of the NDVI index allows for the use of different NDSI thresholds for forested and non-forested pixels without compromising the algorithm performance for other land cover types.

The MODIS snow cover data used in this study are daily snow cover maps from 25 February 2000 to 31 December 2005. We used Version 4 data (Hall et al., 2000, 2003), where each daily map consists of a composite image of a number of overpasses in the afternoon. This means that there is not a single time of day that can be attributed to any one image. The combination procedure uses a scoring algorithm that is based on pixel location, area of coverage in a grid cell and solar elevation. The purpose of scoring is to select the observation nearest to nadir with greatest coverage at the highest solar elevation that was mapped into the grid cell (Hall et al., 2000). The territory of Austria is covered by the h18v04 and h19v04 tiles with 500 m spatial resolution. We combined data from both tiles and reprojected them into Lambert conformal conic projection using MODIS Reprojection Tool (MRT, 2004). After the transformation, we reclassified the

MODIS snow cover maps from originally 16 pixel classes to four classes: snow, no snow (land), clouds and others. These snow cover maps were subsequently used in the quantitative validation.

### 3 Study area and snow depth measurements

Austria is flat or undulating in the East and North, and Alpine in the West and South. It covers an area of about 84 000 km<sup>2</sup>. The elevations range from 115 m a.s.l. to 3797 m a.s.l. (Fig. 1). Austria is located in a temperate climate zone. Mean annual precipitation is less than 400 mm/year in the East and almost 3000 mm/year in the West. Land use is mainly agricultural in the lowlands and forest in the medium elevation ranges. Alpine vegetation and rocks prevail in the highest mountain regions.

The data used in this study consist of measurements of daily snow depths at 754 climate stations from February 2000 to December 2005, a digital elevation model (DEM) of Austria with 250 m spatial resolution, a 10 m DEM in the vicinity of the climate stations and a vector land cover map (EEA, CORINE Land Cover 2000). The location of the climate stations with daily in situ snow depth measurements is presented in Fig. 1. The colours of the station symbols represent the average duration of the snow cover during 2000–2005. The mountainous parts of Austria are covered by snow for several months in a year which highlights the importance of snow for the water balance. The snow depth measurements are performed daily at 07:00 a.m. and snow depths are reported as centimetre integer values (HZB, 1992).

To assist in assessing the representativeness of the spatial arrangement of the climate stations Fig. 2 shows the relative frequencies of elevation (left panel) and selected land cover classes (right panel) for the locations of the climate stations as compared to those of the entire country (DEM map). The figure indicates that the snow depth measurements cover a wide range of elevation zones of the country, but in the mountain regions the stations tend to be located at lower elevations, typically in the valleys. This suggests a slight bias of the validation statistics towards lower elevations. The highest

## Validation of MODIS snow cover images over Austria

J. Parajka and G. Blöschl

Title Page

Abstract

Introduction

Conclusions

References

Tables

Figures

◀

▶

◀

▶

Back

Close

Full Screen / Esc

Printer-friendly Version

Interactive Discussion

climate station is located at 2290 m.a.s.l. which suggests that 6% of Austria (regions above that elevation) are not represented by any climate station.

The evaluation of the station arrangement with respect to different land cover classes (Fig. 2, right) is difficult, because the snow depth measurements are only located at open grassy sites. This is consistent with WMO standards. To examine potential larger scale effects of vegetation, we assigned to each station the dominant land cover class of a circle around the station with 1 km radius. For the land cover classification we applied the nomenclature level 2 of the CORINE Land Cover 2000 (EEA, <http://www.eea.eu.int>), which consists of 14 categories, and reclassified these categories into four classes: pasture, shrubs, forest and others. Not surprisingly, the main differences in the spatial distribution of land cover were found for forest and pasture. Forests cover more than 40% of Austria while only 20% of the climate stations are located near forests. This suggests that the climate stations are not fully representative in terms of land cover categories which adds a caveat to the quantitative validation of the MODIS snow cover product for different land cover classes. Land cover information was hence used in this study only as an indicator of possible tendencies in MODIS errors.

#### 4 Methodology of MODIS evaluation over Austria

The analysis of the MODIS snow cover maps over Austria was performed in three steps:

(a) The frequencies of four MODIS classes (snow, no snow, clouds and others) were evaluated over the entire region of Austria. Map algebra operations were used to calculate the relative frequency of different pixel classes over Austria on a daily basis and the spatial variability of the frequency of these classes on a monthly basis. This test allows us to assess the duration and spatial extent of clouds and snow cover, which sheds light on the usefulness of the MODIS snow cover product for regional water balance modelling.

(b) The in situ measurements of snow depth were used to statistically evaluate the

## Validation of MODIS snow cover images over Austria

J. Parajka and G. Blöschl

Title Page

Abstract

Introduction

Conclusions

References

Tables

Figures

◀

▶

◀

▶

Back

Close

Full Screen / Esc

Printer-friendly Version

Interactive Discussion

**Validation of MODIS snow cover images over Austria**

J. Parajka and G. Blöschl

Title Page

Abstract

Introduction

Conclusions

References

Tables

Figures

◀

▶

◀

▶

Back

Close

Full Screen / Esc

Printer-friendly Version

Interactive Discussion

accuracy of the MODIS snow images. Snow depth observations at the climate stations were considered as ground truth for the pixel that was closest to each station. These pixels were regarded as snow covered when the measured snow depth exceeded or is equalled 1 cm, and snow free otherwise. In the MODIS validation, two types of errors were evaluated: the MODIS misclassification of snow as land termed here the MODIS underestimation error ( $M_U$ ) and the misclassification of land as snow, termed the MODIS overestimation error ( $M_O$ ). Both types of error are represented by the relative frequency of station-days that were misclassified. The station-days are the number of days of misclassification or correct classification summed over all stations. These frequencies were then statistically evaluated on a monthly basis. The validation is performed separately for (i) all MODIS images available in the study period and (ii) only those days when the pixels at the station locations were not obscured by clouds. The overall degree of agreement between MODIS and snow depth measurements in the study period was represented by an index of overall agreement  $K_a$ . The  $K_a$  index is defined as the sum of correctly classified station-days (snow – snow and no snow – no snow) divided by the total number of cloud-free station-days in percent.

(c) As a final step we analysed the potential error sources in terms of land cover of the station surroundings, climate characteristics, patchiness of the snow cover and snow depths on the days of misclassification.

**5 Spatial and temporal variability of MODIS data over Austria**

The temporal variability of the MODIS classes is presented in Fig. 3. Specifically, Fig. 3 shows the spatial extent of the snow, no snow and cloud classes on each day of the period from February 2000 to December, 2005 over the territory of Austria. The spatial extent and frequency of the clouds (grey colour in Fig. 3) clearly demonstrate the limitations of snow products derived from optical sensors. The statistical analysis presented in Table 1 demonstrates that, on average, the clouds obscured about 63% of the area of Austria in the study period. The average spatial extent of the snow cover

was 7% and that of no snow (land) was 29%. Interestingly, in the period 2000–2005 we did not find a single day with 100% snow coverage.

The spatial variability of the MODIS classes was evaluated on a pixel basis for each month of the study period. A typical example for the snowmelt season 2003 is presented in Fig. 4. The spatial patterns of the clouds, no snow and snow classes are closely related to the topography of the study region. An exception is the period of early snow accumulation. In November, December and January clouds, typically, obscure most of Austria on more than 25 days in a month. The spatial patterns of the no snow (land) class indicate that, in the eastern lowland region, snowmelt started in February. The frequency and spatial extent of the no snow class continue to increase in March and April. In April, snow covers only the high mountain regions. The flatlands and the valleys are already snow free.

Figure 5 more closely examines the relationship between the MODIS classes and topographic elevation. Specifically, Fig. 5 shows the monthly frequencies of the MODIS cloud and snow cover classes stratified by 200 m elevation zones in Austria. In summer (May to July), typically, cloud cover increases with elevation while in winter cloud cover tends to decrease with elevation due to winter inversions (e.g. December 2000 and 2001, or February 2003). As would be expected, snow cover frequency increases with elevation but during the snow accumulation period this trend is partly masked by the extensive cloud cover. Similarly, the clouds may hide changes in the spatial extent of snow cover caused by rain-induced snowmelt events.

## 6 Validation of MODIS images against in situ snow depth data

The confusion matrix of Table 2 presents the overall agreement of remotely sensed snow images with the in situ snow depth measurements at the climate stations. The overall accuracy  $K_a$  of about 95% indicates very good agreement of the MODIS snow cover product with ground snow observations. Out of a total of 77 168 cloud-free station-days for which snow was measured at the climate stations, 84% were cor-

## Validation of MODIS snow cover images over Austria

J. Parajka and G. Blöschl

Title Page

Abstract

Introduction

Conclusions

References

Tables

Figures

◀

▶

◀

▶

Back

Close

Full Screen / Esc

Printer-friendly Version

Interactive Discussion



rectly classified as snow by MODIS and 16% were incorrectly classified as no snow (i.e.  $M_U=16\%$ ). On the other hand, out of a total of 447 888 cloud-free station-days for which no snow was measured at the climate stations, 97% were correctly classified as snow by MODIS and  $M_O=3\%$ .

5 Table 3 summarises the seasonal variability of the MODIS snow product performance. From November to March the misclassification errors are largest (up to 19%) while they are much smaller during the rest of the year. Clearly, this seasonal pattern of the MODIS performance is related to the overall snow coverage of Austria. Months with above average snow coverage exhibit above average errors. It is interesting that  
10 the largest errors occur in December while this is not the month with the largest percent snow cover. In other words, in spring when there is a well developed snow pack, errors are smaller than they are in early winter.

Additional information on the seasonal variation of the MODIS snow mapping performance is presented in Fig. 6. Each of the six panels evaluates the monthly statistics of  
15 the relative frequencies of climate stations, for which selected performance measures were assessed on a particular day. The statistical evaluation includes the mean and selected quantiles (10%, 25%, 50%, 75% and 90%) of the climate station frequencies. Panel (a) shows the overall agreement between MODIS and ground observations where the percentage relates to all days (both cloud-free and cloud-covered). The  
20 number of climate stations that are in agreement with the MODIS images on a particular day was statistically evaluated on a monthly basis. For example, in January, there was agreement between MODIS and the in situ data at 20% of the climate stations on average over all January days of the study period. For 10% of the January days (90% quantile) there was agreement at 55% of the climate stations. The lowest agree-  
25 ment between the MODIS and ground measurements occurs in the winter months but in summer the agreement is still relatively low (55%, on average, in August). These low percentages are because of the prevailing cloud cover (Fig. 6, Panel (b)). On average, between 47% (August) and 74% (January) of the stations were obscured by clouds. The frequencies of climate stations where the MODIS product misclassified

## Validation of MODIS snow cover images over Austria

J. Parajka and G. Blöschl

Title Page

Abstract

Introduction

Conclusions

References

Tables

Figures

◀

▶

◀

▶

Back

Close

Full Screen / Esc

Printer-friendly Version

Interactive Discussion



the snow presence or absence are shown in Fig. 6 (Panels (c) to (f)). Panels (c) and (d) express the percentages in terms of all days, panels e) and f) in terms of cloud-free days only. Panels (c) and (e) give the overestimation errors  $M_O$ , panels (d) and (f) the underestimation errors  $M_U$ . The two types of misclassification errors ( $M_O$  and  $M_U$ ) show similar seasonal distributions with summer lows and winter highs. The most noticeable difference between  $M_O$  and  $M_U$  errors occur in November and December, with the overestimation errors being significantly large than the underestimation errors. In November, for example, average  $M_O$  and  $M_U$  are 8.5% and 3% , respectively, when expressed as percent of the cloud-free days. This means that, in these months, the MODIS product is biased with a tendency for classifying pixels as snow that were in fact snow free.

## 7 Potential sources of misclassification

It is now interesting to analyse what are the potential sources of the disagreement of MODIS and the in situ snow cover data. Romanov et al. (2002) and Klein and Barnett (2003) suggested that some of the MODIS errors are caused by the inconsistency of the satellite reference elevation and elevation of the particular climate station. An alternative suggestion was provided by Hall et al. (2001) who noted that the MODIS snow mapping performance differed by land cover with 15% errors for forests, 10% for mixed agriculture and forest, and 5% for other land-covers. Similarly, Simic et al. (2004) reported that MODIS mapping accuracies were the lowest in the evergreen forests, with an error rate of 20% during snowmelt. In order to link these two indicators to the MODIS misclassification errors over Austria, we compared the errors with the dominant land cover type, elevation and topographical variability in the surroundings of the 754 climate stations (Fig. 7). The dominant land cover type was derived for a circle with 1 km radius around each climate station. Topographical variability was represented by the standard deviation of elevation within a 500 m grid cell using a DEM with 10 m spatial resolution. Figure 7 indicates that there is no consistent relationship between site el-

## Validation of MODIS snow cover images over Austria

J. Parajka and G. Blöschl

Title Page

Abstract

Introduction

Conclusions

References

Tables

Figures

◀

▶

◀

▶

Back

Close

Full Screen / Esc

Printer-friendly Version

Interactive Discussion

## Validation of MODIS snow cover images over Austria

J. Parajka and G. Blöschl

Title Page

Abstract

Introduction

Conclusions

References

Tables

Figures

◀

▶

◀

▶

Back

Close

Full Screen / Esc

Printer-friendly Version

Interactive Discussion

evaluation, dominant land cover type, topographical variability and the MODIS mapping accuracies. The stations with the highest misclassification error rates are located in a wide elevation range, from 750 to 1900 m a.s.l. There is a tendency for the errors to increase with elevation but this is related to an increase of percent snow cover with elevation (Fig. 5). In contrast to the studies of Hall et al. (2001) and Simic et al. (2004), in this study the largest errors occur on pastures and shrubs. The mean misclassification error for the shrub class is around 10%, for pastures and forest it is around 6%. The remaining land cover types (grouped into the “other” class) had a mean misclassification error of only 3%. This class consisted of urban fabric, industrial units, open spaces, permanent crops and heterogeneous agricultural areas and inland wetlands. However, it should be noted that the evaluation of such types of errors in Austria is not straightforward, as the snow depth measurements at the climate stations are carried out at grassy sites only. A more detailed analysis of the physiographic and climatic conditions in the local neighbourhood of climate stations would be needed to fully explain the differences between MODIS and ground snow observations.

Another source of MODIS misclassification may be the liberal cloud mask used in the snow mapping algorithm. As found in Riggs et al. (2003), the liberal cloud mask is prone to incorrectly label ice clouds as snow. In this study, we compared grid maps of daily air temperatures with MODIS snow cover images. This comparison indicated that almost all MODIS overestimation errors in the summer months were caused by the misclassification of cirrus clouds as snow. A typical example is shown in Fig. 8, where daily maps of the MODIS snow product and air temperatures for 20 June 2003 are presented. The summer 2003 was in fact one of the hottest summers on record in Austria, so there was clearly no snow present. Although this type of overestimation error is relatively easily detectable for warm days in summer, during snow accumulation and melt it is much more difficult to identify. The increase of cloud coverage with elevation, as found in this study, may thus reduce the MODIS classification accuracy in the alpine regions of Austria.

Evaluation of the MODIS mapping accuracy is difficult when the snow cover becomes

patchy. To illustrate the case, Fig. 9 shows hourly photographs taken at the Edelbode-  
naln (1344 m a.s.l.) in the Hochschwab region of Austria on 9 May 2005. The width  
of the photo is about 100 m and 1.5 km at the far end of the meadow and in the back-  
ground, respectively. The MODIS pixel size is 500 m. The photos clearly illustrate that,  
if the snow is patchy, it would be difficult to ascertain whether a pixel is snow covered  
or not. The photos illustrate an additional factor that may influence the misclassification  
rate. The in situ snow depth data are collected at 7 a.m. while the MODIS data are  
typically captured in the afternoon. This time shift may lead the MODIS data to un-  
derestimate snow cover relative to the in situ snow depth data when snow melt occurs  
during the day as indicated in Fig. 9. Alternatively, snowfall may occur during the day  
which may cause the MODIS data to overestimate snow cover relative to the in situ  
snow depth data. This time shift may, at least partly, explain the overestimation (bias)  
of the MODIS data in November in December shown in Fig. 7e, f as one would expect  
more frequent snowfalls on bare ground during these months than during the rest of  
the year. This potential error source is also consistent with the findings of Klein and  
Barnett (2003) who found that most of the discrepancies between MODIS and ground  
measurements at the SNOTEL sites occurred at the beginning and the end of the snow  
season. These are the situations when one would expect the thinnest and patchiest  
snow cover, so snowfall and snow melt will have the largest impact on the spatial extent  
of the snow cover.

To shed more light on this issue, the snow depths of those days and stations when  
MODIS misclassified snow as land were analysed in Fig. 10. The medians of the snow  
depths range between 5 and 10 cm. These are somewhat larger values than those of  
Klein and Barnett (2003) who reported that snow depths were less than 4 cm on most  
of the days when MODIS failed to map snow. To identify the potential magnitudes of  
daily decreases of snow depths in Austria we estimated the maximum daily decrease of  
snow depth in any one year from the snow depth data. The averages of these values  
over the six years of the study period are shown in Fig. 11 for each climate station.  
There is an interesting spatial pattern. In the lowlands as well as in the mountain valleys

## Validation of MODIS snow cover images over Austria

J. Parajka and G. Blöschl

Title Page

Abstract

Introduction

Conclusions

References

Tables

Figures

◀

▶

◀

▶

Back

Close

Full Screen / Esc

Printer-friendly Version

Interactive Discussion

the decreases tend to be less than 10 cm/day. However, most of the mountain stations exhibit maximum daily decreases in either the 10–20 or >20 cm/day range. These findings suggest that the temporal shift between the two types of snow observations (MODIS and climate stations) may indeed explain some of the inconsistencies. The actual mapping error of MODIS is hence likely somewhat smaller than what is shown in the analyses of Tables 2 and 3 and Fig. 6.

## 8 Discussion and conclusions

Even though the MODIS snow product analysed here is based on a liberal cloud mask and an improved cloud detection algorithm (Riggs and Hall, 2002), the average cloud cover is 63%. This is very likely due to the climate conditions over Austria rather than an artefact of the algorithm. There are spatial and temporal patterns to the cloud cover but it is always large. This large cloud cover percentage has significant implication for the application of the MODIS snow product in snowmelt runoff modelling as it may hide important hydrological processes, such as the onset of snow accumulation and snowmelt. MODIS cloud cover in North America may be somewhat lower (45% as found in Zhou et al., 2005) but cloud is clearly a general limitation of visible and near infrared remote sensing products.

While cloud cover appears to be a problem, the accuracy of the MODIS snow cover product for cloud-free days is very good. The overall accuracy of 95% found here is consistent with monthly errors ranging from 5 to 9% in North America and from 5 to 10% in Eurasia (Hall et al., 2001).

There is a clear seasonal patterns to the errors found here with smaller errors occurring in summer and larger errors in winter. Clearly, this pattern is related to the overall percent snow coverage of Austria. As most of Austria becomes snow free in summer, errors are much less likely to occur than they are in winter and spring. For a given percent snow cover, spring and autumn errors, however, tend to differ. In spring when there is a well developed snow pack, errors tend to be smaller than they are in early

## Validation of MODIS snow cover images over Austria

J. Parajka and G. Blöschl

Title Page

Abstract

Introduction

Conclusions

References

Tables

Figures

◀

▶

◀

▶

Back

Close

Full Screen / Esc

Printer-friendly Version

Interactive Discussion

winter. While Simic et al. (2004) and Vikhamar and Solberg (2002) found a similar seasonal pattern of MODIS snow product errors, they attributed the larger winter errors to the detection algorithm and stressed the need to correct for tree and surface shading effects in winter when solar zenith angles are large.

5 The seasonal patterns of the overestimation errors and underestimation errors found in this study are similar. This means that, overall, there is little bias in the MODIS snow product. This is in agreement with results from North America with MODIS missing snow in approximately 12% of the cases and mapping too much snow in 15% of the cases (Klein and Barnett, 2003). In November and December, however the overestimation errors of this study tend to be larger than the underestimation errors. Average  $M_O$  are about 10% as opposed to  $M_U$  of about 5% of the cloud-free days in these two months. It is likely that these biases are related to a tendency for shallower snow packs in November and December as compared to the mid winter and early spring months that exhibit a similar percent snow cover in Austria. The shallower snow packs may cause the time shift errors to become more important. Time shift errors may occur as the snow depth data are collected at 7 a.m. while the MODIS overpasses, typically, are in the afternoon, and snowfall may have occurred in the mean time. Similarly, some of the errors during the snow melt period may be due to the time shift as some of the snow may have melted in the mean time. The analysis of the maximum decreases of snow depth during the year confirms that time shifts likely contribute to the discrepancies between in situ and MODIS data. Because of this, the classification accuracy of the MODIS snow product on cloud-free days is likely better than 95%. Clearly, there is significant potential of the MODIS snow product for hydrological modelling in a country such as Austria with the caveat of cloud cover issues.

25 Ongoing work on hydrological applications of the MODIS snow product will be geared towards combining MODIS snow images with in situ snow depth data to capitalise on the respective advantages of the two data sources, spatial detail in the case of MODIS and local accuracy in the case of the in situ data. The quantitative estimates of the MODIS mapping errors found in this paper will enable us to merge MODIS snow cover

## Validation of MODIS snow cover images over Austria

J. Parajka and G. Blöschl

Title Page

Abstract

Introduction

Conclusions

References

Tables

Figures

◀

▶

◀

▶

Back

Close

Full Screen / Esc

Printer-friendly Version

Interactive Discussion

information with hydrological models based on data assimilation techniques such as Ensemble Kalman Filtering. We believe that the assimilation of satellite snow cover data into hydrologic models will allow us to estimate snow cover and snow melt more accurately than is possible with traditional ground based data sources alone.

- 5 *Acknowledgements.* The authors would like to thank the European Commission (AWARE project, contract No. SST4-CT-2004-012257) for financial support, the Austrian Hydrographic Service (HZB) for providing the snow depth data and R. Kirnbauer and P. Haas (Kater II project) for providing the photos of Fig. 9.

## References

- 10 Barnes, W. L., Pagano, T. S., and Salomonson, V. V.: Prelaunch characteristics of the Moderate Resolution Imaging Spectroradiometer (MODIS) on EOS-AM1, *IEEE Transactions on Geoscience and Remote Sensing*, 36(4), 1088–1100, 1998.
- Bitner, D., Carroll, T., Cline, D., and Romanov, P.: An assessment of the differences between three satellite snow cover mapping techniques, *Hydrol. Process.*, 16, 3723–3733, 2002.
- 15 Blöschl, G., Kirnbauer, R., and Gutknecht, D.: Distributed snowmelt simulations in an Alpine catchment. 1. Model evaluation on the basis of snow cover patterns, *Water Resour. Res.*, 27(12), 3171–3179, 1991.
- European Environmental Agency (EEA): CORINE Land Cover, <http://www.eea.eu.int>, 2000.
- Grayson, R. B. and Blöschl, G.: *Spatial Patterns in Catchment Hydrology: Observations and Modelling*, Cambridge University Press, Cambridge, UK, 404, 2000.
- 20 Grayson, R. B., Blöschl, G., Western, A., and McMahon, T.: Advances in the use of observed spatial patterns of catchment hydrological response, *Adv. Water Resour.*, 25, 1313–1334, 2002.
- Hall, D. K., Riggs, G. A., Salomonson, V. V., Barton, J. S., Casey, K., Chien, J. Y. L., Di-Girolamo, N. E., Klein, A. G., Powell, H. W., and Tait, A. B.: Algorithm theoretical basis document (ATBD) for the MODIS snow and sea ice-mapping algorithms, available at: <http://www.modis-snow-ice.gsfc.nasa.gov/atbd01.html>, 2001.
- 25 Hall, D. K., Riggs, G. A., Salomonson, V. V., DiGirolamo, N. E., and Bayr, K. J.: MODIS snow-cover products, *Remote Sens. Environ.*, 83, 181–194, 2002.

## Validation of MODIS snow cover images over Austria

J. Parajka and G. Blöschl

Title Page

Abstract

Introduction

Conclusions

References

Tables

Figures

◀

▶

◀

▶

Back

Close

Full Screen / Esc

Printer-friendly Version

Interactive Discussion

Hall, D. K., Foster, J. L., Verbyla, D. L., Klein, A. G., and Benson, C. S.: Assessment of snow-cover mapping accuracy in a variety of vegetation-cover densities in central Alaska, *Remote Sens. Environ.*, 66(2), 129–137, 1998.

Hall, D. K., Riggs, G. A., and Salomonson, V. V.: MODIS/Aqua Snow Cover Daily L3 Global 500 m Grid V004, January to March 2003, Boulder, CO, USA: National Snow and Ice Data Center, Digital media, updated daily, 2003.

Hall, D. K., Riggs, G. A., and Salomonson, V. V.: MODIS/Terra Snow Cover Daily L3 Global 500 m Grid V004, February 2000 to December 2005, Boulder, CO, USA: National Snow and Ice Data Center, Digital media, updated daily, 2000.

HZB: Anleitung zur Beobachtung und Messung von meteorologischen Parametern zur Erfassung des Wasserkreislaufes im Rahmen des Hydrographischen Dienstes in Österreich, (Guidelines of the Hydrographic Service in Austria for observing and measuring meteorological parameters for assessing the water cycle), Federal Ministry of Agriculture and Forestry, Vienna, 1992.

Klein, A. G. and Barnett, A. C.: Validation of daily MODIS snow cover maps if the Upper Rio Grande River Basin for the 2000–2001 snow year, *Remote Sens. Environ.*, 86, 162–176, 2003.

Maurer, E. P., Rhoads, J. D., Dubayah, R. O., and Lettenmaier, D. P.: Evaluation of the snow-covered area data product from MODIS, *Hydrol. Process.*, 17, 59–71, 2003.

MODIS Reprojection Tool (MRT): Users guide. Release 3.2a, Department of Mathematics and Computer Science, South Dakota School of Mines and Technology, USGS EROS Data Center, 58, 2004.

Riggs, G. and Hall, D.: Reduction of cloud obscuration in the MODIS snow data product, Presented at the 59th Eastern Snow Conference, Stowe, Vermont, USA, June 2002, [http://modis-snow-ice.gsfc.nasa.gov/pap\\_cloud\\_obs02.pdf](http://modis-snow-ice.gsfc.nasa.gov/pap_cloud_obs02.pdf), 8, 2002.

Riggs, G. A., Hall, D. K., and Salomonson, V. V.: MODIS snow products user guide for collection 4 data products, [http://modis-snow-ice.gsfc.nasa.gov/sug\\_main.html](http://modis-snow-ice.gsfc.nasa.gov/sug_main.html), January 2003.

Romanov, P., Gutman, G., and Csiszar, I.: Satellite-derived snow cover maps for North America: accuracy assessment, *Adv. Space Res.*, 30(11), 2455–2460, 2002.

Simic, A., Fernandes, R., Brown, R., Romanov, P., and Park, W.: Validation of VEGETATION, MODIS, and GOES+SSM/I snow cover products over Canada based on surface snow depth observations, *Hydrol. Process.*, 18, 1089–1104, 2004.

Vikhamar, D. and Solberg R.: Subpixel mapping of snow cover in forest by optical remote

## Validation of MODIS snow cover images over Austria

J. Parajka and G. Blöschl

Title Page

Abstract

Introduction

Conclusions

References

Tables

Figures

◀

▶

◀

▶

Back

Close

Full Screen / Esc

Printer-friendly Version

Interactive Discussion

sensing, Remote Sens. Environ., 84, 69–82, 2002.  
Zhou, X., Xie, H., and Hendrickx, J. M. H.: Statistical evaluation of remotely sensed snow cover products with constraints from streamflow and SNOTEL measurements, Remote Sens. Environ., 94, 214–231, 2005.

**HESSD**

3, 1569–1601, 2006

---

**Validation of MODIS  
snow cover images  
over Austria**

J. Parajka and G. Blöschl

---

Title Page

Abstract

Introduction

Conclusions

References

Tables

Figures

◀

▶

◀

▶

Back

Close

Full Screen / Esc

Printer-friendly Version

Interactive Discussion

EGU



## Validation of MODIS snow cover images over Austria

J. Parajka and G. Blöschl

**Table 1.** Statistical evaluation of the spatial extent and temporal variability of four MODIS classes: snow, no snow, clouds and others over the territory of Austria in the period February 2000 to December 2005.

Statistics over Austria (period 2000–2005)	Clouds [%]	Snow [%]	No snow [%]	Others [%]
Minimum	0.00	0.00	0.00	0.00
Maximum	100.00	90.38	99.03	100.00
Average	63.10	7.01	28.72	1.17
Median	69.94	1.07	18.61	0.22
Percentile 25%	39.65	0.21	4.59	0.06
Percentile 75%	89.47	7.48	47.96	0.44

Title Page

Abstract

Introduction

Conclusions

References

Tables

Figures

◀

▶

◀

▶

Back

Close

Full Screen / Esc

Printer-friendly Version

Interactive Discussion

## Validation of MODIS snow cover images over Austria

J. Parajka and G. Blöschl

**Table 2.** Confusion matrix for MODIS and in situ snow depth measurements at 754 stations for cloud-free days of the period February 2000 to December 2005. The total number of station-days represents the sum of all cloud-free days for all climate stations of the study period.  $K_a$  is the sum of correctly classified station-days (snow–snow and no snow–no snow) divided by the total number of cloud-free station-days in percent.

		MODIS Snow [%]	MODIS No snow [%]	Total
In situ	Snow [%]	84.2	15.8	77 168
In situ	No snow [%]	3.5	96.5	447 888
	Total	80 478	444 578	525 056
		Overall accuracy $K_a$	94.7%	

Title Page

Abstract

Introduction

Conclusions

References

Tables

Figures

◀

▶

◀

▶

Back

Close

Full Screen / Esc

Printer-friendly Version

Interactive Discussion

## Validation of MODIS snow cover images over Austria

J. Parajka and G. Blöschl

**Table 3.** Mean monthly frequencies of the agreement/disagreement between snow depth measurements at 754 climate stations and MODIS snow images in the period February 2000 to December 2005 on all cloud-free days.  $K_a$  is the sum of correctly classified station-days (snow–snow and no snow–no snow) divided by the total number of cloud-free station-days in percent. For comparison, the average percent snow coverage from the snow depth data is shown.

Month	Agreement $K_a$ [%]	Disagreement $100 - K_a$ [%]	Snow coverage [%]
Jan	86.4	13.6	66.5
Feb	88.2	11.8	58.8
March	89.6	10.4	31.6
April	95.8	4.2	6.5
May	98.6	1.4	1.1
June	99.4	0.6	0.3
July	99.5	0.5	0.2
Aug	99.6	0.4	0.2
Sep	98.9	1.1	0.5
Oct	97.0	3.0	3.2
Nov	89.8	10.2	12.6
Dec	81.2	18.8	38.7
Annual	94.7	5.3	14.7

Title Page

Abstract

Introduction

Conclusions

References

Tables

Figures

◀

▶

◀

▶

Back

Close

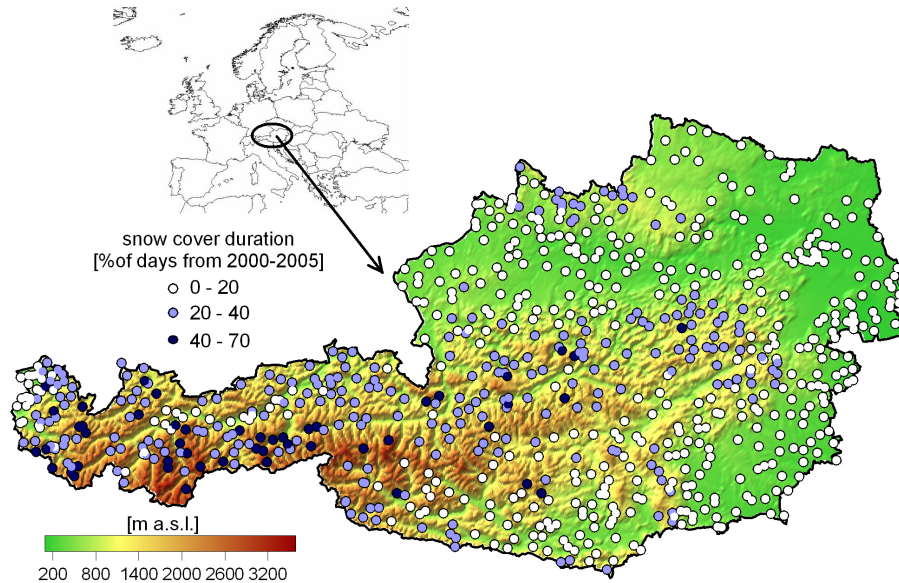
Full Screen / Esc

Printer-friendly Version

Interactive Discussion

Validation of MODIS  
snow cover images  
over Austria

J. Parajka and G. Blöschl



**Fig. 1.** Topography of Austria and spatial distribution of the 754 climate stations with snow depth measurements used in this paper. The colour symbols of the climate stations represent the snow cover duration in % of days in the period 2000–2005.

Title Page

Abstract

Introduction

Conclusions

References

Tables

Figures

◀

▶

◀

▶

Back

Close

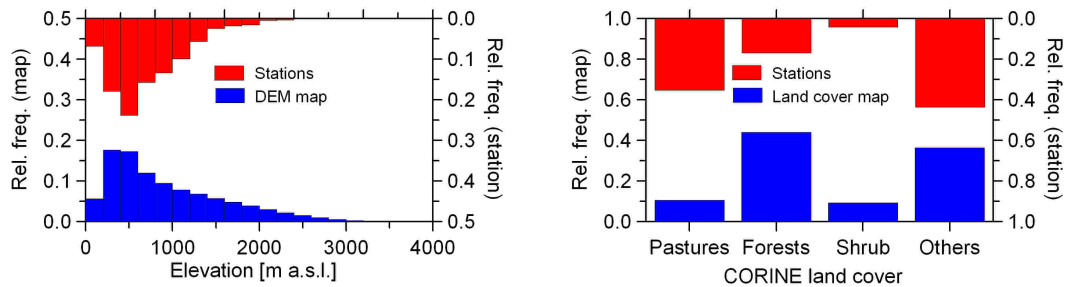
Full Screen / Esc

Printer-friendly Version

Interactive Discussion

## Validation of MODIS snow cover images over Austria

J. Parajka and G. Blöschl



**Fig. 2.** Relative frequencies of different elevation zones (left) and land cover classes (right) for the dataset of 754 climate stations (red bars from top to bottom) and maps covering all of Austria (blue bars from bottom to top).

Title Page

Abstract

Introduction

Conclusions

References

Tables

Figures

◀

▶

◀

▶

Back

Close

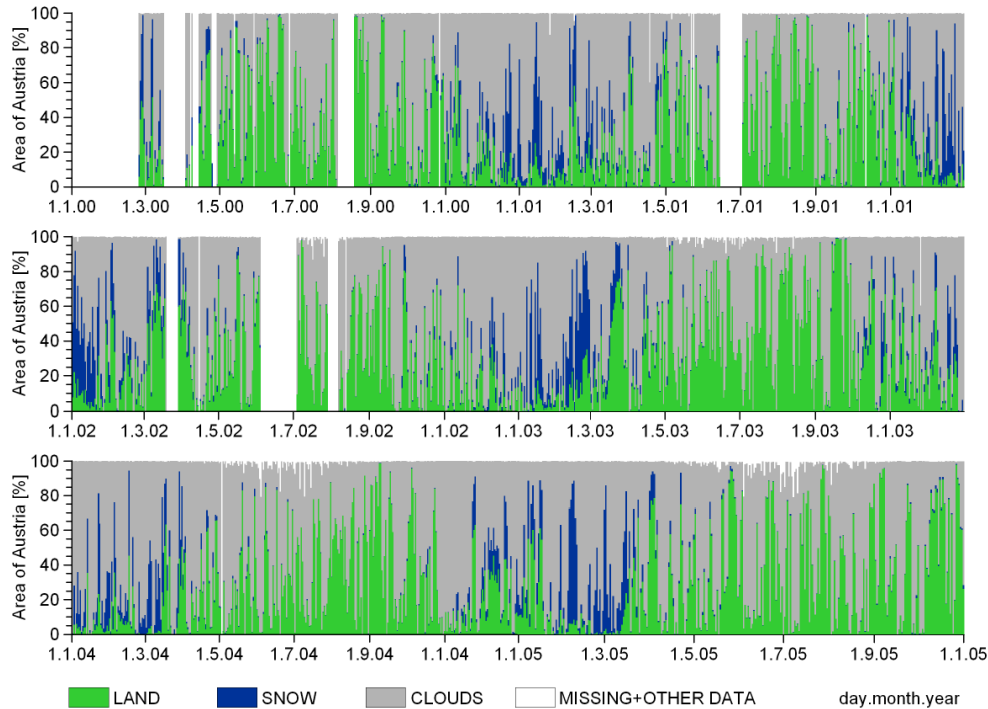
Full Screen / Esc

Printer-friendly Version

Interactive Discussion

## Validation of MODIS snow cover images over Austria

J. Parajka and G. Blöschl



**Fig. 3.** Daily frequencies (% of pixels) of MODIS classes (snow, no snow and clouds) in Austria in the period 2000–2005.

Title Page

Abstract

Introduction

Conclusions

References

Tables

Figures

◀

▶

◀

▶

Back

Close

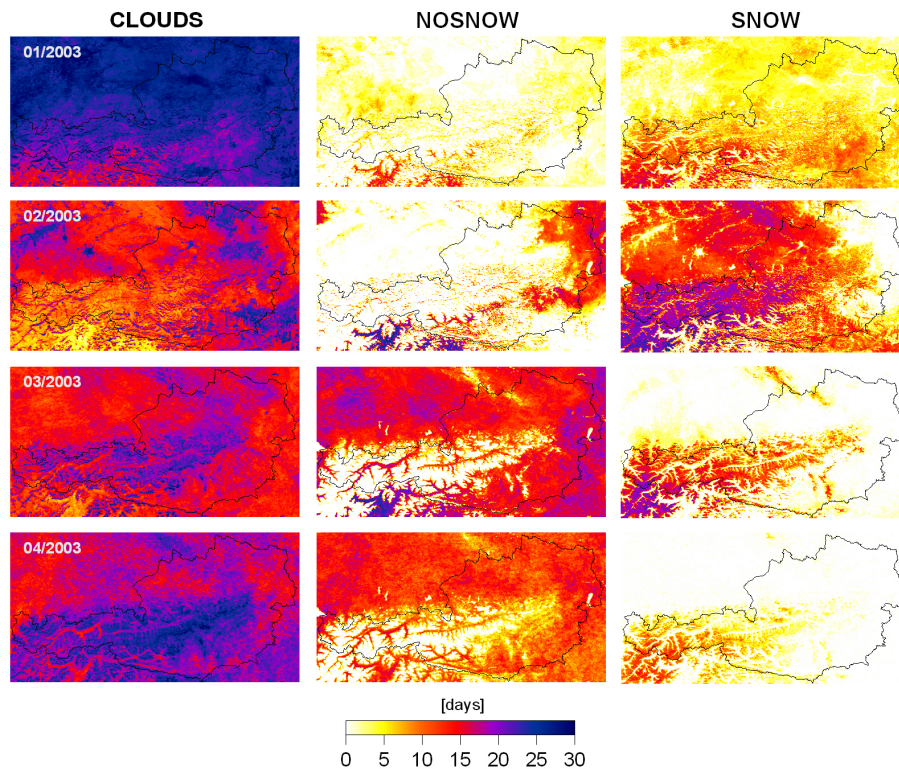
Full Screen / Esc

Printer-friendly Version

Interactive Discussion

## Validation of MODIS snow cover images over Austria

J. Parajka and G. Blöschl



**Fig. 4.** Monthly frequencies (number of days) of MODIS classes (snow, no snow and clouds) in Austria in the snowmelt season 2003.

Title Page

Abstract

Introduction

Conclusions

References

Tables

Figures

◀

▶

◀

▶

Back

Close

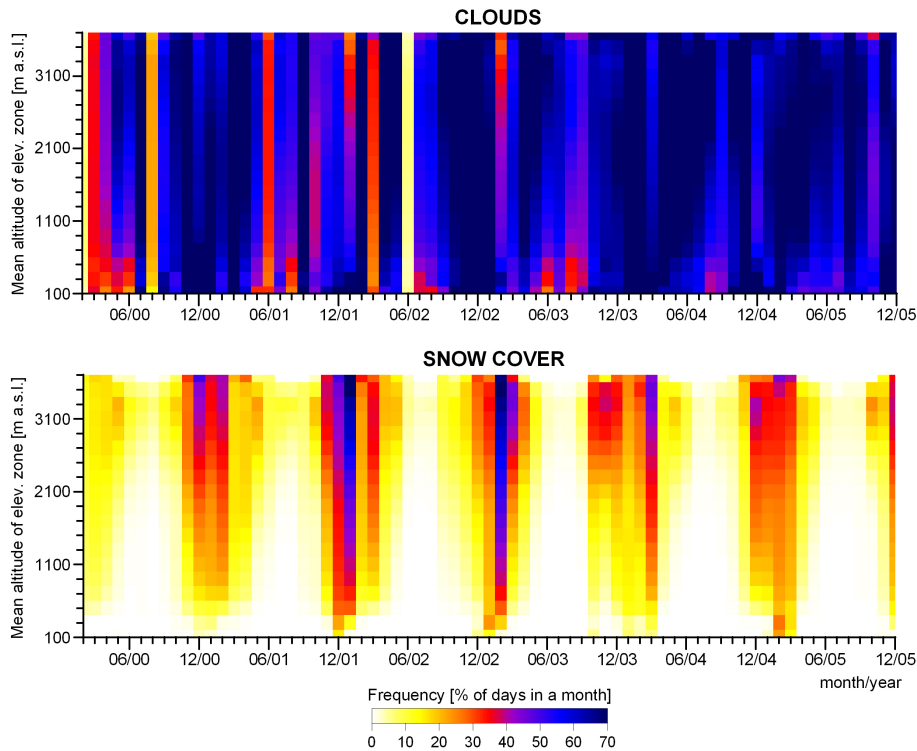
Full Screen / Esc

Printer-friendly Version

Interactive Discussion

Validation of MODIS  
snow cover images  
over Austria

J. Parajka and G. Blöschl



**Fig. 5.** Monthly frequencies (% of pixel-days) of MODIS cloud and snow cover classes in Austria in the period 2000–2005 as a function of elevation.

Title Page

Abstract

Introduction

Conclusions

References

Tables

Figures

◀

▶

◀

▶

Back

Close

Full Screen / Esc

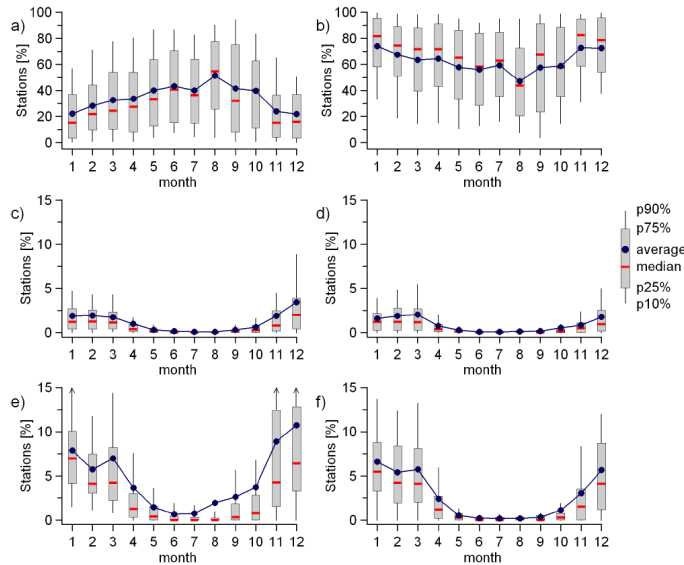
Printer-friendly Version

Interactive Discussion



Validation of MODIS snow cover images over Austria

J. Parajka and G. Blöschl

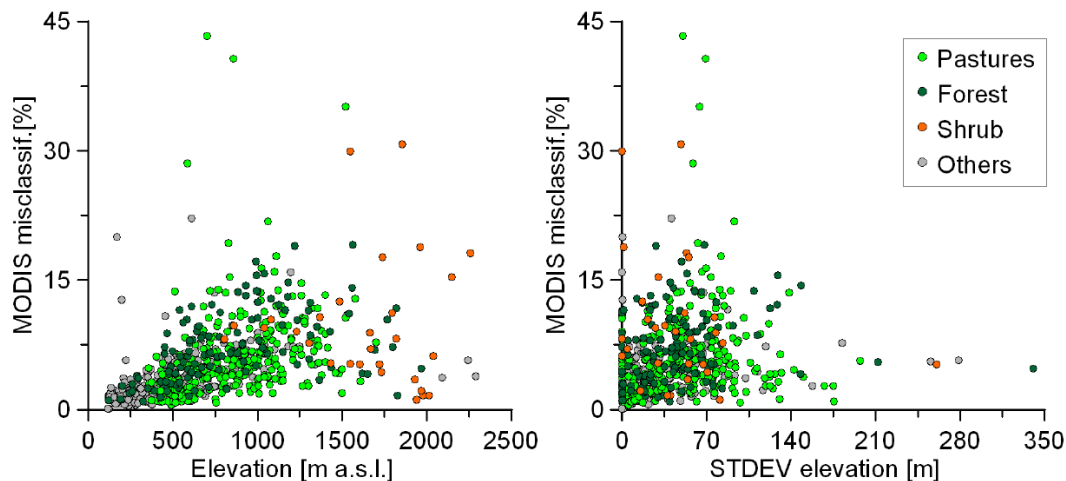


**Fig. 6.** Statistical evaluation of the MODIS snow data against in situ snow depth data at 754 stations in Austria in the period 2000–2005. **(a)** Frequencies of the overall agreement between MODIS and ground snow observations; **(b)** Frequencies of the MODIS clouds class; **(c)** Frequencies of the MODIS overestimation ( $M_O$ ) errors; **(d)** Frequencies of MODIS underestimation ( $M_U$ ) errors **(e)** Frequencies of the  $M_O$  errors evaluated for cloud-free days (p90% of January is 15.4%, November 24.9%, December 29.1%); **(f)** Frequencies of the  $M_U$  errors evaluated for cloud-free days. The frequencies have been calculated as follows: For each day of the data set the percentage of stations of a certain class or agreement class was estimated. With about 6 years and 30 days per month this gave a total of about 180 frequency values for each month. From these values the cumulative distribution with percentiles p10%, p25%, median, p75%, p90% and the average were estimated. This means that the error bars relate to the temporal variability (within month and between years) while the averages relate to the averages of the spatial frequencies.

Title Page	
Abstract	Introduction
Conclusions	References
Tables	Figures
◀	▶
◀	▶
Back	Close
Full Screen / Esc	
Printer-friendly Version	
Interactive Discussion	

**Validation of MODIS snow cover images over Austria**

J. Parajka and G. Blöschl



**Fig. 7.** MODIS misclassification errors (sum of over- and underestimation in % of cloud-free days) plotted vs. elevation and topographical variability in the surroundings of the climate stations. Each point represents a station. Colours show the dominant land cover type within 1 km radius around the climate station. Topographical variability is expressed by the standard deviation of elevation within a 500 m square around the station.

Title Page

Abstract

Introduction

Conclusions

References

Tables

Figures

◀

▶

◀

▶

Back

Close

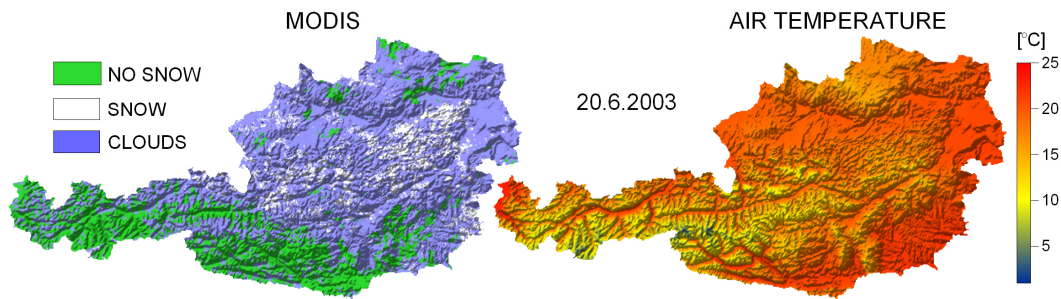
Full Screen / Esc

Printer-friendly Version

Interactive Discussion

## Validation of MODIS snow cover images over Austria

J. Parajka and G. Blöschl



**Fig. 8.** Example of erroneous snow classification. The left panel shows the MODIS snow cover map on 20 June 2003. The right panel shows the mean daily air temperature on the same day interpolated from measurements at 212 climate stations.

Title Page

Abstract

Introduction

Conclusions

References

Tables

Figures

◀

▶

◀

▶

Back

Close

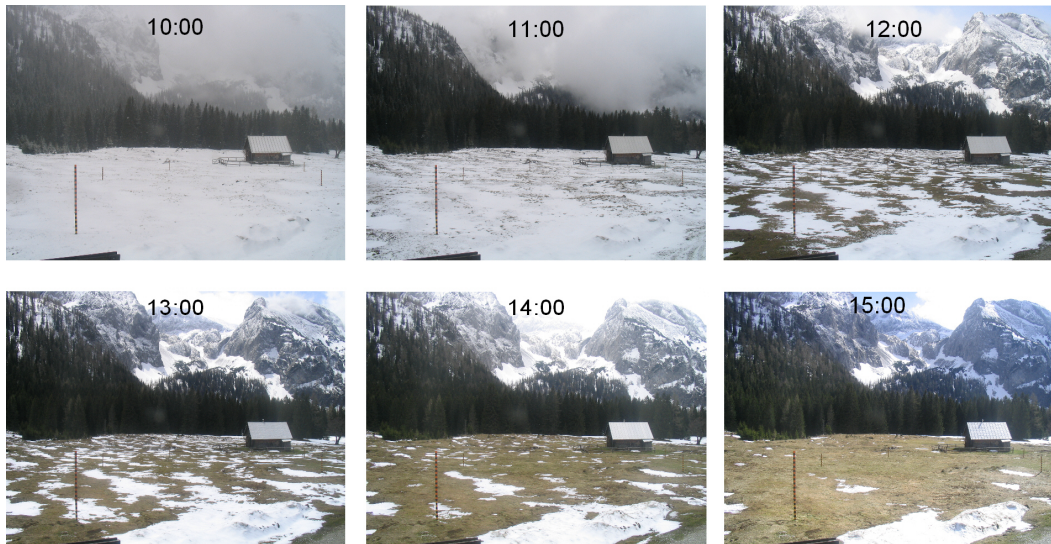
Full Screen / Esc

Printer-friendly Version

Interactive Discussion

## Validation of MODIS snow cover images over Austria

J. Parajka and G. Blöschl



**Fig. 9.** Photos of the Edelbodenalm in the Hochschwab region taken by an automatic still camera on 9 May 2005 to illustrate possible reasons for underestimation of the MODIS data: Patchy snow cover and time shifts. In situ snow depth data are collected at 7 a.m. while the MODIS data are typically captured in the afternoon.

Title Page

Abstract

Introduction

Conclusions

References

Tables

Figures

⏪

⏩

◀

▶

Back

Close

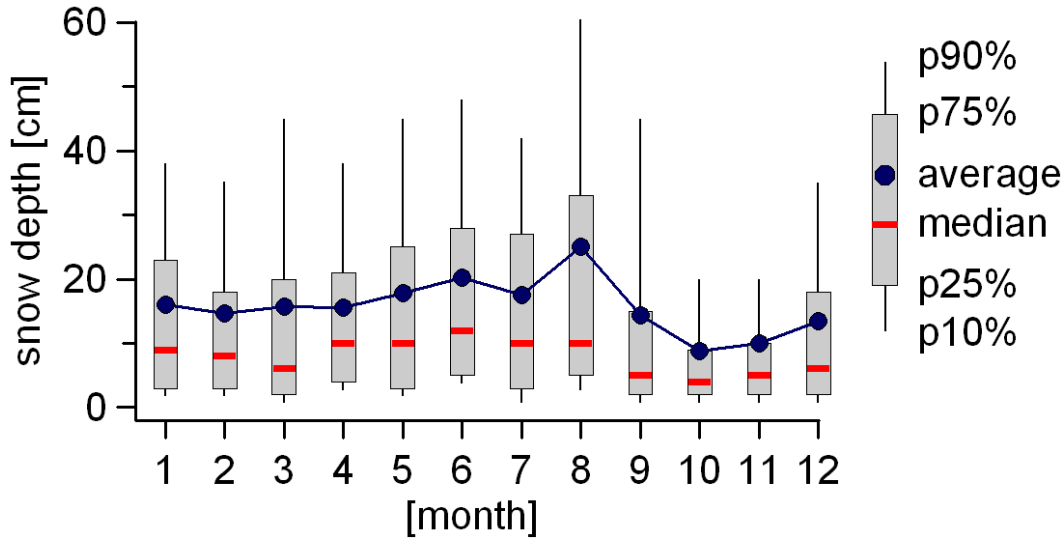
Full Screen / Esc

Printer-friendly Version

Interactive Discussion

**Validation of MODIS  
snow cover images  
over Austria**

J. Parajka and G. Blöschl



**Fig. 10.** Statistical evaluation of in situ snow depths measured at the climate stations for those days when MODIS underestimated the presence of snow cover. Definition of frequencies as in Fig. 6.

Title Page

Abstract

Introduction

Conclusions

References

Tables

Figures

◀

▶

◀

▶

Back

Close

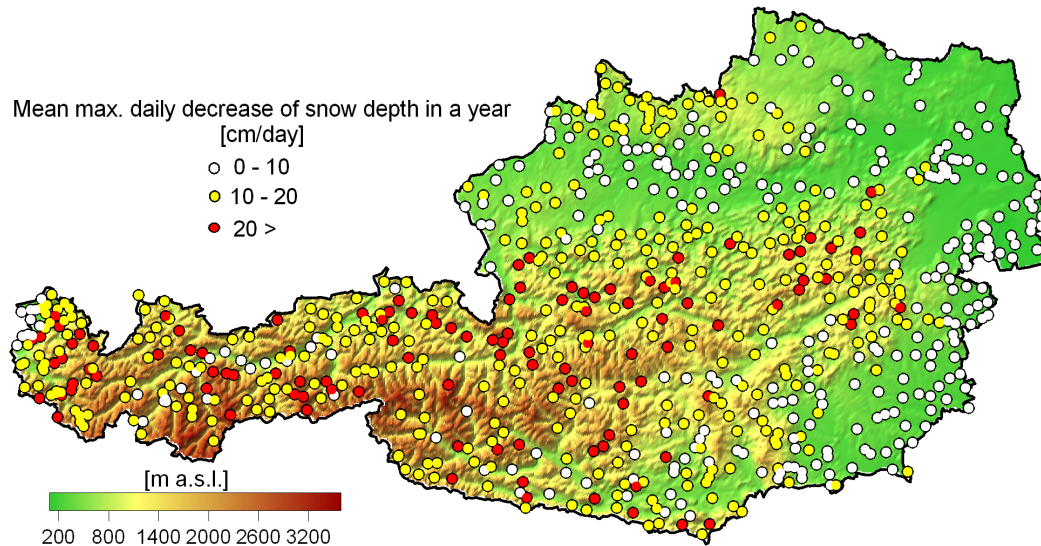
Full Screen / Esc

Printer-friendly Version

Interactive Discussion

## Validation of MODIS snow cover images over Austria

J. Parajka and G. Blöschl



**Fig. 11.** Mean maximum daily decrease in snow depth (cm/day) at 754 climate stations. The mean is calculated over the maximum daily decreases in each year of the period 2000–2005.

Title Page

Abstract

Introduction

Conclusions

References

Tables

Figures

◀

▶

◀

▶

Back

Close

Full Screen / Esc

Printer-friendly Version

Interactive Discussion