



**HAL**  
open science

## Detecting the influence of land use changes on Floods in the Meuse River Basin? the predictive power of a ninety-year rainfall-runoff relation

A. G. Ashagrie, P. J. M. de Laat, M. J. M. de Wit, M. Tu, S. Uhlenbrook

### ► To cite this version:

A. G. Ashagrie, P. J. M. de Laat, M. J. M. de Wit, M. Tu, S. Uhlenbrook. Detecting the influence of land use changes on Floods in the Meuse River Basin? the predictive power of a ninety-year rainfall-runoff relation. *Hydrology and Earth System Sciences Discussions*, 2006, 3 (2), pp.529-559. hal-00298674

**HAL Id: hal-00298674**

**<https://hal.science/hal-00298674>**

Submitted on 18 Jun 2008

**HAL** is a multi-disciplinary open access archive for the deposit and dissemination of scientific research documents, whether they are published or not. The documents may come from teaching and research institutions in France or abroad, or from public or private research centers.

L'archive ouverte pluridisciplinaire **HAL**, est destinée au dépôt et à la diffusion de documents scientifiques de niveau recherche, publiés ou non, émanant des établissements d'enseignement et de recherche français ou étrangers, des laboratoires publics ou privés.

Papers published in *Hydrology and Earth System Sciences Discussions* are under open-access review for the journal *Hydrology and Earth System Sciences*

# Detecting the influence of land use changes on Floods in the Meuse River Basin – the predictive power of a ninety-year rainfall-runoff relation

A. G. Ashagrie<sup>1</sup>, P. J. M. de Laat<sup>1</sup>, M. J. M. de Wit<sup>2</sup>, M. Tu<sup>1</sup>, and S. Uhlenbrook<sup>1</sup>

<sup>1</sup>UNESCO-IHE Institute for Water Education, P.O. Box 3015, 2601 DA Delft, The Netherlands

<sup>2</sup>Rijkswaterstaat RIZA Institute for Inland Water Management and Waste Water Treatment, P.O. Box 9072, 6800 ED Arnhem, The Netherlands

Received: 20 December 2005 – Accepted: 30 January 2006 – Published: 26 April 2006

Correspondence to: S. Uhlenbrook (s.uhlenbrook@unesco-ihe.org)

**HESSD**

3, 529–559, 2006

## Detecting the influence of land use changes

A. G. Ashagrie et al.

Title Page

Abstract

Introduction

Conclusions

References

Tables

Figures

◀

▶

◀

▶

Back

Close

Full Screen / Esc

Printer-friendly Version

Interactive Discussion

EGU

## Abstract

Quantifying how changes in land use affect the hydrological response at the river basin scale is a current challenge in hydrological science. A daily discharge record (1911–2000) of the river Meuse (21 000 km<sup>2</sup>; Western Europe) has been simulated with a semi-distributed conceptual model (HBV). The model has been calibrated and validated with a data set for the period 1968–1998. In this study the performance of the model for the period prior to 1968 has been analysed. The observed and simulated discharge records are compared in terms of annual average discharge, summer and winter average discharge, annual maximum daily discharge, and annual maximum 10-day average discharge. The results are discussed with reference to land use change (i.e. forest type change) and shortcomings of the available precipitation and discharge records.

The general agreement between the observed and simulated discharge records is good (Nash-Sutcliffe efficiency: 0.89–0.93), in particular flood volumes and the highest flood peaks are simulated well but the model has problems with the medium floods (shape and peak value). However, there are some systematic deviations between the observed and simulated discharges during specific periods. The simulation result could somewhat be improved by taking the historical land use into consideration. But the systematic overestimation of the discharge for the period 1933–1968 could not be attributed to observed changes in land use. It is concluded that the overall impact of land use changes in the Meuse basin is too small to be detected given the uncertainties in the available records.

## 1 Introduction

Research on the impact of the change of vegetation on the water balance at catchment scale has been subject to extensive observation and modelling across the world for many years (e.g. McGulloch and Robinson, 1993). There are several evidences that

**HESSD**

3, 529–559, 2006

### Detecting the influence of land use changes

A. G. Ashagrie et al.

Title Page

Abstract

Introduction

Conclusions

References

Tables

Figures

◀

▶

◀

▶

Back

Close

Full Screen / Esc

Printer-friendly Version

Interactive Discussion

EGU

changes in land use have influenced the hydrological regime of various river basins. These impacts can be significant in small basins (e.g. Jones and Grant, 1996). It is, however, more challenging to quantify the impact of land use change on the rainfall-runoff relations for large basins where the interactions between land use, climatic characteristics and the underlying hydrological processes are often more complex and dynamic (e.g. Uhlenbrook et al., 2001). Records of recent flooding indicate at many locations worldwide the more frequent occurrence of floods likely due to climate variability where an increase in heavy precipitation might lead to an over-proportional increase in runoff due to non-linear processes. For instance due to the increased winter rainfall totals and intensities over the second half of the 20th century, signs of increased flooding probability in many areas of the Rhine and Meuse basins have been documented (e.g. Pfister et al., 2004). It is, however, at present rather uncertain how, how much and at which temporal and spatial scale environmental changes are likely to affect the generation of storm runoff and, consequently, the flood discharge of large rivers (e.g. Bronstert et al., 2002).

Recently, land use change impact studies have been performed at different scales using both physically based and conceptual hydrological models. Fohrer et al. (2001) applied the physically based hydrological model SWAT to a meso-scale catchment to assess the impact of land use changes on the annual water balance and temporal runoff dynamics. It was shown that surface runoff was most susceptible to land use changes. Applications of the somewhat more conceptual modelling system ArcEGMO (Lahmer et al., 2001; Klöcking and Haberlandt, 2002) to meso- and macro-scale catchments demonstrated relatively minor effects due to land use change in various water balance components and larger effects for water availability. Wegehenkel (2002) examined the impact of afforestation and demonstrated a significant reduction in discharge and an increase in evapotranspiration for a semi-humid meso-scale catchment in eastern Germany applying a conceptual hydrological model. Using a physically based modelling approach (modified WaSiM-ETH model), Niehoff et al. (2002) showed clearly the influence of the land use on storm runoff generation for different types of rainfall events.

## Detecting the influence of land use changes

A. G. Ashagrie et al.

Title Page

Abstract

Introduction

Conclusions

References

Tables

Figures

◀

▶

◀

▶

Back

Close

Full Screen / Esc

Printer-friendly Version

Interactive Discussion

**Detecting the influence of land use changes**

A. G. Ashagrie et al.

Title Page

Abstract

Introduction

Conclusions

References

Tables

Figures



Back

Close

Full Screen / Esc

Printer-friendly Version

Interactive Discussion

The influence was most distinct for short, intense rainfall events and minor for longer, less intense rainfall events in meso-scale catchments in Germany. Ott and Uhlenbrook (2004) reported similar findings. In addition, they demonstrated the effect of land use change on other water balance components (e.g. groundwater recharge/discharge) and the large impact of the temporal distribution of rainfall intensities during an event on the prediction of design floods for different land use patterns.

The Meuse River basin (21 000 km<sup>2</sup>) has been experiencing severe floods in the last decade. Out of the seven largest floods recorded since 1911 at Borgharen, five of them occurred since 1993. The second and third largest floods were observed in 1993 and 1995, respectively, after the largest one recorded in 1926. Due to these recent extreme floods the concern of the general public about the risk of flooding has increased. It is often suggested that these events are partly triggered by land use changes in the basin. Based on a double-mass analysis of flood volumes and precedent precipitation volumes, WL (1994) found an increase of the runoff ratio in the Meuse. Tu et al. (2005a) have shown using statistical methods that though there is a major land use change since the 1950s, this alone cannot convincingly explain the more frequent occurrence of floods over the last decade. The authors found that the increase in flood peaks in the Meuse and its tributaries appears to be affected by climatic variability, particularly by the increased antecedent precipitation depths. Furthermore, Tu et al. (2005b) provided evidence of climate-induced change in the precipitation pattern in the Meuse basin area over the last two decades.

Recently, several studies have been conducted on the rainfall-runoff relationship of the Meuse River basin. The effect of a changing climate on the runoff regime of the Meuse has been studied by a number of researchers (e.g. Booij, 2005; Tu et al., 2004). Using statistical methods, WL (1994) and Tu et al. (2004) found a notable decrease in the annual runoff coefficient of the Meuse after 1933. Roo et al. (2000) used hydrological modelling to simulate the floods of December 1993 and January 1995. Bultot et al. (1990) have applied hydrological models to study the effect of land use change on the runoff regime of the Houille (114 km<sup>2</sup>) sub-catchment for the period of 1901–1984.

They showed that an increase of the area of coniferous forest results in an increase of the evapotranspiration and as a result a decrease of the discharge volume.

A continuous record for the period 1911–2000 with daily discharges (Q) is available for the Meuse at Borgharen. This station is located downstream of the Dutch-Belgian border and has an upstream area of 21 000 km<sup>2</sup>. Daily precipitation (P) and temperature (T) records covering the period 1911–2000 are also available for a number of stations in or in the vicinity of the upstream basin. During the 20th century many land use changes have occurred within the Meuse basin. The available Q, P and T records allow for an analysis whether and how the land use changes have affected the rainfall-runoff relation. Ideally the impact of these changes should be modelled with a physically based model that allows for a process-based simulation of all observed changes within the basin. However, such an approach requires a temporal and spatial resolution that is not feasible for a study that covers a period of 90 years and an area of 21 000 km<sup>2</sup>. Other shortcomings of physically based models to simulate changed circumstances are discussed for instance by Beven (1993). The conceptual hydrological model used in this study (HBV) is not suited to directly analyse the impact of land use changes. However, it can be used to analyse whether the observed discharge record can be reproduced equally well through the 20th century with precipitation, temperature and evapotranspiration records. If this is the case it implies that the overall impact of the 20th century land use changes in the Meuse basin on the discharge at Borgharen is small, or that it can be accounted for with the used conceptual approach by considering relative distributions of land use classes in 15 sub-catchments. If there exist a systematic difference between the observed and simulated discharge record this may point in the direction of changed circumstances within the basin, i.e. land use changes. However, also measurement errors, shortcomings and uncertainties of the model need to be considered.

The objective of this study is to analyse whether observed fluctuations in the discharge regime of the Meuse can be attributed to observed fluctuations in precipitation and temperature or to land use changes. The discharge regime is assessed in terms

## Detecting the influence of land use changes

A. G. Ashagrie et al.

Title Page

Abstract

Introduction

Conclusions

References

Tables

Figures

◀

▶

◀

▶

Back

Close

Full Screen / Esc

Printer-friendly Version

Interactive Discussion

of annual average discharge (AAD), summer and winter average discharge (SAD and WAD), annual maximum daily discharge (AMaxD), and annual maximum 10-day average discharge (AMaxD10). Changes that cannot be explained by the P and T fluctuations are further explored, with special attention to the possible impact of the large-scale change from deciduous to coniferous forest. The quality of the hydrological and meteorological records (1911–2000) strongly influences the outcome of the analysis. Therefore, the analysis starts with a critical evaluation of the historical records.

## 2 The Meuse River basin

The Meuse (Fig. 1) is one of the largest rivers in Western Europe. It originates in France, flows through Belgium and The Netherlands and finally drains into the North Sea. In this study only the part of the basin, which is situated upstream of the Dutch/Belgian border (at Borgharen), covering an area of 21 000 km<sup>2</sup>, is considered. The study area has an average elevation of 268 m a.m.s.l. ranging from 50 m a.m.s.l. at the Dutch/Belgian border to about 700 m a.m.s.l. in the Ardennes. It is situated in the humid temperate zone with almost evenly distributed precipitation throughout the year. The annual average precipitation amounts to 950 mm a<sup>-1</sup> for the period 1912–2000. The spatial distribution of the average annual precipitation in the basin is largely controlled by the elevation. Accordingly, the largest annual precipitation is observed at the Ardennes (low-mountain range).

Unlike precipitation, evapotranspiration and air temperature show a marked seasonal variation with high values occurring during the summer half-year. The average annual potential evapotranspiration (calculated for grass land) is 537 mm a<sup>-1</sup>, while the summer half-year (May–October) and the winter half-year (November–April) account for 76% and 24%, respectively. The average annual air temperature amounts to 9°C. The discharge regime of the river coincides with the seasonal variation in evapotranspiration. The mean annual discharge of the Meuse and its lateral canals at the Dutch/Belgian border amounts to 276 m<sup>3</sup> s<sup>-1</sup>; the winter and summer half-year mean

## Detecting the influence of land use changes

A. G. Ashagrie et al.

Title Page

Abstract

Introduction

Conclusions

References

Tables

Figures

◀

▶

◀

▶

Back

Close

Full Screen / Esc

Printer-friendly Version

Interactive Discussion

discharges are  $406 \text{ m}^3 \text{ s}^{-1}$  and  $146 \text{ m}^3 \text{ s}^{-1}$ , respectively.

The geology of the basin can be categorized into three parts (Berger, 1992): (i) The upper basin stretching from the source to the mouth of the Chiers, called the Lotharingian Meuse, is dominated by sedimentary Mesozoic rocks. (ii) The middle basin known as the Ardennes Meuse between the mouth of the Chiers and the Dutch border mainly consists of Palaeozoic rocks of the Ardennes Massif. (iii) The lower basin known as the Dutch Meuse is characterized by the Dutch and Flemish lowlands, consisting of Cenozoic unconsolidated sedimentary rocks. According to the CORINE land cover database the Meuse basin upstream of the Belgian/Dutch border comprised 34% arable land, 20% pasture, 35% forest and 9% built up areas by the end of the 20th century. Tu et al. (2005a) have evaluated the historical land use changes in the Meuse basin during the 20th century. The coverage of forest and agricultural land has been relatively stable. However, the forest type and forestry management practices have experienced notable changes. The percentage of deciduous/coniferous forest changed from 25%/10% in the first part of the 20th century to 19%/16% in the last part of the 20th century. In addition, intensification and upscaling of agricultural practices and urbanisation are the most important land use changes in the Meuse basin in the second part of the 20th century.

### 3 Data sets

#### 3.1 Discharge record 1911–2000

A continuous record from 1911 with daily discharge values is available for the Meuse at Borgharen (see Fig. 1). Between Monsin (conglomeration of Liège) and Borgharen several canals extract water from the Meuse River, partly to areas outside the Meuse basin (Fig. 2). Therefore, a record for the “undivided” Meuse River near Monsin (herein called the Monsin record) is generally taken as the reference record for hydrological studies. This record is based on daily observations at Borgharen and estimates of

## Detecting the influence of land use changes

A. G. Ashagrie et al.

Title Page

Abstract

Introduction

Conclusions

References

Tables

Figures

◀

▶

◀

▶

Back

Close

Full Screen / Esc

Printer-friendly Version

Interactive Discussion



canal extractions between Monsin and Borgharen (Bos, 1993). Up to 1990 these values are based on fixed annual extraction rates. After 1990 the extraction rates are based on daily measurements in the Meuse and the canals. Also for the extremely dry year 1976 a more detailed record of the extractions has been reconstructed and used for the Monsin record. It is important to realise that especially for the period prior to 1990 the extraction estimates are not accurate and may roughly represent the reality only on an annual basis. One would expect that more water may be extracted from the Meuse in dry periods/seasons if available, or less if not available. Application of the fixed extraction estimates might cause overestimation in the reconstructed Monsin record for dry years. It should also be mentioned that almost the entire stretch of the Meuse River in the Ardennes is completely regulated with weirs. During periods of low flows, weirs are operated to maintain a minimum water level for shipping (Berger, 1992). The reconstructed Monsin record (1911–2000) has been used in this study. The influence of the above mentioned extractions and regulation is relatively small during flood events, but can cause substantial day-to-day fluctuations during low flow periods that are not caused by rainfall-runoff processes.

Other points of concern are possible in-homogeneities and in-consistencies of the Borgharen discharge record. This record is based on water level measurements and a relation between water level and discharge. This relation is regularly updated in order to account for changes in the geometry of the riverbed (e.g. WL, 1994). Major changes have taken place in this stretch of the river around 1930 with the construction of the Julianakanaal and the weir at Borgharen. The record is called the Borgharen record, but up to 1930 this record is based on measurements at Maastricht, a few kilometres upstream. The station has also been replaced in 1975. The impacts of these changes on the discharge record of Borgharen have been corrected. Nonetheless, these years need to be kept in mind when analysing the rainfall-runoff relation in the Meuse basin.

## Detecting the influence of land use changes

A. G. Ashagrie et al.

Title Page

Abstract

Introduction

Conclusions

References

Tables

Figures

◀

▶

◀

▶

Back

Close

Full Screen / Esc

Printer-friendly Version

Interactive Discussion

## 3.2 Meteorological records 1911–2000

Detailed records for precipitation, temperature and potential evapotranspiration are available for the Meuse but cover only the period 1968–1998 (see Leander et al., 2005). For the period prior to 1968 only data from a limited number of stations were available for this study. It concerns seven stations with daily precipitation data (see Fig. 1) and five stations with daily temperature data (Table 1). It should be noted that four of the five temperature stations are located outside the Meuse basin. Nonetheless, it can be assumed that the temperature stations give a reasonable representation of temperature fluctuations within the Meuse basin, since temperature has a much smaller spatial and temporal variation than precipitation.

The precipitation records were tested for absolute consistency and homogeneity by detecting the presence of abrupt change points using the parametric SNHT (Alexandersson, 1986; Alexandersson and Moberg, 1997) and the non-parametric Pettitt test (Pettitt, 1979) at 5% significance level. Both tests suggested change points in the time series of Chimay (in 1947 and 1979) and Maredsous (in 1934 and 1979). Moreover, the Pettitt test indicated a change point for Hives (in 1952). Leander and Buishand (2004) applied three homogeneity test methods, namely, cumulative sum test, Von Neumann Ratio test and SNHT to the annual totals of the seven stations for the period 1928–1998 and found similar non-homogeneity results for Hives and Chimay stations around the same period at 1% significance level. Split-record tests (Student's t-test) were carried out to test the significance of the difference in the means before and after the change point(s). The results reveal that the means of the three stations (Chimay, Maredsous and Hives) are instable. The relative consistency and homogeneity of the derived time series were also tested with the method of cumulative residuals. The cumulative residual method considers that a time series of hydrological data is relatively consistent, if the periodic data is proportional to an appropriate simultaneous time series, in this case the mean of other adjacent stations (Chang and Lee, 1974). Relative consistency between different stations indicates that similar mechanisms were responsible for the

## HESSD

3, 529–559, 2006

### Detecting the influence of land use changes

A. G. Ashagrie et al.

Title Page

Abstract

Introduction

Conclusions

References

Tables

Figures

◀

▶

◀

▶

Back

Close

Full Screen / Esc

Printer-friendly Version

Interactive Discussion

EGU

generation of the data. It also indicates that the stations are located in the same climatological region. The method of cumulative residual revealed non-homogeneity at least at one time in all the times series. The time of non-homogeneity in the time series is the point at which the cumulative residual attains maximum or minimum value and lays outside the bounding ellipse for the selected confidence level.

The relative consistency and homogeneity of the temperature time series were also tested using the cumulative residual method. This analysis reveals that Uccle and De Bilt experienced non-homogeneities in 1921 and 1976, Karlsruhe and Paris in 1960 and Maastricht in 1945. Table 1 gives the time of non-homogeneities of the P and T records as obtained with the above-mentioned tests. The available metadata for Maastricht reveal that the meteorological station was moved from a level of 35 m at a place in the town to a level of 2 m at a nearby airport in 1945. The time of non-homogeneity for the other P and T stations could not simply be explained by the available metadata. A visual analysis of the records revealed that all the P records except Chiny and Hives experience an upward trend. Also the T records (except for the inconsistent Maastricht record) show upward trends. This observation is in agreement with the results reported by Klein Tank et al. (2002). They studied trends in indices of climate extremes on the basis of daily series of temperature and precipitation observations from more than 100 meteorological stations in Europe.

Additional meteorological data from De Bilt (located 180 km north of Borgharen) were provided by the Royal Netherlands Meteorological Institute (KNMI). It concerns daily values of relative sunshine duration, wind speed, air temperatures, and relative humidity. The wind speed time series was corrected for changes in the height of measurement during the period of observation. The meteorological data were used to calculate the daily potential evapotranspiration for the period 1911–2000.

## Detecting the influence of land use changes

A. G. Ashagrie et al.

Title Page

Abstract

Introduction

Conclusions

References

Tables

Figures

◀

▶

◀

▶

Back

Close

Full Screen / Esc

Printer-friendly Version

Interactive Discussion

## 4 Simulation of the rainfall-runoff processes

### 4.1 The HBV model

The conceptual hydrological model HBV was developed in the early 1970s (Bergström and Forsman, 1973) and has been applied in many catchments all over the world (e.g. Lindström et al., 1997). The HBV model describes the most important runoff generating processes with simple and robust structures. In the “snow routine” storage of precipitation as snow and snow melt are determined using a temperature-index method. The “soil routine” controls which part of the rainfall and melt water generates excess water and how much is stored in the soil and can evaporate. The “runoff generation routine” consists of one upper, non-linear reservoir representing fast runoff components and one lower, linear reservoir representing base flow. Runoff routing processes are simulated with a simplified Muskingum approach. HBV is a semi-distributed model and the river basin can be subdivided into sub-basins. HBV simulates the rainfall-runoff processes for each sub-basin separately. The Meuse basin upstream of Borgharen has been subdivided into 15 sub-basins. The sub-basins are interconnected within the model schematisation and as such HBV can simulate discharge at the outlet.

The HBV model has been calibrated and validated using daily temperature, precipitation, potential evapotranspiration and discharge data for the period 1968–1984 and 1985–1998 by Booij (2002 and 2005) and fine-tuned (with more detailed data) by Deursen (2004). The results have been evaluated in terms of volume error (VE,  $\text{mm a}^{-1}$ ), coefficient of determination ( $r^2$ ) and Nash-Sutcliffe coefficient (RE) (Nash and Sutcliffe, 1970) for stations along the Meuse and the outlet of sub-basins with available discharge records. RE values around 0.9 were obtained, which is a quite satisfactory result. The schematisation derived from Deursen (2004) is used in this study for the model application.

**HESSD**

3, 529–559, 2006

### Detecting the influence of land use changes

A. G. Ashagrie et al.

Title Page

Abstract

Introduction

Conclusions

References

Tables

Figures

◀

▶

◀

▶

Back

Close

Full Screen / Esc

Printer-friendly Version

Interactive Discussion

EGU

## 4.2 HBV application for 1911–2000

The HBV model has been calibrated and validated with input data (P, T,  $E_{\text{pot}}$ ) from the detailed “1968–1998” data set. This implies that systematic difference between the P, T and  $E_{\text{pot}}$  data from the 1968–1998 and the 1911–2000 data set will result in systematic differences in the simulated output. To avoid this the period 1968–1998 has been used to develop relationships for each sub-basin between the detailed P and T data and the measured P and T data from the limited number of stations. Multiple linear regression equations for the period 1968–1998 between areal precipitation/temperature of the sub-basin as dependant variable and observed point precipitation/temperature at all seven/five stations as independent variables were used to generate daily times series (1911–2000) of precipitation and temperature for each of the fifteen sub-basins.

Daily potential evapotranspiration values of deciduous forest, coniferous forest, grass and cereals were calculated with the evapotranspiration module of MUST, a model for unsaturated flow and evapotranspiration (De Laat and Varoonschotikul, 1996). The evapotranspiration module is based on the equation of Penman-Monteith and takes interception losses into account. Evapotranspiration from built-up areas was taken equal to half the value computed for grass. In the absence of long time series of meteorological data within the basin data from De Bilt were used. To simulate the interception evaporation most accurately the model used the areal rainfall data of the Meuse basin for its simulations. Areal evapotranspiration of the basin was then obtained as the weighted mean of the simulated values for the various types of land use. A comparison of the simulated areal evapotranspiration for the entire Meuse basin with the more detailed data set used for the period 1968–1998 shows that the averages of the annual values are very similar (data set:  $555 \text{ mm a}^{-1}$  and simulated:  $546 \text{ mm a}^{-1}$ ). In Fig. 3 potential evapotranspiration of the detailed 1968–1998 data set is compared with the series based on Penman-Monteith (MUST application) and the potential evapotranspiration values estimated from the generated air temperatures in each sub-basin. The latter series as well as the detailed data set, which values are also based on air tem-

**HESSD**

3, 529–559, 2006

---

### Detecting the influence of land use changes

A. G. Ashagrie et al.

---

Title Page

Abstract

Introduction

Conclusions

References

Tables

Figures

◀

▶

◀

▶

Back

Close

Full Screen / Esc

Printer-friendly Version

Interactive Discussion

EGU

peratures, follow the same upward trend as observed in air temperatures since the end of the 1980s. For the simulation with the HBV model preference was given to the time series computed with MUST, because the estimated potential evapotranspiration values are based on all relevant meteorological parameters and the approach allows to make a distinction between evapotranspiration for different types of land use. To study the impact of the observed shift from deciduous to coniferous forest the areal potential evapotranspiration was computed for different weights corresponding to both the present and historical coverage of deciduous and coniferous forest. Figure 4 shows the simulated 5-year moving average values of potential evapotranspiration as calculated with MUST for both the historical and current land use. 5-year moving average values were used to make difference between both data sets clearly visible.

## 5 Results of hydrological simulations

### 5.1 Performance of HBV

For the period 1968–1998 the HBV modelling results obtained with the “detailed data set” (1968–1998) can be compared with the results obtained with the “coarse” (1911–2000) data set. Such a comparison will reveal to what extent the analysis is affected by a different approach to estimating the potential evapotranspiration and the limited number of P and T stations that are available for the entire period of interest (1911–2000). The results (Table 2) indicate only small reductions in  $r^2$  and  $RE$  values. The volume errors in both cases are small. From this comparison it can be concluded that the overall performance of the HBV simulation is only slightly affected by the limited number of P and T stations, and the changed  $E_{pot}$ . This conclusion is supported by the simulation results for the entire period (1912–2000; 1911 is used to establish the initial conditions of the model). The overall performance of the HBV model run for the period 1912–2000 is surprisingly good. Figure 5 shows the simulation result for the three largest floods in the 1911–2000 record (January 1926, December 1993, and January

## Detecting the influence of land use changes

A. G. Ashagrie et al.

Title Page

Abstract

Introduction

Conclusions

References

Tables

Figures

◀

▶

◀

▶

Back

Close

Full Screen / Esc

Printer-friendly Version

Interactive Discussion

1995). Also the flood of January 1993 is shown, to illustrate that the HBV model does not correctly reproduce all observed big floods.

## 5.2 Exploring changes in the discharge regime

The discharge regime has been assessed in terms of annual average discharge (AAD), summer and winter average discharge (SAD and WAD), annual maximum daily discharge (AMaxD), and annual maximum 10-day average discharge (AMaxD10). Figure 6 shows the simulated and observed 5-year average moving values for AAD, SAD, and WAD. There appear to be systematic differences between measured and simulated values for AAD, SAD, and WAD. The discharge during the period prior to 1933 is systematically underestimated, whereas the discharge during the period 1933–1968 is systematically overestimated. This can be observed both for the winter and the summer discharges. Two different simulations are presented in Fig. 6. The grey line gives the results for the simulation where the percentage of deciduous/coniferous forest is fixed at 19%/16% (situation end of the 20th century). The dashed line gives the results of the simulation where the percentage of deciduous/coniferous forest has been changed gradually from 25%/10% for the period 1911–1932, 21%/14% for the period 1933–1968, and 19%/16% for the period 1968–2000. Comparison of the two model simulations reveals that the change of forest type may only to a minor extent explain the systematic deviation in annual and seasonal discharge volumes for the period 1912–1932, but cannot explain the systematic deviation in annual and seasonal discharge volumes for the period 1933–1968.

Figure 7 gives scatter plots for the simulated and observed values for AMaxD and AMaxD10. There is a tendency to underestimate the annual maximum discharge (AMaxD), in particular for the period 1968–2000. However, as shown in Fig. 5 the maximum daily discharge volumes for the largest floods are simulated well. AMaxD10 volumes are generally well reproduced by the HBV model. Differences of the simulation of AMaxD and AMaxD10 with and without a change of forest type were negligible

## Detecting the influence of land use changes

A. G. Ashagrie et al.

Title Page

Abstract

Introduction

Conclusions

References

Tables

Figures

◀

▶

◀

▶

Back

Close

Full Screen / Esc

Printer-friendly Version

Interactive Discussion

and have not been included in Fig. 7.

## 6 Discussion

The overall result of the hydrological simulation of the 1912–2000 discharge record is satisfactory. Especially when considering that only a limited number of P and T records were available, and in-homogeneities were noted in the Q, P, and T records. However, there appear to be some systematic deviations between the observed and simulated Q record for specific periods within the 1912–2000 record. These deviations will now be discussed, with reference to land change and possible shortcomings in the available data.

The most obvious influence of land use on the water balance of a basin is on the evapotranspiration process (Calder, 1993). However, statements about the impact of land use change on the evapotranspiration volume are restricted by the accuracy of the determination of historical evapotranspiration volumes. Fluctuations in the potential evapotranspiration records may also be caused by variations in meteorological conditions, and uncertainties in the determination of evapotranspiration. The magnitude of the natural annual fluctuations of  $E_{\text{pot}}$  and the uncertainty in the estimate of  $E_{\text{pot}}$  are illustrated in Figs. 3 and 4. The records presented in these figures illustrate that the inter-decade natural fluctuation of  $E_{\text{pot}}$  can be up to  $50 \text{ mm}\cdot\text{a}^{-1}$  (1978–1988 versus 1988–1998). These natural fluctuations are taken into account in this study, but it is obvious that the calculation of  $E_{\text{pot}}$  introduces uncertainties. This is partly illustrated by the differences between two estimated  $E_{\text{pot}}$  records for the period 1968–1998 (Fig. 3).

Figure 6 illustrates that the average annual discharge volume during the period prior to 1933 is underestimated ( $-20 \text{ mm}\cdot\text{a}^{-1}$ ), whereas the average annual discharge volume during the period 1933–1968 is overestimated ( $+40 \text{ mm}\cdot\text{a}^{-1}$ ). This deviation can be observed for both winter and summer discharges. The systematic underestimation of the discharge volume for the period prior to 1933 is reduced by about  $5 \text{ mm}\cdot\text{a}^{-1}$  in case the change in forest type is taken into account. The remaining  $15 \text{ mm}\cdot\text{a}^{-1}$  (espe-

## Detecting the influence of land use changes

A. G. Ashagrie et al.

Title Page

Abstract

Introduction

Conclusions

References

Tables

Figures

◀

▶

◀

▶

Back

Close

Full Screen / Esc

Printer-friendly Version

Interactive Discussion



cially in the summer season) is relatively small when considering the uncertainties in the P and  $E_{\text{pot}}$  records used. Moreover, the correction factor applied to the Borgharen record amounts to approximately  $30 \text{ mm}\cdot\text{a}^{-1}$  for this period (see Fig. 2). As noted before this fixed correction factor is uncertain especially during low flows (such as the summer of 1921) when the extraction rate was also reduced, which could not be taken into account in the Monsin record.

The deviation in the discharge volume for the period 1933–1968 cannot be explained by the change in forest type using the available data sets and methods (see Fig. 6). There is no other obvious cause related to observed land use changes in the Meuse basin to explain for this systematic deviation. Nor do the in-homogeneities reported in Table 2 point in the direction that the deviation for the period 1933–1968 can be explained by in-homogeneities of the precipitation records for this period. Another possible cause is the quality of the discharge record. Around 1930 several changes took place in the river near Borgharen. The impact of these changes has been accounted for in the 1912–2000 discharge record, but based on the results presented in this analysis one may question whether this correction was always correct. To further explore the deviation in the discharge volume for the period 1933–1968 the Monsin record has been compared with the discharge record of the Moselle at Cochem (Fig. 8). The Moselle basin neighbours the Meuse basin in the east and has comparable size and physical characteristics. It is striking that the measured Moselle record corresponds very well with the simulated record for the Meuse, except for a systematic deviation for the period 1933–1968. This deviation is even larger than the deviation between the measured and modelled Meuse records. This suggests that the deviation between observed and simulated AAD for the Meuse may not be primarily caused by errors in the discharge record for Borgharen/Monsin. The real cause of this deviation requires further study. A detailed analysis of the climatic input and the rainfall-runoff relation during the 20th century in the Moselle basin may help to further explore this specific observation.

Figure 7 (AmxD) shows that the annual maximum discharge is often underesti-

## Detecting the influence of land use changes

A. G. Ashagrie et al.

Title Page

Abstract

Introduction

Conclusions

References

Tables

Figures

◀

▶

◀

▶

Back

Close

Full Screen / Esc

Printer-friendly Version

Interactive Discussion

mated by the hydrological simulations. Eberle et al. (2002) obtained a similar result from hydrological simulations with HBV for the river Moselle 1962–1997. Both Deursen (2004) and Eberle et al. (2002) calibrated HBV by optimising the Nash-Sutcliffe coefficient and the volume error. Apparently this leads to an underestimation of the medium flood events (see Fig. 7, upper, and as an example the simulation of the flood event of January 1993 in Fig. 5). The underestimation of AMaxD can be observed for all three sub-periods to some extent, but the number of underestimated flood events for the period 1968–2000 is largest. The simulation results for AMaxD10 show that the total volume of the flood is generally well reproduced by HBV (Fig. 7, lower). A plausible cause for the underestimation of AMaxD may be that the flood routing module of HBV is insufficient. Improvement requires more detailed modelling (i.e., a finer temporal resolution, inclusion of the reservoir regulation and coupling with a hydraulic model for flood routing) for which not all required data are readily available (Leander et al., 2005). Due to these limitations the methodology applied in this study is of insufficient detail to make statements about the impact of land use change on the peak and the shape of the flood wave. However, the results demonstrate that land use changes have not substantially influenced the volume of floods in the Meuse during the 20th century.

## 7 Conclusions

Urbanisation, intensification of agricultural practices and a shift from deciduous to coniferous forest are the most important land use changes during the 20th century in the Meuse River basin. Compared to most other rivers around the world, long and relatively reliable precipitation and discharge records are available for the river Meuse. This implies that the Meuse is an interesting river to analyse the overall impact of land use change on rainfall-runoff processes. The analysis presented in this paper shows that most of the variation in the observed discharge record could be explained by variation in the meteorological conditions. However, there also appear to be a systematic difference in the rainfall-runoff ratio for specific periods that could neither be attributed

## Detecting the influence of land use changes

A. G. Ashagrie et al.

Title Page

Abstract

Introduction

Conclusions

References

Tables

Figures

◀

▶

◀

▶

Back

Close

Full Screen / Esc

Printer-friendly Version

Interactive Discussion

to land use change nor to obvious inconsistencies or in-homogeneities in the available precipitation and discharge records. Apparently the overall impact of land use changes in the Meuse basin is too small to be detected given the uncertainties in the available records.

5 *Acknowledgements.* This study was carried out in the framework of Delft Cluster project “Assessment of the effects of land use change on the hydrology of the Meuse”. Rijkswaterstaat Direction Limburg provided the discharge data. The Royal Meteorological Institute of Belgium (KMI), kindly provided the precipitation data for the period 1911–2000. The 1968–1998 data set that has been used as a reference for this study is based on data from KMI and MeteoFrance  
10 and has been prepared by the Royal Meteorological Institute of the Netherlands (KNMI). KNMI also provided the other meteorological data sets. The German federal hydrological survey (BfG) is acknowledged for providing the discharge record for Cochem-Moselle. We thank M. Booij and W. van Deursen for the HBV model schematisation of the Meuse basin.

## References

- 15 Alexandersson, H.: A homogeneity test applied to precipitation data, *J. Climatol.*, 6, 661–675, 1986.
- Alexandersson, H. and Moberg, A.: Homogenization of Swedish temperature data. Part I: Homogeneity test for linear trends, *Int. J. Climatol.*, 17, 25–34, 1997.
- Berger, H. E. J.: Flow forecasting for the river Meuse, PhD thesis, Delft University of Technology, The Netherlands, 1992.
- 20 Bergström, S. and Forsman, A.: Development of a conceptual deterministic rainfall-runoff model, *Nordic hydrology*, 4, 147–170, 1973.
- Beven, K. J.: A discussion of distributed hydrological modelling, in: *Distributed Hydrological Modelling*, edited by: Abbott, M. B. and Refsgaard, J. C., Kluwer Academic, Dordrecht, The Netherlands, 255–278, 1996.
- 25 Booij, M. J.: Appropriate modelling of climate change impacts on river flooding, PhD thesis, Wageningen University, Wageningen, The Netherlands, 2002.
- Booij, M. J.: Impact of climate change on river flooding assessed with different spatial model resolutions, *J. Hydrol.*, 303, 176–198, doi:10.1016/j.hydrol.2004.07.013, 2005.

---

## Detecting the influence of land use changes

A. G. Ashagrie et al.

---

Title Page

Abstract

Introduction

Conclusions

References

Tables

Figures

◀

▶

◀

▶

Back

Close

Full Screen / Esc

Printer-friendly Version

Interactive Discussion

- Bos, H.: Verloop daggemiddelde afvoer Borgharen, periode 1911–1991 (in Dutch), RIZA werkdocument 92.112X, RIZA, Lelystad, The Netherlands, 1993.
- Bronstert, A., Niehoff, D., and Burger, G.: Effects of climate and land use change on storm runoff generation: present knowledge and modelling capabilities, *Hydrol. Processes*, 16, 509–529, 2002.
- Bultot, F., Dupriez, G. L., and Gellens, G.: Simulation of land use changes and impacts on the water balance – a case study for Belgium, *J. Hydrol.*, 114, 327–348, 1990.
- Calder, I. R.: Hydrologic effects of land use change, in: *Handbook of Hydrology*, edited by: Maidment, D. R., McGraw-Hill, New York, 13.1–13.50, 1993.
- Chang, M. and Lee, R.: Objective Double-Mass Analysis, *Water Resour. Res.*, 6, 1123–1126, 1974.
- De Laat, P. J. M. and Varoonchotikul, P.: Modelling Evapotranspiration of Dune Vegetation, in: *Surface-Water Hydrology*, edited by: Singh, V. P. and Kumar, B., Kluwer, 1, 19–27, 1996.
- de Roo, A. P. J., Wesseling, C. G., and Van Deursen, W. P. A.: Physically based River basin modeling within a GIS: The LISFLOOD Model, *Hydrol. Processes*, 14, 1981–1992, 2000.
- Eberle, M., Buiteveld, H., Beersma, J. J., Krahe, P., and Wilke, K.: Estimation of extreme floods in the river Rhine basin by combining precipitation-runoff modelling and a rainfall generator, in: *Proceedings International Conference on Flood Estimation*, Berne, Switzerland, 6–8 March 2002, edited by: Spreafico, M. and Weingartner, R., 459–467 CHR Report II-17, Lelystad, CHR Secretariat, The Netherlands, 2002.
- Fohrer, N., Eckhardt, K., Haverkamp, S., and Frede, H.-G.: Applying the SWAT model as decision supporting tool for land use concepts in peripheral regions in Germany, 994–999, in: *Stott, D.-E.: Sustaining the Global Farm*, edited by: Mohtar, R.-H. and Steinhardt, C.-G., 10th Int. Soil Conservation Organization Meeting, 24–29 May 1999, West Lafayette, 2001.
- Jones, J. A. and Grant, G. E.: Peak flow responses to clear-cutting and roads in small and large basins, western Cascades, Oregon, *Water Resour. Res.*, 32(4), 959–974, 1996.
- Klein Tank, A. M. G., Wijngaard, J. B., Können, G. P., Böhm, R., Demarée, G., Gocheva, A., Miletta, M., Pashiardis, S., Hejkrlik, L., Kern-Hansen, C., Heino, R., Bessemoulin, P., Müller-Westmeier, G., Tzanakou, M., Szalai, S., Pálsdóttir, T., Fitzgerald, D., Rubin, S., Capaldo, M., Maugeri, M., Leitass, A., Bukantis, A., Aberfeld, R., van Engelen, A. F. V., Forland, E., Mietus, M., Coelho, F., Mares, C., Razuvaev, V., Nieplova, E., Cegnar, T., Antonio López, J., Dahlström, B., Moberg, A., Kirchhofer, W., Ceylan, A., Pachaliuk, O., Alexander, L. V., and Petrovic, P.: Daily dataset of 20th century surface air temperature and precipitation series for

**HESSD**

3, 529–559, 2006

---

**Detecting the  
influence of land use  
changes**

A. G. Ashagrie et al.

---

Title Page

Abstract

Introduction

Conclusions

References

Tables

Figures

◀

▶

◀

▶

Back

Close

Full Screen / Esc

Printer-friendly Version

Interactive Discussion

EGU

- the European Climate Assessment, *Int. J. Climatol.*, 22, 1441–1453, 2002.
- Klöcking, B. and Haberlandt, U.: Impact of land use changes on water dynamics – a case study in temperate meso and macro scale river basins, *Phys. Chem. Earth*, 27(9–10), 619–629, 2003.
- 5 Lahmer, W., Pfützner, B., and Ströbl, B.: Possible Impacts of Climate and Land Use Changes on the Water Balance of Semi-arid German River Basins, 19th European Regional ICID Conference on Sustainable Use of Land and Water, Brno and Prague, Czech Republic, 4–8 June 2001 (CD-ROM), 2001.
- Leander, R. and Buishand, A.: Rainfall Generator for the Meuse Basin: Inventory and homogeneity analysis of long daily precipitation records, KNMI-publication 196-II, De Bilt, The Netherlands, 2004.
- 10 Leander, R., Buishand, A., Aalders, P., and de Wit, M. J. M.: Estimation of extreme floods of the River Meuse using a stochastic rainfall generator and rainfall-runoff modeling, *Hydrol. Sci. J.*, 50(6), 1089–1103, 2005.
- 15 Lindström, G., Johansson, B., Persson, M., Gardelin, M., and Bergström, S.: Development and test of the distributed HBV-96 hydrological model, *J. Hydrol.*, 201, 272–288, 1997.
- McGulloch, J. S. G. and Robinson, M.: History of forest hydrology, *J. Hydrol.*, 150, 189–216, 1993.
- Nash, J. E. and Sutcliffe, J. V.: River flow forecasting through conceptual models, Part I – A discussion on principles, *J. Hydrol.*, 10, 282–290, 1970.
- 20 Niehoff, D., Fritsch, U., and Bronstert, A.: Land use impacts on storm-runoff generation: scenarios of land-use change and simulation of hydrological response in a meso-scale catchment in SW-Germany, *J. Hydrol.*, 267(1–2), 80–93, 2002.
- Ott, B. and Uhlenbrook, S.: Quantifying the impact of land use changes at the event and seasonal time scale using a process-oriented catchment model, *Hydrol. Earth Syst. Sci.*, 8, 62–78, 2004.
- 25 Pettitt, A. N.: A non-parametric approach to the change-point problem, *Appl. Stat.*, 28(2), 126–135, 1979.
- Pfister, L., Kwadijk, J., Musy, A., Bronstert, A., and Hoffmann, L.: Climate change, Land use change and runoff prediction in the Rhine – Meuse basins, *River Res. Appl.*, 20, 229–241, 2004.
- 30 Tu, M., Hall, M. J., de Laat, P. J. M., and de Wit, M. J. M.: Detection of long-term changes in precipitation and discharge in the Meuse basin, in: *GIS and Remote Sensing in Hydrology*,

---

**Detecting the  
influence of land use  
changes**A. G. Ashagrie et al.

---

[Title Page](#)[Abstract](#)[Introduction](#)[Conclusions](#)[References](#)[Tables](#)[Figures](#)[◀](#)[▶](#)[◀](#)[▶](#)[Back](#)[Close](#)[Full Screen / Esc](#)[Printer-friendly Version](#)[Interactive Discussion](#)

Water Resour. Environ., Proceedings of ICGRHWE held at the three Gorges Dam, China, IAHS Publ., 289, 2004.

Tu, M., Hall, M. J., de Laat, P. J. M., and de Wit, M. J. M.: Extreme floods in the Meuse river over the past century: aggravated by land-use changes?, Phys. Chem. Earth, Parts A/B/C 30(4–5), 267–276, 2005a.

Tu, M., de Laat, P. J. M., Hall, M. J., and de Wit, M. J. M.: Precipitation variability in the Meuse basin in relation to atmospheric circulation, Water Sci. Technol., 51(5), 5–14, 2005b.

Uhlenbrook, S., Mc Donnell, J., and Leibundgut, C.: Foreword to the special issue: Runoff generation and implications for river basin modelling, Freiburger Schriften zur Hydrologie, 13, 4–13, 2001.

van Deursen, W.: Calibration HBV model Meuse, Report to Rijkswaterstaat RIZA, Carthago Consultancy, Rotterdam (in Dutch), 2004.

Wegehenkel, M.: Estimating of impact of land use changes using the conceptual hydrological model THESEUS – a case study, Phys. Chem. Earth, 27, 631–640, 2002.

WL|Delft Hydraulics: Onderzoek Watersnood Maas: Deelrapport 4, Hydrologische aspecten (in Dutch), WL Delft Hydraulics, Delft, The Netherlands, 1994.

**HESSD**

3, 529–559, 2006

---

**Detecting the  
influence of land use  
changes**

A. G. Ashagrie et al.

---

Title Page

Abstract

Introduction

Conclusions

References

Tables

Figures

◀

▶

◀

▶

Back

Close

Full Screen / Esc

Printer-friendly Version

Interactive Discussion

EGU

## Detecting the influence of land use changes

A. G. Ashagrie et al.

**Table 1.** Stations with precipitation (P) and temperature (T) records (1911–2000) used in this study.

Station name	Latitude	Longitude	Altitude (m)	Variable	Source	Time of non-homogeneity
Maredsous	501 712	044 603	222	P	KMI	1938, 1965
Rochefort	501 034	051 328	193	P	KMI	1927
Thimister	503 915	055 148	266	P	KMI	1951, 1969
Stavelot	502 322	055 534	300	P	KMI	1937, 1994
Hives	500 905	053 450	400	P	KMI	1944
Chimay	495 852	042 034	318	P	KMI	1947
Chiny	494 419	052 045	370	P	KMI	1932, 1986
Uccle	504 800	042 100	100	T	KMI	1921
Paris	484 924	022 012	75	T	MeteoFrance	1960
Karlsruhe	490 100	082 300	114	T	DWD	1960
De Bilt	520 605	051 112	2	T	KNMI	1976
Maastricht	505 034	054 024	114	T	KNMI	1945

Title Page

Abstract

Introduction

Conclusions

References

Tables

Figures

◀

▶

◀

▶

Back

Close

Full Screen / Esc

Printer-friendly Version

Interactive Discussion

## Detecting the influence of land use changes

A. G. Ashagrie et al.

**Table 2.** Performance of the HBV model (at Monsin) using different input data sets.

Period	Criteria	Detailed data set	Coarse data set
1968–1984	$r^2$ (-)	0.92	0.90
	RE (-)	0.91	0.90
	VE ( $\text{mm a}^{-1}$ )	22	11
1985–1998	$r^2$ (-)	0.94	0.93
	RE (-)	0.93	0.93
	VE ( $\text{mm a}^{-1}$ )	9	5
1912–2000	$r^2$ (-)		0.91
	RE (-)		0.89
	VE ( $\text{mm a}^{-1}$ )		12

Title Page

Abstract

Introduction

Conclusions

References

Tables

Figures

◀

▶

◀

▶

Back

Close

Full Screen / Esc

Printer-friendly Version

Interactive Discussion



**Detecting the influence of land use changes**

A. G. Ashagrie et al.



**Fig. 1.** Location of the Meuse river basin including the discharge and precipitation gauging stations used in this study.

Title Page

Abstract

Introduction

Conclusions

References

Tables

Figures

◀

▶

◀

▶

Back

Close

Full Screen / Esc

Printer-friendly Version

Interactive Discussion

Detecting the influence of land use changes

A. G. Ashagrie et al.

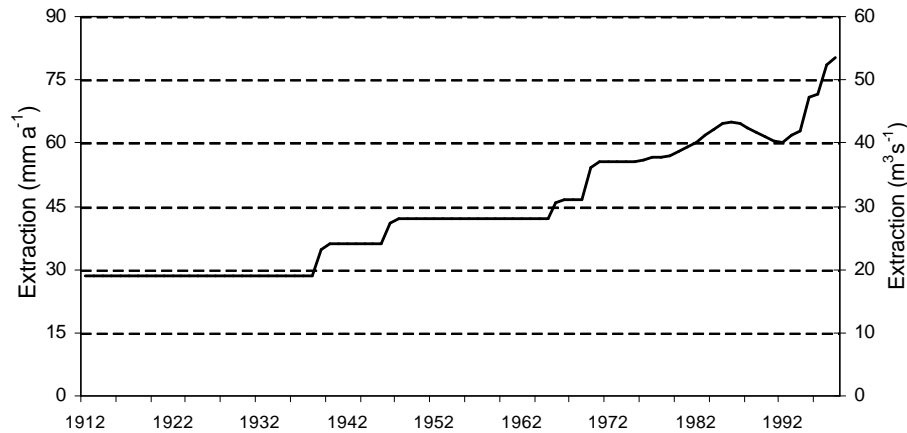


Fig. 2. The water extractions from the Meuse river between Liège (Monsin) and Borgharen.

Title Page

Abstract Introduction

Conclusions References

Tables Figures

◀ ▶

◀ ▶

Back Close

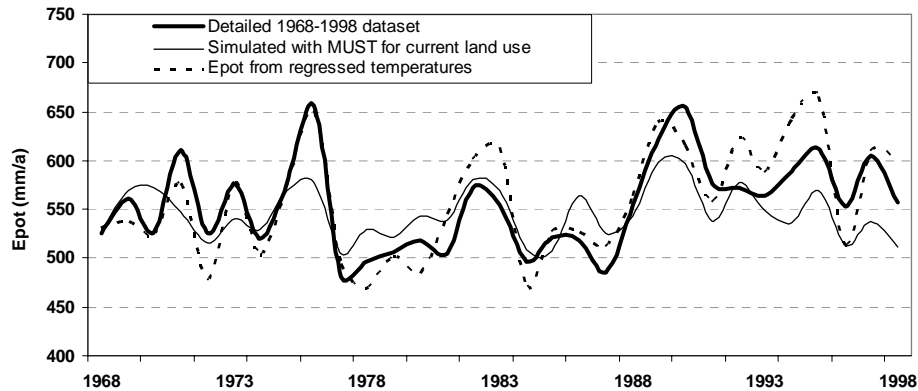
Full Screen / Esc

Printer-friendly Version

Interactive Discussion

## Detecting the influence of land use changes

A. G. Ashagrie et al.



**Fig. 3.** Comparison of calculated potential evapotranspiration derived from three different methods.

Title Page

Abstract

Introduction

Conclusions

References

Tables

Figures

◀

▶

◀

▶

Back

Close

Full Screen / Esc

Printer-friendly Version

Interactive Discussion

Detecting the influence of land use changes

A. G. Ashagrie et al.

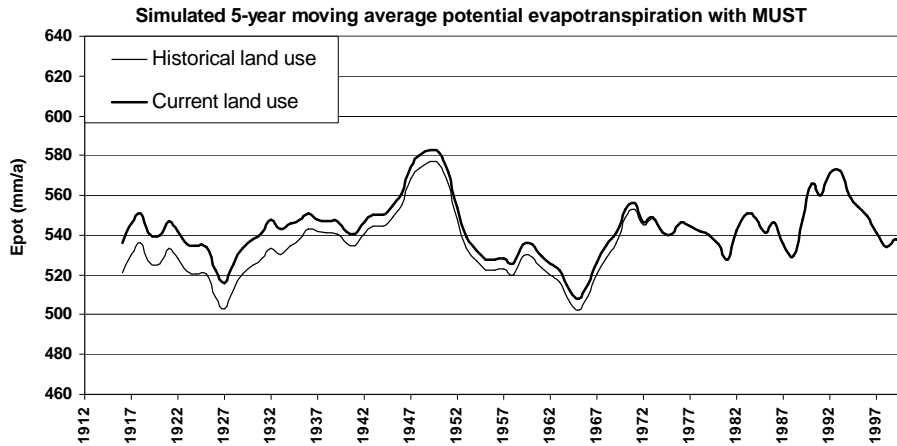


Fig. 4. Simulated 5-year moving average potential evapotranspiration (mm a<sup>-1</sup>) calculated with the MUST model.

Title Page

Abstract Introduction

Conclusions References

Tables Figures

◀ ▶

◀ ▶

Back Close

Full Screen / Esc

Printer-friendly Version

Interactive Discussion

Detecting the influence of land use changes

A. G. Ashagrie et al.

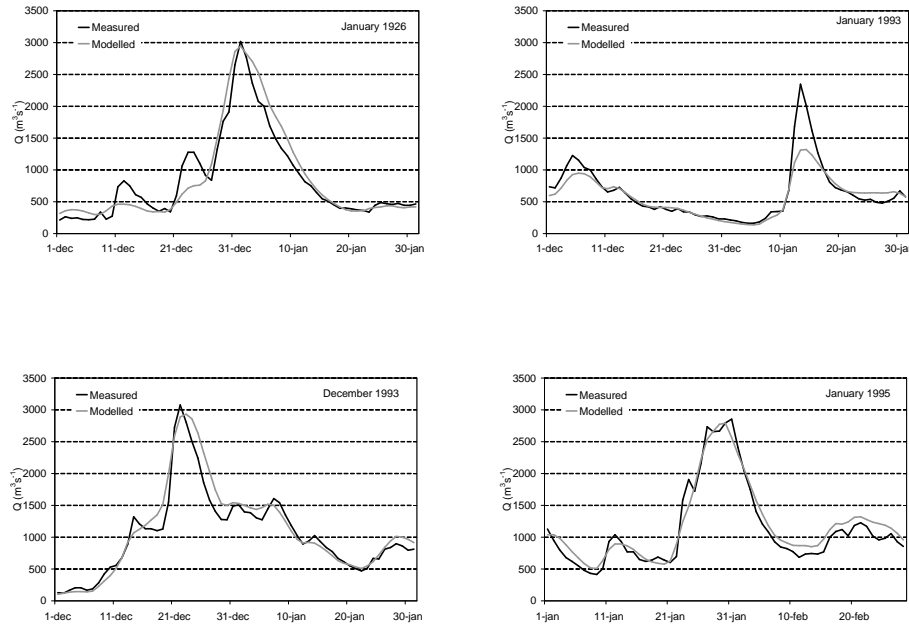


Fig. 5. Simulated (with the coarse data set) and observed floods at Borgharen.

Title Page

Abstract

Introduction

Conclusions

References

Tables

Figures

◀

▶

◀

▶

Back

Close

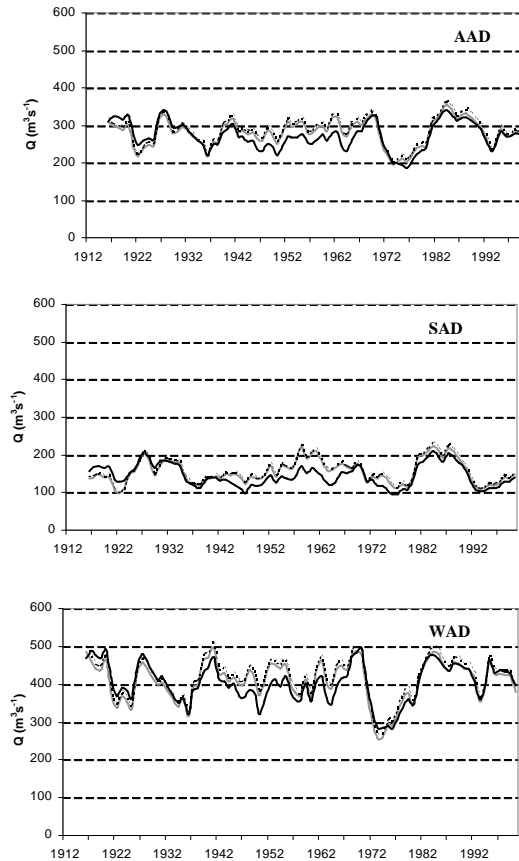
Full Screen / Esc

Printer-friendly Version

Interactive Discussion

## Detecting the influence of land use changes

A. G. Ashagrie et al.



**Fig. 6.** Simulated and observed 5-year average moving values for AAD, SAD, and WAD ( $\text{m}^3 \text{s}^{-1}$ ). Black line is measured, grey line is modelled with forest type end of 20th century, and dashed line is modelled including a gradual change of forest type during the 20th century.

Title Page

Abstract

Introduction

Conclusions

References

Tables

Figures

◀

▶

◀

▶

Back

Close

Full Screen / Esc

Printer-friendly Version

Interactive Discussion

Detecting the influence of land use changes

A. G. Ashagrie et al.

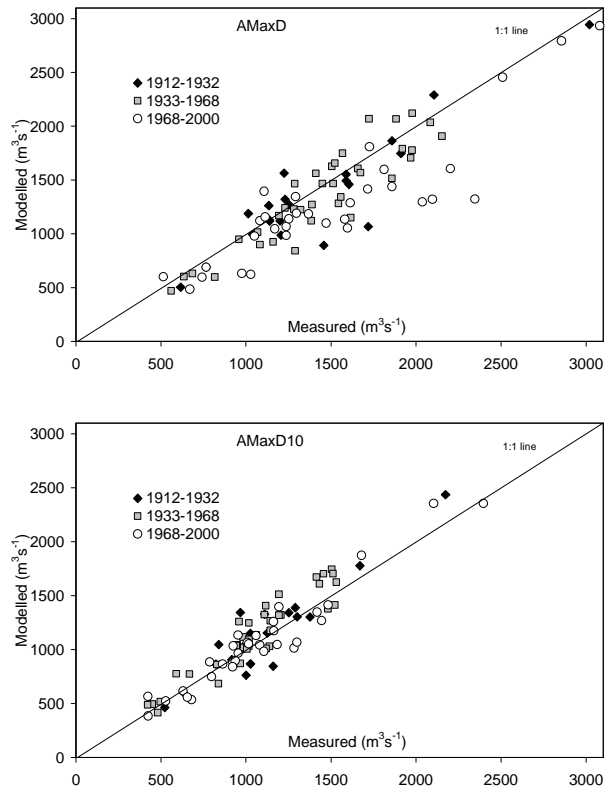


Fig. 7. Simulated and observed values for annual maximum daily and 10-day discharge volume.

Title Page

Abstract

Introduction

Conclusions

References

Tables

Figures



Back

Close

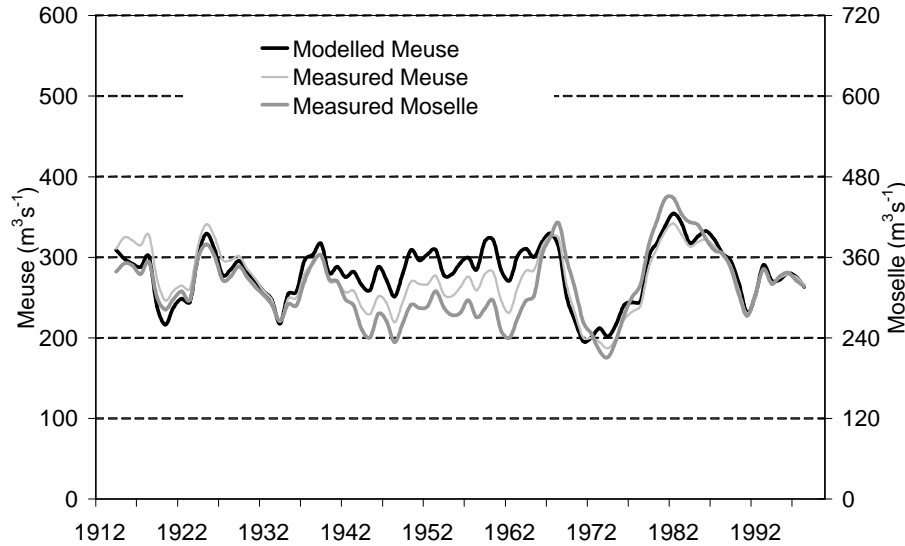
Full Screen / Esc

Printer-friendly Version

Interactive Discussion

Detecting the influence of land use changes

A. G. Ashagrie et al.



**Fig. 8.** Simulated (Meuse) and observed (Meuse and Moselle) 5-year moving average for AAD ( $\text{m}^3/\text{s}$ ).

Title Page

Abstract Introduction

Conclusions References

Tables Figures

◀ ▶

◀ ▶

Back Close

Full Screen / Esc

Printer-friendly Version

Interactive Discussion