



**HAL**  
open science

# Modelling subsurface storm flow with the Representative Elementary Watershed (REW) approach: application to the Alzette River Basin

G. P. Zhang, H. H. G. Savenije, F. Fenicia, L. Pfister

► **To cite this version:**

G. P. Zhang, H. H. G. Savenije, F. Fenicia, L. Pfister. Modelling subsurface storm flow with the Representative Elementary Watershed (REW) approach: application to the Alzette River Basin. *Hydrology and Earth System Sciences Discussions*, 2006, 3 (1), pp.229-270. hal-00298654

**HAL Id: hal-00298654**

**<https://hal.science/hal-00298654>**

Submitted on 18 Jun 2008

**HAL** is a multi-disciplinary open access archive for the deposit and dissemination of scientific research documents, whether they are published or not. The documents may come from teaching and research institutions in France or abroad, or from public or private research centers.

L'archive ouverte pluridisciplinaire **HAL**, est destinée au dépôt et à la diffusion de documents scientifiques de niveau recherche, publiés ou non, émanant des établissements d'enseignement et de recherche français ou étrangers, des laboratoires publics ou privés.

Papers published in *Hydrology and Earth System Sciences Discussions* are under open-access review for the journal *Hydrology and Earth System Sciences*

**Modelling subsurface storm flow with the REW approach**

G. P. Zhang et al.

# Modelling subsurface storm flow with the Representative Elementary Watershed (REW) approach: application to the Alzette River Basin

G. P. Zhang<sup>1</sup>, H. H. G. Savenije<sup>1</sup>, F. Fenicia<sup>1,2</sup>, and L. Pfister<sup>2</sup>

<sup>1</sup>Water Resources Section, Faculty of Civil Engineering and Geosciences, Delft University of Technology, Delft, The Netherlands

<sup>2</sup>Centre de Recherche Public – Gabriel Lippmann, Luxembourg, Grand-duchy of Luxembourg

Received: 1 December 2005 – Accepted: 3 January 2006 – Published: 23 February 2006

Correspondence to: G. P. Zhang (g.zhang@tudelft.nl)

© 2006 Author(s). This work is licensed under a Creative Commons License.

Title Page

Abstract

Introduction

Conclusions

References

Tables

Figures

◀

▶

◀

▶

Back

Close

Full Screen / Esc

Print Version

Interactive Discussion

EGU

## Abstract

A new domain, the macropore domain, for describing subsurface storm flow has been introduced to the Representative Elementary Watershed (REW) approach. The mass balance equations have been reformulated and the closure relations associated with subsurface storm flow have been developed. The model code, REWASH, has been revised accordingly. With the revised REWASH, a rainfall-runoff model has been built for the Hesperange catchment, a sub-catchment of the Alzette River Basin. This meso-scale catchment is characterised by fast catchment response to precipitation and subsurface storm flow is one of the dominant runoff generation processes. The model has been evaluated by a multi-criteria approach using both discharge and groundwater table data measured at various locations in the study site. It is demonstrated that subsurface storm flow contributes considerably to stream flow in the study area. Simulation results show that discharges measured along the main river course are well simulated and groundwater dynamics is well captured, suggesting that the model is a useful tool for catchment-scale hydrological analysis.

## 1. Introduction

Contributions of subsurface flow to storm runoff have long been recognised and investigated (Hewlett and Hibbert, 1965; Whipkey, 1967; Sklash and Farvolden, 1979; McDonnell, 1990; Uchida et al., 2002; Uhlenbrook et al., 2002, and references therein). The dominance of subsurface flow on hydrological response of catchments in humid areas is due to the high infiltration capacities of the forest soils and the limited extent of saturated source areas formed during precipitation events (Scanlon et al., 2000; Wigmosta and Burges, 1977; Tanaka et al., 1988). Sidle et al. (2000) stated that subsurface flow contributes more to storm runoff than overland flow in steep forested catchments.

The significance of research on subsurface flow is at least two-fold: 1) to enhance the understanding of hydrological behaviour at various level of scale (field, hillslope

## Modelling subsurface storm flow with the REW approach

G. P. Zhang et al.

Title Page

Abstract

Introduction

Conclusions

References

Tables

Figures

◀

▶

◀

▶

Back

Close

Full Screen / Esc

Print Version

Interactive Discussion

and catchment) due to the various pathways of flow; 2) and hence to improve the description of solute/contaminant transport in terrestrial environment. It is obvious that insight of hydrological processes in the subsurface must be understood before the quantification or qualification of pollutants movement can be addressed.

In contrast to soil matrix flow, there exist different terms for describing quick subsurface flow processes associated with the diversity of the flow paths in the soil. Examples are pipe flow, which is presented as the flow through well connected macropores found on vegetated hillslopes (Uchida et al., 2002, and the cited references therein); macropore flow defined as quick movement of water in large pores bypassing areas with smaller pores (Williams et al., 2002). Considering the subjectivity of the term “macropore”, bypass flow (e.g. Beven and Gemann, 1982) and preferential flow have been used as well. Wilson et al. (1990) concluded that in their study site, preferential flow through macropores is the predominant storm flow mechanism. The term interflow has been used as an intermediate form of runoff between surface and base flow which can be found through hydrograph separation (e.g. Mosley and McKerchar, 1993). Through-flow is perceived as the flow through a saturated or near-saturated zone in subsurface induced by a permeability jump. Since some or all of the above mentioned processes can coexist in one area, especially at hillslope scale and watershed scale, and it is hard to specify flow paths and therefore to quantify contributions of each local process to storm runoff, we herein generalize all kinds of quick subsurface flow contributing to storm runoff as subsurface storm flow. It is the redistribution of infiltrated water in the soil along the slope of the terrain through macropore structures, fractures and discontinuity of permeability.

Although field experiments have already demonstrated that subsurface storm flow is an important fast runoff generation mechanism, most physically based model approaches or model codes, such as MIKE SHE (Refsgaard and Storm, 1995), GSSHA (Downer and Ogden, 2003), the REW approach (Reggiani et al., 2000; Reggiani and Rientjes, 2005), CREW (Lee et al., 2006) and REWASH (Zhang and Savenije, 2005), only use infiltration-excess and saturation-excess overland flow mechanisms for pro-

## Modelling subsurface storm flow with the REW approach

G. P. Zhang et al.

Title Page

Abstract

Introduction

Conclusions

References

Tables

Figures

◀

▶

◀

▶

Back

Close

Full Screen / Esc

Print Version

Interactive Discussion

**Modelling subsurface storm flow with the REW approach**

G. P. Zhang et al.

Title Page

Abstract

Introduction

Conclusions

References

Tables

Figures

◀

▶

◀

▶

Back

Close

Full Screen / Esc

Print Version

Interactive Discussion

ducing quick runoff. When applying such model codes to a catchment where subsurface storm flow is dominant, structural inefficiency of the models emerges. Despite the fact that McDonnell (2003) provoked a modelling philosophy on moving beyond the variable source area concept of rainfall-runoff response, it remains a challenge, as discussed by Sivapalan (2003), to develop a perceptual model that generalises field knowledge and assimilates it into a numerical model.

In spite of abundant research on modelling preferential flow at the field scale focusing on solute and contaminant transport, sparse literature exists on catchment-scale rainfall-runoff modelling accounting for subsurface storm flow process. Scanlon et al. (2000) made a modified version of TOPMODEL with an additional subsurface storage in line with the storage deficit concept to take the shallow subsurface storm flow into account and applied it to a 237 ha headwater catchment. Beckers and Alila (2004) evaluated contributions of subsurface storm runoff (termed as rapid preferential hillslope runoff) to peak flow at a 10 km<sup>2</sup> forest watershed, using a model inclusive of both fast and slow preferential flow stores. They concluded that the model with preferential flow description is more successful in capturing stream flow behaviour of the studied catchment than the model without preferential flow process. Christiansen et al. (2004) presented a study on macropore flow and transport at a 62.3 km<sup>2</sup> catchment applying MIKE-SHE/Daisy in which a macropore component is embedded. The formulation of macropore processes in this work was specifically designed for the particular catchment, considering only vertical flow from macropore domain to groundwater. Results suggested, however, that macropore processes have no dominating effects on discharge at catchment scale. Zehe et al. (2001) carried out detailed simulations on a Loess catchment using CATFLOW in which the spatial distribution of the macroporosity factor was applied to treat the preferential flow process. Their approach yielded simulation results in good accordance with observations on both the plot and the hillslope scales.

To contribute to further development and application of the Representative Elementary Watershed (REW) approach, this paper has been designed to apply REWASH

code (Zhang and Savenije, 2005) to the Hesperange catchment of the Alzette River Basin, in Luxembourg. In this catchment subsurface storm flow is considered dominant. In the REWASH code, catchment response is modelled by the descriptions of flow processes taking place in five domains and quick runoff generation is simulated using only the saturation-excess overland flow mechanism. Therefore, a new formulation for subsurface storm flow has been developed and an additional flow domain for rapid subsurface flow has been incorporated into REWASH. In the following sections, the model is described and tested. Results show that subsurface storm flow constitutes a considerable part of the stream flow in the upstream headwater sub-catchments. Model validation using a multi-criteria approach with interior gauging data and point piezometric measurements confirmed the model capability of successfully capturing the hydrological behaviour at catchment scale.

## 2. Modelling approach

### 2.1. Brief review of the REW approach and the REWASH code

The REW approach treats the entire catchment as an ensemble of a number of sub-catchments interconnected through the groundwater and a surface drainage network. The sub-catchments, preserving the basic watershed functional components (hillslopes and channels) and having repetitive structure of the flow domains, are called representative elementary watersheds (REWs). Each sub-catchment or REW has a volume, which is defined by the topographic divide on top and an impermeable layer (if known) or a chosen depth at bottom. Originally, the flow processes are implemented over five flow domains within each REW, namely the infiltration-excess flow domain, the saturation-excess flow domain, the river flow domain, the unsaturated and the saturated flow domains.

Starting from the basic physical laws (mass conservation and momentum balance), Reggiani et al. (1998, 1999) derived a system of ordinary differential equations at REW

## Modelling subsurface storm flow with the REW approach

G. P. Zhang et al.

Title Page

Abstract

Introduction

Conclusions

References

Tables

Figures

◀

▶

◀

▶

Back

Close

Full Screen / Esc

Print Version

Interactive Discussion

**Modelling subsurface storm flow with the REW approach**

G. P. Zhang et al.

Title Page

Abstract

Introduction

Conclusions

References

Tables

Figures

◀

▶

◀

▶

Back

Close

Full Screen / Esc

Print Version

Interactive Discussion

scale governing water flow in the five flow domains. Earlier publications (Reggiani et al., 2000, 2001; Reggiani and Rientjes, 2005; Zhang et al., 2005; Zhang and Savenije, 2005) proposed a set of closure relations to the general form of the balance equations. Subsequently, new and revised equations for threshold-based interception, evaporation and transpiration, the Green-Ampt type infiltration, and Darcy type percolation etc., have been obtained, leading to the model code REWASH. Details of these equations can be found in Zhang and Savenije (2005).

REWASH has been applied to the Geer River Basin in Belgium (Zhang and Savenije, 2005). While it is one of the early applications of the REW approach and demonstrates the approach’s attractiveness, we argue that the very form of the approach does not warrant its universal applicability because hydrological processes are site-specific. However, the concept of the REW approach is open to any other processes to be included. To enhance the generality of the model code and to suit it to the application in the study site of this research, we attempted to extend REWASH by including the subsurface storm flow domain (which we shall term the macropore domain hereafter for reason of brevity) and developed an approach to quantify the effect of subsurface storm flow on stream runoff.

## 2.2. Approach to subsurface storm flow

### 2.2.1. Conceptualisation of subsurface storm flow

Since subsurface storm flow may take a variety of paths, it is difficult to specify the exact dimensions of the spatial domain for this flow process at catchment scale, we conceptualise that the unsaturated soil profile (from surface to groundwater table) consists of two compartments: the soil matrix region, corresponding to the so-called unsaturated domain (zone), and the macropore system, named here macropore domain. With this conceptualisation, the total volume of subsurface media of a REW contains

three reservoirs and thus can be expressed as:

$$Z = (y_u + y_m) \omega_u + y_s \omega_s \quad (1)$$

where  $Z$  is the average total soil depth;  $y_u$ ,  $y_m$  and  $y_s$  are the average depth of the unsaturated, macropore and saturated domains respectively;  $\omega_u$  and  $\omega_s$  are area fractions of the unsaturated and saturated domains respectively.

The dual-porosity approach is adopted to treat soil properties in modelling flows in the unsaturated and macropore domains, i.e., hydraulic conductivity for the macropore domain is higher than that for the unsaturated domain (e.g. Ludwig et al., 1999). In the unsaturated domain, only vertical flows are described, as in earlier publications on the REW approach. Although earlier research on preferential flow paths focused on vertical transport, lateral flow is also evident in steep forested slopes underlain by bedrock or till as discussed by Sidle et al. (2001). Therefore, both downward and lateral flows are accounted for in the macropore domain. As a result, the macropore domain is assumed to connect with the infiltration-excess overland flow domain, the saturated domain (groundwater) and the river channel, whereas the exchange between the unsaturated domain (soil matrix) and the macropore domain is neglected. Figure 1 represents the conceptual scheme of the new model for this study.

### 2.2.2. Mass balance equations for the revised REWASH

In line with the conceptualisation of the subsurface storm flow in the macropore domain, flux exchanges and mass conservation in six domains are reformulated for each REW.

#### *Mass conservation for the infiltration-excess overland flow domain*

$$\frac{d(\rho y_c \omega_c A)}{dt} = e_{ctop} + e_{ca} + e_{cu} + e_{cm} \quad (2)$$

**Modelling subsurface storm flow with the REW approach**

G. P. Zhang et al.

Title Page

Abstract

Introduction

Conclusions

References

Tables

Figures

◀

▶

◀

▶

Back

Close

Full Screen / Esc

Print Version

Interactive Discussion



**Modelling subsurface storm flow with the REW approach**

G. P. Zhang et al.

Title Page

Abstract

Introduction

Conclusions

References

Tables

Figures

◀

▶

◀

▶

Back

Close

Full Screen / Esc

Print Version

Interactive Discussion

In the left hand side of Eq. (2),  $\rho$  is water density;  $y_c$  and  $\omega_c$  are the flow depth and the area fraction of the infiltration-excess overland flow domain, respectively.  $A$  is the planner area of the REW in question. On the right hand side of Eq. (2),  $e_{cm}$  is the infiltration flux from this domain to the macropore domain. The other flux terms are described by Zhang Savenije (2005).

*Mass conservation for the unsaturated domain*

$$\frac{d(\rho \varepsilon_u s_u y_u \omega_u A)}{dt} = e_{cu} + e_{us} + e_{ua} \quad (3)$$

where  $\varepsilon_u$  is the soil porosity of the unsaturated domain,  $s_u$  is the saturation degree of the unsaturated domain.  $y_u$  and  $\omega_u$  are the average depth and the area fraction of the unsaturated domain respectively.  $\rho$  and  $A$  are the same as in Eq. (2), and the same in the following equations as well. The flux terms in the on the right hand side of this equation are the same as in Zhang and Savenije (2005).

*Mass conservation for the saturated domain*

$$\frac{d(\rho \varepsilon_s y_s \omega_s A)}{dt} = e_{su} + e_{so} + e_{sr} + e_{sm} \quad (4)$$

where  $\varepsilon_s$  is the soil porosity of the saturated domain. Similar to Eq. (3),  $y_s$  and  $\omega_s$  are the average depth and the area fraction of the saturated domain respectively. Generally, it can be thought that the whole watershed is underlain by a saturated groundwater aquifer. As a result, the area fraction of the saturated domain is invariant and equal to unity (Reggiani et al., 2000).  $e_{sm}$  is the recharge flux to the saturated domain fed by the macropore domain. The remaining flux terms are also the same as described in Zhang and Savenije (2005).

## Mass conservation for the macropore domain

The full capacity of the macropore domain is comprised of the porous space of the domain, represented by the macroporosity and the volume. The volume of the domain is the product of the average depth and the area of the domain. The processes occur in the domain are the rainfall water infiltration, the bypass flow to the groundwater (recharge) and the lateral quick flow to the river channel. Evaporation and transpiration are ignored since the temporal scale of the flow processes in this domain is small compared to those in the slow flow domains. Consequently, the mass balance equation for the macropore domain reads:

$$\frac{d(\rho \varepsilon_m s_m y_m \omega_m A)}{dt} = e_{mc} + e_{mr} + e_{ms} \quad (5)$$

where  $\varepsilon_m$  and  $s_m$  are the macroporosity and the saturation degree of the macropore domain respectively.  $y_m$  and  $\omega_m$  are the average depth and the area fraction of the macropore domain. As discussed earlier, due to the difficulty to precisely locate the macropore structure and define its dimensions, we assume that macropores and the other larger openings facilitating quick subsurface flow are homogeneously scattered all over in the unsaturated soil profile, thus occupying the same area of the unsaturated domain, i.e.  $\omega_m = \omega_u$ ; and therefore  $y_m$  is assumed to vary with the same rate as  $y_u$ .  $e_{mc}$ ,  $e_{mr}$  and  $e_{ms}$  are the infiltration coming from the infiltration-excess overland flow domain, the lateral flow from the macropore domain to the river channel and the recharge flux to the saturated domain, respectively.

## Mass conservation for the saturation-excess overland flow domain

$$\frac{d(\rho y_o \omega_o A)}{dt} = e_{otop} + e_{oa} + e_{os} + e_{or} \quad (6)$$

The symbols stated in this equation are described in Zhang and Savenije (2005).

## Modelling subsurface storm flow with the REW approach

G. P. Zhang et al.

Title Page

Abstract

Introduction

Conclusions

References

Tables

Figures

◀

▶

◀

▶

Back

Close

Full Screen / Esc

Print Version

Interactive Discussion

$$\frac{d(\rho m_r l_r)}{dt} = e_{r\text{top}} + e_{ra} + e_{rs} + e_{ro} + e_{rm} + e_{rin} + e_{rout} \quad (7)$$

where  $e_{rm}$  is the counterpart of the  $e_{mr}$  in Eq. (5), i.e. the later flow from the macropore domain to the river channel. All remaining symbols can also be found in Zhang and Savenije (2005).

### 2.2.3. Closure relations for fluxes in the mass conservation equations

To solve the balance equations presented above, each flux term has to be expressed by the functions relating the unknowns to the resolved variables or quantities. For most of the fluxes, their closures are the same as in previous publications on REWASH. In this paper, we only address those fluxes exchanging with the macropore domain, i.e.  $e_{mc}$  ( $=-e_{cm}$ ),  $e_{mr}$  ( $=-e_{rm}$ ) and  $e_{ms}$  ( $=-e_{sm}$ ).

### Infiltration flux to the macropore domain

During a rainfall event, the effective rainfall infiltrates into the soil matrix (the unsaturated domain) and the macropore domain as well. It is hypothesised that the flow to the macropore domain is initiated only after the infiltration capacity of the unsaturated domain is exceeded. This means, similar to the MCARO approach (Jarvis, 2004), that the effective rainfall is partitioned into the fluxes  $e_{uc}$  and  $e_{mc}$ . The partitioning is determined by the infiltration capacity of the unsaturated domain. In Zhang and Savenije (2005), the infiltration flux to the unsaturated domain is expressed as:

$$e_{cu} = \min [(i - i_{dc}), f] \rho \omega_u A \quad (8)$$

Title Page

Abstract

Introduction

Conclusions

References

Tables

Figures

◀

▶

◀

▶

Back

Close

Full Screen / Esc

Print Version

Interactive Discussion

where  $f$  is the infiltration capacity of the soil matrix, represented by:

$$f = \frac{K_{su}}{\Lambda_u} \left( \frac{1}{2} y_u + h_c \right) \quad (9)$$

As a result, the infiltration flux to the macropore domain can be written as:

$$e_{mc} = \{ i - i_{dc} - \min [(i - i_{dc}), f] \} \rho \omega_u A \quad (10)$$

5 In Eqs. (8), (9) and (10),  $i - i_{dc}$  represents the effective rainfall in which  $i$  and  $i_{dc}$  are the rainfall intensity and the rainfall interception, respectively.  $K_{su}$  is the saturated hydraulic conductivity of the soil matrix;  $h_c$  is the capillary pressure head of the soil matrix that is evaluated using the Brooks-Corey method (Brooks and Corey, 1964).

#### 10 *Fluxes out of the macropore domain*

It is commonly assumed that capillary effect is insignificant for water flow in the macropore domain. Consequently, the downward unit area flux (i.e. the velocity of the flow) of this domain can be approximated by

$$15 \quad v_m = -K_m \quad (11)$$

where  $K_m$  is the hydraulic conductivity of the macropore domain. Since  $v_m$  can be decomposed into a lateral component, contributing to the stream channel along the terrain slope, and a vertical component, contributing to the saturated aquifer as recharge, and considering the anisotropy of the flow conductance in the macropore media, we found  
20 the following expressions:

$$v_{mr} = -K_{ml} \sin \gamma_o \quad (12)$$

$$v_{ms} = -K_{mv} \cos \gamma_o \quad (13)$$

where  $v_{mr}$  and  $v_{ms}$  are the velocity for the flow towards the river channel and towards the saturated domain respectively;  $K_{ml}$  and  $K_{mv}$  are the hydraulic conductivity for the

Title Page

Abstract

Introduction

Conclusions

References

Tables

Figures

◀

▶

◀

▶

Back

Close

Full Screen / Esc

Print Version

Interactive Discussion

lateral flow and the vertical flow respectively;  $\gamma_o$  is the average slope of the hillslope. Negative signs represent that water flows out of the domain in question.

The lateral flux to the river is determined by:

$$e_{mr} = \rho v_{mr} A_{mr} \quad (14)$$

5 where  $A_{mr}$  is the flow area perpendicular to the flow direction.  $A_{mr}$  can be approximated by

$$A_{mr} = w_m D_m \quad (15)$$

10 where  $w_m$  and  $D_m$  are the flow width and depth respectively. As we can conceptualise that the lateral flow is conducted through the saturated macropore media, the flow depth is thus evaluated by

$$D_m = y_m s_m \quad (16)$$

where, same as in Eq. (5),  $y_m$  and  $s_m$  are the average thickness and the saturation degree of the macropore domain. The flow width  $w_m$  is assumed to equal the length of the receiving river channel,  $l_r$ . Thus, it results in:

$$15 \quad A_{mr} = y_m s_m l_m \quad (17)$$

Substituting Eqs. (12), (17) into Eq. (14), and further assuming that the river channel is fed by hillslopes symmetrically from its two sides, it yields

$$e_{mr} = -2\rho K_{ml} y_m s_m l_r \sin \gamma_o \quad (18)$$

The flux to the saturated domain can be described by

$$20 \quad e_{ms} = \rho v_{mv} A_{ms} \quad (19)$$

Where  $A_{ms}$  is the area of the flow perpendicular to  $v_{ms}$ , which can be evaluated by

$$A_{ms} = A \omega_m s_m \quad (20)$$

## Modelling subsurface storm flow with the REW approach

G. P. Zhang et al.

Title Page

Abstract

Introduction

Conclusions

References

Tables

Figures

◀

▶

◀

▶

Back

Close

Full Screen / Esc

Print Version

Interactive Discussion

**Modelling subsurface storm flow with the REW approach**

G. P. Zhang et al.

Title Page

Abstract

Introduction

Conclusions

References

Tables

Figures

◀

▶

◀

▶

Back

Close

Full Screen / Esc

Print Version

Interactive Discussion

Where  $A\omega_m$  represents the part of the planner area of the REW occupied by the macro-pore domain. The involvement of  $s_m$  in Eq. (20) is due to the assumption that the flow is conducted through the water phase, same as for Eq. (16). Substituting Eqs. (13), (20) into Eq. (19) yields

$$e_{ms} = -\rho K_{mv} A \omega_m s_m \cos \gamma_o \tag{21}$$

As a result, a complete description for the macropore flow has been obtained in terms of the continuity equation and the closure relations:

$$\begin{cases} \frac{d(\rho \varepsilon_m s_m \gamma_m \omega_m A)}{dt} = e_{mc} + e_{mr} + e_{ms} \\ e_{mc} = \{(i - i_{dc}) - \min [(i - i_{dc}), f]\} \rho \omega_u A \\ e_{mr} = -2\rho K_{ml} \gamma_m s_m l_r \sin \gamma_o \\ e_{ms} = -\rho K_{mv} A \omega_m s_m \cos \gamma_o \end{cases} \tag{22}$$

This equation set governs macropore flow at catchment scale and has been implemented in REWASH code. From this equation set, it can be inferred that it represents an exceptional case of the conventional kinematic wave approach (e.g. Beven and Germann, 1981) for small scale preferential flow, in which storage and flow is nonlinearly related.

### 3. Numerical simulation

#### 3.1. Site description and data used

The revised REWASH was applied to the Hesperange catchment and a rainfall runoff model was constructed. The Hesperange catchment is a sub-basin of the southern Alzette River Basin that is located upstream of Luxembourg City, covering an area of 292 km<sup>2</sup> (Fig. 2). Lithology of the Hesperange catchment is mainly characterized by marls and marly-sandstones on the left bank tributaries, and limestones on the right bank tributaries of the Alzette River.

**Modelling subsurface storm flow with the REW approach**

G. P. Zhang et al.

Title Page

Abstract

Introduction

Conclusions

References

Tables

Figures

◀

▶

◀

▶

Back

Close

Full Screen / Esc

Print Version

Interactive Discussion

The runoff behaviour of marly areas is characterized by a fast response to rainfall, with a rapid streamflow increase during rainfall events, and relatively low discharges during dry weather periods. This behaviour is explained considering that the marls rock mass is of a low hydraulic conductivity, hampering deep percolation of water. The storage capacity of marls formation is therefore relatively low. Marls areas are overtopped by a shallow layer of loamy-clayey soil, which saturates quickly during rainfall events. Streamflow is sustained, for the large part, by subsurface flow, which likely occurs at the contact between the soil and the underlying bedrock layer.

The limestone areas, in contrast, can be considered as a large reservoir capable of storing and releasing large quantities of water. Limestone formations are strongly fractured and are located on top of a marls confining stratum. Except where the water table has reached the soil surface, all water that reaches the ground infiltrates into the soil. Stream flow is mostly sustained by groundwater, which occurs either as springs at the contact between the sandstone and the marls formation, or by channel incision of the water table.

The study site is instrumented by several rain gauges, stream gauges and piezometric gauges. For the present study, we used daily data of rainfall, discharge, potential evaporation (1997–2000). The rainfall series for the Hesperange catchment were calculated using the Thiessen polygons interpolation method. Daily potential evaporation values are estimated with the Hamon equation (Hamon, 1961), using daily temperature values measured at Luxembourg airport. Discharge gauging stations at Livange and Hesperange are located along the main course of the Alzette River while stations at Mierbech and Dudelingerbach reside in two of the tributaries. Piezometric levels measured at Fentange from 1997 to 2000, at Dumontschaff and Bettembourg in the year 2000, are available (Fig. 3). A digital elevation model (DEM) with 50 m×50 m resolution is used for sub-catchment delineation and spatial analysis.

### 3.2. Model simulations

The Hesperange catchment was delineated using TARDEM software (Tarboton, 1997). Using the third order Strahler threshold, 15 REWs were identified (Fig. 3) and their respective geometric information were extracted. In the whole simulation processes, each parameter was kept homogeneous over the entire catchment due to lacking information on the distribution of parameters. Parameters were initialised empirically while literature reported values have been taken into account.

The numerical simulations were carried out through model calibration and verification steps. Rainfall and potential evaporation data were used as the model driving force input while discharge data measured at the catchment outlet were used to check against the simulated hydrograph. In the calibration step, both manual and automatic calibration methods were applied. Manual calibration was conducted during which physically reasonable ranges of parameters' value were determined. Then GLOBE software with which a global search algorithm, i.e., the adaptive cluster covering with local search (ACCOL) developed by Solomatine (1995, 1999) was applied to search the optimal parameter set. Nash-Sutcliffe efficiency (Nash and Sutcliffe, 1970),  $R_{NS}^2$ , is used as the objective function for automatic calibration. Most emphasis were paid to the parameters for the macropore domain:  $K_{ml}$  (lateral hydraulic conductivity),  $K_{mv}$  (vertical hydraulic conductivity),  $\varepsilon_m$  (porosity); for the unsaturated domain:  $K_{su}$  (saturated hydraulic conductivity),  $\varepsilon_u$  (porosity); for the saturated domain,  $\varepsilon_s$  (porosity); for the river domain:  $K_{sr}$  (hydraulic conductivity of the river bed layer). Rainfall interception threshold  $i_{dc}$  is also subject to calibration. To verify the model, not only were the simulated discharge at the catchment outlet compared with the measured, but also the simulated discharges and groundwater tables at various locations for a number of sub-watersheds were assessed by comparing them with the according measurements.

## Modelling subsurface storm flow with the REW approach

G. P. Zhang et al.

Title Page

Abstract

Introduction

Conclusions

References

Tables

Figures

◀

▶

◀

▶

Back

Close

Full Screen / Esc

Print Version

Interactive Discussion



## 4. Results

### 4.1. Model calibration

The model has been calibrated on 4 years (1997–2000) of data as aforementioned. For the purpose of validation, the model has also been calibrated on the data from 1997 to 1999 and verified by the split-sample test using the data of the year 2000 (see Table 2). Since there is a large parameter space, the uncertainty bound was constrained by prescribing reasonable ranges of the physical parameters. Over 800 computation runs of calibration resulted in less than 10 parameter sets with Nash-Sutcliffe efficiency that is slightly larger than 0.72. The optimum was obtained with  $R_{NS}^2=0.73$  and a discharge volume bias  $\delta_B=4.9\%$ . The simulated discharges are presented in Fig. 4. The optimised parameter values and model performance index values are reported in Tables 1 and 2. It can be seen that the model successfully simulated the general rainfall runoff relation of the catchment. In general, peaks and recession limbs are more accurately simulated than the lower base flows. Figure 5 plots the simulated and the observed hydrographs at a logarithmic scale. It shows clearly that base flows in drier periods are under estimated. It also can be noticed that in drier periods some small peaks are overshoot, while in the period (Day 680 to Day 820) when rainfall events are consecutive, peaks are underestimated. This indicates that the model behaves more strongly responsive to the rainfall data than the real system does.

Although there are no data on subsurface flow measurements available to test against the simulated subsurface storm flow, we present the simulated results to evaluate the significance of the subsurface flow contribution to the stream flow. Figure 6 illustrates the composition of the various flux components for two of the sub-catchments, REW 8 and REW 9. We selected these two REWs because they are headwater watersheds to which there are no lateral or side channel flows disturbing the analysis of stream flow composition resulting from routing effects. To avoid a congested graphic view, only a few events and the corresponding simulations are presented. The stream flow is a result of direct rainfall on the channel flow surface ( $e_{top}$ ), subsurface storm

## Modelling subsurface storm flow with the REW approach

G. P. Zhang et al.

Title Page

Abstract

Introduction

Conclusions

References

Tables

Figures

◀

▶

◀

▶

Back

Close

Full Screen / Esc

Print Version

Interactive Discussion

flow ( $e_{mr}$ ), overland flow ( $e_{or}$ ), and base flow ( $e_{sr}$ ).  $e_{top}$  is of minor effect to the stream flow. Obviously,  $e_{or}$  determines the peaks. Subsurface flow,  $e_{mr}$ , however, makes a significant contribution to the storm runoff. It clearly shows that  $e_{mr}$  dominates the flood events when rainfall intensity becomes smaller. The slopes of the recession limbs are reduced due to the subsurface storm flow.

Figure 7 represents the simulated saturation overland flow area fraction ( $\omega_o$ ) for four headwater sub-watersheds. By analysing the results of each of the 15 REWs, we have found out that  $\omega_o$  varies between 0.19 and 0.48. However,  $\omega_o$  fluctuates within a much smaller range that is from 4% to 8%.

## 4.2. Multi-criteria model evaluation

Model validation was conducted firstly through the split-sample test described above and further evaluated using discharge data measured at interior gauging stations (the Livange, the Mierbech and the Dudelingerbach stations, see Fig. 3) in the catchment, and groundwater table variations observed at three piezometers as well.

### 4.2.1. Discharge of the interior gauging stations

Discharge observed from 1 January 1997 to 31 December 1999 at the Livange station, about 10 km upstream of the outlet of the catchment on the main river course, was compared with the simulated discharge for the REW 4 where the gauging station resides. The total Nash-Sutcliffe efficiency is slightly over 0.70, while it is around 0.60 for 1997, 0.80 for 1998 and 0.69 for 1999 respectively. From Fig. 9, we can see that peaks are generally underestimated. However, we found out that some peaks measured at this location are higher than those measured at the catchment outlet, indicating that potential errors contained in the measurement should be cautiously taken into account in the evaluation of the model.

The Mierbech gauge, located in REW 6, records the stream flow for a small tributary to the main river course. However, the catchment delineation of this study did not gen-

## Modelling subsurface storm flow with the REW approach

G. P. Zhang et al.

Title Page

Abstract

Introduction

Conclusions

References

Tables

Figures

◀

▶

◀

▶

Back

Close

Full Screen / Esc

Print Version

Interactive Discussion

erate this river branch. Therefore, we computed the hillslope discharge of REW 6 by summing the contributing fluxes,  $e_{or}$ ,  $e_{mr}$  and  $e_{sr}$ . The model was run for the complete 4 years using the calibrated parameters and then compared with the observed hydrograph (Fig. 10). One can still recognise that the watershed response is represented although  $R_{NS}^2$  is as low as 0.40. Figure 11 presents the simulated hydrograph for the river branch in REW 12 and the hydrograph observed at the Dudelingerbach station. The plot shows that the general pattern of the stream flow is recognised by the model, however, the model efficiency with respect to this REW is low.

#### 4.2.2. Groundwater table dynamics

Being a physically based model, predicting the integral catchment response is not the only objective. Therefore, the internal process representation (e.g., soil moisture content and groundwater dynamics) is desirably to be evaluated. Especially, the subsurface system of a well vegetated catchment in humid region plays a vital role in hydrological cycle and water balance regime. On that account, we used the available piezometric measurements at three locations in the study area to check the model functioning in terms of representing watershed scale patterns of the groundwater dynamics. Since the piezometric levels are point scale measurements while the simulated groundwater levels are REW (i.e. watershed) scale quantities, one can expect scale discrepancies between the two. Figure 12 presents the observed piezometric level at the Fentange and the simulated average groundwater level for REW 4, from 1 May 1997 to 31 December 1999 at daily time step. The result shows an impressively good match between the simulated and observed time series with respect to the general trend and the seasonal variation. The fluctuation of the piezometric level at the Fentange is within a range of 3.12 m while the fluctuation of the average groundwater level of REW 4 is within 1.04 m. On the other hand, we also observed that the model is more responsive to rainfall events during drier periods than the measured piezometric levels. This behaviour is also exhibited in hydrograph simulations as described earlier.

The average groundwater levels simulated for REW 5 and REW 10 in the model

## Modelling subsurface storm flow with the REW approach

G. P. Zhang et al.

Title Page

Abstract

Introduction

Conclusions

References

Tables

Figures

◀

▶

◀

▶

Back

Close

Full Screen / Esc

Print Version

Interactive Discussion

verification year 2000 were compared with the piezometric levels measured at the Bettembourg and the Dumontshaff (Figs. 13, 14), respectively. The model simulated the average groundwater level of REW 5 varying within a range of 0.67 m while the measured fluctuation at the Bettembourg is 0.74 m. The simulated dynamics accurately concurs with the observed one. The results of REW 10 also show a good agreement between the simulated and the observed series in variation pattern. The piezometer level at the Dumontshaff is within a range of 0.92 m, the simulated one is within 0.40 m.

## 5. Discussion

The characteristics of the fast runoff response to rainfall in the catchment is well represented by the model. On a daily time step, there is almost no lag between rainfall and runoff at the outlet. Rising limbs of the hydrograph are abrupt and steep, which are well simulated. It has been reported in the previous section that discharges are underestimated in the period when rainfall events follow wet antecedent conditions, whereas discharges are overestimated for events after a long dry spell. Through analysing the rainfall and discharge records, it is found that runoff response of the catchment reflects not only the magnitude of individual rainfall event but the antecedent conditions as well. There are two possibilities that can result in such model deficiency. One is that the model is possibly weak in memorising the history, i.e., deficient in soil moisture accounting; the other is that the rainfall data may contain errors since they have been computed as daily areal rainfall over the catchment. In other words, the threshold behaviour is disturbed. To further investigate this issue, using local rainfall record in a distributed manner and/or comparing with other model results, may be an advisable step towards a better understanding.

The general underestimation of base flow is partially a result of using the Nash-Sutcliffe efficiency as the objective function, which attributes more weight to high flows. On the other hand, it may also be that the interdependency of the groundwater reservoir and the river channel gives rise to underestimation of base flow. The interaction

## Modelling subsurface storm flow with the REW approach

G. P. Zhang et al.

Title Page

Abstract

Introduction

Conclusions

References

Tables

Figures

◀

▶

◀

▶

Back

Close

Full Screen / Esc

Print Version

Interactive Discussion

**Modelling subsurface storm flow with the REW approach**

G. P. Zhang et al.

Title Page

Abstract

Introduction

Conclusions

References

Tables

Figures

◀

▶

◀

▶

Back

Close

Full Screen / Esc

Print Version

Interactive Discussion

between the saturated domain and the river domain is governed by Darcian flow, which is linear:  $e_{sr} \propto K_{sr} \cdot \Delta h$ , where  $\Delta h$  is the head difference between the saturated domain and the river domain. During dry periods, the head difference is positive and drives water flow towards the river as base flow whereas during large storm events, it can become negative so that water flows towards the saturated zone as bank infiltration. In the calibration mode, the baseflow parameter  $K_{sr}$  may be adjusted to optimise the high flow performance of the model and in so doing it may reduce the base flow performance. One possible way of improving low flow simulation would be to decouple this two-way interaction or to define different  $K_{sr}$  values for low flow and high flow respectively. The latter is potentially promising because the hydraulics of bank infiltration is essentially different from groundwater exfiltration. Additionally we could follow a stepped calibration approach where the  $K_{sr}$  during low flows is determined by the Nash-Sutcliffe objective function using the logarithm of discharge ( $Q$ ) after which it is fixed during subsequent high flow calibration.

Modelling results indicate that subsurface storm flow contributes considerably to runoff generation of the catchment, however, no data is as yet available to verify the modelling details in this particular aspect. Field experiments with appropriate tracer technology may help to investigate the runoff composition, thus assisting in scrutinising the model. The model deals with subsurface storm flow assuming that the topography is a control of the flow rate. The average slope of the catchment is applied to represent the topography effect. This application implies that subsurface topography is parallel to surface topography. As Freer et al. (2002) demonstrated that local bedrock topography can play a significant role in subsurface storm flow formation, a task to further test the assumption remains. Heterogeneity of the macropore system under REW scale is ignored, while it can be taken into account at above REW scale. Tackling the slope heterogeneity at sub-REW scale is difficult and one could argue that it is against the original REW concept. Nevertheless, the model provides a general framework for further study. In this research, storm flow in the macropore domain is described as a flux exchange without taking routing effect into account. Given the fast response charac-

teristics of the study catchment, this simplification is justifiable. When transferring this model to elsewhere, relaxation to such simplification may be needed. The introduction of the macropore domain increases the complexity of the model, giving rise to a higher equifinality problem. Therefore, uncertainty and parameter identifiability analysis would be an important task for the follow-up research.

Correct mapping of the saturation-excess overland flow area is crucial for a process-based model applied to saturation-prone regions. This part of a catchment is the basis for translating rain falling on it into runoff sustaining the rapid rise of storm peaks. It appears that the model requires a quite high percentage (19%–48% for various REWs respectively) of the catchment area to be saturated all year round. Compared to what field studies reported, this ratio seems high. For instance, field observations in other regions, as presented by Freeze (1974), Tanaka et al. (1988), Güntner et al. (1999), and Srinivasan et al. (2002), among others, show that the extent of the saturated fraction of the catchments is usually less than 10% during storm events. In our modelling results, however, we observed that the range of the effective area fraction for producing hydrograph peaks of each REW, varies between 4% and 8% (see Fig. 7), which is well in agreement with the research quoted above. We interpret the persistently high ratio of the saturated area as an integral representation of the really saturated and near saturated area, indicating that this part of the area is readily available for initialising surface runoff. The relatively high value of the saturated area fraction is most probably a consequence of the implicit topographic simplification of the REW approach.

It appears, from model evaluation using the stream flow data measured at internal gauging stations, that the model is less efficient for REWs with a bigger size and steep slope (e.g., REW 12). However, one should realise that the difference between the simulated and the observed discharge may also be due to the fact that the station is located upstream the REW outlet. Nevertheless, we see that the model, even with its lumped structure, is well capable of catching the hydrological signature of the catchment. To gain more insight into this issue, we propose an alternative modelling strategy whereby the model is first calibrated on the internal gauging data with respect to the

## Modelling subsurface storm flow with the REW approach

G. P. Zhang et al.

[Title Page](#)

[Abstract](#)

[Introduction](#)

[Conclusions](#)

[References](#)

[Tables](#)

[Figures](#)

[⏪](#)

[⏩](#)

[◀](#)

[▶](#)

[Back](#)

[Close](#)

[Full Screen / Esc](#)

[Print Version](#)

[Interactive Discussion](#)

corresponding REWs, and subsequently extended to the whole catchment for verification.

It is realised that a process-based model can only be successful if it represents the real world processes. In the REW approach, system states are always average values.

Therefore, the states that are closely linked to geometric quantities (e.g. groundwater level to elevation) may not be accurately modelled by the REW approach in absolute terms. However, it is expected that the dynamic pattern of the states can be modelled accurately. It is also expected that for REWs with small variations in elevation (and other properties), better simulations can be obtained, compared to those REWs that have a higher degree of heterogeneity. This is substantiated by simulations of the groundwater level. The pattern of groundwater table dynamics, indicated by piezometer levels, was well represented by the simulated groundwater levels of the REWs (Figs. 11 to 13). It is observed that the groundwater table dynamics was best simulated for the low lying watershed, REW 5, which has a smaller surface gradient. The connection between slope and the capacity to correctly simulate groundwater dynamics is an interesting topic for future study. Such knowledge would help to better understand the model behaviour and provide more plausible interpretation of results. It also has a potential that such knowledge can be transferred to ungauged basins.

We have observed that the simulated groundwater table sometimes reacts differently to rainfall than the observed. In general, the model has a linear behaviour whereas the observations are more under the influence of thresholds. This should be explained by one or more of the fluxes entering the groundwater reservoir. These fluxes are infiltration, percolation and macropore recharge. The latter is described by a linear relationship. The infiltration flux is expressed in a nonlinear format (Eq. 9), but it is found that the unsaturated depth ( $y_u$ ) is mostly dominant, leading to an approximately linear flux. The percolation flux is also nonlinear, however, through our modelling exercises, we found out that this flux has a rather limited effect on the groundwater dynamics. As a result, infiltration and macropore recharge have the largest impact on groundwater table variations. Consequently, we may have to reconsider the linearity of macropore

## Modelling subsurface storm flow with the REW approach

G. P. Zhang et al.

Title Page

Abstract

Introduction

Conclusions

References

Tables

Figures

◀

▶

◀

▶

Back

Close

Full Screen / Esc

Print Version

Interactive Discussion

recharge. This confirms the importance of finding appropriate closure relations for the REW approach, which has been stressed in most of the recent publications concerning the REW approach (Reggiani and Schellekens, 2003; Lee et al., 2005; Zhang and Savenije, 2005).

## 6. Conclusions

In this research, the Representative Elementary Watershed (REW) approach has been further developed by the inclusion of a new process domain, the macropore flow domain, in which subsurface storm flow is addressed. As a result, the mass balance equations of the REW approach have been revised and a set of closure relations for the newly introduced fluxes associated with the macropore flow process have been developed. The flow processes related to macropore domain are infiltration, lateral quick flow and preferential recharge. The infiltration flux is split into two parts of which one flows into the soil matrix and the other into the macropore domain. The partitioning is determined by the infiltration capacity. The closure relations proposed for the lateral flux and the preferential recharge flux suggest that macropore flow depends on soil properties and is topographically controlled.

Hence, the model code REWASH has been revised and applied to the Hesperange catchment of the Alzette River Basin. This catchment is characterised by quick response to precipitation, and subsurface flow is one of the dominant runoff generation processes. Model simulations have been carried out using 4 years of rainfall and potential evaporation data. The model has been evaluated using a multi-criteria method with discharge data measured at the catchment outlet, at various interior gauging stations, and piezometric measurements distributed over the catchment. The results show that subsurface storm flow is a significant contribution to stream flow in the head sub-catchments; the active saturation overland flow area fraction simulated for each sub-catchment falls well in the range of saturated area by field mapping reported in the literature; the groundwater table dynamics are well represented by the model. This

## Modelling subsurface storm flow with the REW approach

G. P. Zhang et al.

Title Page

Abstract

Introduction

Conclusions

References

Tables

Figures

◀

▶

◀

▶

Back

Close

Full Screen / Esc

Print Version

Interactive Discussion



research suggests that the model is able to predict stream flow and groundwater dynamics and is a useful tool for catchment scale hydrological analysis.

*Acknowledgements.* This research has been funded by the Delft Cluster project Oppervlakte-water hydrologie: 06.03.04. The authors thank D. P. Solomatine of UNESCO-IHE for providing the GLOBE optimisation software for automatic calibration. We acknowledge P. Reggiani for kindly providing the original computer code, the basis of which the numerical model *REWASH* has been developed.

## References

- Beckers, J. and Alila, Y.: A model of rapid preferential hillslope runoff contributions to peak flow generation in a temperate rain forest watershed, *Water Resour. Res.*, 40, W03501, doi:10.1029/2003WR002582, 2004.
- Beven, K. J. and Germann, P. F.: Water flow in soil macropores II: a combined flow model, *J. Soil Sci.*, 32, 15–29, 1981.
- Beven, K. J. and Germann, P. F.: Macropores and water flow in soils, *Water Resour. Res.*, 18, 1311–1325, 1982.
- Brooks, R. H. and Corey, A. T.: Hydraulic properties of porous media, *Hydrol. Pap. No. 3*, Colorado State Univ., Fort Collins, 1964.
- Christiansen, J. S., Thorsen, M., Clausen, T., Hansen, S., and Refsgaard, J. C.: Modelling of macropore flow and transport processes at catchment scale, *J. Hydrol.*, 299, 136–158, 2004.
- Downer, C. W. and Ogden, F. L.: Prediction of runoff and soil moistures at the watershed scale: Effects of model complexity and parameter assignment, *Water Resour. Res.*, 39(3), 1045, doi:10.1029/2002WR001439, 2003.
- Freer, J., McDonnell, J. J., Beven, K. J., Peters, N. E., Burns, D. A., Hooper, R. P., Aulenbach, B., and Kendall, C.: The role of bedrock topography on subsurface storm flow, *Water Resour. Res.*, 38, 1269, doi:10.1029/2001WR000872, 2002.
- Freeze, A. R.: Streamflow generation, *Rev. Geophys. Space Phys.*, 12, 627–647, 1974.
- Güntner, A., Uhlenbrook, S., Seibert, J., and Leibundgut, Ch.: Multi-criterial validation of TOP-MODEL in a mountainous catchment, *Hydrol. Process.*, 13, 1603–1620, 1999.

## Modelling subsurface storm flow with the REW approach

G. P. Zhang et al.

Title Page

Abstract

Introduction

Conclusions

References

Tables

Figures

◀

▶

◀

▶

Back

Close

Full Screen / Esc

Print Version

Interactive Discussion

- Hamon, W. R.: Estimating potential evapotranspiration, *J. Hydraulics Div. Proc. Am Soc. Civil Eng.*, 87, 107–120, 1961.
- Hewlett, J. D. and Hibbert, A. R.: Factors affecting the response of small watersheds to precipitation in humid areas, in: *Proceedings of 1st International Symposium on Forest Hydrology*, edited by: Sopper, W. E. and Lull, H. W., Pergamon, pp. 275–290, 1967.
- Jarvis, N.: The MACRO Model (Version 4.3): Technical Description, <http://www.mv.slu.se/bgf/macrohtm/macro.htm>, last updated 23 September, 2004.
- Lee, H., Sivapalan, M., and Zehe, E.: Representative Elementary Watershed (REW) approach, a new blueprint for distributed hydrologic modelling at the catchment scale: development of closure relations, in: *Predicting ungauged streamflow in the Mackenzie river basin: today's techniques & tomorrow's solutions*, edited by: Spence, C., Pomeroy, J. W., and Pietroniro, A., Canadian Water Resources Association (CWRA), Ottawa, Canada, pp. 165–218, 2005.
- Lee, H., Zehe, E., and Sivapalan, M.: Predictions of rainfall-runoff response and soil moisture dynamics in a microscale catchment using the CREW model, *Hydrol. Earth Syst. Sci. Discuss.*, in press, 2006.
- Ludwig, R., Gerke, H. H., and Wendroth, O.: Describing water flow in macroporous field soils using the modified macro model, *J. Hydrol.*, 215, 135–152, 1999.
- Nash, J. E. and Sutcliffe, J. V.: River flow forecasting through conceptual models, Part I: a discussion of principles, *J. Hydrol.*, 10, 282–290, 1970.
- McDonnell, J. J.: The rationale for old water discharge through macropores in a steep, humid catchment, *Water Resour. Res.*, 26, 2821–2832, 1990.
- McDonnell, J. J.: Where does water go when it rains? Moving beyond the variable source area concept of rainfall-runoff response, *Hydrol. Process.*, 17, 1869–1875, 2003.
- Mosely, M. P. and Mckerchar, A. I.: Streamflow, in: *Handbook of Hydrology*, edited by: Maidment, D. R., McGraw-Hill, NY, USA, pp. 8.1–8.39, 1993.
- Refsgaard, J. C. and Storm, B.: MIKE SHE, In: *Computer models of watershed hydrology*, edited by: Singh, V. P., Water Resources Publications, USA, pp. 809–846, 1995.
- Reggiani, P. and Schellekens, J.: Modelling of hydrological responses: the representative elementary watershed approach as an alternative blueprint for watershed modelling, *Hydrol. Process.*, 17, 3785–3789, 2003.
- Reggiani, P. and Rientjes, T. H. M.: Flux parameterization in the Representative Elementary Watershed (REW) Approach: application to a natural basin, *Water Resour. Res.*, 41, W04013, doi:10.1029/2004WR003693, 2005.

## Modelling subsurface storm flow with the REW approach

G. P. Zhang et al.

Title Page

Abstract

Introduction

Conclusions

References

Tables

Figures

◀

▶

◀

▶

Back

Close

Full Screen / Esc

Print Version

Interactive Discussion

## Modelling subsurface storm flow with the REW approach

G. P. Zhang et al.

[Title Page](#)

[Abstract](#)

[Introduction](#)

[Conclusions](#)

[References](#)

[Tables](#)

[Figures](#)

[◀](#)

[▶](#)

[◀](#)

[▶](#)

[Back](#)

[Close](#)

[Full Screen / Esc](#)

[Print Version](#)

[Interactive Discussion](#)

Reggiani, P., Sivapalan, M., and Hassanizadeh, S. M.: A unifying framework of watershed thermodynamics: balance equations for mass, momentum, energy and entropy and the second law of thermodynamics, *Adv. Water Res.*, 22, 367–368, 1998.

5 Reggiani, P., Sivapalan, M., and Hassanizadeh, S. M.: Conservation equations governing hillslope responses: Physical basis of water balance, *Water Resour. Res.*, 38, 1845–1863, 2000.

Reggiani, P., Hassanizadeh, S. M., Sivapalan, M., and Gray, W. G.: A unifying framework of watershed thermodynamics: Constitutive relationships, *Adv. Water Res.*, 23, 15–39, 1999.

10 Reggiani, P., Sivapalan, M., Hassanizadeh, S. M., and Gray, W. G.: Coupled equations for mass and momentum balance in a stream network: theoretical derivation and computational experiments, *Proc. R. Soc. Lond. A*(2001), 457, 157–189, 2001.

Scanlon, T. M., Ruffensperger, J. P., Hornbergern, G. M., and Clapp, R. B.: Shallow subsurface storm flow in a forested headwater catchment: Observations and modeling using a modified TOPMODEL, *Water Resour. Res.*, 36(9), 2575–2586, doi:10.1029/2000WR900125, 2000.

15 Sidle, R. C., Tsuboyama, Y., Noguchi, S., Hosoda, I., Fujieda, M., and Shimizu, T.: Stormflow generation in steep forested headwaters: a linked hydrogeomorphic paradigm, *Hydrol. Process.*, 14, 369–385, 2000.

Sidle, R. C., Noguchi, S., Tsuboyama, Y., and Laursen, K.: A conceptual model of preferential flow systems in forested hillslopes: evidence of self-organization, *Hydrol. Process.*, 15, 1675–1692, 2001.

20 Srinivasan, M. S., Gburek, W. J., and Hamlett, J. M.: Dynamics of stormflow generation – A hillslope-scale field study in east-central Pennsylvania, USA, *Hydrol. Process.*, 16, 649–665, 2002.

Sivapalan, M.: Process complexity at hillslope scale, process simplicity at the watershed scale: is there a connection?, *Hydrol. Process.*, 17, 1037–1041, 2003.

25 Sklash, M. G. and Farvolden, R. N.: The role of groundwater in storm runoff, *J. Hydrol.*, 43, 45–65, 1979.

Solomatine, D. P.: Genetic and other global optimization algorithms – comparison and use in calibration problems, in: *Proceedings of the 3rd International Conference on Hydroinformatics*, Copenhagen, Denmark, Balkema Publishers, pp. 1021–1028, 1998.

30 Solomatine, D. P.: The use of global random search methods for models calibration, in: *Proceedings of XXVIth Congress of the International Association for Hydraulic Research (IAHR)*, vol. 1, London, pp. 224–229, 1995.

- Tanaka, T., Yasuhara, M., Sakai, H., and Marui, A.: The Hachioji experimental basin study-storm runoff processes and the mechanism of its generation, *J. Hydrol.*, 102, 139–164, 1988.
- Tarboton, D. G.: A new method for the determination of flow directions and contributing areas in grid digital elevation models, *Water Resour. Res.*, 33, 309–319, 1997.
- 5 Uchida, T., Kosugi, K., and Mizuyama, T.: Effects of pipe flow and bedrock groundwater on runoff generation in a steep headwater catchment in Ashiu, central Japan, *Water Resour. Res.*, 38(7), doi:10.1029/2001WR000261, 2002.
- Uhlenbrook, S., Frey, M., Leibundgut, C., and Maloszewski, P.: Hydrograph separations in a mesoscale mountainous basin at event and seasonal timescales, *Water Resour. Res.*, 38(6),  
10 doi:10.1029/2001WR000938, 2002.
- Whipkey, R. Z.: Subsurface stormflow from forested slopes, *Bull. Int. Assoc. Sci. Hydrol.*, 10, 74–85, 1965.
- Wigmosta, M. S. and Burges, S. J.: An adaptive modeling and monitoring approach to describe the hydrologic behaviour of small catchments, *J. Hydrol.*, 202, 48–77, 1997.
- 15 Williams, A. G., Dowd, J. F., and Meyles, E. W.: A new interpretation of kinematic stormflow generation, *Hydrol. Process.*, 16, 2791–2803, 2002.
- Zehe, E., Maurer, T., Ihringer, J., and Plate, E.: Modeling water flow and Mass Transport in a Loess Catchment, *Phys. Chem. Earth (B)*, 26, 487–507, 2001.
- Zhang, G. P., Fenicia, F., Rientjes, T. H. M., Reggiani, P., and Savenije, H. H. G.: Modeling runoff generation in the Geer River Basin with improved model parameterizations to the REW approach, *Phys. Chem. Earth*, 30, 285–296, 2005.
- 20 Zhang, G. P. and Savenije, H. H. G.: Rainfall-runoff modelling in a catchment with a complex groundwater flow system: application of the Representative Elementary Watershed (REW) approach, *Hydrol. Earth Syst. Sci.*, 9, 243–261, 2005,  
25 [SRef-ID: 1607-7938/hess/2005-9-243](https://doi.org/10.1029/2005-9-243).

---

**Modelling subsurface storm flow with the REW approach**G. P. Zhang et al.

---

Title Page

Abstract

Introduction

Conclusions

References

Tables

Figures

◀

▶

◀

▶

Back

Close

Full Screen / Esc

Print Version

[Interactive Discussion](#)

## Modelling subsurface storm flow with the REW approach

G. P. Zhang et al.

**Table 1.** Optimised parameter values after model calibration.

Parameter	$K_{ml}$ [m/d]	$K_{mv}$ [m/d]	$K_{su}$ [m/d]	$K_{sr}$ [m/d]	$\varepsilon_m$ [-]	$\varepsilon'_u$ [-]	$\varepsilon'_s$ [-]	$i_{dc}$ [mm/d]	$n$ [s/m <sup>1/3</sup> ]	$\alpha_{sf}$ [-]
Value	35.45	8.64e-5	1.05e-4	15.24	0.58	0.13	0.035	2.56	0.08	0.55

Title Page

Abstract

Introduction

Conclusions

References

Tables

Figures

◀

▶

◀

▶

Back

Close

Full Screen / Esc

Print Version

Interactive Discussion

EGU

## Modelling subsurface storm flow with the REW approach

G. P. Zhang et al.

**Table 2.** Model performance for different simulation periods.

	$R_{NS}^2$	$\delta_B$
Calibration (1997–2000)	0.73	3.7%
Calibration (1997–1999)	0.73*	4.9%
Validation (2000)	0.73	0.5%

\*  $R_{NS}^2$  of individual year are 0.65, 0.80 and 0.72 for 1997, 1998 and 1999, respectively.

Title Page

Abstract

Introduction

Conclusions

References

Tables

Figures

◀

▶

◀

▶

Back

Close

Full Screen / Esc

Print Version

Interactive Discussion

EGU

Modelling subsurface storm flow with the REWASH approach

G. P. Zhang et al.

Title Page

Abstract

Introduction

Conclusions

References

Tables

Figures

◀

▶

◀

▶

Back

Close

Full Screen / Esc

Print Version

Interactive Discussion

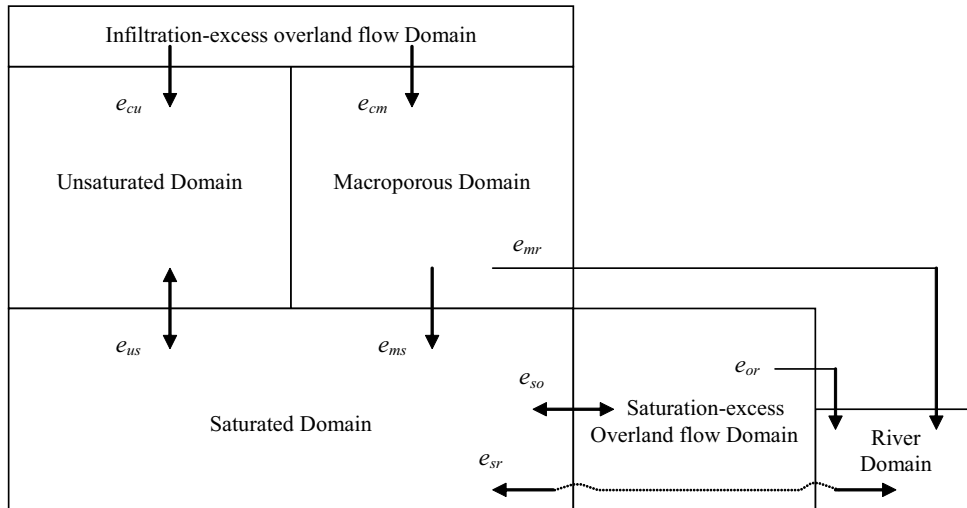


Fig. 1. Conceptual scheme of flow processes and relevant fluxes described in the revised REWASH.

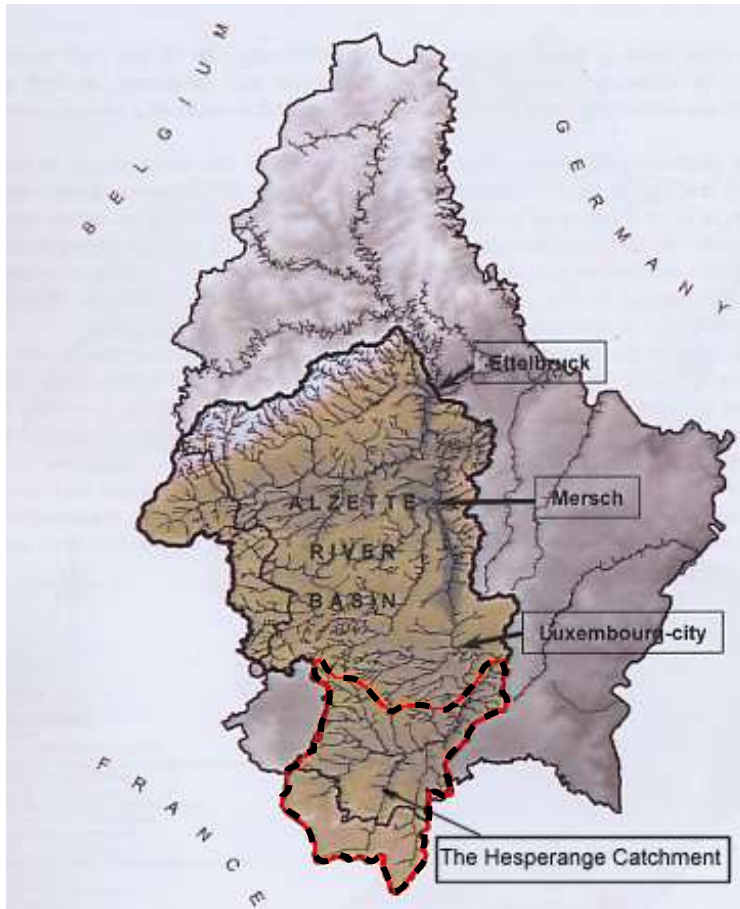


Fig. 2. Location of the Hesperange catchment.

## Modelling subsurface storm flow with the REW approach

G. P. Zhang et al.

Title Page

Abstract

Introduction

Conclusions

References

Tables

Figures

◀

▶

◀

▶

Back

Close

Full Screen / Esc

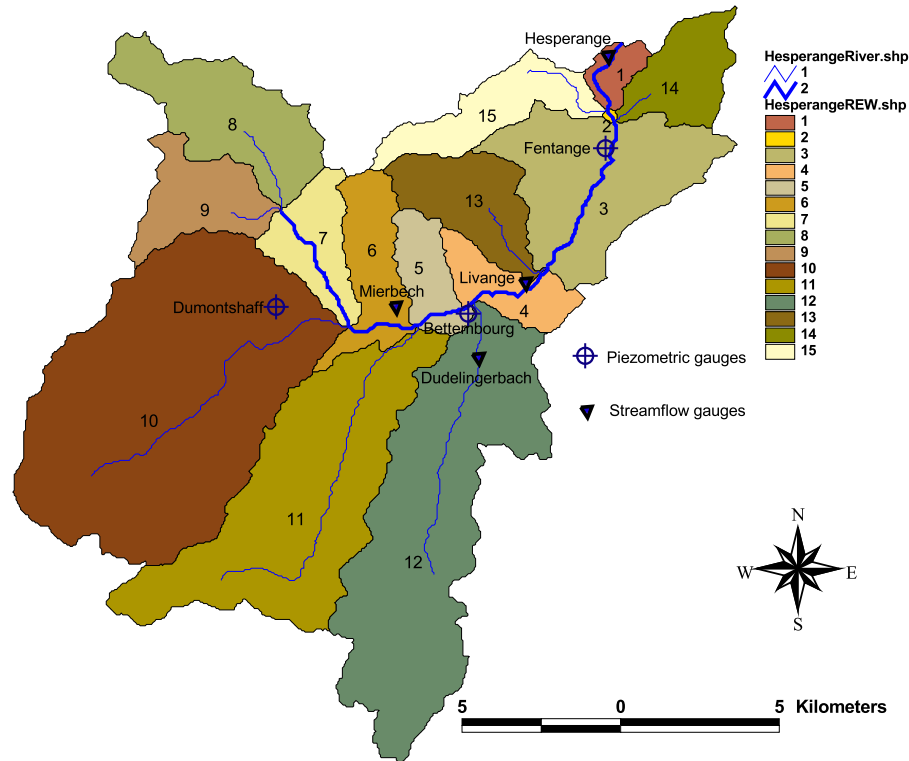
Print Version

Interactive Discussion



## Modelling subsurface storm flow with the REW approach

G. P. Zhang et al.



**Fig. 3.** Delineation of the REWs for the Hesperange catchment and distribution of the gauging stations.

Title Page

Abstract

Introduction

Conclusions

References

Tables

Figures

◀

▶

◀

▶

Back

Close

Full Screen / Esc

Print Version

Interactive Discussion

EGU

## Modelling subsurface storm flow with the REW approach

G. P. Zhang et al.

Title Page

Abstract

Introduction

Conclusions

References

Tables

Figures

◀

▶

◀

▶

Back

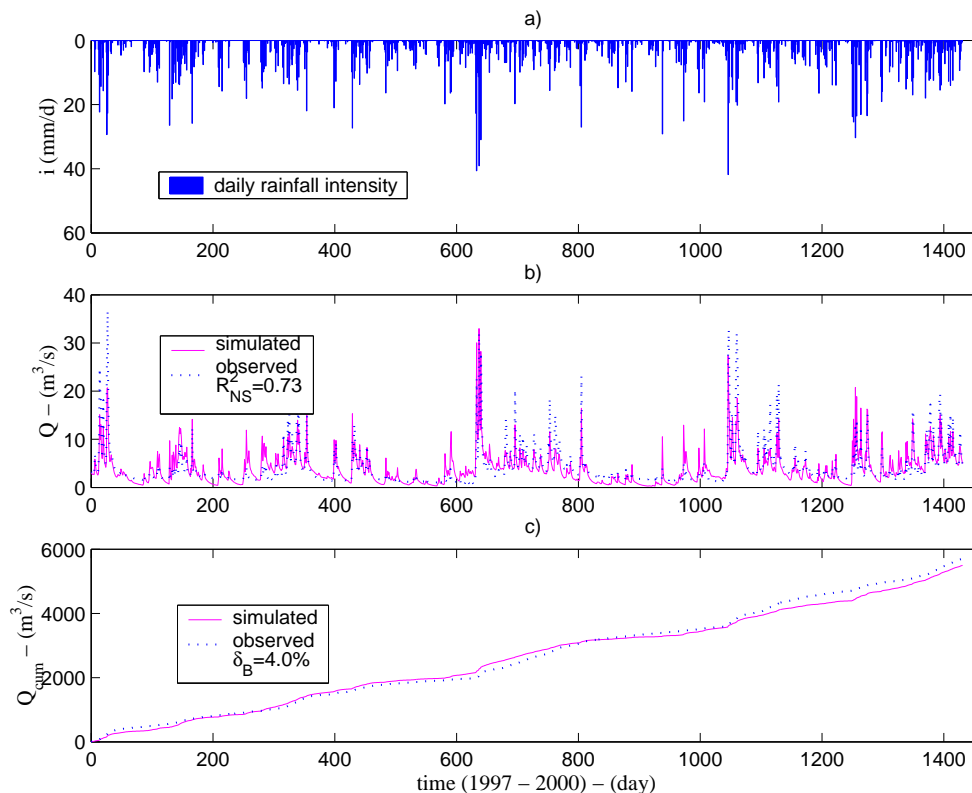
Close

Full Screen / Esc

Print Version

Interactive Discussion

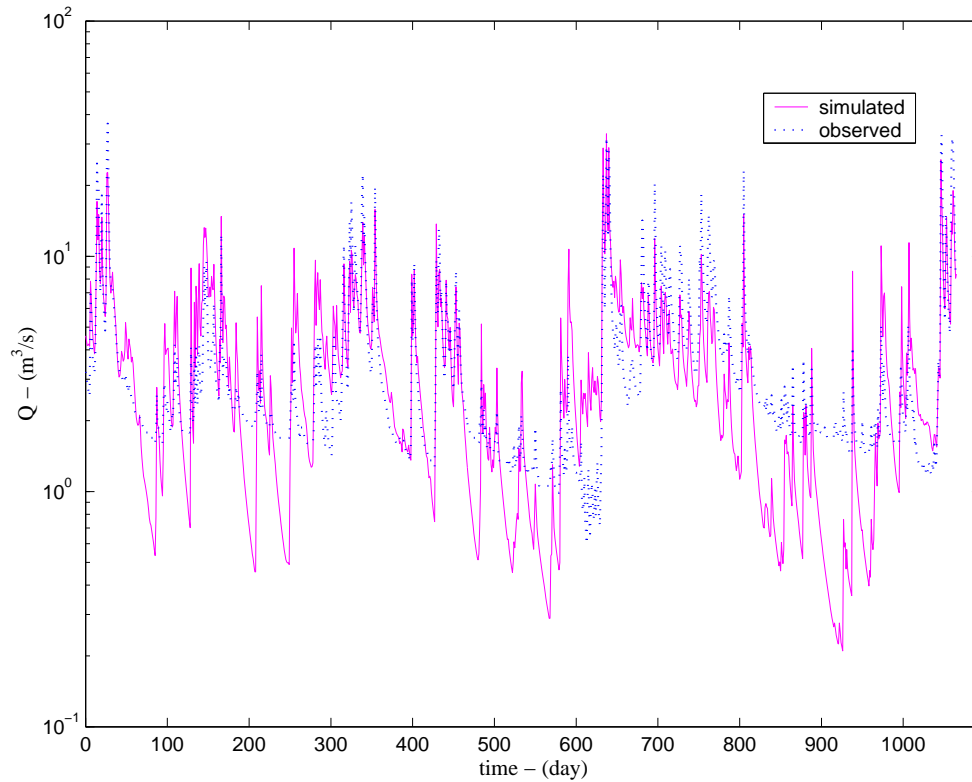
EGU



**Fig. 4.** (a) Rainfall intensity of the Hesperange catchment; (b) Comparison of the observed and the simulated hydrographs at the outlet of the Hesperange catchment (01/01/1997–31/12/2000); (c) Comparison of the observed and the simulated cumulative discharges at the outlet of the Hesperange catchment.

Modelling subsurface storm flow with the REW approach

G. P. Zhang et al.



**Fig. 5.** The observed and the simulated discharge at the outlet of the Hesperange catchment for the calibration period (01/01/1997–31/12/2000) plotted on logarithm scale.

Title Page

Abstract

Introduction

Conclusions

References

Tables

Figures

◀

▶

◀

▶

Back

Close

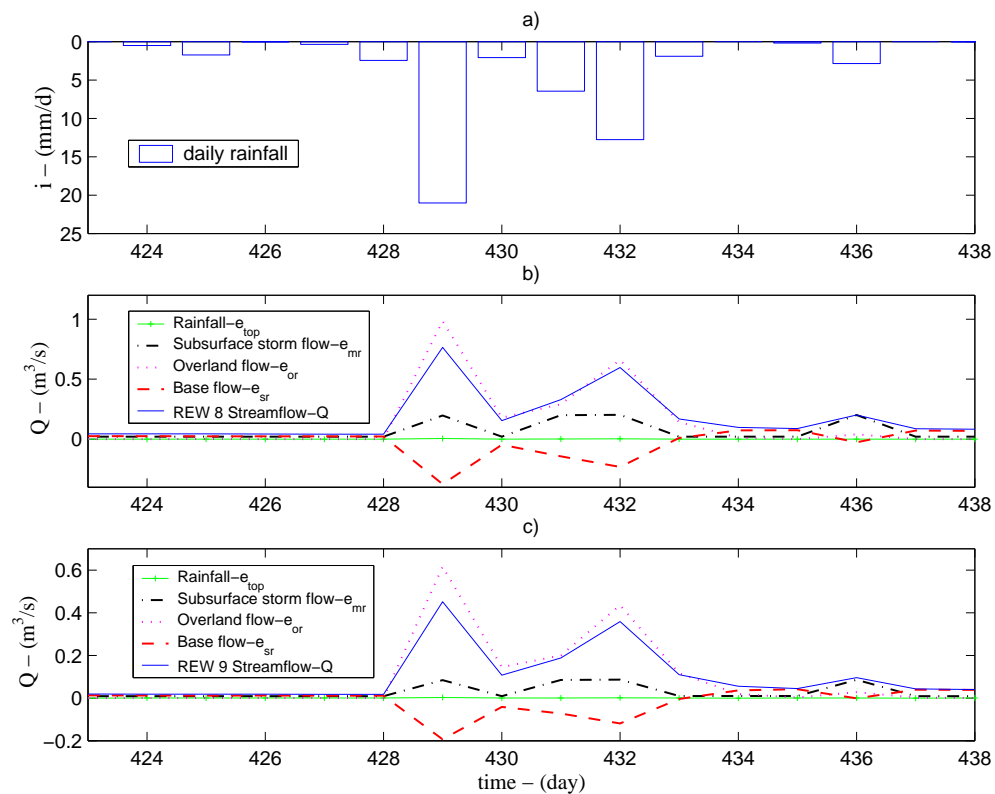
Full Screen / Esc

Print Version

Interactive Discussion

## Modelling subsurface storm flow with the REW approach

G. P. Zhang et al.



**Fig. 6.** (a) Rainfall events (01/03/1997–15/03/1997); (b) Flux components contributing to stream flow in the river channel of the REW 8; (c) Flux components contributing to stream flow in the river channel of the REW 9.

Title Page

Abstract

Introduction

Conclusions

References

Tables

Figures

◀

▶

◀

▶

Back

Close

Full Screen / Esc

Print Version

Interactive Discussion

EGU

Modelling subsurface storm flow with the REW approach

G. P. Zhang et al.

Title Page

Abstract

Introduction

Conclusions

References

Tables

Figures

◀

▶

◀

▶

Back

Close

Full Screen / Esc

Print Version

Interactive Discussion

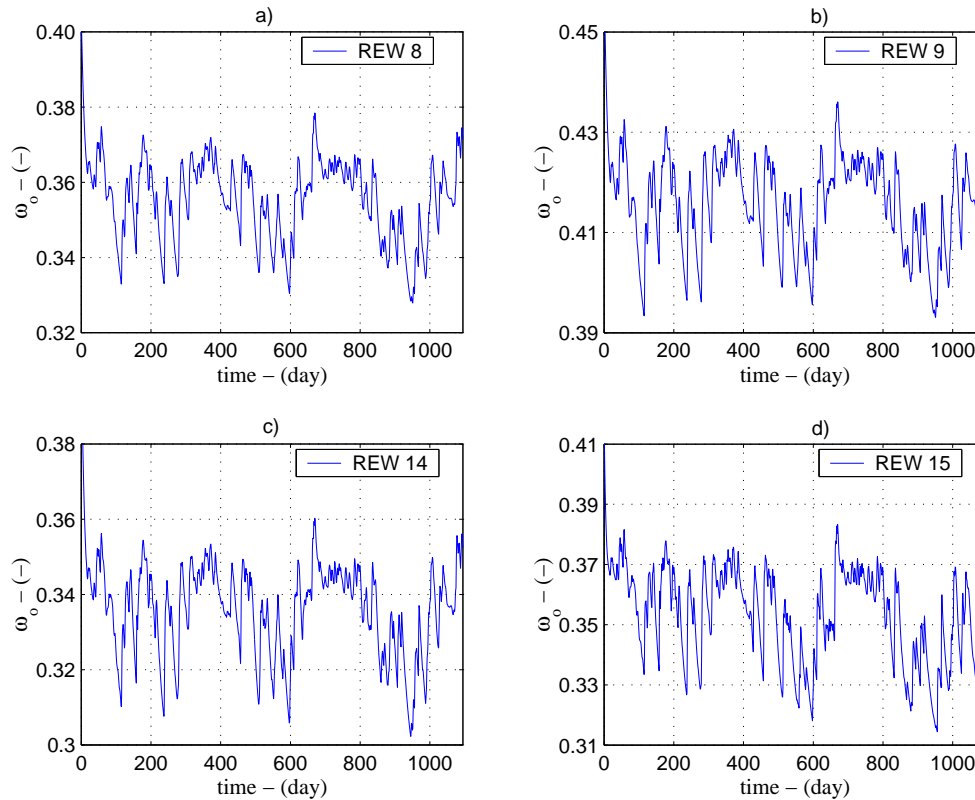
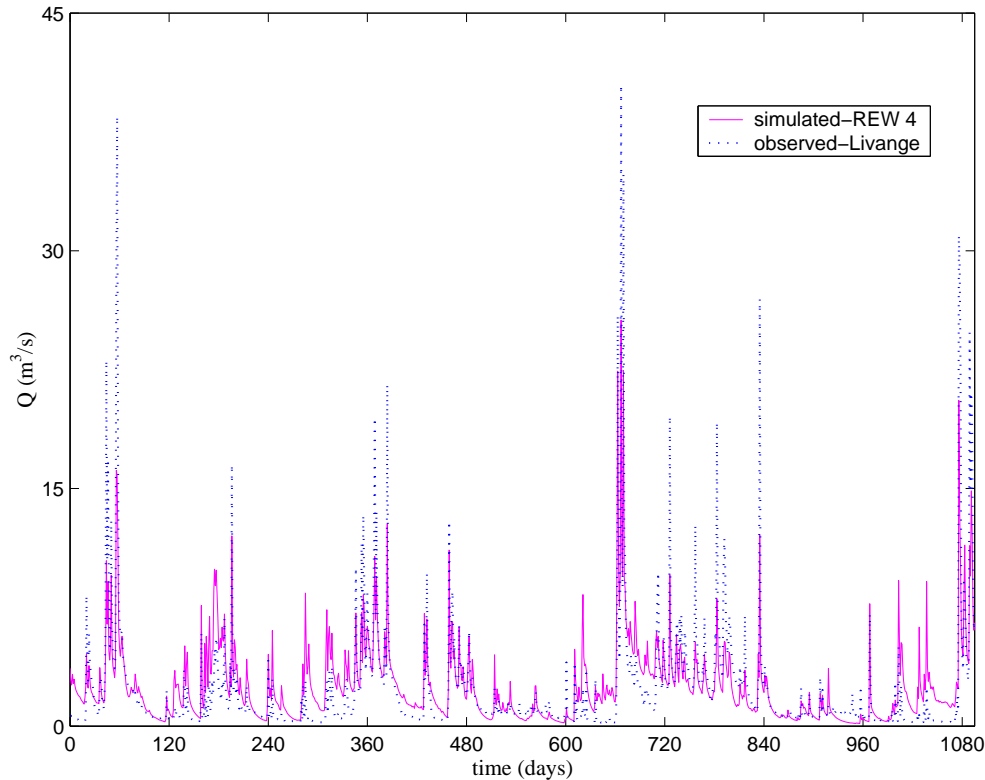


Fig. 7. Simulated variable source area fraction for (a) REW 8, (b) REW9, (c) REW 14 and (d) REW 15.

## Modelling subsurface storm flow with the REW approach

G. P. Zhang et al.



**Fig. 8.** Comparison of the observed and the simulated stream flow at the Livange gauging station for the period of 01/01/1997–31/12/1999. The station is located in the sub-catchment REW 4.

Title Page

Abstract

Introduction

Conclusions

References

Tables

Figures

◀

▶

◀

▶

Back

Close

Full Screen / Esc

Print Version

Interactive Discussion

EGU

**Modelling subsurface storm flow with the REW approach**

G. P. Zhang et al.

Title Page

Abstract

Introduction

Conclusions

References

Tables

Figures

◀

▶

◀

▶

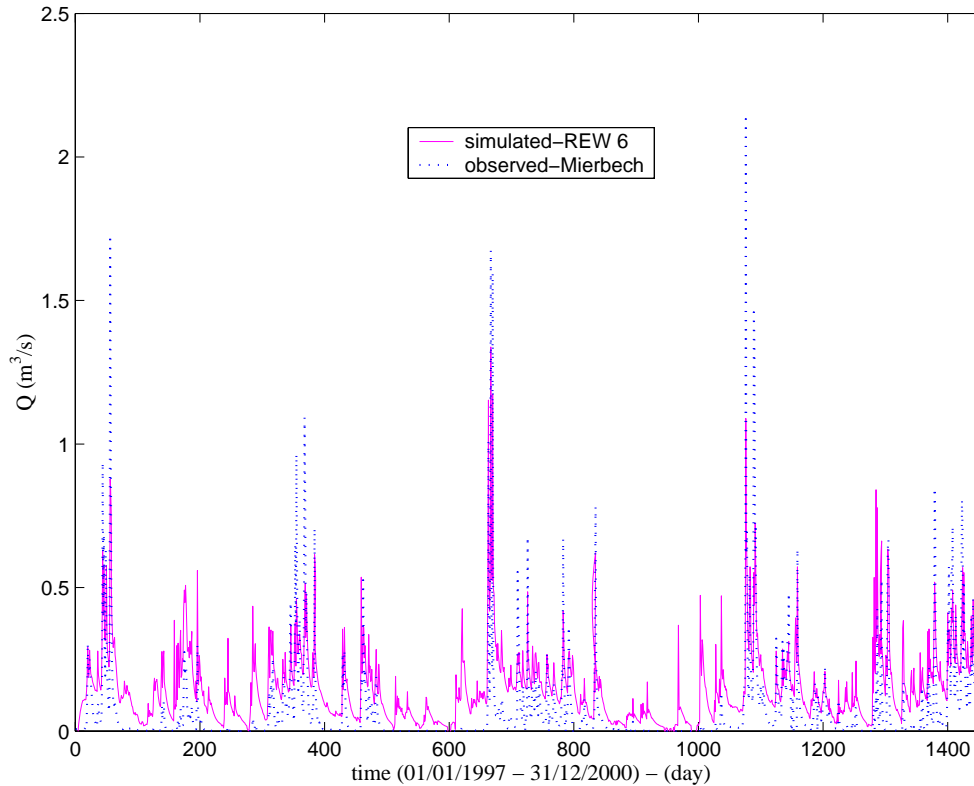
Back

Close

Full Screen / Esc

Print Version

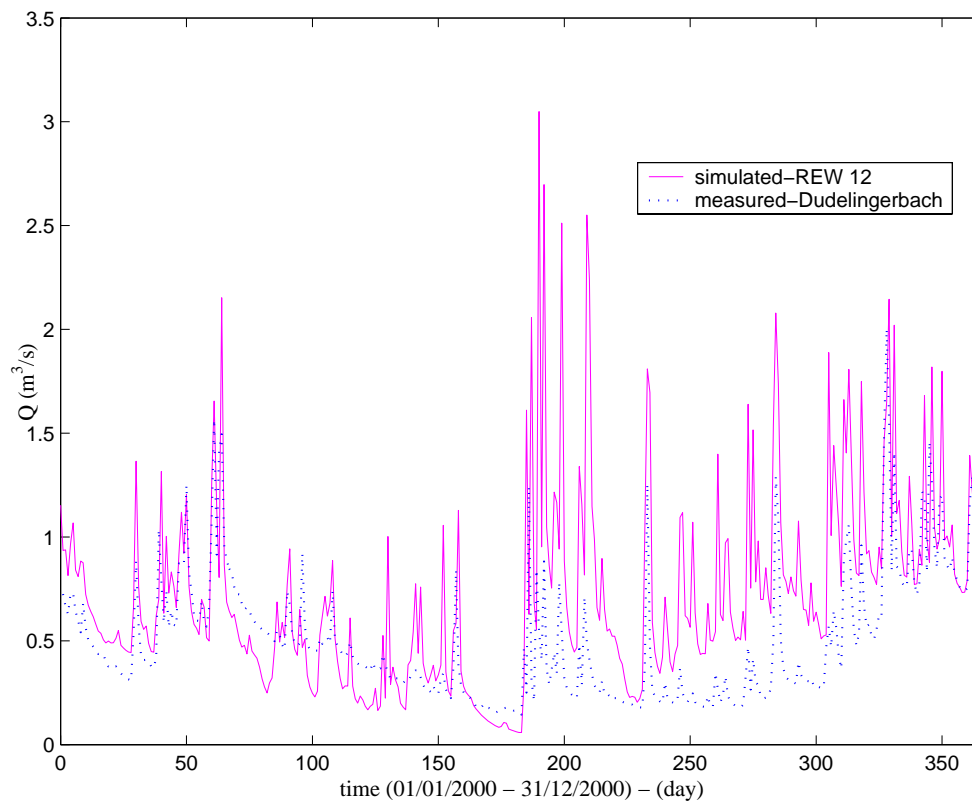
Interactive Discussion



**Fig. 9.** Comparison of the observed and the simulated stream flow at the Mierbech gauging station (01/01/1997–31/12/2000). The station is located in the sub-catchment REW 6.

## Modelling subsurface storm flow with the REW approach

G. P. Zhang et al.



**Fig. 10.** Comparison of the observed and the simulated stream flow at the Dudelingerbach gauging station (01/01/2000–31/12/2000). The station is located in the sub-catchment REW 12.

Title Page

Abstract

Introduction

Conclusions

References

Tables

Figures

◀

▶

◀

▶

Back

Close

Full Screen / Esc

Print Version

Interactive Discussion



Modelling subsurface storm flow with the REW approach

G. P. Zhang et al.

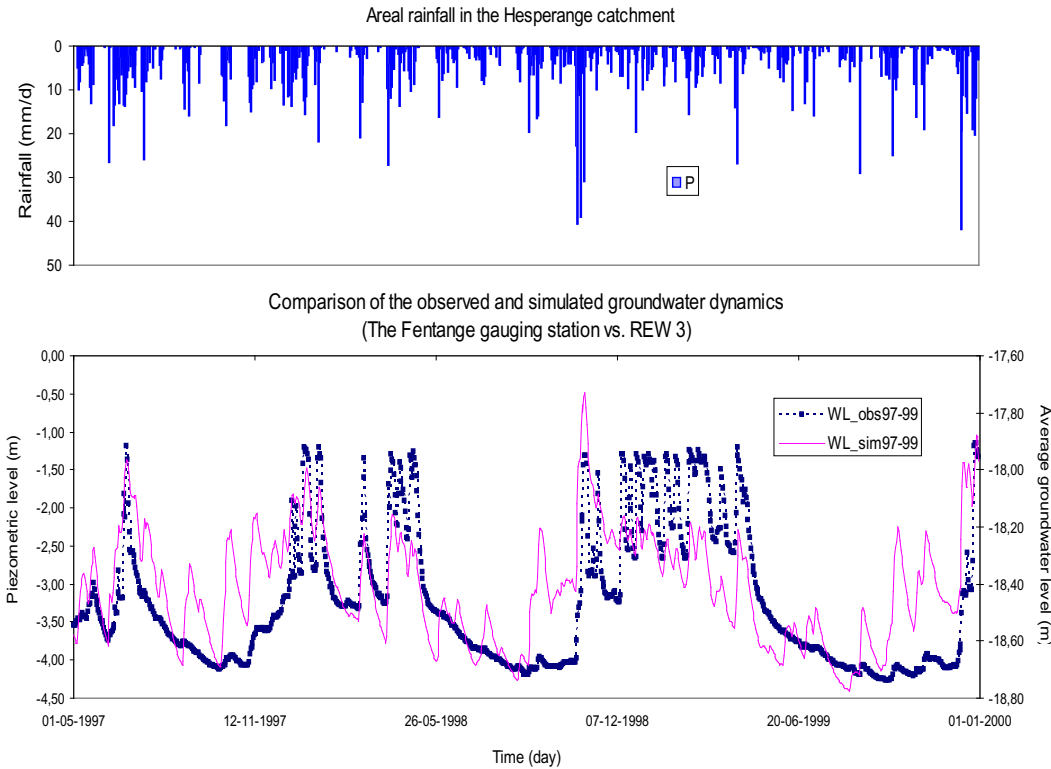


Fig. 11. Comparison of the observed and the simulated groundwater dynamics of the sub-catchment REW 3 (01/05/1997–31/12/1999).

Title Page

Abstract

Introduction

Conclusions

References

Tables

Figures

◀

▶

◀

▶

Back

Close

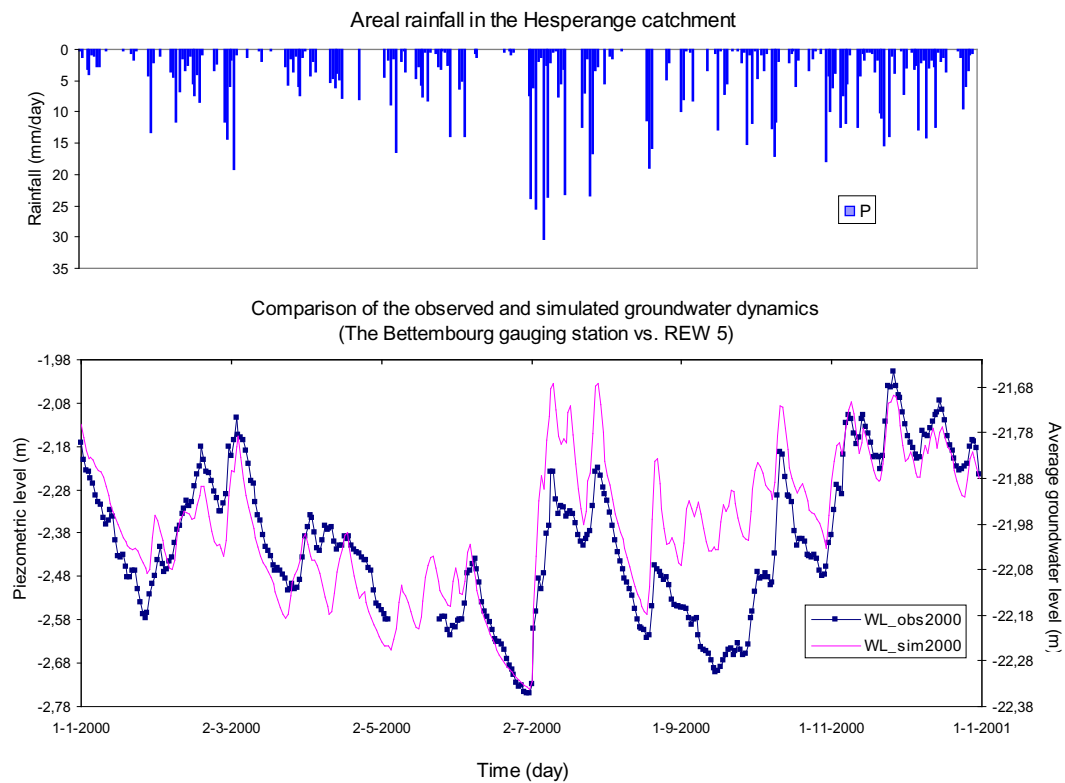
Full Screen / Esc

Print Version

Interactive Discussion

## Modelling subsurface storm flow with the REW approach

G. P. Zhang et al.



**Fig. 12.** Comparison of the observed and the simulated groundwater dynamics of the sub-catchment REW 5 (01/01/2000–31/12/2000).

Title Page

Abstract

Introduction

Conclusions

References

Tables

Figures

◀

▶

◀

▶

Back

Close

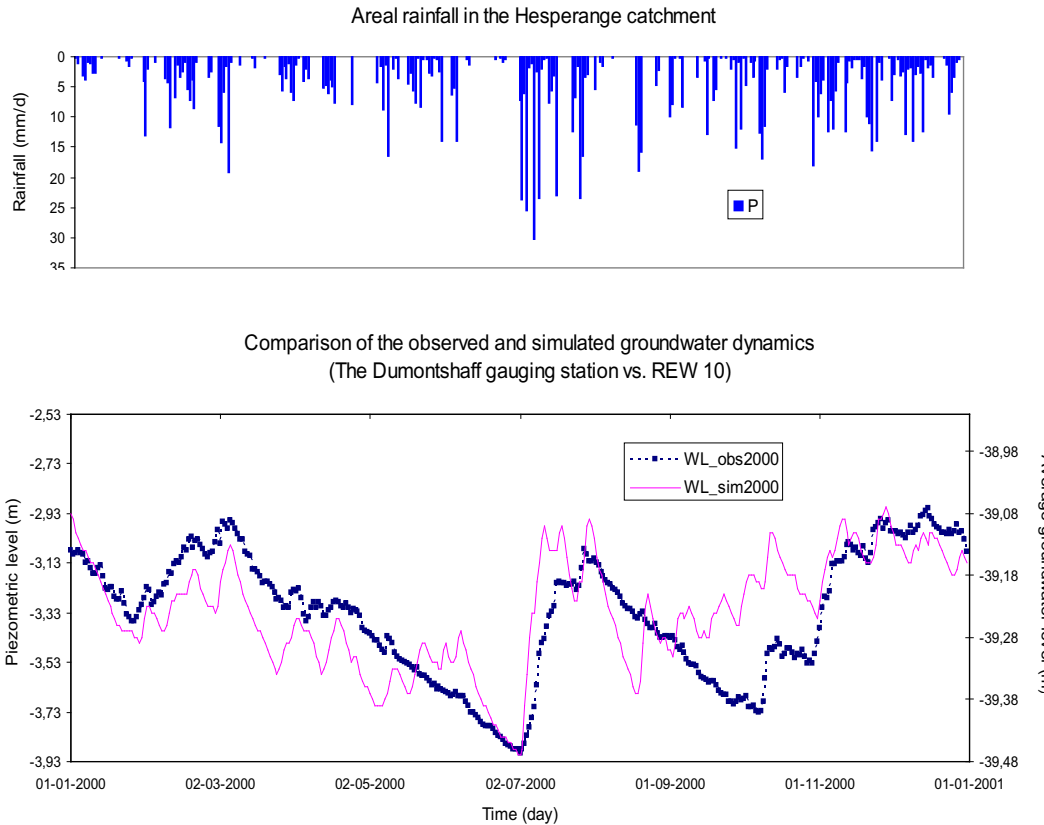
Full Screen / Esc

Print Version

Interactive Discussion

**Modelling subsurface storm flow with the REW approach**

G. P. Zhang et al.



**Fig. 13.** Comparison of the observed and the simulated groundwater dynamics of the sub-catchment REW 10 (01/01/2000–31/12/2000).

Title Page

Abstract

Introduction

Conclusions

References

Tables

Figures

◀

▶

◀

▶

Back

Close

Full Screen / Esc

Print Version

Interactive Discussion