



HAL
open science

Is snow sublimation important in the alpine water balance?

U. Strasser, M. Bernhardt, M. Weber, G. E. Liston, W. Mauser

► **To cite this version:**

U. Strasser, M. Bernhardt, M. Weber, G. E. Liston, W. Mauser. Is snow sublimation important in the alpine water balance?. *The Cryosphere Discussions*, 2007, 1 (2), pp.303-350. hal-00298531

HAL Id: hal-00298531

<https://hal.science/hal-00298531>

Submitted on 18 Jun 2008

HAL is a multi-disciplinary open access archive for the deposit and dissemination of scientific research documents, whether they are published or not. The documents may come from teaching and research institutions in France or abroad, or from public or private research centers.

L'archive ouverte pluridisciplinaire **HAL**, est destinée au dépôt et à la diffusion de documents scientifiques de niveau recherche, publiés ou non, émanant des établissements d'enseignement et de recherche français ou étrangers, des laboratoires publics ou privés.

The Cryosphere Discussions is the access reviewed discussion forum of *The Cryosphere*

Is snow sublimation important in the alpine water balance?

U. Strasser¹, M. Bernhardt¹, M. Weber², G. E. Liston³, and W. Mauser¹

¹Department of Geography, Ludwig-Maximilians University (LMU), Luisenstr. 37, 80333 Munich, Germany

²Commission for Glaciology, Bavarian Academy of Sciences and Humanities, Alfons-Goppel-Str. 11, 80539 Munich, Germany

³Cooperative Institute for Research in the Atmosphere, Colorado State University, Fort Collins, Colorado 80523, USA

Received: 3 August 2007 – Accepted: 3 August 2007 – Published: 6 September 2007

Correspondence to: U. Strasser (u.strasser@iggf.geo.uni-muenchen.de)

TCD

1, 303–350, 2007

A numerical modelling experiment

U. Strasser et al.

Title Page

Abstract

Introduction

Conclusions

References

Tables

Figures

◀

▶

◀

▶

Back

Close

Full Screen / Esc

Printer-friendly Version

Interactive Discussion

EGU

Abstract

In alpine terrain, snow sublimation as a component of the winter moisture budget represents a proportion of precipitation which does not contribute to melt. To quantify its amount we analyze the spatial pattern of snow sublimation at the ground, from a canopy and from turbulent suspension during wind-induced snow transport for a high alpine area in the Berchtesgaden National Park (Germany), and we discuss the efficiency of these processes with respect to seasonal snowfall. Therefore, we utilized hourly meteorological recordings from a network of automatic stations, and a distributed simulation framework comprising validated, physically based models. Meteorological data records were spatially distributed over the simulation domain by means of a quasi-physically based interpolation scheme that accounts for topographic influences on the distributed fields. The applied simulation tools were: a detailed model for shortwave and longwave radiative fluxes, a mass and energy balance model for the ground snow cover, a model for the microclimatic conditions within a forest canopy and related snow-vegetation interactions including snow sublimation from the surface of the trees, and a model for the simulation of wind-induced snow transport and related sublimation from suspended snow particles. For each of the sublimation processes, mass rates were quantified and aggregated over an entire winter season. Sublimation from the ground and from most canopy types are spatially relatively homogeneous and sum up to about 100 mm of snow water equivalent (SWE) over the winter period. Accumulated seasonal sublimation due to turbulent suspension is small in the valley areas, but can locally, at very wind-exposed mountain ridges, add up to more than 1000 mm of SWE. The fraction of these sublimation losses of winter snowfall is between 10 and 90%.

TCD

1, 303–350, 2007

A numerical modelling experiment

U. Strasser et al.

Title Page

Abstract

Introduction

Conclusions

References

Tables

Figures

◀

▶

◀

▶

Back

Close

Full Screen / Esc

Printer-friendly Version

Interactive Discussion

EGU

1 Introduction

Snow sublimation (the phase transition of water from solid to vapour) is a fundamental component of the alpine winter moisture budget. The total energy therefore required is the sum of the latent heat of fusion (melting or freezing) and the latent heat of vaporization (evaporation or condensation), for a total of 2.838 kJ/kg at 0°C and standard pressure. In this sum, the latent melting heat only represents 12% of the latent heat of evaporation. The energy and water exchange at the snow-atmosphere interface is constrained by two important factors: the temperature of the (melting) snow surface can not exceed 0°C, and, consequently, the water vapour partial pressure at the surface will not exceed 6.11 hPa, limiting the humidity conditions at which evaporation can occur. Turbulent motion in the surface layer is driven mechanically during overflow of obstacles, and thermally by buoyancy over small-scale surface heterogeneities. Over snow, and in particular above inclined surfaces, the latter effect is typically not very significant. Due to the relatively high amount of energy required for sublimation, related snow mass change rates are generally assumed small compared with melting; however, for cold snow they can represent the only mass loss. In high mountain regions where the ridges are extremely wind-exposed and slopes are steep (i.e., such as the summit crests in the Himalayas), accumulated solid precipitation is removed by the combined effects of sublimation, blowing-snow and avalanches. As a result, and in accordance with our visual experience, the snowpack does not infinitely accumulate in areas where no melt occurs. In contrast, snow mass-balance models which do not include the latter effects underestimate ablation and lead to unrealistically high snow depths in long-term simulations. These considerations are supported by the observation of reduced snow cover in high mountain areas due to changes in climate: more and more rocks become visible in areas where no melt occurs as an effect of increased snow sublimation due to higher radiative energy input and/or reduced precipitation. The 1999 Mallory and Irvine Research Expedition found the remains of George L. Mallory at 8200 m a.s.l., lost on Mount Everest in 1924. In the exceptionally dry and sunny spring

TCD

1, 303–350, 2007

A numerical modelling experiment

U. Strasser et al.

Title Page

Abstract

Introduction

Conclusions

References

Tables

Figures

◀

▶

◀

▶

Back

Close

Full Screen / Esc

Printer-friendly Version

Interactive Discussion

EGU

season of 1999 he had been released from snow which had covered him the previous 75 years (<http://classic.mountainzone.com/everest/99/north/>, Anker and Roberts, 1999).

Much work has been invested in the study of snow sublimation processes and its important contribution to alpine water balances (Lang, 1981). At Niwot Ridge, Colorado Front Range, Hood et al. (1999) found 195 mm of water equivalent total net sublimation from the ground, or 15% of maximum snow accumulation, for the 1994–1995 snow season. The majority of this amount sublimated during the snow accumulation period, whereas 30 mm net condensation to the snowpack occurred during the snowmelt period. The 15% total seasonal snow accumulation lost to sublimation compares well with earlier results, e.g. by Marks et al. (1992) or Kattelmann and Elder (1991). For Hintereisferner, an alpine glacier in the Ötztal Alps (Austria), annual mass losses due to snow and ice evaporation of approximately 100 mm have been measured with a lysimeter (Kaser, 1983).

The most accurate method for calculating latent heat fluxes above a snow surface and direct conversion of the fluxes into millimeters water equivalent of sublimation or condensation is the eddy correlation method. However, this procedure requires high frequency sonic anemometer and optical water vapour fluctuation measurements, the latter being characterized by poor calibration stability and long-term accuracy (Weber, 2005). If measurements of wind speed, temperature and relative humidity at multiple heights above the snow surface are available, latent heat fluxes can also be quite accurately calculated with the aerodynamic profile method (Dyer, 1987), although reliable stability functions are not yet evaluated for stable stratification. Furthermore, long-term measurements are not realizable with both these procedures due to the varying distance between the snow surface and the instrument mounting device. They are generally only applied for individual sites and for short periods (e.g., Pluess and Mazzoni, 1994; Martin and Lejeune, 1998; Oerlemans and Grisogono, 2002). In contrast, the bulk aerodynamic method requires meteorological measurements at only one height above the snowpack, but gives robust estimates of mechanically-

**A numerical
modelling experiment**U. Strasser et al.

Title Page

Abstract

Introduction

Conclusions

References

Tables

Figures

◀

▶

◀

▶

Back

Close

Full Screen / Esc

Printer-friendly Version

Interactive Discussion

induced turbulent transport (Weber, 2005). This procedure is most applicable for long-term calculations of the latent heat flux, in particular at catchment scale, where typically more than one meteorological station is required to spatially distribute the recordings. Regardless, many models used to simulate seasonal snow cover dynamics neglect mass changes due to sublimation and condensation at the snow surface (<http://www.cnrm.meteo.fr/snowmip/>). Hence, in this study we apply the bulk aerodynamic method to derive seasonal, spatially distributed aggregates of sublimation and condensation for snow-covered ground.

In addition to latent fluxes on the ground, intercepted snow in a forest canopy can sublimate back into the atmosphere. Interception efficiency increases with the available deposition surface, increasing size of falling snow crystals, decreasing temperature, decreasing wind speed, and decreasing density of the falling snow (Pomeroy and Gray, 1995). Due to the large surface area to mass ratio, and the frequent high wind speeds in mountain forest canopies, an efficient turbulent exchange and thus sublimation process is enabled. The resulting proportion of snowfall which sublimes varies depending on interception efficiency, exposure time, and atmospheric conditions. In recent years, numerous models have been developed and applied to quantify the rates at which snow sublimes from evergreen forest canopies (Pomeroy et al., 1998; Hedstrom and Pomeroy, 1998; Link and Marks, 1999; Pomeroy et al., 2002; Essery et al., 2003; Liston and Elder, 2006). These models comprise a detailed simulation of the interception and sublimation processes, depending on meteorological forcing and parameters for tree characteristics like effective leaf area index (LAI) and canopy height. Pomeroy et al. (1998) reported modelled seasonal intercepted snow sublimation to range from 13% of annual snowfall for a mixed spruce-aspen, 31% for mature pine and 40% for a mature spruce stand in the southern boreal forest of central Canada (Waskesiu Lake, Prince Albert National Park, Saskatchewan). Measurements of sublimation from intercepted snow within a subalpine forest canopy at a U.S. continental site amounted to 20–30% of total snowfall accumulated at the site (Montesi et al., 2004).

In addition to interception and sublimation processes, micrometeorological condi-

**A numerical
modelling experiment**U. Strasser et al.

Title Page

Abstract

Introduction

Conclusions

References

Tables

Figures

◀

▶

◀

▶

Back

Close

Full Screen / Esc

Printer-friendly Version

Interactive Discussion

tions at the surface of a ground snow cover are modified by the existence of a forest canopy: shortwave radiation, precipitation and wind speed are reduced and the daily variations in the amplitude of temperature are decreased, whereas longwave radiation and humidity are more pronounced (Link and Marks, 1999; Tribbeck et al., 2004; Strasser and Etchevers, 2005). Consequently, latent fluxes and the associated sublimation rates at the snow surface inside a forest canopy differ from those in the open. The impact of snow interception on forest canopy optical properties and their implications for snowmelt modelling are discussed by Pomeroy and Dion (1996).

Finally, efficient exchange of energy and mass between the snow surface and the air masses above can occur during blowing-snow conditions (Pomeroy and Gray, 1995). By means of turbulent suspension the suspended snow crystals are mechanically decomposed and sublimate, the process being most efficient where fresh snow is available and the wind is accelerating, e.g. at ridges or narrow cols. In nature, sublimating snow from turbulent suspension can be observed as the snow plumes which are blown from high crests into the blue-sky atmosphere (Fig. 1), obviously revealing efficient removing of moisture from the near-surface layer of air. During snow storms sublimation may be limited due to higher saturation of the overlying air masses.

A proper representation of the wind field is most relevant for an accurate simulation of wind-blown snow and the respective suspension and sublimation processes (Liston et al., 2007; Bernhardt et al., 2007a¹, b²). Consequently, snow transport models like the Prairie Blowing Snow Model (PBSM) (Pomeroy et al., 1993; Essery et al., 1999) and SnowTran-3D (Liston and Sturm, 1998; Liston et al., 2007) include linkages with methods for estimating the spatial variation in wind speed (and vegetation type). Al-

¹Bernhardt, M., Zängl, G., Liston, G. E., Strasser, U., and Mauser, W.: Using wind fields from a high resolution atmospheric model for simulating snow dynamics in mountainous terrain, *Hydrol. Process.*, submitted, 2007a.

²Bernhardt, M., Strasser, U., Liston, G. E., and Mauser, W.: High resolution modelling of snow transport in complex terrain using simulated wind fields, *Arct., Antarct. Alp. Res.*, submitted, 2007b.

**A numerical
modelling experiment**U. Strasser et al.

[Title Page](#)[Abstract](#)[Introduction](#)[Conclusions](#)[References](#)[Tables](#)[Figures](#)[◀](#)[▶](#)[◀](#)[▶](#)[Back](#)[Close](#)[Full Screen / Esc](#)[Printer-friendly Version](#)[Interactive Discussion](#)

though sublimation losses from turbulent suspension of wind-blown snow are limited in their spatial extent, they can locally reduce accumulated winter precipitation by a remarkable amount. Simulations of these effects result in significant portions of winter snowfall being sublimated, with the resulting moisture transport being important as both a source of water vapour to the atmosphere and in reducing the snow depth and snowmelt runoff in spring (Marsh, 1999).

Few models exist which simulate the full seasonal snow evolution including sublimation from the ground snow cover, from canopy-intercepted snow as well as blowing-snow redistribution processes (Burlando et al., 2002). An exception is SnowModel (Liston et al., 2007; Liston and Elder, 2006), which has been applied over a wide variety of blowing-snow environments. However, to our knowledge no investigation has yet been conducted to include all relevant processes of snow sublimation for alpine areas by means of a distributed, continuous simulation, including lateral movement of snow slides which is a crucial prerequisite to realistically describe snow redistribution in areas with characteristic alpine orography. The goal of this study is to fill this specific gap: we apply AMUNDSEN (Strasser et al., 2004, 2007), a modelling framework to simulate the energy and mass balance of a mountain snow cover, including coupled modules for forest snow processes (Liston and Elder, 2006) and snow slides (Gruber, 2007), together with SnowTran-3D (Liston and Sturm, 1998; Liston et al., 2007) to quantify the seasonal pattern of snow sublimation losses due to each of the specific processes, and identify their cumulative effect on the winter moisture budget at the scale of an alpine catchment (210 km²).

2 Methods

2.1 Site description

Berchtesgaden National Park is located in southeast Germany in Bavaria, at the southern corner of the administrative district Berchtesgadener Land (Fig. 2).

A numerical modelling experiment

U. Strasser et al.

Title Page

Abstract

Introduction

Conclusions

References

Tables

Figures

◀

▶

◀

▶

Back

Close

Full Screen / Esc

Printer-friendly Version

Interactive Discussion

The park was founded in 1978 and comprises an area of 210 km² (<http://www.nationalpark-berchtesgaden.de/>). For the most part, the border of the National Park is represented by the national boundary to Austria. The moderate to high alpine area of the National Park includes the massifs Watzmann (2713 m a.s.l.) and Hochkalter (2606 m a.s.l.) as well as parts of the massifs Hoher Goell, Hagengebirge, Steinernes Meer and Reiter Alm. The mountain massifs are separated by the deep valleys stretching from south to north of the Koenigssee (water level 603 m a.s.l.), the Wimbach and the Klausbach. The valley areas are characterized by extensive forests with larch, spruce and mountain pine stands (Konnert, 2004). The mountains reach up to the nival zone with the Blaueisgletscher, the most northern glacier of the Alps, shaded by the surrounding steep rock walls and fed by avalanches sliding down from them.

The climate of the National Park area is subject to significant spatial variability, in response to the over 2000-m relief gradient. Small scale local differences are mainly caused by the general position in the mountainous landscape, the windward or lee position relative to the prevailing winds and solar exposure. Mean measured annual rainfall in the valleys is approximately 1500 mm with a July maximum which is also the warmest month; the coldest month is January.

2.2 Data

The input data required for the distributed modelling of snow processes consists of a digital elevation model (DEM, resolution 50 m), the sky view factor (portion of the hemisphere which is visible at each location), hourly meteorological forcings of precipitation, global radiation, temperature, humidity, and wind speed, as well as the data characterizing the forest canopies in the area – the latter two data sources are described in the following sections. Fields of simulated wind directions are derived using the Penn State University – National Center for Atmospheric Research MM5 model and downscaled with an energy-conserving procedure considering small-scale topography (Bernhardt et al., 2007a¹).

A numerical modelling experiment

U. Strasser et al.

Title Page

Abstract

Introduction

Conclusions

References

Tables

Figures

◀

▶

◀

▶

Back

Close

Full Screen / Esc

Printer-friendly Version

Interactive Discussion

2.2.1 Meteorological data

The automatic network of meteorological stations located within the National Park are part of the operational infrastructure from the Bavarian avalanche warning service (LWZ) of the State Office for Environment (Jenner, Reiter Alm, Kuehroint, Funtenseetauern), the Administration of Salzburg (Untersberg) and the German Weather Service (DWD) (Schoenau). Figure 3 shows the locations of the stations, and their position with respect to surrounding topography, e.g. the stations on the summits of Untersberg or Funtenseetauern (1776 m and 2445 m a.s.l., respectively). By connecting these automatic stations via wireless radio transmission to a central database, a unique data pool is available which allows running continuous distributed models in an operational mode with high temporal resolution. Table 1 gives an overview of the parameters recorded at each station. All data are aggregated to hourly means (i.e., average for temperature, humidity, wind speed, radiation and air pressure; sum for precipitation; maximum for maximum wind speed). For the study presented herein, we used the data from the annual period August 2003 to July 2004.

Meteorological fields are provided hourly from the station recordings as follows: first, a so called gradient field is derived by linear regression of the meteorological observations with altitude; this regression is then applied for the entire area represented by the DEM but only within the altitudinal range in which the stations are located (above and below the gradient is set to zero). Then, the residuals (i.e., the deviations of the measurements from the gradient field) are spatially interpolated by applying an inverse distance weighting (IDW) approach, resulting in a so called residual field representing the local deviations from the gradient field. The weights are the distances between a location represented by a DEM pixel and the stations. In a last step, the gradient and residual fields are summed. This algorithm, applied for each time step, ensures that the station observations are reproduced, and it can be applied irrespective of whether a relation of the meteorological variable with altitude or local deviations exist. We are aware that with this procedure we cannot consider all energy exchange processes in

TCD

1, 303–350, 2007

A numerical modelling experiment

U. Strasser et al.

Title Page

Abstract

Introduction

Conclusions

References

Tables

Figures

◀

▶

◀

▶

Back

Close

Full Screen / Esc

Printer-friendly Version

Interactive Discussion

EGU

the area between the stations; however, we trust in its applicability during the snow season in which at least the surface is mostly covered by snow and therefore the representativeness of the recordings is high.

2.2.2 Forest canopy data

5 For the simulation of canopy interception processes, data fields of leaf area index (LAI) and canopy height are required as model inputs. In the National Park area, these datasets have been derived from a combination of forest inventory data, a color infrared aerial photograph interpretation, and by application of the relations by Hammel and Kennel (2001). For snow cover modelling, an effective LAI including stems, leaves,
10 and branches (Chen et al., 1997) is required. To account for that, values for the cortex area index are added in the modelling. During winter, vegetation is not active; minimum LAI values for the winter season have therefore been derived by multiplying the values for spruce (*picea abies*) with a factor of 0.8, and the one for pine (*pinus cembra*) with 0.6; for the mountain pine shrubs (*pinus mungo*) LAI is assumed to be 3.2 (V. Konnert, personal communication, 2006). Resulting effective winter LAI and canopy height are
15 illustrated in Fig. 4 and Fig. 5, respectively.

2.3 Models

2.3.1 Ground snow processes

The **Alpine MULTiscale Numerical Distributed Simulation ENGINE** AMUNDSEN (Strasser et al., 2004, 2007) is a simulation framework for continuous, distributed modelling of
20 snow processes in high mountain areas. In the current version, the functionality of AMUNDSEN includes rapid computation of topographic parameters from a digital elevation model, several interpolation routines for scattered meteorological measurements (Strasser et al., 2004), simulation of shortwave and longwave radiative fluxes including
25 consideration of shadows and cloudiness (Corripio, 2003; Greuell et al., 1997), pa-

A numerical modelling experiment

U. Strasser et al.

Title Page

Abstract

Introduction

Conclusions

References

Tables

Figures

◀

▶

◀

▶

Back

Close

Full Screen / Esc

Printer-friendly Version

Interactive Discussion

parameterization of snow albedo (U.S. Army Corps of Engineers, 1956; Rohrer, 1992), modelling of snowmelt with either an energy balance model (Strasser et al., 2007) or an enhanced temperature index model considering radiation and albedo (Pellicciotti et al., 2005), modelling of forest snow processes (Liston and Elder, 2006), as well as simulation of snow slides from steep mountain slopes along couloir courses which are derived from the DEM (Gruber, 2007); the latter is required to remove snow from areas where it would otherwise infinitely accumulate in long-term simulations. The time step for the snow slide module is set to once a day. Finally, a built-in stochastic weather generator can be used to produce synthetic future meteorological data for climate change scenario simulations of any length (Strasser et al., 2007).

Of specific importance for snow modelling in mountainous regions is the calculation of the shortwave radiative fluxes, significant local differences being caused by several elevation dependent atmospheric processes and the effect of topography: (a) Rayleigh and aerosol scattering and absorption by water vapour, ozone and other trace gases, (b) multiple reflections between the atmosphere and the ground and reflections from the surrounding terrain, as well as obstruction of the horizon, and (c) absorption and scattering by clouds. The effects of these processes cannot be realistically spatially distributed by interpolation of station recordings. In AMUNDSEN, they are quantified by means of a parameterization scheme which considers the effects of hill shading, the decrease of atmospheric transmittance due to the individual processes of scattering, multiple reflections between the atmosphere and the ground, as well as reflections from surrounding terrain. Atmospheric longwave radiative fluxes are computed using the formula of Greuell et al. (1997), based on a virtual longwave emissivity of the atmosphere which depends on temperature, humidity and cloudiness. The latter is derived by comparison of potential global radiation with the recordings. In addition, longwave thermal radiation from surrounding slopes is considered, thereby accounting for whether these slopes are snow covered or not.

The physically based snow cover module in AMUNDSEN is designed to simulate the surface energy balance, water equivalent, and melt rate of snow in the domain.

**A numerical
modelling experiment**U. Strasser et al.

[Title Page](#)[Abstract](#)[Introduction](#)[Conclusions](#)[References](#)[Tables](#)[Figures](#)[◀](#)[▶](#)[◀](#)[▶](#)[Back](#)[Close](#)[Full Screen / Esc](#)[Printer-friendly Version](#)[Interactive Discussion](#)

**A numerical
modelling experiment**

 U. Strasser et al.

[Title Page](#)
[Abstract](#)
[Introduction](#)
[Conclusions](#)
[References](#)
[Tables](#)
[Figures](#)
[◀](#)
[▶](#)
[◀](#)
[▶](#)
[Back](#)
[Close](#)
[Full Screen / Esc](#)
[Printer-friendly Version](#)
[Interactive Discussion](#)

In each time step the following scheme is followed: first, it distinguishes between areas with melting conditions (air temperature ≥ 273.16 K), and areas with no melt (air temperature < 273.16 K). For the first case, the computations include: (a) calculation of the radiation balance, (b) calculation of the turbulent fluxes including mass changes by sublimation/condensation, (c) decision whether eventual precipitation is solid or liquid (if not measured), and calculation of the respective advective heat flux, (d) calculation of snowmelt, if the resulting surface energy balance is positive, and (e) update of the mass budget. For the other areas (air temperature < 273.16 K), an iterative procedure is used to determine the snow surface temperature required to satisfy the surface energy balance. For physical descriptions of the turbulent fluxes, detailed measurements of the snow surface properties are required. Therefore, AMUNDSEN incorporates common empirical descriptions valid for medium roughness and a wide range of wind speeds; these are generally sufficient to investigate seasonal effects, and computationally efficient. Thus, the latent heat flux V (in W/m^2) is calculated using a formula as proposed by Kuchment and Gelfan (1996):

$$V = 32.82 \cdot (0.18 + 0.098 \cdot W) \cdot (e_l - e_s) \quad (1)$$

where W is the measured wind speed (m/s), e_l is the water vapour partial pressure at measurement level and e_s the water vapour saturation pressure at the snow surface, with both water vapour pressures being calculated using the Magnus formula and expressed in hPa. This formulation is one example out of the many available empirically derived bulk formulas that depend on mean wind speed, and it is applicable over a wide range of thermal stratifications. The small mass changes δe (mm) generated by sublimation or condensation to surface hoar are then simulated with

$$\delta e = \frac{V \cdot dt}{l_s} \quad (2)$$

where l_s is the sublimation/condensation heat of snow (2.838 kJ/kg) and dt the duration between two modelling time steps (here 3600 s). With a positive latent flux (towards the snow surface), mass is gained with condensation, whereas with a negative latent flux

(away from the surface), mass is lost due to sublimation. Equations (1) and (2) provide a robust approach to calculate the mass flux towards and away from the ground snow surface that is appropriate for the scale considered here and only requires minimal input data.

5 The algorithm used to simulate snow sliding down steep mountain slopes is a mass-conserving, multiple flow directions procedure which propagates the snow masses along predefined flow couloirs (Gruber, 2007). At decreasing slope angle, the snow is deposited. As a result, snow is removed from the steep rock faces and accumulated at the foot of the hill slopes in the valleys. For daily application with the National Park
10 DEM at 50 m resolution, 70% of the available SWE in slopes steeper than 30 degrees undergo gravitational transport, and no transportable snow is available in forested areas with tree heights above a 5 m threshold. 250 mm is set to be the maximum SWE that can be deposited within a single model cell. These parameters are chosen depending on spatial resolution, thus the algorithm has to be properly adjusted to the
15 specific DEM and scale of application.

2.3.2 Canopy interception and sublimation

Processes affecting snow cover beneath a forest canopy are different from those in the open: on one hand, the meteorological parameters for simulating the evolution of the snow beneath the canopy are different, and on the other hand, a certain amount of
20 precipitation is retained as interception storage. From there, it can melt, fall down to the ground, or sublimate into the air masses above the canopy. This latter process leads to a reduction of precipitation accumulated and stored in the ground snowpack. A forest canopy can lead to both less SWE and shorter duration, or more SWE and longer duration of the snow cover beneath the trees, depending on many factors such as canopy
25 density, gap size and distribution, geographic location and meteorological conditions (Pomeroy et al., 2002). In AMUNDSEN, the processes of interception, unloading by melt and fall down to the ground, as well as sublimation are calculated depending on canopy height and effective LAI, using two well-documented parameterizations from

A numerical modelling experiment

U. Strasser et al.

Title Page

Abstract

Introduction

Conclusions

References

Tables

Figures

◀

▶

◀

▶

Back

Close

Full Screen / Esc

Printer-friendly Version

Interactive Discussion

the literature, mostly following the scheme of Liston and Elder (2006) which is based on the work of Pomeroy et al. (1998). The sublimation loss rate Q_{cs} (mm per model time step) for the intercepted snow l (mm) held within the canopy is expressed as

$$Q_{cs} = C_e \cdot l \cdot \Psi_s dt \quad (3)$$

with Ψ_s (s) being the sublimation loss rate coefficient for an ice sphere and C_e being a non-dimensional canopy exposure coefficient, accounting for the fact that sublimation occurs only at the surface of the intercepted snow (Pomeroy and Schmidt, 1993):

$$C_e = k_c \cdot \left(\frac{l}{l_{\max}} \right)^{-0.4} \quad (4)$$

$k_c=0.01$ is a dimensionless coefficient describing the shape of the intercepted snow deposits (Liston and Elder, 2006). After Hedstrom and Pomeroy (1998), the maximum interception storage l_{\max} (in mm) is equal to $4.4 \cdot LAI$. The canopy-intercepted load l (mm) at time t is given with $t-1$ being the previous time step, and P the total snow precipitation in the current time step (kg/m^2) (Pomeroy et al., 1998):

$$l = l_{t-1} + 0.7 \cdot (l_{\max} - l_{t-1}) \cdot \left(1 - e^{-\frac{P}{l_{\max}}} \right) \quad (5)$$

This equation only treats solid precipitation (in the current model version, liquid precipitation (rain) is assumed to fall through to the ground).

The sublimation loss rate coefficient Ψ_s (s) for an ice sphere is computed as

$$\Psi_s = \frac{\frac{dm}{dt}}{m} \quad (6)$$

with m (kg) being the particle mass and r the radius (ρ_i is the ice density = 917 kg/m^3):

$$m = \frac{4}{3} \pi \cdot \rho_i \cdot r^3 \quad (7)$$

A numerical modelling experiment

U. Strasser et al.

Title Page

Abstract

Introduction

Conclusions

References

Tables

Figures

◀

▶

◀

▶

Back

Close

Full Screen / Esc

Printer-friendly Version

Interactive Discussion

The mass loss rate dm/dt from an ice sphere (in kg), given by the combined effects of humidity gradients between the particle and the atmosphere, absorbed solar radiation, particle size and ventilation influences, is computed with (Thorpe and Mason, 1966; Schmidt, 1972):

$$\frac{dm}{dt} = \frac{2 \cdot \pi \cdot r \cdot \left(\frac{H}{100} - 1\right) - S_a \cdot \Omega}{I_s \cdot \Omega + \frac{1}{D \cdot \rho_v \cdot S_h}} \quad (8)$$

with H being measured relative humidity in %, ρ_v the water vapor density at saturation (kg/m^3), and D the diffusivity of water vapor in the atmosphere (m^2/s) at air temperature T (K):

$$D = 2.06 \cdot 10^{-5} \cdot \left(\frac{T}{273}\right)^{1.75} \quad (9)$$

S_a (W/m^2) is the solar radiation absorbed by the ice particle:

$$S_a = \pi \cdot r^2 \cdot (1 - \alpha) \cdot S \quad (10)$$

with α being the albedo of the snow particle, and S (W/m^2) the incoming global radiation. S_h is the Sherwood number (Lee 1975):

$$S_h = 1.79 + 0.606 \cdot \sqrt{\frac{2 \cdot r \cdot u_c}{\nu}} \quad (11)$$

with ν being the kinematic viscosity of air ($1.3 \times 10^{-5} \text{ m}^2/\text{s}$) and u_c the canopy wind speed (m/s), derived from W under consideration of canopy height. Finally, Ω is given with (Thorpe and Mason, 1966):

$$\Omega = \frac{1}{\lambda_t \cdot T \cdot N_u} \left(\frac{I_s \cdot M}{R \cdot T} - 1 \right) \quad (12)$$

A numerical modelling experiment

U. Strasser et al.

Title Page

Abstract

Introduction

Conclusions

References

Tables

Figures

◀

▶

◀

▶

Back

Close

Full Screen / Esc

Printer-friendly Version

Interactive Discussion

λ_f being the thermal conductivity of the atmosphere (0.024 J/(m s K)), M the molecular weight of water (0.018 kg/mole), N_U the Nusselt number (assumed to equal the Sherwood number) and R the universal gas constant (8.313 J/(mole K)). In addition to mass lost by sublimation, snow can be unloaded through falling down to the ground, and melt.

5 For air temperatures above freezing, we assume a daily unloading rate of 5 kg/(m² d K) for both the combined effects of melt and falling down of snow to the ground (Liston and Elder, 2006). The resulting unloaded mass is added to the solid precipitation reaching the ground beneath the trees. There, the energy balance is computed as for the open, but using meteorological parameters modified for forest conditions: precipitation
10 is reduced by the amount of snow that sublimates, wind speed is reduced applying a relationship by Cionco (1978) considering canopy height, humidity is increased (Durot, 1999), and, finally, reference level temperature attenuation is simulated after Obled (1971).

2.3.3 Wind-induced snow transport

15 For the simulation of wind-induced snow transport and the related snow sublimation losses originating from turbulent suspension we used SnowTran-3D (Liston and Sturm, 1998; Liston et al., 2007). SnowTran-3D is a three dimensional, physically based model which simulates snow-depth evolution resulting from wind-blown snow. The model was originally developed and validated in the arctic tundra of Alaska but has since its intro-
20 duction been applied in a wide range of landscapes including relatively gentle mountainous terrain (Green et al., 1999; Liston et al., 2000; Prasad et al., 2001; Hiemstra et al., 2002; Liston and Sturm, 2002; Hasholt et al., 2003; Bruland et al., 2004; Hiemstra et al., 2006). Recently, the use of modelled wind field has allowed to apply and validate the model in the high mountain area of the Berchtesgaden National Park (Bernhardt
25 et al., 2007a¹, b²). The main components of SnowTran-3D include a) the wind forcing field (here replaced by the Bernhardt et al. (2007a)¹ modelled wind fields), the wind shear stress at the surface, the transport of snow by turbulent suspension, the sublimation of suspended snow, and the accumulation and erosion of snow (Liston and

A numerical modelling experiment

U. Strasser et al.

Title Page

Abstract

Introduction

Conclusions

References

Tables

Figures

◀

▶

◀

▶

Back

Close

Full Screen / Esc

Printer-friendly Version

Interactive Discussion

Sturm, 1998). The model's formulation for the sublimation rate of wind-transported snow follows that of Schmidt (1972, 1991), Pomeroy et al. (1993) and Pomeroy and Gray (1995). The sublimation rate of transported snow Q_V ($\text{kg}/(\text{m}^2\text{s})$), per unit area of snow cover, is given with x^* (m) being the horizontal coordinate in a reference frame defined by the wind-flow direction (increasing down-wind):

$$Q_V(x^*) = \Psi_S \Phi_S h_* + \int_{h_*}^{z_t} \Psi_t(x^*, z) \Phi_t(x^*, z) dz \quad (13)$$

where Ψ (1/s) is the sublimation loss-rate coefficient and Φ (kg/m^3) is the vertical mass-concentration distribution. The integration limits range from the snow surface through the saltating and turbulent-transport regimes (Liston and Sturm, 1998). The subscripts S and t represent saltation ($z=0$ to $z=h_*$) and turbulent suspension layers, respectively.

The sublimation loss rate coefficient, describing the rate of particle mass loss as a function of height within the drifting snow profile, is a function of temperature-dependent humidity gradients between the snow particle and the atmosphere, conductive as well as advective energy and moisture transfer mechanisms, particle size and solar radiation intercepted by the particle. Thereby, the time rate of mass loss from an ice sphere is calculated based on the same principles as given in Eqs. (6) to (12). It is assumed that (a) the mean particle size decays exponentially with height, (b) the relative humidity follows a logarithmic vertical profile, (c) the air temperature in the snow-transport layer is well mixed and constant with height, (d) the variables defined within the saltation layer are constant with height and those in the turbulent suspension layer vary with height, and (e) the solar radiation absorbed by snow particles is a function of the solar elevation angle and fractional cloud cover. The details of this formulation are given by Liston and Sturm (1998); the specific setting of the model as adopted to our domain is described in Bernhardt et al. (2007b)².

A numerical modelling experiment

U. Strasser et al.

Title Page

Abstract

Introduction

Conclusions

References

Tables

Figures

◀

▶

◀

▶

Back

Close

Full Screen / Esc

Printer-friendly Version

Interactive Discussion

**A numerical
modelling experiment**U. Strasser et al.

[Title Page](#)[Abstract](#)[Introduction](#)[Conclusions](#)[References](#)[Tables](#)[Figures](#)[◀](#)[▶](#)[◀](#)[▶](#)[Back](#)[Close](#)[Full Screen / Esc](#)[Printer-friendly Version](#)[Interactive Discussion](#)

In SnowTran-3D, high sublimation rates are achieved during blowing-snow events because of the high snow particle surface-area to mass ratios and the high ventilation rates achieved when the particles are in the wind stream (Schmidt 1972), and assuming the existence of a pool of dry air overlying the surface layer with efficient mixing between the two (the model belongs to the “Schmidt-type” family of sublimation models, Liston and Sturm, 2004). Using such a type of sublimation model, 15–50% of the snow cover were found to be returned to the atmosphere by sublimation in the Arctic (e.g., Liston and Sturm 1998, Essery and Pomeroy 1999, Pomeroy and Essery, 1999), or 15–41% in the Canadian prairies (Pomeroy and Gray, 1995). In contrast, other studies suggest that during blowing-snow events, the air above the surface rapidly saturates with moisture, limiting the amount of snow that can sublimate (e.g., Déry and Yau, 2001; King et al., 2001). As thoroughly discussed in Liston and Sturm (2004), there is not necessarily a contradiction between the two types of sublimation: both regimes may exist depending on the interaction of the surface layer with the overlying air mass. Above inclined snow surfaces, efficient mixing is particularly forced by the frequent catabatic flows and related entrainment of air masses into the shallow surface layer (Smeets et al., 1998). Hence, for the application here, we do assume mixing of the surface layer with an overlying mass of dry air, and such efficient removing of moisture from the turbulent suspension layer during blowing-snow events.

2.4 Model coupling and validation

In AMUNDSEN, the modelling of all processes of relevance here is fully coupled, i.e. the interception processes inside the canopy, the modification of the micrometeorological conditions beneath the canopy, the energy balance of the ground snow cover and the lateral transport of sliding snow all mutually interact with each other. Only the SnowTran-3D runs were conducted separately, and no update of the ground snow cover mass balance was considered after blowing-snow events with respective erosion/deposition of snow. This simplification is justified by the fact that the spatial extent of simulated snow transport is limited to only few model cells around the mountain

crests, and the (small) deposition areas of wind-blown snow at the leeward slopes are within the (much larger) fetches of the snow slides. So the amount of snow entrained and then accumulated by the snow slides may be underestimated, slightly modifying the annual per-pixel water balance in the snow slide accumulation zones. This may represent a shortcoming of the approach presented here, but since we want to quantify the relation of the different sublimation processes at a scale representative for an alpine catchment, we consider this slight underestimation of deposited snow as negligible. However, for snow melt considerations at a local scale in the crest and snow slide accumulation regions this coupling would be required.

Concerning validation of the effects considered here, we rely on models which have been validated elsewhere and proved to deliver robust results compared to local measurements. In particular, the modelling of the ground snow cover as implemented here has been compared with measurements by several investigators (Strasser et al., 2002; Zappa et al., 2003), including analyses at the regional scale using satellite-data derived snow cover (Strasser and Mauser, 2001; Prasch et al., 2007). As an example, comparison of modelled SWE with snow pit measurements is illustrated in Fig. 6 for the Kuehroint station site. The snow interception model has been validated by Montesi et al. (2004) using observations from a continental climate site located within the U.S. Department of Agriculture (USDA) Fraser Experimental Forest (39°53' N, 105°54' W) near Fraser, Colorado, USA. The inside-canopy modification of meteorological parameters has been measured, and the respective parameterization derived, by Durot (1999) for the Col de Porte observation site (1420 m a.s.l.) in the French Alps. The snow slides module has been set up and properly parameterized with data from the Pizazz Avalanche in the Italian Alps (Sovilla, 2004) by Gruber (2007). Finally, SnowTran-3D has been validated at a wide variety of landscapes, including Colorado, Antarctica, Idaho, Wyoming/USA, Alaska, Greenland, Svalbard/Norway and Siberia (complete references are given in Liston et al., 2007). Bernhardt et al. (2007b)² validated the model in the domain investigated here with stake readings from snow erosion and deposition zones.

**A numerical
modelling experiment**U. Strasser et al.

[Title Page](#)[Abstract](#)[Introduction](#)[Conclusions](#)[References](#)[Tables](#)[Figures](#)[◀](#)[▶](#)[◀](#)[▶](#)[Back](#)[Close](#)[Full Screen / Esc](#)[Printer-friendly Version](#)[Interactive Discussion](#)

The goal of our study is not to quantify model performance locally (largely depending on input data accuracy), or on an event basis, but to estimate and compare the effects of snow sublimation processes for an entire winter season at the catchment scale in an alpine domain, where measurements are generally sparse due to the high relief.

5 This questions the value of any validation at a specific location for our application. The measurement of the combined spatial pattern of snow sublimation from the ground, from the canopy and from wind-induced snow transport remains a challenge for the future.

3 Results and discussion

10 In the following, we describe the results of the AMUNDSEN and SnowTran-3D simulations for the year August 2003 to July 2004; all values in mm are related to that period. The winter season was characterized (in mid altitudes) by several snowfalls without a continuous snow cover until December, then accumulation of a high winter snow cover, interrupted with single but only slight melting events, and then a relatively
15 fast and straightforward melt from March until the end of April.

3.1 Snowfall distribution

For distinguishing between rain and snow, the precipitation and temperature fields were combined, and 1°C was set to be the phase transition threshold temperature. For the discussion here, snowfall is defined as that portion of solid precipitation which is actually deposited at the ground. Hence, it is not modified by the snow that is intercepted
20 in the trees of the canopy, and that later melts and drops to the ground. In Fig. 7, the derived hourly snowfall fields are accumulated to provide a picture of seasonal snowfall distribution: generally, snow precipitation increases with height with a maximum of almost 1400 mm in the summit regions of the highest mountains. In the valleys, accumulated seasonal snowfall is approximately 250 mm. Where forest covers the mountain
25

A numerical modelling experiment

U. Strasser et al.

Title Page

Abstract

Introduction

Conclusions

References

Tables

Figures

◀

▶

◀

▶

Back

Close

Full Screen / Esc

Printer-friendly Version

Interactive Discussion

slopes, annual snowfall reaching the ground is between 300 mm and 800 mm. Due to sublimation losses of snow intercepted in the canopy, the mountain forests appear as a sharply delineated minimum area. The accumulated snowfall visualized in Fig. 7 is the amount of snow available for spring melt, apart from the little modifications of the ground snow mass balance generated by the sublimation and condensation processes discussed in the following.

The number of days with snow coverage (Fig. 8) ranges from less than 100 in the valley areas and more than 200 on the higher plateaus like the Untersberg (upper right). A local, but significant modification of this range is caused by the modelled snow slides: in the source areas, snow cover duration is found to be less than 70 days (e.g. the very steep slopes surrounding the southern waterside of the Koenigssee, or the northwestern edge of the Lattengebirge in the north of the Park area). On the other hand, some accumulation areas in the valleys remain snow-covered for more than 300 days (at the run-out zones of the couloir gullies at the foot of steep mountain slopes). Consequently, some of these regions coincide with the locations of the existing glaciers (Blaueisgletscher and Watzmanngletscher).

3.2 Ground snow sublimation and condensation

The processes of sublimation and condensation at an exposed snow surface are associated with simultaneous adjustment of both the thermal energy and the water content of the affected snow layer. According to our previous considerations, mechanically induced turbulence is the main mechanism for the transport of latent heat between the surface and the atmosphere. Its efficiency depends on the irregular and chaotic small scale motion in the surface layer air flow. Generally, one prerequisite for sublimation is a negative saturation deficit, and available energy for the phase transition. At night, sublimation can therefore occur only under very dry and warm conditions with stable stratification, usually within catabatic flow layers, when the sensible heat flux compensates for longwave emission (usually in the range of 0 to -70 W/m^2).

For the purpose considered here, the latent heat flux can be parameterized using

A numerical modelling experiment

U. Strasser et al.

Title Page

Abstract

Introduction

Conclusions

References

Tables

Figures

◀

▶

◀

▶

Back

Close

Full Screen / Esc

Printer-friendly Version

Interactive Discussion

empirically derived bulk formulas of the type of Eq. (1). Such are based on flux-variance-relationships and assuming kinematic latent fluxes can be calculated from the product of variances of vertical wind speed and water vapour (Foken, 2003); the variances are estimated using mean horizontal wind speeds and water vapour differences (Weber, 2007). Utilizing this formula together with Eq. (1), the mass flux from the snow surface to the atmosphere or vice versa were hourly computed. Required inputs of wind speed and relative humidity at each time step were provided using the same spatial distribution procedure as used for the other meteorological variables (see 2.2.1), except that relative humidity was converted to absolute humidity before spatial interpolation. Resulting rates of sublimation mass loss and condensation mass gain are considered in the hourly modelling of the mass balance of the snow cover. Figures 9 and 10 show the accumulated seasonal patterns of sublimation and condensation at the ground surface for the National Park area.

Minimum ground snow sublimation of only a few mm was simulated for the valley areas where the snow cover duration was short, wind speeds were low and turbulent mixing at the snow surface was limited (snow cover duration is illustrated in Fig. 8). At higher elevations, sublimation losses generally increase, with maxima of approximately 180 mm occurring in the summit regions. Highest sublimation occurs at locations where snow is exposed to relatively high wind speeds (e.g., on the summit crests of Hochkalter and Watzmann, the start and end points of the profile transect in Fig. 3). Forest canopy areas represent local minima for ground snow sublimation (10 mm to 30 mm). In these areas not only the amount of snow reaching the ground is reduced, but also incoming radiation and wind speed are less, and humidity is higher than in the open. Couloirs and very steep slopes where most of the snow is removed by snow slides are also areas of comparably low seasonal sublimation amount, results are in the range of 50 mm. Steep rock faces are represented as bright bands around the mountain plateau massifs (e.g., Reiter Alm or Untersberg), here the snow that has slid down accumulates and often remains until late spring. The ground condensation picture (Fig. 10) reveals small values of 10 mm to 20 mm in the most areas. High max-

**A numerical
modelling experiment**U. Strasser et al.

[Title Page](#)[Abstract](#)[Introduction](#)[Conclusions](#)[References](#)[Tables](#)[Figures](#)[◀](#)[▶](#)[◀](#)[▶](#)[Back](#)[Close](#)[Full Screen / Esc](#)[Printer-friendly Version](#)[Interactive Discussion](#)

imum values of more than 200 mm can be found in the small snow deposition zones where the snow slides are retained and accumulate: here, the snow covered period lasts until summer (see Fig. 8), and consequently, frequent warm air and high water vapour pressure conditions in the surface layer enable an efficient latent flux towards the snow surface.

3.3 Canopy snow sublimation

In general, sublimation of snow intercepted in the trees of a mountain canopy increases with (a) larger LAI, (b) higher air temperature, (c) more incoming solar radiation, (d) less atmospheric moisture, and (e) higher wind speed and thus more efficient turbulent mixing, at least up to a certain wind speed threshold. In Fig. 11 the sublimation rates have been accumulated to a seasonal total of sublimation SWE loss for the National Park canopies. Resulting total sublimation ranges between approximately 30 mm (mountain pine stand at the Reiter Alm) and typically around 200 mm for the 30 m and higher spruce stands east of the Koenigssee. Maximum values of more than 250 mm can be found for very dense stands in well ventilated, south-exposed slopes. Generally, frequent smaller snowfall events during winter result in higher total sublimation amount than do intensive but singular events, since the interception storage is limited and hence precipitation surplus falls to the ground. Hence, it is the frequency and duration of snow undergoing the interception processes that governs total sublimation amount. Snow that does not sublimate and therefore remains within the interception storage can melt and fall down to the ground later; this process is computed with a temperature-index model following Pellicciotti et al. (2005).

3.4 Sublimation of snow from turbulent suspension

For the simulations of total winter snow sublimation losses due to wind-induced snow transport discussed here, SnowTran-3D was run with the same DEM and meteorological forcing as AMUNDSEN. Only wind speed and direction data were provided using

A numerical modelling experiment

U. Strasser et al.

Title Page

Abstract

Introduction

Conclusions

References

Tables

Figures

◀

▶

◀

▶

Back

Close

Full Screen / Esc

Printer-friendly Version

Interactive Discussion

5 a library of local wind fields simulated with the Penn State University – National Center for Atmospheric Research MM5 model, applying the procedure described in Bernhardt et al. (2007a)¹. The efficiency of the sublimation process during blowing-snow events depends on the amount of snow in the simulated layers of saltation and turbulent sus-
pension. Accumulated blowing-snow sublimation rates for winter 2003/2004 are illus-
trated in Fig. 12. Although the areas of significant sublimation losses due to turbulent
suspension are spatially limited (below 1800 m a.s.l. they are negligibly small), the ef-
fect is very significant at the local (pixel) scale: at the summit crests and ridges of the
mountain massifs of Hochkalter and Watzmann, more than 1000 mm of SWE are mod-
elled to sublimate into the atmosphere. At such wind-exposed locations with frequent
occurrence of high wind speeds the processes of snow entrainment and transport are
very efficient, and so is moisture transport across the top of the boundary layer in the
air masses above.

3.5 Distribution of total snow sublimation

15 Total snow sublimation losses from the winter snow cover is given by the sum of the
three described processes (Fig. 13). Sublimation from the ground and the canopy
interception storage are similar in their seasonal efficiency and represent a total loss
of approximately 100 mm of SWE at quite extensive areas in our test site. Only in a
small, but exceptionally dense spruce stand east of the Koenigssee almost 300 mm of
SWE sublimate from the canopy due to the high effective LAI there (see Fig. 4). The
general shape of the ground sublimation profile is driven by the exponential expression
of the water vapour calculation required for solving Eq. (1). Sharp edges result from
the snow slide erosion/deposition areas where the melt out is distinctly different from
that in the other regions in the same altitude. Minima can result from south-exposed
areas where the melt out is earlier, from areas where snow is laterally removed, or from
beneath trees where less snow is accumulated at the ground. Sublimation of snow from
turbulent suspension during blowing-snow events is generally much more efficient, but
very limited in its local extent. In Fig. 14, all modelled sublimation losses are illustrated

**A numerical
modelling experiment**

U. Strasser et al.

Title Page

Abstract

Introduction

Conclusions

References

Tables

Figures

◀

▶

◀

▶

Back

Close

Full Screen / Esc

Printer-friendly Version

Interactive Discussion

for a profile transect from Hochkalter (2607 m a.s.l.) across the Wimbach valley to the Watzmann (2713 m a.s.l.), both summits being prominent culmination points. At both sides of the profile transect, sublimation rates increase significantly due to the contribution from turbulent suspension during wind-induced snow transport. In the spatial representation (Fig. 15) this effect is dominant over the other two: the wind-exposed mountain crests appear as maximum areas with total sublimation amount of up to 1200 mm. Dividing this picture by the seasonal snowfall distribution (Fig. 7) results in the fraction of sublimation losses from total seasonal snowfall precipitation as shown in Fig. 15. This fraction amounts to 10 to 20% in large valley areas and on mountain slopes, up to 50% in the denser canopy stands, and up to 90% at the highest mountain crests.

4 Conclusions

We applied the combined, physically based models AMUNDSEN and SnowTran-3D to simulate snow sublimation from the ground, from the forest canopy, and from turbulent suspension during wind-induced snow transport in a high mountain region. Our results indicate the seasonal pattern of accumulated snow sublimation is highly variable, with the contributions from ground being spatially relatively homogeneous and adding to about 100 mm of SWE. This process is most efficient where the snow cover duration is long and wind speeds are generally high, i.e. in the upper regions of the test site. Sublimation from canopy-intercepted snow is most efficient in stands characterized by high trees or in very dense stands, and periods with frequent snowfall events. Results indicate total SWE losses in the range of 100 mm, only in very dense stands with exceptional high LAI almost 300 mm of SWE are transported back into the atmosphere, but the spatial extent of such canopy types is limited. Most efficient is sublimation from turbulent transport during blowing-snow events: on the most exposed mountain ridges, accumulated sublimation losses add up to more than 1000 mm of SWE, due to the long duration of snow availability and efficient turbulence at the frequent high wind speed

A numerical modelling experiment

U. Strasser et al.

Title Page

Abstract

Introduction

Conclusions

References

Tables

Figures

◀

▶

◀

▶

Back

Close

Full Screen / Esc

Printer-friendly Version

Interactive Discussion

situations. The total fraction of these sublimation losses from winter precipitation is between 10 and 90%. This amount of precipitation is not stored as snow on the ground, and does not contribute to later melt.

We can conclude that snow sublimation does have a significant effect on the alpine water balance, notably in areas where wind-induced snow transport is frequent and efficient. However, these areas are spatially relatively limited. Since the topography of our test site can be regarded as extreme, our results can be interpreted as upper limits, at least for alpine measures. In the valley regions the effect of snow sublimation from the ground and from the canopies is moderate; there, our results are in accordance with the literature (Hood et al., 1999; Marks et al., 1992; Kattelmann und Elder, 1991; Kaser, 1983).

Important aspects arise if the presented model algorithms are included as part of water balance modelling. Generally, in high mountain areas the precipitation inputs are considered to be the most inaccurate quantity, particularly for snowfall which is extremely difficult to measure. Considering our snow sublimation estimates, the usually assumed precipitation underestimation in the measurements is even larger by the respective sublimation amount – if not considered in the modelling. If the relevant water exchange processes between the snow surface and the atmosphere can be accurately calculated, atmospheric precipitation distributions could be estimated with an inverse modelling approach (e.g., Liston and Sturm, 2002): for that purpose, we are intending to couple our snow processes models with a runoff scheme, and compare simulated streamflow with observations.

Finally, the processes modelled here are important with respect to understanding the long-term snow cover dynamics in high mountain regions under the influence of changing climatic conditions: the high sublimation losses from turbulent suspension at mountain crests are limited to comparably small areas and may not affect alpine water balances significantly. However, if not considered in long-term simulations, snow can accumulate unrealistically in areas where melting processes are relatively inefficient or limited in their seasonal duration. Additionally, the consideration of gravitational snow

**A numerical
modelling experiment**U. Strasser et al.

[Title Page](#)[Abstract](#)[Introduction](#)[Conclusions](#)[References](#)[Tables](#)[Figures](#)[◀](#)[▶](#)[◀](#)[▶](#)[Back](#)[Close](#)[Full Screen / Esc](#)[Printer-friendly Version](#)[Interactive Discussion](#)

transport is required for consistently accounting for the removal of snow from higher ridge crests and depositing it in the transition zones at the foot of mountain slopes. In that respect, snow sublimation processes and transport by slides is a prerequisite for obtaining realistic results in the simulated snow cover patterns, and for an adequate representation of accumulation and ablation in the long-term modelling of high mountain snow cover and glacier response to climate change.

Acknowledgements. We are thankful to all who provided their help and assistance for writing the manuscript of this paper, in particular H. Franz, V. Konnerth and M. Vogel from the National Park Administration (Berchtesgaden) for data processing and subsidizing our activities. We also acknowledge the contributions of the team of Park rangers for their technical support and valuable expertise for the field work. The meteorological data were generously supplied by the Administration of Salzburg (Untersberg), the Administration Union of the Berchtesgaden-Koenigssee region (Schoenau) and the Bavarian Avalanche Warning Center of the State Office for Environment in Munich (Jenner, Reiter Alm, Kuehrint and Funtenseetauern). M. Warscher (Munich) set up the database for automatically collecting and distributing the meteorological records. The development of AMUNDSEN has profited from the valuable contributions of M. Prasch (Munich), J. Corripio (Innsbruck) and S. Gruber (Zurich). A significant part of the grants with which this work was facilitated has been provided by the GLOWA-Danube project (<http://www.glowa-danube.de/>).

References

- Anker, D., and Roberts, D.: The lost explorer, Simon & Schuster, New York, 1999.
- Bruland, O., Liston, G. E., Vonk, J., Sand, K., and Killingtveit, A.: Modelling the snow distribution at two high arctic sites at Svalbard, Norway, and at an Alpine site in central Norway, Nord. Hydrol., 35, 191–208, 2004.
- Burlando, P., Pellicciotti, F., and Strasser, U.: Modelling Mountainous Water Systems Between Learning and Speculating, Looking for Challenges, Nord. Hydrol., 33(1), 47–74, 2002.
- Chen, J. M., Rich, P. M., Gower, S. T., Norman, J. M., and Plummer, S.: Leaf area index of boreal forests: Theory, techniques, and measurements, J. Geophys. Res., 102, 29 429–29 443, 1997.

A numerical modelling experiment

U. Strasser et al.

Title Page

Abstract

Introduction

Conclusions

References

Tables

Figures

◀

▶

◀

▶

Back

Close

Full Screen / Esc

Printer-friendly Version

Interactive Discussion

- Cionco, R. M.: Analysis of canopy index value for various canopy densities, *Bound. Lay. Meteorol.*, 15, 81–93, 1978.
- Corripio, J.: Vectorial algebra algorithms for calculating terrain parameters from DEMs and solar radiation modelling in mountainous terrain, *Int. J. Geogr. Inf. Sci.*, 17(1), 1–23, 2003.
- 5 Déry, S. J. and Yau, M. K.: Simulation of blowing snow in the Canadian Arctic using a double-moment model, *Bound. Lay. Meteorol.*, 99, 297–316, 2001.
- Durot, K.: Modélisation hydrologique distribuée du bassin versant nivo-pluvial de Sarennes. Validation des données d'entrée et développement d'un module de fonte nivale sous forêt. Ph.D. dissertation, LTHE, 332 p, Grenoble, 1999.
- 10 Dyer, A. J.: A Review of Flux-Profile Relationships, *Bound. Lay. Meteorol.*, 7, 363–372, 1974.
- Essery, R. L. H., Li, L., and Pomeroy, J. W.: A Distributed Model of Blowing Snow over Complex Terrain, *Hydrol. Process.*, 13, 2423–2438, 1999.
- Essery, R. L. H., Pomeroy, J. W., Parvianen, J., and Storck, P.: Sublimation of snow from boreal forests in a climate model, *J. Clim.*, 16, 1855–1864, 2003.
- 15 Foken, T.: *Angewandte Meteorologie – Mikrometeorologische Methoden*, Springer Verlag, ISBN 3540003223, 289 p, Berlin, 2003.
- Greene, E. M., Liston, G. E., and Pielke, R. A.: Simulation of above treeline snowdrift formation using a numerical snow-transport model, *Cold Reg. Sci. Tech.*, 30, 135–144, 1999.
- Greuell, W., Knap, W., and Smeets, P.: Elevational changes in meteorological variables along a midlatitude glacier during summer, *J. Geophys. Res.*, 102(22), 25 941–25 954, 1997.
- 20 Gruber, S.: A mass-conserving fast algorithm to parameterize gravitational transport and deposition using digital elevation models, *Water Resour. Res.*, 43, W06412, doi:10.1029/2006WR004868, 2007.
- Hammel, K. and Kennel, M.: Charakterisierung und Analyse der Wasserverfügbarkeit und des Wasserhaushaltes von Waldstandorten in Bayern mit dem Simulationsmodell BROOK90, *Forstliche Forschungsberichte München*, 185, 148 p, 2001.
- 25 Hasholt, B., Liston, G. E., and Knudsen, N. T.: Snow-distribution modelling in the Ammassalik region, south east Greenland, *Nord. Hydrol.*, 34, 1–16, 2003.
- Hedstrom, N. R. and Pomeroy, J. W.: Measurements and modelling of snow interception in the boreal forest, *Hydrol. Process.*, 12, 1611–1625, 1998.
- 30 Hiemstra, C. A., Liston, G. E., and Reiners, W. A.: Snow redistribution by wind and interactions with vegetation at upper treeline in the Medicine Bow Mountains, Wyoming, USA, *Arct., Antarct. Alp. Res.*, 34, 262–273, 2002.

**A numerical
modelling experiment**

U. Strasser et al.

Title Page

Abstract

Introduction

Conclusions

References

Tables

Figures

◀

▶

◀

▶

Back

Close

Full Screen / Esc

Printer-friendly Version

Interactive Discussion

**A numerical
modelling experiment**U. Strasser et al.

[Title Page](#)[Abstract](#)[Introduction](#)[Conclusions](#)[References](#)[Tables](#)[Figures](#)[I◀](#)[▶I](#)[◀](#)[▶](#)[Back](#)[Close](#)[Full Screen / Esc](#)[Printer-friendly Version](#)[Interactive Discussion](#)

- Hiemstra, C. A., Liston, G. E., and Reiners, W. A.: Observing, modelling, and validating snow redistribution by wind in a Wyoming upper treeline landscape, *Ecol. Mod.*, 197, 35–51, 2006.
- Hood, E., Williams, M., and Cline, D.: Sublimation from a seasonal snowpack at a continental, mid-latitude alpine site, *Hydrol. Process.*, 13, 1781–1797, 1999.
- 5 Kattelmann, R. and Elder, K.: Hydrologic characteristics and water balance of an alpine basin in the Sierra Nevada, *Water Resour. Res.*, 27, 1553–1562, 1991.
- Kaser, G.: Über die Verdunstung auf dem Hintereisferner, *Ztschr. f. Gletschk. Glazialgeol.*, 19(1), 149–162, 1983.
- 10 King, J. C., Anderson, P. S., and Mann, G. W.: The seasonal cycle of sublimation at Halley, Antarctica, *J. Glaciol.*, 47, 1–8, 2001.
- Konnert, V.: Standortkarte Nationalpark Berchtesgaden. Forschungsbericht, 49, Nationalpark Berchtesgaden, 151 p., Berchtesgaden, 2004.
- Kuchment, L. S. and Gelfan, A. N.: The determination of the snowmelt rate and the meltwater outflow from a snowpack for modelling river runoff generation, *J. Hydrol.*, 179, 23–36, 1996.
- 15 Lang, H.: Is evaporation an important component in high alpine hydrology?, *Nord. Hydrol.*, 12, 217–224, 1981.
- Lee, L. W.: Sublimation of snow in a turbulent atmosphere, Ph.D. dissertation, University of Wyoming, 162 p, 1975.
- Link, T. and Marks, D.: Point simulation of seasonal snow cover dynamics beneath boreal forest canopies, *J. Geophys. Res.*, 104(22), 27 841–27 857, 1999.
- 20 Liston, G. E. and Sturm, M.: A snow-transport model for complex terrain, *J. Hydromet.*, 3, 646–659, 1998.
- Liston, G. E. and Sturm, M.: Winter precipitation patterns in Arctic Alaska Determined from a Blowing-Snow Model and Snow-Depth Observations, *Nord. Hydrol.*, 35, 325–334, 2002.
- 25 Liston, G. E. and Sturm, M.: The role of winter sublimation in the Arctic moisture budget, *Nord. Hydrol.*, 35(3), 325–334, 2004.
- Liston, G. E. and Elder, K.: A Distributed Snow-Evolution Modeling System (SnowModel), *J. Hydromet.*, 7(1), 217–234, 2006.
- Liston, G. E., Winther, J. G., Bruland, O., Elvehoy, H., Sand, K., and Karlof, L.: Snow and blue-ice distribution patterns on the coastal Antarctic Ice Sheet, *Antarc. Sci.*, 12, 69–79, 30 2000.
- Liston, G. E., Haehnel, R. B., Sturm, M., Hiemstra, C. A., Berezovskaya, S., and Tabler, R. D.: Simulating complex snow distributions in windy environments using SnowTran-3D, *J. Glaciol.*,

53(181), 241–256, 2007.

Marks, D., Dozier, J., and Davis, R. E.: Climate and energy exchange at the snow surface in the alpine region of the Sierra Nevada: 1. Meteorological measurements and monitoring, *Water Resour. Res.*, 17, 609–627, 1992.

5 Marsh, P.: Snowcover formation and melt: recent advances and future prospects, *Hydrol. Process.*, 13, 2117–2134, 1999.

Martin, E. and Lejeune, Y.: Turbulent fluxes above the snow surface, *Ann. Glaciol.*, 26, 179–183, 1998.

10 Montesi, J., Elder, K., Schmidt, R. A., and Davis, R. E.: Sublimation of intercepted snow within a subalpine forest canopy at two elevations, *J. Hydromet.*, 5, 763–773, 2004.

Obled, Ch.: *Modèle mathématique de la fusion nivale*, Ph.D. dissertation, Institut de mécanique de Grenoble, 170 p., Grenoble, 1971.

Oerlemans, J. and Grisogono, B.: Glacier winds and parameterisation of the related surface heat fluxes, *Tellus*, 54, 440–452, 2002.

15 Pellicciotti, F., Brock, B., Strasser, U., Burlando, P., Funk, M., and Corripio, J.: An enhanced temperature-index glacier melt model including shortwave radiation balance: development and testing for Haut Glacier d’Arolla, Switzerland, *J. Glaciol.*, 51(175), 573–587, 2005.

Pluess, C. and Mazzone, R.: The Role of Turbulent Heat Fluxes in Energy Balance of High Alpine Snow Cover, *Nord. Hydrol.*, 25, 25–28, 1994.

20 Pomeroy, J. W. and Schmidt, R. A.: The Use of Fractal Geometry in Modelling Intercepted Snow Accumulation and Sublimation, *Proceedings of the 50th Annual Eastern Snow Conference*, Honour Paper, 1–10, 1993.

Pomeroy, J. W. and Gray, D. M.: *Snowcover: Accumulation, Relocation, and Management*. National Hydrology Research Institute, Saskatoon, Canada, NHRI Science Report, 7, 144 p, Saskatoon, 1995.

25 Pomeroy, J. W. and Dion, K.: Winter radiation extinction and reflection in a boreal pine canopy: measurements and modelling, *Hydrol. Process.*, 10, 1591–1608, 1996.

Pomeroy, J. W. and Essery, R. L. H.: Turbulent fluxes during blowing snow: field test of model sublimation prediction. *Hydrol. Process.*, 13, 2963–2975, 1999.

30 Pomeroy, J. W., Gray, D. M., and Landine, P. G.: The Prairie Blowing Snow Model – characteristics, validation, operation, *J. Hydrol.*, 144, 165–192, 1993.

Pomeroy, J. W., Gray, D. M., Shook, K. R., Toth, B., Essery, R. L. H., Pietroniro, A., and Hedstrom, N.: An evaluation of snow accumulation and ablation for land surface modelling,

TCD

1, 303–350, 2007

A numerical modelling experiment

U. Strasser et al.

Title Page

Abstract

Introduction

Conclusions

References

Tables

Figures

◀

▶

◀

▶

Back

Close

Full Screen / Esc

Printer-friendly Version

Interactive Discussion

EGU

- Hydrol. Process., 12, 2339–2367, 1998.
- Pomeroy, J. W., Gray, D. M., Hedstrom, N., and Janowicz, J. R.: Prediction of seasonal snow accumulation in cold climate forests, *Hydrol. Process.*, 16, 3543–3558, 2002.
- Prasad, R., Tarboton, D. G., Liston, G. E., Luce, C. H., and Seyfried, M. S.: Testing a blowing snow model against distributed snow measurements at Upper Sheep Creek, Idaho, United States of America, *Water Resour. Res.*, 37, 1341–1356, 2001.
- Prasch, M., Strasser, U., and Mauser, W.: Validation of a physically based snow model for the simulation of the accumulation and ablation of snow (ESCIMO), in: Proceedings of the Alpine*Snow*Workshop (<http://www.alpinesnowworkshop.org>), edited by: Strasser, U., and Vogel, M., Munich, October 5-6, 2006, Germany, Berchtesgaden National Park research report, 52, in press, 2007.
- Rohrer, M. B.: Die Schneedecke im Schweizer Alpenraum und ihre Modellierung. Zuer. Geogr. Schriften, 49, 178 p, Zuerich, 1992.
- Schmidt, R. A.: Sublimation of wind-transported snow – a model. U.S. Forest Service, Research Paper 90, Rocky Mountain Forest and Range Experiment Station, 1972.
- Schmidt, R. A.: Sublimation of snow intercepted by an artificial conifer, *Agric. For. Meteorol.*, 54, 1–27, 1991.
- Smeets, C. J., Dynkerke, P. G., and Vugts, H. F.: Turbulence Characteristics of the Stable Boundary Layer over a Mid-Latitude Glacier. Part 1: A Combination of Katabatic and Large-Scale Forcing, *Bound. Lay. Meteorol.*, 87, 117–145, 1998.
- Sovilla, B.: Field experiments and numerical modelling of mass entrainment and deposition in snow avalanches, Ph.D. dissertation, ETH Zurich, Switzerland, 2004.
- Strasser, U. and Mauser, W.: Modelling the Spatial and Temporal Variations of the Water Balance for the Weser Catchment 1965-1994, *J. Hydrol.*, 254(1-4), 199–214, 2001.
- Strasser, U. and Etchevers, P.: Simulation of Daily Discharges for the Upper Durance Catchment (French Alps) Using Subgrid Parameterization for Topography and a Forest Canopy Climate Model, *Hydrol. Process.*, 19, 2361–2373, 2005.
- Strasser, U., Etchevers, P., and Lejeune, Y.: Intercomparison of two Snow Models with Different Complexity Using Data from an Alpine Site, *Nord. Hydrol.*, 33(1), 15–26, 2002.
- Strasser, U., Corripio, J., Brock, B., Pellicciotti, F., Burlando, P., and Funk, M.: Spatial and Temporal Variability of Meteorological Variables at Haut Glacier d’Arolla (Switzerland) During the Ablation Season 2001: Measurements and Simulations, *J. Geophys. Res.*, 109(2), doi:10.1029/2003JD003973, 2004.

A numerical modelling experiment

U. Strasser et al.

Title Page

Abstract

Introduction

Conclusions

References

Tables

Figures

◀

▶

◀

▶

Back

Close

Full Screen / Esc

Printer-friendly Version

Interactive Discussion

**A numerical
modelling experiment**U. Strasser et al.

Title Page

Abstract

Introduction

Conclusions

References

Tables

Figures

I◀

▶I

◀

▶

Back

Close

Full Screen / Esc

Printer-friendly Version

Interactive Discussion

- Strasser, U., Franz, H., and Mauser, W.: Distributed modelling of snow processes in the Berchtesgaden National Park (Germany), in: Proceedings of the Alpine*Snow*Workshop (<http://www.alpinesnowworkshop.org>), edited by: Strasser, U. and M. Vogel, M., Munich, October 5-6, 2006, Germany. Berchtesgaden National Park research report, 52, in print, 2007.
- 5 Thorpe, A. D. and Mason, B. J.: The evaporation of ice spheres and ice crystals, Brit. J. Appl. Phys., 17, 541–548, 1996.
- Tribbeck, M. J., Gurney, R., Morris, E. M., and Pearson, D. W. C.: A new Snow-SVAT to simulate the accumulation and ablation of seasonal snow beneath a forest canopy, J. Glaciol., 50(169), 171–182, 2004.
- 10 U.S. Army Corps of Engineers: Snow Hydrology, U.S. Army Corps of Engineers, North Pacific Division, 437 p., Portland, 1956.
- Weber, M.: Mikrometeorologische Prozesse bei der Ablation eines Alpengletschers, Institute for Meteorology and Geophysics, Ph.D. dissertation, University of Innsbruck, 2005.
- Weber, M.: A parameterization for the turbulent fluxes over melting surfaces derived from eddy correlation measurements, in: Proceedings of the Alpine*Snow*Workshop (<http://www.alpinesnowworkshop.org>), edited by: Strasser, U., and Vogel, M., Munich, October 5-6, 2006, Germany, Berchtesgaden National Park research report, Nr. 52, in press, 2007.
- 15 Zappa, M., Pos, F., Strasser, U., Warmerdam, P., and Gurtz, J.: Seasonal water balance of an Alpine catchment as evaluated by different methods for spatially distributed snowmelt modelling, Nord. Hydrol., 34(2), 179–202, 2003.
- 20

A numerical modelling experiment

U. Strasser et al.

Table 1. Altitude, location and set of recorded parameters with temporal resolution for the stations comprising the automatic network in the Berchtesgaden National Park. Coordinate system is UTM.

Station	Altitude [a.s.l.]	Easting [m]	Northing [m]	Parameters	Resolution
Reiter Alm I	1755 m	4 560 494	5 279 436	WS, WS _{max} , WD	10 min
Reiter Alm II	1670 m	4 560 835	5 279 235	T, T _{S0} , T _{S20} , T _{S40} , T _{S60} , T _{SS} , H, SH	10 min
Reiter Alm III	1615 m	4 560 950	5 278 982	T, H, GR, RR, P, SH	10 min
Kuehroint	1407 m	4 572 314	5 270 625	T, H, GR, RR, WS, WD, P, SH	10 min
Funtenseetauern	2445 m	4 572 939	5 261 755	T, H, WS, WD	10 min
Jenner I	1200 m	4 576 659	5 272 417	T, T _{S0} , T _{S20} , T _{S40} , T _{SS} , H, SH	10 min
Jenner II	660 m	4 575 000	5 273 988	T, H, P	10 min
Schoenau	617 m	4 573 987	5 275 597	T ₀₀₅ , T, H, GR, DR, SS, WS, WD, P, AP	10 min
Untersberg	1776 m	4 575 822	5 287 649	T, H, WS, WS _{max} , WD, P	30 min

- WS = wind speed
- WS_{max} = maximum wind speed
- WD = wind direction
- T = temperature
- T₀₀₅ = temperature (0.05 m)
- T_{S0} = snow temperature (0.0 m)
- T_{S20} = snow temperature (0.2 m)
- T_{S40} = snow temperature (0.4 m)
- T_{S60} = snow temperature (0.6 m)
- T_{SS} = snow temperature (snow surface)
- H = humidity
- SH = snow height
- SS = sunshine duration
- GR = global radiation
- DR = direct radiation
- RR = reflected radiation
- P = precipitation
- AP = air pressure at sea level

Title Page

Abstract Introduction

Conclusions References

Tables Figures

◀ ▶

◀ ▶

Back Close

Full Screen / Esc

Printer-friendly Version

Interactive Discussion

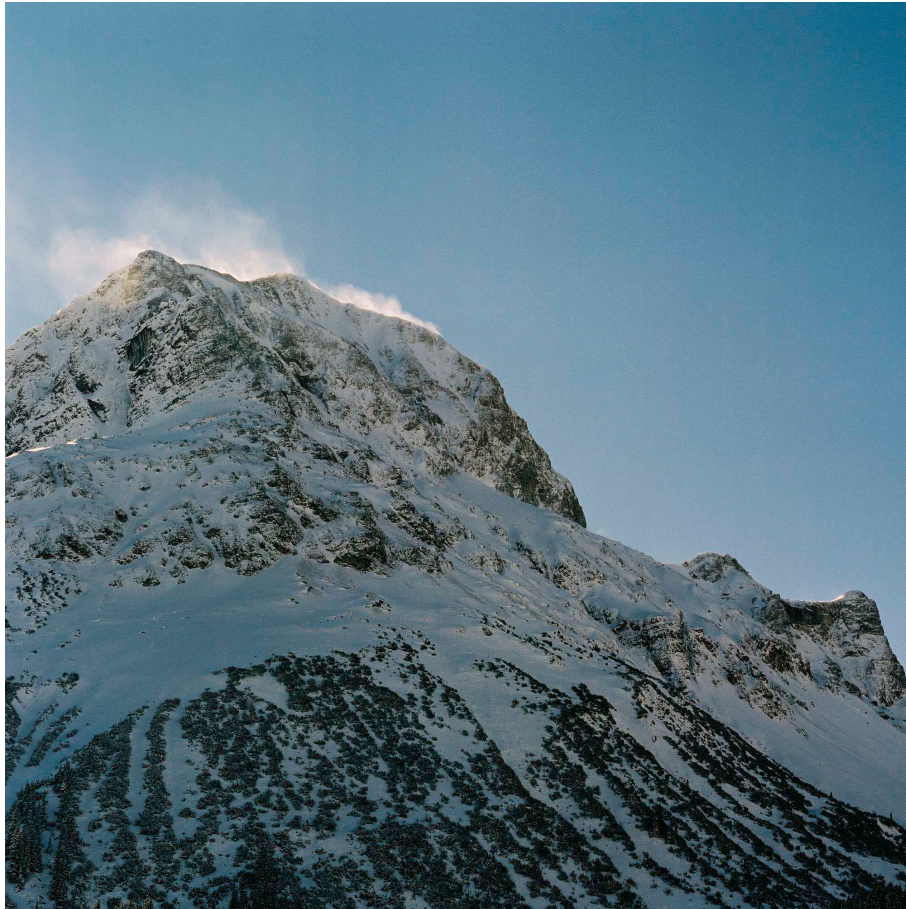


Fig. 1. Wind-induced snow plume on a mountain crest during blue skies (Photo: P. Neusser).

TCD

1, 303–350, 2007

**A numerical
modelling experiment**

U. Strasser et al.

Title Page

Abstract

Introduction

Conclusions

References

Tables

Figures

◀

▶

◀

▶

Back

Close

Full Screen / Esc

Printer-friendly Version

Interactive Discussion

EGU

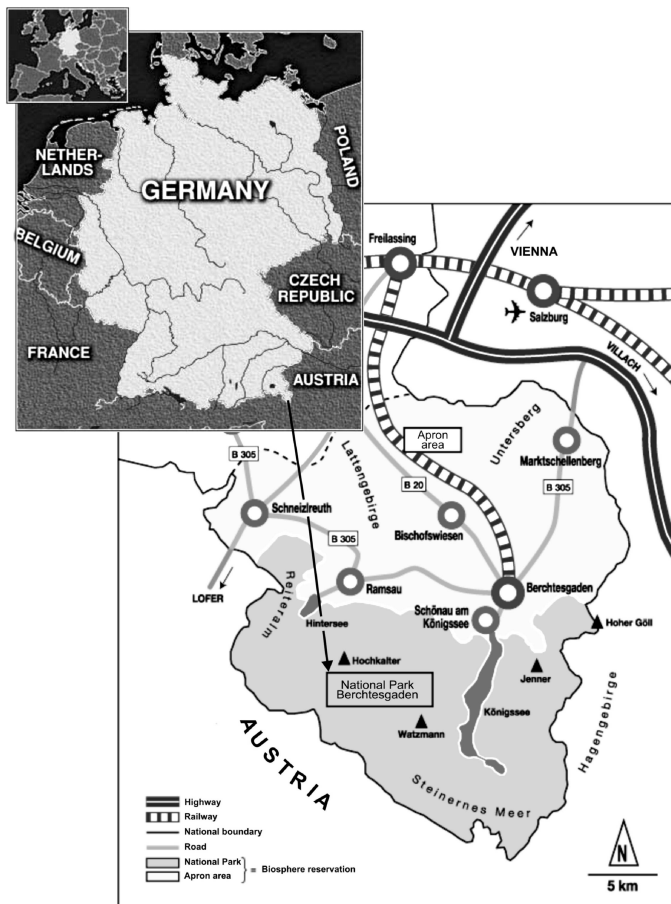


Fig. 2. Location of the Berchtesgaden National Park (Germany). The center (Watzmann) is located at 47.6 N/12.9 E.

**A numerical
modelling experiment**

U. Strasser et al.

Title Page

Abstract

Introduction

Conclusions

References

Tables

Figures

◀

▶

◀

▶

Back

Close

Full Screen / Esc

Printer-friendly Version

Interactive Discussion

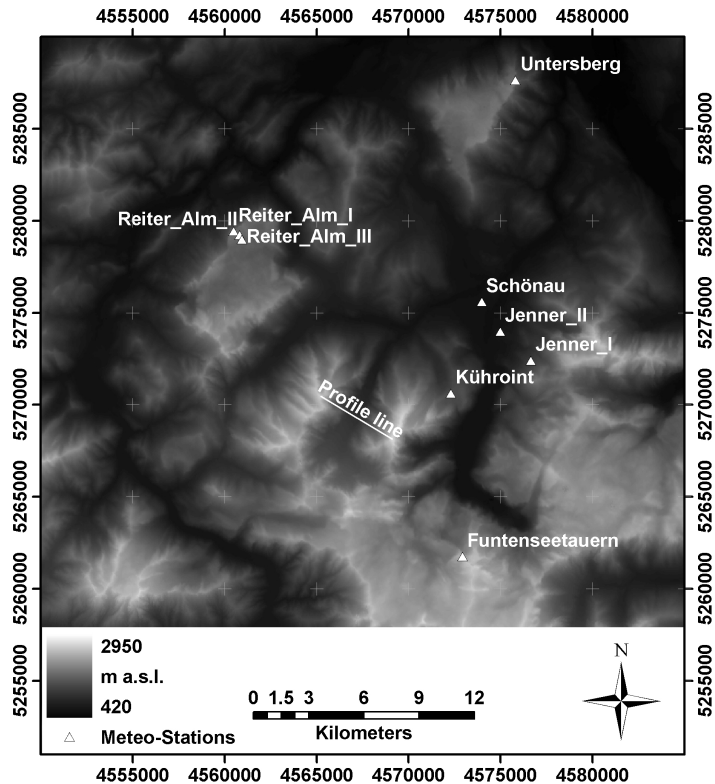


Fig. 3. Digital elevation model (DEM) for the National Park area and its surrounding, resolution 50 m. The triangles represent the locations of the meteorological stations which comprise the automatic network. The straight profile line is a cross-section from the summit of Hochkalter (2607 m a.s.l.) to the one of Watzmann (2713 m a.s.l.).

A numerical modelling experiment

U. Strasser et al.

Title Page	
Abstract	Introduction
Conclusions	References
Tables	Figures
◀	▶
◀	▶
Back	Close
Full Screen / Esc	
Printer-friendly Version	
Interactive Discussion	

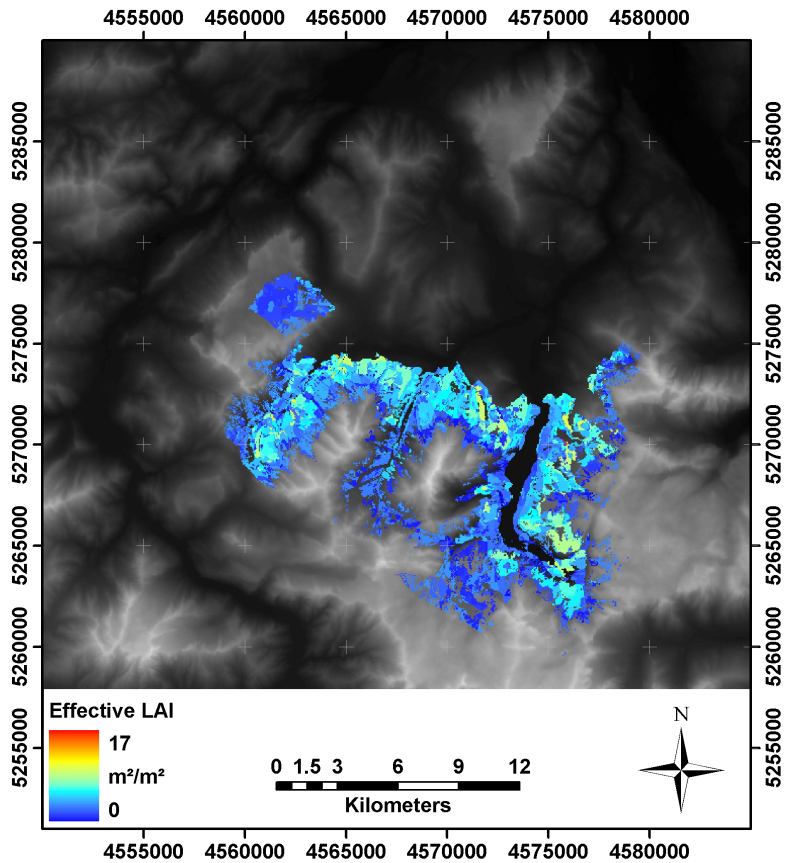


Fig. 4. Effective winter leaf area index for the forest canopies within the National Park area. The pattern reflects the fact that canopy data is only available for the National Park central area.

A numerical modelling experiment

U. Strasser et al.

Title Page

Abstract

Introduction

Conclusions

References

Tables

Figures

◀

▶

◀

▶

Back

Close

Full Screen / Esc

Printer-friendly Version

Interactive Discussion

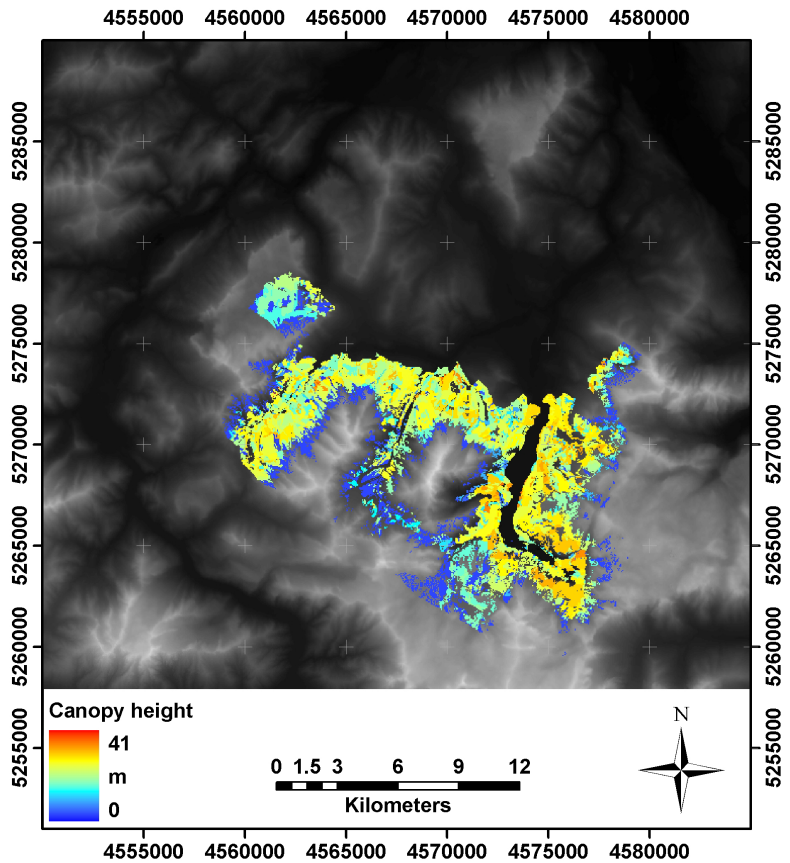


Fig. 5. Canopy height for the forest canopies within the National Park area. The pattern reflects the fact that canopy data is only available for the National Park central area.

TCD

1, 303–350, 2007

A numerical modelling experiment

U. Strasser et al.

Title Page

Abstract

Introduction

Conclusions

References

Tables

Figures

◀

▶

◀

▶

Back

Close

Full Screen / Esc

Printer-friendly Version

Interactive Discussion

EGU

**A numerical
modelling experiment**

U. Strasser et al.

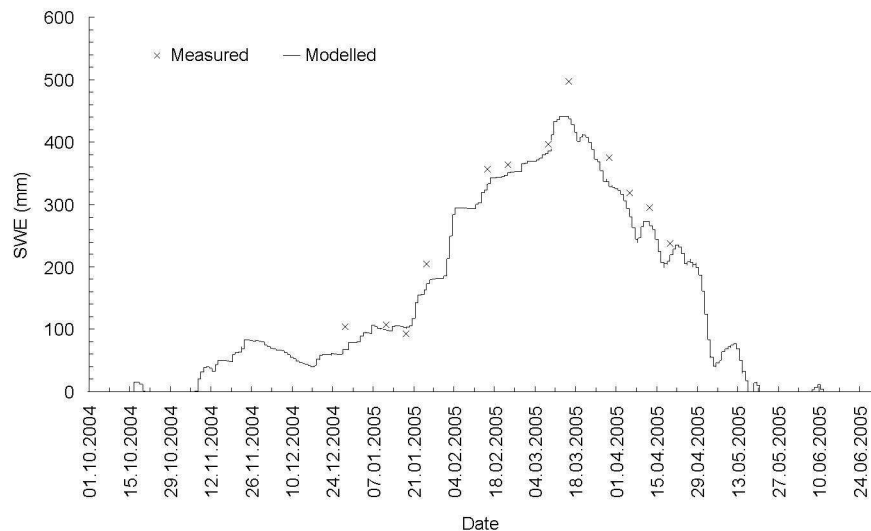


Fig. 6. Measured and modelled seasonal course of snow water equivalent at Kuehrint (1407 m a.s.l.), winter season 2004/05 (no validation data available before). Mean deviation: 26.6 mm.

[Title Page](#)[Abstract](#)[Introduction](#)[Conclusions](#)[References](#)[Tables](#)[Figures](#)[◀](#)[▶](#)[◀](#)[▶](#)[Back](#)[Close](#)[Full Screen / Esc](#)[Printer-friendly Version](#)[Interactive Discussion](#)

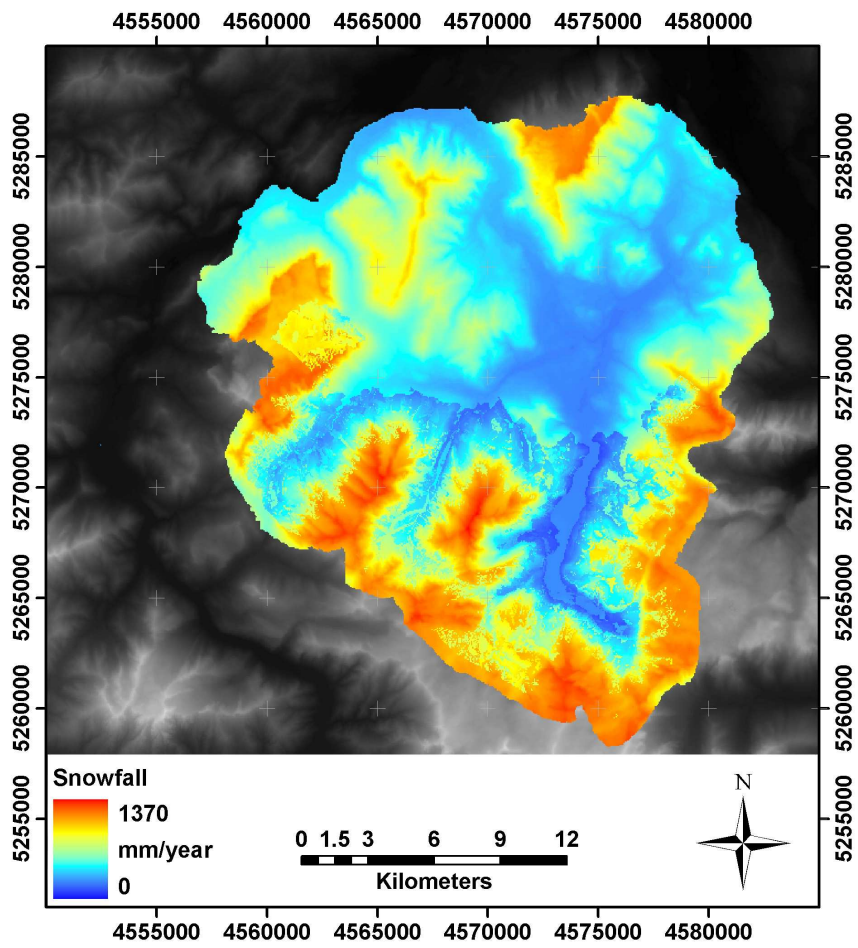


Fig. 7. Annual snowfall (solid precipitation) for the National Park area, 1 August 2003 to 31 July 2004.

TCD

1, 303–350, 2007

A numerical modelling experiment

U. Strasser et al.

Title Page

Abstract

Introduction

Conclusions

References

Tables

Figures

◀

▶

◀

▶

Back

Close

Full Screen / Esc

Printer-friendly Version

Interactive Discussion

EGU

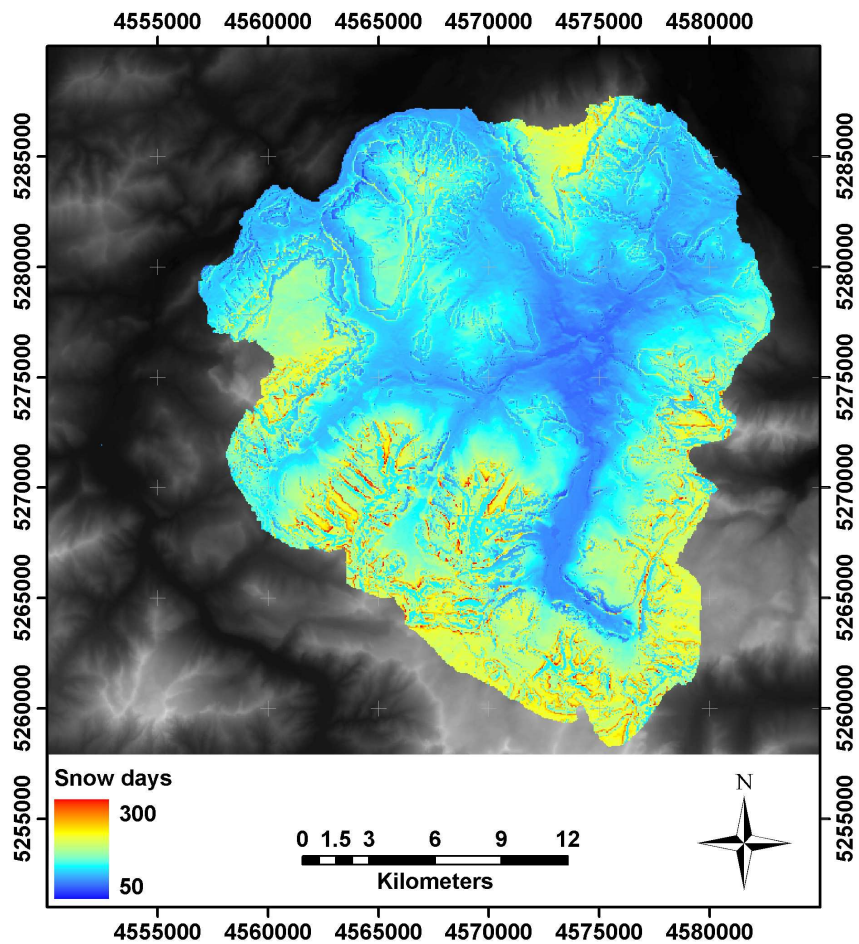


Fig. 8. Snow cover duration for the National Park area, 1 August 2003 to 31 July 2004.
343

TCD

1, 303–350, 2007

**A numerical
modelling experiment**

U. Strasser et al.

Title Page

Abstract

Introduction

Conclusions

References

Tables

Figures

◀

▶

◀

▶

Back

Close

Full Screen / Esc

Printer-friendly Version

Interactive Discussion

EGU

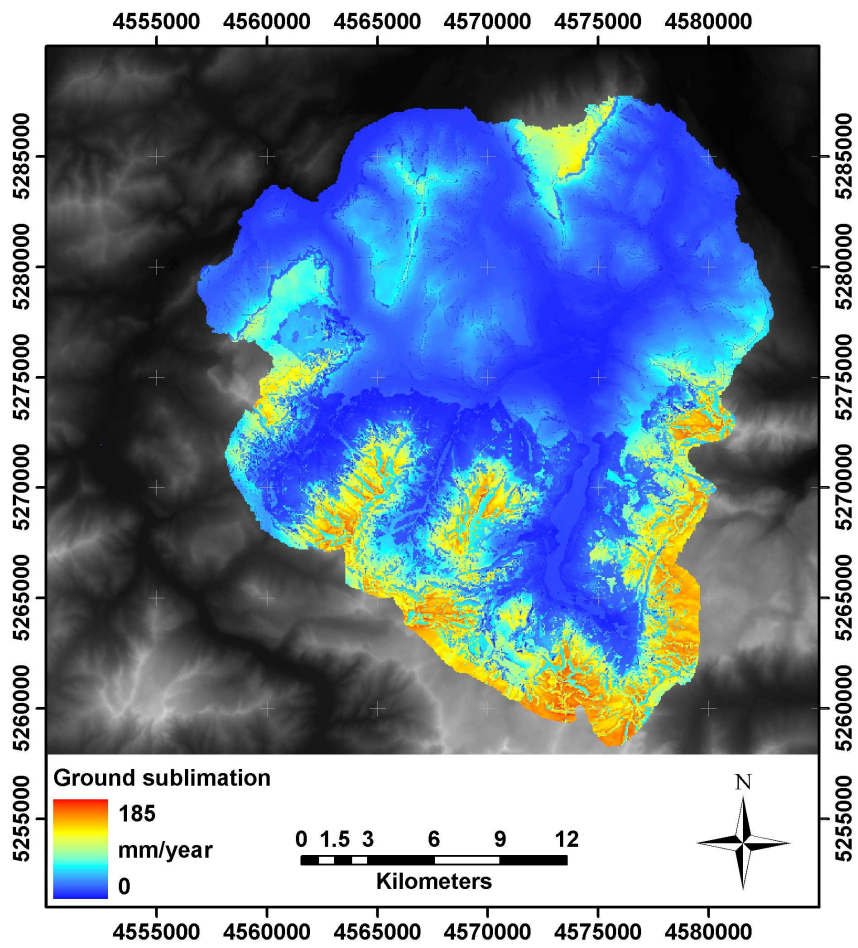


Fig. 9. Modelled total wintery snow sublimation losses in the National Park area (2003/2004).

**A numerical
modelling experiment**

U. Strasser et al.

Title Page

Abstract

Introduction

Conclusions

References

Tables

Figures

◀

▶

◀

▶

Back

Close

Full Screen / Esc

Printer-friendly Version

Interactive Discussion

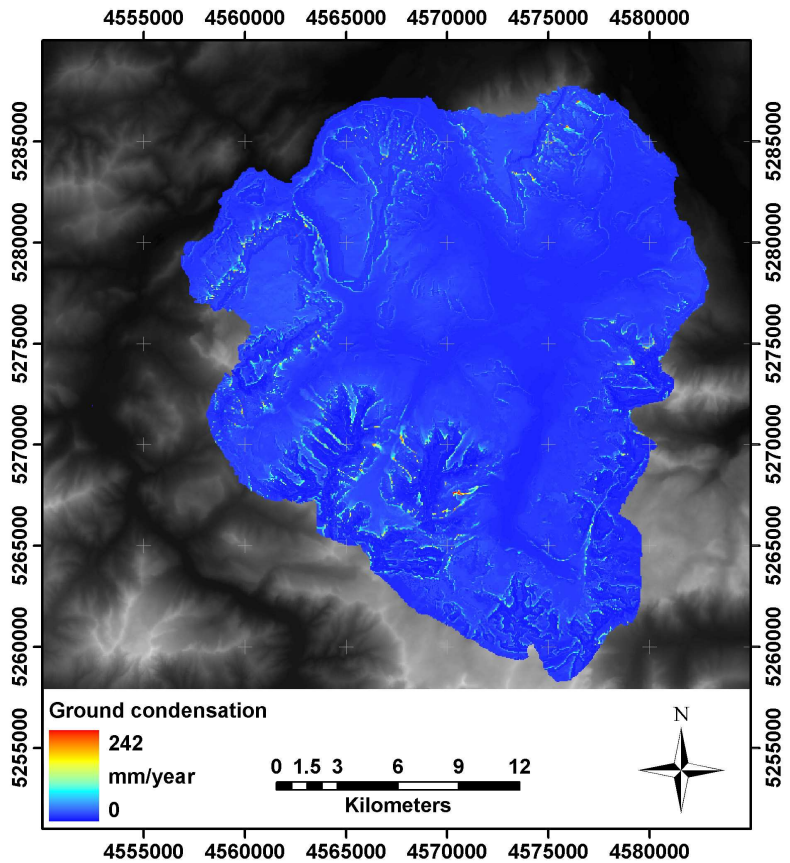


Fig. 10. Modelled total wintery snow yield by condensation in the National Park area (2003/2004).

TCD

1, 303–350, 2007

A numerical modelling experiment

U. Strasser et al.

Title Page

Abstract

Introduction

Conclusions

References

Tables

Figures

◀

▶

◀

▶

Back

Close

Full Screen / Esc

Printer-friendly Version

Interactive Discussion

EGU

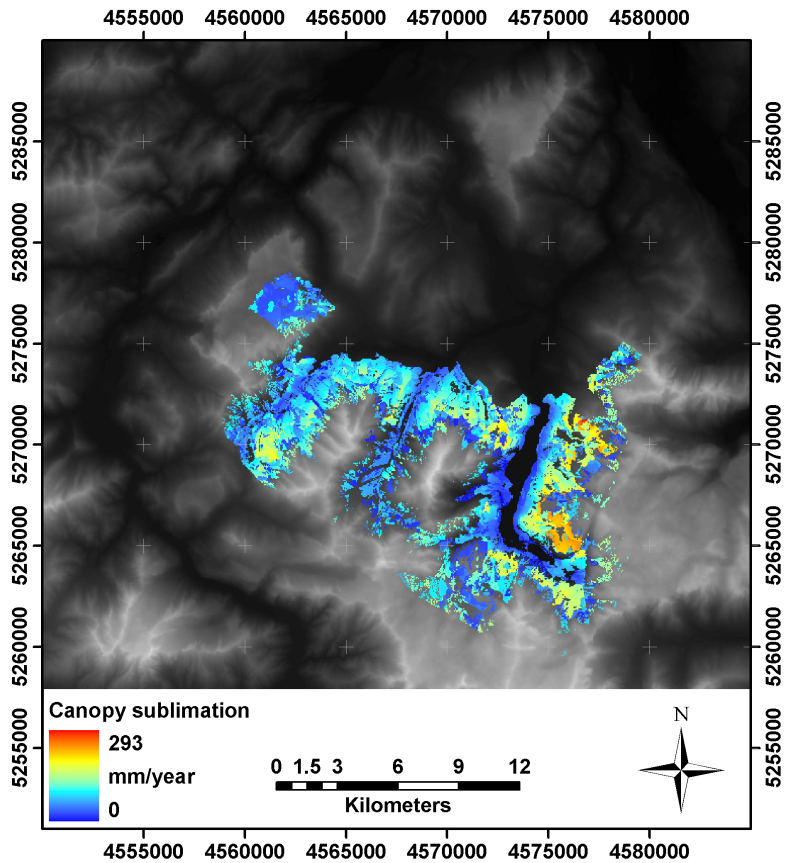


Fig. 11. Modelled total wintery snow sublimation from the canopies in the National Park area (2003/2004).

TCD

1, 303–350, 2007

A numerical modelling experiment

U. Strasser et al.

Title Page

Abstract

Introduction

Conclusions

References

Tables

Figures

◀

▶

◀

▶

Back

Close

Full Screen / Esc

Printer-friendly Version

Interactive Discussion

EGU

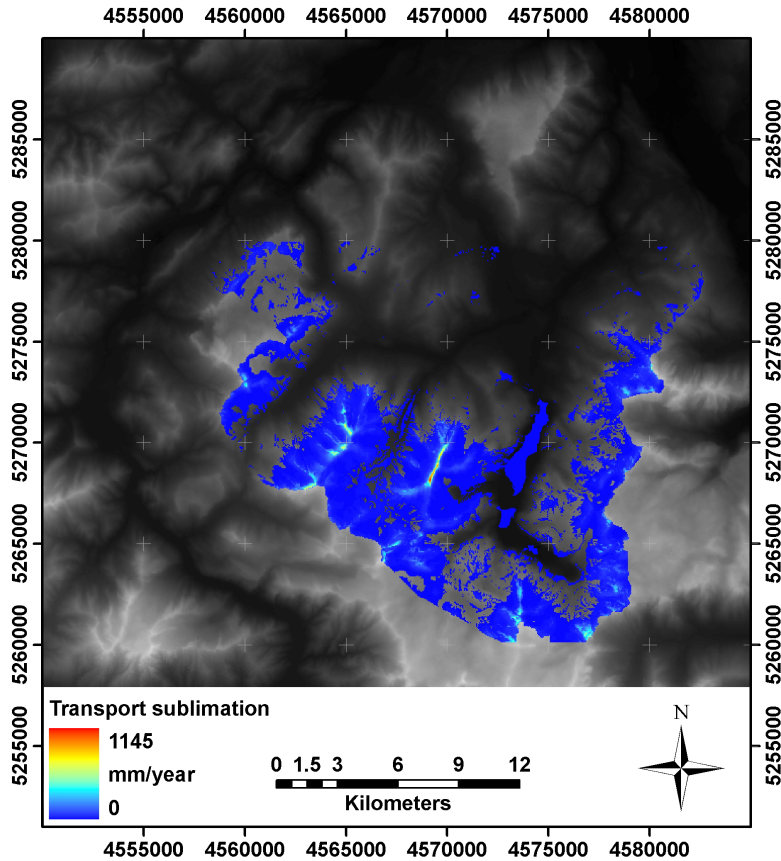


Fig. 12. Modelled total wintery snow sublimation from wind-induced snow transport in the turbulent suspension layer in the National Park area (2003/2004).

TCD

1, 303–350, 2007

A numerical modelling experiment

U. Strasser et al.

Title Page

Abstract

Introduction

Conclusions

References

Tables

Figures

◀

▶

◀

▶

Back

Close

Full Screen / Esc

Printer-friendly Version

Interactive Discussion

EGU

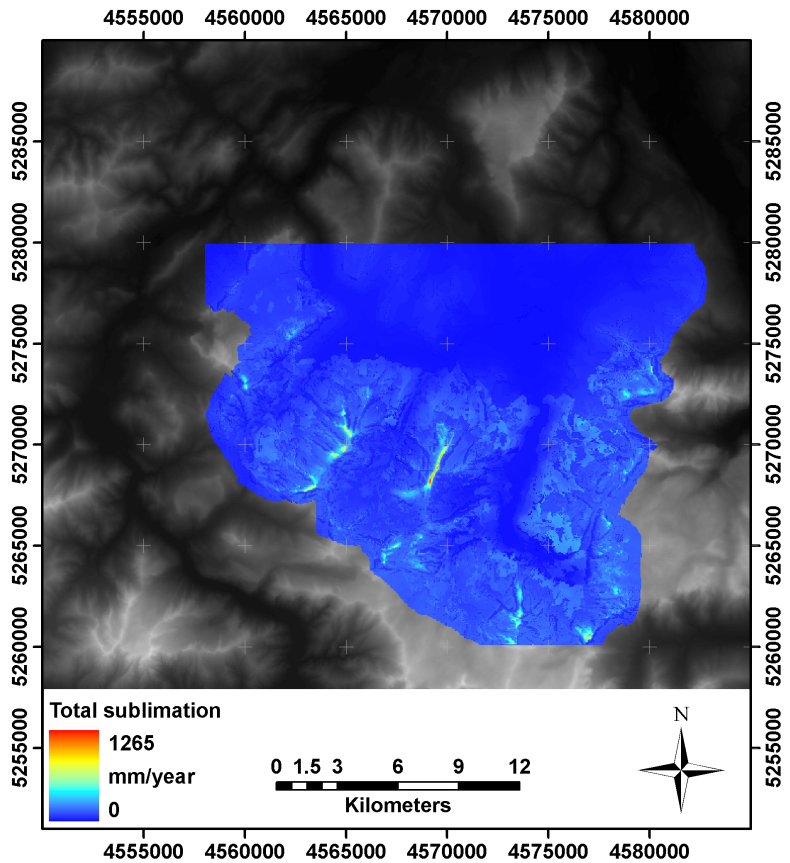


Fig. 13. Modelled total wintery snow sublimation from the ground, the canopies and from wind-induced snow transport in the turbulent suspension layer in the National Park area (2003/2004).

TCD

1, 303–350, 2007

A numerical modelling experiment

U. Strasser et al.

Title Page

Abstract

Introduction

Conclusions

References

Tables

Figures

◀

▶

◀

▶

Back

Close

Full Screen / Esc

Printer-friendly Version

Interactive Discussion

EGU

A numerical modelling experiment

U. Strasser et al.

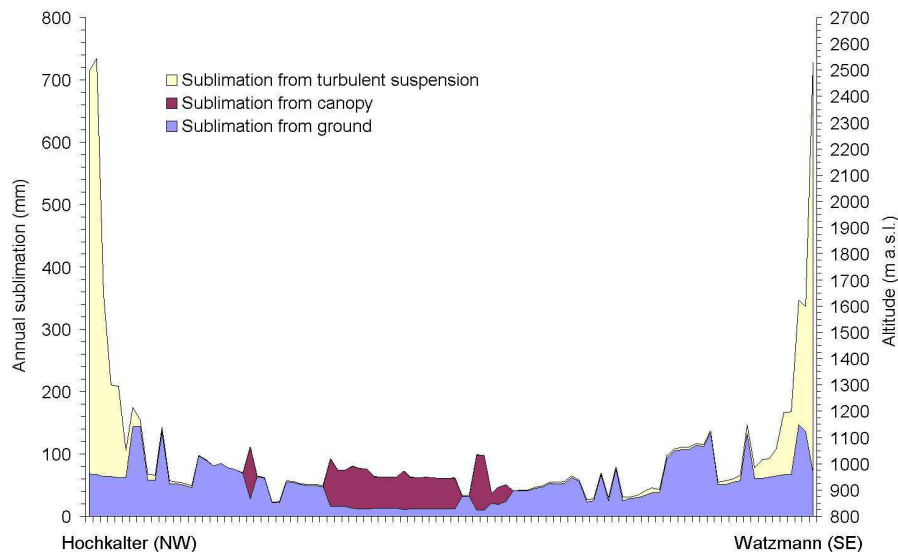


Fig. 14. Simulated contributions to annual snow sublimation from the ground, canopy intercepted snow and wind-induced, turbulent suspended snow along a cross-section from Hochkalter (2607 m a.s.l.) through the Wimbachtal to Watzmann (2713 m a.s.l.) (see also Fig. 3).

Title Page

Abstract

Introduction

Conclusions

References

Tables

Figures

◀

▶

◀

▶

Back

Close

Full Screen / Esc

Printer-friendly Version

Interactive Discussion

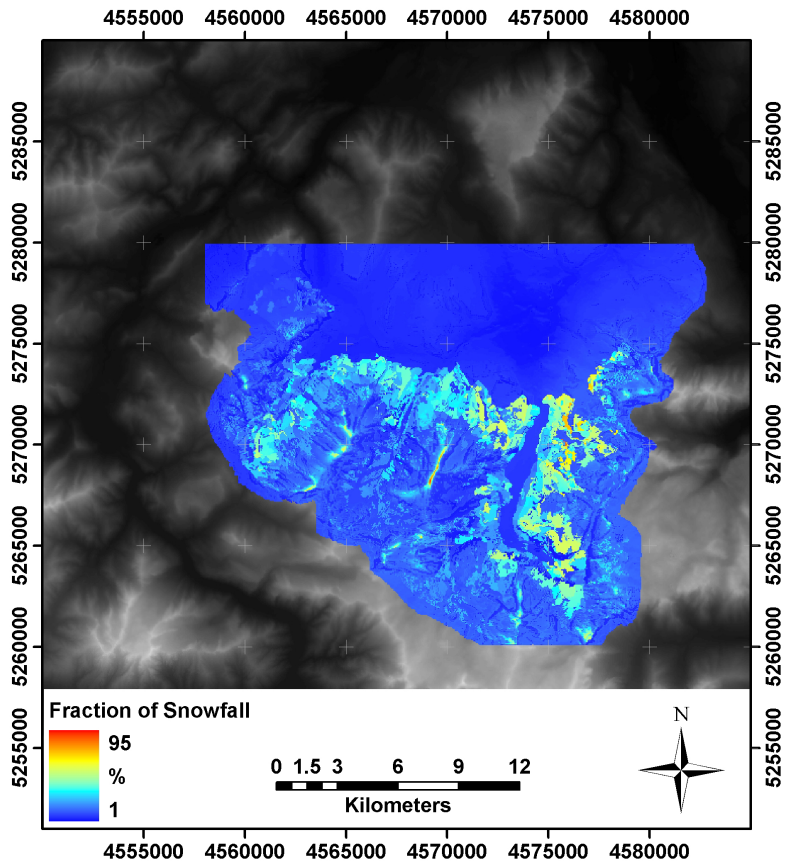


Fig. 15. Fraction of modelled total wintery snow sublimation losses of total wintery snowfall precipitation in the National Park area (2003/2004).

A numerical modelling experiment

U. Strasser et al.

Title Page

Abstract

Introduction

Conclusions

References

Tables

Figures

◀

▶

◀

▶

Back

Close

Full Screen / Esc

Printer-friendly Version

Interactive Discussion