



Observing The Mediterranean Sea from space: 21 years of Pathfinder-AVHRR Sea Surface Temperatures (1985 to 2005). Re-analysis and validation

S. Marullo, B. Buongiorno Nardelli, M. Guarracino, R. Santoleri

► To cite this version:

S. Marullo, B. Buongiorno Nardelli, M. Guarracino, R. Santoleri. Observing The Mediterranean Sea from space: 21 years of Pathfinder-AVHRR Sea Surface Temperatures (1985 to 2005). Re-analysis and validation. Ocean Science Discussions, 2006, 3 (4), pp.1191-1223. hal-00298409

HAL Id: hal-00298409

<https://hal.science/hal-00298409>

Submitted on 18 Jun 2008

HAL is a multi-disciplinary open access archive for the deposit and dissemination of scientific research documents, whether they are published or not. The documents may come from teaching and research institutions in France or abroad, or from public or private research centers.

L'archive ouverte pluridisciplinaire **HAL**, est destinée au dépôt et à la diffusion de documents scientifiques de niveau recherche, publiés ou non, émanant des établissements d'enseignement et de recherche français ou étrangers, des laboratoires publics ou privés.

Papers published in *Ocean Science Discussions* are under
open-access review for the journal *Ocean Science*

Observing The Mediterranean Sea from space: 21 years of Pathfinder-AVHRR Sea Surface Temperatures (1985 to 2005). Re-analysis and validation

S. Marullo¹, B. Buongiorno Nardelli², M. Guarracino¹, and R. Santoleri²

¹ENEA – Centro Ricerche Frascati, Via Enrico Fermi, 45, 00044 Frascati, Italia

²CNR – Istituto di Scienze dell'Atmosfera e del Clima, Gruppo Oceanografia da Satellite, Via
del Fosso del Cavaliere, 100, 00133 Roma, Italia

Received: 17 July 2006 – Accepted: 3 August 2006 – Published: 8 August 2006

Correspondence to: S. Marullo (salvatore.marullo@casaccia.enea.it)

OSD

3, 1191–1223, 2006

**21 years of
Mediterranean SST.
Re-analysis and
validation**

S. Marull et al.

Title Page

Abstract

Introduction

Conclusions

References

Tables

Figures

◀

▶

◀

▶

Back

Close

Full Screen / Esc

Printer-friendly Version

Interactive Discussion

Abstract

The time series of satellite infrared AVHRR data from 1985 to 2005 has been used to produce a daily series of optimally interpolated SST maps over the regular grid of the operational MFSTEP OGCM model of the Mediterranean basin. A complete validation of this OISST (Optimally Interpolated Sea Surface Temperature) product with in situ measurements has been performed in order to exclude any possibility of spurious trends due to instrumental calibration errors/shifts or algorithms malfunctioning related to local geophysical factors. The validation showed that satellite OISST is able to reproduce in situ measurements with a mean bias of less than 0.1°C and RMSE of about 0.5°C and that errors do not drift with time or with the percent interpolation error.

1 Introduction

The atmospheric circulation over the Mediterranean area is dominated in winter by the westerlies regime and in summer by the tropical African circulation, that may give rise to subsidence phenomena influencing the Eastern Mediterranean basin. These climatic conditions determine large Sea Surface Temperature (SST) excursions between summer and winter, and an important response to the large scale interannual variability of the atmospheric forcing over the area. On the other way round, the Mediterranean seasonal predictability appears to be closely linked to the SST variations, that may produce a feedback through modified heat exchange and transport, and through alterations in the uptake of CO_2 , with important implications on both numerical weather prediction and climate research (e.g. Lionello et al., 2006).

In addition to the uncertainties related to the natural variability, it is still an open question how deeply the hydrological cycle of the region has been modified by the intense land usage and coastal urban development in recent years. Moreover, as a matter of fact, human activities in the coastal areas and marine resource exploitation, such as open ocean oil extraction and industrial fisheries, are experiencing a constant

OSD

3, 1191–1223, 2006

21 years of Mediterranean SST. Re-analysis and validation

S. Marull et al.

Title Page

Abstract

Introduction

Conclusions

References

Tables

Figures

◀

▶

◀

▶

Back

Close

Full Screen / Esc

Printer-friendly Version

Interactive Discussion

increase, significantly affecting the marine ecosystem.

This large natural variability and the man-induced changes can not be managed without an advanced nowcasting/forecasting system. To this aim, the Mediterranean Forecasting System (MFS) program built up an operational system for the prediction of currents and biochemical elements in the Mediterranean basin and coastal/shelf areas, developed through a Pilot Project (MFSP) that lasted from 1999 to 2001, and an advanced project: Towards an Environmental Prediction (MFSTEP), that ended in early 2006. The overall scientific objectives of the program include the monitoring and modelling of the ecosystem fluctuations at the level of primary producers and for the time scales of weeks to months, but also a re-analysis of available measurements to explore and better understand the mechanisms driving the Mediterranean dynamics and climate.

To this aim, the SST has been recognized as one of the key parameters: records of SST date back almost one century and satellite observations from infrared data cover now more than 20 years. As a consequence, high resolution/coverage SST data obtained from satellite systems are now available not only for real-time assimilation in forecasting models, but also for interannual/decadal variability studies.

Within the last phase of MFSTEP, a complete re-analysis and interpolation on the MFSTEP OGCM (Ocean General Circulation Model) grid of AVHRR (Advanced Very High Resolution Radiometer) SST measurements from 1985 to 2005 has been performed and is presented here. Interpolation of the SST field was required by the presence of data voids in infrared images, due to cloud cover, and to allow simpler assimilation in the numerical models.

As evidenced also by the Global Ocean Data Assimilation Experiment (GODAE) High-Resolution Sea Surface Temperature Pilot Project (<http://www.ghrsst-pp.org/>), interpolation is far from being a fully solved problem, and it is still the object of several studies, while many different solutions have already been proposed (e.g. Reynolds et al., 2002; Kaplan et al. 1998; Santoleri et al., 1991). In fact, the algorithms applied may vary due to the different characteristics of the area considered, to the different sources

**21 years of
Mediterranean SST.
Re-analysis and
validation**

S. Marull et al.

Title Page

Abstract

Introduction

Conclusions

References

Tables

Figures

◀

▶

◀

▶

Back

Close

Full Screen / Esc

Printer-friendly Version

Interactive Discussion

of data and also to numerical limitations.

In this paper, the optimal interpolation scheme developed within MFSTEP is fully detailed. The interpolation scheme was significantly modified with respect to previous MFSP one (Buongiorno Nardelli et al., 2002), and was used both for the near-real time production of SST maps and for the complete re-analysis of 1985–2005 AVHRR data over the Mediterranean and Eastern Atlantic areas covered by MFSTEP OGCM model grid. The main scope of this work is thus to evaluate the impact of the interpolation algorithm used in the framework of MFSTEP on the accuracy of the SST field, and to assess the accuracy of the re-analyses in order to identify eventual biases that could discourage the application of these data for climate studies (e.g. to detect interannual SST trends in the Mediterranean Sea), or to assimilate data in numerical models. The work clearly required also a further validation of the Pathfinder SST product over the Mediterranean Sea versus in situ data. Though AVHRR instruments sense the temperature of the surface skin layer (SST_{skin}), the validation has been performed with in situ bulk data instead of in situ SST_{skin} data (for a complete discussion on SST definitions see also Donlon et al., 2004). This was coherent with the assumption that our interpolated product (based only on night-time data) is representative of the so called foundation temperature (SST_{fnd} , i.e. the SST at the base of the diurnal mixing layer), and gave also the opportunity to go back to 1985 in the validation with a reasonable and nearly uniform amount of matchups. As a result, for the first time a validated time series of 21 years of optimally interpolated daily SST fields at high resolution will be available for climatological studies.

The paper is organized as follows: the satellite and in situ data sets are described in Sect. 2. Section 3 is dedicated to the description of the optimal interpolation scheme used. The input data set and interpolated maps validation are presented in Sects. 4 and 5, respectively, while a brief summary and conclusions are discussed in Sect. 6.

**21 years of
Mediterranean SST.
Re-analysis and
validation**

S. Marull et al.

Title Page

Abstract

Introduction

Conclusions

References

Tables

Figures

◀

▶

◀

▶

Back

Close

Full Screen / Esc

Printer-friendly Version

Interactive Discussion

2 Satellite and in situ data-set

2.1 Satellite SST

The SST data used in this paper are a Mediterranean subset of the AVHRR Pathfinder product version 5.0. Pathfinder is a joint NASA/NOAA project devoted to the production of global SST maps from 1985 to the present. Pathfinder data are available at daily/4 km time/space resolution, for day and night passes separately, and are derived from 4-km Global Area Coverage (GAC) data (for more information regarding the version 5 of the Pathfinder data see <http://www.nodc.noaa.gov/sog/pathfinder4km/userguide.html>). The Pathfinder algorithm is based on the NLSST (Non Linear Sea Surface Temperature) formulation developed by Walton (1988), Walton et al. (1990, 1998a, 1998b) with some modification introduced as a result of the analysis of the PFMDB (PathFinder Matchup Data Base). The NLSST algorithm has the following form:

$$SST_{\text{sat}} = a + bT_4 + c(T_4 - T_5)SST_{\text{guess}} + d(T_4 - T_5)(\sec \rho - 1)$$

where SST_{sat} is the satellite-derived SST estimate, T_4 and T_5 are brightness temperatures in AVHRR channels 4 and 5 respectively, SST_{guess} is a first-guess SST value, and ρ is the satellite zenith angle. Coefficients a , b , c , and d are estimated from regression analyses using co-located in situ and satellite measurements (hereafter “matchups”). To reduce the presence of spurious trends in the SST estimates, the PFSST coefficients are estimated on a month by month basis at global scale. Matchups are selected within a window of five months, centred on the month for which coefficients were being estimated. This continuous update of the SST algorithm coefficients makes, in principle, the Pathfinder algorithm suitable for studies of year to year SST variability and allows to estimate multi-year SST trends, once the meaning of the used SST has been fixed.

Considering that infrared spacecraft radiometers measure the brightness temperature relative to the skin layer and that Pathfinder SSTs are derived using coefficients

OSD

3, 1191–1223, 2006

**21 years of
Mediterranean SST.
Re-analysis and
validation**

S. Marull et al.

Title Page

Abstract

Introduction

Conclusions

References

Tables

Figures

◀

▶

◀

▶

Back

Close

Full Screen / Esc

Printer-friendly Version

Interactive Discussion

EGU

based on a regression with bulk temperatures, it follows that Pathfinder SST are representative of the SST_{skin} field minus a “mean value” of the $SST_{Skin}-SST_{bulk}$ temperature difference. In other words, “the temperature difference between the bulk sensors and the radiating skin is incorporated into the SST retrieval algorithms in an unresolved, statistical sense” (Minnet, 2003). This statement implies that Pathfinder SST estimates taken in conditions that deviate from “mean” can significantly differ from corresponding in situ bulk measurements. This fact is confirmed by recent studies that compared satellite estimate to skin measurements rather than bulk measurements (e.g. Kearns et al., 2000). They found that, using skin measurements, the scatter of the differences between in situ and satellite temperatures is about half of the corresponding estimate made using bulk measurements (RMS about 0.33°C instead of $0.5-0.7^{\circ}\text{C}$). Further details on the processing and algorithms used for SST estimate can be found in the work of Kilpatrick et al. (2001) or in http://www.rsmas.miami.edu/groups/rsl/pathfinder/Algorithm/algo_index.html.

For this particular work we selected only descending orbits in order to reduce the effect the diurnal cycle on the analysis of algorithms and interpolation performances. Table I shows local solar time (LST) of the descending passes used for Pathfinder v5.

The Pathfinder SST product includes maps of flags that indicate whether each single SST estimate is contaminated by any environmental factor or not. The flags are obtained throughout a series of tests to assess the likelihood that a pixel contains an SST value of suspect quality. The various tests are then combined to define eight overall quality levels for each pixel (see http://podaac.jpl.nasa.gov/pub/sea_surface_temperature/avhrr/pathfinder/doc/usr_gde4_0.toc.html for a detailed description of flags). Of course the best SST estimates are those that have passed all the eight tests. We selected, as valid SST, those pixels that have passed all the tests excluding the reference test (the absolute difference between the Pathfinder SST for the pixel considered and the reference Reynolds SST field must be less or equal to 2°C). This last test has been ignored because another reference test is already included in our OA schema (see Sect. 3.2).

**21 years of
Mediterranean SST.
Re-analysis and
validation**

S. Marull et al.

Title Page

Abstract

Introduction

Conclusions

References

Tables

Figures

◀

▶

◀

▶

Back

Close

Full Screen / Esc

Printer-friendly Version

Interactive Discussion

Valid Pathfinder data have been binned on MFSTEP OGCM grid at 1/16° resolution through a simple median of all valid measurements found within each grid cell. The median was preferred with respect to mean or weighted mean to further reduce the contamination by residual cloudy pixels eventually not flagged.

5 2.2 In situ data sets

The validation of the OISST time series has been performed with in situ data collected by different sensors, and observational programs. The data used are described in the following.

2.2.1 MEDAR/MEDATLAS XBT and CTD

10 MEDAR/MEDATLAS project made available a comprehensive data set of oceanographic parameters collected in the Mediterranean and Black Sea, through a wide cooperation of the Mediterranean and Black Sea countries (Fischaut et al., 2002).

Actually, the MEDAR/MEDATLAS data base contains 36054 CTD casts and 161 890 XBT profiles from about 150 scientific laboratories of 33 countries. These data were
15 submitted to automatic/objective and visual/subjective checks according to international recommendations. As a result, a quality flag is assigned to each numerical value. The list of checks is detailed in the MEDATLAS protocol (<http://www.ifremer.fr/medar>).

We selected all the available XBT and CTD profiles covering the Mediterranean Basin from 1 January 1985 to 31 December 2004 excluding those XBT profiles already included in the MFS data base. The MEDATLAS quality control flags were taken
20 into account to select only valid in situ measurements for the successive satellite data validation.

2.2.2 MFS XBT

Within the MFS-VOS (MFS-Voluntary Observing Ships) program, an extensive collection of temperature profiles by means of expendable Bathythermographs (XBTs)
25

Title Page

Abstract

Introduction

Conclusions

References

Tables

Figures

◀

▶

◀

▶

Back

Close

Full Screen / Esc

Printer-friendly Version

Interactive Discussion

was started since 1999 in the Mediterranean Sea. The XBT were launched from ships of opportunities along selected tracks crossing the main Mediterranean sub-basins. The uncertainty on XBT temperature values was deeply evaluated by Reseghetti et al. (2006a¹, b²) versus simultaneous CTD measurements, and was found to be $\sim 0.10^{\circ}\text{C}$ (i.e. comparable to the standard accuracy) in the surface layer. All quality controlled MFS-VOS data relative to the period 1999–2005 have been included in our matchup dataset (for a complete description of quality control procedures (see Reseghetti et al., 2006b²)).

2.2.3 MEDARGO floats

A large number of T/S profiles provided by autonomous profilers deployed in the Mediterranean is currently available in the framework of the MFSTEP project through CORIOLIS data centre (<http://www.coriolis.eu.org/cdc/projects/mfstep.htm>). The MEDARGO-MFSTEP program has officially started its operational phase on 13 July 2004 and is still providing data today (Poulain et al., 2006³). These floats operate at a neutral parking depth of 350 m (near the salinity maximum of the Levantine Intermediate Water) and are programmed to make periodic profiles of temperature and salinity from 700 m to surface. The floats reach the surface at intervals of 3–7 days. When at surface, the floats are located by and transmit data to the Argos system on-board the NOAA satellites. The data are processed and archived in near-real time at the CORIOLIS Data Center and are disseminated on the GTS following the standards of the international ARGO program. Temperatures measured by ARGO profilers are

¹Reseghetti, F., Borghini, M., and Manzella, G. M. R.: Analysis of XBT data reliability in Western Mediterranean Sea, J. Atmos. Oceanic Technol., submitted, 2006a.

²Reseghetti, F., Borghini M., and Manzella G. M. R.: Improved quality check procedures of XBT profiles in MFS-VOS. Ocean Sci., in preparation, 2006b.

³Poulain, P.-M., Barbanti, R., Font, J., Cruzado, A., Millot, C., Gertman, I., Griffa, A., Rupolo, V., Le Bras S., and Petit de la Villeon, L.: MEDARGO: A Profiling Float Program in the Mediterranean Sea Ocean Sciences, Ocean Sci., in preparation, 2006.

Title Page

Abstract

Introduction

Conclusions

References

Tables

Figures

◀

▶

◀

▶

Back

Close

Full Screen / Esc

Printer-friendly Version

Interactive Discussion

accurate to $\pm 0.005^\circ\text{C}$ (<http://www-argo.ucsd.edu/>).

3 The optimal interpolation scheme

3.1 Background

The optimal interpolation (or statistical interpolation) method has been introduced many years ago to determine the optimal solution to the interpolation of a spatially and temporally variable field with data voids, where “optimal” is intended in a least square sense (Gandin, 1965; Bretherton et al., 1976). Its basic principles are quickly reminded in the following. Considering n observations Φ_{obs} given as the sum of the “true” value Φ plus a random error ε , and assumed to have known mean $\langle\Phi\rangle$ and a known and statistically stationary covariance,

$$\Phi_{\text{obs}^j} = \Phi_j + \varepsilon_j \langle \varepsilon_i \varepsilon_j \rangle = \delta_{ij} \varepsilon^2 (i, j = 1, \dots, n) \quad (1)$$

$\langle\Phi\rangle = \text{known}$

the estimate of Φ at a particular location x (in space and time), is obtained as a linear combination of the observations:

$$\hat{\Phi}(x) = \sum_{i=1}^N \alpha_i(x) \Phi_{\text{obs}^i}, \quad (2)$$

where the coefficients α_i are obtained minimizing the error variance. The Gauss-Markov theorem yields solution:

$$\hat{\Phi}(x) = \langle\Phi\rangle + \sum_{i=1}^n \sum_{j=1}^n A_{ij}^{-1} C_{xj} (\Phi_{\text{obs}^i} - \langle\Phi\rangle), \quad (3)$$

where the coefficients C_{xj} and A_{ij} are defined as:

$$\begin{aligned} C_{xi} &= \langle (\Phi(x) - \langle \Phi \rangle)(\Phi_{\text{obs}^i} - \langle \Phi \rangle) \rangle = F(x, x_i) \\ A_{ij} &= \langle (\Phi_{\text{obs}^i} - \langle \Phi \rangle)(\Phi_{\text{obs}^j} - \langle \Phi \rangle) \rangle = C_{ij} + \langle \varepsilon_i \varepsilon_j \rangle \end{aligned} \quad (4)$$

i.e. they represent the covariance of the field in the observations' space and the total covariance (signal covariance plus observation error covariance), respectively. In general, A_{ij} elements (two-points correlations) are computed from a functional fit of the observation covariance values as a function of distance (in our case a "generalized" space-time distance). This approach is called the Observational or Hollingworth-Lonnberg method. Also C_{xi} can be estimated in this way, taking the zero limit of the observed covariance function at zero distance and exactly the same values elsewhere.

The method also provides an estimate of the error variance, given by:

$$\langle (\Phi(x) - \hat{\Phi}_x)^2 \rangle = C_{xx} - \sum_{i=1}^n \sum_{j=1}^n C_{xi} C_{xj} A_{ij}^{-1}. \quad (5)$$

All the above is rigorously valid only if it is possible to estimate the expected value of the field and to remove it from the observations. This is usually done computing an average of the data, and implies that there must be a sufficiently large number of measurements. However, if the expected value cannot be computed as a simple average (example: not enough data), the theory discussed above still leads to a minimum error variance, provided that a suitable estimated mean is removed from the data. In that case, the coefficients C_{xj} and A_{ij} represent a structure function and differ from the covariance function by the unknown constant value $\langle \Phi \rangle^2$:

$$\begin{aligned} C_{xi} &= \langle \Phi(x) \Phi_{\text{obs}^i} \rangle = R(x, x_i) = F(x, x_i) + \langle \Phi \rangle^2 \\ A_{ij} &= \langle \Phi_{\text{obs}^i} \Phi_{\text{obs}^j} \rangle = C_{ij} + \langle \varepsilon_i \varepsilon_j \rangle + \langle \Phi \rangle^2 \end{aligned} \quad (6)$$

Independently of the value of this constant $\langle \Phi \rangle^2$, the new estimator is then given by:

$$\hat{\Phi}(x) = \tilde{\Phi} + \sum_{i=1}^n \sum_{j=1}^n A_{ij}^{-1} C_{xj} (\Phi_{\text{obs}^i} - \tilde{\Phi}), \quad (7)$$

where the estimated mean $\tilde{\Phi}$ is computed from:

$$\sum_{i=1}^n \sum_{j=1}^n A_{ij}^{-1} (\Phi_{\text{obs}^i} - \tilde{\Phi}) = 0 \quad (8)$$

- 5 i.e. weighting the observations with the observed structure function (Bretherton et al., 1976). This procedure is generally called centering, and the new error estimate includes an additional term:

$$\langle (\Phi(x) - \hat{\Phi}_x)^2 \rangle = C_{xx} - \sum_{i=1}^n \sum_{j=1}^n C_{xi} C_{xj} A_{ij}^{-1} + \frac{\left(1 - \sum_{i=1}^n \sum_{j=1}^n C_{xi} A_{ij}^{-1}\right)^2}{\sum_{i=1}^n \sum_{j=1}^n A_{ij}}. \quad (9)$$

- 10 As 3.9 depends on the structure function R , the interpolation error can be reduced introducing a first guess of the mean field Φ_g (constant) in the equations 3.6–3.9, provided that the new value of C_{xx} (computed with 3.10) is lower than this obtained through 3.6. The structure functions then become:

$$C_{xi} = \langle (\Phi(x) - \Phi_g)(\Phi_{\text{obs}^i} - \Phi_g) \rangle = F(x, x_i) - 2\Phi_g \langle \Phi \rangle + \langle \Phi \rangle^2 = F(x, x_i) + H \quad (10)$$

$$A_{ij} = \langle (\Phi_{\text{obs}^i} - \Phi_g)(\Phi_{\text{obs}^j} - \Phi_g) \rangle = C_{ij} + \langle \varepsilon_i \varepsilon_j \rangle + H$$

- 15 and the new estimator is:

$$\hat{\Phi}(x) = \Phi_g + \tilde{\Phi} + \sum_{i=1}^n \sum_{j=1}^n A_{ij}^{-1} C_{xj} (\Phi_{\text{obs}^i} - \Phi_g - \tilde{\Phi}) \quad (11)$$

The estimated mean in that case would obviously be obtained assuming:

$$\sum_{i=1}^n \sum_{j=1}^n A_{ij}^{-1} (\Phi_{\text{obs}^i} - \Phi_g - \tilde{\Phi}) = 0, \tag{12}$$

while the formula to estimate the error would remain the same as 3.9. This last approach has been chosen in MFSTEP, taking as first guess a daily climatological decadal field built from the dataset described in Sect. 2.1 but using only those SST values that have passed all quality test (including also the reference test). In practice, each daily climatic map in this first guess field has been computed as the average over the whole 21 years period all the data within a 10 days moving window.

3.2 Description of the interpolation scheme

As the Mediterranean Sea is characterized by the presence of many islands and peninsulas, the scheme drives a “multi-basin” analysis to avoid data propagation across land from one sub-basin to the other. In practice, the optimal interpolation is run several times, one for each sub-basin, applying different masks. Six sub-basin have been identified: Eastern Atlantic, Western Mediterranean basin, Tyrrhenian sea, Adriatic sea, Levantine basin, Aegean sea. In order to avoid artefact effects at the border of the different regions, two different masks are used for each sub-basin, one identifying the interpolation points and one for the selection of the observations. This last includes buffer zones at the borders.

The single analysis scheme includes different modules and its details are described in the following:

COVARIANCE/STRUCTURE MODEL: it is often unpractical, if not unfeasible in terms of computational time (as in the case of satellite SST data), to use all the data in a series to interpolate the field at a particular time, especially if the dominant scales of variability are shorter than the length of the time series. This is why most of the schemes first compute the covariance/structure function from all available data and

Title Page

Abstract

Introduction

Conclusions

References

Tables

Figures

⏪

⏩

◀

▶

Back

Close

Full Screen / Esc

Printer-friendly Version

Interactive Discussion

fit it to an analytical function (implicitly assuming statistical stationarity over the whole time series), and successively introduce an influential radius, which represents the maximum (generalized) distance from the interpolation point over which observations are considered useful to the interpolation. In practice, the weights in expression 3.11 are computed directly from the analytical function, and only for a limited number of observations, reducing significantly the dimensions of the matrix to be inverted, as huge amounts of data in time and space are present in satellite datasets. Here, following the results by Marullo et al. (1998) and our recent researches within the Medspiration project (<http://www.medspiration.org>) on the main scales of SST variability, a separated dependence of the structure function from time and space lag has been adopted, and the functional form was taken as:

$$C(r, \Delta t) = e^{-\frac{\Delta t}{\tau}} e^{-\frac{r}{L}} \quad (13)$$

where r is the relative distance, Δt is the time lag, $L = 180$ km is a sort of spatial “decorrelation” length and $\tau = 7$ days is a “temporal” decorrelation scale.

IMAGES SELECTION: the first step in the processing chain includes in the analysis only the images found within a temporal window (temporal influential radius) of $-10/+10$ days with respect to the interpolation day (J) .

RESIDUAL CLOUDY PIXELS FLAGGING: successively, three tests are performed on all selected images prior to enter the interpolation, in order to avoid contamination by unflagged cloudy pixels. Firstly, cloud margins are eroded, flagging all values within a distance of m pixels to a pixel already flagged as cloudy. The second step consists in rejecting the SST values lower than a minimum threshold SST value (that can be changed seasonally). The third step is the comparison to the closer (in time) analysis available, that is used as a reference only if the analysis error (as defined in Sect. 3.1) is lower than a fixed value. Data that differ from the reference field for more than a defined threshold (usually 2σ , where σ represents the average standard deviation between consecutive night images, estimated as 0.7°C) are not included in the analysis. These “residual cloudy pixels flagging” tests contributed to flag residual clouds and many

other partially contaminated pixels avoiding the use of the Pathfinder reference test that often fails in the Mediterranean Sea in areas where important hot or cold dynamical structures are present. A typical example is the Iera-Petra Gyre in the Levantine basin that most of the time is flagged by the Pathfinder reference test.

FIRST GUESS REMOVAL: coherently to the theory we have described in Sect. 3.1, the following step consists in the removal from each input image of the corresponding decadal climatological field.

INFLUENTIAL DATA SELECTION: as already pointed out, for each grid point observations need to be selected within a space-time influential radius. However, only a subset of these observations can effectively be used, because of computational time limitations. In Sect. 3.1, we have seen that the optimal interpolation behaves as a weighted mean of the observations, where the weights are directly related to the correlation between the interpolation point and the single observations, but are reduced if the observations are too much cross-correlated or have low accuracy. Consequently, a strategy to reduce the number of observations in input is to remove most cross-correlated data following some a priori considerations. This strategy also reduces numerical problems arising from the inversion of nearly singular covariance matrices (singularity results from too much cross-correlation). Within MFSTEP, different methodologies have been tried, but very similar results have always been found. The method chosen is a balanced selection around the interpolation point in terms of spatial-temporal coverage, that could be implemented due to the regularity of the grid on which data are organized. The first step thus consists in sorting the data within the influential radius as a function of their correlation to the interpolation point. Successively, the most correlated observation is selected (i.e. included in the analysis), while all successive data are selected only if they are found along a new direction in space-time (until 50 observations are found). This allows a more balanced coverage within the influential bubble, even selecting a small number of observations.

INTERPOLATION: the final step is performed estimating the terms C_{xj} and A_{ij} through the Function (3.13), and the mean of the selected observations through the

centering (3.12). Applying the expression (3.11), the optimal estimate is obtained.

This scheme has been applied to the whole data set from 1985 to 2005. An example of the OISST daily output and the climatological mean of all years are presented in Fig. 1a and b respectively.

4 Evaluation of Pathfinder product in the Mediterranean Sea

In order to evaluate the regional performances of the Pathfinder algorithm in the Mediterranean Sea respect to global ocean performances (Kearns et al., 2000; Minnet, 2003), we produced time series of co-located in situ and satellite measurements. Taking into account that in situ observation originate from a variety of sensors with different errors, sensitivity and levels of quality control, we first performed the validation separately for each dataset and sensor. More in detail the satellite and in situ match-up dataset was built for MEDATLAS/MEDAR and MFS-VOS XBT, MEDATLAS/MEDAR CTD and MEDARGO floats.

The space co-location criterion used to build the Mediterranean matchup files was set to less than 3.5 km between the measurement point and the centre of the $1/16^\circ \times 1/16^\circ$ pixel (i.e. the measurement point must fall within the binned satellite pixel). Figure 2 shows the spatial distribution of the selected matchup points. The time co-location criterion used was simply less than 12 h between satellite and in situ measurement.

To be consistent with previous definitions of SST_{bulk} (Donlon and the GRHSST science team, 2004) and to limit the effect of the diurnal cycle, for each temperature profile the measurement closer to 3 m depth (in the range 2 m to 6 m depth) was selected. This choice was also supported by the analysis of the difference between temperature T at a given depth z and corresponding PFSST (Fig. 3). The profile has been obtained using all the available matchup data points and averaging the differences at each depth. The absolute value of the mean bias was less than 0.1°C between 2 and 6 m of depth. The minimum absolute difference between PFSST and $T(z)$ was found at a depth of 4 m,

Title Page

Abstract

Introduction

Conclusions

References

Tables

Figures

◀

▶

◀

▶

Back

Close

Full Screen / Esc

Printer-friendly Version

Interactive Discussion

where the bias is nearly zero with a standard deviation of 0.6°C . The minimum RMSE ($\sim 0.5^{\circ}\text{C}$) was found at 3 m, with a mean bias error close to zero.

Table II summarizes the main statistical parameters characterizing the difference between in situ and satellite measurement for each in situ dataset, and Fig. 4 shows the scatter plots for the three sources of data. The mean depth of the selected temperature was 3.6 m.

The mean bias error (MBE=mean in situ – mean satellite) is quite satisfactory and nearly stable for all instruments ranging from -0.16°C to 0.10°C . The higher differences are found in the comparison with MEDARGO, with a negative MBE of -0.16°C , due to the lack of MEDARGO measurements at depth lower than 4 m (mean reference depth 4.7 m) and coherently with what found in Fig. 3. The RMSE (standard deviation around the regression line) is very close to 0.5°C for CTD and XBT, while it reaches 0.75°C for MEDARGO. The regression line for XBTs and CTDs basically almost corresponds to the 1 to 1 perfect agreement line. MEDARGO regression line still has a slope very close to 1 but the intersect is 0.3°C .

Averaging all data, the MBE is thus positive but small ($+0.05^{\circ}\text{C}$) due to the relative little amount of MEDARGO data with respect to the sum of XBT and CTD measurements (about 16% of the total). The RMSE values are anyway very close to previous estimates obtained from global data (e.g. Strong and McClain, 1984).

If MEDARGO data are not included in the analysis, the MBE reaches 0.08°C , a value very close to previous global estimates. In fact, differences between PFSST and in situ SST_{skin} at night are expected to be $0.1 \pm 0.33^{\circ}\text{C}$ for mid- and low-latitudes (Kearns et al., 2000, Minnet, 2003) .

Figures 3 and 6 by Minnett (2003) show that the mean difference between SST_{skin} and $\text{SST}_{3\text{m}}$ varies depending on the true wind speed intensity, but this difference is, in general, around -0.2°C at night, in most of the cases independently from the wind intensity.

(For night passes) $\text{PFSST} - \text{SST}_{\text{Skin}} \sim 0.1^{\circ}\text{C}$ (after Kearns et al., 2000)

(For Night measures) $\text{SST}_{\text{Skin}} - \text{SST}_{3\text{m}} \sim -0.2^{\circ}\text{C}$ (after Minnet, 2003)

Title Page

Abstract

Introduction

Conclusions

References

Tables

Figures

◀

▶

◀

▶

Back

Close

Full Screen / Esc

Printer-friendly Version

Interactive Discussion

It follows that, on average at mid- and low-latitudes, the difference between SST_{3m} and PFSST should be about 0.1°C, which is not so far from the results found. This is also in agreement with previous estimates of Pathfinder performances in the Mediterranean Sea made using an old version of Pathfinder algorithm for the years 1985–1994 (D’Ortenzio et al., 2000).

In the following, considering the uniform behaviour of the available source of data (see Table 2), we will continue our analysis using all the data as a single dataset.

The spatial distribution of the in situ and satellite temperature difference (Fig. 5a) and its standard deviation (Fig. 5b) is quite uniform and generally positive with few hot spots greater than 0.5°C mostly located near the coasts.

First of all we evaluate the monthly behaviour of the difference between in situ and satellite estimate in order to verify whether a seasonal signal was present or not. Figure 6b shows the mean monthly values of the bias between in situ measurements and satellite estimates. The MBE ranges from −0.17°C in June to +0.17°C in December with standard deviations comprised between 0.30°C in February and 0.84°C in July. The tendency of the MBE to zero or to a slightly negative values during the warmer months (May, June, July, August and September) indicates the presence of a very small seasonal signal.

The behaviour of the yearly MBE permits to evaluate satellite eventual sensor drifts or shifts that could prevent the use of Pathfinder SST data to evaluate trends in the SST of the Mediterranean Sea for the period 1985–2005. Figure 6c shows that the MBE does not significantly decrease/increase with years exhibiting a slope of $-0.01 \pm 0.02^\circ\text{C}/\text{year}$ (the standard deviations of each mean difference have been used to estimate the uncertainty for the slope).

5 Validation of two decades of OISST

OISST maps were validate against in situ data using the same procedure applied in Sect. 4 for PFSST. The process produced a total of more than 21 000 matchups which

Title Page

Abstract

Introduction

Conclusions

References

Tables

Figures

◀

▶

◀

▶

Back

Close

Full Screen / Esc

Printer-friendly Version

Interactive Discussion

spatial distribution is shown in Fig. 7. Table 3 shows the main statistical parameters that describe the differences between in situ measurements and Optimally Interpolated SST (OISST). These statistical parameters are very similar to those of T_{insitu} -PFSST (Table 2). The mean difference between XBT measurements and OISST estimates remains more or less the same moving from 0.10°C to 0.14°C . For CTD the MBE becomes slightly better than the previous value of 0.07°C . In the case of MEDARGO floats the MBE is now closer to zero reaching the value of -0.06°C .

Also the RMSE does not significantly change, even if a slight increase from 0.52°C to 0.73°C is observed in the case of CTD data and decrease from 0.75°C to 0.69°C is observed for MEDARGO floats resulting in an overall RMSE of 0.66°C . Slopes and intercepts as well as correlation coefficients remain basically unchanged. The scatter plot of in situ measurement against OISST is shown in Fig. 6d.

The behaviour of the $\text{SST}_{\text{insitu}}$ -OISST on monthly and yearly basis is shown in Figs. 6e and f respectively. A first comparison with the corresponding figures obtained using PFSST (Figs. 6b and 6c) instead of OISST indicates that the OISST have not introduced significant differences and that the main characteristics of the behaviour remained unchanged. The use of the MBE does not significantly decrease/increase with years, exhibiting a slope of $0.00 \pm 0.02^{\circ}\text{C}/\text{year}$ (the standard deviation of each mean difference have been used to estimate uncertainty for the slope).

The MBE ranges from -0.14°C in June to $+0.20^{\circ}\text{C}$ in December with standard deviations comprised between 0.36°C in March and 0.96°C in July. The tendency of the MBE to slightly negative values during the warmer months (June, July, August and October) indicates the presence of a very small seasonal signal similar to that already contained in the PFSST MBE time series.

Another interesting feature of the OISST estimates is the behaviour of the MBE and RMSE as a function of the interpolation error. Figure 8 indicates that the MBE is essentially constant and very close to zero for interpolation errors less or equal 50%. For interpolation errors greater than this value, but less than 85% $\text{SST}_{\text{insitu}}$ -OISST ranges in the interval -0.19°C to 0.08°C . For interpolation errors greater or equal 90% the MBE

reaches values as high as 0.5°C but, in this case the number of matchup points is very small (only 12 matchups for 90% error and 11 for 95% error).

Concerning the spatial distribution of the SST_{insitu} and OISST difference (Fig. 5c) and its standard deviation (Fig. 5d) only minor differences with respect to the patterns seen for PFSST are found, with a slightly higher RMSE along the western coasts of the Italian peninsula (Tyrrhenian and Ligurian Sea) and South coasts of France.

6 Summary and conclusion

Among the priorities of the Global Ocean Data Assimilation Experiment, it was clearly indicated the necessity to have an accurate and systematic estimate of the SST at high spatial resolution and daily repetitivity, mainly based on satellite measurements, with no data voids, at global and regional scales. These requirements were driven both by climatological researches and by operational applications, with the final objective of monitoring, understanding and managing the natural variability and the man-induced changes to the marine ecosystem.

Within the MFSTEP program, an optimally interpolated SST product covering the Mediterranean and Eastern Atlantic area at 1/16° resolution has been developed and produced in near-real-time for direct assimilation in MFSTEP large scale model. The hypothesis and assumptions behind MFSTEP optimal interpolation scheme have been fully described in this paper, detailing the characteristics of each module (from cloud detection to data selection, etc.) and justifying authors' choices in the light of theoretical and practical considerations.

The algorithm presented was then used to perform a re-analysis of Pathfinder SST time series, dating back to 1985. In fact, the main scope of the work was to evaluate the impact of MFSTEP interpolation scheme on the accuracy of the SST field, and to validate the 1985–2005 OISST time series. Comparing OISST and original Pathfinder SST data (that were used as input data for the OI) with simultaneous MEDAR/MEDATLAS, MFS-VOS and MEDARGO measurements, it was possible to estimate the OISST ac-

Title Page

Abstract

Introduction

Conclusions

References

Tables

Figures

◀

▶

◀

▶

Back

Close

Full Screen / Esc

Printer-friendly Version

Interactive Discussion

curacy in terms of mean bias error and standard deviation with respect to the SST nearest to 3 m of depth (in the layer 2 m–6 m, see Sect. 4), assumed here as the best approximation to the foundation temperature. The results indicated that the impact of the OI is quite limited, with an increase in the RMSE from 0.54°C to 0.66°C and even a slightly better MBE (around 0.04°C). Moreover, the sensitivity of both PFSST and OISST accuracy to seasonal factors has been evaluated to be lower than 0.3°C and, even more importantly, the presence of significant sensor drifts, shifts or responses to anomalous atmospheric events could be excluded by the present analysis. As a consequence, the MFSTEP OISST produced by the re-analysis of the PFSST represent a valuable dataset to investigate interannual and decade-to-decade variability of the SST field, to detect trends and anomalously warm/cold years (e.g. 2003) and to investigate the role of local and remote forcing, also through assimilation in numerical models.

Acknowledgements. This study was funded by Mediterranean Forecasting Towards Environmental Predictions (MFSTEP) and by Marine and Environment and Security for European Area (MERSEA) European integrated projects. The AVHRR Oceans Pathfinder SST data were obtained from the Physical Oceanography Distributed Active Archive Center (PO.DAAC) at the NASA Jet Propulsion Laboratory, Pasadena, CA, <http://podaac.jpl.nasa.gov>.

References

- Bretherton, F. P., Davis, R. E., and Fandry, C. B.: A technique for objective analysis and design of oceanographic experiments applied to MODE-73. *Deep Sea Res.*, 23, 559–582, 1976.
- Buongiorno Nardelli, B., Larnicol, G., D’Acunzo, E., Santoleri, R., Marullo, S., and Le Traon, P. Y.: Near Real Time SLA and SST products during 2-years of MFS pilot project: processing, analysis of the variability and of the coupled patterns, *Ann. Geophys.*, 20, 1–19, 2002.
- Donlon, C. J., Minnett, P. J., Gentemann, C., Nightingale, T. J., Barton, I. J., Ward, B., and Murray, J.: Towards improved validation of satellite sea surface skin temperature measurements for climate research, *J. Climate*, 15, 353–369, 2002.
- GHRSSST-PP Science Team and ISDU-TAG working group: The Recommended GHRSSST-PP Data Processing Specification GDS (Version 1 revision 1.5). GHRSSST-PP Report Number

Title Page

Abstract

Introduction

Conclusions

References

Tables

Figures

◀

▶

◀

▶

Back

Close

Full Screen / Esc

Printer-friendly Version

Interactive Discussion

17. Published by the International GHRST-PP Project Office; UK Met Office, United Kingdom, 235 pp, 2004.
- D'Ortenzio, F., Marullo, S., and Santoleri, R.: Validation of AVHRR Pathfinder SST's over the Mediterranean Sea, *Geophys. Res. Lett.*, 27, No. 2, 241–244, 2000.
- 5 Fichaut, M., Garcia, M.-J., Giorgetti, A., Iona, A., Kuznetsov, A., Rixen, M., and Group, M.: MEDAR/MEDATLAS 2002: A Mediterranean and Black Sea database for the operational Oceanography, in *Building the European Capacity in Operational Oceanography: Proceedings 3rd EuroGOOS Conference*, Elsevier Oceanogr. Ser., 69, 645–648, 2002.
- Gandin, L. S.: Objective analysis of meteorological fields. Israel Program for Scientific Translation, Jerusalem, 242pp, 1965.
- 10 Kilpatrick, K. A., Podesta, G. P., and Evans, R.: Overview of the NOAA/NASA Advanced Very High Resolution Radiometer Pathfinder algorithm for sea surface temperature and associated matchup database, *J. Geophys. Res.-Oceans*, 106(C5), 9179–9197, 15 MAY 2001.
- Kaplan, A., Cane, M. A., Kushnir, Y., Clement, A. C., Blumenthal, M. B., and Rajagopalan, B.: Analyses of global sea surface temperature 1856–1991, *J. Geophys. Res.*, 103(C9), 18 567–18 590, doi:10.1029/98JC01736, 1998.
- 15 Kearns, E. J., Hanafin, J. A., Evans, R. H., Minnett, P. J., and Brown, O. B.: An independent assessment of Pathfinder AVHRR sea surface temperature accuracy using the Marine-Atmosphere Emitted Radiance Interferometer (M-AERI), *Bull. Am. Meteorol. Soc.*, 81, 1525–1536, 2000.
- 20 Lionello, P., Malanotte-Rizzoli, P., and Boscolo R.: The Mediterranean climate: an overview of the main characteristics and issues, Elsevier, Amsterdam, Netherlands, 2006.
- Minnett, P. J.: Radiometric measurements of the sea-surface skin temperature: the competing roles of the diurnal thermocline and the cool skin, *Int. J. Remote Sensing*, 20 December 2003, 24(24), 5033–5047, 2003.
- 25 Reynolds, R. W., Rayner, N. A., Smith, T. M., Stokes, D. C., and Wang, W.: An improved in situ and satellite SST analysis for climate, *J. Climate*, 15, 1609–1625, 2002.
- Santoleri, R., Marullo, S., and Bohm, E.: An Objective Analysis Schema for AVHRR Imagery, *Int. J. Remote Sensing*, 12, 681–693, 1991.
- 30 Strong, A. E. and McClain, E. P.: Improved ocean surface temperatures from space – comparisons with drifting floats, *Bull. Am. Meteorol. Soc.*, 65, 138–142, 1984.
- Walton, C. C., Pichel, W. G., Sapper, J. F., and May, D. A.: The development and 5046 P. J. Minnett operational application of nonlinear algorithms for the measurement of sea surface

21 years of Mediterranean SST. Re-analysis and validation

S. Marull et al.

Title Page

Abstract

Introduction

Conclusions

References

Tables

Figures

◀

▶

◀

▶

Back

Close

Full Screen / Esc

Printer-friendly Version

Interactive Discussion

temperatures with the NOAA polar-orbiting environmental satellites, J. Geophys. Res., 103, 27 999–28 012, 1998.

Walton, C. C., McClain, E. P., and Sapper, J. F.: Recent changes in satellite based multichannel sea surface temperature algorithms. Marine Technology Society Meeting, MTS' 90, Washington D.C, September 1990.

Walton, C. C., Pichel, W. G., Sapper, J. F., and May D.: The development and operational application of nonlinear algorithms for the measurement of sea surface temperatures with the NOAA polar-orbiting environmental satellites, J. Geophys. Res., 103(C12), 27 999–28 012, 1998a.

Walton, C. C., Sullivan, J. T., Rao, C. R. N., and Weinreb, M.: Corrections for detector nonlinearities and calibration inconsistencies of the infrared channels of the advanced very high resolution radiometer, J. Geophys. Res., 103(C2), 3323–3337, 1998b.

OSD

3, 1191–1223, 2006

**21 years of
Mediterranean SST.
Re-analysis and
validation**

S. Marull et al.

Title Page

Abstract

Introduction

Conclusions

References

Tables

Figures

◀

▶

◀

▶

Back

Close

Full Screen / Esc

Printer-friendly Version

Interactive Discussion

**21 years of
Mediterranean SST.
Re-analysis and
validation**

S. Marull et al.

Table 1. Available satellite platforms during the period 1985–2005 and corresponding acquisition time.

Satellite	Start time (Year–Julian Day)	End time (Year–Julian Day)	Pass Time (Local Solar Time)
NOAA-9	1985 004	1988 312	From 02:20 to 09:16
NOAA-11	1988 313	1994 256	From 01:30 to 05:23
NOAA-9	1994 257	1995 021	From 02:20 to 09:16
NOAA-14	1995 022	2000 285	From 01:30 to 08:06
NOAA-16	2000 286	2002 365	From 02:00 to 02:24
NOAA-17	2003 001	2005 365	From 10:00 to 10:24

Title Page

Abstract

Introduction

Conclusions

References

Tables

Figures

I◀

▶I

◀

▶

Back

Close

Full Screen / Esc

Printer-friendly Version

Interactive Discussion

**21 years of
Mediterranean SST.
Re-analysis and
validation**

S. Marull et al.

Table 2. Statistical parameters characterizing the differences between in situ SST and Pathfinder data.

	MBE	RMSE	Slope	Intercept	R	n. Pair
MEDATLAS-MFS_XBT	+0.1000	0.4575	0.9982	−0.0641	0.9947	2347
MEDATLAS_CTD	+0.0743	0.5218	0.9998	−0.0711	0.9930	2469
MEDARGO_FLOAT	−0.1585	0.7496	0.9930	+0.3110	0.9847	748
ALL_DATA	+0.0541	0.5400	1.0010	−0.07517	0.9927	5564

Title Page

Abstract

Introduction

Conclusions

References

Tables

Figures

I◀

▶I

◀

▶

Back

Close

Full Screen / Esc

Printer-friendly Version

Interactive Discussion

**21 years of
Mediterranean SST.
Re-analysis and
validation**

S. Marull et al.

Table 3. Statistical parameters characterizing the differences between in situ SST and OISST data.

	MBE	RMSE	Slope	Intercept	R	n. Pair
MEDATLAS_MFS_XBT	0.1365	0.5375	0.9966	−0.0709	0.9911	8521
MEDATLAS_CTD	0.0002	0.7348	0.9868	0.2511	0.9826	11162
MEDARGO_FLOAT	−0.0620	0.6886	1.0026	0.0092	0.9870	2196
ALL_DATA	0.04703	0.6645	0.9926	0.0963	0.9864	21879

Title Page

Abstract

Introduction

Conclusions

References

Tables

Figures

◀

▶

◀

▶

Back

Close

Full Screen / Esc

Printer-friendly Version

Interactive Discussion

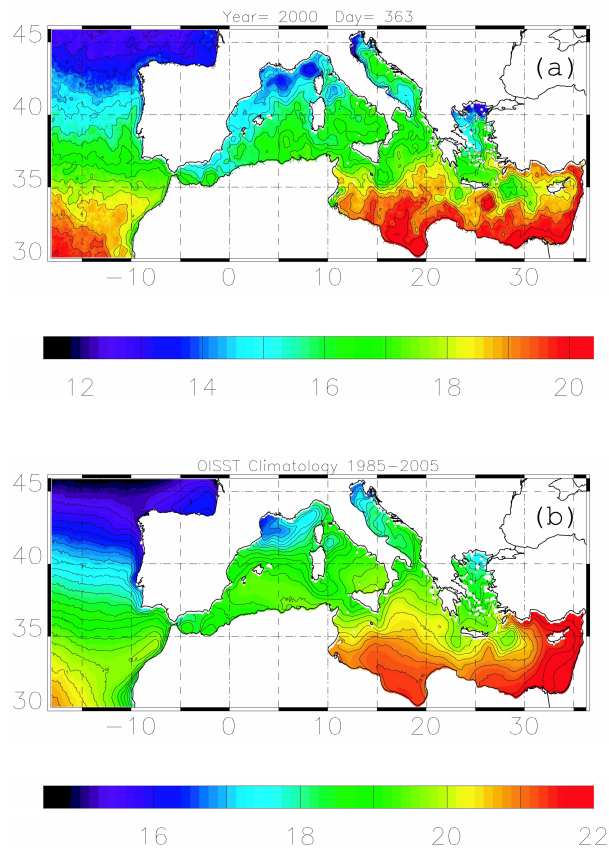


Fig. 1. An example of OISST daily map on 29 December 2000 **(a)** and climatological mean of all years **(b)**.

OSD

3, 1191–1223, 2006

21 years of Mediterranean SST. Re-analysis and validation

S. Marull et al.

Title Page

Abstract

Introduction

Conclusions

References

Tables

Figures

◀

▶

◀

▶

Back

Close

Full Screen / Esc

Printer-friendly Version

Interactive Discussion

EGU

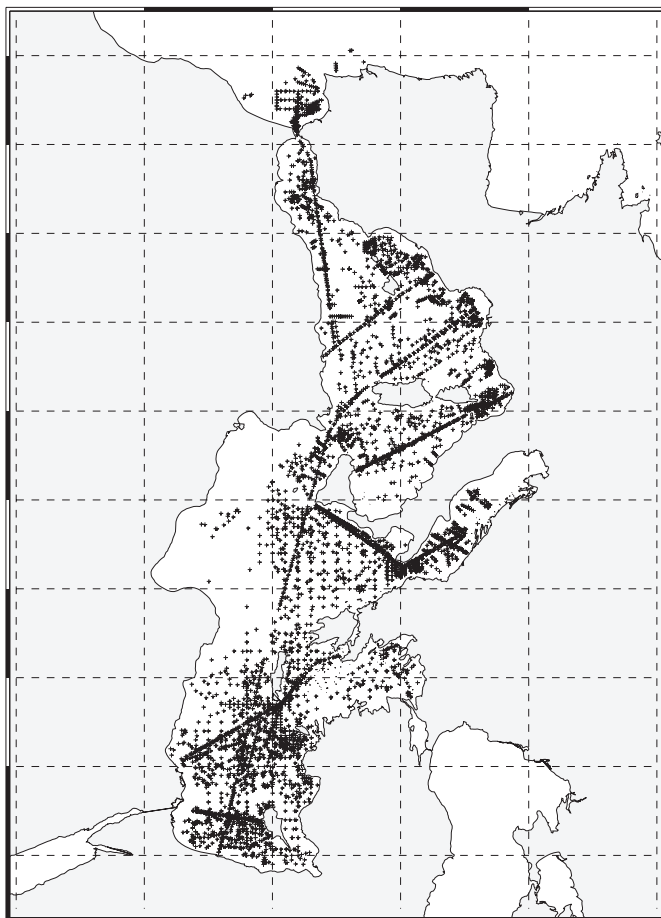


Fig. 2. Spatial distribution of the selected PFSST matchup points.

**21 years of
Mediterranean SST.
Re-analysis and
validation**

S. Marull et al.

Title Page

Abstract

Introduction

Conclusions

References

Tables

Figures

◀

▶

◀

▶

Back

Close

Full Screen / Esc

Printer-friendly Version

Interactive Discussion

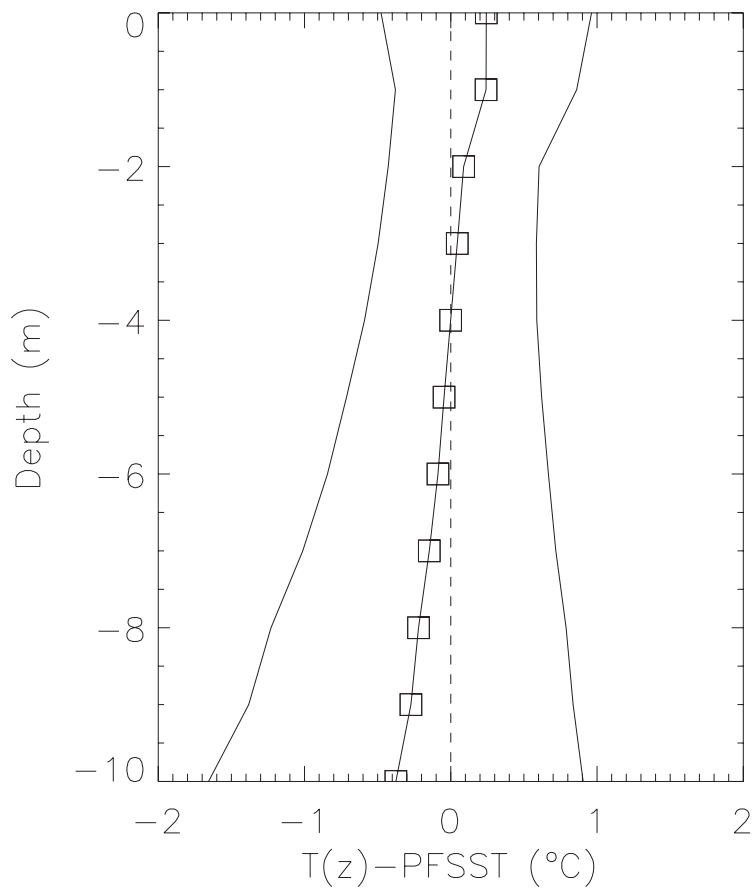


Fig. 3. Vertical profile of the difference between PFSST and in situ temperature as function of the depth z .

21 years of Mediterranean SST. Re-analysis and validation

S. Marull et al.

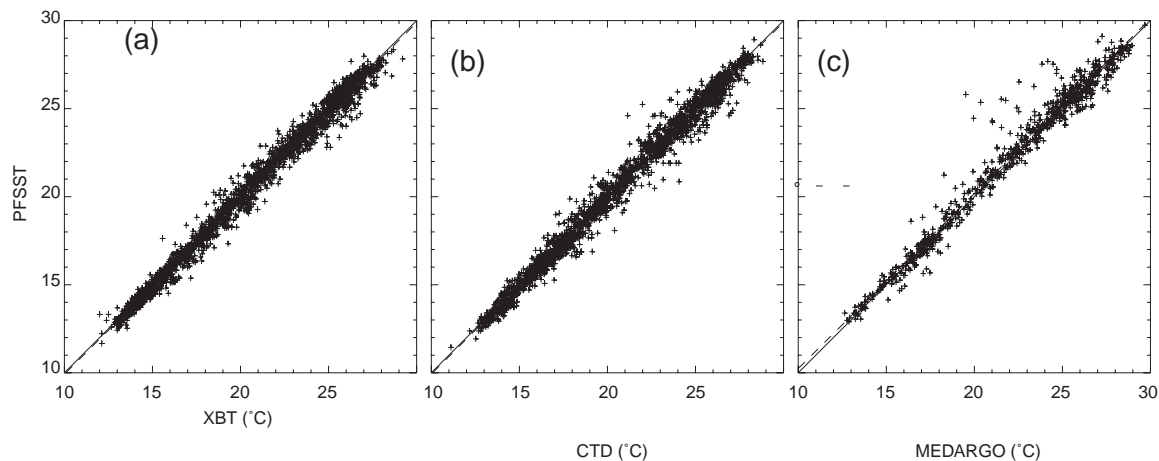


Fig. 4. Scatter plots of PFSST against XBT measurements **(a)**, CTD Measurements **(b)** and MEDARGO measurement **(c)**.

[Title Page](#)[Abstract](#)[Introduction](#)[Conclusions](#)[References](#)[Tables](#)[Figures](#)[◀](#)[▶](#)[◀](#)[▶](#)[Back](#)[Close](#)[Full Screen / Esc](#)[Printer-friendly Version](#)[Interactive Discussion](#)

**21 years of
Mediterranean SST.
Re-analysis and
validation**

S. Marull et al.

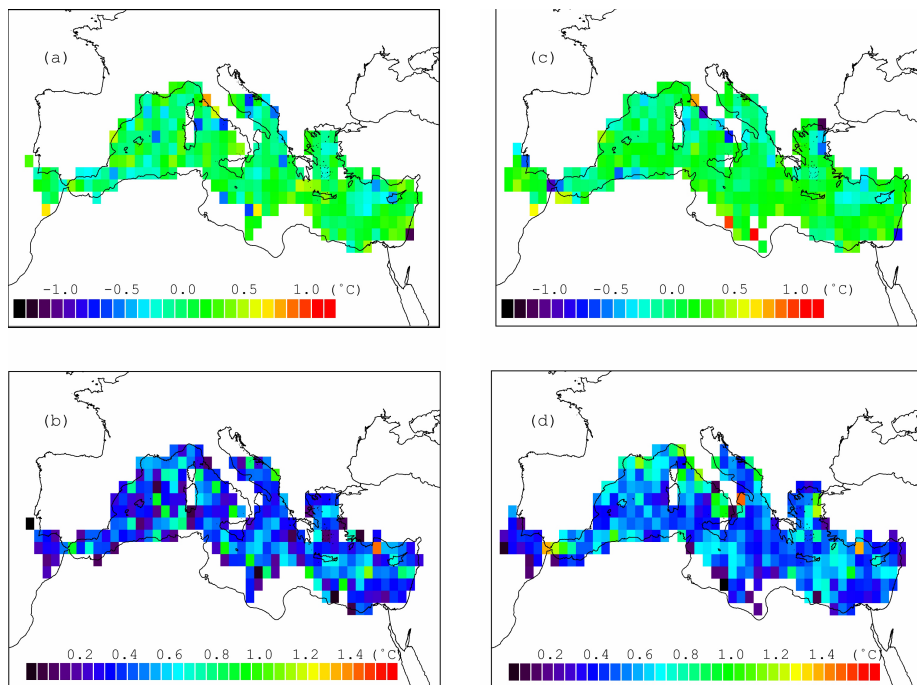


Fig. 5. Spatial distribution of: Tsitu-PFSST **(a)** and its standard deviation **(b)**; Tsitu-OISST **(c)** and its standard deviation **(d)**.

Title Page

Abstract

Introduction

Conclusions

References

Tables

Figures

◀

▶

◀

▶

Back

Close

Full Screen / Esc

Printer-friendly Version

Interactive Discussion

21 years of Mediterranean SST. Re-analysis and validation

S. Marull et al.

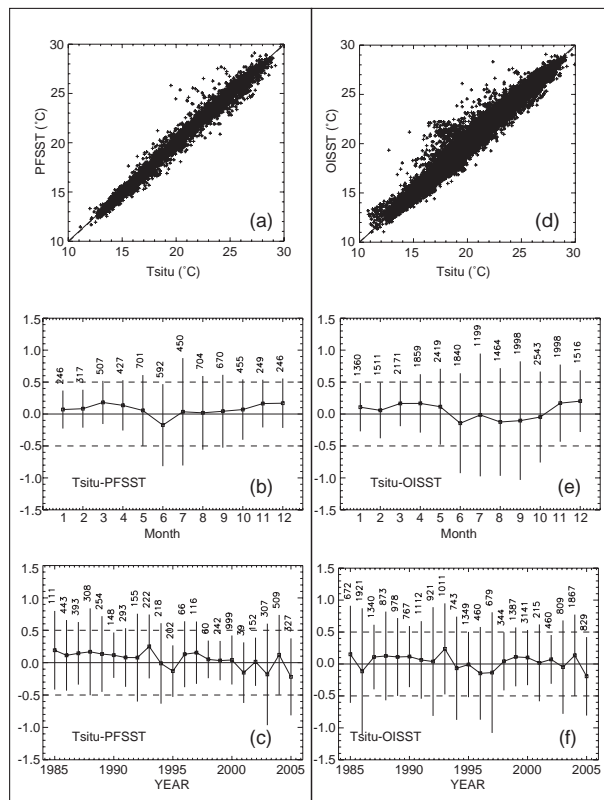


Fig. 6. Comparison of PFSST and OISST behaviours against in situ observations: scatterplot Tsitu versus PFSST (a), monthly behaviour of Tsitu-PFSST (b), yearly behaviour of Tsitu-PFSST (c), scatterplot Tsitu versus OISST (d), monthly behaviour of Tsitu-OISST (e), yearly behaviour of Tsitu-OISST (f). Vertical bars represent the standard deviation of the differences and the numbers represent the number of matchups for each mean.

Title Page

Abstract

Introduction

Conclusions

References

Tables

Figures

◀

▶

◀

▶

Back

Close

Full Screen / Esc

Printer-friendly Version

Interactive Discussion

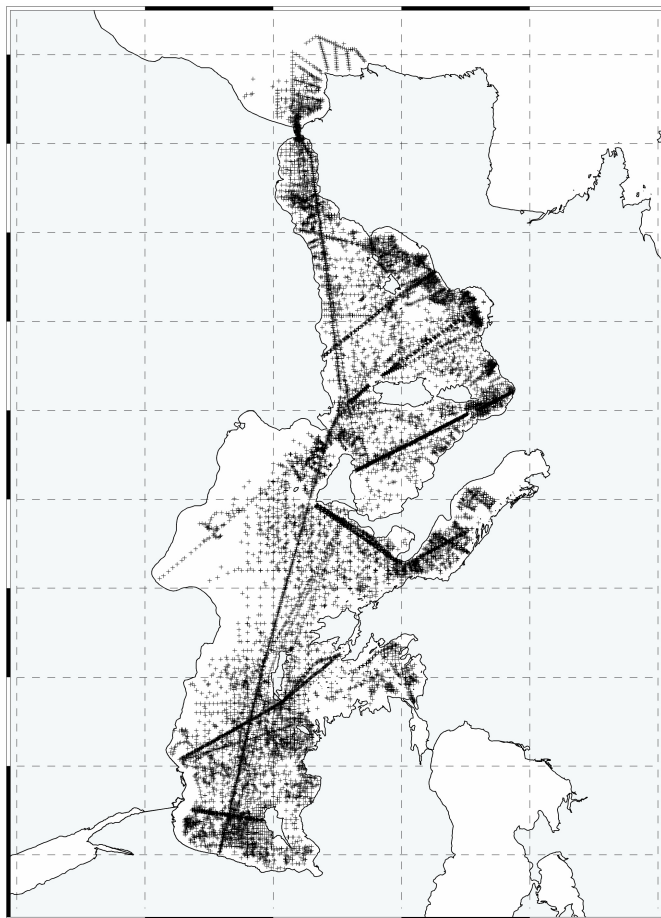


Fig. 7. Spatial distribution of the selected OISST matchup points.

**21 years of
Mediterranean SST.
Re-analysis and
validation**

S. Marull et al.

Title Page

Abstract

Introduction

Conclusions

References

Tables

Figures

◀

▶

◀

▶

Back

Close

Full Screen / Esc

Printer-friendly Version

Interactive Discussion

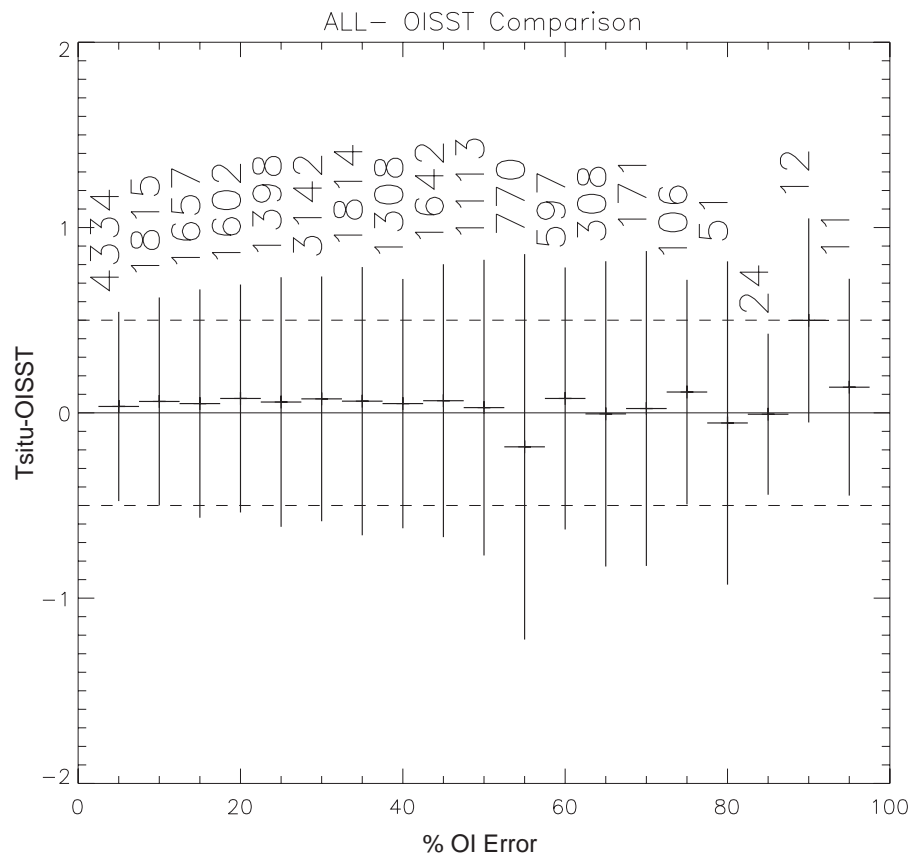


Fig. 8. Behaviour of Tsitu-OISST as a function of the OI interpolation error. Vertical bars represent the standard deviation of the differences and the numbers represent the number of matchups for each mean.