



HAL
open science

Distribution of overwintering Calanus in the North Norwegian Sea

A. Edvardsen, J. M. Pedersen, D. Slagstad, T. Semenova, A. Timonin

► **To cite this version:**

A. Edvardsen, J. M. Pedersen, D. Slagstad, T. Semenova, A. Timonin. Distribution of overwintering Calanus in the North Norwegian Sea. Ocean Science Discussions, 2006, 3 (2), pp.25-53. hal-00298371

HAL Id: hal-00298371

<https://hal.science/hal-00298371>

Submitted on 18 Jun 2008

HAL is a multi-disciplinary open access archive for the deposit and dissemination of scientific research documents, whether they are published or not. The documents may come from teaching and research institutions in France or abroad, or from public or private research centers.

L'archive ouverte pluridisciplinaire **HAL**, est destinée au dépôt et à la diffusion de documents scientifiques de niveau recherche, publiés ou non, émanant des établissements d'enseignement et de recherche français ou étrangers, des laboratoires publics ou privés.

Papers published in *Ocean Science Discussions* are under open-access review for the journal *Ocean Science*

**Overwintering
*Calanus***

A. Edvardsen et al.

Distribution of overwintering *Calanus* in the North Norwegian Sea

A. Edvardsen¹, J. M. Pedersen¹, D. Slagstad², T. Semenova³, and A. Timonin³

¹Department of Aquatic BioSciences, Norwegian College of Fishery Science, University of Tromsø, 9037 Tromsø, Norway

²SINTEF Fisheries and Aquaculture, 7465 Trondheim, Norway

³P. P. Shirsov Institute of Oceanology, Russian Academy of Science, Krasikova St. 23, Moscow, 117 218, Russia

Received: 16 January 2006 – Accepted: 3 February 2006 – Published: 31 March 2006

Correspondence to: A. Edvardsen (edvard@nfh.uit.no)

Title Page

Abstract

Introduction

Conclusions

References

Tables

Figures

◀

▶

◀

▶

Back

Close

Full Screen / Esc

Printer-friendly Version

Interactive Discussion

EGU

Abstract

During winter 2003 and 2004, zooplankton and hydrographic data were collected in the northern parts of the Norwegian Sea (68–72° N, 8–17° E) west of the Norwegian shelf break at depths down to 1800 m. The results cover both inter and intra annual changes of hydrography and distribution of *Calanus* spp. For the whole survey area, average seawater temperature down to 1000 m was higher in 2004 than in the same period in 2003. For the upper 500 m the difference was ca. 1°C. *Calanus finmarchicus* dominated at ca. 75% of the total copepod abundance. Typical abundance of *C. finmarchicus* in the survey area was 30 000–40 000 m⁻². *C. hyperboreus* was found deeper than *C. finmarchicus* while other copepods were found at the depth of *C. finmarchicus* or shallower. From January to February 2004, the peak of abundance of *C. finmarchicus* and *C. hyperboreus* shifted ca. 300 m upwards indicating that ascent from overwintering depth took place at a speed of 10 m d⁻¹ during this period. In general, high abundance of copepods was found adjacent to the shelf slope while oceanic areas had low and intermediate abundance. In the southern part of the survey area, location of high and low copepod abundance shifted both between and within years. In the northern part of the survey area where the shelf slope is less steep, copepods was present at intermediate and high abundance during all surveys.

1 Introduction

The essential role of copepods in the marine food web and its potential sensitivity to changes in the physical properties of the the sea has prompted an enhanced research focus on these organisms. In the North Atlantic, *Calanus finmarchicus* is by biomass the dominating species (Planque and Batten, 2000), making it a prime target for several recent research projects (e.g. ICOS Heath et al., 1999 and TASC Tande and Miller, 2000). Yet, compared to the pool of data available from the productive period during spring and summer, information during the overwintering phase is rudimentary.

OSD

3, 25–53, 2006

Overwintering *Calanus*

A. Edvardsen et al.

Title Page

Abstract

Introduction

Conclusions

References

Tables

Figures

◀

▶

◀

▶

Back

Close

Full Screen / Esc

Printer-friendly Version

Interactive Discussion

EGU

The interactions between biological processes related to overwintering (e.g. active and passive vertical movement, metabolism) and physical processes of the ocean can act as a strong moderator on the recruitment and distribution during spring and summer. In addition, these physical-biological interactions might represent a prerequisite for persistence within populations of *Calanus* in the North Atlantic (Heath et al., 2004; Irigoien, 2004).

At higher latitudes *Calanus* typically enters a state of diapause during autumn after descending to depths below 600 m (Østvedt, 1955; Hirche, 1991, 1996). The winter months is spent living on accumulated lipid reserves at low respiration rates (Hirche, 1996). Enhanced probability of survival due to low temperatures and reduced exposure to predators and parasites are considered to be the main reason for escaping surface waters during winter (Krause and Radach, 1989; Kaartvedt, 1996). In spring the overwintering population ascends to surface waters where it matures and spawns. In the southern part of the Norwegian Sea the depth layers occupied by the species *Calanus finmarchicus* corresponds to the upper parts of Norwegian Sea deep water, a polar water mass found below and flowing in the opposite direction to the poleward North Atlantic Current running along the continental shelf slope (Heath et al., 1999). During diapause, animals are transported southwards from the Norwegian Sea through the Faroe-Shetland Channel into the Atlantic and then carried back again when ascending in spring (Backhaus et al., 1994; Bryant et al., 1998; Heath et al., 1999).

From a 15 year data series on abundance of *C. finmarchicus* during the spring and early summer, Tande et al. (2000) showed that the abundance co-varied throughout the entire region from the NE Norwegian Sea to the eastern part of the Barents Sea. Thus, in periods of high abundance of *C. finmarchicus* in the NE Norwegian Sea, the abundance was also found to be high within the Barents Sea and vice versa. They also found that seawater temperature in the Barents Sea, indicating the extent of Atlantic water advection into the area, showed no clear relationship with the observed biomass of *C. finmarchicus*. Therefore, the project “Plankton Climatology in the Barents Sea” was initiated to seek the mechanisms governing the biomass variability of

**Overwintering
*Calanus***

A. Edvardsen et al.

Title Page

Abstract

Introduction

Conclusions

References

Tables

Figures

◀

▶

◀

▶

Back

Close

Full Screen / Esc

Printer-friendly Version

Interactive Discussion

C. finmarchicus observed in the Barents Sea. Analysis of three years (2000–2002) biomass distribution during both summer and winter generally failed to identify any trends between distant or local atmospheric climate indices and the *C. finmarchicus* biomass (Halvorsen et al., 2003). They argued that deep-water, meso-scale eddies might provide favorable retention areas for the overwintering population of *C. finmarchicus*. Consequently, it is likely that these meso-scale physical features can influence the abundance and advection paths of the overwintering population the following spring and summer (Halvorsen et al., 2003). The pool of data from this area has been extended for another four years (2003–2006) to provide time series data on the overwintering phase. These data are to be accompanied by deep sea current measurements and modelling. Based on the conceptual model proposed by Halvorsen et al. (2003), the current paper assess in more detail the distribution and dynamics of mainly *C. finmarchicus*, but also *C. hyperboreus*, compared to observed and modelled physical properties of the North Norwegian Sea in 2003 and 2004.

2 Material and methods

Field sampling was carried out in January and February, 2003–2004 with R/V “Jan Mayen” in the shelf slope and off shelf areas of the NE Norwegian Sea (Fig. 1, Table 1). Sampling locations were designed to cover the distribution of overwintering zooplankton. For each station temperature, and salinity was measured using a Seabird 911 Conductivity-Temperature-Depth (CTD) profiler (Sea-Bird Electronics, inc., Washington, USA). For each profile, a water sample was collected at maximum depth for on-shore calibration of the conductivity sensor. Each profile was performed down to 10m above the seabed or to a maximum depth of 1800m. Due to a broken conductivity sensor causing non-systematic drift in the measurements, salinity data were not available in January 2003. After each CTD profile, a MultiNet (Type Midi; Hydro-Bios Apparatebau GmbH, Kiel-Holtenau, Germany) was lowered to 10–50 m above the seabed or to a maximum depth of 1800 m for collection of zooplankton. The MultiNet

Overwintering *Calanus*

A. Edvardsen et al.

Title Page

Abstract

Introduction

Conclusions

References

Tables

Figures

◀

▶

◀

▶

Back

Close

Full Screen / Esc

Printer-friendly Version

Interactive Discussion

**Overwintering
*Calanus***A. Edvardsen et al.

Title Page

Abstract

Introduction

Conclusions

References

Tables

Figures

◀

▶

◀

▶

Back

Close

Full Screen / Esc

Printer-friendly Version

Interactive Discussion

was equipped with five 180 μm mesh-size plankton nets giving discrete sampling of five depth strata during ascent of each haul. A flowmeter inside the 0.25 m² opening measured the water flowing through the nets. The MultiNet was hauled at a vertical speed of 0.5 m s⁻¹. After retrieval, flow data were uploaded to the computer. For the surveys conducted in January 2003 and 2004, samples were collected at the depth intervals bottom, 500, 400, 300, 200, 100, 0 m at shallow stations. For the deep stations the depth intervals used were bottom/1800, 1200, 700, 500, 200, 0 m. For each deep station the 700–500 m depth interval was adjusted to covered the 0–2°C temperature interval, hence leading to an adjustment also for the adjacent depth intervals. For the survey conducted in February 2004, the sampling scheme was altered using fixed 300 and 600 m intervals giving bottom, 1200, 900, 600, 300, 0 m and bottom/1800, 1500, 1200, 900, 600, 0 m depth intervals. Upon retrieval zooplankton samples were collected from the cod-ends after flushing the nets. After processing (see below), all samples were preserved in hexamine buffered formaldehyde/seawater solution.

Prior to preservation, the biomass volume of each sample was measured after filtering out excessive water. Biomass data was used for underway mapping of the copepod biomass distribution. In order to gain more information in areas of high copepod biomass variability, additional sampling was performed in those areas after finishing the predefined stations. Counting was performed to stage specific abundance of *Calanus finmarchicus*, *C. hyperboreus* and *C. glacialis* in addition to one group containing other copepod taxa. Quantitative species composition within the group of other copepods was not examined further. Copepods smaller than *C. finmarchicus* stage C1 were not counted. Geo-referenced abundance data were fed into a meridional-zonal grid interpolating the values of empty grid cells using kriging (Surfer v6.01, Golden Software inc., Colorado, USA). Maps were made using M_Map (<http://www2.ocgy.ubc.ca/~rich/map.html>), and properties of seawater was calculated using the tools provided by Morgan (1994).

3 Results

3.1 Bathymetry and hydrography

The survey covered an area from the shelf break at a depth of 500 m to the deeper part of the Northern Norwegian Sea at maximum depth of 3000 m (Fig. 1). Bathymetry of the survey area is characterized by a steep shelf slope in the south with a drop from 500 to 2000 m over a distance of approximately 10 km. As the Barents Sea opens to the east the shelf slope widens out and in the northern part of the survey area the distance between the 500 and 2000 m isobath is approximately 120 km. Several small canyons intersect the shelf break forming channels from the continental shelf into the deep basin areas.

Four hydrographic regions were defined based on the physical properties of seawater found in the survey area (Table 2). In the surface, the relatively low saline Coastal Water (CW) overlay the warmer and saltier Atlantic Water (AW). A transition layer of Intermediate Water (IW) was defined between the AW and the cold Deep Water (DW). The depth of each of these water masses varied in space and time, and there were transition zones of mixed water between them. However, in 2004 the 200–400 m layer of the survey area contained AW, while the DW predominated below 800 m (Fig. 2). In January, the average temperature of the AW was 1°C warmer in 2004 than in 2003. In 2004, more CW was found in the 0–100 m depth layer in January compared to February.

3.2 Abundance of copepods

Calanus finmarchicus dominated the meso-zooplankton community in terms of abundance and biomass. On average this species accounted for approximately 75% of the total abundance for all three surveys. *C. hyperboreus* occurred at approximately 5–10% of the *C. finmarchicus* abundance. *C. glacialis* was found in 20 net samples during January 2003. In January and February 2004, *C. glacialis* was found in 2 and

Title Page

Abstract

Introduction

Conclusions

References

Tables

Figures

◀

▶

◀

▶

Back

Close

Full Screen / Esc

Printer-friendly Version

Interactive Discussion

1 net samples, respectively. For all occurrences of this species, the abundance was very low ($0.01\text{--}0.33\text{ m}^{-3}$). Other copepods (i.e. *Metridia* spp., *Pareuchaeta* spp. and *Gaidius* spp.) made up approximately 20% of the total abundance, but less so in terms of biomass. In the following, *C. finmarchicus* and *C. hyperboreus* will be dealt with in more detail.

The average abundance of *C. finmarchicus* in the survey area was in the range $30\,000\text{--}38\,000\text{ m}^{-2}$ (Table 3). Distribution of developmental stages was on average 17:80:2:1 for copepodite stages IV, V, female and male, respectively. *C. hyperboreus* was present at an average abundance of $1400\text{--}2300\text{ m}^{-2}$ (Table 4). Developmental stage distribution was approximately 2:4:5:5:1 for copepodites III, IV, V, female and male, respectively.

3.3 Vertical distribution of copepods

In January 2003 and 2004, the abundance of *C. finmarchicus* peaked at 600–1200 m depth, while the highest abundance of *C. hyperboreus* was found below 1200 m (Fig. 3), and in January 2003, the highest abundance was found in the depth range 1500–1800 m indicating that part of the *C. hyperboreus* population resided below the depth of sampling. For the other copepods group, abundance was highest above 1200 m.

An shift in the depth distribution for both *C. finmarchicus* and *C. hyperboreus* indicated that upward migration took place from January to February 2004 (Fig. 4). For both species, the abundance peak shifted approximately one depth bin, i.e. 300 m, over a period of one month. Hence, the vertical upward migration speed was on average 10 m d^{-1} .

3.4 Horizontal distribution of copepods

Due to the dominance of *C. finmarchicus*, this species was used for the horizontal mapping of copepod abundance in the survey area. In general, high concentrations

Title Page

Abstract

Introduction

Conclusions

References

Tables

Figures

◀

▶

◀

▶

Back

Close

Full Screen / Esc

Printer-friendly Version

Interactive Discussion

**Overwintering
*Calanus***

A. Edvardsen et al.

Title Page

Abstract

Introduction

Conclusions

References

Tables

Figures

I◀

▶I

◀

▶

Back

Close

Full Screen / Esc

Printer-friendly Version

Interactive Discussion

were found in a band adjacent to the shelf break west of the 1000 m isobath (Fig. 5), but location of high abundance patches along this band shifted between years (January 2003 and 2004) and within years (January and February 2004). Hence, the horizontal position of overwintering copepods was indeed dynamic. However, adjacent to the 1000 m isobath at 70–72° N the abundance was always intermediate or high. Both in January 2003 and 2004, maximum abundances were found in this area. In February 2004, the maximum abundance was found in the southern part of the survey area at 68° N. The western parts of the survey area was recognized by intermediate or low abundance of *C. finmarchicus* during all three surveys.

3.5 Hydrographic distribution of copepods

Results from the depth distribution (Fig. 3) indicated that the different copepod species occupied different habitats. Using the water domains as defined in Table 2, the segregation between *C. finmarchicus* and *C. hyperboreus* was more pronounced. The average abundance of *C. hyperboreus* in Deep Water (DW) was more than twice of that found in the Intermediate Water (IW, Table 5).

For *C. finmarchicus* the average abundance in the IW was 62 m^{-3} and 29 m^{-3} in the DW domain. The majority of the *C. finmarchicus* population was found at temperatures below 2°C in January 2004, while in February 2004, *C. finmarchicus* was more evenly distributed among the DW, IW and AW domains (Fig. 6).

4 Discussion

During January and February 2003 and 2004, the distribution of overwintering copepods was measured in the Lofoten Basin, an off shelf, oceanic region of the North Norwegian Sea. Water masses of the survey area were diverse as given by their physical properties, of which to the *Calanus* population was closely related (discussed below). In 2003, the survey area seemed to have been influenced by colder water masses

than in 2004. The difference in average temperature was approximately 1°C throughout the top 500 m. Even though found at low numbers, the arctic species *C. glacialis* was found in 20 samples during January 2003, but only in two samples during January 2004, suggesting that 2003 was the colder year of the two.

5 *C. finmarchicus* was the dominating species making up 75% of the total abundance of meso zooplankton. *C. hyperboreus* occurred at approximately 10% of the *C. finmarchicus* abundance. *C. finmarchicus* was also dominant during 2000–2002 (unpublished data, but see also Halvorsen et al., 2003). Hence, this species is indeed a robust indicator of the overall biomass of copepods in the Northern Norwegian Sea.

10 *C. finmarchicus* was mainly found as copepodite stage V (78–85%), but also as stage IV (13–21%). Adult females and males were present at 2–3% and 0–2%, respectively. The distribution of developmental stages was very similar to that found in waters around Iceland during winter (Gislason and Astthorsson, 2000). However, data from the southern Norwegian Sea during winter 1996 (Heath et al., 2000) showed that the

15 portion of stage IV was more important and even dominant at some depths making up more than 60% of the *C. finmarchicus* abundance. Table 3 indicate that the ratio of adult males increased from January to February 2004. This was probably due to ontogenetic development within the population rather than transportation of males into the survey area. For *C. hyperboreus*, abundance was more evenly distributed among

20 the copepodite stages, but dominated by stages IV, V and adult females, reflecting the two year life cycle of this species. This is in accordance with data from the Irminger Sea during winter where stage IV and V made up 50–60% and adult females 30–40% (Gislason, 2003, his Fig. 9).

25 The overall depth distribution (Figs. 3 and 4) showed that the population of *C. finmarchicus* resided above that of *C. hyperboreus* indicating different habitat preferences between these two species. Further, the abundance peak of *C. hyperboreus* was close to 1800 m suggesting that the maximum sampling depth was insufficient to cover the overwintering population of this species. The fact that the average abundance of *C. hyperboreus* doubled in the survey area from January to February 2004 (Table 4) and that

**Overwintering
*Calanus***A. Edvardsen et al.

Title Page

Abstract

Introduction

Conclusions

References

Tables

Figures

◀

▶

◀

▶

Back

Close

Full Screen / Esc

Printer-friendly Version

Interactive Discussion

during December, [Gislason \(2003\)](#) found parts of the *C. hyperboreus* below 1800 m in the Irminger Sea, indicated that deeper sampling should be used for this species. From the depth distribution it was also possible to conclude that an upward displacement had taken place between January and February 2004. The magnitude of displacement was approximately 300 m, providing a speed of 10 m d^{-1} for both *C. finmarchicus* and *C. hyperboreus*. According to data compiled by [Hirche \(1996\)](#), the termination of the diapause in *C. finmarchicus* is to take place at the end of January with an ascent phase from February to March. To meet this scheme, the upward migration speed will have to increase over the ascent period. Since the body lipid of *C. finmarchicus* is more compressible than seawater and due to thermal expansion of lipids, an increased ascent speed approaching the surface due to buoyancy forces, is likely ([Visser and Jónasdóttir, 1999](#); [Campbell and Dower, 2003](#)).

At a state of slow or arrested biological rates, the horizontal distribution of *C. finmarchicus* was indeed a dynamic property due to perturbation by physical processes. However, some general features in the distribution of *C. finmarchicus* should be noted: 1) high concentrations occurred in a band adjacent to the shelf break, 2) to the west of this band concentration was low or intermediate and 3) in the north eastern part of the survey area concentrations were always intermediate or high. Even though not conclusive, similar patterns were observed by [Halvorsen et al. \(2003\)](#) during January 2000–2002. They argued that aggregation and dispersal of *C. finmarchicus* occurred as a combined effect of late summer and autumn downward migration and meso scale eddy activity in the area resulting in a meso scale patchy distribution of the overwintering population. For the water column above the continental margin, such eddy activity has been shown to be a prominent feature ([Poulain et al., 1996](#); [Orvik and Niiler, 2002](#)), but in the deeper part of the water column there is a lack of empirical data.

Simulated deep water current data from the hydrodynamical model SINMOD (for a detailed description of SINMOD, see [Moseidjord et al., 1999](#); [Slagstad et al., 1999](#); [Slagstad and McClimans, 2005](#)) suggests that the observed dynamics in distribution of the overwintering population of *C. finmarchicus* is caused by interaction between

**Overwintering
*Calanus***

A. Edvardsen et al.

Title Page

Abstract

Introduction

Conclusions

References

Tables

Figures

◀

▶

◀

▶

Back

Close

Full Screen / Esc

Printer-friendly Version

Interactive Discussion

bottom topography and large scale ocean circulation with the North Atlantic Current (NAC) as the major driving force, and episodic events governed by local and distant atmosphere and ocean forcing acting on the target area altering this process (Slagstad and Tande, in review). South of 70° N, the NAC piles up water towards the narrow shelf break and main land of Norway causing a steep surface slope towards the coast. The pressure gradient in most of the water column will be dominated by the surface slope and the currents tend to be barotropic causing the water below the NAC to move north, parallel to the shelf slope. North of 70° N the Barents Sea opens up to the east and the shelf slope is less steep. Due to a decrease of the Taylor column thicknesses there will be an increase of anticyclonic vorticity causing the northwards flowing water to deflect westward. The pressure gradient across the shelf break is less dominated by the sea surface slope and horizontal pressure gradients become more important in deep water. The result is an anticyclonic eddy situated outside the shelf north of 70° N capable of retaining overwintering copepods (Fig. 7).

During episodic strengthening of the NAC, water masses below the NAC is transported effectively from the south towards the area of the eddy. From January to February 2004, an area of low biomass seemed to have shifted northwards while an area of very high biomass concentration was observed in the southernmost part of the area. This could have been caused by such an episodic strengthening of the NAC and hence increased flow of deep water towards the north-east. The above outline as suggested by the model will be evaluated using time series measurements of currents at selected positions in the survey area from November to March.

For each station, the MultiNet allowed for sampling in five discrete depth intervals from the bottom/1800 m to the surface. Hence, the vertical resolution must be regarded as crude. This must be taken into account when linking the distribution of copepods to the CTD data which values were averaged over the depth interval of each net. During the surveys in January 2003 and 2004 sampling was not performed independently on the hydrographic properties since one of the depth intervals were fixed to the 0–2°C temperature range. However, from the abundance of *C. finmarchicus* it was clear that

**Overwintering
*Calanus***

A. Edvardsen et al.

Title Page

Abstract

Introduction

Conclusions

References

Tables

Figures

◀

▶

◀

▶

Back

Close

Full Screen / Esc

Printer-friendly Version

Interactive Discussion

the population was found below 2°C during January (Fig. 6), similar to that reported by Halvorsen et al. (2003) for 2000–2002. It was also evident that this pattern was changing during February 2004 as the overwintering population had started the ascent. The temperature range previously reported for overwintering *C. finmarchicus* in the Nordic Seas is broad. During November and December *C. finmarchicus* was mainly found at 3–8°C in the Iceland Basin and at 3–6°C in the Irminger Basin (Gislason and Astthorsson, 2000). Similar, high temperatures was also reported from the Norwegian Trench and the Rockall Basin (Heath et al., 2004). At the cold end, the population of *C. finmarchicus* north of the Iceland-Scotland ridge and in the Faroe-Shetland Channel was found from –0.5 to 0.5°C (Heath et al., 2004). It is likely that the variability in temperature, at which an overwintering populations is found, is governed by seabed depth and/or in situ seawater-copepod density contrast, rather than different temperature preferences among local populations of *C. finmarchicus* in the North Atlantic Ocean. Where the seabed does not represent a boundary for downward migration, diapause is expected to take place close to neutral buoyancy (Visser and Jónasdóttir, 1999), even though this state might not represent a fully stable condition (Campbell and Dower, 2003). During January, most *C. finmarchicus* IV, V and females were found at a mean in situ water density of approximately 1032 kg m⁻³, and *C. finmarchicus* males at approximately 1029.5 kg m⁻³ (Fig. 8).

If this represents a state of neutral buoyancy, females was slightly more dense than stage IV, which in turn was slightly more dense than stage V. The same pattern was found in a lab experiment by Knutsen et al. (2001), but at higher levels of density. There were no data to support the density found for males. One month later, as the overwintering phase was terminated, only females had moved to waters of less density. For the other stages, changes in density positions were minor. Males are believed to be the first entering the surface in spring (Hirche, 1996, and references therein). However, during February 2004 males were found at higher in situ water density than one month earlier, indicating that upward migration of males started later than for females. The moulting into males that probably occurred from January to February (see above),

**Overwintering
*Calanus***

A. Edvardsen et al.

Title Page

Abstract

Introduction

Conclusions

References

Tables

Figures

I◀

▶I

◀

▶

Back

Close

Full Screen / Esc

Printer-friendly Version

Interactive Discussion

would also have contributed to the increased in situ density of water were most males were found. Both in the Irminger Basin and the Iceland Basin, [Gislason and Astthorsson \(2000\)](#) found that males resided deeper than females in April. During this period, only parts of the population had entered surface waters ([Gislason and Astthorsson, 2000](#)).

The density of copepods is determined by the relative composition of lipid, water, protein and chitin ([Visser and Jónasdóttir, 1999](#)), e.g. for copepods the diapause habitat will be a function of development stage and feeding history. With regard to horizontal displacement during winter and spring, the variability of density among species and developmental stages within species, will therefore cause variability in the spatial trajectories of the population. It has been suggested that a variation of lipid content among *C. finmarchicus* in the North Atlantic can represent an adaption for retention within the circulation domains of the different populations ([Heath et al., 2004](#); [Irigoién, 2004](#)). For the *C. finmarchicus* population in the Lofoten Basin, advection to the Norwegian shelf, the Barents Sea and north towards the polar basin during spring and summer will represent an effective sink. However, parts of the population will be drained back into the Lofoten Basin from shelf areas and the Barents Sea as the advanced copepodite stages descend during late summer and autumn. It is not known if this is sufficient to sustain a persistent population in the Lofoten Basin system, but it is likely that the Lofoten Basin represents a retention area for copepods advected to the area both during autumn and winter.

Acknowledgements. Technical support during the cruises was provided by B. Vaaja, J.-T. Eilertsen, R. Buvang, F. Tønning, O. Nordgård and K. Lydersen. They kept admirable high spirit in spite of rather unpleasant weather conditions that often occur in the open ocean during winter. The authors also wish to thank the crew on R/V “Jan Mayen”. This project was supported by the Research council of Norway, grant number 153070/120.

**Overwintering
*Calanus***

A. Edvardsen et al.

Title Page

Abstract

Introduction

Conclusions

References

Tables

Figures

◀

▶

◀

▶

Back

Close

Full Screen / Esc

Printer-friendly Version

Interactive Discussion

References

- Backhaus, J. O., Harms, I. H., Krause, M., and Heath, M. R.: An hypothesis concerning the space-time succession of *Calanus finmarchicus* in the northern North Sea, ICES J. Mar. Sci., 51, 169–180, 1994. [27](#)
- 5 Bryant, A. D., Hainbucher, D., and Heath, M.: Basin-scale advection and population persistence of *Calanus finmarchicus*, Fisheries Oceanogr., 7, 235–244, 1998. [27](#)
- Campbell, R. W. and Dower, J. F.: Role of lipids in the maintenance of neutral buoyancy by zooplankton, Mar. Ecology-Progress Series, 263, 93–99, 2003. [34](#), [36](#)
- 10 Gislason, A.: Life-cycle strategies and seasonal migrations of oceanic copepods in the Irminger Sea, Hydrobiologia, 503, 195–209, 2003. [33](#), [34](#)
- Gislason, A. and Astthorsson, O. S.: Winter distribution, ontogenetic migration, and rates of egg production of *Calanus finmarchicus* southwest of Iceland, ICES J. Mar. Sci., 57, 1727–1739, 2000. [33](#), [36](#), [37](#)
- 15 Halvorsen, E., Tande, K. S., Edvardsen, A., Slagstad, D., and Pedersen, O. P.: Habitat selection of overwintering *Calanus finmarchicus* in the NE Norwegian Sea and shelf waters off Northern Norway in 2000–02, Fisheries Oceanogr., 12, 339–351, 2003. [28](#), [33](#), [34](#), [36](#)
- Heath, M., Backhaus, J., Richardson, K., McKenzie, E., Slagstad, D., Beare, D., Dunn, J., Fraser, J., Gallego, A., Hainbucher, D., Hay, S., Jónasdóttir, S., Madden, H., Mardaljevic, J., and Schacht, A.: Climate fluctuations and the spring invasion of the North Sea by *Calanus finmarchicus*, Fisheries Oceanogr., 8, 163–176, 1999. [26](#), [27](#)
- 20 Heath, M. R., Fraser, J. G., Gislason, A., Hay, S. J., Jónasdóttir, S. H., and Richardson, K.: Winter distribution of *Calanus finmarchicus* in the Northeast Atlantic, ICES J. Mar. Sci., 57, 1628–1635, 2000. [33](#)
- 25 Heath, M. R., Boyle, P. R., Gislason, A., Gurney, W. S. C., Hay, S. J., Head, E. J. H., Holmes, S., Ingvarsdóttir, A., Jónasdóttir, S. H., Lindeque, P., Pollard, R. T., Rasmussen, J., Richards, K., Richardson, K., Smerdon, G., and Speirs, D.: Comparative ecology of over-wintering *Calanus finmarchicus* in the northern North Atlantic, and implications for life-cycle patterns, ICES J. Mar. Sci., 61, 698–708, 2004. [27](#), [36](#), [37](#)
- 30 Hirche, H. J.: Distribution of dominant calanoid copepod species in the Greenland Sea during late fall, Polar Biology, 11, 351–362, 1991. [27](#)
- Hirche, H. J.: Diapause in the marine copepod, *Calanus finmarchicus* – A review, Ophelia, 44, 129–143, 1996. [27](#), [34](#), [36](#)

OSD

3, 25–53, 2006

Overwintering *Calanus*

A. Edvardsen et al.

Title Page

Abstract

Introduction

Conclusions

References

Tables

Figures

◀

▶

◀

▶

Back

Close

Full Screen / Esc

Printer-friendly Version

Interactive Discussion

EGU

- Irigoien, X.: Some ideas about the role of lipids in the life cycle of *Calanus finmarchicus*, J. Plankton Res., 26, 259–263, 2004. 27, 37
- Kaartvedt, S.: Habitat preference during overwintering and timing of seasonal vertical migration of *Calanus finmarchicus*, Ophelia, 44, 145–156, 1996. 27
- 5 Knutsen, T., Melle, W., and Calise, L.: Determining the mass density of marine copepods and their eggs with a critical focus on some of the previously used methods, J. Plankton Res., 23, 859–873, 2001. 36
- Krause, M. and Radach, G.: On the relations of vertical-distribution, diurnal migration and nutritional state of herbivorous zooplankton in the northern North Sea during FLEX 1976, Internationale Revue Der Gesamten Hydrobiologie, 74, 371–417, 1989. 27
- 10 Morgan, P. P.: SEAWATER: A Library of MATLAB Computational Routines for the Properties of Sea Water, Tech. Rep. 222, CSIRO Mar. Laboratories, 1994. 29
- Moseidjord, H., Svendsen, H., and Slagstad, D.: Sensitivity studies of circulation and ocean-shelf exchange off northern Norway, Sarsia, 84, 191–198, 1999. 34
- 15 Orvik, K. A. and Niiler, P.: Major pathways of Atlantic water in the northern North Atlantic and Nordic Seas toward Arctic, Geophys. Res. Lett., 29, 2002. 34
- Østvedt, O.-J.: Zooplankton investigations from weather ship M in the Norwegian Sea, 1948-49, vol. 40 of Hvalrådets skrifter, Dybwad, 1955. 27
- Planque, B. and Batten, S. D.: *Calanus finmarchicus* in the North Atlantic: the year of *Calanus* in the context of interdecadal change, ICES J. Mar. Sci., 57, 1528–1535, 2000. 26
- 20 Poulain, P. M., Warn-Varnas, A., and Niiler, P. P.: Near-surface circulation of the Nordic seas as measured by Lagrangian drifters, J. Geophys. Res., 101, 18 237–18 258, 1996. 34
- Slagstad, D. and McClimans, T. A.: Modeling the ecosystem dynamics of the Barents Sea including the marginal ice zone: I. Physical and chemical oceanography, J. Mar. Syst., 58, 1–18, 2005. 34
- 25 Slagstad, D., Tande, K. S., and Wassmann, P.: Modelled carbon fluxes as validated by field data on the north Norwegian shelf during the productive period in 1994, Sarsia, 84, 303–317, 1999. 34
- Tande, K. S. and Miller, C. B.: Population dynamics of *Calanus* in the North Atlantic: results from the trans-Atlantic study of *Calanus finmarchicus*, ICES J. Mar. Sci., 57, 1527–1527, 2000. 26
- 30 Tande, K. S., Drobysheva, S., Nesterova, V., Nilssen, E. M., Edvardsen, A., and Tereschenko, V.: Patterns in the variations of copepod spring and summer abundance in the northeastern

**Overwintering
*Calanus***A. Edvardsen et al.

Title Page

Abstract

Introduction

Conclusions

References

Tables

Figures

◀

▶

◀

▶

Back

Close

Full Screen / Esc

Printer-friendly Version

Interactive Discussion

Norwegian Sea and the Barents Sea in cold and warm years during the 1980s and 1990s, ICES J. Mar. Sci., 57, 1581–1591, 2000. [27](#)
Visser, A. and Jónasdóttir, S.: Lipids, buoyancy and the seasonal vertical migration of *Calanus finmarchicus*, Fisheries Oceanogr., 8, 100–106, 1999. [34](#), [36](#), [37](#)

OSD

3, 25–53, 2006

**Overwintering
*Calanus***

A. Edvardsen et al.

Title Page

Abstract

Introduction

Conclusions

References

Tables

Figures

◀

▶

◀

▶

Back

Close

Full Screen / Esc

Printer-friendly Version

Interactive Discussion

EGU

**Overwintering
*Calanus***

A. Edvardsen et al.

Table 1. Cruise names, sampling periods, numbers of stations and instruments used during the surveys in 2003 and 2004.

Cruise	Period	Stations	Instruments
PCB7	19 Jan–1 Feb 2003	54	CTD, Multinet
PCB9	11–25 Jan 2004	50	CTD, Multinet
PCB11	16–29 Feb 2004	37	CTD, Multinet

[Title Page](#)
[Abstract](#)
[Introduction](#)
[Conclusions](#)
[References](#)
[Tables](#)
[Figures](#)
[I◀](#)
[▶I](#)
[◀](#)
[▶](#)
[Back](#)
[Close](#)
[Full Screen / Esc](#)
[Printer-friendly Version](#)
[Interactive Discussion](#)

**Overwintering
*Calanus***

A. Edvardsen et al.

[Title Page](#)[Abstract](#)[Introduction](#)[Conclusions](#)[References](#)[Tables](#)[Figures](#)[I◀](#)[▶I](#)[◀](#)[▶](#)[Back](#)[Close](#)[Full Screen / Esc](#)[Printer-friendly Version](#)[Interactive Discussion](#)**Table 2.** Physical criteria used to distinguish different water masses.

Water domain	Temperature (°C)	Salinity (psu)
Coastal Water (CW)	≥4	<35
Atlantic Water (AW)	>4	≥35
Intermediate Water (IW)	0–4	<35
Deep Water (DW)	≤0	<35

**Overwintering
*Calanus***

A. Edvardsen et al.

Table 3. Relative mean areal abundance of the copepodites, female and male *C. finmarchicus* (m^{-2}) for all stations at each survey. Absolute numbers are given in parenthesis.

Stage	Jan 2003	Jan 2004	Feb 2004
III	0.00 (5)	0 (0)	0 (0)
IV	0.21 (6 568)	0.13 (3 891)	0.16 (6 229)
V	0.78 (23 747)	0.85 (25 360)	0.78 (29 801)
f	0.02 (470)	0.02 (558)	0.03 (1 252)
m	0.00 (63)	0.00 (16)	0.02 (796)
Sum	1.01 (30 853)	1.00 (29 825)	0.99 (38 078)

Title Page

Abstract

Introduction

Conclusions

References

Tables

Figures

◀

▶

◀

▶

Back

Close

Full Screen / Esc

Printer-friendly Version

Interactive Discussion

**Overwintering
*Calanus***

A. Edvardsen et al.

Table 4. Relative mean areal abundance of the copepodites, female and male *C. hyperboreus* (m^{-2}) for all stations at each survey. Absolute numbers are given in parenthesis.

Stage	Jan 2003	Jan 2004	Feb 2004
III	0.17 (306)	0.08 (120)	0.12 (289)
IV	0.25 (438)	0.21 (297)	0.25 (588)
V	0.31 (550)	0.29 (412)	0.26 (618)
f	0.21 (371)	0.35 (488)	0.30 (705)
m	0.06 (107)	0.07 (97)	0.06 (138)
Sum	1.00 (1 772)	1.00 (1 414)	0.99 (2 338)

[Title Page](#)
[Abstract](#)
[Introduction](#)
[Conclusions](#)
[References](#)
[Tables](#)
[Figures](#)
[I◀](#)
[▶I](#)
[◀](#)
[▶](#)
[Back](#)
[Close](#)
[Full Screen / Esc](#)
[Printer-friendly Version](#)
[Interactive Discussion](#)

**Overwintering
*Calanus***

A. Edvardsen et al.

 Title Page

Abstract

Introduction

Conclusions

References

Tables

Figures

I◀

▶I

◀

▶

Back

Close

Full Screen / Esc

Printer-friendly Version

Interactive Discussion

Table 5. Mean abundance of *C. finmarchicus* (Cf) and *C. hyperboreus* (Ch) (m^{-3}) in different water masses as defined in Table 2. Data from January 2004.

Water domain	Cf	Ch
Coastal Water (CW)	5.18	0.08
Atlantic Water (AW)	7.41	0.14
Intermediate Water (IW)	61.92	0.76
Deep Water (DW)	28.86	1.70

**Overwintering
*Calanus***

A. Edvardsen et al.

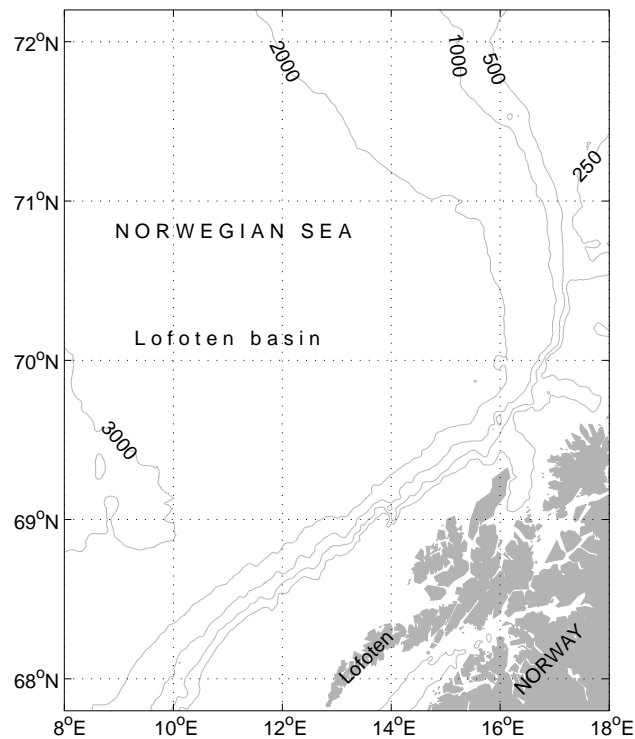


Fig. 1. The survey area is located in the northern parts of the Norwegian Sea, mainly west of the 500 m isobath.

[Title Page](#)[Abstract](#)[Introduction](#)[Conclusions](#)[References](#)[Tables](#)[Figures](#)[◀](#)[▶](#)[◀](#)[▶](#)[Back](#)[Close](#)[Full Screen / Esc](#)[Printer-friendly Version](#)[Interactive Discussion](#)

**Overwintering
*Calanus***

A. Edvardsen et al.

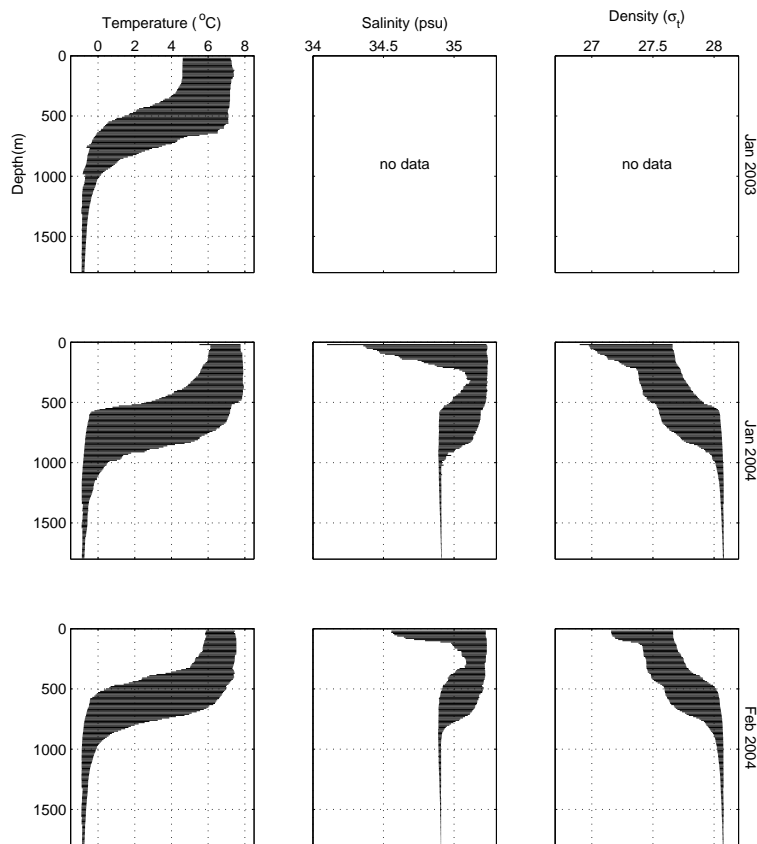


Fig. 2. Minimum and maximum values of seawater temperature, salinity and density at atmospheric pressure for each survey. Data from 2003 are given in the upper panels, while data from 2004 are shown in the panels below. Salinity and hence density data were not available for 2003.

[Title Page](#)[Abstract](#)[Introduction](#)[Conclusions](#)[References](#)[Tables](#)[Figures](#)[◀](#)[▶](#)[◀](#)[▶](#)[Back](#)[Close](#)[Full Screen / Esc](#)[Printer-friendly Version](#)[Interactive Discussion](#)

Overwintering *Calanus*

A. Edvardsen et al.

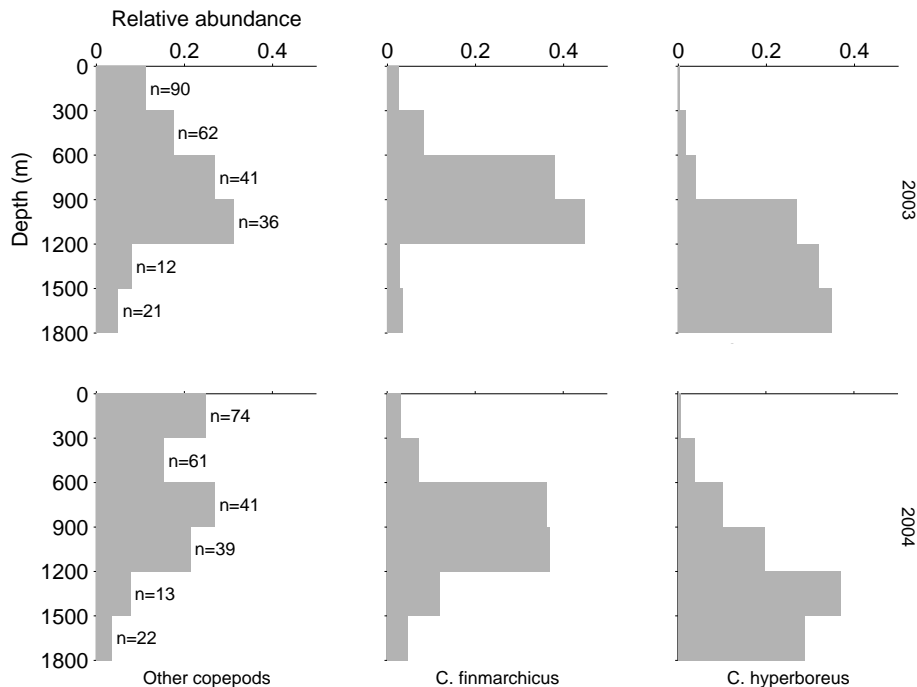


Fig. 3. Relative abundance for each copepod group in 300 m depth bins during the surveys in January 2003 (upper panels) and 2004. Number of samples in each depth bin are given in the left panels.

[Title Page](#)
[Abstract](#)
[Introduction](#)
[Conclusions](#)
[References](#)
[Tables](#)
[Figures](#)
[◀](#)
[▶](#)
[◀](#)
[▶](#)
[Back](#)
[Close](#)
[Full Screen / Esc](#)
[Printer-friendly Version](#)
[Interactive Discussion](#)

**Overwintering
*Calanus***

A. Edvardsen et al.

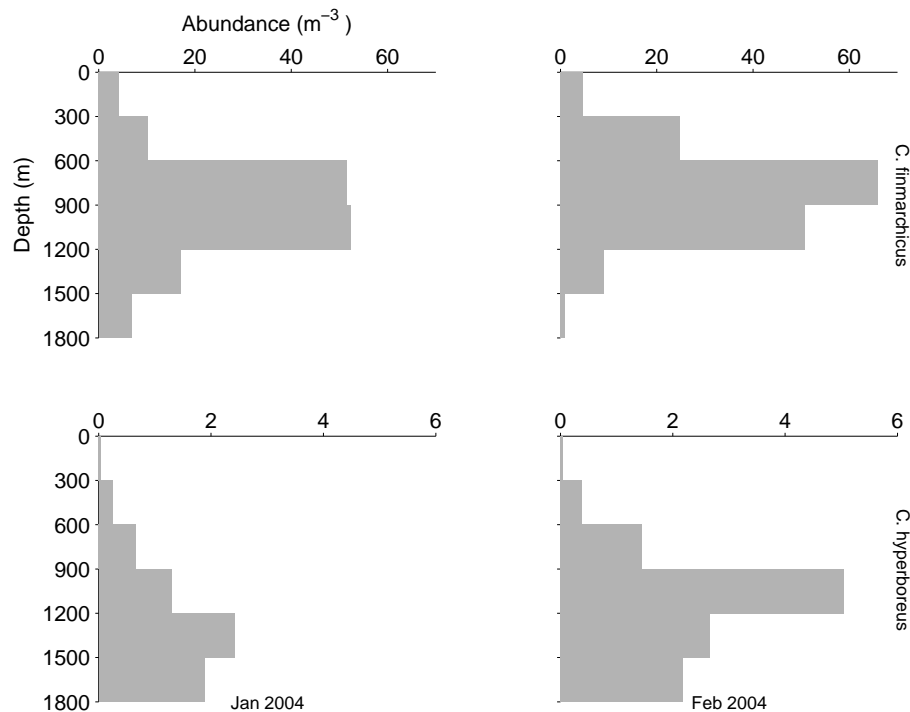


Fig. 4. Vertical distributed abundance of *C. finmarchicus* (upper panels) and *C. hyperboreus* during January (left panels) and February 2004. See also Fig. 3.

[Title Page](#)[Abstract](#)[Introduction](#)[Conclusions](#)[References](#)[Tables](#)[Figures](#)[◀](#)[▶](#)[◀](#)[▶](#)[Back](#)[Close](#)[Full Screen / Esc](#)[Printer-friendly Version](#)[Interactive Discussion](#)

**Overwintering
*Calanus***

A. Edvardsen et al.

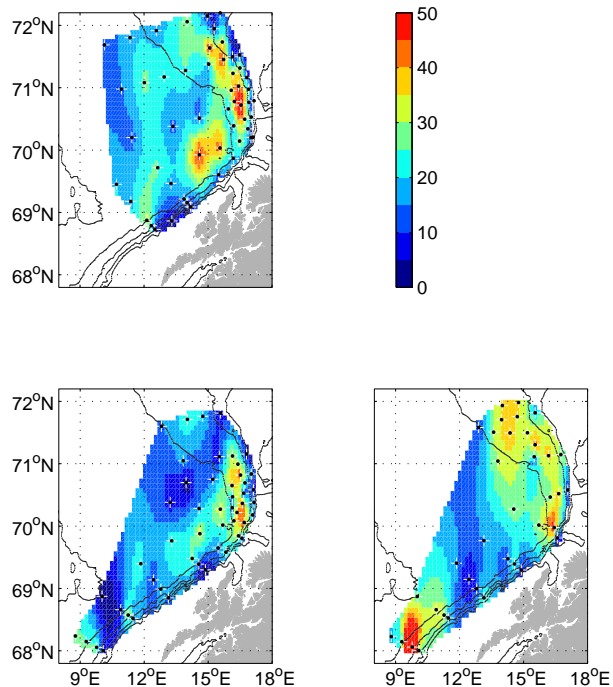


Fig. 5. Map interpolated from average abundance of *C. finmarchicus* (m^{-3}) at each station (\bullet / $+$) during the surveys in January 2003 (upper panel) and January and February 2004 (lower left and right panels, respectively).

Title Page

Abstract

Introduction

Conclusions

References

Tables

Figures

◀

▶

◀

▶

Back

Close

Full Screen / Esc

Printer-friendly Version

Interactive Discussion

Overwintering
Calanus

A. Edvardsen et al.

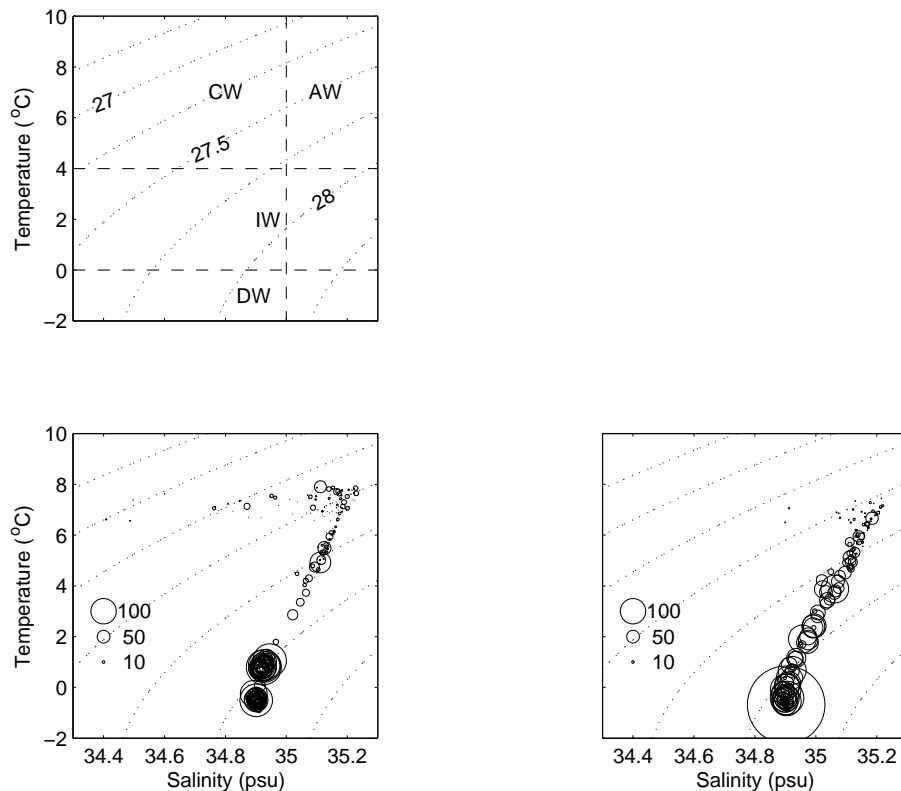


Fig. 6. Hydrographic distribution and abundance (m^{-3}) of *C. finmarchicus* for each sample in January (lower left panel) and February (right panel). Different hydrographic domains (Table 2) and density (σ_t) at atmospheric pressure are given in the top panel.

Title Page

Abstract

Introduction

Conclusions

References

Tables

Figures

◀

▶

◀

▶

Back

Close

Full Screen / Esc

Printer-friendly Version

Interactive Discussion

**Overwintering
*Calanus***

A. Edvardsen et al.

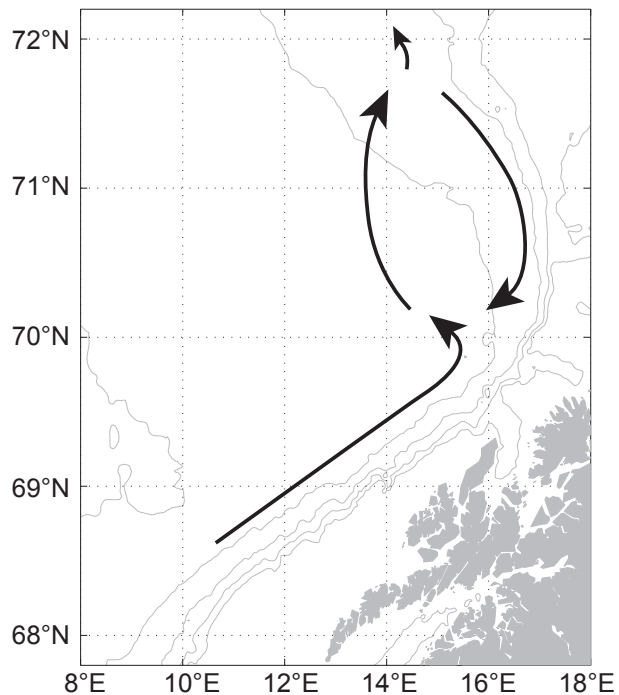


Fig. 7. Overall pathways of the water masses holding the overwintering population of copepods as suggested by the SINMOD current simulations.

[Title Page](#)[Abstract](#)[Introduction](#)[Conclusions](#)[References](#)[Tables](#)[Figures](#)[◀](#)[▶](#)[◀](#)[▶](#)[Back](#)[Close](#)[Full Screen / Esc](#)[Printer-friendly Version](#)[Interactive Discussion](#)

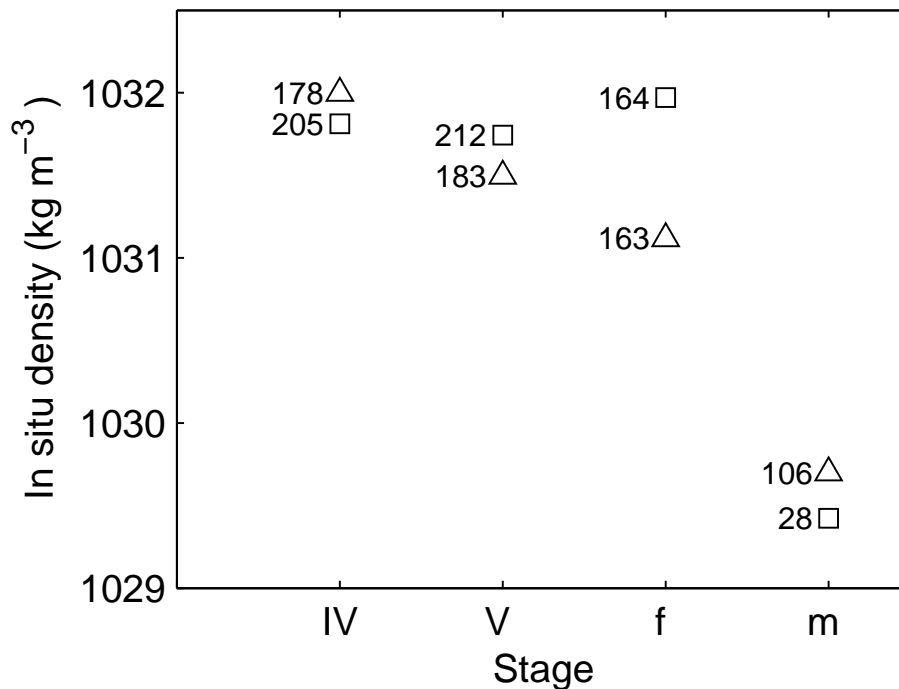


Fig. 8. Indications of in situ seawater density preferences among the copepodite stages of *C. finmarchicus* during January (□) and February (△) 2004. Data represents the mean in situ seawater density weighted by the abundance of *C. finmarchicus* (m⁻³) for each sample. The number of samples are given to the left of each data point.

[Title Page](#)
[Abstract](#)
[Introduction](#)
[Conclusions](#)
[References](#)
[Tables](#)
[Figures](#)
[◀](#)
[▶](#)
[◀](#)
[▶](#)
[Back](#)
[Close](#)
[Full Screen / Esc](#)
[Printer-friendly Version](#)
[Interactive Discussion](#)