



HAL
open science

How does ocean ventilation change under global warming?

A. Gnanadesikan, J. L. Russell, Fanrong Zeng

► **To cite this version:**

A. Gnanadesikan, J. L. Russell, Fanrong Zeng. How does ocean ventilation change under global warming?. *Ocean Science*, 2007, 3 (1), pp.43-53. hal-00298310

HAL Id: hal-00298310

<https://hal.science/hal-00298310>

Submitted on 18 Jun 2008

HAL is a multi-disciplinary open access archive for the deposit and dissemination of scientific research documents, whether they are published or not. The documents may come from teaching and research institutions in France or abroad, or from public or private research centers.

L'archive ouverte pluridisciplinaire **HAL**, est destinée au dépôt et à la diffusion de documents scientifiques de niveau recherche, publiés ou non, émanant des établissements d'enseignement et de recherche français ou étrangers, des laboratoires publics ou privés.

How does ocean ventilation change under global warming?

A. Gnanadesikan¹, J. L. Russell², and Fanrong Zeng³

¹NOAA Geophysical Fluid Dynamics Laboratory, Princeton, NJ, USA

²Department of Geosciences, University of Arizona, Tucson, AZ, USA

³RSIS, Princeton, NJ, USA

Received: 29 May 2006 – Published in Ocean Sci. Discuss.: 11 July 2006

Revised: 8 January 2007 – Accepted: 1 February 2007 – Published: 6 February 2007

Abstract. Since the upper ocean takes up much of the heat added to the earth system by anthropogenic global warming, one would expect that global warming would lead to an increase in stratification and a decrease in the ventilation of the ocean interior. However, multiple simulations in global coupled climate models using an ideal age tracer which is set to zero in the mixed layer and ages at 1 yr/yr outside this layer show that the intermediate depths in the low latitudes, Northwest Atlantic, and parts of the Arctic Ocean become younger under global warming. This paper reconciles these apparently contradictory trends, showing that the decreases result from changes in the relative contributions of old deep waters and younger surface waters. Implications for the tropical oxygen minimum zones, which play a critical role in global biogeochemical cycling are considered in detail.

1 Introduction

The rate at which the interior ocean is ventilated by young surface waters has an important impact on many important elemental cycles. The distribution of oxygen, for example, is controlled by a balance between supply from recently ventilated waters and consumption due to remineralization of organic matter. Large oxygen minimum zones at intermediate depths can be found where the ventilation is comparatively slow (Fig. 1a). Since the oxygen minimum zones are regions where the critical nutrient nitrate is consumed (Gruber and Sarmiento, 1997) changes in the oxygen distribution can have important effects on the nitrogen cycle and in the production of radiatively important trace gases such as nitrous oxide (Elkins et al., 1978; Wallman, 2003). Altabet et al. (1999) suggested that large changes in nitrogen isotopic composition of sediments over the past million years

resulted from changes in the size and intensity of these minimum zones. Galbraith et al. (2004) recently revisited this hypothesis using a number of cores from around the world and found evidence for global scale changes in ventilation rates.

Given the evidence that the oxygen minimum zones have changed in the past, it is important to understand how the ventilation of these zones may change under global warming. Because global warming is expected to add heat to the upper ocean, it would be expected to increase the overall stratification in the tropics (Washington and Meehl, 1989; Manabe and Stouffer, 1994; Hirst et al., 1996; Sarmiento et al., 1998, 2004). The last of these papers considers six coupled models used in the IPCC Third Assessment Report, all of which show such an increase. Given that increasing stratification is associated with less efficient mixing, one would thus expect the ocean interior to become older under global warming. Additionally, as noted by Lionello and Pedlosky (2000), increasing stratification would be expected to lead to a wind-driven circulation that is increasingly trapped near the surface. In high latitudes, the fact that the saturation vapor pressure rises rapidly as the temperature increases is expected to lead to a greater transport of water vapor to these regions, resulting in increased precipitation and reduced salinity in high latitudes causing ventilation rates there to decrease as well.

Additionally, recent results suggest that the Walker circulation is decreasing under global warming (Vecchi et al., 2006) and is expected to decrease further. The reason for this is that the Walker circulation (at least in models) appears to be controlled by the large-scale radiative cooling of the upper troposphere, and is relatively insensitive to changes in surface temperature. As the specific humidities increase in the tropical surface layer, less and less vertical motion is needed to generate the heating required to balance the large-scale cooling. In the IPCC models, the resulting decrease in the Walker circulation and relaxation of the equatorial trade winds causes a reduction of the associated Ekman suction

Correspondence to: A. Gnanadesikan
(anand.gnanadesikan@noaa.gov)

along the Equator and Ekman pumping off the Equator (Vecchi and Soden, 2007). This in turn expected further reduces the supply of young surface waters to the upper thermocline.

There are, however, processes that could act to counterbalance some part of the trends making the interior ocean older. First, the same increase in the hydrological cycle that would produce reduced salinity and decreased stratification at high latitudes would be expected to make the tropical oceans more salty, counterbalancing some of the effect of increased surface temperatures (Sarmiento et al., 2004). Second, global warming can cause mid-latitude westerlies to increase, particularly over the Southern Ocean. Russell et al. (2006) demonstrate that such an increase in winds is associated with an increase in the rate of ventilation of intermediate waters.

A number of global coupled climate models, including three developed at the Geophysical Fluid Dynamics Laboratory (GFDL) have included a tracer of ventilation age known as the ideal age. This tracer is set to zero in the mixed layer and ages at a rate of 1 yr/yr thereafter. (Bryan et al., 2006) recently presented simulations using ideal age in the National Center for Atmospheric Research's coupled model. In this paper, we examine simulations using this tracer and find that one of the most significant changes in the ideal age field under global warming is that a number of regions where oxygen is currently at low levels become younger. The reasons for such a surprising result are examined in one model for which full term balances are available and are attributed to a decrease a change in the balance of waters supplying these regions, with a generally decreasing contribution from older deep and intermediate waters. Implications of this result for global biogeochemical cycles are considered.

2 Description of the simulations

Two model configurations are primarily used in this paper. These are the GFDL's CM2.0 and CM2.1 models developed for the Intergovernmental Panel on Climate Change Fourth Assessment Report (IPCC AR4). The CM2.0 model is run using the new B-grid atmosphere described in GAMDT (2004) with 24 vertical levels (including 6 in the surface boundary layer) and a horizontal resolution of 2.5° in longitude and 2° in latitude. The CM2.1 model is run using the same atmospheric column physics as CM2.0 but with a finite-volume core (Lin, 2004) which produces a significant poleward shift in the winds, particularly in the Southern Hemisphere. As discussed in Gnanadesikan et al. (2006) the shift in winds produces a significant improvement in the circulation. The ocean model is based on the MOM4 code base of Griffies et al. (2003) at a nominal resolution of 1° at mid latitudes, with latitudinal resolution increasing to $1/3^\circ$ at the Equator. Vertical resolution is high in the upper ocean, with 10 m vertical resolution down to 230 m, and an additional 27 layers below this depth. The ocean model includes up-

to-date representations of bottom topography, the free surface, the mixed layer, lateral viscosity, and advection about which more details are provided in Griffies et al. (2005). The control climate simulations are described in Delworth et al. (2006) and the simulations under idealized climate change in Stouffer et al. (2006).

The initialization procedure is based on Stouffer et al. (2004). The atmospheric model is initially run for 17 years with observed sea surface temperatures and sea ice. The resulting heat and water fluxes and observed wind stresses were used to run an ocean model initialized with temperatures and salinities from the World Ocean Atlas 2001 (Conkright et al., 2002) for one year. The restart files from these two runs were used to initialize a "1990 control" (corresponding to the PDcntrl runs in the terminology used in the IPCC AR4 archive) in which radiative forcings were held constant at 1990 values (years 65–70 of this control run are used to compare with CFC-derived ages). "1860 Control" runs (corresponding to the Plcntrl runs in the IPCC AR4 archive) are generated from year 21 of the 1990 Control by setting greenhouse gasses and aerosols to 1860 conditions (Table 1 of Delworth et al., 2006) and allowing the model to adjust for some period of time (300 years for CM2.0, 220 years for CM2.1). The final restart files from these spinup runs are then used to initialize 1860 Control runs and a number of climate change scenarios. We will focus on the idealized climate change scenario (corresponding to the 1%to2 \times scenarios in the IPCC AR4 archive) reported in Stouffer et al. (2006) where the CO₂ is allowed to increase at a rate of 1%/year until it doubles 70 years after the initial run. After this point the CO₂ is held constant. The majority of the results compare the second century of the control run with the second century of the doubled CO₂ run.

In order to examine the robustness of our results, we also use the R30 global coupled climate model which was developed at GFDL for the Third Assessment Report of the IPCC as described in Delworth et al. (2002). In the R30 simulations, the ocean circulation is run out to steady state before the model is coupled to the atmosphere, so that the ideal age is essentially at steady state in the ocean. It thus provides a measure of how much our results may be biased by the fact that the age is not at steady state as well as providing a third simulation with a significantly different atmosphere and ocean. The R30 model has a spectral atmospheric core at R30 resolution (nominally 3.75° by 2.25°) and a 19-level, 2 degree ocean developed using the MOM1.1 code of Pacanowski et al. (1991). This model does not contain many of the more modern physical parameterizations found in the CM2 series such as an explicit mixed layer and the eddy-induced advection parameterization of Gent and McWilliams (1990). The R30 model was run with flux adjustments so as to prevent the ocean from drifting too far from the present state.

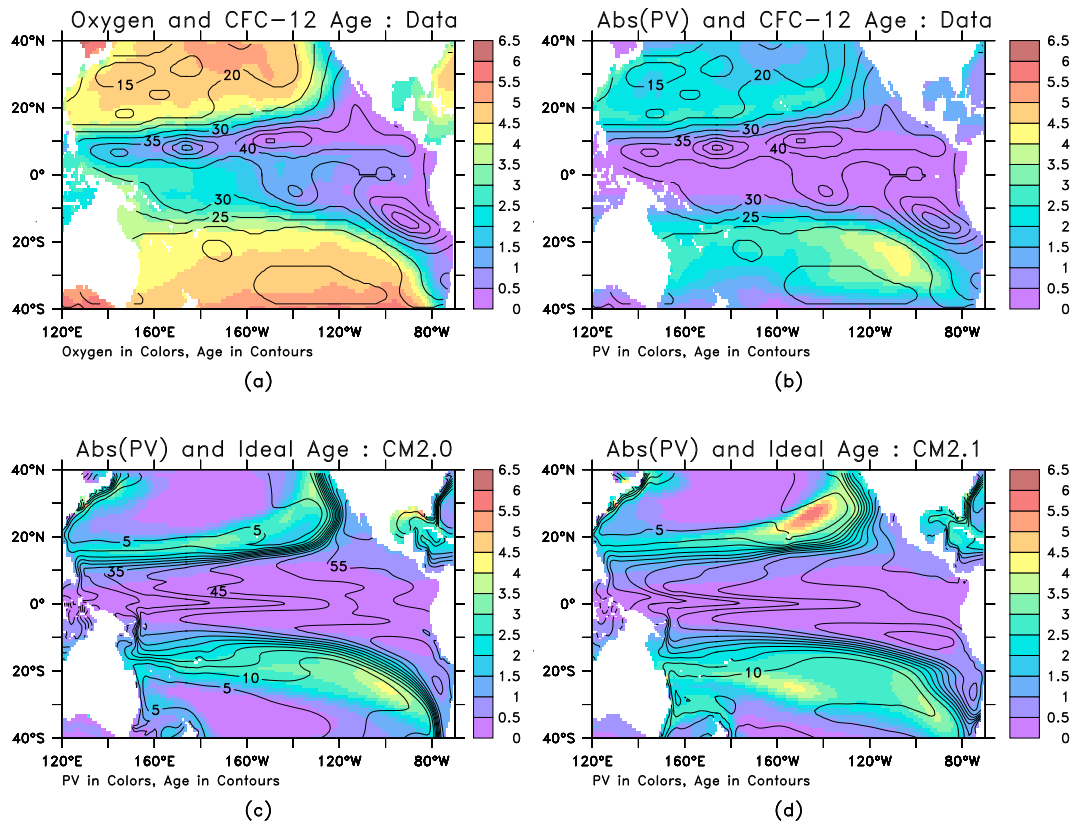


Fig. 1. Oxygen minimum zones, age and potential vorticity in models and data at 300 m in the Central Pacific. **(a)** Oxygen in ml/l from Conkright et al. (2002) (colors) and CFC-12 age in years (contours). CFC-12 age is computed from the dataset of (Willey et al., 2004) from the date at which the in-situ pCFC12 would have been in equilibrium with the atmosphere. The edge of the oxygen minimum zone occurs in a region of strong age gradients. Note also the asymmetry between the Northern and Southern zones. **(b)** Potential vorticity in $\text{s}^{-3} \times 10^9$ (fN^2 colors) and CFC-12 age (contours) for same region. The boundary of the old waters corresponds to a boundary between stratified interior waters (high PV) and weakly stratified waters in the shadow zone (low PV). **(c)** Potential vorticity (colors) and ideal age (contours) in model CM2.0, 67.5 years after the start of the 1990 control run. While ideal age is not directly comparable to CFC age, many of the same features are seen in the model as in the data. **(d)** Potential vorticity and ideal age in CM2.1 model 67.5 years after the start of the 1990 control run.

3 Results

The oxygen minimum zones reflect the underlying dynamics of the ocean circulation. At many depths and along many isopycnals, clear plumes of oxygen-rich water emanate from the eastern polar corners of the basins and seem to follow the gyre circulation into the interior. In the southeast Pacific, for example, Reid (1985) showed that the boundary between low oxygen and high oxygen zones at mid-depths corresponds to boundaries in steric height corresponding to boundaries between flow rapidly ventilated from the south and more sluggish closed circulations or even flow from the north.

The ventilated thermocline theory of Luyten et al. (1983, henceforth LPS) suggests that such a boundary should exist as a result of potential vorticity (PV) dynamics. Because eastern boundaries cannot provide the friction to allow parcels to change their potential vorticity f/H , geostrophic

flow right at the boundary will be sluggish. Instead boundary waves act to homogenize H , removing pressure gradients and resulting in north-south potential vorticity gradients which act to block the gyre flow. The resulting shadow zones have small values of PV which cannot connect directly to larger values found in outcrop regions of mode and intermediate waters. As a result, these regions cannot be directly ventilated by time-mean geostrophic flows and will be older than the ventilated interior gyre. The LPS theory does not predict the age of the shadow zones, since the processes responsible (diapycnal and isopycnal mixing) are not included.

The structure of CFC-12 age (computed from the dataset of (Willey et al., 2004) from the date at which the in-situ partial pressure of CFC12 would have been in equilibrium with the atmosphere) offers a way of evaluating this theory. As seen in Figs. 1a, b) the oxygen minimum zone does in fact correspond to a strong gradient in both CFC-12 age

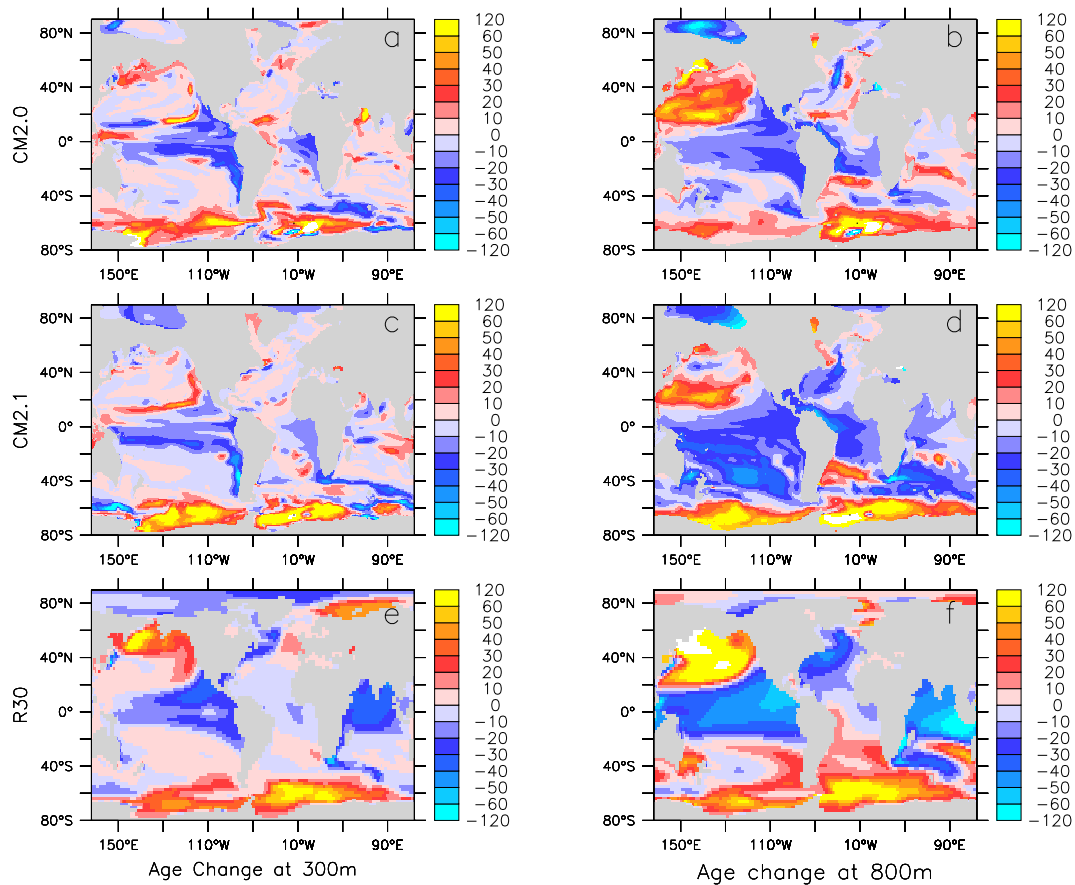


Fig. 2. Age changes under global warming (second century of $2\times\text{CO}_2$ – 1860 control). Note that scale is linear from -60 to 60 years, with extreme age changes being shown by the most extreme colors. (a) CM2.0 at 300 m. (b) CM2.0 at 800 m. (c) CM2.1 at 300 m (d) CM2.1 at 800 m. (e) R30 at 300 m. (f) R30 at 800 m.

and potential vorticity (defined here as fN^2 where f is the Coriolis parameter and N is the buoyancy frequency) as suggested by LPS. The coupled models (Figs. 1c, d) are able to reproduce the potential vorticity gradient, and have a significant gradient in ideal age at this point as well. Note that the CFC-12 age is not strictly comparable to the ideal age due to the fact that it will be biased high by lack of equilibration in sinking water (Russell and Dickson, 2003), and biased low by mixing. Qualitatively though, the CFC-12 ages range between 35 and 50 years in the shadow zones, while the ideal age is around 45 years, suggesting that the ventilation in the models is roughly comparable to the observations.

In the western Pacific, there are clear differences between the models and the data. The data show a strong asymmetry between older, lower oxygen waters to the north and younger, higher oxygen waters to the south while the model produces a more symmetric pattern. This is because the model has equatorial winds that are much more symmetric about the Equator than in the real world. When the ocean model is forced with observed winds, there is a strong North Equa-

torial Counter Current and a weak South Equatorial Counter Current, in agreement with observations. This means that the old, low oxygen water in the east is much more efficiently transported to the west in the Northern Hemisphere relative to the Southern.

Under global warming, the ideal age in the shadow zones changes significantly. Figure 2 shows the ideal age changes in the three GCMs at 300 and 800 m. In the high latitude Southern Ocean and North Pacific, global warming produces an increase in ideal age, as increasing stratification slows the rate of ventilation. However, in the tropics, the ideal age actually decreases over a wide range of latitudes, with some of the largest differences seen in the shadow zones. The differences are largest in the R30 model. The CM2.1 model has the smallest changes at 300 m while the CM2.0 model has the smallest changes at 800 m. Note that the models differ significantly as to whether the South Pacific will get older or younger under global warming, with the R30 model suggesting that it would become older and the CM2.1 projecting a significant decrease in ideal age. Differences are also seen in

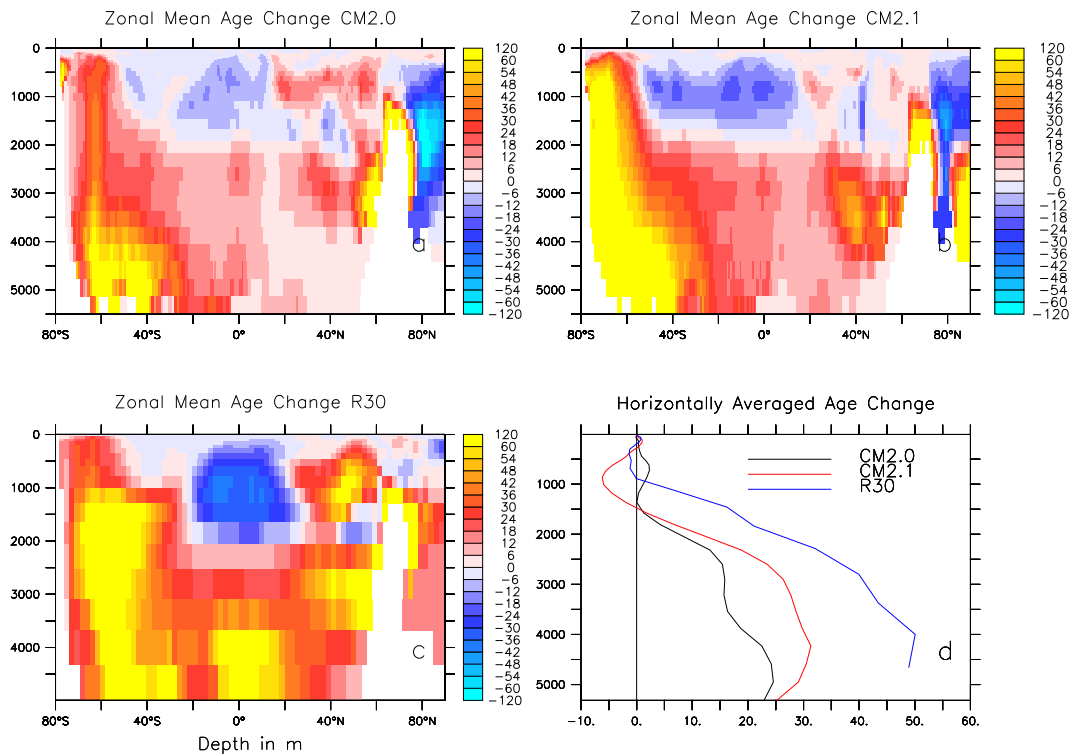


Fig. 3. Average changes in age under global warming (second century of $2\times\text{CO}_2$ – 1860 Control). Note that scale is linear from -60 to 60 years, with extreme age changes being shown by the most extreme colors. (a) Zonally averaged change in CM2.0 (b) Zonally averaged change in CM2.1 (c) Zonally averaged change in R30 (d) Horizontal average in the three cases.

the extent to which Northern Indian Ocean becomes younger, with the R30 model suggesting that this region will become significantly younger at 300 m , the CM2.0 model showing it becoming older, while CM2.1 suggests a mixture of changes. All three models do show decreases in age in the shadow zones, particularly in the Pacific.

A few other regions also show consistent changes between the three models reported here. At 800 m , the Canada Basin becomes younger in all three models shown here, as well as in the simulation of (Bryan et al., 2006). Additionally, the western part of the Atlantic subtropical gyre also becomes younger. While neither of these regions shows the near-total drawdown in oxygen found in the oxygen minimum zones, both regions are places where the apparent oxygen utilization is relatively high.

The age decreases at intermediate depths contrast with age increases in the deep, as shown by zonally-averaged ideal age change in Fig. 3. All three models show the tropics becoming younger above depths of 2000 m , with larger increases below this depth. When horizontal averages are taken, it can be seen that the average increase in deep ideal age is between 20 and 50 years, with the largest values being found in the R30 model. At shallower depths, the age may actually decrease in the horizontal average, depending on whether the increase

in ideal age in the subpolar regions is sufficient to cancel out the decrease in ideal age in the tropics. Although the magnitude of the age changes are much bigger in the R30 model, the broad similarity of the three patterns of ideal age change suggests that the basic pattern of change is not merely a function of details such as whether the model is flux-adjusted or whether the model at equilibrium (in both cases the R30 model is while CM2 models are not). It is also worth noting that very similar changes have recently been reported in the NCAR CCSM3 model (Bryan et al., 2006).

Recent work (Russell et al., 2006) has shown that one can estimate the uptake of anthropogenic carbon dioxide by examining the ideal age distribution. As the bulk of the anthropogenic transient has occurred in the past 50 years, the bulk of the carbon is contained in water that is relatively young – the rapidly-ventilated subtropical gyres and recently ventilated deep waters. The volume of this “young” water thus constitutes an interesting diagnostic of model evolution. Figure 4 shows the volume of water younger than 50 years in the CM2 series. The CM2.0 control run has less young water than the CM2.1 control run (145.2 vs. 152 Mkm^3), a difference of about 4% . Under global warming the volume of young water decreases, with high latitude ventilation in the Southern Ocean and the Northern Hemisphere declining in

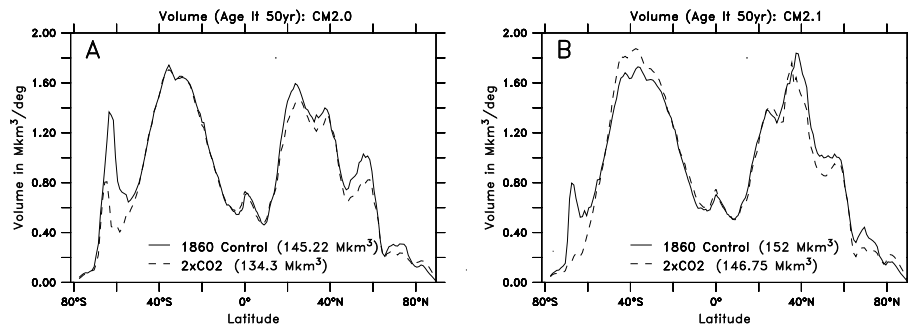


Fig. 4. Volume of “young” water (with an ideal age less than 50 years) in the CM2 series. Solid lines are the 1860 control, dashed lines the doubled carbon dioxide run. **(a)** CM2.0. **(b)** CM2.1.

Table 1. Volumes of water (million cubic km) younger than 50 years old.

Model	CM2.0	CM2.0	CM2.1	CM2.1
Latitude	1860	2xCO2	1860	1860
90 S–50 S	15.8	11.0	15.3	10.2
50 S–20 S	43.9	44.0	47.5	49.8
20 S–20 N	32.2	31.3	30.4	30.7
20 N–50 N	38.4	36.4	43.1	40.1
50 N–90 N	17.7	16.6	19.7	19.0

both models. However, the volume of young water in the mid-latitudes of the Southern Hemisphere actually increases under global warming in CM2.1 and holds essentially constant in CM2.0 (Table 1). Russell et al. (2006) argue that this increase can be attributed to the poleward shift of the Southern Hemisphere westerly winds found under global warming. On short time scales most of the anthropogenic carbon taken up by the ocean ends up in these relatively young waters.

The changes in the shadow zones are particularly interesting because they occur in regions where the variability in ideal age is relatively low. Figure 5 shows time series of ideal age at 300 m in four regions, the Eastern Tropical North Pacific (5 N–15 N, 150 W–90 W) which includes the core of the northern shadow zone, the subpolar North Pacific (45 N–55 N, 150 E–150 W), a region including the Peru Current and offshore waters (10 S–25 S, 100 W–70 W) and the southern ocean (65 S–55 S). Note that CM2.1 is younger than CM2.0 at this depth throughout the world ocean, reflecting in part the difference in the initial spinup. All the control simulations show clear trends in the early, and in some cases the later part of the record as well, reflecting the spinup of the age field. In the two shadow zone regions, there is a very clear separation between the global warming cases and the control cases, with the variability occurring on very short time scales (2–5 years) and much smaller than the signal. At or near the

time of CO₂ doubling the shadow zones have begun to become clearly younger. By contrast in the subpolar regions, the variability is of the same order of magnitude as the net change.

This result has interesting implications for where we should look for the impact of climate change. Doubling carbon dioxide alone corresponds to a radiative forcing of 3.7 W/m². This is only about 25% larger than the 2.8 W/m² that is seen today in our models (T. Knutson, personal communication). Thus, our results suggest that significant and detectable changes in shadow zone ventilation may be occurring today.

4 Discussion

In order to understand the results of the coupled model, it is necessary to distinguish between two conceptual models of the ideal age. The first may be thought of as a “pipe” model, in which the age at a point simply reflects the time required for water to reach that point from a surface outcrop. In such a picture a reduction of the advective or diffusive transport would result in an increase in the age. However, one can propose an alternative “network” model in which there are many different pathways to reach the same point. In such a model the age is actually the centroid of a spectrum of ages, reflecting many different pathways by which surface waters can reach a particular point (see Khatiawala et al., 2001, for a more detailed discussion of this issue). The age at a point can then change not only as the time associated with each pathway changes, but as the relative proportion of waters taking separate pathways changes.

A simple model system that illustrates the different behavior of these two pictures is a one-dimensional advective-diffusive model, of the type used in classic geochemical studies (Volk and Hoffert, 1985; Shaffer and Sarmiento, 1995). Such models typically have two pathways by which surface waters replete in oxygen, radiocarbon and anthropogenic carbon dioxide enter the ocean. One pathway involves the

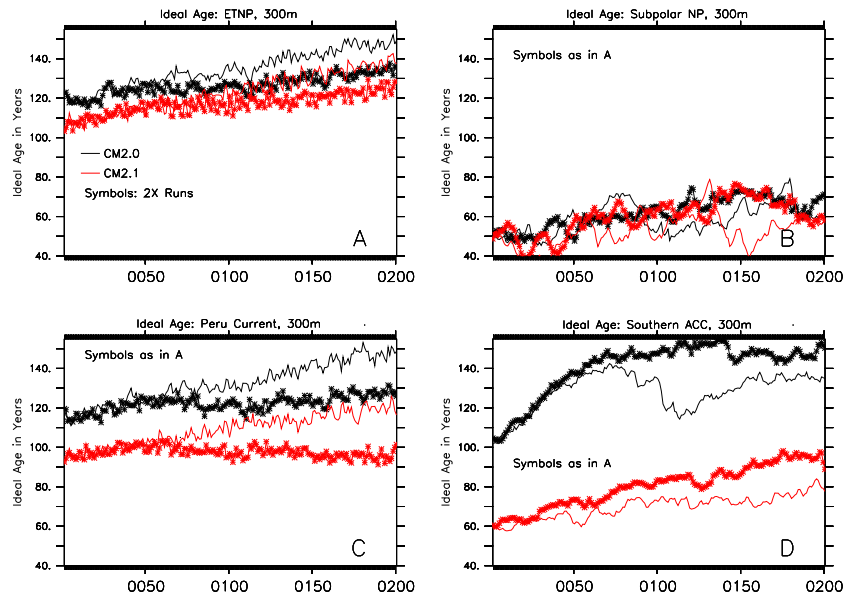


Fig. 5. Time series of the ideal age at 300 m in the CM2 series. Black lines are for CM2.0, red for CM2.1. Lines with symbols are the doubled CO₂ run. **(A)** Eastern Tropical North Pacific. Note that the ages under global warming begin to diverge about year 50. **(B)** Subpolar North Pacific. Note substantial decadal variability of same order of magnitude as climate change. **(C)** Peru Current. Here the difference between the ages cannot be attributed to spinup alone, as year 80 of the control CM2.1 is still substantially younger than CM2.0. **(D)** Southern Ocean. The same difference in age is attributable to a difference in ventilation forced by the higher Southern Ocean winds.

formation of bottom water, which flows from polar regions into the tropics and upwells into the interior, aging as it does so. The other involves the diffusion of tropical surface water from above (which, in models such as the HILDA code of Shaffer and Sarmiento, 1995, is taken as a representation of the wind-driven gyre circulation as well as explicit diapycnal diffusion). The equations governing age in the model interior is then

$$\frac{\partial A}{\partial t} = 1 - w \frac{\partial A}{\partial z} + \frac{\partial}{\partial z} K_v \frac{\partial A}{\partial z} \quad (1)$$

where w is the upwelling velocity and K_v is a vertical diffusion coefficient. Thus the natural rate of change of age is one year per year (first term on the right-hand side of Eq. 1) but this can be altered by the advection or diffusion of age from above or below. At steady-state, this equation can be rearranged as

$$w \frac{\partial A}{\partial z} - \frac{\partial}{\partial z} K_v \frac{\partial A}{\partial z} = 1 \quad (2)$$

A simple solution can be derived by setting $A=0$ at the boundaries of the model interior which we define as $z=0, -D$. While models such as the HILDA code allow for lateral exchange with a well-mixed polar deep box and inject the deep water from this box, such additional complexity does not add additional insight relative to the simple condition of fixing the bottom water and top at an age of 0. With these boundary conditions and an initial condition of $A=0$

everywhere, Eq. (1) will initially be dominated by the time rate of change and will age at approximately one year per year, except near the top boundary, where there will be a diffusive flux of young water from above and the bottom boundary, where there will be both an advective and diffusive flux of young water from below. Over time, these boundary fluxes will penetrate further and further into the interior, resulting in a steady-state solution given by Eq. (2), the solution to which is

$$A = \frac{1}{w} \left(z + \frac{D(1 - e^{zw/K_v})}{1 - e^{-wD/K_v}} \right) \quad (3)$$

which depends critically on the Peclet number $Pe = wD/K_v$. When Pe is large, the solutions of this equation behave like a “pipe” model. As illustrated in Figs. 6a, c when the Peclet number is large, decreasing w means that the age increases throughout the water column as it takes more and more time to bring the water up from below. However, when Pe is small (Figs. 6b, d) decreasing w does not have such a simple impact, as the age is more dominated by diffusion than advection. In the upper part of the water column, decreasing the upwelling means that the age is more dominated by the downward transport of “young” tropical waters and so the age actually decreases. Insofar as the decrease in the upwelling of the extremely old deep waters from below outstrips any decrease in the supply of younger waters from above, one can actually decrease the overall rate of ventilation while still decreasing the age in the upper water column!

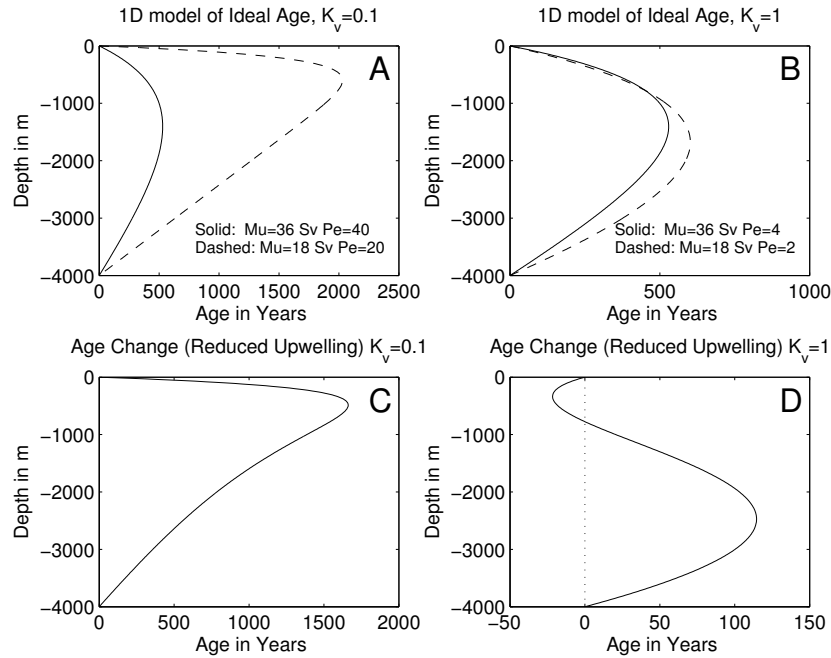


Fig. 6. Solutions generated by a one-dimensional advective-diffusive model of ideal age. In left-hand column, solutions are shown for $Pe=wD/K_v=40, 20$ ($w=0.5, 1 \times 10^{-7}$ m/s corresponding to 18 and 36 Sv of upwelling and $K_v=10^{-5}$ m²/s=0.1 cm²/s). In right hand column solutions are shown for lower values of $Pe=(4,2)$ corresponding to the same pair of upwelling values and a higher diffusive coefficient of 1 cm²/s. The top row shows the equilibrium solutions, the bottom row the difference between these solutions.

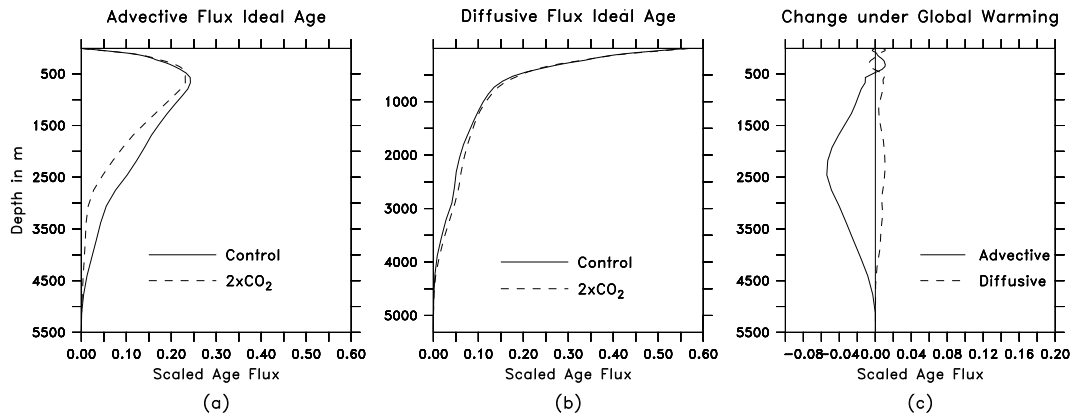


Fig. 7. Budget of age in CM2.1 models. The terms are scaled relative to the volume of the ocean, so that a flux of 1 would mean that the flux was accounting for all of the aging in the ocean below the surface layer. **(a)** Advective age flux, showing a significant decrease in the advective flux under global warming. **(b)** Diffusive age flux (convection+implicit vertical diffusion + isopycnal mixing and advection) showing a relatively small change in this flux. **(c)** Flux changes under global warming. Decrease in advective flux dominates, accounting for the modelled decrease in age above 2000 m and the modelled increase in age below that point.

Such a picture is supported by Fig. 7, which shows the horizontally integrated budget of ideal age from years 220 to 240 of the 2X and 1860 control runs. The diffusive transport of age (encompassing vertical diffusion, convection, and the vertical transport associated with eddies) hardly changes at

all between the two simulations (Fig. 7c). Instead, we see a large change in the upward advective flux of age below a depth of 1000 m (above this depth the advective flux of age actually increases somewhat). This is consistent with a spin-down in the overturning circulation (Fig. 8) which is seen

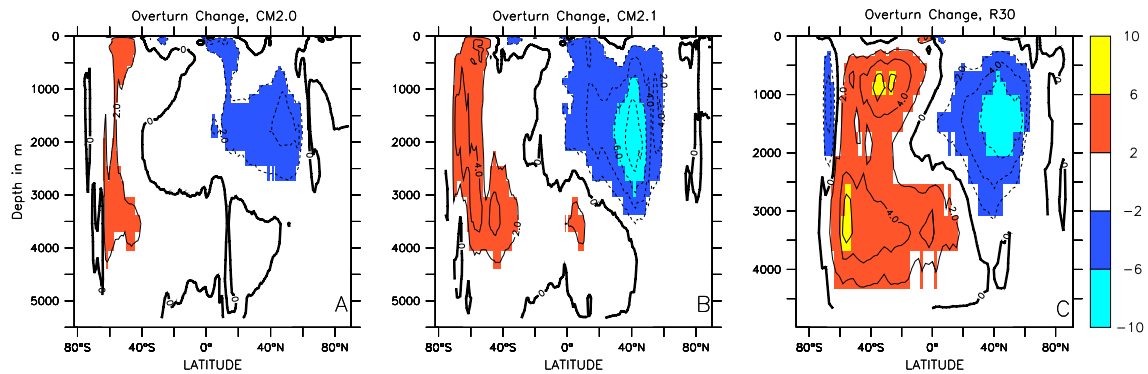


Fig. 8. Overturning change under global warming associated with the three models. Contour interval is every 2 Sv, while colors change every 4 Sv. (a) CM2.0. (b) CM2.1 (c) R30.

in all three models. As a result the age in the intermediate waters drops (less old water is being injected from below) and that at depth increases (less old water is being exported vertically). This explains in part why the signature of global warming on ideal age is so much larger in the R30 model. In the R30 model (which is at equilibrium) ideal ages in the deep ocean are very high. Reducing the upwelling of this old water produces a much bigger signal than in the CM2 series. An additional reason for the difference between the models is that the magnitude of the overturning changes differs between the models. The CM2.0 model has very little deep convection in the Southern Ocean (Gnanadesikan et al., 2006) and little formation of Labrador Sea Water. As a result, when the planet warms and these regions restratify the overturning changes relatively little. By contrast, in CM2.1, the Labrador Sea actually cools under global warming as convection in this region shuts off (Stouffer et al., 2006). The R30 model has an even larger decrease in the overturning, further enhancing the increase in age at depth and decrease at age in the intermediate waters.

More detailed examination of the budget reinforces the idea that changes in the relative contributions of water masses are important for driving changes in age. The total age budget for the tropics is shown in first column of Table 2, where changes in the age supply due to various processes are scaled by the age source over the region. The dominant term is clearly a reduction in the advection of old water through the bottom (all other terms in this column tend to increase the age in this region). Thus, even though the edge of the shadow zone appears to be simulated in terms of a potential vorticity front (as suggested by a theory that assumes an adiabatic interior), diapycnal fluxes still play an important role in setting the exact value of the age within the shadow zone.

The age budgets for other regions where the ocean becomes younger also show the effects of changing the mix of source waters. For example in the North Atlantic (second column of Table 2) the largest decrease is seen in the ad-

Table 2. Changes in age flux into various regions that show waters becoming younger under global warming in CM2.1 model. Values are scaled by the age source within the volume, so that a change of -35 means that the age fluxes would compensate 35% of the local aging. First column is the tropics between depths of 285 m and 1270 m. Second is the west central North Atlantic (between 18 N and 44 N, west 35 W and between 416 m and 1270 m). Third column is the Canadian Arctic between 416 m and 1270 m south of the model grid latitude of 80 N.

Scaled flux change (%)	Tropics	North Atlantic	Canadian Arctic
East Advection	0	32.8	0
South Advection	9.6	-128.4	0
North Advection	7.4	66.2	-85.4
Top Advection	9.4	94.5	81.5
Bottom Advection	-34.0	-33.3	-42.3
Total Advection	-7.7	31.9	-46.2
Neutral Diffusion	0.6	-12.6	33.4
Vertical Diffusion	2.2	-7.2	6.5
Convection	0	-3.8	0.0
Change	-4.9	9.0	-13.7

vection flux of old water from the south. As the overturning declines under global warming less Antarctic Intermediate water is advected from the south- so that the western central North Atlantic is more dominated by mode waters from the North. Similarly, in the Canadian Arctic, there is less upwelling of older deep water from below and more lateral advection of younger Atlantic waters. In contrast to the results of the NCAR model reported in Bryan et al. (2006) the decrease in age at depth does not result from an increase in convection driven by more open water along the Canadian shelf.

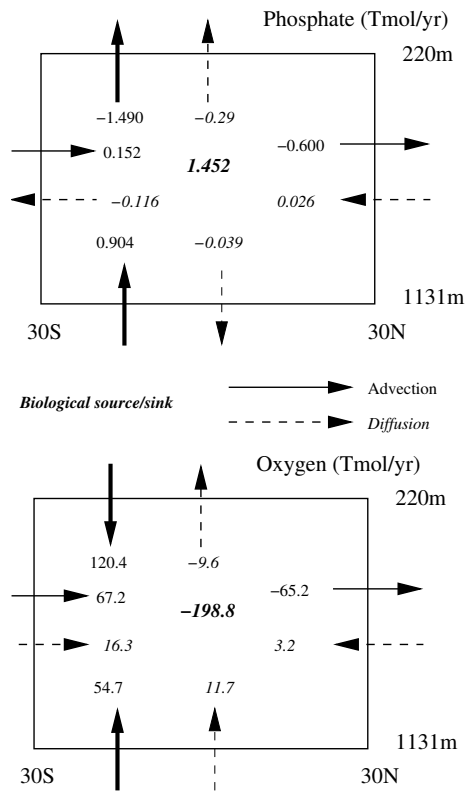


Fig. 9. Budgets of phosphate (top) and oxygen (bottom) in the 220–1131 m depth range from 30S to 30N in the PRINCE2A model of Gnanadesikan et al. (2004). Solid lines are advective fluxes, dashed lines mixing fluxes. The italicized bold numbers indicate biological sources or sinks. Upwelling from below 1100 m supplies a significant amount of phosphate and oxygen to this region.

5 Conclusions

We have shown that under global warming, a number of regions that are relatively poorly ventilated at the present may actually become more tightly coupled to the surface. This is because the relative mix of waters entering these regions may change. This effect is particularly prominent in the oceanic shadow zones where multiple models (our three in addition to the model of Bryan et al., 2006), differing significantly in how atmospheric and oceanic processes are represented all show the ideal age declining. Is it possible to isolate what effect such changes might have on oxygen and nutrient cycles? How important is this deep upwelling for maintaining tropical production, and what is its effect on deep oxygen?

As we do not have access to an earth system model in which all of the relevant terms have been saved, we are forced to approach these questions by looking at the role of deep upwelling fluxes in coarse diagnostic ocean models. We use the 4-degree, 24 level, PRINCE2 model reported in Gnanadesikan et al. (2004) to obtain a rough estimate of the impor-

tance of the deep upwelling and mixing fluxes for the oxygen and phosphorus cycles. As described in Gnanadesikan et al. (2004) this model produces reasonable simulations of temperature, salinity, oxygen, phosphorus, radiocarbon, and particle export when compared with data. Figure 9 shows the budget of oxygen and phosphorus between 30S and 30N and 220–1130 m in this model. Advective fluxes are shown with solid arrows, diffusive fluxes with dashed arrows and biological sources and sinks with italicized bold numbers. Note that the vertical fluxes are not necessarily due to diapycnal processes, isopycnal flows which exchange oxygen-rich and phosphate-poor surface water with oxygen-poor and phosphate-rich intermediate water effectively transport oxygen in the vertical. As can be seen in the bottom panel of Fig. 9 the upwelling of deep waters acts as an important source of oxygen for the intermediate depths, accounting for approximately 36% of the total oxygen demand. The upwelling also serves as a source of phosphate to the region, equivalent to 60% of the phosphate source. This implies that a slowdown in the circulation would reduce mid-depth phosphate concentrations (and thus presumably the biological cycling of phosphate within the tropics) by a larger fraction than it would decrease oxygen. Circulation changes brought on by global warming might, therefore, lead to an increase in mid-depth oxygen, countering some fraction of the decrease which would be caused by decreased oxygen solubility associated with warming. Further investigation of this, however, will have to await detailed analysis of term budgets in full Earth System Models.

In summary, we have shown that global warming changes the balance of waters feeding the intermediate layers, increasing the fraction of younger surface waters and decreasing the fraction of older deep waters. The results of this change are likely to be particularly complex in tropical oxygen minimum zones, where old deep waters serve as a source of oxygen and nutrients to the subtropical ocean.

Acknowledgements. The authors thank the Geophysical Fluid Dynamics Laboratory for support of this research, W. Cooke and R. Slater for their work on including ideal age in the models, and T. Delworth for sharing the results of the R30 run. Comments from K. Rodgers, E. Galbraith, two anonymous reviewers and B. Barnier are gratefully acknowledged.

Edited by: B. Barnier

References

- Altabet, M. A., Murray, D. W., and Prell, W. L.: Climatically linked oscillations in Arabian Sea denitrification over the past 1 m.y.: Implications for the marine nitrogen cycle, *Paleoceanography*, 14, 732–743, 1999.
- Bryan, F. O., Danabasoglu, G., Gent, P. R., and Lindsay, K.: Changes in ocean ventilation during the 21st century in the CCSM3, *Ocean Modelling*, 15, 141–156, doi:10.1016/j.ocemod.2006.01.002, 2006.

- Conkright, M. E., Antonov, J. I., Baranova, O., Boyer, T. P., Garcia, H. E., Gelfeld, R., Johnson, D. D., Locarnini, R. A., Murphy, P. P., O'Brien, T. D., Smolyar, I., and Stephens, C.: World Ocean Database 2001, Volume 1: Introduction, edited by: Levitus, S., NOAA Atlas, NESDIS 42, U.S. Government Printing Office, Washington, D.C., 167 pp, 2002.
- Delworth, T. L., Stouffer, R. J., Dixon, K. W., Spelman, M. J., Knutson, T. R., Broccoli, A. J., Kushner, P. J., and Wetherald, R. T.: Review of simulations of climate variability and change with the GFDL R30 coupled climate model, *Clim. Dyn.*, 19(7), 555–574, 2002.
- Delworth, T., Broccoli, A. J., Rosati, A., et al.: GFDL's global coupled climate models- Part 1: Equilibrium simulations, *J. Climate*, 18, 643–674, 2006.
- Elkins, J. W., Wofsy, S. C., McElroy, M. C., Kolb, C. E., and Kaplan, W. E.: Aquatic sources and sinks for nitrous oxide, *Nature*, 275, 602–606, 1978.
- Galbraith, E. D., Kienast, M., Pedersen, T. F., and Calvert, S. E.: Glacial-interglacial modulation of the marine nitrogen cycle by high-latitude O₂ supply to the global thermocline, *Paleoceanography*, 19, PA4007, doi:10.1029/2003PA001000, 2004.
- Gent, P. and McWilliams, J. C.: Isopycnal mixing in ocean circulation models, *J. Phys. Oceanogr.*, 20, 150–155, 1990.
- The GFDL Global Atmospheric Model Development Team: The new GFDL global atmosphere and land model AM2-LM2: Evaluation with prescribed SST simulations, *J. Climate*, 17(24), 4641–4673, 2004.
- Gnanadesikan, A., Dunne, J. P., Key, R. M., Matsumoto, K., Sarmiento, J. L., Slater, R. D., and Swathi, P. S.: Oceanic ventilation and biogeochemical cycling: Understanding the physical mechanisms that produce realistic distributions of tracers and productivity, *Global Biogeochem. Cycles*, 18, GB4010, doi:10.1029/2003GB002097, 2004.
- Gnanadesikan, A., Dixon, K. W., Griffies, S. M., et al.: GFDL's global coupled climate models- Part 2: The baseline ocean simulation, *J. Climate*, 18, 675–697, 2006.
- Griffies, S. M., Gnanadesikan, A., Dixon, K. W., Dunne, J. P., Gerdes, R., Harrison, M. J., Rosati, A., Russell, J. L., Samuels, B. L., Spelman, M. J., Winton, M., and Zhang, R.: Formulation of an ocean model for global climate simulations, *Ocean Sci.*, 1, 45–79, 2005, <http://www.ocean-sci.net/1/45/2005/>.
- Griffies, S. M., Harrison, M. J., Pacanowski, R. C., and Rosati, A.: A Technical Guide to MOM4. GFDL Ocean Group Technical Report No. 5, Princeton, NJ: NOAA/Geophysical Fluid Dynamics Laboratory, 2003.
- Gruber, N. and Sarmiento, J. L.: Global patterns of marine nitrogen fixation and denitrification, *Global Biogeochem. Cycles*, 11, 235–266, 1997.
- Hirst, A. C., Gordon, H. D., and O'Farrell, S. P.: Global warming in a coupled climate model including oceanic eddy-induced advection, *Geophys. Res. Lett.*, 21, 3361–3364, 1996.
- Lin, S.-J.: A “vertically Lagrangian” finite-volume dynamical core for global models, *Mon. Wea. Rev.*, 132(10), 2293–2307, 2004.
- Lionello, P. and Pedlosky, J.: The role of a finite density jump at the bottom of the quasi-continuous ventilated thermocline, *J. Phys. Oceanogr.*, 30, 338–351, 2000.
- Luyten, J. L., Pedlosky, J., and Stommel, H. M.: The ventilated thermocline, *J. Phys. Oceanogr.*, 13, 292–309, 1983.
- Manabe, S. and Stouffer, R. J.: Multiple-century response of a coupled ocean-atmosphere model to an increase of atmospheric carbon dioxide, *J. Climate*, 7, 5–23, 1994.
- Pacanowski, R., Dixon, K., and Rosati, A.: The GFDL Modular Ocean Model users guide version 1, GFDL Ocean Group Tech Rep 2, pp. 44, 1991.
- Reid, J. L.: On the total geostrophic circulation of the South Pacific: Flow patterns, tracers and transports, *Progress in Oceanography*, 16, 1–61, 1985.
- Russell, J. L. and Dickson, A. G.: Variability in oxygen and nutrients in South Pacific Antarctic Intermediate Water, *Global Biogeochem. Cycles*, 17(2), 1033, doi:10.1029/2000GB001317, 2003.
- Russell, J. L., Dixon, K. W., Gnanadesikan, A., Stouffer, R. J., and Toggweiler, J. R.: Southern Ocean Westerlies in a warming world: Propping open the door to the deep ocean, *J. Climate*, 19, 6382–6390, 2006.
- Sarmiento, J. L., Hughes, T. M. C., Stouffer, R. J., and Manabe, S.: Simulated response of the ocean carbon cycle to anthropogenic climate warming, *Nature*, 393, 245–249, 1998.
- Sarmiento, J. L., Slater, R., Barber, R., Bopp, L., Doney, S. C., Hirst, A. C., Kleypas, J., Matear, R., Mikolajewicz, U., Monfray, P., Soldatov, V., Spall, S. A., and Stouffer, R. J.: Response of ocean ecosystems to global warming, *Global Biogeochem. Cycles*, 18, GB3003, doi:10.1029/2003GB002134, 2004.
- Stouffer, R. J., Weaver, A. J., and Eby, M.: A method for obtaining pre-twentieth century initial conditions for use in climate change studies, *Clim. Dyn.*, 23, 327–339, 2004.
- Stouffer, R. J., Broccoli, A. J., Delworth, T. L., Dixon, K. W., Gudgel, R., Held, I., Hemler, R., Knutson, T., Lee, H.-C., Schwartzkopf, M. D., Soden, B., Spelman, M. J., Winton, M., and Zeng, F.: GFDL's CM2 Global Coupled Climate Models – Part 4: Idealized Climate Response, *J. Climate*, 19, 723–740, 2006.
- Vecchi, G. A. and Soden, B. J.: Global warming and the weakening of the tropical circulation, *J. Climate*, in press, 2007.
- Vecchi, G. A., Soden, B. J., Wittenberg, A. T., Held, I. M., Leetmaa, A., and Harrison, M. J.: Weakening of tropical Pacific atmospheric circulation due to anthropogenic forcing, *Nature*, 441(7089), 73–76, 2006.
- Volk, T. and Hoffert, M. J.: Ocean carbon pumps: analysis of relative strengths and efficiencies in ocean-driven atmospheric pCO₂ change, in: *The Carbon Cycle and Atmospheric CO₂: Natural variations Archean to Present*, edited by: Sundquist, E. and Broecker, W. S., *Geophys. Monogr. Ser.*, 32, 163–184, 1985.
- Wallmann, K.: Feedbacks between oceanic redox states and marine productivity: A model perspective focused on benthic phosphorus cycling, *Global Biogeochem. Cycles*, 17, 1084, doi:10.1029GB001968, 2003.
- Washington, W. M. and Meehl, G. A.: Climate sensitivity due to increased CO₂: experiments with a coupled atmosphere and ocean general circulation model, *Clim. Dyn.*, 4, 1–38, 1989.
- Willey, D. A., Fine, R. A., Sonnerup, R. E., Bullister, J. L., Smethie, W. M., and Warner, M. J.: Global oceanic chlorofluorocarbon inventory, *Geophys. Res. Lett.*, 31, L011303, doi:10.1029/2003GL018816, 2004.