



**HAL**  
open science

## Inter-hemispheric linkages in climate change: paleo-perspectives for future climate change

J. Shulmeister, D. T. Rodbell, M. K. Gagan, G. O. Seltzer

► **To cite this version:**

J. Shulmeister, D. T. Rodbell, M. K. Gagan, G. O. Seltzer. Inter-hemispheric linkages in climate change: paleo-perspectives for future climate change. *Climate of the Past Discussions*, 2006, 2 (1), pp.79-122. hal-00298124

**HAL Id: hal-00298124**

**<https://hal.science/hal-00298124>**

Submitted on 18 Jun 2008

**HAL** is a multi-disciplinary open access archive for the deposit and dissemination of scientific research documents, whether they are published or not. The documents may come from teaching and research institutions in France or abroad, or from public or private research centers.

L'archive ouverte pluridisciplinaire **HAL**, est destinée au dépôt et à la diffusion de documents scientifiques de niveau recherche, publiés ou non, émanant des établissements d'enseignement et de recherche français ou étrangers, des laboratoires publics ou privés.

*Climate of the Past Discussions* is the access reviewed discussion forum of *Climate of the Past*

# Inter-hemispheric linkages in climate change: paleo-perspectives for future climate change

J. Shulmeister<sup>1</sup>, D. T. Rodbell<sup>2</sup>, M. K. Gagan<sup>3</sup>, and G. O. Seltzer<sup>4,†</sup>

<sup>1</sup>Department of Geological Sciences, University of Canterbury, Private Bag 4800, Christchurch, New Zealand

<sup>2</sup>Department of Geology, Union College, Schenectady, NY 12308, USA

<sup>3</sup>Research School of Earth Sciences, The Australian National University, Canberra 2000, ACT, Australia

<sup>4</sup>Department of Earth Sciences, Heroy Geology Lab, University of Syracuse, Syracuse NY 13244, USA

Received: 20 December 2005 – Accepted: 22 January 2006 – Published: 22 February 2006

Correspondence to: J. Shulmeister (james.shulmeister@canterbury.ac.nz)

CPD

2, 79–122, 2006

PEP overview

J. Shulmeister et al.

Title Page

Abstract

Introduction

Conclusions

References

Tables

Figures

◀

▶

◀

▶

Back

Close

Full Screen / Esc

Printer-friendly Version

Interactive Discussion

EGU

## Abstract

The Pole-Equator-Pole (PEP) projects of the PANASH (Paleoclimates of the Northern and Southern Hemisphere) programme have significantly advanced our understanding of past climate change on a global basis and helped to integrate paleo-science across regions and research disciplines. PANASH science allows us to constrain predictions for future climate change and to contribute to the management and mitigation of such changes. We identify three broad areas where PEP science makes key contributions.

*1. The patterns of global changes:* Knowing the exact timing of glacial advances (synchronous or otherwise) during the last glaciation is critical to understanding inter-hemispheric links in climate. Work in PEPI demonstrated that the tropical Andes in South America was deglaciated earlier than the Northern Hemisphere (NH) and that an extended warming began there ca. 21 000 cal years BP. The general pattern is consistent with Antarctica and has now been replicated from studies in Southern Hemisphere (SH) regions of the PEP II transect. That significant deglaciation of SH alpine systems and Antarctica led deglaciation of NH ice sheets may reflect either i) faster response times in alpine systems and Antarctica, ii) regional moisture patterns that influenced glacier mass balance, or iii) a SH temperature forcing that led changes in the NH. This highlights the limitations of current understanding and the need for further fundamental paleoclimate research.

*2. Changes in modes of operation of oscillatory climate systems:* Work across all the PEP transects has led to the recognition that the El Niño Southern Oscillation (ENSO) phenomenon has changed markedly through time. It now appears that ENSO operated during the last glacial termination and during the early Holocene, but that precipitation teleconnections even within the Pacific Basin were turned down, or off. In the modern ENSO phenomenon both inter-annual and seven year periodicities are present, with the inter-annual signal dominant. Paleo-data demonstrate that the relative importance of the two periodicities changes through time, with longer periodicities dominant in the early Holocene.

CPD

2, 79–122, 2006

## PEP overview

J. Shulmeister et al.

Title Page

Abstract

Introduction

Conclusions

References

Tables

Figures

◀

▶

◀

▶

Back

Close

Full Screen / Esc

Printer-friendly Version

Interactive Discussion

EGU

3. *The recognition of climate modulation of oscillatory systems by abrupt climate events:* We examine the relationship of ENSO to an abrupt SH climate event, the Antarctic cold reversal (ACR), in the New Zealand region. We demonstrate that the onset of the ACR was associated with the apparent switching on of an ENSO signal in New Zealand. We infer that this related to enhanced zonal SW winds with the amplification of the pressure fields allowing an existing but weak ENSO signal to manifest itself. Teleconnections of this nature would be difficult to predict for future abrupt change as boundary conditions cannot readily be specified. Paleo-data are critical to predicting the teleconnections of future abrupt changes.

## 1 Introduction

### 1.1 Background to the Pole-Equator-Pole projects of PANASH

The aim of all PANASH science is to understand the modes of climate and environmental variability. This work is problem/project focused. The ENSO climate system, for example, has been a particular focus for research. These research problems are tackled through multi-proxy climate and environmental reconstructions and paleo-climate modelling.

Within PANASH, the largest projects have been the three PEP transects. PEP I covers the Americas, PEP II covers the East Asia to Australasia region, and PEP III extends from Northern Europe to Southern Africa. Under the auspices of the PEPs hundreds of scientists have been involved in dozens of projects. The PEPs have played a major role in bringing together disparate regions and research disciplines into cohesive science programmes and numerous, substantive outputs have been achieved (e.g. Markgraf, 2001; Battarbee et al., 2004; Dodson et al., 2004). Given the scale of the PEP projects, it is not feasible to attempt to summarise the whole of the science programme in a single paper. Instead this paper identifies three general areas of research where PEP projects have significantly contributed to the understanding of past and present climate

CPD

2, 79–122, 2006

PEP overview

J. Shulmeister et al.

Title Page

Abstract

Introduction

Conclusions

References

Tables

Figures

⏪

⏩

◀

▶

Back

Close

Full Screen / Esc

Printer-friendly Version

Interactive Discussion

EGU

systems. In order to further focus the paper we have chosen to review progress in one region, the South Pacific Basin, using a case study approach.

We highlight how the understanding derived from “paleo” work can assist in the management and mitigation of future change. We focus on the need to work on high-resolution records that will allow paleoclimate science to interface with climate modelling and management but we also emphasise the need for on-going fundamental research into past environments and climates. Despite many decades of paleoenvironmental research we do not have adequate understanding of the patterns of change over huge swathes of the globe’s surface, notably Africa, the SH in general and much of the world’s oceans.

The three topics we have chosen to highlight are: 1) Patterns of global change, 2) Changes in the modes of oscillatory climate systems, and 3) Climatic teleconnections of abrupt climate events. The latter two topics deal with the unique power of “paleo” science to deal with longer-term changes and extreme events. The first topic, however, highlights a cautionary note about the limits of our knowledge.

## **2 Contribution 1: the pattern of global changes: case study – the Last Glacial Maximum and the timing of deglaciation in the Southern tropics and mid-latitudes**

One of the longest standing debates in global climate change has been on the mechanism of climate signal transfer from the region of climate forcing to the rest of the globe. The largest climate changes of the recent geological past are the ice ages. On a glacial-interglacial timescale, the timing of glacial advances in the mid-latitude SH appears to be broadly synchronous with those of the main northern ice advances (e.g. Nelson et al., 1985). This is unexpected, as SH conditions based on orbital (Milankovitch) forcing of solar insolation, should be out of phase with the Northern Hemisphere (Mercer, 1984; Berger, 1992). The apparent synchrony requires rapid transfer of cooling from the Northern Hemisphere (NH). The main candidates for this forcing are

Title Page

Abstract

Introduction

Conclusions

References

Tables

Figures

◀

▶

◀

▶

Back

Close

Full Screen / Esc

Printer-friendly Version

Interactive Discussion

changes in greenhouse gas concentration in the atmosphere (e.g. Petit et al., 1999; Indermühle et al., 2000) and/or changes in heat transport through ocean (thermohaline circulation (e.g. Broecker, 2000; Stocker, 2000)).

The focus for much of this work has centred on the termination of the last ice-age. The primary reason for this is that the warming associated with this termination is both rapid and of similar or even larger magnitude than the human-induced climate modification expected under future greenhouse-gas scenarios (Watson et al., 2001). A second reason is that numerous climate archives that span the last deglaciation are both available and well dated. Over the last decade or so, it has become apparent that the timing of deglaciation in the NH (as typified by the Greenland ice core records) and the SH (as exemplified by Antarctica ice core records) are not in harmony. Antarctica started to deglaciate at ~17 000 calendar years ago whereas Greenland did not deglaciate until ~14 700 years ago. This and the mis-timing between late glacial-interglacial transition (LGIT) cooling events, such as the SH Antarctic Cold Reversal and NH Younger Dryas, is seen as evidence for the so-called climate “see-saw”. This, in turn, appears to support a deep ocean overturn mechanism of global climate transmission, though it is not easy to resolve whether the North leads the South, or vice-versa (e.g. Steig and Alley, 2002).

Though the thermohaline mechanism is not universally accepted, there is little doubt that there is an interhemispheric offset in climate change. In the immediate post-LGM period, a warming manifested itself in Antarctica before it showed up in Greenland. A possible implication is that deglaciation started in Antarctica and propagated to the NH. This debate, however, has proceeded without much reference to either the tropics or the mid-latitude SH. Here we present a cautionary note, wherein we summarise evidence for an early “LGM” and an early start to deglaciation in the tropics and southern mid-latitudes. These data can be interpreted to imply that deglaciation started in the tropics and propagated firstly to low mid-latitudes before extending to Antarctica and Greenland.

[Title Page](#)[Abstract](#)[Introduction](#)[Conclusions](#)[References](#)[Tables](#)[Figures](#)[⏪](#)[⏩](#)[◀](#)[▶](#)[Back](#)[Close](#)[Full Screen / Esc](#)[Printer-friendly Version](#)[Interactive Discussion](#)

## 2.1 Timing of the LGM and deglaciation in the SH tropics and mid-latitudes

### 2.1.1 Tropical South America

Recent work (Smith et al., 2005a) has highlighted evidence for the relative unimportance of the globally defined LGM in the Andes of Peru and Bolivia. There, moraines from six valleys (3 valley systems), previously attributed to LGM advances, proved to be much older (Fig. 1). The moraines that date to the global LGM advance are located significantly up valley from their originally inferred LGM ice positions. In addition, a late last glaciation (OIS 3) advance, dating to between 34 000 and 28 000 years ago, was significantly bigger than the subsequent OIS 2 LGM advances in all these systems. Ice may have remained in an advanced position until about 23 000 years ago, after which it retreated rapidly up valley. Therefore, it appears that the global LGM was marked by a minor re-advance during the local deglaciation of the tropical Andes.

A major strength of the recent work of Smith et al. (2005a) is the scale of the dating. Several hundred  $^{10}\text{Be}$  ages were determined of which 106 ages relate to late last glaciation advances. The general pattern of the ages is compelling.

One long-standing climate inference regarding global cooling, based on estimates of equilibrium line altitude (ELA) depression during the global LGM, is also challenged by the Smith et al. (2005a) findings. With the dramatic reduction in the revised extent of the LGM comes a new calculation of the ELA depression during the LGM (Smith et al., 2005b). ELA depressions of only 300–600 m are estimated for the western side of the tropical Andes, indicating LGM cooling of only 2–4°C. This is much closer to the tropical ocean cooling inferred for the Pacific than the changes derived from the Atlantic Basin.

The Smith et al. (2005) conclusion of relatively minor ice extent during the LGM in the Peruvian Andes is consistent with several other studies from the tropical Andes. Seltzer (1994) reported basal radiocarbon dates from a moraine-dammed lake in a cirque in the Cordillera Quimsa Cruz Bolivia of ~20 000 cal yr BP. These dates require deglaciation before this time, and a maximum glacial ELA lowering of <500 m, far less than the purported global average of ~1000 m for the LGM (Broecker and Denton,

CPD

2, 79–122, 2006

### PEP overview

J. Shulmeister et al.

Title Page

Abstract

Introduction

Conclusions

References

Tables

Figures

◀

▶

◀

▶

Back

Close

Full Screen / Esc

Printer-friendly Version

Interactive Discussion

EGU

1989; Porter, 2001). Likewise, Mark et al. (2002) report a maximum ELA depression of 500 m for LGM paleoglaciers in the Quelccaya Ice Cap region of southern Peru. In contrast, in the Andes of northern Peru, Ecuador, and Colombia workers have reported considerably higher (up to ~1500 m) estimates of the magnitude of ELA depression during the LGM (e.g., Clapperton, 1986; Rodbell, 1992; Mark and Helmens, 2005), with universally more ELA depression on the eastern side of the Andes than on the western side. This latter was echoed in the findings of Smith et al. (2005b). These differences raise two significant questions: 1) Does the apparent northward increase in ELA depression for purported LGM paleoglaciers reflect a real paleoclimatic gradient or is it the product of poor age control in northern regions? 2) Do the apparent increases in ELA depression from west to east across the Andes reflect real paleoclimatic gradients or are they the product of different glaciological conditions on the eastern side of the Andes than on the western side. These latter could include the positive feedback set up by paleoglaciers advancing into regions of increasing mean annual precipitation, or higher debris cover on glaciers on the eastern side of the Andes, which general flowed down deeply incised bedrock valleys, whereas those on the western side were mostly piedmont glaciers that expanded out onto Inter-Andean plateaus at ~4000 m a.s.l., such as the Altiplano of southern Peru and Bolivia.

### 2.1.2 Temperate Australasia

During the peak of the last ice age at least discontinuous glaciation extended from Antarctica as far north as the Snowy Mountains in southeastern Australia (36°45' S) in the SW Pacific region. Here again a traditional view of last glacial maxima coinciding with the global LGM has required revision as new age control data have come to light.

The classic glacial sequence in New Zealand comes from the Kumara-Moana area in Westland (Suggate, 1990). The LGM is defined by the Larrikins-2 advance in north Westland and the M5<sub>2</sub> advance in south Westland (Suggate and Almond, 2005). These date to 24 500 to 21 500 years ago. They are not, however, the largest advances during the latter part of the last ice age. Instead the Larrikins-1/M5<sub>1</sub> advance between 34 000

Title Page

Abstract

Introduction

Conclusions

References

Tables

Figures

⏪

⏩

◀

▶

Back

Close

Full Screen / Esc

Printer-friendly Version

Interactive Discussion



and 28 000 years ago extended further and is volumetrically bigger (Fig. 2). The main LGM advance on the eastern side of the Alps is poorly dated except in the Rakaia Valley in Canterbury. Here the Bayfield advances (Soons and Gullentops, 1973), which may represent two Last Glacial maxima yield a mean age of less than 23 500 years ago roughly co-eval with moraines on the west coast. Recent luminescence dating (Shulmeister et al., unpublished data) of outwash deposits previously mapped as OIS 4 indicates that late OIS 3 advances (provisionally post 37 000 years ago) are also recorded (Fig. 2). These OIS 3 ice limits are significantly greater than the true LGM limits. While the timing of relationships between the eastern and western advances requires further work, one conclusion is that the LGM is not the major glacial advance in the latter part of the last glaciation in New Zealand.

The New Zealand pattern is partially confirmed by discontinuous data from Australia. On the eastern highlands at Mt Kosciusko (36°45' S) Barrows et al. (2001) recognised a significant glacial advance at about 32 000 cal yr ago. A pseudo-LGM advance dating to between 24 and 22 000 cal yr ago is also noted but is significantly smaller than the late MIS 3 advance. In contrast, glacial advances in Tasmania during the latter half of the last glaciation are limited to small scale cirque readvances (e.g. Barrows et al., 2002; Kiernan et al., 2004). The LGM moraines were constructed around 20 000–17 000 years ago. They may, or may not, have reoccupied late OIS 3 positions.

A further notable feature of New Zealand paleoclimate is the apparent lack of cooling at the LGM. Traditional proxies such as ELA depression (Porter, 1975) and sea-surface temperature reductions in the Tasman Sea (Barrows and Juggins, 2005) indicate cooling of between 3–7°C with most reconstructions indicating 4–5°C. These values are less than many other regions of the globe but recent efforts to quantify cooling on land have challenged even these moderate figures. Reconstructions from beetle work shows maximum cooling of ~4°C during the LGM (Marra et al., 2004) with cooling during the parts of the LGM averaging only 1°C from a site immediately proximal to an advanced glacier (Marra et al., 2006)! Physical modelling of ice accumulation conditions also suggest that cooling of as little as 2–4°C could trigger large-scale ice advances

[Title Page](#)[Abstract](#)[Introduction](#)[Conclusions](#)[References](#)[Tables](#)[Figures](#)[I◀](#)[▶I](#)[◀](#)[▶](#)[Back](#)[Close](#)[Full Screen / Esc](#)[Printer-friendly Version](#)[Interactive Discussion](#)

in New Zealand (Rother and Shulmeister, 2005). The distinct impression is that while small-scale readvances do occur during the LGM, the peak cooling precedes the LGM by several thousand years, possibly in direct response to the SH insolation minimum at 35 000–30 000 years ago (Vandergoes et al., 2005). Arguments for direct NH forcing are difficult to sustain.

In contrast to New Zealand, temperature reconstructions for Australia suggest significant LGM cooling (ca. 9°C) (Barrows et al., 2001). This trans-Tasman conundrum needs resolution, but we note that there are many more data for New Zealand than temperate Australia.

### 2.1.3 The deglaciation

The only comprehensively dated deglaciation sequence in New Zealand comes from Cobb Valley in the north-western South Island (Shulmeister et al., 2005). Here, seven separate ice terminal positions over a 21 km sequence of end moraines, roche moutonnées and glacially carved bed forms effectively yield a single deglaciation age of 16 400+/-2400 years from surface exposure age dating. Calibration issues mean that the precise age may move by a few percent, and is most likely to be older, but the overwhelming message from this site is the stagnation and rapid disappearance of the local ice cover early in the deglaciation. A rapid and massive deglaciation, as observed in most of the major valley systems, is consistent with evidence for a substantial retreat from LGM positions without early stage deglaciation. This situation is mirrored in Tasmania and the Australian mainland, where no late last deglaciation readvances are observed, indicating early ice evacuation from these areas.

The well known Waiho Loop advance of the Franz Josef Glacier (e.g. Denton and Hendy, 1994) demonstrates that some glaciers did readvance during the deglaciation. In the case of the Waiho Loop it is unclear whether this advance is synchronous with the Younger Dryas Chron (YD) or immediately preceded it. The lack of biological evidence for cooling (see below) and the confinement of YD readvances to high elevation catchments suggests that precipitation, rather than temperature decline, is the primary

Title Page

Abstract

Introduction

Conclusions

References

Tables

Figures

◀

▶

◀

▶

Back

Close

Full Screen / Esc

Printer-friendly Version

Interactive Discussion

forcing for this advance (e.g. Shulmeister et al., 2005).

Support for an early and fairly continuous deglaciation comes from at least two other terrestrial proxies from the New Zealand region. Williams et al. (2005) have recently presented a composite speleothem record from South Island, New Zealand covering the last 22 500 years. Stable isotope values reach a nadir at about 18 500 years and a gradual shift from glacial to non-glacial conditions started at this time. Modern values were achieved by ~15 000 years ago (Fig. 3). This record is quite noisy and suggests a greater degree of variability during the deglaciation than is evident from either the pollen or glacial records. The first biological evidence for a switch from full glacial conditions is recorded in a high resolution pollen record from Auckland in northern New Zealand also ~18 500 years (Sandiford et al., 2003). For many years, pollen records from New Zealand have generally indicated a pattern of fairly continuous climatic warming during the deglaciation with little evidence of any significant reversals (e.g. McGlone, 1995). More recently, Turney et al. (2003) and McGlone et al. (2004) presented a series of high resolution pollen records supported by intensive radiocarbon dating. For their more southerly sites, they concluded that initial warming began shortly before 17 000 years ago and continued until at least 14 600 years ago without a break. Thereafter, they inferred a short-lived cool episode of 1000 years duration which they correlated to the Antarctic Cold Reversal. Sustained warming was observed during the YD.

#### 2.1.4 Middle to low latitude South America

The evidence from mid-latitude South America is somewhat contradictory. On the one hand, there is clear evidence for a major advance of the glaciers in southern Chile at, or about, 28 000 cal yr BP (Lowell et al., 1995). This advance also appears to show up further north in the marine record off Chile at 33° S (Lamy et al., 1999). In contrast, Kaplan et al. (2004) demonstrate that multiple late glacial advances occurred at Lago Buenos Aires in Patagonia. The earliest and largest of these advances occurred at 23 000±1200 years. They find no pre-23 000 year advances belonging to the last glacial cycle. One possible explanation is that this strongly eastern glacial location was

Title Page

Abstract

Introduction

Conclusions

References

Tables

Figures

⏪

⏩

◀

▶

Back

Close

Full Screen / Esc

Printer-friendly Version

Interactive Discussion

starved of moisture when glaciers were most extended west of the Andes.

Lake sediment records from two localities in the tropical Andes indicate that initiation of deglaciation there preceded that in the NH (Seltzer et al., 2002). Cores from Lakes Junin and Titicaca, which are among the relatively few lakes in the Andes that are located beyond the extent of LGM paleoglaciers, record glaciation in the surrounding cordillera as increases in the abundance of glacial flour. These records clearly show the initial reduction in glacial flour flux beginning prior to 20 000 cal yr BP, and cessation by ~19 000 cal yr BP. Sediment records from lakes within the LGM ice limits record a late glacial readvance that was underway by 14 000 cal yr BP, and rapid ice retreat that began ~13 000 cal yr BP (Rodbell and Seltzer, 2000). Most paleoglaciers retreated to nearly modern (~1950 AD) limits by 12 500 cal yr BP, but some actually disappeared for several thousand years before reforming in the mid-late Holocene (Abbott et al., 2003).

There has been considerable disagreement over the moraine evidence for an ice advance synchronous with the YD advance of the NH (reviewed in Rodbell and Seltzer, 2000). In general, there is neither the necessary age control nor the unambiguous stratigraphic evidence to provide compelling evidence for a significant ice advance during the YD in the tropical Andes. The aforementioned lake sediment evidence, which is both well-dated and continuous, provides solid evidence for rapid ice retreat during the YD. The YD, however, was apparently cold in the tropical Andes as evidenced by the Huascarán Peru ice core record (Thompson et al., 1995). Thus it appears that conditions must have become suddenly drier during this time in order to drive significant ice retreat.

### 2.1.5 Summary

The timing of the maximum glaciation in the latter part of the last ice age in the Andean tropics of South America preceded the LGM by 5–10 kyr. There is widespread evidence of late OIS 3 advances in the tropics and mid-latitudes of the SH. These advances are bigger and more pervasive than the LGM advance, at least in the South American Andean tropics and in Australasia. A reasonable case can be made that the first step

CPD

2, 79–122, 2006

## PEP overview

J. Shulmeister et al.

Title Page

Abstract

Introduction

Conclusions

References

Tables

Figures

◀

▶

◀

▶

Back

Close

Full Screen / Esc

Printer-friendly Version

Interactive Discussion

EGU

towards an interglacial climate occurred at about 18 500 cal yr BP in the southern mid-latitudes.

The available paleo-records suggest that the sequence of events for the last deglaciation could be re-interpreted as follows (see Fig. 3): Tropical (and mid-latitude SH) glacial maxima were achieved 5–10 000 years before the LGM. The deglaciation in both regions effectively starts soon after 28 000 years ago but is interrupted by smaller-scale re-advances during the LGM. By about 18 500 years ago these regions have started a nearly continuous drift to deglaciation. This is 1500 years before the inferred warming of Antarctica at ~17 000 years ago and at least 3000 years ahead of Greenland, which warmed after 15 500 years ago. In both Australasia and tropical Andean South America there are glacial fluctuations around 14 000 years ago though it is unclear whether their timing coincides.

The significance of these observations is that they challenge the basic assumptions of climate change on which we base our predictions of global climate response. The records could be interpreted to demonstrate that the Andean tropics and mid-latitude SH lead the polar regions. Our purpose, however, is not to directly dispute the understanding of patterns of global change. It is to emphasise the extent of the uncertainty, given the limitations of the available paleoclimate records. It is imperative, therefore, that fundamental research into the basic patterns of long-term global change continues to be supported. There are large areas of the planet, notably Africa, the SH and large sections of the oceans where our understanding of long-term climate and environmental change is inadequate. We will not be successful in predicting future responses to climate modification if we can't even specify the patterns of past changes.

CPD

2, 79–122, 2006

## PEP overview

J. Shulmeister et al.

Title Page

Abstract

Introduction

Conclusions

References

Tables

Figures

◀

▶

◀

▶

Back

Close

Full Screen / Esc

Printer-friendly Version

Interactive Discussion

EGU

### 3 Contribution 2. The recognition and definition of longer-term changes in modes of operation of climate phenomena. Case study: the Holocene evolution of ENSO and change from long frequency to biennial oscillation ENSO dominance

5 The ENSO phenomenon contributes a large portion of the interannual (2–7 yr) variability in the modern climate system (Gagan et al., 2004). Work across all the PEP transects has led to the recognition that ENSO has changed markedly through time. In particular, a mid-Holocene shift or drift in ENSO activity by ~5000 yr BP has been postulated from both modelling studies (e.g. Clement et al., 1999) and paleo-ENSO records (e.g. Shulmeister and Lees, 1995; Shulmeister, 1999; Rodbell et al., 1999; 10 Moy et al., 2002). A further intensification of ENSO is often invoked at around 3000 yr BP (e.g. Sandweiss et al., 2001; Woodroffe et al., 2003; Gagan et al., 2004). Understanding ENSO variations under mid-late Holocene conditions is particularly important because global sea-level and ice cover are effectively modern, leaving potential forcings such as extra-tropical forcing, changes in mean temperature and the like to be 15 examined (Diaz and Markgraf, 1992).

The following brief review of the ENSO phenomenon follows Cane (2005) (Fig. 4). ENSO is an ocean-atmosphere circulation pattern in the Pacific set up by 2–7 year oscillations in the temperature contrast between the western and eastern tropical Pacific. This zonal temperature contrast is due to upwelling of cold water in the eastern equatorial Pacific, while warm surface waters in the tropical western Pacific are maintained by inflow from the equatorial regions under the prevailing easterly trade wind systems. The temperature contrast maintains the trade wind flow and provides a positive feedback, the so-called “Bjerknes mechanism” (Cane, 2005). If the trade winds weaken, 20 the flow collapses and ultimately reverses. The mechanism explains why the circulation breaks down (to an El Niño) once cooling has started in the western Pacific but it does not provide the trigger for the switch to an El Niño state. This is most probably provided by wave propagation in the tropical ocean thermocline which is described as

Title Page

Abstract

Introduction

Conclusions

References

Tables

Figures

◀

▶

◀

▶

Back

Close

Full Screen / Esc

Printer-friendly Version

Interactive Discussion

the delayed oscillator (Cane, 2005).

The bandwidth for modern ENSO oscillations is 2–7 years. ENSO frequency may respond to solar forcing (e.g. Nuzhdina, 2002) with longer duration ENSO cycles coinciding with periods of stronger solar activity (Enfield and Cid, 1991). Whether or not there is a solar component to the forcing, a bi- or tri-modal ENSO can be identified from the analyses of instrumental records as well as predicted conceptually from modelling (Lau and Sheu, 1988). The different duration ENSOs are similar in climatology and oceanographic effects, but have some notable differences also. Tomita and Yasunari (1993) identified two types of ENSO; a long-frequency ENSO with a mean duration of 57 months and a biennial-oscillation ENSO with a duration of 30 months. The biennial-oscillation ENSO causes a sea surface temperature (SST) anomaly for only one year in the eastern tropical Pacific but is associated with a clockwise eddy of wind-stress anomalies in the western tropical Pacific during the “mature” El Niño phase (Tomita and Yasunari, 1993). This wind stress anomaly assists in terminating the El Niño phase of the ENSO phenomenon and forms part of a teleconnection to the East Asian winter monsoon. Long-frequency ENSO causes SST anomalies in the eastern equatorial Pacific for three successive years but has no wind-stress anomaly in the western tropical Pacific.

ENSO has very significant climatic impacts within the Pacific basin, and through teleconnections to other parts of the globe. Substantial progress has been made in understanding the modern phenomenon, but ENSO has proved very variable in both temporal and spatial impacts, and modern ocean and atmosphere records are not long enough to decipher long-term changes in ENSO behaviour. Here we present a series of ENSO records from across the South Pacific Basin. Cumulatively these records clearly indicate that the frequency of ENSO events has increased through the course of the Holocene and that the mean strength of El Niño events has also increased. The records do not, however, imply that the ENSO system has ever switched off.

Title Page

Abstract

Introduction

Conclusions

References

Tables

Figures

⏪

⏩

◀

▶

Back

Close

Full Screen / Esc

Printer-friendly Version

Interactive Discussion

### 3.1 ENSO in South America

The impact of ENSO on the western margin of South America has been documented for the past several centuries (e.g., Quinn et al., 1987). During non-El Niño years in the tropical eastern Pacific, tradewind circulation dominates, SSTs are cool, and the ~75 km wide onshore coastal belt below 3000 m a.s.l. is very dry. During El Niño events tradewinds slacken, the thermocline in the eastern Pacific deepens, and rainfall increases dramatically along the coast. During strong El Niño years, rising motions occur in parts of the eastern Pacific troposphere that are normally characterized by subsidence and inversion. Under these conditions, rainfall along the coast can be extreme, driven by intraseasonal bursts of deep convection and torrential rainfall.

The inland extent of precipitation events is limited, and, generally, east of the crest of the Andes the climatic response to El Niño events is muted, and in some regions the response is opposite of that noted along the coastal belt. One region where the latter is especially true is on the Peruvian-Bolivian Altiplano. In this region, El Niño events are marked by a significant reduction in precipitation.

The best known record from the high Andes is the Laguna Pallcacocha (Ecuador) record (Rodbell et al., 1999; Moy et al., 2002). Here a 15 000-year record of clastic sediment influx to a lake marks precipitation driven run-off events in a normally semi-arid setting. Spectral analysis of colour changes in the sediments related to the influx events shows that for the last 150 years the colour banding contains significant spectral variance in the 2–7 year ENSO bandwidth. The influx bands are associated with warm SST excursions off the coast of Ecuador during El Niño events. Modern ENSO band variance, along with decadal to centennial scale variance, appears after about 6000 years ago.

The Laguna Pallcacocha record demonstrates a long-term drift from long period variability to shorter period variability (Fig. 5). During the early Holocene, all the spectral variability occurs at long time periods dissimilar to modern ENSO signals. From 6000 to about 3000 years ago the period of variability shortens and a ca. 7 yr ENSO signal

CPD

2, 79–122, 2006

PEP overview

J. Shulmeister et al.

Title Page

Abstract

Introduction

Conclusions

References

Tables

Figures

⏪

⏩

◀

▶

Back

Close

Full Screen / Esc

Printer-friendly Version

Interactive Discussion

EGU



becomes visible. In the last 3000 years the signal frequency has been increasing and 3–4 year period signals have become important. In short ENSO frequency appears to have increased through the Holocene at this site.

Over the last 6000 years, where ENSO has been visible in this record, it is not consistently strongly “on”. Instead at least three phases of enhanced ENSO events centred around 5000, 3000 and 1000 years ago can be recognised. This was inferred by Moy et al. (2002) to represent a roughly 2100 year cyclicality. This repetitive pattern may be forced by insolation (solar activity).

Recently, the first nearly-continuous 20 000-year long archive of past El Niño activity has been obtained from marine sediments off the coast of Peru (Rein et al., 2005). This record shows significant El Niño activity as early as 17 000 cal yr BP, strong activity during the late glacial, and a marked reduction in El Niño activity from 9–5000 years BP. The Holocene portion of this record agrees well with the aforementioned Pallcacocha record, however this is the first compelling evidence of strong El Niño frequencies during MIS 2 from the eastern tropical Pacific.

### 3.2 Coral records of ENSO in the West Pacific Warm Pool

Viewed as an oceanic system, the Western Pacific Warm Pool (WPWP) and Indonesia form the “down-drift” core region for ENSO. Under normal conditions, the surface waters of the WPWP are very warm (>28°C) and provide vast quantities of atmospheric water vapour and latent heat that drive the world’s climate. The resulting high levels of convective rainfall make the surface waters of the WPWP less saline than average tropical seawater. This low density warm pool water is displaced eastward during El Niño events and SSTs in the WPWP decline by about 1°C, mainly in response to the thinning of the surface mixed layer and greater mixing with underlying, cooler water. Consequently, atmospheric convection in the WPWP region is disrupted during El Niño events (Rasmusson and Carpenter, 1982) causing drought conditions in the WPWP region (Ropelewski and Halpert, 1987).

El Niño events are recorded by massive, long-lived corals in the WPWP region

Title Page

Abstract

Introduction

Conclusions

References

Tables

Figures

⏪

⏩

◀

▶

Back

Close

Full Screen / Esc

Printer-friendly Version

Interactive Discussion

through changes in the  $\delta^{18}\text{O}$  values in their skeletons. These changes in skeletal  $\delta^{18}\text{O}$  reflect the combined effect of cooler SSTs and the reduction in  $^{18}\text{O}$ -depleted rainfall during El Niños. Analysis of fossil corals from northern Papua New Guinea dating to 7600–5400 years ago suggests that ENSO amplitude was reduced to 85–40% of modern (Tudhope et al., 2001; McGregor and Gagan, 2004; Fig. 6). Records from Christmas Island in the central equatorial Pacific also contain a strong ENSO signal indicating ENSO amplitudes 80–60% of modern from ~4000 to 3300 years ago (Woodroffe and Gagan, 2000; Woodroffe et al., 2003). In contrast, large and protracted El Niño events are identified for 2500–1700 years ago (McGregor and Gagan, 2004) and remained above modern until the last 1000 years (Moy et al., 2002).

Analysis of individual ENSO events reveals that the precipitation response to El Niño temperature anomalies was subdued in the mid-Holocene (Gagan et al., 2004). Therefore, while ENSO strength may be reduced in the early Holocene, there is no suggestion from coral records for the WPWP that ENSO is eliminated. In fact, coral records documenting the early Holocene climate in Indonesia (Gagan et al., unpublished data) show clear seasonal ENSO SST signals. And, in terms of temperature, mid-Holocene El Niños on the Great Barrier Reef were similar in amplitude to recent events (Gagan et al., 2004). Unlike recent events, however, summer rainfall was only marginally reduced, producing a record with much less interannual rainfall variability.

The relative failure of the precipitation anomaly to develop in these WPWP records may explain the absence of ENSO signals in Ecuador during the early Holocene. With strong convection still occurring over the WPWP, the Walker and Hadley circulations were probably still operating in their usual meridional positions, even if somewhat reduced. Therefore, the opportunity for a strong convective cell to develop in the eastern Pacific may have been reduced. Alternatively, El Niño-driven precipitation only reaches Lake Palcacocha during strong-very strong events when convection reaches ~4000 m and the absence of El Niño signals at this site during the early Holocene may indicate the absence of such strong events.

Just as the amplitude of ENSO varied through the Holocene, so too did the fre-

[Title Page](#)[Abstract](#)[Introduction](#)[Conclusions](#)[References](#)[Tables](#)[Figures](#)[⏪](#)[⏩](#)[◀](#)[▶](#)[Back](#)[Close](#)[Full Screen / Esc](#)[Printer-friendly Version](#)[Interactive Discussion](#)

quency. Unlike Laguna Pallcacocha, where ENSO bandwidths are effectively absent until about 6000 years ago, ENSO-like phenomena are in place at 12 000 years ago elsewhere in the tropics (Rein et al., 2005). By 10 000 years ago the spectral signal shows strong forcing at 1.5–3 year bandwidths. During the peak ENSO frequency period (about 2000 to 1000 years ago) the frequency of events becomes nearly annual before dropping back to a 1.5 yr bandwidth in the last millennium. The overall frequency of events observed in coral records from the WPWP is much greater than in Ecuador, but the trend towards high frequency oscillation is similar. The difference between the records may again be that the Ecuador lake sediments only record El Niño events when they are strong enough to trigger a rainfall anomaly in western tropical South America.

### 3.3 ENSO teleconnections in the SW Pacific (New Zealand)

New Zealand is strongly affected by ENSO (Pepper et al., 2004). The climatic effects of ENSO were mapped in some detail by Gordon (1985) who demonstrated that the impacts in New Zealand vary by season and locality. Also, Mullan (1995) demonstrated that the effects were partially non-stationary and consequently impacts may vary through time. Despite these riders, the strong topographic division of New Zealand makes regional precipitation signals highly sensitive to small-scale synoptic changes and these are what allow us to recognise ENSO effects. The primary ENSO impacts in New Zealand are related to the waxing and waning of surface pressure over eastern Australia in response to El Niño events. During El Niño events, anomalous high pressure over eastern Australia causes an acceleration of the regional southwest air-flow over New Zealand. By contrast, reduced zonal flow and more frequent development of blocking highs over the country occurs during La Ninas.

In the following sections we examine the impact of ENSO on the Holocene glacial records in New Zealand and on paleoclimate records from a maar in the Auckland region. These data are then compared to the recently developed regional composite speleothem record of Williams et al. (2005).

Title Page

Abstract

Introduction

Conclusions

References

Tables

Figures

◀

▶

◀

▶

Back

Close

Full Screen / Esc

Printer-friendly Version

Interactive Discussion

### 3.3.1 Records of glacial activity and speleothems

It has been demonstrated that the strength and pattern of westerly wind flow and concomitant precipitation and cloud cover are critical to modern glacier mass balance in New Zealand (Fitzharris et al., 1992; Tyson et al., 1997; Hooker and Fitzharris, 1999).

5 Changes in westerly air-flow can be directly correlated with ENSO and, at least for the west coast glaciers, a prima facie relationship between a westerly index and glacier fluctuation has been established. Specifically, the modern west coast glaciers respond with a 5–7 year lag to average seasonal synoptic conditions, with advances occurring after years of positive zonal (southwesterly) flow and retreats associated with years of meridional (northerly) anomalies. East coast glaciers, on the other hand, have longer response times and respond to longer period (decadal) forcing. Millennial-scale changes in the westerlies will be controlled by the pole-equator temperature gradient, which is most likely driven by orbital forcing through modification of insolation seasonality (e.g. Dodson, 1998; Shulmeister, 1999; Shulmeister et al., 2004).

10 The long-term records from these glaciers indicate a remarkable absence of evidence for glacial advances from 9000 to 5000 years ago. After 5000 years the glacial systems switched on. The best-studied Holocene glacial record comes from the west coast, Franz Josef Glacier, which advanced at 5000, 2500, 1500 years ago and during the Little Ice Age (Wardle, 1973). This suggests ENSO activity has stepped-up in the latter half of the Holocene.

15 Until recently, there was no long-term continuous record to compare with the intermittent glacial record. The compilation of a composite speleothem stable isotope record for New Zealand (Williams et al., 2005) provides one. In Fig. 7, this speleothem record is plotted against the Franz Josef glacial record, the colour spectral signal of ENSO from Laguna Pallcacocha (Moy et al., 2002) and, as an independent check, against a composite speleothem record from South Africa (a SH site that is affected by, but not a core region for, ENSO impacts). The comparison supports the coherence of paleo-ENSO records for New Zealand and South America through the Holocene. In both

CPD

2, 79–122, 2006

PEP overview

J. Shulmeister et al.

Title Page

Abstract

Introduction

Conclusions

References

Tables

Figures

◀

▶

◀

▶

Back

Close

Full Screen / Esc

Printer-friendly Version

Interactive Discussion

EGU

Laguna Pallcacocha and New Zealand, the earliest flickering of a signal of greater variability occurs about 6000 years ago and the systems swing strongly to a new (ENSO) mode after 5000 years ago. In contrast, the South African record shows very little similarity to Laguna Pallcacocha and New Zealand.

Thus far, nothing in the New Zealand record gives insight into changes in ENSO frequency. We cannot demonstrate a Holocene change in bandwidth from New Zealand, but we can demonstrate that ENSO operated differently during the LGM and deglaciation. Laminated sediment records from Auckland Maar craters are the key (e.g. Horrocks et al., 2005). Some of these laminae are at least quasi-annual and, as they are largely organic, they are measures of primary productivity. The laminae become thinner from the LGM to the Holocene, so they cannot be driven by either temperature or insolation (Pepper et al., 2004) (Fig. 8). Instead, nutrient limitation is the likely driver because the maar lakes are small, deep, closed basins without catchments, so fluvial activity is minimal. The only likely source of variable nutrients is via aeolian input. Both dry and wet deposition are possible but, given that the regional dominant wind (SW) is also the major rain-bearing wind, the sources for both wet and dry deposition coincide. Therefore, we interpret these records to show variability in the southwest wind which, in the Auckland region, is strongly related to ENSO variability (Gordon, 1985). The Auckland Maar record shows strong coherence at a 2–3 year bandwidth near the LGM. There is no visible ENSO signal in the early Holocene, but during the deglaciation there are two brief periods showing strong spectral forcing at a 7 year bandwidth (Fig. 9).

### 3.4 Discussion/summary: changes in the amplitude and frequency of ENSO events

ENSO switches up and down (rather than on and off) during the Holocene. Clearly, there are important changes in paleo-ENSO dynamics in the middle Holocene. To interpret the Holocene evolution of ENSO, we lean towards the hypothesis of Haug et al. (2001) who suggested that the ITCZ was located further north during the early-middle Holocene. This may have strengthened the links between ENSO and the NH

Title Page

Abstract

Introduction

Conclusions

References

Tables

Figures

⏪

⏩

◀

▶

Back

Close

Full Screen / Esc

Printer-friendly Version

Interactive Discussion

monsoonal systems but weakened the link between the Southern Oscillation and ITCZ rainfall patterns in the southern tropics. This would allow the oceanic ENSO temperature signal to be maintained through the early Holocene, as indicated by coral records in the WPWP, in the absence of detectable rainfall anomalies in Ecuador and New Zealand. After 5000 years ago, and especially after 3000 years ago, strengthening links between a southward drifting ITCZ and the Southern Oscillation established the modern rainfall anomalies.

The second half of the Holocene is clearly a period of enhanced ENSO variability, but it is not uniformly enhanced. A critical feature of the Laguna Pallcacocha and New Zealand records is that they suggest phases of enhanced ENSO activity that extend for at least several hundred years, which are separated from each other by hundreds to thousands of years. The evidence from the WPWP shows that ENSO is likely to have been active at inter-annual bandwidth, if at somewhat reduced amplitude, through the entire period. The implication is that transmission of ENSO signals, even to the proximal tropical coast of western South America, requires more than the ENSO oscillation itself. The available records indicate that ENSO is riding on the back of longer-term oscillations in the tropical general circulation (e.g. the Interdecadal Pacific Oscillation) driven by external forcings (e.g. solar forcing).

We conclude that the frequency patterns visible in sites connected by rainfall anomaly teleconnections may not reflect true ENSO base frequencies. While the records indicate that El Niño events became stronger and more frequent through the Holocene, it is likely that they reflect the incidence of extreme events within the ENSO cycles. Nevertheless, they represent a real shift towards shorter frequency El Niños. The pattern is important because bi- or multi-modal oscillations are discernable in the modern ENSO cycle. These modes have similar but not identical climatologies and a systematic shift in the frequency means a systematic shift in climatological responses. It is important because the mode helps to indicate which teleconnections are likely to operate. This will allow us to both better predict the nature of ENSO events themselves and the long-distance climate impacts.

[Title Page](#)[Abstract](#)[Introduction](#)[Conclusions](#)[References](#)[Tables](#)[Figures](#)[I◀](#)[▶I](#)[◀](#)[▶](#)[Back](#)[Close](#)[Full Screen / Esc](#)[Printer-friendly Version](#)[Interactive Discussion](#)

We propose that the strengthened ENSO regime of the late Holocene is a function of a strong SH seasonality that enhances zonal circulations in the SH and reinforces the Southern Oscillation. This sets up the conditions for both increased ENSO amplitude and increased ENSO frequency. Therefore, it is probably not accidental that the most extreme period of ENSO activity (~2500–1500 years ago) coincides with maximum SH seasonality.

#### 4 Contribution 3: the recognition of climate modulation of oscillatory systems by abrupt climate events. Interactions between climate phenomena and abrupt climate events – the case of the Antarctic Cold Reversal

Human systems are capable of dealing with gradual environmental drift but an abrupt change, even of relatively small magnitude, can cause extreme hardship and potentially system collapse. This can be observed on all time scales. For example, the Tambora eruption of 1815, which created the so-called “year without a summer”, disrupted agriculture across much of the globe and caused famines in Europe and elsewhere (Strothers, 1984). The implications of a major abrupt change, such as the shut-down of the global thermohaline circulation that has recently caught the popular imagination, are widespread and potentially catastrophic for human societies.

Unlike gradual climate changes, which can be modelled with Global Climate Models (GCMs) using standard flux equations and modern boundary conditions, abrupt change will not (normally) fall out of climate models. The only real strategy to predict future abrupt change is to examine the history of climate systems from the paleorecord, to see whether and how the system has behaved in the recent geological past. Some abrupt changes over the last 20 000 years are now becoming well recognized, in particular the late-last glaciation cooling known as the Younger Dryas, and oscillatory changes such as Dansgaard-Oeschger events. Recognition of these events allows us to estimate the direction and extent of change possible in climate systems. It also may allow us to identify the trigger, which gives us the potential for managing some

Title Page

Abstract

Introduction

Conclusions

References

Tables

Figures

◀

▶

◀

▶

Back

Close

Full Screen / Esc

Printer-friendly Version

Interactive Discussion



of the changes. As the quality and density of paleo-records improves we are also beginning to recognise the global teleconnections linked to abrupt events and can make useful, if still unquantified statements about far-field effects of abrupt change. Here we present one example, the Antarctic Cold Reversal (ACR) where the climate link between an abrupt change in one region (coastal Antarctica) and its effect in another (New Zealand) can be demonstrated.

#### 4.1 The Antarctic Cold Reversal in the New Zealand record

In Sect. 2.3.2 we highlighted a maar lake record from the Auckland region, New Zealand, that demonstrates strong ENSO-like periodicities (Pepper et al., 2004). Within that record the transition from the last glaciation to the present interglaciation presents a clear story. For most of the deglaciation, there is no evidence of strong inter-annual variability in the Auckland region. During two brief interludes, however, strong inter-annual variability at a 7 year ENSO periodicity is observed. The younger of these two events aligns well with the onset of the Antarctic Cold Reversal between 14 800 and 14 500 years ago (Jouzel et al., 1995; Blunier et al., 1997). The duration of the event is much shorter than the ACR, lasting about 150 years as opposed to the 1700 years of the ACR. Nevertheless the coincidence of the timing of initiation is compelling. Furthermore, there is a strong ACR record from the ocean off New Zealand (Carter et al., 2003) and the ACR also shows up in terrestrial paleoecological records (e.g. Turney et al., 2003; McGlone et al., 2004).

The ACR manifests itself in Antarctica as a cool anomaly recorded in the oxygen isotope ratios of ice formed at ~14 800 years ago. Simplistically, a decrease in temperatures in the Antarctic margin would be expected to increase the speed of the zonal westerlies to the north by increasing the thermal (pressure) contrast between the polar region and the surrounding ocean. A general increase in westerly circulation at southern mid-latitudes would be expected. This is observed from the Auckland record. The individual laminae in the maar records are interpreted as annual and reflect aeolian flux to the maar under zonal south-westerly flows. During the ACR event the laminae

Title Page

Abstract

Introduction

Conclusions

References

Tables

Figures

◀

▶

◀

▶

Back

Close

Full Screen / Esc

Printer-friendly Version

Interactive Discussion



are significantly thicker than at any other time since the LGM (Fig. 8). In short the general pattern of the Auckland record is compatible with a simplistic predicted change in westerly wind strength under Antarctic cooling.

The additional factor is the apparent enhancement of an ENSO signal in the New Zealand region during this event. ENSO has been identified as an important driver of Antarctic climate change on inter-annual to decadal scales (e.g. Kwok and Comiso, 2002). Under modern conditions, ENSO teleconnections exist between New Zealand and the Antarctic. Links between ENSO warm events in the South Pacific and impacts in Antarctica have been recognised, partly through the mechanism of blocking highs hindering migration of the Amundsen Sea Low (Renwick, 1998; Bertler et al., 2004). The position (or absence of) of blocking systems in the South Pacific and eastern Australia, in turn, control the zonal flows over New Zealand during ENSO events (and at other times). This relationship is, however, both seasonal and non-stationary. In the Ross Sea, the regional climate shows a significant positive ENSO correlation during the last decade whereas no significant correlation is observed in the decade from 1971–1980 (Bertler et al., 2004).

Since the Antarctic is not the source area for ENSO, we do not suggest that ENSO actually switches on during the ACR. Rather, we infer that circulation changes associated with the ACR event amplified an existing ENSO signal in the New Zealand region. This occurred through an enhancement of zonal wind flows that magnified the signal sufficiently for it to become visible through primary production in the Auckland maar.

This type of study provides insight into the climatology of a teleconnection for an abrupt climate change event. The El Niño-style anomaly can be projected out of the NZ region using modern climatologies to provide a testable prediction of regional responses to the ACR. These predictions can be tested by further paleoclimate studies in other regions. However, it is likely that only high temporal resolution paleoclimate research will be capable of providing insights into how global climate change is transmitted.

[Title Page](#)[Abstract](#)[Introduction](#)[Conclusions](#)[References](#)[Tables](#)[Figures](#)[⏪](#)[⏩](#)[◀](#)[▶](#)[Back](#)[Close](#)[Full Screen / Esc](#)[Printer-friendly Version](#)[Interactive Discussion](#)

## 5 Conclusions: implications of PANASH work for future management

The PEP projects of PANASH have greatly extended our understanding of past climate change. The main messages from this paper are:

1. Low resolution records provide information on changing background states on which ENSO, the monsoons and other climate phenomena are superimposed. This is a critical underpinning for the higher resolution studies. In addition, as we move towards higher precision, numerical, reconstructions of climate parameters we need the verification that broad reconstructions provide. Many of these low resolution records provide a higher reliability than the numerical reconstructions. The presence of tree stumps in growth position, for example, guarantees that local conditions were favourable enough for trees to grow. Such high reliability indicators greatly reinforce the inferences from numerical reconstructions.

The need for ongoing basic research is highlighted by the fact that although very significant advances have been made in the understanding of past climate systems, we cannot yet define the basic patterns of past climate change accurately. We cannot even hope to reconstruct global impacts of climate change if we have very intermittent coverage of the globe. We note particular data deficiencies over much of the SH, the oceans and Africa. We have highlighted this predicament by demonstrating that one of the better studied periods, the transition from the Last Glaciation Maximum to the current Interglaciation can be re-interpreted in the light of recent paleo-climate finds. We cannot even specify with confidence whether the post LGM warming initiates at one of the Poles or the equator.

2. There is a real need for annually resolvable paleoclimate records. This paper has highlighted the rapid growth in our understanding of the geological history of ENSO. The studies that have provided this insight are annual in resolution, or higher, because only these studies can examine the phenomenon. In fact, the increase in understanding reduces our ability to make simple statements about

CPD

2, 79–122, 2006

### PEP overview

J. Shulmeister et al.

Title Page

Abstract

Introduction

Conclusions

References

Tables

Figures

◀

▶

◀

▶

Back

Close

Full Screen / Esc

Printer-friendly Version

Interactive Discussion

EGU

**PEP overview**

J. Shulmeister et al.

Title Page

Abstract

Introduction

Conclusions

References

Tables

Figures

◀

▶

◀

▶

Back

Close

Full Screen / Esc

Printer-friendly Version

Interactive Discussion

the phenomenon. The recognition that the core ENSO system probably operates continuously through the Holocene but that teleconnections through precipitation and other anomalies are non-stationary on centennial and millennial scales, is, however, significant. Major changes in climate can occur without ENSO switching on or off. The change in frequency and the possible relationship of this change to insolation forcing is also important, both because it affects regional climate responses and because the geological observations allow models of climate change to be tested against real data. The better we know the history of the climate systems, the better our hope of predicting and subsequently managing patterns of climate change.

With respect to annual records, bioturbation of ocean floors is a particular problem. While in earlier studies the relatively high resolution (centennial scale) from marine cores gave a comparative advantage over the available discontinuous terrestrial records, the situation is slowly reversing. Ice core, laminated lake, dendro- and speleothem records all allow quasi-annual resolution on land. We need annual resolution to examine climatic phenomena, such as ENSO, which cannot be examined in centennial resolution records. There is an urgent need to identify higher resolution marine records that can actually see these signals. Other than coral proxies, only a handful of records from anoxic sites (e.g. Rein et al., 2005) can actually be used to examine these types of change.

3. “Rates of change” is one of the critical pieces of the jig-saw that paleoclimate studies can provide. The risk of abrupt climate change is recognised as very important and inherently difficult for future climate change management and mitigation (Watson et al., 2001). Human systems are quite adaptable to change so long as it is gradual and predictable. The same systems may collapse under even moderate change scenarios if the rate of change is too great. Paleoclimate work is the only reliable tool to evaluate how fast natural systems can change.

The observation of interactions between abrupt climate phenomena and oscilla-

PEP overview

J. Shulmeister et al.

Title Page

Abstract

Introduction

Conclusions

References

Tables

Figures



Back

Close

Full Screen / Esc

Printer-friendly Version

Interactive Discussion

tory systems requires well-dated high resolution paleoclimatic records. Thus far paleoclimate work has allowed us to recognise that abrupt climate changes have occurred and to specify some aspects of the change in the core affected regions. Paleoclimate work needs to extend to examining the teleconnections between the abrupt phenomena and distal climates. The importance of distal responses to abrupt change has been recognised for some time (e.g. Broecker, 2000) but it is only with the proliferation of quasi-annual resolution records that we can start to recognise the climatic processes involved in the teleconnections themselves.

4. Modelling work provides the global view and improves our understanding by giving insights into the processes controlling climate change. Paleo-data provide both verification for model runs and in some instances the data and ideas to generate the model scenarios. Modelling provide us with the dynamic reconstructions of past climates and the ability to examine teleconnections. It gives us the ability to turn reconstructions of local climates into a powerful tool for predicting and even managing future change.

PEP studies are at the cutting edge of all these areas of research.

*Acknowledgements.* We dedicate this paper to the memory our colleague and friend G. O. Seltzer, long-time leader of the PEPI project and a major player in much of the science presented in this paper. J. Shulmeister acknowledges Marsden Grant UOC301 and University of Canterbury internal grant U6508 for support of glacial work and PGSF grant VIC-009 for paleolimnological investigations. He thanks the Department of Geosciences, Idaho State University and the RMAP programme RSPAS, Australian National University for hospitality and facilities while writing this paper during a sabbatical visit. D. T. Rodbell acknowledges NSF grants EAR9418886 and ATM-9809229 for support of his work in the tropical Andes. M. K. Gagan acknowledges Australian Research Council grant DP0342917 for support of his work in the west Pacific Warm Pool region.

## References

- Abbott, M. B., Wolfe, B. B., Wolfe, A. P., Seltzer, G. O., Aravena, R., Mark, B. G., Polissar, P. J., Rodbell, D. T., Rowe, H. D., and Vuille, M.: Holocene Paleohydrology and glacial history of the central Andes using multiproxy lake sediment studies, *Palaeogeography, Palaeoclimatology, Palaeoecology*, 194, 123–138, 2003.
- Barrows, T. T. and Juggins, S.: Sea-surface temperatures around the Australian margin and Indian Ocean during the Last Glacial Maximum, *Quat. Sci. Rev.*, 24, 1017–1047, 2005.
- Barrows, T. T., Stone, J. O., Fifield, L. K., and Cresswell, R. G.: Late Pleistocene glaciation of the Kosciusko Massif, Snowy Mountains, Australia, *Quat. Res.*, 55, 179–189, 2001.
- Barrows, T. T., Stone, J. O., Fifield, L. K., and Cresswell, R. G.: The timing of the last glacial maximum in Australia, *Quat. Sci. Rev.*, 21, 159–173, 2002.
- Battarbee, R. Gasse, F., and Stickley, C.: *Past Climate Variability through Europe and Africa*, Kluwer, 610 p., 2004.
- Berger, A.: IGBP PAGES/World Data Center-A for Paleoclimatology Data Contribution Series #, 92–007, 1992.
- Bertler, N. A. N., Barrett, P. J., Mayewski, P. A., Fogt, R. L., Kreutz, K. J., and Shulmeister, J.: El Niño suppresses Antarctic warming, *Geophys. Res. Lett.*, 31, L15207, doi:10.1029/2004GL020749, 2004.
- Blunier, T., Schwander, J., Stauffer, B., Stocker, T., Dällenbach, A., Indermühle, A., Tschumi, J., Chappelaz, J., Raynaud, D., and Barnola, J.-M.: Timing of the Antarctic Cold Reversal and the atmospheric CO<sub>2</sub> increase with respect to the Younger Dryas event, *Geophys. Res. Lett.*, 24, 2683–2686, 1997.
- Broecker, W. S.: Abrupt climate change: causal constraints provided by the paleoclimate record, *Earth Sci. Rev.*, 51, 137–154, 2000.
- Broecker, W. S. and Denton, G. H.: The role of ocean-atmosphere reorganizations in glacial cycles, *Geochim. Cosmochim. Acta*, 53, 2465–2501, 1989.
- Cane, M. A.: The evolution of El Niño, past and future, *Earth and Planetary Science Lett.*, 230, 227–240, 2005.
- Carter, L., Manighetti, B., and Neil, H.: From icebergs to pongas: Antarctica's ocean link with New Zealand, *Water and Atmosphere online*, 11, 30–31, 2003.
- Clapperton, C. M.: Glacial Geomorphology, Quaternary glacial sequence and paleoclimatic inferences in the Ecuadoran Andes, *Int. Geomorph. Proc.*, 1st conference, 2, 843–870, 1986.

CPD

2, 79–122, 2006

PEP overview

J. Shulmeister et al.

Title Page

Abstract

Introduction

Conclusions

References

Tables

Figures

◀

▶

◀

▶

Back

Close

Full Screen / Esc

Printer-friendly Version

Interactive Discussion

EGU

## PEP overview

J. Shulmeister et al.

Title Page

Abstract

Introduction

Conclusions

References

Tables

Figures

◀

▶

◀

▶

Back

Close

Full Screen / Esc

Printer-friendly Version

Interactive Discussion

- Clement, A. C., Seager, R., and Cane, M. A.: Orbital controls on the El Niño/Southern Oscillation and the tropical climate, *Paleoceanography*, 14, 441–456, 1999.
- Denton, G. H. and Hendy, C. H.: Younger Dryas age advance of Franz Josef Glacier in the Southern Alps of New Zealand, *Science*, 264, 1434–1437, 1994.
- 5 Diaz, H. F. and Markgraf, V.: El Niño, Historical and Paleoclimate aspects of the Southern Oscillation, Cambridge University Press, 1992.
- Dodson, J. R.: Timing and response of vegetation change to Minankovitch forcing in temperate Australia and New Zealand, *Global and Planetary Change*, 18, 161–174, 1998.
- Dodson, J., Taylor, D., Ono, Y., and Wang, P.: Climate, Human and Natural Systems of the PEP  
10 II Transect, *Quat. Int.*, 118–119, 1–203, 2004.
- Enfield, D. B. and Cid, L. S.: Low-frequency changes in El Niño-Southern Oscillation, *J. Climate*, 4, 1137–1146, 1991.
- Fitzharris, B. B., Hay, J. E., and Jones, P. D.: Behaviour of New Zealand glaciers and atmospheric circulation changes over the past 130 years, *Holocene*, 2, 97–106, 1992.
- 15 Gagan, M. K., Hendy, E. J., Haberle, S. G., and Hantoro, W. S.: Post-glacial evolution of the Indo-Pacific Warm Pool and El Niño-Southern Oscillation, *Quat. Int.*, 118–119, 127–143, 2004.
- Gordon, N. D.: The Southern Oscillation: A New Zealand perspective, *J. Royal Soc. New Zealand*, 15, 137–155, 1985.
- 20 Grootes, P. M. and Stuiver, M.: Oxygen 18/16 variability in Greenland snow and ice with 10-3- to 105-year time resolution, *J. Geophys. Res.*, 102(C12), 26 455–26 470, 1997.
- Hendy, E. J., Gagan, M. K., and Lough, J. M.: Chronological control of coral records using luminescent lines and evidence for non-stationary ENSO teleconnections in northeast Australia, *The Holocene*, 13, 187–199, 2003.
- 25 Holmgren, K., Lee-Thorp, J. A., Cooper, G. R. J., Lundblad, K., Partridge, T. C., Scott, L., Sitaldeen, R., Siep Talma, A., and Tyson, P. D.: Persistent millennial-scale climatic variability over the past 25 000 years in Southern Africa, *Quat. Sci. Rev.*, 22, 2311–2326, 2003.
- Hooker, B. L. and Fitzharris, B. B.: The correlation between climatic parameters and the retreat and advance of Franz Josef Glacier, New Zealand, *Global and Planetary Change*, 22, 39–48,  
30 1999.
- Horrocks, M., Augustinus, P., Deng, Y., Shane, P., and Anderson, S.: Holocene vegetation, environment and tephra recorded from Lake Pupuke, Auckland, New Zealand, *New Zealand J. Geology and Geophysics*, 48, 85–94, 2005.

## PEP overview

J. Shulmeister et al.

[Title Page](#)[Abstract](#)[Introduction](#)[Conclusions](#)[References](#)[Tables](#)[Figures](#)[◀](#)[▶](#)[◀](#)[▶](#)[Back](#)[Close](#)[Full Screen / Esc](#)[Printer-friendly Version](#)[Interactive Discussion](#)

Haug, G. H., Hughen, K. A., Sigman, D. M., Peterson, L. C., and Rohl, U.: Southward migration of the intertropical convergence zone through the Holocene, *Science*, 293, 1304–1308, 2001.

Indermühle, A., Monnin, E., Stauffer, B., and Stocker, T. F.: Atmospheric CO<sub>2</sub> concentration from 60 to 20 kyr BP from the Taylor Dome ice core, Antarctica, *Geophys. Res. Lett.*, 27, 735–738, 2000.

Jouzel, J., Vaikmae, R., Petit, J. R., et al.: The two step shape and timing of the last deglaciation in Antarctica, *Clim. Dynamics*, 11, 151–161, 1995.

Kaplan, M. R., Ackert Jr., R. P., Singer, B. S., Douglass, D. C., and Kurz, M. D.: Cosmogenic nuclide chronology of millennial-scale glacial advances during O-isotope stage 2 in Patagonia, *GSA Bulletin*, 116, 308–321, 2004.

Kiernan, K. Fifield, L. K., and Chappell, J.: Cosmogenic nuclide ages for Last Glacial Maximum moraine at Schnells Ridge, Southwest Tasmania, *Quat. Res.*, 61, 335–338, 2004.

Kwok, R. and Comiso, J. C.: Southern Ocean climate and sea ice anomalies associated with the Southern Oscillation, *J. Climate*, 15, 487–501, 2002.

Lamy, F., Hebbeln, D., and Wefer, G.: High resolution marine record of climatic change in mid-latitude Chile during the last 28 000 years based on terrigenous sediment parameters, *Quat. Res.*, 51, 83–93, 1999.

Lau, K.-M. and Sheu, P. J.: Annual cycle, quasi-biennial oscillation, and Southern Oscillation in global precipitation, *J. Geophys. Res.*, 93, 10 975–10 988, 1988.

Liu, Z., Kutzbach, J., and Wu, L.: Modeling climatic shift of El Niño variability in the Holocene, *Geophys. Res. Lett.*, 27, 2265–2268, 2000.

Lowell, T. V., Heusser, C. J., Andersen, B. G., Moreno, P. I., Hauser, A., Heusser, L. E., Schluchter, C., Marchant, D. R., and Denton, G. H.: Interhemispheric correlation of Late Pleistocene glacial events, *Science*, 269, 1541–1549, 1995.

Mark, B., Seltzer, G., Rodbell, D., and Goodman, A.: Rates of Deglaciation during the Last Glaciation and Holocene in the Cordillera Vilcanota-Quelccaya Ice Cap Region, Southeastern, Perú, *Quat. Res.*, 57, 287–298, 2002.

Mark, B. G. and Helmens, K. F.: Reconstruction of glacier equilibrium-line altitudes for the last glacial maximum on the High Plain of Bogotá region, eastern cordillera, Colombia: Topographic and Climatic Implications, *J. Quat. Sci.*, 20, 789–800, 2006.

Markgraf, V.: *Interhemispheric Climate Linkages*, Academic Press, 454 p., 2001.

Marra, M. J., Smith, E. G. C., Shulmeister, J., and Leschen, R.: Late Quaternary climate change

## PEP overview

J. Shulmeister et al.

Title Page

Abstract

Introduction

Conclusions

References

Tables

Figures

◀

▶

◀

▶

Back

Close

Full Screen / Esc

Printer-friendly Version

Interactive Discussion

from the Awatere Valley, South Island, New Zealand using the maximum likelihood envelope method, *Quat. Sci. Rev.*, 23, 1637–1650, 2004.

Marra, M. J., Shulmeister, J., and Smith, E. C. G.: Reconstructing temperature during the Last Glacial Maximum from Lyndon Stream, South Island, New Zealand using beetle fossils and maximum likelihood envelopes, *Quat. Sci. Rev.*, in press, 2006.

McGlone, M. S.: Late glacial landscape and vegetation change and the Younger Dryas climatic oscillations in New Zealand, *Quat. Sci. Rev.*, 14, 867–881, 1995.

McGlone, M. S., Turney, C. S. M., and Wilmshurst, J. M.: Late-glacial and Holocene vegetation and climatic history of the Cass Basin, central South Island, New Zealand, *Quat. Res.*, 62, 267–279, 2004.

McGregor, H. V. and Gagan, M. K.: Western Pacific coral  $\delta^{18}\text{O}$  records of anomalous Holocene variability in the El Niño-Southern Oscillation, *Geophys. Res. Lett.*, 31, L11204, doi:10.1029/2004GL019972, 2004.

Mercer, J. H.: Simultaneous climatic change in both hemispheres and similar bipolar interglacial warming: Evidence and implications, in: *Climate Processes and Climate Sensitivity*, edited by: Hansen, H. and Takahashi, T., American Geophysical Union, 307–313, 1984.

Moy, C. M., Seltzer, G. O., Rodbell, D. T., and Anderson, D. M.: Variability of El Niño/Southern Oscillation activity at millennial timescales during the Holocene epoch, *Nature*, 420, 162–165, 2002.

Mullan, A. B.: On the linearity and ability of southern oscillation-climate relationships for New Zealand, *Int. J. Climat.*, 15, 1365–1386, 1995.

Nelson, C. S., Hendy, C. H., Jarrett, G. R., and Cuthbertson, A. M.: Near-synchronicity of New Zealand alpine glaciations and Northern Hemisphere continental glaciations during the past 750 kyr, *Nature*, 318, 361–363, 1985.

Nuzhdina, M. A.: Connection between ENSO phenomenon and solar and geomagnetic activity, *Nat. Hazards Earth Syst. Sci.*, 2, 83–89, 2002.

Ono, Y., Shulmeister, J., Lemkuhle, F., Asahi, K., and Aoki, T.: Timing and causes of glacial advances in the PEP 2 transect (East Asia to Antarctica) during the last glaciation cycle, *Quat. Int.*, 118/119, 55–68, 2004.

Pepper, A. C.: Late Quaternary climate records using laminated lake sediments from an Auckland Maar Crater (Onepoto Maar), New Zealand, Unpub. MSc thesis University of Canterbury, 2003.

Pepper, A. C., Shulmeister, J., Nobes, D. C., and Augustinus, P. C.: Possible ENSO signals



## PEP overview

J. Shulmeister et al.

[Title Page](#)[Abstract](#)[Introduction](#)[Conclusions](#)[References](#)[Tables](#)[Figures](#)[◀](#)[▶](#)[◀](#)[▶](#)[Back](#)[Close](#)[Full Screen / Esc](#)[Printer-friendly Version](#)[Interactive Discussion](#)

prior to the last Glacial Maximum, during the deglaciation and the early Holocene from New Zealand, *Geophys. Res. Lett.*, 31, L15206, doi:10.1029/2004GL020236, 2004.

Petit, J. R., Jouzel, J., Raynaud, D., Barkov, N. I., Barnola, J.-M., Basile, I., Benders, M., Chap-  
pelaz, J., Davis, M., Delaygue, G., Delmotte, M., Kotlyakov, V. M., Legrand, M., Lipenkov,  
5 V. Y., Lorius, C., Pépin, L., Ritz, C., Satzman, E., and Stievenard, M.: Climate and atmo-  
spheric history of the past 420,000 years from the Vostok ice core, Antarctica, *Nature*, 399,  
429–436, 1999.

Porter, S. C.: Equilibrium-Line altitudes of Late Quaternary Glaciers in the Southern Alps, New  
Zealand, *Quat. Res.*, 5, 27–47, 1975.

10 Porter, S. C.: Snowline depression in the tropics during the Last Glaciation, *Quat. Sci. Rev.*,  
20, 1067–1091, 2001.

Quinn, W. H., Neal, V. T., and Antinez de Mayolo, S.: El Niño occurrences over the past four  
and a half centuries, *J. Geophys. Res.*, 92, 14 449–14 461, 1987.

Rasmussen, E. M. and Carpenter, T. H.: Variations in tropical sea surface temperature and  
15 surface wind fields associated with the El Niño/Southern Oscillation, *Mon. Wea. Rev.*, 110,  
354–384, 1982.

Rein, B., Luckge, A., Reinhardt, L., Sirocko, F., Wolf, A., and Dullo, W.-C.: El Niño  
variability off Peru during the last 20 000 years, *Paleoceanography*, 20, PA4003,  
doi:10.1029/2004PA001099, 2005.

20 Renwick, J. A.: ENSO-related variability in the frequency of South Pacific blocking, *Mon. Wea.*  
*Rev.*, 126, 3117–3123, 1998.

Rodbell, D. T.: Late Pleistocene equilibrium-line altitude reconstructions in the northern Peru-  
vian Andes, *Boreas*, 21, 43–52, 1992.

Rodbell, D. T., Seltzer, G. O., Anderson, D. M., Abbott, M. B., Enfield, D. B., and Newman, J.  
25 H.: An ~15 000-year record of El Niño-driven alluviation in southwestern Ecuador, *Science*,  
283, 516–520, 1999.

Rodbell, D. T. and Seltzer, G. O.: Rapid Ice Margin Fluctuations During the Younger Dryas in  
the Tropical Andes, *Quat. Res.*, 54, 328–338, 2000.

Ropelewski, C. F. and Halpert, M. S.: Global and regional scale precipitation patterns associ-  
ated with the El Niño/Southern Oscillation, *Mon. Wea. Rev.*, 115, 1606–1626, 1987.

30 Rother, H. and Shulmeister, J.: Synoptic climate change as a driver of late Quaternary glacia-  
tions in the mid-latitudes of the Southern Hemisphere, *Clim. Past Discuss.*, 1, 231–253,  
2005.

**PEP overview**

J. Shulmeister et al.

Title Page

Abstract

Introduction

Conclusions

References

Tables

Figures

◀

▶

◀

▶

Back

Close

Full Screen / Esc

Printer-friendly Version

Interactive Discussion

Sandiford, A., Newnham, R. M., Alloway, B. V., and Ogden, J.: A 28 000–7600 cal yr BP pollen record of vegetation and climate change from Pukaki Crater, northern New Zealand, *Palaeogeography, Palaeoclimatology, Palaeoecology*, 201, 235–247, 2003.

Sandweiss, D. H., Maasch, K. A., Burger, R. L., Richardson III, J. B., Rollins, H. B., and Clement, A.: Variation in Holocene El Niño frequencies: Climate records and cultural consequences in ancient Peru, *Geology*, 29, 603–606, 2001.

Scott, L.: A Late Quaternary pollen record from the Transvaal bushveld, South Africa, *Quat. Res.*, 17, 339–370, 1982.

Seltzer, G. O.: A lacustrine record of late-Pleistocene climatic change in the subtropical Andes, *Boreas*, 23, 105–111, 1994.

Seltzer, G. O., Rodbell, D. T., Baker, P. A., Fritz, S. C., Tapia, P. M., Rowe, H. D., and Dunbar, R. B.: Early warming of tropical South America at the last glacial-interglacial transition, *Science*, 296, 1685–1686, 2002.

Shulmeister, J.: Australasian evidence for mid-Holocene climate change implies precessional control of Walker Circulation in the Pacific, *Quat. Int.*, 57/58, 81–91, 1999.

Shulmeister, J. and Dodson, J. (Eds.): Late Quaternary climate change in the New Zealand Region, Special Issue *Global and Planetary Change* 33(3–4), 205–362, 2002.

Shulmeister, J. and Lees, B. G.: Pollen evidence from tropical Australia for the onset of an ENSO-dominated climate at c. 4000 BP, *The Holocene* 5, 10–18, 1995.

Shulmeister, J., Goodwin, I., Renwick, J., Harle, K., Armand, L., McGlone, M. S., Cook, E., Dodson, J., Hesse, P. P., Mayewski, P., and Curran, M.: The Southern Hemisphere Westerlies in the Australasian sector during the last glaciation cycle: A synthesis, *Quat. Int.*, 118/119, 23–53, 2004.

Shulmeister, J., Fink, D., and Augustinus, P. C.: A cosmogenic nuclide chronology of the last glacial transition in North-West Nelson, New Zealand – new insights in Southern Hemisphere climate forcing during the last deglaciation, *Earth and Planetary Science Lett.*, 233, 455–466, 2005.

Smith, J. A., Seltzer, G. O., Farber, D. L., Rodbell, D. T., and Finkel, R. C.: Early local last glacial maximum in the tropical Andes, *Science*, 308, 678–680, 2005a.

Smith, J. A., Seltzer, G. O., Rodbell, D. T., and Kline, A. G.: Regional synthesis of last glacial maximum snowlines in the tropical Andes, South America, *Quat. Int.*, 138–139, 145–167, 2005b.

Soons, J. M. and Gullentops, F. W.: Glacial advances in the Rakaia Valley, New Zealand, New

## PEP overview

J. Shulmeister et al.

Title Page

Abstract

Introduction

Conclusions

References

Tables

Figures

◀

▶

◀

▶

Back

Close

Full Screen / Esc

Printer-friendly Version

Interactive Discussion

- Zealand *J. Geology and Geophysics*, 16, 425–438, 1973.
- Steig, E. J. and Alley, R. B.: Phase relationships between Antarctic and Greenland climate records, *Ann. Glaciol.*, 35, 451–456, 2002.
- 5 Strothers, R. B.: The great Tambora eruption of 1815 AD and its aftermath, *Science*, 224, 1191–1198.
- Stocker, T. F.: Past and future reorganisations in the Climate System, *Quat. Sci. Rev.*, 19, 301–319, 2000.
- Suggate, R. P.: Late Pliocene and Quaternary glaciations of New Zealand, *Quat. Sci. Rev.*, 9, 175–194, 1990.
- 10 Suggate, R. P. and Almond, P. C.: The Last Glacial Maximum (LGM) in western South Island, New Zealand: Implications for the global LGM and MIS 2. *Quat. Sci. Rev.*, 24, 1923–1940, 2005.
- Tomita, T. and Yasunari, T.: On the two types of ENSO, *J. Meteorol. Soc. Japan*, 71, 273–283, 1993.
- 15 Thompson, L. G., Mosley-Thompson, E., Davis, M. E., Lin, P.-N., Henderson, K. A., Cole-Dai, J., Bolzan, J. F., and Liu, K.-B.: Late glacial stage and Holocene tropical ice core records from Huascarán, Perú, *Science*, 269, 46–50, 1995.
- Tudhope, A. W., Chilcott, C. P., McCulloch, M. T., Cook, E., Chappell, J., Ellam, R. M., Lea, D. W., Lough, J. M., and Shimmield, G. B.: Variability in the El Niño-Southern Oscillation through a glacial-interglacial cycle, *Science*, 291, 1511–1517, 2001.
- 20 Turney, C. S. M., McGlone, M. S., and Wilmshurst, J. M.: Asynchronous climate change between New Zealand and the North Atlantic during the last deglaciation, *Geology*, 31, 223–226, 2003.
- Tyson, P. D., Sturman, A. P., Fitzharris, B. B., Mason, S. J., and Owens, I. F.: Circulation changes and teleconnections between glacial advances on the west coast of New Zealand and extended spells of drought years in South Africa, *Int. J. Climatol.*, 17, 1499–1512, 1997.
- Vandergoes, M. J., Newnham, R. M., Preusser, F., Hendy, C. H., Lowell, T. V., Fitzsimons, S. J., Hogg, A. G., Kasper, H. U., and Schlüchter, C.: Regional insolation forcing of late Quaternary climate change in the Southern Hemisphere, *Nature*, 436, 242–246, 2005.
- 30 Wardle, P. W.: Variations of glaciers of Westland National Park and the Hooker Range, New Zealand, *New Zealand J. Botany*, 11, 349–388, 1973.
- Watson, R. T. and the Core Writing Team (Eds.): *Climate Change 2001: Synthesis Report*, IPCC, Geneva, 184 p., 2001.

Williams, P. W.: A 230 ka record of glacial and interglacial events from Aurora Cave, Fiordland, New Zealand, *New Zealand J. Geology and Geophysics*, 39, 225–241, 1996.

Williams, P. W., King, D. N. T., Zhao, J.-X., and Collerson, K. D.: Late Pleistocene to Holocene composite speleothem  $^{18}\text{O}$  and  $^{13}\text{C}$  chronologies from South Island, New Zealand—did a global Younger Dryas really exist?, *Earth and Planetary Science Lett.*, 230, 301–317, 2005.

Woodroffe, C. D. and Gagan, M. K.: Coral microatolls from the central Pacific record late Holocene El Niño, *Geophys. Res. Lett.*, 27, 1511–1514, 2000.

Woodroffe, C. D., Beech, M. R., and Gagan, M. K.: Mid-late Holocene El Niño variability in the equatorial Pacific from coral microatolls, *Geophys. Res. Lett.*, 30, 1358, doi:10.1029/2002GL015868, 2002.

CPD

2, 79–122, 2006

## PEP overview

J. Shulmeister et al.

Title Page

Abstract

Introduction

Conclusions

References

Tables

Figures

◀

▶

◀

▶

Back

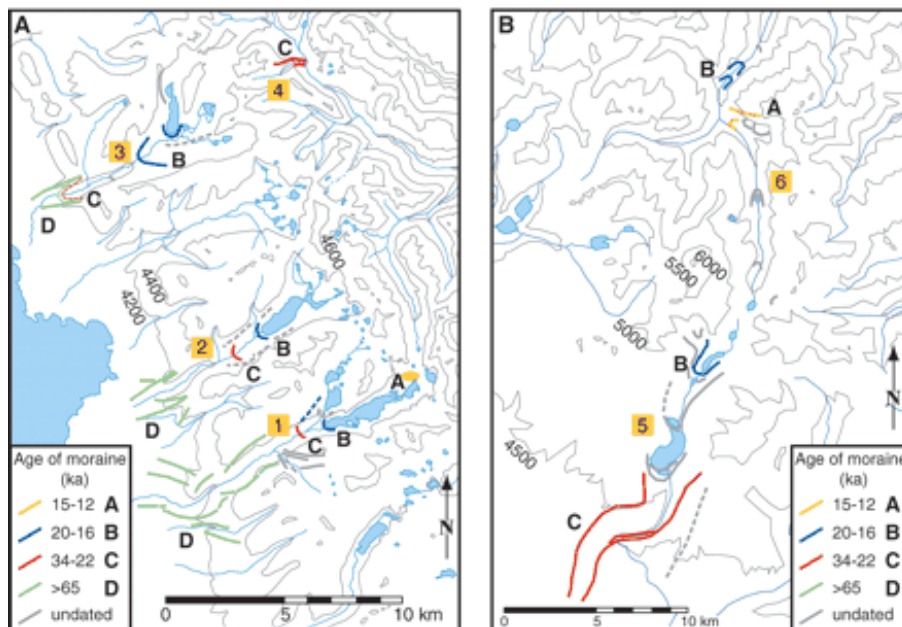
Close

Full Screen / Esc

Printer-friendly Version

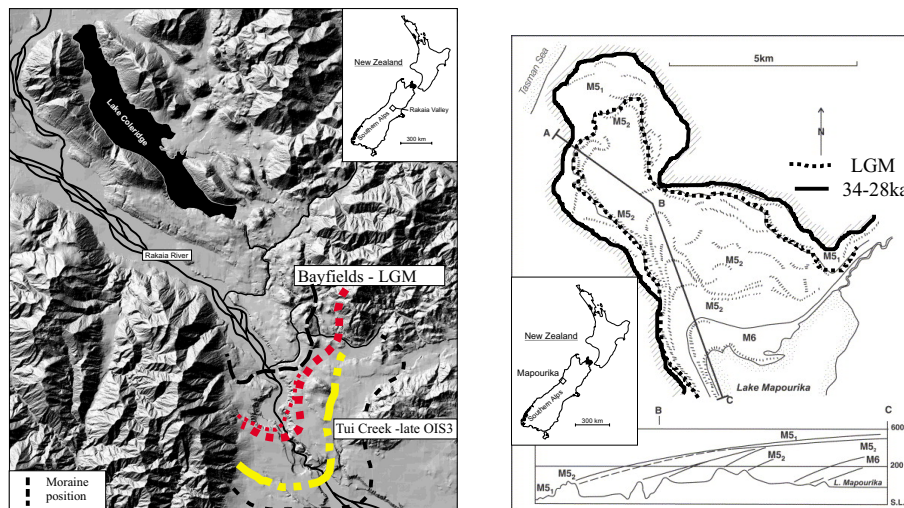
Interactive Discussion

EGU



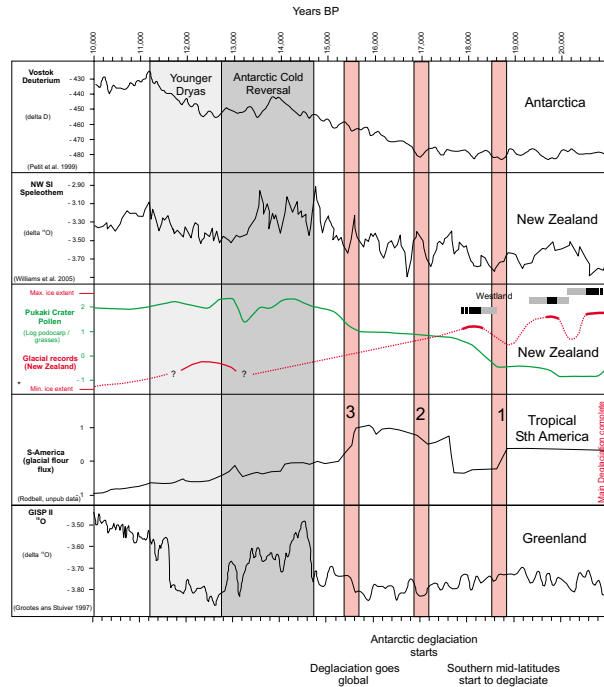
**Fig. 1.** Exposure ages of moraines in the Junin Valleys (Peru; A) and Milluni and Zongo Valleys (Bolivia; B) based on cosmogenic dating with  $^{10}\text{Be}$ . Thin gray lines are contour lines, with altitudes in masl; contour intervals are 200 m (A) and 500 m (B). Many of the moraines of Group D, once thought to be correlative with the LGM, are more than 100 000 yr old. The LGM corresponds with moraines (labelled B) from a relatively minor advance. The most extensive glaciation of the last glacial cycle occurred between 34 and 22 kcal yr BP. Reprinted with permission from Smith et al. (2005), Early Local Last Glacial Maximum in the Tropical Andes: *Science*, v. 308, p. 678–681. Copyright 2005 AAAS.

[Title Page](#)
[Abstract](#)
[Introduction](#)
[Conclusions](#)
[References](#)
[Tables](#)
[Figures](#)
[◀](#)
[▶](#)
[◀](#)
[▶](#)
[Back](#)
[Close](#)
[Full Screen / Esc](#)
[Printer-friendly Version](#)
[Interactive Discussion](#)



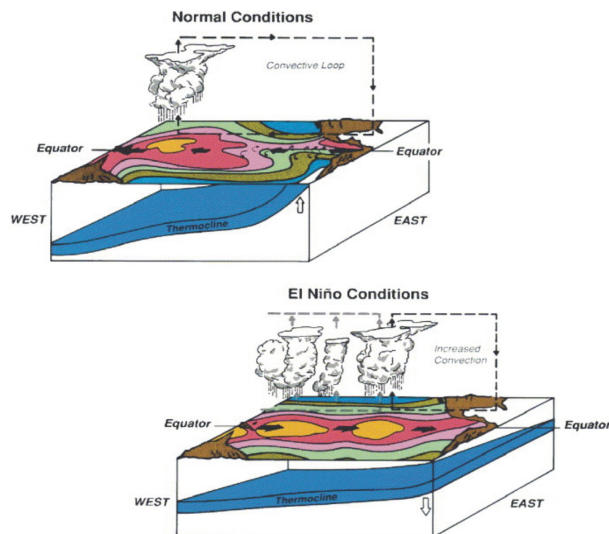
**Fig. 2.** LGM vs OIS 3 limits in New Zealand. **(a)** displays the Rakaia Valley in Canterbury, in the eastern South Island, where recent work (Shulmeister et al., unpublished data) has dated a presumed OIS 4 advance in late OIS 3. This makes OIS 3 advances significantly bigger than LGM advances in this eastern system. **(b)** demonstrates that a late OIS 3 advance is larger than the LGM advance in this west coast system (Suggate and Almond, 2005). A similar age advance, also larger than the LGM advance, is noted at Mt Kosciusko, in SE Australia (Barrows et al., 2001). (b) is reprinted from *Quaternary Science Reviews*, 24, Suggate, R. P. and Almond, P.: The Last Glacial Maximum (LGM) in western South Island, New Zealand: Implications for the global LGM and MIS 2, p. 1923–1940, 2005, with permission from Elsevier.

[Title Page](#)
[Abstract](#)
[Introduction](#)
[Conclusions](#)
[References](#)
[Tables](#)
[Figures](#)
[◀](#)
[▶](#)
[◀](#)
[▶](#)
[Back](#)
[Close](#)
[Full Screen / Esc](#)
[Printer-friendly Version](#)
[Interactive Discussion](#)



**Fig. 3.** Interhemispheric timing of deglaciation: An alternative view. Here we summarise rock flour records from tropical South America (Rodbell, unpublished data) and pollen (Sandiford et al., 2003), glacial (Suggate, 1990) and speleothem records (Williams et al., 2005) from New Zealand and compare them to standard deuterium records from Vostok in Antarctica (Petit et al., 1999) and the oxygen isotope ice core record from GISP II (Grootes and Stuiver, 1997). We highlight shifts in climate (Bands 1–3). Band 1 shows a shift towards interglacial conditions in New Zealand and tropical South America at about 18 500 calibrated years ago. Band 2 marks the onset of continuous warming in the Antarctic at about 17 000 calibrated years ago and Band 3 marks a second warming phase in South America and New Zealand and the first indication of warming in Greenland. In summary, these data suggest that warming initiates in the tropics and southern mid-latitudes and is transmitted to the Antarctic before warming initiates in northern high latitudes.

[Title Page](#)
[Abstract](#)
[Introduction](#)
[Conclusions](#)
[References](#)
[Tables](#)
[Figures](#)
[Back](#)
[Close](#)
[Full Screen / Esc](#)
[Printer-friendly Version](#)
[Interactive Discussion](#)



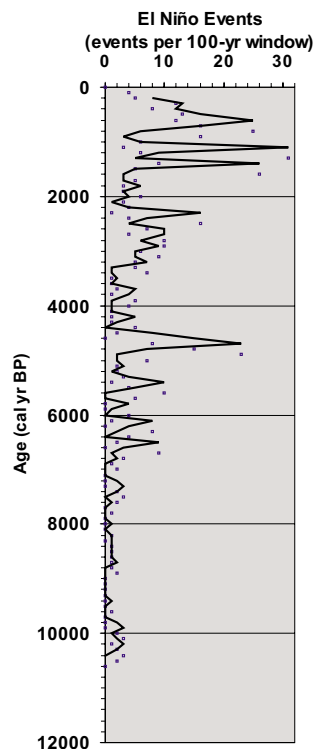
**Fig. 4.** ENSO pattern (from Cane, 2005). **(a)** During normal conditions trade winds drive upwelling off the South American coast and force warm surface waters from the eastern tropical Pacific to the western Pacific. The deep pool of warm water in the western tropical Pacific (a.k.a. West Pacific Warm Pool – WPWP) causes intense convection over the WPWP. Rising air circulates eastward and subsides in the eastern Pacific over the cooler upwelling water, closing the circulation loop. **(b)** During El Niño events, the trade winds decline and warm water flows from the WPWP to the eastern Pacific. The shoaling of the WPWP causes a decline in convection in the western Pacific and a convective cell migrates eastward. This causes widespread modification of global weather patterns. Reprinted from Earth and Planetary Science Letters, 230, M. A. Cane, The evolution of El Niño, past and future, 227–240, 2005, with permission from Elsevier.

[Title Page](#)
[Abstract](#)
[Introduction](#)
[Conclusions](#)
[References](#)
[Tables](#)
[Figures](#)
[◀](#)
[▶](#)
[◀](#)
[▶](#)
[Back](#)
[Close](#)
[Full Screen / Esc](#)
[Printer-friendly Version](#)
[Interactive Discussion](#)



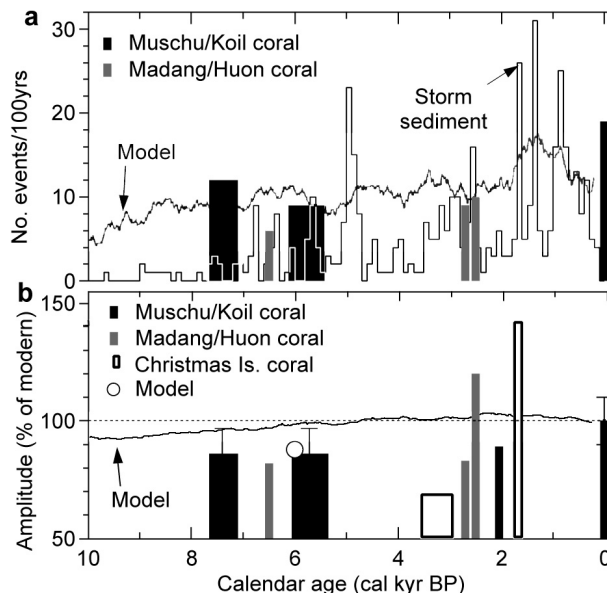
## PEP overview

J. Shulmeister et al.

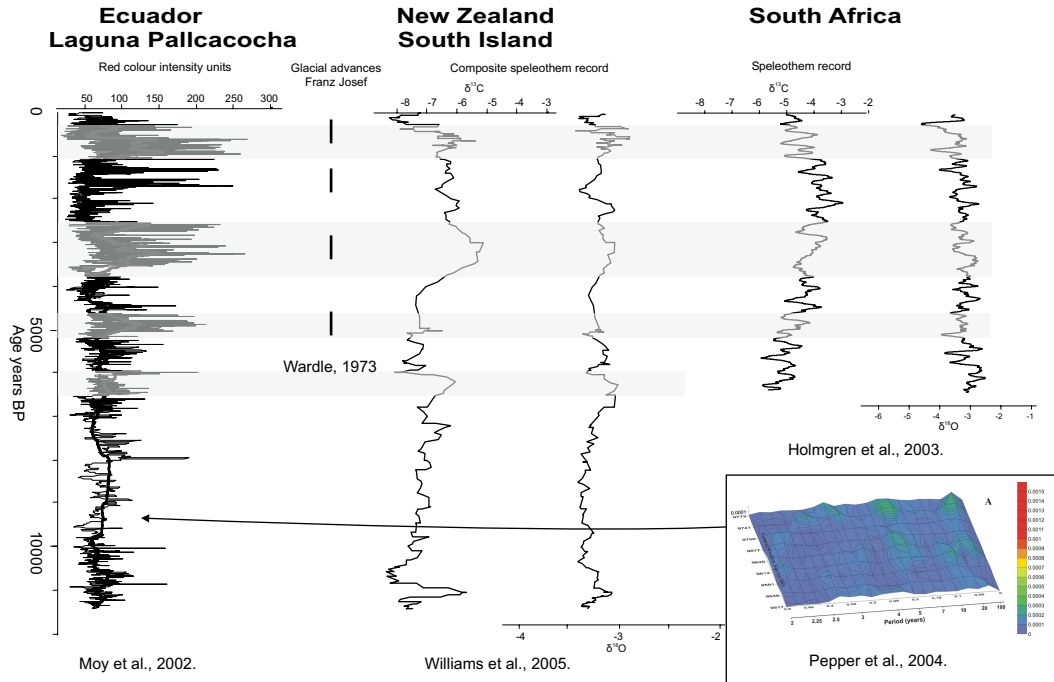


**Fig. 5.** Number of strong El Niño events recorded in Laguna Pallcacocha Ecuador per 100 year overlapping window (from Moy et al., 2002). The early Holocene was marked by fewer events and the frequency of events increased through the Holocene beginning ~6000 cal yr BP and peaked several times in the last 2000 yr.

[Title Page](#)[Abstract](#)[Introduction](#)[Conclusions](#)[References](#)[Tables](#)[Figures](#)[◀](#)[▶](#)[◀](#)[▶](#)[Back](#)[Close](#)[Full Screen / Esc](#)[Printer-friendly Version](#)[Interactive Discussion](#)



**Fig. 6.** From McGregor and Gagan (2004) **(a)** Changes in El Niño frequency given by coral  $d_{18}O$  records from Muschu Island, Koil Island, and Madang, PNG (Tudhope et al., 2001), lacustrine storm deposits (Moy et al., 2002), and model results (Clement et al., 2000). Data are scaled to events/century to facilitate direct comparison. **(b)** Changes in El Niño amplitude given by coral  $d_{18}O$  records in panel (a), the standard deviation of coral  $d_{18}O$  in microatolls from the central equatorial Pacific (Woodroffe et al., 2003), and model results (Clement et al., 2000; Liu et al., 2000). The threshold amplitude analysis of the Tudhope et al. (2001) coral records is restricted to El Niño events to facilitate comparison with our records. Error bar for the modern MS01 coral record is the standard error of the mean for all El Niño events recorded for 1950–1997. Errors for fossil coral percentage changes include the standard errors for both the modern and fossil corals. Reprinted with permission from McGregor, H. V. and Gagan, M. K.: Western Pacific coral  $\delta^{18}O$  records of anomalous Holocene variability in the El Niño–Southern Oscillation, *Geophys. Res. Lett.*, 31, L11204, 1–4, 2004, Copyright 2004 AGU.



**Fig. 7.** Comparison between the Holocene ENSO records from Laguna Pallcacocha in Ecuador (Moy et al., 2002), New Zealand glaciers (Wardle, 1973) and speleothem records (Williams et al., 2005) and South African speleothem records (Holmgren et al., 2003) for the Holocene. These demonstrate strong coherence between the South American and New Zealand records with stronger but distinctly episodic ENSO signals in the last ca. 5000 years. South Africa shows little coherence. A short early Holocene ENSO record from Auckland Maar Lakes (Pepper et al., 2004) is inset. It confirms the weak teleconnections to New Zealand at this time.

Title Page

Abstract

Introduction

Conclusions

References

Tables

Figures

◀

▶

◀

▶

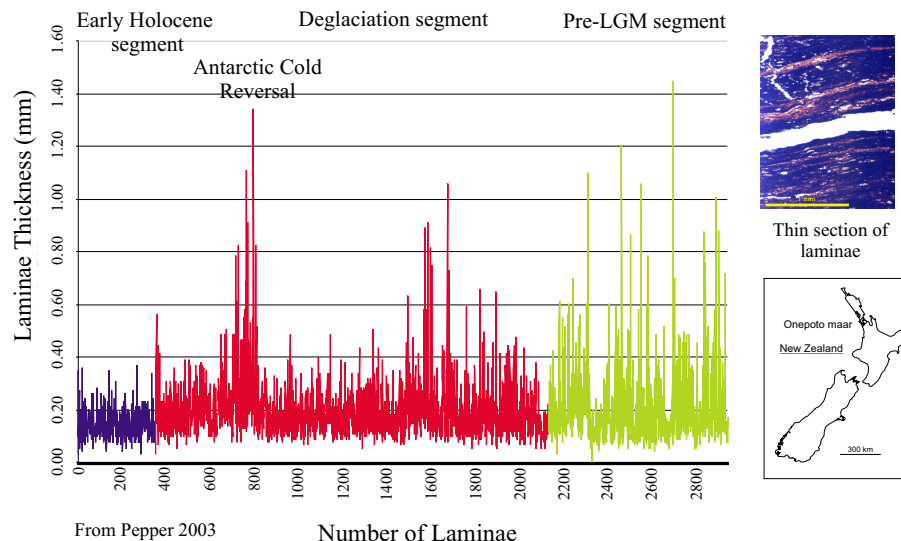
Back

Close

Full Screen / Esc

Printer-friendly Version

Interactive Discussion



**Fig. 8.** After Pepper (2003). Laminated lake sediments in thin section (Fig. 7a) from Onepoto Maar (Fig. 7b) in Auckland. Graph 7c displays laminae thickness for three selected periods in early Holocene, the Last Glacial Interglacial Transition and just prior to the LGM. The laminae are generally thicker during the last glaciation than during the Holocene. The laminae are largely biological (algal) in origin and reflect quasi-annual to annual productivity in the Maar. These records display a general pattern of declining lamina thickness from the LGM to the Holocene but with two periods of greatly enhanced laminae (=productivity) during the deglaciation. This is believed to reflect increased wet and dry deposition of dust under zonal SW winds at this time.

Title Page

Abstract

Introduction

Conclusions

References

Tables

Figures

◀

▶

◀

▶

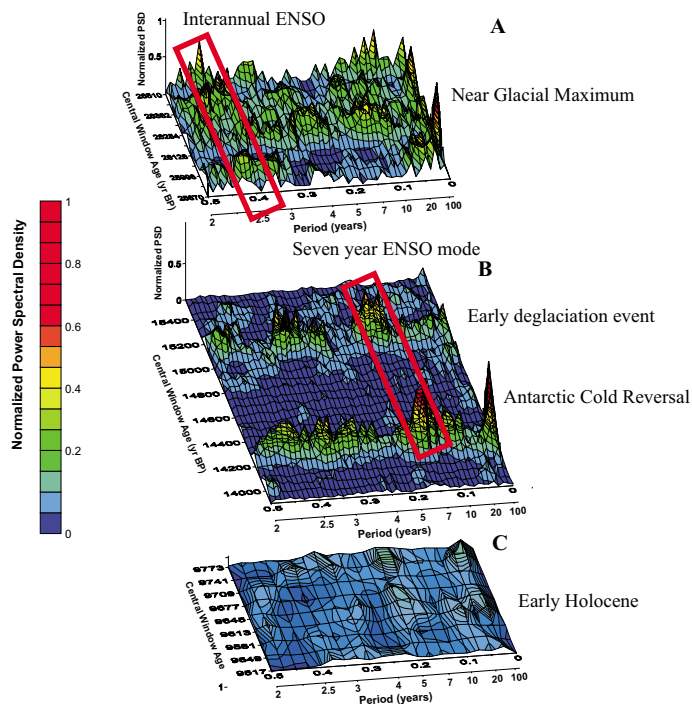
Back

Close

Full Screen / Esc

Printer-friendly Version

Interactive Discussion



**Fig. 9.** Spectral analyses of lamina thickness from Onepoto Maar during parts of (a) the early Holocene (b) the deglaciation and c) immediately prior to the LGM. The deglacial section displays a 7 year ENSO like periodicity during two distinct episodes, which coincide with the sections of thickened laminae in Fig. 7. The younger of these matches the onset of the Antarctic Cold Reversal (ACR). The ACR appears to be reflected in New Zealand by a strengthening of the regional SW flow which amplifies the ENSO signal enough for it to be reflected in the record. Reprinted with permission from Pepper, A. C., Shulmeister, J., Nobes, D. C., and Augustinus, P. C.: Possible ENSO signals prior to the last Glacial Maximum, during the deglaciation and the early Holocene from New Zealand, *Geophys. Res. Lett.*, 31, L15206, 1–4, 2004, Copyright 2004 AGU.

[Title Page](#)
[Abstract](#)
[Introduction](#)
[Conclusions](#)
[References](#)
[Tables](#)
[Figures](#)
[◀](#)
[▶](#)
[◀](#)
[▶](#)
[Back](#)
[Close](#)
[Full Screen / Esc](#)
[Printer-friendly Version](#)
[Interactive Discussion](#)