



## Methane emission and consumption at a North Sea gas seep (Tommeliten area)

H. Niemann, M. Elvert, M. Hovland, B. Orcutt, A. Judd, I. Suck, J. Gutt, S. Joye, E. Damm, K. Finster, et al.

### ► To cite this version:

H. Niemann, M. Elvert, M. Hovland, B. Orcutt, A. Judd, et al.. Methane emission and consumption at a North Sea gas seep (Tommeliten area). Biogeosciences Discussions, 2005, 2 (4), pp.1197-1241. hal-00297796

**HAL Id: hal-00297796**

**<https://hal.science/hal-00297796>**

Submitted on 18 Jun 2008

**HAL** is a multi-disciplinary open access archive for the deposit and dissemination of scientific research documents, whether they are published or not. The documents may come from teaching and research institutions in France or abroad, or from public or private research centers.

L'archive ouverte pluridisciplinaire **HAL**, est destinée au dépôt et à la diffusion de documents scientifiques de niveau recherche, publiés ou non, émanant des établissements d'enseignement et de recherche français ou étrangers, des laboratoires publics ou privés.

*Biogeosciences Discussions* is the access reviewed discussion forum of *Biogeosciences*

# Methane emission and consumption at a North Sea gas seep (Tommeliten area)

H. Niemann<sup>1,2</sup>, M. Elvert<sup>3</sup>, M. Hovland<sup>4</sup>, B. Orcutt<sup>5</sup>, A. Judd<sup>6</sup>, I. Suck<sup>2</sup>, J. Gutt<sup>2</sup>, S. Joye<sup>5</sup>, E. Damm<sup>2</sup>, K. Finster<sup>7</sup>, and A. Boetius<sup>1,8</sup>

<sup>1</sup>Max Planck Institute for Marine Microbiology, 28359 Bremen, Germany

<sup>2</sup>Alfred Wegener Institute for Polar and Marine Research, 27515 Bremerhaven, Germany

<sup>3</sup>Research Center Ocean Margins, University of Bremen, 28334 Bremen, Germany

<sup>4</sup>Statoil, 4001 Stavanger, Norway

<sup>5</sup>University of Georgia, Athens, Georgia 30602-3636, USA

<sup>6</sup>Wilderspool House, High Mickley, Stocksfield, Northumberland, NE43 7LU, UK

<sup>7</sup>University of Aarhus, 8000 Aarhus, Denmark

<sup>8</sup>International University Bremen, 28759 Bremen, Germany

Received: 1 August 2005 – Accepted: 16 August 2005 – Published: 30 August 2005

Correspondence to: H. Niemann (hniemann@mpi-bremen.de)

© 2005 Author(s). This work is licensed under a Creative Commons License.

## Control of methane efflux at the Tommeliten seep area

H. Niemann et al.

Title Page

Abstract

Introduction

Conclusions

References

Tables

Figures

◀

▶

◀

▶

Back

Close

Full Screen / Esc

Print Version

Interactive Discussion

Abstract

The North Sea hosts large coal, oil and gas reservoirs of commercial value. Natural leakage pathways of subsurface gas to the hydrosphere have been recognized during geological surveys (Hovland and Judd, 1988). The Tommeliten seepage area is part of the Greater Ekofisk area, which is situated above the Tommeliten Delta salt diapir in the central North Sea. In this study, we report of an active seep site (56°29.90' N, 2°59.80' E) located in the Tommeliten area, Norwegian Block 1/9, at 75 m water depth. Here, cracks in a buried marl horizon allow methane to migrate into overlying clay-silt and sandy sediments. Hydroacoustic sediment echosounding showed several venting spots coinciding with the apex of marl domes where methane is released into the water column and potentially to the atmosphere during deep mixing situations. In the vicinity of the gas seeps, sea floor observations showed small mats of giant sulphide-oxidizing bacteria above patches of black sediments and carbonate crusts, which are exposed 10 to 50 cm above seafloor forming small reefs. These Methane-Derived Authigenic Carbonates (MDACs) contain <sup>13</sup>C-depleted, archaeal lipids indicating previous gas seepage and AOM activity. High amounts of *sn2*-hydroxyarchaeol relative to archaeol and low abundances of biphytanes in the crusts give evidence that ANaerobic MEthane-oxidising archaea (ANME) of the phylogenetic cluster ANME-2 were the potential mediators of Anaerobic Oxidation of Methane (AOM) at the time of carbonate formation. Small pieces of MDACs were also found subsurface at about 1.7 m sediment depth, associated with the Sulphate-Methane Transition Zone (SMTZ). The SMTZ of Tommeliten is characterized by elevated AOM and Sulphate Reduction (SR) rates, increased concentrations of <sup>13</sup>C-depleted tetraether derived biphytanes, and specific bacterial Fatty Acids (FA). Further biomarker and 16S rDNA based analyses give evidence that AOM at the Tommeliten SMTZ is mediated by archaea belonging to the ANME-1b group and Sulphate Reducing Bacteria (SRB) most likely belonging to the Seep-SRB1 cluster. The zone of active methane consumption was restricted to a distinct horizon of about 20 cm. Concentrations of <sup>13</sup>C-depleted lipid biomarkers (e.g. 500

Control of methane efflux at the Tommeliten seep area

H. Niemann et al.

Title Page

Abstract

Introduction

Conclusions

References

Tables

Figures

◀

▶

◀

▶

Back

Close

Full Screen / Esc

Print Version

Interactive Discussion

ng g-dw<sup>-1</sup> biphythanes, 140 ng g-dw<sup>-1</sup> fatty acid ai-C<sub>15:0</sub>), cell numbers (1.5×10<sup>8</sup> cells cm<sup>-3</sup>), AOM and SR rates (3 nmol cm<sup>-3</sup> d<sup>-1</sup>) in the SMTZ are 2–3 orders of magnitude lower compared to AOM zones of highly active cold seeps such as Hydrate Ridge or the Gulf of Mexico.

5 **1. Introduction**

Hydrocarbon seepage in the ocean has been known for more than thirty years, but the contribution of this process to the global methane budget and the carbon cycle are not well constrained. Upwelling of hydrocarbon-rich geofluids from subsurface reservoirs to the hydro- and atmosphere could be a relevant process in the global carbon cycle, especially with regard to emissions of the greenhouse gas methane. Gas seepage from temperate shallow shelf seas is likely to contribute to methane emissions to the atmosphere, because of the seasonal deep mixing of the water column reaching the gas plumes above active seeps. The main challenge in constraining methane emission from the ocean is the need for quantitative estimates of the abundance and activity of cold seeps of ocean margins. As part of the OMARC cluster (Ocean Margin Deep-Water Research Consortium) of the 5th framework program of the European Commission, the project METROL (Methane flux control in ocean margin sediments) has been investigating methane fluxes from seep systems of the central and northern North Sea. Here we present results from biogeochemical and microbiological investigations of the Tommeliten seep area (56°29.90' N, 2°59.80' E) in the central North Sea. This and other active cold seeps have been detected during pipeline route and site surveys by oil companies (Hovland and Sommerville, 1985). Cold seeps have been reported from various geographic and geological settings (Judd, 2003). Once initiated, cold seeps may continuously emit gas, but they become inactive if subsurface gas and fluids are depleted, or undergo phases of dormancy where the shallow reservoir is recharged and none or little seepage occurs (Çifçi et al., 2003; Hovland and Judd, 1988). In the particular case of the central North Sea, thermogenic methane is produced in Jurassic

**Control of methane  
efflux at the  
Tommeliten seep  
area**

H. Niemann et al.

Title Page

Abstract

Introduction

Conclusions

References

Tables

Figures

◀

▶

◀

▶

Back

Close

Full Screen / Esc

Print Version

Interactive Discussion

sediments (Hovland and Judd, 1988). In the Tommeliten area, the enclosing sedimentary rocks have been pierced by a buried salt diapir, the so called Delta Structure, at about 1 km depth below sea floor (b.s.f.). As a result, the methane reservoir lacks a proper seal and disturbances on seismic profiles indicate that free gas migrates in sediments above the diapir to the sea floor (Hovland, 2002; Hovland and Judd, 1988). Previous expeditions to the Tommeliten seepage area with remotely operated vehicles (ROVs) documented streams of single methane bubbles of a thermogenic origin (−45.6‰ vs. Pee Dee Belemnite), small patches of filamentous, microbial mats and MDACs that outcrop on the sea floor (Hovland and Judd, 1988; Hovland and Sommerville, 1985; Thrasher et al., 1996). Such observations are typical for active seep systems, which have been found at passive and active continental margins.

High fluxes of methane usually lead to the development of methanotrophic microbial communities. Anaerobic methanotrophic archaea dominate submarine seep communities, because they profit from the abundance of sulphate utilised as an electron acceptor for AOM (Hinrichs and Boetius, 2002; Reeburgh, 1996). High AOM activities lead to high fluxes of sulphide and the development of microbial mats of giant sulphide-oxidizing bacteria (e.g. *Beggiatoa sp.*) and other thiotrophic organisms (Boetius and Suess, 2004; and literature therein). Furthermore, methane venting at various cold seeps is associated with the precipitation of MDACs which often contain lipid biomarkers of AOM communities (Bohrmann et al., 1998; Diaz-del-Rio et al., 2003; Hovland et al., 1985, 1987; Michaelis et al., 2002; Peckmann et al., 1999; Roberts and Aharon, 1994; Thiel et al., 2001). The phylogenetic origin of methanotrophic communities has been determined using combinations of lipid analysis and 16S rDNA methods in several methane seep environments (Boetius et al., 2000; Elvert et al., 1999; Hinrichs et al., 1999; Hoehler and Alperin, 1996; Knittel et al., 2003, 2005; Michaelis et al., 2002; Orphan et al., 2001b). Previous works identified two groups of ANME-archaea, which are phylogenetically related to methanogens (*Methanosarcina sp.*). Both ANME-1 and ANME-2 occur in consortia with relatives of a SRB cluster (Seep-SRB1) within the *Desulfosarcina/Desulfococcus* branch (Knittel et al., 2003). Although the geology and

## Control of methane efflux at the Tommeliten seep area

H. Niemann et al.

Title Page

Abstract

Introduction

Conclusions

References

Tables

Figures

◀

▶

◀

▶

Back

Close

Full Screen / Esc

Print Version

Interactive Discussion

biology of a variety of shallow water cold seeps have been well investigated, there is still very little known on the biogeochemistry and relevance of microbial methane consumption (Barry et al., 1996, 1997; Bian et al., 2001; Busmann et al., 1999; Dando and Hovland, 1992; Garcia-Garcia et al., 2003; Thomsen et al., 2001). The aim of this investigation was to study microbial processes related to methane seepage in shelf sediments. The main tasks were to reveal the distribution and identity of methanotrophic microorganisms, the zonation and magnitude of methane oxidation and to analyse the impact of methane venting on a sandy benthic habitat of the North Sea.

## 2. Materials and methods

### 2.1. Field observations

Visual observations of the Tommeliten sea floor were carried out with a Remotely Operated Vehicle (ROV "Sprint 103" of the Alfred Wegener Institute of Polar and Marine Research) during a cruise with R/V Heincke in June 2002 (HE-169) and with a towed video camera in October 2002 (HE-180). Gas flares in the water column were detected with a SES-2000 echosounder operated at different frequencies in the range of 10 to 100 kHz. The same parametric echosounder was used for high-resolution sub-bottom profiling at frequencies between 8 and 15 kHz. Video and echosounder images were used to select positions for sediment sampling.

### 2.2. Sample collection and storage

Sediment samples were collected by vibrocoreing (Institute of Baltic Sea Research) during the cruise HE180 in October 2002. Three cores were recovered from seep areas (core 1860, 1866, 1904, Fig. 1) and one from a reference station (core 1867). Upon recovery, cores were sectioned in 1 m pieces and kept in their plastic bags during subsampling of porewater constituents (methane, sulphate, sulphide) and turnover rate

**BGD**

2, 1197–1241, 2005

## Control of methane efflux at the Tommeliten seep area

H. Niemann et al.

Title Page

Abstract

Introduction

Conclusions

References

Tables

Figures

◀

▶

◀

▶

Back

Close

Full Screen / Esc

Print Version

Interactive Discussion

**EGU**

measurements of methane and sulphate. Replicate subsamples were obtained from a 10 cm section every 10 (cores 1866 and 1904) or 20 cm (core 1860). Samples for lipid biomarkers, cell counts and DNA were collected from the same 10 cm sections of core 1904. Sediment samples for lipid analysis were transferred into pre-cleaned glass vials and stored at  $-25^{\circ}\text{C}$  until extraction. Sediments for microbiological analysis were fixed for Fluorescent In Situ Hybridisation (FISH) or frozen for DNA extraction. Pieces of MDACs were collected from the SMTZ at station 1904 and stored at  $-25^{\circ}\text{C}$  until extraction. MDACs from the surface of the sea floor were collected earlier during a ROV expedition in 1998 (Hovland, 2002). Detailed protocols for the following methods can be obtained from <http://www.metrol.org>.

### 2.3. Methane concentrations

Methane concentrations from selected sediment horizons were determined according to the “head space” method from 5 ml sediment fixed with 25 ml NaOH (2.5%, w/v) in gas-tight glass vials as described previously (Treude et al., 2003). Immediately after sub-sampling, methane concentrations were determined on board using a gas chromatograph as described elsewhere (Treude et al., 2003).

### 2.4. Sulphate concentrations

5ml of wet sediment were fixed in 50 ml corning vials with 25 ml zinc acetate solution (20%, w/v). After vigorous shaking, sediment particles were separated by centrifugation and filtration. Sulphate concentrations were determined from an aliquot of the supernatant using a Waters HPLC system (Waters 512 HPLC pump, I.C.-Pak anion-column (Waters; WAT007355) 4.6×50 mm, Waters 730 conductivity detector). Isophthalic acid (1 mM) was used as a solvent at a constant flow rate of  $1\text{ ml min}^{-1}$ . Sulphate concentrations were corrected for porosity, which was determined according to Treude et al. (2003).

---

## Control of methane efflux at the Tommeliten seep area

H. Niemann et al.

---

Title Page

Abstract

Introduction

Conclusions

References

Tables

Figures

◀

▶

◀

▶

Back

Close

Full Screen / Esc

Print Version

Interactive Discussion

## 2.5. Sulphide concentrations

Total sulphide concentrations were determined using a combination of a WTW Multiline P4 multi meter equipped with a WTW pH/ION 340i ion meter with two coupled electrodes (WTW Ag 500/WTW Ag/S 5001) for  $S^{2-}$  concentration measurements and a WTW Sentix 41-3 electrode for pH measurements. The  $S^{2-}$  measuring section was calibrated against standards of  $H_2S/HS^-/S^{2-}$  at pHs of 6, 7, 8 and 9.

## 2.6. Ex situ AOM and SR measurements

Subsamples for turnover rate measurements were collected from core 1904 by plugging glass tubes (1×6 cm) into a defined sediment horizon of ca. 10 cm ( $n=5$  for AOM and SR, respectively) as described previously (Treude et al., 2005 and references therein). To prevent gas exchange, the tubes were sealed with butyl rubber stoppers and only briefly opened for radiotracer injection, i.e. 50  $\mu$ l  $^{14}C$ -labelled methane and 5  $\mu$ l  $^{35}S$ -labelled sulphate (tracer dissolved in water, 10 kBq and 50 kBq, respectively). Sediment samples were incubated on board at in situ temperature (4°C) for 24 h in the dark. After incubation, AOM and SR samples were fixed like the methane and sulphate samples (see above). Further processing of AOM and SR samples was performed according to Treude et al. (2003) and references therein. Turnover rates were calculated according to the following equations:

$$AOM = \frac{^{14}CO_2}{^{14}CH_4 + ^{14}CO_2} \times \frac{conc. CH_4}{incubat. Time} \quad (1)$$

$$SRR = \frac{TRI^{35}S}{^{35}SO_4^{2-} + TRI^{35}S} \times \frac{conc. SO_4^{2-}}{incubat. Time} \quad (2)$$

Here,  $^{14}CO_2$ ,  $^{35}SO_4^{2-}$  and  $TRI^{35}S$  are the activities (Bq) of carbon dioxide, sulphate and total reduced sulphur species, respectively, whereas conc.  $CH_4$  and conc.  $SO_4^{2-}$

**BGD**

2, 1197–1241, 2005

### Control of methane efflux at the Tommeliten seep area

H. Niemann et al.

Title Page

Abstract

Introduction

Conclusions

References

Tables

Figures

◀

▶

◀

▶

Back

Close

Full Screen / Esc

Print Version

Interactive Discussion

**EGU**

are the concentrations of methane and sulphate at the beginning of the incubation.

2.7. In vitro potential rates

The applied subsampling techniques of this work have been proven useful for muddy sediments (Treude et al., 2003). To test the suitability for sandy sediments, we compared short-term AOM and SR measurements with long-term in vitro measurements (1 wk) of sediments collected from three horizons (surface, at the sulphide peak, and deep horizons) according to a modified method of Nauhaus et al. (2002). For this study, 20 ml sediment slurries were incubated with radio-labelled methane and sulphate ( $n=5$  for AOM and SR, respectively). The slurries consisted of 1 cm<sup>3</sup> fresh sediment and methane saturated (1.4 mM), artificial sea water media with 28 mM sulphate (Widdel and Bak, 1992). As a control, slurries from one horizon (100-150 cm, core 1904) were incubated without methane. After incubation, sediment slurries were processed like those from short-term incubations.

2.8. Extraction of sediment and MDAC samples and preparation of derivatives

The extraction procedure and preparation of Fatty Acid Methyl Esters (FAMES) was carried out according to Elvert et al. (2003). Briefly, total lipid extracts (TLE) were obtained from ca. 25 g of wet sediment collected from core 1904 and from two MDAC pieces (one collected from the surface of the sea floor and one from the SMTZ in core 1904). Prior to extraction, the MDAC pieces were disintegrated with HCL (2M). The TLE was extracted by subsequent ultrasonification using organic solvents of decreasing polarity. Internal standards of known concentration and carbon isotopic compositions were added prior to extraction. Esterified Fatty Acids (FAs) present in glyco- and phospholipids were cleaved by saponification with methanolic KOH-solution. After extraction of the neutral lipid fraction from this mixture, FAs were methylated for analysis with BF<sub>3</sub> in methanol yielding FAMES.

Neutral lipids were further separated into hydrocarbons, ketones and alcohols on

Control of methane  
efflux at the  
Tommeliten seep  
area

H. Niemann et al.

Title Page

Abstract

Introduction

Conclusions

References

Tables

Figures

◀

▶

◀

▶

Back

Close

Full Screen / Esc

Print Version

Interactive Discussion

a SPE silica glass cartridge (0.5 g packing). Prior to separation, the column was rinsed with 15 ml *n*-hexane/dichloromethane (95:5, v/v). After application of the neutral fraction, solvent mixtures of increasing polarity were subsequently added: (I) 5 ml *n*-hexane/dichloromethane (95:5, v/v), (II) 5 ml *n*-hexane/dichloromethane (2:1, v/v) and (III) 5 ml dichloromethane/acetone (9:1, v/v). Neutral lipid fractions (hydrocarbons (I), ketones (II) and alcohols (III), respectively) were collected and concentrated to 100  $\mu$ l using rotary evaporation. Finally, neutral lipid fractions were stored at  $-20^{\circ}\text{C}$  until further processing and/or analysis. Alcohols were analysed as trimethylsilyl (TMS) ethers. Shortly before analysis ( $<1$  wk), aliquots from selected alcohol fractions were dried under a stream of nitrogen. 100  $\mu$ l pyridine and 50  $\mu$ l bis(trimethylsilyl)trifluoroacetamide were added and the reaction was carried out for 1 h at  $70^{\circ}\text{C}$ . After cooling, excess solvent was evaporated and the remaining TMS adducts were re-suspended in 50  $\mu$ l of *n*-hexane. TMS adducts were stored at  $-20^{\circ}\text{C}$  until Gas Chromatography (GC) and Gas Chromatography-Mass Spectrometry (GC-MS) analysis.

Sediments and the two MDAC pieces were additionally analysed for the content of tetraether lipids. Tetraether lipids, which are contained in the alcohol fractions, were subjected to ether cleavage through HI treatment as reported previously yielding phytanes and biphytanes which can be analysed by GC, GC-MS and GC Isotope Ratio Mass Spectrometry (GC-IRMS) analysis (Blumenberg et al., 2004; Kohnen et al., 1992). Briefly, 500  $\mu$ l HI (57%) and 500  $\mu$ l acetic acid (100%) were added to a dried alcohol fraction and iodisation of ether bonds was promoted at  $110^{\circ}\text{C}$  for 4 h. After cooling, alkyl iodides were extracted with *n*-hexane. Excess iodine was removed by adding sodium thiosulphate solution (5%, w/v in water). Subsequently, the hexane phase was removed and dried. Alkyl iodides were reduced to alkanes in 0.5 ml of tetrahydrofuran (THF) by adding lithium-aluminium hydride (2 spatula tips). Reduction of iodides was carried out at  $110^{\circ}\text{C}$  for 3 h. After cooling, excess lithium-aluminium hydride was deactivated by the addition of deionised water. The supernatant solvent phase was removed, dried and stored at  $-20^{\circ}\text{C}$ .

## Control of methane efflux at the Tommeliten seep area

H. Niemann et al.

Title Page

Abstract

Introduction

Conclusions

References

Tables

Figures

◀

▶

◀

▶

Back

Close

Full Screen / Esc

Print Version

Interactive Discussion

## 2.9. Preparation of Dimethyl Disulphide (DMDS) adducts

Double bond positions of monoenoic FAs were determined by analysis as DMDS adducts according to previously reported methods (Moss and Lambert-Fair, 1989; Nichols et al., 1986). Briefly, an aliquot of a selected sample (dissolved in 50  $\mu$ l *n*-hexane) was treated with DMDS (100  $\mu$ l) and iodine-diethyl ether solution (20  $\mu$ l, 6% w/v). Formation of DMDS adducts was carried out at 50 °C for 48 h. After cooling, excess iodine was reduced with sodium thiosulphate (5% w/v in water). The organic phase was removed, dried and stored at -20 °C.

## 2.10. Gas Chromatography, Gas Chromatography-Mass Spectrometry, Gas Chromatography-Isotope Ratio Mass Spectrometry

Concentrations, identities and stable carbon isotope ratios of individual compounds were determined by GC, GC-MS and GC-IRMS analyses, respectively. Instrument specifications and operation modes of the GC, GC-MS and GC-IRMS systems were set according to Elvert et al. (2003). Concentrations were calculated against internal standards. Identities of acquired mass spectra were compared to known standards and published data. The chemical structure of biphytanes are reviewed in Schouten et al. (1998): monocyclic biphytane reported here equals compound IV and bicyclic biphytane compound V. Stable carbon isotope ratios are given in the  $\delta$ -notation against PDB.  $\delta^{13}\text{C}$ -values of FAs and alcohols were corrected for the introduction of additional carbon atoms during derivatisation. Internal standards were used to monitor precision and reproducibility during measurements. Reported  $\delta^{13}\text{C}$ -values have an analytical error of 1–2‰.

## 2.11. Cell counts and fluorescence in situ hybridisation

Selected sediment samples from core 1904 were fixed with 2% formaldehyde and stored at 4 °C until further analysis. Total cell numbers were quantified with the aid

**BGD**

2, 1197–1241, 2005

**Control of methane  
efflux at the  
Tommeliten seep  
area**

H. Niemann et al.

Title Page

Abstract

Introduction

Conclusions

References

Tables

Figures

◀

▶

◀

▶

Back

Close

Full Screen / Esc

Print Version

Interactive Discussion

**EGU**

of epifluorescence microscopy after staining the cells with Acridine Orange according to Knittel et al. (2003). Sediments from above, below and within the SMTZ were analysed for the presence of archaea and bacteria by FISH with Horseradish Peroxidase (HRP)-labelled oligonucleotide probes and tyramide signal amplification (CARD-FISH) according to the method of Pernthaler et al. (2002). The CARD-FISH probes used in this study were EUB338, ARCH915 and ANME1-350, purchased from biomers.net GmbH, Ulm, Germany. Oligonucleotide probes and instrument specification are presented in Knittel et al. (2005). Briefly, after 2 hours fixation at 4°C, formaldehyde fixed sediments were washed with 1×PBS (10 mM sodium phosphate, 130 mM NaCl) and stored in 1×PBS/EtOH (1:1) at –20°C. These samples were diluted 1:10, treated by sonification and filtered on 0.2 µm GTTP polycarbonate filters. Prior to filtration, filters were coated with agarose to prevent cell loss. In addition to ultrasonification, cells were permeabilised with lysozyme solution for 1 h at 37°C and subsequently hybridised with HRP labelled probe for 2 h at 35°C. Finally, filters were incubated for 15 min in tyramide solution labelled with the fluorochrome Cy-3.

2.12. DNA extraction and clone library construction

Total community DNA was directly extracted from ca. 5 g of wet sediment from the SMTZ of core 1904 according to Zhou et al. (1996). Crude DNA was purified with the Wizard DNA Clean-Up Kit (Promega, Madison, WI). Almost full-length archaeal and bacterial 16S rRNA genes from the extracted chromosomal DNAs were amplified using primers 20f (Massana et al., 1997) and Uni1392R (Lane et al., 1985) for archaea and GM3F (Muyzer et al., 1995) and GM4R (Kane et al., 1993) for bacteria. Polymerase chain reactions (PCRs) were performed with a Mastercycler Gradient (Eppendorf, Hamburg, Germany) as described previously (Ravenschlag et al., 1999), except that the annealing temperature was 58°C and 42°C for archaea and bacteria, respectively. PCR products of several reactions were combined and purified with the QiaQuick PCR Purification Kit (Qiagen, Hilden, Germany). DNA was ligated in the pGEM T-Easy vector (Promega, Madison, WI) and transformed into *E. coli* TOP10 cells (Invitrogen,

Control of methane  
efflux at the  
Tommeliten seep  
area

H. Niemann et al.

Title Page

Abstract

Introduction

Conclusions

References

Tables

Figures

◀

▶

◀

▶

Back

Close

Full Screen / Esc

Print Version

Interactive Discussion

Carlsbad, CA) according to the manufacturer's recommendations. Sequencing was performed by *Taq* cycle sequencing with a model ABI1377 sequencer (Applied Biosystems) with insert-specific and vector primers. The absence of chimeric sequences in the clone libraries was verified with the CHIMERA\_CHECK program of the Ribosomal Database Project II (<http://rdp.cme.msu.edu/html/analyses.html>). A total of 57 archaeal and 54 bacterial clones were partially sequenced (~0.5 kb). Using the ARB software package, these sequences were calculated into existing phylogenetic trees by parsimony without allowing changes in the tree topology. Representative sequences of each cluster were then fully sequenced (~1.3 kb) and matched against the NCBI data base (<http://www.ncbi.nlm.nih.gov/BLAST>). The sequence data reported here will appear in the EMBL, GenBank, and DDBJ nucleotide sequence databases under the accession numbers DQ007532 to DQ007540.

### 3. Results

#### 3.1. Field observations

Echosounder transects revealed several gas flares reaching from the sea floor to the sea surface (transducer depth) at 6°29.92' N, 2°59.80' E in an area of ca. 3500 m<sup>2</sup> (Figs. 1 and 2). A small area with 4 single plumes was also found at 6°29.56' N, 2°59.25' E. No plumes were detected outside of the seep areas within a larger area of 12 km<sup>2</sup>. Echosounder guided sampling of the gas flares and subsequent gas extraction showed high concentrations of methane within the plumes (500 nM), which were up to 2 orders of magnitude above the background concentration (5 nM, data not shown). Similar to earlier findings (Hovland, 2002; Hovland and Judd, 1988), sea bottom observations with the ROV and the towed camera showed the presence of bubble streams emanating from small point sources of a few cm in diameter (Fig. 3a). White bacterial mats, most likely formed by giant sulphide oxidizing bacteria with a patch size of some decimetres were found in the same area (Figs. 1 and 3b). No bubble emission

**BGD**

2, 1197–1241, 2005

## Control of methane efflux at the Tommeliten seep area

H. Niemann et al.

Title Page

Abstract

Introduction

Conclusions

References

Tables

Figures

◀

▶

◀

▶

Back

Close

Full Screen / Esc

Print Version

Interactive Discussion

**EGU**

was observed directly from bacterial mats. At various locations mostly situated north of the plume cluster, carbonate crusts with diameters ranging from decimetres to metres were exposed 10–50 cm above the sea floor (Figs. 1 and 3c). These crusts were densely covered by several species of anthozoa and other sessile macrofauna typical of hard grounds (Fig. 3c). These animals were not found in the surrounding area characterized by sandy sediments. Furthermore, a comparably high density of demersal fish was observed in the vicinity of the crusts.

### 3.2. Sediment layers and geochemical profiles

The echosounder profiles showed several dome like structures in the seep area with a distinct sequence of layers narrowing towards the apex of each dome where the gas plumes were situated (Fig. 2). Station 1904 was furthest away from the plume, and station 1860 was closest. All cores obtained from the Tommeliten seep area (1904, 1866 and 1860, Fig. 1) contained four different horizons of sediments (Figs. 4a–6a): (1) the lowest (350–240 cm b.s.f. in core 1904; 300–200 cm b.s.f. in core 1860) consisted of stiff marl followed by (2) a gassy layer of clay-silt (Fig. 3d) (240–175,cm b.s.f. in core 1904; 230–160 cm b.s.f. in core 1866; 200–125 cm b.s.f. in core 1860). (3) 10 to 40 cm of sand comprising MDACs (Fig. 3e) were overlying the clay-silt in cores 1904 and 1860. The presence of gas bubbles of ca 0.1–1 cm in diameter in the clay-silt (2), MDAC bearing sediments (3) and the first 10 to 20 cm just above the carbonate bearing sections gave the sediments a spongy appearance (Fig. 3d). (4) The upper most sediment layer consisted of carbonate-free sand (165–0 cm b.s.f. in core 1904; 85–0 cm b.s.f. in core 1860). Hence, the narrowing of layers towards the apex of the dome visualized by echosounder images (Fig. 2) was reflected in the sedimentology (Figs. 4a and 6a). The sediment layering at station 1866 was different from station 1904 and 1860 as the (3) horizon containing MDACs was found at ca. 75 to 85 cm b.s.f. within the (4) sandy sediments (Fig. 5a). No. (1) marl section was recovered from core 1866, which was 230 cm long. Sediments at the reference station (recovered ca. 5 km away from the seep area) consisted of (4) a sandy surface horizon (0 to 100 cm

## Control of methane efflux at the Tommeliten seep area

H. Niemann et al.

Title Page

Abstract

Introduction

Conclusions

References

Tables

Figures

◀

▶

◀

▶

Back

Close

Full Screen / Esc

Print Version

Interactive Discussion

b.s.f.) and an underlying (3) clay-silt horizon (100–400 cm b.s.f.). No gas bubbles or carbonates were observed at this station (data not shown).

The methane, sulphate and sulphide gradients in the cores from the Tommeliten seep area were influenced by their proximity to the gas plume and by the sediment layering. Because of the artefacts introduced by vibrocoring and subsequent sampling of the gassy and sandy sediments, fluxes of methane and sulphate cannot be calculated from the profiles. Nevertheless, the data indicate a distinct zonation of the processes of anaerobic methane consumption and associated sulphide production. At the reference station away from the seep, sediments contained methane concentrations  $<0.1 \mu\text{M}$  (quantification limit) throughout the core. In contrast, within the seep area, methane concentrations reached supersaturation in the (1) clay horizon and the (3) MDAC-bearing sediments (core 1860=2.5, 1866=1.4, 1904=1.6 mM). Within the stiff marl sediments (1), the methane concentration was comparably low ( $<0.2 \text{ mM}$ ) (Fig. 4a–6a). The sulphate-methane transition zone (SMTZ) is defined here as the horizon with a distinct dip in methane and sulphate concentrations as well as a peak in sulphide concentrations. This was located between the (3) MDAC-bearing sediments and (4) the overlying sandy sediments in cores 1904 and 1860, and in the lower sand section in core 1866. In contrast to a typical SMTZ, sulphate was not depleted in the methane-rich zone. However, this is most likely a result of sampling artefacts. Above the SMTZ, methane concentrations declined to values  $<0.04 \text{ mM}$ . In core 1860, methane concentrations remained comparably high above the carbonate-bearing horizon ( $>0.25 \text{ mM}$ ) but declined to  $<0.04 \text{ mM}$  in the top sediment horizon. At station 1904 and 1866, methane concentrations were below  $0.01 \text{ mM}$  in the top 40 cm of the seabed (Figs. 4a and 5a). Sulphate concentrations declined slightly at the methane transition zone (SMTZ) from seawater values (28 mM) to values between 23 (core 1904, 1866; Figs. 4a and 5a) and 15 mM (core 1860; Fig. 6a). In each core, a distinct sulphide peak was measured just above the horizon in which methane declined with concentrations of 3.1 mM (core 1904, 135 cm b.s.f.), 1.9 mM (core 1866, 115 cm b.s.f.) and 2.1 mM (core 1860, 55 cm b.s.f.), respectively (Figs. 4b–6b). Sulphide concentrations

**Control of methane efflux at the Tommeliten seep area**

H. Niemann et al.

Title Page

Abstract

Introduction

Conclusions

References

Tables

Figures

◀

▶

◀

▶

Back

Close

Full Screen / Esc

Print Version

Interactive Discussion

declined to values below detection limit in surface and bottom horizons. Sediments of the reference station did not show any detectable sulphide concentrations (data not shown).

3.3. Ex situ AOM and SR

5 In short-term ex situ incubations, AOM reached a maximum rate of  $2.4 \text{ nmol cm}^{-3} \text{ d}^{-1}$  at 170 cm b.s.f. in core 1904 within the SMTZ. Sulphate Reduction Rates (SRR) were also elevated at the SMTZ reaching  $2 \text{ nmol cm}^{-3} \text{ d}^{-1}$ . Unfortunately, no SRR could be measured below this horizon due to sample loss. Rates in overlying horizons decreased to values ranging between 0.8 and  $0.1 \text{ nmol cm}^{-3}$  (Fig. 4e). Highest SR  
10 were detected in the surface horizon ( $3.5 \text{ nmol cm}^{-3} \text{ d}^{-1}$ ). AOM and SR rates were highly variable between replicate subsamples within one horizon leading to standard errors of up to 83% of the mean (Fig. 4e).

3.4. In vitro rates at methane saturation

Potential AOM and SR rates ( $\text{AOM}_{\text{max}}$ ,  $\text{SR}_{\text{max}}$ ) measured in long-term incubations were  
15 highest in sediments collected from the SMTZ with 1.4 to 3 and 2.9 to  $4.6 \text{ nmol cm}^{-3} \text{ d}^{-1}$ , respectively (Figs. 4c, 4d–6c and d). In these incubations, the ratio of AOM to SR was 1:1 in core 1904, 0.3:1 in core 1866 and 0.5:1 core 1860. In sediment slurries from the SMTZ at station 1904, SR without methane was 70% lower compared to incubations with methane. This indicates a close coupling between AOM and SR.  
20  $\text{AOM}_{\text{max}}$  and  $\text{SR}_{\text{max}}$  were substantially lower in slurries obtained from horizons above and below the SMTZ (Figs. 4c, 4d–6c and 6d).

Control of methane  
efflux at the  
Tommeliten seep  
area

H. Niemann et al.

Title Page

Abstract

Introduction

Conclusions

References

Tables

Figures

◀

▶

◀

▶

Back

Close

Full Screen / Esc

Print Version

Interactive Discussion

### 3.5. Biomarker signatures

#### 3.5.1. Sediments

Concentration measurements of single lipid compounds showed maxima of specific bacterial FAs and archaeal isoprenoidal lipids in sediments from the SMTZ of core 1904 (150–180 cm b.s.f.; Figs. 4g and 4i, Table 1). At this horizon, stable carbon isotope analysis revealed the highest depletion in  $^{13}\text{C}$  with minimum values of  $-79$  (*sn2*-hydroxyarchaeol) in archaeal diether lipids (Fig. 7) and  $-50\text{‰}$  (ai- $\text{C}_{15:0}$ ) in bacterial FAs (Figs. 4h and 9). The concentration of both archaeal and bacterial lipids decreased just above and below the SMTZ where these biomarkers were also less depleted. Archaeal lipids found at the SMTZ were dominated by the glycerol diether archaeol and the decomposition products of both diether and tetraether lipids, i.e. phytane and biphytanes with  $\delta^{13}\text{C}$ -values ranging from  $-60\text{‰}$  to  $-70\text{‰}$  (Table 1, Fig 7). *sn2*- and *sn3*-hydroxyarchaeol ( $\Sigma$ hydroxyarchaeol) were less abundant relative to archaeol with a ratio of 0.4:1. Concentrations of the biphytanes decreased with increasing degree of cyclisation (Fig. 7). Compared to the di- and tetraethers, archaeal isoprenoidal hydrocarbons were approximately one order of magnitude lower in concentration (Table 1). As a result, the stable carbon isotope composition of these compounds could not be measured (required minimum concentration:  $\sim 100 \text{ ng g-dw}^{-1}$ ). Isoprenoidal hydrocarbons were dominated by 2,6,10,15,19-pentamethylcosenes with two double bonds ( $\Sigma$ PMI:2; 3 isomers) followed by PMI:0 and PMI:1 (Fig. 8). The FA fraction in sediments of the SMTZ was dominated by  $\text{C}_{16:0}$ , followed by  $\text{C}_{18:1\omega 9}$ ,  $\text{C}_{18:0}$  and  $\text{C}_{18:2}$ . FAs that are putatively specific for SRB involved in AOM such as  $\text{C}_{16:1\omega 5}$ , i- $\text{C}_{15:0}$  and ai- $\text{C}_{15:0}$  (Blumenberg et al., 2004; Elvert et al., 2003), were approximately 5 to 50 times lower in concentration compared to  $\text{C}_{16:0}$  in Tommeliten sediments (Table 1). However, in contrast to abundant FAs, stable carbon isotope compositions of i- $\text{C}_{15:0}$  and ai- $\text{C}_{15:0}$  showed a depletion in  $^{13}\text{C}$  (Figs. 4h and 9).

**BGD**

2, 1197–1241, 2005

#### Control of methane efflux at the Tommeliten seep area

H. Niemann et al.

Title Page

Abstract

Introduction

Conclusions

References

Tables

Figures

◀

▶

◀

▶

Back

Close

Full Screen / Esc

Print Version

Interactive Discussion

**EGU**

### 3.5.2. Methane derived authigenic carbonates

Lipid analysis revealed that MDACs from the Tommeliten seep contained specific archaeal and bacterial lipids.  $\delta^{13}\text{C}$ -values of these compounds were 20–30‰-lower in comparison to those extracted from sediment at the SMTZ of station 1904 (Figs. 7–9).

5 In contrast to the SMTZ sediments, the di- and tetraether fraction in the subsurface MDACs was dominated by *sn*2-hydroxyarchaeol, which was slightly more abundant than archaeol (archaeol:  $\Sigma$ hydroxyarchaeol=1:1.6). The surface MDACs even reached a ratio of archaeol to  $\Sigma$ hydroxyarchaeol of 1:1.9 (Fig. 7). The suite of biphytanes found in sediments of the SMTZ was also present in the subsurface and surface MDACs.

10 Furthermore, the biphytanes in the MDACs and in sediments of the SMTZ showed a similar abundance pattern. I.e. concentrations of the biphytanes decreased with higher degrees of cyclisation. However, in contrast to sediments of the SMTZ, the abundance of biphytanes relative to archaeol and phytane was lower in the subsurface MDACs and lowest in surface MDACs (Fig. 7). Furthermore, PMIs in the MDACs showed higher

15 degrees of saturation (Fig. 8) and a higher number of isomers compared to sediments of the SMTZ.  $\Sigma$ PMI:1 comprised 4,  $\Sigma$ PMI:2 5 and  $\Sigma$ PMI:3 2 isomers. Notably, surface MDACs contained very high amounts of crocetane. Stable carbon isotope compositions of diethers, tetraethers and isoprenoid hydrocarbons were uniformly  $<-90$  , both in the subsurface and the surface MDACs. An exception was crocetane showing

20  $\delta^{13}\text{C}$  values of  $-70$  and  $-55$ ‰ in the subsurface and the surface MDACs, respectively (Fig. 8). Variations in  $\delta^{13}\text{C}$ -values among the PMI isomers were small with a maximum of  $\pm 2$ ‰. As with the biphytanes, the FA abundance pattern of the subsurface MDACs showed comparably high similarities to the pattern found in sediments of the SMTZ, whereas the abundance pattern of the surface MDACs showed lower similarities

25 (Fig. 9). Subsurface MDACs contained roughly twice as much  $i\text{-C}_{15:0}$  than  $ai\text{-C}_{15:0}$  while this ratio was almost 1:1 in surface carbonates. In the subsurface MDACs,  $i\text{-C}_{15:0}$  and  $ai\text{-C}_{15:0}$  were the most  $^{13}\text{C}$ -depleted FAs with values down to  $-62$ ‰. In contrast, the most  $^{13}\text{C}$ -depleted FA found in the surface MDACs was  $\text{C}_{16:1\omega 5}$  with a  $\delta^{13}\text{C}$ -value

**BGD**

2, 1197–1241, 2005

## Control of methane efflux at the Tommeliten seep area

H. Niemann et al.

Title Page

Abstract

Introduction

Conclusions

References

Tables

Figures

◀

▶

◀

▶

Back

Close

Full Screen / Esc

Print Version

Interactive Discussion

**EGU**

of -80‰ while i-C<sub>15:0</sub> and ai-C<sub>15:0</sub> showed values of -67‰ and -65‰, respectively (Fig. 9).

### 3.6. Archaeal and bacterial clone libraries

One archaeal and one bacterial clone library were constructed from a sediment sample from the SMTZ of station 1904 to study the microbial diversity in the AOM zone. A total of 57 archaeal and 54 bacterial clones were partially sequenced (~0.5 kb). From each phylogenetic group, one representative sequence was almost fully (~1.5 kb) sequenced. The obtained 16S rDNA archaeal clone library showed a low diversity in comparison to previous publications of methane seep systems (Mills et al., 2003; Orphan et al., 2002; Teske et al., 2002). Two different phylogenetic groups of archaea were detected (Table 2). The ANME-1b cluster (*Methanosarcinales*) accounted for 98% of obtained sequences. The second group comprised a single clone sequence, which belongs to the Marine Benthic Group D (Thermoplasmatales). Other ANME groups or methanogens were not detected.

The bacterial clone library consisted of seven uncultivated, methane seep-related lineages. The next relatives to all sequences obtained are commonly found in marine cold seep sediments (Table 2). Most abundant were clones of the  $\delta$ -Proteobacteria comprising sequences of the putative bacterial partner for AOM (26% of bacterial clone sequences), i.e. the Seep-SRB1 cluster (Knittel et al., 2003). One other abundant group among the  $\delta$ -Proteobacteria were the Desulfoarcuaceae (26%). 38% of bacterial sequences were distantly related to the Haloanaerobiales, which belong to the Firmicutes.

### 3.7. Total cell counts and ANME-1 abundance

Direct cell counts showed highest numbers in surface sediment horizons ( $23.2 \times 10^8$  cells cm<sup>-3</sup> at 30 cm b.s.f.). Cell counts decreased below this horizon to values  $< 0.2 \times 10^8$  cells cm<sup>-3</sup> at 130 cm b.s.f. but showed an increase in sediments of the SMTZ

**Control of methane efflux at the Tommeliten seep area**

H. Niemann et al.

Title Page

Abstract

Introduction

Conclusions

References

Tables

Figures

◀

▶

◀

▶

Back

Close

Full Screen / Esc

Print Version

Interactive Discussion

( $1.1\text{--}1.3\times10^8$  cells  $\text{cm}^{-3}$  at 150–170 cm b.s.f.). In this horizon, probing with CARD-FISH targeting ANME-1 cells resulted in positive signals (Fig. 10). Only single cells or chains of up to three cells were observed. Bacterial partners physically attached to ANME-1 were not observed. Specific CARD-FISH counts resulted in  $1.45\times10^7$  ANME-1 cells  $\text{cm}^{-3}$  sediment. The overlying horizon (110 cm b.s.f.) contained very low numbers of ANME-1 cells ( $<3\times10^5$  cells  $\text{cm}^{-3}$ ), whereas ANME-1 could not be detected in an underlying horizon (190 cm b.s.f.).

## 4. Discussion

### 4.1. Methane emission from the Tommeliten seep area

Two decades after the discovery of gas seeps in the Tommeliten area by Hovland and Judd (1988), we revisited this area for video and biogeochemical surveys. The Tommeliten area is located in the central North Sea ( $56^{\circ}29.90' \text{ N}$ ,  $2^{\circ}59.80' \text{ E}$ ) above three salt diapirs. Here, the so-called Delta structure has pierced the enclosing sedimentary rocks allowing methane to migrate to surface sediments. During ROV surveys, Hovland and Judd (1988) identified several small gas vents emitting single streams of methane bubbles from the sandy seabed into the hydrosphere. High reflective, small patches ( $<5 \text{ m}$  across,  $\sim 0.5 \text{ m}$  deep) noted on short-range side-scan sonar records, which the authors termed “eyed pockmarks”, were found to comprise MDAC crusts serving as a hard substrate for a variety of anthozoa such as sea-anemones and sea pens. Furthermore, it was estimated that the flux of gas from the wider seep area of  $6500 \text{ m}^2$  was  $47 \text{ g CH}_4 \text{ m}^{-2}\text{yr}^{-1}$  (Hovland and Judd, 1992; Hovland et al., 1993). Two decades later, our observations provide evidence that the Tommeliten seep area is still active. Here, several gas flares reaching almost to the sea surface were recorded by hydroacoustic profiling (Fig. 2) and video surveys provided evidence for bubble streams being emitted from the sandy sea floor (Fig. 3a). From these observations it can be concluded that the seeps of the Tommeliten area contribute to atmospheric methane, especially dur-

**Control of methane efflux at the Tommeliten seep area**

H. Niemann et al.

Title Page

Abstract

Introduction

Conclusions

References

Tables

Figures

◀

▶

◀

▶

Back

Close

Full Screen / Esc

Print Version

Interactive Discussion

ing deep mixing situations in the North Sea. Video observations also showed microbial mats of filamentous, presumably thiotrophic bacteria (Fig. 3b) and reef like structures of MDACs as already described by Hovland and Judd (1988).

Such features as observed at Tommeliten are typical for active cold seeps on continental margins and generally indicate high methane fluxes and turnover rates (Boetius and Suess, 2004; Joye et al., 2004; Michaelis et al., 2002; Orphan et al., 2004; Treude et al., 2003). However, we found only few highly focused point sources in the sandy seabed and very patchy, small microbial mats pointing to very restricted AOM zones close to the sea floor.

#### 4.2. Control of methane efflux from seep sediments

Our study provides evidence that methane flux at the Tommeliten seeps is controlled by a combination of geological and microbial processes as illustrated in Fig. 11. The shallow seismic profiles show strong, ascending reflectors in the sediment (Fig. 2). Moreover, ascending and discontinuous reflectors on seismic plots of deep sediment layers (Hovland, 2002; Hovland and Judd, 1988) indicate that the process of local gas venting may have occurred several times in the history of Tommeliten. At present, the position of the methane plumes together with direct observations of methane bubbles (Figs. 1 and 3a) give evidence for seepage pathways at the crest of the marl domes that allow for emission of free gas, circumventing microbial consumption (Fig. 11-II). Our observations from vibrocorer sampling indicate that the marl sediments represent a barrier to gas flow. A shallower depth and narrowing of the marl boundary in the vicinity of plumes as observed previously (Hovland and Judd, 1988) and in this study (Figs. 4a and 6a) suggests that subsurface gas pressure lifts sediments (Fig. 11-I). As a consequence, the marl may locally crack, allowing an advection of methane into and within the overlying clay-silt sediments. At the station 1860 closest to the gas plume, the marl horizon was missing. It is possible that the position of the gas vents is connected to the distribution of sands, which facilitate the passage of free gas bubbles compared to clays.

**Control of methane efflux at the Tommeliten seep area**

H. Niemann et al.

Title Page

Abstract

Introduction

Conclusions

References

Tables

Figures

◀

▶

◀

▶

Back

Close

Full Screen / Esc

Print Version

Interactive Discussion

Within the sediments, methane is most likely advecting horizontally in the clay-silt layer above the marl. Here, it is partially consumed in a very distinct subsurface horizon of no more than 20 cm located at the SMTZ between the MDACs (horizon 3) and the sandy sediments (horizon 4) (Fig. 11-III). The decline of methane concentrations in this sediment layer coincided with increased concentrations of  $^{13}\text{C}$ -depleted lipid biomarkers, cell abundances as well as with relatively elevated rates of AOM and SR measured by in vitro and ex situ incubations.

The ex situ and in vitro AOM and SR rates at the Tommeliten seep SMTZ are 2 to 3 orders of magnitude lower in comparison to highly active cold seeps such as Hydrate Ridge and the Gulf of Mexico (Boetius et al., 2000; Joye et al., 2004; Treude et al., 2003). Nevertheless, AOM apparently consumes all the methane diffusing into the sands. With respect to the abundance of ANME-1 cells ( $1.5 \times 10^7$  cells  $\text{cm}^{-3}$ ) and the average AOM rate in sediments at the SMTZ ( $2.4 \text{ nmol cm}^{-3} \text{ d}^{-1}$ ), the cell-specific AOM rate at Tommeliten was  $\sim 0.17 \text{ fmol d}^{-1}$ . This value is comparable to highly active seeps. At Hydrate Ridge, ex situ measurements of AOM showed near surface peaks with average values of 1.1 and  $1.3 \mu\text{mol cm}^{-3} \text{ d}^{-1}$ , respectively (Treude et al., 2003; study site *Beggiatoa* field 2 at 2.5 and 6.5 cm b.s.f.). In these horizons, ca.  $0.9 \times 10^8$  and  $0.6 \times 10^8$  ANME-2/Seep-SRB1 aggregates per  $\text{cm}^3$  were detected, respectively (Treude et al., 2003). An average aggregate at Hydrate Ridge was found to consist of ca. 100 archaeal and 200 SRB cells (Boetius et al., 2000). Hence, cell-specific AOM rates are ranging between 0.13 and  $0.21 \text{ fmol d}^{-1}$ . These values are in good agreement with in vitro measurements from Hydrate Ridge. Nauhaus et al. (2005) measured in vitro AOM rates of  $2.5 \mu\text{mol g-dw}^{-1} \text{ d}^{-1}$  in sediments from a *Beggiatoa* site, which contained  $0.9 \times 10^8$  aggregates  $\text{g-dw}^{-1}$ . This corresponds to a cell specific rate of  $0.28 \text{ fmol d}^{-1}$ . Other AOM systems such as the ANME-1 dominated microbial mats from the Black Sea were found to contain ca.  $4 \times 10^{10}$  ANME-1 cells  $\text{cm}^{-3}$  (Knittel et al., 2005). Corrected for porosity ( $\sim 87\%$ , Treude pers. com.), in vitro AOM at the Black Sea microbial mats was ca.  $5.3 \mu\text{mol cm}^{-3} \text{ d}^{-1}$  (Nauhaus et al., 2005) which corresponds to a cell-specific rate of  $0.13 \text{ fmol d}^{-1}$ . In conclusion, the capacity for AOM at methane seep systems

# Control of methane efflux at the Tommeliten seep area

H. Niemann et al.

Title Page

Abstract

Introduction

Conclusions

References

Tables

Figures

◀

▶

◀

▶

Back

Close

Full Screen / Esc

Print Version

Interactive Discussion

appears to be mainly related to the biomass and distribution of the AOM community, which is in turn regulated by the availability of methane and sulphate.

The sea floor observations of patches of presumably thiotrophic mats, above blackish, reduced sediments (Figs. 6b and 11-IV), give evidence for another type of patchy hot spot of microbial activity just beneath the sea floor, possibly AOM as indicated by previous observations of free methane trapped below microbial mats (Hovland, 2002). However, we were not able to sample these sediments with our tools during the R/V Heincke expeditions. The imprint of <sup>13</sup>C-depleted archaeal and bacterial lipids in MDACs exposed at the sea floor also provide evidence of AOM activity and resulting carbonate precipitation in near surface sediments at Tommeliten. However, at present, no seepage was observed at the crusts (Hovland, 2002; Hovland and Judd 1988; this work). It is possible that the precipitation of carbonates in the AOM zone leads to a self-sealing of gas leakage pathways (Hovland, 2002). The surface MDAC crusts found at the Tommeliten site may have formed in near-surface horizons just like the MDAC pieces found in the SMTZ, and may have been exposed due to sediment erosion. Today they are providing a niche for sessile hard substrate fauna, which is unusual for the sandy seabed of the central North Sea (Figs. 3c and 11-V). Furthermore, the crusts also attract demersal fish. Hence, these observations indicate that seepage related carbonates, which outcrop the sea floor have a stimulating effect on the abundance of mega fauna.

4.3. Distribution and identity of methanotrophic communities

Specific lipid biomarkers with typically low  $\delta^{13}\text{C}$ -values in sediments and MDACs of the Tommeliten seep area provide evidence for anaerobic methanotrophic communities associated with gas seepage. The differences in the biomarker patterns in sediments at the SMTZ and in the surface and subsurface MDACs indicate the presence of different groups of methanotrophs. Sediments of the SMTZ host a methanotrophic community dominated by ANME-1. MDAC pieces at the SMTZ show a lipid pattern indicative of a mixed ANME-1/ANME-2 community whereas the exposed MDAC crusts contain a

Control of methane efflux at the Tommeliten seep area

H. Niemann et al.

Title Page

Abstract

Introduction

Conclusions

References

Tables

Figures

◀

▶

◀

▶

Back

Close

Full Screen / Esc

Print Version

Interactive Discussion

biomarker signature typical of ANME-2 communities, as discussed in the following:

4.3.1. ANME-1 community in sediments of the SMTZ

<sup>13</sup>C-depleted acyclic and cyclic biphytanes were found in relatively high abundances in sediments at the SMTZ (Fig. 7). Biphytanes are present in various methanogenic archaea and planktonic crenarchaeota (De Rosa and Gambacorta, 1988; Koga et al., 1993; Schouten et al., 2002). However, a substantial  $\delta^{13}\text{C}$ -depletion as observed here and in other seep environments points to methanotrophic organisms. A similar lipid pattern as in the Tommeliten SMTZ was found in microbial mats from the Black Sea. These mats were dominated by ANME-1, as shown by microscopic observation based on FISH (Blumenberg et al., 2004; Knittel et al., 2005; Michaelis et al., 2002). Blumenberg et al. (2004) also showed that biphytanes are absent or rare in ANME-2 dominated microbial mats and proposed to use biphytanes as specific indicators for ANME-1 communities. Furthermore, in sediments of the SMTZ, the low ratio of *sn2*-hydroxyarchaeol relative to archaeol (0.2:1, Fig. 7), both of which are <sup>13</sup>C-depleted, matches typical ANME-1 signatures known from other cold seep sediments and MDACs (Aloisi et al., 2002; Blumenberg et al., 2004; Hinrichs et al., 1999; Hinrichs et al., 2000; Teske et al., 2002). In contrast, a ratio of 2:1 or higher was found in ANME-2 dominated systems (Elvert et al., 2005<sup>1</sup>; Blumenberg et al., 2004; Hinrichs et al., 2000; Orphan et al., 2001a). The predominance of ANME-1 in the SMTZ of Tommeliten seeps is confirmed by 16S rDNA and FISH analysis. We found a very low diversity of archaeal 16S rDNA clone sequences, which belonged almost entirely to the ANME-1b sub-cluster (98% of the retrieved archaeal sequences, Table 2). Epifluorescence microscopy of CARD-FISH targeted cells detected ANME-1 in the SMTZ zone (Fig. 10). In contrast, probes targeting ANME-2a, ANME-2c or ANME-3 gave no positive results in sediments from

<sup>1</sup>Elvert, M., Hopmans E. C., Boetius A., and Hinrichs K.-U.: Spatial variations of archaeal-bacterial assemblages in gas hydrate bearing sediments at a cold seep: Implications from a high resolution molecular and isotopic approach, submitted, 2005.

Control of methane efflux at the Tommeliten seep area

H. Niemann et al.

Title Page

Abstract

Introduction

Conclusions

References

Tables

Figures

◀

▶

◀

▶

Back

Close

Full Screen / Esc

Print Version

Interactive Discussion

the SMTZ or around it.

Usually, ANME cells are found physically associated with SRB in samples from AOM zones of most seep systems. It is generally assumed that these SRB are syntrophic partners of ANME, however, so far, the mechanistic nature of their interaction remains unknown (Boetius et al., 2000; Hoehler et al., 1994; Nauhaus et al., 2002; Orphan et al., 2001b). Fingerprints of  $^{13}\text{C}$ -depleted bacterial FAs and microscopic observations using FISH showed, that the most common partners of ANME-1 and ANME-2 communities are SRB of the Seep-SRB1 cluster (Blumenberg et al., 2004; Elvert et al., 2003; Knittel et al., 2003). Accordingly, the 16S rDNA clone library from sediments of the SMTZ contained high abundances of Seep-SRB1 sequences. Although sequences of the Seep-SRB1 in ANME-1 and ANME-2 dominated habitats form one cluster, FA lipid patterns suggest the existence of two distinct ecotypes of Seep-SRB1 with different FA fingerprints when associated to ANME-1 or ANME-2 (Blumenberg et al., 2004; Elvert et al., 2003). In the Tommeliten SMTZ sediments, the high content of ai- $\text{C}_{15:0}$  relative to i- $\text{C}_{15:0}$  and the lack of abundant amounts of  $\text{C}_{16:1\omega5}$  suggest the presence of the Seep-SRB1 type associated to ANME-1 (Blumenberg et al., 2004).

#### 4.3.2. ANME-1/ANME-2 communities in MDACs

Previous investigations showed that biomarker patterns in MDACs may be derived from living biomass or represent fossilized materials, or a mixture of both (Aloisi et al., 2002; Peckmann et al., 2002; Thiel et al., 2001). The presence of  $^{13}\text{C}$ -depleted archaeal lipids in subsurface and exposed MDACs indicate that carbonate precipitation at Tommeliten is associated with processes of seepage and AOM. The shapes of subsurface MDACs suggest that these were precipitated in pore spaces and channels formed by gas bubble streams. It is interesting to note that the subsurface and exposed MDACs contained different biomarker patterns. The subsurface MDACs were found to contain archaeal lipids which indicate a mixed ANME-1/ANME-2 community. Compared to sediments at the SMTZ, the relative abundance of ANME-1 specific biphytanes was low (Fig. 7). The ratio of *sn2*-hydroxyarchaeol relative to archaeol was comparable

**BGD**

2, 1197–1241, 2005

### Control of methane efflux at the Tommeliten seep area

H. Niemann et al.

Title Page

Abstract

Introduction

Conclusions

References

Tables

Figures

◀

▶

◀

▶

Back

Close

Full Screen / Esc

Print Version

Interactive Discussion

**EGU**

to available values from settings comprising a mixed community consisting of ANME-1/ANME-2 or dominated by ANME-2 (Blumenberg et al., 2004; Elvert et al., submitted; Hinrichs et al., 1999; Hinrichs et al., 2000; Orphan et al., 2001a). In contrast to the subsurface MDACs, the MDACs exposed at the seafloor contained a biomarker signature typical for ANME-2 communities. Low amounts of biphytanes and high amounts of *sn*2-hydroxyarchaeol relative to archaeol (1:1.9, Fig. 7) as well as substantial amounts of <sup>13</sup>C-depleted crocetane (Fig. 8) are in good agreement with published data for ANME-2 dominated systems (Blumenberg et al., 2004; Elvert et al., 2001; Elvert et al., 1999, 2005; Orphan et al., 2001a). The subsurface as well as the exposed MDACs also contained lipid signatures typical of the Seep-SRB1 cluster commonly associated with ANME-1 or ANME-2. High amounts of ai-C<sub>15:0</sub> relative to i-C<sub>15:0</sub> (2.1:1, Fig. 9) in subsurface MDACs are indicative of Seep-SRB1 associated with ANME-1, whereas in exposed MDACs, a ratio of nearly 1:1 and substantial amounts of C<sub>16:1ω5</sub> point to the Seep-SRB1 ecotype associated to ANME-2 (Blumenberg et al., 2004; Elvert et al., 2003). It is possible that the MDACs found at Tommeliten preserve signatures of previous ANME-2 communities once populating the surface sediments of this seep. At present, such a niche could exist in the reduced patches covered by bacterial mats, which we unfortunately were not able to sample because of their small size and patchy distribution. Previous studies at the cold seep systems of Hydrate Ridge showed a similar trend in the distribution of ANME-1 and ANME-2 communities. Here, surface sediments are dominated by ANME-2 whereas the abundance of ANME-1 was found to increase subsurface (Knittel et al., 2003, 2005). However, the environmental factors selecting for these different phylogenetic groups and their bacterial partner remain unknown.

## 5. Conclusions

So far, only very little is known on the identity, activity and distribution of AOM communities of shallow water cold seeps. In this investigation we revisited the Tommeliten area,

### Control of methane efflux at the Tommeliten seep area

H. Niemann et al.

Title Page

Abstract

Introduction

Conclusions

References

Tables

Figures

◀

▶

◀

▶

Back

Close

Full Screen / Esc

Print Version

Interactive Discussion

a seepage site of the central North Sea. Here, an impermeable horizon of stiff marl sediments represents a natural barrier for methane rising from a deep gas reservoir. Methane pressure lifts this horizon forming dome-like subsurface structures. As a consequence, the marl may crack, allowing methane to advect into overlying, sediments of clay-silt. At the interface between silty and sandy sediments, methane is oxidised anaerobically by a community of ANME-1 archaea and SRB of the Seep-SRB1 group in a defined subsurface horizon of ca. 20 cm. This horizon also bears methane-derived authigenic carbonates and shows the highest AOM activity. AOM and SR rates are several orders of magnitude lower in comparison to AOM zones of highly active cold seeps. Nevertheless, the specific activity of methanotrophic cells detected in the sediments is comparable. All uprising methane is consumed within the sediments, except for a few locations with active gas venting to the hydrosphere. Here, at the crest of the marl domes, the ebullition of free gas circumvents microbial consumption most likely due to the presence of gas channels through sandy sediments. Thiotrophic bacterial mats as well as methane-derived authigenic carbonates exposed at the sea floor also indicate the presence of local gas escape routes.

*Acknowledgements.* This study was conducted as part of the METROL project (<http://www.metrol.org>) of the 5th framework program of the European Commission (EVK-3-CT-2002-00080). We thank captain, crew and shipboard scientists of R/V Heincke cruise HE-169 and HE-180 for their excellent support with work at sea. We thank G. Wendt and J. Wunderlich from Rostock University and Innomar Technologie GmbH for providing and operating the echosounder SES-2000 and Werner Dimmler from the Alfred Wegener Institute for Polar and Marine Research for ROV maintenance and operation. We thank R. Usbeck from FIELAX for support with mapping and geo-referencing, I. Busse, V. Beyer and T. Wilkop for laboratory analyses and G. Bening for handling the vibrocorer of the Institute for Baltic Sea Research (IOW). This study would not have been possible without the technical support by the Geology Department of the IOW. R. Rendle-Bühning, J. Schwarz and S. Steinke of the University Bremen are acknowledged for their help with sedimentological descriptions. We also thank T. Pape of the University Hamburg for the provision of analytical protocols.

**Control of methane  
efflux at the  
Tommeliten seep  
area**

H. Niemann et al.

Title Page

Abstract

Introduction

Conclusions

References

Tables

Figures

◀

▶

◀

▶

Back

Close

Full Screen / Esc

Print Version

Interactive Discussion

## References

- Aloisi, G., Bouloubassi I., Heijs S. K., Pancost R. D., Pierre C., Damste J. S. S., Gottschal J. C., Forney L. J., and Rouchy J. M.: CH<sub>4</sub>-consuming microorganisms and the formation of carbonate crusts at cold seeps, *Earth and Planetary Science Letters*, 203, 195–203, 2002.
- 5 Barry, J. P., Greene H. G., Orange D. L., Baxter C. H., Robison B. H., Kochevar R. E., Nybakken J. W., Reed D. L., and McHugh C. M.: Biologic and geologic characteristics of cold seeps in Monterey bay, California, *Deep-Sea Research Part I-Oceanographic Research Papers*, 43, 1739–1762, 1996.
- 10 Barry, J. P., Kochevar R. E., and Baxter C. H.: The influence of pore-water chemistry and physiology on the distribution of vesicomyid clams at cold seeps in Monterey Bay: Implications for patterns of chemosynthetic community organization, *Limnol. Oceanogr.*, 42, 318–328, 1997.
- Bian, L. Q., Hinrichs K. U., Xie T. M., Brassell S. C., Iversen H., Fossing H., Jorgensen B. B., and Hayes J. M.: Algal and archaeal polyisoprenoids in a recent marine sediment: Molecular isotopic evidence for anaerobic oxidation of methane, *Geochemistry Geophysics Geosystems*, 2, U1–U22, 2001.
- 15 Blumenberg, M., Seifert R., Reitner J., Pape T., and Michaelis W.: Membrane lipid patterns typify distinct anaerobic methanotrophic consortia, *Proc. Natl. Acad. Sci. USA*, 101, 30, 2004.
- Boetius, A., Ravensschlag K., Schubert C., Rickert D., Widdel F., Gieseke A., Amann R., Jørgensen B. B., Witte U., and Pfannkuche O.: A marine microbial consortium apparently mediating anaerobic methane of oxidation, *Nature*, 407 623–626, 2000.
- 20 Boetius, A. and Suess E.: Hydrate Ridge: a natural laboratory for the study of microbial life fueled by methane from near-surface gas hydrates, *Chemical Geology*, 205, 291–310, 2004.
- Bohrmann, G., Greinert J., Suess E., and Torres M.: Authigenic carbonates from the Cascadia subduction zone and their relation to gas hydrate stability, *Geology*, 26, 647–650, 1998.
- 25 Bussmann, I., Dando P. R., Niven S. J., and Suess E.: Groundwater seepage in the marine environment: role for mass flux and bacterial activity, *Marine Ecology-Progress Series*, 178, 169–177, 1999.
- Çifçi, G., Dondurur D., and Ergün M.: Deep and shallow structures of large pockmarks in the Turkish shelf, Eastern Black Sea, *Geo-Marine Letters*, 23, 311–322, 2003.
- 30 Dando, P. R. and Hovland M.: Environmental-Effects of Submarine Seeping Natural-Gas, *Continental Shelf Research*, 12, 1197–1207, 1992.
- De Rosa, M. and Gambacorta A.: The lipids of archaebacteria, *Prog. Lipid Res.*, 27, 153–175,

**BGD**

2, 1197–1241, 2005

### Control of methane efflux at the Tommeliten seep area

H. Niemann et al.

Title Page

Abstract

Introduction

Conclusions

References

Tables

Figures

◀

▶

◀

▶

Back

Close

Full Screen / Esc

Print Version

Interactive Discussion

**EGU**

1988.

- Diaz-del-Rio, V., Somoza L., Martinez-Frias J., Mata M. P., Delgado A., Hernandez-Molina F. J., Lunar R., Martin-Rubi J. A., Maestro A., Fernandez-Puga M. C., Leon R., Llave E., Medialdea T., and Vazquez J. T.: Vast fields of hydrocarbon-derived carbonate chimneys related to the accretionary wedge/olistostrome of the Gulf of Cadiz, *Marine Geology*, 195, 177–200, 2003.
- Elvert, M., Boetius A., Knittel K., and Jorgensen B. B.: Characterization of specific membrane fatty acids as chemotaxonomic markers for sulfate-reducing bacteria involved in anaerobic oxidation of methane, *Geomicrobiol. J.*, 20, 403–419, 2003.
- Elvert, M., Greinert J., Suess E., and Whiticar M. J.: Carbon isotopes of biomarkers derived from methane-oxidizing microbes at Hydrate Ridge, Cascadia convergent margin, in: *Natural gas hydrates: Occurrence, distribution, and dynamics*, edited by: Paull, C. K. and Dillon, W. P., AGU, 124, 115–129, 2001.
- Elvert, M., Suess E., and Whiticar M. J.: Anaerobic methane oxidation associated with marine gas hydrates: superlight C-isotopes from saturated and unsaturated C<sub>20</sub> and C<sub>25</sub> irregular isoprenoids, *Naturwissenschaften*, 86, 295–300, 1999.
- Garcia-Garcia, A., Garcia-Gil S., and Vilas F.: Monitoring the Spanish gas fields in the Ria de Vigo (1991–2001), *Geo-Marine Letters*, 23, 200–206, 2003.
- Hinrichs, K.-U. and Boetius A.: The anaerobic oxidation of methane: New insights in microbial ecology and biogeochemistry, in: *Ocean Margin Systems* edited by: Wefer, G., Billett, D., and Hebbeln, D., Springer-Verlag, Berlin, 457–477, 2002.
- Hinrichs, K.-U., Hayes J. M., Sylva S. P., Brewer P. G., and DeLong E. F.: Methane-consuming archaeobacteria in marine sediments, *Nature*, 398, 802–805, 1999
- Hinrichs, K. U., Summons R. E., Orphan V., Sylva S. P., and Hayes J. M.: Molecular and isotopic analysis of anaerobic methane-oxidizing communities in marine sediments, *Organic Geochemistry*, 31, , 1685–1701, 2000.
- Hoehler, T. M. and Alperin M. J.: Anaerobic methane oxidation by a methanogen-sulfate reducer consortium: geochemical evidence and biogeochemical considerations, in: *Microbial Growth on C<sub>1</sub> Compounds*, edited by: Lidstrom, M. E. and Tabita, F. R., Kluwer Academic Publishers, 326–333, 1996.
- Hoehler, T. M., Alperin M. J., Albert D. B., and Martens C. S.: Field and laboratory studies of methane oxidation in an anoxic marine sediment: Evidence for a methanogenic-sulfate reducer consortium, *Global Biogeochemical Cycles*, 8, 451–463, 1994.
- Hovland, M.: On the self-sealing nature of marine seeps, *Continental Shelf Research*, 22,

**BGD**

2, 1197–1241, 2005

## Control of methane efflux at the Tommeliten seep area

H. Niemann et al.

Title Page

Abstract

Introduction

Conclusions

References

Tables

Figures

◀

▶

◀

▶

Back

Close

Full Screen / Esc

Print Version

Interactive Discussion

**EGU**

2387–2394, 2002.

Hovland, M. and Judd A. G.: Seabed Pockmarks and Seepages: Impact on Geology, Biology and the Marine Environment, Graham & Trotman, 1988.

Hovland, M. and Sommerville J. H.: Characteristics of two natural gas seepages in the North Sea, *Marine and Petroleum Geology*, 2, 319–326, 1985.

Hovland, M., Talbot M., Olaussen S., and Aasberg L.: Recently formed methane-derived carbonates from the North Sea floor, in: *Petroleum Geochemistry in Exploration of the Norwegian Shelf*, edited by: Thomas, B. M., Norwegian Petroleum Soc., Graham & Trotman, 263–266, 1985.

Hovland, M., Talbot M. R., Qvale H., Olaussen S., and Aasberg L.: Methane-Related Carbonate Cements in Pockmarks of the North-Sea, *Journal of Sedimentary Petrology*, 57, 881–892, 1987.

Joye, S. B., Boetius A., Orcutt B. N., Montoya J. P., Schulz H. N., Erickson M. J., and Lugo S. K.: The anaerobic oxidation of methane and sulfate reduction in sediments from Gulf of Mexico cold seeps, *Chemical Geology*, 205, 219–238, 2004.

Judd, A. G.: The global importance and context of methane escape from the seabed, *Geo-Marine Letters*, 23, 147–154, 2003.

Kane, M. D., Poulsen L. K., and Stahl D. A.: Monitoring the Enrichment and Isolation of Sulfate-Reducing Bacteria by Using Oligonucleotide Hybridization Probes Designed from Environmentally Derived 16s Ribosomal-Rna Sequences, *Appl. Environ. Microbiol.*, 59, 682–686, 1993.

Knittel, K., Boetius A., Lemke A., Eilers H., Lochte K., Pfannkuche O., Linke P., and Amann R.: Activity, distribution, and diversity of sulfate reducers and other bacteria in sediments above gas hydrate (Cascadia margin, Oregon), *Geomicrobiol. J.*, 20, 269–294, 2003.

Knittel, K., Losekann T., Boetius A., Kort R., and Amann R.: Diversity and distribution of methanotrophic archaea at cold seeps, *Appl. Environ. Microbiol.*, 71, 467–479, 2005.

Koga, Y., Nishihara M., Morii H., and Akagawa-Matsushita M.: Ether polar lipids of methanogenic bacteria: Structures, comparative aspects, and biosyntheses, *Microbiological Reviews*, 57, 164–182, 1993.

Kohnen, M. E. L., Schouten S., Sinningh  Damste J. S., de Leeuw J. W., Merritt D. A., and Hayes J. M.: Recognition of paleobiochemicals by a combined molecular sulfur and isotope geochemical approach, *Science*, 256, 358–362, 1992.

Lane, D. J., Pace B., Olsen G. J., Stahl D. A., Sogin M. L., and Pace N. R.: Rapid-Determination

**BGD**

2, 1197–1241, 2005

## Control of methane efflux at the Tommeliten seep area

H. Niemann et al.

Title Page

Abstract

Introduction

Conclusions

References

Tables

Figures

◀

▶

◀

▶

Back

Close

Full Screen / Esc

Print Version

Interactive Discussion

**EGU**

- of 16s Ribosomal-Rna Sequences for Phylogenetic Analyses, Proc. Natl. Acad. Sci. USA, 82, 6955–6959, 1985.
- Massana, R., Murray A. E., Preston C. M., and DeLong E. F.: Vertical distribution and phylogenetic characterization of marine planktonic Archaea in the Santa Barbara Channel, Appl. Environ. Microbiol., 63, 50–56, 1997.
- Michaelis, W., Seifert R., Nauhaus K., Treude T., Thiel V., Blumenberg M., Knittel K., Gieseke A., Peterknecht K., Pape T., Boetius A., Amann R., Jorgensen B. B., Widdel F., Peckmann J. R., Pimenov N. V., and Gulin M. B.: Microbial reefs in the Black Sea fueled by anaerobic oxidation of methane, Science, 297, 1013–1015, 2002.
- Mills, H. J., Hodges C., Wilson K., MacDonald I. R., and Sobecky P. A.: Microbial diversity in sediments associated with surface-breaching gas hydrate mounds in the Gulf of Mexico, FEMS Microbiol. Ecol., 46, 39–52, 2003.
- Moss, C. W. and Lambert-Fair M. A.: Location of Double Bonds in Monounsaturated Fatty Acids of *Campylobacter cryaerophila* with Dimethyl Disulfide Derivatives and Combined Gas Chromatography-Mass Spectrometry, Journal of Clinical Microbiology, 27, 1467–1470, 1989.
- Muyzer, G., Teske A., Wirsén C. O., and Jannasch H. W.: Phylogenetic-Relationships of *Thiomicrospira* Species and Their Identification in Deep-Sea Hydrothermal Vent Samples by Denaturing Gradient Gel-Electrophoresis of 16s Rdna Fragments, Arch. Microbiol., 164, 165–172, 1995.
- Nauhaus, K., Boetius A., Kruger M., and Widdel F.: In vitro demonstration of anaerobic oxidation of methane coupled to sulphate reduction in sediment from a marine gas hydrate area, Environmental Microbiology, 4, 296–305, 2002.
- Nauhaus, K., Treude T., Boetius A., and Kruger M.: Environmental regulation of the anaerobic oxidation of methane: a comparison of ANME-I and ANME-II communities, Environmental Microbiology, 7, 98–106, 2005.
- Nichols, P. D., Guckert J. B., and White D. C.: Determination of monounsaturated fatty acid double-bond position and geometry for microbial monocultures and complex consortia by capillary GC-MS of their dimethyl disulphide adducts, J. Microbiol. Methods, 5, 49–55, 1986.
- Orphan, V. J., Hinrichs K. U., Ussler W., Paull C. K., Taylor L. T., Sylva S. P., Hayes J. M., and DeLong E. F.: Comparative analysis of methane-oxidizing archaea and sulfate-reducing bacteria in anoxic marine sediments, Appl. Environ. Microbiol., 67, 4, 1922–1934, 2001a.
- Orphan, V. J., House C. H., Hinrichs K. U., McKeegan K. D., and DeLong E. F.: Methane-consuming archaea revealed by directly coupled isotopic and phylogenetic analysis, Science,

**BGD**

2, 1197–1241, 2005

## Control of methane efflux at the Tommeliten seep area

H. Niemann et al.

Title Page

Abstract

Introduction

Conclusions

References

Tables

Figures

◀

▶

◀

▶

Back

Close

Full Screen / Esc

Print Version

Interactive Discussion

**EGU**

293, 484–487, 2001b.

Orphan, V. J., House C. H., Hinrichs K. U., McKeegan K. D., and DeLong E. F.: Multiple archaeal groups mediate methane oxidation in anoxic cold seep sediments, *Proc. Natl. Acad. Sci. USA*, 99, 7663–7668, 2002.

5 Orphan, V. J., Ussler W., Naehr T. H., House C. H., Hinrichs K. U., and Paull C. K.: Geological, geochemical, and microbiological heterogeneity of the seafloor around methane vents in the Eel River Basin, offshore California, *Chemical Geology*, 205, 265–289, 2004.

Peckmann, J., Goedert J. L., Thiel V., Michaelis W., and Reitner J.: A comprehensive approach to the study of methane-seep deposits from the Lincoln Creek Formation, western Washington State, USA, *Sedimentology*, 49, 855–873, 2002.

10 Peckmann, J., Paul J., and Thiel V.: Bacterially mediated formation of diagenetic aragonite and native sulfur in Zechstein carbonates (Upper Permian, Central Germany), *Sedimentary Geology*, 126, 205–222, 1999.

Pernthaler, A., Preston C. M., Pernthaler J., DeLong E. F., and Amann R.: Comparison of fluorescently labeled oligonucleotide and polynucleotide probes for the detection of pelagic marine bacteria and archaea, *Appl. Environ. Microbiol.*, 68, 661–667, 2002.

Ravenschlag, K., Sahm K., Pernthaler J., and Amann R.: High bacterial diversity in permanently cold marine sediments, *Appl. Environ. Microbiol.*, 65, 3982–3989, 1999.

20 Reeburgh, W. S.: “Soft spots” in the global methane budget, in: *Microbial Growth on C<sub>1</sub> Compounds*, edited by Lidstrom, M. E. and Tabita, F. R., Kluwer Academic Publishers, 334–342, 1996.

Roberts, H. H. and Aharon P.: Hydrocarbon-Derived Carbonate Buildups of the Northern Gulf-of-Mexico Continental-Slope – a Review of Submersible Investigations, *Geo-Marine Letters*, 14, 135–148, 1994.

25 Schouten, S., Hoefs M. J. L., Koopmans M. P., Bosch H.-J., and Sinninghe Damsté J. S.: Structural characterization, occurrence and fate of archaeal ether-bound acyclic and cyclic biphytanes and corresponding diols in sediments, *Organic Geochemistry*, 29, 1305–1319, 1998.

Schouten, S., Hopmans E. C., Schefuss E., and Damsté J. S. S.: Distributional variations in marine crenarchaeotal membrane lipids: a new tool for reconstructing ancient sea water temperatures?, *Earth and Planetary Science Letters*, 204, 265–274, 2002.

30 Teske, A., Hinrichs K. U., Edgcomb V., Gomez A. D., Kysela D., Sylva S. P., Sogin M. L., and Jannasch H. W.: Microbial diversity of hydrothermal sediments in the Guaymas Basin:

**BGD**

2, 1197–1241, 2005

---

## Control of methane efflux at the Tommeliten seep area

H. Niemann et al.

---

Title Page

Abstract

Introduction

Conclusions

References

Tables

Figures

◀

▶

◀

▶

Back

Close

Full Screen / Esc

Print Version

Interactive Discussion

**EGU**

- Evidence for anaerobic methanotrophic communities, *Appl. Environ. Microbiol.*, 68, 1994–2007, 2002.
- Thiel, V., Peckmann J., Richnow H. H., Luth U., Reitner J., and Michaelis W.: Molecular signals for anaerobic methane oxidation in Black Sea seep carbonates and a microbial mat, *Mar. Chem.*, 73, 97–112, 2001.
- Thomsen, T. R., Finster K., and Ramsing N. B.: Biogeochemical and molecular signatures of anaerobic methane oxidation in a marine sediment, *Appl. Environ. Microbiol.*, 67, 1646–1656, 2001.
- Thrasher, J., Fleet S. J., Hovland M., and Düppenbecker S.: Understanding geology as the key to using seepage in exploration: spectrum of seepage styles, in: *Hydrocarbon migration and its near-surface expression*, edited by: Schumacher, D. and Abrams, M. A., 223–241, AAPG Memoir, 1996.
- Treude, T., Boetius A., Knittel K., Wallmann K., and Jorgensen B. B.: Anaerobic oxidation of methane above gas hydrates at Hydrate Ridge, NE Pacific Ocean, *Marine Ecology-Progress Series*, 264 1–14, 2003.
- Treude, T., Niggemann J., Kallmeyer J., Wintersteller P., Schubert C. J., Boetius A., and Jorgensen B. B.: Anaerobic oxidation of methane and sulfate reduction along the Chilean continental margin, *Geochimica et Cosmochimica Acta*, 69, 2767–2779, 2005.
- Widdel, F. and Bak F.: The gram negative mesophilic sulfate reducing bacteria, in: *The prokaryotes*, edited by: Dworkin, M., Springer, 3352–3378, 1992.

**BGD**

2, 1197–1241, 2005

## Control of methane efflux at the Tommeliten seep area

H. Niemann et al.

Title Page

Abstract

Introduction

Conclusions

References

Tables

Figures

◀

▶

◀

▶

Back

Close

Full Screen / Esc

Print Version

Interactive Discussion

**EGU**

**Table 1.** Lipid biomarker concentrations extracted from sediments at the sulphate-methane transition zone (155 cm b.s.f.) of core 1904.

Bacterial fatty acids		Archaeal ether lipids	
Component	Concentration (ng g <sup>-1</sup> dw <sup>-1</sup> )	Component	Concentration (ng g <sup>-1</sup> dw <sup>-1</sup> )
Cl14:0	145	crocetane	21
i-Cl5:0	61	PMI:0	56
ai-Cl5:0	140	PMI:1	36
Cl5:0	72	ΣPMI:2	158
i-Cl6:0	25	ΣPMI:3	–
Cl6:1ω9c	88	ΣPMI:4	15
C16:1ω7c	21		
Cl6:1ω5c	11	archaeol	473
Cl6:0	604	sn2-hydroxyarchaeol	84
i-Cl7:0	15	sn3-hydroxyarchaeol	105
ai-Cl7:0	43		
Cl7:0	39	phytane	918
C18:2ω6,9c	215	biphytane	504
Cl8:1ω9c	270	monocycl. biphytane	414
Cl8:1ω7c	58	bicycl. biphytane	139
Cl8:0	345	crenarchaeol	4

## Control of methane efflux at the Tommeliten seep area

H. Niemann et al.

Title Page

Abstract

Introduction

Conclusions

References

Tables

Figures

◀

▶

◀

▶

Back

Close

Full Screen / Esc

Print Version

Interactive Discussion

**Table 2.** Archaeal and bacterial 16S rDNA clone libraries obtained from sediments at the sulphate-methane transition zone (155 cm b.s.f.) of core 1904.

Phylogenetic group		Clones	Representative clone	Next relative	Sequence similarity
Archaea		57			
Euryarchaeota	ANME-1b	56	Tommeliten_ARCH1FL (DQ007532)	Hydrate Ridge Sediment Clone HydCal61 (AJ578089)	≥98%
	Marine Benthic Group D	1	Tommeliten_ARCH69FL (DQ007533)	Uncultured archaeon clone Napoli-3A-13 (AY592524)	99%
Bacteria		54			
δ Proteobacteria	Seep-SRB1	14	Tommeliten_BAC57FL (DQ007534)	Hydrate Ridge clone Hyd89-22 (AJ535247)	≥93%
	Seep-SRB2	2	Tommeliten_BAC13FL (DQ007535)	Hydrate Ridge clone Hyd89-19 (AJ535233)	98%
	Desulfoarculaceae	14	Tommeliten_BAC62FL (DQ007536)	Eel River Basin clone Eel-BEIB4 (AF354145)	≥95%
	distantly to Myxococcales	1	Tommeliten_BAC81FL (DQ007537)	Eel River Basin clone Eel-TE1A7 (AF354155)	93%
Clostridia	distantly to Haloanaerobiaceae	20	Tommeliten_BAC55FL (DQ007538)	hydrocarbon seep clone GCA025 (AF154106)	≥95%
Acidobacteria	distantly to Acidobacteriaceae	2	Tommeliten_BAC4FL (DQ007539)	Gyamas sediment clone Cl.B017 (AF419691)	96%
Thermotogae	distantly to Thermotoga	1	Tommeliten_BAC43FL (DQ007540)	Nakai Trough clone MB-C2-106 (AY093477)	94%

## Control of methane efflux at the Tommeliten seep area

H. Niemann et al.

Title Page

Abstract

Introduction

Conclusions

References

Tables

Figures

◀

▶

◀

▶

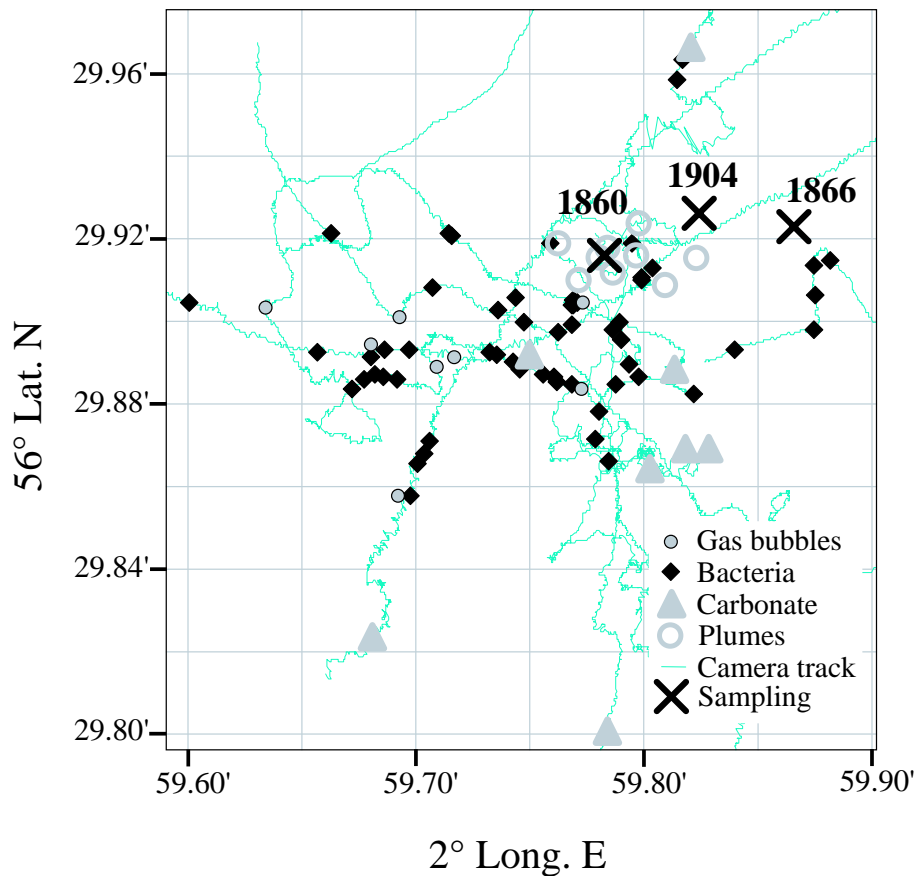
Back

Close

Full Screen / Esc

Print Version

Interactive Discussion



**Fig. 1.** A chart of the survey area at Tommeliten showing sampling positions of vibrocoring, sea floor and hydroacoustic observations.

**Control of methane  
efflux at the  
Tommeliten seep  
area**

H. Niemann et al.

Title Page

Abstract

Introduction

Conclusions

References

Tables

Figures

◀

▶

◀

▶

Back

Close

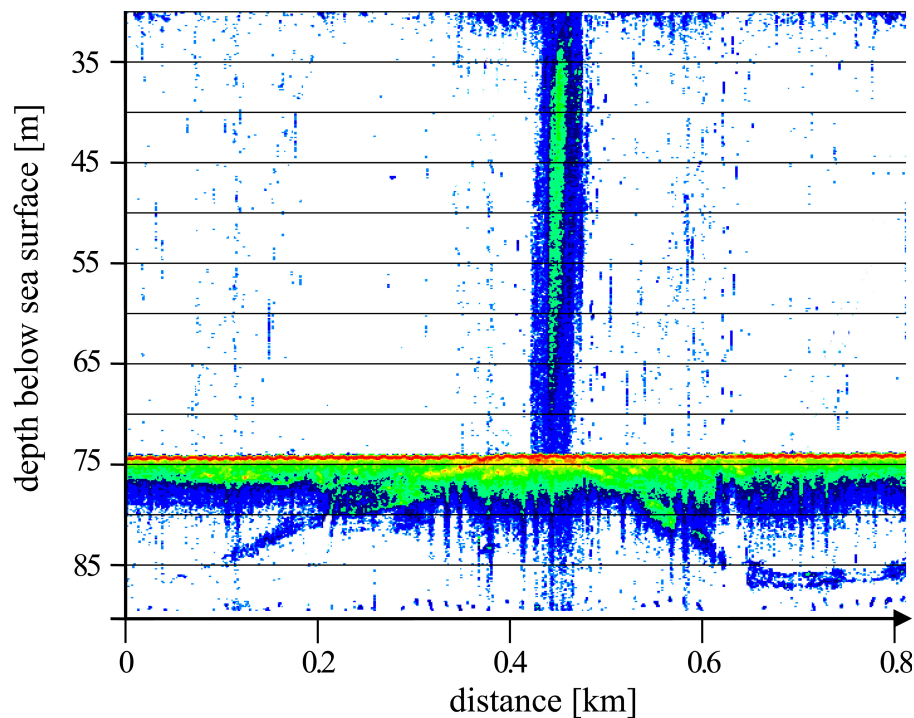
Full Screen / Esc

Print Version

Interactive Discussion

# Control of methane efflux at the Tommeliten seep area

H. Niemann et al.



**Fig. 2.** Hydro acoustic image of a methane plume reaching from the sea floor to the sea surface. Ascending sub-surface horizons forming dome-like structures are visible. The image was recorded with a SES-2000 echosounder operated at 8 to 100 kHz.

Title Page

Abstract

Introduction

Conclusions

References

Tables

Figures

◀

▶

◀

▶

Back

Close

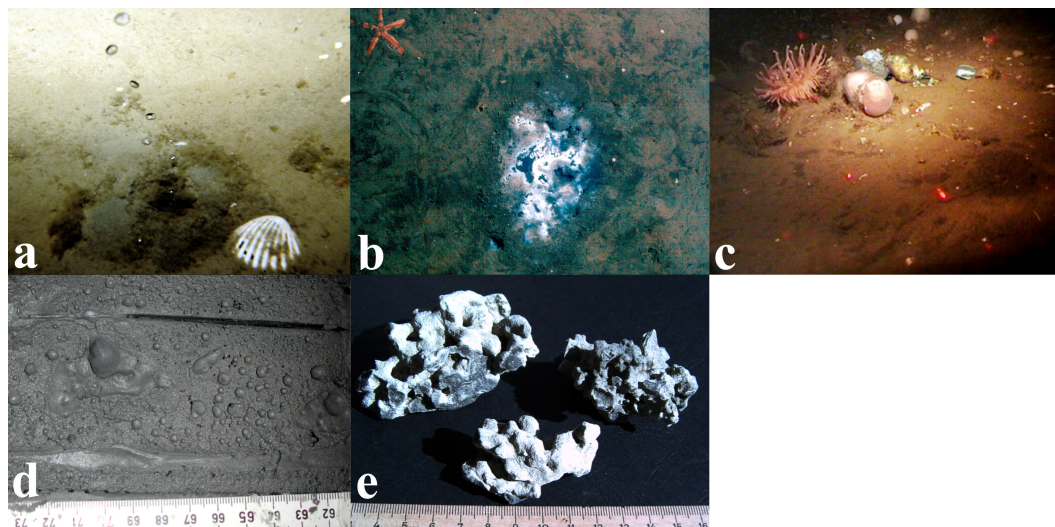
Full Screen / Esc

Print Version

Interactive Discussion

# Control of methane efflux at the Tommeliten seep area

H. Niemann et al.



**Fig. 3.** Images of the seafloor observations showing (a) a stream of methane bubbles, (b) bacterial mats and (c) sessile macro fauna on exposed carbonates. (d) A lower section of core 1904 comprising methane-rich, clay-silt sediments and (e) MDACs recovered at the interface between methane-rich, clay-silt and overlying sandy sediments.

Title Page

Abstract

Introduction

Conclusions

References

Tables

Figures

◀

▶

◀

▶

Back

Close

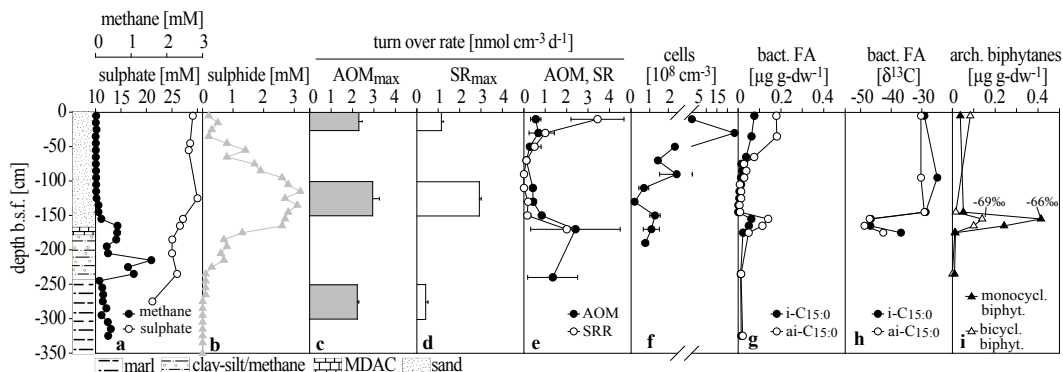
Full Screen / Esc

Print Version

Interactive Discussion

# Control of methane efflux at the Tommeliten seep area

H. Niemann et al.



**Fig. 4.** (a) Methane and sulphate concentrations decline at depth of MDAC bearing sediments (150 cm b.s.f.). (b) Note that sulphide concentrations, (c) potential methane oxidation and (d) sulphate reduction rates, (e) ex situ measured methane oxidation and sulphate reduction rates, (f) cell counts, (g) concentrations and (h) stable carbon isotope values of selected, bacterial fatty acids and (i) concentrations of cleaved, archaeal tetraether lipids peak at the methane-sulphate transition zone. Errors are given as standard errors.

Title Page

Abstract

Introduction

Conclusions

References

Tables

Figures

◀

▶

◀

▶

Back

Close

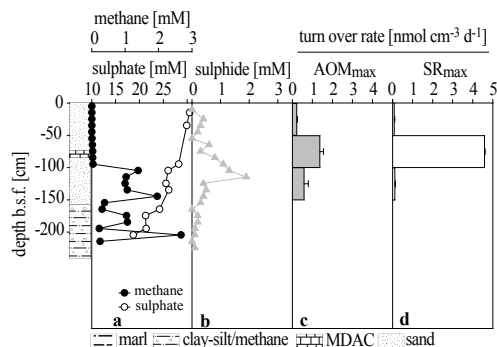
Full Screen / Esc

Print Version

Interactive Discussion

# Control of methane efflux at the Tommeliten seep area

H. Niemann et al.



**Fig. 5.** Station 1866. **(a)** Methane and sulphate concentrations decline below carbonate bearing sediments (100 cm b.s.f.). Homologous to core 1904, **(b)** sulphide concentrations and potential rates of **(c)** methane oxidation and **(d)** sulphate reduction are highest at the sulphate-methane transition zone. Errors are given as standard errors.

Title Page

Abstract

Introduction

Conclusions

References

Tables

Figures

◀

▶

◀

▶

Back

Close

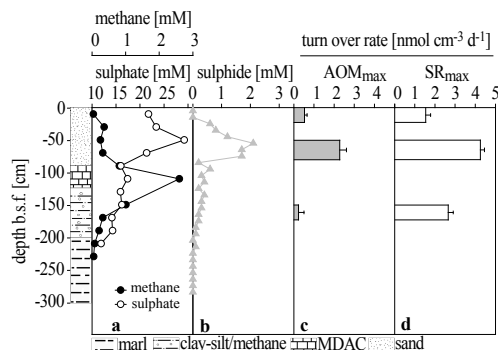
Full Screen / Esc

Print Version

Interactive Discussion

# Control of methane efflux at the Tommeliten seep area

H. Niemann et al.



**Fig. 6.** Station 1860. **(a)** Methane and sulphate concentrations decline at depth of carbonate bearing sediments (70 cm b.s.f.). Homologous to core 1904, **(b)** sulphide concentrations and potential rates of **(c)** methane oxidation and **(d)** sulphate reduction are highest at the sulphate-methane transition zone. Errors are given as standard errors.

Title Page

Abstract

Introduction

Conclusions

References

Tables

Figures

◀

▶

◀

▶

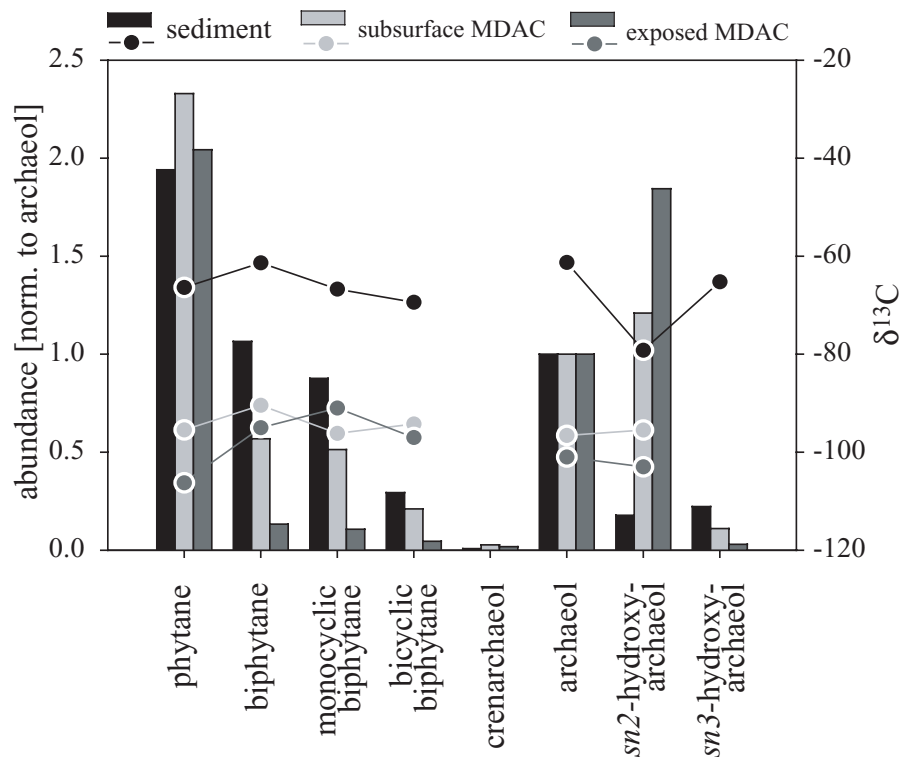
Back

Close

Full Screen / Esc

Print Version

Interactive Discussion



**Fig. 7.** Abundance (bars) and stable carbon isotope composition (circles) of cleaved, archaeal tetraether and whole diether lipids extracted from sediments and MDACs at the sulphate-methane transition zone (155 cm b.s.f.) of core 1904 and from surface MDACs recovered by a ROV. Abundances were normalised to archaeol. Note the constant offset in  $\delta^{13}\text{C}$ -values between sediments and MDACs.

# Control of methane efflux at the Tommeliten seep area

H. Niemann et al.

Title Page

Abstract

Introduction

Conclusions

References

Tables

Figures

◀

▶

◀

▶

Back

Close

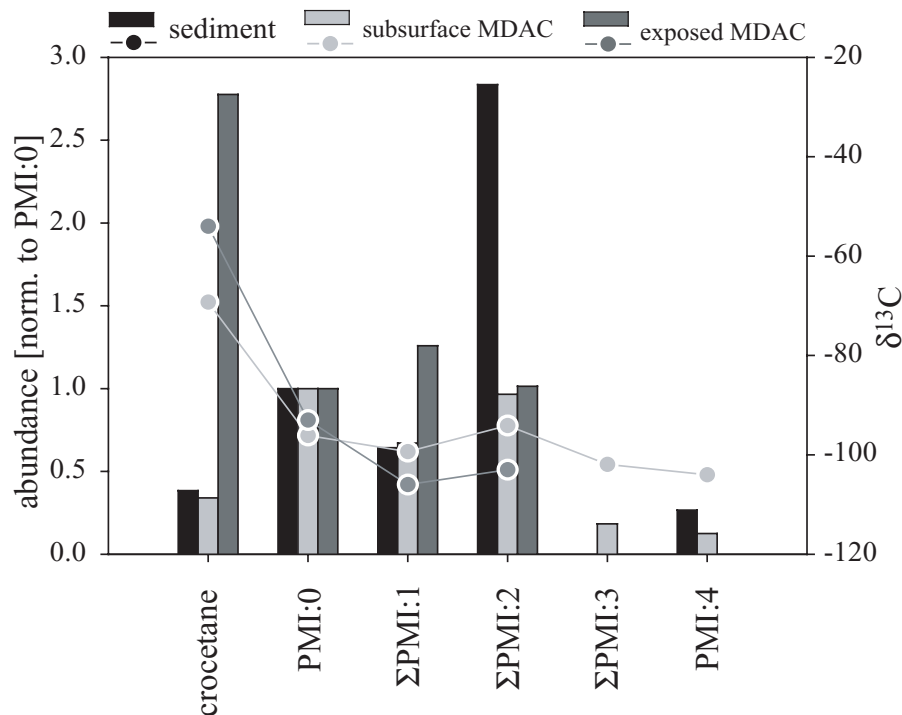
Full Screen / Esc

Print Version

Interactive Discussion

# Control of methane efflux at the Tommeliten seep area

H. Niemann et al.



**Fig. 8.** Abundance (bars) and stable carbon isotope composition (circles) of archaeal, isoprenoid hydrocarbon lipids extracted from sediments and MDACs at the sulphate-methane transition zone (155 cm b.s.f.) of core 1904 and from surface MDACs recovered by a ROV. Abundances were normalised to PMI:0. Note that concentrations of crocetane are ca. 7.5-fold increased in surface MDACs. Low concentrations prohibited  $\delta^{13}\text{C}$ -measurements of hydrocarbons in the sediment.

Title Page

Abstract

Introduction

Conclusions

References

Tables

Figures

◀

▶

◀

▶

Back

Close

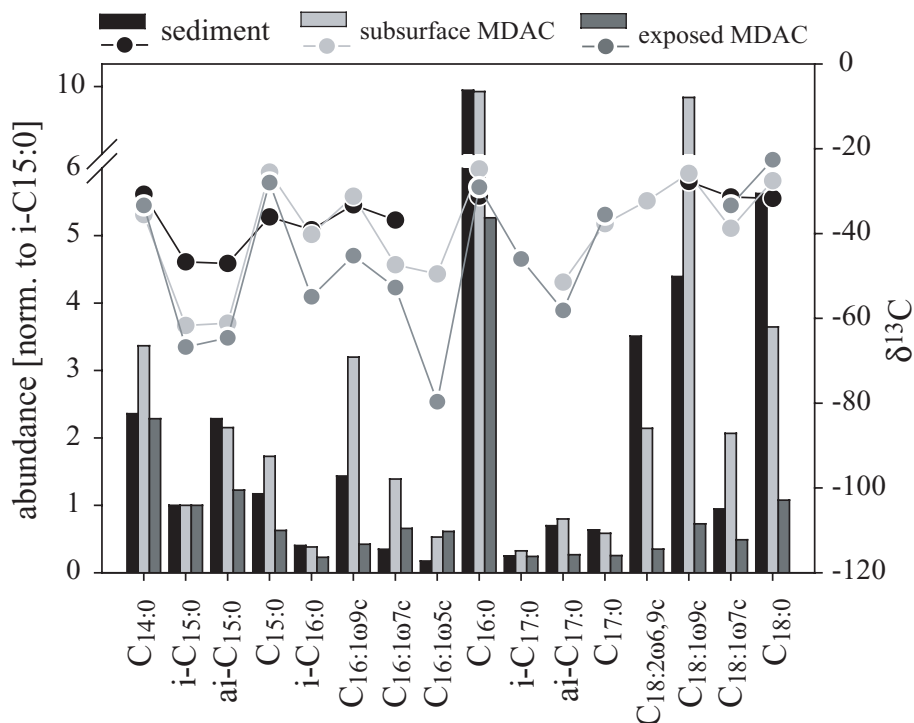
Full Screen / Esc

Print Version

Interactive Discussion

**Control of methane  
efflux at the  
Tommeliten seep  
area**

H. Niemann et al.



**Fig. 9.** Abundance (bars) and stable carbon isotope composition (circles) of fatty acids extracted from sediments and MDACs at the sulphate-methane transition zone (155 cm b.s.f.) of core 1904 and from surface MDACs recovered by a ROV. Abundances were normalised to  $i\text{-C}_{15:0}$ .  $i\text{-C}_{15:0}$ ,  $ai\text{-C}_{15:0}$  and  $C_{16:1\omega5}$  are among the most depleted fatty acids. Note the offset in  $\delta^{13}\text{C}$ -values between sediments and MDACs.

Title Page

Abstract

Introduction

Conclusions

References

Tables

Figures

◀

▶

◀

▶

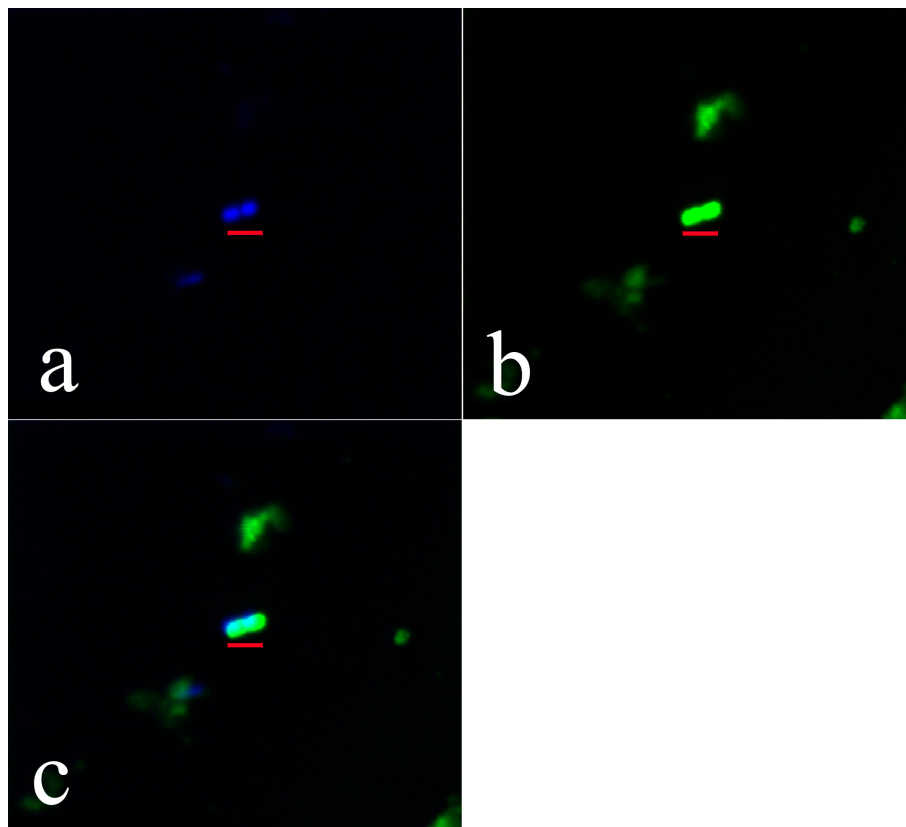
Back

Close

Full Screen / Esc

Print Version

Interactive Discussion



**Fig. 10.** Individual cells of ANME-1 archaea from sediments at the sulphate-methane transition zone (155 cm) of core 1904 **(a)** visualised with 4',6'-diamidino-2-phenylindole (DAPI), **(b)** cy-3 horseradish peroxidase-labeled oligonucleotide probe ANME1-350 and tyramide signal amplification (CARD-FISH) and **(c)** an overlay of both images. The red scale bar represents 2  $\mu\text{m}$ .

**Control of methane  
efflux at the  
Tommeliten seep  
area**

H. Niemann et al.

Title Page

Abstract

Introduction

Conclusions

References

Tables

Figures

◀

▶

◀

▶

Back

Close

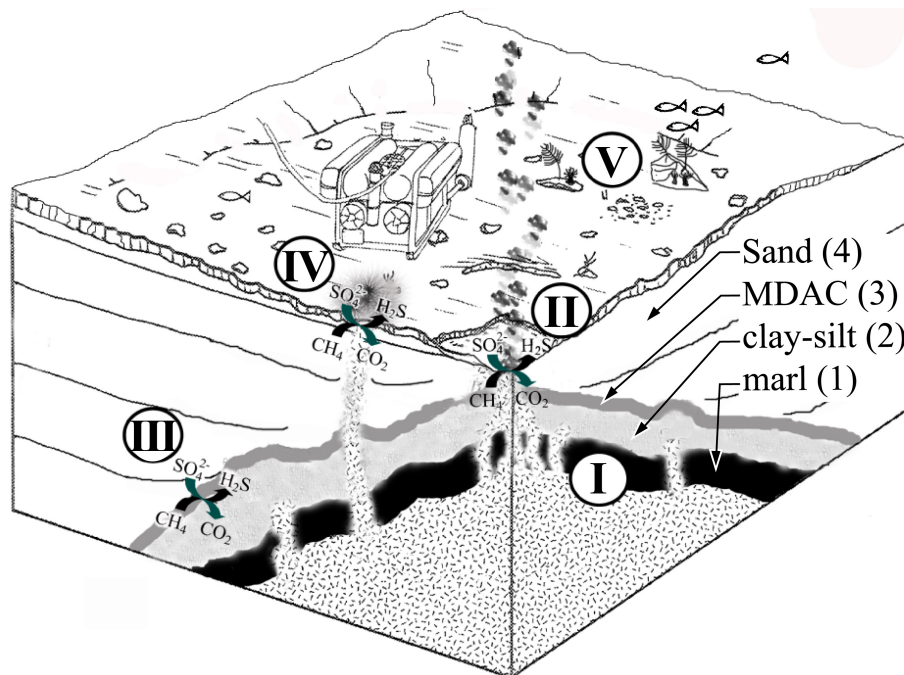
Full Screen / Esc

Print Version

Interactive Discussion

# Control of methane efflux at the Tommeliten seep area

H. Niemann et al.



**Fig. 11.** Schematic overview of seepage and related processes at Tommeliten modified from Hovland and Judd (1988). The different sediment horizons are indicated. (I) methane migrates through cracks in the uplifted marl into overlying, clay-silt sediments. (II) sedimentary pathways at the crest of the marl dome permit the escape of free gas, circumventing microbial consumption. (III) subsurface, AOM depletes uprising methane at the interface between clay silt and sandy sediments where MDACs precipitate. With time and/or reduced methane fluxes, seepage at Tommeliten is sealed off as indicated by (IV) patches of thiotrophic, bacterial mats on the seafloor. These are commonly associated to high AOM rates in shallow surface sediments consuming uprising methane. (V) MDACs are precipitated in near-surface sediments. These provide a hard substrate for sessile macro fauna after exposure.

Title Page

Abstract

Introduction

Conclusions

References

Tables

Figures

◀

▶

◀

▶

Back

Close

Full Screen / Esc

Print Version

Interactive Discussion