



**HAL**  
open science

## In vitro formation of Ca-oxalates and the mineral glushinskite by fungal interaction with carbonate substrates and seawater

K. Kolo, Ph. Claeys

► **To cite this version:**

K. Kolo, Ph. Claeys. In vitro formation of Ca-oxalates and the mineral glushinskite by fungal interaction with carbonate substrates and seawater. *Biogeosciences Discussions*, 2005, 2 (2), pp.451-497. hal-00297743

**HAL Id: hal-00297743**

**<https://hal.science/hal-00297743>**

Submitted on 18 Jun 2008

**HAL** is a multi-disciplinary open access archive for the deposit and dissemination of scientific research documents, whether they are published or not. The documents may come from teaching and research institutions in France or abroad, or from public or private research centers.

L'archive ouverte pluridisciplinaire **HAL**, est destinée au dépôt et à la diffusion de documents scientifiques de niveau recherche, publiés ou non, émanant des établissements d'enseignement et de recherche français ou étrangers, des laboratoires publics ou privés.

*Biogeosciences Discussions* is the access reviewed discussion forum of *Biogeosciences*

**Fungal interaction  
with solid and  
aqueous substrates**

K. Kolo and Ph. Claeys

# In vitro formation of Ca-oxalates and the mineral glushinskite by fungal interaction with carbonate substrates and seawater

**K. Kolo and Ph. Claeys**

Vrije Universiteit Brussel, Department of Geology, Pleinlaan 2, 1050 Brussels, Belgium

Received: 21 February 2005 – Accepted: 21 March 2005 – Published: 15 April 2005

Correspondence to: K. Kolo (kakolo@vub.ac.be)

© 2005 Author(s). This work is licensed under a Creative Commons License.

Title Page

Abstract

Introduction

Conclusions

References

Tables

Figures

◀

▶

◀

▶

Back

Close

Full Screen / Esc

Print Version

Interactive Discussion

EGU

## Abstract

This study investigates the in vitro formation of Ca-oxalates and glushinskite through fungal interaction with carbonate substrates and seawater. In the first experiment, thin-sections prepared from dolomitic rock samples of Terwagne Formation (Carboniferous, Viséan, northern France) served as substrates. The thin sections placed in Petri dishes were exposed to fungi grown from naturally existing airborne spores. In the second experiment, fungal growth and mineral formation was monitored using only standard seawater (SSW) as substrate. Fungal growth media consisted of a high protein/carbohydrates and sugar diet with demineralised water for irrigation. Fungal growth process reached completion under uncontrolled laboratory conditions. The fungal interaction and attack on the carbonate substrates resulted in the formation of Ca-oxalates (weddellite  $\text{CaC}_2\text{O}_4 \cdot 2(\text{H}_2\text{O})$ , whewellite ( $\text{CaC}_2\text{O}_4 \cdot (\text{H}_2\text{O})$ ) and glushinskite  $\text{MgC}_2\text{O}_4 \cdot 2(\text{H}_2\text{O})$  associated with the destruction of the original substrate and its replacement by the new minerals. The seawater substrate resulted also in the formation of glushinskite and Ca-oxalates. Both of Ca and Mg were mobilized from the experimental substrates by fungi. The newly formed minerals and textural changes caused by fungal attack on the carbonate substrate were investigated using light and scanning electron microscopy (SEM-EDX), x-ray diffraction (XRD) and Raman spectroscopy. The results document the role of microorganisms in biomineralization, neo-mineral formation and sediment diagenesis. They also reveal the capacity of living fungi to interact with liquid substrates and precipitate new minerals. This work is the first report on the in vitro formation of the mineral glushinskite through fungal-carbonate and sea water substrates interactions processes.

## 1. Introduction

The formation of Ca-oxalate minerals (weddellite and whewellite) through fungal mediation in various growth environments is well-documented (e.g. Silverman and Munoz,

**BGD**

2, 451–497, 2005

## Fungal interaction with solid and aqueous substrates

K. Kolo and Ph. Claeys

Title Page

Abstract

Introduction

Conclusions

References

Tables

Figures

◀

▶

◀

▶

Back

Close

Full Screen / Esc

Print Version

Interactive Discussion

EGU

1970; Arnott, 1982, 1995; Verrecchia et al., 1993; Garieb et al., 1998; Sayer and Gadd, 1997; Gadd, 1999, 2002; Garvie et al., 2000; Verrecchia, 2000; Burford et al., 2002; Gadd et al., 2002; Kolo et al., 2002). This is not the case for glushinskite [ $\text{MgC}_2\text{O}_4 \cdot 2(\text{H}_2\text{O})$ ], probably because its relatively rare occurrence compared to other oxalates. Glushinskite, a natural organic magnesium oxalate dihydrate was discovered in 1960 (Wilson et al., 1980). Its natural formation is similar to other organic oxalates (e.g. Ca-oxalates) through fungally mediated mineralization processes (Garvie, 2003). The formation of oxalates contributes to the Ca, Mg and C recycling in nature and to bio-weathering of rock substrates (Ascaso et al., 1998; Arocena et al., 2000; Sterflinger, 2000). Frost et al. (2003) considered the finding of organic oxalates (e.g. weddellite, whewellite, glushinskite) on other planets as a possible evidence of primitive life forms such as lichens and fungi. Microbial mineralization processes (whether bacterial or fungal) leave mineralogical (metal oxalates) and organic traces on the affected rock surfaces. These traces, when revealed by Raman spectrometry analysis would indicate the existence of a life signature on earth (Howell et al., 2004) or on Mars (Bishop and Murad, 2004; Hochleitner et al., 2004; Howell et al., 2004).

Magnesium can form both simple and complex oxalates (Gadd, 1999). In nature, the formation of glushinskite, as a biomineral, was attributed to the reaction of oxalic acid produced by the fungal mycobiont of the lichen *Lecanora atra* growing on a Mg-rich substrate of serpentinites (Wilson et al., 1980, 1987). In the case of a rotting saguaro cactus, Garvie (2003) suggested that the reaction between oxalic acid released by fungi and Mg-rich solutions had produced glushinskite. Buildings constructed with Mg-rich limestone or marble could also provide an exposed substrate to fungal interaction and formation of glushinskite under natural conditions. The mineral is also found in human and animal bodies as kidney or urinary tract stones (Diaz-Espineira et al., 1995). Ca-oxalates and glushinskite are considered indicators of biological weathering in Ca and Mg rich milieus (Arocena et al., 2003; Wilson et al., 1987).

This experimental study reports on the biomineralization of Ca and magnesium oxalates produced through free, unselective and un-controlled in vitro fungal growth and

---

**Fungal interaction  
with solid and  
aqueous substrates**K. Kolo and Ph. Claeys

---

Title Page

Abstract

Introduction

Conclusions

References

Tables

Figures

◀

▶

◀

▶

Back

Close

Full Screen / Esc

Print Version

Interactive Discussion



interaction with carbonate and seawater substrates that could develop on any suitable surfaces and causes important mineralogical, petrographic alterations of the substrates. Moreover, these alterations could cause permanent damage to works of art. Geologically, fungal interaction will have diagenetic effects on carbonate substrates including mineralogy, petrography and even isotopic signature (Kolo et al., 2004). This is the first report on experimental formation of glushinskite under laboratory conditions simulating natural fungi-rock substrate environment.

## 2. Experimental: materials and methods

### 2.1. Thin sections

Standard petrographic thin sections (30  $\mu\text{m}$ ) were prepared from dolomitic rock samples of "Terwagne Formation" (Viséan, Bochaut quarry, in northern France). Detailed petrographic and sedimentological analysis could be found elsewhere (Mamet and Preat, 2005). For two samples, duplicate thin sections were prepared to monitor fungal growth and interaction during the experiment. This made it possible to follow the evolution of the experiment without disturbing the original settings on the other thin sections. The dolomite in the thin sections provided the Mg and Ca necessary, either for the reaction with oxalic acid, the main metabolite of fungi or for possible uptake-expulsion by fungi during growth process. Free, natural and unselective fungal growth was expected to occur from airborne spores. Interference with the fungal growth process was minimized to simulate fungal growth under natural outdoor conditions. The growth media consisted of chips of natural organic solids as a source of protein and carbohydrate, sucrose solution (10 wt%) and demineralised water for irrigation.

Thin sections were placed separately in Petri dishes ( $\text{Ø}=90\text{ mm}$ ) containing 20 g of the prescribed natural growth media. The solid chips of growth media surrounded the thin sections but did not touch their surfaces. Ten ml (10 wt%) sugar solution prepared with de-mineralized water was carefully added to each Petri dish, taking care not to

---

## Fungal interaction with solid and aqueous substrates

K. Kolo and Ph. Claeys

---

Title Page

Abstract

Introduction

Conclusions

References

Tables

Figures

◀

▶

◀

▶

Back

Close

Full Screen / Esc

Print Version

Interactive Discussion

cover the thin sections surfaces with the solution. Keeping the thin sections surfaces free of growth media and sugar solution was important in monitoring the development of the fungal mass and the extracellular polymeric substance (EPS) layer over the surfaces.

## 5 2.2. Standard seawater (liquid substrate)

Ten ml of filtered standard seawater (3.69 wt% Mg and 1.16 wt% Ca) were added to three Petri dishes containing the same growth media. The standard sea water (SSW) was intended to monitor fungal interaction with liquid substrate and possible recycling of Ca and Mg in the biomineralization process.

10 The Petri dishes from both experiments were covered and placed in fume hood under continuous air current. Laboratory temperature varied between 23–25°C. All samples were kept stationary during the course of experiment. No pH control was carried out.

15 Throughout the experiment, the growing fungi were occasionally spray-irrigated with de-mineralized water to insure continuous humidity. Specimens of the extracellular polymeric substance (EPS) layer formed on the dolomitic and on seawater substrates were continually examined under the optical microscope.

## 2.3. Instrumentation

20 *SEM-EDX*: The coating of thin sections, slides of fungal and EPS material, and extracted mineral species was carried out with Carbon Coater EMITECH-Carbon evaporator K450. Acquisition of data concerning biominerals morphology, distribution, chemistry and relationship to fungal mass and EPS layer was carried out using scanning electron microscopy (SEM). The instrument was a JEOL-JSM-6400, working at 20 kV and 39 mm working distance, equipped with energy dispersive system (EDX, Thermo-Noran Pioneer) with an Si-Li detector. The spectra treatment was done using a SUN  
25 workstation and the Voyager III software.

*Raman Spectroscopy*: Crystals' identification was done by multiple Raman spec-

---

### **Fungal interaction with solid and aqueous substrates**

K. Kolo and Ph. Claeys

---

Title Page

Abstract

Introduction

Conclusions

References

Tables

Figures

◀

▶

◀

▶

Back

Close

Full Screen / Esc

Print Version

Interactive Discussion

---

**Fungal interaction  
with solid and  
aqueous substrates**K. Kolo and Ph. Claeys

---

Title Page

Abstract

Introduction

Conclusions

References

Tables

Figures

◀

▶

◀

▶

Back

Close

Full Screen / Esc

Print Version

Interactive Discussion

EGU

5 troscopy measurements on selected single-crystals. The Raman device is a Dilor XY equipped with an Olympus BH2 microscope (50x objective was used simultaneously for illumination and collection) and a liquid nitrogen cooled 1024×256 CCD-3000 detector. The excitation source is a Coherent Innova 70C Argon/Krypton mixed gas laser (excitation at 514.5 nm, laser power at 25 mW). Integration time ranged from few to 60 s per spectral domain. Baseline subtraction and smoothing were performed on the spectra to improve readability. The analyzed crystals are pinpointed by viewing the image of the sample using a TV camera attached to the microscope.

10 *X-ray diffraction*: A Siemens GADDS-MDS (MicroDiffraction System) was used for the determination of mineral species in mineral clusters within fungal mass, EPS layer, thin section surfaces and extracted crystals.

### 3. Results and Discussion

15 Thin white hyphae that rapidly occupied the vacant space in all Petri dishes were visible on the solid growth media within the first 48 h. Along the 15-day experiment, Mucorales, the growing fungi, progressively covered the thin sections and the seawater substrates under a thick layer of fungal mycelia associated with extensive sporulation. A whitish gelatinous and consistent EPS layer formed beneath the thick mycelium that overlaid both substrate types.

#### 3.1. Thin sections substrate

20 The EPS layer (~2 mm thick) came in direct contact with the thin sections surfaces. Microscopic examination carried out every 72 h on the two thin sections duplicates showed progressive fungal attack on the exposed surfaces. Parts of the surfaces displayed evidence of gradual disappearance and disintegration of the original mineral phase conferring a patchy appearance to the exposed surfaces. Newly formed minerals appeared as fine, bright and whitish crystals littering the dolomitic substrates and

25

---

**Fungal interaction  
with solid and  
aqueous substrates**

---

K. Kolo and Ph. Claeys

---

[Title Page](#)[Abstract](#)[Introduction](#)[Conclusions](#)[References](#)[Tables](#)[Figures](#)[◀](#)[▶](#)[◀](#)[▶](#)[Back](#)[Close](#)[Full Screen / Esc](#)[Print Version](#)[Interactive Discussion](#)

adhering also to the fungal hyphae that traversed the substrates. Parts of the thin sections that were not covered by fungi or by the EPS layer did not show any signs of attack or new mineral deposition. Under the optical microscope, fresh, untreated specimen from the EPS layer and mounted on glass slides displayed rich mineral neo-formation, crosscut by fungal network (Figs. 1a, b). Total destruction and assimilation of the exposed surfaces of the thin sections was observed by the 15th day of the experiment especially where the fungal-substrate interaction was active. Fresh substrates were formed with new minerals replacing the original dolomite or calcite. At this level of fungal attack, the experiment was considered completed. All thin sections were carefully removed from the Petri dishes, oven dried at 30°C for 24 h and submitted to optical, SEM-EDX XRD and Raman analyses. Fresh and untreated fungal material from the thin section-EPS layer interface was also sampled and mounted on glass slides for similar analysis. The newly formed minerals embedded in fungal mass and EPS layer were extracted by digesting the organic mass in 30% H<sub>2</sub>O<sub>2</sub> at 30°C for 60 min in a magnetic stirrer, followed by successive settling, decantation and washings with demineralised water. The crystals residue was carefully removed from the liquid by suction and mounted on glass slides. The extracted mineral material contained mineral crystals and biomineralized fungal hyphae.

Optical and SEM imagery of attacked thin sections revealed mineral neo-formations that formed definite substrates composed entirely of new minerals. These new substrates covered or replaced the original dolomitic ones. In some areas of the thin sections, the mineralization was intense and the new substrates appeared as densely packed layer of fine-grained crystals (5–20 μm). In relation to fungal hyphae, the new minerals appear attached to hyphae as single, pairs, clusters or beads of crystals external to fungal sheaths. Where mineralization was most active, the newly produced minerals formed an envelope that engulfed the whole fungal sheaths. Through dissolution, fungi created voids between and within the grains of the carbonate substrates, which were subsequently filled by mineral neo-formations. Mineral neo-formations also precipitated at the rim of the grains, as fringing and bridging crystals (Figs. 2a, b, c, d,

e and f). EDX analysis of the new minerals deposited on thin sections or attached to the fungal material revealed two different chemical compositions with distinct crystal habits.

The EDX spectrum of the first group represented by prismatic and bipyramidal crystal habits showed a Ca, C, and O (Fig. 3a) composition. Bipyramidal crystals formed the bulk of the newly precipitated crystals on the thin section surfaces. The second group with lamellar spindle shapes that appeared under optical microscope as striations produced a composition of Mg, C, and O peaks (Fig. 3b). The lamellas appear to be originating from a central longitudinal axis. XRD analysis confirmed the Ca-oxalates (weddellite and whewellite) identity of the first group of minerals. The second group was identified as glushinskite (Fig. 4).

The Ca-oxalates and glushinskite crystals showed strong association with fungal hyphae, while the Ca-oxalates formed ordered and packed encrustation enveloping fungal hyphae (Figs. 2a, b); glushinskite adhered to hyphae as single large crystals (Figs. 5a, b). This association reveals a genetic relationship with fungal hyphae for both mineral groups.

The Raman spectra (Fig. 6) of a selected single large crystal gave intense band at  $1474\text{ cm}^{-1}$  and low band at  $1417\text{ cm}^{-1}$  corresponding to the symmetric C-O stretching vibration, which is cation-mineral dependant (Frost et al., 2003). A low band corresponding to anti-symmetric stretching region appears at  $1629\text{ cm}^{-1}$  and a high band in the  $\nu(\text{C-C})$  stretching region at  $913\text{ cm}^{-1}$ . A low band is observed in the C-C-O bending region at  $502\text{ cm}^{-1}$ . The 193, 225,  $234\text{ cm}^{-1}$  triplet appear in the low wave number region. These bands correspond to OMO ring bending mode. In the hydroxyl-stretching region, a low broad band appears at  $3462\text{ cm}^{-1}$ . These values are in good agreement with the published Raman data for calcium oxalate di-hydrate (Frost et al., 2003a). Whewellite (the Ca-monohydrate) was not identified.

The Raman analysis of the large, foliated, spindle shaped and Mg-bearing crystals produced a different signature (Fig. 7). In the symmetric C-O stretching region appears an intense band at  $1471\text{ cm}^{-1}$  that is associated with a shoulder band at  $1445\text{ cm}^{-1}$ .

---

**Fungal interaction  
with solid and  
aqueous substrates**K. Kolo and Ph. Claeys

---

Title Page

Abstract

Introduction

Conclusions

References

Tables

Figures

◀

▶

◀

▶

Back

Close

Full Screen / Esc

Print Version

Interactive Discussion

Other bands appear at 3369, 1720, 1638, 920, 584, 528, 272, 232 and 124  $\text{cm}^{-1}$ . These bands are in good agreement with published data (Frost et al., 2003a, b, 2004a, b) and are assigned here to the magnesium oxalate mineral glushinskite. All other measurements on similar crystals produced relatively high intensities with good resolution in the low and high wavenumber regions.

A peculiar spectrum was obtained from a prismatic crystal attached to fungal hyphae. The spectrum (Fig. 8) gave intense band at 1051  $\text{cm}^{-1}$  that could be assigned to carbonate bonded to a metal with water coordinated to it. The bands 749, 714 and 528  $\text{cm}^{-1}$  are associated with this carbonate. The spectrum does not agree with dolomite or calcite. The other bands (low intensity bands) at high and low wavenumbers reveal a signature of both Ca and magnesium oxalates (weddelite and glushinskite) existing in low concentrations in the same crystal.

### 3.2. Seawater substrate

The fungal interaction with the standard seawater substrate produced 7.6 mg of biominerals after extraction from the organic mass (fungal and EPS layer). This quantity is quite large. It reveals considerable biomineralization in only 15 days. At the same time, it is a clear manifestation of the role of fungi in modifying the substrate system by addition and subtraction of minerals.

Under optical and SEM microscopy, the specimens showed rich biomineral content forming encrustations, clusters or beads on fungal hyphae traversing the EPS layer (Fig. 9a, b, c). The lower parts of the hyphae embedded in the EPS layer were specifically highly biomineralized. The hyphal parts outside EPS layer did not produce biominerals encrustations, clusters or free crystals. This implies a genetic relationship combining the EPS layer and fungal hyphae in the biomineralization process. Biomineral crystals attached to fungal hyphae were mainly tetragonal bipyramidal and tetragonal prismatic-bipyramidal with well-developed  $\{101\}$  and  $\{100\}$  crystal faces. These forms are normally attributed to Ca-oxalates (Arnott, 1995; Verrecchia, 2000; Pr at et al.,

---

**Fungal interaction  
with solid and  
aqueous substrates**

K. Kolo and Ph. Claeys

---

Title Page

Abstract

Introduction

Conclusions

References

Tables

Figures

◀

▶

◀

▶

Back

Close

Full Screen / Esc

Print Version

Interactive Discussion

2003). The same morphologies occurred as free crystals in the fungal mass within the EPS layer (Figs. 9a, b).

Some of the Ca-oxalates crystals revealed a unique and interesting crystal habit (Figs. 9d–e). The new crystal habit shows a prism (20–25  $\mu\text{m}$ ) with two prismatic-pyramidal endings forming a “Greek Pillar”. Some of these “Greek Pillar” crystals formed clusters that radiate from a central point (Fig. 9e) Sceptre crystal habits are known for quartz as amethyst. But those have only single end crystal re-growth. The new biomineralized Ca-oxalates appear to show a two-end re-growth.

The EDX analysis of the hyphal and EPS crystals revealed a composition of calcium and magnesium respectively. The magnesium bearing crystals represent more than 90% of the extracted crystals. Ca-bearing crystals formed the rest of the extract. The Ca crystals occurred mainly as encrustations on the hyphal sheath. XRD analysis of organic mass and extract revealed two mineral groups: Ca-oxalates (weddellite and whewellite) and glushinskite (Fig. 10). Glushinskite formed the dominant mineral phase in the XRD spectra.

Free crystals extracted from the EPS layer show platy habits (Figs. 11a, b) and coffin shaped habits that are either distorted pyramidal or typical monoclinic  $2/m$  symmetry forms (Figs. 11c, d). The distorted pyramidal crystals bear transversal lines resembling striations. These lines indicate crystal growth. The platy (pinacoidal) and coffin shaped crystals (Figs. 11a, d) are new crystal habits for glushinskite forming in fungal culture.

Prismatic-bipyramidal crystals produced a Raman spectrum of weddellite. Whewellite was not clearly identified in the analysis, probably due to its very low level of concentration. The spectrum (Fig. 12) shows complexity especially at low and high bands. Intense bands are observed at 1631, 1474, 913, 600, 506, 148 and 121  $\text{cm}^{-1}$ , broad band at 250  $\text{cm}^{-1}$  and weak band at 198  $\text{cm}^{-1}$ . The major intense band at 1474  $\text{cm}^{-1}$  is assigned to the C=O symmetric stretching mode. The observation of a single band at 1474  $\text{cm}^{-1}$  indicates the equivalence of C=O stretching vibrations and a centrosymmetric structure. The band is attributed to weddellite. The intense band at 1631  $\text{cm}^{-1}$  appears in antisymmetric stretching region. This band is Raman for-

---

**Fungal interaction  
with solid and  
aqueous substrates**K. Kolo and Ph. Claeys

---

Title Page

Abstract

Introduction

Conclusions

References

Tables

Figures

◀

▶

◀

▶

Back

Close

Full Screen / Esc

Print Version

Interactive Discussion



bidden. The band is observed probably because the structure is a distorted square antiprism (Frost and Weier, 2003a, b). This band is also attributed to weddellite. A single intense band is observed at  $913\text{ cm}^{-1}$  and is attributed to the C-C stretching vibration in weddellite. The Raman spectrum of the low wavenumber region of the mineral shows three Raman bands in the  $400\text{--}600\text{ cm}^{-1}$  region. The doublet bands at  $600$  and  $598\text{ cm}^{-1}$  and the intense band at  $506\text{ cm}^{-1}$  have been assigned to the bending mode of C-C-O and the M-O ring and M-O stretching modes. The broad band centered at  $250\text{ cm}^{-1}$  and the band observed at  $198\text{ cm}^{-1}$  is attributed to the Ca-O bending and stretching modes. The position of these bands is in good agreement with previous data on weddellite (Frost et al., 2003a). The bands  $148$  and  $121\text{ cm}^{-1}$  are new bands that have not been reported in previous studies on Ca-oxalates (Frost et al., 2003a, b, 2004a). Only the tetragonal prismatic bipyramidal crystals of weddellite produced these bands. Tetragonal bipyramidal crystals of the same mineral did not yield these very low wavenumber bands. This suggests a structural control at molecular level related to crystal habit since the measurements were done on the  $\{100\}$  plane of the prismatic bipyramidal crystals and on  $\{101\}$  plane for the bi-pyramidal crystals. The hydroxyl-stretching region is also complex. This region shows two broad bands centered at  $3483$  and  $3281\text{ cm}^{-1}$ . The first band agrees well with published data on whewellite. The second band is reported here for the first time. The low intensity band at  $3072\text{ cm}^{-1}$  is attributed to weddellite and the  $2935\text{ cm}^{-1}$  could be assigned to organic impurities. The hydroxyl-stretching region is showing a partially dehydrated weddellite that also bears a whewellite signature.

Extracted crystals representing coffin shaped (distorted pyramidal and prismatic) and platy crystals were selected for Raman analysis. The EDX analysis of all these crystal types indicated a Mg peak only. The three crystal forms, although indicating glushinskite, gave slightly different Raman spectra (Figs. 13, 14 and 15). The distorted pyramidal crystals produced intense bands at  $3363$ ,  $1470$ ,  $586$ ,  $532$  and  $231\text{ cm}^{-1}$  and low intensity bands at  $1643$ ,  $1659$  and  $914$  and  $271\text{ cm}^{-1}$ . The prismatic crystals show intense bands at  $3368$ ,  $1470$ ,  $920$ ,  $585$ ,  $529$ ,  $230$ ,  $153$ , and  $117\text{ cm}^{-1}$  and moderate

---

## Fungal interaction with solid and aqueous substrates

K. Kolo and Ph. Claeys

---

Title Page

Abstract

Introduction

Conclusions

References

Tables

Figures

◀

▶

◀

▶

Back

Close

Full Screen / Esc

Print Version

Interactive Discussion



bands at 3292, 2902, 1643, 1329 and 274  $\text{cm}^{-1}$ . The platy crystals produced a simpler Raman spectrum with major intense bands observed at 3377 and 229  $\text{cm}^{-1}$  and low intensity bands at 1470, 914 and 529  $\text{cm}^{-1}$ . All three spectra are in agreement with the previous Raman signature of glushinskite obtained on the spindle crystals. Only the prismatic crystals show low wavenumbers at 152 and 117  $\text{cm}^{-1}$ . The distorted bipyramidal crystal forms of glushinskite have been previously reported (Wilson et al., 1987), the prismatic and platy morphologies are reported here for the first time.

### 3.3. Ca- and Mg-oxalates formation

All fungal taxa precipitate calcium oxalate on fungal mycelia (Urbanus et al., 1978). This process is considered as detoxification of excess calcium in the fungal growth environment. Fungi and the carbon source they use determine the growth and form of calcium oxalates crystals precipitated on fungal hyphae (Whitney and Arnott, 1988). Oxalic acid, the principal fungal metabolite reacts with the available  $\text{Ca}^{2+}$  in the growth environment to precipitate Ca-oxalates:



The formation of calcium oxalate monohydrate [ $\text{CaC}_2\text{O}_4 \cdot \text{H}_2\text{O}$ : whewellite] and calcium oxalate dihydrate [ $\text{CaC}_2\text{O}_4 \cdot 2\text{H}_2\text{O}$ : weddellite] depends largely on a variety of factors such as the pH of the growth environment, the solubility of oxalates (Gadd, 1999) and diagenetic re-crystallization (Verrecchia et al., 1993, 2000), the sequence of formation is driven by the loss of crystallization water: dihydrate oxalates form first, monohydrate second and calcium carbonate  $\text{CaCO}_3$  third (Verrecchia et al., 1993). Gadd (1999) considered that trihydrate Ca-oxalates are the initial precipitation phase, followed by either the mono- or the di- hydrate after losing the water of crystallization. In the present work both types of calcium oxalates (weddellite and whewellite) occur simultaneously in the growth environment. Diagenetic factors cannot play a major role in the transformation of weddellite into whewellite considering the short experimental time. The co-existence

[Title Page](#)[Abstract](#)[Introduction](#)[Conclusions](#)[References](#)[Tables](#)[Figures](#)[◀](#)[▶](#)[◀](#)[▶](#)[Back](#)[Close](#)[Full Screen / Esc](#)[Print Version](#)[Interactive Discussion](#)

of the two mineral species is attributed to fungal metabolic activities (Horner et al., 1995).

In natural growth environment, subaerial fungi can use wind blown particles, rain or the substrate as sources of Ca for precipitating oxalates (Braissant et al., 2004). In this study, the only source of Ca and Mg is the dolomite ( $\text{CaMg}(\text{CO}_3)_2$ ) substrate and the seawater. Oxalic and carbonic acids cause dissolution of carbonate substrates leading to their subsequent weathering and deterioration that adds an environmental impact to fungal interaction with buildings and works of art made of this material.

Both Ca and Mg existed in an unbound form in the seawater growth medium. Thus both metals were available for uptake by fungi. Sayer and Gadd (1997) have demonstrated the fungal ability to form different forms of oxalates, e.g. Ca, Cd, Co, Cu, Mn, Sr, and Zn. Howell et al. (2003) have shown that while Ca-oxalates (weddelite and whewellite) were formed by fungal mycobionts of lichens, no magnesium oxalates were detected on the fungal thalli despite the Mg-rich substrates. The fungal culture in the present experiment provided similar results, which could indicate a mechanism of Mg-oxalates formation that differs from that of Ca-oxalates.

### 3.3.1. Thin section substrate

#### A. Ca-oxalates

The oxalic acid excreted by fungal hyphae reacted with the dolomitic substrate and precipitated Ca and Mg oxalates. This process, lead to dissolution and deterioration of the dolomitic substrate. Carbonic acid ( $\text{H}_2\text{CO}_3$ ) could also form in this environment due to the production of  $\text{CO}_2$  by fungal bioactivity in the aqueous growth environment (Rosling et al., 2004). In this latter case, high levels of  $\text{CO}_2$  accumulating in “microenvironments” would produce sufficient concentrations of carbonic acid to induce dissolution of the substrate. This carbonic acid dissolution process also increases the concentration in  $\text{Mg}^{2+}$  and  $\text{Ca}^{2+}$  cations available to react with oxalic acid and frees the carbonate ions into the growth environment, which contributes

---

## Fungal interaction with solid and aqueous substrates

K. Kolo and Ph. Claeys

---

Title Page

Abstract

Introduction

Conclusions

References

Tables

Figures

◀

▶

◀

▶

Back

Close

Full Screen / Esc

Print Version

Interactive Discussion

to calcium carbonate precipitation. The extensive formation of the biomineralized minerals weddellite and whewellite on the analysed thin sections indicates the high availability of  $\text{Ca}^{2+}$  to react with oxalic acid in the fungal growth environment.

Based on SEM observations, the Ca-oxalates within the fungal mass and on the attacked thin sections displayed three precipitation modes:

(i) Direct deposition of tetragonal prismatic dipyramidal crystals ( $1\text{--}10\ \mu\text{m}$ ) on the attacked substrates of the thin sections (Figs. 2a, b, c, d). Here, the precipitation produced dense new layers of single crystals that either replaced the dissolved original substrate or were deposited directly on it. In the latter case, they filled voids and spaces (created mostly by fungal dissolution of the substrate) between and within the original grains. Fungi also extended the precipitation of biominerals to the rims of the glass slide, outside the primarily attacked area. This suggests fungal capability of mobilising and transporting  $\text{Ca}^{2+}$  outside the source area. In all these cases, the process of forming new substrates or filling the original or induced voids can be defined as “biological precipitation”.

The abundant fungal spores (size  $\approx 2\ \mu\text{m}$ ) released into the growth environment come in contact with oxalic acid- $\text{Ca}^{2+}$  rich medium where they became nucleation sites for Ca-oxalates. Unlike other free or attached ca-oxalates, these oxalates possess a multi-layer and concentric zonation structures that reflect crystal growth mechanism around a nucleus (Fig. 16). This structure shows a homogenous and equally spaced smooth internal and external growth surfaces. Most of the crystals show a four layer zonation. Unlike the abundant crystals encrusting the fungal hyphae, the Ca-oxalates deposited around the fungal spores represent prismatic bipyramidal single crystal growth ( $4.5 \times 4\ \mu\text{m}$ ). The crystals interior and nuclei are square shaped with a depression that represents the spores folding. The nuclei size ( $2\ \mu\text{m}$ ) is equal to the size of the spores ( $2\ \mu\text{m}$ ). The EDX analysis of such fungal crystals revealed a spectrum similar to normal Ca-oxalates. However, the formation of these zoned crystals reflects chemical changes in growth environment. Given time, these crystals could transform through diagenesis into real carbonates similar to sedimentary ooids although probably through a different

---

**Fungal interaction  
with solid and  
aqueous substrates**K. Kolo and Ph. Claeys

---

Title Page

Abstract

Introduction

Conclusions

References

Tables

Figures

◀

▶

◀

▶

Back

Close

Full Screen / Esc

Print Version

Interactive Discussion

environment and formation mechanism.

(ii) Precipitation on fungal hyphae. Here, a highly ordered envelope of densely packed Ca-oxalate crystals completely engulfs the fungal sheaths at regular spaces (Fig. 2a, b). The highly mineralized fungal hyphae are mostly seen under the microscope as broken fragments even in fresh specimens. The biomineralized fungal hyphae lose their flexibility and become brittle, probably leading to the death of the affected hyphae. Arocena et al. (2001) suggested the deposition of Ca-oxalates on the fungal hyphae surfaces as a protection against dehydration and grazing. The crystals adhere strongly to fungal hyphae, resisting even the mechanical force during extraction. This further indicates that the crystal grows within fungal sheath.

The first and the second modes of precipitation have been described in present day caliches layers, weathering of carbonate buildings or in plants litter (Arnott, 1995; Sterflinger, 2000; Verrecchia, 2000; Garvie, 2003). However, the formation of Ca-oxalates as highly packed and ordered crystal envelopes around the fungal sheaths indicates a direct expulsion of Ca-oxalate through the fungal cellular walls rather than an exogenous oxalic acid/Ca<sup>2+</sup> reaction and precipitation. The regularity of Ca-oxalates crystals deposition on fungi from plant litter is an indication of the endogenous formation of oxalates followed by expulsion and deposition on the hyphal wall (Arnott, 1995). The occurrence of Ca-oxalates as ordered and packed deposits on fungal hyphal sheaths together with free Ca-oxalate deposits on attacked substrates indicate that both exogenous and endogenous formation of Ca-oxalates have occurred in the course of this experiment. The intensive biomineralization of fungal hyphae is not a general process. Extensive sampling of the fungal mass demonstrates that biomineralization on fungal hyphae is restricted to the lower parts of fungal hyphae embedded in the EPS layer. Above the EPS layer, hyphae did not show biomineralization.

SEM images of some fungal hyphae (Fig. 17) show a double layer of ordered ca-oxalates engulfing fungal sheath. The crystals of the inner layer are much smaller (2–3 μm) than the second external layer (5–10 μm). The growth of two crystal layers suggests two generations separated by a time sequence: a faster inner one and a

**Fungal interaction  
with solid and  
aqueous substrates**

K. Kolo and Ph. Claeys

Title Page

Abstract

Introduction

Conclusions

References

Tables

Figures

⏪

⏩

◀

▶

Back

Close

Full Screen / Esc

Print Version

Interactive Discussion

5 slower outer one. These two generations are possibly related to the availability of Ca in the growth environment. With increased fungal attack on the substrate more Ca is released in the growth environment, which is then immobilized as Ca-oxalates either by direct extracellular expulsion or by reaction of excreted oxalic acid with  $\text{Ca}^{+2}$ . The crystals of the outer envelope seem to be attached to fungal hypha by the {001} plane. The development of the {001} pinacoids seems to be un-stable resulting in small {001} faces and truncated {101} faces. While the crystal morphology of the inner layer type and relation to fungal hyphae have been previously reported (e.g. Arnott, 1995), the double crystal layer and the outer crystal morphology on the hypha are reported here for the first time. The inner crystal layer is densely packed with no apparent orientation to the fungal hypha. The outer layer crystals are orientated perpendicularly to the long hyphal axis resting on the basal pinacoid. Many of these crystals are deeply embedded in the inner layer. The diameter of the inner layer ( $\approx 12\ \mu\text{m}$ ) is doubled by the precipitation of the outer crystal layer ( $\approx 25\ \mu\text{m}$ ). The EDX analysis shows a Ca, O and C composition. Though not a conclusive analysis, the crystals of the inner envelope seems to show a lower calcium content (26 wt%) than the crystals of the outer envelope (34 wt%). The mechanism of formation of the double crystal layers on the hypha is not clear. The general homogeneity of the size of outer layer crystals and their embedding in the fungal hyphal wall passing through the inner layer suggest an inner secretion of oxalates.

20 iii) Precipitation within fungal hyphae. In this case, the Ca-oxalates are lining the inner wall of the fungal sheath (Fig. 2d), indicating an inner formation of weddellite or whewellite. This third mode of Ca-oxalate formation has been subject of discussion. In higher plants the intra-cellular formation of Ca-oxalates is well established (Horner and Wagner, 1995). In fungi, the issue of intra-cellular or extra-cellular formation is not fully understood (Vincent et al., 1995). Arnott (1995) demonstrated a sequential expulsion of Ca-oxalates from the hyphal wall. Gadd (1999) reviewed the different arguments pointing towards an intra-hyphal formation of oxalates as a cellular detoxification process, where the excess Ca is neutralized in the form of insoluble oxalates. In

---

**Fungal interaction  
with solid and  
aqueous substrates**K. Kolo and Ph. Claeys

---

Title Page

Abstract

Introduction

Conclusions

References

Tables

Figures

◀

▶

◀

▶

Back

Close

Full Screen / Esc

Print Version

Interactive Discussion

the SEM micrograph (Fig. 2d), ordered crystal lining is clearly visible inside the broken fungal hyphae. The crystals form a uniform lining that covers the whole inner curvatures of the broken hollow hyphal sheath. This uniform distribution of the inner lining can occur through endogenous precipitation of the Ca-oxalates.

### *B. Glushinskite*

Glushinskite as observed under optical microscopy and SEM, showed peculiar crystal morphology. The crystals have a general “spindle” or pear shapes with layered lamella and locally with transition towards more rhombic or pyramidal morphologies (Figs. 5a, b). The “lamella”, “striations” and “spindle shapes” are common features in the examined glushinskite crystals. Under optical microscope, the lamellas appear as striations. Wilson (1980) observed at the interface between the lichen *Lecanora atra* and serpentinites substrates similar striated crystals of naturally formed glushinskite. But the striations on these latter crystals could belong to the other type of glushinskite crystals, namely the distorted pyramidal forms, where they would indicate growth process involving repetitive twinning. Figure 5a, b also shows the genetic relationship between glushinskite and the fungal hyphae. Here glushinskite crystals, do not cover or envelope fungal hyphae but rather appear attached to hyphal tips and sheaths, similar to a fruit-bearing tree, indicating an external reaction of oxalic acid with an Mg<sup>+2</sup>-rich solution. Glushinskite crystals lie on a layer of finer and more extensively precipitated Ca oxalates. Garvie (2003) observed the common occurrence of fungal hyphae on the mineral glushinskite and considered that it resulted from the reaction of oxalic acid released by fungi with the Mg-rich solutions supplied by a rotting saguaro cactus.

Glushinskite generally superpose Ca-oxalates in thin sections, indicating a post-Ca-oxalates formation. This sequence of biomineralization could indicate the availability and relative importance of Ca and Mg cations in the fungal growth environment. In the case of a dolomitic substrate, it may also illustrate the sequence of possible uptake-

---

**Fungal interaction  
with solid and  
aqueous substrates**

K. Kolo and Ph. Claeys

---

Title Page

Abstract

Introduction

Conclusions

References

Tables

Figures

◀

▶

◀

▶

Back

Close

Full Screen / Esc

Print Version

Interactive Discussion

---

**Fungal interaction  
with solid and  
aqueous substrates**K. Kolo and Ph. Claeys

---

[Title Page](#)[Abstract](#)[Introduction](#)[Conclusions](#)[References](#)[Tables](#)[Figures](#)[⏪](#)[⏩](#)[◀](#)[▶](#)[Back](#)[Close](#)[Full Screen / Esc](#)[Print Version](#)[Interactive Discussion](#)

EGU

expulsion processes for  $\text{Ca}^{2+}$  and  $\text{Mg}^{2+}$  by fungi. Fungi first neutralize the toxicity of excess Ca through the Ca up-take and subsequent precipitation of Ca-oxalates (Gadd, 1999; Sterflinger, 2000). This produces solutions rich in Mg within the fungal growth environment that could precipitate glushinskite. Since the Mg oxalates have a much higher solubility than Ca-oxalates (Gadd, 1999), the restricted spatial distribution of glushinskite suggests that the high Mg concentrations necessary for its precipitation only prevailed in localized microenvironments.

The peculiar spindle and lamellar crystal morphology of the biomineralized glushinskite could suggest its nucleation on bodies with similar shapes. In Fig. 5c unidentified ornamented round bodies (fungal spores?) with “ribbed” and “ridged” walls, seemingly hollow and with star-shaped ornamentation locally litter some of the spindle shaped glushinskite crystals. Numerous EDX spot analyses of these bodies revealed a high Mg content. It is possible to speculate that these ribbed and ridged round bodies formed nucleation sites on which the biomineralized glushinskite grew. The formation of zoned structures around spores has been already demonstrated. Lamella growing from the “ribs” formed complete spindle shapes in full mineral growth. This offers an additional argument for the exogenous formation of the mineral glushinskite.

The EDX analysis of biomineralized crystals on thin sections and on fungal hyphae (crystal encrustations) have shown that the only Mg-bearing neoformations are those crystallized in spindles and foliated shapes. The ordered crystals encrustations engulfing fungal hyphae or forming the new substrates are always Ca-oxalates with their specific prismatic, bipyramidal and sometimes rhombic shapes. In this study, glushinskite did not encrust fungal sheaths. This rules out the possibility of Mg-uptake and expulsion as Mg-oxalates. Actually, the much larger glushinskite crystals (40–100  $\mu\text{m}$ ) compared to Ca-oxalates (usually  $<10 \mu\text{m}$ ) suggests slower and longer crystallization processes in localized microenvironments containing high concentrations of  $\text{Mg}^{2+}$ . The formation of glushinskite is due to a direct reaction between oxalic acid excreted by fungi in the growth environment and the  $\text{Mg}^{2+}$  produced by the dissolution of the dolomitic substrate of the thin section. The notions of “biological mineral deposition”



and the formation of layered “stratum” are invoked here. The Ca-oxalates formed the first deposited “stratum” that was subsequently overlain by a second layer formed of glushinskite. Under natural conditions, where extensive fungal-rock surface interaction is envisaged, this type of microbial deposition could have real geological implications.

5 Lichens cover large areas of exposed rock surfaces almost in any type of environment. Fungi, the mycobiont of lichens interact strongly with rock surfaces modifying their chemistry and petrography and causing rock weathering and deposition of biominerals (Arocena et al., 2003; Sterflinger, 2000; Wilson et al., 1980; Verrecchia, 1990; Verrecchia et al., 1993).

### 10 3.3.2. The seawater substrate

#### *Ca-oxalates*

Fungal interaction with the seawater substrate did not produce a substrate of layered Ca-oxalates. Under the optical and SEM microscopy, the Ca-oxalates were either encrusted on the fungal sheaths or embedded in the fungal mass, the former being predominant. The mineral extract produced high abundance of free glushinskite crystals and fewer free Ca-oxalate crystals. Encrustation on fungal hyphae was the main process of Ca-oxalates formation during this interaction. Tetragonal prismatic, bipyramidal and needle prismatic crystals are the observed crystal habits (Figs. 18a, 15 b, c, d). The size and composition are similar to the Ca-oxalates retrieved from the thin section substrates. Here no double encrustations are observed on the fungal sheaths. Small crystals (1  $\mu\text{m}$ ) protrude perpendicularly from some fungal sheaths (Fig. 18b). These crystals have a wide base on the fungal sheath and a pointed end, making a triangular shape. They appear growing from the hyphal sheath. These growth shapes 20 are interpreted as incipient Ca-oxalates expulsion from fungal sheath. Arnott (1995) observed a similar case of fungi from plant litter. On other hyphae (Figs. 18a, c) rich Ca-oxalates encrustation are observed with tetragonal prismatic and pyramidal crystals with free crystals on the background. The average crystal size is 5  $\mu\text{m}$ . In

Title Page

Abstract

Introduction

Conclusions

References

Tables

Figures

◀

▶

◀

▶

Back

Close

Full Screen / Esc

Print Version

Interactive Discussion



Figs. 18c, d the oxalates encrusting the hyphae are classified as needle prisms. The crystals have high length/width ratio. Some of them show penetration twinning. The fungal background is littered with prismatic bipyramidal crystals.

Very interesting is the extent of biomineralization. Figure 18d shows total biomineralization of fungal sporangium and hypha with prismatic-needle-type Ca-oxalates. The EDX analysis produced a composition of Ca only. Ca-oxalates are known to be related to fungal hyphae in various forms, but sporangia are not known to take part in biomineralization as nucleation sites. The crystals' form (needle prisms) and sizes ( $1 \times 2 \times 5 \mu\text{m}$ ) are identical on both fungal hypha and sporangium. The crystals protrude perpendicularly from the hypha or from the sporangium sphere. This suggests a common biomineralization process different from the background where much larger ( $10 \times 10 \times 5 \mu\text{m}$ ), isolated and tetragonal prismatic and bipyramidal are dominant (Fig. 9a). The formation of similar Ca-crystal forms has been reported as an internal hyphal secretion (Arnott 1987, 1995; Gadd, 1999). If the hyphal wall is a site for Ca-oxalate formation then apparently the fungal sporangium plays identical role. Biomineralization on hyphae and sporangium is induced by indigenous processes through Ca uptake by fungi from the growth medium and subsequent expulsion of Ca-oxalates, while the background Ca-oxalates, imbedded in fungal mycelium are formed through oxalic acid-Ca reaction in the growth medium.

### *Glushinskite*

Glushinskite, as demonstrated earlier, is represented here by three crystal morphologies, i.e. coffin shaped (distorted-pyramidal and prismatic) and platy (pinacoids). The first two types formed the bulk of the extracted crystals. Similar to the case of the thin section substrate, glushinskite formed within fungal mass embedded in the EPS layer but never encrusted fungal filaments. All of the EDX analyses on crystals enveloping hyphal sheaths produced Ca-bearing mineral only. Glushinskite in its different forms occurred as single, clusters or beads of crystals embedded in the

---

**Fungal interaction  
with solid and  
aqueous substrates**

K. Kolo and Ph. Claeys

---

Title Page

Abstract

Introduction

Conclusions

References

Tables

Figures

◀

▶

◀

▶

Back

Close

Full Screen / Esc

Print Version

Interactive Discussion

fungal mucilage. The crystals sometimes adhered to fungal hyphae, but never formed ordered encrustations as is the case for Ca-oxalates. This repeated observation confirms the suggestion that during the fungal growth, neither Mg uptake or Mg expulsion occurred contrary to calcium where both could occur (Jackson and Heath, 1993). The main process of glushinskite formation was exogenous. Oxalic acid secreted by fungi reacted with the free Mg in the growth medium and precipitated glushinskite in the three different forms. Since the solubility constant of glushinskite is much higher than that of Ca-oxalate monohydrate (Gadd, 1999), fungi respond to Ca concentration in the growth medium and reaches an equilibrium between Ca needed for hyphal tip growth process and toxicity of the metal. Excess Ca is excreted outside the cellular walls (Jackson and Heath, 1993) and removed from the growth environment in the form of insoluble Ca-oxalates. This fungal metabolic need for intracellular calcium regulation and the lower solubility constant of Ca-oxalates leads to the formation of a one phase or several phases (e.g. the double encrustations on fungal sheaths) fungal of Ca-oxalates precipitation before Mg<sup>2+</sup> attains the concentration necessary to trigger Mg-oxalate precipitation in the growth environment The Ca was withdrawn from the growth environment before the initiation of glushinskite formation.

#### 4. Conclusions

Fungi growing in vitro from natural air-borne spores under uncontrolled conditions attack and dissolve dolomitic substrates on petrographic thin sections. Consequently, the Ca and Mg cations released in the growth environment lead to the sequential precipitation first of Ca-oxalates followed by the magnesium dihydrate oxalate: glushinskite. The formation of Ca-oxalate involves both exogenous and endogenous processes related to fungal hyphae, while glushinskite only forms exogenously. Fungal interaction with carbonate substrate produces also double-layered encrustations of Ca-oxalates on fungal hyphae. Nucleation on fungal spores produces zoned Ca-oxalates crystals that could over a much larger time period form possible ooidal structures in sedimentary en-

---

### Fungal interaction with solid and aqueous substrates

K. Kolo and Ph. Claeys

---

Title Page

Abstract

Introduction

Conclusions

References

Tables

Figures

◀

▶

◀

▶

Back

Close

Full Screen / Esc

Print Version

Interactive Discussion

vironments. Nucleation is also the possible cause of spindle shaped glushinskite. The new biominerals produced new substrates that either replace or superpose the original dolomite causing a biological stratification and diagenesis of original substrates. These latter results could be compared to actual sedimentary processes. On a seawater substrate, the fungi produce Ca-oxalates and glushinskite by using the Ca and Mg in the seawater. Glushinskite could also exist in prismatic and platy crystal habits in addition to the known distorted pyramidal habit.

*Acknowledgements.* We thank J. Vereecken, O. Verstaeten and K. Baerts, Department of Metallurgy, Vrije Universiteit Brussels, for the SEM-EDX and Raman facilities. We also thank A. Bernard, Department of Geology, Université Libre de Bruxelles for the XRD facility. This work is supported by the Onderzoeksraad van de Vrije Universiteit Brussel.

## References

- Arnott, H. J.: Calcium oxalates (weddelite) crystals in forest litter, *Scan. Electron. Microsc.*, P3, 1141–114, 1982.
- 15 Arnott, H. J.: Calcium oxalates in fungi, in: *Calcium Oxalates in Biological Systems*, edited by: Khan, S. R., CRC press, Boca Raton, 73–111, 1995.
- Arocena, J. M. and Glowa, K. R.: Mineral weathering in ectomycorrhizosphere of subalpine fir (*Abies lasiocarpa* (Hook.) Nutt.) as revealed by soil solution composition, *Forest Ecol. Manag.*, 133, 61–70, 2000.
- 20 Arocena, J. M., Glowa, K. R., and Massicotte, H. B.: Calcium-rich hypha encrustations on *Piloderma*, *Mycorrhiza*, 10, 209–215, 2001.
- Arocena, J. M., Zhu, L. P., and Hall, K.: Mineral accumulations induced by biological activity on granitic rocks in Qindhai Plateau, China, *Earth Surf. Process. Landf.*, 28, 1429–1437, 2003.
- Ascaso, C., Wierzchos, J., and Castello, R.: Study of the biogenic weathering of calcareous litharenite stones caused by lichens and endolithic microorganisms, *Int. Biodeterior. Biodegrad.*, 42, 29–38, 1998.
- 25 Bishop, J. L. and Murad, E.: Characterization of minerals and biogeochemical markers on Mars: A Raman and IR spectroscopic study of montmorillonite, *J. Raman Spectrosc.*, 35, 480–486, 2004.

**BGD**

2, 451–497, 2005

---

## Fungal interaction with solid and aqueous substrates

K. Kolo and Ph. Claeys

---

Title Page

Abstract

Introduction

Conclusions

References

Tables

Figures

◀

▶

◀

▶

Back

Close

Full Screen / Esc

Print Version

Interactive Discussion

EGU

- Braissant, O., Cailleau, G., Aragno, M., and Verrecchia, E.: Biologically induced mineralization in the tree *Milicia excelsa* (*Moraceae*): its causes and consequences to the environment, *Geobiology*, 2, 59–66, 2004.
- Burford, E. P., Hillier, S., and Gadd, G. M.: Rock and mould: transformation of carbonate minerals by fungi, Abstracts, 7th Internat. Mycolog. Congr., Oslo, August 2002.
- Diaz-Espineira, M., Escolar, E., Bellanato, J., and Medina, J. A.: Crystalline composition of equine urinary sabulous deposits, *Scan. Microsc.*, 9, 1071–1079, 1995.
- Edwards, H. G. M., Seaward, M. R. D., Attwood, S. J., Little, S. J., De Oliveira, L. F. C., and Tretiach, M.: FT-Raman spectroscopy of lichens on dolomitic rocks: an assessment of metal oxalate formation, *Analyst*, 128, 1218–1221, 2003.
- Edwards, H. G. M., Villar, J. S. E., Bishop, J. L., and Bloomfield, M.: Raman spectroscopy of sediments from the Antarctic Dry Valleys; an analogue study for exploration of potential paleolakes on Mars, *J. Raman Spectrosc.*, 35, 458–462, 2004.
- Franceschi, V. R. and Loewus, F. A.: Oxalate biosynthesis and function in plants and fungi, in: *Calcium Oxalates in Biological Systems*, edited by: Khan, S. R., CRC press, Boca Raton, 113–130, 1995.
- Frost, L. R. and Weier, L. M.: Thermal treatment of weddellite – a Raman and infrared emission spectroscopic study, *Thermochm. acta*, 406, 221–232, 2003a.
- Frost, L. R. and Weier, L. M.: Raman spectroscopy of natural oxalates at 298 and 77 K, *J. Raman Spectrosc.*, 34, 776–785, 2003b.
- Frost, L. R. and Weier, L. M.: Thermal treatment of whewellite – a thermal analysis and Raman spectroscopic study, *Thermochm. acta*, 409, 79–85, 2004a.
- Frost, L. R., Adebajo, M., and Weir, M. L.: A Raman spectroscopic study of thermally treated glushinskite-the natural magnesium oxalate dehydrate, *Spectrochimica Acta*, part A, 60, 643–651, 2004b.
- Gadd, G. M.: Fungal production of citric and oxalic acid: importance in metal speciation, physiology and biogeochemical processes, *Adv. Microb. Physiol.*, 41, 47–92, 1999.
- Gadd, G. M.: Fungal influence on mineral dissolution and metal mobility: mechanisms and biogeochemical relevance, 12th annual Goldschmidt Conference Abstracts, A257, 2002.
- Gadd, G. M., Burford, E. P., Fomina, M., Harper, F. A., and Jacobs, H.: Fungal influence on metal mobility: Mechanisms and relevance to environment and biotechnology, Abstracts, 7th Internat. Mycolog. Cong., Oslo, August, 2002.
- Garieb, M. M., Sayer, J. A., and Gadd, G. M.: Solubilization of natural gypsum ( $\text{CaSO}_4 \cdot 2\text{H}_2\text{O}$ )

**Fungal interaction  
with solid and  
aqueous substrates**

K. Kolo and Ph. Claeys

Title Page

Abstract

Introduction

Conclusions

References

Tables

Figures

◀

▶

◀

▶

Back

Close

Full Screen / Esc

Print Version

Interactive Discussion

- and the formation of calcium oxalates by *Aspergillus niger* and *Serpula himantiodes*, *Mycol. Res.*, 102, 825–830, 1998.
- Garvie, L. A. J.: Decay-induced biomineralization of the saguaro cactus (*Carnegiea gigantea*), *Am. Mineral.*, 88, 1879–1888, 2003.
- 5 Garvie, L. A. J., Bungartz, F., Nash, T. H., and Knauth, L. P.: Caliche dissolution and calcite biomineralization by the endolithic lichen *Verrucaria rubrocincta* Breuss in the Sonoran desert, *J. Conf. Abstrs.*, 5, 430, 2000.
- Hochleitner, R., Tarcea, N., Simon, G., Kiefer, W., and Popp, J.: Micro-Raman spectroscopy: a valuable tool for the investigation of extraterrestrial material, *J. Raman Spectro.*, 35, 515–
- 10 518, 2004.
- Horner, H. T. and Wagner, B. L.: Calcium oxalate formation in higher plants, in: *Calcium oxalates in biological systems*, edited by: Khan, S. R., Boca Raton, FL, USA: CRC Press, 53–75, 1995.
- Horner, H. T., Tiffany, L. H., and Knaphus, G.: Oak leaf litter rhizomorphs from Iowa and Texas: calcium oxalate producers, *Mycologia*, 87, 34–40, 1995.
- 15 Jackson, S. L. and Heath, I. B.: Roles of calcium ions in hyphal tip growth, *Microbiol. Rev.*, 57, 2, 367–382, 1993.
- Kolo, K., Mamet, B., and Preat, A.: Dichotomous filamentous dolomite crystal growth in the Lower Carboniferous from Northern France: A possible direct production of fungal activity?, *Proceed. 1st Geologica Belgica Intern. Meeting*, edited by: Degryse, P. and Sintubin, M., 117–120, Leuven, 2002.
- 20 Kolo, K., Claeys, Ph., and Preat, A.: Experimental monitoring of fungal diagenesis of carbonate substrates, in: *Microbialites and microbial communities in sedimentary systems*, edited by: Camoin, G. and Guatret, P., Abstract book, publication ASF, Paris, 46, 67, 2004.
- 25 Mamet, B. and Pr eat, A.: S edimentologie de la S erie Vis ennne d’Avesnes-Sur-Helpe (Avesnois, nord de la France), *Geol. Belg.*, 8, 1–2, in press, 2005.
- Preat, A., Kolo, K., Mamet, B., Gorbushina, A., and Gillan, D.: Fossil and sub-recent fungal communities in three calcrete series from the Devonian of Canadian Rocky Mountains, Carboniferous of northern France and Cretaceous of central Italy, in: *Fossil and Recent Biofilms*, edited by: Krumbein, E. W. and Paterson, D. M., Kluwer Academic Publishers, 2003.
- 30 Rodr iguez-Navarro, C., Sebasti an, E., and Rodr iguez-Gallego, M.: An urban model for dolomite precipitation: Authigenic dolomite on weathered building stones, *Sed. Geol.*, 109, 1–11, 1997.

---

**Fungal interaction  
with solid and  
aqueous substrates**K. Kolo and Ph. Claeys

---

[Title Page](#)[Abstract](#)[Introduction](#)[Conclusions](#)[References](#)[Tables](#)[Figures](#)[◀](#)[▶](#)[◀](#)[▶](#)[Back](#)[Close](#)[Full Screen / Esc](#)[Print Version](#)[Interactive Discussion](#)

---

**Fungal interaction  
with solid and  
aqueous substrates**

---

K. Kolo and Ph. Claeys

---

[Title Page](#)[Abstract](#)[Introduction](#)[Conclusions](#)[References](#)[Tables](#)[Figures](#)[◀](#)[▶](#)[◀](#)[▶](#)[Back](#)[Close](#)[Full Screen / Esc](#)[Print Version](#)[Interactive Discussion](#)

EGU

Rosling, A., Lindhal, B. D., Taylor, A. F. S., and Finlay, R. D.: Mycelial growth and substrate acidification of ectomycorrhizal fungi in response to different minerals, *FEMS, Microb. Ecol.*, 47, 31–37, 2004.

Sayer, J. A. and Gadd, G. M.: Solubilization and transformation of insoluble inorganic metal compounds to insoluble metal oxalates by *Aspergillus niger*, *Mycol. Res.*, 101, 653–661, 1997.

Silverman, M. P. and Munoz, E. F.: Fungal attack on rock: solubilisation and altered infra red spectra, *Science*, 169, 985–687, 1970.

Sterflinger, K.: Fungi as geological agents, *Geomicrob. J.*, 17, 97–124, 2000.

Verrecchia, E. P.: Fungi and Sediments, in: *Microbial Sediments*, edited by: Riding, R. E. and Awramik, S. M., Springer-Verlag Berlin Heidelberg, 68–75, 2000.

Verrecchia, E. P., Dumont, J. L., and Verrecchia, K. E.: Role of calcium oxalates biomineralization by fungi in the formation of calcretes: A case study from Nazareth, Israel, *J. Sed. Geol.*, 63, 1000–1006, 1993.

Urbanus, J. F. L. M., van den Ende, H., and Koch, B.: Calcium oxalates crystals in the wall of *Mucor mucedo*, *Mycologia*, 70, 829–842, 1978.

Wilson, M. J. and Bayliss, P.: Mineral nomenclature: glushinskite, *Mineral. Mag.*, 51, 327, 1987.

Wilson, M. J., Jones, D., and Russel J. D.: Glushinskite a naturally occurring magnesium oxalate, *Mineral. Mag.*, 43, 837–840, 1980.

Whitney, K. D. and Arnott, H. J.: The effect if calcium on mycelial growth and calcium oxalate crystal formation in *Gilbertella persicarea* (Mucorales), *Mycologia*, 80, 707–715, 1988.

---

**Fungal interaction  
with solid and  
aqueous substrates**K. Kolo and Ph. Claeys

---

Title Page

Abstract

Introduction

Conclusions

References

Tables

Figures

◀

▶

◀

▶

Back

Close

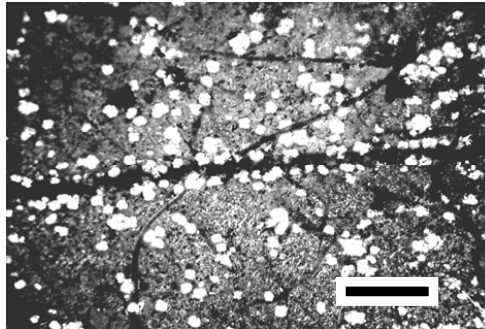
Full Screen / Esc

Print Version

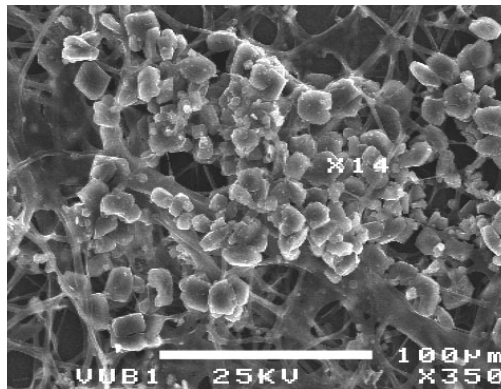
Interactive Discussion

EGU

(a)



(b)

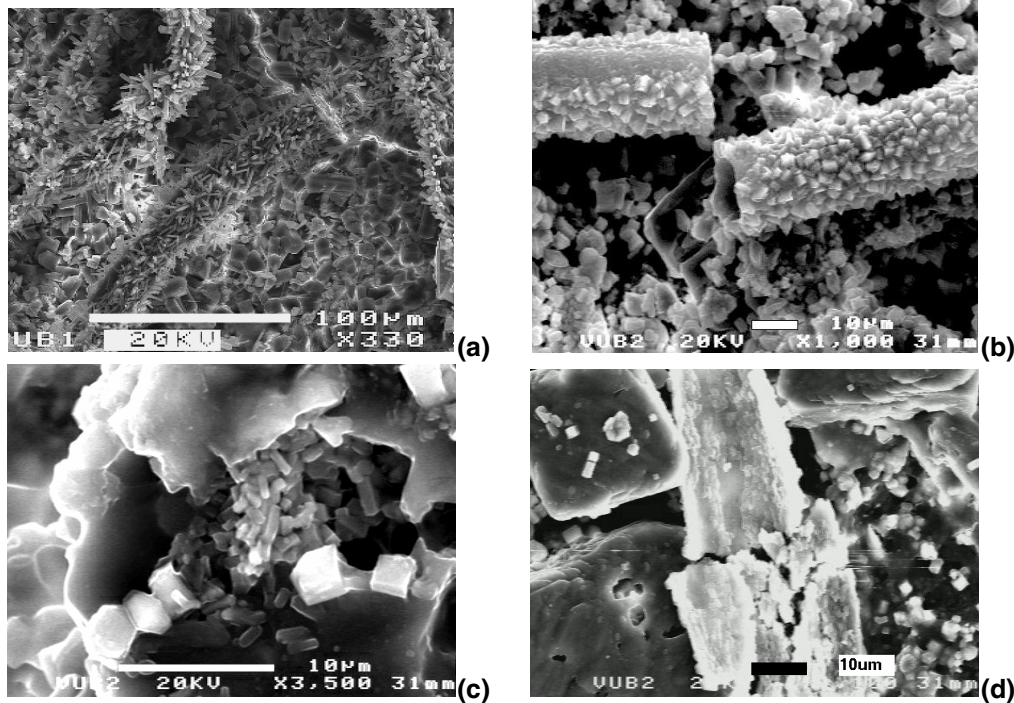


**Fig. 1.** Clusters of minerals biomineralized by fungal interaction with dolomitic substrate. The minerals (white crystals) are: **(a)** Attached to fungal hyphae and **(b)** Embedded in fungal mycelium (black and grey filamentous material). The bead-like ordering of minerals is caused by alignment along hyphal sheaths, revealing a genetic relationship. Optical microscope, XPL. Bar scale=50  $\mu\text{m}$ .



## Fungal interaction with solid and aqueous substrates

K. Kolo and Ph. Claeys



**Fig. 2.** Scanning electron microscope (SEM) images of dolomitic thin sections attacked by fungi showing forms of mineral neoformations produced by fungal interaction with the dolomitic substrates. **(a)** Formation of new substrates by replacement or deposition on the original substrate. Dense precipitation of Ca-oxalates forms the new substrate. Heavily biomineralized fungal filaments are also visible. **(b)** Biomineralization engulfing fungal hyphae. The filaments appear completely encrusted by Ca-oxalates. The background shows a biomineralized new substrate. **(c)** “Nesting”, intra-space filling of a void produced by fungal attack on original matrix grain. The newly produced minerals (prismatic crystals) are “laid” by fungi in the “nest”. **(d)** Hyphal biomineralization. A broken fungal hypha shows Ca-oxalates lining the inner hyphal wall. This suggested an endogenous precipitation of Ca-oxalates.

Title Page

Abstract

Introduction

Conclusions

References

Tables

Figures

◀

▶

◀

▶

Back

Close

Full Screen / Esc

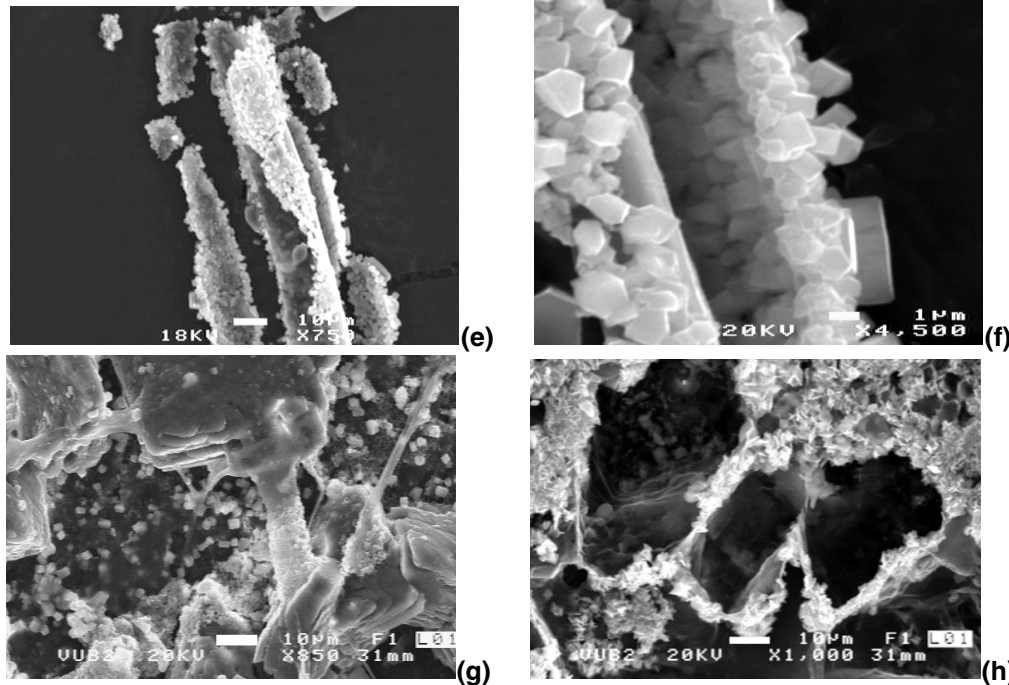
Print Version

Interactive Discussion



## Fungal interaction with solid and aqueous substrates

K. Kolo and Ph. Claeys



**Fig. 2.** (e) A biomaterialized fungal filament extracted from fungal mass. The hypha still preserves its tube shape. The detached fragments show the outer and the inner fungal wall. Both walls are highly mineralized. (f) A detail of (e) showing the Ca-oxalates lining the hyphal wall inside-out. In places, the hyphal wall has been totally replaced by Ca-oxalates. (g) Bridging and inter-space filling, fungal biomineralization bridging original attacked dolomite grains. The mineral-bridge is composed of Ca-oxalates. The empty space between the grains is filled with newly produced minerals (Ca-oxalates). (h) Honey-comb structure formed by preferential deposition of biominerals (Ca-oxalates) on original grain boundaries and void creation by fungal attack and dissolution of those grains. The image also shows the depth of the dissolution. Bar scale: a=100 μm; b, c, d, e, g, h=10 μm; f=1 μm.

Title Page

Abstract

Introduction

Conclusions

References

Tables

Figures

◀

▶

◀

▶

Back

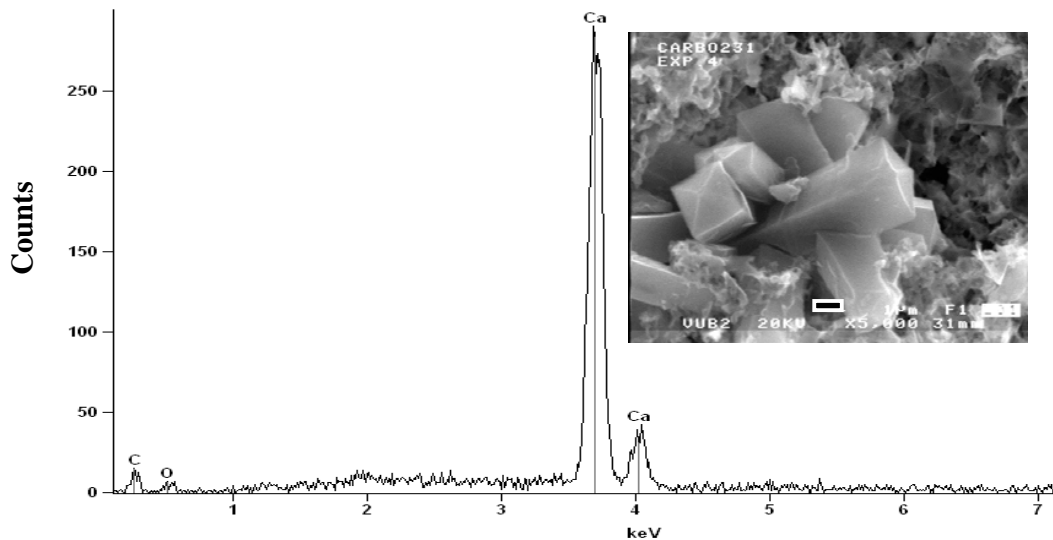
Close

Full Screen / Esc

Print Version

Interactive Discussion

(a)



**Fig. 3. (a)** Energy dispersive x-ray (EDX) analysis of prismatic and bipyramidal crystals (inserted figure) showing high calcium content with C and O. These biomineralized crystals making the fine background proved to be composed of Ca-oxalates: weddellite and whewellite.

Title Page

Abstract

Introduction

Conclusions

References

Tables

Figures

◀

▶

◀

▶

Back

Close

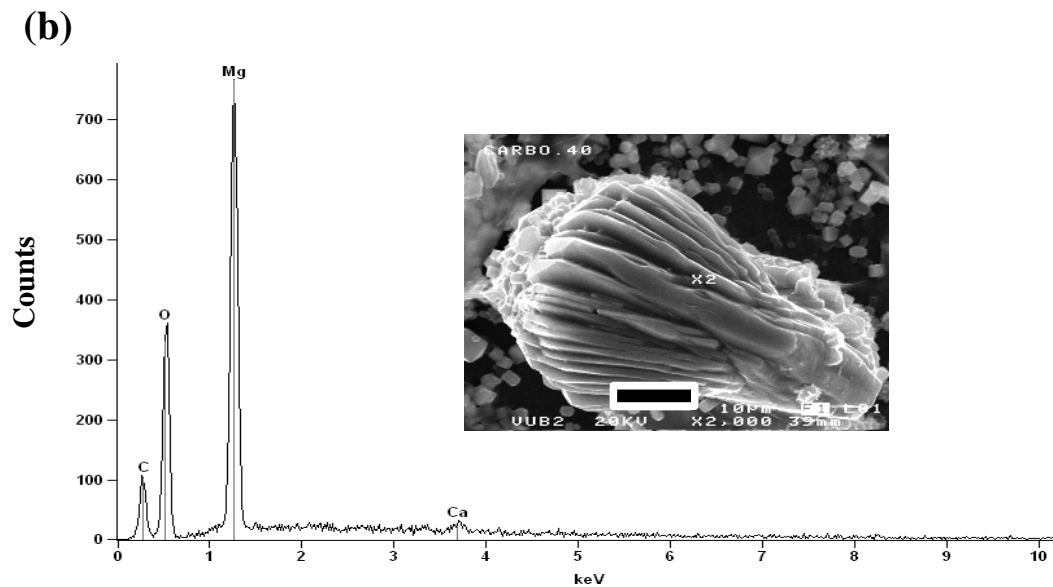
Full Screen / Esc

Print Version

Interactive Discussion

**Fungal interaction  
with solid and  
aqueous substrates**

K. Kolo and Ph. Claeys



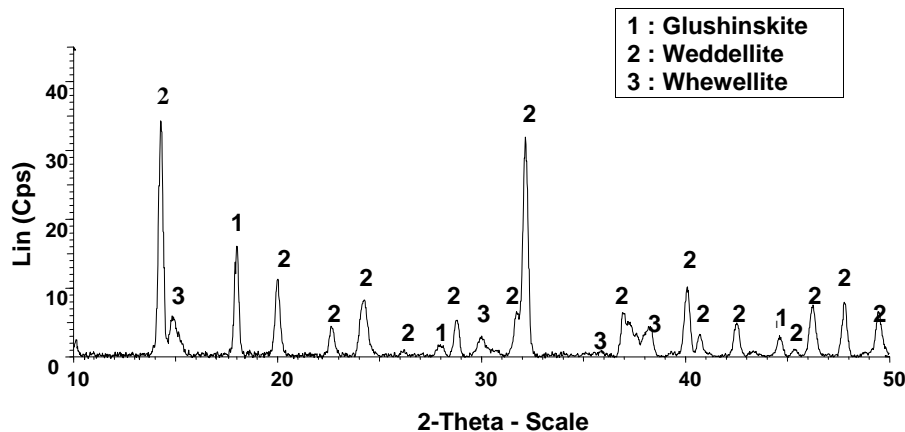
**Fig. 3. (b)** Energy dispersive x-ray (EDX) analysis of foliated and spindle shaped crystals (inserted figure) showing high Mg composition. These crystals proved to be the mineral glushinskite.

[Title Page](#)[Abstract](#)[Introduction](#)[Conclusions](#)[References](#)[Tables](#)[Figures](#)[◀](#)[▶](#)[◀](#)[▶](#)[Back](#)[Close](#)[Full Screen / Esc](#)[Print Version](#)[Interactive Discussion](#)

EGU

**Fungal interaction  
with solid and  
aqueous substrates**

K. Kolo and Ph. Claeys



**Fig. 4.** XRD analysis of mineral neoformations. The identified minerals are Ca-oxalates: weddellite and whewellite as the main phase. Glushinskite appears in the background.

Title Page

Abstract

Introduction

Conclusions

References

Tables

Figures

◀

▶

◀

▶

Back

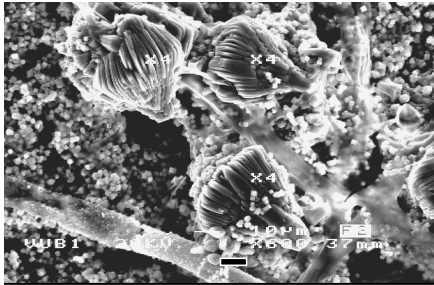
Close

Full Screen / Esc

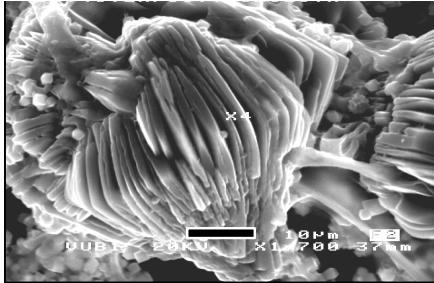
Print Version

Interactive Discussion

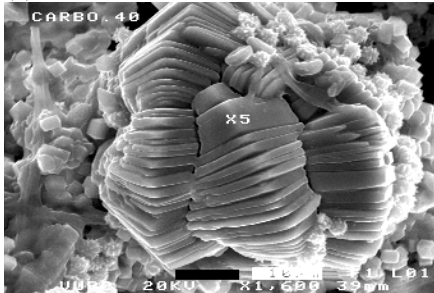
(a)



(b)



(c)



**Fig. 5.** The peculiar forms of glushinskite crystals revealing the lamellar and foliated spindle habits. **(a)** Glushinskite crystals adhering to hyphae as single large ( $40\ \mu\text{m}$ ) crystals; in the background the much finer Ca-oxalates are visible. **(b)** and **(c)** Multiple growths of glushinskite crystals ( $40\text{--}60\ \mu\text{m}$ ) in twinning formations showing the same lamellar habits. This association reveals a genetic relationship with fungal hyphae.

**BGD**

2, 451–497, 2005

---

**Fungal interaction  
with solid and  
aqueous substrates**

K. Kolo and Ph. Claeys

---

Title Page

Abstract

Introduction

Conclusions

References

Tables

Figures

◀

▶

◀

▶

Back

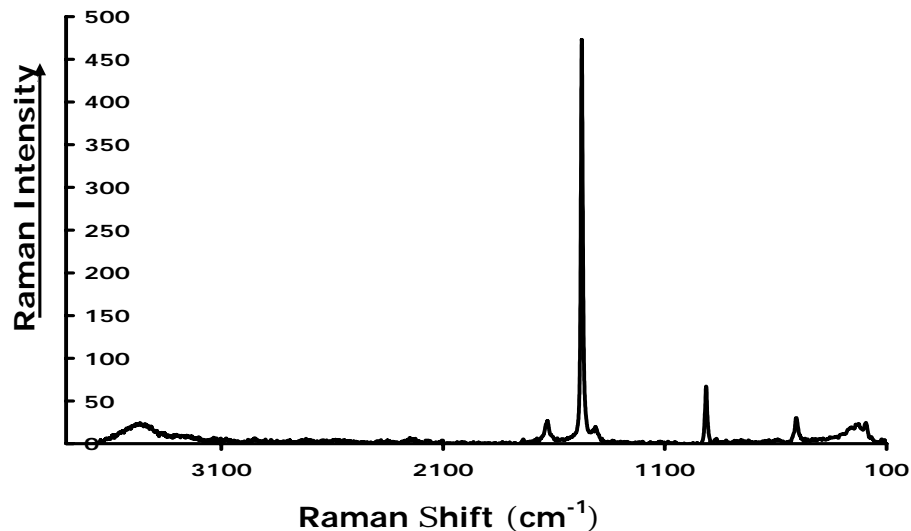
Close

Full Screen / Esc

Print Version

Interactive Discussion

EGU



**Fig. 6.** Raman spectrum of prismatic bipyramidal crystals extracted from fungal mass attacking dolomitic substrate in vitro. The spectrum obtained from single crystal analysis was cross-checked by repeated measurements on several other crystals. The spectrum is typical for weddellite.

**Fungal interaction  
with solid and  
aqueous substrates**

K. Kolo and Ph. Claeys

Title Page

Abstract

Introduction

Conclusions

References

Tables

Figures

◀

▶

◀

▶

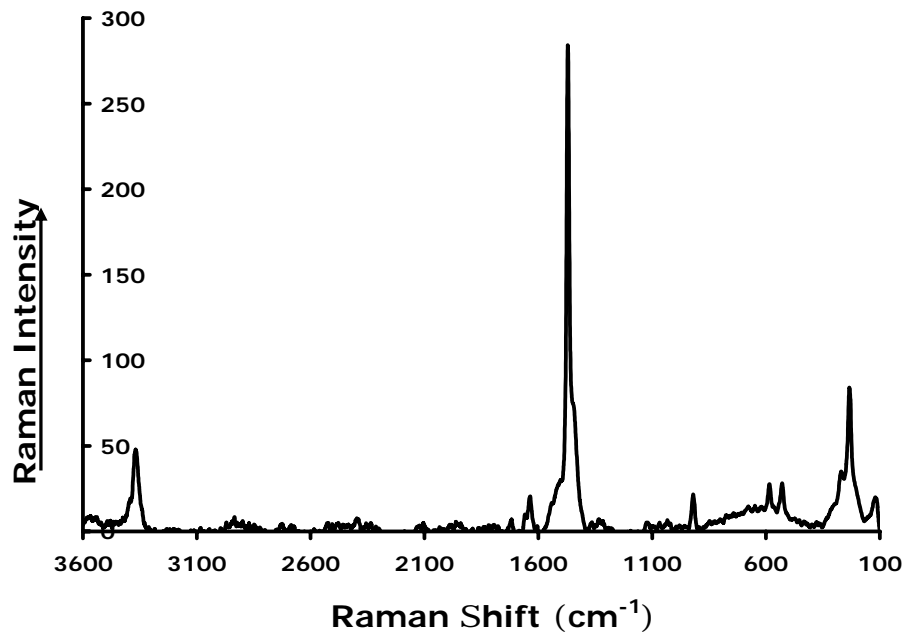
Back

Close

Full Screen / Esc

Print Version

Interactive Discussion



**Fig. 7.** Raman spectrum of lamellar and spindle shaped crystals extracted from fungal mass attacking dolomitic substrate in vitro. Raman analysis identified these crystals (after EDX assertion of their high Mg content) as the Mg-oxalate glushinskite. The crystals produced typical glushinskite spectrum.

**Fungal interaction  
with solid and  
aqueous substrates**

K. Kolo and Ph. Claeys

Title Page

Abstract

Introduction

Conclusions

References

Tables

Figures

◀

▶

◀

▶

Back

Close

Full Screen / Esc

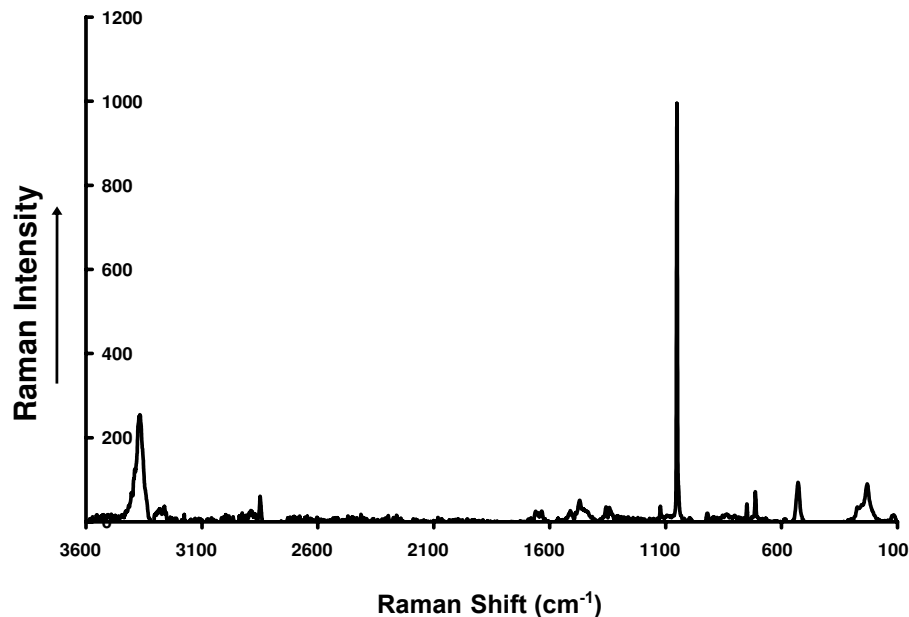
Print Version

Interactive Discussion

---

**Fungal interaction  
with solid and  
aqueous substrates**K. Kolo and Ph. Claeys

---



**Fig. 8.** Raman spectrum of a crystal with mixed signatures of an unidentified carbonate mineral and weddellite. The XRD analyses of the newly formed biominerals did not produce any of the usual carbonate signatures (dolomite or calcite).

[Title Page](#)[Abstract](#)[Introduction](#)[Conclusions](#)[References](#)[Tables](#)[Figures](#)[◀](#)[▶](#)[◀](#)[▶](#)[Back](#)[Close](#)[Full Screen / Esc](#)[Print Version](#)[Interactive Discussion](#)

EGU



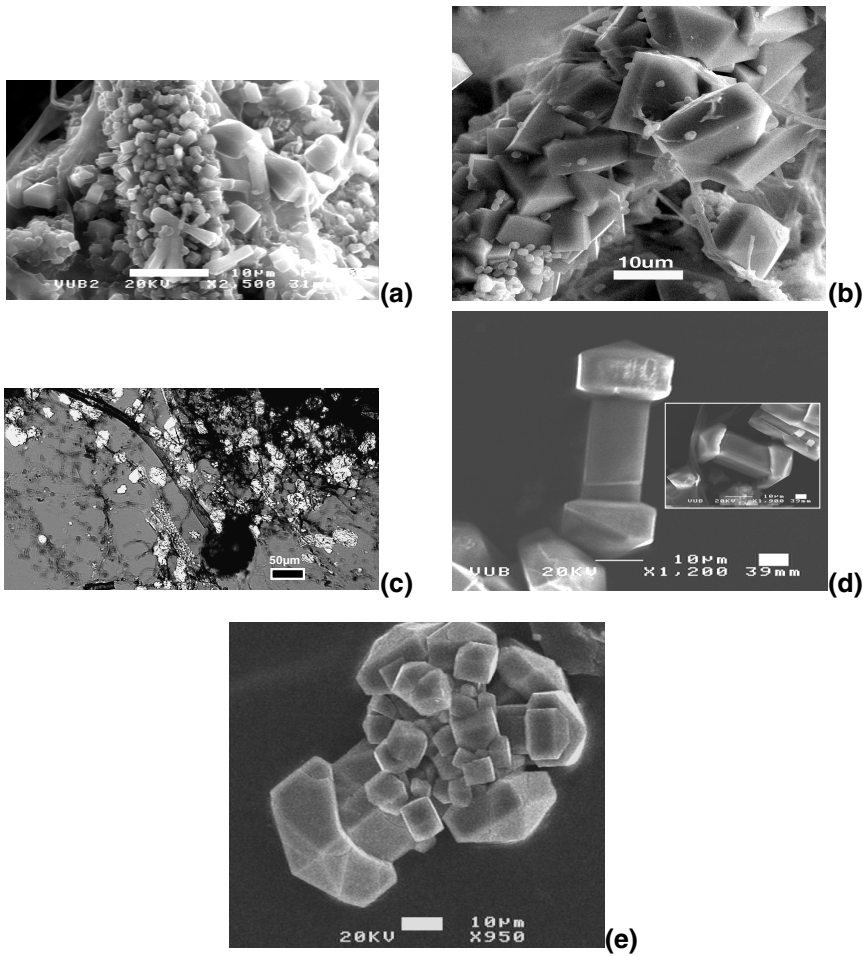


Fig. 9.

**Fungal interaction  
with solid and  
aqueous substrates**

K. Kolo and Ph. Claeys

Title Page

Abstract

Introduction

Conclusions

References

Tables

Figures

◀

▶

◀

▶

Back

Close

Full Screen / Esc

Print Version

Interactive Discussion

## Fungal interaction with solid and aqueous substrates

K. Kolo and Ph. Claeyes

**Fig. 9.** **(a)** SEM image showing fungal specimen with rich biomineral contents forming highly ordered and packed crystal encrustations on fungal hyphae. The crystals forms are mainly tetragonal prismatic and bipyramidal typical of weddellite. The background also shows numerous free isolated weddellite crystals. These latter forms are exogenously formed. **(b)** Same as above but with excellently developed tetragonal prismatic bipyramidal crystal forms of weddellite, some showing penetration twinning. Free crystals embedded in fungal mass but not forming part of crystal encrustations are also visible. **(c)** A typical experimental fungal mass showing the high content of biominerals forming clusters or beads of crystals (bright spots) either attached to fungal hyphae or filling the space within the fungal mass. Optical microscope. XPL. **(d)** New crystal habit of Ca-oxalates (weddellite) showing a “Greek Pillar” shape. The prism in the middle is topped by two tetragonal pyramidal forms, entirely different from the “Sceptre” habits known for quartz. The inserted image shows the prism “plugged” into the two pyramidal endings. (Material extracted from fungal mass). **(e)** Cluster of “Greek Pillar” Ca-oxalates crystals radiating from a central point. One of them is showing twinning. (Material extracted from fungal mass). In Figs. 9a, b and c, the lower parts of the hyphae embedded in the EPS layer were highly biomineralized. The hyphal parts outside EPS layer did not produce biominerals encrustations, clusters or free crystals.

Title Page

Abstract

Introduction

Conclusions

References

Tables

Figures

⏪

⏩

◀

▶

Back

Close

Full Screen / Esc

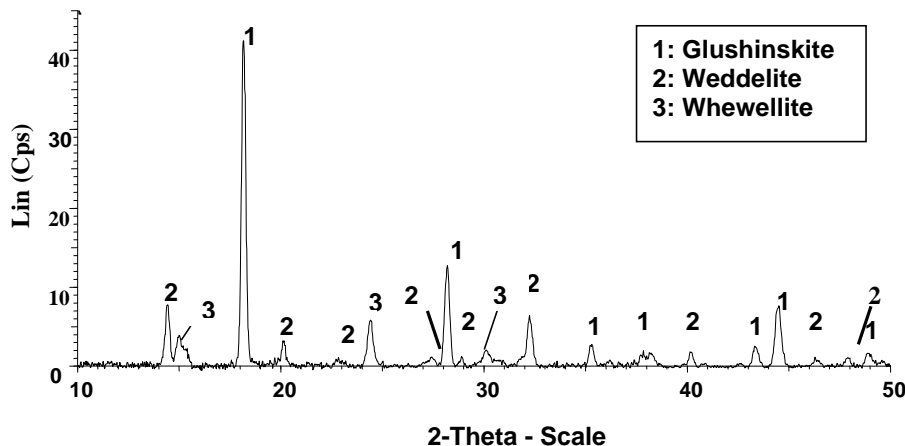
Print Version

Interactive Discussion

EGU

**Fungal interaction  
with solid and  
aqueous substrates**

K. Kolo and Ph. Claeys



**Fig. 10.** XRD analysis of fungal mass and extracted biominerals showing two groups: Ca-oxalates (weddellite and whewellite) and Mg-oxalate (glushinskite) produced through fungal interaction with standard sea water substrate. Glushinskite formed the major mineral phase in the XRD spectra as well as in the extract.

Title Page

Abstract

Introduction

Conclusions

References

Tables

Figures

◀

▶

◀

▶

Back

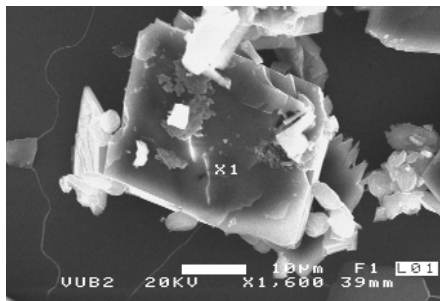
Close

Full Screen / Esc

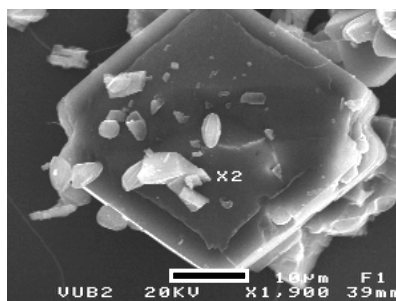
Print Version

Interactive Discussion

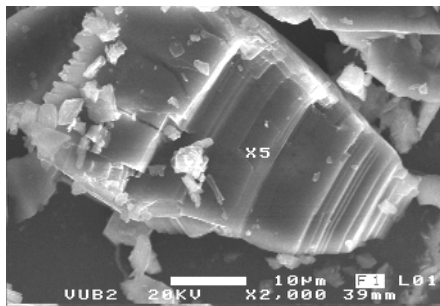
(a)



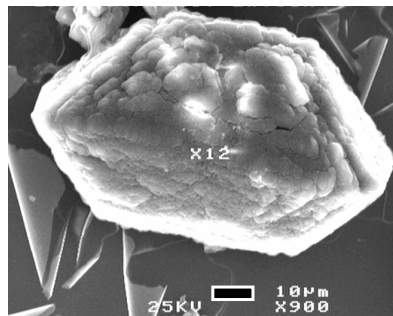
(b)



(c)



(d)



**Fig. 11.** SEM images of free crystals extracted from the EPS layer showing platy habits (a, b) and coffin shaped habits that are either distorted pyramidal or typical monoclinic  $2/m$  symmetry forms (c, d). The distorted pyramidal crystals (c) bear transversal lines resembling striations. These lines indicate crystal growth. The platy (pinacoidal) (a, b) and coffin shaped crystals (d) are new crystal habits of glushinskite that formed in fungal culture. Bar scale =  $10\ \mu\text{m}$ .

**BGD**

2, 451–497, 2005

**Fungal interaction  
with solid and  
aqueous substrates**

K. Kolo and Ph. Claeyes

Title Page

Abstract

Introduction

Conclusions

References

Tables

Figures

◀

▶

◀

▶

Back

Close

Full Screen / Esc

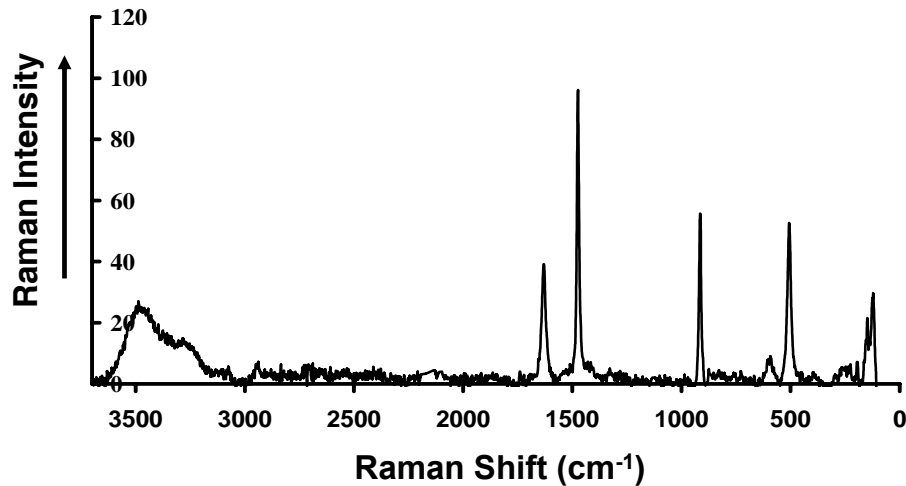
Print Version

Interactive Discussion

EGU

**Fungal interaction  
with solid and  
aqueous substrates**

K. Kolo and Ph. Claeys



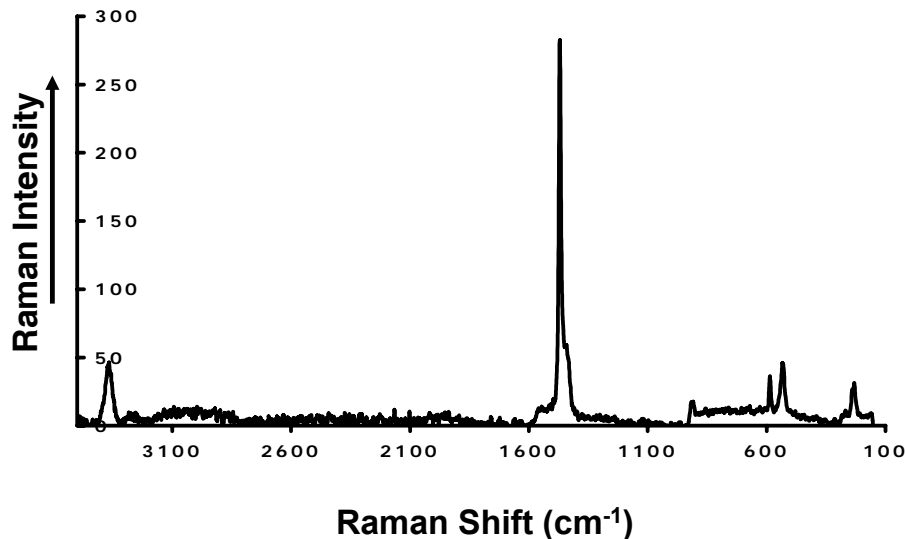
**Fig. 12.** Raman analysis of single tetragonal prismatic bipyramidal crystals extracted from fungal mass and EPS layer. The spectrum indicates the mineral weddellite. Intense and low bands are observed in the spectrum. The very intense band at  $1474\text{ cm}^{-1}$  is a signature of weddellite.

[Title Page](#)[Abstract](#)[Introduction](#)[Conclusions](#)[References](#)[Tables](#)[Figures](#)[◀](#)[▶](#)[◀](#)[▶](#)[Back](#)[Close](#)[Full Screen / Esc](#)[Print Version](#)[Interactive Discussion](#)

EGU

**Fungal interaction  
with solid and  
aqueous substrates**

K. Kolo and Ph. Claeys



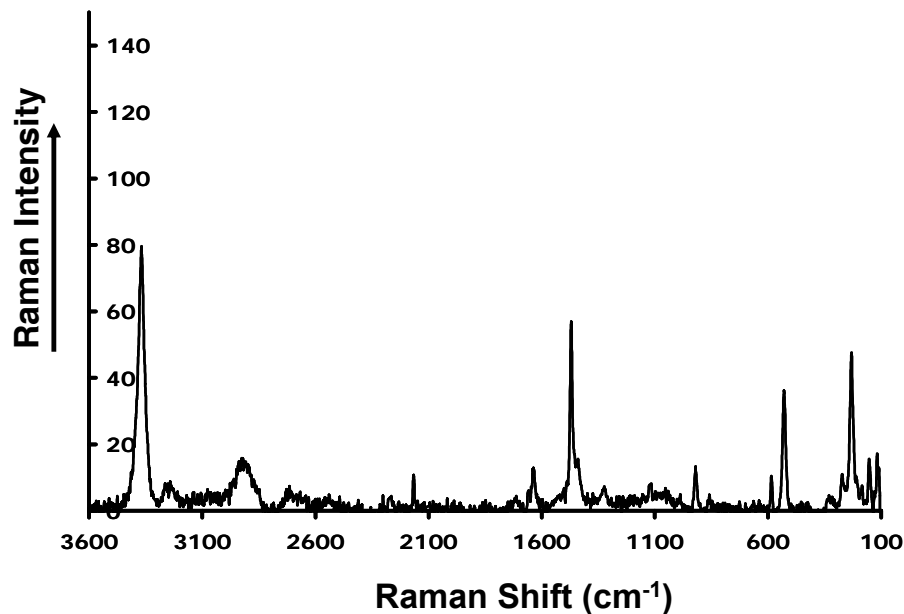
**Fig. 13.** Raman analysis of single distorted pyramidal crystals (coffin shaped) extracted from fungal mass and EPS layer produced by fungal interaction with SSW substrate. The spectrum indicates the mineral glushinskite with very intense band at  $1470\text{ cm}^{-1}$ .

[Title Page](#)[Abstract](#)[Introduction](#)[Conclusions](#)[References](#)[Tables](#)[Figures](#)[⏪](#)[⏩](#)[◀](#)[▶](#)[Back](#)[Close](#)[Full Screen / Esc](#)[Print Version](#)[Interactive Discussion](#)

EGU

**Fungal interaction  
with solid and  
aqueous substrates**

K. Kolo and Ph. Claeys



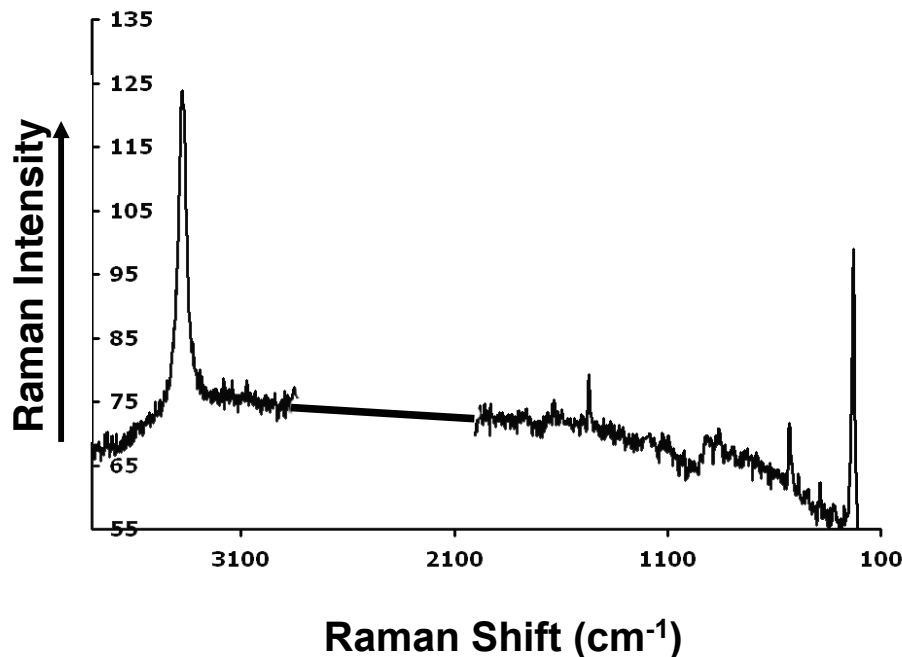
**Fig. 14.** Raman analysis of single prismatic crystals (coffin shaped) extracted from fungal mass and EPS layer produced by fungal interaction with SSW substrate. The spectrum indicates the mineral glushinskite with very intense band at 3368, 1470 and 153  $\text{cm}^{-1}$ .

[Title Page](#)[Abstract](#)[Introduction](#)[Conclusions](#)[References](#)[Tables](#)[Figures](#)[I◀](#)[▶I](#)[◀](#)[▶](#)[Back](#)[Close](#)[Full Screen / Esc](#)[Print Version](#)[Interactive Discussion](#)

EGU

**Fungal interaction  
with solid and  
aqueous substrates**

K. Kolo and Ph. Claeys



**Fig. 15.** Raman analysis of single platy (pinacoidal) crystals extracted from fungal mass and EPS layer produced by fungal interaction with SSW substrate. The spectrum indicates the mineral glushinskite with very intense bands at 3377 and 229  $\text{cm}^{-1}$ . The typical glushinskite band ( $1470 \text{ cm}^{-1}$ ) is weak for this crystal habit.

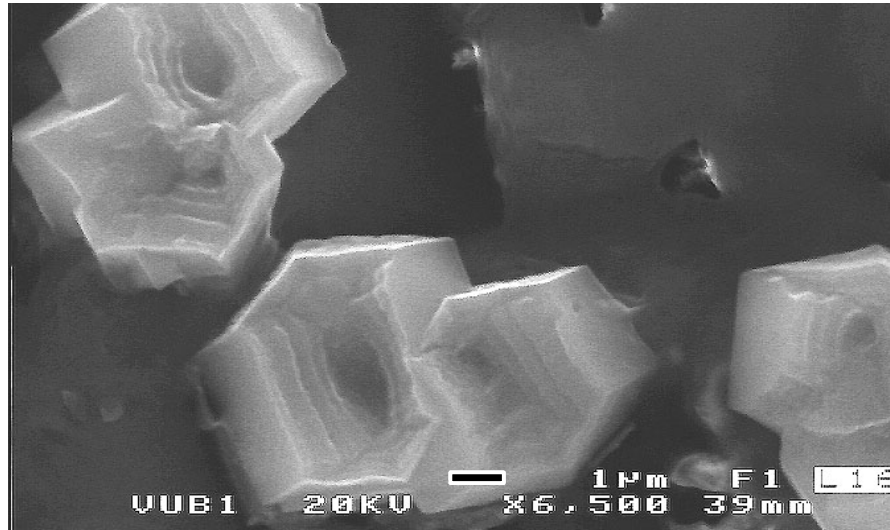
[Title Page](#)[Abstract](#)[Introduction](#)[Conclusions](#)[References](#)[Tables](#)[Figures](#)[◀](#)[▶](#)[◀](#)[▶](#)[Back](#)[Close](#)[Full Screen / Esc](#)[Print Version](#)[Interactive Discussion](#)



---

**Fungal interaction  
with solid and  
aqueous substrates**K. Kolo and Ph. Claeys

---



**Fig. 16.** SEM image of Prismatic bipyramidal Ca-oxalates (weddellite) crystals showing a multi-layer and concentric zonation structures reflecting crystal growth mechanism around a nucleus. Most crystals show a four layer zonation. The crystals nucleated on fungal spores. The size and shape of the nuclei are identical to fungal spores in the growth environment. Black bar scale=1  $\mu\text{m}$ .

[Title Page](#)[Abstract](#)[Introduction](#)[Conclusions](#)[References](#)[Tables](#)[Figures](#)[⏪](#)[⏩](#)[◀](#)[▶](#)[Back](#)[Close](#)[Full Screen / Esc](#)[Print Version](#)[Interactive Discussion](#)

EGU

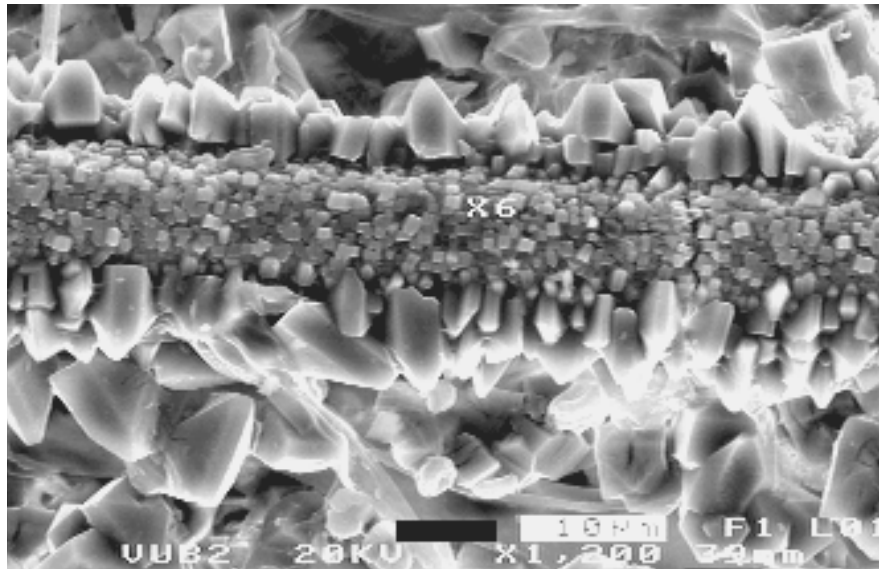
---

**Fungal interaction  
with solid and  
aqueous substrates**K. Kolo and Ph. Claeys

---

[Title Page](#)[Abstract](#)[Introduction](#)[Conclusions](#)[References](#)[Tables](#)[Figures](#)[◀](#)[▶](#)[◀](#)[▶](#)[Back](#)[Close](#)[Full Screen / Esc](#)[Print Version](#)[Interactive Discussion](#)

EGU



**Fig. 17.** SEM images showing a double layer of ordered Ca-oxalates engulfing fungal sheath reflecting two growth generations. The crystals of the inner and outer layer differ in size, crystal morphology and position. Black bar scale=10  $\mu\text{m}$ .

**Fungal interaction  
with solid and  
aqueous substrates**

K. Kolo and Ph. Claeys

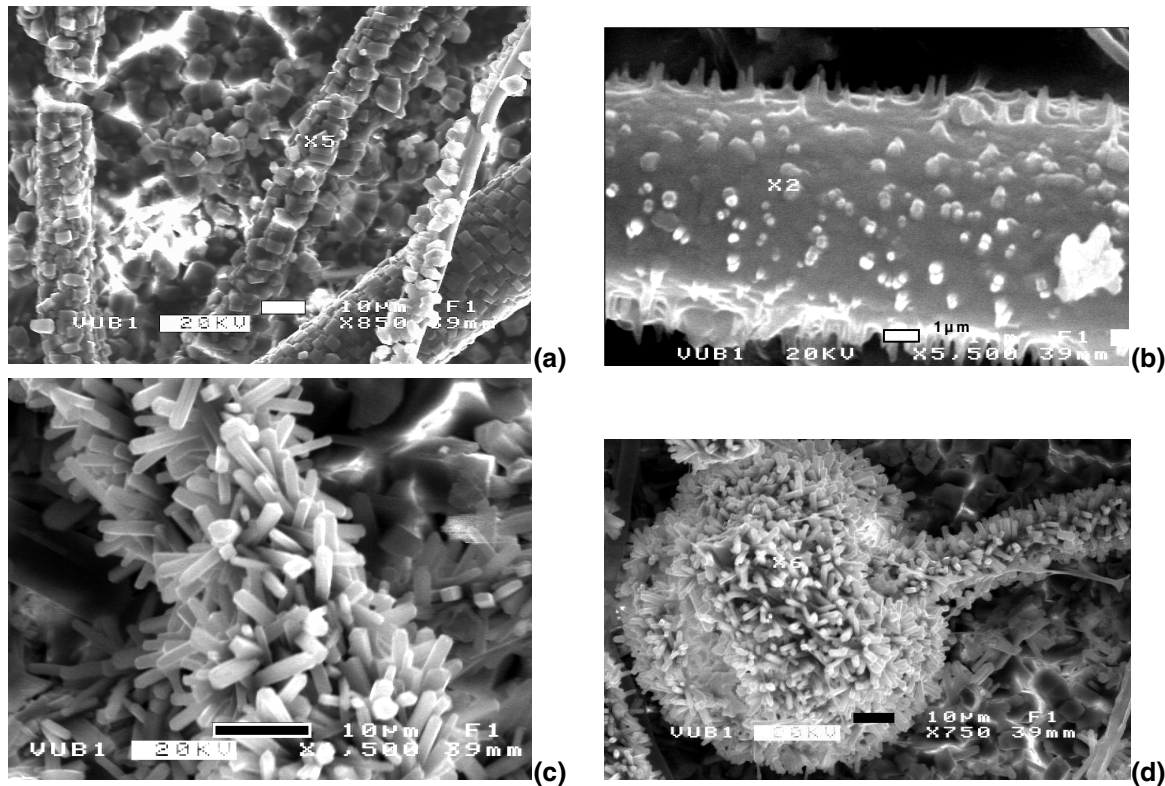


Fig. 18.

Title Page

Abstract

Introduction

Conclusions

References

Tables

Figures

◀

▶

◀

▶

Back

Close

Full Screen / Esc

Print Version

Interactive Discussion

EGU

---

**Fungal interaction  
with solid and  
aqueous substrates**

---

K. Kolo and Ph. Claeys

---

**Fig. 18.** SEM images of various Ca-oxalates encrustation on fungal hyphae produced by fungal interaction with SSW. Tetragonal prismatic bipyramidal, tetragonal bipyramidal and needle prismatic crystals are the observed crystal habits (Figs. 18a, b, c, d). **(a)** SEM image of intense biomineralization and encrustation of Ca-oxalates on fungal hyphae produced by fungal interaction with SSW substrate. Free Ca-oxalate crystals litter the background. The encrustations and free oxalates indicate endogenous and exogenous processes of formation. Bar scale=10  $\mu\text{m}$ . **(b)** SEM image showing incipient biomineralization of Ca-oxalates on fungal sheath produced by fungal interaction with SSW substrate. Small crystals (1  $\mu\text{m}$ ) are protruding perpendicularly from the fungal sheath. The crystals have wide bases and pointed ends, making a triangular shape. They appear to grow from within the hyphal sheath. Bar scale=1  $\mu\text{m}$ . **(c)** SEM image showing rich Ca-oxalates encrustation of fungal hyphae with needle prism crystals produced by fungal interaction with SSW substrate. The average crystal size is 5  $\mu\text{m}$ . The crystals have high length/width ratio. Some of them show penetration twinning. Bar scale=10  $\mu\text{m}$ . **(d)** SEM image showing total biomineralization of fungal sporangium and hypha with prismatic-needle-type Ca-oxalates produced by fungal interaction with SSW substrate. Sporangia are not known to take part in biomineralization as nucleation sites for Ca-oxalates. The crystal forms (needle prisms) and size (1  $\times$  2  $\times$  5  $\mu\text{m}$ ) are identical on both fungal hypha and sporangium. The crystals protrude vertically from the hypha and from the sporangium sphere. This suggests a common endogenous biomineralization process. bar scale=10  $\mu\text{m}$ .

[Title Page](#)[Abstract](#)[Introduction](#)[Conclusions](#)[References](#)[Tables](#)[Figures](#)[◀](#)[▶](#)[◀](#)[▶](#)[Back](#)[Close](#)[Full Screen / Esc](#)[Print Version](#)[Interactive Discussion](#)

EGU