



**HAL**  
open science

## Predicting the global distribution of planktonic foraminifera using a dynamic ecosystem model

I. Fraile, M Schulz, S. Mulitza, M. Kucera

► **To cite this version:**

I. Fraile, M Schulz, S. Mulitza, M. Kucera. Predicting the global distribution of planktonic foraminifera using a dynamic ecosystem model. *Biogeosciences*, 2008, 5 (3), pp.891-911. hal-00297702

**HAL Id: hal-00297702**

**<https://hal.science/hal-00297702>**

Submitted on 18 Jun 2008

**HAL** is a multi-disciplinary open access archive for the deposit and dissemination of scientific research documents, whether they are published or not. The documents may come from teaching and research institutions in France or abroad, or from public or private research centers.

L'archive ouverte pluridisciplinaire **HAL**, est destinée au dépôt et à la diffusion de documents scientifiques de niveau recherche, publiés ou non, émanant des établissements d'enseignement et de recherche français ou étrangers, des laboratoires publics ou privés.

# Predicting the global distribution of planktonic foraminifera using a dynamic ecosystem model

I. Fraile<sup>1</sup>, M. Schulz<sup>1,2</sup>, S. Mulitza<sup>2</sup>, and M. Kucera<sup>3</sup>

<sup>1</sup>Faculty of Geosciences, University of Bremen, P.O. Box 330440, 28334 Bremen, Germany

<sup>2</sup>MARUM – Center For Marine Environmental Sciences, University of Bremen, P.O. Box 330440, 28334 Bremen, Germany

<sup>3</sup>Institute of Geosciences, Eberhard Karls University of Tübingen, Sigwartstrasse 10, 72076 Tübingen, Germany

Received: 17 October 2007 – Published in Biogeosciences Discuss.: 26 November 2007

Revised: 7 April 2008 – Accepted: 9 May 2008 – Published: 2 June 2008

**Abstract.** We present a new planktonic foraminifera model developed for the global ocean mixed-layer. The main purpose of the model is to explore the response of planktonic foraminifera to different boundary conditions in the geological past, and to quantify the seasonal bias in foraminifera-based paleoceanographic proxy records. This model is forced with hydrographic data and with biological information taken from an ecosystem model to predict monthly concentrations of the most common planktonic foraminifera species used in paleoceanography: *N. pachyderma* (sinistral and dextral varieties), *G. bulloides*, *G. ruber* (white variety) and *G. sacculifer*. The sensitivity of each species with respect to temperature (optimal temperature and range of tolerance) is derived from previous sediment-trap studies.

Overall, the spatial distribution patterns of most of the species are in agreement with core-top data. *N. pachyderma* (sin.) is limited to polar regions, *N. pachyderma* (dex.) and *G. bulloides* are the most common species in high productivity zones, while *G. ruber* and *G. sacculifer* are more abundant in tropical and subtropical oligotrophic waters. For *N. pachyderma* (sin) and *N. pachyderma* (dex.), the season of maximum production coincides with that observed in sediment-trap records. Model and sediment-trap data for *G. ruber* and *G. sacculifer* show, in general, lower concentrations and less seasonal variability at all sites. A sensitivity experiment suggest that, within the temperature-tolerance range of a species, food availability may be the main parameter controlling its abundance.

## 1 Introduction

Planktonic foraminifera are widely used for paleoceanographic reconstructions. The spatial distribution of planktonic foraminifera species is controlled by physiological requirements, feeding preferences and temperature (e.g., Bé and Hamilton, 1967; Bé and Tolderlund, 1971). Shells of planktonic foraminifera extracted from marine sediments serve as an archive of chemical and physical signals that can be used to quantify past environmental conditions, such as temperature (e.g., Pflaumann et al., 1996; Malmgren et al., 2001), ocean stratification (e.g., Mulitza et al., 1997), atmospheric CO<sub>2</sub> concentration (Pearson and Palmer, 2000) and biological productivity (Kiefer, 1998). Past sea-surface temperatures can be estimated by either quantifying differences between modern and fossil species assemblages (e.g., CLIMAP, 1976; Pflaumann et al., 1996; Malmgren et al., 2001), or by analyzing the isotopic or trace-element composition of the calcite in the shell (e.g., Rohling and Cooke, 1999; Lea, 1999). In general, all estimation procedures are based on a correlation between modern environmental condition and assemblage composition or shell chemistry.

Seasonal changes in the flux of planktonic foraminifera are strongly influenced by environmental factors, such as sea-surface temperature, the stratification of the water column, and food supply (e.g., Bijma et al., 1990; Ortiz et al., 1995; Watkins et al., 1996; Watkins and Mix, 1998; Eguchi et al., 1999; Schnack-Schiel et al., 2001; King and Howard, 2003a; Morey et al., 2005; Žarić et al., 2005). The seasonality of foraminiferal production is an important factor which has to be taken into account in paleoceanographic interpretations (e.g., Deuser and Ross, 1989; Wefer, 1989; Mulitza et al., 1998; Ganssen and Kroon, 2000; King and Howard, 2001;



Correspondence to: I. Fraile  
(igaratza@palmod.uni-bremen.de)

Pflauman et al., 2003; Waelbroeck et al., 2005). Any change in the timing of the seasonal maximum of foraminiferal flux may lead to a bias in estimated paleotemperature. Mulitza et al. (1998) have shown how temperature sensitivity can alter the proxy record in the sediment. Moreover, these differences in seasonality make reconstructed temperatures based on planktonic foraminifera assemblages difficult to compare with those derived by other sea-surface temperature proxies. For example, Niebler et al. (2003) suggested that discrepancies between temperature reconstructions based on foraminifera and alkenones might be due to different ecological and thus seasonal preferences of alkenone producing algae and planktonic foraminifera. Climate change could induce variations in the seasonal succession of the planktonic foraminifera and such variations need to be quantified to correctly interpret corresponding proxy-based reconstructions.

To study the seasonal variations of planktonic foraminifera species we have developed a numerical model for planktonic foraminifera at a species level. Previously, Žarić et al. (2006) developed an statistical model based on hydrographic and productivity data. In contrast to the model of Žarić et al. (2006), we present a dynamic model which, considering ecological processes, calculates the growth rate of the foraminifera population between successive time steps. This study shows model predictions for spatial and temporal distribution patterns of the five most important modern planktonic foraminifera used as SST proxies.

## 2 Model setup

The geographical distribution and population density of each planktonic foraminifera species depend on biotic (e.g., food, symbionts) and abiotic factors (e.g., light, temperature). To supply the foraminifera model with ecological information, we run the foraminifera module within an ecosystem model.

### 2.1 Ecosystem model

The employed marine ecosystem model (Moore et al., 2002a) is configured for the global mixed-layer of the ocean. It predicts the distribution of zooplankton, diatoms, diazotrophs and a generic group of phytoplankton (so-called “small phytoplankton”). The model considers sinking and non-sinking detrital pools, and carries nitrate, ammonium, phosphate, iron and silicate as nutrients.

The ecosystem model is driven by hydrographic data that are derived from a general ocean circulation model and from climatologies. The forcing data include local processes of turbulent mixing, vertical velocity at the base of the mixed layer, and seasonal mixed-layer entrainment/detrainment. Horizontal advection is not included; thus, there is no lateral exchange between grid points. Since our main interest is the ecosystem in the mixed layer, processes below the surface layer are ignored.

Previously, this two-dimensional model has been validated against a diverse set of field observations from several JGOFS (Joint Global Ocean Flux Study) and historical time series locations (Moore et al., 2002a), satellite observations, and global nutrient climatologies (Moore et al., 2002b). The full list of model terms, parametrizations, resolution, equations and behavior in the global domain is described in detail in Moore et al. (2002a,b) and the code is available at <http://usjgofs.whoi.edu/mzweb/jkmoore/areadme.html>.

### 2.2 PLAFOM

The planktonic foraminifera model determines the global distribution of the following 5 species: *Neogloboquadrina pachyderma* (sinistral and dextral coiling varieties), *Globigerina bulloides*, *Globigerinoides ruber* (white variety) and *Globigerinoides sacculifer*. These species have often been considered to be sensitive to sea-surface temperature, and therefore their assemblage can be used to estimate past sea-surface temperatures by means of transfer functions.

Each species has a different food preference (Hemleben et al., 1989; Watkins et al., 1996; Schiebel et al., 1997; Watkins and Mix, 1998; Arnold and Parker, 1999). In general, spinose species prefer animal prey such as copepods (Spindler et al., 1984; Caron and Bé, 1984; Hemleben et al., 1989) while non-spinose species are largely herbivorous (Anderson et al., 1979; Spindler et al., 1984; Hemleben et al., 1985, 1989), although in some specimens muscle tissue has been found in food vacuoles (Anderson et al., 1979; Hemleben et al., 1989). Many species also contain algal symbionts that may provide nutrition (Caron et al., 1981; Gastrich, 1987; Ortiz et al., 1995). On a seasonal scale, it is generally assumed that food is the predominant factor affecting the distribution of planktonic foraminifera under favorable temperatures (Ortiz et al., 1995). Planktonic foraminifera appear to respond to the redistribution of nutrients and phytoplankton very quickly, increasing in number of individuals within several days (Schiebel et al., 1995). Information about food availability is obtained from the ecosystem model. In the model, the food sources may be either zooplankton, small phytoplankton, diatoms or organic detritus.

For compatibility with the ecosystem model, the foraminifera model calculates foraminiferal abundance of each species via carbon biomass, the same as the ecosystem model. Since our study is directed to paleotemperature reconstructions, our main interest is in species relative abundances rather than in assessing the absolute biomass.

Accordingly, for each species the change in foraminifera concentration is calculated as follows:

$$\frac{dF}{dt} = (\text{GGE} \cdot \text{TG}) - \text{ML} \quad (1)$$

where  $F$  is the foraminifera carbon concentration, and GGE (gross growth efficiency) is the portion of grazed matter that is incorporated into foraminifera biomass, which we assume

to be constant regardless of the food source. TG and ML represent total grazing and mass loss, respectively.

### 2.2.1 Growth (TG)

The growth rates are determined by available food using a modified form of Michaelis-Menton kinetics (Eq. 2),

$$TG = \sum_{n=1}^4 p_n \cdot \left[ G_{\max_n} \cdot \alpha \cdot F \cdot \left( \frac{C_n}{C_n + g} \right) \right] \quad (2)$$

where  $G_{\max}$  is the maximum grazing rate,  $g$  is the half saturation constant for grazing,  $\alpha$  is the relative efficiency for grazing in relation to temperature (calibrated from relative abundances),  $C_n$  represents the concentration of each type of food (diatoms (D), small phytoplankton (SP), zooplankton (Z) or detritus (DR)), and  $p$  is the preference for this food (assumed to be invariant in time). The values and units of all parameters are summarized in Table 1. Food requirements vary for the different foraminifera species. Many species of planktonic foraminifera consume a wide variety of zooplankton and phytoplankton prey, and they are capable of a reasonably flexible adaptation to varying trophic regimes. The food of *N. pachyderma* (sinistral and dextral varieties) consist almost exclusively phytoplankton, commonly diatoms (Hemleben et al., 1989). *G. bulloides* presents biological characteristics that place it on the border between spinose and non-spinose species; while most spinose species carry algal symbionts, *G. bulloides* does not (Gastrich, 1987; Hemleben et al., 1989; Schiebel et al., 1997). It is abundant in periods of high phytoplankton productivity (Prell and Curry, 1981; Reynolds and Thunell, 1985; Hemleben et al., 1989) and feeds on algal prey (Lee et al., 1966). *G. bulloides* is common in mid-latitude and subpolar waters, but it is also present in the subtropical waters of the Indian Ocean. It is generally more abundant in eutrophic waters with high phytoplankton productivity and for this reason it is commonly used as a productivity proxy (Hemleben et al., 1989; Sauter and Thunell, 1989; Ortiz et al., 1995; Gupta and Mohan, 1996; Watkins and Mix, 1998). *G. ruber* exhibits two varieties; a pink and a white form. The pink variety is limited to the Atlantic Ocean, and we have therefore only modeled the white variety. *G. ruber* (white) is a spinose species generally found in tropical to subtropical water masses. It hosts dinoflagellate endosymbionts, and feeds mostly on zooplankton, although it has lower zooplankton dependence than other spinose species (Hemleben et al., 1989). The characteristics of bearing spines, utilization of zooplankton prey and symbiotic association are typical of foraminifera adapted to oligotrophic waters. *G. sacculifer* is also a spinose species hosting dinoflagellate endosymbionts. Culture experiments with *G. sacculifer* confirm that it depends on zooplankton food (Bé et al., 1981). It is also adapted to low productivity areas, mainly the centers of the oceanic gyres. Watkins et al. (1996) suggested that the adaptation to oligotrophic waters

is possible because these foraminifera obtain nutrition from their symbionts. However, the seasonal maximum abundance occurs when productivity in these regions is maximal. To account for adaptation to low productivity regions, we limited the growth of *G. ruber* and *G. sacculifer* to regions in which maximum nutrient and chlorophyll concentration does not exceed a threshold value. This is done multiplying “total grazing” (Eq. 2) by a hyperbolic tangent function which, using maximum nitrate and chlorophyll concentration as input, identifies low productivity zones.

Maximum grazing rate for the foraminifera ( $G_{\max}$ ) varies with the food source. Zooplankton carbon concentration is generally much lower than phytoplankton carbon concentration. For this reason, when zooplankton is the food source  $G_{\max}$ , is set higher than if phytoplankton or detritus are the food source. Thus, under typical food availability conditions, carnivore species can grow as fast as herbivore species.

Based on the observation that most planktonic foraminifera distribution patterns are latitudinal and correlate with temperature, we assume that temperature is the most important physical parameter controlling the distribution of planktonic foraminifera. This is supported by the experimental work of Bijma et al. (1990), which showed evidence for direct temperature control over vital processes. These authors demonstrated that a correlation exists between in vitro temperature tolerance limits and the known natural limits of the species used in their experiments. The tolerance limits of most species are most likely progressive since a departure from optimal growth conditions causes a gradual reduction of vital processes (Arnold and Parker, 1999). Žarić et al. (2005, 2006) compiled planktonic foraminiferal fluxes from sediment-trap observations across the World Ocean. They analyzed species sensitivity to temperature by relating fluxes and relative abundances of seven species to sea-surface temperature. Based on this work, we approximate the temperature relation with a normal distribution. Therefore each species exhibits an optimal SST and an SST tolerance range. The growth rate (Eq. 1) is limited by temperature through the parameter  $\alpha$  (Eq. 3).

$$\alpha = \left[ n \cdot \exp \left[ -0.5 \cdot \left( \frac{(T_s - T_{\text{opt}})}{\sigma} \right)^2 \right] \right]^{\left( \frac{1}{k} \right)} \quad (3)$$

The relationship with temperature assumes that the foraminifera concentration at any site is normally distributed, with an optimum temperature where the relative abundance is highest. Away from this optimum temperature the relative abundance decreases until a critical temperature beyond which the species does not occur. This pattern, with a central peak and symmetrical tails, can be approximated by Gaussian distribution (Eq. 3). The value of  $\alpha$  varies between 0 (out of limit of tolerance) and 1 (optimal temperature).

The parameter  $n$  is an arbitrary parameter that scales the values of  $\alpha$  between 0 and 1.  $T_{\text{opt}}$  and  $T_s$  are the optimum and actual temperatures, respectively, and  $\sigma$  is the tolerance

**Table 1.** Model parameters.

Species	<i>N. pachyderma</i> (sin.)	<i>N. pachyderma</i> (dex.)	<i>G. bulloides</i>	<i>G. ruber</i> (white)	<i>G. sacculifer</i>
$\sigma$	4.0	6.0	6.0	4.0	4.0
$T_{\text{opt}}$	3.8	15.0	12.0	23.5	28
$k$	1	1.2 <sup>SP</sup>	1.25 <sup>D</sup>	1	1
$p(\text{SP})$	0.3	0.2	0.0	0.0	0.0
$p(\text{D})$	0.7	0.8	0.9	0.2	0.1
$p(\text{Z})$	0.0	0.0	0.0	0.6	0.7
$p(\text{DR})$	0.0	0.0	0.1	0.2	0.2
$p'(\text{SP})$	–	0.4	0.2	–	0.0
$p'(\text{D})$	–	0.6	0.8	–	0.3
$p'(\text{Z})$	–	0.0	0.0	–	0.6
$p'(\text{DR})$	–	0.0	0.0	–	0.1
$G_{\text{max}}(\text{SP}, \text{D}, \text{DR})$	1.08	1.08	1.08	1.08	1.08
$G_{\text{max}}(\text{Z})$	2.16	2.16	2.16	2.16	2.16
$g$	0.66	0.66	0.66	0.66	0.66
$cl_{N. pachyderma(\text{sin.}),j}$	–	0.2	0	0	0
$cl_{N. pachyderma(\text{dex.}),j}$	–	–	0.1	1	0
$cl_{G. bulloides}$	–	0.5	–	1	1
$cl_{G. ruber(\text{white}),j}$	–	0.8	0.5	–	0.8
$cl_{G. sacculifer,j}$	–	0	0.5	0.8	–
$d$	–	0.05	0.5	1	1
$pl$	1	4	5	5	4
$rl$	0.06	0.06	0.06	0.06	0.06
GGE	0.3	0.3	0.3	0.3	0.3

$\sigma$ =standard deviation of optimal temperature.

$T_{\text{opt}}$ =optimal temperature (°C).

$k$ =parameter for the range on temperature depending on the food availability.

$p(\text{SP})$ =preference for grazing on small phytoplankton.

$p(\text{D})$ =preference for grazing on diatoms.

$p(\text{Z})$ =preference for grazing on zooplankton.

$p(\text{DR})$ =preference for grazing on detritus.

$p'$ =preference for grazing when main food source is missing.

$G_{\text{max}}(\text{SP})$ =maximum grazing rate when grazing on small phytoplankton (per day).

$G_{\text{max}}(\text{D})$ =maximum grazing rate when grazing on diatoms (per day).

$G_{\text{max}}(\text{Z})$ =maximum grazing rate when grazing on zooplankton (per day).

$G_{\text{max}}(\text{DR})$ =maximum grazing rate when grazing on detritus (per day).

$g$ =half-saturation constant for grazing.

GGE=portion of grazed matter that is incorporated into foraminifera biomass (Gross Growth Efficiency).

$pl$ =quadratic mortality rate coefficient.

$rl$ =respiration loss (per day).

$cl_{ij}$ =effect of competition of the species  $i$  upon the species  $j$ .

$d$ = $e$ -folding constant, which controls the steepness of the Michaelis-Menton equation for competition.

$C$ =food type (SP, D, Z or DR).

SP=small phytoplankton [mmolC/m<sup>3</sup>].

D=diatoms [mmolC/m<sup>3</sup>].

Z=zooplankton [mmolC/m<sup>3</sup>].

DR=detritus [mmolC/m<sup>3</sup>].

range of a species. Species with small  $\sigma$  are more sensitive to temperature. The values of all parameters for each species are summarized in Table 1. Of the five species, *G. ruber* (white) and *G. sacculifer* (both tropical species), together with *N. pachyderma* (sin.) exhibit the narrowest

SST tolerance range. *N. pachyderma* (sin.) is absent above 23.7°C (Žarić et al., 2005). *N. pachyderma* (sin.) is a polar species and survives even within sea ice (Antarctic), where it feeds on diatoms (Dieckman et al., 1991; Spindler, 1996). *N. pachyderma* (dex.) and *G. bulloides* are present almost

throughout the entire oceanic SST range; however, *N. pachyderma* (dex.) exhibits a clear preference for intermediate temperatures. For *G. bulloides*, temperature does not seem to be a controlling factor. It is generally more abundant in eutrophic waters with high phytoplankton productivity, and for this reason it is commonly used as a productivity proxy (Hemleben et al., 1989; Sautter and Thunell, 1989; Ortiz et al., 1995; Guptha and Mohan, 1996; Watkins and Mix, 1998). It has the second largest temperature tolerance, after *N. pachyderma* (dex.), and does not show a unimodal distribution when flux is plotted versus temperature (Žarić et al., 2005). *G. bulloides* comprises at least six different genetic types and exhibits a polymodal distribution pattern (Darling et al., 1999, 2000; Stewart et al., 2001; Kucera and Darling, 2002; Darling et al., 2003). Žarić et al. (2005) showed that in the tropical Indian Ocean, *G. bulloides* is present at higher temperatures than in the Atlantic and Pacific Ocean. In this region, highest abundances of *G. bulloides* occur at SSTs at which Atlantic as well as Pacific samples show reduced fluxes. Since our study is applied at a global scale, the temperature calibration is based on the preferred temperatures of *G. bulloides* in the Pacific and Atlantic Ocean. In Eq. 5 we modified the normal distribution for *N. pachyderma* (dex.) and *G. bulloides* to accept wider limits under high food availability through the parameter  $k$  (see Table 1).

### 2.2.2 Mass loss (ML)

The mass loss (mortality) equation comprises of three terms representing losses due to natural death rate (respiration loss), predation by higher trophic levels and competition (Eqs. 4–8).

$$\text{ML} = \text{predation} + \text{death rate} + \text{competition} \quad (4)$$

$$\text{predation} = pl \cdot \exp\left(-4000 \cdot \left[\frac{1}{T_{sk}} - \frac{1}{T_{mk}}\right]\right) \cdot (F_p)^2 \quad (5)$$

with

$$F_p = \max((F - 0.01), 0) \quad (6)$$

$$\text{death rate} = rl \cdot F_p \quad (7)$$

$$\text{competition} = \sum \left[ F_p \cdot \frac{cl_{ij} \cdot F_i \cdot d}{F_i \cdot d + 0.1} \right] \quad (8)$$

Since our model does not include lateral advection, a minimum threshold is needed to preserve the foraminifera population over the winter at high latitudes or during periods with insufficient food supply in regions with high seasonal variability. We set the minimum foraminifera biomass at  $0.01 \text{ mmolC/m}^3$ . When the populations reach this minimum level the mortality term is set to zero (Eq. 6). Predators specialized on planktonic foraminifera are not known, and therefore, the mortality equation does not explicitly depend upon predator abundance. To represent predation, we choose a

quadratic form which depends on foraminiferal biomass itself (Eq. 5). This may be interpreted either as predation by a higher trophic level not being explicitly modeled (Steele and Henderson, 1992; Edwards and Yool, 2000). The parameter  $pl$  represents the quadratic mortality-rate coefficient, which is used to scale mass loss to grazing. From a bioenergetic perspective, predation is also temperature dependent. Food consumption rates typically increase with increasing temperature; therefore higher trophic levels will exert more predation pressure with increasing temperature (M. Peck, personal communication). The parameter  $b$  is used to scale the temperature function between 0 and 1. Note that  $T_{sk}$  represents the absolute SST, and the maximum SST ( $T_{mk}$ ) assumed in the model corresponds to  $303.15 \text{ K}$  ( $30^\circ\text{C}$ ). Death rate refers to natural physiological biomass losses, including respiration (Eq. 7). It is a linear term of 6% per day ( $rl$ ), the same value used by Moore et al. (2002a) for zooplankton.

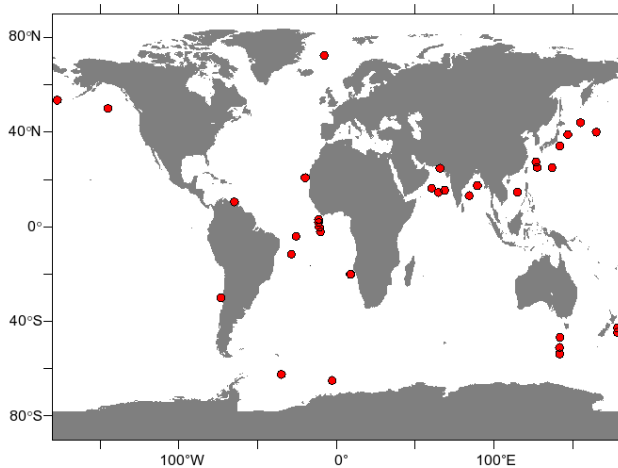
The presence and activity of one species influences negatively the resource availability for another species, leading to the assumption that competition occurs between different species of foraminifera inhabiting the same regions (Eq. 8). In this equation,  $F_i$  is the concentration of the foraminiferal species exerting competition,  $cl_{ij}$  represents the maximum competition pressure of the species  $i$  upon the species  $j$  (varying from 0 to 1) and  $d$  is the  $e$ -folding constant, which controls the steepness of the Michaelis-Menton-type equation.

### 2.3 Standard model experiment: grid, forcing and boundary conditions

The foraminifera model is run within the ecosystem model for the global surface ocean, with a longitudinal resolution of  $3.6^\circ$ , a varying latitudinal resolution (between  $1$ – $2^\circ$ , with higher resolution near the equator), and a temporal resolution of one month. This corresponds to the resolution of the underlying ecosystem model (Moore et al., 2002a,b).

We used the same forcing as Moore et al. (2002a). Mixed-layer temperatures are taken from the World Ocean Atlas 1998 (Conkright et al., 1998), surface shortwave radiation from the ISCCP cloud-cover-corrected dataset (Bishop and Rossow, 1991; Rossow and Schiffer, 1991) and climatological mixed-layer depths from Monterey and Levitus (1997). The minimum mixed-layer depth is set at 25 m. The vertical velocity at the base of mixed layer is derived from the NCAR-3D ocean model (Gent et al., 1998). The turbulent exchange rate at the base of the mixed layer is set to a constant value of  $0.15 \text{ m/day}$ . Sea-ice coverage was obtained from the EOSDIS NSIDC satellite data (Cavalieri et al., 1990). Atmospheric iron flux was obtained from the dust deposition model study of Tegen and Fung (1994, 1995). More details about the forcing can be found in Moore et al. (2002a).

Bottom boundary conditions are the same as for the zooplankton component of the ecosystem model. For all



**Fig. 1.** Locations of the sediment-trap stations used to compare measured and modeled foraminiferal fluxes. See Table 2 for details.

foraminifera species we assumed a uniform distribution inside the mixed layer, whereas below the mixed layer the concentration was calculated as a function of the surface concentration and the mixed-layer depth. When the mixed-layer is thin, the foraminiferal concentration below the mixed-layer is set to 75% of the surface concentration. With increasing mixed-layer depth, the concentration below decreases linearly, until reaching the value 0 at a mixed layer depth of 100 m. This is a realistic limit, as the maximum production of the species in question occurs within this depth range (Bé, 1977; Duplessy et al., 1981; Murray, 1991; Watkins and Mix, 1998).

#### 2.4 Comparison to core-top data

Since our main interest is to understand the distribution of planktonic foraminifera at geological timescales, we used the Brown University Foraminiferal Database (Prell et al., 1999) to compare our model results with sedimentary faunal assemblages. This database contains core-top planktonic foraminifera counts from 1264 cores across the world ocean. We extended this database with the dataset by Pflaumann et al. (1996), which contains planktonic foraminifera counts for 738 surface sediment samples from the North and South Atlantic; and with another 57 core-top samples from the eastern Indian Ocean (Marchant et al., 1998). For comparison, the relative abundances were recalculated using only the five foraminifera species under consideration. Additionally, the number of individuals was transformed to biomass ( $\text{mgC}/\text{m}^3$ ) to take into account the size differences of each species. For this transformation, we calculated the volume occupied by the cytoplasm approximating the shape of all the species to a sphere and assuming that all the volume is occupied by the cytoplasm. For the mean size of each species we used sediment-trap data from Peeters et al. (1999). We as-

sumed the carbon content of the cytoplasm is  $0.089 \text{ pgC}/\mu\text{m}^3$  (Michaels et al., 1995), the same in all species.

To assess the deviation between observed and modeled species distributions, we calculated the root mean squared error (RMSE). For this, the data from each core-top sample was compared to the nearest model grid point. No averaging was applied to the core-top data. This is justified because the observational data base is identical for all species and our interest is only to test model performance for the five species.

#### 2.5 Comparison to sediment-trap data

Several sediment-trap studies were used to compare measured and modeled foraminiferal fluxes (Table 2). Sediment traps show a high temporal resolution and record the flux continuously over several months or years. Because of the sinking speed of foraminiferal shells (150–1300 m/day depending on their weight and size; Takahashi and Bé, 1984), the sediment-trap samples are not significantly affected by dissolution, lateral advection or bioturbation, and therefore can be related directly to modern surface hydrography (e.g., Tedesco and Thunell, 2003; Marchant et al., 2004; Mohiuddin et al., 2004; Žarić et al., 2005). However, due to the short duration of the collecting periods those data may represent local processes of a particular year rather than a long term mean. We used the global database compiled by Žarić et al. (2005, 2006). This database contains planktonic foraminiferal fluxes calculated from various sediment-trap investigations across the world ocean. To compare the modeled and observed annual distribution of the different planktonic foraminifera species we used those datasets with a minimum collecting period of one year and at least monthly resolution. We extended the database of Žarić et al. (2005, 2006) by adding trap data from the northwest Pacific (Oda and Yamasaki, 2005; Xu et al., 2005), Bering Sea (Asahi and Takahashi, 2007), South China Sea (Tian et al., 2005) and Arabian Sea (Schulz et al., 2002). Table 2 summarizes locations, details and references of the sediment-trap studies used in this study. Fig. 1 illustrates locations of the sediment traps.

Sediment-trap studies yield fluxes based on individual shells [ $\text{ind. m}^{-2} \text{ day}^{-1}$ ] whereas the model provides concentrations [ $\text{mmolC}/\text{m}^3$ ]. To compare model output with observations, we assume that the flux through the water column is proportional to the surface concentration. The objective of our study is to detect relative changes in the seasonal distribution, rather than to assess foraminiferal biomass.

#### 2.6 Sensitivity analysis of the parameters

To determine values for biological parameters is difficult as, unlike many chemical or physical parameters, they cannot strictly be regarded as constants. The free parameters have been tuned based on ecological knowledge about different species of foraminifera. In an attempt to assess the sensitivity

**Table 2.** Locations, trap and water depths, sieve size and data sources of the planktonic foraminifera faunas (Žarić et al. (2005) and additional data).

Trap Location	Latitude[° N]	Longitude[° E]	Trap depth [m]	Water depth [m]	Sieve size [ $\mu\text{m}$ ]	References
Ocean Station Papa	50.00	-145.00	3800	4240	$\geq 125$	Reynolds and Thunell (1985) Sautter and Thunell (1989) Wong et al. (1999)
Peru-Chile Current	-30.01	-73.18	2318	4345	$\geq 150$	Marchant et al. (1998) Hebbeln et al. (2000)
N' North Atlantic	72.38	-7.71	500;1000;2300	2624	$\geq 125$	Jensen (1998)
Cape Blanc	69.69	0.48	500;1000	3254	$\geq 125$	Peinert et al. (2001)
	20.76	-19.74	2195	3646	$\geq 150$	Fischer and Wefer (1996) Fischer et al. (1996) Žarić et al. (2005)
W' equatorial Atlantic	21.15	-20.68	732;3552	4103	$\geq 150$	
	-4.00	-25.57	652;1232;4991	5330	$\geq 150$	Fischer and Wefer (1996)
	-7.52	-28.04	631; 5031	5570	$\geq 150$	Fischer (unpublished data) Žarić et al. (2005)
W Atlantic	-11.57	-28.53	719; 4515	5472	$\geq 150$	Fischer (unpublished data) Žarić et al. (2005)
Walvis Ridge	-20.05	9.16	599;1648	2202	$\geq 150$	Fischer and Wefer (1996)
	-20.13	8.96	1717	2263	$\geq 150$	Žarić et al. (2005)
Weddell Sea	-62.44	-34.76	863	3880	$\geq 125$	Donner and Wefer (1994)
	-64.91	-2.55	256;4456	5032	$\geq 125$	
Arabian Sea	16.33	60.49	1028; 3026	4016	$\geq 150$	Curry et al. (1992)
	14.49	64.76	733; 2909	3901	$\geq 150$	Guptha and Mohan (1996)
	15.48	68.74	1401; 2775	3774	$\geq 125$	Haake et al. (1993)
	24.65	65.81	590	1166	$\geq 125$	Schulz et al. (2002)
Bay of Bengal	17.45	89.60	967; 1498; 2029	2263	$\geq 150$	Guptha and Mohan (1996)
	13.15	84.35	950; 2286	3259	$\geq 150$	Guptha et al. (1997)
Northwest Pacific	25.00	136.99	917;1388;4336;4758	5107	$\geq 125$	Mohiuddin et al. (2002)
	39.01	147.00	1371; 1586; 4787	5339	$\geq 125$	
NW' North Pacific	50.02	165.03	3260	5570	$\geq 125$	
	43.97	155.05	2957	5370	$\geq 125$	Kuroyanagi et al. (2002)
	40.00	165.00	2986	5483	$\geq 125$	
Subantarctic Zone	-46.76	142.07	1060;3850	4540	$\geq 150$	King and Howard (2003a,b)
	-51.00	141.74	3080	3780	$\geq 150$	Trull et al. (2001)
	-53.75	141.76	830; 1580	2280	$\geq 150$	
Chatman Rise	-42.70	178.63	300;1000	1500	$\geq 150$	King and Howard (2003a,b)
	-44.62	178.62	300;1000	1500	$\geq 150$	Nodder and Northcote (2001)
Cariaco Basin	10.50	-64.67	275	1400	$\geq 125$	Tedesco and Thunell (2003)
Japan Trench	34.16	141.98	1174;3680	8942	$\geq 125$	Oda and Yamasaki (2005)
	34.17	141.97	1174;3700	8941	$\geq 125$	
Ryukyu Islands	27.38	126.73	1000	1627	$\geq 125$	Xu et al. (2005)
	25.07	127.58	3000	3771	$\geq 125$	
Bering Sea	53.30N	-177	3198	3788	$\geq 125$	Asahi and Takahashi (2007)
	49	-174	4812	5406	$\geq 125$	
South China Sea	14.60	115.11	1208	4270	$\geq 125$	Tian et al. (2005)

of the model to the chosen values, we developed a sensitivity analysis of the parameters. The procedure used was similar to other marine plankton models (e.g., Fasham et al., 1990). We kept the parameters that are common to the ecosystem model constant, and modified only the values chosen for the foraminifera module. We run the model with each parameter altered by half and twice the standard value respectively to determine which parameters have the most effect (Table 3). In case of the parameter  $p$  (preference for the food type), we decreased the main food source was decreased by 50%, sharing this part between the other food sources (scaled rela-

tive to the original  $p$  in experiment 1; and sharing equally between the other food sources during the experiment 2). To test the effect of competition we carried out three experiments: first, reducing experienced competition by 50%, a second experiment switching it off completely and the last experiment increasing competition by 50%. For parameter choice, we compared modelled annual mean relative abundances and core-top data. The sensitivity was quantified by calculating the change of RMSE between sensitivity experiment and standard run. Sensitivities of the species to each parameter are given in Table 3.



**Table 3.** Sensitivity analysis to the parameter values: Reduction of parameter values and resulting change of RMSE between the model and core-top relative abundances (RMSE sensitivity experiment minus RMSE standard run)

Experiment	Parameter change	<i>N. pachyderma</i> (sin.)	<i>N. pachyderma</i> (dex.)	<i>G. bulloides</i>	<i>G. ruber</i> (white)	<i>G. sacculifer</i>
1	$p_{\text{main}}$ (–50%)	–0.3	4.6	–2.9	–4.7	0.6
2	$p_{\text{main}}$ (–50%)	–0.3	4.6	–2.9	–4.7	0.6
3	$d$ (–50%)	–	4.0	–0.2	–1.9	–0.7
4	$d$ (–100%)	–	4.6	0.8	6.4	1.9
5	$d$ (+50%)	–	3.4	–0.5	–5.3	0.7
6	$G_{\text{max}}$ (–50%)	2.9	3.6	–1.9	–5.6	–0.5
7	$G_{\text{max}}$ (+50%)	–0.0	4.1	0.7	–6.2	0.6
8	$\sigma$ (–50%)	1.1	2.1	4.1	–7.1	–1.0
9	$\sigma$ (+50%)	7.4	5.2	–0.1	–4.0	1.3

Experiments:

1=Reduction of main food preference,  $p$ (SP,D,ZO or DR), by 50%; sharing this part between the other food sources (scaled in relation to original  $p$ )

2=Reduction of main food preference,  $p$ (SP,D,ZO or DR), by 50%; sharing this part equally between the other food sources

3=Reduction of experienced competition by 50%

4=Suppression of competition

5=Increase of experienced competition by 50% 6=Decrease of maximum grazing rate,  $G_{\text{max}}$  by 50%

7=Increase of maximum grazing rate,  $G_{\text{max}}$  by 50%

8=Decrease of temperature tolerance range,  $\sigma$  by 50%

9=Increase of temperature tolerance range,  $\sigma$  by 50%

### 3 Results

#### 3.1 Spatial distribution patterns

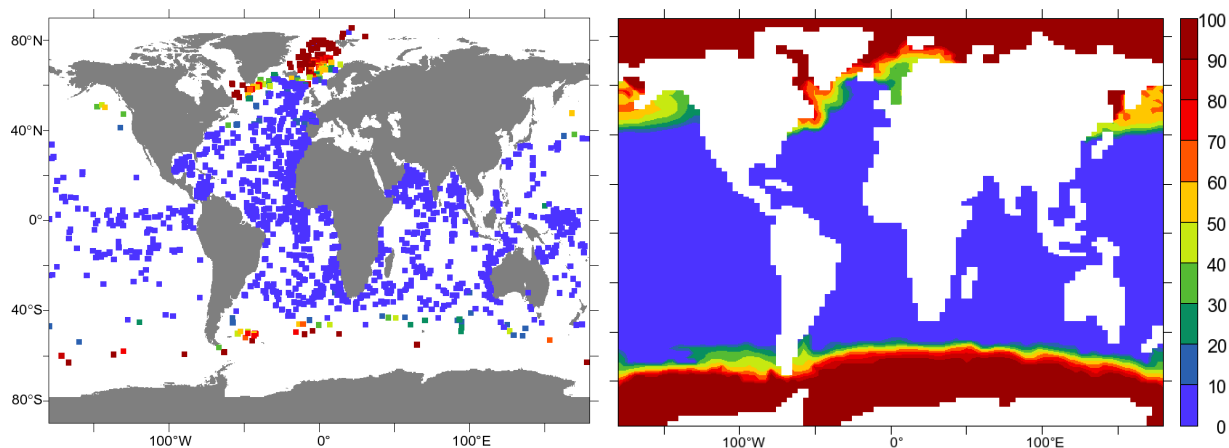
Modeled global distribution patterns of the five foraminifera species are shown together with the corresponding core-top data in Figs. 2–6. The model results are expressed as relative abundances as derived from the biomass data. Relative abundances for core-top data consider only the five species included in the model. The global distribution of *N. pachyderma* (sin.) shows the lowest RMSE, around 9%, while for the remaining the species the error varies between 22% and 25%.

*N. pachyderma* (sin.) is a cold-water species, and dominates planktonic foraminiferal assemblages in polar waters (Pflaumann et al., 1996; Bauch et al., 2003; Kucera et al., 2005). Previous work has shown that it can survive within Antarctic sea ice (Dieckman et al., 1991; Spindler, 1996; Schnack-Schiel et al., 2001). It is usually used as a proxy for cold water conditions (Bauch et al., 1997). Core-top, as well as modeled assemblages, show the highest relative abundances (up to 100%) in polar waters (Fig. 2).

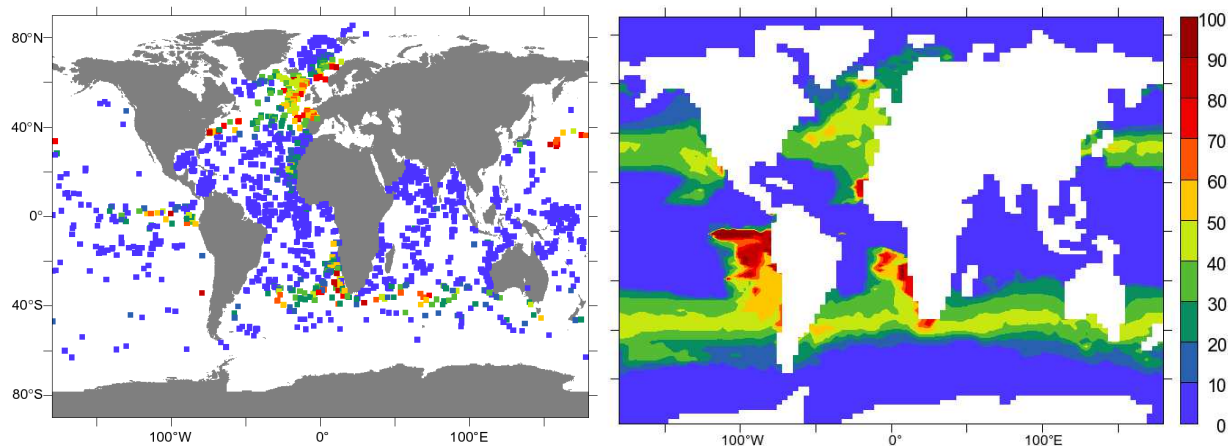
*N. pachyderma* (dex.) is typical of subpolar to transitional water masses. In the surface sediment samples, *N. pachyderma* (dex.) shows a very high relative abundance in the North Atlantic Ocean, the Benguela upwelling system, parts of the Southern Ocean and in the equatorial upwelling of the

Pacific Ocean. It is also present, although at lower abundance, in the upwelling systems off northwest Africa. The model output shows very high concentrations in the Peru-Chile current and the eastern boundary upwelling systems, as well as south of Iceland, and moderate abundances at mid latitudes (Fig. 3).

Like *N. pachyderma* (dex.), *G. bulloides* typically occurs in subpolar and transitional water masses (Bradshaw, 1959; Tolderlund and Bé, 1971; Bé, 1977), and is also found in upwelling areas (Duplessy et al., 1981; Thunell and Reynolds, 1984; Hemleben et al., 1989). Temperature does not seem to be a controlling factor in the distribution of this species, although the exact relationship between environmental parameters and geographical distribution of *G. bulloides* may be masked by the fact that this species group comprises several distinct genotypes (Darling et al., 1999, 2000; Stewart et al., 2001; Kucera and Darling, 2002; Darling et al., 2003). Generally, the abundance of *G. bulloides* is related to high productivity areas (Prell and Curry, 1981; Bé et al., 1985; Hemleben et al., 1989; Giraudeau, 1993; Watkins and Mix, 1998; Žarić et al., 2005). *G. bulloides* shows a high relative abundance in the surface sediment samples of the North Atlantic Ocean, the upwelling systems off northwest and southwest Africa, the Southern Ocean, the northern Indian Ocean, and to a lesser extent, the upwelling region off Baja California. The model results show high concentrations of *G. bulloides* in the subpolar waters of both hemispheres, in the eastern



**Fig. 2.** *N. pachyderma* (sin.) relative abundances (%) from core-top (left) foraminiferal assemblages (Pflaumann et al., 1996; Marchant et al., 1998; Prell et al., 1999) and model output (right). Relative abundances consider only the species included in the model. RMSE is 9%.



**Fig. 3.** *N. pachyderma* (dex.) relative abundances (%) from core-top (left) foraminiferal assemblages (Pflaumann et al., 1996; Marchant et al., 1998; Prell et al., 1999) and model output (right). Relative abundances consider only the species included in the model. RMSE is 22%.

boundary currents of the southern hemisphere and in some locations of the Arabian Sea (Fig. 4).

The seafloor record shows high relative abundance of *G. ruber* (white) in the central North and South Atlantic as well as the South Pacific and less pronounced relative abundance in the South Indian Ocean up to 40° S. The model output shows a similar pattern with high relative abundances in tropical and subtropical waters of the Atlantic, Pacific and Indian Oceans, and very low relative abundances in upwelling areas (Fig. 5).

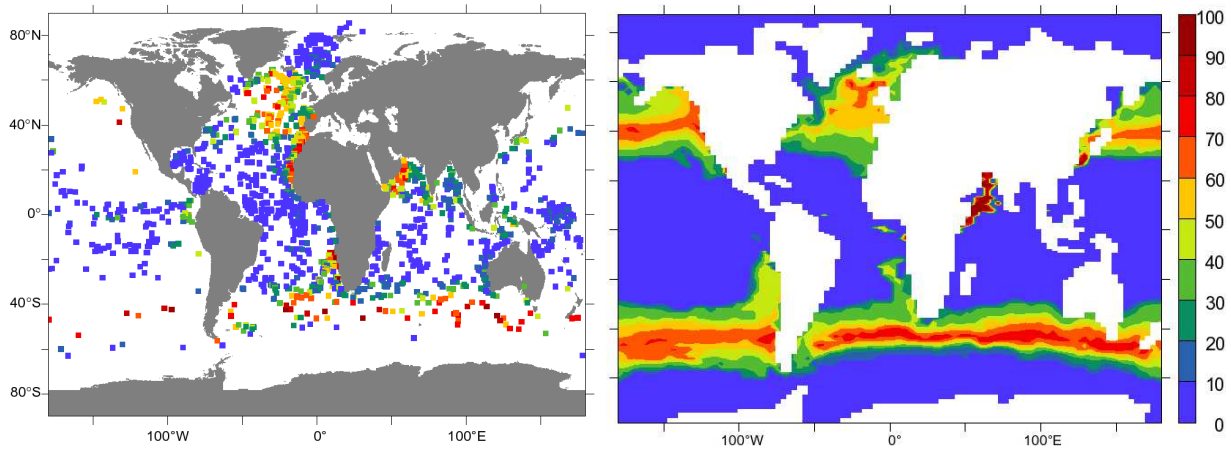
*G. sacculifer* shows a clear preference for high temperatures (optimum of 28°C) and is absent (or in concentrations  $\leq 10\%$ ) below 23°C (Žarić et al., 2005). Core-top data show this species is limited to tropical waters, reflecting its narrow temperature tolerance (Fig. 6). The highest abundances occur in surface sediments from the equatorial Pacific and central

Indian Ocean. The relative abundance in most of the core-top data from the upwelling region of the Arabian Sea is  $< 10\%$ . The annual mean distribution pattern of *G. sacculifer* in the model is limited to tropical waters, with highest concentrations in the equatorial Pacific. The model correctly simulates absence or low concentrations ( $< 10\%$ ) in eastern upwelling systems as well as in the upwelling area of the Arabian Sea.

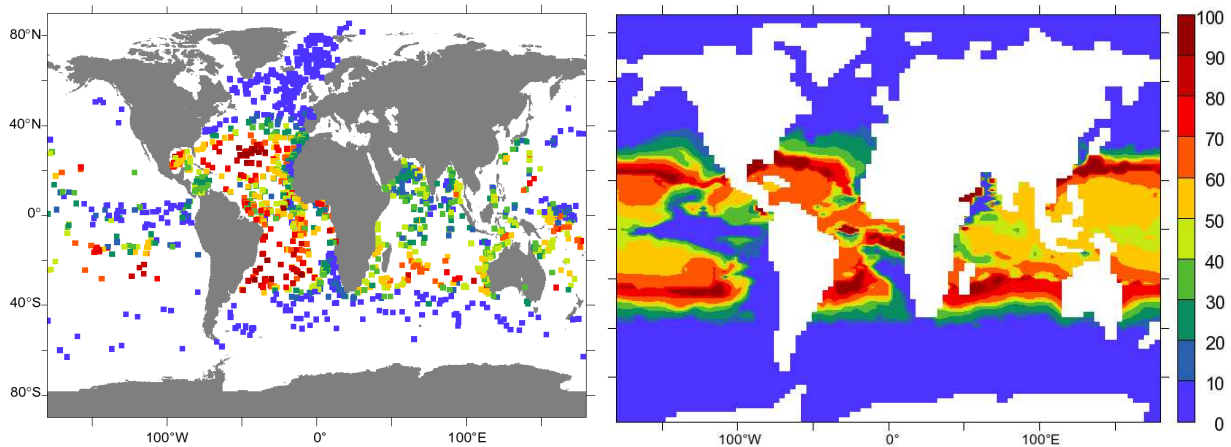
### 3.2 Temporal distribution patterns

We used several sediment-trap datasets to assess the modeled seasonal variations in foraminifera abundance. We limit the following comparison between the model output and the sediment-trap data to a few examples (Figs. 7–11).

In most of the cases, the sediment-trap data exhibit very pronounced interannual variability. In contrast, the model



**Fig. 4.** *G. bulloides* relative abundances (%) from core-top (left) foraminiferal assemblages (Pflaumann et al., 1996; Marchant et al., 1998; Prell et al., 1999) and model output (right). Relative abundances consider only the species included in the model. RMSE is 25%.



**Fig. 5.** *G. ruber* (white) relative abundances (%) from core-top (left) foraminiferal assemblages (Pflaumann et al., 1996; Marchant et al., 1998; Prell et al., 1999) and model output (right). Relative abundances consider only the species included in the model. RMSE is 25%.

is forced with climatological data (i.e., long-term averages), and is therefore unable to reproduce interannual variability. For that reason, we focused on the season with maximum production. In order to compare modeled and observed time series, we picked the season when maximum foraminiferal production occurs (Table 4). When sediment-trap were deployed for more than one year we considered the season in which most maxima occur.

Interannual variability of *N. pachyderma* (sin.) in all the locations is very high (Fig. 7), but the timing of the signal agrees between observed and predicted data.

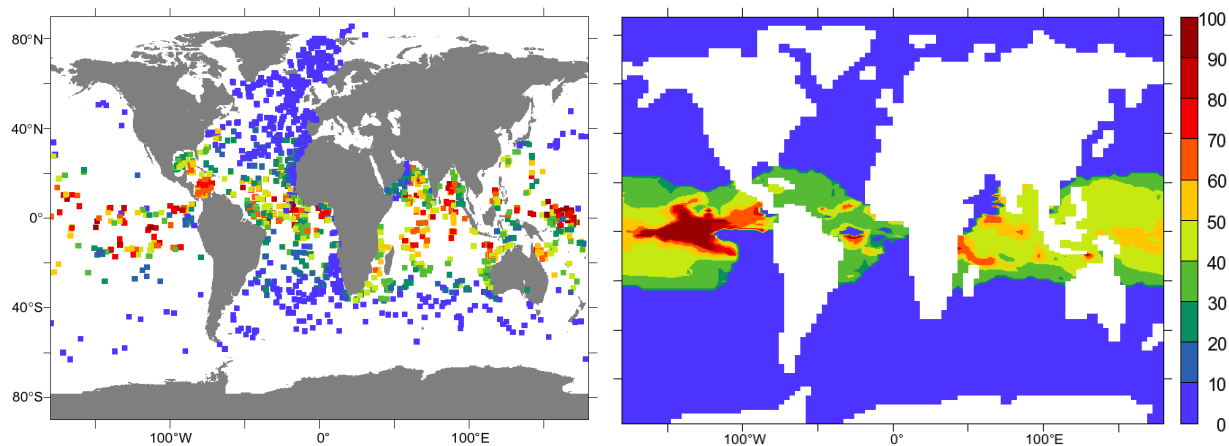
The flux of *N. pachyderma* (dex.) increases during summer (July–October) in northern North Atlantic (Fig. 8a). The seasonal pattern of predicted concentrations corresponds well with the trap record.

Sediment-trap data located at Subantarctic Zone show an increase of the *N. pachyderma* (dex.) population during

the summer (January–February). In accordance with the sediment-trap data, the model results also show the highest concentrations during the summer (Fig. 8b).

Examples for *G. bulloides* are shown in Fig. 9.

At Walvis Ridge, the sediment-trap data reveals a strong seasonality, where maxima occurs in fall (September–November) and in spring (May–June). The model successfully captures this bimodal pattern, with the main bloom occurring in spring. The second example represents a station north of the Kuroshio current in the northwest Pacific (Fig. 9b). At this location the model predicts a small peak during winter (December–January) and the maximum during early summer (May–June). The time-series record also presents this bimodal pattern; nevertheless, model and sediment-trap show better correspondence during the second year.



**Fig. 6.** *G. sacculifer* relative abundances (%) from core-top (left) foraminiferal assemblages (Pflaumann et al., 1996; Marchant et al., 1998; Prell et al., 1999) and model output (right). Relative abundances consider only the species included in the model. RMSE is 23%.

**Table 4.** Season with maximum foraminiferal production at each site in Fig. 1. Empty cells denote if species is absent either in sediment-trap data or the model output.

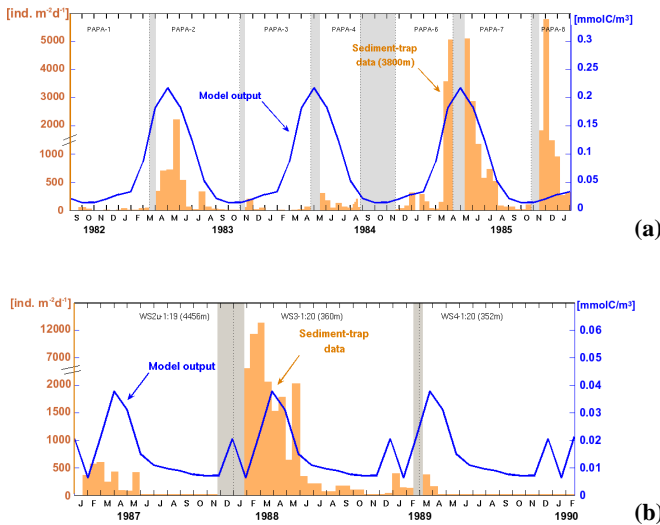
Trap Location	<i>N. pachyderma</i> (sin.)		<i>N. pachyderma</i> (dex.)		<i>G. bulloides</i>		<i>G. ruber</i> (white)		<i>G. sacculifer</i>	
	Model	Sediment-trap	Model	Sediment-trap	Model	Sediment-trap	Model	Sediment-trap	Model	Sediment-trap
Ocean Station Papa	spring	spring	fall	fall	summer	spring	–	–	–	–
Peru-Chile Current	–	–	fall	spring	spring	summer	–	–	–	–
N <sup>o</sup> North Atlantic	summer	summer	summer	summer	–	–	–	–	–	–
Cape Blanc	–	–	–	–	winter	spring	fall	fall	–	–
W <sup>o</sup> equatorial Atlantic	–	–	–	–	–	–	spring	winter / spring	fall	fall / spring
W Atlantic	–	–	–	–	–	–	spring	winter	fall	fall / winter
Walvis Ridge	–	–	spring	spring	spring	fall / spring / winter	–	–	–	–
Weddell Sea	summer	summer	–	–	–	–	–	–	–	–
Arabian Sea	–	–	–	–	summer	summer	–	–	fall	summer
Bay of Bengal	–	–	–	–	–	–	winter	winter	summer	summer
Northwest Pacific	–	–	fall	summer	spring	winter / spring	spring	summer	–	–
NW <sup>o</sup> North Pacific	–	–	fall	fall	spring	spring	–	–	–	–
Subantarctic Zone	summer	summer	summer	summer	–	–	–	–	–	–
Chatman Rise	–	–	summer	summer	–	–	–	–	–	–
Cariaco Basin	–	–	–	–	–	–	spring	spring	–	–
Japan Trench	–	–	–	–	spring	spring	spring	spring	–	–
Ryukyu Islands	–	–	–	–	spring	fall / winter	–	–	–	–
Bering Sea	summer	fall	–	–	–	–	–	–	–	–
South China Sea	–	–	–	–	–	–	winter	winter	–	–

In general, *G. ruber* (white) show, less variability in the sediment-trap data (Fig. 10). Seasonal variations in the flux of *G. ruber* (white) off Cape Blanc, in the Canary Current, are shown for a period of four years (Fig. 10a). The first three years were characterized by a maximum in *G. ruber* flux during fall (September–October). During fall of 1991, however, the peak most likely occurred after the end of the sediment-trap deployment. The model predicts a longer bloom (high concentrations from June to December), but the maximum in September coincides with sediment-trap data. The data recorded by the sediment-trap located at the western equatorial Atlantic does not show a clear pattern (Fig. 10b). The first sampling year is characterized by a bimodal pattern, with high fluxes in the austral summer and winter, whereas during the second year the winter bloom was missing. At

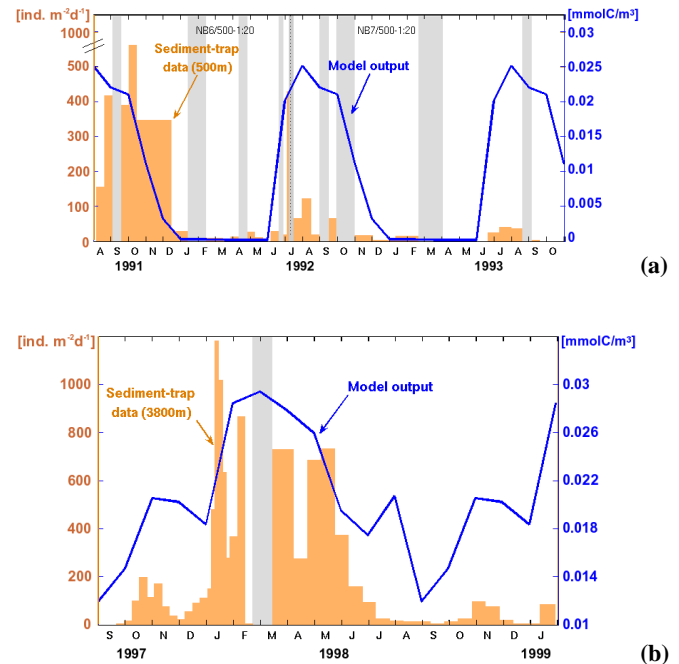
this site, the model predicts a unimodal pattern with highest fluxes from September to October.

*G. sacculifer* shows low fluxes in all sediment-trap data used for model validation. In most of the sites where sediment traps were deployed, the model predicts very low concentrations (Fig. 11).

When the model reaches the threshold value set for the minimum population size (0.01 mmolC/m<sup>3</sup>), the hydrographic component of the model starts to dominate over the population dynamic itself. Therefore, in most of the locations, the model output is too low for comparison. We present examples from the Bay of Bengal and the Arabian Sea (Fig. 11). At both sites, the model predicts little variability in the population of *G. sacculifer*.



**Fig. 7.** Comparison of measured fluxes of *N. pachyderma* (sin.) in sediment traps (orange bars) vs. modeled abundances (blue lines). Note the difference in units between sediment-trap data [ $\text{ind. m}^{-2} \text{ day}^{-1}$ ] and model output [ $\text{mmolC/m}^3$ ], which does not hamper with the assessment of the season of maximum foraminiferal production. Grey bars indicate the season of maximum foraminiferal production. Grey bars indicate gaps in sediment-trap data. (a) Ocean Station PAPA, in northwest Pacific,  $50^\circ \text{N}$   $145^\circ \text{W}$  (Reynolds and Thunell, 1985; Sautter and Thunell, 1989; Wong et al., 1999); (b) Weddell Sea,  $64.91^\circ \text{S}$   $2.55^\circ \text{W}$ , in the Southern Ocean (Donner and Wefer, 1994).



**Fig. 8.** *N. pachyderma* (dex.) in sediment traps (orange bars) vs. modeled abundances (blue lines). Symbols and layout of the graphs are the same as in Fig. 7. (a) northern North Atlantic,  $69.69^\circ \text{N}$   $0.48^\circ \text{E}$  (Jensen, 1998); (b) Subantarctic Zone,  $46.76^\circ \text{S}$   $142.07^\circ \text{E}$  (Trull et al., 2001; King and Howard, 2003a,b).

### 3.3 Spatio-temporal distribution pattern

We analyzed the model prediction for the temporal variation of *G. bulloides* in the North Atlantic. Fig. 12 shows the model output of *G. bulloides* concentrations throughout the year in the North Atlantic. The maximum concentrations occur around  $40^\circ \text{N}$  during spring (March–April) and around  $60^\circ \text{N}$  during summer (June–July), following the phytoplankton bloom in the model.

### 3.4 Sensitivity experiment: spatio-temporal distribution patterns with constant temperature

We ran the foraminifera module with a constant temperature of  $12^\circ \text{C}$  everywhere to test the sensitivity of *G. bulloides* to other environmental parameters (mainly food availability). The chosen temperature corresponds to the optimal temperature of this species in the model. Fig. 13 shows the spatio-temporal distribution of *G. bulloides* in the North Atlantic for this experimental run. In general, absolute concentrations of *G. bulloides* are higher than in the standard run (Fig. 12). However, seasonal pattern does not change substantially from the standard run: During spring the model predicts the highest concentrations in the southern region (around  $40^\circ$ ) while during summer, the bloom shifts to higher latitudes.

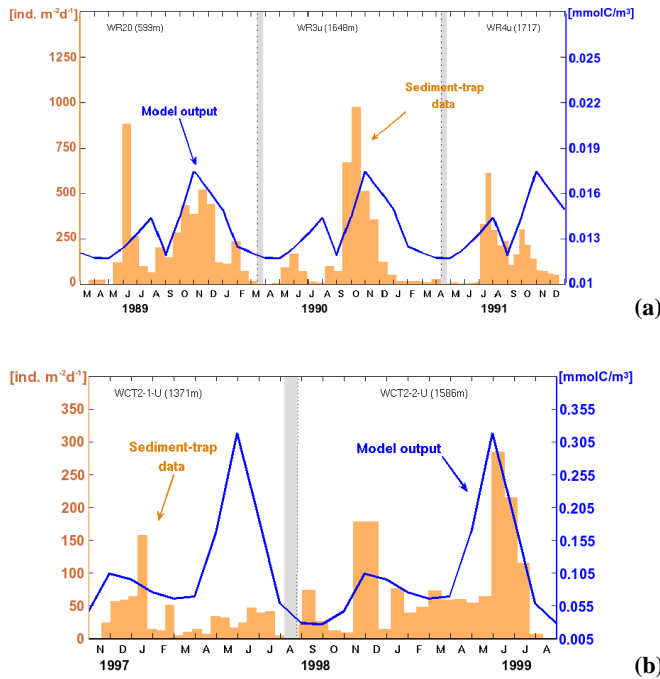
## 4 Discussion

### 4.1 Comparison with core-top data

In general, the global distribution patterns of foraminifera species predicted by the model are very close to those expected from core-top data.

The core-top data reflect the integrated flux through the water column, while our model reflects the situation in the mixed layer. As a consequence, some of the discrepancies between model and core-top distributions could be due to the different depth habitats of the species. However, the five species simulated in our model live for most of their life cycle in the upper part of the water-column, thus we expect only a small error at a global scale. In addition, fossil faunal assemblages may be altered by selective dissolution (Berger, 1968; Thunell and Honjo, 1981; Le and Thunell, 1996; Dittert and Henrich, 1999), and by displacement through subsurface currents or bioturbation processes (Bé, 1977; Bé and Hutson, 1977; Boltovskoy, 1994). Since we can not take into account any of these factors, these processes may explain some of the discrepancies between core-top data and the model results.

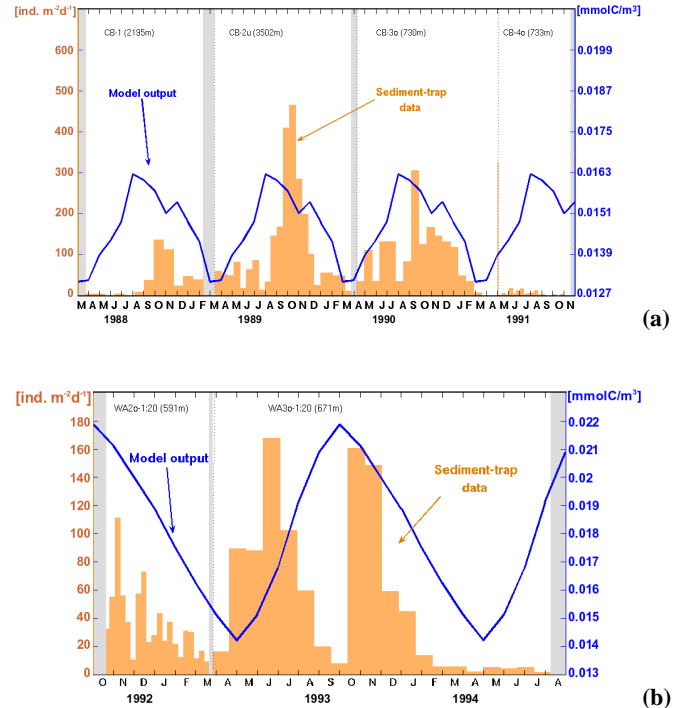
The global distribution pattern of *N. pachyderma* (sin.) is very similar to that in the core-top data (Fig. 2). Distinct *N. pachyderma* (sin.) genotypes were identified by Darling et al. (2004) in the Arctic and Antarctic polar/subpolar waters.



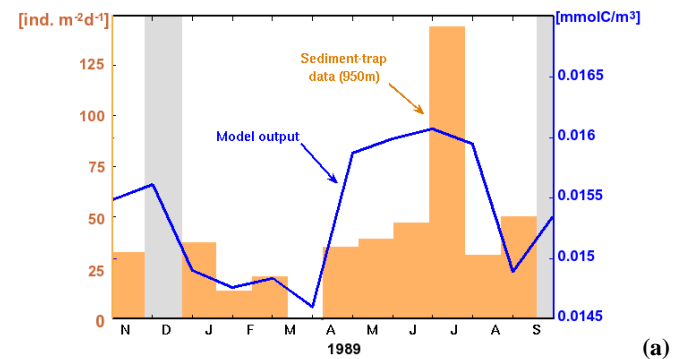
**Fig. 9.** Comparison of measured fluxes of *G. bulloides* in sediment traps (orange bars) vs. modeled abundances (blue lines). Symbols and layout of the graphs are the same as in Fig. 7. (a) Walvis Ridge, 20.05° S 9.16° E (Fischer and Wefer, 1996; Žarić et al., 2005); (b) northwest Pacific, 39.01° N 147.00° E (Mohiuddin et al., 2002).

Those cryptic species seem to have different environmental preferences (Bauch et al., 2003). Accordingly, the temperature tolerance of the populations in the southern hemisphere is larger than that of North Atlantic population (Darling et al., 2006). For the calibration we did not take different genotypes into account. This causes a discrepancy at the edge of the distribution in the North Atlantic, where the temperature tolerance range is narrower. In fact, the model output agrees slightly better with the core-top data in the Southern Ocean, where the Root Mean Square Error is 8.7% compared to 9.3% in the northern hemisphere. This result reflects the fact that our parametrization is mainly based on the temperature tolerance of the southern population. However, the difference between hemispheres is not large, and treating the different genotypes of *N. pachyderma* (sin.) as a single ecological group in the model seems justified.

For *N. pachyderma* (dex.) the model was able to predict the high relative abundances (up to 90%) found in core-top data from the eastern equatorial Pacific and Benguela upwelling systems (Fig. 3). In contrast, in the upwelling system off NW Africa, the model predicts too high relative abundances of *N. pachyderma* (dex.), while those in North Atlantic (40° - 70° N) were underestimated. A noticeable discrepancy arises in the equatorial Pacific, north of the eastern boundary upwelling region, where the model underestimates the relative abundance of *N. pachyderma* (dex.). In

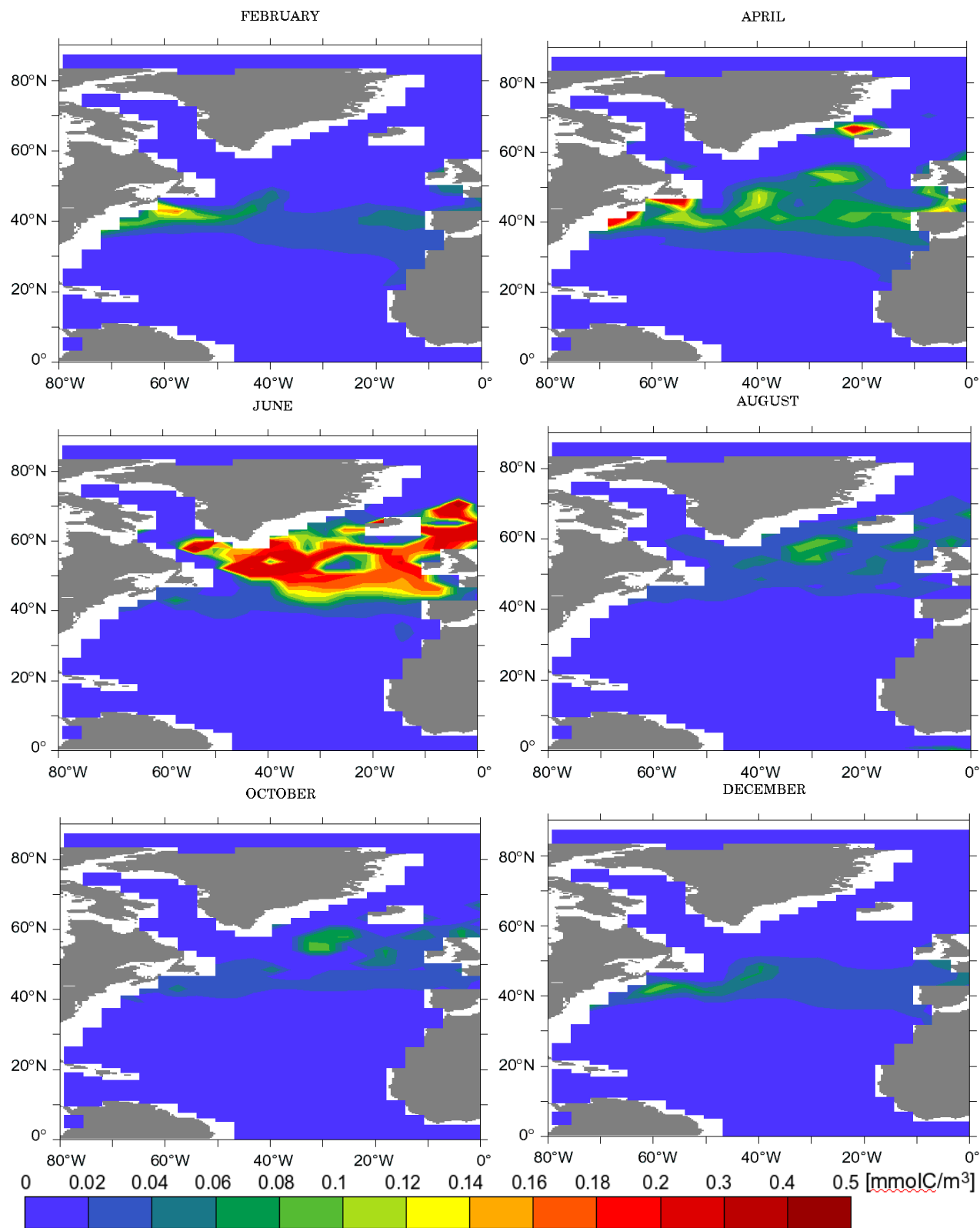


**Fig. 10.** Comparison of measured fluxes of *G. ruber* (white) in sediment-traps (orange bars) vs. modeled abundances (blue lines). Symbols and layout of the graphs are the same as in Fig. 7. (a) Cape Blanc, 21.15° N 20.69° W (Fischer and Wefer, 1996; Fischer et al., 1996; Žarić et al., 2005); (b) western equatorial Atlantic, 7.51° S 28.03° W (Fischer and Wefer, 1996; Fischer et al., 1996; Žarić et al., 2005).

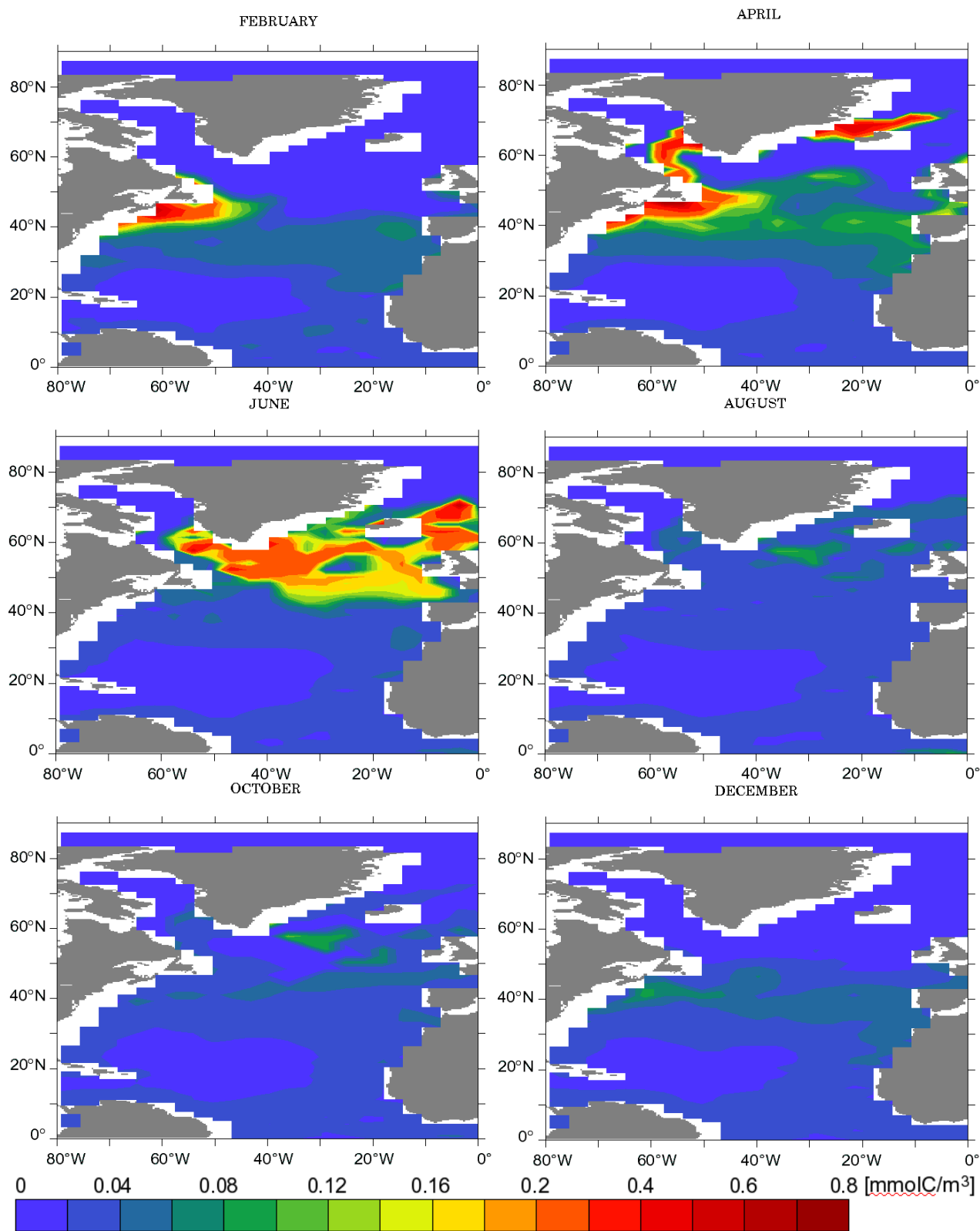


**Fig. 11.** Comparison of measured fluxes of *G. sacculifer* in sediment-traps (orange bars) vs. modeled abundances (blue lines). Symbols and layout of the graphs are the same as in Fig. 7. (a) central Bay of Bengal, 13.15° N 89.35° E (Guptha et al., 1997).

this region, the surface temperature in the model is higher than that typical for *N. pachyderma* (dex.) (minimum temperatures above 22°C). It is therefore possible that *N. pachyderma* (dex.) from these core-tops represent a population living below the mixed layer, as has been described in previous studies (Murray, 1991; Pujol and Grazzini, 1995;



**Fig. 12.** Modeled monthly concentrations of *G. bulloides* in the North Atlantic in the standard run.



**Fig. 13.** Modeled monthly concentrations of *G. bulloides* in an experiment with constant mixed layer temperature of 12 °C.



Kuroyanagi and Kawahata, 2004), or that they are expatriated specimens from the upwelling region.

The model-generated global pattern of *G. bulloides* for the Atlantic, Pacific and Southern Oceans agrees well with core-top data (Fig. 4). The model, however, underestimates the abundance of *G. bulloides* in the northern Indian Ocean. This underestimation could be due to the different *G. bulloides* genotypes. The two warm water types are found mainly in tropical/subtropical regions, whereas cold water types are found in transitional to subpolar waters (Kucera and Darling, 2002). Žarić et al. (2005) studied the sensitivity of several planktonic foraminifera species to sea-surface temperature and concluded that the population of *G. bulloides* present in the tropical Indian Ocean comprises mainly the warm-water genotype. Since the parametrization of the model is done at a global scale without specifically considering the warm water type, the increased relative abundance of warm-water *G. bulloides* in the tropical Indian Ocean cannot be captured by the model. The high concentrations simulated in the Arabian Sea are due to an unrealistically high phytoplankton concentration in the ecosystem model. In addition, the modification of the normal distribution by the introduction of the food-dependent relation (through the parameter  $k$  in Eq. 3) allows *G. bulloides* to grow in tropical waters. The model underestimates relative abundances of *G. bulloides* in the upwelling regions off northwest Africa, Peru-Chile and Benguela as a result of the overestimation of *N. pachyderma* (dex.) concentration. This could be due to the higher turnover-rate of *G. bulloides* in comparison to that of *N. pachyderma* (dex.), which is not included in this model.

The simulated global distribution pattern of *G. ruber* (white) is in good agreement with the core-top data. Only in the northern Indian Ocean are abundances somewhat overestimated (Fig. 5). This may be due to the underestimation of *G. bulloides* in the model as we compare relative abundances.

Both core-top data and model output show that the distribution of *G. sacculifer* is limited to tropical areas (Fig. 6). The model favorably captures the distribution patterns in the Atlantic and eastern Pacific Oceans. The predicted relative abundances of *G. sacculifer* in the Indian and western Pacific Oceans are underestimated in the model. The observed distribution shows a wider spatial range than in the model. This could be due to competition exerted by *G. ruber*. The abundance of this species is overestimated in the mentioned regions and therefore competition is exerting a stronger influence on the other species.

#### 4.2 Comparison with sediment-trap data

The comparison between model predictions and sediment-trap records bears several difficulties. Most of time series only represent short sampling periods (single or a few years). Sediment traps that were deployed for more than one year show pronounced interannual variability that is not captured by the model due to the climatological forcing. Moreover,

the majority of sediment-traps have been deployed close to the coast (Fig. 1), where environmental conditions and ecological successions are more complex than in the open ocean. The lack of sediment-trap data in open-ocean settings is an obstacle for a global scale comparison. Nevertheless, in general, the seasonal pattern of species concentrations in the model is similar to the sediment-trap records (Table. 4).

Simulated variations of *N. pachyderma* (sin.) correlate well with sediment-trap data. In 80% of the cases, the predicted season of maximum production coincides with observational data. In the model *N. pachyderma* (sin.) lives in polar/subpolar waters, and the maximum production of this species occurs during a short period in summer, together with the phytoplankton bloom. For *N. pachyderma* (dex.), the season of maximum production varies between locations. However, model prediction and sediment-trap data coincide in 75% of the cases (Table 4). For the stations in Peru-Chile current and northwest Pacific, model prediction and sediment-trap data differ substantially. However, in the former location, the sampling period is limited to a single year and the data shows an irregular pattern without a distinct seasonal peak, whereas in the northwest Pacific the interannual variability in sediment-trap data is very high. It is likely that at these particular locations the sediment traps do not reflect the mean long-term flux pattern.

For most of the locations, the season of maximum production of *G. bulloides* simulated by the model does not coincide with the observations. At Ocean Station PAPA (northeast Pacific) the modeled seasonal peaks are delayed with respect to sediment-trap data, whereas in the Peru-Chile current and off Cape Blanc, the peak occurs too early. At the Walvis Ridge, close to the coastal upwelling zone, the model predicts successfully the bimodal pattern (Fig. 9a). However, when considering the absolute flux maximum in each year, the season when it occurs varies throughout the sediment-trap record. At Ryukyu Islands (northwest Pacific) two sediment traps were deployed during the same period, but maximum production seasons recorded in both traps are different. The differences observed in the sediment-trap data highlights difficulties in comparing model predictions and observational data.

The season of maximum production of *G. ruber* (white) in the model corresponds to the recorded data in 6 of 8 stations. However, in the western Atlantic, the model produces highest concentrations too early in the year (Table 4). On the other hand, the variations in the sediment-trap data are very small and seem to occur randomly.

Only very few data are available to compare seasonal variations of *G. sacculifer*. Model and sediment-trap data show, in general, lower concentrations than the other four species and little seasonal variability in all sites. This is not surprising considering that *G. sacculifer* is limited to tropical waters, with small seasonal temperature range.

### 4.3 Sensitivity analysis

In an attempt to assess the sensitivity of the model to the chosen parameter values, we performed a sensitivity analysis of the parameters. The procedure used was similar to other marine plankton models (e.g., Fasham et al., 1990). We kept the parameters that are common to the ecosystem model constant, and modified only the values chosen for the foraminifera module. We run the model with each parameter altered by half and twice the standard value respectively to determine which parameters have the most effect (Table 3).

The sensitivity was quantified by calculating the change of RMSE between the sensitivity experiment and the standard run. The results (Table 3) indicate that none of the parameters lead to uniform changes for all species. The model seems to be more robust for *G. sacculifer* than for other species. In several experiments, the error between model and core-top data decreases. This occurs because the standard parametrization is based on ecological data compiled from literature rather than "tuned" to obtain a better fit. Removing competition generates a general increase of RMSE. Not surprisingly, the temperature tolerance range ( $\sigma$ ) seems to be the most sensitive parameter.

### 4.4 Model experiment with constant mixed-layer temperature

When the foraminifera model is run with a constant temperature of 12°C, *G. bulloides* in the North Atlantic still showed highest concentrations at low latitudes during spring and maximum concentrations at higher latitudes in June, linked to the seasonal migration of the phytoplankton bloom (Fig. 13). This indicates that temperature is not the only controlling factor, but that food supply plays an important role in the temporal distribution pattern of this species. The experiment confirms the results of Ganssen and Kroon (2000), who from isotopic studies on North Atlantic surface sediments, concluded that *G. bulloides* reflects temperatures of a northward migrating spring bloom.

## 5 Summary and conclusions

A global model has been developed that predicts monthly planktonic foraminifera concentrations for *N. pachyderma* (sin.), *N. pachyderma* (dex.), *G. bulloides*, *G. ruber* (white) and *G. sacculifer*. It is a nonlinear dynamic model simulating growth rate of foraminifera populations using information from an underlying ecosystem model (Moore et al., 2002a).

The model aims at predicting the distribution of planktonic foraminifera at geological timescales. Overall, the global distribution patterns of the predicted species are similar to core-top data.

Modeled seasonal variations overall agree with sediment-trap records for most of the locations, although the compar-

ison is hampered by interannual variability not captured by the model.

A sensitivity experiment using a constant temperature of 12°C indicates that food availability (primary production in the case of *G. bulloides*) is an important factor controlling the distribution of some species.

Our model provides a tool that will contribute to better assessing how changing environmental conditions in the geological past affected the distribution of foraminifera in space and time.

Quantitative data and a better knowledge of ecological process from laboratory and field studies are essential for further improvement of the current model. Results may also be improved by including additional information, such as different classes of zooplankton, or by explicitly resolving depth.

*Acknowledgements.* We appreciate the contributions and helpful comments of R. Schiebel, M. Peck, A. Beck, A. Bisset, and 4 referees who improved the manuscript. Thanks also to M. Prange and T. Laepple for analytical assistance and G. Fischer for providing sediment-trap data. Special thanks to A. Manschke for computer support. This project was supported by the DFG (Deutsche Forschungsgemeinschaft) as part of the European Graduate Colleague "Proxies in Earth History" (EUROPROX).

Edited by: C. Heinze

## References

- Anderson, O. R., Spindler, M., Be, A. W. H., and Hemleben, C.: Trophic activity of planktonic foraminifera, *J. Mar. Biol. Assoc. U.K.*, 59, 791–799, 1979.
- Arnold, A. J. and Parker, W. C.: Biogeography of planktonic Foraminifera, in: *Modern Foraminifera*, edited by: Gupta, B. S. K., Dordrecht, Boston, London, 103–122, 1999.
- Asahi, H. and Takahashi, K.: A 9-year time-series of planktonic foraminifer fluxes and environmental change in the Bering sea and the central subarctic Pacific Ocean, 1990–1999, *Prog. Oceanogr.*, 72, 343–363, 2007.
- Bauch, D., Carstens, J., and Wefer, G.: Oxygen isotope composition of living *Neogloboquadrina pachyderma* (sin.) in the Arctic Ocean, *Earth. Planet. Sc. Lett.*, 146, 47–58, 1997.
- Bauch, D., Darling, K., Simstich, J., Bauch, H. A., Erlenkeuser, H. and Kroon, D.: Palaeoceanographic implications of genetic variation in living North Atlantic *Neogloboquadrina pachyderma*, *Nature*, 424, 299–302, 2003.
- Bé, A. W. H. and Hamilton, W. H.: Ecology of Recent planktonic foraminifera, *Micropal.*, 13, 87–106, 1967.
- Bé, A. W. H. and Tolderlund, D. S.: Distribution and ecology of living planktonic foraminifera in surface waters of the Atlantic and Indian Oceans, in *The Micropalaeontology of Oceans*, edited by: Funnell, B. M. and Riedel, W. R., 105–149, Cambridge University Press, 1967.
- Bé, A. W. H.: An ecological, zoogeographic and taxonomic review of recent planktonic foraminifera, in: *Oceanic Micropalaeontology*, edited by: Ramsay, A. T. S., 1–100, Academic Press Inc., London, 1977.

- Bé, A. W. H. and Hutson, W. H.: Ecology of planktonic foraminifera and biogeographic patterns of life and fossil assemblages in the Indian Ocean, *Micropal.*, 23, 369–414, 1977.
- Bé, A. W. H., Caron, D. A., and Anderson, O. R.: Effects of feeding frequency on life processes of the planktonic foraminifer *Globigerinoides sacculifer* in laboratory culture, *J. Mar. Biol. Assoc. U.K.*, 61, 257–277, 1981.
- Bé, A. W. H., Bishop, J. K. B., Sverdløve, M. S., and Gardner, W. D.: Standing stock, vertical distribution and flux of planktonic Foraminifera in the Panama Basin, *Mar. Micropal.*, 9, 307–333, 1985.
- Berger, W. H.: Planktonic foraminifera: selective solution and paleoclimatic interpretation, *Deep-Sea Res.*, 15, 31–43, 1968.
- Bijma, J., Faber, W. W. J., and Hemleben, C.: Temperature and salinity limits for growth and survival of some planktonic foraminifera in laboratory cultures, *J. Foramin. Res.*, 20, 95–116, 1990.
- Bishop, J. K. B. and Rossow, W. B.: Spatial and temporal variability of global surface solar irradiance, *J. Geophys. Res.*, 96, 16 839–16 858, 1991.
- Boltovskoy, D.: The sedimentary record of pelagic biogeography, *Prog. Oceanogr.*, 34, 135–160, 1994.
- Bradshaw, J. S.: Ecology of living planktonic foraminifera in the North and equatorial Pacific Ocean, Cushman Foundation for Foraminiferal Research Contribution, 10, 25–64, 1959.
- Caron, D. A., Bé, A. W. H. and Anderson, O. R.: Effects on variations in light intensity on life processes of the planktonic foraminifera *Globigerinoides sacculifer* in laboratory culture, *J. Mar. Biol. Assoc. UK*, 67, 323–341, 1981.
- Caron, D. A. and Bé, A. W. H.: Predicted and observed feeding rates of the spinose planktonic foraminifer *Globigerinoides sacculifer*, *B. Mar. Sci.*, 35, 1–10, 1984.
- Cavaliere, D., Gloerson, P., and Zwally, J.: DMSP SSM/I daily polar gridded sea ice concentrations, October 1998 to September 1999, edited by: Maslanik, J. and Stroeve, J., National Snow and Ice Data Center, Boulder, CO, Digital media, 1990.
- CLIMAP Project Members: The surface of the ice-age earth, *Science*, 191, 1131–1137, 1976.
- Conan, S. M. H., and Brummer, G. J. A.: Fluxes of planktonic foraminifera in response to monsoonal upwelling on the Somalia Basin margin, *Deep-Sea Res. II*, 47, 2207–2227, 2000.
- Conkright, M., Levitus, S., O'Brien, T., Boyer, T., Antonov, J. and Stephens: World Ocean Atlas 1998 CD-ROM Data Set Documentation, Tech. Rep. 15, NODC Internal Report, Silver Spring, MD, 16 pp., 1998.
- Cullen, J. L.: Microfossil evidence for changing salinity patterns in the Bay of Bengal over the last 20,000 years, *Palaeogeogr. Palaeoclimatol.*, 35, 315–356, 1981.
- Curry, W. B., Ostermann, D. R., Guptha, M. V. S., and Ittekkot, V.: Foraminiferal production and monsoonal upwelling in the Arabian Sea: evidence from sediment traps, in: *Upwelling Systems: Evolution Since the Early Miocene*, edited by: Summerhayes, C. P., Prell, W. L., and Emeis, K. C., 93–106, The Geological Society, London, 1992.
- Darling, K. F., Wade, C. M., Kroon, D., Leigh Brown, A. J., and Bijma, J.: The diversity and distribution of modern planktonic foraminiferal small subunit ribosomal RNA genotypes and their potential as tracers of present and past ocean circulations, *Paleoceanography*, 14, 3–12, 1999.
- Darling, K. F., Wade, C. M., Stewart, I. A., Kroon, D., Dingle, R., and Leigh Brown, A. J.: Molecular evidence for genetic mixing of Arctic and Antarctic subpolar populations of planktonic foraminifera, *Nature*, 405, 43–47, 2000.
- Darling, K. F., Kucera, M., Wade, C. M., von Langen, P., and Pak, D.: Seasonal distribution of genetic types of planktonic foraminifer morphospecies in the Santa Barbara Channel and its paleoceanographic implications, *Paleoceanography*, 18, 1032, doi:10.1029/2001PA000723, 2003.
- Darling, K. F., Kucera, M., Pudsey, C. J. and Wade, C. M.: Molecular evidence links cryptic diversification in polar plankton to Quaternary climate dynamics, *Proc. Natl. Acad. Sci., U. S. A.*, 101, 7657–7662, 2004.
- Darling, K. F., Kucera, M., Kroon, D., and Wade, C. M.: A resolution for the coiling direction paradox in *Neogloboquadrina pachyderma*, *Paleoceanography*, 21, 2011, doi:10.1029/2005PA001189, 2006.
- Deuser, W. G. and Ross, E. H.: Seasonally abundant planktonic foraminifera of the Sargasso Sea: succession, deep-water fluxes, isotopic compositions, and paleoceanographic implications, *J. Foramin. Res.*, 19, 268–293, 1989.
- Dieckmann, G. S., Spindler, M., Lange, M. A., Ackley, S. F., and Eicken, H.: Antarctic sea ice: a habitat for the foraminifer *Neogloboquadrina pachyderma*, *J. Foramin. Res.*, 21, 182–189, 1991.
- Dittert, N. and Henrich, R.: Carbonate dissolution in the South Atlantic Ocean: evidence from ultrastructure breakdown in *Globigerina bulloides*, *Deep-Sea Res. I*, 47, 603–620, 1999.
- Donner, B. and Wefer, G.: Flux and stable isotope composition of *Neogloboquadrina pachyderma* and other planktonic foraminifera in the Southern Ocean (Atlantic sector), *Deep-Sea Res. I*, 41, 1733–1743, 1994.
- Duplessy, J. C., Delibrias, G., Turon, J. L., Pujol, C., and Duprat, J.: Deglacial warming of the Northeastern Atlantic Ocean: correlation with the paleoclimatic evolution of the European continent, *Palaeogeogr. Palaeoclimatol.*, 35, 121–144, 1981.
- Edwards, A. M. and Yool, A.: The role of higher predation in plankton population models, *J. Plankton Res.*, 22, 1085–1112, 2000.
- Eguchi, N. O., Kawahata, H., and Taira, A.: Seasonal Response of Planktonic Foraminifera to Surface Ocean Condition: Sediment Trap Results from the Central North Pacific Ocean, *J. Oceanogr.*, 55, 681–691, 1999.
- Fasham, M. J. R., Ducklow, H. W. and McKelvie, S. M.: A nitrogen-based model of plankton dynamics in the oceanic mixed layer, *J. Mar. Res.*, 48, 591–639, 1990.
- Fischer, G. and Wefer, G.: Long-term Observation of Particle Fluxes in the Eastern Atlantic: Seasonality, Changes of Flux with Depth and Comparison with the Sediment Record, in: *The South Atlantic: Present and Past Circulation*, edited by: Wefer, G., Berger, W. H., Siedler, G., and Webb, D. J., 325–344, Springer-Verlag, Berlin Heidelberg, 1996.
- Fischer, G., Donner, B., Ratmeyer, V., Davenport, R., and Wefer, G.: Distinct year-to-year particle flux variations off Cape Blanc during 1988–1991: Relation to  $\delta^{18}\text{O}$ -deduced sea-surface temperatures and trade winds, *J. Mar. Res.*, 54, 73–98, 1996.
- Ganssen, G. M. and Kroon, D.: The isotopic signature of planktonic foraminifera from NE Atlantic surface sediments: implications for the reconstruction of past oceanic conditions, *J. Geol. Soc.*, 157, 693–699, 2000.

- Gastrich, M. D.: Ultrastructure of a new intracellular symbiotic alga found within planktonic foraminifera, *J. Phycol.*, 23, 623–632, 1987.
- Gent, P. R., Bryan, F. O., Danabasoglu, G., Doney, S. C., Holland, W. R., Large, W. G., and McWilliams, J. C.: The NCAR climate system model global ocean component, *J. Climate*, 11, 1287–1306, 1998.
- Giraudeau, J.: Planktonic foraminiferal assemblages in surface sediments from the southwest African continental margin, *Mar. Geol.*, 110, 47–62, 1993.
- Guptha, M. V. S. and Mohan, R.: Seasonal variability of the vertical fluxes of *Globigerina bulloides* (d Orbigny) in the northern Indian Ocean, *Mitt. Geol.-Paläont. Inst. Univ. Hamburg*, 79, 1–17, 1996.
- Guptha, M. V. S., Curry, W. B., Ittekkot, V., and Muralinath, A. S.: Seasonal variation in the flux of planktic foraminifera: Sediment trap results from the Bay of Bengal, northern Indian Ocean, *J. Foramin. Res.*, 27, 5–19, 1997.
- Haake, B., Ittekkot, V., Rixen, T., Ramaswamy, V., Nair, R. R., and Curry, W. B.: Seasonality and interannual variability of particle fluxes to the deep Arabian Sea, *Deep-Sea Res. I*, 40, 1323–1344, 1993.
- Hebbeln, D., Marchant, M., and Wefer, G.: Seasonal variations of the particle flux in the Peru-Chile current at 30° S under normal and El Niño conditions, *Deep-Sea Res. II*, 47, 2101–2128, 2000.
- Hemleben, C., Spindler, M., Breiteringer, J., and Deuser, W. G.: Field and laboratory studies of the ontogeny and ecology of *Globorotalia truncatulinoides* and *G. hirsuta* in the Sargasso Sea, *J. Foramin. Res.*, 15, 254–272, 1985.
- Hemleben, C., Spindler, M., and Anderson, O. R.: *Modern Planktonic Foraminifera*, Springer-Verlag, New York, 1989.
- Jensen, S.: Planktische Foraminiferen im Europäischen Nordmeer: Verbreitung und Vertikalfluss sowie ihre Entwicklung während der letzten 15000 Jahre, *Berichte SFB 313, Univ. Kiel*, 75, 105 pp., 1998.
- Kiefer, T.: Produktivität und Temperaturen im subtropischen Nordatlantik: zyklische und abrupte Veränderungen im späten Quartär, *Berichte – Reports, Geol.-Paläont. Inst., Univ. Kiel*, 90, 1–127, 1998.
- King, A. L. and Howard, W. R.: Seasonality of foraminiferal flux in sediment traps at Chatham Rise, SW Pacific: implications for paleotemperature estimates, *Deep-Sea Res. I*, 48, 1687–1708, 2001.
- King, A. L. and Howard, W. R.: Planktonic foraminiferal flux seasonality in Subantarctic sediment traps: A test for paleoclimate reconstructions, *Paleoceanography*, 18, 1019, doi:10.1029/2002PA000839, 2003a.
- King, A. L. and Howard, W. R.: Seasonal Subantarctic Planktonic Foraminiferal Flux Data, available from the IGBP PAGES/World Data Center for Paleoclimatology (<http://www.ngdc.noaa.gov/paleo>), Data Contribution Series # 2003-022., NOAA/NGDC Paleoclimatology Program, Boulder CO, 2003b.
- Kucera, M. and Darling, K. F.: Cryptic species of planktonic foraminifera: their effect on paleoceanographic reconstructions, *Philos. Tr. Roy. Soc. A*, 360, 695–718, 2002.
- Kucera, M., Rosell-Mele, A., Schneider, R., Waelbroeck, C., and Weinelt, M.: Reconstruction 15 of sea-surface temperatures from assemblages of planktonic foraminifera: multi-technique approach based on geographically constrained calibration data sets and its application to glacial Atlantic and Pacific Oceans, *Quat. Sci. Rev.*, 24, 951998, 2005.
- Kuroyanagi, A., Kawahata, H., Nishi, H., and Honda, M. C.: Seasonal changes in planktonic foraminifera in the northwestern North Pacific Ocean: sediment trap experiments from subarctic and subtropical gyres, *Deep-Sea Res. II*, 49, 5627–5645, 2002.
- Kuroyanagi, A. and Kawahata, H.: Vertical distribution of living planktonic foraminifera in the seas around Japan, *Mar. Micropal.*, 53, 173–196, 2004.
- Le, J. and Thunell, R. C.: Modelling planktic foraminiferal assemblage changes and application to sea surface temperature estimation in the western equatorial Pacific Ocean, *Mar. Micropal.*, 28, 211–229, 1996.
- Lea, D. W.: Trace elements in foraminiferal calcite, in: *Modern foraminifera*, edited by: Gupta, B. S. K., Dordrecht, Boston, London, 259–277, 1999.
- Lee, J. J., McEnery, M. E., Pierce, S., Freudenthal, H. D., and Muller, W. A.: Tracer experiments in feeding littoral foraminifera, *J. Protozool.*, 13, 659–670, 1966.
- Malmgren, B. A., Kucera, M., Nyberg, J., and Waelbroeck, C.: Comparison of statistical and artificial neural network techniques for estimating past sea surface temperature from planktonic foraminifer census data, *Paleoceanography*, 16, 520–530, 2001.
- Marchant, M., Hebbeln, D., and Wefer, G.: Seasonal flux patterns of planktic foraminifera in the Peru-Chile Current, *Deep-Sea Res. I*, 45, 1161–1185, 1998.
- Marchant, M., Hebbeln, D., Giglio, S., Coloma C., and Gonzalez, H.: Seasonal and interannual variability in the flux of planktic foraminifers in the southern Humboldt Current System off central Chile, *Deep-Sea Res. II*, 51, 2441–2455, 2004.
- Martinez, J. I., Taylor, L., Deckker, P., and Barrows, T.: Planktonic foraminifera from the eastern Indian Ocean: distribution and ecology in relation to the Western Pacific Warm Pool (WPWP), *Mar. Micropal.*, 34, 121–151, 1998.
- Michaels, A. F., Caron, D. A., Swanberg, N. R., and Howse, F. A.: Planktonic sarcodines (Acantharia, Radiolaria, Foraminifera) in surface waters near Bermuda: abundance, biomass and vertical flux, *J. Plankton Res.*, 17, 131–163, 1995.
- Mohiuddin, M. M., Nishimura, A., Tanaka, Y., and Shimamoto, A.: Regional and interannual productivity of biogenic components and planktonic foraminiferal fluxes in the northwestern Pacific Basin, *Mar. Micropal.*, 45, 57–82, 2002.
- Mohiuddin, M. M., Nishimura, A., Tanaka, Y., and Shimamoto, A.: Seasonality of biogenic particle and planktonic foraminifera fluxes: response to hydrographic variability in the Kuroshio Extension, northwestern Pacific Ocean, *Deep-Sea Res. I*, 51, 1659–1683, 2004.
- Monterey, G. and Levitus, S.: Seasonal variability of mixed layer depth for the world ocean, NOAA Atlas NESDIS 14, US Government Printing Office, Washington, D.C., 1997.
- Moore, J. K., Doney, S. C., Kleypas, J. A., Glover, D. M., and Fung, I. Y.: An intermediate complexity marine ecosystem model for the global domain, *Deep-Sea Res. II*, 49, 403–462, 2002a.
- Moore, J. K., Doney, S. C., Glover, D. M., and Fung, I. Y.: Iron cycling and nutrient-limitation patterns in surface waters of the World Ocean, *Deep-Sea Res. II*, 49, 463–507, 2002b.
- Morey, A. E., Mix, A. C., and Pisias, N. G.: Planktonic foraminiferal assemblages preserved in surface sediments cor-

- respond to multiple environment variables, *Quat. Sci. Rev.*, 24, 925–950, 2005.
- Mulitza, S., Dürkoop, A., Hale, W., Wefer, G., and Niebler, H. S.: Planktonic foraminifera as recorders of past surface-water stratification, *Geology*, 25, 335–338, 1997.
- Mulitza, S., Wolff, T., Pätzold, J., Hale, W., and Wefer, G.: Temperature sensitivity of planktic foraminifera and its influence on the oxygen isotope record, *Mar. Micropal.*, 33, 223–240, 1998.
- Murray, J. W.: Ecology, and distribution of planktonic foraminifera, in: *Biology of foraminifera*, edited by: Lee, J. J. and Anderson, O. R., Academic Press, Harcourt, 255–284, 1991.
- Niebler, H. S., Arz, H. W., Donner, B., Mulitza, S., Pätzold, J., and Wefer, G.: Sea surface temperatures in the equatorial and South Atlantic Ocean during the last glacial maximum (23–19 ka), *Paleoceanography*, 18, 1069, doi:10.1029/2003PA000902, 2003.
- Nodder, S. D. and Northcote, L. C.: Episodic particulate fluxes at southern temperate mid-latitudes (42–45° S) in the Subtropical Front region, east of New Zealand, *Deep-Sea Res. I*, 48, 833–864, 2001.
- Oda, M. and Yamasaki, M.: Sediment trap results from the Japan Trench in the Kuroshio domain: seasonal variations in the planktic foraminiferal flux, *J. Foramin. Res.*, 35, 315–326, 2005.
- Ortiz, J. D., Mix, A. C., and Collier, R. W.: Environmental control of living symbiotic and asymbiotic foraminifera of the California Current, *Paleoceanography*, 10, 987–1009, 1995.
- Pearson, P. N. and Palmer, M. R.: Atmospheric carbon dioxide concentrations over the past 60 million years, *Nature*, 406, 695–699, 2000.
- Peeters, F., Ivanova, E., Conan, S., Brummer, G. J., Ganssen, G., Troelstra, S., and van Hinte, J.: A size analysis of planktic foraminifera from the Arabian Sea, *Mar. Micropal.*, 36, 31–63, 1999.
- Peinert, R., Antia, A. N., Bauerfeind, E., Haupt, O., Krumbholz, M., Peeken, I., Bodungen, B. V., Ramseier, R., Voss, M., and Zeitzschel, B.: Particle Flux Variability in the Polar and Atlantic Biogeochemical Provinces of the Nordic Seas, in: *The Northern North Atlantic: A Changing Environment*, edited by: Schäfer, P., Ritzrau, W., Schlüter, M., and Thiede, J., 53–68, Springer, Berlin, 2001.
- Pflaumann, U., Duprat, J., Pujol, C., and Labeyrie, L. D.: SIM-MAX: A modern analog technique to deduce Atlantic sea surface temperatures from planktonic foraminifera in deep-sea sediments, *Paleoceanography*, 11, 15–35, 1996.
- Pflaumann, U., Sarnthein, M., Chapman, M., d'Abreu, L., Funnell, B., Huels, M., Kiefer, T., Maslin, M., Schulz, H., Swallow, J., van Kreveld, S., Vautravers, M., Vogelsang, E., and Weinelt, M.: Glacial North Atlantic: Sea-surface conditions reconstructed by GLAMAP 2000, *Paleoceanography*, 18, 1065, doi:10.1029/2002PA000774, 2003.
- Prell, W. L. and Curry, W. B.: Faunal and isotopic indices of monsoonal upwelling: Western Arabian Sea, *Oceanologica Acta*, 4, 91–95, 1981.
- Prell, W. L., Martin, A., Cullen, J., and Trend, M.: The Brown University Foraminiferal Data Base, IGBP PAGES/World Data Center-A for Paleoclimatology, Data Contribution Series # 1999-027, NOAA/NGDC Paleoclimatology Program, Boulder CO, USA, 1999.
- Pujol, C. and Grazzini, C. V.: Distribution patterns of live planktic foraminifera as related to regional hydrography and productive systems of the Mediterranean Sea, *Mar. Micropal.*, 25, 187–217, 1995.
- Reynolds, L. and Thunell, R. C.: Seasonal succession of planktonic foraminifera in the subpolar North Pacific, *J. Foramin. Res.*, 15, 282–301, 1985.
- Rohling, E. J. and Cooke, S.: Stable oxygen and carbon isotopes in foraminiferal carbonate shells in: *Modern foraminifera*, edited by: Gupta, B. S. K., Dortrecht, Boston, London, 239–258, 1999.
- Rossov, W. B. and Schiffer, R. A.: ISCCP cloud data products, *B. Am. Meteorol. Soc.*, 72, 2–20, 1991.
- Sautter, L. R. and Thunell, R. C.: Seasonal succession of planktonic foraminifera: results from a four-year time-series sediment trap experiment in the northeast Pacific, *J. Foramin. Res.*, 19, 253–267, 1989.
- Schiebel, R., Hiller, B., and Hemleben, C.: Impacts of storms on recent planktic foraminiferal test production and CaCO<sub>3</sub> flux in the North Atlantic at 47.8° N, 20.8° W (JGOFS), *Mar. Micropal.*, 26, 115–129, 1995.
- Schiebel, R., Bijma, J., and Hemleben, C.: Population dynamics of the planktic foraminifer *Globigerina bulloides* from the eastern North Atlantic, *Deep-Sea Res.* 44, 1701–1713, 1997.
- Schiebel, R., Waniek, J., Bork, M., and Hemleben, C.: Planktic foraminiferal production stimulated by chlorophyll redistribution and entrainment of nutrients, *Deep-Sea Res. I*, 48, 721–740, 2001.
- Schnack-Schiel, S. B., Dieckmann, G. S., Gradinger, R., Melnikov, I. A., Spindler, M., and Thomas, D. N.: Meiofauna in sea ice of the Weddell Sea (Antarctica), *Polar Biol.*, 24, 724–728, 2001.
- Schulz, H., Von Rad, U., and Ittekkot, V.: Planktic foraminifera, particle flux and oceanic productivity off Pakistan, NE Arabian Sea: modern analogues and application to the paleoclimatic record, in: *The Tectonic and Climatic Evolution of the Arabian Sea Region*, edited by: Clift, P. D., Kroon, D., Gaedicke, C., and Craig, J., *Geol. Soc. Spec. Publ.*, 195, 499–516, 2002.
- Spindler, M., Hemleben, C., Salomons, J. B., and Smit, L. P.: Feeding behavior of some planktonic foraminifera in laboratory cultures, *J. Foramin. Res.*, 14, 237–249, 1984.
- Spindler, M. and Dieckmann, G. S.: Distribution and Abundance of the Planktic Foraminifer *Neogloboquadrina pachyderma* in Sea Ice of the Weddell Sea (Antarctica), *Polar Biol.*, 5, 185–191, 1986.
- Spindler, M.: On the salinity tolerance of the planktonic foraminifer *Neogloboquadrina pachyderma* from Antarctic sea ice, *Polar Biol.*, 9, 85–91, 1996.
- Steele, J. H. and Henderson, E. W.: The role of predation in plankton models, *J. Plankton Res.*, 14, 157–172, 1992.
- Stewart, I. A., Darling, K. F., Kroon, D., Wade, C. M., and Troelstra, S. R.: Genotypic variability in subarctic Atlantic planktic foraminifera, *Mar. Micropal.*, 43, 143–153, 2001.
- Takahashi, K. and Bé, A. W. H.: Planktonic foraminifera: factors controlling sinking speed, *Deep-Sea Res.*, 31, 1477–1500, 1984.
- Tedesco, K. A. and Thunell, R. C.: Seasonal and interannual variations in planktonic foraminiferal flux and assemblage composition in the Cariaco Basin, Venezuela, *J. Foramin. Res.*, 33, 192–210, 2003.
- Tegen, I. and Fung, I. Y.: Modeling of mineral dust in the atmosphere: sources, transport, and optical thickness, *J. Geophys. Res.*, 99, 22 897–22 914, 1994.
- Tegen, I. and Fung, I. Y.: Contribution to the atmospheric mineral

- aerosol load from land surface modification, *J. Geophys. Res.*, 100, 18 707–18 726, 1995.
- Thunell, R. C. and Honjo, S.: Calcite dissolution and the modification of planktonic foraminiferal assemblages, *Mar. Micropal.*, 6, 169–182, 1981.
- Thunell, R. C. and Reynolds, L. A.: Sedimentation of planktonic foraminifera: seasonal changes in species flux in the Panama Basin, *Micropaleontology*, 30, 243–262, 1984.
- Tian, J., Wang, P., Chen, R., and Cheng, X.: Quaternary upper ocean thermal gradient variations in the South China Sea: Implications for east Asian monsoon climate, *Paleoceanography*, 20, 4007, doi:10.1029/2004PA001115, 2005.
- Tolderlund, D. S. and Bé, A. W. H.: Seasonal distribution of planktonic Foraminifera in the western North Atlantic, *Micropalaeontology*, 17, 297–329, 1971.
- Trull, T. W., Bray, S. G., Manganini, S. J., Honjo, S., and Francois, R.: Moored sediment trap measurements of carbon export in the Subantarctic and Polar Frontal Zones of the Southern Ocean, south of Australia, *J. Geophys. Res.*, 106, 31 489–31 510, 2001.
- Waelbroeck, C., Mulitza, S., Spero, H., Dokken, T., Kiefer, T., and Cortijo, E.: A global compilation of late Holocene planktonic foraminiferal  $\delta^{18}\text{O}$ : relationship between surface water temperature and  $\delta^{18}\text{O}$ , *Quat. Sci. Rev.*, 24, 853–868, 2005.
- Watkins, J. M., Mix, A. C., and Wilson, J.: Living planktic foraminifera: tracers of circulation and productivity regimes in the central equatorial Pacific, *Deep-Sea Res. II*, 43, 1257–1282, 1996.
- Watkins, J. M. and Mix, A. C.: Testing the effects of tropical temperature, productivity, and mixed-layer depth on foraminiferal transfer functions, *Paleoceanography*, 13, 96–105, 1998.
- Wefer, G.: Particle Flux in the Ocean: Effects of Episodic Production, in: *Productivity of the Ocean: Present and Past*, edited by: Berger, W. H., Smetacek, V. S., and Wefer, G., 139–154, John Wiley and Sons, New York, 1989.
- Wong, C. S., Whitney, F. A., Crawford, D. W., Iseki, K., Matear, R. J., Johnson, W. K., Page, J. S., and Timothy, D.: Seasonal and interannual variability in particle fluxes of carbon, nitrogen and silicon from time series of sediment traps at Ocean Station PAPA, 1982–1993: relationship to changes in subarctic primary productivity, *Deep-Sea Res. II*, 46, 2735–2760, 1999.
- Xu, X., Yamasaki, M., Oda, M., and Honda, M. C.: Comparison of seasonal flux variations of planktonic foraminifera in sediment traps on both sides of the Ryukyu Islands, Japan, *Mar. Micropal.*, 58, 45–55, 2005.
- Žarić, S., Donner, B., Fischer, G., Mulitza, S., and Wefer, G.: Sensitivity of planktic foraminifera to sea surface temperature and export production as derived from sediment trap data, *Mar. Micropal.*, 55, 75–105, 2005.
- Žarić, S., Schulz, M., and Mulitza, S.: Global prediction of planktic foraminiferal fluxes from hydrography and productivity data, *Biogeosciences*, 3, 187–207, 2006, <http://www.biogeosciences.net/3/187/2006/>.