



HAL
open science

Nitrous oxide in the North Atlantic Ocean

S. Walter, H. W. Bange, U. Breitenbach, D. W. R. Wallace

► **To cite this version:**

S. Walter, H. W. Bange, U. Breitenbach, D. W. R. Wallace. Nitrous oxide in the North Atlantic Ocean. *Biogeosciences*, 2006, 3 (4), pp.607-619. hal-00297585

HAL Id: hal-00297585

<https://hal.science/hal-00297585>

Submitted on 18 Jun 2008

HAL is a multi-disciplinary open access archive for the deposit and dissemination of scientific research documents, whether they are published or not. The documents may come from teaching and research institutions in France or abroad, or from public or private research centers.

L'archive ouverte pluridisciplinaire **HAL**, est destinée au dépôt et à la diffusion de documents scientifiques de niveau recherche, publiés ou non, émanant des établissements d'enseignement et de recherche français ou étrangers, des laboratoires publics ou privés.

Nitrous oxide in the North Atlantic Ocean

S. Walter^{1,*}, H. W. Bange¹, U. Breitenbach¹, and D. W. R. Wallace¹

¹Forschungsbereich Marine Biogeochemie, IFM-GEOMAR, Leibniz-Institut für Meereswissenschaften, Kiel, Germany
*now at: Institute for Marine and Atmospheric Research Utrecht, Utrecht University, Utrecht, The Netherlands

Received: 2 May 2006 – Published in Biogeosciences Discuss.: 17 July 2006

Revised: 10 November 2006 – Accepted: 21 November 2006 – Published: 1 December 2006

Abstract. In order to get a comprehensive picture of the distribution of nitrous oxide (N₂O) in the North Atlantic Ocean, measurements of dissolved nitrous oxide were made during three cruises in the tropical, subtropical and cold-temperate North Atlantic Ocean in October/November 2002, March/April 2004, and May 2002, respectively. To account for the history of atmospheric N₂O, we suggest a new depth-dependent calculation of excess N₂O (Δ N₂O). N₂O depth profiles showed supersaturation throughout the water column with a distinct increasing trend from the cold-temperate to the tropical region. Lowest nitrous oxide concentrations, near equilibrium and with an average of 11.0 ± 1.7 nmol L⁻¹, were found in the cold-temperate North Atlantic where the profiles showed no clear maxima. Highest values up to 37.3 nmol L⁻¹ occurred in the tropical North Atlantic with clear maxima at approximately 400 m. A positive correlation of nitrous oxide with nitrate, as well as excess nitrous oxide with the apparent oxygen utilization (AOU), was only observed in the subtropical and tropical regions. Therefore, we conclude that the formation of nitrous oxide via nitrification occurs in the tropical region rather than in the cold-temperate region of the North Atlantic Ocean

sources of atmospheric N₂O are contributed by the oceans (Prather et al., 2001; Seitzinger et al., 2000). Nitrous oxide is an important component of the oceanic nitrogen cycle, mainly formed by the microbial processes of nitrification and denitrification (Codispoti et al., 2001; Goreau et al., 1980): Nitrification is an aerobic two-step process in which ammonium is oxidized to nitrate ($\text{NH}_4^+ \rightarrow \text{NH}_2\text{OH} \rightarrow \text{NO}_2^- \rightarrow \text{NO}_3^-$) by two different groups of microbes. In this process nitrous oxide is assumed to be a by-product, however the exact pathway for N₂O production remains unclear. In suboxic habitats nitrate can be reduced by denitrification to molecular nitrogen ($\text{NO}_3^- \rightarrow \text{NO}_2^- \rightarrow \text{NO} \rightarrow \text{N}_2\text{O} \rightarrow \text{N}_2$), here nitrous oxide is an intermediate product. Especially at oxic/suboxic boundaries N₂O is produced by coupled nitrification and denitrification, due to the transfer of common intermediates (Yoshinari et al., 1997). Another possibility is aerobic denitrification, whereby under fully aerobic conditions organisms convert ammonia into nitrogen gas without the intermediary accumulation of nitrite (Robertson et al., 1988). All processes depend on oxygen concentrations, as well as the availability of substrates such as ammonium and nitrate. Many organisms are able to switch between different pathways depending on environmental conditions, and also the yield of N₂O during a process depends on environmental conditions (Goreau et al., 1980; Poth and Focht, 1985; Richardson, 2000). Positive correlations of N₂O with apparent oxygen utilization (AOU) or nitrate are interpreted as production of nitrous oxide by nitrification (Yoshinari, 1976; Cohen and Gordon, 1978; Yoshida et al., 1989). However, the dominant production pathway for N₂O on the global scale and the contribution of different pathways still remains unclear (Codispoti et al., 2001; Popp et al., 2002). Information on the vertical N₂O distribution in the North Atlantic is sparse, only a few profiles are available. The first vertical profiles for the North Atlantic were published by Junge and Hahn (1971) and Yoshinari (1976), additional data were collected by Butler et al. (1995), and recently data from a transect at

1 Introduction

Nitrous oxide (N₂O) is an important atmospheric trace gas due to its influence on the Earth's climate. In the troposphere N₂O acts as a greenhouse gas whereas in the stratosphere it is involved in the depletion of ozone by providing NO-radicals (Prather et al., 2001). Since the beginning of the industrial revolution the global mean tropospheric N₂O mole fraction has risen rapidly from 270 ppb up to 314 ppb in 1998 (Prather et al., 2001). About 24% of the natural

Correspondence to: S. Walter
(s.walter@phys.uu.nl)

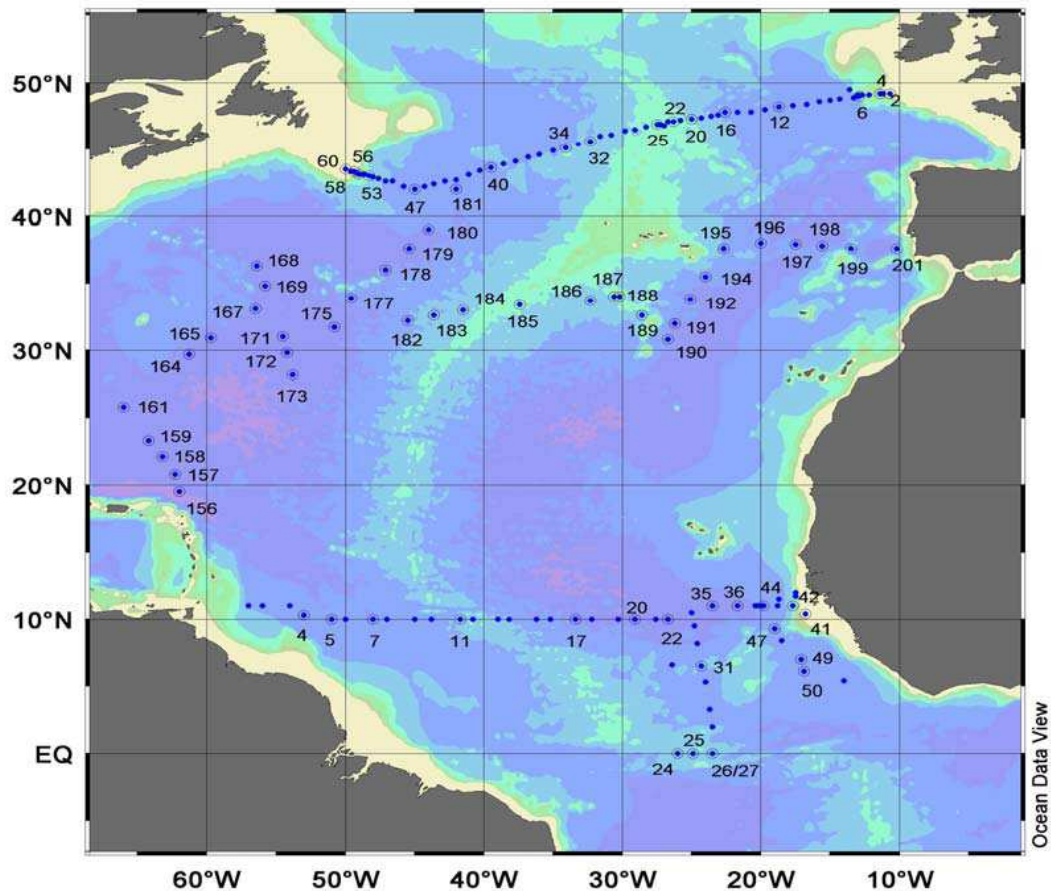


Fig. 1. Cruise tracks for “Gauss 384-1” (cold-temperate North Atlantic, 16th May to 14th June 2002), “Meteor 60-5” (subtropical North Atlantic, 9th March to 14th April 2004) and “Meteor 55” (tropical North Atlantic, 13th October to 16th November 2002). Numbers are given for stations where N_2O profiles were measured.

$7^{\circ}30' \text{ N}$ were reported by Oudot et al. (2002). In this paper we present a comprehensive set of 73 vertical profiles of nitrous oxide from three trans-Atlantic cruises, covering the cold-temperate North Atlantic, the subtropical and the tropical North Atlantic. Based on these new data, we examine the regional differences of the N_2O distribution and its relationship with parameters closely related to the production pathways of N_2O .

2 Study area

2.1 Research cruises

Samples from the three cruises were collected over the period from May 2002 to April 2004 (see Fig. 1).

The first cruise, to the cold-temperate North Atlantic (May/June 2002), started in Hamburg, Germany with the German research vessel “Gauss”. The cruise track followed the WOCE-A2 transect to Halifax, Canada. Depth profiles of

N_2O were measured at 16 stations. The WOCE-A2 transect is located between 42° N and 49° N .

The subtropical North Atlantic was investigated during March/April 2004 onboard the research vessel “Meteor”. The cruise started in Fort de France, Martinique (French Antilles) in the western part of the Atlantic and ended in Lisbon (Portugal). Samples were taken at 37 stations. Most stations were co-located with stations where samples were taken during the Transient Tracers in the Ocean Program (TTO) in 1982.

The tropical North Atlantic samples were taken during the M55-SOLAS cruise (Wallace and Bange, 2004) in October/November 2002, again with the German research vessel “Meteor”. This cruise started in the western tropical North Atlantic in Willemstad, Curaçao (Netherlands Antilles) and followed a cruise track along $10\text{--}11^{\circ} \text{ N}$ to Douala (Cameroon). The track included a transect to the equator between 26° W and 23.5° W . N_2O profiles were taken at 20 stations.

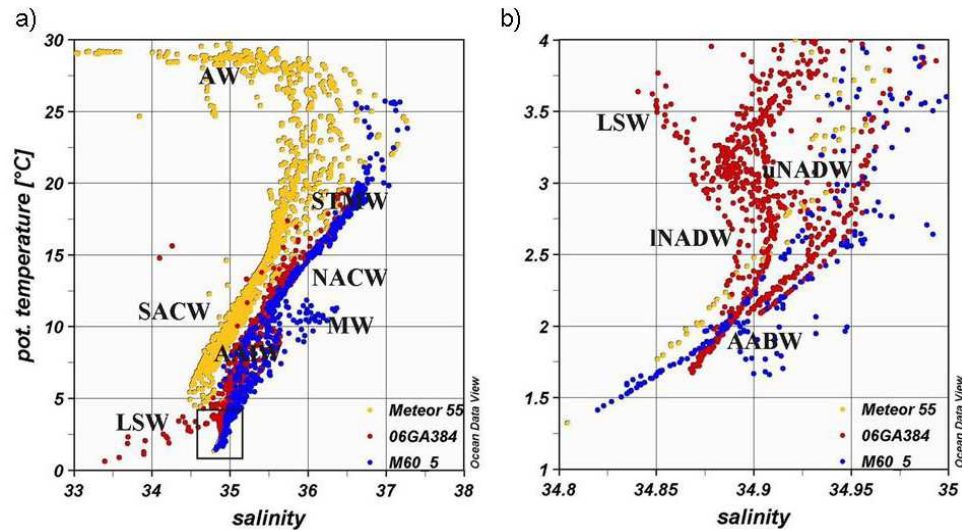


Fig. 2. T-S-diagram of the North Atlantic; **(a)** T-S-diagram with data from all three cruises; **(b)** T-S-diagram in Fig. 2a framed by box.; AW: Amazon Water; STMW: Subtropical Mode Water; MW: Mediterranean Water; SACW: South Atlantic Central Water; NACW: North Atlantic Central Water; AAIW: Antarctic Intermediate Water, AABW: Antarctic Bottom Water; INADW: lower North Atlantic Deep Water; uNADW: upper North Atlantic Deep Water; LSW: Labrador Sea Water.

2.2 Hydrography

Several water masses in the North Atlantic can be identified in the T-S-diagram based on data from the three cruises (see Fig. 2). The main Atlantic water masses were identified according to commonly used classification schemes (Tomczak, 1999; Alvarez et al., 2004; Aiken et al., 2000; Joyce et al., 2001; Poole and Tomczak, 1999).

The WOCE A2 transect (Gauss 384-1 cruise), is located at the boundary region between the subpolar gyre (Gordon, 1986) and the subtropical gyre (Krauss, 1996). This region is highly variable, characterized by the exchange of upper-ocean water between the gyres mainly via the North Atlantic Current, and the Labrador Current. One of the most important water masses here is the Labrador Sea Water (LSW). These water masses provide the major part of the North Atlantic Intermediate Water in combination with the outflow of Mediterranean Sea Water (MW), which is detected in the eastern basin of the subtropical Atlantic Ocean near the Strait of Gibraltar (Richardson et al., 2000) and the Antarctic Intermediate Water (AAIW) from the south (Lorbacher, 2000). Additional water masses of the southern hemisphere that penetrate into the North Atlantic are the South Atlantic Central Water (SACW) and the Antarctic Bottom Water (AABW). SACW flows northwards, and mixes with the North Atlantic Central Water (NACW) at approximately 15° N in the western and 20° N in the eastern basin (Poole and Tomczak, 1999; Aiken et al., 2000).

A typical freshwater influence was found during the Meteor 55 cruise in the western tropical North Atlantic. Water of the Amazon was detected in the surface water, identified by

high temperatures and low salinity. These plumes of freshwater are transported northwards by the North Brazil Current and eastwards by the equatorial current system (Fratantoni and Glickson, 2002).

3 Material and methods

Water samples for N₂O analysis were collected in triplicate from various depths, taken with a 24-Niskin-bottle rosette, equipped with a CTD-sensor. The analytical method applied is a modification of the method described by Bange et al. (2001). Bubble free samples were taken immediately following oxygen sampling in 24 mL glass vials, sealed directly with butyl rubber stoppers and crimped with aluminium caps. To prevent microbial activity, samples were poisoned with 500 μL of 2 mM mercury (II) chloride solution. 10 mL of sample were then replaced with a helium headspace for each vial, and the samples were then allowed to equilibrate for at least two hours at room temperature (temperature was recorded continuously). A 9 mL subsample from the headspace was used to flush a 2 mL sample loop after passing through a moisture trap (filled with Sicapent[®], Merck Germany). Gaschromatographic separation was performed at 190 °C on a packed molecular sieve column (6ft × 1/8"SS, 5A, mesh 80/100, Alltech GmbH, Germany). The N₂O was detected with an electron capture detector. A mixture of argon with 5% by volume methane was used as carrier gas with a flow of 21 mL min⁻¹. For the two-point calibration procedure we used standard gas mixtures with 311.8 ± 0.2 ppb and 346.5 ± 0.2 ppb N₂O in synthetic air (Deuste Steinger

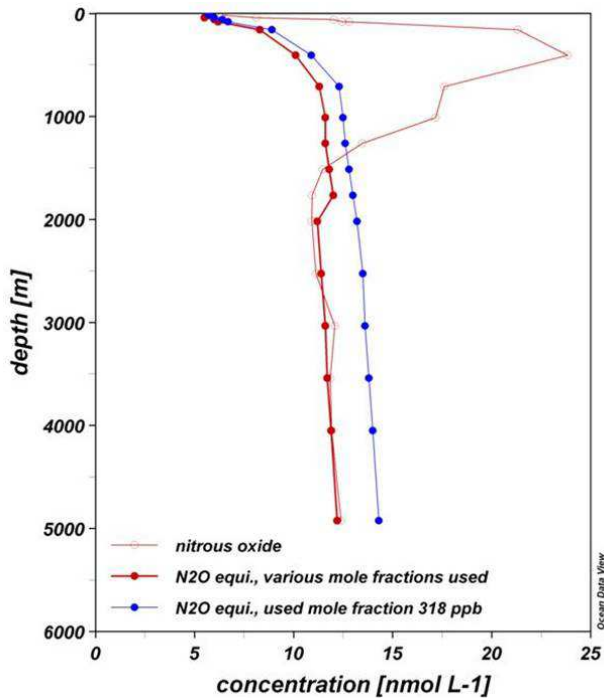


Fig. 3. Measured N_2O concentration in comparison with the N_2O equilibrium concentration based on a uniform mole fraction of 318 ppb and the depth-dependent N_2O equilibrium concentration based on mole fractions of 318 ppb, 294 ppb and 270 ppb. Data are from station 4 of cruise Meteor 55 in the tropical North Atlantic.

GmbH, Mühlhausen Germany). The standard mixtures have been calibrated against the NOAA (National Oceanic and Atmospheric Administration, Boulder, Co.) standard scale in the laboratories of the Air Chemistry Division of the Max Planck Institute for Chemistry, Mainz, Germany.

3.1 Calculations

N_2O water concentrations ($C_{\text{N}_2\text{O}}$) were calculated as follows:

$$C_{\text{N}_2\text{O}} \left[\text{nmol L}^{-1} \right] = \left(\beta x P V_{wp} + \frac{x P}{R T} V_{hs} \right) / V_{wp} \quad (1)$$

where β stands for the Bunsen solubility in $\text{nmol L}^{-1} \text{atm}^{-1}$ (Weiss and Price, 1980), x is the dry gas mole fraction of N_2O in the headspace in ppb, P is the atmospheric pressure in atm, V_{wp} and V_{hs} stand for the volumes of the water and headspace phases, respectively. R is the gas constant ($8.2054 \cdot 10^{-2} \text{ L atm mol}^{-1} \text{ K}^{-1}$) and T is the temperature during equilibration. The salinity was measured by the CTD-Sensor during water sample collection. The overall relative mean analytical error was estimated to be $\pm 1.8 \%$.

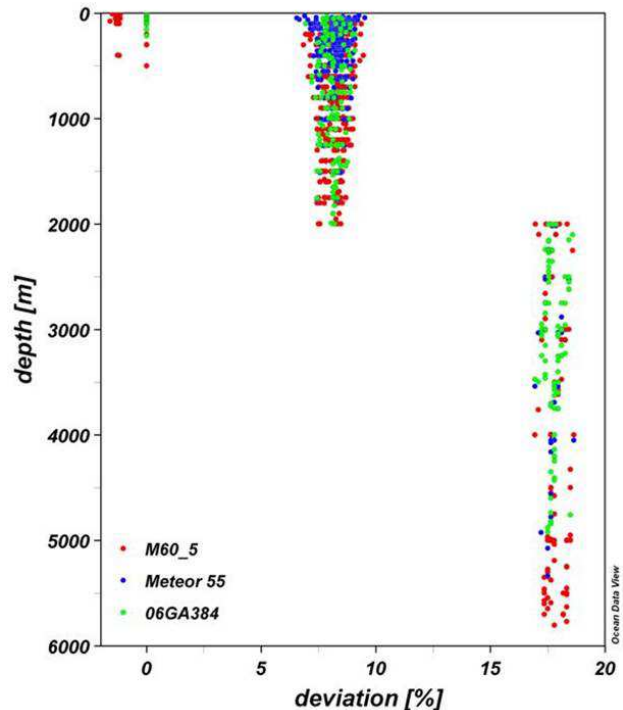


Fig. 4. The percentage deviation between the calculated N_2O equilibrium concentration based on a uniform mole fraction of 318 ppb and the depth-dependent N_2O equilibrium concentration based on mole fractions of 318 ppb, 294 ppb and 270 ppb. The three different cruises are colour-coded.

The excess N_2O ($\Delta\text{N}_2\text{O}$) was calculated as the difference between the calculated N_2O equilibrium concentration and the measured concentration of N_2O as follows

$$\Delta\text{N}_2\text{O} (\text{nmol L}^{-1}) = \text{N}_2\text{O}(\text{observed}) - \text{N}_2\text{O}(\text{equilibrium}). \quad (2)$$

To calculate the N_2O equilibrium concentration we used three different atmospheric mole fractions. Between the mixed layer and the atmosphere, N_2O exchanges in about three weeks (Najjar, 1992), thus we calculated $\Delta\text{N}_2\text{O}$ in the mixed layer using the actual atmospheric N_2O value of 318 ppb measured during the “Meteor 55” cruise (Walter et al., 2004). Below the thermocline, exchange with the atmosphere is unlikely, thus, calculated N_2O equilibrium concentrations depend on the atmospheric N_2O mole fraction at the time of deep-water formation. However, the exact atmospheric mole fraction of N_2O during deep-water formation is unknown because of uncertainty in age determination of water masses. Generally, tropical Atlantic deep waters below 2000 m seem to be older than 200 years (Broecker and Peng, 2000). Therefore for depths $>2000 \text{ m}$ $\Delta\text{N}_2\text{O}$ was calculated with the tropospheric preindustrial value of 270 ppb (Flückiger et al., 1999). An average of the actual and the preindustrial atmospheric value (i.e., 294 ppb) was used for the depth range between the upper thermocline and 2000 m. The effect of using depth-dependent mole fractions

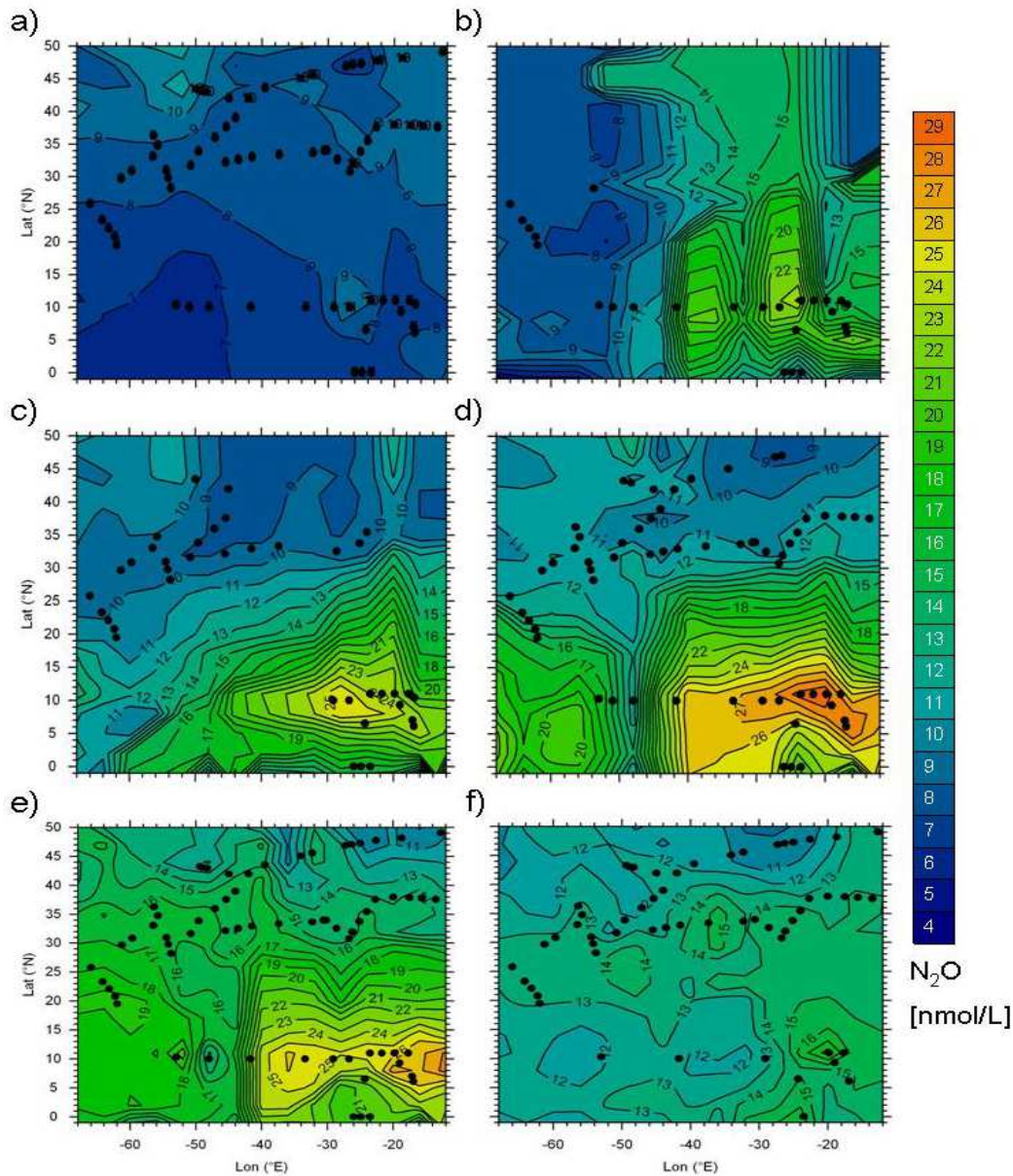


Fig. 5. Distribution of N_2O in the North Atlantic along isopycnal levels σ_θ (kg m^{-3}). Dots indicate stations with available data for the isopycnal levels. (a) surface – thermocline; (b) thermocline – 26.0; (c) 26.1 – 26.5; (d) 26.6 – 27.0; (e) 27.1 – 27.5; (f) 27.6 – 27.93.

is shown in Fig. 3 and Fig. 4. With our approach the calculated equilibrium concentration of N_2O below the thermocline is generally lower than using a uniform N_2O mole fraction for the whole water column. The difference was $0.789 \pm 0.139 \text{ nmol L}^{-1}$ ($n=892$) or about 7 % above 2000 m and $2.075 \pm 0.044 \text{ nmol L}^{-1}$ ($n=313$) or about 17 % below 2000 m.

The thermocline was defined as the depth where the temperature differs from the surface temperature by more than 0.5°C (Tomczak and Godfrey, 2001). For the subtropical and cold-temperate region we calculated $\Delta\text{N}_2\text{O}$ with these same

mole fractions, although the age of water masses is different to the tropical Atlantic and therefore some values may be underestimated, whereas others may be overestimated. The resulting uncertainties of $\Delta\text{N}_2\text{O}$ are about 10–15 %; however, our conclusions are not significantly affected by this uncertainty. The equilibrium values of dissolved oxygen (O_2) were calculated with the equation given by Weiss (1970). The apparent oxygen utilization (AOU) was calculated as follows:

$$\text{AOU}[\mu\text{mol L}^{-1}] = \text{O}_2(\text{equilibrium}) - \text{O}_2(\text{observed}). \quad (3)$$

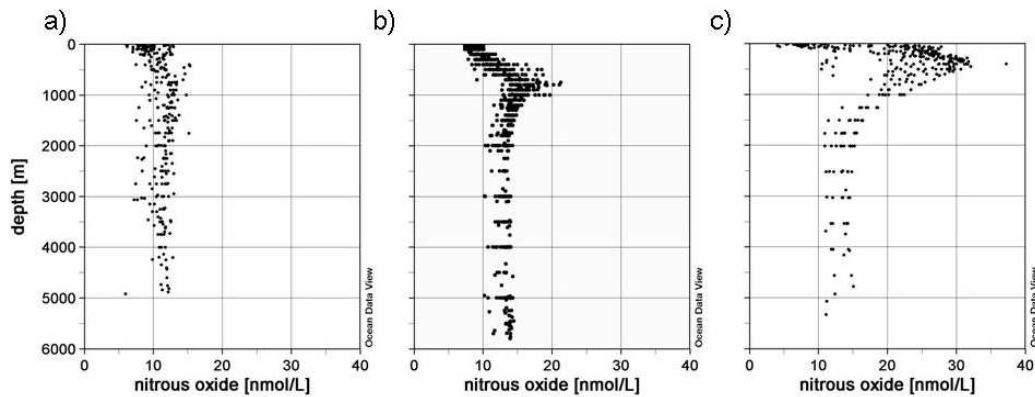


Fig. 6. N₂O concentration in the North Atlantic plotted against depth. (a) cold-temperate, (b) subtropical, (c) tropical North Atlantic.

4 Results

4.1 Distribution of nitrous oxide in the North Atlantic

4.1.1 N₂O distribution along isopycnal levels

In the surface layer of the North Atlantic (Fig. 5a) N₂O concentrations were relatively uniform with $8.5 \pm 1.2 \text{ nmol L}^{-1}$. In the region of the Labrador Current N₂O concentrations were enhanced with an average of $11.6 \pm 0.9 \text{ nmol L}^{-1}$. During the “Meteor 55” cruise, a plume of Amazon Water had been identified in the western basin of the tropical North Atlantic (Körtzinger, 2003). In contrast to Oudot et al. (2002), who reported enhanced values in the plume of the Amazon River, we found no influence on N₂O concentrations (Walter et al., 2004).

Below the thermocline, N₂O concentrations were variable with respect to depths and regions. We found highest concentrations in the eastern basin of the tropical North Atlantic throughout the water column, with maximum concentrations on σ_θ surfaces between 26.3 and 27.1 (Fig. 5b–e). At the Midatlantic Ridge, located at approximately 40° W, a distinct boundary between the western and eastern Atlantic basins was observed (Fig. 5d–e). In the eastern subtropical North Atlantic, at approximately 1000 m (σ_θ 27.6–27.7), a tongue of outflow water from the Mediterranean Sea was detected by higher values of salinity and temperature (Richardson et al., 2000). However, we found no apparent influence of the Mediterranean water on N₂O concentrations. Like the surface layer, deep waters (Fig. 5f) showed nearly uniform N₂O concentrations, though with higher values of $13.3 \pm 1.6 \text{ nmol L}^{-1}$. However, a weak but distinct trend of decreasing concentrations from the tropics ($13.1 \pm 1.3 \text{ nmol L}^{-1}$) to the cold-temperate North Atlantic ($11.1 \pm 1.4 \text{ nmol L}^{-1}$) could be observed.

4.1.2 Vertical N₂O distribution

The vertical distribution of N₂O showed characteristically different profiles in different regions of the North Atlantic (Fig. 6a–c), and between the western and eastern basins of these regions (Fig. 7a–c).

In the cold-temperate North Atlantic (Fig. 6a) vertical gradients of nitrous oxide were weak over the complete cruise track, with no clear or only a very weakly pronounced subsurface maximum. N₂O concentrations were near equilibrium ($11.0 \pm 1.3 \text{ nmol L}^{-1}$) throughout the water column, with average concentrations of $8.6 \pm 1.4 \text{ nmol L}^{-1}$ in the surface layer (σ_θ 25.3–27.0) and $11.3 \pm 1.5 \text{ nmol L}^{-1}$ below the thermocline down to the bottom (σ_θ 26.2–27.7). No differences between the western and the eastern basin were found (Fig. 7a).

In contrast, N₂O distributions and profiles in both the subtropical and tropical North Atlantic showed strong variations with water depth (Fig. 6b–c, Fig. 7b–c). In both regions, the profiles generally had one distinct maximum. In the surface layer (σ_θ 19.3–26.8) concentrations were uniform, increasing below the thermocline up to a maximum and decreasing down to approximately 2000 m (σ_θ 22.1–27.8). Below 2000 m (σ_θ 27.8–27.9) N₂O concentrations were nearly constant with depth in both basins.

In the subtropical North Atlantic (Fig. 6b) N₂O surface concentrations were $8.7 \pm 0.7 \text{ nmol L}^{-1}$, comparable to those in the cold-temperate North Atlantic. Maximum values were found at depths between 600 to 1000 m (σ_θ 26.7–27.7); values ranged from 14.0 in the eastern basin (#198) to 21.3 nmol L⁻¹ in the western basin (#156). Below 2000 m ($\sigma_\theta > 27.8$), concentrations were nearly constant at $13.1 \pm 0.9 \text{ nmol L}^{-1}$. Profiles in the western subtropical North Atlantic showed distinct maxima, while in the eastern basin no clear maximum was expressed (Fig. 7b). From the western to the eastern basin maximum concentrations decreased slightly from $17.7 \pm 1.4 \text{ nmol L}^{-1}$ to $15.1 \pm 0.7 \text{ nmol L}^{-1}$. East of the

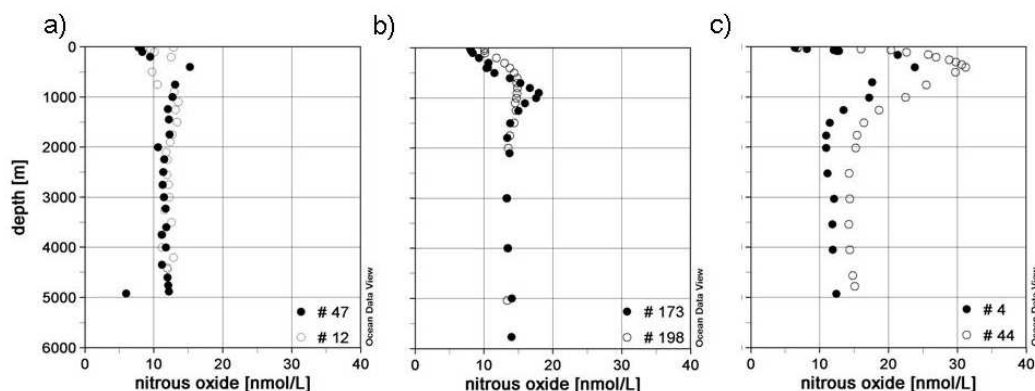


Fig. 7. Selected vertical N_2O profiles in the western basin (filled symbols) and the eastern basin (open symbols) in the North Atlantic. Stations were indicated by numbers. (a) cold-temperate, (b) subtropical, (c) tropical North Atlantic.

Midatlantic Ridge maxima were not clearly expressed and were broader. Additionally, maximum $\Delta\text{N}_2\text{O}$ values were lower in the eastern ($5.5 \pm 0.6 \text{ nmol L}^{-1}$) than in the western basin ($7.9 \pm 1.3 \text{ nmol L}^{-1}$).

In the tropical North Atlantic (Fig. 6c) surface concentrations, with an average of $7.4 \pm 1.1 \text{ nmol L}^{-1}$, were slightly lower than in the subtropical and cold-temperate North Atlantic. In contrast to the subtropical North Atlantic, maxima of N_2O concentrations were found at shallower depths of approximately 400 m ($\sigma_\theta 26.8\text{--}27.1$). The maximum values were higher in general, and ranged from 23.8 nmol L^{-1} in the western basin (#4) to 32.1 nmol L^{-1} in the eastern basin (#44). At station #36, located in the Guinea Dome area (Siedler et al., 1992; Snowden and Molinari, 2003), we observed the highest N_2O values of about 37.3 nmol L^{-1} at 400 m ($\sigma_\theta 27.0$) (Fig. 6c). At the equatorial stations the N_2O maxima were found at shallower water depths (240 m to 280 m, $\sigma_\theta 26.6\text{--}27.0$). Maximum values ranged from 22.3 nmol L^{-1} (#26) to 24.9 nmol L^{-1} (#24). Below 2000 m ($\sigma_\theta > 27.8$) concentrations in the tropical North Atlantic were similar to those in the subtropics with an average of $13.2 \pm 1.3 \text{ nmol L}^{-1}$. In both basins of the tropical North Atlantic profiles looked similar with sharp and clear maxima, however, concentrations throughout the water column increased from west to east (Fig. 7c). Below 2000 m ($\sigma_\theta > 27.8$) N_2O concentrations were about 2 nmol L^{-1} higher in the eastern than in the western basin, whereas the difference of the maximum values was even higher (approximately 8 nmol L^{-1}).

N_2O profiles of the subtropical and tropical North Atlantic are in good agreement, both in absolute concentrations and shape of profiles, with those measured during the Bromine Latitudinal Air/Sea Transect II (BLAST II) cruise in Oct./Nov. 1994 (Butler et al., 1995, <http://www.cmdl.noaa.gov/hats/ocean/blast2/blastii.html>). Comparing our data to those BLAST II data which corre-

spond best in position and depths we found a mean N_2O concentration difference of about $2.05 \pm 1.78 \text{ nmol L}^{-1}$ ($n=92$). We compared stations 1, 2, 4, 6, 7 and 8 of the BLAST II cruise with station 12 of the Gauss cruise, stations 190, 195, 196, and 197 of the Meteor 60-5 cruise and stations 20, 22, 24, 25, 26 and 27 of the Meteor 55 cruise. In the North Atlantic as far as 20° S , the mean N_2O concentration below 1500 m observed by Butler et al. (1995) was about $13.5 \pm 1.0 \text{ nmol L}^{-1}$ ($n=18$) which is in good agreement with our measurements ($12.6 \pm 1.5 \text{ nmol L}^{-1}=449$).

4.2 Comparison of nitrous oxide with other parameters

Parameters most relevant for comparison with nitrous oxide are those assumed to be directly in connection with production pathways of N_2O , like oxygen or the apparent oxygen utilization (AOU), and nitrate. In general, we found the excess of N_2O ($\Delta\text{N}_2\text{O}$) positively correlated with AOU and nitrate (Fig. 8). To account for regional differences we pooled our data set into tropical, subtropical and cold-temperate subsets as shown in Fig. 9. In Fig. 9a–f correlations between $\Delta\text{N}_2\text{O}$ with AOU (Fig. 9a–c) and with NO_3^- (Fig. 9d–f) are shown for each regional data subset.

Since a multiple regression analysis turned out to be not applicable due to the co-linearity between the independent variables nitrate and AOU, we applied simple regression analysis for the isopycnal levels below the thermocline (see Table 1). Above the thermocline in the surface layer no correlations were found.

In the cold-temperate North Atlantic (Fig. 9a, d) $\Delta\text{N}_2\text{O}$ is low, with values near zero. There were no significant correlations found with AOU (Fig. 9a) or nitrate (Fig. 9d; see Tab. 1).

In the subtropical North Atlantic (Fig. 9b, e) $\Delta\text{N}_2\text{O}$ was also low with values ranging from 0 to 10 nmol L^{-1} . In contrast to the cold-temperate North Atlantic we found significant correlations between $\Delta\text{N}_2\text{O}$, AOU (Fig. 9b) and nitrate

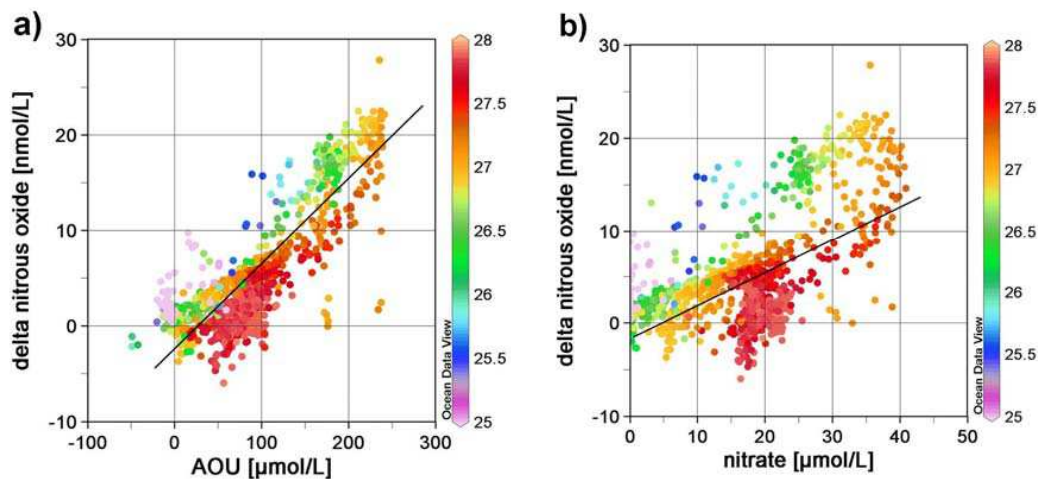


Fig. 8. $\Delta\text{N}_2\text{O}$ in comparison with AOU (a) and nitrate (b) for the North Atlantic, sigma σ_θ is colour coded in kg m^{-3} .
 $y(\Delta\text{N}_2\text{O})=0.089x(\text{AOU})-3.245$, $R^2=0.714$; $y(\Delta\text{N}_2\text{O})=0.331x(\text{NO}_3^-)-1.263$, $R^2=0.322$

(Fig. 9e; see Table 1), especially at depths down to the N_2O maxima (ca. 1000 m; $\sigma_\theta < 27.7$; see regression lines in Fig. 9b, e). Below 1000 m ($\sigma_\theta > 27.7$) $\Delta\text{N}_2\text{O}$ did not correlate with AOU or NO_3^- (circled data in Figs. 9b and 7e).

In the tropical North Atlantic (Fig. 9c, f) correlations between $\Delta\text{N}_2\text{O}$, AOU (Fig. 9c) and nitrate (Fig. 9f) were more pronounced. We observed different $\Delta\text{N}_2\text{O}/\text{AOU}$ ratios at depths down to $\Delta\text{N}_2\text{O}$ maxima and below the $\Delta\text{N}_2\text{O}$ maxima down to the bottom. From the surface layer down to 500 m ($\sigma_\theta < 27.1$; see regression line a) the slope of the regression line ($\Delta\text{N}_2\text{O}/\text{AOU}$) was approximately 20% lower than at depths below 500 m ($\sigma_\theta > 27.1$; see regression line b). This either implies that the yield of N_2O for a given AOU is lower at shallower depths or may reflect mixing effects.

5 Discussion

Based on our results, we were able to assign measured N_2O concentrations to the water masses as shown in Fig. 2a (see Fig. 10). In the following we discuss distributions and possible origins of nitrous oxide at different depths with regard to these water masses.

5.1 N_2O in the surface layer of the North Atlantic

In the surface layer of the North Atlantic the distribution of N_2O was relatively uniform, with concentrations near equilibrium. This is in line with the assumption that denitrification and nitrification as sources of nitrous oxide in the surface layer seem to be negligible due to the high oxygen concentrations and light inhibition of nitrification (Horrigan et al., 1981). Thus, correlations between $\Delta\text{N}_2\text{O}$, AOU and nitrate were nonexistent. Accordingly, we suggest that the N_2O distribution in the surface layer is most likely driven

by solubility and mixing effects. This is also applicable for the enhanced N_2O concentrations found in the Labrador Current. The $\Delta\text{N}_2\text{O}$ concentrations, which are corrected for temperature, showed no enhanced values in this region. Thus, higher N_2O concentrations in the Labrador Current are likely caused by the solubility effect as well. In the warmer surface layer of the tropical North Atlantic $\Delta\text{N}_2\text{O}$ values were up to 4 nmol L^{-1} , indicating the tropical North Atlantic acts as a weak source for atmospheric N_2O (see also Walter et al., 2004).

5.2 N_2O below the surface layer down to 2000 m

Variations of N_2O vertical profiles reflected effects of water mass ventilation and sub-surface N_2O production history. In the cold-temperate North Atlantic we assume that the hydrographic setting (such as convection processes during deep water formation and vertical mixing) is responsible for the observed concentrations and distributions of N_2O and $\Delta\text{N}_2\text{O}$. The most important feature in the cold-temperate North Atlantic is the formation of deep water in winter in the Labrador and Irminger Seas as part of the North Atlantic circulation in 500 to 2000 m (Rhein, 2000), which carries the atmospheric N_2O imprint to depth. Labrador Sea Water spreads rapidly east- and southwards (Rhein, 2000) and thus causes the uniform distribution of N_2O within the cold-temperate North Atlantic. Although the productivity of phytoplankton is relatively high in the cold-temperate North Atlantic, we assume low biological production of N_2O because of two factors: 1) high oxygen concentrations and 2) low temperatures. The yield of N_2O depends on oxygen concentration (Goreau et al., 1980; Poth and Focht, 1985; Richardson, 2000; Codispoti et al., 1992), where high oxygen concentrations weaken the production of N_2O . Furthermore the

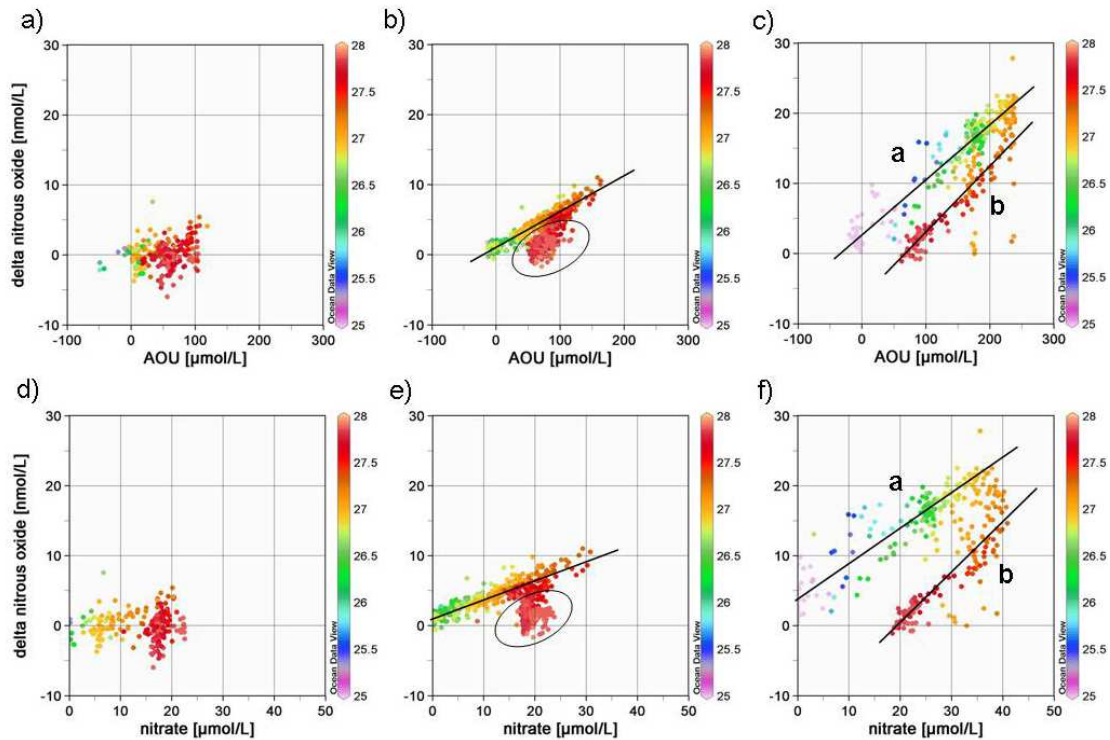


Fig. 9. $\Delta\text{N}_2\text{O}$ in comparison with AOU (a–c) and nitrate (d–f), sigma σ_θ is colour coded in kg m^{-3} .

(a) and (d) cold-temperate North Atlantic;

(b) and (e) subtropical North Atlantic;

$y(\Delta\text{N}_2\text{O})=0.0473x(\text{AOU})+1.1409$, $R^2=0.86$ for $\sigma_\theta < 27.7$ ($\sim < 1000$ m);

$y(\Delta\text{N}_2\text{O})=0.2497x(\text{NO}_3^-)+1.1776$, $R^2=0.80$ for $\sigma_\theta < 27.7$ ($\sim < 1000$ m);

circled data represent $\sigma_\theta > 27.7$ ($\sim > 1000$ m)

(c) and (f) tropical North Atlantic;

(c) line a: $y(\Delta\text{N}_2\text{O})=0.0785x(\text{AOU})+2.4381$, $R^2=0.87$ for $\sigma_\theta < 27.1$ ($\sim < 500$ m);

line b: $y(\Delta\text{N}_2\text{O})=0.0942x(\text{AOU})-6.6675$, $R^2=0.81$ for $\sigma_\theta > 27.1$ ($\sim > 500$ m);

(f) line a: $y(\Delta\text{N}_2\text{O})=-0.4848x(\text{NO}_3^-)+3.1756$, $R^2=0.79$ for $\sigma_\theta < 27.1$ ($\sim < 500$ m);

line b: $y(\Delta\text{N}_2\text{O})=0.7379x(\text{NO}_3^-)-14.665$, $R^2=0.79$ for $\sigma_\theta > 27.1$ ($\sim > 500$ m)

low temperatures of the North Atlantic might have been crucial as well. The temperature dependence of both nitrification rates and enzyme activities is controversially discussed (Berounsky and Nixon, 1990; Vouve et al., 2000; Barnard et al., 2005; Herbert, 1999; Rheinheimer, 1964; Hansen et al., 1981; Rysgaard et al., 1996), however growth rates and biological production of bacteria clearly depend on the prevailing temperatures (Bock and Wagner, 2001; Hoppe et al., 2002). Thus, N_2O production might not be limited directly by temperature but indirectly by the limited abundance of N_2O producing microorganisms.

In the subtropical North Atlantic concentrations of N_2O and $\Delta\text{N}_2\text{O}$ were distinctly higher compared to the cold-temperate North Atlantic. Profiles differed clearly between the western and eastern basin. N_2O profiles in the western basin showed clearly expressed N_2O maxima between 600 to 1000 m. This pattern was not observable east of the Mi-

atlantic Ridge where N_2O and $\Delta\text{N}_2\text{O}$ concentrations were lower than in the western basin, and no peak maxima were observed. Hydrographic processes likely explain the shape of profiles, especially the advection of Labrador Sea Water (LSW) into the eastern basin. LSW with low N_2O concentrations is transported either along the eastern continental slope of America or across the Charlie-Gibbs-Fracture-Zone (Bower et al., 2002). It flows into the eastern subtropical basin at 500–2000 m (Rhein, 2000; Alvarez et al., 2004), and spreads north- and southwards (Bower et al., 2002; Rhein, 2000). In the western basin N_2O concentrations and profiles are in agreement with profiles published by Yoshinari (1976), who also found maximum values in water masses with lower oxygen concentrations. These were identified as Antarctic Intermediate Water (AAIW), which flows northwards. We assume the AAIW transports N_2O from the south to the cold-temperate North Atlantic. At depths shallower

Table 1. Regression analyses between $\Delta\text{N}_2\text{O}$ and AOU, and $\Delta\text{N}_2\text{O}$ and NO_3^- at different isopycnal levels. Bold numbers mean relationships with significance levels of $p < 0.001$ and $R^2 > 0.5$. The coefficients a and b mean slope and intercept.

region	sigma	n	$\Delta\text{N}_2\text{O}/\text{AOU}$			$\Delta\text{N}_2\text{O}/\text{NO}_3^-$		
			a	b	R^2	a	b	R^2
cold-temperate	thermocline – 26.0	–	–	–	–	–	–	–
	26.1–26.5	–	–	–	–	–	–	–
	26.6–27.0	13	0.045	–0.209	0.21	0.205	–0.882	0.09
	27.1–27.5	49	0.028	–0.452	0.23	0.159	–1.087	0.14
	27.6–27.9	179	0.022	–1.714	0.07	0.164	–3.240	0.03
subtropical	thermocline – 26.0	–	–	–	–	–	–	–
	26.1–26.5	45	0.038	1.307	0.58	0.297	1.337	0.51
	26.6–27.0	106	0.065	0.397	0.75	0.390	0.186	0.68
	27.1–27.5	121	0.055	0.426	0.67	0.312	–0.052	0.60
	27.6–27.9	355	0.069	–3.083	0.38	–0.126	4.579	0.02
tropical	thermocline – 26.0	34	0.080	3.783	0.72	0.599	4.681	0.61
	26.1–26.5	39	0.099	–1.421	0.83	0.777	–3.212	0.81
	26.6–27.0	98	0.107	–3.112	0.49	0.376	6.068	0.20
	27.1–27.5	63	0.114	–10.638	0.43	1.289	–35.050	0.42
	27.6–27.9	69	0.075	–4.853	0.67	0.619	–11.830	0.66

than 1000 m ($\sigma_\theta < 27.7$) $\Delta\text{N}_2\text{O}$ was significantly correlated with oxygen utilization and nitrate concentrations (Fig. 9b, e; Table 1), indicating nitrification has contributed to measured N_2O concentrations. In the tropical North Atlantic the N_2O profiles and the observed trend along the West-East transect are in overall agreement with recently published data from a transect along 7.5°N (Oudot et al., 2002) and a previous study in the Guinea Dome area (Oudot et al., 1990). Although the overall pattern is the same, we observed generally lower N_2O concentrations than Oudot et al. (2002). This might be a result of a calibration disagreement, supported by measured atmospheric N_2O values of 316 ppb in 1993. For example, we found a peak N_2O concentration of up to 37.3 nmol L^{-1} in South Atlantic Central Water (SACW) of the eastern basin, whereas Oudot et al. (2002) reported values of up to 60 nmol kg^{-1} . Oudot et al. (2002) assumed enhanced biological activity and remineralization of organic matter in upwelling ecosystems to be responsible for these higher values in the east. However, upwelling in this area is a temporary event (Voituriez et al., 1982; Siedler et al., 1992), and during our cruise no upwelling was observed.

Despite the fact that upwelling might have a long-term large-scale effect, we suppose additional reasons for the higher N_2O concentrations in the eastern basin. The productivity in the eastern basin is fueled not only by coastal upwelling (Signorini et al., 1999) but also by dust deposition off the West African coast (Mills et al., 2004). Moreover, nutrient input by major tropical rivers such as the Senegal, Gambia and Niger (Perry et al., 1996) contribute to enhanced production off the West African coast,

indicated by enhanced chlorophyll a concentrations (for the 2002 seasonal cycle of chlorophyll a see monthly data set of Sea-viewing Wide Field-of-view Sensor (SeaWiFS): <http://earthobservatory.nasa.gov/Observatory/Datasets/chlor.seawifs.html>).

Enhanced productivity leads to a high export production (Antia et al., 2001). Subsequently lowered O_2 concentrations in the eastern intermediate layers due to the decomposition of organic matter support the production of N_2O . Therefore, enhanced N_2O concentrations in the eastern basin at this time of year (Oct./Nov. 2002) might be a residual signal of past high production episode (Signorini et al., 1999).

Upwelling events, indicated by lower sea surface temperatures, were only found at the equator. Surface N_2O concentration and sea surface temperature were positively correlated (Walter et al., 2004), and the comparably shallow N_2O maxima along the equator were caused by upwelling.

Due to the occurrence of linear relationships between $\Delta\text{N}_2\text{O}$ and AOU and between N_2O and nitrate we conclude that nitrification might be the major pathway of N_2O formation in the tropical Atlantic Ocean (Yoshida et al., 1989). Like N_2O , $\Delta\text{N}_2\text{O}$ showed an increasing trend from West to East indicating that nitrification is more pronounced in the eastern than the western basin of the tropical Atlantic.

5.3 N_2O in deep waters $> 2000\text{ m}$ ($\sigma_\theta > 27.8$)

Because the deep ocean contains high nitrate concentrations, nitrification was assumed to be responsible for N_2O production (Zehr and Ward, 2002; Bange and Andreae, 1999). Due

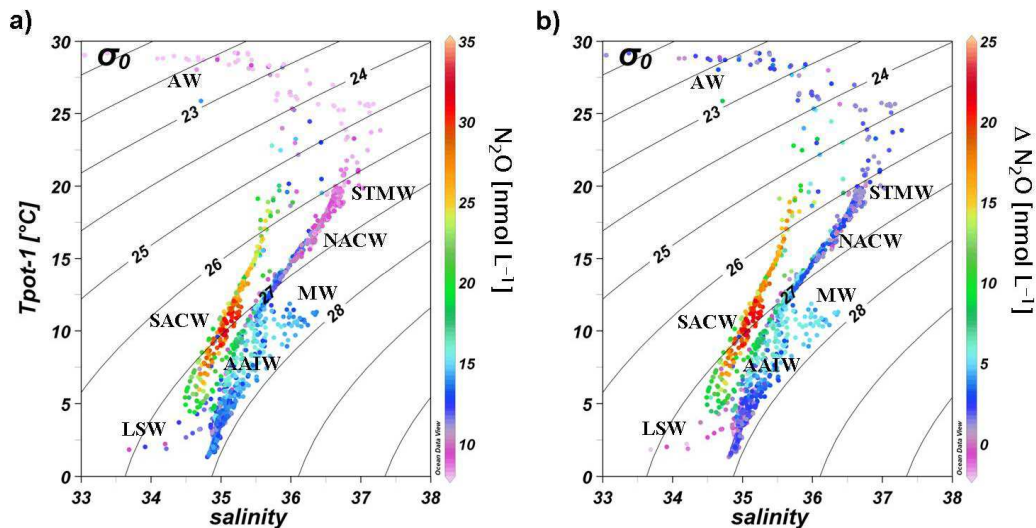


Fig. 10. N_2O concentration (a) and $\Delta\text{N}_2\text{O}$ (b) distributed in a T-S-diagram, the N_2O and $\Delta\text{N}_2\text{O}$ concentrations are colour coded in nmol L^{-1} . AW: Amazon Water; STMW: Subtropical Mode Water; MW: Mediterranean Water; SACW: South Atlantic Central Water; NACW: North Atlantic Central Water; AAIW: Antarctic Intermediate Water; LSW: Labrador Sea Water.

to the low $\Delta\text{N}_2\text{O}$ in deep waters and insufficient correlations with nitrate and AOU, we assume N_2O at these depths probably originates from deep water formation and mixing processes of southern and northern hemisphere water masses. N_2O profiles from a cruise into the Antarctic circumpolar current ($2^\circ\text{E}/49.5^\circ\text{S}$) (Walter et al., 2005) and BLAST II data east of Patagonia reveal distinctly higher N_2O concentrations in the deep waters of the southern hemisphere, with values of approximately 17 nmol L^{-1} . Northwards transport within Antarctic Bottom Water could lead to enhanced N_2O concentrations in the deep water of the North Atlantic by mixing and diffusion process.

6 Summary

N_2O concentrations in the North Atlantic showed characteristic variations in the vertical and horizontal distributions. In general, distribution of N_2O can be explained by a combination of biological and hydrographic reasons. The main conclusions of the present study are

- Production of N_2O by nitrification occurs mainly in the tropical North Atlantic, especially in the eastern basin. Maximum values were found in the Antarctic Intermediate Water (AAIW) in the western basin, and in the South Atlantic Central Water (SACW) in the eastern basin.
- Vertical N_2O distribution and shape of profiles in the subtropical North Atlantic originate from production by nitrification and advection of AAIW from the south into

the western subtropical North Atlantic, respectively advection of LSW from the north in the eastern subtropical North Atlantic.

- In the cold-temperate North Atlantic mainly mixing processes may control the distribution of N_2O , particularly the deep water formation in the Labrador Sea. Production seems to be negligible.
- Tropical and subtropical regions showed supersaturation throughout the water column, thus the tropical and subtropical North Atlantic act as a source of atmospheric N_2O .
- Outflow water of the Amazon or the Mediterranean Sea does not affect the N_2O concentration.

Acknowledgements. We thank the captains and crews of FS Meteor and FS Gauss for their help during sampling. We especially thank P. Fritsche, H. P. Hansen, F. Malien and J. Schafstall for nutrient and oxygen measurements and CTD handling during the Meteor cruises. Thanks to K. P. Koltermann and his colleagues of the Bundesamt für Seeschifffahrt und Hydrographie in Hamburg for the opportunity to participate on the cruise “Gauss 384-1”. Thanks to R. Hoffmann (Max Planck Institute for Chemistry, Mainz, Germany) for calibration of our standard gas mixtures. We also acknowledge the very constructive comments of three anonymous reviewers. This study was financially supported by the Deutsche Forschungsgemeinschaft (DFG) by grants no WA1434/1, WA1434/3, and WA 1434/5.

Edited by: J. Middelburg

References

- Aiken, J., Rees, N., Hooker, S., Holligan, P., Bale, A., Robins, D., Moore, G., Harris, R., and Pilgrim, D.: The Atlantic Meridional Transect: overview and synthesis of data, *Prog. Oceanogr.*, 45(3–4), 257–312, 2000.
- Alvarez, M., Perez, F. F., Bryden, H., and Rios, A. F.: Physical and biogeochemical transports structure in the North Atlantic subtropical gyre, *J. Geophys. Res.-Oceans*, 109(C3), 109, C03027, doi:10.1029/2003JC002015, 2004.
- Antia, A. N., Koeve, W., Fischer, G., Blanz, T., Schulz-Bull, D., Scholten, J., Neuer, S., Kremling, K., Kuss, J., Peinert, R., Hebbeln, D., Bathmann, U., Conte, M., Fehner, U., and Zeitzschel, B.: Basin-wide particulate carbon flux in the Atlantic Ocean: Regional export patterns and potential for atmospheric CO₂ sequestration, *Glob. Biogeochem. Cycles*, 15(4), 845–862, 2001.
- Bange, H. W., and Andreae, M.O.: Nitrous oxide in the deep waters of the world's oceans, *Glob. Biogeochem. Cycles*, 13(4), 1127–1135, 1999.
- Bange, H. W., Rapsomanikis, S., and Andreae, M. O.: Nitrous oxide cycling in the Arabian Sea, *J. Geophys. Res.-Oceans*, 106(C1), 1053–1065, 2001.
- Barnard, R., Leadley, P. W., and Hungate, B. A.: Global change, nitrification, and denitrification: A review, *Glob. Biogeochem. Cycles*, 19, doi:10.1029/2004GB002282, 2005.
- Berounsky, V. M., and Nixon, S. W.: Temperature and the annual cycle of nitrification in waters of Narragansett Bay, *Limnol. Oceanogr.*, 35(7), 1610–1617, 1990.
- Bock, E. and Wagner, M.: Oxidation of inorganic nitrogen compounds as an energy source, in: *The Prokaryotes: An Evolving Electronic Resource for the Microbiological Community*, 3rd edition, release 3.7, Springer Verlag, New York, 2001.
- Bower, A. S., Le Cann, B., Rossby, T., Zenk, W., Gould, J., Speer, K., Richardson, P. L., Prater, M. D., and Zhang, H. M.: Directly measured mid-depth circulation in the northeastern North Atlantic Ocean, *Nature*, 419(6907), 603–607, 2002.
- Broecker, W. S. and Peng, T.-H.: Comparison of ³⁹Ar and ¹⁴C ages for waters in the deep ocean, *Nucl. Instrum. Meth. B*, 172, 473–478, 2000.
- Butler, J. H., Lobert, J. M., Yvon, S. A., and Geller, L. S.: The distribution and cycling of halogenated trace gases, in: *Reports on Polar Research No. 168 - The expedition ANTARKTIS XII of RV "Polarstern" in 1994/95: Reports of legs ANT XII/1 and 2*, edited by: Kattner, G. and Fütterer, D. K., pp. 33–40, Alfred Wegener Institute for Polar and Marine Research, Bremerhaven, 1995.
- Codispoti, L. A., Brandes, J. A., Christensen, J. P., Devol, A. H., Naqvi, S. W. A., Paerl, H. W., and Yoshinari, T.: The oceanic fixed nitrogen and nitrous oxide budgets: Moving targets as we enter the anthropocene?, *Sci. Mar.*, 65(Suppl. 2), 85–105, 2001.
- Codispoti, L. A., Elkins, J. W., Yoshinari, T., Friederich, G. E., Sakamoto, C. M., and Packard, T. T.: On the nitrous oxide flux from productive regions that contain low oxygen waters, 271–284 pp., Oxford and IBH, New Delhi (India), 1992.
- Cohen, Y. and Gordon, L. I.: Nitrous oxide in the oxygen minimum of the eastern tropical North Pacific: evidence for its consumption during denitrification and possible mechanisms for its production, *Deep-Sea Res.*, 25(6), 509–524, 1978.
- Flückiger, J., Dallenbach, A., Blunier, T., Stauffer, B., Stocker, T. F., Raynaud, D., and Barnola, J. M.: Variations in atmospheric N₂O concentration during abrupt climatic changes, *Science*, 285, 5425, 227–230, 1999.
- Fratantoni, D. M. and Glickson, D. A.: North Brazil current ring generation and evolution observed with SeaWiFS, *J. Phys. Oceanogr.*, 32, 3, 1058–1074, 2002.
- Gordon, A. L.: Interocean exchange of thermohaline water, *J. Geophys. Res.*, 91, 5037–5047, 1986.
- Goreau, T. J., Kaplan, W. A., Wofsy, S. C., McElroy, M. B., Valois, F. W., and Watson, S. W.: Production of NO₂⁻ and N₂O by nitrifying bacteria at reduced concentrations of oxygen, *Appl. Environ. Microbiol.*, 40, 3, 526–532, 1980.
- Hansen, J. I., Blackburn, T. H., and Henriksen, K.: Seasonal distribution of nitrifying bacteria and rates of nitrification in coastal marine sediments, *Microb. Ecol.*, 7, 4, 297–304, 1981.
- Herbert, R. A.: Nitrogen cycling in coastal marine ecosystems, *FEMS Microbiol. Rev.*, 23, 563–590, 1999.
- Hoppe, H. G., Gocke, K., Koppe, R., and Begler, C.: Bacterial growth and primary production along a north-south transect of the Atlantic Ocean, *Nature*, 416(6877), 168–171, 2002.
- Horrigan, S. G., Carlucci, A. F., and Williams, P. M.: Light inhibition of nitrification in sea-surface films, *J. Mar. Res.*, 39, 3, 557–565, 1981.
- Joyce, T. M., Hernandez-Guerra, A., and Smethie, W. M.: Zonal circulation in the NW Atlantic and Caribbean from a meridional World Ocean Circulation Experiment hydrographic section at 66° W, *J. Geophys. Res.-Oceans*, 106(C10), 22 095–22 113, 2001.
- Junge, C. and Hahn, J.: N₂O measurements in the North Atlantic, *J. Geophys. Res.*, 76(33), 8143–8146, 1971.
- Körtzinger, A.: A significant CO₂ sink in the tropical Atlantic Ocean associated with the Amazon River plume, *Geophys. Res. Lett.*, 30, 24, 2287, doi: 10.1029/2003GL018841, 2003.
- Krauss, W.: Comments on the development of our knowledge of the general circulation of the North Atlantic Ocean, *The Warmwater-sphere of the North Atlantic Ocean*, edited by: Krauss, W., 1–31, Gebrüder Borntraeger, Berlin-Stuttgart, 1996.
- Lorbacher, K.: Niederfrequente Variabilität meridionaler Transporte in der Divergenzzone des nordatlantischen Subtropen- und Subpolarwirbels - Der WOCE-Schnitt A2, *Bericht des Bundesamtes für Seeschifffahrt und Hydrographie*, 22, 156, 2000.
- Mills, M. M., Ridame, C., Davey, M., La Roche, J., and Geider, R. J.: Iron and phosphorus co-limit nitrogen fixation in the eastern North Atlantic, *Nature*, 429, 292–294, 2004.
- Najjar, R. G.: Marine biogeochemistry, in: *Climate System Modeling*, edited by: Trenberth, K. E., pp. 241–280, Cambridge University Press, Cambridge, 1992.
- Oudot, C., Andrie, C., and Montel, Y.: Nitrous oxide production in the tropical Atlantic Ocean, *Deep-Sea Res. I*, 37(2), 183–202, 1990.
- Oudot, C., Jean-Baptiste, P., Fourre, E., Mormiche, C., Guevel, M., Ternon, J.-F., and Le Corre, P.: Transatlantic equatorial distribution of nitrous oxide and methane, *Deep-Sea Res. I*, 49, 1175–1193, 2002.
- Perry, G. D., Duffy, P. B., and Miller, N. L.: An extended data set of river discharges for validation of general circulation models, *J. Geophys. Res.*, 101(D16), 21 339–21 349, 1996.
- Poole, R. and Tomczak, M.: Optimum multiparameter analysis of the water mass structure in the Atlantic Ocean thermocline,

- Deep-Sea Res. I-Oceanographic Research Papers, 46(11), 1895–1921, 1999.
- Popp, B. N., Westley, M. B., Toyoda, S., Miwa, T., Dore, J. E., Yoshida, N., Rust, T. M., Sansone, F. J., Russ, M. E., Ostrom, N. E., and Ostrom, P. H.: Nitrogen and oxygen isotopomeric constraints on the origins and sea-to-air flux of N_2O in the oligotrophic subtropical North Pacific gyre, *Glob. Biogeochem. Cycles*, 16(4), doi: 10.1029/2001GB001806, 2002.
- Poth, M. and Focht, D. D.: ^{15}N kinetic analysis of N_2O production by *Nitrosomonas europaea* - an examination of nitrifier denitrification, *Appl. Environ. Microbiol.*, 49(5), 1134–1141, 1985.
- Prather, M., Ehhalt, D., Dentener, F., Derwent, R., Dlugokencky, E., Holland, E., Isaksen, I., Katima, J., Kirchhoff, V., Matson, P., Midgley, P., and Wang, M.: Atmospheric chemistry and greenhouse gases, in: *Climate Change 2001: The Scientific Basis. Contribution of Working Group I to the Third Assessment Report of the Intergovernmental Panel on Climate Change*, edited by: Houghton, J. T., Ding, Y., Griggs, D. J., Noguer, M., Van der Linden, P. J., Dai, X., Maskell, K., and Johnson, C. A., 239–287, Cambridge University Press, Cambridge, UK, 2001.
- Rhein, M.: Oceanography – Drifters reveal deep circulation, *Nature*, 407(6800), 30–31, 2000.
- Rheinheimer, G.: Untersuchungen über den Einfluß der Temperatur auf die Nitrifikation im Elbe-Aestuar, *Arch. Mikrobiol.*, 49, 283–290, 1964.
- Richardson, D. J.: Bacterial respiration: a flexible process for a changing environment, *Microbiol.*, 146, 551–571, 2000.
- Richardson, P. L., Bower, A. S., and Zenk, W.: A census of Meddies tracked by floats, *Prog. Oceanogr.*, 45(2), 209–250, 2000.
- Robertson, L. A., van Niel, E. W. J., Torremans, R. A. M., and Kuenen, J. G.: Simultaneous nitrification and denitrification in aerobic chemostat cultures of *Thiosphaera pantotropha*, *Appl. Environ. Microbiol.*, 54(11), 2812–2818, 1988.
- Rysgaard, S., Finster, K., and Dahlgaard, H.: Primary production, nutrient dynamics and mineralisation in a northeastern Greenland fjord during the summer thaw, *Polar Biol.*, 16(7), 497–506, 1996.
- Seitzinger, S. P., Kroeze, C., and Styles, R. V.: Global distribution of N_2O emissions from aquatic systems: Natural emissions and anthropogenic effects, *Chemosphere: Global Change Sci.*, 2(3), 267–279, 2000.
- Siedler, G., Zangenberg, N., and Onken, R.: Seasonal changes in the tropical Atlantic circulation – Observation and simulation of the Guinea Dome, *J. Geophys. Res.-Oceans*, 97(C1), 703–715, 1992.
- Signorini, S. R., Murtugudde, R. G., McClain, C. R., Christian, J. R., Picaut, J., and Busalacchi, A. J.: Biological and physical signatures in the tropical and subtropical Atlantic, *J. Geophys. Res.-Oceans*, 104(C8), 18 367–18 382, 1999.
- Snowden, D. P. and Molinari, R. L.: Subtropical cells in the Atlantic Ocean: An observational summary, in: *Interhemispheric Water Exchange in the Atlantic Ocean*, edited by: Goni, G. J., and Malanotte-Rizzoli, P., pp. 287–312, Elsevier, New York, 2003.
- Tomczak, M.: Some historical, theoretical and applied aspects of qualitative water mass analysis, *J. Mar. Res.*, 57, 275–303, 1999.
- Tomczak, M. and Godfrey, J. S.: *Regional Oceanography: An Introduction*, 391, 2001.
- Voituriez, B., Herbland, A., and Leborgne, R.: Equatorial upwelling in the eastern Atlantic during FGGE, *Oceanol. Acta*, 5(3), 301–314, 1982.
- Vouve, F., Guiraud, G., Marol, C., Girard, M., Richard, P., and Laima, M. J. C.: NH_4^+ turnover in intertidal sediments of Marennes-Oleron Bay (France): effect of sediment temperature, *Oceanol. Acta*, 23(5), 575–584, 2000.
- Wallace, D. W. R. and Bange, H. W.: Introduction to special section: Results of the Meteor 55: Tropical SOLAS Expedition, *Geophys. Res. Lett.*, 31(L23S01), 1–4, 2004.
- Walter, S., Bange, H. W., and Wallace, D. W. R.: Nitrous oxide in the surface layer of the tropical North Atlantic Ocean along a west to east transect, *Geophys. Res. Lett.*, 31(23), L23S07, doi:10.1029/2004GL019937, 2004.
- Walter, S., Peeken, I., Lochte, K., and Bange, H. W.: Nitrous oxide measurements during EIFEX, the European Iron Fertilisation Experiment in the subpolar South Atlantic Ocean, *Geophys. Res. Lett.*, 32, L23613, doi: 10.1029/2005GL024619, 2005.
- Weiss, R. F.: The solubility of nitrogen, oxygen and argon in water and seawater, *Deep-Sea Res.*, 17, 721–735, 1970.
- Weiss, R. F. and Price, B. A.: Nitrous oxide solubility in water and seawater, *Mar. Chem.*, 8, 347–359, 1980.
- Yoshida, N., Morimoto, H., Hirano, M., Koike, I., Matsuo, S., Wada, E., Saino, T., and Hattori, A.: Nitrification rates and ^{15}N abundances of N_2O and NO_3^- in the western North Pacific, *Nature*, 342, 895–897, 1989.
- Yoshinari, T.: Nitrous oxide in the sea, *Mar. Chem.*, 4, 189–202, 1976.
- Yoshinari, T., Altabet, M. A., Naqvi, S. W. A., Codispoti, L., Jayakumar, A., Kuhland, M., and Devol, A.: Nitrogen and oxygen isotopic composition of N_2O from suboxic waters of the eastern tropical North Pacific and the Arabian Sea - Measurement by continuous-flow isotope-ratio monitoring, *Mar. Chem.*, 56(3–4), 253–264, 1997.
- Zehr, J. P. and Ward, B. B.: Nitrogen cycling in the ocean: New perspectives on processes and paradigms, *Appl. Environ. Microbiol.*, 68(3), 1015–1024, 2002.