



HAL
open science

Ice formation in the Arctic during summer: false-bottoms

Phan Thanh Nam, Alain Pham Ngoc Dinh, Pham Hoang Quan, Dang Duc
Trong

► **To cite this version:**

Phan Thanh Nam, Alain Pham Ngoc Dinh, Pham Hoang Quan, Dang Duc Trong. Ice formation in the Arctic during summer: false-bottoms. Applied Mathematics and Computation, 2014, 227, pp.857-870. 10.1016/j.amc.2013.11.003 . hal-00297325v2

HAL Id: hal-00297325

<https://hal.science/hal-00297325v2>

Submitted on 23 Nov 2011

HAL is a multi-disciplinary open access archive for the deposit and dissemination of scientific research documents, whether they are published or not. The documents may come from teaching and research institutions in France or abroad, or from public or private research centers.

L'archive ouverte pluridisciplinaire **HAL**, est destinée au dépôt et à la diffusion de documents scientifiques de niveau recherche, publiés ou non, émanant des établissements d'enseignement et de recherche français ou étrangers, des laboratoires publics ou privés.

Ice formation in the Arctic during summer: false-bottoms

Phan Thanh Nam^{a,b}, Pham Ngoc Dinh Alain^{a*}
Pham Hoang Quan^b and Dang Duc Trong^b

^a*Mathematics Department, MAPMO UMR 6628, BP 67-59, 45067 Orleans cedex, France*

^b*Department of Mathematics, HoChiMinh City National University, Viet Nam*

Abstract

The only source of ice formation in the Arctic during summer is a layer of ice called false-bottoms between an under-ice melt pond and the underlying ocean. Of interest is to give a mathematical model in order to determine the simultaneous growth and ablation of false-bottoms, which is governed by both of heat fluxes and salt fluxes. In one dimension, this problem may be considered mathematically as a two-phase Stefan problem with two free boundaries. Our main result is to prove the existence and uniqueness of the solution from the initial condition.

Mathematics Subject Classification 2000: 35R35, 35Q35.

Keywords: False-bottoms, Free boundary problem, Green's function, Contraction Mapping Principle.

1 Introduction

There are some different reservoirs of fresh water in the Arctic during summer (see, e.g., *Eicken et al.* [2]). First, melt water collects in surface melt pond (melting under the sun) which is the most important reservoir. Second, this melt water can percolate into the ice matrix to form an *under-ice melt pond* (see [5] for more detail). At the interface between this fresh water and the underlying salt water, double-diffusive convection of heat and salt leads to the formation of a layer of ice called *false-bottoms* (see Figure 1 below). Very early, *Nansen* [8] in 1897 noted that this is the only source of forming new ice in the Arctic during the summer. This phenomenon has been considered for a long time by many authors (see, e.g. [1, 2, 5, 6, 7, 9, 10]). However, it has been considered in geophysical view-point based on practical experiments rather than rigorously mathematical formulations.

One of the most interesting ones is the simultaneous growth and ablation of false-bottoms, which is governed by both of heat fluxes and salt fluxes. The ablation of the sea-ice interface is caused by dissolution rather than by melting. Note that salt water has the double properties: it does not freeze even for temperature less than 0°C , and it dissolves ice when it is in contact with ice. *McPhee et al.* [7] emphasized that properly describing heat and salt flux at the ice-ocean interface is essential for understanding and modeling the false-bottoms, and in particular without the double diffusion at this interface false bottoms would be so short-lived. The growth of the upper interface between a false bottom and a under-ice melt pond is governed by the purely thermodynamic condition at the interface.

*Author correspondence: alain.pham@univ-orleans.fr

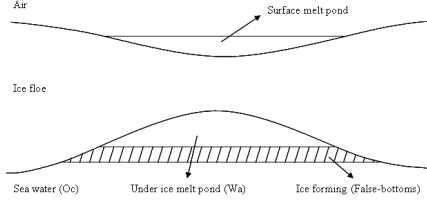


Figure 1: Ice formation in the Arctic during summer.

Recently, in 2003, *Notz et al.* [9] gave a model simulating successfully the simultaneous growth and ablation of false-bottoms. They formulated mathematically the problem by a system of partial differential equations and solved them numerically by using a numerical routine in Mathematica. Although their numerical result fits quite well to early experimental data from *Martin and Kauffman* [6], a rigorous proof of the existence and uniqueness of the solution for the system of equations is still unavailable. Our aim in this paper is to give a such a mathematical proof. More precisely, we shall represent the problem explicitly by a system of partial differential equations associated with free boundary conditions similar to [9], and then show that the system has a unique solution from given initial conditions.

Now we consider a one-dimensional model describing the simultaneous growth and ablation of the ice of false-bottoms. Here we have three environments: the ocean (Oc), the ice of false-bottoms (Fb) and the fresh water (Wa). Denote by $T(x, t)$, $S(x, t)$ the temperature and the salinity, and denote by $h_0(t)$, $h_u(t)$ the free boundaries at the interfaces ice-ocean (Fb-Oc) and ice-water (Fb-Wa), respectively (see Figure 2 below).

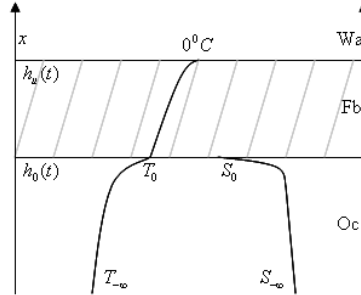


Figure 2: One-dimensional model.

At the interface Fb-Oc, we apply the first principle of thermodynamics, (i.e. variation of energy = variation of heat flux through the interface)

$$\Delta U = \Delta \Phi.$$

The net amount of heat transferred through the interface Fb-Oc in a section s is equal to

$$\Delta U = -dh_0 \rho_I L_f s,$$

where ρ_I is the density of the ice and L_f is the latent heat of fusion. On the other hand, the difference of the heat fluxes through a section s in the ice and the ocean during a time dt is

$$\Delta \Phi = (-\lambda_I T_x(h_0(t)+, t) + \lambda_O T_x(h_0(t)-, t)) s dt,$$

where λ_I , λ_O are thermal conductivities of the ice and the ocean. Here the notations $h_0(t)+$ and $h_0(t)-$ stand for the right limit and the left limit at $x = h_0(t)$. Thus the law of

conservation of energy mentioned above, i.e. $\Delta U = \Delta \Phi$, leads to the Stefan condition for the heat balance at the interface

$$h'_0(t) = \tilde{\lambda}_I T_x(h_0(t)+, t) - \tilde{\lambda}_O T_x(h_0(t)-, t), \quad (1.1)$$

where

$$\tilde{\lambda}_I = \frac{\lambda_I}{\rho_I L_f} > 0, \quad \tilde{\lambda}_O = \frac{\lambda_O}{\rho_I L_f} > 0.$$

For simplicity, we can neglect the salt of the ice of false-bottoms. The water near the interface Fb-Oc is a mixture of melt water, which melts from the ice of false-bottoms, and sea water. This water freshens at the rate $S_0(t)h'_0(t)$, while salt diffuses into this water at the rate $-DS_x(h_0(t)-, t)$, where $S_0(t) = S(h_0(t)-, t)$ is the salinity of the ocean at the interface and $D > 0$ is the molecular diffusivity of salt in sea water. The balance of salt at this interface leads to the conservation condition

$$S_0(t)h'_0(t) = -DS_x(h_0(t)-, t). \quad (1.2)$$

Moreover, the interface temperature $T_0 = T(h_0(t), t)$ and salinity S_0 are connected via freezing-point relationship

$$T_0 + n_0 T'_0 = -m_0 S_0, \quad (1.3)$$

where m_0, n_0 are non-zero constants. The establishment of equations (1.1) and (1.2) bases on *Martin and Kauffman* [6] and *Notz et al.* [9]. In (1.3), if $n_0 = 0$ and $m_0 = 0.054^\circ\text{C psu}^{-1}$ then we obtain the approximation $T_0 \approx -m_0 S_0$, which was used in [6, 9]. However, as we shall show later, it is reasonable to assume that the salinity is dependent on the gradient of the temperature at the freezing point.

At the interface Fb-Wa, we use the simplified scheme presented by *Grenfell and Maykut* [4], in which the temperature of the water in the under-ice melt pond is kept at 0°C . In particular, it leads to the boundary condition at the interface

$$T(h_u(t)-, t) = 0. \quad (1.4)$$

Furthermore, due to the neglect of heat fluxes from the fresh water above the false-bottoms, a thermodynamic condition similar to (1.1) reduces to the Stefan condition at the upper surface

$$h'_u(t) = \tilde{\lambda}_I T_x(h_u(t)-, t). \quad (1.5)$$

Finally, we have the following diffusion equations for salt and heat in the ocean and in the ice

$$T_t = D_I T_{xx}, \quad h_u(t) > x > h_0(t), \quad (1.6)$$

$$T_t = D_O T_{xx}, \quad h_0(t) > x > -\infty, \quad (1.7)$$

$$S_t = DS_{xx}, \quad h_0(t) > x > -\infty, \quad (1.8)$$

where $D_I > 0$ and $D_O > 0$ are the thermal diffusivity. Here all mentioned constants are given.

Assume that the initial conditions $h_0(0) = h_0^0$, $h_u(0) = h_u^0$, $T(x, 0) = T^0(x)$ in $h_u(0) > x > -\infty$ and $S(x, 0) = S^0(x)$ in $h_0(0) > x > -\infty$ are given. The problem is of finding

from the initial conditions (h_0^0, h_u^0, T^0, S^0) a solution (h_0, h_u, T, S) of the system (1.1)-(1.8), where $T = T(x, t)$ in $t > 0$, $h_u(t) > x > -\infty$ and $S = S(x, t)$ in $t > 0$, $h_0(t) > x > -\infty$. This is a one-dimensional two-phase Stefan problem with two free boundaries.

The main result of the present paper is to prove the existence and uniqueness a local solution for the problem. Rigorously, we suppose that the initial conditions (h_0^0, h_u^0, T^0, S^0) satisfy the following three assumptions

- (H1) $h_0^0 < h_u^0$;
- (H2) $(T^0)_x$ is continuous and bounded in $x \in (-\infty, h_0^0]$ and $x \in [h_0^0, h_u^0]$; T^0 is continuous at $x = h_0^0$ and $T^0(h_u^0-) = 0$;
- (H3) S^0 is continuous and bounded in $x \in (-\infty, h_0^0]$.

Remark 1.1. *The condition (H1) means the ice layer of the false-bottom has already existed. It is of course a much more interesting problem to consider the behavior of the false-bottom at the starting time, which corresponds to condition $h_0^0 = h_u^0$, but it is extremely difficult. We mention that the difficulty does not only come from mathematical computation but also be recognized by physical experiments. For example, Notz et al. [9] simulated the experiment of Martin and Kauffman [6], in which they put fresh water at 0°C on top of salt water at its freezing point in order to simulate the evolution of a false-bottoms, but this model does not take salt transport through the false-bottom into account. Therefore they then started with a 5-cm layer of ice.*

Remark 1.2. *It is implicit from (1.1) and (1.5) that $T_x(\cdot, t)$ is continuous at $x = h_0(t)-$, $h_0(t)+$ and $h_u(t)-$. Therefore, it is reasonable to assume that $(T^0)_x$ is continuous also at $x = h_0^0-$, h_0^0+ and h_u^0- in (H2). Similarly, it is natural to assume that T^0 is continuous at $x = h_0^0$ and $T^0(h_u^0-) = 0$ due to (1.3) and (1.4).*

Let $\sigma > 0$. We say that (h_0, h_u, T, S) is a solution of the system (1.1)-(1.8) in $(0, \sigma)$ corresponding to the initial conditions (h_0^0, h_u^0, T^0, S^0) if the following four conditions holds

- (C1) $h_0(t)$ and $h_u(t)$ are continuously differentiable in $t \in [0, \sigma)$; $h_0(0) = h_0^0 < h_u^0 = h_u(0)$ and $h_0(t) < h_u(t)$ in $t \in (0, \sigma)$;
- (C2) T_t, T_{xx} is continuous in $t \in (0, \sigma)$, $x \in (-\infty, h_0(t)) \cup (h_0(t), h_u(t))$; $T_x(\cdot, t)$ is continuous at $x = h_0(t)-$, $x = h_0(t)+$ and $x = h_u(t)-$; $T(\cdot, t)$ is continuous at $x = h_0(t)$; $T(x, \cdot)$ is continuous at $t = 0+$ and $T(x, 0+) = T^0(x)$ in $x \in (-\infty, h_u^0)$;
- (C3) S_t, S_{xx} is continuous in $t \in (0, \sigma)$, $x \in (-\infty, h_0(t))$; $S_x(\cdot, t)$ is continuous at $x = h_0(t)-$; $S(x, \cdot)$ is continuous at $t = 0$ and $S(x, 0+) = S^0(x)$ in $x \in (-\infty, h_0^0)$;
- (C4) Equations (1.1)-(1.8) hold in $t \in (0, \sigma)$.

In general, the conditions (C1)-(C4) assure a classical solution for the system of differential equations (1.1)-(1.8). Our main result is as follows.

Theorem 1.1. *Assume that (h_0^0, h_u^0, T^0, S^0) satisfy (H1)-(H3). Then there is a unique solution (h_0, h_u, T, S) of the system (1.1)-(1.8) in $(0, \sigma)$ corresponding to the initial conditions (h_0^0, h_u^0, T^0, S^0) for some $\sigma > 0$. Moreover, this solution can be extended uniquely whenever the condition $h_u(\sigma) > h_0(\sigma)$ still holds.*

Our proof follows the approach of A.Friedman [3] (Chapter 8), which dealt with a classical one-phase Stefan problem with one free boundary. More precisely, we first reduce the problem to solving a system of nonlinear Volterra integral equations of the second kind and then solve this system by contraction principle. The remainder of the paper is divided into three sections. Section 2 is devoted to some preliminary results on Green functions and Volterra integral equations. In Section 3 we shall reformulate the problem to a system of

nonlinear integral equations. In Section 4 we apply the contraction principle to prove the existence and uniqueness of a local solution for this system.

2 Preliminaries

Let $a(t), b(t)$ be continuously differentiable functions and $b(t) > a(t)$ for all $t \geq 0$. Let $\kappa > 0$ be a constant and let $u(x, t)$ be a solution of the diffusion equation

$$\frac{\partial u}{\partial t} = \kappa \frac{\partial^2 u}{\partial x^2}, \quad t > 0, \quad b(t) > x > a(t). \quad (2.1)$$

We introduce the Green's function of equation (2.1),

$$G(x, t; \xi, \tau) = \frac{H(t - \tau)}{2\sqrt{\pi\kappa(t - \tau)}} \exp\left(-\frac{(x - \xi)^2}{4\kappa(t - \tau)}\right),$$

where H is the Heaviside function,

$$H(t) = \begin{cases} 1, & \text{if } t > 0, \\ 0, & \text{if } t < 0. \end{cases}$$

The following lemma is useful to reformulate the differential equation (2.1) to a Volterra integral equations of the second kind.

Lemma 2.1. *If u is a solution of (2.1) then for $t > 0$ and $a(t) < x < b(t)$ we have*

$$\begin{aligned} u(x, t) &= \int_0^t G(x, t; b(\tau), \tau) [\kappa u_\xi(b(\tau)-, \tau) + u(b(\tau), \tau)b'(\tau)] d\tau \\ &\quad - \int_0^t G(x, t; a(\tau), \tau) [\kappa u_\xi(a(\tau)+, \tau) + u(a(\tau), \tau)a'(\tau)] d\tau \\ &\quad - \kappa \int_0^t G_\xi(x, t; b(\tau), \tau) u(b(\tau), \tau) d\tau + \kappa \int_0^t G_\xi(x, t; a(\tau), \tau) u(a(\tau), \tau) d\tau \\ &\quad + \int_{a(0)}^{b(0)} G(x, t; \xi, 0) u(\xi, 0) d\xi. \end{aligned}$$

Proof. Note that

$$G_\tau + \kappa G_{\xi\xi} = 0 \text{ for all } \tau < t, \quad \text{and } G(x, t; \xi, t-) = \delta(x - \xi), \quad (2.2)$$

where $\delta = H'$ is Dirac delta function.

Integrating the Green's identity, here $u = u(\xi, \tau)$,

$$\kappa \frac{\partial}{\partial \xi} \left(G \frac{\partial u}{\partial \xi} - u \frac{\partial G}{\partial \xi} \right) - \frac{\partial}{\partial \tau} (uG) = 0$$

over the domain $a(\tau) < \xi < b(\tau), 0 < \tau < t$, we will obtain the desired result because

$$\begin{aligned}
& \int_0^t \int_{a(\tau)}^{b(\tau)} \frac{\partial}{\partial \xi} \left(G \frac{\partial u}{\partial \xi} - u \frac{\partial G}{\partial \xi} \right) d\xi d\tau = \int_0^t \left[G \frac{\partial u}{\partial \xi} - u \frac{\partial G}{\partial \xi} \right]_{\xi=a(\tau)}^{\xi=b(\tau)} d\tau \\
& = \int_0^t G(x, t; b(\tau), \tau) u_{\xi}(b(\tau)-, \tau) d\tau - \int_0^t G(x, t; a(\tau), \tau) u_{\xi}(a(\tau)+, \tau) d\tau \\
& \quad - \int_0^t G_{\xi}(x, t; b(\tau), \tau) u(b(\tau), \tau) d\tau + \int_0^t G_{\xi}(x, t; a(\tau), \tau) u(a(\tau), \tau) d\tau,
\end{aligned}$$

and

$$\begin{aligned}
& \int_0^t \int_{a(\tau)}^{b(\tau)} \frac{\partial}{\partial \tau} (uG) d\xi d\tau \\
& = \int_0^t \left\{ \frac{\partial}{\partial \tau} \left(\int_{a(\tau)}^{b(\tau)} uG d\xi \right) - [uG]_{\xi=b(\tau)} b'(\tau) + [uG]_{\xi=a(\tau)} a'(\tau) \right\} d\tau \\
& = \left[\int_{a(\tau)}^{b(\tau)} uG d\xi \right]_{\tau=0}^{\tau=t-} - \int_0^t [uG]_{\xi=b(\tau)} b'(\tau) d\tau + \int_0^t [uG]_{\xi=a(\tau)} a'(\tau) d\tau \\
& = u(x, t) - \int_{a(0)}^{b(0)} G(x, t; \xi, 0) u(\xi, 0) d\xi - \int_0^t G(x, t; b(\tau), \tau) u(b(\tau), \tau) b'(\tau) d\tau \\
& \quad + \int_0^t G(x, t; a(\tau), \tau) u(a(\tau), \tau) a'(\tau) d\tau.
\end{aligned}$$

Here we have made use the following equality, with $v = uG$,

$$\int_{a(\tau)}^{b(\tau)} \frac{\partial}{\partial \tau} (v(\xi, \tau)) d\xi = \frac{\partial}{\partial \tau} \left(\int_{a(\tau)}^{b(\tau)} v(\xi, \tau) d\xi \right) - v(b(\tau), \tau) b'(\tau) + v(a(\tau), \tau) a'(\tau).$$

In fact, in the case $a(t) \equiv 0$ we have

$$\begin{aligned}
& \int_0^{b(\tau)} \frac{\partial}{\partial \tau} (v(\xi, \tau)) d\xi = \int_0^\infty H(b(\tau) - \xi) \frac{\partial}{\partial \tau} (v(\xi, \tau)) d\xi \\
&= \int_0^\infty \frac{\partial}{\partial \tau} [H(b(\tau) - \xi)v(\xi, \tau)] d\xi - \int_0^\infty \frac{\partial}{\partial \tau} [H(b(\tau) - \xi)] v(\xi, \tau) d\xi \\
&= \frac{\partial}{\partial \tau} \left(\int_0^\infty H(b(\tau) - \xi)v(\xi, \tau) d\xi \right) - \int_0^\infty \delta(b(\tau) - \xi) b'(\tau) v(\xi, \tau) d\xi \\
&= \frac{\partial}{\partial \tau} \left(\int_0^{b(\tau)} v(\xi, \tau) d\xi \right) - v(b(\tau), \tau) b'(\tau).
\end{aligned}$$

If $a(t)$ is not constant, we can write

$$\int_{a(\tau)}^{b(\tau)} \frac{\partial}{\partial \tau} (v(\xi, \tau)) d\xi = \int_0^{b(\tau)} \frac{\partial}{\partial \tau} (v(\xi, \tau)) d\xi - \int_0^{a(\tau)} \frac{\partial}{\partial \tau} (v(\xi, \tau)) d\xi,$$

and apply the above result. This completes the proof. \square

Remark 2.1. *The result in Lemma 2.1 still holds for $b(t) \equiv +\infty$ or $a(t) \equiv -\infty$. For example, if $a(t) \equiv -\infty$ then the formula in Lemma 2.1 reduces to*

$$\begin{aligned}
u(x, t) &= \int_0^t G(x, t; b(\tau), \tau) [\kappa u_\xi(b(\tau), \tau) + u(b(\tau), \tau) b'(\tau)] d\tau \\
&\quad - \kappa \int_0^t G_\xi(x, t; b(\tau), \tau) u(b(\tau), \tau) d\tau + \int_{-\infty}^{b(0)} G(x, t; \xi, 0) u(\xi, 0) d\xi.
\end{aligned}$$

We shall need also an useful lemma giving the jump relation at the boundary (see Friedman [3], page 217, Lemma 1).

Lemma 2.2. *Let $p(t)$ be continuous and let $s(t) > 0$ satisfy the Lipschitz condition, $0 \leq t \leq \sigma$. Then, for $0 < t \leq \sigma$,*

$$\lim_{x \rightarrow s(t)^-} \kappa \int_0^t p(\tau) G_x(x, t; s(\tau), \tau) d\tau = \frac{1}{2} p(t) + \kappa \int_0^t p(\tau) G_x(s(t), t; s(\tau), \tau) d\tau.$$

Remark 2.2. *In applications of the above lemma, sometimes we need to note that $G_\xi = -G_x$. Moreover, for the right limit we have*

$$\lim_{x \rightarrow s(t)^+} \kappa \int_0^t p(\tau) G_x(x, t; s(\tau), \tau) d\tau = -\frac{1}{2} p(t) + \kappa \int_0^t p(\tau) G_x(s(t), t; s(\tau), \tau) d\tau.$$

Finally, we state a simple version of the uniqueness for a system of linear Volterra integral equations of the second kind.

Lemma 2.3. *Let $n \in \mathbb{N}$, $\sigma > 0$, $p > 1$, $q > 1$, $1/p + 1/q = 1$. Assume that $\tau \mapsto W_j(t, \tau)$ is measurable in $(0, t)$ for all $t \in (0, \sigma]$ and*

$$\int_0^t |W_j(t, \tau)|^p d\tau \leq \text{const.}, \quad \forall t \in (0, \sigma], j = \overline{1, n}.$$

Then the system

$$\Psi_i(t) = \sum_{j=1}^n \left(\int_0^t W_j(t, \tau) \Psi_j(\tau) d\tau \right), \quad \forall t \in (0, \sigma], j = \overline{1, n},$$

has a unique solution $\{\Psi_j\}_{j=1}^n = 0$ in $L^q(0, \sigma)$.

Proof. Using Holder inequality one has

$$\begin{aligned} |\Psi_i(t)| &\leq \sum_{j=1}^n \left| \int_0^t W_j(t, \tau) \Psi_j(\tau) d\tau \right| \\ &\leq \sum_{j=1}^n \left(\int_0^t |W_j(t, \tau)|^p d\tau \right)^{1/p} \left(\int_0^t |\Psi_j(\tau)|^q d\tau \right)^{1/q} \\ &\leq \text{const.} \sum_{j=1}^n \left(\int_0^t |\Psi_j(\tau)|^q d\tau \right)^{1/q}. \end{aligned}$$

Therefore,

$$\sum_{j=1}^n |\Psi_j(\tau)|^q \leq \text{const.} \sum_{j=1}^n \left(\int_0^t |\Psi_j(\tau)|^q d\tau \right) = \text{const.} \int_0^t \left(\sum_{j=1}^n |\Psi_j(\tau)|^q \right) d\tau,$$

and it follows from Gronwall's Lemma that $\sum_{j=1}^n |\Psi_j(\tau)|^q = 0$. Thus $\{\Psi_j\}_{j=1}^n = 0$. \square

Remark 2.3. *If, for example,*

$$|W_j(t, \tau)| \leq \frac{\text{const.}}{\sqrt{t - \tau}}, \quad j = \overline{1, n}.$$

then we can choose any $p \in (1, 2)$ in order to apply Lemma 2.3.

3 Reduction to integral equations

Denote by G_1, G_2, G_3 the Green function G in Lemma 2.1 corresponding to $\kappa = D, D_O, D_I$, respectively. We shall reformulate the problem (1.1)-(1.8) to a system of integral equations of time-dependent functions (v_0, v_1, v_2, v_3) where

$$v_0(t) = T_0'(t), \quad v_1(t) = T_x(h_0(t)-, t), \quad v_2(t) = T_x(h_0(t)+, t), \quad v_3(t) = T_x(h_u(t)-, t). \quad (3.1)$$

Assume that (h_0, h_u, T, S) is a solution of the system (1.1)-(1.8) in $(0, \sigma)$ corresponding to the initial conditions (h_0^0, h_u^0, T^0, S^0) for some $\sigma > 0$. Applying Lemma 2.1 to equation (1.8) with $h_0(t) > x > -\infty$ and using condition (1.2), one has

$$S(x, t) = -D \int_0^t G_{1\xi}(x, t; h_0(\tau), \tau) S_0(\tau) d\tau + \int_{-\infty}^{h_0^0} G_1(x, t; \xi, 0) S^0(\xi) d\xi. \quad (3.2)$$

In particular, we see from (3.2) that $S(x, t)$ is determined completely by h_0 and $S_0(t)$. Taking $x \rightarrow h_0(t)-$ in (3.2) and using the jump relation in Lemma 2.2, we get

$$S_0(t) = -2D \int_0^t G_{1\xi}(h_0(t), t; h_0(\tau), \tau) S_0(\tau) d\tau + 2 \int_{-\infty}^{h_0^0} G_1(h_0(t), t; \xi, 0) S^0(\xi) d\xi. \quad (3.3)$$

Note that for $v_0(t) = T_0'(t)$ the condition (1.3) can be rewritten as

$$T^0(h_0^0) + \int_0^t v_0(\tau) d\tau + n_0 v_0(t) = -m_0 S_0(t). \quad (3.4)$$

Here we have used $T_0(0) = T(h_0(0), 0) = T_0(h_0^0)$. We deduce from (3.3) and (3.4) the first integral equation

$$\begin{aligned} v_0(t) = & -\frac{1}{n_0} T^0(h_0^0) - \frac{1}{n_0} \int_0^t v_0(\tau) d\tau - \frac{2m_0}{n_0} \int_{-\infty}^{h_0^0} G_1(h_0(t), t; \xi, 0) S^0(\xi) d\xi \\ & - \frac{2D}{n_0} \int_0^t G_{1\xi}(h_0(t), t; h_0(\tau), \tau) \left[T^0(h_0^0) + \int_0^\tau v_0(s) ds + n_0 v_0(\tau) \right] d\tau. \end{aligned} \quad (3.5)$$

We next apply Lemma 2.1 to equation (1.7) for $h_0(t) > x > -\infty$ to get

$$\begin{aligned} T(x, t) = & \int_0^t G_2(x, t; h_0(\tau), \tau) [D_O v_1(\tau) + T_0(\tau) h_0'(\tau)] d\tau \\ & - D_O \int_0^t G_{2\xi}(x, t; h_0(\tau), \tau) T_0(\tau) d\tau + \int_{-\infty}^{h_0^0} G_2(x, t; \xi, 0) T^0(\xi) d\xi, \end{aligned} \quad (3.6)$$

where $v_1(t) = T_x(h_0(t)-, t)$. We now differentiate both sides of (3.6) with respect to x , then

take $x \rightarrow h_0(t)-$. To go into the details, because $D_O G_{2\xi x} = -D_O G_{2\xi\xi} = G_{2\tau}$, we have

$$\begin{aligned}
& -D_O \int_0^t G_{2\xi x}(x, t; h_0(\tau), \tau) T_0(\tau) d\tau = - \int_0^t G_{2\tau}(x, t; h_0(\tau), \tau) T_0(\tau) d\tau \\
& = - \int_0^t \left[\frac{\partial}{\partial \tau} (G_2(x, t; h_0(\tau), \tau)) - G_{2\xi}(x, t; h_0(\tau), \tau) h_0'(\tau) \right] T_0(\tau) d\tau \\
& = G_2(x, t; h_0^0, 0) T_0(0) + \int_0^t G_2(x, t; h_0(\tau), \tau) T_0'(\tau) d\tau \\
& \quad - \int_0^t G_{2x}(x, t; h_0(\tau), \tau) T_0(\tau) h_0'(\tau) d\tau.
\end{aligned}$$

Moreover,

$$\begin{aligned}
& \int_{-\infty}^{h_0^0} G_{2x}(x, t; \xi, 0) T^0(\xi) d\xi = - \int_{-\infty}^{h_0^0} G_{2\xi}(x, t; \xi, 0) T^0(\xi) d\xi \\
& = -G_2(x, t; h_0^0, 0) T^0(h_0^0) + \int_{-\infty}^{h_0^0} G_2(x, t; \xi, 0) T_\xi^0(\xi) d\xi.
\end{aligned}$$

Thus it follows from (3.6) that

$$\begin{aligned}
T_x(x, t) &= D_O \int_0^t G_{2x}(x, t; h_0(\tau), \tau) v_1(\tau) d\tau \\
&\quad + \int_0^t G_2(x, t; h_0(\tau), \tau) v_0(\tau) d\tau + \int_{-\infty}^{h_0^0} G_2(x, t; \xi, 0) T_\xi^0(\xi) d\xi \quad (3.7)
\end{aligned}$$

for all $h_0(t) > x > -\infty$. Here we have used the compatible condition $T_0(0) = T(h_0(0), 0) = T^0(h_0^0)$ and replaced $T_0'(\tau)$ by $v_0(\tau)$. Taking $x \rightarrow h_0(t)-$ in (3.7) and using Lemma 2.1 for the first term of the right hand side, we have the second integral equation

$$\begin{aligned}
v_1(t) &= 2D_O \int_0^t G_{2x}(h_0(t), t; h_0(\tau), \tau) v_1(\tau) d\tau \\
&\quad + 2 \int_0^t G_2(h_0(t), t; h_0(\tau), \tau) v_0(\tau) d\tau + 2 \int_{-\infty}^{h_0^0} G_2(h_0(t), t; \xi, 0) T_\xi^0(\xi) d\xi. \quad (3.8)
\end{aligned}$$

Now we consider the heat distribution in false-bottoms. Applying Lemma 2.1 to equation

(1.6) for $h_u(t) > x > h_0(t)$ one has

$$\begin{aligned}
T(x, t) &= D_I \int_0^t G_3(x, t; h_u(\tau), \tau) v_3(\tau) d\tau \\
&\quad - \int_0^t G_3(x, t; h_0(\tau), \tau) [D_I v_2(\tau) + T_0(\tau) h'_0(\tau)] d\tau \\
&\quad + D_I \int_0^t G_{3\xi}(x, t; h_0(\tau), \tau) T_0(\tau) d\tau + \int_{h_0^0}^{h_u^0} G_3(x, t; \xi, 0) T^0(\xi) d\xi, \quad (3.9)
\end{aligned}$$

where $v_2(t) = T_x(h_0(t)+, t)$ and $v_3(t) = T_x(h_u(t)-, t) = \frac{1}{\lambda_I} h'_u(t)$. Let us differentiate both sides of (3.9) with respect to x . We have

$$\begin{aligned}
&D_I \int_0^t G_{3\xi x}(x, t; h_0(\tau), \tau) T_0(\tau) d\tau = \int_0^t G_{3\tau}(x, t; h_0(\tau), \tau) T_0(\tau) d\tau \\
&= \int_0^t \left[\frac{\partial}{\partial \tau} (G_3(x, t; h_0(\tau), \tau)) - G_{3\xi}(x, t; h_0(\tau), \tau) h'_0(\tau) \right] T_0(\tau) d\tau \\
&= -G_3(x, t; h_0^0, 0) T_0(0) - \int_0^t G_3(x, t; h_0(\tau), \tau) T'_0(\tau) d\tau \\
&\quad + \int_0^t G_{3x}(x, t; h_0(\tau), \tau) T_0(\tau) h'_0(\tau) d\tau
\end{aligned}$$

and

$$\begin{aligned}
&\int_{h_0^0}^{h_u^0} G_{3x}(x, t; \xi, 0) T^0(\xi) d\xi = - \int_{h_0^0}^{h_u^0} G_{3\xi}(x, t; \xi, 0) T^0(\xi) d\xi \\
&= -G_3(x, t; h_u^0, 0) T^0(h_u^0-) + G_3(x, t; h_0^0, 0) T^0(h_0^0-) + \int_{h_0^0}^{h_u^0} G_3(x, t; \xi, 0) T'_\xi(\xi) d\xi.
\end{aligned}$$

Using the compatible conditions $T^0(h_u^0-) = 0$ and $T_0(0) = T^0(h_0^0)$ and replacing $T'_0(\tau)$ by $v_0(\tau)$, we find from (3.9) that

$$\begin{aligned}
T_x(x, t) &= D_I \int_0^t G_{3x}(x, t; h_u(\tau), \tau) v_3(\tau) d\tau - D_I \int_0^t G_{3x}(x, t; h_0(\tau), \tau) v_2(\tau) d\tau \\
&\quad - \int_0^t G_3(x, t; h_0(\tau), \tau) v_0(\tau) d\tau + \int_{h_0^0}^{h_u^0} G_3(x, t; \xi, 0) T'_\xi(\xi) d\xi \quad (3.10)
\end{aligned}$$

for all $h_u(t) > x > h_0(t)$. Taking $x \rightarrow h_0(t)+$ and $x \rightarrow h_u(t)-$ in (3.10) and using Lemma 2.2 again we obtain the last two integral equations

$$\begin{aligned} v_2(t) &= 2D_I \int_0^t G_{3x}(h_0(t), t; h_u(\tau), \tau) v_3(\tau) d\tau - 2D_I \int_0^t G_{3x}(h_0(t), t; h_0(\tau), \tau) v_2(\tau) d\tau \\ &\quad - 2 \int_0^t G_3(h_0(t), t; h_0(\tau), \tau) v_0(\tau) d\tau + 2 \int_{h_0^0}^{h_u^0} G_3(h_0(t), t; \xi, 0) T_\xi^0(\xi) d\xi, \end{aligned} \quad (3.11)$$

and

$$\begin{aligned} v_3(t) &= 2D_I \int_0^t G_{3x}(h_u(t), t; h_u(\tau), \tau) v_3(\tau) d\tau - 2D_I \int_0^t G_{3x}(h_u(t), t; h_0(\tau), \tau) v_2(\tau) d\tau \\ &\quad - 2 \int_0^t G_3(h_u(t), t; h_0(\tau), \tau) v_0(\tau) d\tau + 2 \int_{h_0^0}^{h_u^0} G_3(h_u(t), t; \xi, 0) T_\xi^0(\xi) d\xi. \end{aligned} \quad (3.12)$$

Note that due to the interface condition (1.1) and (1.5), one has

$$h_0(t) = h_0^0 + \tilde{\lambda}_I \int_0^t v_2(\tau) d\tau - \tilde{\lambda}_O \int_0^t v_1(\tau) d\tau. \quad (3.13)$$

and

$$h_u(t) = h_u^0 + \tilde{\lambda}_I \int_0^t v_3(\tau) d\tau. \quad (3.14)$$

Therefore the equations (3.5), (3.8), (3.11) and (3.12) form a system of nonlinear integral equations of the form $v = Pv$, where $v = (v_0, v_1, v_2, v_3)$ and $Pv = (P_0v, P_1v, P_2v, P_3v)$. Note that the time-dependent function $v = (v_0, v_1, v_2, v_3)$ is first only continuous in $(0, \sigma)$ by its definition in (3.1). However, because it is a solution of the system of integral equations (3.5), (3.8), (3.11) and (3.12), it is indeed continuous in $[0, \sigma]$. We thus have proved the direct part of the following statement.

Proposition 3.1. *The problem of finding a solution (h_0, h_u, T, S) of (1.1)-(1.8) in $(0, \sigma)$ is equivalent to the problem of finding a continuous solution $v = (v_0, v_1, v_2, v_3)$ in $[0, \sigma]$ for the system (3.5), (3.8), (3.11) and (3.12) such that $h_u(t) > h_0(t)$ in $(0, \sigma)$, where h_0 and h_u are defined by (3.13) and (3.14).*

We of course just need to prove the converse part of the statement.

Proof. Suppose that $v = (v_0, v_1, v_2, v_3)$ is a continuous solution in $[0, \sigma]$ for the system (3.5), (3.8), (3.11) and (3.12) such that $h_u(t) > h_0(t)$ in $(0, \sigma)$, h_0 and h_u are defined by (3.13) and (3.14). We shall now recover the solution (h_0, h_u, T, S) of (1.1)-(1.8).

Since h_0 and h_u have already been defined by (3.13) and (3.14), it remains to determine T and S . We define $T_0(t)$ by

$$T_0(t) = T^0(h_0^0) + \int_0^t v_0(\tau) d\tau. \quad (3.15)$$

and determine naturally T by (3.6) and (3.9). Similarly, we define S_0 by (3.4) and determine S by (3.2). We need to prove that (h_0, h_u, T, S) satisfies (C1)-(C4).

Step 1. We first prove (C1)-(C3) except the behavior of T and S at the interfaces $x = h_0(t)$ and $x = h_u(t)-$. In fact, the condition (C1) follows the definition of h_0 in (3.13), the definition of h_u in (3.14), and the condition $h_u(t) > h_0(t)$ in definition of the solution $v = (v_0, v_1, v_2, v_3)$.

Due to definition of S in the integral forms (3.2), S_t and S_{xx} are continuous in $t \in (0, \sigma)$, $x \in (-\infty, h_0(t))$. Moreover, getting $t \rightarrow 0+$ in (3.2) and using $\lim_{t \rightarrow 0+} G_1(x, t; \xi, 0) = \delta(x - \xi)$, we obtain the initial condition $S(x, 0+) = S^0(x)$ for all $x \in (-\infty, h_0^0)$.

Similarly, due to definition of T in (3.6) and (3.9), T_t and T_{xx} are continuous in $t \in (0, \sigma)$, $x \in (-\infty, h_0(t)) \cup (h_0(t), h_u(t))$, and $T(x, 0+) = T^0(x)$ for all $x \in (-\infty, h_0^0) \cup (h_0^0, h_u^0)$.

Step 2. We next check three diffusion equations (1.6)-(1.8). To prove (1.8) from the definition of S in (3.2), we simply verify that that each term in the right-hand side of (3.2) is a homogeneous solution of the operator $(\partial/\partial t - D\partial^2/\partial x^2)$ in $t \in (0, \sigma)$, $x \in (-\infty, h_0(t))$. In fact, for the second term one it follows from the properties of Green function that

$$\begin{aligned} & \left(\frac{\partial}{\partial t} - D \frac{\partial^2}{\partial x^2} \right) \left(\int_{-\infty}^{h_0^0} G_1(x, t; \xi, 0) S^0(\xi) d\xi \right) \\ &= \int_{-\infty}^{h_0^0} \left(\frac{\partial}{\partial t} - D \frac{\partial^2}{\partial x^2} \right) (G_1(x, t; \xi, 0)) S^0(\xi) d\xi = 0. \end{aligned}$$

For the first term, we have to be more careful because in general differentiating with respect to t a function of the form $t \mapsto \int_0^t K(t, \tau) d\tau$ may cause a jump,

$$\frac{d}{dt} \left(\int_0^t K(t, \tau) d\tau \right) = \lim_{\tau \rightarrow t-} K(t, \tau) + \int_0^t K_t(t, \tau) d\tau.$$

However, in this case the jump $\lim_{\tau \rightarrow t-} K(t, \tau)$ vanishes since

$$\lim_{\tau \rightarrow t-} G_1(x, t; \xi, \tau) = \lim_{\tau \rightarrow t-} G_{1\xi}(x, t; \xi, \tau) = 0, \quad \forall x \neq \xi.$$

Therefore, the first term can be treat similarly to the second term. Thus (1.8) holds. The proofs for (1.6) and (1.7) are the same.

Step 3. We now prove that $S(h_0(t)-, t) = S_0(t)$, which in particular accomplish (C3), and verify the Stefan condition (1.2).

In fact, (3.3) holds due to (3.4) and (3.5). On the other hand, taking $x \rightarrow h_0(t)-$ in (3.2) and using Lemma 2.2 one has

$$\begin{aligned} S(h_0(t)-, t) &= \frac{1}{2}S_0(t) - D \int_0^t G_{1\xi}(h_0(t), t; h_0(\tau), \tau) S_0(\tau) d\tau \\ &\quad + \int_{-\infty}^{h_0^0} G_1(h_0(t), t; \xi, 0) S^0(\xi) d\xi. \end{aligned}$$

It follows from the latter equation and (3.3) that $S(h_0(t)-, t) = S_0(t)$.

Applying Lemma 2.1 to equation (1.8) for $h_0(t) > x > -\infty$ and using $S(h_0(t)-, t) = S_0(t)$, we have

$$\begin{aligned} S(x, t) &= \int_0^t G_1(x, t; h_0(\tau), \tau) [DS_x(h_0(\tau)-, \tau) + S_0(\tau)h_0'(\tau)] d\tau \\ &\quad - D \int_0^t G_{1\xi}(x, t; h_0(\tau), \tau) S_0(\tau) d\tau + \int_{-\infty}^{h_0^0} G_1(x, t; \xi, 0) S^0(\xi) d\xi. \end{aligned}$$

Comparing the latter equation to the original definition of S in (3.2), we obtain

$$\int_0^t G_1(x, t; h_0(\tau), \tau) \Psi_1(\tau) d\tau = 0, \quad x \in (-\infty, h_0(t)), \quad (3.16)$$

where $\Psi_1(t) = DS_x(h_0(t)-, t) + S_0(t)h_0'(t)$. We shall deduce from (3.16) that $\Psi_1 \equiv 0$, which is equivalent to (1.2). Indeed, differentiating (3.16) with respect to x , then taking $x \rightarrow h_0(t)-$ and using Lemma 2.2 we get

$$\Psi_1(t) = -2 \int_0^t G_{1x}(h_0(t), t; h_0(\tau), \tau) \Psi_1(\tau) d\tau.$$

Note that this is a linear Volterra integral equation of the second kind and

$$|G_{1x}(h_0(t), t; h_0(\tau), \tau)| \leq \frac{\text{const.}}{\sqrt{t-\tau}}.$$

Therefore, it follows from Lemma 2.3 that $\Psi_1(t) = 0$.

Step 4. We prove that $T_x(h_0(t)-, t) = v_1(t)$, $T_x(h_0(t)+, t) = v_2(t)$ and $T_x(h_u(t)-, t) = v_3(t)$, which in particular imply the Stefan conditions (1.1) and (1.5). Note that we have already had from (3.15) that $v_0(t) = T_0'(t)$ and $T_0(0) = T^0(h_0^0)$.

To prove $T_x(h_u(t)-, t) = v_3(t)$ from the definition of T in (3.9), we use the same process of getting (3.12) from (3.9). In fact, differentiating both sides of (3.9) with respect to x and

then taking $x \rightarrow h_u(t)-$ we have

$$\begin{aligned}
T_x(h_u(t)-, t) &= \frac{1}{2}v_3(t) + D_I \int_0^t G_{3x}(h_u(t), t; h_u(\tau), \tau)v_3(\tau)d\tau \\
&\quad - D_I \int_0^t G_{3x}(h_u(t), t; h_0(\tau), \tau)v_2(\tau)d\tau \\
&\quad - \int_0^t G_3(h_u(t), t; h_0(\tau), \tau)T_0'(\tau)d\tau + \int_{h_0^0}^{h_u^0} G_3(h_u(t), t; \xi, 0)T_\xi^0(\xi)d\xi.
\end{aligned}$$

Comparing the latter equation to (3.12) and using $v_0(\tau) = T_0'(\tau)$, we obtain $T_x(h_u(t)-, t) = v_3(t)$. By the same way we find that $T_x(h_0(t)+, t) = v_2(t)$ and $T_x(h_0(t)-, t) = v_1(t)$.

Step 5. Finally, we verify that $T(h_0(t), t) = T_0(t)$ and $T(h_u(t)-, t) = 0$ to accomplish (C2) and (C4).

Applying Lemma 2.1 to equation (1.7) for $h_0(t) > x > -\infty$ one has

$$\begin{aligned}
T(x, t) &= \int_0^t G_2(x, t; h_0(\tau), \tau) [D_O T_x(h_0(\tau)-, \tau) + T(h_0(\tau)-, \tau)h_0'(\tau)] d\tau \\
&\quad - D_O \int_0^t G_{2\xi}(x, t; h_0(\tau), \tau)T(h_0(\tau)-, \tau)d\tau + \int_{-\infty}^{h_0^0} G_2(x, t; \xi, 0)T^0(\xi)d\xi.
\end{aligned}$$

Comparing the latter equation to the original definition of T in (3.6) and using $T_x(h_0(t)-, t) = v_1(t)$, we obtain

$$\int_0^t [G_2(x, t; h_0(\tau), \tau)h_0'(\tau) - D_O G_{2\xi}(x, t; h_0(\tau), \tau)] \Psi_2(\tau)d\tau = 0, \quad (3.17)$$

where $\Psi_2(t) = T(h_0(t)-, t) - T_0(t)$. We now prove $\Psi_2 \equiv 0$ by using the same technique of dealing $\Psi_1 \equiv 0$. Taking $x \rightarrow h_u(t)-$ in (3.17) and using Lemma 2.2, we find that

$$\Psi_2(t) = 2 \int_0^t [G_2(x, t; h_0(\tau), \tau)h_0'(\tau) - D_O G_{2\xi}(x, t; h_0(\tau), \tau)] \Psi_2(\tau)d\tau.$$

Note that this is a linear Volterra integral equation of the second kind and

$$|G_2(x, t; h_0(\tau), \tau)h_0'(\tau) - D_O G_{2\xi}(x, t; h_0(\tau), \tau)| \leq \frac{\text{const.}}{\sqrt{t-\tau}}.$$

Therefore, it follows from Lemma 2.3 that $\Psi_2 \equiv 0$. Thus $T(h_0(t)-, t) = T_0(t)$.

We shall use the same argument, in fact a little more complicated one, to deduce that $T(h_0(t)+, t) = T_0(t)$ and $T(h_u(t), t) = 0$. Applying Lemma 2.1 to equation (1.6) for $h_u(t) >$

$x > h_0(t)$ and comparing to the original definition of T in (3.9), one has

$$\begin{aligned} & \int_0^t [G_3(x, t; h_0(\tau), \tau)h'_0(\tau) - D_I G_{3\xi}(x, t; h_0(\tau), \tau)] \Psi_3(\tau) d\tau \\ &= \int_0^t [G_3(x, t; h_u(\tau), \tau)h'_u(\tau) - D_I G_{3\xi}(x, t; h_u(\tau), \tau)] \Psi_4(\tau) d\tau, \end{aligned} \quad (3.18)$$

where $\Psi_3(\tau) = T(h_0(t)+, t) - T_0(t)$ and $\Psi_4(t) = T(h_u(t)-, t)$. Taking $x \rightarrow h_0(t)+$ and $x \rightarrow h_u(t)-$ in (3.18), we have

$$\begin{aligned} \Psi_3(t) &= 2 \int_0^t [G_3(h_0(t), t; h_0(\tau), \tau)h'_0(\tau) - D_I G_{3\xi}(h_0(t), t; h_0(\tau), \tau)] \Psi_3(\tau) d\tau \\ &- 2 \int_0^t [G_3(h_0(t), t; h_u(\tau), \tau)h'_u(\tau) - D_I G_{3\xi}(h_0(t), t; h_u(\tau), \tau)] \Psi_4(\tau) d\tau, \end{aligned} \quad (3.19)$$

and

$$\begin{aligned} -\Psi_4(t) &= -2 \int_0^t [G_3(h_u(t), t; h_0(\tau), \tau)h'_0(\tau) - D_I G_{3\xi}(h_u(t), t; h_0(\tau), \tau)] \Psi_3(\tau) d\tau \\ &+ 2 \int_0^t [G_3(h_u(t), t; h_u(\tau), \tau)h'_u(\tau) - D_I G_{3\xi}(h_u(t), t; h_u(\tau), \tau)] \Psi_4(\tau) d\tau \end{aligned} \quad (3.20)$$

Note that equations (3.19) and (3.20) form a system of linear Volterra integral equations of the second kind and

$$\begin{aligned} |G_3(h_u(t), t; h_0(\tau), \tau)h'_0(\tau) - D_I G_{3\xi}(h_u(t), t; h_0(\tau), \tau)| &\leq \frac{\text{const.}}{\sqrt{t-\tau}}, \\ |G_3(h_0(t), t; h_u(\tau), \tau)h'_u(\tau) - D_I G_{3\xi}(h_0(t), t; h_u(\tau), \tau)| &\leq \frac{\text{const.}}{\sqrt{t-\tau}}. \end{aligned}$$

We therefore deduce from Lemma 2.3 that $\Psi_3 \equiv \Psi_4 \equiv 0$. Thus $T(h_u(t)-, t) = 0$, i.e. (1.4), and $T(h_0(t), t) = T_0(t)$, which accomplishes (C2) and also implies (1.3) in viewing (3.4). The proof is completed. \square

Remark 3.1. We learned the technique of proving $\Psi_1 \equiv 0$ by (3.16) from Friedman [3]. However, there is a minor mistake in [3]. The formula (1.28) in page 221, i.e.

$$\int_0^t G_\xi(x, t; s(\tau), \tau)u(s(\tau), \tau) d\tau = 0,$$

should be

$$\int_0^t [G_\xi(x, t; s(\tau), \tau) - G(x, t; s(\tau), \tau)s'(\tau)] u(s(\tau), \tau) d\tau = 0.$$

Fortunately, the conclusion $u(s(t), t) = 0$ still holds by the same argument.

4 Solving integral equations

Now we accomplish the proof of Theorem 1.1. We want to prove the system (3.5), (3.8), (3.11) and (3.12) has a unique local solution $v = (v_0, v_1, v_2, v_3)$, and this solution can be extended uniquely by prolongation whenever the condition $h_u(t) > h_0(t)$ still holds. Note that this system is of the form $v = Pv := (P_0v, P_1v, P_2v, P_3v)$, where P_0v, P_1v, P_2v and P_3v are the right-hand sides of (3.5), (3.8), (3.11) and (3.12) respectively.

Denote by $C(\sigma, M)$ the space of functions $v = (v_0, v_1, v_2, v_3)$ continuous in $[0, \sigma]$ and

$$\|v\|_{[0, \sigma]} := \max_{t \in [0, \sigma], j=0,3} |v_j(t)| \leq M.$$

When $v = 0$ then $P(0)$ depends only on the initial conditions (h_0^0, h_u^0, T^0, S^0) and is continuous on $[0, \infty)$. Fix $M > 0$ large enough, says $M \geq 2 \|P(0)\|_{[0,1]}$.

Proposition 4.1. *There exists $\sigma > 0$ depending on (h_0^0, h_u^0, T^0, S^0) such that P maps $C(t_0, M)$ into itself and is a contraction.*

Note that $C(\sigma, M)$ is a complete metric space. Therefore it follows from Proposition 4.1 and the Contraction Mapping Principle that P has a unique fixed point v in $C(\sigma, M)$. It gives also the unique solution (h_0, h_u, T, S) of (1.1)-(1.8) in $(0, \sigma)$ due to Proposition 3.1.

Proof. First at all, let us consider $\sigma > 0$ small enough, says

$$\sigma \leq \frac{h_u^0 - h_0^0}{2(2\tilde{\lambda}_I + \tilde{\lambda}_O)M}.$$

Then for $v \in C(\sigma, M)$, it follows from (3.13)-(3.14) that

$$\begin{aligned} h_u(t) - h_0(\tau) &\geq h_u^0 - h_0^0 - |h_u(t) - h_u(0)| - |h_0(\tau) - h_0(0)| \\ &\geq h_u^0 - h_0^0 - \tilde{\lambda}_I M t - (\tilde{\lambda}_O + \tilde{\lambda}_I) M \tau \geq \frac{h_u^0 - h_0^0}{2} > 0 \end{aligned} \quad (4.1)$$

for all $0 \leq t \leq \sigma$. In particular $h_u(t) > h_0(t)$ for all $t \in [0, \sigma]$ and hence P is well-defined on $C(\sigma, M)$. We now estimate $\|Pv - P\tilde{v}\|_{[0, \sigma]}$ for $v, \tilde{v} \in C(\sigma, M)$. In what follows, denote by \tilde{h}_u and \tilde{h}_0 the functions given by (3.13)-(3.14) where v is replaced by \tilde{v} . For simplicity, we shall always denote by $C_0 > 0$ an universal constant depending only on the initial conditions (h_0^0, h_u^0, T^0, S^0) . We shall go to the details for P_3 , and P_0, P_1, P_2 can be treated by the same way. Recall that

$$\begin{aligned} (P_3v)(t) &= 2D_I \int_0^t G_{3x}(h_u(t), t; h_u(\tau), \tau) v_3(\tau) d\tau - 2D_I \int_0^t G_{3x}(h_u(t), t; h_0(\tau), \tau) v_2(\tau) d\tau \\ &\quad - 2 \int_0^t G_3(h_u(t), t; h_0(\tau), \tau) v_0(\tau) d\tau + 2 \int_{h_0^0}^{h_u^0} G_3(h_u(t), t; \xi, 0) T_\xi^0(\xi) d\xi. \end{aligned}$$

We need some preliminary estimates related to the Green's function G_3 .

Lemma 4.1. For all $v, \tilde{v} \in C(\sigma, M)$, $0 \leq \tau < t \leq \sigma$ and $\xi \in \mathbb{R}$, we have

$$\left| G_{3x}(h_u(t), t; h_u(\tau), \tau) - G_{3x}(\tilde{h}_u(t), t; \tilde{h}_u(\tau), \tau) \right| \leq \frac{C_0}{\sqrt{t-\tau}} \|v - \tilde{v}\|_{[0, \sigma]}, \quad (4.2)$$

$$\left| G_3(h_u(t), t; h_0(\tau), \tau) - G_3(\tilde{h}_u(t), t; \tilde{h}_0(\tau), \tau) \right| \leq \frac{C_0}{\sqrt{t-\tau}} \|v - \tilde{v}\|_{[0, \sigma]}, \quad (4.3)$$

$$\left| G_{3x}(h_u(t), t; h_0(\tau), \tau) - G_{3x}(\tilde{h}_u(t), t; \tilde{h}_0(\tau), \tau) \right| \leq \frac{C_0}{\sqrt{t-\tau}} \|v - \tilde{v}\|_{[0, \sigma]}, \quad (4.4)$$

$$\begin{aligned} & \left| G_{3x}(h_u(t), t; \xi, \tau) - G_{3x}(\tilde{h}_u(t), t; \xi, \tau) \right| \leq \\ & \leq C_0 \left[\exp\left(-\frac{(h_u(t) - \xi)^2}{8D_I t}\right) + \exp\left(-\frac{(\tilde{h}_u(t) - \xi)^2}{8D_I t}\right) \right] \|v - \tilde{v}\|_{[0, \sigma]}. \end{aligned} \quad (4.5)$$

Proof. Considering

$$G_{3x}(h_u(t), t; h_u(\tau), \tau) = -\frac{h_u(t) - h_u(\tau)}{4\sqrt{\pi D_I^3 (t-\tau)^3}} \exp\left(-\frac{(h_u(t) - h_u(\tau))^2}{4D_I(t-\tau)}\right)$$

as a function of one-variable $(h_u(t) - h_u(\tau))$ and using Lagrange formula one has

$$\begin{aligned} & G_{3x}(h_u(t), t; h_u(\tau), \tau) - G_{3x}(\tilde{h}_u(t), t; \tilde{h}_u(\tau), \tau) \\ & = -\frac{[(h_u(t) - h_u(\tau)) - (\tilde{h}_u(t) - \tilde{h}_u(\tau))]}{4\sqrt{\pi D_I^3 (t-\tau)^3}} \exp\left(-\frac{\theta^2}{4D_I(t-\tau)}\right) \left(1 - \frac{2\theta^2}{4D_I(t-\tau)}\right) \end{aligned}$$

for some θ between $(h_u(t) - h_u(\tau))$ and $(\tilde{h}_u(t) - \tilde{h}_u(\tau))$. Thus (4.2) follows

$$|(h_u(t) - h_u(\tau)) - (\tilde{h}_u(t) - \tilde{h}_u(\tau))| \leq \tilde{\lambda}_I(t-\tau) \|v - \tilde{v}\|_{[0, \sigma]},$$

and the elementary inequality

$$e^{-z}|1-2z| \leq \frac{|1-2z|}{1+z} \leq 2, \quad \text{where } z = \frac{\theta^2}{4D_I(t-\tau)} \geq 0.$$

To prove (4.3) we shall use the identity

$$\begin{aligned} & G_3(h_u(t), t; h_0(\tau), \tau) - G_3(\tilde{h}_u(t), t; \tilde{h}_0(\tau), \tau) \\ & = -\frac{[(h_u(t) - h_0(\tau)) - (\tilde{h}_u(t) - \tilde{h}_0(\tau))]\theta_1}{4\sqrt{\pi D_I^3 (t-\tau)^3}} \exp\left(-\frac{\theta_1^2}{4D_I(t-\tau)}\right) \end{aligned}$$

for some θ_1 between $(h_u(t) - h_0(\tau))$ and $(\tilde{h}_u(t) - \tilde{h}_0(\tau))$. Note from (4.1) that $|\theta_1| \geq \frac{h_u^0 - h_0^0}{2}$. Therefore (4.3) follows

$$|(h_u(t) - h_0(\tau)) - (\tilde{h}_u(t) - \tilde{h}_0(\tau))| \leq (2\tilde{\lambda}_I + \tilde{\lambda}_O)\sigma \|v - \tilde{v}\|_{[0, \sigma]}$$

and the elementary inequality

$$e^{-z}z \leq 1, \quad \text{where } z = \frac{\theta_1^2}{4D_I(t-\tau)} \geq 0.$$

We can also prove (4.4) by the same argument. In fact, we write

$$\begin{aligned} & G_{3x}(h_u(t), t; h_0(\tau), \tau) - G_{3x}(\tilde{h}_u(t), t; \tilde{h}_0(\tau), \tau) \\ &= -\frac{[(h_u(t) - h_0(\tau)) - (\tilde{h}_u(t) - \tilde{h}_0(\tau))]}{4\sqrt{\pi D_I^3(t - \tau)^3}} \exp\left(-\frac{\theta_2^2}{4D_I(t - \tau)}\right) \left(1 - \frac{2\theta_2^2}{4D_I(t - \tau)}\right) \end{aligned}$$

for some θ_2 between $(h_u(t) - h_0(\tau))$ and $(\tilde{h}_u(t) - \tilde{h}_0(\tau))$ and use

$$e^{-z}z|1 - 2z| \leq \frac{z|1 - 2z|}{1 + z + \frac{1}{2}z^2} \leq 4, \quad \text{where } z = \frac{\theta_2^2}{4D_I(t - \tau)} \geq 0.$$

Finally, for the last inequality (4.5) we write

$$G_3(h_u(t), t; \xi, 0) - G_3(\tilde{h}_u(t), t; \xi, 0) = -\frac{[h_u(t) - \tilde{h}_u(t)]\theta_3}{4\sqrt{\pi D_I^3 t^3}} \exp\left(-\frac{\theta_3^2}{4D_I t}\right)$$

for some θ_3 between $(h_u(t) - \xi)$ and $(\tilde{h}_u(t) - \xi)$. Note that

$$\exp\left(-\frac{\theta_3^2}{8D_I t}\right) \leq \max\left\{\exp\left(-\frac{(h_u(t) - \xi)^2}{8D_I t}\right), \exp\left(-\frac{(\tilde{h}_u(t) - \xi)^2}{8D_I t}\right)\right\}.$$

Thus (4.5) follows

$$e^{-z}\sqrt{z} \leq \frac{\sqrt{z}}{1 + z} \leq \frac{1}{2}, \quad \text{where } z = \frac{\theta_3^2}{8D_I t} \geq 0,$$

and the estimate $|h_u(t) - \tilde{h}_u(t)| \leq \tilde{\lambda}_I t \|v - \tilde{v}\|_{[0, \sigma]}$. \square

We now already to estimate $\|P_3 v - P_3 \tilde{v}\|_{[0, \sigma]}$ for $v, \tilde{v} \in C(\sigma, M)$. Recall that P_3 is the sum of four terms

$$\begin{aligned} (P_3 v)(t) &= 2D_I \int_0^t G_{3x}(h_u(t), t; h_u(\tau), \tau) v_3(\tau) d\tau - 2D_I \int_0^t G_{3x}(h_u(t), t; h_0(\tau), \tau) v_2(\tau) d\tau \\ &\quad - 2 \int_0^t G_3(h_u(t), t; h_0(\tau), \tau) v_0(\tau) d\tau + 2 \int_{h_0^0}^{h_u^0} G_3(h_u(t), t; \xi, 0) T_\xi^0(\xi) d\xi. \end{aligned}$$

For the first term of P_3 , using (4.2) we have

$$\begin{aligned} & |G_{3x}(h_u(t), t; h_u(\tau), \tau) v_3(\tau) - G_{3x}(\tilde{h}_u(t), t; \tilde{h}_u(\tau), \tau) \tilde{v}_3(\tau)| \\ &\leq |G_{3x}(h_u(t), t; h_u(\tau), \tau) - G_{3x}(\tilde{h}_u(t), t; \tilde{h}_u(\tau), \tau)| \cdot |v_3(\tau)| \\ &\quad + |G_{3x}(\tilde{h}_u(t), t; \tilde{h}_u(\tau), \tau)| \cdot |v_3(\tau) - \tilde{v}_3(\tau)| \\ &\leq \frac{C_0 M}{\sqrt{t - \tau}} \|v - \tilde{v}\|_{[0, \sigma]} + \frac{C_0}{\sqrt{t - \tau}} \|v - \tilde{v}\|_{[0, \sigma]} = \frac{C_0(M + 1)}{\sqrt{t - \tau}} \|v - \tilde{v}\|_{[0, \sigma]} \end{aligned}$$

for all $0 \leq \tau \leq t \leq \sigma$. Therefore

$$\begin{aligned} & \int_0^t \left| G_{3x}(h_u(t), t; h_u(\tau), \tau) v_3(\tau) - G_{3x}(\tilde{h}_u(t), t; \tilde{h}_u(\tau), \tau) \tilde{v}_3(\tau) \right| d\tau \\ &\leq C_0(M + 1)\sqrt{\sigma} \|v - \tilde{v}\|_{[0, \sigma]}, \quad t \in [0, \sigma]. \end{aligned}$$

We have also the same estimate for the second term and the third term of P_3 due to (4.3) and (4.4). For the last term of P_3 , it follows from (4.5) and the boundness of T_x^0 that

$$\begin{aligned} & \int_{h_0^0}^{h_u^0} \left| G_3(h_u(t), t; \xi, 0) - G_3(\tilde{h}_u(t), t; \xi, 0) \right| T_\xi^0(\xi) d\xi \\ & \leq C_0 \|v - \tilde{v}\|_{[0, \sigma]} \int_{h_0^0}^{h_u^0} \left[\exp\left(-\frac{(h_u(t) - \xi)^2}{8D_I t}\right) + \exp\left(-\frac{(\tilde{h}_u(t) - \xi)^2}{8D_I t}\right) \right] d\xi. \end{aligned}$$

Note that by changing of variables

$$\begin{aligned} & \int_{-\infty}^{\infty} \left[\exp\left(-\frac{(h_u(t) - \xi)^2}{8D_I t}\right) + \exp\left(-\frac{(\tilde{h}_u(t) - \xi)^2}{8D_I t}\right) \right] d\xi \\ & = 2 \int_{-\infty}^{\infty} \exp\left(-\frac{\xi^2}{8D_I t}\right) d\xi = 2\sqrt{\pi 8D_I t}. \end{aligned}$$

Thus

$$\int_{h_0(0)}^{h_u(0)} \left| G_3(h_u(t), t; \xi, 0) - G_3(\tilde{h}_u(t), t; \xi, 0) \right| T_\xi^0(\xi) d\xi \leq 2C_0 \sqrt{\pi 8D_I \sigma} \|v - \tilde{v}\|_{[0, \sigma]}.$$

In summary, we have

$$\|P_3 v - P_3 \tilde{v}\|_{[0, \sigma]} \leq C_0 \sqrt{\sigma} \|v - \tilde{v}\|_{[0, \sigma]},$$

where C_0 stands for a constant depending only on the initial conditions (h_0^0, h_u^0, T^0, S^0) . We have also the same estimates for P_0, P_1, P_2 . Thus for $\sigma > 0$ small enough, says $\sigma \leq \frac{1}{4C_0^2}$, one has

$$\|Pv - P\tilde{v}\|_{[0, \sigma]} \leq \frac{1}{2} \|v - \tilde{v}\|_{[0, \sigma]}, \quad \forall v, \tilde{v} \in C(\sigma, M). \quad (4.6)$$

Note that $M \geq 2\|P(0)\|_{[0, 1]} \geq 2\|P(0)\|_{[0, \sigma]}$. Thus it follows from (4.6) that P maps from $C(\sigma, M)$ into itself and is a contraction. \square

To finish the proof of Theorem 1.1, we prove that the solution can be extended uniquely by prolongation whenever $h_u(\sigma) > h_0(\sigma)$. Proposition 3.1 allows us consider the problem of finding $v = (v_0, v_1, v_2, v_3)$ instead of the problem of finding (h_0, h_u, T, S) . Assume that $v = (v_0, v_1, v_2, v_3)$ is a solution of the system (3.5), (3.8), (3.11) and (3.12) in $[0, \sigma]$ such that $h_u(t) > h_0(t)$ for all $t \in [0, \sigma]$. From such solution v , we can extend naturally (h_0, h_u, T, S) in $[0, \sigma]$ by using the scheme of the proof of Proposition 3.1. We now want to check that $(h_0(\sigma), h_u(\sigma), T(\cdot, \sigma), S(\cdot, \sigma))$ satisfy (H1)-(H3).

In fact, the condition (H1) is automatically satisfied. For (H2), the continuity of $T_x(\cdot, \sigma)$ in $(-\infty, h_0(\sigma)) \cup (h_0(\sigma), h_u(\sigma))$ is guaranteed by (3.7) and (3.10), which still hold for $t = \sigma$. The behavior of T at the interface is also insured by the relationships $T_x(h_0(\sigma)-, \sigma) = v_1(\sigma)$,

$T_x(h_0(\sigma)+, \sigma) = v_2(\sigma)$, $T_x(h_u(\sigma)-, \sigma) = v_3(\sigma)$, $T(h_0(\sigma), \sigma) = T_0(\sigma)$ and $T(h_u(\sigma)-, \sigma) = 0$. Moreover, we deduce from (3.7) that

$$\limsup_{x \rightarrow -\infty} |T_x(x, \sigma)| = \limsup_{x \rightarrow -\infty} \left| \int_{-\infty}^{h_0(0)} G_2(x, t; \xi, 0) T_\xi^0(\xi) d\xi \right| \leq \sup_{h_0(0) > \xi > -\infty} |T_\xi^0(\xi)|$$

and the boundness of T_x follows. Here we have used a property of the Green's function

$$\int_{-\infty}^{\infty} |G_2(x, t; \xi, 0)| d\xi = 1.$$

Thus (H2) is indeed true. Similarly, (H3) holds.

By considering $(h_0(\sigma), h_u(\sigma), T(\cdot, \sigma), S(\cdot, \sigma))$ as the new initial condition, we use Proposition 4.1 to extend uniquely the solution $v = (v_0, v_1, v_2, v_3)$ of the system (3.5), (3.8), (3.11) and (3.12) in $[0, \sigma^*]$ such that $h_u(t) > h_0(t)$ for all $t \in (0, \sigma^*)$ for some $\sigma^* > \sigma$. Finally, it follows from Proposition 3.1 that the extended solution v gives the extended solution (h_0, h_u, T, S) of the system (1.1)-(1.8) in $(0, \sigma^*)$ corresponding to the initial conditions (h_0^0, h_u^0, T^0, S^0) . The proof is completed.

Remark 4.1. We may also replace the infinite domain $h_u(0) > x > -\infty$ of the initial conditions by a finite interval $h_u^0 > x > L$ where L is a deep point in the ocean satisfying $L < h_0(t)$ for $0 \leq t \leq \sigma$. However, in this case it is necessary to require the history information $(T(L, \cdot), S(L, \cdot))$, $0 < t < \sigma$, at the point L . We can find the same result by using the Green's function for the half-plane $x > L$,

$$K_j(x, t; \xi, \tau) = G_j(x, t; \xi, \tau) - G_j(2L - x, t; \xi, \tau), \quad j = 1, 2, 3.$$

Acknowledgments: The main part of the paper was accomplished when the second author was doing on the project of his Master thesis in Laboratory MAPMO, University d'Orleans in the summer 2008. He would like to express his heart-felt thanks to everybody of the laboratory for the warm hospitality.

References

- [1] H. Eicken (1994), Structure of under-ice melt ponds in the central Arctic and their effect on the sea-ice cover, *Limnol. Oceanogr.*, 39(3), 682-694.
- [2] H. Eicken, H.R. Krouse, D. Kadko, and D.K. Perovich (2002), Tracer studies of pathways and rates of meltwater transport through Arctic summer sea ice, *J. Geophys. Res.*, 107(C7), 8049, doi:10.1029/2000JC000583.
- [3] A. Friedman (1964), *Partial Differential Equations of Parabolic Type*, Englewood Cliffs, NJ: Prentice-Hall.
- [4] T.C. Grenfell and G.A. Maykut (1977), The optical properties of ice and snow in the Arctic Basin, *J. Glaciol.*, 18, 445-463.

- [5] A.M. Hanson (1965), Studies of the mass budget of Arctic pack-ice floes, *J. Glaciol.*, 5, 701-709.
- [6] S. Martin and P. Kauffman (1974), The evolution of under-ice melt ponds or double diffusion at the freezing point, *J. Fluid. Mech.*, 64, 507-527.
- [7] M.G. McPhee, J. H. Morison, and F. Nilsen (2008), Revisiting heat and salt exchange at the ice-ocean interface: Ocean flux and modeling considerations, *J. Geophys. Res.*, 113, C06014, doi:10.1029/2007JC004383.
- [8] F. Nansen (1987), *Farthest North*, Constable, Westminster, England.
- [9] D. Notz, M.G. McPhee, M.G. Worster, G.A. Maykut, K.H. Schlunzen, and H. Eicken (2003), Impact of underwater-ice evolution on Arctic summer sea ice, *J. Geophys. Res.*, 108(C7), 3223, doi:10.1029/2001JC001173.
- [10] N. Untersteiner, and F. I. Badgley (1958), Preliminary results of thermal budget studies on Arctic pack ice during summer and autumn, in *Arctic Sea Ice*, U.S. National Academy of Sciences-National Research Council Publication 598, pp. 85-92.
- [11] A.W. Woods (1992), Melting and dissolving, *J. Fluid Mech.*, 239, 429-448.